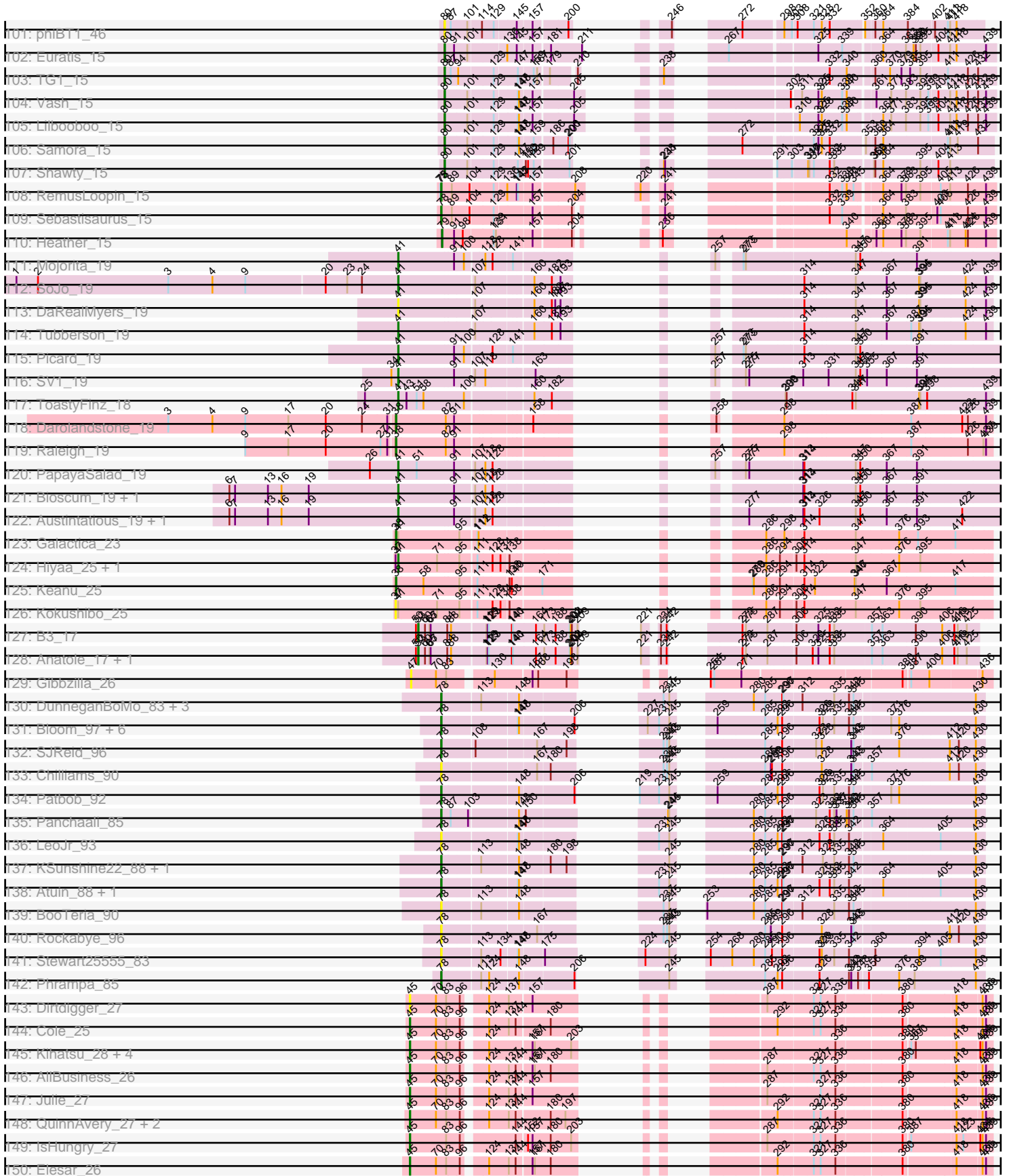


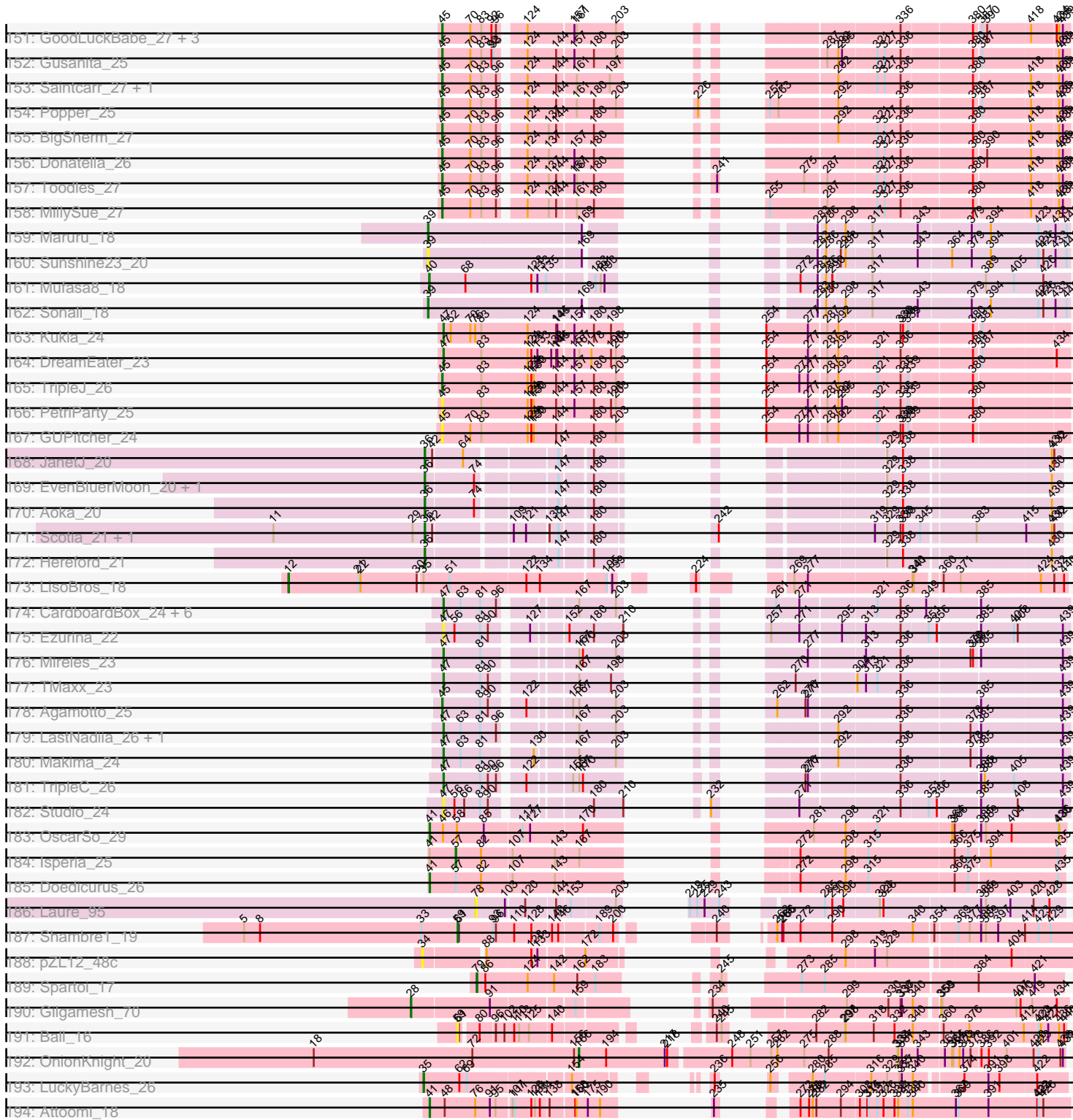
Pham 311141

| | | | | | | | | | | | | | | | | | | | | | | | | |
|---------------------------|----|----|-----|-----|-----|-----|-----|-----|-----|-----|-----|-----|-----|-----|-----|-----|-----|-----|-----|-----|-----|-----|-----|-----|
| 1: Albanese_20 | 85 | 91 | 105 | 129 | 149 | 174 | 196 | 214 | 223 | 240 | 260 | 284 | 291 | 300 | 316 | 323 | 332 | 340 | 347 | 368 | 381 | 389 | 421 | 440 |
| 2: GreenHearts_20 | 85 | 91 | 105 | 129 | 149 | 174 | 196 | 214 | 223 | 240 | 260 | 284 | 291 | 300 | 316 | 323 | 332 | 340 | 347 | 368 | 381 | 389 | 421 | 440 |
| 3: Immaculata_20 + 2 | 85 | 91 | 105 | 129 | 149 | 174 | 196 | 214 | 223 | 240 | 260 | 284 | 291 | 300 | 316 | 323 | 332 | 340 | 347 | 368 | 381 | 389 | 421 | 440 |
| 4: Mikoto_16 + 2 | 85 | 91 | 105 | 129 | 149 | 174 | 196 | 214 | 223 | 240 | 260 | 284 | 291 | 300 | 316 | 323 | 332 | 340 | 347 | 368 | 381 | 389 | 421 | 440 |
| 5: Glenn_20 + 5 | 85 | 91 | 105 | 129 | 149 | 174 | 196 | 214 | 223 | 240 | 260 | 284 | 291 | 300 | 316 | 323 | 332 | 340 | 347 | 368 | 381 | 389 | 421 | 440 |
| 6: BigMack_16 | 85 | 91 | 105 | 129 | 149 | 174 | 196 | 214 | 223 | 240 | 260 | 284 | 291 | 300 | 316 | 323 | 332 | 340 | 347 | 368 | 381 | 389 | 421 | 440 |
| 7: O'Malley_16 + 3 | 85 | 91 | 105 | 129 | 149 | 174 | 196 | 214 | 223 | 240 | 260 | 284 | 291 | 300 | 316 | 323 | 332 | 340 | 347 | 368 | 381 | 389 | 421 | 440 |
| 8: CristinaYang_16 + 6 | 85 | 91 | 105 | 129 | 149 | 174 | 196 | 214 | 223 | 240 | 260 | 284 | 291 | 300 | 316 | 323 | 332 | 340 | 347 | 368 | 381 | 389 | 421 | 440 |
| 9: TattModd_20 + 1 | 85 | 91 | 105 | 129 | 149 | 174 | 196 | 214 | 223 | 240 | 260 | 284 | 291 | 300 | 316 | 323 | 332 | 340 | 347 | 368 | 381 | 389 | 421 | 440 |
| 10: AustinPowers_16 | 85 | 91 | 105 | 129 | 149 | 174 | 196 | 214 | 223 | 240 | 260 | 284 | 291 | 300 | 316 | 323 | 332 | 340 | 347 | 368 | 381 | 389 | 421 | 440 |
| 11: Zorro_20 + 2 | 85 | 91 | 105 | 129 | 149 | 174 | 196 | 214 | 223 | 240 | 260 | 284 | 291 | 300 | 316 | 323 | 332 | 340 | 347 | 368 | 381 | 389 | 421 | 440 |
| 12: KingBob_16 + 4 | 85 | 91 | 105 | 129 | 149 | 174 | 196 | 214 | 223 | 240 | 260 | 284 | 291 | 300 | 316 | 323 | 332 | 340 | 347 | 368 | 381 | 389 | 421 | 440 |
| 13: Kittykat_16 | 85 | 91 | 105 | 129 | 149 | 174 | 196 | 214 | 223 | 240 | 260 | 284 | 291 | 300 | 316 | 323 | 332 | 340 | 347 | 368 | 381 | 389 | 421 | 440 |
| 14: Aledel_16 + 1 | 85 | 91 | 105 | 129 | 149 | 174 | 196 | 214 | 223 | 240 | 260 | 284 | 291 | 300 | 316 | 323 | 332 | 340 | 347 | 368 | 381 | 389 | 421 | 440 |
| 15: Litotes_20 + 2 | 85 | 91 | 105 | 129 | 149 | 174 | 196 | 214 | 223 | 240 | 260 | 284 | 291 | 300 | 316 | 323 | 332 | 340 | 347 | 368 | 381 | 389 | 421 | 440 |
| 16: HunterDaile_16 + 1 | 85 | 91 | 105 | 129 | 149 | 174 | 196 | 214 | 223 | 240 | 260 | 284 | 291 | 300 | 316 | 323 | 332 | 340 | 347 | 368 | 381 | 389 | 421 | 440 |
| 17: CailleO'Malley_20 + 3 | 85 | 91 | 105 | 129 | 149 | 174 | 196 | 214 | 223 | 240 | 260 | 284 | 291 | 300 | 316 | 323 | 332 | 340 | 347 | 368 | 381 | 389 | 421 | 440 |
| 18: Scuttie_20 | 85 | 91 | 105 | 129 | 149 | 174 | 196 | 214 | 223 | 240 | 260 | 284 | 291 | 300 | 316 | 323 | 332 | 340 | 347 | 368 | 381 | 389 | 421 | 440 |
| 19: Fluke_20 | 85 | 91 | 105 | 129 | 149 | 174 | 196 | 214 | 223 | 240 | 260 | 284 | 291 | 300 | 316 | 323 | 332 | 340 | 347 | 368 | 381 | 389 | 421 | 440 |
| 20: BrotherBlo_20 | 85 | 91 | 105 | 129 | 149 | 174 | 196 | 214 | 223 | 240 | 260 | 284 | 291 | 300 | 316 | 323 | 332 | 340 | 347 | 368 | 381 | 389 | 421 | 440 |
| 21: EstebanJulior_16 + 1 | 85 | 91 | 105 | 129 | 149 | 174 | 196 | 214 | 223 | 240 | 260 | 284 | 291 | 300 | 316 | 323 | 332 | 340 | 347 | 368 | 381 | 389 | 421 | 440 |
| 22: AppleCider_20 | 85 | 91 | 105 | 129 | 149 | 174 | 196 | 214 | 223 | 240 | 260 | 284 | 291 | 300 | 316 | 323 | 332 | 340 | 347 | 368 | 381 | 389 | 421 | 440 |
| 23: Nubia_20 | 85 | 91 | 105 | 129 | 149 | 174 | 196 | 214 | 223 | 240 | 260 | 284 | 291 | 300 | 316 | 323 | 332 | 340 | 347 | 368 | 381 | 389 | 421 | 440 |
| 24: Graynor_20 | 85 | 91 | 105 | 129 | 149 | 174 | 196 | 214 | 223 | 240 | 260 | 284 | 291 | 300 | 316 | 323 | 332 | 340 | 347 | 368 | 381 | 389 | 421 | 440 |
| 25: Huckleberry_16 + 1 | 85 | 91 | 105 | 129 | 149 | 174 | 196 | 214 | 223 | 240 | 260 | 284 | 291 | 300 | 316 | 323 | 332 | 340 | 347 | 368 | 381 | 389 | 421 | 440 |
| 26: Bennie_16 | 85 | 91 | 105 | 129 | 149 | 174 | 196 | 214 | 223 | 240 | 260 | 284 | 291 | 300 | 316 | 323 | 332 | 340 | 347 | 368 | 381 | 389 | 421 | 440 |
| 27: HeadNerd_16 | 85 | 91 | 105 | 129 | 149 | 174 | 196 | 214 | 223 | 240 | 260 | 284 | 291 | 300 | 316 | 323 | 332 | 340 | 347 | 368 | 381 | 389 | 421 | 440 |
| 28: Korra_21 | 85 | 91 | 105 | 129 | 149 | 174 | 196 | 214 | 223 | 240 | 260 | 284 | 291 | 300 | 316 | 323 | 332 | 340 | 347 | 368 | 381 | 389 | 421 | 440 |
| 29: Joann_20 | 85 | 91 | 105 | 129 | 149 | 174 | 196 | 214 | 223 | 240 | 260 | 284 | 291 | 300 | 316 | 323 | 332 | 340 | 347 | 368 | 381 | 389 | 421 | 440 |
| 30: Lakshmi_20 | 85 | 91 | 105 | 129 | 149 | 174 | 196 | 214 | 223 | 240 | 260 | 284 | 291 | 300 | 316 | 323 | 332 | 340 | 347 | 368 | 381 | 389 | 421 | 440 |
| 31: Riverdale_20 | 85 | 91 | 105 | 129 | 149 | 174 | 196 | 214 | 223 | 240 | 260 | 284 | 291 | 300 | 316 | 323 | 332 | 340 | 347 | 368 | 381 | 389 | 421 | 440 |
| 32: Carpal_20 | 85 | 91 | 105 | 129 | 149 | 174 | 196 | 214 | 223 | 240 | 260 | 284 | 291 | 300 | 316 | 323 | 332 | 340 | 347 | 368 | 381 | 389 | 421 | 440 |
| 33: DreamTeam_16 + 1 | 85 | 91 | 105 | 129 | 149 | 174 | 196 | 214 | 223 | 240 | 260 | 284 | 291 | 300 | 316 | 323 | 332 | 340 | 347 | 368 | 381 | 389 | 421 | 440 |
| 34: Pumancara_16 | 85 | 91 | 105 | 129 | 149 | 174 | 196 | 214 | 223 | 240 | 260 | 284 | 291 | 300 | 316 | 323 | 332 | 340 | 347 | 368 | 381 | 389 | 421 | 440 |
| 35: Beethoven_20 | 85 | 91 | 105 | 129 | 149 | 174 | 196 | 214 | 223 | 240 | 260 | 284 | 291 | 300 | 316 | 323 | 332 | 340 | 347 | 368 | 381 | 389 | 421 | 440 |
| 36: Misaeng_20 + 2 | 85 | 91 | 105 | 129 | 149 | 174 | 196 | 214 | 223 | 240 | 260 | 284 | 291 | 300 | 316 | 323 | 332 | 340 | 347 | 368 | 381 | 389 | 421 | 440 |
| 37: DrRober_16 + 1 | 85 | 91 | 105 | 129 | 149 | 174 | 196 | 214 | 223 | 240 | 260 | 284 | 291 | 300 | 316 | 323 | 332 | 340 | 347 | 368 | 381 | 389 | 421 | 440 |
| 38: Greenhouse_20 | 85 | 91 | 105 | 129 | 149 | 174 | 196 | 214 | 223 | 240 | 260 | 284 | 291 | 300 | 316 | 323 | 332 | 340 | 347 | 368 | 381 | 389 | 421 | 440 |
| 39: Rozby_20 | 85 | 91 | 105 | 129 | 149 | 174 | 196 | 214 | 223 | 240 | 260 | 284 | 291 | 300 | 316 | 323 | 332 | 340 | 347 | 368 | 381 | 389 | 421 | 440 |
| 40: Uffa_16 | 85 | 91 | 105 | 129 | 149 | 174 | 196 | 214 | 223 | 240 | 260 | 284 | 291 | 300 | 316 | 323 | 332 | 340 | 347 | 368 | 381 | 389 | 421 | 440 |
| 41: Lennox_16 | 85 | 91 | 105 | 129 | 149 | 174 | 196 | 214 | 223 | 240 | 260 | 284 | 291 | 300 | 316 | 323 | 332 | 340 | 347 | 368 | 381 | 389 | 421 | 440 |
| 42: Oxymnius_20 | 85 | 91 | 105 | 129 | 149 | 174 | 196 | 214 | 223 | 240 | 260 | 284 | 291 | 300 | 316 | 323 | 332 | 340 | 347 | 368 | 381 | 389 | 421 | 440 |
| 43: Vallejo_20 | 85 | 91 | 105 | 129 | 149 | 174 | 196 | 214 | 223 | 240 | 260 | 284 | 291 | 300 | 316 | 323 | 332 | 340 | 347 | 368 | 381 | 389 | 421 | 440 |
| 44: OurGinNessie_16 | 85 | 91 | 105 | 129 | 149 | 174 | 196 | 214 | 223 | 240 | 260 | 284 | 291 | 300 | 316 | 323 | 332 | 340 | 347 | 368 | 381 | 389 | 421 | 440 |
| 45: PinkFriday_16 | 85 | 91 | 105 | 129 | 149 | 174 | 196 | 214 | 223 | 240 | 260 | 284 | 291 | 300 | 316 | 323 | 332 | 340 | 347 | 368 | 381 | 389 | 421 | 440 |
| 46: Maria1952_16 | 85 | 91 | 105 | 129 | 149 | 174 | 196 | 214 | 223 | 240 | 260 | 284 | 291 | 300 | 316 | 323 | 332 | 340 | 347 | 368 | 381 | 389 | 421 | 440 |
| 47: Preamble_16 | 85 | 91 | 105 | 129 | 149 | 174 | 196 | 214 | 223 | 240 | 260 | 284 | 291 | 300 | 316 | 323 | 332 | 340 | 347 | 368 | 381 | 389 | 421 | 440 |
| 48: WonderBoy_16 | 85 | 91 | 105 | 129 | 149 | 174 | 196 | 214 | 223 | 240 | 260 | 284 | 291 | 300 | 316 | 323 | 332 | 340 | 347 | 368 | 381 | 389 | 421 | 440 |
| 49: Abidatro_18 | 85 | 91 | 105 | 129 | 149 | 174 | 196 | 214 | 223 | 240 | 260 | 284 | 291 | 300 | 316 | 323 | 332 | 340 | 347 | 368 | 381 | 389 | 421 | 440 |
| 50: Galaxy_18 | 85 | 91 | 105 | 129 | 149 | 174 | 196 | 214 | 223 | 240 | 260 | 284 | 291 | 300 | 316 | 323 | 332 | 340 | 347 | 368 | 381 | 389 | 421 | 440 |

Pham 311141



Pham 311141



Note: Tracks are now grouped by subcluster and scaled. Switching in subcluster is indicated by changes in track color. Track scale is now set by default to display the region 30 bp upstream of start 1 to 30 bp downstream of the last possible start. If this default region is judged to be packed too tightly with annotated starts, the track will be further scaled to only show that region of the ORF with annotated starts. This action will be indicated by adding "Zoomed" to the title. For starts, yellow indicates the location of called starts comprised solely of Glimmer/GeneMark auto-annotations, green indicates the location of called starts with at least 1 manual gene annotation.

Pham 311141 Report

This analysis was run 06/27/26 on database version 652.

WARNING: Pham size does not match number of genes in report. Either unphamerated genes have been added (by you) or starterator has removed genes due to invalid start codon.

Pham number 311141 has 312 members, 53 are drafts.

Phages represented in each track:

- Track 1 : Albanese_20
- Track 2 : GreenHearts_20
- Track 3 : Immaculata_20, Potatoes_20, Cholula_20
- Track 4 : Makoto_16, Pterodactyl_16, ChewChew_16
- Track 5 : Glenn_20, RAP15_20, MeganNoll_20, Savage2526_20, Jumboset_20, MrGloopy_20
- Track 6 : BigMack_16
- Track 7 : OMalley_16, Eunoia_16, Supakev_16, Riovina_16
- Track 8 : CristinaYang_16, Lasagna_16, LilStuart_16, Nancia_16, PitaDog_16, Bodacious_16, Lucy_16
- Track 9 : TattModd_20, Wawa_20
- Track 10 : AustinPowers_16
- Track 11 : Zorro_20, Dino_20, Kalizoi_20
- Track 12 : KingBob_16, Herb_16, Sergei_16, Daiboju_16, Temper16_16
- Track 13 : Kittykat_16
- Track 14 : Aledel_16, Chridison_16
- Track 15 : Litotes_20, MrBoss_20, Wayne_20
- Track 16 : HunterDalle_16, Vulture_16
- Track 17 : CallieOMalley_20, Suppi_20, Canowicakte_20, PartyCup_20
- Track 18 : Scuttle_20
- Track 19 : Fluke_20
- Track 20 : BrotherBLo_20
- Track 21 : EstebanJulior_16, MamaPearl_16
- Track 22 : AppleCider_20
- Track 23 : Nubia_20
- Track 24 : Graynor_20
- Track 25 : Huckleberry_16, Moki_16
- Track 26 : Bennie_16
- Track 27 : HeadNerd_16
- Track 28 : Korra_21
- Track 29 : Joann_20
- Track 30 : Lakshmi_20
- Track 31 : Riverdale_20

- Track 32 : Carpal_20
- Track 33 : DreamTeam_16, Gisselle_16
- Track 34 : Pumancara_16
- Track 35 : Beethoven_20
- Track 36 : Misaeng_20, RcigaStruga_20, Huntingdon_20
- Track 37 : DrRobert_16, Christian_16
- Track 38 : Greenhouse_20
- Track 39 : Rozby_20
- Track 40 : Urla_16
- Track 41 : Lennox_16
- Track 42 : Oxynfrius_20
- Track 43 : Vallejo_20
- Track 44 : OurGirlNessie_16
- Track 45 : PinkFriday_16
- Track 46 : Maria1952_16
- Track 47 : Preamble_16
- Track 48 : WonderBoy_16
- Track 49 : Abidatro_18
- Track 50 : Galaxy_18
- Track 51 : EvePickles_26
- Track 52 : Sashimi_27
- Track 53 : Faja_26
- Track 54 : Michkear_22
- Track 55 : ThursdayNight_17
- Track 56 : Cassia_19
- Track 57 : Joemato_19, AGrandiflora_19, Lego_19, YesChef_19, Flutur_19, Tutumahutu_19, Tbone_19, Powerpuff_19, Cyan_19, Warda_19, Mudpuppy_19, Simpson_21
- Track 58 : ObiToo_18, Crewmate_19
- Track 59 : TforTroy_19
- Track 60 : JohnDoe_19, Kaylissa_19
- Track 61 : MissSwiss_18
- Track 62 : VResidence_18
- Track 63 : Subaru_20, Elezi_19, Eraser_19, London_19, Skelbel_20, Jstan_20, Niobe_19, Asa16_19
- Track 64 : Community_19, Tuck_20
- Track 65 : IttyBittyPiggy_18
- Track 66 : DrManhattan_18
- Track 67 : Adolin_18
- Track 68 : Lizalica_19
- Track 69 : Berrie_19
- Track 70 : JuneStar_19, Schaffner_19
- Track 71 : Nitro_19
- Track 72 : Phives_20
- Track 73 : Pixelle_19
- Track 74 : Pumpkins_19
- Track 75 : Tian_19, Amyev_19
- Track 76 : KeAlii_18
- Track 77 : Adumb2043_19, Amploria_19, AEgle_19, Turab_19
- Track 78 : Sue2_18
- Track 79 : Reedo_18
- Track 80 : Janeemi_20
- Track 81 : Yang_19

- Track 82 : DrSierra_18
- Track 83 : Wildwest_19
- Track 84 : Iter_19, Ascela_19
- Track 85 : PandaPo_18
- Track 86 : Tallboi_19
- Track 87 : Maureen_18, IUFootball_18, Liebe_18
- Track 88 : MaGuCo_18
- Track 89 : Tweety19_18, Snek_18
- Track 90 : Emotion_18
- Track 91 : AceofSpades_18, VroomVroom_18
- Track 92 : MiniMommy_18, JasmineDragon_18, ShakeltOph_18
- Track 93 : Origami_19, LadyAstra_19
- Track 94 : Ashes_19, RockScotty_19, Halsey_19, Moss_19
- Track 95 : Sabourin_19, Cappuccino_19, Kalimba_19, Donkey_19, Gambol_19, Sooty_19
- Track 96 : SpecialK_19
- Track 97 : Mysterium_19, Gumpizza_19, Beaupre_19, Stuu_19, Giorgio_19
- Track 98 : Soondubu_18
- Track 99 : Exile_18
- Track 100 : AinMach_18
- Track 101 : phiBT1_46
- Track 102 : Euratis_15
- Track 103 : TG1_15
- Track 104 : Vash_15
- Track 105 : Lilbooboo_15
- Track 106 : Samora_15
- Track 107 : Shawty_15
- Track 108 : RemusLoopin_15
- Track 109 : Sebastisaurus_15
- Track 110 : Heather_15
- Track 111 : Mojorita_19
- Track 112 : SoJo_19
- Track 113 : DaRealMyers_19
- Track 114 : Tubberson_19
- Track 115 : Picard_19
- Track 116 : SV1_19
- Track 117 : ToastyFinz_18
- Track 118 : Darolandstone_19
- Track 119 : Raleigh_19
- Track 120 : PapayaSalad_19
- Track 121 : Bioscum_19, Ididsumtinwong_19
- Track 122 : Austintatious_19, Lishka_19
- Track 123 : Galactica_23
- Track 124 : Hiyaa_25, Spocter_25
- Track 125 : Keanu_25
- Track 126 : Kokushibo_25
- Track 127 : B3_17
- Track 128 : Anatole_17, E1_17
- Track 129 : Gibbzilla_26
- Track 130 : DunneganBoMo_83, Artu_86, Emmetator_86, WaddleDee_81
- Track 131 : Bloom_97, FloraSnap32_93, GoldenEssence_79, Racecar_94, Mimi_93, Talia1610_93, FrostedClock_95
- Track 132 : SJReid_96

- Track 133 : Chilliams_90
- Track 134 : Patbob_92
- Track 135 : Panchaali_85
- Track 136 : LeoJr_93
- Track 137 : KSunshine22_88, Ellewin_82
- Track 138 : Atuin_88, ReginaGlobina_93
- Track 139 : BooTeria_90
- Track 140 : Rockabye_96
- Track 141 : Stewart25555_83
- Track 142 : Phrampa_85
- Track 143 : Dirtdigger_27
- Track 144 : Cole_25
- Track 145 : Kihatsu_28, Schism_27, Lenoxika_27, Guinevere_27, Nandita_27
- Track 146 : AllBusiness_26
- Track 147 : Julie_27
- Track 148 : QuinnAvery_27, Ichiang_25, Halloweekend_25
- Track 149 : IsHungry_27
- Track 150 : Elesar_26
- Track 151 : GoodLuckBabe_27, Yonex_27, Ryan_27, Zaheer_27
- Track 152 : Gusanita_25
- Track 153 : Saintcarr_27, ToastyOats_29
- Track 154 : Popper_25
- Track 155 : BigSherm_27
- Track 156 : Donatella_26
- Track 157 : Toodles_27
- Track 158 : MillySue_27
- Track 159 : Maruru_18
- Track 160 : Sunshine23_20
- Track 161 : Mufasa8_18
- Track 162 : Sonali_18
- Track 163 : Kukla_24
- Track 164 : DreamEater_23
- Track 165 : TripleJ_26
- Track 166 : PetriParty_25
- Track 167 : GUPitcher_24
- Track 168 : JanetJ_20
- Track 169 : EvenBluerMoon_20, PrairieDogTown_20
- Track 170 : Aoka_20
- Track 171 : Scotia_21, NoSwimming_21
- Track 172 : Hereford_21
- Track 173 : LisoBros_18
- Track 174 : CardboardBox_24, Neuville_23, ChipsNGuac_23, Gerri43_23, Roberts_23, ChamoyPickle_24, AnnabellLee_23
- Track 175 : Ezurina_22
- Track 176 : Mireles_23
- Track 177 : TMaxx_23
- Track 178 : Agamoto_25
- Track 179 : LastNadiia_26, Audell_26
- Track 180 : Makima_24
- Track 181 : TripleC_26
- Track 182 : Studio_24
- Track 183 : OscarSo_29
- Track 184 : Isperia_25

- Track 185 : Doedicurus_26
- Track 186 : Laure_95
- Track 187 : Shambre1_19
- Track 188 : pZL12_48c
- Track 189 : Spartoi_17
- Track 190 : Gilgamesh_70
- Track 191 : Ball_16
- Track 192 : OnionKnight_20
- Track 193 : LuckyBarnes_26
- Track 194 : Attoomi_18

Summary of Final Annotations (See graph section above for start numbers):

The start number called the most often in the published annotations is 59, it was called in 83 of the 259 non-draft genes in the pham.

Genes that call this "Most Annotated" start:

- Albanese_20, AppleCider_20, AustinPowers_16, Ball_16, Beethoven_20, BigMack_16, Bodacious_16, BrotherBLo_20, CallieOMalley_20, Canowicakte_20, Carpal_20, Cholula_20, Christian_16, Crewmate_19, CristinaYang_16, Daiboju_16, Dino_20, DrManhattan_18, DrRobert_16, DrSierra_18, DreamTeam_16, EstebanJulior_16, Eunoia_16, Fluke_20, Gisselle_16, Glenn_20, Graynor_20, GreenHearts_20, Greenhouse_20, Herb_16, Huckleberry_16, HunterDalle_16, Huntingdon_20, Immaculata_20, Joann_20, Jumboset_20, Kalizoi_20, KingBob_16, Kittykat_16, Korra_21, Lakshmi_20, Lasagna_16, Lennox_16, LilStuart_16, Litotes_20, Lucy_16, MamaPearl_16, MeganNoll_20, Misaeng_20, Moki_16, MrBoss_20, MrGloopy_20, Nancia_16, OMalley_16, ObiToo_18, OurGirlNessie_16, Oxynfrius_20, PandaPo_18, PartyCup_20, PinkFriday_16, PitaDog_16, Potatoes_20, Preamble_16, Pumancara_16, RAP15_20, RcigaStruga_20, Riovina_16, Riverdale_20, Rozby_20, Savage2526_20, Scuttle_20, Sergei_16, Shambre1_19, Sue2_18, Supakev_16, Suppi_20, TattModd_20, Temper16_16, Urla_16, VResidence_18, Vallejo_20, Vulture_16, Wawa_20, Wayne_20, Wildwest_19, WonderBoy_16, Zorro_20,

Genes that have the "Most Annotated" start but do not call it:

- Adolin_18, Aledel_16, Bennie_16, ChewChew_16, Chridison_16, HeadNerd_16, IttyBittyPiggy_18, KeAlii_18, Makoto_16, Maria1952_16, MissSwiss_18, Nubia_20, Pterodactyl_16, Reedo_18, Snek_18, Tweety19_18,

Genes that do not have the "Most Annotated" start:

- AEgle_19, AGrandiflora_19, Abidatro_18, AceofSpades_18, Adumb2043_19, Agamoto_25, AinMach_18, AllBusiness_26, Amploria_19, Amyev_19, Anatole_17, AnnabelLee_23, Aoka_20, Artu_86, Asa16_19, Ascela_19, Ashes_19, Attoomi_18, Atuin_88, Audell_26, Austintatious_19, B3_17, Beaupre_19, Berrie_19, BigSherm_27, Bioscum_19, Bloom_97, BooTeria_90, Cappuccino_19, CardboardBox_24, Cassia_19, ChamoyPickle_24, Chilliams_90, ChipsNGuac_23, Cole_25, Community_19, Cyan_19, DaRealMyers_19, Darolandstone_19, Dirtdigger_27, Doedicurus_26, Donatella_26, Donkey_19, DreamEater_23, DunneganBoMo_83, E1_17, Elesar_26, Elezi_19, Ellewin_82, Emmetator_86, Emotion_18, Eraser_19, Euratis_15, EvePickles_26, EvenBluerMoon_20, Exile_18,

Ezurina_22, Faja_26, FloraSnap32_93, Flutur_19, FrostedClock_95, GUPitcher_24, Galactica_23, Galaxy_18, Gambol_19, Gerri43_23, Gibbzilla_26, Gilgamesh_70, Giorgio_19, GoldenEssence_79, GoodLuckBabe_27, Guinevere_27, Gumpizza_19, Gusanita_25, Halloweekend_25, Halsey_19, Heather_15, Hereford_21, Hiyaa_25, IUFootball_18, Ichiang_25, Ididsumtinwong_19, IsHungry_27, Isperia_25, Iter_19, Janeemi_20, JanetJ_20, JasmineDragon_18, Joemato_19, JohnDoe_19, Jstan_20, Julie_27, JuneStar_19, KSunshine22_88, Kalimba_19, Kaylissa_19, Keanu_25, Kihatsu_28, Kokushibo_25, Kukla_24, LadyAstra_19, LastNadiia_26, Laure_95, Lego_19, Lenoxika_27, LeoJr_93, Liebe_18, Lilbooboo_15, Lishka_19, LisoBros_18, Lizalica_19, London_19, LuckyBarnes_26, MaGuCo_18, Makima_24, Maruru_18, Maureen_18, Michkear_22, MillySue_27, Mimi_93, MiniMommy_18, Mireles_23, Moajorita_19, Moss_19, Mudpuppy_19, Mufasa8_18, Mysterium_19, Nandita_27, Neuvillelette_23, Niobe_19, Nitro_19, NoSwimming_21, OnionKnight_20, Origami_19, OscarSo_29, Panchaali_85, PapayaSalad_19, Patbob_92, PetriParty_25, Phives_20, Phrampa_85, Picard_19, Pixelle_19, Popper_25, Powerpuff_19, PrairieDogTown_20, Pumpkins_19, QuinnAvery_27, Racecar_94, Raleigh_19, ReginaGlobina_93, RemusLoopin_15, Roberts_23, RockScotty_19, Rockabye_96, Ryan_27, SJReid_96, SV1_19, Sabourin_19, Saintcarr_27, Samora_15, Sashimi_27, Schaffner_19, Schism_27, Scotia_21, Sebastisaurus_15, ShakeltOph_18, Shawty_15, Simpson_21, Skelbel_20, SoJo_19, Sonali_18, Soondubu_18, Sooty_19, Spartoi_17, SpecialK_19, Spocter_25, Stewart25555_83, Studio_24, Stuu_19, Subaru_20, Sunshine23_20, TG1_15, TMaxx_23, Talia1610_93, Tallboi_19, Tbone_19, TforTroy_19, ThursdayNight_17, Tian_19, ToastyFinz_18, ToastyOats_29, Toodles_27, TripleC_26, TripleJ_26, Tubberston_19, Tuck_20, Turab_19, Tutumahutu_19, Vash_15, VroomVroom_18, WaddleDee_81, Warda_19, Yang_19, YesChef_19, Yonex_27, Zaheer_27, pZL12_48c, phiBT1_46,

Summary by start number:

Start 12:

- Found in 1 of 312 (0.3%) of genes in pham
- Manual Annotations of this start: 1 of 259
- Called 100.0% of time when present
- Phage (with cluster) where this start called: LisoBros_18 (FP),

Start 28:

- Found in 1 of 312 (0.3%) of genes in pham
- Manual Annotations of this start: 1 of 259
- Called 100.0% of time when present
- Phage (with cluster) where this start called: Gilgamesh_70 (singleton),

Start 34:

- Found in 2 of 312 (0.6%) of genes in pham
- No Manual Annotations of this start.
- Called 50.0% of time when present
- Phage (with cluster) where this start called: pZL12_48c (singleton),

Start 35:

- Found in 72 of 312 (23.1%) of genes in pham
- Manual Annotations of this start: 54 of 259
- Called 95.8% of time when present
- Phage (with cluster) where this start called: AEgle_19 (AZ1), AGrandiflora_19 (AZ1), Adumb2043_19 (AZ1), AinMach_18 (AZ7), Amploria_19 (AZ1), Amyev_19 (AZ1),

Asa16_19 (AZ1), Ascela_19 (AZ1), Ashes_19 (AZ5), Beaupre_19 (AZ5), Berrie_19 (AZ1), Cappuccino_19 (AZ5), Cassia_19 (AZ1), Community_19 (AZ1), Cyan_19 (AZ1), Donkey_19 (AZ5), Elezi_19 (AZ1), Eraser_19 (AZ1), Exile_18 (AZ6), Flutur_19 (AZ), Gambol_19 (AZ5), Giorgio_19 (AZ5), Gumpizza_19 (AZ5), Halsey_19 (AZ5), IUFootball_18 (AZ2), Iter_19 (AZ1), Janeemi_20 (AZ1), Joemato_19 (AZ1), JohnDoe_19 (AZ1), Jstan_20 (AZ1), JuneStar_19 (AZ1), Kalimba_19 (AZ5), Kaylissa_19 (AZ1), Lego_19 (AZ1), Liebe_18 (AZ2), Lizalica_19 (AZ1), London_19 (AZ1), LuckyBarnes_26 (singleton), MaGuCo_18 (AZ2), Maureen_18 (AZ2), Michkear_22 (AZ), Moss_19 (AZ5), Mudpuppy_19 (AZ1), Mysterium_19 (AZ5), Niobe_19 (AZ1), Nitro_19 (AZ1), Phives_20 (AZ1), Pixelle_19 (AZ1), Powerpuff_19 (AZ1), Pumpkins_19 (AZ1), RockScotty_19 (AZ5), Sabourin_19 (AZ5), Schaffner_19 (AZ1), Simpson_21 (AZ1), Skelbel_20 (AZ1), Soondubu_18 (AZ6), Sooty_19 (AZ5), Stuu_19 (AZ5), Subaru_20 (AZ1), Tallboi_19 (AZ1), Tbone_19 (AZ1), TforTroy_19 (AZ1), Tian_19 (AZ1), Tuck_20 (AZ1), Turab_19 (AZ1), Tutumahutu_19 (AZ1), Warda_19 (AZ1), Yang_19 (AZ1), YesChef_19 (AZ1),

Start 36:

- Found in 15 of 312 (4.8%) of genes in pham
- Manual Annotations of this start: 12 of 259
- Called 100.0% of time when present
- Phage (with cluster) where this start called: AceofSpades_18 (AZ4), Aoka_20 (FO), Emotion_18 (AZ4), EvenBluerMoon_20 (FO), Hereford_21 (FO), JanetJ_20 (FO), JasmineDragon_18 (AZ4), LadyAstra_19 (AZ4), MiniMommy_18 (AZ4), NoSwimming_21 (FO), Origami_19 (AZ4), PrairieDogTown_20 (FO), Scotia_21 (FO), ShakeltOph_18 (AZ4), VroomVroom_18 (AZ4),

Start 37:

- Found in 3 of 312 (1.0%) of genes in pham
- No Manual Annotations of this start.
- Called 33.3% of time when present
- Phage (with cluster) where this start called: Kokushibo_25 (BQ),

Start 38:

- Found in 4 of 312 (1.3%) of genes in pham
- Manual Annotations of this start: 4 of 259
- Called 100.0% of time when present
- Phage (with cluster) where this start called: Darolandstone_19 (BC2), Galactica_23 (BQ), Keanu_25 (BQ), Raleigh_19 (BC2),

Start 39:

- Found in 3 of 312 (1.0%) of genes in pham
- Manual Annotations of this start: 2 of 259
- Called 100.0% of time when present
- Phage (with cluster) where this start called: Maruru_18 (FG), Sonali_18 (FG), Sunshine23_20 (FG),

Start 40:

- Found in 1 of 312 (0.3%) of genes in pham
- Manual Annotations of this start: 1 of 259
- Called 100.0% of time when present
- Phage (with cluster) where this start called: Mufasa8_18 (FG),

Start 41:

- Found in 20 of 312 (6.4%) of genes in pham
- Manual Annotations of this start: 16 of 259
- Called 85.0% of time when present
- Phage (with cluster) where this start called: Attoomi_18 (singleton), Austintatious_19 (BC3), Bioscum_19 (BC3), DaRealMyers_19 (BC1), Doedicurus_26 (GJ), Hiyaa_25 (BQ), Ididsumtinwong_19 (BC3), Lishka_19 (BC3), Mojorita_19 (BC1), OscarSo_29 (GJ), PapayaSalad_19 (BC3), Picard_19 (BC1), SV1_19 (BC1), SoJo_19 (BC1), Spocter_25 (BQ), ToastyFinz_18 (BC1), Tubberson_19 (BC1),

Start 45:

- Found in 30 of 312 (9.6%) of genes in pham
- Manual Annotations of this start: 24 of 259
- Called 100.0% of time when present
- Phage (with cluster) where this start called: Agamoto_25 (FR), AllBusiness_26 (FF), BigSherm_27 (FF), Cole_25 (FF), Dirtdigger_27 (FF), Donatella_26 (FF), Elesar_26 (FF), GUPitcher_24 (FJ), GoodLuckBabe_27 (FF), Guinevere_27 (FF), Gusanita_25 (FF), Halloween_25 (FF), Ichiang_25 (FF), IsHungry_27 (FF), Julie_27 (FF), Kihatsu_28 (FF), Lenoxika_27 (FF), MillySue_27 (FF), Nandita_27 (FF), PetriParty_25 (FJ), Popper_25 (FF), QuinnAvery_27 (FF), Ryan_27 (FF), Saintcarr_27 (FF), Schism_27 (FF), ToastyOats_29 (FF), Toodles_27 (FF), TripleJ_26 (FJ), Yonex_27 (FF), Zaheer_27 (FF),

Start 47:

- Found in 21 of 312 (6.7%) of genes in pham
- Manual Annotations of this start: 15 of 259
- Called 100.0% of time when present
- Phage (with cluster) where this start called: AnnabelLee_23 (FR), Audell_26 (FR), CardboardBox_24 (FR), ChamoyPickle_24 (FR), ChipsNGuac_23 (FR), DreamEater_23 (FJ), EvePickles_26 (AY), Ezurina_22 (FR), Faja_26 (AY), Gerri43_23 (FR), Gibbzilla_26 (FB), Kukla_24 (FJ), LastNadiia_26 (FR), Makima_24 (FR), Mireles_23 (FR), Neuville_23 (FR), Roberts_23 (FR), Sashimi_27 (AY), Studio_24 (FR), TMaxx_23 (FR), TripleC_26 (FR),

Start 52:

- Found in 21 of 312 (6.7%) of genes in pham
- Manual Annotations of this start: 1 of 259
- Called 4.8% of time when present
- Phage (with cluster) where this start called: SpecialK_19 (AZ5),

Start 53:

- Found in 3 of 312 (1.0%) of genes in pham
- Manual Annotations of this start: 3 of 259
- Called 100.0% of time when present
- Phage (with cluster) where this start called: Anatole_17 (BV), B3_17 (BV), E1_17 (BV),

Start 54:

- Found in 2 of 312 (0.6%) of genes in pham
- Manual Annotations of this start: 2 of 259
- Called 100.0% of time when present
- Phage (with cluster) where this start called: Abidatro_18 (AS1), Galaxy_18 (AS1),

Start 57:

- Found in 18 of 312 (5.8%) of genes in pham
- Manual Annotations of this start: 1 of 259
- Called 5.6% of time when present
- Phage (with cluster) where this start called: Ispéria_25 (GJ),

Start 59:

- Found in 103 of 312 (33.0%) of genes in pham
- Manual Annotations of this start: 83 of 259
- Called 84.5% of time when present
- Phage (with cluster) where this start called: Albanese_20 (AK), AppleCider_20 (AK), AustinPowers_16 (AK), Ball_16 (singleton), Beethoven_20 (AK), BigMack_16 (AK), Bodacious_16 (AK), BrotherBLo_20 (AK), CallieOMalley_20 (AK), Canowicakte_20 (AK), Carpal_20 (AK), Cholula_20 (AK), Christian_16 (AK), Crewmate_19 (AZ1), CristinaYang_16 (AK), Daiboju_16 (AK), Dino_20 (AK), DrManhattan_18 (AZ1), DrRobert_16 (AK), DrSierra_18 (AZ1), DreamTeam_16 (AK), EstebanJulior_16 (AK), Eunoia_16 (AK), Fluke_20 (AK), Gisselle_16 (AK), Glenn_20 (AK), Graynor_20 (AK), GreenHearts_20 (AK), Greenhouse_20 (AK), Herb_16 (AK), Huckleberry_16 (AK), HunterDalle_16 (AK), Huntingdon_20 (AK), Immaculata_20 (AK), Joann_20 (AK), Jumboset_20 (AK), Kalizoi_20 (AK), KingBob_16 (AK), Kittykat_16 (AK), Korra_21 (AK), Lakshmi_20 (AK), Lasagna_16 (AK), Lennox_16 (AK), LilStuart_16 (AK), Litotes_20 (AK), Lucy_16 (AK), MamaPearl_16 (AK), MeganNoll_20 (AK), Misaeng_20 (AK), Moki_16 (AK), MrBoss_20 (AK), MrGloopy_20 (AK), Nancia_16 (AK), OMalley_16 (AK), ObiToo_18 (AZ1), OurGirlNessie_16 (AK), Oxynfrius_20 (AK), PandaPo_18 (AZ1), PartyCup_20 (AK), PinkFriday_16 (AK), PitaDog_16 (AK), Potatoes_20 (AK), Preamble_16 (AK), Pumancara_16 (AK), RAP15_20 (AK), RcigaStruga_20 (AK), Rivovina_16 (AK), Riverdale_20 (AK), Rozby_20 (AK), Savage2526_20 (AK), Scuttle_20 (AK), Sergei_16 (AK), Shambre1_19 (singleton), Sue2_18 (AZ1), Supakev_16 (AK), Suppi_20 (AK), TattModd_20 (AK), Temper16_16 (AK), Urla_16 (AK), VResidence_18 (AZ1), Vallejo_20 (AK), Vulture_16 (AK), Wawa_20 (AK), Wayne_20 (AK), Wildwest_19 (AZ1), WonderBoy_16 (AK), Zorro_20 (AK),

Start 61:

- Found in 103 of 312 (33.0%) of genes in pham
- Manual Annotations of this start: 15 of 259
- Called 14.6% of time when present
- Phage (with cluster) where this start called: Adolin_18 (AZ1), Aledel_16 (AK), Bennie_16 (AK), ChewChew_16 (AK), Chridison_16 (AK), HeadNerd_16 (AK), IttyBittyPiggy_18 (AZ1), KeAlii_18 (AZ1), Makoto_16 (AK), Maria1952_16 (AK), MissSwiss_18 (AZ1), Pterodactyl_16 (AK), Reedo_18 (AZ1), Snek_18 (AZ3), Tweety19_18 (AZ3),

Start 78:

- Found in 79 of 312 (25.3%) of genes in pham
- Manual Annotations of this start: 14 of 259
- Called 34.2% of time when present
- Phage (with cluster) where this start called: Artu_86 (FC), Atuin_88 (FC), Bloom_97 (FC), BooTeria_90 (FC), Chilliams_90 (FC), DunneganBoMo_83 (FC), Ellewin_82 (FC), Emmetator_86 (FC), FloraSnap32_93 (FC), FrostedClock_95 (FC), GoldenEssence_79 (FC), KSunshine22_88 (FC), Laure_95 (UNK), LeoJr_93 (FC), Mimi_93 (FC), Panchaali_85 (FC), Patbob_92 (FC), Phrampa_85 (FC), Racecar_94 (FC), ReginaGlobina_93 (FC), RemusLoopin_15 (BB2), Rockabye_96 (FC), SJReid_96 (FC), Sebastisaurus_15 (BB2), Stewart25555_83 (FC), Talia1610_93

(FC), WaddleDee_81 (FC),

Start 79:

- Found in 2 of 312 (0.6%) of genes in pham
- Manual Annotations of this start: 2 of 259
- Called 100.0% of time when present
- Phage (with cluster) where this start called: Heather_15 (BB2), Spartoi_17 (singleton),

Start 80:

- Found in 35 of 312 (11.2%) of genes in pham
- Manual Annotations of this start: 7 of 259
- Called 22.9% of time when present
- Phage (with cluster) where this start called: Euratis_15 (BB1), Lilbooboo_15 (BB1), Nubia_20 (AK), Samora_15 (BB1), Shawty_15 (BB1), TG1_15 (BB1), Vash_15 (BB1), phiBT1_46 (BB1),

Start 82:

- Found in 53 of 312 (17.0%) of genes in pham
- No Manual Annotations of this start.
- Called 1.9% of time when present
- Phage (with cluster) where this start called: ThursdayNight_17 (AZ),

Start 166:

- Found in 1 of 312 (0.3%) of genes in pham
- Manual Annotations of this start: 1 of 259
- Called 100.0% of time when present
- Phage (with cluster) where this start called: OnionKnight_20 (singleton),

Summary by clusters:

There are 29 clusters represented in this pham: FP, singleton, FR, BV, FC, BQ, FF, FG, FJ, FO, BC3, UNK, BB2, BB1, AS1, AK, AY, AZ, GJ, FB, BC1, AZ6, AZ1, AZ2, AZ3, AZ4, AZ5, BC2, AZ7,

Info for manual annotations of cluster AK:

- Start number 59 was manually annotated 75 times for cluster AK.
- Start number 61 was manually annotated 8 times for cluster AK.
- Start number 80 was manually annotated 1 time for cluster AK.

Info for manual annotations of cluster AS1:

- Start number 54 was manually annotated 2 times for cluster AS1.

Info for manual annotations of cluster AY:

- Start number 47 was manually annotated 3 times for cluster AY.

Info for manual annotations of cluster AZ1:

- Start number 35 was manually annotated 34 times for cluster AZ1.
- Start number 59 was manually annotated 7 times for cluster AZ1.
- Start number 61 was manually annotated 5 times for cluster AZ1.

Info for manual annotations of cluster AZ2:

- Start number 35 was manually annotated 3 times for cluster AZ2.

Info for manual annotations of cluster AZ3:

- Start number 61 was manually annotated 2 times for cluster AZ3.

Info for manual annotations of cluster AZ4:

- Start number 36 was manually annotated 5 times for cluster AZ4.

Info for manual annotations of cluster AZ5:

- Start number 35 was manually annotated 15 times for cluster AZ5.
- Start number 52 was manually annotated 1 time for cluster AZ5.

Info for manual annotations of cluster AZ6:

- Start number 35 was manually annotated 1 time for cluster AZ6.

Info for manual annotations of cluster BB1:

- Start number 80 was manually annotated 6 times for cluster BB1.

Info for manual annotations of cluster BB2:

- Start number 78 was manually annotated 2 times for cluster BB2.
- Start number 79 was manually annotated 1 time for cluster BB2.

Info for manual annotations of cluster BC1:

- Start number 41 was manually annotated 6 times for cluster BC1.

Info for manual annotations of cluster BC2:

- Start number 38 was manually annotated 2 times for cluster BC2.

Info for manual annotations of cluster BC3:

- Start number 41 was manually annotated 5 times for cluster BC3.

Info for manual annotations of cluster BQ:

- Start number 38 was manually annotated 2 times for cluster BQ.
- Start number 41 was manually annotated 2 times for cluster BQ.

Info for manual annotations of cluster BV:

- Start number 53 was manually annotated 3 times for cluster BV.

Info for manual annotations of cluster FC:

- Start number 78 was manually annotated 12 times for cluster FC.

Info for manual annotations of cluster FF:

- Start number 45 was manually annotated 22 times for cluster FF.

Info for manual annotations of cluster FG:

- Start number 39 was manually annotated 2 times for cluster FG.
- Start number 40 was manually annotated 1 time for cluster FG.

Info for manual annotations of cluster FJ:

- Start number 45 was manually annotated 1 time for cluster FJ.
- Start number 47 was manually annotated 2 times for cluster FJ.

Info for manual annotations of cluster FO:

- Start number 36 was manually annotated 7 times for cluster FO.

Info for manual annotations of cluster FP:

- Start number 12 was manually annotated 1 time for cluster FP.

Info for manual annotations of cluster FR:

- Start number 45 was manually annotated 1 time for cluster FR.
- Start number 47 was manually annotated 10 times for cluster FR.

Info for manual annotations of cluster GJ:

- Start number 41 was manually annotated 2 times for cluster GJ.
- Start number 57 was manually annotated 1 time for cluster GJ.

Gene Information:

Gene: AEgle_19 Start: 14931, Stop: 16052, Start Num: 35

Candidate Starts for AEgle_19:

(Start: 35 @14931 has 54 MA's), (55, 14991), (82, 15054), (91, 15075), (204, 15339), (262, 15423), (364, 15783), (370, 15801), (389, 15861),

Gene: AGrandiflora_19 Start: 14916, Stop: 16037, Start Num: 35

Candidate Starts for AGrandiflora_19:

(Start: 35 @14916 has 54 MA's), (55, 14976), (82, 15039), (91, 15060), (182, 15273), (204, 15324), (207, 15330), (299, 15552), (364, 15768), (370, 15786), (389, 15846),

Gene: Abidatro_18 Start: 13671, Stop: 14783, Start Num: 54

Candidate Starts for Abidatro_18:

(Start: 54 @13671 has 2 MA's), (65, 13698), (126, 13854), (132, 13869), (140, 13905), (165, 13965), (233, 14082), (239, 14094), (261, 14124), (262, 14127), (309, 14313), (332, 14397), (340, 14442), (342, 14448), (348, 14472), (386, 14586), (392, 14604), (396, 14619), (401, 14643), (405, 14661), (429, 14745),

Gene: AceofSpades_18 Start: 13087, Stop: 14322, Start Num: 36

Candidate Starts for AceofSpades_18:

(Start: 36 @13087 has 12 MA's), (106, 13282), (116, 13306), (212, 13528), (247, 13657), (286, 13813), (316, 13906), (340, 14005), (393, 14161), (417, 14242),

Gene: Adolin_18 Start: 14366, Stop: 15577, Start Num: 61

Candidate Starts for Adolin_18:

(Start: 59 @14363 has 83 MA's), (Start: 61 @14366 has 15 MA's), (99, 14447), (102, 14459), (130, 14531), (134, 14546), (204, 14714), (205, 14720), (214, 14756), (237, 14828), (262, 14900), (270, 14942), (332, 15185), (340, 15230), (412, 15476), (423, 15509), (436, 15560),

Gene: Adumb2043_19 Start: 14930, Stop: 16051, Start Num: 35

Candidate Starts for Adumb2043_19:

(Start: 35 @14930 has 54 MA's), (55, 14990), (82, 15053), (91, 15074), (204, 15338), (262, 15422), (364, 15782), (370, 15800), (389, 15860),

Gene: Agamoto_25 Start: 18268, Stop: 19368, Start Num: 45

Candidate Starts for Agamoto_25:

(Start: 45 @18268 has 24 MA's), (81, 18358), (90, 18376), (122, 18439), (155, 18526), (167, 18541), (203, 18631), (262, 18715), (276, 18778), (277, 18784), (336, 18979), (385, 19156), (439, 19351),

Gene: AinMach_18 Start: 14089, Stop: 15219, Start Num: 35

Candidate Starts for AinMach_18:

(Start: 35 @14089 has 54 MA's), (55, 14158), (131, 14341), (151, 14404), (215, 14509), (222, 14524), (286, 14692), (317, 14788), (322, 14803), (323, 14806), (327, 14818), (336, 14854), (340, 14884), (358, 14938), (361, 14947), (424, 15163), (430, 15190),

Gene: Albanese_20 Start: 16081, Stop: 17238, Start Num: 59

Candidate Starts for Albanese_20:

(Start: 59 @16081 has 83 MA's), (Start: 61 @16084 has 15 MA's), (73, 16105), (Start: 78 @16111 has 14 MA's), (Start: 80 @16120 has 7 MA's), (140, 16285), (149, 16306), (260, 16561), (297, 16726), (323, 16807), (332, 16843), (340, 16888), (347, 16912), (368, 16981), (381, 17023), (389, 17047), (421, 17161), (429, 17200), (431, 17206), (433, 17212), (440, 17233),

Gene: Aledel_16 Start: 14404, Stop: 15558, Start Num: 61

Candidate Starts for Aledel_16:

(Start: 59 @14401 has 83 MA's), (Start: 61 @14404 has 15 MA's), (Start: 78 @14431 has 14 MA's), (Start: 80 @14440 has 7 MA's), (92, 14467), (113, 14530), (174, 14677), (260, 14881), (318, 15112), (323, 15127), (340, 15208), (376, 15331), (389, 15367), (390, 15370), (409, 15442), (422, 15487), (440, 15553),

Gene: AllBusiness_26 Start: 20291, Stop: 21394, Start Num: 45

Candidate Starts for AllBusiness_26:

(Start: 45 @20291 has 24 MA's), (70, 20360), (83, 20387), (96, 20420), (124, 20468), (137, 20516), (144, 20534), (157, 20570), (161, 20576), (180, 20618), (287, 20855), (321, 20960), (327, 20978), (336, 21017), (380, 21176), (418, 21305), (436, 21368), (439, 21377),

Gene: Amploria_19 Start: 14930, Stop: 16051, Start Num: 35

Candidate Starts for Amploria_19:

(Start: 35 @14930 has 54 MA's), (55, 14990), (82, 15053), (91, 15074), (204, 15338), (262, 15422), (364, 15782), (370, 15800), (389, 15860),

Gene: Amyev_19 Start: 14951, Stop: 16393, Start Num: 35

Candidate Starts for Amyev_19:

(Start: 35 @14951 has 54 MA's), (55, 15011), (Start: 57 @15017 has 1 MA's), (82, 15074), (91, 15095), (180, 15305), (201, 15353), (216, 15473), (252, 15692), (335, 16022), (364, 16124), (370, 16142), (435, 16361),

Gene: Anatole_17 Start: 13815, Stop: 14933, Start Num: 53

Candidate Starts for Anatole_17:

(50, 13809), (Start: 53 @13815 has 3 MA's), (60, 13833), (65, 13845), (67, 13848), (84, 13890), (88, 13899), (119, 13983), (121, 13986), (123, 13989), (140, 14049), (141, 14052), (164, 14112), (173, 14130), (188, 14160), (201, 14196), (202, 14199), (204, 14202), (209, 14217), (221, 14220), (234, 14247), (242, 14262), (272, 14352), (275, 14361), (287, 14418), (306, 14478), (320, 14517), (325, 14532), (332, 14559), (335, 14571), (357, 14661), (363, 14688), (390, 14772), (406, 14838), (416, 14868), (419, 14877), (425, 14901),

Gene: AnnabelLee_23 Start: 15285, Stop: 16382, Start Num: 47

Candidate Starts for AnnabelLee_23:

(Start: 47 @15285 has 15 MA's), (63, 15327), (81, 15375), (96, 15411), (167, 15558), (203, 15648), (261, 15726), (271, 15777), (321, 15936), (336, 15993), (349, 16053), (385, 16170),

Gene: Aoka_20 Start: 16034, Stop: 17083, Start Num: 36

Candidate Starts for Aoka_20:

(Start: 36 @16034 has 12 MA's), (74, 16139), (147, 16304), (180, 16370), (329, 16700), (338, 16736), (430, 17057),

Gene: AppleCider_20 Start: 16039, Stop: 17196, Start Num: 59

Candidate Starts for AppleCider_20:

(Start: 59 @16039 has 83 MA's), (Start: 61 @16042 has 15 MA's), (92, 16105), (140, 16243), (214, 16408), (293, 16672), (294, 16675), (297, 16684), (323, 16765), (340, 16846), (343, 16858), (367, 16936), (368, 16939), (376, 16969), (389, 17005), (390, 17008), (431, 17164),

Gene: Artu_86 Start: 59098, Stop: 60216, Start Num: 78

Candidate Starts for Artu_86:

(Start: 78 @59098 has 14 MA's), (113, 59191), (148, 59284), (237, 59488), (245, 59503), (280, 59641), (285, 59671), (296, 59716), (297, 59719), (312, 59761), (335, 59845), (342, 59884), (345, 59896), (430, 60193),

Gene: Asa16_19 Start: 14900, Stop: 16021, Start Num: 35

Candidate Starts for Asa16_19:

(Start: 35 @14900 has 54 MA's), (55, 14960), (Start: 57 @14966 has 1 MA's), (82, 15023), (91, 15044), (204, 15308), (370, 15770),

Gene: Ascela_19 Start: 14928, Stop: 16049, Start Num: 35

Candidate Starts for Ascela_19:

(Start: 35 @14928 has 54 MA's), (82, 15051), (91, 15072), (178, 15276), (207, 15342), (370, 15798), (389, 15858),

Gene: Ashes_19 Start: 14619, Stop: 16067, Start Num: 35

Candidate Starts for Ashes_19:

(Start: 35 @14619 has 54 MA's), (Start: 52 @14673 has 1 MA's), (204, 15027), (207, 15033), (298, 15579), (316, 15630), (373, 15825),

Gene: Attoomi_18 Start: 15464, Stop: 16561, Start Num: 41

Candidate Starts for Attoomi_18:

(Start: 41 @15464 has 16 MA's), (48, 15500), (76, 15575), (91, 15608), (95, 15620), (107, 15653), (111, 15659), (128, 15695), (131, 15704), (134, 15716), (138, 15734), (158, 15785), (160, 15788), (175, 15815), (190, 15845), (235, 15890), (272, 15944), (278, 15965), (280, 15974), (282, 15983), (294, 16043), (308, 16079), (314, 16097), (315, 16100), (321, 16118), (326, 16133), (332, 16154), (334, 16163), (339, 16187), (340, 16199), (367, 16301), (369, 16307), (391, 16379), (422, 16487), (423, 16490), (426, 16502),

Gene: Atuin_88 Start: 61731, Stop: 62849, Start Num: 78

Candidate Starts for Atuin_88:

(Start: 78 @61731 has 14 MA's), (147, 61914), (148, 61917), (231, 62109), (245, 62136), (280, 62274), (285, 62304), (292, 62337), (296, 62349), (297, 62352), (326, 62439), (332, 62466), (335, 62478), (342, 62517), (364, 62595), (405, 62736), (430, 62826),

Gene: Audell_26 Start: 18579, Stop: 19676, Start Num: 47

Candidate Starts for Audell_26:

(Start: 47 @18579 has 15 MA's), (63, 18621), (81, 18669), (96, 18705), (167, 18852), (203, 18942), (292, 19152), (336, 19287), (378, 19446), (385, 19464), (439, 19659),

Gene: AustinPowers_16 Start: 14402, Stop: 15559, Start Num: 59

Candidate Starts for AustinPowers_16:

(Start: 59 @14402 has 83 MA's), (Start: 61 @14405 has 15 MA's), (Start: 78 @14432 has 14 MA's), (Start: 80 @14441 has 7 MA's), (92, 14468), (105, 14501), (113, 14531), (174, 14678), (260, 14882), (318, 15113), (323, 15128), (340, 15209), (376, 15332), (389, 15368), (390, 15371), (409, 15443), (422, 15488), (440, 15554),

Gene: Austintatious_19 Start: 14189, Stop: 15319, Start Num: 41

Candidate Starts for Austintatious_19:

(6, 13745), (7, 13760), (13, 13847), (16, 13883), (19, 13955), (Start: 41 @14189 has 16 MA's), (91, 14333), (107, 14378), (118, 14402), (128, 14420), (277, 14693), (313, 14822), (314, 14825), (326, 14861), (347, 14951), (350, 14963), (367, 15032), (391, 15110), (422, 15221),

Gene: B3_17 Start: 13818, Stop: 14936, Start Num: 53

Candidate Starts for B3_17:

(50, 13812), (Start: 53 @13818 has 3 MA's), (60, 13836), (65, 13848), (67, 13851), (84, 13893), (88, 13902), (119, 13986), (121, 13989), (123, 13992), (140, 14052), (141, 14055), (164, 14115), (173, 14133), (188, 14163), (201, 14199), (202, 14202), (204, 14205), (209, 14220), (221, 14223), (234, 14250), (242, 14265), (272, 14355), (275, 14364), (287, 14421), (306, 14481), (325, 14535), (332, 14562), (335, 14574), (357, 14664), (363, 14691), (390, 14775), (406, 14841), (416, 14871), (419, 14880), (425, 14904),

Gene: Ball_16 Start: 13208, Stop: 14359, Start Num: 59

Candidate Starts for Ball_16:

(Start: 59 @13208 has 83 MA's), (Start: 61 @13211 has 15 MA's), (Start: 80 @13247 has 7 MA's), (96, 13280), (102, 13301), (110, 13325), (113, 13337), (125, 13361), (140, 13412), (240, 13628), (245, 13640), (282, 13772), (297, 13841), (298, 13844), (318, 13913), (332, 13964), (340, 14009), (360, 14072), (376, 14135), (412, 14258), (423, 14291), (424, 14297), (427, 14315), (436, 14342), (440, 14354),

Gene: Beaupre_19 Start: 14620, Stop: 16068, Start Num: 35

Candidate Starts for Beaupre_19:

(Start: 35 @14620 has 54 MA's), (Start: 52 @14674 has 1 MA's), (193, 14998), (204, 15028), (298, 15580), (316, 15631), (373, 15826),

Gene: Beethoven_20 Start: 15985, Stop: 17142, Start Num: 59

Candidate Starts for Beethoven_20:

(Start: 59 @15985 has 83 MA's), (Start: 61 @15988 has 15 MA's), (73, 16009), (105, 16084), (140, 16189), (196, 16312), (240, 16420), (260, 16465), (293, 16618), (301, 16648), (318, 16696), (323, 16711), (332, 16747), (340, 16792), (381, 16927), (389, 16951), (391, 16957), (429, 17104), (431, 17110), (440, 17137),

Gene: Bennie_16 Start: 14410, Stop: 15564, Start Num: 61

Candidate Starts for Bennie_16:

(Start: 59 @14407 has 83 MA's), (Start: 61 @14410 has 15 MA's), (Start: 78 @14440 has 14 MA's), (92, 14476), (102, 14503), (140, 14614), (149, 14635), (228, 14806), (240, 14845), (258, 14884), (262, 14896), (284, 15004), (305, 15079), (328, 15148), (334, 15178), (340, 15214), (343, 15226), (389, 15373), (409, 15448), (414, 15463), (422, 15493), (429, 15526),

Gene: Berrie_19 Start: 15065, Stop: 16186, Start Num: 35

Candidate Starts for Berrie_19:

(Start: 35 @15065 has 54 MA's), (55, 15125), (Start: 57 @15131 has 1 MA's), (82, 15188), (204, 15473), (207, 15479), (370, 15935), (389, 15995),

Gene: BigMack_16 Start: 14394, Stop: 15551, Start Num: 59

Candidate Starts for BigMack_16:

(Start: 59 @14394 has 83 MA's), (Start: 61 @14397 has 15 MA's), (Start: 78 @14427 has 14 MA's), (92, 14463), (102, 14490), (140, 14601), (149, 14622), (223, 14775), (228, 14793), (240, 14832), (258, 14871), (262, 14883), (284, 14991), (305, 15066), (323, 15120), (328, 15135), (332, 15156), (334, 15165), (340, 15201), (343, 15213), (389, 15360), (409, 15435), (414, 15450), (422, 15480), (429, 15513), (439, 15543),

Gene: BigSherm_27 Start: 20045, Stop: 21148, Start Num: 45

Candidate Starts for BigSherm_27:

(Start: 45 @20045 has 24 MA's), (70, 20114), (83, 20141), (96, 20174), (124, 20222), (137, 20270), (144, 20288), (180, 20372), (292, 20633), (321, 20714), (327, 20732), (336, 20771), (380, 20930), (418, 21059), (436, 21122), (439, 21131),

Gene: Bioscum_19 Start: 14225, Stop: 15355, Start Num: 41

Candidate Starts for Bioscum_19:

(6, 13781), (7, 13796), (13, 13883), (16, 13919), (19, 13991), (Start: 41 @14225 has 16 MA's), (91, 14369), (107, 14414), (118, 14438), (128, 14456), (313, 14858), (314, 14861), (347, 14987), (350, 14999), (367, 15068), (391, 15146),

Gene: Bloom_97 Start: 62603, Stop: 63721, Start Num: 78

Candidate Starts for Bloom_97:

(Start: 78 @62603 has 14 MA's), (147, 62786), (148, 62789), (206, 62924), (227, 62948), (231, 62978), (245, 63005), (259, 63053), (285, 63176), (292, 63209), (296, 63221), (326, 63311), (329, 63320), (335, 63350), (342, 63389), (345, 63401), (371, 63488), (376, 63509), (430, 63698),

Gene: Bodacious_16 Start: 14407, Stop: 15561, Start Num: 59

Candidate Starts for Bodacious_16:

(Start: 59 @14407 has 83 MA's), (Start: 61 @14410 has 15 MA's), (Start: 78 @14437 has 14 MA's), (102, 14500), (115, 14542), (128, 14566), (140, 14611), (240, 14842), (258, 14881), (262, 14893), (284, 15001), (294, 15043), (305, 15076), (323, 15130), (334, 15175), (340, 15211), (343, 15223), (367, 15301), (389, 15370), (409, 15445), (414, 15460), (422, 15490), (429, 15523), (439, 15553),

Gene: BooTeria_90 Start: 59166, Stop: 60284, Start Num: 78

Candidate Starts for BooTeria_90:

(Start: 78 @59166 has 14 MA's), (113, 59259), (148, 59352), (237, 59556), (245, 59571), (253, 59592), (280, 59709), (285, 59739), (296, 59784), (297, 59787), (312, 59829), (335, 59913), (342, 59952), (345, 59964), (430, 60261),

Gene: BrotherBLo_20 Start: 15991, Stop: 17148, Start Num: 59

Candidate Starts for BrotherBLo_20:

(Start: 59 @15991 has 83 MA's), (Start: 61 @15994 has 15 MA's), (73, 16015), (105, 16090), (128, 16150), (140, 16195), (149, 16216), (177, 16273), (196, 16318), (240, 16426), (260, 16471), (293, 16624), (301, 16654), (318, 16702), (323, 16717), (332, 16753), (340, 16798), (381, 16933), (389, 16957), (391, 16963), (429, 17110), (431, 17116), (440, 17143),

Gene: CallieOMalley_20 Start: 16039, Stop: 17196, Start Num: 59

Candidate Starts for CallieOMalley_20:

(Start: 59 @16039 has 83 MA's), (Start: 61 @16042 has 15 MA's), (92, 16105), (140, 16243), (214, 16408), (293, 16672), (294, 16675), (297, 16684), (323, 16765), (340, 16846), (343, 16858), (367, 16936), (368, 16939), (376, 16969), (389, 17005), (431, 17164),

Gene: Canowicakte_20 Start: 16074, Stop: 17231, Start Num: 59

Candidate Starts for Canowicakte_20:

(Start: 59 @16074 has 83 MA's), (Start: 61 @16077 has 15 MA's), (92, 16140), (140, 16278), (214, 16443), (293, 16707), (294, 16710), (297, 16719), (323, 16800), (340, 16881), (343, 16893), (367, 16971), (368, 16974), (376, 17004), (389, 17040), (431, 17199),

Gene: Cappuccino_19 Start: 14527, Stop: 15975, Start Num: 35

Candidate Starts for Cappuccino_19:

(Start: 35 @14527 has 54 MA's), (Start: 52 @14581 has 1 MA's), (193, 14905), (204, 14935), (298, 15487), (373, 15733),

Gene: CardboardBox_24 Start: 15285, Stop: 16382, Start Num: 47

Candidate Starts for CardboardBox_24:

(Start: 47 @15285 has 15 MA's), (63, 15327), (81, 15375), (96, 15411), (167, 15558), (203, 15648), (261, 15726), (271, 15777), (321, 15936), (336, 15993), (349, 16053), (385, 16170),

Gene: Carpal_20 Start: 15992, Stop: 17149, Start Num: 59

Candidate Starts for Carpal_20:

(Start: 59 @15992 has 83 MA's), (Start: 61 @15995 has 15 MA's), (73, 16016), (105, 16091), (128, 16151), (140, 16196), (149, 16217), (184, 16289), (196, 16319), (214, 16361), (240, 16427), (260, 16472), (293, 16625), (301, 16655), (318, 16703), (323, 16718), (332, 16754), (340, 16799), (381, 16934), (389, 16958), (391, 16964), (429, 17111), (431, 17117), (440, 17144),

Gene: Cassia_19 Start: 15026, Stop: 16147, Start Num: 35

Candidate Starts for Cassia_19:

(Start: 35 @15026 has 54 MA's), (87, 15161), (91, 15170), (128, 15260), (204, 15434), (370, 15896),

Gene: ChamoyPickle_24 Start: 15285, Stop: 16382, Start Num: 47

Candidate Starts for ChamoyPickle_24:

(Start: 47 @15285 has 15 MA's), (63, 15327), (81, 15375), (96, 15411), (167, 15558), (203, 15648), (261, 15726), (271, 15777), (321, 15936), (336, 15993), (349, 16053), (385, 16170),

Gene: ChewChew_16 Start: 14409, Stop: 15560, Start Num: 61

Candidate Starts for ChewChew_16:

(Start: 59 @14406 has 83 MA's), (Start: 61 @14409 has 15 MA's), (Start: 78 @14436 has 14 MA's), (102, 14499), (115, 14541), (128, 14565), (140, 14610), (240, 14841), (258, 14880), (262, 14892), (284, 15000), (294, 15042), (305, 15075), (323, 15129), (334, 15174), (340, 15210), (343, 15222), (367, 15300), (389, 15369), (409, 15444), (414, 15459), (422, 15489), (429, 15522), (439, 15552),

Gene: Chilliams_90 Start: 62997, Stop: 64109, Start Num: 78

Candidate Starts for Chilliams_90:

(Start: 78 @62997 has 14 MA's), (167, 63225), (180, 63255), (237, 63384), (243, 63393), (245, 63399), (285, 63564), (289, 63579), (290, 63582), (296, 63609), (328, 63708), (343, 63786), (345, 63792), (357, 63828), (412, 64020), (420, 64041), (430, 64086),

Gene: ChipsNGuac_23 Start: 15285, Stop: 16382, Start Num: 47

Candidate Starts for ChipsNGuac_23:

(Start: 47 @15285 has 15 MA's), (63, 15327), (81, 15375), (96, 15411), (167, 15558), (203, 15648), (261, 15726), (271, 15777), (321, 15936), (336, 15993), (349, 16053), (385, 16170),

Gene: Cholula_20 Start: 16037, Stop: 17194, Start Num: 59

Candidate Starts for Cholula_20:

(Start: 59 @16037 has 83 MA's), (Start: 61 @16040 has 15 MA's), (73, 16061), (Start: 78 @16067 has 14 MA's), (105, 16136), (140, 16241), (184, 16334), (196, 16364), (240, 16472), (260, 16517), (293, 16670), (301, 16700), (318, 16748), (323, 16763), (332, 16799), (340, 16844), (381, 16979), (389, 17003), (412, 17090), (429, 17156), (431, 17162), (440, 17189),

Gene: Chridison_16 Start: 14405, Stop: 15559, Start Num: 61

Candidate Starts for Chridison_16:

(Start: 59 @14402 has 83 MA's), (Start: 61 @14405 has 15 MA's), (Start: 78 @14432 has 14 MA's), (Start: 80 @14441 has 7 MA's), (92, 14468), (113, 14531), (174, 14678), (260, 14882), (318, 15113), (323, 15128), (340, 15209), (376, 15332), (389, 15368), (390, 15371), (409, 15443), (422, 15488), (440, 15554),

Gene: Christian_16 Start: 14407, Stop: 15561, Start Num: 59

Candidate Starts for Christian_16:

(Start: 59 @14407 has 83 MA's), (Start: 61 @14410 has 15 MA's), (Start: 78 @14437 has 14 MA's), (102, 14500), (115, 14542), (128, 14566), (140, 14611), (240, 14842), (258, 14881), (262, 14893), (284, 15001), (294, 15043), (305, 15076), (323, 15130), (334, 15175), (340, 15211), (343, 15223), (367, 15301), (370, 15310), (389, 15370), (409, 15445), (414, 15460), (422, 15490), (429, 15523), (439, 15553),

Gene: Cole_25 Start: 19792, Stop: 20895, Start Num: 45

Candidate Starts for Cole_25:

(Start: 45 @19792 has 24 MA's), (70, 19861), (83, 19888), (96, 19921), (124, 19969), (137, 20017), (144, 20035), (180, 20119), (292, 20380), (321, 20461), (327, 20479), (336, 20518), (380, 20677), (418, 20806), (436, 20869), (439, 20878),

Gene: Community_19 Start: 16147, Stop: 17589, Start Num: 35

Candidate Starts for Community_19:

(Start: 35 @16147 has 54 MA's), (55, 16207), (Start: 57 @16213 has 1 MA's), (82, 16270), (180, 16501), (207, 16561), (249, 16855), (250, 16876), (370, 17338), (391, 17404),

Gene: Crewmate_19 Start: 14349, Stop: 15560, Start Num: 59

Candidate Starts for Crewmate_19:

(Start: 59 @14349 has 83 MA's), (Start: 61 @14352 has 15 MA's), (130, 14514), (134, 14529), (140, 14553), (213, 14733), (225, 14766), (293, 15033), (324, 15135), (332, 15168), (340, 15213), (412, 15459), (423, 15492), (424, 15498), (433, 15534), (436, 15543),

Gene: CristinaYang_16 Start: 14407, Stop: 15561, Start Num: 59

Candidate Starts for CristinaYang_16:

(Start: 59 @14407 has 83 MA's), (Start: 61 @14410 has 15 MA's), (Start: 78 @14437 has 14 MA's), (102, 14500), (115, 14542), (128, 14566), (140, 14611), (240, 14842), (258, 14881), (262, 14893), (284, 15001), (294, 15043), (305, 15076), (323, 15130), (334, 15175), (340, 15211), (343, 15223), (367, 15301), (389, 15370), (409, 15445), (414, 15460), (422, 15490), (429, 15523), (439, 15553),

Gene: Cyan_19 Start: 14919, Stop: 16040, Start Num: 35

Candidate Starts for Cyan_19:

(Start: 35 @14919 has 54 MA's), (55, 14979), (82, 15042), (91, 15063), (182, 15276), (204, 15327), (207, 15333), (299, 15555), (364, 15771), (370, 15789), (389, 15849),

Gene: DaRealMyers_19 Start: 14650, Stop: 15747, Start Num: 41

Candidate Starts for DaRealMyers_19:

(Start: 41 @14650 has 16 MA's), (107, 14839), (160, 14974), (182, 15019), (187, 15028), (193, 15040), (314, 15280), (347, 15406), (367, 15484), (394, 15568), (395, 15571), (424, 15679), (439, 15730),

Gene: Daiboju_16 Start: 14410, Stop: 15567, Start Num: 59

Candidate Starts for Daiboju_16:

(Start: 59 @14410 has 83 MA's), (Start: 61 @14413 has 15 MA's), (73, 14434), (Start: 78 @14440 has 14 MA's), (Start: 80 @14449 has 7 MA's), (92, 14476), (140, 14614), (174, 14686), (260, 14890), (297, 15055), (318, 15121), (340, 15217), (373, 15325), (376, 15340), (382, 15355), (389, 15376), (391, 15382), (409, 15451), (422, 15496), (440, 15562),

Gene: Darolandstone_19 Start: 14810, Stop: 15910, Start Num: 38

Candidate Starts for Darolandstone_19:

(3, 14216), (4, 14333), (9, 14420), (17, 14534), (20, 14633), (24, 14729), (31, 14795), (Start: 38 @14810 has 4 MA's), (82, 14939), (91, 14960), (158, 15137), (258, 15266), (298, 15401), (387, 15713), (422, 15836), (426, 15851), (439, 15896),

Gene: Dino_20 Start: 15990, Stop: 17147, Start Num: 59

Candidate Starts for Dino_20:

(Start: 59 @15990 has 83 MA's), (Start: 61 @15993 has 15 MA's), (73, 16014), (105, 16089), (128, 16149), (140, 16194), (149, 16215), (184, 16287), (196, 16317), (214, 16359), (240, 16425), (260, 16470), (293, 16623), (301, 16653), (318, 16701), (323, 16716), (332, 16752), (340, 16797), (381, 16932), (389, 16956), (412, 17043), (429, 17109), (431, 17115), (440, 17142),

Gene: Dirdigger_27 Start: 19865, Stop: 20968, Start Num: 45

Candidate Starts for Dirdigger_27:

(Start: 45 @19865 has 24 MA's), (70, 19934), (83, 19961), (96, 19994), (124, 20042), (137, 20090), (157, 20144), (287, 20429), (321, 20534), (327, 20552), (336, 20591), (380, 20750), (418, 20879), (436, 20942), (439, 20951),

Gene: Doedicurus_26 Start: 17944, Stop: 19098, Start Num: 41

Candidate Starts for Doedicurus_26:

(Start: 41 @17944 has 16 MA's), (Start: 57 @18007 has 1 MA's), (82, 18067), (107, 18136), (143, 18238), (272, 18490), (298, 18598), (315, 18646), (366, 18844), (375, 18877), (435, 19081),

Gene: Donatella_26 Start: 20256, Stop: 21359, Start Num: 45

Candidate Starts for Donatella_26:

(Start: 45 @20256 has 24 MA's), (70, 20325), (83, 20352), (96, 20385), (124, 20433), (137, 20481), (157, 20535), (180, 20583), (321, 20925), (327, 20943), (336, 20982), (380, 21141), (390, 21168), (418, 21270), (436, 21333), (439, 21342),

Gene: Donkey_19 Start: 14527, Stop: 15975, Start Num: 35

Candidate Starts for Donkey_19:

(Start: 35 @14527 has 54 MA's), (Start: 52 @14581 has 1 MA's), (193, 14905), (204, 14935), (298, 15487), (373, 15733),

Gene: DrManhattan_18 Start: 14353, Stop: 15567, Start Num: 59

Candidate Starts for DrManhattan_18:

(Start: 59 @14353 has 83 MA's), (Start: 61 @14356 has 15 MA's), (99, 14437), (102, 14449), (130, 14521), (134, 14536), (204, 14704), (205, 14710), (214, 14746), (237, 14818), (262, 14890), (270, 14932), (332, 15175), (340, 15220), (412, 15466), (423, 15499), (436, 15550),

Gene: DrRobert_16 Start: 14407, Stop: 15561, Start Num: 59

Candidate Starts for DrRobert_16:

(Start: 59 @14407 has 83 MA's), (Start: 61 @14410 has 15 MA's), (Start: 78 @14437 has 14 MA's), (102, 14500), (115, 14542), (128, 14566), (140, 14611), (240, 14842), (258, 14881), (262, 14893), (284, 15001), (294, 15043), (305, 15076), (323, 15130), (334, 15175), (340, 15211), (343, 15223), (367, 15301), (370, 15310), (389, 15370), (409, 15445), (414, 15460), (422, 15490), (429, 15523), (439, 15553),

Gene: DrSierra_18 Start: 14444, Stop: 15658, Start Num: 59

Candidate Starts for DrSierra_18:

(Start: 59 @14444 has 83 MA's), (Start: 61 @14447 has 15 MA's), (92, 14513), (134, 14627), (204, 14795), (205, 14801), (214, 14837), (270, 15023), (284, 15092), (297, 15143), (332, 15266), (340, 15311), (349, 15344), (369, 15407), (412, 15557), (423, 15590),

Gene: DreamEater_23 Start: 19458, Stop: 20582, Start Num: 47

Candidate Starts for DreamEater_23:

(Start: 47 @19458 has 15 MA's), (83, 19551), (124, 19659), (128, 19668), (133, 19683), (139, 19710), (144, 19722), (145, 19725), (157, 19758), (167, 19770), (178, 19800), (198, 19848), (203, 19860), (254, 19908), (277, 20004), (287, 20043), (292, 20067), (321, 20148), (336, 20205), (380, 20364), (387, 20379), (434, 20550),

Gene: DreamTeam_16 Start: 14447, Stop: 15601, Start Num: 59

Candidate Starts for DreamTeam_16:

(Start: 59 @14447 has 83 MA's), (Start: 61 @14450 has 15 MA's), (73, 14471), (102, 14540), (140, 14651), (149, 14672), (223, 14825), (230, 14858), (240, 14882), (258, 14921), (262, 14933), (305, 15116), (318, 15155), (328, 15185), (334, 15215), (340, 15251), (389, 15410), (414, 15500), (422, 15530), (440, 15596),

Gene: DunneganBoMo_83 Start: 58597, Stop: 59715, Start Num: 78

Candidate Starts for DunneganBoMo_83:

(Start: 78 @58597 has 14 MA's), (113, 58690), (148, 58783), (237, 58987), (245, 59002), (280, 59140), (285, 59170), (296, 59215), (297, 59218), (312, 59260), (335, 59344), (342, 59383), (345, 59395), (430, 59692),

Gene: E1_17 Start: 13815, Stop: 14933, Start Num: 53

Candidate Starts for E1_17:

(50, 13809), (Start: 53 @13815 has 3 MA's), (60, 13833), (65, 13845), (67, 13848), (84, 13890), (88, 13899), (119, 13983), (121, 13986), (123, 13989), (140, 14049), (141, 14052), (164, 14112), (173, 14130), (188, 14160), (201, 14196), (202, 14199), (204, 14202), (209, 14217), (221, 14220), (234, 14247), (242, 14262), (272, 14352), (275, 14361), (287, 14418), (306, 14478), (320, 14517), (325, 14532), (332, 14559), (335, 14571), (357, 14661), (363, 14688), (390, 14772), (406, 14838), (416, 14868), (419, 14877), (425, 14901),

Gene: Elesar_26 Start: 20038, Stop: 21141, Start Num: 45

Candidate Starts for Elesar_26:

(Start: 45 @20038 has 24 MA's), (70, 20107), (83, 20134), (96, 20167), (124, 20215), (137, 20263), (144, 20281), (157, 20317), (161, 20323), (180, 20365), (292, 20626), (321, 20707), (327, 20725), (336, 20764), (380, 20923), (418, 21052), (436, 21115), (439, 21124),

Gene: Elezi_19 Start: 14901, Stop: 16022, Start Num: 35

Candidate Starts for Elezi_19:

(Start: 35 @14901 has 54 MA's), (55, 14961), (Start: 57 @14967 has 1 MA's), (82, 15024), (91, 15045), (204, 15309), (370, 15771),

Gene: Ellewin_82 Start: 58177, Stop: 59295, Start Num: 78

Candidate Starts for Ellewin_82:

(Start: 78 @58177 has 14 MA's), (113, 58270), (148, 58363), (180, 58435), (198, 58477), (245, 58582), (280, 58720), (285, 58750), (296, 58795), (297, 58798), (312, 58840), (329, 58894), (335, 58924), (342, 58963), (345, 58975), (430, 59272),

Gene: Emmetator_86 Start: 59431, Stop: 60549, Start Num: 78

Candidate Starts for Emmetator_86:

(Start: 78 @59431 has 14 MA's), (113, 59524), (148, 59617), (237, 59821), (245, 59836), (280, 59974), (285, 60004), (296, 60049), (297, 60052), (312, 60094), (335, 60178), (342, 60217), (345, 60229), (430, 60526),

Gene: Emotion_18 Start: 13147, Stop: 14427, Start Num: 36

Candidate Starts for Emotion_18:

(Start: 36 @13147 has 12 MA's), (91, 13297), (286, 13915), (316, 14008), (340, 14107),

Gene: Eraser_19 Start: 14901, Stop: 16022, Start Num: 35

Candidate Starts for Eraser_19:

(Start: 35 @14901 has 54 MA's), (55, 14961), (Start: 57 @14967 has 1 MA's), (82, 15024), (91, 15045), (204, 15309), (370, 15771),

Gene: EstebanJulior_16 Start: 14415, Stop: 15572, Start Num: 59

Candidate Starts for EstebanJulior_16:

(Start: 59 @14415 has 83 MA's), (Start: 61 @14418 has 15 MA's), (Start: 78 @14445 has 14 MA's), (115, 14550), (140, 14619), (214, 14784), (223, 14793), (228, 14811), (230, 14826), (332, 15177), (334, 15186), (340, 15222), (369, 15318), (381, 15357), (389, 15381), (423, 15504), (431, 15540), (440, 15567),

Gene: Eunoia_16 Start: 14401, Stop: 15558, Start Num: 59

Candidate Starts for Eunoia_16:

(Start: 59 @14401 has 83 MA's), (Start: 61 @14404 has 15 MA's), (Start: 78 @14431 has 14 MA's), (Start: 80 @14440 has 7 MA's), (92, 14467), (113, 14530), (174, 14677), (260, 14881), (318, 15112), (323, 15127), (340, 15208), (376, 15331), (389, 15367), (390, 15370), (409, 15442), (422, 15487), (440, 15553),

Gene: Euratis_15 Start: 12352, Stop: 13437, Start Num: 80

Candidate Starts for Euratis_15:

(Start: 80 @12352 has 7 MA's), (91, 12376), (101, 12409), (136, 12502), (145, 12526), (157, 12562), (181, 12601), (211, 12682), (267, 12808), (325, 13009), (339, 13072), (364, 13156), (383, 13216), (388, 13234), (390, 13240), (395, 13252), (404, 13294), (413, 13321), (418, 13336), (439, 13411),

Gene: EvePickles_26 Start: 19313, Stop: 20437, Start Num: 47

Candidate Starts for EvePickles_26:

(Start: 47 @19313 has 15 MA's), (70, 19379), (83, 19406), (96, 19439), (124, 19514), (128, 19523), (144, 19577), (157, 19613), (180, 19661), (203, 19715), (254, 19763), (255, 19772), (277, 19859), (287, 19898), (317, 19991), (321, 20003), (336, 20060), (339, 20078), (380, 20219),

Gene: EvenBluerMoon_20 Start: 16069, Stop: 17118, Start Num: 36

Candidate Starts for EvenBluerMoon_20:

(Start: 36 @16069 has 12 MA's), (74, 16174), (147, 16339), (180, 16405), (329, 16735), (338, 16771), (430, 17092),

Gene: Exile_18 Start: 15565, Stop: 16650, Start Num: 35

Candidate Starts for Exile_18:

(Start: 35 @15565 has 54 MA's), (49, 15619), (151, 15877), (178, 15919), (289, 16138), (340, 16315), (358, 16360), (372, 16408), (424, 16585), (430, 16612), (440, 16642),

Gene: Ezurina_22 Start: 15772, Stop: 16866, Start Num: 47

Candidate Starts for Ezurina_22:

(Start: 47 @15772 has 15 MA's), (56, 15799), (81, 15862), (90, 15880), (127, 15952), (152, 16021), (180, 16081), (210, 16153), (257, 16201), (271, 16264), (295, 16354), (313, 16402), (336, 16483), (351, 16543), (356, 16561), (385, 16654), (405, 16735), (408, 16744), (439, 16849),

Gene: Faja_26 Start: 19207, Stop: 20331, Start Num: 47

Candidate Starts for Faja_26:

(Start: 47 @19207 has 15 MA's), (Start: 52 @19225 has 1 MA's), (70, 19273), (83, 19300), (124, 19408), (128, 19417), (144, 19471), (161, 19513), (198, 19597), (203, 19609), (254, 19657), (271, 19732), (277, 19753), (287, 19792), (306, 19855), (321, 19897), (336, 19954), (338, 19960), (339, 19972), (380, 20113), (434, 20299),

Gene: FloraSnap32_93 Start: 61643, Stop: 62761, Start Num: 78

Candidate Starts for FloraSnap32_93:

(Start: 78 @61643 has 14 MA's), (147, 61826), (148, 61829), (206, 61964), (227, 61988), (231, 62018), (245, 62045), (259, 62093), (285, 62216), (292, 62249), (296, 62261), (326, 62351), (329, 62360), (335, 62390), (342, 62429), (345, 62441), (371, 62528), (376, 62549), (430, 62738),

Gene: Fluke_20 Start: 16033, Stop: 17190, Start Num: 59

Candidate Starts for Fluke_20:

(Start: 59 @16033 has 83 MA's), (Start: 61 @16036 has 15 MA's), (73, 16057), (105, 16132), (140, 16237), (149, 16258), (196, 16360), (240, 16468), (260, 16513), (293, 16666), (301, 16696), (318, 16744), (332, 16795), (340, 16840), (381, 16975), (389, 16999), (412, 17086), (429, 17152), (431, 17158), (440, 17185),

Gene: Flutur_19 Start: 14919, Stop: 16040, Start Num: 35

Candidate Starts for Flutur_19:

(Start: 35 @14919 has 54 MA's), (55, 14979), (82, 15042), (91, 15063), (182, 15276), (204, 15327), (207, 15333), (299, 15555), (364, 15771), (370, 15789), (389, 15849),

Gene: FrostedClock_95 Start: 62091, Stop: 63209, Start Num: 78

Candidate Starts for FrostedClock_95:

(Start: 78 @62091 has 14 MA's), (147, 62274), (148, 62277), (206, 62412), (227, 62436), (231, 62466), (245, 62493), (259, 62541), (285, 62664), (292, 62697), (296, 62709), (326, 62799), (329, 62808), (335, 62838), (342, 62877), (345, 62889), (371, 62976), (376, 62997), (430, 63186),

Gene: GUPitcher_24 Start: 18871, Stop: 20004, Start Num: 45

Candidate Starts for GUPitcher_24:

(Start: 45 @18871 has 24 MA's), (70, 18940), (83, 18967), (124, 19075), (128, 19084), (130, 19090), (144, 19141), (180, 19225), (203, 19279), (254, 19330), (271, 19405), (277, 19426), (287, 19465), (292, 19489), (321, 19570), (336, 19627), (338, 19633), (339, 19645), (380, 19786),

Gene: Galactica_23 Start: 20117, Stop: 21220, Start Num: 38

Candidate Starts for Galactica_23:

(Start: 38 @20117 has 4 MA's), (Start: 41 @20123 has 16 MA's), (95, 20279), (111, 20318), (112, 20321), (286, 20666), (298, 20708), (314, 20753), (347, 20879), (376, 20990), (393, 21038), (417, 21128),

Gene: Galaxy_18 Start: 13677, Stop: 14789, Start Num: 54

Candidate Starts for Galaxy_18:

(Start: 54 @13677 has 2 MA's), (65, 13704), (77, 13734), (97, 13788), (132, 13875), (140, 13911), (165, 13971), (176, 13986), (233, 14088), (239, 14100), (261, 14130), (262, 14133), (265, 14145), (274, 14190), (296, 14286), (309, 14319), (332, 14403), (340, 14448), (342, 14454), (348, 14478), (386, 14592), (392, 14610), (396, 14625), (401, 14649), (405, 14667), (408, 14676),

Gene: Gambol_19 Start: 14527, Stop: 15975, Start Num: 35

Candidate Starts for Gambol_19:

(Start: 35 @14527 has 54 MA's), (Start: 52 @14581 has 1 MA's), (193, 14905), (204, 14935), (298, 15487), (373, 15733),

Gene: Gerri43_23 Start: 15285, Stop: 16382, Start Num: 47

Candidate Starts for Gerri43_23:

(Start: 47 @15285 has 15 MA's), (63, 15327), (81, 15375), (96, 15411), (167, 15558), (203, 15648), (261, 15726), (271, 15777), (321, 15936), (336, 15993), (349, 16053), (385, 16170),

Gene: Gibbzilla_26 Start: 16960, Stop: 18060, Start Num: 47

Candidate Starts for Gibbzilla_26:

(Start: 47 @16960 has 15 MA's), (70, 17026), (83, 17053), (130, 17149), (157, 17233), (168, 17248), (198, 17323), (254, 17383), (255, 17392), (271, 17461), (380, 17842), (387, 17857), (400, 17905), (436, 18034),

Gene: Gilgamesh_70 Start: 64726, Stop: 65949, Start Num: 28

Candidate Starts for Gilgamesh_70:

(Start: 28 @64726 has 1 MA's), (91, 64900), (159, 65080), (234, 65218), (299, 65470), (330, 65560), (336, 65587), (337, 65590), (340, 65617), (358, 65662), (359, 65665), (407, 65833), (410, 65839), (419, 65863), (434, 65920),

Gene: Giorgio_19 Start: 14627, Stop: 16075, Start Num: 35

Candidate Starts for Giorgio_19:

(Start: 35 @14627 has 54 MA's), (Start: 52 @14681 has 1 MA's), (193, 15005), (204, 15035), (298, 15587), (316, 15638), (373, 15833),

Gene: Gisselle_16 Start: 14447, Stop: 15601, Start Num: 59

Candidate Starts for Gisselle_16:

(Start: 59 @14447 has 83 MA's), (Start: 61 @14450 has 15 MA's), (73, 14471), (102, 14540), (140, 14651), (149, 14672), (223, 14825), (230, 14858), (240, 14882), (258, 14921), (262, 14933), (305, 15116), (318, 15155), (328, 15185), (334, 15215), (340, 15251), (389, 15410), (414, 15500), (422, 15530), (440, 15596),

Gene: Glenn_20 Start: 16042, Stop: 17199, Start Num: 59

Candidate Starts for Glenn_20:

(Start: 59 @16042 has 83 MA's), (Start: 61 @16045 has 15 MA's), (73, 16066), (105, 16141), (128, 16201), (140, 16246), (149, 16267), (184, 16339), (196, 16369), (240, 16477), (260, 16522), (293, 16675), (301, 16705), (318, 16753), (332, 16804), (340, 16849), (381, 16984), (389, 17008), (412, 17095), (429, 17161), (431, 17167), (440, 17194),

Gene: GoldenEssence_79 Start: 56399, Stop: 57517, Start Num: 78

Candidate Starts for GoldenEssence_79:

(Start: 78 @56399 has 14 MA's), (147, 56582), (148, 56585), (206, 56720), (227, 56744), (231, 56774), (245, 56801), (259, 56849), (285, 56972), (292, 57005), (296, 57017), (326, 57107), (329, 57116), (335, 57146), (342, 57185), (345, 57197), (371, 57284), (376, 57305), (430, 57494),

Gene: GoodLuckBabe_27 Start: 20401, Stop: 21504, Start Num: 45

Candidate Starts for GoodLuckBabe_27:

(Start: 45 @20401 has 24 MA's), (70, 20470), (83, 20497), (92, 20521), (96, 20530), (124, 20578), (157, 20680), (161, 20686), (203, 20782), (336, 21127), (380, 21286), (387, 21301), (390, 21313), (418, 21415), (434, 21472), (436, 21478), (439, 21487),

Gene: Graynor_20 Start: 16060, Stop: 17217, Start Num: 59

Candidate Starts for Graynor_20:

(Start: 59 @16060 has 83 MA's), (Start: 61 @16063 has 15 MA's), (92, 16126), (140, 16264), (214, 16429), (293, 16693), (294, 16696), (298, 16708), (323, 16786), (340, 16867), (343, 16879), (367, 16957), (368, 16960), (376, 16990), (389, 17026), (390, 17029), (431, 17185),

Gene: GreenHearts_20 Start: 16128, Stop: 17285, Start Num: 59

Candidate Starts for GreenHearts_20:

(Start: 59 @16128 has 83 MA's), (Start: 61 @16131 has 15 MA's), (73, 16152), (Start: 78 @16158 has 14 MA's), (Start: 80 @16167 has 7 MA's), (140, 16332), (149, 16353), (260, 16608), (297, 16773), (298, 16776), (323, 16854), (332, 16890), (340, 16935), (347, 16959), (368, 17028), (381, 17070), (389, 17094), (421, 17208), (429, 17247), (431, 17253), (433, 17259), (440, 17280),

Gene: Greenhouse_20 Start: 16052, Stop: 17209, Start Num: 59

Candidate Starts for Greenhouse_20:

(Start: 59 @16052 has 83 MA's), (Start: 61 @16055 has 15 MA's), (73, 16076), (Start: 78 @16082 has 14 MA's), (Start: 80 @16091 has 7 MA's), (140, 16256), (149, 16277), (196, 16379), (260, 16532), (297, 16697), (323, 16778), (332, 16814), (340, 16859), (347, 16883), (368, 16952), (381, 16994), (389, 17018), (421, 17132), (429, 17171), (431, 17177), (433, 17183), (440, 17204),

Gene: Guinevere_27 Start: 19991, Stop: 21094, Start Num: 45

Candidate Starts for Guinevere_27:

(Start: 45 @19991 has 24 MA's), (70, 20060), (83, 20087), (96, 20120), (124, 20168), (157, 20270), (161, 20276), (203, 20372), (336, 20717), (380, 20876), (387, 20891), (390, 20903), (418, 21005), (434, 21062), (436, 21068), (439, 21077),

Gene: Gumpizza_19 Start: 14620, Stop: 16068, Start Num: 35

Candidate Starts for Gumpizza_19:

(Start: 35 @14620 has 54 MA's), (Start: 52 @14674 has 1 MA's), (193, 14998), (204, 15028), (298, 15580), (316, 15631), (373, 15826),

Gene: Gusanita_25 Start: 19747, Stop: 20850, Start Num: 45

Candidate Starts for Gusanita_25:

(Start: 45 @19747 has 24 MA's), (70, 19816), (83, 19843), (92, 19867), (93, 19870), (124, 19924), (144, 19990), (157, 20026), (180, 20074), (203, 20128), (287, 20311), (292, 20335), (295, 20344), (321, 20416), (327, 20434), (336, 20473), (380, 20632), (387, 20647), (436, 20824), (439, 20833),

Gene: Halloweekend_25 Start: 19671, Stop: 20774, Start Num: 45

Candidate Starts for Halloweekend_25:

(Start: 45 @19671 has 24 MA's), (70, 19740), (83, 19767), (96, 19800), (124, 19848), (137, 19896), (144, 19914), (180, 19998), (197, 20037), (292, 20259), (321, 20340), (327, 20358), (336, 20397), (380, 20556), (418, 20685), (436, 20748), (439, 20757),

Gene: Halsey_19 Start: 14619, Stop: 16067, Start Num: 35

Candidate Starts for Halsey_19:

(Start: 35 @14619 has 54 MA's), (Start: 52 @14673 has 1 MA's), (204, 15027), (207, 15033), (298, 15579), (316, 15630), (373, 15825),

Gene: HeadNerd_16 Start: 14410, Stop: 15564, Start Num: 61

Candidate Starts for HeadNerd_16:

(Start: 59 @14407 has 83 MA's), (Start: 61 @14410 has 15 MA's), (Start: 78 @14440 has 14 MA's), (92, 14476), (102, 14503), (138, 14608), (140, 14614), (149, 14635), (228, 14806), (240, 14845), (258, 14884), (262, 14896), (284, 15004), (305, 15079), (318, 15118), (328, 15148), (334, 15178), (340, 15214), (343, 15226), (389, 15373), (409, 15448), (414, 15463), (422, 15493), (429, 15526),

Gene: Heather_15 Start: 12317, Stop: 13387, Start Num: 79

Candidate Starts for Heather_15:

(Start: 79 @12317 has 2 MA's), (91, 12347), (98, 12368), (129, 12443), (131, 12449), (157, 12539), (204, 12632), (236, 12674), (340, 13034), (361, 13091), (364, 13106), (379, 13154), (383, 13166), (395, 13202), (411, 13265), (413, 13271), (424, 13310), (426, 13316), (439, 13361),

Gene: Herb_16 Start: 14410, Stop: 15567, Start Num: 59

Candidate Starts for Herb_16:

(Start: 59 @14410 has 83 MA's), (Start: 61 @14413 has 15 MA's), (73, 14434), (Start: 78 @14440 has 14 MA's), (Start: 80 @14449 has 7 MA's), (92, 14476), (140, 14614), (174, 14686), (260, 14890), (297, 15055), (318, 15121), (340, 15217), (373, 15325), (376, 15340), (382, 15355), (389, 15376), (391, 15382), (409, 15451), (422, 15496), (440, 15562),

Gene: Hereford_21 Start: 16193, Stop: 17242, Start Num: 36

Candidate Starts for Hereford_21:

(Start: 36 @16193 has 12 MA's), (147, 16463), (180, 16529), (329, 16859), (338, 16895), (430, 17216),

Gene: Hiyaa_25 Start: 21164, Stop: 22261, Start Num: 41

Candidate Starts for Hiyaa_25:

(37, 21158), (Start: 41 @21164 has 16 MA's), (71, 21266), (95, 21320), (111, 21359), (128, 21395), (134, 21416), (138, 21434), (286, 21707), (294, 21740), (306, 21773), (314, 21794), (347, 21920), (376, 22031), (395, 22085),

Gene: Huckleberry_16 Start: 14407, Stop: 15564, Start Num: 59

Candidate Starts for Huckleberry_16:

(Start: 59 @14407 has 83 MA's), (Start: 61 @14410 has 15 MA's), (Start: 78 @14440 has 14 MA's), (92, 14476), (102, 14503), (138, 14608), (140, 14614), (149, 14635), (228, 14806), (240, 14845), (258, 14884), (262, 14896), (284, 15004), (305, 15079), (318, 15118), (328, 15148), (334, 15178), (340, 15214), (343, 15226), (389, 15373), (409, 15448), (414, 15463), (422, 15493), (429, 15526),

Gene: HunterDalle_16 Start: 14401, Stop: 15558, Start Num: 59

Candidate Starts for HunterDalle_16:

(Start: 59 @14401 has 83 MA's), (Start: 61 @14404 has 15 MA's), (Start: 78 @14431 has 14 MA's), (Start: 80 @14440 has 7 MA's), (92, 14467), (105, 14500), (174, 14677), (260, 14881), (318, 15112), (323, 15127), (340, 15208), (376, 15331), (389, 15367), (390, 15370), (409, 15442), (422, 15487), (440, 15553),

Gene: Huntingdon_20 Start: 16038, Stop: 17195, Start Num: 59

Candidate Starts for Huntingdon_20:

(Start: 59 @16038 has 83 MA's), (Start: 61 @16041 has 15 MA's), (73, 16062), (Start: 78 @16068 has 14 MA's), (Start: 80 @16077 has 7 MA's), (140, 16242), (149, 16263), (260, 16518), (293, 16671), (318, 16749), (323, 16764), (332, 16800), (340, 16845), (349, 16878), (381, 16980), (389, 17004), (421, 17118), (431, 17163),

Gene: IUFootball_18 Start: 13443, Stop: 14564, Start Num: 35

Candidate Starts for IUFootball_18:

(Start: 35 @13443 has 54 MA's), (58, 13512), (76, 13554), (82, 13566), (91, 13587), (204, 13851), (262, 13935), (321, 14142), (325, 14154), (370, 14313), (389, 14373), (404, 14430), (415, 14457), (417, 14466),

Gene: Ichiang_25 Start: 19690, Stop: 20793, Start Num: 45

Candidate Starts for Ichiang_25:

(Start: 45 @19690 has 24 MA's), (70, 19759), (83, 19786), (96, 19819), (124, 19867), (137, 19915), (144, 19933), (180, 20017), (197, 20056), (292, 20278), (321, 20359), (327, 20377), (336, 20416), (380, 20575), (418, 20704), (436, 20767), (439, 20776),

Gene: Ididsumtinwong_19 Start: 14225, Stop: 15355, Start Num: 41

Candidate Starts for Ididsumtinwong_19:

(6, 13781), (7, 13796), (13, 13883), (16, 13919), (19, 13991), (Start: 41 @14225 has 16 MA's), (91, 14369), (107, 14414), (118, 14438), (128, 14456), (313, 14858), (314, 14861), (347, 14987), (350, 14999), (367, 15068), (391, 15146),

Gene: Immaculata_20 Start: 16036, Stop: 17193, Start Num: 59

Candidate Starts for Immaculata_20:

(Start: 59 @16036 has 83 MA's), (Start: 61 @16039 has 15 MA's), (73, 16060), (Start: 78 @16066 has 14 MA's), (105, 16135), (140, 16240), (184, 16333), (196, 16363), (240, 16471), (260, 16516), (293, 16669), (301, 16699), (318, 16747), (323, 16762), (332, 16798), (340, 16843), (381, 16978), (389, 17002), (412, 17089), (429, 17155), (431, 17161), (440, 17188),

Gene: IsHungry_27 Start: 20288, Stop: 21391, Start Num: 45

Candidate Starts for IsHungry_27:

(Start: 45 @20288 has 24 MA's), (83, 20384), (96, 20417), (144, 20531), (152, 20555), (157, 20567), (180, 20615), (203, 20669), (287, 20852), (321, 20957), (327, 20975), (336, 21014), (380, 21173), (387, 21188), (418, 21302), (423, 21320), (434, 21359), (436, 21365), (439, 21374),

Gene: Isperia_25 Start: 17304, Stop: 18395, Start Num: 57

Candidate Starts for Isperia_25:

(Start: 41 @17241 has 16 MA's), (Start: 57 @17304 has 1 MA's), (82, 17364), (107, 17433), (143, 17535), (167, 17589), (272, 17787), (298, 17895), (315, 17943), (366, 18141), (375, 18174), (394, 18219), (435, 18378),

Gene: Iter_19 Start: 14928, Stop: 16049, Start Num: 35

Candidate Starts for Iter_19:

(Start: 35 @14928 has 54 MA's), (82, 15051), (91, 15072), (178, 15276), (207, 15342), (370, 15798), (389, 15858),

Gene: IttyBittyPiggy_18 Start: 14441, Stop: 15652, Start Num: 61

Candidate Starts for IttyBittyPiggy_18:

(Start: 59 @14438 has 83 MA's), (Start: 61 @14441 has 15 MA's), (134, 14621), (205, 14795), (270, 15017), (298, 15140), (332, 15260), (340, 15305), (412, 15551),

Gene: Janeemi_20 Start: 16175, Stop: 17617, Start Num: 35

Candidate Starts for Janeemi_20:

(Start: 35 @16175 has 54 MA's), (55, 16235), (82, 16298), (180, 16529), (207, 16589), (370, 17366), (401, 17471),

Gene: JanetJ_20 Start: 15852, Stop: 16901, Start Num: 36

Candidate Starts for JanetJ_20:

(Start: 36 @15852 has 12 MA's), (42, 15870), (64, 15930), (147, 16122), (180, 16188), (329, 16518), (338, 16554), (430, 16875), (432, 16881),

Gene: JasmineDragon_18 Start: 13074, Stop: 14306, Start Num: 36

Candidate Starts for JasmineDragon_18:

(Start: 36 @13074 has 12 MA's), (106, 13269), (116, 13293), (247, 13644), (286, 13800), (316, 13890), (340, 13989), (393, 14145), (417, 14226),

Gene: Joann_20 Start: 16032, Stop: 17189, Start Num: 59

Candidate Starts for Joann_20:

(Start: 59 @16032 has 83 MA's), (Start: 61 @16035 has 15 MA's), (73, 16056), (Start: 80 @16071 has 7 MA's), (140, 16236), (149, 16257), (260, 16512), (297, 16677), (323, 16758), (332, 16794), (340, 16839), (347, 16863), (368, 16932), (381, 16974), (389, 16998), (421, 17112), (429, 17151), (431, 17157), (433, 17163), (440, 17184),

Gene: Joemato_19 Start: 14919, Stop: 16040, Start Num: 35

Candidate Starts for Joemato_19:

(Start: 35 @14919 has 54 MA's), (55, 14979), (82, 15042), (91, 15063), (182, 15276), (204, 15327), (207, 15333), (299, 15555), (364, 15771), (370, 15789), (389, 15849),

Gene: JohnDoe_19 Start: 14914, Stop: 16035, Start Num: 35

Candidate Starts for JohnDoe_19:

(Start: 35 @14914 has 54 MA's), (55, 14974), (82, 15037), (91, 15058), (182, 15271), (204, 15322), (207, 15328), (299, 15550), (370, 15784), (389, 15844),

Gene: Jstan_20 Start: 14901, Stop: 16022, Start Num: 35

Candidate Starts for Jstan_20:

(Start: 35 @14901 has 54 MA's), (55, 14961), (Start: 57 @14967 has 1 MA's), (82, 15024), (91, 15045), (204, 15309), (370, 15771),

Gene: Julie_27 Start: 20442, Stop: 21545, Start Num: 45

Candidate Starts for Julie_27:

(Start: 45 @20442 has 24 MA's), (70, 20511), (83, 20538), (96, 20571), (124, 20619), (137, 20667), (144, 20685), (157, 20721), (287, 21006), (327, 21129), (336, 21168), (380, 21327), (418, 21456), (436, 21519), (439, 21528),

Gene: Jumboset_20 Start: 15985, Stop: 17142, Start Num: 59

Candidate Starts for Jumboset_20:

(Start: 59 @15985 has 83 MA's), (Start: 61 @15988 has 15 MA's), (73, 16009), (105, 16084), (128, 16144), (140, 16189), (149, 16210), (184, 16282), (196, 16312), (240, 16420), (260, 16465), (293, 16618), (301, 16648), (318, 16696), (332, 16747), (340, 16792), (381, 16927), (389, 16951), (412, 17038), (429, 17104), (431, 17110), (440, 17137),

Gene: JuneStar_19 Start: 15024, Stop: 16145, Start Num: 35

Candidate Starts for JuneStar_19:

(Start: 35 @15024 has 54 MA's), (91, 15168), (128, 15258), (207, 15438), (370, 15894), (434, 16110),

Gene: KSunshine22_88 Start: 59810, Stop: 60928, Start Num: 78

Candidate Starts for KSunshine22_88:

(Start: 78 @59810 has 14 MA's), (113, 59903), (148, 59996), (180, 60068), (198, 60110), (245, 60215), (280, 60353), (285, 60383), (296, 60428), (297, 60431), (312, 60473), (329, 60527), (335, 60557),

(342, 60596), (345, 60608), (430, 60905),

Gene: Kalimba_19 Start: 14528, Stop: 15976, Start Num: 35

Candidate Starts for Kalimba_19:

(Start: 35 @14528 has 54 MA's), (Start: 52 @14582 has 1 MA's), (193, 14906), (204, 14936), (298, 15488), (373, 15734),

Gene: Kalizoi_20 Start: 15984, Stop: 17141, Start Num: 59

Candidate Starts for Kalizoi_20:

(Start: 59 @15984 has 83 MA's), (Start: 61 @15987 has 15 MA's), (73, 16008), (105, 16083), (128, 16143), (140, 16188), (149, 16209), (184, 16281), (196, 16311), (214, 16353), (240, 16419), (260, 16464), (293, 16617), (301, 16647), (318, 16695), (323, 16710), (332, 16746), (340, 16791), (381, 16926), (389, 16950), (412, 17037), (429, 17103), (431, 17109), (440, 17136),

Gene: Kaylissa_19 Start: 14920, Stop: 16041, Start Num: 35

Candidate Starts for Kaylissa_19:

(Start: 35 @14920 has 54 MA's), (55, 14980), (82, 15043), (91, 15064), (182, 15277), (204, 15328), (207, 15334), (299, 15556), (370, 15790), (389, 15850),

Gene: KeAlii_18 Start: 13937, Stop: 15121, Start Num: 61

Candidate Starts for KeAlii_18:

(Start: 59 @13934 has 83 MA's), (Start: 61 @13937 has 15 MA's), (73, 13955), (82, 13973), (87, 13985), (102, 14024), (110, 14048), (132, 14102), (134, 14111), (243, 14381), (266, 14459), (332, 14729), (340, 14774), (412, 15020), (423, 15053), (436, 15104),

Gene: Keanu_25 Start: 21193, Stop: 22296, Start Num: 38

Candidate Starts for Keanu_25:

(Start: 38 @21193 has 4 MA's), (58, 21265), (95, 21355), (111, 21394), (138, 21469), (140, 21475), (171, 21544), (279, 21706), (280, 21709), (286, 21742), (294, 21775), (314, 21829), (322, 21853), (346, 21952), (347, 21955), (367, 22033), (417, 22204),

Gene: Kihatsu_28 Start: 20316, Stop: 21419, Start Num: 45

Candidate Starts for Kihatsu_28:

(Start: 45 @20316 has 24 MA's), (70, 20385), (83, 20412), (96, 20445), (124, 20493), (157, 20595), (161, 20601), (203, 20697), (336, 21042), (380, 21201), (387, 21216), (390, 21228), (418, 21330), (434, 21387), (436, 21393), (439, 21402),

Gene: KingBob_16 Start: 14410, Stop: 15567, Start Num: 59

Candidate Starts for KingBob_16:

(Start: 59 @14410 has 83 MA's), (Start: 61 @14413 has 15 MA's), (73, 14434), (Start: 78 @14440 has 14 MA's), (Start: 80 @14449 has 7 MA's), (92, 14476), (140, 14614), (174, 14686), (260, 14890), (297, 15055), (318, 15121), (340, 15217), (373, 15325), (376, 15340), (382, 15355), (389, 15376), (391, 15382), (409, 15451), (422, 15496), (440, 15562),

Gene: Kittykat_16 Start: 14431, Stop: 15585, Start Num: 59

Candidate Starts for Kittykat_16:

(Start: 59 @14431 has 83 MA's), (Start: 61 @14434 has 15 MA's), (73, 14455), (102, 14524), (138, 14629), (140, 14635), (149, 14656), (196, 14758), (223, 14809), (230, 14842), (240, 14866), (258, 14905), (262, 14917), (305, 15100), (318, 15139), (328, 15169), (334, 15199), (340, 15235), (389, 15394), (422, 15514), (440, 15580),

Gene: Kokushibo_25 Start: 21173, Stop: 22276, Start Num: 37

Candidate Starts for Kokushibo_25:

(37, 21173), (Start: 41 @21179 has 16 MA's), (71, 21281), (95, 21335), (111, 21374), (128, 21410), (134, 21431), (138, 21449), (286, 21722), (294, 21755), (306, 21788), (314, 21809), (347, 21935), (376, 22046), (395, 22100),

Gene: Korra_21 Start: 15990, Stop: 17147, Start Num: 59

Candidate Starts for Korra_21:

(Start: 59 @15990 has 83 MA's), (Start: 61 @15993 has 15 MA's), (73, 16014), (105, 16089), (140, 16194), (149, 16215), (184, 16287), (196, 16317), (240, 16425), (260, 16470), (293, 16623), (301, 16653), (318, 16701), (323, 16716), (332, 16752), (340, 16797), (389, 16956), (391, 16962), (412, 17043), (429, 17109), (431, 17115), (440, 17142),

Gene: Kukla_24 Start: 18700, Stop: 19824, Start Num: 47

Candidate Starts for Kukla_24:

(Start: 47 @18700 has 15 MA's), (Start: 52 @18718 has 1 MA's), (70, 18766), (76, 18778), (83, 18793), (124, 18901), (144, 18964), (145, 18967), (157, 19000), (180, 19048), (198, 19090), (254, 19150), (277, 19246), (287, 19285), (292, 19309), (336, 19447), (338, 19453), (339, 19465), (380, 19606), (387, 19621),

Gene: LadyAstra_19 Start: 13076, Stop: 14311, Start Num: 36

Candidate Starts for LadyAstra_19:

(15, 12755), (Start: 36 @13076 has 12 MA's), (106, 13271), (116, 13295), (247, 13646), (286, 13802), (316, 13895), (340, 13994), (393, 14150), (417, 14231),

Gene: Lakshmi_20 Start: 16057, Stop: 17214, Start Num: 59

Candidate Starts for Lakshmi_20:

(Start: 59 @16057 has 83 MA's), (Start: 61 @16060 has 15 MA's), (73, 16081), (Start: 78 @16087 has 14 MA's), (Start: 80 @16096 has 7 MA's), (140, 16261), (149, 16282), (260, 16537), (297, 16702), (323, 16783), (332, 16819), (340, 16864), (347, 16888), (368, 16957), (381, 16999), (389, 17023), (414, 17113), (421, 17137), (429, 17176), (431, 17182), (433, 17188), (440, 17209),

Gene: Lasagna_16 Start: 14407, Stop: 15561, Start Num: 59

Candidate Starts for Lasagna_16:

(Start: 59 @14407 has 83 MA's), (Start: 61 @14410 has 15 MA's), (Start: 78 @14437 has 14 MA's), (102, 14500), (115, 14542), (128, 14566), (140, 14611), (240, 14842), (258, 14881), (262, 14893), (284, 15001), (294, 15043), (305, 15076), (323, 15130), (334, 15175), (340, 15211), (343, 15223), (367, 15301), (389, 15370), (409, 15445), (414, 15460), (422, 15490), (429, 15523), (439, 15553),

Gene: LastNadiia_26 Start: 17531, Stop: 18628, Start Num: 47

Candidate Starts for LastNadiia_26:

(Start: 47 @17531 has 15 MA's), (63, 17573), (81, 17621), (96, 17657), (167, 17804), (203, 17894), (292, 18104), (336, 18239), (378, 18398), (385, 18416), (439, 18611),

Gene: Laure_95 Start: 61000, Stop: 62112, Start Num: 78

Candidate Starts for Laure_95:

(Start: 78 @61000 has 14 MA's), (103, 61066), (120, 61108), (144, 61177), (153, 61207), (203, 61312), (219, 61330), (225, 61348), (229, 61366), (243, 61402), (285, 61561), (290, 61579), (296, 61606), (323, 61687), (326, 61696), (385, 61915), (389, 61927), (403, 61981), (420, 62035), (428, 62074),

Gene: Lego_19 Start: 14919, Stop: 16040, Start Num: 35

Candidate Starts for Lego_19:

(Start: 35 @14919 has 54 MA's), (55, 14979), (82, 15042), (91, 15063), (182, 15276), (204, 15327), (207, 15333), (299, 15555), (364, 15771), (370, 15789), (389, 15849),

Gene: Lennox_16 Start: 14395, Stop: 15549, Start Num: 59

Candidate Starts for Lennox_16:

(Start: 59 @14395 has 83 MA's), (Start: 61 @14398 has 15 MA's), (Start: 78 @14425 has 14 MA's), (102, 14488), (115, 14530), (128, 14554), (140, 14599), (240, 14830), (258, 14869), (262, 14881), (284, 14989), (294, 15031), (305, 15064), (318, 15103), (323, 15118), (334, 15163), (340, 15199), (343, 15211), (367, 15289), (389, 15358), (409, 15433), (414, 15448), (422, 15478), (429, 15511), (439, 15541),

Gene: Lenoxika_27 Start: 19987, Stop: 21090, Start Num: 45

Candidate Starts for Lenoxika_27:

(Start: 45 @19987 has 24 MA's), (70, 20056), (83, 20083), (96, 20116), (124, 20164), (157, 20266), (161, 20272), (203, 20368), (336, 20713), (380, 20872), (387, 20887), (390, 20899), (418, 21001), (434, 21058), (436, 21064), (439, 21073),

Gene: LeoJr_93 Start: 61859, Stop: 62977, Start Num: 78

Candidate Starts for LeoJr_93:

(Start: 78 @61859 has 14 MA's), (147, 62042), (148, 62045), (231, 62237), (245, 62264), (280, 62402), (285, 62432), (292, 62465), (296, 62477), (297, 62480), (326, 62567), (332, 62594), (335, 62606), (342, 62645), (364, 62723), (405, 62864), (430, 62954),

Gene: Liebe_18 Start: 13443, Stop: 14564, Start Num: 35

Candidate Starts for Liebe_18:

(Start: 35 @13443 has 54 MA's), (58, 13512), (76, 13554), (82, 13566), (91, 13587), (204, 13851), (262, 13935), (321, 14142), (325, 14154), (370, 14313), (389, 14373), (404, 14430), (415, 14457), (417, 14466),

Gene: LilStuart_16 Start: 14395, Stop: 15549, Start Num: 59

Candidate Starts for LilStuart_16:

(Start: 59 @14395 has 83 MA's), (Start: 61 @14398 has 15 MA's), (Start: 78 @14425 has 14 MA's), (102, 14488), (115, 14530), (128, 14554), (140, 14599), (240, 14830), (258, 14869), (262, 14881), (284, 14989), (294, 15031), (305, 15064), (323, 15118), (334, 15163), (340, 15199), (343, 15211), (367, 15289), (389, 15358), (409, 15433), (414, 15448), (422, 15478), (429, 15511), (439, 15541),

Gene: Lilbooboo_15 Start: 12353, Stop: 13450, Start Num: 80

Candidate Starts for Lilbooboo_15:

(Start: 80 @12353 has 7 MA's), (101, 12410), (129, 12473), (147, 12530), (148, 12533), (157, 12563), (205, 12662), (310, 12977), (325, 13022), (328, 13031), (339, 13085), (340, 13097), (364, 13169), (371, 13190), (383, 13229), (395, 13265), (399, 13286), (404, 13307), (413, 13334), (418, 13349), (426, 13379), (432, 13403), (439, 13424),

Gene: Lishka_19 Start: 14189, Stop: 15319, Start Num: 41

Candidate Starts for Lishka_19:

(6, 13745), (7, 13760), (13, 13847), (16, 13883), (19, 13955), (Start: 41 @14189 has 16 MA's), (91, 14333), (107, 14378), (118, 14402), (128, 14420), (277, 14693), (313, 14822), (314, 14825), (326, 14861), (347, 14951), (350, 14963), (367, 15032), (391, 15110), (422, 15221),

Gene: LisoBros_18 Start: 14897, Stop: 16402, Start Num: 12

Candidate Starts for LisoBros_18:

(Start: 12 @14897 has 1 MA's), (21, 15068), (22, 15074), (30, 15212), (Start: 35 @15221 has 54 MA's), (51, 15284), (122, 15461), (134, 15494), (195, 15641), (199, 15647), (224, 15701), (269, 15803), (277, 15836), (340, 16067), (341, 16070), (360, 16118), (371, 16157), (424, 16337), (432, 16370), (440, 16394),

Gene: Litotes_20 Start: 16024, Stop: 17181, Start Num: 59

Candidate Starts for Litotes_20:

(Start: 59 @16024 has 83 MA's), (Start: 61 @16027 has 15 MA's), (92, 16090), (140, 16228), (214, 16393), (293, 16657), (294, 16660), (297, 16669), (323, 16750), (340, 16831), (343, 16843), (367, 16921), (376, 16954), (389, 16990), (390, 16993), (431, 17149),

Gene: Lizalica_19 Start: 14904, Stop: 16025, Start Num: 35

Candidate Starts for Lizalica_19:

(Start: 35 @14904 has 54 MA's), (55, 14964), (82, 15027), (91, 15048), (204, 15312), (207, 15318), (364, 15756), (370, 15774), (389, 15834),

Gene: London_19 Start: 14901, Stop: 16022, Start Num: 35

Candidate Starts for London_19:

(Start: 35 @14901 has 54 MA's), (55, 14961), (Start: 57 @14967 has 1 MA's), (82, 15024), (91, 15045), (204, 15309), (370, 15771),

Gene: LuckyBarnes_26 Start: 21950, Stop: 23038, Start Num: 35

Candidate Starts for LuckyBarnes_26:

(Start: 35 @21950 has 54 MA's), (62, 22034), (69, 22049), (154, 22274), (236, 22403), (256, 22415), (280, 22487), (285, 22514), (316, 22607), (329, 22646), (335, 22673), (337, 22679), (340, 22706), (374, 22805), (391, 22859), (398, 22883), (422, 22964),

Gene: Lucy_16 Start: 14387, Stop: 15541, Start Num: 59

Candidate Starts for Lucy_16:

(Start: 59 @14387 has 83 MA's), (Start: 61 @14390 has 15 MA's), (Start: 78 @14417 has 14 MA's), (102, 14480), (115, 14522), (128, 14546), (140, 14591), (240, 14822), (258, 14861), (262, 14873), (284, 14981), (294, 15023), (305, 15056), (323, 15110), (334, 15155), (340, 15191), (343, 15203), (367, 15281), (389, 15350), (409, 15425), (414, 15440), (422, 15470), (429, 15503), (439, 15533),

Gene: MaGuCo_18 Start: 13377, Stop: 14498, Start Num: 35

Candidate Starts for MaGuCo_18:

(Start: 35 @13377 has 54 MA's), (82, 13500), (91, 13521), (207, 13791), (262, 13869), (321, 14076), (325, 14088), (364, 14229), (370, 14247), (389, 14307), (404, 14364), (415, 14391), (417, 14400),

Gene: Makima_24 Start: 16614, Stop: 17711, Start Num: 47

Candidate Starts for Makima_24:

(Start: 47 @16614 has 15 MA's), (63, 16656), (81, 16704), (130, 16803), (167, 16887), (203, 16977), (292, 17187), (336, 17322), (378, 17481), (385, 17499), (439, 17694),

Gene: Makoto_16 Start: 14411, Stop: 15562, Start Num: 61

Candidate Starts for Makoto_16:

(Start: 59 @14408 has 83 MA's), (Start: 61 @14411 has 15 MA's), (Start: 78 @14438 has 14 MA's), (102, 14501), (115, 14543), (128, 14567), (140, 14612), (240, 14843), (258, 14882), (262, 14894), (284, 15002), (294, 15044), (305, 15077), (323, 15131), (334, 15176), (340, 15212), (343, 15224), (367, 15302), (389, 15371), (409, 15446), (414, 15461), (422, 15491), (429, 15524), (439, 15554),

Gene: MamaPearl_16 Start: 14415, Stop: 15572, Start Num: 59

Candidate Starts for MamaPearl_16:

(Start: 59 @14415 has 83 MA's), (Start: 61 @14418 has 15 MA's), (Start: 78 @14445 has 14 MA's), (115, 14550), (140, 14619), (214, 14784), (223, 14793), (228, 14811), (230, 14826), (332, 15177), (334, 15186), (340, 15222), (369, 15318), (381, 15357), (389, 15381), (423, 15504), (431, 15540), (440, 15567),

Gene: Maria1952_16 Start: 14413, Stop: 15567, Start Num: 61

Candidate Starts for Maria1952_16:

(Start: 59 @14410 has 83 MA's), (Start: 61 @14413 has 15 MA's), (73, 14434), (Start: 78 @14440 has 14 MA's), (Start: 80 @14449 has 7 MA's), (92, 14476), (140, 14614), (174, 14686), (260, 14890), (297, 15055), (318, 15121), (340, 15217), (373, 15325), (376, 15340), (382, 15355), (389, 15376), (391, 15382), (409, 15451), (422, 15496), (440, 15562),

Gene: Maruru_18 Start: 18201, Stop: 19316, Start Num: 39

Candidate Starts for Maruru_18:

(Start: 39 @18201 has 2 MA's), (169, 18552), (283, 18750), (286, 18762), (298, 18801), (317, 18855), (343, 18963), (379, 19086), (394, 19128), (423, 19239), (433, 19281), (441, 19308),

Gene: Maureen_18 Start: 13443, Stop: 14564, Start Num: 35

Candidate Starts for Maureen_18:

(Start: 35 @13443 has 54 MA's), (58, 13512), (76, 13554), (82, 13566), (91, 13587), (204, 13851), (262, 13935), (321, 14142), (325, 14154), (370, 14313), (389, 14373), (404, 14430), (415, 14457), (417, 14466),

Gene: MeganNoll_20 Start: 16042, Stop: 17199, Start Num: 59

Candidate Starts for MeganNoll_20:

(Start: 59 @16042 has 83 MA's), (Start: 61 @16045 has 15 MA's), (73, 16066), (105, 16141), (128, 16201), (140, 16246), (149, 16267), (184, 16339), (196, 16369), (240, 16477), (260, 16522), (293, 16675), (301, 16705), (318, 16753), (332, 16804), (340, 16849), (381, 16984), (389, 17008), (412, 17095), (429, 17161), (431, 17167), (440, 17194),

Gene: Michkear_22 Start: 16776, Stop: 17867, Start Num: 35

Candidate Starts for Michkear_22:

(Start: 35 @16776 has 54 MA's), (44, 16809), (Start: 52 @16830 has 1 MA's), (207, 17190), (325, 17457), (364, 17598), (370, 17616),

Gene: MillySue_27 Start: 19861, Stop: 20964, Start Num: 45

Candidate Starts for MillySue_27:

(Start: 45 @19861 has 24 MA's), (70, 19930), (83, 19957), (96, 19990), (124, 20038), (137, 20086), (144, 20104), (161, 20146), (180, 20188), (255, 20299), (287, 20425), (321, 20530), (327, 20548), (336, 20587), (380, 20746), (418, 20875), (436, 20938), (439, 20947),

Gene: Mimi_93 Start: 61950, Stop: 63068, Start Num: 78

Candidate Starts for Mimi_93:

(Start: 78 @61950 has 14 MA's), (147, 62133), (148, 62136), (206, 62271), (227, 62295), (231, 62325), (245, 62352), (259, 62400), (285, 62523), (292, 62556), (296, 62568), (326, 62658), (329, 62667), (335, 62697), (342, 62736), (345, 62748), (371, 62835), (376, 62856), (430, 63045),

Gene: MiniMommy_18 Start: 13075, Stop: 14307, Start Num: 36

Candidate Starts for MiniMommy_18:

(Start: 36 @13075 has 12 MA's), (106, 13270), (116, 13294), (247, 13645), (286, 13801), (316, 13891), (340, 13990), (393, 14146), (417, 14227),

Gene: Mireles_23 Start: 15185, Stop: 16282, Start Num: 47

Candidate Starts for Mireles_23:

(Start: 47 @15185 has 15 MA's), (81, 15275), (167, 15458), (170, 15467), (203, 15548), (277, 15698), (313, 15812), (336, 15893), (378, 16052), (380, 16058), (385, 16070), (439, 16265),

Gene: Misaeng_20 Start: 16102, Stop: 17259, Start Num: 59

Candidate Starts for Misaeng_20:

(Start: 59 @16102 has 83 MA's), (Start: 61 @16105 has 15 MA's), (73, 16126), (Start: 78 @16132 has 14 MA's), (Start: 80 @16141 has 7 MA's), (140, 16306), (149, 16327), (260, 16582), (293, 16735), (318, 16813), (323, 16828), (332, 16864), (340, 16909), (349, 16942), (381, 17044), (389, 17068), (421, 17182), (431, 17227),

Gene: MissSwiss_18 Start: 14398, Stop: 15609, Start Num: 61

Candidate Starts for MissSwiss_18:

(Start: 59 @14395 has 83 MA's), (Start: 61 @14398 has 15 MA's), (82, 14440), (102, 14491), (134, 14578), (205, 14752), (225, 14815), (261, 14929), (270, 14974), (297, 15094), (318, 15166), (332, 15217), (337, 15235), (340, 15262), (362, 15328), (381, 15397), (412, 15508), (423, 15541), (436, 15592),

Gene: Mojorita_19 Start: 14327, Stop: 15457, Start Num: 41

Candidate Starts for Mojorita_19:

(Start: 41 @14327 has 16 MA's), (91, 14471), (100, 14495), (118, 14540), (128, 14558), (141, 14606), (257, 14780), (273, 14816), (275, 14822), (347, 15089), (350, 15101), (391, 15248),

Gene: Moki_16 Start: 14407, Stop: 15564, Start Num: 59

Candidate Starts for Moki_16:

(Start: 59 @14407 has 83 MA's), (Start: 61 @14410 has 15 MA's), (Start: 78 @14440 has 14 MA's), (92, 14476), (102, 14503), (138, 14608), (140, 14614), (149, 14635), (228, 14806), (240, 14845), (258, 14884), (262, 14896), (284, 15004), (305, 15079), (318, 15118), (328, 15148), (334, 15178), (340, 15214), (343, 15226), (389, 15373), (409, 15448), (414, 15463), (422, 15493), (429, 15526),

Gene: Moss_19 Start: 14619, Stop: 16067, Start Num: 35

Candidate Starts for Moss_19:

(Start: 35 @14619 has 54 MA's), (Start: 52 @14673 has 1 MA's), (204, 15027), (207, 15033), (298, 15579), (316, 15630), (373, 15825),

Gene: MrBoss_20 Start: 16024, Stop: 17181, Start Num: 59

Candidate Starts for MrBoss_20:

(Start: 59 @16024 has 83 MA's), (Start: 61 @16027 has 15 MA's), (92, 16090), (140, 16228), (214, 16393), (293, 16657), (294, 16660), (297, 16669), (323, 16750), (340, 16831), (343, 16843), (367, 16921), (376, 16954), (389, 16990), (390, 16993), (431, 17149),

Gene: MrGloopy_20 Start: 15976, Stop: 17133, Start Num: 59

Candidate Starts for MrGloopy_20:

(Start: 59 @15976 has 83 MA's), (Start: 61 @15979 has 15 MA's), (73, 16000), (105, 16075), (128, 16135), (140, 16180), (149, 16201), (184, 16273), (196, 16303), (240, 16411), (260, 16456), (293, 16609), (301, 16639), (318, 16687), (332, 16738), (340, 16783), (381, 16918), (389, 16942), (412, 17029), (429, 17095), (431, 17101), (440, 17128),

Gene: Mudpuppy_19 Start: 14918, Stop: 16039, Start Num: 35

Candidate Starts for Mudpuppy_19:

(Start: 35 @14918 has 54 MA's), (55, 14978), (82, 15041), (91, 15062), (182, 15275), (204, 15326), (207, 15332), (299, 15554), (364, 15770), (370, 15788), (389, 15848),

Gene: Mufasa8_18 Start: 18827, Stop: 19933, Start Num: 40

Candidate Starts for Mufasa8_18:

(Start: 40 @18827 has 1 MA's), (68, 18908), (128, 19064), (133, 19079), (135, 19100), (183, 19190), (191, 19202), (193, 19211), (272, 19328), (283, 19370), (286, 19382), (290, 19397), (317, 19475), (389, 19733), (405, 19799), (426, 19868),

Gene: Mysterium_19 Start: 14620, Stop: 16068, Start Num: 35

Candidate Starts for Mysterium_19:

(Start: 35 @14620 has 54 MA's), (Start: 52 @14674 has 1 MA's), (193, 14998), (204, 15028), (298, 15580), (316, 15631), (373, 15826),

Gene: Nancia_16 Start: 14407, Stop: 15561, Start Num: 59

Candidate Starts for Nancia_16:

(Start: 59 @14407 has 83 MA's), (Start: 61 @14410 has 15 MA's), (Start: 78 @14437 has 14 MA's), (102, 14500), (115, 14542), (128, 14566), (140, 14611), (240, 14842), (258, 14881), (262, 14893), (284, 15001), (294, 15043), (305, 15076), (323, 15130), (334, 15175), (340, 15211), (343, 15223), (367, 15301), (389, 15370), (409, 15445), (414, 15460), (422, 15490), (429, 15523), (439, 15553),

Gene: Nandita_27 Start: 19991, Stop: 21094, Start Num: 45

Candidate Starts for Nandita_27:

(Start: 45 @19991 has 24 MA's), (70, 20060), (83, 20087), (96, 20120), (124, 20168), (157, 20270), (161, 20276), (203, 20372), (336, 20717), (380, 20876), (387, 20891), (390, 20903), (418, 21005), (434, 21062), (436, 21068), (439, 21077),

Gene: Neuville_23 Start: 15285, Stop: 16382, Start Num: 47

Candidate Starts for Neuville_23:

(Start: 47 @15285 has 15 MA's), (63, 15327), (81, 15375), (96, 15411), (167, 15558), (203, 15648), (261, 15726), (271, 15777), (321, 15936), (336, 15993), (349, 16053), (385, 16170),

Gene: Niobe_19 Start: 14901, Stop: 16022, Start Num: 35

Candidate Starts for Niobe_19:

(Start: 35 @14901 has 54 MA's), (55, 14961), (Start: 57 @14967 has 1 MA's), (82, 15024), (91, 15045), (204, 15309), (370, 15771),

Gene: Nitro_19 Start: 14929, Stop: 16050, Start Num: 35

Candidate Starts for Nitro_19:

(Start: 35 @14929 has 54 MA's), (55, 14989), (82, 15052), (91, 15073), (207, 15343), (264, 15430), (370, 15799),

Gene: NoSwimming_21 Start: 16995, Stop: 18044, Start Num: 36

Candidate Starts for NoSwimming_21:

(11, 16623), (29, 16965), (Start: 36 @16995 has 12 MA's), (42, 17013), (109, 17169), (121, 17196), (138, 17244), (147, 17265), (180, 17331), (242, 17412), (319, 17637), (329, 17661), (336, 17691), (338, 17697), (345, 17739), (383, 17856), (415, 17958), (430, 18018), (432, 18024),

Gene: Nubia_20 Start: 16056, Stop: 17174, Start Num: 80

Candidate Starts for Nubia_20:

(Start: 59 @16017 has 83 MA's), (Start: 61 @16020 has 15 MA's), (73, 16041), (Start: 78 @16047 has 14 MA's), (Start: 80 @16056 has 7 MA's), (140, 16221), (149, 16242), (260, 16497), (297, 16662), (323, 16743), (332, 16779), (340, 16824), (347, 16848), (368, 16917), (381, 16959), (389, 16983), (421, 17097), (429, 17136), (431, 17142), (433, 17148), (440, 17169),

Gene: OMalley_16 Start: 14401, Stop: 15558, Start Num: 59

Candidate Starts for OMalley_16:

(Start: 59 @14401 has 83 MA's), (Start: 61 @14404 has 15 MA's), (Start: 78 @14431 has 14 MA's), (Start: 80 @14440 has 7 MA's), (92, 14467), (113, 14530), (174, 14677), (260, 14881), (318, 15112), (323, 15127), (340, 15208), (376, 15331), (389, 15367), (390, 15370), (409, 15442), (422, 15487), (440, 15553),

Gene: ObiToo_18 Start: 14086, Stop: 15297, Start Num: 59

Candidate Starts for ObiToo_18:

(Start: 59 @14086 has 83 MA's), (Start: 61 @14089 has 15 MA's), (130, 14251), (134, 14266), (140, 14290), (213, 14470), (225, 14503), (293, 14770), (324, 14872), (332, 14905), (340, 14950), (412, 15196), (423, 15229), (424, 15235), (433, 15271), (436, 15280),

Gene: OnionKnight_20 Start: 16035, Stop: 17189, Start Num: 166

Candidate Starts for OnionKnight_20:

(18, 15387), (72, 15777), (156, 16023), (Start: 166 @16035 has 1 MA's), (194, 16101), (217, 16245), (218, 16251), (248, 16395), (251, 16440), (257, 16491), (262, 16506), (275, 16572), (288, 16632), (333, 16800), (334, 16803), (337, 16812), (343, 16851), (361, 16908), (364, 16926), (365, 16929), (370, 16944), (373, 16953), (378, 16971), (386, 16992), (392, 17010), (401, 17049), (420, 17112), (423, 17124), (438, 17178), (439, 17184),

Gene: Origami_19 Start: 13076, Stop: 14311, Start Num: 36

Candidate Starts for Origami_19:

(15, 12755), (Start: 36 @13076 has 12 MA's), (106, 13271), (116, 13295), (247, 13646), (286, 13802), (316, 13895), (340, 13994), (393, 14150), (417, 14231),

Gene: OscarSo_29 Start: 19754, Stop: 20926, Start Num: 41

Candidate Starts for OscarSo_29:

(Start: 41 @19754 has 16 MA's), (46, 19787), (58, 19820), (85, 19883), (117, 19970), (127, 19988), (170, 20111), (281, 20345), (298, 20420), (321, 20486), (364, 20663), (366, 20669), (385, 20723), (389, 20735), (404, 20798), (435, 20906), (436, 20909),

Gene: OurGirlNessie_16 Start: 14387, Stop: 15541, Start Num: 59

Candidate Starts for OurGirlNessie_16:

(Start: 59 @14387 has 83 MA's), (Start: 61 @14390 has 15 MA's), (Start: 78 @14417 has 14 MA's), (102, 14480), (115, 14522), (128, 14546), (140, 14591), (240, 14822), (258, 14861), (262, 14873), (284, 14981), (294, 15023), (305, 15056), (323, 15110), (334, 15155), (340, 15191), (343, 15203), (389, 15350), (409, 15425), (414, 15440), (422, 15470), (429, 15503), (439, 15533),

Gene: Oxynfrius_20 Start: 16030, Stop: 17187, Start Num: 59

Candidate Starts for Oxynfrius_20:

(Start: 59 @16030 has 83 MA's), (Start: 61 @16033 has 15 MA's), (73, 16054), (Start: 78 @16060 has 14 MA's), (Start: 80 @16069 has 7 MA's), (105, 16129), (128, 16189), (140, 16234), (149, 16255), (260, 16510), (297, 16675), (323, 16756), (332, 16792), (340, 16837), (347, 16861), (368, 16930), (381, 16972), (389, 16996), (421, 17110), (429, 17149), (431, 17155), (433, 17161), (440, 17182),

Gene: Panchaali_85 Start: 59690, Stop: 60808, Start Num: 78

Candidate Starts for Panchaali_85:

(Start: 78 @59690 has 14 MA's), (87, 59714), (103, 59756), (148, 59876), (150, 59888), (244, 60095), (245, 60098), (280, 60233), (285, 60263), (296, 60308), (323, 60389), (332, 60425), (335, 60437), (337, 60443), (340, 60470), (342, 60476), (345, 60488), (357, 60524), (430, 60785),

Gene: PandaPo_18 Start: 14395, Stop: 15609, Start Num: 59

Candidate Starts for PandaPo_18:

(Start: 59 @14395 has 83 MA's), (Start: 61 @14398 has 15 MA's), (82, 14440), (102, 14491), (134, 14578), (205, 14752), (225, 14815), (261, 14929), (270, 14974), (297, 15094), (318, 15166), (332, 15217), (337, 15235), (340, 15262), (362, 15328), (381, 15397), (412, 15508), (423, 15541), (436, 15592),

Gene: PapayaSalad_19 Start: 14200, Stop: 15330, Start Num: 41

Candidate Starts for PapayaSalad_19:

(26, 14128), (Start: 41 @14200 has 16 MA's), (51, 14248), (91, 14344), (107, 14389), (118, 14413), (128, 14431), (257, 14653), (275, 14695), (277, 14704), (313, 14833), (314, 14836), (347, 14962), (350, 14974), (367, 15043), (391, 15121),

Gene: PartyCup_20 Start: 16071, Stop: 17228, Start Num: 59

Candidate Starts for PartyCup_20:

(Start: 59 @16071 has 83 MA's), (Start: 61 @16074 has 15 MA's), (92, 16137), (140, 16275), (214, 16440), (293, 16704), (294, 16707), (297, 16716), (323, 16797), (340, 16878), (343, 16890), (367, 16968), (368, 16971), (376, 17001), (389, 17037), (431, 17196),

Gene: Patbob_92 Start: 62822, Stop: 63940, Start Num: 78

Candidate Starts for Patbob_92:

(Start: 78 @62822 has 14 MA's), (148, 63008), (206, 63143), (219, 63146), (231, 63197), (245, 63224), (259, 63272), (285, 63395), (292, 63428), (296, 63440), (326, 63530), (329, 63539), (335, 63569), (342, 63608), (345, 63620), (371, 63707), (376, 63728), (430, 63917),

Gene: PetriParty_25 Start: 19561, Stop: 20691, Start Num: 45

Candidate Starts for PetriParty_25:

(Start: 45 @19561 has 24 MA's), (83, 19657), (124, 19765), (128, 19774), (130, 19780), (144, 19831), (157, 19867), (180, 19915), (198, 19957), (203, 19969), (254, 20017), (277, 20113), (287, 20152), (292, 20176), (295, 20185), (321, 20257), (336, 20314), (339, 20332), (380, 20473),

Gene: Phives_20 Start: 16011, Stop: 17453, Start Num: 35

Candidate Starts for Phives_20:

(Start: 35 @16011 has 54 MA's), (55, 16071), (Start: 57 @16077 has 1 MA's), (82, 16134), (91, 16155), (129, 16248), (180, 16365), (201, 16413), (216, 16533), (252, 16752), (335, 17082), (364, 17184), (370, 17202), (435, 17421),

Gene: Phrampa_85 Start: 60127, Stop: 61239, Start Num: 78

Candidate Starts for Phrampa_85:

(Start: 78 @60127 has 14 MA's), (113, 60220), (124, 60241), (148, 60313), (206, 60448), (245, 60529), (285, 60694), (292, 60727), (296, 60739), (326, 60829), (342, 60907), (343, 60913), (348, 60931), (356, 60952), (376, 61027), (389, 61063), (430, 61216),

Gene: Picard_19 Start: 14321, Stop: 15451, Start Num: 41

Candidate Starts for Picard_19:

(Start: 41 @14321 has 16 MA's), (91, 14465), (100, 14489), (128, 14552), (141, 14600), (257, 14774), (273, 14810), (275, 14816), (314, 14957), (347, 15083), (350, 15095), (391, 15242),

Gene: PinkFriday_16 Start: 14431, Stop: 15588, Start Num: 59

Candidate Starts for PinkFriday_16:

(Start: 59 @14431 has 83 MA's), (Start: 61 @14434 has 15 MA's), (Start: 78 @14461 has 14 MA's), (Start: 80 @14470 has 7 MA's), (92, 14497), (102, 14524), (128, 14590), (149, 14656), (214, 14800), (223, 14809), (260, 14911), (301, 15094), (307, 15106), (324, 15160), (334, 15202), (340, 15238), (373, 15346), (376, 15361), (389, 15397), (390, 15400), (422, 15517), (436, 15571), (440, 15583),

Gene: PitaDog_16 Start: 14398, Stop: 15552, Start Num: 59

Candidate Starts for PitaDog_16:

(Start: 59 @14398 has 83 MA's), (Start: 61 @14401 has 15 MA's), (Start: 78 @14428 has 14 MA's), (102, 14491), (115, 14533), (128, 14557), (140, 14602), (240, 14833), (258, 14872), (262, 14884), (284, 14992), (294, 15034), (305, 15067), (323, 15121), (334, 15166), (340, 15202), (343, 15214),

(367, 15292), (389, 15361), (409, 15436), (414, 15451), (422, 15481), (429, 15514), (439, 15544),

Gene: Pixelle_19 Start: 14954, Stop: 16396, Start Num: 35

Candidate Starts for Pixelle_19:

(Start: 35 @14954 has 54 MA's), (55, 15014), (Start: 57 @15020 has 1 MA's), (82, 15077), (180, 15308), (201, 15356), (204, 15362), (216, 15476), (252, 15695), (335, 16025), (364, 16127), (370, 16145), (435, 16364),

Gene: Popper_25 Start: 19896, Stop: 20999, Start Num: 45

Candidate Starts for Popper_25:

(Start: 45 @19896 has 24 MA's), (70, 19965), (83, 19992), (96, 20025), (124, 20073), (144, 20139), (161, 20181), (180, 20223), (203, 20277), (226, 20301), (255, 20334), (263, 20355), (292, 20484), (336, 20622), (380, 20781), (387, 20796), (418, 20910), (436, 20973), (439, 20982),

Gene: Potatoes_20 Start: 16037, Stop: 17194, Start Num: 59

Candidate Starts for Potatoes_20:

(Start: 59 @16037 has 83 MA's), (Start: 61 @16040 has 15 MA's), (73, 16061), (Start: 78 @16067 has 14 MA's), (105, 16136), (140, 16241), (184, 16334), (196, 16364), (240, 16472), (260, 16517), (293, 16670), (301, 16700), (318, 16748), (323, 16763), (332, 16799), (340, 16844), (381, 16979), (389, 17003), (412, 17090), (429, 17156), (431, 17162), (440, 17189),

Gene: Powerpuff_19 Start: 14970, Stop: 16091, Start Num: 35

Candidate Starts for Powerpuff_19:

(Start: 35 @14970 has 54 MA's), (55, 15030), (82, 15093), (91, 15114), (182, 15327), (204, 15378), (207, 15384), (299, 15606), (364, 15822), (370, 15840), (389, 15900),

Gene: PrairieDogTown_20 Start: 16071, Stop: 17120, Start Num: 36

Candidate Starts for PrairieDogTown_20:

(Start: 36 @16071 has 12 MA's), (74, 16176), (147, 16341), (180, 16407), (329, 16737), (338, 16773), (430, 17094),

Gene: Preamble_16 Start: 14408, Stop: 15562, Start Num: 59

Candidate Starts for Preamble_16:

(Start: 59 @14408 has 83 MA's), (Start: 61 @14411 has 15 MA's), (73, 14432), (102, 14501), (138, 14606), (140, 14612), (149, 14633), (223, 14786), (230, 14819), (240, 14843), (258, 14882), (262, 14894), (305, 15077), (318, 15116), (328, 15146), (334, 15176), (340, 15212), (389, 15371), (414, 15461), (422, 15491), (440, 15557),

Gene: Pterodactyl_16 Start: 14391, Stop: 15542, Start Num: 61

Candidate Starts for Pterodactyl_16:

(Start: 59 @14388 has 83 MA's), (Start: 61 @14391 has 15 MA's), (Start: 78 @14418 has 14 MA's), (102, 14481), (115, 14523), (128, 14547), (140, 14592), (240, 14823), (258, 14862), (262, 14874), (284, 14982), (294, 15024), (305, 15057), (323, 15111), (334, 15156), (340, 15192), (343, 15204), (367, 15282), (389, 15351), (409, 15426), (414, 15441), (422, 15471), (429, 15504), (439, 15534),

Gene: Pumancara_16 Start: 14412, Stop: 15569, Start Num: 59

Candidate Starts for Pumancara_16:

(Start: 59 @14412 has 83 MA's), (Start: 61 @14415 has 15 MA's), (Start: 78 @14442 has 14 MA's), (Start: 80 @14451 has 7 MA's), (92, 14478), (140, 14616), (174, 14688), (260, 14892), (282, 14988), (297, 15057), (318, 15123), (340, 15219), (373, 15327), (376, 15342), (382, 15357), (389, 15378), (391, 15384), (409, 15453), (422, 15498), (429, 15531),

Gene: Pumpkins_19 Start: 15036, Stop: 16157, Start Num: 35

Candidate Starts for Pumpkins_19:

(10, 14664), (14, 14709), (Start: 35 @15036 has 54 MA's), (87, 15171), (91, 15180), (128, 15270), (204, 15444), (207, 15450), (370, 15906),

Gene: QuinnAvery_27 Start: 20054, Stop: 21157, Start Num: 45

Candidate Starts for QuinnAvery_27:

(Start: 45 @20054 has 24 MA's), (70, 20123), (83, 20150), (96, 20183), (124, 20231), (137, 20279), (144, 20297), (180, 20381), (197, 20420), (292, 20642), (321, 20723), (327, 20741), (336, 20780), (380, 20939), (418, 21068), (436, 21131), (439, 21140),

Gene: RAP15_20 Start: 16042, Stop: 17199, Start Num: 59

Candidate Starts for RAP15_20:

(Start: 59 @16042 has 83 MA's), (Start: 61 @16045 has 15 MA's), (73, 16066), (105, 16141), (128, 16201), (140, 16246), (149, 16267), (184, 16339), (196, 16369), (240, 16477), (260, 16522), (293, 16675), (301, 16705), (318, 16753), (332, 16804), (340, 16849), (381, 16984), (389, 17008), (412, 17095), (429, 17161), (431, 17167), (440, 17194),

Gene: Racecar_94 Start: 62603, Stop: 63721, Start Num: 78

Candidate Starts for Racecar_94:

(Start: 78 @62603 has 14 MA's), (147, 62786), (148, 62789), (206, 62924), (227, 62948), (231, 62978), (245, 63005), (259, 63053), (285, 63176), (292, 63209), (296, 63221), (326, 63311), (329, 63320), (335, 63350), (342, 63389), (345, 63401), (371, 63488), (376, 63509), (430, 63698),

Gene: Raleigh_19 Start: 14995, Stop: 16095, Start Num: 38

Candidate Starts for Raleigh_19:

(9, 14605), (17, 14719), (20, 14818), (27, 14962), (31, 14980), (Start: 38 @14995 has 4 MA's), (82, 15124), (91, 15145), (298, 15586), (387, 15898), (426, 16036), (437, 16075), (439, 16081),

Gene: RcigaStruga_20 Start: 16038, Stop: 17195, Start Num: 59

Candidate Starts for RcigaStruga_20:

(Start: 59 @16038 has 83 MA's), (Start: 61 @16041 has 15 MA's), (73, 16062), (Start: 78 @16068 has 14 MA's), (Start: 80 @16077 has 7 MA's), (140, 16242), (149, 16263), (260, 16518), (293, 16671), (318, 16749), (323, 16764), (332, 16800), (340, 16845), (349, 16878), (381, 16980), (389, 17004), (421, 17118), (431, 17163),

Gene: Reedo_18 Start: 13956, Stop: 15140, Start Num: 61

Candidate Starts for Reedo_18:

(Start: 59 @13953 has 83 MA's), (Start: 61 @13956 has 15 MA's), (73, 13974), (87, 14004), (102, 14043), (132, 14121), (134, 14130), (149, 14175), (262, 14463), (270, 14505), (328, 14727), (332, 14748), (337, 14766), (340, 14793), (349, 14826), (412, 15039), (423, 15072), (429, 15102), (433, 15114),

Gene: ReginaGlobina_93 Start: 62612, Stop: 63730, Start Num: 78

Candidate Starts for ReginaGlobina_93:

(Start: 78 @62612 has 14 MA's), (147, 62795), (148, 62798), (231, 62990), (245, 63017), (280, 63155), (285, 63185), (292, 63218), (296, 63230), (297, 63233), (326, 63320), (332, 63347), (335, 63359), (342, 63398), (364, 63476), (405, 63617), (430, 63707),

Gene: RemusLoopin_15 Start: 12317, Stop: 13417, Start Num: 78

Candidate Starts for RemusLoopin_15:

(75, 12314), (Start: 78 @12317 has 14 MA's), (89, 12341), (104, 12386), (129, 12443), (136, 12473), (145, 12497), (147, 12500), (157, 12533), (208, 12635), (220, 12674), (241, 12710), (332, 13019), (339, 13052), (340, 13064), (345, 13082), (364, 13136), (379, 13184), (383, 13196), (395, 13232),

(405, 13280), (413, 13301), (426, 13346), (439, 13391),

Gene: Riovina_16 Start: 14401, Stop: 15558, Start Num: 59

Candidate Starts for Riovina_16:

(Start: 59 @14401 has 83 MA's), (Start: 61 @14404 has 15 MA's), (Start: 78 @14431 has 14 MA's), (Start: 80 @14440 has 7 MA's), (92, 14467), (113, 14530), (174, 14677), (260, 14881), (318, 15112), (323, 15127), (340, 15208), (376, 15331), (389, 15367), (390, 15370), (409, 15442), (422, 15487), (440, 15553),

Gene: Riverdale_20 Start: 15972, Stop: 17129, Start Num: 59

Candidate Starts for Riverdale_20:

(Start: 59 @15972 has 83 MA's), (Start: 61 @15975 has 15 MA's), (73, 15996), (105, 16071), (149, 16197), (196, 16299), (240, 16407), (260, 16452), (293, 16605), (318, 16683), (332, 16734), (340, 16779), (381, 16914), (389, 16938), (391, 16944), (429, 17091), (431, 17097), (440, 17124),

Gene: Roberts_23 Start: 15285, Stop: 16382, Start Num: 47

Candidate Starts for Roberts_23:

(Start: 47 @15285 has 15 MA's), (63, 15327), (81, 15375), (96, 15411), (167, 15558), (203, 15648), (261, 15726), (271, 15777), (321, 15936), (336, 15993), (349, 16053), (385, 16170),

Gene: RockScotty_19 Start: 14619, Stop: 16067, Start Num: 35

Candidate Starts for RockScotty_19:

(Start: 35 @14619 has 54 MA's), (Start: 52 @14673 has 1 MA's), (204, 15027), (207, 15033), (298, 15579), (316, 15630), (373, 15825),

Gene: Rockabye_96 Start: 63356, Stop: 64468, Start Num: 78

Candidate Starts for Rockabye_96:

(Start: 78 @63356 has 14 MA's), (167, 63584), (237, 63743), (243, 63752), (245, 63758), (285, 63923), (289, 63938), (296, 63968), (328, 64067), (343, 64145), (345, 64151), (412, 64379), (420, 64400), (430, 64445),

Gene: Rozby_20 Start: 15973, Stop: 17130, Start Num: 59

Candidate Starts for Rozby_20:

(Start: 59 @15973 has 83 MA's), (Start: 61 @15976 has 15 MA's), (73, 15997), (105, 16072), (128, 16132), (140, 16177), (149, 16198), (196, 16300), (240, 16408), (260, 16453), (293, 16606), (301, 16636), (318, 16684), (323, 16699), (332, 16735), (340, 16780), (381, 16915), (389, 16939), (391, 16945), (429, 17092), (431, 17098), (440, 17125),

Gene: Ryan_27 Start: 20581, Stop: 21684, Start Num: 45

Candidate Starts for Ryan_27:

(Start: 45 @20581 has 24 MA's), (70, 20650), (83, 20677), (92, 20701), (96, 20710), (124, 20758), (157, 20860), (161, 20866), (203, 20962), (336, 21307), (380, 21466), (387, 21481), (390, 21493), (418, 21595), (434, 21652), (436, 21658), (439, 21667),

Gene: SJReid_96 Start: 62409, Stop: 63521, Start Num: 78

Candidate Starts for SJReid_96:

(Start: 78 @62409 has 14 MA's), (108, 62487), (167, 62637), (198, 62709), (237, 62796), (243, 62805), (245, 62811), (285, 62976), (296, 63021), (323, 63105), (328, 63120), (343, 63198), (345, 63204), (376, 63309), (412, 63432), (420, 63453), (430, 63498),

Gene: SV1_19 Start: 14433, Stop: 15563, Start Num: 41

Candidate Starts for SV1_19:

(34, 14418), (Start: 41 @14433 has 16 MA's), (91, 14577), (107, 14622), (118, 14646), (163, 14763), (257, 14886), (275, 14928), (277, 14937), (313, 15066), (331, 15123), (347, 15195), (350, 15207), (355, 15225), (367, 15276), (391, 15354),

Gene: Sabourin_19 Start: 14526, Stop: 15974, Start Num: 35

Candidate Starts for Sabourin_19:

(Start: 35 @14526 has 54 MA's), (Start: 52 @14580 has 1 MA's), (193, 14904), (204, 14934), (298, 15486), (373, 15732),

Gene: Saintcarr_27 Start: 20137, Stop: 21240, Start Num: 45

Candidate Starts for Saintcarr_27:

(Start: 45 @20137 has 24 MA's), (70, 20206), (83, 20233), (96, 20266), (124, 20314), (144, 20380), (161, 20422), (197, 20503), (292, 20725), (321, 20806), (327, 20824), (336, 20863), (380, 21022), (418, 21151), (436, 21214), (439, 21223),

Gene: Samora_15 Start: 12384, Stop: 13424, Start Num: 80

Candidate Starts for Samora_15:

(Start: 80 @12384 has 7 MA's), (101, 12441), (129, 12504), (147, 12561), (148, 12564), (159, 12597), (186, 12639), (200, 12678), (201, 12681), (272, 12831), (321, 12990), (325, 13002), (328, 13011), (332, 13032), (353, 13113), (360, 13131), (364, 13149), (411, 13308), (413, 13314), (419, 13332), (432, 13383),

Gene: Sashimi_27 Start: 19113, Stop: 20237, Start Num: 47

Candidate Starts for Sashimi_27:

(Start: 47 @19113 has 15 MA's), (Start: 52 @19131 has 1 MA's), (70, 19179), (83, 19206), (96, 19239), (124, 19314), (144, 19377), (157, 19413), (180, 19461), (198, 19503), (203, 19515), (254, 19563), (277, 19659), (287, 19698), (336, 19860), (338, 19866), (339, 19878), (376, 20010), (380, 20019), (387, 20034), (434, 20205), (436, 20211),

Gene: Savage2526_20 Start: 16036, Stop: 17193, Start Num: 59

Candidate Starts for Savage2526_20:

(Start: 59 @16036 has 83 MA's), (Start: 61 @16039 has 15 MA's), (73, 16060), (105, 16135), (128, 16195), (140, 16240), (149, 16261), (184, 16333), (196, 16363), (240, 16471), (260, 16516), (293, 16669), (301, 16699), (318, 16747), (332, 16798), (340, 16843), (381, 16978), (389, 17002), (412, 17089), (429, 17155), (431, 17161), (440, 17188),

Gene: Schaffner_19 Start: 15023, Stop: 16144, Start Num: 35

Candidate Starts for Schaffner_19:

(Start: 35 @15023 has 54 MA's), (91, 15167), (128, 15257), (207, 15437), (370, 15893), (434, 16109),

Gene: Schism_27 Start: 19991, Stop: 21094, Start Num: 45

Candidate Starts for Schism_27:

(Start: 45 @19991 has 24 MA's), (70, 20060), (83, 20087), (96, 20120), (124, 20168), (157, 20270), (161, 20276), (203, 20372), (336, 20717), (380, 20876), (387, 20891), (390, 20903), (418, 21005), (434, 21062), (436, 21068), (439, 21077),

Gene: Scotia_21 Start: 16995, Stop: 18044, Start Num: 36

Candidate Starts for Scotia_21:

(11, 16623), (29, 16965), (Start: 36 @16995 has 12 MA's), (42, 17013), (109, 17169), (121, 17196), (138, 17244), (147, 17265), (180, 17331), (242, 17412), (319, 17637), (329, 17661), (336, 17691), (338, 17697), (345, 17739), (383, 17856), (415, 17958), (430, 18018), (432, 18024),

Gene: Scuttle_20 Start: 16041, Stop: 17198, Start Num: 59

Candidate Starts for Scuttle_20:

(Start: 59 @16041 has 83 MA's), (Start: 61 @16044 has 15 MA's), (73, 16065), (105, 16140), (149, 16266), (196, 16368), (240, 16476), (260, 16521), (293, 16674), (301, 16704), (318, 16752), (323, 16767), (332, 16803), (340, 16848), (381, 16983), (389, 17007), (391, 17013), (429, 17160), (431, 17166), (440, 17193),

Gene: Sebastisaurus_15 Start: 12349, Stop: 13407, Start Num: 78

Candidate Starts for Sebastisaurus_15:

(Start: 78 @12349 has 14 MA's), (89, 12373), (104, 12418), (129, 12475), (157, 12565), (204, 12658), (241, 12700), (332, 13009), (339, 13042), (364, 13126), (383, 13186), (403, 13261), (405, 13270), (426, 13336), (439, 13381),

Gene: Sergei_16 Start: 14410, Stop: 15567, Start Num: 59

Candidate Starts for Sergei_16:

(Start: 59 @14410 has 83 MA's), (Start: 61 @14413 has 15 MA's), (73, 14434), (Start: 78 @14440 has 14 MA's), (Start: 80 @14449 has 7 MA's), (92, 14476), (140, 14614), (174, 14686), (260, 14890), (297, 15055), (318, 15121), (340, 15217), (373, 15325), (376, 15340), (382, 15355), (389, 15376), (391, 15382), (409, 15451), (422, 15496), (440, 15562),

Gene: ShakeltOph_18 Start: 13074, Stop: 14306, Start Num: 36

Candidate Starts for ShakeltOph_18:

(Start: 36 @13074 has 12 MA's), (106, 13269), (116, 13293), (247, 13644), (286, 13800), (316, 13890), (340, 13989), (393, 14145), (417, 14226),

Gene: Shambre1_19 Start: 15533, Stop: 16816, Start Num: 59

Candidate Starts for Shambre1_19:

(5, 15008), (8, 15047), (33, 15443), (Start: 59 @15533 has 83 MA's), (Start: 61 @15536 has 15 MA's), (93, 15617), (96, 15623), (110, 15668), (128, 15710), (140, 15755), (146, 15770), (189, 15857), (200, 15890), (240, 15977), (262, 16031), (265, 16043), (266, 16046), (272, 16085), (290, 16163), (340, 16361), (354, 16406), (369, 16457), (377, 16484), (385, 16508), (389, 16520), (397, 16550), (414, 16613), (423, 16643), (429, 16673),

Gene: Shawty_15 Start: 12323, Stop: 13369, Start Num: 80

Candidate Starts for Shawty_15:

(Start: 80 @12323 has 7 MA's), (101, 12380), (129, 12443), (147, 12500), (150, 12515), (152, 12521), (159, 12536), (201, 12620), (238, 12659), (241, 12662), (291, 12848), (303, 12881), (316, 12914), (317, 12917), (321, 12929), (332, 12971), (335, 12983), (359, 13073), (360, 13076), (364, 13094), (395, 13190), (404, 13232), (413, 13259),

Gene: Simpson_21 Start: 14919, Stop: 16040, Start Num: 35

Candidate Starts for Simpson_21:

(Start: 35 @14919 has 54 MA's), (55, 14979), (82, 15042), (91, 15063), (182, 15276), (204, 15327), (207, 15333), (299, 15555), (364, 15771), (370, 15789), (389, 15849),

Gene: Skelbel_20 Start: 14901, Stop: 16022, Start Num: 35

Candidate Starts for Skelbel_20:

(Start: 35 @14901 has 54 MA's), (55, 14961), (Start: 57 @14967 has 1 MA's), (82, 15024), (91, 15045), (204, 15309), (370, 15771),

Gene: Snek_18 Start: 12989, Stop: 14173, Start Num: 61

Candidate Starts for Snek_18:

(32, 12893), (Start: 59 @12986 has 83 MA's), (Start: 61 @12989 has 15 MA's), (87, 13037), (102, 13076), (110, 13100), (132, 13154), (134, 13163), (205, 13337), (297, 13658), (328, 13760), (332,

13781), (340, 13826), (375, 13946), (412, 14072), (423, 14105), (436, 14156),

Gene: SoJo_19 Start: 14651, Stop: 15748, Start Num: 41

Candidate Starts for SoJo_19:

(1, 13649), (2, 13706), (3, 14051), (4, 14168), (9, 14255), (20, 14459), (23, 14516), (24, 14555), (Start: 41 @14651 has 16 MA's), (107, 14840), (160, 14975), (182, 15020), (193, 15041), (314, 15281), (347, 15407), (367, 15485), (394, 15569), (395, 15572), (424, 15680), (439, 15731),

Gene: Sonali_18 Start: 18766, Stop: 19881, Start Num: 39

Candidate Starts for Sonali_18:

(Start: 39 @18766 has 2 MA's), (169, 19117), (283, 19315), (286, 19327), (298, 19366), (317, 19420), (343, 19528), (379, 19651), (394, 19693), (423, 19804), (426, 19816), (433, 19846), (441, 19873),

Gene: Soondubu_18 Start: 15573, Stop: 16658, Start Num: 35

Candidate Starts for Soondubu_18:

(Start: 35 @15573 has 54 MA's), (49, 15627), (151, 15885), (289, 16146), (340, 16323), (358, 16368), (424, 16593), (430, 16620), (440, 16650),

Gene: Sooty_19 Start: 14529, Stop: 15977, Start Num: 35

Candidate Starts for Sooty_19:

(Start: 35 @14529 has 54 MA's), (Start: 52 @14583 has 1 MA's), (193, 14907), (204, 14937), (298, 15489), (373, 15735),

Gene: Spartoi_17 Start: 13760, Stop: 14860, Start Num: 79

Candidate Starts for Spartoi_17:

(Start: 79 @13760 has 2 MA's), (86, 13781), (124, 13880), (142, 13940), (162, 13997), (183, 14042), (245, 14147), (273, 14249), (285, 14303), (384, 14660), (421, 14789),

Gene: SpecialK_19 Start: 14580, Stop: 15974, Start Num: 52

Candidate Starts for SpecialK_19:

(Start: 35 @14526 has 54 MA's), (Start: 52 @14580 has 1 MA's), (204, 14934), (207, 14940), (298, 15486), (316, 15537), (373, 15732),

Gene: Spocter_25 Start: 21152, Stop: 22249, Start Num: 41

Candidate Starts for Spocter_25:

(37, 21146), (Start: 41 @21152 has 16 MA's), (71, 21254), (95, 21308), (111, 21347), (128, 21383), (134, 21404), (138, 21422), (286, 21695), (294, 21728), (306, 21761), (314, 21782), (347, 21908), (376, 22019), (395, 22073),

Gene: Stewart25555_83 Start: 59117, Stop: 60238, Start Num: 78

Candidate Starts for Stewart25555_83:

(Start: 78 @59117 has 14 MA's), (113, 59210), (134, 59261), (147, 59300), (148, 59303), (175, 59360), (224, 59462), (245, 59525), (254, 59555), (268, 59609), (280, 59663), (285, 59693), (290, 59711), (296, 59738), (326, 59828), (328, 59834), (335, 59867), (342, 59906), (360, 59963), (394, 60074), (405, 60125), (430, 60215),

Gene: Studio_24 Start: 15927, Stop: 17021, Start Num: 47

Candidate Starts for Studio_24:

(Start: 47 @15927 has 15 MA's), (56, 15954), (66, 15978), (81, 16017), (90, 16035), (180, 16236), (210, 16308), (232, 16326), (271, 16419), (336, 16638), (351, 16698), (356, 16716), (385, 16809), (408, 16899), (439, 17004),

Gene: Stuu_19 Start: 14619, Stop: 16067, Start Num: 35

Candidate Starts for Stuu_19:

(Start: 35 @14619 has 54 MA's), (Start: 52 @14673 has 1 MA's), (193, 14997), (204, 15027), (298, 15579), (316, 15630), (373, 15825),

Gene: Subaru_20 Start: 14901, Stop: 16022, Start Num: 35

Candidate Starts for Subaru_20:

(Start: 35 @14901 has 54 MA's), (55, 14961), (Start: 57 @14967 has 1 MA's), (82, 15024), (91, 15045), (204, 15309), (370, 15771),

Gene: Sue2_18 Start: 14593, Stop: 15807, Start Num: 59

Candidate Starts for Sue2_18:

(Start: 59 @14593 has 83 MA's), (Start: 61 @14596 has 15 MA's), (82, 14638), (132, 14767), (134, 14776), (205, 14950), (214, 14986), (318, 15364), (332, 15415), (337, 15433), (340, 15460), (412, 15706), (423, 15739), (424, 15745),

Gene: Sunshine23_20 Start: 18778, Stop: 19893, Start Num: 39

Candidate Starts for Sunshine23_20:

(Start: 39 @18778 has 2 MA's), (169, 19129), (283, 19327), (286, 19339), (294, 19369), (298, 19378), (317, 19432), (343, 19540), (364, 19615), (379, 19663), (394, 19705), (423, 19816), (426, 19828), (433, 19858), (441, 19885),

Gene: Supakev_16 Start: 14403, Stop: 15560, Start Num: 59

Candidate Starts for Supakev_16:

(Start: 59 @14403 has 83 MA's), (Start: 61 @14406 has 15 MA's), (Start: 78 @14433 has 14 MA's), (Start: 80 @14442 has 7 MA's), (92, 14469), (113, 14532), (174, 14679), (260, 14883), (318, 15114), (323, 15129), (340, 15210), (376, 15333), (389, 15369), (390, 15372), (409, 15444), (422, 15489), (440, 15555),

Gene: Suppi_20 Start: 16074, Stop: 17231, Start Num: 59

Candidate Starts for Suppi_20:

(Start: 59 @16074 has 83 MA's), (Start: 61 @16077 has 15 MA's), (92, 16140), (140, 16278), (214, 16443), (293, 16707), (294, 16710), (297, 16719), (323, 16800), (340, 16881), (343, 16893), (367, 16971), (368, 16974), (376, 17004), (389, 17040), (431, 17199),

Gene: TG1_15 Start: 12342, Stop: 13400, Start Num: 80

Candidate Starts for TG1_15:

(Start: 80 @12342 has 7 MA's), (87, 12357), (94, 12375), (129, 12462), (147, 12519), (159, 12555), (167, 12564), (179, 12588), (210, 12645), (238, 12684), (332, 12999), (340, 13044), (360, 13101), (370, 13137), (379, 13167), (385, 13188), (395, 13215), (411, 13278), (426, 13329), (432, 13353),

Gene: TMaxx_23 Start: 15095, Stop: 16195, Start Num: 47

Candidate Starts for TMaxx_23:

(Start: 47 @15095 has 15 MA's), (81, 15185), (90, 15203), (167, 15368), (198, 15446), (270, 15578), (304, 15704), (313, 15722), (321, 15746), (336, 15803), (439, 16178),

Gene: Talia1610_93 Start: 61968, Stop: 63086, Start Num: 78

Candidate Starts for Talia1610_93:

(Start: 78 @61968 has 14 MA's), (147, 62151), (148, 62154), (206, 62289), (227, 62313), (231, 62343), (245, 62370), (259, 62418), (285, 62541), (292, 62574), (296, 62586), (326, 62676), (329, 62685), (335, 62715), (342, 62754), (345, 62766), (371, 62853), (376, 62874), (430, 63063),

Gene: Tallboi_19 Start: 14933, Stop: 16054, Start Num: 35

Candidate Starts for Tallboi_19:

(Start: 35 @14933 has 54 MA's), (55, 14993), (Start: 57 @14999 has 1 MA's), (82, 15056), (91, 15077), (129, 15170), (204, 15341), (207, 15347), (299, 15569), (364, 15785), (370, 15803),

Gene: TattModd_20 Start: 16035, Stop: 17192, Start Num: 59

Candidate Starts for TattModd_20:

(Start: 59 @16035 has 83 MA's), (Start: 61 @16038 has 15 MA's), (73, 16059), (105, 16134), (128, 16194), (140, 16239), (149, 16260), (196, 16362), (240, 16470), (260, 16515), (293, 16668), (301, 16698), (318, 16746), (332, 16797), (340, 16842), (381, 16977), (389, 17001), (412, 17088), (429, 17154), (431, 17160), (440, 17187),

Gene: Tbone_19 Start: 14923, Stop: 16044, Start Num: 35

Candidate Starts for Tbone_19:

(Start: 35 @14923 has 54 MA's), (55, 14983), (82, 15046), (91, 15067), (182, 15280), (204, 15331), (207, 15337), (299, 15559), (364, 15775), (370, 15793), (389, 15853),

Gene: Temper16_16 Start: 14410, Stop: 15567, Start Num: 59

Candidate Starts for Temper16_16:

(Start: 59 @14410 has 83 MA's), (Start: 61 @14413 has 15 MA's), (73, 14434), (Start: 78 @14440 has 14 MA's), (Start: 80 @14449 has 7 MA's), (92, 14476), (140, 14614), (174, 14686), (260, 14890), (297, 15055), (318, 15121), (340, 15217), (373, 15325), (376, 15340), (382, 15355), (389, 15376), (391, 15382), (409, 15451), (422, 15496), (440, 15562),

Gene: TforTroy_19 Start: 15054, Stop: 16175, Start Num: 35

Candidate Starts for TforTroy_19:

(Start: 35 @15054 has 54 MA's), (87, 15189), (91, 15198), (128, 15288), (204, 15462), (207, 15468), (239, 15501), (370, 15924),

Gene: ThursdayNight_17 Start: 13779, Stop: 14744, Start Num: 82

Candidate Starts for ThursdayNight_17:

(Start: 35 @13656 has 54 MA's), (Start: 52 @13710 has 1 MA's), (82, 13779), (325, 14334), (364, 14475), (370, 14493),

Gene: Tian_19 Start: 14951, Stop: 16393, Start Num: 35

Candidate Starts for Tian_19:

(Start: 35 @14951 has 54 MA's), (55, 15011), (Start: 57 @15017 has 1 MA's), (82, 15074), (91, 15095), (180, 15305), (201, 15353), (216, 15473), (252, 15692), (335, 16022), (364, 16124), (370, 16142), (435, 16361),

Gene: ToastyFinz_18 Start: 14328, Stop: 15425, Start Num: 41

Candidate Starts for ToastyFinz_18:

(25, 14241), (Start: 41 @14328 has 16 MA's), (43, 14349), (51, 14376), (58, 14394), (100, 14496), (160, 14652), (182, 14697), (299, 14916), (300, 14919), (344, 15075), (347, 15084), (394, 15246), (395, 15249), (398, 15264), (439, 15408),

Gene: ToastyOats_29 Start: 20595, Stop: 21698, Start Num: 45

Candidate Starts for ToastyOats_29:

(Start: 45 @20595 has 24 MA's), (70, 20664), (83, 20691), (96, 20724), (124, 20772), (144, 20838), (161, 20880), (197, 20961), (292, 21183), (321, 21264), (327, 21282), (336, 21321), (380, 21480), (418, 21609), (436, 21672), (439, 21681),

Gene: Toodles_27 Start: 20421, Stop: 21524, Start Num: 45

Candidate Starts for Toodles_27:

(Start: 45 @20421 has 24 MA's), (70, 20490), (83, 20517), (96, 20550), (124, 20598), (137, 20646), (144, 20664), (157, 20700), (161, 20706), (180, 20748), (241, 20844), (275, 20937), (287, 20985), (321, 21090), (327, 21108), (336, 21147), (380, 21306), (418, 21435), (436, 21498), (439, 21507),

Gene: TripleC_26 Start: 18583, Stop: 19683, Start Num: 47

Candidate Starts for TripleC_26:

(Start: 47 @18583 has 15 MA's), (81, 18673), (90, 18691), (96, 18709), (122, 18754), (155, 18841), (167, 18856), (170, 18865), (276, 19093), (277, 19099), (336, 19294), (385, 19471), (388, 19480), (405, 19552), (439, 19666),

Gene: TripleJ_26 Start: 19578, Stop: 20708, Start Num: 45

Candidate Starts for TripleJ_26:

(Start: 45 @19578 has 24 MA's), (83, 19674), (124, 19782), (128, 19791), (130, 19797), (144, 19848), (157, 19884), (180, 19932), (203, 19986), (254, 20034), (271, 20109), (277, 20130), (287, 20169), (292, 20193), (321, 20274), (336, 20331), (339, 20349), (380, 20490),

Gene: Tubberson_19 Start: 14650, Stop: 15747, Start Num: 41

Candidate Starts for Tubberson_19:

(Start: 41 @14650 has 16 MA's), (107, 14839), (160, 14974), (182, 15019), (193, 15040), (314, 15280), (347, 15406), (367, 15484), (387, 15547), (394, 15568), (395, 15571), (424, 15679), (439, 15730),

Gene: Tuck_20 Start: 16127, Stop: 17569, Start Num: 35

Candidate Starts for Tuck_20:

(Start: 35 @16127 has 54 MA's), (55, 16187), (Start: 57 @16193 has 1 MA's), (82, 16250), (180, 16481), (207, 16541), (249, 16835), (250, 16856), (370, 17318), (391, 17384),

Gene: Turab_19 Start: 14930, Stop: 16051, Start Num: 35

Candidate Starts for Turab_19:

(Start: 35 @14930 has 54 MA's), (55, 14990), (82, 15053), (91, 15074), (204, 15338), (262, 15422), (364, 15782), (370, 15800), (389, 15860),

Gene: Tutumahutu_19 Start: 14970, Stop: 16091, Start Num: 35

Candidate Starts for Tutumahutu_19:

(Start: 35 @14970 has 54 MA's), (55, 15030), (82, 15093), (91, 15114), (182, 15327), (204, 15378), (207, 15384), (299, 15606), (364, 15822), (370, 15840), (389, 15900),

Gene: Tweety19_18 Start: 12988, Stop: 14172, Start Num: 61

Candidate Starts for Tweety19_18:

(32, 12892), (Start: 59 @12985 has 83 MA's), (Start: 61 @12988 has 15 MA's), (87, 13036), (102, 13075), (110, 13099), (132, 13153), (134, 13162), (205, 13336), (297, 13657), (328, 13759), (332, 13780), (340, 13825), (375, 13945), (412, 14071), (423, 14104), (436, 14155),

Gene: Urla_16 Start: 14417, Stop: 15574, Start Num: 59

Candidate Starts for Urla_16:

(Start: 59 @14417 has 83 MA's), (Start: 61 @14420 has 15 MA's), (Start: 78 @14447 has 14 MA's), (140, 14621), (214, 14786), (223, 14795), (228, 14813), (230, 14828), (318, 15128), (332, 15179), (334, 15188), (340, 15224), (369, 15320), (381, 15359), (389, 15383), (431, 15542), (440, 15569),

Gene: VResidence_18 Start: 14006, Stop: 15220, Start Num: 59

Candidate Starts for VResidence_18:

(Start: 59 @14006 has 83 MA's), (Start: 61 @14009 has 15 MA's), (82, 14051), (102, 14102), (134, 14189), (192, 14324), (262, 14543), (270, 14585), (282, 14636), (332, 14828), (340, 14873), (362, 14939), (367, 14963), (389, 15032), (412, 15119), (423, 15152),

Gene: Vallejo_20 Start: 15974, Stop: 17131, Start Num: 59

Candidate Starts for Vallejo_20:

(Start: 59 @15974 has 83 MA's), (Start: 61 @15977 has 15 MA's), (73, 15998), (105, 16073), (149, 16199), (196, 16301), (240, 16409), (260, 16454), (293, 16607), (301, 16637), (318, 16685), (323, 16700), (332, 16736), (340, 16781), (381, 16916), (389, 16940), (391, 16946), (423, 17063), (429, 17093), (431, 17099), (440, 17126),

Gene: Vash_15 Start: 12359, Stop: 13456, Start Num: 80

Candidate Starts for Vash_15:

(Start: 80 @12359 has 7 MA's), (101, 12416), (129, 12479), (147, 12536), (148, 12539), (157, 12569), (205, 12668), (302, 12968), (311, 12989), (325, 13028), (328, 13037), (339, 13091), (340, 13103), (361, 13160), (371, 13196), (383, 13235), (395, 13271), (399, 13292), (404, 13313), (413, 13340), (418, 13355), (426, 13385), (432, 13409), (439, 13430),

Gene: VroomVroom_18 Start: 13087, Stop: 14322, Start Num: 36

Candidate Starts for VroomVroom_18:

(Start: 36 @13087 has 12 MA's), (106, 13282), (116, 13306), (212, 13528), (247, 13657), (286, 13813), (316, 13906), (340, 14005), (393, 14161), (417, 14242),

Gene: Vulture_16 Start: 14401, Stop: 15558, Start Num: 59

Candidate Starts for Vulture_16:

(Start: 59 @14401 has 83 MA's), (Start: 61 @14404 has 15 MA's), (Start: 78 @14431 has 14 MA's), (Start: 80 @14440 has 7 MA's), (92, 14467), (105, 14500), (174, 14677), (260, 14881), (318, 15112), (323, 15127), (340, 15208), (376, 15331), (389, 15367), (390, 15370), (409, 15442), (422, 15487), (440, 15553),

Gene: WaddleDee_81 Start: 58452, Stop: 59570, Start Num: 78

Candidate Starts for WaddleDee_81:

(Start: 78 @58452 has 14 MA's), (113, 58545), (148, 58638), (237, 58842), (245, 58857), (280, 58995), (285, 59025), (296, 59070), (297, 59073), (312, 59115), (335, 59199), (342, 59238), (345, 59250), (430, 59547),

Gene: Warda_19 Start: 14915, Stop: 16036, Start Num: 35

Candidate Starts for Warda_19:

(Start: 35 @14915 has 54 MA's), (55, 14975), (82, 15038), (91, 15059), (182, 15272), (204, 15323), (207, 15329), (299, 15551), (364, 15767), (370, 15785), (389, 15845),

Gene: Wawa_20 Start: 16011, Stop: 17168, Start Num: 59

Candidate Starts for Wawa_20:

(Start: 59 @16011 has 83 MA's), (Start: 61 @16014 has 15 MA's), (73, 16035), (105, 16110), (128, 16170), (140, 16215), (149, 16236), (196, 16338), (240, 16446), (260, 16491), (293, 16644), (301, 16674), (318, 16722), (332, 16773), (340, 16818), (381, 16953), (389, 16977), (412, 17064), (429, 17130), (431, 17136), (440, 17163),

Gene: Wayne_20 Start: 16120, Stop: 17277, Start Num: 59

Candidate Starts for Wayne_20:

(Start: 59 @16120 has 83 MA's), (Start: 61 @16123 has 15 MA's), (92, 16186), (140, 16324), (214, 16489), (293, 16753), (294, 16756), (297, 16765), (323, 16846), (340, 16927), (343, 16939), (367, 17017), (376, 17050), (389, 17086), (390, 17089), (431, 17245),

Gene: Wildwest_19 Start: 15358, Stop: 16572, Start Num: 59

Candidate Starts for Wildwest_19:

(Start: 59 @15358 has 83 MA's), (Start: 61 @15361 has 15 MA's), (134, 15541), (204, 15709), (205, 15715), (213, 15745), (214, 15751), (259, 15886), (261, 15892), (270, 15937), (297, 16057), (332, 16180), (337, 16198), (340, 16225), (369, 16321), (412, 16471), (423, 16504), (436, 16555),

Gene: WonderBoy_16 Start: 14388, Stop: 15542, Start Num: 59

Candidate Starts for WonderBoy_16:

(Start: 59 @14388 has 83 MA's), (Start: 61 @14391 has 15 MA's), (Start: 78 @14418 has 14 MA's), (102, 14481), (115, 14523), (128, 14547), (138, 14586), (140, 14592), (240, 14823), (258, 14862), (262, 14874), (294, 15024), (305, 15057), (318, 15096), (323, 15111), (334, 15156), (340, 15192), (343, 15204), (367, 15282), (389, 15351), (409, 15426), (414, 15441), (422, 15471), (429, 15504), (439, 15534),

Gene: Yang_19 Start: 15026, Stop: 16147, Start Num: 35

Candidate Starts for Yang_19:

(Start: 35 @15026 has 54 MA's), (91, 15170), (128, 15260), (185, 15386), (364, 15878), (370, 15896), (434, 16112),

Gene: YesChef_19 Start: 14970, Stop: 16091, Start Num: 35

Candidate Starts for YesChef_19:

(Start: 35 @14970 has 54 MA's), (55, 15030), (82, 15093), (91, 15114), (182, 15327), (204, 15378), (207, 15384), (299, 15606), (364, 15822), (370, 15840), (389, 15900),

Gene: Yonex_27 Start: 20581, Stop: 21684, Start Num: 45

Candidate Starts for Yonex_27:

(Start: 45 @20581 has 24 MA's), (70, 20650), (83, 20677), (92, 20701), (96, 20710), (124, 20758), (157, 20860), (161, 20866), (203, 20962), (336, 21307), (380, 21466), (387, 21481), (390, 21493), (418, 21595), (434, 21652), (436, 21658), (439, 21667),

Gene: Zaheer_27 Start: 20670, Stop: 21773, Start Num: 45

Candidate Starts for Zaheer_27:

(Start: 45 @20670 has 24 MA's), (70, 20739), (83, 20766), (92, 20790), (96, 20799), (124, 20847), (157, 20949), (161, 20955), (203, 21051), (336, 21396), (380, 21555), (387, 21570), (390, 21582), (418, 21684), (434, 21741), (436, 21747), (439, 21756),

Gene: Zorro_20 Start: 15990, Stop: 17147, Start Num: 59

Candidate Starts for Zorro_20:

(Start: 59 @15990 has 83 MA's), (Start: 61 @15993 has 15 MA's), (73, 16014), (105, 16089), (128, 16149), (140, 16194), (149, 16215), (184, 16287), (196, 16317), (214, 16359), (240, 16425), (260, 16470), (293, 16623), (301, 16653), (318, 16701), (323, 16716), (332, 16752), (340, 16797), (381, 16932), (389, 16956), (412, 17043), (429, 17109), (431, 17115), (440, 17142),

Gene: pZL12_48c Start: 37533, Stop: 36430, Start Num: 34

Candidate Starts for pZL12_48c:

(34, 37533), (88, 37407), (128, 37308), (133, 37293), (172, 37194), (298, 36936), (319, 36876), (329, 36846), (404, 36582),

Gene: phiBT1_46 Start: 12374, Stop: 13390, Start Num: 80

Candidate Starts for phiBT1_46:

(Start: 80 @12374 has 7 MA's), (87, 12389), (101, 12431), (114, 12464), (129, 12494), (145, 12548), (157, 12584), (200, 12668), (246, 12731), (272, 12821), (298, 12914), (303, 12932), (308, 12941), (321, 12980), (328, 13001), (332, 13022), (352, 13103), (360, 13121), (364, 13139), (384, 13202), (402, 13268), (411, 13298), (413, 13304), (418, 13319),