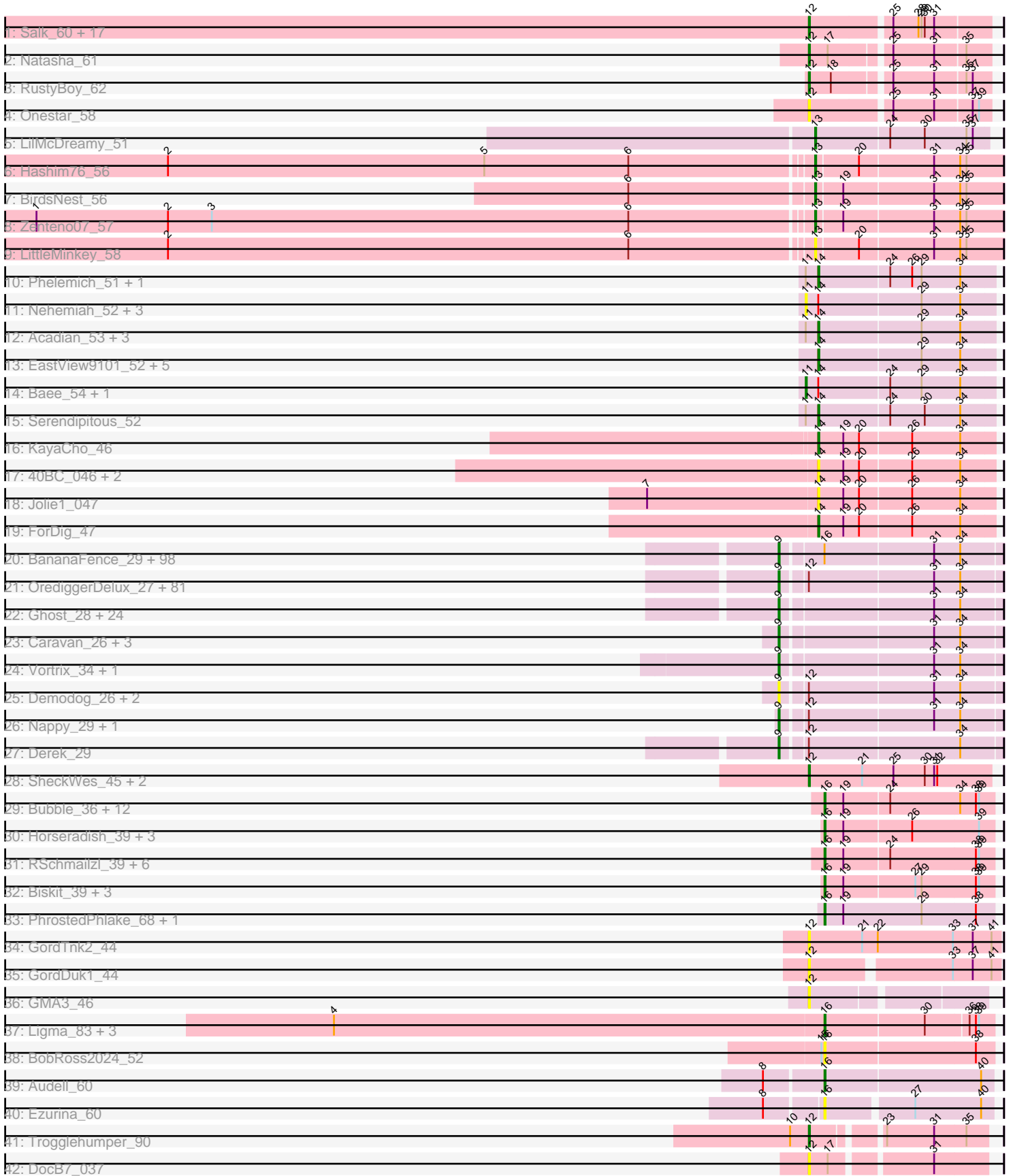


Pham 311142



Note: Tracks are now grouped by subcluster and scaled. Switching in subcluster is indicated by changes in track color. Track scale is now set by default to display the region 30 bp upstream of start 1 to 30 bp downstream of the last possible start. If this default region is judged to be packed too tightly with annotated starts, the track will be further scaled to only show that region of the ORF with annotated starts. This action will be indicated by adding "Zoomed" to the title. For starts, yellow indicates the location of called starts comprised solely of Glimmer/GeneMark auto-annotations, green indicates the location of called starts with at least 1 manual gene annotation.

Pham 311142 Report

This analysis was run 06/27/26 on database version 652.

Pham number 311142 has 314 members, 70 are drafts.

Phages represented in each track:

- Track 1 : Salk_60, Egad_60, BronxBay_60, Djungelskog_59, MrAaronian_60, Boog_59, Raunak_62, Sloopyjoe_60, Linda_60, Michelle_60, DoctorPepper_59, HerbBucket_59, Spain_61, Shiba_59, Stayer_60, StarLord_60, Jeremy4pt0_59, ProfFrink_60
- Track 2 : Natasha_61
- Track 3 : RustyBoy_62
- Track 4 : Onestar_58
- Track 5 : LilMcDreamy_51
- Track 6 : Hashim76_56
- Track 7 : BirdsNest_56
- Track 8 : Zenteno07_57
- Track 9 : LittleMinkey_58
- Track 10 : Phelemich_51, Reprobate_52
- Track 11 : Nehemiah_52, DigitDog_53, Nangang_53, Shenyu_53
- Track 12 : Acadian_53, StinkyVeggy_53, KarasumaRum_53, Mysterious_51
- Track 13 : EastView9101_52, Suigeneris_54, Reccee_53, SirJeffery_52, Donny_54, Rita130_52
- Track 14 : Bae_54, Rich_53
- Track 15 : Serendipitous_52
- Track 16 : KayaCho_46
- Track 17 : 40BC_046, 39HC_046, Hosp_045
- Track 18 : Jolie1_047
- Track 19 : ForDig_47
- Track 20 : BananaFence_29, Kboogie_28, Labradorite_27, McGee_27, MoMoMixon_29, BadAgartude_29, Asterius_29, Babyland_27, JayJay_31, BobaPhatt_25, IkeLoa_24, Bezza_20, DeejaClivia_24, Grungle_21, Mangeria_31, Littleton_28, LordLeafolot_34, Shnickers_28, Jessibeth14_27, Spec_26, Domi_23, Blackbrain_26, Astraea_29, ET08_23, Fixie_25, Koguma_24, Drazdys_28, Primadonna_23, FrayBell_34, Montpel_27, Cleatunium_24, Bonray_28, LRRHood_25, Khaleesi_27, Lunareta_27, Sprinklers_28, Alice_23, Chargie21_27, Stubby_26, Fongie_28, QBert_26, Halldule_24, Basquiat_27, ScottMcG_28, Trinitium_27, Gabriel_28, Rabinovish_27, EmmaElysia_26, PharkleMinkus_33, Jedediah_28, Phox_27, Shaqnato_24, Sauce_29, Cactojaque_25, StubbySaigey_27, NuevoMundo_31, Blackdragon_23, ErnieJ_29, ChickenPhender_27, Moby_22, Sebata_28, Jezreel_27, Cane17_21, Maturis_28, Colt_21, Delylah_29, Duckfeet_25, Moiqah_22, Essence_27, JulietS_23, RoMag_23, ChaylaJr_27, Chomp_28, Cali_28, Flabslab_29, StephanieG_28, Jaygup_28, Darko_27, Yassified_25, HyRo_27,

LookingGlass_31, Turret_26, Ablatia_27, Ading_28, Shelob_30, Tainan_33, Rocha_26, Issimir_28, Lukilu_21, Pinkcreek_20, LinStu_28, Pupusa_35, JPickles_26, McWolfish_27, Fludd_27, Belieber_24, Shifa_25, Dietrick_23, Lethe_27

- Track 21 : OrediggerDelux_27, Gizmo_30, Ava3_29, Pio_31, SoilZilla_25, Matsumoto_27, Izajani_29, SVoro_27, Pleione_30, LifeSavor_29, CharlieB_28, NedWong_29, EmToTheThree_31, InterFolia_35, SrishMeg2525_27, PurduePete_27, Phusco_28, Rizal_26, Bangla1971_27, Bread_29, Lee7_27, Substance289_25, Shrimp_28, Tyke_30, I3_30, Yucca_28, Zalkecks_30, Iota_25, Norm_28, ParkTD_27, Daffodil_30, Burrough_28, Zeenon_30, JustHall_27, Loanshark_28, EggyFarm_32, Spud_30, Bowman_27, ZygoTaiga_28, Bxz1_28, Breeniome_28, Ronan_23, LolaVinca_31, FudgeTart_29, Delilah_28, BigCity_32, Nidhogg_29, Melpomini_27, DrPhinkDaddy_28, DTDevon_29, Willis_28, Teardrop_27, MikeLiesIn_28, DirtMonster_27, Blubba_22, FoxtrotP1_28, TinyTim_28, Naval22_30, YemiJoy2021_29, Erdmann_29, Mikro_26, ShiaLabeouf_28, Specks_33, EasyJones_27, SmallFry_28, Bipolarisk_27, Megamind_28, Grasshills_32, Guwapp_28, Naija_28, Morizzled23_27, Salacia_30, Tortoise16_27, Maby2021_29, Rahel_28, Roots515_28, Pier_30, BackyardAgain_25, Catera_26, Wally_27, Ewok_28, Napoleon13_27
- Track 22 : Ghost_28, Adlitam_28, Amataga_28, Patter_28, ArcherS7_27, InigoMontoya_29, Janiyra_28, Latch_28, Pivoine_28, Gangam_28, GlutenPhree_29, Kamryn_28, Dessert_26, Capablanca_30, CindyLou_28, Atlantean_28, ValleyTerrace_28, Audrick_30, YoungMoneyMata_28, Ngannou_26, Phlegm_30, SilverDipper_29, Quasimodo_28, Jemmno_28, Momo_27
- Track 23 : Caravan_26, Bigswole_34, NoodleTree_27, BeanWater_24
- Track 24 : Vortrix_34, Tonenili_32
- Track 25 : Demodog_26, Concombre_27, JigglyPuff_28
- Track 26 : Nappy_29, Dandelion_32
- Track 27 : Derek_29
- Track 28 : SheckWes_45, McDazzle_44, ElJefes_43
- Track 29 : Bubble_36, Axym_37, RedBaron_41, Starburst_39, Sopespian_37, SweatNTears_39, PsychoKiller_37, Agatha_37, RADical_39, Cozz_36, Elliott_38, Quasar_38, GoldHunter_39
- Track 30 : Horseradish_39, MScarn_40, Yummy_39, Buttrmilkdreams_39
- Track 31 : RSchmailzl_39, MunkgeeRoachy_36, Burnsey_37, Typhonmarchy_36, Nina_37, Socotra_38, Carsonalex_41
- Track 32 : Biskit_39, Blondies_40, SketchMex_37, Troje_39
- Track 33 : PhrostedPhlake_68, UmaThurman_64
- Track 34 : GordTnk2_44
- Track 35 : GordDuk1_44
- Track 36 : GMA3_46
- Track 37 : Ligma_83, Fresco_83, Axumite_83, Shatter_83
- Track 38 : BobRoss2024_52
- Track 39 : Audell_60
- Track 40 : Ezurina_60
- Track 41 : Trogglehumper_90
- Track 42 : DocB7_037

Summary of Final Annotations (See graph section above for start numbers):

The start number called the most often in the published annotations is 9, it was called in 181 of the 244 non-draft genes in the pham.

Genes that call this "Most Annotated" start:

- Ablatia_27, Ading_28, Adlitam_28, Alice_23, Amataga_28, ArcherS7_27, Asterius_29, Astraea_29, Atlantean_28, Audrick_30, Ava3_29, Babyland_27, BackyardAgain_25, BadAgartude_29, BananaFence_29, Bangla1971_27, Basquiat_27, BeanWater_24, Belieber_24, Bezza_20, BigCity_32, Bigswole_34, Bipolarisk_27, Blackbrain_26, Blackdragon_23, Blubba_22, BobaPhatt_25, Bonray_28, Bowman_27, Bread_29, Breeniome_28, Burrough_28, Bxz1_28, Cactojaque_25, Cali_28, Cane17_21, Capablanca_30, Caravan_26, Catera_26, Chargie21_27, CharlieB_28, ChaylaJr_27, ChickenPhender_27, Chomp_28, CindyLou_28, Cleatunium_24, Colt_21, Concombre_27, DTDevon_29, Daffodil_30, Dandelion_32, Darko_27, DeejaClivia_24, Delilah_28, Delylah_29, Demodog_26, Derek_29, Dessert_26, Dietrick_23, DirtMonster_27, Domi_23, DrPhinkDaddy_28, Drazdys_28, Duckfeet_25, ET08_23, EasyJones_27, EggyFarm_32, EmToTheThree_31, EmmaElysia_26, Erdmann_29, ErnieJ_29, Essence_27, Ewok_28, Fixie_25, Flabslab_29, Fludd_27, Fongie_28, FoxtrotP1_28, FrayBell_34, FudgeTart_29, Gabriel_28, Gamgam_28, Ghost_28, Gizmo_30, GlutenPhree_29, Grasshills_32, Grungle_21, Guwapp_28, Halldule_24, HyRo_27, I3_30, IkeLoa_24, InigoMontoya_29, InterFolia_35, Iota_25, Issimir_28, Izajani_29, JPickles_26, Janiyra_28, JayJay_31, Jaygup_28, Jedediah_28, Jemmno_28, Jessibeth14_27, Jezreel_27, JigglyPuff_28, JulietS_23, JustHall_27, Kamryn_28, Kboogie_28, Khaleesi_27, Koguma_24, LRRHood_25, Labradorite_27, Latch_28, Lee7_27, Lethe_27, LifeSavor_29, LinStu_28, Littleton_28, Loanshark_28, LolaVinca_31, LookingGlass_31, LordLeafolot_34, Lukilu_21, Lunareta_27, Maby2021_29, Mangeria_31, Matsumoto_27, Maturis_28, McGee_27, McWolfish_27, Megamind_28, Melpomini_27, MikeLiesIn_28, Mikro_26, MoMoMixon_29, Moby_22, Moiqah_22, Momo_27, Montpel_27, Morizzled23_27, Naija_28, Napoleon13_27, Nappy_29, Naval22_30, NedWong_29, Ngannou_26, Nidhogg_29, NoodleTree_27, Norm_28, NuevoMundo_31, OrediggerDelux_27, ParkTD_27, Patter_28, PharkleMinkus_33, Phlegm_30, Phox_27, Phusco_28, Pier_30, Pinkcreek_20, Pio_31, Pivoine_28, Pleione_30, Primadonna_23, Pupusa_35, PurduePete_27, QBert_26, Quasimodo_28, Rabinovish_27, Rahel_28, Rizal_26, RoMag_23, Rocha_26, Ronan_23, Roots515_28, SVoro_27, Salacia_30, Sauce_29, ScottMcG_28, Sebata_28, Shaqnato_24, Shelob_30, ShiaLabeouf_28, Shifa_25, Shnickers_28, Shrimp_28, SilverDipper_29, SmallFry_28, SoilZilla_25, Spec_26, Specks_33, Sprinklers_28, Spud_30, SrishMeg2525_27, StephanieG_28, StubbySaigey_27, Stubby_26, Substance289_25, Tainan_33, Teardrop_27, TinyTim_28, Tonenili_32, Tortoise16_27, Trinitium_27, Turret_26, Tyke_30, ValleyTerrace_28, Vortrix_34, Wally_27, Willis_28, Yassified_25, YemiJoy2021_29, YoungMoneyMata_28, Yucca_28, Zalkecks_30, Zeenon_30, ZygoTaiga_28,

Genes that have the "Most Annotated" start but do not call it:

-

Genes that do not have the "Most Annotated" start:

- 39HC_046, 40BC_046, Acadian_53, Agatha_37, Audell_60, Axumite_83, Axym_37, Bae_54, BirdsNest_56, Biskit_39, Blondies_40, BobRoss2024_52, Boog_59, BronxBay_60, Bubble_36, Burnsey_37, Buttrmlkdreams_39, Carsonalex_41, Cozz_36, DigitDog_53, Djungelskog_59, DocB7_037, DoctorPepper_59, Donny_54, EastView9101_52, Egad_60, ElJefes_43, Elliott_38, Ezurina_60, ForDig_47, Fresco_83, GMA3_46, GoldHunter_39, GordDuk1_44, GordTnk2_44, Hashim76_56,

HerbBucket_59, Horseradish_39, Hosp_045, Jeremy4pt0_59, Jolie1_047, KarasumaRum_53, KayaCho_46, Ligma_83, LilMcDreamy_51, Linda_60, LittleMinkey_58, MScarn_40, McDazzle_44, Michelle_60, MrAaronian_60, MunkgeeRoachy_36, Mysterious_51, Nangang_53, Natasha_61, Nehemiah_52, Nina_37, Onestar_58, Phelemich_51, PhrostedPhlake_68, ProfFrink_60, PsychoKiller_37, Quasar_38, RADical_39, RSchmailzl_39, Raunak_62, Reccee_53, RedBaron_41, Reprobate_52, Rich_53, Rita130_52, RustyBoy_62, Salk_60, Serendipitous_52, Shatter_83, SheckWes_45, Shenyu_53, Shiba_59, SirJeffery_52, SketchMex_37, Sloopyjoe_60, Socotra_38, Sopesian_37, Spain_61, StarLord_60, Starburst_39, Stayer_60, StinkyVeggy_53, Suigeneris_54, SweatNTears_39, Trogglehumper_90, Troje_39, Typhonmarchy_36, UmaThurman_64, Yummy_39, Zenteno07_57,

Summary by start number:

Start 9:

- Found in 218 of 314 (69.4%) of genes in pham
- Manual Annotations of this start: 181 of 244
- Called 100.0% of time when present
- Phage (with cluster) where this start called: Ablatia_27 (C1), Ading_28 (C1), Adlitam_28 (C1), Alice_23 (C1), Amataga_28 (C1), ArcherS7_27 (C1), Asterius_29 (C1), Astraea_29 (C1), Atlantean_28 (C1), Audrick_30 (C1), Ava3_29 (C1), Babyland_27 (C1), BackyardAgain_25 (C1), BadAgartude_29 (C1), BananaFence_29 (C1), Bangla1971_27 (C1), Basquiat_27 (C1), BeanWater_24 (C1), Belieber_24 (C1), Bezza_20 (C1), BigCity_32 (C1), Bigswole_34 (C1), Bipolarisk_27 (C1), Blackbrain_26 (C1), Blackdragon_23 (C1), Blubba_22 (C1), BobaPhatt_25 (C1), Bonray_28 (C1), Bowman_27 (C1), Bread_29 (C1), Breeniome_28 (C1), Burrough_28 (C1), Bxz1_28 (C1), Cactojaque_25 (C1), Cali_28 (C1), Cane17_21 (C1), Capablanca_30 (C1), Caravan_26 (C1), Catera_26 (C1), Chargie21_27 (C1), CharlieB_28 (C1), ChaylaJr_27 (C1), ChickenPhender_27 (C1), Chomp_28 (C1), CindyLou_28 (C1), Cleatunium_24 (C1), Colt_21 (C1), Concombre_27 (C1), DTDevon_29 (C1), Daffodil_30 (C1), Dandelion_32 (C1), Darko_27 (C1), DeejaClivia_24 (C1), Delilah_28 (C1), Delylah_29 (C1), Demodog_26 (C1), Derek_29 (C1), Dessert_26 (C1), Dietrick_23 (C1), DirtMonster_27 (C1), Domi_23 (C1), DrPhinkDaddy_28 (C1), Drazdys_28 (C1), Duckfeet_25 (C1), ET08_23 (C1), EasyJones_27 (C1), EggyFarm_32 (C1), EmToTheThree_31 (C1), EmmaElysia_26 (C1), Erdmann_29 (C1), ErnieJ_29 (C1), Essence_27 (C1), Ewok_28 (C1), Fixie_25 (C1), Flabslab_29 (C1), Fludd_27 (C1), Fongie_28 (C1), FoxtrotP1_28 (C1), FrayBell_34 (C1), FudgeTart_29 (C1), Gabriel_28 (C1), Gamgam_28 (C1), Ghost_28 (C1), Gizmo_30 (C1), GlutenPhree_29 (C1), Grasshills_32 (C1), Grungle_21 (C1), Guwapp_28 (C1), Halldule_24 (C1), HyRo_27 (C1), I3_30 (C1), IkeLoa_24 (C1), InigoMontoya_29 (C1), InterFolia_35 (C1), Iota_25 (C1), Issimir_28 (C1), Izajani_29 (C1), JPickles_26 (C1), Janiyra_28 (C1), JayJay_31 (C1), Jaygup_28 (C1), Jedediah_28 (C1), Jemmno_28 (C1), Jessibeth14_27 (C1), Jezreel_27 (C1), JigglyPuff_28 (C1), JulietS_23 (C1), JustHall_27 (C1), Kamryn_28 (C1), Kboogie_28 (C1), Khaleesi_27 (C1), Koguma_24 (C1), LRRHood_25 (C1), Labradorite_27 (C1), Latch_28 (C1), Lee7_27 (C1), Lethe_27 (C1), LifeSavor_29 (C1), LinStu_28 (C1), Littleton_28 (C1), Loanshark_28 (C1), LolaVinca_31 (C1), LookingGlass_31 (C1), LordLeafolot_34 (C1), Lukilu_21 (C1), Lunareta_27 (C1), Maby2021_29 (C1), Mangeria_31 (C1), Matsumoto_27 (C1), Maturis_28 (C1), McGee_27 (C1), McWolfish_27 (C1), Megamind_28 (C1), Melpomini_27 (C1), MikeLiesIn_28 (C1), Mikro_26 (C1), MoMoMixon_29 (C1), Moby_22 (C1), Moiqah_22 (C1), Momo_27 (C1), Montpel_27 (C1), Morizzled23_27 (C1), Naija_28 (C1), Napoleon13_27 (C1),

Nappy_29 (C1), Naval22_30 (C1), NedWong_29 (C1), Ngannou_26 (C1), Nidhogg_29 (C1), NoodleTree_27 (C1), Norm_28 (C1), NuevoMundo_31 (C1), OrediggerDelux_27 (C1), ParkTD_27 (C1), Patter_28 (C1), PharkleMinkus_33 (C1), Phlegm_30 (C1), Phox_27 (C1), Phusco_28 (C1), Pier_30 (C1), Pinkcreek_20 (C1), Pio_31 (C1), Pivoine_28 (C1), Pleione_30 (C1), Primadonna_23 (C1), Pupusa_35 (C1), PurduePete_27 (C1), QBert_26 (C1), Quasimodo_28 (C1), Rabinovish_27 (C1), Rahel_28 (C1), Rizal_26 (C1), RoMag_23 (C1), Rocha_26 (C1), Ronan_23 (C1), Roots515_28 (C1), SVoro_27 (C1), Salacia_30 (C1), Sauce_29 (C1), ScottMcG_28 (C1), Sebata_28 (C1), Shaqato_24 (C1), Shelob_30 (C1), ShiaLabeouf_28 (C1), Shifa_25 (C1), Shnickers_28 (C1), Shrimp_28 (C1), SilverDipper_29 (C1), SmallFry_28 (C1), SoilZilla_25 (C1), Spec_26 (C1), Specks_33 (C1), Sprinklers_28 (C1), Spud_30 (C1), SrishMeg2525_27 (C1), StephanieG_28 (C1), StubbySaigey_27 (C1), Stubby_26 (C1), Substance289_25 (C1), Tainan_33 (C1), Teardrop_27 (C1), TinyTim_28 (C1), Tonenili_32 (C1), Tortoise16_27 (C1), Trinitium_27 (C1), Turret_26 (C1), Tyke_30 (C1), ValleyTerrace_28 (C1), Vortrix_34 (C1), Wally_27 (C1), Willis_28 (C1), Yassified_25 (C1), YemiJoy2021_29 (C1), YoungMoneyMata_28 (C1), Yucca_28 (C1), Zalkecks_30 (C1), Zeenon_30 (C1), ZygoTaiga_28 (C1),

Start 11:

- Found in 13 of 314 (4.1%) of genes in pham
- Manual Annotations of this start: 2 of 244
- Called 46.2% of time when present
- Phage (with cluster) where this start called: Bae_54 (B5), DigitDog_53 (B5), Nangang_53 (B5), Nehemiah_52 (B5), Rich_53 (B5), Shenyu_53 (B5),

Start 12:

- Found in 117 of 314 (37.3%) of genes in pham
- Manual Annotations of this start: 19 of 244
- Called 24.8% of time when present
- Phage (with cluster) where this start called: Boog_59 (AW), BronxBay_60 (AW), Djungelskog_59 (AW), DocB7_037 (singleton), DoctorPepper_59 (AW), Egad_60 (AW), ElJefes_43 (CT), GMA3_46 (DF2), GordDuk1_44 (DF1), GordTnk2_44 (DF1), HerbBucket_59 (AW), Jeremy4pt0_59 (AW), Linda_60 (AW), McDazzle_44 (CT), Michelle_60 (AW), MrAaronian_60 (AW), Natasha_61 (AW), Onestar_58 (AW), ProfFrink_60 (AW), Raunak_62 (AW), RustyBoy_62 (AW), Salk_60 (AW), SheckWes_45 (CT), Shiba_59 (AW), Sloopyjoe_60 (AW), Spain_61 (AW), StarLord_60 (AW), Stayer_60 (AW), Trogglehumper_90 (singleton),

Start 13:

- Found in 5 of 314 (1.6%) of genes in pham
- Manual Annotations of this start: 4 of 244
- Called 100.0% of time when present
- Phage (with cluster) where this start called: BirdsNest_56 (B13), Hashim76_56 (B13), LilMcDreamy_51 (B12), LittleMinkey_58 (B13), Zenteno07_57 (B13),

Start 14:

- Found in 25 of 314 (8.0%) of genes in pham
- Manual Annotations of this start: 11 of 244
- Called 76.0% of time when present
- Phage (with cluster) where this start called: 39HC_046 (B6), 40BC_046 (B6), Acadian_53 (B5), Donny_54 (B5), EastView9101_52 (B5), ForDig_47 (B6), Hosp_045 (B6), Jolie1_047 (B6), KarasumaRum_53 (B5), KayaCho_46 (B6), Mysterious_51 (B5), Phelemich_51 (B5), Reccee_53 (B5), Reprobate_52 (B5), Rita130_52 (B5),

Serendipitous_52 (B5), SirJeffery_52 (B5), StinkyVeggy_53 (B5), Suigeneris_54 (B5),

Start 16:

- Found in 136 of 314 (43.3%) of genes in pham
- Manual Annotations of this start: 27 of 244
- Called 27.2% of time when present
- Phage (with cluster) where this start called: Agatha_37 (CT), Audell_60 (FR), Axumite_83 (DR), Axym_37 (CT), Biskit_39 (CT), Blondies_40 (CT), BobRoss2024_52 (DR), Bubble_36 (CT), Burnsey_37 (CT), Buttrmlkdreams_39 (CT), Carsonalex_41 (CT), Cozz_36 (CT), Elliott_38 (CT), Ezurina_60 (FR), Fresco_83 (DR), GoldHunter_39 (CT), Horseradish_39 (CT), Ligma_83 (DR), MScarn_40 (CT), MunkgeeRoachy_36 (CT), Nina_37 (CT), PhrostedPhlake_68 (CV), PsychoKiller_37 (CT), Quasar_38 (CT), RADical_39 (CT), RSchmailzl_39 (CT), RedBaron_41 (CT), Shatter_83 (DR), SketchMex_37 (CT), Socotra_38 (CT), Sopespian_37 (CT), Starburst_39 (CT), SweatNTears_39 (CT), Troje_39 (CT), Typhonmarchy_36 (CT), UmaThurman_64 (CV), Yummy_39 (CT),

Summary by clusters:

There are 13 clusters represented in this pham: singleton, DF1, FR, DF2, B5, B6, B12, B13, AW, C1, DR, CV, CT,

Info for manual annotations of cluster AW:

- Start number 12 was manually annotated 17 times for cluster AW.

Info for manual annotations of cluster B12:

- Start number 13 was manually annotated 1 time for cluster B12.

Info for manual annotations of cluster B13:

- Start number 13 was manually annotated 3 times for cluster B13.

Info for manual annotations of cluster B5:

- Start number 11 was manually annotated 2 times for cluster B5.
- Start number 14 was manually annotated 9 times for cluster B5.

Info for manual annotations of cluster B6:

- Start number 14 was manually annotated 2 times for cluster B6.

Info for manual annotations of cluster C1:

- Start number 9 was manually annotated 181 times for cluster C1.

Info for manual annotations of cluster CT:

- Start number 12 was manually annotated 1 time for cluster CT.
- Start number 16 was manually annotated 20 times for cluster CT.

Info for manual annotations of cluster CV:

- Start number 16 was manually annotated 2 times for cluster CV.

Info for manual annotations of cluster DR:

- Start number 16 was manually annotated 4 times for cluster DR.

Info for manual annotations of cluster FR:

•Start number 16 was manually annotated 1 time for cluster FR.

Gene Information:

Gene: 39HC_046 Start: 45589, Stop: 45425, Start Num: 14

Candidate Starts for 39HC_046:

(Start: 14 @45589 has 11 MA's), (19, 45565), (20, 45550), (26, 45502), (34, 45457),

Gene: 40BC_046 Start: 45589, Stop: 45425, Start Num: 14

Candidate Starts for 40BC_046:

(Start: 14 @45589 has 11 MA's), (19, 45565), (20, 45550), (26, 45502), (34, 45457),

Gene: Ablatia_27 Start: 8347, Stop: 8547, Start Num: 9

Candidate Starts for Ablatia_27:

(Start: 9 @8347 has 181 MA's), (Start: 16 @8383 has 27 MA's), (31, 8485), (34, 8509),

Gene: Acadian_53 Start: 48105, Stop: 47941, Start Num: 14

Candidate Starts for Acadian_53:

(Start: 11 @48117 has 2 MA's), (Start: 14 @48105 has 11 MA's), (29, 48009), (34, 47973),

Gene: Ading_28 Start: 8607, Stop: 8807, Start Num: 9

Candidate Starts for Ading_28:

(Start: 9 @8607 has 181 MA's), (Start: 16 @8643 has 27 MA's), (31, 8745), (34, 8769),

Gene: Adlitam_28 Start: 8624, Stop: 8824, Start Num: 9

Candidate Starts for Adlitam_28:

(Start: 9 @8624 has 181 MA's), (31, 8762), (34, 8786),

Gene: Agatha_37 Start: 27161, Stop: 27003, Start Num: 16

Candidate Starts for Agatha_37:

(Start: 16 @27161 has 27 MA's), (19, 27143), (24, 27101), (34, 27035), (38, 27020), (39, 27017),

Gene: Alice_23 Start: 7705, Stop: 7905, Start Num: 9

Candidate Starts for Alice_23:

(Start: 9 @7705 has 181 MA's), (Start: 16 @7741 has 27 MA's), (31, 7843), (34, 7867),

Gene: Amataga_28 Start: 8628, Stop: 8828, Start Num: 9

Candidate Starts for Amataga_28:

(Start: 9 @8628 has 181 MA's), (31, 8766), (34, 8790),

Gene: ArcherS7_27 Start: 8624, Stop: 8824, Start Num: 9

Candidate Starts for ArcherS7_27:

(Start: 9 @8624 has 181 MA's), (31, 8762), (34, 8786),

Gene: Asterius_29 Start: 8896, Stop: 9096, Start Num: 9

Candidate Starts for Asterius_29:

(Start: 9 @8896 has 181 MA's), (Start: 16 @8932 has 27 MA's), (31, 9034), (34, 9058),

Gene: Astraea_29 Start: 8801, Stop: 9001, Start Num: 9

Candidate Starts for Astraea_29:

(Start: 9 @8801 has 181 MA's), (Start: 16 @8837 has 27 MA's), (31, 8939), (34, 8963),

Gene: Atlantean_28 Start: 8628, Stop: 8828, Start Num: 9

Candidate Starts for Atlantean_28:

(Start: 9 @8628 has 181 MA's), (31, 8766), (34, 8790),

Gene: Audell_60 Start: 38775, Stop: 38617, Start Num: 16

Candidate Starts for Audell_60:

(8, 38829), (Start: 16 @38775 has 27 MA's), (40, 38628),

Gene: Audrick_30 Start: 8607, Stop: 8807, Start Num: 9

Candidate Starts for Audrick_30:

(Start: 9 @8607 has 181 MA's), (31, 8745), (34, 8769),

Gene: Ava3_29 Start: 9173, Stop: 9373, Start Num: 9

Candidate Starts for Ava3_29:

(Start: 9 @9173 has 181 MA's), (Start: 12 @9194 has 19 MA's), (31, 9311), (34, 9335),

Gene: Axumite_83 Start: 60379, Stop: 60224, Start Num: 16

Candidate Starts for Axumite_83:

(4, 60847), (Start: 16 @60379 has 27 MA's), (30, 60286), (36, 60247), (38, 60241), (39, 60238),

Gene: Axym_37 Start: 27139, Stop: 26981, Start Num: 16

Candidate Starts for Axym_37:

(Start: 16 @27139 has 27 MA's), (19, 27121), (24, 27079), (34, 27013), (38, 26998), (39, 26995),

Gene: Babyland_27 Start: 8069, Stop: 8269, Start Num: 9

Candidate Starts for Babyland_27:

(Start: 9 @8069 has 181 MA's), (Start: 16 @8105 has 27 MA's), (31, 8207), (34, 8231),

Gene: BackyardAgain_25 Start: 8053, Stop: 8253, Start Num: 9

Candidate Starts for BackyardAgain_25:

(Start: 9 @8053 has 181 MA's), (Start: 12 @8074 has 19 MA's), (31, 8191), (34, 8215),

Gene: BadAgartude_29 Start: 9263, Stop: 9463, Start Num: 9

Candidate Starts for BadAgartude_29:

(Start: 9 @9263 has 181 MA's), (Start: 16 @9299 has 27 MA's), (31, 9401), (34, 9425),

Gene: Bae_54 Start: 49393, Stop: 49217, Start Num: 11

Candidate Starts for Bae_54:

(Start: 11 @49393 has 2 MA's), (Start: 14 @49381 has 11 MA's), (24, 49315), (29, 49285), (34, 49249),

Gene: BananaFence_29 Start: 9060, Stop: 9260, Start Num: 9

Candidate Starts for BananaFence_29:

(Start: 9 @9060 has 181 MA's), (Start: 16 @9096 has 27 MA's), (31, 9198), (34, 9222),

Gene: Bangla1971_27 Start: 8624, Stop: 8824, Start Num: 9

Candidate Starts for Bangla1971_27:

(Start: 9 @8624 has 181 MA's), (Start: 12 @8645 has 19 MA's), (31, 8762), (34, 8786),

Gene: Basquiat_27 Start: 8050, Stop: 8250, Start Num: 9

Candidate Starts for Basquiat_27:

(Start: 9 @8050 has 181 MA's), (Start: 16 @8086 has 27 MA's), (31, 8188), (34, 8212),

Gene: BeanWater_24 Start: 9017, Stop: 9217, Start Num: 9

Candidate Starts for BeanWater_24:

(Start: 9 @9017 has 181 MA's), (31, 9155), (34, 9179),

Gene: Belieber_24 Start: 7817, Stop: 8017, Start Num: 9

Candidate Starts for Belieber_24:

(Start: 9 @7817 has 181 MA's), (Start: 16 @7853 has 27 MA's), (31, 7955), (34, 7979),

Gene: Bezza_20 Start: 7696, Stop: 7896, Start Num: 9

Candidate Starts for Bezza_20:

(Start: 9 @7696 has 181 MA's), (Start: 16 @7732 has 27 MA's), (31, 7834), (34, 7858),

Gene: BigCity_32 Start: 10153, Stop: 10353, Start Num: 9

Candidate Starts for BigCity_32:

(Start: 9 @10153 has 181 MA's), (Start: 12 @10174 has 19 MA's), (31, 10291), (34, 10315),

Gene: Bigswole_34 Start: 10967, Stop: 11167, Start Num: 9

Candidate Starts for Bigswole_34:

(Start: 9 @10967 has 181 MA's), (31, 11105), (34, 11129),

Gene: Bipolarisk_27 Start: 8890, Stop: 9090, Start Num: 9

Candidate Starts for Bipolarisk_27:

(Start: 9 @8890 has 181 MA's), (Start: 12 @8911 has 19 MA's), (31, 9028), (34, 9052),

Gene: BirdsNest_56 Start: 47002, Stop: 46829, Start Num: 13

Candidate Starts for BirdsNest_56:

(6, 47173), (Start: 13 @47002 has 4 MA's), (19, 46978), (31, 46894), (34, 46870), (35, 46864),

Gene: Biskit_39 Start: 27114, Stop: 26956, Start Num: 16

Candidate Starts for Biskit_39:

(Start: 16 @27114 has 27 MA's), (19, 27096), (27, 27030), (29, 27024), (38, 26973), (39, 26970),

Gene: Blackbrain_26 Start: 7866, Stop: 8066, Start Num: 9

Candidate Starts for Blackbrain_26:

(Start: 9 @7866 has 181 MA's), (Start: 16 @7902 has 27 MA's), (31, 8004), (34, 8028),

Gene: Blackdragon_23 Start: 7664, Stop: 7864, Start Num: 9

Candidate Starts for Blackdragon_23:

(Start: 9 @7664 has 181 MA's), (Start: 16 @7700 has 27 MA's), (31, 7802), (34, 7826),

Gene: Blondies_40 Start: 27432, Stop: 27274, Start Num: 16

Candidate Starts for Blondies_40:

(Start: 16 @27432 has 27 MA's), (19, 27414), (27, 27348), (29, 27342), (38, 27291), (39, 27288),

Gene: Blubba_22 Start: 7354, Stop: 7554, Start Num: 9

Candidate Starts for Blubba_22:

(Start: 9 @7354 has 181 MA's), (Start: 12 @7375 has 19 MA's), (31, 7492), (34, 7516),

Gene: BobRoss2024_52 Start: 46394, Stop: 46236, Start Num: 16

Candidate Starts for BobRoss2024_52:

(15, 46397), (Start: 16 @46394 has 27 MA's), (38, 46253),

Gene: BobaPhatt_25 Start: 8061, Stop: 8261, Start Num: 9

Candidate Starts for BobaPhatt_25:

(Start: 9 @8061 has 181 MA's), (Start: 16 @8097 has 27 MA's), (31, 8199), (34, 8223),

Gene: Bonray_28 Start: 9164, Stop: 9364, Start Num: 9

Candidate Starts for Bonray_28:

(Start: 9 @9164 has 181 MA's), (Start: 16 @9200 has 27 MA's), (31, 9302), (34, 9326),

Gene: Boog_59 Start: 40730, Stop: 40891, Start Num: 12

Candidate Starts for Boog_59:

(Start: 12 @40730 has 19 MA's), (25, 40802), (28, 40826), (29, 40829), (30, 40832), (31, 40841),

Gene: Bowman_27 Start: 9173, Stop: 9373, Start Num: 9

Candidate Starts for Bowman_27:

(Start: 9 @9173 has 181 MA's), (Start: 12 @9194 has 19 MA's), (31, 9311), (34, 9335),

Gene: Bread_29 Start: 9173, Stop: 9373, Start Num: 9

Candidate Starts for Bread_29:

(Start: 9 @9173 has 181 MA's), (Start: 12 @9194 has 19 MA's), (31, 9311), (34, 9335),

Gene: Breeniome_28 Start: 8047, Stop: 8247, Start Num: 9

Candidate Starts for Breeniome_28:

(Start: 9 @8047 has 181 MA's), (Start: 12 @8068 has 19 MA's), (31, 8185), (34, 8209),

Gene: BronxBay_60 Start: 40986, Stop: 41147, Start Num: 12

Candidate Starts for BronxBay_60:

(Start: 12 @40986 has 19 MA's), (25, 41058), (28, 41082), (29, 41085), (30, 41088), (31, 41097),

Gene: Bubble_36 Start: 26748, Stop: 26590, Start Num: 16

Candidate Starts for Bubble_36:

(Start: 16 @26748 has 27 MA's), (19, 26730), (24, 26688), (34, 26622), (38, 26607), (39, 26604),

Gene: Burnsey_37 Start: 27152, Stop: 26994, Start Num: 16

Candidate Starts for Burnsey_37:

(Start: 16 @27152 has 27 MA's), (19, 27134), (24, 27092), (38, 27011), (39, 27008),

Gene: Burrough_28 Start: 8890, Stop: 9090, Start Num: 9

Candidate Starts for Burrough_28:

(Start: 9 @8890 has 181 MA's), (Start: 12 @8911 has 19 MA's), (31, 9028), (34, 9052),

Gene: Buttrmlkdreams_39 Start: 27438, Stop: 27280, Start Num: 16

Candidate Starts for Buttrmlkdreams_39:

(Start: 16 @27438 has 27 MA's), (19, 27420), (26, 27357), (39, 27294),

Gene: Bxz1_28 Start: 9633, Stop: 9833, Start Num: 9

Candidate Starts for Bxz1_28:

(Start: 9 @9633 has 181 MA's), (Start: 12 @9654 has 19 MA's), (31, 9771), (34, 9795),

Gene: Cactojaque_25 Start: 7755, Stop: 7955, Start Num: 9

Candidate Starts for Cactojaque_25:

(Start: 9 @7755 has 181 MA's), (Start: 16 @7791 has 27 MA's), (31, 7893), (34, 7917),

Gene: Cali_28 Start: 10197, Stop: 10397, Start Num: 9

Candidate Starts for Cali_28:

(Start: 9 @10197 has 181 MA's), (Start: 16 @10233 has 27 MA's), (31, 10335), (34, 10359),

Gene: Cane17_21 Start: 7226, Stop: 7426, Start Num: 9

Candidate Starts for Cane17_21:

(Start: 9 @7226 has 181 MA's), (Start: 16 @7262 has 27 MA's), (31, 7364), (34, 7388),

Gene: Capablanca_30 Start: 9753, Stop: 9953, Start Num: 9

Candidate Starts for Capablanca_30:

(Start: 9 @9753 has 181 MA's), (31, 9891), (34, 9915),

Gene: Caravan_26 Start: 8443, Stop: 8643, Start Num: 9

Candidate Starts for Caravan_26:

(Start: 9 @8443 has 181 MA's), (31, 8581), (34, 8605),

Gene: Carsonalex_41 Start: 27189, Stop: 27031, Start Num: 16

Candidate Starts for Carsonalex_41:

(Start: 16 @27189 has 27 MA's), (19, 27171), (24, 27129), (38, 27048), (39, 27045),

Gene: Catera_26 Start: 8051, Stop: 8251, Start Num: 9

Candidate Starts for Catera_26:

(Start: 9 @8051 has 181 MA's), (Start: 12 @8072 has 19 MA's), (31, 8189), (34, 8213),

Gene: Chargie21_27 Start: 8050, Stop: 8250, Start Num: 9

Candidate Starts for Chargie21_27:

(Start: 9 @8050 has 181 MA's), (Start: 16 @8086 has 27 MA's), (31, 8188), (34, 8212),

Gene: CharlieB_28 Start: 8204, Stop: 8404, Start Num: 9

Candidate Starts for CharlieB_28:

(Start: 9 @8204 has 181 MA's), (Start: 12 @8225 has 19 MA's), (31, 8342), (34, 8366),

Gene: ChaylaJr_27 Start: 8137, Stop: 8337, Start Num: 9

Candidate Starts for ChaylaJr_27:

(Start: 9 @8137 has 181 MA's), (Start: 16 @8173 has 27 MA's), (31, 8275), (34, 8299),

Gene: ChickenPhender_27 Start: 8095, Stop: 8295, Start Num: 9

Candidate Starts for ChickenPhender_27:

(Start: 9 @8095 has 181 MA's), (Start: 16 @8131 has 27 MA's), (31, 8233), (34, 8257),

Gene: Chomp_28 Start: 8628, Stop: 8828, Start Num: 9

Candidate Starts for Chomp_28:

(Start: 9 @8628 has 181 MA's), (Start: 16 @8664 has 27 MA's), (31, 8766), (34, 8790),

Gene: CindyLou_28 Start: 8628, Stop: 8828, Start Num: 9

Candidate Starts for CindyLou_28:

(Start: 9 @8628 has 181 MA's), (31, 8766), (34, 8790),

Gene: Cleatunium_24 Start: 8326, Stop: 8526, Start Num: 9

Candidate Starts for Cleatunium_24:

(Start: 9 @8326 has 181 MA's), (Start: 16 @8362 has 27 MA's), (31, 8464), (34, 8488),

Gene: Colt_21 Start: 7232, Stop: 7432, Start Num: 9

Candidate Starts for Colt_21:

(Start: 9 @7232 has 181 MA's), (Start: 16 @7268 has 27 MA's), (31, 7370), (34, 7394),

Gene: Concombres_27 Start: 9399, Stop: 9599, Start Num: 9

Candidate Starts for Concombres_27:

(Start: 9 @9399 has 181 MA's), (Start: 12 @9420 has 19 MA's), (31, 9537), (34, 9561),

Gene: Cozz_36 Start: 26749, Stop: 26591, Start Num: 16

Candidate Starts for Cozz_36:

(Start: 16 @26749 has 27 MA's), (19, 26731), (24, 26689), (34, 26623), (38, 26608), (39, 26605),

Gene: DTDevon_29 Start: 9792, Stop: 9992, Start Num: 9

Candidate Starts for DTDevon_29:

(Start: 9 @9792 has 181 MA's), (Start: 12 @9813 has 19 MA's), (31, 9930), (34, 9954),

Gene: Daffodil_30 Start: 9173, Stop: 9373, Start Num: 9

Candidate Starts for Daffodil_30:

(Start: 9 @9173 has 181 MA's), (Start: 12 @9194 has 19 MA's), (31, 9311), (34, 9335),

Gene: Dandelion_32 Start: 10487, Stop: 10687, Start Num: 9

Candidate Starts for Dandelion_32:

(Start: 9 @10487 has 181 MA's), (Start: 12 @10508 has 19 MA's), (31, 10625), (34, 10649),

Gene: Darko_27 Start: 9029, Stop: 9229, Start Num: 9

Candidate Starts for Darko_27:

(Start: 9 @9029 has 181 MA's), (Start: 16 @9065 has 27 MA's), (31, 9167), (34, 9191),

Gene: DeejaClivia_24 Start: 7714, Stop: 7914, Start Num: 9

Candidate Starts for DeejaClivia_24:

(Start: 9 @7714 has 181 MA's), (Start: 16 @7750 has 27 MA's), (31, 7852), (34, 7876),

Gene: Delilah_28 Start: 9173, Stop: 9373, Start Num: 9

Candidate Starts for Delilah_28:

(Start: 9 @9173 has 181 MA's), (Start: 12 @9194 has 19 MA's), (31, 9311), (34, 9335),

Gene: Delylah_29 Start: 8956, Stop: 9156, Start Num: 9

Candidate Starts for Delylah_29:

(Start: 9 @8956 has 181 MA's), (Start: 16 @8992 has 27 MA's), (31, 9094), (34, 9118),

Gene: Demodog_26 Start: 9399, Stop: 9599, Start Num: 9

Candidate Starts for Demodog_26:

(Start: 9 @9399 has 181 MA's), (Start: 12 @9420 has 19 MA's), (31, 9537), (34, 9561),

Gene: Derek_29 Start: 8585, Stop: 8785, Start Num: 9

Candidate Starts for Derek_29:

(Start: 9 @8585 has 181 MA's), (Start: 12 @8606 has 19 MA's), (34, 8747),

Gene: Dessert_26 Start: 8628, Stop: 8828, Start Num: 9

Candidate Starts for Dessert_26:

(Start: 9 @8628 has 181 MA's), (31, 8766), (34, 8790),

Gene: Dietrick_23 Start: 7823, Stop: 8023, Start Num: 9

Candidate Starts for Dietrick_23:

(Start: 9 @7823 has 181 MA's), (Start: 16 @7859 has 27 MA's), (31, 7961), (34, 7985),

Gene: DigitDog_53 Start: 48113, Stop: 47937, Start Num: 11

Candidate Starts for DigitDog_53:

(Start: 11 @48113 has 2 MA's), (Start: 14 @48101 has 11 MA's), (29, 48005), (34, 47969),

Gene: DirtMonster_27 Start: 9717, Stop: 9917, Start Num: 9

Candidate Starts for DirtMonster_27:

(Start: 9 @9717 has 181 MA's), (Start: 12 @9738 has 19 MA's), (31, 9855), (34, 9879),

Gene: Djungelskog_59 Start: 40985, Stop: 41146, Start Num: 12

Candidate Starts for Djungelskog_59:

(Start: 12 @40985 has 19 MA's), (25, 41057), (28, 41081), (29, 41084), (30, 41087), (31, 41096),

Gene: DocB7_037 Start: 37679, Stop: 37524, Start Num: 12

Candidate Starts for DocB7_037:

(Start: 12 @37679 has 19 MA's), (17, 37661), (31, 37574),

Gene: DoctorPepper_59 Start: 40690, Stop: 40851, Start Num: 12

Candidate Starts for DoctorPepper_59:

(Start: 12 @40690 has 19 MA's), (25, 40762), (28, 40786), (29, 40789), (30, 40792), (31, 40801),

Gene: Domi_23 Start: 8448, Stop: 8648, Start Num: 9

Candidate Starts for Domi_23:

(Start: 9 @8448 has 181 MA's), (Start: 16 @8484 has 27 MA's), (31, 8586), (34, 8610),

Gene: Donny_54 Start: 48395, Stop: 48231, Start Num: 14

Candidate Starts for Donny_54:

(Start: 14 @48395 has 11 MA's), (29, 48299), (34, 48263),

Gene: DrPhinkDaddy_28 Start: 9170, Stop: 9370, Start Num: 9

Candidate Starts for DrPhinkDaddy_28:

(Start: 9 @9170 has 181 MA's), (Start: 12 @9191 has 19 MA's), (31, 9308), (34, 9332),

Gene: Drazdys_28 Start: 8958, Stop: 9158, Start Num: 9

Candidate Starts for Drazdys_28:

(Start: 9 @8958 has 181 MA's), (Start: 16 @8994 has 27 MA's), (31, 9096), (34, 9120),

Gene: Duckfeet_25 Start: 8367, Stop: 8567, Start Num: 9

Candidate Starts for Duckfeet_25:

(Start: 9 @8367 has 181 MA's), (Start: 16 @8403 has 27 MA's), (31, 8505), (34, 8529),

Gene: ET08_23 Start: 8632, Stop: 8832, Start Num: 9

Candidate Starts for ET08_23:

(Start: 9 @8632 has 181 MA's), (Start: 16 @8668 has 27 MA's), (31, 8770), (34, 8794),

Gene: EastView9101_52 Start: 48042, Stop: 47878, Start Num: 14

Candidate Starts for EastView9101_52:

(Start: 14 @48042 has 11 MA's), (29, 47946), (34, 47910),

Gene: EasyJones_27 Start: 7797, Stop: 7997, Start Num: 9

Candidate Starts for EasyJones_27:

(Start: 9 @7797 has 181 MA's), (Start: 12 @7818 has 19 MA's), (31, 7935), (34, 7959),

Gene: Egad_60 Start: 40987, Stop: 41148, Start Num: 12
Candidate Starts for Egad_60:
(Start: 12 @40987 has 19 MA's), (25, 41059), (28, 41083), (29, 41086), (30, 41089), (31, 41098),

Gene: EggyFarm_32 Start: 10153, Stop: 10353, Start Num: 9
Candidate Starts for EggyFarm_32:
(Start: 9 @10153 has 181 MA's), (Start: 12 @10174 has 19 MA's), (31, 10291), (34, 10315),

Gene: ElJefes_43 Start: 30713, Stop: 30540, Start Num: 12
Candidate Starts for ElJefes_43:
(Start: 12 @30713 has 19 MA's), (21, 30662), (25, 30632), (30, 30602), (31, 30593), (32, 30590),

Gene: Elliott_38 Start: 27160, Stop: 27002, Start Num: 16
Candidate Starts for Elliott_38:
(Start: 16 @27160 has 27 MA's), (19, 27142), (24, 27100), (34, 27034), (38, 27019), (39, 27016),

Gene: EmToTheThree_31 Start: 10587, Stop: 10787, Start Num: 9
Candidate Starts for EmToTheThree_31:
(Start: 9 @10587 has 181 MA's), (Start: 12 @10608 has 19 MA's), (31, 10725), (34, 10749),

Gene: EmmaElysia_26 Start: 7815, Stop: 8015, Start Num: 9
Candidate Starts for EmmaElysia_26:
(Start: 9 @7815 has 181 MA's), (Start: 16 @7851 has 27 MA's), (31, 7953), (34, 7977),

Gene: Erdmann_29 Start: 9173, Stop: 9373, Start Num: 9
Candidate Starts for Erdmann_29:
(Start: 9 @9173 has 181 MA's), (Start: 12 @9194 has 19 MA's), (31, 9311), (34, 9335),

Gene: ErnieJ_29 Start: 8996, Stop: 9196, Start Num: 9
Candidate Starts for ErnieJ_29:
(Start: 9 @8996 has 181 MA's), (Start: 16 @9032 has 27 MA's), (31, 9134), (34, 9158),

Gene: Essence_27 Start: 8350, Stop: 8550, Start Num: 9
Candidate Starts for Essence_27:
(Start: 9 @8350 has 181 MA's), (Start: 16 @8386 has 27 MA's), (31, 8488), (34, 8512),

Gene: Ewok_28 Start: 9176, Stop: 9376, Start Num: 9
Candidate Starts for Ewok_28:
(Start: 9 @9176 has 181 MA's), (Start: 12 @9197 has 19 MA's), (31, 9314), (34, 9338),

Gene: Ezurina_60 Start: 36586, Stop: 36434, Start Num: 16
Candidate Starts for Ezurina_60:
(8, 36637), (Start: 16 @36586 has 27 MA's), (27, 36508), (40, 36445),

Gene: Fixie_25 Start: 7798, Stop: 7998, Start Num: 9
Candidate Starts for Fixie_25:
(Start: 9 @7798 has 181 MA's), (Start: 16 @7834 has 27 MA's), (31, 7936), (34, 7960),

Gene: Flabslab_29 Start: 9106, Stop: 9306, Start Num: 9
Candidate Starts for Flabslab_29:
(Start: 9 @9106 has 181 MA's), (Start: 16 @9142 has 27 MA's), (31, 9244), (34, 9268),

Gene: Fludd_27 Start: 8051, Stop: 8251, Start Num: 9

Candidate Starts for Fludd_27:

(Start: 9 @8051 has 181 MA's), (Start: 16 @8087 has 27 MA's), (31, 8189), (34, 8213),

Gene: Fongie_28 Start: 9708, Stop: 9908, Start Num: 9

Candidate Starts for Fongie_28:

(Start: 9 @9708 has 181 MA's), (Start: 16 @9744 has 27 MA's), (31, 9846), (34, 9870),

Gene: ForDig_47 Start: 45828, Stop: 45664, Start Num: 14

Candidate Starts for ForDig_47:

(Start: 14 @45828 has 11 MA's), (19, 45804), (20, 45789), (26, 45741), (34, 45696),

Gene: FoxtrotP1_28 Start: 9501, Stop: 9701, Start Num: 9

Candidate Starts for FoxtrotP1_28:

(Start: 9 @9501 has 181 MA's), (Start: 12 @9522 has 19 MA's), (31, 9639), (34, 9663),

Gene: FrayBell_34 Start: 10744, Stop: 10944, Start Num: 9

Candidate Starts for FrayBell_34:

(Start: 9 @10744 has 181 MA's), (Start: 16 @10780 has 27 MA's), (31, 10882), (34, 10906),

Gene: Fresco_83 Start: 60385, Stop: 60230, Start Num: 16

Candidate Starts for Fresco_83:

(4, 60853), (Start: 16 @60385 has 27 MA's), (30, 60292), (36, 60253), (38, 60247), (39, 60244),

Gene: FudgeTart_29 Start: 9173, Stop: 9373, Start Num: 9

Candidate Starts for FudgeTart_29:

(Start: 9 @9173 has 181 MA's), (Start: 12 @9194 has 19 MA's), (31, 9311), (34, 9335),

Gene: GMA3_46 Start: 44762, Stop: 44610, Start Num: 12

Candidate Starts for GMA3_46:

(Start: 12 @44762 has 19 MA's),

Gene: Gabriel_28 Start: 8047, Stop: 8247, Start Num: 9

Candidate Starts for Gabriel_28:

(Start: 9 @8047 has 181 MA's), (Start: 16 @8083 has 27 MA's), (31, 8185), (34, 8209),

Gene: Gamgam_28 Start: 8628, Stop: 8828, Start Num: 9

Candidate Starts for Gamgam_28:

(Start: 9 @8628 has 181 MA's), (31, 8766), (34, 8790),

Gene: Ghost_28 Start: 8628, Stop: 8828, Start Num: 9

Candidate Starts for Ghost_28:

(Start: 9 @8628 has 181 MA's), (31, 8766), (34, 8790),

Gene: Gizmo_30 Start: 9175, Stop: 9375, Start Num: 9

Candidate Starts for Gizmo_30:

(Start: 9 @9175 has 181 MA's), (Start: 12 @9196 has 19 MA's), (31, 9313), (34, 9337),

Gene: GlutenPhree_29 Start: 8628, Stop: 8828, Start Num: 9

Candidate Starts for GlutenPhree_29:

(Start: 9 @8628 has 181 MA's), (31, 8766), (34, 8790),

Gene: GoldHunter_39 Start: 27161, Stop: 27003, Start Num: 16

Candidate Starts for GoldHunter_39:

(Start: 16 @27161 has 27 MA's), (19, 27143), (24, 27101), (34, 27035), (38, 27020), (39, 27017),

Gene: GordDuk1_44 Start: 42833, Stop: 42663, Start Num: 12

Candidate Starts for GordDuk1_44:

(Start: 12 @42833 has 19 MA's), (33, 42707), (37, 42689), (41, 42671),

Gene: GordTnk2_44 Start: 42811, Stop: 42629, Start Num: 12

Candidate Starts for GordTnk2_44:

(Start: 12 @42811 has 19 MA's), (21, 42760), (22, 42745), (33, 42673), (37, 42655), (41, 42637),

Gene: Grasshills_32 Start: 10153, Stop: 10353, Start Num: 9

Candidate Starts for Grasshills_32:

(Start: 9 @10153 has 181 MA's), (Start: 12 @10174 has 19 MA's), (31, 10291), (34, 10315),

Gene: Grungle_21 Start: 6747, Stop: 6947, Start Num: 9

Candidate Starts for Grungle_21:

(Start: 9 @6747 has 181 MA's), (Start: 16 @6783 has 27 MA's), (31, 6885), (34, 6909),

Gene: Guwapp_28 Start: 8585, Stop: 8785, Start Num: 9

Candidate Starts for Guwapp_28:

(Start: 9 @8585 has 181 MA's), (Start: 12 @8606 has 19 MA's), (31, 8723), (34, 8747),

Gene: Halldule_24 Start: 7417, Stop: 7617, Start Num: 9

Candidate Starts for Halldule_24:

(Start: 9 @7417 has 181 MA's), (Start: 16 @7453 has 27 MA's), (31, 7555), (34, 7579),

Gene: Hashim76_56 Start: 47575, Stop: 47402, Start Num: 13

Candidate Starts for Hashim76_56:

(2, 48184), (5, 47881), (6, 47743), (Start: 13 @47575 has 4 MA's), (20, 47536), (31, 47467), (34, 47443), (35, 47437),

Gene: HerbBucket_59 Start: 40727, Stop: 40888, Start Num: 12

Candidate Starts for HerbBucket_59:

(Start: 12 @40727 has 19 MA's), (25, 40799), (28, 40823), (29, 40826), (30, 40829), (31, 40838),

Gene: Horseradish_39 Start: 26966, Stop: 26808, Start Num: 16

Candidate Starts for Horseradish_39:

(Start: 16 @26966 has 27 MA's), (19, 26948), (26, 26885), (39, 26822),

Gene: Hosp_045 Start: 44019, Stop: 43855, Start Num: 14

Candidate Starts for Hosp_045:

(Start: 14 @44019 has 11 MA's), (19, 43995), (20, 43980), (26, 43932), (34, 43887),

Gene: HyRo_27 Start: 9363, Stop: 9563, Start Num: 9

Candidate Starts for HyRo_27:

(Start: 9 @9363 has 181 MA's), (Start: 16 @9399 has 27 MA's), (31, 9501), (34, 9525),

Gene: I3_30 Start: 9740, Stop: 9940, Start Num: 9

Candidate Starts for I3_30:

(Start: 9 @9740 has 181 MA's), (Start: 12 @9761 has 19 MA's), (31, 9878), (34, 9902),

Gene: IkeLoa_24 Start: 8474, Stop: 8674, Start Num: 9

Candidate Starts for IkeLoa_24:

(Start: 9 @8474 has 181 MA's), (Start: 16 @8510 has 27 MA's), (31, 8612), (34, 8636),

Gene: InigoMontoya_29 Start: 8589, Stop: 8789, Start Num: 9

Candidate Starts for InigoMontoya_29:

(Start: 9 @8589 has 181 MA's), (31, 8727), (34, 8751),

Gene: InterFolia_35 Start: 11279, Stop: 11479, Start Num: 9

Candidate Starts for InterFolia_35:

(Start: 9 @11279 has 181 MA's), (Start: 12 @11300 has 19 MA's), (31, 11417), (34, 11441),

Gene: Iota_25 Start: 8708, Stop: 8908, Start Num: 9

Candidate Starts for Iota_25:

(Start: 9 @8708 has 181 MA's), (Start: 12 @8729 has 19 MA's), (31, 8846), (34, 8870),

Gene: Issimir_28 Start: 9168, Stop: 9368, Start Num: 9

Candidate Starts for Issimir_28:

(Start: 9 @9168 has 181 MA's), (Start: 16 @9204 has 27 MA's), (31, 9306), (34, 9330),

Gene: Izajani_29 Start: 9173, Stop: 9373, Start Num: 9

Candidate Starts for Izajani_29:

(Start: 9 @9173 has 181 MA's), (Start: 12 @9194 has 19 MA's), (31, 9311), (34, 9335),

Gene: JPickles_26 Start: 7825, Stop: 8025, Start Num: 9

Candidate Starts for JPickles_26:

(Start: 9 @7825 has 181 MA's), (Start: 16 @7861 has 27 MA's), (31, 7963), (34, 7987),

Gene: Janiyra_28 Start: 8607, Stop: 8807, Start Num: 9

Candidate Starts for Janiyra_28:

(Start: 9 @8607 has 181 MA's), (31, 8745), (34, 8769),

Gene: JayJay_31 Start: 9141, Stop: 9341, Start Num: 9

Candidate Starts for JayJay_31:

(Start: 9 @9141 has 181 MA's), (Start: 16 @9177 has 27 MA's), (31, 9279), (34, 9303),

Gene: Jaygup_28 Start: 8624, Stop: 8824, Start Num: 9

Candidate Starts for Jaygup_28:

(Start: 9 @8624 has 181 MA's), (Start: 16 @8660 has 27 MA's), (31, 8762), (34, 8786),

Gene: Jedediah_28 Start: 8093, Stop: 8293, Start Num: 9

Candidate Starts for Jedediah_28:

(Start: 9 @8093 has 181 MA's), (Start: 16 @8129 has 27 MA's), (31, 8231), (34, 8255),

Gene: Jemmno_28 Start: 8628, Stop: 8828, Start Num: 9

Candidate Starts for Jemmno_28:

(Start: 9 @8628 has 181 MA's), (31, 8766), (34, 8790),

Gene: Jeremy4pt0_59 Start: 40685, Stop: 40846, Start Num: 12

Candidate Starts for Jeremy4pt0_59:

(Start: 12 @40685 has 19 MA's), (25, 40757), (28, 40781), (29, 40784), (30, 40787), (31, 40796),

Gene: Jessibeth14_27 Start: 8896, Stop: 9096, Start Num: 9

Candidate Starts for Jessibeth14_27:

(Start: 9 @8896 has 181 MA's), (Start: 16 @8932 has 27 MA's), (31, 9034), (34, 9058),

Gene: Jezreel_27 Start: 8645, Stop: 8845, Start Num: 9

Candidate Starts for Jezreel_27:

(Start: 9 @8645 has 181 MA's), (Start: 16 @8681 has 27 MA's), (31, 8783), (34, 8807),

Gene: JigglyPuff_28 Start: 9449, Stop: 9649, Start Num: 9

Candidate Starts for JigglyPuff_28:

(Start: 9 @9449 has 181 MA's), (Start: 12 @9470 has 19 MA's), (31, 9587), (34, 9611),

Gene: Jolie1_047 Start: 45807, Stop: 45643, Start Num: 14

Candidate Starts for Jolie1_047:

(7, 45969), (Start: 14 @45807 has 11 MA's), (19, 45783), (20, 45768), (26, 45720), (34, 45675),

Gene: JulietS_23 Start: 7050, Stop: 7250, Start Num: 9

Candidate Starts for JulietS_23:

(Start: 9 @7050 has 181 MA's), (Start: 16 @7086 has 27 MA's), (31, 7188), (34, 7212),

Gene: JustHall_27 Start: 9073, Stop: 9273, Start Num: 9

Candidate Starts for JustHall_27:

(Start: 9 @9073 has 181 MA's), (Start: 12 @9094 has 19 MA's), (31, 9211), (34, 9235),

Gene: Kamryn_28 Start: 8952, Stop: 9152, Start Num: 9

Candidate Starts for Kamryn_28:

(Start: 9 @8952 has 181 MA's), (31, 9090), (34, 9114),

Gene: KarasumaRum_53 Start: 48252, Stop: 48088, Start Num: 14

Candidate Starts for KarasumaRum_53:

(Start: 11 @48264 has 2 MA's), (Start: 14 @48252 has 11 MA's), (29, 48156), (34, 48120),

Gene: KayaCho_46 Start: 45592, Stop: 45428, Start Num: 14

Candidate Starts for KayaCho_46:

(Start: 14 @45592 has 11 MA's), (19, 45568), (20, 45553), (26, 45505), (34, 45460),

Gene: Kboogie_28 Start: 8106, Stop: 8306, Start Num: 9

Candidate Starts for Kboogie_28:

(Start: 9 @8106 has 181 MA's), (Start: 16 @8142 has 27 MA's), (31, 8244), (34, 8268),

Gene: Khaleesi_27 Start: 8923, Stop: 9123, Start Num: 9

Candidate Starts for Khaleesi_27:

(Start: 9 @8923 has 181 MA's), (Start: 16 @8959 has 27 MA's), (31, 9061), (34, 9085),

Gene: Koguma_24 Start: 7393, Stop: 7593, Start Num: 9

Candidate Starts for Koguma_24:

(Start: 9 @7393 has 181 MA's), (Start: 16 @7429 has 27 MA's), (31, 7531), (34, 7555),

Gene: LRRHood_25 Start: 9316, Stop: 9516, Start Num: 9

Candidate Starts for LRRHood_25:

(Start: 9 @9316 has 181 MA's), (Start: 16 @9352 has 27 MA's), (31, 9454), (34, 9478),

Gene: Labradorite_27 Start: 8624, Stop: 8824, Start Num: 9

Candidate Starts for Labradorite_27:

(Start: 9 @8624 has 181 MA's), (Start: 16 @8660 has 27 MA's), (31, 8762), (34, 8786),

Gene: Latch_28 Start: 8628, Stop: 8828, Start Num: 9
Candidate Starts for Latch_28:
(Start: 9 @8628 has 181 MA's), (31, 8766), (34, 8790),

Gene: Lee7_27 Start: 9170, Stop: 9370, Start Num: 9
Candidate Starts for Lee7_27:
(Start: 9 @9170 has 181 MA's), (Start: 12 @9191 has 19 MA's), (31, 9308), (34, 9332),

Gene: Lethe_27 Start: 8867, Stop: 9067, Start Num: 9
Candidate Starts for Lethe_27:
(Start: 9 @8867 has 181 MA's), (Start: 16 @8903 has 27 MA's), (31, 9005), (34, 9029),

Gene: LifeSavor_29 Start: 8624, Stop: 8824, Start Num: 9
Candidate Starts for LifeSavor_29:
(Start: 9 @8624 has 181 MA's), (Start: 12 @8645 has 19 MA's), (31, 8762), (34, 8786),

Gene: Ligma_83 Start: 60379, Stop: 60224, Start Num: 16
Candidate Starts for Ligma_83:
(4, 60847), (Start: 16 @60379 has 27 MA's), (30, 60286), (36, 60247), (38, 60241), (39, 60238),

Gene: LilMcDreamy_51 Start: 47791, Stop: 47630, Start Num: 13
Candidate Starts for LilMcDreamy_51:
(Start: 13 @47791 has 4 MA's), (24, 47722), (30, 47689), (35, 47650), (37, 47644),

Gene: LinStu_28 Start: 9526, Stop: 9726, Start Num: 9
Candidate Starts for LinStu_28:
(Start: 9 @9526 has 181 MA's), (Start: 16 @9562 has 27 MA's), (31, 9664), (34, 9688),

Gene: Linda_60 Start: 40983, Stop: 41144, Start Num: 12
Candidate Starts for Linda_60:
(Start: 12 @40983 has 19 MA's), (25, 41055), (28, 41079), (29, 41082), (30, 41085), (31, 41094),

Gene: LittleMinkey_58 Start: 47214, Stop: 47041, Start Num: 13
Candidate Starts for LittleMinkey_58:
(2, 47823), (6, 47382), (Start: 13 @47214 has 4 MA's), (20, 47175), (31, 47106), (34, 47082), (35, 47076),

Gene: Littleton_28 Start: 8628, Stop: 8828, Start Num: 9
Candidate Starts for Littleton_28:
(Start: 9 @8628 has 181 MA's), (Start: 16 @8664 has 27 MA's), (31, 8766), (34, 8790),

Gene: Loanshark_28 Start: 9173, Stop: 9373, Start Num: 9
Candidate Starts for Loanshark_28:
(Start: 9 @9173 has 181 MA's), (Start: 12 @9194 has 19 MA's), (31, 9311), (34, 9335),

Gene: LolaVinca_31 Start: 10385, Stop: 10585, Start Num: 9
Candidate Starts for LolaVinca_31:
(Start: 9 @10385 has 181 MA's), (Start: 12 @10406 has 19 MA's), (31, 10523), (34, 10547),

Gene: LookingGlass_31 Start: 9947, Stop: 10147, Start Num: 9
Candidate Starts for LookingGlass_31:
(Start: 9 @9947 has 181 MA's), (Start: 16 @9983 has 27 MA's), (31, 10085), (34, 10109),

Gene: LordLeafolot_34 Start: 10743, Stop: 10943, Start Num: 9
Candidate Starts for LordLeafolot_34:
(Start: 9 @10743 has 181 MA's), (Start: 16 @10779 has 27 MA's), (31, 10881), (34, 10905),

Gene: Lukilu_21 Start: 7767, Stop: 7967, Start Num: 9
Candidate Starts for Lukilu_21:
(Start: 9 @7767 has 181 MA's), (Start: 16 @7803 has 27 MA's), (31, 7905), (34, 7929),

Gene: Lunareta_27 Start: 8907, Stop: 9107, Start Num: 9
Candidate Starts for Lunareta_27:
(Start: 9 @8907 has 181 MA's), (Start: 16 @8943 has 27 MA's), (31, 9045), (34, 9069),

Gene: MScarn_40 Start: 27106, Stop: 26948, Start Num: 16
Candidate Starts for MScarn_40:
(Start: 16 @27106 has 27 MA's), (19, 27088), (26, 27025), (39, 26962),

Gene: Maby2021_29 Start: 9173, Stop: 9373, Start Num: 9
Candidate Starts for Maby2021_29:
(Start: 9 @9173 has 181 MA's), (Start: 12 @9194 has 19 MA's), (31, 9311), (34, 9335),

Gene: Mangeria_31 Start: 9699, Stop: 9899, Start Num: 9
Candidate Starts for Mangeria_31:
(Start: 9 @9699 has 181 MA's), (Start: 16 @9735 has 27 MA's), (31, 9837), (34, 9861),

Gene: Matsumoto_27 Start: 8589, Stop: 8789, Start Num: 9
Candidate Starts for Matsumoto_27:
(Start: 9 @8589 has 181 MA's), (Start: 12 @8610 has 19 MA's), (31, 8727), (34, 8751),

Gene: Maturis_28 Start: 8946, Stop: 9146, Start Num: 9
Candidate Starts for Maturis_28:
(Start: 9 @8946 has 181 MA's), (Start: 16 @8982 has 27 MA's), (31, 9084), (34, 9108),

Gene: McDazzle_44 Start: 30707, Stop: 30534, Start Num: 12
Candidate Starts for McDazzle_44:
(Start: 12 @30707 has 19 MA's), (21, 30656), (25, 30626), (30, 30596), (31, 30587), (32, 30584),

Gene: McGee_27 Start: 7815, Stop: 8015, Start Num: 9
Candidate Starts for McGee_27:
(Start: 9 @7815 has 181 MA's), (Start: 16 @7851 has 27 MA's), (31, 7953), (34, 7977),

Gene: McWolfish_27 Start: 8923, Stop: 9123, Start Num: 9
Candidate Starts for McWolfish_27:
(Start: 9 @8923 has 181 MA's), (Start: 16 @8959 has 27 MA's), (31, 9061), (34, 9085),

Gene: Megamind_28 Start: 9164, Stop: 9364, Start Num: 9
Candidate Starts for Megamind_28:
(Start: 9 @9164 has 181 MA's), (Start: 12 @9185 has 19 MA's), (31, 9302), (34, 9326),

Gene: Melpomini_27 Start: 8030, Stop: 8230, Start Num: 9
Candidate Starts for Melpomini_27:
(Start: 9 @8030 has 181 MA's), (Start: 12 @8051 has 19 MA's), (31, 8168), (34, 8192),

Gene: Michelle_60 Start: 40985, Stop: 41146, Start Num: 12

Candidate Starts for Michelle_60:
(Start: 12 @40985 has 19 MA's), (25, 41057), (28, 41081), (29, 41084), (30, 41087), (31, 41096),

Gene: MikeLiesIn_28 Start: 9173, Stop: 9373, Start Num: 9
Candidate Starts for MikeLiesIn_28:
(Start: 9 @9173 has 181 MA's), (Start: 12 @9194 has 19 MA's), (31, 9311), (34, 9335),

Gene: Mikro_26 Start: 9659, Stop: 9859, Start Num: 9
Candidate Starts for Mikro_26:
(Start: 9 @9659 has 181 MA's), (Start: 12 @9680 has 19 MA's), (31, 9797), (34, 9821),

Gene: MoMoMixon_29 Start: 9490, Stop: 9690, Start Num: 9
Candidate Starts for MoMoMixon_29:
(Start: 9 @9490 has 181 MA's), (Start: 16 @9526 has 27 MA's), (31, 9628), (34, 9652),

Gene: Moby_22 Start: 6171, Stop: 6371, Start Num: 9
Candidate Starts for Moby_22:
(Start: 9 @6171 has 181 MA's), (Start: 16 @6207 has 27 MA's), (31, 6309), (34, 6333),

Gene: Moiqah_22 Start: 6171, Stop: 6371, Start Num: 9
Candidate Starts for Moiqah_22:
(Start: 9 @6171 has 181 MA's), (Start: 16 @6207 has 27 MA's), (31, 6309), (34, 6333),

Gene: Momo_27 Start: 8628, Stop: 8828, Start Num: 9
Candidate Starts for Momo_27:
(Start: 9 @8628 has 181 MA's), (31, 8766), (34, 8790),

Gene: Montpel_27 Start: 8907, Stop: 9107, Start Num: 9
Candidate Starts for Montpel_27:
(Start: 9 @8907 has 181 MA's), (Start: 16 @8943 has 27 MA's), (31, 9045), (34, 9069),

Gene: Morizzled23_27 Start: 8030, Stop: 8230, Start Num: 9
Candidate Starts for Morizzled23_27:
(Start: 9 @8030 has 181 MA's), (Start: 12 @8051 has 19 MA's), (31, 8168), (34, 8192),

Gene: MrAaronian_60 Start: 40985, Stop: 41146, Start Num: 12
Candidate Starts for MrAaronian_60:
(Start: 12 @40985 has 19 MA's), (25, 41057), (28, 41081), (29, 41084), (30, 41087), (31, 41096),

Gene: MunkgeeRoachy_36 Start: 26623, Stop: 26465, Start Num: 16
Candidate Starts for MunkgeeRoachy_36:
(Start: 16 @26623 has 27 MA's), (19, 26605), (24, 26563), (38, 26482), (39, 26479),

Gene: Mysterious_51 Start: 48234, Stop: 48070, Start Num: 14
Candidate Starts for Mysterious_51:
(Start: 11 @48246 has 2 MA's), (Start: 14 @48234 has 11 MA's), (29, 48138), (34, 48102),

Gene: Naija_28 Start: 8628, Stop: 8828, Start Num: 9
Candidate Starts for Naija_28:
(Start: 9 @8628 has 181 MA's), (Start: 12 @8649 has 19 MA's), (31, 8766), (34, 8790),

Gene: Nangang_53 Start: 48478, Stop: 48302, Start Num: 11
Candidate Starts for Nangang_53:

(Start: 11 @48478 has 2 MA's), (Start: 14 @48466 has 11 MA's), (29, 48370), (34, 48334),

Gene: Napoleon13_27 Start: 8049, Stop: 8249, Start Num: 9

Candidate Starts for Napoleon13_27:

(Start: 9 @8049 has 181 MA's), (Start: 12 @8070 has 19 MA's), (31, 8187), (34, 8211),

Gene: Nappy_29 Start: 9337, Stop: 9537, Start Num: 9

Candidate Starts for Nappy_29:

(Start: 9 @9337 has 181 MA's), (Start: 12 @9358 has 19 MA's), (31, 9475), (34, 9499),

Gene: Natasha_61 Start: 40720, Stop: 40878, Start Num: 12

Candidate Starts for Natasha_61:

(Start: 12 @40720 has 19 MA's), (17, 40738), (25, 40789), (31, 40828), (35, 40855),

Gene: Naval22_30 Start: 9213, Stop: 9413, Start Num: 9

Candidate Starts for Naval22_30:

(Start: 9 @9213 has 181 MA's), (Start: 12 @9234 has 19 MA's), (31, 9351), (34, 9375),

Gene: NedWong_29 Start: 9173, Stop: 9373, Start Num: 9

Candidate Starts for NedWong_29:

(Start: 9 @9173 has 181 MA's), (Start: 12 @9194 has 19 MA's), (31, 9311), (34, 9335),

Gene: Nehemiah_52 Start: 48246, Stop: 48070, Start Num: 11

Candidate Starts for Nehemiah_52:

(Start: 11 @48246 has 2 MA's), (Start: 14 @48234 has 11 MA's), (29, 48138), (34, 48102),

Gene: Ngannou_26 Start: 7804, Stop: 8004, Start Num: 9

Candidate Starts for Ngannou_26:

(Start: 9 @7804 has 181 MA's), (31, 7942), (34, 7966),

Gene: Nidhogg_29 Start: 9243, Stop: 9443, Start Num: 9

Candidate Starts for Nidhogg_29:

(Start: 9 @9243 has 181 MA's), (Start: 12 @9264 has 19 MA's), (31, 9381), (34, 9405),

Gene: Nina_37 Start: 27285, Stop: 27127, Start Num: 16

Candidate Starts for Nina_37:

(Start: 16 @27285 has 27 MA's), (19, 27267), (24, 27225), (38, 27144), (39, 27141),

Gene: NoodleTree_27 Start: 8939, Stop: 9139, Start Num: 9

Candidate Starts for NoodleTree_27:

(Start: 9 @8939 has 181 MA's), (31, 9077), (34, 9101),

Gene: Norm_28 Start: 9173, Stop: 9373, Start Num: 9

Candidate Starts for Norm_28:

(Start: 9 @9173 has 181 MA's), (Start: 12 @9194 has 19 MA's), (31, 9311), (34, 9335),

Gene: NuevoMundo_31 Start: 10230, Stop: 10430, Start Num: 9

Candidate Starts for NuevoMundo_31:

(Start: 9 @10230 has 181 MA's), (Start: 16 @10266 has 27 MA's), (31, 10368), (34, 10392),

Gene: Onestar_58 Start: 40746, Stop: 40907, Start Num: 12

Candidate Starts for Onestar_58:

(Start: 12 @40746 has 19 MA's), (25, 40818), (31, 40857), (37, 40890), (39, 40896),

Gene: OrediggerDelux_27 Start: 9173, Stop: 9373, Start Num: 9

Candidate Starts for OrediggerDelux_27:

(Start: 9 @9173 has 181 MA's), (Start: 12 @9194 has 19 MA's), (31, 9311), (34, 9335),

Gene: ParkTD_27 Start: 9173, Stop: 9373, Start Num: 9

Candidate Starts for ParkTD_27:

(Start: 9 @9173 has 181 MA's), (Start: 12 @9194 has 19 MA's), (31, 9311), (34, 9335),

Gene: Patter_28 Start: 8645, Stop: 8845, Start Num: 9

Candidate Starts for Patter_28:

(Start: 9 @8645 has 181 MA's), (31, 8783), (34, 8807),

Gene: PharkleMinkus_33 Start: 10744, Stop: 10944, Start Num: 9

Candidate Starts for PharkleMinkus_33:

(Start: 9 @10744 has 181 MA's), (Start: 16 @10780 has 27 MA's), (31, 10882), (34, 10906),

Gene: Phelemich_51 Start: 48233, Stop: 48069, Start Num: 14

Candidate Starts for Phelemich_51:

(Start: 11 @48245 has 2 MA's), (Start: 14 @48233 has 11 MA's), (24, 48167), (26, 48146), (29, 48137), (34, 48101),

Gene: Phlegm_30 Start: 8628, Stop: 8828, Start Num: 9

Candidate Starts for Phlegm_30:

(Start: 9 @8628 has 181 MA's), (31, 8766), (34, 8790),

Gene: Phox_27 Start: 9340, Stop: 9540, Start Num: 9

Candidate Starts for Phox_27:

(Start: 9 @9340 has 181 MA's), (Start: 16 @9376 has 27 MA's), (31, 9478), (34, 9502),

Gene: PhrostedPhlake_68 Start: 41801, Stop: 41962, Start Num: 16

Candidate Starts for PhrostedPhlake_68:

(Start: 16 @41801 has 27 MA's), (19, 41819), (29, 41894), (38, 41945),

Gene: Phusco_28 Start: 8624, Stop: 8824, Start Num: 9

Candidate Starts for Phusco_28:

(Start: 9 @8624 has 181 MA's), (Start: 12 @8645 has 19 MA's), (31, 8762), (34, 8786),

Gene: Pier_30 Start: 9331, Stop: 9531, Start Num: 9

Candidate Starts for Pier_30:

(Start: 9 @9331 has 181 MA's), (Start: 12 @9352 has 19 MA's), (31, 9469), (34, 9493),

Gene: Pinkcreek_20 Start: 7035, Stop: 7235, Start Num: 9

Candidate Starts for Pinkcreek_20:

(Start: 9 @7035 has 181 MA's), (Start: 16 @7071 has 27 MA's), (31, 7173), (34, 7197),

Gene: Pio_31 Start: 10022, Stop: 10222, Start Num: 9

Candidate Starts for Pio_31:

(Start: 9 @10022 has 181 MA's), (Start: 12 @10043 has 19 MA's), (31, 10160), (34, 10184),

Gene: Pivoine_28 Start: 8628, Stop: 8828, Start Num: 9

Candidate Starts for Pivoine_28:

(Start: 9 @8628 has 181 MA's), (31, 8766), (34, 8790),

Gene: Pleione_30 Start: 9173, Stop: 9373, Start Num: 9

Candidate Starts for Pleione_30:

(Start: 9 @9173 has 181 MA's), (Start: 12 @9194 has 19 MA's), (31, 9311), (34, 9335),

Gene: Primadonna_23 Start: 8280, Stop: 8480, Start Num: 9

Candidate Starts for Primadonna_23:

(Start: 9 @8280 has 181 MA's), (Start: 16 @8316 has 27 MA's), (31, 8418), (34, 8442),

Gene: ProfFrink_60 Start: 40986, Stop: 41147, Start Num: 12

Candidate Starts for ProfFrink_60:

(Start: 12 @40986 has 19 MA's), (25, 41058), (28, 41082), (29, 41085), (30, 41088), (31, 41097),

Gene: PsychoKiller_37 Start: 27161, Stop: 27003, Start Num: 16

Candidate Starts for PsychoKiller_37:

(Start: 16 @27161 has 27 MA's), (19, 27143), (24, 27101), (34, 27035), (38, 27020), (39, 27017),

Gene: Pupusa_35 Start: 11281, Stop: 11481, Start Num: 9

Candidate Starts for Pupusa_35:

(Start: 9 @11281 has 181 MA's), (Start: 16 @11317 has 27 MA's), (31, 11419), (34, 11443),

Gene: PurduePete_27 Start: 8890, Stop: 9090, Start Num: 9

Candidate Starts for PurduePete_27:

(Start: 9 @8890 has 181 MA's), (Start: 12 @8911 has 19 MA's), (31, 9028), (34, 9052),

Gene: QBert_26 Start: 9340, Stop: 9540, Start Num: 9

Candidate Starts for QBert_26:

(Start: 9 @9340 has 181 MA's), (Start: 16 @9376 has 27 MA's), (31, 9478), (34, 9502),

Gene: Quasar_38 Start: 27709, Stop: 27551, Start Num: 16

Candidate Starts for Quasar_38:

(Start: 16 @27709 has 27 MA's), (19, 27691), (24, 27649), (34, 27583), (38, 27568), (39, 27565),

Gene: Quasimodo_28 Start: 9588, Stop: 9788, Start Num: 9

Candidate Starts for Quasimodo_28:

(Start: 9 @9588 has 181 MA's), (31, 9726), (34, 9750),

Gene: RADical_39 Start: 27155, Stop: 26997, Start Num: 16

Candidate Starts for RADical_39:

(Start: 16 @27155 has 27 MA's), (19, 27137), (24, 27095), (34, 27029), (38, 27014), (39, 27011),

Gene: RSchmailzl_39 Start: 27198, Stop: 27040, Start Num: 16

Candidate Starts for RSchmailzl_39:

(Start: 16 @27198 has 27 MA's), (19, 27180), (24, 27138), (38, 27057), (39, 27054),

Gene: Rabinovish_27 Start: 9628, Stop: 9828, Start Num: 9

Candidate Starts for Rabinovish_27:

(Start: 9 @9628 has 181 MA's), (Start: 16 @9664 has 27 MA's), (31, 9766), (34, 9790),

Gene: Rahel_28 Start: 8624, Stop: 8824, Start Num: 9

Candidate Starts for Rahel_28:

(Start: 9 @8624 has 181 MA's), (Start: 12 @8645 has 19 MA's), (31, 8762), (34, 8786),

Gene: Raunak_62 Start: 40683, Stop: 40844, Start Num: 12
Candidate Starts for Raunak_62:
(Start: 12 @40683 has 19 MA's), (25, 40755), (28, 40779), (29, 40782), (30, 40785), (31, 40794),

Gene: Reccee_53 Start: 48293, Stop: 48129, Start Num: 14
Candidate Starts for Reccee_53:
(Start: 14 @48293 has 11 MA's), (29, 48197), (34, 48161),

Gene: RedBaron_41 Start: 27398, Stop: 27240, Start Num: 16
Candidate Starts for RedBaron_41:
(Start: 16 @27398 has 27 MA's), (19, 27380), (24, 27338), (34, 27272), (38, 27257), (39, 27254),

Gene: Reprobate_52 Start: 48238, Stop: 48074, Start Num: 14
Candidate Starts for Reprobate_52:
(Start: 11 @48250 has 2 MA's), (Start: 14 @48238 has 11 MA's), (24, 48172), (26, 48151), (29, 48142),
(34, 48106),

Gene: Rich_53 Start: 49684, Stop: 49508, Start Num: 11
Candidate Starts for Rich_53:
(Start: 11 @49684 has 2 MA's), (Start: 14 @49672 has 11 MA's), (24, 49606), (29, 49576), (34, 49540),

Gene: Rita130_52 Start: 48113, Stop: 47949, Start Num: 14
Candidate Starts for Rita130_52:
(Start: 14 @48113 has 11 MA's), (29, 48017), (34, 47981),

Gene: Rizal_26 Start: 8090, Stop: 8290, Start Num: 9
Candidate Starts for Rizal_26:
(Start: 9 @8090 has 181 MA's), (Start: 12 @8111 has 19 MA's), (31, 8228), (34, 8252),

Gene: RoMag_23 Start: 8425, Stop: 8625, Start Num: 9
Candidate Starts for RoMag_23:
(Start: 9 @8425 has 181 MA's), (Start: 16 @8461 has 27 MA's), (31, 8563), (34, 8587),

Gene: Rocha_26 Start: 8121, Stop: 8321, Start Num: 9
Candidate Starts for Rocha_26:
(Start: 9 @8121 has 181 MA's), (Start: 16 @8157 has 27 MA's), (31, 8259), (34, 8283),

Gene: Ronan_23 Start: 6736, Stop: 6936, Start Num: 9
Candidate Starts for Ronan_23:
(Start: 9 @6736 has 181 MA's), (Start: 12 @6757 has 19 MA's), (31, 6874), (34, 6898),

Gene: Roots515_28 Start: 9172, Stop: 9372, Start Num: 9
Candidate Starts for Roots515_28:
(Start: 9 @9172 has 181 MA's), (Start: 12 @9193 has 19 MA's), (31, 9310), (34, 9334),

Gene: RustyBoy_62 Start: 40919, Stop: 41077, Start Num: 12
Candidate Starts for RustyBoy_62:
(Start: 12 @40919 has 19 MA's), (18, 40940), (25, 40988), (31, 41027), (35, 41054), (37, 41060),

Gene: SVoro_27 Start: 9167, Stop: 9367, Start Num: 9
Candidate Starts for SVoro_27:
(Start: 9 @9167 has 181 MA's), (Start: 12 @9188 has 19 MA's), (31, 9305), (34, 9329),

Gene: Salacia_30 Start: 9173, Stop: 9373, Start Num: 9

Candidate Starts for Salacia_30:

(Start: 9 @9173 has 181 MA's), (Start: 12 @9194 has 19 MA's), (31, 9311), (34, 9335),

Gene: Salk_60 Start: 40983, Stop: 41144, Start Num: 12

Candidate Starts for Salk_60:

(Start: 12 @40983 has 19 MA's), (25, 41055), (28, 41079), (29, 41082), (30, 41085), (31, 41094),

Gene: Sauce_29 Start: 9303, Stop: 9503, Start Num: 9

Candidate Starts for Sauce_29:

(Start: 9 @9303 has 181 MA's), (Start: 16 @9339 has 27 MA's), (31, 9441), (34, 9465),

Gene: ScottMcG_28 Start: 9483, Stop: 9683, Start Num: 9

Candidate Starts for ScottMcG_28:

(Start: 9 @9483 has 181 MA's), (Start: 16 @9519 has 27 MA's), (31, 9621), (34, 9645),

Gene: Sebata_28 Start: 9526, Stop: 9726, Start Num: 9

Candidate Starts for Sebata_28:

(Start: 9 @9526 has 181 MA's), (Start: 16 @9562 has 27 MA's), (31, 9664), (34, 9688),

Gene: Serendipitous_52 Start: 47955, Stop: 47791, Start Num: 14

Candidate Starts for Serendipitous_52:

(Start: 11 @47967 has 2 MA's), (Start: 14 @47955 has 11 MA's), (24, 47889), (30, 47856), (34, 47823),

Gene: Shaqnato_24 Start: 7750, Stop: 7950, Start Num: 9

Candidate Starts for Shaqnato_24:

(Start: 9 @7750 has 181 MA's), (Start: 16 @7786 has 27 MA's), (31, 7888), (34, 7912),

Gene: Shatter_83 Start: 60379, Stop: 60224, Start Num: 16

Candidate Starts for Shatter_83:

(4, 60847), (Start: 16 @60379 has 27 MA's), (30, 60286), (36, 60247), (38, 60241), (39, 60238),

Gene: SheckWes_45 Start: 30252, Stop: 30079, Start Num: 12

Candidate Starts for SheckWes_45:

(Start: 12 @30252 has 19 MA's), (21, 30201), (25, 30171), (30, 30141), (31, 30132), (32, 30129),

Gene: Shelob_30 Start: 10058, Stop: 10258, Start Num: 9

Candidate Starts for Shelob_30:

(Start: 9 @10058 has 181 MA's), (Start: 16 @10094 has 27 MA's), (31, 10196), (34, 10220),

Gene: Shenyu_53 Start: 48478, Stop: 48302, Start Num: 11

Candidate Starts for Shenyu_53:

(Start: 11 @48478 has 2 MA's), (Start: 14 @48466 has 11 MA's), (29, 48370), (34, 48334),

Gene: ShiaLabeouf_28 Start: 8624, Stop: 8824, Start Num: 9

Candidate Starts for ShiaLabeouf_28:

(Start: 9 @8624 has 181 MA's), (Start: 12 @8645 has 19 MA's), (31, 8762), (34, 8786),

Gene: Shiba_59 Start: 40683, Stop: 40844, Start Num: 12

Candidate Starts for Shiba_59:

(Start: 12 @40683 has 19 MA's), (25, 40755), (28, 40779), (29, 40782), (30, 40785), (31, 40794),

Gene: Shifa_25 Start: 8809, Stop: 9009, Start Num: 9

Candidate Starts for Shifa_25:

(Start: 9 @8809 has 181 MA's), (Start: 16 @8845 has 27 MA's), (31, 8947), (34, 8971),

Gene: Shnickers_28 Start: 8624, Stop: 8824, Start Num: 9

Candidate Starts for Shnickers_28:

(Start: 9 @8624 has 181 MA's), (Start: 16 @8660 has 27 MA's), (31, 8762), (34, 8786),

Gene: Shrimp_28 Start: 9177, Stop: 9377, Start Num: 9

Candidate Starts for Shrimp_28:

(Start: 9 @9177 has 181 MA's), (Start: 12 @9198 has 19 MA's), (31, 9315), (34, 9339),

Gene: SilverDipper_29 Start: 8628, Stop: 8828, Start Num: 9

Candidate Starts for SilverDipper_29:

(Start: 9 @8628 has 181 MA's), (31, 8766), (34, 8790),

Gene: SirJeffery_52 Start: 48115, Stop: 47951, Start Num: 14

Candidate Starts for SirJeffery_52:

(Start: 14 @48115 has 11 MA's), (29, 48019), (34, 47983),

Gene: SketchMex_37 Start: 27114, Stop: 26956, Start Num: 16

Candidate Starts for SketchMex_37:

(Start: 16 @27114 has 27 MA's), (19, 27096), (27, 27030), (29, 27024), (38, 26973), (39, 26970),

Gene: Sloopyjoe_60 Start: 40987, Stop: 41148, Start Num: 12

Candidate Starts for Sloopyjoe_60:

(Start: 12 @40987 has 19 MA's), (25, 41059), (28, 41083), (29, 41086), (30, 41089), (31, 41098),

Gene: SmallFry_28 Start: 8624, Stop: 8824, Start Num: 9

Candidate Starts for SmallFry_28:

(Start: 9 @8624 has 181 MA's), (Start: 12 @8645 has 19 MA's), (31, 8762), (34, 8786),

Gene: Socotra_38 Start: 27160, Stop: 27002, Start Num: 16

Candidate Starts for Socotra_38:

(Start: 16 @27160 has 27 MA's), (19, 27142), (24, 27100), (38, 27019), (39, 27016),

Gene: SoilZilla_25 Start: 8878, Stop: 9078, Start Num: 9

Candidate Starts for SoilZilla_25:

(Start: 9 @8878 has 181 MA's), (Start: 12 @8899 has 19 MA's), (31, 9016), (34, 9040),

Gene: Sopespian_37 Start: 27162, Stop: 27004, Start Num: 16

Candidate Starts for Sopespian_37:

(Start: 16 @27162 has 27 MA's), (19, 27144), (24, 27102), (34, 27036), (38, 27021), (39, 27018),

Gene: Spain_61 Start: 40985, Stop: 41146, Start Num: 12

Candidate Starts for Spain_61:

(Start: 12 @40985 has 19 MA's), (25, 41057), (28, 41081), (29, 41084), (30, 41087), (31, 41096),

Gene: Spec_26 Start: 8630, Stop: 8830, Start Num: 9

Candidate Starts for Spec_26:

(Start: 9 @8630 has 181 MA's), (Start: 16 @8666 has 27 MA's), (31, 8768), (34, 8792),

Gene: Specks_33 Start: 10462, Stop: 10662, Start Num: 9

Candidate Starts for Specks_33:

(Start: 9 @10462 has 181 MA's), (Start: 12 @10483 has 19 MA's), (31, 10600), (34, 10624),

Gene: Sprinklers_28 Start: 8665, Stop: 8865, Start Num: 9

Candidate Starts for Sprinklers_28:

(Start: 9 @8665 has 181 MA's), (Start: 16 @8701 has 27 MA's), (31, 8803), (34, 8827),

Gene: Spud_30 Start: 10022, Stop: 10222, Start Num: 9

Candidate Starts for Spud_30:

(Start: 9 @10022 has 181 MA's), (Start: 12 @10043 has 19 MA's), (31, 10160), (34, 10184),

Gene: SrishMeg2525_27 Start: 8890, Stop: 9090, Start Num: 9

Candidate Starts for SrishMeg2525_27:

(Start: 9 @8890 has 181 MA's), (Start: 12 @8911 has 19 MA's), (31, 9028), (34, 9052),

Gene: StarLord_60 Start: 40986, Stop: 41147, Start Num: 12

Candidate Starts for StarLord_60:

(Start: 12 @40986 has 19 MA's), (25, 41058), (28, 41082), (29, 41085), (30, 41088), (31, 41097),

Gene: Starburst_39 Start: 27155, Stop: 26997, Start Num: 16

Candidate Starts for Starburst_39:

(Start: 16 @27155 has 27 MA's), (19, 27137), (24, 27095), (34, 27029), (38, 27014), (39, 27011),

Gene: Stayer_60 Start: 40983, Stop: 41144, Start Num: 12

Candidate Starts for Stayer_60:

(Start: 12 @40983 has 19 MA's), (25, 41055), (28, 41079), (29, 41082), (30, 41085), (31, 41094),

Gene: StephanieG_28 Start: 9356, Stop: 9556, Start Num: 9

Candidate Starts for StephanieG_28:

(Start: 9 @9356 has 181 MA's), (Start: 16 @9392 has 27 MA's), (31, 9494), (34, 9518),

Gene: StinkyVeggy_53 Start: 48252, Stop: 48088, Start Num: 14

Candidate Starts for StinkyVeggy_53:

(Start: 11 @48264 has 2 MA's), (Start: 14 @48252 has 11 MA's), (29, 48156), (34, 48120),

Gene: Stubby_26 Start: 8436, Stop: 8636, Start Num: 9

Candidate Starts for Stubby_26:

(Start: 9 @8436 has 181 MA's), (Start: 16 @8472 has 27 MA's), (31, 8574), (34, 8598),

Gene: StubbySaigey_27 Start: 7816, Stop: 8016, Start Num: 9

Candidate Starts for StubbySaigey_27:

(Start: 9 @7816 has 181 MA's), (Start: 16 @7852 has 27 MA's), (31, 7954), (34, 7978),

Gene: Substance289_25 Start: 8104, Stop: 8304, Start Num: 9

Candidate Starts for Substance289_25:

(Start: 9 @8104 has 181 MA's), (Start: 12 @8125 has 19 MA's), (31, 8242), (34, 8266),

Gene: Suigeneris_54 Start: 48395, Stop: 48231, Start Num: 14

Candidate Starts for Suigeneris_54:

(Start: 14 @48395 has 11 MA's), (29, 48299), (34, 48263),

Gene: SweatNTears_39 Start: 27058, Stop: 26900, Start Num: 16

Candidate Starts for SweatNTears_39:

(Start: 16 @27058 has 27 MA's), (19, 27040), (24, 26998), (34, 26932), (38, 26917), (39, 26914),

Gene: Tainan_33 Start: 10743, Stop: 10943, Start Num: 9
Candidate Starts for Tainan_33:
(Start: 9 @10743 has 181 MA's), (Start: 16 @10779 has 27 MA's), (31, 10881), (34, 10905),

Gene: Teardrop_27 Start: 8089, Stop: 8289, Start Num: 9
Candidate Starts for Teardrop_27:
(Start: 9 @8089 has 181 MA's), (Start: 12 @8110 has 19 MA's), (31, 8227), (34, 8251),

Gene: TinyTim_28 Start: 9173, Stop: 9373, Start Num: 9
Candidate Starts for TinyTim_28:
(Start: 9 @9173 has 181 MA's), (Start: 12 @9194 has 19 MA's), (31, 9311), (34, 9335),

Gene: Tonenili_32 Start: 10275, Stop: 10475, Start Num: 9
Candidate Starts for Tonenili_32:
(Start: 9 @10275 has 181 MA's), (31, 10413), (34, 10437),

Gene: Tortoise16_27 Start: 8624, Stop: 8824, Start Num: 9
Candidate Starts for Tortoise16_27:
(Start: 9 @8624 has 181 MA's), (Start: 12 @8645 has 19 MA's), (31, 8762), (34, 8786),

Gene: Trinitium_27 Start: 8065, Stop: 8265, Start Num: 9
Candidate Starts for Trinitium_27:
(Start: 9 @8065 has 181 MA's), (Start: 16 @8101 has 27 MA's), (31, 8203), (34, 8227),

Gene: Trogglehumper_90 Start: 66999, Stop: 66847, Start Num: 12
Candidate Starts for Trogglehumper_90:
(10, 67017), (Start: 12 @66999 has 19 MA's), (23, 66942), (31, 66897), (35, 66867),

Gene: Troje_39 Start: 27463, Stop: 27305, Start Num: 16
Candidate Starts for Troje_39:
(Start: 16 @27463 has 27 MA's), (19, 27445), (27, 27379), (29, 27373), (38, 27322), (39, 27319),

Gene: Turret_26 Start: 7804, Stop: 8004, Start Num: 9
Candidate Starts for Turret_26:
(Start: 9 @7804 has 181 MA's), (Start: 16 @7840 has 27 MA's), (31, 7942), (34, 7966),

Gene: Tyke_30 Start: 10036, Stop: 10236, Start Num: 9
Candidate Starts for Tyke_30:
(Start: 9 @10036 has 181 MA's), (Start: 12 @10057 has 19 MA's), (31, 10174), (34, 10198),

Gene: Typhonomachy_36 Start: 26780, Stop: 26622, Start Num: 16
Candidate Starts for Typhonomachy_36:
(Start: 16 @26780 has 27 MA's), (19, 26762), (24, 26720), (38, 26639), (39, 26636),

Gene: UmaThurman_64 Start: 41829, Stop: 41990, Start Num: 16
Candidate Starts for UmaThurman_64:
(Start: 16 @41829 has 27 MA's), (19, 41847), (29, 41922), (38, 41973),

Gene: ValleyTerrace_28 Start: 8628, Stop: 8828, Start Num: 9
Candidate Starts for ValleyTerrace_28:
(Start: 9 @8628 has 181 MA's), (31, 8766), (34, 8790),

Gene: Vortrix_34 Start: 10736, Stop: 10936, Start Num: 9
Candidate Starts for Vortrix_34:
(Start: 9 @10736 has 181 MA's), (31, 10874), (34, 10898),

Gene: Wally_27 Start: 8051, Stop: 8251, Start Num: 9
Candidate Starts for Wally_27:
(Start: 9 @8051 has 181 MA's), (Start: 12 @8072 has 19 MA's), (31, 8189), (34, 8213),

Gene: Willis_28 Start: 9068, Stop: 9268, Start Num: 9
Candidate Starts for Willis_28:
(Start: 9 @9068 has 181 MA's), (Start: 12 @9089 has 19 MA's), (31, 9206), (34, 9230),

Gene: Yassified_25 Start: 7828, Stop: 8028, Start Num: 9
Candidate Starts for Yassified_25:
(Start: 9 @7828 has 181 MA's), (Start: 16 @7864 has 27 MA's), (31, 7966), (34, 7990),

Gene: YemiJoy2021_29 Start: 9173, Stop: 9373, Start Num: 9
Candidate Starts for YemiJoy2021_29:
(Start: 9 @9173 has 181 MA's), (Start: 12 @9194 has 19 MA's), (31, 9311), (34, 9335),

Gene: YoungMoneyMata_28 Start: 8379, Stop: 8579, Start Num: 9
Candidate Starts for YoungMoneyMata_28:
(Start: 9 @8379 has 181 MA's), (31, 8517), (34, 8541),

Gene: Yucca_28 Start: 9095, Stop: 9295, Start Num: 9
Candidate Starts for Yucca_28:
(Start: 9 @9095 has 181 MA's), (Start: 12 @9116 has 19 MA's), (31, 9233), (34, 9257),

Gene: Yummy_39 Start: 27080, Stop: 26922, Start Num: 16
Candidate Starts for Yummy_39:
(Start: 16 @27080 has 27 MA's), (19, 27062), (26, 26999), (39, 26936),

Gene: Zalkecks_30 Start: 9177, Stop: 9377, Start Num: 9
Candidate Starts for Zalkecks_30:
(Start: 9 @9177 has 181 MA's), (Start: 12 @9198 has 19 MA's), (31, 9315), (34, 9339),

Gene: Zeenon_30 Start: 9165, Stop: 9365, Start Num: 9
Candidate Starts for Zeenon_30:
(Start: 9 @9165 has 181 MA's), (Start: 12 @9186 has 19 MA's), (31, 9303), (34, 9327),

Gene: Zenteno07_57 Start: 47237, Stop: 47064, Start Num: 13
Candidate Starts for Zenteno07_57:
(1, 47972), (2, 47846), (3, 47804), (6, 47405), (Start: 13 @47237 has 4 MA's), (19, 47213), (31, 47129),
(34, 47105), (35, 47099),

Gene: ZygoTaiga_28 Start: 9173, Stop: 9373, Start Num: 9
Candidate Starts for ZygoTaiga_28:
(Start: 9 @9173 has 181 MA's), (Start: 12 @9194 has 19 MA's), (31, 9311), (34, 9335),