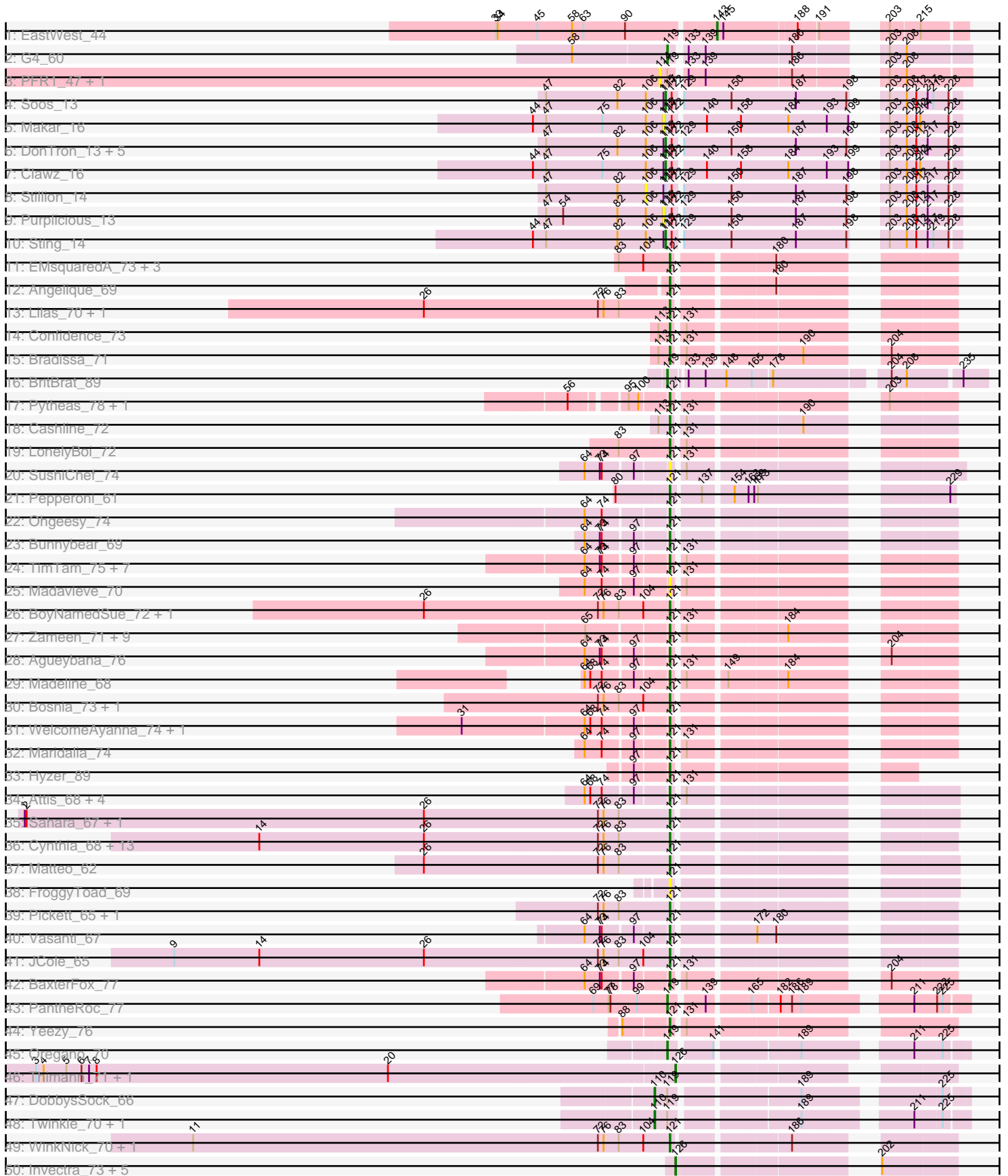
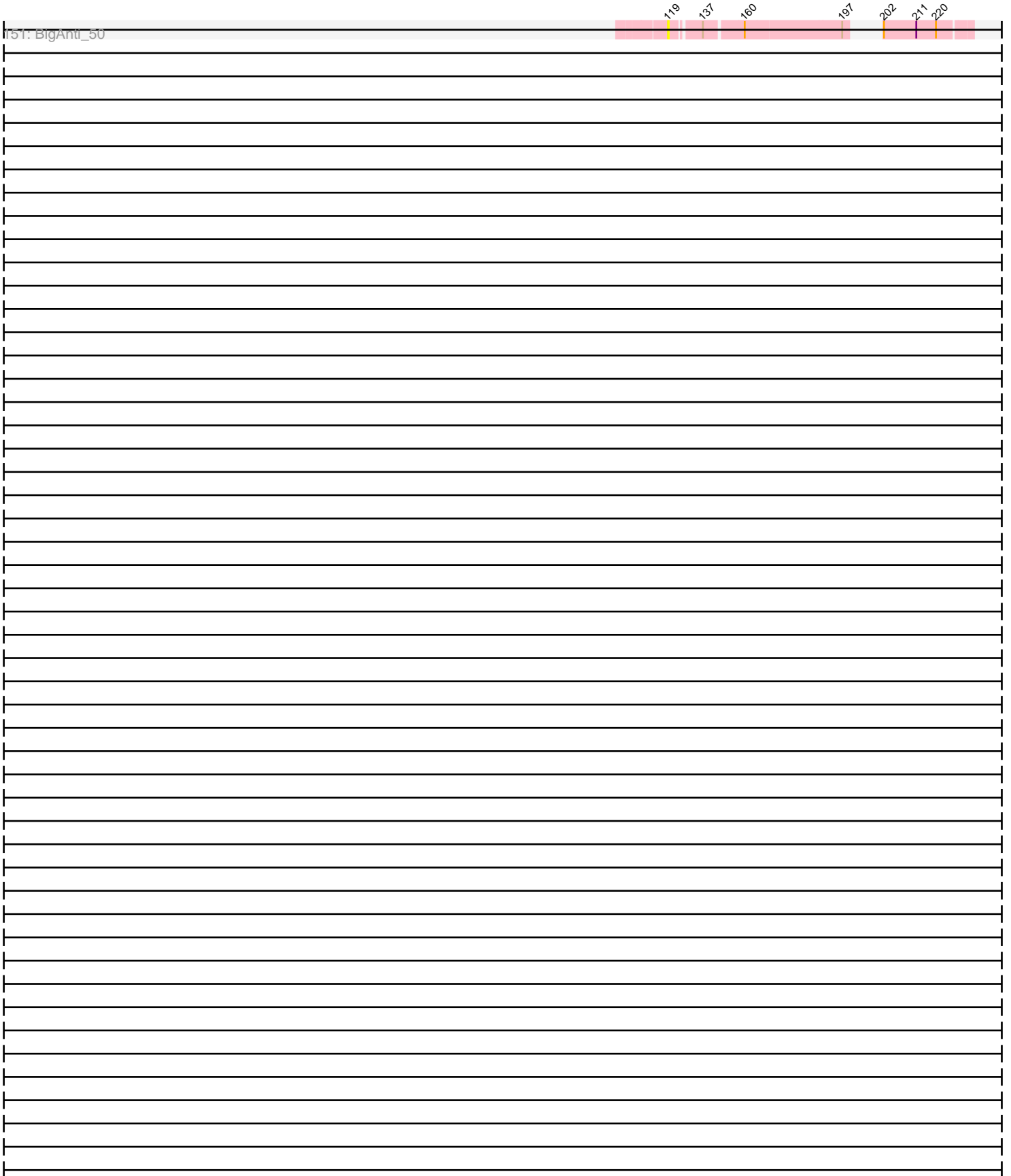


Pham 311145



Pham 311145



Note: Tracks are now grouped by subcluster and scaled. Switching in subcluster is indicated by changes in track color. Track scale is now set by default to display the region 30 bp upstream of start 1 to 30 bp downstream of the last possible start. If this default region is judged to be packed too tightly with annotated starts, the track will be further scaled to only show that region of the ORF with annotated starts. This action will be indicated by adding "Zoomed" to the title. For starts, yellow indicates the location of called starts comprised solely of Glimmer/GeneMark auto-annotations, green indicates the location of called starts with at least 1 manual gene annotation.

Pham 311145 Report

This analysis was run 06/27/26 on database version 652.

Pham number 311145 has 311 members, 54 are drafts.

Phages represented in each track:

- Track 1 : EastWest_44
- Track 2 : G4_60
- Track 3 : PFR1_47, PFR2_49
- Track 4 : Soos_13
- Track 5 : Makar_16
- Track 6 : DonTron_13, KingstonB_13, ColdSoup_15, Grumio_14, Jollymon_14, Amo99_15
- Track 7 : Clawz_16
- Track 8 : Stillion_14
- Track 9 : Purpicious_13
- Track 10 : Sting_14
- Track 11 : EMSquaredA_73, Floral_74, Pollux_76, Marteena_72
- Track 12 : Angelique_69
- Track 13 : Lilas_70, EnalisNailo_69
- Track 14 : Confidence_73
- Track 15 : Bradissa_71
- Track 16 : BritBrat_89
- Track 17 : Pytheas_78, Jablanski_77
- Track 18 : Cashline_72
- Track 19 : LonelyBoi_72
- Track 20 : SushiChef_74
- Track 21 : Pepperoni_61
- Track 22 : Ohgeesy_74
- Track 23 : Bunnybear_69
- Track 24 : TimTam_75, Bialota_69, Herod_75, Eviarto_75, BatStarr_74, Hugley_73, Nymphadora_75, Zirinka_69
- Track 25 : Madavieve_70
- Track 26 : BoyNamedSue_72, AlumE_72
- Track 27 : Zameen_71, Eudoria_71, Neobush_73, Kita_72, Tayonia_71, Polly_68, Manasvini_73, Suscepit_71, Antonio_70, Trumpet_71
- Track 28 : Agueybana_76
- Track 29 : Madeline_68
- Track 30 : Bosnia_73, BeeGee_76
- Track 31 : WelcomeAyanna_74, ThankyouJordi_74
- Track 32 : Maridalia_74
- Track 33 : Hyzer_89
- Track 34 : Attis_68, Yeet412_67, Nettuno_66, SoilAssassin_68, LordFarquaad_71

- Track 35 : Sahara_67, Jalleen_72
- Track 36 : Cynthia_68, Bjanes7_65, Sproutie_68, Whiteclaw_68, Ebert_71, Clap_68, Mocha12_68, TuertoX_68, GemG_68, Haley23_68, Gizermo_68, Savage_68, Yinzer_68, Lamberg_64
- Track 37 : Matteo_62
- Track 38 : FroggyToad_69
- Track 39 : Pickett_65, EdnaMode_67
- Track 40 : Vasanti_67
- Track 41 : JCole_65
- Track 42 : BaxterFox_77
- Track 43 : PantheRoc_77
- Track 44 : Yeezy_76
- Track 45 : Oregano_70
- Track 46 : Thimann_71, Easley_68
- Track 47 : DobbysSock_66
- Track 48 : Twinkle_70, Shlim410_69
- Track 49 : WinkNick_70, Dolores_70
- Track 50 : Invectra_73, Beenie_64, Tuti_64, Clark_69, Samman98_71, MichaelScott_71
- Track 51 : Suerte_64
- Track 52 : Mcklovin_70
- Track 53 : Annalisa_68
- Track 54 : Hortense_71, Howe_71, Adora_68
- Track 55 : Powerball_68, PhriskyACE_66
- Track 56 : Rizz_71
- Track 57 : Sekhmet_69
- Track 58 : Dorito_64
- Track 59 : Denise_65
- Track 60 : OneDirection_62
- Track 61 : Moosehead_69
- Track 62 : Sidious_71
- Track 63 : RavenCo17_69
- Track 64 : PhorbessPhlower_66, InLimbo_65, Kuwabara_86, Lton_65, Morkie_68
- Track 65 : Lucky10_65
- Track 66 : BotCity_92, Lutum_91, BENtherdunthat_90, Phabuloso_97, Getalong_93
- Track 67 : Budski_95
- Track 68 : MortyNRick_82
- Track 69 : Malisha_90, Faith5x5_63
- Track 70 : ODay_98
- Track 71 : Horus_91, Leroy_90, ShawBrad_95, Frickyeah_97, Periwinkle_99
- Track 72 : Whitney_89
- Track 73 : Holliday_92
- Track 74 : Kamaru_84
- Track 75 : Crater_90, Ecliptus_97, Apricot_90, Phistory_88
- Track 76 : ArchiDore_72
- Track 77 : Ruthy_70
- Track 78 : Sprinklemunch_77
- Track 79 : MakCheese_79
- Track 80 : Zodiariah_66
- Track 81 : Malibo_73
- Track 82 : DumpsterDude_68
- Track 83 : Nicole72_45
- Track 84 : Teamocil_49, Gina_49

- Track 85 : Jayden_49
- Track 86 : SirFrank_47, NoodlelyBoi_48
- Track 87 : RobsFeet_50, Fireman_49, Tyrumbra_47
- Track 88 : Megan_45
- Track 89 : Shrubaron_49
- Track 90 : ClearAsMud_50
- Track 91 : Metamorphoo_49
- Track 92 : Skugga_46
- Track 93 : Bran_49
- Track 94 : LordVader_60
- Track 95 : Frankie_73
- Track 96 : MulchSalad_67
- Track 97 : Alatao_64
- Track 98 : Gibbzilla_72
- Track 99 : AirForce1_53
- Track 100 : Orkz_57
- Track 101 : Hum25_62
- Track 102 : Pitbull_61
- Track 103 : Merpity_62
- Track 104 : Skitty_55
- Track 105 : Raya_58, Skyerus_53, MrSmee_60
- Track 106 : Island3_53, Brujita_53
- Track 107 : Sbash_61
- Track 108 : Che9c_64
- Track 109 : Acquire49_77, UPIE_76, Appletree2_76, AvadaKedavra_77, DirkDirk_74, Tyson_78, Rose5_77, Enceladus_74, LeBron_76, Halena_75, MAckerman_75, Wamburgrxpress_77, Zaria_78, Wyatt2_78, CicholasNage_74
- Track 110 : JoeDirt_77
- Track 111 : Calm_79, Silverleaf_77
- Track 112 : Gabriela_79, SoJulia_82, BobsGarage_80, Breezona_80, Faith1_80, DrSeegs_80, BigCheese_80, Itos_79, Miley16_80, Netyap_81, Winky_80
- Track 113 : Baoshan_78
- Track 114 : Finemlucis_79
- Track 115 : Gardann_80, GuuelaD_78, OverPar_81, Loadrie_79, Zakai_81, Nicholasp3_80, LilDestine_79, Underpass_71, Lewan_81, MkaliMinitis3_81, Rumpelstiltskin_77, Sarshaun_81, Soap141_80, Vetrix_79, Crossroads_80
- Track 116 : Claus_79, Hafay_81
- Track 117 : DHan_83, ZhongYanYuan_77
- Track 118 : Bazzle_77, DanBing_80, Wigglewiggle_79, Rossetti_81
- Track 119 : Wilder_81, Kahlid_80, Lynnae_82
- Track 120 : Archie_77
- Track 121 : Tourach_79
- Track 122 : Finnry_78, Moostard_76, Bellis_78, Clautastrophe_76, MiniMac_82, Whirlwind_79, Kingsolomon_76, Krypton555_79, MiniLon_82, Jubie_77, Nicholas_76, TriFive_79, Lolly9_77, Lumos_79, Samty_77, Jobypre_78, Snenia_77
- Track 123 : DuncansLeg_78
- Track 124 : Ellson_77, BourbonZero_79
- Track 125 : KirDoubleO7_76, LiyuLake_77
- Track 126 : Red305_79, MsGreen_78
- Track 127 : FarmResident_79
- Track 128 : Kropertea_75, DyoEdafos_82
- Track 129 : BrainDrainer_78, Sheng711_79, Douzhi_78
- Track 130 : Chaser_76

- Track 131 : Douge_77
- Track 132 : PYPDinur_77
- Track 133 : ChutneyChips_78, Bromden_78
- Track 134 : Quby_78
- Track 135 : Baudelaire_87, Aegeus_87
- Track 136 : Cubone_56, Aloeri_71, ChickenDinner_70, Misha28_68, DocMcStuffins_70, Awesomesauce_70, Piper2020_71, TootsiePop_68
- Track 137 : SkinnyPete_48
- Track 138 : Scitech_46
- Track 139 : Tortellini_59
- Track 140 : PhaoMing_68
- Track 141 : Mbo4_59
- Track 142 : GAL1_69
- Track 143 : Finkle_64
- Track 144 : LilSpotty_67
- Track 145 : DillyDally_54
- Track 146 : OnionKnight_42
- Track 147 : Jace_77
- Track 148 : Elener_62
- Track 149 : Gudmit_62
- Track 150 : Tonitrus_75
- Track 151 : BigAnti_50

Summary of Final Annotations (See graph section above for start numbers):

The start number called the most often in the published annotations is 121, it was called in 91 of the 257 non-draft genes in the pham.

Genes that call this "Most Annotated" start:

• Agueybana_76, AlumE_72, Angelique_69, Annalisa_68, Antonio_70, ArchiDore_72, Attis_68, BatStarr_74, BaxterFox_77, BeeGee_76, Bialota_69, Bjanes7_65, Bosnia_73, BoyNamedSue_72, Bradissa_71, Bunnybear_69, Cashline_72, Clap_68, Confidence_73, Cynthia_68, Denise_65, Dolores_70, EMSquaredA_73, Ebert_71, EdnaMode_67, EnalisNailo_69, Eudoria_71, Eviarto_75, Faith5x5_63, Floral_74, FroggyToad_69, GemG_68, Gizermo_68, Haley23_68, Herod_75, Hugley_73, Hyzer_89, InLimbo_65, JCole_65, Jablanski_77, Jalleen_72, Kita_72, Kuwabara_86, Lamberg_64, Lilas_70, LonelyBoi_72, LordFarquaad_71, Lton_65, Lucky10_65, Madavieve_70, Madeline_68, MakCheese_79, Malibo_73, Malisha_90, Manasvini_73, Maridalia_74, Marteena_72, Matteo_62, Mcklovin_70, Mocha12_68, Morkie_68, Neobush_73, Nettuno_66, Nymphadora_75, Ohgeesy_74, OneDirection_62, Pepperoni_61, PhorbesPhlower_66, PhriskyACE_66, Pickett_65, Pollux_76, Polly_68, Powerball_68, Pytheas_78, RavenCo17_69, Sahara_67, Savage_68, Sekhmet_69, Sidious_71, SoilAssassin_68, Sproutie_68, Suerte_64, Suscepit_71, SushiChef_74, Tayonia_71, ThankyouJordi_74, TimTam_75, Trumpet_71, TuertoX_68, Vasanti_67, WelcomeAyanna_74, Whiteclaw_68, WinkNick_70, Yeet412_67, Yeezy_76, Yinzer_68, Zameen_71, Zirinka_69, Zodiariah_66,

Genes that have the "Most Annotated" start but do not call it:

- Sprinklemunch_77,

Genes that do not have the "Most Annotated" start:

- Acquire49_77, Adora_68, Aegeus_87, AirForce1_53, Alatato_64, Aloeri_71, Amo99_15, Appletree2_76, Apricot_90, Archie_77, AvadaKedavra_77, Awesomesauce_70, BEntherdunthat_90, Baoshan_78, Baudelaire_87, Bazzle_77, Beenie_64, Bellis_78, BigAnti_50, BigCheese_80, BobsGarage_80, BotCity_92, BourbonZero_79, BrainDrainer_78, Bran_49, Breezona_80, BritBrat_89, Bromden_78, Brujita_53, Budski_95, Calm_79, Chaser_76, Che9c_64, ChickenDinner_70, ChutneyChips_78, CicholasNage_74, Clark_69, Claus_79, Clautastrophe_76, Clawz_16, ClearAsMud_50, ColdSoup_15, Crater_90, Crossroads_80, Cubone_56, DHan_83, DanBing_80, DillyDally_54, DirkDirk_74, DobbysSock_66, DocMcStuffins_70, DonTron_13, Dorito_64, Douge_77, Douzhi_78, DrSeegs_80, DumpsterDude_68, DuncansLeg_78, DyoEdafos_82, Easley_68, EastWest_44, Ecliptus_97, Elener_62, Ellson_77, Enceladus_74, Faith1_80, FarmResident_79, Finemlucis_79, Finkle_64, Finnry_78, Fireman_49, Frankie_73, Frickyeah_97, G4_60, GAL1_69, Gabriela_79, Gardann_80, Getalong_93, Gibbzilla_72, Gina_49, Grumio_14, Gudmit_62, GuuelaD_78, Hafay_81, Halena_75, Holliday_92, Hortense_71, Horus_91, Howe_71, Hum25_62, Invecetra_73, Island3_53, Itos_79, Jace_77, Jayden_49, Jobypre_78, JoeDirt_77, Jollymon_14, Jubie_77, Kahlid_80, Kamaru_84, Kingsolomon_76, KingstonB_13, KirDoubleO7_76, Kropertea_75, Krypton555_79, LeBron_76, Leroy_90, Lewan_81, LilDestine_79, LilSpotty_67, LiyuLake_77, Loadrie_79, Lolly9_77, LordVader_60, Lumos_79, Lutum_91, Lynnae_82, MAckerman_75, Makar_16, Mbo4_59, Megan_45, Merpity_62, Metamorphoo_49, MichaelScott_71, Miley16_80, MiniLon_82, MiniMac_82, Misha28_68, MkaliMitinis3_81, Moosehead_69, Moostard_76, MortyNRick_82, MrSmee_60, MsGreen_78, MulchSalad_67, Netyap_81, Nicholas_76, Nicholasp3_80, Nicole72_45, NoodlelyBoi_48, ODay_98, OnionKnight_42, Oregano_70, Orkz_57, OverPar_81, PFR1_47, PFR2_49, PYPDinur_77, PantheRoc_77, Periwinkle_99, Phabuloso_97, PhaoMing_68, Phistory_88, Piper2020_71, Pitbull_61, Purplicious_13, Quby_78, Raya_58, Red305_79, Rizz_71, RobsFeet_50, Rose5_77, Rossetti_81, Rumpelstiltskin_77, Ruthy_70, Samman98_71, Samty_77, Sarshaun_81, Sbash_61, Scitech_46, ShawBrad_95, Sheng711_79, Shlim410_69, Shrubaron_49, Silverleaf_77, SirFrank_47, SkinnyPete_48, Skitty_55, Skugga_46, Skyerus_53, Sneria_77, SoJulia_82, Soap141_80, Soos_13, Stillion_14, Sting_14, Teamocil_49, Thimann_71, Tonitrus_75, TootsiePop_68, Tortellini_59, Tourach_79, TriFive_79, Tuti_64, Twinkle_70, Tyumbra_47, Tyson_78, UPIE_76, Underpass_71, Vetrix_79, Wamburgrxpress_77, Whirlwind_79, Whitney_89, Wigglewiggle_79, Wilder_81, Winky_80, Wyatt2_78, Zakai_81, Zaria_78, ZhongYanYuan_77,

Summary by start number:

Start 53:

- Found in 1 of 311 (0.3%) of genes in pham
- Manual Annotations of this start: 1 of 257
- Called 100.0% of time when present
- Phage (with cluster) where this start called: Elener_62 (singleton),

Start 86:

- Found in 1 of 311 (0.3%) of genes in pham
- Manual Annotations of this start: 1 of 257
- Called 100.0% of time when present
- Phage (with cluster) where this start called: OnionKnight_42 (singleton),

Start 96:

- Found in 1 of 311 (0.3%) of genes in pham
- No Manual Annotations of this start.
- Called 100.0% of time when present
- Phage (with cluster) where this start called: Orkz_57 (FL),

Start 101:

- Found in 2 of 311 (0.6%) of genes in pham
- No Manual Annotations of this start.
- Called 100.0% of time when present
- Phage (with cluster) where this start called: LordVader_60 (F), Scitech_46 (N),

Start 106:

- Found in 12 of 311 (3.9%) of genes in pham
- No Manual Annotations of this start.
- Called 8.3% of time when present
- Phage (with cluster) where this start called: Stillion_14 (CP),

Start 109:

- Found in 1 of 311 (0.3%) of genes in pham
- Manual Annotations of this start: 1 of 257
- Called 100.0% of time when present
- Phage (with cluster) where this start called: Tonitrus_75 (singleton),

Start 110:

- Found in 6 of 311 (1.9%) of genes in pham
- Manual Annotations of this start: 3 of 257
- Called 50.0% of time when present
- Phage (with cluster) where this start called: DobbysSock_66 (CZ4), Shlim410_69 (CZ4), Twinkle_70 (CZ4),

Start 114:

- Found in 2 of 311 (0.6%) of genes in pham
- No Manual Annotations of this start.
- Called 100.0% of time when present
- Phage (with cluster) where this start called: PFR1_47 (BX), PFR2_49 (BX),

Start 115:

- Found in 12 of 311 (3.9%) of genes in pham
- No Manual Annotations of this start.
- Called 16.7% of time when present
- Phage (with cluster) where this start called: Makar_16 (CP), Purplicious_13 (CP),

Start 116:

- Found in 1 of 311 (0.3%) of genes in pham
- No Manual Annotations of this start.
- Called 100.0% of time when present
- Phage (with cluster) where this start called: Merpity_62 (FQ1),

Start 117:

- Found in 12 of 311 (3.9%) of genes in pham
- Manual Annotations of this start: 6 of 257

- Called 75.0% of time when present
- Phage (with cluster) where this start called: Amo99_15 (CP), Clawz_16 (CP), ColdSoup_15 (CP), DonTron_13 (CP), Grumio_14 (CP), Jollymon_14 (CP), KingstonB_13 (CP), Soos_13 (CP), Sting_14 (CP),

Start 118:

- Found in 9 of 311 (2.9%) of genes in pham
- Manual Annotations of this start: 5 of 257
- Called 88.9% of time when present
- Phage (with cluster) where this start called: Alatato_64 (FB), Gibbzilla_72 (FB), Hum25_62 (FQ1), MrSmee_60 (FQ1), Pitbull_61 (FQ1), Raya_58 (FQ2), Skitty_55 (FQ1), Skyerus_53 (FQ2),

Start 119:

- Found in 42 of 311 (13.5%) of genes in pham
- Manual Annotations of this start: 31 of 257
- Called 81.0% of time when present
- Phage (with cluster) where this start called: Adora_68 (CZ4), Aloeri_71 (F1), Apricot_90 (DN3), Awesomesauce_70 (F1), BigAnti_50 (singleton), BritBrat_89 (CY2), Brujita_53 (I1), Che9c_64 (I2), ChickenDinner_70 (F1), Crater_90 (DN3), Cubone_56 (N), DocMcStuffins_70 (F1), Ecliptus_97 (DN), Finkle_64 (singleton), Frankie_73 (F1), G4_60 (BW), Holliday_92 (DN1), Hortense_71 (CZ4), Howe_71 (CZ4), Island3_53 (I1), Kamaru_84 (DN1), LilSpotty_67 (singleton), Mbo4_59 (singleton), Misha28_68 (F1), Moosehead_69 (CZ6), MortyNRick_82 (DN), Oregano_70 (CZ4), PantheRoc_77 (CZ3), Phistory_88 (DN1), Piper2020_71 (F1), Sbash_61 (I2), SkinnyPete_48 (N), TootsiePop_68 (F1), Tortellini_59 (P2),

Start 120:

- Found in 103 of 311 (33.1%) of genes in pham
- Manual Annotations of this start: 77 of 257
- Called 88.3% of time when present
- Phage (with cluster) where this start called: Acquire49_77 (L1), Aegeus_87 (L5), Appletree2_76 (L1), Archie_77 (L2), AvadaKedavra_77 (L1), Baoshan_78 (L2), Baudelaire_87 (L5), Bazzle_77 (L2), Bellis_78 (L3), BigCheese_80 (L2), BobsGarage_80 (L2), BrainDrainer_78 (L4), Breezona_80 (L2), Bromden_78 (L4), Budski_95 (DN), Chaser_76 (L4), ChutneyChips_78 (L4), CicholasNage_74 (L1), Claus_79 (L2), Clautastrophe_76 (L3), Crossroads_80 (L2), DHan_83 (L2), DanBing_80 (L2), DirkDirk_74 (L1), Douzhi_78 (L4), DrSeegs_80 (L2), DuncansLeg_78 (L3), DyoEdafos_82 (L4), Enceladus_74 (L1), Faith1_80 (L2), Finemlucis_79 (L2), Finnry_78 (L3), Frickyeah_97 (DN1), Gabriela_79 (L2), Gardann_80 (L2), Gudmit_62 (singleton), GuuelaD_78 (L2), Hafay_81 (L2), Halena_75 (L1), Horus_91 (DN1), Itos_79 (L2), Jobypre_78 (L3), Jubie_77 (L3), Kahlid_80 (L2), Kingsolomon_76 (L3), Kropertea_75 (L4), Krypton555_79 (L3), LeBron_76 (L1), Leroy_90 (DN1), Lewan_81 (L2), LilDestine_79 (L2), Loadrie_79 (L2), Lolly9_77 (L3), Lumos_79 (L3), Lynnae_82 (L2), MAckerman_75 (L1), Miley16_80 (L2), MiniLon_82 (L3), MiniMac_82 (L3), MkaliMitinis3_81 (L2), Moostard_76 (L3), Netyap_81 (L2), Nicholas_76 (L3), Nicholasp3_80 (L2), OverPar_81 (L2), Periwinkle_99 (DN1), Rose5_77 (L1), Rossetti_81 (L2), Rumpelstiltskin_77 (L2), Samty_77 (L3), Sarshaun_81 (L2), ShawBrad_95 (DN1), Sheng711_79 (L4), Snenia_77 (L3), SoJulia_82 (L2), Soap141_80 (L2), Tourach_79 (L2), TriFive_79 (L3), Tyson_78 (L1), UPIE_76 (L1), Underpass_71 (L2), Vetrrix_79 (L2), Wamburggrxpress_77 (L1), Whirlwind_79 (L3), Wigglewiggles_79 (L2), Wilder_81 (L2), Winky_80 (L2), Wyatt2_78 (L1), Zakai_81 (L2), Zaria_78 (L1),

ZhongYanYuan_77 (L2),

Start 121:

- Found in 100 of 311 (32.2%) of genes in pham
- Manual Annotations of this start: 91 of 257
- Called 99.0% of time when present
- Phage (with cluster) where this start called: Agueybana_76 (CZ1), AlumE_72 (CZ1), Angelique_69 (CY1), Annalisa_68 (CZ4), Antonio_70 (CZ1), ArchiDore_72 (DW), Attis_68 (CZ2), BatStarr_74 (CZ1), BaxterFox_77 (CZ3), BeeGee_76 (CY5), Bialota_69 (CZ1), Bjanese7_65 (CZ2), Bosnia_73 (CZ1), BoyNamedSue_72 (CZ1), Bradissa_71 (CY1), Bunnybear_69 (CZ), Cashline_72 (CY6), Clap_68 (CZ2), Confidence_73 (CY1), Cynthia_68 (CZ2), Denise_65 (CZ5), Dolores_70 (CZ4), EMSquaredA_73 (CY1), Ebert_71 (CZ2), EdnaMode_67 (CZ2), EnalisNailo_69 (CY1), Eudoria_71 (CZ1), Eviarto_75 (CZ1), Faith5x5_63 (CZ6), Floral_74 (CY1), FroggyToad_69 (CZ2), GemG_68 (CZ2), Gizermo_68 (CZ2), Haley23_68 (CZ2), Herod_75 (CZ1), Hugley_73 (CZ1), Hyzer_89 (CZ1), InLimbo_65 (DH), JCole_65 (CZ2), Jablanski_77 (CY3), Jalleen_72 (CZ2), Kita_72 (CZ1), Kuwabara_86 (DN4), Lamberg_64 (CZ2), Lilas_70 (CY1), LonelyBoi_72 (CY7), LordFarquaad_71 (CZ2), Lton_65 (CZ), Lucky10_65 (DH), Madavieve_70 (CZ1), Madeline_68 (CZ1), MakCheese_79 (DW), Malibo_73 (DW), Malisha_90 (DN), Manasvini_73 (CZ1), Maridalia_74 (CZ1), Marteena_72 (CY1), Matteo_62 (CZ2), Mcklovin_70 (CZ4), Mocha12_68 (CZ2), Morkie_68 (DH), Neobush_73 (CZ1), Nettuno_66 (CZ2), Nymphadora_75 (CZ1), Ohgeesy_74 (CZ), OneDirection_62 (CZ6), Pepperoni_61 (CZ), PhorbessPhlower_66 (DH), PhriskyACE_66 (CZ4), Pickett_65 (CZ2), Pollux_76 (CY1), Polly_68 (CZ1), Powerball_68 (CZ4), Pytheas_78 (CY3), RavenCo17_69 (CZ8), Sahara_67 (CZ2), Savage_68 (CZ2), Sekhmet_69 (CZ4), Sidious_71 (CZ7), SoilAssassin_68 (CZ2), Sproutie_68 (CZ2), Suerte_64 (CZ4), Suscepit_71 (CZ1), SushiChef_74 (CZ), Tayonia_71 (CZ1), ThankyouJordi_74 (CZ1), TimTam_75 (CZ1), Trumpet_71 (CZ1), TuertoX_68 (CZ2), Vasanti_67 (CZ2), WelcomeAyanna_74 (CZ1), Whiteclaw_68 (CZ2), WinkNick_70 (CZ4), Yeet412_67 (CZ2), Yeezy_76 (CZ3), Yinzer_68 (CZ2), Zameen_71 (CZ1), Zirinka_69 (CZ1), Zodiariah_66 (DW),

Start 122:

- Found in 24 of 311 (7.7%) of genes in pham
- Manual Annotations of this start: 9 of 257
- Called 50.0% of time when present
- Phage (with cluster) where this start called: BENtherdunthat_90 (DN1), BotCity_92 (DN), DumpsterDude_68 (DW), GAL1_69 (singleton), Getalong_93 (DN1), Lutum_91 (DN1), MulchSalad_67 (F7), ODay_98 (DN), Phabuloso_97 (DN1), PhaoMing_68 (UNK), Ruthy_70 (DW), Whitney_89 (DN1),

Start 123:

- Found in 1 of 311 (0.3%) of genes in pham
- Manual Annotations of this start: 1 of 257
- Called 100.0% of time when present
- Phage (with cluster) where this start called: DillyDally_54 (singleton),

Start 124:

- Found in 1 of 311 (0.3%) of genes in pham
- Manual Annotations of this start: 1 of 257
- Called 100.0% of time when present
- Phage (with cluster) where this start called: Bran_49 (EP),

Start 125:

- Found in 1 of 311 (0.3%) of genes in pham
- Manual Annotations of this start: 1 of 257
- Called 100.0% of time when present
- Phage (with cluster) where this start called: Jace_77 (singleton),

Start 126:

- Found in 12 of 311 (3.9%) of genes in pham
- Manual Annotations of this start: 10 of 257
- Called 91.7% of time when present
- Phage (with cluster) where this start called: AirForce1_53 (FL), Beenie_64 (CZ4), Clark_69 (CZ4), Dorito_64 (CZ4), Easley_68 (CZ4), Invectra_73 (CZ4), MichaelScott_71 (CZ4), Rizz_71 (CZ4), Samman98_71 (CZ4), Thimann_71 (CZ4), Tuti_64 (CZ4),

Start 129:

- Found in 11 of 311 (3.5%) of genes in pham
- Manual Annotations of this start: 1 of 257
- Called 9.1% of time when present
- Phage (with cluster) where this start called: Megan_45 (EC),

Start 130:

- Found in 12 of 311 (3.9%) of genes in pham
- Manual Annotations of this start: 11 of 257
- Called 100.0% of time when present
- Phage (with cluster) where this start called: ClearAsMud_50 (EC), Fireman_49 (EC), Gina_49 (EC), Jayden_49 (EC), Metamorphoo_49 (EC), NoodlelyBoi_48 (EC), RobsFeet_50 (EC), Shrubaron_49 (EC), SirFrank_47 (EC), Skugga_46 (EC), Teamocil_49 (EC), Tyrumbra_47 (EC),

Start 132:

- Found in 1 of 311 (0.3%) of genes in pham
- Manual Annotations of this start: 1 of 257
- Called 100.0% of time when present
- Phage (with cluster) where this start called: Nicole72_45 (EC),

Start 133:

- Found in 45 of 311 (14.5%) of genes in pham
- No Manual Annotations of this start.
- Called 6.7% of time when present
- Phage (with cluster) where this start called: BourbonZero_79 (L3), Ellson_77 (L3), PYPDinur_77 (L4),

Start 134:

- Found in 14 of 311 (4.5%) of genes in pham
- Manual Annotations of this start: 1 of 257
- Called 14.3% of time when present
- Phage (with cluster) where this start called: Douge_77 (L4), FarmResident_79 (L4),

Start 136:

- Found in 2 of 311 (0.6%) of genes in pham
- No Manual Annotations of this start.
- Called 50.0% of time when present

- Phage (with cluster) where this start called: Sprinklemunch_77 (DW),

Start 137:

- Found in 125 of 311 (40.2%) of genes in pham
- Manual Annotations of this start: 4 of 257
- Called 5.6% of time when present
- Phage (with cluster) where this start called: Calm_79 (L1), JoeDirt_77 (L1), KirDoubleO7_76 (L3), LiyuLake_77 (L3), MsGreen_78 (L3), Red305_79 (L3), Silverleaf_77 (L1),

Start 143:

- Found in 4 of 311 (1.3%) of genes in pham
- Manual Annotations of this start: 1 of 257
- Called 25.0% of time when present
- Phage (with cluster) where this start called: EastWest_44 (AO),

Start 146:

- Found in 13 of 311 (4.2%) of genes in pham
- No Manual Annotations of this start.
- Called 7.7% of time when present
- Phage (with cluster) where this start called: Quby_78 (L4),

Summary by clusters:

There are 45 clusters represented in this pham: DN, P2, singleton, DH, CZ2, CZ3, CZ1, CZ6, CZ7, CZ4, CZ5, FB, BW, CZ8, DW, FL, UNK, I1, BX, I2, DN4, DN1, DN3, CY3, CY2, CY1, CY7, CY6, CY5, F, EC, N, CZ, L4, L5, L2, L3, L1, CP, EP, F1, F7, AO, FQ2, FQ1,

Info for manual annotations of cluster AO:

- Start number 143 was manually annotated 1 time for cluster AO.

Info for manual annotations of cluster BW:

- Start number 119 was manually annotated 1 time for cluster BW.

Info for manual annotations of cluster CP:

- Start number 117 was manually annotated 6 times for cluster CP.

Info for manual annotations of cluster CY1:

- Start number 121 was manually annotated 9 times for cluster CY1.

Info for manual annotations of cluster CY2:

- Start number 119 was manually annotated 1 time for cluster CY2.

Info for manual annotations of cluster CY3:

- Start number 121 was manually annotated 2 times for cluster CY3.

Info for manual annotations of cluster CY5:

- Start number 121 was manually annotated 1 time for cluster CY5.

Info for manual annotations of cluster CY6:

- Start number 121 was manually annotated 1 time for cluster CY6.

Info for manual annotations of cluster CY7:

- Start number 121 was manually annotated 1 time for cluster CY7.

Info for manual annotations of cluster CZ:

- Start number 121 was manually annotated 4 times for cluster CZ.

Info for manual annotations of cluster CZ1:

- Start number 121 was manually annotated 26 times for cluster CZ1.

Info for manual annotations of cluster CZ2:

- Start number 121 was manually annotated 24 times for cluster CZ2.

Info for manual annotations of cluster CZ3:

- Start number 119 was manually annotated 1 time for cluster CZ3.
- Start number 121 was manually annotated 2 times for cluster CZ3.

Info for manual annotations of cluster CZ4:

- Start number 110 was manually annotated 3 times for cluster CZ4.
- Start number 119 was manually annotated 4 times for cluster CZ4.
- Start number 121 was manually annotated 8 times for cluster CZ4.
- Start number 126 was manually annotated 9 times for cluster CZ4.

Info for manual annotations of cluster CZ5:

- Start number 121 was manually annotated 1 time for cluster CZ5.

Info for manual annotations of cluster CZ6:

- Start number 119 was manually annotated 1 time for cluster CZ6.
- Start number 121 was manually annotated 2 times for cluster CZ6.

Info for manual annotations of cluster CZ7:

- Start number 121 was manually annotated 1 time for cluster CZ7.

Info for manual annotations of cluster CZ8:

- Start number 121 was manually annotated 1 time for cluster CZ8.

Info for manual annotations of cluster DH:

- Start number 121 was manually annotated 3 times for cluster DH.

Info for manual annotations of cluster DN:

- Start number 119 was manually annotated 2 times for cluster DN.
- Start number 120 was manually annotated 1 time for cluster DN.
- Start number 121 was manually annotated 1 time for cluster DN.
- Start number 122 was manually annotated 2 times for cluster DN.

Info for manual annotations of cluster DN1:

- Start number 119 was manually annotated 3 times for cluster DN1.
- Start number 120 was manually annotated 3 times for cluster DN1.
- Start number 122 was manually annotated 5 times for cluster DN1.

Info for manual annotations of cluster DN3:

- Start number 119 was manually annotated 2 times for cluster DN3.

Info for manual annotations of cluster DN4:

- Start number 121 was manually annotated 1 time for cluster DN4.

Info for manual annotations of cluster DW:

- Start number 121 was manually annotated 3 times for cluster DW.
- Start number 122 was manually annotated 2 times for cluster DW.

Info for manual annotations of cluster EC:

- Start number 129 was manually annotated 1 time for cluster EC.
- Start number 130 was manually annotated 11 times for cluster EC.
- Start number 132 was manually annotated 1 time for cluster EC.

Info for manual annotations of cluster EP:

- Start number 124 was manually annotated 1 time for cluster EP.

Info for manual annotations of cluster F1:

- Start number 119 was manually annotated 8 times for cluster F1.

Info for manual annotations of cluster FB:

- Start number 118 was manually annotated 1 time for cluster FB.

Info for manual annotations of cluster FL:

- Start number 126 was manually annotated 1 time for cluster FL.

Info for manual annotations of cluster FQ1:

- Start number 118 was manually annotated 4 times for cluster FQ1.

Info for manual annotations of cluster I1:

- Start number 119 was manually annotated 2 times for cluster I1.

Info for manual annotations of cluster I2:

- Start number 119 was manually annotated 2 times for cluster I2.

Info for manual annotations of cluster L1:

- Start number 120 was manually annotated 15 times for cluster L1.
- Start number 137 was manually annotated 3 times for cluster L1.

Info for manual annotations of cluster L2:

- Start number 120 was manually annotated 32 times for cluster L2.

Info for manual annotations of cluster L3:

- Start number 120 was manually annotated 18 times for cluster L3.
- Start number 137 was manually annotated 1 time for cluster L3.

Info for manual annotations of cluster L4:

- Start number 120 was manually annotated 5 times for cluster L4.
- Start number 134 was manually annotated 1 time for cluster L4.

Info for manual annotations of cluster L5:

- Start number 120 was manually annotated 2 times for cluster L5.

Info for manual annotations of cluster N:

- Start number 119 was manually annotated 1 time for cluster N.

Info for manual annotations of cluster P2:

- Start number 119 was manually annotated 1 time for cluster P2.

Gene Information:

Gene: Acquire49_77 Start: 51648, Stop: 52061, Start Num: 120

Candidate Starts for Acquire49_77:

(Start: 120 @51648 has 77 MA's), (Start: 137 @51687 has 4 MA's), (151, 51723), (186, 51810), (212, 51951), (236, 52029), (237, 52032),

Gene: Adora_68 Start: 47407, Stop: 47808, Start Num: 119

Candidate Starts for Adora_68:

(Start: 110 @47389 has 3 MA's), (Start: 119 @47407 has 31 MA's), (189, 47584), (211, 47728), (225, 47770),

Gene: Aegeus_87 Start: 54478, Stop: 54843, Start Num: 120

Candidate Starts for Aegeus_87:

(Start: 120 @54478 has 77 MA's), (133, 54496), (Start: 134 @54502 has 1 MA's), (Start: 137 @54517 has 4 MA's), (190, 54658), (198, 54724), (202, 54727), (212, 54781), (227, 54829),

Gene: Agueybana_76 Start: 49121, Stop: 49486, Start Num: 121

Candidate Starts for Agueybana_76:

(64, 49004), (73, 49028), (74, 49031), (97, 49073), (Start: 121 @49121 has 91 MA's), (204, 49385),

Gene: AirForce1_53 Start: 36526, Stop: 36900, Start Num: 126

Candidate Starts for AirForce1_53:

(17, 35989), (25, 36145), (41, 36283), (50, 36343), (61, 36376), (Start: 126 @36526 has 10 MA's), (154, 36607), (162, 36625), (188, 36694), (197, 36757), (198, 36766), (212, 36823), (225, 36865),

Gene: Alatato_64 Start: 36072, Stop: 36431, Start Num: 118

Candidate Starts for Alatato_64:

(93, 36012), (112, 36057), (Start: 118 @36072 has 5 MA's), (131, 36087), (145, 36144), (199, 36318), (212, 36372),

Gene: Aloeri_71 Start: 43637, Stop: 44014, Start Num: 119

Candidate Starts for Aloeri_71:

(Start: 119 @43637 has 31 MA's), (141, 43706), (160, 43742), (171, 43760), (204, 43901), (208, 43925), (225, 43982), (234, 44006),

Gene: AlumE_72 Start: 48795, Stop: 49160, Start Num: 121

Candidate Starts for AlumE_72:

(26, 48408), (72, 48681), (76, 48690), (83, 48714), (104, 48753), (Start: 121 @48795 has 91 MA's),

Gene: Amo99_15 Start: 7379, Stop: 7768, Start Num: 117

Candidate Starts for Amo99_15:

(47, 7193), (82, 7304), (106, 7349), (115, 7376), (Start: 117 @7379 has 6 MA's), (Start: 122 @7388 has 9 MA's), (Start: 129 @7397 has 1 MA's), (150, 7472), (187, 7571), (198, 7649), (203, 7664), (208, 7691), (212, 7703), (217, 7721), (228, 7754),

Gene: Angelique_69 Start: 48080, Stop: 48445, Start Num: 121
Candidate Starts for Angelique_69:
(Start: 121 @48080 has 91 MA's), (180, 48221),

Gene: Annalisa_68 Start: 43981, Stop: 44349, Start Num: 121
Candidate Starts for Annalisa_68:
(72, 43867), (76, 43876), (83, 43900), (104, 43939), (Start: 121 @43981 has 91 MA's),

Gene: Antonio_70 Start: 46557, Stop: 46922, Start Num: 121
Candidate Starts for Antonio_70:
(65, 46443), (Start: 121 @46557 has 91 MA's), (131, 46572), (184, 46713),

Gene: Appletree2_76 Start: 51259, Stop: 51672, Start Num: 120
Candidate Starts for Appletree2_76:
(Start: 120 @51259 has 77 MA's), (Start: 137 @51298 has 4 MA's), (151, 51334), (186, 51421), (212, 51562), (236, 51640), (237, 51643),

Gene: Apricot_90 Start: 48459, Stop: 48836, Start Num: 119
Candidate Starts for Apricot_90:
(Start: 119 @48459 has 31 MA's), (139, 48507), (160, 48555), (186, 48621), (196, 48693), (211, 48759), (217, 48780), (225, 48801),

Gene: ArchiDore_72 Start: 49542, Stop: 49913, Start Num: 121
Candidate Starts for ArchiDore_72:
(68, 49416), (71, 49425), (Start: 121 @49542 has 91 MA's), (Start: 137 @49584 has 4 MA's), (163, 49644), (173, 49656), (186, 49710),

Gene: Archie_77 Start: 53141, Stop: 53554, Start Num: 120
Candidate Starts for Archie_77:
(Start: 120 @53141 has 77 MA's), (Start: 137 @53180 has 4 MA's), (175, 53261), (186, 53303), (212, 53444), (238, 53540),

Gene: Attis_68 Start: 45280, Stop: 45648, Start Num: 121
Candidate Starts for Attis_68:
(64, 45163), (68, 45172), (74, 45190), (97, 45232), (Start: 121 @45280 has 91 MA's), (131, 45295),

Gene: AvadaKedavra_77 Start: 51727, Stop: 52140, Start Num: 120
Candidate Starts for AvadaKedavra_77:
(Start: 120 @51727 has 77 MA's), (Start: 137 @51766 has 4 MA's), (151, 51802), (186, 51889), (212, 52030), (236, 52108), (237, 52111),

Gene: Awesomesauce_70 Start: 42720, Stop: 43097, Start Num: 119
Candidate Starts for Awesomesauce_70:
(Start: 119 @42720 has 31 MA's), (141, 42789), (160, 42825), (171, 42843), (204, 42984), (208, 43008), (225, 43065), (234, 43089),

Gene: BENtherdunthat_90 Start: 49249, Stop: 49614, Start Num: 122
Candidate Starts for BENtherdunthat_90:

(12, 48544), (18, 48700), (27, 48880), (36, 48991), (51, 49075), (Start: 122 @49249 has 9 MA's), (Start: 137 @49285 has 4 MA's), (169, 49354), (173, 49357), (181, 49390), (187, 49417), (194, 49471), (195, 49474), (212, 49552),

Gene: Baoshan_78 Start: 53427, Stop: 53840, Start Num: 120

Candidate Starts for Baoshan_78:

(Start: 120 @53427 has 77 MA's), (Start: 137 @53466 has 4 MA's), (154, 53505), (175, 53547), (186, 53589), (202, 53676), (212, 53730), (238, 53826),

Gene: BatStarr_74 Start: 49525, Stop: 49890, Start Num: 121

Candidate Starts for BatStarr_74:

(64, 49408), (73, 49432), (74, 49435), (97, 49477), (Start: 121 @49525 has 91 MA's), (131, 49540),

Gene: Baudelaire_87 Start: 54478, Stop: 54843, Start Num: 120

Candidate Starts for Baudelaire_87:

(Start: 120 @54478 has 77 MA's), (133, 54496), (Start: 134 @54502 has 1 MA's), (Start: 137 @54517 has 4 MA's), (190, 54658), (198, 54724), (202, 54727), (212, 54781), (227, 54829),

Gene: BaxterFox_77 Start: 50109, Stop: 50474, Start Num: 121

Candidate Starts for BaxterFox_77:

(64, 49992), (73, 50016), (74, 50019), (97, 50061), (Start: 121 @50109 has 91 MA's), (131, 50124), (204, 50373),

Gene: Bazzle_77 Start: 53330, Stop: 53743, Start Num: 120

Candidate Starts for Bazzle_77:

(Start: 120 @53330 has 77 MA's), (Start: 137 @53369 has 4 MA's), (175, 53450), (186, 53492), (202, 53579), (212, 53633), (238, 53729),

Gene: BeeGee_76 Start: 48379, Stop: 48744, Start Num: 121

Candidate Starts for BeeGee_76:

(72, 48265), (76, 48274), (83, 48298), (104, 48337), (Start: 121 @48379 has 91 MA's),

Gene: Beenie_64 Start: 44525, Stop: 44890, Start Num: 126

Candidate Starts for Beenie_64:

(Start: 126 @44525 has 10 MA's), (202, 44774),

Gene: Bellis_78 Start: 53435, Stop: 53827, Start Num: 120

Candidate Starts for Bellis_78:

(Start: 120 @53435 has 77 MA's), (133, 53453), (Start: 137 @53474 has 4 MA's), (186, 53597), (212, 53738), (236, 53816), (237, 53819),

Gene: Bialota_69 Start: 48237, Stop: 48602, Start Num: 121

Candidate Starts for Bialota_69:

(64, 48120), (73, 48144), (74, 48147), (97, 48189), (Start: 121 @48237 has 91 MA's), (131, 48252),

Gene: BigAnti_50 Start: 44697, Stop: 45083, Start Num: 119

Candidate Starts for BigAnti_50:

(Start: 119 @44697 has 31 MA's), (Start: 137 @44739 has 4 MA's), (160, 44796), (197, 44943), (202, 44955), (211, 45006), (220, 45036),

Gene: BigCheese_80 Start: 53557, Stop: 53970, Start Num: 120

Candidate Starts for BigCheese_80:

(Start: 120 @53557 has 77 MA's), (Start: 137 @53596 has 4 MA's), (175, 53677), (186, 53719), (202, 53806), (212, 53860), (238, 53956),

Gene: Bjaner7_65 Start: 42654, Stop: 43019, Start Num: 121

Candidate Starts for Bjaner7_65:

(14, 42006), (26, 42267), (72, 42540), (76, 42549), (83, 42573), (Start: 121 @42654 has 91 MA's),

Gene: BobsGarage_80 Start: 53557, Stop: 53970, Start Num: 120

Candidate Starts for BobsGarage_80:

(Start: 120 @53557 has 77 MA's), (Start: 137 @53596 has 4 MA's), (175, 53677), (186, 53719), (202, 53806), (212, 53860), (238, 53956),

Gene: Bosnia_73 Start: 50639, Stop: 51004, Start Num: 121

Candidate Starts for Bosnia_73:

(72, 50525), (76, 50534), (83, 50558), (104, 50597), (Start: 121 @50639 has 91 MA's),

Gene: BotCity_92 Start: 50778, Stop: 51143, Start Num: 122

Candidate Starts for BotCity_92:

(12, 50073), (18, 50229), (27, 50409), (36, 50520), (51, 50604), (Start: 122 @50778 has 9 MA's), (Start: 137 @50814 has 4 MA's), (169, 50883), (173, 50886), (181, 50919), (187, 50946), (194, 51000), (195, 51003), (212, 51081),

Gene: BourbonZero_79 Start: 53449, Stop: 53823, Start Num: 133

Candidate Starts for BourbonZero_79:

(Start: 120 @53431 has 77 MA's), (133, 53449), (Start: 137 @53470 has 4 MA's), (186, 53593), (197, 53668), (212, 53734), (236, 53812), (237, 53815),

Gene: BoyNamedSue_72 Start: 48795, Stop: 49160, Start Num: 121

Candidate Starts for BoyNamedSue_72:

(26, 48408), (72, 48681), (76, 48690), (83, 48714), (104, 48753), (Start: 121 @48795 has 91 MA's),

Gene: Bradissa_71 Start: 49627, Stop: 49992, Start Num: 121

Candidate Starts for Bradissa_71:

(113, 49609), (Start: 121 @49627 has 91 MA's), (131, 49642), (190, 49807), (204, 49891),

Gene: BrainDrainer_78 Start: 52369, Stop: 52743, Start Num: 120

Candidate Starts for BrainDrainer_78:

(Start: 120 @52369 has 77 MA's), (133, 52387), (Start: 134 @52393 has 1 MA's), (Start: 137 @52408 has 4 MA's), (146, 52432), (186, 52531), (197, 52606), (203, 52630), (212, 52672), (216, 52687),

Gene: Bran_49 Start: 35390, Stop: 35785, Start Num: 124

Candidate Starts for Bran_49:

(Start: 124 @35390 has 1 MA's), (141, 35450), (193, 35606),

Gene: Breezona_80 Start: 53557, Stop: 53970, Start Num: 120

Candidate Starts for Breezona_80:

(Start: 120 @53557 has 77 MA's), (Start: 137 @53596 has 4 MA's), (175, 53677), (186, 53719), (202, 53806), (212, 53860), (238, 53956),

Gene: BritBrat_89 Start: 51800, Stop: 52234, Start Num: 119

Candidate Starts for BritBrat_89:

(Start: 119 @51800 has 31 MA's), (133, 51821), (139, 51848), (148, 51881), (165, 51920), (178, 51947), (204, 52097), (208, 52121), (235, 52199),

Gene: Bromden_78 Start: 53002, Stop: 53388, Start Num: 120

Candidate Starts for Bromden_78:

(Start: 120 @53002 has 77 MA's), (133, 53020), (Start: 134 @53026 has 1 MA's), (Start: 137 @53041 has 4 MA's), (146, 53065), (186, 53164), (197, 53239), (203, 53263), (212, 53305), (216, 53320), (236, 53380),

Gene: Brujita_53 Start: 36853, Stop: 37233, Start Num: 119

Candidate Starts for Brujita_53:

(Start: 119 @36853 has 31 MA's), (141, 36925), (203, 37117), (204, 37120), (225, 37201),

Gene: Budski_95 Start: 51613, Stop: 51987, Start Num: 120

Candidate Starts for Budski_95:

(48, 51436), (93, 51556), (Start: 120 @51613 has 77 MA's), (133, 51631), (141, 51670), (155, 51694), (156, 51697), (160, 51706), (165, 51718), (178, 51745), (184, 51766), (195, 51835), (198, 51856), (202, 51859), (208, 51898), (211, 51910),

Gene: Bunnybear_69 Start: 47790, Stop: 48155, Start Num: 121

Candidate Starts for Bunnybear_69:

(64, 47673), (73, 47697), (74, 47700), (97, 47742), (Start: 121 @47790 has 91 MA's),

Gene: Calm_79 Start: 52009, Stop: 52383, Start Num: 137

Candidate Starts for Calm_79:

(Start: 120 @51970 has 77 MA's), (Start: 137 @52009 has 4 MA's), (151, 52045), (186, 52132), (212, 52273), (236, 52351), (237, 52354),

Gene: Cashline_72 Start: 50322, Stop: 50687, Start Num: 121

Candidate Starts for Cashline_72:

(113, 50304), (Start: 121 @50322 has 91 MA's), (131, 50337), (190, 50502),

Gene: Chaser_76 Start: 52001, Stop: 52387, Start Num: 120

Candidate Starts for Chaser_76:

(Start: 120 @52001 has 77 MA's), (133, 52019), (Start: 134 @52025 has 1 MA's), (Start: 137 @52040 has 4 MA's), (146, 52064), (186, 52163), (197, 52238), (203, 52262), (212, 52304), (236, 52379),

Gene: Che9c_64 Start: 45395, Stop: 45778, Start Num: 119

Candidate Starts for Che9c_64:

(Start: 119 @45395 has 31 MA's), (141, 45467), (203, 45659), (204, 45662), (225, 45743), (235, 45770),

Gene: ChickenDinner_70 Start: 43637, Stop: 44014, Start Num: 119

Candidate Starts for ChickenDinner_70:

(Start: 119 @43637 has 31 MA's), (141, 43706), (160, 43742), (171, 43760), (204, 43901), (208, 43925), (225, 43982), (234, 44006),

Gene: ChutneyChips_78 Start: 52346, Stop: 52732, Start Num: 120

Candidate Starts for ChutneyChips_78:

(Start: 120 @52346 has 77 MA's), (133, 52364), (Start: 134 @52370 has 1 MA's), (Start: 137 @52385 has 4 MA's), (146, 52409), (186, 52508), (197, 52583), (203, 52607), (212, 52649), (216, 52664), (236, 52724),

Gene: CicholasNage_74 Start: 51312, Stop: 51725, Start Num: 120

Candidate Starts for CicholasNage_74:

(Start: 120 @51312 has 77 MA's), (Start: 137 @51351 has 4 MA's), (151, 51387), (186, 51474), (212, 51615), (236, 51693), (237, 51696),

Gene: Clap_68 Start: 42833, Stop: 43198, Start Num: 121

Candidate Starts for Clap_68:

(14, 42185), (26, 42446), (72, 42719), (76, 42728), (83, 42752), (Start: 121 @42833 has 91 MA's),

Gene: Clark_69 Start: 44288, Stop: 44653, Start Num: 126

Candidate Starts for Clark_69:

(Start: 126 @44288 has 10 MA's), (202, 44537),

Gene: Claus_79 Start: 53492, Stop: 53905, Start Num: 120

Candidate Starts for Claus_79:

(Start: 120 @53492 has 77 MA's), (Start: 137 @53531 has 4 MA's), (186, 53654), (202, 53741), (212, 53795), (238, 53891),

Gene: Clautastrophe_76 Start: 53433, Stop: 53825, Start Num: 120

Candidate Starts for Clautastrophe_76:

(Start: 120 @53433 has 77 MA's), (133, 53451), (Start: 137 @53472 has 4 MA's), (186, 53595), (212, 53736), (236, 53814), (237, 53817),

Gene: Clawz_16 Start: 7752, Stop: 8141, Start Num: 117

Candidate Starts for Clawz_16:

(44, 7545), (47, 7566), (75, 7653), (106, 7722), (115, 7749), (Start: 117 @7752 has 6 MA's), (Start: 122 @7761 has 9 MA's), (140, 7806), (158, 7860), (184, 7932), (193, 7992), (199, 8025), (203, 8037), (208, 8064), (212, 8076), (214, 8082), (228, 8127),

Gene: ClearAsMud_50 Start: 32507, Stop: 32881, Start Num: 130

Candidate Starts for ClearAsMud_50:

(Start: 130 @32507 has 11 MA's), (147, 32567), (159, 32594), (186, 32663), (188, 32672), (190, 32681), (192, 32714), (204, 32765), (208, 32789), (212, 32801), (221, 32831), (228, 32852), (231, 32858),

Gene: ColdSoup_15 Start: 7379, Stop: 7768, Start Num: 117

Candidate Starts for ColdSoup_15:

(47, 7193), (82, 7304), (106, 7349), (115, 7376), (Start: 117 @7379 has 6 MA's), (Start: 122 @7388 has 9 MA's), (Start: 129 @7397 has 1 MA's), (150, 7472), (187, 7571), (198, 7649), (203, 7664), (208, 7691), (212, 7703), (217, 7721), (228, 7754),

Gene: Confidence_73 Start: 47600, Stop: 47965, Start Num: 121

Candidate Starts for Confidence_73:

(113, 47582), (Start: 121 @47600 has 91 MA's), (131, 47615),

Gene: Crater_90 Start: 48803, Stop: 49180, Start Num: 119

Candidate Starts for Crater_90:

(Start: 119 @48803 has 31 MA's), (139, 48851), (160, 48899), (186, 48965), (196, 49037), (211, 49103), (217, 49124), (225, 49145),

Gene: Crossroads_80 Start: 53632, Stop: 54045, Start Num: 120

Candidate Starts for Crossroads_80:

(Start: 120 @53632 has 77 MA's), (Start: 137 @53671 has 4 MA's), (175, 53752), (186, 53794), (202, 53881), (212, 53935), (238, 54031),

Gene: Cubone_56 Start: 34210, Stop: 34587, Start Num: 119

Candidate Starts for Cubone_56:

(Start: 119 @34210 has 31 MA's), (141, 34279), (160, 34315), (171, 34333), (204, 34474), (208, 34498), (225, 34555), (234, 34579),

Gene: Cynthia_68 Start: 42831, Stop: 43196, Start Num: 121

Candidate Starts for Cynthia_68:

(14, 42183), (26, 42444), (72, 42717), (76, 42726), (83, 42750), (Start: 121 @42831 has 91 MA's),

Gene: DHan_83 Start: 53710, Stop: 54123, Start Num: 120

Candidate Starts for DHan_83:

(Start: 120 @53710 has 77 MA's), (Start: 137 @53749 has 4 MA's), (175, 53830), (186, 53872), (202, 53959), (212, 54013), (238, 54109),

Gene: DanBing_80 Start: 53362, Stop: 53775, Start Num: 120

Candidate Starts for DanBing_80:

(Start: 120 @53362 has 77 MA's), (Start: 137 @53401 has 4 MA's), (175, 53482), (186, 53524), (202, 53611), (212, 53665), (238, 53761),

Gene: Denise_65 Start: 39624, Stop: 39992, Start Num: 121

Candidate Starts for Denise_65:

(80, 39543), (Start: 121 @39624 has 91 MA's), (Start: 137 @39666 has 4 MA's), (163, 39726), (169, 39735), (173, 39738), (182, 39774),

Gene: DillyDally_54 Start: 35605, Stop: 35967, Start Num: 123

Candidate Starts for DillyDally_54:

(70, 35485), (105, 35563), (Start: 118 @35596 has 5 MA's), (Start: 123 @35605 has 1 MA's), (131, 35617), (133, 35620), (145, 35674), (183, 35761), (186, 35770), (195, 35830), (198, 35851), (205, 35872), (212, 35908), (221, 35938), (223, 35941),

Gene: DirkDirk_74 Start: 50839, Stop: 51252, Start Num: 120

Candidate Starts for DirkDirk_74:

(Start: 120 @50839 has 77 MA's), (Start: 137 @50878 has 4 MA's), (151, 50914), (186, 51001), (212, 51142), (236, 51220), (237, 51223),

Gene: DobbysSock_66 Start: 44836, Stop: 45252, Start Num: 110

Candidate Starts for DobbysSock_66:

(Start: 110 @44836 has 3 MA's), (Start: 119 @44854 has 31 MA's), (189, 45031), (225, 45217),

Gene: DocMcStuffins_70 Start: 43637, Stop: 44014, Start Num: 119

Candidate Starts for DocMcStuffins_70:

(Start: 119 @43637 has 31 MA's), (141, 43706), (160, 43742), (171, 43760), (204, 43901), (208, 43925), (225, 43982), (234, 44006),

Gene: Dolores_70 Start: 43516, Stop: 43884, Start Num: 121

Candidate Starts for Dolores_70:

(11, 42763), (72, 43402), (76, 43411), (83, 43435), (104, 43474), (Start: 121 @43516 has 91 MA's), (186, 43681),

Gene: DonTron_13 Start: 6968, Stop: 7357, Start Num: 117

Candidate Starts for DonTron_13:

(47, 6782), (82, 6893), (106, 6938), (115, 6965), (Start: 117 @6968 has 6 MA's), (Start: 122 @6977 has 9 MA's), (Start: 129 @6986 has 1 MA's), (150, 7061), (187, 7160), (198, 7238), (203, 7253), (208,

7280), (212, 7292), (217, 7310), (228, 7343),

Gene: Dorito_64 Start: 42718, Stop: 43086, Start Num: 126

Candidate Starts for Dorito_64:

(Start: 126 @42718 has 10 MA's),

Gene: Douge_77 Start: 51948, Stop: 52310, Start Num: 134

Candidate Starts for Douge_77:

(Start: 120 @51924 has 77 MA's), (133, 51942), (Start: 134 @51948 has 1 MA's), (Start: 137 @51963 has 4 MA's), (146, 51987), (186, 52086), (197, 52161), (203, 52185), (212, 52227), (236, 52302),

Gene: Douzhi_78 Start: 52186, Stop: 52560, Start Num: 120

Candidate Starts for Douzhi_78:

(Start: 120 @52186 has 77 MA's), (133, 52204), (Start: 134 @52210 has 1 MA's), (Start: 137 @52225 has 4 MA's), (146, 52249), (186, 52348), (197, 52423), (203, 52447), (212, 52489), (216, 52504),

Gene: DrSeegs_80 Start: 53557, Stop: 53970, Start Num: 120

Candidate Starts for DrSeegs_80:

(Start: 120 @53557 has 77 MA's), (Start: 137 @53596 has 4 MA's), (175, 53677), (186, 53719), (202, 53806), (212, 53860), (238, 53956),

Gene: DumpsterDude_68 Start: 50011, Stop: 50379, Start Num: 122

Candidate Starts for DumpsterDude_68:

(71, 49891), (Start: 122 @50011 has 9 MA's), (Start: 137 @50050 has 4 MA's), (154, 50089), (163, 50110), (173, 50122), (186, 50176),

Gene: DuncansLeg_78 Start: 53419, Stop: 53811, Start Num: 120

Candidate Starts for DuncansLeg_78:

(Start: 120 @53419 has 77 MA's), (133, 53437), (Start: 137 @53458 has 4 MA's), (186, 53581), (197, 53656), (212, 53722), (236, 53800), (237, 53803),

Gene: DyoEdafos_82 Start: 52834, Stop: 53220, Start Num: 120

Candidate Starts for DyoEdafos_82:

(Start: 120 @52834 has 77 MA's), (133, 52852), (Start: 134 @52858 has 1 MA's), (Start: 137 @52873 has 4 MA's), (146, 52897), (186, 52996), (203, 53095), (212, 53137), (236, 53212),

Gene: EMSquaredA_73 Start: 47755, Stop: 48120, Start Num: 121

Candidate Starts for EMSquaredA_73:

(83, 47674), (104, 47713), (Start: 121 @47755 has 91 MA's), (180, 47896),

Gene: Easley_68 Start: 43289, Stop: 43654, Start Num: 126

Candidate Starts for Easley_68:

(3, 42284), (4, 42296), (5, 42332), (6, 42356), (7, 42368), (8, 42380), (20, 42842), (Start: 126 @43289 has 10 MA's),

Gene: EastWest_44 Start: 33743, Stop: 34048, Start Num: 143

Candidate Starts for EastWest_44:

(33, 33407), (34, 33410), (45, 33473), (58, 33527), (63, 33545), (90, 33611), (Start: 143 @33743 has 1 MA's), (145, 33752), (188, 33857), (191, 33887), (203, 33944), (215, 33986),

Gene: Ebert_71 Start: 43265, Stop: 43630, Start Num: 121

Candidate Starts for Ebert_71:

(14, 42617), (26, 42878), (72, 43151), (76, 43160), (83, 43184), (Start: 121 @43265 has 91 MA's),

Gene: Ecliptus_97 Start: 52002, Stop: 52379, Start Num: 119

Candidate Starts for Ecliptus_97:

(Start: 119 @52002 has 31 MA's), (139, 52050), (160, 52098), (186, 52164), (196, 52236), (211, 52302), (217, 52323), (225, 52344),

Gene: EdnaMode_67 Start: 42941, Stop: 43306, Start Num: 121

Candidate Starts for EdnaMode_67:

(72, 42827), (76, 42836), (83, 42860), (Start: 121 @42941 has 91 MA's),

Gene: Elener_62 Start: 35866, Stop: 36444, Start Num: 53

Candidate Starts for Elener_62:

(13, 35353), (22, 35629), (Start: 53 @35866 has 1 MA's), (59, 35884), (94, 35971), (98, 35980), (139, 36088), (211, 36349), (230, 36412),

Gene: Ellson_77 Start: 53752, Stop: 54126, Start Num: 133

Candidate Starts for Ellson_77:

(Start: 120 @53734 has 77 MA's), (133, 53752), (Start: 137 @53773 has 4 MA's), (186, 53896), (197, 53971), (212, 54037), (236, 54115), (237, 54118),

Gene: EnalisNailo_69 Start: 48247, Stop: 48612, Start Num: 121

Candidate Starts for EnalisNailo_69:

(26, 47860), (72, 48133), (76, 48142), (83, 48166), (Start: 121 @48247 has 91 MA's),

Gene: Enceladus_74 Start: 51616, Stop: 52029, Start Num: 120

Candidate Starts for Enceladus_74:

(Start: 120 @51616 has 77 MA's), (Start: 137 @51655 has 4 MA's), (151, 51691), (186, 51778), (212, 51919), (236, 51997), (237, 52000),

Gene: Eudoria_71 Start: 46557, Stop: 46922, Start Num: 121

Candidate Starts for Eudoria_71:

(65, 46443), (Start: 121 @46557 has 91 MA's), (131, 46572), (184, 46713),

Gene: Eviarto_75 Start: 49500, Stop: 49865, Start Num: 121

Candidate Starts for Eviarto_75:

(64, 49383), (73, 49407), (74, 49410), (97, 49452), (Start: 121 @49500 has 91 MA's), (131, 49515),

Gene: Faith1_80 Start: 53557, Stop: 53970, Start Num: 120

Candidate Starts for Faith1_80:

(Start: 120 @53557 has 77 MA's), (Start: 137 @53596 has 4 MA's), (175, 53677), (186, 53719), (202, 53806), (212, 53860), (238, 53956),

Gene: Faith5x5_63 Start: 38073, Stop: 38444, Start Num: 121

Candidate Starts for Faith5x5_63:

(80, 37992), (102, 38031), (Start: 121 @38073 has 91 MA's), (Start: 137 @38115 has 4 MA's), (154, 38154), (163, 38175), (173, 38187),

Gene: FarmResident_79 Start: 51952, Stop: 52314, Start Num: 134

Candidate Starts for FarmResident_79:

(Start: 120 @51928 has 77 MA's), (131, 51943), (133, 51946), (Start: 134 @51952 has 1 MA's), (Start: 137 @51967 has 4 MA's), (146, 51991), (186, 52090), (197, 52165), (203, 52189), (212, 52231), (236, 52306),

Gene: Finemlucis_79 Start: 54025, Stop: 54423, Start Num: 120

Candidate Starts for Finemlucis_79:

(Start: 120 @54025 has 77 MA's), (Start: 137 @54064 has 4 MA's), (169, 54133), (173, 54136), (186, 54187), (198, 54271), (212, 54328), (237, 54409),

Gene: Finkle_64 Start: 40296, Stop: 40754, Start Num: 119

Candidate Starts for Finkle_64:

(35, 40047), (38, 40068), (Start: 119 @40296 has 31 MA's), (165, 40404), (186, 40458), (188, 40467), (208, 40605), (225, 40659),

Gene: Finnry_78 Start: 53684, Stop: 54076, Start Num: 120

Candidate Starts for Finnry_78:

(Start: 120 @53684 has 77 MA's), (133, 53702), (Start: 137 @53723 has 4 MA's), (186, 53846), (212, 53987), (236, 54065), (237, 54068),

Gene: Fireman_49 Start: 33919, Stop: 34293, Start Num: 130

Candidate Starts for Fireman_49:

(Start: 130 @33919 has 11 MA's), (192, 34126), (204, 34177), (208, 34201), (212, 34213), (227, 34261), (231, 34270),

Gene: Floral_74 Start: 49712, Stop: 50077, Start Num: 121

Candidate Starts for Floral_74:

(83, 49631), (104, 49670), (Start: 121 @49712 has 91 MA's), (180, 49853),

Gene: Frankie_73 Start: 45043, Stop: 45420, Start Num: 119

Candidate Starts for Frankie_73:

(28, 44707), (32, 44749), (91, 44986), (Start: 119 @45043 has 31 MA's), (141, 45112), (203, 45304), (204, 45307), (208, 45331), (225, 45388),

Gene: Frickyeah_97 Start: 50758, Stop: 51126, Start Num: 120

Candidate Starts for Frickyeah_97:

(Start: 120 @50758 has 77 MA's), (141, 50815), (174, 50872), (185, 50914), (186, 50917), (187, 50923), (202, 51004), (208, 51043), (211, 51055), (213, 51061), (225, 51091),

Gene: FroggyToad_69 Start: 44360, Stop: 44728, Start Num: 121

Candidate Starts for FroggyToad_69:

(Start: 121 @44360 has 91 MA's),

Gene: G4_60 Start: 34029, Stop: 34412, Start Num: 119

Candidate Starts for G4_60:

(58, 33882), (Start: 119 @34029 has 31 MA's), (133, 34047), (139, 34071), (186, 34194), (203, 34290), (208, 34317),

Gene: GAL1_69 Start: 43840, Stop: 44205, Start Num: 122

Candidate Starts for GAL1_69:

(Start: 122 @43840 has 9 MA's), (Start: 137 @43876 has 4 MA's), (169, 43945), (173, 43948), (187, 44008), (194, 44062), (195, 44065), (197, 44077), (212, 44143),

Gene: Gabriela_79 Start: 52903, Stop: 53316, Start Num: 120

Candidate Starts for Gabriela_79:

(Start: 120 @52903 has 77 MA's), (Start: 137 @52942 has 4 MA's), (175, 53023), (186, 53065), (202, 53152), (212, 53206), (238, 53302),

Gene: Gardann_80 Start: 53392, Stop: 53805, Start Num: 120

Candidate Starts for Gardann_80:

(Start: 120 @53392 has 77 MA's), (Start: 137 @53431 has 4 MA's), (175, 53512), (186, 53554), (202, 53641), (212, 53695), (238, 53791),

Gene: GemG_68 Start: 42837, Stop: 43202, Start Num: 121

Candidate Starts for GemG_68:

(14, 42189), (26, 42450), (72, 42723), (76, 42732), (83, 42756), (Start: 121 @42837 has 91 MA's),

Gene: Getalong_93 Start: 51704, Stop: 52069, Start Num: 122

Candidate Starts for Getalong_93:

(12, 50999), (18, 51155), (27, 51335), (36, 51446), (51, 51530), (Start: 122 @51704 has 9 MA's), (Start: 137 @51740 has 4 MA's), (169, 51809), (173, 51812), (181, 51845), (187, 51872), (194, 51926), (195, 51929), (212, 52007),

Gene: Gibbzilla_72 Start: 36470, Stop: 36829, Start Num: 118

Candidate Starts for Gibbzilla_72:

(89, 36416), (Start: 118 @36470 has 5 MA's), (131, 36485), (145, 36542), (199, 36716), (212, 36770),

Gene: Gina_49 Start: 32061, Stop: 32435, Start Num: 130

Candidate Starts for Gina_49:

(Start: 130 @32061 has 11 MA's), (170, 32166), (186, 32217), (192, 32268), (204, 32319), (208, 32343), (212, 32355), (214, 32361), (218, 32376), (228, 32406), (231, 32412),

Gene: Gizermo_68 Start: 42833, Stop: 43198, Start Num: 121

Candidate Starts for Gizermo_68:

(14, 42185), (26, 42446), (72, 42719), (76, 42728), (83, 42752), (Start: 121 @42833 has 91 MA's),

Gene: Grumio_14 Start: 6968, Stop: 7357, Start Num: 117

Candidate Starts for Grumio_14:

(47, 6782), (82, 6893), (106, 6938), (115, 6965), (Start: 117 @6968 has 6 MA's), (Start: 122 @6977 has 9 MA's), (Start: 129 @6986 has 1 MA's), (150, 7061), (187, 7160), (198, 7238), (203, 7253), (208, 7280), (212, 7292), (217, 7310), (228, 7343),

Gene: Gudmit_62 Start: 37386, Stop: 37871, Start Num: 120

Candidate Starts for Gudmit_62:

(92, 37326), (Start: 120 @37386 has 77 MA's), (Start: 137 @37425 has 4 MA's), (144, 37452), (163, 37497), (184, 37557), (197, 37638), (198, 37647), (211, 37701), (225, 37743),

Gene: GuuelaD_78 Start: 53672, Stop: 54085, Start Num: 120

Candidate Starts for GuuelaD_78:

(Start: 120 @53672 has 77 MA's), (Start: 137 @53711 has 4 MA's), (175, 53792), (186, 53834), (202, 53921), (212, 53975), (238, 54071),

Gene: Hafay_81 Start: 53487, Stop: 53900, Start Num: 120

Candidate Starts for Hafay_81:

(Start: 120 @53487 has 77 MA's), (Start: 137 @53526 has 4 MA's), (186, 53649), (202, 53736), (212, 53790), (238, 53886),

Gene: Halena_75 Start: 50886, Stop: 51299, Start Num: 120

Candidate Starts for Halena_75:

(Start: 120 @50886 has 77 MA's), (Start: 137 @50925 has 4 MA's), (151, 50961), (186, 51048), (212, 51189), (236, 51267), (237, 51270),

Gene: Haley23_68 Start: 42833, Stop: 43198, Start Num: 121
Candidate Starts for Haley23_68:
(14, 42185), (26, 42446), (72, 42719), (76, 42728), (83, 42752), (Start: 121 @42833 has 91 MA's),

Gene: Herod_75 Start: 49919, Stop: 50284, Start Num: 121
Candidate Starts for Herod_75:
(64, 49802), (73, 49826), (74, 49829), (97, 49871), (Start: 121 @49919 has 91 MA's), (131, 49934),

Gene: Holliday_92 Start: 52368, Stop: 52745, Start Num: 119
Candidate Starts for Holliday_92:
(Start: 119 @52368 has 31 MA's), (139, 52416), (160, 52464), (196, 52602), (211, 52668), (225, 52710),

Gene: Hortense_71 Start: 48762, Stop: 49163, Start Num: 119
Candidate Starts for Hortense_71:
(Start: 110 @48744 has 3 MA's), (Start: 119 @48762 has 31 MA's), (189, 48939), (211, 49083), (225, 49125),

Gene: Horus_91 Start: 51033, Stop: 51401, Start Num: 120
Candidate Starts for Horus_91:
(Start: 120 @51033 has 77 MA's), (141, 51090), (174, 51147), (185, 51189), (186, 51192), (187, 51198), (202, 51279), (208, 51318), (211, 51330), (213, 51336), (225, 51366),

Gene: Howe_71 Start: 48762, Stop: 49163, Start Num: 119
Candidate Starts for Howe_71:
(Start: 110 @48744 has 3 MA's), (Start: 119 @48762 has 31 MA's), (189, 48939), (211, 49083), (225, 49125),

Gene: Hugley_73 Start: 49899, Stop: 50264, Start Num: 121
Candidate Starts for Hugley_73:
(64, 49782), (73, 49806), (74, 49809), (97, 49851), (Start: 121 @49899 has 91 MA's), (131, 49914),

Gene: Hum25_62 Start: 35736, Stop: 36095, Start Num: 118
Candidate Starts for Hum25_62:
(Start: 118 @35736 has 5 MA's), (138, 35775), (Start: 143 @35796 has 1 MA's), (145, 35805), (161, 35838), (176, 35865), (188, 35910), (197, 35973), (207, 36018), (212, 36039), (223, 36072), (228, 36084),

Gene: Hyzer_89 Start: 56367, Stop: 56672, Start Num: 121
Candidate Starts for Hyzer_89:
(97, 56319), (Start: 121 @56367 has 91 MA's),

Gene: InLimbo_65 Start: 39068, Stop: 39436, Start Num: 121
Candidate Starts for InLimbo_65:
(Start: 121 @39068 has 91 MA's), (Start: 137 @39110 has 4 MA's), (154, 39149), (163, 39170), (169, 39179), (173, 39182), (229, 39428),

Gene: Invectra_73 Start: 45861, Stop: 46226, Start Num: 126
Candidate Starts for Invectra_73:
(Start: 126 @45861 has 10 MA's), (202, 46110),

Gene: Island3_53 Start: 36853, Stop: 37233, Start Num: 119

Candidate Starts for Island3_53:

(Start: 119 @36853 has 31 MA's), (141, 36925), (203, 37117), (204, 37120), (225, 37201),

Gene: Itos_79 Start: 52463, Stop: 52876, Start Num: 120

Candidate Starts for Itos_79:

(Start: 120 @52463 has 77 MA's), (Start: 137 @52502 has 4 MA's), (175, 52583), (186, 52625), (202, 52712), (212, 52766), (238, 52862),

Gene: JCole_65 Start: 41503, Stop: 41868, Start Num: 121

Candidate Starts for JCole_65:

(9, 40720), (14, 40855), (26, 41116), (72, 41389), (76, 41398), (83, 41422), (104, 41461), (Start: 121 @41503 has 91 MA's),

Gene: Jablanski_77 Start: 51014, Stop: 51379, Start Num: 121

Candidate Starts for Jablanski_77:

(56, 50894), (95, 50963), (100, 50978), (Start: 121 @51014 has 91 MA's), (203, 51275),

Gene: Jace_77 Start: 44043, Stop: 44462, Start Num: 125

Candidate Starts for Jace_77:

(30, 43710), (44, 43836), (Start: 125 @44043 has 1 MA's), (139, 44088), (142, 44103), (148, 44121), (160, 44148), (165, 44160), (184, 44208), (186, 44214), (200, 44313), (201, 44316), (203, 44358), (204, 44361), (208, 44385), (232, 44445),

Gene: Jalleen_72 Start: 43560, Stop: 43928, Start Num: 121

Candidate Starts for Jalleen_72:

(1, 42540), (2, 42543), (26, 43173), (72, 43446), (76, 43455), (83, 43479), (Start: 121 @43560 has 91 MA's),

Gene: Jayden_49 Start: 32758, Stop: 33132, Start Num: 130

Candidate Starts for Jayden_49:

(85, 32671), (Start: 130 @32758 has 11 MA's), (158, 32842), (186, 32914), (192, 32965), (208, 33040), (212, 33052), (214, 33058), (228, 33103), (231, 33109),

Gene: Jobypre_78 Start: 53433, Stop: 53825, Start Num: 120

Candidate Starts for Jobypre_78:

(Start: 120 @53433 has 77 MA's), (133, 53451), (Start: 137 @53472 has 4 MA's), (186, 53595), (212, 53736), (236, 53814), (237, 53817),

Gene: JoeDirt_77 Start: 52253, Stop: 52627, Start Num: 137

Candidate Starts for JoeDirt_77:

(Start: 137 @52253 has 4 MA's), (151, 52289), (186, 52376), (212, 52517), (236, 52595), (237, 52598),

Gene: Jollymon_14 Start: 7379, Stop: 7768, Start Num: 117

Candidate Starts for Jollymon_14:

(47, 7193), (82, 7304), (106, 7349), (115, 7376), (Start: 117 @7379 has 6 MA's), (Start: 122 @7388 has 9 MA's), (Start: 129 @7397 has 1 MA's), (150, 7472), (187, 7571), (198, 7649), (203, 7664), (208, 7691), (212, 7703), (217, 7721), (228, 7754),

Gene: Jubie_77 Start: 53568, Stop: 53960, Start Num: 120

Candidate Starts for Jubie_77:

(Start: 120 @53568 has 77 MA's), (133, 53586), (Start: 137 @53607 has 4 MA's), (186, 53730), (212, 53871), (236, 53949), (237, 53952),

Gene: Kahlid_80 Start: 53563, Stop: 53976, Start Num: 120

Candidate Starts for Kahlid_80:

(Start: 120 @53563 has 77 MA's), (Start: 137 @53602 has 4 MA's), (163, 53662), (175, 53683), (186, 53725), (202, 53812), (212, 53866), (238, 53962),

Gene: Kamaru_84 Start: 48067, Stop: 48444, Start Num: 119

Candidate Starts for Kamaru_84:

(48, 47893), (Start: 119 @48067 has 31 MA's), (133, 48088), (139, 48115), (178, 48202), (196, 48301), (198, 48313), (210, 48364), (211, 48367), (225, 48409),

Gene: Kingsolomon_76 Start: 53440, Stop: 53832, Start Num: 120

Candidate Starts for Kingsolomon_76:

(Start: 120 @53440 has 77 MA's), (133, 53458), (Start: 137 @53479 has 4 MA's), (186, 53602), (212, 53743), (236, 53821), (237, 53824),

Gene: KingstonB_13 Start: 6968, Stop: 7357, Start Num: 117

Candidate Starts for KingstonB_13:

(47, 6782), (82, 6893), (106, 6938), (115, 6965), (Start: 117 @6968 has 6 MA's), (Start: 122 @6977 has 9 MA's), (Start: 129 @6986 has 1 MA's), (150, 7061), (187, 7160), (198, 7238), (203, 7253), (208, 7280), (212, 7292), (217, 7310), (228, 7343),

Gene: KirDoubleO7_76 Start: 53460, Stop: 53813, Start Num: 137

Candidate Starts for KirDoubleO7_76:

(Start: 120 @53421 has 77 MA's), (133, 53439), (Start: 137 @53460 has 4 MA's), (186, 53583), (197, 53658), (212, 53724), (236, 53802), (237, 53805),

Gene: Kita_72 Start: 46566, Stop: 46931, Start Num: 121

Candidate Starts for Kita_72:

(65, 46452), (Start: 121 @46566 has 91 MA's), (131, 46581), (184, 46722),

Gene: Kropertea_75 Start: 52116, Stop: 52502, Start Num: 120

Candidate Starts for Kropertea_75:

(Start: 120 @52116 has 77 MA's), (133, 52134), (Start: 134 @52140 has 1 MA's), (Start: 137 @52155 has 4 MA's), (146, 52179), (186, 52278), (203, 52377), (212, 52419), (236, 52494),

Gene: Krypton555_79 Start: 53667, Stop: 54059, Start Num: 120

Candidate Starts for Krypton555_79:

(Start: 120 @53667 has 77 MA's), (133, 53685), (Start: 137 @53706 has 4 MA's), (186, 53829), (212, 53970), (236, 54048), (237, 54051),

Gene: Kuwabara_86 Start: 51241, Stop: 51609, Start Num: 121

Candidate Starts for Kuwabara_86:

(Start: 121 @51241 has 91 MA's), (Start: 137 @51283 has 4 MA's), (154, 51322), (163, 51343), (169, 51352), (173, 51355), (229, 51601),

Gene: Lamberg_64 Start: 41342, Stop: 41707, Start Num: 121

Candidate Starts for Lamberg_64:

(14, 40694), (26, 40955), (72, 41228), (76, 41237), (83, 41261), (Start: 121 @41342 has 91 MA's),

Gene: LeBron_76 Start: 50885, Stop: 51298, Start Num: 120

Candidate Starts for LeBron_76:

(Start: 120 @50885 has 77 MA's), (Start: 137 @50924 has 4 MA's), (151, 50960), (186, 51047), (212, 51188), (236, 51266), (237, 51269),

Gene: Leroy_90 Start: 49228, Stop: 49596, Start Num: 120

Candidate Starts for Leroy_90:

(Start: 120 @49228 has 77 MA's), (141, 49285), (174, 49342), (185, 49384), (186, 49387), (187, 49393), (202, 49474), (208, 49513), (211, 49525), (213, 49531), (225, 49561),

Gene: Lewan_81 Start: 53615, Stop: 54049, Start Num: 120

Candidate Starts for Lewan_81:

(Start: 120 @53615 has 77 MA's), (Start: 137 @53654 has 4 MA's), (175, 53735), (186, 53777), (202, 53864), (212, 53918), (238, 54014),

Gene: LilDestine_79 Start: 53467, Stop: 53880, Start Num: 120

Candidate Starts for LilDestine_79:

(Start: 120 @53467 has 77 MA's), (Start: 137 @53506 has 4 MA's), (175, 53587), (186, 53629), (202, 53716), (212, 53770), (238, 53866),

Gene: LilSpotty_67 Start: 41443, Stop: 41820, Start Num: 119

Candidate Starts for LilSpotty_67:

(66, 41326), (67, 41329), (75, 41350), (Start: 119 @41443 has 31 MA's), (141, 41512), (203, 41704), (204, 41707), (208, 41731), (225, 41788),

Gene: Lilas_70 Start: 49785, Stop: 50150, Start Num: 121

Candidate Starts for Lilas_70:

(26, 49398), (72, 49671), (76, 49680), (83, 49704), (Start: 121 @49785 has 91 MA's),

Gene: LiyuLake_77 Start: 53533, Stop: 53886, Start Num: 137

Candidate Starts for LiyuLake_77:

(Start: 120 @53494 has 77 MA's), (133, 53512), (Start: 137 @53533 has 4 MA's), (186, 53656), (197, 53731), (212, 53797), (236, 53875), (237, 53878),

Gene: Loadrie_79 Start: 53642, Stop: 54055, Start Num: 120

Candidate Starts for Loadrie_79:

(Start: 120 @53642 has 77 MA's), (Start: 137 @53681 has 4 MA's), (175, 53762), (186, 53804), (202, 53891), (212, 53945), (238, 54041),

Gene: Lolly9_77 Start: 53537, Stop: 53929, Start Num: 120

Candidate Starts for Lolly9_77:

(Start: 120 @53537 has 77 MA's), (133, 53555), (Start: 137 @53576 has 4 MA's), (186, 53699), (212, 53840), (236, 53918), (237, 53921),

Gene: LonelyBoi_72 Start: 50747, Stop: 51112, Start Num: 121

Candidate Starts for LonelyBoi_72:

(83, 50669), (Start: 121 @50747 has 91 MA's), (131, 50762),

Gene: LordFarquaad_71 Start: 45261, Stop: 45629, Start Num: 121

Candidate Starts for LordFarquaad_71:

(64, 45144), (68, 45153), (74, 45171), (97, 45213), (Start: 121 @45261 has 91 MA's), (131, 45276),

Gene: LordVader_60 Start: 37776, Stop: 38195, Start Num: 101

Candidate Starts for LordVader_60:

(57, 37668), (101, 37776), (111, 37803), (Start: 119 @37818 has 31 MA's), (141, 37887), (160, 37923), (171, 37941), (204, 38082), (225, 38163), (234, 38187),

Gene: Lton_65 Start: 38394, Stop: 38762, Start Num: 121

Candidate Starts for Lton_65:

(Start: 121 @38394 has 91 MA's), (Start: 137 @38436 has 4 MA's), (154, 38475), (163, 38496), (169, 38505), (173, 38508), (229, 38754),

Gene: Lucky10_65 Start: 40814, Stop: 41182, Start Num: 121

Candidate Starts for Lucky10_65:

(55, 40652), (Start: 121 @40814 has 91 MA's), (136, 40853), (Start: 137 @40856 has 4 MA's), (154, 40895), (163, 40916), (169, 40925), (173, 40928),

Gene: Lumos_79 Start: 53430, Stop: 53822, Start Num: 120

Candidate Starts for Lumos_79:

(Start: 120 @53430 has 77 MA's), (133, 53448), (Start: 137 @53469 has 4 MA's), (186, 53592), (212, 53733), (236, 53811), (237, 53814),

Gene: Lutum_91 Start: 49684, Stop: 50049, Start Num: 122

Candidate Starts for Lutum_91:

(12, 48979), (18, 49135), (27, 49315), (36, 49426), (51, 49510), (Start: 122 @49684 has 9 MA's), (Start: 137 @49720 has 4 MA's), (169, 49789), (173, 49792), (181, 49825), (187, 49852), (194, 49906), (195, 49909), (212, 49987),

Gene: Lynnae_82 Start: 53575, Stop: 53988, Start Num: 120

Candidate Starts for Lynnae_82:

(Start: 120 @53575 has 77 MA's), (Start: 137 @53614 has 4 MA's), (163, 53674), (175, 53695), (186, 53737), (202, 53824), (212, 53878), (238, 53974),

Gene: MAckerman_75 Start: 50879, Stop: 51292, Start Num: 120

Candidate Starts for MAckerman_75:

(Start: 120 @50879 has 77 MA's), (Start: 137 @50918 has 4 MA's), (151, 50954), (186, 51041), (212, 51182), (236, 51260), (237, 51263),

Gene: Madavieve_70 Start: 47922, Stop: 48287, Start Num: 121

Candidate Starts for Madavieve_70:

(64, 47805), (74, 47832), (97, 47874), (Start: 121 @47922 has 91 MA's), (131, 47937),

Gene: Madeline_68 Start: 48371, Stop: 48736, Start Num: 121

Candidate Starts for Madeline_68:

(64, 48254), (68, 48263), (74, 48281), (97, 48323), (Start: 121 @48371 has 91 MA's), (131, 48386), (149, 48440), (184, 48527),

Gene: MakCheese_79 Start: 49464, Stop: 49835, Start Num: 121

Candidate Starts for MakCheese_79:

(83, 49383), (104, 49422), (Start: 121 @49464 has 91 MA's),

Gene: Makar_16 Start: 7749, Stop: 8141, Start Num: 115

Candidate Starts for Makar_16:

(44, 7545), (47, 7566), (75, 7653), (106, 7722), (115, 7749), (Start: 117 @7752 has 6 MA's), (Start: 122 @7761 has 9 MA's), (140, 7806), (158, 7860), (184, 7932), (193, 7992), (199, 8025), (203, 8037), (208, 8064), (212, 8076), (214, 8082), (228, 8127),

Gene: Malibo_73 Start: 47674, Stop: 48039, Start Num: 121

Candidate Starts for Malibo_73:

(19, 47248), (64, 47557), (73, 47581), (74, 47584), (97, 47626), (Start: 121 @47674 has 91 MA's),

Gene: Malisha_90 Start: 52796, Stop: 53167, Start Num: 121

Candidate Starts for Malisha_90:

(80, 52715), (102, 52754), (Start: 121 @52796 has 91 MA's), (Start: 137 @52838 has 4 MA's), (154, 52877), (163, 52898), (173, 52910),

Gene: Manasvini_73 Start: 46581, Stop: 46946, Start Num: 121

Candidate Starts for Manasvini_73:

(65, 46467), (Start: 121 @46581 has 91 MA's), (131, 46596), (184, 46737),

Gene: Maridalia_74 Start: 47802, Stop: 48167, Start Num: 121

Candidate Starts for Maridalia_74:

(64, 47685), (74, 47712), (97, 47754), (Start: 121 @47802 has 91 MA's), (131, 47817),

Gene: Marteena_72 Start: 47755, Stop: 48120, Start Num: 121

Candidate Starts for Marteena_72:

(83, 47674), (104, 47713), (Start: 121 @47755 has 91 MA's), (180, 47896),

Gene: Matteo_62 Start: 41374, Stop: 41742, Start Num: 121

Candidate Starts for Matteo_62:

(26, 40987), (72, 41260), (76, 41269), (83, 41293), (Start: 121 @41374 has 91 MA's),

Gene: Mbo4_59 Start: 42474, Stop: 42896, Start Num: 119

Candidate Starts for Mbo4_59:

(32, 42183), (41, 42258), (60, 42348), (Start: 119 @42474 has 31 MA's), (139, 42522), (146, 42552), (178, 42621), (208, 42795),

Gene: Mcklovin_70 Start: 50090, Stop: 50455, Start Num: 121

Candidate Starts for Mcklovin_70:

(72, 49976), (76, 49985), (83, 50009), (104, 50048), (Start: 121 @50090 has 91 MA's), (198, 50336),

Gene: Megan_45 Start: 35422, Stop: 35853, Start Num: 129

Candidate Starts for Megan_45:

(103, 35371), (Start: 129 @35422 has 1 MA's), (164, 35521), (189, 35593), (192, 35629), (195, 35641), (199, 35665), (203, 35677), (204, 35680), (208, 35704), (209, 35707), (212, 35716), (224, 35755), (228, 35767), (231, 35773), (235, 35782), (239, 35809),

Gene: Merpity_62 Start: 35478, Stop: 35843, Start Num: 116

Candidate Starts for Merpity_62:

(116, 35478), (138, 35520), (145, 35550), (161, 35583), (167, 35595), (176, 35610), (179, 35625), (183, 35637), (188, 35655), (190, 35664), (197, 35718), (199, 35730), (207, 35766), (212, 35787), (223, 35820), (228, 35832),

Gene: Metamorphoo_49 Start: 33181, Stop: 33555, Start Num: 130

Candidate Starts for Metamorphoo_49:

(Start: 130 @33181 has 11 MA's), (192, 33388), (204, 33439), (208, 33463), (212, 33475), (227, 33523), (231, 33532),

Gene: MichaelScott_71 Start: 44969, Stop: 45334, Start Num: 126

Candidate Starts for MichaelScott_71:

(Start: 126 @44969 has 10 MA's), (202, 45218),

Gene: Miley16_80 Start: 53557, Stop: 53970, Start Num: 120

Candidate Starts for Miley16_80:

(Start: 120 @53557 has 77 MA's), (Start: 137 @53596 has 4 MA's), (175, 53677), (186, 53719), (202, 53806), (212, 53860), (238, 53956),

Gene: MiniLon_82 Start: 53538, Stop: 53930, Start Num: 120

Candidate Starts for MiniLon_82:

(Start: 120 @53538 has 77 MA's), (133, 53556), (Start: 137 @53577 has 4 MA's), (186, 53700), (212, 53841), (236, 53919), (237, 53922),

Gene: MiniMac_82 Start: 53533, Stop: 53925, Start Num: 120

Candidate Starts for MiniMac_82:

(Start: 120 @53533 has 77 MA's), (133, 53551), (Start: 137 @53572 has 4 MA's), (186, 53695), (212, 53836), (236, 53914), (237, 53917),

Gene: Misha28_68 Start: 42725, Stop: 43102, Start Num: 119

Candidate Starts for Misha28_68:

(Start: 119 @42725 has 31 MA's), (141, 42794), (160, 42830), (171, 42848), (204, 42989), (208, 43013), (225, 43070), (234, 43094),

Gene: MkaliMitinis3_81 Start: 53626, Stop: 54039, Start Num: 120

Candidate Starts for MkaliMitinis3_81:

(Start: 120 @53626 has 77 MA's), (Start: 137 @53665 has 4 MA's), (175, 53746), (186, 53788), (202, 53875), (212, 53929), (238, 54025),

Gene: Mocha12_68 Start: 42833, Stop: 43198, Start Num: 121

Candidate Starts for Mocha12_68:

(14, 42185), (26, 42446), (72, 42719), (76, 42728), (83, 42752), (Start: 121 @42833 has 91 MA's),

Gene: Moosehead_69 Start: 39233, Stop: 39610, Start Num: 119

Candidate Starts for Moosehead_69:

(46, 39047), (79, 39152), (83, 39164), (108, 39209), (Start: 119 @39233 has 31 MA's), (139, 39281), (160, 39329), (211, 39533),

Gene: Moostard_76 Start: 53435, Stop: 53827, Start Num: 120

Candidate Starts for Moostard_76:

(Start: 120 @53435 has 77 MA's), (133, 53453), (Start: 137 @53474 has 4 MA's), (186, 53597), (212, 53738), (236, 53816), (237, 53819),

Gene: Morkie_68 Start: 39542, Stop: 39910, Start Num: 121

Candidate Starts for Morkie_68:

(Start: 121 @39542 has 91 MA's), (Start: 137 @39584 has 4 MA's), (154, 39623), (163, 39644), (169, 39653), (173, 39656), (229, 39902),

Gene: MortyNRick_82 Start: 48781, Stop: 49158, Start Num: 119

Candidate Starts for MortyNRick_82:

(Start: 119 @48781 has 31 MA's), (139, 48829), (160, 48877), (196, 49015), (203, 49042), (211, 49081), (217, 49102), (225, 49123),

Gene: MrSmee_60 Start: 35393, Stop: 35752, Start Num: 118

Candidate Starts for MrSmee_60:

(Start: 118 @35393 has 5 MA's), (138, 35432), (161, 35495), (167, 35507), (188, 35567), (197, 35630), (207, 35675), (208, 35681), (212, 35696), (223, 35729), (228, 35741),

Gene: MsGreen_78 Start: 53471, Stop: 53824, Start Num: 137
Candidate Starts for MsGreen_78:
(Start: 120 @53432 has 77 MA's), (133, 53450), (Start: 137 @53471 has 4 MA's), (186, 53594), (212, 53735), (236, 53813), (237, 53816),

Gene: MulchSalad_67 Start: 40786, Stop: 41157, Start Num: 122
Candidate Starts for MulchSalad_67:
(Start: 122 @40786 has 9 MA's), (128, 40795), (131, 40801), (Start: 137 @40825 has 4 MA's), (166, 40891), (173, 40897), (186, 40951), (187, 40957), (202, 41038),

Gene: Neobush_73 Start: 47125, Stop: 47490, Start Num: 121
Candidate Starts for Neobush_73:
(65, 47011), (Start: 121 @47125 has 91 MA's), (131, 47140), (184, 47281),

Gene: Nettuno_66 Start: 42038, Stop: 42406, Start Num: 121
Candidate Starts for Nettuno_66:
(64, 41921), (68, 41930), (74, 41948), (97, 41990), (Start: 121 @42038 has 91 MA's), (131, 42053),

Gene: Netyap_81 Start: 53558, Stop: 53971, Start Num: 120
Candidate Starts for Netyap_81:
(Start: 120 @53558 has 77 MA's), (Start: 137 @53597 has 4 MA's), (175, 53678), (186, 53720), (202, 53807), (212, 53861), (238, 53957),

Gene: Nicholas_76 Start: 53440, Stop: 53832, Start Num: 120
Candidate Starts for Nicholas_76:
(Start: 120 @53440 has 77 MA's), (133, 53458), (Start: 137 @53479 has 4 MA's), (186, 53602), (212, 53743), (236, 53821), (237, 53824),

Gene: Nicholasp3_80 Start: 53392, Stop: 53805, Start Num: 120
Candidate Starts for Nicholasp3_80:
(Start: 120 @53392 has 77 MA's), (Start: 137 @53431 has 4 MA's), (175, 53512), (186, 53554), (202, 53641), (212, 53695), (238, 53791),

Gene: Nicole72_45 Start: 35846, Stop: 36274, Start Num: 132
Candidate Starts for Nicole72_45:
(62, 35690), (Start: 132 @35846 has 1 MA's), (135, 35855), (192, 36047), (193, 36050), (203, 36095), (204, 36098), (208, 36122), (212, 36134), (219, 36161), (224, 36173), (226, 36179), (228, 36185), (231, 36191), (235, 36203), (239, 36230),

Gene: NoodlelyBoi_48 Start: 32719, Stop: 33093, Start Num: 130
Candidate Starts for NoodlelyBoi_48:
(Start: 130 @32719 has 11 MA's), (147, 32779), (159, 32806), (186, 32875), (188, 32884), (190, 32893), (192, 32926), (199, 32962), (204, 32977), (208, 33001), (212, 33013), (228, 33064), (231, 33070),

Gene: Nymphadora_75 Start: 49524, Stop: 49889, Start Num: 121
Candidate Starts for Nymphadora_75:
(64, 49407), (73, 49431), (74, 49434), (97, 49476), (Start: 121 @49524 has 91 MA's), (131, 49539),

Gene: ODay_98 Start: 52337, Stop: 52702, Start Num: 122
Candidate Starts for ODay_98:
(Start: 122 @52337 has 9 MA's), (Start: 137 @52373 has 4 MA's), (169, 52442), (173, 52445), (177, 52463), (181, 52478), (187, 52505), (192, 52550), (194, 52559), (195, 52562), (208, 52625), (212,

52640),

Gene: Ohgeesy_74 Start: 49004, Stop: 49369, Start Num: 121

Candidate Starts for Ohgeesy_74:

(64, 48887), (74, 48914), (Start: 121 @49004 has 91 MA's),

Gene: OneDirection_62 Start: 36956, Stop: 37324, Start Num: 121

Candidate Starts for OneDirection_62:

(Start: 121 @36956 has 91 MA's), (Start: 137 @36998 has 4 MA's), (154, 37037), (163, 37058), (169, 37067), (173, 37070),

Gene: OnionKnight_42 Start: 30317, Stop: 30808, Start Num: 86

Candidate Starts for OnionKnight_42:

(Start: 86 @30317 has 1 MA's), (107, 30359), (Start: 137 @30434 has 4 MA's), (153, 30485), (157, 30494), (167, 30515), (197, 30641), (199, 30653), (212, 30707), (216, 30722), (217, 30725), (238, 30797),

Gene: Oregano_70 Start: 43852, Stop: 44250, Start Num: 119

Candidate Starts for Oregano_70:

(Start: 119 @43852 has 31 MA's), (141, 43912), (189, 44029), (211, 44173), (225, 44215),

Gene: Orkz_57 Start: 36268, Stop: 36717, Start Num: 96

Candidate Starts for Orkz_57:

(15, 35722), (23, 35932), (24, 35935), (29, 35983), (41, 36097), (50, 36157), (61, 36190), (96, 36268), (99, 36280), (Start: 126 @36340 has 10 MA's), (145, 36403), (154, 36421), (167, 36448), (188, 36508), (206, 36616), (212, 36640), (233, 36703),

Gene: OverPar_81 Start: 53642, Stop: 54055, Start Num: 120

Candidate Starts for OverPar_81:

(Start: 120 @53642 has 77 MA's), (Start: 137 @53681 has 4 MA's), (175, 53762), (186, 53804), (202, 53891), (212, 53945), (238, 54041),

Gene: PFR1_47 Start: 32984, Stop: 33379, Start Num: 114

Candidate Starts for PFR1_47:

(114, 32984), (Start: 119 @32996 has 31 MA's), (133, 33014), (139, 33038), (186, 33161), (203, 33257), (208, 33284),

Gene: PFR2_49 Start: 34553, Stop: 34948, Start Num: 114

Candidate Starts for PFR2_49:

(114, 34553), (Start: 119 @34565 has 31 MA's), (133, 34583), (139, 34607), (186, 34730), (203, 34826), (208, 34853),

Gene: PYPDinur_77 Start: 52639, Stop: 52995, Start Num: 133

Candidate Starts for PYPDinur_77:

(Start: 120 @52621 has 77 MA's), (133, 52639), (Start: 134 @52645 has 1 MA's), (Start: 137 @52660 has 4 MA's), (146, 52684), (186, 52783), (197, 52858), (203, 52882), (212, 52924), (216, 52939),

Gene: PantheRoc_77 Start: 49218, Stop: 49622, Start Num: 119

Candidate Starts for PantheRoc_77:

(69, 49101), (77, 49125), (78, 49128), (99, 49170), (Start: 119 @49218 has 31 MA's), (139, 49266), (165, 49326), (182, 49365), (186, 49380), (189, 49395), (211, 49539), (222, 49575), (225, 49584),

Gene: Pepperoni_61 Start: 38082, Stop: 38450, Start Num: 121

Candidate Starts for Pepperoni_61:

(80, 38001), (Start: 121 @38082 has 91 MA's), (Start: 137 @38124 has 4 MA's), (154, 38163), (163, 38184), (169, 38193), (173, 38196), (229, 38442),

Gene: Periwinkle_99 Start: 52035, Stop: 52403, Start Num: 120

Candidate Starts for Periwinkle_99:

(Start: 120 @52035 has 77 MA's), (141, 52092), (174, 52149), (185, 52191), (186, 52194), (187, 52200), (202, 52281), (208, 52320), (211, 52332), (213, 52338), (225, 52368),

Gene: Phabuloso_97 Start: 51176, Stop: 51541, Start Num: 122

Candidate Starts for Phabuloso_97:

(12, 50471), (18, 50627), (27, 50807), (36, 50918), (51, 51002), (Start: 122 @51176 has 9 MA's), (Start: 137 @51212 has 4 MA's), (169, 51281), (173, 51284), (181, 51317), (187, 51344), (194, 51398), (195, 51401), (212, 51479),

Gene: PhaoMing_68 Start: 43324, Stop: 43689, Start Num: 122

Candidate Starts for PhaoMing_68:

(Start: 122 @43324 has 9 MA's), (Start: 137 @43360 has 4 MA's), (169, 43429), (173, 43432), (181, 43465), (187, 43492), (194, 43546), (195, 43549), (212, 43627),

Gene: Phistory_88 Start: 48067, Stop: 48444, Start Num: 119

Candidate Starts for Phistory_88:

(Start: 119 @48067 has 31 MA's), (139, 48115), (160, 48163), (186, 48229), (196, 48301), (211, 48367), (217, 48388), (225, 48409),

Gene: PhorbesPhlower_66 Start: 38937, Stop: 39305, Start Num: 121

Candidate Starts for PhorbesPhlower_66:

(Start: 121 @38937 has 91 MA's), (Start: 137 @38979 has 4 MA's), (154, 39018), (163, 39039), (169, 39048), (173, 39051), (229, 39297),

Gene: PhriskyACE_66 Start: 44129, Stop: 44497, Start Num: 121

Candidate Starts for PhriskyACE_66:

(83, 44048), (104, 44087), (Start: 121 @44129 has 91 MA's), (155, 44213),

Gene: Pickett_65 Start: 41546, Stop: 41911, Start Num: 121

Candidate Starts for Pickett_65:

(72, 41432), (76, 41441), (83, 41465), (Start: 121 @41546 has 91 MA's),

Gene: Piper2020_71 Start: 43620, Stop: 43997, Start Num: 119

Candidate Starts for Piper2020_71:

(Start: 119 @43620 has 31 MA's), (141, 43689), (160, 43725), (171, 43743), (204, 43884), (208, 43908), (225, 43965), (234, 43989),

Gene: Pitbull_61 Start: 34580, Stop: 34939, Start Num: 118

Candidate Starts for Pitbull_61:

(Start: 118 @34580 has 5 MA's), (138, 34619), (Start: 143 @34640 has 1 MA's), (145, 34649), (152, 34664), (161, 34682), (176, 34709), (192, 34793), (207, 34862), (212, 34883), (223, 34916), (228, 34928),

Gene: Pollux_76 Start: 49712, Stop: 50077, Start Num: 121

Candidate Starts for Pollux_76:

(83, 49631), (104, 49670), (Start: 121 @49712 has 91 MA's), (180, 49853),

Gene: Polly_68 Start: 46000, Stop: 46365, Start Num: 121
Candidate Starts for Polly_68:
(65, 45886), (Start: 121 @46000 has 91 MA's), (131, 46015), (184, 46156),

Gene: Powerball_68 Start: 44232, Stop: 44600, Start Num: 121
Candidate Starts for Powerball_68:
(83, 44151), (104, 44190), (Start: 121 @44232 has 91 MA's), (155, 44316),

Gene: Purplicious_13 Start: 6966, Stop: 7358, Start Num: 115
Candidate Starts for Purplicious_13:
(47, 6783), (54, 6810), (82, 6894), (106, 6939), (115, 6966), (Start: 117 @6969 has 6 MA's), (Start: 122 @6978 has 9 MA's), (Start: 129 @6987 has 1 MA's), (150, 7062), (187, 7161), (198, 7239), (203, 7254), (208, 7281), (212, 7293), (217, 7311), (228, 7344),

Gene: Pytheas_78 Start: 51013, Stop: 51378, Start Num: 121
Candidate Starts for Pytheas_78:
(56, 50893), (95, 50962), (100, 50977), (Start: 121 @51013 has 91 MA's), (203, 51274),

Gene: Quby_78 Start: 52015, Stop: 52338, Start Num: 146
Candidate Starts for Quby_78:
(Start: 120 @51952 has 77 MA's), (133, 51970), (Start: 134 @51976 has 1 MA's), (Start: 137 @51991 has 4 MA's), (146, 52015), (186, 52114), (187, 52120), (197, 52189), (203, 52213), (212, 52255), (236, 52330),

Gene: RavenCo17_69 Start: 47361, Stop: 47729, Start Num: 121
Candidate Starts for RavenCo17_69:
(10, 46593), (Start: 121 @47361 has 91 MA's), (131, 47376), (204, 47625),

Gene: Raya_58 Start: 34523, Stop: 34882, Start Num: 118
Candidate Starts for Raya_58:
(Start: 118 @34523 has 5 MA's), (138, 34562), (161, 34625), (167, 34637), (188, 34697), (197, 34760), (207, 34805), (208, 34811), (212, 34826), (223, 34859), (228, 34871),

Gene: Red305_79 Start: 53472, Stop: 53825, Start Num: 137
Candidate Starts for Red305_79:
(Start: 120 @53433 has 77 MA's), (133, 53451), (Start: 137 @53472 has 4 MA's), (186, 53595), (212, 53736), (236, 53814), (237, 53817),

Gene: Rizz_71 Start: 45086, Stop: 45454, Start Num: 126
Candidate Starts for Rizz_71:
(3, 44081), (4, 44093), (5, 44129), (6, 44153), (7, 44165), (8, 44177), (Start: 126 @45086 has 10 MA's),

Gene: RobsFeet_50 Start: 33462, Stop: 33836, Start Num: 130
Candidate Starts for RobsFeet_50:
(Start: 130 @33462 has 11 MA's), (192, 33669), (204, 33720), (208, 33744), (212, 33756), (227, 33804), (231, 33813),

Gene: Rose5_77 Start: 52059, Stop: 52472, Start Num: 120
Candidate Starts for Rose5_77:
(Start: 120 @52059 has 77 MA's), (Start: 137 @52098 has 4 MA's), (151, 52134), (186, 52221), (212, 52362), (236, 52440), (237, 52443),

Gene: Rossetti_81 Start: 53966, Stop: 54379, Start Num: 120

Candidate Starts for Rossetti_81:

(Start: 120 @53966 has 77 MA's), (Start: 137 @54005 has 4 MA's), (175, 54086), (186, 54128), (202, 54215), (212, 54269), (238, 54365),

Gene: Rumpelstiltskin_77 Start: 53185, Stop: 53598, Start Num: 120

Candidate Starts for Rumpelstiltskin_77:

(Start: 120 @53185 has 77 MA's), (Start: 137 @53224 has 4 MA's), (175, 53305), (186, 53347), (202, 53434), (212, 53488), (238, 53584),

Gene: Ruthy_70 Start: 49109, Stop: 49477, Start Num: 122

Candidate Starts for Ruthy_70:

(37, 48851), (39, 48860), (71, 48989), (Start: 122 @49109 has 9 MA's), (Start: 137 @49148 has 4 MA's), (154, 49187), (163, 49208), (173, 49220), (186, 49274),

Gene: Sahara_67 Start: 42654, Stop: 43022, Start Num: 121

Candidate Starts for Sahara_67:

(1, 41634), (2, 41637), (26, 42267), (72, 42540), (76, 42549), (83, 42573), (Start: 121 @42654 has 91 MA's),

Gene: Samman98_71 Start: 44391, Stop: 44756, Start Num: 126

Candidate Starts for Samman98_71:

(Start: 126 @44391 has 10 MA's), (202, 44640),

Gene: Samty_77 Start: 53428, Stop: 53820, Start Num: 120

Candidate Starts for Samty_77:

(Start: 120 @53428 has 77 MA's), (133, 53446), (Start: 137 @53467 has 4 MA's), (186, 53590), (212, 53731), (236, 53809), (237, 53812),

Gene: Sarshaun_81 Start: 53650, Stop: 54063, Start Num: 120

Candidate Starts for Sarshaun_81:

(Start: 120 @53650 has 77 MA's), (Start: 137 @53689 has 4 MA's), (175, 53770), (186, 53812), (202, 53899), (212, 53953), (238, 54049),

Gene: Savage_68 Start: 42833, Stop: 43198, Start Num: 121

Candidate Starts for Savage_68:

(14, 42185), (26, 42446), (72, 42719), (76, 42728), (83, 42752), (Start: 121 @42833 has 91 MA's),

Gene: Sbash_61 Start: 42805, Stop: 43188, Start Num: 119

Candidate Starts for Sbash_61:

(42, 42580), (84, 42736), (87, 42739), (Start: 119 @42805 has 31 MA's), (127, 42826), (141, 42877), (203, 43069), (204, 43072), (225, 43153), (235, 43180),

Gene: Scitech_46 Start: 32555, Stop: 32974, Start Num: 101

Candidate Starts for Scitech_46:

(101, 32555), (111, 32582), (Start: 119 @32597 has 31 MA's), (141, 32666), (160, 32702), (171, 32720), (204, 32861), (225, 32942), (234, 32966),

Gene: Sekhmet_69 Start: 43915, Stop: 44283, Start Num: 121

Candidate Starts for Sekhmet_69:

(11, 43162), (72, 43801), (76, 43810), (83, 43834), (104, 43873), (Start: 121 @43915 has 91 MA's),

Gene: ShawBrad_95 Start: 49284, Stop: 49652, Start Num: 120

Candidate Starts for ShawBrad_95:

(Start: 120 @49284 has 77 MA's), (141, 49341), (174, 49398), (185, 49440), (186, 49443), (187, 49449), (202, 49530), (208, 49569), (211, 49581), (213, 49587), (225, 49617),

Gene: Sheng711_79 Start: 52255, Stop: 52629, Start Num: 120

Candidate Starts for Sheng711_79:

(Start: 120 @52255 has 77 MA's), (133, 52273), (Start: 134 @52279 has 1 MA's), (Start: 137 @52294 has 4 MA's), (146, 52318), (186, 52417), (197, 52492), (203, 52516), (212, 52558), (216, 52573),

Gene: Shlim410_69 Start: 48744, Stop: 49163, Start Num: 110

Candidate Starts for Shlim410_69:

(Start: 110 @48744 has 3 MA's), (Start: 119 @48762 has 31 MA's), (189, 48939), (211, 49083), (225, 49125),

Gene: Shrubaron_49 Start: 33096, Stop: 33470, Start Num: 130

Candidate Starts for Shrubaron_49:

(Start: 130 @33096 has 11 MA's), (192, 33303), (204, 33354), (208, 33378), (212, 33390), (227, 33438), (231, 33447),

Gene: Sidious_71 Start: 48554, Stop: 48919, Start Num: 121

Candidate Starts for Sidious_71:

(83, 48473), (104, 48512), (Start: 121 @48554 has 91 MA's),

Gene: Silverleaf_77 Start: 51554, Stop: 51928, Start Num: 137

Candidate Starts for Silverleaf_77:

(Start: 120 @51515 has 77 MA's), (Start: 137 @51554 has 4 MA's), (151, 51590), (186, 51677), (212, 51818), (236, 51896), (237, 51899),

Gene: SirFrank_47 Start: 32289, Stop: 32663, Start Num: 130

Candidate Starts for SirFrank_47:

(Start: 130 @32289 has 11 MA's), (147, 32349), (159, 32376), (186, 32445), (188, 32454), (190, 32463), (192, 32496), (199, 32532), (204, 32547), (208, 32571), (212, 32583), (228, 32634), (231, 32640),

Gene: SkinnyPete_48 Start: 33096, Stop: 33473, Start Num: 119

Candidate Starts for SkinnyPete_48:

(Start: 119 @33096 has 31 MA's), (141, 33165), (160, 33201), (171, 33219), (204, 33360), (225, 33441), (234, 33465),

Gene: Skitty_55 Start: 33627, Stop: 33986, Start Num: 118

Candidate Starts for Skitty_55:

(Start: 118 @33627 has 5 MA's), (138, 33666), (Start: 143 @33687 has 1 MA's), (145, 33696), (161, 33729), (188, 33801), (207, 33909), (212, 33930), (223, 33963), (228, 33975),

Gene: Skugga_46 Start: 32083, Stop: 32457, Start Num: 130

Candidate Starts for Skugga_46:

(Start: 130 @32083 has 11 MA's), (186, 32239), (208, 32365), (212, 32377), (228, 32428), (231, 32434),

Gene: Skyerus_53 Start: 32641, Stop: 33000, Start Num: 118

Candidate Starts for Skyerus_53:

(Start: 118 @32641 has 5 MA's), (138, 32680), (161, 32743), (167, 32755), (188, 32815), (197, 32878), (207, 32923), (208, 32929), (212, 32944), (223, 32977), (228, 32989),

Gene: Snenia_77 Start: 53434, Stop: 53826, Start Num: 120

Candidate Starts for Snenia_77:

(Start: 120 @53434 has 77 MA's), (133, 53452), (Start: 137 @53473 has 4 MA's), (186, 53596), (212, 53737), (236, 53815), (237, 53818),

Gene: SoJulia_82 Start: 54718, Stop: 55131, Start Num: 120

Candidate Starts for SoJulia_82:

(Start: 120 @54718 has 77 MA's), (Start: 137 @54757 has 4 MA's), (175, 54838), (186, 54880), (202, 54967), (212, 55021), (238, 55117),

Gene: Soap141_80 Start: 53650, Stop: 54063, Start Num: 120

Candidate Starts for Soap141_80:

(Start: 120 @53650 has 77 MA's), (Start: 137 @53689 has 4 MA's), (175, 53770), (186, 53812), (202, 53899), (212, 53953), (238, 54049),

Gene: SoilAssassin_68 Start: 45279, Stop: 45647, Start Num: 121

Candidate Starts for SoilAssassin_68:

(64, 45162), (68, 45171), (74, 45189), (97, 45231), (Start: 121 @45279 has 91 MA's), (131, 45294),

Gene: Soos_13 Start: 6967, Stop: 7356, Start Num: 117

Candidate Starts for Soos_13:

(47, 6781), (82, 6892), (106, 6937), (115, 6964), (Start: 117 @6967 has 6 MA's), (Start: 122 @6976 has 9 MA's), (Start: 129 @6985 has 1 MA's), (150, 7060), (187, 7159), (198, 7237), (203, 7252), (208, 7279), (212, 7291), (217, 7309), (219, 7318), (228, 7342),

Gene: Sprinklemunch_77 Start: 49362, Stop: 49694, Start Num: 136

Candidate Starts for Sprinklemunch_77:

(71, 49206), (81, 49239), (Start: 121 @49323 has 91 MA's), (136, 49362), (Start: 137 @49365 has 4 MA's), (163, 49425), (173, 49437),

Gene: Sproutie_68 Start: 42833, Stop: 43198, Start Num: 121

Candidate Starts for Sproutie_68:

(14, 42185), (26, 42446), (72, 42719), (76, 42728), (83, 42752), (Start: 121 @42833 has 91 MA's),

Gene: Stillion_14 Start: 7417, Stop: 7836, Start Num: 106

Candidate Starts for Stillion_14:

(47, 7261), (82, 7372), (106, 7417), (115, 7444), (Start: 117 @7447 has 6 MA's), (Start: 122 @7456 has 9 MA's), (Start: 129 @7465 has 1 MA's), (150, 7540), (187, 7639), (198, 7717), (203, 7732), (208, 7759), (212, 7771), (217, 7789), (228, 7822),

Gene: Sting_14 Start: 7379, Stop: 7768, Start Num: 117

Candidate Starts for Sting_14:

(44, 7172), (47, 7193), (82, 7304), (106, 7349), (115, 7376), (Start: 117 @7379 has 6 MA's), (Start: 122 @7388 has 9 MA's), (Start: 129 @7397 has 1 MA's), (150, 7472), (187, 7571), (198, 7649), (203, 7664), (208, 7691), (212, 7703), (217, 7721), (219, 7730), (228, 7754),

Gene: Suerte_64 Start: 43530, Stop: 43898, Start Num: 121

Candidate Starts for Suerte_64:

(72, 43416), (76, 43425), (83, 43449), (Start: 121 @43530 has 91 MA's),

Gene: Suscepit_71 Start: 46558, Stop: 46923, Start Num: 121

Candidate Starts for Suscepit_71:

(65, 46444), (Start: 121 @46558 has 91 MA's), (131, 46573), (184, 46714),

Gene: SushiChef_74 Start: 49689, Stop: 50066, Start Num: 121

Candidate Starts for SushiChef_74:

(64, 49572), (73, 49596), (74, 49599), (97, 49641), (Start: 121 @49689 has 91 MA's), (131, 49704),

Gene: Tayonia_71 Start: 46557, Stop: 46922, Start Num: 121

Candidate Starts for Tayonia_71:

(65, 46443), (Start: 121 @46557 has 91 MA's), (131, 46572), (184, 46713),

Gene: Teamocil_49 Start: 32160, Stop: 32534, Start Num: 130

Candidate Starts for Teamocil_49:

(Start: 130 @32160 has 11 MA's), (170, 32265), (186, 32316), (192, 32367), (204, 32418), (208, 32442), (212, 32454), (214, 32460), (218, 32475), (228, 32505), (231, 32511),

Gene: ThankyouJordi_74 Start: 49930, Stop: 50295, Start Num: 121

Candidate Starts for ThankyouJordi_74:

(31, 49627), (64, 49813), (68, 49822), (74, 49840), (97, 49882), (Start: 121 @49930 has 91 MA's),

Gene: Thimann_71 Start: 44657, Stop: 45025, Start Num: 126

Candidate Starts for Thimann_71:

(3, 43652), (4, 43664), (5, 43700), (6, 43724), (7, 43736), (8, 43748), (20, 44210), (Start: 126 @44657 has 10 MA's),

Gene: TimTam_75 Start: 49524, Stop: 49889, Start Num: 121

Candidate Starts for TimTam_75:

(64, 49407), (73, 49431), (74, 49434), (97, 49476), (Start: 121 @49524 has 91 MA's), (131, 49539),

Gene: Tonitrus_75 Start: 53537, Stop: 53983, Start Num: 109

Candidate Starts for Tonitrus_75:

(40, 53345), (105, 53534), (Start: 109 @53537 has 1 MA's), (Start: 119 @53561 has 31 MA's), (139, 53606), (141, 53618), (149, 53630), (168, 53669), (184, 53714), (188, 53729), (198, 53804),

Gene: TootsiePop_68 Start: 42725, Stop: 43102, Start Num: 119

Candidate Starts for TootsiePop_68:

(Start: 119 @42725 has 31 MA's), (141, 42794), (160, 42830), (171, 42848), (204, 42989), (208, 43013), (225, 43070), (234, 43094),

Gene: Tortellini_59 Start: 41926, Stop: 42303, Start Num: 119

Candidate Starts for Tortellini_59:

(21, 41533), (49, 41752), (91, 41869), (Start: 119 @41926 has 31 MA's), (141, 41995), (160, 42031), (171, 42049), (208, 42214), (225, 42271), (234, 42295),

Gene: Tourach_79 Start: 53675, Stop: 54073, Start Num: 120

Candidate Starts for Tourach_79:

(Start: 120 @53675 has 77 MA's), (Start: 137 @53714 has 4 MA's), (151, 53750), (175, 53795), (186, 53837), (202, 53924), (212, 53978), (236, 54056),

Gene: TriFive_79 Start: 53433, Stop: 53825, Start Num: 120

Candidate Starts for TriFive_79:

(Start: 120 @53433 has 77 MA's), (133, 53451), (Start: 137 @53472 has 4 MA's), (186, 53595), (212, 53736), (236, 53814), (237, 53817),

Gene: Trumpet_71 Start: 46558, Stop: 46923, Start Num: 121

Candidate Starts for Trumpet_71:

(65, 46444), (Start: 121 @46558 has 91 MA's), (131, 46573), (184, 46714),

Gene: TuertoX_68 Start: 42833, Stop: 43198, Start Num: 121

Candidate Starts for TuertoX_68:

(14, 42185), (26, 42446), (72, 42719), (76, 42728), (83, 42752), (Start: 121 @42833 has 91 MA's),

Gene: Tuti_64 Start: 44827, Stop: 45192, Start Num: 126

Candidate Starts for Tuti_64:

(Start: 126 @44827 has 10 MA's), (202, 45076),

Gene: Twinkle_70 Start: 49803, Stop: 50222, Start Num: 110

Candidate Starts for Twinkle_70:

(Start: 110 @49803 has 3 MA's), (Start: 119 @49821 has 31 MA's), (189, 49998), (211, 50142), (225, 50184),

Gene: Tyumbra_47 Start: 33262, Stop: 33636, Start Num: 130

Candidate Starts for Tyumbra_47:

(Start: 130 @33262 has 11 MA's), (192, 33469), (204, 33520), (208, 33544), (212, 33556), (227, 33604), (231, 33613),

Gene: Tyson_78 Start: 51985, Stop: 52398, Start Num: 120

Candidate Starts for Tyson_78:

(Start: 120 @51985 has 77 MA's), (Start: 137 @52024 has 4 MA's), (151, 52060), (186, 52147), (212, 52288), (236, 52366), (237, 52369),

Gene: UPIE_76 Start: 51581, Stop: 51994, Start Num: 120

Candidate Starts for UPIE_76:

(Start: 120 @51581 has 77 MA's), (Start: 137 @51620 has 4 MA's), (151, 51656), (186, 51743), (212, 51884), (236, 51962), (237, 51965),

Gene: Underpass_71 Start: 48428, Stop: 48841, Start Num: 120

Candidate Starts for Underpass_71:

(Start: 120 @48428 has 77 MA's), (Start: 137 @48467 has 4 MA's), (175, 48548), (186, 48590), (202, 48677), (212, 48731), (238, 48827),

Gene: Vasanti_67 Start: 44256, Stop: 44621, Start Num: 121

Candidate Starts for Vasanti_67:

(64, 44139), (73, 44163), (74, 44166), (97, 44208), (Start: 121 @44256 has 91 MA's), (172, 44367), (180, 44397),

Gene: Vetrix_79 Start: 53474, Stop: 53887, Start Num: 120

Candidate Starts for Vetrix_79:

(Start: 120 @53474 has 77 MA's), (Start: 137 @53513 has 4 MA's), (175, 53594), (186, 53636), (202, 53723), (212, 53777), (238, 53873),

Gene: Wamburgexpress_77 Start: 52020, Stop: 52433, Start Num: 120

Candidate Starts for Wamburgexpress_77:

(Start: 120 @52020 has 77 MA's), (Start: 137 @52059 has 4 MA's), (151, 52095), (186, 52182), (212, 52323), (236, 52401), (237, 52404),

Gene: WelcomeAyanna_74 Start: 50077, Stop: 50442, Start Num: 121

Candidate Starts for WelcomeAyanna_74:

(31, 49774), (64, 49960), (68, 49969), (74, 49987), (97, 50029), (Start: 121 @50077 has 91 MA's),

Gene: Whirlwind_79 Start: 53633, Stop: 54025, Start Num: 120

Candidate Starts for Whirlwind_79:

(Start: 120 @53633 has 77 MA's), (133, 53651), (Start: 137 @53672 has 4 MA's), (186, 53795), (212, 53936), (236, 54014), (237, 54017),

Gene: Whiteclaw_68 Start: 42833, Stop: 43198, Start Num: 121

Candidate Starts for Whiteclaw_68:

(14, 42185), (26, 42446), (72, 42719), (76, 42728), (83, 42752), (Start: 121 @42833 has 91 MA's),

Gene: Whitney_89 Start: 51269, Stop: 51634, Start Num: 122

Candidate Starts for Whitney_89:

(Start: 122 @51269 has 9 MA's), (Start: 137 @51305 has 4 MA's), (169, 51374), (173, 51377), (181, 51410), (187, 51437), (194, 51491), (195, 51494), (212, 51572),

Gene: Wigglewigggle_79 Start: 53419, Stop: 53832, Start Num: 120

Candidate Starts for Wigglewigggle_79:

(Start: 120 @53419 has 77 MA's), (Start: 137 @53458 has 4 MA's), (175, 53539), (186, 53581), (202, 53668), (212, 53722), (238, 53818),

Gene: Wilder_81 Start: 53563, Stop: 53976, Start Num: 120

Candidate Starts for Wilder_81:

(Start: 120 @53563 has 77 MA's), (Start: 137 @53602 has 4 MA's), (163, 53662), (175, 53683), (186, 53725), (202, 53812), (212, 53866), (238, 53962),

Gene: WinkNick_70 Start: 43439, Stop: 43807, Start Num: 121

Candidate Starts for WinkNick_70:

(11, 42686), (72, 43325), (76, 43334), (83, 43358), (104, 43397), (Start: 121 @43439 has 91 MA's), (186, 43604),

Gene: Winky_80 Start: 53557, Stop: 53970, Start Num: 120

Candidate Starts for Winky_80:

(Start: 120 @53557 has 77 MA's), (Start: 137 @53596 has 4 MA's), (175, 53677), (186, 53719), (202, 53806), (212, 53860), (238, 53956),

Gene: Wyatt2_78 Start: 51983, Stop: 52396, Start Num: 120

Candidate Starts for Wyatt2_78:

(Start: 120 @51983 has 77 MA's), (Start: 137 @52022 has 4 MA's), (151, 52058), (186, 52145), (212, 52286), (236, 52364), (237, 52367),

Gene: Yeet412_67 Start: 44083, Stop: 44451, Start Num: 121

Candidate Starts for Yeet412_67:

(64, 43966), (68, 43975), (74, 43993), (97, 44035), (Start: 121 @44083 has 91 MA's), (131, 44098),

Gene: Yeezy_76 Start: 47471, Stop: 47836, Start Num: 121

Candidate Starts for Yeezy_76:

(88, 47405), (Start: 121 @47471 has 91 MA's), (131, 47486),

Gene: Yinzer_68 Start: 42833, Stop: 43198, Start Num: 121

Candidate Starts for Yinzer_68:

(14, 42185), (26, 42446), (72, 42719), (76, 42728), (83, 42752), (Start: 121 @42833 has 91 MA's),

Gene: Zakai_81 Start: 53883, Stop: 54296, Start Num: 120

Candidate Starts for Zakai_81:

(Start: 120 @53883 has 77 MA's), (Start: 137 @53922 has 4 MA's), (175, 54003), (186, 54045), (202, 54132), (212, 54186), (238, 54282),

Gene: Zameen_71 Start: 46557, Stop: 46922, Start Num: 121

Candidate Starts for Zameen_71:

(65, 46443), (Start: 121 @46557 has 91 MA's), (131, 46572), (184, 46713),

Gene: Zaria_78 Start: 51435, Stop: 51848, Start Num: 120

Candidate Starts for Zaria_78:

(Start: 120 @51435 has 77 MA's), (Start: 137 @51474 has 4 MA's), (151, 51510), (186, 51597), (212, 51738), (236, 51816), (237, 51819),

Gene: ZhongYanYuan_77 Start: 53010, Stop: 53423, Start Num: 120

Candidate Starts for ZhongYanYuan_77:

(Start: 120 @53010 has 77 MA's), (Start: 137 @53049 has 4 MA's), (175, 53130), (186, 53172), (202, 53259), (212, 53313), (238, 53409),

Gene: Zirinka_69 Start: 48225, Stop: 48590, Start Num: 121

Candidate Starts for Zirinka_69:

(64, 48108), (73, 48132), (74, 48135), (97, 48177), (Start: 121 @48225 has 91 MA's), (131, 48240),

Gene: Zodiariah_66 Start: 48840, Stop: 49217, Start Num: 121

Candidate Starts for Zodiariah_66:

(16, 48246), (43, 48618), (52, 48675), (Start: 121 @48840 has 91 MA's), (138, 48894),