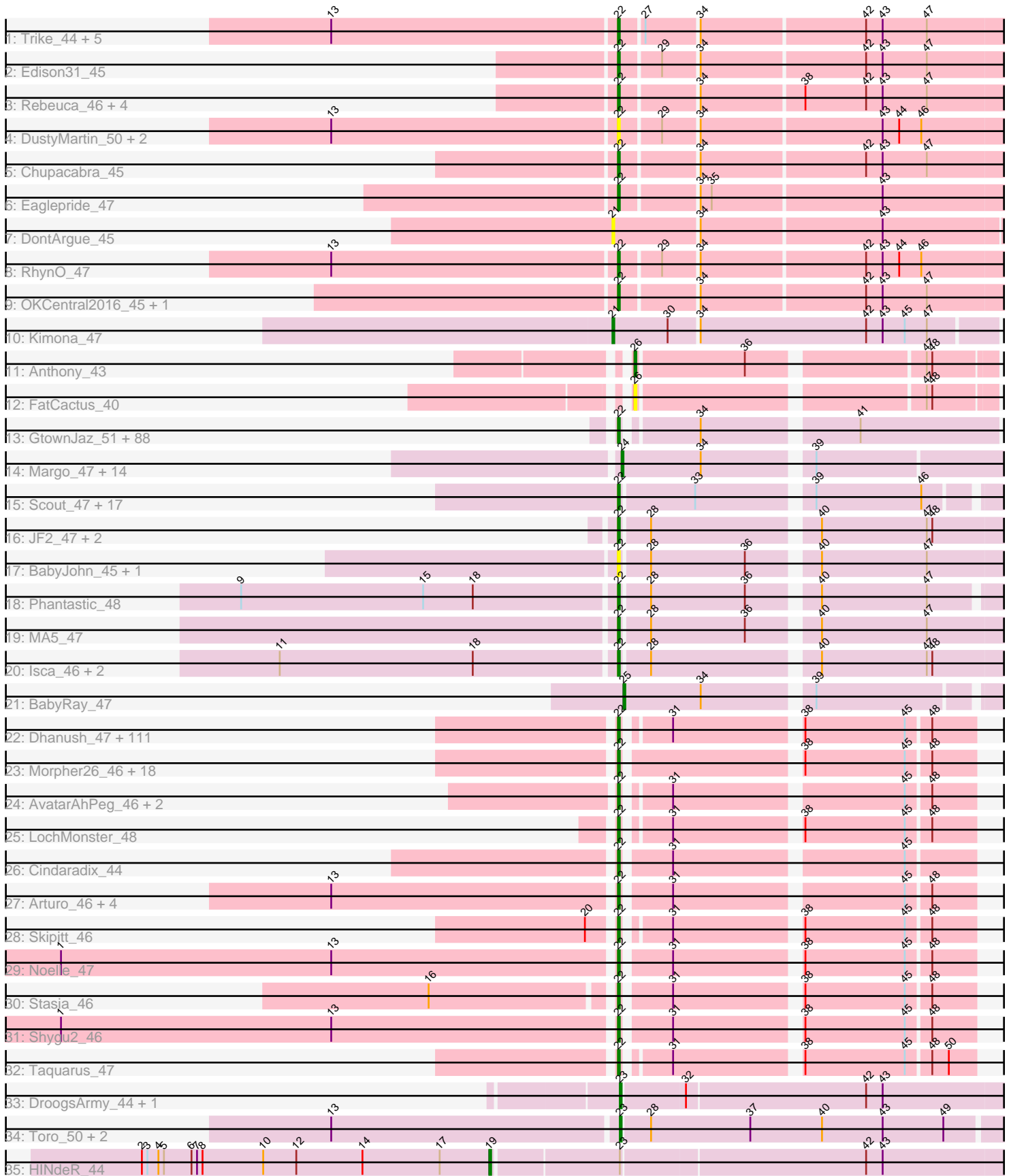


Pham 311148



Note: Tracks are now grouped by subcluster and scaled. Switching in subcluster is indicated by changes in track color. Track scale is now set by default to display the region 30 bp upstream of start 1 to 30 bp downstream of the last possible start. If this default region is judged to be packed too tightly with annotated starts, the track will be further scaled to only show that region of the ORF with annotated starts. This action will be indicated by adding "Zoomed" to the title. For starts, yellow indicates the location of called starts comprised solely of Glimmer/GeneMark auto-annotations, green indicates the location of called starts with at least 1 manual gene annotation.

Pham 311148 Report

This analysis was run 06/27/26 on database version 652.

Pham number 311148 has 309 members, 28 are drafts.

Phages represented in each track:

- Track 1 : Trike_44, Poompha_45, KittenMittens_43, Drake94_44, Severus_44, PeaceMeal1_44
- Track 2 : Edison31_45
- Track 3 : Rebeuca_46, Topanga_44, WalterMcMickey_44, Kristoff_46, Twister_44
- Track 4 : DustyMartin_50, Shapes_50, Rowdy_50
- Track 5 : Chupacabra_45
- Track 6 : Eaglepride_47
- Track 7 : DontArgue_45
- Track 8 : RhynO_47
- Track 9 : OKCentral2016_45, Goose_46
- Track 10 : Kimona_47
- Track 11 : Anthony_43
- Track 12 : FatCactus_40
- Track 13 : GtownJaz_51, Kalnoky_52, Malinsilva_53, LugYA_54, Spike509_51, Croquant_52, Sabia_51, JHC117_51, Jobu08_50, Grum1_51, Ollie_51, Lilith_52, Zetzy_50, Bigflo_51, Hercules11_51, Aglet_52, Heliosoles_50, SoYo_51, MarQuardt_51, Microwolf_51, ACFishhook_50, Tiffany_51, AugsMagnumOpus_54, StepMih_51, MadMarie_51, DaHudson_51, Fernando_51, BuzzBuzz_49, Phoebe_52, OlanP_50, Gwennie_50, Watson_51, Pawn_51, Daishi_50, BreSam8_51, AgronaGT15_50, TinyPebbles_50, Dieselweasel_52, Calvinny_51, Beauxregard13_51, Phranny_52, Marie_51, Marius_52, HaveUMetTed_52, GingkoMaracino_51, MuchMore_54, Anubis_54, Colbster_51, Lowa_51, Grub_51, Soshari_53, Gemma_50, Groupthink_52, EpicPhail_52, Rummer_50, PGHhamlin_53, Snickers_51, PurpleHaze_51, Bxz2_47, LBerry_52, Pembroke_51, MoneyMay_51, Manu_51, HashRod_52, Stagni_51, PhishRPhriends_49, Misomonster_52, Louie6_50, Kalb97_52, Mainiac_51, Sabinator_50, JeppNRM_52, KADY_51, Montavir_50, P28Green_52, ClownCar_51, Penny1_52, Cullens_51, Taurus_52, Reba_51, Phoxy_51, Vix_51, Farber_51, LarryKay_51, PotatoSplit_53, JenCasNa_52, Wooldri_53, Grif_51, SoilDragon_51
- Track 14 : Margo_47, Lambert1_47, Noella_47, Texage_46, Caviar_47, QuinnKiro_46, Pocahontas_47, Hookmount_47, ResDef_47, Veracruz_46, Todacoro_47, Norbert_46, EtoileNova_48, Popcicle_47, Panamaxus_45
- Track 15 : Scout_47, BlueBird_49, Giroux_49, Zarafa_47, Fred313_47, Heathen_47, Bugatti_48, TNguyen7_48, Kachowdy_47, Marchesa_47, Roimos_47, Idleandcovert_48, SaturnRing_48, DropBear_47, Clammy_48, Pistachio_49, Puppy_49, HelDan_47
- Track 16 : JF2_47, JF4_47, B1_44

- Track 17 : BabyJohn_45, Chiqui_45
- Track 18 : Phantastic_48
- Track 19 : MA5_47
- Track 20 : Isca_46, MK4_47, Rockstar_47
- Track 21 : BabyRay_47
- Track 22 : Dhanush_47, Nebs_48, Wilbur_47, Avle17_47, Bombshell_47, Pipcraft_45, Relief_46, KekoraPapaka_47, Clarenza_46, Funston_46, NotAPhaseMom_47, Jaykayelowell_45, Mazhar510_47, JoongJeon_46, Ulysses_46, Sultana_47, Chaph_47, RockieBear_46, NorthStar_46, CentreCat_47, Melvin_49, Ruin_47, Mayonnaise_46, Nyxis_47, Annyong_47, TygerBlood_47, HamSlice_46, JetBlade_47, Lemur_47, Caelakin_47, Cintron_46, SenorClean_47, Alberto7_48, Bruiser_46, Medusa_47, BellusTerra_48, Connomayer_47, KFPoly_46, Phacado_47, BubbleTrouble_46, Romney_47, SteMason_46, Sabertooth_47, Morrow_48, Camperdownii_45, LittleB_47, Millski_46, Iracema64_48, Lunsford_48, Bartimeaus_47, Druantia_47, Koreni_46, Iceman_47, Phelipe_48, Eurydice_48, Ohfah_48, LeoAvram_47, Koan_45, Peaches_47, Burger_45, Happiness_46, Broseidon_47, MeeZee_47, Shaka_47, Sparxx_48, Thanksgivukkah_46, Wizard007_47, Scamp_47, Albee_47, Holli_46, Citius_47, Eapen_47, Deano_46, Maxo_48, Baby16_47, Flux_47, Wander_47, Eros_47, LittleGuy_47, TroyPia_48, LappelDuVide_47, Huxley_46, Tinybot_46, Kingmustik0402_47, Palestino_46, Phontbonne_47, Houdini22_47, Maverick_47, Rosa24_46, Eris_46, Kyee_47, Kamy_47, Eagle_47, Kremtemulon_47, Abdiel_47, TinaFeyge_47, OKaNui_47, Commander_47, Lorenzo_47, TiroTheta9_47, Florean_47, Polymorphads_48, Cocoaberry_47, Pumbaa_47, Roosevelt_46, PeterPeter_47, Nemo27_47, ICleared_47, Gadost_47, YoSam321_47, Blackmoor_47, Spino_46
- Track 23 : Morpher26_46, Cici_46, Datway_46, Cerulean_48, BangNhom_48, Bumblebee11_45, LHTSCC_49, SheldonCooper_49, AbbysRanger_46, Obama12_48, Achebe_45, Xena_45, Wile_46, PetiteSangsue_46, Katalie136_46, Badger_45, Backyardigan_45, ChampagnePapi_49, Perplexer_46
- Track 24 : AvatarAhPeg_46, Stink_47, Miramae_46
- Track 25 : LochMonster_48
- Track 26 : Cindaradix_44
- Track 27 : Arturo_46, Mundrea_46, Phighter1804_47, DirtyDunning_46, Kratark_47
- Track 28 : Skipitt_46
- Track 29 : Noelle_47
- Track 30 : Stasia_46
- Track 31 : Shygu2_46
- Track 32 : Taquarus_47
- Track 33 : DroogsArmy_44, Timshel_46
- Track 34 : Toro_50, FlyCatcher_52, Sheen_48
- Track 35 : HINdeR_44

Summary of Final Annotations (See graph section above for start numbers):

The start number called the most often in the published annotations is 22, it was called in 260 of the 281 non-draft genes in the pham.

Genes that call this "Most Annotated" start:

- ACFishhook_50, AbbysRanger_46, Abdiel_47, Achebe_45, Aglet_52, AgronaGT15_50, Albee_47, Alberto7_48, Annyong_47, Anubis_54, Arturo_46,

AugsMagnumOpus_54, AvatarAhPeg_46, Avle17_47, B1_44, Baby16_47, BabyJohn_45, Backyardigan_45, Badger_45, BangNhom_48, Bartimeaus_47, Beauxregard13_51, BellusTerra_48, Bigflo_51, Blackmoor_47, BlueBird_49, Bombshell_47, BreSam8_51, Broseidon_47, Bruiser_46, BubbleTrouble_46, Bugatti_48, Bumblebee11_45, Burger_45, BuzzBuzz_49, Bxz2_47, Caelakin_47, Calvinny_51, Camperdownii_45, CentreCat_47, Cerulean_48, ChampagnePapi_49, Chaph_47, Chiqui_45, Chupacabra_45, Cici_46, Cindaradix_44, Cintron_46, Citius_47, Clammy_48, Clarenza_46, ClownCar_51, Cocoaberry_47, Colbster_51, Commander_47, Connomayer_47, Croquant_52, Cullens_51, DaHudson_51, Daishi_50, Datway_46, Deano_46, Dhanush_47, Dieselweasel_52, DirtyDunning_46, Drake94_44, DropBear_47, Druantia_47, DustyMartin_50, Eagle_47, Eaglepride_47, Eapen_47, Edison31_45, EpicPhail_52, Eris_46, Eros_47, Eurydice_48, Farber_51, Fernando_51, Florean_47, Flux_47, Fred313_47, Funston_46, Gadost_47, Gemma_50, GingkoMaracino_51, Giroux_49, Goose_46, Grif_51, Groupthink_52, Grub_51, Grum1_51, GtownJaz_51, Gwennie_50, HamSlice_46, Happiness_46, HashRod_52, HaveUMetTed_52, Heathen_47, HelDan_47, Heliosoles_50, Hercules11_51, Holli_46, Houdini22_47, Huxley_46, ICleared_47, Iceman_47, Idleandcovert_48, Iracema64_48, Isca_46, JF2_47, JF4_47, JHC117_51, Jaykayelowell_45, JenCasNa_52, JeppNRM_52, JetBlade_47, Jobu08_50, JoongJeon_46, KADY_51, KFPoly_46, Kachowdy_47, Kalb97_52, Kalnoky_52, Kamy_47, Katalie136_46, KekoraPapaka_47, Kingmustik0402_47, KittenMittens_43, Koan_45, Koreni_46, Kratark_47, Kremtemulon_47, Kristoff_46, Kyee_47, LBerry_52, LHTSCC_49, LappelDuVide_47, LarryKay_51, Lemur_47, LeoAvram_47, Lilith_52, LittleB_47, LittleGuy_47, LochMonster_48, Lorenzo_47, Louie6_50, Lova_51, LugYA_54, Lunsford_48, MA5_47, MK4_47, MadMarie_51, Mainiac_51, Malinsilva_53, Manu_51, MarQuardt_51, Marchesa_47, Marie_51, Marius_52, Maverick_47, Maxo_48, Mayonnaise_46, Mazhar510_47, Medusa_47, MeeZee_47, Melvin_49, Microwolf_51, Millski_46, Miramae_46, Misomonster_52, MoneyMay_51, Montavir_50, Morpher26_46, Morrow_48, MuchMore_54, Mundrea_46, Nebs_48, Nemo27_47, Noelle_47, NorthStar_46, NotAPhaseMom_47, Nyxis_47, OKCentral2016_45, OKaNui_47, Obama12_48, Ohfah_48, OlanP_50, Ollie_51, P28Green_52, PGHhamlin_53, Palestino_46, Pawn_51, PeaceMeal1_44, Peaches_47, Pembroke_51, Penny1_52, Perplexer_46, PeterPeter_47, PetiteSangsue_46, Phacado_47, Phantastic_48, Phelipe_48, Phighter1804_47, PhishRPhriends_49, Phoebe_52, Phontbonne_47, Phoxy_51, Phranny_52, Pipcraft_45, Pistachio_49, Polymorphads_48, Poompha_45, PotatoSplit_53, Pumbaa_47, Puppy_49, PurpleHaze_51, Reba_51, Rebeuca_46, Relief_46, RhynO_47, RockieBear_46, Rockstar_47, Roimos_47, Romney_47, Roosevelt_46, Rosa24_46, Rowdy_50, Ruin_47, Rummer_50, Sabertooth_47, Sabia_51, Sabinator_50, SaturnRing_48, Scamp_47, Scout_47, SenorClean_47, Severus_44, Shaka_47, Shapes_50, SheldonCooper_49, Shygu2_46, Skipitt_46, Snickers_51, SoYo_51, SoilDragon_51, Soshari_53, Sparxx_48, Spike509_51, Spino_46, Stagni_51, Stasia_46, SteMason_46, StepMih_51, Stink_47, Sultana_47, TNguyen7_48, Taquarus_47, Taurus_52, Thanksgivukkah_46, Tiffany_51, TinaFeyge_47, TinyPebbles_50, Tinybot_46, TiroTheta9_47, Topanga_44, Trike_44, TroyPia_48, Twister_44, TygerBlood_47, Ulysses_46, Vix_51, WalterMcMickey_44, Wander_47, Watson_51, Wilbur_47, Wile_46, Wizard007_47, Wooldri_53, Xena_45, YoSam321_47, Zarafa_47, Zetzy_50,

Genes that have the "Most Annotated" start but do not call it:

-

Genes that do not have the "Most Annotated" start:

- Anthony_43, BabyRay_47, Caviar_47, DontArgue_45, DroogsArmy_44, EtoileNova_48, FatCactus_40, FlyCatcher_52, HINdeR_44, Hookmount_47, Kimona_47, Lambert1_47, Margo_47, Noella_47, Norbert_46, Panamaxus_45, Pocahontas_47, Popcicle_47, QuinnKiro_46, ResDef_47, Sheen_48, Texage_46, Timshel_46, Todacoro_47, Toro_50, Veracruz_46,

Summary by start number:

Start 19:

- Found in 1 of 309 (0.3%) of genes in pham
- Manual Annotations of this start: 1 of 281
- Called 100.0% of time when present
- Phage (with cluster) where this start called: HINdeR_44 (A7),

Start 21:

- Found in 2 of 309 (0.6%) of genes in pham
- Manual Annotations of this start: 1 of 281
- Called 100.0% of time when present
- Phage (with cluster) where this start called: DontArgue_45 (A10), Kimona_47 (A19),

Start 22:

- Found in 283 of 309 (91.6%) of genes in pham
- Manual Annotations of this start: 260 of 281
- Called 100.0% of time when present
- Phage (with cluster) where this start called: ACFishhook_50 (A3), AbbysRanger_46 (A4), Abdiel_47 (A4), Achebe_45 (A4), Aglet_52 (A3), AgronaGT15_50 (A3), Albee_47 (A4), Alberto7_48 (A4), Annyong_47 (A4), Anubis_54 (A3), Arturo_46 (A4), AugsMagnumOpus_54 (A3), AvatarAhPeg_46 (A4), Avle17_47 (A4), B1_44 (A3), Baby16_47 (A4), BabyJohn_45 (A3), Backyardigan_45 (A4), Badger_45 (A4), BangNhom_48 (A4), Bartimeaus_47 (A4), Beauxregard13_51 (A3), BellusTerra_48 (A4), Bigflo_51 (A3), Blackmoor_47 (A4), BlueBird_49 (A3), Bombshell_47 (A4), BreSam8_51 (A3), Broseidon_47 (A4), Bruiser_46 (A4), BubbleTrouble_46 (A4), Bugatti_48 (A3), Bumblebee11_45 (A4), Burger_45 (A4), BuzzBuzz_49 (A3), Bxz2_47 (A3), Caelakin_47 (A4), Calvinny_51 (A3), Camperdownii_45 (A4), CentreCat_47 (A4), Cerulean_48 (A4), ChampagnePapi_49 (A4), Chaph_47 (A4), Chiqui_45 (A3), Chupacabra_45 (A10), Cici_46 (A4), Cindaradix_44 (A4), Cintron_46 (A4), Citius_47 (A4), Clammy_48 (A3), Clarenza_46 (A4), ClownCar_51 (A3), Cocoaberry_47 (A4), Colbster_51 (A3), Commander_47 (A4), Connomayer_47 (A4), Croquant_52 (A3), Cullens_51 (A3), DaHudson_51 (A3), Daishi_50 (A3), Datway_46 (A4), Deano_46 (A4), Dhanush_47 (A4), Dieselweasel_52 (A3), DirtyDunning_46 (A4), Drake94_44 (A10), DropBear_47 (A3), Druantia_47 (A4), DustyMartin_50 (A10), Eagle_47 (A4), Eaglepride_47 (A10), Eapen_47 (A4), Edison31_45 (A10), EpicPhail_52 (A3), Eris_46 (A4), Eros_47 (A4), Eurydice_48 (A4), Farber_51 (A3), Fernando_51 (A3), Florean_47 (A4), Flux_47 (A4), Fred313_47 (A3), Funston_46 (A4), Gadost_47 (A4), Gemma_50 (A3), GingkoMaracino_51 (A3), Giroux_49 (A3), Goose_46 (A10), Grif_51 (A3), Groupthink_52 (A3), Grub_51 (A3), Grum1_51 (A3), GtownJaz_51 (A3), Gwennie_50 (A3), HamSlice_46 (A4), Happiness_46 (A4), HashRod_52 (A3), HaveUMetTed_52 (A3), Heathen_47 (A3), HelDan_47 (A3), Heliosoles_50 (A3), Hercules11_51 (A3), Holli_46 (A4), Houdini22_47 (A4), Huxley_46 (A4), ICleared_47 (A4), Iceman_47 (A4), Idleandcovert_48 (A3), Iracema64_48 (A4), Isca_46 (A3), JF2_47 (A3), JF4_47 (A3), JHC117_51 (A3), Jaykayelowell_45 (A4), JenCasNa_52 (A3), JeppNRM_52 (A3), JetBlade_47 (A4), Jobu08_50 (A3), JoongJeon_46 (A4), KADY_51 (A3), KFPoly_46 (A4), Kachowdy_47

(A3), Kalb97_52 (A3), Kalnoky_52 (A3), Kampy_47 (A4), Katalie136_46 (A4), KekoraPapaka_47 (A4), Kingmustik0402_47 (A4), KittenMittens_43 (A10), Koan_45 (A4), Koreni_46 (A4), Kratark_47 (A4), Kremtemulon_47 (A4), Kristoff_46 (A10), Kyee_47 (A4), LBerry_52 (A3), LHTSCC_49 (A4), LappelDuVide_47 (A4), LarryKay_51 (A3), Lemur_47 (A4), LeoAvram_47 (A4), Lilith_52 (A3), LittleB_47 (A4), LittleGuy_47 (A4), LochMonster_48 (A4), Lorenzo_47 (A4), Louie6_50 (A3), Lowa_51 (A3), LugYA_54 (A3), Lunsford_48 (A4), MA5_47 (A3), MK4_47 (A3), MadMarie_51 (A3), Mainiac_51 (A3), Malinsilva_53 (A3), Manu_51 (A3), MarQuardt_51 (A3), Marchesa_47 (A3), Marie_51 (A3), Marius_52 (A3), Maverick_47 (A4), Maxo_48 (A4), Mayonnaise_46 (A4), Mazhar510_47 (A4), Medusa_47 (A4), MeeZee_47 (A4), Melvin_49 (A4), Microwolf_51 (A3), Millski_46 (A4), Miramae_46 (A4), Misomonster_52 (A3), MoneyMay_51 (A3), Montavir_50 (A3), Morpher26_46 (A4), Morrow_48 (A4), MuchMore_54 (A3), Mundrea_46 (A4), Nebs_48 (A4), Nemo27_47 (A4), Noelle_47 (A4), NorthStar_46 (A4), NotAPhaseMom_47 (A4), Nyxis_47 (A4), OKCentral2016_45 (A10), OKaNui_47 (A4), Obama12_48 (A4), Ohfah_48 (A4), OlanP_50 (A3), Ollie_51 (A3), P28Green_52 (A3), PGHhamlin_53 (A3), Palestino_46 (A4), Pawn_51 (A3), PeaceMeal1_44 (A10), Peaches_47 (A4), Pembroke_51 (A3), Penny1_52 (A3), Perplexer_46 (A4), PeterPeter_47 (A4), PetiteSangsue_46 (A4), Phacado_47 (A4), Phantastic_48 (A3), Felipe_48 (A4), Phighter1804_47 (A4), PhishRPhriends_49 (A3), Phoebe_52 (A3), Phontbonne_47 (A4), Phoxy_51 (A3), Phranny_52 (A3), Pipcraft_45 (A4), Pistachio_49 (A3), Polymorphads_48 (A4), Poompha_45 (A10), PotatoSplit_53 (A3), Pumbaa_47 (A4), Puppy_49 (A3), PurpleHaze_51 (A3), Reba_51 (A3), Rebeuca_46 (A10), Relief_46 (A4), RhynO_47 (A10), RockieBear_46 (A4), Rockstar_47 (A3), Roimos_47 (A3), Romney_47 (A4), Roosevelt_46 (A4), Rosa24_46 (A4), Rowdy_50 (A10), Ruin_47 (A4), Rummer_50 (A3), Sabertooth_47 (A4), Sabia_51 (A3), Sabinator_50 (A3), SaturnRing_48 (A3), Scamp_47 (A4), Scout_47 (A3), SenorClean_47 (A4), Severus_44 (A10), Shaka_47 (A4), Shapes_50 (A10), SheldonCooper_49 (A4), Shygu2_46 (A4), Skipitt_46 (A4), Snickers_51 (A3), SoYo_51 (A3), SoilDragon_51 (A3), Soshari_53 (A3), Sparxx_48 (A4), Spike509_51 (A3), Spino_46 (A4), Stagni_51 (A3), Stasia_46 (A4), SteMason_46 (A4), StepMih_51 (A3), Stink_47 (A4), Sultana_47 (A4), TNguyen7_48 (A3), Taquarus_47 (A4), Taurus_52 (A3), Thanksgivukkah_46 (A4), Tiffany_51 (A3), TinaFeyge_47 (A4), TinyPebbles_50 (A3), Tinybot_46 (A4), TiroTheta9_47 (A4), Topanga_44 (A10), Trike_44 (A10), TroyPia_48 (A4), Twister_44 (A10), TygerBlood_47 (A4), Ulysses_46 (A4), Vix_51 (A3), WalterMcMickey_44 (A10), Wander_47 (A4), Watson_51 (A3), Wilbur_47 (A4), Wile_46 (A4), Wizard007_47 (A4), Wooldri_53 (A3), Xena_45 (A4), YoSam321_47 (A4), Zarafa_47 (A3), Zetzy_50 (A3),

Start 23:

- Found in 6 of 309 (1.9%) of genes in pham
- Manual Annotations of this start: 3 of 281
- Called 83.3% of time when present
- Phage (with cluster) where this start called: DroogsArmy_44 (A7), FlyCatcher_52 (A7), Sheen_48 (A7), Timshel_46 (A7), Toro_50 (A7),

Start 24:

- Found in 15 of 309 (4.9%) of genes in pham
- Manual Annotations of this start: 14 of 281
- Called 100.0% of time when present
- Phage (with cluster) where this start called: Caviar_47 (A3), EtoileNova_48 (A3), Hookmount_47 (A3), Lambert1_47 (A3), Margo_47 (A3), Noella_47 (A3), Norbert_46 (A3), Panamaxus_45 (A3), Pocahontas_47 (A3), Popcicle_47 (A3), QuinnKiro_46

(A3), ResDef_47 (A3), Texage_46 (A3), Todacoro_47 (A3), Veracruz_46 (A3),

Start 25:

- Found in 1 of 309 (0.3%) of genes in pham
- Manual Annotations of this start: 1 of 281
- Called 100.0% of time when present
- Phage (with cluster) where this start called: BabyRay_47 (A3),

Start 26:

- Found in 2 of 309 (0.6%) of genes in pham
- Manual Annotations of this start: 1 of 281
- Called 100.0% of time when present
- Phage (with cluster) where this start called: Anthony_43 (A20), FatCactus_40 (A20),

Summary by clusters:

There are 6 clusters represented in this pham: A20, A10, A19, A3, A4, A7,

Info for manual annotations of cluster A10:

- Start number 22 was manually annotated 17 times for cluster A10.

Info for manual annotations of cluster A19:

- Start number 21 was manually annotated 1 time for cluster A19.

Info for manual annotations of cluster A20:

- Start number 26 was manually annotated 1 time for cluster A20.

Info for manual annotations of cluster A3:

- Start number 22 was manually annotated 100 times for cluster A3.
- Start number 24 was manually annotated 14 times for cluster A3.
- Start number 25 was manually annotated 1 time for cluster A3.

Info for manual annotations of cluster A4:

- Start number 22 was manually annotated 143 times for cluster A4.

Info for manual annotations of cluster A7:

- Start number 19 was manually annotated 1 time for cluster A7.
- Start number 23 was manually annotated 3 times for cluster A7.

Gene Information:

Gene: ACFishhook_50 Start: 32461, Stop: 32273, Start Num: 22

Candidate Starts for ACFishhook_50:

(Start: 22 @32461 has 260 MA's), (34, 32425), (41, 32347),

Gene: AbbysRanger_46 Start: 32043, Stop: 31867, Start Num: 22

Candidate Starts for AbbysRanger_46:

(Start: 22 @32043 has 260 MA's), (38, 31956), (45, 31902), (48, 31890),

Gene: Abdiel_47 Start: 32054, Stop: 31881, Start Num: 22

Candidate Starts for Abdiel_47:

(Start: 22 @32054 has 260 MA's), (31, 32033), (38, 31970), (45, 31916), (48, 31904),

Gene: Achebe_45 Start: 32026, Stop: 31850, Start Num: 22

Candidate Starts for Achebe_45:

(Start: 22 @32026 has 260 MA's), (38, 31939), (45, 31885), (48, 31873),

Gene: Aglet_52 Start: 32490, Stop: 32302, Start Num: 22

Candidate Starts for Aglet_52:

(Start: 22 @32490 has 260 MA's), (34, 32454), (41, 32376),

Gene: AgronaGT15_50 Start: 32341, Stop: 32153, Start Num: 22

Candidate Starts for AgronaGT15_50:

(Start: 22 @32341 has 260 MA's), (34, 32305), (41, 32227),

Gene: Albee_47 Start: 32053, Stop: 31880, Start Num: 22

Candidate Starts for Albee_47:

(Start: 22 @32053 has 260 MA's), (31, 32032), (38, 31969), (45, 31915), (48, 31903),

Gene: Alberto7_48 Start: 32390, Stop: 32217, Start Num: 22

Candidate Starts for Alberto7_48:

(Start: 22 @32390 has 260 MA's), (31, 32369), (38, 32306), (45, 32252), (48, 32240),

Gene: Annyong_47 Start: 32098, Stop: 31925, Start Num: 22

Candidate Starts for Annyong_47:

(Start: 22 @32098 has 260 MA's), (31, 32077), (38, 32014), (45, 31960), (48, 31948),

Gene: Anthony_43 Start: 29967, Stop: 29788, Start Num: 26

Candidate Starts for Anthony_43:

(Start: 26 @29967 has 1 MA's), (36, 29910), (47, 29823), (48, 29820),

Gene: Anubis_54 Start: 32376, Stop: 32188, Start Num: 22

Candidate Starts for Anubis_54:

(Start: 22 @32376 has 260 MA's), (34, 32340), (41, 32262),

Gene: Arturo_46 Start: 32333, Stop: 32157, Start Num: 22

Candidate Starts for Arturo_46:

(13, 32483), (Start: 22 @32333 has 260 MA's), (31, 32309), (45, 32192), (48, 32180),

Gene: AugsMagnumOpus_54 Start: 32481, Stop: 32293, Start Num: 22

Candidate Starts for AugsMagnumOpus_54:

(Start: 22 @32481 has 260 MA's), (34, 32445), (41, 32367),

Gene: AvatarAhPeg_46 Start: 32552, Stop: 32379, Start Num: 22

Candidate Starts for AvatarAhPeg_46:

(Start: 22 @32552 has 260 MA's), (31, 32531), (45, 32414), (48, 32402),

Gene: Avle17_47 Start: 32050, Stop: 31877, Start Num: 22

Candidate Starts for Avle17_47:

(Start: 22 @32050 has 260 MA's), (31, 32029), (38, 31966), (45, 31912), (48, 31900),

Gene: B1_44 Start: 31212, Stop: 31006, Start Num: 22

Candidate Starts for B1_44:

(Start: 22 @31212 has 260 MA's), (28, 31197), (40, 31113), (47, 31056), (48, 31053),

Gene: Baby16_47 Start: 32064, Stop: 31891, Start Num: 22
Candidate Starts for Baby16_47:
(Start: 22 @32064 has 260 MA's), (31, 32043), (38, 31980), (45, 31926), (48, 31914),

Gene: BabyJohn_45 Start: 32004, Stop: 31798, Start Num: 22
Candidate Starts for BabyJohn_45:
(Start: 22 @32004 has 260 MA's), (28, 31989), (36, 31938), (40, 31905), (47, 31848),

Gene: BabyRay_47 Start: 31939, Stop: 31742, Start Num: 25
Candidate Starts for BabyRay_47:
(Start: 25 @31939 has 1 MA's), (34, 31897), (39, 31843),

Gene: Backyardigan_45 Start: 32059, Stop: 31883, Start Num: 22
Candidate Starts for Backyardigan_45:
(Start: 22 @32059 has 260 MA's), (38, 31972), (45, 31918), (48, 31906),

Gene: Badger_45 Start: 32027, Stop: 31851, Start Num: 22
Candidate Starts for Badger_45:
(Start: 22 @32027 has 260 MA's), (38, 31940), (45, 31886), (48, 31874),

Gene: BangNhom_48 Start: 32475, Stop: 32302, Start Num: 22
Candidate Starts for BangNhom_48:
(Start: 22 @32475 has 260 MA's), (38, 32391), (45, 32337), (48, 32325),

Gene: Bartimeaus_47 Start: 32055, Stop: 31882, Start Num: 22
Candidate Starts for Bartimeaus_47:
(Start: 22 @32055 has 260 MA's), (31, 32034), (38, 31971), (45, 31917), (48, 31905),

Gene: Beauxregard13_51 Start: 32493, Stop: 32305, Start Num: 22
Candidate Starts for Beauxregard13_51:
(Start: 22 @32493 has 260 MA's), (34, 32457), (41, 32379),

Gene: BellusTerra_48 Start: 32054, Stop: 31881, Start Num: 22
Candidate Starts for BellusTerra_48:
(Start: 22 @32054 has 260 MA's), (31, 32033), (38, 31970), (45, 31916), (48, 31904),

Gene: Bigflo_51 Start: 32489, Stop: 32301, Start Num: 22
Candidate Starts for Bigflo_51:
(Start: 22 @32489 has 260 MA's), (34, 32453), (41, 32375),

Gene: Blackmoor_47 Start: 32055, Stop: 31882, Start Num: 22
Candidate Starts for Blackmoor_47:
(Start: 22 @32055 has 260 MA's), (31, 32034), (38, 31971), (45, 31917), (48, 31905),

Gene: BlueBird_49 Start: 32028, Stop: 31831, Start Num: 22
Candidate Starts for BlueBird_49:
(Start: 22 @32028 has 260 MA's), (33, 31989), (39, 31932), (46, 31875),

Gene: Bombshell_47 Start: 32050, Stop: 31877, Start Num: 22
Candidate Starts for Bombshell_47:
(Start: 22 @32050 has 260 MA's), (31, 32029), (38, 31966), (45, 31912), (48, 31900),

Gene: BreSam8_51 Start: 32483, Stop: 32295, Start Num: 22

Candidate Starts for BreSam8_51:

(Start: 22 @32483 has 260 MA's), (34, 32447), (41, 32369),

Gene: Broseidon_47 Start: 32055, Stop: 31882, Start Num: 22

Candidate Starts for Broseidon_47:

(Start: 22 @32055 has 260 MA's), (31, 32034), (38, 31971), (45, 31917), (48, 31905),

Gene: Bruiser_46 Start: 32053, Stop: 31880, Start Num: 22

Candidate Starts for Bruiser_46:

(Start: 22 @32053 has 260 MA's), (31, 32032), (38, 31969), (45, 31915), (48, 31903),

Gene: BubbleTrouble_46 Start: 32053, Stop: 31880, Start Num: 22

Candidate Starts for BubbleTrouble_46:

(Start: 22 @32053 has 260 MA's), (31, 32032), (38, 31969), (45, 31915), (48, 31903),

Gene: Bugatti_48 Start: 32028, Stop: 31831, Start Num: 22

Candidate Starts for Bugatti_48:

(Start: 22 @32028 has 260 MA's), (33, 31989), (39, 31932), (46, 31875),

Gene: Bumblebee11_45 Start: 32029, Stop: 31853, Start Num: 22

Candidate Starts for Bumblebee11_45:

(Start: 22 @32029 has 260 MA's), (38, 31942), (45, 31888), (48, 31876),

Gene: Burger_45 Start: 32053, Stop: 31880, Start Num: 22

Candidate Starts for Burger_45:

(Start: 22 @32053 has 260 MA's), (31, 32032), (38, 31969), (45, 31915), (48, 31903),

Gene: BuzzBuzz_49 Start: 32520, Stop: 32332, Start Num: 22

Candidate Starts for BuzzBuzz_49:

(Start: 22 @32520 has 260 MA's), (34, 32484), (41, 32406),

Gene: Bxz2_47 Start: 32527, Stop: 32339, Start Num: 22

Candidate Starts for Bxz2_47:

(Start: 22 @32527 has 260 MA's), (34, 32491), (41, 32413),

Gene: Caelakin_47 Start: 32053, Stop: 31880, Start Num: 22

Candidate Starts for Caelakin_47:

(Start: 22 @32053 has 260 MA's), (31, 32032), (38, 31969), (45, 31915), (48, 31903),

Gene: Calvinny_51 Start: 32389, Stop: 32201, Start Num: 22

Candidate Starts for Calvinny_51:

(Start: 22 @32389 has 260 MA's), (34, 32353), (41, 32275),

Gene: Camperdownii_45 Start: 31726, Stop: 31553, Start Num: 22

Candidate Starts for Camperdownii_45:

(Start: 22 @31726 has 260 MA's), (31, 31705), (38, 31642), (45, 31588), (48, 31576),

Gene: Caviar_47 Start: 32274, Stop: 32074, Start Num: 24

Candidate Starts for Caviar_47:

(Start: 24 @32274 has 14 MA's), (34, 32232), (39, 32178),

Gene: CentreCat_47 Start: 32056, Stop: 31883, Start Num: 22

Candidate Starts for CentreCat_47:

(Start: 22 @32056 has 260 MA's), (31, 32035), (38, 31972), (45, 31918), (48, 31906),

Gene: Cerulean_48 Start: 32476, Stop: 32303, Start Num: 22

Candidate Starts for Cerulean_48:

(Start: 22 @32476 has 260 MA's), (38, 32392), (45, 32338), (48, 32326),

Gene: ChampagnePapi_49 Start: 32475, Stop: 32302, Start Num: 22

Candidate Starts for ChampagnePapi_49:

(Start: 22 @32475 has 260 MA's), (38, 32391), (45, 32337), (48, 32325),

Gene: Chaph_47 Start: 32064, Stop: 31891, Start Num: 22

Candidate Starts for Chaph_47:

(Start: 22 @32064 has 260 MA's), (31, 32043), (38, 31980), (45, 31926), (48, 31914),

Gene: Chiqui_45 Start: 32013, Stop: 31807, Start Num: 22

Candidate Starts for Chiqui_45:

(Start: 22 @32013 has 260 MA's), (28, 31998), (36, 31947), (40, 31914), (47, 31857),

Gene: Chupacabra_45 Start: 31666, Stop: 31460, Start Num: 22

Candidate Starts for Chupacabra_45:

(Start: 22 @31666 has 260 MA's), (34, 31627), (42, 31540), (43, 31531), (47, 31507),

Gene: Cici_46 Start: 32044, Stop: 31868, Start Num: 22

Candidate Starts for Cici_46:

(Start: 22 @32044 has 260 MA's), (38, 31957), (45, 31903), (48, 31891),

Gene: Cindaradix_44 Start: 31669, Stop: 31493, Start Num: 22

Candidate Starts for Cindaradix_44:

(Start: 22 @31669 has 260 MA's), (31, 31645), (45, 31528),

Gene: Cintron_46 Start: 32033, Stop: 31860, Start Num: 22

Candidate Starts for Cintron_46:

(Start: 22 @32033 has 260 MA's), (31, 32012), (38, 31949), (45, 31895), (48, 31883),

Gene: Citius_47 Start: 32074, Stop: 31901, Start Num: 22

Candidate Starts for Citius_47:

(Start: 22 @32074 has 260 MA's), (31, 32053), (38, 31990), (45, 31936), (48, 31924),

Gene: Clammy_48 Start: 32028, Stop: 31831, Start Num: 22

Candidate Starts for Clammy_48:

(Start: 22 @32028 has 260 MA's), (33, 31989), (39, 31932), (46, 31875),

Gene: Clarenza_46 Start: 32050, Stop: 31877, Start Num: 22

Candidate Starts for Clarenza_46:

(Start: 22 @32050 has 260 MA's), (31, 32029), (38, 31966), (45, 31912), (48, 31900),

Gene: ClownCar_51 Start: 32382, Stop: 32194, Start Num: 22

Candidate Starts for ClownCar_51:

(Start: 22 @32382 has 260 MA's), (34, 32346), (41, 32268),

Gene: Cocoaberry_47 Start: 32057, Stop: 31884, Start Num: 22

Candidate Starts for Cocoaberry_47:

(Start: 22 @32057 has 260 MA's), (31, 32036), (38, 31973), (45, 31919), (48, 31907),

Gene: Colbster_51 Start: 32493, Stop: 32305, Start Num: 22

Candidate Starts for Colbster_51:

(Start: 22 @32493 has 260 MA's), (34, 32457), (41, 32379),

Gene: Commander_47 Start: 32052, Stop: 31879, Start Num: 22

Candidate Starts for Commander_47:

(Start: 22 @32052 has 260 MA's), (31, 32031), (38, 31968), (45, 31914), (48, 31902),

Gene: Connomayer_47 Start: 32053, Stop: 31880, Start Num: 22

Candidate Starts for Connomayer_47:

(Start: 22 @32053 has 260 MA's), (31, 32032), (38, 31969), (45, 31915), (48, 31903),

Gene: Croquant_52 Start: 32488, Stop: 32300, Start Num: 22

Candidate Starts for Croquant_52:

(Start: 22 @32488 has 260 MA's), (34, 32452), (41, 32374),

Gene: Cullens_51 Start: 32489, Stop: 32301, Start Num: 22

Candidate Starts for Cullens_51:

(Start: 22 @32489 has 260 MA's), (34, 32453), (41, 32375),

Gene: DaHudson_51 Start: 32482, Stop: 32294, Start Num: 22

Candidate Starts for DaHudson_51:

(Start: 22 @32482 has 260 MA's), (34, 32446), (41, 32368),

Gene: Daishi_50 Start: 31361, Stop: 31173, Start Num: 22

Candidate Starts for Daishi_50:

(Start: 22 @31361 has 260 MA's), (34, 31325), (41, 31247),

Gene: Datway_46 Start: 32015, Stop: 31839, Start Num: 22

Candidate Starts for Datway_46:

(Start: 22 @32015 has 260 MA's), (38, 31928), (45, 31874), (48, 31862),

Gene: Deano_46 Start: 32061, Stop: 31888, Start Num: 22

Candidate Starts for Deano_46:

(Start: 22 @32061 has 260 MA's), (31, 32040), (38, 31977), (45, 31923), (48, 31911),

Gene: Dhanush_47 Start: 32056, Stop: 31883, Start Num: 22

Candidate Starts for Dhanush_47:

(Start: 22 @32056 has 260 MA's), (31, 32035), (38, 31972), (45, 31918), (48, 31906),

Gene: Dieselweasel_52 Start: 32492, Stop: 32304, Start Num: 22

Candidate Starts for Dieselweasel_52:

(Start: 22 @32492 has 260 MA's), (34, 32456), (41, 32378),

Gene: DirtyDunning_46 Start: 32074, Stop: 31898, Start Num: 22

Candidate Starts for DirtyDunning_46:

(13, 32224), (Start: 22 @32074 has 260 MA's), (31, 32050), (45, 31933), (48, 31921),

Gene: DontArgue_45 Start: 30902, Stop: 30693, Start Num: 21

Candidate Starts for DontArgue_45:

(Start: 21 @30902 has 1 MA's), (34, 30857), (43, 30761),

Gene: Drake94_44 Start: 30942, Stop: 30736, Start Num: 22

Candidate Starts for Drake94_44:

(13, 31095), (Start: 22 @30942 has 260 MA's), (27, 30930), (34, 30903), (42, 30816), (43, 30807), (47, 30783),

Gene: DroogsArmy_44 Start: 33755, Stop: 33543, Start Num: 23

Candidate Starts for DroogsArmy_44:

(Start: 23 @33755 has 3 MA's), (32, 33722), (42, 33626), (43, 33617),

Gene: DropBear_47 Start: 31916, Stop: 31719, Start Num: 22

Candidate Starts for DropBear_47:

(Start: 22 @31916 has 260 MA's), (33, 31877), (39, 31820), (46, 31763),

Gene: Druantia_47 Start: 32056, Stop: 31883, Start Num: 22

Candidate Starts for Druantia_47:

(Start: 22 @32056 has 260 MA's), (31, 32035), (38, 31972), (45, 31918), (48, 31906),

Gene: DustyMartin_50 Start: 31746, Stop: 31540, Start Num: 22

Candidate Starts for DustyMartin_50:

(13, 31899), (Start: 22 @31746 has 260 MA's), (29, 31725), (34, 31707), (43, 31611), (44, 31602), (46, 31590),

Gene: Eagle_47 Start: 32078, Stop: 31905, Start Num: 22

Candidate Starts for Eagle_47:

(Start: 22 @32078 has 260 MA's), (31, 32057), (38, 31994), (45, 31940), (48, 31928),

Gene: Eaglepride_47 Start: 31736, Stop: 31527, Start Num: 22

Candidate Starts for Eaglepride_47:

(Start: 22 @31736 has 260 MA's), (34, 31697), (35, 31691), (43, 31601),

Gene: Eapen_47 Start: 32048, Stop: 31875, Start Num: 22

Candidate Starts for Eapen_47:

(Start: 22 @32048 has 260 MA's), (31, 32027), (38, 31964), (45, 31910), (48, 31898),

Gene: Edison31_45 Start: 31686, Stop: 31480, Start Num: 22

Candidate Starts for Edison31_45:

(Start: 22 @31686 has 260 MA's), (29, 31665), (34, 31647), (42, 31560), (43, 31551), (47, 31527),

Gene: EpicPhail_52 Start: 32493, Stop: 32305, Start Num: 22

Candidate Starts for EpicPhail_52:

(Start: 22 @32493 has 260 MA's), (34, 32457), (41, 32379),

Gene: Eris_46 Start: 32053, Stop: 31880, Start Num: 22

Candidate Starts for Eris_46:

(Start: 22 @32053 has 260 MA's), (31, 32032), (38, 31969), (45, 31915), (48, 31903),

Gene: Eros_47 Start: 32055, Stop: 31882, Start Num: 22

Candidate Starts for Eros_47:

(Start: 22 @32055 has 260 MA's), (31, 32034), (38, 31971), (45, 31917), (48, 31905),

Gene: EtoileNova_48 Start: 32278, Stop: 32078, Start Num: 24

Candidate Starts for EtoileNova_48:

(Start: 24 @32278 has 14 MA's), (34, 32236), (39, 32182),

Gene: Eurydice_48 Start: 32050, Stop: 31877, Start Num: 22

Candidate Starts for Eurydice_48:

(Start: 22 @32050 has 260 MA's), (31, 32029), (38, 31966), (45, 31912), (48, 31900),

Gene: Farber_51 Start: 32482, Stop: 32294, Start Num: 22

Candidate Starts for Farber_51:

(Start: 22 @32482 has 260 MA's), (34, 32446), (41, 32368),

Gene: FatCactus_40 Start: 29627, Stop: 29448, Start Num: 26

Candidate Starts for FatCactus_40:

(Start: 26 @29627 has 1 MA's), (47, 29483), (48, 29480),

Gene: Fernando_51 Start: 32489, Stop: 32301, Start Num: 22

Candidate Starts for Fernando_51:

(Start: 22 @32489 has 260 MA's), (34, 32453), (41, 32375),

Gene: Florean_47 Start: 32052, Stop: 31879, Start Num: 22

Candidate Starts for Florean_47:

(Start: 22 @32052 has 260 MA's), (31, 32031), (38, 31968), (45, 31914), (48, 31902),

Gene: Flux_47 Start: 32052, Stop: 31879, Start Num: 22

Candidate Starts for Flux_47:

(Start: 22 @32052 has 260 MA's), (31, 32031), (38, 31968), (45, 31914), (48, 31902),

Gene: FlyCatcher_52 Start: 34416, Stop: 34204, Start Num: 23

Candidate Starts for FlyCatcher_52:

(13, 34569), (Start: 23 @34416 has 3 MA's), (28, 34401), (37, 34347), (40, 34308), (43, 34275), (49, 34242),

Gene: Fred313_47 Start: 31601, Stop: 31404, Start Num: 22

Candidate Starts for Fred313_47:

(Start: 22 @31601 has 260 MA's), (33, 31562), (39, 31505), (46, 31448),

Gene: Funston_46 Start: 32053, Stop: 31880, Start Num: 22

Candidate Starts for Funston_46:

(Start: 22 @32053 has 260 MA's), (31, 32032), (38, 31969), (45, 31915), (48, 31903),

Gene: Gadost_47 Start: 32057, Stop: 31884, Start Num: 22

Candidate Starts for Gadost_47:

(Start: 22 @32057 has 260 MA's), (31, 32036), (38, 31973), (45, 31919), (48, 31907),

Gene: Gemma_50 Start: 32385, Stop: 32197, Start Num: 22

Candidate Starts for Gemma_50:

(Start: 22 @32385 has 260 MA's), (34, 32349), (41, 32271),

Gene: GingkoMaracino_51 Start: 32375, Stop: 32187, Start Num: 22

Candidate Starts for GingkoMaracino_51:

(Start: 22 @32375 has 260 MA's), (34, 32339), (41, 32261),

Gene: Giroux_49 Start: 32027, Stop: 31830, Start Num: 22

Candidate Starts for Giroux_49:

(Start: 22 @32027 has 260 MA's), (33, 31988), (39, 31931), (46, 31874),

Gene: Goose_46 Start: 31470, Stop: 31264, Start Num: 22

Candidate Starts for Goose_46:

(Start: 22 @31470 has 260 MA's), (34, 31431), (42, 31344), (43, 31335), (47, 31311),

Gene: Grif_51 Start: 32564, Stop: 32376, Start Num: 22

Candidate Starts for Grif_51:

(Start: 22 @32564 has 260 MA's), (34, 32528), (41, 32450),

Gene: Groupthink_52 Start: 32389, Stop: 32201, Start Num: 22

Candidate Starts for Groupthink_52:

(Start: 22 @32389 has 260 MA's), (34, 32353), (41, 32275),

Gene: Grub_51 Start: 32481, Stop: 32293, Start Num: 22

Candidate Starts for Grub_51:

(Start: 22 @32481 has 260 MA's), (34, 32445), (41, 32367),

Gene: Grum1_51 Start: 32489, Stop: 32301, Start Num: 22

Candidate Starts for Grum1_51:

(Start: 22 @32489 has 260 MA's), (34, 32453), (41, 32375),

Gene: GtownJaz_51 Start: 32491, Stop: 32303, Start Num: 22

Candidate Starts for GtownJaz_51:

(Start: 22 @32491 has 260 MA's), (34, 32455), (41, 32377),

Gene: Gwennie_50 Start: 32493, Stop: 32305, Start Num: 22

Candidate Starts for Gwennie_50:

(Start: 22 @32493 has 260 MA's), (34, 32457), (41, 32379),

Gene: HINdeR_44 Start: 33644, Stop: 33369, Start Num: 19

Candidate Starts for HINdeR_44:

(2, 33833), (3, 33830), (4, 33824), (5, 33821), (6, 33806), (7, 33803), (8, 33800), (10, 33767), (12, 33749), (14, 33713), (17, 33671), (Start: 19 @33644 has 1 MA's), (Start: 23 @33578 has 3 MA's), (42, 33449), (43, 33440),

Gene: HamSlice_46 Start: 32051, Stop: 31878, Start Num: 22

Candidate Starts for HamSlice_46:

(Start: 22 @32051 has 260 MA's), (31, 32030), (38, 31967), (45, 31913), (48, 31901),

Gene: Happiness_46 Start: 32058, Stop: 31885, Start Num: 22

Candidate Starts for Happiness_46:

(Start: 22 @32058 has 260 MA's), (31, 32037), (38, 31974), (45, 31920), (48, 31908),

Gene: HashRod_52 Start: 32520, Stop: 32332, Start Num: 22

Candidate Starts for HashRod_52:

(Start: 22 @32520 has 260 MA's), (34, 32484), (41, 32406),

Gene: HaveUMetTed_52 Start: 32371, Stop: 32183, Start Num: 22

Candidate Starts for HaveUMetTed_52:

(Start: 22 @32371 has 260 MA's), (34, 32335), (41, 32257),

Gene: Heathen_47 Start: 31657, Stop: 31460, Start Num: 22

Candidate Starts for Heathen_47:

(Start: 22 @31657 has 260 MA's), (33, 31618), (39, 31561), (46, 31504),

Gene: HelDan_47 Start: 31909, Stop: 31712, Start Num: 22

Candidate Starts for HelDan_47:

(Start: 22 @31909 has 260 MA's), (33, 31870), (39, 31813), (46, 31756),

Gene: Heliosoles_50 Start: 32392, Stop: 32204, Start Num: 22

Candidate Starts for Heliosoles_50:

(Start: 22 @32392 has 260 MA's), (34, 32356), (41, 32278),

Gene: Hercules11_51 Start: 32498, Stop: 32310, Start Num: 22

Candidate Starts for Hercules11_51:

(Start: 22 @32498 has 260 MA's), (34, 32462), (41, 32384),

Gene: Holli_46 Start: 31843, Stop: 31670, Start Num: 22

Candidate Starts for Holli_46:

(Start: 22 @31843 has 260 MA's), (31, 31822), (38, 31759), (45, 31705), (48, 31693),

Gene: Hookmount_47 Start: 32275, Stop: 32075, Start Num: 24

Candidate Starts for Hookmount_47:

(Start: 24 @32275 has 14 MA's), (34, 32233), (39, 32179),

Gene: Houdini22_47 Start: 32057, Stop: 31884, Start Num: 22

Candidate Starts for Houdini22_47:

(Start: 22 @32057 has 260 MA's), (31, 32036), (38, 31973), (45, 31919), (48, 31907),

Gene: Huxley_46 Start: 32114, Stop: 31941, Start Num: 22

Candidate Starts for Huxley_46:

(Start: 22 @32114 has 260 MA's), (31, 32093), (38, 32030), (45, 31976), (48, 31964),

Gene: ICleared_47 Start: 32082, Stop: 31909, Start Num: 22

Candidate Starts for ICleared_47:

(Start: 22 @32082 has 260 MA's), (31, 32061), (38, 31998), (45, 31944), (48, 31932),

Gene: Iceman_47 Start: 32339, Stop: 32166, Start Num: 22

Candidate Starts for Iceman_47:

(Start: 22 @32339 has 260 MA's), (31, 32318), (38, 32255), (45, 32201), (48, 32189),

Gene: Idleandcovert_48 Start: 32028, Stop: 31831, Start Num: 22

Candidate Starts for Idleandcovert_48:

(Start: 22 @32028 has 260 MA's), (33, 31989), (39, 31932), (46, 31875),

Gene: Iracema64_48 Start: 32317, Stop: 32144, Start Num: 22

Candidate Starts for Iracema64_48:

(Start: 22 @32317 has 260 MA's), (31, 32296), (38, 32233), (45, 32179), (48, 32167),

Gene: Isca_46 Start: 31461, Stop: 31255, Start Num: 22

Candidate Starts for Isca_46:

(11, 31641), (18, 31536), (Start: 22 @31461 has 260 MA's), (28, 31446), (40, 31362), (47, 31305), (48, 31302),

Gene: JF2_47 Start: 31212, Stop: 31006, Start Num: 22

Candidate Starts for JF2_47:

(Start: 22 @31212 has 260 MA's), (28, 31197), (40, 31113), (47, 31056), (48, 31053),

Gene: JF4_47 Start: 31212, Stop: 31006, Start Num: 22

Candidate Starts for JF4_47:

(Start: 22 @31212 has 260 MA's), (28, 31197), (40, 31113), (47, 31056), (48, 31053),

Gene: JHC117_51 Start: 32488, Stop: 32300, Start Num: 22

Candidate Starts for JHC117_51:

(Start: 22 @32488 has 260 MA's), (34, 32452), (41, 32374),

Gene: Jaykayelowell_45 Start: 32046, Stop: 31873, Start Num: 22

Candidate Starts for Jaykayelowell_45:

(Start: 22 @32046 has 260 MA's), (31, 32025), (38, 31962), (45, 31908), (48, 31896),

Gene: JenCasNa_52 Start: 32489, Stop: 32301, Start Num: 22

Candidate Starts for JenCasNa_52:

(Start: 22 @32489 has 260 MA's), (34, 32453), (41, 32375),

Gene: JeppNRM_52 Start: 32390, Stop: 32202, Start Num: 22

Candidate Starts for JeppNRM_52:

(Start: 22 @32390 has 260 MA's), (34, 32354), (41, 32276),

Gene: JetBlade_47 Start: 32047, Stop: 31874, Start Num: 22

Candidate Starts for JetBlade_47:

(Start: 22 @32047 has 260 MA's), (31, 32026), (38, 31963), (45, 31909), (48, 31897),

Gene: Jobu08_50 Start: 32321, Stop: 32133, Start Num: 22

Candidate Starts for Jobu08_50:

(Start: 22 @32321 has 260 MA's), (34, 32285), (41, 32207),

Gene: JoongJeon_46 Start: 32050, Stop: 31877, Start Num: 22

Candidate Starts for JoongJeon_46:

(Start: 22 @32050 has 260 MA's), (31, 32029), (38, 31966), (45, 31912), (48, 31900),

Gene: KADY_51 Start: 32520, Stop: 32332, Start Num: 22

Candidate Starts for KADY_51:

(Start: 22 @32520 has 260 MA's), (34, 32484), (41, 32406),

Gene: KFPoly_46 Start: 32047, Stop: 31874, Start Num: 22

Candidate Starts for KFPoly_46:

(Start: 22 @32047 has 260 MA's), (31, 32026), (38, 31963), (45, 31909), (48, 31897),

Gene: Kachowdy_47 Start: 31909, Stop: 31712, Start Num: 22

Candidate Starts for Kachowdy_47:

(Start: 22 @31909 has 260 MA's), (33, 31870), (39, 31813), (46, 31756),

Gene: Kalb97_52 Start: 32388, Stop: 32200, Start Num: 22

Candidate Starts for Kalb97_52:

(Start: 22 @32388 has 260 MA's), (34, 32352), (41, 32274),

Gene: Kalnoky_52 Start: 32386, Stop: 32198, Start Num: 22

Candidate Starts for Kalnoky_52:

(Start: 22 @32386 has 260 MA's), (34, 32350), (41, 32272),

Gene: Kamy_47 Start: 32055, Stop: 31882, Start Num: 22

Candidate Starts for Kamy_47:

(Start: 22 @32055 has 260 MA's), (31, 32034), (38, 31971), (45, 31917), (48, 31905),

Gene: Katalie136_46 Start: 32029, Stop: 31853, Start Num: 22

Candidate Starts for Katalie136_46:

(Start: 22 @32029 has 260 MA's), (38, 31942), (45, 31888), (48, 31876),

Gene: KekoraPapaka_47 Start: 32053, Stop: 31880, Start Num: 22

Candidate Starts for KekoraPapaka_47:

(Start: 22 @32053 has 260 MA's), (31, 32032), (38, 31969), (45, 31915), (48, 31903),

Gene: Kimona_47 Start: 30659, Stop: 30456, Start Num: 21

Candidate Starts for Kimona_47:

(Start: 21 @30659 has 1 MA's), (30, 30629), (34, 30614), (42, 30524), (43, 30515), (45, 30503), (47, 30491),

Gene: Kingmustik0402_47 Start: 32042, Stop: 31869, Start Num: 22

Candidate Starts for Kingmustik0402_47:

(Start: 22 @32042 has 260 MA's), (31, 32021), (38, 31958), (45, 31904), (48, 31892),

Gene: KittenMittens_43 Start: 30950, Stop: 30744, Start Num: 22

Candidate Starts for KittenMittens_43:

(13, 31103), (Start: 22 @30950 has 260 MA's), (27, 30938), (34, 30911), (42, 30824), (43, 30815), (47, 30791),

Gene: Koan_45 Start: 32053, Stop: 31880, Start Num: 22

Candidate Starts for Koan_45:

(Start: 22 @32053 has 260 MA's), (31, 32032), (38, 31969), (45, 31915), (48, 31903),

Gene: Koreni_46 Start: 31734, Stop: 31561, Start Num: 22

Candidate Starts for Koreni_46:

(Start: 22 @31734 has 260 MA's), (31, 31713), (38, 31650), (45, 31596), (48, 31584),

Gene: Kratark_47 Start: 32216, Stop: 32040, Start Num: 22

Candidate Starts for Kratark_47:

(13, 32366), (Start: 22 @32216 has 260 MA's), (31, 32192), (45, 32075), (48, 32063),

Gene: Kremtemulon_47 Start: 32004, Stop: 31831, Start Num: 22

Candidate Starts for Kremtemulon_47:

(Start: 22 @32004 has 260 MA's), (31, 31983), (38, 31920), (45, 31866), (48, 31854),

Gene: Kristoff_46 Start: 32038, Stop: 31832, Start Num: 22

Candidate Starts for Kristoff_46:

(Start: 22 @32038 has 260 MA's), (34, 31999), (38, 31945), (42, 31912), (43, 31903), (47, 31879),

Gene: Kyee_47 Start: 32051, Stop: 31878, Start Num: 22

Candidate Starts for Kyee_47:

(Start: 22 @32051 has 260 MA's), (31, 32030), (38, 31967), (45, 31913), (48, 31901),

Gene: LBerry_52 Start: 32493, Stop: 32305, Start Num: 22

Candidate Starts for LBerry_52:

(Start: 22 @32493 has 260 MA's), (34, 32457), (41, 32379),

Gene: LHTSCC_49 Start: 32475, Stop: 32302, Start Num: 22

Candidate Starts for LHTSCC_49:

(Start: 22 @32475 has 260 MA's), (38, 32391), (45, 32337), (48, 32325),

Gene: Lambert1_47 Start: 32274, Stop: 32074, Start Num: 24

Candidate Starts for Lambert1_47:

(Start: 24 @32274 has 14 MA's), (34, 32232), (39, 32178),

Gene: LappelDuVide_47 Start: 32052, Stop: 31879, Start Num: 22

Candidate Starts for LappelDuVide_47:

(Start: 22 @32052 has 260 MA's), (31, 32031), (38, 31968), (45, 31914), (48, 31902),

Gene: LarryKay_51 Start: 32522, Stop: 32334, Start Num: 22

Candidate Starts for LarryKay_51:

(Start: 22 @32522 has 260 MA's), (34, 32486), (41, 32408),

Gene: Lemur_47 Start: 32050, Stop: 31877, Start Num: 22

Candidate Starts for Lemur_47:

(Start: 22 @32050 has 260 MA's), (31, 32029), (38, 31966), (45, 31912), (48, 31900),

Gene: LeoAvram_47 Start: 32053, Stop: 31880, Start Num: 22

Candidate Starts for LeoAvram_47:

(Start: 22 @32053 has 260 MA's), (31, 32032), (38, 31969), (45, 31915), (48, 31903),

Gene: Lilith_52 Start: 32482, Stop: 32294, Start Num: 22

Candidate Starts for Lilith_52:

(Start: 22 @32482 has 260 MA's), (34, 32446), (41, 32368),

Gene: LittleB_47 Start: 32054, Stop: 31881, Start Num: 22

Candidate Starts for LittleB_47:

(Start: 22 @32054 has 260 MA's), (31, 32033), (38, 31970), (45, 31916), (48, 31904),

Gene: LittleGuy_47 Start: 31949, Stop: 31776, Start Num: 22

Candidate Starts for LittleGuy_47:

(Start: 22 @31949 has 260 MA's), (31, 31928), (38, 31865), (45, 31811), (48, 31799),

Gene: LochMonster_48 Start: 32289, Stop: 32116, Start Num: 22

Candidate Starts for LochMonster_48:

(Start: 22 @32289 has 260 MA's), (31, 32268), (38, 32205), (45, 32151), (48, 32139),

Gene: Lorenzo_47 Start: 32053, Stop: 31880, Start Num: 22

Candidate Starts for Lorenzo_47:

(Start: 22 @32053 has 260 MA's), (31, 32032), (38, 31969), (45, 31915), (48, 31903),

Gene: Louie6_50 Start: 32521, Stop: 32333, Start Num: 22

Candidate Starts for Louie6_50:

(Start: 22 @32521 has 260 MA's), (34, 32485), (41, 32407),

Gene: Lowa_51 Start: 32481, Stop: 32293, Start Num: 22

Candidate Starts for Lowa_51:

(Start: 22 @32481 has 260 MA's), (34, 32445), (41, 32367),

Gene: LugYA_54 Start: 32490, Stop: 32302, Start Num: 22

Candidate Starts for LugYA_54:

(Start: 22 @32490 has 260 MA's), (34, 32454), (41, 32376),

Gene: Lunsford_48 Start: 32047, Stop: 31874, Start Num: 22

Candidate Starts for Lunsford_48:

(Start: 22 @32047 has 260 MA's), (31, 32026), (38, 31963), (45, 31909), (48, 31897),

Gene: MA5_47 Start: 31363, Stop: 31157, Start Num: 22

Candidate Starts for MA5_47:

(Start: 22 @31363 has 260 MA's), (28, 31348), (36, 31297), (40, 31264), (47, 31207),

Gene: MK4_47 Start: 31446, Stop: 31240, Start Num: 22

Candidate Starts for MK4_47:

(11, 31626), (18, 31521), (Start: 22 @31446 has 260 MA's), (28, 31431), (40, 31347), (47, 31290), (48, 31287),

Gene: MadMarie_51 Start: 32491, Stop: 32303, Start Num: 22

Candidate Starts for MadMarie_51:

(Start: 22 @32491 has 260 MA's), (34, 32455), (41, 32377),

Gene: Mainiac_51 Start: 32483, Stop: 32295, Start Num: 22

Candidate Starts for Mainiac_51:

(Start: 22 @32483 has 260 MA's), (34, 32447), (41, 32369),

Gene: Malinsilva_53 Start: 32481, Stop: 32293, Start Num: 22

Candidate Starts for Malinsilva_53:

(Start: 22 @32481 has 260 MA's), (34, 32445), (41, 32367),

Gene: Manu_51 Start: 32389, Stop: 32201, Start Num: 22

Candidate Starts for Manu_51:

(Start: 22 @32389 has 260 MA's), (34, 32353), (41, 32275),

Gene: MarQuardt_51 Start: 32491, Stop: 32303, Start Num: 22

Candidate Starts for MarQuardt_51:

(Start: 22 @32491 has 260 MA's), (34, 32455), (41, 32377),

Gene: Marchesa_47 Start: 31907, Stop: 31710, Start Num: 22

Candidate Starts for Marchesa_47:

(Start: 22 @31907 has 260 MA's), (33, 31868), (39, 31811), (46, 31754),

Gene: Margo_47 Start: 32300, Stop: 32100, Start Num: 24

Candidate Starts for Margo_47:

(Start: 24 @32300 has 14 MA's), (34, 32258), (39, 32204),

Gene: Marie_51 Start: 32489, Stop: 32301, Start Num: 22

Candidate Starts for Marie_51:

(Start: 22 @32489 has 260 MA's), (34, 32453), (41, 32375),

Gene: Marius_52 Start: 32386, Stop: 32198, Start Num: 22

Candidate Starts for Marius_52:

(Start: 22 @32386 has 260 MA's), (34, 32350), (41, 32272),

Gene: Maverick_47 Start: 32053, Stop: 31880, Start Num: 22

Candidate Starts for Maverick_47:

(Start: 22 @32053 has 260 MA's), (31, 32032), (38, 31969), (45, 31915), (48, 31903),

Gene: Maxo_48 Start: 32055, Stop: 31882, Start Num: 22

Candidate Starts for Maxo_48:

(Start: 22 @32055 has 260 MA's), (31, 32034), (38, 31971), (45, 31917), (48, 31905),

Gene: Mayonnaise_46 Start: 32053, Stop: 31880, Start Num: 22

Candidate Starts for Mayonnaise_46:

(Start: 22 @32053 has 260 MA's), (31, 32032), (38, 31969), (45, 31915), (48, 31903),

Gene: Mazhar510_47 Start: 32054, Stop: 31881, Start Num: 22

Candidate Starts for Mazhar510_47:

(Start: 22 @32054 has 260 MA's), (31, 32033), (38, 31970), (45, 31916), (48, 31904),

Gene: Medusa_47 Start: 32052, Stop: 31879, Start Num: 22

Candidate Starts for Medusa_47:

(Start: 22 @32052 has 260 MA's), (31, 32031), (38, 31968), (45, 31914), (48, 31902),

Gene: MeeZee_47 Start: 32050, Stop: 31877, Start Num: 22

Candidate Starts for MeeZee_47:

(Start: 22 @32050 has 260 MA's), (31, 32029), (38, 31966), (45, 31912), (48, 31900),

Gene: Melvin_49 Start: 32048, Stop: 31875, Start Num: 22

Candidate Starts for Melvin_49:

(Start: 22 @32048 has 260 MA's), (31, 32027), (38, 31964), (45, 31910), (48, 31898),

Gene: Microwolf_51 Start: 32490, Stop: 32302, Start Num: 22

Candidate Starts for Microwolf_51:

(Start: 22 @32490 has 260 MA's), (34, 32454), (41, 32376),

Gene: Millski_46 Start: 32054, Stop: 31881, Start Num: 22

Candidate Starts for Millski_46:

(Start: 22 @32054 has 260 MA's), (31, 32033), (38, 31970), (45, 31916), (48, 31904),

Gene: Miramae_46 Start: 32214, Stop: 32041, Start Num: 22

Candidate Starts for Miramae_46:

(Start: 22 @32214 has 260 MA's), (31, 32193), (45, 32076), (48, 32064),

Gene: Misomonster_52 Start: 32519, Stop: 32331, Start Num: 22

Candidate Starts for Misomonster_52:

(Start: 22 @32519 has 260 MA's), (34, 32483), (41, 32405),

Gene: MoneyMay_51 Start: 32489, Stop: 32301, Start Num: 22

Candidate Starts for MoneyMay_51:

(Start: 22 @32489 has 260 MA's), (34, 32453), (41, 32375),

Gene: Montavir_50 Start: 32490, Stop: 32302, Start Num: 22

Candidate Starts for Montavir_50:

(Start: 22 @32490 has 260 MA's), (34, 32454), (41, 32376),

Gene: Morpher26_46 Start: 32050, Stop: 31874, Start Num: 22
Candidate Starts for Morpher26_46:
(Start: 22 @32050 has 260 MA's), (38, 31963), (45, 31909), (48, 31897),

Gene: Morrow_48 Start: 32059, Stop: 31886, Start Num: 22
Candidate Starts for Morrow_48:
(Start: 22 @32059 has 260 MA's), (31, 32038), (38, 31975), (45, 31921), (48, 31909),

Gene: MuchMore_54 Start: 32481, Stop: 32293, Start Num: 22
Candidate Starts for MuchMore_54:
(Start: 22 @32481 has 260 MA's), (34, 32445), (41, 32367),

Gene: Mundrea_46 Start: 32037, Stop: 31861, Start Num: 22
Candidate Starts for Mundrea_46:
(13, 32187), (Start: 22 @32037 has 260 MA's), (31, 32013), (45, 31896), (48, 31884),

Gene: Nebs_48 Start: 32053, Stop: 31880, Start Num: 22
Candidate Starts for Nebs_48:
(Start: 22 @32053 has 260 MA's), (31, 32032), (38, 31969), (45, 31915), (48, 31903),

Gene: Nemo27_47 Start: 32052, Stop: 31879, Start Num: 22
Candidate Starts for Nemo27_47:
(Start: 22 @32052 has 260 MA's), (31, 32031), (38, 31968), (45, 31914), (48, 31902),

Gene: Noella_47 Start: 32275, Stop: 32075, Start Num: 24
Candidate Starts for Noella_47:
(Start: 24 @32275 has 14 MA's), (34, 32233), (39, 32179),

Gene: Noelle_47 Start: 32339, Stop: 32163, Start Num: 22
Candidate Starts for Noelle_47:
(1, 32636), (13, 32489), (Start: 22 @32339 has 260 MA's), (31, 32315), (38, 32252), (45, 32198), (48, 32186),

Gene: Norbert_46 Start: 32274, Stop: 32074, Start Num: 24
Candidate Starts for Norbert_46:
(Start: 24 @32274 has 14 MA's), (34, 32232), (39, 32178),

Gene: NorthStar_46 Start: 32053, Stop: 31880, Start Num: 22
Candidate Starts for NorthStar_46:
(Start: 22 @32053 has 260 MA's), (31, 32032), (38, 31969), (45, 31915), (48, 31903),

Gene: NotAPhaseMom_47 Start: 32057, Stop: 31884, Start Num: 22
Candidate Starts for NotAPhaseMom_47:
(Start: 22 @32057 has 260 MA's), (31, 32036), (38, 31973), (45, 31919), (48, 31907),

Gene: Nyxis_47 Start: 31943, Stop: 31770, Start Num: 22
Candidate Starts for Nyxis_47:
(Start: 22 @31943 has 260 MA's), (31, 31922), (38, 31859), (45, 31805), (48, 31793),

Gene: OKCentral2016_45 Start: 31373, Stop: 31167, Start Num: 22
Candidate Starts for OKCentral2016_45:
(Start: 22 @31373 has 260 MA's), (34, 31334), (42, 31247), (43, 31238), (47, 31214),

Gene: OKaNui_47 Start: 32103, Stop: 31930, Start Num: 22
Candidate Starts for OKaNui_47:
(Start: 22 @32103 has 260 MA's), (31, 32082), (38, 32019), (45, 31965), (48, 31953),

Gene: Obama12_48 Start: 32477, Stop: 32304, Start Num: 22
Candidate Starts for Obama12_48:
(Start: 22 @32477 has 260 MA's), (38, 32393), (45, 32339), (48, 32327),

Gene: Ohfah_48 Start: 32053, Stop: 31880, Start Num: 22
Candidate Starts for Ohfah_48:
(Start: 22 @32053 has 260 MA's), (31, 32032), (38, 31969), (45, 31915), (48, 31903),

Gene: OlanP_50 Start: 32559, Stop: 32371, Start Num: 22
Candidate Starts for OlanP_50:
(Start: 22 @32559 has 260 MA's), (34, 32523), (41, 32445),

Gene: Ollie_51 Start: 32360, Stop: 32172, Start Num: 22
Candidate Starts for Ollie_51:
(Start: 22 @32360 has 260 MA's), (34, 32324), (41, 32246),

Gene: P28Green_52 Start: 32492, Stop: 32304, Start Num: 22
Candidate Starts for P28Green_52:
(Start: 22 @32492 has 260 MA's), (34, 32456), (41, 32378),

Gene: PGHhamlin_53 Start: 32481, Stop: 32293, Start Num: 22
Candidate Starts for PGHhamlin_53:
(Start: 22 @32481 has 260 MA's), (34, 32445), (41, 32367),

Gene: Palestino_46 Start: 32053, Stop: 31880, Start Num: 22
Candidate Starts for Palestino_46:
(Start: 22 @32053 has 260 MA's), (31, 32032), (38, 31969), (45, 31915), (48, 31903),

Gene: Panamaxus_45 Start: 32274, Stop: 32074, Start Num: 24
Candidate Starts for Panamaxus_45:
(Start: 24 @32274 has 14 MA's), (34, 32232), (39, 32178),

Gene: Pawn_51 Start: 32393, Stop: 32205, Start Num: 22
Candidate Starts for Pawn_51:
(Start: 22 @32393 has 260 MA's), (34, 32357), (41, 32279),

Gene: PeaceMeal1_44 Start: 30951, Stop: 30745, Start Num: 22
Candidate Starts for PeaceMeal1_44:
(13, 31104), (Start: 22 @30951 has 260 MA's), (27, 30939), (34, 30912), (42, 30825), (43, 30816), (47, 30792),

Gene: Peaches_47 Start: 32052, Stop: 31879, Start Num: 22
Candidate Starts for Peaches_47:
(Start: 22 @32052 has 260 MA's), (31, 32031), (38, 31968), (45, 31914), (48, 31902),

Gene: Pembroke_51 Start: 32490, Stop: 32302, Start Num: 22
Candidate Starts for Pembroke_51:
(Start: 22 @32490 has 260 MA's), (34, 32454), (41, 32376),

Gene: Penny1_52 Start: 32493, Stop: 32305, Start Num: 22

Candidate Starts for Penny1_52:

(Start: 22 @32493 has 260 MA's), (34, 32457), (41, 32379),

Gene: Perplexer_46 Start: 32026, Stop: 31850, Start Num: 22

Candidate Starts for Perplexer_46:

(Start: 22 @32026 has 260 MA's), (38, 31939), (45, 31885), (48, 31873),

Gene: PeterPeter_47 Start: 32050, Stop: 31877, Start Num: 22

Candidate Starts for PeterPeter_47:

(Start: 22 @32050 has 260 MA's), (31, 32029), (38, 31966), (45, 31912), (48, 31900),

Gene: PetiteSangsue_46 Start: 32029, Stop: 31853, Start Num: 22

Candidate Starts for PetiteSangsue_46:

(Start: 22 @32029 has 260 MA's), (38, 31942), (45, 31888), (48, 31876),

Gene: Phacado_47 Start: 32052, Stop: 31879, Start Num: 22

Candidate Starts for Phacado_47:

(Start: 22 @32052 has 260 MA's), (31, 32031), (38, 31968), (45, 31914), (48, 31902),

Gene: Phantastic_48 Start: 31650, Stop: 31450, Start Num: 22

Candidate Starts for Phantastic_48:

(9, 31851), (15, 31752), (18, 31725), (Start: 22 @31650 has 260 MA's), (28, 31635), (36, 31584), (40, 31551), (47, 31494),

Gene: Phelipe_48 Start: 32053, Stop: 31880, Start Num: 22

Candidate Starts for Phelipe_48:

(Start: 22 @32053 has 260 MA's), (31, 32032), (38, 31969), (45, 31915), (48, 31903),

Gene: Phighter1804_47 Start: 32119, Stop: 31943, Start Num: 22

Candidate Starts for Phighter1804_47:

(13, 32269), (Start: 22 @32119 has 260 MA's), (31, 32095), (45, 31978), (48, 31966),

Gene: PhishRPhriends_49 Start: 31567, Stop: 31379, Start Num: 22

Candidate Starts for PhishRPhriends_49:

(Start: 22 @31567 has 260 MA's), (34, 31531), (41, 31453),

Gene: Phoebe_52 Start: 32482, Stop: 32294, Start Num: 22

Candidate Starts for Phoebe_52:

(Start: 22 @32482 has 260 MA's), (34, 32446), (41, 32368),

Gene: Phontbonne_47 Start: 31944, Stop: 31771, Start Num: 22

Candidate Starts for Phontbonne_47:

(Start: 22 @31944 has 260 MA's), (31, 31923), (38, 31860), (45, 31806), (48, 31794),

Gene: Phoxy_51 Start: 32517, Stop: 32329, Start Num: 22

Candidate Starts for Phoxy_51:

(Start: 22 @32517 has 260 MA's), (34, 32481), (41, 32403),

Gene: Phranny_52 Start: 32375, Stop: 32187, Start Num: 22

Candidate Starts for Phranny_52:

(Start: 22 @32375 has 260 MA's), (34, 32339), (41, 32261),

Gene: Pipcraft_45 Start: 32053, Stop: 31880, Start Num: 22
Candidate Starts for Pipcraft_45:
(Start: 22 @32053 has 260 MA's), (31, 32032), (38, 31969), (45, 31915), (48, 31903),

Gene: Pistachio_49 Start: 31575, Stop: 31378, Start Num: 22
Candidate Starts for Pistachio_49:
(Start: 22 @31575 has 260 MA's), (33, 31536), (39, 31479), (46, 31422),

Gene: Pocahontas_47 Start: 32271, Stop: 32071, Start Num: 24
Candidate Starts for Pocahontas_47:
(Start: 24 @32271 has 14 MA's), (34, 32229), (39, 32175),

Gene: Polymorphads_48 Start: 32046, Stop: 31873, Start Num: 22
Candidate Starts for Polymorphads_48:
(Start: 22 @32046 has 260 MA's), (31, 32025), (38, 31962), (45, 31908), (48, 31896),

Gene: Poompha_45 Start: 30949, Stop: 30743, Start Num: 22
Candidate Starts for Poompha_45:
(13, 31102), (Start: 22 @30949 has 260 MA's), (27, 30937), (34, 30910), (42, 30823), (43, 30814), (47, 30790),

Gene: Popcicle_47 Start: 32271, Stop: 32071, Start Num: 24
Candidate Starts for Popcicle_47:
(Start: 24 @32271 has 14 MA's), (34, 32229), (39, 32175),

Gene: PotatoSplit_53 Start: 32493, Stop: 32305, Start Num: 22
Candidate Starts for PotatoSplit_53:
(Start: 22 @32493 has 260 MA's), (34, 32457), (41, 32379),

Gene: Pumbaa_47 Start: 31998, Stop: 31825, Start Num: 22
Candidate Starts for Pumbaa_47:
(Start: 22 @31998 has 260 MA's), (31, 31977), (38, 31914), (45, 31860), (48, 31848),

Gene: Puppy_49 Start: 31648, Stop: 31451, Start Num: 22
Candidate Starts for Puppy_49:
(Start: 22 @31648 has 260 MA's), (33, 31609), (39, 31552), (46, 31495),

Gene: PurpleHaze_51 Start: 32388, Stop: 32200, Start Num: 22
Candidate Starts for PurpleHaze_51:
(Start: 22 @32388 has 260 MA's), (34, 32352), (41, 32274),

Gene: QuinnKiro_46 Start: 32274, Stop: 32074, Start Num: 24
Candidate Starts for QuinnKiro_46:
(Start: 24 @32274 has 14 MA's), (34, 32232), (39, 32178),

Gene: Reba_51 Start: 32048, Stop: 31860, Start Num: 22
Candidate Starts for Reba_51:
(Start: 22 @32048 has 260 MA's), (34, 32012), (41, 31934),

Gene: Rebeuca_46 Start: 32039, Stop: 31833, Start Num: 22
Candidate Starts for Rebeuca_46:
(Start: 22 @32039 has 260 MA's), (34, 32000), (38, 31946), (42, 31913), (43, 31904), (47, 31880),

Gene: Relief_46 Start: 32050, Stop: 31877, Start Num: 22
Candidate Starts for Relief_46:
(Start: 22 @32050 has 260 MA's), (31, 32029), (38, 31966), (45, 31912), (48, 31900),

Gene: ResDef_47 Start: 32274, Stop: 32074, Start Num: 24
Candidate Starts for ResDef_47:
(Start: 24 @32274 has 14 MA's), (34, 32232), (39, 32178),

Gene: RhynO_47 Start: 31838, Stop: 31632, Start Num: 22
Candidate Starts for RhynO_47:
(13, 31991), (Start: 22 @31838 has 260 MA's), (29, 31817), (34, 31799), (42, 31712), (43, 31703), (44, 31694), (46, 31682),

Gene: RockieBear_46 Start: 32053, Stop: 31880, Start Num: 22
Candidate Starts for RockieBear_46:
(Start: 22 @32053 has 260 MA's), (31, 32032), (38, 31969), (45, 31915), (48, 31903),

Gene: Rockstar_47 Start: 31455, Stop: 31249, Start Num: 22
Candidate Starts for Rockstar_47:
(11, 31635), (18, 31530), (Start: 22 @31455 has 260 MA's), (28, 31440), (40, 31356), (47, 31299), (48, 31296),

Gene: Roimos_47 Start: 31825, Stop: 31628, Start Num: 22
Candidate Starts for Roimos_47:
(Start: 22 @31825 has 260 MA's), (33, 31786), (39, 31729), (46, 31672),

Gene: Romney_47 Start: 32050, Stop: 31877, Start Num: 22
Candidate Starts for Romney_47:
(Start: 22 @32050 has 260 MA's), (31, 32029), (38, 31966), (45, 31912), (48, 31900),

Gene: Roosevelt_46 Start: 32055, Stop: 31882, Start Num: 22
Candidate Starts for Roosevelt_46:
(Start: 22 @32055 has 260 MA's), (31, 32034), (38, 31971), (45, 31917), (48, 31905),

Gene: Rosa24_46 Start: 32084, Stop: 31911, Start Num: 22
Candidate Starts for Rosa24_46:
(Start: 22 @32084 has 260 MA's), (31, 32063), (38, 32000), (45, 31946), (48, 31934),

Gene: Rowdy_50 Start: 31746, Stop: 31540, Start Num: 22
Candidate Starts for Rowdy_50:
(13, 31899), (Start: 22 @31746 has 260 MA's), (29, 31725), (34, 31707), (43, 31611), (44, 31602), (46, 31590),

Gene: Ruin_47 Start: 32046, Stop: 31873, Start Num: 22
Candidate Starts for Ruin_47:
(Start: 22 @32046 has 260 MA's), (31, 32025), (38, 31962), (45, 31908), (48, 31896),

Gene: Rummer_50 Start: 32520, Stop: 32332, Start Num: 22
Candidate Starts for Rummer_50:
(Start: 22 @32520 has 260 MA's), (34, 32484), (41, 32406),

Gene: Sabertooth_47 Start: 32055, Stop: 31882, Start Num: 22

Candidate Starts for Sabertooth_47:
(Start: 22 @32055 has 260 MA's), (31, 32034), (38, 31971), (45, 31917), (48, 31905),

Gene: Sabia_51 Start: 32483, Stop: 32295, Start Num: 22
Candidate Starts for Sabia_51:
(Start: 22 @32483 has 260 MA's), (34, 32447), (41, 32369),

Gene: Sabinator_50 Start: 32488, Stop: 32300, Start Num: 22
Candidate Starts for Sabinator_50:
(Start: 22 @32488 has 260 MA's), (34, 32452), (41, 32374),

Gene: SaturnRing_48 Start: 32028, Stop: 31831, Start Num: 22
Candidate Starts for SaturnRing_48:
(Start: 22 @32028 has 260 MA's), (33, 31989), (39, 31932), (46, 31875),

Gene: Scamp_47 Start: 32055, Stop: 31882, Start Num: 22
Candidate Starts for Scamp_47:
(Start: 22 @32055 has 260 MA's), (31, 32034), (38, 31971), (45, 31917), (48, 31905),

Gene: Scout_47 Start: 31156, Stop: 30959, Start Num: 22
Candidate Starts for Scout_47:
(Start: 22 @31156 has 260 MA's), (33, 31117), (39, 31060), (46, 31003),

Gene: SenorClean_47 Start: 32053, Stop: 31880, Start Num: 22
Candidate Starts for SenorClean_47:
(Start: 22 @32053 has 260 MA's), (31, 32032), (38, 31969), (45, 31915), (48, 31903),

Gene: Severus_44 Start: 30949, Stop: 30743, Start Num: 22
Candidate Starts for Severus_44:
(13, 31102), (Start: 22 @30949 has 260 MA's), (27, 30937), (34, 30910), (42, 30823), (43, 30814), (47, 30790),

Gene: Shaka_47 Start: 32050, Stop: 31877, Start Num: 22
Candidate Starts for Shaka_47:
(Start: 22 @32050 has 260 MA's), (31, 32029), (38, 31966), (45, 31912), (48, 31900),

Gene: Shapes_50 Start: 31746, Stop: 31540, Start Num: 22
Candidate Starts for Shapes_50:
(13, 31899), (Start: 22 @31746 has 260 MA's), (29, 31725), (34, 31707), (43, 31611), (44, 31602), (46, 31590),

Gene: Sheen_48 Start: 34305, Stop: 34093, Start Num: 23
Candidate Starts for Sheen_48:
(13, 34458), (Start: 23 @34305 has 3 MA's), (28, 34290), (37, 34236), (40, 34197), (43, 34164), (49, 34131),

Gene: SheldonCooper_49 Start: 32476, Stop: 32303, Start Num: 22
Candidate Starts for SheldonCooper_49:
(Start: 22 @32476 has 260 MA's), (38, 32392), (45, 32338), (48, 32326),

Gene: Shygu2_46 Start: 32029, Stop: 31853, Start Num: 22
Candidate Starts for Shygu2_46:

(1, 32326), (13, 32179), (Start: 22 @32029 has 260 MA's), (31, 32005), (38, 31942), (45, 31888), (48, 31876),

Gene: Skipitt_46 Start: 32047, Stop: 31874, Start Num: 22

Candidate Starts for Skipitt_46:

(20, 32059), (Start: 22 @32047 has 260 MA's), (31, 32026), (38, 31963), (45, 31909), (48, 31897),

Gene: Snickers_51 Start: 32463, Stop: 32275, Start Num: 22

Candidate Starts for Snickers_51:

(Start: 22 @32463 has 260 MA's), (34, 32427), (41, 32349),

Gene: SoYo_51 Start: 32401, Stop: 32213, Start Num: 22

Candidate Starts for SoYo_51:

(Start: 22 @32401 has 260 MA's), (34, 32365), (41, 32287),

Gene: SoilDragon_51 Start: 31937, Stop: 31749, Start Num: 22

Candidate Starts for SoilDragon_51:

(Start: 22 @31937 has 260 MA's), (34, 31901), (41, 31823),

Gene: Soshari_53 Start: 32516, Stop: 32328, Start Num: 22

Candidate Starts for Soshari_53:

(Start: 22 @32516 has 260 MA's), (34, 32480), (41, 32402),

Gene: Sparxx_48 Start: 32048, Stop: 31875, Start Num: 22

Candidate Starts for Sparxx_48:

(Start: 22 @32048 has 260 MA's), (31, 32027), (38, 31964), (45, 31910), (48, 31898),

Gene: Spike509_51 Start: 32517, Stop: 32329, Start Num: 22

Candidate Starts for Spike509_51:

(Start: 22 @32517 has 260 MA's), (34, 32481), (41, 32403),

Gene: Spino_46 Start: 32053, Stop: 31880, Start Num: 22

Candidate Starts for Spino_46:

(Start: 22 @32053 has 260 MA's), (31, 32032), (38, 31969), (45, 31915), (48, 31903),

Gene: Stagni_51 Start: 32492, Stop: 32304, Start Num: 22

Candidate Starts for Stagni_51:

(Start: 22 @32492 has 260 MA's), (34, 32456), (41, 32378),

Gene: Stasia_46 Start: 31928, Stop: 31752, Start Num: 22

Candidate Starts for Stasia_46:

(16, 32021), (Start: 22 @31928 has 260 MA's), (31, 31904), (38, 31841), (45, 31787), (48, 31775),

Gene: SteMason_46 Start: 32050, Stop: 31877, Start Num: 22

Candidate Starts for SteMason_46:

(Start: 22 @32050 has 260 MA's), (31, 32029), (38, 31966), (45, 31912), (48, 31900),

Gene: StepMih_51 Start: 32483, Stop: 32295, Start Num: 22

Candidate Starts for StepMih_51:

(Start: 22 @32483 has 260 MA's), (34, 32447), (41, 32369),

Gene: Stink_47 Start: 32494, Stop: 32321, Start Num: 22

Candidate Starts for Stink_47:

(Start: 22 @32494 has 260 MA's), (31, 32473), (45, 32356), (48, 32344),

Gene: Sultana_47 Start: 32053, Stop: 31880, Start Num: 22

Candidate Starts for Sultana_47:

(Start: 22 @32053 has 260 MA's), (31, 32032), (38, 31969), (45, 31915), (48, 31903),

Gene: TNguyen7_48 Start: 31995, Stop: 31798, Start Num: 22

Candidate Starts for TNguyen7_48:

(Start: 22 @31995 has 260 MA's), (33, 31956), (39, 31899), (46, 31842),

Gene: Taquarus_47 Start: 32056, Stop: 31883, Start Num: 22

Candidate Starts for Taquarus_47:

(Start: 22 @32056 has 260 MA's), (31, 32035), (38, 31972), (45, 31918), (48, 31906), (50, 31897),

Gene: Taurus_52 Start: 32489, Stop: 32301, Start Num: 22

Candidate Starts for Taurus_52:

(Start: 22 @32489 has 260 MA's), (34, 32453), (41, 32375),

Gene: Texage_46 Start: 32275, Stop: 32075, Start Num: 24

Candidate Starts for Texage_46:

(Start: 24 @32275 has 14 MA's), (34, 32233), (39, 32179),

Gene: Thanksgivukkah_46 Start: 32051, Stop: 31878, Start Num: 22

Candidate Starts for Thanksgivukkah_46:

(Start: 22 @32051 has 260 MA's), (31, 32030), (38, 31967), (45, 31913), (48, 31901),

Gene: Tiffany_51 Start: 32375, Stop: 32187, Start Num: 22

Candidate Starts for Tiffany_51:

(Start: 22 @32375 has 260 MA's), (34, 32339), (41, 32261),

Gene: Timshel_46 Start: 34012, Stop: 33800, Start Num: 23

Candidate Starts for Timshel_46:

(Start: 23 @34012 has 3 MA's), (32, 33979), (42, 33883), (43, 33874),

Gene: TinaFeyge_47 Start: 32048, Stop: 31875, Start Num: 22

Candidate Starts for TinaFeyge_47:

(Start: 22 @32048 has 260 MA's), (31, 32027), (38, 31964), (45, 31910), (48, 31898),

Gene: TinyPebbles_50 Start: 32522, Stop: 32334, Start Num: 22

Candidate Starts for TinyPebbles_50:

(Start: 22 @32522 has 260 MA's), (34, 32486), (41, 32408),

Gene: Tinybot_46 Start: 32080, Stop: 31907, Start Num: 22

Candidate Starts for Tinybot_46:

(Start: 22 @32080 has 260 MA's), (31, 32059), (38, 31996), (45, 31942), (48, 31930),

Gene: TiroTheta9_47 Start: 32047, Stop: 31874, Start Num: 22

Candidate Starts for TiroTheta9_47:

(Start: 22 @32047 has 260 MA's), (31, 32026), (38, 31963), (45, 31909), (48, 31897),

Gene: Todacoro_47 Start: 32274, Stop: 32074, Start Num: 24

Candidate Starts for Todacoro_47:

(Start: 24 @32274 has 14 MA's), (34, 32232), (39, 32178),

Gene: Topanga_44 Start: 31688, Stop: 31482, Start Num: 22

Candidate Starts for Topanga_44:

(Start: 22 @31688 has 260 MA's), (34, 31649), (38, 31595), (42, 31562), (43, 31553), (47, 31529),

Gene: Toro_50 Start: 34416, Stop: 34204, Start Num: 23

Candidate Starts for Toro_50:

(13, 34569), (Start: 23 @34416 has 3 MA's), (28, 34401), (37, 34347), (40, 34308), (43, 34275), (49, 34242),

Gene: Trike_44 Start: 30957, Stop: 30751, Start Num: 22

Candidate Starts for Trike_44:

(13, 31110), (Start: 22 @30957 has 260 MA's), (27, 30945), (34, 30918), (42, 30831), (43, 30822), (47, 30798),

Gene: TroyPia_48 Start: 32051, Stop: 31878, Start Num: 22

Candidate Starts for TroyPia_48:

(Start: 22 @32051 has 260 MA's), (31, 32030), (38, 31967), (45, 31913), (48, 31901),

Gene: Twister_44 Start: 31599, Stop: 31393, Start Num: 22

Candidate Starts for Twister_44:

(Start: 22 @31599 has 260 MA's), (34, 31560), (38, 31506), (42, 31473), (43, 31464), (47, 31440),

Gene: TygerBlood_47 Start: 32053, Stop: 31880, Start Num: 22

Candidate Starts for TygerBlood_47:

(Start: 22 @32053 has 260 MA's), (31, 32032), (38, 31969), (45, 31915), (48, 31903),

Gene: Ulysses_46 Start: 31730, Stop: 31557, Start Num: 22

Candidate Starts for Ulysses_46:

(Start: 22 @31730 has 260 MA's), (31, 31709), (38, 31646), (45, 31592), (48, 31580),

Gene: Veracruz_46 Start: 32274, Stop: 32074, Start Num: 24

Candidate Starts for Veracruz_46:

(Start: 24 @32274 has 14 MA's), (34, 32232), (39, 32178),

Gene: Vix_51 Start: 32572, Stop: 32384, Start Num: 22

Candidate Starts for Vix_51:

(Start: 22 @32572 has 260 MA's), (34, 32536), (41, 32458),

Gene: WalterMcMickey_44 Start: 31599, Stop: 31393, Start Num: 22

Candidate Starts for WalterMcMickey_44:

(Start: 22 @31599 has 260 MA's), (34, 31560), (38, 31506), (42, 31473), (43, 31464), (47, 31440),

Gene: Wander_47 Start: 32050, Stop: 31877, Start Num: 22

Candidate Starts for Wander_47:

(Start: 22 @32050 has 260 MA's), (31, 32029), (38, 31966), (45, 31912), (48, 31900),

Gene: Watson_51 Start: 32481, Stop: 32293, Start Num: 22

Candidate Starts for Watson_51:

(Start: 22 @32481 has 260 MA's), (34, 32445), (41, 32367),

Gene: Wilbur_47 Start: 32050, Stop: 31877, Start Num: 22

Candidate Starts for Wilbur_47:

(Start: 22 @32050 has 260 MA's), (31, 32029), (38, 31966), (45, 31912), (48, 31900),

Gene: Wile_46 Start: 32060, Stop: 31884, Start Num: 22

Candidate Starts for Wile_46:

(Start: 22 @32060 has 260 MA's), (38, 31973), (45, 31919), (48, 31907),

Gene: Wizard007_47 Start: 32058, Stop: 31885, Start Num: 22

Candidate Starts for Wizard007_47:

(Start: 22 @32058 has 260 MA's), (31, 32037), (38, 31974), (45, 31920), (48, 31908),

Gene: Wooldri_53 Start: 32401, Stop: 32213, Start Num: 22

Candidate Starts for Wooldri_53:

(Start: 22 @32401 has 260 MA's), (34, 32365), (41, 32287),

Gene: Xena_45 Start: 32026, Stop: 31850, Start Num: 22

Candidate Starts for Xena_45:

(Start: 22 @32026 has 260 MA's), (38, 31939), (45, 31885), (48, 31873),

Gene: YoSam321_47 Start: 32047, Stop: 31874, Start Num: 22

Candidate Starts for YoSam321_47:

(Start: 22 @32047 has 260 MA's), (31, 32026), (38, 31963), (45, 31909), (48, 31897),

Gene: Zarafa_47 Start: 31918, Stop: 31721, Start Num: 22

Candidate Starts for Zarafa_47:

(Start: 22 @31918 has 260 MA's), (33, 31879), (39, 31822), (46, 31765),

Gene: Zetzy_50 Start: 32052, Stop: 31864, Start Num: 22

Candidate Starts for Zetzy_50:

(Start: 22 @32052 has 260 MA's), (34, 32016), (41, 31938),