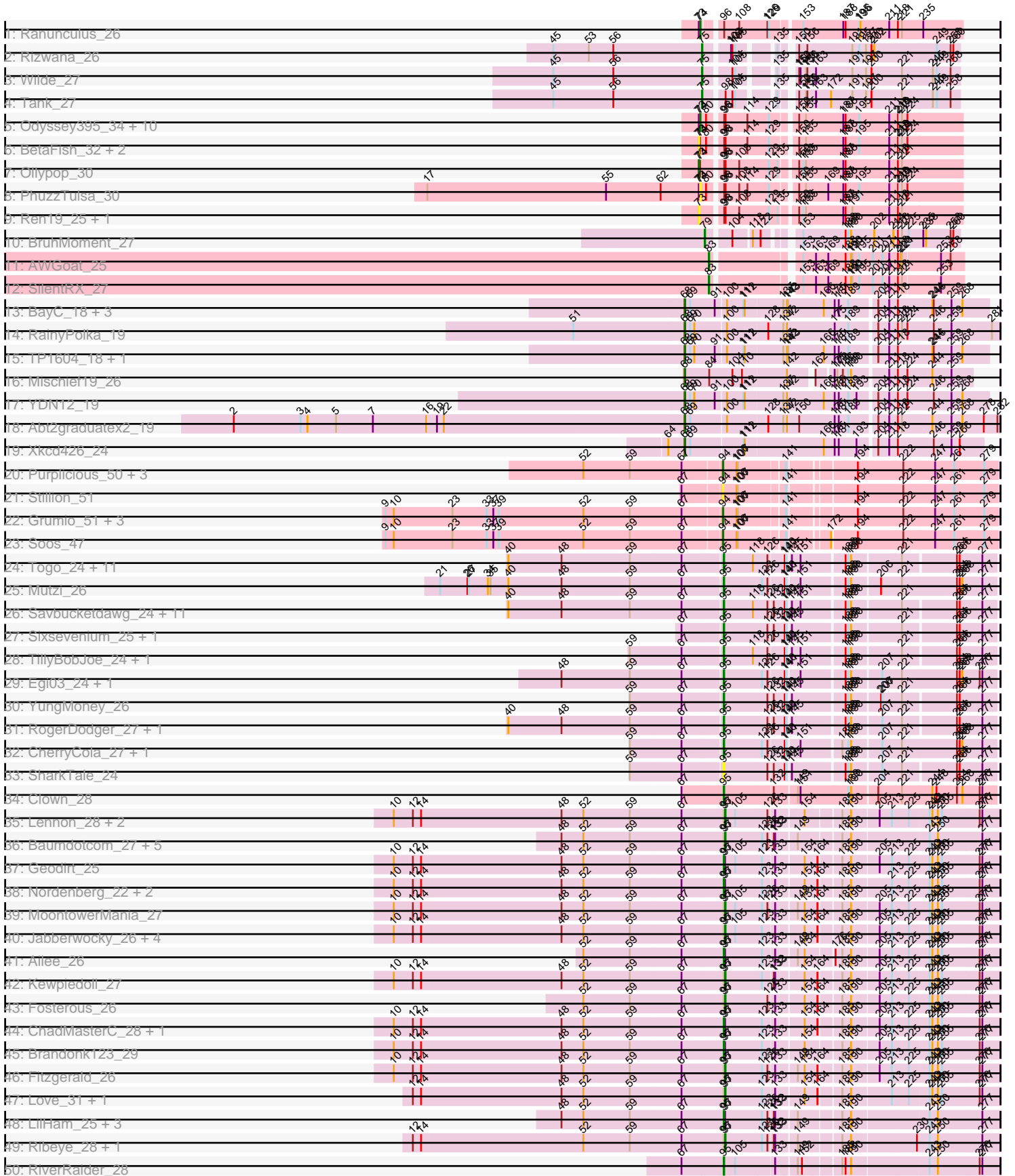
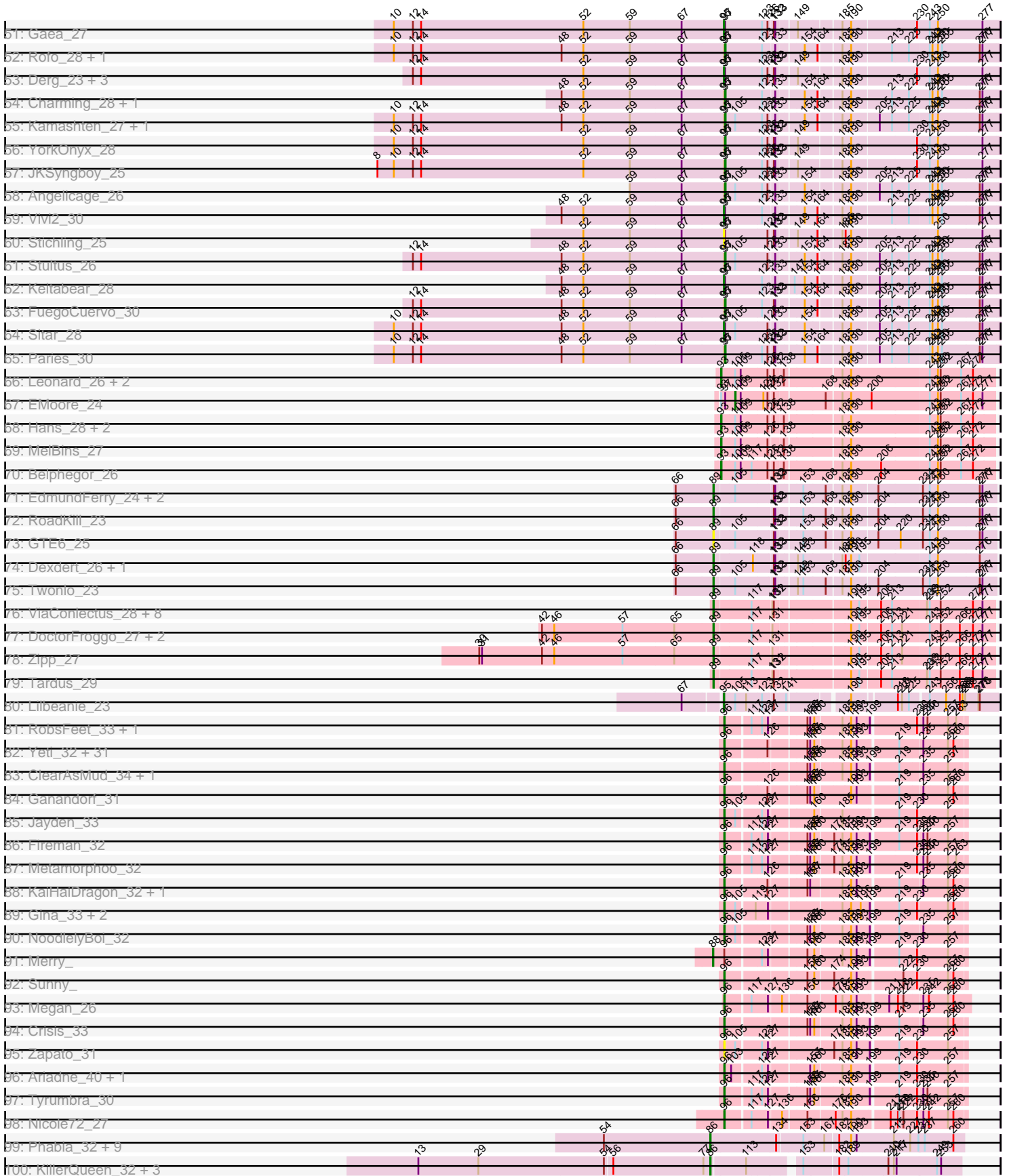


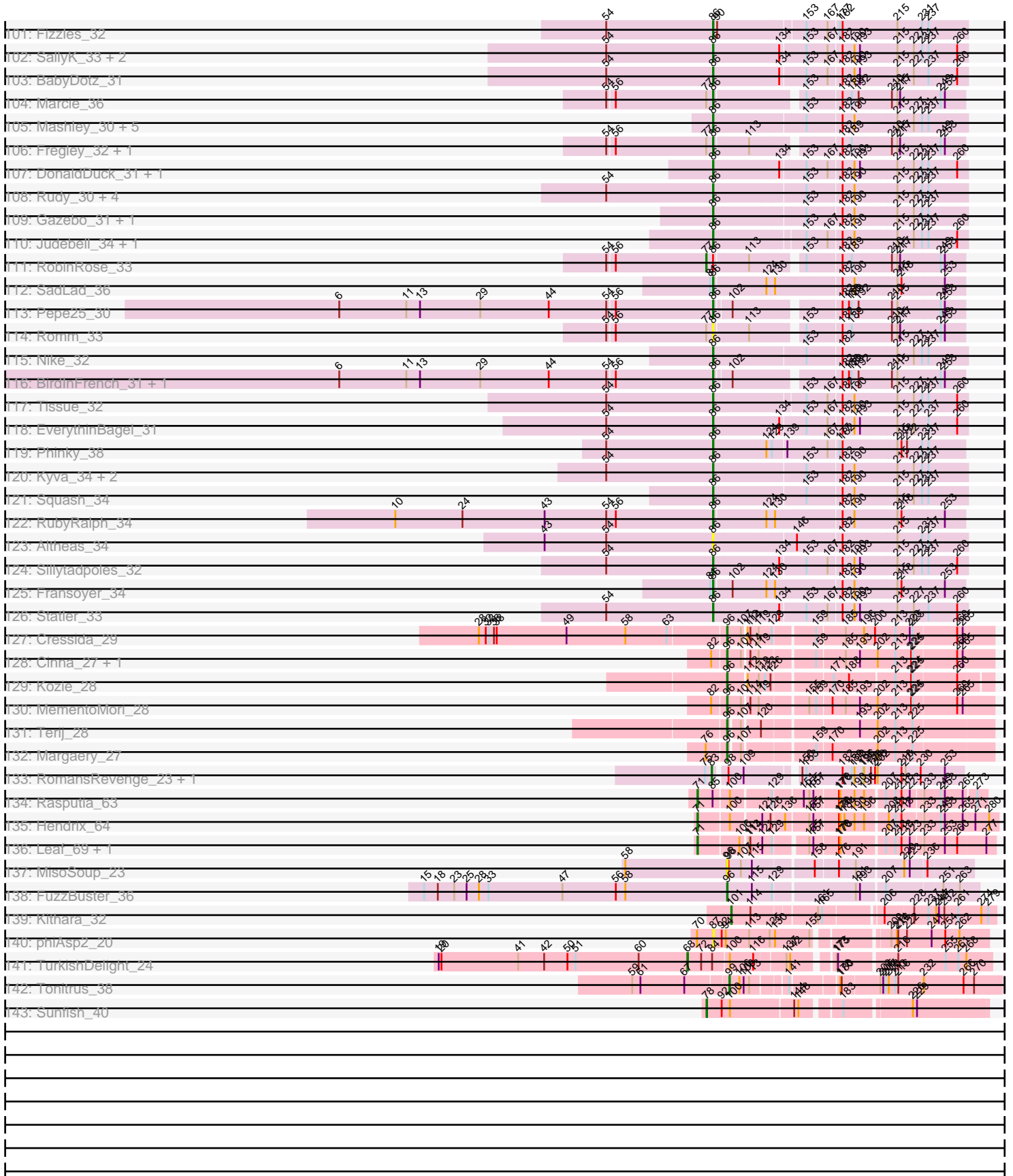
Zoomed Pham 311155



Zoomed Pham 311155



Zoomed Pham 311155



Note: Tracks are now grouped by subcluster and scaled. Switching in subcluster is indicated by changes in track color. Track scale is now set by default to display the region 30 bp upstream of start 1 to 30 bp downstream of the last possible start. If this default region is judged to be packed too tightly with annotated starts, the track will be further scaled to only show that region of the ORF with annotated starts. This action will be indicated by adding "Zoomed" to the title. For starts, yellow indicates the location of called starts comprised solely of Glimmer/GeneMark auto-annotations, green indicates the location of called starts with at least 1 manual gene annotation.

Pham 311155 Report

This analysis was run 06/27/26 on database version 652.

Pham number 311155 has 305 members, 37 are drafts.

Phages represented in each track:

- Track 1 : Ranunculus_26
- Track 2 : Rizwana_26
- Track 3 : Wilde_27
- Track 4 : Tank_27
- Track 5 : Odyssey395_34, Forrestell_29, Beagle_33, Pointis_32, RazzB_28, MellowYellow_29, RIPWilbur_30, DogYard_32, Pureglobe5_34, NyleyClemson_27, Kubulix_33
- Track 6 : BetaFish_32, Hive_32, Popstraw_30
- Track 7 : Ollypop_30
- Track 8 : PhuzzTulsa_30
- Track 9 : Ren19_25, Nikan_27
- Track 10 : BruhMoment_27
- Track 11 : AWGoat_25
- Track 12 : SilentRX_27
- Track 13 : BayC_18, Salete_18, Maih_18, Asis_18
- Track 14 : RainyPolka_19
- Track 15 : TP1604_18, BabyGotBac_18
- Track 16 : Mischief19_26
- Track 17 : YDN12_19
- Track 18 : Abt2graduatex2_19
- Track 19 : Xkcd426_24
- Track 20 : Purplicious_50, ColdSoup_52, Amo99_52, Jollymon_51
- Track 21 : Stillion_51
- Track 22 : Grumio_51, Sting_50, DonTron_51, KingstonB_49
- Track 23 : Soos_47
- Track 24 : Togo_24, Portcullis_24, Gezellig_24, JohnPork_24, PullumCavea_24, Salvador_24, Nubi_24, Wizard_24, Evamon_24, Phlop_24, Shinji_24, SmokingBunny_24
- Track 25 : Mutzi_26
- Track 26 : Savbucketdawg_24, Jambalaya_24, CoveyB_26, Halo3_25, VanDeWege_27, ClamChowder_26, Danyall_26, KimmyK_26, PinkCoffee_26, Fugax_26, Twister6_26, Barb_26
- Track 27 : Sixsevenium_25, Bakery_25
- Track 28 : TillyBobJoe_24, Fireball_25
- Track 29 : Egi03_24, Sendy_25
- Track 30 : YungMoney_26
- Track 31 : RogerDodger_27, Arri_27

- Track 32 : CherryCola_27, Valary_27
- Track 33 : SharkTale_24
- Track 34 : Clown_28
- Track 35 : Lennon_28, Bibwit_27, Sedona_28
- Track 36 : Baumdotcom_27, Tycho_27, Saronaya_27, Ashertheman_28, Tangerine_27, Gustavo_27
- Track 37 : Geodirt_25
- Track 38 : Nordenberg_22, McKinley_30, BobBob_25
- Track 39 : MoontowerMania_27
- Track 40 : Jabberwocky_26, Shivanishola_29, Affeca_26, Sanjuju_26, Brawn1_24
- Track 41 : Ailee_26
- Track 42 : Kewpiedoll_27
- Track 43 : Fosterous_26
- Track 44 : ChadMasterC_28, Barsten_28
- Track 45 : Brandonk123_29
- Track 46 : Fitzgerald_26
- Track 47 : Love_31, McCrothy_28
- Track 48 : LilHam_25, StorminNorm_27, SchottB_26, Kwobi_29
- Track 49 : Ribeye_28, Kroos_28
- Track 50 : RiverRaider_28
- Track 51 : Gaea_27
- Track 52 : Rofo_28, Galadriel_28
- Track 53 : Derg_23, Baddon_27, Flatwoods_28, Bizzy_28
- Track 54 : Charming_28, Tangent_28
- Track 55 : Kamashten_27, Thing3_27
- Track 56 : YorkOnyx_28
- Track 57 : JKSyngboy_25
- Track 58 : Angelicage_26
- Track 59 : Vivi2_30
- Track 60 : Stichling_25
- Track 61 : Stultus_26
- Track 62 : Keitabear_28
- Track 63 : FuegoCuervo_30
- Track 64 : Sitar_28
- Track 65 : Paries_30
- Track 66 : Leonard_26, Phinally_26, Ali17_24
- Track 67 : EMoore_24
- Track 68 : Hans_28, Inspectinfecti_27, Phauci_19
- Track 69 : MelBins_27
- Track 70 : Belphegor_26
- Track 71 : EdmundFerry_24, Chickadee_25, Tiamoceli_26
- Track 72 : RoadKill_23
- Track 73 : GTE6_25
- Track 74 : Dxdert_26, Kwekel_25
- Track 75 : Twonlo_23
- Track 76 : ViaConlectus_28, Scioto_28, Natkenzie_28, BigHunkinEater_31, Pumpkiney_29, Zitch_29, APunk_29, Sampson_28, Abblin_28
- Track 77 : DoctorFroggo_27, Verity_27, Delrey21_27
- Track 78 : Zipp_27
- Track 79 : Tardus_29
- Track 80 : Lilbeanie_23
- Track 81 : RobsFeet_33, Shrubaron_32

- Track 82 : Yeti_32, Honeyfin_33, Jollipop_32, Hermeonysus_31, Jefe_32, Busephilis_31, BrazzalePHS_31, Selwyn23_33, Cranjis_33, Lucretia_32, Ramiel05_31, Quhwah_35, BeagleBug_31, PierreOrion_32, Glorp_33, Phrancesco_32, PhedwardCullen_31, Onika_31, Savannah_31, Pulchra_33, PiperSansNom_32, Piperis_32, CrazyRich_31, Antares_32, Kowalski_31, Paschalis_31, Germa_33, Shotgun_31, Scumberland_33, Rockwell_31, LittleFortune_33, Phorgeous_31
- Track 83 : ClearAsMud_34, SirFrank_31
- Track 84 : Ganandorf_31
- Track 85 : Jayden_33
- Track 86 : Fireman_32
- Track 87 : Metamorphoo_32
- Track 88 : KaiHaiDragon_32, EarickHC_32
- Track 89 : Gina_33, Teamocil_33, Skugga_30
- Track 90 : NoodlelyBoi_32
- Track 91 : Merry_
- Track 92 : Sunny_
- Track 93 : Megan_26
- Track 94 : Crisis_33
- Track 95 : Zapato_31
- Track 96 : Ariadne_40, Smarties_40
- Track 97 : Tyumbra_30
- Track 98 : Nicole72_27
- Track 99 : Phabia_32, Lonelysoil_31, Casend_33, Zhafia_34, MorillMayhem_32, Wheelie_31, Jehoshaphat_34, Teehee_33, BaconCheese_35, Wayne3_33
- Track 100 : KillerQueen_32, Tempo_31, Kelcole_30, CandC_30
- Track 101 : Fizzles_32
- Track 102 : SallyK_33, SlySloth_34, WheelerS25_37
- Track 103 : BabyDotz_31
- Track 104 : Marcie_36
- Track 105 : Mashley_30, Mentos_37, Zagie_32, Hyperion_31, AluminumJesus_30, Blab_30
- Track 106 : Fregley_32, OneinaGillian_31
- Track 107 : DonaldDuck_31, Llemily_31
- Track 108 : Rudy_30, Quammi_30, Rowlf_28, StrawberryJamm_34, Viceroy_31
- Track 109 : Gazebo_31, Mila11_35
- Track 110 : Judebell_34, FrankDeliGuy_29
- Track 111 : RobinRose_33
- Track 112 : SadLad_36
- Track 113 : Pepe25_30
- Track 114 : Romm_33
- Track 115 : Nike_32
- Track 116 : BirdInFrench_31, Wilca_31
- Track 117 : Tissue_32
- Track 118 : EverythinBagel_31
- Track 119 : Phinky_38
- Track 120 : Kyva_34, Namago_32, Grassboy_33
- Track 121 : Squash_34
- Track 122 : RubyRalph_34
- Track 123 : Altheas_34
- Track 124 : Sillytadpoles_32
- Track 125 : Fransoyer_34
- Track 126 : Statler_33

- Track 127 : Cressida_29
- Track 128 : Cinna_27, Matzah_28
- Track 129 : Kozie_28
- Track 130 : MementoMori_28
- Track 131 : Terij_28
- Track 132 : Margaery_27
- Track 133 : RomansRevenge_23, Boise_23
- Track 134 : Rasputia_63
- Track 135 : Hendrix_64
- Track 136 : Leaf_69, Dewdrop_69
- Track 137 : MisoSoup_23
- Track 138 : FuzzBuster_36
- Track 139 : Kithara_32
- Track 140 : phiAsp2_20
- Track 141 : TurkishDelight_24
- Track 142 : Tonitrus_38
- Track 143 : Sunfish_40

Summary of Final Annotations (See graph section above for start numbers):

The start number called the most often in the published annotations is 96, it was called in 56 of the 268 non-draft genes in the pham.

Genes that call this "Most Annotated" start:

- Antares_32, Ariadne_40, BeagleBug_31, BrazzalePHS_31, Busephilis_31, Cinna_27, ClearAsMud_34, Cranjis_33, CrazyRich_31, Cressida_29, Crisis_33, EarickHC_32, Fireman_32, FuzzBuster_36, Ganandorf_31, Germa_33, Gina_33, Glorp_33, Hermeonysus_31, Honeyfin_33, Jayden_33, Jefe_32, Jollipop_32, KaiHaiDragon_32, Kowalski_31, Kozie_28, LittleFortune_33, Lucretia_32, Margaery_27, Matzah_28, Megan_26, MementoMori_28, Metamorphoo_32, MisoSoup_23, Nicole72_27, NoodlelyBoi_32, Onika_31, Paschalis_31, PhedwardCullen_31, Phorgeous_31, Phrancesco_32, PierreOrion_32, PiperSansNom_32, Piperis_32, Pulchra_33, Quhwah_35, Ramiel05_31, RobsFeet_33, Rockwell_31, Savannah_31, Scumberland_33, Selwyn23_33, Shotgun_31, Shrubaron_32, SirFrank_31, Skugga_30, Smarties_40, Sunny_, Teamocil_33, Terij_28, Tyumbra_30, Yeti_32, Zapato_31,

Genes that have the "Most Annotated" start but do not call it:

- Beagle_33, BetaFish_32, DogYard_32, Forrestell_29, Hive_32, Kubulix_33, MellowYellow_29, Merry_, Nikan_27, NyleyClemson_27, Odyssey395_34, Ollypop_30, PhuzzTulsa_30, Pointis_32, Popstraw_30, Pureglobe5_34, RIPWilbur_30, Ranunculus_26, RazzB_28, Ren19_25,

Genes that do not have the "Most Annotated" start:

- APunk_29, AWGoat_25, Abblin_28, Abt2graduatex2_19, Affeca_26, Ailee_26, Ali17_24, Altheas_34, AluminumJesus_30, Amo99_52, Angelicage_26, Arri_27, Ashertheman_28, Asis_18, BabyDotz_31, BabyGotBac_18, BaconCheese_35, Baddon_27, Bakery_25, Barb_26, Barsten_28, Baumdotcom_27, BayC_18, Belphegor_26, Bibwit_27, BigHunkinEater_31, BirdInFrench_31, Bizzy_28, Blab_30, BobBob_25, Boise_23, Brandonk123_29, Brawn1_24, BruhMoment_27, CandC_30,

Casend_33, ChadMasterC_28, Charming_28, CherryCola_27, Chickadee_25, ClamChowder_26, Clown_28, ColdSoup_52, CoveyB_26, Danyall_26, Delrey21_27, Derg_23, Dewdrop_69, Dexdert_26, DoctorFroggo_27, DonTron_51, DonaldDuck_31, EMoore_24, EdmundFerry_24, Egi03_24, Evamon_24, EverythinBagel_31, Fireball_25, Fitzgerald_26, Fizzles_32, Flatwoods_28, Fosterous_26, FrankDeliGuy_29, Fransoyer_34, Fregley_32, FuegoCuervo_30, Fugax_26, GTE6_25, Gaea_27, Galadriel_28, Gazebo_31, Geodirt_25, Gezellig_24, Grassboy_33, Grumio_51, Gustavo_27, Halo3_25, Hans_28, Hendrix_64, Hyperion_31, Inspectinfecti_27, JKSyngboy_25, Jabberwocky_26, Jambalaya_24, Jehoshaphat_34, JohnPork_24, Jollymon_51, Judebell_34, Kamashten_27, Keitabear_28, Kelcole_30, Kewpiedoll_27, KillerQueen_32, KimmyK_26, KingstonB_49, Kithara_32, Kroos_28, Kwekel_25, Kwobi_29, Kyva_34, Leaf_69, Lennon_28, Leonard_26, LilHam_25, Lilbeanie_23, Llemily_31, Lonelysoil_31, Love_31, Maih_18, Marcie_36, Mashley_30, McCrothy_28, McKinley_30, MelBins_27, Mentos_37, Mila11_35, Mischief19_26, MoontowerMania_27, MorillMayhem_32, Mutzi_26, Namago_32, Natkenzie_28, Nike_32, Nordenberg_22, Nubi_24, OneinaGillian_31, Paries_30, Pepe25_30, Phabia_32, Phauci_19, Phinally_26, Phinky_38, Phlop_24, PinkCoffee_26, Portcullis_24, PullumCavea_24, Pumpkiney_29, Purplicious_50, Quammi_30, RainyPolka_19, Rasputia_63, Ribeye_28, RiverRaider_28, Rizwana_26, RoadKill_23, RobinRose_33, Rofo_28, RogerDodger_27, RomansRevenge_23, Romm_33, Rowlf_28, RubyRalph_34, Rudy_30, SadLad_36, Salete_18, SallyK_33, Salvador_24, Sampson_28, Sanjuju_26, Saronaya_27, Savbucketdawg_24, SchottB_26, Scioto_28, Sedona_28, Sendy_25, SharkTale_24, Shinji_24, Shivanishola_29, SilentRX_27, Sillytadpoles_32, Sitar_28, Sixsevenium_25, SlySloth_34, SmokingBunny_24, Soos_47, Squash_34, Statler_33, Stichling_25, Stillion_51, Sting_50, StorminNorm_27, StrawberryJamm_34, Stultus_26, Sunfish_40, TP1604_18, Tangent_28, Tangerine_27, Tank_27, Tardus_29, Teehee_33, Tempo_31, Thing3_27, Tiamoceli_26, TillyBobJoe_24, Tissue_32, Togo_24, Tonitrus_38, TurkishDelight_24, Twister6_26, Twonlo_23, Tycho_27, Valary_27, VanDeWege_27, Verity_27, ViaConlectus_28, Viceroy_31, Vivi2_30, Wayne3_33, WheelerS25_37, Wheelie_31, Wilca_31, Wilde_27, Wizard_24, Xkcd426_24, YDN12_19, YorkOnyx_28, YungMoney_26, Zagie_32, Zhafia_34, Zipp_27, Zitch_29, phiAsp2_20,

Summary by start number:

Start 68:

- Found in 12 of 305 (3.9%) of genes in pham
- Manual Annotations of this start: 12 of 268
- Called 100.0% of time when present
- Phage (with cluster) where this start called: Abt2graduatex2_19 (BG), Asis_18 (BG), BabyGotBac_18 (BG), BayC_18 (BG), Maih_18 (BG), Mischief19_26 (BG), RainyPolka_19 (BG), Salete_18 (BG), TP1604_18 (BG), TurkishDelight_24 (singleton), Xkcd426_24 (BG), YDN12_19 (BG),

Start 71:

- Found in 4 of 305 (1.3%) of genes in pham
- Manual Annotations of this start: 4 of 268
- Called 100.0% of time when present
- Phage (with cluster) where this start called: Dewdrop_69 (GC), Hendrix_64 (GC), Leaf_69 (GC), Rasputia_63 (GC),

Start 73:

- Found in 19 of 305 (6.2%) of genes in pham
- Manual Annotations of this start: 1 of 268
- Called 31.6% of time when present
- Phage (with cluster) where this start called: BetaFish_32 (AP2), Hive_32 (AP2), Nikan_27 (AP2), Ollypop_30 (AP2), Popstraw_30 (AP2), Ren19_25 (AP2),

Start 74:

- Found in 17 of 305 (5.6%) of genes in pham
- Manual Annotations of this start: 12 of 268
- Called 76.5% of time when present
- Phage (with cluster) where this start called: Beagle_33 (AP2), DogYard_32 (AP2), Forrestell_29 (AP2), Kubulix_33 (AP2), MellowYellow_29 (AP2), NyleyClemson_27 (AP2), Odyssey395_34 (AP2), PhuzzTulsa_30 (AP2), Pointis_32 (AP2), Pureglobe5_34 (AP2), RIPWilbur_30 (AP2), Ranunculus_26 (AP), RazzB_28 (AP2),

Start 75:

- Found in 5 of 305 (1.6%) of genes in pham
- Manual Annotations of this start: 3 of 268
- Called 60.0% of time when present
- Phage (with cluster) where this start called: Rizwana_26 (AP1), Tank_27 (AP1), Wilde_27 (AP1),

Start 77:

- Found in 9 of 305 (3.0%) of genes in pham
- Manual Annotations of this start: 1 of 268
- Called 11.1% of time when present
- Phage (with cluster) where this start called: RobinRose_33 (EG),

Start 78:

- Found in 1 of 305 (0.3%) of genes in pham
- Manual Annotations of this start: 1 of 268
- Called 100.0% of time when present
- Phage (with cluster) where this start called: Sunfish_40 (singleton),

Start 79:

- Found in 1 of 305 (0.3%) of genes in pham
- Manual Annotations of this start: 1 of 268
- Called 100.0% of time when present
- Phage (with cluster) where this start called: BruhMoment_27 (AP3),

Start 83:

- Found in 4 of 305 (1.3%) of genes in pham
- Manual Annotations of this start: 3 of 268
- Called 100.0% of time when present
- Phage (with cluster) where this start called: AWGoat_25 (AP4), Boise_23 (FT), RomansRevenge_23 (FT), SilentRX_27 (AP4),

Start 86:

- Found in 58 of 305 (19.0%) of genes in pham
- Manual Annotations of this start: 50 of 268
- Called 98.3% of time when present
- Phage (with cluster) where this start called: Altheas_34 (EG), AluminumJesus_30 (EG), BabyDotz_31 (EG), BaconCheese_35 (EG), BirdInFrench_31 (EG), Blab_30

(EG), CandC_30 (EG), Casend_33 (EG), DonaldDuck_31 (EG), EverythinBagel_31 (EG), Fizzles_32 (EG), FrankDeliGuy_29 (EG), Fransoyer_34 (EG), Fregley_32 (EG), Gazebo_31 (EG), Grassboy_33 (EG), Hyperion_31 (EG), Jehoshaphat_34 (EG), Judebell_34 (EG), Kelcole_30 (EG), KillerQueen_32 (EG), Kyva_34 (EG), Llemily_31 (EG), Lonelysoil_31 (EG), Marcie_36 (EG), Mashley_30 (EG), Mentos_37 (EG), Mila11_35 (EG), MorillMayhem_32 (EG), Namago_32 (EG), Nike_32 (EG), OneinaGillian_31 (EG), Pepe25_30 (EG), Phabia_32 (EG), Phinky_38 (EG), Quammi_30 (EG), Romm_33 (EG), Rowlf_28 (EG), RubyRalph_34 (EG), Rudy_30 (EG), SadLad_36 (EG), SallyK_33 (EG), Sillytadpoles_32 (EG), SlySloth_34 (EG), Squash_34 (EG), Statler_33 (EG), StrawberryJamm_34 (EG), Teehee_33 (EG), Tempo_31 (EG), Tissue_32 (EG), Viceroy_31 (EG), Wayne3_33 (EG), WheelerS25_37 (EG), Wheelie_31 (EG), Wilca_31 (EG), Zagie_32 (EG), Zhafia_34 (EG),

Start 87:

- Found in 1 of 305 (0.3%) of genes in pham
- No Manual Annotations of this start.
- Called 100.0% of time when present
- Phage (with cluster) where this start called: phiAsp2_20 (singleton),

Start 88:

- Found in 1 of 305 (0.3%) of genes in pham
- Manual Annotations of this start: 1 of 268
- Called 100.0% of time when present
- Phage (with cluster) where this start called: Merry_ (EC),

Start 89:

- Found in 22 of 305 (7.2%) of genes in pham
- Manual Annotations of this start: 20 of 268
- Called 100.0% of time when present
- Phage (with cluster) where this start called: APunk_29 (DE4), Abblin_28 (DE4), BigHunkinEater_31 (DE4), Chickadee_25 (DE3), Delrey21_27 (DE4), Dextert_26 (DE3), DoctorFroggo_27 (DE4), EdmundFerry_24 (DE3), GTE6_25 (DE3), Kwekel_25 (DE3), Natkenzie_28 (DE4), Pumpkiney_29 (DE4), RoadKill_23 (DE3), Sampson_28 (DE4), Scioto_28 (DE4), Tardus_29 (DE4), Tiamoceli_26 (DE3), Twonlo_23 (DE3), Verity_27 (DE4), ViaConlectus_28 (DE4), Zipp_27 (DE4), Zitch_29 (DE4),

Start 93:

- Found in 9 of 305 (3.0%) of genes in pham
- Manual Annotations of this start: 8 of 268
- Called 88.9% of time when present
- Phage (with cluster) where this start called: Ali17_24 (DE2), Belphegor_26 (DE2), Hans_28 (DE2), Inspectinfecti_27 (DE2), Leonard_26 (DE2), MelBins_27 (DE2), Phauci_19 (DE2), Phinally_26 (DE2),

Start 94:

- Found in 11 of 305 (3.6%) of genes in pham
- Manual Annotations of this start: 5 of 268
- Called 90.9% of time when present
- Phage (with cluster) where this start called: Amo99_52 (CP), ColdSoup_52 (CP), DonTron_51 (CP), Grumio_51 (CP), Jollymon_51 (CP), KingstonB_49 (CP), Purplicious_50 (CP), Soos_47 (CP), Stillion_51 (CP), Sting_50 (CP),

Start 95:

- Found in 95 of 305 (31.1%) of genes in pham
- Manual Annotations of this start: 55 of 268
- Called 64.2% of time when present
- Phage (with cluster) where this start called: Ailee_26 (DE1), Arri_27 (DC1), Baddon_27 (DE1), Bakery_25 (DC1), Barb_26 (DC1), Barsten_28 (DE1), Bizzy_28 (DE1), BobBob_25 (DE1), Brandonk123_29 (DE1), ChadMasterC_28 (DE1), CherryCola_27 (DC1), ClamChowder_26 (DC1), Clown_28 (DC2), CoveyB_26 (DC1), Danyall_26 (DC1), Derg_23 (DE1), Egi03_24 (DC1), Evamon_24 (DC1), Fireball_25 (DC1), Flatwoods_28 (DE1), Fugax_26 (DC1), Gaea_27 (DE1), Geodirt_25 (DE1), Gezellig_24 (DC1), Halo3_25 (DC1), Jambalaya_24 (DC1), JohnPork_24 (DC1), Keitabear_28 (DE1), KimmyK_26 (DC1), Kwobi_29 (DE1), LilHam_25 (DE1), Lilbeanie_23 (DE5), McKinley_30 (DE1), Mutzi_26 (DC1), Nordenberg_22 (DE1), Nubi_24 (DC1), Phlop_24 (DC1), PinkCoffee_26 (DC1), Portcullis_24 (DC1), PullumCavea_24 (DC1), RiverRaider_28 (DE1), RogerDodger_27 (DC1), Salvador_24 (DC1), Savbucketdawg_24 (DC1), SchottB_26 (DE1), Sendy_25 (DC1), SharkTale_24 (DC1), Shinji_24 (DC1), Sitar_28 (DE1), Sixsevenium_25 (DC1), SmokingBunny_24 (DC1), Stichling_25 (DE1), StorminNorm_27 (DE1), TillyBobJoe_24 (DC1), Togo_24 (DC1), Twister6_26 (DC1), Valary_27 (DC1), VanDeWege_27 (DC1), Vivi2_30 (DE1), Wizard_24 (DC1), YungMoney_26 (DC1),

Start 96:

- Found in 83 of 305 (27.2%) of genes in pham
- Manual Annotations of this start: 56 of 268
- Called 75.9% of time when present
- Phage (with cluster) where this start called: Antares_32 (EC), Ariadne_40 (EC), BeagleBug_31 (EC), BrazzalePHS_31 (EC), Busephilis_31 (EC), Cinna_27 (EI), ClearAsMud_34 (EC), Cranjis_33 (EC), CrazyRich_31 (EC), Cressida_29 (EI), Crisis_33 (EC), EarickHC_32 (EC), Fireman_32 (EC), FuzzBuster_36 (GM), Ganandorf_31 (EC), Germa_33 (EC), Gina_33 (EC), Glorp_33 (EC), Hermeonysus_31 (EC), Honeyfin_33 (EC), Jayden_33 (EC), Jefe_32 (EC), Jollipop_32 (EC), KaiHaiDragon_32 (EC), Kowalski_31 (EC), Kozie_28 (EI), LittleFortune_33 (EC), Lucretia_32 (EC), Margaery_27 (EI), Matzah_28 (EI), Megan_26 (EC), MementoMori_28 (EI), Metamorphoo_32 (EC), MisoSoup_23 (GM), Nicole72_27 (EC), NoodlelyBoi_32 (EC), Onika_31 (EC), Paschalis_31 (EC), PhedwardCullen_31 (EC), Phorgeous_31 (EC), Phrancesco_32 (EC), PierreOrion_32 (EC), PiperSansNom_32 (EC), Piperis_32 (EC), Pulchra_33 (EC), Quhwah_35 (EC), Ramiel05_31 (EC), RobsFeet_33 (EC), Rockwell_31 (EC), Savannah_31 (EC), Scumberland_33 (EC), Selwyn23_33 (EC), Shotgun_31 (EC), Shrubaron_32 (EC), SirFrank_31 (EC), Skugga_30 (EC), Smarties_40 (EC), Sunny_ (EC), Teamocil_33 (EC), Terij_28 (EI), Tyrumbra_30 (EC), Yeti_32 (EC), Zapato_31 (EC),

Start 97:

- Found in 56 of 305 (18.4%) of genes in pham
- Manual Annotations of this start: 32 of 268
- Called 60.7% of time when present
- Phage (with cluster) where this start called: Affeca_26 (DE1), Angelicage_26 (DE1), Ashertheman_28 (DE1), Baumdotcom_27 (DE1), Bibwit_27 (DE1), Brawn1_24 (DE1), Charming_28 (DE1), Fitzgerald_26 (DE1), Fosterous_26 (DE1), FuegoCuervo_30 (DE1), Galadriel_28 (DE1), Gustavo_27 (DE1), JKSyngboy_25 (DE1), Jabberwocky_26 (DE1), Kamashten_27 (DE1), Kewpiedoll_27 (DE1), Kroos_28 (DE1), Lennon_28 (DE1), Love_31 (DE1), McCrothy_28 (DE1), MoontowerMania_27

(DE1), Paries_30 (DE1), Ribeye_28 (DE1), Rofo_28 (DE1), Sanjuju_26 (DE1), Saronaya_27 (DE1), Sedona_28 (DE1), Shivanishola_29 (DE1), Stultus_26 (DE1), Tangent_28 (DE1), Tangerine_27 (DE1), Thing3_27 (DE1), Tycho_27 (DE1), YorkOnyx_28 (DE1),

Start 99:

- Found in 1 of 305 (0.3%) of genes in pham
- Manual Annotations of this start: 1 of 268
- Called 100.0% of time when present
- Phage (with cluster) where this start called: Tonitrus_38 (singleton),

Start 101:

- Found in 1 of 305 (0.3%) of genes in pham
- Manual Annotations of this start: 1 of 268
- Called 100.0% of time when present
- Phage (with cluster) where this start called: Kithara_32 (singleton),

Start 105:

- Found in 40 of 305 (13.1%) of genes in pham
- Manual Annotations of this start: 1 of 268
- Called 2.5% of time when present
- Phage (with cluster) where this start called: EMoore_24 (DE2),

Summary by clusters:

There are 21 clusters represented in this pham: singleton, AP1, FT, AP2, DE1, EG, DE3, DE4, DE5, EC, AP, BG, GC, AP4, AP3, EI, GM, CP, DC2, DE2, DC1,

Info for manual annotations of cluster AP:

- Start number 74 was manually annotated 1 time for cluster AP.

Info for manual annotations of cluster AP1:

- Start number 75 was manually annotated 3 times for cluster AP1.

Info for manual annotations of cluster AP2:

- Start number 73 was manually annotated 1 time for cluster AP2.
- Start number 74 was manually annotated 11 times for cluster AP2.

Info for manual annotations of cluster AP3:

- Start number 79 was manually annotated 1 time for cluster AP3.

Info for manual annotations of cluster AP4:

- Start number 83 was manually annotated 2 times for cluster AP4.

Info for manual annotations of cluster BG:

- Start number 68 was manually annotated 11 times for cluster BG.

Info for manual annotations of cluster CP:

- Start number 94 was manually annotated 5 times for cluster CP.

Info for manual annotations of cluster DC1:

- Start number 95 was manually annotated 32 times for cluster DC1.

Info for manual annotations of cluster DC2:

- Start number 95 was manually annotated 1 time for cluster DC2.

Info for manual annotations of cluster DE1:

- Start number 95 was manually annotated 21 times for cluster DE1.
- Start number 97 was manually annotated 32 times for cluster DE1.

Info for manual annotations of cluster DE2:

- Start number 93 was manually annotated 8 times for cluster DE2.
- Start number 105 was manually annotated 1 time for cluster DE2.

Info for manual annotations of cluster DE3:

- Start number 89 was manually annotated 7 times for cluster DE3.

Info for manual annotations of cluster DE4:

- Start number 89 was manually annotated 13 times for cluster DE4.

Info for manual annotations of cluster DE5:

- Start number 95 was manually annotated 1 time for cluster DE5.

Info for manual annotations of cluster EC:

- Start number 88 was manually annotated 1 time for cluster EC.
- Start number 96 was manually annotated 48 times for cluster EC.

Info for manual annotations of cluster EG:

- Start number 77 was manually annotated 1 time for cluster EG.
- Start number 86 was manually annotated 50 times for cluster EG.

Info for manual annotations of cluster EI:

- Start number 96 was manually annotated 7 times for cluster EI.

Info for manual annotations of cluster FT:

- Start number 83 was manually annotated 1 time for cluster FT.

Info for manual annotations of cluster GC:

- Start number 71 was manually annotated 4 times for cluster GC.

Info for manual annotations of cluster GM:

- Start number 96 was manually annotated 1 time for cluster GM.

Gene Information:

Gene: APunk_29 Start: 21390, Stop: 21947, Start Num: 89

Candidate Starts for APunk_29:

(Start: 89 @21390 has 20 MA's), (117, 21468), (131, 21504), (132, 21507), (190, 21651), (195, 21669), (206, 21711), (213, 21735), (239, 21807), (243, 21813), (252, 21834), (272, 21900), (277, 21921),

Gene: AWGoat_25 Start: 20372, Stop: 20869, Start Num: 83

Candidate Starts for AWGoat_25:

(Start: 83 @20372 has 3 MA's), (153, 20534), (163, 20561), (169, 20588), (188, 20621), (190, 20633), (191, 20636), (195, 20651), (201, 20678), (207, 20699), (211, 20714), (218, 20732), (220, 20738),

(221, 20741), (253, 20819), (258, 20840),

Gene: Abblin_28 Start: 22002, Stop: 22559, Start Num: 89

Candidate Starts for Abblin_28:

(Start: 89 @22002 has 20 MA's), (117, 22080), (131, 22116), (132, 22119), (190, 22263), (195, 22281), (206, 22323), (213, 22347), (239, 22419), (243, 22425), (252, 22446), (272, 22512), (277, 22533),

Gene: Abt2graduatex2_19 Start: 19085, Stop: 19747, Start Num: 68

Candidate Starts for Abt2graduatex2_19:

(2, 18098), (3, 18245), (4, 18260), (5, 18323), (7, 18404), (16, 18521), (19, 18545), (22, 18560), (Start: 68 @19085 has 12 MA's), (69, 19097), (100, 19172), (128, 19256), (137, 19289), (142, 19295), (150, 19322), (175, 19400), (181, 19409), (189, 19430), (204, 19484), (211, 19508), (218, 19526), (221, 19535), (244, 19601), (259, 19643), (268, 19667), (278, 19712), (282, 19742),

Gene: Affeca_26 Start: 21919, Stop: 22467, Start Num: 97

Candidate Starts for Affeca_26:

(10, 21196), (12, 21238), (14, 21256), (48, 21565), (52, 21613), (59, 21715), (67, 21826), (Start: 95 @21916 has 55 MA's), (Start: 97 @21919 has 32 MA's), (Start: 105 @21940 has 1 MA's), (123, 21997), (133, 22018), (154, 22069), (164, 22096), (185, 22138), (190, 22156), (205, 22213), (213, 22240), (225, 22276), (243, 22318), (244, 22324), (250, 22333), (255, 22342), (276, 22423), (277, 22429),

Gene: Ailee_26 Start: 22628, Stop: 23176, Start Num: 95

Candidate Starts for Ailee_26:

(52, 22325), (59, 22427), (67, 22538), (Start: 95 @22628 has 55 MA's), (Start: 97 @22631 has 32 MA's), (123, 22709), (133, 22730), (149, 22766), (154, 22781), (176, 22835), (185, 22850), (190, 22868), (205, 22925), (213, 22952), (225, 22988), (243, 23030), (244, 23036), (250, 23045), (255, 23054), (276, 23135), (277, 23141),

Gene: Ali17_24 Start: 19765, Stop: 20319, Start Num: 93

Candidate Starts for Ali17_24:

(Start: 93 @19765 has 8 MA's), (Start: 105 @19795 has 1 MA's), (109, 19807), (126, 19864), (132, 19870), (138, 19888), (185, 19996), (190, 20014), (243, 20182), (250, 20197), (252, 20203), (267, 20248), (272, 20272),

Gene: Altheas_34 Start: 21898, Stop: 22431, Start Num: 86

Candidate Starts for Altheas_34:

(43, 21532), (54, 21667), (Start: 86 @21898 has 50 MA's), (146, 22072), (182, 22165), (215, 22279), (231, 22333), (237, 22345),

Gene: AluminumJesus_30 Start: 21395, Stop: 21925, Start Num: 86

Candidate Starts for AluminumJesus_30:

(Start: 86 @21395 has 50 MA's), (153, 21587), (182, 21659), (190, 21683), (215, 21773), (227, 21809), (231, 21827), (237, 21839),

Gene: Amo99_52 Start: 28627, Stop: 29169, Start Num: 94

Candidate Starts for Amo99_52:

(52, 28333), (59, 28435), (67, 28549), (Start: 94 @28627 has 5 MA's), (106, 28657), (107, 28660), (141, 28747), (194, 28870), (222, 28966), (247, 29035), (261, 29077), (279, 29140),

Gene: Angelicage_26 Start: 22339, Stop: 22884, Start Num: 97

Candidate Starts for Angelicage_26:

(59, 22135), (67, 22246), (Start: 95 @22336 has 55 MA's), (Start: 97 @22339 has 32 MA's), (Start: 105 @22360 has 1 MA's), (123, 22417), (126, 22429), (133, 22438), (154, 22489), (185, 22558), (190, 22576), (205, 22633), (213, 22660), (225, 22696), (243, 22738), (244, 22744), (250, 22753), (255, 22762), (276, 22843), (277, 22849),

Gene: Antares_32 Start: 19129, Stop: 19593, Start Num: 96

Candidate Starts for Antares_32:

(Start: 96 @19129 has 56 MA's), (126, 19210), (156, 19282), (157, 19288), (160, 19297), (185, 19348), (190, 19366), (193, 19378), (219, 19459), (235, 19504), (257, 19555), (260, 19567),

Gene: Ariadne_40 Start: 20819, Stop: 21283, Start Num: 96

Candidate Starts for Ariadne_40:

(Start: 96 @20819 has 56 MA's), (103, 20834), (123, 20888), (127, 20900), (157, 20978), (160, 20987), (185, 21038), (190, 21056), (199, 21095), (219, 21149), (230, 21185), (257, 21245),

Gene: Arri_27 Start: 17393, Stop: 17929, Start Num: 95

Candidate Starts for Arri_27:

(40, 16931), (48, 17048), (59, 17198), (67, 17309), (Start: 95 @17393 has 55 MA's), (126, 17486), (132, 17492), (140, 17516), (141, 17519), (145, 17525), (188, 17630), (189, 17636), (190, 17642), (207, 17696), (221, 17738), (264, 17849), (266, 17855), (277, 17903),

Gene: Ashertheman_28 Start: 21231, Stop: 21773, Start Num: 97

Candidate Starts for Ashertheman_28:

(48, 20883), (52, 20931), (59, 21033), (67, 21144), (Start: 95 @21228 has 55 MA's), (Start: 97 @21231 has 32 MA's), (123, 21309), (126, 21321), (132, 21327), (133, 21330), (149, 21366), (185, 21447), (190, 21465), (243, 21627), (250, 21642), (277, 21738),

Gene: Asis_18 Start: 18600, Stop: 19238, Start Num: 68

Candidate Starts for Asis_18:

(Start: 68 @18600 has 12 MA's), (69, 18612), (91, 18666), (100, 18687), (111, 18723), (112, 18726), (137, 18804), (142, 18810), (143, 18813), (166, 18891), (175, 18915), (181, 18924), (189, 18945), (204, 18999), (211, 19023), (218, 19041), (244, 19116), (246, 19119), (259, 19158), (268, 19182),

Gene: BabyDotz_31 Start: 21663, Stop: 22193, Start Num: 86

Candidate Starts for BabyDotz_31:

(54, 21432), (Start: 86 @21663 has 50 MA's), (134, 21804), (153, 21855), (167, 21900), (182, 21927), (190, 21951), (193, 21963), (215, 22041), (227, 22077), (237, 22107), (260, 22170),

Gene: BabyGotBac_18 Start: 18600, Stop: 19238, Start Num: 68

Candidate Starts for BabyGotBac_18:

(Start: 68 @18600 has 12 MA's), (69, 18612), (70, 18621), (91, 18666), (100, 18687), (111, 18723), (112, 18726), (137, 18804), (142, 18810), (143, 18813), (166, 18891), (175, 18915), (181, 18924), (189, 18945), (204, 18999), (211, 19023), (218, 19041), (244, 19116), (246, 19119), (259, 19158), (268, 19182),

Gene: BaconCheese_35 Start: 22912, Stop: 23442, Start Num: 86

Candidate Starts for BaconCheese_35:

(54, 22681), (Start: 86 @22912 has 50 MA's), (134, 23053), (153, 23104), (167, 23149), (182, 23176), (190, 23200), (193, 23212), (215, 23290), (227, 23326), (231, 23344), (237, 23356), (260, 23419),

Gene: Baddon_27 Start: 22040, Stop: 22585, Start Num: 95

Candidate Starts for Baddon_27:

(12, 21368), (14, 21386), (52, 21743), (59, 21845), (67, 21956), (Start: 95 @22040 has 55 MA's), (Start: 97 @22043 has 32 MA's), (123, 22121), (126, 22133), (132, 22139), (133, 22142), (149, 22178), (185, 22259), (190, 22277), (230, 22415), (243, 22439), (250, 22454), (277, 22550),

Gene: Bakery_25 Start: 16581, Stop: 17117, Start Num: 95

Candidate Starts for Bakery_25:

(67, 16497), (Start: 95 @16581 has 55 MA's), (126, 16674), (132, 16680), (140, 16704), (141, 16707), (145, 16713), (188, 16818), (189, 16824), (190, 16830), (221, 16926), (264, 17037), (266, 17043), (277, 17091),

Gene: Barb_26 Start: 17426, Stop: 17962, Start Num: 95

Candidate Starts for Barb_26:

(40, 16964), (48, 17081), (59, 17231), (67, 17342), (Start: 95 @17426 has 55 MA's), (118, 17489), (126, 17519), (132, 17525), (140, 17549), (141, 17552), (145, 17558), (151, 17576), (188, 17663), (189, 17669), (190, 17675), (221, 17771), (264, 17882), (266, 17888), (277, 17936),

Gene: Barsten_28 Start: 21760, Stop: 22308, Start Num: 95

Candidate Starts for Barsten_28:

(10, 21040), (12, 21082), (14, 21100), (48, 21409), (52, 21457), (59, 21559), (67, 21670), (Start: 95 @21760 has 55 MA's), (Start: 97 @21763 has 32 MA's), (123, 21841), (133, 21862), (154, 21913), (164, 21940), (185, 21982), (190, 22000), (205, 22057), (213, 22084), (225, 22120), (243, 22162), (244, 22168), (250, 22177), (255, 22186), (276, 22267), (277, 22273),

Gene: Baumdotcom_27 Start: 20846, Stop: 21388, Start Num: 97

Candidate Starts for Baumdotcom_27:

(48, 20498), (52, 20546), (59, 20648), (67, 20759), (Start: 95 @20843 has 55 MA's), (Start: 97 @20846 has 32 MA's), (123, 20924), (126, 20936), (132, 20942), (133, 20945), (149, 20981), (185, 21062), (190, 21080), (243, 21242), (250, 21257), (277, 21353),

Gene: BayC_18 Start: 18600, Stop: 19238, Start Num: 68

Candidate Starts for BayC_18:

(Start: 68 @18600 has 12 MA's), (69, 18612), (91, 18666), (100, 18687), (111, 18723), (112, 18726), (137, 18804), (142, 18810), (143, 18813), (166, 18891), (175, 18915), (181, 18924), (189, 18945), (204, 18999), (211, 19023), (218, 19041), (244, 19116), (246, 19119), (259, 19158), (268, 19182),

Gene: Beagle_33 Start: 19814, Stop: 20341, Start Num: 74

Candidate Starts for Beagle_33:

(Start: 73 @19811 has 1 MA's), (Start: 74 @19814 has 12 MA's), (80, 19826), (Start: 96 @19850 has 56 MA's), (98, 19853), (114, 19901), (129, 19946), (150, 19991), (155, 20006), (187, 20087), (188, 20090), (195, 20120), (211, 20183), (218, 20201), (219, 20204), (221, 20210), (224, 20222),

Gene: BeagleBug_31 Start: 18910, Stop: 19374, Start Num: 96

Candidate Starts for BeagleBug_31:

(Start: 96 @18910 has 56 MA's), (126, 18991), (156, 19063), (157, 19069), (160, 19078), (185, 19129), (190, 19147), (193, 19159), (219, 19240), (235, 19285), (257, 19336), (260, 19348),

Gene: Belphegor_26 Start: 21314, Stop: 21868, Start Num: 93

Candidate Starts for Belphegor_26:

(Start: 93 @21314 has 8 MA's), (Start: 105 @21344 has 1 MA's), (109, 21356), (117, 21380), (126, 21413), (132, 21419), (138, 21437), (185, 21545), (190, 21563), (206, 21629), (243, 21731), (250, 21746), (252, 21752), (267, 21797), (272, 21821),

Gene: BetaFish_32 Start: 20005, Stop: 20535, Start Num: 73

Candidate Starts for BetaFish_32:

(Start: 73 @20005 has 1 MA's), (Start: 74 @20008 has 12 MA's), (80, 20020), (Start: 96 @20044 has 56 MA's), (98, 20047), (114, 20095), (129, 20140), (150, 20185), (155, 20200), (187, 20281), (188, 20284), (195, 20314), (211, 20377), (218, 20395), (219, 20398), (221, 20404), (224, 20416),

Gene: Bibwit_27 Start: 21950, Stop: 22495, Start Num: 97

Candidate Starts for Bibwit_27:

(10, 21227), (12, 21269), (14, 21287), (48, 21596), (52, 21644), (59, 21746), (67, 21857), (Start: 95 @21947 has 55 MA's), (Start: 97 @21950 has 32 MA's), (Start: 105 @21971 has 1 MA's), (126, 22040), (133, 22049), (154, 22100), (185, 22169), (190, 22187), (205, 22244), (213, 22271), (225, 22307), (243, 22349), (244, 22355), (250, 22364), (255, 22373), (276, 22454), (277, 22460),

Gene: BigHunkinEater_31 Start: 21172, Stop: 21729, Start Num: 89

Candidate Starts for BigHunkinEater_31:

(Start: 89 @21172 has 20 MA's), (117, 21250), (131, 21286), (132, 21289), (190, 21433), (195, 21451), (206, 21493), (213, 21517), (239, 21589), (243, 21595), (252, 21616), (272, 21682), (277, 21703),

Gene: BirdInFrench_31 Start: 20336, Stop: 20827, Start Num: 86

Candidate Starts for BirdInFrench_31:

(1, 18518), (6, 19529), (11, 19676), (13, 19706), (29, 19838), (44, 19988), (54, 20111), (56, 20126), (Start: 86 @20336 has 50 MA's), (102, 20366), (182, 20567), (188, 20579), (189, 20585), (192, 20600), (210, 20669), (215, 20681), (249, 20774), (253, 20783),

Gene: Bizzy_28 Start: 21187, Stop: 21732, Start Num: 95

Candidate Starts for Bizzy_28:

(12, 20515), (14, 20533), (52, 20890), (59, 20992), (67, 21103), (Start: 95 @21187 has 55 MA's), (Start: 97 @21190 has 32 MA's), (123, 21268), (126, 21280), (132, 21286), (133, 21289), (149, 21325), (185, 21406), (190, 21424), (230, 21562), (243, 21586), (250, 21601), (277, 21697),

Gene: Blab_30 Start: 21320, Stop: 21850, Start Num: 86

Candidate Starts for Blab_30:

(Start: 86 @21320 has 50 MA's), (153, 21512), (182, 21584), (190, 21608), (215, 21698), (227, 21734), (231, 21752), (237, 21764),

Gene: BobBob_25 Start: 21225, Stop: 21773, Start Num: 95

Candidate Starts for BobBob_25:

(10, 20505), (12, 20547), (14, 20565), (48, 20874), (52, 20922), (59, 21024), (67, 21135), (Start: 95 @21225 has 55 MA's), (Start: 97 @21228 has 32 MA's), (123, 21306), (133, 21327), (154, 21378), (164, 21405), (185, 21447), (190, 21465), (213, 21549), (225, 21585), (243, 21627), (244, 21633), (250, 21642), (255, 21651), (276, 21732), (277, 21738),

Gene: Boise_23 Start: 18318, Stop: 18812, Start Num: 83

Candidate Starts for Boise_23:

(Start: 75 @18303 has 3 MA's), (Start: 83 @18318 has 3 MA's), (98, 18339), (109, 18372), (150, 18468), (153, 18477), (182, 18552), (189, 18570), (190, 18576), (195, 18594), (196, 18597), (198, 18612), (200, 18621), (202, 18627), (218, 18678), (221, 18687), (230, 18720), (253, 18771),

Gene: Brandonk123_29 Start: 22294, Stop: 22842, Start Num: 95

Candidate Starts for Brandonk123_29:

(10, 21574), (12, 21616), (14, 21634), (48, 21943), (52, 21991), (59, 22093), (67, 22204), (Start: 95 @22294 has 55 MA's), (Start: 97 @22297 has 32 MA's), (123, 22375), (133, 22396), (154, 22447), (185, 22516), (190, 22534), (205, 22591), (213, 22618), (225, 22654), (243, 22696), (244, 22702), (250, 22711), (255, 22720), (276, 22801), (277, 22807),

Gene: Brawn1_24 Start: 21114, Stop: 21659, Start Num: 97

Candidate Starts for Brawn1_24:

(10, 20391), (12, 20433), (14, 20451), (48, 20760), (52, 20808), (59, 20910), (67, 21021), (Start: 95 @21111 has 55 MA's), (Start: 97 @21114 has 32 MA's), (Start: 105 @21135 has 1 MA's), (123, 21192), (133, 21213), (154, 21264), (164, 21291), (185, 21333), (190, 21351), (205, 21408), (213, 21435), (225, 21471), (243, 21513), (244, 21519), (250, 21528), (255, 21537), (276, 21618), (277, 21624),

Gene: BrazzalePHS_31 Start: 18924, Stop: 19388, Start Num: 96

Candidate Starts for BrazzalePHS_31:

(Start: 96 @18924 has 56 MA's), (126, 19005), (156, 19077), (157, 19083), (160, 19092), (185, 19143), (190, 19161), (193, 19173), (219, 19254), (235, 19299), (257, 19350), (260, 19362),

Gene: BruhMoment_27 Start: 19390, Stop: 19878, Start Num: 79

Candidate Starts for BruhMoment_27:

(Start: 79 @19390 has 1 MA's), (104, 19435), (118, 19471), (122, 19486), (153, 19540), (188, 19633), (189, 19639), (190, 19645), (202, 19693), (214, 19735), (218, 19744), (221, 19753), (225, 19768), (235, 19798), (238, 19804), (258, 19858), (260, 19864),

Gene: Busephilis_31 Start: 18859, Stop: 19323, Start Num: 96

Candidate Starts for Busephilis_31:

(Start: 96 @18859 has 56 MA's), (126, 18940), (156, 19012), (157, 19018), (160, 19027), (185, 19078), (190, 19096), (193, 19108), (219, 19189), (235, 19234), (257, 19285), (260, 19297),

Gene: CandC_30 Start: 20030, Stop: 20527, Start Num: 86

Candidate Starts for CandC_30:

(13, 19397), (29, 19529), (54, 19802), (56, 19817), (Start: 77 @20015 has 1 MA's), (Start: 86 @20030 has 50 MA's), (113, 20102), (153, 20195), (182, 20267), (189, 20285), (210, 20369), (215, 20381), (217, 20387), (249, 20474), (253, 20483),

Gene: Casend_33 Start: 22072, Stop: 22602, Start Num: 86

Candidate Starts for Casend_33:

(54, 21841), (Start: 86 @22072 has 50 MA's), (134, 22213), (153, 22264), (167, 22309), (182, 22336), (190, 22360), (193, 22372), (215, 22450), (227, 22486), (231, 22504), (237, 22516), (260, 22579),

Gene: ChadMasterC_28 Start: 22952, Stop: 23500, Start Num: 95

Candidate Starts for ChadMasterC_28:

(10, 22232), (12, 22274), (14, 22292), (48, 22601), (52, 22649), (59, 22751), (67, 22862), (Start: 95 @22952 has 55 MA's), (Start: 97 @22955 has 32 MA's), (123, 23033), (133, 23054), (154, 23105), (164, 23132), (185, 23174), (190, 23192), (205, 23249), (213, 23276), (225, 23312), (243, 23354), (244, 23360), (250, 23369), (255, 23378), (276, 23459), (277, 23465),

Gene: Charming_28 Start: 21806, Stop: 22351, Start Num: 97

Candidate Starts for Charming_28:

(48, 21452), (52, 21500), (59, 21602), (67, 21713), (Start: 95 @21803 has 55 MA's), (Start: 97 @21806 has 32 MA's), (123, 21884), (133, 21905), (154, 21956), (164, 21983), (185, 22025), (190, 22043), (213, 22127), (225, 22163), (243, 22205), (244, 22211), (250, 22220), (255, 22229), (276, 22310), (277, 22316),

Gene: CherryCola_27 Start: 17634, Stop: 18179, Start Num: 95

Candidate Starts for CherryCola_27:

(59, 17439), (67, 17550), (Start: 95 @17634 has 55 MA's), (123, 17715), (126, 17727), (140, 17757), (141, 17760), (151, 17784), (185, 17865), (189, 17877), (190, 17883), (207, 17937), (221, 17979), (264, 18099), (266, 18105), (268, 18111), (277, 18153),

Gene: Chickadee_25 Start: 18756, Stop: 19319, Start Num: 89

Candidate Starts for Chickadee_25:

(66, 18675), (Start: 89 @18756 has 20 MA's), (Start: 105 @18798 has 1 MA's), (132, 18873), (133, 18876), (153, 18924), (168, 18972), (185, 18999), (190, 19017), (204, 19071), (234, 19164), (243, 19179), (250, 19194), (276, 19284), (277, 19290),

Gene: Cinna_27 Start: 18274, Stop: 18807, Start Num: 96

Candidate Starts for Cinna_27:

(82, 18247), (Start: 96 @18274 has 56 MA's), (107, 18301), (114, 18313), (119, 18331), (159, 18439), (185, 18496), (193, 18526), (202, 18562), (213, 18601), (224, 18634), (225, 18637), (260, 18730), (265, 18742),

Gene: ClamChowder_26 Start: 17426, Stop: 17962, Start Num: 95

Candidate Starts for ClamChowder_26:

(40, 16964), (48, 17081), (59, 17231), (67, 17342), (Start: 95 @17426 has 55 MA's), (118, 17489), (126, 17519), (132, 17525), (140, 17549), (141, 17552), (145, 17558), (151, 17576), (188, 17663), (189, 17669), (190, 17675), (221, 17771), (264, 17882), (266, 17888), (277, 17936),

Gene: ClearAsMud_34 Start: 19638, Stop: 20102, Start Num: 96

Candidate Starts for ClearAsMud_34:

(Start: 96 @19638 has 56 MA's), (156, 19791), (157, 19797), (160, 19806), (185, 19857), (190, 19875), (193, 19887), (199, 19914), (219, 19968), (235, 20013), (257, 20064),

Gene: Clown_28 Start: 19350, Stop: 19904, Start Num: 95

Candidate Starts for Clown_28:

(67, 19272), (Start: 95 @19350 has 55 MA's), (132, 19449), (149, 19494), (151, 19500), (189, 19602), (190, 19608), (204, 19653), (221, 19704), (244, 19770), (248, 19779), (264, 19824), (268, 19836), (276, 19872), (277, 19878),

Gene: ColdSoup_52 Start: 28627, Stop: 29169, Start Num: 94

Candidate Starts for ColdSoup_52:

(52, 28333), (59, 28435), (67, 28549), (Start: 94 @28627 has 5 MA's), (106, 28657), (107, 28660), (141, 28747), (194, 28870), (222, 28966), (247, 29035), (261, 29077), (279, 29140),

Gene: CoveyB_26 Start: 17226, Stop: 17762, Start Num: 95

Candidate Starts for CoveyB_26:

(40, 16764), (48, 16881), (59, 17031), (67, 17142), (Start: 95 @17226 has 55 MA's), (118, 17289), (126, 17319), (132, 17325), (140, 17349), (141, 17352), (145, 17358), (151, 17376), (188, 17463), (189, 17469), (190, 17475), (221, 17571), (264, 17682), (266, 17688), (277, 17736),

Gene: Cranjis_33 Start: 19084, Stop: 19548, Start Num: 96

Candidate Starts for Cranjis_33:

(Start: 96 @19084 has 56 MA's), (126, 19165), (156, 19237), (157, 19243), (160, 19252), (185, 19303), (190, 19321), (193, 19333), (219, 19414), (235, 19459), (257, 19510), (260, 19522),

Gene: CrazyRich_31 Start: 18893, Stop: 19357, Start Num: 96

Candidate Starts for CrazyRich_31:

(Start: 96 @18893 has 56 MA's), (126, 18974), (156, 19046), (157, 19052), (160, 19061), (185, 19112), (190, 19130), (193, 19142), (219, 19223), (235, 19268), (257, 19319), (260, 19331),

Gene: Cressida_29 Start: 18333, Stop: 18866, Start Num: 96

Candidate Starts for Cressida_29:

(28, 17808), (32, 17823), (33, 17829), (36, 17841), (38, 17847), (49, 18000), (58, 18129), (63, 18219), (Start: 96 @18333 has 56 MA's), (107, 18360), (112, 18366), (114, 18372), (119, 18390), (129, 18417), (159, 18498), (185, 18555), (196, 18594), (200, 18615), (213, 18660), (223, 18690), (225, 18696), (260, 18789), (265, 18801),

Gene: Crisis_33 Start: 18878, Stop: 19342, Start Num: 96

Candidate Starts for Crisis_33:

(Start: 96 @18878 has 56 MA's), (156, 19031), (157, 19037), (160, 19046), (185, 19097), (190, 19115), (193, 19127), (199, 19154), (219, 19208), (235, 19253), (257, 19304), (260, 19316),

Gene: Danyall_26 Start: 17226, Stop: 17762, Start Num: 95

Candidate Starts for Danyall_26:

(40, 16764), (48, 16881), (59, 17031), (67, 17142), (Start: 95 @17226 has 55 MA's), (118, 17289), (126, 17319), (132, 17325), (140, 17349), (141, 17352), (145, 17358), (151, 17376), (188, 17463), (189, 17469), (190, 17475), (221, 17571), (264, 17682), (266, 17688), (277, 17736),

Gene: Delrey21_27 Start: 22132, Stop: 22689, Start Num: 89

Candidate Starts for Delrey21_27:

(42, 21760), (46, 21787), (57, 21937), (65, 22048), (Start: 89 @22132 has 20 MA's), (117, 22210), (131, 22246), (190, 22393), (195, 22411), (206, 22453), (213, 22477), (221, 22498), (243, 22555), (252, 22576), (266, 22615), (272, 22642), (277, 22663),

Gene: Derg_23 Start: 20783, Stop: 21328, Start Num: 95

Candidate Starts for Derg_23:

(12, 20111), (14, 20129), (52, 20486), (59, 20588), (67, 20699), (Start: 95 @20783 has 55 MA's), (Start: 97 @20786 has 32 MA's), (123, 20864), (126, 20876), (132, 20882), (133, 20885), (149, 20921), (185, 21002), (190, 21020), (230, 21158), (243, 21182), (250, 21197), (277, 21293),

Gene: Dewdrop_69 Start: 38303, Stop: 38872, Start Num: 71

Candidate Starts for Dewdrop_69:

(Start: 71 @38303 has 4 MA's), (106, 38378), (113, 38390), (114, 38393), (121, 38417), (129, 38438), (155, 38501), (157, 38510), (176, 38558), (178, 38561), (207, 38648), (213, 38669), (218, 38681), (223, 38699), (233, 38720), (253, 38765), (260, 38792), (277, 38852),

Gene: Dxdert_26 Start: 19196, Stop: 19759, Start Num: 89

Candidate Starts for Dxdert_26:

(66, 19115), (Start: 89 @19196 has 20 MA's), (118, 19277), (132, 19313), (133, 19316), (149, 19352), (153, 19364), (185, 19439), (188, 19445), (190, 19457), (195, 19475), (243, 19619), (250, 19634), (276, 19724),

Gene: DoctorFroggo_27 Start: 22132, Stop: 22689, Start Num: 89

Candidate Starts for DoctorFroggo_27:

(42, 21760), (46, 21787), (57, 21937), (65, 22048), (Start: 89 @22132 has 20 MA's), (117, 22210), (131, 22246), (190, 22393), (195, 22411), (206, 22453), (213, 22477), (221, 22498), (243, 22555), (252, 22576), (266, 22615), (272, 22642), (277, 22663),

Gene: DogYard_32 Start: 19702, Stop: 20229, Start Num: 74

Candidate Starts for DogYard_32:

(Start: 73 @19699 has 1 MA's), (Start: 74 @19702 has 12 MA's), (80, 19714), (Start: 96 @19738 has 56 MA's), (98, 19741), (114, 19789), (129, 19834), (150, 19879), (155, 19894), (187, 19975), (188,

19978), (195, 20008), (211, 20071), (218, 20089), (219, 20092), (221, 20098), (224, 20110),

Gene: DonTron_51 Start: 28667, Stop: 29209, Start Num: 94

Candidate Starts for DonTron_51:

(9, 27938), (10, 27956), (23, 28085), (33, 28160), (37, 28175), (39, 28187), (52, 28373), (59, 28475), (67, 28589), (Start: 94 @28667 has 5 MA's), (106, 28697), (107, 28700), (141, 28787), (194, 28910), (222, 29006), (247, 29075), (261, 29117), (279, 29180),

Gene: DonaldDuck_31 Start: 21418, Stop: 21948, Start Num: 86

Candidate Starts for DonaldDuck_31:

(Start: 86 @21418 has 50 MA's), (134, 21559), (153, 21610), (167, 21655), (182, 21682), (190, 21706), (193, 21718), (215, 21796), (227, 21832), (231, 21850), (237, 21862), (260, 21925),

Gene: EMoore_24 Start: 20639, Stop: 21163, Start Num: 105

Candidate Starts for EMoore_24:

(Start: 93 @20609 has 8 MA's), (Start: 97 @20618 has 32 MA's), (Start: 105 @20639 has 1 MA's), (109, 20651), (124, 20699), (126, 20708), (132, 20714), (168, 20813), (185, 20840), (190, 20858), (200, 20903), (243, 21026), (250, 21041), (252, 21047), (267, 21092), (272, 21116), (277, 21137),

Gene: EarickHC_32 Start: 18804, Stop: 19268, Start Num: 96

Candidate Starts for EarickHC_32:

(Start: 96 @18804 has 56 MA's), (126, 18885), (156, 18957), (157, 18963), (185, 19023), (190, 19041), (193, 19053), (219, 19134), (235, 19179), (257, 19230), (260, 19242),

Gene: EdmundFerry_24 Start: 18785, Stop: 19348, Start Num: 89

Candidate Starts for EdmundFerry_24:

(66, 18704), (Start: 89 @18785 has 20 MA's), (Start: 105 @18827 has 1 MA's), (132, 18902), (133, 18905), (153, 18953), (168, 19001), (185, 19028), (190, 19046), (204, 19100), (234, 19193), (243, 19208), (250, 19223), (276, 19313), (277, 19319),

Gene: Egi03_24 Start: 16841, Stop: 17389, Start Num: 95

Candidate Starts for Egi03_24:

(48, 16496), (59, 16646), (67, 16757), (Start: 95 @16841 has 55 MA's), (123, 16922), (126, 16934), (140, 16964), (141, 16967), (151, 16991), (188, 17078), (189, 17084), (190, 17090), (207, 17144), (221, 17186), (264, 17306), (266, 17312), (268, 17318), (276, 17354), (277, 17360),

Gene: Evamon_24 Start: 16712, Stop: 17248, Start Num: 95

Candidate Starts for Evamon_24:

(40, 16250), (48, 16367), (59, 16517), (67, 16628), (Start: 95 @16712 has 55 MA's), (118, 16775), (126, 16805), (140, 16835), (141, 16838), (145, 16844), (151, 16862), (188, 16949), (189, 16955), (190, 16961), (221, 17057), (264, 17168), (266, 17174), (277, 17222),

Gene: EverythinBagel_31 Start: 21806, Stop: 22336, Start Num: 86

Candidate Starts for EverythinBagel_31:

(54, 21575), (Start: 86 @21806 has 50 MA's), (134, 21947), (153, 21998), (167, 22043), (182, 22070), (190, 22094), (193, 22106), (215, 22184), (227, 22220), (237, 22250), (260, 22313),

Gene: Fireball_25 Start: 16844, Stop: 17380, Start Num: 95

Candidate Starts for Fireball_25:

(59, 16649), (67, 16760), (Start: 95 @16844 has 55 MA's), (118, 16907), (126, 16937), (140, 16967), (141, 16970), (145, 16976), (151, 16994), (188, 17081), (189, 17087), (190, 17093), (221, 17189), (264, 17300), (266, 17306), (277, 17354),

Gene: Fireman_32 Start: 18694, Stop: 19158, Start Num: 96

Candidate Starts for Fireman_32:

(Start: 96 @18694 has 56 MA's), (117, 18742), (123, 18763), (127, 18775), (156, 18847), (157, 18853), (160, 18862), (174, 18898), (185, 18913), (190, 18931), (193, 18943), (199, 18970), (219, 19024), (230, 19060), (235, 19069), (240, 19078), (257, 19120),

Gene: Fitzgerald_26 Start: 22386, Stop: 22934, Start Num: 97

Candidate Starts for Fitzgerald_26:

(10, 21663), (12, 21705), (14, 21723), (48, 22032), (52, 22080), (59, 22182), (67, 22293), (Start: 95 @22383 has 55 MA's), (Start: 97 @22386 has 32 MA's), (123, 22464), (126, 22476), (133, 22485), (149, 22521), (154, 22536), (164, 22563), (185, 22605), (190, 22623), (205, 22680), (213, 22707), (225, 22743), (243, 22785), (244, 22791), (250, 22800), (255, 22809), (276, 22890), (277, 22896),

Gene: Fizzles_32 Start: 21131, Stop: 21658, Start Num: 86

Candidate Starts for Fizzles_32:

(54, 20903), (Start: 86 @21131 has 50 MA's), (90, 21140), (153, 21320), (167, 21365), (177, 21386), (182, 21392), (215, 21506), (231, 21560), (237, 21572),

Gene: Flatwoods_28 Start: 21144, Stop: 21689, Start Num: 95

Candidate Starts for Flatwoods_28:

(12, 20472), (14, 20490), (52, 20847), (59, 20949), (67, 21060), (Start: 95 @21144 has 55 MA's), (Start: 97 @21147 has 32 MA's), (123, 21225), (126, 21237), (132, 21243), (133, 21246), (149, 21282), (185, 21363), (190, 21381), (230, 21519), (243, 21543), (250, 21558), (277, 21654),

Gene: Forrestell_29 Start: 18513, Stop: 19040, Start Num: 74

Candidate Starts for Forrestell_29:

(Start: 73 @18510 has 1 MA's), (Start: 74 @18513 has 12 MA's), (80, 18525), (Start: 96 @18549 has 56 MA's), (98, 18552), (114, 18600), (129, 18645), (150, 18690), (155, 18705), (187, 18786), (188, 18789), (195, 18819), (211, 18882), (218, 18900), (219, 18903), (221, 18909), (224, 18921),

Gene: Fosterous_26 Start: 22219, Stop: 22767, Start Num: 97

Candidate Starts for Fosterous_26:

(52, 21913), (59, 22015), (67, 22126), (Start: 95 @22216 has 55 MA's), (Start: 97 @22219 has 32 MA's), (126, 22309), (133, 22318), (154, 22369), (164, 22396), (185, 22438), (190, 22456), (205, 22513), (213, 22540), (225, 22576), (243, 22618), (244, 22624), (250, 22633), (255, 22642), (276, 22723), (277, 22729),

Gene: FrankDeliGuy_29 Start: 21381, Stop: 21908, Start Num: 86

Candidate Starts for FrankDeliGuy_29:

(Start: 86 @21381 has 50 MA's), (153, 21570), (167, 21615), (182, 21642), (190, 21666), (215, 21756), (227, 21792), (231, 21810), (237, 21822), (260, 21885),

Gene: Fransoyer_34 Start: 21245, Stop: 21772, Start Num: 86

Candidate Starts for Fransoyer_34:

(81, 21239), (Start: 86 @21245 has 50 MA's), (102, 21281), (124, 21353), (130, 21371), (182, 21512), (190, 21536), (215, 21626), (218, 21635), (253, 21728),

Gene: Fregley_32 Start: 20600, Stop: 21097, Start Num: 86

Candidate Starts for Fregley_32:

(54, 20372), (56, 20387), (Start: 77 @20585 has 1 MA's), (Start: 86 @20600 has 50 MA's), (113, 20672), (182, 20837), (189, 20855), (210, 20939), (215, 20951), (217, 20957), (249, 21044), (253, 21053),

Gene: FuegoCuervo_30 Start: 20764, Stop: 21309, Start Num: 97

Candidate Starts for FuegoCuervo_30:

(12, 20083), (14, 20101), (48, 20410), (52, 20458), (59, 20560), (67, 20671), (Start: 95 @20761 has 55 MA's), (Start: 97 @20764 has 32 MA's), (123, 20842), (132, 20860), (133, 20863), (154, 20914), (164, 20941), (185, 20983), (190, 21001), (205, 21058), (213, 21085), (225, 21121), (243, 21163), (244, 21169), (250, 21178), (255, 21187), (276, 21268), (277, 21274),

Gene: Fugax_26 Start: 17426, Stop: 17962, Start Num: 95

Candidate Starts for Fugax_26:

(40, 16964), (48, 17081), (59, 17231), (67, 17342), (Start: 95 @17426 has 55 MA's), (118, 17489), (126, 17519), (132, 17525), (140, 17549), (141, 17552), (145, 17558), (151, 17576), (188, 17663), (189, 17669), (190, 17675), (221, 17771), (264, 17882), (266, 17888), (277, 17936),

Gene: FuzzBuster_36 Start: 18981, Stop: 19487, Start Num: 96

Candidate Starts for FuzzBuster_36:

(15, 18327), (18, 18357), (23, 18393), (25, 18420), (28, 18447), (33, 18468), (47, 18630), (56, 18747), (58, 18768), (Start: 96 @18981 has 56 MA's), (115, 19035), (129, 19077), (191, 19242), (193, 19251), (207, 19296), (251, 19410), (263, 19446),

Gene: GTE6_25 Start: 19274, Stop: 19837, Start Num: 89

Candidate Starts for GTE6_25:

(66, 19193), (Start: 89 @19274 has 20 MA's), (Start: 105 @19316 has 1 MA's), (132, 19391), (133, 19394), (153, 19442), (168, 19490), (185, 19517), (190, 19535), (204, 19589), (220, 19637), (234, 19682), (243, 19697), (250, 19712), (276, 19802), (277, 19808),

Gene: Gaea_27 Start: 20795, Stop: 21340, Start Num: 95

Candidate Starts for Gaea_27:

(10, 20081), (12, 20123), (14, 20141), (52, 20498), (59, 20600), (67, 20711), (Start: 95 @20795 has 55 MA's), (Start: 97 @20798 has 32 MA's), (123, 20876), (126, 20888), (132, 20894), (133, 20897), (149, 20933), (185, 21014), (190, 21032), (230, 21170), (243, 21194), (250, 21209), (277, 21305),

Gene: Galadriel_28 Start: 22711, Stop: 23256, Start Num: 97

Candidate Starts for Galadriel_28:

(10, 21988), (12, 22030), (14, 22048), (48, 22357), (52, 22405), (59, 22507), (67, 22618), (Start: 95 @22708 has 55 MA's), (Start: 97 @22711 has 32 MA's), (123, 22789), (133, 22810), (154, 22861), (164, 22888), (185, 22930), (190, 22948), (213, 23032), (225, 23068), (243, 23110), (244, 23116), (250, 23125), (255, 23134), (276, 23215), (277, 23221),

Gene: Ganandorf_31 Start: 18940, Stop: 19404, Start Num: 96

Candidate Starts for Ganandorf_31:

(Start: 96 @18940 has 56 MA's), (126, 19021), (156, 19093), (157, 19099), (160, 19108), (190, 19177), (193, 19189), (219, 19270), (235, 19315), (257, 19366), (260, 19378),

Gene: Gazebo_31 Start: 21858, Stop: 22388, Start Num: 86

Candidate Starts for Gazebo_31:

(Start: 86 @21858 has 50 MA's), (153, 22050), (182, 22122), (190, 22146), (215, 22236), (227, 22272), (231, 22290), (237, 22302),

Gene: Geodirt_25 Start: 21691, Stop: 22239, Start Num: 95

Candidate Starts for Geodirt_25:

(10, 20971), (12, 21013), (14, 21031), (48, 21340), (52, 21388), (59, 21490), (67, 21601), (Start: 95 @21691 has 55 MA's), (Start: 97 @21694 has 32 MA's), (Start: 105 @21715 has 1 MA's), (123, 21772), (133, 21793), (154, 21844), (164, 21871), (185, 21913), (190, 21931), (205, 21988), (213,

22015), (225, 22051), (243, 22093), (244, 22099), (250, 22108), (255, 22117), (276, 22198), (277, 22204),

Gene: Germa_33 Start: 18769, Stop: 19233, Start Num: 96

Candidate Starts for Germa_33:

(Start: 96 @18769 has 56 MA's), (126, 18850), (156, 18922), (157, 18928), (160, 18937), (185, 18988), (190, 19006), (193, 19018), (219, 19099), (235, 19144), (257, 19195), (260, 19207),

Gene: Gezellig_24 Start: 16844, Stop: 17380, Start Num: 95

Candidate Starts for Gezellig_24:

(40, 16382), (48, 16499), (59, 16649), (67, 16760), (Start: 95 @16844 has 55 MA's), (118, 16907), (126, 16937), (140, 16967), (141, 16970), (145, 16976), (151, 16994), (188, 17081), (189, 17087), (190, 17093), (221, 17189), (264, 17300), (266, 17306), (277, 17354),

Gene: Gina_33 Start: 18717, Stop: 19181, Start Num: 96

Candidate Starts for Gina_33:

(Start: 96 @18717 has 56 MA's), (Start: 105 @18738 has 1 MA's), (119, 18774), (127, 18798), (185, 18936), (190, 18954), (196, 18975), (199, 18993), (219, 19047), (230, 19083), (257, 19143), (260, 19155),

Gene: Glorp_33 Start: 18941, Stop: 19405, Start Num: 96

Candidate Starts for Glorp_33:

(Start: 96 @18941 has 56 MA's), (126, 19022), (156, 19094), (157, 19100), (160, 19109), (185, 19160), (190, 19178), (193, 19190), (219, 19271), (235, 19316), (257, 19367), (260, 19379),

Gene: Grassboy_33 Start: 22032, Stop: 22562, Start Num: 86

Candidate Starts for Grassboy_33:

(54, 21801), (Start: 86 @22032 has 50 MA's), (153, 22224), (182, 22296), (190, 22320), (215, 22410), (227, 22446), (231, 22464), (237, 22476),

Gene: Grumio_51 Start: 28105, Stop: 28647, Start Num: 94

Candidate Starts for Grumio_51:

(9, 27376), (10, 27394), (23, 27523), (33, 27598), (37, 27613), (39, 27625), (52, 27811), (59, 27913), (67, 28027), (Start: 94 @28105 has 5 MA's), (106, 28135), (107, 28138), (141, 28225), (194, 28348), (222, 28444), (247, 28513), (261, 28555), (279, 28618),

Gene: Gustavo_27 Start: 20938, Stop: 21480, Start Num: 97

Candidate Starts for Gustavo_27:

(48, 20590), (52, 20638), (59, 20740), (67, 20851), (Start: 95 @20935 has 55 MA's), (Start: 97 @20938 has 32 MA's), (123, 21016), (126, 21028), (132, 21034), (133, 21037), (149, 21073), (185, 21154), (190, 21172), (243, 21334), (250, 21349), (277, 21445),

Gene: Halo3_25 Start: 17137, Stop: 17673, Start Num: 95

Candidate Starts for Halo3_25:

(40, 16675), (48, 16792), (59, 16942), (67, 17053), (Start: 95 @17137 has 55 MA's), (118, 17200), (126, 17230), (132, 17236), (140, 17260), (141, 17263), (145, 17269), (151, 17287), (188, 17374), (189, 17380), (190, 17386), (221, 17482), (264, 17593), (266, 17599), (277, 17647),

Gene: Hans_28 Start: 20427, Stop: 20981, Start Num: 93

Candidate Starts for Hans_28:

(Start: 93 @20427 has 8 MA's), (Start: 105 @20457 has 1 MA's), (109, 20469), (126, 20526), (132, 20532), (138, 20550), (185, 20658), (190, 20676), (243, 20844), (250, 20859), (252, 20865), (267, 20910), (272, 20934),

Gene: Hendrix_64 Start: 37513, Stop: 38091, Start Num: 71

Candidate Starts for Hendrix_64:

(Start: 71 @37513 has 4 MA's), (100, 37570), (121, 37627), (126, 37645), (136, 37672), (155, 37717), (157, 37726), (176, 37774), (178, 37777), (184, 37786), (190, 37807), (196, 37828), (208, 37870), (213, 37885), (218, 37897), (233, 37936), (249, 37972), (253, 37981), (265, 38020), (271, 38041), (280, 38071),

Gene: Hermeonysus_31 Start: 18813, Stop: 19277, Start Num: 96

Candidate Starts for Hermeonysus_31:

(Start: 96 @18813 has 56 MA's), (126, 18894), (156, 18966), (157, 18972), (160, 18981), (185, 19032), (190, 19050), (193, 19062), (219, 19143), (235, 19188), (257, 19239), (260, 19251),

Gene: Hive_32 Start: 19886, Stop: 20416, Start Num: 73

Candidate Starts for Hive_32:

(Start: 73 @19886 has 1 MA's), (Start: 74 @19889 has 12 MA's), (80, 19901), (Start: 96 @19925 has 56 MA's), (98, 19928), (114, 19976), (129, 20021), (150, 20066), (155, 20081), (187, 20162), (188, 20165), (195, 20195), (211, 20258), (218, 20276), (219, 20279), (221, 20285), (224, 20297),

Gene: Honeyfin_33 Start: 19128, Stop: 19592, Start Num: 96

Candidate Starts for Honeyfin_33:

(Start: 96 @19128 has 56 MA's), (126, 19209), (156, 19281), (157, 19287), (160, 19296), (185, 19347), (190, 19365), (193, 19377), (219, 19458), (235, 19503), (257, 19554), (260, 19566),

Gene: Hyperion_31 Start: 21815, Stop: 22345, Start Num: 86

Candidate Starts for Hyperion_31:

(Start: 86 @21815 has 50 MA's), (153, 22007), (182, 22079), (190, 22103), (215, 22193), (227, 22229), (231, 22247), (237, 22259),

Gene: Inspectinfecti_27 Start: 20851, Stop: 21405, Start Num: 93

Candidate Starts for Inspectinfecti_27:

(Start: 93 @20851 has 8 MA's), (Start: 105 @20881 has 1 MA's), (109, 20893), (126, 20950), (132, 20956), (138, 20974), (185, 21082), (190, 21100), (243, 21268), (250, 21283), (252, 21289), (267, 21334), (272, 21358),

Gene: JKSyngboy_25 Start: 21507, Stop: 22049, Start Num: 97

Candidate Starts for JKSyngboy_25:

(8, 20754), (10, 20790), (12, 20832), (14, 20850), (52, 21207), (59, 21309), (67, 21420), (Start: 95 @21504 has 55 MA's), (Start: 97 @21507 has 32 MA's), (123, 21585), (126, 21597), (132, 21603), (133, 21606), (149, 21642), (185, 21723), (190, 21741), (230, 21879), (243, 21903), (250, 21918), (277, 22014),

Gene: Jabberwocky_26 Start: 22853, Stop: 23398, Start Num: 97

Candidate Starts for Jabberwocky_26:

(10, 22130), (12, 22172), (14, 22190), (48, 22499), (52, 22547), (59, 22649), (67, 22760), (Start: 95 @22850 has 55 MA's), (Start: 97 @22853 has 32 MA's), (Start: 105 @22874 has 1 MA's), (123, 22931), (133, 22952), (154, 23003), (164, 23030), (185, 23072), (190, 23090), (205, 23147), (213, 23174), (225, 23210), (243, 23252), (244, 23258), (250, 23267), (255, 23276), (276, 23357), (277, 23363),

Gene: Jambalaya_24 Start: 16491, Stop: 17027, Start Num: 95

Candidate Starts for Jambalaya_24:

(40, 16029), (48, 16146), (59, 16296), (67, 16407), (Start: 95 @16491 has 55 MA's), (118, 16554), (126, 16584), (132, 16590), (140, 16614), (141, 16617), (145, 16623), (151, 16641), (188, 16728), (189, 16734), (190, 16740), (221, 16836), (264, 16947), (266, 16953), (277, 17001),

Gene: Jayden_33 Start: 18864, Stop: 19328, Start Num: 96

Candidate Starts for Jayden_33:

(Start: 96 @18864 has 56 MA's), (Start: 105 @18885 has 1 MA's), (123, 18933), (127, 18945), (160, 19032), (185, 19083), (219, 19194), (230, 19230), (257, 19290),

Gene: Jefe_32 Start: 18865, Stop: 19329, Start Num: 96

Candidate Starts for Jefe_32:

(Start: 96 @18865 has 56 MA's), (126, 18946), (156, 19018), (157, 19024), (160, 19033), (185, 19084), (190, 19102), (193, 19114), (219, 19195), (235, 19240), (257, 19291), (260, 19303),

Gene: Jehoshaphat_34 Start: 22337, Stop: 22867, Start Num: 86

Candidate Starts for Jehoshaphat_34:

(54, 22106), (Start: 86 @22337 has 50 MA's), (134, 22478), (153, 22529), (167, 22574), (182, 22601), (190, 22625), (193, 22637), (215, 22715), (227, 22751), (231, 22769), (237, 22781), (260, 22844),

Gene: JohnPork_24 Start: 16739, Stop: 17275, Start Num: 95

Candidate Starts for JohnPork_24:

(40, 16277), (48, 16394), (59, 16544), (67, 16655), (Start: 95 @16739 has 55 MA's), (118, 16802), (126, 16832), (140, 16862), (141, 16865), (145, 16871), (151, 16889), (188, 16976), (189, 16982), (190, 16988), (221, 17084), (264, 17195), (266, 17201), (277, 17249),

Gene: Jollipop_32 Start: 19210, Stop: 19674, Start Num: 96

Candidate Starts for Jollipop_32:

(Start: 96 @19210 has 56 MA's), (126, 19291), (156, 19363), (157, 19369), (160, 19378), (185, 19429), (190, 19447), (193, 19459), (219, 19540), (235, 19585), (257, 19636), (260, 19648),

Gene: Jollymon_51 Start: 28627, Stop: 29169, Start Num: 94

Candidate Starts for Jollymon_51:

(52, 28333), (59, 28435), (67, 28549), (Start: 94 @28627 has 5 MA's), (106, 28657), (107, 28660), (141, 28747), (194, 28870), (222, 28966), (247, 29035), (261, 29077), (279, 29140),

Gene: Judebell_34 Start: 21846, Stop: 22373, Start Num: 86

Candidate Starts for Judebell_34:

(Start: 86 @21846 has 50 MA's), (153, 22035), (167, 22080), (182, 22107), (190, 22131), (215, 22221), (227, 22257), (231, 22275), (237, 22287), (260, 22350),

Gene: KaiHaiDragon_32 Start: 18804, Stop: 19268, Start Num: 96

Candidate Starts for KaiHaiDragon_32:

(Start: 96 @18804 has 56 MA's), (126, 18885), (156, 18957), (157, 18963), (185, 19023), (190, 19041), (193, 19053), (219, 19134), (235, 19179), (257, 19230), (260, 19242),

Gene: Kamashten_27 Start: 22299, Stop: 22844, Start Num: 97

Candidate Starts for Kamashten_27:

(10, 21576), (12, 21618), (14, 21636), (48, 21945), (52, 21993), (59, 22095), (67, 22206), (Start: 95 @22296 has 55 MA's), (Start: 97 @22299 has 32 MA's), (Start: 105 @22320 has 1 MA's), (123, 22377), (126, 22389), (133, 22398), (154, 22449), (164, 22476), (185, 22518), (190, 22536), (205, 22593), (213, 22620), (225, 22656), (243, 22698), (244, 22704), (250, 22713), (276, 22803), (277, 22809),

Gene: Keitabear_28 Start: 23652, Stop: 24200, Start Num: 95

Candidate Starts for Keitabear_28:

(48, 23301), (52, 23349), (59, 23451), (67, 23562), (Start: 95 @23652 has 55 MA's), (Start: 97 @23655 has 32 MA's), (123, 23733), (133, 23754), (147, 23784), (154, 23805), (164, 23832), (185, 23874), (190, 23892), (205, 23949), (213, 23976), (225, 24012), (243, 24054), (244, 24060), (250, 24069), (255, 24078), (276, 24159), (277, 24165),

Gene: Kelcole_30 Start: 20482, Stop: 20979, Start Num: 86

Candidate Starts for Kelcole_30:

(13, 19849), (29, 19981), (54, 20254), (56, 20269), (Start: 77 @20467 has 1 MA's), (Start: 86 @20482 has 50 MA's), (113, 20554), (153, 20647), (182, 20719), (189, 20737), (210, 20821), (215, 20833), (217, 20839), (249, 20926), (253, 20935),

Gene: Kewpiedoll_27 Start: 21496, Stop: 22041, Start Num: 97

Candidate Starts for Kewpiedoll_27:

(10, 20773), (12, 20815), (14, 20833), (48, 21142), (52, 21190), (59, 21292), (67, 21403), (Start: 95 @21493 has 55 MA's), (Start: 97 @21496 has 32 MA's), (123, 21574), (132, 21592), (133, 21595), (154, 21646), (164, 21673), (185, 21715), (190, 21733), (205, 21790), (213, 21817), (225, 21853), (243, 21895), (244, 21901), (250, 21910), (255, 21919), (276, 22000), (277, 22006),

Gene: KillerQueen_32 Start: 20277, Stop: 20774, Start Num: 86

Candidate Starts for KillerQueen_32:

(13, 19644), (29, 19776), (54, 20049), (56, 20064), (Start: 77 @20262 has 1 MA's), (Start: 86 @20277 has 50 MA's), (113, 20349), (153, 20442), (182, 20514), (189, 20532), (210, 20616), (215, 20628), (217, 20634), (249, 20721), (253, 20730),

Gene: KimmyK_26 Start: 17426, Stop: 17962, Start Num: 95

Candidate Starts for KimmyK_26:

(40, 16964), (48, 17081), (59, 17231), (67, 17342), (Start: 95 @17426 has 55 MA's), (118, 17489), (126, 17519), (132, 17525), (140, 17549), (141, 17552), (145, 17558), (151, 17576), (188, 17663), (189, 17669), (190, 17675), (221, 17771), (264, 17882), (266, 17888), (277, 17936),

Gene: KingstonB_49 Start: 28105, Stop: 28647, Start Num: 94

Candidate Starts for KingstonB_49:

(9, 27376), (10, 27394), (23, 27523), (33, 27598), (37, 27613), (39, 27625), (52, 27811), (59, 27913), (67, 28027), (Start: 94 @28105 has 5 MA's), (106, 28135), (107, 28138), (141, 28225), (194, 28348), (222, 28444), (247, 28513), (261, 28555), (279, 28618),

Gene: Kithara_32 Start: 23051, Stop: 23572, Start Num: 101

Candidate Starts for Kithara_32:

(Start: 101 @23051 has 1 MA's), (114, 23093), (161, 23216), (165, 23225), (206, 23336), (228, 23396), (237, 23426), (244, 23441), (247, 23447), (252, 23459), (261, 23489), (274, 23540), (279, 23555),

Gene: Kowalski_31 Start: 18920, Stop: 19384, Start Num: 96

Candidate Starts for Kowalski_31:

(Start: 96 @18920 has 56 MA's), (126, 19001), (156, 19073), (157, 19079), (160, 19088), (185, 19139), (190, 19157), (193, 19169), (219, 19250), (235, 19295), (257, 19346), (260, 19358),

Gene: Kozie_28 Start: 18580, Stop: 19092, Start Num: 96

Candidate Starts for Kozie_28:

(Start: 96 @18580 has 56 MA's), (112, 18613), (119, 18637), (123, 18649), (126, 18661), (171, 18778), (188, 18808), (213, 18898), (224, 18931), (225, 18934), (260, 19027),

Gene: Kroos_28 Start: 21691, Stop: 22233, Start Num: 97

Candidate Starts for Kroos_28:

(12, 21016), (14, 21034), (52, 21391), (59, 21493), (67, 21604), (Start: 95 @21688 has 55 MA's), (Start: 97 @21691 has 32 MA's), (123, 21769), (126, 21781), (132, 21787), (133, 21790), (149, 21826), (185, 21907), (190, 21925), (230, 22063), (243, 22087), (250, 22102), (277, 22198),

Gene: Kubulix_33 Start: 19998, Stop: 20525, Start Num: 74

Candidate Starts for Kubulix_33:

(Start: 73 @19995 has 1 MA's), (Start: 74 @19998 has 12 MA's), (80, 20010), (Start: 96 @20034 has 56 MA's), (98, 20037), (114, 20085), (129, 20130), (150, 20175), (155, 20190), (187, 20271), (188, 20274), (195, 20304), (211, 20367), (218, 20385), (219, 20388), (221, 20394), (224, 20406),

Gene: Kwekel_25 Start: 18715, Stop: 19278, Start Num: 89

Candidate Starts for Kwekel_25:

(66, 18634), (Start: 89 @18715 has 20 MA's), (118, 18796), (132, 18832), (133, 18835), (149, 18871), (153, 18883), (185, 18958), (188, 18964), (190, 18976), (195, 18994), (243, 19138), (250, 19153), (276, 19243),

Gene: Kwobi_29 Start: 21674, Stop: 22219, Start Num: 95

Candidate Starts for Kwobi_29:

(48, 21329), (52, 21377), (59, 21479), (67, 21590), (Start: 95 @21674 has 55 MA's), (Start: 97 @21677 has 32 MA's), (123, 21755), (126, 21767), (132, 21773), (133, 21776), (149, 21812), (185, 21893), (190, 21911), (243, 22073), (250, 22088), (277, 22184),

Gene: Kyva_34 Start: 22067, Stop: 22597, Start Num: 86

Candidate Starts for Kyva_34:

(54, 21836), (Start: 86 @22067 has 50 MA's), (153, 22259), (182, 22331), (190, 22355), (215, 22445), (227, 22481), (231, 22499), (237, 22511),

Gene: Leaf_69 Start: 38303, Stop: 38872, Start Num: 71

Candidate Starts for Leaf_69:

(Start: 71 @38303 has 4 MA's), (106, 38378), (113, 38390), (114, 38393), (121, 38417), (129, 38438), (155, 38501), (157, 38510), (176, 38558), (178, 38561), (207, 38648), (213, 38669), (218, 38681), (223, 38699), (233, 38720), (253, 38765), (260, 38792), (277, 38852),

Gene: Lennon_28 Start: 23454, Stop: 24002, Start Num: 97

Candidate Starts for Lennon_28:

(10, 22731), (12, 22773), (14, 22791), (48, 23100), (52, 23148), (59, 23250), (67, 23361), (Start: 95 @23451 has 55 MA's), (Start: 97 @23454 has 32 MA's), (Start: 105 @23475 has 1 MA's), (126, 23544), (133, 23553), (154, 23604), (185, 23673), (190, 23691), (205, 23748), (213, 23775), (225, 23811), (243, 23853), (244, 23859), (250, 23868), (255, 23877), (276, 23958), (277, 23964),

Gene: Leonard_26 Start: 20425, Stop: 20979, Start Num: 93

Candidate Starts for Leonard_26:

(Start: 93 @20425 has 8 MA's), (Start: 105 @20455 has 1 MA's), (109, 20467), (126, 20524), (132, 20530), (138, 20548), (185, 20656), (190, 20674), (243, 20842), (250, 20857), (252, 20863), (267, 20908), (272, 20932),

Gene: LilHam_25 Start: 20268, Stop: 20813, Start Num: 95

Candidate Starts for LilHam_25:

(48, 19923), (52, 19971), (59, 20073), (67, 20184), (Start: 95 @20268 has 55 MA's), (Start: 97 @20271 has 32 MA's), (123, 20349), (126, 20361), (132, 20367), (133, 20370), (149, 20406), (185, 20487), (190, 20505), (243, 20667), (250, 20682), (277, 20778),

Gene: Lilbeanie_23 Start: 15700, Stop: 16221, Start Num: 95

Candidate Starts for Lilbeanie_23:

(67, 15625), (Start: 95 @15700 has 55 MA's), (Start: 105 @15724 has 1 MA's), (113, 15748), (123, 15781), (132, 15799), (141, 15823), (190, 15934), (218, 16021), (221, 16030), (225, 16045), (243, 16078), (256, 16111), (266, 16141), (268, 16147), (269, 16153), (275, 16180), (276, 16183),

Gene: LittleFortune_33 Start: 19170, Stop: 19634, Start Num: 96

Candidate Starts for LittleFortune_33:

(Start: 96 @19170 has 56 MA's), (126, 19251), (156, 19323), (157, 19329), (160, 19338), (185, 19389), (190, 19407), (193, 19419), (219, 19500), (235, 19545), (257, 19596), (260, 19608),

Gene: Llemily_31 Start: 21113, Stop: 21643, Start Num: 86

Candidate Starts for Llemily_31:

(Start: 86 @21113 has 50 MA's), (134, 21254), (153, 21305), (167, 21350), (182, 21377), (190, 21401), (193, 21413), (215, 21491), (227, 21527), (231, 21545), (237, 21557), (260, 21620),

Gene: Lonelysoil_31 Start: 21358, Stop: 21888, Start Num: 86

Candidate Starts for Lonelysoil_31:

(54, 21127), (Start: 86 @21358 has 50 MA's), (134, 21499), (153, 21550), (167, 21595), (182, 21622), (190, 21646), (193, 21658), (215, 21736), (227, 21772), (231, 21790), (237, 21802), (260, 21865),

Gene: Love_31 Start: 23221, Stop: 23766, Start Num: 97

Candidate Starts for Love_31:

(12, 22540), (14, 22558), (48, 22867), (52, 22915), (59, 23017), (67, 23128), (Start: 95 @23218 has 55 MA's), (Start: 97 @23221 has 32 MA's), (123, 23299), (133, 23320), (154, 23371), (164, 23398), (185, 23440), (190, 23458), (213, 23542), (225, 23578), (243, 23620), (244, 23626), (250, 23635), (255, 23644), (276, 23725), (277, 23731),

Gene: Lucretia_32 Start: 18857, Stop: 19321, Start Num: 96

Candidate Starts for Lucretia_32:

(Start: 96 @18857 has 56 MA's), (126, 18938), (156, 19010), (157, 19016), (160, 19025), (185, 19076), (190, 19094), (193, 19106), (219, 19187), (235, 19232), (257, 19283), (260, 19295),

Gene: Maih_18 Start: 18599, Stop: 19237, Start Num: 68

Candidate Starts for Maih_18:

(Start: 68 @18599 has 12 MA's), (69, 18611), (91, 18665), (100, 18686), (111, 18722), (112, 18725), (137, 18803), (142, 18809), (143, 18812), (166, 18890), (175, 18914), (181, 18923), (189, 18944), (204, 18998), (211, 19022), (218, 19040), (244, 19115), (246, 19118), (259, 19157), (268, 19181),

Gene: Marcie_36 Start: 21138, Stop: 21635, Start Num: 86

Candidate Starts for Marcie_36:

(54, 20910), (56, 20925), (Start: 77 @21123 has 1 MA's), (Start: 86 @21138 has 50 MA's), (153, 21303), (182, 21375), (189, 21393), (192, 21408), (210, 21477), (215, 21489), (217, 21495), (249, 21582), (253, 21591),

Gene: Margaery_27 Start: 18221, Stop: 18748, Start Num: 96

Candidate Starts for Margaery_27:

(76, 18182), (Start: 96 @18221 has 56 MA's), (107, 18242), (159, 18380), (170, 18410), (202, 18503), (213, 18542), (225, 18578),

Gene: Mashley_30 Start: 21630, Stop: 22160, Start Num: 86

Candidate Starts for Mashley_30:

(Start: 86 @21630 has 50 MA's), (153, 21822), (182, 21894), (190, 21918), (215, 22008), (227, 22044), (231, 22062), (237, 22074),

Gene: Matzah_28 Start: 18251, Stop: 18784, Start Num: 96

Candidate Starts for Matzah_28:

(82, 18224), (Start: 96 @18251 has 56 MA's), (107, 18278), (114, 18290), (119, 18308), (159, 18416), (185, 18473), (193, 18503), (202, 18539), (213, 18578), (224, 18611), (225, 18614), (260, 18707), (265, 18719),

Gene: McCrothy_28 Start: 23020, Stop: 23565, Start Num: 97

Candidate Starts for McCrothy_28:

(12, 22339), (14, 22357), (48, 22666), (52, 22714), (59, 22816), (67, 22927), (Start: 95 @23017 has 55 MA's), (Start: 97 @23020 has 32 MA's), (123, 23098), (133, 23119), (154, 23170), (164, 23197), (185, 23239), (190, 23257), (213, 23341), (225, 23377), (243, 23419), (244, 23425), (250, 23434), (255, 23443), (276, 23524), (277, 23530),

Gene: McKinley_30 Start: 23250, Stop: 23798, Start Num: 95

Candidate Starts for McKinley_30:

(10, 22530), (12, 22572), (14, 22590), (48, 22899), (52, 22947), (59, 23049), (67, 23160), (Start: 95 @23250 has 55 MA's), (Start: 97 @23253 has 32 MA's), (123, 23331), (133, 23352), (154, 23403), (164, 23430), (185, 23472), (190, 23490), (213, 23574), (225, 23610), (243, 23652), (244, 23658), (250, 23667), (255, 23676), (276, 23757), (277, 23763),

Gene: Megan_26 Start: 20113, Stop: 20586, Start Num: 96

Candidate Starts for Megan_26:

(Start: 96 @20113 has 56 MA's), (117, 20161), (127, 20194), (136, 20218), (156, 20266), (176, 20320), (185, 20332), (190, 20350), (193, 20362), (211, 20422), (218, 20440), (222, 20452), (235, 20488), (242, 20500), (257, 20539), (260, 20551),

Gene: MelBins_27 Start: 20633, Stop: 21187, Start Num: 93

Candidate Starts for MelBins_27:

(Start: 93 @20633 has 8 MA's), (Start: 105 @20663 has 1 MA's), (109, 20675), (126, 20732), (138, 20756), (185, 20864), (190, 20882), (243, 21050), (250, 21065), (252, 21071), (267, 21116), (272, 21140),

Gene: MellowYellow_29 Start: 18549, Stop: 19076, Start Num: 74

Candidate Starts for MellowYellow_29:

(Start: 73 @18546 has 1 MA's), (Start: 74 @18549 has 12 MA's), (80, 18561), (Start: 96 @18585 has 56 MA's), (98, 18588), (114, 18636), (129, 18681), (150, 18726), (155, 18741), (187, 18822), (188, 18825), (195, 18855), (211, 18918), (218, 18936), (219, 18939), (221, 18945), (224, 18957),

Gene: MementoMori_28 Start: 17980, Stop: 18513, Start Num: 96

Candidate Starts for MementoMori_28:

(82, 17953), (Start: 96 @17980 has 56 MA's), (107, 18007), (114, 18019), (119, 18037), (155, 18130), (159, 18145), (170, 18175), (185, 18202), (193, 18232), (202, 18268), (213, 18307), (224, 18340), (225, 18343), (260, 18436), (265, 18448),

Gene: Mentos_37 Start: 22717, Stop: 23247, Start Num: 86

Candidate Starts for Mentos_37:

(Start: 86 @22717 has 50 MA's), (153, 22909), (182, 22981), (190, 23005), (215, 23095), (227, 23131), (231, 23149), (237, 23161),

Gene: Merry_ Start: 20953, Stop: 21441, Start Num: 88

Candidate Starts for Merry_:

(Start: 88 @20953 has 1 MA's), (Start: 96 @20977 has 56 MA's), (123, 21046), (127, 21058), (156, 21130), (160, 21145), (185, 21196), (190, 21214), (193, 21226), (199, 21253), (219, 21307), (230, 21343), (257, 21403),

Gene: Metamorphoo_32 Start: 18716, Stop: 19180, Start Num: 96

Candidate Starts for Metamorphoo_32:

(Start: 96 @18716 has 56 MA's), (117, 18764), (123, 18785), (127, 18797), (156, 18869), (157, 18875), (160, 18884), (174, 18920), (185, 18935), (190, 18953), (193, 18965), (199, 18992), (230, 19082), (235, 19091), (240, 19100), (257, 19142), (263, 19160),

Gene: Mila11_35 Start: 22602, Stop: 23132, Start Num: 86

Candidate Starts for Mila11_35:

(Start: 86 @22602 has 50 MA's), (153, 22794), (182, 22866), (190, 22890), (215, 22980), (227, 23016), (231, 23034), (237, 23046),

Gene: Mischief19_26 Start: 28535, Stop: 29116, Start Num: 68

Candidate Starts for Mischief19_26:

(Start: 68 @28535 has 12 MA's), (84, 28589), (104, 28640), (110, 28661), (142, 28754), (162, 28799), (175, 28832), (179, 28838), (186, 28850), (189, 28862), (190, 28868), (211, 28940), (218, 28958), (224, 28979), (244, 29030), (259, 29072),

Gene: MisoSoup_23 Start: 14884, Stop: 15366, Start Num: 96

Candidate Starts for MisoSoup_23:

(58, 14665), (Start: 96 @14884 has 56 MA's), (98, 14887), (107, 14911), (115, 14935), (158, 15055), (176, 15100), (191, 15136), (220, 15229), (223, 15241), (236, 15274),

Gene: MoontowerMania_27 Start: 22061, Stop: 22609, Start Num: 97

Candidate Starts for MoontowerMania_27:

(10, 21338), (12, 21380), (14, 21398), (48, 21707), (52, 21755), (59, 21857), (67, 21968), (Start: 95 @22058 has 55 MA's), (Start: 97 @22061 has 32 MA's), (Start: 105 @22082 has 1 MA's), (123, 22139), (126, 22151), (133, 22160), (149, 22196), (154, 22211), (164, 22238), (185, 22280), (190, 22298), (205, 22355), (213, 22382), (225, 22418), (243, 22460), (244, 22466), (250, 22475), (255, 22484), (276, 22565), (277, 22571),

Gene: MorillMayhem_32 Start: 21628, Stop: 22158, Start Num: 86

Candidate Starts for MorillMayhem_32:

(54, 21397), (Start: 86 @21628 has 50 MA's), (134, 21769), (153, 21820), (167, 21865), (182, 21892), (190, 21916), (193, 21928), (215, 22006), (227, 22042), (231, 22060), (237, 22072), (260, 22135),

Gene: Mutzi_26 Start: 17080, Stop: 17625, Start Num: 95

Candidate Starts for Mutzi_26:

(21, 16468), (26, 16528), (27, 16531), (34, 16573), (35, 16579), (40, 16618), (48, 16735), (59, 16885), (67, 16996), (Start: 95 @17080 has 55 MA's), (123, 17161), (126, 17173), (140, 17203), (141, 17206), (151, 17230), (188, 17317), (189, 17323), (190, 17329), (206, 17380), (221, 17425), (264, 17545), (266, 17551), (268, 17557), (277, 17599),

Gene: Namago_32 Start: 21197, Stop: 21727, Start Num: 86

Candidate Starts for Namago_32:

(54, 20966), (Start: 86 @21197 has 50 MA's), (153, 21389), (182, 21461), (190, 21485), (215, 21575), (227, 21611), (231, 21629), (237, 21641),

Gene: Natkenzie_28 Start: 22002, Stop: 22559, Start Num: 89

Candidate Starts for Natkenzie_28:

(Start: 89 @22002 has 20 MA's), (117, 22080), (131, 22116), (132, 22119), (190, 22263), (195, 22281), (206, 22323), (213, 22347), (239, 22419), (243, 22425), (252, 22446), (272, 22512), (277, 22533),

Gene: Nicole72_27 Start: 20490, Stop: 20954, Start Num: 96

Candidate Starts for Nicole72_27:

(Start: 96 @20490 has 56 MA's), (117, 20538), (127, 20571), (136, 20595), (156, 20643), (176, 20697), (185, 20709), (190, 20727), (212, 20802), (218, 20817), (219, 20820), (222, 20829), (230, 20856), (235, 20865), (242, 20877), (257, 20916), (260, 20928),

Gene: Nikan_27 Start: 18892, Stop: 19422, Start Num: 73

Candidate Starts for Nikan_27:

(Start: 73 @18892 has 1 MA's), (Start: 96 @18928 has 56 MA's), (98, 18931), (108, 18961), (129, 19024), (135, 19042), (150, 19072), (153, 19081), (155, 19087), (187, 19168), (188, 19171), (191, 19186), (211, 19264), (218, 19282), (221, 19291),

Gene: Nike_32 Start: 22149, Stop: 22679, Start Num: 86

Candidate Starts for Nike_32:

(Start: 86 @22149 has 50 MA's), (153, 22341), (182, 22413), (215, 22527), (227, 22563), (231, 22581), (237, 22593),

Gene: NoodlelyBoi_32 Start: 19248, Stop: 19712, Start Num: 96

Candidate Starts for NoodlelyBoi_32:

(Start: 96 @19248 has 56 MA's), (Start: 105 @19269 has 1 MA's), (156, 19401), (157, 19407), (160, 19416), (185, 19467), (190, 19485), (193, 19497), (199, 19524), (219, 19578), (235, 19623), (257, 19674),

Gene: Nordenberg_22 Start: 21420, Stop: 21968, Start Num: 95

Candidate Starts for Nordenberg_22:

(10, 20700), (12, 20742), (14, 20760), (48, 21069), (52, 21117), (59, 21219), (67, 21330), (Start: 95 @21420 has 55 MA's), (Start: 97 @21423 has 32 MA's), (123, 21501), (133, 21522), (154, 21573), (164, 21600), (185, 21642), (190, 21660), (213, 21744), (225, 21780), (243, 21822), (244, 21828), (250, 21837), (255, 21846), (276, 21927), (277, 21933),

Gene: Nubi_24 Start: 16732, Stop: 17268, Start Num: 95

Candidate Starts for Nubi_24:

(40, 16270), (48, 16387), (59, 16537), (67, 16648), (Start: 95 @16732 has 55 MA's), (118, 16795), (126, 16825), (140, 16855), (141, 16858), (145, 16864), (151, 16882), (188, 16969), (189, 16975), (190, 16981), (221, 17077), (264, 17188), (266, 17194), (277, 17242),

Gene: NyleyClemson_27 Start: 18494, Stop: 19021, Start Num: 74

Candidate Starts for NyleyClemson_27:

(Start: 73 @18491 has 1 MA's), (Start: 74 @18494 has 12 MA's), (80, 18506), (Start: 96 @18530 has 56 MA's), (98, 18533), (114, 18581), (129, 18626), (150, 18671), (155, 18686), (187, 18767), (188, 18770), (195, 18800), (211, 18863), (218, 18881), (219, 18884), (221, 18890), (224, 18902),

Gene: Odyssey395_34 Start: 19827, Stop: 20354, Start Num: 74

Candidate Starts for Odyssey395_34:

(Start: 73 @19824 has 1 MA's), (Start: 74 @19827 has 12 MA's), (80, 19839), (Start: 96 @19863 has 56 MA's), (98, 19866), (114, 19914), (129, 19959), (150, 20004), (155, 20019), (187, 20100), (188, 20103), (195, 20133), (211, 20196), (218, 20214), (219, 20217), (221, 20223), (224, 20235),

Gene: Ollypop_30 Start: 18914, Stop: 19444, Start Num: 73

Candidate Starts for Ollypop_30:

(Start: 73 @18914 has 1 MA's), (Start: 74 @18917 has 12 MA's), (Start: 96 @18950 has 56 MA's), (98, 18953), (108, 18983), (129, 19046), (135, 19064), (150, 19094), (153, 19103), (155, 19109), (187, 19190), (188, 19193), (211, 19286), (218, 19304), (221, 19313),

Gene: OneinaGillian_31 Start: 20129, Stop: 20626, Start Num: 86

Candidate Starts for OneinaGillian_31:

(54, 19901), (56, 19916), (Start: 77 @20114 has 1 MA's), (Start: 86 @20129 has 50 MA's), (113, 20201), (182, 20366), (189, 20384), (210, 20468), (215, 20480), (217, 20486), (249, 20573), (253, 20582),

Gene: Onika_31 Start: 18895, Stop: 19359, Start Num: 96

Candidate Starts for Onika_31:

(Start: 96 @18895 has 56 MA's), (126, 18976), (156, 19048), (157, 19054), (160, 19063), (185, 19114), (190, 19132), (193, 19144), (219, 19225), (235, 19270), (257, 19321), (260, 19333),

Gene: Paries_30 Start: 22880, Stop: 23425, Start Num: 97

Candidate Starts for Paries_30:

(10, 22157), (12, 22199), (14, 22217), (48, 22526), (52, 22574), (59, 22676), (67, 22787), (Start: 95 @22877 has 55 MA's), (Start: 97 @22880 has 32 MA's), (123, 22958), (126, 22970), (132, 22976), (133, 22979), (154, 23030), (164, 23057), (185, 23099), (190, 23117), (205, 23174), (213, 23201), (225, 23237), (243, 23279), (244, 23285), (250, 23294), (255, 23303), (276, 23384), (277, 23390),

Gene: Paschalis_31 Start: 18908, Stop: 19372, Start Num: 96

Candidate Starts for Paschalis_31:

(Start: 96 @18908 has 56 MA's), (126, 18989), (156, 19061), (157, 19067), (160, 19076), (185, 19127), (190, 19145), (193, 19157), (219, 19238), (235, 19283), (257, 19334), (260, 19346),

Gene: Pepe25_30 Start: 20353, Stop: 20844, Start Num: 86

Candidate Starts for Pepe25_30:

(6, 19546), (11, 19693), (13, 19723), (29, 19855), (44, 20005), (54, 20128), (56, 20143), (Start: 86 @20353 has 50 MA's), (102, 20383), (182, 20584), (188, 20596), (189, 20602), (192, 20617), (210, 20686), (215, 20698), (249, 20791), (253, 20800),

Gene: Phabia_32 Start: 21531, Stop: 22061, Start Num: 86

Candidate Starts for Phabia_32:

(54, 21300), (Start: 86 @21531 has 50 MA's), (134, 21672), (153, 21723), (167, 21768), (182, 21795), (190, 21819), (193, 21831), (215, 21909), (227, 21945), (231, 21963), (237, 21975), (260, 22038),

Gene: Phauci_19 Start: 17014, Stop: 17568, Start Num: 93

Candidate Starts for Phauci_19:

(Start: 93 @17014 has 8 MA's), (Start: 105 @17044 has 1 MA's), (109, 17056), (126, 17113), (132, 17119), (138, 17137), (185, 17245), (190, 17263), (243, 17431), (250, 17446), (252, 17452), (267, 17497), (272, 17521),

Gene: PhedwardCullen_31 Start: 18653, Stop: 19117, Start Num: 96

Candidate Starts for PhedwardCullen_31:

(Start: 96 @18653 has 56 MA's), (126, 18734), (156, 18806), (157, 18812), (160, 18821), (185, 18872), (190, 18890), (193, 18902), (219, 18983), (235, 19028), (257, 19079), (260, 19091),

Gene: Phinally_26 Start: 20422, Stop: 20976, Start Num: 93

Candidate Starts for Phinally_26:

(Start: 93 @20422 has 8 MA's), (Start: 105 @20452 has 1 MA's), (109, 20464), (126, 20521), (132, 20527), (138, 20545), (185, 20653), (190, 20671), (243, 20839), (250, 20854), (252, 20860), (267, 20905), (272, 20929),

Gene: Phinky_38 Start: 22707, Stop: 23231, Start Num: 86

Candidate Starts for Phinky_38:

(54, 22479), (Start: 86 @22707 has 50 MA's), (124, 22821), (129, 22833), (139, 22860), (167, 22944), (177, 22965), (182, 22971), (215, 23085), (218, 23094), (222, 23106), (231, 23139), (237, 23151),

Gene: Phlop_24 Start: 16796, Stop: 17332, Start Num: 95

Candidate Starts for Phlop_24:

(40, 16334), (48, 16451), (59, 16601), (67, 16712), (Start: 95 @16796 has 55 MA's), (118, 16859), (126, 16889), (140, 16919), (141, 16922), (145, 16928), (151, 16946), (188, 17033), (189, 17039), (190, 17045), (221, 17141), (264, 17252), (266, 17258), (277, 17306),

Gene: Phorgeous_31 Start: 18762, Stop: 19226, Start Num: 96

Candidate Starts for Phorgeous_31:

(Start: 96 @18762 has 56 MA's), (126, 18843), (156, 18915), (157, 18921), (160, 18930), (185, 18981), (190, 18999), (193, 19011), (219, 19092), (235, 19137), (257, 19188), (260, 19200),

Gene: Phrancesco_32 Start: 19040, Stop: 19504, Start Num: 96

Candidate Starts for Phrancesco_32:

(Start: 96 @19040 has 56 MA's), (126, 19121), (156, 19193), (157, 19199), (160, 19208), (185, 19259), (190, 19277), (193, 19289), (219, 19370), (235, 19415), (257, 19466), (260, 19478),

Gene: PhuzzTulsa_30 Start: 19787, Stop: 20314, Start Num: 74

Candidate Starts for PhuzzTulsa_30:

(17, 19187), (55, 19580), (62, 19700), (Start: 73 @19784 has 1 MA's), (Start: 74 @19787 has 12 MA's), (80, 19799), (Start: 96 @19823 has 56 MA's), (98, 19826), (108, 19856), (114, 19874), (129, 19919), (150, 19964), (155, 19979), (169, 20027), (187, 20060), (188, 20063), (195, 20093), (211, 20156), (218, 20174), (219, 20177), (221, 20183), (224, 20195),

Gene: PierreOrion_32 Start: 19063, Stop: 19527, Start Num: 96

Candidate Starts for PierreOrion_32:

(Start: 96 @19063 has 56 MA's), (126, 19144), (156, 19216), (157, 19222), (160, 19231), (185, 19282), (190, 19300), (193, 19312), (219, 19393), (235, 19438), (257, 19489), (260, 19501),

Gene: PinkCoffee_26 Start: 17435, Stop: 17971, Start Num: 95

Candidate Starts for PinkCoffee_26:

(40, 16973), (48, 17090), (59, 17240), (67, 17351), (Start: 95 @17435 has 55 MA's), (118, 17498), (126, 17528), (132, 17534), (140, 17558), (141, 17561), (145, 17567), (151, 17585), (188, 17672), (189, 17678), (190, 17684), (221, 17780), (264, 17891), (266, 17897), (277, 17945),

Gene: PiperSansNom_32 Start: 19215, Stop: 19679, Start Num: 96

Candidate Starts for PiperSansNom_32:

(Start: 96 @19215 has 56 MA's), (126, 19296), (156, 19368), (157, 19374), (160, 19383), (185, 19434), (190, 19452), (193, 19464), (219, 19545), (235, 19590), (257, 19641), (260, 19653),

Gene: Piperis_32 Start: 18885, Stop: 19349, Start Num: 96

Candidate Starts for Piperis_32:

(Start: 96 @18885 has 56 MA's), (126, 18966), (156, 19038), (157, 19044), (160, 19053), (185, 19104), (190, 19122), (193, 19134), (219, 19215), (235, 19260), (257, 19311), (260, 19323),

Gene: Pointis_32 Start: 19831, Stop: 20358, Start Num: 74

Candidate Starts for Pointis_32:

(Start: 73 @19828 has 1 MA's), (Start: 74 @19831 has 12 MA's), (80, 19843), (Start: 96 @19867 has 56 MA's), (98, 19870), (114, 19918), (129, 19963), (150, 20008), (155, 20023), (187, 20104), (188, 20107), (195, 20137), (211, 20200), (218, 20218), (219, 20221), (221, 20227), (224, 20239),

Gene: Popstraw_30 Start: 19614, Stop: 20144, Start Num: 73

Candidate Starts for Popstraw_30:

(Start: 73 @19614 has 1 MA's), (Start: 74 @19617 has 12 MA's), (80, 19629), (Start: 96 @19653 has 56 MA's), (98, 19656), (114, 19704), (129, 19749), (150, 19794), (155, 19809), (187, 19890), (188, 19893), (195, 19923), (211, 19986), (218, 20004), (219, 20007), (221, 20013), (224, 20025),

Gene: Portcullis_24 Start: 16739, Stop: 17275, Start Num: 95

Candidate Starts for Portcullis_24:

(40, 16277), (48, 16394), (59, 16544), (67, 16655), (Start: 95 @16739 has 55 MA's), (118, 16802), (126, 16832), (140, 16862), (141, 16865), (145, 16871), (151, 16889), (188, 16976), (189, 16982), (190, 16988), (221, 17084), (264, 17195), (266, 17201), (277, 17249),

Gene: Pulchra_33 Start: 19285, Stop: 19749, Start Num: 96

Candidate Starts for Pulchra_33:

(Start: 96 @19285 has 56 MA's), (126, 19366), (156, 19438), (157, 19444), (160, 19453), (185, 19504), (190, 19522), (193, 19534), (219, 19615), (235, 19660), (257, 19711), (260, 19723),

Gene: PullumCavea_24 Start: 16796, Stop: 17332, Start Num: 95

Candidate Starts for PullumCavea_24:

(40, 16334), (48, 16451), (59, 16601), (67, 16712), (Start: 95 @16796 has 55 MA's), (118, 16859), (126, 16889), (140, 16919), (141, 16922), (145, 16928), (151, 16946), (188, 17033), (189, 17039), (190, 17045), (221, 17141), (264, 17252), (266, 17258), (277, 17306),

Gene: Pumpkiney_29 Start: 19320, Stop: 19877, Start Num: 89

Candidate Starts for Pumpkiney_29:

(Start: 89 @19320 has 20 MA's), (117, 19398), (131, 19434), (132, 19437), (190, 19581), (195, 19599), (206, 19641), (213, 19665), (239, 19737), (243, 19743), (252, 19764), (272, 19830), (277, 19851),

Gene: Pureglobe5_34 Start: 20014, Stop: 20541, Start Num: 74

Candidate Starts for Pureglobe5_34:

(Start: 73 @20011 has 1 MA's), (Start: 74 @20014 has 12 MA's), (80, 20026), (Start: 96 @20050 has 56 MA's), (98, 20053), (114, 20101), (129, 20146), (150, 20191), (155, 20206), (187, 20287), (188, 20290), (195, 20320), (211, 20383), (218, 20401), (219, 20404), (221, 20410), (224, 20422),

Gene: Purplicious_50 Start: 27873, Stop: 28415, Start Num: 94

Candidate Starts for Purplicious_50:

(52, 27579), (59, 27681), (67, 27795), (Start: 94 @27873 has 5 MA's), (106, 27903), (107, 27906), (141, 27993), (194, 28116), (222, 28212), (247, 28281), (261, 28323), (279, 28386),

Gene: Quammi_30 Start: 21103, Stop: 21633, Start Num: 86

Candidate Starts for Quammi_30:

(54, 20872), (Start: 86 @21103 has 50 MA's), (153, 21295), (182, 21367), (190, 21391), (215, 21481), (227, 21517), (231, 21535), (237, 21547),

Gene: Quhwah_35 Start: 19511, Stop: 19975, Start Num: 96

Candidate Starts for Quhwah_35:

(Start: 96 @19511 has 56 MA's), (126, 19592), (156, 19664), (157, 19670), (160, 19679), (185, 19730), (190, 19748), (193, 19760), (219, 19841), (235, 19886), (257, 19937), (260, 19949),

Gene: RIPWilbur_30 Start: 19159, Stop: 19686, Start Num: 74

Candidate Starts for RIPWilbur_30:

(Start: 73 @19156 has 1 MA's), (Start: 74 @19159 has 12 MA's), (80, 19171), (Start: 96 @19195 has 56 MA's), (98, 19198), (114, 19246), (129, 19291), (150, 19336), (155, 19351), (187, 19432), (188, 19435), (195, 19465), (211, 19528), (218, 19546), (219, 19549), (221, 19555), (224, 19567),

Gene: RainyPolka_19 Start: 18941, Stop: 19603, Start Num: 68

Candidate Starts for RainyPolka_19:

(51, 18701), (Start: 68 @18941 has 12 MA's), (69, 18953), (70, 18962), (100, 19028), (128, 19112), (137, 19145), (142, 19151), (175, 19256), (189, 19286), (204, 19340), (211, 19364), (218, 19382), (221, 19391), (224, 19403), (246, 19460), (259, 19499), (281, 19586),

Gene: Ramiel05_31 Start: 18920, Stop: 19384, Start Num: 96

Candidate Starts for Ramiel05_31:

(Start: 96 @18920 has 56 MA's), (126, 19001), (156, 19073), (157, 19079), (160, 19088), (185, 19139), (190, 19157), (193, 19169), (219, 19250), (235, 19295), (257, 19346), (260, 19358),

Gene: Ranunculus_26 Start: 18939, Stop: 19457, Start Num: 74

Candidate Starts for Ranunculus_26:

(Start: 73 @18936 has 1 MA's), (Start: 74 @18939 has 12 MA's), (Start: 96 @18966 has 56 MA's), (108, 18999), (126, 19059), (129, 19062), (153, 19119), (187, 19203), (188, 19206), (195, 19236), (196, 19239), (211, 19299), (218, 19317), (221, 19326), (235, 19371),

Gene: Rasputia_63 Start: 37173, Stop: 37721, Start Num: 71

Candidate Starts for Rasputia_63:

(Start: 71 @37173 has 4 MA's), (85, 37200), (100, 37230), (129, 37308), (151, 37365), (155, 37377), (157, 37386), (176, 37434), (178, 37437), (190, 37467), (196, 37488), (207, 37524), (213, 37545), (218, 37557), (223, 37575), (233, 37596), (249, 37632), (253, 37641), (265, 37680), (273, 37701),

Gene: RazzB_28 Start: 18313, Stop: 18840, Start Num: 74

Candidate Starts for RazzB_28:

(Start: 73 @18310 has 1 MA's), (Start: 74 @18313 has 12 MA's), (80, 18325), (Start: 96 @18349 has 56 MA's), (98, 18352), (114, 18400), (129, 18445), (150, 18490), (155, 18505), (187, 18586), (188, 18589), (195, 18619), (211, 18682), (218, 18700), (219, 18703), (221, 18709), (224, 18721),

Gene: Ren19_25 Start: 18892, Stop: 19422, Start Num: 73

Candidate Starts for Ren19_25:

(Start: 73 @18892 has 1 MA's), (Start: 96 @18928 has 56 MA's), (98, 18931), (108, 18961), (129, 19024), (135, 19042), (150, 19072), (153, 19081), (155, 19087), (187, 19168), (188, 19171), (191, 19186), (211, 19264), (218, 19282), (221, 19291),

Gene: Ribeye_28 Start: 22104, Stop: 22646, Start Num: 97

Candidate Starts for Ribeye_28:

(12, 21429), (14, 21447), (52, 21804), (59, 21906), (67, 22017), (Start: 95 @22101 has 55 MA's), (Start: 97 @22104 has 32 MA's), (123, 22182), (126, 22194), (132, 22200), (133, 22203), (149, 22239), (185, 22320), (190, 22338), (230, 22476), (243, 22500), (250, 22515), (277, 22611),

Gene: RiverRaider_28 Start: 20482, Stop: 21030, Start Num: 95

Candidate Starts for RiverRaider_28:

(67, 20392), (Start: 95 @20482 has 55 MA's), (Start: 105 @20506 has 1 MA's), (133, 20584), (149, 20620), (152, 20629), (185, 20701), (188, 20707), (190, 20719), (243, 20881), (250, 20896), (276, 20986), (277, 20992),

Gene: Rizwana_26 Start: 19077, Stop: 19556, Start Num: 75

Candidate Starts for Rizwana_26:

(45, 18750), (53, 18828), (56, 18882), (Start: 75 @19077 has 3 MA's), (103, 19125), (104, 19128), (Start: 105 @19134 has 1 MA's), (135, 19197), (150, 19218), (156, 19236), (191, 19329), (195, 19344), (197, 19356), (200, 19368), (202, 19374), (249, 19506), (258, 19536), (260, 19542),

Gene: RoadKill_23 Start: 18262, Stop: 18825, Start Num: 89

Candidate Starts for RoadKill_23:

(66, 18181), (Start: 89 @18262 has 20 MA's), (132, 18379), (133, 18382), (153, 18430), (168, 18478), (185, 18505), (190, 18523), (204, 18577), (234, 18670), (243, 18685), (250, 18700), (276, 18790), (277, 18796),

Gene: RobinRose_33 Start: 20618, Stop: 21130, Start Num: 77

Candidate Starts for RobinRose_33:

(54, 20405), (56, 20420), (Start: 77 @20618 has 1 MA's), (Start: 86 @20633 has 50 MA's), (113, 20705), (153, 20798), (182, 20870), (189, 20888), (210, 20972), (215, 20984), (217, 20990), (249, 21077), (253, 21086),

Gene: RobsFeet_33 Start: 18997, Stop: 19461, Start Num: 96

Candidate Starts for RobsFeet_33:

(Start: 96 @18997 has 56 MA's), (117, 19045), (123, 19066), (127, 19078), (156, 19150), (157, 19156), (160, 19165), (185, 19216), (190, 19234), (193, 19246), (199, 19273), (230, 19363), (235, 19372), (240, 19381), (257, 19423), (263, 19441),

Gene: Rockwell_31 Start: 18920, Stop: 19384, Start Num: 96

Candidate Starts for Rockwell_31:

(Start: 96 @18920 has 56 MA's), (126, 19001), (156, 19073), (157, 19079), (160, 19088), (185, 19139), (190, 19157), (193, 19169), (219, 19250), (235, 19295), (257, 19346), (260, 19358),

Gene: Rofo_28 Start: 22284, Stop: 22829, Start Num: 97

Candidate Starts for Rofo_28:

(10, 21561), (12, 21603), (14, 21621), (48, 21930), (52, 21978), (59, 22080), (67, 22191), (Start: 95 @22281 has 55 MA's), (Start: 97 @22284 has 32 MA's), (123, 22362), (133, 22383), (154, 22434), (164, 22461), (185, 22503), (190, 22521), (213, 22605), (225, 22641), (243, 22683), (244, 22689), (250, 22698), (255, 22707), (276, 22788), (277, 22794),

Gene: RogerDodger_27 Start: 17589, Stop: 18125, Start Num: 95

Candidate Starts for RogerDodger_27:

(40, 17127), (48, 17244), (59, 17394), (67, 17505), (Start: 95 @17589 has 55 MA's), (126, 17682), (132, 17688), (140, 17712), (141, 17715), (145, 17721), (188, 17826), (189, 17832), (190, 17838), (207, 17892), (221, 17934), (264, 18045), (266, 18051), (277, 18099),

Gene: RomansRevenge_23 Start: 18318, Stop: 18812, Start Num: 83

Candidate Starts for RomansRevenge_23:

(Start: 75 @18303 has 3 MA's), (Start: 83 @18318 has 3 MA's), (98, 18339), (109, 18372), (150, 18468), (153, 18477), (182, 18552), (189, 18570), (190, 18576), (195, 18594), (196, 18597), (198, 18612), (200, 18621), (202, 18627), (218, 18678), (221, 18687), (230, 18720), (253, 18771),

Gene: Romm_33 Start: 20633, Stop: 21130, Start Num: 86

Candidate Starts for Romm_33:

(54, 20405), (56, 20420), (Start: 77 @20618 has 1 MA's), (Start: 86 @20633 has 50 MA's), (113, 20705), (153, 20798), (182, 20870), (189, 20888), (210, 20972), (215, 20984), (217, 20990), (249, 21077), (253, 21086),

Gene: Rowlf_28 Start: 21278, Stop: 21808, Start Num: 86

Candidate Starts for Rowlf_28:

(54, 21047), (Start: 86 @21278 has 50 MA's), (153, 21470), (182, 21542), (190, 21566), (215, 21656), (227, 21692), (231, 21710), (237, 21722),

Gene: RubyRalph_34 Start: 21173, Stop: 21700, Start Num: 86

Candidate Starts for RubyRalph_34:

(10, 20483), (24, 20630), (43, 20810), (54, 20945), (56, 20963), (Start: 86 @21173 has 50 MA's), (124, 21281), (130, 21299), (182, 21440), (190, 21464), (215, 21554), (218, 21563), (253, 21656),

Gene: Rudy_30 Start: 21136, Stop: 21666, Start Num: 86

Candidate Starts for Rudy_30:

(54, 20905), (Start: 86 @21136 has 50 MA's), (153, 21328), (182, 21400), (190, 21424), (215, 21514), (227, 21550), (231, 21568), (237, 21580),

Gene: SadLad_36 Start: 22116, Stop: 22643, Start Num: 86

Candidate Starts for SadLad_36:

(81, 22110), (Start: 86 @22116 has 50 MA's), (124, 22224), (130, 22242), (182, 22383), (190, 22407), (215, 22497), (218, 22506), (253, 22599),

Gene: Salete_18 Start: 18600, Stop: 19238, Start Num: 68

Candidate Starts for Salete_18:

(Start: 68 @18600 has 12 MA's), (69, 18612), (91, 18666), (100, 18687), (111, 18723), (112, 18726), (137, 18804), (142, 18810), (143, 18813), (166, 18891), (175, 18915), (181, 18924), (189, 18945), (204, 18999), (211, 19023), (218, 19041), (244, 19116), (246, 19119), (259, 19158), (268, 19182),

Gene: SallyK_33 Start: 22211, Stop: 22741, Start Num: 86

Candidate Starts for SallyK_33:

(54, 21980), (Start: 86 @22211 has 50 MA's), (134, 22352), (153, 22403), (167, 22448), (182, 22475), (190, 22499), (193, 22511), (215, 22589), (227, 22625), (231, 22643), (237, 22655), (260, 22718),

Gene: Salvador_24 Start: 16710, Stop: 17246, Start Num: 95

Candidate Starts for Salvador_24:

(40, 16248), (48, 16365), (59, 16515), (67, 16626), (Start: 95 @16710 has 55 MA's), (118, 16773), (126, 16803), (140, 16833), (141, 16836), (145, 16842), (151, 16860), (188, 16947), (189, 16953), (190, 16959), (221, 17055), (264, 17166), (266, 17172), (277, 17220),

Gene: Sampson_28 Start: 21947, Stop: 22504, Start Num: 89

Candidate Starts for Sampson_28:

(Start: 89 @21947 has 20 MA's), (117, 22025), (131, 22061), (132, 22064), (190, 22208), (195, 22226), (206, 22268), (213, 22292), (239, 22364), (243, 22370), (252, 22391), (272, 22457), (277, 22478),

Gene: Sanjuju_26 Start: 22465, Stop: 23010, Start Num: 97

Candidate Starts for Sanjuju_26:

(10, 21742), (12, 21784), (14, 21802), (48, 22111), (52, 22159), (59, 22261), (67, 22372), (Start: 95 @22462 has 55 MA's), (Start: 97 @22465 has 32 MA's), (Start: 105 @22486 has 1 MA's), (123, 22543), (133, 22564), (154, 22615), (164, 22642), (185, 22684), (190, 22702), (205, 22759), (213, 22786), (225, 22822), (243, 22864), (244, 22870), (250, 22879), (255, 22888), (276, 22969), (277,

22975),

Gene: Saronaya_27 Start: 20938, Stop: 21480, Start Num: 97

Candidate Starts for Saronaya_27:

(48, 20590), (52, 20638), (59, 20740), (67, 20851), (Start: 95 @20935 has 55 MA's), (Start: 97 @20938 has 32 MA's), (123, 21016), (126, 21028), (132, 21034), (133, 21037), (149, 21073), (185, 21154), (190, 21172), (243, 21334), (250, 21349), (277, 21445),

Gene: Savannah_31 Start: 18947, Stop: 19411, Start Num: 96

Candidate Starts for Savannah_31:

(Start: 96 @18947 has 56 MA's), (126, 19028), (156, 19100), (157, 19106), (160, 19115), (185, 19166), (190, 19184), (193, 19196), (219, 19277), (235, 19322), (257, 19373), (260, 19385),

Gene: Savbucketdawg_24 Start: 16491, Stop: 17027, Start Num: 95

Candidate Starts for Savbucketdawg_24:

(40, 16029), (48, 16146), (59, 16296), (67, 16407), (Start: 95 @16491 has 55 MA's), (118, 16554), (126, 16584), (132, 16590), (140, 16614), (141, 16617), (145, 16623), (151, 16641), (188, 16728), (189, 16734), (190, 16740), (221, 16836), (264, 16947), (266, 16953), (277, 17001),

Gene: SchottB_26 Start: 21947, Stop: 22492, Start Num: 95

Candidate Starts for SchottB_26:

(48, 21602), (52, 21650), (59, 21752), (67, 21863), (Start: 95 @21947 has 55 MA's), (Start: 97 @21950 has 32 MA's), (123, 22028), (126, 22040), (132, 22046), (133, 22049), (149, 22085), (185, 22166), (190, 22184), (243, 22346), (250, 22361), (277, 22457),

Gene: Scioto_28 Start: 22002, Stop: 22559, Start Num: 89

Candidate Starts for Scioto_28:

(Start: 89 @22002 has 20 MA's), (117, 22080), (131, 22116), (132, 22119), (190, 22263), (195, 22281), (206, 22323), (213, 22347), (239, 22419), (243, 22425), (252, 22446), (272, 22512), (277, 22533),

Gene: Scumberland_33 Start: 19136, Stop: 19600, Start Num: 96

Candidate Starts for Scumberland_33:

(Start: 96 @19136 has 56 MA's), (126, 19217), (156, 19289), (157, 19295), (160, 19304), (185, 19355), (190, 19373), (193, 19385), (219, 19466), (235, 19511), (257, 19562), (260, 19574),

Gene: Sedona_28 Start: 23390, Stop: 23935, Start Num: 97

Candidate Starts for Sedona_28:

(10, 22667), (12, 22709), (14, 22727), (48, 23036), (52, 23084), (59, 23186), (67, 23297), (Start: 95 @23387 has 55 MA's), (Start: 97 @23390 has 32 MA's), (Start: 105 @23411 has 1 MA's), (126, 23480), (133, 23489), (154, 23540), (185, 23609), (190, 23627), (205, 23684), (213, 23711), (225, 23747), (243, 23789), (244, 23795), (250, 23804), (255, 23813), (276, 23894), (277, 23900),

Gene: Selwyn23_33 Start: 19113, Stop: 19577, Start Num: 96

Candidate Starts for Selwyn23_33:

(Start: 96 @19113 has 56 MA's), (126, 19194), (156, 19266), (157, 19272), (160, 19281), (185, 19332), (190, 19350), (193, 19362), (219, 19443), (235, 19488), (257, 19539), (260, 19551),

Gene: Sendy_25 Start: 16841, Stop: 17389, Start Num: 95

Candidate Starts for Sendy_25:

(48, 16496), (59, 16646), (67, 16757), (Start: 95 @16841 has 55 MA's), (123, 16922), (126, 16934), (140, 16964), (141, 16967), (151, 16991), (188, 17078), (189, 17084), (190, 17090), (207, 17144), (221, 17186), (264, 17306), (266, 17312), (268, 17318), (276, 17354), (277, 17360),

Gene: SharkTale_24 Start: 17432, Stop: 17968, Start Num: 95

Candidate Starts for SharkTale_24:

(59, 17237), (67, 17348), (Start: 95 @17432 has 55 MA's), (126, 17525), (132, 17531), (140, 17555), (141, 17558), (145, 17564), (188, 17669), (189, 17675), (190, 17681), (207, 17735), (221, 17777), (264, 17888), (266, 17894), (277, 17942),

Gene: Shinji_24 Start: 16680, Stop: 17216, Start Num: 95

Candidate Starts for Shinji_24:

(40, 16218), (48, 16335), (59, 16485), (67, 16596), (Start: 95 @16680 has 55 MA's), (118, 16743), (126, 16773), (140, 16803), (141, 16806), (145, 16812), (151, 16830), (188, 16917), (189, 16923), (190, 16929), (221, 17025), (264, 17136), (266, 17142), (277, 17190),

Gene: Shivanishola_29 Start: 22364, Stop: 22909, Start Num: 97

Candidate Starts for Shivanishola_29:

(10, 21641), (12, 21683), (14, 21701), (48, 22010), (52, 22058), (59, 22160), (67, 22271), (Start: 95 @22361 has 55 MA's), (Start: 97 @22364 has 32 MA's), (Start: 105 @22385 has 1 MA's), (123, 22442), (133, 22463), (154, 22514), (164, 22541), (185, 22583), (190, 22601), (205, 22658), (213, 22685), (225, 22721), (243, 22763), (244, 22769), (250, 22778), (255, 22787), (276, 22868), (277, 22874),

Gene: Shotgun_31 Start: 18746, Stop: 19210, Start Num: 96

Candidate Starts for Shotgun_31:

(Start: 96 @18746 has 56 MA's), (126, 18827), (156, 18899), (157, 18905), (160, 18914), (185, 18965), (190, 18983), (193, 18995), (219, 19076), (235, 19121), (257, 19172), (260, 19184),

Gene: Shrubaron_32 Start: 18631, Stop: 19095, Start Num: 96

Candidate Starts for Shrubaron_32:

(Start: 96 @18631 has 56 MA's), (117, 18679), (123, 18700), (127, 18712), (156, 18784), (157, 18790), (160, 18799), (185, 18850), (190, 18868), (193, 18880), (199, 18907), (230, 18997), (235, 19006), (240, 19015), (257, 19057), (263, 19075),

Gene: SilentRX_27 Start: 20093, Stop: 20590, Start Num: 83

Candidate Starts for SilentRX_27:

(Start: 83 @20093 has 3 MA's), (153, 20255), (163, 20282), (169, 20309), (188, 20342), (190, 20354), (191, 20357), (195, 20372), (201, 20399), (207, 20420), (211, 20435), (218, 20453), (221, 20462), (253, 20540),

Gene: Sillytadpoles_32 Start: 21101, Stop: 21631, Start Num: 86

Candidate Starts for Sillytadpoles_32:

(54, 20870), (Start: 86 @21101 has 50 MA's), (134, 21242), (153, 21293), (167, 21338), (182, 21365), (190, 21389), (193, 21401), (215, 21479), (227, 21515), (231, 21533), (237, 21545), (260, 21608),

Gene: SirFrank_31 Start: 18848, Stop: 19312, Start Num: 96

Candidate Starts for SirFrank_31:

(Start: 96 @18848 has 56 MA's), (156, 19001), (157, 19007), (160, 19016), (185, 19067), (190, 19085), (193, 19097), (199, 19124), (219, 19178), (235, 19223), (257, 19274),

Gene: Sitar_28 Start: 23451, Stop: 24002, Start Num: 95

Candidate Starts for Sitar_28:

(10, 22731), (12, 22773), (14, 22791), (48, 23100), (52, 23148), (59, 23250), (67, 23361), (Start: 95 @23451 has 55 MA's), (Start: 97 @23454 has 32 MA's), (Start: 105 @23475 has 1 MA's), (126, 23544), (133, 23553), (154, 23604), (185, 23673), (190, 23691), (205, 23748), (213, 23775), (225, 23811), (243, 23853), (244, 23859), (250, 23868), (255, 23877), (276, 23958), (277, 23964),

Gene: Sixsevenium_25 Start: 16581, Stop: 17117, Start Num: 95

Candidate Starts for Sixsevenium_25:

(67, 16497), (Start: 95 @16581 has 55 MA's), (126, 16674), (132, 16680), (140, 16704), (141, 16707), (145, 16713), (188, 16818), (189, 16824), (190, 16830), (221, 16926), (264, 17037), (266, 17043), (277, 17091),

Gene: Skugga_30 Start: 18735, Stop: 19199, Start Num: 96

Candidate Starts for Skugga_30:

(Start: 96 @18735 has 56 MA's), (Start: 105 @18756 has 1 MA's), (119, 18792), (127, 18816), (185, 18954), (190, 18972), (196, 18993), (199, 19011), (219, 19065), (230, 19101), (257, 19161), (260, 19173),

Gene: SlySloth_34 Start: 22106, Stop: 22636, Start Num: 86

Candidate Starts for SlySloth_34:

(54, 21875), (Start: 86 @22106 has 50 MA's), (134, 22247), (153, 22298), (167, 22343), (182, 22370), (190, 22394), (193, 22406), (215, 22484), (227, 22520), (231, 22538), (237, 22550), (260, 22613),

Gene: Smarties_40 Start: 20819, Stop: 21283, Start Num: 96

Candidate Starts for Smarties_40:

(Start: 96 @20819 has 56 MA's), (103, 20834), (123, 20888), (127, 20900), (157, 20978), (160, 20987), (185, 21038), (190, 21056), (199, 21095), (219, 21149), (230, 21185), (257, 21245),

Gene: SmokingBunny_24 Start: 16710, Stop: 17246, Start Num: 95

Candidate Starts for SmokingBunny_24:

(40, 16248), (48, 16365), (59, 16515), (67, 16626), (Start: 95 @16710 has 55 MA's), (118, 16773), (126, 16803), (140, 16833), (141, 16836), (145, 16842), (151, 16860), (188, 16947), (189, 16953), (190, 16959), (221, 17055), (264, 17166), (266, 17172), (277, 17220),

Gene: Soos_47 Start: 27834, Stop: 28376, Start Num: 94

Candidate Starts for Soos_47:

(9, 27105), (10, 27123), (23, 27252), (33, 27327), (37, 27342), (39, 27354), (52, 27540), (59, 27642), (67, 27756), (Start: 94 @27834 has 5 MA's), (106, 27864), (107, 27867), (141, 27954), (172, 28026), (194, 28077), (222, 28173), (247, 28242), (261, 28284), (279, 28347),

Gene: Squash_34 Start: 22160, Stop: 22690, Start Num: 86

Candidate Starts for Squash_34:

(Start: 86 @22160 has 50 MA's), (153, 22352), (182, 22424), (190, 22448), (215, 22538), (227, 22574), (231, 22592), (237, 22604),

Gene: Statler_33 Start: 22020, Stop: 22550, Start Num: 86

Candidate Starts for Statler_33:

(54, 21789), (Start: 86 @22020 has 50 MA's), (134, 22161), (153, 22212), (167, 22257), (182, 22284), (190, 22308), (193, 22320), (215, 22398), (227, 22434), (237, 22464), (260, 22527),

Gene: Stichling_25 Start: 20449, Stop: 20994, Start Num: 95

Candidate Starts for Stichling_25:

(52, 20152), (59, 20254), (67, 20365), (Start: 95 @20449 has 55 MA's), (Start: 97 @20452 has 32 MA's), (126, 20542), (132, 20548), (133, 20551), (149, 20587), (164, 20629), (185, 20668), (188, 20674), (190, 20686), (250, 20863), (277, 20959),

Gene: Stillion_51 Start: 28431, Stop: 28973, Start Num: 94

Candidate Starts for Stillion_51:

(67, 28353), (Start: 94 @28431 has 5 MA's), (106, 28461), (107, 28464), (141, 28551), (194, 28674), (222, 28770), (247, 28839), (261, 28881), (279, 28944),

Gene: Sting_50 Start: 28273, Stop: 28815, Start Num: 94

Candidate Starts for Sting_50:

(9, 27544), (10, 27562), (23, 27691), (33, 27766), (37, 27781), (39, 27793), (52, 27979), (59, 28081), (67, 28195), (Start: 94 @28273 has 5 MA's), (106, 28303), (107, 28306), (141, 28393), (194, 28516), (222, 28612), (247, 28681), (261, 28723), (279, 28786),

Gene: StorminNorm_27 Start: 20814, Stop: 21359, Start Num: 95

Candidate Starts for StorminNorm_27:

(48, 20469), (52, 20517), (59, 20619), (67, 20730), (Start: 95 @20814 has 55 MA's), (Start: 97 @20817 has 32 MA's), (123, 20895), (126, 20907), (132, 20913), (133, 20916), (149, 20952), (185, 21033), (190, 21051), (243, 21213), (250, 21228), (277, 21324),

Gene: StrawberryJamm_34 Start: 21340, Stop: 21870, Start Num: 86

Candidate Starts for StrawberryJamm_34:

(54, 21109), (Start: 86 @21340 has 50 MA's), (153, 21532), (182, 21604), (190, 21628), (215, 21718), (227, 21754), (231, 21772), (237, 21784),

Gene: Stultus_26 Start: 21369, Stop: 21917, Start Num: 97

Candidate Starts for Stultus_26:

(12, 20688), (14, 20706), (48, 21015), (52, 21063), (59, 21165), (67, 21276), (Start: 95 @21366 has 55 MA's), (Start: 97 @21369 has 32 MA's), (Start: 105 @21390 has 1 MA's), (126, 21459), (133, 21468), (154, 21519), (164, 21546), (185, 21588), (190, 21606), (205, 21663), (213, 21690), (225, 21726), (243, 21768), (244, 21774), (250, 21783), (255, 21792), (276, 21873), (277, 21879),

Gene: Sunfish_40 Start: 22467, Stop: 23003, Start Num: 78

Candidate Starts for Sunfish_40:

(Start: 78 @22467 has 1 MA's), (92, 22497), (100, 22512), (144, 22641), (148, 22650), (183, 22722), (226, 22851), (229, 22860),

Gene: Sunny_ Start: 20982, Stop: 21446, Start Num: 96

Candidate Starts for Sunny_:

(Start: 96 @20982 has 56 MA's), (156, 21135), (160, 21150), (174, 21186), (190, 21219), (193, 21231), (222, 21321), (230, 21348), (257, 21408), (260, 21420),

Gene: TP1604_18 Start: 18600, Stop: 19238, Start Num: 68

Candidate Starts for TP1604_18:

(Start: 68 @18600 has 12 MA's), (69, 18612), (70, 18621), (91, 18666), (100, 18687), (111, 18723), (112, 18726), (137, 18804), (142, 18810), (143, 18813), (166, 18891), (175, 18915), (181, 18924), (189, 18945), (204, 18999), (211, 19023), (218, 19041), (244, 19116), (246, 19119), (259, 19158), (268, 19182),

Gene: Tangent_28 Start: 21806, Stop: 22351, Start Num: 97

Candidate Starts for Tangent_28:

(48, 21452), (52, 21500), (59, 21602), (67, 21713), (Start: 95 @21803 has 55 MA's), (Start: 97 @21806 has 32 MA's), (123, 21884), (133, 21905), (154, 21956), (164, 21983), (185, 22025), (190, 22043), (213, 22127), (225, 22163), (243, 22205), (244, 22211), (250, 22220), (255, 22229), (276, 22310), (277, 22316),

Gene: Tangerine_27 Start: 20823, Stop: 21365, Start Num: 97

Candidate Starts for Tangerine_27:

(48, 20475), (52, 20523), (59, 20625), (67, 20736), (Start: 95 @20820 has 55 MA's), (Start: 97 @20823 has 32 MA's), (123, 20901), (126, 20913), (132, 20919), (133, 20922), (149, 20958), (185, 21039), (190, 21057), (243, 21219), (250, 21234), (277, 21330),

Gene: Tank_27 Start: 19021, Stop: 19503, Start Num: 75

Candidate Starts for Tank_27:

(45, 18694), (56, 18826), (Start: 75 @19021 has 3 MA's), (98, 19057), (104, 19072), (Start: 105 @19078 has 1 MA's), (135, 19141), (150, 19162), (155, 19177), (156, 19180), (163, 19198), (172, 19231), (191, 19276), (197, 19303), (200, 19315), (221, 19381), (245, 19444), (249, 19453), (258, 19483),

Gene: Tardus_29 Start: 21283, Stop: 21840, Start Num: 89

Candidate Starts for Tardus_29:

(Start: 89 @21283 has 20 MA's), (117, 21361), (131, 21397), (132, 21400), (190, 21544), (195, 21562), (206, 21604), (213, 21628), (239, 21700), (243, 21706), (252, 21727), (266, 21766), (272, 21793), (277, 21814),

Gene: Teamocil_33 Start: 18816, Stop: 19280, Start Num: 96

Candidate Starts for Teamocil_33:

(Start: 96 @18816 has 56 MA's), (Start: 105 @18837 has 1 MA's), (119, 18873), (127, 18897), (185, 19035), (190, 19053), (196, 19074), (199, 19092), (219, 19146), (230, 19182), (257, 19242), (260, 19254),

Gene: Teehee_33 Start: 22337, Stop: 22867, Start Num: 86

Candidate Starts for Teehee_33:

(54, 22106), (Start: 86 @22337 has 50 MA's), (134, 22478), (153, 22529), (167, 22574), (182, 22601), (190, 22625), (193, 22637), (215, 22715), (227, 22751), (231, 22769), (237, 22781), (260, 22844),

Gene: Tempo_31 Start: 20509, Stop: 21006, Start Num: 86

Candidate Starts for Tempo_31:

(13, 19876), (29, 20008), (54, 20281), (56, 20296), (Start: 77 @20494 has 1 MA's), (Start: 86 @20509 has 50 MA's), (113, 20581), (153, 20674), (182, 20746), (189, 20764), (210, 20848), (215, 20860), (217, 20866), (249, 20953), (253, 20962),

Gene: Terij_28 Start: 18304, Stop: 18828, Start Num: 96

Candidate Starts for Terij_28:

(Start: 96 @18304 has 56 MA's), (107, 18325), (120, 18358), (193, 18550), (202, 18586), (213, 18625), (225, 18661),

Gene: Thing3_27 Start: 22299, Stop: 22844, Start Num: 97

Candidate Starts for Thing3_27:

(10, 21576), (12, 21618), (14, 21636), (48, 21945), (52, 21993), (59, 22095), (67, 22206), (Start: 95 @22296 has 55 MA's), (Start: 97 @22299 has 32 MA's), (Start: 105 @22320 has 1 MA's), (123, 22377), (126, 22389), (133, 22398), (154, 22449), (164, 22476), (185, 22518), (190, 22536), (205, 22593), (213, 22620), (225, 22656), (243, 22698), (244, 22704), (250, 22713), (276, 22803), (277, 22809),

Gene: Tiamoceli_26 Start: 19613, Stop: 20176, Start Num: 89

Candidate Starts for Tiamoceli_26:

(66, 19532), (Start: 89 @19613 has 20 MA's), (Start: 105 @19655 has 1 MA's), (132, 19730), (133, 19733), (153, 19781), (168, 19829), (185, 19856), (190, 19874), (204, 19928), (234, 20021), (243, 20036), (250, 20051), (276, 20141), (277, 20147),

Gene: TillyBobJoe_24 Start: 16494, Stop: 17030, Start Num: 95

Candidate Starts for TillyBobJoe_24:

(59, 16299), (67, 16410), (Start: 95 @16494 has 55 MA's), (118, 16557), (126, 16587), (140, 16617), (141, 16620), (145, 16626), (151, 16644), (188, 16731), (189, 16737), (190, 16743), (221, 16839), (264, 16950), (266, 16956), (277, 17004),

Gene: Tissue_32 Start: 21857, Stop: 22384, Start Num: 86

Candidate Starts for Tissue_32:

(54, 21626), (Start: 86 @21857 has 50 MA's), (153, 22046), (167, 22091), (182, 22118), (190, 22142), (215, 22232), (227, 22268), (231, 22286), (237, 22298), (260, 22361),

Gene: Togo_24 Start: 16710, Stop: 17246, Start Num: 95

Candidate Starts for Togo_24:

(40, 16248), (48, 16365), (59, 16515), (67, 16626), (Start: 95 @16710 has 55 MA's), (118, 16773), (126, 16803), (140, 16833), (141, 16836), (145, 16842), (151, 16860), (188, 16947), (189, 16953), (190, 16959), (221, 17055), (264, 17166), (266, 17172), (277, 17220),

Gene: Tonitrus_38 Start: 26505, Stop: 27032, Start Num: 99

Candidate Starts for Tonitrus_38:

(59, 26307), (61, 26325), (67, 26421), (Start: 99 @26505 has 1 MA's), (106, 26526), (109, 26535), (113, 26547), (141, 26607), (178, 26697), (180, 26700), (203, 26772), (205, 26778), (207, 26784), (208, 26790), (213, 26805), (216, 26811), (232, 26865), (266, 26952), (270, 26973),

Gene: TurkishDelight_24 Start: 20839, Stop: 21438, Start Num: 68

Candidate Starts for TurkishDelight_24:

(19, 20296), (20, 20302), (41, 20470), (42, 20527), (50, 20578), (51, 20596), (60, 20734), (Start: 68 @20839 has 12 MA's), (72, 20869), (84, 20893), (100, 20926), (116, 20977), (137, 21040), (142, 21046), (173, 21118), (175, 21121), (216, 21241), (255, 21343), (261, 21370), (268, 21388),

Gene: Twister6_26 Start: 17137, Stop: 17673, Start Num: 95

Candidate Starts for Twister6_26:

(40, 16675), (48, 16792), (59, 16942), (67, 17053), (Start: 95 @17137 has 55 MA's), (118, 17200), (126, 17230), (132, 17236), (140, 17260), (141, 17263), (145, 17269), (151, 17287), (188, 17374), (189, 17380), (190, 17386), (221, 17482), (264, 17593), (266, 17599), (277, 17647),

Gene: Twonlo_23 Start: 18231, Stop: 18794, Start Num: 89

Candidate Starts for Twonlo_23:

(66, 18150), (Start: 89 @18231 has 20 MA's), (Start: 105 @18273 has 1 MA's), (132, 18348), (133, 18351), (149, 18387), (153, 18399), (168, 18447), (185, 18474), (190, 18492), (204, 18546), (234, 18639), (243, 18654), (250, 18669), (276, 18759), (277, 18765),

Gene: Tycho_27 Start: 20912, Stop: 21454, Start Num: 97

Candidate Starts for Tycho_27:

(48, 20564), (52, 20612), (59, 20714), (67, 20825), (Start: 95 @20909 has 55 MA's), (Start: 97 @20912 has 32 MA's), (123, 20990), (126, 21002), (132, 21008), (133, 21011), (149, 21047), (185, 21128), (190, 21146), (243, 21308), (250, 21323), (277, 21419),

Gene: Tyrumbra_30 Start: 18037, Stop: 18501, Start Num: 96

Candidate Starts for Tyrumbra_30:

(Start: 96 @18037 has 56 MA's), (117, 18085), (123, 18106), (127, 18118), (156, 18190), (157, 18196), (160, 18205), (185, 18256), (190, 18274), (199, 18313), (219, 18367), (230, 18403), (235, 18412), (240, 18421), (257, 18463),

Gene: Valary_27 Start: 17634, Stop: 18179, Start Num: 95

Candidate Starts for Valary_27:

(59, 17439), (67, 17550), (Start: 95 @17634 has 55 MA's), (123, 17715), (126, 17727), (140, 17757), (141, 17760), (151, 17784), (185, 17865), (189, 17877), (190, 17883), (207, 17937), (221, 17979), (264, 18099), (266, 18105), (268, 18111), (277, 18153),

Gene: VanDeWege_27 Start: 17518, Stop: 18054, Start Num: 95

Candidate Starts for VanDeWege_27:

(40, 17056), (48, 17173), (59, 17323), (67, 17434), (Start: 95 @17518 has 55 MA's), (118, 17581), (126, 17611), (132, 17617), (140, 17641), (141, 17644), (145, 17650), (151, 17668), (188, 17755), (189, 17761), (190, 17767), (221, 17863), (264, 17974), (266, 17980), (277, 18028),

Gene: Verity_27 Start: 22132, Stop: 22689, Start Num: 89

Candidate Starts for Verity_27:

(42, 21760), (46, 21787), (57, 21937), (65, 22048), (Start: 89 @22132 has 20 MA's), (117, 22210), (131, 22246), (190, 22393), (195, 22411), (206, 22453), (213, 22477), (221, 22498), (243, 22555), (252, 22576), (266, 22615), (272, 22642), (277, 22663),

Gene: ViaConlectus_28 Start: 20624, Stop: 21181, Start Num: 89

Candidate Starts for ViaConlectus_28:

(Start: 89 @20624 has 20 MA's), (117, 20702), (131, 20738), (132, 20741), (190, 20885), (195, 20903), (206, 20945), (213, 20969), (239, 21041), (243, 21047), (252, 21068), (272, 21134), (277, 21155),

Gene: Viceroy_31 Start: 21103, Stop: 21633, Start Num: 86

Candidate Starts for Viceroy_31:

(54, 20872), (Start: 86 @21103 has 50 MA's), (153, 21295), (182, 21367), (190, 21391), (215, 21481), (227, 21517), (231, 21535), (237, 21547),

Gene: Vivi2_30 Start: 22976, Stop: 23524, Start Num: 95

Candidate Starts for Vivi2_30:

(48, 22625), (52, 22673), (59, 22775), (67, 22886), (Start: 95 @22976 has 55 MA's), (Start: 97 @22979 has 32 MA's), (123, 23057), (133, 23078), (154, 23129), (164, 23156), (185, 23198), (190, 23216), (213, 23300), (225, 23336), (243, 23378), (244, 23384), (250, 23393), (255, 23402), (276, 23483), (277, 23489),

Gene: Wayne3_33 Start: 22100, Stop: 22630, Start Num: 86

Candidate Starts for Wayne3_33:

(54, 21869), (Start: 86 @22100 has 50 MA's), (134, 22241), (153, 22292), (167, 22337), (182, 22364), (190, 22388), (193, 22400), (215, 22478), (227, 22514), (231, 22532), (237, 22544), (260, 22607),

Gene: WheelerS25_37 Start: 22860, Stop: 23390, Start Num: 86

Candidate Starts for WheelerS25_37:

(54, 22629), (Start: 86 @22860 has 50 MA's), (134, 23001), (153, 23052), (167, 23097), (182, 23124), (190, 23148), (193, 23160), (215, 23238), (227, 23274), (231, 23292), (237, 23304), (260, 23367),

Gene: Wheelie_31 Start: 21418, Stop: 21948, Start Num: 86

Candidate Starts for Wheelie_31:

(54, 21187), (Start: 86 @21418 has 50 MA's), (134, 21559), (153, 21610), (167, 21655), (182, 21682), (190, 21706), (193, 21718), (215, 21796), (227, 21832), (231, 21850), (237, 21862), (260, 21925),

Gene: Wilca_31 Start: 20336, Stop: 20827, Start Num: 86

Candidate Starts for Wilca_31:

(1, 18518), (6, 19529), (11, 19676), (13, 19706), (29, 19838), (44, 19988), (54, 20111), (56, 20126), (Start: 86 @20336 has 50 MA's), (102, 20366), (182, 20567), (188, 20579), (189, 20585), (192, 20600), (210, 20669), (215, 20681), (249, 20774), (253, 20783),

Gene: Wilde_27 Start: 18950, Stop: 19432, Start Num: 75

Candidate Starts for Wilde_27:

(45, 18623), (56, 18755), (Start: 75 @18950 has 3 MA's), (104, 19001), (Start: 105 @19007 has 1 MA's), (135, 19070), (150, 19091), (151, 19094), (155, 19106), (156, 19109), (163, 19127), (191, 19205), (197, 19232), (200, 19244), (221, 19310), (245, 19373), (249, 19382), (258, 19412),

Gene: Wizard_24 Start: 16844, Stop: 17380, Start Num: 95

Candidate Starts for Wizard_24:

(40, 16382), (48, 16499), (59, 16649), (67, 16760), (Start: 95 @16844 has 55 MA's), (118, 16907), (126, 16937), (140, 16967), (141, 16970), (145, 16976), (151, 16994), (188, 17081), (189, 17087), (190, 17093), (221, 17189), (264, 17300), (266, 17306), (277, 17354),

Gene: Xkcd426_24 Start: 26011, Stop: 26637, Start Num: 68

Candidate Starts for Xkcd426_24:

(64, 25975), (Start: 68 @26011 has 12 MA's), (69, 26023), (111, 26134), (112, 26137), (166, 26302), (175, 26326), (181, 26335), (193, 26374), (204, 26410), (211, 26434), (218, 26452), (246, 26530), (259, 26569), (266, 26587),

Gene: YDN12_19 Start: 18536, Stop: 19174, Start Num: 68

Candidate Starts for YDN12_19:

(Start: 68 @18536 has 12 MA's), (69, 18548), (70, 18557), (91, 18602), (100, 18623), (111, 18659), (112, 18662), (137, 18740), (142, 18746), (166, 18827), (175, 18851), (181, 18860), (189, 18881), (193, 18899), (204, 18935), (211, 18959), (218, 18977), (224, 18998), (246, 19055), (259, 19094), (268, 19118),

Gene: Yeti_32 Start: 18915, Stop: 19379, Start Num: 96

Candidate Starts for Yeti_32:

(Start: 96 @18915 has 56 MA's), (126, 18996), (156, 19068), (157, 19074), (160, 19083), (185, 19134), (190, 19152), (193, 19164), (219, 19245), (235, 19290), (257, 19341), (260, 19353),

Gene: YorkOnyx_28 Start: 21180, Stop: 21722, Start Num: 97

Candidate Starts for YorkOnyx_28:

(10, 20463), (12, 20505), (14, 20523), (52, 20880), (59, 20982), (67, 21093), (Start: 95 @21177 has 55 MA's), (Start: 97 @21180 has 32 MA's), (123, 21258), (126, 21270), (132, 21276), (133, 21279), (149, 21315), (185, 21396), (190, 21414), (230, 21552), (243, 21576), (250, 21591), (277, 21687),

Gene: YungMoney_26 Start: 18132, Stop: 18668, Start Num: 95

Candidate Starts for YungMoney_26:

(59, 17937), (67, 18048), (Start: 95 @18132 has 55 MA's), (126, 18225), (132, 18231), (140, 18255), (141, 18258), (145, 18264), (188, 18369), (189, 18375), (190, 18381), (206, 18432), (207, 18435), (221, 18477), (264, 18588), (266, 18594), (277, 18642),

Gene: Zagie_32 Start: 21541, Stop: 22071, Start Num: 86

Candidate Starts for Zagie_32:

(Start: 86 @21541 has 50 MA's), (153, 21733), (182, 21805), (190, 21829), (215, 21919), (227, 21955), (231, 21973), (237, 21985),

Gene: Zapato_31 Start: 18760, Stop: 19224, Start Num: 96

Candidate Starts for Zapato_31:

(Start: 96 @18760 has 56 MA's), (Start: 105 @18781 has 1 MA's), (123, 18829), (127, 18841), (174, 18964), (185, 18979), (190, 18997), (193, 19009), (199, 19036), (219, 19090), (230, 19126), (257, 19186),

Gene: Zhafia_34 Start: 21896, Stop: 22426, Start Num: 86

Candidate Starts for Zhafia_34:

(54, 21665), (Start: 86 @21896 has 50 MA's), (134, 22037), (153, 22088), (167, 22133), (182, 22160), (190, 22184), (193, 22196), (215, 22274), (227, 22310), (231, 22328), (237, 22340), (260, 22403),

Gene: Zipp_27 Start: 22029, Stop: 22586, Start Num: 89

Candidate Starts for Zipp_27:

(30, 21519), (31, 21525), (42, 21657), (46, 21684), (57, 21834), (65, 21945), (Start: 89 @22029 has 20 MA's), (117, 22107), (131, 22143), (190, 22290), (195, 22308), (206, 22350), (213, 22374), (221, 22395), (243, 22452), (252, 22473), (266, 22512), (272, 22539), (277, 22560),

Gene: Zitch_29 Start: 19905, Stop: 20462, Start Num: 89

Candidate Starts for Zitch_29:

(Start: 89 @19905 has 20 MA's), (117, 19983), (131, 20019), (132, 20022), (190, 20166), (195, 20184), (206, 20226), (213, 20250), (239, 20322), (243, 20328), (252, 20349), (272, 20415), (277, 20436),

Gene: phiAsp2_20 Start: 13014, Stop: 13562, Start Num: 87

Candidate Starts for phiAsp2_20:

(70, 12978), (87, 13014), (92, 13029), (Start: 94 @13035 has 5 MA's), (113, 13086), (125, 13131), (130, 13143), (155, 13218), (209, 13356), (214, 13368), (216, 13371), (222, 13389), (241, 13443), (254, 13473), (262, 13500),