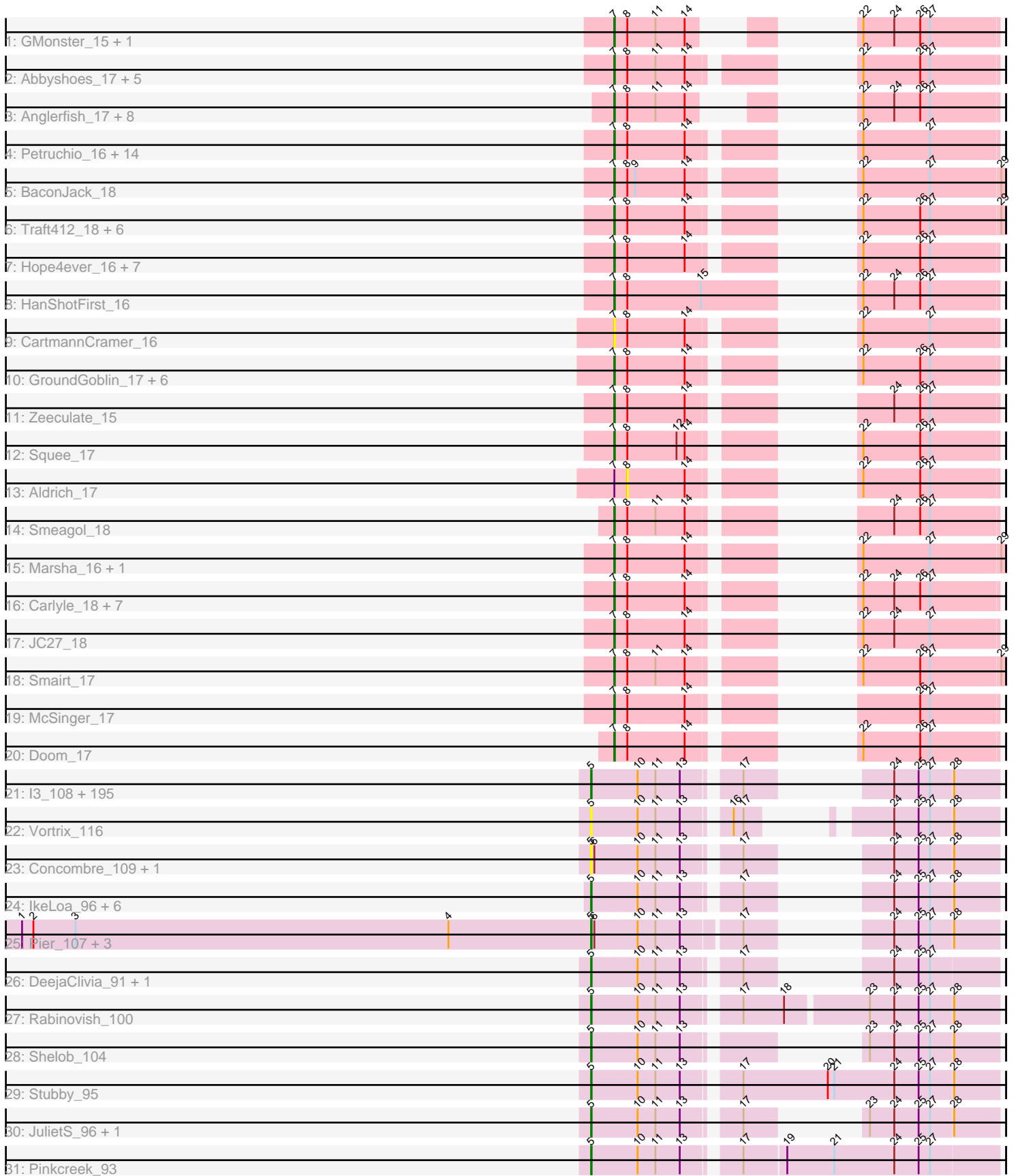


Pham 311162



Note: Tracks are now grouped by subcluster and scaled. Switching in subcluster is indicated by changes in track color. Track scale is now set by default to display the region 30 bp upstream of start 1 to 30 bp downstream of the last possible start. If this default region is judged to be packed too tightly with annotated starts, the track will be further scaled to only show that region of the ORF with annotated starts. This action will be indicated by adding "Zoomed" to the title. For starts, yellow indicates the location of called starts comprised solely of Glimmer/GeneMark auto-annotations, green indicates the location of called starts with at least 1 manual gene annotation.

Pham 311162 Report

This analysis was run 06/27/26 on database version 652.

Pham number 311162 has 293 members, 43 are drafts.

Phages represented in each track:

- Track 1 : GMonster_15, Briton15_18
- Track 2 : Abbyshoes_17, Kenmech_19, Tripl3t_17, Corvo_16, Peterson_19, Dussy_17
- Track 3 : Anglerfish_17, Zephyr_16, HermioneGrange_16, Agaliana_16, U2_16, DreamCatcher_19, Manatee_17, Switzer_17, NEHalo_16
- Track 4 : Petruchio_16, Treddle_18, Monet_18, Froghopper_17, LilBib_17, Edtherson_17, Thor_16, StrongArm_15, SarFire_16, Alvin_17, Fenn_17, Gwendoluna_18, Naira_17, PowerRanger_16, Bexan_15
- Track 5 : BaconJack_18
- Track 6 : Traft412_18, Francis47_16, Arcanine_17, DrFeelGood_15, Papez_18, RidgeCB_16, Rajelicia_16
- Track 7 : Hope4ever_16, Parliament_15, Bircsak_16, Gompeii16_16, Buttons_17, TheloniousMonk_18, Licorice_18, Marcell_16
- Track 8 : HanShotFirst_16
- Track 9 : CartmannCramer_16
- Track 10 : GroundGoblin_17, CatBus_17, Noxious_18, Hermia_18, DirtDevil_17, Gyzlar_18, KikiBouba_18
- Track 11 : Zeeculate_15
- Track 12 : Squee_17
- Track 13 : Aldrich_17
- Track 14 : Smeagol_18
- Track 15 : Marsha_16, Nhonho_16
- Track 16 : Carlyle_18, ShortQueendom_16, Sibs6_18, Bigchungji_16, Rufus_17, STLscum_17, Wheeler_16, Blackflame_16
- Track 17 : JC27_18
- Track 18 : Smairt_17
- Track 19 : McSinger_17
- Track 20 : Doom_17
- Track 21 : I3_108, BeanWater_94, Atlantean_101, BackyardAgain_99, Roots515_101, SilverDipper_103, CindyLou_103, JPickles_100, Halldule_96, CharlieB_98, RoMag_97, Naija_101, Gabriel_103, Substance289_100, Rizal_98, Moby_93, Delylah_105, BigCity_110, Primadonna_96, BananaFence_101, Naval22_110, Amataga_102, Belieber_98, EasyJones_105, LifeSavor_101, Ngannou_98, Chargie21_99, ChaylaJr_97, Bread_102, ValleyTerrace_102, Babyland_103, SoilZilla_98, Catera_99, Teardrop_101, Megamind_101, Fixie_99, MikeLiesIn_103, Nidhogg_103, Rahel_101, Guwapp_101, Essence_99, Caravan_97, JayJay_108, Ewok_103, Jaygup_102, DTDevon_103, Napoleon13_98, Domi_96,

Grasshills_109, ArcherS7_101, ScottMcG_99, Bonray_102, Kboogie_106, Bowman_99, Tyke_103, ParkTD_103, TinyTim_102, LolaVinca_103, Derek_102, FoxtrotP1_102, ShiaLabeouf_101, Bigswole_107, LordLeafolot_107, Jemmno_102, Yassified_99, Zalkecks_103, Dietrick_94, Tainan_106, EggyFarm_110, DirtMonster_96, Phlegm_104, NuevoMundo_108, Ading_102, ZygoTaiga_101, Ablatia_101, Adlitam_102, ET08_91, Spec_98, Ronan_96, StephanieG_101, Moiqah_93, Gizmo_106, Erdmann_103, JustHall_99, OrediggerDelux_100, Specks_107, PharkleMinkus_106, Asterius_105, NedWong_103, Trinitium_99, BadAgartude_98, Sebata_104, Blackdragon_98, Astraea_99, Capablanca_104, Ghost_101, Sprinklers_98, Darko_102, Wally_101, Bipolarisk_101, Pivoine_101, McGee_104, DrPhinkDaddy_101, YemiJoy2021_103, FrayBell_107, Tonenili_117, Cleatunium_96, Lunareta_101, LRRHood_97, Basquiat_99, Zeenon_104, Grungle_90, Phox_99, StubbySaigey_105, Spud_102, ChickenPhender_98, Janiyra_104, Quasimodo_103, Momo_101, Drazdys_101, Ava3_103, Mangeria_102, Littleton_102, LookingGlass_103, Phusco_102, Shnickers_102, Burrough_102, Jessibeth14_101, Izajani_102, Shifa_91, QBert_96, NoodleTree_109, Turret_97, Jedediah_105, HyRo_94, Montpel_101, Audrick_104, Willis_103, GlutenPhree_103, Lukilu_93, LinStu_102, Tortoise16_99, Cali_98, Maby2021_102, InigoMontoya_103, Matsumoto_100, Duckfeet_95, Maturis_100, Gamgam_102, Shaqnato_95, Cactojaque_97, EmToTheThree_105, Blackbrain_97, Bezza_91, Norm_103, SrishMeg2525_101, Salacia_106, Fongie_100, Melpomini_96, Jezreel_102, Mikro_100, Daffodil_107, Lee7_100, Issimir_101, MoMoMixon_103, Chomp_101, SmallFry_102, Morizzled23_102, Nappy_105, EmmaElysia_102, JigglyPuff_110, Delilah_102, Patter_102, Pio_106, Pupusa_108, Bxz1_100, Shrimp_102, Flabslab_96, Lethe_101, Koguma_99, YoungMoneyMata_103, Labradorite_101, FudgeTart_102, ErnieJ_98, Pleione_105, InterFolia_110, Iota_97, Yucca_102, Dessert_99, Breeniome_101, Fludd_103, Latch_102, Bangla1971_103, Sauce_103, Alice_95, BobaPhatt_98

- Track 22 : Vortrix_116
- Track 23 : Concombre_109, Demodog_109
- Track 24 : IkeLoa_96, Khaleesi_101, Kamryn_102, Rocha_101, McWolfish_100, SVoro_100, PurduePete_102
- Track 25 : Pier_107, Blubba_92, Cane17_92, Colt_93
- Track 26 : DeejaClivia_91, Loanshark_102
- Track 27 : Rabinovish_100
- Track 28 : Shelob_104
- Track 29 : Stubby_95
- Track 30 : JulietS_96, Dandelion_109
- Track 31 : Pinkcreek_93

Summary of Final Annotations (See graph section above for start numbers):

The start number called the most often in the published annotations is 5, it was called in 181 of the 250 non-draft genes in the pham.

Genes that call this "Most Annotated" start:

- Ablatia_101, Ading_102, Adlitam_102, Alice_95, Amataga_102, ArcherS7_101, Asterius_105, Astraea_99, Atlantean_101, Audrick_104, Ava3_103, Babyland_103, BackyardAgain_99, BadAgartude_98, BananaFence_101, Bangla1971_103, Basquiat_99, BeanWater_94, Belieber_98, Bezza_91, BigCity_110, Bigswole_107,

Bipolarisk_101, Blackbrain_97, Blackdragon_98, Blubba_92, BobaPhatt_98, Bonray_102, Bowman_99, Bread_102, Breeniome_101, Burrough_102, Bxz1_100, Cactojaque_97, Cali_98, Cane17_92, Capablanca_104, Caravan_97, Catera_99, Chargie21_99, CharlieB_98, ChaylaJr_97, ChickenPhender_98, Chomp_101, CindyLou_103, Cleatunium_96, Colt_93, Concombre_109, DTDevon_103, Daffodil_107, Dandelion_109, Darko_102, DeejaClivia_91, Delilah_102, Delylah_105, Demodog_109, Derek_102, Dessert_99, Dietrick_94, DirtMonster_96, Domi_96, DrPhinkDaddy_101, Drazdys_101, Duckfeet_95, ET08_91, EasyJones_105, EggyFarm_110, EmToTheThree_105, EmmaElysia_102, Erdmann_103, ErnieJ_98, Essence_99, Ewok_103, Fixie_99, Flabslab_96, Fludd_103, Fongie_100, FoxtrotP1_102, FrayBell_107, FudgeTart_102, Gabriel_103, Gamgam_102, Ghost_101, Gizmo_106, GlutenPhree_103, Grasshills_109, Grungle_90, Guwapp_101, Halldule_96, HyRo_94, I3_108, IkeLoa_96, InigoMontoya_103, InterFolia_110, Iota_97, Issimir_101, Izajani_102, JPickles_100, Janiyra_104, JayJay_108, Jaygup_102, Jedediah_105, Jemmno_102, Jessibeth14_101, Jezreel_102, JigglyPuff_110, JulietS_96, JustHall_99, Kamryn_102, Kboogie_106, Khaleesi_101, Koguma_99, LRRHood_97, Labradorite_101, Latch_102, Lee7_100, Lethe_101, LifeSavor_101, LinStu_102, Littleton_102, Loanshark_102, LolaVinca_103, LookingGlass_103, LordLeafolot_107, Lukilu_93, Lunareta_101, Maby2021_102, Mangeria_102, Matsumoto_100, Maturis_100, McGee_104, McWolfish_100, Megamind_101, Melpomini_96, MikeLiesIn_103, Mikro_100, MoMoMixon_103, Moby_93, Moiqah_93, Momo_101, Montpel_101, Morizzled23_102, Naija_101, Napoleon13_98, Nappy_105, Naval22_110, NedWong_103, Ngannou_98, Nidhogg_103, NoodleTree_109, Norm_103, NuevoMundo_108, OrediggerDelux_100, ParkTD_103, Patter_102, PharkleMinkus_106, Phlegm_104, Phox_99, Phusco_102, Pier_107, Pinkcreek_93, Pio_106, Pivoine_101, Pleione_105, Primadonna_96, Pupusa_108, PurduePete_102, QBert_96, Quasimodo_103, Rabinovish_100, Rahel_101, Rizal_98, RoMag_97, Rocha_101, Ronan_96, Roots515_101, SVoro_100, Salacia_106, Sauce_103, ScottMcG_99, Sebata_104, Shaqnato_95, Shelob_104, ShiaLabeouf_101, Shifa_91, Shnickers_102, Shrimp_102, SilverDipper_103, SmallFry_102, SoilZilla_98, Spec_98, Specks_107, Sprinklers_98, Spud_102, SrishMeg2525_101, StephanieG_101, StubbySaigey_105, Stubby_95, Substance289_100, Tainan_106, Teardrop_101, TinyTim_102, Tonenili_117, Tortoise16_99, Trinitium_99, Turret_97, Tyke_103, ValleyTerrace_102, Vortrix_116, Wally_101, Willis_103, Yassified_99, YemiJoy2021_103, YoungMoneyMata_103, Yucca_102, Zalkecks_103, Zeenon_104, ZygoTaiga_101,

Genes that have the "Most Annotated" start but do not call it:

-

Genes that do not have the "Most Annotated" start:

- Abbyshoes_17, Agaliana_16, Aldrich_17, Alvin_17, Anglerfish_17, Arcanine_17, BaconJack_18, Bexan_15, Bigchungji_16, Bircsak_16, Blackflame_16, Briton15_18, Buttons_17, Carlyle_18, CartmannCramer_16, CatBus_17, Corvo_16, DirtDevil_17, Doom_17, DrFeelGood_15, DreamCatcher_19, Dussy_17, Edtherson_17, Fenn_17, Francis47_16, Froghopper_17, GMonster_15, Gompeii16_16, GroundGoblin_17, Gwendoluna_18, Gyzzlar_18, HanShotFirst_16, Hermia_18, HermioneGrange_16, Hope4ever_16, JC27_18, Kenmech_19, KikiBouba_18, Licorice_18, LilBib_17, Manatee_17, Marcell_16, Marsha_16, McSinger_17, Monet_18, NEHalo_16, Naira_17, Nhonho_16, Noxious_18, Papez_18, Parliament_15, Peterson_19, Petruccio_16, PowerRanger_16, Rajelicia_16, RidgeCB_16, Rufus_17, STLscum_17, SarFire_16, ShortQueendom_16, Sibs6_18, Smairt_17, Smeagol_18, Squee_17,

StrongArm_15, Switzer_17, TheloniousMonk_18, Thor_16, Traft412_18, Treddle_18, Tripl3t_17, U2_16, Wheeler_16, Zeeculate_15, Zephyr_16,

Summary by start number:

Start 5:

- Found in 218 of 293 (74.4%) of genes in pham
- Manual Annotations of this start: 181 of 250
- Called 100.0% of time when present
- Phage (with cluster) where this start called: Ablatia_101 (C1), Ading_102 (C1), Adlitam_102 (C1), Alice_95 (C1), Amataga_102 (C1), ArcherS7_101 (C1), Asterius_105 (C1), Astraea_99 (C1), Atlantean_101 (C1), Audrick_104 (C1), Ava3_103 (C1), Babyland_103 (C1), BackyardAgain_99 (C1), BadAgartude_98 (C1), BananaFence_101 (C1), Bangla1971_103 (C1), Basquiat_99 (C1), BeanWater_94 (C1), Belieber_98 (C1), Bezza_91 (C1), BigCity_110 (C1), Bigswole_107 (C1), Bipolarisk_101 (C1), Blackbrain_97 (C1), Blackdragon_98 (C1), Blubba_92 (C1), BobaPhatt_98 (C1), Bonray_102 (C1), Bowman_99 (C1), Bread_102 (C1), Breeniome_101 (C1), Burrough_102 (C1), Bxz1_100 (C1), Cactojaque_97 (C1), Cali_98 (C1), Cane17_92 (C1), Capablanca_104 (C1), Caravan_97 (C1), Catera_99 (C1), Chargie21_99 (C1), CharlieB_98 (C1), ChaylaJr_97 (C1), ChickenPhender_98 (C1), Chomp_101 (C1), CindyLou_103 (C1), Cleatunium_96 (C1), Colt_93 (C1), Concombre_109 (C1), DTDevon_103 (C1), Daffodil_107 (C1), Dandelion_109 (C1), Darko_102 (C1), DeejaClivia_91 (C1), Delilah_102 (C1), Delyiah_105 (C1), Demodog_109 (C1), Derek_102 (C1), Dessert_99 (C1), Dietrick_94 (C1), DirtMonster_96 (C1), Domi_96 (C1), DrPhinkDaddy_101 (C1), Drazdys_101 (C1), Duckfeet_95 (C1), ET08_91 (C1), EasyJones_105 (C1), EggyFarm_110 (C1), EmToTheThree_105 (C1), EmmaElysia_102 (C1), Erdmann_103 (C1), ErnieJ_98 (C1), Essence_99 (C1), Ewok_103 (C1), Fixie_99 (C1), Flabslab_96 (C1), Fludd_103 (C1), Fongie_100 (C1), FoxtrotP1_102 (C1), FrayBell_107 (C1), FudgeTart_102 (C1), Gabriel_103 (C1), Gamgam_102 (C1), Ghost_101 (C1), Gizmo_106 (C1), GlutenPhree_103 (C1), Grasshills_109 (C1), Grungle_90 (C1), Guwapp_101 (C1), Haldule_96 (C1), HyRo_94 (C1), I3_108 (C1), IkeLoa_96 (C1), InigoMontoya_103 (C1), InterFolia_110 (C1), Iota_97 (C1), Issimir_101 (C1), Izajani_102 (C1), JPickles_100 (C1), Janiyra_104 (C1), JayJay_108 (C1), Jaygup_102 (C1), Jedediah_105 (C1), Jemmno_102 (C1), Jessibeth14_101 (C1), Jezreel_102 (C1), JigglyPuff_110 (C1), JulietS_96 (C1), JustHall_99 (C1), Kamryn_102 (C1), Kboogie_106 (C1), Khaleesi_101 (C1), Koguma_99 (C1), LRRHood_97 (C1), Labradorite_101 (C1), Latch_102 (C1), Lee7_100 (C1), Lethe_101 (C1), LifeSavor_101 (C1), LinStu_102 (C1), Littleton_102 (C1), Loanshark_102 (C1), LolaVinca_103 (C1), LookingGlass_103 (C1), LordLeafolot_107 (C1), Lukilu_93 (C1), Lunareta_101 (C1), Maby2021_102 (C1), Mangeria_102 (C1), Matsumoto_100 (C1), Maturis_100 (C1), McGee_104 (C1), McWolfish_100 (C1), Megamind_101 (C1), Melpomini_96 (C1), MikeLiesIn_103 (C1), Mikro_100 (C1), MoMoMixon_103 (C1), Moby_93 (C1), Moiqah_93 (C1), Momo_101 (C1), Montpel_101 (C1), Morizzled23_102 (C1), Naija_101 (C1), Napoleon13_98 (C1), Nappy_105 (C1), Naval22_110 (C1), NedWong_103 (C1), Ngannou_98 (C1), Nidhogg_103 (C1), NoodleTree_109 (C1), Norm_103 (C1), NuevoMundo_108 (C1), OrediggerDelux_100 (C1), ParkTD_103 (C1), Patter_102 (C1), PharkleMinkus_106 (C1), Phlegm_104 (C1), Phox_99 (C1), Phusco_102 (C1), Pier_107 (C1), Pinkcreek_93 (C1), Pio_106 (C1), Pivoine_101 (C1), Pleione_105 (C1), Primadonna_96 (C1), Pupusa_108 (C1), PurduePete_102 (C1), QBert_96 (C1), Quasimodo_103 (C1), Rabinovish_100 (C1), Rahel_101 (C1), Rizal_98 (C1), RoMag_97 (C1), Rocha_101 (C1), Ronan_96 (C1), Roots515_101 (C1), SVoro_100 (C1), Salacia_106 (C1), Sauce_103 (C1),

ScottMcG_99 (C1), Sebata_104 (C1), Shaqnato_95 (C1), Shelob_104 (C1), ShiaLabeouf_101 (C1), Shifa_91 (C1), Shnickers_102 (C1), Shrimp_102 (C1), SilverDipper_103 (C1), SmallFry_102 (C1), SoilZilla_98 (C1), Spec_98 (C1), Specks_107 (C1), Sprinklers_98 (C1), Spud_102 (C1), SrishMeg2525_101 (C1), StephanieG_101 (C1), StubbySaigey_105 (C1), Stubby_95 (C1), Substance289_100 (C1), Tainan_106 (C1), Teardrop_101 (C1), TinyTim_102 (C1), Tonenili_117 (C1), Tortoise16_99 (C1), Trinitium_99 (C1), Turret_97 (C1), Tyke_103 (C1), ValleyTerrace_102 (C1), Vortrix_116 (C1), Wally_101 (C1), Willis_103 (C1), Yassified_99 (C1), YemiJoy2021_103 (C1), YoungMoneyMata_103 (C1), Yucca_102 (C1), Zalkecks_103 (C1), Zeenon_104 (C1), ZygoTaiga_101 (C1),

Start 7:

- Found in 75 of 293 (25.6%) of genes in pham
- Manual Annotations of this start: 69 of 250
- Called 98.7% of time when present
- Phage (with cluster) where this start called: Abbyshoes_17 (A1), Agaliana_16 (A1), Alvin_17 (A1), Anglerfish_17 (A1), Arcanine_17 (A1), BaconJack_18 (A1), Bexan_15 (A1), Bigchung_16 (A1), Bircsak_16 (A1), Blackflame_16 (A1), Briton15_18 (A1), Buttons_17 (A1), Carlyle_18 (A1), CartmannCramer_16 (A1), CatBus_17 (A1), Corvo_16 (A1), DirtDevil_17 (A1), Doom_17 (A1), DrFeelGood_15 (A1), DreamCatcher_19 (A1), Dussy_17 (A1), Edtherson_17 (A1), Fenn_17 (A1), Francis47_16 (A1), Froghopper_17 (A1), GMonster_15 (A1), Gompeii16_16 (A1), GroundGoblin_17 (A1), Gwendoluna_18 (A1), Gyzlar_18 (A1), HanShotFirst_16 (A1), Hermia_18 (A1), HermioneGrange_16 (A1), Hope4ever_16 (A1), JC27_18 (A1), Kenmech_19 (A1), KikiBouba_18 (A1), Licorice_18 (A1), LilBib_17 (A1), Manatee_17 (A1), Marcell_16 (A1), Marsha_16 (A1), McSinger_17 (A1), Monet_18 (A1), NEHalo_16 (A1), Naira_17 (A1), Nhonho_16 (A1), Noxious_18 (A1), Papez_18 (A1), Parliament_15 (A1), Peterson_19 (A1), Petruchio_16 (A1), PowerRanger_16 (A1), Rajelicia_16 (A1), RidgeCB_16 (A1), Rufus_17 (A1), STLscum_17 (A1), SarFire_16 (A1), ShortQueendom_16 (A1), Sibs6_18 (A1), Smairt_17 (A1), Smeago1_18 (A1), Squee_17 (A1), StrongArm_15 (A1), Switzer_17 (A1), TheloniousMonk_18 (A1), Thor_16 (A1), Traft412_18 (A1), Treddle_18 (A1), Tripl3t_17 (A1), U2_16 (A1), Wheeler_16 (A1), Zeeculate_15 (A1), Zephyr_16 (A1),

Start 8:

- Found in 75 of 293 (25.6%) of genes in pham
- No Manual Annotations of this start.
- Called 1.3% of time when present
- Phage (with cluster) where this start called: Aldrich_17 (A1),

Summary by clusters:

There are 2 clusters represented in this pham: A1, C1,

Info for manual annotations of cluster A1:

- Start number 7 was manually annotated 69 times for cluster A1.

Info for manual annotations of cluster C1:

- Start number 5 was manually annotated 181 times for cluster C1.

Gene Information:

Gene: Abbysshoes_17 Start: 12688, Stop: 13206, Start Num: 7
Candidate Starts for Abbysshoes_17:
(Start: 7 @12688 has 69 MA's), (8, 12712), (11, 12763), (14, 12817), (22, 12964), (26, 13066), (27, 13084),

Gene: Ablatia_101 Start: 51406, Stop: 51945, Start Num: 5
Candidate Starts for Ablatia_101:
(Start: 5 @51406 has 181 MA's), (10, 51487), (11, 51520), (13, 51562), (17, 51646), (24, 51760), (25, 51805), (27, 51826), (28, 51865),

Gene: Ading_102 Start: 51790, Stop: 52329, Start Num: 5
Candidate Starts for Ading_102:
(Start: 5 @51790 has 181 MA's), (10, 51871), (11, 51904), (13, 51946), (17, 52030), (24, 52144), (25, 52189), (27, 52210), (28, 52249),

Gene: Adlitam_102 Start: 51807, Stop: 52346, Start Num: 5
Candidate Starts for Adlitam_102:
(Start: 5 @51807 has 181 MA's), (10, 51888), (11, 51921), (13, 51963), (17, 52047), (24, 52161), (25, 52206), (27, 52227), (28, 52266),

Gene: Agaliana_16 Start: 12737, Stop: 13198, Start Num: 7
Candidate Starts for Agaliana_16:
(Start: 7 @12737 has 69 MA's), (8, 12761), (11, 12812), (14, 12866), (22, 12956), (24, 13010), (26, 13058), (27, 13076),

Gene: Aldrich_17 Start: 13253, Stop: 13747, Start Num: 8
Candidate Starts for Aldrich_17:
(Start: 7 @13229 has 69 MA's), (8, 13253), (14, 13358), (22, 13505), (26, 13607), (27, 13625),

Gene: Alice_95 Start: 50705, Stop: 51244, Start Num: 5
Candidate Starts for Alice_95:
(Start: 5 @50705 has 181 MA's), (10, 50786), (11, 50819), (13, 50861), (17, 50945), (24, 51059), (25, 51104), (27, 51125), (28, 51164),

Gene: Alvin_17 Start: 12938, Stop: 13456, Start Num: 7
Candidate Starts for Alvin_17:
(Start: 7 @12938 has 69 MA's), (8, 12962), (14, 13067), (22, 13214), (27, 13334),

Gene: Amataga_102 Start: 51052, Stop: 51591, Start Num: 5
Candidate Starts for Amataga_102:
(Start: 5 @51052 has 181 MA's), (10, 51133), (11, 51166), (13, 51208), (17, 51292), (24, 51406), (25, 51451), (27, 51472), (28, 51511),

Gene: Anglerfish_17 Start: 13657, Stop: 14118, Start Num: 7
Candidate Starts for Anglerfish_17:
(Start: 7 @13657 has 69 MA's), (8, 13681), (11, 13732), (14, 13786), (22, 13876), (24, 13930), (26, 13978), (27, 13996),

Gene: Arcanine_17 Start: 12607, Stop: 13137, Start Num: 7
Candidate Starts for Arcanine_17:
(Start: 7 @12607 has 69 MA's), (8, 12631), (14, 12736), (22, 12883), (26, 12985), (27, 13003), (29, 13129),

Gene: ArcherS7_101 Start: 51370, Stop: 51909, Start Num: 5

Candidate Starts for ArcherS7_101:

(Start: 5 @51370 has 181 MA's), (10, 51451), (11, 51484), (13, 51526), (17, 51610), (24, 51724), (25, 51769), (27, 51790), (28, 51829),

Gene: Asterius_105 Start: 52045, Stop: 52584, Start Num: 5

Candidate Starts for Asterius_105:

(Start: 5 @52045 has 181 MA's), (10, 52126), (11, 52159), (13, 52201), (17, 52285), (24, 52399), (25, 52444), (27, 52465), (28, 52504),

Gene: Astraea_99 Start: 50821, Stop: 51360, Start Num: 5

Candidate Starts for Astraea_99:

(Start: 5 @50821 has 181 MA's), (10, 50902), (11, 50935), (13, 50977), (17, 51061), (24, 51175), (25, 51220), (27, 51241), (28, 51280),

Gene: Atlantean_101 Start: 51052, Stop: 51591, Start Num: 5

Candidate Starts for Atlantean_101:

(Start: 5 @51052 has 181 MA's), (10, 51133), (11, 51166), (13, 51208), (17, 51292), (24, 51406), (25, 51451), (27, 51472), (28, 51511),

Gene: Audrick_104 Start: 51031, Stop: 51570, Start Num: 5

Candidate Starts for Audrick_104:

(Start: 5 @51031 has 181 MA's), (10, 51112), (11, 51145), (13, 51187), (17, 51271), (24, 51385), (25, 51430), (27, 51451), (28, 51490),

Gene: Ava3_103 Start: 51965, Stop: 52504, Start Num: 5

Candidate Starts for Ava3_103:

(Start: 5 @51965 has 181 MA's), (10, 52046), (11, 52079), (13, 52121), (17, 52205), (24, 52319), (25, 52364), (27, 52385), (28, 52424),

Gene: Babyland_103 Start: 51140, Stop: 51679, Start Num: 5

Candidate Starts for Babyland_103:

(Start: 5 @51140 has 181 MA's), (10, 51221), (11, 51254), (13, 51296), (17, 51380), (24, 51494), (25, 51539), (27, 51560), (28, 51599),

Gene: BackyardAgain_99 Start: 50970, Stop: 51509, Start Num: 5

Candidate Starts for BackyardAgain_99:

(Start: 5 @50970 has 181 MA's), (10, 51051), (11, 51084), (13, 51126), (17, 51210), (24, 51324), (25, 51369), (27, 51390), (28, 51429),

Gene: BaconJack_18 Start: 12707, Stop: 13237, Start Num: 7

Candidate Starts for BaconJack_18:

(Start: 7 @12707 has 69 MA's), (8, 12731), (9, 12746), (14, 12836), (22, 12983), (27, 13103), (29, 13229),

Gene: BadAgartude_98 Start: 52490, Stop: 53029, Start Num: 5

Candidate Starts for BadAgartude_98:

(Start: 5 @52490 has 181 MA's), (10, 52571), (11, 52604), (13, 52646), (17, 52730), (24, 52844), (25, 52889), (27, 52910), (28, 52949),

Gene: BananaFence_101 Start: 52224, Stop: 52763, Start Num: 5

Candidate Starts for BananaFence_101:

(Start: 5 @52224 has 181 MA's), (10, 52305), (11, 52338), (13, 52380), (17, 52464), (24, 52578), (25, 52623), (27, 52644), (28, 52683),

Gene: Bangla1971_103 Start: 51500, Stop: 52039, Start Num: 5

Candidate Starts for Bangla1971_103:

(Start: 5 @51500 has 181 MA's), (10, 51581), (11, 51614), (13, 51656), (17, 51740), (24, 51854), (25, 51899), (27, 51920), (28, 51959),

Gene: Basquiat_99 Start: 50939, Stop: 51478, Start Num: 5

Candidate Starts for Basquiat_99:

(Start: 5 @50939 has 181 MA's), (10, 51020), (11, 51053), (13, 51095), (17, 51179), (24, 51293), (25, 51338), (27, 51359), (28, 51398),

Gene: BeanWater_94 Start: 51820, Stop: 52359, Start Num: 5

Candidate Starts for BeanWater_94:

(Start: 5 @51820 has 181 MA's), (10, 51901), (11, 51934), (13, 51976), (17, 52060), (24, 52174), (25, 52219), (27, 52240), (28, 52279),

Gene: Belieber_98 Start: 51286, Stop: 51825, Start Num: 5

Candidate Starts for Belieber_98:

(Start: 5 @51286 has 181 MA's), (10, 51367), (11, 51400), (13, 51442), (17, 51526), (24, 51640), (25, 51685), (27, 51706), (28, 51745),

Gene: Bexan_15 Start: 13382, Stop: 13900, Start Num: 7

Candidate Starts for Bexan_15:

(Start: 7 @13382 has 69 MA's), (8, 13406), (14, 13511), (22, 13658), (27, 13778),

Gene: Bezza_91 Start: 51245, Stop: 51784, Start Num: 5

Candidate Starts for Bezza_91:

(Start: 5 @51245 has 181 MA's), (10, 51326), (11, 51359), (13, 51401), (17, 51485), (24, 51599), (25, 51644), (27, 51665), (28, 51704),

Gene: BigCity_110 Start: 54481, Stop: 55020, Start Num: 5

Candidate Starts for BigCity_110:

(Start: 5 @54481 has 181 MA's), (10, 54562), (11, 54595), (13, 54637), (17, 54721), (24, 54835), (25, 54880), (27, 54901), (28, 54940),

Gene: Bigchungj_16 Start: 12405, Stop: 12923, Start Num: 7

Candidate Starts for Bigchungj_16:

(Start: 7 @12405 has 69 MA's), (8, 12429), (14, 12534), (22, 12681), (24, 12735), (26, 12783), (27, 12801),

Gene: Bigswole_107 Start: 55013, Stop: 55552, Start Num: 5

Candidate Starts for Bigswole_107:

(Start: 5 @55013 has 181 MA's), (10, 55094), (11, 55127), (13, 55169), (17, 55253), (24, 55367), (25, 55412), (27, 55433), (28, 55472),

Gene: Bipolarisk_101 Start: 52223, Stop: 52762, Start Num: 5

Candidate Starts for Bipolarisk_101:

(Start: 5 @52223 has 181 MA's), (10, 52304), (11, 52337), (13, 52379), (17, 52463), (24, 52577), (25, 52622), (27, 52643), (28, 52682),

Gene: Bircsak_16 Start: 12891, Stop: 13409, Start Num: 7

Candidate Starts for Bircsak_16:

(Start: 7 @12891 has 69 MA's), (8, 12915), (14, 13020), (22, 13167), (26, 13269), (27, 13287),

Gene: Blackbrain_97 Start: 50517, Stop: 51056, Start Num: 5

Candidate Starts for Blackbrain_97:

(Start: 5 @50517 has 181 MA's), (10, 50598), (11, 50631), (13, 50673), (17, 50757), (24, 50871), (25, 50916), (27, 50937), (28, 50976),

Gene: Blackdragon_98 Start: 51647, Stop: 52186, Start Num: 5

Candidate Starts for Blackdragon_98:

(Start: 5 @51647 has 181 MA's), (10, 51728), (11, 51761), (13, 51803), (17, 51887), (24, 52001), (25, 52046), (27, 52067), (28, 52106),

Gene: Blackflame_16 Start: 12414, Stop: 12932, Start Num: 7

Candidate Starts for Blackflame_16:

(Start: 7 @12414 has 69 MA's), (8, 12438), (14, 12543), (22, 12690), (24, 12744), (26, 12792), (27, 12810),

Gene: Blubba_92 Start: 52245, Stop: 52799, Start Num: 5

Candidate Starts for Blubba_92:

(1, 51192), (2, 51213), (3, 51291), (4, 51981), (Start: 5 @52245 has 181 MA's), (6, 52251), (10, 52326), (11, 52359), (13, 52401), (17, 52500), (24, 52614), (25, 52659), (27, 52680), (28, 52719),

Gene: BobaPhatt_98 Start: 50570, Stop: 51109, Start Num: 5

Candidate Starts for BobaPhatt_98:

(Start: 5 @50570 has 181 MA's), (10, 50651), (11, 50684), (13, 50726), (17, 50810), (24, 50924), (25, 50969), (27, 50990), (28, 51029),

Gene: Bonray_102 Start: 52396, Stop: 52935, Start Num: 5

Candidate Starts for Bonray_102:

(Start: 5 @52396 has 181 MA's), (10, 52477), (11, 52510), (13, 52552), (17, 52636), (24, 52750), (25, 52795), (27, 52816), (28, 52855),

Gene: Bowman_99 Start: 51957, Stop: 52496, Start Num: 5

Candidate Starts for Bowman_99:

(Start: 5 @51957 has 181 MA's), (10, 52038), (11, 52071), (13, 52113), (17, 52197), (24, 52311), (25, 52356), (27, 52377), (28, 52416),

Gene: Bread_102 Start: 52051, Stop: 52590, Start Num: 5

Candidate Starts for Bread_102:

(Start: 5 @52051 has 181 MA's), (10, 52132), (11, 52165), (13, 52207), (17, 52291), (24, 52405), (25, 52450), (27, 52471), (28, 52510),

Gene: Breeniome_101 Start: 50633, Stop: 51172, Start Num: 5

Candidate Starts for Breeniome_101:

(Start: 5 @50633 has 181 MA's), (10, 50714), (11, 50747), (13, 50789), (17, 50873), (24, 50987), (25, 51032), (27, 51053), (28, 51092),

Gene: Briton15_18 Start: 12751, Stop: 13212, Start Num: 7

Candidate Starts for Briton15_18:

(Start: 7 @12751 has 69 MA's), (8, 12775), (11, 12826), (14, 12880), (22, 12970), (24, 13024), (26, 13072), (27, 13090),

Gene: Burrough_102 Start: 52550, Stop: 53089, Start Num: 5

Candidate Starts for Burrough_102:

(Start: 5 @52550 has 181 MA's), (10, 52631), (11, 52664), (13, 52706), (17, 52790), (24, 52904), (25, 52949), (27, 52970), (28, 53009),

Gene: Buttons_17 Start: 12879, Stop: 13397, Start Num: 7

Candidate Starts for Buttons_17:

(Start: 7 @12879 has 69 MA's), (8, 12903), (14, 13008), (22, 13155), (26, 13257), (27, 13275),

Gene: Bxz1_100 Start: 53988, Stop: 54527, Start Num: 5

Candidate Starts for Bxz1_100:

(Start: 5 @53988 has 181 MA's), (10, 54069), (11, 54102), (13, 54144), (17, 54228), (24, 54342), (25, 54387), (27, 54408), (28, 54447),

Gene: Cactojaque_97 Start: 50624, Stop: 51163, Start Num: 5

Candidate Starts for Cactojaque_97:

(Start: 5 @50624 has 181 MA's), (10, 50705), (11, 50738), (13, 50780), (17, 50864), (24, 50978), (25, 51023), (27, 51044), (28, 51083),

Gene: Cali_98 Start: 52552, Stop: 53091, Start Num: 5

Candidate Starts for Cali_98:

(Start: 5 @52552 has 181 MA's), (10, 52633), (11, 52666), (13, 52708), (17, 52792), (24, 52906), (25, 52951), (27, 52972), (28, 53011),

Gene: Cane17_92 Start: 52318, Stop: 52857, Start Num: 5

Candidate Starts for Cane17_92:

(1, 51265), (2, 51286), (3, 51364), (4, 52054), (Start: 5 @52318 has 181 MA's), (6, 52324), (10, 52399), (11, 52432), (13, 52474), (17, 52558), (24, 52672), (25, 52717), (27, 52738), (28, 52777),

Gene: Capablanca_104 Start: 52802, Stop: 53341, Start Num: 5

Candidate Starts for Capablanca_104:

(Start: 5 @52802 has 181 MA's), (10, 52883), (11, 52916), (13, 52958), (17, 53042), (24, 53156), (25, 53201), (27, 53222), (28, 53261),

Gene: Caravan_97 Start: 51909, Stop: 52448, Start Num: 5

Candidate Starts for Caravan_97:

(Start: 5 @51909 has 181 MA's), (10, 51990), (11, 52023), (13, 52065), (17, 52149), (24, 52263), (25, 52308), (27, 52329), (28, 52368),

Gene: Carlyle_18 Start: 13261, Stop: 13779, Start Num: 7

Candidate Starts for Carlyle_18:

(Start: 7 @13261 has 69 MA's), (8, 13285), (14, 13390), (22, 13537), (24, 13591), (26, 13639), (27, 13657),

Gene: CartmannCramer_16 Start: 14229, Stop: 14747, Start Num: 7

Candidate Starts for CartmannCramer_16:

(Start: 7 @14229 has 69 MA's), (8, 14253), (14, 14358), (22, 14505), (27, 14625),

Gene: CatBus_17 Start: 13421, Stop: 13939, Start Num: 7

Candidate Starts for CatBus_17:

(Start: 7 @13421 has 69 MA's), (8, 13445), (14, 13550), (22, 13697), (26, 13799), (27, 13817),

Gene: Catera_99 Start: 50825, Stop: 51364, Start Num: 5

Candidate Starts for Catera_99:

(Start: 5 @50825 has 181 MA's), (10, 50906), (11, 50939), (13, 50981), (17, 51065), (24, 51179), (25, 51224), (27, 51245), (28, 51284),

Gene: Chargie21_99 Start: 50939, Stop: 51478, Start Num: 5

Candidate Starts for Chargie21_99:

(Start: 5 @50939 has 181 MA's), (10, 51020), (11, 51053), (13, 51095), (17, 51179), (24, 51293), (25, 51338), (27, 51359), (28, 51398),

Gene: CharlieB_98 Start: 50954, Stop: 51493, Start Num: 5

Candidate Starts for CharlieB_98:

(Start: 5 @50954 has 181 MA's), (10, 51035), (11, 51068), (13, 51110), (17, 51194), (24, 51308), (25, 51353), (27, 51374), (28, 51413),

Gene: ChaylaJr_97 Start: 50445, Stop: 50984, Start Num: 5

Candidate Starts for ChaylaJr_97:

(Start: 5 @50445 has 181 MA's), (10, 50526), (11, 50559), (13, 50601), (17, 50685), (24, 50799), (25, 50844), (27, 50865), (28, 50904),

Gene: ChickenPhender_98 Start: 50748, Stop: 51287, Start Num: 5

Candidate Starts for ChickenPhender_98:

(Start: 5 @50748 has 181 MA's), (10, 50829), (11, 50862), (13, 50904), (17, 50988), (24, 51102), (25, 51147), (27, 51168), (28, 51207),

Gene: Chomp_101 Start: 52340, Stop: 52879, Start Num: 5

Candidate Starts for Chomp_101:

(Start: 5 @52340 has 181 MA's), (10, 52421), (11, 52454), (13, 52496), (17, 52580), (24, 52694), (25, 52739), (27, 52760), (28, 52799),

Gene: CindyLou_103 Start: 52381, Stop: 52920, Start Num: 5

Candidate Starts for CindyLou_103:

(Start: 5 @52381 has 181 MA's), (10, 52462), (11, 52495), (13, 52537), (17, 52621), (24, 52735), (25, 52780), (27, 52801), (28, 52840),

Gene: Cleatunium_96 Start: 51038, Stop: 51577, Start Num: 5

Candidate Starts for Cleatunium_96:

(Start: 5 @51038 has 181 MA's), (10, 51119), (11, 51152), (13, 51194), (17, 51278), (24, 51392), (25, 51437), (27, 51458), (28, 51497),

Gene: Colt_93 Start: 52914, Stop: 53453, Start Num: 5

Candidate Starts for Colt_93:

(1, 51861), (2, 51882), (3, 51960), (4, 52650), (Start: 5 @52914 has 181 MA's), (6, 52920), (10, 52995), (11, 53028), (13, 53070), (17, 53154), (24, 53268), (25, 53313), (27, 53334), (28, 53373),

Gene: Concombres_109 Start: 54722, Stop: 55261, Start Num: 5

Candidate Starts for Concombres_109:

(Start: 5 @54722 has 181 MA's), (6, 54728), (10, 54803), (11, 54836), (13, 54878), (17, 54962), (24, 55076), (25, 55121), (27, 55142), (28, 55181),

Gene: Corvo_16 Start: 12850, Stop: 13368, Start Num: 7

Candidate Starts for Corvo_16:

(Start: 7 @12850 has 69 MA's), (8, 12874), (11, 12925), (14, 12979), (22, 13126), (26, 13228), (27, 13246),

Gene: DTDevon_103 Start: 52826, Stop: 53365, Start Num: 5

Candidate Starts for DTDevon_103:

(Start: 5 @52826 has 181 MA's), (10, 52907), (11, 52940), (13, 52982), (17, 53066), (24, 53180), (25, 53225), (27, 53246), (28, 53285),

Gene: Daffodil_107 Start: 52523, Stop: 53062, Start Num: 5

Candidate Starts for Daffodil_107:

(Start: 5 @52523 has 181 MA's), (10, 52604), (11, 52637), (13, 52679), (17, 52763), (24, 52877), (25, 52922), (27, 52943), (28, 52982),

Gene: Dandelion_109 Start: 54960, Stop: 55499, Start Num: 5

Candidate Starts for Dandelion_109:

(Start: 5 @54960 has 181 MA's), (10, 55041), (11, 55074), (13, 55116), (17, 55200), (23, 55269), (24, 55314), (25, 55359), (27, 55380), (28, 55419),

Gene: Darko_102 Start: 52459, Stop: 52998, Start Num: 5

Candidate Starts for Darko_102:

(Start: 5 @52459 has 181 MA's), (10, 52540), (11, 52573), (13, 52615), (17, 52699), (24, 52813), (25, 52858), (27, 52879), (28, 52918),

Gene: DeejaClivia_91 Start: 49136, Stop: 49675, Start Num: 5

Candidate Starts for DeejaClivia_91:

(Start: 5 @49136 has 181 MA's), (10, 49217), (11, 49250), (13, 49292), (17, 49376), (24, 49490), (25, 49535), (27, 49556),

Gene: Delilah_102 Start: 52677, Stop: 53216, Start Num: 5

Candidate Starts for Delilah_102:

(Start: 5 @52677 has 181 MA's), (10, 52758), (11, 52791), (13, 52833), (17, 52917), (24, 53031), (25, 53076), (27, 53097), (28, 53136),

Gene: Delylah_105 Start: 52216, Stop: 52755, Start Num: 5

Candidate Starts for Delylah_105:

(Start: 5 @52216 has 181 MA's), (10, 52297), (11, 52330), (13, 52372), (17, 52456), (24, 52570), (25, 52615), (27, 52636), (28, 52675),

Gene: Demodog_109 Start: 54722, Stop: 55261, Start Num: 5

Candidate Starts for Demodog_109:

(Start: 5 @54722 has 181 MA's), (6, 54728), (10, 54803), (11, 54836), (13, 54878), (17, 54962), (24, 55076), (25, 55121), (27, 55142), (28, 55181),

Gene: Derek_102 Start: 52142, Stop: 52681, Start Num: 5

Candidate Starts for Derek_102:

(Start: 5 @52142 has 181 MA's), (10, 52223), (11, 52256), (13, 52298), (17, 52382), (24, 52496), (25, 52541), (27, 52562), (28, 52601),

Gene: Dessert_99 Start: 50618, Stop: 51157, Start Num: 5

Candidate Starts for Dessert_99:

(Start: 5 @50618 has 181 MA's), (10, 50699), (11, 50732), (13, 50774), (17, 50858), (24, 50972), (25, 51017), (27, 51038), (28, 51077),

Gene: Dietrick_94 Start: 50218, Stop: 50757, Start Num: 5

Candidate Starts for Dietrick_94:

(Start: 5 @50218 has 181 MA's), (10, 50299), (11, 50332), (13, 50374), (17, 50458), (24, 50572), (25, 50617), (27, 50638), (28, 50677),

Gene: DirtDevil_17 Start: 13229, Stop: 13747, Start Num: 7

Candidate Starts for DirtDevil_17:

(Start: 7 @13229 has 69 MA's), (8, 13253), (14, 13358), (22, 13505), (26, 13607), (27, 13625),

Gene: DirtMonster_96 Start: 51710, Stop: 52249, Start Num: 5

Candidate Starts for DirtMonster_96:

(Start: 5 @51710 has 181 MA's), (10, 51791), (11, 51824), (13, 51866), (17, 51950), (24, 52064), (25, 52109), (27, 52130), (28, 52169),

Gene: Domi_96 Start: 51567, Stop: 52106, Start Num: 5

Candidate Starts for Domi_96:

(Start: 5 @51567 has 181 MA's), (10, 51648), (11, 51681), (13, 51723), (17, 51807), (24, 51921), (25, 51966), (27, 51987), (28, 52026),

Gene: Doom_17 Start: 13116, Stop: 13634, Start Num: 7

Candidate Starts for Doom_17:

(Start: 7 @13116 has 69 MA's), (8, 13140), (14, 13245), (22, 13392), (26, 13494), (27, 13512),

Gene: DrFeelGood_15 Start: 12456, Stop: 12986, Start Num: 7

Candidate Starts for DrFeelGood_15:

(Start: 7 @12456 has 69 MA's), (8, 12480), (14, 12585), (22, 12732), (26, 12834), (27, 12852), (29, 12978),

Gene: DrPhinkDaddy_101 Start: 52743, Stop: 53282, Start Num: 5

Candidate Starts for DrPhinkDaddy_101:

(Start: 5 @52743 has 181 MA's), (10, 52824), (11, 52857), (13, 52899), (17, 52983), (24, 53097), (25, 53142), (27, 53163), (28, 53202),

Gene: Drazdys_101 Start: 51440, Stop: 51979, Start Num: 5

Candidate Starts for Drazdys_101:

(Start: 5 @51440 has 181 MA's), (10, 51521), (11, 51554), (13, 51596), (17, 51680), (24, 51794), (25, 51839), (27, 51860), (28, 51899),

Gene: DreamCatcher_19 Start: 13882, Stop: 14343, Start Num: 7

Candidate Starts for DreamCatcher_19:

(Start: 7 @13882 has 69 MA's), (8, 13906), (11, 13957), (14, 14011), (22, 14101), (24, 14155), (26, 14203), (27, 14221),

Gene: Duckfeet_95 Start: 50667, Stop: 51206, Start Num: 5

Candidate Starts for Duckfeet_95:

(Start: 5 @50667 has 181 MA's), (10, 50748), (11, 50781), (13, 50823), (17, 50907), (24, 51021), (25, 51066), (27, 51087), (28, 51126),

Gene: Dussy_17 Start: 12688, Stop: 13206, Start Num: 7

Candidate Starts for Dussy_17:

(Start: 7 @12688 has 69 MA's), (8, 12712), (11, 12763), (14, 12817), (22, 12964), (26, 13066), (27, 13084),

Gene: ET08_91 Start: 51209, Stop: 51748, Start Num: 5

Candidate Starts for ET08_91:

(Start: 5 @51209 has 181 MA's), (10, 51290), (11, 51323), (13, 51365), (17, 51449), (24, 51563), (25, 51608), (27, 51629), (28, 51668),

Gene: EasyJones_105 Start: 51602, Stop: 52141, Start Num: 5

Candidate Starts for EasyJones_105:

(Start: 5 @51602 has 181 MA's), (10, 51683), (11, 51716), (13, 51758), (17, 51842), (24, 51956), (25, 52001), (27, 52022), (28, 52061),

Gene: Edtherson_17 Start: 13186, Stop: 13704, Start Num: 7

Candidate Starts for Edtherson_17:

(Start: 7 @13186 has 69 MA's), (8, 13210), (14, 13315), (22, 13462), (27, 13582),

Gene: EggyFarm_110 Start: 54481, Stop: 55020, Start Num: 5

Candidate Starts for EggyFarm_110:

(Start: 5 @54481 has 181 MA's), (10, 54562), (11, 54595), (13, 54637), (17, 54721), (24, 54835), (25, 54880), (27, 54901), (28, 54940),

Gene: EmToTheThree_105 Start: 53740, Stop: 54279, Start Num: 5

Candidate Starts for EmToTheThree_105:

(Start: 5 @53740 has 181 MA's), (10, 53821), (11, 53854), (13, 53896), (17, 53980), (24, 54094), (25, 54139), (27, 54160), (28, 54199),

Gene: EmmaElysia_102 Start: 51268, Stop: 51810, Start Num: 5

Candidate Starts for EmmaElysia_102:

(Start: 5 @51268 has 181 MA's), (10, 51349), (11, 51382), (13, 51424), (17, 51508), (24, 51622), (25, 51667), (27, 51688), (28, 51727),

Gene: Erdmann_103 Start: 52524, Stop: 53063, Start Num: 5

Candidate Starts for Erdmann_103:

(Start: 5 @52524 has 181 MA's), (10, 52605), (11, 52638), (13, 52680), (17, 52764), (24, 52878), (25, 52923), (27, 52944), (28, 52983),

Gene: ErnieJ_98 Start: 50734, Stop: 51273, Start Num: 5

Candidate Starts for ErnieJ_98:

(Start: 5 @50734 has 181 MA's), (10, 50815), (11, 50848), (13, 50890), (17, 50974), (24, 51088), (25, 51133), (27, 51154), (28, 51193),

Gene: Essence_99 Start: 51606, Stop: 52145, Start Num: 5

Candidate Starts for Essence_99:

(Start: 5 @51606 has 181 MA's), (10, 51687), (11, 51720), (13, 51762), (17, 51846), (24, 51960), (25, 52005), (27, 52026), (28, 52065),

Gene: Ewok_103 Start: 51911, Stop: 52450, Start Num: 5

Candidate Starts for Ewok_103:

(Start: 5 @51911 has 181 MA's), (10, 51992), (11, 52025), (13, 52067), (17, 52151), (24, 52265), (25, 52310), (27, 52331), (28, 52370),

Gene: Fenn_17 Start: 13992, Stop: 14453, Start Num: 7

Candidate Starts for Fenn_17:

(Start: 7 @13992 has 69 MA's), (8, 14016), (14, 14121), (22, 14211), (27, 14331),

Gene: Fixie_99 Start: 51164, Stop: 51703, Start Num: 5

Candidate Starts for Fixie_99:

(Start: 5 @51164 has 181 MA's), (10, 51245), (11, 51278), (13, 51320), (17, 51404), (24, 51518), (25, 51563), (27, 51584), (28, 51623),

Gene: Flabslab_96 Start: 49603, Stop: 50142, Start Num: 5

Candidate Starts for Flabslab_96:

(Start: 5 @49603 has 181 MA's), (10, 49684), (11, 49717), (13, 49759), (17, 49843), (24, 49957), (25, 50002), (27, 50023), (28, 50062),

Gene: Fludd_103 Start: 51374, Stop: 51913, Start Num: 5

Candidate Starts for Fludd_103:

(Start: 5 @51374 has 181 MA's), (10, 51455), (11, 51488), (13, 51530), (17, 51614), (24, 51728), (25, 51773), (27, 51794), (28, 51833),

Gene: Fongie_100 Start: 52124, Stop: 52663, Start Num: 5

Candidate Starts for Fongie_100:

(Start: 5 @52124 has 181 MA's), (10, 52205), (11, 52238), (13, 52280), (17, 52364), (24, 52478), (25, 52523), (27, 52544), (28, 52583),

Gene: FoxtrotP1_102 Start: 53694, Stop: 54233, Start Num: 5

Candidate Starts for FoxtrotP1_102:

(Start: 5 @53694 has 181 MA's), (10, 53775), (11, 53808), (13, 53850), (17, 53934), (24, 54048), (25, 54093), (27, 54114), (28, 54153),

Gene: Francis47_16 Start: 12932, Stop: 13462, Start Num: 7

Candidate Starts for Francis47_16:

(Start: 7 @12932 has 69 MA's), (8, 12956), (14, 13061), (22, 13208), (26, 13310), (27, 13328), (29, 13454),

Gene: FrayBell_107 Start: 53092, Stop: 53631, Start Num: 5

Candidate Starts for FrayBell_107:

(Start: 5 @53092 has 181 MA's), (10, 53173), (11, 53206), (13, 53248), (17, 53332), (24, 53446), (25, 53491), (27, 53512), (28, 53551),

Gene: Froghopper_17 Start: 12360, Stop: 12878, Start Num: 7

Candidate Starts for Froghopper_17:

(Start: 7 @12360 has 69 MA's), (8, 12384), (14, 12489), (22, 12636), (27, 12756),

Gene: FudgeTart_102 Start: 51808, Stop: 52347, Start Num: 5

Candidate Starts for FudgeTart_102:

(Start: 5 @51808 has 181 MA's), (10, 51889), (11, 51922), (13, 51964), (17, 52048), (24, 52162), (25, 52207), (27, 52228), (28, 52267),

Gene: GMonster_15 Start: 12300, Stop: 12761, Start Num: 7

Candidate Starts for GMonster_15:

(Start: 7 @12300 has 69 MA's), (8, 12324), (11, 12375), (14, 12429), (22, 12519), (24, 12573), (26, 12621), (27, 12639),

Gene: Gabriel_103 Start: 51012, Stop: 51551, Start Num: 5

Candidate Starts for Gabriel_103:

(Start: 5 @51012 has 181 MA's), (10, 51093), (11, 51126), (13, 51168), (17, 51252), (24, 51366), (25, 51411), (27, 51432), (28, 51471),

Gene: Gamgam_102 Start: 51052, Stop: 51591, Start Num: 5

Candidate Starts for Gamgam_102:

(Start: 5 @51052 has 181 MA's), (10, 51133), (11, 51166), (13, 51208), (17, 51292), (24, 51406), (25, 51451), (27, 51472), (28, 51511),

Gene: Ghost_101 Start: 51052, Stop: 51591, Start Num: 5

Candidate Starts for Ghost_101:

(Start: 5 @51052 has 181 MA's), (10, 51133), (11, 51166), (13, 51208), (17, 51292), (24, 51406), (25, 51451), (27, 51472), (28, 51511),

Gene: Gizmo_106 Start: 53674, Stop: 54213, Start Num: 5

Candidate Starts for Gizmo_106:

(Start: 5 @53674 has 181 MA's), (10, 53755), (11, 53788), (13, 53830), (17, 53914), (24, 54028), (25, 54073), (27, 54094), (28, 54133),

Gene: GlutenPhree_103 Start: 51052, Stop: 51591, Start Num: 5

Candidate Starts for GlutenPhree_103:

(Start: 5 @51052 has 181 MA's), (10, 51133), (11, 51166), (13, 51208), (17, 51292), (24, 51406), (25, 51451), (27, 51472), (28, 51511),

Gene: Gompeii16_16 Start: 12892, Stop: 13410, Start Num: 7

Candidate Starts for Gompeii16_16:

(Start: 7 @12892 has 69 MA's), (8, 12916), (14, 13021), (22, 13168), (26, 13270), (27, 13288),

Gene: Grasshills_109 Start: 54481, Stop: 55020, Start Num: 5

Candidate Starts for Grasshills_109:

(Start: 5 @54481 has 181 MA's), (10, 54562), (11, 54595), (13, 54637), (17, 54721), (24, 54835), (25, 54880), (27, 54901), (28, 54940),

Gene: GroundGoblin_17 Start: 13229, Stop: 13747, Start Num: 7

Candidate Starts for GroundGoblin_17:

(Start: 7 @13229 has 69 MA's), (8, 13253), (14, 13358), (22, 13505), (26, 13607), (27, 13625),

Gene: Grungle_90 Start: 48867, Stop: 49406, Start Num: 5

Candidate Starts for Grungle_90:

(Start: 5 @48867 has 181 MA's), (10, 48948), (11, 48981), (13, 49023), (17, 49107), (24, 49221), (25, 49266), (27, 49287), (28, 49326),

Gene: Guwapp_101 Start: 51177, Stop: 51716, Start Num: 5

Candidate Starts for Guwapp_101:

(Start: 5 @51177 has 181 MA's), (10, 51258), (11, 51291), (13, 51333), (17, 51417), (24, 51531), (25, 51576), (27, 51597), (28, 51636),

Gene: Gwendoluna_18 Start: 13861, Stop: 14322, Start Num: 7

Candidate Starts for Gwendoluna_18:

(Start: 7 @13861 has 69 MA's), (8, 13885), (14, 13990), (22, 14080), (27, 14200),

Gene: Gyzlar_18 Start: 13634, Stop: 14152, Start Num: 7

Candidate Starts for Gyzlar_18:

(Start: 7 @13634 has 69 MA's), (8, 13658), (14, 13763), (22, 13910), (26, 14012), (27, 14030),

Gene: Halldule_96 Start: 49893, Stop: 50432, Start Num: 5

Candidate Starts for Halldule_96:

(Start: 5 @49893 has 181 MA's), (10, 49974), (11, 50007), (13, 50049), (17, 50133), (24, 50247), (25, 50292), (27, 50313), (28, 50352),

Gene: HanShotFirst_16 Start: 12280, Stop: 12831, Start Num: 7

Candidate Starts for HanShotFirst_16:

(Start: 7 @12280 has 69 MA's), (8, 12304), (15, 12439), (22, 12589), (24, 12643), (26, 12691), (27, 12709),

Gene: Hermia_18 Start: 13421, Stop: 13939, Start Num: 7

Candidate Starts for Hermia_18:

(Start: 7 @13421 has 69 MA's), (8, 13445), (14, 13550), (22, 13697), (26, 13799), (27, 13817),

Gene: HermioneGrange_16 Start: 12390, Stop: 12851, Start Num: 7

Candidate Starts for HermioneGrange_16:

(Start: 7 @12390 has 69 MA's), (8, 12414), (11, 12465), (14, 12519), (22, 12609), (24, 12663), (26, 12711), (27, 12729),

Gene: Hope4ever_16 Start: 12809, Stop: 13327, Start Num: 7

Candidate Starts for Hope4ever_16:

(Start: 7 @12809 has 69 MA's), (8, 12833), (14, 12938), (22, 13085), (26, 13187), (27, 13205),

Gene: HyRo_94 Start: 51304, Stop: 51843, Start Num: 5

Candidate Starts for HyRo_94:

(Start: 5 @51304 has 181 MA's), (10, 51385), (11, 51418), (13, 51460), (17, 51544), (24, 51658), (25, 51703), (27, 51724), (28, 51763),

Gene: I3_108 Start: 53019, Stop: 53558, Start Num: 5

Candidate Starts for I3_108:

(Start: 5 @53019 has 181 MA's), (10, 53100), (11, 53133), (13, 53175), (17, 53259), (24, 53373), (25, 53418), (27, 53439), (28, 53478),

Gene: IkeLoa_96 Start: 51134, Stop: 51673, Start Num: 5

Candidate Starts for IkeLoa_96:

(Start: 5 @51134 has 181 MA's), (10, 51215), (11, 51248), (13, 51290), (17, 51374), (24, 51488), (25, 51533), (27, 51554), (28, 51593),

Gene: InigoMontoya_103 Start: 51013, Stop: 51552, Start Num: 5

Candidate Starts for InigoMontoya_103:

(Start: 5 @51013 has 181 MA's), (10, 51094), (11, 51127), (13, 51169), (17, 51253), (24, 51367), (25, 51412), (27, 51433), (28, 51472),

Gene: InterFolia_110 Start: 54027, Stop: 54566, Start Num: 5

Candidate Starts for InterFolia_110:

(Start: 5 @54027 has 181 MA's), (10, 54108), (11, 54141), (13, 54183), (17, 54267), (24, 54381), (25, 54426), (27, 54447), (28, 54486),

Gene: Iota_97 Start: 51489, Stop: 52028, Start Num: 5

Candidate Starts for Iota_97:

(Start: 5 @51489 has 181 MA's), (10, 51570), (11, 51603), (13, 51645), (17, 51729), (24, 51843), (25, 51888), (27, 51909), (28, 51948),

Gene: Issimir_101 Start: 52498, Stop: 53037, Start Num: 5

Candidate Starts for Issimir_101:

(Start: 5 @52498 has 181 MA's), (10, 52579), (11, 52612), (13, 52654), (17, 52738), (24, 52852), (25, 52897), (27, 52918), (28, 52957),

Gene: Izajani_102 Start: 52704, Stop: 53243, Start Num: 5

Candidate Starts for Izajani_102:

(Start: 5 @52704 has 181 MA's), (10, 52785), (11, 52818), (13, 52860), (17, 52944), (24, 53058), (25, 53103), (27, 53124), (28, 53163),

Gene: JC27_18 Start: 13304, Stop: 13822, Start Num: 7

Candidate Starts for JC27_18:

(Start: 7 @13304 has 69 MA's), (8, 13328), (14, 13433), (22, 13580), (24, 13634), (27, 13700),

Gene: JPickles_100 Start: 50283, Stop: 50822, Start Num: 5

Candidate Starts for JPickles_100:

(Start: 5 @50283 has 181 MA's), (10, 50364), (11, 50397), (13, 50439), (17, 50523), (24, 50637), (25, 50682), (27, 50703), (28, 50742),

Gene: Janiyra_104 Start: 51979, Stop: 52518, Start Num: 5

Candidate Starts for Janiyra_104:

(Start: 5 @51979 has 181 MA's), (10, 52060), (11, 52093), (13, 52135), (17, 52219), (24, 52333), (25, 52378), (27, 52399), (28, 52438),

Gene: JayJay_108 Start: 53744, Stop: 54283, Start Num: 5

Candidate Starts for JayJay_108:

(Start: 5 @53744 has 181 MA's), (10, 53825), (11, 53858), (13, 53900), (17, 53984), (24, 54098), (25, 54143), (27, 54164), (28, 54203),

Gene: Jaygup_102 Start: 51808, Stop: 52347, Start Num: 5

Candidate Starts for Jaygup_102:

(Start: 5 @51808 has 181 MA's), (10, 51889), (11, 51922), (13, 51964), (17, 52048), (24, 52162), (25, 52207), (27, 52228), (28, 52267),

Gene: Jedediah_105 Start: 52341, Stop: 52880, Start Num: 5

Candidate Starts for Jedediah_105:

(Start: 5 @52341 has 181 MA's), (10, 52422), (11, 52455), (13, 52497), (17, 52581), (24, 52695), (25, 52740), (27, 52761), (28, 52800),

Gene: Jemmno_102 Start: 51788, Stop: 52327, Start Num: 5

Candidate Starts for Jemmno_102:

(Start: 5 @51788 has 181 MA's), (10, 51869), (11, 51902), (13, 51944), (17, 52028), (24, 52142), (25, 52187), (27, 52208), (28, 52247),

Gene: Jessibeth14_101 Start: 52309, Stop: 52848, Start Num: 5

Candidate Starts for Jessibeth14_101:

(Start: 5 @52309 has 181 MA's), (10, 52390), (11, 52423), (13, 52465), (17, 52549), (24, 52663), (25, 52708), (27, 52729), (28, 52768),

Gene: Jezreel_102 Start: 52472, Stop: 53011, Start Num: 5

Candidate Starts for Jezreel_102:

(Start: 5 @52472 has 181 MA's), (10, 52553), (11, 52586), (13, 52628), (17, 52712), (24, 52826), (25, 52871), (27, 52892), (28, 52931),

Gene: JigglyPuff_110 Start: 54638, Stop: 55177, Start Num: 5

Candidate Starts for JigglyPuff_110:

(Start: 5 @54638 has 181 MA's), (10, 54719), (11, 54752), (13, 54794), (17, 54878), (24, 54992), (25, 55037), (27, 55058), (28, 55097),

Gene: JulietS_96 Start: 49746, Stop: 50285, Start Num: 5

Candidate Starts for JulietS_96:

(Start: 5 @49746 has 181 MA's), (10, 49827), (11, 49860), (13, 49902), (17, 49986), (23, 50055), (24, 50100), (25, 50145), (27, 50166), (28, 50205),

Gene: JustHall_99 Start: 51847, Stop: 52386, Start Num: 5

Candidate Starts for JustHall_99:

(Start: 5 @51847 has 181 MA's), (10, 51928), (11, 51961), (13, 52003), (17, 52087), (24, 52201), (25, 52246), (27, 52267), (28, 52306),

Gene: Kamryn_102 Start: 53124, Stop: 53663, Start Num: 5

Candidate Starts for Kamryn_102:

(Start: 5 @53124 has 181 MA's), (10, 53205), (11, 53238), (13, 53280), (17, 53364), (24, 53478), (25, 53523), (27, 53544), (28, 53583),

Gene: Kboogie_106 Start: 51483, Stop: 52022, Start Num: 5

Candidate Starts for Kboogie_106:

(Start: 5 @51483 has 181 MA's), (10, 51564), (11, 51597), (13, 51639), (17, 51723), (24, 51837), (25, 51882), (27, 51903), (28, 51942),

Gene: Kenmech_19 Start: 13774, Stop: 14292, Start Num: 7

Candidate Starts for Kenmech_19:

(Start: 7 @13774 has 69 MA's), (8, 13798), (11, 13849), (14, 13903), (22, 14050), (26, 14152), (27, 14170),

Gene: Khaleesi_101 Start: 52423, Stop: 52962, Start Num: 5

Candidate Starts for Khaleesi_101:

(Start: 5 @52423 has 181 MA's), (10, 52504), (11, 52537), (13, 52579), (17, 52663), (24, 52777), (25, 52822), (27, 52843), (28, 52882),

Gene: KikiBouba_18 Start: 13230, Stop: 13748, Start Num: 7

Candidate Starts for KikiBouba_18:

(Start: 7 @13230 has 69 MA's), (8, 13254), (14, 13359), (22, 13506), (26, 13608), (27, 13626),

Gene: Koguma_99 Start: 49968, Stop: 50507, Start Num: 5

Candidate Starts for Koguma_99:

(Start: 5 @49968 has 181 MA's), (10, 50049), (11, 50082), (13, 50124), (17, 50208), (24, 50322), (25, 50367), (27, 50388), (28, 50427),

Gene: LRRHood_97 Start: 52022, Stop: 52561, Start Num: 5

Candidate Starts for LRRHood_97:

(Start: 5 @52022 has 181 MA's), (10, 52103), (11, 52136), (13, 52178), (17, 52262), (24, 52376), (25, 52421), (27, 52442), (28, 52481),

Gene: Labradorite_101 Start: 50739, Stop: 51278, Start Num: 5

Candidate Starts for Labradorite_101:

(Start: 5 @50739 has 181 MA's), (10, 50820), (11, 50853), (13, 50895), (17, 50979), (24, 51093), (25, 51138), (27, 51159), (28, 51198),

Gene: Latch_102 Start: 51052, Stop: 51591, Start Num: 5

Candidate Starts for Latch_102:

(Start: 5 @51052 has 181 MA's), (10, 51133), (11, 51166), (13, 51208), (17, 51292), (24, 51406), (25, 51451), (27, 51472), (28, 51511),

Gene: Lee7_100 Start: 53054, Stop: 53593, Start Num: 5

Candidate Starts for Lee7_100:

(Start: 5 @53054 has 181 MA's), (10, 53135), (11, 53168), (13, 53210), (17, 53294), (24, 53408), (25, 53453), (27, 53474), (28, 53513),

Gene: Lethe_101 Start: 52495, Stop: 53034, Start Num: 5

Candidate Starts for Lethe_101:

(Start: 5 @52495 has 181 MA's), (10, 52576), (11, 52609), (13, 52651), (17, 52735), (24, 52849), (25, 52894), (27, 52915), (28, 52954),

Gene: Licorice_18 Start: 13300, Stop: 13818, Start Num: 7

Candidate Starts for Licorice_18:

(Start: 7 @13300 has 69 MA's), (8, 13324), (14, 13429), (22, 13576), (26, 13678), (27, 13696),

Gene: LifeSavor_101 Start: 51740, Stop: 52279, Start Num: 5

Candidate Starts for LifeSavor_101:

(Start: 5 @51740 has 181 MA's), (10, 51821), (11, 51854), (13, 51896), (17, 51980), (24, 52094), (25, 52139), (27, 52160), (28, 52199),

Gene: LilBib_17 Start: 13230, Stop: 13748, Start Num: 7

Candidate Starts for LilBib_17:

(Start: 7 @13230 has 69 MA's), (8, 13254), (14, 13359), (22, 13506), (27, 13626),

Gene: LinStu_102 Start: 52630, Stop: 53169, Start Num: 5

Candidate Starts for LinStu_102:

(Start: 5 @52630 has 181 MA's), (10, 52711), (11, 52744), (13, 52786), (17, 52870), (24, 52984), (25, 53029), (27, 53050), (28, 53089),

Gene: Littleton_102 Start: 51872, Stop: 52411, Start Num: 5

Candidate Starts for Littleton_102:

(Start: 5 @51872 has 181 MA's), (10, 51953), (11, 51986), (13, 52028), (17, 52112), (24, 52226), (25, 52271), (27, 52292), (28, 52331),

Gene: Loanshark_102 Start: 52647, Stop: 53186, Start Num: 5

Candidate Starts for Loanshark_102:

(Start: 5 @52647 has 181 MA's), (10, 52728), (11, 52761), (13, 52803), (17, 52887), (24, 53001), (25, 53046), (27, 53067),

Gene: LolaVinca_103 Start: 52746, Stop: 53285, Start Num: 5

Candidate Starts for LolaVinca_103:

(Start: 5 @52746 has 181 MA's), (10, 52827), (11, 52860), (13, 52902), (17, 52986), (24, 53100), (25, 53145), (27, 53166), (28, 53205),

Gene: LookingGlass_103 Start: 52570, Stop: 53109, Start Num: 5

Candidate Starts for LookingGlass_103:

(Start: 5 @52570 has 181 MA's), (10, 52651), (11, 52684), (13, 52726), (17, 52810), (24, 52924), (25, 52969), (27, 52990), (28, 53029),

Gene: LordLeafolot_107 Start: 53710, Stop: 54249, Start Num: 5

Candidate Starts for LordLeafolot_107:

(Start: 5 @53710 has 181 MA's), (10, 53791), (11, 53824), (13, 53866), (17, 53950), (24, 54064), (25, 54109), (27, 54130), (28, 54169),

Gene: Lukilu_93 Start: 52153, Stop: 52692, Start Num: 5

Candidate Starts for Lukilu_93:

(Start: 5 @52153 has 181 MA's), (10, 52234), (11, 52267), (13, 52309), (17, 52393), (24, 52507), (25, 52552), (27, 52573), (28, 52612),

Gene: Lunareta_101 Start: 53663, Stop: 54202, Start Num: 5

Candidate Starts for Lunareta_101:

(Start: 5 @53663 has 181 MA's), (10, 53744), (11, 53777), (13, 53819), (17, 53903), (24, 54017), (25, 54062), (27, 54083), (28, 54122),

Gene: Maby2021_102 Start: 52517, Stop: 53056, Start Num: 5

Candidate Starts for Maby2021_102:

(Start: 5 @52517 has 181 MA's), (10, 52598), (11, 52631), (13, 52673), (17, 52757), (24, 52871), (25, 52916), (27, 52937), (28, 52976),

Gene: Manatee_17 Start: 12678, Stop: 13139, Start Num: 7

Candidate Starts for Manatee_17:

(Start: 7 @12678 has 69 MA's), (8, 12702), (11, 12753), (14, 12807), (22, 12897), (24, 12951), (26, 12999), (27, 13017),

Gene: Mangeria_102 Start: 52586, Stop: 53125, Start Num: 5

Candidate Starts for Mangeria_102:

(Start: 5 @52586 has 181 MA's), (10, 52667), (11, 52700), (13, 52742), (17, 52826), (24, 52940), (25, 52985), (27, 53006), (28, 53045),

Gene: Marcell_16 Start: 12619, Stop: 13137, Start Num: 7

Candidate Starts for Marcell_16:

(Start: 7 @12619 has 69 MA's), (8, 12643), (14, 12748), (22, 12895), (26, 12997), (27, 13015),

Gene: Marsha_16 Start: 12875, Stop: 13405, Start Num: 7

Candidate Starts for Marsha_16:

(Start: 7 @12875 has 69 MA's), (8, 12899), (14, 13004), (22, 13151), (27, 13271), (29, 13397),

Gene: Matsumoto_100 Start: 51368, Stop: 51907, Start Num: 5

Candidate Starts for Matsumoto_100:

(Start: 5 @51368 has 181 MA's), (10, 51449), (11, 51482), (13, 51524), (17, 51608), (24, 51722), (25, 51767), (27, 51788), (28, 51827),

Gene: Maturis_100 Start: 52159, Stop: 52698, Start Num: 5

Candidate Starts for Maturis_100:

(Start: 5 @52159 has 181 MA's), (10, 52240), (11, 52273), (13, 52315), (17, 52399), (24, 52513), (25, 52558), (27, 52579), (28, 52618),

Gene: McGee_104 Start: 51124, Stop: 51663, Start Num: 5

Candidate Starts for McGee_104:

(Start: 5 @51124 has 181 MA's), (10, 51205), (11, 51238), (13, 51280), (17, 51364), (24, 51478), (25, 51523), (27, 51544), (28, 51583),

Gene: McSinger_17 Start: 12814, Stop: 13332, Start Num: 7
Candidate Starts for McSinger_17:
(Start: 7 @12814 has 69 MA's), (8, 12838), (14, 12943), (26, 13192), (27, 13210),

Gene: McWolfish_100 Start: 52306, Stop: 52845, Start Num: 5
Candidate Starts for McWolfish_100:
(Start: 5 @52306 has 181 MA's), (10, 52387), (11, 52420), (13, 52462), (17, 52546), (24, 52660), (25, 52705), (27, 52726), (28, 52765),

Gene: Megamind_101 Start: 52190, Stop: 52729, Start Num: 5
Candidate Starts for Megamind_101:
(Start: 5 @52190 has 181 MA's), (10, 52271), (11, 52304), (13, 52346), (17, 52430), (24, 52544), (25, 52589), (27, 52610), (28, 52649),

Gene: Melpomini_96 Start: 49659, Stop: 50198, Start Num: 5
Candidate Starts for Melpomini_96:
(Start: 5 @49659 has 181 MA's), (10, 49740), (11, 49773), (13, 49815), (17, 49899), (24, 50013), (25, 50058), (27, 50079), (28, 50118),

Gene: MikeLiesIn_103 Start: 52537, Stop: 53076, Start Num: 5
Candidate Starts for MikeLiesIn_103:
(Start: 5 @52537 has 181 MA's), (10, 52618), (11, 52651), (13, 52693), (17, 52777), (24, 52891), (25, 52936), (27, 52957), (28, 52996),

Gene: Mikro_100 Start: 53759, Stop: 54298, Start Num: 5
Candidate Starts for Mikro_100:
(Start: 5 @53759 has 181 MA's), (10, 53840), (11, 53873), (13, 53915), (17, 53999), (24, 54113), (25, 54158), (27, 54179), (28, 54218),

Gene: MoMoMixon_103 Start: 52013, Stop: 52552, Start Num: 5
Candidate Starts for MoMoMixon_103:
(Start: 5 @52013 has 181 MA's), (10, 52094), (11, 52127), (13, 52169), (17, 52253), (24, 52367), (25, 52412), (27, 52433), (28, 52472),

Gene: Moby_93 Start: 48546, Stop: 49085, Start Num: 5
Candidate Starts for Moby_93:
(Start: 5 @48546 has 181 MA's), (10, 48627), (11, 48660), (13, 48702), (17, 48786), (24, 48900), (25, 48945), (27, 48966), (28, 49005),

Gene: Moiqah_93 Start: 48546, Stop: 49085, Start Num: 5
Candidate Starts for Moiqah_93:
(Start: 5 @48546 has 181 MA's), (10, 48627), (11, 48660), (13, 48702), (17, 48786), (24, 48900), (25, 48945), (27, 48966), (28, 49005),

Gene: Momo_101 Start: 51052, Stop: 51591, Start Num: 5
Candidate Starts for Momo_101:
(Start: 5 @51052 has 181 MA's), (10, 51133), (11, 51166), (13, 51208), (17, 51292), (24, 51406), (25, 51451), (27, 51472), (28, 51511),

Gene: Monet_18 Start: 13656, Stop: 14174, Start Num: 7
Candidate Starts for Monet_18:
(Start: 7 @13656 has 69 MA's), (8, 13680), (14, 13785), (22, 13932), (27, 14052),

Gene: Montpel_101 Start: 53661, Stop: 54200, Start Num: 5

Candidate Starts for Montpel_101:

(Start: 5 @53661 has 181 MA's), (10, 53742), (11, 53775), (13, 53817), (17, 53901), (24, 54015), (25, 54060), (27, 54081), (28, 54120),

Gene: Morizzled23_102 Start: 51417, Stop: 51956, Start Num: 5

Candidate Starts for Morizzled23_102:

(Start: 5 @51417 has 181 MA's), (10, 51498), (11, 51531), (13, 51573), (17, 51657), (24, 51771), (25, 51816), (27, 51837), (28, 51876),

Gene: NEHalo_16 Start: 12240, Stop: 12701, Start Num: 7

Candidate Starts for NEHalo_16:

(Start: 7 @12240 has 69 MA's), (8, 12264), (11, 12315), (14, 12369), (22, 12459), (24, 12513), (26, 12561), (27, 12579),

Gene: Naija_101 Start: 51052, Stop: 51591, Start Num: 5

Candidate Starts for Naija_101:

(Start: 5 @51052 has 181 MA's), (10, 51133), (11, 51166), (13, 51208), (17, 51292), (24, 51406), (25, 51451), (27, 51472), (28, 51511),

Gene: Naira_17 Start: 13992, Stop: 14453, Start Num: 7

Candidate Starts for Naira_17:

(Start: 7 @13992 has 69 MA's), (8, 14016), (14, 14121), (22, 14211), (27, 14331),

Gene: Napoleon13_98 Start: 50097, Stop: 50636, Start Num: 5

Candidate Starts for Napoleon13_98:

(Start: 5 @50097 has 181 MA's), (10, 50178), (11, 50211), (13, 50253), (17, 50337), (24, 50451), (25, 50496), (27, 50517), (28, 50556),

Gene: Nappy_105 Start: 53447, Stop: 53986, Start Num: 5

Candidate Starts for Nappy_105:

(Start: 5 @53447 has 181 MA's), (10, 53528), (11, 53561), (13, 53603), (17, 53687), (24, 53801), (25, 53846), (27, 53867), (28, 53906),

Gene: Naval22_110 Start: 54028, Stop: 54567, Start Num: 5

Candidate Starts for Naval22_110:

(Start: 5 @54028 has 181 MA's), (10, 54109), (11, 54142), (13, 54184), (17, 54268), (24, 54382), (25, 54427), (27, 54448), (28, 54487),

Gene: NedWong_103 Start: 52524, Stop: 53063, Start Num: 5

Candidate Starts for NedWong_103:

(Start: 5 @52524 has 181 MA's), (10, 52605), (11, 52638), (13, 52680), (17, 52764), (24, 52878), (25, 52923), (27, 52944), (28, 52983),

Gene: Ngannou_98 Start: 50034, Stop: 50573, Start Num: 5

Candidate Starts for Ngannou_98:

(Start: 5 @50034 has 181 MA's), (10, 50115), (11, 50148), (13, 50190), (17, 50274), (24, 50388), (25, 50433), (27, 50454), (28, 50493),

Gene: Nhonho_16 Start: 12600, Stop: 13130, Start Num: 7

Candidate Starts for Nhonho_16:

(Start: 7 @12600 has 69 MA's), (8, 12624), (14, 12729), (22, 12876), (27, 12996), (29, 13122),

Gene: Nidhogg_103 Start: 52258, Stop: 52797, Start Num: 5

Candidate Starts for Nidhogg_103:

(Start: 5 @52258 has 181 MA's), (10, 52339), (11, 52372), (13, 52414), (17, 52498), (24, 52612), (25, 52657), (27, 52678), (28, 52717),

Gene: NoodleTree_109 Start: 52850, Stop: 53389, Start Num: 5

Candidate Starts for NoodleTree_109:

(Start: 5 @52850 has 181 MA's), (10, 52931), (11, 52964), (13, 53006), (17, 53090), (24, 53204), (25, 53249), (27, 53270), (28, 53309),

Gene: Norm_103 Start: 53453, Stop: 53992, Start Num: 5

Candidate Starts for Norm_103:

(Start: 5 @53453 has 181 MA's), (10, 53534), (11, 53567), (13, 53609), (17, 53693), (24, 53807), (25, 53852), (27, 53873), (28, 53912),

Gene: Noxious_18 Start: 13421, Stop: 13939, Start Num: 7

Candidate Starts for Noxious_18:

(Start: 7 @13421 has 69 MA's), (8, 13445), (14, 13550), (22, 13697), (26, 13799), (27, 13817),

Gene: NuevoMundo_108 Start: 54801, Stop: 55340, Start Num: 5

Candidate Starts for NuevoMundo_108:

(Start: 5 @54801 has 181 MA's), (10, 54882), (11, 54915), (13, 54957), (17, 55041), (24, 55155), (25, 55200), (27, 55221), (28, 55260),

Gene: OrediggerDelux_100 Start: 53054, Stop: 53593, Start Num: 5

Candidate Starts for OrediggerDelux_100:

(Start: 5 @53054 has 181 MA's), (10, 53135), (11, 53168), (13, 53210), (17, 53294), (24, 53408), (25, 53453), (27, 53474), (28, 53513),

Gene: Papez_18 Start: 14127, Stop: 14600, Start Num: 7

Candidate Starts for Papez_18:

(Start: 7 @14127 has 69 MA's), (8, 14151), (14, 14256), (22, 14346), (26, 14448), (27, 14466), (29, 14592),

Gene: ParkTD_103 Start: 52520, Stop: 53059, Start Num: 5

Candidate Starts for ParkTD_103:

(Start: 5 @52520 has 181 MA's), (10, 52601), (11, 52634), (13, 52676), (17, 52760), (24, 52874), (25, 52919), (27, 52940), (28, 52979),

Gene: Parliament_15 Start: 12499, Stop: 13017, Start Num: 7

Candidate Starts for Parliament_15:

(Start: 7 @12499 has 69 MA's), (8, 12523), (14, 12628), (22, 12775), (26, 12877), (27, 12895),

Gene: Patter_102 Start: 51069, Stop: 51608, Start Num: 5

Candidate Starts for Patter_102:

(Start: 5 @51069 has 181 MA's), (10, 51150), (11, 51183), (13, 51225), (17, 51309), (24, 51423), (25, 51468), (27, 51489), (28, 51528),

Gene: Peterson_19 Start: 14109, Stop: 14627, Start Num: 7

Candidate Starts for Peterson_19:

(Start: 7 @14109 has 69 MA's), (8, 14133), (11, 14184), (14, 14238), (22, 14385), (26, 14487), (27, 14505),

Gene: Petruccio_16 Start: 12360, Stop: 12878, Start Num: 7

Candidate Starts for Petruccio_16:

(Start: 7 @12360 has 69 MA's), (8, 12384), (14, 12489), (22, 12636), (27, 12756),

Gene: PharkleMinkus_106 Start: 53092, Stop: 53631, Start Num: 5

Candidate Starts for PharkleMinkus_106:

(Start: 5 @53092 has 181 MA's), (10, 53173), (11, 53206), (13, 53248), (17, 53332), (24, 53446), (25, 53491), (27, 53512), (28, 53551),

Gene: Phlegm_104 Start: 51052, Stop: 51591, Start Num: 5

Candidate Starts for Phlegm_104:

(Start: 5 @51052 has 181 MA's), (10, 51133), (11, 51166), (13, 51208), (17, 51292), (24, 51406), (25, 51451), (27, 51472), (28, 51511),

Gene: Phox_99 Start: 52800, Stop: 53339, Start Num: 5

Candidate Starts for Phox_99:

(Start: 5 @52800 has 181 MA's), (10, 52881), (11, 52914), (13, 52956), (17, 53040), (24, 53154), (25, 53199), (27, 53220), (28, 53259),

Gene: Phusco_102 Start: 51817, Stop: 52356, Start Num: 5

Candidate Starts for Phusco_102:

(Start: 5 @51817 has 181 MA's), (10, 51898), (11, 51931), (13, 51973), (17, 52057), (24, 52171), (25, 52216), (27, 52237), (28, 52276),

Gene: Pier_107 Start: 54794, Stop: 55348, Start Num: 5

Candidate Starts for Pier_107:

(1, 53741), (2, 53762), (3, 53840), (4, 54530), (Start: 5 @54794 has 181 MA's), (6, 54800), (10, 54875), (11, 54908), (13, 54950), (17, 55049), (24, 55163), (25, 55208), (27, 55229), (28, 55268),

Gene: Pinkcreek_93 Start: 49611, Stop: 50303, Start Num: 5

Candidate Starts for Pinkcreek_93:

(Start: 5 @49611 has 181 MA's), (10, 49692), (11, 49725), (13, 49767), (17, 49851), (19, 49920), (21, 50007), (24, 50118), (25, 50163), (27, 50184),

Gene: Pio_106 Start: 54410, Stop: 54949, Start Num: 5

Candidate Starts for Pio_106:

(Start: 5 @54410 has 181 MA's), (10, 54491), (11, 54524), (13, 54566), (17, 54650), (24, 54764), (25, 54809), (27, 54830), (28, 54869),

Gene: Pivoine_101 Start: 51052, Stop: 51591, Start Num: 5

Candidate Starts for Pivoine_101:

(Start: 5 @51052 has 181 MA's), (10, 51133), (11, 51166), (13, 51208), (17, 51292), (24, 51406), (25, 51451), (27, 51472), (28, 51511),

Gene: Pleione_105 Start: 52687, Stop: 53226, Start Num: 5

Candidate Starts for Pleione_105:

(Start: 5 @52687 has 181 MA's), (10, 52768), (11, 52801), (13, 52843), (17, 52927), (24, 53041), (25, 53086), (27, 53107), (28, 53146),

Gene: PowerRanger_16 Start: 12990, Stop: 13508, Start Num: 7

Candidate Starts for PowerRanger_16:

(Start: 7 @12990 has 69 MA's), (8, 13014), (14, 13119), (22, 13266), (27, 13386),

Gene: Primadonna_96 Start: 51416, Stop: 51955, Start Num: 5

Candidate Starts for Primadonna_96:

(Start: 5 @51416 has 181 MA's), (10, 51497), (11, 51530), (13, 51572), (17, 51656), (24, 51770), (25, 51815), (27, 51836), (28, 51875),

Gene: Pupusa_108 Start: 53899, Stop: 54438, Start Num: 5

Candidate Starts for Pupusa_108:

(Start: 5 @53899 has 181 MA's), (10, 53980), (11, 54013), (13, 54055), (17, 54139), (24, 54253), (25, 54298), (27, 54319), (28, 54358),

Gene: PurduePete_102 Start: 52944, Stop: 53483, Start Num: 5

Candidate Starts for PurduePete_102:

(Start: 5 @52944 has 181 MA's), (10, 53025), (11, 53058), (13, 53100), (17, 53184), (24, 53298), (25, 53343), (27, 53364), (28, 53403),

Gene: QBert_96 Start: 51595, Stop: 52134, Start Num: 5

Candidate Starts for QBert_96:

(Start: 5 @51595 has 181 MA's), (10, 51676), (11, 51709), (13, 51751), (17, 51835), (24, 51949), (25, 51994), (27, 52015), (28, 52054),

Gene: Quasimodo_103 Start: 52476, Stop: 53015, Start Num: 5

Candidate Starts for Quasimodo_103:

(Start: 5 @52476 has 181 MA's), (10, 52557), (11, 52590), (13, 52632), (17, 52716), (24, 52830), (25, 52875), (27, 52896), (28, 52935),

Gene: Rabinovish_100 Start: 52575, Stop: 53258, Start Num: 5

Candidate Starts for Rabinovish_100:

(Start: 5 @52575 has 181 MA's), (10, 52656), (11, 52689), (13, 52731), (17, 52815), (18, 52884), (23, 53028), (24, 53073), (25, 53118), (27, 53139), (28, 53178),

Gene: Rahel_101 Start: 51409, Stop: 51948, Start Num: 5

Candidate Starts for Rahel_101:

(Start: 5 @51409 has 181 MA's), (10, 51490), (11, 51523), (13, 51565), (17, 51649), (24, 51763), (25, 51808), (27, 51829), (28, 51868),

Gene: Rajelicia_16 Start: 12636, Stop: 13166, Start Num: 7

Candidate Starts for Rajelicia_16:

(Start: 7 @12636 has 69 MA's), (8, 12660), (14, 12765), (22, 12912), (26, 13014), (27, 13032), (29, 13158),

Gene: RidgeCB_16 Start: 12260, Stop: 12733, Start Num: 7

Candidate Starts for RidgeCB_16:

(Start: 7 @12260 has 69 MA's), (8, 12284), (14, 12389), (22, 12479), (26, 12581), (27, 12599), (29, 12725),

Gene: Rizal_98 Start: 50557, Stop: 51096, Start Num: 5

Candidate Starts for Rizal_98:

(Start: 5 @50557 has 181 MA's), (10, 50638), (11, 50671), (13, 50713), (17, 50797), (24, 50911), (25, 50956), (27, 50977), (28, 51016),

Gene: RoMag_97 Start: 51732, Stop: 52271, Start Num: 5

Candidate Starts for RoMag_97:

(Start: 5 @51732 has 181 MA's), (10, 51813), (11, 51846), (13, 51888), (17, 51972), (24, 52086), (25, 52131), (27, 52152), (28, 52191),

Gene: Rocha_101 Start: 51985, Stop: 52524, Start Num: 5

Candidate Starts for Rocha_101:

(Start: 5 @51985 has 181 MA's), (10, 52066), (11, 52099), (13, 52141), (17, 52225), (24, 52339), (25, 52384), (27, 52405), (28, 52444),

Gene: Ronan_96 Start: 49683, Stop: 50222, Start Num: 5

Candidate Starts for Ronan_96:

(Start: 5 @49683 has 181 MA's), (10, 49764), (11, 49797), (13, 49839), (17, 49923), (24, 50037), (25, 50082), (27, 50103), (28, 50142),

Gene: Roots515_101 Start: 52717, Stop: 53256, Start Num: 5

Candidate Starts for Roots515_101:

(Start: 5 @52717 has 181 MA's), (10, 52798), (11, 52831), (13, 52873), (17, 52957), (24, 53071), (25, 53116), (27, 53137), (28, 53176),

Gene: Rufus_17 Start: 12806, Stop: 13324, Start Num: 7

Candidate Starts for Rufus_17:

(Start: 7 @12806 has 69 MA's), (8, 12830), (14, 12935), (22, 13082), (24, 13136), (26, 13184), (27, 13202),

Gene: STLscum_17 Start: 12849, Stop: 13367, Start Num: 7

Candidate Starts for STLscum_17:

(Start: 7 @12849 has 69 MA's), (8, 12873), (14, 12978), (22, 13125), (24, 13179), (26, 13227), (27, 13245),

Gene: SVoro_100 Start: 52894, Stop: 53433, Start Num: 5

Candidate Starts for SVoro_100:

(Start: 5 @52894 has 181 MA's), (10, 52975), (11, 53008), (13, 53050), (17, 53134), (24, 53248), (25, 53293), (27, 53314), (28, 53353),

Gene: Salacia_106 Start: 52858, Stop: 53397, Start Num: 5

Candidate Starts for Salacia_106:

(Start: 5 @52858 has 181 MA's), (10, 52939), (11, 52972), (13, 53014), (17, 53098), (24, 53212), (25, 53257), (27, 53278), (28, 53317),

Gene: SarFire_16 Start: 12515, Stop: 13033, Start Num: 7

Candidate Starts for SarFire_16:

(Start: 7 @12515 has 69 MA's), (8, 12539), (14, 12644), (22, 12791), (27, 12911),

Gene: Sauce_103 Start: 51720, Stop: 52259, Start Num: 5

Candidate Starts for Sauce_103:

(Start: 5 @51720 has 181 MA's), (10, 51801), (11, 51834), (13, 51876), (17, 51960), (24, 52074), (25, 52119), (27, 52140), (28, 52179),

Gene: ScottMcG_99 Start: 51482, Stop: 52021, Start Num: 5

Candidate Starts for ScottMcG_99:

(Start: 5 @51482 has 181 MA's), (10, 51563), (11, 51596), (13, 51638), (17, 51722), (24, 51836), (25, 51881), (27, 51902), (28, 51941),

Gene: Sebata_104 Start: 53189, Stop: 53728, Start Num: 5

Candidate Starts for Sebata_104:

(Start: 5 @53189 has 181 MA's), (10, 53270), (11, 53303), (13, 53345), (17, 53429), (24, 53543), (25, 53588), (27, 53609), (28, 53648),

Gene: Shaqnato_95 Start: 50595, Stop: 51134, Start Num: 5

Candidate Starts for Shaqnato_95:

(Start: 5 @50595 has 181 MA's), (10, 50676), (11, 50709), (13, 50751), (17, 50835), (24, 50949), (25, 50994), (27, 51015), (28, 51054),

Gene: Shelob_104 Start: 53305, Stop: 53844, Start Num: 5

Candidate Starts for Shelob_104:

(Start: 5 @53305 has 181 MA's), (10, 53386), (11, 53419), (13, 53461), (23, 53614), (24, 53659), (25, 53704), (27, 53725), (28, 53764),

Gene: ShiaLabeouf_101 Start: 51844, Stop: 52383, Start Num: 5

Candidate Starts for ShiaLabeouf_101:

(Start: 5 @51844 has 181 MA's), (10, 51925), (11, 51958), (13, 52000), (17, 52084), (24, 52198), (25, 52243), (27, 52264), (28, 52303),

Gene: Shifa_91 Start: 50570, Stop: 51109, Start Num: 5

Candidate Starts for Shifa_91:

(Start: 5 @50570 has 181 MA's), (10, 50651), (11, 50684), (13, 50726), (17, 50810), (24, 50924), (25, 50969), (27, 50990), (28, 51029),

Gene: Shnickers_102 Start: 51808, Stop: 52347, Start Num: 5

Candidate Starts for Shnickers_102:

(Start: 5 @51808 has 181 MA's), (10, 51889), (11, 51922), (13, 51964), (17, 52048), (24, 52162), (25, 52207), (27, 52228), (28, 52267),

Gene: ShortQueendom_16 Start: 12321, Stop: 12839, Start Num: 7

Candidate Starts for ShortQueendom_16:

(Start: 7 @12321 has 69 MA's), (8, 12345), (14, 12450), (22, 12597), (24, 12651), (26, 12699), (27, 12717),

Gene: Shrimp_102 Start: 52528, Stop: 53067, Start Num: 5

Candidate Starts for Shrimp_102:

(Start: 5 @52528 has 181 MA's), (10, 52609), (11, 52642), (13, 52684), (17, 52768), (24, 52882), (25, 52927), (27, 52948), (28, 52987),

Gene: Sibs6_18 Start: 12958, Stop: 13476, Start Num: 7

Candidate Starts for Sibs6_18:

(Start: 7 @12958 has 69 MA's), (8, 12982), (14, 13087), (22, 13234), (24, 13288), (26, 13336), (27, 13354),

Gene: SilverDipper_103 Start: 51052, Stop: 51591, Start Num: 5

Candidate Starts for SilverDipper_103:

(Start: 5 @51052 has 181 MA's), (10, 51133), (11, 51166), (13, 51208), (17, 51292), (24, 51406), (25, 51451), (27, 51472), (28, 51511),

Gene: Smairt_17 Start: 13129, Stop: 13659, Start Num: 7

Candidate Starts for Smairt_17:

(Start: 7 @13129 has 69 MA's), (8, 13153), (11, 13204), (14, 13258), (22, 13405), (26, 13507), (27, 13525), (29, 13651),

Gene: SmallFry_102 Start: 51033, Stop: 51572, Start Num: 5

Candidate Starts for SmallFry_102:

(Start: 5 @51033 has 181 MA's), (10, 51114), (11, 51147), (13, 51189), (17, 51273), (24, 51387), (25, 51432), (27, 51453), (28, 51492),

Gene: Smeagol_18 Start: 13730, Stop: 14248, Start Num: 7

Candidate Starts for Smeagol_18:

(Start: 7 @13730 has 69 MA's), (8, 13754), (11, 13805), (14, 13859), (24, 14060), (26, 14108), (27, 14126),

Gene: SoilZilla_98 Start: 51807, Stop: 52346, Start Num: 5

Candidate Starts for SoilZilla_98:

(Start: 5 @51807 has 181 MA's), (10, 51888), (11, 51921), (13, 51963), (17, 52047), (24, 52161), (25, 52206), (27, 52227), (28, 52266),

Gene: Spec_98 Start: 51573, Stop: 52112, Start Num: 5

Candidate Starts for Spec_98:

(Start: 5 @51573 has 181 MA's), (10, 51654), (11, 51687), (13, 51729), (17, 51813), (24, 51927), (25, 51972), (27, 51993), (28, 52032),

Gene: Specks_107 Start: 53707, Stop: 54246, Start Num: 5

Candidate Starts for Specks_107:

(Start: 5 @53707 has 181 MA's), (10, 53788), (11, 53821), (13, 53863), (17, 53947), (24, 54061), (25, 54106), (27, 54127), (28, 54166),

Gene: Sprinklers_98 Start: 51092, Stop: 51631, Start Num: 5

Candidate Starts for Sprinklers_98:

(Start: 5 @51092 has 181 MA's), (10, 51173), (11, 51206), (13, 51248), (17, 51332), (24, 51446), (25, 51491), (27, 51512), (28, 51551),

Gene: Spud_102 Start: 52607, Stop: 53146, Start Num: 5

Candidate Starts for Spud_102:

(Start: 5 @52607 has 181 MA's), (10, 52688), (11, 52721), (13, 52763), (17, 52847), (24, 52961), (25, 53006), (27, 53027), (28, 53066),

Gene: Squee_17 Start: 13131, Stop: 13649, Start Num: 7

Candidate Starts for Squee_17:

(Start: 7 @13131 has 69 MA's), (8, 13155), (12, 13245), (14, 13260), (22, 13407), (26, 13509), (27, 13527),

Gene: SrishMeg2525_101 Start: 52626, Stop: 53165, Start Num: 5

Candidate Starts for SrishMeg2525_101:

(Start: 5 @52626 has 181 MA's), (10, 52707), (11, 52740), (13, 52782), (17, 52866), (24, 52980), (25, 53025), (27, 53046), (28, 53085),

Gene: StephanieG_101 Start: 53437, Stop: 53976, Start Num: 5

Candidate Starts for StephanieG_101:

(Start: 5 @53437 has 181 MA's), (10, 53518), (11, 53551), (13, 53593), (17, 53677), (24, 53791), (25, 53836), (27, 53857), (28, 53896),

Gene: StrongArm_15 Start: 13382, Stop: 13900, Start Num: 7

Candidate Starts for StrongArm_15:

(Start: 7 @13382 has 69 MA's), (8, 13406), (14, 13511), (22, 13658), (27, 13778),

Gene: Stubby_95 Start: 50727, Stop: 51425, Start Num: 5

Candidate Starts for Stubby_95:

(Start: 5 @50727 has 181 MA's), (10, 50808), (11, 50841), (13, 50883), (17, 50967), (20, 51117), (21, 51129), (24, 51240), (25, 51285), (27, 51306), (28, 51345),

Gene: StubbySaigey_105 Start: 51224, Stop: 51763, Start Num: 5

Candidate Starts for StubbySaigey_105:

(Start: 5 @51224 has 181 MA's), (10, 51305), (11, 51338), (13, 51380), (17, 51464), (24, 51578), (25, 51623), (27, 51644), (28, 51683),

Gene: Substance289_100 Start: 51326, Stop: 51865, Start Num: 5

Candidate Starts for Substance289_100:

(Start: 5 @51326 has 181 MA's), (10, 51407), (11, 51440), (13, 51482), (17, 51566), (24, 51680), (25, 51725), (27, 51746), (28, 51785),

Gene: Switzer_17 Start: 12610, Stop: 13071, Start Num: 7

Candidate Starts for Switzer_17:

(Start: 7 @12610 has 69 MA's), (8, 12634), (11, 12685), (14, 12739), (22, 12829), (24, 12883), (26, 12931), (27, 12949),

Gene: Tainan_106 Start: 53030, Stop: 53569, Start Num: 5

Candidate Starts for Tainan_106:

(Start: 5 @53030 has 181 MA's), (10, 53111), (11, 53144), (13, 53186), (17, 53270), (24, 53384), (25, 53429), (27, 53450), (28, 53489),

Gene: Teardrop_101 Start: 51031, Stop: 51570, Start Num: 5

Candidate Starts for Teardrop_101:

(Start: 5 @51031 has 181 MA's), (10, 51112), (11, 51145), (13, 51187), (17, 51271), (24, 51385), (25, 51430), (27, 51451), (28, 51490),

Gene: TheloniousMonk_18 Start: 13677, Stop: 14195, Start Num: 7

Candidate Starts for TheloniousMonk_18:

(Start: 7 @13677 has 69 MA's), (8, 13701), (14, 13806), (22, 13953), (26, 14055), (27, 14073),

Gene: Thor_16 Start: 12515, Stop: 13033, Start Num: 7

Candidate Starts for Thor_16:

(Start: 7 @12515 has 69 MA's), (8, 12539), (14, 12644), (22, 12791), (27, 12911),

Gene: TinyTim_102 Start: 52284, Stop: 52823, Start Num: 5

Candidate Starts for TinyTim_102:

(Start: 5 @52284 has 181 MA's), (10, 52365), (11, 52398), (13, 52440), (17, 52524), (24, 52638), (25, 52683), (27, 52704), (28, 52743),

Gene: Tonenili_117 Start: 56031, Stop: 56570, Start Num: 5

Candidate Starts for Tonenili_117:

(Start: 5 @56031 has 181 MA's), (10, 56112), (11, 56145), (13, 56187), (17, 56271), (24, 56385), (25, 56430), (27, 56451), (28, 56490),

Gene: Tortoise16_99 Start: 51632, Stop: 52171, Start Num: 5

Candidate Starts for Tortoise16_99:

(Start: 5 @51632 has 181 MA's), (10, 51713), (11, 51746), (13, 51788), (17, 51872), (24, 51986), (25, 52031), (27, 52052), (28, 52091),

Gene: Traft412_18 Start: 13332, Stop: 13862, Start Num: 7

Candidate Starts for Traft412_18:

(Start: 7 @13332 has 69 MA's), (8, 13356), (14, 13461), (22, 13608), (26, 13710), (27, 13728), (29, 13854),

Gene: Treddle_18 Start: 13657, Stop: 14175, Start Num: 7

Candidate Starts for Treddle_18:

(Start: 7 @13657 has 69 MA's), (8, 13681), (14, 13786), (22, 13933), (27, 14053),

Gene: Trinitium_99 Start: 50990, Stop: 51529, Start Num: 5

Candidate Starts for Trinitium_99:

(Start: 5 @50990 has 181 MA's), (10, 51071), (11, 51104), (13, 51146), (17, 51230), (24, 51344), (25, 51389), (27, 51410), (28, 51449),

Gene: Tripl3t_17 Start: 13342, Stop: 13860, Start Num: 7

Candidate Starts for Tripl3t_17:

(Start: 7 @13342 has 69 MA's), (8, 13366), (11, 13417), (14, 13471), (22, 13618), (26, 13720), (27, 13738),

Gene: Turret_97 Start: 50435, Stop: 50974, Start Num: 5

Candidate Starts for Turret_97:

(Start: 5 @50435 has 181 MA's), (10, 50516), (11, 50549), (13, 50591), (17, 50675), (24, 50789), (25, 50834), (27, 50855), (28, 50894),

Gene: Tyke_103 Start: 53173, Stop: 53712, Start Num: 5

Candidate Starts for Tyke_103:

(Start: 5 @53173 has 181 MA's), (10, 53254), (11, 53287), (13, 53329), (17, 53413), (24, 53527), (25, 53572), (27, 53593), (28, 53632),

Gene: U2_16 Start: 12616, Stop: 13077, Start Num: 7

Candidate Starts for U2_16:

(Start: 7 @12616 has 69 MA's), (8, 12640), (11, 12691), (14, 12745), (22, 12835), (24, 12889), (26, 12937), (27, 12955),

Gene: ValleyTerrace_102 Start: 51052, Stop: 51591, Start Num: 5

Candidate Starts for ValleyTerrace_102:

(Start: 5 @51052 has 181 MA's), (10, 51133), (11, 51166), (13, 51208), (17, 51292), (24, 51406), (25, 51451), (27, 51472), (28, 51511),

Gene: Vortrix_116 Start: 55349, Stop: 55888, Start Num: 5

Candidate Starts for Vortrix_116:

(Start: 5 @55349 has 181 MA's), (10, 55430), (11, 55463), (13, 55505), (16, 55571), (17, 55589), (24, 55703), (25, 55748), (27, 55769), (28, 55808),

Gene: Wally_101 Start: 51062, Stop: 51601, Start Num: 5

Candidate Starts for Wally_101:

(Start: 5 @51062 has 181 MA's), (10, 51143), (11, 51176), (13, 51218), (17, 51302), (24, 51416), (25, 51461), (27, 51482), (28, 51521),

Gene: Wheeler_16 Start: 12709, Stop: 13227, Start Num: 7

Candidate Starts for Wheeler_16:

(Start: 7 @12709 has 69 MA's), (8, 12733), (14, 12838), (22, 12985), (24, 13039), (26, 13087), (27, 13105),

Gene: Willis_103 Start: 52419, Stop: 52958, Start Num: 5

Candidate Starts for Willis_103:

(Start: 5 @52419 has 181 MA's), (10, 52500), (11, 52533), (13, 52575), (17, 52659), (24, 52773), (25, 52818), (27, 52839), (28, 52878),

Gene: Yassified_99 Start: 51139, Stop: 51678, Start Num: 5

Candidate Starts for Yassified_99:

(Start: 5 @51139 has 181 MA's), (10, 51220), (11, 51253), (13, 51295), (17, 51379), (24, 51493), (25, 51538), (27, 51559), (28, 51598),

Gene: YemiJoy2021_103 Start: 52521, Stop: 53060, Start Num: 5

Candidate Starts for YemiJoy2021_103:

(Start: 5 @52521 has 181 MA's), (10, 52602), (11, 52635), (13, 52677), (17, 52761), (24, 52875), (25, 52920), (27, 52941), (28, 52980),

Gene: YoungMoneyMata_103 Start: 51685, Stop: 52224, Start Num: 5

Candidate Starts for YoungMoneyMata_103:

(Start: 5 @51685 has 181 MA's), (10, 51766), (11, 51799), (13, 51841), (17, 51925), (24, 52039), (25, 52084), (27, 52105), (28, 52144),

Gene: Yucca_102 Start: 52203, Stop: 52742, Start Num: 5

Candidate Starts for Yucca_102:

(Start: 5 @52203 has 181 MA's), (10, 52284), (11, 52317), (13, 52359), (17, 52443), (24, 52557), (25, 52602), (27, 52623), (28, 52662),

Gene: Zalkecks_103 Start: 52204, Stop: 52743, Start Num: 5

Candidate Starts for Zalkecks_103:

(Start: 5 @52204 has 181 MA's), (10, 52285), (11, 52318), (13, 52360), (17, 52444), (24, 52558), (25, 52603), (27, 52624), (28, 52663),

Gene: Zeeculate_15 Start: 12395, Stop: 12913, Start Num: 7

Candidate Starts for Zeeculate_15:

(Start: 7 @12395 has 69 MA's), (8, 12419), (14, 12524), (24, 12725), (26, 12773), (27, 12791),

Gene: Zeenon_104 Start: 52289, Stop: 52828, Start Num: 5

Candidate Starts for Zeenon_104:

(Start: 5 @52289 has 181 MA's), (10, 52370), (11, 52403), (13, 52445), (17, 52529), (24, 52643), (25, 52688), (27, 52709), (28, 52748),

Gene: Zephyr_16 Start: 12544, Stop: 13005, Start Num: 7

Candidate Starts for Zephyr_16:

(Start: 7 @12544 has 69 MA's), (8, 12568), (11, 12619), (14, 12673), (22, 12763), (24, 12817), (26, 12865), (27, 12883),

Gene: ZygoTaiga_101 Start: 53449, Stop: 53988, Start Num: 5

Candidate Starts for ZygoTaiga_101:

(Start: 5 @53449 has 181 MA's), (10, 53530), (11, 53563), (13, 53605), (17, 53689), (24, 53803), (25, 53848), (27, 53869), (28, 53908),