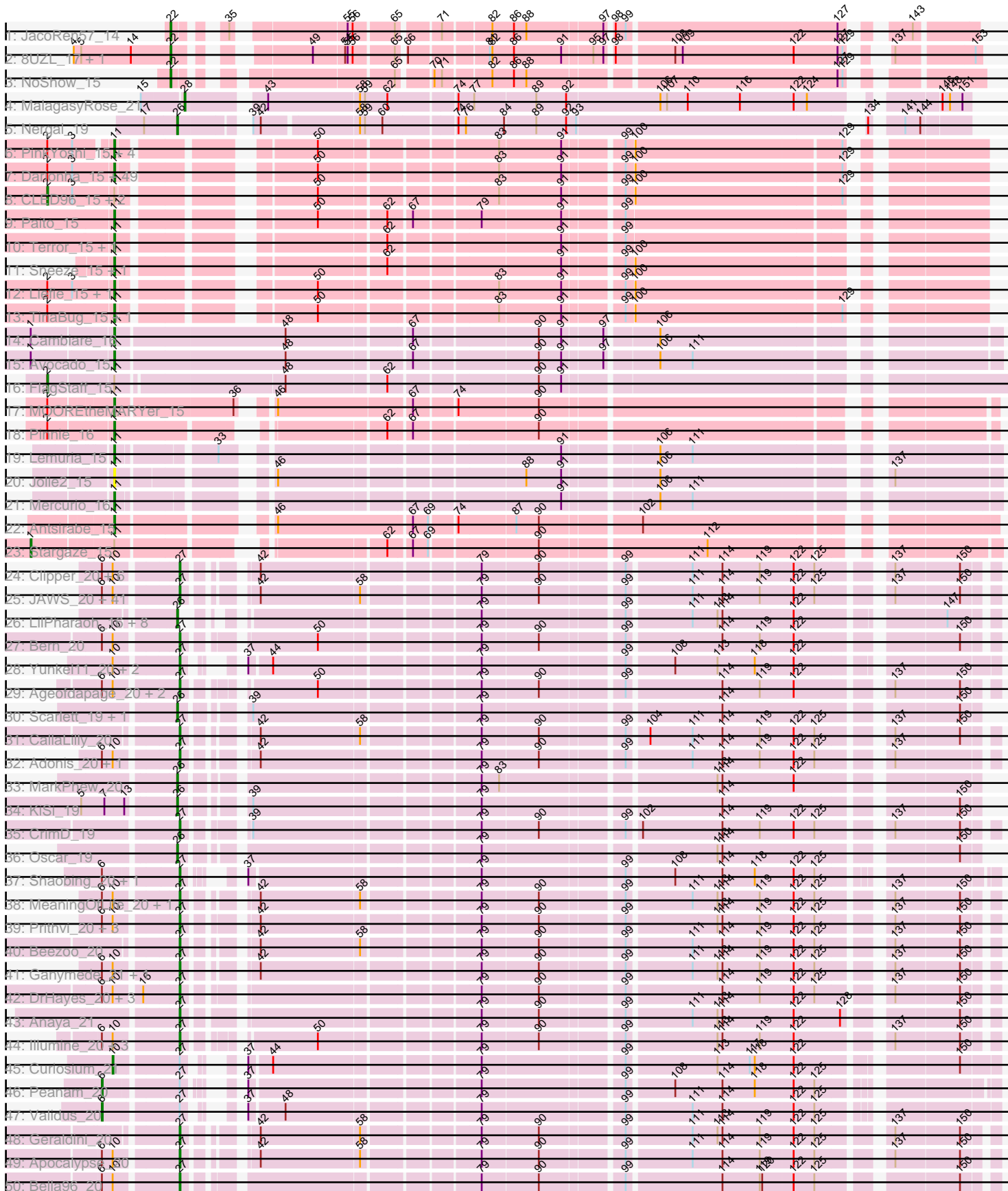
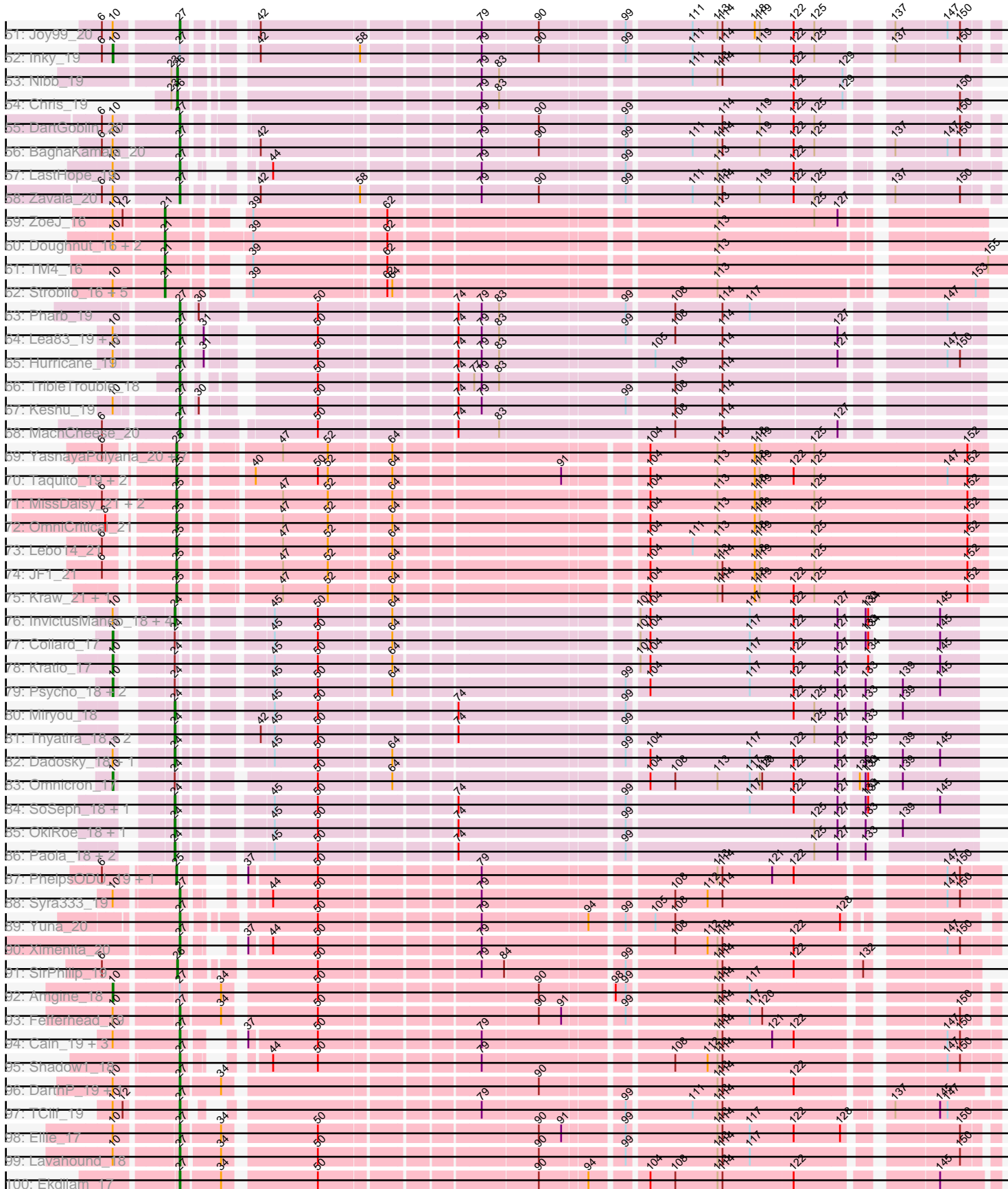


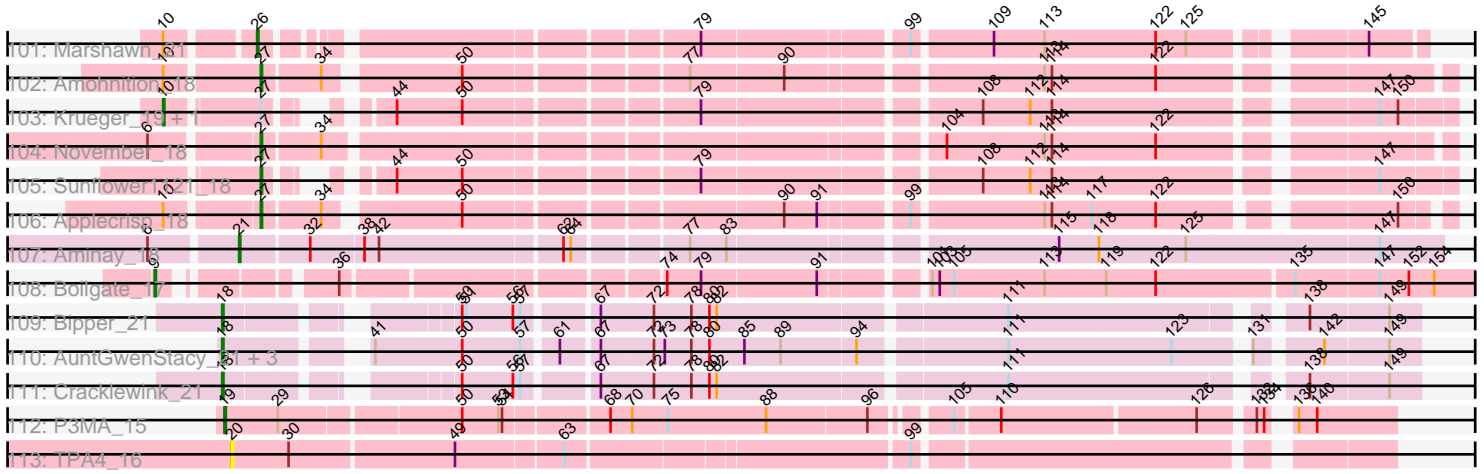
Pham 311166



Pham 311166



Pham 311166



Note: Tracks are now grouped by subcluster and scaled. Switching in subcluster is indicated by changes in track color. Track scale is now set by default to display the region 30 bp upstream of start 1 to 30 bp downstream of the last possible start. If this default region is judged to be packed too tightly with annotated starts, the track will be further scaled to only show that region of the ORF with annotated starts. This action will be indicated by adding "Zoomed" to the title. For starts, yellow indicates the location of called starts comprised solely of Glimmer/GeneMark auto-annotations, green indicates the location of called starts with at least 1 manual gene annotation.

Pham 311166 Report

This analysis was run 06/27/26 on database version 652.

Pham number 311166 has 290 members, 3 are drafts.

Phages represented in each track:

- Track 1 : JacoRen57_14
- Track 2 : 8UZL_17, Muddy_17
- Track 3 : NoShow_15
- Track 4 : MalagasyRose_21
- Track 5 : Nergal_19
- Track 6 : PinkYoshi_15, Coleslaw_15, Neoh_15, BQuat_15, Annihilator_15
- Track 7 : Darionha_15, Crespo_15, Frosty24_15, Gomashi_14, Ruriko_15, DingDing_15, LouisV14_15, Jolene_15, Jane_15, CassieYates_15, Angel_15, TomBrady_15, OctaviousRex_14, Maliketh_15, ECartman_15, DMoney_15, Kasen3_15, Sweets_15, Wendigo_15, AzulaCat_15, Avrafan_15, Peeb_15, ShaboiShabazz_15, Gideon_15, Periodt_15, ZoMa_15, Jonghyun_15, Schiebel_15, Plagueis_15, Olga_15, Aroostook_15, Sizemore_15, Barkley26_15, Zombie_15, Hope_14, MZKinsey_15, Hotshotbaby7_15, Mowgli_15, Cherrybomb426_15, Kareem_15, Chance64_14, BruceB_15, Marmie_15, Camri_15, Cedasite_15, Renaissance_15, JorRay_15, Phreak_15, Phish_15, BPs_15
- Track 8 : CLED96_15, Remy19_15, GoldenAsh_15
- Track 9 : Paito_15
- Track 10 : Terror_15, Taheera_15
- Track 11 : Sneeze_15, Rabbs_15
- Track 12 : Liefie_15, Grizzly_15
- Track 13 : TinaBug_15, Halo_15
- Track 14 : Cambiare_16
- Track 15 : Avocado_15
- Track 16 : FlagStaff_15
- Track 17 : MOOREtheMARYer_15
- Track 18 : Pinnie_16
- Track 19 : Lemuria_15
- Track 20 : Jolie2_15
- Track 21 : Mercurio_16
- Track 22 : Antsirabe_15
- Track 23 : Stargaze_15
- Track 24 : Clipper_20, CheetoDust_20, Angelica_20, Sulley_20, MacKat_20, Deby_20, Pokerus_19
- Track 25 : JAWS_20, BarrelRoll_20, Capricorn_20, Blizzard_20, BEEST_20, Belladonna_20, Lunahalos_20, Durfee_20, Adephagia_20, Padpat_20, Tachez_20, YoureAdopted_19, Homura_20, Twitch_20, ShiaSurprise_20, Emerson_19, Rosmarinus_20, Jayhawk_20, Rapunzel97_20, CREW_20, CaseJules_20,

Asayake_20, Jarvi_20, TruffulaTree_20, BGIlluviae_20, Spock_20, Peel_20, Piatt_20, Padfoot_20, Dalmuri_20, Boiiii_20, Topper_20, Hyperbowlee_20, Zabiza_20, Jeckyll_20, AlishaPH_20, ActinUp_20, Veliki_20, Slimphazie_20, HedwigODU_20, Ramen_20, Atiba_20

• Track 26 : LilPharaoh_16, Mdavu_16, Nikao_16, Nutello_16, Amelie_16, Torres_16, SgtBeansprout_16, Biglebops_16, Enkosi_16

• Track 27 : Bern_20

• Track 28 : Yunkel11_20, Efra2_20, Guanica15_20

• Track 29 : Ageofdapage_20, Murucutumbu_20, LaterM_20

• Track 30 : Scarlett_19, LeMond_19

• Track 31 : CallaLilly_20

• Track 32 : Adonis_20, Tiri_20

• Track 33 : MarkPhew_20

• Track 34 : KiSi_19

• Track 35 : CrimD_19

• Track 36 : Oscar_19

• Track 37 : Shaobing_20, Niklas_20

• Track 38 : MeaningOfLife_20, Mynx_20

• Track 39 : Prithvi_20, Megsy_20, LindNT_20, TreyKay_20

• Track 40 : Beezoo_20

• Track 41 : Ganymede_21, QuincyRose_19

• Track 42 : DrHayes_20, SamuelLPlaqson_20, TiniBug_20, Urkel_20

• Track 43 : Anaya_21

• Track 44 : Illumine_20, Stinson_20, Dole_20, Devera_20

• Track 45 : Curiosium_21

• Track 46 : Peanam_20

• Track 47 : Validus_20

• Track 48 : Geraldini_20

• Track 49 : Apocalypse_20

• Track 50 : Bella96_20

• Track 51 : Joy99_20

• Track 52 : Inky_19

• Track 53 : Nibb_19

• Track 54 : Chris_19

• Track 55 : DartGoblin_20

• Track 56 : BaghaKamala_20

• Track 57 : LastHope_19

• Track 58 : Zavala_20

• Track 59 : ZoeJ_16

• Track 60 : Doughnut_16, Mufasa_16, BoostSeason_16

• Track 61 : TM4_16

• Track 62 : Strobilo_16, Milly_16, DismalFunk_15, Marcoliusprime_16, Findley_16, DismalStressor_16

• Track 63 : Pharb_19

• Track 64 : Lea83_19, Pixie_18, ShedlockHolmes_19, TBond007_19

• Track 65 : Hurricane_19

• Track 66 : TribbleTrouble_18

• Track 67 : Keshu_19

• Track 68 : MacnCheese_20

• Track 69 : YasnayaPolyana_20, Wintermute_21, Mitti_21, Chancellor_21, Fionnbharth_21, Cheetobro_21, SamScheppers_19, Slarp_20

• Track 70 : Taquito_19, Juliette_21, Eponine_21

• Track 71 : MissDaisy_21, Patt_20, Reptar3000_21

- Track 72 : OmniCritical_21
- Track 73 : Lebo14_21
- Track 74 : JF1_21
- Track 75 : Kraw_21, Malthus_21
- Track 76 : InvictusManeo_18, LilDirt_17, BananenDer11_18, ViviJ_17, Agent47_18
- Track 77 : Collard_17
- Track 78 : Kratio_17
- Track 79 : Psycho_18, AlleyCat_18, Larva_18
- Track 80 : Miryou_18
- Track 81 : Thyatira_18, Waterfoul_18, Feyre_18
- Track 82 : Dadosky_18, Edugator_16
- Track 83 : Omnicron_17
- Track 84 : SoSeph_18, Heftyboy_18
- Track 85 : OkiRoe_18, Leston_18
- Track 86 : Paola_18, Gengar_18, Guillsminger_17
- Track 87 : PhelpsODU_19, Unicorn_19
- Track 88 : Syra333_19
- Track 89 : Yuna_20
- Track 90 : Ximenita_20
- Track 91 : SirPhilip_19
- Track 92 : Amgine_18
- Track 93 : Fefferhead_19
- Track 94 : Cain_19, Phrank_19, Tierra_19, Bryler_19
- Track 95 : Shadow1_18
- Track 96 : DarthP_19, Hammy_19
- Track 97 : TClif_19
- Track 98 : Ellie_17
- Track 99 : Lavahound_18
- Track 100 : Ekdilam_17
- Track 101 : Marshawn_21
- Track 102 : Amohnition_18
- Track 103 : Krueger_19, Tigress9_19
- Track 104 : November_18
- Track 105 : Sunflower1121_18
- Track 106 : Applecrisp_18
- Track 107 : Aminay_18
- Track 108 : Boilgate_17
- Track 109 : Bipper_21
- Track 110 : AuntGwenStacy_21, Faiyaz_21, Typha_21, Hilltopfarm_21
- Track 111 : Cracklewink_21
- Track 112 : P3MA_15
- Track 113 : TPA4_16

Summary of Final Annotations (See graph section above for start numbers):

The start number called the most often in the published annotations is 27, it was called in 116 of the 287 non-draft genes in the pham.

Genes that call this "Most Annotated" start:

- ActinUp_20, Adephegia_20, Adonis_20, Ageofdapage_20, AlishaPH_20, Amohntion_18, Anaya_21, Angelica_20, Apocalypse_20, Applecrisp_18, Asayake_20, Atiba_20, BEEST_20, BGIluvia_20, BaghaKamala_20, BarrelRoll_20, Beezoo_20, Bella96_20, Belladonna_20, Bern_20, Blizzard_20, Boiiii_20, Bryler_19, CREW_20, Cain_19, CallaLilly_20, Capricorn_20, CaseJules_20, CheetoDust_20, Clipper_20, CrimD_19, Dalmuri_20, DartGoblin_20, DarthP_19, Deby_20, Devera_20, Dole_20, DrHayes_20, Durfee_20, Efra2_20, Ekdilam_17, Ellie_17, Emerson_19, Fefferhead_19, Ganymede_21, Geraldini_20, Guanica15_20, Hammy_19, HedwigODU_20, Homura_20, Hurricane_19, Hyperbowlee_20, Illumine_20, JAWS_20, Jarvi_20, Jayhawk_20, Jeckyll_20, Joy99_20, Keshu_19, LastHope_19, LaterM_20, Lavahound_18, Lea83_19, LindNT_20, Lunahalos_20, MacKat_20, MacnCheese_20, MeaningOfLife_20, Megsy_20, Murucutumbu_20, Mynx_20, Niklas_20, November_18, Padfoot_20, Padpat_20, Peel_20, Pharb_19, Phrank_19, Piatt_20, Pixie_18, Pokerus_19, Prithvi_20, QuincyRose_19, Ramen_20, Rapunzel97_20, Rosmarinus_20, SamuelLPlaqsom_20, Shadow1_18, Shaobing_20, ShedlockHolmes_19, ShiaSurprise_20, Slimphazie_20, Spock_20, Stinson_20, Sulley_20, Sunflower1121_18, Syra333_19, TBond007_19, TClif_19, Tachez_20, Tierra_19, TiniBug_20, Tiri_20, Topper_20, TreyKay_20, TripleTrouble_18, TruffulaTree_20, Twitch_20, Urkel_20, Veliki_20, Ximenita_20, YoureAdopted_19, Yuna_20, Yunkel11_20, Zabiza_20, Zavala_20,

Genes that have the "Most Annotated" start but do not call it:

- Amgine_18, Curiosium_21, Inky_19, Krueger_19, Peanam_20, Tigress9_19, Validus_20,

Genes that do not have the "Most Annotated" start:

- 8UZL_17, Agent47_18, AlleyCat_18, Amelie_16, Aminay_18, Angel_15, Annihilator_15, Antsirabe_15, Aroostook_15, AuntGwenStacy_21, Avocado_15, Avrafan_15, AzulaCat_15, BPs_15, BQuat_15, BananenDer11_18, Barkley26_15, Binglebops_16, Bipper_21, Boilgate_17, BoostSeason_16, BruceB_15, CLED96_15, Cambiare_16, Camri_15, CassieYates_15, Cedasite_15, Chance64_14, Chancellor_21, Cheetobro_21, Cherrybomb426_15, Chris_19, Coleslaw_15, Collard_17, Cracklewink_21, Crespo_15, DMoney_15, Dadosky_18, Darionha_15, DingDing_15, DismalFunk_15, DismalStressor_16, Doughnut_16, ECartman_15, Edugator_16, Enkosi_16, Eponine_21, Faiyaz_21, Feyre_18, Findley_16, Fionnbharth_21, FlagStaff_15, Frosty24_15, Gengar_18, Gideon_15, GoldenAsh_15, Gomashi_14, Grizzly_15, Guillsminger_17, Halo_15, Heftyboy_18, Hilltopfarm_21, Hope_14, Hotshotbaby7_15, InvictusManeo_18, JF1_21, JacoRen57_14, Jane_15, Jolene_15, Jolie2_15, Jonghyun_15, JorRay_15, Juliette_21, Kareem_15, Kasen3_15, KiSi_19, Kratio_17, Kraw_21, Larva_18, LeMond_19, Lebo14_21, Lemuria_15, Leston_18, Liefie_15, LilDirt_17, LilPharaoh_16, LouisV14_15, MOOREtheMARYer_15, MZKinsey_15, MalagasyRose_21, Maliketh_15, Malthus_21, Marcoliusprime_16, MarkPhew_20, Marmie_15, Marshawn_21, Mdavu_16, Mercurio_16, Milly_16, Miryou_18, MissDaisy_21, Mitti_21, Mowgli_15, Muddy_17, Mufasa_16, Neoh_15, Nergal_19, Nibb_19, Nikao_16, NoShow_15, Nutello_16, OctaviousRex_14, OkiRoe_18, Olga_15, OmniCritical_21, Omnicron_17, Oscar_19, P3MA_15, Paito_15, Paola_18, Patt_20, Peeb_15, Periodt_15, PhelpsODU_19, Phish_15, Phreak_15, PinkYoshi_15, Pinnie_16, Plagueis_15, Psycho_18, Rabbs_15, Remy19_15, Renaissance_15, Reptar3000_21, Ruriko_15, SamScheppers_19, Scarlett_19, Schiebel_15, SgtBeansprout_16, ShaboiShabazz_15, SirPhilip_19, Sizemore_15, Slarp_20, Sneeze_15, SoSeph_18, Stargaze_15, Strobilo_16, Sweets_15, TM4_16, TPA4_16, Taheera_15, Taquito_19, Terror_15, Thyatira_18, TinaBug_15, TomBrady_15, Torres_16, Typha_21,

Unicorn_19, ViviJ_17, Waterfoul_18, Wendigo_15, Wintermute_21, YasnayaPolyana_20, ZoMa_15, ZoeJ_16, Zombie_15,

Summary by start number:

Start 1:

- Found in 3 of 290 (1.0%) of genes in pham
- Manual Annotations of this start: 1 of 287
- Called 33.3% of time when present
- Phage (with cluster) where this start called: Stargaze_15 (G5),

Start 2:

- Found in 65 of 290 (22.4%) of genes in pham
- Manual Annotations of this start: 4 of 287
- Called 6.2% of time when present
- Phage (with cluster) where this start called: CLED96_15 (G1), FlagStaff_15 (G2), GoldenAsh_15 (G1), Remy19_15 (G1),

Start 6:

- Found in 101 of 290 (34.8%) of genes in pham
- Manual Annotations of this start: 2 of 287
- Called 2.0% of time when present
- Phage (with cluster) where this start called: Peanam_20 (K1), Validus_20 (K1),

Start 9:

- Found in 1 of 290 (0.3%) of genes in pham
- Manual Annotations of this start: 1 of 287
- Called 100.0% of time when present
- Phage (with cluster) where this start called: Boilgate_17 (K8),

Start 10:

- Found in 129 of 290 (44.5%) of genes in pham
- Manual Annotations of this start: 11 of 287
- Called 8.5% of time when present
- Phage (with cluster) where this start called: AlleyCat_18 (K5), Amgine_18 (K6), Collard_17 (K5), Curiosium_21 (K1), Inky_19 (K1), Kratio_17 (K5), Krueger_19 (K6), Larva_18 (K5), Omnicron_17 (K5), Psycho_18 (K5), Tigress9_19 (K6),

Start 11:

- Found in 77 of 290 (26.6%) of genes in pham
- Manual Annotations of this start: 71 of 287
- Called 93.5% of time when present
- Phage (with cluster) where this start called: Angel_15 (G1), Annihilator_15 (G1), Antsirabe_15 (G5), Aroostook_15 (G1), Avocado_15 (G2), Avrafan_15 (G1), AzulaCat_15 (G1), BPs_15 (G1), BQuat_15 (G1), Barkley26_15 (G1), BruceB_15 (G1), Cambiare_16 (G2), Camri_15 (G1), CassieYates_15 (G1), Cedasite_15 (G1), Chance64_14 (G1), Cherrybomb426_15 (G1), Coleslaw_15 (G1), Crespo_15 (G1), DMoney_15 (G1), Darionha_15 (G1), DingDing_15 (G1), ECartman_15 (G1), Frosty24_15 (G1), Gideon_15 (G1), Gomashi_14 (G1), Grizzly_15 (G1), Halo_15 (G1), Hope_14 (G1), Hotshotbaby7_15 (G1), Jane_15 (G1), Jolene_15 (G1), Jolie2_15 (G4), Jonghyun_15 (G1), JorRay_15 (G1), Kareem_15 (G1), Kasen3_15 (G1), Lemuria_15 (G4), Liefie_15 (G1), LouisV14_15 (G1), MOOREtheMARYer_15 (G3), MZKinsey_15 (G1), Maliketh_15 (G1), Marmie_15 (G1), Mercurio_16 (G4),

Mowgli_15 (G1), Neoh_15 (G), OctaviousRex_14 (G1), Olga_15 (G1), Paito_15 (G1), Peeb_15 (G1), Periodt_15 (G1), Phish_15 (G1), Phreak_15 (G1), PinkYoshi_15 (G1), Pinnie_16 (G3), Plagueis_15 (G1), Rabbs_15 (G1), Renaissance_15 (G1), Ruriko_15 (G1), Schiebel_15 (G1), ShaboiShabazz_15 (G1), Sizemore_15 (G1), Sneeze_15 (G1), Sweets_15 (G1), Taheera_15 (G1), Terror_15 (G1), TinaBug_15 (G1), TomBrady_15 (G1), Wendigo_15 (G1), ZoMa_15 (G1), Zombie_15 (G1),

Start 18:

- Found in 6 of 290 (2.1%) of genes in pham
- Manual Annotations of this start: 6 of 287
- Called 100.0% of time when present
- Phage (with cluster) where this start called: AuntGwenStacy_21 (Y), Bipper_21 (Y), Cracklewink_21 (Y), Faiyaz_21 (Y), Hilltopfarm_21 (Y), Typha_21 (Y),

Start 19:

- Found in 1 of 290 (0.3%) of genes in pham
- Manual Annotations of this start: 1 of 287
- Called 100.0% of time when present
- Phage (with cluster) where this start called: P3MA_15 (singleton),

Start 20:

- Found in 1 of 290 (0.3%) of genes in pham
- No Manual Annotations of this start.
- Called 100.0% of time when present
- Phage (with cluster) where this start called: TPA4_16 (singleton),

Start 21:

- Found in 12 of 290 (4.1%) of genes in pham
- Manual Annotations of this start: 12 of 287
- Called 100.0% of time when present
- Phage (with cluster) where this start called: Aminay_18 (K7), BoostSeason_16 (K2), DismalFunk_15 (K2), DismalStressor_16 (K2), Doughnut_16 (K2), Findley_16 (K2), Marcoliusprime_16 (K2), Milly_16 (K2), Mufasa_16 (K2), Strobilo_16 (K2), TM4_16 (K2), ZoeJ_16 (K2),

Start 22:

- Found in 4 of 290 (1.4%) of genes in pham
- Manual Annotations of this start: 3 of 287
- Called 100.0% of time when present
- Phage (with cluster) where this start called: 8UZL_17 (AB), JacoRen57_14 (AB), Muddy_17 (AB), NoShow_15 (AB),

Start 24:

- Found in 24 of 290 (8.3%) of genes in pham
- Manual Annotations of this start: 18 of 287
- Called 75.0% of time when present
- Phage (with cluster) where this start called: Agent47_18 (K5), BananenDer11_18 (K5), Dadosky_18 (K5), Edugator_16 (K5), Feyre_18 (K5), Gengar_18 (K5), Guillsminger_17 (K5), Heftyboy_18 (K5), InvictusManeo_18 (K5), Leston_18 (K5), LilDirt_17 (K5), Miryou_18 (K5), OkiRoe_18 (K5), Paola_18 (K5), SoSeph_18 (K5), Thyatira_18 (K5), ViviJ_17 (K5), Waterfoul_18 (K5),

Start 25:

- Found in 21 of 290 (7.2%) of genes in pham
- Manual Annotations of this start: 21 of 287
- Called 100.0% of time when present
- Phage (with cluster) where this start called: Chancellor_21 (K4), Cheetobro_21 (K4), Eponine_21 (K4), Fionnbharth_21 (K4), JF1_21 (K4), Juliette_21 (K4), Kraw_21 (K4), Lebo14_21 (K4), Malthus_21 (K4), MissDaisy_21 (K4), Mitti_21 (K4), OmniCritical_21 (K4), Patt_20 (K4), PhelpsODU_19 (K6), Reptar3000_21 (K4), SamScheppers_19 (K4), Slarp_20 (K4), Taquito_19 (K4), Unicorn_19 (K6), Wintermute_21 (K4), YasnayaPolyana_20 (K4),

Start 26:

- Found in 19 of 290 (6.6%) of genes in pham
- Manual Annotations of this start: 19 of 287
- Called 100.0% of time when present
- Phage (with cluster) where this start called: Amelie_16 (K1), Binglebops_16 (K1), Chris_19 (K1), Enkosi_16 (K1), KiSi_19 (K1), LeMond_19 (K1), LilPharaoh_16 (K1), MarkPhew_20 (K1), Marshawn_21 (K6), Mdavu_16 (K1), Nergal_19 (AG), Nibb_19 (K1), Nikao_16 (K1), Nutello_16 (K1), Oscar_19 (K1), Scarlett_19 (K1), SgtBeansprout_16 (K1), SirPhilip_19 (K6), Torres_16 (K1),

Start 27:

- Found in 123 of 290 (42.4%) of genes in pham
- Manual Annotations of this start: 116 of 287
- Called 94.3% of time when present
- Phage (with cluster) where this start called: ActinUp_20 (K1), Adephagia_20 (K1), Adonis_20 (K1), Ageofdapage_20 (K1), AlishaPH_20 (K1), Amohnition_18 (K6), Anaya_21 (K1), Angelica_20 (K1), Apocalypse_20 (K1), Applecrisp_18 (K6), Asayake_20 (K1), Atiba_20 (K1), BEEST_20 (K1), BGIlluviae_20 (K1), BaghaKamala_20 (K1), BarrelRoll_20 (K1), Beezoo_20 (K1), Bella96_20 (K1), Belladonna_20 (K1), Bern_20 (K1), Blizzard_20 (K1), Boiiii_20 (K1), Bryler_19 (K6), CREW_20 (K1), Cain_19 (K6), CallaLilly_20 (K1), Capricorn_20 (K1), CaseJules_20 (K1), CheetoDust_20 (K1), Clipper_20 (K1), CrimD_19 (K1), Dalmuri_20 (K1), DartGoblin_20 (K1), DARTH_19 (K6), Deby_20 (K1), Devera_20 (K1), Dole_20 (K1), DrHayes_20 (K1), Durfee_20 (K1), Efra2_20 (K1), Ekdilam_17 (K6), Ellie_17 (K6), Emerson_19 (K1), Fefferhead_19 (K6), Ganymede_21 (K1), Geraldini_20 (K1), Guanica15_20 (K1), Hammy_19 (K6), HedwigODU_20 (K1), Homura_20 (K1), Hurricane_19 (K3), Hyperbowlee_20 (K1), Illumine_20 (K1), JAWS_20 (K1), Jarvi_20 (K1), Jayhawk_20 (K1), Jeckyll_20 (K1), Joy99_20 (K1), Keshu_19 (K3), LastHope_19 (K1), LaterM_20 (K1), Lavahound_18 (K6), Lea83_19 (K3), LindNT_20 (K1), Lunahalos_20 (K1), MacKat_20 (K1), MacnCheese_20 (K3), MeaningOfLife_20 (K1), Megsy_20 (K1), Murucutumbu_20 (K1), Mynx_20 (K1), Niklas_20 (K1), November_18 (K6), Padfoot_20 (K1), Padpat_20 (K1), Peel_20 (K1), Pharb_19 (K3), Phrank_19 (K6), Piatt_20 (K1), Pixie_18 (K3), Pokerus_19 (K1), Prithvi_20 (K1), QuincyRose_19 (K1), Ramen_20 (K1), Rapunzel97_20 (K1), Rosmarinus_20 (K1), SamuelLPlaqson_20 (K1), Shadow1_18 (K6), Shaobing_20 (K1), ShedlockHolmes_19 (K3), ShiaSurprise_20 (K1), Slimphazie_20 (K1), Spock_20 (K1), Stinson_20 (K1), Sulley_20 (K1), Sunflower1121_18 (K6), Syra333_19 (K6), TBond007_19 (K3), TClif_19 (K6), Tachez_20 (K1), Tierra_19 (K6), TiniBug_20 (K1), Tiri_20 (K1), Topper_20 (K1), TreyKay_20 (K1), TribbleTrouble_18 (K3), TruffulaTree_20 (K1), Twitch_20 (K1), Urkel_20 (K1), Veliki_20 (K1), Ximenita_20 (K6), YoureAdopted_19 (K1), Yuna_20 (K6), Yunkel11_20 (K1), Zabiza_20 (K1), Zavala_20 (K1),

Start 28:

- Found in 1 of 290 (0.3%) of genes in pham
- Manual Annotations of this start: 1 of 287
- Called 100.0% of time when present
- Phage (with cluster) where this start called: MalagasyRose_21 (AG),

Summary by clusters:

There are 18 clusters represented in this pham: G5, AB, G3, AG, G1, G, singleton, K3, K2, K1, G4, K7, K6, K5, K4, Y, K8, G2,

Info for manual annotations of cluster AB:

- Start number 22 was manually annotated 3 times for cluster AB.

Info for manual annotations of cluster AG:

- Start number 26 was manually annotated 1 time for cluster AG.
- Start number 28 was manually annotated 1 time for cluster AG.

Info for manual annotations of cluster G:

- Start number 11 was manually annotated 1 time for cluster G.

Info for manual annotations of cluster G1:

- Start number 2 was manually annotated 3 times for cluster G1.
- Start number 11 was manually annotated 63 times for cluster G1.

Info for manual annotations of cluster G2:

- Start number 2 was manually annotated 1 time for cluster G2.
- Start number 11 was manually annotated 2 times for cluster G2.

Info for manual annotations of cluster G3:

- Start number 11 was manually annotated 2 times for cluster G3.

Info for manual annotations of cluster G4:

- Start number 11 was manually annotated 2 times for cluster G4.

Info for manual annotations of cluster G5:

- Start number 1 was manually annotated 1 time for cluster G5.
- Start number 11 was manually annotated 1 time for cluster G5.

Info for manual annotations of cluster K1:

- Start number 6 was manually annotated 2 times for cluster K1.
- Start number 10 was manually annotated 2 times for cluster K1.
- Start number 26 was manually annotated 16 times for cluster K1.
- Start number 27 was manually annotated 88 times for cluster K1.

Info for manual annotations of cluster K2:

- Start number 21 was manually annotated 11 times for cluster K2.

Info for manual annotations of cluster K3:

- Start number 27 was manually annotated 9 times for cluster K3.

Info for manual annotations of cluster K4:

- Start number 25 was manually annotated 19 times for cluster K4.

Info for manual annotations of cluster K5:

- Start number 10 was manually annotated 6 times for cluster K5.
- Start number 24 was manually annotated 18 times for cluster K5.

Info for manual annotations of cluster K6:

- Start number 10 was manually annotated 3 times for cluster K6.
- Start number 25 was manually annotated 2 times for cluster K6.
- Start number 26 was manually annotated 2 times for cluster K6.
- Start number 27 was manually annotated 19 times for cluster K6.

Info for manual annotations of cluster K7:

- Start number 21 was manually annotated 1 time for cluster K7.

Info for manual annotations of cluster K8:

- Start number 9 was manually annotated 1 time for cluster K8.

Info for manual annotations of cluster Y:

- Start number 18 was manually annotated 6 times for cluster Y.

Gene Information:

Gene: 8UZL_17 Start: 10640, Stop: 11439, Start Num: 22

Candidate Starts for 8UZL_17:

(4, 10523), (5, 10532), (14, 10592), (Start: 22 @10640 has 3 MA's), (49, 10751), (54, 10787), (55, 10790), (56, 10796), (65, 10841), (66, 10847), (81, 10931), (82, 10934), (86, 10958), (91, 11015), (95, 11048), (97, 11060), (98, 11066), (108, 11129), (109, 11138), (122, 11270), (127, 11321), (129, 11327), (137, 11345), (153, 11432),

Gene: ActinUp_20 Start: 11232, Stop: 12079, Start Num: 27

Candidate Starts for ActinUp_20:

(Start: 6 @11154 has 2 MA's), (Start: 10 @11166 has 11 MA's), (Start: 27 @11232 has 116 MA's), (42, 11289), (58, 11406), (79, 11529), (90, 11595), (99, 11685), (111, 11757), (114, 11793), (119, 11838), (122, 11877), (125, 11901), (137, 11970), (150, 12045),

Gene: Adephagia_20 Start: 11232, Stop: 12079, Start Num: 27

Candidate Starts for Adephagia_20:

(Start: 6 @11154 has 2 MA's), (Start: 10 @11166 has 11 MA's), (Start: 27 @11232 has 116 MA's), (42, 11289), (58, 11406), (79, 11529), (90, 11595), (99, 11685), (111, 11757), (114, 11793), (119, 11838), (122, 11877), (125, 11901), (137, 11970), (150, 12045),

Gene: Adonis_20 Start: 11241, Stop: 12088, Start Num: 27

Candidate Starts for Adonis_20:

(Start: 6 @11163 has 2 MA's), (Start: 10 @11175 has 11 MA's), (Start: 27 @11241 has 116 MA's), (42, 11298), (79, 11538), (90, 11604), (99, 11694), (111, 11766), (114, 11802), (119, 11847), (122, 11886), (125, 11910), (137, 11979),

Gene: Agent47_18 Start: 11377, Stop: 12218, Start Num: 24

Candidate Starts for Agent47_18:

(Start: 10 @11332 has 11 MA's), (Start: 24 @11377 has 18 MA's), (45, 11461), (50, 11512), (64, 11593), (101, 11848), (104, 11860), (117, 11980), (122, 12031), (127, 12082), (133, 12109), (134,

12112), (145, 12175),

Gene: Ageofdapage_20 Start: 11170, Stop: 12014, Start Num: 27

Candidate Starts for Ageofdapage_20:

(Start: 6 @11092 has 2 MA's), (Start: 10 @11104 has 11 MA's), (Start: 27 @11170 has 116 MA's), (50, 11293), (79, 11464), (90, 11530), (99, 11620), (114, 11728), (119, 11773), (122, 11812), (137, 11905), (150, 11980),

Gene: AlishaPH_20 Start: 11228, Stop: 12075, Start Num: 27

Candidate Starts for AlishaPH_20:

(Start: 6 @11150 has 2 MA's), (Start: 10 @11162 has 11 MA's), (Start: 27 @11228 has 116 MA's), (42, 11285), (58, 11402), (79, 11525), (90, 11591), (99, 11681), (111, 11753), (114, 11789), (119, 11834), (122, 11873), (125, 11897), (137, 11966), (150, 12041),

Gene: AlleyCat_18 Start: 11208, Stop: 12094, Start Num: 10

Candidate Starts for AlleyCat_18:

(Start: 10 @11208 has 11 MA's), (Start: 24 @11253 has 18 MA's), (45, 11337), (50, 11388), (64, 11469), (99, 11715), (104, 11736), (117, 11856), (122, 11907), (127, 11958), (133, 11985), (139, 12009), (145, 12051),

Gene: Amelie_16 Start: 10504, Stop: 11327, Start Num: 26

Candidate Starts for Amelie_16:

(Start: 26 @10504 has 19 MA's), (79, 10780), (99, 10936), (111, 11008), (113, 11038), (114, 11044), (122, 11128), (147, 11278),

Gene: Amgine_18 Start: 10940, Stop: 11862, Start Num: 10

Candidate Starts for Amgine_18:

(Start: 10 @10940 has 11 MA's), (Start: 27 @11003 has 116 MA's), (34, 11045), (50, 11144), (90, 11381), (98, 11459), (99, 11471), (113, 11573), (114, 11579), (117, 11612),

Gene: Aminay_18 Start: 11067, Stop: 11992, Start Num: 21

Candidate Starts for Aminay_18:

(Start: 6 @11001 has 2 MA's), (Start: 21 @11067 has 12 MA's), (32, 11121), (38, 11163), (42, 11175), (62, 11319), (64, 11325), (77, 11406), (83, 11436), (115, 11685), (118, 11718), (125, 11787), (147, 11943),

Gene: Amohnition_18 Start: 11325, Stop: 12196, Start Num: 27

Candidate Starts for Amohnition_18:

(Start: 10 @11256 has 11 MA's), (Start: 27 @11325 has 116 MA's), (34, 11370), (50, 11469), (77, 11631), (90, 11706), (113, 11898), (114, 11904), (122, 11988),

Gene: Anaya_21 Start: 11244, Stop: 12097, Start Num: 27

Candidate Starts for Anaya_21:

(Start: 27 @11244 has 116 MA's), (79, 11547), (90, 11613), (99, 11703), (111, 11775), (113, 11805), (114, 11811), (122, 11895), (128, 11949), (150, 12063),

Gene: Angel_15 Start: 10569, Stop: 11464, Start Num: 11

Candidate Starts for Angel_15:

(Start: 2 @10494 has 4 MA's), (3, 10524), (Start: 11 @10569 has 71 MA's), (50, 10755), (83, 10947), (91, 11019), (99, 11082), (100, 11091), (129, 11331),

Gene: Angelica_20 Start: 11203, Stop: 12050, Start Num: 27

Candidate Starts for Angelica_20:

(Start: 6 @11125 has 2 MA's), (Start: 10 @11137 has 11 MA's), (Start: 27 @11203 has 116 MA's), (42, 11260), (79, 11500), (90, 11566), (99, 11656), (111, 11728), (114, 11764), (119, 11809), (122, 11848), (125, 11872), (137, 11941), (150, 12016),

Gene: Annihilator_15 Start: 10560, Stop: 11455, Start Num: 11

Candidate Starts for Annihilator_15:

(Start: 2 @10494 has 4 MA's), (3, 10524), (Start: 11 @10560 has 71 MA's), (50, 10746), (83, 10938), (91, 11010), (99, 11073), (100, 11082), (129, 11322),

Gene: Antsirabe_15 Start: 10908, Stop: 11833, Start Num: 11

Candidate Starts for Antsirabe_15:

(Start: 11 @10908 has 71 MA's), (46, 11058), (67, 11214), (69, 11232), (74, 11259), (87, 11325), (90, 11352), (102, 11463),

Gene: Apocalypse_20 Start: 11206, Stop: 12053, Start Num: 27

Candidate Starts for Apocalypse_20:

(Start: 6 @11128 has 2 MA's), (Start: 10 @11140 has 11 MA's), (Start: 27 @11206 has 116 MA's), (42, 11263), (58, 11380), (79, 11503), (90, 11569), (99, 11659), (111, 11731), (114, 11767), (119, 11812), (122, 11851), (125, 11875), (137, 11944), (150, 12019),

Gene: Applecrisp_18 Start: 11411, Stop: 12273, Start Num: 27

Candidate Starts for Applecrisp_18:

(Start: 10 @11345 has 11 MA's), (Start: 27 @11411 has 116 MA's), (34, 11456), (50, 11555), (90, 11792), (91, 11819), (99, 11882), (113, 11984), (114, 11990), (117, 12023), (122, 12074), (150, 12239),

Gene: Aroostook_15 Start: 10569, Stop: 11464, Start Num: 11

Candidate Starts for Aroostook_15:

(Start: 2 @10494 has 4 MA's), (3, 10524), (Start: 11 @10569 has 71 MA's), (50, 10755), (83, 10947), (91, 11019), (99, 11082), (100, 11091), (129, 11331),

Gene: Asayake_20 Start: 11269, Stop: 12116, Start Num: 27

Candidate Starts for Asayake_20:

(Start: 6 @11191 has 2 MA's), (Start: 10 @11203 has 11 MA's), (Start: 27 @11269 has 116 MA's), (42, 11326), (58, 11443), (79, 11566), (90, 11632), (99, 11722), (111, 11794), (114, 11830), (119, 11875), (122, 11914), (125, 11938), (137, 12007), (150, 12082),

Gene: Atiba_20 Start: 11195, Stop: 12042, Start Num: 27

Candidate Starts for Atiba_20:

(Start: 6 @11117 has 2 MA's), (Start: 10 @11129 has 11 MA's), (Start: 27 @11195 has 116 MA's), (42, 11252), (58, 11369), (79, 11492), (90, 11558), (99, 11648), (111, 11720), (114, 11756), (119, 11801), (122, 11840), (125, 11864), (137, 11933), (150, 12008),

Gene: AuntGwenStacy_21 Start: 13145, Stop: 14025, Start Num: 18

Candidate Starts for AuntGwenStacy_21:

(Start: 18 @13145 has 6 MA's), (41, 13235), (50, 13307), (57, 13355), (61, 13379), (67, 13406), (72, 13448), (73, 13457), (78, 13478), (80, 13493), (85, 13520), (89, 13550), (94, 13610), (111, 13721), (123, 13853), (131, 13904), (142, 13949), (149, 14000),

Gene: Avocado_15 Start: 10731, Stop: 11689, Start Num: 11

Candidate Starts for Avocado_15:

(Start: 1 @10641 has 1 MA's), (Start: 11 @10731 has 71 MA's), (48, 10929), (67, 11067), (90, 11205), (91, 11232), (97, 11277), (106, 11334), (111, 11373),

Gene: Avrafan_15 Start: 10569, Stop: 11464, Start Num: 11

Candidate Starts for Avrafan_15:

(Start: 2 @10494 has 4 MA's), (3, 10524), (Start: 11 @10569 has 71 MA's), (50, 10755), (83, 10947), (91, 11019), (99, 11082), (100, 11091), (129, 11331),

Gene: AzulaCat_15 Start: 10569, Stop: 11464, Start Num: 11

Candidate Starts for AzulaCat_15:

(Start: 2 @10494 has 4 MA's), (3, 10524), (Start: 11 @10569 has 71 MA's), (50, 10755), (83, 10947), (91, 11019), (99, 11082), (100, 11091), (129, 11331),

Gene: BEEST_20 Start: 11269, Stop: 12116, Start Num: 27

Candidate Starts for BEEST_20:

(Start: 6 @11191 has 2 MA's), (Start: 10 @11203 has 11 MA's), (Start: 27 @11269 has 116 MA's), (42, 11326), (58, 11443), (79, 11566), (90, 11632), (99, 11722), (111, 11794), (114, 11830), (119, 11875), (122, 11914), (125, 11938), (137, 12007), (150, 12082),

Gene: BGIlluviae_20 Start: 11269, Stop: 12116, Start Num: 27

Candidate Starts for BGIlluviae_20:

(Start: 6 @11191 has 2 MA's), (Start: 10 @11203 has 11 MA's), (Start: 27 @11269 has 116 MA's), (42, 11326), (58, 11443), (79, 11566), (90, 11632), (99, 11722), (111, 11794), (114, 11830), (119, 11875), (122, 11914), (125, 11938), (137, 12007), (150, 12082),

Gene: BPs_15 Start: 10569, Stop: 11464, Start Num: 11

Candidate Starts for BPs_15:

(Start: 2 @10494 has 4 MA's), (3, 10524), (Start: 11 @10569 has 71 MA's), (50, 10755), (83, 10947), (91, 11019), (99, 11082), (100, 11091), (129, 11331),

Gene: BQuat_15 Start: 10560, Stop: 11455, Start Num: 11

Candidate Starts for BQuat_15:

(Start: 2 @10494 has 4 MA's), (3, 10524), (Start: 11 @10560 has 71 MA's), (50, 10746), (83, 10938), (91, 11010), (99, 11073), (100, 11082), (129, 11322),

Gene: BaghaKamala_20 Start: 11198, Stop: 12045, Start Num: 27

Candidate Starts for BaghaKamala_20:

(Start: 6 @11120 has 2 MA's), (Start: 10 @11132 has 11 MA's), (Start: 27 @11198 has 116 MA's), (42, 11255), (79, 11495), (90, 11561), (99, 11651), (111, 11723), (113, 11753), (114, 11759), (119, 11804), (122, 11843), (125, 11867), (137, 11936), (147, 11996), (150, 12011),

Gene: BananenDer11_18 Start: 11338, Stop: 12179, Start Num: 24

Candidate Starts for BananenDer11_18:

(Start: 10 @11293 has 11 MA's), (Start: 24 @11338 has 18 MA's), (45, 11422), (50, 11473), (64, 11554), (101, 11809), (104, 11821), (117, 11941), (122, 11992), (127, 12043), (133, 12070), (134, 12073), (145, 12136),

Gene: Barkley26_15 Start: 10569, Stop: 11464, Start Num: 11

Candidate Starts for Barkley26_15:

(Start: 2 @10494 has 4 MA's), (3, 10524), (Start: 11 @10569 has 71 MA's), (50, 10755), (83, 10947), (91, 11019), (99, 11082), (100, 11091), (129, 11331),

Gene: BarrelRoll_20 Start: 11221, Stop: 12068, Start Num: 27

Candidate Starts for BarrelRoll_20:

(Start: 6 @11143 has 2 MA's), (Start: 10 @11155 has 11 MA's), (Start: 27 @11221 has 116 MA's), (42, 11278), (58, 11395), (79, 11518), (90, 11584), (99, 11674), (111, 11746), (114, 11782), (119, 11827), (122, 11866), (125, 11890), (137, 11959), (150, 12034),

Gene: Beezoo_20 Start: 11245, Stop: 12092, Start Num: 27

Candidate Starts for Beezoo_20:

(Start: 27 @11245 has 116 MA's), (42, 11302), (58, 11419), (79, 11542), (90, 11608), (99, 11698), (111, 11770), (114, 11806), (119, 11851), (122, 11890), (125, 11914), (137, 11983), (150, 12058),

Gene: Bella96_20 Start: 11152, Stop: 12005, Start Num: 27

Candidate Starts for Bella96_20:

(Start: 6 @11074 has 2 MA's), (Start: 10 @11086 has 11 MA's), (Start: 27 @11152 has 116 MA's), (79, 11455), (90, 11521), (99, 11611), (114, 11719), (119, 11764), (120, 11767), (122, 11803), (125, 11827), (150, 11971),

Gene: Belladonna_20 Start: 11269, Stop: 12116, Start Num: 27

Candidate Starts for Belladonna_20:

(Start: 6 @11191 has 2 MA's), (Start: 10 @11203 has 11 MA's), (Start: 27 @11269 has 116 MA's), (42, 11326), (58, 11443), (79, 11566), (90, 11632), (99, 11722), (111, 11794), (114, 11830), (119, 11875), (122, 11914), (125, 11938), (137, 12007), (150, 12082),

Gene: Bern_20 Start: 11183, Stop: 12033, Start Num: 27

Candidate Starts for Bern_20:

(Start: 6 @11105 has 2 MA's), (Start: 10 @11117 has 11 MA's), (Start: 27 @11183 has 116 MA's), (50, 11312), (79, 11483), (90, 11549), (99, 11639), (114, 11747), (119, 11792), (122, 11831), (150, 11999),

Gene: Biglebops_16 Start: 10504, Stop: 11327, Start Num: 26

Candidate Starts for Biglebops_16:

(Start: 26 @10504 has 19 MA's), (79, 10780), (99, 10936), (111, 11008), (113, 11038), (114, 11044), (122, 11128), (147, 11278),

Gene: Bipper_21 Start: 13191, Stop: 14053, Start Num: 18

Candidate Starts for Bipper_21:

(Start: 18 @13191 has 6 MA's), (50, 13338), (51, 13341), (56, 13380), (57, 13386), (67, 13437), (72, 13479), (78, 13509), (80, 13524), (82, 13530), (111, 13752), (138, 13965), (149, 14028),

Gene: Blizzard_20 Start: 11269, Stop: 12116, Start Num: 27

Candidate Starts for Blizzard_20:

(Start: 6 @11191 has 2 MA's), (Start: 10 @11203 has 11 MA's), (Start: 27 @11269 has 116 MA's), (42, 11326), (58, 11443), (79, 11566), (90, 11632), (99, 11722), (111, 11794), (114, 11830), (119, 11875), (122, 11914), (125, 11938), (137, 12007), (150, 12082),

Gene: Boiiii_20 Start: 11271, Stop: 12118, Start Num: 27

Candidate Starts for Boiiii_20:

(Start: 6 @11193 has 2 MA's), (Start: 10 @11205 has 11 MA's), (Start: 27 @11271 has 116 MA's), (42, 11328), (58, 11445), (79, 11568), (90, 11634), (99, 11724), (111, 11796), (114, 11832), (119, 11877), (122, 11916), (125, 11940), (137, 12009), (150, 12084),

Gene: Boilgate_17 Start: 11192, Stop: 12174, Start Num: 9

Candidate Starts for Boilgate_17:

(Start: 9 @11192 has 1 MA's), (36, 11297), (74, 11528), (79, 11555), (91, 11648), (101, 11720), (103, 11726), (105, 11738), (113, 11813), (119, 11864), (122, 11903), (135, 12011), (147, 12077), (152, 12101), (154, 12122),

Gene: BoostSeason_16 Start: 9260, Stop: 10143, Start Num: 21

Candidate Starts for BoostSeason_16:

(Start: 10 @9203 has 11 MA's), (Start: 21 @9260 has 12 MA's), (39, 9350), (62, 9503), (113, 9857),

Gene: BruceB_15 Start: 10569, Stop: 11464, Start Num: 11

Candidate Starts for BruceB_15:

(Start: 2 @10494 has 4 MA's), (3, 10524), (Start: 11 @10569 has 71 MA's), (50, 10755), (83, 10947), (91, 11019), (99, 11082), (100, 11091), (129, 11331),

Gene: Bryler_19 Start: 10254, Stop: 11095, Start Num: 27

Candidate Starts for Bryler_19:

(Start: 10 @10188 has 11 MA's), (Start: 27 @10254 has 116 MA's), (37, 10287), (50, 10365), (79, 10536), (113, 10794), (114, 10800), (121, 10860), (122, 10884), (147, 11037), (150, 11052),

Gene: CLED96_15 Start: 10494, Stop: 11464, Start Num: 2

Candidate Starts for CLED96_15:

(Start: 2 @10494 has 4 MA's), (3, 10524), (Start: 11 @10569 has 71 MA's), (50, 10755), (83, 10947), (91, 11019), (99, 11082), (100, 11091), (129, 11331),

Gene: CREW_20 Start: 11269, Stop: 12116, Start Num: 27

Candidate Starts for CREW_20:

(Start: 6 @11191 has 2 MA's), (Start: 10 @11203 has 11 MA's), (Start: 27 @11269 has 116 MA's), (42, 11326), (58, 11443), (79, 11566), (90, 11632), (99, 11722), (111, 11794), (114, 11830), (119, 11875), (122, 11914), (125, 11938), (137, 12007), (150, 12082),

Gene: Cain_19 Start: 10242, Stop: 11083, Start Num: 27

Candidate Starts for Cain_19:

(Start: 10 @10176 has 11 MA's), (Start: 27 @10242 has 116 MA's), (37, 10275), (50, 10353), (79, 10524), (113, 10782), (114, 10788), (121, 10848), (122, 10872), (147, 11025), (150, 11040),

Gene: CallaLilly_20 Start: 11192, Stop: 12039, Start Num: 27

Candidate Starts for CallaLilly_20:

(Start: 27 @11192 has 116 MA's), (42, 11249), (58, 11366), (79, 11489), (90, 11555), (99, 11645), (104, 11666), (111, 11717), (114, 11753), (119, 11798), (122, 11837), (125, 11861), (137, 11930), (150, 12005),

Gene: Cambiare_16 Start: 11193, Stop: 12151, Start Num: 11

Candidate Starts for Cambiare_16:

(Start: 1 @11103 has 1 MA's), (Start: 11 @11193 has 71 MA's), (48, 11391), (67, 11529), (90, 11667), (91, 11694), (97, 11739), (106, 11796),

Gene: Camri_15 Start: 10569, Stop: 11464, Start Num: 11

Candidate Starts for Camri_15:

(Start: 2 @10494 has 4 MA's), (3, 10524), (Start: 11 @10569 has 71 MA's), (50, 10755), (83, 10947), (91, 11019), (99, 11082), (100, 11091), (129, 11331),

Gene: Capricorn_20 Start: 11269, Stop: 12116, Start Num: 27

Candidate Starts for Capricorn_20:

(Start: 6 @11191 has 2 MA's), (Start: 10 @11203 has 11 MA's), (Start: 27 @11269 has 116 MA's), (42, 11326), (58, 11443), (79, 11566), (90, 11632), (99, 11722), (111, 11794), (114, 11830), (119, 11875), (122, 11914), (125, 11938), (137, 12007), (150, 12082),

Gene: CaseJules_20 Start: 11269, Stop: 12116, Start Num: 27

Candidate Starts for CaseJules_20:

(Start: 6 @11191 has 2 MA's), (Start: 10 @11203 has 11 MA's), (Start: 27 @11269 has 116 MA's), (42, 11326), (58, 11443), (79, 11566), (90, 11632), (99, 11722), (111, 11794), (114, 11830), (119, 11875), (122, 11914), (125, 11938), (137, 12007), (150, 12082),

Gene: CassieYates_15 Start: 10569, Stop: 11464, Start Num: 11

Candidate Starts for CassieYates_15:

(Start: 2 @10494 has 4 MA's), (3, 10524), (Start: 11 @10569 has 71 MA's), (50, 10755), (83, 10947), (91, 11019), (99, 11082), (100, 11091), (129, 11331),

Gene: Cedasite_15 Start: 10569, Stop: 11464, Start Num: 11

Candidate Starts for Cedasite_15:

(Start: 2 @10494 has 4 MA's), (3, 10524), (Start: 11 @10569 has 71 MA's), (50, 10755), (83, 10947), (91, 11019), (99, 11082), (100, 11091), (129, 11331),

Gene: Chance64_14 Start: 10569, Stop: 11464, Start Num: 11

Candidate Starts for Chance64_14:

(Start: 2 @10494 has 4 MA's), (3, 10524), (Start: 11 @10569 has 71 MA's), (50, 10755), (83, 10947), (91, 11019), (99, 11082), (100, 11091), (129, 11331),

Gene: Chancellor_21 Start: 12441, Stop: 13321, Start Num: 25

Candidate Starts for Chancellor_21:

(Start: 6 @12378 has 2 MA's), (Start: 25 @12441 has 21 MA's), (47, 12540), (52, 12594), (64, 12660), (104, 12927), (113, 13008), (118, 13053), (119, 13059), (125, 13122), (152, 13302),

Gene: CheetoDust_20 Start: 11246, Stop: 12093, Start Num: 27

Candidate Starts for CheetoDust_20:

(Start: 6 @11168 has 2 MA's), (Start: 10 @11180 has 11 MA's), (Start: 27 @11246 has 116 MA's), (42, 11303), (79, 11543), (90, 11609), (99, 11699), (111, 11771), (114, 11807), (119, 11852), (122, 11891), (125, 11915), (137, 11984), (150, 12059),

Gene: Cheetobro_21 Start: 12441, Stop: 13321, Start Num: 25

Candidate Starts for Cheetobro_21:

(Start: 6 @12378 has 2 MA's), (Start: 25 @12441 has 21 MA's), (47, 12540), (52, 12594), (64, 12660), (104, 12927), (113, 13008), (118, 13053), (119, 13059), (125, 13122), (152, 13302),

Gene: Cherrybomb426_15 Start: 10569, Stop: 11464, Start Num: 11

Candidate Starts for Cherrybomb426_15:

(Start: 2 @10494 has 4 MA's), (3, 10524), (Start: 11 @10569 has 71 MA's), (50, 10755), (83, 10947), (91, 11019), (99, 11082), (100, 11091), (129, 11331),

Gene: Chris_19 Start: 10215, Stop: 11062, Start Num: 26

Candidate Starts for Chris_19:

(23, 10209), (Start: 26 @10215 has 19 MA's), (79, 10524), (83, 10545), (122, 10872), (129, 10929), (150, 11040),

Gene: Clipper_20 Start: 11246, Stop: 12093, Start Num: 27

Candidate Starts for Clipper_20:

(Start: 6 @11168 has 2 MA's), (Start: 10 @11180 has 11 MA's), (Start: 27 @11246 has 116 MA's), (42, 11303), (79, 11543), (90, 11609), (99, 11699), (111, 11771), (114, 11807), (119, 11852), (122, 11891), (125, 11915), (137, 11984), (150, 12059),

Gene: Coleslaw_15 Start: 10560, Stop: 11455, Start Num: 11

Candidate Starts for Coleslaw_15:

(Start: 2 @10494 has 4 MA's), (3, 10524), (Start: 11 @10560 has 71 MA's), (50, 10746), (83, 10938), (91, 11010), (99, 11073), (100, 11082), (129, 11322),

Gene: Collard_17 Start: 11293, Stop: 12179, Start Num: 10

Candidate Starts for Collard_17:

(Start: 10 @11293 has 11 MA's), (Start: 24 @11338 has 18 MA's), (45, 11422), (50, 11473), (64, 11554), (101, 11809), (104, 11821), (117, 11941), (122, 11992), (127, 12043), (133, 12070), (134, 12073), (145, 12136),

Gene: Cracklewink_21 Start: 13191, Stop: 14053, Start Num: 18

Candidate Starts for Cracklewink_21:

(Start: 18 @13191 has 6 MA's), (50, 13338), (56, 13380), (57, 13386), (67, 13437), (72, 13479), (78, 13509), (80, 13524), (82, 13530), (111, 13752), (138, 13965), (149, 14028),

Gene: Crespo_15 Start: 10570, Stop: 11465, Start Num: 11

Candidate Starts for Crespo_15:

(Start: 2 @10495 has 4 MA's), (3, 10525), (Start: 11 @10570 has 71 MA's), (50, 10756), (83, 10948), (91, 11020), (99, 11083), (100, 11092), (129, 11332),

Gene: CrimD_19 Start: 11200, Stop: 12050, Start Num: 27

Candidate Starts for CrimD_19:

(Start: 27 @11200 has 116 MA's), (39, 11251), (79, 11500), (90, 11566), (99, 11656), (102, 11668), (114, 11764), (119, 11809), (122, 11848), (125, 11872), (137, 11941), (150, 12016),

Gene: Curiosium_21 Start: 10615, Stop: 11510, Start Num: 10

Candidate Starts for Curiosium_21:

(Start: 10 @10615 has 11 MA's), (Start: 27 @10681 has 116 MA's), (37, 10705), (44, 10729), (79, 10954), (99, 11110), (113, 11212), (117, 11251), (118, 11257), (122, 11302), (150, 11467),

Gene: DMoney_15 Start: 10569, Stop: 11464, Start Num: 11

Candidate Starts for DMoney_15:

(Start: 2 @10494 has 4 MA's), (3, 10524), (Start: 11 @10569 has 71 MA's), (50, 10755), (83, 10947), (91, 11019), (99, 11082), (100, 11091), (129, 11331),

Gene: Dadosky_18 Start: 11254, Stop: 12095, Start Num: 24

Candidate Starts for Dadosky_18:

(Start: 10 @11209 has 11 MA's), (Start: 24 @11254 has 18 MA's), (45, 11338), (50, 11389), (64, 11470), (99, 11716), (104, 11737), (117, 11857), (122, 11908), (127, 11959), (133, 11986), (139, 12010), (145, 12052),

Gene: Dalmuri_20 Start: 11269, Stop: 12116, Start Num: 27

Candidate Starts for Dalmuri_20:

(Start: 6 @11191 has 2 MA's), (Start: 10 @11203 has 11 MA's), (Start: 27 @11269 has 116 MA's), (42, 11326), (58, 11443), (79, 11566), (90, 11632), (99, 11722), (111, 11794), (114, 11830), (119, 11875), (122, 11914), (125, 11938), (137, 12007), (150, 12082),

Gene: Darionha_15 Start: 10569, Stop: 11464, Start Num: 11

Candidate Starts for Darionha_15:

(Start: 2 @10494 has 4 MA's), (3, 10524), (Start: 11 @10569 has 71 MA's), (50, 10755), (83, 10947), (91, 11019), (99, 11082), (100, 11091), (129, 11331),

Gene: DartGoblin_20 Start: 11152, Stop: 12002, Start Num: 27

Candidate Starts for DartGoblin_20:

(Start: 6 @11074 has 2 MA's), (Start: 10 @11086 has 11 MA's), (Start: 27 @11152 has 116 MA's), (79, 11452), (90, 11518), (99, 11608), (114, 11716), (119, 11761), (122, 11800), (125, 11824), (150, 11968),

Gene: DarthP_19 Start: 11325, Stop: 12196, Start Num: 27

Candidate Starts for DarthP_19:

(Start: 10 @11256 has 11 MA's), (Start: 27 @11325 has 116 MA's), (34, 11370), (90, 11706), (113, 11898), (114, 11904), (122, 11988),

Gene: Deby_20 Start: 11203, Stop: 12050, Start Num: 27

Candidate Starts for Deby_20:

(Start: 6 @11125 has 2 MA's), (Start: 10 @11137 has 11 MA's), (Start: 27 @11203 has 116 MA's), (42, 11260), (79, 11500), (90, 11566), (99, 11656), (111, 11728), (114, 11764), (119, 11809), (122, 11848), (125, 11872), (137, 11941), (150, 12016),

Gene: Devera_20 Start: 11230, Stop: 12074, Start Num: 27

Candidate Starts for Devera_20:

(Start: 6 @11152 has 2 MA's), (Start: 10 @11164 has 11 MA's), (Start: 27 @11230 has 116 MA's), (50, 11353), (79, 11524), (90, 11590), (99, 11680), (113, 11782), (114, 11788), (119, 11833), (122, 11872), (137, 11965), (150, 12040),

Gene: DingDing_15 Start: 10569, Stop: 11464, Start Num: 11

Candidate Starts for DingDing_15:

(Start: 2 @10494 has 4 MA's), (3, 10524), (Start: 11 @10569 has 71 MA's), (50, 10755), (83, 10947), (91, 11019), (99, 11082), (100, 11091), (129, 11331),

Gene: DismalFunk_15 Start: 9253, Stop: 10115, Start Num: 21

Candidate Starts for DismalFunk_15:

(Start: 10 @9196 has 11 MA's), (Start: 21 @9253 has 12 MA's), (39, 9325), (62, 9475), (64, 9481), (113, 9829), (153, 10102),

Gene: DismalStressor_16 Start: 9253, Stop: 10115, Start Num: 21

Candidate Starts for DismalStressor_16:

(Start: 10 @9196 has 11 MA's), (Start: 21 @9253 has 12 MA's), (39, 9325), (62, 9475), (64, 9481), (113, 9829), (153, 10102),

Gene: Dole_20 Start: 11232, Stop: 12076, Start Num: 27

Candidate Starts for Dole_20:

(Start: 6 @11154 has 2 MA's), (Start: 10 @11166 has 11 MA's), (Start: 27 @11232 has 116 MA's), (50, 11355), (79, 11526), (90, 11592), (99, 11682), (113, 11784), (114, 11790), (119, 11835), (122, 11874), (137, 11967), (150, 12042),

Gene: Doughnut_16 Start: 9254, Stop: 10137, Start Num: 21

Candidate Starts for Doughnut_16:

(Start: 10 @9197 has 11 MA's), (Start: 21 @9254 has 12 MA's), (39, 9344), (62, 9497), (113, 9851),

Gene: DrHayes_20 Start: 11173, Stop: 12023, Start Num: 27

Candidate Starts for DrHayes_20:

(Start: 6 @11095 has 2 MA's), (Start: 10 @11107 has 11 MA's), (16, 11134), (Start: 27 @11173 has 116 MA's), (79, 11473), (90, 11539), (99, 11629), (114, 11737), (119, 11782), (122, 11821), (125, 11845), (137, 11914), (150, 11989),

Gene: Durfee_20 Start: 11269, Stop: 12116, Start Num: 27

Candidate Starts for Durfee_20:

(Start: 6 @11191 has 2 MA's), (Start: 10 @11203 has 11 MA's), (Start: 27 @11269 has 116 MA's), (42, 11326), (58, 11443), (79, 11566), (90, 11632), (99, 11722), (111, 11794), (114, 11830), (119, 11875), (122, 11914), (125, 11938), (137, 12007), (150, 12082),

Gene: ECartman_15 Start: 10569, Stop: 11464, Start Num: 11

Candidate Starts for ECartman_15:

(Start: 2 @10494 has 4 MA's), (3, 10524), (Start: 11 @10569 has 71 MA's), (50, 10755), (83, 10947), (91, 11019), (99, 11082), (100, 11091), (129, 11331),

Gene: Edugator_16 Start: 11254, Stop: 12095, Start Num: 24

Candidate Starts for Edugator_16:

(Start: 10 @11209 has 11 MA's), (Start: 24 @11254 has 18 MA's), (45, 11338), (50, 11389), (64, 11470), (99, 11716), (104, 11737), (117, 11857), (122, 11908), (127, 11959), (133, 11986), (139, 12010), (145, 12052),

Gene: Efra2_20 Start: 10171, Stop: 11000, Start Num: 27

Candidate Starts for Efra2_20:

(Start: 10 @10105 has 11 MA's), (Start: 27 @10171 has 116 MA's), (37, 10195), (44, 10219), (79, 10444), (99, 10600), (108, 10651), (113, 10702), (118, 10747), (122, 10792),

Gene: Ekdilam_17 Start: 11036, Stop: 11907, Start Num: 27

Candidate Starts for Ekdilam_17:

(Start: 27 @11036 has 116 MA's), (34, 11081), (50, 11180), (90, 11417), (94, 11471), (104, 11528), (108, 11558), (113, 11609), (114, 11615), (122, 11699), (145, 11843),

Gene: Ellie_17 Start: 11081, Stop: 11943, Start Num: 27

Candidate Starts for Ellie_17:

(Start: 10 @11015 has 11 MA's), (Start: 27 @11081 has 116 MA's), (34, 11126), (50, 11225), (90, 11462), (91, 11489), (99, 11552), (113, 11654), (114, 11660), (117, 11693), (122, 11744), (128, 11798), (150, 11909),

Gene: Emerson_19 Start: 11229, Stop: 12076, Start Num: 27

Candidate Starts for Emerson_19:

(Start: 6 @11151 has 2 MA's), (Start: 10 @11163 has 11 MA's), (Start: 27 @11229 has 116 MA's), (42, 11286), (58, 11403), (79, 11526), (90, 11592), (99, 11682), (111, 11754), (114, 11790), (119, 11835), (122, 11874), (125, 11898), (137, 11967), (150, 12042),

Gene: Enkosi_16 Start: 10504, Stop: 11327, Start Num: 26

Candidate Starts for Enkosi_16:

(Start: 26 @10504 has 19 MA's), (79, 10780), (99, 10936), (111, 11008), (113, 11038), (114, 11044), (122, 11128), (147, 11278),

Gene: Eponine_21 Start: 12303, Stop: 13189, Start Num: 25

Candidate Starts for Eponine_21:

(Start: 25 @12303 has 21 MA's), (40, 12372), (50, 12447), (52, 12459), (64, 12525), (91, 12708), (104, 12792), (113, 12873), (118, 12918), (119, 12924), (122, 12963), (125, 12987), (147, 13143), (152, 13167),

Gene: Faiyaz_21 Start: 13145, Stop: 14025, Start Num: 18

Candidate Starts for Faiyaz_21:

(Start: 18 @13145 has 6 MA's), (41, 13235), (50, 13307), (57, 13355), (61, 13379), (67, 13406), (72, 13448), (73, 13457), (78, 13478), (80, 13493), (85, 13520), (89, 13550), (94, 13610), (111, 13721), (123, 13853), (131, 13904), (142, 13949), (149, 14000),

Gene: Fefferhead_19 Start: 11248, Stop: 12110, Start Num: 27

Candidate Starts for Fefferhead_19:

(Start: 10 @11182 has 11 MA's), (Start: 27 @11248 has 116 MA's), (34, 11293), (50, 11392), (90, 11629), (91, 11656), (99, 11719), (113, 11821), (114, 11827), (117, 11860), (120, 11875), (150, 12076),

Gene: Feyre_18 Start: 11196, Stop: 12037, Start Num: 24

Candidate Starts for Feyre_18:

(Start: 24 @11196 has 18 MA's), (42, 11268), (45, 11280), (50, 11331), (74, 11475), (99, 11658), (125, 11874), (127, 11901), (133, 11928),

Gene: Findley_16 Start: 9253, Stop: 10115, Start Num: 21

Candidate Starts for Findley_16:

(Start: 10 @9196 has 11 MA's), (Start: 21 @9253 has 12 MA's), (39, 9325), (62, 9475), (64, 9481), (113, 9829), (153, 10102),

Gene: Fionnbharth_21 Start: 12431, Stop: 13311, Start Num: 25

Candidate Starts for Fionnbharth_21:

(Start: 6 @12368 has 2 MA's), (Start: 25 @12431 has 21 MA's), (47, 12530), (52, 12584), (64, 12650), (104, 12917), (113, 12998), (118, 13043), (119, 13049), (125, 13112), (152, 13292),

Gene: FlagStaff_15 Start: 10592, Stop: 11628, Start Num: 2

Candidate Starts for FlagStaff_15:

(Start: 2 @10592 has 4 MA's), (Start: 11 @10664 has 71 MA's), (48, 10853), (62, 10967), (90, 11129), (91, 11156),

Gene: Frosty24_15 Start: 10569, Stop: 11464, Start Num: 11

Candidate Starts for Frosty24_15:

(Start: 2 @10494 has 4 MA's), (3, 10524), (Start: 11 @10569 has 71 MA's), (50, 10755), (83, 10947), (91, 11019), (99, 11082), (100, 11091), (129, 11331),

Gene: Ganymede_21 Start: 11249, Stop: 12096, Start Num: 27

Candidate Starts for Ganymede_21:

(Start: 6 @11171 has 2 MA's), (Start: 10 @11183 has 11 MA's), (Start: 27 @11249 has 116 MA's), (42, 11306), (79, 11546), (90, 11612), (99, 11702), (111, 11774), (113, 11804), (114, 11810), (119, 11855), (122, 11894), (125, 11918), (137, 11987), (150, 12062),

Gene: Gengar_18 Start: 11303, Stop: 12144, Start Num: 24

Candidate Starts for Gengar_18:

(Start: 24 @11303 has 18 MA's), (45, 11387), (50, 11438), (74, 11582), (99, 11765), (125, 11981), (127, 12008), (133, 12035),

Gene: Geraldini_20 Start: 11245, Stop: 12092, Start Num: 27

Candidate Starts for Geraldini_20:

(Start: 27 @11245 has 116 MA's), (42, 11302), (58, 11419), (79, 11542), (90, 11608), (99, 11698), (111, 11770), (113, 11800), (114, 11806), (119, 11851), (122, 11890), (125, 11914), (137, 11983), (150, 12058),

Gene: Gideon_15 Start: 10569, Stop: 11464, Start Num: 11

Candidate Starts for Gideon_15:

(Start: 2 @10494 has 4 MA's), (3, 10524), (Start: 11 @10569 has 71 MA's), (50, 10755), (83, 10947), (91, 11019), (99, 11082), (100, 11091), (129, 11331),

Gene: GoldenAsh_15 Start: 10494, Stop: 11464, Start Num: 2

Candidate Starts for GoldenAsh_15:

(Start: 2 @10494 has 4 MA's), (3, 10524), (Start: 11 @10569 has 71 MA's), (50, 10755), (83, 10947), (91, 11019), (99, 11082), (100, 11091), (129, 11331),

Gene: Gomashi_14 Start: 10570, Stop: 11465, Start Num: 11

Candidate Starts for Gomashi_14:

(Start: 2 @10495 has 4 MA's), (3, 10525), (Start: 11 @10570 has 71 MA's), (50, 10756), (83, 10948), (91, 11020), (99, 11083), (100, 11092), (129, 11332),

Gene: Grizzly_15 Start: 10569, Stop: 11464, Start Num: 11

Candidate Starts for Grizzly_15:

(Start: 2 @10494 has 4 MA's), (3, 10524), (Start: 11 @10569 has 71 MA's), (50, 10755), (83, 10947), (91, 11019), (99, 11082), (100, 11091),

Gene: Guanica15_20 Start: 10187, Stop: 11016, Start Num: 27

Candidate Starts for Guanica15_20:

(Start: 10 @10121 has 11 MA's), (Start: 27 @10187 has 116 MA's), (37, 10211), (44, 10235), (79, 10460), (99, 10616), (108, 10667), (113, 10718), (118, 10763), (122, 10808),

Gene: Guillsminger_17 Start: 11278, Stop: 12119, Start Num: 24

Candidate Starts for Guillsminger_17:

(Start: 24 @11278 has 18 MA's), (45, 11362), (50, 11413), (74, 11557), (99, 11740), (125, 11956), (127, 11983), (133, 12010),

Gene: Halo_15 Start: 10564, Stop: 11459, Start Num: 11

Candidate Starts for Halo_15:

(Start: 2 @10489 has 4 MA's), (Start: 11 @10564 has 71 MA's), (50, 10750), (83, 10942), (91, 11014), (99, 11077), (100, 11086), (129, 11326),

Gene: Hammy_19 Start: 11319, Stop: 12190, Start Num: 27

Candidate Starts for Hammy_19:

(Start: 10 @11250 has 11 MA's), (Start: 27 @11319 has 116 MA's), (34, 11364), (90, 11700), (113, 11892), (114, 11898), (122, 11982),

Gene: HedwigODU_20 Start: 11232, Stop: 12079, Start Num: 27

Candidate Starts for HedwigODU_20:

(Start: 6 @11154 has 2 MA's), (Start: 10 @11166 has 11 MA's), (Start: 27 @11232 has 116 MA's), (42, 11289), (58, 11406), (79, 11529), (90, 11595), (99, 11685), (111, 11757), (114, 11793), (119, 11838), (122, 11877), (125, 11901), (137, 11970), (150, 12045),

Gene: Heftyboy_18 Start: 11405, Stop: 12246, Start Num: 24

Candidate Starts for Heftyboy_18:

(Start: 24 @11405 has 18 MA's), (45, 11489), (50, 11540), (74, 11684), (99, 11867), (117, 12008), (122, 12059), (127, 12110), (133, 12137), (134, 12140), (145, 12203),

Gene: Hilltopfarm_21 Start: 13175, Stop: 14055, Start Num: 18

Candidate Starts for Hilltopfarm_21:

(Start: 18 @13175 has 6 MA's), (41, 13265), (50, 13337), (57, 13385), (61, 13409), (67, 13436), (72, 13478), (73, 13487), (78, 13508), (80, 13523), (85, 13550), (89, 13580), (94, 13640), (111, 13751), (123, 13883), (131, 13934), (142, 13979), (149, 14030),

Gene: Homura_20 Start: 11269, Stop: 12116, Start Num: 27

Candidate Starts for Homura_20:

(Start: 6 @11191 has 2 MA's), (Start: 10 @11203 has 11 MA's), (Start: 27 @11269 has 116 MA's), (42, 11326), (58, 11443), (79, 11566), (90, 11632), (99, 11722), (111, 11794), (114, 11830), (119, 11875), (122, 11914), (125, 11938), (137, 12007), (150, 12082),

Gene: Hope_14 Start: 10569, Stop: 11464, Start Num: 11

Candidate Starts for Hope_14:

(Start: 2 @10494 has 4 MA's), (3, 10524), (Start: 11 @10569 has 71 MA's), (50, 10755), (83, 10947), (91, 11019), (99, 11082), (100, 11091), (129, 11331),

Gene: Hotshotbaby7_15 Start: 10569, Stop: 11464, Start Num: 11

Candidate Starts for Hotshotbaby7_15:

(Start: 2 @10494 has 4 MA's), (3, 10524), (Start: 11 @10569 has 71 MA's), (50, 10755), (83, 10947), (91, 11019), (99, 11082), (100, 11091), (129, 11331),

Gene: Hurricane_19 Start: 11360, Stop: 12204, Start Num: 27

Candidate Starts for Hurricane_19:

(Start: 10 @11297 has 11 MA's), (Start: 27 @11360 has 116 MA's), (31, 11378), (50, 11483), (74, 11627), (79, 11654), (83, 11675), (105, 11846), (114, 11927), (127, 12059), (147, 12161), (150, 12176),

Gene: Hyperbowlee_20 Start: 11269, Stop: 12116, Start Num: 27

Candidate Starts for Hyperbowlee_20:

(Start: 6 @11191 has 2 MA's), (Start: 10 @11203 has 11 MA's), (Start: 27 @11269 has 116 MA's), (42, 11326), (58, 11443), (79, 11566), (90, 11632), (99, 11722), (111, 11794), (114, 11830), (119, 11875), (122, 11914), (125, 11938), (137, 12007), (150, 12082),

Gene: Illumine_20 Start: 11232, Stop: 12076, Start Num: 27

Candidate Starts for Illumine_20:

(Start: 6 @11154 has 2 MA's), (Start: 10 @11166 has 11 MA's), (Start: 27 @11232 has 116 MA's), (50, 11355), (79, 11526), (90, 11592), (99, 11682), (113, 11784), (114, 11790), (119, 11835), (122, 11874), (137, 11967), (150, 12042),

Gene: Inky_19 Start: 11203, Stop: 12116, Start Num: 10

Candidate Starts for Inky_19:

(Start: 6 @11191 has 2 MA's), (Start: 10 @11203 has 11 MA's), (Start: 27 @11269 has 116 MA's), (42, 11326), (58, 11443), (79, 11566), (90, 11632), (99, 11722), (111, 11794), (114, 11830), (119, 11875), (122, 11914), (125, 11938), (137, 12007), (150, 12082),

Gene: InvictusManeo_18 Start: 11381, Stop: 12222, Start Num: 24

Candidate Starts for InvictusManeo_18:

(Start: 10 @11336 has 11 MA's), (Start: 24 @11381 has 18 MA's), (45, 11465), (50, 11516), (64, 11597), (101, 11852), (104, 11864), (117, 11984), (122, 12035), (127, 12086), (133, 12113), (134, 12116), (145, 12179),

Gene: JAWS_20 Start: 11223, Stop: 12070, Start Num: 27

Candidate Starts for JAWS_20:

(Start: 6 @11145 has 2 MA's), (Start: 10 @11157 has 11 MA's), (Start: 27 @11223 has 116 MA's), (42, 11280), (58, 11397), (79, 11520), (90, 11586), (99, 11676), (111, 11748), (114, 11784), (119, 11829), (122, 11868), (125, 11892), (137, 11961), (150, 12036),

Gene: JF1_21 Start: 12430, Stop: 13310, Start Num: 25

Candidate Starts for JF1_21:

(Start: 6 @12367 has 2 MA's), (Start: 25 @12430 has 21 MA's), (47, 12529), (52, 12583), (64, 12649), (104, 12916), (113, 12997), (114, 13003), (118, 13042), (119, 13048), (125, 13111), (152, 13291),

Gene: JacoRen57_14 Start: 9095, Stop: 9897, Start Num: 22

Candidate Starts for JacoRen57_14:

(Start: 22 @9095 has 3 MA's), (35, 9131), (55, 9245), (56, 9251), (65, 9296), (71, 9338), (82, 9389), (86, 9413), (88, 9428), (97, 9515), (98, 9521), (99, 9533), (127, 9776), (143, 9827),

Gene: Jane_15 Start: 10569, Stop: 11464, Start Num: 11

Candidate Starts for Jane_15:

(Start: 2 @10494 has 4 MA's), (3, 10524), (Start: 11 @10569 has 71 MA's), (50, 10755), (83, 10947), (91, 11019), (99, 11082), (100, 11091), (129, 11331),

Gene: Jarvi_20 Start: 11269, Stop: 12116, Start Num: 27

Candidate Starts for Jarvi_20:

(Start: 6 @11191 has 2 MA's), (Start: 10 @11203 has 11 MA's), (Start: 27 @11269 has 116 MA's), (42, 11326), (58, 11443), (79, 11566), (90, 11632), (99, 11722), (111, 11794), (114, 11830), (119, 11875), (122, 11914), (125, 11938), (137, 12007), (150, 12082),

Gene: Jayhawk_20 Start: 11233, Stop: 12080, Start Num: 27

Candidate Starts for Jayhawk_20:

(Start: 6 @11155 has 2 MA's), (Start: 10 @11167 has 11 MA's), (Start: 27 @11233 has 116 MA's), (42, 11290), (58, 11407), (79, 11530), (90, 11596), (99, 11686), (111, 11758), (114, 11794), (119, 11839), (122, 11878), (125, 11902), (137, 11971), (150, 12046),

Gene: Jeckyll_20 Start: 11269, Stop: 12116, Start Num: 27

Candidate Starts for Jeckyll_20:

(Start: 6 @11191 has 2 MA's), (Start: 10 @11203 has 11 MA's), (Start: 27 @11269 has 116 MA's), (42, 11326), (58, 11443), (79, 11566), (90, 11632), (99, 11722), (111, 11794), (114, 11830), (119, 11875), (122, 11914), (125, 11938), (137, 12007), (150, 12082),

Gene: Jolene_15 Start: 10569, Stop: 11464, Start Num: 11

Candidate Starts for Jolene_15:

(Start: 2 @10494 has 4 MA's), (3, 10524), (Start: 11 @10569 has 71 MA's), (50, 10755), (83, 10947), (91, 11019), (99, 11082), (100, 11091), (129, 11331),

Gene: Jolie2_15 Start: 9852, Stop: 10765, Start Num: 11

Candidate Starts for Jolie2_15:

(Start: 11 @9852 has 71 MA's), (46, 9996), (88, 10266), (91, 10308), (106, 10410), (137, 10644),

Gene: Jonghyun_15 Start: 10569, Stop: 11464, Start Num: 11

Candidate Starts for Jonghyun_15:

(Start: 2 @10494 has 4 MA's), (3, 10524), (Start: 11 @10569 has 71 MA's), (50, 10755), (83, 10947), (91, 11019), (99, 11082), (100, 11091), (129, 11331),

Gene: JorRay_15 Start: 10569, Stop: 11464, Start Num: 11

Candidate Starts for JorRay_15:

(Start: 2 @10494 has 4 MA's), (3, 10524), (Start: 11 @10569 has 71 MA's), (50, 10755), (83, 10947), (91, 11019), (99, 11082), (100, 11091), (129, 11331),

Gene: Joy99_20 Start: 11198, Stop: 12045, Start Num: 27

Candidate Starts for Joy99_20:

(Start: 6 @11120 has 2 MA's), (Start: 10 @11132 has 11 MA's), (Start: 27 @11198 has 116 MA's), (42, 11255), (79, 11495), (90, 11561), (99, 11651), (111, 11723), (113, 11753), (114, 11759), (118, 11798), (119, 11804), (122, 11843), (125, 11867), (137, 11936), (147, 11996), (150, 12011),

Gene: Juliette_21 Start: 12303, Stop: 13189, Start Num: 25

Candidate Starts for Juliette_21:

(Start: 25 @12303 has 21 MA's), (40, 12372), (50, 12447), (52, 12459), (64, 12525), (91, 12708), (104, 12792), (113, 12873), (118, 12918), (119, 12924), (122, 12963), (125, 12987), (147, 13143), (152, 13167),

Gene: Kareem_15 Start: 10569, Stop: 11464, Start Num: 11

Candidate Starts for Kareem_15:

(Start: 2 @10494 has 4 MA's), (3, 10524), (Start: 11 @10569 has 71 MA's), (50, 10755), (83, 10947), (91, 11019), (99, 11082), (100, 11091), (129, 11331),

Gene: Kasen3_15 Start: 10570, Stop: 11465, Start Num: 11

Candidate Starts for Kasen3_15:

(Start: 2 @10495 has 4 MA's), (3, 10525), (Start: 11 @10570 has 71 MA's), (50, 10756), (83, 10948), (91, 11020), (99, 11083), (100, 11092), (129, 11332),

Gene: Keshu_19 Start: 11346, Stop: 12184, Start Num: 27

Candidate Starts for Keshu_19:

(Start: 10 @11283 has 11 MA's), (Start: 27 @11346 has 116 MA's), (30, 11358), (50, 11463), (74, 11607), (79, 11634), (99, 11799), (108, 11850), (114, 11907),

Gene: KiSi_19 Start: 10161, Stop: 11002, Start Num: 26

Candidate Starts for KiSi_19:

(5, 10059), (7, 10086), (13, 10110), (Start: 26 @10161 has 19 MA's), (39, 10215), (79, 10464), (114, 10728), (150, 10980),

Gene: Kratio_17 Start: 10964, Stop: 11850, Start Num: 10

Candidate Starts for Kratio_17:

(Start: 10 @10964 has 11 MA's), (Start: 24 @11009 has 18 MA's), (45, 11093), (50, 11144), (64, 11225), (101, 11480), (104, 11492), (117, 11612), (122, 11663), (127, 11714), (134, 11744), (145, 11807),

Gene: Kraw_21 Start: 12354, Stop: 13234, Start Num: 25

Candidate Starts for Kraw_21:

(Start: 25 @12354 has 21 MA's), (47, 12453), (52, 12507), (64, 12573), (104, 12840), (113, 12921), (114, 12927), (118, 12966), (119, 12972), (122, 13011), (125, 13035), (152, 13215),

Gene: Krueger_19 Start: 10147, Stop: 11051, Start Num: 10

Candidate Starts for Krueger_19:

(Start: 10 @10147 has 11 MA's), (Start: 27 @10210 has 116 MA's), (44, 10264), (50, 10318), (79, 10489), (108, 10699), (112, 10738), (114, 10756), (147, 10993), (150, 11008),

Gene: Larva_18 Start: 11076, Stop: 11962, Start Num: 10

Candidate Starts for Larva_18:

(Start: 10 @11076 has 11 MA's), (Start: 24 @11121 has 18 MA's), (45, 11205), (50, 11256), (64, 11337), (99, 11583), (104, 11604), (117, 11724), (122, 11775), (127, 11826), (133, 11853), (139, 11877), (145, 11919),

Gene: LastHope_19 Start: 10261, Stop: 11090, Start Num: 27

Candidate Starts for LastHope_19:

(Start: 10 @10195 has 11 MA's), (Start: 27 @10261 has 116 MA's), (44, 10309), (79, 10534), (99, 10690), (113, 10792), (122, 10882),

Gene: LaterM_20 Start: 11198, Stop: 12042, Start Num: 27

Candidate Starts for LaterM_20:

(Start: 6 @11120 has 2 MA's), (Start: 10 @11132 has 11 MA's), (Start: 27 @11198 has 116 MA's), (50, 11321), (79, 11492), (90, 11558), (99, 11648), (114, 11756), (119, 11801), (122, 11840), (137, 11933), (150, 12008),

Gene: Lavahound_18 Start: 11003, Stop: 11862, Start Num: 27

Candidate Starts for Lavahound_18:

(Start: 10 @10940 has 11 MA's), (Start: 27 @11003 has 116 MA's), (34, 11045), (50, 11144), (90, 11381), (99, 11471), (113, 11573), (114, 11579), (117, 11612), (150, 11828),

Gene: LeMond_19 Start: 10232, Stop: 11073, Start Num: 26

Candidate Starts for LeMond_19:

(Start: 26 @10232 has 19 MA's), (39, 10286), (79, 10535), (114, 10799), (150, 11051),

Gene: Lea83_19 Start: 11349, Stop: 12193, Start Num: 27

Candidate Starts for Lea83_19:

(Start: 10 @11286 has 11 MA's), (Start: 27 @11349 has 116 MA's), (31, 11367), (50, 11472), (74, 11616), (79, 11643), (83, 11664), (99, 11808), (108, 11859), (114, 11916), (127, 12048),

Gene: Lebo14_21 Start: 12444, Stop: 13324, Start Num: 25

Candidate Starts for Lebo14_21:

(Start: 6 @12381 has 2 MA's), (Start: 25 @12444 has 21 MA's), (47, 12543), (52, 12597), (64, 12663), (104, 12930), (111, 12981), (113, 13011), (118, 13056), (119, 13062), (125, 13125), (152, 13305),

Gene: Lemuria_15 Start: 9901, Stop: 10811, Start Num: 11

Candidate Starts for Lemuria_15:

(Start: 11 @9901 has 71 MA's), (33, 10003), (91, 10354), (106, 10456), (111, 10495),

Gene: Leston_18 Start: 11408, Stop: 12249, Start Num: 24

Candidate Starts for Leston_18:

(Start: 24 @11408 has 18 MA's), (45, 11492), (50, 11543), (74, 11687), (99, 11870), (125, 12086), (127, 12113), (133, 12140), (139, 12164),

Gene: Liefie_15 Start: 10568, Stop: 11463, Start Num: 11

Candidate Starts for Liefie_15:

(Start: 2 @10493 has 4 MA's), (3, 10523), (Start: 11 @10568 has 71 MA's), (50, 10754), (83, 10946), (91, 11018), (99, 11081), (100, 11090),

Gene: LilDirt_17 Start: 11138, Stop: 11979, Start Num: 24

Candidate Starts for LilDirt_17:

(Start: 10 @11093 has 11 MA's), (Start: 24 @11138 has 18 MA's), (45, 11222), (50, 11273), (64, 11354), (101, 11609), (104, 11621), (117, 11741), (122, 11792), (127, 11843), (133, 11870), (134, 11873), (145, 11936),

Gene: LilPharaoh_16 Start: 10504, Stop: 11327, Start Num: 26

Candidate Starts for LilPharaoh_16:

(Start: 26 @10504 has 19 MA's), (79, 10780), (99, 10936), (111, 11008), (113, 11038), (114, 11044), (122, 11128), (147, 11278),

Gene: LindNT_20 Start: 11196, Stop: 12046, Start Num: 27

Candidate Starts for LindNT_20:

(Start: 6 @11118 has 2 MA's), (Start: 10 @11130 has 11 MA's), (Start: 27 @11196 has 116 MA's), (42, 11256), (79, 11496), (90, 11562), (99, 11652), (113, 11754), (114, 11760), (119, 11805), (122, 11844), (125, 11868), (137, 11937), (150, 12012),

Gene: LouisV14_15 Start: 10569, Stop: 11464, Start Num: 11

Candidate Starts for LouisV14_15:

(Start: 2 @10494 has 4 MA's), (3, 10524), (Start: 11 @10569 has 71 MA's), (50, 10755), (83, 10947), (91, 11019), (99, 11082), (100, 11091), (129, 11331),

Gene: Lunahalos_20 Start: 11269, Stop: 12116, Start Num: 27

Candidate Starts for Lunahalos_20:

(Start: 6 @11191 has 2 MA's), (Start: 10 @11203 has 11 MA's), (Start: 27 @11269 has 116 MA's), (42, 11326), (58, 11443), (79, 11566), (90, 11632), (99, 11722), (111, 11794), (114, 11830), (119, 11875), (122, 11914), (125, 11938), (137, 12007), (150, 12082),

Gene: MOOREtheMARYer_15 Start: 10788, Stop: 11710, Start Num: 11

Candidate Starts for MOOREtheMARYer_15:

(Start: 2 @10719 has 4 MA's), (Start: 11 @10788 has 71 MA's), (36, 10923), (46, 10944), (67, 11097), (74, 11142), (90, 11235),

Gene: MZKinsey_15 Start: 10569, Stop: 11464, Start Num: 11

Candidate Starts for MZKinsey_15:

(Start: 2 @10494 has 4 MA's), (3, 10524), (Start: 11 @10569 has 71 MA's), (50, 10755), (83, 10947), (91, 11019), (99, 11082), (100, 11091), (129, 11331),

Gene: MacKat_20 Start: 11246, Stop: 12093, Start Num: 27

Candidate Starts for MacKat_20:

(Start: 6 @11168 has 2 MA's), (Start: 10 @11180 has 11 MA's), (Start: 27 @11246 has 116 MA's), (42, 11303), (79, 11543), (90, 11609), (99, 11699), (111, 11771), (114, 11807), (119, 11852), (122, 11891), (125, 11915), (137, 11984), (150, 12059),

Gene: MacnCheese_20 Start: 11578, Stop: 12428, Start Num: 27

Candidate Starts for MacnCheese_20:

(Start: 6 @11497 has 2 MA's), (Start: 27 @11578 has 116 MA's), (50, 11707), (74, 11851), (83, 11899), (108, 12094), (114, 12151), (127, 12283),

Gene: MalagasyRose_21 Start: 11606, Stop: 12456, Start Num: 28

Candidate Starts for MalagasyRose_21:

(15, 11561), (Start: 28 @11606 has 1 MA's), (43, 11684), (58, 11792), (59, 11798), (62, 11825), (74, 11900), (77, 11918), (89, 11990), (92, 12026), (106, 12137), (107, 12143), (110, 12167), (116, 12230), (122, 12293), (124, 12308), (146, 12422), (148, 12431), (151, 12446),

Gene: Maliketh_15 Start: 10569, Stop: 11464, Start Num: 11

Candidate Starts for Maliketh_15:

(Start: 2 @10494 has 4 MA's), (3, 10524), (Start: 11 @10569 has 71 MA's), (50, 10755), (83, 10947), (91, 11019), (99, 11082), (100, 11091), (129, 11331),

Gene: Malthus_21 Start: 12354, Stop: 13234, Start Num: 25

Candidate Starts for Malthus_21:

(Start: 25 @12354 has 21 MA's), (47, 12453), (52, 12507), (64, 12573), (104, 12840), (113, 12921), (114, 12927), (118, 12966), (119, 12972), (122, 13011), (125, 13035), (152, 13215),

Gene: Marcoliusprime_16 Start: 9253, Stop: 10115, Start Num: 21

Candidate Starts for Marcoliusprime_16:

(Start: 10 @9196 has 11 MA's), (Start: 21 @9253 has 12 MA's), (39, 9325), (62, 9475), (64, 9481), (113, 9829), (153, 10102),

Gene: MarkPhew_20 Start: 10120, Stop: 10964, Start Num: 26

Candidate Starts for MarkPhew_20:

(Start: 26 @10120 has 19 MA's), (79, 10426), (83, 10447), (113, 10684), (114, 10690), (122, 10774),

Gene: Marmie_15 Start: 10569, Stop: 11464, Start Num: 11

Candidate Starts for Marmie_15:

(Start: 2 @10494 has 4 MA's), (3, 10524), (Start: 11 @10569 has 71 MA's), (50, 10755), (83, 10947), (91, 11019), (99, 11082), (100, 11091), (129, 11331),

Gene: Marshawn_21 Start: 10810, Stop: 11645, Start Num: 26

Candidate Starts for Marshawn_21:

(Start: 10 @10753 has 11 MA's), (Start: 26 @10810 has 19 MA's), (79, 11113), (99, 11269), (109, 11329), (113, 11371), (122, 11461), (125, 11485), (145, 11602),

Gene: Mdavu_16 Start: 10492, Stop: 11315, Start Num: 26

Candidate Starts for Mdavu_16:

(Start: 26 @10492 has 19 MA's), (79, 10768), (99, 10924), (111, 10996), (113, 11026), (114, 11032), (122, 11116), (147, 11266),

Gene: MeaningOfLife_20 Start: 11205, Stop: 12052, Start Num: 27

Candidate Starts for MeaningOfLife_20:

(Start: 6 @11127 has 2 MA's), (Start: 10 @11139 has 11 MA's), (Start: 27 @11205 has 116 MA's), (42, 11262), (58, 11379), (79, 11502), (90, 11568), (99, 11658), (111, 11730), (113, 11760), (114, 11766), (119, 11811), (122, 11850), (125, 11874), (137, 11943), (150, 12018),

Gene: Megsy_20 Start: 11199, Stop: 12049, Start Num: 27

Candidate Starts for Megsy_20:

(Start: 6 @11121 has 2 MA's), (Start: 10 @11133 has 11 MA's), (Start: 27 @11199 has 116 MA's), (42, 11259), (79, 11499), (90, 11565), (99, 11655), (113, 11757), (114, 11763), (119, 11808), (122, 11847), (125, 11871), (137, 11940), (150, 12015),

Gene: Mercurio_16 Start: 10548, Stop: 11458, Start Num: 11

Candidate Starts for Mercurio_16:

(Start: 11 @10548 has 71 MA's), (91, 11001), (106, 11103), (111, 11142),

Gene: Milly_16 Start: 9253, Stop: 10115, Start Num: 21

Candidate Starts for Milly_16:

(Start: 10 @9196 has 11 MA's), (Start: 21 @9253 has 12 MA's), (39, 9325), (62, 9475), (64, 9481), (113, 9829), (153, 10102),

Gene: Miryou_18 Start: 11256, Stop: 12097, Start Num: 24

Candidate Starts for Miryou_18:

(Start: 24 @11256 has 18 MA's), (45, 11340), (50, 11391), (74, 11535), (99, 11718), (122, 11910), (125, 11934), (127, 11961), (133, 11988), (139, 12012),

Gene: MissDaisy_21 Start: 12205, Stop: 13085, Start Num: 25

Candidate Starts for MissDaisy_21:

(Start: 6 @12142 has 2 MA's), (Start: 25 @12205 has 21 MA's), (47, 12304), (52, 12358), (64, 12424), (104, 12691), (113, 12772), (118, 12817), (119, 12823), (125, 12886), (152, 13066),

Gene: Mitti_21 Start: 12354, Stop: 13234, Start Num: 25

Candidate Starts for Mitti_21:

(Start: 6 @12291 has 2 MA's), (Start: 25 @12354 has 21 MA's), (47, 12453), (52, 12507), (64, 12573), (104, 12840), (113, 12921), (118, 12966), (119, 12972), (125, 13035), (152, 13215),

Gene: Mowgli_15 Start: 10569, Stop: 11464, Start Num: 11

Candidate Starts for Mowgli_15:

(Start: 2 @10494 has 4 MA's), (3, 10524), (Start: 11 @10569 has 71 MA's), (50, 10755), (83, 10947), (91, 11019), (99, 11082), (100, 11091), (129, 11331),

Gene: Muddy_17 Start: 10848, Stop: 11647, Start Num: 22

Candidate Starts for Muddy_17:

(4, 10731), (5, 10740), (14, 10800), (Start: 22 @10848 has 3 MA's), (49, 10959), (54, 10995), (55, 10998), (56, 11004), (65, 11049), (66, 11055), (81, 11139), (82, 11142), (86, 11166), (91, 11223), (95, 11256), (97, 11268), (98, 11274), (108, 11337), (109, 11346), (122, 11478), (127, 11529), (129, 11535), (137, 11553), (153, 11640),

Gene: Mufasa_16 Start: 9254, Stop: 10137, Start Num: 21

Candidate Starts for Mufasa_16:

(Start: 10 @9197 has 11 MA's), (Start: 21 @9254 has 12 MA's), (39, 9344), (62, 9497), (113, 9851),

Gene: Murucutumbu_20 Start: 11191, Stop: 12035, Start Num: 27

Candidate Starts for Murucutumbu_20:

(Start: 6 @11113 has 2 MA's), (Start: 10 @11125 has 11 MA's), (Start: 27 @11191 has 116 MA's), (50, 11314), (79, 11485), (90, 11551), (99, 11641), (114, 11749), (119, 11794), (122, 11833), (137, 11926), (150, 12001),

Gene: Mynx_20 Start: 11252, Stop: 12099, Start Num: 27

Candidate Starts for Mynx_20:

(Start: 6 @11174 has 2 MA's), (Start: 10 @11186 has 11 MA's), (Start: 27 @11252 has 116 MA's), (42, 11309), (58, 11426), (79, 11549), (90, 11615), (99, 11705), (111, 11777), (113, 11807), (114, 11813), (119, 11858), (122, 11897), (125, 11921), (137, 11990), (150, 12065),

Gene: Neoh_15 Start: 10561, Stop: 11456, Start Num: 11

Candidate Starts for Neoh_15:

(Start: 2 @10495 has 4 MA's), (3, 10525), (Start: 11 @10561 has 71 MA's), (50, 10747), (83, 10939), (91, 11011), (99, 11074), (100, 11083), (129, 11323),

Gene: Nergal_19 Start: 12091, Stop: 12935, Start Num: 26

Candidate Starts for Nergal_19:

(17, 12052), (Start: 26 @12091 has 19 MA's), (39, 12154), (42, 12163), (58, 12271), (59, 12277), (60, 12298), (74, 12379), (76, 12388), (84, 12433), (89, 12469), (92, 12505), (93, 12517), (134, 12835), (141, 12862), (144, 12880),

Gene: Nibb_19 Start: 10272, Stop: 11113, Start Num: 26

Candidate Starts for Nibb_19:

(23, 10266), (Start: 26 @10272 has 19 MA's), (79, 10575), (83, 10596), (111, 10803), (113, 10833), (114, 10839), (122, 10923), (129, 10980),

Gene: Nikao_16 Start: 10504, Stop: 11327, Start Num: 26

Candidate Starts for Nikao_16:

(Start: 26 @10504 has 19 MA's), (79, 10780), (99, 10936), (111, 11008), (113, 11038), (114, 11044), (122, 11128), (147, 11278),

Gene: Niklas_20 Start: 10305, Stop: 11128, Start Num: 27

Candidate Starts for Niklas_20:

(Start: 6 @10227 has 2 MA's), (Start: 27 @10305 has 116 MA's), (37, 10332), (79, 10581), (99, 10737), (108, 10788), (114, 10845), (118, 10884), (122, 10929), (125, 10953),

Gene: NoShow_15 Start: 9392, Stop: 10209, Start Num: 22

Candidate Starts for NoShow_15:

(Start: 22 @9392 has 3 MA's), (65, 9599), (70, 9632), (71, 9641), (82, 9692), (86, 9716), (88, 9731), (127, 10079), (129, 10085),

Gene: November_18 Start: 11163, Stop: 12037, Start Num: 27

Candidate Starts for November_18:

(Start: 6 @11085 has 2 MA's), (Start: 27 @11163 has 116 MA's), (34, 11208), (104, 11661), (113, 11742), (114, 11748), (122, 11832),

Gene: Nutello_16 Start: 10504, Stop: 11327, Start Num: 26

Candidate Starts for Nutello_16:

(Start: 26 @10504 has 19 MA's), (79, 10780), (99, 10936), (111, 11008), (113, 11038), (114, 11044), (122, 11128), (147, 11278),

Gene: OctaviousRex_14 Start: 10569, Stop: 11464, Start Num: 11

Candidate Starts for OctaviousRex_14:

(Start: 2 @10494 has 4 MA's), (3, 10524), (Start: 11 @10569 has 71 MA's), (50, 10755), (83, 10947), (91, 11019), (99, 11082), (100, 11091), (129, 11331),

Gene: OkiRoe_18 Start: 11278, Stop: 12119, Start Num: 24

Candidate Starts for OkiRoe_18:

(Start: 24 @11278 has 18 MA's), (45, 11362), (50, 11413), (74, 11557), (99, 11740), (125, 11956), (127, 11983), (133, 12010), (139, 12034),

Gene: Olga_15 Start: 10569, Stop: 11464, Start Num: 11

Candidate Starts for Olga_15:

(Start: 2 @10494 has 4 MA's), (3, 10524), (Start: 11 @10569 has 71 MA's), (50, 10755), (83, 10947), (91, 11019), (99, 11082), (100, 11091), (129, 11331),

Gene: OmniCritical_21 Start: 12342, Stop: 13222, Start Num: 25

Candidate Starts for OmniCritical_21:

(8, 12282), (Start: 25 @12342 has 21 MA's), (47, 12441), (52, 12495), (64, 12561), (104, 12828), (113, 12909), (118, 12954), (119, 12960), (125, 13023), (152, 13203),

Gene: Omnicron_17 Start: 10271, Stop: 11151, Start Num: 10

Candidate Starts for Omnicron_17:

(Start: 10 @10271 has 11 MA's), (Start: 24 @10316 has 18 MA's), (50, 10448), (64, 10529), (104, 10796), (108, 10826), (113, 10877), (117, 10916), (119, 10928), (120, 10931), (122, 10967), (127, 11018), (130, 11036), (133, 11042), (134, 11045), (139, 11066),

Gene: Oscar_19 Start: 10233, Stop: 11074, Start Num: 26

Candidate Starts for Oscar_19:

(Start: 26 @10233 has 19 MA's), (79, 10536), (113, 10794), (114, 10800), (150, 11052),

Gene: P3MA_15 Start: 9183, Stop: 10054, Start Num: 19

Candidate Starts for P3MA_15:

(Start: 19 @9183 has 1 MA's), (29, 9225), (50, 9366), (53, 9396), (54, 9399), (68, 9477), (70, 9495), (75, 9525), (88, 9606), (96, 9687), (105, 9738), (110, 9771), (126, 9921), (132, 9960), (134, 9966), (136, 9975), (140, 9990),

Gene: Padfoot_20 Start: 11269, Stop: 12116, Start Num: 27

Candidate Starts for Padfoot_20:

(Start: 6 @11191 has 2 MA's), (Start: 10 @11203 has 11 MA's), (Start: 27 @11269 has 116 MA's), (42, 11326), (58, 11443), (79, 11566), (90, 11632), (99, 11722), (111, 11794), (114, 11830), (119, 11875), (122, 11914), (125, 11938), (137, 12007), (150, 12082),

Gene: Padpat_20 Start: 11229, Stop: 12076, Start Num: 27

Candidate Starts for Padpat_20:

(Start: 6 @11151 has 2 MA's), (Start: 10 @11163 has 11 MA's), (Start: 27 @11229 has 116 MA's), (42, 11286), (58, 11403), (79, 11526), (90, 11592), (99, 11682), (111, 11754), (114, 11790), (119, 11835), (122, 11874), (125, 11898), (137, 11967), (150, 12042),

Gene: Paito_15 Start: 10684, Stop: 11582, Start Num: 11

Candidate Starts for Paito_15:

(Start: 11 @10684 has 71 MA's), (50, 10873), (62, 10948), (67, 10972), (79, 11044), (91, 11137), (99, 11200),

Gene: Paola_18 Start: 11278, Stop: 12119, Start Num: 24

Candidate Starts for Paola_18:

(Start: 24 @11278 has 18 MA's), (45, 11362), (50, 11413), (74, 11557), (99, 11740), (125, 11956), (127, 11983), (133, 12010),

Gene: Patt_20 Start: 12181, Stop: 13061, Start Num: 25

Candidate Starts for Patt_20:

(Start: 6 @12118 has 2 MA's), (Start: 25 @12181 has 21 MA's), (47, 12280), (52, 12334), (64, 12400), (104, 12667), (113, 12748), (118, 12793), (119, 12799), (125, 12862), (152, 13042),

Gene: Peanam_20 Start: 10227, Stop: 11128, Start Num: 6

Candidate Starts for Peanam_20:

(Start: 6 @10227 has 2 MA's), (Start: 27 @10305 has 116 MA's), (37, 10332), (79, 10581), (99, 10737), (108, 10788), (114, 10845), (118, 10884), (122, 10929), (125, 10953),

Gene: Peeb_15 Start: 10569, Stop: 11464, Start Num: 11

Candidate Starts for Peeb_15:

(Start: 2 @10494 has 4 MA's), (3, 10524), (Start: 11 @10569 has 71 MA's), (50, 10755), (83, 10947), (91, 11019), (99, 11082), (100, 11091), (129, 11331),

Gene: Peel_20 Start: 11269, Stop: 12116, Start Num: 27

Candidate Starts for Peel_20:

(Start: 6 @11191 has 2 MA's), (Start: 10 @11203 has 11 MA's), (Start: 27 @11269 has 116 MA's), (42, 11326), (58, 11443), (79, 11566), (90, 11632), (99, 11722), (111, 11794), (114, 11830), (119, 11875), (122, 11914), (125, 11938), (137, 12007), (150, 12082),

Gene: Periodt_15 Start: 10569, Stop: 11464, Start Num: 11

Candidate Starts for Periodt_15:

(Start: 2 @10494 has 4 MA's), (3, 10524), (Start: 11 @10569 has 71 MA's), (50, 10755), (83, 10947), (91, 11019), (99, 11082), (100, 11091), (129, 11331),

Gene: Pharb_19 Start: 11150, Stop: 12009, Start Num: 27

Candidate Starts for Pharb_19:

(Start: 27 @11150 has 116 MA's), (30, 11162), (50, 11288), (74, 11432), (79, 11459), (83, 11480), (99, 11624), (108, 11675), (114, 11732), (117, 11765), (147, 11966),

Gene: PhelpsODU_19 Start: 10279, Stop: 11123, Start Num: 25

Candidate Starts for PhelpsODU_19:

(Start: 6 @10207 has 2 MA's), (Start: 25 @10279 has 21 MA's), (37, 10312), (50, 10390), (79, 10561), (113, 10819), (114, 10825), (121, 10885), (122, 10909), (147, 11062), (150, 11077),

Gene: Phish_15 Start: 10569, Stop: 11464, Start Num: 11

Candidate Starts for Phish_15:

(Start: 2 @10494 has 4 MA's), (3, 10524), (Start: 11 @10569 has 71 MA's), (50, 10755), (83, 10947), (91, 11019), (99, 11082), (100, 11091), (129, 11331),

Gene: Phrank_19 Start: 10230, Stop: 11071, Start Num: 27

Candidate Starts for Phrank_19:

(Start: 10 @10164 has 11 MA's), (Start: 27 @10230 has 116 MA's), (37, 10263), (50, 10341), (79, 10512), (113, 10770), (114, 10776), (121, 10836), (122, 10860), (147, 11013), (150, 11028),

Gene: Phreak_15 Start: 10569, Stop: 11464, Start Num: 11

Candidate Starts for Phreak_15:

(Start: 2 @10494 has 4 MA's), (3, 10524), (Start: 11 @10569 has 71 MA's), (50, 10755), (83, 10947), (91, 11019), (99, 11082), (100, 11091), (129, 11331),

Gene: Piatt_20 Start: 11269, Stop: 12116, Start Num: 27

Candidate Starts for Piatt_20:

(Start: 6 @11191 has 2 MA's), (Start: 10 @11203 has 11 MA's), (Start: 27 @11269 has 116 MA's), (42, 11326), (58, 11443), (79, 11566), (90, 11632), (99, 11722), (111, 11794), (114, 11830), (119, 11875), (122, 11914), (125, 11938), (137, 12007), (150, 12082),

Gene: PinkYoshi_15 Start: 10560, Stop: 11455, Start Num: 11

Candidate Starts for PinkYoshi_15:

(Start: 2 @10494 has 4 MA's), (3, 10524), (Start: 11 @10560 has 71 MA's), (50, 10746), (83, 10938), (91, 11010), (99, 11073), (100, 11082), (129, 11322),

Gene: Pinnie_16 Start: 11257, Stop: 12158, Start Num: 11

Candidate Starts for Pinnie_16:

(Start: 2 @11185 has 4 MA's), (Start: 11 @11257 has 71 MA's), (62, 11521), (67, 11545), (90, 11683),

Gene: Pixie_18 Start: 11101, Stop: 11945, Start Num: 27

Candidate Starts for Pixie_18:

(Start: 10 @11038 has 11 MA's), (Start: 27 @11101 has 116 MA's), (31, 11119), (50, 11224), (74, 11368), (79, 11395), (83, 11416), (99, 11560), (108, 11611), (114, 11668), (127, 11800),

Gene: Plagueis_15 Start: 10569, Stop: 11464, Start Num: 11

Candidate Starts for Plagueis_15:

(Start: 2 @10494 has 4 MA's), (3, 10524), (Start: 11 @10569 has 71 MA's), (50, 10755), (83, 10947), (91, 11019), (99, 11082), (100, 11091), (129, 11331),

Gene: Pokerus_19 Start: 11186, Stop: 12033, Start Num: 27

Candidate Starts for Pokerus_19:

(Start: 6 @11108 has 2 MA's), (Start: 10 @11120 has 11 MA's), (Start: 27 @11186 has 116 MA's), (42, 11243), (79, 11483), (90, 11549), (99, 11639), (111, 11711), (114, 11747), (119, 11792), (122, 11831), (125, 11855), (137, 11924), (150, 11999),

Gene: Prithvi_20 Start: 11196, Stop: 12046, Start Num: 27

Candidate Starts for Prithvi_20:

(Start: 6 @11118 has 2 MA's), (Start: 10 @11130 has 11 MA's), (Start: 27 @11196 has 116 MA's), (42, 11256), (79, 11496), (90, 11562), (99, 11652), (113, 11754), (114, 11760), (119, 11805), (122, 11844), (125, 11868), (137, 11937), (150, 12012),

Gene: Psycho_18 Start: 11206, Stop: 12092, Start Num: 10

Candidate Starts for Psycho_18:

(Start: 10 @11206 has 11 MA's), (Start: 24 @11251 has 18 MA's), (45, 11335), (50, 11386), (64, 11467), (99, 11713), (104, 11734), (117, 11854), (122, 11905), (127, 11956), (133, 11983), (139, 12007), (145, 12049),

Gene: QuincyRose_19 Start: 11249, Stop: 12096, Start Num: 27

Candidate Starts for QuincyRose_19:

(Start: 6 @11171 has 2 MA's), (Start: 10 @11183 has 11 MA's), (Start: 27 @11249 has 116 MA's), (42, 11306), (79, 11546), (90, 11612), (99, 11702), (111, 11774), (113, 11804), (114, 11810), (119, 11855), (122, 11894), (125, 11918), (137, 11987), (150, 12062),

Gene: Rabbs_15 Start: 10556, Stop: 11454, Start Num: 11

Candidate Starts for Rabbs_15:

(Start: 11 @10556 has 71 MA's), (62, 10820), (91, 11009), (99, 11072), (100, 11081),

Gene: Ramen_20 Start: 11232, Stop: 12079, Start Num: 27

Candidate Starts for Ramen_20:

(Start: 6 @11154 has 2 MA's), (Start: 10 @11166 has 11 MA's), (Start: 27 @11232 has 116 MA's), (42, 11289), (58, 11406), (79, 11529), (90, 11595), (99, 11685), (111, 11757), (114, 11793), (119, 11838), (122, 11877), (125, 11901), (137, 11970), (150, 12045),

Gene: Rapunzel97_20 Start: 11233, Stop: 12080, Start Num: 27

Candidate Starts for Rapunzel97_20:

(Start: 6 @11155 has 2 MA's), (Start: 10 @11167 has 11 MA's), (Start: 27 @11233 has 116 MA's), (42, 11290), (58, 11407), (79, 11530), (90, 11596), (99, 11686), (111, 11758), (114, 11794), (119, 11839), (122, 11878), (125, 11902), (137, 11971), (150, 12046),

Gene: Remy19_15 Start: 10494, Stop: 11464, Start Num: 2

Candidate Starts for Remy19_15:

(Start: 2 @10494 has 4 MA's), (3, 10524), (Start: 11 @10569 has 71 MA's), (50, 10755), (83, 10947), (91, 11019), (99, 11082), (100, 11091), (129, 11331),

Gene: Renaissance_15 Start: 10569, Stop: 11464, Start Num: 11

Candidate Starts for Renaissance_15:

(Start: 2 @10494 has 4 MA's), (3, 10524), (Start: 11 @10569 has 71 MA's), (50, 10755), (83, 10947), (91, 11019), (99, 11082), (100, 11091), (129, 11331),

Gene: Reptar3000_21 Start: 12183, Stop: 13063, Start Num: 25

Candidate Starts for Reptar3000_21:

(Start: 6 @12120 has 2 MA's), (Start: 25 @12183 has 21 MA's), (47, 12282), (52, 12336), (64, 12402), (104, 12669), (113, 12750), (118, 12795), (119, 12801), (125, 12864), (152, 13044),

Gene: Rosmarinus_20 Start: 11257, Stop: 12104, Start Num: 27

Candidate Starts for Rosmarinus_20:

(Start: 6 @11179 has 2 MA's), (Start: 10 @11191 has 11 MA's), (Start: 27 @11257 has 116 MA's), (42, 11314), (58, 11431), (79, 11554), (90, 11620), (99, 11710), (111, 11782), (114, 11818), (119, 11863), (122, 11902), (125, 11926), (137, 11995), (150, 12070),

Gene: Ruriko_15 Start: 10569, Stop: 11464, Start Num: 11

Candidate Starts for Ruriko_15:

(Start: 2 @10494 has 4 MA's), (3, 10524), (Start: 11 @10569 has 71 MA's), (50, 10755), (83, 10947), (91, 11019), (99, 11082), (100, 11091), (129, 11331),

Gene: SamScheppers_19 Start: 11957, Stop: 12837, Start Num: 25

Candidate Starts for SamScheppers_19:

(Start: 6 @11894 has 2 MA's), (Start: 25 @11957 has 21 MA's), (47, 12056), (52, 12110), (64, 12176), (104, 12443), (113, 12524), (118, 12569), (119, 12575), (125, 12638), (152, 12818),

Gene: SamuelLPlaqson_20 Start: 11173, Stop: 12023, Start Num: 27

Candidate Starts for SamuelLPlaqson_20:

(Start: 6 @11095 has 2 MA's), (Start: 10 @11107 has 11 MA's), (16, 11134), (Start: 27 @11173 has 116 MA's), (79, 11473), (90, 11539), (99, 11629), (114, 11737), (119, 11782), (122, 11821), (125, 11845), (137, 11914), (150, 11989),

Gene: Scarlett_19 Start: 10232, Stop: 11073, Start Num: 26

Candidate Starts for Scarlett_19:

(Start: 26 @10232 has 19 MA's), (39, 10286), (79, 10535), (114, 10799), (150, 11051),

Gene: Schiebel_15 Start: 10569, Stop: 11464, Start Num: 11

Candidate Starts for Schiebel_15:

(Start: 2 @10494 has 4 MA's), (3, 10524), (Start: 11 @10569 has 71 MA's), (50, 10755), (83, 10947), (91, 11019), (99, 11082), (100, 11091), (129, 11331),

Gene: SgtBeansprout_16 Start: 10504, Stop: 11327, Start Num: 26

Candidate Starts for SgtBeansprout_16:

(Start: 26 @10504 has 19 MA's), (79, 10780), (99, 10936), (111, 11008), (113, 11038), (114, 11044), (122, 11128), (147, 11278),

Gene: ShaboiShabazz_15 Start: 10569, Stop: 11464, Start Num: 11

Candidate Starts for ShaboiShabazz_15:

(Start: 2 @10494 has 4 MA's), (3, 10524), (Start: 11 @10569 has 71 MA's), (50, 10755), (83, 10947), (91, 11019), (99, 11082), (100, 11091), (129, 11331),

Gene: Shadow1_18 Start: 10121, Stop: 10962, Start Num: 27

Candidate Starts for Shadow1_18:

(Start: 27 @10121 has 116 MA's), (44, 10175), (50, 10229), (79, 10400), (108, 10610), (112, 10649), (113, 10661), (114, 10667), (147, 10904), (150, 10919),

Gene: Shaobing_20 Start: 10305, Stop: 11128, Start Num: 27

Candidate Starts for Shaobing_20:

(Start: 6 @10227 has 2 MA's), (Start: 27 @10305 has 116 MA's), (37, 10332), (79, 10581), (99, 10737), (108, 10788), (114, 10845), (118, 10884), (122, 10929), (125, 10953),

Gene: ShedlockHolmes_19 Start: 11349, Stop: 12193, Start Num: 27

Candidate Starts for ShedlockHolmes_19:

(Start: 10 @11286 has 11 MA's), (Start: 27 @11349 has 116 MA's), (31, 11367), (50, 11472), (74, 11616), (79, 11643), (83, 11664), (99, 11808), (108, 11859), (114, 11916), (127, 12048),

Gene: ShiaSurprise_20 Start: 11269, Stop: 12116, Start Num: 27

Candidate Starts for ShiaSurprise_20:

(Start: 6 @11191 has 2 MA's), (Start: 10 @11203 has 11 MA's), (Start: 27 @11269 has 116 MA's), (42, 11326), (58, 11443), (79, 11566), (90, 11632), (99, 11722), (111, 11794), (114, 11830), (119, 11875), (122, 11914), (125, 11938), (137, 12007), (150, 12082),

Gene: SirPhilip_19 Start: 10000, Stop: 10844, Start Num: 26

Candidate Starts for SirPhilip_19:

(Start: 6 @9922 has 2 MA's), (Start: 26 @10000 has 19 MA's), (50, 10135), (79, 10306), (84, 10333), (99, 10462), (113, 10564), (114, 10570), (122, 10654), (132, 10726),

Gene: Sizemore_15 Start: 10570, Stop: 11465, Start Num: 11

Candidate Starts for Sizemore_15:

(Start: 2 @10495 has 4 MA's), (3, 10525), (Start: 11 @10570 has 71 MA's), (50, 10756), (83, 10948), (91, 11020), (99, 11083), (100, 11092), (129, 11332),

Gene: Slarp_20 Start: 12441, Stop: 13321, Start Num: 25

Candidate Starts for Slarp_20:

(Start: 6 @12378 has 2 MA's), (Start: 25 @12441 has 21 MA's), (47, 12540), (52, 12594), (64, 12660), (104, 12927), (113, 13008), (118, 13053), (119, 13059), (125, 13122), (152, 13302),

Gene: Slimphazie_20 Start: 11233, Stop: 12080, Start Num: 27

Candidate Starts for Slimphazie_20:

(Start: 6 @11155 has 2 MA's), (Start: 10 @11167 has 11 MA's), (Start: 27 @11233 has 116 MA's), (42, 11290), (58, 11407), (79, 11530), (90, 11596), (99, 11686), (111, 11758), (114, 11794), (119, 11839), (122, 11878), (125, 11902), (137, 11971), (150, 12046),

Gene: Sneeze_15 Start: 10555, Stop: 11453, Start Num: 11

Candidate Starts for Sneeze_15:

(Start: 11 @10555 has 71 MA's), (62, 10819), (91, 11008), (99, 11071), (100, 11080),

Gene: SoSeph_18 Start: 11405, Stop: 12246, Start Num: 24

Candidate Starts for SoSeph_18:

(Start: 24 @11405 has 18 MA's), (45, 11489), (50, 11540), (74, 11684), (99, 11867), (117, 12008), (122, 12059), (127, 12110), (133, 12137), (134, 12140), (145, 12203),

Gene: Spock_20 Start: 11269, Stop: 12116, Start Num: 27

Candidate Starts for Spock_20:

(Start: 6 @11191 has 2 MA's), (Start: 10 @11203 has 11 MA's), (Start: 27 @11269 has 116 MA's), (42, 11326), (58, 11443), (79, 11566), (90, 11632), (99, 11722), (111, 11794), (114, 11830), (119, 11875), (122, 11914), (125, 11938), (137, 12007), (150, 12082),

Gene: Stargaze_15 Start: 10778, Stop: 11766, Start Num: 1

Candidate Starts for Stargaze_15:

(Start: 1 @10778 has 1 MA's), (Start: 11 @10865 has 71 MA's), (62, 11123), (67, 11147), (69, 11165), (90, 11285), (112, 11474),

Gene: Stinson_20 Start: 11203, Stop: 12047, Start Num: 27

Candidate Starts for Stinson_20:

(Start: 6 @11125 has 2 MA's), (Start: 10 @11137 has 11 MA's), (Start: 27 @11203 has 116 MA's), (50, 11326), (79, 11497), (90, 11563), (99, 11653), (113, 11755), (114, 11761), (119, 11806), (122, 11845), (137, 11938), (150, 12013),

Gene: Strobilo_16 Start: 9253, Stop: 10115, Start Num: 21

Candidate Starts for Strobilo_16:

(Start: 10 @9196 has 11 MA's), (Start: 21 @9253 has 12 MA's), (39, 9325), (62, 9475), (64, 9481), (113, 9829), (153, 10102),

Gene: Sulley_20 Start: 11202, Stop: 12049, Start Num: 27

Candidate Starts for Sulley_20:

(Start: 6 @11124 has 2 MA's), (Start: 10 @11136 has 11 MA's), (Start: 27 @11202 has 116 MA's), (42, 11259), (79, 11499), (90, 11565), (99, 11655), (111, 11727), (114, 11763), (119, 11808), (122, 11847), (125, 11871), (137, 11940), (150, 12015),

Gene: Sunflower1121_18 Start: 10132, Stop: 10973, Start Num: 27

Candidate Starts for Sunflower1121_18:

(Start: 27 @10132 has 116 MA's), (44, 10186), (50, 10240), (79, 10411), (108, 10621), (112, 10660), (114, 10678), (147, 10915),

Gene: Sweets_15 Start: 10564, Stop: 11459, Start Num: 11

Candidate Starts for Sweets_15:

(Start: 2 @10489 has 4 MA's), (3, 10519), (Start: 11 @10564 has 71 MA's), (50, 10750), (83, 10942), (91, 11014), (99, 11077), (100, 11086), (129, 11326),

Gene: Syra333_19 Start: 10227, Stop: 11068, Start Num: 27

Candidate Starts for Syra333_19:

(Start: 10 @10164 has 11 MA's), (Start: 27 @10227 has 116 MA's), (44, 10281), (50, 10335), (79, 10506), (108, 10716), (112, 10755), (114, 10773), (147, 11010), (150, 11025),

Gene: TBond007_19 Start: 11100, Stop: 11944, Start Num: 27

Candidate Starts for TBond007_19:

(Start: 10 @11037 has 11 MA's), (Start: 27 @11100 has 116 MA's), (31, 11118), (50, 11223), (74, 11367), (79, 11394), (83, 11415), (99, 11559), (108, 11610), (114, 11667), (127, 11799),

Gene: TClif_19 Start: 10225, Stop: 11063, Start Num: 27

Candidate Starts for TClif_19:

(Start: 10 @10156 has 11 MA's), (12, 10168), (Start: 27 @10225 has 116 MA's), (79, 10507), (99, 10663), (111, 10735), (113, 10765), (114, 10771), (137, 10945), (145, 10996), (147, 11005),

Gene: TM4_16 Start: 9314, Stop: 10236, Start Num: 21

Candidate Starts for TM4_16:

(Start: 21 @9314 has 12 MA's), (39, 9383), (62, 9536), (113, 9890), (155, 10184),

Gene: TPA4_16 Start: 10600, Stop: 11465, Start Num: 20

Candidate Starts for TPA4_16:

(20, 10600), (30, 10645), (49, 10777), (63, 10861), (99, 11116),

Gene: Tachez_20 Start: 11195, Stop: 12042, Start Num: 27

Candidate Starts for Tachez_20:

(Start: 6 @11117 has 2 MA's), (Start: 10 @11129 has 11 MA's), (Start: 27 @11195 has 116 MA's), (42, 11252), (58, 11369), (79, 11492), (90, 11558), (99, 11648), (111, 11720), (114, 11756), (119, 11801), (122, 11840), (125, 11864), (137, 11933), (150, 12008),

Gene: Taheera_15 Start: 10568, Stop: 11466, Start Num: 11

Candidate Starts for Taheera_15:

(Start: 11 @10568 has 71 MA's), (62, 10832), (91, 11021), (99, 11084),

Gene: Taquito_19 Start: 12025, Stop: 12911, Start Num: 25

Candidate Starts for Taquito_19:

(Start: 25 @12025 has 21 MA's), (40, 12094), (50, 12169), (52, 12181), (64, 12247), (91, 12430), (104, 12514), (113, 12595), (118, 12640), (119, 12646), (122, 12685), (125, 12709), (147, 12865), (152, 12889),

Gene: Terror_15 Start: 10568, Stop: 11466, Start Num: 11

Candidate Starts for Terror_15:

(Start: 11 @10568 has 71 MA's), (62, 10832), (91, 11021), (99, 11084),

Gene: Thyatira_18 Start: 11277, Stop: 12118, Start Num: 24

Candidate Starts for Thyatira_18:

(Start: 24 @11277 has 18 MA's), (42, 11349), (45, 11361), (50, 11412), (74, 11556), (99, 11739), (125, 11955), (127, 11982), (133, 12009),

Gene: Tierra_19 Start: 10951, Stop: 11792, Start Num: 27

Candidate Starts for Tierra_19:

(Start: 10 @10885 has 11 MA's), (Start: 27 @10951 has 116 MA's), (37, 10984), (50, 11062), (79, 11233), (113, 11491), (114, 11497), (121, 11557), (122, 11581), (147, 11734), (150, 11749),

Gene: Tigress9_19 Start: 10147, Stop: 11051, Start Num: 10

Candidate Starts for Tigress9_19:

(Start: 10 @10147 has 11 MA's), (Start: 27 @10210 has 116 MA's), (44, 10264), (50, 10318), (79, 10489), (108, 10699), (112, 10738), (114, 10756), (147, 10993), (150, 11008),

Gene: TinaBug_15 Start: 10564, Stop: 11459, Start Num: 11

Candidate Starts for TinaBug_15:

(Start: 2 @10489 has 4 MA's), (Start: 11 @10564 has 71 MA's), (50, 10750), (83, 10942), (91, 11014), (99, 11077), (100, 11086), (129, 11326),

Gene: TiniBug_20 Start: 11173, Stop: 12023, Start Num: 27

Candidate Starts for TiniBug_20:

(Start: 6 @11095 has 2 MA's), (Start: 10 @11107 has 11 MA's), (16, 11134), (Start: 27 @11173 has 116 MA's), (79, 11473), (90, 11539), (99, 11629), (114, 11737), (119, 11782), (122, 11821), (125, 11845), (137, 11914), (150, 11989),

Gene: Tiri_20 Start: 11241, Stop: 12088, Start Num: 27

Candidate Starts for Tiri_20:

(Start: 6 @11163 has 2 MA's), (Start: 10 @11175 has 11 MA's), (Start: 27 @11241 has 116 MA's), (42, 11298), (79, 11538), (90, 11604), (99, 11694), (111, 11766), (114, 11802), (119, 11847), (122, 11886), (125, 11910), (137, 11979),

Gene: TomBrady_15 Start: 10570, Stop: 11465, Start Num: 11

Candidate Starts for TomBrady_15:

(Start: 2 @10495 has 4 MA's), (3, 10525), (Start: 11 @10570 has 71 MA's), (50, 10756), (83, 10948), (91, 11020), (99, 11083), (100, 11092), (129, 11332),

Gene: Topper_20 Start: 11269, Stop: 12116, Start Num: 27

Candidate Starts for Topper_20:

(Start: 6 @11191 has 2 MA's), (Start: 10 @11203 has 11 MA's), (Start: 27 @11269 has 116 MA's), (42, 11326), (58, 11443), (79, 11566), (90, 11632), (99, 11722), (111, 11794), (114, 11830), (119, 11875), (122, 11914), (125, 11938), (137, 12007), (150, 12082),

Gene: Torres_16 Start: 10504, Stop: 11327, Start Num: 26

Candidate Starts for Torres_16:

(Start: 26 @10504 has 19 MA's), (79, 10780), (99, 10936), (111, 11008), (113, 11038), (114, 11044), (122, 11128), (147, 11278),

Gene: TreyKay_20 Start: 11196, Stop: 12046, Start Num: 27

Candidate Starts for TreyKay_20:

(Start: 6 @11118 has 2 MA's), (Start: 10 @11130 has 11 MA's), (Start: 27 @11196 has 116 MA's), (42, 11256), (79, 11496), (90, 11562), (99, 11652), (113, 11754), (114, 11760), (119, 11805), (122, 11844), (125, 11868), (137, 11937), (150, 12012),

Gene: TribbleTrouble_18 Start: 11167, Stop: 12002, Start Num: 27

Candidate Starts for TribbleTrouble_18:

(Start: 27 @11167 has 116 MA's), (50, 11281), (74, 11425), (77, 11443), (79, 11452), (83, 11473), (108, 11668), (114, 11725),

Gene: TruffulaTree_20 Start: 11229, Stop: 12076, Start Num: 27

Candidate Starts for TruffulaTree_20:

(Start: 6 @11151 has 2 MA's), (Start: 10 @11163 has 11 MA's), (Start: 27 @11229 has 116 MA's), (42, 11286), (58, 11403), (79, 11526), (90, 11592), (99, 11682), (111, 11754), (114, 11790), (119, 11835), (122, 11874), (125, 11898), (137, 11967), (150, 12042),

Gene: Twitch_20 Start: 11269, Stop: 12116, Start Num: 27

Candidate Starts for Twitch_20:

(Start: 6 @11191 has 2 MA's), (Start: 10 @11203 has 11 MA's), (Start: 27 @11269 has 116 MA's), (42, 11326), (58, 11443), (79, 11566), (90, 11632), (99, 11722), (111, 11794), (114, 11830), (119, 11875), (122, 11914), (125, 11938), (137, 12007), (150, 12082),

Gene: Typha_21 Start: 13145, Stop: 14025, Start Num: 18

Candidate Starts for Typha_21:

(Start: 18 @13145 has 6 MA's), (41, 13235), (50, 13307), (57, 13355), (61, 13379), (67, 13406), (72, 13448), (73, 13457), (78, 13478), (80, 13493), (85, 13520), (89, 13550), (94, 13610), (111, 13721), (123, 13853), (131, 13904), (142, 13949), (149, 14000),

Gene: Unicorn_19 Start: 10279, Stop: 11123, Start Num: 25

Candidate Starts for Unicorn_19:

(Start: 6 @10207 has 2 MA's), (Start: 25 @10279 has 21 MA's), (37, 10312), (50, 10390), (79, 10561), (113, 10819), (114, 10825), (121, 10885), (122, 10909), (147, 11062), (150, 11077),

Gene: Urkel_20 Start: 11173, Stop: 12023, Start Num: 27

Candidate Starts for Urkel_20:

(Start: 6 @11095 has 2 MA's), (Start: 10 @11107 has 11 MA's), (16, 11134), (Start: 27 @11173 has 116 MA's), (79, 11473), (90, 11539), (99, 11629), (114, 11737), (119, 11782), (122, 11821), (125, 11845), (137, 11914), (150, 11989),

Gene: Validus_20 Start: 10149, Stop: 11056, Start Num: 6

Candidate Starts for Validus_20:

(Start: 6 @10149 has 2 MA's), (Start: 27 @10230 has 116 MA's), (37, 10254), (48, 10293), (79, 10503), (99, 10659), (111, 10731), (114, 10767), (122, 10851), (125, 10875),

Gene: Veliki_20 Start: 11269, Stop: 12116, Start Num: 27

Candidate Starts for Veliki_20:

(Start: 6 @11191 has 2 MA's), (Start: 10 @11203 has 11 MA's), (Start: 27 @11269 has 116 MA's), (42, 11326), (58, 11443), (79, 11566), (90, 11632), (99, 11722), (111, 11794), (114, 11830), (119, 11875), (122, 11914), (125, 11938), (137, 12007), (150, 12082),

Gene: ViviJ_17 Start: 11138, Stop: 11979, Start Num: 24

Candidate Starts for ViviJ_17:

(Start: 10 @11093 has 11 MA's), (Start: 24 @11138 has 18 MA's), (45, 11222), (50, 11273), (64, 11354), (101, 11609), (104, 11621), (117, 11741), (122, 11792), (127, 11843), (133, 11870), (134, 11873), (145, 11936),

Gene: Waterfoul_18 Start: 11299, Stop: 12140, Start Num: 24

Candidate Starts for Waterfoul_18:

(Start: 24 @11299 has 18 MA's), (42, 11371), (45, 11383), (50, 11434), (74, 11578), (99, 11761), (125, 11977), (127, 12004), (133, 12031),

Gene: Wendigo_15 Start: 10569, Stop: 11464, Start Num: 11

Candidate Starts for Wendigo_15:

(Start: 2 @10494 has 4 MA's), (3, 10524), (Start: 11 @10569 has 71 MA's), (50, 10755), (83, 10947), (91, 11019), (99, 11082), (100, 11091), (129, 11331),

Gene: Wintermute_21 Start: 12430, Stop: 13310, Start Num: 25

Candidate Starts for Wintermute_21:

(Start: 6 @12367 has 2 MA's), (Start: 25 @12430 has 21 MA's), (47, 12529), (52, 12583), (64, 12649), (104, 12916), (113, 12997), (118, 13042), (119, 13048), (125, 13111), (152, 13291),

Gene: Ximenita_20 Start: 10406, Stop: 11247, Start Num: 27

Candidate Starts for Ximenita_20:

(Start: 27 @10406 has 116 MA's), (37, 10436), (44, 10460), (50, 10514), (79, 10685), (108, 10895), (112, 10934), (113, 10946), (114, 10952), (122, 11036), (147, 11189), (150, 11204),

Gene: YasnayaPolyana_20 Start: 12431, Stop: 13311, Start Num: 25

Candidate Starts for YasnayaPolyana_20:

(Start: 6 @12368 has 2 MA's), (Start: 25 @12431 has 21 MA's), (47, 12530), (52, 12584), (64, 12650), (104, 12917), (113, 12998), (118, 13043), (119, 13049), (125, 13112), (152, 13292),

Gene: YoureAdopted_19 Start: 11202, Stop: 12049, Start Num: 27

Candidate Starts for YoureAdopted_19:

(Start: 6 @11124 has 2 MA's), (Start: 10 @11136 has 11 MA's), (Start: 27 @11202 has 116 MA's), (42, 11259), (58, 11376), (79, 11499), (90, 11565), (99, 11655), (111, 11727), (114, 11763), (119, 11808), (122, 11847), (125, 11871), (137, 11940), (150, 12015),

Gene: Yuna_20 Start: 10337, Stop: 11187, Start Num: 27

Candidate Starts for Yuna_20:

(Start: 27 @10337 has 116 MA's), (50, 10472), (79, 10643), (94, 10763), (99, 10799), (105, 10826), (108, 10850), (128, 11045),

Gene: Yunkel11_20 Start: 10187, Stop: 11016, Start Num: 27

Candidate Starts for Yunkel11_20:

(Start: 10 @10121 has 11 MA's), (Start: 27 @10187 has 116 MA's), (37, 10211), (44, 10235), (79, 10460), (99, 10616), (108, 10667), (113, 10718), (118, 10763), (122, 10808),

Gene: Zabiza_20 Start: 11230, Stop: 12077, Start Num: 27

Candidate Starts for Zabiza_20:

(Start: 6 @11152 has 2 MA's), (Start: 10 @11164 has 11 MA's), (Start: 27 @11230 has 116 MA's), (42, 11287), (58, 11404), (79, 11527), (90, 11593), (99, 11683), (111, 11755), (114, 11791), (119, 11836), (122, 11875), (125, 11899), (137, 11968), (150, 12043),

Gene: Zavala_20 Start: 11210, Stop: 12057, Start Num: 27

Candidate Starts for Zavala_20:

(Start: 6 @11132 has 2 MA's), (Start: 10 @11144 has 11 MA's), (Start: 27 @11210 has 116 MA's), (42, 11267), (58, 11384), (79, 11507), (90, 11573), (99, 11663), (111, 11735), (113, 11765), (114, 11771), (119, 11816), (122, 11855), (125, 11879), (137, 11948), (150, 12023),

Gene: ZoMa_15 Start: 10569, Stop: 11464, Start Num: 11

Candidate Starts for ZoMa_15:

(Start: 2 @10494 has 4 MA's), (3, 10524), (Start: 11 @10569 has 71 MA's), (50, 10755), (83, 10947), (91, 11019), (99, 11082), (100, 11091), (129, 11331),

Gene: ZoeJ_16 Start: 9211, Stop: 10076, Start Num: 21

Candidate Starts for ZoeJ_16:

(Start: 10 @9154 has 11 MA's), (12, 9166), (Start: 21 @9211 has 12 MA's), (39, 9283), (62, 9436), (113, 9790), (125, 9904), (127, 9931),

Gene: Zombie_15 Start: 10569, Stop: 11464, Start Num: 11

Candidate Starts for Zombie_15:

(Start: 2 @10494 has 4 MA's), (3, 10524), (Start: 11 @10569 has 71 MA's), (50, 10755), (83, 10947), (91, 11019), (99, 11082), (100, 11091), (129, 11331),