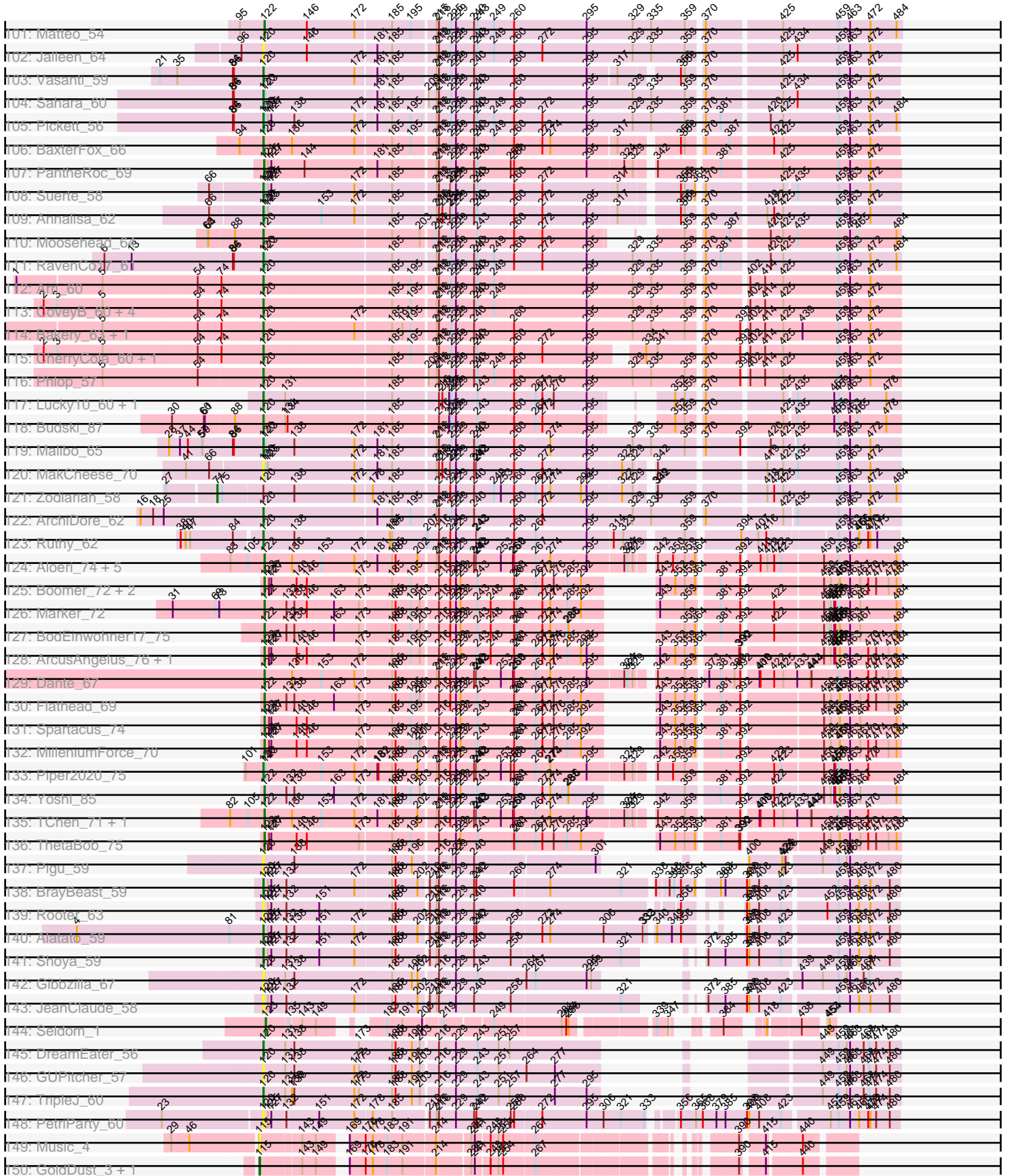
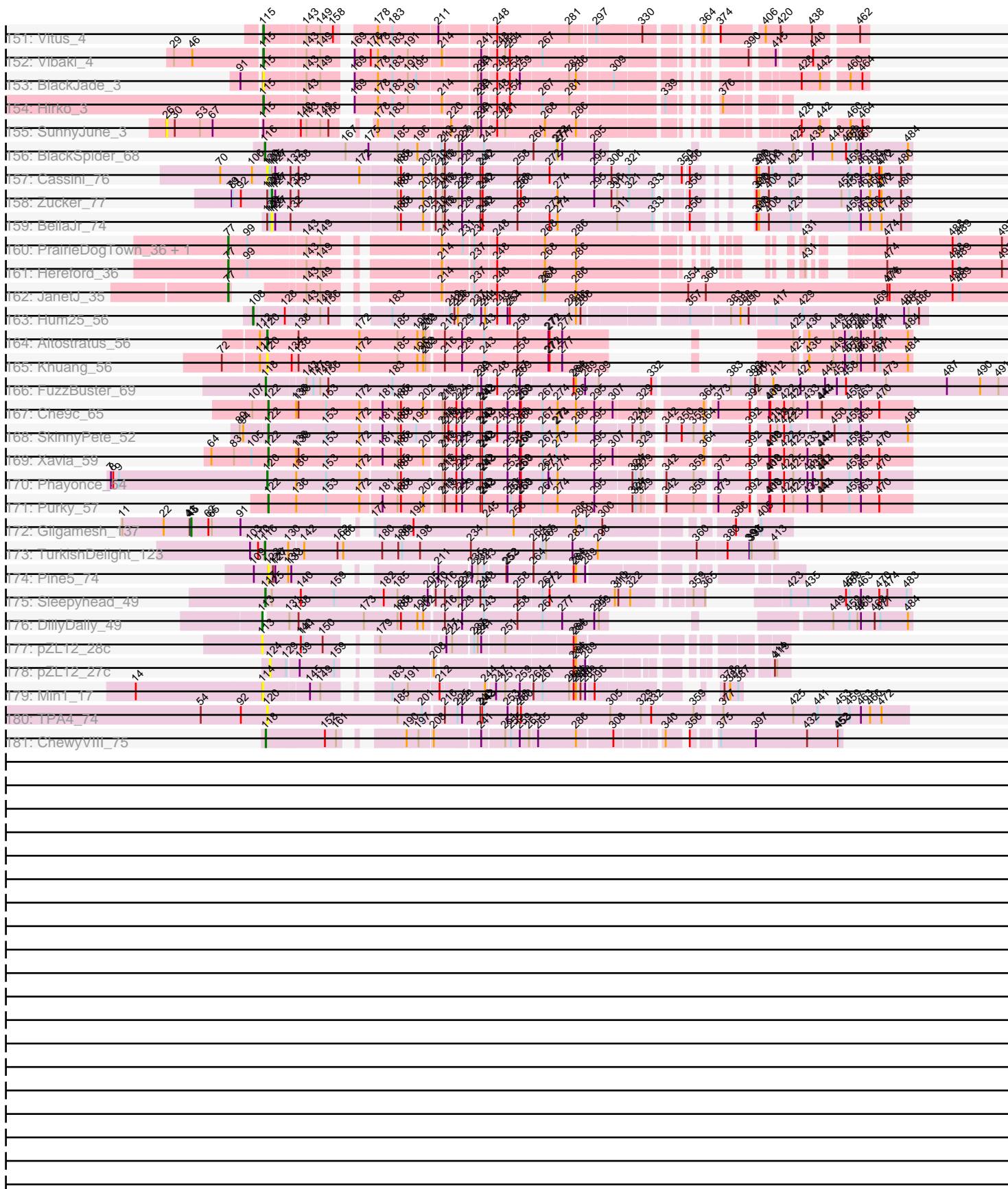


Pham 311193



Pham 311193



Note: Tracks are now grouped by subcluster and scaled. Switching in subcluster is indicated by changes in track color. Track scale is now set by default to display the region 30 bp upstream of start 1 to 30 bp downstream of the last possible start. If this default region is judged to be packed too tightly with annotated starts, the track will be further scaled to only show that region of the ORF with annotated starts. This action will be indicated by adding "Zoomed" to the title. For starts, yellow indicates the location of called starts comprised solely of Glimmer/GeneMark auto-annotations, green indicates the location of called starts with at least 1 manual gene annotation.

Pham 311193 Report

This analysis was run 06/27/26 on database version 652.

WARNING: Pham size does not match number of genes in report. Either unphamerated genes have been added (by you) or starterator has removed genes due to invalid start codon.

Pham number 311193 has 248 members, 46 are drafts.

Phages represented in each track:

- Track 1 : Cueylyss_44
- Track 2 : Mao1_72
- Track 3 : Dori_72
- Track 4 : Farewell_66
- Track 5 : Sparky_64
- Track 6 : Hillester_83, BasketStar_79, RadFad_84
- Track 7 : Mapleville_74
- Track 8 : SpicyFrank_81
- Track 9 : Ding_79
- Track 10 : Kabloowy_79, JellyBread_76
- Track 11 : Gorpy_77, Sakai_76
- Track 12 : BlueShadow_77
- Track 13 : CosmicBrownie_76, Lasker_79
- Track 14 : SonDevVon_86
- Track 15 : Nyilah_83
- Track 16 : AbbyDaisy_82
- Track 17 : Shukran_76
- Track 18 : Isolde_77
- Track 19 : MUWow_82
- Track 20 : BillyTP_80
- Track 21 : GumGum_84
- Track 22 : DarwinJr_83, Crescenzo_82
- Track 23 : YoungHarleezy_79
- Track 24 : Persistence_73
- Track 25 : Anekin_81
- Track 26 : Globfish_79
- Track 27 : MaterMagnus_79, Aikyam_78
- Track 28 : Raqqa_77
- Track 29 : BenchScraper_79
- Track 30 : Raphaella_80, Sporco_81
- Track 31 : Tiff81_75
- Track 32 : CookieBear_78
- Track 33 : Seahorse_87

- Track 34 : Lawnathon_81
- Track 35 : JakeTheSnake_82
- Track 36 : Faja_82, Vopal_81, Hestia_73
- Track 37 : Phrank15_83
- Track 38 : NewKitty_81
- Track 39 : EvePickles_78
- Track 40 : Bhageatrice_83
- Track 41 : Sashimi_77
- Track 42 : Satrap_79
- Track 43 : Auxilium_77
- Track 44 : ThayneTheZag_84
- Track 45 : LeBruni_80
- Track 46 : Richie_82
- Track 47 : Windest_83
- Track 48 : Michkear_46
- Track 49 : ThursdayNight_50
- Track 50 : Michkear_52
- Track 51 : Amyev_47, Tian_46
- Track 52 : Yang_47
- Track 53 : Schaffner_47
- Track 54 : JuneStar_49
- Track 55 : Crewmate_52
- Track 56 : Pixelle_48
- Track 57 : Pumpkins_46
- Track 58 : MaGuCo_45
- Track 59 : BabyGotBac_41, TP1604_40
- Track 60 : Maih_39, Asis_40, BayC_40, Salete_40
- Track 61 : YDN12_41
- Track 62 : RainyPolka_41
- Track 63 : Abt2graduatex2_41
- Track 64 : Zilla_63, Barco_63
- Track 65 : CheeseSpider_76
- Track 66 : BlingBling_62
- Track 67 : PhrostedPhlake_70
- Track 68 : JuJu_74
- Track 69 : Frokostdame_66
- Track 70 : Blino_69, Soilmate_71, CarolAnn_68
- Track 71 : KappaFarmDelta_68
- Track 72 : Murp_66
- Track 73 : Angelique_59
- Track 74 : Pollux_67, Floral_65
- Track 75 : EnalisNailo_60
- Track 76 : Lilas_61
- Track 77 : EMSquaredA_64, Marteena_63
- Track 78 : BeeGee_69
- Track 79 : Cashline_62
- Track 80 : LonelyBoi_62
- Track 81 : Bunnybear_57
- Track 82 : SushiChef_61
- Track 83 : AlumE_65, BoyNamedSue_65
- Track 84 : Hyzer_72
- Track 85 : Zirinka_60, Bialota_61

- Track 86 : Trumpet_63, Eudoria_63, Kita_64, Antonio_63, Suscepit_63, Tayonia_63, Manasvini_64, Zameen_63, Polly_60
- Track 87 : Hugley_65, Herod_67
- Track 88 : Bosnia_64
- Track 89 : Madeline_61
- Track 90 : Agueybana_67
- Track 91 : Maridalia_65
- Track 92 : Eviarto_66, BatStarr_65, Nymphadora_66, TimTam_66
- Track 93 : Neobush_65
- Track 94 : ThankyouJordi_65, WelcomeAyanna_65
- Track 95 : Madavieve_61
- Track 96 : JCole_57, Yeet412_58
- Track 97 : Cynthia_61, Bjanest_58, TuertoX_61, Haley23_61, Ebert_65, Sproutie_61, Whiteclaw_61, Clap_61, Gizermo_61, Lamberg_57, Mocha12_61, GemG_61, Yinzer_61, Savage_61
- Track 98 : FroggyToad_59
- Track 99 : Nettuno_57
- Track 100 : EdnaMode_57
- Track 101 : Matteo_54
- Track 102 : Jalleen_64
- Track 103 : Vasanti_59
- Track 104 : Sahara_60
- Track 105 : Pickett_56
- Track 106 : BaxterFox_66
- Track 107 : PantheRoc_69
- Track 108 : Suerte_58
- Track 109 : Annalisa_62
- Track 110 : Moosehead_64
- Track 111 : RavenCo17_61
- Track 112 : Arri_60
- Track 113 : CoveyB_60, VanDeWege_61, Halo3_58, Wizard_57, Gezellig_57
- Track 114 : Bakery_63, Sixsevenium_61
- Track 115 : CherryCola_60, Valary_60
- Track 116 : Phlop_57
- Track 117 : Lucky10_60, Kuwabara_82
- Track 118 : Budski_87
- Track 119 : Malibo_65
- Track 120 : MakCheese_70
- Track 121 : Zodiariah_58
- Track 122 : ArchiDore_62
- Track 123 : Ruthy_62
- Track 124 : Aloeri_74, ChickenDinner_73, TootsiePop_71, DocMcStuffins_73, Misha28_71, Awesomesauce_73
- Track 125 : Boomer_72, PMC_64, Rockne_68
- Track 126 : Marker_72
- Track 127 : BodEinwohner17_75
- Track 128 : ArcusAngelus_76, Chevrolet_78
- Track 129 : Dante_67
- Track 130 : Flathead_69
- Track 131 : Spartacus_74
- Track 132 : MilleniumForce_70
- Track 133 : Piper2020_75
- Track 134 : Yoshi_85

- Track 135 : TChen_71, LunaStella_69
- Track 136 : ThetaBob_75
- Track 137 : Pigu_59
- Track 138 : BrayBeast_59
- Track 139 : Rooter_63
- Track 140 : Alatato_59
- Track 141 : Shoya_59
- Track 142 : Gibbzilla_67
- Track 143 : JeanClaude_58
- Track 144 : Seldom_1
- Track 145 : DreamEater_56
- Track 146 : GUPitcher_57
- Track 147 : TripleJ_60
- Track 148 : PetriParty_60
- Track 149 : Music_4
- Track 150 : GoldDust_3, Gooberta_3
- Track 151 : Vitus_4
- Track 152 : Vibaki_4
- Track 153 : BlackJade_3
- Track 154 : Hirko_3
- Track 155 : SunnyJune_3
- Track 156 : BlackSpider_68
- Track 157 : Cassini_76
- Track 158 : Zucker_77
- Track 159 : BellaJr_74
- Track 160 : PrairieDogTown_36, EvenBluerMoon_35
- Track 161 : Hereford_36
- Track 162 : JanetJ_35
- Track 163 : Hum25_56
- Track 164 : Altostratus_56
- Track 165 : Khuang_56
- Track 166 : FuzzBuster_69
- Track 167 : Che9c_65
- Track 168 : SkinnyPete_52
- Track 169 : Xavia_59
- Track 170 : Phayonce_54
- Track 171 : Purky_57
- Track 172 : Gilgamesh_137
- Track 173 : TurkishDelight_123
- Track 174 : Pine5_74
- Track 175 : Sleepyhead_49
- Track 176 : DillyDally_49
- Track 177 : pZL12_28c
- Track 178 : pZL12_27c
- Track 179 : Min1_17
- Track 180 : TPA4_74
- Track 181 : ChewyVIII_75

Summary of Final Annotations (See graph section above for start numbers):

The start number called the most often in the published annotations is 120, it was called in 116 of the 202 non-draft genes in the pham.

Genes that call this "Most Annotated" start:

- AbbyDaisy_82, Agueybana_67, Aikyam_78, Alatao_59, Altostratus_56, AlumE_65, Anekin_81, Angelique_59, Annalisa_62, Antonio_63, ArchiDore_62, Arri_60, Auxilium_77, Bakery_63, Barco_63, BasketStar_79, BatStarr_65, BaxterFox_66, BeeGee_69, BenchScraper_79, Bhageatrice_83, Bialota_61, BillyTP_80, Bjaner7_58, Blino_69, BlueShadow_77, Bosnia_64, BoyNamedSue_65, BrayBeast_59, Budski_87, Bunnybear_57, CarolAnn_68, Cashline_62, Cassini_76, CherryCola_60, Clap_61, CookieBear_78, CoveyB_60, Crescenzo_82, Cynthia_61, DarwinJr_83, DreamEater_56, Ebert_65, EdnaMode_57, Eudoria_63, Eviarto_66, Faja_82, FroggyToad_59, Frokostdame_66, GUPitcher_57, GemG_61, Gezellig_57, Gibbzilla_67, Gizermo_61, Globfish_79, Gorpy_77, Haley23_61, Halo3_58, Herod_67, Hestia_73, Hillester_83, Hugley_65, Isolde_77, JCole_57, JakeTheSnake_82, Jalleen_64, JeanClaude_58, JellyBread_76, Kabloowy_79, Khuang_56, Kita_64, Kuwabara_82, Lamberg_57, Lawnathon_81, LeBruni_80, LonelyBoi_62, Lucky10_60, MUWow_82, Madavieve_61, Madeline_61, MakCheese_70, Malibo_65, Manasvini_64, Mao1_72, Mapleville_74, Maridalia_65, MaterMagnus_79, Mocha12_61, Moosehead_64, Murp_66, Nettuno_57, NewKitty_81, Nyilah_83, Nymphadora_66, Persistence_73, PetriParty_60, Phayonce_54, Phlop_57, Phrank15_83, Pickett_56, Pigu_59, Piper2020_75, Polly_60, RadFad_84, Raphaella_80, Raqqa_77, RavenCo17_61, Rooter_63, Ruthy_62, Sahara_60, Sakai_76, Sashimi_77, Savage_61, Seahorse_87, Shoya_59, Shukran_76, Sixsevenium_61, Soilmate_71, SonDevVon_86, SpicyFrank_81, Sporco_81, Sproutie_61, Suerte_58, Suscepit_63, SushiChef_61, TPA4_74, Tayonia_63, Tiff81_75, TimTam_66, TripleJ_60, Trumpet_63, TuertoX_61, Valary_60, VanDeWege_61, Vasanti_59, Vopal_81, Whiteclaw_61, Windest_83, Wizard_57, Yeet412_58, Yinzer_61, YoungHarleezy_79, Zameen_63, Zilla_63, Zirinka_60,

Genes that have the "Most Annotated" start but do not call it:

- BellaJr_74, Richie_82, Satrap_79, Zodiariah_58, Zucker_77,

Genes that do not have the "Most Annotated" start:

- Abt2graduatex2_41, Aloeri_74, Amyev_47, ArcusAngelus_76, Asis_40, Awesomesauce_73, BabyGotBac_41, BayC_40, BlackJade_3, BlackSpider_68, BlingBling_62, BodEinwohner17_75, Boomer_72, Che9c_65, CheeseSpider_76, Chevrolet_78, ChewyVIII_75, ChickenDinner_73, CosmicBrownie_76, Crewmate_52, Cueyllyss_44, Dante_67, DillyDally_49, Ding_79, DocMcStuffins_73, Dori_72, EMSquaredA_64, EnalisNailo_60, EvePickles_78, EvenBluerMoon_35, Farewell_66, Flathead_69, Floral_65, FuzzBuster_69, Gilgamesh_137, GoldDust_3, Gooberta_3, GumGum_84, Hereford_36, Hirko_3, Hum25_56, Hyzer_72, JanetJ_35, JuJu_74, JuneStar_49, KappaFarmDelta_68, Lasker_79, Lilas_61, LunaStella_69, MaGuCo_45, Maih_39, Marker_72, Marteenaa_63, Matteo_54, Michkear_46, Michkear_52, MilleniumForce_70, Min1_17, Misha28_71, Music_4, Neobush_65, PMC_64, PantheRoc_69, PhrostedPhlake_70, Pine5_74, Pixelle_48, Pollux_67, PrairieDogTown_36, Pumpkins_46, Purky_57, RainyPolka_41, Rockne_68, Salete_40, Schaffner_47, Seldom_1, SkinnyPete_52, Sleepyhead_49, Sparky_64, Spartacus_74, SunnyJune_3, TChen_71, TP1604_40, ThankyouJordi_65, ThayneTheZag_84, ThetaBob_75, ThursdayNight_50, Tian_46, TootsiePop_71, TurkishDelight_123, Vibaki_4, Vitus_4, WelcomeAyanna_65, Xavia_59, YDN12_41, Yang_47, Yoshi_85, pZL12_27c, pZL12_28c,

Summary by start number:

Start 26:

- Found in 1 of 248 (0.4%) of genes in pham
- No Manual Annotations of this start.
- Called 100.0% of time when present
- Phage (with cluster) where this start called: SunnyJune_3 (FL),

Start 45:

- Found in 1 of 248 (0.4%) of genes in pham
- Manual Annotations of this start: 1 of 202
- Called 100.0% of time when present
- Phage (with cluster) where this start called: Gilgamesh_137 (singleton),

Start 71:

- Found in 1 of 248 (0.4%) of genes in pham
- Manual Annotations of this start: 1 of 202
- Called 100.0% of time when present
- Phage (with cluster) where this start called: Zodiariah_58 (DW),

Start 77:

- Found in 4 of 248 (1.6%) of genes in pham
- Manual Annotations of this start: 4 of 202
- Called 100.0% of time when present
- Phage (with cluster) where this start called: EvenBluerMoon_35 (FO), Hereford_36 (FO), JanetJ_35 (FO), PrairieDogTown_36 (FO),

Start 85:

- Found in 2 of 248 (0.8%) of genes in pham
- Manual Annotations of this start: 1 of 202
- Called 50.0% of time when present
- Phage (with cluster) where this start called: ThayneTheZag_84 (AY),

Start 98:

- Found in 1 of 248 (0.4%) of genes in pham
- Manual Annotations of this start: 1 of 202
- Called 100.0% of time when present
- Phage (with cluster) where this start called: Cueyllyss_44 (A1),

Start 108:

- Found in 1 of 248 (0.4%) of genes in pham
- Manual Annotations of this start: 1 of 202
- Called 100.0% of time when present
- Phage (with cluster) where this start called: Hum25_56 (FQ1),

Start 113:

- Found in 3 of 248 (1.2%) of genes in pham
- Manual Annotations of this start: 2 of 202
- Called 100.0% of time when present
- Phage (with cluster) where this start called: BlingBling_62 (CV), DillyDally_49 (singleton), pZL12_28c (singleton),

Start 114:

- Found in 4 of 248 (1.6%) of genes in pham
- Manual Annotations of this start: 3 of 202
- Called 100.0% of time when present
- Phage (with cluster) where this start called: EnalisNailo_60 (CY1), Lilas_61 (CY1), Min1_17 (singleton), Neobush_65 (CZ1),

Start 115:

- Found in 11 of 248 (4.4%) of genes in pham
- Manual Annotations of this start: 6 of 202
- Called 90.9% of time when present
- Phage (with cluster) where this start called: BlackJade_3 (FL), GoldDust_3 (FL), Gooberta_3 (FL), Hirko_3 (FL), MaGuCo_45 (AZ2), Michkear_46 (AZ), Music_4 (FL), ThursdayNight_50 (AZ), Vibaki_4 (FL), Vitus_4 (FL),

Start 116:

- Found in 7 of 248 (2.8%) of genes in pham
- Manual Annotations of this start: 4 of 202
- Called 100.0% of time when present
- Phage (with cluster) where this start called: BlackSpider_68 (FN), CosmicBrownie_76 (AY), Ding_79 (AY), EvePickles_78 (AY), GumGum_84 (AY), Lasker_79 (AY), TurkishDelight_123 (singleton),

Start 117:

- Found in 1 of 248 (0.4%) of genes in pham
- Manual Annotations of this start: 1 of 202
- Called 100.0% of time when present
- Phage (with cluster) where this start called: Sleepyhead_49 (singleton),

Start 118:

- Found in 2 of 248 (0.8%) of genes in pham
- Manual Annotations of this start: 2 of 202
- Called 100.0% of time when present
- Phage (with cluster) where this start called: ChewyVIII_75 (singleton), FuzzBuster_69 (GM),

Start 119:

- Found in 7 of 248 (2.8%) of genes in pham
- Manual Annotations of this start: 6 of 202
- Called 100.0% of time when present
- Phage (with cluster) where this start called: CheeseSpider_76 (CV), Hyzer_72 (CZ1), JuJu_74 (CV), KappaFarmDelta_68 (CV), PhrostedPhlake_70 (CV), ThankyouJordi_65 (CZ1), WelcomeAyanna_65 (CZ1),

Start 120:

- Found in 150 of 248 (60.5%) of genes in pham
- Manual Annotations of this start: 116 of 202
- Called 96.7% of time when present
- Phage (with cluster) where this start called: AbbyDaisy_82 (AY), Agueybana_67 (CZ1), Aikyam_78 (AY), Alatato_59 (FB), Altostratus_56 (FS), AlumE_65 (CZ1), Anekin_81 (AY), Angelique_59 (CY1), Annalisa_62 (CZ4), Antonio_63 (CZ1), ArchiDore_62 (DW), Arri_60 (DC1), Auxilium_77 (AY), Bakery_63 (DC1), Barco_63 (CV), BasketStar_79 (AY), BatStarr_65 (CZ1), BaxterFox_66 (CZ3), BeeGee_69

(CY5), BenchScraper_79 (AY), Bhageatrice_83 (AY), Bialota_61 (CZ1), BillyTP_80 (AY), Bjaner7_58 (CZ2), Blino_69 (CV), BlueShadow_77 (AY), Bosnia_64 (CZ1), BoyNamedSue_65 (CZ1), BrayBeast_59 (FB), Budski_87 (DN), Bunnybear_57 (CZ), CarolAnn_68 (CV), Cashline_62 (CY6), Cassini_76 (FN), CherryCola_60 (DC1), Clap_61 (CZ2), CookieBear_78 (AY), CoveyB_60 (DC1), Crescenzo_82 (AY), Cynthia_61 (CZ2), DarwinJr_83 (AY), DreamEater_56 (FJ), Ebert_65 (CZ2), EdnaMode_57 (CZ2), Eudoria_63 (CZ1), Eviarto_66 (CZ1), Faja_82 (AY), FroggyToad_59 (CZ2), Frokostdame_66 (CV), GUPitcher_57 (FJ), GemG_61 (CZ2), Gezellig_57 (DC1), Gibbzilla_67 (FB), Gizermo_61 (CZ2), Globfish_79 (AY), Gorpy_77 (AY), Haley23_61 (CZ2), Halo3_58 (DC1), Herod_67 (CZ1), Hestia_73 (AY), Hillester_83 (AY), Hugley_65 (CZ1), Isolde_77 (AY), JCole_57 (CZ2), JakeTheSnake_82 (AY), Jalleen_64 (CZ2), JeanClaude_58 (FB), JellyBread_76 (AY), Kabloowy_79 (AY), Khuang_56 (FS), Kita_64 (CZ1), Kuwabara_82 (DN4), Lamberg_57 (CZ2), Lawnathon_81 (AY), LeBruni_80 (AY), LonelyBoi_62 (CY7), Lucky10_60 (DH), MUWow_82 (AY), Madavieve_61 (CZ1), Madeline_61 (CZ1), MakCheese_70 (DW), Malibo_65 (DW), Manasvini_64 (CZ1), Mao1_72 (AD), Mapleville_74 (AY), Maridalia_65 (CZ1), MaterMagnus_79 (AY), Mocha12_61 (CZ2), Moosehead_64 (CZ6), Murp_66 (CV), Nettuno_57 (CZ2), NewKitty_81 (AY), Nyilah_83 (AY), Nymphadora_66 (CZ1), Persistence_73 (AY), PetriParty_60 (FJ), Phayonce_54 (P5), Phlop_57 (DC1), Phrank15_83 (AY), Pickett_56 (CZ2), Pigu_59 (FB), Piper2020_75 (F1), Polly_60 (CZ1), RadFad_84 (AY), Raphaella_80 (AY), Raqqa_77 (AY), RavenCo17_61 (CZ8), Rooter_63 (FB), Ruthy_62 (DW), Sahara_60 (CZ2), Sakai_76 (AY), Sashimi_77 (AY), Savage_61 (CZ2), Seahorse_87 (AY), Shoya_59 (FB), Shukran_76 (AY), Sixsevenium_61 (DC1), Soilmate_71 (CV), SonDevVon_86 (AY), SpicyFrank_81 (AY), Sporco_81 (AY), Sproutie_61 (CZ2), Suerte_58 (CZ4), Suscepit_63 (CZ1), SushiChef_61 (CZ), TPA4_74 (singleton), Tayonia_63 (CZ1), Tiff81_75 (AY), TimTam_66 (CZ1), TripleJ_60 (FJ), Trumpet_63 (CZ1), TuertoX_61 (CZ2), Valary_60 (DC1), VanDeWege_61 (DC1), Vasanti_59 (CZ2), Vopal_81 (AY), Whiteclaw_61 (CZ2), Windest_83 (AY), Wizard_57 (DC1), Yeet412_58 (CZ2), Yinzer_61 (CZ2), YoungHarleezy_79 (AY), Zameen_63 (CZ1), Zilla_63 (CV), Zirinka_60 (CZ1),

Start 121:

- Found in 1 of 248 (0.4%) of genes in pham
- Manual Annotations of this start: 1 of 202
- Called 100.0% of time when present
- Phage (with cluster) where this start called: PantheRoc_69 (CZ3),

Start 122:

- Found in 45 of 248 (18.1%) of genes in pham
- Manual Annotations of this start: 43 of 202
- Called 97.8% of time when present
- Phage (with cluster) where this start called: Abt2graduatex2_41 (BG), Aleri_74 (F1), ArcusAngelus_76 (F1), Asis_40 (BG), Awesomesauce_73 (F1), BabyGotBac_41 (BG), BayC_40 (BG), BodEinwohner17_75 (F1), Boomer_72 (F1), Che9c_65 (I2), Chevrolet_78 (F1), ChickenDinner_73 (F1), Dante_67 (F1), DocMcStuffins_73 (F1), Dori_72 (AD), EMSquaredA_64 (CY1), Farewell_66 (AF), Flathead_69 (F1), Floral_65 (CY1), JuneStar_49 (AZ1), LunaStella_69 (F4), Maih_39 (BG), Marker_72 (F1), Marteena_63 (CY1), Matteo_54 (CZ2), MilleniumForce_70 (F1), Misha28_71 (F1), PMC_64 (F1), Pine5_74 (singleton), Pollux_67 (CY1), Purky_57 (P6), RainyPolka_41 (BG), Rockne_68 (F1), Salet_40 (BG), SkinnyPete_52 (N), Sparky_64 (AF), Spartacus_74 (F1), TChen_71 (F4), TP1604_40 (BG), ThetaBob_75 (F4), TootsiePop_71 (F1), Xavia_59 (P3), YDN12_41 (BG), Yoshi_85 (F2),

Start 123:

- Found in 61 of 248 (24.6%) of genes in pham
- Manual Annotations of this start: 7 of 202
- Called 13.1% of time when present
- Phage (with cluster) where this start called: Amyev_47 (AZ1), Crewmate_52 (AZ1), Pixelle_48 (AZ1), Pumpkins_46 (AZ1), Schaffner_47 (AZ1), Seldom_1 (FD), Tian_46 (AZ1), Yang_47 (AZ1),

Start 124:

- Found in 1 of 248 (0.4%) of genes in pham
- No Manual Annotations of this start.
- Called 100.0% of time when present
- Phage (with cluster) where this start called: pZL12_27c (singleton),

Start 125:

- Found in 41 of 248 (16.5%) of genes in pham
- Manual Annotations of this start: 1 of 202
- Called 4.9% of time when present
- Phage (with cluster) where this start called: BellaJr_74 (FN), Zucker_77 (FN),

Start 126:

- Found in 10 of 248 (4.0%) of genes in pham
- No Manual Annotations of this start.
- Called 10.0% of time when present
- Phage (with cluster) where this start called: Michkear_52 (AZ),

Start 132:

- Found in 59 of 248 (23.8%) of genes in pham
- Manual Annotations of this start: 1 of 202
- Called 3.4% of time when present
- Phage (with cluster) where this start called: Richie_82 (AY), Satrap_79 (AY),

Summary by clusters:

There are 43 clusters represented in this pham: DN, singleton, BG, DH, CZ2, CZ3, CZ1, CZ6, CZ8, CZ4, FB, FS, FD, DW, FJ, FL, FN, FO, P5, A1, DN4, P3, CY1, CY7, CY6, CY5, AF, N, CZ, AY, GM, AZ, CV, DC1, F1, F2, F4, AD, AZ1, AZ2, FQ1, P6, I2,

Info for manual annotations of cluster A1:

- Start number 98 was manually annotated 1 time for cluster A1.

Info for manual annotations of cluster AD:

- Start number 120 was manually annotated 1 time for cluster AD.
- Start number 122 was manually annotated 1 time for cluster AD.

Info for manual annotations of cluster AF:

- Start number 122 was manually annotated 2 times for cluster AF.

Info for manual annotations of cluster AY:

- Start number 85 was manually annotated 1 time for cluster AY.
- Start number 116 was manually annotated 2 times for cluster AY.
- Start number 120 was manually annotated 33 times for cluster AY.

- Start number 132 was manually annotated 1 time for cluster AY.

Info for manual annotations of cluster AZ1:

- Start number 122 was manually annotated 1 time for cluster AZ1.
- Start number 123 was manually annotated 6 times for cluster AZ1.

Info for manual annotations of cluster AZ2:

- Start number 115 was manually annotated 1 time for cluster AZ2.

Info for manual annotations of cluster BG:

- Start number 122 was manually annotated 9 times for cluster BG.

Info for manual annotations of cluster CV:

- Start number 113 was manually annotated 1 time for cluster CV.
- Start number 119 was manually annotated 3 times for cluster CV.
- Start number 120 was manually annotated 6 times for cluster CV.

Info for manual annotations of cluster CY1:

- Start number 114 was manually annotated 2 times for cluster CY1.
- Start number 120 was manually annotated 1 time for cluster CY1.
- Start number 122 was manually annotated 4 times for cluster CY1.

Info for manual annotations of cluster CY5:

- Start number 120 was manually annotated 1 time for cluster CY5.

Info for manual annotations of cluster CY6:

- Start number 120 was manually annotated 1 time for cluster CY6.

Info for manual annotations of cluster CY7:

- Start number 120 was manually annotated 1 time for cluster CY7.

Info for manual annotations of cluster CZ:

- Start number 120 was manually annotated 1 time for cluster CZ.

Info for manual annotations of cluster CZ1:

- Start number 114 was manually annotated 1 time for cluster CZ1.
- Start number 119 was manually annotated 3 times for cluster CZ1.
- Start number 120 was manually annotated 22 times for cluster CZ1.

Info for manual annotations of cluster CZ2:

- Start number 120 was manually annotated 20 times for cluster CZ2.
- Start number 122 was manually annotated 1 time for cluster CZ2.

Info for manual annotations of cluster CZ3:

- Start number 120 was manually annotated 1 time for cluster CZ3.
- Start number 121 was manually annotated 1 time for cluster CZ3.

Info for manual annotations of cluster CZ4:

- Start number 120 was manually annotated 2 times for cluster CZ4.

Info for manual annotations of cluster CZ6:

- Start number 120 was manually annotated 1 time for cluster CZ6.

Info for manual annotations of cluster CZ8:

- Start number 120 was manually annotated 1 time for cluster CZ8.

Info for manual annotations of cluster DC1:

- Start number 120 was manually annotated 10 times for cluster DC1.

Info for manual annotations of cluster DH:

- Start number 120 was manually annotated 1 time for cluster DH.

Info for manual annotations of cluster DN:

- Start number 120 was manually annotated 1 time for cluster DN.

Info for manual annotations of cluster DN4:

- Start number 120 was manually annotated 1 time for cluster DN4.

Info for manual annotations of cluster DW:

- Start number 71 was manually annotated 1 time for cluster DW.
- Start number 120 was manually annotated 3 times for cluster DW.

Info for manual annotations of cluster F1:

- Start number 120 was manually annotated 1 time for cluster F1.
- Start number 122 was manually annotated 17 times for cluster F1.

Info for manual annotations of cluster F2:

- Start number 122 was manually annotated 1 time for cluster F2.

Info for manual annotations of cluster F4:

- Start number 122 was manually annotated 3 times for cluster F4.

Info for manual annotations of cluster FB:

- Start number 120 was manually annotated 3 times for cluster FB.

Info for manual annotations of cluster FD:

- Start number 123 was manually annotated 1 time for cluster FD.

Info for manual annotations of cluster FJ:

- Start number 120 was manually annotated 2 times for cluster FJ.

Info for manual annotations of cluster FL:

- Start number 115 was manually annotated 5 times for cluster FL.

Info for manual annotations of cluster FN:

- Start number 116 was manually annotated 1 time for cluster FN.
- Start number 125 was manually annotated 1 time for cluster FN.

Info for manual annotations of cluster FO:

- Start number 77 was manually annotated 4 times for cluster FO.

Info for manual annotations of cluster FQ1:

- Start number 108 was manually annotated 1 time for cluster FQ1.

Info for manual annotations of cluster FS:

- Start number 120 was manually annotated 1 time for cluster FS.

Info for manual annotations of cluster GM:

- Start number 118 was manually annotated 1 time for cluster GM.

Info for manual annotations of cluster I2:

- Start number 122 was manually annotated 1 time for cluster I2.

Info for manual annotations of cluster N:

- Start number 122 was manually annotated 1 time for cluster N.

Info for manual annotations of cluster P3:

- Start number 122 was manually annotated 1 time for cluster P3.

Info for manual annotations of cluster P5:

- Start number 120 was manually annotated 1 time for cluster P5.

Info for manual annotations of cluster P6:

- Start number 122 was manually annotated 1 time for cluster P6.

Gene Information:

Gene: AbbyDaisy_82 Start: 45997, Stop: 47574, Start Num: 120

Candidate Starts for AbbyDaisy_82:

(78, 45919), (Start: 120 @45997 has 116 MA's), (127, 46018), (Start: 132 @46057 has 1 MA's), (141, 46087), (185, 46324), (188, 46333), (202, 46387), (210, 46408), (216, 46432), (224, 46462), (227, 46468), (229, 46477), (240, 46525), (243, 46534), (257, 46612), (260, 46624), (272, 46693), (295, 46810), (344, 46978), (361, 47032), (385, 47122), (398, 47179), (400, 47185), (408, 47209), (411, 47218), (422, 47248), (423, 47263), (426, 47275), (459, 47413), (463, 47443), (466, 47467), (482, 47560),

Gene: Abt2graduatex2_41 Start: 32795, Stop: 31851, Start Num: 122

Candidate Starts for Abt2graduatex2_41:

(39, 33008), (49, 32975), (51, 32969), (96, 32852), (104, 32837), (Start: 122 @32795 has 43 MA's), (Start: 125 @32786 has 1 MA's), (191, 32534), (195, 32513), (202, 32495), (204, 32486), (208, 32474), (221, 32438), (241, 32366), (264, 32246), (270, 32213), (284, 32168), (286, 32162), (294, 32126), (319, 32039), (325, 32024), (326, 32021), (336, 31967),

Gene: Agueybana_67 Start: 44681, Stop: 46258, Start Num: 120

Candidate Starts for Agueybana_67:

(59, 44537), (84, 44612), (86, 44615), (Start: 120 @44681 has 116 MA's), (Start: 123 @44687 has 7 MA's), (185, 45008), (195, 45053), (215, 45110), (216, 45116), (224, 45146), (225, 45149), (229, 45161), (240, 45209), (243, 45218), (249, 45260), (260, 45308), (272, 45380), (295, 45497), (329, 45617), (335, 45665), (359, 45743), (370, 45776), (424, 45950), (425, 45953), (435, 45989), (459, 46097), (463, 46127), (472, 46181),

Gene: Aikyam_78 Start: 42265, Stop: 43836, Start Num: 120

Candidate Starts for Aikyam_78:

(Start: 120 @42265 has 116 MA's), (127, 42286), (Start: 132 @42325 has 1 MA's), (141, 42355), (185, 42592), (188, 42601), (202, 42655), (210, 42676), (215, 42694), (216, 42700), (224, 42730), (227, 42736), (229, 42745), (240, 42793), (260, 42892), (285, 43027), (295, 43078), (363, 43303), (368,

43324), (379, 43360), (385, 43384), (398, 43441), (400, 43447), (408, 43471), (422, 43510), (423, 43525), (426, 43537), (459, 43675), (463, 43705), (466, 43729), (482, 43822),

Gene: Alatato_59 Start: 33126, Stop: 34595, Start Num: 120

Candidate Starts for Alatato_59:

(4, 32646), (81, 33048), (Start: 120 @33126 has 116 MA's), (Start: 125 @33138 has 1 MA's), (127, 33147), (Start: 132 @33186 has 1 MA's), (138, 33204), (151, 33270), (172, 33363), (185, 33453), (188, 33462), (202, 33516), (210, 33537), (215, 33555), (216, 33561), (229, 33606), (240, 33654), (242, 33660), (258, 33747), (272, 33825), (274, 33846), (306, 33987), (332, 34080), (333, 34083), (340, 34098), (349, 34134), (356, 34158), (398, 34218), (400, 34224), (408, 34248), (423, 34302), (459, 34434), (463, 34464), (466, 34488), (472, 34518), (480, 34569),

Gene: Aloeri_74 Start: 44615, Stop: 46129, Start Num: 122

Candidate Starts for Aloeri_74:

(83, 44531), (105, 44573), (Start: 122 @44615 has 43 MA's), (136, 44684), (153, 44762), (172, 44849), (181, 44900), (185, 44939), (188, 44948), (202, 45002), (215, 45041), (216, 45047), (224, 45077), (229, 45092), (240, 45140), (242, 45146), (243, 45149), (253, 45209), (259, 45236), (260, 45239), (267, 45296), (274, 45335), (295, 45431), (324, 45518), (327, 45524), (329, 45533), (342, 45566), (350, 45599), (359, 45626), (364, 45650), (392, 45749), (410, 45779), (419, 45797), (422, 45815), (423, 45830), (450, 45926), (459, 45965), (463, 45995), (484, 46118),

Gene: Altostratus_56 Start: 32137, Stop: 33381, Start Num: 120

Candidate Starts for Altostratus_56:

(112, 32122), (Start: 120 @32137 has 116 MA's), (138, 32212), (172, 32371), (185, 32467), (196, 32515), (202, 32530), (203, 32536), (216, 32575), (229, 32620), (243, 32677), (258, 32755), (271, 32833), (272, 32836), (277, 32869), (425, 33091), (436, 33118), (449, 33178), (457, 33208), (459, 33220), (461, 33241), (463, 33250), (468, 33286), (471, 33301), (484, 33370),

Gene: AlumE_65 Start: 44344, Stop: 45924, Start Num: 120

Candidate Starts for AlumE_65:

(84, 44272), (86, 44275), (Start: 120 @44344 has 116 MA's), (Start: 123 @44350 has 7 MA's), (172, 44581), (181, 44632), (185, 44671), (209, 44752), (215, 44773), (216, 44779), (225, 44812), (229, 44824), (240, 44872), (243, 44881), (260, 44971), (272, 45043), (295, 45160), (329, 45280), (335, 45328), (356, 45397), (359, 45406), (370, 45439), (381, 45478), (425, 45616), (435, 45652), (459, 45760), (463, 45790), (472, 45844), (484, 45913),

Gene: Amyev_47 Start: 35220, Stop: 36194, Start Num: 123

Candidate Starts for Amyev_47:

(58, 35097), (Start: 123 @35220 has 7 MA's), (143, 35304), (149, 35340), (183, 35439), (219, 35565), (239, 35625), (248, 35667), (286, 35862), (315, 35973),

Gene: Anekin_81 Start: 45011, Stop: 46582, Start Num: 120

Candidate Starts for Anekin_81:

(Start: 120 @45011 has 116 MA's), (127, 45032), (Start: 132 @45071 has 1 MA's), (141, 45101), (185, 45338), (188, 45347), (202, 45401), (210, 45422), (216, 45446), (227, 45482), (229, 45491), (240, 45539), (243, 45548), (257, 45626), (260, 45638), (285, 45773), (295, 45824), (306, 45869), (368, 46070), (379, 46106), (385, 46130), (398, 46187), (400, 46193), (408, 46217), (411, 46226), (422, 46256), (423, 46271), (426, 46283), (459, 46421), (463, 46451), (466, 46475),

Gene: Angelique_59 Start: 42888, Stop: 44414, Start Num: 120

Candidate Starts for Angelique_59:

(32, 42672), (36, 42681), (59, 42744), (84, 42819), (86, 42822), (Start: 120 @42888 has 116 MA's), (Start: 123 @42894 has 7 MA's), (172, 43125), (181, 43176), (185, 43215), (195, 43260), (215, 43317),

(216, 43323), (225, 43356), (229, 43368), (240, 43416), (243, 43425), (249, 43467), (260, 43515), (272, 43587), (295, 43704), (317, 43776), (359, 43899), (370, 43932), (420, 44079), (425, 44109), (443, 44178), (459, 44253), (463, 44283), (472, 44337),

Gene: Annalisa_62 Start: 40576, Stop: 42105, Start Num: 120

Candidate Starts for Annalisa_62:

(66, 40453), (Start: 120 @40576 has 116 MA's), (Start: 123 @40582 has 7 MA's), (Start: 125 @40588 has 1 MA's), (153, 40726), (172, 40813), (185, 40903), (215, 41005), (216, 41011), (218, 41020), (224, 41041), (225, 41044), (229, 41056), (240, 41104), (243, 41113), (260, 41203), (272, 41275), (295, 41392), (317, 41464), (356, 41578), (359, 41587), (370, 41620), (419, 41758), (422, 41776), (425, 41797), (459, 41941), (463, 41971), (472, 42025),

Gene: Antonio_63 Start: 42163, Stop: 43740, Start Num: 120

Candidate Starts for Antonio_63:

(84, 42094), (86, 42097), (Start: 120 @42163 has 116 MA's), (Start: 123 @42169 has 7 MA's), (Start: 125 @42175 has 1 MA's), (127, 42184), (138, 42241), (172, 42400), (185, 42490), (195, 42535), (215, 42592), (216, 42598), (225, 42631), (229, 42643), (240, 42691), (243, 42700), (249, 42742), (260, 42790), (272, 42862), (295, 42979), (329, 43099), (335, 43147), (356, 43216), (359, 43225), (370, 43258), (381, 43297), (420, 43405), (425, 43435), (459, 43579), (463, 43609), (472, 43663),

Gene: ArchiDore_62 Start: 43868, Stop: 45436, Start Num: 120

Candidate Starts for ArchiDore_62:

(16, 43574), (18, 43607), (25, 43634), (Start: 120 @43868 has 116 MA's), (181, 44156), (185, 44195), (195, 44240), (215, 44297), (216, 44303), (225, 44336), (229, 44348), (240, 44396), (260, 44495), (272, 44567), (295, 44684), (329, 44804), (335, 44852), (359, 44930), (370, 44963), (425, 45140), (435, 45167), (459, 45275), (463, 45305), (472, 45359),

Gene: ArcusAngelus_76 Start: 45995, Stop: 47422, Start Num: 122

Candidate Starts for ArcusAngelus_76:

(Start: 122 @45995 has 43 MA's), (126, 46007), (127, 46013), (140, 46076), (146, 46103), (173, 46241), (185, 46319), (195, 46364), (203, 46388), (216, 46427), (229, 46472), (232, 46484), (243, 46529), (248, 46562), (260, 46619), (261, 46625), (267, 46676), (272, 46694), (274, 46715), (276, 46724), (285, 46760), (292, 46796), (295, 46811), (343, 46865), (352, 46898), (359, 46919), (364, 46943), (390, 47039), (392, 47042), (450, 47219), (455, 47237), (457, 47246), (458, 47249), (459, 47258), (460, 47261), (463, 47288), (470, 47336), (474, 47357), (479, 47390), (484, 47411),

Gene: Arri_60 Start: 43821, Stop: 45401, Start Num: 120

Candidate Starts for Arri_60:

(1, 43194), (5, 43413), (54, 43662), (74, 43719), (Start: 120 @43821 has 116 MA's), (185, 44148), (195, 44193), (215, 44250), (216, 44256), (225, 44289), (229, 44301), (240, 44349), (243, 44358), (249, 44400), (295, 44637), (329, 44757), (335, 44805), (359, 44883), (370, 44916), (402, 45015), (414, 45048), (425, 45096), (459, 45240), (463, 45270), (472, 45324),

Gene: Asis_40 Start: 32623, Stop: 31679, Start Num: 122

Candidate Starts for Asis_40:

(74, 32728), (96, 32680), (102, 32668), (104, 32665), (Start: 122 @32623 has 43 MA's), (Start: 125 @32614 has 1 MA's), (178, 32437), (190, 32365), (195, 32341), (241, 32194), (246, 32173), (254, 32128), (264, 32074), (286, 31990), (287, 31981), (294, 31954), (316, 31879), (326, 31849), (336, 31795),

Gene: Auxilium_77 Start: 41952, Stop: 43523, Start Num: 120

Candidate Starts for Auxilium_77:

(Start: 120 @41952 has 116 MA's), (127, 41973), (Start: 132 @42012 has 1 MA's), (141, 42042), (172, 42189), (185, 42279), (188, 42288), (202, 42342), (210, 42363), (215, 42381), (216, 42387), (224, 42417), (227, 42423), (229, 42432), (240, 42480), (257, 42567), (260, 42579), (285, 42714), (295, 42765), (363, 42990), (368, 43011), (379, 43047), (385, 43071), (398, 43128), (400, 43134), (408, 43158), (411, 43167), (422, 43197), (423, 43212), (426, 43224), (459, 43362), (463, 43392), (466, 43416),

Gene: Awesomesauce_73 Start: 43698, Stop: 45212, Start Num: 122

Candidate Starts for Awesomesauce_73:

(83, 43614), (105, 43656), (Start: 122 @43698 has 43 MA's), (136, 43767), (153, 43845), (172, 43932), (181, 43983), (185, 44022), (188, 44031), (202, 44085), (215, 44124), (216, 44130), (224, 44160), (229, 44175), (240, 44223), (242, 44229), (243, 44232), (253, 44292), (259, 44319), (260, 44322), (267, 44379), (274, 44418), (295, 44514), (324, 44601), (327, 44607), (329, 44616), (342, 44649), (350, 44682), (359, 44709), (364, 44733), (392, 44832), (410, 44862), (419, 44880), (422, 44898), (423, 44913), (450, 45009), (459, 45048), (463, 45078), (484, 45201),

Gene: BabyGotBac_41 Start: 32623, Stop: 31679, Start Num: 122

Candidate Starts for BabyGotBac_41:

(74, 32728), (96, 32680), (102, 32668), (104, 32665), (Start: 122 @32623 has 43 MA's), (Start: 125 @32614 has 1 MA's), (178, 32437), (190, 32365), (195, 32341), (241, 32194), (246, 32173), (254, 32128), (264, 32074), (286, 31990), (287, 31981), (294, 31954), (326, 31849), (336, 31795),

Gene: Bakery_63 Start: 45011, Stop: 46591, Start Num: 120

Candidate Starts for Bakery_63:

(5, 44603), (54, 44852), (74, 44909), (Start: 120 @45011 has 116 MA's), (172, 45248), (185, 45338), (191, 45365), (195, 45383), (215, 45440), (216, 45446), (225, 45479), (229, 45491), (240, 45539), (260, 45638), (295, 45827), (329, 45947), (335, 45995), (359, 46073), (370, 46106), (392, 46196), (402, 46205), (414, 46238), (425, 46286), (439, 46334), (459, 46430), (463, 46460), (472, 46514),

Gene: Barco_63 Start: 40408, Stop: 41934, Start Num: 120

Candidate Starts for Barco_63:

(53, 40258), (55, 40267), (107, 40378), (Start: 120 @40408 has 116 MA's), (182, 40699), (185, 40735), (215, 40837), (216, 40843), (224, 40873), (225, 40876), (229, 40888), (240, 40936), (243, 40945), (249, 40987), (260, 41035), (267, 41089), (272, 41107), (295, 41224), (317, 41296), (356, 41410), (359, 41419), (370, 41452), (424, 41626), (425, 41629), (459, 41773), (463, 41803), (472, 41857),

Gene: BasketStar_79 Start: 44729, Stop: 46195, Start Num: 120

Candidate Starts for BasketStar_79:

(78, 44651), (Start: 120 @44729 has 116 MA's), (127, 44750), (Start: 132 @44789 has 1 MA's), (141, 44819), (185, 45056), (188, 45065), (210, 45140), (213, 45155), (216, 45164), (227, 45200), (229, 45209), (240, 45257), (257, 45344), (260, 45356), (295, 45542), (306, 45587), (344, 45701), (356, 45734), (364, 45770), (398, 45800), (400, 45806), (408, 45830), (411, 45839), (422, 45869), (423, 45884), (426, 45896), (459, 46034), (463, 46064), (466, 46088),

Gene: BatStarr_65 Start: 44724, Stop: 46301, Start Num: 120

Candidate Starts for BatStarr_65:

(88, 44658), (Start: 120 @44724 has 116 MA's), (172, 44961), (185, 45051), (195, 45096), (215, 45153), (216, 45159), (225, 45192), (229, 45204), (240, 45252), (249, 45303), (260, 45351), (295, 45540), (329, 45660), (335, 45708), (342, 45726), (356, 45777), (359, 45786), (370, 45819), (381, 45858), (420, 45966), (425, 45996), (433, 46032), (459, 46140), (463, 46170), (472, 46224),

Gene: BaxterFox_66 Start: 44728, Stop: 46254, Start Num: 120

Candidate Starts for BaxterFox_66:

(94, 44677), (Start: 120 @44728 has 116 MA's), (136, 44800), (172, 44965), (185, 45055), (195, 45100), (215, 45157), (216, 45163), (225, 45196), (229, 45208), (240, 45256), (243, 45265), (249, 45307), (260, 45355), (272, 45427), (274, 45448), (295, 45544), (317, 45616), (356, 45730), (359, 45739), (370, 45772), (387, 45832), (422, 45928), (425, 45949), (459, 46093), (463, 46123), (472, 46177),

Gene: BayC_40 Start: 32623, Stop: 31679, Start Num: 122

Candidate Starts for BayC_40:

(74, 32728), (96, 32680), (102, 32668), (104, 32665), (Start: 122 @32623 has 43 MA's), (Start: 125 @32614 has 1 MA's), (178, 32437), (190, 32365), (195, 32341), (241, 32194), (246, 32173), (254, 32128), (264, 32074), (286, 31990), (287, 31981), (294, 31954), (316, 31879), (326, 31849), (336, 31795),

Gene: BeeGee_69 Start: 44179, Stop: 45723, Start Num: 120

Candidate Starts for BeeGee_69:

(24, 43933), (59, 44035), (84, 44110), (86, 44113), (Start: 120 @44179 has 116 MA's), (Start: 123 @44185 has 7 MA's), (138, 44257), (184, 44500), (185, 44506), (207, 44596), (216, 44626), (224, 44656), (229, 44671), (242, 44725), (243, 44728), (260, 44818), (267, 44872), (278, 44926), (292, 44992), (295, 45007), (314, 45073), (323, 45097), (359, 45220), (394, 45337), (407, 45373), (416, 45394), (459, 45562), (463, 45592), (465, 45613), (466, 45616), (472, 45646), (475, 45664),

Gene: BellaJr_74 Start: 43248, Stop: 44678, Start Num: 125

Candidate Starts for BellaJr_74:

(Start: 120 @43236 has 116 MA's), (Start: 123 @43242 has 7 MA's), (Start: 125 @43248 has 1 MA's), (127, 43257), (Start: 132 @43296 has 1 MA's), (185, 43563), (188, 43572), (202, 43626), (210, 43647), (215, 43665), (216, 43671), (229, 43716), (240, 43764), (242, 43770), (258, 43857), (272, 43935), (274, 43956), (311, 44112), (333, 44193), (356, 44244), (398, 44301), (400, 44307), (408, 44331), (423, 44385), (459, 44517), (463, 44547), (466, 44571), (472, 44601), (480, 44652),

Gene: BenchScraper_79 Start: 42970, Stop: 44436, Start Num: 120

Candidate Starts for BenchScraper_79:

(103, 42934), (Start: 120 @42970 has 116 MA's), (127, 42991), (Start: 132 @43030 has 1 MA's), (141, 43060), (164, 43156), (185, 43297), (188, 43306), (210, 43381), (213, 43396), (216, 43405), (227, 43441), (229, 43450), (240, 43498), (257, 43585), (260, 43597), (295, 43783), (306, 43828), (344, 43942), (356, 43975), (364, 44011), (398, 44041), (400, 44047), (408, 44071), (411, 44080), (422, 44110), (423, 44125), (426, 44137), (459, 44275), (463, 44305), (466, 44329),

Gene: Bhageatrice_83 Start: 46793, Stop: 48364, Start Num: 120

Candidate Starts for Bhageatrice_83:

(Start: 120 @46793 has 116 MA's), (127, 46814), (Start: 132 @46853 has 1 MA's), (141, 46883), (185, 47120), (210, 47204), (216, 47228), (227, 47264), (229, 47273), (240, 47321), (257, 47408), (260, 47420), (295, 47606), (333, 47747), (368, 47852), (379, 47888), (385, 47912), (398, 47969), (400, 47975), (408, 47999), (411, 48008), (422, 48038), (423, 48053), (426, 48065), (459, 48203), (463, 48233), (466, 48257),

Gene: Bialota_61 Start: 42795, Stop: 44375, Start Num: 120

Candidate Starts for Bialota_61:

(84, 42726), (86, 42729), (Start: 120 @42795 has 116 MA's), (Start: 123 @42801 has 7 MA's), (Start: 125 @42807 has 1 MA's), (127, 42816), (138, 42873), (172, 43032), (181, 43083), (185, 43122), (195, 43167), (215, 43224), (216, 43230), (225, 43263), (229, 43275), (240, 43323), (243, 43332), (249, 43374), (260, 43422), (272, 43494), (295, 43611), (329, 43731), (335, 43779), (342, 43797), (359, 43857), (370, 43890), (392, 43980), (425, 44067), (459, 44211), (463, 44241), (472, 44295),

Gene: BillyTP_80 Start: 44963, Stop: 46426, Start Num: 120

Candidate Starts for BillyTP_80:

(Start: 120 @44963 has 116 MA's), (127, 44984), (Start: 132 @45023 has 1 MA's), (141, 45053), (185, 45290), (188, 45299), (202, 45353), (210, 45374), (215, 45392), (216, 45398), (224, 45428), (227, 45434), (229, 45443), (240, 45491), (242, 45497), (257, 45578), (260, 45590), (285, 45725), (295, 45776), (306, 45821), (344, 45935), (356, 45968), (398, 46031), (400, 46037), (408, 46061), (411, 46070), (422, 46100), (423, 46115), (426, 46127), (459, 46265), (463, 46295), (466, 46319), (470, 46343), (482, 46412),

Gene: Bjaner7_58 Start: 38542, Stop: 40071, Start Num: 120

Candidate Starts for Bjaner7_58:

(84, 38473), (86, 38476), (Start: 120 @38542 has 116 MA's), (Start: 123 @38548 has 7 MA's), (185, 38869), (195, 38914), (215, 38971), (216, 38977), (225, 39010), (229, 39022), (240, 39070), (243, 39079), (249, 39121), (260, 39169), (272, 39241), (274, 39262), (295, 39358), (317, 39430), (356, 39544), (359, 39553), (370, 39586), (392, 39676), (425, 39763), (459, 39907), (463, 39937), (472, 39991),

Gene: BlackJade_3 Start: 2028, Stop: 3266, Start Num: 115

Candidate Starts for BlackJade_3:

(91, 1980), (Start: 115 @2028 has 6 MA's), (143, 2121), (149, 2157), (169, 2208), (178, 2265), (183, 2301), (191, 2340), (195, 2358), (239, 2487), (241, 2496), (248, 2529), (254, 2562), (259, 2586), (281, 2703), (286, 2721), (309, 2802), (428, 3120), (442, 3168), (460, 3222), (464, 3252),

Gene: BlackSpider_68 Start: 41508, Stop: 42755, Start Num: 116

Candidate Starts for BlackSpider_68:

(Start: 116 @41508 has 4 MA's), (167, 41712), (175, 41772), (185, 41844), (196, 41892), (213, 41943), (216, 41952), (227, 41988), (229, 41997), (243, 42054), (264, 42171), (273, 42231), (274, 42234), (277, 42246), (295, 42330), (425, 42468), (439, 42501), (448, 42549), (458, 42585), (459, 42594), (461, 42615), (463, 42624), (484, 42744),

Gene: BlingBling_62 Start: 41239, Stop: 42816, Start Num: 113

Candidate Starts for BlingBling_62:

(48, 41089), (52, 41098), (100, 41209), (Start: 113 @41239 has 2 MA's), (172, 41476), (185, 41566), (215, 41668), (216, 41674), (225, 41707), (229, 41719), (240, 41767), (243, 41776), (260, 41866), (272, 41938), (295, 42055), (329, 42175), (335, 42223), (359, 42301), (370, 42334), (392, 42424), (425, 42511), (459, 42655), (463, 42685), (472, 42739),

Gene: Blino_69 Start: 46388, Stop: 47965, Start Num: 120

Candidate Starts for Blino_69:

(19, 46133), (103, 46352), (Start: 120 @46388 has 116 MA's), (172, 46625), (185, 46715), (195, 46760), (215, 46817), (216, 46823), (225, 46856), (229, 46868), (240, 46916), (243, 46925), (249, 46967), (260, 47015), (272, 47087), (295, 47204), (329, 47324), (335, 47372), (359, 47450), (381, 47522), (425, 47660), (459, 47804), (463, 47834), (472, 47888),

Gene: BlueShadow_77 Start: 44113, Stop: 45681, Start Num: 120

Candidate Starts for BlueShadow_77:

(12, 43747), (103, 44077), (Start: 120 @44113 has 116 MA's), (127, 44134), (Start: 132 @44173 has 1 MA's), (141, 44203), (185, 44440), (188, 44449), (202, 44503), (210, 44524), (215, 44542), (216, 44548), (227, 44584), (229, 44593), (240, 44641), (260, 44740), (272, 44809), (285, 44875), (295, 44926), (363, 45151), (371, 45181), (398, 45286), (400, 45292), (408, 45316), (411, 45325), (422, 45355), (423, 45370), (426, 45382), (459, 45520), (463, 45550), (466, 45574), (470, 45598), (482, 45667),

Gene: BodEinwohner17_75 Start: 46641, Stop: 48068, Start Num: 122

Candidate Starts for BodEinwohner17_75:

(Start: 122 @46641 has 43 MA's), (Start: 132 @46698 has 1 MA's), (138, 46716), (163, 46821), (173, 46887), (185, 46965), (188, 46974), (195, 47010), (203, 47034), (216, 47073), (224, 47103), (229, 47118), (232, 47130), (243, 47175), (248, 47208), (260, 47265), (261, 47271), (272, 47340), (274, 47361), (285, 47406), (286, 47409), (359, 47565), (364, 47589), (381, 47637), (392, 47688), (422, 47754), (450, 47865), (453, 47877), (455, 47883), (457, 47892), (458, 47895), (459, 47904), (460, 47907), (463, 47934), (467, 47961), (484, 48057),

Gene: Boomer_72 Start: 44736, Stop: 46163, Start Num: 122

Candidate Starts for Boomer_72:

(Start: 122 @44736 has 43 MA's), (126, 44748), (127, 44754), (140, 44817), (146, 44844), (173, 44982), (185, 45060), (195, 45105), (216, 45168), (224, 45198), (229, 45213), (232, 45225), (243, 45270), (260, 45360), (261, 45366), (267, 45417), (272, 45435), (276, 45465), (285, 45501), (292, 45537), (343, 45606), (352, 45639), (359, 45660), (364, 45684), (381, 45732), (392, 45783), (450, 45960), (455, 45978), (459, 45999), (460, 46002), (463, 46029), (467, 46056), (470, 46077), (474, 46098), (479, 46131), (484, 46152),

Gene: Bosnia_64 Start: 45202, Stop: 46728, Start Num: 120

Candidate Starts for Bosnia_64:

(97, 45151), (Start: 120 @45202 has 116 MA's), (146, 45313), (181, 45490), (185, 45529), (215, 45631), (216, 45637), (224, 45667), (225, 45670), (229, 45682), (240, 45730), (243, 45739), (249, 45781), (260, 45829), (272, 45901), (295, 46018), (359, 46213), (370, 46246), (425, 46423), (439, 46471), (459, 46567), (463, 46597), (472, 46651),

Gene: BoyNamedSue_65 Start: 44344, Stop: 45924, Start Num: 120

Candidate Starts for BoyNamedSue_65:

(84, 44272), (86, 44275), (Start: 120 @44344 has 116 MA's), (Start: 123 @44350 has 7 MA's), (172, 44581), (181, 44632), (185, 44671), (209, 44752), (215, 44773), (216, 44779), (225, 44812), (229, 44824), (240, 44872), (243, 44881), (260, 44971), (272, 45043), (295, 45160), (329, 45280), (335, 45328), (356, 45397), (359, 45406), (370, 45439), (381, 45478), (425, 45616), (435, 45652), (459, 45760), (463, 45790), (472, 45844), (484, 45913),

Gene: BrayBeast_59 Start: 32681, Stop: 34225, Start Num: 120

Candidate Starts for BrayBeast_59:

(Start: 120 @32681 has 116 MA's), (Start: 125 @32693 has 1 MA's), (127, 32702), (Start: 132 @32741 has 1 MA's), (172, 32918), (185, 33008), (188, 33017), (202, 33071), (210, 33092), (215, 33110), (216, 33116), (229, 33161), (240, 33209), (242, 33215), (260, 33311), (274, 33401), (321, 33584), (338, 33650), (348, 33677), (351, 33689), (356, 33701), (364, 33737), (382, 33779), (385, 33791), (398, 33848), (400, 33854), (408, 33878), (423, 33932), (459, 34064), (463, 34094), (466, 34118), (472, 34148), (480, 34199),

Gene: Budski_87 Start: 47845, Stop: 49278, Start Num: 120

Candidate Starts for Budski_87:

(30, 47617), (60, 47701), (61, 47704), (88, 47779), (Start: 120 @47845 has 116 MA's), (131, 47902), (134, 47908), (185, 48172), (216, 48280), (223, 48307), (225, 48313), (229, 48325), (243, 48382), (260, 48472), (267, 48526), (272, 48544), (295, 48661), (352, 48748), (359, 48769), (370, 48802), (425, 48979), (435, 49006), (457, 49102), (459, 49114), (463, 49144), (465, 49165), (478, 49240),

Gene: Bunnybear_57 Start: 41879, Stop: 43459, Start Num: 120

Candidate Starts for Bunnybear_57:

(Start: 120 @41879 has 116 MA's), (172, 42116), (185, 42206), (195, 42251), (215, 42308), (216, 42314), (224, 42344), (225, 42347), (229, 42359), (240, 42407), (243, 42416), (260, 42506), (272,

42578), (295, 42695), (329, 42815), (335, 42863), (356, 42932), (359, 42941), (370, 42974), (392, 43064), (402, 43073), (414, 43106), (425, 43154), (439, 43202), (459, 43298), (463, 43328), (472, 43382),

Gene: CarolAnn_68 Start: 46387, Stop: 47964, Start Num: 120

Candidate Starts for CarolAnn_68:

(19, 46132), (103, 46351), (Start: 120 @46387 has 116 MA's), (172, 46624), (185, 46714), (195, 46759), (215, 46816), (216, 46822), (225, 46855), (229, 46867), (240, 46915), (243, 46924), (249, 46966), (260, 47014), (272, 47086), (295, 47203), (329, 47323), (335, 47371), (359, 47449), (381, 47521), (425, 47659), (459, 47803), (463, 47833), (472, 47887),

Gene: Cashline_62 Start: 44043, Stop: 45572, Start Num: 120

Candidate Starts for Cashline_62:

(59, 43911), (60, 43914), (84, 43971), (86, 43974), (Start: 120 @44043 has 116 MA's), (Start: 123 @44049 has 7 MA's), (172, 44280), (181, 44331), (185, 44370), (195, 44415), (215, 44472), (216, 44478), (225, 44511), (229, 44523), (240, 44571), (243, 44580), (258, 44661), (260, 44670), (272, 44742), (295, 44859), (329, 44967), (342, 44997), (370, 45090), (425, 45267), (459, 45411), (463, 45441), (472, 45495),

Gene: Cassini_76 Start: 43767, Stop: 45209, Start Num: 120

Candidate Starts for Cassini_76:

(70, 43650), (106, 43731), (Start: 120 @43767 has 116 MA's), (Start: 123 @43773 has 7 MA's), (Start: 125 @43779 has 1 MA's), (127, 43788), (Start: 132 @43827 has 1 MA's), (138, 43845), (172, 44004), (185, 44094), (188, 44103), (202, 44157), (210, 44178), (215, 44196), (216, 44202), (229, 44247), (240, 44295), (242, 44301), (258, 44388), (272, 44466), (295, 44583), (306, 44628), (321, 44670), (350, 44763), (356, 44775), (398, 44832), (400, 44838), (408, 44862), (411, 44871), (423, 44916), (459, 45048), (463, 45078), (466, 45102), (470, 45126), (472, 45132), (480, 45183),

Gene: Che9c_65 Start: 45778, Stop: 47319, Start Num: 122

Candidate Starts for Che9c_65:

(107, 45736), (Start: 122 @45778 has 43 MA's), (136, 45847), (138, 45853), (153, 45925), (172, 46012), (181, 46063), (185, 46102), (188, 46111), (202, 46165), (215, 46204), (216, 46210), (224, 46240), (229, 46255), (240, 46303), (242, 46309), (243, 46312), (253, 46372), (259, 46399), (260, 46402), (267, 46459), (274, 46498), (286, 46546), (295, 46594), (307, 46642), (329, 46702), (364, 46822), (373, 46843), (392, 46924), (409, 46951), (410, 46954), (422, 46990), (425, 47011), (433, 47047), (443, 47080), (444, 47083), (459, 47155), (463, 47185), (470, 47233),

Gene: CheeseSpider_76 Start: 43979, Stop: 45511, Start Num: 119

Candidate Starts for CheeseSpider_76:

(Start: 85 @43913 has 1 MA's), (Start: 119 @43979 has 6 MA's), (172, 44216), (185, 44306), (215, 44408), (216, 44414), (225, 44447), (229, 44459), (240, 44507), (243, 44516), (260, 44606), (272, 44678), (295, 44795), (329, 44903), (342, 44933), (370, 45026), (392, 45116), (403, 45125), (414, 45158), (425, 45206), (433, 45242), (459, 45350), (463, 45380), (472, 45434),

Gene: CherryCola_60 Start: 44491, Stop: 46023, Start Num: 120

Candidate Starts for CherryCola_60:

(2, 43927), (3, 43963), (5, 44083), (54, 44332), (74, 44389), (Start: 120 @44491 has 116 MA's), (185, 44818), (195, 44863), (215, 44920), (216, 44926), (225, 44959), (229, 44971), (240, 45019), (243, 45028), (260, 45118), (272, 45190), (295, 45307), (334, 45415), (341, 45445), (370, 45538), (392, 45628), (402, 45637), (414, 45670), (425, 45718), (459, 45862), (463, 45892), (472, 45946),

Gene: Chevrolet_78 Start: 45996, Stop: 47423, Start Num: 122

Candidate Starts for Chevrolet_78:

(Start: 122 @45996 has 43 MA's), (126, 46008), (127, 46014), (140, 46077), (146, 46104), (173, 46242), (185, 46320), (195, 46365), (203, 46389), (216, 46428), (229, 46473), (232, 46485), (243, 46530), (248, 46563), (260, 46620), (261, 46626), (267, 46677), (272, 46695), (274, 46716), (276, 46725), (285, 46761), (292, 46797), (295, 46812), (343, 46866), (352, 46899), (359, 46920), (364, 46944), (390, 47040), (392, 47043), (450, 47220), (455, 47238), (457, 47247), (458, 47250), (459, 47259), (460, 47262), (463, 47289), (470, 47337), (474, 47358), (479, 47391), (484, 47412),

Gene: ChewyVIII_75 Start: 55068, Stop: 53818, Start Num: 118

Candidate Starts for ChewyVIII_75:

(Start: 118 @55068 has 2 MA's), (152, 54921), (161, 54894), (190, 54792), (197, 54762), (208, 54729), (241, 54624), (251, 54570), (255, 54555), (259, 54534), (263, 54510), (265, 54492), (286, 54399), (308, 54312), (340, 54213), (356, 54177), (375, 54132), (397, 54042), (432, 53910), (452, 53829), (453, 53826),

Gene: ChickenDinner_73 Start: 44615, Stop: 46129, Start Num: 122

Candidate Starts for ChickenDinner_73:

(83, 44531), (105, 44573), (Start: 122 @44615 has 43 MA's), (136, 44684), (153, 44762), (172, 44849), (181, 44900), (185, 44939), (188, 44948), (202, 45002), (215, 45041), (216, 45047), (224, 45077), (229, 45092), (240, 45140), (242, 45146), (243, 45149), (253, 45209), (259, 45236), (260, 45239), (267, 45296), (274, 45335), (295, 45431), (324, 45518), (327, 45524), (329, 45533), (342, 45566), (350, 45599), (359, 45626), (364, 45650), (392, 45749), (410, 45779), (419, 45797), (422, 45815), (423, 45830), (450, 45926), (459, 45965), (463, 45995), (484, 46118),

Gene: Clap_61 Start: 38721, Stop: 40250, Start Num: 120

Candidate Starts for Clap_61:

(84, 38652), (86, 38655), (Start: 120 @38721 has 116 MA's), (Start: 123 @38727 has 7 MA's), (185, 39048), (195, 39093), (215, 39150), (216, 39156), (225, 39189), (229, 39201), (240, 39249), (243, 39258), (249, 39300), (260, 39348), (272, 39420), (274, 39441), (295, 39537), (317, 39609), (356, 39723), (359, 39732), (370, 39765), (392, 39855), (425, 39942), (459, 40086), (463, 40116), (472, 40170),

Gene: CookieBear_78 Start: 43444, Stop: 44910, Start Num: 120

Candidate Starts for CookieBear_78:

(12, 43078), (103, 43408), (Start: 120 @43444 has 116 MA's), (127, 43465), (Start: 132 @43504 has 1 MA's), (141, 43534), (164, 43630), (185, 43771), (188, 43780), (202, 43834), (210, 43855), (216, 43879), (224, 43909), (227, 43915), (229, 43924), (240, 43972), (260, 44071), (295, 44257), (306, 44302), (344, 44416), (356, 44449), (364, 44485), (398, 44515), (400, 44521), (408, 44545), (411, 44554), (422, 44584), (423, 44599), (426, 44611), (459, 44749), (463, 44779), (466, 44803), (482, 44896),

Gene: CosmicBrownie_76 Start: 42818, Stop: 44065, Start Num: 116

Candidate Starts for CosmicBrownie_76:

(87, 42749), (Start: 116 @42818 has 4 MA's), (136, 42893), (137, 42896), (167, 43022), (173, 43070), (185, 43154), (196, 43202), (213, 43253), (216, 43262), (227, 43298), (229, 43307), (240, 43355), (243, 43364), (263, 43472), (277, 43556), (285, 43589), (439, 43811), (459, 43904), (461, 43925), (463, 43934), (474, 44003), (482, 44051),

Gene: CoveyB_60 Start: 43536, Stop: 45116, Start Num: 120

Candidate Starts for CoveyB_60:

(2, 42972), (3, 43008), (5, 43128), (54, 43377), (74, 43434), (Start: 120 @43536 has 116 MA's), (185, 43863), (195, 43908), (215, 43965), (216, 43971), (225, 44004), (229, 44016), (240, 44064), (243, 44073), (249, 44115), (295, 44352), (329, 44472), (335, 44520), (359, 44598), (370, 44631), (402, 44730), (414, 44763), (425, 44811), (459, 44955), (463, 44985), (472, 45039),

Gene: Crescenzo_82 Start: 46383, Stop: 47849, Start Num: 120

Candidate Starts for Crescenzo_82:

(Start: 120 @46383 has 116 MA's), (127, 46404), (Start: 132 @46443 has 1 MA's), (141, 46473), (185, 46710), (210, 46794), (216, 46818), (227, 46854), (229, 46863), (240, 46911), (257, 46998), (260, 47010), (295, 47196), (306, 47241), (344, 47355), (356, 47388), (364, 47424), (398, 47454), (400, 47460), (408, 47484), (411, 47493), (422, 47523), (423, 47538), (426, 47550), (459, 47688), (463, 47718), (466, 47742),

Gene: Crewmate_52 Start: 34132, Stop: 35106, Start Num: 123

Candidate Starts for Crewmate_52:

(58, 34009), (Start: 123 @34132 has 7 MA's), (143, 34216), (149, 34252), (183, 34351), (219, 34477), (239, 34537), (248, 34579), (286, 34774), (315, 34885),

Gene: Cueyllyss_44 Start: 34031, Stop: 32712, Start Num: 98

Candidate Starts for Cueyllyss_44:

(Start: 98 @34031 has 1 MA's), (141, 33896), (145, 33881), (148, 33869), (155, 33836), (157, 33824), (160, 33815), (183, 33725), (187, 33707), (192, 33686), (193, 33683), (198, 33662), (200, 33659), (206, 33635), (234, 33542), (238, 33530), (252, 33458), (262, 33413), (280, 33317), (282, 33302), (313, 33185), (410, 32825), (414, 32813), (437, 32720),

Gene: Cynthia_61 Start: 38719, Stop: 40248, Start Num: 120

Candidate Starts for Cynthia_61:

(84, 38650), (86, 38653), (Start: 120 @38719 has 116 MA's), (Start: 123 @38725 has 7 MA's), (185, 39046), (195, 39091), (215, 39148), (216, 39154), (225, 39187), (229, 39199), (240, 39247), (243, 39256), (249, 39298), (260, 39346), (272, 39418), (274, 39439), (295, 39535), (317, 39607), (356, 39721), (359, 39730), (370, 39763), (392, 39853), (425, 39940), (459, 40084), (463, 40114), (472, 40168),

Gene: Dante_67 Start: 42162, Stop: 43691, Start Num: 122

Candidate Starts for Dante_67:

(Start: 122 @42162 has 43 MA's), (136, 42231), (153, 42309), (172, 42396), (185, 42486), (188, 42495), (215, 42588), (216, 42594), (224, 42624), (229, 42639), (240, 42687), (242, 42693), (243, 42696), (253, 42756), (259, 42783), (260, 42786), (267, 42843), (274, 42882), (295, 42978), (324, 43065), (327, 43071), (329, 43080), (342, 43113), (359, 43173), (373, 43215), (381, 43245), (389, 43281), (392, 43296), (409, 43323), (410, 43326), (422, 43362), (425, 43383), (433, 43419), (443, 43452), (444, 43455), (459, 43527), (463, 43557), (470, 43605), (474, 43626), (479, 43659), (484, 43680),

Gene: DarwinJr_83 Start: 46338, Stop: 47804, Start Num: 120

Candidate Starts for DarwinJr_83:

(Start: 120 @46338 has 116 MA's), (127, 46359), (Start: 132 @46398 has 1 MA's), (141, 46428), (185, 46665), (210, 46749), (216, 46773), (227, 46809), (229, 46818), (240, 46866), (257, 46953), (260, 46965), (295, 47151), (306, 47196), (344, 47310), (356, 47343), (364, 47379), (398, 47409), (400, 47415), (408, 47439), (411, 47448), (422, 47478), (423, 47493), (426, 47505), (459, 47643), (463, 47673), (466, 47697),

Gene: DillyDally_49 Start: 31245, Stop: 32495, Start Num: 113

Candidate Starts for DillyDally_49:

(Start: 113 @31245 has 2 MA's), (131, 31302), (138, 31323), (173, 31494), (185, 31578), (188, 31587), (196, 31626), (202, 31641), (216, 31686), (229, 31731), (243, 31788), (258, 31866), (267, 31929), (277, 31980), (295, 32064), (299, 32076), (449, 32289), (459, 32331), (461, 32352), (463, 32361), (468, 32397), (471, 32412), (484, 32484),

Gene: Ding_79 Start: 43969, Stop: 45216, Start Num: 116

Candidate Starts for Ding_79:

(Start: 116 @43969 has 4 MA's), (167, 44173), (173, 44221), (185, 44305), (196, 44353), (216, 44413), (227, 44449), (229, 44458), (243, 44515), (274, 44695), (295, 44791), (303, 44818), (432, 44950), (458, 45046), (459, 45055), (461, 45076), (463, 45085), (474, 45154),

Gene: DocMcStuffins_73 Start: 44615, Stop: 46129, Start Num: 122

Candidate Starts for DocMcStuffins_73:

(83, 44531), (105, 44573), (Start: 122 @44615 has 43 MA's), (136, 44684), (153, 44762), (172, 44849), (181, 44900), (185, 44939), (188, 44948), (202, 45002), (215, 45041), (216, 45047), (224, 45077), (229, 45092), (240, 45140), (242, 45146), (243, 45149), (253, 45209), (259, 45236), (260, 45239), (267, 45296), (274, 45335), (295, 45431), (324, 45518), (327, 45524), (329, 45533), (342, 45566), (350, 45599), (359, 45626), (364, 45650), (392, 45749), (410, 45779), (419, 45797), (422, 45815), (423, 45830), (450, 45926), (459, 45965), (463, 45995), (484, 46118),

Gene: Dori_72 Start: 54225, Stop: 55727, Start Num: 122

Candidate Starts for Dori_72:

(Start: 122 @54225 has 43 MA's), (136, 54294), (172, 54459), (181, 54510), (185, 54549), (188, 54558), (202, 54612), (215, 54651), (216, 54657), (224, 54687), (229, 54702), (240, 54750), (242, 54756), (243, 54759), (258, 54840), (260, 54849), (261, 54855), (267, 54906), (272, 54924), (295, 55041), (324, 55128), (329, 55143), (342, 55176), (343, 55182), (359, 55236), (381, 55308), (392, 55359), (400, 55365), (423, 55434), (447, 55518), (459, 55563), (463, 55593), (470, 55641),

Gene: DreamEater_56 Start: 36468, Stop: 37715, Start Num: 120

Candidate Starts for DreamEater_56:

(Start: 120 @36468 has 116 MA's), (131, 36525), (138, 36546), (173, 36717), (185, 36801), (188, 36810), (196, 36849), (203, 36870), (216, 36909), (229, 36954), (243, 37011), (251, 37062), (257, 37086), (449, 37512), (459, 37554), (461, 37575), (463, 37584), (468, 37620), (471, 37635), (474, 37653), (480, 37689),

Gene: EMSquaredA_64 Start: 43271, Stop: 44845, Start Num: 122

Candidate Starts for EMSquaredA_64:

(95, 43217), (Start: 122 @43271 has 43 MA's), (182, 43559), (185, 43595), (195, 43640), (215, 43697), (216, 43703), (224, 43733), (225, 43736), (229, 43748), (240, 43796), (243, 43805), (249, 43847), (260, 43895), (272, 43967), (274, 43988), (295, 44084), (329, 44204), (359, 44330), (370, 44363), (381, 44402), (425, 44540), (459, 44684), (463, 44714), (472, 44768), (478, 44810),

Gene: Ebert_65 Start: 39153, Stop: 40682, Start Num: 120

Candidate Starts for Ebert_65:

(84, 39084), (86, 39087), (Start: 120 @39153 has 116 MA's), (Start: 123 @39159 has 7 MA's), (185, 39480), (195, 39525), (215, 39582), (216, 39588), (225, 39621), (229, 39633), (240, 39681), (243, 39690), (249, 39732), (260, 39780), (272, 39852), (274, 39873), (295, 39969), (317, 40041), (356, 40155), (359, 40164), (370, 40197), (392, 40287), (425, 40374), (459, 40518), (463, 40548), (472, 40602),

Gene: EdnaMode_57 Start: 37984, Stop: 39561, Start Num: 120

Candidate Starts for EdnaMode_57:

(84, 37915), (86, 37918), (Start: 120 @37984 has 116 MA's), (Start: 123 @37990 has 7 MA's), (Start: 125 @37996 has 1 MA's), (127, 38005), (138, 38062), (172, 38221), (181, 38272), (185, 38311), (195, 38356), (215, 38413), (216, 38419), (225, 38452), (229, 38464), (240, 38512), (243, 38521), (249, 38563), (260, 38611), (272, 38683), (295, 38800), (329, 38920), (335, 38968), (342, 38986), (359, 39046), (370, 39079), (425, 39256), (459, 39400), (463, 39430), (472, 39484),

Gene: EnalisNailo_60 Start: 43074, Stop: 44633, Start Num: 114

Candidate Starts for EnalisNailo_60:

(89, 43023), (Start: 114 @43074 has 3 MA's), (136, 43146), (185, 43401), (195, 43446), (215, 43503), (216, 43509), (225, 43542), (229, 43554), (240, 43602), (243, 43611), (260, 43701), (267, 43755), (274, 43776), (295, 43872), (329, 43992), (335, 44040), (359, 44118), (370, 44151), (425, 44328), (459, 44472), (463, 44502), (472, 44556),

Gene: Eudoria_63 Start: 42163, Stop: 43740, Start Num: 120

Candidate Starts for Eudoria_63:

(84, 42094), (86, 42097), (Start: 120 @42163 has 116 MA's), (Start: 123 @42169 has 7 MA's), (Start: 125 @42175 has 1 MA's), (127, 42184), (138, 42241), (172, 42400), (185, 42490), (195, 42535), (215, 42592), (216, 42598), (225, 42631), (229, 42643), (240, 42691), (243, 42700), (249, 42742), (260, 42790), (272, 42862), (295, 42979), (329, 43099), (335, 43147), (356, 43216), (359, 43225), (370, 43258), (381, 43297), (420, 43405), (425, 43435), (459, 43579), (463, 43609), (472, 43663),

Gene: EvePickles_78 Start: 44846, Stop: 46093, Start Num: 116

Candidate Starts for EvePickles_78:

(55, 44693), (83, 44768), (Start: 116 @44846 has 4 MA's), (136, 44921), (137, 44924), (167, 45050), (173, 45098), (185, 45182), (196, 45230), (213, 45281), (216, 45290), (227, 45326), (229, 45335), (240, 45383), (243, 45392), (263, 45500), (277, 45584), (285, 45617), (295, 45668), (439, 45839), (459, 45932), (461, 45953), (463, 45962), (474, 46031), (482, 46079),

Gene: EvenBluerMoon_35 Start: 27808, Stop: 29394, Start Num: 77

Candidate Starts for EvenBluerMoon_35:

(Start: 77 @27808 has 4 MA's), (99, 27856), (143, 27994), (149, 28030), (214, 28258), (231, 28306), (237, 28324), (248, 28375), (268, 28489), (286, 28567), (431, 28906), (474, 29026), (488, 29197), (489, 29215), (492, 29326),

Gene: Eviarto_66 Start: 44699, Stop: 46276, Start Num: 120

Candidate Starts for Eviarto_66:

(88, 44633), (Start: 120 @44699 has 116 MA's), (172, 44936), (185, 45026), (195, 45071), (215, 45128), (216, 45134), (225, 45167), (229, 45179), (240, 45227), (249, 45278), (260, 45326), (295, 45515), (329, 45635), (335, 45683), (342, 45701), (356, 45752), (359, 45761), (370, 45794), (381, 45833), (420, 45941), (425, 45971), (433, 46007), (459, 46115), (463, 46145), (472, 46199),

Gene: Faja_82 Start: 45486, Stop: 46952, Start Num: 120

Candidate Starts for Faja_82:

(Start: 120 @45486 has 116 MA's), (127, 45507), (Start: 132 @45546 has 1 MA's), (141, 45576), (185, 45813), (188, 45822), (202, 45876), (210, 45897), (216, 45921), (224, 45951), (227, 45957), (229, 45966), (240, 46014), (260, 46113), (295, 46299), (306, 46344), (344, 46458), (356, 46491), (364, 46527), (398, 46557), (400, 46563), (408, 46587), (411, 46596), (422, 46626), (423, 46641), (426, 46653), (459, 46791), (463, 46821), (466, 46845), (470, 46869), (482, 46938),

Gene: Farewell_66 Start: 43090, Stop: 44370, Start Num: 122

Candidate Starts for Farewell_66:

(84, 43021), (Start: 122 @43090 has 43 MA's), (136, 43159), (153, 43237), (172, 43324), (181, 43375), (185, 43414), (188, 43423), (202, 43477), (215, 43516), (216, 43522), (224, 43552), (229, 43567), (240, 43615), (242, 43621), (243, 43624), (304, 43693), (324, 43744), (327, 43750), (329, 43759), (342, 43792), (359, 43852), (392, 43975), (410, 44005), (422, 44041), (425, 44062), (433, 44098), (443, 44131), (444, 44134), (446, 44158), (459, 44206), (463, 44236), (470, 44284),

Gene: Flathead_69 Start: 43259, Stop: 44686, Start Num: 122

Candidate Starts for Flathead_69:

(Start: 122 @43259 has 43 MA's), (Start: 132 @43316 has 1 MA's), (138, 43334), (163, 43439), (173, 43505), (185, 43583), (188, 43592), (195, 43628), (201, 43643), (203, 43652), (216, 43691), (224, 43721), (229, 43736), (232, 43748), (243, 43793), (260, 43883), (261, 43889), (267, 43940), (272, 43958), (276, 43988), (285, 44024), (292, 44060), (343, 44129), (352, 44162), (359, 44183), (364, 44207), (381, 44255), (392, 44306), (450, 44483), (455, 44501), (459, 44522), (460, 44525), (463, 44552), (467, 44579), (470, 44600), (474, 44621), (479, 44654), (484, 44675),

Gene: Floral_65 Start: 45156, Stop: 46730, Start Num: 122

Candidate Starts for Floral_65:

(95, 45102), (Start: 122 @45156 has 43 MA's), (182, 45444), (185, 45480), (195, 45525), (215, 45582), (216, 45588), (224, 45618), (225, 45621), (229, 45633), (240, 45681), (243, 45690), (249, 45732), (260, 45780), (272, 45852), (295, 45969), (329, 46089), (335, 46137), (359, 46215), (370, 46248), (392, 46338), (425, 46425), (459, 46569), (463, 46599), (472, 46653),

Gene: FroggyToad_59 Start: 38944, Stop: 40470, Start Num: 120

Candidate Starts for FroggyToad_59:

(49, 38776), (58, 38797), (84, 38872), (86, 38875), (Start: 120 @38944 has 116 MA's), (Start: 123 @38950 has 7 MA's), (172, 39181), (181, 39232), (185, 39271), (195, 39316), (197, 39322), (215, 39373), (216, 39379), (225, 39412), (229, 39424), (240, 39472), (243, 39481), (260, 39571), (272, 39643), (295, 39760), (317, 39832), (356, 39946), (359, 39955), (370, 39988), (425, 40165), (459, 40309), (463, 40339), (472, 40393),

Gene: Frokostdame_66 Start: 42064, Stop: 43590, Start Num: 120

Candidate Starts for Frokostdame_66:

(Start: 120 @42064 has 116 MA's), (153, 42214), (172, 42301), (181, 42352), (185, 42391), (195, 42436), (213, 42490), (215, 42493), (216, 42499), (225, 42532), (227, 42535), (229, 42544), (240, 42592), (243, 42601), (260, 42691), (295, 42880), (317, 42952), (356, 43066), (359, 43075), (370, 43108), (420, 43255), (425, 43285), (459, 43429), (463, 43459), (472, 43513), (484, 43582),

Gene: FuzzBuster_69 Start: 41767, Stop: 39908, Start Num: 118

Candidate Starts for FuzzBuster_69:

(Start: 118 @41767 has 2 MA's), (143, 41677), (147, 41659), (149, 41641), (156, 41620), (183, 41458), (239, 41269), (241, 41260), (248, 41227), (257, 41179), (259, 41170), (284, 41038), (286, 41032), (289, 41008), (299, 40972), (332, 40840), (383, 40651), (393, 40600), (396, 40588), (401, 40576), (412, 40540), (427, 40471), (445, 40408), (451, 40378), (458, 40354), (473, 40249), (487, 40090), (490, 40003), (491, 39955),

Gene: GUPitcher_57 Start: 36582, Stop: 37829, Start Num: 120

Candidate Starts for GUPitcher_57:

(Start: 120 @36582 has 116 MA's), (131, 36639), (138, 36660), (172, 36819), (173, 36831), (185, 36915), (188, 36924), (196, 36963), (203, 36984), (216, 37023), (229, 37068), (243, 37125), (251, 37176), (264, 37242), (277, 37317), (449, 37626), (459, 37668), (461, 37689), (463, 37698), (468, 37734), (471, 37749), (474, 37767), (480, 37803),

Gene: GemG_61 Start: 38725, Stop: 40254, Start Num: 120

Candidate Starts for GemG_61:

(84, 38656), (86, 38659), (Start: 120 @38725 has 116 MA's), (Start: 123 @38731 has 7 MA's), (185, 39052), (195, 39097), (215, 39154), (216, 39160), (225, 39193), (229, 39205), (240, 39253), (243, 39262), (249, 39304), (260, 39352), (272, 39424), (274, 39445), (295, 39541), (317, 39613), (356, 39727), (359, 39736), (370, 39769), (392, 39859), (425, 39946), (459, 40090), (463, 40120), (472, 40174),

Gene: Gezellig_57 Start: 43689, Stop: 45269, Start Num: 120

Candidate Starts for Gezellig_57:

(2, 43125), (3, 43161), (5, 43281), (54, 43530), (74, 43587), (Start: 120 @43689 has 116 MA's), (185, 44016), (195, 44061), (215, 44118), (216, 44124), (225, 44157), (229, 44169), (240, 44217), (243, 44226), (249, 44268), (295, 44505), (329, 44625), (335, 44673), (359, 44751), (370, 44784), (402, 44883), (414, 44916), (425, 44964), (459, 45108), (463, 45138), (472, 45192),

Gene: Gibbzilla_67 Start: 33987, Stop: 35237, Start Num: 120

Candidate Starts for Gibbzilla_67:

(Start: 120 @33987 has 116 MA's), (131, 34044), (138, 34065), (185, 34320), (196, 34368), (202, 34383), (216, 34428), (229, 34473), (243, 34530), (264, 34647), (267, 34671), (295, 34806), (299, 34818), (439, 34980), (449, 35031), (459, 35073), (461, 35094), (463, 35103), (468, 35139), (471, 35154),

Gene: Gilgamesh_137 Start: 118223, Stop: 119593, Start Num: 45

Candidate Starts for Gilgamesh_137:

(11, 118043), (22, 118151), (41, 118217), (43, 118220), (Start: 45 @118223 has 1 MA's), (62, 118268), (65, 118277), (91, 118352), (177, 118619), (194, 118715), (245, 118898), (256, 118964), (286, 119111), (291, 119138), (300, 119180), (386, 119462), (405, 119513),

Gene: Gizermo_61 Start: 38721, Stop: 40250, Start Num: 120

Candidate Starts for Gizermo_61:

(84, 38652), (86, 38655), (Start: 120 @38721 has 116 MA's), (Start: 123 @38727 has 7 MA's), (185, 39048), (195, 39093), (215, 39150), (216, 39156), (225, 39189), (229, 39201), (240, 39249), (243, 39258), (249, 39300), (260, 39348), (272, 39420), (274, 39441), (295, 39537), (317, 39609), (356, 39723), (359, 39732), (370, 39765), (392, 39855), (425, 39942), (459, 40086), (463, 40116), (472, 40170),

Gene: Globfish_79 Start: 43154, Stop: 44596, Start Num: 120

Candidate Starts for Globfish_79:

(93, 43094), (106, 43118), (Start: 120 @43154 has 116 MA's), (Start: 123 @43160 has 7 MA's), (Start: 125 @43166 has 1 MA's), (127, 43175), (Start: 132 @43214 has 1 MA's), (138, 43232), (151, 43298), (153, 43304), (172, 43391), (174, 43412), (185, 43481), (202, 43544), (210, 43565), (215, 43583), (216, 43589), (229, 43634), (240, 43682), (258, 43775), (260, 43784), (295, 43970), (321, 44057), (350, 44150), (398, 44219), (400, 44225), (408, 44249), (411, 44258), (423, 44303), (459, 44435), (463, 44465), (466, 44489), (472, 44519), (480, 44570),

Gene: GoldDust_3 Start: 1973, Stop: 3220, Start Num: 115

Candidate Starts for GoldDust_3:

(Start: 115 @1973 has 6 MA's), (143, 2069), (149, 2105), (169, 2156), (176, 2195), (178, 2213), (183, 2249), (191, 2288), (214, 2360), (239, 2435), (241, 2444), (248, 2477), (251, 2498), (254, 2510), (267, 2585), (390, 2984), (415, 3029), (440, 3104),

Gene: Gooberta_3 Start: 1973, Stop: 3220, Start Num: 115

Candidate Starts for Gooberta_3:

(Start: 115 @1973 has 6 MA's), (143, 2069), (149, 2105), (169, 2156), (176, 2195), (178, 2213), (183, 2249), (191, 2288), (214, 2360), (239, 2435), (241, 2444), (248, 2477), (251, 2498), (254, 2510), (267, 2585), (390, 2984), (415, 3029), (440, 3104),

Gene: Gorpy_77 Start: 44685, Stop: 46253, Start Num: 120

Candidate Starts for Gorpy_77:

(Start: 120 @44685 has 116 MA's), (127, 44706), (Start: 132 @44745 has 1 MA's), (141, 44775), (185, 45012), (188, 45021), (202, 45075), (210, 45096), (216, 45120), (224, 45150), (227, 45156), (229,

45165), (233, 45186), (240, 45213), (260, 45312), (285, 45447), (295, 45498), (363, 45723), (365, 45729), (371, 45753), (398, 45858), (400, 45864), (408, 45888), (411, 45897), (422, 45927), (423, 45942), (426, 45954), (459, 46092), (463, 46122), (466, 46146), (470, 46170), (482, 46239),

Gene: GumGum_84 Start: 44619, Stop: 45866, Start Num: 116

Candidate Starts for GumGum_84:

(87, 44550), (Start: 116 @44619 has 4 MA's), (136, 44694), (137, 44697), (167, 44823), (173, 44871), (185, 44955), (196, 45003), (213, 45054), (216, 45063), (227, 45099), (229, 45108), (240, 45156), (243, 45165), (263, 45273), (277, 45357), (285, 45390), (295, 45441), (439, 45612), (459, 45705), (461, 45726), (463, 45735), (474, 45804), (482, 45852),

Gene: Haley23_61 Start: 38721, Stop: 40250, Start Num: 120

Candidate Starts for Haley23_61:

(84, 38652), (86, 38655), (Start: 120 @38721 has 116 MA's), (Start: 123 @38727 has 7 MA's), (185, 39048), (195, 39093), (215, 39150), (216, 39156), (225, 39189), (229, 39201), (240, 39249), (243, 39258), (249, 39300), (260, 39348), (272, 39420), (274, 39441), (295, 39537), (317, 39609), (356, 39723), (359, 39732), (370, 39765), (392, 39855), (425, 39942), (459, 40086), (463, 40116), (472, 40170),

Gene: Halo3_58 Start: 44274, Stop: 45854, Start Num: 120

Candidate Starts for Halo3_58:

(2, 43710), (3, 43746), (5, 43866), (54, 44115), (74, 44172), (Start: 120 @44274 has 116 MA's), (185, 44601), (195, 44646), (215, 44703), (216, 44709), (225, 44742), (229, 44754), (240, 44802), (243, 44811), (249, 44853), (295, 45090), (329, 45210), (335, 45258), (359, 45336), (370, 45369), (402, 45468), (414, 45501), (425, 45549), (459, 45693), (463, 45723), (472, 45777),

Gene: Hereford_36 Start: 27642, Stop: 29228, Start Num: 77

Candidate Starts for Hereford_36:

(Start: 77 @27642 has 4 MA's), (99, 27690), (143, 27828), (149, 27864), (214, 28092), (237, 28158), (248, 28209), (268, 28323), (286, 28401), (431, 28740), (474, 28860), (488, 29031), (489, 29049), (492, 29160),

Gene: Herod_67 Start: 45556, Stop: 47085, Start Num: 120

Candidate Starts for Herod_67:

(97, 45505), (Start: 120 @45556 has 116 MA's), (146, 45667), (181, 45844), (185, 45883), (215, 45985), (216, 45991), (225, 46024), (229, 46036), (240, 46084), (243, 46093), (249, 46135), (260, 46183), (272, 46255), (274, 46276), (295, 46372), (317, 46444), (356, 46558), (359, 46567), (370, 46600), (392, 46690), (425, 46777), (459, 46921), (463, 46951), (472, 47005),

Gene: Hestia_73 Start: 41709, Stop: 43175, Start Num: 120

Candidate Starts for Hestia_73:

(Start: 120 @41709 has 116 MA's), (127, 41730), (Start: 132 @41769 has 1 MA's), (141, 41799), (185, 42036), (188, 42045), (202, 42099), (210, 42120), (216, 42144), (224, 42174), (227, 42180), (229, 42189), (240, 42237), (260, 42336), (295, 42522), (306, 42567), (344, 42681), (356, 42714), (364, 42750), (398, 42780), (400, 42786), (408, 42810), (411, 42819), (422, 42849), (423, 42864), (426, 42876), (459, 43014), (463, 43044), (466, 43068), (470, 43092), (482, 43161),

Gene: Hillester_83 Start: 44856, Stop: 46322, Start Num: 120

Candidate Starts for Hillester_83:

(78, 44778), (Start: 120 @44856 has 116 MA's), (127, 44877), (Start: 132 @44916 has 1 MA's), (141, 44946), (185, 45183), (188, 45192), (210, 45267), (213, 45282), (216, 45291), (227, 45327), (229, 45336), (240, 45384), (257, 45471), (260, 45483), (295, 45669), (306, 45714), (344, 45828), (356, 45861), (364, 45897), (398, 45927), (400, 45933), (408, 45957), (411, 45966), (422, 45996), (423,

46011), (426, 46023), (459, 46161), (463, 46191), (466, 46215),

Gene: Hirko_3 Start: 1965, Stop: 3029, Start Num: 115

Candidate Starts for Hirko_3:

(Start: 115 @1965 has 6 MA's), (143, 2058), (169, 2145), (178, 2202), (183, 2238), (191, 2277), (214, 2349), (239, 2424), (241, 2433), (248, 2466), (254, 2499), (267, 2574), (281, 2640), (339, 2847), (376, 2907),

Gene: Hugley_65 Start: 45536, Stop: 47065, Start Num: 120

Candidate Starts for Hugley_65:

(97, 45485), (Start: 120 @45536 has 116 MA's), (146, 45647), (181, 45824), (185, 45863), (215, 45965), (216, 45971), (225, 46004), (229, 46016), (240, 46064), (243, 46073), (249, 46115), (260, 46163), (272, 46235), (274, 46256), (295, 46352), (317, 46424), (356, 46538), (359, 46547), (370, 46580), (392, 46670), (425, 46757), (459, 46901), (463, 46931), (472, 46985),

Gene: Hum25_56 Start: 30981, Stop: 32510, Start Num: 108

Candidate Starts for Hum25_56:

(Start: 108 @30981 has 1 MA's), (128, 31053), (143, 31098), (149, 31134), (156, 31155), (183, 31251), (219, 31377), (222, 31389), (226, 31398), (237, 31428), (241, 31446), (244, 31455), (248, 31479), (253, 31506), (254, 31512), (281, 31653), (286, 31671), (288, 31683), (357, 31917), (383, 32010), (388, 32034), (390, 32055), (417, 32121), (429, 32184), (469, 32376), (481, 32448), (485, 32460), (486, 32487),

Gene: Hyzer_72 Start: 47312, Stop: 48832, Start Num: 119

Candidate Starts for Hyzer_72:

(16, 47012), (17, 47021), (42, 47132), (50, 47156), (90, 47258), (Start: 119 @47312 has 6 MA's), (172, 47549), (181, 47600), (185, 47639), (195, 47684), (209, 47720), (215, 47741), (216, 47747), (225, 47780), (229, 47792), (240, 47840), (260, 47939), (272, 48011), (295, 48128), (322, 48215), (329, 48236), (342, 48266), (370, 48359), (420, 48506), (425, 48536), (435, 48563), (459, 48671), (463, 48701), (472, 48755), (484, 48824),

Gene: Isolde_77 Start: 43555, Stop: 45126, Start Num: 120

Candidate Starts for Isolde_77:

(12, 43189), (103, 43519), (Start: 120 @43555 has 116 MA's), (127, 43576), (Start: 132 @43615 has 1 MA's), (141, 43645), (185, 43882), (188, 43891), (202, 43945), (210, 43966), (215, 43984), (216, 43990), (224, 44020), (227, 44026), (229, 44035), (240, 44083), (260, 44182), (278, 44287), (295, 44368), (363, 44593), (365, 44599), (368, 44614), (379, 44650), (385, 44674), (398, 44731), (400, 44737), (408, 44761), (411, 44770), (422, 44800), (423, 44815), (426, 44827), (459, 44965), (463, 44995), (466, 45019), (470, 45043), (482, 45112),

Gene: JCole_57 Start: 37050, Stop: 38579, Start Num: 120

Candidate Starts for JCole_57:

(24, 36804), (34, 36840), (59, 36906), (84, 36981), (86, 36984), (Start: 120 @37050 has 116 MA's), (Start: 123 @37056 has 7 MA's), (Start: 125 @37062 has 1 MA's), (127, 37071), (138, 37128), (184, 37371), (185, 37377), (207, 37467), (216, 37497), (224, 37527), (229, 37542), (242, 37596), (260, 37689), (267, 37743), (295, 37878), (309, 37926), (359, 38076), (394, 38193), (407, 38229), (416, 38250), (459, 38418), (463, 38448), (465, 38469), (466, 38472), (472, 38502), (475, 38520),

Gene: JakeTheSnake_82 Start: 46521, Stop: 47984, Start Num: 120

Candidate Starts for JakeTheSnake_82:

(89, 46461), (94, 46470), (Start: 120 @46521 has 116 MA's), (127, 46542), (Start: 132 @46581 has 1 MA's), (141, 46611), (185, 46848), (202, 46911), (210, 46932), (215, 46950), (216, 46956), (227, 46992), (229, 47001), (240, 47049), (257, 47136), (260, 47148), (295, 47334), (344, 47493), (363,

47559), (398, 47589), (400, 47595), (408, 47619), (411, 47628), (422, 47658), (423, 47673), (426, 47685), (459, 47823), (463, 47853), (466, 47877), (474, 47922),

Gene: Jalleen_64 Start: 39374, Stop: 40951, Start Num: 120

Candidate Starts for Jalleen_64:

(96, 39323), (Start: 120 @39374 has 116 MA's), (146, 39485), (181, 39662), (185, 39701), (215, 39803), (216, 39809), (225, 39842), (229, 39854), (240, 39902), (243, 39911), (249, 39953), (260, 40001), (272, 40073), (295, 40190), (329, 40310), (335, 40358), (359, 40436), (370, 40469), (425, 40646), (434, 40682), (459, 40790), (463, 40820), (472, 40874),

Gene: JanetJ_35 Start: 28312, Stop: 30129, Start Num: 77

Candidate Starts for JanetJ_35:

(Start: 77 @28312 has 4 MA's), (143, 28411), (149, 28447), (214, 28675), (237, 28741), (248, 28792), (267, 28900), (268, 28906), (286, 28984), (354, 29257), (366, 29302), (474, 29761), (476, 29767), (488, 29932), (489, 29950),

Gene: JeanClaude_58 Start: 31148, Stop: 32590, Start Num: 120

Candidate Starts for JeanClaude_58:

(Start: 120 @31148 has 116 MA's), (Start: 125 @31160 has 1 MA's), (127, 31169), (Start: 132 @31208 has 1 MA's), (172, 31385), (185, 31475), (188, 31484), (202, 31538), (210, 31559), (215, 31577), (216, 31583), (229, 31628), (240, 31676), (258, 31769), (321, 32051), (372, 32111), (385, 32156), (398, 32213), (400, 32219), (408, 32243), (423, 32297), (459, 32429), (463, 32459), (466, 32483), (472, 32513), (480, 32564),

Gene: JellyBread_76 Start: 43874, Stop: 45337, Start Num: 120

Candidate Starts for JellyBread_76:

(Start: 120 @43874 has 116 MA's), (127, 43895), (Start: 132 @43934 has 1 MA's), (141, 43964), (185, 44201), (188, 44210), (202, 44264), (210, 44285), (216, 44309), (224, 44339), (227, 44345), (229, 44354), (240, 44402), (257, 44489), (260, 44501), (285, 44636), (295, 44687), (300, 44708), (306, 44732), (350, 44867), (398, 44942), (400, 44948), (408, 44972), (411, 44981), (422, 45011), (423, 45026), (426, 45038), (459, 45176), (463, 45206), (466, 45230), (470, 45254), (482, 45323),

Gene: JuJu_74 Start: 45794, Stop: 47326, Start Num: 119

Candidate Starts for JuJu_74:

(20, 45539), (103, 45758), (Start: 119 @45794 has 6 MA's), (172, 46031), (185, 46121), (195, 46166), (201, 46181), (215, 46223), (216, 46229), (225, 46262), (229, 46274), (240, 46322), (243, 46331), (260, 46421), (295, 46610), (329, 46718), (342, 46748), (364, 46832), (370, 46841), (381, 46880), (392, 46931), (403, 46940), (414, 46973), (425, 47021), (439, 47069), (459, 47165), (463, 47195), (472, 47249),

Gene: JuneStar_49 Start: 36072, Stop: 37253, Start Num: 122

Candidate Starts for JuneStar_49:

(Start: 122 @36072 has 43 MA's), (143, 36156), (149, 36192), (183, 36288), (191, 36327), (219, 36414), (235, 36459), (248, 36516), (286, 36708), (290, 36732), (298, 36756), (421, 37116),

Gene: Kabloowy_79 Start: 44758, Stop: 46221, Start Num: 120

Candidate Starts for Kabloowy_79:

(Start: 120 @44758 has 116 MA's), (127, 44779), (Start: 132 @44818 has 1 MA's), (141, 44848), (185, 45085), (188, 45094), (202, 45148), (210, 45169), (216, 45193), (224, 45223), (227, 45229), (229, 45238), (240, 45286), (257, 45373), (260, 45385), (285, 45520), (295, 45571), (300, 45592), (306, 45616), (350, 45751), (398, 45826), (400, 45832), (408, 45856), (411, 45865), (422, 45895), (423, 45910), (426, 45922), (459, 46060), (463, 46090), (466, 46114), (470, 46138), (482, 46207),

Gene: KappaFarmDelta_68 Start: 41663, Stop: 43192, Start Num: 119

Candidate Starts for KappaFarmDelta_68:

(Start: 119 @41663 has 6 MA's), (172, 41900), (185, 41990), (215, 42092), (216, 42098), (225, 42131), (229, 42143), (240, 42191), (260, 42290), (295, 42479), (329, 42587), (342, 42617), (425, 42887), (433, 42923), (459, 43031), (463, 43061), (472, 43115),

Gene: Khuang_56 Start: 32333, Stop: 33580, Start Num: 120

Candidate Starts for Khuang_56:

(72, 32231), (112, 32318), (Start: 120 @32333 has 116 MA's), (134, 32396), (138, 32411), (172, 32570), (185, 32666), (196, 32714), (202, 32729), (203, 32735), (216, 32774), (229, 32819), (243, 32876), (258, 32954), (271, 33032), (272, 33035), (277, 33068), (425, 33290), (436, 33317), (449, 33377), (457, 33407), (459, 33419), (461, 33440), (463, 33449), (468, 33485), (471, 33500), (484, 33569),

Gene: Kita_64 Start: 42172, Stop: 43749, Start Num: 120

Candidate Starts for Kita_64:

(84, 42103), (86, 42106), (Start: 120 @42172 has 116 MA's), (Start: 123 @42178 has 7 MA's), (Start: 125 @42184 has 1 MA's), (127, 42193), (138, 42250), (172, 42409), (185, 42499), (195, 42544), (215, 42601), (216, 42607), (225, 42640), (229, 42652), (240, 42700), (243, 42709), (249, 42751), (260, 42799), (272, 42871), (295, 42988), (329, 43108), (335, 43156), (356, 43225), (359, 43234), (370, 43267), (381, 43306), (420, 43414), (425, 43444), (459, 43588), (463, 43618), (472, 43672),

Gene: Kuwabara_82 Start: 48202, Stop: 49635, Start Num: 120

Candidate Starts for Kuwabara_82:

(Start: 120 @48202 has 116 MA's), (131, 48259), (185, 48529), (216, 48637), (218, 48646), (223, 48664), (225, 48670), (229, 48682), (243, 48739), (260, 48829), (267, 48883), (272, 48901), (276, 48931), (295, 49018), (352, 49105), (359, 49126), (370, 49159), (425, 49336), (435, 49363), (457, 49459), (459, 49471), (463, 49501), (478, 49597),

Gene: Lamberg_57 Start: 37230, Stop: 38759, Start Num: 120

Candidate Starts for Lamberg_57:

(84, 37161), (86, 37164), (Start: 120 @37230 has 116 MA's), (Start: 123 @37236 has 7 MA's), (185, 37557), (195, 37602), (215, 37659), (216, 37665), (225, 37698), (229, 37710), (240, 37758), (243, 37767), (249, 37809), (260, 37857), (272, 37929), (274, 37950), (295, 38046), (317, 38118), (356, 38232), (359, 38241), (370, 38274), (392, 38364), (425, 38451), (459, 38595), (463, 38625), (472, 38679),

Gene: Lasker_79 Start: 45058, Stop: 46305, Start Num: 116

Candidate Starts for Lasker_79:

(87, 44989), (Start: 116 @45058 has 4 MA's), (136, 45133), (137, 45136), (167, 45262), (173, 45310), (185, 45394), (196, 45442), (213, 45493), (216, 45502), (227, 45538), (229, 45547), (240, 45595), (243, 45604), (263, 45712), (277, 45796), (285, 45829), (439, 46051), (459, 46144), (461, 46165), (463, 46174), (474, 46243), (482, 46291),

Gene: Lawnathon_81 Start: 43967, Stop: 45538, Start Num: 120

Candidate Starts for Lawnathon_81:

(Start: 120 @43967 has 116 MA's), (127, 43988), (Start: 132 @44027 has 1 MA's), (141, 44057), (185, 44294), (188, 44303), (202, 44357), (210, 44378), (215, 44396), (216, 44402), (224, 44432), (227, 44438), (229, 44447), (240, 44495), (260, 44594), (278, 44699), (295, 44780), (363, 45005), (365, 45011), (368, 45026), (379, 45062), (385, 45086), (398, 45143), (400, 45149), (408, 45173), (411, 45182), (422, 45212), (423, 45227), (426, 45239), (459, 45377), (463, 45407), (466, 45431), (470, 45455), (482, 45524),

Gene: LeBruni_80 Start: 43765, Stop: 45336, Start Num: 120

Candidate Starts for LeBruni_80:

(78, 43687), (Start: 120 @43765 has 116 MA's), (127, 43786), (Start: 132 @43825 has 1 MA's), (141, 43855), (185, 44092), (202, 44155), (210, 44176), (216, 44200), (224, 44230), (227, 44236), (229, 44245), (240, 44293), (260, 44392), (295, 44578), (306, 44623), (333, 44719), (368, 44824), (379, 44860), (385, 44884), (398, 44941), (400, 44947), (408, 44971), (411, 44980), (422, 45010), (423, 45025), (426, 45037), (459, 45175), (463, 45205), (466, 45229),

Gene: Lilas_61 Start: 44594, Stop: 46171, Start Num: 114

Candidate Starts for Lilas_61:

(89, 44543), (Start: 114 @44594 has 3 MA's), (136, 44666), (185, 44921), (195, 44966), (215, 45023), (216, 45029), (225, 45062), (229, 45074), (240, 45122), (243, 45131), (260, 45221), (272, 45293), (274, 45314), (295, 45410), (329, 45530), (335, 45578), (359, 45656), (370, 45689), (425, 45866), (459, 46010), (463, 46040), (472, 46094),

Gene: LonelyBoi_62 Start: 45276, Stop: 46808, Start Num: 120

Candidate Starts for LonelyBoi_62:

(84, 45204), (86, 45207), (Start: 120 @45276 has 116 MA's), (Start: 123 @45282 has 7 MA's), (172, 45513), (185, 45603), (195, 45648), (209, 45684), (215, 45705), (216, 45711), (224, 45741), (225, 45744), (229, 45756), (240, 45804), (243, 45813), (260, 45903), (272, 45975), (295, 46092), (329, 46200), (342, 46230), (370, 46323), (381, 46362), (420, 46470), (425, 46500), (459, 46644), (463, 46674), (472, 46728), (480, 46779), (484, 46797),

Gene: Lucky10_60 Start: 37798, Stop: 39231, Start Num: 120

Candidate Starts for Lucky10_60:

(Start: 120 @37798 has 116 MA's), (131, 37855), (185, 38125), (216, 38233), (218, 38242), (223, 38260), (225, 38266), (229, 38278), (243, 38335), (260, 38425), (267, 38479), (272, 38497), (276, 38527), (295, 38614), (352, 38701), (359, 38722), (370, 38755), (425, 38932), (435, 38959), (457, 39055), (459, 39067), (463, 39097), (478, 39193),

Gene: LunaStella_69 Start: 43715, Stop: 45244, Start Num: 122

Candidate Starts for LunaStella_69:

(82, 43631), (105, 43673), (Start: 122 @43715 has 43 MA's), (136, 43784), (153, 43862), (172, 43949), (181, 44000), (185, 44039), (188, 44048), (202, 44102), (215, 44141), (216, 44147), (224, 44177), (229, 44192), (240, 44240), (242, 44246), (243, 44249), (253, 44309), (259, 44336), (260, 44339), (267, 44396), (274, 44435), (295, 44531), (324, 44618), (327, 44624), (329, 44633), (342, 44666), (359, 44726), (392, 44849), (409, 44876), (410, 44879), (422, 44915), (425, 44936), (433, 44972), (443, 45005), (444, 45008), (459, 45080), (463, 45110), (470, 45158),

Gene: MUWow_82 Start: 45808, Stop: 47274, Start Num: 120

Candidate Starts for MUWow_82:

(Start: 120 @45808 has 116 MA's), (127, 45829), (Start: 132 @45868 has 1 MA's), (141, 45898), (172, 46045), (185, 46135), (202, 46198), (210, 46219), (215, 46237), (216, 46243), (227, 46279), (229, 46288), (240, 46336), (257, 46423), (260, 46435), (295, 46621), (306, 46666), (344, 46780), (356, 46813), (364, 46849), (398, 46879), (400, 46885), (408, 46909), (411, 46918), (422, 46948), (423, 46963), (426, 46975), (459, 47113), (463, 47143), (466, 47167), (470, 47191), (482, 47260),

Gene: MaGuCo_45 Start: 34507, Stop: 35697, Start Num: 115

Candidate Starts for MaGuCo_45:

(Start: 115 @34507 has 6 MA's), (Start: 122 @34516 has 43 MA's), (143, 34600), (149, 34636), (171, 34687), (183, 34732), (191, 34771), (211, 34834), (248, 34960), (259, 35017), (286, 35152), (290, 35176), (328, 35287), (386, 35446), (428, 35602), (456, 35686),

Gene: Madavieve_61 Start: 43469, Stop: 44995, Start Num: 120

Candidate Starts for Madavieve_61:

(84, 43397), (86, 43400), (Start: 120 @43469 has 116 MA's), (Start: 123 @43475 has 7 MA's), (168, 43679), (172, 43706), (181, 43757), (185, 43796), (191, 43823), (215, 43898), (216, 43904), (225, 43937), (229, 43949), (240, 43997), (260, 44096), (272, 44168), (295, 44285), (317, 44357), (349, 44450), (359, 44480), (370, 44513), (420, 44660), (425, 44690), (459, 44834), (463, 44864), (472, 44918),

Gene: Madeline_61 Start: 43674, Stop: 45254, Start Num: 120

Candidate Starts for Madeline_61:

(10, 43302), (15, 43353), (76, 43578), (Start: 120 @43674 has 116 MA's), (Start: 123 @43680 has 7 MA's), (172, 43911), (181, 43962), (185, 44001), (191, 44028), (215, 44103), (216, 44109), (225, 44142), (229, 44154), (240, 44202), (243, 44211), (249, 44253), (260, 44301), (295, 44490), (335, 44658), (359, 44736), (370, 44769), (422, 44925), (425, 44946), (459, 45090), (463, 45120), (472, 45174),

Gene: Maih_39 Start: 32622, Stop: 31678, Start Num: 122

Candidate Starts for Maih_39:

(74, 32727), (96, 32679), (102, 32667), (104, 32664), (Start: 122 @32622 has 43 MA's), (Start: 125 @32613 has 1 MA's), (178, 32436), (190, 32364), (195, 32340), (241, 32193), (246, 32172), (254, 32127), (264, 32073), (286, 31989), (287, 31980), (294, 31953), (316, 31878), (326, 31848), (336, 31794),

Gene: MakCheese_70 Start: 45045, Stop: 46577, Start Num: 120

Candidate Starts for MakCheese_70:

(41, 44865), (66, 44925), (Start: 120 @45045 has 116 MA's), (Start: 123 @45051 has 7 MA's), (Start: 125 @45057 has 1 MA's), (172, 45282), (181, 45333), (185, 45372), (215, 45474), (216, 45480), (218, 45489), (224, 45510), (225, 45513), (229, 45525), (240, 45573), (242, 45579), (243, 45582), (260, 45672), (272, 45744), (295, 45861), (322, 45948), (329, 45969), (342, 45999), (419, 46230), (425, 46269), (435, 46305), (459, 46413), (463, 46443), (472, 46497),

Gene: Malibo_65 Start: 43071, Stop: 44639, Start Num: 120

Candidate Starts for Malibo_65:

(28, 42840), (37, 42864), (44, 42885), (57, 42921), (59, 42924), (84, 42999), (86, 43002), (Start: 120 @43071 has 116 MA's), (Start: 123 @43077 has 7 MA's), (138, 43149), (172, 43308), (181, 43359), (185, 43398), (215, 43500), (216, 43506), (225, 43539), (229, 43551), (240, 43599), (243, 43608), (260, 43698), (274, 43791), (295, 43887), (329, 44007), (335, 44055), (359, 44133), (370, 44166), (392, 44256), (420, 44313), (425, 44343), (435, 44370), (459, 44478), (463, 44508), (472, 44562),

Gene: Manasvini_64 Start: 42187, Stop: 43764, Start Num: 120

Candidate Starts for Manasvini_64:

(84, 42118), (86, 42121), (Start: 120 @42187 has 116 MA's), (Start: 123 @42193 has 7 MA's), (Start: 125 @42199 has 1 MA's), (127, 42208), (138, 42265), (172, 42424), (185, 42514), (195, 42559), (215, 42616), (216, 42622), (225, 42655), (229, 42667), (240, 42715), (243, 42724), (249, 42766), (260, 42814), (272, 42886), (295, 43003), (329, 43123), (335, 43171), (356, 43240), (359, 43249), (370, 43282), (381, 43321), (420, 43429), (425, 43459), (459, 43603), (463, 43633), (472, 43687),

Gene: Mao1_72 Start: 51862, Stop: 53394, Start Num: 120

Candidate Starts for Mao1_72:

(7, 51460), (8, 51466), (9, 51481), (Start: 120 @51862 has 116 MA's), (136, 51934), (153, 52012), (172, 52099), (181, 52150), (185, 52189), (188, 52198), (197, 52240), (202, 52252), (215, 52291), (216, 52297), (224, 52327), (229, 52342), (240, 52390), (242, 52396), (243, 52399), (253, 52459), (259, 52486), (260, 52489), (267, 52546), (273, 52582), (295, 52681), (324, 52768), (329, 52783),

(342, 52816), (350, 52849), (356, 52867), (359, 52876), (364, 52900), (392, 52999), (409, 53026), (410, 53029), (422, 53065), (425, 53086), (433, 53122), (443, 53155), (444, 53158), (459, 53230), (463, 53260), (470, 53308),

Gene: Mapleville_74 Start: 43280, Stop: 44854, Start Num: 120

Candidate Starts for Mapleville_74:

(Start: 120 @43280 has 116 MA's), (127, 43301), (Start: 132 @43340 has 1 MA's), (141, 43370), (185, 43607), (188, 43616), (202, 43670), (210, 43691), (216, 43715), (224, 43745), (227, 43751), (229, 43760), (240, 43808), (260, 43907), (285, 44042), (295, 44093), (344, 44252), (364, 44321), (367, 44339), (385, 44402), (398, 44459), (400, 44465), (408, 44489), (422, 44528), (423, 44543), (426, 44555), (459, 44693), (463, 44723), (466, 44747), (470, 44771), (482, 44840),

Gene: Maridalia_65 Start: 43541, Stop: 45118, Start Num: 120

Candidate Starts for Maridalia_65:

(Start: 120 @43541 has 116 MA's), (172, 43778), (185, 43868), (195, 43913), (215, 43970), (216, 43976), (225, 44009), (229, 44021), (240, 44069), (243, 44078), (260, 44168), (274, 44261), (295, 44357), (329, 44477), (335, 44525), (359, 44603), (370, 44636), (381, 44675), (420, 44783), (425, 44813), (459, 44957), (463, 44987), (472, 45041),

Gene: Marker_72 Start: 43973, Stop: 45400, Start Num: 122

Candidate Starts for Marker_72:

(31, 43730), (69, 43844), (73, 43853), (Start: 122 @43973 has 43 MA's), (Start: 132 @44030 has 1 MA's), (138, 44048), (146, 44081), (163, 44153), (173, 44219), (185, 44297), (188, 44306), (195, 44342), (203, 44366), (216, 44405), (224, 44435), (229, 44450), (232, 44462), (243, 44507), (248, 44540), (260, 44597), (261, 44603), (272, 44672), (274, 44693), (285, 44738), (292, 44774), (343, 44843), (359, 44897), (381, 44969), (392, 45020), (422, 45086), (450, 45197), (453, 45209), (455, 45215), (457, 45224), (458, 45227), (459, 45236), (463, 45266), (467, 45293), (484, 45389),

Gene: Marteena_63 Start: 43271, Stop: 44845, Start Num: 122

Candidate Starts for Marteena_63:

(95, 43217), (Start: 122 @43271 has 43 MA's), (182, 43559), (185, 43595), (195, 43640), (215, 43697), (216, 43703), (224, 43733), (225, 43736), (229, 43748), (240, 43796), (243, 43805), (249, 43847), (260, 43895), (272, 43967), (274, 43988), (295, 44084), (329, 44204), (359, 44330), (370, 44363), (381, 44402), (425, 44540), (459, 44684), (463, 44714), (472, 44768), (478, 44810),

Gene: MaterMagnus_79 Start: 44437, Stop: 46008, Start Num: 120

Candidate Starts for MaterMagnus_79:

(Start: 120 @44437 has 116 MA's), (127, 44458), (Start: 132 @44497 has 1 MA's), (141, 44527), (185, 44764), (188, 44773), (202, 44827), (210, 44848), (215, 44866), (216, 44872), (224, 44902), (227, 44908), (229, 44917), (240, 44965), (260, 45064), (285, 45199), (295, 45250), (363, 45475), (368, 45496), (379, 45532), (385, 45556), (398, 45613), (400, 45619), (408, 45643), (422, 45682), (423, 45697), (426, 45709), (459, 45847), (463, 45877), (466, 45901), (482, 45994),

Gene: Matteo_54 Start: 36307, Stop: 37884, Start Num: 122

Candidate Starts for Matteo_54:

(95, 36253), (Start: 122 @36307 has 43 MA's), (146, 36415), (172, 36541), (185, 36631), (195, 36676), (215, 36733), (216, 36739), (225, 36772), (229, 36784), (240, 36832), (243, 36841), (249, 36883), (260, 36931), (295, 37120), (329, 37240), (335, 37288), (359, 37366), (370, 37399), (425, 37576), (459, 37720), (463, 37750), (472, 37804), (484, 37873),

Gene: Michkear_46 Start: 34363, Stop: 35316, Start Num: 115

Candidate Starts for Michkear_46:

(80, 34297), (Start: 115 @34363 has 6 MA's), (143, 34456), (149, 34492), (171, 34543), (183, 34588), (191, 34627), (219, 34714), (237, 34765), (248, 34816),

Gene: Michkear_52 Start: 38917, Stop: 37712, Start Num: 126

Candidate Starts for Michkear_52:

(Start: 123 @38926 has 7 MA's), (126, 38917), (127, 38911), (154, 38785), (155, 38782), (165, 38752), (178, 38710), (183, 38674), (191, 38635), (222, 38530), (228, 38515), (230, 38509), (293, 38203), (302, 38173), (315, 38125), (318, 38113), (320, 38110), (331, 38071), (358, 37969), (362, 37951), (393, 37843), (399, 37822), (404, 37816),

Gene: MilleniumForce_70 Start: 44610, Stop: 46037, Start Num: 122

Candidate Starts for MilleniumForce_70:

(Start: 122 @44610 has 43 MA's), (126, 44622), (127, 44628), (140, 44691), (146, 44718), (173, 44856), (185, 44934), (188, 44943), (195, 44979), (201, 44994), (203, 45003), (216, 45042), (224, 45072), (229, 45087), (232, 45099), (243, 45144), (260, 45234), (261, 45240), (267, 45291), (272, 45309), (276, 45339), (285, 45375), (292, 45411), (343, 45480), (352, 45513), (359, 45534), (364, 45558), (381, 45606), (392, 45657), (450, 45834), (455, 45852), (459, 45873), (460, 45876), (463, 45903), (467, 45930), (470, 45951), (474, 45972), (479, 46005), (484, 46026),

Gene: Min1_17 Start: 7577, Stop: 8530, Start Num: 114

Candidate Starts for Min1_17:

(14, 7247), (Start: 114 @7577 has 3 MA's), (145, 7682), (149, 7709), (183, 7811), (191, 7850), (212, 7916), (244, 8015), (247, 8036), (251, 8060), (259, 8096), (264, 8126), (267, 8147), (281, 8213), (284, 8225), (286, 8231), (288, 8243), (289, 8255), (296, 8273), (378, 8483), (382, 8498), (387, 8519),

Gene: Misha28_71 Start: 43703, Stop: 45217, Start Num: 122

Candidate Starts for Misha28_71:

(83, 43619), (105, 43661), (Start: 122 @43703 has 43 MA's), (136, 43772), (153, 43850), (172, 43937), (181, 43988), (185, 44027), (188, 44036), (202, 44090), (215, 44129), (216, 44135), (224, 44165), (229, 44180), (240, 44228), (242, 44234), (243, 44237), (253, 44297), (259, 44324), (260, 44327), (267, 44384), (274, 44423), (295, 44519), (324, 44606), (327, 44612), (329, 44621), (342, 44654), (350, 44687), (359, 44714), (364, 44738), (392, 44837), (410, 44867), (419, 44885), (422, 44903), (423, 44918), (450, 45014), (459, 45053), (463, 45083), (484, 45206),

Gene: Mocha12_61 Start: 38721, Stop: 40250, Start Num: 120

Candidate Starts for Mocha12_61:

(84, 38652), (86, 38655), (Start: 120 @38721 has 116 MA's), (Start: 123 @38727 has 7 MA's), (185, 39048), (195, 39093), (215, 39150), (216, 39156), (225, 39189), (229, 39201), (240, 39249), (243, 39258), (249, 39300), (260, 39348), (272, 39420), (274, 39441), (295, 39537), (317, 39609), (356, 39723), (359, 39732), (370, 39765), (392, 39855), (425, 39942), (459, 40086), (463, 40116), (472, 40170),

Gene: Moosehead_64 Start: 36373, Stop: 37815, Start Num: 120

Candidate Starts for Moosehead_64:

(63, 36238), (64, 36241), (88, 36307), (Start: 120 @36373 has 116 MA's), (185, 36700), (203, 36769), (213, 36799), (216, 36808), (225, 36841), (229, 36853), (243, 36910), (260, 37000), (272, 37072), (295, 37189), (359, 37297), (370, 37330), (387, 37390), (420, 37477), (425, 37507), (435, 37543), (459, 37651), (463, 37681), (465, 37702), (484, 37804),

Gene: Murp_66 Start: 44295, Stop: 45821, Start Num: 120

Candidate Starts for Murp_66:

(53, 44145), (55, 44154), (107, 44265), (Start: 120 @44295 has 116 MA's), (185, 44622), (195, 44667), (215, 44724), (216, 44730), (225, 44763), (229, 44775), (240, 44823), (243, 44832), (260, 44922),

(295, 45111), (317, 45183), (352, 45285), (356, 45297), (359, 45306), (370, 45339), (425, 45516), (459, 45660), (463, 45690), (472, 45744),

Gene: Music_4 Start: 2201, Stop: 3448, Start Num: 115

Candidate Starts for Music_4:

(29, 1982), (46, 2030), (Start: 115 @2201 has 6 MA's), (143, 2297), (149, 2333), (169, 2384), (176, 2423), (178, 2441), (183, 2477), (191, 2516), (214, 2588), (239, 2663), (241, 2672), (248, 2705), (251, 2726), (254, 2738), (267, 2813), (390, 3212), (415, 3257), (440, 3332),

Gene: Neobush_65 Start: 42731, Stop: 44308, Start Num: 114

Candidate Starts for Neobush_65:

(56, 42602), (89, 42680), (Start: 114 @42731 has 3 MA's), (136, 42803), (172, 42968), (181, 43019), (185, 43058), (195, 43103), (215, 43160), (216, 43166), (224, 43196), (225, 43199), (229, 43211), (240, 43259), (243, 43268), (249, 43310), (260, 43358), (272, 43430), (295, 43547), (329, 43667), (335, 43715), (356, 43784), (359, 43793), (370, 43826), (381, 43865), (420, 43973), (425, 44003), (459, 44147), (463, 44177), (472, 44231),

Gene: Nettuno_57 Start: 37230, Stop: 38759, Start Num: 120

Candidate Starts for Nettuno_57:

(84, 37161), (86, 37164), (Start: 120 @37230 has 116 MA's), (Start: 123 @37236 has 7 MA's), (Start: 125 @37242 has 1 MA's), (127, 37251), (138, 37308), (172, 37467), (185, 37557), (215, 37659), (216, 37665), (225, 37698), (229, 37710), (240, 37758), (243, 37767), (249, 37809), (260, 37857), (272, 37929), (295, 38046), (353, 38226), (356, 38232), (359, 38241), (370, 38274), (420, 38421), (425, 38451), (459, 38595), (463, 38625), (472, 38679),

Gene: NewKitty_81 Start: 45548, Stop: 47119, Start Num: 120

Candidate Starts for NewKitty_81:

(Start: 120 @45548 has 116 MA's), (127, 45569), (Start: 132 @45608 has 1 MA's), (141, 45638), (172, 45785), (185, 45875), (188, 45884), (202, 45938), (210, 45959), (216, 45983), (224, 46013), (227, 46019), (229, 46028), (240, 46076), (257, 46163), (260, 46175), (285, 46310), (295, 46361), (363, 46586), (365, 46592), (368, 46607), (379, 46643), (385, 46667), (398, 46724), (400, 46730), (408, 46754), (411, 46763), (422, 46793), (423, 46808), (426, 46820), (459, 46958), (463, 46988), (466, 47012), (470, 47036), (482, 47105),

Gene: Nyilah_83 Start: 44222, Stop: 45688, Start Num: 120

Candidate Starts for Nyilah_83:

(Start: 120 @44222 has 116 MA's), (127, 44243), (Start: 132 @44282 has 1 MA's), (141, 44312), (185, 44549), (210, 44633), (216, 44657), (227, 44693), (229, 44702), (240, 44750), (257, 44837), (260, 44849), (295, 45035), (306, 45080), (344, 45194), (356, 45227), (364, 45263), (398, 45293), (400, 45299), (408, 45323), (411, 45332), (422, 45362), (423, 45377), (426, 45389), (459, 45527), (463, 45557), (466, 45581),

Gene: Nymphadora_66 Start: 44723, Stop: 46300, Start Num: 120

Candidate Starts for Nymphadora_66:

(88, 44657), (Start: 120 @44723 has 116 MA's), (172, 44960), (185, 45050), (195, 45095), (215, 45152), (216, 45158), (225, 45191), (229, 45203), (240, 45251), (249, 45302), (260, 45350), (295, 45539), (329, 45659), (335, 45707), (342, 45725), (356, 45776), (359, 45785), (370, 45818), (381, 45857), (420, 45965), (425, 45995), (433, 46031), (459, 46139), (463, 46169), (472, 46223),

Gene: PMC_64 Start: 42960, Stop: 44387, Start Num: 122

Candidate Starts for PMC_64:

(Start: 122 @42960 has 43 MA's), (126, 42972), (127, 42978), (140, 43041), (146, 43068), (173, 43206), (185, 43284), (195, 43329), (216, 43392), (224, 43422), (229, 43437), (232, 43449), (243,

43494), (260, 43584), (261, 43590), (267, 43641), (272, 43659), (276, 43689), (285, 43725), (292, 43761), (343, 43830), (352, 43863), (359, 43884), (364, 43908), (381, 43956), (392, 44007), (450, 44184), (455, 44202), (459, 44223), (460, 44226), (463, 44253), (467, 44280), (470, 44301), (474, 44322), (479, 44355), (484, 44376),

Gene: PantheRoc_69 Start: 44855, Stop: 46384, Start Num: 121

Candidate Starts for PantheRoc_69:

(Start: 121 @44855 has 1 MA's), (Start: 125 @44864 has 1 MA's), (127, 44873), (144, 44957), (181, 45140), (185, 45179), (215, 45281), (216, 45287), (225, 45320), (229, 45332), (240, 45380), (243, 45389), (258, 45470), (260, 45479), (295, 45668), (324, 45761), (329, 45776), (342, 45806), (381, 45938), (425, 46076), (459, 46220), (463, 46250), (472, 46304),

Gene: Persistence_73 Start: 42080, Stop: 43552, Start Num: 120

Candidate Starts for Persistence_73:

(89, 42020), (Start: 120 @42080 has 116 MA's), (127, 42101), (Start: 132 @42140 has 1 MA's), (141, 42170), (185, 42407), (188, 42416), (202, 42470), (210, 42491), (216, 42515), (224, 42545), (227, 42551), (229, 42560), (240, 42608), (242, 42614), (243, 42617), (257, 42695), (260, 42707), (285, 42842), (295, 42893), (321, 42980), (344, 43052), (355, 43082), (398, 43157), (400, 43163), (408, 43187), (422, 43226), (423, 43241), (426, 43253), (459, 43391), (463, 43421), (466, 43445), (470, 43469),

Gene: PetriParty_60 Start: 36068, Stop: 37624, Start Num: 120

Candidate Starts for PetriParty_60:

(23, 35819), (Start: 120 @36068 has 116 MA's), (Start: 125 @36080 has 1 MA's), (127, 36089), (Start: 132 @36128 has 1 MA's), (151, 36212), (172, 36305), (178, 36344), (185, 36395), (210, 36479), (215, 36497), (216, 36503), (229, 36548), (240, 36596), (242, 36602), (258, 36689), (260, 36698), (272, 36767), (295, 36884), (306, 36929), (321, 36971), (333, 37025), (356, 37076), (365, 37115), (368, 37130), (379, 37166), (385, 37190), (398, 37247), (400, 37253), (408, 37277), (423, 37331), (455, 37442), (459, 37463), (463, 37493), (466, 37517), (470, 37541), (472, 37547), (474, 37562), (480, 37598),

Gene: Phayonce_54 Start: 38025, Stop: 39557, Start Num: 120

Candidate Starts for Phayonce_54:

(7, 37623), (8, 37629), (9, 37644), (Start: 120 @38025 has 116 MA's), (136, 38097), (153, 38175), (172, 38262), (185, 38352), (188, 38361), (215, 38454), (216, 38460), (224, 38490), (229, 38505), (240, 38553), (242, 38559), (243, 38562), (253, 38622), (259, 38649), (260, 38652), (267, 38709), (271, 38724), (274, 38748), (295, 38844), (324, 38931), (327, 38937), (329, 38946), (342, 38979), (359, 39039), (373, 39081), (392, 39162), (409, 39189), (410, 39192), (422, 39228), (425, 39249), (433, 39285), (439, 39297), (443, 39318), (444, 39321), (459, 39393), (463, 39423), (470, 39471),

Gene: Phlop_57 Start: 43764, Stop: 45344, Start Num: 120

Candidate Starts for Phlop_57:

(5, 43356), (54, 43605), (Start: 120 @43764 has 116 MA's), (185, 44091), (209, 44172), (215, 44193), (216, 44199), (225, 44232), (229, 44244), (240, 44292), (243, 44301), (249, 44343), (260, 44391), (295, 44580), (329, 44700), (335, 44748), (359, 44826), (370, 44859), (392, 44949), (402, 44958), (414, 44991), (425, 45039), (459, 45183), (463, 45213), (472, 45267),

Gene: Phrank15_83 Start: 44698, Stop: 46269, Start Num: 120

Candidate Starts for Phrank15_83:

(Start: 120 @44698 has 116 MA's), (127, 44719), (Start: 132 @44758 has 1 MA's), (141, 44788), (185, 45025), (188, 45034), (202, 45088), (210, 45109), (215, 45127), (216, 45133), (224, 45163), (227, 45169), (229, 45178), (240, 45226), (260, 45325), (285, 45460), (295, 45511), (363, 45736), (368, 45757), (379, 45793), (385, 45817), (398, 45874), (400, 45880), (408, 45904), (422, 45943), (423,

45958), (426, 45970), (459, 46108), (463, 46138), (466, 46162), (470, 46186), (482, 46255),

Gene: PhrostedPhlake_70 Start: 42207, Stop: 43736, Start Num: 119

Candidate Starts for PhrostedPhlake_70:

(Start: 119 @42207 has 6 MA's), (172, 42444), (185, 42534), (195, 42579), (215, 42636), (216, 42642), (225, 42675), (229, 42687), (240, 42735), (243, 42744), (258, 42825), (260, 42834), (295, 43023), (329, 43131), (342, 43161), (420, 43401), (425, 43431), (459, 43575), (463, 43605), (472, 43659), (484, 43728),

Gene: Pickett_56 Start: 36460, Stop: 38037, Start Num: 120

Candidate Starts for Pickett_56:

(84, 36391), (86, 36394), (Start: 120 @36460 has 116 MA's), (Start: 123 @36466 has 7 MA's), (Start: 125 @36472 has 1 MA's), (127, 36481), (138, 36538), (172, 36697), (181, 36748), (185, 36787), (195, 36832), (215, 36889), (216, 36895), (225, 36928), (229, 36940), (240, 36988), (243, 36997), (249, 37039), (260, 37087), (272, 37159), (295, 37276), (329, 37396), (335, 37444), (359, 37522), (370, 37555), (381, 37594), (420, 37702), (425, 37732), (459, 37876), (463, 37906), (472, 37960), (484, 38029),

Gene: Pigu_59 Start: 31590, Stop: 32825, Start Num: 120

Candidate Starts for Pigu_59:

(Start: 120 @31590 has 116 MA's), (138, 31668), (185, 31917), (188, 31926), (196, 31965), (216, 32025), (227, 32061), (229, 32070), (240, 32118), (301, 32421), (400, 32451), (424, 32532), (425, 32535), (426, 32541), (449, 32622), (459, 32664), (461, 32685), (463, 32694),

Gene: Pine5_74 Start: 54534, Stop: 55667, Start Num: 122

Candidate Starts for Pine5_74:

(109, 54501), (Start: 122 @54534 has 43 MA's), (126, 54546), (127, 54552), (130, 54585), (133, 54591), (211, 54882), (235, 54954), (239, 54966), (243, 54981), (252, 55032), (253, 55035), (264, 55095), (284, 55194), (286, 55200), (289, 55224),

Gene: Piper2020_75 Start: 44921, Stop: 46438, Start Num: 120

Candidate Starts for Piper2020_75:

(101, 44876), (Start: 120 @44921 has 116 MA's), (Start: 123 @44927 has 7 MA's), (153, 45071), (172, 45158), (181, 45209), (182, 45212), (185, 45248), (188, 45257), (202, 45311), (215, 45350), (216, 45356), (224, 45386), (229, 45401), (240, 45449), (242, 45455), (243, 45458), (253, 45518), (258, 45539), (260, 45548), (267, 45605), (273, 45641), (274, 45644), (295, 45740), (324, 45827), (329, 45842), (342, 45875), (350, 45908), (359, 45935), (392, 46058), (422, 46124), (423, 46139), (450, 46235), (457, 46262), (458, 46265), (459, 46274), (463, 46304), (470, 46352),

Gene: Pixelle_48 Start: 35564, Stop: 36538, Start Num: 123

Candidate Starts for Pixelle_48:

(58, 35441), (Start: 123 @35564 has 7 MA's), (143, 35648), (149, 35684), (183, 35783), (219, 35909), (239, 35969), (248, 36011), (286, 36206), (315, 36317),

Gene: Pollux_67 Start: 45156, Stop: 46730, Start Num: 122

Candidate Starts for Pollux_67:

(95, 45102), (Start: 122 @45156 has 43 MA's), (182, 45444), (185, 45480), (195, 45525), (215, 45582), (216, 45588), (224, 45618), (225, 45621), (229, 45633), (240, 45681), (243, 45690), (249, 45732), (260, 45780), (272, 45852), (295, 45969), (329, 46089), (335, 46137), (359, 46215), (370, 46248), (392, 46338), (425, 46425), (459, 46569), (463, 46599), (472, 46653),

Gene: Polly_60 Start: 41606, Stop: 43183, Start Num: 120

Candidate Starts for Polly_60:

(84, 41537), (86, 41540), (Start: 120 @41606 has 116 MA's), (Start: 123 @41612 has 7 MA's), (Start: 125 @41618 has 1 MA's), (127, 41627), (138, 41684), (172, 41843), (185, 41933), (195, 41978), (215, 42035), (216, 42041), (225, 42074), (229, 42086), (240, 42134), (243, 42143), (249, 42185), (260, 42233), (272, 42305), (295, 42422), (329, 42542), (335, 42590), (356, 42659), (359, 42668), (370, 42701), (381, 42740), (420, 42848), (425, 42878), (459, 43022), (463, 43052), (472, 43106),

Gene: PrairieDogTown_36 Start: 27810, Stop: 29396, Start Num: 77

Candidate Starts for PrairieDogTown_36:

(Start: 77 @27810 has 4 MA's), (99, 27858), (143, 27996), (149, 28032), (214, 28260), (231, 28308), (237, 28326), (248, 28377), (268, 28491), (286, 28569), (431, 28908), (474, 29028), (488, 29199), (489, 29217), (492, 29328),

Gene: Pumpkins_46 Start: 33990, Stop: 34940, Start Num: 123

Candidate Starts for Pumpkins_46:

(Start: 123 @33990 has 7 MA's), (143, 34074), (149, 34110), (220, 34338), (241, 34404), (248, 34437), (264, 34524), (333, 34794),

Gene: Purky_57 Start: 38149, Stop: 39678, Start Num: 122

Candidate Starts for Purky_57:

(Start: 122 @38149 has 43 MA's), (136, 38218), (153, 38296), (172, 38383), (181, 38434), (185, 38473), (188, 38482), (202, 38536), (215, 38575), (216, 38581), (224, 38611), (229, 38626), (240, 38674), (242, 38680), (243, 38683), (253, 38743), (255, 38752), (259, 38770), (260, 38773), (267, 38830), (274, 38869), (295, 38965), (324, 39052), (327, 39058), (329, 39067), (342, 39100), (359, 39160), (373, 39202), (392, 39283), (409, 39310), (410, 39313), (422, 39349), (425, 39370), (433, 39406), (443, 39439), (444, 39442), (459, 39514), (463, 39544), (470, 39592),

Gene: RadFad_84 Start: 44856, Stop: 46322, Start Num: 120

Candidate Starts for RadFad_84:

(78, 44778), (Start: 120 @44856 has 116 MA's), (127, 44877), (Start: 132 @44916 has 1 MA's), (141, 44946), (185, 45183), (188, 45192), (210, 45267), (213, 45282), (216, 45291), (227, 45327), (229, 45336), (240, 45384), (257, 45471), (260, 45483), (295, 45669), (306, 45714), (344, 45828), (356, 45861), (364, 45897), (398, 45927), (400, 45933), (408, 45957), (411, 45966), (422, 45996), (423, 46011), (426, 46023), (459, 46161), (463, 46191), (466, 46215),

Gene: RainyPolka_41 Start: 32578, Stop: 31634, Start Num: 122

Candidate Starts for RainyPolka_41:

(96, 32635), (104, 32620), (Start: 122 @32578 has 43 MA's), (Start: 125 @32569 has 1 MA's), (195, 32296), (196, 32293), (202, 32278), (204, 32269), (236, 32170), (241, 32149), (254, 32083), (263, 32035), (264, 32029), (266, 32011), (275, 31975), (279, 31963), (284, 31951), (286, 31945), (287, 31936), (294, 31909), (319, 31822), (326, 31804), (336, 31750),

Gene: Raphaella_80 Start: 43675, Stop: 45243, Start Num: 120

Candidate Starts for Raphaella_80:

(Start: 120 @43675 has 116 MA's), (127, 43696), (Start: 132 @43735 has 1 MA's), (141, 43765), (185, 44002), (188, 44011), (202, 44065), (210, 44086), (216, 44110), (224, 44140), (227, 44146), (229, 44155), (240, 44203), (260, 44302), (285, 44437), (295, 44488), (363, 44713), (365, 44719), (369, 44743), (398, 44848), (400, 44854), (408, 44878), (422, 44917), (423, 44932), (426, 44944), (459, 45082), (463, 45112), (466, 45136),

Gene: Raqqa_77 Start: 44350, Stop: 45816, Start Num: 120

Candidate Starts for Raqqa_77:

(Start: 120 @44350 has 116 MA's), (127, 44371), (Start: 132 @44410 has 1 MA's), (141, 44440), (185, 44677), (210, 44761), (216, 44785), (227, 44821), (229, 44830), (240, 44878), (257, 44965), (260,

44977), (285, 45112), (295, 45163), (306, 45208), (344, 45322), (356, 45355), (364, 45391), (398, 45421), (400, 45427), (408, 45451), (422, 45490), (423, 45505), (426, 45517), (459, 45655), (463, 45685), (466, 45709),

Gene: RavenCo17_61 Start: 42978, Stop: 44555, Start Num: 120

Candidate Starts for RavenCo17_61:

(6, 42573), (13, 42645), (84, 42906), (86, 42909), (Start: 120 @42978 has 116 MA's), (Start: 123 @42984 has 7 MA's), (185, 43305), (215, 43407), (216, 43413), (225, 43446), (229, 43458), (240, 43506), (243, 43515), (249, 43557), (260, 43605), (272, 43677), (295, 43794), (329, 43914), (335, 43962), (359, 44040), (370, 44073), (381, 44112), (420, 44220), (425, 44250), (459, 44394), (463, 44424), (472, 44478), (484, 44547),

Gene: Richie_82 Start: 45603, Stop: 47006, Start Num: 132

Candidate Starts for Richie_82:

(Start: 120 @45543 has 116 MA's), (127, 45564), (Start: 132 @45603 has 1 MA's), (141, 45633), (185, 45870), (188, 45879), (202, 45933), (210, 45954), (215, 45972), (216, 45978), (224, 46008), (227, 46014), (229, 46023), (240, 46071), (257, 46158), (260, 46170), (295, 46356), (300, 46377), (306, 46401), (398, 46611), (400, 46617), (408, 46641), (411, 46650), (422, 46680), (423, 46695), (426, 46707), (459, 46845), (463, 46875), (466, 46899), (470, 46923), (482, 46992),

Gene: Rockne_68 Start: 42972, Stop: 44399, Start Num: 122

Candidate Starts for Rockne_68:

(Start: 122 @42972 has 43 MA's), (126, 42984), (127, 42990), (140, 43053), (146, 43080), (173, 43218), (185, 43296), (195, 43341), (216, 43404), (224, 43434), (229, 43449), (232, 43461), (243, 43506), (260, 43596), (261, 43602), (267, 43653), (272, 43671), (276, 43701), (285, 43737), (292, 43773), (343, 43842), (352, 43875), (359, 43896), (364, 43920), (381, 43968), (392, 44019), (450, 44196), (455, 44214), (459, 44235), (460, 44238), (463, 44265), (467, 44292), (470, 44313), (474, 44334), (479, 44367), (484, 44388),

Gene: Rooter_63 Start: 33036, Stop: 34478, Start Num: 120

Candidate Starts for Rooter_63:

(Start: 120 @33036 has 116 MA's), (Start: 125 @33048 has 1 MA's), (127, 33057), (Start: 132 @33096 has 1 MA's), (151, 33180), (185, 33363), (188, 33372), (210, 33447), (215, 33465), (216, 33471), (229, 33516), (240, 33564), (356, 34044), (398, 34101), (400, 34107), (408, 34131), (423, 34185), (452, 34287), (459, 34317), (463, 34347), (466, 34371), (472, 34401), (480, 34452),

Gene: Ruthy_62 Start: 43747, Stop: 45291, Start Num: 120

Candidate Starts for Ruthy_62:

(38, 43567), (40, 43579), (47, 43591), (84, 43693), (Start: 120 @43747 has 116 MA's), (138, 43825), (184, 44068), (185, 44074), (207, 44164), (216, 44194), (224, 44224), (229, 44239), (242, 44293), (243, 44296), (260, 44386), (267, 44440), (295, 44575), (314, 44641), (323, 44665), (359, 44788), (394, 44905), (407, 44941), (416, 44962), (459, 45130), (463, 45160), (465, 45181), (466, 45184), (470, 45208), (472, 45214), (475, 45232),

Gene: Sahara_60 Start: 38468, Stop: 40045, Start Num: 120

Candidate Starts for Sahara_60:

(84, 38399), (86, 38402), (Start: 120 @38468 has 116 MA's), (Start: 123 @38474 has 7 MA's), (181, 38756), (185, 38795), (209, 38876), (215, 38897), (216, 38903), (225, 38936), (229, 38948), (240, 38996), (243, 39005), (260, 39095), (295, 39284), (329, 39404), (335, 39452), (359, 39530), (370, 39563), (425, 39740), (434, 39776), (459, 39884), (463, 39914), (472, 39968),

Gene: Sakai_76 Start: 43396, Stop: 44964, Start Num: 120

Candidate Starts for Sakai_76:

(Start: 120 @43396 has 116 MA's), (127, 43417), (Start: 132 @43456 has 1 MA's), (141, 43486), (185, 43723), (188, 43732), (202, 43786), (210, 43807), (216, 43831), (224, 43861), (227, 43867), (229, 43876), (233, 43897), (240, 43924), (260, 44023), (285, 44158), (295, 44209), (363, 44434), (365, 44440), (371, 44464), (398, 44569), (400, 44575), (408, 44599), (411, 44608), (422, 44638), (423, 44653), (426, 44665), (459, 44803), (463, 44833), (466, 44857), (470, 44881), (482, 44950),

Gene: Salete_40 Start: 32623, Stop: 31679, Start Num: 122

Candidate Starts for Salete_40:

(74, 32728), (96, 32680), (102, 32668), (104, 32665), (Start: 122 @32623 has 43 MA's), (Start: 125 @32614 has 1 MA's), (178, 32437), (190, 32365), (195, 32341), (241, 32194), (246, 32173), (254, 32128), (264, 32074), (286, 31990), (287, 31981), (294, 31954), (316, 31879), (326, 31849), (336, 31795),

Gene: Sashimi_77 Start: 44063, Stop: 45505, Start Num: 120

Candidate Starts for Sashimi_77:

(106, 44027), (Start: 120 @44063 has 116 MA's), (Start: 123 @44069 has 7 MA's), (Start: 125 @44075 has 1 MA's), (127, 44084), (Start: 132 @44123 has 1 MA's), (138, 44141), (151, 44207), (172, 44300), (185, 44390), (191, 44417), (202, 44453), (210, 44474), (215, 44492), (216, 44498), (229, 44543), (240, 44591), (242, 44597), (258, 44684), (260, 44693), (295, 44879), (321, 44966), (333, 45020), (337, 45026), (350, 45059), (398, 45128), (400, 45134), (408, 45158), (411, 45167), (423, 45212), (459, 45344), (463, 45374), (466, 45398), (470, 45422), (472, 45428), (480, 45479),

Gene: Satrap_79 Start: 44377, Stop: 45783, Start Num: 132

Candidate Starts for Satrap_79:

(Start: 120 @44317 has 116 MA's), (127, 44338), (Start: 132 @44377 has 1 MA's), (141, 44407), (185, 44644), (188, 44653), (202, 44707), (210, 44728), (215, 44746), (216, 44752), (224, 44782), (227, 44788), (229, 44797), (240, 44845), (257, 44932), (260, 44944), (295, 45130), (306, 45175), (344, 45289), (356, 45322), (364, 45358), (398, 45388), (400, 45394), (408, 45418), (411, 45427), (422, 45457), (423, 45472), (426, 45484), (459, 45622), (463, 45652), (466, 45676),

Gene: Savage_61 Start: 38721, Stop: 40250, Start Num: 120

Candidate Starts for Savage_61:

(84, 38652), (86, 38655), (Start: 120 @38721 has 116 MA's), (Start: 123 @38727 has 7 MA's), (185, 39048), (195, 39093), (215, 39150), (216, 39156), (225, 39189), (229, 39201), (240, 39249), (243, 39258), (249, 39300), (260, 39348), (272, 39420), (274, 39441), (295, 39537), (317, 39609), (356, 39723), (359, 39732), (370, 39765), (392, 39855), (425, 39942), (459, 40086), (463, 40116), (472, 40170),

Gene: Schaffner_47 Start: 33959, Stop: 34921, Start Num: 123

Candidate Starts for Schaffner_47:

(Start: 123 @33959 has 7 MA's), (143, 34043), (149, 34079), (170, 34127), (199, 34250), (241, 34385), (259, 34475),

Gene: Seahorse_87 Start: 49210, Stop: 50784, Start Num: 120

Candidate Starts for Seahorse_87:

(68, 49099), (Start: 120 @49210 has 116 MA's), (127, 49231), (Start: 132 @49270 has 1 MA's), (141, 49300), (164, 49396), (185, 49537), (188, 49546), (202, 49600), (210, 49621), (216, 49645), (224, 49675), (227, 49681), (229, 49690), (240, 49738), (257, 49825), (260, 49837), (295, 50023), (306, 50068), (344, 50182), (367, 50269), (385, 50332), (398, 50389), (400, 50395), (408, 50419), (411, 50428), (422, 50458), (423, 50473), (426, 50485), (459, 50623), (463, 50653), (466, 50677), (477, 50746),

Gene: Seldom_1 Start: 1247, Stop: 138, Start Num: 123

Candidate Starts for Seldom_1:

(Start: 123 @1247 has 7 MA's), (135, 1193), (143, 1163), (149, 1127), (183, 1025), (191, 986), (205, 941), (219, 899), (249, 788), (281, 620), (284, 608), (286, 602), (339, 425), (347, 398), (384, 341), (418, 275), (438, 203), (453, 158), (454, 155),

Gene: Shoya_59 Start: 32612, Stop: 34054, Start Num: 120

Candidate Starts for Shoya_59:

(Start: 120 @32612 has 116 MA's), (Start: 125 @32624 has 1 MA's), (127, 32633), (Start: 132 @32672 has 1 MA's), (151, 32756), (172, 32849), (185, 32939), (188, 32948), (210, 33023), (215, 33041), (216, 33047), (229, 33092), (240, 33140), (258, 33233), (321, 33515), (372, 33575), (385, 33620), (398, 33677), (400, 33683), (408, 33707), (423, 33761), (459, 33893), (463, 33923), (466, 33947), (472, 33977), (480, 34028),

Gene: Shukran_76 Start: 42947, Stop: 44419, Start Num: 120

Candidate Starts for Shukran_76:

(103, 42911), (Start: 120 @42947 has 116 MA's), (127, 42968), (Start: 132 @43007 has 1 MA's), (141, 43037), (164, 43133), (185, 43274), (202, 43337), (209, 43355), (210, 43358), (216, 43382), (224, 43412), (227, 43418), (229, 43427), (240, 43475), (257, 43562), (260, 43574), (272, 43643), (295, 43760), (311, 43820), (321, 43847), (344, 43919), (355, 43949), (398, 44024), (400, 44030), (408, 44054), (411, 44063), (422, 44093), (423, 44108), (426, 44120), (459, 44258), (463, 44288), (466, 44312), (470, 44336), (474, 44357),

Gene: Sixsevenium_61 Start: 44240, Stop: 45820, Start Num: 120

Candidate Starts for Sixsevenium_61:

(5, 43832), (54, 44081), (74, 44138), (Start: 120 @44240 has 116 MA's), (172, 44477), (185, 44567), (191, 44594), (195, 44612), (215, 44669), (216, 44675), (225, 44708), (229, 44720), (240, 44768), (260, 44867), (295, 45056), (329, 45176), (335, 45224), (359, 45302), (370, 45335), (392, 45425), (402, 45434), (414, 45467), (425, 45515), (439, 45563), (459, 45659), (463, 45689), (472, 45743),

Gene: SkinnyPete_52 Start: 34484, Stop: 35998, Start Num: 122

Candidate Starts for SkinnyPete_52:

(89, 34418), (94, 34427), (Start: 122 @34484 has 43 MA's), (153, 34631), (172, 34718), (181, 34769), (185, 34808), (188, 34817), (195, 34853), (215, 34910), (216, 34916), (218, 34925), (224, 34946), (229, 34961), (240, 35009), (242, 35015), (243, 35018), (248, 35051), (253, 35078), (258, 35099), (260, 35108), (267, 35165), (273, 35201), (274, 35204), (286, 35252), (295, 35300), (324, 35387), (329, 35402), (342, 35435), (350, 35468), (359, 35495), (364, 35519), (392, 35618), (410, 35648), (419, 35666), (422, 35684), (423, 35699), (450, 35795), (459, 35834), (463, 35864), (484, 35987),

Gene: Sleepyhead_49 Start: 32717, Stop: 34159, Start Num: 117

Candidate Starts for Sleepyhead_49:

(Start: 117 @32717 has 1 MA's), (Start: 125 @32732 has 1 MA's), (140, 32804), (159, 32891), (182, 33014), (185, 33050), (205, 33125), (210, 33134), (216, 33158), (227, 33194), (229, 33203), (240, 33251), (243, 33260), (258, 33344), (267, 33404), (272, 33422), (310, 33593), (312, 33602), (322, 33629), (359, 33740), (365, 33770), (423, 33851), (435, 33896), (458, 33989), (459, 33998), (463, 34028), (470, 34076), (474, 34097), (483, 34148),

Gene: Soilmate_71 Start: 46387, Stop: 47964, Start Num: 120

Candidate Starts for Soilmate_71:

(19, 46132), (103, 46351), (Start: 120 @46387 has 116 MA's), (172, 46624), (185, 46714), (195, 46759), (215, 46816), (216, 46822), (225, 46855), (229, 46867), (240, 46915), (243, 46924), (249, 46966), (260, 47014), (272, 47086), (295, 47203), (329, 47323), (335, 47371), (359, 47449), (381, 47521), (425, 47659), (459, 47803), (463, 47833), (472, 47887),

Gene: SonDevVon_86 Start: 44445, Stop: 45908, Start Num: 120

Candidate Starts for SonDevVon_86:

(12, 44079), (103, 44409), (Start: 120 @44445 has 116 MA's), (127, 44466), (Start: 132 @44505 has 1 MA's), (141, 44535), (185, 44772), (188, 44781), (202, 44835), (210, 44856), (215, 44874), (216, 44880), (224, 44910), (227, 44916), (229, 44925), (240, 44973), (257, 45060), (260, 45072), (295, 45258), (300, 45279), (306, 45303), (398, 45513), (400, 45519), (408, 45543), (411, 45552), (422, 45582), (423, 45597), (426, 45609), (459, 45747), (463, 45777), (466, 45801), (470, 45825), (482, 45894),

Gene: Sparky_64 Start: 44023, Stop: 45552, Start Num: 122

Candidate Starts for Sparky_64:

(80, 43939), (Start: 122 @44023 has 43 MA's), (136, 44092), (153, 44170), (172, 44257), (181, 44308), (185, 44347), (188, 44356), (202, 44410), (215, 44449), (216, 44455), (224, 44485), (229, 44500), (240, 44548), (242, 44554), (243, 44557), (253, 44617), (259, 44644), (260, 44647), (267, 44704), (274, 44743), (295, 44839), (324, 44926), (327, 44932), (329, 44941), (342, 44974), (359, 45034), (392, 45157), (409, 45184), (410, 45187), (422, 45223), (425, 45244), (433, 45280), (439, 45292), (443, 45313), (444, 45316), (459, 45388), (463, 45418), (470, 45466),

Gene: Spartacus_74 Start: 46658, Stop: 48085, Start Num: 122

Candidate Starts for Spartacus_74:

(Start: 122 @46658 has 43 MA's), (126, 46670), (127, 46676), (140, 46739), (146, 46766), (173, 46904), (185, 46982), (195, 47027), (216, 47090), (229, 47135), (232, 47147), (243, 47192), (260, 47282), (261, 47288), (267, 47339), (272, 47357), (276, 47387), (285, 47423), (292, 47459), (343, 47528), (352, 47561), (359, 47582), (364, 47606), (381, 47654), (392, 47705), (450, 47882), (455, 47900), (459, 47921), (460, 47924), (463, 47951), (467, 47978), (484, 48074),

Gene: SpicyFrank_81 Start: 43924, Stop: 45495, Start Num: 120

Candidate Starts for SpicyFrank_81:

(78, 43846), (Start: 120 @43924 has 116 MA's), (127, 43945), (Start: 132 @43984 has 1 MA's), (141, 44014), (185, 44251), (188, 44260), (202, 44314), (210, 44335), (215, 44353), (216, 44359), (224, 44389), (227, 44395), (229, 44404), (240, 44452), (260, 44551), (285, 44686), (295, 44737), (344, 44896), (349, 44914), (368, 44983), (379, 45019), (385, 45043), (398, 45100), (400, 45106), (408, 45130), (411, 45139), (422, 45169), (423, 45184), (426, 45196), (459, 45334), (463, 45364), (466, 45388), (470, 45412), (482, 45481),

Gene: Sporco_81 Start: 45355, Stop: 46923, Start Num: 120

Candidate Starts for Sporco_81:

(Start: 120 @45355 has 116 MA's), (127, 45376), (Start: 132 @45415 has 1 MA's), (141, 45445), (185, 45682), (188, 45691), (202, 45745), (210, 45766), (216, 45790), (224, 45820), (227, 45826), (229, 45835), (240, 45883), (260, 45982), (285, 46117), (295, 46168), (363, 46393), (365, 46399), (369, 46423), (398, 46528), (400, 46534), (408, 46558), (422, 46597), (423, 46612), (426, 46624), (459, 46762), (463, 46792), (466, 46816),

Gene: Sproutie_61 Start: 38721, Stop: 40250, Start Num: 120

Candidate Starts for Sproutie_61:

(84, 38652), (86, 38655), (Start: 120 @38721 has 116 MA's), (Start: 123 @38727 has 7 MA's), (185, 39048), (195, 39093), (215, 39150), (216, 39156), (225, 39189), (229, 39201), (240, 39249), (243, 39258), (249, 39300), (260, 39348), (272, 39420), (274, 39441), (295, 39537), (317, 39609), (356, 39723), (359, 39732), (370, 39765), (392, 39855), (425, 39942), (459, 40086), (463, 40116), (472, 40170),

Gene: Suerte_58 Start: 40134, Stop: 41654, Start Num: 120

Candidate Starts for Suerte_58:

(66, 40011), (Start: 120 @40134 has 116 MA's), (Start: 123 @40140 has 7 MA's), (Start: 125 @40146 has 1 MA's), (127, 40155), (172, 40371), (185, 40461), (215, 40563), (216, 40569), (224, 40599), (225, 40602), (229, 40614), (240, 40662), (243, 40671), (260, 40761), (272, 40833), (317, 41022), (356, 41136), (359, 41145), (364, 41169), (370, 41178), (425, 41355), (435, 41382), (459, 41490), (463, 41520), (472, 41574),

Gene: SunnyJune_3 Start: 2021, Stop: 3454, Start Num: 26

Candidate Starts for SunnyJune_3:

(26, 2021), (30, 2042), (53, 2108), (67, 2141), (Start: 115 @2261 has 6 MA's), (140, 2342), (143, 2357), (149, 2393), (156, 2414), (178, 2453), (183, 2489), (220, 2618), (239, 2675), (241, 2684), (248, 2717), (251, 2738), (268, 2831), (286, 2909), (428, 3308), (442, 3356), (460, 3410), (464, 3440),

Gene: Susceptit_63 Start: 42164, Stop: 43741, Start Num: 120

Candidate Starts for Susceptit_63:

(84, 42095), (86, 42098), (Start: 120 @42164 has 116 MA's), (Start: 123 @42170 has 7 MA's), (Start: 125 @42176 has 1 MA's), (127, 42185), (138, 42242), (172, 42401), (185, 42491), (195, 42536), (215, 42593), (216, 42599), (225, 42632), (229, 42644), (240, 42692), (243, 42701), (249, 42743), (260, 42791), (272, 42863), (295, 42980), (329, 43100), (335, 43148), (356, 43217), (359, 43226), (370, 43259), (381, 43298), (420, 43406), (425, 43436), (459, 43580), (463, 43610), (472, 43664),

Gene: SushiChef_61 Start: 44393, Stop: 45970, Start Num: 120

Candidate Starts for SushiChef_61:

(Start: 120 @44393 has 116 MA's), (172, 44630), (185, 44720), (195, 44765), (215, 44822), (216, 44828), (224, 44858), (225, 44861), (229, 44873), (240, 44921), (243, 44930), (260, 45020), (272, 45092), (295, 45209), (304, 45245), (329, 45329), (335, 45377), (356, 45446), (359, 45455), (370, 45488), (381, 45527), (420, 45635), (425, 45665), (459, 45809), (463, 45839), (472, 45893),

Gene: TChen_71 Start: 45666, Stop: 47195, Start Num: 122

Candidate Starts for TChen_71:

(82, 45582), (105, 45624), (Start: 122 @45666 has 43 MA's), (136, 45735), (153, 45813), (172, 45900), (181, 45951), (185, 45990), (188, 45999), (202, 46053), (215, 46092), (216, 46098), (224, 46128), (229, 46143), (240, 46191), (242, 46197), (243, 46200), (253, 46260), (259, 46287), (260, 46290), (267, 46347), (274, 46386), (295, 46482), (324, 46569), (327, 46575), (329, 46584), (342, 46617), (359, 46677), (392, 46800), (409, 46827), (410, 46830), (422, 46866), (425, 46887), (433, 46923), (443, 46956), (444, 46959), (459, 47031), (463, 47061), (470, 47109),

Gene: TP1604_40 Start: 32623, Stop: 31679, Start Num: 122

Candidate Starts for TP1604_40:

(74, 32728), (96, 32680), (102, 32668), (104, 32665), (Start: 122 @32623 has 43 MA's), (Start: 125 @32614 has 1 MA's), (178, 32437), (190, 32365), (195, 32341), (241, 32194), (246, 32173), (254, 32128), (264, 32074), (286, 31990), (287, 31981), (294, 31954), (326, 31849), (336, 31795),

Gene: TPA4_74 Start: 47059, Stop: 48669, Start Num: 120

Candidate Starts for TPA4_74:

(54, 46888), (92, 46993), (Start: 120 @47059 has 116 MA's), (185, 47395), (201, 47455), (216, 47503), (225, 47536), (229, 47548), (240, 47596), (242, 47602), (243, 47605), (253, 47665), (258, 47686), (260, 47695), (305, 47926), (329, 48004), (332, 48031), (359, 48130), (377, 48184), (425, 48367), (441, 48430), (453, 48487), (459, 48514), (463, 48544), (466, 48568), (472, 48598),

Gene: Tayonia_63 Start: 42163, Stop: 43740, Start Num: 120

Candidate Starts for Tayonia_63:

(84, 42094), (86, 42097), (Start: 120 @42163 has 116 MA's), (Start: 123 @42169 has 7 MA's), (Start: 125 @42175 has 1 MA's), (127, 42184), (138, 42241), (172, 42400), (185, 42490), (195, 42535), (215,

42592), (216, 42598), (225, 42631), (229, 42643), (240, 42691), (243, 42700), (249, 42742), (260, 42790), (272, 42862), (295, 42979), (329, 43099), (335, 43147), (356, 43216), (359, 43225), (370, 43258), (381, 43297), (420, 43405), (425, 43435), (459, 43579), (463, 43609), (472, 43663),

Gene: ThankyouJordi_65 Start: 45325, Stop: 46878, Start Num: 119

Candidate Starts for ThankyouJordi_65:

(33, 45115), (84, 45253), (86, 45256), (Start: 119 @45325 has 6 MA's), (172, 45562), (181, 45613), (185, 45652), (195, 45697), (215, 45754), (216, 45760), (225, 45793), (229, 45805), (240, 45853), (243, 45862), (260, 45952), (272, 46024), (295, 46141), (329, 46249), (342, 46279), (343, 46285), (345, 46297), (356, 46336), (370, 46393), (381, 46432), (420, 46540), (425, 46570), (459, 46714), (463, 46744), (472, 46798), (480, 46849),

Gene: ThayneTheZag_84 Start: 44587, Stop: 46248, Start Num: 85

Candidate Starts for ThayneTheZag_84:

(Start: 85 @44587 has 1 MA's), (111, 44641), (127, 44677), (136, 44728), (141, 44746), (172, 44893), (185, 44983), (188, 44992), (201, 45043), (202, 45046), (210, 45067), (216, 45091), (224, 45121), (227, 45127), (229, 45136), (240, 45184), (242, 45190), (243, 45193), (250, 45238), (258, 45274), (295, 45472), (337, 45619), (346, 45640), (356, 45664), (368, 45718), (379, 45754), (385, 45778), (400, 45841), (408, 45865), (423, 45919), (426, 45931), (430, 45955), (459, 46069), (463, 46099), (466, 46123), (479, 46201),

Gene: ThetaBob_75 Start: 44798, Stop: 46225, Start Num: 122

Candidate Starts for ThetaBob_75:

(Start: 122 @44798 has 43 MA's), (126, 44810), (127, 44816), (140, 44879), (146, 44906), (173, 45044), (185, 45122), (195, 45167), (216, 45230), (229, 45275), (232, 45287), (243, 45332), (260, 45422), (261, 45428), (267, 45479), (272, 45497), (276, 45527), (285, 45563), (292, 45599), (343, 45668), (352, 45701), (359, 45722), (364, 45746), (381, 45794), (390, 45842), (392, 45845), (450, 46022), (455, 46040), (459, 46061), (460, 46064), (463, 46091), (467, 46118), (470, 46139), (474, 46160), (479, 46193), (484, 46214),

Gene: ThursdayNight_50 Start: 35166, Stop: 36119, Start Num: 115

Candidate Starts for ThursdayNight_50:

(Start: 115 @35166 has 6 MA's), (143, 35259), (146, 35271), (149, 35295), (183, 35391), (286, 35811), (333, 35973),

Gene: Tian_46 Start: 35220, Stop: 36194, Start Num: 123

Candidate Starts for Tian_46:

(58, 35097), (Start: 123 @35220 has 7 MA's), (143, 35304), (149, 35340), (183, 35439), (219, 35565), (239, 35625), (248, 35667), (286, 35862), (315, 35973),

Gene: Tiff81_75 Start: 42815, Stop: 44386, Start Num: 120

Candidate Starts for Tiff81_75:

(Start: 120 @42815 has 116 MA's), (127, 42836), (Start: 132 @42875 has 1 MA's), (141, 42905), (185, 43142), (188, 43151), (210, 43226), (215, 43244), (216, 43250), (224, 43280), (227, 43286), (229, 43295), (240, 43343), (257, 43430), (260, 43442), (295, 43628), (332, 43766), (363, 43853), (368, 43874), (379, 43910), (385, 43934), (398, 43991), (400, 43997), (408, 44021), (422, 44060), (423, 44075), (426, 44087), (459, 44225), (463, 44255), (466, 44279),

Gene: TimTam_66 Start: 44723, Stop: 46300, Start Num: 120

Candidate Starts for TimTam_66:

(88, 44657), (Start: 120 @44723 has 116 MA's), (172, 44960), (185, 45050), (195, 45095), (215, 45152), (216, 45158), (225, 45191), (229, 45203), (240, 45251), (249, 45302), (260, 45350), (295, 45539), (329, 45659), (335, 45707), (342, 45725), (356, 45776), (359, 45785), (370, 45818), (381,

45857), (420, 45965), (425, 45995), (433, 46031), (459, 46139), (463, 46169), (472, 46223),

Gene: TootsiePop_71 Start: 43703, Stop: 45217, Start Num: 122

Candidate Starts for TootsiePop_71:

(83, 43619), (105, 43661), (Start: 122 @43703 has 43 MA's), (136, 43772), (153, 43850), (172, 43937), (181, 43988), (185, 44027), (188, 44036), (202, 44090), (215, 44129), (216, 44135), (224, 44165), (229, 44180), (240, 44228), (242, 44234), (243, 44237), (253, 44297), (259, 44324), (260, 44327), (267, 44384), (274, 44423), (295, 44519), (324, 44606), (327, 44612), (329, 44621), (342, 44654), (350, 44687), (359, 44714), (364, 44738), (392, 44837), (410, 44867), (419, 44885), (422, 44903), (423, 44918), (450, 45014), (459, 45053), (463, 45083), (484, 45206),

Gene: TripleJ_60 Start: 36003, Stop: 37250, Start Num: 120

Candidate Starts for TripleJ_60:

(Start: 120 @36003 has 116 MA's), (131, 36060), (136, 36075), (138, 36081), (172, 36240), (173, 36252), (185, 36336), (188, 36345), (196, 36384), (203, 36405), (216, 36444), (229, 36489), (243, 36546), (251, 36597), (257, 36621), (277, 36738), (295, 36822), (449, 37047), (459, 37089), (461, 37110), (463, 37119), (468, 37155), (471, 37170), (474, 37188), (480, 37224),

Gene: Trumpet_63 Start: 42164, Stop: 43741, Start Num: 120

Candidate Starts for Trumpet_63:

(84, 42095), (86, 42098), (Start: 120 @42164 has 116 MA's), (Start: 123 @42170 has 7 MA's), (Start: 125 @42176 has 1 MA's), (127, 42185), (138, 42242), (172, 42401), (185, 42491), (195, 42536), (215, 42593), (216, 42599), (225, 42632), (229, 42644), (240, 42692), (243, 42701), (249, 42743), (260, 42791), (272, 42863), (295, 42980), (329, 43100), (335, 43148), (356, 43217), (359, 43226), (370, 43259), (381, 43298), (420, 43406), (425, 43436), (459, 43580), (463, 43610), (472, 43664),

Gene: TuertoX_61 Start: 38721, Stop: 40250, Start Num: 120

Candidate Starts for TuertoX_61:

(84, 38652), (86, 38655), (Start: 120 @38721 has 116 MA's), (Start: 123 @38727 has 7 MA's), (185, 39048), (195, 39093), (215, 39150), (216, 39156), (225, 39189), (229, 39201), (240, 39249), (243, 39258), (249, 39300), (260, 39348), (272, 39420), (274, 39441), (295, 39537), (317, 39609), (356, 39723), (359, 39732), (370, 39765), (392, 39855), (425, 39942), (459, 40086), (463, 40116), (472, 40170),

Gene: TurkishDelight_123 Start: 90090, Stop: 91361, Start Num: 116

Candidate Starts for TurkishDelight_123:

(103, 90051), (110, 90072), (Start: 116 @90090 has 4 MA's), (130, 90150), (142, 90180), (162, 90267), (166, 90282), (180, 90378), (186, 90417), (189, 90426), (198, 90471), (234, 90591), (264, 90747), (267, 90771), (269, 90780), (283, 90846), (298, 90912), (360, 91155), (380, 91230), (391, 91287), (393, 91290), (395, 91293), (413, 91353),

Gene: Valary_60 Start: 44491, Stop: 46023, Start Num: 120

Candidate Starts for Valary_60:

(2, 43927), (3, 43963), (5, 44083), (54, 44332), (74, 44389), (Start: 120 @44491 has 116 MA's), (185, 44818), (195, 44863), (215, 44920), (216, 44926), (225, 44959), (229, 44971), (240, 45019), (243, 45028), (260, 45118), (272, 45190), (295, 45307), (334, 45415), (341, 45445), (370, 45538), (392, 45628), (402, 45637), (414, 45670), (425, 45718), (459, 45862), (463, 45892), (472, 45946),

Gene: VanDeWege_61 Start: 43783, Stop: 45363, Start Num: 120

Candidate Starts for VanDeWege_61:

(2, 43219), (3, 43255), (5, 43375), (54, 43624), (74, 43681), (Start: 120 @43783 has 116 MA's), (185, 44110), (195, 44155), (215, 44212), (216, 44218), (225, 44251), (229, 44263), (240, 44311), (243, 44320), (249, 44362), (295, 44599), (329, 44719), (335, 44767), (359, 44845), (370, 44878), (402,

44977), (414, 45010), (425, 45058), (459, 45202), (463, 45232), (472, 45286),

Gene: Vasanti_59 Start: 38703, Stop: 40229, Start Num: 120

Candidate Starts for Vasanti_59:

(21, 38448), (35, 38493), (84, 38631), (86, 38634), (Start: 120 @38703 has 116 MA's), (172, 38940), (181, 38991), (185, 39030), (215, 39132), (216, 39138), (225, 39171), (229, 39183), (240, 39231), (260, 39330), (295, 39519), (317, 39591), (356, 39705), (359, 39714), (370, 39747), (425, 39924), (459, 40068), (463, 40098), (472, 40152),

Gene: Vibaki_4 Start: 2231, Stop: 3478, Start Num: 115

Candidate Starts for Vibaki_4:

(29, 2012), (46, 2060), (Start: 115 @2231 has 6 MA's), (143, 2327), (149, 2363), (169, 2414), (176, 2453), (178, 2471), (183, 2507), (191, 2546), (214, 2618), (241, 2702), (248, 2735), (251, 2756), (254, 2768), (267, 2843), (390, 3242), (415, 3287), (440, 3362),

Gene: Vitus_4 Start: 2116, Stop: 3375, Start Num: 115

Candidate Starts for Vitus_4:

(Start: 115 @2116 has 6 MA's), (143, 2212), (149, 2248), (158, 2281), (178, 2356), (183, 2392), (211, 2494), (248, 2620), (281, 2794), (297, 2851), (330, 2953), (364, 3037), (374, 3049), (406, 3145), (420, 3178), (438, 3253), (462, 3352),

Gene: Vopal_81 Start: 45846, Stop: 47312, Start Num: 120

Candidate Starts for Vopal_81:

(Start: 120 @45846 has 116 MA's), (127, 45867), (Start: 132 @45906 has 1 MA's), (141, 45936), (185, 46173), (188, 46182), (202, 46236), (210, 46257), (216, 46281), (224, 46311), (227, 46317), (229, 46326), (240, 46374), (260, 46473), (295, 46659), (306, 46704), (344, 46818), (356, 46851), (364, 46887), (398, 46917), (400, 46923), (408, 46947), (411, 46956), (422, 46986), (423, 47001), (426, 47013), (459, 47151), (463, 47181), (466, 47205), (470, 47229), (482, 47298),

Gene: WelcomeAyanna_65 Start: 45472, Stop: 47025, Start Num: 119

Candidate Starts for WelcomeAyanna_65:

(33, 45262), (84, 45400), (86, 45403), (Start: 119 @45472 has 6 MA's), (172, 45709), (181, 45760), (185, 45799), (195, 45844), (215, 45901), (216, 45907), (225, 45940), (229, 45952), (240, 46000), (243, 46009), (260, 46099), (272, 46171), (295, 46288), (329, 46396), (342, 46426), (343, 46432), (345, 46444), (356, 46483), (370, 46540), (381, 46579), (420, 46687), (425, 46717), (459, 46861), (463, 46891), (472, 46945), (480, 46996),

Gene: Whiteclaw_61 Start: 38721, Stop: 40250, Start Num: 120

Candidate Starts for Whiteclaw_61:

(84, 38652), (86, 38655), (Start: 120 @38721 has 116 MA's), (Start: 123 @38727 has 7 MA's), (185, 39048), (195, 39093), (215, 39150), (216, 39156), (225, 39189), (229, 39201), (240, 39249), (243, 39258), (249, 39300), (260, 39348), (272, 39420), (274, 39441), (295, 39537), (317, 39609), (356, 39723), (359, 39732), (370, 39765), (392, 39855), (425, 39942), (459, 40086), (463, 40116), (472, 40170),

Gene: Windest_83 Start: 43025, Stop: 44491, Start Num: 120

Candidate Starts for Windest_83:

(Start: 120 @43025 has 116 MA's), (127, 43046), (Start: 132 @43085 has 1 MA's), (141, 43115), (185, 43352), (188, 43361), (202, 43415), (210, 43436), (215, 43454), (216, 43460), (224, 43490), (227, 43496), (229, 43505), (240, 43553), (242, 43559), (257, 43640), (260, 43652), (285, 43787), (295, 43838), (306, 43883), (344, 43997), (356, 44030), (364, 44066), (398, 44096), (400, 44102), (408, 44126), (411, 44135), (422, 44165), (423, 44180), (426, 44192), (459, 44330), (463, 44360), (466, 44384), (470, 44408), (482, 44477),

Gene: Wizard_57 Start: 43689, Stop: 45269, Start Num: 120

Candidate Starts for Wizard_57:

(2, 43125), (3, 43161), (5, 43281), (54, 43530), (74, 43587), (Start: 120 @43689 has 116 MA's), (185, 44016), (195, 44061), (215, 44118), (216, 44124), (225, 44157), (229, 44169), (240, 44217), (243, 44226), (249, 44268), (295, 44505), (329, 44625), (335, 44673), (359, 44751), (370, 44784), (402, 44883), (414, 44916), (425, 44964), (459, 45108), (463, 45138), (472, 45192),

Gene: Xavia_59 Start: 42100, Stop: 43641, Start Num: 122

Candidate Starts for Xavia_59:

(64, 41959), (83, 42016), (105, 42058), (Start: 122 @42100 has 43 MA's), (136, 42169), (138, 42175), (153, 42247), (172, 42334), (181, 42385), (185, 42424), (188, 42433), (202, 42487), (215, 42526), (216, 42532), (224, 42562), (229, 42577), (240, 42625), (242, 42631), (243, 42634), (253, 42694), (259, 42721), (260, 42724), (267, 42781), (273, 42817), (295, 42916), (307, 42964), (329, 43024), (364, 43144), (392, 43246), (409, 43273), (410, 43276), (422, 43312), (425, 43333), (433, 43369), (443, 43402), (444, 43405), (459, 43477), (463, 43507), (470, 43555),

Gene: YDN12_41 Start: 32025, Stop: 31081, Start Num: 122

Candidate Starts for YDN12_41:

(94, 32088), (Start: 122 @32025 has 43 MA's), (Start: 125 @32016 has 1 MA's), (156, 31878), (191, 31764), (195, 31743), (208, 31704), (241, 31596), (246, 31575), (254, 31530), (264, 31476), (284, 31398), (286, 31392), (294, 31356), (316, 31281), (319, 31269), (325, 31254), (326, 31251),

Gene: Yang_47 Start: 33687, Stop: 34649, Start Num: 123

Candidate Starts for Yang_47:

(Start: 123 @33687 has 7 MA's), (143, 33771), (149, 33807), (170, 33855), (222, 34056), (235, 34089), (248, 34146), (259, 34203),

Gene: Yeet412_58 Start: 39267, Stop: 40796, Start Num: 120

Candidate Starts for Yeet412_58:

(24, 39021), (34, 39057), (59, 39123), (84, 39198), (86, 39201), (Start: 120 @39267 has 116 MA's), (Start: 123 @39273 has 7 MA's), (Start: 125 @39279 has 1 MA's), (127, 39288), (138, 39345), (184, 39588), (185, 39594), (207, 39684), (216, 39714), (224, 39744), (229, 39759), (242, 39813), (260, 39906), (267, 39960), (295, 40095), (309, 40143), (359, 40293), (394, 40410), (407, 40446), (416, 40467), (459, 40635), (463, 40665), (465, 40686), (466, 40689), (472, 40719), (475, 40737),

Gene: Yinzer_61 Start: 38721, Stop: 40250, Start Num: 120

Candidate Starts for Yinzer_61:

(84, 38652), (86, 38655), (Start: 120 @38721 has 116 MA's), (Start: 123 @38727 has 7 MA's), (185, 39048), (195, 39093), (215, 39150), (216, 39156), (225, 39189), (229, 39201), (240, 39249), (243, 39258), (249, 39300), (260, 39348), (272, 39420), (274, 39441), (295, 39537), (317, 39609), (356, 39723), (359, 39732), (370, 39765), (392, 39855), (425, 39942), (459, 40086), (463, 40116), (472, 40170),

Gene: Yoshi_85 Start: 45264, Stop: 46691, Start Num: 122

Candidate Starts for Yoshi_85:

(Start: 122 @45264 has 43 MA's), (Start: 132 @45321 has 1 MA's), (138, 45339), (163, 45444), (173, 45510), (185, 45588), (188, 45597), (195, 45633), (203, 45657), (216, 45696), (224, 45726), (229, 45741), (232, 45753), (243, 45798), (260, 45888), (261, 45894), (272, 45963), (274, 45984), (285, 46029), (286, 46032), (359, 46188), (381, 46260), (392, 46311), (422, 46377), (450, 46488), (455, 46506), (457, 46515), (458, 46518), (459, 46527), (460, 46530), (463, 46557), (467, 46584), (484, 46680),

Gene: YoungHarleezy_79 Start: 43945, Stop: 45516, Start Num: 120

Candidate Starts for YoungHarleezy_79:

(Start: 120 @43945 has 116 MA's), (127, 43966), (Start: 132 @44005 has 1 MA's), (141, 44035), (185, 44272), (188, 44281), (202, 44335), (210, 44356), (215, 44374), (216, 44380), (224, 44410), (227, 44416), (229, 44425), (240, 44473), (260, 44572), (285, 44707), (295, 44758), (363, 44983), (368, 45004), (379, 45040), (385, 45064), (398, 45121), (400, 45127), (408, 45151), (422, 45190), (423, 45205), (426, 45217), (459, 45355), (463, 45385), (466, 45409), (482, 45502),

Gene: Zameen_63 Start: 42163, Stop: 43740, Start Num: 120

Candidate Starts for Zameen_63:

(84, 42094), (86, 42097), (Start: 120 @42163 has 116 MA's), (Start: 123 @42169 has 7 MA's), (Start: 125 @42175 has 1 MA's), (127, 42184), (138, 42241), (172, 42400), (185, 42490), (195, 42535), (215, 42592), (216, 42598), (225, 42631), (229, 42643), (240, 42691), (243, 42700), (249, 42742), (260, 42790), (272, 42862), (295, 42979), (329, 43099), (335, 43147), (356, 43216), (359, 43225), (370, 43258), (381, 43297), (420, 43405), (425, 43435), (459, 43579), (463, 43609), (472, 43663),

Gene: Zilla_63 Start: 40425, Stop: 41951, Start Num: 120

Candidate Starts for Zilla_63:

(53, 40275), (55, 40284), (107, 40395), (Start: 120 @40425 has 116 MA's), (182, 40716), (185, 40752), (215, 40854), (216, 40860), (224, 40890), (225, 40893), (229, 40905), (240, 40953), (243, 40962), (249, 41004), (260, 41052), (267, 41106), (272, 41124), (295, 41241), (317, 41313), (356, 41427), (359, 41436), (370, 41469), (424, 41643), (425, 41646), (459, 41790), (463, 41820), (472, 41874),

Gene: Zirinka_60 Start: 42783, Stop: 44363, Start Num: 120

Candidate Starts for Zirinka_60:

(84, 42714), (86, 42717), (Start: 120 @42783 has 116 MA's), (Start: 123 @42789 has 7 MA's), (Start: 125 @42795 has 1 MA's), (127, 42804), (138, 42861), (172, 43020), (181, 43071), (185, 43110), (195, 43155), (215, 43212), (216, 43218), (225, 43251), (229, 43263), (240, 43311), (243, 43320), (249, 43362), (260, 43410), (272, 43482), (295, 43599), (329, 43719), (335, 43767), (342, 43785), (359, 43845), (370, 43878), (392, 43968), (425, 44055), (459, 44199), (463, 44229), (472, 44283),

Gene: Zodiariah_58 Start: 43978, Stop: 45615, Start Num: 71

Candidate Starts for Zodiariah_58:

(27, 43855), (Start: 71 @43978 has 1 MA's), (75, 43987), (Start: 120 @44080 has 116 MA's), (138, 44158), (172, 44317), (178, 44356), (185, 44407), (216, 44515), (224, 44545), (229, 44560), (240, 44608), (249, 44659), (253, 44677), (260, 44707), (267, 44764), (272, 44782), (274, 44803), (292, 44884), (295, 44899), (322, 44986), (329, 45007), (339, 45034), (342, 45037), (419, 45268), (422, 45286), (425, 45307), (459, 45451), (463, 45481), (472, 45535), (484, 45604),

Gene: Zucker_77 Start: 45179, Stop: 46609, Start Num: 125

Candidate Starts for Zucker_77:

(79, 45080), (81, 45083), (92, 45104), (Start: 120 @45167 has 116 MA's), (Start: 123 @45173 has 7 MA's), (Start: 125 @45179 has 1 MA's), (127, 45188), (Start: 132 @45227 has 1 MA's), (138, 45245), (185, 45494), (188, 45503), (202, 45557), (210, 45578), (215, 45596), (216, 45602), (227, 45638), (229, 45647), (240, 45695), (242, 45701), (258, 45788), (260, 45797), (274, 45887), (295, 45983), (306, 46028), (311, 46043), (321, 46070), (333, 46124), (356, 46175), (398, 46232), (400, 46238), (408, 46262), (423, 46316), (455, 46427), (459, 46448), (463, 46478), (466, 46502), (470, 46526), (472, 46532), (480, 46583),

Gene: pZL12_28c Start: 19291, Stop: 18185, Start Num: 113

Candidate Starts for pZL12_28c:

(Start: 113 @19291 has 2 MA's), (140, 19198), (141, 19192), (150, 19141), (179, 19078), (217, 18925), (221, 18910), (237, 18871), (239, 18862), (241, 18853), (251, 18799), (284, 18640), (286, 18634),

Gene: pZL12_27c Start: 18188, Stop: 17142, Start Num: 124

Candidate Starts for pZL12_27c:

(124, 18188), (129, 18149), (139, 18122), (159, 18032), (208, 17873), (284, 17546), (286, 17540),
(289, 17516), (414, 17180), (419, 17174),