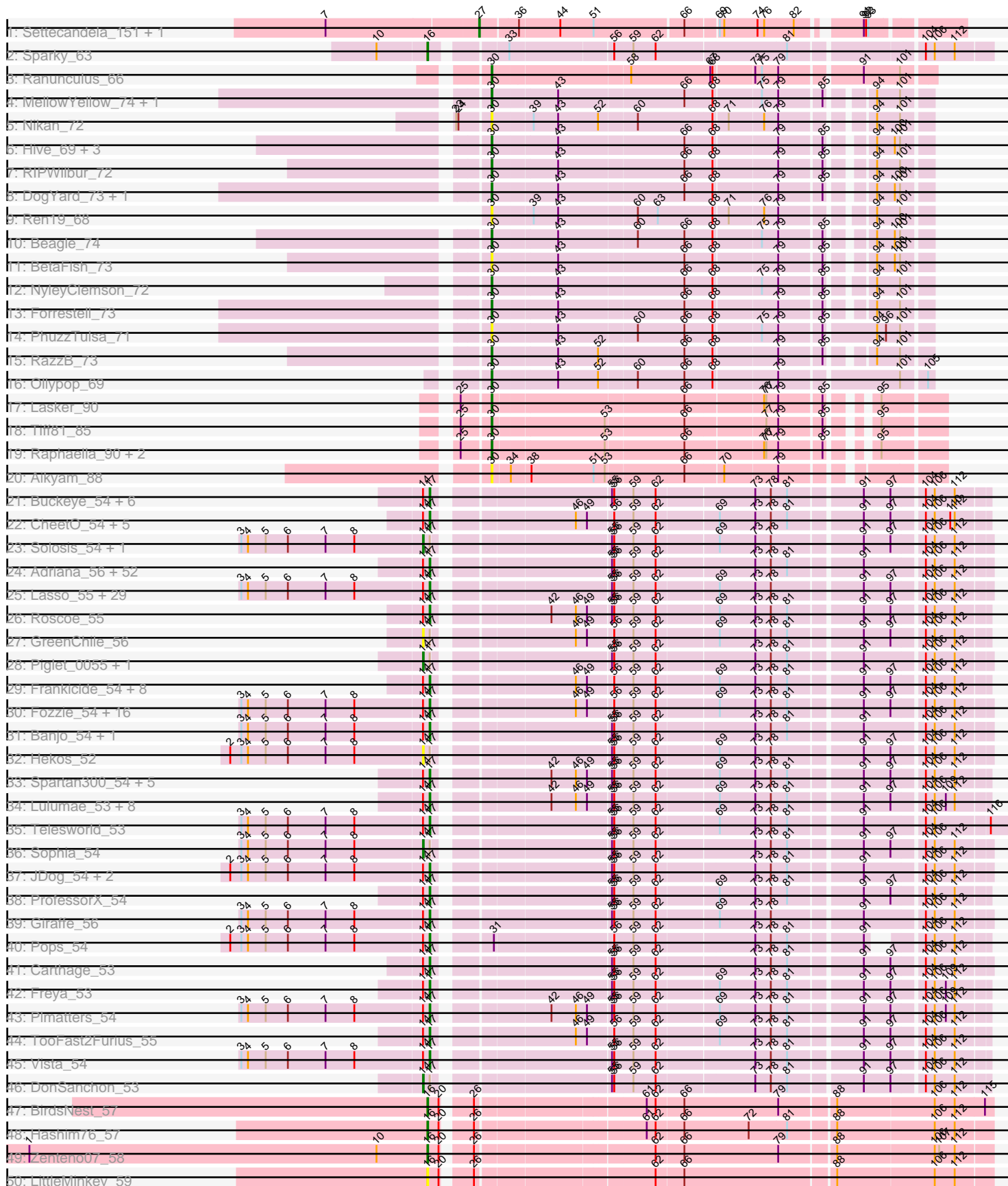
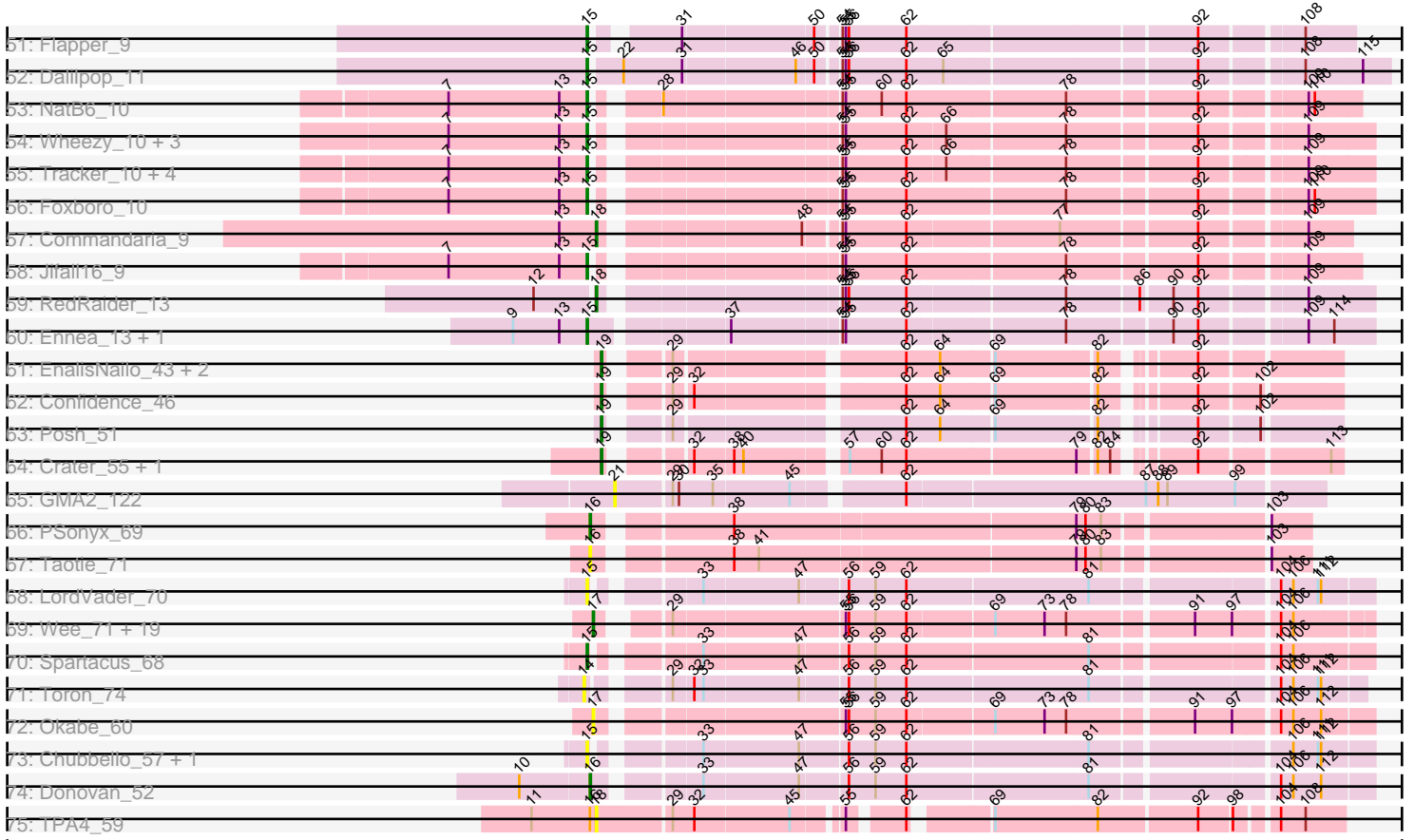


Pham 311194



Pham 311194



Note: Tracks are now grouped by subcluster and scaled. Switching in subcluster is indicated by changes in track color. Track scale is now set by default to display the region 30 bp upstream of start 1 to 30 bp downstream of the last possible start. If this default region is judged to be packed too tightly with annotated starts, the track will be further scaled to only show that region of the ORF with annotated starts. This action will be indicated by adding "Zoomed" to the title. For starts, yellow indicates the location of called starts comprised solely of Glimmer/GeneMark auto-annotations, green indicates the location of called starts with at least 1 manual gene annotation.

Pham 311194 Report

This analysis was run 06/27/26 on database version 652.

Pham number 311194 has 248 members, 33 are drafts.

Phages represented in each track:

- Track 1 : Settecandela_151, Phrappuccino_151
- Track 2 : Sparky_63
- Track 3 : Ranunculus_66
- Track 4 : MellowYellow_74, Popstraw_69
- Track 5 : Nikan_72
- Track 6 : Hive_69, Pureglobe5_72, Kubulix_73, Pointis_70
- Track 7 : RIPWilbur_72
- Track 8 : DogYard_73, Odyssey395_74
- Track 9 : Ren19_68
- Track 10 : Beagle_74
- Track 11 : BetaFish_73
- Track 12 : NyleyClemson_72
- Track 13 : Forrestell_73
- Track 14 : PhuzzTulsa_71
- Track 15 : RazzB_73
- Track 16 : Ollypop_69
- Track 17 : Lasker_90
- Track 18 : Tiff81_85
- Track 19 : Raphaella_90, Vopal_91, MurphyJoseph_88
- Track 20 : Aikyam_88
- Track 21 : Buckeye_54, SilverBell_54, Murdoc_54, PinheadLarry_56, UncleHowie_54, Matalotodo_54, Pipsqueak_54
- Track 22 : CheetO_54, Schadenfreude_54, KlimbOn_54, Crownjwl_55, AbsoluteMadLad_54, Riverton_54
- Track 23 : Solosis_54, Xavier_54
- Track 24 : Adriana_56, Thora_55, Morty_56, Samaymay_55, CamL_55, ABU_56, Serpentine_0055, Soile_56, Hamish_54, Chaelin_56, Mulan_55, Cher_55, Nacho_0056, Bishoperium_55, Brilliant_57, Windsor_55, Mecca_55, Megatron_56, Kahve_55, QueenBeane_55, Usavi_55, Omniscient_56, Dati_55, Eugenia_55, Jesabah_56, DolOn_59, HogWash_55, IsaacEli_56, Vaticameos_52, Badfish_56, PhatCats2014_56, Happabalu_55, Lego3393_54, Placalicious_55, Kimbrough_56, HenryJackson_55, FugateOSU_55, Gareth_55, Oosterbaan_55, Jillium_55, Gwilliam_56, PG1_56, Hertubise_55, Etaye_55, Haimas_54, Waterdiva_55, Bluephacebaby_55, Weher20_55, ThreeOh3D2_56, Melc17_55, KingTut_47, Kikipoo_56, Tomlarah_56
- Track 25 : Lasso_55, Squid_55, Daffy_55, Haleema_54, MrPhizzler_57, DaddyDaniels_57, Held_55, Mosaic_54, Craff_58, Grand2040_55, MRabcd_54,

Potter_54, SassyCat97_54, Vortex_55, Mana_54, MitKao_55, Timmi_54, Chorkpop_55, Serendipity_55, Puhltonio_55, Cosmolli16_56, Childish_55, TomBombadil_55, TallGrassMM_55, Maru_55, Khan1_56, Morgushi_55, Surely_55, Cannibal_55, Kwadwo_54

- Track 26 : Roscoe_55
- Track 27 : GreenChile_56
- Track 28 : Piglet_0055, SirBeauregard_56
- Track 29 : Frankicide_54, Eremos_54, Basato_55, Horchata_54, Aelin_54, HSavage_54, OneBrain_56, RedRaider89_55, OliverWalter_54
- Track 30 : Fozzie_54, Cornobble_54, Inverness_54, ElvisPhasley_56, Lehmann_55, Mesh1_56, UAch1_54, Vaishali24_53, Antonia_54, Harvey_54, OSmaximus_56, Manad_54, Hetaeria_54, EmGer13_55, Newman_54, Triad_55, Robyn_54
- Track 31 : Banjo_54, FremontTroll_56
- Track 32 : Hekos_52
- Track 33 : Spartan300_54, Valjean_54, Boehler_54, Zaider_55, Olive_54, EmpTee_54
- Track 34 : Lulumae_53, Altwerkus_53, Phunky_54, DoesntMatter_53, Roy17_54, LuckyMarjie_53, Dione_53, Phareon_54, Numberten_54
- Track 35 : Telesworld_53
- Track 36 : Sophia_54
- Track 37 : JDog_54, LeeLot_55, Zelda_55
- Track 38 : ProfessorX_54
- Track 39 : Giraffe_56
- Track 40 : Pops_54
- Track 41 : Carthage_53
- Track 42 : Freya_53
- Track 43 : Plmatters_54
- Track 44 : TooFast2Furius_55
- Track 45 : Vista_54
- Track 46 : DonSanchon_53
- Track 47 : BirdsNest_57
- Track 48 : Hashim76_57
- Track 49 : Zenteno07_58
- Track 50 : LittleMinkey_59
- Track 51 : Flapper_9
- Track 52 : Dalilpop_11
- Track 53 : NatB6_10
- Track 54 : Wheezy_10, Arti_10, GrootJr_12, NovumRegina_10
- Track 55 : Tracker_10, Phomeo_9, Emianna_10, Kurt_10, KidneyBean_10
- Track 56 : Foxboro_10
- Track 57 : Commandaria_9
- Track 58 : Jifall16_9
- Track 59 : RedRaider_13
- Track 60 : Ennea_13, Lollipop1437_12
- Track 61 : EnalisNailo_43, Bradissa_44, Lilas_46
- Track 62 : Confidence_46
- Track 63 : Posh_51
- Track 64 : Crater_55, Apricot_55
- Track 65 : GMA2_122
- Track 66 : PSonyx_69
- Track 67 : Taotie_71
- Track 68 : LordVader_70

- Track 69 : Wee_71, WillSterrel_67, SilverChicken_76, Ogopogo_73, TDanisky_73, UncleRicky_65, Doomphist_66, Poenanya_66, Enby_67, Oksu_71, Llij_62, Lorde_66, Sparkdehlily_73, Tootsieroll_66, DirtMcgirt_65, Phatniss_64, Drago_63, Fruitloop_61, IrishSherpFalk_67, Taj_71
- Track 70 : Spartacus_68
- Track 71 : Toron_74
- Track 72 : Okabe_60
- Track 73 : Chubbello_57, BronnyJr_56
- Track 74 : Donovan_52
- Track 75 : TPA4_59

Summary of Final Annotations (See graph section above for start numbers):

The start number called the most often in the published annotations is 17, it was called in 160 of the 215 non-draft genes in the pham.

Genes that call this "Most Annotated" start:

- ABU_56, AbsoluteMadLad_54, Adriana_56, Aelin_54, Altwerkus_53, Antonia_54, Badfish_56, Banjo_54, Basato_55, Bishoperium_55, Bluephacebaby_55, Boehler_54, Brilliant_57, Buckeye_54, CamL_55, Cannibal_55, Carthage_53, Chaelin_56, CheetO_54, Cher_55, Childish_55, Chorkpop_55, Cornobble_54, Cosmolli16_56, Craff_58, Crownjwl_55, DaddyDaniels_57, Daffy_55, Dati_55, Dione_53, DirtMcgirt_65, DoesntMatter_53, DoIOn_59, Doomphist_66, Drago_63, ElvisPhasley_56, EmGer13_55, EmpTee_54, Enby_67, Eremos_54, Etaye_55, Eugenia_55, Fozzie_54, Frankicide_54, FremontTroll_56, Freya_53, Fruitloop_61, FugateOSU_55, Gareth_55, Giraffe_56, Grand2040_55, Gwilliam_56, HSavage_54, Haimas_54, Haleema_54, Hamish_54, Happabalu_55, Harvey_54, Held_55, HenryJackson_55, Hertubise_55, Hetaeria_54, HogWash_55, Horchata_54, Inverness_54, IrishSherpFalk_67, IsaacEli_56, JDog_54, Jesabah_56, Jillium_55, Kahve_55, Khan1_56, Kikipoo_56, Kimbrough_56, KingTut_47, KlimbOn_54, Kwadwo_54, Lasso_55, LeeLot_55, Lego3393_54, Lehmann_55, Llij_62, Lorde_66, LuckyMarjie_53, Lulumae_53, MRabcd_54, Mana_54, Manad_54, Maru_55, Matalotodo_54, Mecca_55, Megatron_56, Melc17_55, Mesh1_56, MitKao_55, Morgushi_55, Morty_56, Mosaic_54, MrPhizzler_57, Mulan_55, Murdoc_54, Nacho_0056, Newman_54, Numberten_54, OSmaximus_56, Ogopogo_73, Okabe_60, Oksu_71, Olive_54, OliverWalter_54, Omniscient_56, OneBrain_56, Oosterbaan_55, PG1_56, Phareon_54, PhatCats2014_56, Phatniss_64, Phunky_54, PinheadLarry_56, Pipsqueak_54, Placalicious_55, Plmatters_54, Poenanya_66, Pops_54, Potter_54, ProfessorX_54, Puhltonio_55, QueenBeane_55, RedRaider89_55, Riverton_54, Robyn_54, Roscoe_55, Roy17_54, Samaymay_55, SassyCat97_54, Schadenfreude_54, Serendipity_55, Serpentine_0055, SilverBell_54, SilverChicken_76, Soile_56, Sparkdehlily_73, Spartan300_54, Squid_55, Surely_55, TDanisky_73, Taj_71, TallGrassMM_55, Telesworld_53, Thora_55, ThreeOh3D2_56, Timmi_54, TomBombadil_55, Tomlarah_56, TooFast2Furius_55, Tootsieroll_66, Triad_55, UAch1_54, UncleHowie_54, UncleRicky_65, Usavi_55, Vaishali24_53, Valjean_54, Vaticameos_52, Vista_54, Vortex_55, Waterdiva_55, Wee_71, Weher20_55, WillSterrel_67, Windsor_55, Zaider_55, Zelda_55,

Genes that have the "Most Annotated" start but do not call it:

- DonSanchon_53, GreenChile_56, Hekos_52, Piglet_0055, SirBeauregard_56, Solosis_54, Sophia_54, Xavier_54,

Genes that do not have the "Most Annotated" start:

- Aikyam_88, Apricot_55, Arti_10, Beagle_74, BetaFish_73, BirdsNest_57, Bradissa_44, BronnyJr_56, Chubbello_57, Commandaria_9, Confidence_46, Crater_55, Dalilpop_11, DogYard_73, Donovan_52, Emianna_10, EnalisNailo_43, Ennea_13, Flapper_9, Forrestell_73, Foxboro_10, GMA2_122, GrootJr_12, Hashim76_57, Hive_69, Jifall16_9, KidneyBean_10, Kubulix_73, Kurt_10, Lasker_90, Lilas_46, LittleMinkey_59, Lollipop1437_12, LordVader_70, MellowYellow_74, MurphyJoseph_88, NatB6_10, Nikan_72, NovumRegina_10, NyleyClemson_72, Odyssey395_74, Ollypop_69, PSonyx_69, Phomeo_9, Phrappuccino_151, PhuzzTulsa_71, Pointis_70, Popstraw_69, Posh_51, Pureglobe5_72, RIPWilbur_72, Ranunculus_66, Raphaella_90, RazzB_73, RedRaider_13, Ren19_68, Settecandela_151, Sparky_63, Spartacus_68, TPA4_59, Taotie_71, Tiff81_85, Toron_74, Tracker_10, Vopal_91, Wheezy_10, Zenteno07_58,

Summary by start number:

Start 14:

- Found in 161 of 248 (64.9%) of genes in pham
- Manual Annotations of this start: 5 of 215
- Called 5.6% of time when present
- Phage (with cluster) where this start called: DonSanchon_53 (B1), GreenChile_56 (B1), Hekos_52 (B1), Piglet_0055 (B1), SirBeauregard_56 (B1), Solosis_54 (B1), Sophia_54 (B1), Toron_74 (F6), Xavier_54 (B1),

Start 15:

- Found in 20 of 248 (8.1%) of genes in pham
- Manual Annotations of this start: 17 of 215
- Called 100.0% of time when present
- Phage (with cluster) where this start called: Arti_10 (CR2), BronnyJr_56 (P1), Chubbello_57 (P1), Dalilpop_11 (CR1), Emianna_10 (CR2), Ennea_13 (CR3), Flapper_9 (CR1), Foxboro_10 (CR2), GrootJr_12 (CR2), Jifall16_9 (CR2), KidneyBean_10 (CR2), Kurt_10 (CR2), Lollipop1437_12 (CR3), LordVader_70 (F), NatB6_10 (CR2), NovumRegina_10 (CR2), Phomeo_9 (CR2), Spartacus_68 (F1), Tracker_10 (CR2), Wheezy_10 (CR2),

Start 16:

- Found in 9 of 248 (3.6%) of genes in pham
- Manual Annotations of this start: 6 of 215
- Called 88.9% of time when present
- Phage (with cluster) where this start called: BirdsNest_57 (B13), Donovan_52 (P1), Hashim76_57 (B13), LittleMinkey_59 (B13), PSonyx_69 (EQ), Sparky_63 (AF), Taotie_71 (EQ), Zenteno07_58 (B13),

Start 17:

- Found in 181 of 248 (73.0%) of genes in pham
- Manual Annotations of this start: 160 of 215
- Called 95.6% of time when present
- Phage (with cluster) where this start called: ABU_56 (B1), AbsoluteMadLad_54 (B1), Adriana_56 (B1), Aelin_54 (B1), Altwerkus_53 (B1), Antonia_54 (B1), Badfish_56 (B1), Banjo_54 (B1), Basato_55 (B1), Bishoperium_55 (B1), Bluephacebaby_55 (B1),

Boehler_54 (B1), Brilliant_57 (B1), Buckeye_54 (B1), CamL_55 (B1), Cannibal_55 (B1), Carthage_53 (B1), Chaelin_56 (B1), CheetO_54 (B1), Cher_55 (B1), Childish_55 (B1), Chorkpop_55 (B1), Cornobble_54 (B1), Cosmoli16_56 (B1), Craff_58 (B1), Crownjwl_55 (B1), DaddyDaniels_57 (B1), Daffy_55 (B1), Dati_55 (B1), Dione_53 (B1), DirtMcgirt_65 (F1), DoesntMatter_53 (B1), DoOn_59 (B1), Doomphist_66 (F1), Drago_63 (F1), ElvisPhasley_56 (B1), EmGer13_55 (B1), EmpTee_54 (B1), Enby_67 (F1), Eremos_54 (B1), Etaye_55 (B1), Eugenia_55 (B1), Fozzie_54 (B1), Frankicide_54 (B1), FremontTroll_56 (B1), Freya_53 (B1), Fruitloop_61 (F1), FugateOSU_55 (B1), Gareth_55 (B1), Giraffe_56 (B1), Grand2040_55 (B1), Gwilliam_56 (B1), HSavage_54 (B1), Haimas_54 (B1), Haleema_54 (B1), Hamish_54 (B1), Happabalu_55 (B1), Harvey_54 (B1), Held_55 (B1), HenryJackson_55 (B1), Hertubise_55 (B1), Hetaeria_54 (B1), HogWash_55 (B1), Horchata_54 (B1), Inverness_54 (B1), IrishSherpFalk_67 (F1), IsaacEli_56 (B1), JDog_54 (B1), Jesabah_56 (B1), Jillium_55 (B1), Kahve_55 (B1), Khan1_56 (B1), Kikipoo_56 (B1), Kimbrough_56 (B1), KingTut_47 (B1), KlimbOn_54 (B1), Kwadwo_54 (B1), Lasso_55 (B1), LeeLot_55 (B1), Lego3393_54 (B1), Lehmann_55 (B1), Llij_62 (F1), Lorde_66 (F1), LuckyMarjie_53 (B1), Lulumae_53 (B1), MRabcd_54 (B1), Mana_54 (B1), Manad_54 (B1), Maru_55 (B1), Matalotodo_54 (B1), Mecca_55 (B1), Megatron_56 (B1), Melc17_55 (B1), Mesh1_56 (B1), MitKao_55 (B1), Morgushi_55 (B1), Morty_56 (B1), Mosaic_54 (B1), MrPhizzler_57 (B1), Mulan_55 (B1), Murdoc_54 (B1), Nacho_0056 (B1), Newman_54 (B1), Numberten_54 (B1), OSmaximus_56 (B1), Ogotopogo_73 (F1), Okabe_60 (F8), Oksu_71 (F1), Olive_54 (B1), OliverWalter_54 (B1), Omniscient_56 (B1), OneBrain_56 (B1), Oosterbaan_55 (B1), PG1_56 (B1), Phareon_54 (B1), PhatCats2014_56 (B1), Phatniss_64 (F1), Phunky_54 (B1), PinheadLarry_56 (B1), Pipsqueak_54 (B1), Placalicious_55 (B1), Plmatters_54 (B1), Poenanya_66 (F1), Pops_54 (B1), Potter_54 (B1), ProfessorX_54 (B1), Puhltonio_55 (B1), QueenBeane_55 (B1), RedRaider89_55 (B1), Riverton_54 (B1), Robyn_54 (B1), Roscoe_55 (B1), Roy17_54 (B1), Samaymay_55 (B1), SassyCat97_54 (B1), Schadenfreude_54 (B1), Serendipity_55 (B1), Serpentine_0055 (B1), SilverBell_54 (B1), SilverChicken_76 (F2), Soile_56 (B1), Sparkdehlily_73 (F1), Spartan300_54 (B1), Squid_55 (B1), Surely_55 (B1), TDanisky_73 (F1), Taj_71 (F1), TallGrassMM_55 (B1), Telesworld_53 (B1), Thora_55 (B1), ThreeOh3D2_56 (B1), Timmi_54 (B1), TomBombadil_55 (B1), Tomlarah_56 (B1), TooFast2Furius_55 (B1), Tootsieroll_66 (F1), Triad_55 (B1), UAch1_54 (B1), UncleHowie_54 (B1), UncleRicky_65 (F1), Usavi_55 (B1), Vaishali24_53 (B1), Valjean_54 (B1), Vaticameos_52 (B1), Vista_54 (B1), Vortex_55 (B1), Waterdiva_55 (B1), Wee_71 (F1), Weher20_55 (B1), WillSterrel_67 (F1), Windsor_55 (B1), Zaider_55 (B1), Zelda_55 (B1),

Start 18:

- Found in 3 of 248 (1.2%) of genes in pham
- Manual Annotations of this start: 2 of 215
- Called 100.0% of time when present
- Phage (with cluster) where this start called: Commandaria_9 (CR2), RedRaider_13 (CR3), TPA4_59 (singleton),

Start 19:

- Found in 7 of 248 (2.8%) of genes in pham
- Manual Annotations of this start: 7 of 215
- Called 100.0% of time when present
- Phage (with cluster) where this start called: Apricot_55 (DN3), Bradissa_44 (CY1), Confidence_46 (CY1), Crater_55 (DN3), EnalisNailo_43 (CY1), Lilas_46 (CY1),

Posh_51 (CY4),

Start 21:

- Found in 1 of 248 (0.4%) of genes in pham
- No Manual Annotations of this start.
- Called 100.0% of time when present
- Phage (with cluster) where this start called: GMA2_122 (DS),

Start 27:

- Found in 2 of 248 (0.8%) of genes in pham
- Manual Annotations of this start: 2 of 215
- Called 100.0% of time when present
- Phage (with cluster) where this start called: Phrappuccino_151 (AA), Settecandela_151 (AA),

Start 30:

- Found in 26 of 248 (10.5%) of genes in pham
- Manual Annotations of this start: 16 of 215
- Called 96.2% of time when present
- Phage (with cluster) where this start called: Aikyam_88 (AY), Beagle_74 (AP2), BetaFish_73 (AP2), DogYard_73 (AP2), Forrestell_73 (AP2), Hive_69 (AP2), Kubulix_73 (AP2), Lasker_90 (AY), MellowYellow_74 (AP2), MurphyJoseph_88 (AY), Nikan_72 (AP2), NyleyClemson_72 (AP2), Odyssey395_74 (AP2), Ollypop_69 (AP2), PhuzzTulsa_71 (AP2), Pointis_70 (AP2), Popstraw_69 (AP2), Pureglobe5_72 (AP2), RIPWilbur_72 (AP2), Ranunculus_66 (AP), Raphaella_90 (AY), RazzB_73 (AP2), Ren19_68 (AP2), Tiff81_85 (AY), Vopal_91 (AY),

Summary by clusters:

There are 22 clusters represented in this pham: singleton, AP2, B13, DS, F, DN3, AA, CY1, P1, AF, CR3, AP, AY, EQ, CR2, F1, F2, CR1, F6, F8, B1, CY4,

Info for manual annotations of cluster AA:

- Start number 27 was manually annotated 2 times for cluster AA.

Info for manual annotations of cluster AF:

- Start number 16 was manually annotated 1 time for cluster AF.

Info for manual annotations of cluster AP:

- Start number 30 was manually annotated 1 time for cluster AP.

Info for manual annotations of cluster AP2:

- Start number 30 was manually annotated 12 times for cluster AP2.

Info for manual annotations of cluster AY:

- Start number 30 was manually annotated 3 times for cluster AY.

Info for manual annotations of cluster B1:

- Start number 14 was manually annotated 5 times for cluster B1.
- Start number 17 was manually annotated 142 times for cluster B1.

Info for manual annotations of cluster B13:

- Start number 16 was manually annotated 3 times for cluster B13.

Info for manual annotations of cluster CR1:

- Start number 15 was manually annotated 2 times for cluster CR1.

Info for manual annotations of cluster CR2:

- Start number 15 was manually annotated 12 times for cluster CR2.
- Start number 18 was manually annotated 1 time for cluster CR2.

Info for manual annotations of cluster CR3:

- Start number 15 was manually annotated 2 times for cluster CR3.
- Start number 18 was manually annotated 1 time for cluster CR3.

Info for manual annotations of cluster CY1:

- Start number 19 was manually annotated 4 times for cluster CY1.

Info for manual annotations of cluster CY4:

- Start number 19 was manually annotated 1 time for cluster CY4.

Info for manual annotations of cluster DN3:

- Start number 19 was manually annotated 2 times for cluster DN3.

Info for manual annotations of cluster EQ:

- Start number 16 was manually annotated 1 time for cluster EQ.

Info for manual annotations of cluster F1:

- Start number 15 was manually annotated 1 time for cluster F1.
- Start number 17 was manually annotated 18 times for cluster F1.

Info for manual annotations of cluster P1:

- Start number 16 was manually annotated 1 time for cluster P1.

Gene Information:

Gene: ABU_56 Start: 48493, Stop: 47813, Start Num: 17

Candidate Starts for ABU_56:

(Start: 14 @48502 has 5 MA's), (Start: 17 @48493 has 160 MA's), (55, 48286), (56, 48283), (59, 48259), (62, 48229), (73, 48103), (78, 48082), (81, 48061), (91, 47971), (104, 47896), (106, 47884), (112, 47857),

Gene: AbsoluteMadLad_54 Start: 48205, Stop: 47528, Start Num: 17

Candidate Starts for AbsoluteMadLad_54:

(Start: 14 @48214 has 5 MA's), (Start: 17 @48205 has 160 MA's), (46, 48043), (49, 48028), (56, 47995), (59, 47971), (62, 47941), (69, 47863), (73, 47815), (78, 47794), (81, 47773), (91, 47683), (97, 47647), (104, 47608), (106, 47596), (110, 47575), (112, 47569),

Gene: Adriana_56 Start: 48490, Stop: 47810, Start Num: 17

Candidate Starts for Adriana_56:

(Start: 14 @48499 has 5 MA's), (Start: 17 @48490 has 160 MA's), (55, 48283), (56, 48280), (59, 48256), (62, 48226), (73, 48100), (78, 48079), (81, 48058), (91, 47968), (104, 47893), (106, 47881), (112, 47854),

Gene: Aelin_54 Start: 47769, Stop: 47092, Start Num: 17

Candidate Starts for Aelin_54:

(Start: 14 @47778 has 5 MA's), (Start: 17 @47769 has 160 MA's), (46, 47607), (49, 47592), (56, 47559), (59, 47535), (62, 47505), (69, 47427), (73, 47379), (78, 47358), (81, 47337), (91, 47247), (97, 47211), (104, 47172), (106, 47160), (112, 47133),

Gene: Aikyam_88 Start: 47939, Stop: 48487, Start Num: 30

Candidate Starts for Aikyam_88:

(Start: 30 @47939 has 16 MA's), (34, 47960), (38, 47984), (51, 48068), (53, 48083), (66, 48185), (70, 48233), (79, 48302),

Gene: Altwerkus_53 Start: 47657, Stop: 46980, Start Num: 17

Candidate Starts for Altwerkus_53:

(Start: 14 @47666 has 5 MA's), (Start: 17 @47657 has 160 MA's), (42, 47528), (46, 47495), (49, 47480), (55, 47450), (56, 47447), (59, 47423), (62, 47393), (69, 47315), (73, 47267), (78, 47246), (81, 47225), (91, 47135), (97, 47099), (104, 47060), (106, 47048), (109, 47033), (112, 47021),

Gene: Antonia_54 Start: 47769, Stop: 47092, Start Num: 17

Candidate Starts for Antonia_54:

(3, 48021), (4, 48012), (5, 47988), (6, 47958), (7, 47907), (8, 47868), (Start: 14 @47778 has 5 MA's), (Start: 17 @47769 has 160 MA's), (46, 47607), (49, 47592), (56, 47559), (59, 47535), (62, 47505), (69, 47427), (73, 47379), (78, 47358), (81, 47337), (91, 47247), (97, 47211), (104, 47172), (106, 47160), (112, 47133),

Gene: Apricot_55 Start: 35565, Stop: 36167, Start Num: 19

Candidate Starts for Apricot_55:

(Start: 19 @35565 has 7 MA's), (32, 35622), (38, 35658), (40, 35667), (57, 35751), (60, 35778), (62, 35802), (79, 35958), (82, 35973), (84, 35985), (92, 36042), (113, 36156),

Gene: Arti_10 Start: 5991, Stop: 6665, Start Num: 15

Candidate Starts for Arti_10:

(7, 5856), (13, 5964), (Start: 15 @5991 has 17 MA's), (54, 6192), (55, 6195), (62, 6252), (66, 6285), (78, 6396), (92, 6513), (109, 6603),

Gene: Badfish_56 Start: 48515, Stop: 47835, Start Num: 17

Candidate Starts for Badfish_56:

(Start: 14 @48524 has 5 MA's), (Start: 17 @48515 has 160 MA's), (55, 48308), (56, 48305), (59, 48281), (62, 48251), (73, 48125), (78, 48104), (81, 48083), (91, 47993), (104, 47918), (106, 47906), (112, 47879),

Gene: Banjo_54 Start: 47962, Stop: 47282, Start Num: 17

Candidate Starts for Banjo_54:

(3, 48214), (4, 48205), (5, 48181), (6, 48151), (7, 48100), (8, 48061), (Start: 14 @47971 has 5 MA's), (Start: 17 @47962 has 160 MA's), (55, 47755), (56, 47752), (59, 47728), (62, 47698), (73, 47572), (78, 47551), (81, 47530), (91, 47440), (104, 47365), (106, 47353), (112, 47326),

Gene: Basato_55 Start: 48237, Stop: 47560, Start Num: 17

Candidate Starts for Basato_55:

(Start: 14 @48246 has 5 MA's), (Start: 17 @48237 has 160 MA's), (46, 48075), (49, 48060), (56, 48027), (59, 48003), (62, 47973), (69, 47895), (73, 47847), (78, 47826), (81, 47805), (91, 47715), (97, 47679), (104, 47640), (106, 47628), (112, 47601),

Gene: Beagle_74 Start: 45004, Stop: 44471, Start Num: 30

Candidate Starts for Beagle_74:

(Start: 30 @45004 has 16 MA's), (43, 44920), (60, 44818), (66, 44755), (68, 44719), (75, 44659), (79, 44638), (85, 44584), (94, 44539), (100, 44515), (101, 44509),

Gene: BetaFish_73 Start: 45733, Stop: 45200, Start Num: 30

Candidate Starts for BetaFish_73:

(Start: 30 @45733 has 16 MA's), (43, 45649), (66, 45484), (68, 45448), (79, 45367), (85, 45313), (94, 45268), (100, 45244), (101, 45238),

Gene: BirdsNest_57 Start: 47703, Stop: 46999, Start Num: 16

Candidate Starts for BirdsNest_57:

(Start: 16 @47703 has 6 MA's), (20, 47688), (26, 47658), (61, 47448), (62, 47436), (66, 47400), (79, 47274), (88, 47205), (106, 47076), (112, 47049), (115, 47010),

Gene: Bishoperium_55 Start: 48501, Stop: 47821, Start Num: 17

Candidate Starts for Bishoperium_55:

(Start: 14 @48510 has 5 MA's), (Start: 17 @48501 has 160 MA's), (55, 48294), (56, 48291), (59, 48267), (62, 48237), (73, 48111), (78, 48090), (81, 48069), (91, 47979), (104, 47904), (106, 47895), (112, 47865),

Gene: Bluephacebaby_55 Start: 48504, Stop: 47824, Start Num: 17

Candidate Starts for Bluephacebaby_55:

(Start: 14 @48513 has 5 MA's), (Start: 17 @48504 has 160 MA's), (55, 48297), (56, 48294), (59, 48270), (62, 48240), (73, 48114), (78, 48093), (81, 48072), (91, 47982), (104, 47907), (106, 47895), (112, 47868),

Gene: Boehler_54 Start: 47946, Stop: 47269, Start Num: 17

Candidate Starts for Boehler_54:

(Start: 14 @47955 has 5 MA's), (Start: 17 @47946 has 160 MA's), (42, 47817), (46, 47784), (49, 47769), (55, 47739), (56, 47736), (59, 47712), (62, 47682), (69, 47604), (73, 47556), (78, 47535), (81, 47514), (91, 47424), (97, 47388), (104, 47349), (106, 47337), (112, 47310),

Gene: Bradissa_44 Start: 36341, Stop: 36946, Start Num: 19

Candidate Starts for Bradissa_44:

(Start: 19 @36341 has 7 MA's), (29, 36383), (62, 36578), (64, 36611), (69, 36659), (82, 36752), (92, 36821),

Gene: Brilliant_57 Start: 48504, Stop: 47824, Start Num: 17

Candidate Starts for Brilliant_57:

(Start: 14 @48513 has 5 MA's), (Start: 17 @48504 has 160 MA's), (55, 48297), (56, 48294), (59, 48270), (62, 48240), (73, 48114), (78, 48093), (81, 48072), (91, 47982), (104, 47907), (106, 47895), (112, 47868),

Gene: BronnyJr_56 Start: 38699, Stop: 39382, Start Num: 15

Candidate Starts for BronnyJr_56:

(Start: 15 @38699 has 17 MA's), (33, 38777), (47, 38867), (56, 38909), (59, 38933), (62, 38963), (81, 39134), (106, 39308), (111, 39332), (112, 39335),

Gene: Buckeye_54 Start: 48015, Stop: 47338, Start Num: 17

Candidate Starts for Buckeye_54:

(Start: 14 @48024 has 5 MA's), (Start: 17 @48015 has 160 MA's), (55, 47808), (56, 47805), (59, 47781), (62, 47751), (73, 47625), (78, 47604), (81, 47583), (91, 47493), (97, 47457), (104, 47418), (106, 47406), (112, 47379),

Gene: CamL_55 Start: 48269, Stop: 47589, Start Num: 17

Candidate Starts for CamL_55:

(Start: 14 @48278 has 5 MA's), (Start: 17 @48269 has 160 MA's), (55, 48062), (56, 48059), (59, 48035), (62, 48005), (73, 47879), (78, 47858), (81, 47837), (91, 47747), (104, 47672), (106, 47660), (112, 47633),

Gene: Cannibal_55 Start: 48252, Stop: 47572, Start Num: 17

Candidate Starts for Cannibal_55:

(3, 48504), (4, 48495), (5, 48471), (6, 48441), (7, 48390), (8, 48351), (Start: 14 @48261 has 5 MA's), (Start: 17 @48252 has 160 MA's), (55, 48045), (56, 48042), (59, 48018), (62, 47988), (69, 47910), (73, 47862), (78, 47841), (91, 47730), (97, 47694), (104, 47655), (106, 47643), (112, 47616),

Gene: Carthage_53 Start: 47247, Stop: 46567, Start Num: 17

Candidate Starts for Carthage_53:

(Start: 14 @47256 has 5 MA's), (Start: 17 @47247 has 160 MA's), (55, 47040), (56, 47037), (59, 47013), (62, 46983), (73, 46857), (78, 46836), (81, 46815), (91, 46725), (97, 46689), (104, 46650), (106, 46638), (112, 46611),

Gene: Chaelin_56 Start: 48499, Stop: 47819, Start Num: 17

Candidate Starts for Chaelin_56:

(Start: 14 @48508 has 5 MA's), (Start: 17 @48499 has 160 MA's), (55, 48292), (56, 48289), (59, 48265), (62, 48235), (73, 48109), (78, 48088), (81, 48067), (91, 47977), (104, 47902), (106, 47890), (112, 47863),

Gene: CheetO_54 Start: 47985, Stop: 47308, Start Num: 17

Candidate Starts for CheetO_54:

(Start: 14 @47994 has 5 MA's), (Start: 17 @47985 has 160 MA's), (46, 47823), (49, 47808), (56, 47775), (59, 47751), (62, 47721), (69, 47643), (73, 47595), (78, 47574), (81, 47553), (91, 47463), (97, 47427), (104, 47388), (106, 47376), (110, 47355), (112, 47349),

Gene: Cher_55 Start: 48521, Stop: 47841, Start Num: 17

Candidate Starts for Cher_55:

(Start: 14 @48530 has 5 MA's), (Start: 17 @48521 has 160 MA's), (55, 48314), (56, 48311), (59, 48287), (62, 48257), (73, 48131), (78, 48110), (81, 48089), (91, 47999), (104, 47924), (106, 47912), (112, 47885),

Gene: Childish_55 Start: 48531, Stop: 47851, Start Num: 17

Candidate Starts for Childish_55:

(3, 48783), (4, 48774), (5, 48750), (6, 48720), (7, 48669), (8, 48630), (Start: 14 @48540 has 5 MA's), (Start: 17 @48531 has 160 MA's), (55, 48324), (56, 48321), (59, 48297), (62, 48267), (69, 48189), (73, 48141), (78, 48120), (91, 48009), (97, 47973), (104, 47934), (106, 47922), (112, 47895),

Gene: Chorkpop_55 Start: 48008, Stop: 47328, Start Num: 17

Candidate Starts for Chorkpop_55:

(3, 48260), (4, 48251), (5, 48227), (6, 48197), (7, 48146), (8, 48107), (Start: 14 @48017 has 5 MA's), (Start: 17 @48008 has 160 MA's), (55, 47801), (56, 47798), (59, 47774), (62, 47744), (69, 47666), (73, 47618), (78, 47597), (91, 47486), (97, 47450), (104, 47411), (106, 47399), (112, 47372),

Gene: Chubbello_57 Start: 37644, Stop: 38327, Start Num: 15

Candidate Starts for Chubbello_57:

(Start: 15 @37644 has 17 MA's), (33, 37722), (47, 37812), (56, 37854), (59, 37878), (62, 37908), (81, 38079), (106, 38253), (111, 38277), (112, 38280),

Gene: Commandaria_9 Start: 5029, Stop: 5676, Start Num: 18

Candidate Starts for Commandaria_9:

(13, 4993), (Start: 18 @5029 has 2 MA's), (48, 5200), (54, 5227), (55, 5230), (62, 5287), (77, 5425), (92, 5548), (109, 5638),

Gene: Confidence_46 Start: 34232, Stop: 34837, Start Num: 19

Candidate Starts for Confidence_46:

(Start: 19 @34232 has 7 MA's), (29, 34274), (32, 34289), (62, 34469), (64, 34502), (69, 34550), (82, 34643), (92, 34712), (102, 34766),

Gene: Cornobble_54 Start: 47922, Stop: 47242, Start Num: 17

Candidate Starts for Cornobble_54:

(3, 48174), (4, 48165), (5, 48141), (6, 48111), (7, 48060), (8, 48021), (Start: 14 @47931 has 5 MA's), (Start: 17 @47922 has 160 MA's), (46, 47760), (49, 47745), (56, 47712), (59, 47688), (62, 47658), (69, 47580), (73, 47532), (78, 47511), (81, 47490), (91, 47400), (97, 47364), (104, 47325), (106, 47313), (112, 47286),

Gene: Cosmolli16_56 Start: 48711, Stop: 48031, Start Num: 17

Candidate Starts for Cosmolli16_56:

(3, 48963), (4, 48954), (5, 48930), (6, 48900), (7, 48849), (8, 48810), (Start: 14 @48720 has 5 MA's), (Start: 17 @48711 has 160 MA's), (55, 48504), (56, 48501), (59, 48477), (62, 48447), (69, 48369), (73, 48321), (78, 48300), (91, 48189), (97, 48153), (104, 48114), (106, 48102), (112, 48075),

Gene: Craff_58 Start: 48956, Stop: 48276, Start Num: 17

Candidate Starts for Craff_58:

(3, 49208), (4, 49199), (5, 49175), (6, 49145), (7, 49094), (8, 49055), (Start: 14 @48965 has 5 MA's), (Start: 17 @48956 has 160 MA's), (55, 48749), (56, 48746), (59, 48722), (62, 48692), (69, 48614), (73, 48566), (78, 48545), (91, 48434), (97, 48398), (104, 48359), (106, 48347), (112, 48320),

Gene: Crater_55 Start: 35960, Stop: 36562, Start Num: 19

Candidate Starts for Crater_55:

(Start: 19 @35960 has 7 MA's), (32, 36017), (38, 36053), (40, 36062), (57, 36146), (60, 36173), (62, 36197), (79, 36353), (82, 36368), (84, 36380), (92, 36437), (113, 36551),

Gene: Crownjwl_55 Start: 47988, Stop: 47311, Start Num: 17

Candidate Starts for Crownjwl_55:

(Start: 14 @47997 has 5 MA's), (Start: 17 @47988 has 160 MA's), (46, 47826), (49, 47811), (56, 47778), (59, 47754), (62, 47724), (69, 47646), (73, 47598), (78, 47577), (81, 47556), (91, 47466), (97, 47430), (104, 47391), (106, 47379), (110, 47358), (112, 47352),

Gene: DaddyDaniels_57 Start: 48488, Stop: 47808, Start Num: 17

Candidate Starts for DaddyDaniels_57:

(3, 48740), (4, 48731), (5, 48707), (6, 48677), (7, 48626), (8, 48587), (Start: 14 @48497 has 5 MA's), (Start: 17 @48488 has 160 MA's), (55, 48281), (56, 48278), (59, 48254), (62, 48224), (69, 48146), (73, 48098), (78, 48077), (91, 47966), (97, 47930), (104, 47891), (106, 47879), (112, 47852),

Gene: Daffy_55 Start: 47994, Stop: 47314, Start Num: 17

Candidate Starts for Daffy_55:

(3, 48246), (4, 48237), (5, 48213), (6, 48183), (7, 48132), (8, 48093), (Start: 14 @48003 has 5 MA's), (Start: 17 @47994 has 160 MA's), (55, 47787), (56, 47784), (59, 47760), (62, 47730), (69, 47652), (73, 47604), (78, 47583), (91, 47472), (97, 47436), (104, 47397), (106, 47385), (112, 47358),

Gene: Dalilpop_11 Start: 6087, Stop: 6800, Start Num: 15

Candidate Starts for Dalilpop_11:

(Start: 15 @6087 has 17 MA's), (22, 6114), (31, 6171), (46, 6276), (50, 6291), (54, 6309), (55, 6312), (56, 6315), (62, 6369), (65, 6402), (92, 6633), (108, 6720), (115, 6774),

Gene: Dati_55 Start: 48526, Stop: 47846, Start Num: 17

Candidate Starts for Dati_55:

(Start: 14 @48535 has 5 MA's), (Start: 17 @48526 has 160 MA's), (55, 48319), (56, 48316), (59, 48292), (62, 48262), (73, 48136), (78, 48115), (81, 48094), (91, 48004), (104, 47929), (106, 47917), (112, 47890),

Gene: Dione_53 Start: 47666, Stop: 46989, Start Num: 17

Candidate Starts for Dione_53:

(Start: 14 @47675 has 5 MA's), (Start: 17 @47666 has 160 MA's), (42, 47537), (46, 47504), (49, 47489), (55, 47459), (56, 47456), (59, 47432), (62, 47402), (69, 47324), (73, 47276), (78, 47255), (81, 47234), (91, 47144), (97, 47108), (104, 47069), (106, 47057), (109, 47042), (112, 47030),

Gene: DirtMcgirt_65 Start: 40913, Stop: 41590, Start Num: 17

Candidate Starts for DirtMcgirt_65:

(Start: 17 @40913 has 160 MA's), (29, 40955), (55, 41114), (56, 41117), (59, 41141), (62, 41171), (69, 41249), (73, 41297), (78, 41318), (91, 41429), (97, 41465), (104, 41504), (106, 41516),

Gene: DoesntMatter_53 Start: 47959, Stop: 47282, Start Num: 17

Candidate Starts for DoesntMatter_53:

(Start: 14 @47968 has 5 MA's), (Start: 17 @47959 has 160 MA's), (42, 47830), (46, 47797), (49, 47782), (55, 47752), (56, 47749), (59, 47725), (62, 47695), (69, 47617), (73, 47569), (78, 47548), (81, 47527), (91, 47437), (97, 47401), (104, 47362), (106, 47350), (109, 47335), (112, 47323),

Gene: DogYard_73 Start: 45220, Stop: 44687, Start Num: 30

Candidate Starts for DogYard_73:

(Start: 30 @45220 has 16 MA's), (43, 45136), (66, 44971), (68, 44935), (79, 44854), (85, 44800), (94, 44755), (100, 44731), (101, 44725),

Gene: DolOn_59 Start: 49214, Stop: 48534, Start Num: 17

Candidate Starts for DolOn_59:

(Start: 14 @49223 has 5 MA's), (Start: 17 @49214 has 160 MA's), (55, 49007), (56, 49004), (59, 48980), (62, 48950), (73, 48824), (78, 48803), (81, 48782), (91, 48692), (104, 48617), (106, 48605), (112, 48578),

Gene: DonSanchon_53 Start: 47700, Stop: 47014, Start Num: 14

Candidate Starts for DonSanchon_53:

(Start: 14 @47700 has 5 MA's), (Start: 17 @47691 has 160 MA's), (55, 47484), (56, 47481), (59, 47457), (62, 47427), (73, 47301), (78, 47280), (81, 47259), (91, 47169), (97, 47133), (104, 47094), (106, 47082), (112, 47055),

Gene: Donovan_52 Start: 35711, Stop: 36400, Start Num: 16

Candidate Starts for Donovan_52:

(10, 35645), (Start: 16 @35711 has 6 MA's), (33, 35795), (47, 35885), (56, 35927), (59, 35951), (62, 35981), (81, 36152), (104, 36314), (106, 36326), (112, 36353),

Gene: Doomphist_66 Start: 43323, Stop: 44000, Start Num: 17

Candidate Starts for Doomphist_66:

(Start: 17 @43323 has 160 MA's), (29, 43365), (55, 43524), (56, 43527), (59, 43551), (62, 43581), (69, 43659), (73, 43707), (78, 43728), (91, 43839), (97, 43875), (104, 43914), (106, 43926),

Gene: Drago_63 Start: 40916, Stop: 41593, Start Num: 17

Candidate Starts for Drago_63:

(Start: 17 @40916 has 160 MA's), (29, 40958), (55, 41117), (56, 41120), (59, 41144), (62, 41174), (69, 41252), (73, 41300), (78, 41321), (91, 41432), (97, 41468), (104, 41507), (106, 41519),

Gene: ElvisPhasley_56 Start: 48537, Stop: 47857, Start Num: 17

Candidate Starts for ElvisPhasley_56:

(3, 48789), (4, 48780), (5, 48756), (6, 48726), (7, 48675), (8, 48636), (Start: 14 @48546 has 5 MA's), (Start: 17 @48537 has 160 MA's), (46, 48375), (49, 48360), (56, 48327), (59, 48303), (62, 48273), (69, 48195), (73, 48147), (78, 48126), (81, 48105), (91, 48015), (97, 47979), (104, 47940), (106, 47928), (112, 47901),

Gene: EmGer13_55 Start: 47769, Stop: 47092, Start Num: 17

Candidate Starts for EmGer13_55:

(3, 48021), (4, 48012), (5, 47988), (6, 47958), (7, 47907), (8, 47868), (Start: 14 @47778 has 5 MA's), (Start: 17 @47769 has 160 MA's), (46, 47607), (49, 47592), (56, 47559), (59, 47535), (62, 47505), (69, 47427), (73, 47379), (78, 47358), (81, 47337), (91, 47247), (97, 47211), (104, 47172), (106, 47160), (112, 47133),

Gene: Emianna_10 Start: 5953, Stop: 6612, Start Num: 15

Candidate Starts for Emianna_10:

(7, 5818), (13, 5926), (Start: 15 @5953 has 17 MA's), (54, 6154), (55, 6157), (62, 6214), (66, 6247), (78, 6358), (92, 6475), (109, 6565),

Gene: EmpTee_54 Start: 47972, Stop: 47295, Start Num: 17

Candidate Starts for EmpTee_54:

(Start: 14 @47981 has 5 MA's), (Start: 17 @47972 has 160 MA's), (42, 47843), (46, 47810), (49, 47795), (55, 47765), (56, 47762), (59, 47738), (62, 47708), (69, 47630), (73, 47582), (78, 47561), (81, 47540), (91, 47450), (97, 47414), (104, 47375), (106, 47363), (112, 47336),

Gene: EnalisNailo_43 Start: 35875, Stop: 36480, Start Num: 19

Candidate Starts for EnalisNailo_43:

(Start: 19 @35875 has 7 MA's), (29, 35917), (62, 36112), (64, 36145), (69, 36193), (82, 36286), (92, 36355),

Gene: Enby_67 Start: 41192, Stop: 41869, Start Num: 17

Candidate Starts for Enby_67:

(Start: 17 @41192 has 160 MA's), (29, 41234), (55, 41393), (56, 41396), (59, 41420), (62, 41450), (69, 41528), (73, 41576), (78, 41597), (91, 41708), (97, 41744), (104, 41783), (106, 41795),

Gene: Ennea_13 Start: 6764, Stop: 7453, Start Num: 15

Candidate Starts for Ennea_13:

(9, 6692), (13, 6737), (Start: 15 @6764 has 17 MA's), (37, 6881), (54, 6980), (55, 6983), (62, 7040), (78, 7184), (90, 7277), (92, 7301), (109, 7391), (114, 7415),

Gene: Eremos_54 Start: 47965, Stop: 47288, Start Num: 17

Candidate Starts for Eremos_54:

(Start: 14 @47974 has 5 MA's), (Start: 17 @47965 has 160 MA's), (46, 47803), (49, 47788), (56, 47755), (59, 47731), (62, 47701), (69, 47623), (73, 47575), (78, 47554), (81, 47533), (91, 47443), (97, 47407), (104, 47368), (106, 47356), (112, 47329),

Gene: Etaye_55 Start: 48795, Stop: 48115, Start Num: 17

Candidate Starts for Etaye_55:

(Start: 14 @48804 has 5 MA's), (Start: 17 @48795 has 160 MA's), (55, 48588), (56, 48585), (59, 48561), (62, 48531), (73, 48405), (78, 48384), (81, 48363), (91, 48273), (104, 48198), (106, 48186), (112, 48159),

Gene: Eugenia_55 Start: 48360, Stop: 47680, Start Num: 17

Candidate Starts for Eugenia_55:

(Start: 14 @48369 has 5 MA's), (Start: 17 @48360 has 160 MA's), (55, 48153), (56, 48150), (59, 48126), (62, 48096), (73, 47970), (78, 47949), (81, 47928), (91, 47838), (104, 47763), (106, 47751), (112, 47724),

Gene: Flapper_9 Start: 4974, Stop: 5633, Start Num: 15

Candidate Starts for Flapper_9:

(Start: 15 @4974 has 17 MA's), (31, 5037), (50, 5157), (54, 5175), (55, 5178), (56, 5181), (62, 5235), (92, 5499), (108, 5586),

Gene: Forrestell_73 Start: 44528, Stop: 43995, Start Num: 30

Candidate Starts for Forrestell_73:

(Start: 30 @44528 has 16 MA's), (43, 44444), (66, 44279), (68, 44243), (79, 44162), (85, 44108), (94, 44063), (101, 44033),

Gene: Foxboro_10 Start: 5964, Stop: 6641, Start Num: 15

Candidate Starts for Foxboro_10:

(7, 5829), (13, 5937), (Start: 15 @5964 has 17 MA's), (54, 6165), (55, 6168), (62, 6225), (78, 6372), (92, 6489), (109, 6579), (110, 6585),

Gene: Fozzie_54 Start: 48298, Stop: 47618, Start Num: 17

Candidate Starts for Fozzie_54:

(3, 48550), (4, 48541), (5, 48517), (6, 48487), (7, 48436), (8, 48397), (Start: 14 @48307 has 5 MA's), (Start: 17 @48298 has 160 MA's), (46, 48136), (49, 48121), (56, 48088), (59, 48064), (62, 48034), (69, 47956), (73, 47908), (78, 47887), (81, 47866), (91, 47776), (97, 47740), (104, 47701), (106, 47689), (112, 47662),

Gene: Frankicide_54 Start: 47996, Stop: 47319, Start Num: 17

Candidate Starts for Frankicide_54:

(Start: 14 @48005 has 5 MA's), (Start: 17 @47996 has 160 MA's), (46, 47834), (49, 47819), (56, 47786), (59, 47762), (62, 47732), (69, 47654), (73, 47606), (78, 47585), (81, 47564), (91, 47474), (97, 47438), (104, 47399), (106, 47387), (112, 47360),

Gene: FremontTroll_56 Start: 48563, Stop: 47883, Start Num: 17

Candidate Starts for FremontTroll_56:

(3, 48815), (4, 48806), (5, 48782), (6, 48752), (7, 48701), (8, 48662), (Start: 14 @48572 has 5 MA's), (Start: 17 @48563 has 160 MA's), (55, 48356), (56, 48353), (59, 48329), (62, 48299), (73, 48173), (78, 48152), (81, 48131), (91, 48041), (104, 47966), (106, 47954), (112, 47927),

Gene: Freya_53 Start: 47657, Stop: 46980, Start Num: 17

Candidate Starts for Freya_53:

(Start: 14 @47666 has 5 MA's), (Start: 17 @47657 has 160 MA's), (55, 47450), (56, 47447), (59, 47423), (62, 47393), (69, 47315), (73, 47267), (78, 47246), (81, 47225), (91, 47135), (97, 47099), (104, 47060), (106, 47048), (109, 47033), (112, 47021),

Gene: Fruitloop_61 Start: 42550, Stop: 43227, Start Num: 17

Candidate Starts for Fruitloop_61:

(Start: 17 @42550 has 160 MA's), (29, 42592), (55, 42751), (56, 42754), (59, 42778), (62, 42808), (69, 42886), (73, 42934), (78, 42955), (91, 43066), (97, 43102), (104, 43141), (106, 43153),

Gene: FugateOSU_55 Start: 48502, Stop: 47822, Start Num: 17

Candidate Starts for FugateOSU_55:

(Start: 14 @48511 has 5 MA's), (Start: 17 @48502 has 160 MA's), (55, 48295), (56, 48292), (59, 48268), (62, 48238), (73, 48112), (78, 48091), (81, 48070), (91, 47980), (104, 47905), (106, 47893), (112, 47866),

Gene: GMA2_122 Start: 101578, Stop: 100931, Start Num: 21

Candidate Starts for GMA2_122:

(21, 101578), (29, 101527), (Start: 30 @101521 has 16 MA's), (35, 101488), (45, 101416), (62, 101323), (87, 101098), (88, 101086), (89, 101077), (99, 101011),

Gene: Gareth_55 Start: 48496, Stop: 47816, Start Num: 17

Candidate Starts for Gareth_55:

(Start: 14 @48505 has 5 MA's), (Start: 17 @48496 has 160 MA's), (55, 48289), (56, 48286), (59, 48262), (62, 48232), (73, 48106), (78, 48085), (81, 48064), (91, 47974), (104, 47899), (106, 47887), (112, 47860),

Gene: Giraffe_56 Start: 48492, Stop: 47812, Start Num: 17

Candidate Starts for Giraffe_56:

(3, 48744), (4, 48735), (5, 48711), (6, 48681), (7, 48630), (8, 48591), (Start: 14 @48501 has 5 MA's), (Start: 17 @48492 has 160 MA's), (55, 48285), (56, 48282), (59, 48258), (62, 48228), (69, 48150), (73, 48102), (78, 48081), (91, 47970), (104, 47895), (106, 47883), (112, 47856),

Gene: Grand2040_55 Start: 48486, Stop: 47806, Start Num: 17

Candidate Starts for Grand2040_55:

(3, 48738), (4, 48729), (5, 48705), (6, 48675), (7, 48624), (8, 48585), (Start: 14 @48495 has 5 MA's), (Start: 17 @48486 has 160 MA's), (55, 48279), (56, 48276), (59, 48252), (62, 48222), (69, 48144), (73, 48096), (78, 48075), (91, 47964), (97, 47928), (104, 47889), (106, 47877), (112, 47850),

Gene: GreenChile_56 Start: 47987, Stop: 47301, Start Num: 14

Candidate Starts for GreenChile_56:

(Start: 14 @47987 has 5 MA's), (Start: 17 @47978 has 160 MA's), (46, 47816), (49, 47801), (56, 47768), (59, 47744), (62, 47714), (69, 47636), (73, 47588), (78, 47567), (81, 47546), (91, 47456), (97, 47420), (104, 47381), (106, 47369), (112, 47342),

Gene: GrootJr_12 Start: 6386, Stop: 7060, Start Num: 15

Candidate Starts for GrootJr_12:

(7, 6251), (13, 6359), (Start: 15 @6386 has 17 MA's), (54, 6587), (55, 6590), (62, 6647), (66, 6680), (78, 6791), (92, 6908), (109, 6998),

Gene: Gwilliam_56 Start: 48849, Stop: 48169, Start Num: 17

Candidate Starts for Gwilliam_56:

(Start: 14 @48858 has 5 MA's), (Start: 17 @48849 has 160 MA's), (55, 48642), (56, 48639), (59, 48615), (62, 48585), (73, 48459), (78, 48438), (81, 48417), (91, 48327), (104, 48252), (106, 48240), (112, 48213),

Gene: HSavage_54 Start: 47975, Stop: 47298, Start Num: 17

Candidate Starts for HSavage_54:

(Start: 14 @47984 has 5 MA's), (Start: 17 @47975 has 160 MA's), (46, 47813), (49, 47798), (56, 47765), (59, 47741), (62, 47711), (69, 47633), (73, 47585), (78, 47564), (81, 47543), (91, 47453), (97, 47417), (104, 47378), (106, 47366), (112, 47339),

Gene: Haimas_54 Start: 47991, Stop: 47314, Start Num: 17

Candidate Starts for Haimas_54:

(Start: 14 @48000 has 5 MA's), (Start: 17 @47991 has 160 MA's), (55, 47784), (56, 47781), (59, 47757), (62, 47727), (73, 47601), (78, 47580), (81, 47559), (91, 47469), (104, 47394), (106, 47382), (112, 47355),

Gene: Haleema_54 Start: 47990, Stop: 47310, Start Num: 17

Candidate Starts for Haleema_54:

(3, 48242), (4, 48233), (5, 48209), (6, 48179), (7, 48128), (8, 48089), (Start: 14 @47999 has 5 MA's), (Start: 17 @47990 has 160 MA's), (55, 47783), (56, 47780), (59, 47756), (62, 47726), (69, 47648), (73, 47600), (78, 47579), (91, 47468), (97, 47432), (104, 47393), (106, 47381), (112, 47354),

Gene: Hamish_54 Start: 47984, Stop: 47307, Start Num: 17

Candidate Starts for Hamish_54:

(Start: 14 @47993 has 5 MA's), (Start: 17 @47984 has 160 MA's), (55, 47777), (56, 47774), (59, 47750), (62, 47720), (73, 47594), (78, 47573), (81, 47552), (91, 47462), (104, 47387), (106, 47375), (112, 47348),

Gene: Happabalu_55 Start: 48526, Stop: 47846, Start Num: 17

Candidate Starts for Happabalu_55:

(Start: 14 @48535 has 5 MA's), (Start: 17 @48526 has 160 MA's), (55, 48319), (56, 48316), (59, 48292), (62, 48262), (73, 48136), (78, 48115), (81, 48094), (91, 48004), (104, 47929), (106, 47917), (112, 47890),

Gene: Harvey_54 Start: 48021, Stop: 47344, Start Num: 17

Candidate Starts for Harvey_54:

(3, 48273), (4, 48264), (5, 48240), (6, 48210), (7, 48159), (8, 48120), (Start: 14 @48030 has 5 MA's), (Start: 17 @48021 has 160 MA's), (46, 47859), (49, 47844), (56, 47811), (59, 47787), (62, 47757), (69, 47679), (73, 47631), (78, 47610), (81, 47589), (91, 47499), (97, 47463), (104, 47424), (106, 47412), (112, 47385),

Gene: Hashim76_57 Start: 48273, Stop: 47572, Start Num: 16

Candidate Starts for Hashim76_57:

(Start: 16 @48273 has 6 MA's), (20, 48258), (26, 48228), (61, 48018), (62, 48006), (66, 47970), (72, 47883), (81, 47832), (88, 47775), (106, 47646), (112, 47619),

Gene: Hekos_52 Start: 47372, Stop: 46683, Start Num: 14

Candidate Starts for Hekos_52:

(2, 47630), (3, 47615), (4, 47606), (5, 47582), (6, 47552), (7, 47501), (8, 47462), (Start: 14 @47372 has 5 MA's), (Start: 17 @47363 has 160 MA's), (55, 47156), (56, 47153), (59, 47129), (62, 47099), (69, 47021), (73, 46973), (78, 46952), (91, 46841), (97, 46805), (104, 46766), (106, 46754), (112, 46727),

Gene: Held_55 Start: 47995, Stop: 47315, Start Num: 17

Candidate Starts for Held_55:

(3, 48247), (4, 48238), (5, 48214), (6, 48184), (7, 48133), (8, 48094), (Start: 14 @48004 has 5 MA's), (Start: 17 @47995 has 160 MA's), (55, 47788), (56, 47785), (59, 47761), (62, 47731), (69, 47653), (73, 47605), (78, 47584), (91, 47473), (97, 47437), (104, 47398), (106, 47386), (112, 47359),

Gene: HenryJackson_55 Start: 48520, Stop: 47840, Start Num: 17

Candidate Starts for HenryJackson_55:

(Start: 14 @48529 has 5 MA's), (Start: 17 @48520 has 160 MA's), (55, 48313), (56, 48310), (59, 48286), (62, 48256), (73, 48130), (78, 48109), (81, 48088), (91, 47998), (104, 47923), (106, 47911), (112, 47884),

Gene: Hertubise_55 Start: 48287, Stop: 47607, Start Num: 17

Candidate Starts for Hertubise_55:

(Start: 14 @48296 has 5 MA's), (Start: 17 @48287 has 160 MA's), (55, 48080), (56, 48077), (59, 48053), (62, 48023), (73, 47897), (78, 47876), (81, 47855), (91, 47765), (104, 47690), (106, 47678), (112, 47651),

Gene: Hetaeria_54 Start: 48022, Stop: 47345, Start Num: 17

Candidate Starts for Hetaeria_54:

(3, 48274), (4, 48265), (5, 48241), (6, 48211), (7, 48160), (8, 48121), (Start: 14 @48031 has 5 MA's), (Start: 17 @48022 has 160 MA's), (46, 47860), (49, 47845), (56, 47812), (59, 47788), (62, 47758), (69, 47680), (73, 47632), (78, 47611), (81, 47590), (91, 47500), (97, 47464), (104, 47425), (106, 47413), (112, 47386),

Gene: Hive_69 Start: 45000, Stop: 44467, Start Num: 30

Candidate Starts for Hive_69:

(Start: 30 @45000 has 16 MA's), (43, 44916), (66, 44751), (68, 44715), (79, 44634), (85, 44580), (94, 44535), (100, 44511), (101, 44505),

Gene: HogWash_55 Start: 48817, Stop: 48137, Start Num: 17

Candidate Starts for HogWash_55:

(Start: 14 @48826 has 5 MA's), (Start: 17 @48817 has 160 MA's), (55, 48610), (56, 48607), (59, 48583), (62, 48553), (73, 48427), (78, 48406), (81, 48385), (91, 48295), (104, 48220), (106, 48208), (112, 48181),

Gene: Horchata_54 Start: 47975, Stop: 47298, Start Num: 17

Candidate Starts for Horchata_54:

(Start: 14 @47984 has 5 MA's), (Start: 17 @47975 has 160 MA's), (46, 47813), (49, 47798), (56, 47765), (59, 47741), (62, 47711), (69, 47633), (73, 47585), (78, 47564), (81, 47543), (91, 47453), (97, 47417), (104, 47378), (106, 47366), (112, 47339),

Gene: Inverness_54 Start: 47984, Stop: 47307, Start Num: 17

Candidate Starts for Inverness_54:

(3, 48236), (4, 48227), (5, 48203), (6, 48173), (7, 48122), (8, 48083), (Start: 14 @47993 has 5 MA's), (Start: 17 @47984 has 160 MA's), (46, 47822), (49, 47807), (56, 47774), (59, 47750), (62, 47720), (69, 47642), (73, 47594), (78, 47573), (81, 47552), (91, 47462), (97, 47426), (104, 47387), (106, 47375), (112, 47348),

Gene: IrishSherpFalk_67 Start: 43906, Stop: 44583, Start Num: 17

Candidate Starts for IrishSherpFalk_67:

(Start: 17 @43906 has 160 MA's), (29, 43948), (55, 44107), (56, 44110), (59, 44134), (62, 44164), (69, 44242), (73, 44290), (78, 44311), (91, 44422), (97, 44458), (104, 44497), (106, 44509),

Gene: IsaacEli_56 Start: 48508, Stop: 47828, Start Num: 17

Candidate Starts for IsaacEli_56:

(Start: 14 @48517 has 5 MA's), (Start: 17 @48508 has 160 MA's), (55, 48301), (56, 48298), (59, 48274), (62, 48244), (73, 48118), (78, 48097), (81, 48076), (91, 47986), (104, 47911), (106, 47899), (112, 47872),

Gene: JDog_54 Start: 48524, Stop: 47844, Start Num: 17

Candidate Starts for JDog_54:

(2, 48791), (3, 48776), (4, 48767), (5, 48743), (6, 48713), (7, 48662), (8, 48623), (Start: 14 @48533 has 5 MA's), (Start: 17 @48524 has 160 MA's), (55, 48317), (56, 48314), (59, 48290), (62, 48260), (73, 48134), (78, 48113), (81, 48092), (91, 48002), (104, 47927), (106, 47915), (112, 47888),

Gene: Jesabah_56 Start: 48525, Stop: 47845, Start Num: 17

Candidate Starts for Jesabah_56:

(Start: 14 @48534 has 5 MA's), (Start: 17 @48525 has 160 MA's), (55, 48318), (56, 48315), (59, 48291), (62, 48261), (73, 48135), (78, 48114), (81, 48093), (91, 48003), (104, 47928), (106, 47916), (112, 47889),

Gene: Jifall16_9 Start: 5425, Stop: 6087, Start Num: 15

Candidate Starts for Jifall16_9:

(7, 5290), (13, 5398), (Start: 15 @5425 has 17 MA's), (54, 5626), (55, 5629), (62, 5686), (78, 5833), (92, 5950), (109, 6040),

Gene: Jillium_55 Start: 48516, Stop: 47836, Start Num: 17

Candidate Starts for Jillium_55:

(Start: 14 @48525 has 5 MA's), (Start: 17 @48516 has 160 MA's), (55, 48309), (56, 48306), (59, 48282), (62, 48252), (73, 48126), (78, 48105), (81, 48084), (91, 47994), (104, 47919), (106, 47907), (112, 47880),

Gene: Kahve_55 Start: 48517, Stop: 47837, Start Num: 17

Candidate Starts for Kahve_55:

(Start: 14 @48526 has 5 MA's), (Start: 17 @48517 has 160 MA's), (55, 48310), (56, 48307), (59, 48283), (62, 48253), (73, 48127), (78, 48106), (81, 48085), (91, 47995), (104, 47920), (106, 47908), (112, 47881),

Gene: Khan1_56 Start: 48473, Stop: 47793, Start Num: 17

Candidate Starts for Khan1_56:

(3, 48725), (4, 48716), (5, 48692), (6, 48662), (7, 48611), (8, 48572), (Start: 14 @48482 has 5 MA's), (Start: 17 @48473 has 160 MA's), (55, 48266), (56, 48263), (59, 48239), (62, 48209), (69, 48131), (73, 48083), (78, 48062), (91, 47951), (97, 47915), (104, 47876), (106, 47864), (112, 47837),

Gene: KidneyBean_10 Start: 5770, Stop: 6429, Start Num: 15

Candidate Starts for KidneyBean_10:

(7, 5635), (13, 5743), (Start: 15 @5770 has 17 MA's), (54, 5971), (55, 5974), (62, 6031), (66, 6064), (78, 6175), (92, 6292), (109, 6382),

Gene: Kikipoo_56 Start: 48508, Stop: 47828, Start Num: 17

Candidate Starts for Kikipoo_56:

(Start: 14 @48517 has 5 MA's), (Start: 17 @48508 has 160 MA's), (55, 48301), (56, 48298), (59, 48274), (62, 48244), (73, 48118), (78, 48097), (81, 48076), (91, 47986), (104, 47911), (106, 47899), (112, 47872),

Gene: Kimbrough_56 Start: 48517, Stop: 47837, Start Num: 17

Candidate Starts for Kimbrough_56:

(Start: 14 @48526 has 5 MA's), (Start: 17 @48517 has 160 MA's), (55, 48310), (56, 48307), (59, 48283), (62, 48253), (73, 48127), (78, 48106), (81, 48085), (91, 47995), (104, 47920), (106, 47908), (112, 47881),

Gene: KingTut_47 Start: 44181, Stop: 43501, Start Num: 17

Candidate Starts for KingTut_47:

(Start: 14 @44190 has 5 MA's), (Start: 17 @44181 has 160 MA's), (55, 43974), (56, 43971), (59, 43947), (62, 43917), (73, 43791), (78, 43770), (81, 43749), (91, 43659), (104, 43584), (106, 43572), (112, 43545),

Gene: KlimbOn_54 Start: 47976, Stop: 47299, Start Num: 17

Candidate Starts for KlimbOn_54:

(Start: 14 @47985 has 5 MA's), (Start: 17 @47976 has 160 MA's), (46, 47814), (49, 47799), (56, 47766), (59, 47742), (62, 47712), (69, 47634), (73, 47586), (78, 47565), (81, 47544), (91, 47454), (97, 47418), (104, 47379), (106, 47367), (110, 47346), (112, 47340),

Gene: Kubulix_73 Start: 44890, Stop: 44357, Start Num: 30

Candidate Starts for Kubulix_73:

(Start: 30 @44890 has 16 MA's), (43, 44806), (66, 44641), (68, 44605), (79, 44524), (85, 44470), (94, 44425), (100, 44401), (101, 44395),

Gene: Kurt_10 Start: 5953, Stop: 6612, Start Num: 15

Candidate Starts for Kurt_10:

(7, 5818), (13, 5926), (Start: 15 @5953 has 17 MA's), (54, 6154), (55, 6157), (62, 6214), (66, 6247), (78, 6358), (92, 6475), (109, 6565),

Gene: Kwadwo_54 Start: 47969, Stop: 47289, Start Num: 17

Candidate Starts for Kwadwo_54:

(3, 48221), (4, 48212), (5, 48188), (6, 48158), (7, 48107), (8, 48068), (Start: 14 @47978 has 5 MA's), (Start: 17 @47969 has 160 MA's), (55, 47762), (56, 47759), (59, 47735), (62, 47705), (69, 47627), (73, 47579), (78, 47558), (91, 47447), (97, 47411), (104, 47372), (106, 47360), (112, 47333),

Gene: Lasker_90 Start: 50641, Stop: 51180, Start Num: 30

Candidate Starts for Lasker_90:

(25, 50605), (Start: 30 @50641 has 16 MA's), (66, 50887), (76, 50986), (77, 50989), (79, 51004), (85, 51058), (95, 51100),

Gene: Lasso_55 Start: 48244, Stop: 47564, Start Num: 17

Candidate Starts for Lasso_55:

(3, 48496), (4, 48487), (5, 48463), (6, 48433), (7, 48382), (8, 48343), (Start: 14 @48253 has 5 MA's), (Start: 17 @48244 has 160 MA's), (55, 48037), (56, 48034), (59, 48010), (62, 47980), (69, 47902), (73, 47854), (78, 47833), (91, 47722), (97, 47686), (104, 47647), (106, 47635), (112, 47608),

Gene: LeeLot_55 Start: 48296, Stop: 47616, Start Num: 17

Candidate Starts for LeeLot_55:

(2, 48563), (3, 48548), (4, 48539), (5, 48515), (6, 48485), (7, 48434), (8, 48395), (Start: 14 @48305 has 5 MA's), (Start: 17 @48296 has 160 MA's), (55, 48089), (56, 48086), (59, 48062), (62, 48032), (73, 47906), (78, 47885), (81, 47864), (91, 47774), (104, 47699), (106, 47687), (112, 47660),

Gene: Lego3393_54 Start: 48508, Stop: 47828, Start Num: 17

Candidate Starts for Lego3393_54:

(Start: 14 @48517 has 5 MA's), (Start: 17 @48508 has 160 MA's), (55, 48301), (56, 48298), (59, 48274), (62, 48244), (73, 48118), (78, 48097), (81, 48076), (91, 47986), (104, 47911), (106, 47899), (112, 47872),

Gene: Lehmann_55 Start: 47867, Stop: 47187, Start Num: 17

Candidate Starts for Lehmann_55:

(3, 48119), (4, 48110), (5, 48086), (6, 48056), (7, 48005), (8, 47966), (Start: 14 @47876 has 5 MA's), (Start: 17 @47867 has 160 MA's), (46, 47705), (49, 47690), (56, 47657), (59, 47633), (62, 47603), (69, 47525), (73, 47477), (78, 47456), (81, 47435), (91, 47345), (97, 47309), (104, 47270), (106, 47258), (112, 47231),

Gene: Lilas_46 Start: 37586, Stop: 38191, Start Num: 19

Candidate Starts for Lilas_46:

(Start: 19 @37586 has 7 MA's), (29, 37628), (62, 37823), (64, 37856), (69, 37904), (82, 37997), (92, 38066),

Gene: LittleMinkey_59 Start: 47912, Stop: 47211, Start Num: 16

Candidate Starts for LittleMinkey_59:

(Start: 16 @47912 has 6 MA's), (20, 47897), (26, 47867), (62, 47645), (66, 47609), (88, 47414), (106, 47285), (112, 47258),

Gene: Llij_62 Start: 41070, Stop: 41747, Start Num: 17

Candidate Starts for Llij_62:

(Start: 17 @41070 has 160 MA's), (29, 41112), (55, 41271), (56, 41274), (59, 41298), (62, 41328), (69, 41406), (73, 41454), (78, 41475), (91, 41586), (97, 41622), (104, 41661), (106, 41673),

Gene: Lollipop1437_12 Start: 6752, Stop: 7441, Start Num: 15

Candidate Starts for Lollipop1437_12:

(9, 6680), (13, 6725), (Start: 15 @6752 has 17 MA's), (37, 6869), (54, 6968), (55, 6971), (62, 7028), (78, 7172), (90, 7265), (92, 7289), (109, 7379), (114, 7403),

Gene: LordVader_70 Start: 40689, Stop: 41372, Start Num: 15

Candidate Starts for LordVader_70:

(Start: 15 @40689 has 17 MA's), (33, 40767), (47, 40857), (56, 40899), (59, 40923), (62, 40953), (81, 41124), (104, 41286), (106, 41298), (111, 41322), (112, 41325),

Gene: Lorde_66 Start: 40357, Stop: 41034, Start Num: 17

Candidate Starts for Lorde_66:

(Start: 17 @40357 has 160 MA's), (29, 40399), (55, 40558), (56, 40561), (59, 40585), (62, 40615), (69, 40693), (73, 40741), (78, 40762), (91, 40873), (97, 40909), (104, 40948), (106, 40960),

Gene: LuckyMarjie_53 Start: 47677, Stop: 47000, Start Num: 17

Candidate Starts for LuckyMarjie_53:

(Start: 14 @47686 has 5 MA's), (Start: 17 @47677 has 160 MA's), (42, 47548), (46, 47515), (49, 47500), (55, 47470), (56, 47467), (59, 47443), (62, 47413), (69, 47335), (73, 47287), (78, 47266), (81, 47245), (91, 47155), (97, 47119), (104, 47080), (106, 47068), (109, 47053), (112, 47041),

Gene: Lulumae_53 Start: 47662, Stop: 46985, Start Num: 17

Candidate Starts for Lulumae_53:

(Start: 14 @47671 has 5 MA's), (Start: 17 @47662 has 160 MA's), (42, 47533), (46, 47500), (49, 47485), (55, 47455), (56, 47452), (59, 47428), (62, 47398), (69, 47320), (73, 47272), (78, 47251), (81, 47230), (91, 47140), (97, 47104), (104, 47065), (106, 47053), (109, 47038), (112, 47026),

Gene: MRabcd_54 Start: 48059, Stop: 47379, Start Num: 17

Candidate Starts for MRabcd_54:

(3, 48311), (4, 48302), (5, 48278), (6, 48248), (7, 48197), (8, 48158), (Start: 14 @48068 has 5 MA's), (Start: 17 @48059 has 160 MA's), (55, 47852), (56, 47849), (59, 47825), (62, 47795), (69, 47717), (73, 47669), (78, 47648), (91, 47537), (97, 47501), (104, 47462), (106, 47450), (112, 47423),

Gene: Mana_54 Start: 47984, Stop: 47304, Start Num: 17

Candidate Starts for Mana_54:

(3, 48236), (4, 48227), (5, 48203), (6, 48173), (7, 48122), (8, 48083), (Start: 14 @47993 has 5 MA's), (Start: 17 @47984 has 160 MA's), (55, 47777), (56, 47774), (59, 47750), (62, 47720), (69, 47642), (73, 47594), (78, 47573), (91, 47462), (97, 47426), (104, 47387), (106, 47375), (112, 47348),

Gene: Manad_54 Start: 47959, Stop: 47282, Start Num: 17

Candidate Starts for Manad_54:

(3, 48211), (4, 48202), (5, 48178), (6, 48148), (7, 48097), (8, 48058), (Start: 14 @47968 has 5 MA's), (Start: 17 @47959 has 160 MA's), (46, 47797), (49, 47782), (56, 47749), (59, 47725), (62, 47695), (69, 47617), (73, 47569), (78, 47548), (81, 47527), (91, 47437), (97, 47401), (104, 47362), (106, 47350), (112, 47323),

Gene: Maru_55 Start: 48423, Stop: 47743, Start Num: 17

Candidate Starts for Maru_55:

(3, 48675), (4, 48666), (5, 48642), (6, 48612), (7, 48561), (8, 48522), (Start: 14 @48432 has 5 MA's), (Start: 17 @48423 has 160 MA's), (55, 48216), (56, 48213), (59, 48189), (62, 48159), (69, 48081), (73, 48033), (78, 48012), (91, 47901), (97, 47865), (104, 47826), (106, 47814), (112, 47787),

Gene: Matalotodo_54 Start: 47994, Stop: 47317, Start Num: 17

Candidate Starts for Matalotodo_54:

(Start: 14 @48003 has 5 MA's), (Start: 17 @47994 has 160 MA's), (55, 47787), (56, 47784), (59, 47760), (62, 47730), (73, 47604), (78, 47583), (81, 47562), (91, 47472), (97, 47436), (104, 47397), (106, 47385), (112, 47358),

Gene: Mecca_55 Start: 48505, Stop: 47825, Start Num: 17

Candidate Starts for Mecca_55:

(Start: 14 @48514 has 5 MA's), (Start: 17 @48505 has 160 MA's), (55, 48298), (56, 48295), (59, 48271), (62, 48241), (73, 48115), (78, 48094), (81, 48073), (91, 47983), (104, 47908), (106, 47896), (112, 47869),

Gene: Megatron_56 Start: 48496, Stop: 47816, Start Num: 17

Candidate Starts for Megatron_56:

(Start: 14 @48505 has 5 MA's), (Start: 17 @48496 has 160 MA's), (55, 48289), (56, 48286), (59, 48262), (62, 48232), (73, 48106), (78, 48085), (81, 48064), (91, 47974), (104, 47899), (106, 47887), (112, 47860),

Gene: Melc17_55 Start: 48814, Stop: 48134, Start Num: 17

Candidate Starts for Melc17_55:

(Start: 14 @48823 has 5 MA's), (Start: 17 @48814 has 160 MA's), (55, 48607), (56, 48604), (59, 48580), (62, 48550), (73, 48424), (78, 48403), (81, 48382), (91, 48292), (104, 48217), (106, 48205), (112, 48178),

Gene: MellowYellow_74 Start: 45201, Stop: 44665, Start Num: 30

Candidate Starts for MellowYellow_74:

(Start: 30 @45201 has 16 MA's), (43, 45117), (66, 44952), (68, 44916), (75, 44856), (79, 44835), (85, 44781), (94, 44733), (101, 44703),

Gene: Mesh1_56 Start: 48516, Stop: 47836, Start Num: 17

Candidate Starts for Mesh1_56:

(3, 48768), (4, 48759), (5, 48735), (6, 48705), (7, 48654), (8, 48615), (Start: 14 @48525 has 5 MA's), (Start: 17 @48516 has 160 MA's), (46, 48354), (49, 48339), (56, 48306), (59, 48282), (62, 48252), (69, 48174), (73, 48126), (78, 48105), (81, 48084), (91, 47994), (97, 47958), (104, 47919), (106, 47907), (112, 47880),

Gene: MitKao_55 Start: 47994, Stop: 47314, Start Num: 17

Candidate Starts for MitKao_55:

(3, 48246), (4, 48237), (5, 48213), (6, 48183), (7, 48132), (8, 48093), (Start: 14 @48003 has 5 MA's), (Start: 17 @47994 has 160 MA's), (55, 47787), (56, 47784), (59, 47760), (62, 47730), (69, 47652), (73, 47604), (78, 47583), (91, 47472), (97, 47436), (104, 47397), (106, 47385), (112, 47358),

Gene: Morgushi_55 Start: 47983, Stop: 47303, Start Num: 17

Candidate Starts for Morgushi_55:

(3, 48235), (4, 48226), (5, 48202), (6, 48172), (7, 48121), (8, 48082), (Start: 14 @47992 has 5 MA's), (Start: 17 @47983 has 160 MA's), (55, 47776), (56, 47773), (59, 47749), (62, 47719), (69, 47641), (73, 47593), (78, 47572), (91, 47461), (97, 47425), (104, 47386), (106, 47374), (112, 47347),

Gene: Morty_56 Start: 48505, Stop: 47825, Start Num: 17

Candidate Starts for Morty_56:

(Start: 14 @48514 has 5 MA's), (Start: 17 @48505 has 160 MA's), (55, 48298), (56, 48295), (59, 48271), (62, 48241), (73, 48115), (78, 48094), (81, 48073), (91, 47983), (104, 47908), (106, 47896), (112, 47869),

Gene: Mosaic_54 Start: 47988, Stop: 47308, Start Num: 17

Candidate Starts for Mosaic_54:

(3, 48240), (4, 48231), (5, 48207), (6, 48177), (7, 48126), (8, 48087), (Start: 14 @47997 has 5 MA's), (Start: 17 @47988 has 160 MA's), (55, 47781), (56, 47778), (59, 47754), (62, 47724), (69, 47646), (73, 47598), (78, 47577), (91, 47466), (97, 47430), (104, 47391), (106, 47379), (112, 47352),

Gene: MrPhizzler_57 Start: 48450, Stop: 47770, Start Num: 17

Candidate Starts for MrPhizzler_57:

(3, 48702), (4, 48693), (5, 48669), (6, 48639), (7, 48588), (8, 48549), (Start: 14 @48459 has 5 MA's), (Start: 17 @48450 has 160 MA's), (55, 48243), (56, 48240), (59, 48216), (62, 48186), (69, 48108), (73, 48060), (78, 48039), (91, 47928), (97, 47892), (104, 47853), (106, 47841), (112, 47814),

Gene: Mulan_55 Start: 48222, Stop: 47542, Start Num: 17

Candidate Starts for Mulan_55:

(Start: 14 @48231 has 5 MA's), (Start: 17 @48222 has 160 MA's), (55, 48015), (56, 48012), (59, 47988), (62, 47958), (73, 47832), (78, 47811), (81, 47790), (91, 47700), (104, 47625), (106, 47613), (112, 47586),

Gene: Murdoc_54 Start: 47984, Stop: 47307, Start Num: 17

Candidate Starts for Murdoc_54:

(Start: 14 @47993 has 5 MA's), (Start: 17 @47984 has 160 MA's), (55, 47777), (56, 47774), (59, 47750), (62, 47720), (73, 47594), (78, 47573), (81, 47552), (91, 47462), (97, 47426), (104, 47387), (106, 47375), (112, 47348),

Gene: MurphyJoseph_88 Start: 48254, Stop: 48793, Start Num: 30

Candidate Starts for MurphyJoseph_88:

(25, 48218), (Start: 30 @48254 has 16 MA's), (53, 48398), (66, 48500), (76, 48599), (77, 48602), (79, 48617), (85, 48671), (95, 48713),

Gene: Nacho_0056 Start: 48499, Stop: 47819, Start Num: 17

Candidate Starts for Nacho_0056:

(Start: 14 @48508 has 5 MA's), (Start: 17 @48499 has 160 MA's), (55, 48292), (56, 48289), (59, 48265), (62, 48235), (73, 48109), (78, 48088), (81, 48067), (91, 47977), (104, 47902), (106, 47890), (112, 47863),

Gene: NatB6_10 Start: 6032, Stop: 6694, Start Num: 15

Candidate Starts for NatB6_10:

(7, 5897), (13, 6005), (Start: 15 @6032 has 17 MA's), (28, 6074), (54, 6233), (55, 6236), (60, 6269), (62, 6293), (78, 6440), (92, 6557), (109, 6647), (110, 6653),

Gene: Newman_54 Start: 47979, Stop: 47302, Start Num: 17

Candidate Starts for Newman_54:

(3, 48231), (4, 48222), (5, 48198), (6, 48168), (7, 48117), (8, 48078), (Start: 14 @47988 has 5 MA's), (Start: 17 @47979 has 160 MA's), (46, 47817), (49, 47802), (56, 47769), (59, 47745), (62, 47715), (69, 47637), (73, 47589), (78, 47568), (81, 47547), (91, 47457), (97, 47421), (104, 47382), (106, 47370), (112, 47343),

Gene: Nikan_72 Start: 45393, Stop: 44857, Start Num: 30

Candidate Starts for Nikan_72:

(23, 45435), (24, 45432), (Start: 30 @45393 has 16 MA's), (39, 45342), (43, 45309), (52, 45255), (60, 45207), (68, 45108), (71, 45090), (76, 45045), (79, 45027), (94, 44925), (101, 44895),

Gene: NovumRegina_10 Start: 6385, Stop: 7059, Start Num: 15

Candidate Starts for NovumRegina_10:

(7, 6250), (13, 6358), (Start: 15 @6385 has 17 MA's), (54, 6586), (55, 6589), (62, 6646), (66, 6679), (78, 6790), (92, 6907), (109, 6997),

Gene: Numberten_54 Start: 47974, Stop: 47297, Start Num: 17

Candidate Starts for Numberten_54:

(Start: 14 @47983 has 5 MA's), (Start: 17 @47974 has 160 MA's), (42, 47845), (46, 47812), (49, 47797), (55, 47767), (56, 47764), (59, 47740), (62, 47710), (69, 47632), (73, 47584), (78, 47563), (81, 47542), (91, 47452), (97, 47416), (104, 47377), (106, 47365), (109, 47350), (112, 47338),

Gene: NyleyClemson_72 Start: 44816, Stop: 44280, Start Num: 30

Candidate Starts for NyleyClemson_72:

(Start: 30 @44816 has 16 MA's), (43, 44732), (66, 44567), (68, 44531), (75, 44471), (79, 44450), (85, 44396), (94, 44348), (101, 44318),

Gene: OSmaximus_56 Start: 48538, Stop: 47858, Start Num: 17

Candidate Starts for OSmaximus_56:

(3, 48790), (4, 48781), (5, 48757), (6, 48727), (7, 48676), (8, 48637), (Start: 14 @48547 has 5 MA's), (Start: 17 @48538 has 160 MA's), (46, 48376), (49, 48361), (56, 48328), (59, 48304), (62, 48274), (69, 48196), (73, 48148), (78, 48127), (81, 48106), (91, 48016), (97, 47980), (104, 47941), (106, 47929), (112, 47902),

Gene: Odyssey395_74 Start: 45241, Stop: 44708, Start Num: 30

Candidate Starts for Odyssey395_74:

(Start: 30 @45241 has 16 MA's), (43, 45157), (66, 44992), (68, 44956), (79, 44875), (85, 44821), (94, 44776), (100, 44752), (101, 44746),

Gene: Ogotogo_73 Start: 43850, Stop: 44527, Start Num: 17

Candidate Starts for Ogotogo_73:

(Start: 17 @43850 has 160 MA's), (29, 43892), (55, 44051), (56, 44054), (59, 44078), (62, 44108), (69, 44186), (73, 44234), (78, 44255), (91, 44366), (97, 44402), (104, 44441), (106, 44453),

Gene: Okabe_60 Start: 38644, Stop: 39330, Start Num: 17

Candidate Starts for Okabe_60:

(Start: 17 @38644 has 160 MA's), (55, 38854), (56, 38857), (59, 38881), (62, 38911), (69, 38989), (73, 39037), (78, 39058), (91, 39169), (97, 39205), (104, 39244), (106, 39256), (112, 39283),

Gene: Oksu_71 Start: 46299, Stop: 46976, Start Num: 17

Candidate Starts for Oksu_71:

(Start: 17 @46299 has 160 MA's), (29, 46341), (55, 46500), (56, 46503), (59, 46527), (62, 46557), (69, 46635), (73, 46683), (78, 46704), (91, 46815), (97, 46851), (104, 46890), (106, 46902),

Gene: Olive_54 Start: 47964, Stop: 47287, Start Num: 17

Candidate Starts for Olive_54:

(Start: 14 @47973 has 5 MA's), (Start: 17 @47964 has 160 MA's), (42, 47835), (46, 47802), (49, 47787), (55, 47757), (56, 47754), (59, 47730), (62, 47700), (69, 47622), (73, 47574), (78, 47553), (81, 47532), (91, 47442), (97, 47406), (104, 47367), (106, 47355), (112, 47328),

Gene: OliverWalter_54 Start: 47985, Stop: 47308, Start Num: 17

Candidate Starts for OliverWalter_54:

(Start: 14 @47994 has 5 MA's), (Start: 17 @47985 has 160 MA's), (46, 47823), (49, 47808), (56, 47775), (59, 47751), (62, 47721), (69, 47643), (73, 47595), (78, 47574), (81, 47553), (91, 47463), (97, 47427), (104, 47388), (106, 47376), (112, 47349),

Gene: Ollypop_69 Start: 45618, Stop: 45067, Start Num: 30

Candidate Starts for Ollypop_69:

(Start: 30 @45618 has 16 MA's), (43, 45534), (52, 45480), (60, 45432), (66, 45369), (68, 45333), (79, 45252), (101, 45105), (105, 45075),

Gene: Omniscient_56 Start: 48812, Stop: 48132, Start Num: 17

Candidate Starts for Omniscient_56:

(Start: 14 @48821 has 5 MA's), (Start: 17 @48812 has 160 MA's), (55, 48605), (56, 48602), (59, 48578), (62, 48548), (73, 48422), (78, 48401), (81, 48380), (91, 48290), (104, 48215), (106, 48203), (112, 48176),

Gene: OneBrain_56 Start: 48016, Stop: 47336, Start Num: 17

Candidate Starts for OneBrain_56:

(Start: 14 @48025 has 5 MA's), (Start: 17 @48016 has 160 MA's), (46, 47854), (49, 47839), (56, 47806), (59, 47782), (62, 47752), (69, 47674), (73, 47626), (78, 47605), (81, 47584), (91, 47494), (97, 47458), (104, 47419), (106, 47407), (112, 47380),

Gene: Oosterbaan_55 Start: 48274, Stop: 47594, Start Num: 17

Candidate Starts for Oosterbaan_55:

(Start: 14 @48283 has 5 MA's), (Start: 17 @48274 has 160 MA's), (55, 48067), (56, 48064), (59, 48040), (62, 48010), (73, 47884), (78, 47863), (81, 47842), (91, 47752), (104, 47677), (106, 47665), (112, 47638),

Gene: PG1_56 Start: 48507, Stop: 47827, Start Num: 17

Candidate Starts for PG1_56:

(Start: 14 @48516 has 5 MA's), (Start: 17 @48507 has 160 MA's), (55, 48300), (56, 48297), (59, 48273), (62, 48243), (73, 48117), (78, 48096), (81, 48075), (91, 47985), (104, 47910), (106, 47898), (112, 47871),

Gene: PSonyx_69 Start: 41194, Stop: 40556, Start Num: 16

Candidate Starts for PSonyx_69:

(Start: 16 @41194 has 6 MA's), (38, 41083), (79, 40762), (80, 40753), (83, 40738), (103, 40594),

Gene: Phareon_54 Start: 47671, Stop: 46994, Start Num: 17

Candidate Starts for Phareon_54:

(Start: 14 @47680 has 5 MA's), (Start: 17 @47671 has 160 MA's), (42, 47542), (46, 47509), (49, 47494), (55, 47464), (56, 47461), (59, 47437), (62, 47407), (69, 47329), (73, 47281), (78, 47260), (81, 47239), (91, 47149), (97, 47113), (104, 47074), (106, 47062), (109, 47047), (112, 47035),

Gene: PhatCats2014_56 Start: 48511, Stop: 47831, Start Num: 17

Candidate Starts for PhatCats2014_56:

(Start: 14 @48520 has 5 MA's), (Start: 17 @48511 has 160 MA's), (55, 48304), (56, 48301), (59, 48277), (62, 48247), (73, 48121), (78, 48100), (81, 48079), (91, 47989), (104, 47914), (106, 47902), (112, 47875),

Gene: Phatniss_64 Start: 42165, Stop: 42842, Start Num: 17

Candidate Starts for Phatniss_64:

(Start: 17 @42165 has 160 MA's), (29, 42207), (55, 42366), (56, 42369), (59, 42393), (62, 42423), (69, 42501), (73, 42549), (78, 42570), (91, 42681), (97, 42717), (104, 42756), (106, 42768),

Gene: Phomeo_9 Start: 5606, Stop: 6265, Start Num: 15

Candidate Starts for Phomeo_9:

(7, 5471), (13, 5579), (Start: 15 @5606 has 17 MA's), (54, 5807), (55, 5810), (62, 5867), (66, 5900), (78, 6011), (92, 6128), (109, 6218),

Gene: Phrappuccino_151 Start: 104613, Stop: 105200, Start Num: 27

Candidate Starts for Phrappuccino_151:

(7, 104412), (Start: 27 @104613 has 2 MA's), (36, 104661), (44, 104712), (51, 104757), (66, 104874), (69, 104913), (70, 104919), (74, 104964), (76, 104973), (82, 105012), (91, 105081), (92, 105084), (93, 105087),

Gene: Phunky_54 Start: 47968, Stop: 47291, Start Num: 17

Candidate Starts for Phunky_54:

(Start: 14 @47977 has 5 MA's), (Start: 17 @47968 has 160 MA's), (42, 47839), (46, 47806), (49, 47791), (55, 47761), (56, 47758), (59, 47734), (62, 47704), (69, 47626), (73, 47578), (78, 47557), (81, 47536), (91, 47446), (97, 47410), (104, 47371), (106, 47359), (109, 47344), (112, 47332),

Gene: PhuzzTulsa_71 Start: 45504, Stop: 44953, Start Num: 30

Candidate Starts for PhuzzTulsa_71:

(Start: 30 @45504 has 16 MA's), (43, 45420), (60, 45318), (66, 45255), (68, 45219), (75, 45159), (79, 45138), (85, 45084), (94, 45021), (96, 45009), (101, 44991),

Gene: Piglet_0055 Start: 48493, Stop: 47804, Start Num: 14

Candidate Starts for Piglet_0055:

(Start: 14 @48493 has 5 MA's), (Start: 17 @48484 has 160 MA's), (55, 48277), (56, 48274), (59, 48250), (62, 48220), (73, 48094), (78, 48073), (81, 48052), (91, 47962), (104, 47887), (106, 47875), (112, 47848),

Gene: PinheadLarry_56 Start: 48509, Stop: 47829, Start Num: 17

Candidate Starts for PinheadLarry_56:

(Start: 14 @48518 has 5 MA's), (Start: 17 @48509 has 160 MA's), (55, 48302), (56, 48299), (59, 48275), (62, 48245), (73, 48119), (78, 48098), (81, 48077), (91, 47987), (97, 47951), (104, 47912), (106, 47900), (112, 47873),

Gene: Pipsqueak_54 Start: 47997, Stop: 47320, Start Num: 17

Candidate Starts for Pipsqueak_54:

(Start: 14 @48006 has 5 MA's), (Start: 17 @47997 has 160 MA's), (55, 47790), (56, 47787), (59, 47763), (62, 47733), (73, 47607), (78, 47586), (81, 47565), (91, 47475), (97, 47439), (104, 47400), (106, 47388), (112, 47361),

Gene: Placalicious_55 Start: 48499, Stop: 47819, Start Num: 17

Candidate Starts for Placalicious_55:

(Start: 14 @48508 has 5 MA's), (Start: 17 @48499 has 160 MA's), (55, 48292), (56, 48289), (59, 48265), (62, 48235), (73, 48109), (78, 48088), (81, 48067), (91, 47977), (104, 47902), (106, 47890), (112, 47863),

Gene: Plmatters_54 Start: 47971, Stop: 47294, Start Num: 17

Candidate Starts for Plmatters_54:

(3, 48223), (4, 48214), (5, 48190), (6, 48160), (7, 48109), (8, 48070), (Start: 14 @47980 has 5 MA's), (Start: 17 @47971 has 160 MA's), (42, 47842), (46, 47809), (49, 47794), (55, 47764), (56, 47761), (59, 47737), (62, 47707), (69, 47629), (73, 47581), (78, 47560), (81, 47539), (91, 47449), (97, 47413), (104, 47374), (106, 47362), (109, 47347), (112, 47335),

Gene: Poenanya_66 Start: 43323, Stop: 44000, Start Num: 17

Candidate Starts for Poenanya_66:

(Start: 17 @43323 has 160 MA's), (29, 43365), (55, 43524), (56, 43527), (59, 43551), (62, 43581), (69, 43659), (73, 43707), (78, 43728), (91, 43839), (97, 43875), (104, 43914), (106, 43926),

Gene: Pointis_70 Start: 44817, Stop: 44284, Start Num: 30

Candidate Starts for Pointis_70:

(Start: 30 @44817 has 16 MA's), (43, 44733), (66, 44568), (68, 44532), (79, 44451), (85, 44397), (94, 44352), (100, 44328), (101, 44322),

Gene: Pops_54 Start: 47956, Stop: 47309, Start Num: 17

Candidate Starts for Pops_54:

(2, 48223), (3, 48208), (4, 48199), (5, 48175), (6, 48145), (7, 48094), (8, 48055), (Start: 14 @47965 has 5 MA's), (Start: 17 @47956 has 160 MA's), (31, 47899), (56, 47746), (59, 47722), (62, 47692), (73, 47566), (78, 47545), (81, 47524), (91, 47434), (104, 47389), (106, 47377), (112, 47350),

Gene: Popstraw_69 Start: 44976, Stop: 44440, Start Num: 30

Candidate Starts for Popstraw_69:

(Start: 30 @44976 has 16 MA's), (43, 44892), (66, 44727), (68, 44691), (75, 44631), (79, 44610), (85, 44556), (94, 44508), (101, 44478),

Gene: Posh_51 Start: 37991, Stop: 38596, Start Num: 19

Candidate Starts for Posh_51:

(Start: 19 @37991 has 7 MA's), (29, 38033), (62, 38228), (64, 38261), (69, 38309), (82, 38402), (92, 38471), (102, 38525),

Gene: Potter_54 Start: 48005, Stop: 47325, Start Num: 17

Candidate Starts for Potter_54:

(3, 48257), (4, 48248), (5, 48224), (6, 48194), (7, 48143), (8, 48104), (Start: 14 @48014 has 5 MA's), (Start: 17 @48005 has 160 MA's), (55, 47798), (56, 47795), (59, 47771), (62, 47741), (69, 47663), (73, 47615), (78, 47594), (91, 47483), (97, 47447), (104, 47408), (106, 47396), (112, 47369),

Gene: ProfessorX_54 Start: 47963, Stop: 47286, Start Num: 17

Candidate Starts for ProfessorX_54:

(Start: 14 @47972 has 5 MA's), (Start: 17 @47963 has 160 MA's), (55, 47756), (56, 47753), (59, 47729), (62, 47699), (69, 47621), (73, 47573), (78, 47552), (81, 47531), (91, 47441), (97, 47405), (104, 47366), (106, 47354), (112, 47327),

Gene: Puhltonio_55 Start: 48279, Stop: 47599, Start Num: 17

Candidate Starts for Puhltonio_55:

(3, 48531), (4, 48522), (5, 48498), (6, 48468), (7, 48417), (8, 48378), (Start: 14 @48288 has 5 MA's), (Start: 17 @48279 has 160 MA's), (55, 48072), (56, 48069), (59, 48045), (62, 48015), (69, 47937), (73, 47889), (78, 47868), (91, 47757), (97, 47721), (104, 47682), (106, 47670), (112, 47643),

Gene: Pureglobe5_72 Start: 45261, Stop: 44728, Start Num: 30

Candidate Starts for Pureglobe5_72:

(Start: 30 @45261 has 16 MA's), (43, 45177), (66, 45012), (68, 44976), (79, 44895), (85, 44841), (94, 44796), (100, 44772), (101, 44766),

Gene: QueenBeane_55 Start: 48269, Stop: 47589, Start Num: 17

Candidate Starts for QueenBeane_55:

(Start: 14 @48278 has 5 MA's), (Start: 17 @48269 has 160 MA's), (55, 48062), (56, 48059), (59, 48035), (62, 48005), (73, 47879), (78, 47858), (81, 47837), (91, 47747), (104, 47672), (106, 47660), (112, 47633),

Gene: RIPWilbur_72 Start: 44850, Stop: 44317, Start Num: 30

Candidate Starts for RIPWilbur_72:

(Start: 30 @44850 has 16 MA's), (43, 44766), (66, 44601), (68, 44565), (79, 44484), (85, 44430), (94, 44385), (101, 44355),

Gene: Ranunculus_66 Start: 47460, Stop: 46906, Start Num: 30

Candidate Starts for Ranunculus_66:

(Start: 30 @47460 has 16 MA's), (58, 47283), (67, 47178), (68, 47175), (73, 47124), (75, 47115), (79, 47094), (91, 46995), (101, 46947),

Gene: Raphaella_90 Start: 48880, Stop: 49419, Start Num: 30

Candidate Starts for Raphaella_90:

(25, 48844), (Start: 30 @48880 has 16 MA's), (53, 49024), (66, 49126), (76, 49225), (77, 49228), (79, 49243), (85, 49297), (95, 49339),

Gene: RazzB_73 Start: 44944, Stop: 44411, Start Num: 30

Candidate Starts for RazzB_73:

(Start: 30 @44944 has 16 MA's), (43, 44860), (52, 44806), (66, 44695), (68, 44659), (79, 44578), (85, 44524), (94, 44479), (101, 44449),

Gene: RedRaider_13 Start: 6700, Stop: 7374, Start Num: 18

Candidate Starts for RedRaider_13:

(12, 6646), (Start: 18 @6700 has 2 MA's), (54, 6901), (55, 6904), (56, 6907), (62, 6961), (78, 7105), (86, 7171), (90, 7198), (92, 7222), (109, 7312),

Gene: RedRaider89_55 Start: 48196, Stop: 47519, Start Num: 17

Candidate Starts for RedRaider89_55:

(Start: 14 @48205 has 5 MA's), (Start: 17 @48196 has 160 MA's), (46, 48034), (49, 48019), (56, 47986), (59, 47962), (62, 47932), (69, 47854), (73, 47806), (78, 47785), (81, 47764), (91, 47674), (97, 47638), (104, 47599), (106, 47587), (112, 47560),

Gene: Ren19_68 Start: 44988, Stop: 44452, Start Num: 30

Candidate Starts for Ren19_68:

(Start: 30 @44988 has 16 MA's), (39, 44937), (43, 44904), (60, 44802), (63, 44775), (68, 44703), (71, 44685), (76, 44640), (79, 44622), (94, 44520), (101, 44490),

Gene: Riverton_54 Start: 47990, Stop: 47313, Start Num: 17

Candidate Starts for Riverton_54:

(Start: 14 @47999 has 5 MA's), (Start: 17 @47990 has 160 MA's), (46, 47828), (49, 47813), (56, 47780), (59, 47756), (62, 47726), (69, 47648), (73, 47600), (78, 47579), (81, 47558), (91, 47468), (97, 47432), (104, 47393), (106, 47381), (110, 47360), (112, 47354),

Gene: Robyn_54 Start: 47908, Stop: 47228, Start Num: 17

Candidate Starts for Robyn_54:

(3, 48160), (4, 48151), (5, 48127), (6, 48097), (7, 48046), (8, 48007), (Start: 14 @47917 has 5 MA's), (Start: 17 @47908 has 160 MA's), (46, 47746), (49, 47731), (56, 47698), (59, 47674), (62, 47644), (69, 47566), (73, 47518), (78, 47497), (81, 47476), (91, 47386), (97, 47350), (104, 47311), (106, 47299), (112, 47272),

Gene: Roscoe_55 Start: 48208, Stop: 47531, Start Num: 17

Candidate Starts for Roscoe_55:

(Start: 14 @48217 has 5 MA's), (Start: 17 @48208 has 160 MA's), (42, 48079), (46, 48046), (49, 48031), (55, 48001), (56, 47998), (59, 47974), (62, 47944), (69, 47866), (73, 47818), (78, 47797), (81, 47776), (91, 47686), (97, 47650), (104, 47611), (106, 47599), (112, 47572),

Gene: Roy17_54 Start: 47662, Stop: 46985, Start Num: 17

Candidate Starts for Roy17_54:

(Start: 14 @47671 has 5 MA's), (Start: 17 @47662 has 160 MA's), (42, 47533), (46, 47500), (49, 47485), (55, 47455), (56, 47452), (59, 47428), (62, 47398), (69, 47320), (73, 47272), (78, 47251), (81, 47230), (91, 47140), (97, 47104), (104, 47065), (106, 47053), (109, 47038), (112, 47026),

Gene: Samaymay_55 Start: 48269, Stop: 47589, Start Num: 17

Candidate Starts for Samaymay_55:

(Start: 14 @48278 has 5 MA's), (Start: 17 @48269 has 160 MA's), (55, 48062), (56, 48059), (59, 48035), (62, 48005), (73, 47879), (78, 47858), (81, 47837), (91, 47747), (104, 47672), (106, 47660), (112, 47633),

Gene: SassyCat97_54 Start: 47996, Stop: 47316, Start Num: 17

Candidate Starts for SassyCat97_54:

(3, 48248), (4, 48239), (5, 48215), (6, 48185), (7, 48134), (8, 48095), (Start: 14 @48005 has 5 MA's), (Start: 17 @47996 has 160 MA's), (55, 47789), (56, 47786), (59, 47762), (62, 47732), (69, 47654), (73, 47606), (78, 47585), (91, 47474), (97, 47438), (104, 47399), (106, 47387), (112, 47360),

Gene: Schadenfreude_54 Start: 47755, Stop: 47078, Start Num: 17

Candidate Starts for Schadenfreude_54:

(Start: 14 @47764 has 5 MA's), (Start: 17 @47755 has 160 MA's), (46, 47593), (49, 47578), (56, 47545), (59, 47521), (62, 47491), (69, 47413), (73, 47365), (78, 47344), (81, 47323), (91, 47233), (97, 47197), (104, 47158), (106, 47146), (110, 47125), (112, 47119),

Gene: Serendipity_55 Start: 48293, Stop: 47613, Start Num: 17

Candidate Starts for Serendipity_55:

(3, 48545), (4, 48536), (5, 48512), (6, 48482), (7, 48431), (8, 48392), (Start: 14 @48302 has 5 MA's), (Start: 17 @48293 has 160 MA's), (55, 48086), (56, 48083), (59, 48059), (62, 48029), (69, 47951), (73, 47903), (78, 47882), (91, 47771), (97, 47735), (104, 47696), (106, 47684), (112, 47657),

Gene: Serpentine_0055 Start: 48376, Stop: 47696, Start Num: 17

Candidate Starts for Serpentine_0055:

(Start: 14 @48385 has 5 MA's), (Start: 17 @48376 has 160 MA's), (55, 48169), (56, 48166), (59, 48142), (62, 48112), (73, 47986), (78, 47965), (81, 47944), (91, 47854), (104, 47779), (106, 47767), (112, 47740),

Gene: Settecandela_151 Start: 104613, Stop: 105200, Start Num: 27

Candidate Starts for Settecandela_151:

(7, 104412), (Start: 27 @104613 has 2 MA's), (36, 104661), (44, 104712), (51, 104757), (66, 104874), (69, 104913), (70, 104919), (74, 104964), (76, 104973), (82, 105012), (91, 105081), (92, 105084), (93, 105087),

Gene: SilverBell_54 Start: 48014, Stop: 47337, Start Num: 17

Candidate Starts for SilverBell_54:

(Start: 14 @48023 has 5 MA's), (Start: 17 @48014 has 160 MA's), (55, 47807), (56, 47804), (59, 47780), (62, 47750), (73, 47624), (78, 47603), (81, 47582), (91, 47492), (97, 47456), (104, 47417), (106, 47405), (112, 47378),

Gene: SilverChicken_76 Start: 42471, Stop: 43148, Start Num: 17

Candidate Starts for SilverChicken_76:

(Start: 17 @42471 has 160 MA's), (29, 42513), (55, 42672), (56, 42675), (59, 42699), (62, 42729), (69, 42807), (73, 42855), (78, 42876), (91, 42987), (97, 43023), (104, 43062), (106, 43074),

Gene: SirBeauregard_56 Start: 48508, Stop: 47819, Start Num: 14

Candidate Starts for SirBeauregard_56:

(Start: 14 @48508 has 5 MA's), (Start: 17 @48499 has 160 MA's), (55, 48292), (56, 48289), (59, 48265), (62, 48235), (73, 48109), (78, 48088), (81, 48067), (91, 47977), (104, 47902), (106, 47890), (112, 47863),

Gene: Soile_56 Start: 48517, Stop: 47837, Start Num: 17

Candidate Starts for Soile_56:

(Start: 14 @48526 has 5 MA's), (Start: 17 @48517 has 160 MA's), (55, 48310), (56, 48307), (59, 48283), (62, 48253), (73, 48127), (78, 48106), (81, 48085), (91, 47995), (104, 47920), (106, 47908), (112, 47881),

Gene: Solosis_54 Start: 47999, Stop: 47310, Start Num: 14

Candidate Starts for Solosis_54:

(3, 48242), (4, 48233), (5, 48209), (6, 48179), (7, 48128), (8, 48089), (Start: 14 @47999 has 5 MA's), (Start: 17 @47990 has 160 MA's), (55, 47783), (56, 47780), (59, 47756), (62, 47726), (69, 47648), (73, 47600), (78, 47579), (91, 47468), (97, 47432), (104, 47393), (106, 47381), (112, 47354),

Gene: Sophia_54 Start: 47993, Stop: 47304, Start Num: 14

Candidate Starts for Sophia_54:

(3, 48236), (4, 48227), (5, 48203), (6, 48173), (7, 48122), (8, 48083), (Start: 14 @47993 has 5 MA's), (Start: 17 @47984 has 160 MA's), (55, 47777), (56, 47774), (59, 47750), (62, 47720), (73, 47594), (78, 47573), (81, 47552), (91, 47462), (97, 47426), (104, 47387), (106, 47375), (112, 47348),

Gene: Sparkdehlily_73 Start: 43625, Stop: 44299, Start Num: 17

Candidate Starts for Sparkdehlily_73:

(Start: 17 @43625 has 160 MA's), (29, 43667), (55, 43826), (56, 43829), (59, 43853), (62, 43883), (69, 43961), (73, 44009), (78, 44030), (91, 44141), (97, 44177), (104, 44216), (106, 44228),

Gene: Sparky_63 Start: 43334, Stop: 44023, Start Num: 16

Candidate Starts for Sparky_63:

(10, 43268), (Start: 16 @43334 has 6 MA's), (33, 43418), (56, 43550), (59, 43574), (62, 43604), (81, 43775), (104, 43937), (106, 43949), (112, 43976),

Gene: Spartacus_68 Start: 42822, Stop: 43505, Start Num: 15

Candidate Starts for Spartacus_68:

(Start: 15 @42822 has 17 MA's), (33, 42900), (47, 42990), (56, 43032), (59, 43056), (62, 43086), (81, 43257), (104, 43419), (106, 43431),

Gene: Spartan300_54 Start: 47968, Stop: 47291, Start Num: 17

Candidate Starts for Spartan300_54:

(Start: 14 @47977 has 5 MA's), (Start: 17 @47968 has 160 MA's), (42, 47839), (46, 47806), (49, 47791), (55, 47761), (56, 47758), (59, 47734), (62, 47704), (69, 47626), (73, 47578), (78, 47557), (81, 47536), (91, 47446), (97, 47410), (104, 47371), (106, 47359), (112, 47332),

Gene: Squid_55 Start: 47996, Stop: 47316, Start Num: 17

Candidate Starts for Squid_55:

(3, 48248), (4, 48239), (5, 48215), (6, 48185), (7, 48134), (8, 48095), (Start: 14 @48005 has 5 MA's), (Start: 17 @47996 has 160 MA's), (55, 47789), (56, 47786), (59, 47762), (62, 47732), (69, 47654), (73, 47606), (78, 47585), (91, 47474), (97, 47438), (104, 47399), (106, 47387), (112, 47360),

Gene: Surely_55 Start: 48286, Stop: 47606, Start Num: 17

Candidate Starts for Surely_55:

(3, 48538), (4, 48529), (5, 48505), (6, 48475), (7, 48424), (8, 48385), (Start: 14 @48295 has 5 MA's), (Start: 17 @48286 has 160 MA's), (55, 48079), (56, 48076), (59, 48052), (62, 48022), (69, 47944), (73, 47896), (78, 47875), (91, 47764), (97, 47728), (104, 47689), (106, 47677), (112, 47650),

Gene: TDanisky_73 Start: 43625, Stop: 44299, Start Num: 17

Candidate Starts for TDanisky_73:

(Start: 17 @43625 has 160 MA's), (29, 43667), (55, 43826), (56, 43829), (59, 43853), (62, 43883), (69, 43961), (73, 44009), (78, 44030), (91, 44141), (97, 44177), (104, 44216), (106, 44228),

Gene: TPA4_59 Start: 41974, Stop: 42615, Start Num: 18

Candidate Starts for TPA4_59:

(11, 41911), (Start: 16 @41968 has 6 MA's), (Start: 18 @41974 has 2 MA's), (29, 42043), (32, 42064), (45, 42154), (55, 42193), (62, 42238), (69, 42301), (82, 42400), (92, 42490), (98, 42520), (104, 42553), (108, 42577),

Gene: Taj_71 Start: 44380, Stop: 45054, Start Num: 17

Candidate Starts for Taj_71:

(Start: 17 @44380 has 160 MA's), (29, 44422), (55, 44581), (56, 44584), (59, 44608), (62, 44638), (69, 44716), (73, 44764), (78, 44785), (91, 44896), (97, 44932), (104, 44971), (106, 44983),

Gene: TallGrassMM_55 Start: 47900, Stop: 47220, Start Num: 17

Candidate Starts for TallGrassMM_55:

(3, 48152), (4, 48143), (5, 48119), (6, 48089), (7, 48038), (8, 47999), (Start: 14 @47909 has 5 MA's), (Start: 17 @47900 has 160 MA's), (55, 47693), (56, 47690), (59, 47666), (62, 47636), (69, 47558), (73,

47510), (78, 47489), (91, 47378), (97, 47342), (104, 47303), (106, 47291), (112, 47264),

Gene: Taotie_71 Start: 39774, Stop: 39136, Start Num: 16

Candidate Starts for Taotie_71:

(Start: 16 @39774 has 6 MA's), (38, 39663), (41, 39639), (79, 39342), (80, 39333), (83, 39318), (103, 39174),

Gene: Telesworld_53 Start: 48063, Stop: 47170, Start Num: 17

Candidate Starts for Telesworld_53:

(3, 48315), (4, 48306), (5, 48282), (6, 48252), (7, 48201), (8, 48162), (Start: 14 @48072 has 5 MA's), (Start: 17 @48063 has 160 MA's), (55, 47856), (56, 47853), (59, 47829), (62, 47799), (69, 47721), (73, 47673), (78, 47652), (81, 47631), (91, 47541), (104, 47466), (106, 47454), (116, 47385),

Gene: Thora_55 Start: 48282, Stop: 47602, Start Num: 17

Candidate Starts for Thora_55:

(Start: 14 @48291 has 5 MA's), (Start: 17 @48282 has 160 MA's), (55, 48075), (56, 48072), (59, 48048), (62, 48018), (73, 47892), (78, 47871), (81, 47850), (91, 47760), (104, 47685), (106, 47673), (112, 47646),

Gene: ThreeOh3D2_56 Start: 48502, Stop: 47822, Start Num: 17

Candidate Starts for ThreeOh3D2_56:

(Start: 14 @48511 has 5 MA's), (Start: 17 @48502 has 160 MA's), (55, 48295), (56, 48292), (59, 48268), (62, 48238), (73, 48112), (78, 48091), (81, 48070), (91, 47980), (104, 47905), (106, 47893), (112, 47866),

Gene: Tiff81_85 Start: 48000, Stop: 48539, Start Num: 30

Candidate Starts for Tiff81_85:

(25, 47964), (Start: 30 @48000 has 16 MA's), (53, 48144), (66, 48246), (77, 48348), (79, 48363), (85, 48417), (95, 48459),

Gene: Timmi_54 Start: 47985, Stop: 47305, Start Num: 17

Candidate Starts for Timmi_54:

(3, 48237), (4, 48228), (5, 48204), (6, 48174), (7, 48123), (8, 48084), (Start: 14 @47994 has 5 MA's), (Start: 17 @47985 has 160 MA's), (55, 47778), (56, 47775), (59, 47751), (62, 47721), (69, 47643), (73, 47595), (78, 47574), (91, 47463), (97, 47427), (104, 47388), (106, 47376), (112, 47349),

Gene: TomBombadil_55 Start: 48270, Stop: 47590, Start Num: 17

Candidate Starts for TomBombadil_55:

(3, 48522), (4, 48513), (5, 48489), (6, 48459), (7, 48408), (8, 48369), (Start: 14 @48279 has 5 MA's), (Start: 17 @48270 has 160 MA's), (55, 48063), (56, 48060), (59, 48036), (62, 48006), (69, 47928), (73, 47880), (78, 47859), (91, 47748), (97, 47712), (104, 47673), (106, 47661), (112, 47634),

Gene: Tomlarah_56 Start: 48797, Stop: 48117, Start Num: 17

Candidate Starts for Tomlarah_56:

(Start: 14 @48806 has 5 MA's), (Start: 17 @48797 has 160 MA's), (55, 48590), (56, 48587), (59, 48563), (62, 48533), (73, 48407), (78, 48386), (81, 48365), (91, 48275), (104, 48200), (106, 48188), (112, 48161),

Gene: TooFast2Furius_55 Start: 48209, Stop: 47532, Start Num: 17

Candidate Starts for TooFast2Furius_55:

(Start: 14 @48218 has 5 MA's), (Start: 17 @48209 has 160 MA's), (46, 48047), (49, 48032), (56, 47999), (59, 47975), (62, 47945), (69, 47867), (73, 47819), (78, 47798), (81, 47777), (91, 47687), (97, 47651), (104, 47612), (106, 47600), (112, 47573),

Gene: Tootsieroll_66 Start: 42088, Stop: 42765, Start Num: 17

Candidate Starts for Tootsieroll_66:

(Start: 17 @42088 has 160 MA's), (29, 42130), (55, 42289), (56, 42292), (59, 42316), (62, 42346), (69, 42424), (73, 42472), (78, 42493), (91, 42604), (97, 42640), (104, 42679), (106, 42691),

Gene: Toron_74 Start: 45951, Stop: 46631, Start Num: 14

Candidate Starts for Toron_74:

(Start: 14 @45951 has 5 MA's), (29, 46008), (32, 46026), (33, 46035), (47, 46125), (56, 46167), (59, 46191), (62, 46221), (81, 46392), (104, 46554), (106, 46566), (111, 46590), (112, 46593),

Gene: Tracker_10 Start: 5745, Stop: 6419, Start Num: 15

Candidate Starts for Tracker_10:

(7, 5610), (13, 5718), (Start: 15 @5745 has 17 MA's), (54, 5946), (55, 5949), (62, 6006), (66, 6039), (78, 6150), (92, 6267), (109, 6357),

Gene: Triad_55 Start: 47197, Stop: 46517, Start Num: 17

Candidate Starts for Triad_55:

(3, 47449), (4, 47440), (5, 47416), (6, 47386), (7, 47335), (8, 47296), (Start: 14 @47206 has 5 MA's), (Start: 17 @47197 has 160 MA's), (46, 47035), (49, 47020), (56, 46987), (59, 46963), (62, 46933), (69, 46855), (73, 46807), (78, 46786), (81, 46765), (91, 46675), (97, 46639), (104, 46600), (106, 46588), (112, 46561),

Gene: UAch1_54 Start: 48022, Stop: 47345, Start Num: 17

Candidate Starts for UAch1_54:

(3, 48274), (4, 48265), (5, 48241), (6, 48211), (7, 48160), (8, 48121), (Start: 14 @48031 has 5 MA's), (Start: 17 @48022 has 160 MA's), (46, 47860), (49, 47845), (56, 47812), (59, 47788), (62, 47758), (69, 47680), (73, 47632), (78, 47611), (81, 47590), (91, 47500), (97, 47464), (104, 47425), (106, 47413), (112, 47386),

Gene: UncleHowie_54 Start: 47697, Stop: 47020, Start Num: 17

Candidate Starts for UncleHowie_54:

(Start: 14 @47706 has 5 MA's), (Start: 17 @47697 has 160 MA's), (55, 47490), (56, 47487), (59, 47463), (62, 47433), (73, 47307), (78, 47286), (81, 47265), (91, 47175), (97, 47139), (104, 47100), (106, 47088), (112, 47061),

Gene: UncleRicky_65 Start: 42413, Stop: 43090, Start Num: 17

Candidate Starts for UncleRicky_65:

(Start: 17 @42413 has 160 MA's), (29, 42455), (55, 42614), (56, 42617), (59, 42641), (62, 42671), (69, 42749), (73, 42797), (78, 42818), (91, 42929), (97, 42965), (104, 43004), (106, 43016),

Gene: Usavi_55 Start: 48365, Stop: 47685, Start Num: 17

Candidate Starts for Usavi_55:

(Start: 14 @48374 has 5 MA's), (Start: 17 @48365 has 160 MA's), (55, 48158), (56, 48155), (59, 48131), (62, 48101), (73, 47975), (78, 47954), (81, 47933), (91, 47843), (104, 47768), (106, 47756), (112, 47729),

Gene: Vaishali24_53 Start: 47657, Stop: 46980, Start Num: 17

Candidate Starts for Vaishali24_53:

(3, 47909), (4, 47900), (5, 47876), (6, 47846), (7, 47795), (8, 47756), (Start: 14 @47666 has 5 MA's), (Start: 17 @47657 has 160 MA's), (46, 47495), (49, 47480), (56, 47447), (59, 47423), (62, 47393), (69, 47315), (73, 47267), (78, 47246), (81, 47225), (91, 47135), (97, 47099), (104, 47060), (106, 47048), (112, 47021),

Gene: Valjean_54 Start: 47978, Stop: 47301, Start Num: 17

Candidate Starts for Valjean_54:

(Start: 14 @47987 has 5 MA's), (Start: 17 @47978 has 160 MA's), (42, 47849), (46, 47816), (49, 47801), (55, 47771), (56, 47768), (59, 47744), (62, 47714), (69, 47636), (73, 47588), (78, 47567), (81, 47546), (91, 47456), (97, 47420), (104, 47381), (106, 47369), (112, 47342),

Gene: Vaticameos_52 Start: 46488, Stop: 45808, Start Num: 17

Candidate Starts for Vaticameos_52:

(Start: 14 @46497 has 5 MA's), (Start: 17 @46488 has 160 MA's), (55, 46281), (56, 46278), (59, 46254), (62, 46224), (73, 46098), (78, 46077), (81, 46056), (91, 45966), (104, 45891), (106, 45879), (112, 45852),

Gene: Vista_54 Start: 47998, Stop: 47321, Start Num: 17

Candidate Starts for Vista_54:

(3, 48250), (4, 48241), (5, 48217), (6, 48187), (7, 48136), (8, 48097), (Start: 14 @48007 has 5 MA's), (Start: 17 @47998 has 160 MA's), (55, 47791), (56, 47788), (59, 47764), (62, 47734), (73, 47608), (78, 47587), (81, 47566), (91, 47476), (97, 47440), (104, 47401), (106, 47389), (112, 47362),

Gene: Vopal_91 Start: 50946, Stop: 51485, Start Num: 30

Candidate Starts for Vopal_91:

(25, 50910), (Start: 30 @50946 has 16 MA's), (53, 51090), (66, 51192), (76, 51291), (77, 51294), (79, 51309), (85, 51363), (95, 51405),

Gene: Vortex_55 Start: 47980, Stop: 47300, Start Num: 17

Candidate Starts for Vortex_55:

(3, 48232), (4, 48223), (5, 48199), (6, 48169), (7, 48118), (8, 48079), (Start: 14 @47989 has 5 MA's), (Start: 17 @47980 has 160 MA's), (55, 47773), (56, 47770), (59, 47746), (62, 47716), (69, 47638), (73, 47590), (78, 47569), (91, 47458), (97, 47422), (104, 47383), (106, 47371), (112, 47344),

Gene: Waterdiva_55 Start: 48359, Stop: 47679, Start Num: 17

Candidate Starts for Waterdiva_55:

(Start: 14 @48368 has 5 MA's), (Start: 17 @48359 has 160 MA's), (55, 48152), (56, 48149), (59, 48125), (62, 48095), (73, 47969), (78, 47948), (81, 47927), (91, 47837), (104, 47762), (106, 47750), (112, 47723),

Gene: Wee_71 Start: 44456, Stop: 45130, Start Num: 17

Candidate Starts for Wee_71:

(Start: 17 @44456 has 160 MA's), (29, 44498), (55, 44657), (56, 44660), (59, 44684), (62, 44714), (69, 44792), (73, 44840), (78, 44861), (91, 44972), (97, 45008), (104, 45047), (106, 45059),

Gene: Weher20_55 Start: 48803, Stop: 48123, Start Num: 17

Candidate Starts for Weher20_55:

(Start: 14 @48812 has 5 MA's), (Start: 17 @48803 has 160 MA's), (55, 48596), (56, 48593), (59, 48569), (62, 48539), (73, 48413), (78, 48392), (81, 48371), (91, 48281), (104, 48206), (106, 48194), (112, 48167),

Gene: Wheezy_10 Start: 6003, Stop: 6677, Start Num: 15

Candidate Starts for Wheezy_10:

(7, 5868), (13, 5976), (Start: 15 @6003 has 17 MA's), (54, 6204), (55, 6207), (62, 6264), (66, 6297), (78, 6408), (92, 6525), (109, 6615),

Gene: WillSterrel_67 Start: 43939, Stop: 44616, Start Num: 17

Candidate Starts for WillSterrel_67:

(Start: 17 @43939 has 160 MA's), (29, 43981), (55, 44140), (56, 44143), (59, 44167), (62, 44197), (69, 44275), (73, 44323), (78, 44344), (91, 44455), (97, 44491), (104, 44530), (106, 44542),

Gene: Windsor_55 Start: 48503, Stop: 47823, Start Num: 17

Candidate Starts for Windsor_55:

(Start: 14 @48512 has 5 MA's), (Start: 17 @48503 has 160 MA's), (55, 48296), (56, 48293), (59, 48269), (62, 48239), (73, 48113), (78, 48092), (81, 48071), (91, 47981), (104, 47906), (106, 47894), (112, 47867),

Gene: Xavier_54 Start: 47996, Stop: 47307, Start Num: 14

Candidate Starts for Xavier_54:

(3, 48239), (4, 48230), (5, 48206), (6, 48176), (7, 48125), (8, 48086), (Start: 14 @47996 has 5 MA's), (Start: 17 @47987 has 160 MA's), (55, 47780), (56, 47777), (59, 47753), (62, 47723), (69, 47645), (73, 47597), (78, 47576), (91, 47465), (97, 47429), (104, 47390), (106, 47378), (112, 47351),

Gene: Zaider_55 Start: 48222, Stop: 47545, Start Num: 17

Candidate Starts for Zaider_55:

(Start: 14 @48231 has 5 MA's), (Start: 17 @48222 has 160 MA's), (42, 48093), (46, 48060), (49, 48045), (55, 48015), (56, 48012), (59, 47988), (62, 47958), (69, 47880), (73, 47832), (78, 47811), (81, 47790), (91, 47700), (97, 47664), (104, 47625), (106, 47613), (112, 47586),

Gene: Zelda_55 Start: 48324, Stop: 47644, Start Num: 17

Candidate Starts for Zelda_55:

(2, 48591), (3, 48576), (4, 48567), (5, 48543), (6, 48513), (7, 48462), (8, 48423), (Start: 14 @48333 has 5 MA's), (Start: 17 @48324 has 160 MA's), (55, 48117), (56, 48114), (59, 48090), (62, 48060), (73, 47934), (78, 47913), (81, 47892), (91, 47802), (104, 47727), (106, 47715), (112, 47688),

Gene: Zenteno07_58 Start: 47935, Stop: 47234, Start Num: 16

Candidate Starts for Zenteno07_58:

(1, 48472), (10, 48004), (Start: 16 @47935 has 6 MA's), (20, 47920), (26, 47890), (62, 47668), (66, 47632), (79, 47506), (88, 47437), (106, 47308), (107, 47302), (112, 47281),