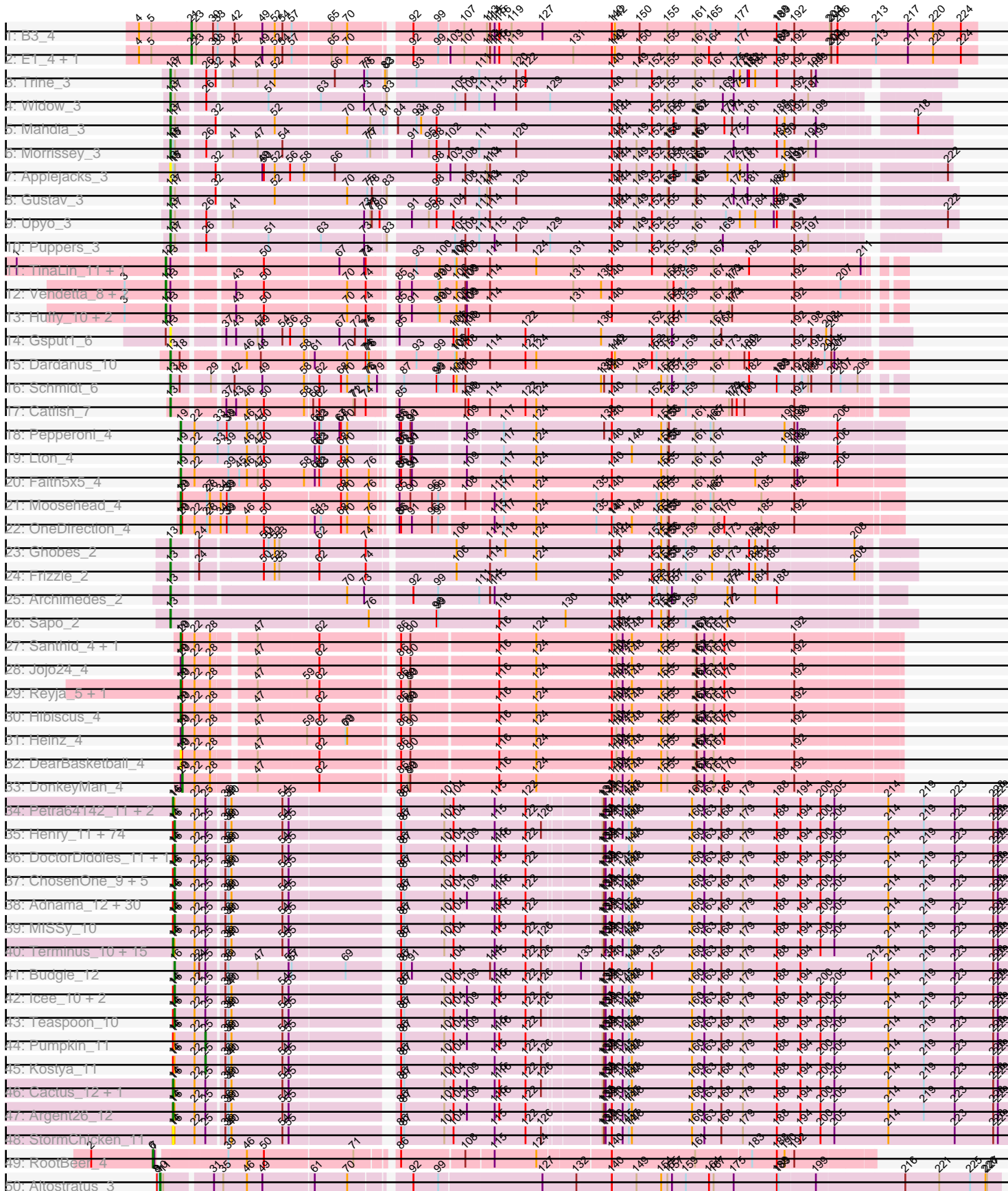
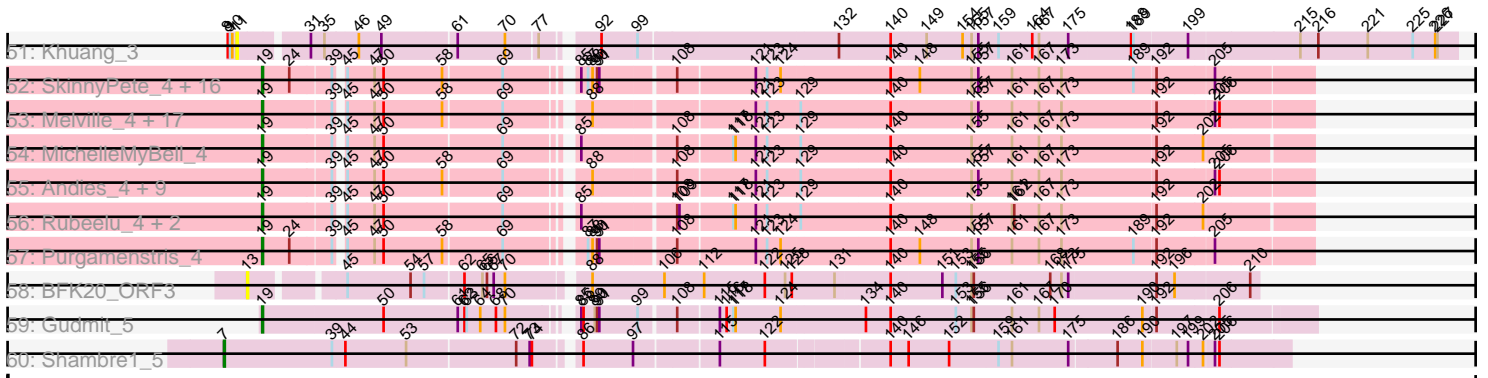


Pham 311201



Pham 311201



Note: Tracks are now grouped by subcluster and scaled. Switching in subcluster is indicated by changes in track color. Track scale is now set by default to display the region 30 bp upstream of start 1 to 30 bp downstream of the last possible start. If this default region is judged to be packed too tightly with annotated starts, the track will be further scaled to only show that region of the ORF with annotated starts. This action will be indicated by adding "Zoomed" to the title. For starts, yellow indicates the location of called starts comprised solely of Glimmer/GeneMark auto-annotations, green indicates the location of called starts with at least 1 manual gene annotation.

Pham 311201 Report

This analysis was run 06/27/26 on database version 652.

Pham number 311201 has 242 members, 23 are drafts.

Phages represented in each track:

- Track 1 : B3_4
- Track 2 : E1_4, Anatole_4
- Track 3 : Trine_3
- Track 4 : Widow_3
- Track 5 : Mahdia_3
- Track 6 : Morrissey_3
- Track 7 : Applejacks_3
- Track 8 : Gustav_3
- Track 9 : Upyo_3
- Track 10 : Puppies_3
- Track 11 : TinaLin_11, Banquo_12
- Track 12 : Vendetta_8, Goib_9, Splinter_8
- Track 13 : Huffy_10, TZGordon_10, DinoDaryn_10
- Track 14 : Gspu1_6
- Track 15 : Dardanus_10
- Track 16 : Schmidt_6
- Track 17 : Catfish_7
- Track 18 : Pepperoni_4
- Track 19 : Lton_4
- Track 20 : Faith5x5_4
- Track 21 : Moosehead_4
- Track 22 : OneDirection_4
- Track 23 : Ghobes_2
- Track 24 : Frizzle_2
- Track 25 : Archimedes_2
- Track 26 : Sapo_2
- Track 27 : Santhid_4, Tarzan_4
- Track 28 : Jojo24_4
- Track 29 : Reyja_5, DinoNuggs_5
- Track 30 : Hibiscus_4
- Track 31 : Heinz_4
- Track 32 : DearBasketball_4
- Track 33 : DonkeyMan_4
- Track 34 : Petra64142_11, GoldenSpark_12, Lilpickle_9
- Track 35 : Henry_11, BigBubba_10, Palpatine_10, Bruin_10, IHOP_10, Greep_11, Misfit_10, Qualification_12, Rakim_12, Bench_12, Balomoji_10, StellaBean_11, Miniwave_11, Command613_12, Thimble_11, CrystalP_11, 244_11, Mindy_11,

Tomaszewski_10, Murphy_10, Mosby_10, Pat3_10, Moldemort_11,
 Marshmallow_11, FairyPath_11, Becksu_10, Phaux_9, Glexan_9, Cookies_11,
 ShamWow_11, Sotrice96_11, Rimmer_10, Simpliphy_11, SophKB_11, TBrady12_12,
 Buck_10, Czyszczone1_11, NelitzaMV_11, Highbury_11, Liveloughbron_10,
 Phaja_10, Bask21_10, Kanye_12, TeardropMSU_10, OrionPax_11, Nimrod_10,
 SirDuracell_10, Youngblood_10, BaboJay_10, Gator_9, DrDrey_11,
 BilboSwaggins_11, Tuco_11, BugsBunny_8, Sassay_10, MadamMonkfish_10,
 Hopey_11, Myrale_11, Policronamos_10, Inca_10, HanKaySha_11, NoSleep_11,
 Willez_10, ChotaBhai_10, TeamEdward_11, MollyToe_11, Tarkin_12, Murica_9,
 Dumbo_10, Nala_10, Amao_11, xkcd_11, FoghornLeghorn_10, Saints25_11,
 RiverMonster_10

- Track 36 : DoctorDiddles_11, Holt_12
- Track 37 : ChosenOne_9, ShereKhan_12, Hoonter_12, Elite2014_9, Brewer_10, Easy2Say_11
- Track 38 : Adnama_12, FireRed_10, NonchalantPear_10, Lilizi_12, Filch_11, AmericanBeauty_12, Maxxinista_11, Stark_11, Cjw1_10, MPhalcon_10, Goku_11, Thresher_11, PaddyBaddy_11, Eureka_10, Stank_12, GooberAzure_12, Xandras_12, Wiggin_12, Elph10_11, Goldilocks_12, StolenFromERC_12, Gemini_12, Phrux_10, PhatBacter_10, Lilac_12, Bogg_11, JeTaime_12, Ptowny_10, Gage_12, Kimchi_12, Ukulele_10
- Track 39 : MISSy_10
- Track 40 : Terminus_10, Flypotenuse_9, Dusk_10, Manda_10, YassJohnny_11, ABCat_10, Toto_11, Paperbeatsrock_12, Contagion_10, BadStone_10, Emmina_10, Porky_9, Harella_9, HuffyPuff_9, Pharsalus_11, Daikon_9
- Track 41 : Budgie_12
- Track 42 : Icee_10, Traaww1_9, Asriel_10
- Track 43 : Teaspoon_10
- Track 44 : Pumpkin_11
- Track 45 : Kostya_11
- Track 46 : Cactus_12, Barbarian_10
- Track 47 : Argent26_12
- Track 48 : StormChicken_11
- Track 49 : RootBeer_4
- Track 50 : Altostratus_3
- Track 51 : Khuang_3
- Track 52 : SkinnyPete_4, Jamie19_4, Rebel_4, Raymond7_4, PhancyPhin_4, Snekmaggon_4, Hanako_4, Spinach_4, Phrann_4, Impisi_4, Shweta_4, Redi_4, SpongeBob_4, Nenae_4, ShrimpFriedEgg_4, Panchino_4, BabeRuth_4
- Track 53 : Melville_4, Xerxes_4, Tapioca_4, Bosection6_4, Parmesanjohn_4, Duplicity_4, Gex_4, Philonius_4, Smurph_4, Schnauzer_4, Journey_4, Magsby_4, Aggie_4, Tessdabest_3, Charlie_4, Silvy_4, Pipsqueaks_4, Chewbacca_4
- Track 54 : MichelleMyBell_4
- Track 55 : Andies_4, Scitech_4, Fulbright_4, Xeno_4, Cubone_3, Tortoise12_4, EGunicorn_4, Silvafighter_4, Phloss_4, Carcharodon_4
- Track 56 : Rubeelu_4, Kevin1_4, Butters_4
- Track 57 : Purgamenstris_4
- Track 58 : BFK20_ORF3
- Track 59 : Gudmit_5
- Track 60 : Shambre1_5

Summary of Final Annotations (See graph section above for start numbers):

The start number called the most often in the published annotations is 16, it was called in 110 of the 219 non-draft genes in the pham.

Genes that call this "Most Annotated" start:

- 244_11, Adnama_12, Amao_11, AmericanBeauty_12, Asriel_10, BaboJay_10, Balomoji_10, Bask21_10, Becksu_10, Bench_12, BigBubba_10, BilboSwaggins_11, Bogg_11, Brewer_10, Bruin_10, Buck_10, Budgie_12, BugsBunny_8, ChosenOne_9, ChotaBhai_10, Cjw1_10, Command613_12, Cookies_11, CrystalP_11, Czyszczonek_11, DoctorDiddles_11, DrDrey_11, Dumbo_10, Easy2Say_11, Elite2014_9, Elph10_11, Eureka_10, FairyPath_11, Filch_11, FireRed_10, FoghornLeghorn_10, Gage_12, Gator_9, Gemini_12, Glexan_9, Goku_11, Goldilocks_12, GooberAzure_12, Greep_11, HanKaySha_11, Henry_11, Highbury_11, Holt_12, Hoonter_12, Hopey_11, IHOP_10, Icee_10, Inca_10, JeTaime_12, Kanye_12, Kimchi_12, Lilac_12, Lilizi_12, Liveloughbron_10, MISSy_10, MPhalcon_10, MadamMonkfish_10, Marshmallow_11, Maxxinista_11, Mindy_11, Miniwave_11, Misfit_10, Moldemort_11, MollyToe_11, Mosby_10, Murica_9, Murphy_10, Myrale_11, Nala_10, NelitzaMV_11, Nimrod_10, NoSleep_11, NonchalantPear_10, OrionPax_11, PaddyBaddy_11, Palpatine_10, Pat3_10, Phaja_10, PhatBacter_10, Phaux_9, Phrux_10, Policronamos_10, Ptowny_10, Quallification_12, Rakim_12, Rimmer_10, RiverMonster_10, Saints25_11, Sassay_10, ShamWow_11, ShereKhan_12, Simpliphy_11, SirDuracell_10, SophKB_11, Sotrice96_11, Stank_12, Stark_11, StellaBean_11, StolenFromERC_12, TBrady12_12, Tarkin_12, TeamEdward_11, TeardropMSU_10, Teaspoon_10, Thimble_11, Thresher_11, Tomaszewski_10, Traaww1_9, Tuco_11, Ukulele_10, Wiggin_12, Willez_10, Xandras_12, Youngblood_10, xkcd_11,

Genes that have the "Most Annotated" start but do not call it:

- ABCat_10, Argent26_12, BadStone_10, Barbarian_10, Cactus_12, Contagion_10, Daikon_9, Dusk_10, Emmina_10, Flypotenuse_9, GoldenSpark_12, Harella_9, HufflyPuff_9, Kostya_11, Lilpickle_9, Manda_10, Paperbeatsrock_12, Petra64142_11, Pharsalus_11, Porky_9, Pumpkin_11, StormChicken_11, Terminus_10, Toto_11, YassJohnny_11,

Genes that do not have the "Most Annotated" start:

- Aggie_4, Altostratus_3, Anatole_4, Andies_4, Applejacks_3, Archimedes_2, B3_4, BFK20_ORF3, BabeRuth_4, Banquo_12, Bosection6_4, Butters_4, Carcharodon_4, Catfish_7, Charlie_4, Chewbacca_4, Cubone_3, Dardanus_10, DearBasketball_4, DinoDaryn_10, DinoNuggs_5, DonkeyMan_4, Duplicity_4, E1_4, EGUnicorn_4, Faith5x5_4, Frizzle_2, Fulbright_4, Gex_4, Ghobes_2, Goib_9, Gspat1_6, Gudmit_5, Gustav_3, Hanako_4, Heinz_4, Hibiscus_4, Huffy_10, Impisi_4, Jamie19_4, Jojo24_4, Journey_4, Kevin1_4, Khuang_3, Lton_4, Magsby_4, Mahdia_3, Melville_4, MichelleMyBell_4, Moosehead_4, Morrissey_3, Nенаe_4, OneDirection_4, Panchino_4, Parmesanjohn_4, Pepperoni_4, PhancyPhin_4, Philonius_4, Phloss_4, Phrann_4, Pipsqueaks_4, Puppies_3, Purgamenstris_4, Raymond7_4, Rebel_4, Redi_4, Reyja_5, RootBeer_4, Rubeelu_4, Santhid_4, Sapo_2, Schmidt_6, Schnauzer_4, Scitech_4, Shambre1_5, ShrimpFriedEgg_4, Shweta_4, Silvafighter_4, Silvy_4, SkinnyPete_4, Smurph_4, Snekmaggon_4, Spinach_4, Splinter_8, SpongeBob_4, TZGordon_10, Tapioca_4, Tarzan_4, Tessdabest_3, TinaLin_11, Tortoise12_4, Trine_3, Upyo_3, Vendetta_8, Widow_3, Xeno_4, Xerxes_4,

Summary by start number:

Start 6:

- Found in 1 of 242 (0.4%) of genes in pham
- Manual Annotations of this start: 1 of 219
- Called 100.0% of time when present
- Phage (with cluster) where this start called: RootBeer_4 (FA),

Start 7:

- Found in 2 of 242 (0.8%) of genes in pham
- Manual Annotations of this start: 1 of 219
- Called 50.0% of time when present
- Phage (with cluster) where this start called: Shambre1_5 (singleton),

Start 10:

- Found in 2 of 242 (0.8%) of genes in pham
- Manual Annotations of this start: 1 of 219
- Called 50.0% of time when present
- Phage (with cluster) where this start called: Altostratus_3 (FS),

Start 11:

- Found in 2 of 242 (0.8%) of genes in pham
- No Manual Annotations of this start.
- Called 50.0% of time when present
- Phage (with cluster) where this start called: Khuang_3 (FS),

Start 12:

- Found in 9 of 242 (3.7%) of genes in pham
- Manual Annotations of this start: 8 of 219
- Called 88.9% of time when present
- Phage (with cluster) where this start called: Banquo_12 (CU1), DinoDaryn_10 (CU1), Goib_9 (CU1), Huff_10 (CU1), Splinter_8 (CU1), TZGordon_10 (CU1), TinaLin_11 (CU1), Vendetta_8 (CU1),

Start 13:

- Found in 25 of 242 (10.3%) of genes in pham
- Manual Annotations of this start: 14 of 219
- Called 68.0% of time when present
- Phage (with cluster) where this start called: Applejacks_3 (CD), Archimedes_2 (DA), BFK20_ORF3 (singleton), Catfish_7 (CU5), Dardanus_10 (CU3), Frizzle_2 (DA), Ghobes_2 (DA), Gspu1_6 (CU2), Gustav_3 (CD), Mahdia_3 (CD), Morrissey_3 (CD), Puppies_3 (CD), Sapo_2 (DA), Schmidt_6 (CU4), Trine_3 (CD), Upyo_3 (CD), Widow_3 (CD),

Start 14:

- Found in 144 of 242 (59.5%) of genes in pham
- Manual Annotations of this start: 20 of 219
- Called 16.0% of time when present
- Phage (with cluster) where this start called: ABCat_10 (E), Argent26_12 (E), BadStone_10 (E), Barbarian_10 (E), Cactus_12 (E), Contagion_10 (E), Daikon_9 (E), Dusk_10 (E), Emmina_10 (E), Flypotenuse_9 (E), GoldenSpark_12 (E), Harella_9 (E), HufflyPuff_9 (E), Lilpickle_9 (E), Manda_10 (E), Paperbeatsrock_12 (E), Petra64142_11 (E), Pharsalus_11 (E), Porky_9 (E), StormChicken_11 (E), Terminus_10 (E), Toto_11 (E), YassJohnny_11 (E),

Start 16:

- Found in 145 of 242 (59.9%) of genes in pham
- Manual Annotations of this start: 110 of 219
- Called 82.8% of time when present
- Phage (with cluster) where this start called: 244_11 (E), Adnama_12 (E), Amao_11 (E), AmericanBeauty_12 (E), Asriel_10 (E), BaboJay_10 (E), Balomoji_10 (E), Bask21_10 (E), Becksu_10 (E), Bench_12 (E), BigBubba_10 (E), BilboSwaggins_11 (E), Bogg_11 (E), Brewer_10 (E), Bruin_10 (E), Buck_10 (E), Budgie_12 (E), BugsBunny_8 (E), ChosenOne_9 (E), ChotaBhai_10 (E), Cjw1_10 (E), Command613_12 (E), Cookies_11 (E), CrystalP_11 (E), Czyszczo1_11 (E), DoctorDiddles_11 (E), DrDrey_11 (E), Dumbo_10 (E), Easy2Say_11 (E), Elite2014_9 (E), Elph10_11 (E), Eureka_10 (E), FairyPath_11 (E), Filch_11 (E), FireRed_10 (E), FoghornLeghorn_10 (E), Gage_12 (E), Gator_9 (E), Gemini_12 (E), Glexan_9 (E), Goku_11 (E), Goldilocks_12 (E), GooberAzure_12 (E), Greep_11 (E), HanKaySha_11 (E), Henry_11 (E), Highbury_11 (E), Holt_12 (E), Hoonter_12 (E), Hopey_11 (E), IHOP_10 (E), Icee_10 (E), Inca_10 (E), JeTaime_12 (E), Kanye_12 (E), Kimchi_12 (E), Lilac_12 (E), Lilizi_12 (E), Liveloughbron_10 (E), MISSy_10 (E), MPhalcon_10 (E), MadamMonkfish_10 (E), Marshmallow_11 (E), Maxxinsta_11 (E), Mindy_11 (E), Miniwave_11 (E), Misfit_10 (E), Moldemort_11 (E), MollyToe_11 (E), Mosby_10 (E), Murica_9 (E), Murphy_10 (E), Myrale_11 (E), Nala_10 (E), NelitzaMV_11 (E), Nimrod_10 (E), NoSleep_11 (E), NonchalantPear_10 (E), OrionPax_11 (E), PaddyBaddy_11 (E), Palpatine_10 (E), Pat3_10 (E), Phaja_10 (E), PhatBacter_10 (E), Phaux_9 (E), Phrux_10 (E), Policronamos_10 (E), Ptowny_10 (E), Quallification_12 (E), Rakim_12 (E), Rimmer_10 (E), RiverMonster_10 (E), Saints25_11 (E), Sassay_10 (E), ShamWow_11 (E), ShereKhan_12 (E), Simpliphy_11 (E), SirDuracell_10 (E), SophKB_11 (E), Sotrice96_11 (E), Stank_12 (E), Stark_11 (E), StellaBean_11 (E), StolenFromERC_12 (E), TBrady12_12 (E), Tarkin_12 (E), TeamEdward_11 (E), TeardropMSU_10 (E), Teaspoon_10 (E), Thimble_11 (E), Thresher_11 (E), Tomaszewski_10 (E), Traaww1_9 (E), Tuco_11 (E), Ukulele_10 (E), Wiggin_12 (E), Willez_10 (E), Xandras_12 (E), Youngblood_10 (E), xkcd_11 (E),

Start 19:

- Found in 65 of 242 (26.9%) of genes in pham
- Manual Annotations of this start: 56 of 219
- Called 95.4% of time when present
- Phage (with cluster) where this start called: Aggie_4 (N), Andies_4 (N), BabeRuth_4 (N), Bosection6_4 (N), Butters_4 (N), Carcharodon_4 (N), Charlie_4 (N), Chewbacca_4 (N), Cubone_3 (N), DearBasketball_4 (DY), DinoNuggs_5 (DY), Duplicity_4 (N), EGUnicorn_4 (N), Faith5x5_4 (CZ6), Fulbright_4 (N), Gex_4 (N), Gudmit_5 (singleton), Hanako_4 (N), Hibiscus_4 (DY), Impisi_4 (N), Jamie19_4 (N), Journey_4 (N), Kevin1_4 (N), Lton_4 (CZ), Magsby_4 (N), Melville_4 (N), MichelleMyBell_4 (N), Moosehead_4 (CZ6), Nenae_4 (N), OneDirection_4 (CZ6), Panchino_4 (N), Parmesanjohn_4 (N), Pepperoni_4 (CZ), PhancyPhin_4 (N), Philonius_4 (N), Phloss_4 (N), Phrann_4 (N), Pipsqueaks_4 (N), Purgamenstris_4 (N), Raymond7_4 (N), Rebel_4 (N), Redi_4 (N), Reyja_5 (DY), Rubeelu_4 (N), Santhid_4 (DY), Schnauzer_4 (N), Scitech_4 (N), ShrimpFriedEgg_4 (N), Shweta_4 (N), Silvafighter_4 (N), Silvy_4 (N), SkinnyPete_4 (N), Smurph_4 (N), Snekmaggedon_4 (N), Spinach_4 (N), SpongeBob_4 (N), Tapioca_4 (N), Tarzan_4 (DY), Tessdabest_3 (N), Tortoise12_4 (N), Xen0_4 (N), Xerxes_4 (N),

Start 20:

- Found in 11 of 242 (4.5%) of genes in pham
- Manual Annotations of this start: 3 of 219
- Called 27.3% of time when present
- Phage (with cluster) where this start called: DonkeyMan_4 (DY), Heinz_4 (DY), Jojo24_4 (DY),

Start 21:

- Found in 3 of 242 (1.2%) of genes in pham
- Manual Annotations of this start: 3 of 219
- Called 100.0% of time when present
- Phage (with cluster) where this start called: Anatole_4 (BV), B3_4 (BV), E1_4 (BV),

Start 25:

- Found in 145 of 242 (59.9%) of genes in pham
- Manual Annotations of this start: 2 of 219
- Called 1.4% of time when present
- Phage (with cluster) where this start called: Kostya_11 (E), Pumpkin_11 (E),

Summary by clusters:

There are 16 clusters represented in this pham: CU5, CU4, E, CU2, CU1, DA, CZ6, singleton, CZ, N, FA, BV, FS, DY, CU3, CD,

Info for manual annotations of cluster BV:

- Start number 21 was manually annotated 3 times for cluster BV.

Info for manual annotations of cluster CD:

- Start number 13 was manually annotated 7 times for cluster CD.

Info for manual annotations of cluster CU1:

- Start number 12 was manually annotated 8 times for cluster CU1.

Info for manual annotations of cluster CU3:

- Start number 13 was manually annotated 1 time for cluster CU3.

Info for manual annotations of cluster CU4:

- Start number 13 was manually annotated 1 time for cluster CU4.

Info for manual annotations of cluster CU5:

- Start number 13 was manually annotated 1 time for cluster CU5.

Info for manual annotations of cluster CZ:

- Start number 19 was manually annotated 2 times for cluster CZ.

Info for manual annotations of cluster CZ6:

- Start number 19 was manually annotated 3 times for cluster CZ6.

Info for manual annotations of cluster DA:

- Start number 13 was manually annotated 4 times for cluster DA.

Info for manual annotations of cluster DY:

- Start number 19 was manually annotated 4 times for cluster DY.

- Start number 20 was manually annotated 3 times for cluster DY.

Info for manual annotations of cluster E:

- Start number 14 was manually annotated 20 times for cluster E.
- Start number 16 was manually annotated 110 times for cluster E.
- Start number 25 was manually annotated 2 times for cluster E.

Info for manual annotations of cluster FA:

- Start number 6 was manually annotated 1 time for cluster FA.

Info for manual annotations of cluster FS:

- Start number 10 was manually annotated 1 time for cluster FS.

Info for manual annotations of cluster N:

- Start number 19 was manually annotated 46 times for cluster N.

Gene Information:

Gene: 244_11 Start: 4167, Stop: 5723, Start Num: 16

Candidate Starts for 244_11:

(Start: 14 @4164 has 20 MA's), (Start: 16 @4167 has 110 MA's), (22, 4206), (Start: 25 @4227 has 2 MA's), (36, 4257), (39, 4263), (40, 4269), (54, 4368), (55, 4377), (86, 4560), (87, 4566), (101, 4644), (104, 4659), (115, 4734), (122, 4794), (126, 4824), (137, 4923), (138, 4926), (139, 4929), (140, 4941), (145, 4962), (147, 4971), (148, 4977), (160, 5094), (163, 5118), (168, 5151), (179, 5193), (188, 5259), (194, 5304), (200, 5343), (205, 5370), (214, 5475), (219, 5544), (223, 5604), (228, 5679), (229, 5688),

Gene: ABCat_10 Start: 5183, Stop: 6742, Start Num: 14

Candidate Starts for ABCat_10:

(Start: 14 @5183 has 20 MA's), (Start: 16 @5186 has 110 MA's), (22, 5225), (Start: 25 @5246 has 2 MA's), (36, 5276), (39, 5282), (40, 5288), (54, 5387), (55, 5396), (86, 5579), (87, 5585), (101, 5663), (104, 5678), (115, 5753), (122, 5813), (126, 5843), (137, 5942), (138, 5945), (139, 5948), (140, 5960), (145, 5981), (147, 5990), (148, 5996), (160, 6113), (163, 6137), (168, 6170), (179, 6212), (188, 6278), (194, 6323), (200, 6362), (205, 6389), (214, 6494), (219, 6563), (223, 6623), (228, 6698), (229, 6707),

Gene: Adnama_12 Start: 4399, Stop: 5955, Start Num: 16

Candidate Starts for Adnama_12:

(Start: 14 @4396 has 20 MA's), (Start: 16 @4399 has 110 MA's), (22, 4438), (Start: 25 @4459 has 2 MA's), (36, 4489), (39, 4495), (40, 4501), (54, 4600), (55, 4609), (86, 4792), (87, 4798), (101, 4876), (104, 4891), (109, 4915), (115, 4966), (116, 4975), (122, 5026), (137, 5155), (138, 5158), (139, 5161), (140, 5173), (145, 5194), (147, 5203), (148, 5209), (160, 5326), (163, 5350), (168, 5383), (179, 5425), (188, 5491), (194, 5536), (200, 5575), (205, 5602), (214, 5707), (219, 5776), (223, 5836), (228, 5911), (229, 5920),

Gene: Aggie_4 Start: 2249, Stop: 3538, Start Num: 19

Candidate Starts for Aggie_4:

(Start: 19 @2249 has 56 MA's), (39, 2336), (45, 2342), (47, 2378), (50, 2390), (58, 2468), (69, 2543), (88, 2630), (121, 2825), (123, 2840), (129, 2882), (140, 2996), (155, 3101), (157, 3110), (161, 3155), (167, 3191), (173, 3221), (192, 3344), (205, 3416), (206, 3422),

Gene: Altostratus_3 Start: 1985, Stop: 3505, Start Num: 10

Candidate Starts for Altostratus_3:

(8, 1979), (9, 1982), (Start: 10 @1985 has 1 MA's), (11, 1991), (31, 2072), (35, 2090), (46, 2132), (49, 2162), (61, 2255), (70, 2318), (92, 2411), (99, 2456), (127, 2648), (132, 2708), (140, 2774), (149, 2819), (154, 2867), (155, 2879), (157, 2888), (159, 2915), (164, 2960), (167, 2969), (175, 3005), (188, 3086), (189, 3089), (199, 3158), (216, 3323), (221, 3389), (225, 3446), (226, 3476), (227, 3479),

Gene: Amao_11 Start: 4193, Stop: 5749, Start Num: 16

Candidate Starts for Amao_11:

(Start: 14 @4190 has 20 MA's), (Start: 16 @4193 has 110 MA's), (22, 4232), (Start: 25 @4253 has 2 MA's), (36, 4283), (39, 4289), (40, 4295), (54, 4394), (55, 4403), (86, 4586), (87, 4592), (101, 4670), (104, 4685), (115, 4760), (122, 4820), (126, 4850), (137, 4949), (138, 4952), (139, 4955), (140, 4967), (145, 4988), (147, 4997), (148, 5003), (160, 5120), (163, 5144), (168, 5177), (179, 5219), (188, 5285), (194, 5330), (200, 5369), (205, 5396), (214, 5501), (219, 5570), (223, 5630), (228, 5705), (229, 5714),

Gene: AmericanBeauty_12 Start: 4396, Stop: 5952, Start Num: 16

Candidate Starts for AmericanBeauty_12:

(Start: 14 @4393 has 20 MA's), (Start: 16 @4396 has 110 MA's), (22, 4435), (Start: 25 @4456 has 2 MA's), (36, 4486), (39, 4492), (40, 4498), (54, 4597), (55, 4606), (86, 4789), (87, 4795), (101, 4873), (104, 4888), (109, 4912), (115, 4963), (116, 4972), (122, 5023), (137, 5152), (138, 5155), (139, 5158), (140, 5170), (145, 5191), (147, 5200), (148, 5206), (160, 5323), (163, 5347), (168, 5380), (179, 5422), (188, 5488), (194, 5533), (200, 5572), (205, 5599), (214, 5704), (219, 5773), (223, 5833), (228, 5908), (229, 5917),

Gene: Anatole_4 Start: 2800, Stop: 4233, Start Num: 21

Candidate Starts for Anatole_4:

(4, 2701), (5, 2725), (Start: 21 @2800 has 3 MA's), (23, 2809), (30, 2842), (33, 2851), (42, 2884), (49, 2938), (52, 2962), (54, 2977), (57, 2995), (65, 3067), (70, 3097), (92, 3199), (99, 3244), (103, 3262), (107, 3289), (113, 3328), (114, 3334), (115, 3343), (116, 3352), (119, 3376), (131, 3490), (140, 3559), (142, 3565), (150, 3610), (155, 3664), (161, 3718), (164, 3745), (177, 3802), (188, 3871), (189, 3874), (192, 3901), (203, 3964), (204, 3967), (206, 3979), (213, 4045), (217, 4102), (220, 4150), (224, 4204),

Gene: Andies_4 Start: 2249, Stop: 3538, Start Num: 19

Candidate Starts for Andies_4:

(Start: 19 @2249 has 56 MA's), (39, 2336), (45, 2342), (47, 2378), (50, 2390), (58, 2468), (69, 2543), (88, 2630), (108, 2726), (121, 2825), (123, 2840), (129, 2882), (140, 2996), (155, 3101), (157, 3110), (161, 3155), (167, 3191), (173, 3221), (192, 3344), (205, 3416), (206, 3422),

Gene: Applejacks_3 Start: 2099, Stop: 3511, Start Num: 13

Candidate Starts for Applejacks_3:

(Start: 13 @2099 has 14 MA's), (15, 2105), (17, 2108), (32, 2168), (49, 2246), (50, 2249), (52, 2270), (56, 2300), (58, 2327), (66, 2381), (98, 2576), (103, 2600), (108, 2627), (113, 2666), (114, 2672), (140, 2903), (144, 2918), (149, 2948), (152, 2978), (155, 3008), (158, 3020), (159, 3044), (161, 3062), (162, 3065), (172, 3125), (178, 3149), (181, 3164), (190, 3236), (191, 3248), (192, 3251), (222, 3503),

Gene: Archimedes_2 Start: 1796, Stop: 3112, Start Num: 13

Candidate Starts for Archimedes_2:

(Start: 13 @1796 has 14 MA's), (70, 2105), (73, 2138), (92, 2213), (99, 2258), (111, 2333), (114, 2351), (115, 2360), (140, 2582), (152, 2657), (153, 2666), (155, 2687), (157, 2696), (161, 2741), (172, 2804), (174, 2813), (184, 2855), (188, 2897),

Gene: Argent26_12 Start: 4396, Stop: 5955, Start Num: 14

Candidate Starts for Argent26_12:

(Start: 14 @4396 has 20 MA's), (Start: 16 @4399 has 110 MA's), (22, 4438), (Start: 25 @4459 has 2 MA's), (36, 4489), (39, 4495), (40, 4501), (54, 4600), (55, 4609), (86, 4792), (87, 4798), (101, 4876),

(104, 4891), (109, 4915), (115, 4966), (116, 4975), (122, 5026), (137, 5155), (138, 5158), (139, 5161), (140, 5173), (145, 5194), (147, 5203), (148, 5209), (160, 5326), (163, 5350), (168, 5383), (179, 5425), (188, 5491), (194, 5536), (200, 5575), (205, 5602), (214, 5707), (219, 5776), (223, 5836), (228, 5911), (229, 5920),

Gene: Asriel_10 Start: 4058, Stop: 5614, Start Num: 16

Candidate Starts for Asriel_10:

(Start: 14 @4055 has 20 MA's), (Start: 16 @4058 has 110 MA's), (22, 4097), (Start: 25 @4118 has 2 MA's), (36, 4148), (39, 4154), (40, 4160), (54, 4259), (55, 4268), (86, 4451), (87, 4457), (101, 4535), (104, 4550), (109, 4574), (115, 4625), (116, 4634), (122, 4685), (126, 4715), (137, 4814), (138, 4817), (139, 4820), (140, 4832), (145, 4853), (147, 4862), (148, 4868), (160, 4985), (163, 5009), (168, 5042), (179, 5084), (188, 5150), (194, 5195), (200, 5234), (205, 5261), (214, 5366), (219, 5435), (223, 5495), (228, 5570), (229, 5579),

Gene: B3_4 Start: 2800, Stop: 4233, Start Num: 21

Candidate Starts for B3_4:

(4, 2701), (5, 2725), (Start: 21 @2800 has 3 MA's), (23, 2809), (30, 2842), (33, 2851), (42, 2884), (49, 2938), (52, 2962), (54, 2977), (57, 2995), (65, 3067), (70, 3097), (92, 3199), (99, 3244), (107, 3289), (113, 3328), (114, 3334), (115, 3343), (116, 3352), (119, 3376), (127, 3436), (140, 3559), (142, 3565), (150, 3610), (155, 3664), (161, 3718), (165, 3748), (177, 3802), (188, 3871), (189, 3874), (192, 3901), (203, 3964), (204, 3967), (206, 3979), (213, 4045), (217, 4102), (220, 4150), (224, 4204),

Gene: BFK20_ORF3 Start: 2178, Stop: 3449, Start Num: 13

Candidate Starts for BFK20_ORF3:

(Start: 13 @2178 has 14 MA's), (45, 2286), (54, 2370), (57, 2388), (62, 2436), (65, 2460), (66, 2466), (67, 2475), (70, 2490), (88, 2583), (106, 2679), (112, 2727), (122, 2808), (125, 2835), (128, 2844), (131, 2901), (140, 2973), (151, 3039), (153, 3057), (155, 3078), (156, 3081), (168, 3183), (173, 3198), (175, 3207), (192, 3321), (196, 3345), (210, 3438),

Gene: BabeRuth_4 Start: 2263, Stop: 3552, Start Num: 19

Candidate Starts for BabeRuth_4:

(Start: 19 @2263 has 56 MA's), (24, 2299), (39, 2350), (45, 2356), (47, 2392), (50, 2404), (58, 2482), (69, 2557), (85, 2629), (87, 2638), (88, 2644), (90, 2650), (91, 2653), (108, 2740), (121, 2839), (123, 2854), (124, 2872), (140, 3010), (148, 3046), (155, 3115), (157, 3124), (161, 3169), (167, 3205), (173, 3235), (189, 3331), (192, 3358), (205, 3430),

Gene: BaboJay_10 Start: 4717, Stop: 6273, Start Num: 16

Candidate Starts for BaboJay_10:

(Start: 14 @4714 has 20 MA's), (Start: 16 @4717 has 110 MA's), (22, 4756), (Start: 25 @4777 has 2 MA's), (36, 4807), (39, 4813), (40, 4819), (54, 4918), (55, 4927), (86, 5110), (87, 5116), (101, 5194), (104, 5209), (115, 5284), (122, 5344), (126, 5374), (137, 5473), (138, 5476), (139, 5479), (140, 5491), (145, 5512), (147, 5521), (148, 5527), (160, 5644), (163, 5668), (168, 5701), (179, 5743), (188, 5809), (194, 5854), (200, 5893), (205, 5920), (214, 6025), (219, 6094), (223, 6154), (228, 6229), (229, 6238),

Gene: BadStone_10 Start: 5183, Stop: 6742, Start Num: 14

Candidate Starts for BadStone_10:

(Start: 14 @5183 has 20 MA's), (Start: 16 @5186 has 110 MA's), (22, 5225), (Start: 25 @5246 has 2 MA's), (36, 5276), (39, 5282), (40, 5288), (54, 5387), (55, 5396), (86, 5579), (87, 5585), (101, 5663), (104, 5678), (115, 5753), (122, 5813), (126, 5843), (137, 5942), (138, 5945), (139, 5948), (140, 5960), (145, 5981), (147, 5990), (148, 5996), (160, 6113), (163, 6137), (168, 6170), (179, 6212), (188, 6278), (194, 6323), (200, 6362), (205, 6389), (214, 6494), (219, 6563), (223, 6623), (228, 6698), (229, 6707),

Gene: Balomoji_10 Start: 4920, Stop: 6476, Start Num: 16

Candidate Starts for Balomoji_10:

(Start: 14 @4917 has 20 MA's), (Start: 16 @4920 has 110 MA's), (22, 4959), (Start: 25 @4980 has 2 MA's), (36, 5010), (39, 5016), (40, 5022), (54, 5121), (55, 5130), (86, 5313), (87, 5319), (101, 5397), (104, 5412), (115, 5487), (122, 5547), (126, 5577), (137, 5676), (138, 5679), (139, 5682), (140, 5694), (145, 5715), (147, 5724), (148, 5730), (160, 5847), (163, 5871), (168, 5904), (179, 5946), (188, 6012), (194, 6057), (200, 6096), (205, 6123), (214, 6228), (219, 6297), (223, 6357), (228, 6432), (229, 6441),

Gene: Banquo_12 Start: 6215, Stop: 7504, Start Num: 12

Candidate Starts for Banquo_12:

(1, 5927), (Start: 12 @6215 has 8 MA's), (Start: 13 @6224 has 14 MA's), (50, 6374), (67, 6515), (73, 6563), (74, 6566), (93, 6638), (100, 6680), (105, 6707), (106, 6710), (108, 6725), (114, 6770), (124, 6860), (131, 6926), (140, 6998), (152, 7073), (155, 7103), (159, 7139), (167, 7193), (182, 7256), (192, 7340), (211, 7454),

Gene: Barbarian_10 Start: 4055, Stop: 5614, Start Num: 14

Candidate Starts for Barbarian_10:

(Start: 14 @4055 has 20 MA's), (Start: 16 @4058 has 110 MA's), (22, 4097), (Start: 25 @4118 has 2 MA's), (36, 4148), (39, 4154), (40, 4160), (54, 4259), (55, 4268), (86, 4451), (87, 4457), (101, 4535), (104, 4550), (109, 4574), (115, 4625), (116, 4634), (122, 4685), (126, 4715), (137, 4814), (138, 4817), (139, 4820), (140, 4832), (145, 4853), (147, 4862), (148, 4868), (160, 4985), (163, 5009), (168, 5042), (179, 5084), (188, 5150), (194, 5195), (200, 5234), (205, 5261), (214, 5366), (219, 5435), (223, 5495), (228, 5570), (229, 5579),

Gene: Bask21_10 Start: 3853, Stop: 5409, Start Num: 16

Candidate Starts for Bask21_10:

(Start: 14 @3850 has 20 MA's), (Start: 16 @3853 has 110 MA's), (22, 3892), (Start: 25 @3913 has 2 MA's), (36, 3943), (39, 3949), (40, 3955), (54, 4054), (55, 4063), (86, 4246), (87, 4252), (101, 4330), (104, 4345), (115, 4420), (122, 4480), (126, 4510), (137, 4609), (138, 4612), (139, 4615), (140, 4627), (145, 4648), (147, 4657), (148, 4663), (160, 4780), (163, 4804), (168, 4837), (179, 4879), (188, 4945), (194, 4990), (200, 5029), (205, 5056), (214, 5161), (219, 5230), (223, 5290), (228, 5365), (229, 5374),

Gene: Becksu_10 Start: 4787, Stop: 6343, Start Num: 16

Candidate Starts for Becksu_10:

(Start: 14 @4784 has 20 MA's), (Start: 16 @4787 has 110 MA's), (22, 4826), (Start: 25 @4847 has 2 MA's), (36, 4877), (39, 4883), (40, 4889), (54, 4988), (55, 4997), (86, 5180), (87, 5186), (101, 5264), (104, 5279), (115, 5354), (122, 5414), (126, 5444), (137, 5543), (138, 5546), (139, 5549), (140, 5561), (145, 5582), (147, 5591), (148, 5597), (160, 5714), (163, 5738), (168, 5771), (179, 5813), (188, 5879), (194, 5924), (200, 5963), (205, 5990), (214, 6095), (219, 6164), (223, 6224), (228, 6299), (229, 6308),

Gene: Bench_12 Start: 4473, Stop: 6029, Start Num: 16

Candidate Starts for Bench_12:

(Start: 14 @4470 has 20 MA's), (Start: 16 @4473 has 110 MA's), (22, 4512), (Start: 25 @4533 has 2 MA's), (36, 4563), (39, 4569), (40, 4575), (54, 4674), (55, 4683), (86, 4866), (87, 4872), (101, 4950), (104, 4965), (115, 5040), (122, 5100), (126, 5130), (137, 5229), (138, 5232), (139, 5235), (140, 5247), (145, 5268), (147, 5277), (148, 5283), (160, 5400), (163, 5424), (168, 5457), (179, 5499), (188, 5565), (194, 5610), (200, 5649), (205, 5676), (214, 5781), (219, 5850), (223, 5910), (228, 5985), (229, 5994),

Gene: BigBubba_10 Start: 3853, Stop: 5409, Start Num: 16

Candidate Starts for BigBubba_10:

(Start: 14 @3850 has 20 MA's), (Start: 16 @3853 has 110 MA's), (22, 3892), (Start: 25 @3913 has 2 MA's), (36, 3943), (39, 3949), (40, 3955), (54, 4054), (55, 4063), (86, 4246), (87, 4252), (101, 4330), (104, 4345), (115, 4420), (122, 4480), (126, 4510), (137, 4609), (138, 4612), (139, 4615), (140, 4627), (145, 4648), (147, 4657), (148, 4663), (160, 4780), (163, 4804), (168, 4837), (179, 4879), (188, 4945),

(194, 4990), (200, 5029), (205, 5056), (214, 5161), (219, 5230), (223, 5290), (228, 5365), (229, 5374),

Gene: BilboSwaggins_11 Start: 5186, Stop: 6742, Start Num: 16

Candidate Starts for BilboSwaggins_11:

(Start: 14 @5183 has 20 MA's), (Start: 16 @5186 has 110 MA's), (22, 5225), (Start: 25 @5246 has 2 MA's), (36, 5276), (39, 5282), (40, 5288), (54, 5387), (55, 5396), (86, 5579), (87, 5585), (101, 5663), (104, 5678), (115, 5753), (122, 5813), (126, 5843), (137, 5942), (138, 5945), (139, 5948), (140, 5960), (145, 5981), (147, 5990), (148, 5996), (160, 6113), (163, 6137), (168, 6170), (179, 6212), (188, 6278), (194, 6323), (200, 6362), (205, 6389), (214, 6494), (219, 6563), (223, 6623), (228, 6698), (229, 6707),

Gene: Bogg_11 Start: 4067, Stop: 5623, Start Num: 16

Candidate Starts for Bogg_11:

(Start: 14 @4064 has 20 MA's), (Start: 16 @4067 has 110 MA's), (22, 4106), (Start: 25 @4127 has 2 MA's), (36, 4157), (39, 4163), (40, 4169), (54, 4268), (55, 4277), (86, 4460), (87, 4466), (101, 4544), (104, 4559), (109, 4583), (115, 4634), (116, 4643), (122, 4694), (137, 4823), (138, 4826), (139, 4829), (140, 4841), (145, 4862), (147, 4871), (148, 4877), (160, 4994), (163, 5018), (168, 5051), (179, 5093), (188, 5159), (194, 5204), (200, 5243), (205, 5270), (214, 5375), (219, 5444), (223, 5504), (228, 5579), (229, 5588),

Gene: Bosection6_4 Start: 2249, Stop: 3538, Start Num: 19

Candidate Starts for Bosection6_4:

(Start: 19 @2249 has 56 MA's), (39, 2336), (45, 2342), (47, 2378), (50, 2390), (58, 2468), (69, 2543), (88, 2630), (121, 2825), (123, 2840), (129, 2882), (140, 2996), (155, 3101), (157, 3110), (161, 3155), (167, 3191), (173, 3221), (192, 3344), (205, 3416), (206, 3422),

Gene: Brewer_10 Start: 4852, Stop: 6408, Start Num: 16

Candidate Starts for Brewer_10:

(Start: 14 @4849 has 20 MA's), (Start: 16 @4852 has 110 MA's), (22, 4891), (Start: 25 @4912 has 2 MA's), (36, 4942), (39, 4948), (40, 4954), (54, 5053), (55, 5062), (86, 5245), (87, 5251), (101, 5329), (104, 5344), (115, 5419), (122, 5479), (137, 5608), (138, 5611), (139, 5614), (140, 5626), (145, 5647), (147, 5656), (148, 5662), (160, 5779), (163, 5803), (168, 5836), (179, 5878), (188, 5944), (194, 5989), (200, 6028), (205, 6055), (214, 6160), (219, 6229), (223, 6289), (228, 6364), (229, 6373),

Gene: Bruin_10 Start: 4787, Stop: 6343, Start Num: 16

Candidate Starts for Bruin_10:

(Start: 14 @4784 has 20 MA's), (Start: 16 @4787 has 110 MA's), (22, 4826), (Start: 25 @4847 has 2 MA's), (36, 4877), (39, 4883), (40, 4889), (54, 4988), (55, 4997), (86, 5180), (87, 5186), (101, 5264), (104, 5279), (115, 5354), (122, 5414), (126, 5444), (137, 5543), (138, 5546), (139, 5549), (140, 5561), (145, 5582), (147, 5591), (148, 5597), (160, 5714), (163, 5738), (168, 5771), (179, 5813), (188, 5879), (194, 5924), (200, 5963), (205, 5990), (214, 6095), (219, 6164), (223, 6224), (228, 6299), (229, 6308),

Gene: Buck_10 Start: 4852, Stop: 6408, Start Num: 16

Candidate Starts for Buck_10:

(Start: 14 @4849 has 20 MA's), (Start: 16 @4852 has 110 MA's), (22, 4891), (Start: 25 @4912 has 2 MA's), (36, 4942), (39, 4948), (40, 4954), (54, 5053), (55, 5062), (86, 5245), (87, 5251), (101, 5329), (104, 5344), (115, 5419), (122, 5479), (126, 5509), (137, 5608), (138, 5611), (139, 5614), (140, 5626), (145, 5647), (147, 5656), (148, 5662), (160, 5779), (163, 5803), (168, 5836), (179, 5878), (188, 5944), (194, 5989), (200, 6028), (205, 6055), (214, 6160), (219, 6229), (223, 6289), (228, 6364), (229, 6373),

Gene: Budgie_12 Start: 4482, Stop: 6038, Start Num: 16

Candidate Starts for Budgie_12:

(Start: 16 @4482 has 110 MA's), (22, 4521), (24, 4530), (Start: 25 @4542 has 2 MA's), (36, 4572), (39, 4578), (47, 4635), (55, 4692), (57, 4698), (69, 4797), (86, 4875), (87, 4881), (91, 4896), (104, 4974),

(114, 5040), (115, 5049), (122, 5109), (126, 5139), (133, 5202), (138, 5241), (140, 5256), (147, 5286), (148, 5292), (152, 5331), (160, 5409), (163, 5433), (168, 5466), (179, 5508), (188, 5574), (194, 5619), (212, 5757), (214, 5790), (219, 5859), (223, 5919), (228, 5994), (229, 6003),

Gene: BugsBunny_8 Start: 4353, Stop: 5909, Start Num: 16

Candidate Starts for BugsBunny_8:

(Start: 14 @4350 has 20 MA's), (Start: 16 @4353 has 110 MA's), (22, 4392), (Start: 25 @4413 has 2 MA's), (36, 4443), (39, 4449), (40, 4455), (54, 4554), (55, 4563), (86, 4746), (87, 4752), (101, 4830), (104, 4845), (115, 4920), (122, 4980), (126, 5010), (137, 5109), (138, 5112), (139, 5115), (140, 5127), (145, 5148), (147, 5157), (148, 5163), (160, 5280), (163, 5304), (168, 5337), (179, 5379), (188, 5445), (194, 5490), (200, 5529), (205, 5556), (214, 5661), (219, 5730), (223, 5790), (228, 5865), (229, 5874),

Gene: Butters_4 Start: 2249, Stop: 3535, Start Num: 19

Candidate Starts for Butters_4:

(Start: 19 @2249 has 56 MA's), (39, 2336), (45, 2342), (47, 2378), (50, 2390), (69, 2543), (85, 2615), (108, 2726), (109, 2729), (117, 2795), (118, 2798), (121, 2825), (123, 2840), (129, 2882), (140, 2996), (155, 3101), (161, 3155), (162, 3158), (167, 3191), (173, 3221), (192, 3344), (202, 3404),

Gene: Cactus_12 Start: 4396, Stop: 5955, Start Num: 14

Candidate Starts for Cactus_12:

(Start: 14 @4396 has 20 MA's), (Start: 16 @4399 has 110 MA's), (22, 4438), (Start: 25 @4459 has 2 MA's), (36, 4489), (39, 4495), (40, 4501), (54, 4600), (55, 4609), (86, 4792), (87, 4798), (101, 4876), (104, 4891), (109, 4915), (115, 4966), (116, 4975), (122, 5026), (126, 5056), (137, 5155), (138, 5158), (139, 5161), (140, 5173), (145, 5194), (147, 5203), (148, 5209), (160, 5326), (163, 5350), (168, 5383), (179, 5425), (188, 5491), (194, 5536), (200, 5575), (205, 5602), (214, 5707), (219, 5776), (223, 5836), (228, 5911), (229, 5920),

Gene: Carcharodon_4 Start: 2249, Stop: 3538, Start Num: 19

Candidate Starts for Carcharodon_4:

(Start: 19 @2249 has 56 MA's), (39, 2336), (45, 2342), (47, 2378), (50, 2390), (58, 2468), (69, 2543), (88, 2630), (108, 2726), (121, 2825), (123, 2840), (129, 2882), (140, 2996), (155, 3101), (157, 3110), (161, 3155), (167, 3191), (173, 3221), (192, 3344), (205, 3416), (206, 3422),

Gene: Catfish_7 Start: 4168, Stop: 5466, Start Num: 13

Candidate Starts for Catfish_7:

(Start: 13 @4168 has 14 MA's), (37, 4246), (43, 4264), (46, 4285), (50, 4318), (58, 4396), (60, 4408), (62, 4420), (71, 4486), (72, 4489), (74, 4510), (85, 4549), (108, 4669), (110, 4675), (114, 4714), (122, 4783), (124, 4804), (140, 4942), (152, 5017), (155, 5047), (159, 5083), (173, 5167), (174, 5173), (176, 5182), (180, 5194), (192, 5284),

Gene: Charlie_4 Start: 2249, Stop: 3538, Start Num: 19

Candidate Starts for Charlie_4:

(Start: 19 @2249 has 56 MA's), (39, 2336), (45, 2342), (47, 2378), (50, 2390), (58, 2468), (69, 2543), (88, 2630), (121, 2825), (123, 2840), (129, 2882), (140, 2996), (155, 3101), (157, 3110), (161, 3155), (167, 3191), (173, 3221), (192, 3344), (205, 3416), (206, 3422),

Gene: Chewbacca_4 Start: 2249, Stop: 3538, Start Num: 19

Candidate Starts for Chewbacca_4:

(Start: 19 @2249 has 56 MA's), (39, 2336), (45, 2342), (47, 2378), (50, 2390), (58, 2468), (69, 2543), (88, 2630), (121, 2825), (123, 2840), (129, 2882), (140, 2996), (155, 3101), (157, 3110), (161, 3155), (167, 3191), (173, 3221), (192, 3344), (205, 3416), (206, 3422),

Gene: ChosenOne_9 Start: 3619, Stop: 5175, Start Num: 16

Candidate Starts for ChosenOne_9:

(Start: 14 @3616 has 20 MA's), (Start: 16 @3619 has 110 MA's), (22, 3658), (Start: 25 @3679 has 2 MA's), (36, 3709), (39, 3715), (40, 3721), (54, 3820), (55, 3829), (86, 4012), (87, 4018), (101, 4096), (104, 4111), (115, 4186), (122, 4246), (137, 4375), (138, 4378), (139, 4381), (140, 4393), (145, 4414), (147, 4423), (148, 4429), (160, 4546), (163, 4570), (168, 4603), (179, 4645), (188, 4711), (194, 4756), (200, 4795), (205, 4822), (214, 4927), (219, 4996), (223, 5056), (228, 5131), (229, 5140),

Gene: ChotaBhai_10 Start: 3853, Stop: 5409, Start Num: 16

Candidate Starts for ChotaBhai_10:

(Start: 14 @3850 has 20 MA's), (Start: 16 @3853 has 110 MA's), (22, 3892), (Start: 25 @3913 has 2 MA's), (36, 3943), (39, 3949), (40, 3955), (54, 4054), (55, 4063), (86, 4246), (87, 4252), (101, 4330), (104, 4345), (115, 4420), (122, 4480), (126, 4510), (137, 4609), (138, 4612), (139, 4615), (140, 4627), (145, 4648), (147, 4657), (148, 4663), (160, 4780), (163, 4804), (168, 4837), (179, 4879), (188, 4945), (194, 4990), (200, 5029), (205, 5056), (214, 5161), (219, 5230), (223, 5290), (228, 5365), (229, 5374),

Gene: Cjw1_10 Start: 5169, Stop: 6725, Start Num: 16

Candidate Starts for Cjw1_10:

(Start: 14 @5166 has 20 MA's), (Start: 16 @5169 has 110 MA's), (22, 5208), (Start: 25 @5229 has 2 MA's), (36, 5259), (39, 5265), (40, 5271), (54, 5370), (55, 5379), (86, 5562), (87, 5568), (101, 5646), (104, 5661), (109, 5685), (115, 5736), (116, 5745), (122, 5796), (137, 5925), (138, 5928), (139, 5931), (140, 5943), (145, 5964), (147, 5973), (148, 5979), (160, 6096), (163, 6120), (168, 6153), (179, 6195), (188, 6261), (194, 6306), (200, 6345), (205, 6372), (214, 6477), (219, 6546), (223, 6606), (228, 6681), (229, 6690),

Gene: Command613_12 Start: 5257, Stop: 6813, Start Num: 16

Candidate Starts for Command613_12:

(Start: 14 @5254 has 20 MA's), (Start: 16 @5257 has 110 MA's), (22, 5296), (Start: 25 @5317 has 2 MA's), (36, 5347), (39, 5353), (40, 5359), (54, 5458), (55, 5467), (86, 5650), (87, 5656), (101, 5734), (104, 5749), (115, 5824), (122, 5884), (126, 5914), (137, 6013), (138, 6016), (139, 6019), (140, 6031), (145, 6052), (147, 6061), (148, 6067), (160, 6184), (163, 6208), (168, 6241), (179, 6283), (188, 6349), (194, 6394), (200, 6433), (205, 6460), (214, 6565), (219, 6634), (223, 6694), (228, 6769), (229, 6778),

Gene: Contagion_10 Start: 4784, Stop: 6343, Start Num: 14

Candidate Starts for Contagion_10:

(Start: 14 @4784 has 20 MA's), (Start: 16 @4787 has 110 MA's), (22, 4826), (Start: 25 @4847 has 2 MA's), (36, 4877), (39, 4883), (40, 4889), (54, 4988), (55, 4997), (86, 5180), (87, 5186), (101, 5264), (104, 5279), (115, 5354), (122, 5414), (126, 5444), (137, 5543), (138, 5546), (139, 5549), (140, 5561), (145, 5582), (147, 5591), (148, 5597), (160, 5714), (163, 5738), (168, 5771), (179, 5813), (188, 5879), (194, 5924), (200, 5963), (205, 5990), (214, 6095), (219, 6164), (223, 6224), (228, 6299), (229, 6308),

Gene: Cookies_11 Start: 5059, Stop: 6615, Start Num: 16

Candidate Starts for Cookies_11:

(Start: 14 @5056 has 20 MA's), (Start: 16 @5059 has 110 MA's), (22, 5098), (Start: 25 @5119 has 2 MA's), (36, 5149), (39, 5155), (40, 5161), (54, 5260), (55, 5269), (86, 5452), (87, 5458), (101, 5536), (104, 5551), (115, 5626), (122, 5686), (126, 5716), (137, 5815), (138, 5818), (139, 5821), (140, 5833), (145, 5854), (147, 5863), (148, 5869), (160, 5986), (163, 6010), (168, 6043), (179, 6085), (188, 6151), (194, 6196), (200, 6235), (205, 6262), (214, 6367), (219, 6436), (223, 6496), (228, 6571), (229, 6580),

Gene: CrystalP_11 Start: 5186, Stop: 6742, Start Num: 16

Candidate Starts for CrystalP_11:

(Start: 14 @5183 has 20 MA's), (Start: 16 @5186 has 110 MA's), (22, 5225), (Start: 25 @5246 has 2 MA's), (36, 5276), (39, 5282), (40, 5288), (54, 5387), (55, 5396), (86, 5579), (87, 5585), (101, 5663), (104, 5678), (115, 5753), (122, 5813), (126, 5843), (137, 5942), (138, 5945), (139, 5948), (140, 5960),

(145, 5981), (147, 5990), (148, 5996), (160, 6113), (163, 6137), (168, 6170), (179, 6212), (188, 6278), (194, 6323), (200, 6362), (205, 6389), (214, 6494), (219, 6563), (223, 6623), (228, 6698), (229, 6707),

Gene: Cubone_3 Start: 2249, Stop: 3538, Start Num: 19

Candidate Starts for Cubone_3:

(Start: 19 @2249 has 56 MA's), (39, 2336), (45, 2342), (47, 2378), (50, 2390), (58, 2468), (69, 2543), (88, 2630), (108, 2726), (121, 2825), (123, 2840), (129, 2882), (140, 2996), (155, 3101), (157, 3110), (161, 3155), (167, 3191), (173, 3221), (192, 3344), (205, 3416), (206, 3422),

Gene: Czyszczone1_11 Start: 4355, Stop: 5911, Start Num: 16

Candidate Starts for Czyszczone1_11:

(Start: 14 @4352 has 20 MA's), (Start: 16 @4355 has 110 MA's), (22, 4394), (Start: 25 @4415 has 2 MA's), (36, 4445), (39, 4451), (40, 4457), (54, 4556), (55, 4565), (86, 4748), (87, 4754), (101, 4832), (104, 4847), (115, 4922), (122, 4982), (126, 5012), (137, 5111), (138, 5114), (139, 5117), (140, 5129), (145, 5150), (147, 5159), (148, 5165), (160, 5282), (163, 5306), (168, 5339), (179, 5381), (188, 5447), (194, 5492), (200, 5531), (205, 5558), (214, 5663), (219, 5732), (223, 5792), (228, 5867), (229, 5876),

Gene: Daikon_9 Start: 4917, Stop: 6476, Start Num: 14

Candidate Starts for Daikon_9:

(Start: 14 @4917 has 20 MA's), (Start: 16 @4920 has 110 MA's), (22, 4959), (Start: 25 @4980 has 2 MA's), (36, 5010), (39, 5016), (40, 5022), (54, 5121), (55, 5130), (86, 5313), (87, 5319), (101, 5397), (104, 5412), (115, 5487), (122, 5547), (126, 5577), (137, 5676), (138, 5679), (139, 5682), (140, 5694), (145, 5715), (147, 5724), (148, 5730), (160, 5847), (163, 5871), (168, 5904), (179, 5946), (188, 6012), (194, 6057), (200, 6096), (205, 6123), (214, 6228), (219, 6297), (223, 6357), (228, 6432), (229, 6441),

Gene: Dardanus_10 Start: 5244, Stop: 6548, Start Num: 13

Candidate Starts for Dardanus_10:

(Start: 13 @5244 has 14 MA's), (18, 5262), (46, 5361), (48, 5388), (58, 5472), (61, 5487), (70, 5550), (74, 5586), (75, 5589), (76, 5592), (93, 5658), (99, 5697), (105, 5727), (106, 5730), (108, 5745), (114, 5790), (122, 5859), (124, 5880), (140, 6018), (142, 6024), (152, 6093), (153, 6102), (155, 6123), (159, 6159), (167, 6213), (173, 6243), (180, 6270), (182, 6276), (192, 6360), (198, 6393), (201, 6417), (204, 6426), (205, 6432),

Gene: DearBasketball_4 Start: 2354, Stop: 3655, Start Num: 19

Candidate Starts for DearBasketball_4:

(Start: 19 @2354 has 56 MA's), (Start: 20 @2357 has 3 MA's), (22, 2381), (28, 2411), (47, 2483), (62, 2600), (86, 2732), (90, 2750), (116, 2906), (124, 2978), (140, 3119), (143, 3128), (145, 3140), (148, 3155), (154, 3212), (155, 3224), (161, 3278), (162, 3281), (163, 3296), (167, 3314), (192, 3461),

Gene: DinoDaryn_10 Start: 5301, Stop: 6593, Start Num: 12

Candidate Starts for DinoDaryn_10:

(3, 5223), (Start: 12 @5301 has 8 MA's), (Start: 13 @5310 has 14 MA's), (43, 5406), (50, 5460), (70, 5616), (74, 5652), (85, 5691), (91, 5715), (99, 5763), (100, 5766), (106, 5796), (108, 5811), (109, 5814), (114, 5856), (131, 6012), (140, 6084), (155, 6189), (158, 6201), (159, 6225), (167, 6279), (173, 6309), (174, 6315), (192, 6426),

Gene: DinoNuggs_5 Start: 2467, Stop: 3768, Start Num: 19

Candidate Starts for DinoNuggs_5:

(Start: 19 @2467 has 56 MA's), (Start: 20 @2470 has 3 MA's), (22, 2494), (28, 2524), (47, 2596), (59, 2689), (62, 2713), (86, 2845), (89, 2860), (90, 2863), (116, 3019), (124, 3091), (140, 3232), (143, 3241), (145, 3253), (148, 3268), (154, 3325), (155, 3337), (161, 3391), (162, 3394), (163, 3409), (167, 3427), (170, 3448), (192, 3574),

Gene: DoctorDiddles_11 Start: 4352, Stop: 5908, Start Num: 16

Candidate Starts for DoctorDiddles_11:

(Start: 14 @4349 has 20 MA's), (Start: 16 @4352 has 110 MA's), (22, 4391), (Start: 25 @4412 has 2 MA's), (36, 4442), (39, 4448), (40, 4454), (54, 4553), (55, 4562), (86, 4745), (87, 4751), (101, 4829), (104, 4844), (109, 4868), (115, 4919), (116, 4928), (122, 4979), (137, 5108), (138, 5111), (139, 5114), (140, 5126), (147, 5156), (148, 5162), (160, 5279), (163, 5303), (168, 5336), (179, 5378), (188, 5444), (194, 5489), (200, 5528), (205, 5555), (214, 5660), (219, 5729), (223, 5789), (228, 5864), (229, 5873),

Gene: DonkeyMan_4 Start: 2357, Stop: 3652, Start Num: 20

Candidate Starts for DonkeyMan_4:

(Start: 19 @2354 has 56 MA's), (Start: 20 @2357 has 3 MA's), (22, 2381), (28, 2411), (47, 2483), (62, 2600), (86, 2732), (89, 2747), (90, 2750), (116, 2906), (124, 2978), (140, 3119), (143, 3128), (145, 3140), (148, 3155), (154, 3212), (155, 3224), (161, 3278), (162, 3281), (163, 3296), (167, 3314), (170, 3335), (192, 3461),

Gene: DrDrey_11 Start: 5186, Stop: 6742, Start Num: 16

Candidate Starts for DrDrey_11:

(Start: 14 @5183 has 20 MA's), (Start: 16 @5186 has 110 MA's), (22, 5225), (Start: 25 @5246 has 2 MA's), (36, 5276), (39, 5282), (40, 5288), (54, 5387), (55, 5396), (86, 5579), (87, 5585), (101, 5663), (104, 5678), (115, 5753), (122, 5813), (126, 5843), (137, 5942), (138, 5945), (139, 5948), (140, 5960), (145, 5981), (147, 5990), (148, 5996), (160, 6113), (163, 6137), (168, 6170), (179, 6212), (188, 6278), (194, 6323), (200, 6362), (205, 6389), (214, 6494), (219, 6563), (223, 6623), (228, 6698), (229, 6707),

Gene: Dumbo_10 Start: 4167, Stop: 5723, Start Num: 16

Candidate Starts for Dumbo_10:

(Start: 14 @4164 has 20 MA's), (Start: 16 @4167 has 110 MA's), (22, 4206), (Start: 25 @4227 has 2 MA's), (36, 4257), (39, 4263), (40, 4269), (54, 4368), (55, 4377), (86, 4560), (87, 4566), (101, 4644), (104, 4659), (115, 4734), (122, 4794), (126, 4824), (137, 4923), (138, 4926), (139, 4929), (140, 4941), (145, 4962), (147, 4971), (148, 4977), (160, 5094), (163, 5118), (168, 5151), (179, 5193), (188, 5259), (194, 5304), (200, 5343), (205, 5370), (214, 5475), (219, 5544), (223, 5604), (228, 5679), (229, 5688),

Gene: Duplicity_4 Start: 2249, Stop: 3538, Start Num: 19

Candidate Starts for Duplicity_4:

(Start: 19 @2249 has 56 MA's), (39, 2336), (45, 2342), (47, 2378), (50, 2390), (58, 2468), (69, 2543), (88, 2630), (121, 2825), (123, 2840), (129, 2882), (140, 2996), (155, 3101), (157, 3110), (161, 3155), (167, 3191), (173, 3221), (192, 3344), (205, 3416), (206, 3422),

Gene: Dusk_10 Start: 4843, Stop: 6402, Start Num: 14

Candidate Starts for Dusk_10:

(Start: 14 @4843 has 20 MA's), (Start: 16 @4846 has 110 MA's), (22, 4885), (Start: 25 @4906 has 2 MA's), (36, 4936), (39, 4942), (40, 4948), (54, 5047), (55, 5056), (86, 5239), (87, 5245), (101, 5323), (104, 5338), (115, 5413), (122, 5473), (126, 5503), (137, 5602), (138, 5605), (139, 5608), (140, 5620), (145, 5641), (147, 5650), (148, 5656), (160, 5773), (163, 5797), (168, 5830), (179, 5872), (188, 5938), (194, 5983), (200, 6022), (205, 6049), (214, 6154), (219, 6223), (223, 6283), (228, 6358), (229, 6367),

Gene: E1_4 Start: 2800, Stop: 4233, Start Num: 21

Candidate Starts for E1_4:

(4, 2701), (5, 2725), (Start: 21 @2800 has 3 MA's), (23, 2809), (30, 2842), (33, 2851), (42, 2884), (49, 2938), (52, 2962), (54, 2977), (57, 2995), (65, 3067), (70, 3097), (92, 3199), (99, 3244), (103, 3262), (107, 3289), (113, 3328), (114, 3334), (115, 3343), (116, 3352), (119, 3376), (131, 3490), (140, 3559), (142, 3565), (150, 3610), (155, 3664), (161, 3718), (164, 3745), (177, 3802), (188, 3871), (189, 3874), (192, 3901), (203, 3964), (204, 3967), (206, 3979), (213, 4045), (217, 4102), (220, 4150), (224, 4204),

Gene: EGUunicorn_4 Start: 2249, Stop: 3538, Start Num: 19

Candidate Starts for EGUunicorn_4:

(Start: 19 @2249 has 56 MA's), (39, 2336), (45, 2342), (47, 2378), (50, 2390), (58, 2468), (69, 2543), (88, 2630), (108, 2726), (121, 2825), (123, 2840), (129, 2882), (140, 2996), (155, 3101), (157, 3110), (161, 3155), (167, 3191), (173, 3221), (192, 3344), (205, 3416), (206, 3422),

Gene: Easy2Say_11 Start: 5142, Stop: 6698, Start Num: 16

Candidate Starts for Easy2Say_11:

(Start: 14 @5139 has 20 MA's), (Start: 16 @5142 has 110 MA's), (22, 5181), (Start: 25 @5202 has 2 MA's), (36, 5232), (39, 5238), (40, 5244), (54, 5343), (55, 5352), (86, 5535), (87, 5541), (101, 5619), (104, 5634), (115, 5709), (122, 5769), (137, 5898), (138, 5901), (139, 5904), (140, 5916), (145, 5937), (147, 5946), (148, 5952), (160, 6069), (163, 6093), (168, 6126), (179, 6168), (188, 6234), (194, 6279), (200, 6318), (205, 6345), (214, 6450), (219, 6519), (223, 6579), (228, 6654), (229, 6663),

Gene: Elite2014_9 Start: 3619, Stop: 5175, Start Num: 16

Candidate Starts for Elite2014_9:

(Start: 14 @3616 has 20 MA's), (Start: 16 @3619 has 110 MA's), (22, 3658), (Start: 25 @3679 has 2 MA's), (36, 3709), (39, 3715), (40, 3721), (54, 3820), (55, 3829), (86, 4012), (87, 4018), (101, 4096), (104, 4111), (115, 4186), (122, 4246), (137, 4375), (138, 4378), (139, 4381), (140, 4393), (145, 4414), (147, 4423), (148, 4429), (160, 4546), (163, 4570), (168, 4603), (179, 4645), (188, 4711), (194, 4756), (200, 4795), (205, 4822), (214, 4927), (219, 4996), (223, 5056), (228, 5131), (229, 5140),

Gene: Elph10_11 Start: 4170, Stop: 5726, Start Num: 16

Candidate Starts for Elph10_11:

(Start: 14 @4167 has 20 MA's), (Start: 16 @4170 has 110 MA's), (22, 4209), (Start: 25 @4230 has 2 MA's), (36, 4260), (39, 4266), (40, 4272), (54, 4371), (55, 4380), (86, 4563), (87, 4569), (101, 4647), (104, 4662), (109, 4686), (115, 4737), (116, 4746), (122, 4797), (137, 4926), (138, 4929), (139, 4932), (140, 4944), (145, 4965), (147, 4974), (148, 4980), (160, 5097), (163, 5121), (168, 5154), (179, 5196), (188, 5262), (194, 5307), (200, 5346), (205, 5373), (214, 5478), (219, 5547), (223, 5607), (228, 5682), (229, 5691),

Gene: Emmina_10 Start: 3721, Stop: 5280, Start Num: 14

Candidate Starts for Emmina_10:

(Start: 14 @3721 has 20 MA's), (Start: 16 @3724 has 110 MA's), (22, 3763), (Start: 25 @3784 has 2 MA's), (36, 3814), (39, 3820), (40, 3826), (54, 3925), (55, 3934), (86, 4117), (87, 4123), (101, 4201), (104, 4216), (115, 4291), (122, 4351), (126, 4381), (137, 4480), (138, 4483), (139, 4486), (140, 4498), (145, 4519), (147, 4528), (148, 4534), (160, 4651), (163, 4675), (168, 4708), (179, 4750), (188, 4816), (194, 4861), (200, 4900), (205, 4927), (214, 5032), (219, 5101), (223, 5161), (228, 5236), (229, 5245),

Gene: Eureka_10 Start: 4890, Stop: 6446, Start Num: 16

Candidate Starts for Eureka_10:

(Start: 14 @4887 has 20 MA's), (Start: 16 @4890 has 110 MA's), (22, 4929), (Start: 25 @4950 has 2 MA's), (36, 4980), (39, 4986), (40, 4992), (54, 5091), (55, 5100), (86, 5283), (87, 5289), (101, 5367), (104, 5382), (109, 5406), (115, 5457), (116, 5466), (122, 5517), (137, 5646), (138, 5649), (139, 5652), (140, 5664), (145, 5685), (147, 5694), (148, 5700), (160, 5817), (163, 5841), (168, 5874), (179, 5916), (188, 5982), (194, 6027), (200, 6066), (205, 6093), (214, 6198), (219, 6267), (223, 6327), (228, 6402), (229, 6411),

Gene: FairyPath_11 Start: 5186, Stop: 6742, Start Num: 16

Candidate Starts for FairyPath_11:

(Start: 14 @5183 has 20 MA's), (Start: 16 @5186 has 110 MA's), (22, 5225), (Start: 25 @5246 has 2 MA's), (36, 5276), (39, 5282), (40, 5288), (54, 5387), (55, 5396), (86, 5579), (87, 5585), (101, 5663), (104, 5678), (115, 5753), (122, 5813), (126, 5843), (137, 5942), (138, 5945), (139, 5948), (140, 5960),

(145, 5981), (147, 5990), (148, 5996), (160, 6113), (163, 6137), (168, 6170), (179, 6212), (188, 6278), (194, 6323), (200, 6362), (205, 6389), (214, 6494), (219, 6563), (223, 6623), (228, 6698), (229, 6707),

Gene: Faith5x5_4 Start: 2170, Stop: 3483, Start Num: 19

Candidate Starts for Faith5x5_4:

(Start: 19 @2170 has 56 MA's), (22, 2197), (39, 2260), (45, 2281), (46, 2296), (47, 2317), (50, 2329), (58, 2407), (61, 2428), (62, 2437), (63, 2440), (68, 2479), (70, 2491), (76, 2533), (85, 2557), (86, 2560), (90, 2578), (91, 2581), (109, 2671), (117, 2737), (124, 2800), (140, 2938), (154, 3031), (155, 3043), (161, 3097), (167, 3133), (184, 3214), (192, 3286), (193, 3292), (206, 3364),

Gene: Filch_11 Start: 4164, Stop: 5720, Start Num: 16

Candidate Starts for Filch_11:

(Start: 14 @4161 has 20 MA's), (Start: 16 @4164 has 110 MA's), (22, 4203), (Start: 25 @4224 has 2 MA's), (36, 4254), (39, 4260), (40, 4266), (54, 4365), (55, 4374), (86, 4557), (87, 4563), (101, 4641), (104, 4656), (109, 4680), (115, 4731), (116, 4740), (122, 4791), (137, 4920), (138, 4923), (139, 4926), (140, 4938), (145, 4959), (147, 4968), (148, 4974), (160, 5091), (163, 5115), (168, 5148), (179, 5190), (188, 5256), (194, 5301), (200, 5340), (205, 5367), (214, 5472), (219, 5541), (223, 5601), (228, 5676), (229, 5685),

Gene: FireRed_10 Start: 4787, Stop: 6343, Start Num: 16

Candidate Starts for FireRed_10:

(Start: 14 @4784 has 20 MA's), (Start: 16 @4787 has 110 MA's), (22, 4826), (Start: 25 @4847 has 2 MA's), (36, 4877), (39, 4883), (40, 4889), (54, 4988), (55, 4997), (86, 5180), (87, 5186), (101, 5264), (104, 5279), (109, 5303), (115, 5354), (116, 5363), (122, 5414), (137, 5543), (138, 5546), (139, 5549), (140, 5561), (145, 5582), (147, 5591), (148, 5597), (160, 5714), (163, 5738), (168, 5771), (179, 5813), (188, 5879), (194, 5924), (200, 5963), (205, 5990), (214, 6095), (219, 6164), (223, 6224), (228, 6299), (229, 6308),

Gene: Flypotenuse_9 Start: 4799, Stop: 6358, Start Num: 14

Candidate Starts for Flypotenuse_9:

(Start: 14 @4799 has 20 MA's), (Start: 16 @4802 has 110 MA's), (22, 4841), (Start: 25 @4862 has 2 MA's), (36, 4892), (39, 4898), (40, 4904), (54, 5003), (55, 5012), (86, 5195), (87, 5201), (101, 5279), (104, 5294), (115, 5369), (122, 5429), (126, 5459), (137, 5558), (138, 5561), (139, 5564), (140, 5576), (145, 5597), (147, 5606), (148, 5612), (160, 5729), (163, 5753), (168, 5786), (179, 5828), (188, 5894), (194, 5939), (200, 5978), (205, 6005), (214, 6110), (219, 6179), (223, 6239), (228, 6314), (229, 6323),

Gene: FoghornLeghorn_10 Start: 4784, Stop: 6340, Start Num: 16

Candidate Starts for FoghornLeghorn_10:

(Start: 14 @4781 has 20 MA's), (Start: 16 @4784 has 110 MA's), (22, 4823), (Start: 25 @4844 has 2 MA's), (36, 4874), (39, 4880), (40, 4886), (54, 4985), (55, 4994), (86, 5177), (87, 5183), (101, 5261), (104, 5276), (115, 5351), (122, 5411), (126, 5441), (137, 5540), (138, 5543), (139, 5546), (140, 5558), (145, 5579), (147, 5588), (148, 5594), (160, 5711), (163, 5735), (168, 5768), (179, 5810), (188, 5876), (194, 5921), (200, 5960), (205, 5987), (214, 6092), (219, 6161), (223, 6221), (228, 6296), (229, 6305),

Gene: Frizzle_2 Start: 1804, Stop: 3138, Start Num: 13

Candidate Starts for Frizzle_2:

(Start: 13 @1804 has 14 MA's), (24, 1846), (50, 1960), (52, 1981), (53, 1990), (62, 2062), (74, 2152), (106, 2299), (114, 2359), (124, 2449), (140, 2590), (152, 2665), (154, 2683), (155, 2695), (156, 2698), (159, 2731), (166, 2782), (173, 2815), (182, 2851), (184, 2863), (186, 2887), (208, 3043),

Gene: Fulbright_4 Start: 2249, Stop: 3538, Start Num: 19

Candidate Starts for Fulbright_4:

(Start: 19 @2249 has 56 MA's), (39, 2336), (45, 2342), (47, 2378), (50, 2390), (58, 2468), (69, 2543), (88, 2630), (108, 2726), (121, 2825), (123, 2840), (129, 2882), (140, 2996), (155, 3101), (157, 3110), (161, 3155), (167, 3191), (173, 3221), (192, 3344), (205, 3416), (206, 3422),

Gene: Gage_12 Start: 4399, Stop: 5955, Start Num: 16

Candidate Starts for Gage_12:

(Start: 14 @4396 has 20 MA's), (Start: 16 @4399 has 110 MA's), (22, 4438), (Start: 25 @4459 has 2 MA's), (36, 4489), (39, 4495), (40, 4501), (54, 4600), (55, 4609), (86, 4792), (87, 4798), (101, 4876), (104, 4891), (109, 4915), (115, 4966), (116, 4975), (122, 5026), (137, 5155), (138, 5158), (139, 5161), (140, 5173), (145, 5194), (147, 5203), (148, 5209), (160, 5326), (163, 5350), (168, 5383), (179, 5425), (188, 5491), (194, 5536), (200, 5575), (205, 5602), (214, 5707), (219, 5776), (223, 5836), (228, 5911), (229, 5920),

Gene: Gator_9 Start: 4802, Stop: 6358, Start Num: 16

Candidate Starts for Gator_9:

(Start: 14 @4799 has 20 MA's), (Start: 16 @4802 has 110 MA's), (22, 4841), (Start: 25 @4862 has 2 MA's), (36, 4892), (39, 4898), (40, 4904), (54, 5003), (55, 5012), (86, 5195), (87, 5201), (101, 5279), (104, 5294), (115, 5369), (122, 5429), (126, 5459), (137, 5558), (138, 5561), (139, 5564), (140, 5576), (145, 5597), (147, 5606), (148, 5612), (160, 5729), (163, 5753), (168, 5786), (179, 5828), (188, 5894), (194, 5939), (200, 5978), (205, 6005), (214, 6110), (219, 6179), (223, 6239), (228, 6314), (229, 6323),

Gene: Gemini_12 Start: 4399, Stop: 5955, Start Num: 16

Candidate Starts for Gemini_12:

(Start: 14 @4396 has 20 MA's), (Start: 16 @4399 has 110 MA's), (22, 4438), (Start: 25 @4459 has 2 MA's), (36, 4489), (39, 4495), (40, 4501), (54, 4600), (55, 4609), (86, 4792), (87, 4798), (101, 4876), (104, 4891), (109, 4915), (115, 4966), (116, 4975), (122, 5026), (137, 5155), (138, 5158), (139, 5161), (140, 5173), (145, 5194), (147, 5203), (148, 5209), (160, 5326), (163, 5350), (168, 5383), (179, 5425), (188, 5491), (194, 5536), (200, 5575), (205, 5602), (214, 5707), (219, 5776), (223, 5836), (228, 5911), (229, 5920),

Gene: Gex_4 Start: 2249, Stop: 3538, Start Num: 19

Candidate Starts for Gex_4:

(Start: 19 @2249 has 56 MA's), (39, 2336), (45, 2342), (47, 2378), (50, 2390), (58, 2468), (69, 2543), (88, 2630), (121, 2825), (123, 2840), (129, 2882), (140, 2996), (155, 3101), (157, 3110), (161, 3155), (167, 3191), (173, 3221), (192, 3344), (205, 3416), (206, 3422),

Gene: Ghobes_2 Start: 1804, Stop: 3138, Start Num: 13

Candidate Starts for Ghobes_2:

(Start: 13 @1804 has 14 MA's), (24, 1846), (50, 1960), (51, 1969), (52, 1981), (53, 1990), (62, 2062), (74, 2152), (106, 2299), (114, 2359), (118, 2389), (124, 2449), (140, 2590), (144, 2605), (152, 2665), (154, 2683), (155, 2695), (156, 2698), (159, 2731), (166, 2782), (173, 2815), (182, 2851), (184, 2863), (186, 2887), (208, 3043),

Gene: Glexan_9 Start: 4802, Stop: 6358, Start Num: 16

Candidate Starts for Glexan_9:

(Start: 14 @4799 has 20 MA's), (Start: 16 @4802 has 110 MA's), (22, 4841), (Start: 25 @4862 has 2 MA's), (36, 4892), (39, 4898), (40, 4904), (54, 5003), (55, 5012), (86, 5195), (87, 5201), (101, 5279), (104, 5294), (115, 5369), (122, 5429), (126, 5459), (137, 5558), (138, 5561), (139, 5564), (140, 5576), (145, 5597), (147, 5606), (148, 5612), (160, 5729), (163, 5753), (168, 5786), (179, 5828), (188, 5894), (194, 5939), (200, 5978), (205, 6005), (214, 6110), (219, 6179), (223, 6239), (228, 6314), (229, 6323),

Gene: Goib_9 Start: 5071, Stop: 6363, Start Num: 12

Candidate Starts for Goib_9:

(3, 4993), (Start: 12 @5071 has 8 MA's), (Start: 13 @5080 has 14 MA's), (43, 5176), (50, 5230), (70, 5386), (74, 5422), (85, 5461), (91, 5485), (99, 5533), (100, 5536), (106, 5566), (108, 5581), (109, 5584), (114, 5626), (131, 5782), (136, 5833), (140, 5854), (155, 5959), (158, 5971), (159, 5995), (167, 6049), (173, 6079), (174, 6085), (192, 6196), (207, 6280),

Gene: Goku_11 Start: 4890, Stop: 6446, Start Num: 16

Candidate Starts for Goku_11:

(Start: 14 @4887 has 20 MA's), (Start: 16 @4890 has 110 MA's), (22, 4929), (Start: 25 @4950 has 2 MA's), (36, 4980), (39, 4986), (40, 4992), (54, 5091), (55, 5100), (86, 5283), (87, 5289), (101, 5367), (104, 5382), (109, 5406), (115, 5457), (116, 5466), (122, 5517), (137, 5646), (138, 5649), (139, 5652), (140, 5664), (145, 5685), (147, 5694), (148, 5700), (160, 5817), (163, 5841), (168, 5874), (179, 5916), (188, 5982), (194, 6027), (200, 6066), (205, 6093), (214, 6198), (219, 6267), (223, 6327), (228, 6402), (229, 6411),

Gene: GoldenSpark_12 Start: 4396, Stop: 5955, Start Num: 14

Candidate Starts for GoldenSpark_12:

(Start: 14 @4396 has 20 MA's), (Start: 16 @4399 has 110 MA's), (22, 4438), (Start: 25 @4459 has 2 MA's), (36, 4489), (39, 4495), (40, 4501), (54, 4600), (55, 4609), (86, 4792), (87, 4798), (101, 4876), (104, 4891), (115, 4966), (122, 5026), (137, 5155), (138, 5158), (139, 5161), (140, 5173), (145, 5194), (147, 5203), (148, 5209), (160, 5326), (163, 5350), (168, 5383), (179, 5425), (188, 5491), (194, 5536), (200, 5575), (205, 5602), (214, 5707), (219, 5776), (223, 5836), (228, 5911), (229, 5920),

Gene: Goldilocks_12 Start: 4399, Stop: 5955, Start Num: 16

Candidate Starts for Goldilocks_12:

(Start: 14 @4396 has 20 MA's), (Start: 16 @4399 has 110 MA's), (22, 4438), (Start: 25 @4459 has 2 MA's), (36, 4489), (39, 4495), (40, 4501), (54, 4600), (55, 4609), (86, 4792), (87, 4798), (101, 4876), (104, 4891), (109, 4915), (115, 4966), (116, 4975), (122, 5026), (137, 5155), (138, 5158), (139, 5161), (140, 5173), (145, 5194), (147, 5203), (148, 5209), (160, 5326), (163, 5350), (168, 5383), (179, 5425), (188, 5491), (194, 5536), (200, 5575), (205, 5602), (214, 5707), (219, 5776), (223, 5836), (228, 5911), (229, 5920),

Gene: GooberAzure_12 Start: 4399, Stop: 5955, Start Num: 16

Candidate Starts for GooberAzure_12:

(Start: 14 @4396 has 20 MA's), (Start: 16 @4399 has 110 MA's), (22, 4438), (Start: 25 @4459 has 2 MA's), (36, 4489), (39, 4495), (40, 4501), (54, 4600), (55, 4609), (86, 4792), (87, 4798), (101, 4876), (104, 4891), (109, 4915), (115, 4966), (116, 4975), (122, 5026), (137, 5155), (138, 5158), (139, 5161), (140, 5173), (145, 5194), (147, 5203), (148, 5209), (160, 5326), (163, 5350), (168, 5383), (179, 5425), (188, 5491), (194, 5536), (200, 5575), (205, 5602), (214, 5707), (219, 5776), (223, 5836), (228, 5911), (229, 5920),

Gene: Greep_11 Start: 4930, Stop: 6486, Start Num: 16

Candidate Starts for Greep_11:

(Start: 14 @4927 has 20 MA's), (Start: 16 @4930 has 110 MA's), (22, 4969), (Start: 25 @4990 has 2 MA's), (36, 5020), (39, 5026), (40, 5032), (54, 5131), (55, 5140), (86, 5323), (87, 5329), (101, 5407), (104, 5422), (115, 5497), (122, 5557), (126, 5587), (137, 5686), (138, 5689), (139, 5692), (140, 5704), (145, 5725), (147, 5734), (148, 5740), (160, 5857), (163, 5881), (168, 5914), (179, 5956), (188, 6022), (194, 6067), (200, 6106), (205, 6133), (214, 6238), (219, 6307), (223, 6367), (228, 6442), (229, 6451),

Gene: Gspu1_6 Start: 3629, Stop: 4933, Start Num: 13

Candidate Starts for Gspu1_6:

(Start: 12 @3623 has 8 MA's), (Start: 13 @3629 has 14 MA's), (37, 3707), (43, 3725), (47, 3767), (49, 3776), (54, 3815), (56, 3830), (58, 3857), (67, 3920), (72, 3950), (74, 3971), (75, 3974), (85, 4010), (104, 4109), (106, 4115), (108, 4130), (110, 4136), (122, 4244), (136, 4382), (152, 4478), (155, 4508),

(157, 4517), (167, 4598), (168, 4613), (192, 4745), (198, 4778), (202, 4805), (204, 4811),

Gene: Gudmit_5 Start: 2938, Stop: 4251, Start Num: 19

Candidate Starts for Gudmit_5:

(Start: 19 @2938 has 56 MA's), (50, 3097), (61, 3196), (62, 3205), (63, 3208), (64, 3226), (68, 3247), (70, 3259), (85, 3325), (86, 3328), (89, 3343), (90, 3346), (91, 3349), (99, 3394), (108, 3436), (115, 3487), (116, 3496), (117, 3505), (118, 3508), (124, 3568), (134, 3673), (140, 3706), (153, 3790), (155, 3811), (156, 3814), (161, 3865), (167, 3901), (170, 3922), (190, 4039), (192, 4054), (206, 4132),

Gene: Gustav_3 Start: 2120, Stop: 3523, Start Num: 13

Candidate Starts for Gustav_3:

(Start: 13 @2120 has 14 MA's), (17, 2129), (32, 2192), (52, 2294), (70, 2429), (75, 2468), (78, 2477), (83, 2501), (98, 2576), (108, 2627), (111, 2654), (113, 2666), (114, 2672), (120, 2723), (140, 2903), (144, 2918), (149, 2948), (152, 2978), (155, 3008), (156, 3011), (161, 3062), (162, 3065), (175, 3137), (181, 3164), (187, 3215), (188, 3221),

Gene: HanKaySha_11 Start: 4355, Stop: 5911, Start Num: 16

Candidate Starts for HanKaySha_11:

(Start: 14 @4352 has 20 MA's), (Start: 16 @4355 has 110 MA's), (22, 4394), (Start: 25 @4415 has 2 MA's), (36, 4445), (39, 4451), (40, 4457), (54, 4556), (55, 4565), (86, 4748), (87, 4754), (101, 4832), (104, 4847), (115, 4922), (122, 4982), (126, 5012), (137, 5111), (138, 5114), (139, 5117), (140, 5129), (145, 5150), (147, 5159), (148, 5165), (160, 5282), (163, 5306), (168, 5339), (179, 5381), (188, 5447), (194, 5492), (200, 5531), (205, 5558), (214, 5663), (219, 5732), (223, 5792), (228, 5867), (229, 5876),

Gene: Hanako_4 Start: 2263, Stop: 3552, Start Num: 19

Candidate Starts for Hanako_4:

(Start: 19 @2263 has 56 MA's), (24, 2299), (39, 2350), (45, 2356), (47, 2392), (50, 2404), (58, 2482), (69, 2557), (85, 2629), (87, 2638), (88, 2644), (90, 2650), (91, 2653), (108, 2740), (121, 2839), (123, 2854), (124, 2872), (140, 3010), (148, 3046), (155, 3115), (157, 3124), (161, 3169), (167, 3205), (173, 3235), (189, 3331), (192, 3358), (205, 3430),

Gene: Harella_9 Start: 4799, Stop: 6358, Start Num: 14

Candidate Starts for Harella_9:

(Start: 14 @4799 has 20 MA's), (Start: 16 @4802 has 110 MA's), (22, 4841), (Start: 25 @4862 has 2 MA's), (36, 4892), (39, 4898), (40, 4904), (54, 5003), (55, 5012), (86, 5195), (87, 5201), (101, 5279), (104, 5294), (115, 5369), (122, 5429), (126, 5459), (137, 5558), (138, 5561), (139, 5564), (140, 5576), (145, 5597), (147, 5606), (148, 5612), (160, 5729), (163, 5753), (168, 5786), (179, 5828), (188, 5894), (194, 5939), (200, 5978), (205, 6005), (214, 6110), (219, 6179), (223, 6239), (228, 6314), (229, 6323),

Gene: Heinz_4 Start: 2359, Stop: 3654, Start Num: 20

Candidate Starts for Heinz_4:

(Start: 19 @2356 has 56 MA's), (Start: 20 @2359 has 3 MA's), (22, 2383), (28, 2413), (47, 2485), (59, 2578), (62, 2602), (69, 2653), (70, 2656), (86, 2734), (90, 2752), (116, 2908), (124, 2980), (140, 3121), (143, 3130), (145, 3142), (148, 3157), (154, 3214), (155, 3226), (161, 3280), (162, 3283), (163, 3298), (167, 3316), (170, 3337), (192, 3463),

Gene: Henry_11 Start: 5186, Stop: 6742, Start Num: 16

Candidate Starts for Henry_11:

(Start: 14 @5183 has 20 MA's), (Start: 16 @5186 has 110 MA's), (22, 5225), (Start: 25 @5246 has 2 MA's), (36, 5276), (39, 5282), (40, 5288), (54, 5387), (55, 5396), (86, 5579), (87, 5585), (101, 5663), (104, 5678), (115, 5753), (122, 5813), (126, 5843), (137, 5942), (138, 5945), (139, 5948), (140, 5960), (145, 5981), (147, 5990), (148, 5996), (160, 6113), (163, 6137), (168, 6170), (179, 6212), (188, 6278), (194, 6323), (200, 6362), (205, 6389), (214, 6494), (219, 6563), (223, 6623), (228, 6698), (229, 6707),

Gene: Hibiscus_4 Start: 2356, Stop: 3654, Start Num: 19

Candidate Starts for Hibiscus_4:

(Start: 19 @2356 has 56 MA's), (Start: 20 @2359 has 3 MA's), (22, 2383), (28, 2413), (47, 2485), (62, 2602), (86, 2734), (89, 2749), (90, 2752), (116, 2908), (124, 2980), (140, 3121), (143, 3130), (145, 3142), (148, 3157), (154, 3214), (155, 3226), (161, 3280), (162, 3283), (163, 3298), (167, 3316), (170, 3337), (192, 3463),

Gene: Highbury_11 Start: 4364, Stop: 5920, Start Num: 16

Candidate Starts for Highbury_11:

(Start: 14 @4361 has 20 MA's), (Start: 16 @4364 has 110 MA's), (22, 4403), (Start: 25 @4424 has 2 MA's), (36, 4454), (39, 4460), (40, 4466), (54, 4565), (55, 4574), (86, 4757), (87, 4763), (101, 4841), (104, 4856), (115, 4931), (122, 4991), (126, 5021), (137, 5120), (138, 5123), (139, 5126), (140, 5138), (145, 5159), (147, 5168), (148, 5174), (160, 5291), (163, 5315), (168, 5348), (179, 5390), (188, 5456), (194, 5501), (200, 5540), (205, 5567), (214, 5672), (219, 5741), (223, 5801), (228, 5876), (229, 5885),

Gene: Holt_12 Start: 4470, Stop: 6026, Start Num: 16

Candidate Starts for Holt_12:

(Start: 14 @4467 has 20 MA's), (Start: 16 @4470 has 110 MA's), (22, 4509), (Start: 25 @4530 has 2 MA's), (36, 4560), (39, 4566), (40, 4572), (54, 4671), (55, 4680), (86, 4863), (87, 4869), (101, 4947), (104, 4962), (109, 4986), (115, 5037), (116, 5046), (122, 5097), (137, 5226), (138, 5229), (139, 5232), (140, 5244), (147, 5274), (148, 5280), (160, 5397), (163, 5421), (168, 5454), (179, 5496), (188, 5562), (194, 5607), (200, 5646), (205, 5673), (214, 5778), (219, 5847), (223, 5907), (228, 5982), (229, 5991),

Gene: Hoonter_12 Start: 4399, Stop: 5955, Start Num: 16

Candidate Starts for Hoonter_12:

(Start: 14 @4396 has 20 MA's), (Start: 16 @4399 has 110 MA's), (22, 4438), (Start: 25 @4459 has 2 MA's), (36, 4489), (39, 4495), (40, 4501), (54, 4600), (55, 4609), (86, 4792), (87, 4798), (101, 4876), (104, 4891), (115, 4966), (122, 5026), (137, 5155), (138, 5158), (139, 5161), (140, 5173), (145, 5194), (147, 5203), (148, 5209), (160, 5326), (163, 5350), (168, 5383), (179, 5425), (188, 5491), (194, 5536), (200, 5575), (205, 5602), (214, 5707), (219, 5776), (223, 5836), (228, 5911), (229, 5920),

Gene: Hopecy_11 Start: 4164, Stop: 5720, Start Num: 16

Candidate Starts for Hopecy_11:

(Start: 14 @4161 has 20 MA's), (Start: 16 @4164 has 110 MA's), (22, 4203), (Start: 25 @4224 has 2 MA's), (36, 4254), (39, 4260), (40, 4266), (54, 4365), (55, 4374), (86, 4557), (87, 4563), (101, 4641), (104, 4656), (115, 4731), (122, 4791), (126, 4821), (137, 4920), (138, 4923), (139, 4926), (140, 4938), (145, 4959), (147, 4968), (148, 4974), (160, 5091), (163, 5115), (168, 5148), (179, 5190), (188, 5256), (194, 5301), (200, 5340), (205, 5367), (214, 5472), (219, 5541), (223, 5601), (228, 5676), (229, 5685),

Gene: HufflyPuff_9 Start: 4740, Stop: 6299, Start Num: 14

Candidate Starts for HufflyPuff_9:

(Start: 14 @4740 has 20 MA's), (Start: 16 @4743 has 110 MA's), (22, 4782), (Start: 25 @4803 has 2 MA's), (36, 4833), (39, 4839), (40, 4845), (54, 4944), (55, 4953), (86, 5136), (87, 5142), (101, 5220), (104, 5235), (115, 5310), (122, 5370), (126, 5400), (137, 5499), (138, 5502), (139, 5505), (140, 5517), (145, 5538), (147, 5547), (148, 5553), (160, 5670), (163, 5694), (168, 5727), (179, 5769), (188, 5835), (194, 5880), (200, 5919), (205, 5946), (214, 6051), (219, 6120), (223, 6180), (228, 6255), (229, 6264),

Gene: Huffly_10 Start: 5301, Stop: 6593, Start Num: 12

Candidate Starts for Huffly_10:

(3, 5223), (Start: 12 @5301 has 8 MA's), (Start: 13 @5310 has 14 MA's), (43, 5406), (50, 5460), (70, 5616), (74, 5652), (85, 5691), (91, 5715), (99, 5763), (100, 5766), (106, 5796), (108, 5811), (109, 5814), (114, 5856), (131, 6012), (140, 6084), (155, 6189), (158, 6201), (159, 6225), (167, 6279), (173,

6309), (174, 6315), (192, 6426),

Gene: IHOP_10 Start: 4846, Stop: 6402, Start Num: 16

Candidate Starts for IHOP_10:

(Start: 14 @4843 has 20 MA's), (Start: 16 @4846 has 110 MA's), (22, 4885), (Start: 25 @4906 has 2 MA's), (36, 4936), (39, 4942), (40, 4948), (54, 5047), (55, 5056), (86, 5239), (87, 5245), (101, 5323), (104, 5338), (115, 5413), (122, 5473), (126, 5503), (137, 5602), (138, 5605), (139, 5608), (140, 5620), (145, 5641), (147, 5650), (148, 5656), (160, 5773), (163, 5797), (168, 5830), (179, 5872), (188, 5938), (194, 5983), (200, 6022), (205, 6049), (214, 6154), (219, 6223), (223, 6283), (228, 6358), (229, 6367),

Gene: Icee_10 Start: 4846, Stop: 6402, Start Num: 16

Candidate Starts for Icee_10:

(Start: 14 @4843 has 20 MA's), (Start: 16 @4846 has 110 MA's), (22, 4885), (Start: 25 @4906 has 2 MA's), (36, 4936), (39, 4942), (40, 4948), (54, 5047), (55, 5056), (86, 5239), (87, 5245), (101, 5323), (104, 5338), (109, 5362), (115, 5413), (116, 5422), (122, 5473), (126, 5503), (137, 5602), (138, 5605), (139, 5608), (140, 5620), (145, 5641), (147, 5650), (148, 5656), (160, 5773), (163, 5797), (168, 5830), (179, 5872), (188, 5938), (194, 5983), (200, 6022), (205, 6049), (214, 6154), (219, 6223), (223, 6283), (228, 6358), (229, 6367),

Gene: Impisi_4 Start: 2263, Stop: 3552, Start Num: 19

Candidate Starts for Impisi_4:

(Start: 19 @2263 has 56 MA's), (24, 2299), (39, 2350), (45, 2356), (47, 2392), (50, 2404), (58, 2482), (69, 2557), (85, 2629), (87, 2638), (88, 2644), (90, 2650), (91, 2653), (108, 2740), (121, 2839), (123, 2854), (124, 2872), (140, 3010), (148, 3046), (155, 3115), (157, 3124), (161, 3169), (167, 3205), (173, 3235), (189, 3331), (192, 3358), (205, 3430),

Gene: Inca_10 Start: 3866, Stop: 5422, Start Num: 16

Candidate Starts for Inca_10:

(Start: 14 @3863 has 20 MA's), (Start: 16 @3866 has 110 MA's), (22, 3905), (Start: 25 @3926 has 2 MA's), (36, 3956), (39, 3962), (40, 3968), (54, 4067), (55, 4076), (86, 4259), (87, 4265), (101, 4343), (104, 4358), (115, 4433), (122, 4493), (126, 4523), (137, 4622), (138, 4625), (139, 4628), (140, 4640), (145, 4661), (147, 4670), (148, 4676), (160, 4793), (163, 4817), (168, 4850), (179, 4892), (188, 4958), (194, 5003), (200, 5042), (205, 5069), (214, 5174), (219, 5243), (223, 5303), (228, 5378), (229, 5387),

Gene: Jamie19_4 Start: 2263, Stop: 3552, Start Num: 19

Candidate Starts for Jamie19_4:

(Start: 19 @2263 has 56 MA's), (24, 2299), (39, 2350), (45, 2356), (47, 2392), (50, 2404), (58, 2482), (69, 2557), (85, 2629), (87, 2638), (88, 2644), (90, 2650), (91, 2653), (108, 2740), (121, 2839), (123, 2854), (124, 2872), (140, 3010), (148, 3046), (155, 3115), (157, 3124), (161, 3169), (167, 3205), (173, 3235), (189, 3331), (192, 3358), (205, 3430),

Gene: JeTaime_12 Start: 5204, Stop: 6760, Start Num: 16

Candidate Starts for JeTaime_12:

(Start: 14 @5201 has 20 MA's), (Start: 16 @5204 has 110 MA's), (22, 5243), (Start: 25 @5264 has 2 MA's), (36, 5294), (39, 5300), (40, 5306), (54, 5405), (55, 5414), (86, 5597), (87, 5603), (101, 5681), (104, 5696), (109, 5720), (115, 5771), (116, 5780), (122, 5831), (137, 5960), (138, 5963), (139, 5966), (140, 5978), (145, 5999), (147, 6008), (148, 6014), (160, 6131), (163, 6155), (168, 6188), (179, 6230), (188, 6296), (194, 6341), (200, 6380), (205, 6407), (214, 6512), (219, 6581), (223, 6641), (228, 6716), (229, 6725),

Gene: Jojo24_4 Start: 2354, Stop: 3649, Start Num: 20

Candidate Starts for Jojo24_4:

(Start: 19 @2351 has 56 MA's), (Start: 20 @2354 has 3 MA's), (22, 2378), (28, 2408), (47, 2480), (62, 2597), (86, 2729), (90, 2747), (116, 2903), (124, 2975), (140, 3116), (143, 3125), (145, 3137), (148, 3152), (154, 3209), (155, 3221), (161, 3275), (162, 3278), (163, 3293), (167, 3311), (170, 3332), (192, 3458),

Gene: Journey_4 Start: 2249, Stop: 3538, Start Num: 19

Candidate Starts for Journey_4:

(Start: 19 @2249 has 56 MA's), (39, 2336), (45, 2342), (47, 2378), (50, 2390), (58, 2468), (69, 2543), (88, 2630), (121, 2825), (123, 2840), (129, 2882), (140, 2996), (155, 3101), (157, 3110), (161, 3155), (167, 3191), (173, 3221), (192, 3344), (205, 3416), (206, 3422),

Gene: Kanye_12 Start: 5392, Stop: 6948, Start Num: 16

Candidate Starts for Kanye_12:

(Start: 14 @5389 has 20 MA's), (Start: 16 @5392 has 110 MA's), (22, 5431), (Start: 25 @5452 has 2 MA's), (36, 5482), (39, 5488), (40, 5494), (54, 5593), (55, 5602), (86, 5785), (87, 5791), (101, 5869), (104, 5884), (115, 5959), (122, 6019), (126, 6049), (137, 6148), (138, 6151), (139, 6154), (140, 6166), (145, 6187), (147, 6196), (148, 6202), (160, 6319), (163, 6343), (168, 6376), (179, 6418), (188, 6484), (194, 6529), (200, 6568), (205, 6595), (214, 6700), (219, 6769), (223, 6829), (228, 6904), (229, 6913),

Gene: Kevin1_4 Start: 2249, Stop: 3535, Start Num: 19

Candidate Starts for Kevin1_4:

(Start: 19 @2249 has 56 MA's), (39, 2336), (45, 2342), (47, 2378), (50, 2390), (69, 2543), (85, 2615), (108, 2726), (109, 2729), (117, 2795), (118, 2798), (121, 2825), (123, 2840), (129, 2882), (140, 2996), (155, 3101), (161, 3155), (162, 3158), (167, 3191), (173, 3221), (192, 3344), (202, 3404),

Gene: Khuang_3 Start: 1991, Stop: 3505, Start Num: 11

Candidate Starts for Khuang_3:

(8, 1979), (9, 1982), (Start: 10 @1985 has 1 MA's), (11, 1991), (31, 2072), (35, 2090), (46, 2132), (49, 2162), (61, 2255), (70, 2318), (77, 2357), (92, 2411), (99, 2456), (132, 2708), (140, 2774), (149, 2819), (154, 2867), (155, 2879), (157, 2888), (159, 2915), (164, 2960), (167, 2969), (175, 3005), (188, 3086), (189, 3089), (199, 3158), (215, 3299), (216, 3323), (221, 3389), (225, 3446), (226, 3476), (227, 3479),

Gene: Kimchi_12 Start: 4399, Stop: 5955, Start Num: 16

Candidate Starts for Kimchi_12:

(Start: 14 @4396 has 20 MA's), (Start: 16 @4399 has 110 MA's), (22, 4438), (Start: 25 @4459 has 2 MA's), (36, 4489), (39, 4495), (40, 4501), (54, 4600), (55, 4609), (86, 4792), (87, 4798), (101, 4876), (104, 4891), (109, 4915), (115, 4966), (116, 4975), (122, 5026), (137, 5155), (138, 5158), (139, 5161), (140, 5173), (145, 5194), (147, 5203), (148, 5209), (160, 5326), (163, 5350), (168, 5383), (179, 5425), (188, 5491), (194, 5536), (200, 5575), (205, 5602), (214, 5707), (219, 5776), (223, 5836), (228, 5911), (229, 5920),

Gene: Kostya_11 Start: 5246, Stop: 6742, Start Num: 25

Candidate Starts for Kostya_11:

(Start: 14 @5183 has 20 MA's), (Start: 16 @5186 has 110 MA's), (22, 5225), (Start: 25 @5246 has 2 MA's), (36, 5276), (39, 5282), (40, 5288), (54, 5387), (55, 5396), (86, 5579), (87, 5585), (101, 5663), (104, 5678), (115, 5753), (122, 5813), (126, 5843), (137, 5942), (138, 5945), (139, 5948), (140, 5960), (145, 5981), (147, 5990), (148, 5996), (160, 6113), (163, 6137), (168, 6170), (179, 6212), (188, 6278), (194, 6323), (200, 6362), (205, 6389), (214, 6494), (219, 6563), (223, 6623), (228, 6698), (229, 6707),

Gene: Lilac_12 Start: 4191, Stop: 5747, Start Num: 16

Candidate Starts for Lilac_12:

(Start: 14 @4188 has 20 MA's), (Start: 16 @4191 has 110 MA's), (22, 4230), (Start: 25 @4251 has 2 MA's), (36, 4281), (39, 4287), (40, 4293), (54, 4392), (55, 4401), (86, 4584), (87, 4590), (101, 4668),

(104, 4683), (109, 4707), (115, 4758), (116, 4767), (122, 4818), (137, 4947), (138, 4950), (139, 4953), (140, 4965), (145, 4986), (147, 4995), (148, 5001), (160, 5118), (163, 5142), (168, 5175), (179, 5217), (188, 5283), (194, 5328), (200, 5367), (205, 5394), (214, 5499), (219, 5568), (223, 5628), (228, 5703), (229, 5712),

Gene: Lilizi_12 Start: 4402, Stop: 5958, Start Num: 16

Candidate Starts for Lilizi_12:

(Start: 14 @4399 has 20 MA's), (Start: 16 @4402 has 110 MA's), (22, 4441), (Start: 25 @4462 has 2 MA's), (36, 4492), (39, 4498), (40, 4504), (54, 4603), (55, 4612), (86, 4795), (87, 4801), (101, 4879), (104, 4894), (109, 4918), (115, 4969), (116, 4978), (122, 5029), (137, 5158), (138, 5161), (139, 5164), (140, 5176), (145, 5197), (147, 5206), (148, 5212), (160, 5329), (163, 5353), (168, 5386), (179, 5428), (188, 5494), (194, 5539), (200, 5578), (205, 5605), (214, 5710), (219, 5779), (223, 5839), (228, 5914), (229, 5923),

Gene: Lilpickle_9 Start: 3616, Stop: 5175, Start Num: 14

Candidate Starts for Lilpickle_9:

(Start: 14 @3616 has 20 MA's), (Start: 16 @3619 has 110 MA's), (22, 3658), (Start: 25 @3679 has 2 MA's), (36, 3709), (39, 3715), (40, 3721), (54, 3820), (55, 3829), (86, 4012), (87, 4018), (101, 4096), (104, 4111), (115, 4186), (122, 4246), (137, 4375), (138, 4378), (139, 4381), (140, 4393), (145, 4414), (147, 4423), (148, 4429), (160, 4546), (163, 4570), (168, 4603), (179, 4645), (188, 4711), (194, 4756), (200, 4795), (205, 4822), (214, 4927), (219, 4996), (223, 5056), (228, 5131), (229, 5140),

Gene: Liveloughbron_10 Start: 4787, Stop: 6343, Start Num: 16

Candidate Starts for Liveloughbron_10:

(Start: 14 @4784 has 20 MA's), (Start: 16 @4787 has 110 MA's), (22, 4826), (Start: 25 @4847 has 2 MA's), (36, 4877), (39, 4883), (40, 4889), (54, 4988), (55, 4997), (86, 5180), (87, 5186), (101, 5264), (104, 5279), (115, 5354), (122, 5414), (126, 5444), (137, 5543), (138, 5546), (139, 5549), (140, 5561), (145, 5582), (147, 5591), (148, 5597), (160, 5714), (163, 5738), (168, 5771), (179, 5813), (188, 5879), (194, 5924), (200, 5963), (205, 5990), (214, 6095), (219, 6164), (223, 6224), (228, 6299), (229, 6308),

Gene: Lton_4 Start: 2174, Stop: 3487, Start Num: 19

Candidate Starts for Lton_4:

(Start: 19 @2174 has 56 MA's), (22, 2201), (33, 2243), (39, 2264), (46, 2300), (47, 2321), (50, 2333), (61, 2432), (62, 2441), (63, 2444), (68, 2483), (70, 2495), (85, 2561), (86, 2564), (90, 2582), (91, 2585), (109, 2675), (117, 2741), (124, 2804), (140, 2942), (148, 2978), (154, 3035), (155, 3047), (156, 3050), (161, 3101), (167, 3137), (190, 3275), (192, 3290), (193, 3296), (206, 3368),

Gene: MISSy_10 Start: 4787, Stop: 6343, Start Num: 16

Candidate Starts for MISSy_10:

(Start: 14 @4784 has 20 MA's), (Start: 16 @4787 has 110 MA's), (22, 4826), (Start: 25 @4847 has 2 MA's), (36, 4877), (39, 4883), (40, 4889), (54, 4988), (55, 4997), (86, 5180), (87, 5186), (101, 5264), (104, 5279), (115, 5354), (116, 5363), (122, 5414), (137, 5543), (138, 5546), (139, 5549), (140, 5561), (145, 5582), (147, 5591), (148, 5597), (160, 5714), (163, 5738), (168, 5771), (179, 5813), (188, 5879), (194, 5924), (200, 5963), (205, 5990), (214, 6095), (219, 6164), (223, 6224), (228, 6299), (229, 6308),

Gene: MPhalcon_10 Start: 4787, Stop: 6343, Start Num: 16

Candidate Starts for MPhalcon_10:

(Start: 14 @4784 has 20 MA's), (Start: 16 @4787 has 110 MA's), (22, 4826), (Start: 25 @4847 has 2 MA's), (36, 4877), (39, 4883), (40, 4889), (54, 4988), (55, 4997), (86, 5180), (87, 5186), (101, 5264), (104, 5279), (109, 5303), (115, 5354), (116, 5363), (122, 5414), (137, 5543), (138, 5546), (139, 5549), (140, 5561), (145, 5582), (147, 5591), (148, 5597), (160, 5714), (163, 5738), (168, 5771), (179, 5813), (188, 5879), (194, 5924), (200, 5963), (205, 5990), (214, 6095), (219, 6164), (223, 6224), (228, 6299), (229, 6308),

Gene: MadamMonkfish_10 Start: 4031, Stop: 5587, Start Num: 16

Candidate Starts for MadamMonkfish_10:

(Start: 14 @4028 has 20 MA's), (Start: 16 @4031 has 110 MA's), (22, 4070), (Start: 25 @4091 has 2 MA's), (36, 4121), (39, 4127), (40, 4133), (54, 4232), (55, 4241), (86, 4424), (87, 4430), (101, 4508), (104, 4523), (115, 4598), (122, 4658), (126, 4688), (137, 4787), (138, 4790), (139, 4793), (140, 4805), (145, 4826), (147, 4835), (148, 4841), (160, 4958), (163, 4982), (168, 5015), (179, 5057), (188, 5123), (194, 5168), (200, 5207), (205, 5234), (214, 5339), (219, 5408), (223, 5468), (228, 5543), (229, 5552),

Gene: Magsby_4 Start: 2249, Stop: 3538, Start Num: 19

Candidate Starts for Magsby_4:

(Start: 19 @2249 has 56 MA's), (39, 2336), (45, 2342), (47, 2378), (50, 2390), (58, 2468), (69, 2543), (88, 2630), (121, 2825), (123, 2840), (129, 2882), (140, 2996), (155, 3101), (157, 3110), (161, 3155), (167, 3191), (173, 3221), (192, 3344), (205, 3416), (206, 3422),

Gene: Mahdia_3 Start: 2134, Stop: 3525, Start Num: 13

Candidate Starts for Mahdia_3:

(Start: 13 @2134 has 14 MA's), (17, 2143), (32, 2206), (52, 2308), (70, 2443), (77, 2488), (81, 2509), (84, 2518), (93, 2554), (94, 2563), (98, 2590), (140, 2917), (144, 2932), (152, 2992), (155, 3022), (158, 3034), (161, 3076), (162, 3079), (170, 3133), (174, 3148), (181, 3178), (188, 3235), (190, 3250), (192, 3265), (199, 3307), (218, 3463),

Gene: Manda_10 Start: 4679, Stop: 6238, Start Num: 14

Candidate Starts for Manda_10:

(Start: 14 @4679 has 20 MA's), (Start: 16 @4682 has 110 MA's), (22, 4721), (Start: 25 @4742 has 2 MA's), (36, 4772), (39, 4778), (40, 4784), (54, 4883), (55, 4892), (86, 5075), (87, 5081), (101, 5159), (104, 5174), (115, 5249), (122, 5309), (126, 5339), (137, 5438), (138, 5441), (139, 5444), (140, 5456), (145, 5477), (147, 5486), (148, 5492), (160, 5609), (163, 5633), (168, 5666), (179, 5708), (188, 5774), (194, 5819), (200, 5858), (205, 5885), (214, 5990), (219, 6059), (223, 6119), (228, 6194), (229, 6203),

Gene: Marshmallow_11 Start: 5186, Stop: 6742, Start Num: 16

Candidate Starts for Marshmallow_11:

(Start: 14 @5183 has 20 MA's), (Start: 16 @5186 has 110 MA's), (22, 5225), (Start: 25 @5246 has 2 MA's), (36, 5276), (39, 5282), (40, 5288), (54, 5387), (55, 5396), (86, 5579), (87, 5585), (101, 5663), (104, 5678), (115, 5753), (122, 5813), (126, 5843), (137, 5942), (138, 5945), (139, 5948), (140, 5960), (145, 5981), (147, 5990), (148, 5996), (160, 6113), (163, 6137), (168, 6170), (179, 6212), (188, 6278), (194, 6323), (200, 6362), (205, 6389), (214, 6494), (219, 6563), (223, 6623), (228, 6698), (229, 6707),

Gene: Maxxinista_11 Start: 4170, Stop: 5726, Start Num: 16

Candidate Starts for Maxxinista_11:

(Start: 14 @4167 has 20 MA's), (Start: 16 @4170 has 110 MA's), (22, 4209), (Start: 25 @4230 has 2 MA's), (36, 4260), (39, 4266), (40, 4272), (54, 4371), (55, 4380), (86, 4563), (87, 4569), (101, 4647), (104, 4662), (109, 4686), (115, 4737), (116, 4746), (122, 4797), (137, 4926), (138, 4929), (139, 4932), (140, 4944), (145, 4965), (147, 4974), (148, 4980), (160, 5097), (163, 5121), (168, 5154), (179, 5196), (188, 5262), (194, 5307), (200, 5346), (205, 5373), (214, 5478), (219, 5547), (223, 5607), (228, 5682), (229, 5691),

Gene: Melville_4 Start: 2249, Stop: 3538, Start Num: 19

Candidate Starts for Melville_4:

(Start: 19 @2249 has 56 MA's), (39, 2336), (45, 2342), (47, 2378), (50, 2390), (58, 2468), (69, 2543), (88, 2630), (121, 2825), (123, 2840), (129, 2882), (140, 2996), (155, 3101), (157, 3110), (161, 3155), (167, 3191), (173, 3221), (192, 3344), (205, 3416), (206, 3422),

Gene: MichelleMyBell_4 Start: 2263, Stop: 3549, Start Num: 19

Candidate Starts for MichelleMyBell_4:

(Start: 19 @2263 has 56 MA's), (39, 2350), (45, 2356), (47, 2392), (50, 2404), (69, 2557), (85, 2629), (108, 2740), (117, 2809), (118, 2812), (121, 2839), (123, 2854), (129, 2896), (140, 3010), (155, 3115), (161, 3169), (167, 3205), (173, 3235), (192, 3358), (202, 3418),

Gene: Mindy_11 Start: 5057, Stop: 6613, Start Num: 16

Candidate Starts for Mindy_11:

(Start: 14 @5054 has 20 MA's), (Start: 16 @5057 has 110 MA's), (22, 5096), (Start: 25 @5117 has 2 MA's), (36, 5147), (39, 5153), (40, 5159), (54, 5258), (55, 5267), (86, 5450), (87, 5456), (101, 5534), (104, 5549), (115, 5624), (122, 5684), (126, 5714), (137, 5813), (138, 5816), (139, 5819), (140, 5831), (145, 5852), (147, 5861), (148, 5867), (160, 5984), (163, 6008), (168, 6041), (179, 6083), (188, 6149), (194, 6194), (200, 6233), (205, 6260), (214, 6365), (219, 6434), (223, 6494), (228, 6569), (229, 6578),

Gene: Miniwave_11 Start: 5186, Stop: 6742, Start Num: 16

Candidate Starts for Miniwave_11:

(Start: 14 @5183 has 20 MA's), (Start: 16 @5186 has 110 MA's), (22, 5225), (Start: 25 @5246 has 2 MA's), (36, 5276), (39, 5282), (40, 5288), (54, 5387), (55, 5396), (86, 5579), (87, 5585), (101, 5663), (104, 5678), (115, 5753), (122, 5813), (126, 5843), (137, 5942), (138, 5945), (139, 5948), (140, 5960), (145, 5981), (147, 5990), (148, 5996), (160, 6113), (163, 6137), (168, 6170), (179, 6212), (188, 6278), (194, 6323), (200, 6362), (205, 6389), (214, 6494), (219, 6563), (223, 6623), (228, 6698), (229, 6707),

Gene: Misfit_10 Start: 4787, Stop: 6343, Start Num: 16

Candidate Starts for Misfit_10:

(Start: 14 @4784 has 20 MA's), (Start: 16 @4787 has 110 MA's), (22, 4826), (Start: 25 @4847 has 2 MA's), (36, 4877), (39, 4883), (40, 4889), (54, 4988), (55, 4997), (86, 5180), (87, 5186), (101, 5264), (104, 5279), (115, 5354), (122, 5414), (126, 5444), (137, 5543), (138, 5546), (139, 5549), (140, 5561), (145, 5582), (147, 5591), (148, 5597), (160, 5714), (163, 5738), (168, 5771), (179, 5813), (188, 5879), (194, 5924), (200, 5963), (205, 5990), (214, 6095), (219, 6164), (223, 6224), (228, 6299), (229, 6308),

Gene: Moldemort_11 Start: 4355, Stop: 5911, Start Num: 16

Candidate Starts for Moldemort_11:

(Start: 14 @4352 has 20 MA's), (Start: 16 @4355 has 110 MA's), (22, 4394), (Start: 25 @4415 has 2 MA's), (36, 4445), (39, 4451), (40, 4457), (54, 4556), (55, 4565), (86, 4748), (87, 4754), (101, 4832), (104, 4847), (115, 4922), (122, 4982), (126, 5012), (137, 5111), (138, 5114), (139, 5117), (140, 5129), (145, 5150), (147, 5159), (148, 5165), (160, 5282), (163, 5306), (168, 5339), (179, 5381), (188, 5447), (194, 5492), (200, 5531), (205, 5558), (214, 5663), (219, 5732), (223, 5792), (228, 5867), (229, 5876),

Gene: MollyToe_11 Start: 5065, Stop: 6621, Start Num: 16

Candidate Starts for MollyToe_11:

(Start: 14 @5062 has 20 MA's), (Start: 16 @5065 has 110 MA's), (22, 5104), (Start: 25 @5125 has 2 MA's), (36, 5155), (39, 5161), (40, 5167), (54, 5266), (55, 5275), (86, 5458), (87, 5464), (101, 5542), (104, 5557), (115, 5632), (122, 5692), (126, 5722), (137, 5821), (138, 5824), (139, 5827), (140, 5839), (145, 5860), (147, 5869), (148, 5875), (160, 5992), (163, 6016), (168, 6049), (179, 6091), (188, 6157), (194, 6202), (200, 6241), (205, 6268), (214, 6373), (219, 6442), (223, 6502), (228, 6577), (229, 6586),

Gene: Moosehead_4 Start: 2170, Stop: 3477, Start Num: 19

Candidate Starts for Moosehead_4:

(Start: 19 @2170 has 56 MA's), (Start: 20 @2173 has 3 MA's), (27, 2221), (28, 2227), (34, 2248), (38, 2260), (39, 2263), (50, 2332), (68, 2476), (70, 2488), (76, 2530), (85, 2554), (90, 2575), (96, 2614), (99, 2623), (108, 2665), (115, 2716), (117, 2734), (124, 2797), (135, 2905), (140, 2935), (153, 3019), (154, 3028), (155, 3040), (161, 3094), (165, 3124), (167, 3130), (185, 3223), (192, 3283),

Gene: Morrissey_3 Start: 2106, Stop: 3524, Start Num: 13

Candidate Starts for Morrissey_3:

(Start: 13 @2106 has 14 MA's), (15, 2112), (17, 2115), (26, 2163), (41, 2202), (47, 2250), (54, 2298), (75, 2457), (77, 2463), (91, 2520), (95, 2553), (98, 2565), (102, 2586), (111, 2643), (120, 2712), (140, 2892), (144, 2907), (149, 2937), (152, 2967), (155, 2997), (156, 3000), (161, 3051), (162, 3054), (175, 3126), (188, 3210), (190, 3225), (197, 3267), (199, 3282),

Gene: Mosby_10 Start: 4787, Stop: 6343, Start Num: 16

Candidate Starts for Mosby_10:

(Start: 14 @4784 has 20 MA's), (Start: 16 @4787 has 110 MA's), (22, 4826), (Start: 25 @4847 has 2 MA's), (36, 4877), (39, 4883), (40, 4889), (54, 4988), (55, 4997), (86, 5180), (87, 5186), (101, 5264), (104, 5279), (115, 5354), (122, 5414), (126, 5444), (137, 5543), (138, 5546), (139, 5549), (140, 5561), (145, 5582), (147, 5591), (148, 5597), (160, 5714), (163, 5738), (168, 5771), (179, 5813), (188, 5879), (194, 5924), (200, 5963), (205, 5990), (214, 6095), (219, 6164), (223, 6224), (228, 6299), (229, 6308),

Gene: Murica_9 Start: 4743, Stop: 6299, Start Num: 16

Candidate Starts for Murica_9:

(Start: 14 @4740 has 20 MA's), (Start: 16 @4743 has 110 MA's), (22, 4782), (Start: 25 @4803 has 2 MA's), (36, 4833), (39, 4839), (40, 4845), (54, 4944), (55, 4953), (86, 5136), (87, 5142), (101, 5220), (104, 5235), (115, 5310), (122, 5370), (126, 5400), (137, 5499), (138, 5502), (139, 5505), (140, 5517), (145, 5538), (147, 5547), (148, 5553), (160, 5670), (163, 5694), (168, 5727), (179, 5769), (188, 5835), (194, 5880), (200, 5919), (205, 5946), (214, 6051), (219, 6120), (223, 6180), (228, 6255), (229, 6264),

Gene: Murphy_10 Start: 4072, Stop: 5628, Start Num: 16

Candidate Starts for Murphy_10:

(Start: 14 @4069 has 20 MA's), (Start: 16 @4072 has 110 MA's), (22, 4111), (Start: 25 @4132 has 2 MA's), (36, 4162), (39, 4168), (40, 4174), (54, 4273), (55, 4282), (86, 4465), (87, 4471), (101, 4549), (104, 4564), (115, 4639), (122, 4699), (126, 4729), (137, 4828), (138, 4831), (139, 4834), (140, 4846), (145, 4867), (147, 4876), (148, 4882), (160, 4999), (163, 5023), (168, 5056), (179, 5098), (188, 5164), (194, 5209), (200, 5248), (205, 5275), (214, 5380), (219, 5449), (223, 5509), (228, 5584), (229, 5593),

Gene: Myrale_11 Start: 5057, Stop: 6613, Start Num: 16

Candidate Starts for Myrale_11:

(Start: 14 @5054 has 20 MA's), (Start: 16 @5057 has 110 MA's), (22, 5096), (Start: 25 @5117 has 2 MA's), (36, 5147), (39, 5153), (40, 5159), (54, 5258), (55, 5267), (86, 5450), (87, 5456), (101, 5534), (104, 5549), (115, 5624), (122, 5684), (126, 5714), (137, 5813), (138, 5816), (139, 5819), (140, 5831), (145, 5852), (147, 5861), (148, 5867), (160, 5984), (163, 6008), (168, 6041), (179, 6083), (188, 6149), (194, 6194), (200, 6233), (205, 6260), (214, 6365), (219, 6434), (223, 6494), (228, 6569), (229, 6578),

Gene: Nala_10 Start: 4787, Stop: 6343, Start Num: 16

Candidate Starts for Nala_10:

(Start: 14 @4784 has 20 MA's), (Start: 16 @4787 has 110 MA's), (22, 4826), (Start: 25 @4847 has 2 MA's), (36, 4877), (39, 4883), (40, 4889), (54, 4988), (55, 4997), (86, 5180), (87, 5186), (101, 5264), (104, 5279), (115, 5354), (122, 5414), (126, 5444), (137, 5543), (138, 5546), (139, 5549), (140, 5561), (145, 5582), (147, 5591), (148, 5597), (160, 5714), (163, 5738), (168, 5771), (179, 5813), (188, 5879), (194, 5924), (200, 5963), (205, 5990), (214, 6095), (219, 6164), (223, 6224), (228, 6299), (229, 6308),

Gene: NelitzaMV_11 Start: 5057, Stop: 6613, Start Num: 16

Candidate Starts for NelitzaMV_11:

(Start: 14 @5054 has 20 MA's), (Start: 16 @5057 has 110 MA's), (22, 5096), (Start: 25 @5117 has 2 MA's), (36, 5147), (39, 5153), (40, 5159), (54, 5258), (55, 5267), (86, 5450), (87, 5456), (101, 5534), (104, 5549), (115, 5624), (122, 5684), (126, 5714), (137, 5813), (138, 5816), (139, 5819), (140, 5831), (145, 5852), (147, 5861), (148, 5867), (160, 5984), (163, 6008), (168, 6041), (179, 6083), (188, 6149),

(194, 6194), (200, 6233), (205, 6260), (214, 6365), (219, 6434), (223, 6494), (228, 6569), (229, 6578),

Gene: Nenae_4 Start: 2263, Stop: 3552, Start Num: 19

Candidate Starts for Nenae_4:

(Start: 19 @2263 has 56 MA's), (24, 2299), (39, 2350), (45, 2356), (47, 2392), (50, 2404), (58, 2482), (69, 2557), (85, 2629), (87, 2638), (88, 2644), (90, 2650), (91, 2653), (108, 2740), (121, 2839), (123, 2854), (124, 2872), (140, 3010), (148, 3046), (155, 3115), (157, 3124), (161, 3169), (167, 3205), (173, 3235), (189, 3331), (192, 3358), (205, 3430),

Gene: Nimrod_10 Start: 4852, Stop: 6408, Start Num: 16

Candidate Starts for Nimrod_10:

(Start: 14 @4849 has 20 MA's), (Start: 16 @4852 has 110 MA's), (22, 4891), (Start: 25 @4912 has 2 MA's), (36, 4942), (39, 4948), (40, 4954), (54, 5053), (55, 5062), (86, 5245), (87, 5251), (101, 5329), (104, 5344), (115, 5419), (122, 5479), (126, 5509), (137, 5608), (138, 5611), (139, 5614), (140, 5626), (145, 5647), (147, 5656), (148, 5662), (160, 5779), (163, 5803), (168, 5836), (179, 5878), (188, 5944), (194, 5989), (200, 6028), (205, 6055), (214, 6160), (219, 6229), (223, 6289), (228, 6364), (229, 6373),

Gene: NoSleep_11 Start: 4352, Stop: 5908, Start Num: 16

Candidate Starts for NoSleep_11:

(Start: 14 @4349 has 20 MA's), (Start: 16 @4352 has 110 MA's), (22, 4391), (Start: 25 @4412 has 2 MA's), (36, 4442), (39, 4448), (40, 4454), (54, 4553), (55, 4562), (86, 4745), (87, 4751), (101, 4829), (104, 4844), (115, 4919), (122, 4979), (126, 5009), (137, 5108), (138, 5111), (139, 5114), (140, 5126), (145, 5147), (147, 5156), (148, 5162), (160, 5279), (163, 5303), (168, 5336), (179, 5378), (188, 5444), (194, 5489), (200, 5528), (205, 5555), (214, 5660), (219, 5729), (223, 5789), (228, 5864), (229, 5873),

Gene: NonchalantPear_10 Start: 4104, Stop: 5660, Start Num: 16

Candidate Starts for NonchalantPear_10:

(Start: 14 @4101 has 20 MA's), (Start: 16 @4104 has 110 MA's), (22, 4143), (Start: 25 @4164 has 2 MA's), (36, 4194), (39, 4200), (40, 4206), (54, 4305), (55, 4314), (86, 4497), (87, 4503), (101, 4581), (104, 4596), (109, 4620), (115, 4671), (116, 4680), (122, 4731), (137, 4860), (138, 4863), (139, 4866), (140, 4878), (145, 4899), (147, 4908), (148, 4914), (160, 5031), (163, 5055), (168, 5088), (179, 5130), (188, 5196), (194, 5241), (200, 5280), (205, 5307), (214, 5412), (219, 5481), (223, 5541), (228, 5616), (229, 5625),

Gene: OneDirection_4 Start: 2171, Stop: 3472, Start Num: 19

Candidate Starts for OneDirection_4:

(Start: 19 @2171 has 56 MA's), (Start: 20 @2174 has 3 MA's), (22, 2198), (27, 2222), (28, 2228), (34, 2249), (38, 2261), (39, 2264), (46, 2300), (50, 2333), (61, 2426), (63, 2438), (68, 2477), (70, 2489), (76, 2531), (85, 2555), (86, 2558), (91, 2579), (96, 2615), (99, 2624), (115, 2717), (117, 2735), (124, 2798), (135, 2906), (140, 2936), (141, 2939), (148, 2972), (153, 3020), (154, 3029), (155, 3041), (156, 3044), (161, 3095), (167, 3131), (170, 3152), (185, 3224), (192, 3284),

Gene: OrionPax_11 Start: 4355, Stop: 5911, Start Num: 16

Candidate Starts for OrionPax_11:

(Start: 14 @4352 has 20 MA's), (Start: 16 @4355 has 110 MA's), (22, 4394), (Start: 25 @4415 has 2 MA's), (36, 4445), (39, 4451), (40, 4457), (54, 4556), (55, 4565), (86, 4748), (87, 4754), (101, 4832), (104, 4847), (115, 4922), (122, 4982), (126, 5012), (137, 5111), (138, 5114), (139, 5117), (140, 5129), (145, 5150), (147, 5159), (148, 5165), (160, 5282), (163, 5306), (168, 5339), (179, 5381), (188, 5447), (194, 5492), (200, 5531), (205, 5558), (214, 5663), (219, 5732), (223, 5792), (228, 5867), (229, 5876),

Gene: PaddyBaddy_11 Start: 4164, Stop: 5720, Start Num: 16

Candidate Starts for PaddyBaddy_11:

(Start: 14 @4161 has 20 MA's), (Start: 16 @4164 has 110 MA's), (22, 4203), (Start: 25 @4224 has 2 MA's), (36, 4254), (39, 4260), (40, 4266), (54, 4365), (55, 4374), (86, 4557), (87, 4563), (101, 4641), (104, 4656), (109, 4680), (115, 4731), (116, 4740), (122, 4791), (137, 4920), (138, 4923), (139, 4926), (140, 4938), (145, 4959), (147, 4968), (148, 4974), (160, 5091), (163, 5115), (168, 5148), (179, 5190), (188, 5256), (194, 5301), (200, 5340), (205, 5367), (214, 5472), (219, 5541), (223, 5601), (228, 5676), (229, 5685),

Gene: Palpatine_10 Start: 4784, Stop: 6340, Start Num: 16

Candidate Starts for Palpatine_10:

(Start: 14 @4781 has 20 MA's), (Start: 16 @4784 has 110 MA's), (22, 4823), (Start: 25 @4844 has 2 MA's), (36, 4874), (39, 4880), (40, 4886), (54, 4985), (55, 4994), (86, 5177), (87, 5183), (101, 5261), (104, 5276), (115, 5351), (122, 5411), (126, 5441), (137, 5540), (138, 5543), (139, 5546), (140, 5558), (145, 5579), (147, 5588), (148, 5594), (160, 5711), (163, 5735), (168, 5768), (179, 5810), (188, 5876), (194, 5921), (200, 5960), (205, 5987), (214, 6092), (219, 6161), (223, 6221), (228, 6296), (229, 6305),

Gene: Panchino_4 Start: 2263, Stop: 3552, Start Num: 19

Candidate Starts for Panchino_4:

(Start: 19 @2263 has 56 MA's), (24, 2299), (39, 2350), (45, 2356), (47, 2392), (50, 2404), (58, 2482), (69, 2557), (85, 2629), (87, 2638), (88, 2644), (90, 2650), (91, 2653), (108, 2740), (121, 2839), (123, 2854), (124, 2872), (140, 3010), (148, 3046), (155, 3115), (157, 3124), (161, 3169), (167, 3205), (173, 3235), (189, 3331), (192, 3358), (205, 3430),

Gene: Paperbeatsrock_12 Start: 5383, Stop: 6942, Start Num: 14

Candidate Starts for Paperbeatsrock_12:

(Start: 14 @5383 has 20 MA's), (Start: 16 @5386 has 110 MA's), (22, 5425), (Start: 25 @5446 has 2 MA's), (36, 5476), (39, 5482), (40, 5488), (54, 5587), (55, 5596), (86, 5779), (87, 5785), (101, 5863), (104, 5878), (115, 5953), (122, 6013), (126, 6043), (137, 6142), (138, 6145), (139, 6148), (140, 6160), (145, 6181), (147, 6190), (148, 6196), (160, 6313), (163, 6337), (168, 6370), (179, 6412), (188, 6478), (194, 6523), (200, 6562), (205, 6589), (214, 6694), (219, 6763), (223, 6823), (228, 6898), (229, 6907),

Gene: Parmesanjohn_4 Start: 2249, Stop: 3538, Start Num: 19

Candidate Starts for Parmesanjohn_4:

(Start: 19 @2249 has 56 MA's), (39, 2336), (45, 2342), (47, 2378), (50, 2390), (58, 2468), (69, 2543), (88, 2630), (121, 2825), (123, 2840), (129, 2882), (140, 2996), (155, 3101), (157, 3110), (161, 3155), (167, 3191), (173, 3221), (192, 3344), (205, 3416), (206, 3422),

Gene: Pat3_10 Start: 3893, Stop: 5449, Start Num: 16

Candidate Starts for Pat3_10:

(Start: 14 @3890 has 20 MA's), (Start: 16 @3893 has 110 MA's), (22, 3932), (Start: 25 @3953 has 2 MA's), (36, 3983), (39, 3989), (40, 3995), (54, 4094), (55, 4103), (86, 4286), (87, 4292), (101, 4370), (104, 4385), (115, 4460), (122, 4520), (126, 4550), (137, 4649), (138, 4652), (139, 4655), (140, 4667), (145, 4688), (147, 4697), (148, 4703), (160, 4820), (163, 4844), (168, 4877), (179, 4919), (188, 4985), (194, 5030), (200, 5069), (205, 5096), (214, 5201), (219, 5270), (223, 5330), (228, 5405), (229, 5414),

Gene: Pepperoni_4 Start: 2468, Stop: 3781, Start Num: 19

Candidate Starts for Pepperoni_4:

(Start: 19 @2468 has 56 MA's), (22, 2495), (33, 2537), (38, 2555), (39, 2558), (46, 2594), (47, 2615), (50, 2627), (61, 2726), (62, 2735), (63, 2738), (67, 2774), (68, 2777), (70, 2789), (85, 2855), (86, 2858), (90, 2876), (91, 2879), (109, 2969), (117, 3035), (124, 3098), (138, 3221), (140, 3236), (154, 3329), (155, 3341), (156, 3344), (161, 3395), (165, 3425), (167, 3431), (190, 3569), (192, 3584), (193, 3590), (206, 3662),

Gene: Petra64142_11 Start: 5065, Stop: 6624, Start Num: 14

Candidate Starts for Petra64142_11:

(Start: 14 @5065 has 20 MA's), (Start: 16 @5068 has 110 MA's), (22, 5107), (Start: 25 @5128 has 2 MA's), (36, 5158), (39, 5164), (40, 5170), (54, 5269), (55, 5278), (86, 5461), (87, 5467), (101, 5545), (104, 5560), (115, 5635), (122, 5695), (137, 5824), (138, 5827), (139, 5830), (140, 5842), (145, 5863), (147, 5872), (148, 5878), (160, 5995), (163, 6019), (168, 6052), (179, 6094), (188, 6160), (194, 6205), (200, 6244), (205, 6271), (214, 6376), (219, 6445), (223, 6505), (228, 6580), (229, 6589),

Gene: Phaja_10 Start: 4846, Stop: 6402, Start Num: 16

Candidate Starts for Phaja_10:

(Start: 14 @4843 has 20 MA's), (Start: 16 @4846 has 110 MA's), (22, 4885), (Start: 25 @4906 has 2 MA's), (36, 4936), (39, 4942), (40, 4948), (54, 5047), (55, 5056), (86, 5239), (87, 5245), (101, 5323), (104, 5338), (115, 5413), (122, 5473), (126, 5503), (137, 5602), (138, 5605), (139, 5608), (140, 5620), (145, 5641), (147, 5650), (148, 5656), (160, 5773), (163, 5797), (168, 5830), (179, 5872), (188, 5938), (194, 5983), (200, 6022), (205, 6049), (214, 6154), (219, 6223), (223, 6283), (228, 6358), (229, 6367),

Gene: PhancyPhin_4 Start: 2263, Stop: 3552, Start Num: 19

Candidate Starts for PhancyPhin_4:

(Start: 19 @2263 has 56 MA's), (24, 2299), (39, 2350), (45, 2356), (47, 2392), (50, 2404), (58, 2482), (69, 2557), (85, 2629), (87, 2638), (88, 2644), (90, 2650), (91, 2653), (108, 2740), (121, 2839), (123, 2854), (124, 2872), (140, 3010), (148, 3046), (155, 3115), (157, 3124), (161, 3169), (167, 3205), (173, 3235), (189, 3331), (192, 3358), (205, 3430),

Gene: Pharsalus_11 Start: 5183, Stop: 6742, Start Num: 14

Candidate Starts for Pharsalus_11:

(Start: 14 @5183 has 20 MA's), (Start: 16 @5186 has 110 MA's), (22, 5225), (Start: 25 @5246 has 2 MA's), (36, 5276), (39, 5282), (40, 5288), (54, 5387), (55, 5396), (86, 5579), (87, 5585), (101, 5663), (104, 5678), (115, 5753), (122, 5813), (126, 5843), (137, 5942), (138, 5945), (139, 5948), (140, 5960), (145, 5981), (147, 5990), (148, 5996), (160, 6113), (163, 6137), (168, 6170), (179, 6212), (188, 6278), (194, 6323), (200, 6362), (205, 6389), (214, 6494), (219, 6563), (223, 6623), (228, 6698), (229, 6707),

Gene: PhatBacter_10 Start: 4787, Stop: 6343, Start Num: 16

Candidate Starts for PhatBacter_10:

(Start: 14 @4784 has 20 MA's), (Start: 16 @4787 has 110 MA's), (22, 4826), (Start: 25 @4847 has 2 MA's), (36, 4877), (39, 4883), (40, 4889), (54, 4988), (55, 4997), (86, 5180), (87, 5186), (101, 5264), (104, 5279), (109, 5303), (115, 5354), (116, 5363), (122, 5414), (137, 5543), (138, 5546), (139, 5549), (140, 5561), (145, 5582), (147, 5591), (148, 5597), (160, 5714), (163, 5738), (168, 5771), (179, 5813), (188, 5879), (194, 5924), (200, 5963), (205, 5990), (214, 6095), (219, 6164), (223, 6224), (228, 6299), (229, 6308),

Gene: Phaux_9 Start: 4787, Stop: 6343, Start Num: 16

Candidate Starts for Phaux_9:

(Start: 14 @4784 has 20 MA's), (Start: 16 @4787 has 110 MA's), (22, 4826), (Start: 25 @4847 has 2 MA's), (36, 4877), (39, 4883), (40, 4889), (54, 4988), (55, 4997), (86, 5180), (87, 5186), (101, 5264), (104, 5279), (115, 5354), (122, 5414), (126, 5444), (137, 5543), (138, 5546), (139, 5549), (140, 5561), (145, 5582), (147, 5591), (148, 5597), (160, 5714), (163, 5738), (168, 5771), (179, 5813), (188, 5879), (194, 5924), (200, 5963), (205, 5990), (214, 6095), (219, 6164), (223, 6224), (228, 6299), (229, 6308),

Gene: Philonius_4 Start: 2249, Stop: 3538, Start Num: 19

Candidate Starts for Philonius_4:

(Start: 19 @2249 has 56 MA's), (39, 2336), (45, 2342), (47, 2378), (50, 2390), (58, 2468), (69, 2543), (88, 2630), (121, 2825), (123, 2840), (129, 2882), (140, 2996), (155, 3101), (157, 3110), (161, 3155), (167, 3191), (173, 3221), (192, 3344), (205, 3416), (206, 3422),

Gene: Phloss_4 Start: 2249, Stop: 3538, Start Num: 19

Candidate Starts for Phloss_4:

(Start: 19 @2249 has 56 MA's), (39, 2336), (45, 2342), (47, 2378), (50, 2390), (58, 2468), (69, 2543), (88, 2630), (108, 2726), (121, 2825), (123, 2840), (129, 2882), (140, 2996), (155, 3101), (157, 3110), (161, 3155), (167, 3191), (173, 3221), (192, 3344), (205, 3416), (206, 3422),

Gene: Phrann_4 Start: 2263, Stop: 3552, Start Num: 19

Candidate Starts for Phrann_4:

(Start: 19 @2263 has 56 MA's), (24, 2299), (39, 2350), (45, 2356), (47, 2392), (50, 2404), (58, 2482), (69, 2557), (85, 2629), (87, 2638), (88, 2644), (90, 2650), (91, 2653), (108, 2740), (121, 2839), (123, 2854), (124, 2872), (140, 3010), (148, 3046), (155, 3115), (157, 3124), (161, 3169), (167, 3205), (173, 3235), (189, 3331), (192, 3358), (205, 3430),

Gene: Phrux_10 Start: 4150, Stop: 5706, Start Num: 16

Candidate Starts for Phrux_10:

(Start: 14 @4147 has 20 MA's), (Start: 16 @4150 has 110 MA's), (22, 4189), (Start: 25 @4210 has 2 MA's), (36, 4240), (39, 4246), (40, 4252), (54, 4351), (55, 4360), (86, 4543), (87, 4549), (101, 4627), (104, 4642), (109, 4666), (115, 4717), (116, 4726), (122, 4777), (137, 4906), (138, 4909), (139, 4912), (140, 4924), (145, 4945), (147, 4954), (148, 4960), (160, 5077), (163, 5101), (168, 5134), (179, 5176), (188, 5242), (194, 5287), (200, 5326), (205, 5353), (214, 5458), (219, 5527), (223, 5587), (228, 5662), (229, 5671),

Gene: Pipsqueaks_4 Start: 2249, Stop: 3538, Start Num: 19

Candidate Starts for Pipsqueaks_4:

(Start: 19 @2249 has 56 MA's), (39, 2336), (45, 2342), (47, 2378), (50, 2390), (58, 2468), (69, 2543), (88, 2630), (121, 2825), (123, 2840), (129, 2882), (140, 2996), (155, 3101), (157, 3110), (161, 3155), (167, 3191), (173, 3221), (192, 3344), (205, 3416), (206, 3422),

Gene: Policronamos_10 Start: 4787, Stop: 6343, Start Num: 16

Candidate Starts for Policronamos_10:

(Start: 14 @4784 has 20 MA's), (Start: 16 @4787 has 110 MA's), (22, 4826), (Start: 25 @4847 has 2 MA's), (36, 4877), (39, 4883), (40, 4889), (54, 4988), (55, 4997), (86, 5180), (87, 5186), (101, 5264), (104, 5279), (115, 5354), (122, 5414), (126, 5444), (137, 5543), (138, 5546), (139, 5549), (140, 5561), (145, 5582), (147, 5591), (148, 5597), (160, 5714), (163, 5738), (168, 5771), (179, 5813), (188, 5879), (194, 5924), (200, 5963), (205, 5990), (214, 6095), (219, 6164), (223, 6224), (228, 6299), (229, 6308),

Gene: Porky_9 Start: 3721, Stop: 5280, Start Num: 14

Candidate Starts for Porky_9:

(Start: 14 @3721 has 20 MA's), (Start: 16 @3724 has 110 MA's), (22, 3763), (Start: 25 @3784 has 2 MA's), (36, 3814), (39, 3820), (40, 3826), (54, 3925), (55, 3934), (86, 4117), (87, 4123), (101, 4201), (104, 4216), (115, 4291), (122, 4351), (126, 4381), (137, 4480), (138, 4483), (139, 4486), (140, 4498), (145, 4519), (147, 4528), (148, 4534), (160, 4651), (163, 4675), (168, 4708), (179, 4750), (188, 4816), (194, 4861), (200, 4900), (205, 4927), (214, 5032), (219, 5101), (223, 5161), (228, 5236), (229, 5245),

Gene: Ptowny_10 Start: 3791, Stop: 5347, Start Num: 16

Candidate Starts for Ptowny_10:

(Start: 14 @3788 has 20 MA's), (Start: 16 @3791 has 110 MA's), (22, 3830), (Start: 25 @3851 has 2 MA's), (36, 3881), (39, 3887), (40, 3893), (54, 3992), (55, 4001), (86, 4184), (87, 4190), (101, 4268), (104, 4283), (109, 4307), (115, 4358), (116, 4367), (122, 4418), (137, 4547), (138, 4550), (139, 4553), (140, 4565), (145, 4586), (147, 4595), (148, 4601), (160, 4718), (163, 4742), (168, 4775), (179, 4817), (188, 4883), (194, 4928), (200, 4967), (205, 4994), (214, 5099), (219, 5168), (223, 5228), (228, 5303), (229, 5312),

Gene: Pumpkin_11 Start: 4228, Stop: 5724, Start Num: 25

Candidate Starts for Pumpkin_11:

(Start: 14 @4165 has 20 MA's), (Start: 16 @4168 has 110 MA's), (22, 4207), (Start: 25 @4228 has 2 MA's), (36, 4258), (39, 4264), (40, 4270), (54, 4369), (55, 4378), (86, 4561), (87, 4567), (101, 4645), (104, 4660), (109, 4684), (115, 4735), (116, 4744), (122, 4795), (137, 4924), (138, 4927), (139, 4930), (140, 4942), (145, 4963), (147, 4972), (148, 4978), (160, 5095), (163, 5119), (168, 5152), (179, 5194), (188, 5260), (194, 5305), (200, 5344), (205, 5371), (214, 5476), (219, 5545), (223, 5605), (228, 5680), (229, 5689),

Gene: Puppies_3 Start: 2078, Stop: 3436, Start Num: 13

Candidate Starts for Puppies_3:

(Start: 13 @2078 has 14 MA's), (17, 2087), (26, 2135), (51, 2243), (63, 2339), (73, 2423), (83, 2462), (105, 2570), (108, 2588), (111, 2615), (115, 2642), (120, 2684), (129, 2747), (140, 2864), (149, 2909), (152, 2939), (155, 2969), (161, 3023), (169, 3077), (192, 3212), (197, 3239),

Gene: Purgamenstris_4 Start: 2263, Stop: 3552, Start Num: 19

Candidate Starts for Purgamenstris_4:

(Start: 19 @2263 has 56 MA's), (24, 2299), (39, 2350), (45, 2356), (47, 2392), (50, 2404), (58, 2482), (69, 2557), (87, 2638), (88, 2644), (90, 2650), (91, 2653), (108, 2740), (121, 2839), (123, 2854), (124, 2872), (140, 3010), (148, 3046), (155, 3115), (157, 3124), (161, 3169), (167, 3205), (173, 3235), (189, 3331), (192, 3358), (205, 3430),

Gene: Quallification_12 Start: 5392, Stop: 6948, Start Num: 16

Candidate Starts for Quallification_12:

(Start: 14 @5389 has 20 MA's), (Start: 16 @5392 has 110 MA's), (22, 5431), (Start: 25 @5452 has 2 MA's), (36, 5482), (39, 5488), (40, 5494), (54, 5593), (55, 5602), (86, 5785), (87, 5791), (101, 5869), (104, 5884), (115, 5959), (122, 6019), (126, 6049), (137, 6148), (138, 6151), (139, 6154), (140, 6166), (145, 6187), (147, 6196), (148, 6202), (160, 6319), (163, 6343), (168, 6376), (179, 6418), (188, 6484), (194, 6529), (200, 6568), (205, 6595), (214, 6700), (219, 6769), (223, 6829), (228, 6904), (229, 6913),

Gene: Rakim_12 Start: 5392, Stop: 6948, Start Num: 16

Candidate Starts for Rakim_12:

(Start: 14 @5389 has 20 MA's), (Start: 16 @5392 has 110 MA's), (22, 5431), (Start: 25 @5452 has 2 MA's), (36, 5482), (39, 5488), (40, 5494), (54, 5593), (55, 5602), (86, 5785), (87, 5791), (101, 5869), (104, 5884), (115, 5959), (122, 6019), (126, 6049), (137, 6148), (138, 6151), (139, 6154), (140, 6166), (145, 6187), (147, 6196), (148, 6202), (160, 6319), (163, 6343), (168, 6376), (179, 6418), (188, 6484), (194, 6529), (200, 6568), (205, 6595), (214, 6700), (219, 6769), (223, 6829), (228, 6904), (229, 6913),

Gene: Raymond7_4 Start: 2263, Stop: 3552, Start Num: 19

Candidate Starts for Raymond7_4:

(Start: 19 @2263 has 56 MA's), (24, 2299), (39, 2350), (45, 2356), (47, 2392), (50, 2404), (58, 2482), (69, 2557), (85, 2629), (87, 2638), (88, 2644), (90, 2650), (91, 2653), (108, 2740), (121, 2839), (123, 2854), (124, 2872), (140, 3010), (148, 3046), (155, 3115), (157, 3124), (161, 3169), (167, 3205), (173, 3235), (189, 3331), (192, 3358), (205, 3430),

Gene: Rebel_4 Start: 2263, Stop: 3552, Start Num: 19

Candidate Starts for Rebel_4:

(Start: 19 @2263 has 56 MA's), (24, 2299), (39, 2350), (45, 2356), (47, 2392), (50, 2404), (58, 2482), (69, 2557), (85, 2629), (87, 2638), (88, 2644), (90, 2650), (91, 2653), (108, 2740), (121, 2839), (123, 2854), (124, 2872), (140, 3010), (148, 3046), (155, 3115), (157, 3124), (161, 3169), (167, 3205), (173, 3235), (189, 3331), (192, 3358), (205, 3430),

Gene: Redi_4 Start: 2263, Stop: 3552, Start Num: 19

Candidate Starts for Redi_4:

(Start: 19 @2263 has 56 MA's), (24, 2299), (39, 2350), (45, 2356), (47, 2392), (50, 2404), (58, 2482), (69, 2557), (85, 2629), (87, 2638), (88, 2644), (90, 2650), (91, 2653), (108, 2740), (121, 2839), (123, 2854), (124, 2872), (140, 3010), (148, 3046), (155, 3115), (157, 3124), (161, 3169), (167, 3205), (173, 3235), (189, 3331), (192, 3358), (205, 3430),

Gene: Reyja_5 Start: 2467, Stop: 3768, Start Num: 19

Candidate Starts for Reyja_5:

(Start: 19 @2467 has 56 MA's), (Start: 20 @2470 has 3 MA's), (22, 2494), (28, 2524), (47, 2596), (59, 2689), (62, 2713), (86, 2845), (89, 2860), (90, 2863), (116, 3019), (124, 3091), (140, 3232), (143, 3241), (145, 3253), (148, 3268), (154, 3325), (155, 3337), (161, 3391), (162, 3394), (163, 3409), (167, 3427), (170, 3448), (192, 3574),

Gene: Rimmer_10 Start: 4846, Stop: 6402, Start Num: 16

Candidate Starts for Rimmer_10:

(Start: 14 @4843 has 20 MA's), (Start: 16 @4846 has 110 MA's), (22, 4885), (Start: 25 @4906 has 2 MA's), (36, 4936), (39, 4942), (40, 4948), (54, 5047), (55, 5056), (86, 5239), (87, 5245), (101, 5323), (104, 5338), (115, 5413), (122, 5473), (126, 5503), (137, 5602), (138, 5605), (139, 5608), (140, 5620), (145, 5641), (147, 5650), (148, 5656), (160, 5773), (163, 5797), (168, 5830), (179, 5872), (188, 5938), (194, 5983), (200, 6022), (205, 6049), (214, 6154), (219, 6223), (223, 6283), (228, 6358), (229, 6367),

Gene: RiverMonster_10 Start: 4164, Stop: 5720, Start Num: 16

Candidate Starts for RiverMonster_10:

(Start: 14 @4161 has 20 MA's), (Start: 16 @4164 has 110 MA's), (22, 4203), (Start: 25 @4224 has 2 MA's), (36, 4254), (39, 4260), (40, 4266), (54, 4365), (55, 4374), (86, 4557), (87, 4563), (101, 4641), (104, 4656), (115, 4731), (122, 4791), (126, 4821), (137, 4920), (138, 4923), (139, 4926), (140, 4938), (145, 4959), (147, 4968), (148, 4974), (160, 5091), (163, 5115), (168, 5148), (179, 5190), (188, 5256), (194, 5301), (200, 5340), (205, 5367), (214, 5472), (219, 5541), (223, 5601), (228, 5676), (229, 5685),

Gene: RootBeer_4 Start: 2459, Stop: 3739, Start Num: 6

Candidate Starts for RootBeer_4:

(2, 2339), (Start: 6 @2459 has 1 MA's), (Start: 7 @2462 has 1 MA's), (39, 2582), (46, 2615), (50, 2648), (71, 2816), (86, 2879), (108, 2993), (115, 3044), (124, 3125), (140, 3251), (161, 3410), (183, 3515), (188, 3563), (190, 3578), (192, 3593),

Gene: Rubeelu_4 Start: 2249, Stop: 3535, Start Num: 19

Candidate Starts for Rubeelu_4:

(Start: 19 @2249 has 56 MA's), (39, 2336), (45, 2342), (47, 2378), (50, 2390), (69, 2543), (85, 2615), (108, 2726), (109, 2729), (117, 2795), (118, 2798), (121, 2825), (123, 2840), (129, 2882), (140, 2996), (155, 3101), (161, 3155), (162, 3158), (167, 3191), (173, 3221), (192, 3344), (202, 3404),

Gene: Saints25_11 Start: 4364, Stop: 5920, Start Num: 16

Candidate Starts for Saints25_11:

(Start: 14 @4361 has 20 MA's), (Start: 16 @4364 has 110 MA's), (22, 4403), (Start: 25 @4424 has 2 MA's), (36, 4454), (39, 4460), (40, 4466), (54, 4565), (55, 4574), (86, 4757), (87, 4763), (101, 4841), (104, 4856), (115, 4931), (122, 4991), (126, 5021), (137, 5120), (138, 5123), (139, 5126), (140, 5138), (145, 5159), (147, 5168), (148, 5174), (160, 5291), (163, 5315), (168, 5348), (179, 5390), (188, 5456), (194, 5501), (200, 5540), (205, 5567), (214, 5672), (219, 5741), (223, 5801), (228, 5876), (229, 5885),

Gene: Santhid_4 Start: 2353, Stop: 3651, Start Num: 19

Candidate Starts for Santhid_4:

(Start: 19 @2353 has 56 MA's), (Start: 20 @2356 has 3 MA's), (22, 2380), (28, 2410), (47, 2482), (62, 2599), (86, 2731), (90, 2749), (116, 2905), (124, 2977), (140, 3118), (143, 3127), (145, 3139), (148,

3154), (154, 3211), (155, 3223), (161, 3277), (162, 3280), (163, 3295), (167, 3313), (170, 3334), (192, 3460),

Gene: Sapo_2 Start: 1792, Stop: 3132, Start Num: 13

Candidate Starts for Sapo_2:

(Start: 13 @1792 has 14 MA's), (76, 2155), (98, 2260), (99, 2263), (116, 2374), (130, 2497), (140, 2587), (144, 2602), (152, 2662), (154, 2680), (155, 2692), (156, 2695), (159, 2728), (172, 2809),

Gene: Sassay_10 Start: 4787, Stop: 6343, Start Num: 16

Candidate Starts for Sassay_10:

(Start: 14 @4784 has 20 MA's), (Start: 16 @4787 has 110 MA's), (22, 4826), (Start: 25 @4847 has 2 MA's), (36, 4877), (39, 4883), (40, 4889), (54, 4988), (55, 4997), (86, 5180), (87, 5186), (101, 5264), (104, 5279), (115, 5354), (122, 5414), (126, 5444), (137, 5543), (138, 5546), (139, 5549), (140, 5561), (145, 5582), (147, 5591), (148, 5597), (160, 5714), (163, 5738), (168, 5771), (179, 5813), (188, 5879), (194, 5924), (200, 5963), (205, 5990), (214, 6095), (219, 6164), (223, 6224), (228, 6299), (229, 6308),

Gene: Schmidt_6 Start: 3556, Stop: 4848, Start Num: 13

Candidate Starts for Schmidt_6:

(Start: 13 @3556 has 14 MA's), (18, 3574), (29, 3619), (42, 3652), (49, 3706), (58, 3787), (62, 3811), (68, 3853), (70, 3865), (75, 3904), (76, 3907), (79, 3922), (87, 3949), (98, 4009), (99, 4012), (104, 4042), (106, 4048), (108, 4063), (136, 4315), (138, 4321), (140, 4336), (149, 4381), (154, 4429), (155, 4441), (157, 4450), (159, 4477), (167, 4531), (182, 4594), (188, 4648), (189, 4651), (192, 4678), (195, 4693), (197, 4705), (198, 4711), (204, 4744), (207, 4762), (209, 4792),

Gene: Schnauzer_4 Start: 2249, Stop: 3538, Start Num: 19

Candidate Starts for Schnauzer_4:

(Start: 19 @2249 has 56 MA's), (39, 2336), (45, 2342), (47, 2378), (50, 2390), (58, 2468), (69, 2543), (88, 2630), (121, 2825), (123, 2840), (129, 2882), (140, 2996), (155, 3101), (157, 3110), (161, 3155), (167, 3191), (173, 3221), (192, 3344), (205, 3416), (206, 3422),

Gene: Scitech_4 Start: 2249, Stop: 3538, Start Num: 19

Candidate Starts for Scitech_4:

(Start: 19 @2249 has 56 MA's), (39, 2336), (45, 2342), (47, 2378), (50, 2390), (58, 2468), (69, 2543), (88, 2630), (108, 2726), (121, 2825), (123, 2840), (129, 2882), (140, 2996), (155, 3101), (157, 3110), (161, 3155), (167, 3191), (173, 3221), (192, 3344), (205, 3416), (206, 3422),

Gene: ShamWow_11 Start: 5186, Stop: 6742, Start Num: 16

Candidate Starts for ShamWow_11:

(Start: 14 @5183 has 20 MA's), (Start: 16 @5186 has 110 MA's), (22, 5225), (Start: 25 @5246 has 2 MA's), (36, 5276), (39, 5282), (40, 5288), (54, 5387), (55, 5396), (86, 5579), (87, 5585), (101, 5663), (104, 5678), (115, 5753), (122, 5813), (126, 5843), (137, 5942), (138, 5945), (139, 5948), (140, 5960), (145, 5981), (147, 5990), (148, 5996), (160, 6113), (163, 6137), (168, 6170), (179, 6212), (188, 6278), (194, 6323), (200, 6362), (205, 6389), (214, 6494), (219, 6563), (223, 6623), (228, 6698), (229, 6707),

Gene: Shambre1_5 Start: 3925, Stop: 5259, Start Num: 7

Candidate Starts for Shambre1_5:

(Start: 7 @3925 has 1 MA's), (39, 4069), (44, 4084), (53, 4165), (72, 4306), (73, 4324), (74, 4327), (86, 4372), (97, 4438), (115, 4540), (122, 4600), (140, 4747), (146, 4771), (152, 4825), (159, 4888), (161, 4906), (175, 4981), (186, 5041), (190, 5074), (197, 5116), (199, 5131), (202, 5149), (205, 5161), (206, 5167),

Gene: ShereKhan_12 Start: 5392, Stop: 6948, Start Num: 16

Candidate Starts for ShereKhan_12:

(Start: 14 @5389 has 20 MA's), (Start: 16 @5392 has 110 MA's), (22, 5431), (Start: 25 @5452 has 2 MA's), (36, 5482), (39, 5488), (40, 5494), (54, 5593), (55, 5602), (86, 5785), (87, 5791), (101, 5869), (104, 5884), (115, 5959), (122, 6019), (137, 6148), (138, 6151), (139, 6154), (140, 6166), (145, 6187), (147, 6196), (148, 6202), (160, 6319), (163, 6343), (168, 6376), (179, 6418), (188, 6484), (194, 6529), (200, 6568), (205, 6595), (214, 6700), (219, 6769), (223, 6829), (228, 6904), (229, 6913),

Gene: ShrimpFriedEgg_4 Start: 2263, Stop: 3552, Start Num: 19

Candidate Starts for ShrimpFriedEgg_4:

(Start: 19 @2263 has 56 MA's), (24, 2299), (39, 2350), (45, 2356), (47, 2392), (50, 2404), (58, 2482), (69, 2557), (85, 2629), (87, 2638), (88, 2644), (90, 2650), (91, 2653), (108, 2740), (121, 2839), (123, 2854), (124, 2872), (140, 3010), (148, 3046), (155, 3115), (157, 3124), (161, 3169), (167, 3205), (173, 3235), (189, 3331), (192, 3358), (205, 3430),

Gene: Shweta_4 Start: 2263, Stop: 3552, Start Num: 19

Candidate Starts for Shweta_4:

(Start: 19 @2263 has 56 MA's), (24, 2299), (39, 2350), (45, 2356), (47, 2392), (50, 2404), (58, 2482), (69, 2557), (85, 2629), (87, 2638), (88, 2644), (90, 2650), (91, 2653), (108, 2740), (121, 2839), (123, 2854), (124, 2872), (140, 3010), (148, 3046), (155, 3115), (157, 3124), (161, 3169), (167, 3205), (173, 3235), (189, 3331), (192, 3358), (205, 3430),

Gene: Silvafighter_4 Start: 2249, Stop: 3538, Start Num: 19

Candidate Starts for Silvafighter_4:

(Start: 19 @2249 has 56 MA's), (39, 2336), (45, 2342), (47, 2378), (50, 2390), (58, 2468), (69, 2543), (88, 2630), (108, 2726), (121, 2825), (123, 2840), (129, 2882), (140, 2996), (155, 3101), (157, 3110), (161, 3155), (167, 3191), (173, 3221), (192, 3344), (205, 3416), (206, 3422),

Gene: Silvy_4 Start: 2249, Stop: 3538, Start Num: 19

Candidate Starts for Silvy_4:

(Start: 19 @2249 has 56 MA's), (39, 2336), (45, 2342), (47, 2378), (50, 2390), (58, 2468), (69, 2543), (88, 2630), (121, 2825), (123, 2840), (129, 2882), (140, 2996), (155, 3101), (157, 3110), (161, 3155), (167, 3191), (173, 3221), (192, 3344), (205, 3416), (206, 3422),

Gene: Simpliphy_11 Start: 4355, Stop: 5911, Start Num: 16

Candidate Starts for Simpliphy_11:

(Start: 14 @4352 has 20 MA's), (Start: 16 @4355 has 110 MA's), (22, 4394), (Start: 25 @4415 has 2 MA's), (36, 4445), (39, 4451), (40, 4457), (54, 4556), (55, 4565), (86, 4748), (87, 4754), (101, 4832), (104, 4847), (115, 4922), (122, 4982), (126, 5012), (137, 5111), (138, 5114), (139, 5117), (140, 5129), (145, 5150), (147, 5159), (148, 5165), (160, 5282), (163, 5306), (168, 5339), (179, 5381), (188, 5447), (194, 5492), (200, 5531), (205, 5558), (214, 5663), (219, 5732), (223, 5792), (228, 5867), (229, 5876),

Gene: SirDuracell_10 Start: 3853, Stop: 5409, Start Num: 16

Candidate Starts for SirDuracell_10:

(Start: 14 @3850 has 20 MA's), (Start: 16 @3853 has 110 MA's), (22, 3892), (Start: 25 @3913 has 2 MA's), (36, 3943), (39, 3949), (40, 3955), (54, 4054), (55, 4063), (86, 4246), (87, 4252), (101, 4330), (104, 4345), (115, 4420), (122, 4480), (126, 4510), (137, 4609), (138, 4612), (139, 4615), (140, 4627), (145, 4648), (147, 4657), (148, 4663), (160, 4780), (163, 4804), (168, 4837), (179, 4879), (188, 4945), (194, 4990), (200, 5029), (205, 5056), (214, 5161), (219, 5230), (223, 5290), (228, 5365), (229, 5374),

Gene: SkinnyPete_4 Start: 2263, Stop: 3552, Start Num: 19

Candidate Starts for SkinnyPete_4:

(Start: 19 @2263 has 56 MA's), (24, 2299), (39, 2350), (45, 2356), (47, 2392), (50, 2404), (58, 2482), (69, 2557), (85, 2629), (87, 2638), (88, 2644), (90, 2650), (91, 2653), (108, 2740), (121, 2839), (123, 2854), (124, 2872), (140, 3010), (148, 3046), (155, 3115), (157, 3124), (161, 3169), (167, 3205), (173, 3235), (189, 3331), (192, 3358), (205, 3430),

3235), (189, 3331), (192, 3358), (205, 3430),

Gene: Smurph_4 Start: 2249, Stop: 3538, Start Num: 19

Candidate Starts for Smurph_4:

(Start: 19 @2249 has 56 MA's), (39, 2336), (45, 2342), (47, 2378), (50, 2390), (58, 2468), (69, 2543), (88, 2630), (121, 2825), (123, 2840), (129, 2882), (140, 2996), (155, 3101), (157, 3110), (161, 3155), (167, 3191), (173, 3221), (192, 3344), (205, 3416), (206, 3422),

Gene: Snekmaggedon_4 Start: 2263, Stop: 3552, Start Num: 19

Candidate Starts for Snekmaggedon_4:

(Start: 19 @2263 has 56 MA's), (24, 2299), (39, 2350), (45, 2356), (47, 2392), (50, 2404), (58, 2482), (69, 2557), (85, 2629), (87, 2638), (88, 2644), (90, 2650), (91, 2653), (108, 2740), (121, 2839), (123, 2854), (124, 2872), (140, 3010), (148, 3046), (155, 3115), (157, 3124), (161, 3169), (167, 3205), (173, 3235), (189, 3331), (192, 3358), (205, 3430),

Gene: SophKB_11 Start: 5186, Stop: 6742, Start Num: 16

Candidate Starts for SophKB_11:

(Start: 14 @5183 has 20 MA's), (Start: 16 @5186 has 110 MA's), (22, 5225), (Start: 25 @5246 has 2 MA's), (36, 5276), (39, 5282), (40, 5288), (54, 5387), (55, 5396), (86, 5579), (87, 5585), (101, 5663), (104, 5678), (115, 5753), (122, 5813), (126, 5843), (137, 5942), (138, 5945), (139, 5948), (140, 5960), (145, 5981), (147, 5990), (148, 5996), (160, 6113), (163, 6137), (168, 6170), (179, 6212), (188, 6278), (194, 6323), (200, 6362), (205, 6389), (214, 6494), (219, 6563), (223, 6623), (228, 6698), (229, 6707),

Gene: Sotrice96_11 Start: 5142, Stop: 6698, Start Num: 16

Candidate Starts for Sotrice96_11:

(Start: 14 @5139 has 20 MA's), (Start: 16 @5142 has 110 MA's), (22, 5181), (Start: 25 @5202 has 2 MA's), (36, 5232), (39, 5238), (40, 5244), (54, 5343), (55, 5352), (86, 5535), (87, 5541), (101, 5619), (104, 5634), (115, 5709), (122, 5769), (126, 5799), (137, 5898), (138, 5901), (139, 5904), (140, 5916), (145, 5937), (147, 5946), (148, 5952), (160, 6069), (163, 6093), (168, 6126), (179, 6168), (188, 6234), (194, 6279), (200, 6318), (205, 6345), (214, 6450), (219, 6519), (223, 6579), (228, 6654), (229, 6663),

Gene: Spinach_4 Start: 2263, Stop: 3552, Start Num: 19

Candidate Starts for Spinach_4:

(Start: 19 @2263 has 56 MA's), (24, 2299), (39, 2350), (45, 2356), (47, 2392), (50, 2404), (58, 2482), (69, 2557), (85, 2629), (87, 2638), (88, 2644), (90, 2650), (91, 2653), (108, 2740), (121, 2839), (123, 2854), (124, 2872), (140, 3010), (148, 3046), (155, 3115), (157, 3124), (161, 3169), (167, 3205), (173, 3235), (189, 3331), (192, 3358), (205, 3430),

Gene: Splinter_8 Start: 5071, Stop: 6363, Start Num: 12

Candidate Starts for Splinter_8:

(3, 4993), (Start: 12 @5071 has 8 MA's), (Start: 13 @5080 has 14 MA's), (43, 5176), (50, 5230), (70, 5386), (74, 5422), (85, 5461), (91, 5485), (99, 5533), (100, 5536), (106, 5566), (108, 5581), (109, 5584), (114, 5626), (131, 5782), (136, 5833), (140, 5854), (155, 5959), (158, 5971), (159, 5995), (167, 6049), (173, 6079), (174, 6085), (192, 6196), (207, 6280),

Gene: SpongeBob_4 Start: 2263, Stop: 3552, Start Num: 19

Candidate Starts for SpongeBob_4:

(Start: 19 @2263 has 56 MA's), (24, 2299), (39, 2350), (45, 2356), (47, 2392), (50, 2404), (58, 2482), (69, 2557), (85, 2629), (87, 2638), (88, 2644), (90, 2650), (91, 2653), (108, 2740), (121, 2839), (123, 2854), (124, 2872), (140, 3010), (148, 3046), (155, 3115), (157, 3124), (161, 3169), (167, 3205), (173, 3235), (189, 3331), (192, 3358), (205, 3430),

Gene: Stank_12 Start: 4399, Stop: 5955, Start Num: 16

Candidate Starts for Stank_12:

(Start: 14 @4396 has 20 MA's), (Start: 16 @4399 has 110 MA's), (22, 4438), (Start: 25 @4459 has 2 MA's), (36, 4489), (39, 4495), (40, 4501), (54, 4600), (55, 4609), (86, 4792), (87, 4798), (101, 4876), (104, 4891), (109, 4915), (115, 4966), (116, 4975), (122, 5026), (137, 5155), (138, 5158), (139, 5161), (140, 5173), (145, 5194), (147, 5203), (148, 5209), (160, 5326), (163, 5350), (168, 5383), (179, 5425), (188, 5491), (194, 5536), (200, 5575), (205, 5602), (214, 5707), (219, 5776), (223, 5836), (228, 5911), (229, 5920),

Gene: Stark_11 Start: 4167, Stop: 5723, Start Num: 16

Candidate Starts for Stark_11:

(Start: 14 @4164 has 20 MA's), (Start: 16 @4167 has 110 MA's), (22, 4206), (Start: 25 @4227 has 2 MA's), (36, 4257), (39, 4263), (40, 4269), (54, 4368), (55, 4377), (86, 4560), (87, 4566), (101, 4644), (104, 4659), (109, 4683), (115, 4734), (116, 4743), (122, 4794), (137, 4923), (138, 4926), (139, 4929), (140, 4941), (145, 4962), (147, 4971), (148, 4977), (160, 5094), (163, 5118), (168, 5151), (179, 5193), (188, 5259), (194, 5304), (200, 5343), (205, 5370), (214, 5475), (219, 5544), (223, 5604), (228, 5679), (229, 5688),

Gene: StellaBean_11 Start: 5186, Stop: 6742, Start Num: 16

Candidate Starts for StellaBean_11:

(Start: 14 @5183 has 20 MA's), (Start: 16 @5186 has 110 MA's), (22, 5225), (Start: 25 @5246 has 2 MA's), (36, 5276), (39, 5282), (40, 5288), (54, 5387), (55, 5396), (86, 5579), (87, 5585), (101, 5663), (104, 5678), (115, 5753), (122, 5813), (126, 5843), (137, 5942), (138, 5945), (139, 5948), (140, 5960), (145, 5981), (147, 5990), (148, 5996), (160, 6113), (163, 6137), (168, 6170), (179, 6212), (188, 6278), (194, 6323), (200, 6362), (205, 6389), (214, 6494), (219, 6563), (223, 6623), (228, 6698), (229, 6707),

Gene: StolenFromERC_12 Start: 4399, Stop: 5955, Start Num: 16

Candidate Starts for StolenFromERC_12:

(Start: 14 @4396 has 20 MA's), (Start: 16 @4399 has 110 MA's), (22, 4438), (Start: 25 @4459 has 2 MA's), (36, 4489), (39, 4495), (40, 4501), (54, 4600), (55, 4609), (86, 4792), (87, 4798), (101, 4876), (104, 4891), (109, 4915), (115, 4966), (116, 4975), (122, 5026), (137, 5155), (138, 5158), (139, 5161), (140, 5173), (145, 5194), (147, 5203), (148, 5209), (160, 5326), (163, 5350), (168, 5383), (179, 5425), (188, 5491), (194, 5536), (200, 5575), (205, 5602), (214, 5707), (219, 5776), (223, 5836), (228, 5911), (229, 5920),

Gene: StormChicken_11 Start: 5065, Stop: 6624, Start Num: 14

Candidate Starts for StormChicken_11:

(Start: 14 @5065 has 20 MA's), (Start: 16 @5068 has 110 MA's), (22, 5107), (Start: 25 @5128 has 2 MA's), (36, 5158), (39, 5164), (40, 5170), (54, 5269), (55, 5278), (86, 5461), (87, 5467), (101, 5545), (104, 5560), (115, 5635), (122, 5695), (126, 5725), (137, 5824), (138, 5827), (139, 5830), (140, 5842), (145, 5863), (147, 5872), (148, 5878), (160, 5995), (163, 6019), (168, 6052), (179, 6094), (188, 6160), (194, 6205), (200, 6244), (205, 6271), (214, 6376), (223, 6505), (228, 6580), (229, 6589),

Gene: TBrady12_12 Start: 4399, Stop: 5955, Start Num: 16

Candidate Starts for TBrady12_12:

(Start: 14 @4396 has 20 MA's), (Start: 16 @4399 has 110 MA's), (22, 4438), (Start: 25 @4459 has 2 MA's), (36, 4489), (39, 4495), (40, 4501), (54, 4600), (55, 4609), (86, 4792), (87, 4798), (101, 4876), (104, 4891), (115, 4966), (122, 5026), (126, 5056), (137, 5155), (138, 5158), (139, 5161), (140, 5173), (145, 5194), (147, 5203), (148, 5209), (160, 5326), (163, 5350), (168, 5383), (179, 5425), (188, 5491), (194, 5536), (200, 5575), (205, 5602), (214, 5707), (219, 5776), (223, 5836), (228, 5911), (229, 5920),

Gene: TZGordon_10 Start: 5216, Stop: 6508, Start Num: 12

Candidate Starts for TZGordon_10:

(3, 5138), (Start: 12 @5216 has 8 MA's), (Start: 13 @5225 has 14 MA's), (43, 5321), (50, 5375), (70, 5531), (74, 5567), (85, 5606), (91, 5630), (99, 5678), (100, 5681), (106, 5711), (108, 5726), (109, 5729), (114, 5771), (131, 5927), (140, 5999), (155, 6104), (158, 6116), (159, 6140), (167, 6194), (173, 6224), (174, 6230), (192, 6341),

Gene: Tapioca_4 Start: 2249, Stop: 3538, Start Num: 19

Candidate Starts for Tapioca_4:

(Start: 19 @2249 has 56 MA's), (39, 2336), (45, 2342), (47, 2378), (50, 2390), (58, 2468), (69, 2543), (88, 2630), (121, 2825), (123, 2840), (129, 2882), (140, 2996), (155, 3101), (157, 3110), (161, 3155), (167, 3191), (173, 3221), (192, 3344), (205, 3416), (206, 3422),

Gene: Tarkin_12 Start: 5395, Stop: 6951, Start Num: 16

Candidate Starts for Tarkin_12:

(Start: 14 @5392 has 20 MA's), (Start: 16 @5395 has 110 MA's), (22, 5434), (Start: 25 @5455 has 2 MA's), (36, 5485), (39, 5491), (40, 5497), (54, 5596), (55, 5605), (86, 5788), (87, 5794), (101, 5872), (104, 5887), (115, 5962), (122, 6022), (126, 6052), (137, 6151), (138, 6154), (139, 6157), (140, 6169), (145, 6190), (147, 6199), (148, 6205), (160, 6322), (163, 6346), (168, 6379), (179, 6421), (188, 6487), (194, 6532), (200, 6571), (205, 6598), (214, 6703), (219, 6772), (223, 6832), (228, 6907), (229, 6916),

Gene: Tarzan_4 Start: 2353, Stop: 3654, Start Num: 19

Candidate Starts for Tarzan_4:

(Start: 19 @2353 has 56 MA's), (Start: 20 @2356 has 3 MA's), (22, 2380), (28, 2410), (47, 2482), (62, 2599), (86, 2731), (90, 2749), (116, 2905), (124, 2977), (140, 3118), (143, 3127), (145, 3139), (148, 3154), (154, 3211), (155, 3223), (161, 3277), (162, 3280), (163, 3295), (167, 3313), (170, 3334), (192, 3460),

Gene: TeamEdward_11 Start: 5065, Stop: 6621, Start Num: 16

Candidate Starts for TeamEdward_11:

(Start: 14 @5062 has 20 MA's), (Start: 16 @5065 has 110 MA's), (22, 5104), (Start: 25 @5125 has 2 MA's), (36, 5155), (39, 5161), (40, 5167), (54, 5266), (55, 5275), (86, 5458), (87, 5464), (101, 5542), (104, 5557), (115, 5632), (122, 5692), (126, 5722), (137, 5821), (138, 5824), (139, 5827), (140, 5839), (145, 5860), (147, 5869), (148, 5875), (160, 5992), (163, 6016), (168, 6049), (179, 6091), (188, 6157), (194, 6202), (200, 6241), (205, 6268), (214, 6373), (219, 6442), (223, 6502), (228, 6577), (229, 6586),

Gene: TeardropMSU_10 Start: 5186, Stop: 6742, Start Num: 16

Candidate Starts for TeardropMSU_10:

(Start: 14 @5183 has 20 MA's), (Start: 16 @5186 has 110 MA's), (22, 5225), (Start: 25 @5246 has 2 MA's), (36, 5276), (39, 5282), (40, 5288), (54, 5387), (55, 5396), (86, 5579), (87, 5585), (101, 5663), (104, 5678), (115, 5753), (122, 5813), (126, 5843), (137, 5942), (138, 5945), (139, 5948), (140, 5960), (145, 5981), (147, 5990), (148, 5996), (160, 6113), (163, 6137), (168, 6170), (179, 6212), (188, 6278), (194, 6323), (200, 6362), (205, 6389), (214, 6494), (219, 6563), (223, 6623), (228, 6698), (229, 6707),

Gene: Teaspoon_10 Start: 3893, Stop: 5449, Start Num: 16

Candidate Starts for Teaspoon_10:

(Start: 14 @3890 has 20 MA's), (Start: 16 @3893 has 110 MA's), (22, 3932), (Start: 25 @3953 has 2 MA's), (36, 3983), (39, 3989), (40, 3995), (54, 4094), (55, 4103), (86, 4286), (87, 4292), (101, 4370), (104, 4385), (109, 4409), (115, 4460), (122, 4520), (126, 4550), (137, 4649), (138, 4652), (139, 4655), (140, 4667), (145, 4688), (147, 4697), (148, 4703), (160, 4820), (163, 4844), (168, 4877), (179, 4919), (188, 4985), (194, 5030), (200, 5069), (205, 5096), (214, 5201), (219, 5270), (223, 5330), (228, 5405), (229, 5414),

Gene: Terminus_10 Start: 4784, Stop: 6343, Start Num: 14

Candidate Starts for Terminus_10:

(Start: 14 @4784 has 20 MA's), (Start: 16 @4787 has 110 MA's), (22, 4826), (Start: 25 @4847 has 2 MA's), (36, 4877), (39, 4883), (40, 4889), (54, 4988), (55, 4997), (86, 5180), (87, 5186), (101, 5264), (104, 5279), (115, 5354), (122, 5414), (126, 5444), (137, 5543), (138, 5546), (139, 5549), (140, 5561), (145, 5582), (147, 5591), (148, 5597), (160, 5714), (163, 5738), (168, 5771), (179, 5813), (188, 5879), (194, 5924), (200, 5963), (205, 5990), (214, 6095), (219, 6164), (223, 6224), (228, 6299), (229, 6308),

Gene: Tessdabest_3 Start: 2249, Stop: 3538, Start Num: 19

Candidate Starts for Tessdabest_3:

(Start: 19 @2249 has 56 MA's), (39, 2336), (45, 2342), (47, 2378), (50, 2390), (58, 2468), (69, 2543), (88, 2630), (121, 2825), (123, 2840), (129, 2882), (140, 2996), (155, 3101), (157, 3110), (161, 3155), (167, 3191), (173, 3221), (192, 3344), (205, 3416), (206, 3422),

Gene: Thimble_11 Start: 4146, Stop: 5702, Start Num: 16

Candidate Starts for Thimble_11:

(Start: 14 @4143 has 20 MA's), (Start: 16 @4146 has 110 MA's), (22, 4185), (Start: 25 @4206 has 2 MA's), (36, 4236), (39, 4242), (40, 4248), (54, 4347), (55, 4356), (86, 4539), (87, 4545), (101, 4623), (104, 4638), (115, 4713), (122, 4773), (126, 4803), (137, 4902), (138, 4905), (139, 4908), (140, 4920), (145, 4941), (147, 4950), (148, 4956), (160, 5073), (163, 5097), (168, 5130), (179, 5172), (188, 5238), (194, 5283), (200, 5322), (205, 5349), (214, 5454), (219, 5523), (223, 5583), (228, 5658), (229, 5667),

Gene: Thresher_11 Start: 5157, Stop: 6713, Start Num: 16

Candidate Starts for Thresher_11:

(Start: 14 @5154 has 20 MA's), (Start: 16 @5157 has 110 MA's), (22, 5196), (Start: 25 @5217 has 2 MA's), (36, 5247), (39, 5253), (40, 5259), (54, 5358), (55, 5367), (86, 5550), (87, 5556), (101, 5634), (104, 5649), (109, 5673), (115, 5724), (116, 5733), (122, 5784), (137, 5913), (138, 5916), (139, 5919), (140, 5931), (145, 5952), (147, 5961), (148, 5967), (160, 6084), (163, 6108), (168, 6141), (179, 6183), (188, 6249), (194, 6294), (200, 6333), (205, 6360), (214, 6465), (219, 6534), (223, 6594), (228, 6669), (229, 6678),

Gene: TinaLin_11 Start: 5838, Stop: 7127, Start Num: 12

Candidate Starts for TinaLin_11:

(1, 5550), (Start: 12 @5838 has 8 MA's), (Start: 13 @5847 has 14 MA's), (50, 5997), (67, 6138), (73, 6186), (74, 6189), (93, 6261), (100, 6303), (105, 6330), (106, 6333), (108, 6348), (114, 6393), (124, 6483), (131, 6549), (140, 6621), (152, 6696), (155, 6726), (159, 6762), (167, 6816), (182, 6879), (192, 6963), (211, 7077),

Gene: Tomaszewski_10 Start: 4787, Stop: 6343, Start Num: 16

Candidate Starts for Tomaszewski_10:

(Start: 14 @4784 has 20 MA's), (Start: 16 @4787 has 110 MA's), (22, 4826), (Start: 25 @4847 has 2 MA's), (36, 4877), (39, 4883), (40, 4889), (54, 4988), (55, 4997), (86, 5180), (87, 5186), (101, 5264), (104, 5279), (115, 5354), (122, 5414), (126, 5444), (137, 5543), (138, 5546), (139, 5549), (140, 5561), (145, 5582), (147, 5591), (148, 5597), (160, 5714), (163, 5738), (168, 5771), (179, 5813), (188, 5879), (194, 5924), (200, 5963), (205, 5990), (214, 6095), (219, 6164), (223, 6224), (228, 6299), (229, 6308),

Gene: Tortoise12_4 Start: 2249, Stop: 3538, Start Num: 19

Candidate Starts for Tortoise12_4:

(Start: 19 @2249 has 56 MA's), (39, 2336), (45, 2342), (47, 2378), (50, 2390), (58, 2468), (69, 2543), (88, 2630), (108, 2726), (121, 2825), (123, 2840), (129, 2882), (140, 2996), (155, 3101), (157, 3110), (161, 3155), (167, 3191), (173, 3221), (192, 3344), (205, 3416), (206, 3422),

Gene: Toto_11 Start: 5183, Stop: 6742, Start Num: 14

Candidate Starts for Toto_11:

(Start: 14 @5183 has 20 MA's), (Start: 16 @5186 has 110 MA's), (22, 5225), (Start: 25 @5246 has 2 MA's), (36, 5276), (39, 5282), (40, 5288), (54, 5387), (55, 5396), (86, 5579), (87, 5585), (101, 5663), (104, 5678), (115, 5753), (122, 5813), (126, 5843), (137, 5942), (138, 5945), (139, 5948), (140, 5960), (145, 5981), (147, 5990), (148, 5996), (160, 6113), (163, 6137), (168, 6170), (179, 6212), (188, 6278), (194, 6323), (200, 6362), (205, 6389), (214, 6494), (219, 6563), (223, 6623), (228, 6698), (229, 6707),

Gene: Traaww1_9 Start: 4832, Stop: 6388, Start Num: 16

Candidate Starts for Traaww1_9:

(Start: 14 @4829 has 20 MA's), (Start: 16 @4832 has 110 MA's), (22, 4871), (Start: 25 @4892 has 2 MA's), (36, 4922), (39, 4928), (40, 4934), (54, 5033), (55, 5042), (86, 5225), (87, 5231), (101, 5309), (104, 5324), (109, 5348), (115, 5399), (116, 5408), (122, 5459), (126, 5489), (137, 5588), (138, 5591), (139, 5594), (140, 5606), (145, 5627), (147, 5636), (148, 5642), (160, 5759), (163, 5783), (168, 5816), (179, 5858), (188, 5924), (194, 5969), (200, 6008), (205, 6035), (214, 6140), (219, 6209), (223, 6269), (228, 6344), (229, 6353),

Gene: Trine_3 Start: 2126, Stop: 3523, Start Num: 13

Candidate Starts for Trine_3:

(Start: 13 @2126 has 14 MA's), (17, 2135), (26, 2177), (32, 2192), (41, 2213), (47, 2261), (52, 2294), (66, 2405), (73, 2462), (75, 2468), (82, 2498), (83, 2501), (93, 2540), (111, 2654), (120, 2723), (122, 2741), (140, 2903), (149, 2948), (152, 2978), (155, 3008), (161, 3062), (167, 3098), (175, 3137), (178, 3149), (181, 3164), (182, 3167), (184, 3179), (188, 3221), (192, 3251), (198, 3284), (199, 3293),

Gene: Tuco_11 Start: 5186, Stop: 6742, Start Num: 16

Candidate Starts for Tuco_11:

(Start: 14 @5183 has 20 MA's), (Start: 16 @5186 has 110 MA's), (22, 5225), (Start: 25 @5246 has 2 MA's), (36, 5276), (39, 5282), (40, 5288), (54, 5387), (55, 5396), (86, 5579), (87, 5585), (101, 5663), (104, 5678), (115, 5753), (122, 5813), (126, 5843), (137, 5942), (138, 5945), (139, 5948), (140, 5960), (145, 5981), (147, 5990), (148, 5996), (160, 6113), (163, 6137), (168, 6170), (179, 6212), (188, 6278), (194, 6323), (200, 6362), (205, 6389), (214, 6494), (219, 6563), (223, 6623), (228, 6698), (229, 6707),

Gene: Ukulele_10 Start: 4167, Stop: 5723, Start Num: 16

Candidate Starts for Ukulele_10:

(Start: 14 @4164 has 20 MA's), (Start: 16 @4167 has 110 MA's), (22, 4206), (Start: 25 @4227 has 2 MA's), (36, 4257), (39, 4263), (40, 4269), (54, 4368), (55, 4377), (86, 4560), (87, 4566), (101, 4644), (104, 4659), (109, 4683), (115, 4734), (116, 4743), (122, 4794), (137, 4923), (138, 4926), (139, 4929), (140, 4941), (145, 4962), (147, 4971), (148, 4977), (160, 5094), (163, 5118), (168, 5151), (179, 5193), (188, 5259), (194, 5304), (200, 5343), (205, 5370), (214, 5475), (219, 5544), (223, 5604), (228, 5679), (229, 5688),

Gene: Upyo_3 Start: 2133, Stop: 3530, Start Num: 13

Candidate Starts for Upyo_3:

(Start: 13 @2133 has 14 MA's), (17, 2142), (26, 2187), (41, 2226), (73, 2475), (77, 2487), (78, 2490), (80, 2505), (91, 2544), (95, 2577), (98, 2589), (104, 2619), (111, 2667), (114, 2685), (140, 2916), (144, 2931), (149, 2961), (152, 2991), (155, 3021), (161, 3075), (171, 3135), (178, 3162), (184, 3192), (187, 3228), (188, 3234), (191, 3261), (192, 3264), (222, 3510),

Gene: Vendetta_8 Start: 5071, Stop: 6363, Start Num: 12

Candidate Starts for Vendetta_8:

(3, 4993), (Start: 12 @5071 has 8 MA's), (Start: 13 @5080 has 14 MA's), (43, 5176), (50, 5230), (70, 5386), (74, 5422), (85, 5461), (91, 5485), (99, 5533), (100, 5536), (106, 5566), (108, 5581), (109, 5584), (114, 5626), (131, 5782), (136, 5833), (140, 5854), (155, 5959), (158, 5971), (159, 5995), (167, 6049), (173, 6079), (174, 6085), (192, 6196), (207, 6280),

Gene: Widow_3 Start: 2078, Stop: 3436, Start Num: 13

Candidate Starts for Widow_3:

(Start: 13 @2078 has 14 MA's), (17, 2087), (26, 2135), (51, 2243), (63, 2339), (73, 2423), (83, 2462), (105, 2570), (108, 2588), (111, 2615), (115, 2642), (120, 2684), (129, 2747), (140, 2864), (152, 2939), (155, 2969), (161, 3023), (169, 3077), (175, 3098), (192, 3212), (197, 3239),

Gene: Wiggin_12 Start: 4399, Stop: 5955, Start Num: 16

Candidate Starts for Wiggin_12:

(Start: 14 @4396 has 20 MA's), (Start: 16 @4399 has 110 MA's), (22, 4438), (Start: 25 @4459 has 2 MA's), (36, 4489), (39, 4495), (40, 4501), (54, 4600), (55, 4609), (86, 4792), (87, 4798), (101, 4876), (104, 4891), (109, 4915), (115, 4966), (116, 4975), (122, 5026), (137, 5155), (138, 5158), (139, 5161), (140, 5173), (145, 5194), (147, 5203), (148, 5209), (160, 5326), (163, 5350), (168, 5383), (179, 5425), (188, 5491), (194, 5536), (200, 5575), (205, 5602), (214, 5707), (219, 5776), (223, 5836), (228, 5911), (229, 5920),

Gene: Willez_10 Start: 4787, Stop: 6343, Start Num: 16

Candidate Starts for Willez_10:

(Start: 14 @4784 has 20 MA's), (Start: 16 @4787 has 110 MA's), (22, 4826), (Start: 25 @4847 has 2 MA's), (36, 4877), (39, 4883), (40, 4889), (54, 4988), (55, 4997), (86, 5180), (87, 5186), (101, 5264), (104, 5279), (115, 5354), (122, 5414), (126, 5444), (137, 5543), (138, 5546), (139, 5549), (140, 5561), (145, 5582), (147, 5591), (148, 5597), (160, 5714), (163, 5738), (168, 5771), (179, 5813), (188, 5879), (194, 5924), (200, 5963), (205, 5990), (214, 6095), (219, 6164), (223, 6224), (228, 6299), (229, 6308),

Gene: Xandras_12 Start: 4399, Stop: 5955, Start Num: 16

Candidate Starts for Xandras_12:

(Start: 14 @4396 has 20 MA's), (Start: 16 @4399 has 110 MA's), (22, 4438), (Start: 25 @4459 has 2 MA's), (36, 4489), (39, 4495), (40, 4501), (54, 4600), (55, 4609), (86, 4792), (87, 4798), (101, 4876), (104, 4891), (109, 4915), (115, 4966), (116, 4975), (122, 5026), (137, 5155), (138, 5158), (139, 5161), (140, 5173), (145, 5194), (147, 5203), (148, 5209), (160, 5326), (163, 5350), (168, 5383), (179, 5425), (188, 5491), (194, 5536), (200, 5575), (205, 5602), (214, 5707), (219, 5776), (223, 5836), (228, 5911), (229, 5920),

Gene: Xeno_4 Start: 2249, Stop: 3538, Start Num: 19

Candidate Starts for Xeno_4:

(Start: 19 @2249 has 56 MA's), (39, 2336), (45, 2342), (47, 2378), (50, 2390), (58, 2468), (69, 2543), (88, 2630), (108, 2726), (121, 2825), (123, 2840), (129, 2882), (140, 2996), (155, 3101), (157, 3110), (161, 3155), (167, 3191), (173, 3221), (192, 3344), (205, 3416), (206, 3422),

Gene: Xerxes_4 Start: 2249, Stop: 3538, Start Num: 19

Candidate Starts for Xerxes_4:

(Start: 19 @2249 has 56 MA's), (39, 2336), (45, 2342), (47, 2378), (50, 2390), (58, 2468), (69, 2543), (88, 2630), (121, 2825), (123, 2840), (129, 2882), (140, 2996), (155, 3101), (157, 3110), (161, 3155), (167, 3191), (173, 3221), (192, 3344), (205, 3416), (206, 3422),

Gene: YassJohnny_11 Start: 5183, Stop: 6742, Start Num: 14

Candidate Starts for YassJohnny_11:

(Start: 14 @5183 has 20 MA's), (Start: 16 @5186 has 110 MA's), (22, 5225), (Start: 25 @5246 has 2 MA's), (36, 5276), (39, 5282), (40, 5288), (54, 5387), (55, 5396), (86, 5579), (87, 5585), (101, 5663), (104, 5678), (115, 5753), (122, 5813), (126, 5843), (137, 5942), (138, 5945), (139, 5948), (140, 5960), (145, 5981), (147, 5990), (148, 5996), (160, 6113), (163, 6137), (168, 6170), (179, 6212), (188, 6278), (194, 6323), (200, 6362), (205, 6389), (214, 6494), (219, 6563), (223, 6623), (228, 6698), (229, 6707),

Gene: Youngblood_10 Start: 4778, Stop: 6334, Start Num: 16

Candidate Starts for Youngblood_10:

(Start: 14 @4775 has 20 MA's), (Start: 16 @4778 has 110 MA's), (22, 4817), (Start: 25 @4838 has 2 MA's), (36, 4868), (39, 4874), (40, 4880), (54, 4979), (55, 4988), (86, 5171), (87, 5177), (101, 5255), (104, 5270), (115, 5345), (122, 5405), (126, 5435), (137, 5534), (138, 5537), (139, 5540), (140, 5552), (145, 5573), (147, 5582), (148, 5588), (160, 5705), (163, 5729), (168, 5762), (179, 5804), (188, 5870), (194, 5915), (200, 5954), (205, 5981), (214, 6086), (219, 6155), (223, 6215), (228, 6290), (229, 6299),

Gene: xkcd_11 Start: 4939, Stop: 6495, Start Num: 16

Candidate Starts for xkcd_11:

(Start: 14 @4936 has 20 MA's), (Start: 16 @4939 has 110 MA's), (22, 4978), (Start: 25 @4999 has 2 MA's), (36, 5029), (39, 5035), (40, 5041), (54, 5140), (55, 5149), (86, 5332), (87, 5338), (101, 5416), (104, 5431), (115, 5506), (122, 5566), (126, 5596), (137, 5695), (138, 5698), (139, 5701), (140, 5713), (145, 5734), (147, 5743), (148, 5749), (160, 5866), (163, 5890), (168, 5923), (179, 5965), (188, 6031), (194, 6076), (200, 6115), (205, 6142), (214, 6247), (219, 6316), (223, 6376), (228, 6451), (229, 6460),