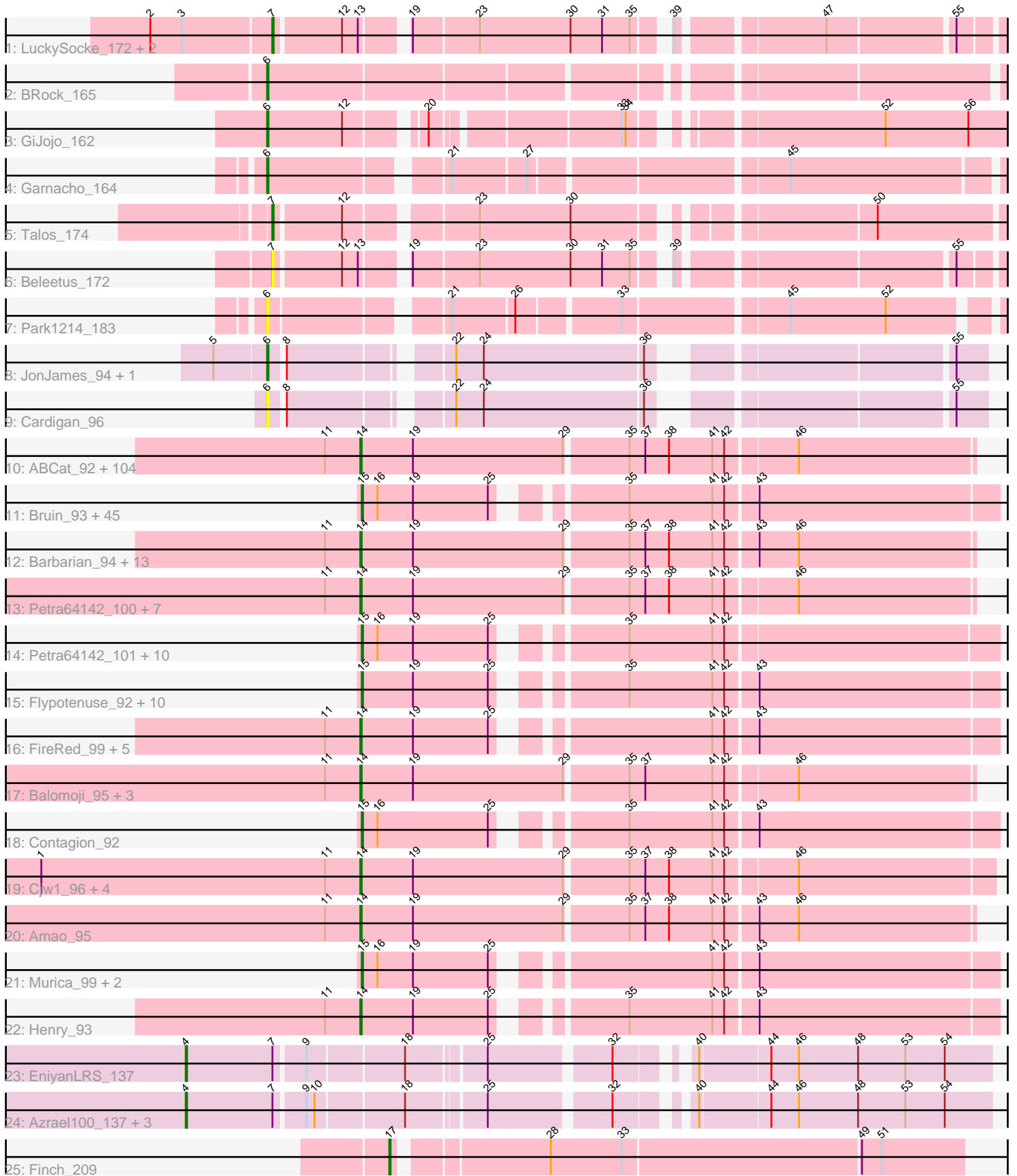


Pham 311210



Note: Tracks are now grouped by subcluster and scaled. Switching in subcluster is indicated by changes in track color. Track scale is now set by default to display the region 30 bp upstream of start 1 to 30 bp downstream of the last possible start. If this default region is judged to be packed too tightly with annotated starts, the track will be further scaled to only show that region of the ORF with annotated starts. This action will be indicated by adding "Zoomed" to the title. For starts, yellow indicates the location of called starts comprised solely of Glimmer/GeneMark auto-annotations, green indicates the location of called starts with at least 1 manual gene annotation.

Pham 311210 Report

This analysis was run 06/27/26 on database version 652.

Pham number 311210 has 234 members, 21 are drafts.

Phages represented in each track:

- Track 1 : LuckySocke_172, Fudan_171, Alone3_174
- Track 2 : BRock_165
- Track 3 : GiJojo_162
- Track 4 : Garnacho_164
- Track 5 : Talos_174
- Track 6 : Beleetus_172
- Track 7 : Park1214_183
- Track 8 : JonJames_94, Yvonnetastic_92
- Track 9 : Cardigan_96
- Track 10 : ABCat_92, Bruin_92, GoldenSpark_99, HanKaySha_96, ShereKhan_93, Lilpickle_94, Hopey_96, Thresher_98, Thimble_97, IHOP_93, Ukulele_90, Murica_98, Command613_97, Bench_98, Myrale_95, MPhalcon_96, BugsBunny_95, Becksu_94, Filch_97, Quallification_96, Rakim_96, StellaBean_93, Highbury_94, Marshmallow_93, FairyPath_96, Czyszczonek_96, Misfit_96, CrystalP_94, Mindy_94, Holt_100, AmericanBeauty_99, Easy2Say_96, Mosby_91, Manda_97, Goku_94, Pumpkin_99, NelitzaMV_93, Kostya_95, Dumbo_95, Moldemort_98, YassJohnny_92, Eureka_94, ShamWow_95, Phaux_98, ChosenOne_95, Hoonter_98, SophKB_92, Gemini_100, Brewer_91, Inca_92, Phaja_93, Stank_97, Youngblood_98, Emmina_95, SirDuracell_95, Tomaszewski_90, BaboJay_95, Argent26_99, GooberAzure_98, RiverMonster_96, Xandras_94, Ptowny_92, TeardropMSU_91, Sassay_90, Elite2014_94, Murphy_95, BilboSwaggins_93, NonchalantPear_95, Pharsalus_92, Kanye_92, Gage_97, Paperbeatsrock_94, Maxxinista_98, MadamMonkfish_95, NoSleep_96, BadStone_92, Saints25_94, Lilac_98, Dusk_92, Bogg_95, Stark_97, HufflyPuff_97, MollyToe_90, DrDrey_95, TBrady12_98, Elph10_96, Goldilocks_98, Contagion_91, Simpliphy_94, PaddyBaddy_96, Toto_93, Greep_99, Nala_97, Lilizi_96, OrionPax_94, Willez_90, MISSy_96, Porky_94, StolenFromERC_98, xkcd_98, Miniwave_90, Tarkin_94, Kimchi_99, Phrux_93, Terminus_98
- Track 11 : Bruin_93, HanKaySha_97, Hopey_97, Mosby_92, Pat3_93, Ukulele_91, Harella_96, MPhalcon_97, Becksu_95, Gator_94, Rakim_97, Czyszczonek_97, Argent26_100, 244_97, Misfit_97, Mindy_95, Tomaszewski_91, Myrale_96, Kanye_93, GoldenSpark_100, Moldemort_99, Gemini_101, Brewer_92, Stank_98, Youngblood_99, Simpliphy_95, Cookies_93, GooberAzure_99, Xandras_95, Sassay_91, MadamMonkfish_96, Nala_98, Balomoji_96, Hoonter_99, Holt_101, Bench_99, ShereKhan_94, Dumbo_96, Lilizi_97, OrionPax_95, Willez_91, MISSy_97, StolenFromERC_99, Kimchi_100, Gage_98, Terminus_99

- Track 12 : Barbarian_94, Adnama_99, BigBubba_95, Tuco_96, Harella_95, Teaspoon_96, Cactus_98, Wiggin_97, Sotrice96_96, Icee_96, Asriel_93, Flypotenuse_91, Glexan_94, Traaww1_91
- Track 13 : Petra64142_100, DoctorDiddles_94, Pat3_92, ChotaBhai_95, Buck_96, Bask21_95, Daikon_96, StormChicken_97
- Track 14 : Petra64142_101, ChotaBhai_96, DoctorDiddles_95, Amao_96, Rimmer_94, SirDuracell_96, Buck_97, Bask21_96, Daikon_97, TeamEdward_96, StormChicken_98
- Track 15 : Flypotenuse_92, Adnama_100, Barbarian_95, Wiggin_98, Sotrice96_97, Cactus_99, Asriel_94, Tuco_97, Icee_97, Traaww1_92, Glexan_95
- Track 16 : FireRed_99, Palpatine_97, Policronamos_98, Nimrod_96, Livelaughbron_97, PhatBacter_99
- Track 17 : Balomoji_95, Gator_93, Cookies_92, FoghornLeghorn_89
- Track 18 : Contagion_92
- Track 19 : Cjw1_96, 244_96, Rimmer_93, TeamEdward_95, JeTaime_96
- Track 20 : Amao_95
- Track 21 : Murica_99, HufflyPuff_98, xkcd_99
- Track 22 : Henry_93
- Track 23 : EniyanLRS_137
- Track 24 : Azrael100_137, Cosmo_144, MaryV_130, Wildcat_144
- Track 25 : Finch_209

Summary of Final Annotations (See graph section above for start numbers):

The start number called the most often in the published annotations is 14, it was called in 131 of the 213 non-draft genes in the pham.

Genes that call this "Most Annotated" start:

- 244_96, ABCat_92, Adnama_99, Amao_95, AmericanBeauty_99, Argent26_99, Asriel_93, BaboJay_95, BadStone_92, Balomoji_95, Barbarian_94, Bask21_95, Becksu_94, Bench_98, BigBubba_95, BilboSwaggins_93, Bogg_95, Brewer_91, Bruin_92, Buck_96, BugsBunny_95, Cactus_98, ChosenOne_95, ChotaBhai_95, Cjw1_96, Command613_97, Contagion_91, Cookies_92, CrystalP_94, Czystczon1_96, Daikon_96, DoctorDiddles_94, DrDrey_95, Dumbo_95, Dusk_92, Easy2Say_96, Elite2014_94, Elph10_96, Emmina_95, Eureka_94, FairyPath_96, Filch_97, FireRed_99, Flypotenuse_91, FoghornLeghorn_89, Gage_97, Gator_93, Gemini_100, Glexan_94, Goku_94, GoldenSpark_99, Goldilocks_98, GooberAzure_98, Greep_99, HanKaySha_96, Harella_95, Henry_93, Highbury_94, Holt_100, Hoonter_98, Hopey_96, HufflyPuff_97, IHOP_93, Icee_96, Inca_92, JeTaime_96, Kanye_92, Kimchi_99, Kostya_95, Lilac_98, Lilizi_96, Lilpickle_94, Livelaughbron_97, MISSy_96, MPhalcon_96, MadamMonkfish_95, Manda_97, Marshmallow_93, Maxxinista_98, Mindy_94, Miniwave_90, Misfit_96, Moldemort_98, MollyToe_90, Mosby_91, Murica_98, Murphy_95, Myrale_95, Nala_97, NelitzaMV_93, Nimrod_96, NoSleep_96, NonchalantPear_95, OrionPax_94, PaddyBaddy_96, Palpatine_97, Paperbeatsrock_94, Pat3_92, Petra64142_100, Phaja_93, Pharsalus_92, PhatBacter_99, Phaux_98, Phrux_93, Policronamos_98, Porky_94, Ptowny_92, Pumpkin_99, Quallification_96, Rakim_96, Rimmer_93, RiverMonster_96, Saints25_94, Sassay_90, ShamWow_95, ShereKhan_93, Simpliphy_94, SirDuracell_95, SophKB_92, Sotrice96_96, Stank_97, Stark_97, StellaBean_93, StolenFromERC_98, StormChicken_97, TBrady12_98, Tarkin_94,

TeamEdward_95, TeardropMSU_91, Teaspoon_96, Terminus_98, Thimble_97, Thresher_98, Tomaszewski_90, Toto_93, Traaww1_91, Tuco_96, Ukulele_90, Wiggin_97, Willez_90, Xandras_94, YassJohnny_92, Youngblood_98, xkcd_98,

Genes that have the "Most Annotated" start but do not call it:

-

Genes that do not have the "Most Annotated" start:

- 244_97, Adnama_100, Alone3_174, Amao_96, Argent26_100, Asriel_94, Azrael100_137, BRock_165, Balomoji_96, Barbarian_95, Bask21_96, Becksu_95, Beleetus_172, Bench_99, Brewer_92, Bruin_93, Buck_97, Cactus_99, Cardigan_96, ChotaBhai_96, Contagion_92, Cookies_93, Cosmo_144, Czyszczonek_97, Daikon_97, DoctorDiddles_95, Dumbo_96, EniyanLRS_137, Finch_209, Flypotenuse_92, Fudan_171, Gage_98, Garnacho_164, Gator_94, Gemini_101, GiJojo_162, Glexan_95, GoldenSpark_100, GooberAzure_99, HanKaySha_97, Harella_96, Holt_101, Hoonter_99, Hopey_97, HufflyPuff_98, Icee_97, JonJames_94, Kanye_93, Kimchi_100, Lilizi_97, LuckySocke_172, MISSy_97, MPhalcon_97, MadamMonkfish_96, MaryV_130, Mindy_95, Misfit_97, Moldemort_99, Mosby_92, Murica_99, Myrale_96, Nala_98, OrionPax_95, Park1214_183, Pat3_93, Petra64142_101, Rakim_97, Rimmer_94, Sassay_91, ShereKhan_94, Simpliphy_95, SirDuracell_96, Sotrice96_97, Stank_98, StolenFromERC_99, StormChicken_98, Talos_174, TeamEdward_96, Terminus_99, Tomaszewski_91, Traaww1_92, Tuco_97, Ukulele_91, Wiggin_98, Wildcat_144, Willez_91, Xandras_95, Youngblood_99, Yvonnetastic_92, xkcd_99,

Summary by start number:

Start 4:

- Found in 5 of 234 (2.1%) of genes in pham
- Manual Annotations of this start: 5 of 213
- Called 100.0% of time when present
- Phage (with cluster) where this start called: Azrael100_137 (V), Cosmo_144 (V), EniyanLRS_137 (V), MaryV_130 (V), Wildcat_144 (V),

Start 6:

- Found in 7 of 234 (3.0%) of genes in pham
- Manual Annotations of this start: 5 of 213
- Called 100.0% of time when present
- Phage (with cluster) where this start called: BRock_165 (BS), Cardigan_96 (DD), Garnacho_164 (BS), GiJojo_162 (BS), JonJames_94 (DD), Park1214_183 (BS), Yvonnetastic_92 (DD),

Start 7:

- Found in 10 of 234 (4.3%) of genes in pham
- Manual Annotations of this start: 4 of 213
- Called 50.0% of time when present
- Phage (with cluster) where this start called: Alone3_174 (BS), Beleetus_172 (BS), Fudan_171 (BS), LuckySocke_172 (BS), Talos_174 (BS),

Start 14:

- Found in 144 of 234 (61.5%) of genes in pham
- Manual Annotations of this start: 131 of 213
- Called 100.0% of time when present

- Phage (with cluster) where this start called: 244_96 (E), ABCat_92 (E), Adnama_99 (E), Amao_95 (E), AmericanBeauty_99 (E), Argent26_99 (E), Asriel_93 (E), BaboJay_95 (E), BadStone_92 (E), Balomoji_95 (E), Barbarian_94 (E), Bask21_95 (E), Becksu_94 (E), Bench_98 (E), BigBubba_95 (E), BilboSwaggins_93 (E), Bogg_95 (E), Brewer_91 (E), Bruin_92 (E), Buck_96 (E), BugsBunny_95 (E), Cactus_98 (E), ChosenOne_95 (E), ChotaBhai_95 (E), Cjw1_96 (E), Command613_97 (E), Contagion_91 (E), Cookies_92 (E), CrystalP_94 (E), Czystoczon1_96 (E), Daikon_96 (E), DoctorDiddles_94 (E), DrDrey_95 (E), Dumbo_95 (E), Dusk_92 (E), Easy2Say_96 (E), Elite2014_94 (E), Elph10_96 (E), Emmina_95 (E), Eureka_94 (E), FairyPath_96 (E), Filch_97 (E), FireRed_99 (E), Flypotenuse_91 (E), FoghornLeghorn_89 (E), Gage_97 (E), Gator_93 (E), Gemini_100 (E), Glexan_94 (E), Goku_94 (E), GoldenSpark_99 (E), Goldilocks_98 (E), GooberAzure_98 (E), Greep_99 (E), HanKaySha_96 (E), Harella_95 (E), Henry_93 (E), Highbury_94 (E), Holt_100 (E), Hoonter_98 (E), Hopey_96 (E), HufflyPuff_97 (E), IHOP_93 (E), Icee_96 (E), Inca_92 (E), JeTaime_96 (E), Kanye_92 (E), Kimchi_99 (E), Kostya_95 (E), Lilac_98 (E), Lilizi_96 (E), Lilpickle_94 (E), Liveloughbron_97 (E), MISSy_96 (E), MPhalcon_96 (E), MadamMonkfish_95 (E), Manda_97 (E), Marshmallow_93 (E), Maxxinista_98 (E), Mindy_94 (E), Miniwave_90 (E), Misfit_96 (E), Moldemort_98 (E), MollyToe_90 (E), Mosby_91 (E), Murica_98 (E), Murphy_95 (E), Myrale_95 (E), Nala_97 (E), NelitzaMV_93 (E), Nimrod_96 (E), NoSleep_96 (E), NonchalantPear_95 (E), OrionPax_94 (E), PaddyBaddy_96 (E), Palpatine_97 (E), Paperbeatsrock_94 (E), Pat3_92 (E), Petra64142_100 (E), Phaja_93 (E), Pharsalus_92 (E), PhatBacter_99 (E), Phaux_98 (E), Phrux_93 (E), Policronamos_98 (E), Porky_94 (E), Ptowny_92 (E), Pumpkin_99 (E), Quallification_96 (E), Rakim_96 (E), Rimmer_93 (E), RiverMonster_96 (E), Saints25_94 (E), Sassay_90 (E), ShamWow_95 (E), ShereKhan_93 (E), Simpliphy_94 (E), SirDuracell_95 (E), SophKB_92 (E), Sotrice96_96 (E), Stank_97 (E), Stark_97 (E), StellaBean_93 (E), StolenFromERC_98 (E), StormChicken_97 (E), TBrady12_98 (E), Tarkin_94 (E), TeamEdward_95 (E), TeardropMSU_91 (E), Teaspoon_96 (E), Terminus_98 (E), Thimble_97 (E), Thresher_98 (E), Tomaszewski_90 (E), Toto_93 (E), Traaww1_91 (E), Tuco_96 (E), Ukulele_90 (E), Wiggin_97 (E), Willez_90 (E), Xandras_94 (E), YassJohnny_92 (E), Youngblood_98 (E), xkcd_98 (E),

Start 15:

- Found in 72 of 234 (30.8%) of genes in pham
- Manual Annotations of this start: 67 of 213
- Called 100.0% of time when present
- Phage (with cluster) where this start called: 244_97 (E), Adnama_100 (E), Amao_96 (E), Argent26_100 (E), Asriel_94 (E), Balomoji_96 (E), Barbarian_95 (E), Bask21_96 (E), Becksu_95 (E), Bench_99 (E), Brewer_92 (E), Bruin_93 (E), Buck_97 (E), Cactus_99 (E), ChotaBhai_96 (E), Contagion_92 (E), Cookies_93 (E), Czystoczon1_97 (E), Daikon_97 (E), DoctorDiddles_95 (E), Dumbo_96 (E), Flypotenuse_92 (E), Gage_98 (E), Gator_94 (E), Gemini_101 (E), Glexan_95 (E), GoldenSpark_100 (E), GooberAzure_99 (E), HanKaySha_97 (E), Harella_96 (E), Holt_101 (E), Hoonter_99 (E), Hopey_97 (E), HufflyPuff_98 (E), Icee_97 (E), Kanye_93 (E), Kimchi_100 (E), Lilizi_97 (E), MISSy_97 (E), MPhalcon_97 (E), MadamMonkfish_96 (E), Mindy_95 (E), Misfit_97 (E), Moldemort_99 (E), Mosby_92 (E), Murica_99 (E), Myrale_96 (E), Nala_98 (E), OrionPax_95 (E), Pat3_93 (E), Petra64142_101 (E), Rakim_97 (E), Rimmer_94 (E), Sassay_91 (E), ShereKhan_94 (E), Simpliphy_95 (E), SirDuracell_96 (E), Sotrice96_97 (E), Stank_98 (E), StolenFromERC_99 (E), StormChicken_98 (E), TeamEdward_96 (E), Terminus_99 (E), Tomaszewski_91 (E), Traaww1_92 (E), Tuco_97 (E), Ukulele_91 (E), Wiggin_98

(E), Willez_91 (E), Xandras_95 (E), Youngblood_99 (E), xkcd_99 (E),

Start 17:

- Found in 1 of 234 (0.4%) of genes in pham
- Manual Annotations of this start: 1 of 213
- Called 100.0% of time when present
- Phage (with cluster) where this start called: Finch_209 (singleton),

Summary by clusters:

There are 5 clusters represented in this pham: DD, BS, E, singleton, V,

Info for manual annotations of cluster BS:

- Start number 6 was manually annotated 3 times for cluster BS.
- Start number 7 was manually annotated 4 times for cluster BS.

Info for manual annotations of cluster DD:

- Start number 6 was manually annotated 2 times for cluster DD.

Info for manual annotations of cluster E:

- Start number 14 was manually annotated 131 times for cluster E.
- Start number 15 was manually annotated 67 times for cluster E.

Info for manual annotations of cluster V:

- Start number 4 was manually annotated 5 times for cluster V.

Gene Information:

Gene: 244_97 Start: 57329, Stop: 57772, Start Num: 15

Candidate Starts for 244_97:

(Start: 15 @57329 has 67 MA's), (16, 57341), (19, 57368), (25, 57425), (35, 57500), (41, 57563), (42, 57572), (43, 57593),

Gene: 244_96 Start: 56873, Stop: 57325, Start Num: 14

Candidate Starts for 244_96:

(1, 56630), (11, 56846), (Start: 14 @56873 has 131 MA's), (19, 56912), (29, 57026), (35, 57071), (37, 57083), (38, 57101), (41, 57134), (42, 57143), (46, 57194),

Gene: ABCat_92 Start: 57560, Stop: 58012, Start Num: 14

Candidate Starts for ABCat_92:

(11, 57533), (Start: 14 @57560 has 131 MA's), (19, 57599), (29, 57713), (35, 57758), (37, 57770), (38, 57788), (41, 57821), (42, 57830), (46, 57881),

Gene: Adnama_99 Start: 57168, Stop: 57620, Start Num: 14

Candidate Starts for Adnama_99:

(11, 57141), (Start: 14 @57168 has 131 MA's), (19, 57207), (29, 57321), (35, 57366), (37, 57378), (38, 57396), (41, 57429), (42, 57438), (43, 57459), (46, 57489),

Gene: Adnama_100 Start: 57624, Stop: 58067, Start Num: 15

Candidate Starts for Adnama_100:

(Start: 15 @57624 has 67 MA's), (19, 57663), (25, 57720), (35, 57795), (41, 57858), (42, 57867), (43, 57888),

Gene: Alone3_174 Start: 90396, Stop: 90902, Start Num: 7

Candidate Starts for Alone3_174:

(2, 90306), (3, 90330), (Start: 7 @90396 has 4 MA's), (12, 90444), (13, 90456), (19, 90483), (23, 90531), (30, 90600), (31, 90624), (35, 90645), (39, 90663), (47, 90762), (55, 90852),

Gene: Amao_96 Start: 57137, Stop: 57580, Start Num: 15

Candidate Starts for Amao_96:

(Start: 15 @57137 has 67 MA's), (16, 57149), (19, 57176), (25, 57233), (35, 57308), (41, 57371), (42, 57380),

Gene: Amao_95 Start: 56681, Stop: 57133, Start Num: 14

Candidate Starts for Amao_95:

(11, 56654), (Start: 14 @56681 has 131 MA's), (19, 56720), (29, 56834), (35, 56879), (37, 56891), (38, 56909), (41, 56942), (42, 56951), (43, 56972), (46, 57002),

Gene: AmericanBeauty_99 Start: 57729, Stop: 58181, Start Num: 14

Candidate Starts for AmericanBeauty_99:

(11, 57702), (Start: 14 @57729 has 131 MA's), (19, 57768), (29, 57882), (35, 57927), (37, 57939), (38, 57957), (41, 57990), (42, 57999), (46, 58050),

Gene: Argent26_100 Start: 57545, Stop: 57991, Start Num: 15

Candidate Starts for Argent26_100:

(Start: 15 @57545 has 67 MA's), (16, 57557), (19, 57584), (25, 57641), (35, 57716), (41, 57779), (42, 57788), (43, 57809),

Gene: Argent26_99 Start: 57089, Stop: 57541, Start Num: 14

Candidate Starts for Argent26_99:

(11, 57062), (Start: 14 @57089 has 131 MA's), (19, 57128), (29, 57242), (35, 57287), (37, 57299), (38, 57317), (41, 57350), (42, 57359), (46, 57410),

Gene: Asriel_94 Start: 55961, Stop: 56404, Start Num: 15

Candidate Starts for Asriel_94:

(Start: 15 @55961 has 67 MA's), (19, 56000), (25, 56057), (35, 56132), (41, 56195), (42, 56204), (43, 56225),

Gene: Asriel_93 Start: 55505, Stop: 55957, Start Num: 14

Candidate Starts for Asriel_93:

(11, 55478), (Start: 14 @55505 has 131 MA's), (19, 55544), (29, 55658), (35, 55703), (37, 55715), (38, 55733), (41, 55766), (42, 55775), (43, 55796), (46, 55826),

Gene: Azrael100_137 Start: 67846, Stop: 67289, Start Num: 4

Candidate Starts for Azrael100_137:

(Start: 4 @67846 has 5 MA's), (Start: 7 @67780 has 4 MA's), (9, 67759), (10, 67753), (18, 67690), (25, 67636), (32, 67552), (40, 67507), (44, 67456), (46, 67435), (48, 67390), (53, 67354), (54, 67324),

Gene: BRock_165 Start: 85734, Stop: 86285, Start Num: 6

Candidate Starts for BRock_165:

(Start: 6 @85734 has 5 MA's),

Gene: BaboJay_95 Start: 57751, Stop: 58203, Start Num: 14

Candidate Starts for BaboJay_95:

(11, 57724), (Start: 14 @57751 has 131 MA's), (19, 57790), (29, 57904), (35, 57949), (37, 57961), (38, 57979), (41, 58012), (42, 58021), (46, 58072),

Gene: BadStone_92 Start: 57129, Stop: 57581, Start Num: 14

Candidate Starts for BadStone_92:

(11, 57102), (Start: 14 @57129 has 131 MA's), (19, 57168), (29, 57282), (35, 57327), (37, 57339), (38, 57357), (41, 57390), (42, 57399), (46, 57450),

Gene: Balomoji_95 Start: 57288, Stop: 57740, Start Num: 14

Candidate Starts for Balomoji_95:

(11, 57261), (Start: 14 @57288 has 131 MA's), (19, 57327), (29, 57441), (35, 57486), (37, 57498), (41, 57549), (42, 57558), (46, 57609),

Gene: Balomoji_96 Start: 57744, Stop: 58187, Start Num: 15

Candidate Starts for Balomoji_96:

(Start: 15 @57744 has 67 MA's), (16, 57756), (19, 57783), (25, 57840), (35, 57915), (41, 57978), (42, 57987), (43, 58008),

Gene: Barbarian_94 Start: 55505, Stop: 55957, Start Num: 14

Candidate Starts for Barbarian_94:

(11, 55478), (Start: 14 @55505 has 131 MA's), (19, 55544), (29, 55658), (35, 55703), (37, 55715), (38, 55733), (41, 55766), (42, 55775), (43, 55796), (46, 55826),

Gene: Barbarian_95 Start: 55961, Stop: 56404, Start Num: 15

Candidate Starts for Barbarian_95:

(Start: 15 @55961 has 67 MA's), (19, 56000), (25, 56057), (35, 56132), (41, 56195), (42, 56204), (43, 56225),

Gene: Bask21_95 Start: 56141, Stop: 56593, Start Num: 14

Candidate Starts for Bask21_95:

(11, 56114), (Start: 14 @56141 has 131 MA's), (19, 56180), (29, 56294), (35, 56339), (37, 56351), (38, 56369), (41, 56402), (42, 56411), (46, 56462),

Gene: Bask21_96 Start: 56597, Stop: 57043, Start Num: 15

Candidate Starts for Bask21_96:

(Start: 15 @56597 has 67 MA's), (16, 56609), (19, 56636), (25, 56693), (35, 56768), (41, 56831), (42, 56840),

Gene: Becksu_95 Start: 57937, Stop: 58380, Start Num: 15

Candidate Starts for Becksu_95:

(Start: 15 @57937 has 67 MA's), (16, 57949), (19, 57976), (25, 58033), (35, 58108), (41, 58171), (42, 58180), (43, 58201),

Gene: Becksu_94 Start: 57481, Stop: 57933, Start Num: 14

Candidate Starts for Becksu_94:

(11, 57454), (Start: 14 @57481 has 131 MA's), (19, 57520), (29, 57634), (35, 57679), (37, 57691), (38, 57709), (41, 57742), (42, 57751), (46, 57802),

Gene: Beleetus_172 Start: 89060, Stop: 89566, Start Num: 7

Candidate Starts for Beleetus_172:

(Start: 7 @89060 has 4 MA's), (12, 89108), (13, 89120), (19, 89147), (23, 89195), (30, 89264), (31, 89288), (35, 89309), (39, 89327), (55, 89516),

Gene: Bench_98 Start: 57224, Stop: 57676, Start Num: 14

Candidate Starts for Bench_98:

(11, 57197), (Start: 14 @57224 has 131 MA's), (19, 57263), (29, 57377), (35, 57422), (37, 57434), (38, 57452), (41, 57485), (42, 57494), (46, 57545),

Gene: Bench_99 Start: 57680, Stop: 58123, Start Num: 15

Candidate Starts for Bench_99:

(Start: 15 @57680 has 67 MA's), (16, 57692), (19, 57719), (25, 57776), (35, 57851), (41, 57914), (42, 57923), (43, 57944),

Gene: BigBubba_95 Start: 56521, Stop: 56973, Start Num: 14

Candidate Starts for BigBubba_95:

(11, 56494), (Start: 14 @56521 has 131 MA's), (19, 56560), (29, 56674), (35, 56719), (37, 56731), (38, 56749), (41, 56782), (42, 56791), (43, 56812), (46, 56842),

Gene: BilboSwaggins_93 Start: 57526, Stop: 57978, Start Num: 14

Candidate Starts for BilboSwaggins_93:

(11, 57499), (Start: 14 @57526 has 131 MA's), (19, 57565), (29, 57679), (35, 57724), (37, 57736), (38, 57754), (41, 57787), (42, 57796), (46, 57847),

Gene: Bogg_95 Start: 56439, Stop: 56891, Start Num: 14

Candidate Starts for Bogg_95:

(11, 56412), (Start: 14 @56439 has 131 MA's), (19, 56478), (29, 56592), (35, 56637), (37, 56649), (38, 56667), (41, 56700), (42, 56709), (46, 56760),

Gene: Brewer_91 Start: 56026, Stop: 56478, Start Num: 14

Candidate Starts for Brewer_91:

(11, 55999), (Start: 14 @56026 has 131 MA's), (19, 56065), (29, 56179), (35, 56224), (37, 56236), (38, 56254), (41, 56287), (42, 56296), (46, 56347),

Gene: Brewer_92 Start: 56482, Stop: 56925, Start Num: 15

Candidate Starts for Brewer_92:

(Start: 15 @56482 has 67 MA's), (16, 56494), (19, 56521), (25, 56578), (35, 56653), (41, 56716), (42, 56725), (43, 56746),

Gene: Bruin_93 Start: 56559, Stop: 57002, Start Num: 15

Candidate Starts for Bruin_93:

(Start: 15 @56559 has 67 MA's), (16, 56571), (19, 56598), (25, 56655), (35, 56730), (41, 56793), (42, 56802), (43, 56823),

Gene: Bruin_92 Start: 56103, Stop: 56555, Start Num: 14

Candidate Starts for Bruin_92:

(11, 56076), (Start: 14 @56103 has 131 MA's), (19, 56142), (29, 56256), (35, 56301), (37, 56313), (38, 56331), (41, 56364), (42, 56373), (46, 56424),

Gene: Buck_97 Start: 58249, Stop: 58692, Start Num: 15

Candidate Starts for Buck_97:

(Start: 15 @58249 has 67 MA's), (16, 58261), (19, 58288), (25, 58345), (35, 58420), (41, 58483), (42, 58492),

Gene: Buck_96 Start: 57793, Stop: 58245, Start Num: 14

Candidate Starts for Buck_96:

(11, 57766), (Start: 14 @57793 has 131 MA's), (19, 57832), (29, 57946), (35, 57991), (37, 58003), (38, 58021), (41, 58054), (42, 58063), (46, 58114),

Gene: BugsBunny_95 Start: 57632, Stop: 58102, Start Num: 14

Candidate Starts for BugsBunny_95:

(11, 57605), (Start: 14 @57632 has 131 MA's), (19, 57671), (29, 57785), (35, 57830), (37, 57842), (38, 57860), (41, 57893), (42, 57902), (46, 57953),

Gene: Cactus_98 Start: 56169, Stop: 56621, Start Num: 14

Candidate Starts for Cactus_98:

(11, 56142), (Start: 14 @56169 has 131 MA's), (19, 56208), (29, 56322), (35, 56367), (37, 56379), (38, 56397), (41, 56430), (42, 56439), (43, 56460), (46, 56490),

Gene: Cactus_99 Start: 56625, Stop: 57068, Start Num: 15

Candidate Starts for Cactus_99:

(Start: 15 @56625 has 67 MA's), (19, 56664), (25, 56721), (35, 56796), (41, 56859), (42, 56868), (43, 56889),

Gene: Cardigan_96 Start: 57149, Stop: 57616, Start Num: 6

Candidate Starts for Cardigan_96:

(Start: 6 @57149 has 5 MA's), (8, 57158), (22, 57263), (24, 57284), (36, 57401), (55, 57593),

Gene: ChosenOne_95 Start: 56584, Stop: 57036, Start Num: 14

Candidate Starts for ChosenOne_95:

(11, 56557), (Start: 14 @56584 has 131 MA's), (19, 56623), (29, 56737), (35, 56782), (37, 56794), (38, 56812), (41, 56845), (42, 56854), (46, 56905),

Gene: ChotaBhai_95 Start: 56506, Stop: 56958, Start Num: 14

Candidate Starts for ChotaBhai_95:

(11, 56479), (Start: 14 @56506 has 131 MA's), (19, 56545), (29, 56659), (35, 56704), (37, 56716), (38, 56734), (41, 56767), (42, 56776), (46, 56827),

Gene: ChotaBhai_96 Start: 56962, Stop: 57405, Start Num: 15

Candidate Starts for ChotaBhai_96:

(Start: 15 @56962 has 67 MA's), (16, 56974), (19, 57001), (25, 57058), (35, 57133), (41, 57196), (42, 57205),

Gene: Cjw1_96 Start: 58549, Stop: 59016, Start Num: 14

Candidate Starts for Cjw1_96:

(1, 58306), (11, 58522), (Start: 14 @58549 has 131 MA's), (19, 58588), (29, 58702), (35, 58747), (37, 58759), (38, 58777), (41, 58810), (42, 58819), (46, 58870),

Gene: Command613_97 Start: 57623, Stop: 58075, Start Num: 14

Candidate Starts for Command613_97:

(11, 57596), (Start: 14 @57623 has 131 MA's), (19, 57662), (29, 57776), (35, 57821), (37, 57833), (38, 57851), (41, 57884), (42, 57893), (46, 57944),

Gene: Contagion_92 Start: 56840, Stop: 57283, Start Num: 15

Candidate Starts for Contagion_92:

(Start: 15 @56840 has 67 MA's), (16, 56852), (25, 56936), (35, 57011), (41, 57074), (42, 57083), (43, 57104),

Gene: Contagion_91 Start: 56384, Stop: 56836, Start Num: 14

Candidate Starts for Contagion_91:

(11, 56357), (Start: 14 @56384 has 131 MA's), (19, 56423), (29, 56537), (35, 56582), (37, 56594), (38, 56612), (41, 56645), (42, 56654), (46, 56705),

Gene: Cookies_92 Start: 56363, Stop: 56815, Start Num: 14

Candidate Starts for Cookies_92:

(11, 56336), (Start: 14 @56363 has 131 MA's), (19, 56402), (29, 56516), (35, 56561), (37, 56573), (41, 56624), (42, 56633), (46, 56684),

Gene: Cookies_93 Start: 56819, Stop: 57262, Start Num: 15

Candidate Starts for Cookies_93:

(Start: 15 @56819 has 67 MA's), (16, 56831), (19, 56858), (25, 56915), (35, 56990), (41, 57053), (42, 57062), (43, 57083),

Gene: Cosmo_144 Start: 68009, Stop: 67452, Start Num: 4

Candidate Starts for Cosmo_144:

(Start: 4 @68009 has 5 MA's), (Start: 7 @67943 has 4 MA's), (9, 67922), (10, 67916), (18, 67853), (25, 67799), (32, 67715), (40, 67670), (44, 67619), (46, 67598), (48, 67553), (53, 67517), (54, 67487),

Gene: CrystalP_94 Start: 57526, Stop: 57978, Start Num: 14

Candidate Starts for CrystalP_94:

(11, 57499), (Start: 14 @57526 has 131 MA's), (19, 57565), (29, 57679), (35, 57724), (37, 57736), (38, 57754), (41, 57787), (42, 57796), (46, 57847),

Gene: Czyszczone1_96 Start: 57087, Stop: 57539, Start Num: 14

Candidate Starts for Czyszczone1_96:

(11, 57060), (Start: 14 @57087 has 131 MA's), (19, 57126), (29, 57240), (35, 57285), (37, 57297), (38, 57315), (41, 57348), (42, 57357), (46, 57408),

Gene: Czyszczone1_97 Start: 57543, Stop: 57986, Start Num: 15

Candidate Starts for Czyszczone1_97:

(Start: 15 @57543 has 67 MA's), (16, 57555), (19, 57582), (25, 57639), (35, 57714), (41, 57777), (42, 57786), (43, 57807),

Gene: Daikon_96 Start: 57115, Stop: 57567, Start Num: 14

Candidate Starts for Daikon_96:

(11, 57088), (Start: 14 @57115 has 131 MA's), (19, 57154), (29, 57268), (35, 57313), (37, 57325), (38, 57343), (41, 57376), (42, 57385), (46, 57436),

Gene: Daikon_97 Start: 57571, Stop: 58014, Start Num: 15

Candidate Starts for Daikon_97:

(Start: 15 @57571 has 67 MA's), (16, 57583), (19, 57610), (25, 57667), (35, 57742), (41, 57805), (42, 57814),

Gene: DoctorDiddles_94 Start: 56550, Stop: 57002, Start Num: 14

Candidate Starts for DoctorDiddles_94:

(11, 56523), (Start: 14 @56550 has 131 MA's), (19, 56589), (29, 56703), (35, 56748), (37, 56760), (38, 56778), (41, 56811), (42, 56820), (46, 56871),

Gene: DoctorDiddles_95 Start: 57006, Stop: 57449, Start Num: 15

Candidate Starts for DoctorDiddles_95:

(Start: 15 @57006 has 67 MA's), (16, 57018), (19, 57045), (25, 57102), (35, 57177), (41, 57240), (42, 57249),

Gene: DrDrey_95 Start: 58006, Stop: 58458, Start Num: 14

Candidate Starts for DrDrey_95:

(11, 57979), (Start: 14 @58006 has 131 MA's), (19, 58045), (29, 58159), (35, 58204), (37, 58216), (38, 58234), (41, 58267), (42, 58276), (46, 58327),

Gene: Dumbo_95 Start: 56486, Stop: 56938, Start Num: 14

Candidate Starts for Dumbo_95:

(11, 56459), (Start: 14 @56486 has 131 MA's), (19, 56525), (29, 56639), (35, 56684), (37, 56696), (38, 56714), (41, 56747), (42, 56756), (46, 56807),

Gene: Dumbo_96 Start: 56942, Stop: 57385, Start Num: 15

Candidate Starts for Dumbo_96:

(Start: 15 @56942 has 67 MA's), (16, 56954), (19, 56981), (25, 57038), (35, 57113), (41, 57176), (42, 57185), (43, 57206),

Gene: Dusk_92 Start: 56789, Stop: 57241, Start Num: 14

Candidate Starts for Dusk_92:

(11, 56762), (Start: 14 @56789 has 131 MA's), (19, 56828), (29, 56942), (35, 56987), (37, 56999), (38, 57017), (41, 57050), (42, 57059), (46, 57110),

Gene: Easy2Say_96 Start: 57988, Stop: 58458, Start Num: 14

Candidate Starts for Easy2Say_96:

(11, 57961), (Start: 14 @57988 has 131 MA's), (19, 58027), (29, 58141), (35, 58186), (37, 58198), (38, 58216), (41, 58249), (42, 58258), (46, 58309),

Gene: Elite2014_94 Start: 56583, Stop: 57035, Start Num: 14

Candidate Starts for Elite2014_94:

(11, 56556), (Start: 14 @56583 has 131 MA's), (19, 56622), (29, 56736), (35, 56781), (37, 56793), (38, 56811), (41, 56844), (42, 56853), (46, 56904),

Gene: Elph10_96 Start: 56576, Stop: 57046, Start Num: 14

Candidate Starts for Elph10_96:

(11, 56549), (Start: 14 @56576 has 131 MA's), (19, 56615), (29, 56729), (35, 56774), (37, 56786), (38, 56804), (41, 56837), (42, 56846), (46, 56897),

Gene: Emmina_95 Start: 56209, Stop: 56661, Start Num: 14

Candidate Starts for Emmina_95:

(11, 56182), (Start: 14 @56209 has 131 MA's), (19, 56248), (29, 56362), (35, 56407), (37, 56419), (38, 56437), (41, 56470), (42, 56479), (46, 56530),

Gene: EniyanLRS_137 Start: 68351, Stop: 67797, Start Num: 4

Candidate Starts for EniyanLRS_137:

(Start: 4 @68351 has 5 MA's), (Start: 7 @68285 has 4 MA's), (9, 68264), (18, 68195), (25, 68141), (32, 68057), (40, 68015), (44, 67964), (46, 67943), (48, 67898), (53, 67862), (54, 67832),

Gene: Eureka_94 Start: 57496, Stop: 57948, Start Num: 14

Candidate Starts for Eureka_94:

(11, 57469), (Start: 14 @57496 has 131 MA's), (19, 57535), (29, 57649), (35, 57694), (37, 57706), (38, 57724), (41, 57757), (42, 57766), (46, 57817),

Gene: FairyPath_96 Start: 57702, Stop: 58154, Start Num: 14

Candidate Starts for FairyPath_96:

(11, 57675), (Start: 14 @57702 has 131 MA's), (19, 57741), (29, 57855), (35, 57900), (37, 57912), (38, 57930), (41, 57963), (42, 57972), (46, 58023),

Gene: Filch_97 Start: 56781, Stop: 57233, Start Num: 14

Candidate Starts for Filch_97:

(11, 56754), (Start: 14 @56781 has 131 MA's), (19, 56820), (29, 56934), (35, 56979), (37, 56991), (38, 57009), (41, 57042), (42, 57051), (46, 57102),

Gene: Finch_209 Start: 121773, Stop: 122186, Start Num: 17

Candidate Starts for Finch_209:

(Start: 17 @121773 has 1 MA's), (28, 121878), (33, 121932), (49, 122109), (51, 122124),

Gene: FireRed_99 Start: 57799, Stop: 58242, Start Num: 14

Candidate Starts for FireRed_99:

(11, 57772), (Start: 14 @57799 has 131 MA's), (19, 57838), (25, 57895), (41, 58033), (42, 58042), (43, 58063),

Gene: Flypotenuse_92 Start: 56615, Stop: 57058, Start Num: 15

Candidate Starts for Flypotenuse_92:

(Start: 15 @56615 has 67 MA's), (19, 56654), (25, 56711), (35, 56786), (41, 56849), (42, 56858), (43, 56879),

Gene: Flypotenuse_91 Start: 56159, Stop: 56611, Start Num: 14

Candidate Starts for Flypotenuse_91:

(11, 56132), (Start: 14 @56159 has 131 MA's), (19, 56198), (29, 56312), (35, 56357), (37, 56369), (38, 56387), (41, 56420), (42, 56429), (43, 56450), (46, 56480),

Gene: FoghornLeghorn_89 Start: 55185, Stop: 55637, Start Num: 14

Candidate Starts for FoghornLeghorn_89:

(11, 55158), (Start: 14 @55185 has 131 MA's), (19, 55224), (29, 55338), (35, 55383), (37, 55395), (41, 55446), (42, 55455), (46, 55506),

Gene: Fudan_171 Start: 88952, Stop: 89458, Start Num: 7

Candidate Starts for Fudan_171:

(2, 88862), (3, 88886), (Start: 7 @88952 has 4 MA's), (12, 89000), (13, 89012), (19, 89039), (23, 89087), (30, 89156), (31, 89180), (35, 89201), (39, 89219), (47, 89318), (55, 89408),

Gene: Gage_97 Start: 57230, Stop: 57682, Start Num: 14

Candidate Starts for Gage_97:

(11, 57203), (Start: 14 @57230 has 131 MA's), (19, 57269), (29, 57383), (35, 57428), (37, 57440), (38, 57458), (41, 57491), (42, 57500), (46, 57551),

Gene: Gage_98 Start: 57686, Stop: 58129, Start Num: 15

Candidate Starts for Gage_98:

(Start: 15 @57686 has 67 MA's), (16, 57698), (19, 57725), (25, 57782), (35, 57857), (41, 57920), (42, 57929), (43, 57950),

Gene: Garnacho_164 Start: 88706, Stop: 89239, Start Num: 6

Candidate Starts for Garnacho_164:

(Start: 6 @88706 has 5 MA's), (21, 88826), (27, 88880), (45, 89060),

Gene: Gator_93 Start: 57015, Stop: 57467, Start Num: 14

Candidate Starts for Gator_93:

(11, 56988), (Start: 14 @57015 has 131 MA's), (19, 57054), (29, 57168), (35, 57213), (37, 57225), (41, 57276), (42, 57285), (46, 57336),

Gene: Gator_94 Start: 57471, Stop: 57914, Start Num: 15

Candidate Starts for Gator_94:

(Start: 15 @57471 has 67 MA's), (16, 57483), (19, 57510), (25, 57567), (35, 57642), (41, 57705), (42, 57714), (43, 57735),

Gene: Gemini_100 Start: 57606, Stop: 58058, Start Num: 14

Candidate Starts for Gemini_100:

(11, 57579), (Start: 14 @57606 has 131 MA's), (19, 57645), (29, 57759), (35, 57804), (37, 57816), (38, 57834), (41, 57867), (42, 57876), (46, 57927),

Gene: Gemini_101 Start: 58062, Stop: 58508, Start Num: 15

Candidate Starts for Gemini_101:

(Start: 15 @58062 has 67 MA's), (16, 58074), (19, 58101), (25, 58158), (35, 58233), (41, 58296), (42, 58305), (43, 58326),

Gene: GiJojo_162 Start: 89485, Stop: 90018, Start Num: 6

Candidate Starts for GiJojo_162:

(Start: 6 @89485 has 5 MA's), (12, 89542), (20, 89590), (33, 89719), (34, 89722), (52, 89884), (56, 89947),

Gene: Glexan_94 Start: 57289, Stop: 57741, Start Num: 14

Candidate Starts for Glexan_94:

(11, 57262), (Start: 14 @57289 has 131 MA's), (19, 57328), (29, 57442), (35, 57487), (37, 57499), (38, 57517), (41, 57550), (42, 57559), (43, 57580), (46, 57610),

Gene: Glexan_95 Start: 57745, Stop: 58188, Start Num: 15

Candidate Starts for Glexan_95:

(Start: 15 @57745 has 67 MA's), (19, 57784), (25, 57841), (35, 57916), (41, 57979), (42, 57988), (43, 58009),

Gene: Goku_94 Start: 57225, Stop: 57677, Start Num: 14

Candidate Starts for Goku_94:

(11, 57198), (Start: 14 @57225 has 131 MA's), (19, 57264), (29, 57378), (35, 57423), (37, 57435), (38, 57453), (41, 57486), (42, 57495), (46, 57546),

Gene: GoldenSpark_99 Start: 57089, Stop: 57541, Start Num: 14

Candidate Starts for GoldenSpark_99:

(11, 57062), (Start: 14 @57089 has 131 MA's), (19, 57128), (29, 57242), (35, 57287), (37, 57299), (38, 57317), (41, 57350), (42, 57359), (46, 57410),

Gene: GoldenSpark_100 Start: 57545, Stop: 57991, Start Num: 15

Candidate Starts for GoldenSpark_100:

(Start: 15 @57545 has 67 MA's), (16, 57557), (19, 57584), (25, 57641), (35, 57716), (41, 57779), (42, 57788), (43, 57809),

Gene: Goldilocks_98 Start: 56447, Stop: 56899, Start Num: 14

Candidate Starts for Goldilocks_98:

(11, 56420), (Start: 14 @56447 has 131 MA's), (19, 56486), (29, 56600), (35, 56645), (37, 56657), (38, 56675), (41, 56708), (42, 56717), (46, 56768),

Gene: GooberAzure_98 Start: 57089, Stop: 57541, Start Num: 14

Candidate Starts for GooberAzure_98:

(11, 57062), (Start: 14 @57089 has 131 MA's), (19, 57128), (29, 57242), (35, 57287), (37, 57299), (38, 57317), (41, 57350), (42, 57359), (46, 57410),

Gene: GooberAzure_99 Start: 57545, Stop: 57991, Start Num: 15

Candidate Starts for GooberAzure_99:

(Start: 15 @57545 has 67 MA's), (16, 57557), (19, 57584), (25, 57641), (35, 57716), (41, 57779), (42, 57788), (43, 57809),

Gene: Greep_99 Start: 58363, Stop: 58815, Start Num: 14

Candidate Starts for Greep_99:

(11, 58336), (Start: 14 @58363 has 131 MA's), (19, 58402), (29, 58516), (35, 58561), (37, 58573), (38, 58591), (41, 58624), (42, 58633), (46, 58684),

Gene: HanKaySha_97 Start: 57112, Stop: 57555, Start Num: 15

Candidate Starts for HanKaySha_97:

(Start: 15 @57112 has 67 MA's), (16, 57124), (19, 57151), (25, 57208), (35, 57283), (41, 57346), (42, 57355), (43, 57376),

Gene: HanKaySha_96 Start: 56656, Stop: 57108, Start Num: 14

Candidate Starts for HanKaySha_96:

(11, 56629), (Start: 14 @56656 has 131 MA's), (19, 56695), (29, 56809), (35, 56854), (37, 56866), (38, 56884), (41, 56917), (42, 56926), (46, 56977),

Gene: Harella_96 Start: 58261, Stop: 58704, Start Num: 15

Candidate Starts for Harella_96:

(Start: 15 @58261 has 67 MA's), (16, 58273), (19, 58300), (25, 58357), (35, 58432), (41, 58495), (42, 58504), (43, 58525),

Gene: Harella_95 Start: 57805, Stop: 58257, Start Num: 14

Candidate Starts for Harella_95:

(11, 57778), (Start: 14 @57805 has 131 MA's), (19, 57844), (29, 57958), (35, 58003), (37, 58015), (38, 58033), (41, 58066), (42, 58075), (43, 58096), (46, 58126),

Gene: Henry_93 Start: 56966, Stop: 57409, Start Num: 14

Candidate Starts for Henry_93:

(11, 56939), (Start: 14 @56966 has 131 MA's), (19, 57005), (25, 57062), (35, 57137), (41, 57200), (42, 57209), (43, 57230),

Gene: Highbury_94 Start: 56656, Stop: 57126, Start Num: 14

Candidate Starts for Highbury_94:

(11, 56629), (Start: 14 @56656 has 131 MA's), (19, 56695), (29, 56809), (35, 56854), (37, 56866), (38, 56884), (41, 56917), (42, 56926), (46, 56977),

Gene: Holt_100 Start: 57503, Stop: 57955, Start Num: 14

Candidate Starts for Holt_100:

(11, 57476), (Start: 14 @57503 has 131 MA's), (19, 57542), (29, 57656), (35, 57701), (37, 57713), (38, 57731), (41, 57764), (42, 57773), (46, 57824),

Gene: Holt_101 Start: 57959, Stop: 58405, Start Num: 15

Candidate Starts for Holt_101:

(Start: 15 @57959 has 67 MA's), (16, 57971), (19, 57998), (25, 58055), (35, 58130), (41, 58193), (42, 58202), (43, 58223),

Gene: Hoonter_98 Start: 56961, Stop: 57413, Start Num: 14

Candidate Starts for Hoonter_98:

(11, 56934), (Start: 14 @56961 has 131 MA's), (19, 57000), (29, 57114), (35, 57159), (37, 57171), (38, 57189), (41, 57222), (42, 57231), (46, 57282),

Gene: Hoonter_99 Start: 57417, Stop: 57860, Start Num: 15

Candidate Starts for Hoonter_99:

(Start: 15 @57417 has 67 MA's), (16, 57429), (19, 57456), (25, 57513), (35, 57588), (41, 57651), (42, 57660), (43, 57681),

Gene: Hokey_96 Start: 57467, Stop: 57919, Start Num: 14

Candidate Starts for Hokey_96:

(11, 57440), (Start: 14 @57467 has 131 MA's), (19, 57506), (29, 57620), (35, 57665), (37, 57677), (38, 57695), (41, 57728), (42, 57737), (46, 57788),

Gene: Hokey_97 Start: 57923, Stop: 58366, Start Num: 15

Candidate Starts for Hokey_97:

(Start: 15 @57923 has 67 MA's), (16, 57935), (19, 57962), (25, 58019), (35, 58094), (41, 58157), (42, 58166), (43, 58187),

Gene: HufflyPuff_97 Start: 57551, Stop: 58003, Start Num: 14

Candidate Starts for HufflyPuff_97:

(11, 57524), (Start: 14 @57551 has 131 MA's), (19, 57590), (29, 57704), (35, 57749), (37, 57761), (38, 57779), (41, 57812), (42, 57821), (46, 57872),

Gene: HufflyPuff_98 Start: 58007, Stop: 58450, Start Num: 15

Candidate Starts for HufflyPuff_98:

(Start: 15 @58007 has 67 MA's), (16, 58019), (19, 58046), (25, 58103), (41, 58241), (42, 58250), (43, 58271),

Gene: IHOP_93 Start: 57129, Stop: 57581, Start Num: 14

Candidate Starts for IHOP_93:

(11, 57102), (Start: 14 @57129 has 131 MA's), (19, 57168), (29, 57282), (35, 57327), (37, 57339), (38, 57357), (41, 57390), (42, 57399), (46, 57450),

Gene: Icee_96 Start: 56616, Stop: 57068, Start Num: 14

Candidate Starts for Icee_96:

(11, 56589), (Start: 14 @56616 has 131 MA's), (19, 56655), (29, 56769), (35, 56814), (37, 56826), (38, 56844), (41, 56877), (42, 56886), (43, 56907), (46, 56937),

Gene: Icee_97 Start: 57072, Stop: 57515, Start Num: 15

Candidate Starts for Icee_97:

(Start: 15 @57072 has 67 MA's), (19, 57111), (25, 57168), (35, 57243), (41, 57306), (42, 57315), (43, 57336),

Gene: Inca_92 Start: 55618, Stop: 56070, Start Num: 14

Candidate Starts for Inca_92:

(11, 55591), (Start: 14 @55618 has 131 MA's), (19, 55657), (29, 55771), (35, 55816), (37, 55828), (38, 55846), (41, 55879), (42, 55888), (46, 55939),

Gene: JeTaime_96 Start: 57820, Stop: 58290, Start Num: 14

Candidate Starts for JeTaime_96:

(1, 57577), (11, 57793), (Start: 14 @57820 has 131 MA's), (19, 57859), (29, 57973), (35, 58018), (37, 58030), (38, 58048), (41, 58081), (42, 58090), (46, 58141),

Gene: JonJames_94 Start: 57342, Stop: 57809, Start Num: 6

Candidate Starts for JonJames_94:

(5, 57303), (Start: 6 @57342 has 5 MA's), (8, 57351), (22, 57456), (24, 57477), (36, 57594), (55, 57786),

Gene: Kanye_93 Start: 57169, Stop: 57612, Start Num: 15

Candidate Starts for Kanye_93:

(Start: 15 @57169 has 67 MA's), (16, 57181), (19, 57208), (25, 57265), (35, 57340), (41, 57403), (42, 57412), (43, 57433),

Gene: Kanye_92 Start: 56713, Stop: 57165, Start Num: 14

Candidate Starts for Kanye_92:

(11, 56686), (Start: 14 @56713 has 131 MA's), (19, 56752), (29, 56866), (35, 56911), (37, 56923), (38, 56941), (41, 56974), (42, 56983), (46, 57034),

Gene: Kimchi_99 Start: 57233, Stop: 57685, Start Num: 14

Candidate Starts for Kimchi_99:

(11, 57206), (Start: 14 @57233 has 131 MA's), (19, 57272), (29, 57386), (35, 57431), (37, 57443), (38, 57461), (41, 57494), (42, 57503), (46, 57554),

Gene: Kimchi_100 Start: 57689, Stop: 58132, Start Num: 15

Candidate Starts for Kimchi_100:

(Start: 15 @57689 has 67 MA's), (16, 57701), (19, 57728), (25, 57785), (35, 57860), (41, 57923), (42, 57932), (43, 57953),

Gene: Kostya_95 Start: 57231, Stop: 57683, Start Num: 14

Candidate Starts for Kostya_95:

(11, 57204), (Start: 14 @57231 has 131 MA's), (19, 57270), (29, 57384), (35, 57429), (37, 57441), (38, 57459), (41, 57492), (42, 57501), (46, 57552),

Gene: Lilac_98 Start: 57058, Stop: 57528, Start Num: 14

Candidate Starts for Lilac_98:

(11, 57031), (Start: 14 @57058 has 131 MA's), (19, 57097), (29, 57211), (35, 57256), (37, 57268), (38, 57286), (41, 57319), (42, 57328), (46, 57379),

Gene: Lilizi_97 Start: 57151, Stop: 57594, Start Num: 15

Candidate Starts for Lilizi_97:

(Start: 15 @57151 has 67 MA's), (16, 57163), (19, 57190), (25, 57247), (35, 57322), (41, 57385), (42, 57394), (43, 57415),

Gene: Lilizi_96 Start: 56695, Stop: 57147, Start Num: 14

Candidate Starts for Lilizi_96:

(11, 56668), (Start: 14 @56695 has 131 MA's), (19, 56734), (29, 56848), (35, 56893), (37, 56905), (38, 56923), (41, 56956), (42, 56965), (46, 57016),

Gene: Lilpickle_94 Start: 56583, Stop: 57035, Start Num: 14

Candidate Starts for Lilpickle_94:

(11, 56556), (Start: 14 @56583 has 131 MA's), (19, 56622), (29, 56736), (35, 56781), (37, 56793), (38, 56811), (41, 56844), (42, 56853), (46, 56904),

Gene: Liveloughbron_97 Start: 58158, Stop: 58601, Start Num: 14

Candidate Starts for Liveloughbron_97:

(11, 58131), (Start: 14 @58158 has 131 MA's), (19, 58197), (25, 58254), (41, 58392), (42, 58401), (43, 58422),

Gene: LuckySocke_172 Start: 88901, Stop: 89407, Start Num: 7

Candidate Starts for LuckySocke_172:

(2, 88811), (3, 88835), (Start: 7 @88901 has 4 MA's), (12, 88949), (13, 88961), (19, 88988), (23, 89036), (30, 89105), (31, 89129), (35, 89150), (39, 89168), (47, 89267), (55, 89357),

Gene: MISSy_96 Start: 56811, Stop: 57263, Start Num: 14

Candidate Starts for MISSy_96:

(11, 56784), (Start: 14 @56811 has 131 MA's), (19, 56850), (29, 56964), (35, 57009), (37, 57021), (38, 57039), (41, 57072), (42, 57081), (46, 57132),

Gene: MISSy_97 Start: 57267, Stop: 57710, Start Num: 15

Candidate Starts for MISSy_97:

(Start: 15 @57267 has 67 MA's), (16, 57279), (19, 57306), (25, 57363), (35, 57438), (41, 57501), (42, 57510), (43, 57531),

Gene: MPhalcon_96 Start: 56804, Stop: 57256, Start Num: 14

Candidate Starts for MPhalcon_96:

(11, 56777), (Start: 14 @56804 has 131 MA's), (19, 56843), (29, 56957), (35, 57002), (37, 57014), (38, 57032), (41, 57065), (42, 57074), (46, 57125),

Gene: MPhalcon_97 Start: 57260, Stop: 57703, Start Num: 15

Candidate Starts for MPhalcon_97:

(Start: 15 @57260 has 67 MA's), (16, 57272), (19, 57299), (25, 57356), (35, 57431), (41, 57494), (42, 57503), (43, 57524),

Gene: MadamMonkfish_96 Start: 56766, Stop: 57209, Start Num: 15

Candidate Starts for MadamMonkfish_96:

(Start: 15 @56766 has 67 MA's), (16, 56778), (19, 56805), (25, 56862), (35, 56937), (41, 57000), (42, 57009), (43, 57030),

Gene: MadamMonkfish_95 Start: 56310, Stop: 56762, Start Num: 14

Candidate Starts for MadamMonkfish_95:

(11, 56283), (Start: 14 @56310 has 131 MA's), (19, 56349), (29, 56463), (35, 56508), (37, 56520), (38, 56538), (41, 56571), (42, 56580), (46, 56631),

Gene: Manda_97 Start: 58387, Stop: 58839, Start Num: 14

Candidate Starts for Manda_97:

(11, 58360), (Start: 14 @58387 has 131 MA's), (19, 58426), (29, 58540), (35, 58585), (37, 58597), (38, 58615), (41, 58648), (42, 58657), (46, 58708),

Gene: Marshmallow_93 Start: 57859, Stop: 58329, Start Num: 14

Candidate Starts for Marshmallow_93:

(11, 57832), (Start: 14 @57859 has 131 MA's), (19, 57898), (29, 58012), (35, 58057), (37, 58069), (38, 58087), (41, 58120), (42, 58129), (46, 58180),

Gene: MaryV_130 Start: 66197, Stop: 65640, Start Num: 4

Candidate Starts for MaryV_130:

(Start: 4 @66197 has 5 MA's), (Start: 7 @66131 has 4 MA's), (9, 66110), (10, 66104), (18, 66041), (25, 65987), (32, 65903), (40, 65858), (44, 65807), (46, 65786), (48, 65741), (53, 65705), (54, 65675),

Gene: Maxxinista_98 Start: 57225, Stop: 57695, Start Num: 14

Candidate Starts for Maxxinista_98:

(11, 57198), (Start: 14 @57225 has 131 MA's), (19, 57264), (29, 57378), (35, 57423), (37, 57435), (38, 57453), (41, 57486), (42, 57495), (46, 57546),

Gene: Mindy_94 Start: 56132, Stop: 56584, Start Num: 14

Candidate Starts for Mindy_94:

(11, 56105), (Start: 14 @56132 has 131 MA's), (19, 56171), (29, 56285), (35, 56330), (37, 56342), (38, 56360), (41, 56393), (42, 56402), (46, 56453),

Gene: Mindy_95 Start: 56588, Stop: 57031, Start Num: 15

Candidate Starts for Mindy_95:

(Start: 15 @56588 has 67 MA's), (16, 56600), (19, 56627), (25, 56684), (35, 56759), (41, 56822), (42, 56831), (43, 56852),

Gene: Miniwave_90 Start: 56627, Stop: 57079, Start Num: 14

Candidate Starts for Miniwave_90:

(11, 56600), (Start: 14 @56627 has 131 MA's), (19, 56666), (29, 56780), (35, 56825), (37, 56837), (38, 56855), (41, 56888), (42, 56897), (46, 56948),

Gene: Misfit_96 Start: 58101, Stop: 58553, Start Num: 14

Candidate Starts for Misfit_96:

(11, 58074), (Start: 14 @58101 has 131 MA's), (19, 58140), (29, 58254), (35, 58299), (37, 58311), (38, 58329), (41, 58362), (42, 58371), (46, 58422),

Gene: Misfit_97 Start: 58557, Stop: 59000, Start Num: 15

Candidate Starts for Misfit_97:

(Start: 15 @58557 has 67 MA's), (16, 58569), (19, 58596), (25, 58653), (35, 58728), (41, 58791), (42, 58800), (43, 58821),

Gene: Moldemort_98 Start: 56768, Stop: 57220, Start Num: 14

Candidate Starts for Moldemort_98:

(11, 56741), (Start: 14 @56768 has 131 MA's), (19, 56807), (29, 56921), (35, 56966), (37, 56978), (38, 56996), (41, 57029), (42, 57038), (46, 57089),

Gene: Moldemort_99 Start: 57224, Stop: 57667, Start Num: 15

Candidate Starts for Moldemort_99:

(Start: 15 @57224 has 67 MA's), (16, 57236), (19, 57263), (25, 57320), (35, 57395), (41, 57458), (42, 57467), (43, 57488),

Gene: MollyToe_90 Start: 55650, Stop: 56102, Start Num: 14

Candidate Starts for MollyToe_90:

(11, 55623), (Start: 14 @55650 has 131 MA's), (19, 55689), (29, 55803), (35, 55848), (37, 55860), (38, 55878), (41, 55911), (42, 55920), (46, 55971),

Gene: Mosby_92 Start: 56840, Stop: 57283, Start Num: 15

Candidate Starts for Mosby_92:

(Start: 15 @56840 has 67 MA's), (16, 56852), (19, 56879), (25, 56936), (35, 57011), (41, 57074), (42, 57083), (43, 57104),

Gene: Mosby_91 Start: 56384, Stop: 56836, Start Num: 14

Candidate Starts for Mosby_91:

(11, 56357), (Start: 14 @56384 has 131 MA's), (19, 56423), (29, 56537), (35, 56582), (37, 56594), (38, 56612), (41, 56645), (42, 56654), (46, 56705),

Gene: Murica_98 Start: 58027, Stop: 58479, Start Num: 14

Candidate Starts for Murica_98:

(11, 58000), (Start: 14 @58027 has 131 MA's), (19, 58066), (29, 58180), (35, 58225), (37, 58237), (38, 58255), (41, 58288), (42, 58297), (46, 58348),

Gene: Murica_99 Start: 58483, Stop: 58926, Start Num: 15

Candidate Starts for Murica_99:

(Start: 15 @58483 has 67 MA's), (16, 58495), (19, 58522), (25, 58579), (41, 58717), (42, 58726), (43, 58747),

Gene: Murphy_95 Start: 57468, Stop: 57920, Start Num: 14

Candidate Starts for Murphy_95:

(11, 57441), (Start: 14 @57468 has 131 MA's), (19, 57507), (29, 57621), (35, 57666), (37, 57678), (38, 57696), (41, 57729), (42, 57738), (46, 57789),

Gene: Myrale_95 Start: 57590, Stop: 58042, Start Num: 14

Candidate Starts for Myrale_95:

(11, 57563), (Start: 14 @57590 has 131 MA's), (19, 57629), (29, 57743), (35, 57788), (37, 57800), (38, 57818), (41, 57851), (42, 57860), (46, 57911),

Gene: Myrale_96 Start: 58046, Stop: 58489, Start Num: 15

Candidate Starts for Myrale_96:

(Start: 15 @58046 has 67 MA's), (16, 58058), (19, 58085), (25, 58142), (35, 58217), (41, 58280), (42, 58289), (43, 58310),

Gene: Nala_98 Start: 57769, Stop: 58212, Start Num: 15

Candidate Starts for Nala_98:

(Start: 15 @57769 has 67 MA's), (16, 57781), (19, 57808), (25, 57865), (35, 57940), (41, 58003), (42, 58012), (43, 58033),

Gene: Nala_97 Start: 57313, Stop: 57765, Start Num: 14

Candidate Starts for Nala_97:

(11, 57286), (Start: 14 @57313 has 131 MA's), (19, 57352), (29, 57466), (35, 57511), (37, 57523), (38, 57541), (41, 57574), (42, 57583), (46, 57634),

Gene: NelitzaMV_93 Start: 56673, Stop: 57125, Start Num: 14

Candidate Starts for NelitzaMV_93:

(11, 56646), (Start: 14 @56673 has 131 MA's), (19, 56712), (29, 56826), (35, 56871), (37, 56883), (38, 56901), (41, 56934), (42, 56943), (46, 56994),

Gene: Nimrod_96 Start: 58016, Stop: 58456, Start Num: 14

Candidate Starts for Nimrod_96:

(11, 57989), (Start: 14 @58016 has 131 MA's), (19, 58055), (25, 58112), (41, 58250), (42, 58259), (43, 58280),

Gene: NoSleep_96 Start: 56650, Stop: 57102, Start Num: 14

Candidate Starts for NoSleep_96:

(11, 56623), (Start: 14 @56650 has 131 MA's), (19, 56689), (29, 56803), (35, 56848), (37, 56860), (38, 56878), (41, 56911), (42, 56920), (46, 56971),

Gene: NonchalantPear_95 Start: 56506, Stop: 56958, Start Num: 14

Candidate Starts for NonchalantPear_95:

(11, 56479), (Start: 14 @56506 has 131 MA's), (19, 56545), (29, 56659), (35, 56704), (37, 56716), (38, 56734), (41, 56767), (42, 56776), (46, 56827),

Gene: OrionPax_94 Start: 56401, Stop: 56853, Start Num: 14

Candidate Starts for OrionPax_94:

(11, 56374), (Start: 14 @56401 has 131 MA's), (19, 56440), (29, 56554), (35, 56599), (37, 56611), (38, 56629), (41, 56662), (42, 56671), (46, 56722),

Gene: OrionPax_95 Start: 56857, Stop: 57300, Start Num: 15

Candidate Starts for OrionPax_95:

(Start: 15 @56857 has 67 MA's), (16, 56869), (19, 56896), (25, 56953), (35, 57028), (41, 57091), (42, 57100), (43, 57121),

Gene: PaddyBaddy_96 Start: 56949, Stop: 57419, Start Num: 14

Candidate Starts for PaddyBaddy_96:

(11, 56922), (Start: 14 @56949 has 131 MA's), (19, 56988), (29, 57102), (35, 57147), (37, 57159), (38, 57177), (41, 57210), (42, 57219), (46, 57270),

Gene: Palpatine_97 Start: 58054, Stop: 58497, Start Num: 14

Candidate Starts for Palpatine_97:

(11, 58027), (Start: 14 @58054 has 131 MA's), (19, 58093), (25, 58150), (41, 58288), (42, 58297), (43, 58318),

Gene: Paperbeatsrock_94 Start: 57305, Stop: 57757, Start Num: 14

Candidate Starts for Paperbeatsrock_94:

(11, 57278), (Start: 14 @57305 has 131 MA's), (19, 57344), (29, 57458), (35, 57503), (37, 57515), (38, 57533), (41, 57566), (42, 57575), (46, 57626),

Gene: Park1214_183 Start: 90265, Stop: 90783, Start Num: 6

Candidate Starts for Park1214_183:

(Start: 6 @90265 has 5 MA's), (21, 90382), (26, 90427), (33, 90499), (45, 90616), (52, 90688),

Gene: Pat3_92 Start: 55504, Stop: 55956, Start Num: 14

Candidate Starts for Pat3_92:

(11, 55477), (Start: 14 @55504 has 131 MA's), (19, 55543), (29, 55657), (35, 55702), (37, 55714), (38, 55732), (41, 55765), (42, 55774), (46, 55825),

Gene: Pat3_93 Start: 55960, Stop: 56406, Start Num: 15

Candidate Starts for Pat3_93:

(Start: 15 @55960 has 67 MA's), (16, 55972), (19, 55999), (25, 56056), (35, 56131), (41, 56194), (42, 56203), (43, 56224),

Gene: Petra64142_100 Start: 58509, Stop: 58961, Start Num: 14

Candidate Starts for Petra64142_100:

(11, 58482), (Start: 14 @58509 has 131 MA's), (19, 58548), (29, 58662), (35, 58707), (37, 58719), (38, 58737), (41, 58770), (42, 58779), (46, 58830),

Gene: Petra64142_101 Start: 58965, Stop: 59408, Start Num: 15

Candidate Starts for Petra64142_101:

(Start: 15 @58965 has 67 MA's), (16, 58977), (19, 59004), (25, 59061), (35, 59136), (41, 59199), (42, 59208),

Gene: Phaja_93 Start: 57131, Stop: 57583, Start Num: 14

Candidate Starts for Phaja_93:

(11, 57104), (Start: 14 @57131 has 131 MA's), (19, 57170), (29, 57284), (35, 57329), (37, 57341), (38, 57359), (41, 57392), (42, 57401), (46, 57452),

Gene: Pharsalus_92 Start: 57105, Stop: 57557, Start Num: 14

Candidate Starts for Pharsalus_92:

(11, 57078), (Start: 14 @57105 has 131 MA's), (19, 57144), (29, 57258), (35, 57303), (37, 57315), (38, 57333), (41, 57366), (42, 57375), (46, 57426),

Gene: PhatBacter_99 Start: 57799, Stop: 58242, Start Num: 14

Candidate Starts for PhatBacter_99:

(11, 57772), (Start: 14 @57799 has 131 MA's), (19, 57838), (25, 57895), (41, 58033), (42, 58042), (43, 58063),

Gene: Phaux_98 Start: 58341, Stop: 58811, Start Num: 14

Candidate Starts for Phaux_98:

(11, 58314), (Start: 14 @58341 has 131 MA's), (19, 58380), (29, 58494), (35, 58539), (37, 58551), (38, 58569), (41, 58602), (42, 58611), (46, 58662),

Gene: Phrux_93 Start: 56617, Stop: 57087, Start Num: 14

Candidate Starts for Phrux_93:

(11, 56590), (Start: 14 @56617 has 131 MA's), (19, 56656), (29, 56770), (35, 56815), (37, 56827), (38, 56845), (41, 56878), (42, 56887), (46, 56938),

Gene: Policronamos_98 Start: 58072, Stop: 58515, Start Num: 14

Candidate Starts for Policronamos_98:

(11, 58045), (Start: 14 @58072 has 131 MA's), (19, 58111), (25, 58168), (41, 58306), (42, 58315), (43, 58336),

Gene: Porky_94 Start: 56217, Stop: 56669, Start Num: 14

Candidate Starts for Porky_94:

(11, 56190), (Start: 14 @56217 has 131 MA's), (19, 56256), (29, 56370), (35, 56415), (37, 56427), (38, 56445), (41, 56478), (42, 56487), (46, 56538),

Gene: Ptowny_92 Start: 55967, Stop: 56419, Start Num: 14

Candidate Starts for Ptowny_92:

(11, 55940), (Start: 14 @55967 has 131 MA's), (19, 56006), (29, 56120), (35, 56165), (37, 56177), (38, 56195), (41, 56228), (42, 56237), (46, 56288),

Gene: Pumpkin_99 Start: 57993, Stop: 58463, Start Num: 14

Candidate Starts for Pumpkin_99:

(11, 57966), (Start: 14 @57993 has 131 MA's), (19, 58032), (29, 58146), (35, 58191), (37, 58203), (38, 58221), (41, 58254), (42, 58263), (46, 58314),

Gene: Quallification_96 Start: 57713, Stop: 58165, Start Num: 14

Candidate Starts for Quallification_96:

(11, 57686), (Start: 14 @57713 has 131 MA's), (19, 57752), (29, 57866), (35, 57911), (37, 57923), (38, 57941), (41, 57974), (42, 57983), (46, 58034),

Gene: Rakim_97 Start: 57498, Stop: 57941, Start Num: 15

Candidate Starts for Rakim_97:

(Start: 15 @57498 has 67 MA's), (16, 57510), (19, 57537), (25, 57594), (35, 57669), (41, 57732), (42, 57741), (43, 57762),

Gene: Rakim_96 Start: 57042, Stop: 57494, Start Num: 14

Candidate Starts for Rakim_96:

(11, 57015), (Start: 14 @57042 has 131 MA's), (19, 57081), (29, 57195), (35, 57240), (37, 57252), (38, 57270), (41, 57303), (42, 57312), (46, 57363),

Gene: Rimmer_94 Start: 57071, Stop: 57517, Start Num: 15

Candidate Starts for Rimmer_94:

(Start: 15 @57071 has 67 MA's), (16, 57083), (19, 57110), (25, 57167), (35, 57242), (41, 57305), (42, 57314),

Gene: Rimmer_93 Start: 56615, Stop: 57067, Start Num: 14

Candidate Starts for Rimmer_93:

(1, 56372), (11, 56588), (Start: 14 @56615 has 131 MA's), (19, 56654), (29, 56768), (35, 56813), (37, 56825), (38, 56843), (41, 56876), (42, 56885), (46, 56936),

Gene: RiverMonster_96 Start: 57513, Stop: 57983, Start Num: 14

Candidate Starts for RiverMonster_96:

(11, 57486), (Start: 14 @57513 has 131 MA's), (19, 57552), (29, 57666), (35, 57711), (37, 57723), (38, 57741), (41, 57774), (42, 57783), (46, 57834),

Gene: Saints25_94 Start: 56656, Stop: 57126, Start Num: 14

Candidate Starts for Saints25_94:

(11, 56629), (Start: 14 @56656 has 131 MA's), (19, 56695), (29, 56809), (35, 56854), (37, 56866), (38, 56884), (41, 56917), (42, 56926), (46, 56977),

Gene: Sassay_90 Start: 55346, Stop: 55798, Start Num: 14

Candidate Starts for Sassay_90:

(11, 55319), (Start: 14 @55346 has 131 MA's), (19, 55385), (29, 55499), (35, 55544), (37, 55556), (38, 55574), (41, 55607), (42, 55616), (46, 55667),

Gene: Sassay_91 Start: 55802, Stop: 56245, Start Num: 15

Candidate Starts for Sassay_91:

(Start: 15 @55802 has 67 MA's), (16, 55814), (19, 55841), (25, 55898), (35, 55973), (41, 56036), (42, 56045), (43, 56066),

Gene: ShamWow_95 Start: 57526, Stop: 57978, Start Num: 14

Candidate Starts for ShamWow_95:

(11, 57499), (Start: 14 @57526 has 131 MA's), (19, 57565), (29, 57679), (35, 57724), (37, 57736), (38, 57754), (41, 57787), (42, 57796), (46, 57847),

Gene: ShereKhan_93 Start: 57638, Stop: 58090, Start Num: 14

Candidate Starts for ShereKhan_93:

(11, 57611), (Start: 14 @57638 has 131 MA's), (19, 57677), (29, 57791), (35, 57836), (37, 57848), (38, 57866), (41, 57899), (42, 57908), (46, 57959),

Gene: ShereKhan_94 Start: 58094, Stop: 58537, Start Num: 15

Candidate Starts for ShereKhan_94:

(Start: 15 @58094 has 67 MA's), (16, 58106), (19, 58133), (25, 58190), (35, 58265), (41, 58328), (42, 58337), (43, 58358),

Gene: Simpliphy_95 Start: 57102, Stop: 57545, Start Num: 15

Candidate Starts for Simpliphy_95:

(Start: 15 @57102 has 67 MA's), (16, 57114), (19, 57141), (25, 57198), (35, 57273), (41, 57336), (42, 57345), (43, 57366),

Gene: Simpliphy_94 Start: 56646, Stop: 57098, Start Num: 14

Candidate Starts for Simpliphy_94:

(11, 56619), (Start: 14 @56646 has 131 MA's), (19, 56685), (29, 56799), (35, 56844), (37, 56856), (38, 56874), (41, 56907), (42, 56916), (46, 56967),

Gene: SirDuracell_96 Start: 56475, Stop: 56921, Start Num: 15

Candidate Starts for SirDuracell_96:

(Start: 15 @56475 has 67 MA's), (16, 56487), (19, 56514), (25, 56571), (35, 56646), (41, 56709), (42, 56718),

Gene: SirDuracell_95 Start: 56019, Stop: 56471, Start Num: 14

Candidate Starts for SirDuracell_95:

(11, 55992), (Start: 14 @56019 has 131 MA's), (19, 56058), (29, 56172), (35, 56217), (37, 56229), (38, 56247), (41, 56280), (42, 56289), (46, 56340),

Gene: SophKB_92 Start: 56324, Stop: 56776, Start Num: 14

Candidate Starts for SophKB_92:

(11, 56297), (Start: 14 @56324 has 131 MA's), (19, 56363), (29, 56477), (35, 56522), (37, 56534), (38, 56552), (41, 56585), (42, 56594), (46, 56645),

Gene: Sotrice96_97 Start: 57368, Stop: 57811, Start Num: 15

Candidate Starts for Sotrice96_97:

(Start: 15 @57368 has 67 MA's), (19, 57407), (25, 57464), (35, 57539), (41, 57602), (42, 57611), (43, 57632),

Gene: Sotrice96_96 Start: 56912, Stop: 57364, Start Num: 14

Candidate Starts for Sotrice96_96:

(11, 56885), (Start: 14 @56912 has 131 MA's), (19, 56951), (29, 57065), (35, 57110), (37, 57122), (38, 57140), (41, 57173), (42, 57182), (43, 57203), (46, 57233),

Gene: Stank_98 Start: 57761, Stop: 58204, Start Num: 15

Candidate Starts for Stank_98:

(Start: 15 @57761 has 67 MA's), (16, 57773), (19, 57800), (25, 57857), (35, 57932), (41, 57995), (42, 58004), (43, 58025),

Gene: Stank_97 Start: 57305, Stop: 57757, Start Num: 14

Candidate Starts for Stank_97:

(11, 57278), (Start: 14 @57305 has 131 MA's), (19, 57344), (29, 57458), (35, 57503), (37, 57515), (38, 57533), (41, 57566), (42, 57575), (46, 57626),

Gene: Stark_97 Start: 57396, Stop: 57866, Start Num: 14

Candidate Starts for Stark_97:

(11, 57369), (Start: 14 @57396 has 131 MA's), (19, 57435), (29, 57549), (35, 57594), (37, 57606), (38, 57624), (41, 57657), (42, 57666), (46, 57717),

Gene: StellaBean_93 Start: 56850, Stop: 57302, Start Num: 14

Candidate Starts for StellaBean_93:

(11, 56823), (Start: 14 @56850 has 131 MA's), (19, 56889), (29, 57003), (35, 57048), (37, 57060), (38, 57078), (41, 57111), (42, 57120), (46, 57171),

Gene: StolenFromERC_98 Start: 57230, Stop: 57682, Start Num: 14

Candidate Starts for StolenFromERC_98:

(11, 57203), (Start: 14 @57230 has 131 MA's), (19, 57269), (29, 57383), (35, 57428), (37, 57440), (38, 57458), (41, 57491), (42, 57500), (46, 57551),

Gene: StolenFromERC_99 Start: 57686, Stop: 58129, Start Num: 15

Candidate Starts for StolenFromERC_99:

(Start: 15 @57686 has 67 MA's), (16, 57698), (19, 57725), (25, 57782), (35, 57857), (41, 57920), (42, 57929), (43, 57950),

Gene: StormChicken_97 Start: 58010, Stop: 58462, Start Num: 14

Candidate Starts for StormChicken_97:

(11, 57983), (Start: 14 @58010 has 131 MA's), (19, 58049), (29, 58163), (35, 58208), (37, 58220), (38, 58238), (41, 58271), (42, 58280), (46, 58331),

Gene: StormChicken_98 Start: 58466, Stop: 58909, Start Num: 15

Candidate Starts for StormChicken_98:

(Start: 15 @58466 has 67 MA's), (16, 58478), (19, 58505), (25, 58562), (35, 58637), (41, 58700), (42, 58709),

Gene: TBrady12_98 Start: 57066, Stop: 57518, Start Num: 14

Candidate Starts for TBrady12_98:

(11, 57039), (Start: 14 @57066 has 131 MA's), (19, 57105), (29, 57219), (35, 57264), (37, 57276), (38, 57294), (41, 57327), (42, 57336), (46, 57387),

Gene: Talos_174 Start: 88895, Stop: 89413, Start Num: 7

Candidate Starts for Talos_174:

(Start: 7 @88895 has 4 MA's), (12, 88943), (23, 89030), (30, 89099), (50, 89294),

Gene: Tarkin_94 Start: 57314, Stop: 57766, Start Num: 14

Candidate Starts for Tarkin_94:

(11, 57287), (Start: 14 @57314 has 131 MA's), (19, 57353), (29, 57467), (35, 57512), (37, 57524), (38, 57542), (41, 57575), (42, 57584), (46, 57635),

Gene: TeamEdward_95 Start: 57216, Stop: 57668, Start Num: 14

Candidate Starts for TeamEdward_95:

(1, 56973), (11, 57189), (Start: 14 @57216 has 131 MA's), (19, 57255), (29, 57369), (35, 57414), (37, 57426), (38, 57444), (41, 57477), (42, 57486), (46, 57537),

Gene: TeamEdward_96 Start: 57672, Stop: 58115, Start Num: 15

Candidate Starts for TeamEdward_96:

(Start: 15 @57672 has 67 MA's), (16, 57684), (19, 57711), (25, 57768), (35, 57843), (41, 57906), (42, 57915),

Gene: TeardropMSU_91 Start: 56314, Stop: 56766, Start Num: 14

Candidate Starts for TeardropMSU_91:

(11, 56287), (Start: 14 @56314 has 131 MA's), (19, 56353), (29, 56467), (35, 56512), (37, 56524), (38, 56542), (41, 56575), (42, 56584), (46, 56635),

Gene: Teaspoon_96 Start: 57166, Stop: 57618, Start Num: 14

Candidate Starts for Teaspoon_96:

(11, 57139), (Start: 14 @57166 has 131 MA's), (19, 57205), (29, 57319), (35, 57364), (37, 57376), (38, 57394), (41, 57427), (42, 57436), (43, 57457), (46, 57487),

Gene: Terminus_99 Start: 58557, Stop: 59000, Start Num: 15

Candidate Starts for Terminus_99:

(Start: 15 @58557 has 67 MA's), (16, 58569), (19, 58596), (25, 58653), (35, 58728), (41, 58791), (42, 58800), (43, 58821),

Gene: Terminus_98 Start: 58101, Stop: 58553, Start Num: 14

Candidate Starts for Terminus_98:

(11, 58074), (Start: 14 @58101 has 131 MA's), (19, 58140), (29, 58254), (35, 58299), (37, 58311), (38, 58329), (41, 58362), (42, 58371), (46, 58422),

Gene: Thimble_97 Start: 56816, Stop: 57268, Start Num: 14

Candidate Starts for Thimble_97:

(11, 56789), (Start: 14 @56816 has 131 MA's), (19, 56855), (29, 56969), (35, 57014), (37, 57026), (38, 57044), (41, 57077), (42, 57086), (46, 57137),

Gene: Thresher_98 Start: 58176, Stop: 58646, Start Num: 14

Candidate Starts for Thresher_98:

(11, 58149), (Start: 14 @58176 has 131 MA's), (19, 58215), (29, 58329), (35, 58374), (37, 58386), (38, 58404), (41, 58437), (42, 58446), (46, 58497),

Gene: Tomaszewski_91 Start: 56933, Stop: 57376, Start Num: 15

Candidate Starts for Tomaszewski_91:

(Start: 15 @56933 has 67 MA's), (16, 56945), (19, 56972), (25, 57029), (35, 57104), (41, 57167), (42, 57176), (43, 57197),

Gene: Tomaszewski_90 Start: 56477, Stop: 56929, Start Num: 14

Candidate Starts for Tomaszewski_90:

(11, 56450), (Start: 14 @56477 has 131 MA's), (19, 56516), (29, 56630), (35, 56675), (37, 56687), (38, 56705), (41, 56738), (42, 56747), (46, 56798),

Gene: Toto_93 Start: 57526, Stop: 57978, Start Num: 14

Candidate Starts for Toto_93:

(11, 57499), (Start: 14 @57526 has 131 MA's), (19, 57565), (29, 57679), (35, 57724), (37, 57736), (38, 57754), (41, 57787), (42, 57796), (46, 57847),

Gene: Traaww1_91 Start: 56334, Stop: 56786, Start Num: 14

Candidate Starts for Traaww1_91:

(11, 56307), (Start: 14 @56334 has 131 MA's), (19, 56373), (29, 56487), (35, 56532), (37, 56544), (38, 56562), (41, 56595), (42, 56604), (43, 56625), (46, 56655),

Gene: Traaww1_92 Start: 56790, Stop: 57233, Start Num: 15

Candidate Starts for Traaww1_92:

(Start: 15 @56790 has 67 MA's), (19, 56829), (25, 56886), (35, 56961), (41, 57024), (42, 57033), (43, 57054),

Gene: Tuco_96 Start: 58073, Stop: 58525, Start Num: 14

Candidate Starts for Tuco_96:

(11, 58046), (Start: 14 @58073 has 131 MA's), (19, 58112), (29, 58226), (35, 58271), (37, 58283), (38, 58301), (41, 58334), (42, 58343), (43, 58364), (46, 58394),

Gene: Tuco_97 Start: 58529, Stop: 58972, Start Num: 15

Candidate Starts for Tuco_97:

(Start: 15 @58529 has 67 MA's), (19, 58568), (25, 58625), (35, 58700), (41, 58763), (42, 58772), (43, 58793),

Gene: Ukulele_90 Start: 56459, Stop: 56911, Start Num: 14

Candidate Starts for Ukulele_90:

(11, 56432), (Start: 14 @56459 has 131 MA's), (19, 56498), (29, 56612), (35, 56657), (37, 56669), (38, 56687), (41, 56720), (42, 56729), (46, 56780),

Gene: Ukulele_91 Start: 56915, Stop: 57358, Start Num: 15

Candidate Starts for Ukulele_91:

(Start: 15 @56915 has 67 MA's), (16, 56927), (19, 56954), (25, 57011), (35, 57086), (41, 57149), (42, 57158), (43, 57179),

Gene: Wiggin_97 Start: 56735, Stop: 57187, Start Num: 14

Candidate Starts for Wiggin_97:

(11, 56708), (Start: 14 @56735 has 131 MA's), (19, 56774), (29, 56888), (35, 56933), (37, 56945), (38, 56963), (41, 56996), (42, 57005), (43, 57026), (46, 57056),

Gene: Wiggin_98 Start: 57191, Stop: 57634, Start Num: 15

Candidate Starts for Wiggin_98:

(Start: 15 @57191 has 67 MA's), (19, 57230), (25, 57287), (35, 57362), (41, 57425), (42, 57434), (43, 57455),

Gene: Wildcat_144 Start: 68090, Stop: 67533, Start Num: 4

Candidate Starts for Wildcat_144:

(Start: 4 @68090 has 5 MA's), (Start: 7 @68024 has 4 MA's), (9, 68003), (10, 67997), (18, 67934), (25, 67880), (32, 67796), (40, 67751), (44, 67700), (46, 67679), (48, 67634), (53, 67598), (54, 67568),

Gene: Willez_91 Start: 55802, Stop: 56245, Start Num: 15

Candidate Starts for Willez_91:

(Start: 15 @55802 has 67 MA's), (16, 55814), (19, 55841), (25, 55898), (35, 55973), (41, 56036), (42, 56045), (43, 56066),

Gene: Willez_90 Start: 55346, Stop: 55798, Start Num: 14

Candidate Starts for Willez_90:

(11, 55319), (Start: 14 @55346 has 131 MA's), (19, 55385), (29, 55499), (35, 55544), (37, 55556), (38, 55574), (41, 55607), (42, 55616), (46, 55667),

Gene: Xandras_94 Start: 56558, Stop: 57010, Start Num: 14

Candidate Starts for Xandras_94:

(11, 56531), (Start: 14 @56558 has 131 MA's), (19, 56597), (29, 56711), (35, 56756), (37, 56768), (38, 56786), (41, 56819), (42, 56828), (46, 56879),

Gene: Xandras_95 Start: 57014, Stop: 57457, Start Num: 15

Candidate Starts for Xandras_95:

(Start: 15 @57014 has 67 MA's), (16, 57026), (19, 57053), (25, 57110), (35, 57185), (41, 57248), (42, 57257), (43, 57278),

Gene: YassJohnny_92 Start: 56199, Stop: 56651, Start Num: 14

Candidate Starts for YassJohnny_92:

(11, 56172), (Start: 14 @56199 has 131 MA's), (19, 56238), (29, 56352), (35, 56397), (37, 56409), (38, 56427), (41, 56460), (42, 56469), (46, 56520),

Gene: Youngblood_98 Start: 58028, Stop: 58480, Start Num: 14

Candidate Starts for Youngblood_98:

(11, 58001), (Start: 14 @58028 has 131 MA's), (19, 58067), (29, 58181), (35, 58226), (37, 58238), (38, 58256), (41, 58289), (42, 58298), (46, 58349),

Gene: Youngblood_99 Start: 58484, Stop: 58927, Start Num: 15

Candidate Starts for Youngblood_99:

(Start: 15 @58484 has 67 MA's), (16, 58496), (19, 58523), (25, 58580), (35, 58655), (41, 58718), (42, 58727), (43, 58748),

Gene: Yvonnetastic_92 Start: 54884, Stop: 55351, Start Num: 6

Candidate Starts for Yvonnetastic_92:

(5, 54845), (Start: 6 @54884 has 5 MA's), (8, 54893), (22, 54998), (24, 55019), (36, 55136), (55, 55328),

Gene: xkcd_98 Start: 58212, Stop: 58664, Start Num: 14

Candidate Starts for xkcd_98:

(11, 58185), (Start: 14 @58212 has 131 MA's), (19, 58251), (29, 58365), (35, 58410), (37, 58422), (38, 58440), (41, 58473), (42, 58482), (46, 58533),

Gene: xkcd_99 Start: 58668, Stop: 59111, Start Num: 15

Candidate Starts for xkcd_99:

(Start: 15 @58668 has 67 MA's), (16, 58680), (19, 58707), (25, 58764), (41, 58902), (42, 58911), (43, 58932),