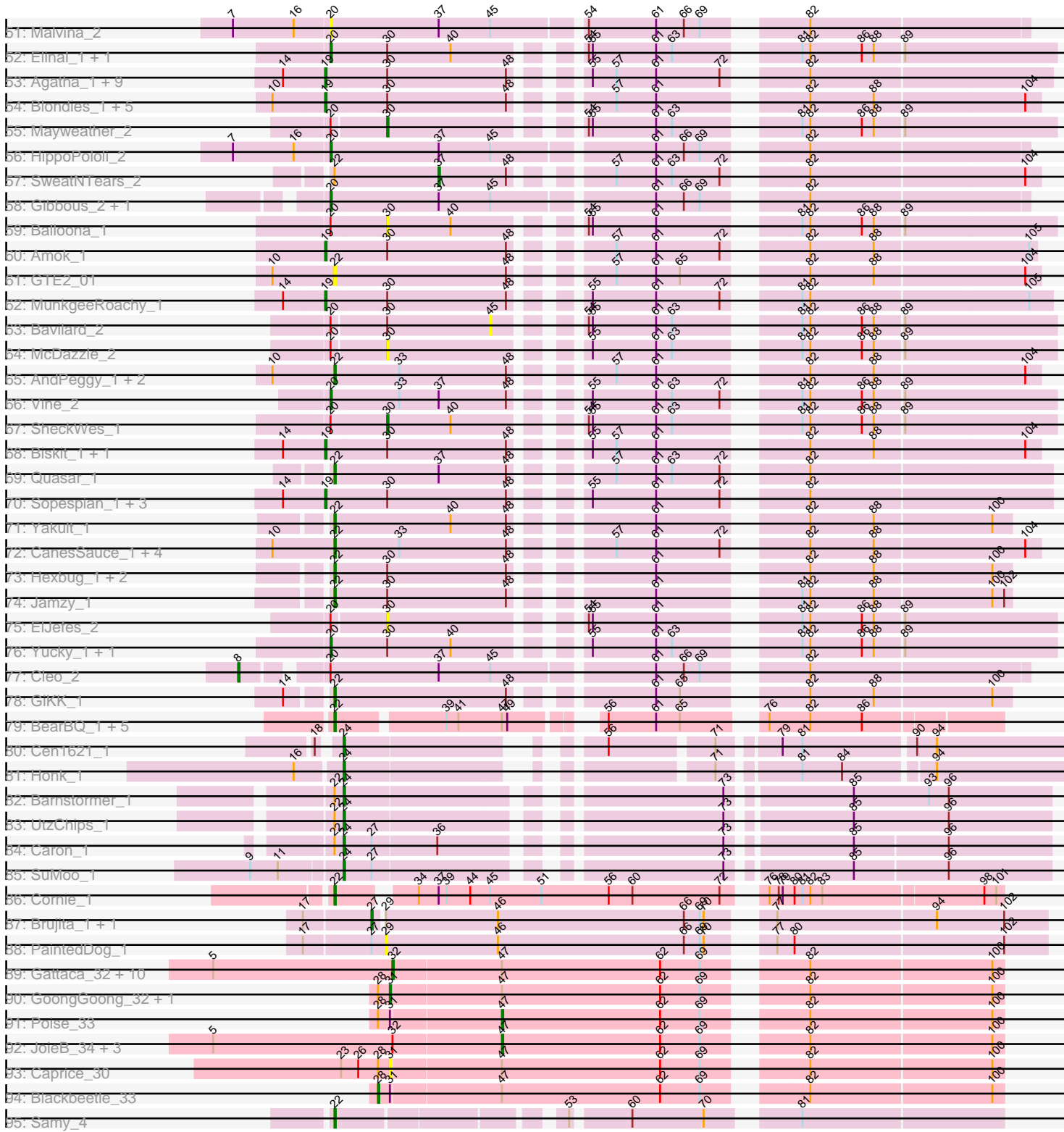


Pham 311228



Note: Tracks are now grouped by subcluster and scaled. Switching in subcluster is indicated by changes in track color. Track scale is now set by default to display the region 30 bp upstream of start 1 to 30 bp downstream of the last possible start. If this default region is judged to be packed too tightly with annotated starts, the track will be further scaled to only show that region of the ORF with annotated starts. This action will be indicated by adding "Zoomed" to the title. For starts, yellow indicates the location of called starts comprised solely of Glimmer/GeneMark auto-annotations, green indicates the location of called starts with at least 1 manual gene annotation.

Pham 311228 Report

This analysis was run 06/27/26 on database version 652.

WARNING: Pham size does not match number of genes in report. Either unphamerated genes have been added (by you) or starterator has removed genes due to invalid start codon.

Pham number 311228 has 217 members, 46 are drafts.

Phages represented in each track:

- Track 1 : Michkear_4
- Track 2 : ThursdayNight_1
- Track 3 : Schaffner_1
- Track 4 : Janeemi_2
- Track 5 : IttyBittyPiggy_1
- Track 6 : Reedo_1
- Track 7 : AGrandiflora_1
- Track 8 : London_1, Eraser_1, Elezi_1, Lizalica_1, Skelbel_1, Subaru_1, Niobe_1, Jstan_1
- Track 9 : Yang_1, JuneStar_1
- Track 10 : Warda_1, Cyan_1, YesChef_1, Flutur_1, Tbone_1, JohnDoe_1, Kaylissa_1, Tutumahutu_1, Simpson_1, Lego_1, Powerpuff_1, Joemato_1
- Track 11 : Pixelle_1, Amyev_1, Tian_1
- Track 12 : Sue2_1
- Track 13 : Tallboi_1, ObiToo_1, DrSierra_1
- Track 14 : VResidence_1
- Track 15 : Berrie_1
- Track 16 : Nitro_1
- Track 17 : AEgle_1, DrManhattan_1, Amploria_1, Adolin_1, Turab_1, Adumb2043_1
- Track 18 : KeAlii_1
- Track 19 : Mudpuppy_1
- Track 20 : Tuck_2, Phives_2, Community_2
- Track 21 : Crewmate_1, Iter_1, Ascela_1
- Track 22 : Cassia_1, Pumpkins_1
- Track 23 : MissSwiss_1, PandaPo_1
- Track 24 : Asa16_1
- Track 25 : Wildwest_2
- Track 26 : TforTroy_1
- Track 27 : MaGuCo_1
- Track 28 : IUFootball_1, Liebe_1, Maureen_1
- Track 29 : Tweety19_2, Snek_2
- Track 30 : JasmineDragon_1, ShakeltOph_1, MiniMommy_1
- Track 31 : Origami_1, FiveHead_1, JohnThicc_1, LadyAstra_1

- Track 32 : Emotion_1
- Track 33 : AceofSpades_1
- Track 34 : VroomVroom_1
- Track 35 : Gumpizza_1, Giorgio_1, Moss_1, Mysterium_1, Halsey_1, Beaupre_1, Stuu_1, Ashes_1, RockScotty_1, SpecialK_1
- Track 36 : Sooty_1
- Track 37 : Sabourin_1, Cappuccino_1, Donkey_1, Kalimba_1, Gambol_1
- Track 38 : Soondubu_1
- Track 39 : Exile_1
- Track 40 : AinMach_1
- Track 41 : VWB_1
- Track 42 : SPB78_1
- Track 43 : MaVan_2, Wallaby_2, Wolfwood_2, Azira_2, Zareef_2, Nibbles_2
- Track 44 : CocoaPuff_1, Tarnish_1, MAnor_1, BigChungus_1, Feastonyeet_1, SummitAcademy_1, CherryonLim_1, Pons_1
- Track 45 : Survivors_2, Fribs8_2
- Track 46 : Lauer_1
- Track 47 : Emalyn_1, AikoCarson_1
- Track 48 : RSchmailzl_1, RedBaron_1, Carsonalex_1
- Track 49 : RADical_1
- Track 50 : RanchParmCat_1, Button_1, Margaret_1
- Track 51 : Malvina_2
- Track 52 : Elinal_1, KayGee_1
- Track 53 : Agatha_1, Nina_1, Cozz_1, ChickenTender_1, Bubble_1, Typhonmarchy_1, GoldHunter_1, Socotra_1, Starburst_1, Axym_1
- Track 54 : Blondies_1, Horseradish_1, Troje_1, MScarn_1, Buttrmilkdreams_1, Yummy_1
- Track 55 : Mayweather_2
- Track 56 : HippoPololi_2
- Track 57 : SweatNTears_2
- Track 58 : Gibbous_2, Dre3_2
- Track 59 : Balloona_1
- Track 60 : Amok_1
- Track 61 : GTE2_01
- Track 62 : MunkgeeRoachy_1
- Track 63 : Bavidard_2
- Track 64 : McDazzle_2
- Track 65 : AndPeggy_1, SteamedHams_1, BillDoor_1
- Track 66 : Vine_2
- Track 67 : SheckWes_1
- Track 68 : Biskit_1, SketchMex_1
- Track 69 : Quasar_1
- Track 70 : Sopespian_1, PsychoKiller_1, Burnsey_1, Elliott_1
- Track 71 : Yakult_1
- Track 72 : CanesSauce_1, Tolls_1, CaramelLatte_1, ChocoMunchkin_1, Yarn_1
- Track 73 : Hexbug_1, Orla_1, Nodigi_1
- Track 74 : Jamzy_1
- Track 75 : ElJefes_2
- Track 76 : Yucky_1, PotPie_1
- Track 77 : Cleo_2
- Track 78 : GiKK_1
- Track 79 : BearBQ_1, MortyNRick_1, Kuwabara_1, Crater_1, Apricot_1, Birdsong_1
- Track 80 : Cen1621_1

- Track 81 : Honk_1
- Track 82 : Barnstormer_1
- Track 83 : UtzChips_1
- Track 84 : Caron_1
- Track 85 : SuMoo_1
- Track 86 : Cornie_1
- Track 87 : Brujita_1, Island3_1
- Track 88 : PaintedDog_1
- Track 89 : Gattaca_32, RedRaider77_33, Huphlepuuff_35, Tesla_32, Pringar_33, Lilbit_32, LittleLaf_33, Corazon_31, VasuNzinga_33, FeliMaine_35, Clarkson_34
- Track 90 : GoongGoong_32, Raela_33
- Track 91 : Poise_33
- Track 92 : JoieB_34, Marvin_31, MosMoris_31, Beelzebub_37
- Track 93 : Caprice_30
- Track 94 : Blackbeetle_33
- Track 95 : Samy_4

Summary of Final Annotations (See graph section above for start numbers):

The start number called the most often in the published annotations is 22, it was called in 78 of the 171 non-draft genes in the pham.

Genes that call this "Most Annotated" start:

- AEgle_1, AceofSpades_1, Adolin_1, Adumb2043_1, AinMach_1, Amploria_1, AndPeggy_1, Apricot_1, Asa16_1, Ascela_1, BearBQ_1, Berrie_1, BillDoor_1, Birdsong_1, Button_1, CanesSauce_1, CaramellLatte_1, Cassia_1, ChocoMunchkin_1, Community_2, Cornie_1, Crater_1, Crewmate_1, Cyan_1, DrManhattan_1, DrSierra_1, Elezi_1, Emotion_1, Eraser_1, Exile_1, FiveHead_1, Flutur_1, GTE2_01, GiKK_1, Hexbug_1, IUFootball_1, Iter_1, IttyBittyPiggy_1, Jamzy_1, Janeemi_2, JasmineDragon_1, Joemato_1, JohnDoe_1, JohnThicc_1, Jstan_1, JuneStar_1, Kaylissa_1, KeAlii_1, Kuwabara_1, LadyAstra_1, Lego_1, Liebe_1, Lizalica_1, London_1, MaGuCo_1, Margaret_1, Maureen_1, Michkear_4, MiniMommy_1, MissSwiss_1, MortyNRick_1, Mudpuppy_1, Niobe_1, Nitro_1, Nodigi_1, ObiToo_1, Origami_1, Orla_1, PandaPo_1, Phives_2, Powerpuff_1, Pumpkins_1, Quasar_1, RanchParmCat_1, Reedo_1, SPB78_1, Samy_4, Schaffner_1, ShakeltOph_1, Simpson_1, Skelbel_1, Snek_2, Soondubu_1, SteamedHams_1, Subaru_1, Sue2_1, Tallboi_1, Tbone_1, TforTroy_1, ThursdayNight_1, Tolls_1, Tuck_2, Turab_1, Tutumahutu_1, Tweety19_2, VResidence_1, VWB_1, VroomVroom_1, Warda_1, Wildwest_2, Yakult_1, Yang_1, Yarn_1, YesChef_1,

Genes that have the "Most Annotated" start but do not call it:

- AGrandiflora_1, Barnstormer_1, Caron_1, SweatNTears_2, UtzChips_1,

Genes that do not have the "Most Annotated" start:

- Agatha_1, AikoCarson_1, Amok_1, Amyev_1, Ashes_1, Axym_1, Azira_2, Balloona_1, Bavidard_2, Beaupre_1, Beelzebub_37, BigChungus_1, Biskit_1, Blackbeetle_33, Blondies_1, Brujita_1, Bubble_1, Burnsey_1, Buttrmikedreams_1, Cappuccino_1, Caprice_30, Carsonalex_1, Cen1621_1, CherryonLim_1, ChickenTender_1, Clarkson_34, Cleo_2, CocoaPuff_1, Corazon_31, Cozz_1,

Donkey_1, Dre3_2, ElJefes_2, Elinal_1, Elliott_1, Emalyn_1, Feastonyeet_1, FeliMaine_35, Fribs8_2, Gambol_1, Gattaca_32, Gibbous_2, Giorgio_1, GoldHunter_1, GoongGoong_32, Gumpizza_1, Halsey_1, HippoPololi_2, Honk_1, Horseradish_1, Huphlepufl_35, Island3_1, JoieB_34, Kalimba_1, KayGee_1, Lauer_1, Lilbit_32, LittleLaf_33, MAnor_1, MScarn_1, MaVan_2, Malvina_2, Marvin_31, Mayweather_2, McDazzle_2, MosMoris_31, Moss_1, MunkgeeRoachy_1, Mysterium_1, Nibbles_2, Nina_1, PaintedDog_1, Pixelle_1, Poise_33, Pons_1, PotPie_1, Pringar_33, PsychoKiller_1, RADical_1, RSchmailz_1, Raela_33, RedBaron_1, RedRaider77_33, RockScotty_1, Sabourin_1, SheckWes_1, SketchMex_1, Socotra_1, Sooty_1, Sopespian_1, SpecialK_1, Starburst_1, Stuu_1, SuMoo_1, SummitAcademy_1, Survivors_2, Tarnish_1, Tesla_32, Tian_1, Troje_1, Typhonomachy_1, VasuNzinga_33, Vine_2, Wallaby_2, Wolfwood_2, Yucky_1, Yummy_1, Zareef_2,

Summary by start number:

Start 8:

- Found in 1 of 217 (0.5%) of genes in pham
- Manual Annotations of this start: 1 of 171
- Called 100.0% of time when present
- Phage (with cluster) where this start called: Cleo_2 (CT),

Start 19:

- Found in 30 of 217 (13.8%) of genes in pham
- Manual Annotations of this start: 21 of 171
- Called 100.0% of time when present
- Phage (with cluster) where this start called: Agatha_1 (CT), AikoCarson_1 (CT), Amok_1 (CT), Axym_1 (CT), Biskit_1 (CT), Blondies_1 (CT), Bubble_1 (CT), Burnsey_1 (CT), Buttrmlkdreams_1 (CT), Carsonalex_1 (CT), ChickenTender_1 (CT), Cozz_1 (CT), Elliott_1 (CT), Emalyn_1 (CT), GoldHunter_1 (CT), Horseradish_1 (CT), MScarn_1 (CT), MunkgeeRoachy_1 (CT), Nina_1 (CT), PsychoKiller_1 (CT), RADical_1 (CT), RSchmailz_1 (CT), RedBaron_1 (CT), SketchMex_1 (CT), Socotra_1 (CT), Sopespian_1 (CT), Starburst_1 (CT), Troje_1 (CT), Typhonomachy_1 (CT), Yummy_1 (CT),

Start 20:

- Found in 33 of 217 (15.2%) of genes in pham
- Manual Annotations of this start: 22 of 171
- Called 75.8% of time when present
- Phage (with cluster) where this start called: Azira_2 (CT), BigChungus_1 (CT), CherryonLim_1 (CT), CocoaPuff_1 (CT), Dre3_2 (CT), Elinal_1 (CT), Feastonyeet_1 (CT), Fribs8_2 (CT), Gibbous_2 (CT), HippoPololi_2 (CT), KayGee_1 (CT), MAnor_1 (CT), MaVan_2 (CT), Malvina_2 (CT), Nibbles_2 (CT), Pons_1 (CT), PotPie_1 (CT), SummitAcademy_1 (CT), Survivors_2 (CT), Tarnish_1 (CT), Vine_2 (CT), Wallaby_2 (CT), Wolfwood_2 (CT), Yucky_1 (CT), Zareef_2 (CT),

Start 21:

- Found in 3 of 217 (1.4%) of genes in pham
- Manual Annotations of this start: 2 of 171
- Called 100.0% of time when present
- Phage (with cluster) where this start called: Amyev_1 (AZ1), Pixelle_1 (AZ1), Tian_1 (AZ1),

Start 22:

- Found in 109 of 217 (50.2%) of genes in pham
- Manual Annotations of this start: 78 of 171
- Called 95.4% of time when present
- Phage (with cluster) where this start called: AEgle_1 (AZ1), AceofSpades_1 (AZ4), Adolin_1 (AZ1), Adumb2043_1 (AZ1), AinMach_1 (AZ7), Amploria_1 (AZ1), AndPeggy_1 (CT), Apricot_1 (DN3), Asa16_1 (AZ1), Ascela_1 (AZ1), BearBQ_1 (DN), Berrie_1 (AZ1), BillDoor_1 (CT), Birdsong_1 (DN), Button_1 (CT), CanesSauce_1 (CT), CaramelLatte_1 (CT), Cassia_1 (AZ1), ChocoMunchkin_1 (CT), Community_2 (AZ1), Cornie_1 (F5), Crater_1 (DN3), Crewmate_1 (AZ1), Cyan_1 (AZ1), DrManhattan_1 (AZ1), DrSierra_1 (AZ1), Elezi_1 (AZ1), Emotion_1 (AZ4), Eraser_1 (AZ1), Exile_1 (AZ6), FiveHead_1 (AZ4), Flutur_1 (AZ), GTE2_01 (CT), GiKK_1 (CT), Hexbug_1 (CT), IUFootball_1 (AZ2), Iter_1 (AZ1), IttyBittyPiggy_1 (AZ1), Jamzy_1 (CT), Janeemi_2 (AZ1), JasmineDragon_1 (AZ4), Joemato_1 (AZ1), JohnDoe_1 (AZ1), JohnThicc_1 (AZ4), Jstan_1 (AZ1), JuneStar_1 (AZ1), Kaylissa_1 (AZ1), KeAlii_1 (AZ1), Kuwabara_1 (DN4), LadyAstra_1 (AZ4), Lego_1 (AZ1), Liebe_1 (AZ2), Lizalica_1 (AZ1), London_1 (AZ1), MaGuCo_1 (AZ2), Margaret_1 (CT), Maureen_1 (AZ2), Michkear_4 (AZ), MiniMommy_1 (AZ4), MissSwiss_1 (AZ1), MortyNRick_1 (DN), Mudpuppy_1 (AZ1), Niobe_1 (AZ1), Nitro_1 (AZ1), Nodigi_1 (CT), ObiToo_1 (AZ1), Origami_1 (AZ4), Orla_1 (CT), PandaPo_1 (AZ1), Phives_2 (AZ1), Powerpuff_1 (AZ1), Pumpkins_1 (AZ1), Quasar_1 (CT), RanchParmCat_1 (CT), Reedo_1 (AZ1), SPB78_1 (BA), Samy_4 (singleton), Schaffner_1 (AZ1), ShakeltOph_1 (AZ4), Simpson_1 (AZ1), Skelbel_1 (AZ1), Sneak_2 (AZ3), Soondubu_1 (AZ6), SteamedHams_1 (CT), Subaru_1 (AZ1), Sue2_1 (AZ1), Tallboi_1 (AZ1), Tbone_1 (AZ1), TforTroy_1 (AZ1), ThursdayNight_1 (AZ), Tolls_1 (CT), Tuck_2 (AZ1), Turab_1 (AZ1), Tutumahutu_1 (AZ1), Tweety19_2 (AZ3), VResidence_1 (AZ1), VWB_1 (BA), VroomVroom_1 (AZ4), Warda_1 (AZ1), Wildwest_2 (AZ1), Yakult_1 (CT), Yang_1 (AZ1), Yarn_1 (CT), YesChef_1 (AZ1),

Start 24:

- Found in 22 of 217 (10.1%) of genes in pham
- Manual Annotations of this start: 22 of 171
- Called 100.0% of time when present
- Phage (with cluster) where this start called: Ashes_1 (AZ5), Barnstormer_1 (EH), Beaupre_1 (AZ5), Cappuccino_1 (AZ5), Caron_1 (EH), Cen1621_1 (EH), Donkey_1 (AZ5), Gambol_1 (AZ5), Giorgio_1 (AZ5), Gumpizza_1 (AZ5), Halsey_1 (AZ5), Honk_1 (EH), Kalimba_1 (AZ5), Moss_1 (AZ5), Mysterium_1 (AZ5), RockScotty_1 (AZ5), Sabourin_1 (AZ5), Sooty_1 (AZ5), SpecialK_1 (AZ5), Stuu_1 (AZ5), SuMoo_1 (EH), UtzChips_1 (EH),

Start 27:

- Found in 9 of 217 (4.1%) of genes in pham
- Manual Annotations of this start: 2 of 171
- Called 22.2% of time when present
- Phage (with cluster) where this start called: Brujita_1 (I1), Island3_1 (I1),

Start 28:

- Found in 5 of 217 (2.3%) of genes in pham
- Manual Annotations of this start: 1 of 171
- Called 20.0% of time when present
- Phage (with cluster) where this start called: Blackbeetle_33 (S),

Start 29:

- Found in 3 of 217 (1.4%) of genes in pham
- No Manual Annotations of this start.
- Called 33.3% of time when present
- Phage (with cluster) where this start called: PaintedDog_1 (I1),

Start 30:

- Found in 53 of 217 (24.4%) of genes in pham
- Manual Annotations of this start: 2 of 171
- Called 9.4% of time when present
- Phage (with cluster) where this start called: Balloona_1 (CT), ElJefes_2 (CT), Mayweather_2 (CT), McDazzle_2 (CT), SheckWes_1 (CT),

Start 31:

- Found in 5 of 217 (2.3%) of genes in pham
- Manual Annotations of this start: 2 of 171
- Called 60.0% of time when present
- Phage (with cluster) where this start called: Caprice_30 (S), GoongGoong_32 (S), Raela_33 (S),

Start 32:

- Found in 15 of 217 (6.9%) of genes in pham
- Manual Annotations of this start: 11 of 171
- Called 73.3% of time when present
- Phage (with cluster) where this start called: Clarkson_34 (S), Corazon_31 (S), FeliMaine_35 (S), Gattaca_32 (S), Huphlepuuff_35 (S), Lilbit_32 (S), LittleLaf_33 (S), Pringar_33 (S), RedRaider77_33 (S), Tesla_32 (S), VasuNzinga_33 (S),

Start 37:

- Found in 17 of 217 (7.8%) of genes in pham
- Manual Annotations of this start: 1 of 171
- Called 5.9% of time when present
- Phage (with cluster) where this start called: SweatNTears_2 (CT),

Start 40:

- Found in 17 of 217 (7.8%) of genes in pham
- Manual Annotations of this start: 1 of 171
- Called 5.9% of time when present
- Phage (with cluster) where this start called: Lauer_1 (CT),

Start 45:

- Found in 7 of 217 (3.2%) of genes in pham
- No Manual Annotations of this start.
- Called 14.3% of time when present
- Phage (with cluster) where this start called: Bavilard_2 (CT),

Start 47:

- Found in 26 of 217 (12.0%) of genes in pham
- Manual Annotations of this start: 5 of 171
- Called 19.2% of time when present
- Phage (with cluster) where this start called: Beelzebub_37 (S), JoieB_34 (S), Marvin_31 (S), MosMoris_31 (S), Poise_33 (S),

Start 50:

- Found in 35 of 217 (16.1%) of genes in pham
- No Manual Annotations of this start.
- Called 2.9% of time when present
- Phage (with cluster) where this start called: AGrandiflora_1 (AZ1),

Summary by clusters:

There are 18 clusters represented in this pham: DN, singleton, AZ, EH, F5, I1, BA, AZ3, DN4, S, DN3, AZ1, AZ2, AZ7, AZ4, AZ5, AZ6, CT,

Info for manual annotations of cluster AZ1:

- Start number 21 was manually annotated 2 times for cluster AZ1.
- Start number 22 was manually annotated 44 times for cluster AZ1.

Info for manual annotations of cluster AZ2:

- Start number 22 was manually annotated 3 times for cluster AZ2.

Info for manual annotations of cluster AZ3:

- Start number 22 was manually annotated 2 times for cluster AZ3.

Info for manual annotations of cluster AZ4:

- Start number 22 was manually annotated 5 times for cluster AZ4.

Info for manual annotations of cluster AZ5:

- Start number 24 was manually annotated 16 times for cluster AZ5.

Info for manual annotations of cluster AZ6:

- Start number 22 was manually annotated 1 time for cluster AZ6.

Info for manual annotations of cluster CT:

- Start number 8 was manually annotated 1 time for cluster CT.
- Start number 19 was manually annotated 21 times for cluster CT.
- Start number 20 was manually annotated 22 times for cluster CT.
- Start number 22 was manually annotated 15 times for cluster CT.
- Start number 30 was manually annotated 2 times for cluster CT.
- Start number 37 was manually annotated 1 time for cluster CT.
- Start number 40 was manually annotated 1 time for cluster CT.

Info for manual annotations of cluster DN:

- Start number 22 was manually annotated 3 times for cluster DN.

Info for manual annotations of cluster DN3:

- Start number 22 was manually annotated 2 times for cluster DN3.

Info for manual annotations of cluster DN4:

- Start number 22 was manually annotated 1 time for cluster DN4.

Info for manual annotations of cluster EH:

- Start number 24 was manually annotated 6 times for cluster EH.

Info for manual annotations of cluster F5:

- Start number 22 was manually annotated 1 time for cluster F5.

Info for manual annotations of cluster I1:

- Start number 27 was manually annotated 2 times for cluster I1.

Info for manual annotations of cluster S:

- Start number 28 was manually annotated 1 time for cluster S.
- Start number 31 was manually annotated 2 times for cluster S.
- Start number 32 was manually annotated 11 times for cluster S.
- Start number 47 was manually annotated 5 times for cluster S.

Gene Information:

Gene: AEgle_1 Start: 85, Stop: 540, Start Num: 22

Candidate Starts for AEgle_1:

(Start: 22 @85 has 78 MA's), (50, 214), (97, 511), (99, 520),

Gene: AGrandiflora_1 Start: 213, Stop: 536, Start Num: 50

Candidate Starts for AGrandiflora_1:

(13, 54), (Start: 22 @84 has 78 MA's), (50, 213), (91, 471), (97, 510), (99, 519),

Gene: AceofSpades_1 Start: 132, Stop: 563, Start Num: 22

Candidate Starts for AceofSpades_1:

(Start: 22 @132 has 78 MA's), (42, 228), (91, 519),

Gene: Adolin_1 Start: 85, Stop: 537, Start Num: 22

Candidate Starts for Adolin_1:

(Start: 22 @85 has 78 MA's), (50, 214), (97, 508), (99, 517),

Gene: Adumb2043_1 Start: 85, Stop: 540, Start Num: 22

Candidate Starts for Adumb2043_1:

(Start: 22 @85 has 78 MA's), (50, 214), (97, 511), (99, 520),

Gene: Agatha_1 Start: 52, Stop: 543, Start Num: 19

Candidate Starts for Agatha_1:

(14, 22), (Start: 19 @52 has 21 MA's), (Start: 30 @97 has 2 MA's), (48, 187), (55, 223), (57, 241), (61, 271), (72, 319), (82, 364),

Gene: AikoCarson_1 Start: 52, Stop: 531, Start Num: 19

Candidate Starts for AikoCarson_1:

(14, 22), (Start: 19 @52 has 21 MA's), (Start: 30 @97 has 2 MA's), (48, 187), (57, 241), (61, 271), (72, 319), (82, 364), (88, 412), (105, 526),

Gene: AinMach_1 Start: 140, Stop: 574, Start Num: 22

Candidate Starts for AinMach_1:

(Start: 22 @140 has 78 MA's), (Start: 27 @167 has 2 MA's), (35, 212), (43, 239), (54, 281), (68, 359), (87, 473), (91, 509), (92, 512),

Gene: Amok_1 Start: 53, Stop: 532, Start Num: 19

Candidate Starts for Amok_1:

(Start: 19 @53 has 21 MA's), (Start: 30 @98 has 2 MA's), (48, 188), (57, 242), (61, 272), (72, 320), (82, 365), (88, 413), (105, 527),

Gene: Amploria_1 Start: 85, Stop: 540, Start Num: 22

Candidate Starts for Amploria_1:

(Start: 22 @85 has 78 MA's), (50, 214), (97, 511), (99, 520),

Gene: Amyev_1 Start: 84, Stop: 536, Start Num: 21

Candidate Starts for Amyev_1:

(4, 12), (13, 54), (Start: 21 @84 has 2 MA's), (91, 471), (97, 510),

Gene: AndPeggy_1 Start: 59, Stop: 535, Start Num: 22

Candidate Starts for AndPeggy_1:

(10, 14), (Start: 22 @59 has 78 MA's), (33, 107), (48, 188), (57, 242), (61, 272), (82, 365), (88, 413), (104, 524),

Gene: Apricot_1 Start: 50, Stop: 484, Start Num: 22

Candidate Starts for Apricot_1:

(Start: 22 @50 has 78 MA's), (39, 125), (41, 134), (Start: 47 @167 has 5 MA's), (49, 170), (56, 218), (61, 254), (65, 272), (76, 317), (82, 347), (86, 386),

Gene: Asa16_1 Start: 84, Stop: 536, Start Num: 22

Candidate Starts for Asa16_1:

(Start: 22 @84 has 78 MA's), (50, 213), (91, 471), (95, 489), (97, 510), (99, 519),

Gene: Ascela_1 Start: 85, Stop: 537, Start Num: 22

Candidate Starts for Ascela_1:

(Start: 22 @85 has 78 MA's), (91, 472), (95, 490), (97, 511),

Gene: Ashes_1 Start: 139, Stop: 579, Start Num: 24

Candidate Starts for Ashes_1:

(Start: 24 @139 has 22 MA's), (43, 232),

Gene: Axym_1 Start: 52, Stop: 543, Start Num: 19

Candidate Starts for Axym_1:

(14, 22), (Start: 19 @52 has 21 MA's), (Start: 30 @97 has 2 MA's), (48, 187), (55, 223), (57, 241), (61, 271), (72, 319), (82, 364),

Gene: Azira_2 Start: 425, Stop: 922, Start Num: 20

Candidate Starts for Azira_2:

(15, 398), (Start: 20 @425 has 22 MA's), (Start: 37 @506 has 1 MA's), (61, 659), (66, 680), (82, 752), (86, 791), (103, 899),

Gene: Balloona_1 Start: 98, Stop: 547, Start Num: 30

Candidate Starts for Balloona_1:

(Start: 20 @56 has 22 MA's), (Start: 30 @98 has 2 MA's), (Start: 40 @146 has 1 MA's), (54, 221), (55, 224), (61, 272), (81, 359), (82, 365), (86, 404), (88, 413), (89, 434),

Gene: Barnstormer_1 Start: 114, Stop: 596, Start Num: 24

Candidate Starts for Barnstormer_1:

(Start: 22 @108 has 78 MA's), (Start: 24 @114 has 22 MA's), (73, 363), (85, 447), (93, 504), (96, 519),

Gene: Bavilard_2 Start: 592, Stop: 963, Start Num: 45

Candidate Starts for Bavilard_2:

(Start: 20 @475 has 22 MA's), (Start: 30 @514 has 2 MA's), (45, 592), (54, 637), (55, 640), (61, 688), (63, 700), (81, 775), (82, 781), (86, 820), (88, 829), (89, 850),

Gene: BearBQ_1 Start: 50, Stop: 484, Start Num: 22

Candidate Starts for BearBQ_1:

(Start: 22 @50 has 78 MA's), (39, 125), (41, 134), (Start: 47 @167 has 5 MA's), (49, 170), (56, 218), (61, 254), (65, 272), (76, 317), (82, 347), (86, 386),

Gene: Beaupre_1 Start: 139, Stop: 579, Start Num: 24

Candidate Starts for Beaupre_1:

(Start: 24 @139 has 22 MA's), (43, 232),

Gene: Beelzebub_37 Start: 10803, Stop: 11156, Start Num: 47

Candidate Starts for Beelzebub_37:

(5, 10587), (Start: 32 @10722 has 11 MA's), (Start: 47 @10803 has 5 MA's), (62, 10923), (69, 10953), (82, 11013), (100, 11148),

Gene: Berrie_1 Start: 83, Stop: 535, Start Num: 22

Candidate Starts for Berrie_1:

(Start: 22 @83 has 78 MA's), (91, 470), (95, 488), (97, 509),

Gene: BigChungus_1 Start: 56, Stop: 547, Start Num: 20

Candidate Starts for BigChungus_1:

(Start: 20 @56 has 22 MA's), (Start: 30 @98 has 2 MA's), (Start: 40 @146 has 1 MA's), (54, 221), (55, 224), (61, 272), (81, 359), (82, 365), (86, 404), (88, 413), (89, 434),

Gene: BillDoor_1 Start: 59, Stop: 535, Start Num: 22

Candidate Starts for BillDoor_1:

(10, 14), (Start: 22 @59 has 78 MA's), (33, 107), (48, 188), (57, 242), (61, 272), (82, 365), (88, 413), (104, 524),

Gene: Birdsong_1 Start: 50, Stop: 484, Start Num: 22

Candidate Starts for Birdsong_1:

(Start: 22 @50 has 78 MA's), (39, 125), (41, 134), (Start: 47 @167 has 5 MA's), (49, 170), (56, 218), (61, 254), (65, 272), (76, 317), (82, 347), (86, 386),

Gene: Biskit_1 Start: 52, Stop: 534, Start Num: 19

Candidate Starts for Biskit_1:

(14, 22), (Start: 19 @52 has 21 MA's), (Start: 30 @97 has 2 MA's), (48, 187), (55, 223), (57, 241), (61, 271), (82, 364), (88, 412), (104, 523),

Gene: Blackbeetle_33 Start: 9732, Stop: 10175, Start Num: 28

Candidate Starts for Blackbeetle_33:

(Start: 28 @9732 has 1 MA's), (Start: 31 @9741 has 2 MA's), (Start: 47 @9822 has 5 MA's), (62, 9942), (69, 9972), (82, 10032), (100, 10167),

Gene: Blondies_1 Start: 53, Stop: 535, Start Num: 19

Candidate Starts for Blondies_1:

(10, 14), (Start: 19 @53 has 21 MA's), (Start: 30 @98 has 2 MA's), (48, 188), (57, 242), (61, 272), (82, 365), (88, 413), (104, 524),

Gene: Brujita_1 Start: 62, Stop: 541, Start Num: 27

Candidate Starts for Brujita_1:

(17, 14), (Start: 27 @62 has 2 MA's), (29, 68), (46, 152), (66, 293), (69, 305), (70, 308), (77, 341), (94, 458), (102, 509),

Gene: Bubble_1 Start: 52, Stop: 543, Start Num: 19

Candidate Starts for Bubble_1:

(14, 22), (Start: 19 @52 has 21 MA's), (Start: 30 @97 has 2 MA's), (48, 187), (55, 223), (57, 241), (61, 271), (72, 319), (82, 364),

Gene: Burnsey_1 Start: 52, Stop: 543, Start Num: 19

Candidate Starts for Burnsey_1:

(14, 22), (Start: 19 @52 has 21 MA's), (Start: 30 @97 has 2 MA's), (48, 187), (55, 223), (61, 271), (72, 319), (82, 364),

Gene: Button_1 Start: 50, Stop: 505, Start Num: 22

Candidate Starts for Button_1:

(Start: 22 @50 has 78 MA's), (61, 263), (82, 356), (88, 404), (100, 491),

Gene: Buttrmlkdreams_1 Start: 53, Stop: 535, Start Num: 19

Candidate Starts for Buttrmlkdreams_1:

(10, 14), (Start: 19 @53 has 21 MA's), (Start: 30 @98 has 2 MA's), (48, 188), (57, 242), (61, 272), (82, 365), (88, 413), (104, 524),

Gene: CanesSauce_1 Start: 59, Stop: 535, Start Num: 22

Candidate Starts for CanesSauce_1:

(10, 14), (Start: 22 @59 has 78 MA's), (33, 107), (48, 188), (57, 242), (61, 272), (72, 320), (82, 365), (88, 413), (104, 524),

Gene: Cappuccino_1 Start: 138, Stop: 578, Start Num: 24

Candidate Starts for Cappuccino_1:

(Start: 24 @138 has 22 MA's), (43, 231),

Gene: Caprice_30 Start: 9811, Stop: 10245, Start Num: 31

Candidate Starts for Caprice_30:

(23, 9775), (26, 9787), (Start: 28 @9802 has 1 MA's), (Start: 31 @9811 has 2 MA's), (Start: 47 @9892 has 5 MA's), (62, 10012), (69, 10042), (82, 10102), (100, 10237),

Gene: Caramellatte_1 Start: 59, Stop: 535, Start Num: 22

Candidate Starts for Caramellatte_1:

(10, 14), (Start: 22 @59 has 78 MA's), (33, 107), (48, 188), (57, 242), (61, 272), (72, 320), (82, 365), (88, 413), (104, 524),

Gene: Caron_1 Start: 114, Stop: 593, Start Num: 24

Candidate Starts for Caron_1:

(Start: 22 @108 has 78 MA's), (Start: 24 @114 has 22 MA's), (Start: 27 @135 has 2 MA's), (36, 183), (73, 363), (85, 447), (96, 516),

Gene: Carsonalex_1 Start: 52, Stop: 543, Start Num: 19

Candidate Starts for Carsonalex_1:

(14, 22), (Start: 19 @52 has 21 MA's), (Start: 30 @97 has 2 MA's), (48, 187), (55, 223), (57, 241), (61, 271), (72, 319), (82, 364), (105, 526),

Gene: Cassia_1 Start: 86, Stop: 550, Start Num: 22

Candidate Starts for Cassia_1:

(Start: 22 @86 has 78 MA's), (65, 305), (95, 503), (99, 533),

Gene: Cen1621_1 Start: 100, Stop: 576, Start Num: 24

Candidate Starts for Cen1621_1:

(18, 88), (Start: 24 @100 has 22 MA's), (56, 250), (71, 322), (79, 361), (81, 376), (90, 457), (94, 472),

Gene: CherryonLim_1 Start: 56, Stop: 547, Start Num: 20

Candidate Starts for CherryonLim_1:

(Start: 20 @56 has 22 MA's), (Start: 30 @98 has 2 MA's), (Start: 40 @146 has 1 MA's), (54, 221), (55, 224), (61, 272), (81, 359), (82, 365), (86, 404), (88, 413), (89, 434),

Gene: ChickenTender_1 Start: 52, Stop: 543, Start Num: 19

Candidate Starts for ChickenTender_1:

(14, 22), (Start: 19 @52 has 21 MA's), (Start: 30 @97 has 2 MA's), (48, 187), (55, 223), (57, 241), (61, 271), (72, 319), (82, 364),

Gene: ChocoMunchkin_1 Start: 59, Stop: 535, Start Num: 22

Candidate Starts for ChocoMunchkin_1:

(10, 14), (Start: 22 @59 has 78 MA's), (33, 107), (48, 188), (57, 242), (61, 272), (72, 320), (82, 365), (88, 413), (104, 524),

Gene: Clarkson_34 Start: 10423, Stop: 10857, Start Num: 32

Candidate Starts for Clarkson_34:

(5, 10288), (Start: 32 @10423 has 11 MA's), (Start: 47 @10504 has 5 MA's), (62, 10624), (69, 10654), (82, 10714), (100, 10849),

Gene: Cleo_2 Start: 447, Stop: 983, Start Num: 8

Candidate Starts for Cleo_2:

(Start: 8 @447 has 1 MA's), (Start: 20 @498 has 22 MA's), (Start: 37 @579 has 1 MA's), (45, 618), (61, 732), (66, 753), (69, 765), (82, 825),

Gene: CocoaPuff_1 Start: 56, Stop: 547, Start Num: 20

Candidate Starts for CocoaPuff_1:

(Start: 20 @56 has 22 MA's), (Start: 30 @98 has 2 MA's), (Start: 40 @146 has 1 MA's), (54, 221), (55, 224), (61, 272), (81, 359), (82, 365), (86, 404), (88, 413), (89, 434),

Gene: Community_2 Start: 1157, Stop: 1609, Start Num: 22

Candidate Starts for Community_2:

(2, 1052), (Start: 22 @1157 has 78 MA's), (91, 1544), (95, 1562), (97, 1583),

Gene: Corazon_31 Start: 10376, Stop: 10810, Start Num: 32

Candidate Starts for Corazon_31:

(5, 10241), (Start: 32 @10376 has 11 MA's), (Start: 47 @10457 has 5 MA's), (62, 10577), (69, 10607), (82, 10667), (100, 10802),

Gene: Cornie_1 Start: 85, Stop: 549, Start Num: 22

Candidate Starts for Cornie_1:

(Start: 22 @85 has 78 MA's), (34, 133), (Start: 37 @148 has 1 MA's), (39, 154), (44, 172), (45, 187), (51, 226), (56, 277), (60, 295), (72, 361), (76, 379), (78, 385), (79, 388), (80, 397), (81, 403), (82, 409), (83, 418), (98, 535), (101, 544),

Gene: Cozz_1 Start: 52, Stop: 543, Start Num: 19

Candidate Starts for Cozz_1:

(14, 22), (Start: 19 @52 has 21 MA's), (Start: 30 @97 has 2 MA's), (48, 187), (55, 223), (57, 241), (61, 271), (72, 319), (82, 364),

Gene: Crater_1 Start: 50, Stop: 484, Start Num: 22

Candidate Starts for Crater_1:

(Start: 22 @50 has 78 MA's), (39, 125), (41, 134), (Start: 47 @167 has 5 MA's), (49, 170), (56, 218), (61, 254), (65, 272), (76, 317), (82, 347), (86, 386),

Gene: Crewmate_1 Start: 85, Stop: 549, Start Num: 22

Candidate Starts for Crewmate_1:

(Start: 22 @85 has 78 MA's), (91, 484), (95, 502), (97, 523),

Gene: Cyan_1 Start: 84, Stop: 536, Start Num: 22

Candidate Starts for Cyan_1:

(13, 54), (Start: 22 @84 has 78 MA's), (50, 213), (91, 471), (97, 510), (99, 519),

Gene: Donkey_1 Start: 138, Stop: 578, Start Num: 24

Candidate Starts for Donkey_1:

(Start: 24 @138 has 22 MA's), (43, 231),

Gene: DrManhattan_1 Start: 85, Stop: 537, Start Num: 22

Candidate Starts for DrManhattan_1:

(Start: 22 @85 has 78 MA's), (50, 214), (97, 508), (99, 517),

Gene: DrSierra_1 Start: 87, Stop: 551, Start Num: 22

Candidate Starts for DrSierra_1:

(Start: 22 @87 has 78 MA's), (97, 525),

Gene: Dre3_2 Start: 442, Stop: 927, Start Num: 20

Candidate Starts for Dre3_2:

(Start: 20 @442 has 22 MA's), (Start: 37 @523 has 1 MA's), (45, 562), (61, 676), (66, 697), (69, 709), (82, 769),

Gene: ElJefes_2 Start: 514, Stop: 963, Start Num: 30

Candidate Starts for ElJefes_2:

(Start: 20 @475 has 22 MA's), (Start: 30 @514 has 2 MA's), (54, 637), (55, 640), (61, 688), (81, 775), (82, 781), (86, 820), (88, 829), (89, 850),

Gene: Elezi_1 Start: 85, Stop: 537, Start Num: 22

Candidate Starts for Elezi_1:

(Start: 22 @85 has 78 MA's), (50, 214), (91, 472), (95, 490), (97, 511), (99, 520),

Gene: Elinal_1 Start: 56, Stop: 547, Start Num: 20

Candidate Starts for Elinal_1:

(Start: 20 @56 has 22 MA's), (Start: 30 @98 has 2 MA's), (Start: 40 @146 has 1 MA's), (54, 221), (55, 224), (61, 272), (63, 284), (81, 359), (82, 365), (86, 404), (88, 413), (89, 434),

Gene: Elliott_1 Start: 52, Stop: 543, Start Num: 19

Candidate Starts for Elliott_1:

(14, 22), (Start: 19 @52 has 21 MA's), (Start: 30 @97 has 2 MA's), (48, 187), (55, 223), (61, 271), (72, 319), (82, 364),

Gene: Emalyn_1 Start: 52, Stop: 531, Start Num: 19

Candidate Starts for Emalyn_1:

(14, 22), (Start: 19 @52 has 21 MA's), (Start: 30 @97 has 2 MA's), (48, 187), (57, 241), (61, 271), (72, 319), (82, 364), (88, 412), (105, 526),

Gene: Emotion_1 Start: 130, Stop: 558, Start Num: 22

Candidate Starts for Emotion_1:

(Start: 22 @130 has 78 MA's), (59, 310), (79, 415),

Gene: Eraser_1 Start: 85, Stop: 537, Start Num: 22

Candidate Starts for Eraser_1:

(Start: 22 @85 has 78 MA's), (50, 214), (91, 472), (95, 490), (97, 511), (99, 520),

Gene: Exile_1 Start: 140, Stop: 571, Start Num: 22

Candidate Starts for Exile_1:

(6, 71), (Start: 22 @140 has 78 MA's), (97, 545), (99, 554),

Gene: Feastonyeet_1 Start: 56, Stop: 547, Start Num: 20

Candidate Starts for Feastonyeet_1:

(Start: 20 @56 has 22 MA's), (Start: 30 @98 has 2 MA's), (Start: 40 @146 has 1 MA's), (54, 221), (55, 224), (61, 272), (81, 359), (82, 365), (86, 404), (88, 413), (89, 434),

Gene: FeliMaine_35 Start: 10424, Stop: 10858, Start Num: 32

Candidate Starts for FeliMaine_35:

(5, 10289), (Start: 32 @10424 has 11 MA's), (Start: 47 @10505 has 5 MA's), (62, 10625), (69, 10655), (82, 10715), (100, 10850),

Gene: FiveHead_1 Start: 132, Stop: 563, Start Num: 22

Candidate Starts for FiveHead_1:

(Start: 22 @132 has 78 MA's), (42, 228), (91, 519),

Gene: Flutur_1 Start: 84, Stop: 536, Start Num: 22

Candidate Starts for Flutur_1:

(13, 54), (Start: 22 @84 has 78 MA's), (50, 213), (91, 471), (97, 510), (99, 519),

Gene: Fribs8_2 Start: 426, Stop: 911, Start Num: 20

Candidate Starts for Fribs8_2:

(15, 399), (Start: 20 @426 has 22 MA's), (Start: 37 @507 has 1 MA's), (61, 660), (66, 681), (82, 753), (86, 792),

Gene: GTE2_01 Start: 59, Stop: 535, Start Num: 22

Candidate Starts for GTE2_01:

(10, 14), (Start: 22 @59 has 78 MA's), (48, 188), (57, 242), (61, 272), (65, 290), (82, 365), (88, 413), (104, 524),

Gene: Gambol_1 Start: 138, Stop: 578, Start Num: 24

Candidate Starts for Gambol_1:

(Start: 24 @138 has 22 MA's), (43, 231),

Gene: Gattaca_32 Start: 9603, Stop: 10037, Start Num: 32

Candidate Starts for Gattaca_32:

(5, 9468), (Start: 32 @9603 has 11 MA's), (Start: 47 @9684 has 5 MA's), (62, 9804), (69, 9834), (82, 9894), (100, 10029),

Gene: GiKK_1 Start: 49, Stop: 504, Start Num: 22

Candidate Starts for GiKK_1:

(14, 22), (Start: 22 @49 has 78 MA's), (48, 178), (61, 262), (65, 280), (82, 355), (88, 403), (100, 490),

Gene: Gibbous_2 Start: 442, Stop: 927, Start Num: 20

Candidate Starts for Gibbous_2:

(Start: 20 @442 has 22 MA's), (Start: 37 @523 has 1 MA's), (45, 562), (61, 676), (66, 697), (69, 709), (82, 769),

Gene: Giorgio_1 Start: 139, Stop: 579, Start Num: 24

Candidate Starts for Giorgio_1:

(Start: 24 @139 has 22 MA's), (43, 232),

Gene: GoldHunter_1 Start: 52, Stop: 543, Start Num: 19

Candidate Starts for GoldHunter_1:

(14, 22), (Start: 19 @52 has 21 MA's), (Start: 30 @97 has 2 MA's), (48, 187), (55, 223), (57, 241), (61, 271), (72, 319), (82, 364),

Gene: GoongGoong_32 Start: 9643, Stop: 10077, Start Num: 31

Candidate Starts for GoongGoong_32:

(Start: 28 @9634 has 1 MA's), (Start: 31 @9643 has 2 MA's), (Start: 47 @9724 has 5 MA's), (62, 9844), (69, 9874), (82, 9934), (100, 10069),

Gene: Gumpizza_1 Start: 139, Stop: 579, Start Num: 24

Candidate Starts for Gumpizza_1:

(Start: 24 @139 has 22 MA's), (43, 232),

Gene: Halsey_1 Start: 139, Stop: 579, Start Num: 24

Candidate Starts for Halsey_1:

(Start: 24 @139 has 22 MA's), (43, 232),

Gene: Hexbug_1 Start: 50, Stop: 505, Start Num: 22

Candidate Starts for Hexbug_1:

(Start: 22 @50 has 78 MA's), (Start: 30 @89 has 2 MA's), (48, 179), (61, 263), (82, 356), (88, 404), (100, 491),

Gene: HippoPololi_2 Start: 449, Stop: 934, Start Num: 20

Candidate Starts for HippoPololi_2:

(7, 380), (16, 425), (Start: 20 @449 has 22 MA's), (Start: 37 @530 has 1 MA's), (45, 569), (61, 683), (66, 704), (69, 716), (82, 776),

Gene: Honk_1 Start: 161, Stop: 634, Start Num: 24

Candidate Starts for Honk_1:

(16, 128), (Start: 24 @161 has 22 MA's), (71, 383), (81, 437), (84, 467), (94, 530),

Gene: Horseradish_1 Start: 53, Stop: 535, Start Num: 19

Candidate Starts for Horseradish_1:

(10, 14), (Start: 19 @53 has 21 MA's), (Start: 30 @98 has 2 MA's), (48, 188), (57, 242), (61, 272), (82, 365), (88, 413), (104, 524),

Gene: Huphlepuuff_35 Start: 10228, Stop: 10662, Start Num: 32

Candidate Starts for Huphlepuuff_35:

(5, 10093), (Start: 32 @10228 has 11 MA's), (Start: 47 @10309 has 5 MA's), (62, 10429), (69, 10459), (82, 10519), (100, 10654),

Gene: IUFootball_1 Start: 80, Stop: 535, Start Num: 22

Candidate Starts for IUFootball_1:

(Start: 22 @80 has 78 MA's), (67, 311),

Gene: Island3_1 Start: 62, Stop: 541, Start Num: 27

Candidate Starts for Island3_1:

(17, 14), (Start: 27 @62 has 2 MA's), (29, 68), (46, 152), (66, 293), (69, 305), (70, 308), (77, 341), (94, 458), (102, 509),

Gene: Iter_1 Start: 85, Stop: 537, Start Num: 22

Candidate Starts for Iter_1:

(Start: 22 @85 has 78 MA's), (91, 472), (95, 490), (97, 511),

Gene: IttyBittyPiggy_1 Start: 86, Stop: 538, Start Num: 22

Candidate Starts for IttyBittyPiggy_1:

(Start: 22 @86 has 78 MA's), (50, 215), (91, 473), (95, 491), (99, 521),

Gene: Jamzy_1 Start: 49, Stop: 504, Start Num: 22

Candidate Starts for Jamzy_1:

(Start: 22 @49 has 78 MA's), (Start: 30 @88 has 2 MA's), (48, 178), (61, 262), (81, 349), (82, 355), (88, 403), (100, 490), (102, 499),

Gene: Janeemi_2 Start: 1168, Stop: 1620, Start Num: 22

Candidate Starts for Janeemi_2:

(Start: 22 @1168 has 78 MA's), (91, 1555), (95, 1573), (97, 1594),

Gene: JasmineDragon_1 Start: 132, Stop: 560, Start Num: 22

Candidate Starts for JasmineDragon_1:

(Start: 22 @132 has 78 MA's), (79, 417), (95, 534),

Gene: Joemato_1 Start: 84, Stop: 536, Start Num: 22

Candidate Starts for Joemato_1:

(13, 54), (Start: 22 @84 has 78 MA's), (50, 213), (91, 471), (97, 510), (99, 519),

Gene: JohnDoe_1 Start: 84, Stop: 536, Start Num: 22

Candidate Starts for JohnDoe_1:

(13, 54), (Start: 22 @84 has 78 MA's), (50, 213), (91, 471), (97, 510), (99, 519),

Gene: JohnThicc_1 Start: 132, Stop: 563, Start Num: 22

Candidate Starts for JohnThicc_1:

(Start: 22 @132 has 78 MA's), (42, 228), (91, 519),

Gene: JoieB_34 Start: 10528, Stop: 10881, Start Num: 47

Candidate Starts for JoieB_34:

(5, 10312), (Start: 32 @10447 has 11 MA's), (Start: 47 @10528 has 5 MA's), (62, 10648), (69, 10678), (82, 10738), (100, 10873),

Gene: Jstan_1 Start: 85, Stop: 537, Start Num: 22

Candidate Starts for Jstan_1:

(Start: 22 @85 has 78 MA's), (50, 214), (91, 472), (95, 490), (97, 511), (99, 520),

Gene: JuneStar_1 Start: 84, Stop: 548, Start Num: 22
Candidate Starts for JuneStar_1:
(13, 54), (Start: 22 @84 has 78 MA's), (95, 501), (99, 531),

Gene: Kalimba_1 Start: 138, Stop: 578, Start Num: 24
Candidate Starts for Kalimba_1:
(Start: 24 @138 has 22 MA's), (43, 231),

Gene: KayGee_1 Start: 56, Stop: 547, Start Num: 20
Candidate Starts for KayGee_1:
(Start: 20 @56 has 22 MA's), (Start: 30 @98 has 2 MA's), (Start: 40 @146 has 1 MA's), (54, 221), (55, 224), (61, 272), (63, 284), (81, 359), (82, 365), (86, 404), (88, 413), (89, 434),

Gene: Kaylissa_1 Start: 84, Stop: 536, Start Num: 22
Candidate Starts for Kaylissa_1:
(13, 54), (Start: 22 @84 has 78 MA's), (50, 213), (91, 471), (97, 510), (99, 519),

Gene: KeAlii_1 Start: 69, Stop: 521, Start Num: 22
Candidate Starts for KeAlii_1:
(Start: 22 @69 has 78 MA's), (97, 492), (99, 501),

Gene: Kuwabara_1 Start: 50, Stop: 484, Start Num: 22
Candidate Starts for Kuwabara_1:
(Start: 22 @50 has 78 MA's), (39, 125), (41, 134), (Start: 47 @167 has 5 MA's), (49, 170), (56, 218), (61, 254), (65, 272), (76, 317), (82, 347), (86, 386),

Gene: LadyAstra_1 Start: 132, Stop: 563, Start Num: 22
Candidate Starts for LadyAstra_1:
(Start: 22 @132 has 78 MA's), (42, 228), (91, 519),

Gene: Lauer_1 Start: 146, Stop: 547, Start Num: 40
Candidate Starts for Lauer_1:
(Start: 20 @56 has 22 MA's), (Start: 30 @98 has 2 MA's), (Start: 40 @146 has 1 MA's), (54, 221), (55, 224), (61, 272), (63, 284), (81, 359), (82, 365), (86, 404), (88, 413), (89, 434),

Gene: Lego_1 Start: 84, Stop: 536, Start Num: 22
Candidate Starts for Lego_1:
(13, 54), (Start: 22 @84 has 78 MA's), (50, 213), (91, 471), (97, 510), (99, 519),

Gene: Liebe_1 Start: 80, Stop: 535, Start Num: 22
Candidate Starts for Liebe_1:
(Start: 22 @80 has 78 MA's), (67, 311),

Gene: Lilbit_32 Start: 10424, Stop: 10858, Start Num: 32
Candidate Starts for Lilbit_32:
(5, 10289), (Start: 32 @10424 has 11 MA's), (Start: 47 @10505 has 5 MA's), (62, 10625), (69, 10655), (82, 10715), (100, 10850),

Gene: LittleLaf_33 Start: 10153, Stop: 10587, Start Num: 32
Candidate Starts for LittleLaf_33:
(5, 10018), (Start: 32 @10153 has 11 MA's), (Start: 47 @10234 has 5 MA's), (62, 10354), (69, 10384), (82, 10444), (100, 10579),

Gene: Lizalica_1 Start: 85, Stop: 534, Start Num: 22
Candidate Starts for Lizalica_1:
(Start: 22 @85 has 78 MA's), (50, 214), (91, 469), (95, 487), (97, 508), (99, 517),

Gene: London_1 Start: 85, Stop: 537, Start Num: 22
Candidate Starts for London_1:
(Start: 22 @85 has 78 MA's), (50, 214), (91, 472), (95, 490), (97, 511), (99, 520),

Gene: MAnor_1 Start: 56, Stop: 547, Start Num: 20
Candidate Starts for MAnor_1:
(Start: 20 @56 has 22 MA's), (Start: 30 @98 has 2 MA's), (Start: 40 @146 has 1 MA's), (54, 221), (55, 224), (61, 272), (81, 359), (82, 365), (86, 404), (88, 413), (89, 434),

Gene: MScarn_1 Start: 53, Stop: 535, Start Num: 19
Candidate Starts for MScarn_1:
(10, 14), (Start: 19 @53 has 21 MA's), (Start: 30 @98 has 2 MA's), (48, 188), (57, 242), (61, 272), (82, 365), (88, 413), (104, 524),

Gene: MaGuCo_1 Start: 80, Stop: 535, Start Num: 22
Candidate Starts for MaGuCo_1:
(Start: 22 @80 has 78 MA's), (67, 311), (92, 473),

Gene: MaVan_2 Start: 426, Stop: 923, Start Num: 20
Candidate Starts for MaVan_2:
(15, 399), (Start: 20 @426 has 22 MA's), (Start: 37 @507 has 1 MA's), (61, 660), (66, 681), (82, 753), (86, 792), (103, 900),

Gene: Malvina_2 Start: 449, Stop: 934, Start Num: 20
Candidate Starts for Malvina_2:
(7, 380), (16, 425), (Start: 20 @449 has 22 MA's), (Start: 37 @530 has 1 MA's), (45, 569), (54, 632), (61, 683), (66, 704), (69, 716), (82, 776),

Gene: Margaret_1 Start: 49, Stop: 504, Start Num: 22
Candidate Starts for Margaret_1:
(Start: 22 @49 has 78 MA's), (61, 262), (82, 355), (88, 403), (100, 490),

Gene: Marvin_31 Start: 10504, Stop: 10857, Start Num: 47
Candidate Starts for Marvin_31:
(5, 10288), (Start: 32 @10423 has 11 MA's), (Start: 47 @10504 has 5 MA's), (62, 10624), (69, 10654), (82, 10714), (100, 10849),

Gene: Maureen_1 Start: 80, Stop: 535, Start Num: 22
Candidate Starts for Maureen_1:
(Start: 22 @80 has 78 MA's), (67, 311),

Gene: Mayweather_2 Start: 513, Stop: 962, Start Num: 30
Candidate Starts for Mayweather_2:
(Start: 20 @474 has 22 MA's), (Start: 30 @513 has 2 MA's), (54, 636), (55, 639), (61, 687), (63, 699), (81, 774), (82, 780), (86, 819), (88, 828), (89, 849),

Gene: McDazzle_2 Start: 514, Stop: 963, Start Num: 30
Candidate Starts for McDazzle_2:

(Start: 20 @475 has 22 MA's), (Start: 30 @514 has 2 MA's), (55, 640), (61, 688), (63, 700), (81, 775), (82, 781), (86, 820), (88, 829), (89, 850),

Gene: Michkear_4 Start: 1968, Stop: 2402, Start Num: 22

Candidate Starts for Michkear_4:

(Start: 22 @1968 has 78 MA's), (97, 2376), (99, 2385),

Gene: MiniMommy_1 Start: 132, Stop: 560, Start Num: 22

Candidate Starts for MiniMommy_1:

(Start: 22 @132 has 78 MA's), (79, 417), (95, 534),

Gene: MissSwiss_1 Start: 87, Stop: 554, Start Num: 22

Candidate Starts for MissSwiss_1:

(Start: 22 @87 has 78 MA's), (50, 216), (88, 453), (95, 504), (97, 525), (99, 534),

Gene: MortyNRick_1 Start: 50, Stop: 484, Start Num: 22

Candidate Starts for MortyNRick_1:

(Start: 22 @50 has 78 MA's), (39, 125), (41, 134), (Start: 47 @167 has 5 MA's), (49, 170), (56, 218), (61, 254), (65, 272), (76, 317), (82, 347), (86, 386),

Gene: MosMoris_31 Start: 9684, Stop: 10037, Start Num: 47

Candidate Starts for MosMoris_31:

(5, 9468), (Start: 32 @9603 has 11 MA's), (Start: 47 @9684 has 5 MA's), (62, 9804), (69, 9834), (82, 9894), (100, 10029),

Gene: Moss_1 Start: 139, Stop: 579, Start Num: 24

Candidate Starts for Moss_1:

(Start: 24 @139 has 22 MA's), (43, 232),

Gene: Mudpuppy_1 Start: 84, Stop: 536, Start Num: 22

Candidate Starts for Mudpuppy_1:

(4, 12), (13, 54), (Start: 22 @84 has 78 MA's), (50, 213), (91, 471), (97, 510), (99, 519),

Gene: MunkgeeRoachy_1 Start: 52, Stop: 543, Start Num: 19

Candidate Starts for MunkgeeRoachy_1:

(14, 22), (Start: 19 @52 has 21 MA's), (Start: 30 @97 has 2 MA's), (48, 187), (55, 223), (61, 271), (72, 319), (81, 358), (82, 364), (105, 526),

Gene: Mysterium_1 Start: 139, Stop: 579, Start Num: 24

Candidate Starts for Mysterium_1:

(Start: 24 @139 has 22 MA's), (43, 232),

Gene: Nibbles_2 Start: 426, Stop: 923, Start Num: 20

Candidate Starts for Nibbles_2:

(15, 399), (Start: 20 @426 has 22 MA's), (Start: 37 @507 has 1 MA's), (61, 660), (66, 681), (82, 753), (86, 792), (103, 900),

Gene: Nina_1 Start: 52, Stop: 543, Start Num: 19

Candidate Starts for Nina_1:

(14, 22), (Start: 19 @52 has 21 MA's), (Start: 30 @97 has 2 MA's), (48, 187), (55, 223), (57, 241), (61, 271), (72, 319), (82, 364),

Gene: Niobe_1 Start: 85, Stop: 537, Start Num: 22

Candidate Starts for Niobe_1:

(Start: 22 @85 has 78 MA's), (50, 214), (91, 472), (95, 490), (97, 511), (99, 520),

Gene: Nitro_1 Start: 86, Stop: 538, Start Num: 22

Candidate Starts for Nitro_1:

(Start: 22 @86 has 78 MA's), (50, 215), (91, 473), (97, 512), (99, 521),

Gene: Nodigi_1 Start: 50, Stop: 505, Start Num: 22

Candidate Starts for Nodigi_1:

(Start: 22 @50 has 78 MA's), (Start: 30 @89 has 2 MA's), (48, 179), (61, 263), (82, 356), (88, 404), (100, 491),

Gene: ObiToo_1 Start: 85, Stop: 549, Start Num: 22

Candidate Starts for ObiToo_1:

(Start: 22 @85 has 78 MA's), (97, 523),

Gene: Origami_1 Start: 132, Stop: 563, Start Num: 22

Candidate Starts for Origami_1:

(Start: 22 @132 has 78 MA's), (42, 228), (91, 519),

Gene: Orla_1 Start: 49, Stop: 504, Start Num: 22

Candidate Starts for Orla_1:

(Start: 22 @49 has 78 MA's), (Start: 30 @88 has 2 MA's), (48, 178), (61, 262), (82, 355), (88, 403), (100, 490),

Gene: PaintedDog_1 Start: 68, Stop: 541, Start Num: 29

Candidate Starts for PaintedDog_1:

(17, 14), (Start: 27 @62 has 2 MA's), (29, 68), (46, 152), (66, 293), (69, 305), (70, 308), (77, 341), (80, 353), (102, 509),

Gene: PandaPo_1 Start: 87, Stop: 554, Start Num: 22

Candidate Starts for PandaPo_1:

(Start: 22 @87 has 78 MA's), (50, 216), (88, 453), (95, 504), (97, 525), (99, 534),

Gene: Phives_2 Start: 1157, Stop: 1609, Start Num: 22

Candidate Starts for Phives_2:

(2, 1052), (Start: 22 @1157 has 78 MA's), (91, 1544), (95, 1562), (97, 1583),

Gene: Pixelle_1 Start: 84, Stop: 536, Start Num: 21

Candidate Starts for Pixelle_1:

(4, 12), (13, 54), (Start: 21 @84 has 2 MA's), (91, 471), (97, 510),

Gene: Poise_33 Start: 9822, Stop: 10175, Start Num: 47

Candidate Starts for Poise_33:

(Start: 28 @9732 has 1 MA's), (Start: 31 @9741 has 2 MA's), (Start: 47 @9822 has 5 MA's), (62, 9942), (69, 9972), (82, 10032), (100, 10167),

Gene: Pons_1 Start: 56, Stop: 547, Start Num: 20

Candidate Starts for Pons_1:

(Start: 20 @56 has 22 MA's), (Start: 30 @98 has 2 MA's), (Start: 40 @146 has 1 MA's), (54, 221), (55, 224), (61, 272), (81, 359), (82, 365), (86, 404), (88, 413), (89, 434),

Gene: PotPie_1 Start: 56, Stop: 547, Start Num: 20

Candidate Starts for PotPie_1:

(Start: 20 @56 has 22 MA's), (Start: 30 @98 has 2 MA's), (Start: 40 @146 has 1 MA's), (55, 224), (61, 272), (63, 284), (81, 359), (82, 365), (86, 404), (88, 413), (89, 434),

Gene: Powerpuff_1 Start: 84, Stop: 536, Start Num: 22

Candidate Starts for Powerpuff_1:

(13, 54), (Start: 22 @84 has 78 MA's), (50, 213), (91, 471), (97, 510), (99, 519),

Gene: Pringar_33 Start: 10053, Stop: 10487, Start Num: 32

Candidate Starts for Pringar_33:

(5, 9918), (Start: 32 @10053 has 11 MA's), (Start: 47 @10134 has 5 MA's), (62, 10254), (69, 10284), (82, 10344), (100, 10479),

Gene: PsychoKiller_1 Start: 52, Stop: 543, Start Num: 19

Candidate Starts for PsychoKiller_1:

(14, 22), (Start: 19 @52 has 21 MA's), (Start: 30 @97 has 2 MA's), (48, 187), (55, 223), (61, 271), (72, 319), (82, 364),

Gene: Pumpkins_1 Start: 86, Stop: 550, Start Num: 22

Candidate Starts for Pumpkins_1:

(Start: 22 @86 has 78 MA's), (65, 305), (95, 503), (99, 533),

Gene: Quasar_1 Start: 679, Stop: 1164, Start Num: 22

Candidate Starts for Quasar_1:

(Start: 22 @679 has 78 MA's), (Start: 37 @757 has 1 MA's), (48, 808), (57, 862), (61, 892), (63, 904), (72, 940), (82, 985),

Gene: RADical_1 Start: 53, Stop: 544, Start Num: 19

Candidate Starts for RADical_1:

(Start: 19 @53 has 21 MA's), (Start: 30 @98 has 2 MA's), (48, 188), (55, 224), (57, 242), (61, 272), (72, 320), (82, 365),

Gene: RSchmailzl_1 Start: 52, Stop: 543, Start Num: 19

Candidate Starts for RSchmailzl_1:

(14, 22), (Start: 19 @52 has 21 MA's), (Start: 30 @97 has 2 MA's), (48, 187), (55, 223), (57, 241), (61, 271), (72, 319), (82, 364), (105, 526),

Gene: Raela_33 Start: 10296, Stop: 10730, Start Num: 31

Candidate Starts for Raela_33:

(Start: 28 @10287 has 1 MA's), (Start: 31 @10296 has 2 MA's), (Start: 47 @10377 has 5 MA's), (62, 10497), (69, 10527), (82, 10587), (100, 10722),

Gene: RanchParmCat_1 Start: 49, Stop: 504, Start Num: 22

Candidate Starts for RanchParmCat_1:

(Start: 22 @49 has 78 MA's), (61, 262), (82, 355), (88, 403), (100, 490),

Gene: RedBaron_1 Start: 52, Stop: 543, Start Num: 19

Candidate Starts for RedBaron_1:

(14, 22), (Start: 19 @52 has 21 MA's), (Start: 30 @97 has 2 MA's), (48, 187), (55, 223), (57, 241), (61, 271), (72, 319), (82, 364), (105, 526),

Gene: RedRaider77_33 Start: 10197, Stop: 10631, Start Num: 32

Candidate Starts for RedRaider77_33:

(5, 10062), (Start: 32 @10197 has 11 MA's), (Start: 47 @10278 has 5 MA's), (62, 10398), (69, 10428), (82, 10488), (100, 10623),

Gene: Reedo_1 Start: 95, Stop: 547, Start Num: 22

Candidate Starts for Reedo_1:

(Start: 22 @95 has 78 MA's), (Start: 27 @122 has 2 MA's), (50, 224), (95, 497), (97, 518), (99, 527),

Gene: RockScotty_1 Start: 139, Stop: 579, Start Num: 24

Candidate Starts for RockScotty_1:

(Start: 24 @139 has 22 MA's), (43, 232),

Gene: SPB78_1 Start: 51220, Stop: 426, Start Num: 22

Candidate Starts for SPB78_1:

(12, 51184), (Start: 22 @51220 has 78 MA's), (25, 51229), (Start: 40 @51298 has 1 MA's), (52, 51373), (56, 51406), (87, 51580),

Gene: Sabourin_1 Start: 138, Stop: 578, Start Num: 24

Candidate Starts for Sabourin_1:

(Start: 24 @138 has 22 MA's), (43, 231),

Gene: Samy_4 Start: 1334, Stop: 1780, Start Num: 22

Candidate Starts for Samy_4:

(Start: 22 @1334 has 78 MA's), (53, 1484), (60, 1523), (70, 1577), (81, 1631),

Gene: Schaffner_1 Start: 84, Stop: 548, Start Num: 22

Candidate Starts for Schaffner_1:

(13, 54), (Start: 22 @84 has 78 MA's), (50, 213), (95, 501), (99, 531),

Gene: ShakeltOph_1 Start: 132, Stop: 560, Start Num: 22

Candidate Starts for ShakeltOph_1:

(Start: 22 @132 has 78 MA's), (79, 417), (95, 534),

Gene: SheckWes_1 Start: 98, Stop: 547, Start Num: 30

Candidate Starts for SheckWes_1:

(Start: 20 @56 has 22 MA's), (Start: 30 @98 has 2 MA's), (Start: 40 @146 has 1 MA's), (54, 221), (55, 224), (61, 272), (63, 284), (81, 359), (82, 365), (86, 404), (88, 413), (89, 434),

Gene: Simpson_1 Start: 84, Stop: 536, Start Num: 22

Candidate Starts for Simpson_1:

(13, 54), (Start: 22 @84 has 78 MA's), (50, 213), (91, 471), (97, 510), (99, 519),

Gene: Skelbel_1 Start: 85, Stop: 537, Start Num: 22

Candidate Starts for Skelbel_1:

(Start: 22 @85 has 78 MA's), (50, 214), (91, 472), (95, 490), (97, 511), (99, 520),

Gene: SketchMex_1 Start: 52, Stop: 534, Start Num: 19

Candidate Starts for SketchMex_1:

(14, 22), (Start: 19 @52 has 21 MA's), (Start: 30 @97 has 2 MA's), (48, 187), (55, 223), (57, 241), (61, 271), (82, 364), (88, 412), (104, 523),

Gene: Snek_2 Start: 958, Stop: 1422, Start Num: 22

Candidate Starts for Snek_2:

(Start: 22 @958 has 78 MA's), (72, 1207), (97, 1396), (99, 1405),

Gene: Socotra_1 Start: 52, Stop: 543, Start Num: 19

Candidate Starts for Socotra_1:

(14, 22), (Start: 19 @52 has 21 MA's), (Start: 30 @97 has 2 MA's), (48, 187), (55, 223), (57, 241), (61, 271), (72, 319), (82, 364),

Gene: Soondubu_1 Start: 140, Stop: 571, Start Num: 22

Candidate Starts for Soondubu_1:

(Start: 22 @140 has 78 MA's), (97, 545), (99, 554),

Gene: Sooty_1 Start: 138, Stop: 578, Start Num: 24

Candidate Starts for Sooty_1:

(3, 12), (Start: 24 @138 has 22 MA's), (43, 231),

Gene: Sopespian_1 Start: 52, Stop: 543, Start Num: 19

Candidate Starts for Sopespian_1:

(14, 22), (Start: 19 @52 has 21 MA's), (Start: 30 @97 has 2 MA's), (48, 187), (55, 223), (61, 271), (72, 319), (82, 364),

Gene: SpecialK_1 Start: 139, Stop: 579, Start Num: 24

Candidate Starts for SpecialK_1:

(Start: 24 @139 has 22 MA's), (43, 232),

Gene: Starburst_1 Start: 52, Stop: 543, Start Num: 19

Candidate Starts for Starburst_1:

(14, 22), (Start: 19 @52 has 21 MA's), (Start: 30 @97 has 2 MA's), (48, 187), (55, 223), (57, 241), (61, 271), (72, 319), (82, 364),

Gene: SteamedHams_1 Start: 59, Stop: 535, Start Num: 22

Candidate Starts for SteamedHams_1:

(10, 14), (Start: 22 @59 has 78 MA's), (33, 107), (48, 188), (57, 242), (61, 272), (82, 365), (88, 413), (104, 524),

Gene: Stuu_1 Start: 139, Stop: 579, Start Num: 24

Candidate Starts for Stuu_1:

(Start: 24 @139 has 22 MA's), (43, 232),

Gene: SuMoo_1 Start: 124, Stop: 603, Start Num: 24

Candidate Starts for SuMoo_1:

(9, 58), (11, 79), (Start: 24 @124 has 22 MA's), (Start: 27 @145 has 2 MA's), (73, 373), (85, 457), (96, 526),

Gene: Subaru_1 Start: 85, Stop: 537, Start Num: 22

Candidate Starts for Subaru_1:

(Start: 22 @85 has 78 MA's), (50, 214), (91, 472), (95, 490), (97, 511), (99, 520),

Gene: Sue2_1 Start: 75, Stop: 542, Start Num: 22

Candidate Starts for Sue2_1:

(4, 12), (Start: 22 @75 has 78 MA's), (Start: 27 @102 has 2 MA's), (58, 249), (74, 342), (97, 513), (99, 522),

Gene: SummitAcademy_1 Start: 56, Stop: 547, Start Num: 20

Candidate Starts for SummitAcademy_1:

(Start: 20 @56 has 22 MA's), (Start: 30 @98 has 2 MA's), (Start: 40 @146 has 1 MA's), (54, 221), (55, 224), (61, 272), (81, 359), (82, 365), (86, 404), (88, 413), (89, 434),

Gene: Survivors_2 Start: 426, Stop: 911, Start Num: 20

Candidate Starts for Survivors_2:

(15, 399), (Start: 20 @426 has 22 MA's), (Start: 37 @507 has 1 MA's), (61, 660), (66, 681), (82, 753), (86, 792),

Gene: SweatNTears_2 Start: 757, Stop: 1155, Start Num: 37

Candidate Starts for SweatNTears_2:

(Start: 22 @679 has 78 MA's), (Start: 37 @757 has 1 MA's), (48, 808), (57, 862), (61, 892), (63, 904), (72, 940), (82, 985), (104, 1144),

Gene: Tallboi_1 Start: 85, Stop: 537, Start Num: 22

Candidate Starts for Tallboi_1:

(Start: 22 @85 has 78 MA's), (97, 511),

Gene: Tarnish_1 Start: 56, Stop: 547, Start Num: 20

Candidate Starts for Tarnish_1:

(Start: 20 @56 has 22 MA's), (Start: 30 @98 has 2 MA's), (Start: 40 @146 has 1 MA's), (54, 221), (55, 224), (61, 272), (81, 359), (82, 365), (86, 404), (88, 413), (89, 434),

Gene: Tbone_1 Start: 84, Stop: 536, Start Num: 22

Candidate Starts for Tbone_1:

(13, 54), (Start: 22 @84 has 78 MA's), (50, 213), (91, 471), (97, 510), (99, 519),

Gene: Tesla_32 Start: 10046, Stop: 10480, Start Num: 32

Candidate Starts for Tesla_32:

(5, 9911), (Start: 32 @10046 has 11 MA's), (Start: 47 @10127 has 5 MA's), (62, 10247), (69, 10277), (82, 10337), (100, 10472),

Gene: TforTroy_1 Start: 86, Stop: 550, Start Num: 22

Candidate Starts for TforTroy_1:

(Start: 22 @86 has 78 MA's), (38, 167), (65, 305), (95, 503), (99, 533),

Gene: ThursdayNight_1 Start: 97, Stop: 549, Start Num: 22

Candidate Starts for ThursdayNight_1:

(Start: 22 @97 has 78 MA's), (53, 247), (67, 328),

Gene: Tian_1 Start: 84, Stop: 536, Start Num: 21

Candidate Starts for Tian_1:

(4, 12), (13, 54), (Start: 21 @84 has 2 MA's), (91, 471), (97, 510),

Gene: Tolls_1 Start: 59, Stop: 535, Start Num: 22

Candidate Starts for Tolls_1:

(10, 14), (Start: 22 @59 has 78 MA's), (33, 107), (48, 188), (57, 242), (61, 272), (72, 320), (82, 365), (88, 413), (104, 524),

Gene: Troje_1 Start: 53, Stop: 535, Start Num: 19

Candidate Starts for Troje_1:

(10, 14), (Start: 19 @53 has 21 MA's), (Start: 30 @98 has 2 MA's), (48, 188), (57, 242), (61, 272), (82, 365), (88, 413), (104, 524),

Gene: Tuck_2 Start: 1145, Stop: 1597, Start Num: 22
Candidate Starts for Tuck_2:
(2, 1040), (Start: 22 @1145 has 78 MA's), (91, 1532), (95, 1550), (97, 1571),

Gene: Turab_1 Start: 85, Stop: 540, Start Num: 22
Candidate Starts for Turab_1:
(Start: 22 @85 has 78 MA's), (50, 214), (97, 511), (99, 520),

Gene: Tutumahutu_1 Start: 84, Stop: 536, Start Num: 22
Candidate Starts for Tutumahutu_1:
(13, 54), (Start: 22 @84 has 78 MA's), (50, 213), (91, 471), (97, 510), (99, 519),

Gene: Tweety19_2 Start: 958, Stop: 1422, Start Num: 22
Candidate Starts for Tweety19_2:
(Start: 22 @958 has 78 MA's), (72, 1207), (97, 1396), (99, 1405),

Gene: Typhonomachy_1 Start: 52, Stop: 543, Start Num: 19
Candidate Starts for Typhonomachy_1:
(14, 22), (Start: 19 @52 has 21 MA's), (Start: 30 @97 has 2 MA's), (48, 187), (55, 223), (57, 241), (61, 271), (72, 319), (82, 364),

Gene: UtzChips_1 Start: 114, Stop: 596, Start Num: 24
Candidate Starts for UtzChips_1:
(Start: 22 @108 has 78 MA's), (Start: 24 @114 has 22 MA's), (73, 363), (85, 447), (96, 519),

Gene: VResidence_1 Start: 140, Stop: 604, Start Num: 22
Candidate Starts for VResidence_1:
(Start: 22 @140 has 78 MA's), (Start: 27 @167 has 2 MA's), (58, 314), (87, 503), (95, 557), (97, 578), (99, 587),

Gene: VWB_1 Start: 1, Stop: 480, Start Num: 22
Candidate Starts for VWB_1:
(Start: 22 @1 has 78 MA's), (25, 10), (39, 76), (52, 154), (56, 187), (87, 361), (88, 364),

Gene: VasuNzinga_33 Start: 9630, Stop: 10064, Start Num: 32
Candidate Starts for VasuNzinga_33:
(5, 9495), (Start: 32 @9630 has 11 MA's), (Start: 47 @9711 has 5 MA's), (62, 9831), (69, 9861), (82, 9921), (100, 10056),

Gene: Vine_2 Start: 681, Stop: 1172, Start Num: 20
Candidate Starts for Vine_2:
(Start: 20 @681 has 22 MA's), (33, 732), (Start: 37 @762 has 1 MA's), (48, 813), (55, 849), (61, 897), (63, 909), (72, 945), (81, 984), (82, 990), (86, 1029), (88, 1038), (89, 1059),

Gene: VroomVroom_1 Start: 132, Stop: 563, Start Num: 22
Candidate Starts for VroomVroom_1:
(Start: 22 @132 has 78 MA's), (42, 228), (75, 393), (91, 519),

Gene: Wallaby_2 Start: 425, Stop: 922, Start Num: 20
Candidate Starts for Wallaby_2:
(15, 398), (Start: 20 @425 has 22 MA's), (Start: 37 @506 has 1 MA's), (61, 659), (66, 680), (82, 752), (86, 791), (103, 899),

Gene: Warda_1 Start: 84, Stop: 536, Start Num: 22
Candidate Starts for Warda_1:
(13, 54), (Start: 22 @84 has 78 MA's), (50, 213), (91, 471), (97, 510), (99, 519),

Gene: Wildwest_2 Start: 1032, Stop: 1481, Start Num: 22
Candidate Starts for Wildwest_2:
(1, 825), (Start: 22 @1032 has 78 MA's), (64, 1248), (97, 1455), (99, 1464),

Gene: Wolfwood_2 Start: 425, Stop: 922, Start Num: 20
Candidate Starts for Wolfwood_2:
(15, 398), (Start: 20 @425 has 22 MA's), (Start: 37 @506 has 1 MA's), (61, 659), (66, 680), (82, 752),
(86, 791), (103, 899),

Gene: Yakult_1 Start: 48, Stop: 503, Start Num: 22
Candidate Starts for Yakult_1:
(Start: 22 @48 has 78 MA's), (Start: 40 @135 has 1 MA's), (48, 177), (61, 261), (82, 354), (88, 402),
(100, 489),

Gene: Yang_1 Start: 84, Stop: 548, Start Num: 22
Candidate Starts for Yang_1:
(13, 54), (Start: 22 @84 has 78 MA's), (95, 501), (99, 531),

Gene: Yarn_1 Start: 59, Stop: 535, Start Num: 22
Candidate Starts for Yarn_1:
(10, 14), (Start: 22 @59 has 78 MA's), (33, 107), (48, 188), (57, 242), (61, 272), (72, 320), (82, 365),
(88, 413), (104, 524),

Gene: YesChef_1 Start: 84, Stop: 536, Start Num: 22
Candidate Starts for YesChef_1:
(13, 54), (Start: 22 @84 has 78 MA's), (50, 213), (91, 471), (97, 510), (99, 519),

Gene: Yucky_1 Start: 56, Stop: 547, Start Num: 20
Candidate Starts for Yucky_1:
(Start: 20 @56 has 22 MA's), (Start: 30 @98 has 2 MA's), (Start: 40 @146 has 1 MA's), (55, 224), (61,
272), (63, 284), (81, 359), (82, 365), (86, 404), (88, 413), (89, 434),

Gene: Yummy_1 Start: 53, Stop: 535, Start Num: 19
Candidate Starts for Yummy_1:
(10, 14), (Start: 19 @53 has 21 MA's), (Start: 30 @98 has 2 MA's), (48, 188), (57, 242), (61, 272), (82,
365), (88, 413), (104, 524),

Gene: Zareef_2 Start: 426, Stop: 923, Start Num: 20
Candidate Starts for Zareef_2:
(15, 399), (Start: 20 @426 has 22 MA's), (Start: 37 @507 has 1 MA's), (61, 660), (66, 681), (82, 753),
(86, 792), (103, 900),