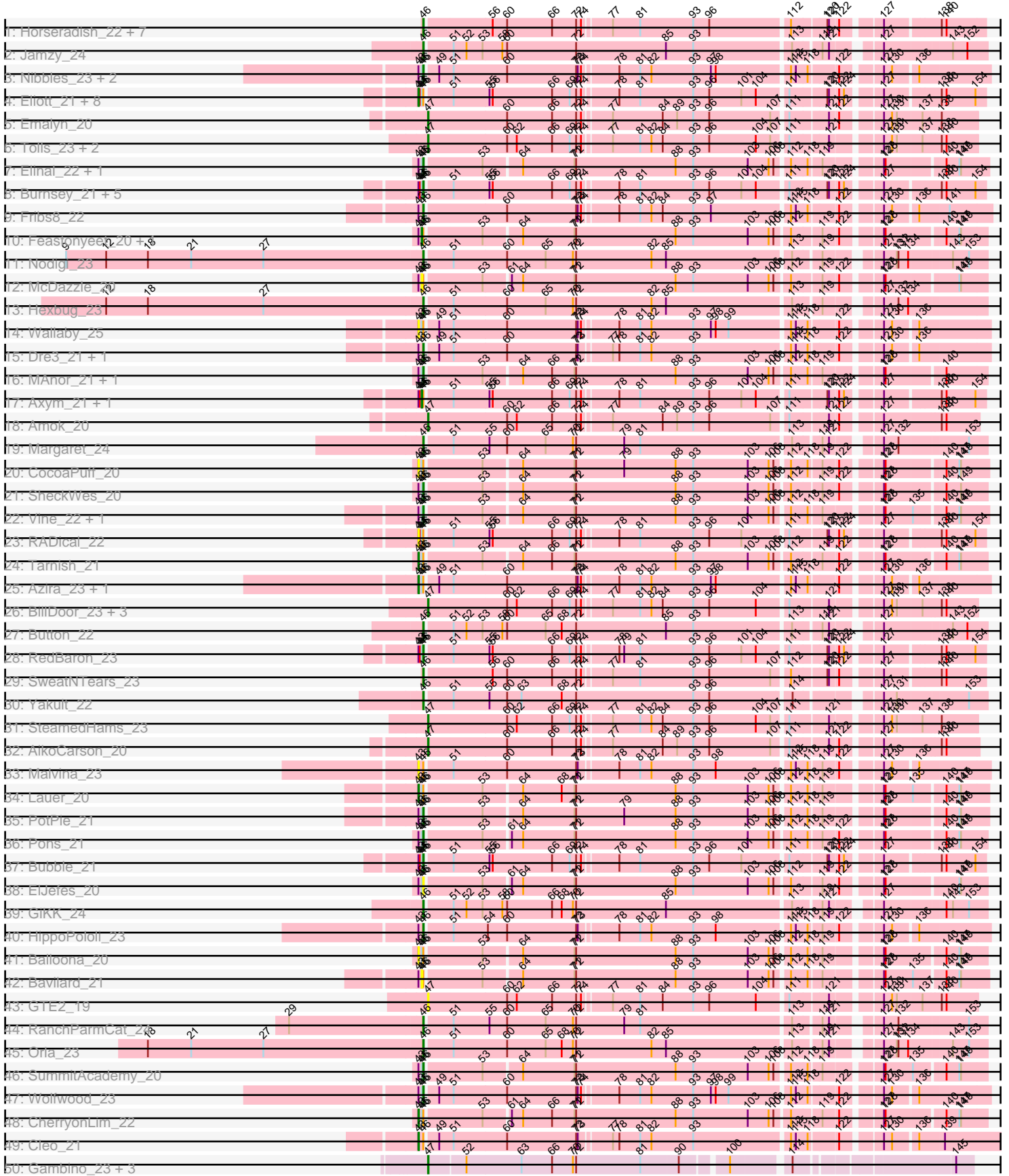
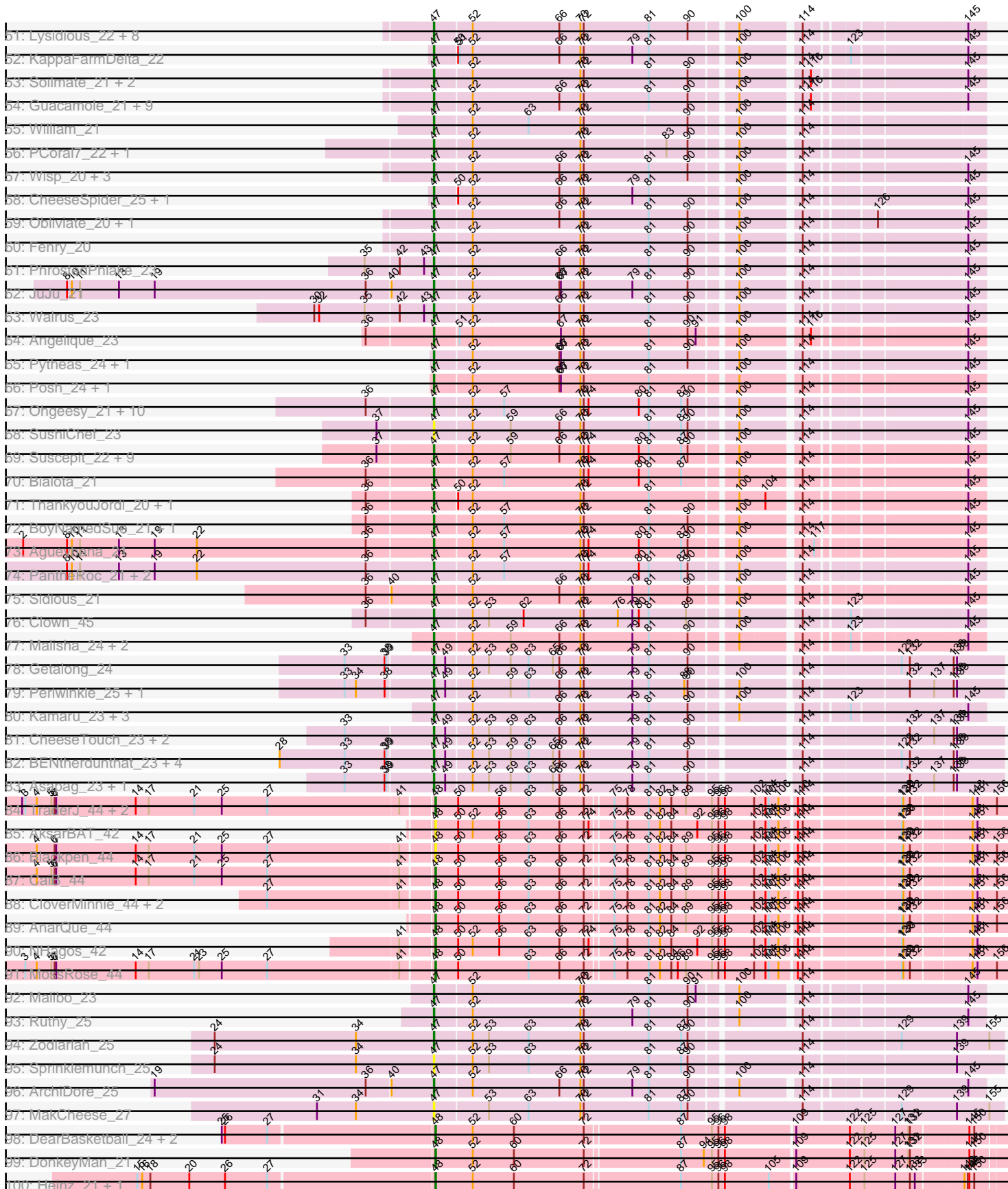


Pham 311233



Pham 311233



Note: Tracks are now grouped by subcluster and scaled. Switching in subcluster is indicated by changes in track color. Track scale is now set by default to display the region 30 bp upstream of start 1 to 30 bp downstream of the last possible start. If this default region is judged to be packed too tightly with annotated starts, the track will be further scaled to only show that region of the ORF with annotated starts. This action will be indicated by adding "Zoomed" to the title. For starts, yellow indicates the location of called starts comprised solely of Glimmer/GeneMark auto-annotations, green indicates the location of called starts with at least 1 manual gene annotation.

Pham 311233 Report

This analysis was run 06/27/26 on database version 652.

Pham number 311233 has 210 members, 34 are drafts.

Phages represented in each track:

- Track 1 : Horseradish_22, MScarn_23, Blondies_22, Biskit_22, Buttrmlkdreams_21, Troje_21, SketchMex_20, Yummy_22
- Track 2 : Jamzy_24
- Track 3 : Nibbles_23, MaVan_23, Survivors_23
- Track 4 : Elliott_21, Carsonalex_22, Starburst_22, ChickenTender_23, RSchmailz_22, Nina_22, Sopespian_21, GoldHunter_22, PsychoKiller_21
- Track 5 : Emalyn_20
- Track 6 : Tolls_23, AndPeggy_20, Yarn_20
- Track 7 : Elinal_22, KayGee_21
- Track 8 : Burnsey_21, Typhonmarchy_21, Agatha_21, Socotra_22, MunkgeeRoachy_21, Quasar_21
- Track 9 : Fribs8_22
- Track 10 : Feastonyeet_20, BigChungus_20
- Track 11 : Nodigi_23
- Track 12 : McDazzle_20
- Track 13 : Hexbug_23
- Track 14 : Wallaby_25
- Track 15 : Dre3_21, Gibbous_21
- Track 16 : MAnor_21, Mayweather_22
- Track 17 : Axym_21, Cozz_21
- Track 18 : Amok_20
- Track 19 : Margaret_24
- Track 20 : CocoaPuff_20
- Track 21 : SheckWes_20
- Track 22 : Vine_22, Yucky_21
- Track 23 : RADical_22
- Track 24 : Tarnish_21
- Track 25 : Azira_23, Zareef_23
- Track 26 : BillDoor_23, CanesSauce_21, CaramelLatte_21, ChocoMunchkin_21
- Track 27 : Button_22
- Track 28 : RedBaron_23
- Track 29 : SweatNTears_23
- Track 30 : Yakult_22
- Track 31 : SteamedHams_23
- Track 32 : AikoCarson_20
- Track 33 : Malvina_23
- Track 34 : Lauer_20

- Track 35 : PotPie_21
- Track 36 : Pons_21
- Track 37 : Bubble_21
- Track 38 : ElJefes_20
- Track 39 : GiKK_24
- Track 40 : HippoPololi_23
- Track 41 : Balloona_20
- Track 42 : Bavidard_21
- Track 43 : GTE2_19
- Track 44 : RanchParmCat_24
- Track 45 : Orla_23
- Track 46 : SummitAcademy_20
- Track 47 : Wolfwood_23
- Track 48 : CherryonLim_22
- Track 49 : Cleo_21
- Track 50 : Gambino_23, MissRona_23, Blueberry_23, Azula_23
- Track 51 : Lysidious_22, Malachai_22, Pipp_21, Mellie_20, Hitter_21, Jalammah_23, Begonia_22, Samba_21, Frokostdame_21
- Track 52 : KappaFarmDelta_22
- Track 53 : Soilmate_21, CarolAnn_21, Blino_21
- Track 54 : Guacamole_21, Zarbodnamra_21, Barco_21, BlingBling_21, JasperJr_21, Zilla_21, Archis_22, Utz_21, Melba_21, MintFen_21
- Track 55 : William_21
- Track 56 : PCoral7_22, Toast_22
- Track 57 : Wisp_20, CaptainKirk2_21, UmaThurman_21, Delian_21
- Track 58 : CheeseSpider_25, Murp_22
- Track 59 : Obliviate_20, ZiggyZoo_20
- Track 60 : Fenry_20
- Track 61 : PhrostedPhlake_23
- Track 62 : JuJu_21
- Track 63 : Walrus_23
- Track 64 : Angelique_23
- Track 65 : Pytheas_24, Jablanski_24
- Track 66 : Posh_24, Wrigley_24
- Track 67 : Ohgeesy_21, Bosnia_21, BatStarr_21, Nymphadora_21, Madavieve_21, Herod_21, TimTam_21, Zirinka_21, Madeline_21, Hugley_21, Eviarto_21
- Track 68 : SushiChef_23
- Track 69 : Suscepit_22, Tayonia_22, Neobush_22, Antonio_22, Maridalia_21, Zameen_22, Eudoria_22, Trumpet_22, Manasvini_22, Kita_22
- Track 70 : Bialota_21
- Track 71 : ThankyouJordi_20, WelcomeAyanna_20
- Track 72 : BoyNamedSue_21, AlumE_21
- Track 73 : Agueybana_21
- Track 74 : PantheRoc_21, BaxterFox_20, Yeezy_22
- Track 75 : Sidious_21
- Track 76 : Clown_45
- Track 77 : Malisha_24, Squiddly_25, Spooky_23
- Track 78 : Getalong_24
- Track 79 : Periwinkle_25, ShawBrad_23
- Track 80 : Kamaru_23, Holliday_23, Budski_23, Whitney_24
- Track 81 : CheeseTouch_23, Lutum_23, Kenna_22
- Track 82 : BENtherdunthat_23, BearBQ_22, MortyNRick_22, Kuwabara_22, Birdsong_22

- Track 83 : Asapag_23, BotCity_23
- Track 84 : TraderJ_44, Yeshua_44, Wooper_44
- Track 85 : AksarBAT_42
- Track 86 : Blackpen_44
- Track 87 : CaiB_44
- Track 88 : CloverMinnie_44, MakoManhole_44, FelixTres_44
- Track 89 : AnarQue_44
- Track 90 : NHagos_42
- Track 91 : MossRose_44
- Track 92 : Malibo_23
- Track 93 : Ruthy_25
- Track 94 : Zodiariah_25
- Track 95 : Sprinklemunch_25
- Track 96 : ArchiDore_25
- Track 97 : MakCheese_27
- Track 98 : DearBasketball_24, DinoNuggs_22, Reyja_22
- Track 99 : DonkeyMan_21
- Track 100 : Heinz_21, Hibiscus_21
- Track 101 : Santhid_21
- Track 102 : Jojo24_21
- Track 103 : Tarzan_21

Summary of Final Annotations (See graph section above for start numbers):

The start number called the most often in the published annotations is 47, it was called in 105 of the 176 non-draft genes in the pham.

Genes that call this "Most Annotated" start:

- Agueybana_21, AikoCarson_20, AlumE_21, Amok_20, AndPeggy_20, Angelique_23, Antonio_22, ArchiDore_25, Archis_22, Asapag_23, Azula_23, BENtherdunthat_23, Barco_21, BatStarr_21, BaxterFox_20, BearBQ_22, Begonia_22, Bialota_21, BillDoor_23, Birdsong_22, BlingBling_21, Blino_21, Blueberry_23, Bosnia_21, BotCity_23, BoyNamedSue_21, Budski_23, CanesSauce_21, CaptainKirk2_21, CaramelLatte_21, CarolAnn_21, CheeseSpider_25, CheeseTouch_23, ChocoMunchkin_21, Clown_45, Delian_21, Emalyn_20, Eudoria_22, Eviarto_21, Fenry_20, Frokostdame_21, GTE2_19, Gambino_23, Getalong_24, Guacamole_21, Herod_21, Hitter_21, Holliday_23, Hugley_21, Jablanski_24, Jalammah_23, JasperJr_21, JuJu_21, Kamaru_23, KappaFarmDelta_22, Kenna_22, Kita_22, Kuwabara_22, Lutum_23, Lysidious_22, Madavieve_21, Madeline_21, MakCheese_27, Malachai_22, Malibo_23, Malisha_24, Manasvini_22, Maridalia_21, Melba_21, Mellie_20, MintFen_21, MissRona_23, MortyNRick_22, Murp_22, Neobush_22, Nymphadora_21, Obliviate_20, Ohgeesy_21, PCoral7_22, PantheRoc_21, Periwinkle_25, PhrostedPhlake_23, Pipp_21, Posh_24, Pytheas_24, Ruthy_25, Samba_21, ShawBrad_23, Sidious_21, Soilmate_21, Spooky_23, Sprinklemunch_25, Squiddly_25, SteamedHams_23, Suscepit_22, SushiChef_23, Tayonia_22, ThankyouJordi_20, TimTam_21, Toast_22, Tolls_23, Trumpet_22, UmaThurman_21, Utz_21, Walrus_23, WelcomeAyanna_20, Whitney_24, William_21, Wisp_20, Wrigley_24, Yarn_20, Yeezy_22, Zameen_22, Zarbodnamra_21, ZiggyZoo_20, Zilla_21, Zirinka_21, Zodiariah_25,

Genes that have the "Most Annotated" start but do not call it:

-

Genes that do not have the "Most Annotated" start:

- Agatha_21, AksarBAT_42, AnarQue_44, Axym_21, Azira_23, Balloona_20, Bavidard_21, BigChungus_20, Biskit_22, Blackpen_44, Blondies_22, Bubble_21, Burnsey_21, Button_22, Buttrmlkdreams_21, CaiB_44, Carsonalex_22, CherryonLim_22, ChickenTender_23, Cleo_21, CloverMinnie_44, CocoaPuff_20, Cozz_21, DearBasketball_24, DinoNuggs_22, DonkeyMan_21, Dre3_21, ElJefes_20, Elinal_22, Elliott_21, Feastonyeet_20, FelixTres_44, Fribs8_22, GiKK_24, Gibbous_21, GoldHunter_22, Heinz_21, Hexbug_23, Hibiscus_21, HippoPololi_23, Horseradish_22, Jamzy_24, Jojo24_21, KayGee_21, Lauer_20, MAnor_21, MScarn_23, MaVan_23, MakoManhole_44, Malvina_23, Margaret_24, Mayweather_22, McDazzle_20, MossRose_44, MunkgeeRoachy_21, NHagos_42, Nibbles_23, Nina_22, Nodigi_23, Orla_23, Pons_21, PotPie_21, PsychoKiller_21, Quasar_21, RADical_22, RSchmailzl_22, RanchParmCat_24, RedBaron_23, Reyja_22, Santhid_21, SheckWes_20, SketchMex_20, Socotra_22, Sopespian_21, Starburst_22, SummitAcademy_20, Survivors_23, SweatNTears_23, Tarnish_21, Tarzan_21, TraderJ_44, Troje_21, Typhonomachy_21, Vine_22, Wallaby_25, Wolfwood_23, Wooper_44, Yakult_22, Yeshua_44, Yucky_21, Yummy_22, Zareef_23,

Summary by start number:

Start 43:

- Found in 55 of 210 (26.2%) of genes in pham
- Manual Annotations of this start: 7 of 176
- Called 36.4% of time when present
- Phage (with cluster) where this start called: Azira_23 (CT), Balloona_20 (CT), Carsonalex_22 (CT), CherryonLim_22 (CT), ChickenTender_23 (CT), Cleo_21 (CT), CocoaPuff_20 (CT), Elliott_21 (CT), GoldHunter_22 (CT), Lauer_20 (CT), Malvina_23 (CT), Nina_22 (CT), PsychoKiller_21 (CT), RADical_22 (CT), RSchmailzl_22 (CT), Sopespian_21 (CT), Starburst_22 (CT), Tarnish_21 (CT), Wallaby_25 (CT), Zareef_23 (CT),

Start 45:

- Found in 47 of 210 (22.4%) of genes in pham
- Manual Annotations of this start: 4 of 176
- Called 12.8% of time when present
- Phage (with cluster) where this start called: Axym_21 (CT), Bavidard_21 (CT), BigChungus_20 (CT), Cozz_21 (CT), Feastonyeet_20 (CT), McDazzle_20 (CT),

Start 46:

- Found in 71 of 210 (33.8%) of genes in pham
- Manual Annotations of this start: 44 of 176
- Called 63.4% of time when present
- Phage (with cluster) where this start called: Agatha_21 (CT), Biskit_22 (CT), Blondies_22 (CT), Bubble_21 (CT), Burnsey_21 (CT), Button_22 (CT), Buttrmlkdreams_21 (CT), Dre3_21 (CT), ElJefes_20 (CT), Elinal_22 (CT), Fribs8_22 (CT), GiKK_24 (CT), Gibbous_21 (CT), Hexbug_23 (CT), HippoPololi_23 (CT), Horseradish_22 (CT), Jamzy_24 (CT), KayGee_21 (CT), MAnor_21 (CT), MScarn_23 (CT), MaVan_23 (CT), Margaret_24 (CT), Mayweather_22 (CT), MunkgeeRoachy_21 (CT), Nibbles_23 (CT), Nodigi_23 (CT), Orla_23 (CT), Pons_21 (CT), PotPie_21 (CT),

Quasar_21 (CT), RanchParmCat_24 (CT), RedBaron_23 (CT), SheckWes_20 (CT), SketchMex_20 (CT), Socotra_22 (CT), SummitAcademy_20 (CT), Survivors_23 (CT), SweatNTears_23 (CT), Troje_21 (CT), Typhonmarchy_21 (CT), Vine_22 (CT), Wolfwood_23 (CT), Yakult_22 (CT), Yucky_21 (CT), Yummy_22 (CT),

Start 47:

- Found in 118 of 210 (56.2%) of genes in pham
- Manual Annotations of this start: 105 of 176
- Called 100.0% of time when present
- Phage (with cluster) where this start called: Agueybana_21 (CZ1), AikoCarson_20 (CT), AlumE_21 (CZ1), Amok_20 (CT), AndPeggy_20 (CT), Angelique_23 (CY1), Antonio_22 (CZ1), ArchiDore_25 (DW), Archis_22 (CV), Asapag_23 (DN1), Azula_23 (CV), BENTherdunthat_23 (DN1), Barco_21 (CV), BatStarr_21 (CZ1), BaxterFox_20 (CZ3), BearBQ_22 (DN), Begonia_22 (CV), Bialota_21 (CZ1), BillDoor_23 (CT), Birdsong_22 (DN), BlingBling_21 (CV), Blino_21 (CV), Blueberry_23 (CV), Bosnia_21 (CZ1), BotCity_23 (DN), BoyNamedSue_21 (CZ1), Budski_23 (DN), CanesSauce_21 (CT), CaptainKirk2_21 (CV), CaramelLatte_21 (CT), CarolAnn_21 (CV), CheeseSpider_25 (CV), CheeseTouch_23 (DN1), ChocoMunchkin_21 (CT), Clown_45 (DC2), Delian_21 (CV), Emalyn_20 (CT), Eudoria_22 (CZ1), Eviarto_21 (CZ1), Fenry_20 (CV), Frokostdame_21 (CV), GTE2_19 (CT), Gambino_23 (CV), Getalong_24 (DN1), Guacamole_21 (CV), Herod_21 (CZ1), Hitter_21 (CV), Holliday_23 (DN1), Hugley_21 (CZ1), Jablanski_24 (CY3), Jalammah_23 (CV), JasperJr_21 (CV), JuJu_21 (CV), Kamaru_23 (DN1), KappaFarmDelta_22 (CV), Kenna_22 (DN1), Kita_22 (CZ1), Kuwabara_22 (DN4), Lutum_23 (DN1), Lysidious_22 (CV), Madavieve_21 (CZ1), Madeline_21 (CZ1), MakCheese_27 (DW), Malachai_22 (CV), Malibo_23 (DW), Malisha_24 (DN), Manasvini_22 (CZ1), Maridalia_21 (CZ1), Melba_21 (CV), Mellie_20 (CV), MintFen_21 (CV), MissRona_23 (CV), MortyNRick_22 (DN), Murp_22 (CV), Neobush_22 (CZ1), Nymphadora_21 (CZ1), Obliviate_20 (CV), Ohgeesy_21 (CZ), PCoral7_22 (CV), PantheRoc_21 (CZ3), Periwinkle_25 (DN1), PhrostedPhlake_23 (CV), Pipp_21 (CV), Posh_24 (CY4), Pytheas_24 (CY3), Ruthy_25 (DW), Samba_21 (CV), ShawBrad_23 (DN1), Sidious_21 (CZ7), Soilmate_21 (CV), Spooky_23 (DN2), Sprinklemunch_25 (DW), Squiddly_25 (DN2), SteamedHams_23 (CT), Suscepit_22 (CZ1), SushiChef_23 (CZ), Tayonia_22 (CZ1), ThankyouJordi_20 (CZ1), TimTam_21 (CZ1), Toast_22 (CV), Tolls_23 (CT), Trumpet_22 (CZ1), UmaThurman_21 (CV), Utz_21 (CV), Walrus_23 (CV), WelcomeAyanna_20 (CZ1), Whitney_24 (DN1), William_21 (CV), Wisp_20 (CV), Wrigley_24 (CY4), Yarn_20 (CT), Yeezy_22 (CZ3), Zameen_22 (CZ1), Zarbodnamra_21 (CV), ZiggyZoo_20 (CV), Zilla_21 (CV), Zirinka_21 (CZ1), Zodiariah_25 (DW),

Start 48:

- Found in 21 of 210 (10.0%) of genes in pham
- Manual Annotations of this start: 16 of 176
- Called 100.0% of time when present
- Phage (with cluster) where this start called: AksarBAT_42 (DR), AnarQue_44 (DR), Blackpen_44 (DR), CaiB_44 (DR), CloverMinnie_44 (DR), DearBasketball_24 (DY), DinoNuggs_22 (DY), DonkeyMan_21 (DY), FelixTres_44 (DR), Heinz_21 (DY), Hibiscus_21 (DY), Jojo24_21 (DY), MakoManhole_44 (DR), MossRose_44 (DR), NHagos_42 (DR), Reyja_22 (DY), Santhid_21 (DY), Tarzan_21 (DY), TraderJ_44 (DR), Wooper_44 (DR), Yeshua_44 (DR),

Summary by clusters:

There are 17 clusters represented in this pham: DN, CY3, CY1, DN4, CY4, CZ3, DC2, CZ1, CZ7, DN2, CZ, DN1, DY, DW, DR, CV, CT,

Info for manual annotations of cluster CT:

- Start number 43 was manually annotated 7 times for cluster CT.
- Start number 45 was manually annotated 4 times for cluster CT.
- Start number 46 was manually annotated 44 times for cluster CT.
- Start number 47 was manually annotated 8 times for cluster CT.

Info for manual annotations of cluster CV:

- Start number 47 was manually annotated 39 times for cluster CV.

Info for manual annotations of cluster CY1:

- Start number 47 was manually annotated 1 time for cluster CY1.

Info for manual annotations of cluster CY3:

- Start number 47 was manually annotated 2 times for cluster CY3.

Info for manual annotations of cluster CY4:

- Start number 47 was manually annotated 2 times for cluster CY4.

Info for manual annotations of cluster CZ:

- Start number 47 was manually annotated 1 time for cluster CZ.

Info for manual annotations of cluster CZ1:

- Start number 47 was manually annotated 24 times for cluster CZ1.

Info for manual annotations of cluster CZ3:

- Start number 47 was manually annotated 3 times for cluster CZ3.

Info for manual annotations of cluster CZ7:

- Start number 47 was manually annotated 1 time for cluster CZ7.

Info for manual annotations of cluster DC2:

- Start number 47 was manually annotated 1 time for cluster DC2.

Info for manual annotations of cluster DN:

- Start number 47 was manually annotated 6 times for cluster DN.

Info for manual annotations of cluster DN1:

- Start number 47 was manually annotated 10 times for cluster DN1.

Info for manual annotations of cluster DN2:

- Start number 47 was manually annotated 2 times for cluster DN2.

Info for manual annotations of cluster DN4:

- Start number 47 was manually annotated 1 time for cluster DN4.

Info for manual annotations of cluster DR:

- Start number 48 was manually annotated 9 times for cluster DR.

Info for manual annotations of cluster DW:

- Start number 47 was manually annotated 4 times for cluster DW.

Info for manual annotations of cluster DY:

•Start number 48 was manually annotated 7 times for cluster DY.

Gene Information:

Gene: Agatha_21 Start: 18406, Stop: 19365, Start Num: 46

Candidate Starts for Agatha_21:

(Start: 43 @18397 has 7 MA's), (44, 18400), (Start: 45 @18403 has 4 MA's), (Start: 46 @18406 has 44 MA's), (51, 18451), (55, 18517), (56, 18523), (66, 18634), (69, 18667), (72, 18679), (74, 18688), (78, 18745), (81, 18784), (93, 18883), (96, 18913), (101, 18973), (104, 19000), (111, 19051), (120, 19111), (121, 19114), (122, 19129), (124, 19138), (127, 19192), (138, 19285), (140, 19294), (154, 19348),

Gene: Agueybana_21 Start: 20174, Stop: 21085, Start Num: 47

Candidate Starts for Agueybana_21:

(2, 19433), (8, 19514), (10, 19523), (11, 19538), (13, 19610), (19, 19676), (22, 19754), (36, 20066), (Start: 47 @20174 has 105 MA's), (52, 20240), (57, 20297), (70, 20435), (72, 20441), (74, 20450), (80, 20543), (81, 20558), (87, 20615), (90, 20627), (100, 20702), (114, 20795), (117, 20813), (145, 21053),

Gene: AikoCarson_20 Start: 17729, Stop: 18682, Start Num: 47

Candidate Starts for AikoCarson_20:

(Start: 47 @17729 has 105 MA's), (60, 17873), (66, 17957), (72, 18002), (74, 18011), (77, 18056), (84, 18149), (89, 18176), (93, 18206), (96, 18236), (107, 18350), (111, 18374), (121, 18437), (122, 18452), (127, 18515), (138, 18614), (140, 18623),

Gene: AksarBAT_42 Start: 35139, Stop: 36161, Start Num: 48

Candidate Starts for AksarBAT_42:

(Start: 48 @35139 has 16 MA's), (50, 35181), (52, 35208), (56, 35256), (63, 35310), (66, 35367), (72, 35412), (74, 35421), (75, 35454), (78, 35478), (81, 35517), (82, 35538), (84, 35559), (92, 35607), (95, 35631), (96, 35643), (98, 35655), (102, 35709), (104, 35730), (105, 35736), (106, 35754), (110, 35781), (114, 35790), (129, 35955), (130, 35958), (148, 36069), (151, 36078),

Gene: AlumE_21 Start: 20173, Stop: 21084, Start Num: 47

Candidate Starts for AlumE_21:

(36, 20065), (Start: 47 @20173 has 105 MA's), (52, 20239), (57, 20296), (70, 20434), (72, 20440), (81, 20557), (90, 20626), (100, 20701), (114, 20794), (145, 21052),

Gene: Amok_20 Start: 17726, Stop: 18679, Start Num: 47

Candidate Starts for Amok_20:

(Start: 47 @17726 has 105 MA's), (60, 17870), (62, 17888), (66, 17954), (72, 17999), (74, 18008), (77, 18053), (84, 18146), (89, 18173), (93, 18203), (96, 18233), (107, 18347), (111, 18371), (121, 18434), (122, 18449), (127, 18512), (138, 18611), (140, 18620),

Gene: AnarQue_44 Start: 36551, Stop: 37570, Start Num: 48

Candidate Starts for AnarQue_44:

(Start: 48 @36551 has 16 MA's), (50, 36590), (56, 36665), (63, 36719), (66, 36776), (72, 36821), (75, 36863), (78, 36887), (81, 36926), (82, 36947), (84, 36968), (89, 36995), (95, 37040), (96, 37052), (98, 37064), (102, 37118), (104, 37139), (105, 37145), (106, 37163), (110, 37190), (114, 37199), (129, 37364), (130, 37367), (132, 37379), (148, 37478), (151, 37487), (156, 37523),

Gene: AndPeggy_20 Start: 18098, Stop: 19048, Start Num: 47

Candidate Starts for AndPeggy_20:

(Start: 47 @18098 has 105 MA's), (60, 18242), (62, 18260), (66, 18326), (69, 18359), (72, 18371), (74, 18380), (77, 18425), (81, 18476), (82, 18497), (84, 18518), (93, 18575), (96, 18605), (104, 18692), (107, 18719), (111, 18743), (121, 18806), (127, 18884), (130, 18899), (131, 18908), (137, 18953), (138, 18983), (140, 18992),

Gene: Angelique_23 Start: 20524, Stop: 21435, Start Num: 47

Candidate Starts for Angelique_23:

(36, 20413), (Start: 47 @20524 has 105 MA's), (51, 20566), (52, 20590), (67, 20752), (70, 20785), (72, 20791), (81, 20908), (90, 20977), (91, 20992), (100, 21052), (114, 21145), (116, 21157), (145, 21403),

Gene: Antonio_22 Start: 20294, Stop: 21205, Start Num: 47

Candidate Starts for Antonio_22:

(37, 20198), (Start: 47 @20294 has 105 MA's), (52, 20360), (59, 20429), (66, 20519), (70, 20555), (72, 20561), (74, 20570), (80, 20663), (81, 20678), (87, 20735), (90, 20747), (100, 20822), (114, 20915), (145, 21173),

Gene: ArchiDore_25 Start: 22305, Stop: 23216, Start Num: 47

Candidate Starts for ArchiDore_25:

(19, 21804), (36, 22194), (40, 22233), (Start: 47 @22305 has 105 MA's), (52, 22371), (66, 22530), (70, 22566), (72, 22572), (79, 22662), (81, 22689), (90, 22758), (100, 22833), (114, 22926), (145, 23184),

Gene: Archis_22 Start: 19231, Stop: 20142, Start Num: 47

Candidate Starts for Archis_22:

(Start: 47 @19231 has 105 MA's), (52, 19297), (66, 19456), (70, 19492), (72, 19498), (81, 19615), (90, 19684), (100, 19759), (114, 19852), (116, 19864), (145, 20110),

Gene: Asapag_23 Start: 19217, Stop: 20194, Start Num: 47

Candidate Starts for Asapag_23:

(33, 19061), (38, 19133), (39, 19136), (Start: 47 @19217 has 105 MA's), (49, 19238), (52, 19283), (53, 19313), (59, 19352), (63, 19385), (65, 19430), (66, 19442), (70, 19478), (72, 19484), (79, 19574), (81, 19601), (90, 19670), (114, 19841), (132, 20021), (137, 20066), (138, 20102), (139, 20108),

Gene: Axym_21 Start: 18403, Stop: 19365, Start Num: 45

Candidate Starts for Axym_21:

(Start: 43 @18397 has 7 MA's), (44, 18400), (Start: 45 @18403 has 4 MA's), (Start: 46 @18406 has 44 MA's), (51, 18451), (55, 18517), (56, 18523), (66, 18634), (69, 18667), (72, 18679), (74, 18688), (78, 18745), (81, 18784), (93, 18883), (96, 18913), (101, 18973), (104, 19000), (111, 19051), (120, 19111), (121, 19114), (122, 19129), (124, 19138), (127, 19192), (138, 19285), (140, 19294), (154, 19348),

Gene: Azira_23 Start: 19360, Stop: 20337, Start Num: 43

Candidate Starts for Azira_23:

(Start: 43 @19360 has 7 MA's), (Start: 45 @19366 has 4 MA's), (Start: 46 @19369 has 44 MA's), (49, 19387), (51, 19411), (60, 19510), (72, 19639), (73, 19642), (74, 19648), (78, 19705), (81, 19744), (82, 19765), (93, 19843), (97, 19876), (98, 19885), (112, 20014), (115, 20023), (118, 20044), (122, 20092), (127, 20155), (130, 20170), (136, 20212),

Gene: Azula_23 Start: 19335, Stop: 20246, Start Num: 47

Candidate Starts for Azula_23:

(Start: 47 @19335 has 105 MA's), (52, 19401), (63, 19503), (66, 19560), (70, 19596), (72, 19602), (81, 19719), (90, 19788), (100, 19863), (114, 19956), (145, 20214),

Gene: BENtherdunthat_23 Start: 19217, Stop: 20194, Start Num: 47

Candidate Starts for BENtherdunthat_23:

(28, 18941), (33, 19061), (38, 19133), (39, 19136), (Start: 47 @19217 has 105 MA's), (49, 19238), (52, 19283), (53, 19313), (59, 19352), (63, 19385), (65, 19430), (66, 19442), (70, 19478), (72, 19484), (79, 19574), (81, 19601), (90, 19670), (114, 19841), (129, 20006), (132, 20021), (138, 20102), (139, 20108),

Gene: Balloona_20 Start: 18083, Stop: 19057, Start Num: 43

Candidate Starts for Balloona_20:

(Start: 43 @18083 has 7 MA's), (Start: 45 @18089 has 4 MA's), (Start: 46 @18092 has 44 MA's), (53, 18191), (64, 18257), (71, 18353), (72, 18356), (88, 18539), (93, 18572), (103, 18674), (106, 18713), (108, 18722), (112, 18740), (118, 18770), (119, 18791), (127, 18881), (128, 18884), (140, 18983), (147, 19007), (149, 19010),

Gene: Barco_21 Start: 19020, Stop: 19931, Start Num: 47

Candidate Starts for Barco_21:

(Start: 47 @19020 has 105 MA's), (52, 19086), (66, 19245), (70, 19281), (72, 19287), (81, 19404), (90, 19473), (100, 19548), (114, 19641), (116, 19653), (145, 19899),

Gene: BatStarr_21 Start: 20161, Stop: 21072, Start Num: 47

Candidate Starts for BatStarr_21:

(36, 20053), (Start: 47 @20161 has 105 MA's), (52, 20227), (57, 20284), (70, 20422), (72, 20428), (74, 20437), (80, 20530), (81, 20545), (87, 20602), (90, 20614), (100, 20689), (114, 20782), (145, 21040),

Gene: Bavilard_21 Start: 18871, Stop: 19842, Start Num: 45

Candidate Starts for Bavilard_21:

(Start: 43 @18865 has 7 MA's), (Start: 45 @18871 has 4 MA's), (Start: 46 @18874 has 44 MA's), (53, 18973), (64, 19039), (71, 19135), (72, 19138), (88, 19321), (93, 19354), (103, 19456), (106, 19495), (108, 19504), (112, 19522), (118, 19552), (119, 19573), (127, 19663), (128, 19666), (135, 19714), (140, 19765), (147, 19789), (149, 19792),

Gene: BaxterFox_20 Start: 19500, Stop: 20411, Start Num: 47

Candidate Starts for BaxterFox_20:

(8, 18840), (10, 18849), (11, 18864), (13, 18936), (19, 19002), (22, 19080), (36, 19392), (Start: 47 @19500 has 105 MA's), (52, 19566), (57, 19623), (70, 19761), (72, 19767), (74, 19776), (80, 19869), (81, 19884), (87, 19941), (90, 19953), (100, 20028), (114, 20121), (145, 20379),

Gene: BearBQ_22 Start: 20057, Stop: 21034, Start Num: 47

Candidate Starts for BearBQ_22:

(28, 19781), (33, 19901), (38, 19973), (39, 19976), (Start: 47 @20057 has 105 MA's), (49, 20078), (52, 20123), (53, 20153), (59, 20192), (63, 20225), (65, 20270), (66, 20282), (70, 20318), (72, 20324), (79, 20414), (81, 20441), (90, 20510), (114, 20681), (129, 20846), (132, 20861), (138, 20942), (139, 20948),

Gene: Begonia_22 Start: 19498, Stop: 20412, Start Num: 47

Candidate Starts for Begonia_22:

(Start: 47 @19498 has 105 MA's), (52, 19564), (66, 19723), (70, 19759), (72, 19765), (81, 19882), (90, 19951), (100, 20026), (114, 20119), (145, 20380),

Gene: Bialota_21 Start: 20173, Stop: 21084, Start Num: 47

Candidate Starts for Bialota_21:

(36, 20065), (Start: 47 @20173 has 105 MA's), (52, 20239), (57, 20296), (70, 20434), (72, 20440), (74, 20449), (80, 20542), (81, 20557), (87, 20614), (100, 20701), (114, 20794), (145, 21052),

Gene: BigChungus_20 Start: 18129, Stop: 19100, Start Num: 45

Candidate Starts for BigChungus_20:

(Start: 43 @18123 has 7 MA's), (Start: 45 @18129 has 4 MA's), (Start: 46 @18132 has 44 MA's), (53, 18231), (64, 18297), (71, 18393), (72, 18396), (88, 18579), (93, 18612), (103, 18714), (106, 18753), (108, 18762), (112, 18783), (119, 18834), (122, 18861), (127, 18924), (128, 18927), (140, 19026), (147, 19050), (149, 19053),

Gene: BillDoor_23 Start: 18066, Stop: 19016, Start Num: 47

Candidate Starts for BillDoor_23:

(Start: 47 @18066 has 105 MA's), (60, 18210), (62, 18228), (66, 18294), (69, 18327), (72, 18339), (74, 18348), (77, 18393), (81, 18444), (82, 18465), (84, 18486), (93, 18543), (96, 18573), (104, 18660), (111, 18711), (121, 18774), (127, 18852), (130, 18867), (131, 18876), (137, 18921), (138, 18951), (140, 18960),

Gene: Birdsong_22 Start: 18950, Stop: 19927, Start Num: 47

Candidate Starts for Birdsong_22:

(28, 18674), (33, 18794), (38, 18866), (39, 18869), (Start: 47 @18950 has 105 MA's), (49, 18971), (52, 19016), (53, 19046), (59, 19085), (63, 19118), (65, 19163), (66, 19175), (70, 19211), (72, 19217), (79, 19307), (81, 19334), (90, 19403), (114, 19574), (129, 19739), (132, 19754), (138, 19835), (139, 19841),

Gene: Biskit_22 Start: 18077, Stop: 19039, Start Num: 46

Candidate Starts for Biskit_22:

(Start: 46 @18077 has 44 MA's), (56, 18194), (60, 18221), (66, 18305), (72, 18350), (74, 18359), (77, 18404), (81, 18455), (93, 18554), (96, 18584), (112, 18725), (120, 18785), (121, 18788), (122, 18803), (127, 18866), (138, 18959), (140, 18968),

Gene: Blackpen_44 Start: 35969, Stop: 36988, Start Num: 48

Candidate Starts for Blackpen_44:

(4, 35252), (6, 35285), (7, 35288), (14, 35435), (17, 35459), (21, 35543), (25, 35594), (27, 35678), (41, 35915), (Start: 48 @35969 has 16 MA's), (50, 36008), (56, 36083), (63, 36137), (66, 36194), (72, 36239), (75, 36281), (78, 36305), (81, 36344), (82, 36365), (84, 36386), (89, 36413), (95, 36458), (96, 36470), (98, 36482), (102, 36536), (104, 36557), (105, 36563), (106, 36581), (110, 36608), (114, 36617), (129, 36782), (130, 36785), (132, 36797), (148, 36896), (151, 36905), (156, 36941),

Gene: BlingBling_21 Start: 19020, Stop: 19931, Start Num: 47

Candidate Starts for BlingBling_21:

(Start: 47 @19020 has 105 MA's), (52, 19086), (66, 19245), (70, 19281), (72, 19287), (81, 19404), (90, 19473), (100, 19548), (114, 19641), (116, 19653), (145, 19899),

Gene: Blino_21 Start: 18988, Stop: 19899, Start Num: 47

Candidate Starts for Blino_21:

(Start: 47 @18988 has 105 MA's), (52, 19054), (70, 19249), (72, 19255), (81, 19372), (90, 19441), (100, 19516), (114, 19609), (116, 19621), (145, 19867),

Gene: Blondies_22 Start: 18060, Stop: 19022, Start Num: 46

Candidate Starts for Blondies_22:

(Start: 46 @18060 has 44 MA's), (56, 18177), (60, 18204), (66, 18288), (72, 18333), (74, 18342), (77, 18387), (81, 18438), (93, 18537), (96, 18567), (112, 18708), (120, 18768), (121, 18771), (122, 18786), (127, 18849), (138, 18942), (140, 18951),

Gene: Blueberry_23 Start: 19335, Stop: 20246, Start Num: 47

Candidate Starts for Blueberry_23:

(Start: 47 @19335 has 105 MA's), (52, 19401), (63, 19503), (66, 19560), (70, 19596), (72, 19602), (81, 19719), (90, 19788), (100, 19863), (114, 19956), (145, 20214),

Gene: Bosnia_21 Start: 20161, Stop: 21072, Start Num: 47

Candidate Starts for Bosnia_21:

(36, 20053), (Start: 47 @20161 has 105 MA's), (52, 20227), (57, 20284), (70, 20422), (72, 20428), (74, 20437), (80, 20530), (81, 20545), (87, 20602), (90, 20614), (100, 20689), (114, 20782), (145, 21040),

Gene: BotCity_23 Start: 19215, Stop: 20192, Start Num: 47

Candidate Starts for BotCity_23:

(33, 19059), (38, 19131), (39, 19134), (Start: 47 @19215 has 105 MA's), (49, 19236), (52, 19281), (53, 19311), (59, 19350), (63, 19383), (65, 19428), (66, 19440), (70, 19476), (72, 19482), (79, 19572), (81, 19599), (90, 19668), (114, 19839), (132, 20019), (137, 20064), (138, 20100), (139, 20106),

Gene: BoyNamedSue_21 Start: 20173, Stop: 21084, Start Num: 47

Candidate Starts for BoyNamedSue_21:

(36, 20065), (Start: 47 @20173 has 105 MA's), (52, 20239), (57, 20296), (70, 20434), (72, 20440), (81, 20557), (90, 20626), (100, 20701), (114, 20794), (145, 21052),

Gene: Bubble_21 Start: 18406, Stop: 19365, Start Num: 46

Candidate Starts for Bubble_21:

(Start: 43 @18397 has 7 MA's), (44, 18400), (Start: 45 @18403 has 4 MA's), (Start: 46 @18406 has 44 MA's), (51, 18451), (55, 18517), (56, 18523), (66, 18634), (69, 18667), (72, 18679), (74, 18688), (78, 18745), (81, 18784), (93, 18883), (96, 18913), (101, 18973), (111, 19051), (120, 19111), (121, 19114), (122, 19129), (124, 19138), (127, 19192), (138, 19285), (140, 19294), (154, 19348),

Gene: Budski_23 Start: 19385, Stop: 20299, Start Num: 47

Candidate Starts for Budski_23:

(Start: 47 @19385 has 105 MA's), (52, 19451), (66, 19610), (70, 19646), (72, 19652), (79, 19742), (81, 19769), (90, 19838), (100, 19913), (114, 20006), (123, 20075), (145, 20267),

Gene: Burnsey_21 Start: 18407, Stop: 19366, Start Num: 46

Candidate Starts for Burnsey_21:

(Start: 43 @18398 has 7 MA's), (44, 18401), (Start: 45 @18404 has 4 MA's), (Start: 46 @18407 has 44 MA's), (51, 18452), (55, 18518), (56, 18524), (66, 18635), (69, 18668), (72, 18680), (74, 18689), (78, 18746), (81, 18785), (93, 18884), (96, 18914), (101, 18974), (104, 19001), (111, 19052), (120, 19112), (121, 19115), (122, 19130), (124, 19139), (127, 19193), (138, 19286), (140, 19295), (154, 19349),

Gene: Button_22 Start: 17436, Stop: 18404, Start Num: 46

Candidate Starts for Button_22:

(Start: 46 @17436 has 44 MA's), (51, 17478), (52, 17502), (53, 17532), (58, 17568), (60, 17577), (65, 17649), (68, 17679), (72, 17706), (85, 17874), (93, 17925), (113, 18096), (119, 18141), (121, 18153), (127, 18222), (143, 18342), (152, 18369),

Gene: Buttrmlkdreams_21 Start: 18059, Stop: 19021, Start Num: 46

Candidate Starts for Buttrmlkdreams_21:

(Start: 46 @18059 has 44 MA's), (56, 18176), (60, 18203), (66, 18287), (72, 18332), (74, 18341), (77, 18386), (81, 18437), (93, 18536), (96, 18566), (112, 18707), (120, 18767), (121, 18770), (122, 18785), (127, 18848), (138, 18941), (140, 18950),

Gene: CaiB_44 Start: 36537, Stop: 37556, Start Num: 48

Candidate Starts for CaiB_44:

(4, 35820), (5, 35847), (6, 35853), (7, 35856), (14, 36003), (17, 36027), (21, 36111), (25, 36162), (27, 36246), (41, 36483), (Start: 48 @36537 has 16 MA's), (50, 36576), (56, 36651), (63, 36705), (66, 36762), (72, 36807), (75, 36849), (78, 36873), (81, 36912), (82, 36933), (84, 36954), (89, 36981), (95, 37026), (96, 37038), (98, 37050), (102, 37104), (104, 37125), (105, 37131), (106, 37149), (110, 37176), (114, 37185), (129, 37350), (130, 37353), (132, 37365), (148, 37464), (151, 37473), (156, 37509),

Gene: CanesSauce_21 Start: 18099, Stop: 19049, Start Num: 47

Candidate Starts for CanesSauce_21:

(Start: 47 @18099 has 105 MA's), (60, 18243), (62, 18261), (66, 18327), (69, 18360), (72, 18372), (74, 18381), (77, 18426), (81, 18477), (82, 18498), (84, 18519), (93, 18576), (96, 18606), (104, 18693), (111, 18744), (121, 18807), (127, 18885), (130, 18900), (131, 18909), (137, 18954), (138, 18984), (140, 18993),

Gene: CaptainKirk2_21 Start: 19041, Stop: 19952, Start Num: 47

Candidate Starts for CaptainKirk2_21:

(Start: 47 @19041 has 105 MA's), (52, 19107), (66, 19266), (70, 19302), (72, 19308), (81, 19425), (90, 19494), (100, 19569), (114, 19662), (145, 19920),

Gene: CaramellLatte_21 Start: 18099, Stop: 19049, Start Num: 47

Candidate Starts for CaramellLatte_21:

(Start: 47 @18099 has 105 MA's), (60, 18243), (62, 18261), (66, 18327), (69, 18360), (72, 18372), (74, 18381), (77, 18426), (81, 18477), (82, 18498), (84, 18519), (93, 18576), (96, 18606), (104, 18693), (111, 18744), (121, 18807), (127, 18885), (130, 18900), (131, 18909), (137, 18954), (138, 18984), (140, 18993),

Gene: CarolAnn_21 Start: 18987, Stop: 19898, Start Num: 47

Candidate Starts for CarolAnn_21:

(Start: 47 @18987 has 105 MA's), (52, 19053), (70, 19248), (72, 19254), (81, 19371), (90, 19440), (100, 19515), (114, 19608), (116, 19620), (145, 19866),

Gene: Carsonalex_22 Start: 18455, Stop: 19423, Start Num: 43

Candidate Starts for Carsonalex_22:

(Start: 43 @18455 has 7 MA's), (44, 18458), (Start: 45 @18461 has 4 MA's), (Start: 46 @18464 has 44 MA's), (51, 18509), (55, 18575), (56, 18581), (66, 18692), (69, 18725), (72, 18737), (74, 18746), (78, 18803), (81, 18842), (93, 18941), (96, 18971), (101, 19031), (104, 19058), (111, 19109), (120, 19169), (121, 19172), (122, 19187), (124, 19196), (127, 19250), (138, 19343), (140, 19352), (154, 19406),

Gene: CheeseSpider_25 Start: 19586, Stop: 20497, Start Num: 47

Candidate Starts for CheeseSpider_25:

(Start: 47 @19586 has 105 MA's), (50, 19625), (52, 19652), (66, 19811), (70, 19847), (72, 19853), (79, 19943), (81, 19970), (100, 20114), (114, 20207), (145, 20465),

Gene: CheeseTouch_23 Start: 19211, Stop: 20188, Start Num: 47

Candidate Starts for CheeseTouch_23:

(33, 19055), (Start: 47 @19211 has 105 MA's), (49, 19232), (52, 19277), (53, 19307), (59, 19346), (63, 19379), (66, 19436), (70, 19472), (72, 19478), (79, 19568), (81, 19595), (90, 19664), (114, 19835), (132, 20015), (137, 20060), (138, 20096), (139, 20102),

Gene: CherryonLim_22 Start: 18832, Stop: 19809, Start Num: 43

Candidate Starts for CherryonLim_22:

(Start: 43 @18832 has 7 MA's), (Start: 45 @18838 has 4 MA's), (Start: 46 @18841 has 44 MA's), (53, 18940), (61, 18985), (64, 19006), (66, 19060), (71, 19102), (72, 19105), (88, 19288), (93, 19321), (103,

19423), (106, 19462), (108, 19471), (112, 19492), (119, 19543), (122, 19570), (127, 19633), (128, 19636), (140, 19735), (147, 19759), (149, 19762),

Gene: ChickenTender_23 Start: 18462, Stop: 19430, Start Num: 43

Candidate Starts for ChickenTender_23:

(Start: 43 @18462 has 7 MA's), (44, 18465), (Start: 45 @18468 has 4 MA's), (Start: 46 @18471 has 44 MA's), (51, 18516), (55, 18582), (56, 18588), (66, 18699), (69, 18732), (72, 18744), (74, 18753), (78, 18810), (81, 18849), (93, 18948), (96, 18978), (101, 19038), (104, 19065), (111, 19116), (120, 19176), (121, 19179), (122, 19194), (124, 19203), (127, 19257), (138, 19350), (140, 19359), (154, 19413),

Gene: ChocoMunchkin_21 Start: 18099, Stop: 19049, Start Num: 47

Candidate Starts for ChocoMunchkin_21:

(Start: 47 @18099 has 105 MA's), (60, 18243), (62, 18261), (66, 18327), (69, 18360), (72, 18372), (74, 18381), (77, 18426), (81, 18477), (82, 18498), (84, 18519), (93, 18576), (96, 18606), (104, 18693), (111, 18744), (121, 18807), (127, 18885), (130, 18900), (131, 18909), (137, 18954), (138, 18984), (140, 18993),

Gene: Cleo_21 Start: 18673, Stop: 19674, Start Num: 43

Candidate Starts for Cleo_21:

(Start: 43 @18673 has 7 MA's), (Start: 46 @18682 has 44 MA's), (49, 18703), (51, 18727), (60, 18826), (72, 18955), (73, 18958), (77, 19009), (78, 19021), (81, 19060), (82, 19081), (93, 19159), (112, 19330), (115, 19339), (118, 19360), (122, 19408), (127, 19471), (130, 19486), (136, 19528), (139, 19570),

Gene: CloverMinnie_44 Start: 36477, Stop: 37496, Start Num: 48

Candidate Starts for CloverMinnie_44:

(27, 36186), (41, 36423), (Start: 48 @36477 has 16 MA's), (50, 36516), (56, 36591), (63, 36645), (66, 36702), (72, 36747), (75, 36789), (78, 36813), (81, 36852), (82, 36873), (84, 36894), (89, 36921), (95, 36966), (96, 36978), (98, 36990), (102, 37044), (104, 37065), (105, 37071), (106, 37089), (110, 37116), (114, 37125), (129, 37290), (130, 37293), (132, 37305), (148, 37404), (151, 37413), (156, 37449),

Gene: Clown_45 Start: 36252, Stop: 37166, Start Num: 47

Candidate Starts for Clown_45:

(36, 36141), (Start: 47 @36252 has 105 MA's), (52, 36318), (53, 36348), (62, 36411), (70, 36513), (72, 36519), (76, 36582), (79, 36609), (80, 36621), (81, 36636), (89, 36702), (100, 36780), (114, 36873), (123, 36942), (145, 37134),

Gene: CocoaPuff_20 Start: 18077, Stop: 19054, Start Num: 43

Candidate Starts for CocoaPuff_20:

(Start: 43 @18077 has 7 MA's), (Start: 45 @18083 has 4 MA's), (Start: 46 @18086 has 44 MA's), (53, 18185), (64, 18251), (71, 18347), (72, 18350), (79, 18440), (88, 18533), (93, 18566), (103, 18668), (106, 18707), (108, 18716), (112, 18734), (118, 18764), (119, 18785), (122, 18812), (127, 18875), (128, 18878), (140, 18977), (147, 19001), (149, 19004),

Gene: Cozz_21 Start: 18404, Stop: 19366, Start Num: 45

Candidate Starts for Cozz_21:

(Start: 43 @18398 has 7 MA's), (44, 18401), (Start: 45 @18404 has 4 MA's), (Start: 46 @18407 has 44 MA's), (51, 18452), (55, 18518), (56, 18524), (66, 18635), (69, 18668), (72, 18680), (74, 18689), (78, 18746), (81, 18785), (93, 18884), (96, 18914), (101, 18974), (104, 19001), (111, 19052), (120, 19112), (121, 19115), (122, 19130), (124, 19139), (127, 19193), (138, 19286), (140, 19295), (154, 19349),

Gene: DearBasketball_24 Start: 17807, Stop: 18817, Start Num: 48

Candidate Starts for DearBasketball_24:

(25, 17426), (26, 17432), (27, 17510), (Start: 48 @17807 has 16 MA's), (52, 17873), (60, 17948), (72, 18077), (87, 18242), (95, 18296), (96, 18308), (98, 18320), (109, 18443), (122, 18542), (125, 18569), (127, 18626), (131, 18650), (132, 18653), (146, 18752), (150, 18761),

Gene: Delian_21 Start: 19041, Stop: 19952, Start Num: 47

Candidate Starts for Delian_21:

(Start: 47 @19041 has 105 MA's), (52, 19107), (66, 19266), (70, 19302), (72, 19308), (81, 19425), (90, 19494), (100, 19569), (114, 19662), (145, 19920),

Gene: DinoNuggs_22 Start: 17773, Stop: 18783, Start Num: 48

Candidate Starts for DinoNuggs_22:

(25, 17392), (26, 17398), (27, 17476), (Start: 48 @17773 has 16 MA's), (52, 17839), (60, 17914), (72, 18043), (87, 18208), (95, 18262), (96, 18274), (98, 18286), (109, 18409), (122, 18508), (125, 18535), (127, 18592), (131, 18616), (132, 18619), (146, 18718), (150, 18727),

Gene: DonkeyMan_21 Start: 17562, Stop: 18572, Start Num: 48

Candidate Starts for DonkeyMan_21:

(Start: 48 @17562 has 16 MA's), (52, 17628), (60, 17703), (72, 17832), (87, 17997), (94, 18039), (95, 18051), (96, 18063), (98, 18075), (109, 18198), (122, 18297), (125, 18324), (127, 18381), (131, 18405), (132, 18408), (146, 18507), (150, 18516),

Gene: Dre3_21 Start: 18629, Stop: 19600, Start Num: 46

Candidate Starts for Dre3_21:

(Start: 43 @18620 has 7 MA's), (Start: 46 @18629 has 44 MA's), (49, 18650), (51, 18674), (60, 18773), (72, 18902), (73, 18905), (77, 18956), (78, 18968), (81, 19007), (82, 19028), (93, 19106), (112, 19277), (115, 19286), (118, 19307), (122, 19355), (127, 19418), (130, 19433), (136, 19475),

Gene: ElJefes_20 Start: 18564, Stop: 19532, Start Num: 46

Candidate Starts for ElJefes_20:

(Start: 43 @18555 has 7 MA's), (Start: 45 @18561 has 4 MA's), (Start: 46 @18564 has 44 MA's), (53, 18663), (61, 18708), (64, 18729), (71, 18825), (72, 18828), (88, 19011), (93, 19044), (103, 19146), (106, 19185), (108, 19194), (112, 19215), (119, 19266), (122, 19293), (127, 19356), (128, 19359), (147, 19482), (149, 19485),

Gene: Elinal_22 Start: 18085, Stop: 19053, Start Num: 46

Candidate Starts for Elinal_22:

(Start: 43 @18076 has 7 MA's), (Start: 45 @18082 has 4 MA's), (Start: 46 @18085 has 44 MA's), (53, 18184), (64, 18250), (71, 18346), (72, 18349), (88, 18532), (93, 18565), (103, 18667), (106, 18706), (108, 18715), (112, 18733), (118, 18763), (119, 18784), (127, 18874), (128, 18877), (140, 18976), (147, 19000), (149, 19003),

Gene: Elliott_21 Start: 18397, Stop: 19365, Start Num: 43

Candidate Starts for Elliott_21:

(Start: 43 @18397 has 7 MA's), (44, 18400), (Start: 45 @18403 has 4 MA's), (Start: 46 @18406 has 44 MA's), (51, 18451), (55, 18517), (56, 18523), (66, 18634), (69, 18667), (72, 18679), (74, 18688), (78, 18745), (81, 18784), (93, 18883), (96, 18913), (101, 18973), (104, 19000), (111, 19051), (120, 19111), (121, 19114), (122, 19129), (124, 19138), (127, 19192), (138, 19285), (140, 19294), (154, 19348),

Gene: Emalyn_20 Start: 17725, Stop: 18675, Start Num: 47

Candidate Starts for Emalyn_20:

(Start: 47 @17725 has 105 MA's), (60, 17869), (66, 17953), (72, 17998), (74, 18007), (77, 18052), (84, 18145), (89, 18172), (93, 18202), (96, 18232), (107, 18346), (111, 18370), (121, 18433), (122, 18448), (127, 18511), (130, 18526), (131, 18535), (137, 18580), (138, 18610),

Gene: Eudoria_22 Start: 20294, Stop: 21205, Start Num: 47

Candidate Starts for Eudoria_22:

(37, 20198), (Start: 47 @20294 has 105 MA's), (52, 20360), (59, 20429), (66, 20519), (70, 20555), (72, 20561), (74, 20570), (80, 20663), (81, 20678), (87, 20735), (90, 20747), (100, 20822), (114, 20915), (145, 21173),

Gene: Eviarto_21 Start: 20161, Stop: 21072, Start Num: 47

Candidate Starts for Eviarto_21:

(36, 20053), (Start: 47 @20161 has 105 MA's), (52, 20227), (57, 20284), (70, 20422), (72, 20428), (74, 20437), (80, 20530), (81, 20545), (87, 20602), (90, 20614), (100, 20689), (114, 20782), (145, 21040),

Gene: Feastonyeet_20 Start: 18129, Stop: 19100, Start Num: 45

Candidate Starts for Feastonyeet_20:

(Start: 43 @18123 has 7 MA's), (Start: 45 @18129 has 4 MA's), (Start: 46 @18132 has 44 MA's), (53, 18231), (64, 18297), (71, 18393), (72, 18396), (88, 18579), (93, 18612), (103, 18714), (106, 18753), (108, 18762), (112, 18783), (119, 18834), (122, 18861), (127, 18924), (128, 18927), (140, 19026), (147, 19050), (149, 19053),

Gene: FelixTres_44 Start: 36540, Stop: 37559, Start Num: 48

Candidate Starts for FelixTres_44:

(27, 36249), (41, 36486), (Start: 48 @36540 has 16 MA's), (50, 36579), (56, 36654), (63, 36708), (66, 36765), (72, 36810), (75, 36852), (78, 36876), (81, 36915), (82, 36936), (84, 36957), (89, 36984), (95, 37029), (96, 37041), (98, 37053), (102, 37107), (104, 37128), (105, 37134), (106, 37152), (110, 37179), (114, 37188), (129, 37353), (130, 37356), (132, 37368), (148, 37467), (151, 37476), (156, 37512),

Gene: Fenry_20 Start: 18739, Stop: 19650, Start Num: 47

Candidate Starts for Fenry_20:

(Start: 47 @18739 has 105 MA's), (52, 18805), (70, 19000), (72, 19006), (81, 19123), (90, 19192), (100, 19267), (114, 19360), (145, 19618),

Gene: Fribs8_22 Start: 19213, Stop: 20184, Start Num: 46

Candidate Starts for Fribs8_22:

(Start: 43 @19204 has 7 MA's), (Start: 46 @19213 has 44 MA's), (60, 19354), (72, 19483), (73, 19486), (74, 19492), (78, 19549), (81, 19588), (82, 19609), (84, 19630), (93, 19687), (97, 19720), (112, 19858), (115, 19867), (118, 19888), (122, 19936), (127, 19999), (130, 20014), (136, 20056), (141, 20107),

Gene: Frokostdame_21 Start: 18989, Stop: 19900, Start Num: 47

Candidate Starts for Frokostdame_21:

(Start: 47 @18989 has 105 MA's), (52, 19055), (66, 19214), (70, 19250), (72, 19256), (81, 19373), (90, 19442), (100, 19517), (114, 19610), (145, 19868),

Gene: GTE2_19 Start: 17772, Stop: 18722, Start Num: 47

Candidate Starts for GTE2_19:

(Start: 47 @17772 has 105 MA's), (60, 17916), (62, 17934), (66, 18000), (72, 18045), (74, 18054), (77, 18099), (81, 18150), (84, 18192), (93, 18249), (96, 18279), (104, 18366), (111, 18417), (121, 18480), (127, 18558), (130, 18573), (131, 18582), (137, 18627), (138, 18657), (140, 18666),

Gene: Gambino_23 Start: 19335, Stop: 20246, Start Num: 47

Candidate Starts for Gambino_23:

(Start: 47 @19335 has 105 MA's), (52, 19401), (63, 19503), (66, 19560), (70, 19596), (72, 19602), (81, 19719), (90, 19788), (100, 19863), (114, 19956), (145, 20214),

Gene: Getalong_24 Start: 20017, Stop: 20994, Start Num: 47

Candidate Starts for Getalong_24:

(33, 19861), (38, 19933), (39, 19936), (Start: 47 @20017 has 105 MA's), (49, 20038), (52, 20083), (53, 20113), (59, 20152), (63, 20185), (65, 20230), (66, 20242), (70, 20278), (72, 20284), (79, 20374), (81, 20401), (90, 20470), (114, 20641), (129, 20806), (132, 20821), (138, 20902), (139, 20908),

Gene: GiKK_24 Start: 17739, Stop: 18707, Start Num: 46

Candidate Starts for GiKK_24:

(Start: 46 @17739 has 44 MA's), (51, 17781), (52, 17805), (53, 17835), (58, 17871), (60, 17880), (66, 17964), (68, 17982), (70, 18003), (72, 18009), (85, 18177), (113, 18399), (119, 18444), (121, 18456), (127, 18525), (140, 18633), (143, 18645), (153, 18675),

Gene: Gibbous_21 Start: 18629, Stop: 19600, Start Num: 46

Candidate Starts for Gibbous_21:

(Start: 43 @18620 has 7 MA's), (Start: 46 @18629 has 44 MA's), (49, 18650), (51, 18674), (60, 18773), (72, 18902), (73, 18905), (77, 18956), (78, 18968), (81, 19007), (82, 19028), (93, 19106), (112, 19277), (115, 19286), (118, 19307), (122, 19355), (127, 19418), (130, 19433), (136, 19475),

Gene: GoldHunter_22 Start: 18398, Stop: 19366, Start Num: 43

Candidate Starts for GoldHunter_22:

(Start: 43 @18398 has 7 MA's), (44, 18401), (Start: 45 @18404 has 4 MA's), (Start: 46 @18407 has 44 MA's), (51, 18452), (55, 18518), (56, 18524), (66, 18635), (69, 18668), (72, 18680), (74, 18689), (78, 18746), (81, 18785), (93, 18884), (96, 18914), (101, 18974), (104, 19001), (111, 19052), (120, 19112), (121, 19115), (122, 19130), (124, 19139), (127, 19193), (138, 19286), (140, 19295), (154, 19349),

Gene: Guacamole_21 Start: 19024, Stop: 19935, Start Num: 47

Candidate Starts for Guacamole_21:

(Start: 47 @19024 has 105 MA's), (52, 19090), (66, 19249), (70, 19285), (72, 19291), (81, 19408), (90, 19477), (100, 19552), (114, 19645), (116, 19657), (145, 19903),

Gene: Heinz_21 Start: 17654, Stop: 18664, Start Num: 48

Candidate Starts for Heinz_21:

(15, 17117), (16, 17126), (18, 17141), (20, 17213), (26, 17279), (27, 17357), (Start: 48 @17654 has 16 MA's), (52, 17720), (60, 17795), (72, 17924), (87, 18089), (95, 18143), (96, 18155), (98, 18167), (105, 18248), (109, 18290), (122, 18389), (125, 18416), (127, 18473), (132, 18500), (133, 18509), (142, 18590), (144, 18596), (146, 18599), (150, 18608),

Gene: Herod_21 Start: 20161, Stop: 21072, Start Num: 47

Candidate Starts for Herod_21:

(36, 20053), (Start: 47 @20161 has 105 MA's), (52, 20227), (57, 20284), (70, 20422), (72, 20428), (74, 20437), (80, 20530), (81, 20545), (87, 20602), (90, 20614), (100, 20689), (114, 20782), (145, 21040),

Gene: Hexbug_23 Start: 18431, Stop: 19402, Start Num: 46

Candidate Starts for Hexbug_23:

(12, 17843), (18, 17921), (27, 18137), (Start: 46 @18431 has 44 MA's), (51, 18476), (60, 18575), (65, 18647), (70, 18698), (72, 18704), (82, 18845), (85, 18872), (113, 19094), (119, 19139), (127, 19220), (132, 19247), (134, 19265),

Gene: Hibiscus_21 Start: 17602, Stop: 18612, Start Num: 48

Candidate Starts for Hibiscus_21:

(15, 17065), (16, 17074), (18, 17089), (20, 17161), (26, 17227), (27, 17305), (Start: 48 @17602 has 16 MA's), (52, 17668), (60, 17743), (72, 17872), (87, 18037), (95, 18091), (96, 18103), (98, 18115), (105,

18196), (109, 18238), (122, 18337), (125, 18364), (127, 18421), (132, 18448), (133, 18457), (142, 18538), (144, 18544), (146, 18547), (150, 18556),

Gene: HippoPololi_23 Start: 19281, Stop: 20252, Start Num: 46

Candidate Starts for HippoPololi_23:

(Start: 43 @19272 has 7 MA's), (Start: 46 @19281 has 44 MA's), (51, 19326), (54, 19389), (60, 19425), (72, 19554), (73, 19557), (78, 19620), (81, 19659), (82, 19680), (93, 19758), (98, 19800), (112, 19929), (115, 19938), (118, 19959), (119, 19980), (122, 20007), (127, 20070), (130, 20085), (136, 20127),

Gene: Hitter_21 Start: 19020, Stop: 19931, Start Num: 47

Candidate Starts for Hitter_21:

(Start: 47 @19020 has 105 MA's), (52, 19086), (66, 19245), (70, 19281), (72, 19287), (81, 19404), (90, 19473), (100, 19548), (114, 19641), (145, 19899),

Gene: Holliday_23 Start: 19385, Stop: 20299, Start Num: 47

Candidate Starts for Holliday_23:

(Start: 47 @19385 has 105 MA's), (52, 19451), (66, 19610), (70, 19646), (72, 19652), (79, 19742), (81, 19769), (90, 19838), (100, 19913), (114, 20006), (123, 20075), (145, 20267),

Gene: Horseradish_22 Start: 17973, Stop: 18935, Start Num: 46

Candidate Starts for Horseradish_22:

(Start: 46 @17973 has 44 MA's), (56, 18090), (60, 18117), (66, 18201), (72, 18246), (74, 18255), (77, 18300), (81, 18351), (93, 18450), (96, 18480), (112, 18621), (120, 18681), (121, 18684), (122, 18699), (127, 18762), (138, 18855), (140, 18864),

Gene: Hugley_21 Start: 20161, Stop: 21072, Start Num: 47

Candidate Starts for Hugley_21:

(36, 20053), (Start: 47 @20161 has 105 MA's), (52, 20227), (57, 20284), (70, 20422), (72, 20428), (74, 20437), (80, 20530), (81, 20545), (87, 20602), (90, 20614), (100, 20689), (114, 20782), (145, 21040),

Gene: Jablanski_24 Start: 20700, Stop: 21611, Start Num: 47

Candidate Starts for Jablanski_24:

(Start: 47 @20700 has 105 MA's), (52, 20766), (66, 20925), (67, 20928), (70, 20961), (72, 20967), (81, 21084), (90, 21153), (100, 21228), (114, 21321), (145, 21579),

Gene: Jalamah_23 Start: 19814, Stop: 20725, Start Num: 47

Candidate Starts for Jalamah_23:

(Start: 47 @19814 has 105 MA's), (52, 19880), (66, 20039), (70, 20075), (72, 20081), (81, 20198), (90, 20267), (100, 20342), (114, 20435), (145, 20693),

Gene: Jamzy_24 Start: 17749, Stop: 18717, Start Num: 46

Candidate Starts for Jamzy_24:

(Start: 46 @17749 has 44 MA's), (51, 17791), (52, 17815), (53, 17845), (58, 17881), (60, 17890), (72, 18019), (85, 18187), (93, 18238), (113, 18409), (119, 18454), (121, 18466), (127, 18535), (143, 18655), (152, 18682),

Gene: JasperJr_21 Start: 19024, Stop: 19935, Start Num: 47

Candidate Starts for JasperJr_21:

(Start: 47 @19024 has 105 MA's), (52, 19090), (66, 19249), (70, 19285), (72, 19291), (81, 19408), (90, 19477), (100, 19552), (114, 19645), (116, 19657), (145, 19903),

Gene: Jojo24_21 Start: 17599, Stop: 18609, Start Num: 48

Candidate Starts for Jojo24_21:

(Start: 48 @17599 has 16 MA's), (52, 17665), (60, 17740), (72, 17869), (87, 18034), (95, 18088), (96, 18100), (98, 18112), (105, 18193), (109, 18235), (122, 18334), (125, 18361), (127, 18418), (132, 18445), (142, 18535), (146, 18544), (150, 18553),

Gene: JuJu_21 Start: 18942, Stop: 19853, Start Num: 47

Candidate Starts for JuJu_21:

(8, 18282), (10, 18291), (11, 18306), (13, 18378), (19, 18444), (36, 18834), (40, 18873), (Start: 47 @18942 has 105 MA's), (52, 19008), (66, 19167), (67, 19170), (70, 19203), (72, 19209), (79, 19299), (81, 19326), (90, 19395), (100, 19470), (114, 19563), (145, 19821),

Gene: Kamaru_23 Start: 19385, Stop: 20299, Start Num: 47

Candidate Starts for Kamaru_23:

(Start: 47 @19385 has 105 MA's), (52, 19451), (66, 19610), (70, 19646), (72, 19652), (79, 19742), (81, 19769), (90, 19838), (100, 19913), (114, 20006), (123, 20075), (145, 20267),

Gene: KappaFarmDelta_22 Start: 19388, Stop: 20299, Start Num: 47

Candidate Starts for KappaFarmDelta_22:

(Start: 47 @19388 has 105 MA's), (50, 19427), (51, 19430), (52, 19454), (66, 19613), (70, 19649), (72, 19655), (79, 19745), (81, 19772), (100, 19916), (114, 20009), (123, 20075), (145, 20267),

Gene: KayGee_21 Start: 18085, Stop: 19053, Start Num: 46

Candidate Starts for KayGee_21:

(Start: 43 @18076 has 7 MA's), (Start: 45 @18082 has 4 MA's), (Start: 46 @18085 has 44 MA's), (53, 18184), (64, 18250), (71, 18346), (72, 18349), (88, 18532), (93, 18565), (103, 18667), (106, 18706), (108, 18715), (112, 18733), (118, 18763), (119, 18784), (127, 18874), (128, 18877), (140, 18976), (147, 19000), (149, 19003),

Gene: Kenna_22 Start: 19218, Stop: 20195, Start Num: 47

Candidate Starts for Kenna_22:

(33, 19062), (Start: 47 @19218 has 105 MA's), (49, 19239), (52, 19284), (53, 19314), (59, 19353), (63, 19386), (66, 19443), (70, 19479), (72, 19485), (79, 19575), (81, 19602), (90, 19671), (114, 19842), (132, 20022), (137, 20067), (138, 20103), (139, 20109),

Gene: Kita_22 Start: 20294, Stop: 21205, Start Num: 47

Candidate Starts for Kita_22:

(37, 20198), (Start: 47 @20294 has 105 MA's), (52, 20360), (59, 20429), (66, 20519), (70, 20555), (72, 20561), (74, 20570), (80, 20663), (81, 20678), (87, 20735), (90, 20747), (100, 20822), (114, 20915), (145, 21173),

Gene: Kuwabara_22 Start: 18644, Stop: 19621, Start Num: 47

Candidate Starts for Kuwabara_22:

(28, 18368), (33, 18488), (38, 18560), (39, 18563), (Start: 47 @18644 has 105 MA's), (49, 18665), (52, 18710), (53, 18740), (59, 18779), (63, 18812), (65, 18857), (66, 18869), (70, 18905), (72, 18911), (79, 19001), (81, 19028), (90, 19097), (114, 19268), (129, 19433), (132, 19448), (138, 19529), (139, 19535),

Gene: Lauer_20 Start: 18125, Stop: 19102, Start Num: 43

Candidate Starts for Lauer_20:

(Start: 43 @18125 has 7 MA's), (Start: 45 @18131 has 4 MA's), (Start: 46 @18134 has 44 MA's), (53, 18233), (64, 18299), (68, 18371), (71, 18395), (72, 18398), (88, 18581), (93, 18614), (103, 18716), (106, 18755), (108, 18764), (112, 18782), (118, 18812), (119, 18833), (127, 18923), (128, 18926), (135, 18974), (140, 19025), (147, 19049), (149, 19052),

Gene: Lutum_23 Start: 19218, Stop: 20195, Start Num: 47

Candidate Starts for Lutum_23:

(33, 19062), (Start: 47 @19218 has 105 MA's), (49, 19239), (52, 19284), (53, 19314), (59, 19353), (63, 19386), (66, 19443), (70, 19479), (72, 19485), (79, 19575), (81, 19602), (90, 19671), (114, 19842), (132, 20022), (137, 20067), (138, 20103), (139, 20109),

Gene: Lysidious_22 Start: 19544, Stop: 20455, Start Num: 47

Candidate Starts for Lysidious_22:

(Start: 47 @19544 has 105 MA's), (52, 19610), (66, 19769), (70, 19805), (72, 19811), (81, 19928), (90, 19997), (100, 20072), (114, 20165), (145, 20423),

Gene: MAnor_21 Start: 18096, Stop: 19067, Start Num: 46

Candidate Starts for MAnor_21:

(Start: 43 @18087 has 7 MA's), (Start: 45 @18093 has 4 MA's), (Start: 46 @18096 has 44 MA's), (53, 18195), (64, 18261), (66, 18315), (71, 18357), (72, 18360), (88, 18543), (93, 18576), (103, 18678), (106, 18717), (108, 18726), (112, 18750), (118, 18780), (119, 18801), (127, 18891), (128, 18894), (140, 18993),

Gene: MScarn_23 Start: 18062, Stop: 19024, Start Num: 46

Candidate Starts for MScarn_23:

(Start: 46 @18062 has 44 MA's), (56, 18179), (60, 18206), (66, 18290), (72, 18335), (74, 18344), (77, 18389), (81, 18440), (93, 18539), (96, 18569), (112, 18710), (120, 18770), (121, 18773), (122, 18788), (127, 18851), (138, 18944), (140, 18953),

Gene: MaVan_23 Start: 19369, Stop: 20337, Start Num: 46

Candidate Starts for MaVan_23:

(Start: 43 @19360 has 7 MA's), (Start: 45 @19366 has 4 MA's), (Start: 46 @19369 has 44 MA's), (49, 19387), (51, 19411), (60, 19510), (72, 19639), (73, 19642), (74, 19648), (78, 19705), (81, 19744), (82, 19765), (93, 19843), (97, 19876), (98, 19885), (112, 20014), (115, 20023), (118, 20044), (122, 20092), (127, 20155), (130, 20170), (136, 20212),

Gene: Madavieve_21 Start: 20441, Stop: 21352, Start Num: 47

Candidate Starts for Madavieve_21:

(36, 20333), (Start: 47 @20441 has 105 MA's), (52, 20507), (57, 20564), (70, 20702), (72, 20708), (74, 20717), (80, 20810), (81, 20825), (87, 20882), (90, 20894), (100, 20969), (114, 21062), (145, 21320),

Gene: Madeline_21 Start: 20459, Stop: 21370, Start Num: 47

Candidate Starts for Madeline_21:

(36, 20351), (Start: 47 @20459 has 105 MA's), (52, 20525), (57, 20582), (70, 20720), (72, 20726), (74, 20735), (80, 20828), (81, 20843), (87, 20900), (90, 20912), (100, 20987), (114, 21080), (145, 21338),

Gene: MakCheese_27 Start: 23638, Stop: 24627, Start Num: 47

Candidate Starts for MakCheese_27:

(31, 23425), (34, 23497), (Start: 47 @23638 has 105 MA's), (53, 23734), (63, 23806), (70, 23899), (72, 23905), (81, 24022), (87, 24079), (90, 24091), (114, 24274), (129, 24439), (139, 24541), (155, 24601),

Gene: MakoManhole_44 Start: 36555, Stop: 37574, Start Num: 48

Candidate Starts for MakoManhole_44:

(27, 36264), (41, 36501), (Start: 48 @36555 has 16 MA's), (50, 36594), (56, 36669), (63, 36723), (66, 36780), (72, 36825), (75, 36867), (78, 36891), (81, 36930), (82, 36951), (84, 36972), (89, 36999), (95, 37044), (96, 37056), (98, 37068), (102, 37122), (104, 37143), (105, 37149), (106, 37167), (110, 37194), (114, 37203), (129, 37368), (130, 37371), (132, 37383), (148, 37482), (151, 37491), (156, 37527),

Gene: Malachai_22 Start: 19498, Stop: 20412, Start Num: 47

Candidate Starts for Malachai_22:

(Start: 47 @19498 has 105 MA's), (52, 19564), (66, 19723), (70, 19759), (72, 19765), (81, 19882), (90, 19951), (100, 20026), (114, 20119), (145, 20380),

Gene: Malibo_23 Start: 19343, Stop: 20254, Start Num: 47

Candidate Starts for Malibo_23:

(Start: 47 @19343 has 105 MA's), (52, 19409), (70, 19604), (72, 19610), (81, 19727), (90, 19796), (91, 19811), (100, 19871), (114, 19964), (145, 20222),

Gene: Malisha_24 Start: 21166, Stop: 22080, Start Num: 47

Candidate Starts for Malisha_24:

(Start: 47 @21166 has 105 MA's), (52, 21232), (59, 21301), (66, 21391), (70, 21427), (72, 21433), (79, 21523), (81, 21550), (90, 21619), (100, 21694), (114, 21787), (123, 21856), (145, 22048),

Gene: Malvina_23 Start: 19275, Stop: 20255, Start Num: 43

Candidate Starts for Malvina_23:

(Start: 43 @19275 has 7 MA's), (Start: 46 @19284 has 44 MA's), (51, 19329), (60, 19428), (72, 19557), (73, 19560), (78, 19623), (81, 19662), (82, 19683), (93, 19761), (98, 19803), (112, 19932), (115, 19941), (118, 19962), (119, 19983), (122, 20010), (127, 20073), (130, 20088), (136, 20130),

Gene: Manasvini_22 Start: 20294, Stop: 21205, Start Num: 47

Candidate Starts for Manasvini_22:

(37, 20198), (Start: 47 @20294 has 105 MA's), (52, 20360), (59, 20429), (66, 20519), (70, 20555), (72, 20561), (74, 20570), (80, 20663), (81, 20678), (87, 20735), (90, 20747), (100, 20822), (114, 20915), (145, 21173),

Gene: Margaret_24 Start: 18118, Stop: 19089, Start Num: 46

Candidate Starts for Margaret_24:

(Start: 46 @18118 has 44 MA's), (51, 18163), (55, 18229), (60, 18262), (65, 18334), (70, 18385), (72, 18391), (79, 18481), (81, 18511), (113, 18781), (119, 18826), (121, 18838), (127, 18907), (132, 18934), (153, 19057),

Gene: Maridalia_21 Start: 20294, Stop: 21205, Start Num: 47

Candidate Starts for Maridalia_21:

(37, 20198), (Start: 47 @20294 has 105 MA's), (52, 20360), (59, 20429), (66, 20519), (70, 20555), (72, 20561), (74, 20570), (80, 20663), (81, 20678), (87, 20735), (90, 20747), (100, 20822), (114, 20915), (145, 21173),

Gene: Mayweather_22 Start: 18711, Stop: 19682, Start Num: 46

Candidate Starts for Mayweather_22:

(Start: 43 @18702 has 7 MA's), (Start: 45 @18708 has 4 MA's), (Start: 46 @18711 has 44 MA's), (53, 18810), (64, 18876), (66, 18930), (71, 18972), (72, 18975), (88, 19158), (93, 19191), (103, 19293), (106, 19332), (108, 19341), (112, 19365), (118, 19395), (119, 19416), (127, 19506), (128, 19509), (140, 19608),

Gene: McDazzle_20 Start: 18555, Stop: 19526, Start Num: 45

Candidate Starts for McDazzle_20:

(Start: 43 @18549 has 7 MA's), (Start: 45 @18555 has 4 MA's), (Start: 46 @18558 has 44 MA's), (53, 18657), (61, 18702), (64, 18723), (71, 18819), (72, 18822), (88, 19005), (93, 19038), (103, 19140), (106, 19179), (108, 19188), (112, 19209), (119, 19260), (122, 19287), (127, 19350), (128, 19353), (147, 19476), (149, 19479),

Gene: Melba_21 Start: 19020, Stop: 19931, Start Num: 47

Candidate Starts for Melba_21:

(Start: 47 @19020 has 105 MA's), (52, 19086), (66, 19245), (70, 19281), (72, 19287), (81, 19404), (90, 19473), (100, 19548), (114, 19641), (116, 19653), (145, 19899),

Gene: Mellie_20 Start: 18781, Stop: 19692, Start Num: 47

Candidate Starts for Mellie_20:

(Start: 47 @18781 has 105 MA's), (52, 18847), (66, 19006), (70, 19042), (72, 19048), (81, 19165), (90, 19234), (100, 19309), (114, 19402), (145, 19660),

Gene: MintFen_21 Start: 19020, Stop: 19931, Start Num: 47

Candidate Starts for MintFen_21:

(Start: 47 @19020 has 105 MA's), (52, 19086), (66, 19245), (70, 19281), (72, 19287), (81, 19404), (90, 19473), (100, 19548), (114, 19641), (116, 19653), (145, 19899),

Gene: MissRona_23 Start: 19335, Stop: 20246, Start Num: 47

Candidate Starts for MissRona_23:

(Start: 47 @19335 has 105 MA's), (52, 19401), (63, 19503), (66, 19560), (70, 19596), (72, 19602), (81, 19719), (90, 19788), (100, 19863), (114, 19956), (145, 20214),

Gene: MortyNRick_22 Start: 18950, Stop: 19927, Start Num: 47

Candidate Starts for MortyNRick_22:

(28, 18674), (33, 18794), (38, 18866), (39, 18869), (Start: 47 @18950 has 105 MA's), (49, 18971), (52, 19016), (53, 19046), (59, 19085), (63, 19118), (65, 19163), (66, 19175), (70, 19211), (72, 19217), (79, 19307), (81, 19334), (90, 19403), (114, 19574), (129, 19739), (132, 19754), (138, 19835), (139, 19841),

Gene: MossRose_44 Start: 36534, Stop: 37553, Start Num: 48

Candidate Starts for MossRose_44:

(3, 35796), (4, 35817), (5, 35844), (6, 35850), (7, 35853), (14, 36000), (17, 36024), (21, 36108), (23, 36117), (25, 36159), (27, 36243), (41, 36480), (Start: 48 @36534 has 16 MA's), (50, 36573), (63, 36702), (66, 36759), (72, 36804), (75, 36846), (78, 36870), (81, 36909), (82, 36930), (84, 36951), (86, 36963), (89, 36978), (95, 37023), (96, 37035), (98, 37047), (102, 37101), (104, 37122), (105, 37128), (106, 37146), (110, 37173), (114, 37182), (129, 37347), (130, 37350), (132, 37362), (148, 37461), (151, 37470), (156, 37506),

Gene: MunkgeeRoachy_21 Start: 18454, Stop: 19413, Start Num: 46

Candidate Starts for MunkgeeRoachy_21:

(Start: 43 @18445 has 7 MA's), (44, 18448), (Start: 45 @18451 has 4 MA's), (Start: 46 @18454 has 44 MA's), (51, 18499), (55, 18565), (56, 18571), (66, 18682), (69, 18715), (72, 18727), (74, 18736), (78, 18793), (81, 18832), (93, 18931), (96, 18961), (101, 19021), (104, 19048), (111, 19099), (120, 19159), (121, 19162), (122, 19177), (124, 19186), (127, 19240), (138, 19333), (140, 19342), (154, 19396),

Gene: Murp_22 Start: 19288, Stop: 20199, Start Num: 47

Candidate Starts for Murp_22:

(Start: 47 @19288 has 105 MA's), (50, 19327), (52, 19354), (66, 19513), (70, 19549), (72, 19555), (79, 19645), (81, 19672), (100, 19816), (114, 19909), (145, 20167),

Gene: NHagos_42 Start: 35138, Stop: 36160, Start Num: 48

Candidate Starts for NHagos_42:

(41, 35084), (Start: 48 @35138 has 16 MA's), (50, 35180), (52, 35207), (56, 35255), (63, 35309), (66, 35366), (72, 35411), (74, 35420), (75, 35453), (78, 35477), (81, 35516), (82, 35537), (84, 35558), (92,

35606), (95, 35630), (96, 35642), (98, 35654), (102, 35708), (104, 35729), (105, 35735), (106, 35753), (110, 35780), (114, 35789), (129, 35954), (130, 35957), (148, 36068), (151, 36077),

Gene: Neobush_22 Start: 20294, Stop: 21205, Start Num: 47

Candidate Starts for Neobush_22:

(37, 20198), (Start: 47 @20294 has 105 MA's), (52, 20360), (59, 20429), (66, 20519), (70, 20555), (72, 20561), (74, 20570), (80, 20663), (81, 20678), (87, 20735), (90, 20747), (100, 20822), (114, 20915), (145, 21173),

Gene: Nibbles_23 Start: 19369, Stop: 20337, Start Num: 46

Candidate Starts for Nibbles_23:

(Start: 43 @19360 has 7 MA's), (Start: 45 @19366 has 4 MA's), (Start: 46 @19369 has 44 MA's), (49, 19387), (51, 19411), (60, 19510), (72, 19639), (73, 19642), (74, 19648), (78, 19705), (81, 19744), (82, 19765), (93, 19843), (97, 19876), (98, 19885), (112, 20014), (115, 20023), (118, 20044), (122, 20092), (127, 20155), (130, 20170), (136, 20212),

Gene: Nina_22 Start: 19439, Stop: 20407, Start Num: 43

Candidate Starts for Nina_22:

(Start: 43 @19439 has 7 MA's), (44, 19442), (Start: 45 @19445 has 4 MA's), (Start: 46 @19448 has 44 MA's), (51, 19493), (55, 19559), (56, 19565), (66, 19676), (69, 19709), (72, 19721), (74, 19730), (78, 19787), (81, 19826), (93, 19925), (96, 19955), (101, 20015), (104, 20042), (111, 20093), (120, 20153), (121, 20156), (122, 20171), (124, 20180), (127, 20234), (138, 20327), (140, 20336), (154, 20390),

Gene: Nodigi_23 Start: 18410, Stop: 19381, Start Num: 46

Candidate Starts for Nodigi_23:

(9, 17747), (12, 17822), (18, 17900), (21, 17981), (27, 18116), (Start: 46 @18410 has 44 MA's), (51, 18455), (60, 18554), (65, 18626), (70, 18677), (72, 18683), (82, 18824), (85, 18851), (113, 19073), (119, 19118), (127, 19199), (131, 19223), (132, 19226), (134, 19244), (143, 19319), (153, 19349),

Gene: Nymphadora_21 Start: 20161, Stop: 21072, Start Num: 47

Candidate Starts for Nymphadora_21:

(36, 20053), (Start: 47 @20161 has 105 MA's), (52, 20227), (57, 20284), (70, 20422), (72, 20428), (74, 20437), (80, 20530), (81, 20545), (87, 20602), (90, 20614), (100, 20689), (114, 20782), (145, 21040),

Gene: Obliviate_20 Start: 18810, Stop: 19721, Start Num: 47

Candidate Starts for Obliviate_20:

(Start: 47 @18810 has 105 MA's), (52, 18876), (66, 19035), (70, 19071), (72, 19077), (81, 19194), (90, 19263), (100, 19338), (114, 19431), (126, 19539), (145, 19689),

Gene: Ohgeesy_21 Start: 19784, Stop: 20695, Start Num: 47

Candidate Starts for Ohgeesy_21:

(36, 19676), (Start: 47 @19784 has 105 MA's), (52, 19850), (57, 19907), (70, 20045), (72, 20051), (74, 20060), (80, 20153), (81, 20168), (87, 20225), (90, 20237), (100, 20312), (114, 20405), (145, 20663),

Gene: Orla_23 Start: 18414, Stop: 19385, Start Num: 46

Candidate Starts for Orla_23:

(18, 17904), (21, 17985), (27, 18120), (Start: 46 @18414 has 44 MA's), (51, 18459), (60, 18558), (65, 18630), (68, 18660), (70, 18681), (72, 18687), (82, 18828), (85, 18855), (113, 19077), (119, 19122), (121, 19134), (127, 19203), (131, 19227), (132, 19230), (134, 19248), (143, 19323), (153, 19353),

Gene: PCoral7_22 Start: 19309, Stop: 20226, Start Num: 47

Candidate Starts for PCoral7_22:

(Start: 47 @19309 has 105 MA's), (52, 19375), (70, 19570), (72, 19576), (83, 19723), (90, 19759), (100, 19834), (114, 19930),

Gene: PantheRoc_21 Start: 19492, Stop: 20403, Start Num: 47

Candidate Starts for PantheRoc_21:

(8, 18832), (10, 18841), (11, 18856), (13, 18928), (19, 18994), (22, 19072), (36, 19384), (Start: 47 @19492 has 105 MA's), (52, 19558), (57, 19615), (70, 19753), (72, 19759), (74, 19768), (80, 19861), (81, 19876), (87, 19933), (90, 19945), (100, 20020), (114, 20113), (145, 20371),

Gene: Periwinkle_25 Start: 19684, Stop: 20661, Start Num: 47

Candidate Starts for Periwinkle_25:

(33, 19528), (34, 19549), (38, 19600), (Start: 47 @19684 has 105 MA's), (49, 19705), (52, 19750), (59, 19819), (63, 19852), (66, 19909), (70, 19945), (72, 19951), (79, 20041), (81, 20068), (88, 20131), (90, 20137), (100, 20212), (114, 20308), (132, 20488), (137, 20533), (138, 20569), (139, 20575),

Gene: PhrostedPhlake_23 Start: 19713, Stop: 20624, Start Num: 47

Candidate Starts for PhrostedPhlake_23:

(35, 19599), (42, 19656), (Start: 43 @19698 has 7 MA's), (Start: 47 @19713 has 105 MA's), (52, 19779), (66, 19938), (70, 19974), (72, 19980), (81, 20097), (90, 20166), (100, 20241), (114, 20334), (145, 20592),

Gene: Pipp_21 Start: 19014, Stop: 19925, Start Num: 47

Candidate Starts for Pipp_21:

(Start: 47 @19014 has 105 MA's), (52, 19080), (66, 19239), (70, 19275), (72, 19281), (81, 19398), (90, 19467), (100, 19542), (114, 19635), (145, 19893),

Gene: Pons_21 Start: 18086, Stop: 19057, Start Num: 46

Candidate Starts for Pons_21:

(Start: 43 @18077 has 7 MA's), (Start: 45 @18083 has 4 MA's), (Start: 46 @18086 has 44 MA's), (53, 18185), (61, 18230), (64, 18251), (71, 18347), (72, 18350), (88, 18533), (93, 18566), (103, 18668), (106, 18707), (108, 18716), (112, 18740), (118, 18770), (119, 18791), (122, 18818), (127, 18881), (128, 18884), (140, 18983), (147, 19007), (149, 19010),

Gene: Posh_24 Start: 20553, Stop: 21464, Start Num: 47

Candidate Starts for Posh_24:

(Start: 47 @20553 has 105 MA's), (52, 20619), (66, 20778), (67, 20781), (70, 20814), (72, 20820), (81, 20937), (100, 21081), (114, 21174), (145, 21432),

Gene: PotPie_21 Start: 18951, Stop: 19919, Start Num: 46

Candidate Starts for PotPie_21:

(Start: 43 @18942 has 7 MA's), (Start: 45 @18948 has 4 MA's), (Start: 46 @18951 has 44 MA's), (53, 19050), (64, 19116), (71, 19212), (72, 19215), (79, 19305), (88, 19398), (93, 19431), (103, 19533), (106, 19572), (108, 19581), (112, 19599), (118, 19629), (119, 19650), (127, 19740), (128, 19743), (140, 19842), (147, 19866), (149, 19869),

Gene: PsychoKiller_21 Start: 18397, Stop: 19365, Start Num: 43

Candidate Starts for PsychoKiller_21:

(Start: 43 @18397 has 7 MA's), (44, 18400), (Start: 45 @18403 has 4 MA's), (Start: 46 @18406 has 44 MA's), (51, 18451), (55, 18517), (56, 18523), (66, 18634), (69, 18667), (72, 18679), (74, 18688), (78, 18745), (81, 18784), (93, 18883), (96, 18913), (101, 18973), (104, 19000), (111, 19051), (120, 19111), (121, 19114), (122, 19129), (124, 19138), (127, 19192), (138, 19285), (140, 19294), (154, 19348),

Gene: Pytheas_24 Start: 20699, Stop: 21610, Start Num: 47

Candidate Starts for Pytheas_24:

(Start: 47 @20699 has 105 MA's), (52, 20765), (66, 20924), (67, 20927), (70, 20960), (72, 20966), (81, 21083), (90, 21152), (100, 21227), (114, 21320), (145, 21578),

Gene: Quasar_21 Start: 19015, Stop: 19974, Start Num: 46

Candidate Starts for Quasar_21:

(Start: 43 @19006 has 7 MA's), (44, 19009), (Start: 45 @19012 has 4 MA's), (Start: 46 @19015 has 44 MA's), (51, 19060), (55, 19126), (56, 19132), (66, 19243), (69, 19276), (72, 19288), (74, 19297), (78, 19354), (81, 19393), (93, 19492), (96, 19522), (101, 19582), (104, 19609), (111, 19660), (120, 19720), (121, 19723), (122, 19738), (124, 19747), (127, 19801), (138, 19894), (140, 19903), (154, 19957),

Gene: RADical_22 Start: 18398, Stop: 19366, Start Num: 43

Candidate Starts for RADical_22:

(Start: 43 @18398 has 7 MA's), (44, 18401), (Start: 45 @18404 has 4 MA's), (Start: 46 @18407 has 44 MA's), (51, 18452), (55, 18518), (56, 18524), (66, 18635), (69, 18668), (72, 18680), (74, 18689), (78, 18746), (81, 18785), (93, 18884), (96, 18914), (101, 18974), (111, 19052), (120, 19112), (121, 19115), (122, 19130), (124, 19139), (127, 19193), (138, 19286), (140, 19295), (154, 19349),

Gene: RSchmailzl_22 Start: 18541, Stop: 19509, Start Num: 43

Candidate Starts for RSchmailzl_22:

(Start: 43 @18541 has 7 MA's), (44, 18544), (Start: 45 @18547 has 4 MA's), (Start: 46 @18550 has 44 MA's), (51, 18595), (55, 18661), (56, 18667), (66, 18778), (69, 18811), (72, 18823), (74, 18832), (78, 18889), (81, 18928), (93, 19027), (96, 19057), (101, 19117), (104, 19144), (111, 19195), (120, 19255), (121, 19258), (122, 19273), (124, 19282), (127, 19336), (138, 19429), (140, 19438), (154, 19492),

Gene: RanchParmCat_24 Start: 18118, Stop: 19089, Start Num: 46

Candidate Starts for RanchParmCat_24:

(29, 17872), (Start: 46 @18118 has 44 MA's), (51, 18163), (55, 18229), (60, 18262), (65, 18334), (70, 18385), (72, 18391), (79, 18481), (81, 18511), (113, 18781), (119, 18826), (121, 18838), (127, 18907), (132, 18934), (153, 19057),

Gene: RedBaron_23 Start: 18450, Stop: 19409, Start Num: 46

Candidate Starts for RedBaron_23:

(Start: 43 @18441 has 7 MA's), (44, 18444), (Start: 45 @18447 has 4 MA's), (Start: 46 @18450 has 44 MA's), (51, 18495), (55, 18561), (56, 18567), (66, 18678), (69, 18711), (72, 18723), (74, 18732), (78, 18789), (79, 18798), (81, 18828), (93, 18927), (96, 18957), (101, 19017), (104, 19044), (111, 19095), (120, 19155), (121, 19158), (122, 19173), (124, 19182), (127, 19236), (138, 19329), (140, 19338), (154, 19392),

Gene: Reyja_22 Start: 17773, Stop: 18783, Start Num: 48

Candidate Starts for Reyja_22:

(25, 17392), (26, 17398), (27, 17476), (Start: 48 @17773 has 16 MA's), (52, 17839), (60, 17914), (72, 18043), (87, 18208), (95, 18262), (96, 18274), (98, 18286), (109, 18409), (122, 18508), (125, 18535), (127, 18592), (131, 18616), (132, 18619), (146, 18718), (150, 18727),

Gene: Ruthy_25 Start: 22394, Stop: 23305, Start Num: 47

Candidate Starts for Ruthy_25:

(Start: 47 @22394 has 105 MA's), (52, 22460), (70, 22655), (72, 22661), (79, 22751), (81, 22778), (90, 22847), (100, 22922), (114, 23015), (145, 23273),

Gene: Samba_21 Start: 19098, Stop: 20009, Start Num: 47

Candidate Starts for Samba_21:

(Start: 47 @19098 has 105 MA's), (52, 19164), (66, 19323), (70, 19359), (72, 19365), (81, 19482), (90, 19551), (100, 19626), (114, 19719), (145, 19977),

Gene: Santhid_21 Start: 17607, Stop: 18617, Start Num: 48

Candidate Starts for Santhid_21:

(Start: 48 @17607 has 16 MA's), (52, 17673), (60, 17748), (72, 17877), (87, 18042), (95, 18096), (96, 18108), (98, 18120), (105, 18201), (109, 18243), (122, 18342), (125, 18369), (127, 18426), (132, 18453), (142, 18543), (144, 18549), (146, 18552), (150, 18561),

Gene: ShawBrad_23 Start: 19227, Stop: 20204, Start Num: 47

Candidate Starts for ShawBrad_23:

(33, 19071), (34, 19092), (38, 19143), (Start: 47 @19227 has 105 MA's), (49, 19248), (52, 19293), (59, 19362), (63, 19395), (66, 19452), (70, 19488), (72, 19494), (79, 19584), (81, 19611), (88, 19674), (90, 19680), (100, 19755), (114, 19851), (132, 20031), (137, 20076), (138, 20112), (139, 20118),

Gene: SheckWes_20 Start: 18086, Stop: 19054, Start Num: 46

Candidate Starts for SheckWes_20:

(Start: 43 @18077 has 7 MA's), (Start: 45 @18083 has 4 MA's), (Start: 46 @18086 has 44 MA's), (53, 18185), (64, 18251), (71, 18347), (72, 18350), (88, 18533), (93, 18566), (103, 18668), (106, 18707), (108, 18716), (112, 18737), (119, 18788), (122, 18815), (127, 18878), (128, 18881), (140, 18980), (149, 19007),

Gene: Sidious_21 Start: 19616, Stop: 20527, Start Num: 47

Candidate Starts for Sidious_21:

(36, 19505), (40, 19544), (Start: 47 @19616 has 105 MA's), (52, 19682), (66, 19841), (70, 19877), (72, 19883), (79, 19973), (81, 20000), (90, 20069), (100, 20144), (114, 20237), (145, 20495),

Gene: SketchMex_20 Start: 18077, Stop: 19039, Start Num: 46

Candidate Starts for SketchMex_20:

(Start: 46 @18077 has 44 MA's), (56, 18194), (60, 18221), (66, 18305), (72, 18350), (74, 18359), (77, 18404), (81, 18455), (93, 18554), (96, 18584), (112, 18725), (120, 18785), (121, 18788), (122, 18803), (127, 18866), (138, 18959), (140, 18968),

Gene: Socotra_22 Start: 18406, Stop: 19365, Start Num: 46

Candidate Starts for Socotra_22:

(Start: 43 @18397 has 7 MA's), (44, 18400), (Start: 45 @18403 has 4 MA's), (Start: 46 @18406 has 44 MA's), (51, 18451), (55, 18517), (56, 18523), (66, 18634), (69, 18667), (72, 18679), (74, 18688), (78, 18745), (81, 18784), (93, 18883), (96, 18913), (101, 18973), (104, 19000), (111, 19051), (120, 19111), (121, 19114), (122, 19129), (124, 19138), (127, 19192), (138, 19285), (140, 19294), (154, 19348),

Gene: Soilmate_21 Start: 18987, Stop: 19898, Start Num: 47

Candidate Starts for Soilmate_21:

(Start: 47 @18987 has 105 MA's), (52, 19053), (70, 19248), (72, 19254), (81, 19371), (90, 19440), (100, 19515), (114, 19608), (116, 19620), (145, 19866),

Gene: Sopespian_21 Start: 18398, Stop: 19366, Start Num: 43

Candidate Starts for Sopespian_21:

(Start: 43 @18398 has 7 MA's), (44, 18401), (Start: 45 @18404 has 4 MA's), (Start: 46 @18407 has 44 MA's), (51, 18452), (55, 18518), (56, 18524), (66, 18635), (69, 18668), (72, 18680), (74, 18689), (78, 18746), (81, 18785), (93, 18884), (96, 18914), (101, 18974), (104, 19001), (111, 19052), (120, 19112), (121, 19115), (122, 19130), (124, 19139), (127, 19193), (138, 19286), (140, 19295), (154, 19349),

Gene: Spooky_23 Start: 19375, Stop: 20289, Start Num: 47

Candidate Starts for Spooky_23:

(Start: 47 @19375 has 105 MA's), (52, 19441), (59, 19510), (66, 19600), (70, 19636), (72, 19642), (79, 19732), (81, 19759), (90, 19828), (100, 19903), (114, 19996), (123, 20065), (145, 20257),

Gene: Sprinklemunch_25 Start: 23888, Stop: 24880, Start Num: 47

Candidate Starts for Sprinklemunch_25:

(24, 23486), (34, 23747), (Start: 47 @23888 has 105 MA's), (52, 23954), (53, 23984), (63, 24056), (70, 24149), (72, 24155), (81, 24272), (87, 24329), (90, 24341), (114, 24527), (139, 24794),

Gene: Squiddly_25 Start: 20787, Stop: 21701, Start Num: 47

Candidate Starts for Squiddly_25:

(Start: 47 @20787 has 105 MA's), (52, 20853), (59, 20922), (66, 21012), (70, 21048), (72, 21054), (79, 21144), (81, 21171), (90, 21240), (100, 21315), (114, 21408), (123, 21477), (145, 21669),

Gene: Starburst_22 Start: 18397, Stop: 19365, Start Num: 43

Candidate Starts for Starburst_22:

(Start: 43 @18397 has 7 MA's), (44, 18400), (Start: 45 @18403 has 4 MA's), (Start: 46 @18406 has 44 MA's), (51, 18451), (55, 18517), (56, 18523), (66, 18634), (69, 18667), (72, 18679), (74, 18688), (78, 18745), (81, 18784), (93, 18883), (96, 18913), (101, 18973), (104, 19000), (111, 19051), (120, 19111), (121, 19114), (122, 19129), (124, 19138), (127, 19192), (138, 19285), (140, 19294), (154, 19348),

Gene: SteamedHams_23 Start: 18099, Stop: 19049, Start Num: 47

Candidate Starts for SteamedHams_23:

(Start: 47 @18099 has 105 MA's), (60, 18243), (62, 18261), (66, 18327), (69, 18360), (72, 18372), (74, 18381), (77, 18426), (81, 18477), (82, 18498), (84, 18519), (93, 18576), (96, 18606), (104, 18693), (107, 18720), (111, 18744), (121, 18807), (127, 18885), (130, 18900), (131, 18909), (137, 18954), (138, 18984),

Gene: SummitAcademy_20 Start: 18166, Stop: 19131, Start Num: 46

Candidate Starts for SummitAcademy_20:

(Start: 43 @18157 has 7 MA's), (Start: 45 @18163 has 4 MA's), (Start: 46 @18166 has 44 MA's), (53, 18265), (64, 18331), (71, 18427), (72, 18430), (88, 18613), (93, 18646), (103, 18748), (106, 18787), (108, 18796), (112, 18814), (118, 18844), (119, 18865), (127, 18955), (128, 18958), (135, 19006), (140, 19057), (147, 19081), (149, 19084),

Gene: Survivors_23 Start: 19218, Stop: 20186, Start Num: 46

Candidate Starts for Survivors_23:

(Start: 43 @19209 has 7 MA's), (Start: 45 @19215 has 4 MA's), (Start: 46 @19218 has 44 MA's), (49, 19236), (51, 19260), (60, 19359), (72, 19488), (73, 19491), (74, 19497), (78, 19554), (81, 19593), (82, 19614), (93, 19692), (97, 19725), (98, 19734), (112, 19863), (115, 19872), (118, 19893), (122, 19941), (127, 20004), (130, 20019), (136, 20061),

Gene: Suscepit_22 Start: 20294, Stop: 21205, Start Num: 47

Candidate Starts for Suscepit_22:

(37, 20198), (Start: 47 @20294 has 105 MA's), (52, 20360), (59, 20429), (66, 20519), (70, 20555), (72, 20561), (74, 20570), (80, 20663), (81, 20678), (87, 20735), (90, 20747), (100, 20822), (114, 20915), (145, 21173),

Gene: SushiChef_23 Start: 20360, Stop: 21271, Start Num: 47

Candidate Starts for SushiChef_23:

(37, 20264), (Start: 47 @20360 has 105 MA's), (52, 20426), (59, 20495), (66, 20585), (70, 20621), (72, 20627), (81, 20744), (87, 20801), (90, 20813), (100, 20888), (114, 20981), (145, 21239),

Gene: SweatNTears_23 Start: 18588, Stop: 19550, Start Num: 46

Candidate Starts for SweatNTears_23:

(Start: 46 @18588 has 44 MA's), (56, 18705), (60, 18732), (66, 18816), (72, 18861), (74, 18870), (77, 18915), (81, 18966), (93, 19065), (96, 19095), (107, 19209), (112, 19236), (120, 19296), (121, 19299), (122, 19314), (127, 19377), (138, 19470), (140, 19479),

Gene: Tarnish_21 Start: 18447, Stop: 19424, Start Num: 43

Candidate Starts for Tarnish_21:

(Start: 43 @18447 has 7 MA's), (Start: 45 @18453 has 4 MA's), (Start: 46 @18456 has 44 MA's), (53, 18555), (64, 18621), (66, 18675), (71, 18717), (72, 18720), (88, 18903), (93, 18936), (103, 19038), (106, 19077), (108, 19086), (112, 19107), (119, 19158), (122, 19185), (127, 19248), (128, 19251), (140, 19350), (147, 19374), (149, 19377),

Gene: Tarzan_21 Start: 17576, Stop: 18586, Start Num: 48

Candidate Starts for Tarzan_21:

(26, 17201), (27, 17279), (Start: 48 @17576 has 16 MA's), (52, 17642), (60, 17717), (72, 17846), (87, 18011), (95, 18065), (96, 18077), (98, 18089), (109, 18212), (125, 18338), (127, 18395), (131, 18419), (132, 18422), (144, 18518), (146, 18521), (150, 18530),

Gene: Tayonia_22 Start: 20294, Stop: 21205, Start Num: 47

Candidate Starts for Tayonia_22:

(37, 20198), (Start: 47 @20294 has 105 MA's), (52, 20360), (59, 20429), (66, 20519), (70, 20555), (72, 20561), (74, 20570), (80, 20663), (81, 20678), (87, 20735), (90, 20747), (100, 20822), (114, 20915), (145, 21173),

Gene: ThankyouJordi_20 Start: 20133, Stop: 21047, Start Num: 47

Candidate Starts for ThankyouJordi_20:

(36, 20022), (Start: 47 @20133 has 105 MA's), (50, 20172), (52, 20199), (70, 20397), (72, 20403), (81, 20520), (100, 20664), (104, 20709), (114, 20757), (145, 21015),

Gene: TimTam_21 Start: 20161, Stop: 21072, Start Num: 47

Candidate Starts for TimTam_21:

(36, 20053), (Start: 47 @20161 has 105 MA's), (52, 20227), (57, 20284), (70, 20422), (72, 20428), (74, 20437), (80, 20530), (81, 20545), (87, 20602), (90, 20614), (100, 20689), (114, 20782), (145, 21040),

Gene: Toast_22 Start: 19309, Stop: 20226, Start Num: 47

Candidate Starts for Toast_22:

(Start: 47 @19309 has 105 MA's), (52, 19375), (70, 19570), (72, 19576), (83, 19723), (90, 19759), (100, 19834), (114, 19930),

Gene: Tolls_23 Start: 18102, Stop: 19052, Start Num: 47

Candidate Starts for Tolls_23:

(Start: 47 @18102 has 105 MA's), (60, 18246), (62, 18264), (66, 18330), (69, 18363), (72, 18375), (74, 18384), (77, 18429), (81, 18480), (82, 18501), (84, 18522), (93, 18579), (96, 18609), (104, 18696), (107, 18723), (111, 18747), (121, 18810), (127, 18888), (130, 18903), (131, 18912), (137, 18957), (138, 18987), (140, 18996),

Gene: TraderJ_44 Start: 36566, Stop: 37585, Start Num: 48

Candidate Starts for TraderJ_44:

(1, 35822), (3, 35828), (4, 35849), (5, 35876), (6, 35882), (7, 35885), (14, 36032), (17, 36056), (21, 36140), (25, 36191), (27, 36275), (41, 36512), (Start: 48 @36566 has 16 MA's), (50, 36605), (56, 36680), (63, 36734), (66, 36791), (72, 36836), (75, 36878), (78, 36902), (81, 36941), (82, 36962), (84, 36983), (89, 37010), (95, 37055), (96, 37067), (98, 37079), (102, 37133), (104, 37154), (105, 37160),

(106, 37178), (110, 37205), (114, 37214), (129, 37379), (130, 37382), (132, 37394), (148, 37493),
(151, 37502), (156, 37538),

Gene: Troje_21 Start: 18059, Stop: 19021, Start Num: 46

Candidate Starts for Troje_21:

(Start: 46 @18059 has 44 MA's), (56, 18176), (60, 18203), (66, 18287), (72, 18332), (74, 18341), (77, 18386), (81, 18437), (93, 18536), (96, 18566), (112, 18707), (120, 18767), (121, 18770), (122, 18785), (127, 18848), (138, 18941), (140, 18950),

Gene: Trumpet_22 Start: 20294, Stop: 21205, Start Num: 47

Candidate Starts for Trumpet_22:

(37, 20198), (Start: 47 @20294 has 105 MA's), (52, 20360), (59, 20429), (66, 20519), (70, 20555), (72, 20561), (74, 20570), (80, 20663), (81, 20678), (87, 20735), (90, 20747), (100, 20822), (114, 20915), (145, 21173),

Gene: Typhonomachy_21 Start: 18406, Stop: 19365, Start Num: 46

Candidate Starts for Typhonomachy_21:

(Start: 43 @18397 has 7 MA's), (44, 18400), (Start: 45 @18403 has 4 MA's), (Start: 46 @18406 has 44 MA's), (51, 18451), (55, 18517), (56, 18523), (66, 18634), (69, 18667), (72, 18679), (74, 18688), (78, 18745), (81, 18784), (93, 18883), (96, 18913), (101, 18973), (104, 19000), (111, 19051), (120, 19111), (121, 19114), (122, 19129), (124, 19138), (127, 19192), (138, 19285), (140, 19294), (154, 19348),

Gene: UmaThurman_21 Start: 19145, Stop: 20056, Start Num: 47

Candidate Starts for UmaThurman_21:

(Start: 47 @19145 has 105 MA's), (52, 19211), (66, 19370), (70, 19406), (72, 19412), (81, 19529), (90, 19598), (100, 19673), (114, 19766), (145, 20024),

Gene: Utz_21 Start: 19015, Stop: 19926, Start Num: 47

Candidate Starts for Utz_21:

(Start: 47 @19015 has 105 MA's), (52, 19081), (66, 19240), (70, 19276), (72, 19282), (81, 19399), (90, 19468), (100, 19543), (114, 19636), (116, 19648), (145, 19894),

Gene: Vine_22 Start: 19098, Stop: 20066, Start Num: 46

Candidate Starts for Vine_22:

(Start: 43 @19089 has 7 MA's), (Start: 45 @19095 has 4 MA's), (Start: 46 @19098 has 44 MA's), (53, 19197), (64, 19263), (71, 19359), (72, 19362), (88, 19545), (93, 19578), (103, 19680), (106, 19719), (108, 19728), (112, 19746), (118, 19776), (119, 19797), (127, 19887), (128, 19890), (135, 19938), (140, 19989), (147, 20013), (149, 20016),

Gene: Wallaby_25 Start: 19353, Stop: 20330, Start Num: 43

Candidate Starts for Wallaby_25:

(Start: 43 @19353 has 7 MA's), (Start: 45 @19359 has 4 MA's), (Start: 46 @19362 has 44 MA's), (49, 19380), (51, 19404), (60, 19503), (72, 19632), (73, 19635), (74, 19641), (78, 19698), (81, 19737), (82, 19758), (93, 19836), (97, 19869), (98, 19878), (99, 19902), (112, 20007), (115, 20016), (118, 20037), (122, 20085), (127, 20148), (130, 20163), (136, 20205),

Gene: Walrus_23 Start: 19560, Stop: 20471, Start Num: 47

Candidate Starts for Walrus_23:

(30, 19353), (32, 19362), (35, 19446), (42, 19503), (Start: 43 @19545 has 7 MA's), (Start: 47 @19560 has 105 MA's), (52, 19626), (66, 19785), (70, 19821), (72, 19827), (81, 19944), (90, 20013), (100, 20088), (114, 20181), (145, 20439),

Gene: WelcomeAyanna_20 Start: 20133, Stop: 21047, Start Num: 47

Candidate Starts for WelcomeAyanna_20:

(36, 20022), (Start: 47 @20133 has 105 MA's), (50, 20172), (52, 20199), (70, 20397), (72, 20403), (81, 20520), (100, 20664), (104, 20709), (114, 20757), (145, 21015),

Gene: Whitney_24 Start: 20189, Stop: 21103, Start Num: 47

Candidate Starts for Whitney_24:

(Start: 47 @20189 has 105 MA's), (52, 20255), (66, 20414), (70, 20450), (72, 20456), (79, 20546), (81, 20573), (90, 20642), (100, 20717), (114, 20810), (123, 20879), (145, 21071),

Gene: William_21 Start: 19064, Stop: 19978, Start Num: 47

Candidate Starts for William_21:

(Start: 47 @19064 has 105 MA's), (52, 19130), (63, 19232), (70, 19325), (72, 19331), (90, 19514), (100, 19589), (114, 19682),

Gene: Wisp_20 Start: 18730, Stop: 19641, Start Num: 47

Candidate Starts for Wisp_20:

(Start: 47 @18730 has 105 MA's), (52, 18796), (66, 18955), (70, 18991), (72, 18997), (81, 19114), (90, 19183), (100, 19258), (114, 19351), (145, 19609),

Gene: Wolfwood_23 Start: 19362, Stop: 20330, Start Num: 46

Candidate Starts for Wolfwood_23:

(Start: 43 @19353 has 7 MA's), (Start: 45 @19359 has 4 MA's), (Start: 46 @19362 has 44 MA's), (49, 19380), (51, 19404), (60, 19503), (72, 19632), (73, 19635), (74, 19641), (78, 19698), (81, 19737), (82, 19758), (93, 19836), (97, 19869), (98, 19878), (99, 19902), (112, 20007), (115, 20016), (118, 20037), (122, 20085), (127, 20148), (130, 20163), (136, 20205),

Gene: Wooper_44 Start: 36572, Stop: 37591, Start Num: 48

Candidate Starts for Wooper_44:

(1, 35828), (3, 35834), (4, 35855), (5, 35882), (6, 35888), (7, 35891), (14, 36038), (17, 36062), (21, 36146), (25, 36197), (27, 36281), (41, 36518), (Start: 48 @36572 has 16 MA's), (50, 36611), (56, 36686), (63, 36740), (66, 36797), (72, 36842), (75, 36884), (78, 36908), (81, 36947), (82, 36968), (84, 36989), (89, 37016), (95, 37061), (96, 37073), (98, 37085), (102, 37139), (104, 37160), (105, 37166), (106, 37184), (110, 37211), (114, 37220), (129, 37385), (130, 37388), (132, 37400), (148, 37499), (151, 37508), (156, 37544),

Gene: Wrigley_24 Start: 20450, Stop: 21361, Start Num: 47

Candidate Starts for Wrigley_24:

(Start: 47 @20450 has 105 MA's), (52, 20516), (66, 20675), (67, 20678), (70, 20711), (72, 20717), (81, 20834), (100, 20978), (114, 21071), (145, 21329),

Gene: Yakult_22 Start: 17972, Stop: 18943, Start Num: 46

Candidate Starts for Yakult_22:

(Start: 46 @17972 has 44 MA's), (51, 18017), (55, 18083), (60, 18116), (63, 18143), (68, 18218), (72, 18245), (93, 18464), (96, 18494), (114, 18635), (127, 18761), (131, 18785), (153, 18911),

Gene: Yarn_20 Start: 18092, Stop: 19042, Start Num: 47

Candidate Starts for Yarn_20:

(Start: 47 @18092 has 105 MA's), (60, 18236), (62, 18254), (66, 18320), (69, 18353), (72, 18365), (74, 18374), (77, 18419), (81, 18470), (82, 18491), (84, 18512), (93, 18569), (96, 18599), (104, 18686), (107, 18713), (111, 18737), (121, 18800), (127, 18878), (130, 18893), (131, 18902), (137, 18947), (138, 18977), (140, 18986),

Gene: Yeezy_22 Start: 19516, Stop: 20427, Start Num: 47

Candidate Starts for Yeezy_22:

(8, 18856), (10, 18865), (11, 18880), (13, 18952), (19, 19018), (22, 19096), (36, 19408), (Start: 47 @19516 has 105 MA's), (52, 19582), (57, 19639), (70, 19777), (72, 19783), (74, 19792), (80, 19885), (81, 19900), (87, 19957), (90, 19969), (100, 20044), (114, 20137), (145, 20395),

Gene: Yeshua_44 Start: 36549, Stop: 37568, Start Num: 48

Candidate Starts for Yeshua_44:

(1, 35805), (3, 35811), (4, 35832), (5, 35859), (6, 35865), (7, 35868), (14, 36015), (17, 36039), (21, 36123), (25, 36174), (27, 36258), (41, 36495), (Start: 48 @36549 has 16 MA's), (50, 36588), (56, 36663), (63, 36717), (66, 36774), (72, 36819), (75, 36861), (78, 36885), (81, 36924), (82, 36945), (84, 36966), (89, 36993), (95, 37038), (96, 37050), (98, 37062), (102, 37116), (104, 37137), (105, 37143), (106, 37161), (110, 37188), (114, 37197), (129, 37362), (130, 37365), (132, 37377), (148, 37476), (151, 37485), (156, 37521),

Gene: Yucky_21 Start: 18957, Stop: 19925, Start Num: 46

Candidate Starts for Yucky_21:

(Start: 43 @18948 has 7 MA's), (Start: 45 @18954 has 4 MA's), (Start: 46 @18957 has 44 MA's), (53, 19056), (64, 19122), (71, 19218), (72, 19221), (88, 19404), (93, 19437), (103, 19539), (106, 19578), (108, 19587), (112, 19605), (118, 19635), (119, 19656), (127, 19746), (128, 19749), (135, 19797), (140, 19848), (147, 19872), (149, 19875),

Gene: Yummy_22 Start: 17973, Stop: 18935, Start Num: 46

Candidate Starts for Yummy_22:

(Start: 46 @17973 has 44 MA's), (56, 18090), (60, 18117), (66, 18201), (72, 18246), (74, 18255), (77, 18300), (81, 18351), (93, 18450), (96, 18480), (112, 18621), (120, 18681), (121, 18684), (122, 18699), (127, 18762), (138, 18855), (140, 18864),

Gene: Zameen_22 Start: 20294, Stop: 21205, Start Num: 47

Candidate Starts for Zameen_22:

(37, 20198), (Start: 47 @20294 has 105 MA's), (52, 20360), (59, 20429), (66, 20519), (70, 20555), (72, 20561), (74, 20570), (80, 20663), (81, 20678), (87, 20735), (90, 20747), (100, 20822), (114, 20915), (145, 21173),

Gene: Zarbodnamra_21 Start: 19019, Stop: 19930, Start Num: 47

Candidate Starts for Zarbodnamra_21:

(Start: 47 @19019 has 105 MA's), (52, 19085), (66, 19244), (70, 19280), (72, 19286), (81, 19403), (90, 19472), (100, 19547), (114, 19640), (116, 19652), (145, 19898),

Gene: Zareef_23 Start: 19361, Stop: 20338, Start Num: 43

Candidate Starts for Zareef_23:

(Start: 43 @19361 has 7 MA's), (Start: 45 @19367 has 4 MA's), (Start: 46 @19370 has 44 MA's), (49, 19388), (51, 19412), (60, 19511), (72, 19640), (73, 19643), (74, 19649), (78, 19706), (81, 19745), (82, 19766), (93, 19844), (97, 19877), (98, 19886), (112, 20015), (115, 20024), (118, 20045), (122, 20093), (127, 20156), (130, 20171), (136, 20213),

Gene: ZiggyZoo_20 Start: 18810, Stop: 19721, Start Num: 47

Candidate Starts for ZiggyZoo_20:

(Start: 47 @18810 has 105 MA's), (52, 18876), (66, 19035), (70, 19071), (72, 19077), (81, 19194), (90, 19263), (100, 19338), (114, 19431), (126, 19539), (145, 19689),

Gene: Zilla_21 Start: 19037, Stop: 19948, Start Num: 47

Candidate Starts for Zilla_21:

(Start: 47 @19037 has 105 MA's), (52, 19103), (66, 19262), (70, 19298), (72, 19304), (81, 19421), (90, 19490), (100, 19565), (114, 19658), (116, 19670), (145, 19916),

Gene: Zirinka_21 Start: 20173, Stop: 21084, Start Num: 47

Candidate Starts for Zirinka_21:

(36, 20065), (Start: 47 @20173 has 105 MA's), (52, 20239), (57, 20296), (70, 20434), (72, 20440), (74, 20449), (80, 20542), (81, 20557), (87, 20614), (90, 20626), (100, 20701), (114, 20794), (145, 21052),

Gene: Zodiariah_25 Start: 23934, Stop: 24923, Start Num: 47

Candidate Starts for Zodiariah_25:

(24, 23532), (34, 23793), (Start: 47 @23934 has 105 MA's), (52, 24000), (53, 24030), (63, 24102), (70, 24195), (72, 24201), (81, 24318), (87, 24375), (90, 24387), (114, 24570), (129, 24735), (139, 24837), (155, 24897),