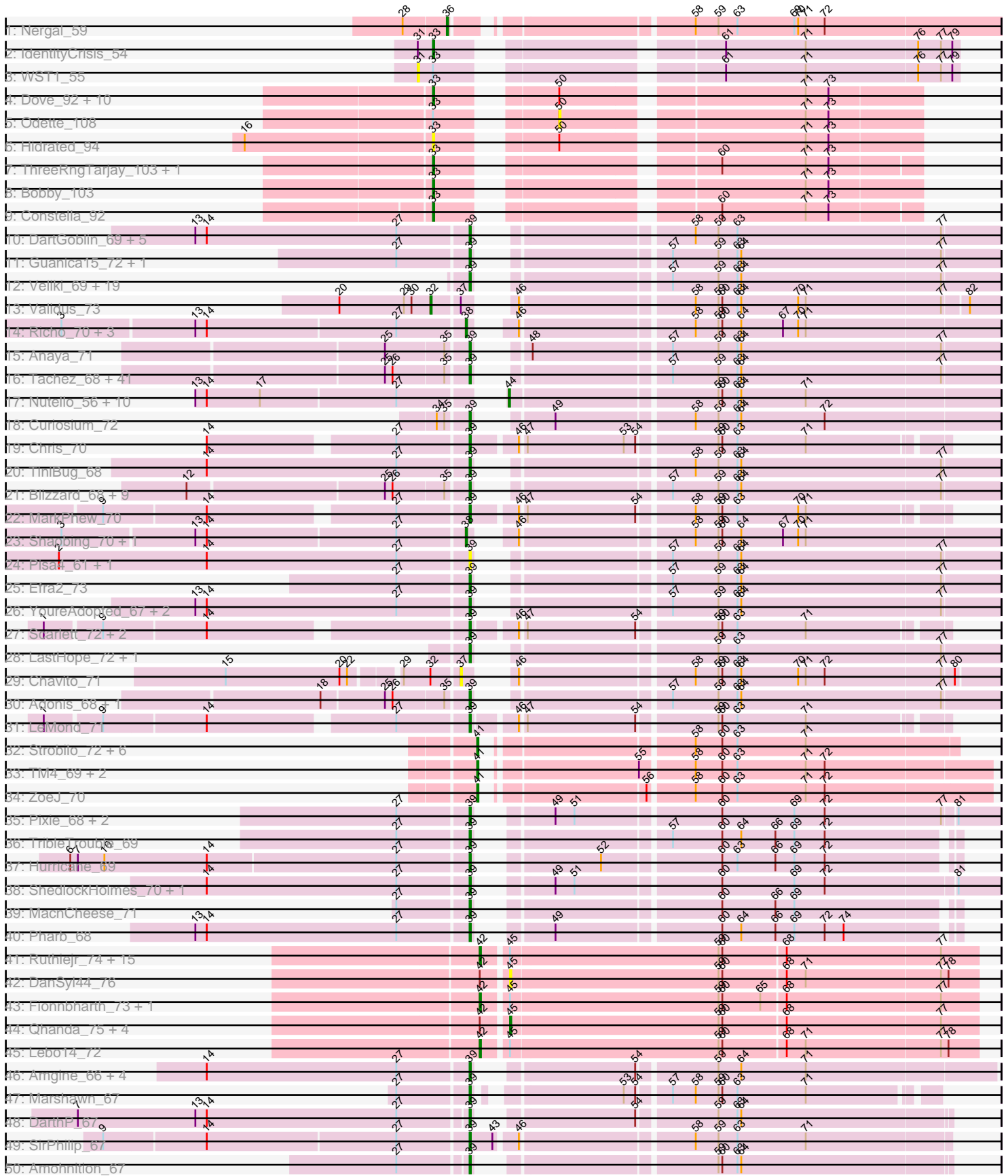


Pham 311246



Note: Tracks are now grouped by subcluster and scaled. Switching in subcluster is indicated by changes in track color. Track scale is now set by default to display the region 30 bp upstream of start 1 to 30 bp downstream of the last possible start. If this default region is judged to be packed too tightly with annotated starts, the track will be further scaled to only show that region of the ORF with annotated starts. This action will be indicated by adding "Zoomed" to the title. For starts, yellow indicates the location of called starts comprised solely of Glimmer/GeneMark auto-annotations, green indicates the location of called starts with at least 1 manual gene annotation.

Pham 311246 Report

This analysis was run 06/27/26 on database version 652.

Pham number 311246 has 200 members, 17 are drafts.

Phages represented in each track:

- Track 1 : Nergal_59
- Track 2 : IdentityCrisis_54
- Track 3 : WST1_55
- Track 4 : Dove_92, Bombitas_95, Ejimix_100, JuicyJay_103, Halley_108, Beem_108, Minerva_106, Schatzie_101, Redno2_98, HokkenD_96, NihilNomen_108
- Track 5 : Odette_108
- Track 6 : Hidrated_94
- Track 7 : ThreeRngTarjay_103, Optimus_100
- Track 8 : Bobby_103
- Track 9 : Constella_92
- Track 10 : DartGoblin_69, Anma_69, Urkel_68, DrHayes_68, Bella96_68, SamuelLPlaqson_68
- Track 11 : Guanica15_72, Yunkel11_72
- Track 12 : Veliki_69, LaterM_68, Prithvi_69, Apocalypse_70, JAWS_68, Devera_75, Ageofdapage_71, BaghaKamala_67, Stinson_69, Deby_68, Megsy_70, TaiwanKao_70, Murucutumbu_69, Dole_73, CheetoDust_67, Tiri_68, Illumine_73, LindNT_67, TreyKay_69, Bern_69
- Track 13 : Validus_73
- Track 14 : Richo_70, Dartin_70, Niklas_70, McMater_70
- Track 15 : Anaya_71
- Track 16 : Tachez_68, BGIlluviae_68, Inky_68, Jarvi_68, Twitch_68, Emerson_70, Zabiza_63, Atiba_69, Padpat_71, Adephegia_68, Ramen_69, Pokerus_68, Homura_68, BarrelRoll_69, Rapunzel97_70, Beezoo_70, Spock_68, TruffulaTree_69, QuincyRose_66, Joy99_68, Lunahalos_68, ActinUp_68, Slimphazie_69, Zavala_71, Peel_68, MacKat_64, Belladonna_68, Rosmarinus_68, HedwigODU_68, Topper_68, Dalmuri_68, Jayhawk_70, CallaLilly_68, Clipper_72, Jeckyll_68, Capricorn_68, Llorens_68, Ganymede_68, MeaningOfLife_69, AlishaPH_68, Mynx_70, CREW_68
- Track 17 : Nutello_56, LilPharaoh_57, Teejan_58, Torres_59, Nikao_59, Binglebops_56, Trice_56, Mdavu_57, Enkosi_58, Amelie_56, SgtBeansprout_57
- Track 18 : Curiosium_72
- Track 19 : Chris_70
- Track 20 : TiniBug_68
- Track 21 : Blizzard_68, Hyperbowlee_68, CaseJules_70, ShiaSurprise_69, Boiiii_68, Durfee_68, Piatt_68, Padfoot_68, Asayake_68, BEEST_68
- Track 22 : MarkPhew_70
- Track 23 : Shaobing_70, Peanam_70
- Track 24 : Pisa4_61, Pisa1_67

- Track 25 : Efra2_73
- Track 26 : YoureAdopted_67, Sulley_67, Angelica_67
- Track 27 : Scarlett_72, KiSi_72, Oscar_71
- Track 28 : LastHope_72, TingHuaYa_71
- Track 29 : Chavito_71
- Track 30 : Adonis_68, Geraldini_71
- Track 31 : LeMond_71
- Track 32 : Strobilo_72, Doughnut_71, DismalFunk_71, Milly_71, Marcoliusprime_71, Findley_71, DismalStressor_71
- Track 33 : TM4_69, BoostSeason_71, Mufasa_71
- Track 34 : ZoeJ_70
- Track 35 : Pixie_68, Keshu_71, TBond007_65
- Track 36 : TribbleTrouble_69
- Track 37 : Hurricane_69
- Track 38 : ShedlockHolmes_70, Lea83_69
- Track 39 : MacnCheese_71
- Track 40 : Pharb_68
- Track 41 : Ruthiejr_74, Cheetobro_73, Reptar3000_70, MissDaisy_70, Malthus_74, Y10_70, Y2_70, Mitti_73, Juliette_75, Taquito_72, Patt_69, Chancellor_73, SamScheppers_71, Slarp_73, JF1_73, Wintermute_73
- Track 42 : DanSyl44_76
- Track 43 : Fionnbharth_73, Eponine_75
- Track 44 : Qhanda_75, Kraw_73, Bobquesha_74, YasnayaPolyana_72, OmniCritical_72
- Track 45 : Lebo14_72
- Track 46 : Amgine_66, Fefferhead_65, Ellie_63, Applecrisp_64, Lavahound_65
- Track 47 : Marshawn_67
- Track 48 : DARTH_P_67
- Track 49 : SirPhilip_67
- Track 50 : Amohnition_67
- Track 51 : Ekdilam_64
- Track 52 : Hammy_67
- Track 53 : Yuna_72
- Track 54 : November_65
- Track 55 : TClif_69
- Track 56 : Aminay_68
- Track 57 : Boilgate_65
- Track 58 : Tortellini_67

Summary of Final Annotations (See graph section above for start numbers):

The start number called the most often in the published annotations is 39, it was called in 116 of the 183 non-draft genes in the pham.

Genes that call this "Most Annotated" start:

- ActinUp_68, Adephegia_68, Adonis_68, Ageofdapage_71, AlishaPH_68, Amgine_66, Amohnition_67, Anaya_71, Angelica_67, Anma_69, Apocalypse_70, Applecrisp_64, Asayake_68, Atiba_69, BEEST_68, BGIlluviae_68, BaghaKamala_67, BarrelRoll_69, Beezoo_70, Bella96_68, Belladonna_68, Bern_69, Blizzard_68, Boiiii_68, CREW_68, CallaLilly_68, Capricorn_68, CaseJules_70, CheetoDust_67,

Chris_70, Clipper_72, Curiosium_72, Dalmuri_68, DartGoblin_69, DarthP_67, Deby_68, Devera_75, Dole_73, DrHayes_68, Durfee_68, Efra2_73, Ekdilam_64, Ellie_63, Emerson_70, Fefferhead_65, Ganymede_68, Geraldini_71, Guanica15_72, Hammy_67, HedwigODU_68, Homura_68, Hurricane_69, Hyperbowlee_68, Illumine_73, Inky_68, JAWS_68, Jarvi_68, Jayhawk_70, Jeckyll_68, Joy99_68, Keshu_71, KiSi_72, LastHope_72, LaterM_68, Lavahound_65, LeMond_71, Lea83_69, LindNT_67, Llorens_68, Lunahalos_68, MacKat_64, MacnCheese_71, MarkPhew_70, Marshawn_67, MeaningOfLife_69, Megsy_70, Murucutumbu_69, Mynx_70, November_65, Oscar_71, Padfoot_68, Padpat_71, Peel_68, Pharb_68, Piatt_68, Pisa1_67, Pisa4_61, Pixie_68, Pokerus_68, Prithvi_69, QuincyRose_66, Ramen_69, Rapunzel97_70, Rosmarinus_68, SamuelLPlaqson_68, Scarlett_72, ShedlockHolmes_70, ShiaSurprise_69, SirPhilip_67, Slimphazie_69, Spock_68, Stinson_69, Sulley_67, TBond007_65, TClif_69, Tachez_68, TaiwanKao_70, TingHuaYa_71, TiniBug_68, Tiri_68, Topper_68, TreyKay_69, TripleTrouble_69, TruffulaTree_69, Twitch_68, Urkel_68, Veliki_69, YoureAdopted_67, Yunkel11_72, Zabiza_63, Zavala_71,

Genes that have the "Most Annotated" start but do not call it:

-

Genes that do not have the "Most Annotated" start:

- Amelie_56, Aminay_68, Beem_108, Biglebops_56, Bobby_103, Bobquesha_74, Boilgate_65, Bombitas_95, BoostSeason_71, Chancellor_73, Chavito_71, Cheetobro_73, Constella_92, DanSyl44_76, Dartin_70, DismalFunk_71, DismalStressor_71, Doughnut_71, Dove_92, Ejimix_100, Enkosi_58, Eponine_75, Findley_71, Fionnbharth_73, Halley_108, Hidrated_94, HokkenD_96, IdentityCrisis_54, JF1_73, JuicyJay_103, Juliette_75, Kraw_73, Lebo14_72, LilPharaoh_57, Malthus_74, Marcoliusprime_71, McMater_70, Mdavu_57, Milly_71, Minerva_106, MissDaisy_70, Mitti_73, Mufasa_71, Nergal_59, NihilNomen_108, Nikao_59, Niklas_70, Nutello_56, Odette_108, OmniCritical_72, Optimus_100, Patt_69, Peanam_70, Qhanda_75, Redno2_98, Reptar3000_70, Richo_70, Ruthiejr_74, SamScheppers_71, Schatzie_101, SgtBeansprout_57, Shaobing_70, Slarp_73, Strobilo_72, TM4_69, Taquito_72, Teejan_58, ThreeRngTarjay_103, Torres_59, Tortellini_67, Trice_56, Validus_73, WST1_55, Wintermute_73, Y10_70, Y2_70, YasnayaPolyana_72, Yuna_72, ZoeJ_70,

Summary by start number:

Start 31:

- Found in 2 of 200 (1.0%) of genes in pham
- No Manual Annotations of this start.
- Called 50.0% of time when present
- Phage (with cluster) where this start called: WST1_55 (AJ),

Start 32:

- Found in 2 of 200 (1.0%) of genes in pham
- Manual Annotations of this start: 1 of 183
- Called 50.0% of time when present
- Phage (with cluster) where this start called: Validus_73 (K1),

Start 33:

- Found in 20 of 200 (10.0%) of genes in pham
- Manual Annotations of this start: 17 of 183

- Called 90.0% of time when present
- Phage (with cluster) where this start called: Beem_108 (J), Bobby_103 (J), Bombitas_95 (J), Constella_92 (J), Dove_92 (J), Ejimix_100 (J), Halley_108 (J), Hidrated_94 (J), HokkenD_96 (J), IdentityCrisis_54 (AJ), JuicyJay_103 (J), Minerva_106 (J), NihilNomen_108 (J), Optimus_100 (J), Redno2_98 (J), Schatzie_101 (J), ThreeRngTarjay_103 (J), Tortellini_67 (P2),

Start 36:

- Found in 1 of 200 (0.5%) of genes in pham
- Manual Annotations of this start: 1 of 183
- Called 100.0% of time when present
- Phage (with cluster) where this start called: Nergal_59 (AG),

Start 37:

- Found in 2 of 200 (1.0%) of genes in pham
- No Manual Annotations of this start.
- Called 50.0% of time when present
- Phage (with cluster) where this start called: Chavito_71 (K1),

Start 38:

- Found in 7 of 200 (3.5%) of genes in pham
- Manual Annotations of this start: 4 of 183
- Called 100.0% of time when present
- Phage (with cluster) where this start called: Dartin_70 (K1), McMater_70 (K1), Niklas_70 (K1), Peanam_70 (K1), Richo_70 (K1), Shaobing_70 (K1), Yuna_72 (K6),

Start 39:

- Found in 121 of 200 (60.5%) of genes in pham
- Manual Annotations of this start: 116 of 183
- Called 100.0% of time when present
- Phage (with cluster) where this start called: ActinUp_68 (K1), Adephagia_68 (K1), Adonis_68 (K1), Ageofdapage_71 (K1), AlishaPH_68 (K1), Amgine_66 (K6), Amohnition_67 (K6), Anaya_71 (K1), Angelica_67 (K1), Anma_69 (K1), Apocalypse_70 (K1), Applecrisp_64 (K6), Asayake_68 (K1), Atiba_69 (K1), BEEST_68 (K1), BGlluviae_68 (K1), BaghaKamala_67 (K1), BarrelRoll_69 (K1), Beezoo_70 (K1), Bella96_68 (K1), Belladonna_68 (K1), Bern_69 (K1), Blizzard_68 (K1), Boiiii_68 (K1), CREW_68 (K1), CallaLilly_68 (K1), Capricorn_68 (K1), CaseJules_70 (K1), CheetoDust_67 (K1), Chris_70 (K1), Clipper_72 (K1), Curiosium_72 (K1), Dalmuri_68 (K1), DartGoblin_69 (K1), DarthP_67 (K6), Deby_68 (K1), Devera_75 (K1), Dole_73 (K1), DrHayes_68 (K1), Durfee_68 (K1), Efra2_73 (K1), Ekdilam_64 (K6), Ellie_63 (K6), Emerson_70 (K1), Fefferhead_65 (K6), Ganymede_68 (K1), Geraldini_71 (K1), Guanica15_72 (K1), Hammy_67 (K6), HedwigODU_68 (K1), Homura_68 (K1), Hurricane_69 (K3), Hyperbowlee_68 (K1), Illumine_73 (K1), Inky_68 (K1), JAWS_68 (K1), Jarvi_68 (K1), Jayhawk_70 (K1), Jeckyll_68 (K1), Joy99_68 (K1), Keshu_71 (K3), KiSi_72 (K1), LastHope_72 (K1), LaterM_68 (K1), Lavahound_65 (K6), LeMond_71 (K1), Lea83_69 (K3), LindNT_67 (K1), Llorens_68 (K1), Lunahalos_68 (K1), MacKat_64 (K1), MacnCheese_71 (K3), MarkPhew_70 (K1), Marshawn_67 (K6), MeaningOfLife_69 (K1), Megsy_70 (K1), Murucutumbu_69 (K1), Mynx_70 (K1), November_65 (K6), Oscar_71 (K1), Padfoot_68 (K1), Padpat_71 (K1), Peel_68 (K1), Pharb_68 (K3), Piatt_68 (K1), Pisa1_67 (K1), Pisa4_61 (K1), Pixie_68 (K3), Pokerus_68 (K1), Prithvi_69 (K1), QuincyRose_66 (K1), Ramen_69 (K1), Rapunzel97_70 (K1), Rosmarinus_68 (K1), SamuelLPlaqson_68 (K1), Scarlett_72 (K1), ShedlockHolmes_70 (K3),

ShiaSurprise_69 (K1), SirPhilip_67 (K6), Slimphazie_69 (K1), Spock_68 (K1), Stinson_69 (K1), Sulley_67 (K1), TBond007_65 (K3), TClif_69 (K6), Tachez_68 (K1), TaiwanKao_70 (K1), TingHuaYa_71 (K1), TiniBug_68 (K1), Tiri_68 (K1), Topper_68 (K1), TreyKay_69 (K1), TribbleTrouble_69 (K3), TruffulaTree_69 (K1), Twitch_68 (K1), Urkel_68 (K1), Veliki_69 (K1), YoureAdopted_67 (K1), Yunkel11_72 (K1), Zabiza_63 (K1), Zavala_71 (K1),

Start 41:

- Found in 11 of 200 (5.5%) of genes in pham
- Manual Annotations of this start: 11 of 183
- Called 100.0% of time when present
- Phage (with cluster) where this start called: BoostSeason_71 (K2), DismalFunk_71 (K2), DismalStressor_71 (K2), Doughnut_71 (K2), Findley_71 (K2), Marcoliusprime_71 (K2), Milly_71 (K2), Mufasa_71 (K2), Strobilo_72 (K2), TM4_69 (K2), ZoeJ_70 (K2),

Start 42:

- Found in 27 of 200 (13.5%) of genes in pham
- Manual Annotations of this start: 21 of 183
- Called 77.8% of time when present
- Phage (with cluster) where this start called: Aminay_68 (K7), Boilgate_65 (K8), Chancellor_73 (K4), Cheetobro_73 (K4), Eponine_75 (K4), Fionnbharth_73 (K4), JF1_73 (K4), Juliette_75 (K4), Lebo14_72 (K4), Malthus_74 (K4), MissDaisy_70 (K4), Mitti_73 (K4), Patt_69 (K4), Reptar3000_70 (K4), Ruthiejr_74 (K4), SamScheppers_71 (K4), Slarp_73 (K4), Taquito_72 (K4), Wintermute_73 (K4), Y10_70 (K4), Y2_70 (K4),

Start 44:

- Found in 11 of 200 (5.5%) of genes in pham
- Manual Annotations of this start: 9 of 183
- Called 100.0% of time when present
- Phage (with cluster) where this start called: Amelie_56 (K1), Binglebops_56 (K1), Enkosi_58 (K1), LilPharaoh_57 (K1), Mdavu_57 (K1), Nikao_59 (K1), Nutello_56 (K1), SgtBeansprout_57 (K1), Teejan_58 (K1), Torres_59 (K1), Trice_56 (K1),

Start 45:

- Found in 25 of 200 (12.5%) of genes in pham
- Manual Annotations of this start: 3 of 183
- Called 24.0% of time when present
- Phage (with cluster) where this start called: Bobquesha_74 (K4), DanSyl44_76 (K4), Kraw_73 (K4), OmniCritical_72 (K4), Qhanda_75 (K4), YasnayaPolyana_72 (K4),

Start 50:

- Found in 13 of 200 (6.5%) of genes in pham
- No Manual Annotations of this start.
- Called 7.7% of time when present
- Phage (with cluster) where this start called: Odette_108 (J),

Summary by clusters:

There are 11 clusters represented in this pham: P2, J, AG, AJ, K3, K2, K1, K7, K6, K4, K8,

Info for manual annotations of cluster AG:

- Start number 36 was manually annotated 1 time for cluster AG.

Info for manual annotations of cluster AJ:

- Start number 33 was manually annotated 1 time for cluster AJ.

Info for manual annotations of cluster J:

- Start number 33 was manually annotated 15 times for cluster J.

Info for manual annotations of cluster K1:

- Start number 32 was manually annotated 1 time for cluster K1.
- Start number 38 was manually annotated 3 times for cluster K1.
- Start number 39 was manually annotated 94 times for cluster K1.
- Start number 44 was manually annotated 9 times for cluster K1.

Info for manual annotations of cluster K2:

- Start number 41 was manually annotated 11 times for cluster K2.

Info for manual annotations of cluster K3:

- Start number 39 was manually annotated 9 times for cluster K3.

Info for manual annotations of cluster K4:

- Start number 42 was manually annotated 19 times for cluster K4.
- Start number 45 was manually annotated 3 times for cluster K4.

Info for manual annotations of cluster K6:

- Start number 38 was manually annotated 1 time for cluster K6.
- Start number 39 was manually annotated 13 times for cluster K6.

Info for manual annotations of cluster K7:

- Start number 42 was manually annotated 1 time for cluster K7.

Info for manual annotations of cluster K8:

- Start number 42 was manually annotated 1 time for cluster K8.

Info for manual annotations of cluster P2:

- Start number 33 was manually annotated 1 time for cluster P2.

Gene Information:

Gene: ActinUp_68 Start: 43942, Stop: 44313, Start Num: 39

Candidate Starts for ActinUp_68:

(25, 43882), (26, 43888), (35, 43927), (Start: 39 @43942 has 116 MA's), (57, 44059), (59, 44095), (63, 44110), (64, 44113), (77, 44269),

Gene: Adephagia_68 Start: 43979, Stop: 44350, Start Num: 39

Candidate Starts for Adephagia_68:

(25, 43919), (26, 43925), (35, 43964), (Start: 39 @43979 has 116 MA's), (57, 44096), (59, 44132), (63, 44147), (64, 44150), (77, 44306),

Gene: Adonis_68 Start: 44214, Stop: 44585, Start Num: 39

Candidate Starts for Adonis_68:

(18, 44106), (25, 44154), (26, 44160), (35, 44199), (Start: 39 @44214 has 116 MA's), (57, 44331), (59, 44367), (63, 44382), (64, 44385), (77, 44541),

Gene: Ageofdapage_71 Start: 45137, Stop: 45508, Start Num: 39

Candidate Starts for Ageofdapage_71:

(Start: 39 @45137 has 116 MA's), (57, 45254), (59, 45290), (63, 45305), (64, 45308), (77, 45464),

Gene: AlishaPH_68 Start: 44240, Stop: 44611, Start Num: 39

Candidate Starts for AlishaPH_68:

(25, 44180), (26, 44186), (35, 44225), (Start: 39 @44240 has 116 MA's), (57, 44357), (59, 44393), (63, 44408), (64, 44411), (77, 44567),

Gene: Amelie_56 Start: 41183, Stop: 41554, Start Num: 44

Candidate Starts for Amelie_56:

(13, 40970), (14, 40979), (17, 41021), (27, 41126), (Start: 44 @41183 has 9 MA's), (59, 41336), (60, 41339), (63, 41351), (64, 41354), (71, 41405),

Gene: Amgine_66 Start: 44807, Stop: 45178, Start Num: 39

Candidate Starts for Amgine_66:

(14, 44603), (27, 44753), (Start: 39 @44807 has 116 MA's), (54, 44906), (59, 44963), (64, 44981), (71, 45032),

Gene: Aminay_68 Start: 43564, Stop: 43917, Start Num: 42

Candidate Starts for Aminay_68:

(40, 43558), (Start: 42 @43564 has 21 MA's), (59, 43735), (60, 43738), (62, 43747), (63, 43750), (75, 43837),

Gene: Amohnition_67 Start: 44352, Stop: 44687, Start Num: 39

Candidate Starts for Amohnition_67:

(27, 44301), (Start: 39 @44352 has 116 MA's), (59, 44508), (60, 44511), (63, 44523), (64, 44526),

Gene: Anaya_71 Start: 44933, Stop: 45304, Start Num: 39

Candidate Starts for Anaya_71:

(25, 44873), (35, 44918), (Start: 39 @44933 has 116 MA's), (48, 44948), (57, 45050), (59, 45086), (63, 45101), (64, 45104), (77, 45260),

Gene: Angelica_67 Start: 43899, Stop: 44270, Start Num: 39

Candidate Starts for Angelica_67:

(13, 43686), (14, 43695), (27, 43845), (Start: 39 @43899 has 116 MA's), (57, 44016), (59, 44052), (63, 44067), (64, 44070), (77, 44226),

Gene: Anma_69 Start: 44604, Stop: 44975, Start Num: 39

Candidate Starts for Anma_69:

(13, 44391), (14, 44400), (27, 44550), (Start: 39 @44604 has 116 MA's), (58, 44739), (59, 44757), (63, 44772), (77, 44931),

Gene: Apocalypse_70 Start: 44662, Stop: 45033, Start Num: 39

Candidate Starts for Apocalypse_70:

(Start: 39 @44662 has 116 MA's), (57, 44779), (59, 44815), (63, 44830), (64, 44833), (77, 44989),

Gene: Applecrisp_64 Start: 43937, Stop: 44308, Start Num: 39

Candidate Starts for Applecrisp_64:

(14, 43733), (27, 43883), (Start: 39 @43937 has 116 MA's), (54, 44036), (59, 44093), (64, 44111), (71, 44162),

Gene: Asayake_68 Start: 44294, Stop: 44665, Start Num: 39

Candidate Starts for Asayake_68:

(12, 44084), (25, 44234), (26, 44240), (35, 44279), (Start: 39 @44294 has 116 MA's), (57, 44411), (59, 44447), (63, 44462), (64, 44465), (77, 44621),

Gene: Atiba_69 Start: 43942, Stop: 44313, Start Num: 39

Candidate Starts for Atiba_69:

(25, 43882), (26, 43888), (35, 43927), (Start: 39 @43942 has 116 MA's), (57, 44059), (59, 44095), (63, 44110), (64, 44113), (77, 44269),

Gene: BEEST_68 Start: 44294, Stop: 44665, Start Num: 39

Candidate Starts for BEEST_68:

(12, 44084), (25, 44234), (26, 44240), (35, 44279), (Start: 39 @44294 has 116 MA's), (57, 44411), (59, 44447), (63, 44462), (64, 44465), (77, 44621),

Gene: BGlluviae_68 Start: 44097, Stop: 44468, Start Num: 39

Candidate Starts for BGlluviae_68:

(25, 44037), (26, 44043), (35, 44082), (Start: 39 @44097 has 116 MA's), (57, 44214), (59, 44250), (63, 44265), (64, 44268), (77, 44424),

Gene: BaghaKamala_67 Start: 43528, Stop: 43899, Start Num: 39

Candidate Starts for BaghaKamala_67:

(Start: 39 @43528 has 116 MA's), (57, 43645), (59, 43681), (63, 43696), (64, 43699), (77, 43855),

Gene: BarrelRoll_69 Start: 44380, Stop: 44751, Start Num: 39

Candidate Starts for BarrelRoll_69:

(25, 44320), (26, 44326), (35, 44365), (Start: 39 @44380 has 116 MA's), (57, 44497), (59, 44533), (63, 44548), (64, 44551), (77, 44707),

Gene: Beem_108 Start: 62992, Stop: 63327, Start Num: 33

Candidate Starts for Beem_108:

(Start: 33 @62992 has 17 MA's), (50, 63064), (71, 63238), (73, 63256),

Gene: Beezoo_70 Start: 44892, Stop: 45263, Start Num: 39

Candidate Starts for Beezoo_70:

(25, 44832), (26, 44838), (35, 44877), (Start: 39 @44892 has 116 MA's), (57, 45009), (59, 45045), (63, 45060), (64, 45063), (77, 45219),

Gene: Bella96_68 Start: 44450, Stop: 44821, Start Num: 39

Candidate Starts for Bella96_68:

(13, 44237), (14, 44246), (27, 44396), (Start: 39 @44450 has 116 MA's), (58, 44585), (59, 44603), (63, 44618), (77, 44777),

Gene: Belladonna_68 Start: 44097, Stop: 44468, Start Num: 39

Candidate Starts for Belladonna_68:

(25, 44037), (26, 44043), (35, 44082), (Start: 39 @44097 has 116 MA's), (57, 44214), (59, 44250), (63, 44265), (64, 44268), (77, 44424),

Gene: Bern_69 Start: 43121, Stop: 43492, Start Num: 39

Candidate Starts for Bern_69:

(Start: 39 @43121 has 116 MA's), (57, 43238), (59, 43274), (63, 43289), (64, 43292), (77, 43448),

Gene: Binglebops_56 Start: 41183, Stop: 41554, Start Num: 44

Candidate Starts for Binglebops_56:

(13, 40970), (14, 40979), (17, 41021), (27, 41126), (Start: 44 @41183 has 9 MA's), (59, 41336), (60, 41339), (63, 41351), (64, 41354), (71, 41405),

Gene: Blizzard_68 Start: 44294, Stop: 44665, Start Num: 39

Candidate Starts for Blizzard_68:

(12, 44084), (25, 44234), (26, 44240), (35, 44279), (Start: 39 @44294 has 116 MA's), (57, 44411), (59, 44447), (63, 44462), (64, 44465), (77, 44621),

Gene: Bobby_103 Start: 64857, Stop: 65192, Start Num: 33

Candidate Starts for Bobby_103:

(Start: 33 @64857 has 17 MA's), (71, 65103), (73, 65121),

Gene: Bobquesha_74 Start: 43552, Stop: 43914, Start Num: 45

Candidate Starts for Bobquesha_74:

(Start: 42 @43534 has 21 MA's), (Start: 45 @43552 has 3 MA's), (59, 43714), (60, 43717), (68, 43765), (77, 43885),

Gene: Boiiii_68 Start: 44296, Stop: 44667, Start Num: 39

Candidate Starts for Boiiii_68:

(12, 44086), (25, 44236), (26, 44242), (35, 44281), (Start: 39 @44296 has 116 MA's), (57, 44413), (59, 44449), (63, 44464), (64, 44467), (77, 44623),

Gene: Boilgate_65 Start: 46267, Stop: 46611, Start Num: 42

Candidate Starts for Boilgate_65:

(1, 45925), (5, 45943), (8, 45961), (11, 46003), (14, 46054), (24, 46183), (Start: 42 @46267 has 21 MA's), (60, 46444),

Gene: Bombitas_95 Start: 60155, Stop: 60490, Start Num: 33

Candidate Starts for Bombitas_95:

(Start: 33 @60155 has 17 MA's), (50, 60227), (71, 60401), (73, 60419),

Gene: BoostSeason_71 Start: 46076, Stop: 46420, Start Num: 41

Candidate Starts for BoostSeason_71:

(Start: 41 @46076 has 11 MA's), (55, 46181), (58, 46220), (60, 46241), (63, 46253), (71, 46307), (72, 46322),

Gene: CREW_68 Start: 44097, Stop: 44468, Start Num: 39

Candidate Starts for CREW_68:

(25, 44037), (26, 44043), (35, 44082), (Start: 39 @44097 has 116 MA's), (57, 44214), (59, 44250), (63, 44265), (64, 44268), (77, 44424),

Gene: CallaLilly_68 Start: 44020, Stop: 44391, Start Num: 39

Candidate Starts for CallaLilly_68:

(25, 43960), (26, 43966), (35, 44005), (Start: 39 @44020 has 116 MA's), (57, 44137), (59, 44173), (63, 44188), (64, 44191), (77, 44347),

Gene: Capricorn_68 Start: 44097, Stop: 44468, Start Num: 39

Candidate Starts for Capricorn_68:

(25, 44037), (26, 44043), (35, 44082), (Start: 39 @44097 has 116 MA's), (57, 44214), (59, 44250), (63, 44265), (64, 44268), (77, 44424),

Gene: CaseJules_70 Start: 44294, Stop: 44665, Start Num: 39

Candidate Starts for CaseJules_70:

(12, 44084), (25, 44234), (26, 44240), (35, 44279), (Start: 39 @44294 has 116 MA's), (57, 44411), (59, 44447), (63, 44462), (64, 44465), (77, 44621),

Gene: Chancellor_73 Start: 44642, Stop: 45022, Start Num: 42

Candidate Starts for Chancellor_73:

(Start: 42 @44642 has 21 MA's), (Start: 45 @44660 has 3 MA's), (59, 44822), (60, 44825), (68, 44873), (77, 44993),

Gene: Chavito_71 Start: 45115, Stop: 45489, Start Num: 37

Candidate Starts for Chavito_71:

(15, 44947), (20, 45037), (22, 45043), (29, 45076), (Start: 32 @45097 has 1 MA's), (37, 45115), (46, 45130), (58, 45256), (59, 45274), (60, 45277), (63, 45289), (64, 45292), (70, 45337), (71, 45343), (72, 45358), (77, 45448), (80, 45457),

Gene: CheetoDust_67 Start: 43575, Stop: 43946, Start Num: 39

Candidate Starts for CheetoDust_67:

(Start: 39 @43575 has 116 MA's), (57, 43692), (59, 43728), (63, 43743), (64, 43746), (77, 43902),

Gene: Cheetobro_73 Start: 44639, Stop: 45019, Start Num: 42

Candidate Starts for Cheetobro_73:

(Start: 42 @44639 has 21 MA's), (Start: 45 @44657 has 3 MA's), (59, 44819), (60, 44822), (68, 44870), (77, 44990),

Gene: Chris_70 Start: 44892, Stop: 45239, Start Num: 39

Candidate Starts for Chris_70:

(14, 44703), (27, 44838), (Start: 39 @44892 has 116 MA's), (46, 44925), (47, 44928), (53, 45003), (54, 45012), (59, 45069), (60, 45072), (63, 45084), (71, 45138),

Gene: Clipper_72 Start: 44996, Stop: 45367, Start Num: 39

Candidate Starts for Clipper_72:

(25, 44936), (26, 44942), (35, 44981), (Start: 39 @44996 has 116 MA's), (57, 45113), (59, 45149), (63, 45164), (64, 45167), (77, 45323),

Gene: Constella_92 Start: 57167, Stop: 57499, Start Num: 33

Candidate Starts for Constella_92:

(Start: 33 @57167 has 17 MA's), (60, 57347), (71, 57413), (73, 57431),

Gene: Curiosium_72 Start: 43619, Stop: 43990, Start Num: 39

Candidate Starts for Curiosium_72:

(34, 43598), (35, 43604), (Start: 39 @43619 has 116 MA's), (49, 43652), (58, 43754), (59, 43772), (63, 43787), (64, 43790), (72, 43856),

Gene: Dalmuri_68 Start: 44097, Stop: 44468, Start Num: 39

Candidate Starts for Dalmuri_68:

(25, 44037), (26, 44043), (35, 44082), (Start: 39 @44097 has 116 MA's), (57, 44214), (59, 44250), (63, 44265), (64, 44268), (77, 44424),

Gene: DanSyl44_76 Start: 45851, Stop: 46213, Start Num: 45

Candidate Starts for DanSyl44_76:

(Start: 42 @45833 has 21 MA's), (Start: 45 @45851 has 3 MA's), (59, 46013), (60, 46016), (68, 46064), (71, 46079), (77, 46184), (78, 46190),

Gene: DartGoblin_69 Start: 44422, Stop: 44793, Start Num: 39

Candidate Starts for DartGoblin_69:

(13, 44209), (14, 44218), (27, 44368), (Start: 39 @44422 has 116 MA's), (58, 44557), (59, 44575), (63, 44590), (77, 44749),

Gene: DarthP_67 Start: 44206, Stop: 44541, Start Num: 39

Candidate Starts for DarthP_67:

(7, 43903), (13, 43996), (14, 44005), (27, 44155), (Start: 39 @44206 has 116 MA's), (54, 44305), (59, 44362), (63, 44377), (64, 44380),

Gene: Dartin_70 Start: 44359, Stop: 44739, Start Num: 38

Candidate Starts for Dartin_70:

(3, 44050), (13, 44152), (14, 44161), (27, 44308), (Start: 38 @44359 has 4 MA's), (46, 44377), (58, 44503), (59, 44521), (60, 44524), (64, 44539), (67, 44572), (70, 44584), (71, 44590),

Gene: Deby_68 Start: 44347, Stop: 44718, Start Num: 39

Candidate Starts for Deby_68:

(Start: 39 @44347 has 116 MA's), (57, 44464), (59, 44500), (63, 44515), (64, 44518), (77, 44674),

Gene: Devera_75 Start: 45700, Stop: 46071, Start Num: 39

Candidate Starts for Devera_75:

(Start: 39 @45700 has 116 MA's), (57, 45817), (59, 45853), (63, 45868), (64, 45871), (77, 46027),

Gene: DismalFunk_71 Start: 46501, Stop: 46845, Start Num: 41

Candidate Starts for DismalFunk_71:

(Start: 41 @46501 has 11 MA's), (58, 46642), (60, 46663), (63, 46675), (71, 46729),

Gene: DismalStressor_71 Start: 46501, Stop: 46845, Start Num: 41

Candidate Starts for DismalStressor_71:

(Start: 41 @46501 has 11 MA's), (58, 46642), (60, 46663), (63, 46675), (71, 46729),

Gene: Dole_73 Start: 45703, Stop: 46074, Start Num: 39

Candidate Starts for Dole_73:

(Start: 39 @45703 has 116 MA's), (57, 45820), (59, 45856), (63, 45871), (64, 45874), (77, 46030),

Gene: Doughnut_71 Start: 46117, Stop: 46461, Start Num: 41

Candidate Starts for Doughnut_71:

(Start: 41 @46117 has 11 MA's), (58, 46258), (60, 46279), (63, 46291), (71, 46345),

Gene: Dove_92 Start: 58421, Stop: 58756, Start Num: 33

Candidate Starts for Dove_92:

(Start: 33 @58421 has 17 MA's), (50, 58493), (71, 58667), (73, 58685),

Gene: DrHayes_68 Start: 44604, Stop: 44975, Start Num: 39

Candidate Starts for DrHayes_68:

(13, 44391), (14, 44400), (27, 44550), (Start: 39 @44604 has 116 MA's), (58, 44739), (59, 44757), (63, 44772), (77, 44931),

Gene: Durfee_68 Start: 44294, Stop: 44665, Start Num: 39

Candidate Starts for Durfee_68:

(12, 44084), (25, 44234), (26, 44240), (35, 44279), (Start: 39 @44294 has 116 MA's), (57, 44411), (59, 44447), (63, 44462), (64, 44465), (77, 44621),

Gene: Efra2_73 Start: 44448, Stop: 44819, Start Num: 39

Candidate Starts for Efra2_73:

(27, 44394), (Start: 39 @44448 has 116 MA's), (57, 44565), (59, 44601), (63, 44616), (64, 44619), (77, 44775),

Gene: Ejimix_100 Start: 62719, Stop: 63054, Start Num: 33

Candidate Starts for Ejimix_100:

(Start: 33 @62719 has 17 MA's), (50, 62791), (71, 62965), (73, 62983),

Gene: Ekdilam_64 Start: 44431, Stop: 44766, Start Num: 39

Candidate Starts for Ekdilam_64:

(4, 44122), (13, 44221), (14, 44230), (27, 44380), (Start: 39 @44431 has 116 MA's), (59, 44587), (60, 44590), (64, 44605), (69, 44647), (72, 44671),

Gene: Ellie_63 Start: 43667, Stop: 44038, Start Num: 39

Candidate Starts for Ellie_63:

(14, 43463), (27, 43613), (Start: 39 @43667 has 116 MA's), (54, 43766), (59, 43823), (64, 43841), (71, 43892),

Gene: Emerson_70 Start: 44414, Stop: 44785, Start Num: 39

Candidate Starts for Emerson_70:

(25, 44354), (26, 44360), (35, 44399), (Start: 39 @44414 has 116 MA's), (57, 44531), (59, 44567), (63, 44582), (64, 44585), (77, 44741),

Gene: Enkosi_58 Start: 43796, Stop: 44167, Start Num: 44

Candidate Starts for Enkosi_58:

(13, 43583), (14, 43592), (17, 43634), (27, 43739), (Start: 44 @43796 has 9 MA's), (59, 43949), (60, 43952), (63, 43964), (64, 43967), (71, 44018),

Gene: Eponine_75 Start: 45485, Stop: 45865, Start Num: 42

Candidate Starts for Eponine_75:

(Start: 42 @45485 has 21 MA's), (Start: 45 @45503 has 3 MA's), (59, 45665), (60, 45668), (65, 45698), (68, 45716), (77, 45836),

Gene: Fefferhead_65 Start: 43576, Stop: 43947, Start Num: 39

Candidate Starts for Fefferhead_65:

(14, 43372), (27, 43522), (Start: 39 @43576 has 116 MA's), (54, 43675), (59, 43732), (64, 43750), (71, 43801),

Gene: Findley_71 Start: 46495, Stop: 46839, Start Num: 41

Candidate Starts for Findley_71:

(Start: 41 @46495 has 11 MA's), (58, 46636), (60, 46657), (63, 46669), (71, 46723),

Gene: Fionnbharth_73 Start: 44883, Stop: 45263, Start Num: 42

Candidate Starts for Fionnbharth_73:

(Start: 42 @44883 has 21 MA's), (Start: 45 @44901 has 3 MA's), (59, 45063), (60, 45066), (65, 45096), (68, 45114), (77, 45234),

Gene: Ganymede_68 Start: 44320, Stop: 44691, Start Num: 39

Candidate Starts for Ganymede_68:

(25, 44260), (26, 44266), (35, 44305), (Start: 39 @44320 has 116 MA's), (57, 44437), (59, 44473), (63, 44488), (64, 44491), (77, 44647),

Gene: Geraldini_71 Start: 44976, Stop: 45347, Start Num: 39

Candidate Starts for Geraldini_71:

(18, 44868), (25, 44916), (26, 44922), (35, 44961), (Start: 39 @44976 has 116 MA's), (57, 45093), (59, 45129), (63, 45144), (64, 45147), (77, 45303),

Gene: Guanica15_72 Start: 44186, Stop: 44557, Start Num: 39

Candidate Starts for Guanica15_72:

(27, 44132), (Start: 39 @44186 has 116 MA's), (57, 44303), (59, 44339), (63, 44354), (64, 44357), (77, 44513),

Gene: Halley_108 Start: 62993, Stop: 63328, Start Num: 33

Candidate Starts for Halley_108:

(Start: 33 @62993 has 17 MA's), (50, 63065), (71, 63239), (73, 63257),

Gene: Hammy_67 Start: 44194, Stop: 44529, Start Num: 39

Candidate Starts for Hammy_67:

(7, 43891), (13, 43984), (14, 43993), (27, 44143), (Start: 39 @44194 has 116 MA's), (59, 44350), (63, 44365), (64, 44368),

Gene: HedwigODU_68 Start: 43942, Stop: 44313, Start Num: 39

Candidate Starts for HedwigODU_68:

(25, 43882), (26, 43888), (35, 43927), (Start: 39 @43942 has 116 MA's), (57, 44059), (59, 44095), (63, 44110), (64, 44113), (77, 44269),

Gene: Hidrated_94 Start: 60927, Stop: 61262, Start Num: 33

Candidate Starts for Hidrated_94:

(16, 60783), (Start: 33 @60927 has 17 MA's), (50, 60999), (71, 61173), (73, 61191),

Gene: HokkenD_96 Start: 61261, Stop: 61596, Start Num: 33

Candidate Starts for HokkenD_96:

(Start: 33 @61261 has 17 MA's), (50, 61333), (71, 61507), (73, 61525),

Gene: Homura_68 Start: 44097, Stop: 44468, Start Num: 39

Candidate Starts for Homura_68:

(25, 44037), (26, 44043), (35, 44082), (Start: 39 @44097 has 116 MA's), (57, 44214), (59, 44250), (63, 44265), (64, 44268), (77, 44424),

Gene: Hurricane_69 Start: 44340, Stop: 44675, Start Num: 39

Candidate Starts for Hurricane_69:

(6, 44031), (7, 44037), (10, 44058), (14, 44139), (27, 44286), (Start: 39 @44340 has 116 MA's), (52, 44412), (60, 44499), (63, 44511), (66, 44541), (69, 44556), (72, 44580),

Gene: Hyperbowlee_68 Start: 44294, Stop: 44665, Start Num: 39

Candidate Starts for Hyperbowlee_68:

(12, 44084), (25, 44234), (26, 44240), (35, 44279), (Start: 39 @44294 has 116 MA's), (57, 44411), (59, 44447), (63, 44462), (64, 44465), (77, 44621),

Gene: IdentityCrisis_54 Start: 33602, Stop: 33967, Start Num: 33

Candidate Starts for IdentityCrisis_54:

(31, 33590), (Start: 33 @33602 has 17 MA's), (61, 33785), (71, 33848), (76, 33935), (77, 33953), (79, 33962),

Gene: Illumine_73 Start: 45702, Stop: 46073, Start Num: 39

Candidate Starts for Illumine_73:

(Start: 39 @45702 has 116 MA's), (57, 45819), (59, 45855), (63, 45870), (64, 45873), (77, 46029),

Gene: Inky_68 Start: 44097, Stop: 44468, Start Num: 39

Candidate Starts for Inky_68:

(25, 44037), (26, 44043), (35, 44082), (Start: 39 @44097 has 116 MA's), (57, 44214), (59, 44250), (63, 44265), (64, 44268), (77, 44424),

Gene: JAWS_68 Start: 44140, Stop: 44511, Start Num: 39

Candidate Starts for JAWS_68:

(Start: 39 @44140 has 116 MA's), (57, 44257), (59, 44293), (63, 44308), (64, 44311), (77, 44467),

Gene: JF1_73 Start: 44849, Stop: 45229, Start Num: 42

Candidate Starts for JF1_73:

(Start: 42 @44849 has 21 MA's), (Start: 45 @44867 has 3 MA's), (59, 45029), (60, 45032), (68, 45080), (77, 45200),

Gene: Jarvi_68 Start: 44097, Stop: 44468, Start Num: 39

Candidate Starts for Jarvi_68:

(25, 44037), (26, 44043), (35, 44082), (Start: 39 @44097 has 116 MA's), (57, 44214), (59, 44250), (63, 44265), (64, 44268), (77, 44424),

Gene: Jayhawk_70 Start: 44440, Stop: 44811, Start Num: 39

Candidate Starts for Jayhawk_70:

(25, 44380), (26, 44386), (35, 44425), (Start: 39 @44440 has 116 MA's), (57, 44557), (59, 44593), (63, 44608), (64, 44611), (77, 44767),

Gene: Jeckyll_68 Start: 44097, Stop: 44468, Start Num: 39

Candidate Starts for Jeckyll_68:

(25, 44037), (26, 44043), (35, 44082), (Start: 39 @44097 has 116 MA's), (57, 44214), (59, 44250), (63, 44265), (64, 44268), (77, 44424),

Gene: Joy99_68 Start: 44026, Stop: 44397, Start Num: 39

Candidate Starts for Joy99_68:

(25, 43966), (26, 43972), (35, 44011), (Start: 39 @44026 has 116 MA's), (57, 44143), (59, 44179), (63, 44194), (64, 44197), (77, 44353),

Gene: JuicyJay_103 Start: 64127, Stop: 64462, Start Num: 33

Candidate Starts for JuicyJay_103:

(Start: 33 @64127 has 17 MA's), (50, 64199), (71, 64373), (73, 64391),

Gene: Juliette_75 Start: 44947, Stop: 45327, Start Num: 42

Candidate Starts for Juliette_75:

(Start: 42 @44947 has 21 MA's), (Start: 45 @44965 has 3 MA's), (59, 45127), (60, 45130), (68, 45178), (77, 45298),

Gene: Keshu_71 Start: 44440, Stop: 44811, Start Num: 39

Candidate Starts for Keshu_71:

(27, 44386), (Start: 39 @44440 has 116 MA's), (49, 44476), (51, 44491), (60, 44599), (69, 44656), (72, 44680), (77, 44770), (81, 44779),

Gene: KiSi_72 Start: 44874, Stop: 45218, Start Num: 39

Candidate Starts for KiSi_72:

(1, 44565), (9, 44607), (14, 44685), (Start: 39 @44874 has 116 MA's), (46, 44904), (47, 44907), (54, 44991), (59, 45048), (60, 45051), (63, 45063), (71, 45117),

Gene: Kraw_73 Start: 44653, Stop: 45015, Start Num: 45

Candidate Starts for Kraw_73:

(Start: 42 @44635 has 21 MA's), (Start: 45 @44653 has 3 MA's), (59, 44815), (60, 44818), (68, 44866), (77, 44986),

Gene: LastHope_72 Start: 43303, Stop: 43674, Start Num: 39

Candidate Starts for LastHope_72:

(Start: 39 @43303 has 116 MA's), (59, 43456), (63, 43471), (77, 43630),

Gene: LaterM_68 Start: 44555, Stop: 44926, Start Num: 39

Candidate Starts for LaterM_68:

(Start: 39 @44555 has 116 MA's), (57, 44672), (59, 44708), (63, 44723), (64, 44726), (77, 44882),

Gene: Lavahound_65 Start: 44944, Stop: 45315, Start Num: 39

Candidate Starts for Lavahound_65:

(14, 44740), (27, 44890), (Start: 39 @44944 has 116 MA's), (54, 45043), (59, 45100), (64, 45118), (71, 45169),

Gene: LeMond_71 Start: 44508, Stop: 44852, Start Num: 39

Candidate Starts for LeMond_71:

(1, 44199), (9, 44241), (14, 44319), (27, 44454), (Start: 39 @44508 has 116 MA's), (46, 44538), (47, 44541), (54, 44625), (59, 44682), (60, 44685), (63, 44697), (71, 44751),

Gene: Lea83_69 Start: 44374, Stop: 44745, Start Num: 39

Candidate Starts for Lea83_69:

(14, 44170), (27, 44320), (Start: 39 @44374 has 116 MA's), (49, 44410), (51, 44425), (60, 44533), (69, 44590), (72, 44614), (81, 44713),

Gene: Lebo14_72 Start: 44968, Stop: 45348, Start Num: 42

Candidate Starts for Lebo14_72:

(Start: 42 @44968 has 21 MA's), (Start: 45 @44986 has 3 MA's), (59, 45148), (60, 45151), (68, 45199), (71, 45214), (77, 45319), (78, 45325),

Gene: LilPharaoh_57 Start: 40911, Stop: 41282, Start Num: 44

Candidate Starts for LilPharaoh_57:

(13, 40698), (14, 40707), (17, 40749), (27, 40854), (Start: 44 @40911 has 9 MA's), (59, 41064), (60, 41067), (63, 41079), (64, 41082), (71, 41133),

Gene: LindNT_67 Start: 44352, Stop: 44723, Start Num: 39

Candidate Starts for LindNT_67:

(Start: 39 @44352 has 116 MA's), (57, 44469), (59, 44505), (63, 44520), (64, 44523), (77, 44679),

Gene: Llorens_68 Start: 44097, Stop: 44468, Start Num: 39

Candidate Starts for Llorens_68:

(25, 44037), (26, 44043), (35, 44082), (Start: 39 @44097 has 116 MA's), (57, 44214), (59, 44250), (63, 44265), (64, 44268), (77, 44424),

Gene: Lunahalos_68 Start: 44097, Stop: 44468, Start Num: 39

Candidate Starts for Lunahalos_68:

(25, 44037), (26, 44043), (35, 44082), (Start: 39 @44097 has 116 MA's), (57, 44214), (59, 44250), (63, 44265), (64, 44268), (77, 44424),

Gene: MacKat_64 Start: 39880, Stop: 40251, Start Num: 39

Candidate Starts for MacKat_64:

(25, 39820), (26, 39826), (35, 39865), (Start: 39 @39880 has 116 MA's), (57, 39997), (59, 40033), (63, 40048), (64, 40051), (77, 40207),

Gene: MacnCheese_71 Start: 44967, Stop: 45302, Start Num: 39

Candidate Starts for MacnCheese_71:

(27, 44913), (Start: 39 @44967 has 116 MA's), (60, 45126), (66, 45168), (69, 45183),

Gene: Malthus_74 Start: 44635, Stop: 45015, Start Num: 42

Candidate Starts for Malthus_74:

(Start: 42 @44635 has 21 MA's), (Start: 45 @44653 has 3 MA's), (59, 44815), (60, 44818), (68, 44866), (77, 44986),

Gene: Marcoliusprime_71 Start: 46501, Stop: 46845, Start Num: 41

Candidate Starts for Marcoliusprime_71:

(Start: 41 @46501 has 11 MA's), (58, 46642), (60, 46663), (63, 46675), (71, 46729),

Gene: MarkPhew_70 Start: 44007, Stop: 44354, Start Num: 39

Candidate Starts for MarkPhew_70:

(9, 43740), (14, 43818), (27, 43953), (Start: 39 @44007 has 116 MA's), (46, 44040), (47, 44043), (54, 44127), (58, 44166), (59, 44184), (60, 44187), (63, 44199), (70, 44247), (71, 44253),

Gene: Marshawn_67 Start: 44384, Stop: 44707, Start Num: 39

Candidate Starts for Marshawn_67:

(27, 44330), (Start: 39 @44384 has 116 MA's), (53, 44480), (54, 44489), (57, 44510), (58, 44528), (59, 44546), (60, 44549), (63, 44561), (71, 44615),

Gene: McMater_70 Start: 44359, Stop: 44739, Start Num: 38

Candidate Starts for McMater_70:

(3, 44050), (13, 44152), (14, 44161), (27, 44308), (Start: 38 @44359 has 4 MA's), (46, 44377), (58, 44503), (59, 44521), (60, 44524), (64, 44539), (67, 44572), (70, 44584), (71, 44590),

Gene: Mdavu_57 Start: 41172, Stop: 41543, Start Num: 44

Candidate Starts for Mdavu_57:

(13, 40959), (14, 40968), (17, 41010), (27, 41115), (Start: 44 @41172 has 9 MA's), (59, 41325), (60, 41328), (63, 41340), (64, 41343), (71, 41394),

Gene: MeaningOfLife_69 Start: 44849, Stop: 45220, Start Num: 39

Candidate Starts for MeaningOfLife_69:

(25, 44789), (26, 44795), (35, 44834), (Start: 39 @44849 has 116 MA's), (57, 44966), (59, 45002), (63, 45017), (64, 45020), (77, 45176),

Gene: Megsy_70 Start: 44274, Stop: 44645, Start Num: 39

Candidate Starts for Megsy_70:

(Start: 39 @44274 has 116 MA's), (57, 44391), (59, 44427), (63, 44442), (64, 44445), (77, 44601),

Gene: Milly_71 Start: 46475, Stop: 46819, Start Num: 41

Candidate Starts for Milly_71:

(Start: 41 @46475 has 11 MA's), (58, 46616), (60, 46637), (63, 46649), (71, 46703),

Gene: Minerva_106 Start: 62938, Stop: 63273, Start Num: 33

Candidate Starts for Minerva_106:

(Start: 33 @62938 has 17 MA's), (50, 63010), (71, 63184), (73, 63202),

Gene: MissDaisy_70 Start: 43549, Stop: 43929, Start Num: 42

Candidate Starts for MissDaisy_70:

(Start: 42 @43549 has 21 MA's), (Start: 45 @43567 has 3 MA's), (59, 43729), (60, 43732), (68, 43780), (77, 43900),

Gene: Mitti_73 Start: 44790, Stop: 45170, Start Num: 42

Candidate Starts for Mitti_73:

(Start: 42 @44790 has 21 MA's), (Start: 45 @44808 has 3 MA's), (59, 44970), (60, 44973), (68, 45021), (77, 45141),

Gene: Mufasa_71 Start: 46061, Stop: 46405, Start Num: 41

Candidate Starts for Mufasa_71:

(Start: 41 @46061 has 11 MA's), (55, 46166), (58, 46205), (60, 46226), (63, 46238), (71, 46292), (72, 46307),

Gene: Murucutumbu_69 Start: 45130, Stop: 45501, Start Num: 39

Candidate Starts for Murucutumbu_69:

(Start: 39 @45130 has 116 MA's), (57, 45247), (59, 45283), (63, 45298), (64, 45301), (77, 45457),

Gene: Mynx_70 Start: 44709, Stop: 45080, Start Num: 39

Candidate Starts for Mynx_70:

(25, 44649), (26, 44655), (35, 44694), (Start: 39 @44709 has 116 MA's), (57, 44826), (59, 44862), (63, 44877), (64, 44880), (77, 45036),

Gene: Nergal_59 Start: 40436, Stop: 40837, Start Num: 36

Candidate Starts for Nergal_59:

(28, 40403), (Start: 36 @40436 has 1 MA's), (58, 40598), (59, 40616), (63, 40631), (69, 40676), (70, 40679), (71, 40685), (72, 40700),

Gene: NihilNomen_108 Start: 63079, Stop: 63414, Start Num: 33

Candidate Starts for NihilNomen_108:

(Start: 33 @63079 has 17 MA's), (50, 63151), (71, 63325), (73, 63343),

Gene: Nikao_59 Start: 43796, Stop: 44167, Start Num: 44

Candidate Starts for Nikao_59:

(13, 43583), (14, 43592), (17, 43634), (27, 43739), (Start: 44 @43796 has 9 MA's), (59, 43949), (60, 43952), (63, 43964), (64, 43967), (71, 44018),

Gene: Niklas_70 Start: 44420, Stop: 44800, Start Num: 38

Candidate Starts for Niklas_70:

(3, 44111), (13, 44213), (14, 44222), (27, 44369), (Start: 38 @44420 has 4 MA's), (46, 44438), (58, 44564), (59, 44582), (60, 44585), (64, 44600), (67, 44633), (70, 44645), (71, 44651),

Gene: November_65 Start: 44103, Stop: 44429, Start Num: 39
Candidate Starts for November_65:
(27, 44052), (Start: 39 @44103 has 116 MA's), (59, 44259), (63, 44274), (64, 44277),

Gene: Nutello_56 Start: 41183, Stop: 41554, Start Num: 44
Candidate Starts for Nutello_56:
(13, 40970), (14, 40979), (17, 41021), (27, 41126), (Start: 44 @41183 has 9 MA's), (59, 41336), (60, 41339), (63, 41351), (64, 41354), (71, 41405),

Gene: Odette_108 Start: 62194, Stop: 62457, Start Num: 50
Candidate Starts for Odette_108:
(Start: 33 @62122 has 17 MA's), (50, 62194), (71, 62368), (73, 62386),

Gene: OmniCritical_72 Start: 44741, Stop: 45103, Start Num: 45
Candidate Starts for OmniCritical_72:
(Start: 42 @44723 has 21 MA's), (Start: 45 @44741 has 3 MA's), (59, 44903), (60, 44906), (68, 44954), (77, 45074),

Gene: Optimus_100 Start: 61613, Stop: 61945, Start Num: 33
Candidate Starts for Optimus_100:
(Start: 33 @61613 has 17 MA's), (60, 61793), (71, 61859), (73, 61877),

Gene: Oscar_71 Start: 44425, Stop: 44769, Start Num: 39
Candidate Starts for Oscar_71:
(1, 44116), (9, 44158), (14, 44236), (Start: 39 @44425 has 116 MA's), (46, 44455), (47, 44458), (54, 44542), (59, 44599), (60, 44602), (63, 44614), (71, 44668),

Gene: Padfoot_68 Start: 44294, Stop: 44665, Start Num: 39
Candidate Starts for Padfoot_68:
(12, 44084), (25, 44234), (26, 44240), (35, 44279), (Start: 39 @44294 has 116 MA's), (57, 44411), (59, 44447), (63, 44462), (64, 44465), (77, 44621),

Gene: Padpat_71 Start: 44414, Stop: 44785, Start Num: 39
Candidate Starts for Padpat_71:
(25, 44354), (26, 44360), (35, 44399), (Start: 39 @44414 has 116 MA's), (57, 44531), (59, 44567), (63, 44582), (64, 44585), (77, 44741),

Gene: Patt_69 Start: 43273, Stop: 43653, Start Num: 42
Candidate Starts for Patt_69:
(Start: 42 @43273 has 21 MA's), (Start: 45 @43291 has 3 MA's), (59, 43453), (60, 43456), (68, 43504), (77, 43624),

Gene: Peanam_70 Start: 44377, Stop: 44757, Start Num: 38
Candidate Starts for Peanam_70:
(3, 44068), (13, 44170), (14, 44179), (27, 44326), (Start: 38 @44377 has 4 MA's), (46, 44395), (58, 44521), (59, 44539), (60, 44542), (64, 44557), (67, 44590), (70, 44602), (71, 44608),

Gene: Peel_68 Start: 44099, Stop: 44470, Start Num: 39
Candidate Starts for Peel_68:
(25, 44039), (26, 44045), (35, 44084), (Start: 39 @44099 has 116 MA's), (57, 44216), (59, 44252), (63, 44267), (64, 44270), (77, 44426),

Gene: Pharb_68 Start: 43690, Stop: 44025, Start Num: 39

Candidate Starts for Pharb_68:

(13, 43477), (14, 43486), (27, 43636), (Start: 39 @43690 has 116 MA's), (49, 43726), (60, 43849), (64, 43864), (66, 43891), (69, 43906), (72, 43930), (74, 43945),

Gene: Piatt_68 Start: 44294, Stop: 44665, Start Num: 39

Candidate Starts for Piatt_68:

(12, 44084), (25, 44234), (26, 44240), (35, 44279), (Start: 39 @44294 has 116 MA's), (57, 44411), (59, 44447), (63, 44462), (64, 44465), (77, 44621),

Gene: Pisa1_67 Start: 44679, Stop: 45050, Start Num: 39

Candidate Starts for Pisa1_67:

(2, 44358), (14, 44475), (27, 44625), (Start: 39 @44679 has 116 MA's), (57, 44796), (59, 44832), (63, 44847), (64, 44850), (77, 45006),

Gene: Pisa4_61 Start: 40048, Stop: 40419, Start Num: 39

Candidate Starts for Pisa4_61:

(2, 39727), (14, 39844), (27, 39994), (Start: 39 @40048 has 116 MA's), (57, 40165), (59, 40201), (63, 40216), (64, 40219), (77, 40375),

Gene: Pixie_68 Start: 43865, Stop: 44236, Start Num: 39

Candidate Starts for Pixie_68:

(27, 43811), (Start: 39 @43865 has 116 MA's), (49, 43901), (51, 43916), (60, 44024), (69, 44081), (72, 44105), (77, 44195), (81, 44204),

Gene: Pokerus_68 Start: 44439, Stop: 44810, Start Num: 39

Candidate Starts for Pokerus_68:

(25, 44379), (26, 44385), (35, 44424), (Start: 39 @44439 has 116 MA's), (57, 44556), (59, 44592), (63, 44607), (64, 44610), (77, 44766),

Gene: Prithvi_69 Start: 44352, Stop: 44723, Start Num: 39

Candidate Starts for Prithvi_69:

(Start: 39 @44352 has 116 MA's), (57, 44469), (59, 44505), (63, 44520), (64, 44523), (77, 44679),

Gene: Qhanda_75 Start: 44669, Stop: 45031, Start Num: 45

Candidate Starts for Qhanda_75:

(Start: 42 @44651 has 21 MA's), (Start: 45 @44669 has 3 MA's), (59, 44831), (60, 44834), (68, 44882), (77, 45002),

Gene: QuincyRose_66 Start: 44320, Stop: 44691, Start Num: 39

Candidate Starts for QuincyRose_66:

(25, 44260), (26, 44266), (35, 44305), (Start: 39 @44320 has 116 MA's), (57, 44437), (59, 44473), (63, 44488), (64, 44491), (77, 44647),

Gene: Ramen_69 Start: 43944, Stop: 44315, Start Num: 39

Candidate Starts for Ramen_69:

(25, 43884), (26, 43890), (35, 43929), (Start: 39 @43944 has 116 MA's), (57, 44061), (59, 44097), (63, 44112), (64, 44115), (77, 44271),

Gene: Rapunzel97_70 Start: 44395, Stop: 44766, Start Num: 39

Candidate Starts for Rapunzel97_70:

(25, 44335), (26, 44341), (35, 44380), (Start: 39 @44395 has 116 MA's), (57, 44512), (59, 44548), (63, 44563), (64, 44566), (77, 44722),

Gene: Redno2_98 Start: 58813, Stop: 59148, Start Num: 33
Candidate Starts for Redno2_98:
(Start: 33 @58813 has 17 MA's), (50, 58885), (71, 59059), (73, 59077),

Gene: Reptar3000_70 Start: 43262, Stop: 43642, Start Num: 42
Candidate Starts for Reptar3000_70:
(Start: 42 @43262 has 21 MA's), (Start: 45 @43280 has 3 MA's), (59, 43442), (60, 43445), (68, 43493),
(77, 43613),

Gene: Richo_70 Start: 44359, Stop: 44739, Start Num: 38
Candidate Starts for Richo_70:
(3, 44050), (13, 44152), (14, 44161), (27, 44308), (Start: 38 @44359 has 4 MA's), (46, 44377), (58,
44503), (59, 44521), (60, 44524), (64, 44539), (67, 44572), (70, 44584), (71, 44590),

Gene: Rosmarinus_68 Start: 44085, Stop: 44456, Start Num: 39
Candidate Starts for Rosmarinus_68:
(25, 44025), (26, 44031), (35, 44070), (Start: 39 @44085 has 116 MA's), (57, 44202), (59, 44238), (63,
44253), (64, 44256), (77, 44412),

Gene: Ruthiejr_74 Start: 44734, Stop: 45114, Start Num: 42
Candidate Starts for Ruthiejr_74:
(Start: 42 @44734 has 21 MA's), (Start: 45 @44752 has 3 MA's), (59, 44914), (60, 44917), (68, 44965),
(77, 45085),

Gene: SamScheppers_71 Start: 45114, Stop: 45494, Start Num: 42
Candidate Starts for SamScheppers_71:
(Start: 42 @45114 has 21 MA's), (Start: 45 @45132 has 3 MA's), (59, 45294), (60, 45297), (68, 45345),
(77, 45465),

Gene: SamuelLPlaqson_68 Start: 44604, Stop: 44975, Start Num: 39
Candidate Starts for SamuelLPlaqson_68:
(13, 44391), (14, 44400), (27, 44550), (Start: 39 @44604 has 116 MA's), (58, 44739), (59, 44757), (63,
44772), (77, 44931),

Gene: Scarlett_72 Start: 44755, Stop: 45099, Start Num: 39
Candidate Starts for Scarlett_72:
(1, 44446), (9, 44488), (14, 44566), (Start: 39 @44755 has 116 MA's), (46, 44785), (47, 44788), (54,
44872), (59, 44929), (60, 44932), (63, 44944), (71, 44998),

Gene: Schatzie_101 Start: 61869, Stop: 62204, Start Num: 33
Candidate Starts for Schatzie_101:
(Start: 33 @61869 has 17 MA's), (50, 61941), (71, 62115), (73, 62133),

Gene: SgtBeansprout_57 Start: 41183, Stop: 41554, Start Num: 44
Candidate Starts for SgtBeansprout_57:
(13, 40970), (14, 40979), (17, 41021), (27, 41126), (Start: 44 @41183 has 9 MA's), (59, 41336), (60,
41339), (63, 41351), (64, 41354), (71, 41405),

Gene: Shaobing_70 Start: 44395, Stop: 44775, Start Num: 38
Candidate Starts for Shaobing_70:
(3, 44086), (13, 44188), (14, 44197), (27, 44344), (Start: 38 @44395 has 4 MA's), (46, 44413), (58,
44539), (59, 44557), (60, 44560), (64, 44575), (67, 44608), (70, 44620), (71, 44626),

Gene: ShedlockHolmes_70 Start: 44378, Stop: 44749, Start Num: 39

Candidate Starts for ShedlockHolmes_70:

(14, 44174), (27, 44324), (Start: 39 @44378 has 116 MA's), (49, 44414), (51, 44429), (60, 44537), (69, 44594), (72, 44618), (81, 44717),

Gene: ShiaSurprise_69 Start: 44294, Stop: 44665, Start Num: 39

Candidate Starts for ShiaSurprise_69:

(12, 44084), (25, 44234), (26, 44240), (35, 44279), (Start: 39 @44294 has 116 MA's), (57, 44411), (59, 44447), (63, 44462), (64, 44465), (77, 44621),

Gene: SirPhilip_67 Start: 44537, Stop: 44893, Start Num: 39

Candidate Starts for SirPhilip_67:

(9, 44258), (14, 44336), (27, 44483), (Start: 39 @44537 has 116 MA's), (43, 44555), (46, 44570), (58, 44696), (59, 44714), (63, 44729), (71, 44783),

Gene: Slarp_73 Start: 44642, Stop: 45022, Start Num: 42

Candidate Starts for Slarp_73:

(Start: 42 @44642 has 21 MA's), (Start: 45 @44660 has 3 MA's), (59, 44822), (60, 44825), (68, 44873), (77, 44993),

Gene: Slimphazie_69 Start: 44395, Stop: 44766, Start Num: 39

Candidate Starts for Slimphazie_69:

(25, 44335), (26, 44341), (35, 44380), (Start: 39 @44395 has 116 MA's), (57, 44512), (59, 44548), (63, 44563), (64, 44566), (77, 44722),

Gene: Spock_68 Start: 44098, Stop: 44469, Start Num: 39

Candidate Starts for Spock_68:

(25, 44038), (26, 44044), (35, 44083), (Start: 39 @44098 has 116 MA's), (57, 44215), (59, 44251), (63, 44266), (64, 44269), (77, 44425),

Gene: Stinson_69 Start: 44490, Stop: 44861, Start Num: 39

Candidate Starts for Stinson_69:

(Start: 39 @44490 has 116 MA's), (57, 44607), (59, 44643), (63, 44658), (64, 44661), (77, 44817),

Gene: Strobilo_72 Start: 46477, Stop: 46821, Start Num: 41

Candidate Starts for Strobilo_72:

(Start: 41 @46477 has 11 MA's), (58, 46618), (60, 46639), (63, 46651), (71, 46705),

Gene: Sulley_67 Start: 43925, Stop: 44296, Start Num: 39

Candidate Starts for Sulley_67:

(13, 43712), (14, 43721), (27, 43871), (Start: 39 @43925 has 116 MA's), (57, 44042), (59, 44078), (63, 44093), (64, 44096), (77, 44252),

Gene: TBond007_65 Start: 43864, Stop: 44235, Start Num: 39

Candidate Starts for TBond007_65:

(27, 43810), (Start: 39 @43864 has 116 MA's), (49, 43900), (51, 43915), (60, 44023), (69, 44080), (72, 44104), (77, 44194), (81, 44203),

Gene: TClif_69 Start: 43964, Stop: 44338, Start Num: 39

Candidate Starts for TClif_69:

(14, 43763), (27, 43910), (Start: 39 @43964 has 116 MA's), (58, 44102), (64, 44138), (69, 44180),

Gene: TM4_69 Start: 41139, Stop: 41513, Start Num: 41

Candidate Starts for TM4_69:

(Start: 41 @41139 has 11 MA's), (55, 41244), (58, 41283), (60, 41304), (63, 41316), (71, 41370), (72, 41385),

Gene: Tachez_68 Start: 43942, Stop: 44313, Start Num: 39

Candidate Starts for Tachez_68:

(25, 43882), (26, 43888), (35, 43927), (Start: 39 @43942 has 116 MA's), (57, 44059), (59, 44095), (63, 44110), (64, 44113), (77, 44269),

Gene: TaiwanKao_70 Start: 44414, Stop: 44785, Start Num: 39

Candidate Starts for TaiwanKao_70:

(Start: 39 @44414 has 116 MA's), (57, 44531), (59, 44567), (63, 44582), (64, 44585), (77, 44741),

Gene: Taquito_72 Start: 44847, Stop: 45227, Start Num: 42

Candidate Starts for Taquito_72:

(Start: 42 @44847 has 21 MA's), (Start: 45 @44865 has 3 MA's), (59, 45027), (60, 45030), (68, 45078), (77, 45198),

Gene: Teejan_58 Start: 43796, Stop: 44167, Start Num: 44

Candidate Starts for Teejan_58:

(13, 43583), (14, 43592), (17, 43634), (27, 43739), (Start: 44 @43796 has 9 MA's), (59, 43949), (60, 43952), (63, 43964), (64, 43967), (71, 44018),

Gene: ThreeRngTarjay_103 Start: 63154, Stop: 63486, Start Num: 33

Candidate Starts for ThreeRngTarjay_103:

(Start: 33 @63154 has 17 MA's), (60, 63334), (71, 63400), (73, 63418),

Gene: TingHuaYa_71 Start: 43669, Stop: 44040, Start Num: 39

Candidate Starts for TingHuaYa_71:

(Start: 39 @43669 has 116 MA's), (59, 43822), (63, 43837), (77, 43996),

Gene: TiniBug_68 Start: 44600, Stop: 44971, Start Num: 39

Candidate Starts for TiniBug_68:

(14, 44396), (27, 44546), (Start: 39 @44600 has 116 MA's), (58, 44735), (59, 44753), (63, 44768), (64, 44771), (77, 44927),

Gene: Tiri_68 Start: 43998, Stop: 44369, Start Num: 39

Candidate Starts for Tiri_68:

(Start: 39 @43998 has 116 MA's), (57, 44115), (59, 44151), (63, 44166), (64, 44169), (77, 44325),

Gene: Topper_68 Start: 44097, Stop: 44468, Start Num: 39

Candidate Starts for Topper_68:

(25, 44037), (26, 44043), (35, 44082), (Start: 39 @44097 has 116 MA's), (57, 44214), (59, 44250), (63, 44265), (64, 44268), (77, 44424),

Gene: Torres_59 Start: 43797, Stop: 44168, Start Num: 44

Candidate Starts for Torres_59:

(13, 43584), (14, 43593), (17, 43635), (27, 43740), (Start: 44 @43797 has 9 MA's), (59, 43950), (60, 43953), (63, 43965), (64, 43968), (71, 44019),

Gene: Tortellini_67 Start: 45000, Stop: 45356, Start Num: 33

Candidate Starts for Tortellini_67:

(19, 44925), (21, 44931), (23, 44949), (Start: 33 @45000 has 17 MA's), (61, 45183), (71, 45246), (76, 45333),

Gene: TreyKay_69 Start: 44352, Stop: 44723, Start Num: 39

Candidate Starts for TreyKay_69:

(Start: 39 @44352 has 116 MA's), (57, 44469), (59, 44505), (63, 44520), (64, 44523), (77, 44679),

Gene: TribbleTrouble_69 Start: 44867, Stop: 45202, Start Num: 39

Candidate Starts for TribbleTrouble_69:

(27, 44813), (Start: 39 @44867 has 116 MA's), (57, 44987), (60, 45026), (64, 45041), (66, 45068), (69, 45083), (72, 45107),

Gene: Trice_56 Start: 41184, Stop: 41555, Start Num: 44

Candidate Starts for Trice_56:

(13, 40971), (14, 40980), (17, 41022), (27, 41127), (Start: 44 @41184 has 9 MA's), (59, 41337), (60, 41340), (63, 41352), (64, 41355), (71, 41406),

Gene: TruffulaTree_69 Start: 44391, Stop: 44762, Start Num: 39

Candidate Starts for TruffulaTree_69:

(25, 44331), (26, 44337), (35, 44376), (Start: 39 @44391 has 116 MA's), (57, 44508), (59, 44544), (63, 44559), (64, 44562), (77, 44718),

Gene: Twitch_68 Start: 44099, Stop: 44470, Start Num: 39

Candidate Starts for Twitch_68:

(25, 44039), (26, 44045), (35, 44084), (Start: 39 @44099 has 116 MA's), (57, 44216), (59, 44252), (63, 44267), (64, 44270), (77, 44426),

Gene: Urkel_68 Start: 44604, Stop: 44975, Start Num: 39

Candidate Starts for Urkel_68:

(13, 44391), (14, 44400), (27, 44550), (Start: 39 @44604 has 116 MA's), (58, 44739), (59, 44757), (63, 44772), (77, 44931),

Gene: Validus_73 Start: 44948, Stop: 45340, Start Num: 32

Candidate Starts for Validus_73:

(20, 44876), (29, 44927), (30, 44933), (Start: 32 @44948 has 1 MA's), (37, 44966), (46, 44981), (58, 45107), (59, 45125), (60, 45128), (63, 45140), (64, 45143), (70, 45188), (71, 45194), (77, 45299), (82, 45317),

Gene: Veliki_69 Start: 44131, Stop: 44502, Start Num: 39

Candidate Starts for Veliki_69:

(Start: 39 @44131 has 116 MA's), (57, 44248), (59, 44284), (63, 44299), (64, 44302), (77, 44458),

Gene: WST1_55 Start: 33447, Stop: 33824, Start Num: 31

Candidate Starts for WST1_55:

(31, 33447), (Start: 33 @33459 has 17 MA's), (61, 33642), (71, 33705), (76, 33792), (77, 33810), (79, 33819),

Gene: Wintermute_73 Start: 44872, Stop: 45252, Start Num: 42

Candidate Starts for Wintermute_73:

(Start: 42 @44872 has 21 MA's), (Start: 45 @44890 has 3 MA's), (59, 45052), (60, 45055), (68, 45103), (77, 45223),

Gene: Y10_70 Start: 44849, Stop: 45229, Start Num: 42

Candidate Starts for Y10_70:

(Start: 42 @44849 has 21 MA's), (Start: 45 @44867 has 3 MA's), (59, 45029), (60, 45032), (68, 45080), (77, 45200),

Gene: Y2_70 Start: 44849, Stop: 45229, Start Num: 42

Candidate Starts for Y2_70:

(Start: 42 @44849 has 21 MA's), (Start: 45 @44867 has 3 MA's), (59, 45029), (60, 45032), (68, 45080), (77, 45200),

Gene: YasnayaPolyana_72 Start: 44716, Stop: 45078, Start Num: 45

Candidate Starts for YasnayaPolyana_72:

(Start: 42 @44698 has 21 MA's), (Start: 45 @44716 has 3 MA's), (59, 44878), (60, 44881), (68, 44929), (77, 45049),

Gene: YoureAdopted_67 Start: 44277, Stop: 44648, Start Num: 39

Candidate Starts for YoureAdopted_67:

(13, 44064), (14, 44073), (27, 44223), (Start: 39 @44277 has 116 MA's), (57, 44394), (59, 44430), (63, 44445), (64, 44448), (77, 44604),

Gene: Yuna_72 Start: 45450, Stop: 45779, Start Num: 38

Candidate Starts for Yuna_72:

(Start: 38 @45450 has 4 MA's), (66, 45651), (69, 45666),

Gene: Yunkel11_72 Start: 44191, Stop: 44562, Start Num: 39

Candidate Starts for Yunkel11_72:

(27, 44137), (Start: 39 @44191 has 116 MA's), (57, 44308), (59, 44344), (63, 44359), (64, 44362), (77, 44518),

Gene: Zabiza_63 Start: 40247, Stop: 40618, Start Num: 39

Candidate Starts for Zabiza_63:

(25, 40187), (26, 40193), (35, 40232), (Start: 39 @40247 has 116 MA's), (57, 40364), (59, 40400), (63, 40415), (64, 40418), (77, 40574),

Gene: Zavala_71 Start: 44669, Stop: 45040, Start Num: 39

Candidate Starts for Zavala_71:

(25, 44609), (26, 44615), (35, 44654), (Start: 39 @44669 has 116 MA's), (57, 44786), (59, 44822), (63, 44837), (64, 44840), (77, 44996),

Gene: ZoeJ_70 Start: 45880, Stop: 46251, Start Num: 41

Candidate Starts for ZoeJ_70:

(Start: 41 @45880 has 11 MA's), (56, 45988), (58, 46021), (60, 46042), (63, 46054), (71, 46108), (72, 46123),