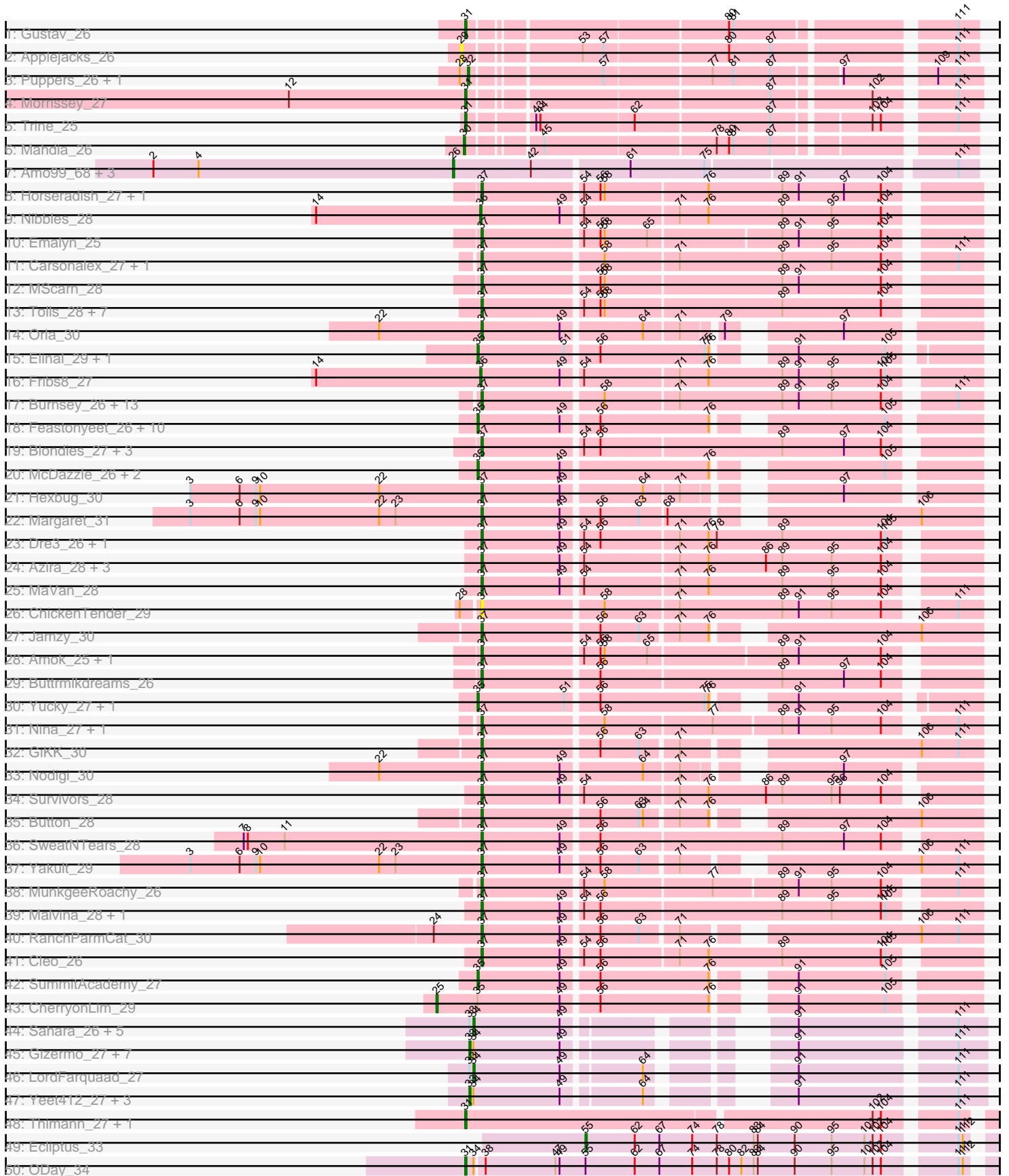
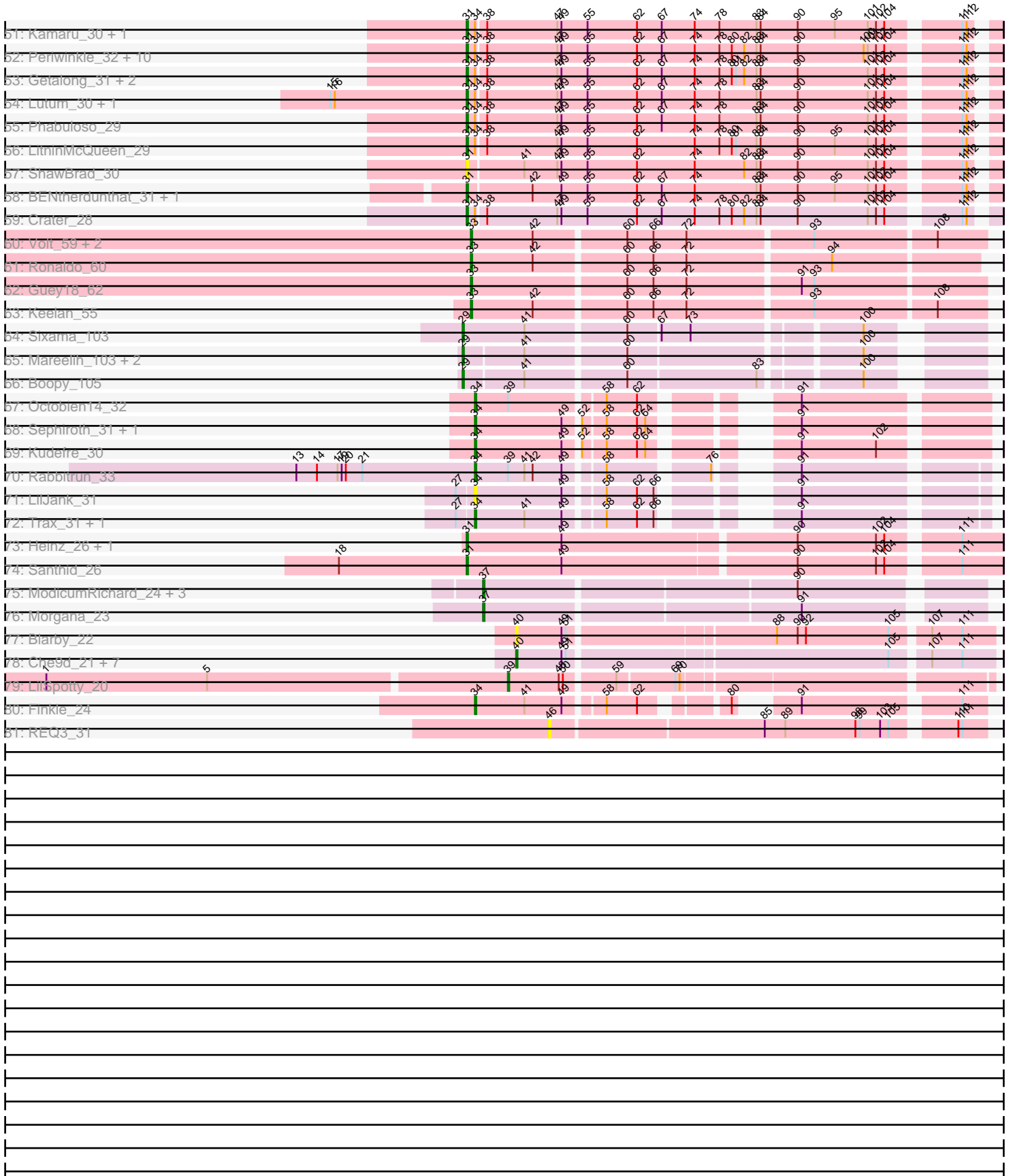


Pham 311271



Pham 311271



Note: Tracks are now grouped by subcluster and scaled. Switching in subcluster is indicated by changes in track color. Track scale is now set by default to display the region 30 bp upstream of start 1 to 30 bp downstream of the last possible start. If this default region is judged to be packed too tightly with annotated starts, the track will be further scaled to only show that region of the ORF with annotated starts. This action will be indicated by adding "Zoomed" to the title. For starts, yellow indicates the location of called starts comprised solely of Glimmer/GeneMark auto-annotations, green indicates the location of called starts with at least 1 manual gene annotation.

Pham 311271 Report

This analysis was run 06/27/26 on database version 652.

Pham number 311271 has 179 members, 31 are drafts.

Phages represented in each track:

- Track 1 : Gustav_26
- Track 2 : Applejacks_26
- Track 3 : Puppies_26, Widow_26
- Track 4 : Morrissey_27
- Track 5 : Trine_25
- Track 6 : Mahdia_26
- Track 7 : Amo99_68, Jollymon_67, Purplicious_66, ColdSoup_68
- Track 8 : Horseradish_27, Yummy_27
- Track 9 : Nibbles_28
- Track 10 : Emalyn_25
- Track 11 : Carsonalex_27, RedBaron_28
- Track 12 : MScarn_28
- Track 13 : Tolls_28, AndPeggy_25, CanesSauce_26, BillDoor_28, Yarn_25, SteamedHams_28, CaramelLatte_26, ChocoMunchkin_26
- Track 14 : Orla_30
- Track 15 : Elinal_29, KayGee_28
- Track 16 : Fribs8_27
- Track 17 : Burnsey_26, Axym_26, RSchmailzl_27, RADical_27, Typhonmarchy_26, Sopespian_26, GoldHunter_27, Cozz_26, Socotra_27, PsychoKiller_26, Starburst_27, Bubble_26, Elliott_26, Quasar_26
- Track 18 : Feastonyeet_26, CocoaPuff_26, SheckWes_27, Tarnish_28, Mayweather_29, MAnor_28, PotPie_27, Lauer_27, Balloona_26, Bavidard_27, BigChungus_26
- Track 19 : Blondies_27, Biskit_27, SketchMex_25, Troje_26
- Track 20 : McDazzle_26, ElJefes_26, Pons_28
- Track 21 : Hexbug_30
- Track 22 : Margaret_31
- Track 23 : Dre3_26, Gibbous_26
- Track 24 : Azira_28, Wallaby_30, Zareef_28, Wolfwood_28
- Track 25 : MaVan_28
- Track 26 : ChickenTender_29
- Track 27 : Jamzy_30
- Track 28 : Amok_25, AikoCarson_25
- Track 29 : Buttrmilkdreams_26
- Track 30 : Yucky_27, Vine_28
- Track 31 : Nina_27, Agatha_26
- Track 32 : GiKK_30

- Track 33 : Nodigi_30
- Track 34 : Survivors_28
- Track 35 : Button_28
- Track 36 : SweatNTears_28
- Track 37 : Yakult_29
- Track 38 : MunkgeeRoachy_26
- Track 39 : Malvina_28, HippoPololi_28
- Track 40 : RanchParmCat_30
- Track 41 : Cleo_26
- Track 42 : SummitAcademy_27
- Track 43 : CherryonLim_29
- Track 44 : Sahara_26, Haley23_27, GemG_27, Whiteclaw_27, Clap_27, TuertoX_27
- Track 45 : Gizermo_27, Jalleen_27, Savage_27, Cynthia_27, Ebert_27, Sproutie_27, Yinzer_27, Mocha12_27
- Track 46 : LordFarquaad_27
- Track 47 : Yeet412_27, Attis_27, Bjanes7_27, SoilAssassin_27
- Track 48 : Thimann_27, Suerte_25
- Track 49 : Ecliptus_33
- Track 50 : ODay_34
- Track 51 : Kamaru_30, Holliday_30
- Track 52 : Periwinkle_32, Horus_30, Phistory_31, Frickyeah_29, Apricot_29, Asapag_30, Leroy_30, BearBQ_29, Kuwabara_29, MortyNRick_29, Birdsong_29
- Track 53 : Getalong_31, Whitney_31, Budski_30
- Track 54 : Lutum_30, Kenna_29
- Track 55 : Phabuloso_29
- Track 56 : LitninMcQueen_29
- Track 57 : ShawBrad_30
- Track 58 : BENtherdunthat_31, BotCity_31
- Track 59 : Crater_28
- Track 60 : Volt_59, Fryberger_57, Ziko_60
- Track 61 : Ronaldo_60
- Track 62 : Guey18_62
- Track 63 : Keelan_55
- Track 64 : Sixama_103
- Track 65 : Mareelih_103, Forza_105, BlueNGold_104
- Track 66 : Boopy_105
- Track 67 : Octobien14_32
- Track 68 : Sephiroth_31, Syleon_31
- Track 69 : Kudrefre_30
- Track 70 : Rabbitrun_33
- Track 71 : LilJank_31
- Track 72 : Trax_31, Neville_31
- Track 73 : Heinz_26, Hibiscus_26
- Track 74 : Santhid_26
- Track 75 : ModicumRichard_24, Aleemily_23, ObLaDi_24, Cafasso_24
- Track 76 : Morgana_23
- Track 77 : Blarby_22
- Track 78 : Che9d_21, Zapner_22, Avani_21, SilverChicken_21, Jabbawokkie_23, Demsculpinboyz_21, Soul22_21, Yoshi_21
- Track 79 : LilSpotty_20
- Track 80 : Finkle_24
- Track 81 : REQ3_31

Summary of Final Annotations (See graph section above for start numbers):

The start number called the most often in the published annotations is 37, it was called in 51 of the 148 non-draft genes in the pham.

Genes that call this "Most Annotated" start:

- Agatha_26, AikoCarson_25, Aleemily_23, Amok_25, AndPeggy_25, Axym_26, Azira_28, BillDoor_28, Biskit_27, Blondies_27, Bubble_26, Burnsey_26, Button_28, Buttrmilkdreams_26, Cafasso_24, CanesSauce_26, CaramellLatte_26, Carsonalex_27, ChickenTender_29, ChocoMunchkin_26, Cleo_26, Cozz_26, Dre3_26, Elliott_26, Emalyn_25, GiKK_30, Gibbous_26, GoldHunter_27, Hexbug_30, HippoPololi_28, Horseradish_27, Jamzy_30, MScarn_28, MaVan_28, Malvina_28, Margaret_31, ModicumRichard_24, Morgana_23, MunkgeeRoachy_26, Nina_27, Nodigi_30, ObLaDi_24, Orla_30, PsychoKiller_26, Quasar_26, RADical_27, RSchmailzl_27, RanchParmCat_30, RedBaron_28, SketchMex_25, Socotra_27, Sopespian_26, Starburst_27, SteamedHams_28, Survivors_28, SweatNTears_28, Tolls_28, Troje_26, Typhonmarchy_26, Wallaby_30, Wolfwood_28, Yakult_29, Yarn_25, Yummy_27, Zareef_28,

Genes that have the "Most Annotated" start but do not call it:

-

Genes that do not have the "Most Annotated" start:

- Amo99_68, Applejacks_26, Apricot_29, Asapag_30, Attis_27, Avani_21, BENtherdunthat_31, Balloona_26, Bavidard_27, BearBQ_29, BigChungus_26, Birdsong_29, Bjanese7_27, Blarby_22, BlueNGold_104, Boopy_105, BotCity_31, Budski_30, Che9d_21, CherryonLim_29, Clap_27, CocoaPuff_26, ColdSoup_68, Crater_28, Cynthia_27, Demsculpinboyz_21, Ebert_27, Ecliptus_33, ElJefes_26, Elinal_29, Feastonyeet_26, Finkle_24, Forza_105, Fribs8_27, Frickyeah_29, Fryberger_57, GemG_27, Getalong_31, Gizermo_27, Guey18_62, Gustav_26, Haley23_27, Heinz_26, Hibiscus_26, Holliday_30, Horus_30, Jabbawokkie_23, Jalleen_27, Jollymon_67, Kamaru_30, KayGee_28, Keelan_55, Kenna_29, Kudrefre_30, Kuwabara_29, Lauer_27, Leroy_30, LilJank_31, LilSpotty_20, LitninMcQueen_29, LordFarquaad_27, Lutum_30, MAnor_28, Mahdia_26, Mareelih_103, Mayweather_29, McDazzle_26, Mocha12_27, Morrissey_27, MortyNRick_29, Neville_31, Nibbles_28, ODay_34, Octobien14_32, Periwinkle_32, Phabuloso_29, Phistory_31, Pons_28, PotPie_27, Puppies_26, Purplicious_66, REQ3_31, Rabbitrun_33, Ronaldo_60, Sahara_26, Santhid_26, Savage_27, Sephiroth_31, ShawBrad_30, SheckWes_27, SilverChicken_21, Sixama_103, SoilAssassin_27, Soul22_21, Sproutie_27, Suerte_25, SummitAcademy_27, Syleon_31, Tarnish_28, Thimann_27, Trax_31, Trine_25, TuertoX_27, Vine_28, Volt_59, Whiteclaw_27, Whitney_31, Widow_26, Yeet412_27, Yinzer_27, Yoshi_21, Yucky_27, Zapner_22, Ziko_60,

Summary by start number:

Start 25:

- Found in 1 of 179 (0.6%) of genes in pham
- Manual Annotations of this start: 1 of 148

- Called 100.0% of time when present
- Phage (with cluster) where this start called: CherryonLim_29 (CT),

Start 26:

- Found in 4 of 179 (2.2%) of genes in pham
- Manual Annotations of this start: 1 of 148
- Called 100.0% of time when present
- Phage (with cluster) where this start called: Amo99_68 (CP), ColdSoup_68 (CP), Jollymon_67 (CP), Purplicious_66 (CP),

Start 29:

- Found in 6 of 179 (3.4%) of genes in pham
- Manual Annotations of this start: 5 of 148
- Called 100.0% of time when present
- Phage (with cluster) where this start called: Applejacks_26 (CD), BlueNGold_104 (DS), Boopy_105 (DS), Forza_105 (DS), Mareelih_103 (DS), Sixama_103 (DS),

Start 30:

- Found in 1 of 179 (0.6%) of genes in pham
- Manual Annotations of this start: 1 of 148
- Called 100.0% of time when present
- Phage (with cluster) where this start called: Mahdia_26 (CD),

Start 31:

- Found in 33 of 179 (18.4%) of genes in pham
- Manual Annotations of this start: 31 of 148
- Called 100.0% of time when present
- Phage (with cluster) where this start called: Apricot_29 (DN3), Asapag_30 (DN1), BENTherdunthat_31 (DN1), BearBQ_29 (DN), Birdsong_29 (DN), BotCity_31 (DN), Budski_30 (DN), Crater_28 (DN3), Frickyeah_29 (DN1), Getalong_31 (DN1), Gustav_26 (CD), Heinz_26 (DY), Hibiscus_26 (DY), Holliday_30 (DN1), Horus_30 (DN1), Kamaru_30 (DN1), Kenna_29 (DN1), Kuwabara_29 (DN4), Leroy_30 (DN1), LitninMcQueen_29 (DN1), Lutum_30 (DN1), Morrissey_27 (CD), MortyNRick_29 (DN), ODay_34 (DN), Periwinkle_32 (DN1), Phabuloso_29 (DN1), Phistory_31 (DN1), Santhid_26 (DY), ShawBrad_30 (DN1), Suerte_25 (CZ4), Thimann_27 (CZ4), Trine_25 (CD), Whitney_31 (DN1),

Start 32:

- Found in 2 of 179 (1.1%) of genes in pham
- Manual Annotations of this start: 2 of 148
- Called 100.0% of time when present
- Phage (with cluster) where this start called: Puppies_26 (CD), Widow_26 (CD),

Start 33:

- Found in 25 of 179 (14.0%) of genes in pham
- Manual Annotations of this start: 16 of 148
- Called 72.0% of time when present
- Phage (with cluster) where this start called: Attis_27 (CZ2), Bjaner7_27 (CZ2), Cynthia_27 (CZ2), Ebert_27 (CZ2), Fryberger_57 (DP), Gizermo_27 (CZ2), Guey18_62 (DP), Jalleen_27 (CZ2), Keelan_55 (DP), Mocha12_27 (CZ2), Ronaldo_60 (DP), Savage_27 (CZ2), SoilAssassin_27 (CZ2), Sproutie_27 (CZ2), Volt_59 (DP), Yeet412_27 (CZ2), Yinzer_27 (CZ2), Ziko_60 (DP),

Start 34:

- Found in 50 of 179 (27.9%) of genes in pham
- Manual Annotations of this start: 15 of 148
- Called 32.0% of time when present
- Phage (with cluster) where this start called: Clap_27 (CZ2), Finkle_24 (singleton), GemG_27 (CZ2), Haley23_27 (CZ2), Kudrefre_30 (DU1), LilJank_31 (DU2), LordFarquaad_27 (CZ2), Neville_31 (DU2), Octobien14_32 (DU1), Rabbitrun_33 (DU2), Sahara_26 (CZ2), Sephiroth_31 (DU1), Syleon_31 (DU1), Trax_31 (DU2), TuertoX_27 (CZ2), Whiteclaw_27 (CZ2),

Start 35:

- Found in 20 of 179 (11.2%) of genes in pham
- Manual Annotations of this start: 14 of 148
- Called 95.0% of time when present
- Phage (with cluster) where this start called: Balloona_26 (CT), Bavidard_27 (CT), BigChungus_26 (CT), CocoaPuff_26 (CT), ElJefes_26 (CT), Elinal_29 (CT), Feastonyeet_26 (CT), KayGee_28 (CT), Lauer_27 (CT), MAnor_28 (CT), Mayweather_29 (CT), McDazzle_26 (CT), Pons_28 (CT), PotPie_27 (CT), SheckWes_27 (CT), SummitAcademy_27 (CT), Tarnish_28 (CT), Vine_28 (CT), Yucky_27 (CT),

Start 36:

- Found in 2 of 179 (1.1%) of genes in pham
- Manual Annotations of this start: 2 of 148
- Called 100.0% of time when present
- Phage (with cluster) where this start called: Fribs8_27 (CT), Nibbles_28 (CT),

Start 37:

- Found in 65 of 179 (36.3%) of genes in pham
- Manual Annotations of this start: 51 of 148
- Called 100.0% of time when present
- Phage (with cluster) where this start called: Agatha_26 (CT), AikoCarson_25 (CT), Aleemily_23 (DZ), Amok_25 (CT), AndPeggy_25 (CT), Axym_26 (CT), Azira_28 (CT), BillDoor_28 (CT), Biskit_27 (CT), Blondies_27 (CT), Bubble_26 (CT), Burnsey_26 (CT), Button_28 (CT), Buttrmilkdreams_26 (CT), Cafasso_24 (DZ), CanesSauce_26 (CT), CaramelLatte_26 (CT), Carsonalex_27 (CT), ChickenTender_29 (CT), ChocoMunchkin_26 (CT), Cleo_26 (CT), Cozz_26 (CT), Dre3_26 (CT), Elliott_26 (CT), Emalyn_25 (CT), GiKK_30 (CT), Gibbous_26 (CT), GoldHunter_27 (CT), Hexbug_30 (CT), HippoPololi_28 (CT), Horseradish_27 (CT), Jamzy_30 (CT), MScarn_28 (CT), MaVan_28 (CT), Malvina_28 (CT), Margaret_31 (CT), ModicumRichard_24 (DZ), Morgana_23 (DZ), MunkgeeRoachy_26 (CT), Nina_27 (CT), Nodigi_30 (CT), ObLaDi_24 (DZ), Orla_30 (CT), PsychoKiller_26 (CT), Quasar_26 (CT), RADical_27 (CT), RSchmailzl_27 (CT), RanchParmCat_30 (CT), RedBaron_28 (CT), SketchMex_25 (CT), Socotra_27 (CT), Sopespian_26 (CT), Starburst_27 (CT), SteamedHams_28 (CT), Survivors_28 (CT), SweatNTears_28 (CT), Tolls_28 (CT), Troje_26 (CT), Typhonmarchy_26 (CT), Wallaby_30 (CT), Wolfwood_28 (CT), Yakult_29 (CT), Yarn_25 (CT), Yummy_27 (CT), Zareef_28 (CT),

Start 39:

- Found in 3 of 179 (1.7%) of genes in pham
- Manual Annotations of this start: 1 of 148
- Called 33.3% of time when present
- Phage (with cluster) where this start called: LilSpotty_20 (singleton),

Start 40:

- Found in 9 of 179 (5.0%) of genes in pham
- Manual Annotations of this start: 7 of 148
- Called 100.0% of time when present
- Phage (with cluster) where this start called: Avani_21 (F2), Blarby_22 (F), Che9d_21 (F2), Demsculpinboyz_21 (F2), Jabbawokkie_23 (F2), SilverChicken_21 (F2), Soul22_21 (F2), Yoshi_21 (F2), Zapner_22 (F2),

Start 46:

- Found in 1 of 179 (0.6%) of genes in pham
- No Manual Annotations of this start.
- Called 100.0% of time when present
- Phage (with cluster) where this start called: REQ3_31 (singleton),

Start 55:

- Found in 26 of 179 (14.5%) of genes in pham
- Manual Annotations of this start: 1 of 148
- Called 3.8% of time when present
- Phage (with cluster) where this start called: Ecliptus_33 (DN),

Summary by clusters:

There are 18 clusters represented in this pham: DN, F2, F, CZ2, singleton, CZ4, CD, DN4, DN1, DZ, DN3, DY, DU1, DU2, CP, DS, DP, CT,

Info for manual annotations of cluster CD:

- Start number 30 was manually annotated 1 time for cluster CD.
- Start number 31 was manually annotated 3 times for cluster CD.
- Start number 32 was manually annotated 2 times for cluster CD.

Info for manual annotations of cluster CP:

- Start number 26 was manually annotated 1 time for cluster CP.

Info for manual annotations of cluster CT:

- Start number 25 was manually annotated 1 time for cluster CT.
- Start number 35 was manually annotated 14 times for cluster CT.
- Start number 36 was manually annotated 2 times for cluster CT.
- Start number 37 was manually annotated 46 times for cluster CT.

Info for manual annotations of cluster CZ2:

- Start number 33 was manually annotated 10 times for cluster CZ2.
- Start number 34 was manually annotated 7 times for cluster CZ2.

Info for manual annotations of cluster CZ4:

- Start number 31 was manually annotated 2 times for cluster CZ4.

Info for manual annotations of cluster DN:

- Start number 31 was manually annotated 6 times for cluster DN.
- Start number 55 was manually annotated 1 time for cluster DN.

Info for manual annotations of cluster DN1:

- Start number 31 was manually annotated 14 times for cluster DN1.

Info for manual annotations of cluster DN3:

- Start number 31 was manually annotated 2 times for cluster DN3.

Info for manual annotations of cluster DN4:

- Start number 31 was manually annotated 1 time for cluster DN4.

Info for manual annotations of cluster DP:

- Start number 33 was manually annotated 6 times for cluster DP.

Info for manual annotations of cluster DS:

- Start number 29 was manually annotated 5 times for cluster DS.

Info for manual annotations of cluster DU1:

- Start number 34 was manually annotated 4 times for cluster DU1.

Info for manual annotations of cluster DU2:

- Start number 34 was manually annotated 3 times for cluster DU2.

Info for manual annotations of cluster DY:

- Start number 31 was manually annotated 3 times for cluster DY.

Info for manual annotations of cluster DZ:

- Start number 37 was manually annotated 5 times for cluster DZ.

Info for manual annotations of cluster F2:

- Start number 40 was manually annotated 7 times for cluster F2.

Gene Information:

Gene: Agatha_26 Start: 21623, Stop: 21961, Start Num: 37

Candidate Starts for Agatha_26:

(Start: 37 @21623 has 51 MA's), (58, 21707), (77, 21782), (89, 21830), (91, 21842), (95, 21866), (104, 21902), (111, 21944),

Gene: AikoCarson_25 Start: 20901, Stop: 21239, Start Num: 37

Candidate Starts for AikoCarson_25:

(Start: 37 @20901 has 51 MA's), (54, 20970), (56, 20982), (58, 20985), (65, 21015), (89, 21108), (91, 21120), (104, 21180),

Gene: Aleemily_23 Start: 21080, Stop: 21418, Start Num: 37

Candidate Starts for Aleemily_23:

(Start: 37 @21080 has 51 MA's), (90, 21296),

Gene: Amo99_68 Start: 44946, Stop: 45308, Start Num: 26

Candidate Starts for Amo99_68:

(2, 44727), (4, 44760), (Start: 26 @44946 has 1 MA's), (42, 45003), (61, 45069), (75, 45123), (111, 45294),

Gene: Amok_25 Start: 20859, Stop: 21197, Start Num: 37

Candidate Starts for Amok_25:

(Start: 37 @20859 has 51 MA's), (54, 20928), (56, 20940), (58, 20943), (65, 20973), (89, 21066), (91, 21078), (104, 21138),

Gene: AndPeggy_25 Start: 21304, Stop: 21645, Start Num: 37

Candidate Starts for AndPeggy_25:

(Start: 37 @21304 has 51 MA's), (54, 21373), (56, 21385), (58, 21388), (89, 21514), (104, 21586),

Gene: Applejacks_26 Start: 20444, Stop: 20785, Start Num: 29

Candidate Starts for Applejacks_26:

(Start: 29 @20444 has 5 MA's), (53, 20519), (57, 20534), (80, 20621), (87, 20651), (111, 20771),

Gene: Apricot_29 Start: 23511, Stop: 23873, Start Num: 31

Candidate Starts for Apricot_29:

(Start: 31 @23511 has 31 MA's), (Start: 34 @23517 has 15 MA's), (38, 23523), (47, 23574), (49, 23577), (Start: 55 @23595 has 1 MA's), (62, 23631), (67, 23649), (74, 23673), (78, 23691), (80, 23700), (82, 23709), (83, 23718), (84, 23721), (90, 23748), (100, 23796), (101, 23799), (102, 23805), (104, 23811), (111, 23856), (112, 23859),

Gene: Asapag_30 Start: 23953, Stop: 24315, Start Num: 31

Candidate Starts for Asapag_30:

(Start: 31 @23953 has 31 MA's), (Start: 34 @23959 has 15 MA's), (38, 23965), (47, 24016), (49, 24019), (Start: 55 @24037 has 1 MA's), (62, 24073), (67, 24091), (74, 24115), (78, 24133), (80, 24142), (82, 24151), (83, 24160), (84, 24163), (90, 24190), (100, 24238), (101, 24241), (102, 24247), (104, 24253), (111, 24298), (112, 24301),

Gene: Attis_27 Start: 22281, Stop: 22592, Start Num: 33

Candidate Starts for Attis_27:

(Start: 33 @22281 has 16 MA's), (Start: 34 @22284 has 15 MA's), (49, 22347), (64, 22398), (91, 22467), (111, 22572),

Gene: Avani_21 Start: 15770, Stop: 16093, Start Num: 40

Candidate Starts for Avani_21:

(Start: 40 @15770 has 7 MA's), (49, 15803), (51, 15806), (105, 16025), (107, 16049), (111, 16070),

Gene: Axym_26 Start: 21623, Stop: 21964, Start Num: 37

Candidate Starts for Axym_26:

(Start: 37 @21623 has 51 MA's), (58, 21707), (71, 21758), (89, 21833), (91, 21845), (95, 21869), (104, 21905), (111, 21947),

Gene: Azira_28 Start: 22601, Stop: 22942, Start Num: 37

Candidate Starts for Azira_28:

(Start: 37 @22601 has 51 MA's), (49, 22658), (54, 22670), (71, 22736), (76, 22757), (86, 22799), (89, 22811), (95, 22847), (104, 22883),

Gene: BENtherdunthat_31 Start: 23518, Stop: 23880, Start Num: 31

Candidate Starts for BENtherdunthat_31:

(Start: 31 @23518 has 31 MA's), (42, 23563), (49, 23584), (Start: 55 @23602 has 1 MA's), (62, 23638), (67, 23656), (74, 23680), (83, 23725), (84, 23728), (90, 23755), (95, 23782), (101, 23806), (102, 23812), (104, 23818), (111, 23863), (112, 23866),

Gene: Balloona_26 Start: 21507, Stop: 21830, Start Num: 35

Candidate Starts for Balloona_26:

(Start: 35 @21507 has 14 MA's), (49, 21567), (56, 21591), (76, 21669), (105, 21771),

Gene: Bavilard_27 Start: 22292, Stop: 22615, Start Num: 35

Candidate Starts for Bavilard_27:

(Start: 35 @22292 has 14 MA's), (49, 22352), (56, 22376), (76, 22454), (105, 22556),

Gene: BearBQ_29 Start: 24739, Stop: 25101, Start Num: 31

Candidate Starts for BearBQ_29:

(Start: 31 @24739 has 31 MA's), (Start: 34 @24745 has 15 MA's), (38, 24751), (47, 24802), (49, 24805), (Start: 55 @24823 has 1 MA's), (62, 24859), (67, 24877), (74, 24901), (78, 24919), (80, 24928), (82, 24937), (83, 24946), (84, 24949), (90, 24976), (100, 25024), (101, 25027), (102, 25033), (104, 25039), (111, 25084), (112, 25087),

Gene: BigChungus_26 Start: 21550, Stop: 21873, Start Num: 35

Candidate Starts for BigChungus_26:

(Start: 35 @21550 has 14 MA's), (49, 21610), (56, 21634), (76, 21712), (105, 21814),

Gene: BillDoor_28 Start: 21251, Stop: 21592, Start Num: 37

Candidate Starts for BillDoor_28:

(Start: 37 @21251 has 51 MA's), (54, 21320), (56, 21332), (58, 21335), (89, 21461), (104, 21533),

Gene: Birdsong_29 Start: 23632, Stop: 23994, Start Num: 31

Candidate Starts for Birdsong_29:

(Start: 31 @23632 has 31 MA's), (Start: 34 @23638 has 15 MA's), (38, 23644), (47, 23695), (49, 23698), (Start: 55 @23716 has 1 MA's), (62, 23752), (67, 23770), (74, 23794), (78, 23812), (80, 23821), (82, 23830), (83, 23839), (84, 23842), (90, 23869), (100, 23917), (101, 23920), (102, 23926), (104, 23932), (111, 23977), (112, 23980),

Gene: Biskit_27 Start: 21276, Stop: 21617, Start Num: 37

Candidate Starts for Biskit_27:

(Start: 37 @21276 has 51 MA's), (54, 21345), (56, 21357), (89, 21486), (97, 21531), (104, 21558),

Gene: Bjaner7_27 Start: 22281, Stop: 22592, Start Num: 33

Candidate Starts for Bjaner7_27:

(Start: 33 @22281 has 16 MA's), (Start: 34 @22284 has 15 MA's), (49, 22347), (64, 22398), (91, 22467), (111, 22572),

Gene: Blarby_22 Start: 16290, Stop: 16613, Start Num: 40

Candidate Starts for Blarby_22:

(Start: 40 @16290 has 7 MA's), (49, 16323), (51, 16326), (88, 16464), (90, 16479), (92, 16485), (105, 16545), (107, 16569), (111, 16590),

Gene: Blondies_27 Start: 21259, Stop: 21600, Start Num: 37

Candidate Starts for Blondies_27:

(Start: 37 @21259 has 51 MA's), (54, 21328), (56, 21340), (89, 21469), (97, 21514), (104, 21541),

Gene: BlueNGold_104 Start: 64169, Stop: 64501, Start Num: 29

Candidate Starts for BlueNGold_104:

(Start: 29 @64169 has 5 MA's), (41, 64211), (60, 64280), (100, 64433),

Gene: Boopy_105 Start: 64181, Stop: 64513, Start Num: 29

Candidate Starts for Boopy_105:

(Start: 29 @64181 has 5 MA's), (41, 64223), (60, 64292), (83, 64382), (100, 64445),

Gene: BotCity_31 Start: 23519, Stop: 23881, Start Num: 31

Candidate Starts for BotCity_31:

(Start: 31 @23519 has 31 MA's), (42, 23564), (49, 23585), (Start: 55 @23603 has 1 MA's), (62, 23639), (67, 23657), (74, 23681), (83, 23726), (84, 23729), (90, 23756), (95, 23783), (101, 23807), (102, 23813), (104, 23819), (111, 23864), (112, 23867),

Gene: Bubble_26 Start: 21623, Stop: 21964, Start Num: 37

Candidate Starts for Bubble_26:

(Start: 37 @21623 has 51 MA's), (58, 21707), (71, 21758), (89, 21833), (91, 21845), (95, 21869), (104, 21905), (111, 21947),

Gene: Budski_30 Start: 24058, Stop: 24420, Start Num: 31

Candidate Starts for Budski_30:

(Start: 31 @24058 has 31 MA's), (Start: 34 @24064 has 15 MA's), (38, 24070), (47, 24121), (49, 24124), (Start: 55 @24142 has 1 MA's), (62, 24178), (67, 24196), (74, 24220), (78, 24238), (80, 24247), (81, 24250), (82, 24256), (83, 24265), (84, 24268), (90, 24295), (101, 24346), (102, 24352), (104, 24358), (111, 24403), (112, 24406),

Gene: Burnsey_26 Start: 21624, Stop: 21965, Start Num: 37

Candidate Starts for Burnsey_26:

(Start: 37 @21624 has 51 MA's), (58, 21708), (71, 21759), (89, 21834), (91, 21846), (95, 21870), (104, 21906), (111, 21948),

Gene: Button_28 Start: 21047, Stop: 21373, Start Num: 37

Candidate Starts for Button_28:

(Start: 37 @21047 has 51 MA's), (56, 21128), (63, 21155), (64, 21158), (71, 21179), (76, 21200), (106, 21329),

Gene: Buttrmlkdreams_26 Start: 21258, Stop: 21599, Start Num: 37

Candidate Starts for Buttrmlkdreams_26:

(Start: 37 @21258 has 51 MA's), (56, 21339), (89, 21468), (97, 21513), (104, 21540),

Gene: Cafasso_24 Start: 21653, Stop: 21991, Start Num: 37

Candidate Starts for Cafasso_24:

(Start: 37 @21653 has 51 MA's), (90, 21869),

Gene: CanesSauce_26 Start: 21305, Stop: 21646, Start Num: 37

Candidate Starts for CanesSauce_26:

(Start: 37 @21305 has 51 MA's), (54, 21374), (56, 21386), (58, 21389), (89, 21515), (104, 21587),

Gene: CaramellLatte_26 Start: 21305, Stop: 21646, Start Num: 37

Candidate Starts for CaramellLatte_26:

(Start: 37 @21305 has 51 MA's), (54, 21374), (56, 21386), (58, 21389), (89, 21515), (104, 21587),

Gene: Carsonalex_27 Start: 21681, Stop: 22022, Start Num: 37

Candidate Starts for Carsonalex_27:

(Start: 37 @21681 has 51 MA's), (58, 21765), (71, 21816), (89, 21891), (95, 21927), (104, 21963), (111, 22005),

Gene: Che9d_21 Start: 15778, Stop: 16101, Start Num: 40

Candidate Starts for Che9d_21:

(Start: 40 @15778 has 7 MA's), (49, 15811), (51, 15814), (105, 16033), (107, 16057), (111, 16078),

Gene: CherryonLim_29 Start: 23257, Stop: 23610, Start Num: 25
Candidate Starts for CherryonLim_29:
(Start: 25 @23257 has 1 MA's), (Start: 35 @23287 has 14 MA's), (49, 23347), (56, 23371), (76, 23449),
(91, 23488), (105, 23551),

Gene: ChickenTender_29 Start: 21897, Stop: 22238, Start Num: 37
Candidate Starts for ChickenTender_29:
(28, 21885), (Start: 37 @21897 has 51 MA's), (58, 21981), (71, 22032), (89, 22107), (91, 22119), (95,
22143), (104, 22179), (111, 22221),

Gene: ChocoMunchkin_26 Start: 21305, Stop: 21646, Start Num: 37
Candidate Starts for ChocoMunchkin_26:
(Start: 37 @21305 has 51 MA's), (54, 21374), (56, 21386), (58, 21389), (89, 21515), (104, 21587),

Gene: Clap_27 Start: 22291, Stop: 22599, Start Num: 34
Candidate Starts for Clap_27:
(Start: 33 @22288 has 16 MA's), (Start: 34 @22291 has 15 MA's), (49, 22354), (91, 22474), (111,
22579),

Gene: Cleo_26 Start: 21948, Stop: 22289, Start Num: 37
Candidate Starts for Cleo_26:
(Start: 37 @21948 has 51 MA's), (49, 22005), (54, 22017), (56, 22029), (71, 22083), (76, 22104), (89,
22158), (104, 22230), (105, 22233),

Gene: CocoaPuff_26 Start: 21504, Stop: 21827, Start Num: 35
Candidate Starts for CocoaPuff_26:
(Start: 35 @21504 has 14 MA's), (49, 21564), (56, 21588), (76, 21666), (105, 21768),

Gene: ColdSoup_68 Start: 45027, Stop: 45389, Start Num: 26
Candidate Starts for ColdSoup_68:
(2, 44808), (4, 44841), (Start: 26 @45027 has 1 MA's), (42, 45084), (61, 45150), (75, 45204), (111,
45375),

Gene: Cozz_26 Start: 21624, Stop: 21965, Start Num: 37
Candidate Starts for Cozz_26:
(Start: 37 @21624 has 51 MA's), (58, 21708), (71, 21759), (89, 21834), (91, 21846), (95, 21870), (104,
21906), (111, 21948),

Gene: Crater_28 Start: 23511, Stop: 23873, Start Num: 31
Candidate Starts for Crater_28:
(Start: 31 @23511 has 31 MA's), (Start: 34 @23517 has 15 MA's), (38, 23523), (47, 23574), (49,
23577), (Start: 55 @23595 has 1 MA's), (62, 23631), (67, 23649), (74, 23673), (78, 23691), (80,
23700), (82, 23709), (83, 23718), (84, 23721), (90, 23748), (101, 23799), (102, 23805), (104, 23811),
(111, 23856), (112, 23859),

Gene: Cynthia_27 Start: 22288, Stop: 22599, Start Num: 33
Candidate Starts for Cynthia_27:
(Start: 33 @22288 has 16 MA's), (Start: 34 @22291 has 15 MA's), (49, 22354), (91, 22474), (111,
22579),

Gene: Demsculpinboyz_21 Start: 15763, Stop: 16086, Start Num: 40
Candidate Starts for Demsculpinboyz_21:

(Start: 40 @15763 has 7 MA's), (49, 15796), (51, 15799), (105, 16018), (107, 16042), (111, 16063),

Gene: Dre3_26 Start: 21874, Stop: 22215, Start Num: 37

Candidate Starts for Dre3_26:

(Start: 37 @21874 has 51 MA's), (49, 21931), (54, 21943), (56, 21955), (71, 22009), (76, 22030), (78, 22036), (89, 22084), (104, 22156), (105, 22159),

Gene: Ebert_27 Start: 22288, Stop: 22599, Start Num: 33

Candidate Starts for Ebert_27:

(Start: 33 @22288 has 16 MA's), (Start: 34 @22291 has 15 MA's), (49, 22354), (91, 22474), (111, 22579),

Gene: Ecliptus_33 Start: 25566, Stop: 25844, Start Num: 55

Candidate Starts for Ecliptus_33:

(Start: 55 @25566 has 1 MA's), (62, 25602), (67, 25620), (74, 25644), (78, 25662), (83, 25689), (84, 25692), (90, 25719), (95, 25746), (101, 25770), (102, 25776), (104, 25782), (111, 25827), (112, 25830),

Gene: ElJefes_26 Start: 21983, Stop: 22306, Start Num: 35

Candidate Starts for ElJefes_26:

(Start: 35 @21983 has 14 MA's), (49, 22043), (76, 22145), (105, 22247),

Gene: Elinal_29 Start: 22527, Stop: 22847, Start Num: 35

Candidate Starts for Elinal_29:

(Start: 35 @22527 has 14 MA's), (51, 22590), (56, 22611), (75, 22686), (76, 22689), (91, 22728), (105, 22791),

Gene: Elliott_26 Start: 21623, Stop: 21964, Start Num: 37

Candidate Starts for Elliott_26:

(Start: 37 @21623 has 51 MA's), (58, 21707), (71, 21758), (89, 21833), (91, 21845), (95, 21869), (104, 21905), (111, 21947),

Gene: Emalyn_25 Start: 20900, Stop: 21238, Start Num: 37

Candidate Starts for Emalyn_25:

(Start: 37 @20900 has 51 MA's), (54, 20969), (56, 20981), (58, 20984), (65, 21014), (89, 21107), (91, 21119), (95, 21143), (104, 21179),

Gene: Feastonyeet_26 Start: 21550, Stop: 21873, Start Num: 35

Candidate Starts for Feastonyeet_26:

(Start: 35 @21550 has 14 MA's), (49, 21610), (56, 21634), (76, 21712), (105, 21814),

Gene: Finkle_24 Start: 21315, Stop: 21617, Start Num: 34

Candidate Starts for Finkle_24:

(Start: 34 @21315 has 15 MA's), (41, 21351), (49, 21378), (58, 21402), (62, 21423), (80, 21471), (91, 21495), (111, 21600),

Gene: Forza_105 Start: 64097, Stop: 64429, Start Num: 29

Candidate Starts for Forza_105:

(Start: 29 @64097 has 5 MA's), (41, 64139), (60, 64208), (100, 64361),

Gene: Fribs8_27 Start: 22452, Stop: 22793, Start Num: 36

Candidate Starts for Fribs8_27:

(14, 22332), (Start: 36 @22452 has 2 MA's), (49, 22509), (54, 22521), (71, 22587), (76, 22608), (89, 22662), (91, 22674), (95, 22698), (104, 22734), (105, 22737),

Gene: Frickyeah_29 Start: 23716, Stop: 24078, Start Num: 31

Candidate Starts for Frickyeah_29:

(Start: 31 @23716 has 31 MA's), (Start: 34 @23722 has 15 MA's), (38, 23728), (47, 23779), (49, 23782), (Start: 55 @23800 has 1 MA's), (62, 23836), (67, 23854), (74, 23878), (78, 23896), (80, 23905), (82, 23914), (83, 23923), (84, 23926), (90, 23953), (100, 24001), (101, 24004), (102, 24010), (104, 24016), (111, 24061), (112, 24064),

Gene: Fryberger_57 Start: 31459, Stop: 31815, Start Num: 33

Candidate Starts for Fryberger_57:

(Start: 33 @31459 has 16 MA's), (42, 31504), (60, 31567), (66, 31585), (72, 31609), (93, 31696), (108, 31780),

Gene: GemG_27 Start: 22291, Stop: 22599, Start Num: 34

Candidate Starts for GemG_27:

(Start: 33 @22288 has 16 MA's), (Start: 34 @22291 has 15 MA's), (49, 22354), (91, 22474), (111, 22579),

Gene: Getalong_31 Start: 24753, Stop: 25115, Start Num: 31

Candidate Starts for Getalong_31:

(Start: 31 @24753 has 31 MA's), (Start: 34 @24759 has 15 MA's), (38, 24765), (47, 24816), (49, 24819), (Start: 55 @24837 has 1 MA's), (62, 24873), (67, 24891), (74, 24915), (78, 24933), (80, 24942), (81, 24945), (82, 24951), (83, 24960), (84, 24963), (90, 24990), (101, 25041), (102, 25047), (104, 25053), (111, 25098), (112, 25101),

Gene: GiKK_30 Start: 21346, Stop: 21672, Start Num: 37

Candidate Starts for GiKK_30:

(Start: 37 @21346 has 51 MA's), (56, 21427), (63, 21454), (71, 21478), (106, 21628), (111, 21655),

Gene: Gibbous_26 Start: 21874, Stop: 22215, Start Num: 37

Candidate Starts for Gibbous_26:

(Start: 37 @21874 has 51 MA's), (49, 21931), (54, 21943), (56, 21955), (71, 22009), (76, 22030), (78, 22036), (89, 22084), (104, 22156), (105, 22159),

Gene: Gizermo_27 Start: 22288, Stop: 22599, Start Num: 33

Candidate Starts for Gizermo_27:

(Start: 33 @22288 has 16 MA's), (Start: 34 @22291 has 15 MA's), (49, 22354), (91, 22474), (111, 22579),

Gene: GoldHunter_27 Start: 21624, Stop: 21965, Start Num: 37

Candidate Starts for GoldHunter_27:

(Start: 37 @21624 has 51 MA's), (58, 21708), (71, 21759), (89, 21834), (91, 21846), (95, 21870), (104, 21906), (111, 21948),

Gene: Guey18_62 Start: 32651, Stop: 33007, Start Num: 33

Candidate Starts for Guey18_62:

(Start: 33 @32651 has 16 MA's), (60, 32759), (66, 32777), (72, 32801), (91, 32879), (93, 32888),

Gene: Gustav_26 Start: 21213, Stop: 21548, Start Num: 31

Candidate Starts for Gustav_26:

(Start: 31 @21213 has 31 MA's), (80, 21387), (81, 21390), (111, 21534),

Gene: Haley23_27 Start: 22291, Stop: 22599, Start Num: 34

Candidate Starts for Haley23_27:

(Start: 33 @22288 has 16 MA's), (Start: 34 @22291 has 15 MA's), (49, 22354), (91, 22474), (111, 22579),

Gene: Heinz_26 Start: 21267, Stop: 21635, Start Num: 31

Candidate Starts for Heinz_26:

(Start: 31 @21267 has 31 MA's), (49, 21336), (90, 21498), (102, 21555), (104, 21561), (111, 21606),

Gene: Hexbug_30 Start: 21835, Stop: 22149, Start Num: 37

Candidate Starts for Hexbug_30:

(3, 21622), (6, 21658), (9, 21670), (10, 21673), (22, 21760), (Start: 37 @21835 has 51 MA's), (49, 21892), (64, 21946), (71, 21970), (97, 22060),

Gene: Hibiscus_26 Start: 21215, Stop: 21583, Start Num: 31

Candidate Starts for Hibiscus_26:

(Start: 31 @21215 has 31 MA's), (49, 21284), (90, 21446), (102, 21503), (104, 21509), (111, 21554),

Gene: HippoPololi_28 Start: 22523, Stop: 22864, Start Num: 37

Candidate Starts for HippoPololi_28:

(Start: 37 @22523 has 51 MA's), (49, 22580), (54, 22592), (56, 22604), (89, 22733), (95, 22769), (104, 22805), (105, 22808),

Gene: Holliday_30 Start: 24058, Stop: 24420, Start Num: 31

Candidate Starts for Holliday_30:

(Start: 31 @24058 has 31 MA's), (Start: 34 @24064 has 15 MA's), (38, 24070), (47, 24121), (49, 24124), (Start: 55 @24142 has 1 MA's), (62, 24178), (67, 24196), (74, 24220), (78, 24238), (83, 24265), (84, 24268), (90, 24295), (95, 24322), (101, 24346), (102, 24352), (104, 24358), (111, 24403), (112, 24406),

Gene: Horseradish_27 Start: 21097, Stop: 21438, Start Num: 37

Candidate Starts for Horseradish_27:

(Start: 37 @21097 has 51 MA's), (54, 21166), (56, 21178), (58, 21181), (76, 21253), (89, 21307), (91, 21319), (97, 21352), (104, 21379),

Gene: Horus_30 Start: 23975, Stop: 24337, Start Num: 31

Candidate Starts for Horus_30:

(Start: 31 @23975 has 31 MA's), (Start: 34 @23981 has 15 MA's), (38, 23987), (47, 24038), (49, 24041), (Start: 55 @24059 has 1 MA's), (62, 24095), (67, 24113), (74, 24137), (78, 24155), (80, 24164), (82, 24173), (83, 24182), (84, 24185), (90, 24212), (100, 24260), (101, 24263), (102, 24269), (104, 24275), (111, 24320), (112, 24323),

Gene: Jabbawokkie_23 Start: 16293, Stop: 16616, Start Num: 40

Candidate Starts for Jabbawokkie_23:

(Start: 40 @16293 has 7 MA's), (49, 16326), (51, 16329), (105, 16548), (107, 16572), (111, 16593),

Gene: Jalleen_27 Start: 21927, Stop: 22238, Start Num: 33

Candidate Starts for Jalleen_27:

(Start: 33 @21927 has 16 MA's), (Start: 34 @21930 has 15 MA's), (49, 21993), (91, 22113), (111, 22218),

Gene: Jamzy_30 Start: 21360, Stop: 21686, Start Num: 37

Candidate Starts for Jamzy_30:

(Start: 37 @21360 has 51 MA's), (56, 21441), (63, 21468), (71, 21492), (76, 21513), (106, 21642),

Gene: Jollymon_67 Start: 45027, Stop: 45389, Start Num: 26

Candidate Starts for Jollymon_67:

(2, 44808), (4, 44841), (Start: 26 @45027 has 1 MA's), (42, 45084), (61, 45150), (75, 45204), (111, 45375),

Gene: Kamaru_30 Start: 24058, Stop: 24420, Start Num: 31

Candidate Starts for Kamaru_30:

(Start: 31 @24058 has 31 MA's), (Start: 34 @24064 has 15 MA's), (38, 24070), (47, 24121), (49, 24124), (Start: 55 @24142 has 1 MA's), (62, 24178), (67, 24196), (74, 24220), (78, 24238), (83, 24265), (84, 24268), (90, 24295), (95, 24322), (101, 24346), (102, 24352), (104, 24358), (111, 24403), (112, 24406),

Gene: KayGee_28 Start: 22527, Stop: 22847, Start Num: 35

Candidate Starts for KayGee_28:

(Start: 35 @22527 has 14 MA's), (51, 22590), (56, 22611), (75, 22686), (76, 22689), (91, 22728), (105, 22791),

Gene: Keelan_55 Start: 31456, Stop: 31812, Start Num: 33

Candidate Starts for Keelan_55:

(Start: 33 @31456 has 16 MA's), (42, 31501), (60, 31564), (66, 31582), (72, 31606), (93, 31693), (108, 31777),

Gene: Kenna_29 Start: 23951, Stop: 24313, Start Num: 31

Candidate Starts for Kenna_29:

(15, 23852), (16, 23855), (Start: 31 @23951 has 31 MA's), (Start: 34 @23957 has 15 MA's), (38, 23963), (47, 24014), (49, 24017), (Start: 55 @24035 has 1 MA's), (62, 24071), (67, 24089), (74, 24113), (78, 24131), (83, 24158), (84, 24161), (90, 24188), (101, 24239), (102, 24245), (104, 24251), (111, 24296), (112, 24299),

Gene: Kudrefre_30 Start: 25686, Stop: 25994, Start Num: 34

Candidate Starts for Kudrefre_30:

(Start: 34 @25686 has 15 MA's), (49, 25749), (52, 25758), (58, 25773), (62, 25794), (64, 25800), (91, 25869), (102, 25923),

Gene: Kuwabara_29 Start: 23326, Stop: 23688, Start Num: 31

Candidate Starts for Kuwabara_29:

(Start: 31 @23326 has 31 MA's), (Start: 34 @23332 has 15 MA's), (38, 23338), (47, 23389), (49, 23392), (Start: 55 @23410 has 1 MA's), (62, 23446), (67, 23464), (74, 23488), (78, 23506), (80, 23515), (82, 23524), (83, 23533), (84, 23536), (90, 23563), (100, 23611), (101, 23614), (102, 23620), (104, 23626), (111, 23671), (112, 23674),

Gene: Lauer_27 Start: 22580, Stop: 22903, Start Num: 35

Candidate Starts for Lauer_27:

(Start: 35 @22580 has 14 MA's), (49, 22640), (56, 22664), (76, 22742), (105, 22844),

Gene: Leroy_30 Start: 23976, Stop: 24338, Start Num: 31

Candidate Starts for Leroy_30:

(Start: 31 @23976 has 31 MA's), (Start: 34 @23982 has 15 MA's), (38, 23988), (47, 24039), (49, 24042), (Start: 55 @24060 has 1 MA's), (62, 24096), (67, 24114), (74, 24138), (78, 24156), (80, 24165), (82, 24174), (83, 24183), (84, 24186), (90, 24213), (100, 24261), (101, 24264), (102, 24270),

(104, 24276), (111, 24321), (112, 24324),

Gene: LilJank_31 Start: 27468, Stop: 27773, Start Num: 34

Candidate Starts for LilJank_31:

(27, 27456), (Start: 34 @27468 has 15 MA's), (49, 27531), (58, 27555), (62, 27576), (66, 27588), (91, 27651),

Gene: LilSpotty_20 Start: 16864, Stop: 17184, Start Num: 39

Candidate Starts for LilSpotty_20:

(1, 16537), (5, 16654), (Start: 39 @16864 has 1 MA's), (48, 16900), (50, 16903), (59, 16936), (69, 16975), (70, 16978),

Gene: LitninMcQueen_29 Start: 23707, Stop: 24069, Start Num: 31

Candidate Starts for LitninMcQueen_29:

(Start: 31 @23707 has 31 MA's), (Start: 34 @23713 has 15 MA's), (38, 23719), (47, 23770), (49, 23773), (Start: 55 @23791 has 1 MA's), (62, 23827), (74, 23869), (78, 23887), (80, 23896), (81, 23899), (83, 23914), (84, 23917), (90, 23944), (95, 23971), (101, 23995), (102, 24001), (104, 24007), (111, 24052), (112, 24055),

Gene: LordFarquaad_27 Start: 22284, Stop: 22592, Start Num: 34

Candidate Starts for LordFarquaad_27:

(Start: 33 @22281 has 16 MA's), (Start: 34 @22284 has 15 MA's), (49, 22347), (64, 22398), (91, 22467), (111, 22572),

Gene: Lutum_30 Start: 23951, Stop: 24313, Start Num: 31

Candidate Starts for Lutum_30:

(15, 23852), (16, 23855), (Start: 31 @23951 has 31 MA's), (Start: 34 @23957 has 15 MA's), (38, 23963), (47, 24014), (49, 24017), (Start: 55 @24035 has 1 MA's), (62, 24071), (67, 24089), (74, 24113), (78, 24131), (83, 24158), (84, 24161), (90, 24188), (101, 24239), (102, 24245), (104, 24251), (111, 24296), (112, 24299),

Gene: MAnor_28 Start: 22547, Stop: 22870, Start Num: 35

Candidate Starts for MAnor_28:

(Start: 35 @22547 has 14 MA's), (49, 22607), (56, 22631), (76, 22709), (105, 22811),

Gene: MScarn_28 Start: 21261, Stop: 21602, Start Num: 37

Candidate Starts for MScarn_28:

(Start: 37 @21261 has 51 MA's), (56, 21342), (58, 21345), (89, 21471), (91, 21483), (104, 21543),

Gene: MaVan_28 Start: 22634, Stop: 22975, Start Num: 37

Candidate Starts for MaVan_28:

(Start: 37 @22634 has 51 MA's), (49, 22691), (54, 22703), (71, 22769), (76, 22790), (89, 22844), (95, 22880), (104, 22916),

Gene: Mahdia_26 Start: 20538, Stop: 20870, Start Num: 30

Candidate Starts for Mahdia_26:

(Start: 30 @20538 has 1 MA's), (45, 20583), (78, 20703), (80, 20712), (81, 20715), (87, 20742),

Gene: Malvina_28 Start: 22526, Stop: 22867, Start Num: 37

Candidate Starts for Malvina_28:

(Start: 37 @22526 has 51 MA's), (49, 22583), (54, 22595), (56, 22607), (89, 22736), (95, 22772), (104, 22808), (105, 22811),

Gene: Mareelih_103 Start: 63599, Stop: 63931, Start Num: 29
Candidate Starts for Mareelih_103:
(Start: 29 @63599 has 5 MA's), (41, 63641), (60, 63710), (100, 63863),

Gene: Margaret_31 Start: 21555, Stop: 21884, Start Num: 37
Candidate Starts for Margaret_31:
(3, 21342), (6, 21378), (9, 21390), (10, 21393), (22, 21480), (23, 21492), (Start: 37 @21555 has 51 MA's), (49, 21612), (56, 21636), (63, 21663), (68, 21681), (106, 21840),

Gene: Mayweather_29 Start: 23163, Stop: 23486, Start Num: 35
Candidate Starts for Mayweather_29:
(Start: 35 @23163 has 14 MA's), (49, 23223), (56, 23247), (76, 23325), (105, 23427),

Gene: McDazzle_26 Start: 21977, Stop: 22300, Start Num: 35
Candidate Starts for McDazzle_26:
(Start: 35 @21977 has 14 MA's), (49, 22037), (76, 22139), (105, 22241),

Gene: Mocha12_27 Start: 22288, Stop: 22599, Start Num: 33
Candidate Starts for Mocha12_27:
(Start: 33 @22288 has 16 MA's), (Start: 34 @22291 has 15 MA's), (49, 22354), (91, 22474), (111, 22579),

Gene: ModicumRichard_24 Start: 21653, Stop: 21991, Start Num: 37
Candidate Starts for ModicumRichard_24:
(Start: 37 @21653 has 51 MA's), (90, 21869),

Gene: Morgana_23 Start: 21084, Stop: 21422, Start Num: 37
Candidate Starts for Morgana_23:
(Start: 37 @21084 has 51 MA's), (91, 21303),

Gene: Morrissey_27 Start: 22085, Stop: 22423, Start Num: 31
Candidate Starts for Morrissey_27:
(12, 21956), (Start: 31 @22085 has 31 MA's), (87, 22289), (102, 22355), (111, 22406),

Gene: MortyNRick_29 Start: 23632, Stop: 23994, Start Num: 31
Candidate Starts for MortyNRick_29:
(Start: 31 @23632 has 31 MA's), (Start: 34 @23638 has 15 MA's), (38, 23644), (47, 23695), (49, 23698), (Start: 55 @23716 has 1 MA's), (62, 23752), (67, 23770), (74, 23794), (78, 23812), (80, 23821), (82, 23830), (83, 23839), (84, 23842), (90, 23869), (100, 23917), (101, 23920), (102, 23926), (104, 23932), (111, 23977), (112, 23980),

Gene: MunkgeeRoachy_26 Start: 21704, Stop: 22042, Start Num: 37
Candidate Starts for MunkgeeRoachy_26:
(Start: 37 @21704 has 51 MA's), (54, 21773), (58, 21788), (77, 21863), (89, 21911), (91, 21923), (95, 21947), (104, 21983), (111, 22025),

Gene: Neville_31 Start: 27108, Stop: 27413, Start Num: 34
Candidate Starts for Neville_31:
(27, 27096), (Start: 34 @27108 has 15 MA's), (41, 27144), (49, 27171), (58, 27195), (62, 27216), (66, 27228), (91, 27291),

Gene: Nibbles_28 Start: 22633, Stop: 22974, Start Num: 36
Candidate Starts for Nibbles_28:

(14, 22513), (Start: 36 @22633 has 2 MA's), (49, 22690), (54, 22702), (71, 22768), (76, 22789), (89, 22843), (95, 22879), (104, 22915),

Gene: Nina_27 Start: 22666, Stop: 23004, Start Num: 37

Candidate Starts for Nina_27:

(Start: 37 @22666 has 51 MA's), (58, 22750), (77, 22825), (89, 22873), (91, 22885), (95, 22909), (104, 22945), (111, 22987),

Gene: Nodigi_30 Start: 21804, Stop: 22118, Start Num: 37

Candidate Starts for Nodigi_30:

(22, 21729), (Start: 37 @21804 has 51 MA's), (49, 21861), (64, 21915), (71, 21939), (97, 22029),

Gene: ODay_34 Start: 25778, Stop: 26140, Start Num: 31

Candidate Starts for ODay_34:

(Start: 31 @25778 has 31 MA's), (Start: 34 @25784 has 15 MA's), (38, 25790), (47, 25841), (49, 25844), (Start: 55 @25862 has 1 MA's), (62, 25898), (67, 25916), (74, 25940), (78, 25958), (80, 25967), (82, 25976), (83, 25985), (84, 25988), (90, 26015), (95, 26042), (101, 26066), (102, 26072), (104, 26078), (111, 26123), (112, 26126),

Gene: ObLaDi_24 Start: 21632, Stop: 21970, Start Num: 37

Candidate Starts for ObLaDi_24:

(Start: 37 @21632 has 51 MA's), (90, 21848),

Gene: Octobien14_32 Start: 26679, Stop: 26987, Start Num: 34

Candidate Starts for Octobien14_32:

(Start: 34 @26679 has 15 MA's), (Start: 39 @26703 has 1 MA's), (58, 26766), (62, 26787), (91, 26862),

Gene: Orla_30 Start: 21808, Stop: 22122, Start Num: 37

Candidate Starts for Orla_30:

(22, 21733), (Start: 37 @21808 has 51 MA's), (49, 21865), (64, 21919), (71, 21943), (79, 21967), (97, 22033),

Gene: Periwinkle_32 Start: 24420, Stop: 24782, Start Num: 31

Candidate Starts for Periwinkle_32:

(Start: 31 @24420 has 31 MA's), (Start: 34 @24426 has 15 MA's), (38, 24432), (47, 24483), (49, 24486), (Start: 55 @24504 has 1 MA's), (62, 24540), (67, 24558), (74, 24582), (78, 24600), (80, 24609), (82, 24618), (83, 24627), (84, 24630), (90, 24657), (100, 24705), (101, 24708), (102, 24714), (104, 24720), (111, 24765), (112, 24768),

Gene: Phabuloso_29 Start: 23707, Stop: 24069, Start Num: 31

Candidate Starts for Phabuloso_29:

(Start: 31 @23707 has 31 MA's), (Start: 34 @23713 has 15 MA's), (38, 23719), (47, 23770), (49, 23773), (Start: 55 @23791 has 1 MA's), (62, 23827), (67, 23845), (74, 23869), (78, 23887), (83, 23914), (84, 23917), (90, 23944), (101, 23995), (102, 24001), (104, 24007), (111, 24052), (112, 24055),

Gene: Phistory_31 Start: 24741, Stop: 25103, Start Num: 31

Candidate Starts for Phistory_31:

(Start: 31 @24741 has 31 MA's), (Start: 34 @24747 has 15 MA's), (38, 24753), (47, 24804), (49, 24807), (Start: 55 @24825 has 1 MA's), (62, 24861), (67, 24879), (74, 24903), (78, 24921), (80, 24930), (82, 24939), (83, 24948), (84, 24951), (90, 24978), (100, 25026), (101, 25029), (102, 25035), (104, 25041), (111, 25086), (112, 25089),

Gene: Pons_28 Start: 22536, Stop: 22859, Start Num: 35
Candidate Starts for Pons_28:
(Start: 35 @22536 has 14 MA's), (49, 22596), (76, 22698), (105, 22800),

Gene: PotPie_27 Start: 22369, Stop: 22692, Start Num: 35
Candidate Starts for PotPie_27:
(Start: 35 @22369 has 14 MA's), (49, 22429), (56, 22453), (76, 22531), (105, 22633),

Gene: PsychoKiller_26 Start: 21623, Stop: 21964, Start Num: 37
Candidate Starts for PsychoKiller_26:
(Start: 37 @21623 has 51 MA's), (58, 21707), (71, 21758), (89, 21833), (91, 21845), (95, 21869), (104, 21905), (111, 21947),

Gene: Puppies_26 Start: 20940, Stop: 21272, Start Num: 32
Candidate Starts for Puppies_26:
(28, 20934), (Start: 32 @20940 has 2 MA's), (57, 21024), (77, 21099), (81, 21114), (87, 21141), (97, 21183), (109, 21240), (111, 21255),

Gene: Purplicious_66 Start: 44274, Stop: 44636, Start Num: 26
Candidate Starts for Purplicious_66:
(2, 44055), (4, 44088), (Start: 26 @44274 has 1 MA's), (42, 44331), (61, 44397), (75, 44451), (111, 44622),

Gene: Quasar_26 Start: 22232, Stop: 22573, Start Num: 37
Candidate Starts for Quasar_26:
(Start: 37 @22232 has 51 MA's), (58, 22316), (71, 22367), (89, 22442), (91, 22454), (95, 22478), (104, 22514), (111, 22556),

Gene: RADical_27 Start: 21624, Stop: 21965, Start Num: 37
Candidate Starts for RADical_27:
(Start: 37 @21624 has 51 MA's), (58, 21708), (71, 21759), (89, 21834), (91, 21846), (95, 21870), (104, 21906), (111, 21948),

Gene: REQ3_31 Start: 14457, Stop: 14756, Start Num: 46
Candidate Starts for REQ3_31:
(46, 14457), (85, 14607), (89, 14622), (98, 14673), (99, 14676), (103, 14691), (105, 14697), (110, 14736), (111, 14739),

Gene: RSchmailzl_27 Start: 21767, Stop: 22108, Start Num: 37
Candidate Starts for RSchmailzl_27:
(Start: 37 @21767 has 51 MA's), (58, 21851), (71, 21902), (89, 21977), (91, 21989), (95, 22013), (104, 22049), (111, 22091),

Gene: Rabbitrun_33 Start: 27422, Stop: 27727, Start Num: 34
Candidate Starts for Rabbitrun_33:
(13, 27293), (14, 27308), (17, 27323), (19, 27326), (20, 27329), (21, 27341), (Start: 34 @27422 has 15 MA's), (Start: 39 @27446 has 1 MA's), (41, 27458), (42, 27464), (49, 27485), (58, 27509), (76, 27572), (91, 27605),

Gene: RanchParmCat_30 Start: 21691, Stop: 22017, Start Num: 37
Candidate Starts for RanchParmCat_30:
(24, 21658), (Start: 37 @21691 has 51 MA's), (49, 21748), (56, 21772), (63, 21799), (71, 21823), (106, 21973), (111, 22000),

Gene: RedBaron_28 Start: 21667, Stop: 22008, Start Num: 37
Candidate Starts for RedBaron_28:
(Start: 37 @21667 has 51 MA's), (58, 21751), (71, 21802), (89, 21877), (95, 21913), (104, 21949),
(111, 21991),

Gene: Ronaldo_60 Start: 32404, Stop: 32754, Start Num: 33
Candidate Starts for Ronaldo_60:
(Start: 33 @32404 has 16 MA's), (42, 32449), (60, 32512), (66, 32530), (72, 32554), (94, 32653),

Gene: Sahara_26 Start: 21963, Stop: 22271, Start Num: 34
Candidate Starts for Sahara_26:
(Start: 33 @21960 has 16 MA's), (Start: 34 @21963 has 15 MA's), (49, 22026), (91, 22146), (111,
22251),

Gene: Santhid_26 Start: 21396, Stop: 21764, Start Num: 31
Candidate Starts for Santhid_26:
(18, 21303), (Start: 31 @21396 has 31 MA's), (49, 21465), (90, 21627), (102, 21684), (104, 21690),
(111, 21735),

Gene: Savage_27 Start: 22288, Stop: 22599, Start Num: 33
Candidate Starts for Savage_27:
(Start: 33 @22288 has 16 MA's), (Start: 34 @22291 has 15 MA's), (49, 22354), (91, 22474), (111,
22579),

Gene: Sephiroth_31 Start: 25857, Stop: 26165, Start Num: 34
Candidate Starts for Sephiroth_31:
(Start: 34 @25857 has 15 MA's), (49, 25920), (52, 25929), (58, 25944), (62, 25965), (64, 25971), (91,
26040),

Gene: ShawBrad_30 Start: 23963, Stop: 24325, Start Num: 31
Candidate Starts for ShawBrad_30:
(Start: 31 @23963 has 31 MA's), (41, 24002), (47, 24026), (49, 24029), (Start: 55 @24047 has 1 MA's),
(62, 24083), (74, 24125), (82, 24161), (83, 24170), (84, 24173), (90, 24200), (101, 24251), (102,
24257), (104, 24263), (111, 24308), (112, 24311),

Gene: SheckWes_27 Start: 21513, Stop: 21836, Start Num: 35
Candidate Starts for SheckWes_27:
(Start: 35 @21513 has 14 MA's), (49, 21573), (56, 21597), (76, 21675), (105, 21777),

Gene: SilverChicken_21 Start: 15770, Stop: 16093, Start Num: 40
Candidate Starts for SilverChicken_21:
(Start: 40 @15770 has 7 MA's), (49, 15803), (51, 15806), (105, 16025), (107, 16049), (111, 16070),

Gene: Sixama_103 Start: 63600, Stop: 63935, Start Num: 29
Candidate Starts for Sixama_103:
(Start: 29 @63600 has 5 MA's), (41, 63645), (60, 63714), (67, 63735), (73, 63756), (100, 63867),

Gene: SketchMex_25 Start: 21276, Stop: 21617, Start Num: 37
Candidate Starts for SketchMex_25:
(Start: 37 @21276 has 51 MA's), (54, 21345), (56, 21357), (89, 21486), (97, 21531), (104, 21558),

Gene: Socotra_27 Start: 21623, Stop: 21964, Start Num: 37

Candidate Starts for Socotra_27:

(Start: 37 @21623 has 51 MA's), (58, 21707), (71, 21758), (89, 21833), (91, 21845), (95, 21869), (104, 21905), (111, 21947),

Gene: SoilAssassin_27 Start: 22281, Stop: 22592, Start Num: 33

Candidate Starts for SoilAssassin_27:

(Start: 33 @22281 has 16 MA's), (Start: 34 @22284 has 15 MA's), (49, 22347), (64, 22398), (91, 22467), (111, 22572),

Gene: Sopespian_26 Start: 21624, Stop: 21965, Start Num: 37

Candidate Starts for Sopespian_26:

(Start: 37 @21624 has 51 MA's), (58, 21708), (71, 21759), (89, 21834), (91, 21846), (95, 21870), (104, 21906), (111, 21948),

Gene: Soul22_21 Start: 15768, Stop: 16091, Start Num: 40

Candidate Starts for Soul22_21:

(Start: 40 @15768 has 7 MA's), (49, 15801), (51, 15804), (105, 16023), (107, 16047), (111, 16068),

Gene: Sproutie_27 Start: 22288, Stop: 22599, Start Num: 33

Candidate Starts for Sproutie_27:

(Start: 33 @22288 has 16 MA's), (Start: 34 @22291 has 15 MA's), (49, 22354), (91, 22474), (111, 22579),

Gene: Starburst_27 Start: 21624, Stop: 21965, Start Num: 37

Candidate Starts for Starburst_27:

(Start: 37 @21624 has 51 MA's), (58, 21708), (71, 21759), (89, 21834), (91, 21846), (95, 21870), (104, 21906), (111, 21948),

Gene: SteamedHams_28 Start: 21281, Stop: 21622, Start Num: 37

Candidate Starts for SteamedHams_28:

(Start: 37 @21281 has 51 MA's), (54, 21350), (56, 21362), (58, 21365), (89, 21491), (104, 21563),

Gene: Suerte_25 Start: 23182, Stop: 23538, Start Num: 31

Candidate Starts for Suerte_25:

(Start: 31 @23182 has 31 MA's), (102, 23470), (104, 23476), (111, 23521),

Gene: SummitAcademy_27 Start: 21589, Stop: 21912, Start Num: 35

Candidate Starts for SummitAcademy_27:

(Start: 35 @21589 has 14 MA's), (49, 21649), (56, 21673), (76, 21751), (91, 21790), (105, 21853),

Gene: Survivors_28 Start: 22450, Stop: 22791, Start Num: 37

Candidate Starts for Survivors_28:

(Start: 37 @22450 has 51 MA's), (49, 22507), (54, 22519), (71, 22585), (76, 22606), (86, 22648), (89, 22660), (95, 22696), (96, 22702), (104, 22732),

Gene: SweatNTears_28 Start: 21544, Stop: 21885, Start Num: 37

Candidate Starts for SweatNTears_28:

(7, 21370), (8, 21373), (11, 21400), (Start: 37 @21544 has 51 MA's), (49, 21601), (56, 21625), (89, 21754), (97, 21799), (104, 21826),

Gene: Syleon_31 Start: 25779, Stop: 26087, Start Num: 34

Candidate Starts for Syleon_31:

(Start: 34 @25779 has 15 MA's), (49, 25842), (52, 25851), (58, 25866), (62, 25887), (64, 25893), (91, 25962),

Gene: Tarnish_28 Start: 22904, Stop: 23227, Start Num: 35

Candidate Starts for Tarnish_28:

(Start: 35 @22904 has 14 MA's), (49, 22964), (56, 22988), (76, 23066), (105, 23168),

Gene: Thimann_27 Start: 23650, Stop: 24006, Start Num: 31

Candidate Starts for Thimann_27:

(Start: 31 @23650 has 31 MA's), (102, 23938), (104, 23944), (111, 23989),

Gene: Tolls_28 Start: 21275, Stop: 21616, Start Num: 37

Candidate Starts for Tolls_28:

(Start: 37 @21275 has 51 MA's), (54, 21344), (56, 21356), (58, 21359), (89, 21485), (104, 21557),

Gene: Trax_31 Start: 27414, Stop: 27719, Start Num: 34

Candidate Starts for Trax_31:

(27, 27402), (Start: 34 @27414 has 15 MA's), (41, 27450), (49, 27477), (58, 27501), (62, 27522), (66, 27534), (91, 27597),

Gene: Trine_25 Start: 20596, Stop: 20931, Start Num: 31

Candidate Starts for Trine_25:

(Start: 31 @20596 has 31 MA's), (43, 20638), (44, 20641), (62, 20707), (87, 20803), (102, 20866), (104, 20872), (111, 20917),

Gene: Troje_26 Start: 21258, Stop: 21599, Start Num: 37

Candidate Starts for Troje_26:

(Start: 37 @21258 has 51 MA's), (54, 21327), (56, 21339), (89, 21468), (97, 21513), (104, 21540),

Gene: TuertoX_27 Start: 22291, Stop: 22599, Start Num: 34

Candidate Starts for TuertoX_27:

(Start: 33 @22288 has 16 MA's), (Start: 34 @22291 has 15 MA's), (49, 22354), (91, 22474), (111, 22579),

Gene: Typhonomachy_26 Start: 21656, Stop: 21997, Start Num: 37

Candidate Starts for Typhonomachy_26:

(Start: 37 @21656 has 51 MA's), (58, 21740), (71, 21791), (89, 21866), (91, 21878), (95, 21902), (104, 21938), (111, 21980),

Gene: Vine_28 Start: 22510, Stop: 22830, Start Num: 35

Candidate Starts for Vine_28:

(Start: 35 @22510 has 14 MA's), (51, 22573), (56, 22594), (75, 22669), (76, 22672), (91, 22711),

Gene: Volt_59 Start: 32404, Stop: 32760, Start Num: 33

Candidate Starts for Volt_59:

(Start: 33 @32404 has 16 MA's), (42, 32449), (60, 32512), (66, 32530), (72, 32554), (93, 32641), (108, 32725),

Gene: Wallaby_30 Start: 22594, Stop: 22935, Start Num: 37

Candidate Starts for Wallaby_30:

(Start: 37 @22594 has 51 MA's), (49, 22651), (54, 22663), (71, 22729), (76, 22750), (86, 22792), (89, 22804), (95, 22840), (104, 22876),

Gene: Whiteclaw_27 Start: 22291, Stop: 22599, Start Num: 34

Candidate Starts for Whiteclaw_27:

(Start: 33 @22288 has 16 MA's), (Start: 34 @22291 has 15 MA's), (49, 22354), (91, 22474), (111, 22579),

Gene: Whitney_31 Start: 24862, Stop: 25224, Start Num: 31

Candidate Starts for Whitney_31:

(Start: 31 @24862 has 31 MA's), (Start: 34 @24868 has 15 MA's), (38, 24874), (47, 24925), (49, 24928), (Start: 55 @24946 has 1 MA's), (62, 24982), (67, 25000), (74, 25024), (78, 25042), (80, 25051), (81, 25054), (82, 25060), (83, 25069), (84, 25072), (90, 25099), (101, 25150), (102, 25156), (104, 25162), (111, 25207), (112, 25210),

Gene: Widow_26 Start: 20931, Stop: 21263, Start Num: 32

Candidate Starts for Widow_26:

(28, 20925), (Start: 32 @20931 has 2 MA's), (57, 21015), (77, 21090), (81, 21105), (87, 21132), (97, 21174), (109, 21231), (111, 21246),

Gene: Wolfwood_28 Start: 22594, Stop: 22935, Start Num: 37

Candidate Starts for Wolfwood_28:

(Start: 37 @22594 has 51 MA's), (49, 22651), (54, 22663), (71, 22729), (76, 22750), (86, 22792), (89, 22804), (95, 22840), (104, 22876),

Gene: Yakult_29 Start: 21409, Stop: 21735, Start Num: 37

Candidate Starts for Yakult_29:

(3, 21196), (6, 21232), (9, 21244), (10, 21247), (22, 21334), (23, 21346), (Start: 37 @21409 has 51 MA's), (49, 21466), (56, 21490), (63, 21517), (71, 21541), (106, 21691), (111, 21718),

Gene: Yarn_25 Start: 21298, Stop: 21639, Start Num: 37

Candidate Starts for Yarn_25:

(Start: 37 @21298 has 51 MA's), (54, 21367), (56, 21379), (58, 21382), (89, 21508), (104, 21580),

Gene: Yeet412_27 Start: 22281, Stop: 22592, Start Num: 33

Candidate Starts for Yeet412_27:

(Start: 33 @22281 has 16 MA's), (Start: 34 @22284 has 15 MA's), (49, 22347), (64, 22398), (91, 22467), (111, 22572),

Gene: Yinzer_27 Start: 22288, Stop: 22599, Start Num: 33

Candidate Starts for Yinzer_27:

(Start: 33 @22288 has 16 MA's), (Start: 34 @22291 has 15 MA's), (49, 22354), (91, 22474), (111, 22579),

Gene: Yoshi_21 Start: 15769, Stop: 16092, Start Num: 40

Candidate Starts for Yoshi_21:

(Start: 40 @15769 has 7 MA's), (49, 15802), (51, 15805), (105, 16024), (107, 16048), (111, 16069),

Gene: Yucky_27 Start: 22369, Stop: 22689, Start Num: 35

Candidate Starts for Yucky_27:

(Start: 35 @22369 has 14 MA's), (51, 22432), (56, 22453), (75, 22528), (76, 22531), (91, 22570),

Gene: Yummy_27 Start: 21211, Stop: 21552, Start Num: 37

Candidate Starts for Yummy_27:

(Start: 37 @21211 has 51 MA's), (54, 21280), (56, 21292), (58, 21295), (76, 21367), (89, 21421), (91, 21433), (97, 21466), (104, 21493),

Gene: Zapner_22 Start: 16294, Stop: 16617, Start Num: 40

Candidate Starts for Zapner_22:

(Start: 40 @16294 has 7 MA's), (49, 16327), (51, 16330), (105, 16549), (107, 16573), (111, 16594),

Gene: Zareef_28 Start: 22602, Stop: 22943, Start Num: 37

Candidate Starts for Zareef_28:

(Start: 37 @22602 has 51 MA's), (49, 22659), (54, 22671), (71, 22737), (76, 22758), (86, 22800), (89, 22812), (95, 22848), (104, 22884),

Gene: Ziko_60 Start: 32344, Stop: 32700, Start Num: 33

Candidate Starts for Ziko_60:

(Start: 33 @32344 has 16 MA's), (42, 32389), (60, 32452), (66, 32470), (72, 32494), (93, 32581), (108, 32665),