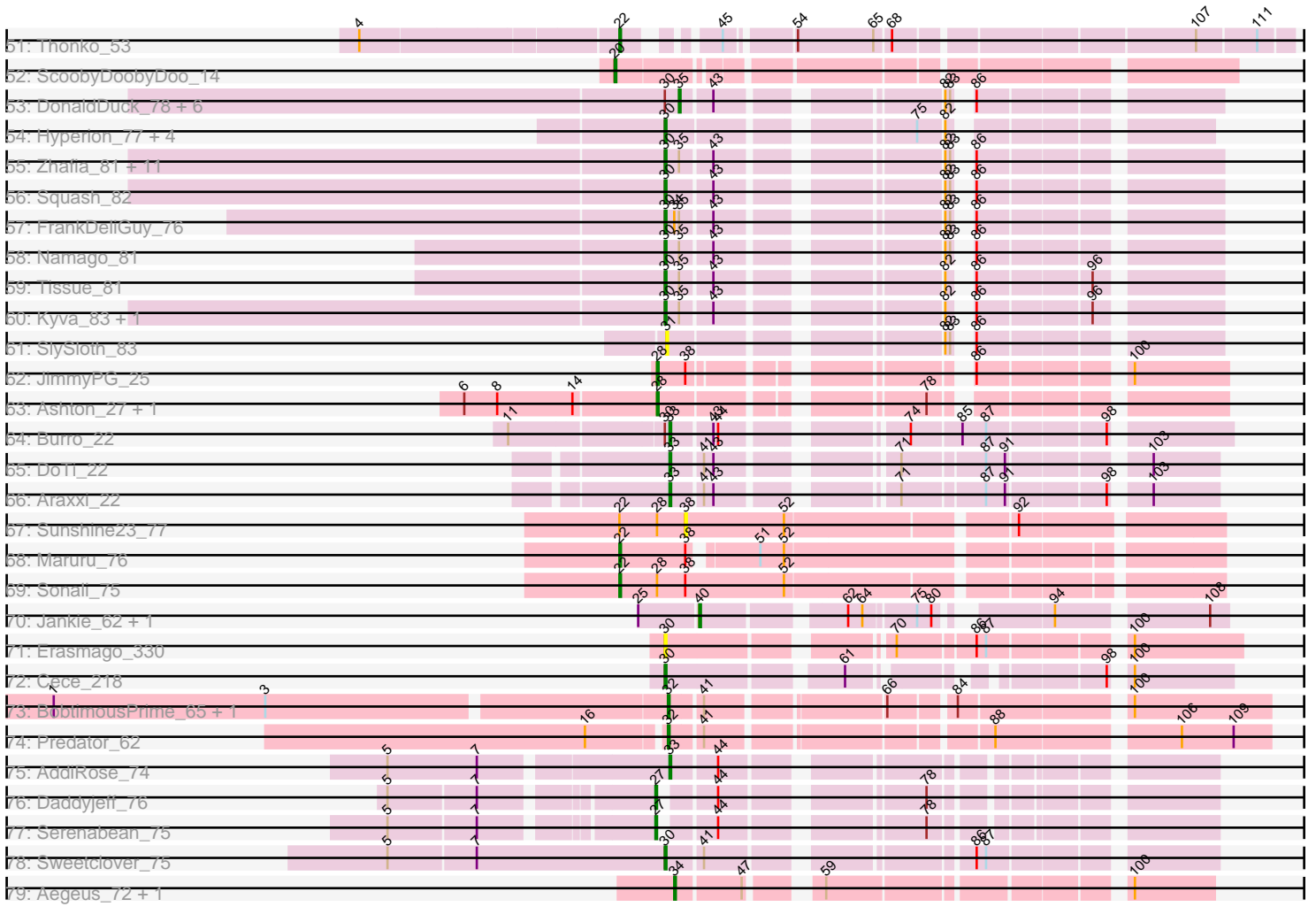


Pham 311274



Note: Tracks are now grouped by subcluster and scaled. Switching in subcluster is indicated by changes in track color. Track scale is now set by default to display the region 30 bp upstream of start 1 to 30 bp downstream of the last possible start. If this default region is judged to be packed too tightly with annotated starts, the track will be further scaled to only show that region of the ORF with annotated starts. This action will be indicated by adding "Zoomed" to the title. For starts, yellow indicates the location of called starts comprised solely of Glimmer/GeneMark auto-annotations, green indicates the location of called starts with at least 1 manual gene annotation.

Pham 311274 Report

This analysis was run 06/27/26 on database version 652.

Pham number 311274 has 178 members, 20 are drafts.

Phages represented in each track:

- Track 1 : Wilde_54
- Track 2 : ScienceWizSam_64, Gordon_61, Darby_62, Nivinsha_66, DevitoJr_63, Westerlin_63, Tatanka_59, Synopsis_62, AreFloNak_66
- Track 3 : Trustiboi_63, Breylor17_63, Nightmare_65, CastorTray_67
- Track 4 : Acai_64, Teacup_65, LucySwiss_64, Niktson_64, ElephantMan_64
- Track 5 : Brunswick_65
- Track 6 : Dinallo_62
- Track 7 : MiniBagel_63, Tenno_64
- Track 8 : Issa_62
- Track 9 : CapnMurica_61
- Track 10 : Bouchard_68, Chlochlo_68, Tipton_69
- Track 11 : LilHuddy_68
- Track 12 : Giantsbane_67
- Track 13 : Phaby_69
- Track 14 : Shepard_69
- Track 15 : Tokki_73
- Track 16 : Anandi_71
- Track 17 : MediumFry_64
- Track 18 : Caterpillar_63
- Track 19 : Truckee_65, Makai_67
- Track 20 : Barbonzobean_42, Kinny_39
- Track 21 : Zippen_69
- Track 22 : Inked_69
- Track 23 : Salk_66, BronxBay_66, Shiba_65, MrAaronian_66, DoctorPepper_65, Sloopyjoe_66, Linda_66, Michelle_66, Jeremy4pt0_65, Djungelskog_65, Spain_66, Stayer_66, StarLord_66
- Track 24 : Egad_66
- Track 25 : Raunak_67
- Track 26 : Boog_65
- Track 27 : PowellDog_68
- Track 28 : HerbBucket_64, ProfFrink_66
- Track 29 : Natasha_68
- Track 30 : Sprinkle_65
- Track 31 : Sporto_65
- Track 32 : RustyBoy_69
- Track 33 : Indlovu_80
- Track 34 : LittleMinkey_97

- Track 35 : Zenteno07_94
- Track 36 : BirdsNest_94
- Track 37 : Hashim76_91
- Track 38 : Compostia_84, ChaChing_85, Philly_84, GlenHope_86, Halfpint_84, Marlia_86
- Track 39 : OrangeOswald_84, Ben11_85, Corofin_85, Phayeta_88, Kronus_85, Audrey_85, LestyG_83, Mortcellus_85, Baloo_84, RomaT_85
- Track 40 : Yinz_85
- Track 41 : Athena_87, Phaedrus_80, TinyTerror_86, Tydolla_81, RagingRooster_84, Phlyer_85, Heathcliff_85, SynergyX_85, Akoma_85, Abinghost_85, Chentzyk_87, SlippinJimmy_88, Briakila_85, Kamiyu_85, Devonte_83, Deenasa_85, Daisy_84, Chalmers_84, Nozo_85, Casbah_85, Yahalom_83, Glubnar_86, Obutu_87
- Track 42 : HarveySr_84, Marley1013_86, Morty007_84, Neos5_85
- Track 43 : Jackstina_79
- Track 44 : Mulaychimus_86, Gervas_86
- Track 45 : Chandler_85
- Track 46 : Olivio_85
- Track 47 : MmasiCarm_86
- Track 48 : Rita1961_86
- Track 49 : SwainyDoc_86
- Track 50 : Shenandoah_84
- Track 51 : Thonko_53
- Track 52 : ScoobyDoobyDoo_14
- Track 53 : DonaldDuck_78, Judebell_78, Mentos_82, Wayne3_80, Rudy_76, BabyDotz_77, Zagie_80
- Track 54 : Hyperion_77, Blab_75, AluminumJesus_75, Mashley_79, Gazebo_79
- Track 55 : Zhafia_81, Viceroy_77, Teehee_79, Jehoshaphat_80, Phabia_78, StrawberryJamm_84, Lonelysoil_76, Quammi_77, Wheelie_78, Casend_79, Sillytadpoles_79, Llemily_78
- Track 56 : Squash_82
- Track 57 : FrankDeliGuy_76
- Track 58 : Namago_81
- Track 59 : Tissue_81
- Track 60 : Kyva_83, Grassboy_83
- Track 61 : SlySloth_83
- Track 62 : JimmyPG_25
- Track 63 : Ashton_27, ShyRosie_26
- Track 64 : Burro_22
- Track 65 : DoTi_22
- Track 66 : Araxxi_22
- Track 67 : Sunshine23_77
- Track 68 : Maruru_76
- Track 69 : Sonali_75
- Track 70 : Jankie_62, GrimEater_61
- Track 71 : Erasmago_330
- Track 72 : Cece_218
- Track 73 : BobtimousPrime_65, Oaker_62
- Track 74 : Predator_62
- Track 75 : AddiRose_74
- Track 76 : Daddyjeff_76
- Track 77 : Serenabean_75
- Track 78 : Sweetclover_75

- Track 79 : Aegeus_72, Baudelaire_72

Summary of Final Annotations (See graph section above for start numbers):

The start number called the most often in the published annotations is 30, it was called in 44 of the 158 non-draft genes in the pham.

Genes that call this "Most Annotated" start:

- AluminumJesus_75, Audrey_85, Baloo_84, Barbonzobean_42, Ben11_85, Blab_75, Casend_79, Cece_218, Chandler_85, Corofin_85, Erasmago_330, FrankDeliGuy_76, Gazebo_79, Grassboy_83, HarveySr_84, Hyperion_77, Jackstina_79, Jehoshaphat_80, Kinny_39, Kronus_85, Kyva_83, LestyG_83, Llemily_78, Lonelysoil_76, Marley1013_86, Mashley_79, MmasiCarm_86, Mortcellus_85, Morty007_84, Namago_81, Neos5_85, OrangeOswald_84, Phabia_78, Phayeta_88, Quammi_77, RomaT_85, Sillytadpoles_79, Squash_82, StrawberryJamm_84, Sweetclover_75, Teehee_79, Tissue_81, Viceroy_77, Wheelie_78, Yinz_85, Zhafia_81,

Genes that have the "Most Annotated" start but do not call it:

- Abinghost_85, Akoma_85, Athena_87, BabyDotz_77, Briakila_85, Burro_22, Casbah_85, ChaChing_85, Chalmers_84, Chentzyk_87, Compostia_84, Daisy_84, Deenasa_85, Devonte_83, DonaldDuck_78, Gervas_86, GlenHope_86, Glubnar_86, Halfpint_84, Heathcliff_85, Judebell_78, Kamiyu_85, Marlia_86, Mentos_82, Mulaychimus_86, Nozo_85, Obutu_87, Olivio_85, Phaedrus_80, Philly_84, Phlyer_85, Powelldog_68, RagingRooster_84, Rita1961_86, Rudy_76, Shenandoah_84, SlippinJimmy_88, SwainyDoc_86, SynergyX_85, TinyTerror_86, Tydolla_81, Wayne3_80, Yahalom_83, Zagie_80,

Genes that do not have the "Most Annotated" start:

- Acai_64, AddiRose_74, Aegeus_72, Anandi_71, Araxxi_22, AreFloNak_66, Ashton_27, Baudelaire_72, BirdsNest_94, BobtimousPrime_65, Boog_65, Bouchard_68, Breylor17_63, BronxBay_66, Brunswick_65, CapnMurica_61, CastorTray_67, Caterpillar_63, Chlochlo_68, Daddyjeff_76, Darby_62, DevitoJr_63, Dinallo_62, Djungelskog_65, DoTi_22, DoctorPepper_65, Egad_66, ElephantMan_64, Giantsbane_67, Gordon_61, GrimEater_61, Hashim76_91, HerbBucket_64, Indlovu_80, Inked_69, Issa_62, Jankie_62, Jeremy4pt0_65, JimmyPG_25, LilHuddy_68, Linda_66, LittleMinkey_97, LucySwiss_64, Makai_67, Maruru_76, MediumFry_64, Michelle_66, MiniBagel_63, MrAaronian_66, Natasha_68, Nightmare_65, Niktson_64, Nivinsha_66, Oaker_62, Phaby_69, Predator_62, ProfFrink_66, Raunak_67, RustyBoy_69, Salk_66, ScienceWizSam_64, ScoobyDoobyDoo_14, Serenabean_75, Shepard_69, Shiba_65, ShyRosie_26, Sloopyjoe_66, SlySloth_83, Sonali_75, Spain_66, Sporto_65, Sprinkle_65, StarLord_66, Stayer_66, Sunshine23_77, Synopsis_62, Tatanka_59, Teacup_65, Tenno_64, Thonko_53, Tipton_69, Tokki_73, Truckee_65, Trustiboi_63, Westerlin_63, Wilde_54, Zenteno07_94, Zippen_69,

Summary by start number:

Start 20:

- Found in 1 of 178 (0.6%) of genes in pham

- Manual Annotations of this start: 1 of 158
- Called 100.0% of time when present
- Phage (with cluster) where this start called: ScoobyDoobyDoo_14 (C2),

Start 21:

- Found in 1 of 178 (0.6%) of genes in pham
- Manual Annotations of this start: 1 of 158
- Called 100.0% of time when present
- Phage (with cluster) where this start called: Powelldog_68 (AW),

Start 22:

- Found in 4 of 178 (2.2%) of genes in pham
- Manual Annotations of this start: 3 of 158
- Called 75.0% of time when present
- Phage (with cluster) where this start called: Maruru_76 (FG), Sonali_75 (FG), Thonko_53 (B8),

Start 24:

- Found in 19 of 178 (10.7%) of genes in pham
- Manual Annotations of this start: 15 of 158
- Called 100.0% of time when present
- Phage (with cluster) where this start called: Anandi_71 (AU4), AreFloNak_66 (AU1), Breylor17_63 (AU1), CapnMurica_61 (AU1), CastorTray_67 (AU1), Darby_62 (AU1), DevitoJr_63 (AU1), Dinallo_62 (AU1), Gordon_61 (AU1), Issa_62 (AU1), MiniBagel_63 (AU1), Nightmare_65 (AU1), Nivinsha_66 (AU1), ScienceWizSam_64 (AU1), Synopsis_62 (AU1), Tatanka_59 (AU1), Tenno_64 (AU1), Trustiboi_63 (AU1), Westerlin_63 (AU1),

Start 25:

- Found in 17 of 178 (9.6%) of genes in pham
- Manual Annotations of this start: 7 of 158
- Called 47.1% of time when present
- Phage (with cluster) where this start called: Acai_64 (AU1), Brunswick_65 (AU1), ElephantMan_64 (AU1), Inked_69 (AU7), LucySwiss_64 (AU1), Niktson_64 (AU1), Teacup_65 (AU1), Zippen_69 (AU7),

Start 26:

- Found in 19 of 178 (10.7%) of genes in pham
- Manual Annotations of this start: 15 of 158
- Called 89.5% of time when present
- Phage (with cluster) where this start called: Boog_65 (AW), BronxBay_66 (AW), Djungelskog_65 (AW), DoctorPepper_65 (AW), HerbBucket_64 (AW), Jeremy4pt0_65 (AW), Linda_66 (AW), Michelle_66 (AW), MrAaronian_66 (AW), ProfFrink_66 (AW), Salk_66 (AW), Shiba_65 (AW), Sloopyjoe_66 (AW), Spain_66 (AW), Sporto_65 (AW), StarLord_66 (AW), Stayer_66 (AW),

Start 27:

- Found in 2 of 178 (1.1%) of genes in pham
- Manual Annotations of this start: 2 of 158
- Called 100.0% of time when present
- Phage (with cluster) where this start called: Daddyjeff_76 (JA), Serenabean_75 (JA),

Start 28:

- Found in 5 of 178 (2.8%) of genes in pham
- Manual Annotations of this start: 3 of 158
- Called 60.0% of time when present
- Phage (with cluster) where this start called: Ashton_27 (EK2), JimmyPG_25 (EK2), ShyRosie_26 (EK2),

Start 30:

- Found in 90 of 178 (50.6%) of genes in pham
- Manual Annotations of this start: 44 of 158
- Called 51.1% of time when present
- Phage (with cluster) where this start called: AluminumJesus_75 (EG), Audrey_85 (B3), Baloo_84 (B3), Barbonzobean_42 (AU6), Ben11_85 (B3), Blab_75 (EG), Casend_79 (EG), Cece_218 (GD3), Chandler_85 (B3), Corofin_85 (B3), Erasmago_330 (GD2), FrankDeliGuy_76 (EG), Gazebo_79 (EG), Grassboy_83 (EG), HarveySr_84 (B3), Hyperion_77 (EG), Jackstina_79 (B3), Jehoshaphat_80 (EG), Kinny_39 (AU6), Kronus_85 (B3), Kyva_83 (EG), LestyG_83 (B3), Llemily_78 (EG), Lonelysoil_76 (EG), Marley1013_86 (B3), Mashley_79 (EG), MmasiCarm_86 (B3), Mortcellus_85 (B3), Morty007_84 (B3), Namago_81 (EG), Neos5_85 (B3), OrangeOswald_84 (B3), Phabia_78 (EG), Phayeta_88 (B3), Quammi_77 (EG), RomaT_85 (B3), Sillytadpoles_79 (EG), Squash_82 (EG), StrawberryJamm_84 (EG), Sweetclover_75 (JA), Teehee_79 (EG), Tissue_81 (EG), Viceroy_77 (EG), Wheelie_78 (EG), Yinz_85 (B3), Zhafia_81 (EG),

Start 31:

- Found in 2 of 178 (1.1%) of genes in pham
- No Manual Annotations of this start.
- Called 100.0% of time when present
- Phage (with cluster) where this start called: SlySloth_83 (EG), Sprinkle_65 (AW),

Start 32:

- Found in 3 of 178 (1.7%) of genes in pham
- Manual Annotations of this start: 3 of 158
- Called 100.0% of time when present
- Phage (with cluster) where this start called: BobtimousPrime_65 (H1), Oaker_62 (H1), Predator_62 (H1),

Start 33:

- Found in 57 of 178 (32.0%) of genes in pham
- Manual Annotations of this start: 38 of 158
- Called 77.2% of time when present
- Phage (with cluster) where this start called: Abinghost_85 (B3), AddiRose_74 (JA), Akoma_85 (B3), Araxxi_22 (EM1), Athena_87 (B3), BirdsNest_94 (B13), Briakila_85 (B3), Burro_22 (EM1), Casbah_85 (B3), ChaChing_85 (B3), Chalmers_84 (B3), Chentzyk_87 (B3), Compostia_84 (B3), Daisy_84 (B3), Deenasa_85 (B3), Devonte_83 (B3), DoTi_22 (EM1), Gervas_86 (B3), GlenHope_86 (B3), Glubnar_86 (B3), Halfpint_84 (B3), Hashim76_91 (B13), Heathcliff_85 (B3), Indlovu_80 (B11), Kamiyu_85 (B3), LittleMinkey_97 (B13), Marlia_86 (B3), Mulaychimus_86 (B3), Nozo_85 (B3), Obutu_87 (B3), Olivio_85 (B3), Phaedrus_80 (B3), Philly_84 (B3), Phlyer_85 (B3), RagingRooster_84 (B3), Rita1961_86 (B3), Shenandoah_84 (B3), SlippinJimmy_88 (B3), SwainyDoc_86 (B3), SynergyX_85 (B3), TinyTerror_86 (B3), Tydolla_81 (B3), Yahalom_83 (B3), Zenteno07_94 (B13),

Start 34:

- Found in 3 of 178 (1.7%) of genes in pham
- Manual Annotations of this start: 2 of 158
- Called 66.7% of time when present
- Phage (with cluster) where this start called: Aegeus_72 (L5), Baudelaire_72 (L5),

Start 35:

- Found in 24 of 178 (13.5%) of genes in pham
- Manual Annotations of this start: 6 of 158
- Called 29.2% of time when present
- Phage (with cluster) where this start called: BabyDotz_77 (EG), DonaldDuck_78 (EG), Judebell_78 (EG), Mentos_82 (EG), Rudy_76 (EG), Wayne3_80 (EG), Zagie_80 (EG),

Start 36:

- Found in 1 of 178 (0.6%) of genes in pham
- Manual Annotations of this start: 1 of 158
- Called 100.0% of time when present
- Phage (with cluster) where this start called: Wilde_54 (AP1),

Start 38:

- Found in 16 of 178 (9.0%) of genes in pham
- Manual Annotations of this start: 12 of 158
- Called 81.2% of time when present
- Phage (with cluster) where this start called: Bouchard_68 (AU2), Caterpillar_63 (AU4), Chlochlo_68 (AU2), Giantsbane_67 (AU2), LilHuddy_68 (AU2), Makai_67 (AU5), MediumFry_64 (AU4), Phaby_69 (AU2), Shepard_69 (AU2), Sunshine23_77 (FG), Tipton_69 (AU2), Tokki_73 (AU2), Truckee_65 (AU5),

Start 39:

- Found in 18 of 178 (10.1%) of genes in pham
- Manual Annotations of this start: 1 of 158
- Called 5.6% of time when present
- Phage (with cluster) where this start called: Egad_66 (AW),

Start 40:

- Found in 39 of 178 (21.9%) of genes in pham
- Manual Annotations of this start: 2 of 158
- Called 5.1% of time when present
- Phage (with cluster) where this start called: GrimEater_61 (FP), Jankie_62 (FP),

Start 42:

- Found in 8 of 178 (4.5%) of genes in pham
- No Manual Annotations of this start.
- Called 12.5% of time when present
- Phage (with cluster) where this start called: Raunak_67 (AW),

Start 48:

- Found in 40 of 178 (22.5%) of genes in pham
- Manual Annotations of this start: 2 of 158
- Called 5.0% of time when present
- Phage (with cluster) where this start called: Natasha_68 (AW), RustyBoy_69 (AW),

Summary by clusters:

There are 23 clusters represented in this pham: FP, GD2, GD3, AP1, B13, FG, JA, AU1, AU2, AU5, AU4, AU7, AU6, C2, EG, L5, AW, H1, B11, EM1, B3, B8, EK2,

Info for manual annotations of cluster AP1:

- Start number 36 was manually annotated 1 time for cluster AP1.

Info for manual annotations of cluster AU1:

- Start number 24 was manually annotated 14 times for cluster AU1.
- Start number 25 was manually annotated 5 times for cluster AU1.

Info for manual annotations of cluster AU2:

- Start number 38 was manually annotated 8 times for cluster AU2.

Info for manual annotations of cluster AU4:

- Start number 24 was manually annotated 1 time for cluster AU4.
- Start number 38 was manually annotated 2 times for cluster AU4.

Info for manual annotations of cluster AU5:

- Start number 38 was manually annotated 2 times for cluster AU5.

Info for manual annotations of cluster AU6:

- Start number 30 was manually annotated 1 time for cluster AU6.

Info for manual annotations of cluster AU7:

- Start number 25 was manually annotated 2 times for cluster AU7.

Info for manual annotations of cluster AW:

- Start number 21 was manually annotated 1 time for cluster AW.
- Start number 26 was manually annotated 15 times for cluster AW.
- Start number 39 was manually annotated 1 time for cluster AW.
- Start number 48 was manually annotated 2 times for cluster AW.

Info for manual annotations of cluster B11:

- Start number 33 was manually annotated 1 time for cluster B11.

Info for manual annotations of cluster B13:

- Start number 33 was manually annotated 3 times for cluster B13.

Info for manual annotations of cluster B3:

- Start number 30 was manually annotated 18 times for cluster B3.
- Start number 33 was manually annotated 30 times for cluster B3.

Info for manual annotations of cluster B8:

- Start number 22 was manually annotated 1 time for cluster B8.

Info for manual annotations of cluster C2:

- Start number 20 was manually annotated 1 time for cluster C2.

Info for manual annotations of cluster EG:

- Start number 30 was manually annotated 23 times for cluster EG.
- Start number 35 was manually annotated 6 times for cluster EG.

Info for manual annotations of cluster EK2:

- Start number 28 was manually annotated 3 times for cluster EK2.

Info for manual annotations of cluster EM1:

- Start number 33 was manually annotated 3 times for cluster EM1.

Info for manual annotations of cluster FG:

- Start number 22 was manually annotated 2 times for cluster FG.

Info for manual annotations of cluster FP:

- Start number 40 was manually annotated 2 times for cluster FP.

Info for manual annotations of cluster GD3:

- Start number 30 was manually annotated 1 time for cluster GD3.

Info for manual annotations of cluster H1:

- Start number 32 was manually annotated 3 times for cluster H1.

Info for manual annotations of cluster JA:

- Start number 27 was manually annotated 2 times for cluster JA.
- Start number 30 was manually annotated 1 time for cluster JA.
- Start number 33 was manually annotated 1 time for cluster JA.

Info for manual annotations of cluster L5:

- Start number 34 was manually annotated 2 times for cluster L5.

Gene Information:

Gene: Abinghost_85 Start: 62155, Stop: 61802, Start Num: 33

Candidate Starts for Abinghost_85:

(Start: 30 @62158 has 44 MA's), (Start: 33 @62155 has 38 MA's), (Start: 40 @62140 has 2 MA's), (59, 62062), (65, 62032), (66, 62026), (76, 62005), (93, 61930), (107, 61840),

Gene: Acai_64 Start: 44756, Stop: 45067, Start Num: 25

Candidate Starts for Acai_64:

(Start: 25 @44756 has 7 MA's), (Start: 48 @44822 has 2 MA's), (52, 44846), (63, 44885), (67, 44909),

Gene: AddiRose_74 Start: 47344, Stop: 47628, Start Num: 33

Candidate Starts for AddiRose_74:

(5, 47176), (7, 47233), (Start: 33 @47344 has 38 MA's), (44, 47371),

Gene: Aegeus_72 Start: 46824, Stop: 47111, Start Num: 34

Candidate Starts for Aegeus_72:

(Start: 34 @46824 has 2 MA's), (47, 46863), (59, 46896), (100, 47061),

Gene: Akoma_85 Start: 62195, Stop: 61842, Start Num: 33

Candidate Starts for Akoma_85:

(Start: 30 @62198 has 44 MA's), (Start: 33 @62195 has 38 MA's), (Start: 40 @62180 has 2 MA's), (59, 62102), (65, 62072), (66, 62066), (76, 62045), (93, 61970), (107, 61880),

Gene: AluminumJesus_75 Start: 51316, Stop: 51035, Start Num: 30

Candidate Starts for AluminumJesus_75:

(Start: 30 @51316 has 44 MA's), (75, 51187), (82, 51172),

Gene: Anandi_71 Start: 45261, Stop: 45578, Start Num: 24

Candidate Starts for Anandi_71:

(Start: 24 @45261 has 15 MA's), (Start: 48 @45327 has 2 MA's), (59, 45375), (101, 45531),

Gene: Araxxi_22 Start: 16801, Stop: 16511, Start Num: 33

Candidate Starts for Araxxi_22:

(Start: 33 @16801 has 38 MA's), (41, 16783), (43, 16777), (71, 16687), (87, 16639), (91, 16627), (98, 16570), (103, 16552),

Gene: AreFloNak_66 Start: 44576, Stop: 44890, Start Num: 24

Candidate Starts for AreFloNak_66:

(Start: 24 @44576 has 15 MA's), (Start: 48 @44645 has 2 MA's), (63, 44708), (81, 44759),

Gene: Ashton_27 Start: 15701, Stop: 15408, Start Num: 28

Candidate Starts for Ashton_27:

(6, 15821), (8, 15800), (14, 15752), (Start: 28 @15701 has 3 MA's), (78, 15563),

Gene: Athena_87 Start: 62930, Stop: 62577, Start Num: 33

Candidate Starts for Athena_87:

(Start: 30 @62933 has 44 MA's), (Start: 33 @62930 has 38 MA's), (Start: 40 @62915 has 2 MA's), (59, 62837), (65, 62807), (66, 62801), (76, 62780), (93, 62705), (107, 62615),

Gene: Audrey_85 Start: 62187, Stop: 61831, Start Num: 30

Candidate Starts for Audrey_85:

(Start: 30 @62187 has 44 MA's), (Start: 33 @62184 has 38 MA's), (Start: 40 @62169 has 2 MA's), (59, 62091), (65, 62061), (66, 62055), (76, 62034), (93, 61959), (107, 61869),

Gene: BabyDotz_77 Start: 52957, Stop: 52679, Start Num: 35

Candidate Starts for BabyDotz_77:

(Start: 30 @52966 has 44 MA's), (Start: 35 @52957 has 6 MA's), (43, 52939), (82, 52822), (83, 52819), (86, 52816),

Gene: Baloo_84 Start: 62039, Stop: 61683, Start Num: 30

Candidate Starts for Baloo_84:

(Start: 30 @62039 has 44 MA's), (Start: 33 @62036 has 38 MA's), (Start: 40 @62021 has 2 MA's), (59, 61943), (65, 61913), (66, 61907), (76, 61886), (93, 61811), (107, 61721),

Gene: Barbonzobean_42 Start: 30119, Stop: 30469, Start Num: 30

Candidate Starts for Barbonzobean_42:

(Start: 30 @30119 has 44 MA's), (104, 30428),

Gene: Baudelaire_72 Start: 46824, Stop: 47111, Start Num: 34

Candidate Starts for Baudelaire_72:

(Start: 34 @46824 has 2 MA's), (47, 46863), (59, 46896), (100, 47061),

Gene: Ben11_85 Start: 62414, Stop: 62058, Start Num: 30

Candidate Starts for Ben11_85:

(Start: 30 @62414 has 44 MA's), (Start: 33 @62411 has 38 MA's), (Start: 40 @62396 has 2 MA's), (59, 62318), (65, 62288), (66, 62282), (76, 62261), (93, 62186), (107, 62096),

Gene: BirdsNest_94 Start: 66955, Stop: 66563, Start Num: 33

Candidate Starts for BirdsNest_94:

(Start: 33 @66955 has 38 MA's), (46, 66919), (54, 66886), (73, 66820), (84, 66787), (90, 66760), (98, 66697), (100, 66682),

Gene: Blab_75 Start: 51607, Stop: 51326, Start Num: 30

Candidate Starts for Blab_75:

(Start: 30 @51607 has 44 MA's), (75, 51478), (82, 51463),

Gene: BobtimousPrime_65 Start: 48847, Stop: 49185, Start Num: 32

Candidate Starts for BobtimousPrime_65:

(1, 48466), (3, 48601), (Start: 32 @48847 has 3 MA's), (41, 48865), (66, 48967), (84, 49003), (100, 49099),

Gene: Boog_65 Start: 42487, Stop: 42786, Start Num: 26

Candidate Starts for Boog_65:

(Start: 25 @42484 has 7 MA's), (Start: 26 @42487 has 15 MA's), (Start: 39 @42517 has 1 MA's), (42, 42526), (49, 42547), (105, 42760),

Gene: Bouchard_68 Start: 45451, Stop: 45738, Start Num: 38

Candidate Starts for Bouchard_68:

(Start: 38 @45451 has 12 MA's), (Start: 48 @45490 has 2 MA's), (59, 45541), (67, 45580), (89, 45625), (95, 45670), (101, 45697),

Gene: Breylor17_63 Start: 45151, Stop: 45465, Start Num: 24

Candidate Starts for Breylor17_63:

(Start: 24 @45151 has 15 MA's), (Start: 48 @45220 has 2 MA's), (58, 45265), (63, 45283), (81, 45334),

Gene: Briakila_85 Start: 62382, Stop: 62029, Start Num: 33

Candidate Starts for Briakila_85:

(Start: 30 @62385 has 44 MA's), (Start: 33 @62382 has 38 MA's), (Start: 40 @62367 has 2 MA's), (59, 62289), (65, 62259), (66, 62253), (76, 62232), (93, 62157), (107, 62067),

Gene: BronxBay_66 Start: 42743, Stop: 43054, Start Num: 26

Candidate Starts for BronxBay_66:

(15, 42701), (Start: 26 @42743 has 15 MA's), (Start: 39 @42776 has 1 MA's), (66, 42893), (102, 43016), (104, 43028),

Gene: Brunswick_65 Start: 44599, Stop: 44910, Start Num: 25

Candidate Starts for Brunswick_65:

(Start: 25 @44599 has 7 MA's), (Start: 48 @44665 has 2 MA's), (52, 44689), (63, 44728), (93, 44827),

Gene: Burro_22 Start: 15917, Stop: 15615, Start Num: 33

Candidate Starts for Burro_22:

(11, 16013), (Start: 30 @15920 has 44 MA's), (Start: 33 @15917 has 38 MA's), (43, 15893), (44, 15890), (74, 15797), (85, 15767), (87, 15752), (98, 15683),

Gene: CapnMurica_61 Start: 45337, Stop: 45651, Start Num: 24

Candidate Starts for CapnMurica_61:

(Start: 24 @45337 has 15 MA's), (Start: 48 @45406 has 2 MA's), (63, 45469), (67, 45493), (81, 45520),

Gene: Casbah_85 Start: 62495, Stop: 62142, Start Num: 33

Candidate Starts for Casbah_85:

(Start: 30 @62498 has 44 MA's), (Start: 33 @62495 has 38 MA's), (Start: 40 @62480 has 2 MA's), (59, 62402), (65, 62372), (66, 62366), (76, 62345), (93, 62270), (107, 62180),

Gene: Casend_79 Start: 52248, Stop: 51961, Start Num: 30

Candidate Starts for Casend_79:

(Start: 30 @52248 has 44 MA's), (Start: 35 @52239 has 6 MA's), (43, 52221), (82, 52104), (83, 52101), (86, 52098),

Gene: CastorTray_67 Start: 45340, Stop: 45654, Start Num: 24

Candidate Starts for CastorTray_67:

(Start: 24 @45340 has 15 MA's), (Start: 48 @45409 has 2 MA's), (58, 45454), (63, 45472), (81, 45523),

Gene: Caterpillar_63 Start: 44268, Stop: 44546, Start Num: 38

Candidate Starts for Caterpillar_63:

(Start: 38 @44268 has 12 MA's), (Start: 48 @44307 has 2 MA's), (50, 44313), (101, 44505),

Gene: Cece_218 Start: 133451, Stop: 133741, Start Num: 30

Candidate Starts for Cece_218:

(Start: 30 @133451 has 44 MA's), (61, 133550), (98, 133673), (100, 133679),

Gene: ChaChing_85 Start: 62197, Stop: 61847, Start Num: 33

Candidate Starts for ChaChing_85:

(Start: 30 @62200 has 44 MA's), (Start: 33 @62197 has 38 MA's), (41, 62179), (54, 62125), (59, 62107), (65, 62077), (85, 62029), (93, 61975), (107, 61885),

Gene: Chalmers_84 Start: 62630, Stop: 62277, Start Num: 33

Candidate Starts for Chalmers_84:

(Start: 30 @62633 has 44 MA's), (Start: 33 @62630 has 38 MA's), (Start: 40 @62615 has 2 MA's), (59, 62537), (65, 62507), (66, 62501), (76, 62480), (93, 62405), (107, 62315),

Gene: Chandler_85 Start: 62974, Stop: 62618, Start Num: 30

Candidate Starts for Chandler_85:

(Start: 30 @62974 has 44 MA's), (Start: 33 @62971 has 38 MA's), (Start: 40 @62956 has 2 MA's), (59, 62878), (65, 62848), (66, 62842), (76, 62821), (93, 62746),

Gene: Chentzyk_87 Start: 63129, Stop: 62776, Start Num: 33

Candidate Starts for Chentzyk_87:

(Start: 30 @63132 has 44 MA's), (Start: 33 @63129 has 38 MA's), (Start: 40 @63114 has 2 MA's), (59, 63036), (65, 63006), (66, 63000), (76, 62979), (93, 62904), (107, 62814),

Gene: Chlochlo_68 Start: 44978, Stop: 45265, Start Num: 38

Candidate Starts for Chlochlo_68:

(Start: 38 @44978 has 12 MA's), (Start: 48 @45017 has 2 MA's), (59, 45068), (67, 45107), (89, 45152), (95, 45197), (101, 45224),

Gene: Compostia_84 Start: 62637, Stop: 62287, Start Num: 33

Candidate Starts for Compostia_84:

(Start: 30 @62640 has 44 MA's), (Start: 33 @62637 has 38 MA's), (41, 62619), (54, 62565), (59, 62547), (65, 62517), (85, 62469), (93, 62415), (107, 62325),

Gene: Corofin_85 Start: 62209, Stop: 61853, Start Num: 30

Candidate Starts for Corofin_85:

(Start: 30 @62209 has 44 MA's), (Start: 33 @62206 has 38 MA's), (Start: 40 @62191 has 2 MA's), (59, 62113), (65, 62083), (66, 62077), (76, 62056), (93, 61981), (107, 61891),

Gene: Daddyjeff_76 Start: 47745, Stop: 48029, Start Num: 27

Candidate Starts for Daddyjeff_76:

(5, 47595), (7, 47649), (Start: 27 @47745 has 2 MA's), (44, 47772), (78, 47880),

Gene: Daisy_84 Start: 61757, Stop: 61404, Start Num: 33

Candidate Starts for Daisy_84:

(Start: 30 @61760 has 44 MA's), (Start: 33 @61757 has 38 MA's), (Start: 40 @61742 has 2 MA's), (59, 61664), (65, 61634), (66, 61628), (76, 61607), (93, 61532), (107, 61442),

Gene: Darby_62 Start: 44386, Stop: 44700, Start Num: 24

Candidate Starts for Darby_62:

(Start: 24 @44386 has 15 MA's), (Start: 48 @44455 has 2 MA's), (63, 44518), (81, 44569),

Gene: Deenasa_85 Start: 63106, Stop: 62753, Start Num: 33

Candidate Starts for Deenasa_85:

(Start: 30 @63109 has 44 MA's), (Start: 33 @63106 has 38 MA's), (Start: 40 @63091 has 2 MA's), (59, 63013), (65, 62983), (66, 62977), (76, 62956), (93, 62881), (107, 62791),

Gene: DevitoJr_63 Start: 44772, Stop: 45086, Start Num: 24

Candidate Starts for DevitoJr_63:

(Start: 24 @44772 has 15 MA's), (Start: 48 @44841 has 2 MA's), (63, 44904), (81, 44955),

Gene: Devonte_83 Start: 61823, Stop: 61470, Start Num: 33

Candidate Starts for Devonte_83:

(Start: 30 @61826 has 44 MA's), (Start: 33 @61823 has 38 MA's), (Start: 40 @61808 has 2 MA's), (59, 61730), (65, 61700), (66, 61694), (76, 61673), (93, 61598), (107, 61508),

Gene: Dinallo_62 Start: 45647, Stop: 45961, Start Num: 24

Candidate Starts for Dinallo_62:

(Start: 24 @45647 has 15 MA's), (67, 45803), (81, 45830),

Gene: Djungelskog_65 Start: 42742, Stop: 43056, Start Num: 26

Candidate Starts for Djungelskog_65:

(15, 42700), (Start: 26 @42742 has 15 MA's), (Start: 39 @42775 has 1 MA's), (66, 42895), (102, 43018), (104, 43030),

Gene: DoTi_22 Start: 16882, Stop: 16592, Start Num: 33

Candidate Starts for DoTi_22:

(Start: 33 @16882 has 38 MA's), (41, 16864), (43, 16858), (71, 16768), (87, 16720), (91, 16708), (103, 16633),

Gene: DoctorPepper_65 Start: 42447, Stop: 42758, Start Num: 26

Candidate Starts for DoctorPepper_65:

(15, 42405), (Start: 26 @42447 has 15 MA's), (Start: 39 @42480 has 1 MA's), (66, 42597), (102, 42720), (104, 42732),

Gene: DonaldDuck_78 Start: 51591, Stop: 51313, Start Num: 35

Candidate Starts for DonaldDuck_78:

(Start: 30 @51600 has 44 MA's), (Start: 35 @51591 has 6 MA's), (43, 51573), (82, 51456), (83, 51453), (86, 51450),

Gene: Egad_66 Start: 42768, Stop: 43037, Start Num: 39

Candidate Starts for Egad_66:

(Start: 25 @42735 has 7 MA's), (Start: 26 @42738 has 15 MA's), (Start: 39 @42768 has 1 MA's), (42, 42777), (105, 43011),

Gene: ElephantMan_64 Start: 45229, Stop: 45540, Start Num: 25

Candidate Starts for ElephantMan_64:

(Start: 25 @45229 has 7 MA's), (Start: 48 @45295 has 2 MA's), (52, 45319), (63, 45358), (67, 45382),

Gene: Erasmago_330 Start: 171755, Stop: 172069, Start Num: 30

Candidate Starts for Erasmago_330:

(Start: 30 @171755 has 44 MA's), (70, 171875), (86, 171920), (87, 171926), (100, 172001),

Gene: FrankDeliGuy_76 Start: 51968, Stop: 51681, Start Num: 30

Candidate Starts for FrankDeliGuy_76:

(Start: 30 @51968 has 44 MA's), (Start: 34 @51962 has 2 MA's), (Start: 35 @51959 has 6 MA's), (43, 51941), (82, 51824), (83, 51821), (86, 51818),

Gene: Gazebo_79 Start: 52534, Stop: 52253, Start Num: 30

Candidate Starts for Gazebo_79:

(Start: 30 @52534 has 44 MA's), (75, 52405), (82, 52390),

Gene: Gervas_86 Start: 62651, Stop: 62298, Start Num: 33

Candidate Starts for Gervas_86:

(Start: 30 @62654 has 44 MA's), (Start: 33 @62651 has 38 MA's), (41, 62633), (59, 62558), (65, 62528), (66, 62522), (76, 62501), (93, 62426), (107, 62336),

Gene: Giantsbane_67 Start: 43961, Stop: 44245, Start Num: 38

Candidate Starts for Giantsbane_67:

(Start: 38 @43961 has 12 MA's), (Start: 48 @44000 has 2 MA's), (60, 44051), (101, 44204),

Gene: GlenHope_86 Start: 62227, Stop: 61877, Start Num: 33

Candidate Starts for GlenHope_86:

(Start: 30 @62230 has 44 MA's), (Start: 33 @62227 has 38 MA's), (41, 62209), (54, 62155), (59, 62137), (65, 62107), (85, 62059), (93, 62005), (107, 61915),

Gene: Glubnar_86 Start: 62089, Stop: 61736, Start Num: 33

Candidate Starts for Glubnar_86:

(Start: 30 @62092 has 44 MA's), (Start: 33 @62089 has 38 MA's), (Start: 40 @62074 has 2 MA's), (59, 61996), (65, 61966), (66, 61960), (76, 61939), (93, 61864), (107, 61774),

Gene: Gordon_61 Start: 45264, Stop: 45578, Start Num: 24

Candidate Starts for Gordon_61:

(Start: 24 @45264 has 15 MA's), (Start: 48 @45333 has 2 MA's), (63, 45396), (81, 45447),

Gene: Grassboy_83 Start: 52649, Stop: 52362, Start Num: 30

Candidate Starts for Grassboy_83:

(Start: 30 @52649 has 44 MA's), (Start: 35 @52640 has 6 MA's), (43, 52622), (82, 52505), (86, 52499), (96, 52433),

Gene: GrimEater_61 Start: 40064, Stop: 40342, Start Num: 40

Candidate Starts for GrimEater_61:

(Start: 25 @40028 has 7 MA's), (Start: 40 @40064 has 2 MA's), (62, 40142), (64, 40151), (75, 40181), (80, 40190), (94, 40244), (108, 40331),

Gene: Halfpint_84 Start: 61969, Stop: 61619, Start Num: 33

Candidate Starts for Halfpint_84:

(Start: 30 @61972 has 44 MA's), (Start: 33 @61969 has 38 MA's), (41, 61951), (54, 61897), (59, 61879), (65, 61849), (85, 61801), (93, 61747), (107, 61657),

Gene: HarveySr_84 Start: 61732, Stop: 61388, Start Num: 30

Candidate Starts for HarveySr_84:

(18, 61780), (Start: 30 @61732 has 44 MA's), (41, 61717), (45, 61705), (54, 61666), (59, 61648), (65, 61618), (91, 61543), (99, 61474),

Gene: Hashim76_91 Start: 66420, Stop: 66052, Start Num: 33

Candidate Starts for Hashim76_91:

(9, 66519), (Start: 33 @66420 has 38 MA's), (54, 66351), (73, 66285), (90, 66231), (110, 66078),

Gene: Heathcliff_85 Start: 62151, Stop: 61798, Start Num: 33

Candidate Starts for Heathcliff_85:

(Start: 30 @62154 has 44 MA's), (Start: 33 @62151 has 38 MA's), (Start: 40 @62136 has 2 MA's), (59, 62058), (65, 62028), (66, 62022), (76, 62001), (93, 61926), (107, 61836),

Gene: HerbBucket_64 Start: 42469, Stop: 42768, Start Num: 26

Candidate Starts for HerbBucket_64:

(Start: 25 @42466 has 7 MA's), (Start: 26 @42469 has 15 MA's), (Start: 39 @42499 has 1 MA's), (42, 42508), (105, 42742),

Gene: Hyperion_77 Start: 51797, Stop: 51516, Start Num: 30

Candidate Starts for Hyperion_77:

(Start: 30 @51797 has 44 MA's), (75, 51668), (82, 51653),

Gene: Indlovu_80 Start: 64701, Stop: 64342, Start Num: 33

Candidate Starts for Indlovu_80:

(2, 65067), (12, 64773), (Start: 33 @64701 has 38 MA's), (54, 64632), (59, 64614), (65, 64584), (68, 64575), (85, 64539), (100, 64440), (106, 64410),

Gene: Inked_69 Start: 45815, Stop: 46129, Start Num: 25

Candidate Starts for Inked_69:

(Start: 25 @45815 has 7 MA's), (Start: 48 @45884 has 2 MA's), (60, 45935), (101, 46088),

Gene: Issa_62 Start: 44432, Stop: 44746, Start Num: 24

Candidate Starts for Issa_62:

(Start: 24 @44432 has 15 MA's), (Start: 48 @44501 has 2 MA's), (67, 44588), (81, 44615), (89, 44633),

Gene: Jackstina_79 Start: 62068, Stop: 61712, Start Num: 30

Candidate Starts for Jackstina_79:

(Start: 30 @62068 has 44 MA's), (Start: 33 @62065 has 38 MA's), (Start: 40 @62050 has 2 MA's), (59, 61972), (65, 61942), (76, 61915), (93, 61840), (107, 61750),

Gene: Jankie_62 Start: 40246, Stop: 40524, Start Num: 40

Candidate Starts for Jankie_62:

(Start: 25 @40210 has 7 MA's), (Start: 40 @40246 has 2 MA's), (62, 40324), (64, 40333), (75, 40363), (80, 40372), (94, 40426), (108, 40513),

Gene: Jehoshaphat_80 Start: 52516, Stop: 52229, Start Num: 30

Candidate Starts for Jehoshaphat_80:

(Start: 30 @52516 has 44 MA's), (Start: 35 @52507 has 6 MA's), (43, 52489), (82, 52372), (83, 52369), (86, 52366),

Gene: Jeremy4pt0_65 Start: 42442, Stop: 42753, Start Num: 26

Candidate Starts for Jeremy4pt0_65:

(15, 42400), (Start: 26 @42442 has 15 MA's), (Start: 39 @42475 has 1 MA's), (66, 42592), (102, 42715), (104, 42727),

Gene: JimmyPG_25 Start: 15562, Stop: 15272, Start Num: 28

Candidate Starts for JimmyPG_25:

(Start: 28 @15562 has 3 MA's), (Start: 38 @15544 has 12 MA's), (86, 15412), (100, 15331),

Gene: Judebell_78 Start: 51731, Stop: 51453, Start Num: 35

Candidate Starts for Judebell_78:

(Start: 30 @51740 has 44 MA's), (Start: 35 @51731 has 6 MA's), (43, 51713), (82, 51596), (83, 51593), (86, 51590),

Gene: Kamiyu_85 Start: 62154, Stop: 61801, Start Num: 33

Candidate Starts for Kamiyu_85:

(Start: 30 @62157 has 44 MA's), (Start: 33 @62154 has 38 MA's), (Start: 40 @62139 has 2 MA's), (59, 62061), (65, 62031), (66, 62025), (76, 62004), (93, 61929), (107, 61839),

Gene: Kinny_39 Start: 30437, Stop: 30787, Start Num: 30

Candidate Starts for Kinny_39:

(Start: 30 @30437 has 44 MA's), (104, 30746),

Gene: Kronus_85 Start: 63241, Stop: 62885, Start Num: 30

Candidate Starts for Kronus_85:

(Start: 30 @63241 has 44 MA's), (Start: 33 @63238 has 38 MA's), (Start: 40 @63223 has 2 MA's), (59, 63145), (65, 63115), (66, 63109), (76, 63088), (93, 63013), (107, 62923),

Gene: Kyva_83 Start: 52673, Stop: 52386, Start Num: 30

Candidate Starts for Kyva_83:

(Start: 30 @52673 has 44 MA's), (Start: 35 @52664 has 6 MA's), (43, 52646), (82, 52529), (86, 52523), (96, 52457),

Gene: LestyG_83 Start: 61727, Stop: 61371, Start Num: 30

Candidate Starts for LestyG_83:

(Start: 30 @61727 has 44 MA's), (Start: 33 @61724 has 38 MA's), (Start: 40 @61709 has 2 MA's), (59, 61631), (65, 61601), (66, 61595), (76, 61574), (93, 61499), (107, 61409),

Gene: LilHuddy_68 Start: 45074, Stop: 45361, Start Num: 38

Candidate Starts for LilHuddy_68:

(Start: 38 @45074 has 12 MA's), (Start: 48 @45113 has 2 MA's), (59, 45164), (60, 45167), (89, 45248), (101, 45320),

Gene: Linda_66 Start: 42740, Stop: 43051, Start Num: 26

Candidate Starts for Linda_66:

(15, 42698), (Start: 26 @42740 has 15 MA's), (Start: 39 @42773 has 1 MA's), (66, 42890), (102, 43013), (104, 43025),

Gene: LittleMinkey_97 Start: 66895, Stop: 66527, Start Num: 33

Candidate Starts for LittleMinkey_97:

(Start: 33 @66895 has 38 MA's), (54, 66826), (73, 66760), (90, 66706), (98, 66643), (110, 66553),

Gene: Llemily_78 Start: 51295, Stop: 51008, Start Num: 30

Candidate Starts for Llemily_78:

(Start: 30 @51295 has 44 MA's), (Start: 35 @51286 has 6 MA's), (43, 51268), (82, 51151), (83, 51148), (86, 51145),

Gene: Lonelysoil_76 Start: 51052, Stop: 50765, Start Num: 30

Candidate Starts for Lonelysoil_76:

(Start: 30 @51052 has 44 MA's), (Start: 35 @51043 has 6 MA's), (43, 51025), (82, 50908), (83, 50905), (86, 50902),

Gene: LucySwiss_64 Start: 44380, Stop: 44691, Start Num: 25

Candidate Starts for LucySwiss_64:

(Start: 25 @44380 has 7 MA's), (Start: 48 @44446 has 2 MA's), (52, 44470), (63, 44509), (67, 44533),

Gene: Makai_67 Start: 45228, Stop: 45506, Start Num: 38

Candidate Starts for Makai_67:

(Start: 38 @45228 has 12 MA's), (Start: 48 @45267 has 2 MA's), (59, 45312), (101, 45465),

Gene: Marley1013_86 Start: 63081, Stop: 62737, Start Num: 30

Candidate Starts for Marley1013_86:

(18, 63129), (Start: 30 @63081 has 44 MA's), (41, 63066), (45, 63054), (54, 63015), (59, 62997), (65, 62967), (91, 62892), (99, 62823),

Gene: Marlia_86 Start: 62620, Stop: 62270, Start Num: 33

Candidate Starts for Marlia_86:

(Start: 30 @62623 has 44 MA's), (Start: 33 @62620 has 38 MA's), (41, 62602), (54, 62548), (59, 62530), (65, 62500), (85, 62452), (93, 62398), (107, 62308),

Gene: Maruru_76 Start: 48335, Stop: 48679, Start Num: 22

Candidate Starts for Maruru_76:

(Start: 22 @48335 has 3 MA's), (Start: 38 @48377 has 12 MA's), (51, 48413), (52, 48428),

Gene: Mashley_79 Start: 52319, Stop: 52038, Start Num: 30

Candidate Starts for Mashley_79:

(Start: 30 @52319 has 44 MA's), (75, 52190), (82, 52175),

Gene: MediumFry_64 Start: 44564, Stop: 44842, Start Num: 38

Candidate Starts for MediumFry_64:

(Start: 38 @44564 has 12 MA's), (Start: 48 @44603 has 2 MA's), (50, 44609), (55, 44636), (101, 44801),

Gene: Mentos_82 Start: 52962, Stop: 52684, Start Num: 35

Candidate Starts for Mentos_82:

(Start: 30 @52971 has 44 MA's), (Start: 35 @52962 has 6 MA's), (43, 52944), (82, 52827), (83, 52824), (86, 52821),

Gene: Michelle_66 Start: 42742, Stop: 43053, Start Num: 26

Candidate Starts for Michelle_66:

(15, 42700), (Start: 26 @42742 has 15 MA's), (Start: 39 @42775 has 1 MA's), (66, 42892), (102, 43015), (104, 43027),

Gene: MiniBagel_63 Start: 45328, Stop: 45642, Start Num: 24

Candidate Starts for MiniBagel_63:

(Start: 24 @45328 has 15 MA's), (Start: 48 @45397 has 2 MA's), (67, 45484), (81, 45511),

Gene: MmasiCarm_86 Start: 62584, Stop: 62240, Start Num: 30

Candidate Starts for MmasiCarm_86:

(Start: 30 @62584 has 44 MA's), (41, 62569), (45, 62557), (54, 62518), (59, 62500), (65, 62470), (91, 62395), (99, 62326),

Gene: Mortcellus_85 Start: 63322, Stop: 62966, Start Num: 30

Candidate Starts for Mortcellus_85:

(Start: 30 @63322 has 44 MA's), (Start: 33 @63319 has 38 MA's), (Start: 40 @63304 has 2 MA's), (59, 63226), (65, 63196), (66, 63190), (76, 63169), (93, 63094), (107, 63004),

Gene: Morty007_84 Start: 63081, Stop: 62737, Start Num: 30

Candidate Starts for Morty007_84:

(18, 63129), (Start: 30 @63081 has 44 MA's), (41, 63066), (45, 63054), (54, 63015), (59, 62997), (65, 62967), (91, 62892), (99, 62823),

Gene: MrAaronian_66 Start: 42742, Stop: 43053, Start Num: 26

Candidate Starts for MrAaronian_66:

(15, 42700), (Start: 26 @42742 has 15 MA's), (Start: 39 @42775 has 1 MA's), (66, 42892), (102, 43015), (104, 43027),

Gene: Mulaychimus_86 Start: 62600, Stop: 62250, Start Num: 33

Candidate Starts for Mulaychimus_86:

(Start: 30 @62603 has 44 MA's), (Start: 33 @62600 has 38 MA's), (41, 62582), (59, 62510), (65, 62480), (66, 62474), (76, 62453), (93, 62378), (107, 62288),

Gene: Namago_81 Start: 52020, Stop: 51733, Start Num: 30

Candidate Starts for Namago_81:

(Start: 30 @52020 has 44 MA's), (Start: 35 @52011 has 6 MA's), (43, 51993), (82, 51876), (83, 51873), (86, 51870),

Gene: Natasha_68 Start: 42740, Stop: 42982, Start Num: 48

Candidate Starts for Natasha_68:

(10, 42605), (15, 42650), (23, 42671), (42, 42722), (Start: 48 @42740 has 2 MA's), (77, 42845), (79, 42848), (101, 42938),

Gene: Neos5_85 Start: 62543, Stop: 62199, Start Num: 30

Candidate Starts for Neos5_85:

(18, 62591), (Start: 30 @62543 has 44 MA's), (41, 62528), (45, 62516), (54, 62477), (59, 62459), (65, 62429), (91, 62354), (99, 62285),

Gene: Nightmare_65 Start: 45626, Stop: 45940, Start Num: 24

Candidate Starts for Nightmare_65:

(Start: 24 @45626 has 15 MA's), (Start: 48 @45695 has 2 MA's), (58, 45740), (63, 45758), (81, 45809),

Gene: Niktson_64 Start: 45229, Stop: 45540, Start Num: 25

Candidate Starts for Niktson_64:

(Start: 25 @45229 has 7 MA's), (Start: 48 @45295 has 2 MA's), (52, 45319), (63, 45358), (67, 45382),

Gene: Nivinsha_66 Start: 44576, Stop: 44890, Start Num: 24

Candidate Starts for Nivinsha_66:

(Start: 24 @44576 has 15 MA's), (Start: 48 @44645 has 2 MA's), (63, 44708), (81, 44759),

Gene: Nozo_85 Start: 62961, Stop: 62608, Start Num: 33

Candidate Starts for Nozo_85:

(Start: 30 @62964 has 44 MA's), (Start: 33 @62961 has 38 MA's), (Start: 40 @62946 has 2 MA's), (59, 62868), (65, 62838), (66, 62832), (76, 62811), (93, 62736), (107, 62646),

Gene: Oaker_62 Start: 48655, Stop: 48993, Start Num: 32

Candidate Starts for Oaker_62:

(1, 48274), (3, 48409), (Start: 32 @48655 has 3 MA's), (41, 48673), (66, 48775), (84, 48811), (100, 48907),

Gene: Obutu_87 Start: 62764, Stop: 62411, Start Num: 33

Candidate Starts for Obutu_87:

(Start: 30 @62767 has 44 MA's), (Start: 33 @62764 has 38 MA's), (Start: 40 @62749 has 2 MA's), (59, 62671), (65, 62641), (66, 62635), (76, 62614), (93, 62539), (107, 62449),

Gene: Olivio_85 Start: 62402, Stop: 62052, Start Num: 33

Candidate Starts for Olivio_85:

(Start: 30 @62405 has 44 MA's), (Start: 33 @62402 has 38 MA's), (41, 62384), (54, 62330), (59, 62312), (65, 62282), (76, 62255), (93, 62180), (107, 62090),

Gene: OrangeOswald_84 Start: 62199, Stop: 61843, Start Num: 30

Candidate Starts for OrangeOswald_84:

(Start: 30 @62199 has 44 MA's), (Start: 33 @62196 has 38 MA's), (Start: 40 @62181 has 2 MA's), (59, 62103), (65, 62073), (66, 62067), (76, 62046), (93, 61971), (107, 61881),

Gene: Phabia_78 Start: 51707, Stop: 51420, Start Num: 30

Candidate Starts for Phabia_78:

(Start: 30 @51707 has 44 MA's), (Start: 35 @51698 has 6 MA's), (43, 51680), (82, 51563), (83, 51560), (86, 51557),

Gene: Phaby_69 Start: 45635, Stop: 45922, Start Num: 38

Candidate Starts for Phaby_69:

(Start: 38 @45635 has 12 MA's), (Start: 48 @45674 has 2 MA's), (53, 45701), (60, 45728), (101, 45881),

Gene: Phaedrus_80 Start: 61612, Stop: 61259, Start Num: 33

Candidate Starts for Phaedrus_80:

(Start: 30 @61615 has 44 MA's), (Start: 33 @61612 has 38 MA's), (Start: 40 @61597 has 2 MA's), (59, 61519), (65, 61489), (66, 61483), (76, 61462), (93, 61387), (107, 61297),

Gene: Phayeta_88 Start: 62684, Stop: 62328, Start Num: 30

Candidate Starts for Phayeta_88:

(Start: 30 @62684 has 44 MA's), (Start: 33 @62681 has 38 MA's), (Start: 40 @62666 has 2 MA's), (59, 62588), (65, 62558), (66, 62552), (76, 62531), (93, 62456), (107, 62366),

Gene: Philly_84 Start: 62041, Stop: 61691, Start Num: 33

Candidate Starts for Philly_84:

(Start: 30 @62044 has 44 MA's), (Start: 33 @62041 has 38 MA's), (41, 62023), (54, 61969), (59, 61951), (65, 61921), (85, 61873), (93, 61819), (107, 61729),

Gene: Phlyer_85 Start: 62907, Stop: 62554, Start Num: 33

Candidate Starts for Phlyer_85:

(Start: 30 @62910 has 44 MA's), (Start: 33 @62907 has 38 MA's), (Start: 40 @62892 has 2 MA's), (59, 62814), (65, 62784), (66, 62778), (76, 62757), (93, 62682), (107, 62592),

Gene: Powelldog_68 Start: 43177, Stop: 43494, Start Num: 21

Candidate Starts for Powelldog_68:

(Start: 21 @43177 has 1 MA's), (29, 43201), (Start: 30 @43204 has 44 MA's), (Start: 33 @43207 has 38 MA's), (37, 43216), (Start: 39 @43222 has 1 MA's), (44, 43237), (59, 43303), (97, 43438),

Gene: Predator_62 Start: 46573, Stop: 46911, Start Num: 32

Candidate Starts for Predator_62:

(16, 46528), (Start: 32 @46573 has 3 MA's), (41, 46591), (88, 46750), (106, 46855), (109, 46888),

Gene: ProfFrink_66 Start: 42737, Stop: 43036, Start Num: 26

Candidate Starts for ProfFrink_66:

(Start: 25 @42734 has 7 MA's), (Start: 26 @42737 has 15 MA's), (Start: 39 @42767 has 1 MA's), (42, 42776), (105, 43010),

Gene: Quammi_77 Start: 51407, Stop: 51120, Start Num: 30

Candidate Starts for Quammi_77:

(Start: 30 @51407 has 44 MA's), (Start: 35 @51398 has 6 MA's), (43, 51380), (82, 51263), (83, 51260), (86, 51257),

Gene: RagingRooster_84 Start: 61887, Stop: 61534, Start Num: 33

Candidate Starts for RagingRooster_84:

(Start: 30 @61890 has 44 MA's), (Start: 33 @61887 has 38 MA's), (Start: 40 @61872 has 2 MA's), (59, 61794), (65, 61764), (66, 61758), (76, 61737), (93, 61662), (107, 61572),

Gene: Raunak_67 Start: 42437, Stop: 42697, Start Num: 42

Candidate Starts for Raunak_67:

(Start: 25 @42395 has 7 MA's), (Start: 26 @42398 has 15 MA's), (42, 42437), (105, 42671),

Gene: Rita1961_86 Start: 62538, Stop: 62188, Start Num: 33

Candidate Starts for Rita1961_86:

(Start: 30 @62541 has 44 MA's), (Start: 33 @62538 has 38 MA's), (41, 62520), (54, 62466), (59, 62448), (65, 62418), (93, 62316), (107, 62226),

Gene: RomaT_85 Start: 62764, Stop: 62408, Start Num: 30

Candidate Starts for RomaT_85:

(Start: 30 @62764 has 44 MA's), (Start: 33 @62761 has 38 MA's), (Start: 40 @62746 has 2 MA's), (59, 62668), (65, 62638), (66, 62632), (76, 62611), (93, 62536), (107, 62446),

Gene: Rudy_76 Start: 51434, Stop: 51156, Start Num: 35

Candidate Starts for Rudy_76:

(Start: 30 @51443 has 44 MA's), (Start: 35 @51434 has 6 MA's), (43, 51416), (82, 51299), (83, 51296), (86, 51293),

Gene: RustyBoy_69 Start: 42939, Stop: 43181, Start Num: 48

Candidate Starts for RustyBoy_69:

(15, 42849), (23, 42870), (42, 42921), (Start: 48 @42939 has 2 MA's), (51, 42948), (77, 43044), (79, 43047), (101, 43137),

Gene: Salk_66 Start: 42740, Stop: 43051, Start Num: 26

Candidate Starts for Salk_66:

(15, 42698), (Start: 26 @42740 has 15 MA's), (Start: 39 @42773 has 1 MA's), (66, 42890), (102, 43013), (104, 43025),

Gene: ScienceWizSam_64 Start: 44738, Stop: 45052, Start Num: 24

Candidate Starts for ScienceWizSam_64:

(Start: 24 @44738 has 15 MA's), (Start: 48 @44807 has 2 MA's), (63, 44870), (81, 44921),

Gene: ScoobyDoobyDoo_14 Start: 4522, Stop: 4866, Start Num: 20

Candidate Starts for ScoobyDoobyDoo_14:

(Start: 20 @4522 has 1 MA's),

Gene: Serenabean_75 Start: 47658, Stop: 47942, Start Num: 27

Candidate Starts for Serenabean_75:

(5, 47508), (7, 47562), (Start: 27 @47658 has 2 MA's), (44, 47685), (78, 47793),

Gene: Shenandoah_84 Start: 61807, Stop: 61454, Start Num: 33

Candidate Starts for Shenandoah_84:

(Start: 30 @61810 has 44 MA's), (Start: 33 @61807 has 38 MA's), (Start: 40 @61792 has 2 MA's), (59, 61714), (65, 61684), (66, 61678), (76, 61657), (93, 61582),

Gene: Shepard_69 Start: 44933, Stop: 45220, Start Num: 38

Candidate Starts for Shepard_69:

(Start: 38 @44933 has 12 MA's), (Start: 48 @44972 has 2 MA's), (59, 45023), (67, 45062), (89, 45107), (95, 45152), (101, 45179),

Gene: Shiba_65 Start: 42398, Stop: 42709, Start Num: 26

Candidate Starts for Shiba_65:

(15, 42356), (Start: 26 @42398 has 15 MA's), (Start: 39 @42431 has 1 MA's), (66, 42548), (102, 42671), (104, 42683),

Gene: ShyRosie_26 Start: 15707, Stop: 15414, Start Num: 28

Candidate Starts for ShyRosie_26:

(6, 15827), (8, 15806), (14, 15758), (Start: 28 @15707 has 3 MA's), (78, 15569),

Gene: Sillytadpoles_79 Start: 51283, Stop: 50996, Start Num: 30

Candidate Starts for Sillytadpoles_79:

(Start: 30 @51283 has 44 MA's), (Start: 35 @51274 has 6 MA's), (43, 51256), (82, 51139), (83, 51136), (86, 51133),

Gene: SlippinJimmy_88 Start: 63571, Stop: 63218, Start Num: 33

Candidate Starts for SlippinJimmy_88:

(Start: 30 @63574 has 44 MA's), (Start: 33 @63571 has 38 MA's), (Start: 40 @63556 has 2 MA's), (59, 63478), (65, 63448), (66, 63442), (76, 63421), (93, 63346), (107, 63256),

Gene: Sloopyjoe_66 Start: 42744, Stop: 43055, Start Num: 26

Candidate Starts for Sloopyjoe_66:

(15, 42702), (Start: 26 @42744 has 15 MA's), (Start: 39 @42777 has 1 MA's), (66, 42894), (102, 43017), (104, 43029),

Gene: SlySloth_83 Start: 52256, Stop: 51969, Start Num: 31

Candidate Starts for SlySloth_83:

(31, 52256), (82, 52112), (83, 52109), (86, 52106),

Gene: Sonali_75 Start: 48306, Stop: 48659, Start Num: 22

Candidate Starts for Sonali_75:

(Start: 22 @48306 has 3 MA's), (Start: 28 @48330 has 3 MA's), (Start: 38 @48348 has 12 MA's), (52, 48411),

Gene: Spain_66 Start: 42742, Stop: 43053, Start Num: 26

Candidate Starts for Spain_66:

(15, 42700), (Start: 26 @42742 has 15 MA's), (Start: 39 @42775 has 1 MA's), (66, 42892), (102, 43015), (104, 43027),

Gene: Sporto_65 Start: 43859, Stop: 44170, Start Num: 26

Candidate Starts for Sporto_65:

(10, 43772), (15, 43817), (Start: 25 @43856 has 7 MA's), (Start: 26 @43859 has 15 MA's), (66, 44009), (95, 44102), (102, 44132),

Gene: Sprinkle_65 Start: 42929, Stop: 43231, Start Num: 31

Candidate Starts for Sprinkle_65:

(13, 42884), (15, 42890), (17, 42896), (19, 42899), (Start: 25 @42917 has 7 MA's), (31, 42929), (42, 42956), (60, 43025),

Gene: Squash_82 Start: 52656, Stop: 52369, Start Num: 30

Candidate Starts for Squash_82:

(Start: 30 @52656 has 44 MA's), (43, 52629), (82, 52512), (83, 52509), (86, 52506),

Gene: StarLord_66 Start: 42737, Stop: 43048, Start Num: 26

Candidate Starts for StarLord_66:

(15, 42695), (Start: 26 @42737 has 15 MA's), (Start: 39 @42770 has 1 MA's), (66, 42887), (102, 43010), (104, 43022),

Gene: Stayer_66 Start: 42740, Stop: 43051, Start Num: 26

Candidate Starts for Stayer_66:

(15, 42698), (Start: 26 @42740 has 15 MA's), (Start: 39 @42773 has 1 MA's), (66, 42890), (102, 43013), (104, 43025),

Gene: StrawberryJamm_84 Start: 51823, Stop: 51536, Start Num: 30

Candidate Starts for StrawberryJamm_84:

(Start: 30 @51823 has 44 MA's), (Start: 35 @51814 has 6 MA's), (43, 51796), (82, 51679), (83, 51676), (86, 51673),

Gene: Sunshine23_77 Start: 48481, Stop: 48795, Start Num: 38

Candidate Starts for Sunshine23_77:

(Start: 22 @48439 has 3 MA's), (Start: 28 @48463 has 3 MA's), (Start: 38 @48481 has 12 MA's), (52, 48544), (92, 48676),

Gene: SwainyDoc_86 Start: 62570, Stop: 62217, Start Num: 33

Candidate Starts for SwainyDoc_86:

(Start: 30 @62573 has 44 MA's), (Start: 33 @62570 has 38 MA's), (Start: 40 @62555 has 2 MA's), (59, 62477), (65, 62447), (85, 62399), (93, 62345), (107, 62255),

Gene: Sweetclover_75 Start: 46977, Stop: 47273, Start Num: 30
Candidate Starts for Sweetclover_75:
(5, 46803), (7, 46857), (Start: 30 @46977 has 44 MA's), (41, 46998), (86, 47139), (87, 47145),

Gene: Synopsis_62 Start: 44739, Stop: 45053, Start Num: 24
Candidate Starts for Synopsis_62:
(Start: 24 @44739 has 15 MA's), (Start: 48 @44808 has 2 MA's), (63, 44871), (81, 44922),

Gene: SynergyX_85 Start: 62198, Stop: 61845, Start Num: 33
Candidate Starts for SynergyX_85:
(Start: 30 @62201 has 44 MA's), (Start: 33 @62198 has 38 MA's), (Start: 40 @62183 has 2 MA's), (59, 62105), (65, 62075), (66, 62069), (76, 62048), (93, 61973), (107, 61883),

Gene: Tatanka_59 Start: 44875, Stop: 45189, Start Num: 24
Candidate Starts for Tatanka_59:
(Start: 24 @44875 has 15 MA's), (Start: 48 @44944 has 2 MA's), (63, 45007), (81, 45058),

Gene: Teacup_65 Start: 45308, Stop: 45619, Start Num: 25
Candidate Starts for Teacup_65:
(Start: 25 @45308 has 7 MA's), (Start: 48 @45374 has 2 MA's), (52, 45398), (63, 45437), (67, 45461),

Gene: Teehee_79 Start: 52513, Stop: 52226, Start Num: 30
Candidate Starts for Teehee_79:
(Start: 30 @52513 has 44 MA's), (Start: 35 @52504 has 6 MA's), (43, 52486), (82, 52369), (83, 52366), (86, 52363),

Gene: Tenno_64 Start: 45392, Stop: 45706, Start Num: 24
Candidate Starts for Tenno_64:
(Start: 24 @45392 has 15 MA's), (Start: 48 @45461 has 2 MA's), (67, 45548), (81, 45575),

Gene: Thonko_53 Start: 44732, Stop: 44370, Start Num: 22
Candidate Starts for Thonko_53:
(4, 44885), (Start: 22 @44732 has 3 MA's), (45, 44693), (54, 44657), (65, 44609), (68, 44600), (107, 44426), (111, 44390),

Gene: TinyTerror_86 Start: 62621, Stop: 62268, Start Num: 33
Candidate Starts for TinyTerror_86:
(Start: 30 @62624 has 44 MA's), (Start: 33 @62621 has 38 MA's), (Start: 40 @62606 has 2 MA's), (59, 62528), (65, 62498), (66, 62492), (76, 62471), (93, 62396), (107, 62306),

Gene: Tipton_69 Start: 45472, Stop: 45759, Start Num: 38
Candidate Starts for Tipton_69:
(Start: 38 @45472 has 12 MA's), (Start: 48 @45511 has 2 MA's), (59, 45562), (67, 45601), (89, 45646), (95, 45691), (101, 45718),

Gene: Tissue_81 Start: 52280, Stop: 51993, Start Num: 30
Candidate Starts for Tissue_81:
(Start: 30 @52280 has 44 MA's), (Start: 35 @52271 has 6 MA's), (43, 52253), (82, 52136), (86, 52130), (96, 52064),

Gene: Tokki_73 Start: 45503, Stop: 45790, Start Num: 38
Candidate Starts for Tokki_73:

(Start: 38 @45503 has 12 MA's), (Start: 48 @45542 has 2 MA's), (59, 45593), (89, 45677), (101, 45749),

Gene: Truckee_65 Start: 45012, Stop: 45290, Start Num: 38

Candidate Starts for Truckee_65:

(Start: 38 @45012 has 12 MA's), (Start: 48 @45051 has 2 MA's), (59, 45096), (101, 45249),

Gene: Trustiboi_63 Start: 44994, Stop: 45308, Start Num: 24

Candidate Starts for Trustiboi_63:

(Start: 24 @44994 has 15 MA's), (Start: 48 @45063 has 2 MA's), (58, 45108), (63, 45126), (81, 45177),

Gene: Tydolla_81 Start: 62177, Stop: 61824, Start Num: 33

Candidate Starts for Tydolla_81:

(Start: 30 @62180 has 44 MA's), (Start: 33 @62177 has 38 MA's), (Start: 40 @62162 has 2 MA's), (59, 62084), (65, 62054), (66, 62048), (76, 62027), (93, 61952), (107, 61862),

Gene: Viceroy_77 Start: 51416, Stop: 51129, Start Num: 30

Candidate Starts for Viceroy_77:

(Start: 30 @51416 has 44 MA's), (Start: 35 @51407 has 6 MA's), (43, 51389), (82, 51272), (83, 51269), (86, 51266),

Gene: Wayne3_80 Start: 52267, Stop: 51989, Start Num: 35

Candidate Starts for Wayne3_80:

(Start: 30 @52276 has 44 MA's), (Start: 35 @52267 has 6 MA's), (43, 52249), (82, 52132), (83, 52129), (86, 52126),

Gene: Westerlin_63 Start: 46083, Stop: 46397, Start Num: 24

Candidate Starts for Westerlin_63:

(Start: 24 @46083 has 15 MA's), (Start: 48 @46152 has 2 MA's), (63, 46215), (81, 46266),

Gene: Wheelie_78 Start: 51597, Stop: 51310, Start Num: 30

Candidate Starts for Wheelie_78:

(Start: 30 @51597 has 44 MA's), (Start: 35 @51588 has 6 MA's), (43, 51570), (82, 51453), (83, 51450), (86, 51447),

Gene: Wilde_54 Start: 41249, Stop: 40941, Start Num: 36

Candidate Starts for Wilde_54:

(Start: 36 @41249 has 1 MA's), (56, 41177), (57, 41174), (86, 41093), (87, 41087), (92, 41069),

Gene: Yahalom_83 Start: 62004, Stop: 61651, Start Num: 33

Candidate Starts for Yahalom_83:

(Start: 30 @62007 has 44 MA's), (Start: 33 @62004 has 38 MA's), (Start: 40 @61989 has 2 MA's), (59, 61911), (65, 61881), (66, 61875), (76, 61854), (93, 61779), (107, 61689),

Gene: Yinz_85 Start: 62060, Stop: 61716, Start Num: 30

Candidate Starts for Yinz_85:

(18, 62108), (Start: 30 @62060 has 44 MA's), (41, 62045), (45, 62033), (54, 61994), (59, 61976), (65, 61946), (91, 61871), (99, 61802), (107, 61754),

Gene: Zagie_80 Start: 52091, Stop: 51813, Start Num: 35

Candidate Starts for Zagie_80:

(Start: 30 @52100 has 44 MA's), (Start: 35 @52091 has 6 MA's), (43, 52073), (82, 51956), (83, 51953), (86, 51950),

Gene: Zenteno07_94 Start: 66543, Stop: 66193, Start Num: 33

Candidate Starts for Zenteno07_94:

(8, 66642), (Start: 33 @66543 has 38 MA's), (54, 66477), (65, 66429), (69, 66420), (72, 66414), (110, 66216),

Gene: Zhafia_81 Start: 52077, Stop: 51790, Start Num: 30

Candidate Starts for Zhafia_81:

(Start: 30 @52077 has 44 MA's), (Start: 35 @52068 has 6 MA's), (43, 52050), (82, 51933), (83, 51930), (86, 51927),

Gene: Zippen_69 Start: 45683, Stop: 46003, Start Num: 25

Candidate Starts for Zippen_69:

(Start: 25 @45683 has 7 MA's), (Start: 48 @45752 has 2 MA's), (59, 45800), (101, 45956),