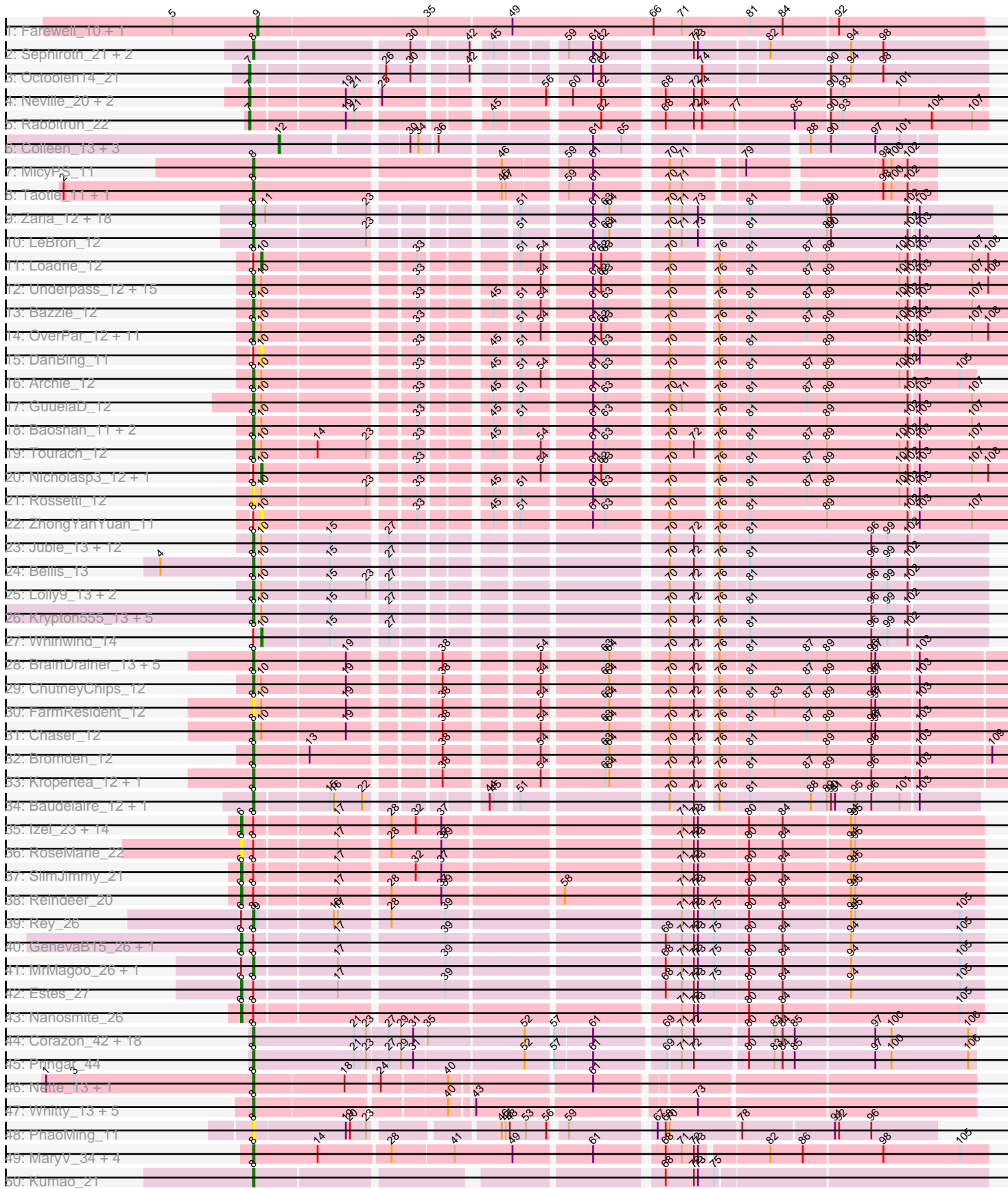


Pham 311275



Note: Tracks are now grouped by subcluster and scaled. Switching in subcluster is indicated by changes in track color. Track scale is now set by default to display the region 30 bp upstream of start 1 to 30 bp downstream of the last possible start. If this default region is judged to be packed too tightly with annotated starts, the track will be further scaled to only show that region of the ORF with annotated starts. This action will be indicated by adding "Zoomed" to the title. For starts, yellow indicates the location of called starts comprised solely of Glimmer/GeneMark auto-annotations, green indicates the location of called starts with at least 1 manual gene annotation.

Pham 311275 Report

This analysis was run 06/27/26 on database version 652.

Pham number 311275 has 177 members, 30 are drafts.

Phages represented in each track:

- Track 1 : Farewell_10, Sparky_10
- Track 2 : Sephiroth_21, Kudrefre_20, Syleon_21
- Track 3 : Octobien14_21
- Track 4 : Neville_20, LilJank_20, Trax_20
- Track 5 : Rabbitrun_22
- Track 6 : Colleen_13, Poushou_13, TouchMeNot_13, Arianna_13
- Track 7 : MicyPS_11
- Track 8 : Taotie_11, PSonyx_11
- Track 9 : Zaria_12, Wyatt2_12, Silverleaf_12, Appletree2_12, AvadaKedavra_12, DirkDirk_12, Rose5_12, Acquire49_12, Tyson_12, JoeDirt_12, UPIE_12, Halena_12, CicholasNage_12, Enceladus_12, MAckerman_12, Wamburggrxpress_12, Poochiewood_12, OhShagHennessy_12, Calm_12
- Track 10 : LeBron_12
- Track 11 : Loadrie_12
- Track 12 : Underpass_12, BigCheese_12, MkaliMitinis3_12, Faith1_12, Miley16_12, DrSeegs_12, BobsGarage_12, Zakai_12, SoJulia_12, Itos_12, Gabriela_12, Winky_12, Breezona_12, Gardann_12, Rumpelstiltskin_12, Netyap_12
- Track 13 : Bazzle_12
- Track 14 : OverPar_12, LilDestine_12, Lewan_12, Hafay_12, Kahlid_12, Wigglewiggles_12, Vetrix_12, Soap141_12, Finemlucis_12, Lynnae_12, Sarshaun_12, Wilder_12
- Track 15 : DanBing_11
- Track 16 : Archie_12
- Track 17 : GuuelaD_12
- Track 18 : Baoshan_11, DHan_12, Claus_12
- Track 19 : Tourach_12
- Track 20 : Nicholasp3_12, Crossroads_12
- Track 21 : Rossetti_12
- Track 22 : ZhongYanYuan_11
- Track 23 : Jubie_13, TriFive_13, Snenia_13, Finnry_13, Moostard_13, MsGreen_13, Jobypre_13, Kingsolomon_13, Nicholas_13, Red305_13, Clautastrophe_13, Samty_13, Lumos_13
- Track 24 : Bellis_13
- Track 25 : Lolly9_13, MiniMac_13, MiniLon_13
- Track 26 : Krypton555_13, KirDoubleO7_11, BourbonZero_12, DuncansLeg_13, Ellson_13, LiyuLake_13
- Track 27 : Whirlwind_14

- Track 28 : BrainDrainer_13, Douge_12, Douzhi_12, Quby_12, Sheng711_12, PYPDinur_12
- Track 29 : ChutneyChips_12
- Track 30 : FarmResident_12
- Track 31 : Chaser_12
- Track 32 : Bromden_12
- Track 33 : Kropertea_12, DyoEdafos_13
- Track 34 : Baudelaire_12, Aegeus_12
- Track 35 : Izel_23, Auspice_22, TyDawg_22, IPhane7_22, LilhomieP_21, KleverKiS_22, Dulcita_23, Glaske16_23, Skinny_23, Bongo_22, PegLeg_22, Bricole_22, TpudiCK_23, Diminimus_23, FreakyGoo_23
- Track 36 : RoseMarie_22
- Track 37 : SlimJimmy_21
- Track 38 : Reindeer_20
- Track 39 : Rey_26
- Track 40 : GenevaB15_26, Aziz_26
- Track 41 : MrMagoo_26, GardenSalsa_26
- Track 42 : Estes_27
- Track 43 : Nanosmite_26
- Track 44 : Corazon_42, Blackbeetle_44, Raela_44, Clarkson_45, GoongGoong_43, VasuNzinga_44, FeliMaine_46, JoieB_45, Poise_44, Beelzebub_48, Marvin_42, Lilbit_43, Huphlebuff_46, MosMoris_42, Caprice_41, Gattaca_43, Tesla_43, RedRaider77_44, LittleLaf_44
- Track 45 : Pringar_44
- Track 46 : Nette_13, Mendokysei_12
- Track 47 : Whitty_13, RonRayGun_13, Bernal13_13, ZenTime222_13, Nairb_13, Ibrahim_13
- Track 48 : PhaoMing_11
- Track 49 : MaryV_34, Cosmo_34, Wildcat_34, Azrael100_33, EniyanLRS_31
- Track 50 : Kumao_21
- Track 51 : GAL1_14

Summary of Final Annotations (See graph section above for start numbers):

The start number called the most often in the published annotations is 8, it was called in 114 of the 147 non-draft genes in the pham.

Genes that call this "Most Annotated" start:

- Acquire49_12, Aegeus_12, Appletree2_12, Archie_12, AvadaKedavra_12, Azrael100_33, Baoshan_11, Baudelaire_12, Bazzle_12, Beelzebub_48, Bellis_13, Bernal13_13, BigCheese_12, Blackbeetle_44, BobsGarage_12, BourbonZero_12, BrainDrainer_13, Breezona_12, Bromden_12, Calm_12, Caprice_41, Chaser_12, ChutneyChips_12, CicholasNage_12, Clarkson_45, Claus_12, Clautastrophe_13, Corazon_42, Cosmo_34, DHan_12, DirkDirk_12, Douge_12, Douzhi_12, DrSeegs_12, DuncansLeg_13, DyoEdafos_13, Ellson_13, Enceladus_12, EniyanLRS_31, Faith1_12, FarmResident_12, FeliMaine_46, Finemlucis_12, Finnry_13, GAL1_14, Gabriela_12, Gardann_12, GardenSalsa_26, Gattaca_43, GoongGoong_43, GuuelaD_12, Hafay_12, Halena_12, Huphlebuff_46, Ibrahim_13, Itos_12, Jobypre_13, JoeDirt_12, JoieB_45, Jubie_13, Kahlid_12, Kingsolomon_13, KirDoubleO7_11, Kropertea_12, Krypton555_13, Kudfre_20, Kumao_21,

LeBron_12, Lewan_12, LilDestine_12, Lilbit_43, LittleLaf_44, LiyuLake_13, Lolly9_13, Lumos_13, Lynnae_12, MAckerman_12, Marvin_42, MaryV_34, Mendokysei_12, MicyPS_11, Miley16_12, MiniLon_13, MiniMac_13, MkaliMitinis3_12, Moostard_13, MosMoris_42, MrMagoo_26, MsGreen_13, Nairb_13, Nette_13, Netyap_12, Nicholas_13, OhShagHennessy_12, OverPar_12, PSonyx_11, PYPDinur_12, PhaoMing_11, Poise_44, Pochiewood_12, Pringar_44, Quby_12, Raela_44, Red305_13, RedRaider77_44, Rey_26, RonRayGun_13, Rose5_12, Rossetti_12, Rumpelstiltskin_12, Samty_13, Sarshaun_12, Sephiroth_21, Sheng711_12, Silverleaf_12, Snenia_13, SoJulia_12, Soap141_12, Syleon_21, Taotie_11, Tesla_43, Tourach_12, TriFive_13, Tyson_12, UPIE_12, Underpass_12, VasuNzinga_44, Vetrix_12, Wamburggrxpress_12, Whitty_13, Wigglewiggle_12, Wildcat_34, Wilder_12, Winky_12, Wyatt2_12, Zakai_12, Zaria_12, ZenTime222_13,

Genes that have the "Most Annotated" start but do not call it:

- Auspice_22, Aziz_26, Bongo_22, Bricole_22, Crossroads_12, DanBing_11, Diminimus_23, Dulcita_23, Estes_27, FreakyGoo_23, GenevaB15_26, Glaske16_23, IPhane7_22, Izel_23, KleverKiS_22, LilhomieP_21, Loadrie_12, Nanosmite_26, Nicholasp3_12, PegLeg_22, Reindeer_20, RoseMarie_22, Skinny_23, SlimJimmy_21, TpudiCK_23, TyDawg_22, Whirlwind_14, ZhongYanYuan_11,

Genes that do not have the "Most Annotated" start:

- Arianna_13, Colleen_13, Farewell_10, LilJank_20, Neville_20, Octobien14_21, Poushou_13, Rabbitrun_22, Sparky_10, TouchMeNot_13, Trax_20,

Summary by start number:

Start 6:

- Found in 25 of 177 (14.1%) of genes in pham
- Manual Annotations of this start: 19 of 147
- Called 88.0% of time when present
- Phage (with cluster) where this start called: Auspice_22 (M1), Aziz_26 (M2), Bongo_22 (M1), Bricole_22 (M1), Diminimus_23 (M1), Dulcita_23 (M1), Estes_27 (M2), FreakyGoo_23 (M1), GenevaB15_26 (M2), Glaske16_23 (M1), IPhane7_22 (M1), Izel_23 (M1), KleverKiS_22 (M1), LilhomieP_21 (M1), Nanosmite_26 (M3), PegLeg_22 (M1), Reindeer_20 (M1), RoseMarie_22 (M1), Skinny_23 (M1), SlimJimmy_21 (M1), TpudiCK_23 (M1), TyDawg_22 (M1),

Start 7:

- Found in 5 of 177 (2.8%) of genes in pham
- Manual Annotations of this start: 4 of 147
- Called 100.0% of time when present
- Phage (with cluster) where this start called: LilJank_20 (DU2), Neville_20 (DU2), Octobien14_21 (DU1), Rabbitrun_22 (DU2), Trax_20 (DU2),

Start 8:

- Found in 166 of 177 (93.8%) of genes in pham
- Manual Annotations of this start: 114 of 147
- Called 83.1% of time when present
- Phage (with cluster) where this start called: Acquire49_12 (L1), Aegeus_12 (L5), Appletree2_12 (L1), Archie_12 (L2), AvadaKedavra_12 (L1), Azrael100_33 (V), Baoshan_11 (L2), Baudelaire_12 (L5), Bazzle_12 (L2), Beelzebub_48 (S), Bellis_13 (L3), Bernal13_13 (T), BigCheese_12 (L2), Blackbeetle_44 (S), BobsGarage_12 (L2), BourbonZero_12 (L3), BrainDrainer_13 (L4), Breezona_12 (L2), Bromden_12 (L4),

Calm_12 (L1), Caprice_41 (S), Chaser_12 (L4), ChutneyChips_12 (L4), CicholasNage_12 (L1), Clarkson_45 (S), Claus_12 (L2), Clautastrophe_13 (L3), Corazon_42 (S), Cosmo_34 (V), DHan_12 (L2), DirkDirk_12 (L1), Douge_12 (L4), Douzhi_12 (L4), DrSeegs_12 (L2), DuncansLeg_13 (L3), DyoEdafos_13 (L4), Ellson_13 (L3), Enceladus_12 (L1), EniyanLRS_31 (V), Faith1_12 (L2), FarmResident_12 (L4), FeliMaine_46 (S), Finemlucis_12 (L2), Finnry_13 (L3), GAL1_14 (singleton), Gabriela_12 (L2), Gardann_12 (L2), GardenSalsa_26 (M2), Gattaca_43 (S), GoongGoong_43 (S), GuuelaD_12 (L2), Hafay_12 (L2), Halena_12 (L1), Huphlepuuff_46 (S), Ibrahim_13 (T), Itos_12 (L2), Jobypre_13 (L3), JoeDirt_12 (L1), JoieB_45 (S), Jubie_13 (L3), Kahlid_12 (L2), Kingsolomon_13 (L3), KirDoubleO7_11 (L3), Kropertea_12 (L4), Krypton555_13 (L3), Kudrefre_20 (DU1), Kumao_21 (singleton), LeBron_12 (L1), Lewan_12 (L2), LilDestine_12 (L2), Lilbit_43 (S), LittleLaf_44 (S), LiyuLake_13 (L3), Lolly9_13 (L3), Lumos_13 (L3), Lynnae_12 (L2), MAckerman_12 (L1), Marvin_42 (S), MaryV_34 (V), Mendokysei_12 (T), MicyPS_11 (EQ), Miley16_12 (L2), MiniLon_13 (L3), MiniMac_13 (L3), MkaliMinitis3_12 (L2), Moostard_13 (L3), MosMoris_42 (S), MrMagoo_26 (M2), MsGreen_13 (L3), Nairb_13 (T), Nette_13 (T), Netyap_12 (L2), Nicholas_13 (L3), OhShagHennessy_12 (L1), OverPar_12 (L2), PSonyx_11 (EQ), PYPDinur_12 (L4), PhaoMing_11 (UNK), Poise_44 (S), Poochiewood_12 (L1), Pringar_44 (S), Quby_12 (L4), Raela_44 (S), Red305_13 (L3), RedRaider77_44 (S), Rey_26 (M2), RonRayGun_13 (T), Rose5_12 (L1), Rossetti_12 (L2), Rumpelstiltskin_12 (L2), Samty_13 (L3), Sarshaun_12 (L2), Sephiroth_21 (DU1), Sheng711_12 (L4), Silverleaf_12 (L1), Sneria_13 (L3), SoJulia_12 (L2), Soap141_12 (L2), Syleon_21 (DU1), Taotie_11 (EQ), Tesla_43 (S), Tourach_12 (L2), TriFive_13 (L3), Tyson_12 (L1), UPIE_12 (L1), Underpass_12 (L2), VasuNzinga_44 (S), Vetrix_12 (L2), Wamburgrxpress_12 (L1), Whitty_13 (T), Wigglewiggle_12 (L2), Wildcat_34 (V), Wilder_12 (L2), Winky_12 (L2), Wyatt2_12 (L1), Zakai_12 (L2), Zaria_12 (L1), ZenTime222_13 (T),

Start 9:

- Found in 4 of 177 (2.3%) of genes in pham
- Manual Annotations of this start: 2 of 147
- Called 50.0% of time when present
- Phage (with cluster) where this start called: Farewell_10 (AF), Sparky_10 (AF),

Start 10:

- Found in 68 of 177 (38.4%) of genes in pham
- Manual Annotations of this start: 4 of 147
- Called 8.8% of time when present
- Phage (with cluster) where this start called: Crossroads_12 (L2), DanBing_11 (L2), Loadrie_12 (L2), Nicholasp3_12 (L2), Whirlwind_14 (L3), ZhongYanYuan_11 (L2),

Start 12:

- Found in 4 of 177 (2.3%) of genes in pham
- Manual Annotations of this start: 4 of 147
- Called 100.0% of time when present
- Phage (with cluster) where this start called: Arianna_13 (EO), Colleen_13 (EO), Poushou_13 (EO), TouchMeNot_13 (EO),

Summary by clusters:

There are 18 clusters represented in this pham: EO, L1, AF, V, L4, DU1, S, L5, L2, L3, M3, M2, M1, singleton, UNK, EQ, DU2, T,

Info for manual annotations of cluster AF:

- Start number 9 was manually annotated 2 times for cluster AF.

Info for manual annotations of cluster DU1:

- Start number 7 was manually annotated 1 time for cluster DU1.
- Start number 8 was manually annotated 3 times for cluster DU1.

Info for manual annotations of cluster DU2:

- Start number 7 was manually annotated 3 times for cluster DU2.

Info for manual annotations of cluster EO:

- Start number 12 was manually annotated 4 times for cluster EO.

Info for manual annotations of cluster EQ:

- Start number 8 was manually annotated 2 times for cluster EQ.

Info for manual annotations of cluster L1:

- Start number 8 was manually annotated 19 times for cluster L1.

Info for manual annotations of cluster L2:

- Start number 8 was manually annotated 29 times for cluster L2.
- Start number 10 was manually annotated 3 times for cluster L2.

Info for manual annotations of cluster L3:

- Start number 8 was manually annotated 18 times for cluster L3.
- Start number 10 was manually annotated 1 time for cluster L3.

Info for manual annotations of cluster L4:

- Start number 8 was manually annotated 6 times for cluster L4.

Info for manual annotations of cluster L5:

- Start number 8 was manually annotated 2 times for cluster L5.

Info for manual annotations of cluster M1:

- Start number 6 was manually annotated 15 times for cluster M1.

Info for manual annotations of cluster M2:

- Start number 6 was manually annotated 3 times for cluster M2.
- Start number 8 was manually annotated 3 times for cluster M2.

Info for manual annotations of cluster M3:

- Start number 6 was manually annotated 1 time for cluster M3.

Info for manual annotations of cluster S:

- Start number 8 was manually annotated 19 times for cluster S.

Info for manual annotations of cluster T:

- Start number 8 was manually annotated 7 times for cluster T.

Info for manual annotations of cluster V:

- Start number 8 was manually annotated 5 times for cluster V.

Gene Information:

Gene: Acquire49_12 Start: 8473, Stop: 8961, Start Num: 8

Candidate Starts for Acquire49_12:

(Start: 8 @8473 has 114 MA's), (11, 8482), (23, 8554), (51, 8638), (61, 8686), (63, 8695), (64, 8698), (70, 8734), (71, 8743), (73, 8755), (81, 8785), (89, 8842), (90, 8845), (102, 8902), (103, 8908),

Gene: Aegeus_12 Start: 8098, Stop: 8574, Start Num: 8

Candidate Starts for Aegeus_12:

(Start: 8 @8098 has 114 MA's), (15, 8149), (16, 8152), (22, 8173), (44, 8242), (45, 8245), (51, 8260), (70, 8356), (72, 8374), (76, 8386), (81, 8407), (88, 8452), (89, 8464), (90, 8467), (91, 8470), (95, 8485), (96, 8497), (101, 8518), (103, 8530),

Gene: Appletree2_12 Start: 8447, Stop: 8935, Start Num: 8

Candidate Starts for Appletree2_12:

(Start: 8 @8447 has 114 MA's), (11, 8456), (23, 8528), (51, 8612), (61, 8660), (63, 8669), (64, 8672), (70, 8708), (71, 8717), (73, 8729), (81, 8759), (89, 8816), (90, 8819), (102, 8876), (103, 8882),

Gene: Archie_12 Start: 8444, Stop: 8920, Start Num: 8

Candidate Starts for Archie_12:

(Start: 8 @8444 has 114 MA's), (Start: 10 @8450 has 4 MA's), (33, 8552), (45, 8594), (51, 8609), (54, 8624), (61, 8657), (63, 8666), (70, 8705), (76, 8735), (81, 8756), (87, 8798), (89, 8813), (101, 8867), (102, 8873), (105, 8909),

Gene: Arianna_13 Start: 9268, Stop: 9699, Start Num: 12

Candidate Starts for Arianna_13:

(Start: 12 @9268 has 4 MA's), (30, 9352), (34, 9358), (36, 9370), (61, 9472), (65, 9493), (88, 9610), (90, 9625), (97, 9658), (101, 9676),

Gene: Auspice_22 Start: 12285, Stop: 12797, Start Num: 6

Candidate Starts for Auspice_22:

(Start: 6 @12285 has 19 MA's), (Start: 8 @12294 has 114 MA's), (17, 12351), (28, 12384), (32, 12402), (37, 12420), (71, 12579), (72, 12588), (73, 12591), (80, 12627), (84, 12651), (94, 12699), (95, 12702),

Gene: AvadaKedavra_12 Start: 8473, Stop: 8961, Start Num: 8

Candidate Starts for AvadaKedavra_12:

(Start: 8 @8473 has 114 MA's), (11, 8482), (23, 8554), (51, 8638), (61, 8686), (63, 8695), (64, 8698), (70, 8734), (71, 8743), (73, 8755), (81, 8785), (89, 8842), (90, 8845), (102, 8902), (103, 8908),

Gene: Aziz_26 Start: 12859, Stop: 13371, Start Num: 6

Candidate Starts for Aziz_26:

(Start: 6 @12859 has 19 MA's), (Start: 8 @12868 has 114 MA's), (17, 12925), (39, 12997), (68, 13141), (71, 13153), (72, 13162), (73, 13165), (75, 13177), (80, 13201), (84, 13225), (94, 13273), (105, 13354),

Gene: Azrael100_33 Start: 15365, Stop: 15877, Start Num: 8

Candidate Starts for Azrael100_33:

(Start: 8 @15365 has 114 MA's), (14, 15413), (28, 15464), (41, 15509), (49, 15551), (61, 15605), (68, 15650), (71, 15662), (72, 15671), (73, 15674), (82, 15719), (86, 15743), (98, 15800), (105, 15857),

Gene: Baoshan_11 Start: 8299, Stop: 8802, Start Num: 8

Candidate Starts for Baoshan_11:

(Start: 8 @8299 has 114 MA's), (Start: 10 @8305 has 4 MA's), (33, 8407), (45, 8449), (51, 8464), (61, 8512), (63, 8521), (70, 8560), (76, 8590), (81, 8611), (89, 8668), (102, 8728), (103, 8734), (107, 8773),

Gene: Baudelaire_12 Start: 8098, Stop: 8574, Start Num: 8

Candidate Starts for Baudelaire_12:

(Start: 8 @8098 has 114 MA's), (15, 8149), (16, 8152), (22, 8173), (44, 8242), (45, 8245), (51, 8260), (70, 8356), (72, 8374), (76, 8386), (81, 8407), (88, 8452), (89, 8464), (90, 8467), (91, 8470), (95, 8485), (96, 8497), (101, 8518), (103, 8530),

Gene: Bazzle_12 Start: 8420, Stop: 8923, Start Num: 8

Candidate Starts for Bazzle_12:

(Start: 8 @8420 has 114 MA's), (Start: 10 @8426 has 4 MA's), (33, 8528), (45, 8570), (51, 8585), (54, 8600), (61, 8633), (63, 8642), (70, 8681), (76, 8711), (81, 8732), (87, 8774), (89, 8789), (101, 8843), (102, 8849), (103, 8855), (107, 8894),

Gene: Beelzebub_48 Start: 18820, Stop: 19326, Start Num: 8

Candidate Starts for Beelzebub_48:

(Start: 8 @18820 has 114 MA's), (21, 18895), (23, 18904), (27, 18919), (29, 18928), (31, 18937), (35, 18946), (52, 19015), (57, 19033), (61, 19060), (69, 19108), (71, 19117), (72, 19126), (80, 19162), (83, 19180), (84, 19186), (85, 19195), (97, 19252), (100, 19264), (106, 19321),

Gene: Bellis_13 Start: 8603, Stop: 9088, Start Num: 8

Candidate Starts for Bellis_13:

(4, 8537), (Start: 8 @8603 has 114 MA's), (Start: 10 @8609 has 4 MA's), (15, 8657), (27, 8693), (70, 8864), (72, 8882), (76, 8894), (81, 8915), (96, 9005), (99, 9017), (102, 9032),

Gene: Bernal13_13 Start: 9373, Stop: 9864, Start Num: 8

Candidate Starts for Bernal13_13:

(Start: 8 @9373 has 114 MA's), (40, 9505), (43, 9520), (73, 9667),

Gene: BigCheese_12 Start: 8471, Stop: 8974, Start Num: 8

Candidate Starts for BigCheese_12:

(Start: 8 @8471 has 114 MA's), (Start: 10 @8477 has 4 MA's), (33, 8579), (54, 8651), (61, 8684), (62, 8690), (63, 8693), (70, 8732), (76, 8762), (81, 8783), (87, 8825), (89, 8840), (101, 8894), (102, 8900), (103, 8906), (107, 8945), (108, 8957),

Gene: Blackbeetle_44 Start: 17839, Stop: 18345, Start Num: 8

Candidate Starts for Blackbeetle_44:

(Start: 8 @17839 has 114 MA's), (21, 17914), (23, 17923), (27, 17938), (29, 17947), (31, 17956), (35, 17965), (52, 18034), (57, 18052), (61, 18079), (69, 18127), (71, 18136), (72, 18145), (80, 18181), (83, 18199), (84, 18205), (85, 18214), (97, 18271), (100, 18283), (106, 18340),

Gene: BobsGarage_12 Start: 8471, Stop: 8974, Start Num: 8

Candidate Starts for BobsGarage_12:

(Start: 8 @8471 has 114 MA's), (Start: 10 @8477 has 4 MA's), (33, 8579), (54, 8651), (61, 8684), (62, 8690), (63, 8693), (70, 8732), (76, 8762), (81, 8783), (87, 8825), (89, 8840), (101, 8894), (102, 8900), (103, 8906), (107, 8945), (108, 8957),

Gene: Bongo_22 Start: 12285, Stop: 12797, Start Num: 6

Candidate Starts for Bongo_22:

(Start: 6 @12285 has 19 MA's), (Start: 8 @12294 has 114 MA's), (17, 12351), (28, 12384), (32, 12402), (37, 12420), (71, 12579), (72, 12588), (73, 12591), (80, 12627), (84, 12651), (94, 12699), (95, 12702),

Gene: BourbonZero_12 Start: 8610, Stop: 9095, Start Num: 8

Candidate Starts for BourbonZero_12:

(Start: 8 @8610 has 114 MA's), (Start: 10 @8616 has 4 MA's), (15, 8664), (27, 8700), (70, 8871), (72, 8889), (76, 8901), (81, 8922), (96, 9012), (99, 9024), (102, 9039),

Gene: BrainDrainer_13 Start: 8280, Stop: 8783, Start Num: 8

Candidate Starts for BrainDrainer_13:

(Start: 8 @8280 has 114 MA's), (19, 8346), (38, 8403), (54, 8463), (63, 8505), (64, 8508), (70, 8544), (72, 8562), (76, 8574), (81, 8595), (87, 8637), (89, 8652), (96, 8685), (97, 8688), (103, 8718),

Gene: Breezona_12 Start: 8471, Stop: 8974, Start Num: 8

Candidate Starts for Breezona_12:

(Start: 8 @8471 has 114 MA's), (Start: 10 @8477 has 4 MA's), (33, 8579), (54, 8651), (61, 8684), (62, 8690), (63, 8693), (70, 8732), (76, 8762), (81, 8783), (87, 8825), (89, 8840), (101, 8894), (102, 8900), (103, 8906), (107, 8945), (108, 8957),

Gene: Bricole_22 Start: 12284, Stop: 12796, Start Num: 6

Candidate Starts for Bricole_22:

(Start: 6 @12284 has 19 MA's), (Start: 8 @12293 has 114 MA's), (17, 12350), (28, 12383), (32, 12401), (37, 12419), (71, 12578), (72, 12587), (73, 12590), (80, 12626), (84, 12650), (94, 12698), (95, 12701),

Gene: Bromden_12 Start: 8191, Stop: 8694, Start Num: 8

Candidate Starts for Bromden_12:

(Start: 8 @8191 has 114 MA's), (13, 8230), (38, 8314), (54, 8374), (63, 8416), (64, 8419), (70, 8455), (72, 8473), (76, 8485), (81, 8506), (89, 8563), (96, 8596), (103, 8629), (109, 8680),

Gene: Calm_12 Start: 8474, Stop: 8962, Start Num: 8

Candidate Starts for Calm_12:

(Start: 8 @8474 has 114 MA's), (11, 8483), (23, 8555), (51, 8639), (61, 8687), (63, 8696), (64, 8699), (70, 8735), (71, 8744), (73, 8756), (81, 8786), (89, 8843), (90, 8846), (102, 8903), (103, 8909),

Gene: Caprice_41 Start: 17909, Stop: 18415, Start Num: 8

Candidate Starts for Caprice_41:

(Start: 8 @17909 has 114 MA's), (21, 17984), (23, 17993), (27, 18008), (29, 18017), (31, 18026), (35, 18035), (52, 18104), (57, 18122), (61, 18149), (69, 18197), (71, 18206), (72, 18215), (80, 18251), (83, 18269), (84, 18275), (85, 18284), (97, 18341), (100, 18353), (106, 18410),

Gene: Chaser_12 Start: 8195, Stop: 8698, Start Num: 8

Candidate Starts for Chaser_12:

(Start: 8 @8195 has 114 MA's), (Start: 10 @8201 has 4 MA's), (19, 8261), (38, 8318), (54, 8378), (63, 8420), (64, 8423), (70, 8459), (72, 8477), (76, 8489), (81, 8510), (87, 8552), (89, 8567), (96, 8600), (97, 8603), (103, 8633),

Gene: ChutneyChips_12 Start: 8184, Stop: 8687, Start Num: 8

Candidate Starts for ChutneyChips_12:

(Start: 8 @8184 has 114 MA's), (Start: 10 @8190 has 4 MA's), (19, 8250), (38, 8307), (54, 8367), (63, 8409), (64, 8412), (70, 8448), (72, 8466), (76, 8478), (81, 8499), (87, 8541), (89, 8556), (96, 8589), (97, 8592), (103, 8622),

Gene: CicholasNage_12 Start: 8474, Stop: 8962, Start Num: 8

Candidate Starts for CicholasNage_12:

(Start: 8 @8474 has 114 MA's), (11, 8483), (23, 8555), (51, 8639), (61, 8687), (63, 8696), (64, 8699), (70, 8735), (71, 8744), (73, 8756), (81, 8786), (89, 8843), (90, 8846), (102, 8903), (103, 8909),

Gene: Clarkson_45 Start: 18521, Stop: 19027, Start Num: 8

Candidate Starts for Clarkson_45:

(Start: 8 @18521 has 114 MA's), (21, 18596), (23, 18605), (27, 18620), (29, 18629), (31, 18638), (35, 18647), (52, 18716), (57, 18734), (61, 18761), (69, 18809), (71, 18818), (72, 18827), (80, 18863), (83, 18881), (84, 18887), (85, 18896), (97, 18953), (100, 18965), (106, 19022),

Gene: Claus_12 Start: 8479, Stop: 8982, Start Num: 8

Candidate Starts for Claus_12:

(Start: 8 @8479 has 114 MA's), (Start: 10 @8485 has 4 MA's), (33, 8587), (45, 8629), (51, 8644), (61, 8692), (63, 8701), (70, 8740), (76, 8770), (81, 8791), (89, 8848), (102, 8908), (103, 8914), (107, 8953),

Gene: Clautastrophe_13 Start: 8608, Stop: 9093, Start Num: 8

Candidate Starts for Clautastrophe_13:

(Start: 8 @8608 has 114 MA's), (Start: 10 @8614 has 4 MA's), (15, 8662), (27, 8698), (70, 8869), (72, 8887), (76, 8899), (81, 8920), (96, 9010), (99, 9022), (102, 9037),

Gene: Colleen_13 Start: 9268, Stop: 9699, Start Num: 12

Candidate Starts for Colleen_13:

(Start: 12 @9268 has 4 MA's), (30, 9352), (34, 9358), (36, 9370), (61, 9472), (65, 9493), (88, 9610), (90, 9625), (97, 9658), (101, 9676),

Gene: Corazon_42 Start: 18474, Stop: 18980, Start Num: 8

Candidate Starts for Corazon_42:

(Start: 8 @18474 has 114 MA's), (21, 18549), (23, 18558), (27, 18573), (29, 18582), (31, 18591), (35, 18600), (52, 18669), (57, 18687), (61, 18714), (69, 18762), (71, 18771), (72, 18780), (80, 18816), (83, 18834), (84, 18840), (85, 18849), (97, 18906), (100, 18918), (106, 18975),

Gene: Cosmo_34 Start: 15372, Stop: 15884, Start Num: 8

Candidate Starts for Cosmo_34:

(Start: 8 @15372 has 114 MA's), (14, 15420), (28, 15471), (41, 15516), (49, 15558), (61, 15612), (68, 15657), (71, 15669), (72, 15678), (73, 15681), (82, 15726), (86, 15750), (98, 15807), (105, 15864),

Gene: Crossroads_12 Start: 8477, Stop: 8974, Start Num: 10

Candidate Starts for Crossroads_12:

(Start: 8 @8471 has 114 MA's), (Start: 10 @8477 has 4 MA's), (33, 8579), (54, 8651), (61, 8684), (62, 8690), (63, 8693), (70, 8732), (76, 8762), (81, 8783), (87, 8825), (89, 8840), (101, 8894), (102, 8900), (103, 8906), (107, 8945), (108, 8957),

Gene: DHan_12 Start: 8415, Stop: 8918, Start Num: 8

Candidate Starts for DHan_12:

(Start: 8 @8415 has 114 MA's), (Start: 10 @8421 has 4 MA's), (33, 8523), (45, 8565), (51, 8580), (61, 8628), (63, 8637), (70, 8676), (76, 8706), (81, 8727), (89, 8784), (102, 8844), (103, 8850), (107, 8889),

Gene: DanBing_11 Start: 8304, Stop: 8801, Start Num: 10

Candidate Starts for DanBing_11:

(Start: 8 @8298 has 114 MA's), (Start: 10 @8304 has 4 MA's), (33, 8406), (45, 8448), (51, 8463), (61, 8511), (63, 8520), (70, 8559), (76, 8589), (81, 8610), (89, 8667), (102, 8727), (103, 8733),

Gene: Diminimus_23 Start: 12284, Stop: 12796, Start Num: 6

Candidate Starts for Diminimus_23:

(Start: 6 @12284 has 19 MA's), (Start: 8 @12293 has 114 MA's), (17, 12350), (28, 12383), (32, 12401), (37, 12419), (71, 12578), (72, 12587), (73, 12590), (80, 12626), (84, 12650), (94, 12698), (95, 12701),

Gene: DirkDirk_12 Start: 8475, Stop: 8963, Start Num: 8

Candidate Starts for DirkDirk_12:

(Start: 8 @8475 has 114 MA's), (11, 8484), (23, 8556), (51, 8640), (61, 8688), (63, 8697), (64, 8700), (70, 8736), (71, 8745), (73, 8757), (81, 8787), (89, 8844), (90, 8847), (102, 8904), (103, 8910),

Gene: Douge_12 Start: 8141, Stop: 8644, Start Num: 8

Candidate Starts for Douge_12:

(Start: 8 @8141 has 114 MA's), (19, 8207), (38, 8264), (54, 8324), (63, 8366), (64, 8369), (70, 8405), (72, 8423), (76, 8435), (81, 8456), (87, 8498), (89, 8513), (96, 8546), (97, 8549), (103, 8579),

Gene: Douzhi_12 Start: 8141, Stop: 8644, Start Num: 8

Candidate Starts for Douzhi_12:

(Start: 8 @8141 has 114 MA's), (19, 8207), (38, 8264), (54, 8324), (63, 8366), (64, 8369), (70, 8405), (72, 8423), (76, 8435), (81, 8456), (87, 8498), (89, 8513), (96, 8546), (97, 8549), (103, 8579),

Gene: DrSeegs_12 Start: 8471, Stop: 8974, Start Num: 8

Candidate Starts for DrSeegs_12:

(Start: 8 @8471 has 114 MA's), (Start: 10 @8477 has 4 MA's), (33, 8579), (54, 8651), (61, 8684), (62, 8690), (63, 8693), (70, 8732), (76, 8762), (81, 8783), (87, 8825), (89, 8840), (101, 8894), (102, 8900), (103, 8906), (107, 8945), (108, 8957),

Gene: Dulcita_23 Start: 12284, Stop: 12796, Start Num: 6

Candidate Starts for Dulcita_23:

(Start: 6 @12284 has 19 MA's), (Start: 8 @12293 has 114 MA's), (17, 12350), (28, 12383), (32, 12401), (37, 12419), (71, 12578), (72, 12587), (73, 12590), (80, 12626), (84, 12650), (94, 12698), (95, 12701),

Gene: DuncansLeg_13 Start: 8612, Stop: 9097, Start Num: 8

Candidate Starts for DuncansLeg_13:

(Start: 8 @8612 has 114 MA's), (Start: 10 @8618 has 4 MA's), (15, 8666), (27, 8702), (70, 8873), (72, 8891), (76, 8903), (81, 8924), (96, 9014), (99, 9026), (102, 9041),

Gene: DyoEdafos_13 Start: 8351, Stop: 8854, Start Num: 8

Candidate Starts for DyoEdafos_13:

(Start: 8 @8351 has 114 MA's), (38, 8474), (54, 8534), (63, 8576), (64, 8579), (70, 8615), (72, 8633), (76, 8645), (81, 8666), (87, 8708), (89, 8723), (96, 8756), (103, 8789),

Gene: Ellson_13 Start: 8620, Stop: 9105, Start Num: 8

Candidate Starts for Ellson_13:

(Start: 8 @8620 has 114 MA's), (Start: 10 @8626 has 4 MA's), (15, 8674), (27, 8710), (70, 8881), (72, 8899), (76, 8911), (81, 8932), (96, 9022), (99, 9034), (102, 9049),

Gene: Enceladus_12 Start: 8475, Stop: 8963, Start Num: 8

Candidate Starts for Enceladus_12:

(Start: 8 @8475 has 114 MA's), (11, 8484), (23, 8556), (51, 8640), (61, 8688), (63, 8697), (64, 8700), (70, 8736), (71, 8745), (73, 8757), (81, 8787), (89, 8844), (90, 8847), (102, 8904), (103, 8910),

Gene: EniyanLRS_31 Start: 15066, Stop: 15578, Start Num: 8

Candidate Starts for EniyanLRS_31:

(Start: 8 @15066 has 114 MA's), (14, 15114), (28, 15165), (41, 15210), (49, 15252), (61, 15306), (68, 15351), (71, 15363), (72, 15372), (73, 15375), (82, 15420), (86, 15444), (98, 15501), (105, 15558),

Gene: Estes_27 Start: 12996, Stop: 13508, Start Num: 6

Candidate Starts for Estes_27:

(Start: 6 @12996 has 19 MA's), (Start: 8 @13005 has 114 MA's), (17, 13062), (39, 13134), (68, 13278), (71, 13290), (72, 13299), (73, 13302), (75, 13314), (80, 13338), (84, 13362), (94, 13410), (105, 13491),

Gene: Faith1_12 Start: 8471, Stop: 8974, Start Num: 8

Candidate Starts for Faith1_12:

(Start: 8 @8471 has 114 MA's), (Start: 10 @8477 has 4 MA's), (33, 8579), (54, 8651), (61, 8684), (62, 8690), (63, 8693), (70, 8732), (76, 8762), (81, 8783), (87, 8825), (89, 8840), (101, 8894), (102, 8900), (103, 8906), (107, 8945), (108, 8957),

Gene: Farewell_10 Start: 7492, Stop: 8022, Start Num: 9

Candidate Starts for Farewell_10:

(5, 7429), (Start: 9 @7492 has 2 MA's), (35, 7615), (49, 7675), (66, 7780), (71, 7801), (81, 7852), (84, 7876), (92, 7915),

Gene: FarmResident_12 Start: 8186, Stop: 8689, Start Num: 8

Candidate Starts for FarmResident_12:

(Start: 8 @8186 has 114 MA's), (Start: 10 @8192 has 4 MA's), (19, 8252), (38, 8309), (54, 8369), (63, 8411), (64, 8414), (70, 8450), (72, 8468), (76, 8480), (81, 8501), (83, 8519), (87, 8543), (89, 8558), (96, 8591), (97, 8594), (103, 8624),

Gene: FeliMaine_46 Start: 18522, Stop: 19028, Start Num: 8

Candidate Starts for FeliMaine_46:

(Start: 8 @18522 has 114 MA's), (21, 18597), (23, 18606), (27, 18621), (29, 18630), (31, 18639), (35, 18648), (52, 18717), (57, 18735), (61, 18762), (69, 18810), (71, 18819), (72, 18828), (80, 18864), (83, 18882), (84, 18888), (85, 18897), (97, 18954), (100, 18966), (106, 19023),

Gene: Finemlucis_12 Start: 8471, Stop: 8974, Start Num: 8

Candidate Starts for Finemlucis_12:

(Start: 8 @8471 has 114 MA's), (Start: 10 @8477 has 4 MA's), (33, 8579), (51, 8636), (54, 8651), (61, 8684), (62, 8690), (63, 8693), (70, 8732), (76, 8762), (81, 8783), (87, 8825), (89, 8840), (101, 8894), (102, 8900), (103, 8906), (107, 8945), (108, 8957),

Gene: Finnry_13 Start: 8605, Stop: 9090, Start Num: 8

Candidate Starts for Finnry_13:

(Start: 8 @8605 has 114 MA's), (Start: 10 @8611 has 4 MA's), (15, 8659), (27, 8695), (70, 8866), (72, 8884), (76, 8896), (81, 8917), (96, 9007), (99, 9019), (102, 9034),

Gene: FreakyGoo_23 Start: 12285, Stop: 12797, Start Num: 6

Candidate Starts for FreakyGoo_23:

(Start: 6 @12285 has 19 MA's), (Start: 8 @12294 has 114 MA's), (17, 12351), (28, 12384), (32, 12402), (37, 12420), (71, 12579), (72, 12588), (73, 12591), (80, 12627), (84, 12651), (94, 12699), (95, 12702),

Gene: GAL1_14 Start: 9230, Stop: 9691, Start Num: 8

Candidate Starts for GAL1_14:

(Start: 8 @9230 has 114 MA's), (Start: 9 @9233 has 2 MA's), (19, 9296), (20, 9299), (23, 9311), (47, 9395), (48, 9398), (50, 9401), (53, 9410), (55, 9422), (56, 9425), (59, 9434), (67, 9491), (68, 9497), (70, 9500), (78, 9551), (91, 9617), (92, 9620), (96, 9644),

Gene: Gabriela_12 Start: 8471, Stop: 8974, Start Num: 8

Candidate Starts for Gabriela_12:

(Start: 8 @8471 has 114 MA's), (Start: 10 @8477 has 4 MA's), (33, 8579), (54, 8651), (61, 8684), (62, 8690), (63, 8693), (70, 8732), (76, 8762), (81, 8783), (87, 8825), (89, 8840), (101, 8894), (102, 8900), (103, 8906), (107, 8945), (108, 8957),

Gene: Gardann_12 Start: 8471, Stop: 8974, Start Num: 8

Candidate Starts for Gardann_12:

(Start: 8 @8471 has 114 MA's), (Start: 10 @8477 has 4 MA's), (33, 8579), (54, 8651), (61, 8684), (62, 8690), (63, 8693), (70, 8732), (76, 8762), (81, 8783), (87, 8825), (89, 8840), (101, 8894), (102, 8900), (103, 8906), (107, 8945), (108, 8957),

Gene: GardenSalsa_26 Start: 12841, Stop: 13344, Start Num: 8

Candidate Starts for GardenSalsa_26:

(Start: 6 @12832 has 19 MA's), (Start: 8 @12841 has 114 MA's), (17, 12898), (39, 12970), (68, 13114), (71, 13126), (72, 13135), (73, 13138), (75, 13150), (80, 13174), (84, 13198), (94, 13246), (105, 13327),

Gene: Gattaca_43 Start: 17701, Stop: 18207, Start Num: 8

Candidate Starts for Gattaca_43:

(Start: 8 @17701 has 114 MA's), (21, 17776), (23, 17785), (27, 17800), (29, 17809), (31, 17818), (35, 17827), (52, 17896), (57, 17914), (61, 17941), (69, 17989), (71, 17998), (72, 18007), (80, 18043), (83, 18061), (84, 18067), (85, 18076), (97, 18133), (100, 18145), (106, 18202),

Gene: GenevaB15_26 Start: 12859, Stop: 13371, Start Num: 6

Candidate Starts for GenevaB15_26:

(Start: 6 @12859 has 19 MA's), (Start: 8 @12868 has 114 MA's), (17, 12925), (39, 12997), (68, 13141), (71, 13153), (72, 13162), (73, 13165), (75, 13177), (80, 13201), (84, 13225), (94, 13273), (105, 13354),

Gene: Glaske16_23 Start: 12284, Stop: 12796, Start Num: 6

Candidate Starts for Glaske16_23:

(Start: 6 @12284 has 19 MA's), (Start: 8 @12293 has 114 MA's), (17, 12350), (28, 12383), (32, 12401), (37, 12419), (71, 12578), (72, 12587), (73, 12590), (80, 12626), (84, 12650), (94, 12698), (95, 12701),

Gene: GoongGoong_43 Start: 17741, Stop: 18247, Start Num: 8

Candidate Starts for GoongGoong_43:

(Start: 8 @17741 has 114 MA's), (21, 17816), (23, 17825), (27, 17840), (29, 17849), (31, 17858), (35, 17867), (52, 17936), (57, 17954), (61, 17981), (69, 18029), (71, 18038), (72, 18047), (80, 18083), (83, 18101), (84, 18107), (85, 18116), (97, 18173), (100, 18185), (106, 18242),

Gene: GuuelaD_12 Start: 8503, Stop: 9006, Start Num: 8

Candidate Starts for GuuelaD_12:

(Start: 8 @8503 has 114 MA's), (Start: 10 @8509 has 4 MA's), (33, 8611), (45, 8653), (51, 8668), (61, 8716), (63, 8725), (70, 8764), (71, 8773), (76, 8794), (81, 8815), (87, 8857), (89, 8872), (102, 8932), (103, 8938), (107, 8977),

Gene: Hafay_12 Start: 8504, Stop: 9007, Start Num: 8

Candidate Starts for Hafay_12:

(Start: 8 @8504 has 114 MA's), (Start: 10 @8510 has 4 MA's), (33, 8612), (51, 8669), (54, 8684), (61, 8717), (62, 8723), (63, 8726), (70, 8765), (76, 8795), (81, 8816), (87, 8858), (89, 8873), (101, 8927), (102, 8933), (103, 8939), (107, 8978), (108, 8990),

Gene: Halena_12 Start: 8474, Stop: 8962, Start Num: 8

Candidate Starts for Halena_12:

(Start: 8 @8474 has 114 MA's), (11, 8483), (23, 8555), (51, 8639), (61, 8687), (63, 8696), (64, 8699), (70, 8735), (71, 8744), (73, 8756), (81, 8786), (89, 8843), (90, 8846), (102, 8903), (103, 8909),

Gene: Huphlepuuff_46 Start: 18326, Stop: 18832, Start Num: 8

Candidate Starts for Huphlepuuff_46:

(Start: 8 @18326 has 114 MA's), (21, 18401), (23, 18410), (27, 18425), (29, 18434), (31, 18443), (35, 18452), (52, 18521), (57, 18539), (61, 18566), (69, 18614), (71, 18623), (72, 18632), (80, 18668), (83, 18686), (84, 18692), (85, 18701), (97, 18758), (100, 18770), (106, 18827),

Gene: IPhane7_22 Start: 12285, Stop: 12797, Start Num: 6

Candidate Starts for IPhane7_22:

(Start: 6 @12285 has 19 MA's), (Start: 8 @12294 has 114 MA's), (17, 12351), (28, 12384), (32, 12402), (37, 12420), (71, 12579), (72, 12588), (73, 12591), (80, 12627), (84, 12651), (94, 12699), (95, 12702),

Gene: Ibrahim_13 Start: 9373, Stop: 9864, Start Num: 8

Candidate Starts for Ibrahim_13:

(Start: 8 @9373 has 114 MA's), (40, 9505), (43, 9520), (73, 9667),

Gene: Itos_12 Start: 8471, Stop: 8974, Start Num: 8

Candidate Starts for Itos_12:

(Start: 8 @8471 has 114 MA's), (Start: 10 @8477 has 4 MA's), (33, 8579), (54, 8651), (61, 8684), (62, 8690), (63, 8693), (70, 8732), (76, 8762), (81, 8783), (87, 8825), (89, 8840), (101, 8894), (102, 8900), (103, 8906), (107, 8945), (108, 8957),

Gene: Izel_23 Start: 12284, Stop: 12796, Start Num: 6

Candidate Starts for Izel_23:

(Start: 6 @12284 has 19 MA's), (Start: 8 @12293 has 114 MA's), (17, 12350), (28, 12383), (32, 12401), (37, 12419), (71, 12578), (72, 12587), (73, 12590), (80, 12626), (84, 12650), (94, 12698), (95, 12701),

Gene: Jobypre_13 Start: 8608, Stop: 9093, Start Num: 8

Candidate Starts for Jobypre_13:

(Start: 8 @8608 has 114 MA's), (Start: 10 @8614 has 4 MA's), (15, 8662), (27, 8698), (70, 8869), (72, 8887), (76, 8899), (81, 8920), (96, 9010), (99, 9022), (102, 9037),

Gene: JoeDirt_12 Start: 8474, Stop: 8962, Start Num: 8

Candidate Starts for JoeDirt_12:

(Start: 8 @8474 has 114 MA's), (11, 8483), (23, 8555), (51, 8639), (61, 8687), (63, 8696), (64, 8699), (70, 8735), (71, 8744), (73, 8756), (81, 8786), (89, 8843), (90, 8846), (102, 8903), (103, 8909),

Gene: JoieB_45 Start: 18545, Stop: 19051, Start Num: 8

Candidate Starts for JoieB_45:

(Start: 8 @18545 has 114 MA's), (21, 18620), (23, 18629), (27, 18644), (29, 18653), (31, 18662), (35, 18671), (52, 18740), (57, 18758), (61, 18785), (69, 18833), (71, 18842), (72, 18851), (80, 18887), (83, 18905), (84, 18911), (85, 18920), (97, 18977), (100, 18989), (106, 19046),

Gene: Jubie_13 Start: 8608, Stop: 9093, Start Num: 8

Candidate Starts for Jubie_13:

(Start: 8 @8608 has 114 MA's), (Start: 10 @8614 has 4 MA's), (15, 8662), (27, 8698), (70, 8869), (72, 8887), (76, 8899), (81, 8920), (96, 9010), (99, 9022), (102, 9037),

Gene: Kahlid_12 Start: 8471, Stop: 8974, Start Num: 8

Candidate Starts for Kahlid_12:

(Start: 8 @8471 has 114 MA's), (Start: 10 @8477 has 4 MA's), (33, 8579), (51, 8636), (54, 8651), (61, 8684), (62, 8690), (63, 8693), (70, 8732), (76, 8762), (81, 8783), (87, 8825), (89, 8840), (101, 8894), (102, 8900), (103, 8906), (107, 8945), (108, 8957),

Gene: Kingsolomon_13 Start: 8608, Stop: 9093, Start Num: 8

Candidate Starts for Kingsolomon_13:

(Start: 8 @8608 has 114 MA's), (Start: 10 @8614 has 4 MA's), (15, 8662), (27, 8698), (70, 8869), (72, 8887), (76, 8899), (81, 8920), (96, 9010), (99, 9022), (102, 9037),

Gene: KirDoubleO7_11 Start: 8621, Stop: 9106, Start Num: 8

Candidate Starts for KirDoubleO7_11:

(Start: 8 @8621 has 114 MA's), (Start: 10 @8627 has 4 MA's), (15, 8675), (27, 8711), (70, 8882), (72, 8900), (76, 8912), (81, 8933), (96, 9023), (99, 9035), (102, 9050),

Gene: KleverKiS_22 Start: 12281, Stop: 12793, Start Num: 6

Candidate Starts for KleverKiS_22:

(Start: 6 @12281 has 19 MA's), (Start: 8 @12290 has 114 MA's), (17, 12347), (28, 12380), (32, 12398), (37, 12416), (71, 12575), (72, 12584), (73, 12587), (80, 12623), (84, 12647), (94, 12695), (95, 12698),

Gene: Kropertea_12 Start: 8157, Stop: 8660, Start Num: 8

Candidate Starts for Kropertea_12:

(Start: 8 @8157 has 114 MA's), (38, 8280), (54, 8340), (63, 8382), (64, 8385), (70, 8421), (72, 8439), (76, 8451), (81, 8472), (87, 8514), (89, 8529), (96, 8562), (103, 8595),

Gene: Krypton555_13 Start: 8597, Stop: 9082, Start Num: 8

Candidate Starts for Krypton555_13:

(Start: 8 @8597 has 114 MA's), (Start: 10 @8603 has 4 MA's), (15, 8651), (27, 8687), (70, 8858), (72, 8876), (76, 8888), (81, 8909), (96, 8999), (99, 9011), (102, 9026),

Gene: Kudfre_20 Start: 11817, Stop: 12305, Start Num: 8

Candidate Starts for Kudfre_20:

(Start: 8 @11817 has 114 MA's), (30, 11925), (42, 11961), (45, 11970), (59, 12012), (61, 12030), (62, 12036), (72, 12096), (73, 12099), (82, 12147), (94, 12204), (98, 12228),

Gene: Kumao_21 Start: 11563, Stop: 12060, Start Num: 8

Candidate Starts for Kumao_21:

(Start: 8 @11563 has 114 MA's), (68, 11830), (72, 11851), (73, 11854), (75, 11866),

Gene: LeBron_12 Start: 8474, Stop: 8962, Start Num: 8

Candidate Starts for LeBron_12:

(Start: 8 @8474 has 114 MA's), (23, 8555), (51, 8639), (61, 8687), (63, 8696), (64, 8699), (70, 8735), (71, 8744), (73, 8756), (81, 8786), (89, 8843), (90, 8846), (102, 8903), (103, 8909),

Gene: Lewan_12 Start: 8471, Stop: 8974, Start Num: 8

Candidate Starts for Lewan_12:

(Start: 8 @8471 has 114 MA's), (Start: 10 @8477 has 4 MA's), (33, 8579), (51, 8636), (54, 8651), (61, 8684), (62, 8690), (63, 8693), (70, 8732), (76, 8762), (81, 8783), (87, 8825), (89, 8840), (101, 8894), (102, 8900), (103, 8906), (107, 8945), (108, 8957),

Gene: LilDestine_12 Start: 8471, Stop: 8974, Start Num: 8

Candidate Starts for LilDestine_12:

(Start: 8 @8471 has 114 MA's), (Start: 10 @8477 has 4 MA's), (33, 8579), (51, 8636), (54, 8651), (61, 8684), (62, 8690), (63, 8693), (70, 8732), (76, 8762), (81, 8783), (87, 8825), (89, 8840), (101, 8894), (102, 8900), (103, 8906), (107, 8945), (108, 8957),

Gene: LilJank_20 Start: 11699, Stop: 12193, Start Num: 7

Candidate Starts for LilJank_20:

(Start: 7 @11699 has 4 MA's), (19, 11765), (21, 11771), (25, 11786), (56, 11888), (60, 11900), (62, 11921), (68, 11960), (72, 11981), (74, 11987), (90, 12077), (93, 12086), (101, 12128),

Gene: Lilbit_43 Start: 18522, Stop: 19028, Start Num: 8

Candidate Starts for Lilbit_43:

(Start: 8 @18522 has 114 MA's), (21, 18597), (23, 18606), (27, 18621), (29, 18630), (31, 18639), (35, 18648), (52, 18717), (57, 18735), (61, 18762), (69, 18810), (71, 18819), (72, 18828), (80, 18864), (83, 18882), (84, 18888), (85, 18897), (97, 18954), (100, 18966), (106, 19023),

Gene: LilhomieP_21 Start: 12285, Stop: 12797, Start Num: 6

Candidate Starts for LilhomieP_21:

(Start: 6 @12285 has 19 MA's), (Start: 8 @12294 has 114 MA's), (17, 12351), (28, 12384), (32, 12402), (37, 12420), (71, 12579), (72, 12588), (73, 12591), (80, 12627), (84, 12651), (94, 12699), (95, 12702),

Gene: LittleLaf_44 Start: 18251, Stop: 18757, Start Num: 8

Candidate Starts for LittleLaf_44:

(Start: 8 @18251 has 114 MA's), (21, 18326), (23, 18335), (27, 18350), (29, 18359), (31, 18368), (35, 18377), (52, 18446), (57, 18464), (61, 18491), (69, 18539), (71, 18548), (72, 18557), (80, 18593), (83, 18611), (84, 18617), (85, 18626), (97, 18683), (100, 18695), (106, 18752),

Gene: LiyuLake_13 Start: 8612, Stop: 9097, Start Num: 8

Candidate Starts for LiyuLake_13:

(Start: 8 @8612 has 114 MA's), (Start: 10 @8618 has 4 MA's), (15, 8666), (27, 8702), (70, 8873), (72, 8891), (76, 8903), (81, 8924), (96, 9014), (99, 9026), (102, 9041),

Gene: Loadrie_12 Start: 8510, Stop: 9007, Start Num: 10

Candidate Starts for Loadrie_12:

(Start: 8 @8504 has 114 MA's), (Start: 10 @8510 has 4 MA's), (33, 8612), (51, 8669), (54, 8684), (61, 8717), (62, 8723), (63, 8726), (70, 8765), (76, 8795), (81, 8816), (87, 8858), (89, 8873), (101, 8927), (102, 8933), (103, 8939), (107, 8978), (108, 8990),

Gene: Lolly9_13 Start: 8615, Stop: 9100, Start Num: 8

Candidate Starts for Lolly9_13:

(Start: 8 @8615 has 114 MA's), (Start: 10 @8621 has 4 MA's), (15, 8669), (23, 8696), (27, 8705), (70, 8876), (72, 8894), (76, 8906), (81, 8927), (96, 9017), (99, 9029), (102, 9044),

Gene: Lumos_13 Start: 8608, Stop: 9093, Start Num: 8

Candidate Starts for Lumos_13:

(Start: 8 @8608 has 114 MA's), (Start: 10 @8614 has 4 MA's), (15, 8662), (27, 8698), (70, 8869), (72, 8887), (76, 8899), (81, 8920), (96, 9010), (99, 9022), (102, 9037),

Gene: Lynnae_12 Start: 8471, Stop: 8974, Start Num: 8

Candidate Starts for Lynnae_12:

(Start: 8 @8471 has 114 MA's), (Start: 10 @8477 has 4 MA's), (33, 8579), (51, 8636), (54, 8651), (61, 8684), (62, 8690), (63, 8693), (70, 8732), (76, 8762), (81, 8783), (87, 8825), (89, 8840), (101, 8894), (102, 8900), (103, 8906), (107, 8945), (108, 8957),

Gene: MAckerman_12 Start: 8473, Stop: 8961, Start Num: 8

Candidate Starts for MAckerman_12:

(Start: 8 @8473 has 114 MA's), (11, 8482), (23, 8554), (51, 8638), (61, 8686), (63, 8695), (64, 8698), (70, 8734), (71, 8743), (73, 8755), (81, 8785), (89, 8842), (90, 8845), (102, 8902), (103, 8908),

Gene: Marvin_42 Start: 18521, Stop: 19027, Start Num: 8

Candidate Starts for Marvin_42:

(Start: 8 @18521 has 114 MA's), (21, 18596), (23, 18605), (27, 18620), (29, 18629), (31, 18638), (35, 18647), (52, 18716), (57, 18734), (61, 18761), (69, 18809), (71, 18818), (72, 18827), (80, 18863), (83, 18881), (84, 18887), (85, 18896), (97, 18953), (100, 18965), (106, 19022),

Gene: MaryV_34 Start: 15338, Stop: 15850, Start Num: 8

Candidate Starts for MaryV_34:

(Start: 8 @15338 has 114 MA's), (14, 15386), (28, 15437), (41, 15482), (49, 15524), (61, 15578), (68, 15623), (71, 15635), (72, 15644), (73, 15647), (82, 15692), (86, 15716), (98, 15773), (105, 15830),

Gene: Mendokysei_12 Start: 9351, Stop: 9842, Start Num: 8

Candidate Starts for Mendokysei_12:

(1, 9198), (3, 9219), (Start: 8 @9351 has 114 MA's), (18, 9417), (24, 9438), (40, 9483), (61, 9579),

Gene: MicyPS_11 Start: 8253, Stop: 8705, Start Num: 8

Candidate Starts for MicyPS_11:

(Start: 8 @8253 has 114 MA's), (46, 8424), (59, 8463), (61, 8481), (70, 8529), (71, 8538), (79, 8577), (98, 8667), (100, 8673), (102, 8685),

Gene: Miley16_12 Start: 8471, Stop: 8974, Start Num: 8

Candidate Starts for Miley16_12:

(Start: 8 @8471 has 114 MA's), (Start: 10 @8477 has 4 MA's), (33, 8579), (54, 8651), (61, 8684), (62, 8690), (63, 8693), (70, 8732), (76, 8762), (81, 8783), (87, 8825), (89, 8840), (101, 8894), (102, 8900), (103, 8906), (107, 8945), (108, 8957),

Gene: MiniLon_13 Start: 8615, Stop: 9100, Start Num: 8

Candidate Starts for MiniLon_13:

(Start: 8 @8615 has 114 MA's), (Start: 10 @8621 has 4 MA's), (15, 8669), (23, 8696), (27, 8705), (70, 8876), (72, 8894), (76, 8906), (81, 8927), (96, 9017), (99, 9029), (102, 9044),

Gene: MiniMac_13 Start: 8616, Stop: 9101, Start Num: 8

Candidate Starts for MiniMac_13:

(Start: 8 @8616 has 114 MA's), (Start: 10 @8622 has 4 MA's), (15, 8670), (23, 8697), (27, 8706), (70, 8877), (72, 8895), (76, 8907), (81, 8928), (96, 9018), (99, 9030), (102, 9045),

Gene: MkaliMitinis3_12 Start: 8471, Stop: 8974, Start Num: 8

Candidate Starts for MkaliMitinis3_12:

(Start: 8 @8471 has 114 MA's), (Start: 10 @8477 has 4 MA's), (33, 8579), (54, 8651), (61, 8684), (62, 8690), (63, 8693), (70, 8732), (76, 8762), (81, 8783), (87, 8825), (89, 8840), (101, 8894), (102, 8900), (103, 8906), (107, 8945), (108, 8957),

Gene: Moostard_13 Start: 8604, Stop: 9089, Start Num: 8

Candidate Starts for Moostard_13:

(Start: 8 @8604 has 114 MA's), (Start: 10 @8610 has 4 MA's), (15, 8658), (27, 8694), (70, 8865), (72, 8883), (76, 8895), (81, 8916), (96, 9006), (99, 9018), (102, 9033),

Gene: MosMoris_42 Start: 17701, Stop: 18207, Start Num: 8

Candidate Starts for MosMoris_42:

(Start: 8 @17701 has 114 MA's), (21, 17776), (23, 17785), (27, 17800), (29, 17809), (31, 17818), (35, 17827), (52, 17896), (57, 17914), (61, 17941), (69, 17989), (71, 17998), (72, 18007), (80, 18043), (83, 18061), (84, 18067), (85, 18076), (97, 18133), (100, 18145), (106, 18202),

Gene: MrMagoo_26 Start: 12841, Stop: 13344, Start Num: 8

Candidate Starts for MrMagoo_26:

(Start: 6 @12832 has 19 MA's), (Start: 8 @12841 has 114 MA's), (17, 12898), (39, 12970), (68, 13114), (71, 13126), (72, 13135), (73, 13138), (75, 13150), (80, 13174), (84, 13198), (94, 13246), (105, 13327),

Gene: MsGreen_13 Start: 8608, Stop: 9093, Start Num: 8

Candidate Starts for MsGreen_13:

(Start: 8 @8608 has 114 MA's), (Start: 10 @8614 has 4 MA's), (15, 8662), (27, 8698), (70, 8869), (72, 8887), (76, 8899), (81, 8920), (96, 9010), (99, 9022), (102, 9037),

Gene: Nairb_13 Start: 9373, Stop: 9864, Start Num: 8

Candidate Starts for Nairb_13:

(Start: 8 @9373 has 114 MA's), (40, 9505), (43, 9520), (73, 9667),

Gene: Nanosmite_26 Start: 13051, Stop: 13563, Start Num: 6

Candidate Starts for Nanosmite_26:

(Start: 6 @13051 has 19 MA's), (Start: 8 @13060 has 114 MA's), (71, 13345), (72, 13354), (73, 13357), (80, 13393), (84, 13417), (105, 13546),

Gene: Nette_13 Start: 9360, Stop: 9851, Start Num: 8

Candidate Starts for Nette_13:

(1, 9207), (3, 9228), (Start: 8 @9360 has 114 MA's), (18, 9426), (24, 9447), (40, 9492), (61, 9588),

Gene: Netyap_12 Start: 8471, Stop: 8974, Start Num: 8

Candidate Starts for Netyap_12:

(Start: 8 @8471 has 114 MA's), (Start: 10 @8477 has 4 MA's), (33, 8579), (54, 8651), (61, 8684), (62, 8690), (63, 8693), (70, 8732), (76, 8762), (81, 8783), (87, 8825), (89, 8840), (101, 8894), (102, 8900), (103, 8906), (107, 8945), (108, 8957),

Gene: Neville_20 Start: 11648, Stop: 12142, Start Num: 7

Candidate Starts for Neville_20:

(Start: 7 @11648 has 4 MA's), (19, 11714), (21, 11720), (25, 11735), (56, 11837), (60, 11849), (62, 11870), (68, 11909), (72, 11930), (74, 11936), (90, 12026), (93, 12035), (101, 12077),

Gene: Nicholas_13 Start: 8608, Stop: 9093, Start Num: 8

Candidate Starts for Nicholas_13:

(Start: 8 @8608 has 114 MA's), (Start: 10 @8614 has 4 MA's), (15, 8662), (27, 8698), (70, 8869), (72, 8887), (76, 8899), (81, 8920), (96, 9010), (99, 9022), (102, 9037),

Gene: Nicholasp3_12 Start: 8477, Stop: 8974, Start Num: 10

Candidate Starts for Nicholasp3_12:

(Start: 8 @8471 has 114 MA's), (Start: 10 @8477 has 4 MA's), (33, 8579), (54, 8651), (61, 8684), (62, 8690), (63, 8693), (70, 8732), (76, 8762), (81, 8783), (87, 8825), (89, 8840), (101, 8894), (102, 8900), (103, 8906), (107, 8945), (108, 8957),

Gene: Octobien14_21 Start: 12862, Stop: 13350, Start Num: 7

Candidate Starts for Octobien14_21:

(Start: 7 @12862 has 4 MA's), (26, 12952), (30, 12970), (42, 13006), (61, 13075), (62, 13081), (74, 13147), (90, 13234), (94, 13249), (98, 13273),

Gene: OhShagHennessy_12 Start: 8447, Stop: 8935, Start Num: 8

Candidate Starts for OhShagHennessy_12:

(Start: 8 @8447 has 114 MA's), (11, 8456), (23, 8528), (51, 8612), (61, 8660), (63, 8669), (64, 8672), (70, 8708), (71, 8717), (73, 8729), (81, 8759), (89, 8816), (90, 8819), (102, 8876), (103, 8882),

Gene: OverPar_12 Start: 8504, Stop: 9007, Start Num: 8

Candidate Starts for OverPar_12:

(Start: 8 @8504 has 114 MA's), (Start: 10 @8510 has 4 MA's), (33, 8612), (51, 8669), (54, 8684), (61, 8717), (62, 8723), (63, 8726), (70, 8765), (76, 8795), (81, 8816), (87, 8858), (89, 8873), (101, 8927), (102, 8933), (103, 8939), (107, 8978), (108, 8990),

Gene: PSonyx_11 Start: 8406, Stop: 8858, Start Num: 8

Candidate Starts for PSonyx_11:

(2, 8265), (Start: 8 @8406 has 114 MA's), (46, 8577), (47, 8580), (59, 8616), (61, 8634), (70, 8682), (71, 8691), (98, 8820), (100, 8826), (102, 8838),

Gene: PYPDinur_12 Start: 8141, Stop: 8644, Start Num: 8

Candidate Starts for PYPDinur_12:

(Start: 8 @8141 has 114 MA's), (19, 8207), (38, 8264), (54, 8324), (63, 8366), (64, 8369), (70, 8405), (72, 8423), (76, 8435), (81, 8456), (87, 8498), (89, 8513), (96, 8546), (97, 8549), (103, 8579),

Gene: PegLeg_22 Start: 12284, Stop: 12796, Start Num: 6

Candidate Starts for PegLeg_22:

(Start: 6 @12284 has 19 MA's), (Start: 8 @12293 has 114 MA's), (17, 12350), (28, 12383), (32, 12401), (37, 12419), (71, 12578), (72, 12587), (73, 12590), (80, 12626), (84, 12650), (94, 12698), (95, 12701),

Gene: PhaoMing_11 Start: 7850, Stop: 8311, Start Num: 8

Candidate Starts for PhaoMing_11:

(Start: 8 @7850 has 114 MA's), (19, 7916), (20, 7919), (23, 7931), (46, 8012), (47, 8015), (48, 8018), (53, 8030), (56, 8045), (59, 8054), (67, 8111), (68, 8117), (70, 8120), (78, 8171), (91, 8237), (92, 8240), (96, 8264),

Gene: Poise_44 Start: 17839, Stop: 18345, Start Num: 8

Candidate Starts for Poise_44:

(Start: 8 @17839 has 114 MA's), (21, 17914), (23, 17923), (27, 17938), (29, 17947), (31, 17956), (35, 17965), (52, 18034), (57, 18052), (61, 18079), (69, 18127), (71, 18136), (72, 18145), (80, 18181), (83, 18199), (84, 18205), (85, 18214), (97, 18271), (100, 18283), (106, 18340),

Gene: Pochiewood_12 Start: 8473, Stop: 8961, Start Num: 8

Candidate Starts for Pochiewood_12:

(Start: 8 @8473 has 114 MA's), (11, 8482), (23, 8554), (51, 8638), (61, 8686), (63, 8695), (64, 8698), (70, 8734), (71, 8743), (73, 8755), (81, 8785), (89, 8842), (90, 8845), (102, 8902), (103, 8908),

Gene: Poushou_13 Start: 9268, Stop: 9699, Start Num: 12

Candidate Starts for Poushou_13:

(Start: 12 @9268 has 4 MA's), (30, 9352), (34, 9358), (36, 9370), (61, 9472), (65, 9493), (88, 9610), (90, 9625), (97, 9658), (101, 9676),

Gene: Pringar_44 Start: 18151, Stop: 18657, Start Num: 8

Candidate Starts for Pringar_44:

(Start: 8 @18151 has 114 MA's), (21, 18226), (23, 18235), (27, 18250), (29, 18259), (31, 18268), (52, 18346), (57, 18364), (61, 18391), (69, 18439), (71, 18448), (72, 18457), (80, 18493), (83, 18511), (84, 18517), (85, 18526), (97, 18583), (100, 18595), (106, 18652),

Gene: Quby_12 Start: 8140, Stop: 8643, Start Num: 8

Candidate Starts for Quby_12:

(Start: 8 @8140 has 114 MA's), (19, 8206), (38, 8263), (54, 8323), (63, 8365), (64, 8368), (70, 8404), (72, 8422), (76, 8434), (81, 8455), (87, 8497), (89, 8512), (96, 8545), (97, 8548), (103, 8578),

Gene: Rabbitrun_22 Start: 12210, Stop: 12704, Start Num: 7

Candidate Starts for Rabbitrun_22:

(Start: 7 @12210 has 4 MA's), (19, 12276), (21, 12282), (45, 12363), (62, 12432), (68, 12471), (72, 12492), (74, 12498), (77, 12522), (85, 12564), (90, 12588), (93, 12597), (104, 12663), (107, 12693),

Gene: Raela_44 Start: 18394, Stop: 18900, Start Num: 8

Candidate Starts for Raela_44:

(Start: 8 @18394 has 114 MA's), (21, 18469), (23, 18478), (27, 18493), (29, 18502), (31, 18511), (35, 18520), (52, 18589), (57, 18607), (61, 18634), (69, 18682), (71, 18691), (72, 18700), (80, 18736), (83, 18754), (84, 18760), (85, 18769), (97, 18826), (100, 18838), (106, 18895),

Gene: Red305_13 Start: 8608, Stop: 9093, Start Num: 8

Candidate Starts for Red305_13:

(Start: 8 @8608 has 114 MA's), (Start: 10 @8614 has 4 MA's), (15, 8662), (27, 8698), (70, 8869), (72, 8887), (76, 8899), (81, 8920), (96, 9010), (99, 9022), (102, 9037),

Gene: RedRaider77_44 Start: 18295, Stop: 18801, Start Num: 8

Candidate Starts for RedRaider77_44:

(Start: 8 @18295 has 114 MA's), (21, 18370), (23, 18379), (27, 18394), (29, 18403), (31, 18412), (35, 18421), (52, 18490), (57, 18508), (61, 18535), (69, 18583), (71, 18592), (72, 18601), (80, 18637), (83, 18655), (84, 18661), (85, 18670), (97, 18727), (100, 18739), (106, 18796),

Gene: Reindeer_20 Start: 12137, Stop: 12649, Start Num: 6

Candidate Starts for Reindeer_20:

(Start: 6 @12137 has 19 MA's), (Start: 8 @12146 has 114 MA's), (17, 12203), (28, 12236), (37, 12272), (39, 12275), (58, 12353), (71, 12431), (72, 12440), (73, 12443), (80, 12479), (84, 12503), (94, 12551), (95, 12554),

Gene: Rey_26 Start: 13073, Stop: 13576, Start Num: 8

Candidate Starts for Rey_26:

(Start: 6 @13064 has 19 MA's), (Start: 8 @13073 has 114 MA's), (Start: 9 @13076 has 2 MA's), (16, 13127), (17, 13130), (28, 13163), (39, 13202), (71, 13358), (72, 13367), (73, 13370), (75, 13382), (80, 13406), (84, 13430), (94, 13478), (95, 13481), (105, 13559),

Gene: RonRayGun_13 Start: 9373, Stop: 9864, Start Num: 8

Candidate Starts for RonRayGun_13:

(Start: 8 @9373 has 114 MA's), (40, 9505), (43, 9520), (73, 9667),

Gene: Rose5_12 Start: 8473, Stop: 8961, Start Num: 8

Candidate Starts for Rose5_12:

(Start: 8 @8473 has 114 MA's), (11, 8482), (23, 8554), (51, 8638), (61, 8686), (63, 8695), (64, 8698), (70, 8734), (71, 8743), (73, 8755), (81, 8785), (89, 8842), (90, 8845), (102, 8902), (103, 8908),

Gene: RoseMarie_22 Start: 12527, Stop: 13039, Start Num: 6

Candidate Starts for RoseMarie_22:

(Start: 6 @12527 has 19 MA's), (Start: 8 @12536 has 114 MA's), (17, 12593), (28, 12626), (37, 12662), (39, 12665), (71, 12821), (72, 12830), (73, 12833), (80, 12869), (84, 12893), (94, 12941), (95, 12944),

Gene: Rossetti_12 Start: 8471, Stop: 8974, Start Num: 8

Candidate Starts for Rossetti_12:

(Start: 8 @8471 has 114 MA's), (Start: 10 @8477 has 4 MA's), (23, 8552), (33, 8579), (45, 8621), (51, 8636), (61, 8684), (63, 8693), (70, 8732), (76, 8762), (81, 8783), (87, 8825), (89, 8840), (101, 8894), (102, 8900), (103, 8906),

Gene: Rumpelstiltskin_12 Start: 8471, Stop: 8974, Start Num: 8

Candidate Starts for Rumpelstiltskin_12:

(Start: 8 @8471 has 114 MA's), (Start: 10 @8477 has 4 MA's), (33, 8579), (54, 8651), (61, 8684), (62, 8690), (63, 8693), (70, 8732), (76, 8762), (81, 8783), (87, 8825), (89, 8840), (101, 8894), (102, 8900), (103, 8906), (107, 8945), (108, 8957),

Gene: Samty_13 Start: 8604, Stop: 9089, Start Num: 8

Candidate Starts for Samty_13:

(Start: 8 @8604 has 114 MA's), (Start: 10 @8610 has 4 MA's), (15, 8658), (27, 8694), (70, 8865), (72, 8883), (76, 8895), (81, 8916), (96, 9006), (99, 9018), (102, 9033),

Gene: Sarshaun_12 Start: 8504, Stop: 9007, Start Num: 8

Candidate Starts for Sarshaun_12:

(Start: 8 @8504 has 114 MA's), (Start: 10 @8510 has 4 MA's), (33, 8612), (51, 8669), (54, 8684), (61, 8717), (62, 8723), (63, 8726), (70, 8765), (76, 8795), (81, 8816), (87, 8858), (89, 8873), (101, 8927), (102, 8933), (103, 8939), (107, 8978), (108, 8990),

Gene: Sephiroth_21 Start: 11988, Stop: 12476, Start Num: 8

Candidate Starts for Sephiroth_21:

(Start: 8 @11988 has 114 MA's), (30, 12096), (42, 12132), (45, 12141), (59, 12183), (61, 12201), (62, 12207), (72, 12267), (73, 12270), (82, 12318), (94, 12375), (98, 12399),

Gene: Sheng711_12 Start: 8141, Stop: 8644, Start Num: 8

Candidate Starts for Sheng711_12:

(Start: 8 @8141 has 114 MA's), (19, 8207), (38, 8264), (54, 8324), (63, 8366), (64, 8369), (70, 8405), (72, 8423), (76, 8435), (81, 8456), (87, 8498), (89, 8513), (96, 8546), (97, 8549), (103, 8579),

Gene: Silverleaf_12 Start: 8473, Stop: 8961, Start Num: 8

Candidate Starts for Silverleaf_12:

(Start: 8 @8473 has 114 MA's), (11, 8482), (23, 8554), (51, 8638), (61, 8686), (63, 8695), (64, 8698), (70, 8734), (71, 8743), (73, 8755), (81, 8785), (89, 8842), (90, 8845), (102, 8902), (103, 8908),

Gene: Skinny_23 Start: 12285, Stop: 12797, Start Num: 6

Candidate Starts for Skinny_23:

(Start: 6 @12285 has 19 MA's), (Start: 8 @12294 has 114 MA's), (17, 12351), (28, 12384), (32, 12402), (37, 12420), (71, 12579), (72, 12588), (73, 12591), (80, 12627), (84, 12651), (94, 12699), (95, 12702),

Gene: SlimJimmy_21 Start: 12284, Stop: 12796, Start Num: 6

Candidate Starts for SlimJimmy_21:

(Start: 6 @12284 has 19 MA's), (Start: 8 @12293 has 114 MA's), (17, 12350), (32, 12401), (37, 12419), (71, 12578), (72, 12587), (73, 12590), (80, 12626), (84, 12650), (94, 12698), (95, 12701),

Gene: Snenia_13 Start: 8609, Stop: 9094, Start Num: 8

Candidate Starts for Snenia_13:

(Start: 8 @8609 has 114 MA's), (Start: 10 @8615 has 4 MA's), (15, 8663), (27, 8699), (70, 8870), (72, 8888), (76, 8900), (81, 8921), (96, 9011), (99, 9023), (102, 9038),

Gene: SoJulia_12 Start: 8471, Stop: 8974, Start Num: 8

Candidate Starts for SoJulia_12:

(Start: 8 @8471 has 114 MA's), (Start: 10 @8477 has 4 MA's), (33, 8579), (54, 8651), (61, 8684), (62, 8690), (63, 8693), (70, 8732), (76, 8762), (81, 8783), (87, 8825), (89, 8840), (101, 8894), (102, 8900), (103, 8906), (107, 8945), (108, 8957),

Gene: Soap141_12 Start: 8504, Stop: 9007, Start Num: 8

Candidate Starts for Soap141_12:

(Start: 8 @8504 has 114 MA's), (Start: 10 @8510 has 4 MA's), (33, 8612), (51, 8669), (54, 8684), (61, 8717), (62, 8723), (63, 8726), (70, 8765), (76, 8795), (81, 8816), (87, 8858), (89, 8873), (101, 8927), (102, 8933), (103, 8939), (107, 8978), (108, 8990),

Gene: Sparky_10 Start: 7493, Stop: 8023, Start Num: 9

Candidate Starts for Sparky_10:

(5, 7430), (Start: 9 @7493 has 2 MA's), (35, 7616), (49, 7676), (66, 7781), (71, 7802), (81, 7853), (84, 7877), (92, 7916),

Gene: Syleon_21 Start: 11910, Stop: 12395, Start Num: 8

Candidate Starts for Syleon_21:

(Start: 8 @11910 has 114 MA's), (30, 12018), (42, 12054), (45, 12063), (59, 12105), (61, 12123), (62, 12129), (72, 12189), (73, 12192), (82, 12240), (94, 12297), (98, 12321),

Gene: Taotie_11 Start: 9303, Stop: 9755, Start Num: 8

Candidate Starts for Taotie_11:

(2, 9162), (Start: 8 @9303 has 114 MA's), (46, 9474), (47, 9477), (59, 9513), (61, 9531), (70, 9579), (71, 9588), (98, 9717), (100, 9723), (102, 9735),

Gene: Tesla_43 Start: 18144, Stop: 18650, Start Num: 8

Candidate Starts for Tesla_43:

(Start: 8 @18144 has 114 MA's), (21, 18219), (23, 18228), (27, 18243), (29, 18252), (31, 18261), (35, 18270), (52, 18339), (57, 18357), (61, 18384), (69, 18432), (71, 18441), (72, 18450), (80, 18486), (83, 18504), (84, 18510), (85, 18519), (97, 18576), (100, 18588), (106, 18645),

Gene: TouchMeNot_13 Start: 9268, Stop: 9699, Start Num: 12

Candidate Starts for TouchMeNot_13:

(Start: 12 @9268 has 4 MA's), (30, 9352), (34, 9358), (36, 9370), (61, 9472), (65, 9493), (88, 9610), (90, 9625), (97, 9658), (101, 9676),

Gene: Tourach_12 Start: 8484, Stop: 8987, Start Num: 8

Candidate Starts for Tourach_12:

(Start: 8 @8484 has 114 MA's), (Start: 10 @8490 has 4 MA's), (14, 8529), (23, 8565), (33, 8592), (45, 8634), (54, 8664), (61, 8697), (63, 8706), (70, 8745), (72, 8763), (76, 8775), (81, 8796), (87, 8838), (89, 8853), (101, 8907), (102, 8913), (103, 8919), (107, 8958),

Gene: TpudiCK_23 Start: 12284, Stop: 12796, Start Num: 6

Candidate Starts for TpudiCK_23:

(Start: 6 @12284 has 19 MA's), (Start: 8 @12293 has 114 MA's), (17, 12350), (28, 12383), (32, 12401), (37, 12419), (71, 12578), (72, 12587), (73, 12590), (80, 12626), (84, 12650), (94, 12698), (95, 12701),

Gene: Trax_20 Start: 11648, Stop: 12142, Start Num: 7

Candidate Starts for Trax_20:

(Start: 7 @11648 has 4 MA's), (19, 11714), (21, 11720), (25, 11735), (56, 11837), (60, 11849), (62, 11870), (68, 11909), (72, 11930), (74, 11936), (90, 12026), (93, 12035), (101, 12077),

Gene: TriFive_13 Start: 8608, Stop: 9093, Start Num: 8

Candidate Starts for TriFive_13:

(Start: 8 @8608 has 114 MA's), (Start: 10 @8614 has 4 MA's), (15, 8662), (27, 8698), (70, 8869), (72, 8887), (76, 8899), (81, 8920), (96, 9010), (99, 9022), (102, 9037),

Gene: TyDawg_22 Start: 12285, Stop: 12797, Start Num: 6

Candidate Starts for TyDawg_22:

(Start: 6 @12285 has 19 MA's), (Start: 8 @12294 has 114 MA's), (17, 12351), (28, 12384), (32, 12402), (37, 12420), (71, 12579), (72, 12588), (73, 12591), (80, 12627), (84, 12651), (94, 12699), (95, 12702),

Gene: Tyson_12 Start: 8473, Stop: 8961, Start Num: 8

Candidate Starts for Tyson_12:

(Start: 8 @8473 has 114 MA's), (11, 8482), (23, 8554), (51, 8638), (61, 8686), (63, 8695), (64, 8698), (70, 8734), (71, 8743), (73, 8755), (81, 8785), (89, 8842), (90, 8845), (102, 8902), (103, 8908),

Gene: UPIE_12 Start: 8471, Stop: 8959, Start Num: 8

Candidate Starts for UPIE_12:

(Start: 8 @8471 has 114 MA's), (11, 8480), (23, 8552), (51, 8636), (61, 8684), (63, 8693), (64, 8696), (70, 8732), (71, 8741), (73, 8753), (81, 8783), (89, 8840), (90, 8843), (102, 8900), (103, 8906),

Gene: Underpass_12 Start: 8471, Stop: 8974, Start Num: 8

Candidate Starts for Underpass_12:

(Start: 8 @8471 has 114 MA's), (Start: 10 @8477 has 4 MA's), (33, 8579), (54, 8651), (61, 8684), (62, 8690), (63, 8693), (70, 8732), (76, 8762), (81, 8783), (87, 8825), (89, 8840), (101, 8894), (102, 8900), (103, 8906), (107, 8945), (108, 8957),

Gene: VasuNzinga_44 Start: 17728, Stop: 18234, Start Num: 8

Candidate Starts for VasuNzinga_44:

(Start: 8 @17728 has 114 MA's), (21, 17803), (23, 17812), (27, 17827), (29, 17836), (31, 17845), (35, 17854), (52, 17923), (57, 17941), (61, 17968), (69, 18016), (71, 18025), (72, 18034), (80, 18070), (83, 18088), (84, 18094), (85, 18103), (97, 18160), (100, 18172), (106, 18229),

Gene: Vetrix_12 Start: 8471, Stop: 8974, Start Num: 8

Candidate Starts for Vetrix_12:

(Start: 8 @8471 has 114 MA's), (Start: 10 @8477 has 4 MA's), (33, 8579), (51, 8636), (54, 8651), (61, 8684), (62, 8690), (63, 8693), (70, 8732), (76, 8762), (81, 8783), (87, 8825), (89, 8840), (101, 8894), (102, 8900), (103, 8906), (107, 8945), (108, 8957),

Gene: Wamburgexpress_12 Start: 8473, Stop: 8961, Start Num: 8

Candidate Starts for Wamburgexpress_12:

(Start: 8 @8473 has 114 MA's), (11, 8482), (23, 8554), (51, 8638), (61, 8686), (63, 8695), (64, 8698), (70, 8734), (71, 8743), (73, 8755), (81, 8785), (89, 8842), (90, 8845), (102, 8902), (103, 8908),

Gene: Whirlwind_14 Start: 8608, Stop: 9087, Start Num: 10

Candidate Starts for Whirlwind_14:

(Start: 8 @8602 has 114 MA's), (Start: 10 @8608 has 4 MA's), (15, 8656), (27, 8692), (70, 8863), (72, 8881), (76, 8893), (81, 8914), (96, 9004), (99, 9016), (102, 9031),

Gene: Whitty_13 Start: 9373, Stop: 9864, Start Num: 8

Candidate Starts for Whitty_13:

(Start: 8 @9373 has 114 MA's), (40, 9505), (43, 9520), (73, 9667),

Gene: Wigglewobble_12 Start: 8504, Stop: 9007, Start Num: 8

Candidate Starts for Wigglewiggle_12:

(Start: 8 @8504 has 114 MA's), (Start: 10 @8510 has 4 MA's), (33, 8612), (51, 8669), (54, 8684), (61, 8717), (62, 8723), (63, 8726), (70, 8765), (76, 8795), (81, 8816), (87, 8858), (89, 8873), (101, 8927), (102, 8933), (103, 8939), (107, 8978), (108, 8990),

Gene: Wildcat_34 Start: 15348, Stop: 15860, Start Num: 8

Candidate Starts for Wildcat_34:

(Start: 8 @15348 has 114 MA's), (14, 15396), (28, 15447), (41, 15492), (49, 15534), (61, 15588), (68, 15633), (71, 15645), (72, 15654), (73, 15657), (82, 15702), (86, 15726), (98, 15783), (105, 15840),

Gene: Wilder_12 Start: 8471, Stop: 8974, Start Num: 8

Candidate Starts for Wilder_12:

(Start: 8 @8471 has 114 MA's), (Start: 10 @8477 has 4 MA's), (33, 8579), (51, 8636), (54, 8651), (61, 8684), (62, 8690), (63, 8693), (70, 8732), (76, 8762), (81, 8783), (87, 8825), (89, 8840), (101, 8894), (102, 8900), (103, 8906), (107, 8945), (108, 8957),

Gene: Winky_12 Start: 8471, Stop: 8974, Start Num: 8

Candidate Starts for Winky_12:

(Start: 8 @8471 has 114 MA's), (Start: 10 @8477 has 4 MA's), (33, 8579), (54, 8651), (61, 8684), (62, 8690), (63, 8693), (70, 8732), (76, 8762), (81, 8783), (87, 8825), (89, 8840), (101, 8894), (102, 8900), (103, 8906), (107, 8945), (108, 8957),

Gene: Wyatt2_12 Start: 8473, Stop: 8961, Start Num: 8

Candidate Starts for Wyatt2_12:

(Start: 8 @8473 has 114 MA's), (11, 8482), (23, 8554), (51, 8638), (61, 8686), (63, 8695), (64, 8698), (70, 8734), (71, 8743), (73, 8755), (81, 8785), (89, 8842), (90, 8845), (102, 8902), (103, 8908),

Gene: Zakai_12 Start: 8459, Stop: 8962, Start Num: 8

Candidate Starts for Zakai_12:

(Start: 8 @8459 has 114 MA's), (Start: 10 @8465 has 4 MA's), (33, 8567), (54, 8639), (61, 8672), (62, 8678), (63, 8681), (70, 8720), (76, 8750), (81, 8771), (87, 8813), (89, 8828), (101, 8882), (102, 8888), (103, 8894), (107, 8933), (108, 8945),

Gene: Zaria_12 Start: 8474, Stop: 8962, Start Num: 8

Candidate Starts for Zaria_12:

(Start: 8 @8474 has 114 MA's), (11, 8483), (23, 8555), (51, 8639), (61, 8687), (63, 8696), (64, 8699), (70, 8735), (71, 8744), (73, 8756), (81, 8786), (89, 8843), (90, 8846), (102, 8903), (103, 8909),

Gene: ZenTime222_13 Start: 9373, Stop: 9864, Start Num: 8

Candidate Starts for ZenTime222_13:

(Start: 8 @9373 has 114 MA's), (40, 9505), (43, 9520), (73, 9667),

Gene: ZhongYanYuan_11 Start: 8305, Stop: 8802, Start Num: 10

Candidate Starts for ZhongYanYuan_11:

(Start: 8 @8299 has 114 MA's), (Start: 10 @8305 has 4 MA's), (33, 8407), (45, 8449), (51, 8464), (61, 8512), (63, 8521), (70, 8560), (76, 8590), (81, 8611), (89, 8668), (102, 8728), (103, 8734), (107, 8773),