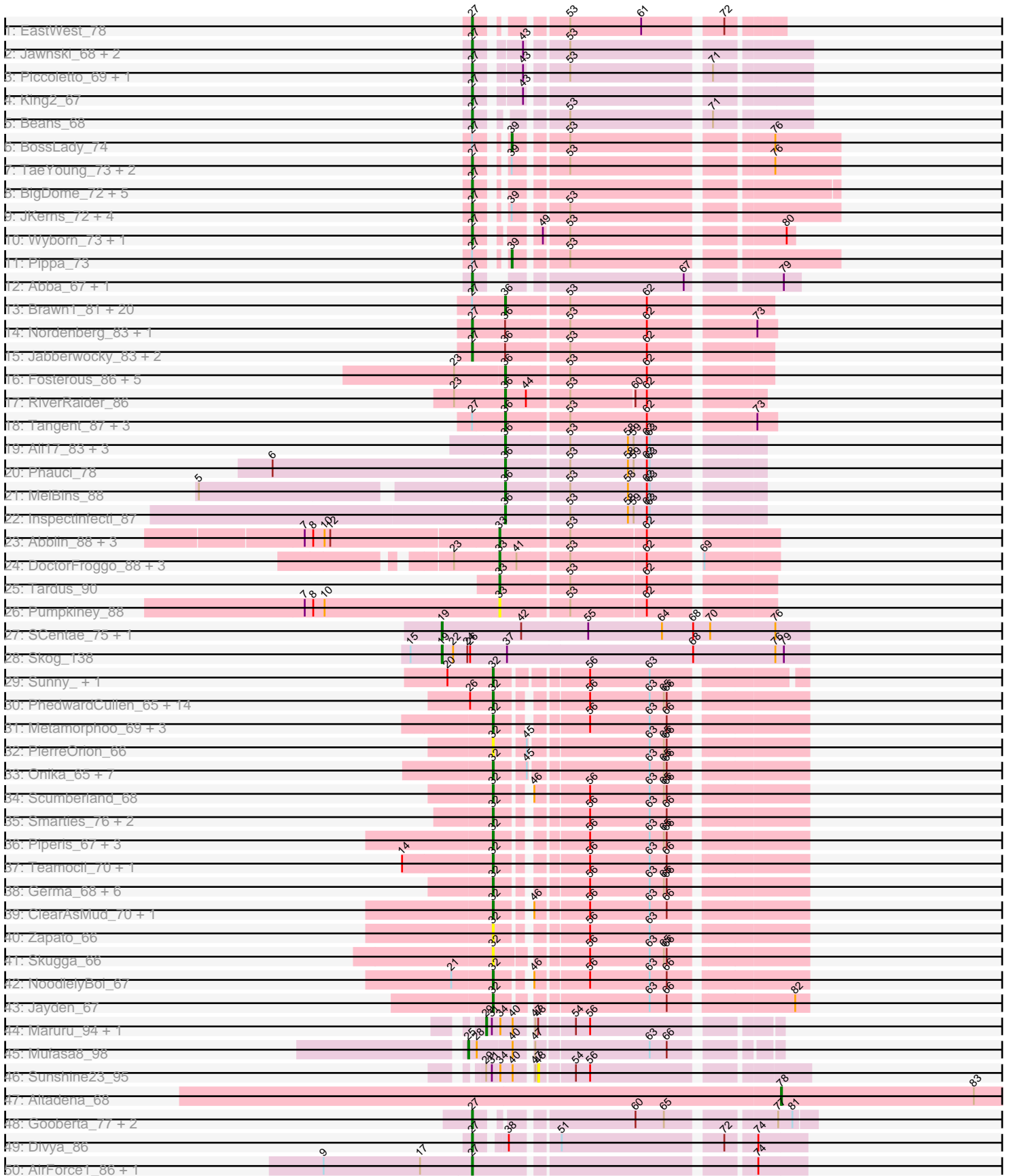
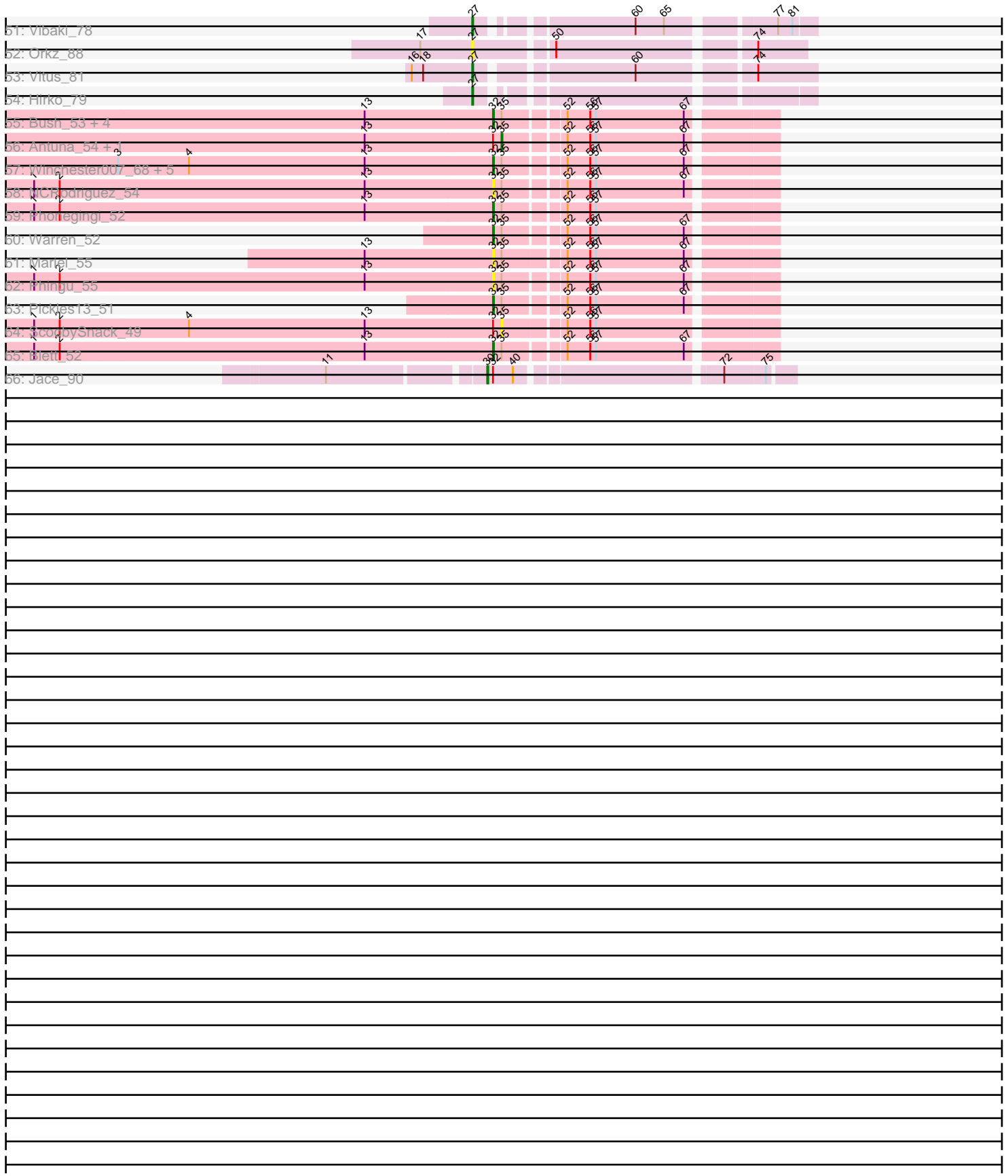


Pham 311278



Pham 311278



Note: Tracks are now grouped by subcluster and scaled. Switching in subcluster is indicated by changes in track color. Track scale is now set by default to display the region 30 bp upstream of start 1 to 30 bp downstream of the last possible start. If this default region is judged to be packed too tightly with annotated starts, the track will be further scaled to only show that region of the ORF with annotated starts. This action will be indicated by adding "Zoomed" to the title. For starts, yellow indicates the location of called starts comprised solely of Glimmer/GeneMark auto-annotations, green indicates the location of called starts with at least 1 manual gene annotation.

Pham 311278 Report

This analysis was run 06/27/26 on database version 652.

Pham number 311278 has 175 members, 23 are drafts.

Phages represented in each track:

- Track 1 : EastWest_78
- Track 2 : Jawnski_68, Brent_69, Franzy_67
- Track 3 : Piccoletto_69, NathanVaag_68
- Track 4 : King2_67
- Track 5 : Beans_68
- Track 6 : BossLady_74
- Track 7 : TaeYoung_73, Grekaycon_73, Martha_72
- Track 8 : BigDome_72, Timinator_73, GravityBall_72, LeeroyJ_73, StevieBAY_73, BarretLemon_72
- Track 9 : JKerns_72, Shade_72, Sonny_72, Jordan_73, Zartrosa_74
- Track 10 : Wyborn_73, Sicarius2_74
- Track 11 : Pippa_73
- Track 12 : Abba_67, Nostromo_67
- Track 13 : Brawn1_81, Sedona_82, Paries_88, Lennon_84, BobBob_86, Stultus_79, FuegoCuervo_89, Fitzgerald_82, ChadMasterC_83, Angelicage_83, Shivanishola_86, Sanjuju_82, Ailee_82, Affeca_86, Bibwit_82, McKinley_87, Sitar_83, Love_90, Brandonk123_88, Baddon_82, Kewpiedoll_85
- Track 14 : Nordenberg_83, Charming_87
- Track 15 : Jabberwocky_83, MoontowerMania_85, Keitabear_82
- Track 16 : Fosterous_86, Kamashten_85, Galadriel_85, McCrothy_83, Thing3_85, Rofo_84
- Track 17 : RiverRaider_86
- Track 18 : Tangent_87, Vivi2_88, Barsten_87, Geodirt_84
- Track 19 : Ali17_83, Leonard_86, Hans_87, Phinally_86
- Track 20 : Phauci_78
- Track 21 : MelBins_88
- Track 22 : Inspectinfecti_87
- Track 23 : Abblin_88, Natkenzie_88, Sampson_90, Scioto_89
- Track 24 : DoctorFroggo_88, Verity_87, Zipp_88, Delrey21_88
- Track 25 : Tardus_90
- Track 26 : Pumpkiney_88
- Track 27 : SCentae_75, Pupper_76
- Track 28 : Skog_138
- Track 29 : Sunny_, Merry_
- Track 30 : PhedwardCullen_65, Crisis_67, Antares_66, Shotgun_66, Phrancesco_66, Phorgeous_66, CrazyRich_65, Honeyfin_67, Jefe_66, Busephilis_65, Ganandorf_65, Glorp_67, Selwyn23_67, Pulchra_68, Lucretia_66

- Track 31 : Metamorphoo_69, Tyumbra_65, Shrubaron_70, RobsFeet_70
- Track 32 : PierreOrion_66
- Track 33 : Onika_65, Kowalski_65, Rockwell_65, Paschalis_66, BrazzalePHS_65, Jollipop_67, PiperSansNom_67, Ramiel05_65
- Track 34 : Scumberland_68
- Track 35 : Smarties_76, Fireman_69, Ariadne_76
- Track 36 : Piperis_67, KaiHaiDragon_67, Yeti_68, EarickHC_67
- Track 37 : Teamocil_70, Gina_70
- Track 38 : Germa_68, Hermeonysus_66, Quhwah_70, Savannah_65, BeagleBug_65, LittleFortune_68, Cranjis_67
- Track 39 : ClearAsMud_70, SirFrank_66
- Track 40 : Zapato_66
- Track 41 : Skugga_66
- Track 42 : NoodlelyBoi_67
- Track 43 : Jayden_67
- Track 44 : Maruru_94, Sonali_93
- Track 45 : Mufasa8_98
- Track 46 : Sunshine23_95
- Track 47 : Altadena_68
- Track 48 : Gooberta_77, GoldDust_76, Music_81
- Track 49 : Divya_86
- Track 50 : AirForce1_86, Jinkies_84
- Track 51 : Vibaki_78
- Track 52 : Orkz_88
- Track 53 : Vitus_81
- Track 54 : Hirko_79
- Track 55 : Bush_53, Violeta_54, Carrillo_54, Jakelyne_55, MenE_54
- Track 56 : Antuna_54, Losacky_54
- Track 57 : Winchester007_68, Guzman_52, CookieDog_52, Dropshot_52, Appa_52, PhillyJawn_53
- Track 58 : NCRodriguez_54
- Track 59 : Phonegingi_52
- Track 60 : Warren_52
- Track 61 : Mariel_55
- Track 62 : Phingu_55
- Track 63 : Pickles13_51
- Track 64 : ScoobySnack_49
- Track 65 : Blett_52
- Track 66 : Jace_90

Summary of Final Annotations (See graph section above for start numbers):

The start number called the most often in the published annotations is 32, it was called in 56 of the 152 non-draft genes in the pham.

Genes that call this "Most Annotated" start:

- Antares_66, Appa_52, Ariadne_76, BeagleBug_65, Blett_52, BrazzalePHS_65, Busephilis_65, Bush_53, Carrillo_54, ClearAsMud_70, CookieDog_52, Cranjis_67, CrazyRich_65, Crisis_67, Dropshot_52, EarickHC_67, Fireman_69, Ganandorf_65, Germa_68, Gina_70, Glorp_67, Guzman_52, Hermeonysus_66, Honeyfin_67,

Jakelyne_55, Jayden_67, Jefe_66, Jollipop_67, KaiHaiDragon_67, Kowalski_65, LittleFortune_68, Lucretia_66, Mariel_55, MenE_54, Merry_, Metamorphoo_69, NCRodriguez_54, NoodlelyBoi_67, Onika_65, Paschalis_66, PhedwardCullen_65, PhillyJawn_53, Phingu_55, Phonegingi_52, Phorgeous_66, Phrancesco_66, Pickles13_51, PierreOrion_66, PiperSansNom_67, Piperis_67, Pulchra_68, Quhwah_70, Ramiel05_65, RobsFeet_70, Rockwell_65, Savannah_65, Scumberland_68, Selwyn23_67, Shotgun_66, Shrubaron_70, SirFrank_66, Skugga_66, Smarties_76, Sunny_, Teamocil_70, Tyrumbra_65, Violeta_54, Warren_52, Winchester007_68, Yeti_68, Zapato_66,

Genes that have the "Most Annotated" start but do not call it:

- Antuna_54, Jace_90, Losacky_54, ScoobySnack_49,

Genes that do not have the "Most Annotated" start:

- Abba_67, Abblin_88, Affeca_86, Ailee_82, AirForce1_86, Ali17_83, Altadena_68, Angelicage_83, Baddon_82, BarretLemon_72, Barsten_87, Beans_68, Bibwit_82, BigDome_72, BobBob_86, BossLady_74, Brandonk123_88, Brawn1_81, Brent_69, ChadMasterC_83, Charming_87, Delrey21_88, Divya_86, DoctorFroggo_88, EastWest_78, Fitzgerald_82, Fosterous_86, Franzy_67, FuegoCuervo_89, Galadriel_85, Geodirt_84, GoldDust_76, Gooberta_77, GravityBall_72, Grekaycon_73, Hans_87, Hirko_79, Inspectinfecti_87, JKerns_72, Jabberwocky_83, Jawnski_68, Jinkies_84, Jordan_73, Kamashten_85, Keitabear_82, Kewpiedoll_85, King2_67, LeeroyJ_73, Lennon_84, Leonard_86, Love_90, Martha_72, Maruru_94, McCrothy_83, McKinley_87, MelBins_88, MoontowerMania_85, Mufasa8_98, Music_81, NathanVaag_68, Natkenzie_88, Nordenberg_83, Nostromo_67, Orkz_88, Paries_88, Phauci_78, Phinally_86, Piccoletto_69, Pippa_73, Pumpkiney_88, Pupper_76, RiverRaider_86, Rofo_84, SCentae_75, Sampson_90, Sanjuju_82, Scioto_89, Sedona_82, Shade_72, Shivanishola_86, Sicarius2_74, Sitar_83, Skog_138, Sonali_93, Sonny_72, StevieBAY_73, Stultus_79, Sunshine23_95, TaeYoung_73, Tangent_87, Tardus_90, Thing3_85, Timinator_73, Verity_87, Vibaki_78, Vitus_81, Vivi2_88, Wyborn_73, Zartrosa_74, Zipp_88,

Summary by start number:

Start 19:

- Found in 3 of 175 (1.7%) of genes in pham
- Manual Annotations of this start: 3 of 152
- Called 100.0% of time when present
- Phage (with cluster) where this start called: Pupper_76 (DO), SCentae_75 (DO), Skog_138 (DO),

Start 25:

- Found in 1 of 175 (0.6%) of genes in pham
- Manual Annotations of this start: 1 of 152
- Called 100.0% of time when present
- Phage (with cluster) where this start called: Mufasa8_98 (FG),

Start 27:

- Found in 68 of 175 (38.9%) of genes in pham
- Manual Annotations of this start: 38 of 152
- Called 60.3% of time when present
- Phage (with cluster) where this start called: Abba_67 (AO3), AirForce1_86 (FL), BarretLemon_72 (AO2), Beans_68 (AO1), BigDome_72 (AO2), Brent_69 (AO1),

Charming_87 (DE1), Divya_86 (FL), EastWest_78 (AO), Franzy_67 (AO1), GoldDust_76 (FL), Gooberta_77 (FL), GravityBall_72 (AO2), Grekaycon_73 (AO2), Hirko_79 (FL), JKerns_72 (AO2), Jabberwocky_83 (DE1), Jawnski_68 (AO1), Jinkies_84 (FL), Jordan_73 (AO2), Keitabear_82 (DE1), King2_67 (AO1), LeeroyJ_73 (AO2), Martha_72 (AO2), MoontowerMania_85 (DE1), Music_81 (FL), NathanVaag_68 (AO1), Nordenberg_83 (DE1), Nostromo_67 (AO3), Orkz_88 (FL), Piccoletto_69 (AO1), Shade_72 (AO2), Sicarius2_74 (AO2), Sonny_72 (AO2), StevieBAY_73 (AO2), TaeYoung_73 (AO2), Timinator_73 (AO2), Vibaki_78 (FL), Vitus_81 (FL), Wyborn_73 (AO2), Zartrosa_74 (AO2),

Start 29:

- Found in 3 of 175 (1.7%) of genes in pham
- Manual Annotations of this start: 2 of 152
- Called 66.7% of time when present
- Phage (with cluster) where this start called: Maruru_94 (FG), Sonali_93 (FG),

Start 30:

- Found in 1 of 175 (0.6%) of genes in pham
- Manual Annotations of this start: 1 of 152
- Called 100.0% of time when present
- Phage (with cluster) where this start called: Jace_90 (singleton),

Start 32:

- Found in 75 of 175 (42.9%) of genes in pham
- Manual Annotations of this start: 56 of 152
- Called 94.7% of time when present
- Phage (with cluster) where this start called: Antares_66 (EC), Appa_52 (GA), Ariadne_76 (EC), BeagleBug_65 (EC), Blett_52 (GA), BrazzalePHS_65 (EC), Busephilis_65 (EC), Bush_53 (GA), Carrillo_54 (GA), ClearAsMud_70 (EC), CookieDog_52 (GA), Cranjjs_67 (EC), CrazyRich_65 (EC), Crisis_67 (EC), Dropshot_52 (GA), EarickHC_67 (EC), Fireman_69 (EC), Ganandorf_65 (EC), Germa_68 (EC), Gina_70 (EC), Glorp_67 (EC), Guzman_52 (GA), Hermeonysus_66 (EC), Honeyfin_67 (EC), Jakelyne_55 (GA), Jayden_67 (EC), Jefe_66 (EC), Jollipop_67 (EC), KaiHaiDragon_67 (EC), Kowalski_65 (EC), LittleFortune_68 (EC), Lucretia_66 (EC), Mariel_55 (GA), MenE_54 (GA), Merry_ (EC), Metamorphoo_69 (EC), NCRodriguez_54 (GA), NoodlelyBoi_67 (EC), Onika_65 (EC), Paschalis_66 (EC), PhedwardCullen_65 (EC), PhillyJawn_53 (GA), Phingu_55 (GA), Phonegingi_52 (GA), Phorgeous_66 (EC), Phrancesco_66 (EC), Pickles13_51 (GA), PierreOrion_66 (EC), PiperSansNom_67 (EC), Piperis_67 (EC), Pulchra_68 (EC), Quhwah_70 (EC), Ramiel05_65 (EC), RobsFeet_70 (EC), Rockwell_65 (EC), Savannah_65 (EC), Scumberland_68 (EC), Selwyn23_67 (EC), Shotgun_66 (EC), Shrubaron_70 (EC), SirFrank_66 (EC), Skugga_66 (EC), Smarties_76 (EC), Sunny_ (EC), Teamocil_70 (EC), Tyrumbra_65 (EC), Violeta_54 (GA), Warren_52 (GA), Winchester007_68 (GA), Yeti_68 (EC), Zapato_66 (EC),

Start 33:

- Found in 10 of 175 (5.7%) of genes in pham
- Manual Annotations of this start: 9 of 152
- Called 100.0% of time when present
- Phage (with cluster) where this start called: Abblin_88 (DE4), Delrey21_88 (DE4), DoctorFroggo_88 (DE4), Natkenzie_88 (DE4), Pumpkiney_88 (DE4), Sampson_90 (DE4), Scioto_89 (DE4), Tardus_90 (DE4), Verity_87 (DE4), Zipp_88 (DE4),

Start 35:

- Found in 21 of 175 (12.0%) of genes in pham
- Manual Annotations of this start: 2 of 152
- Called 14.3% of time when present
- Phage (with cluster) where this start called: Antuna_54 (GA), Losacky_54 (GA), ScoobySnack_49 (GA),

Start 36:

- Found in 44 of 175 (25.1%) of genes in pham
- Manual Annotations of this start: 37 of 152
- Called 88.6% of time when present
- Phage (with cluster) where this start called: Affeca_86 (DE1), Ailee_82 (DE1), Ali17_83 (DE2), Angelicage_83 (DE1), Baddon_82 (DE1), Barsten_87 (DE1), Bibwit_82 (DE1), BobBob_86 (DE1), Brandonk123_88 (DE1), Brawn1_81 (DE1), ChadMasterC_83 (DE1), Fitzgerald_82 (DE1), Fosterous_86 (DE1), FuegoCuervo_89 (DE1), Galadriel_85 (DE1), Geodirt_84 (DE1), Hans_87 (DE2), Inspectinfecti_87 (DE2), Kamashten_85 (DE1), Kewpiedoll_85 (DE1), Lennon_84 (DE1), Leonard_86 (DE2), Love_90 (DE1), McCrothy_83 (DE1), McKinley_87 (DE1), MelBins_88 (DE2), Paries_88 (DE1), Phauci_78 (DE2), Phinally_86 (DE2), RiverRaider_86 (DE1), Rofo_84 (DE1), Sanjuju_82 (DE1), Sedona_82 (DE1), Shivanishola_86 (DE1), Sitar_83 (DE1), Stultus_79 (DE1), Tangent_87 (DE1), Thing3_85 (DE1), Vivi2_88 (DE1),

Start 39:

- Found in 10 of 175 (5.7%) of genes in pham
- Manual Annotations of this start: 2 of 152
- Called 20.0% of time when present
- Phage (with cluster) where this start called: BossLady_74 (AO2), Pippa_73 (AO2),

Start 48:

- Found in 3 of 175 (1.7%) of genes in pham
- No Manual Annotations of this start.
- Called 33.3% of time when present
- Phage (with cluster) where this start called: Sunshine23_95 (FG),

Start 78:

- Found in 1 of 175 (0.6%) of genes in pham
- Manual Annotations of this start: 1 of 152
- Called 100.0% of time when present
- Phage (with cluster) where this start called: Altadena_68 (FH),

Summary by clusters:

There are 14 clusters represented in this pham: DO, singleton, AO1, AO, DE1, DE2, DE4, EC, AO3, AO2, GA, FG, FH, FL,

Info for manual annotations of cluster AO:

- Start number 27 was manually annotated 1 time for cluster AO.

Info for manual annotations of cluster AO1:

- Start number 27 was manually annotated 7 times for cluster AO1.

Info for manual annotations of cluster AO2:

- Start number 27 was manually annotated 15 times for cluster AO2.
- Start number 39 was manually annotated 2 times for cluster AO2.

Info for manual annotations of cluster AO3:

- Start number 27 was manually annotated 2 times for cluster AO3.

Info for manual annotations of cluster DE1:

- Start number 27 was manually annotated 5 times for cluster DE1.
- Start number 36 was manually annotated 30 times for cluster DE1.

Info for manual annotations of cluster DE2:

- Start number 36 was manually annotated 7 times for cluster DE2.

Info for manual annotations of cluster DE4:

- Start number 33 was manually annotated 9 times for cluster DE4.

Info for manual annotations of cluster DO:

- Start number 19 was manually annotated 3 times for cluster DO.

Info for manual annotations of cluster EC:

- Start number 32 was manually annotated 47 times for cluster EC.

Info for manual annotations of cluster FG:

- Start number 25 was manually annotated 1 time for cluster FG.
- Start number 29 was manually annotated 2 times for cluster FG.

Info for manual annotations of cluster FH:

- Start number 78 was manually annotated 1 time for cluster FH.

Info for manual annotations of cluster FL:

- Start number 27 was manually annotated 8 times for cluster FL.

Info for manual annotations of cluster GA:

- Start number 32 was manually annotated 9 times for cluster GA.
- Start number 35 was manually annotated 2 times for cluster GA.

Gene Information:

Gene: Abba_67 Start: 42825, Stop: 42538, Start Num: 27

Candidate Starts for Abba_67:

(Start: 27 @42825 has 38 MA's), (67, 42639), (79, 42555),

Gene: Abblin_88 Start: 58873, Stop: 59145, Start Num: 33

Candidate Starts for Abblin_88:

(7, 58672), (8, 58681), (10, 58693), (12, 58699), (Start: 33 @58873 has 9 MA's), (53, 58942), (62, 59020),

Gene: Affeca_86 Start: 58157, Stop: 58420, Start Num: 36

Candidate Starts for Affeca_86:

(Start: 27 @58124 has 38 MA's), (Start: 36 @58157 has 37 MA's), (53, 58220), (62, 58301),

Gene: Ailee_82 Start: 57328, Stop: 57591, Start Num: 36
Candidate Starts for Ailee_82:
(Start: 27 @57295 has 38 MA's), (Start: 36 @57328 has 37 MA's), (53, 57391), (62, 57472),

Gene: AirForce1_86 Start: 47421, Stop: 47104, Start Num: 27
Candidate Starts for AirForce1_86:
(9, 47577), (17, 47475), (Start: 27 @47421 has 38 MA's), (74, 47154),

Gene: Ali17_83 Start: 57614, Stop: 57865, Start Num: 36
Candidate Starts for Ali17_83:
(Start: 36 @57614 has 37 MA's), (53, 57677), (58, 57737), (59, 57743), (62, 57755), (63, 57758),

Gene: Altadena_68 Start: 43198, Stop: 42947, Start Num: 78
Candidate Starts for Altadena_68:
(Start: 78 @43198 has 1 MA's), (83, 42994),

Gene: Angelicage_83 Start: 58231, Stop: 58494, Start Num: 36
Candidate Starts for Angelicage_83:
(Start: 27 @58198 has 38 MA's), (Start: 36 @58231 has 37 MA's), (53, 58294), (62, 58375),

Gene: Antares_66 Start: 41631, Stop: 41924, Start Num: 32
Candidate Starts for Antares_66:
(26, 41607), (Start: 32 @41631 has 56 MA's), (56, 41709), (63, 41772), (65, 41787), (66, 41790),

Gene: Antuna_54 Start: 32652, Stop: 32918, Start Num: 35
Candidate Starts for Antuna_54:
(13, 32508), (Start: 32 @32643 has 56 MA's), (Start: 35 @32652 has 2 MA's), (52, 32709), (56, 32733),
(57, 32739), (67, 32832),

Gene: Appa_52 Start: 32408, Stop: 32683, Start Num: 32
Candidate Starts for Appa_52:
(3, 32012), (4, 32087), (13, 32273), (Start: 32 @32408 has 56 MA's), (Start: 35 @32417 has 2 MA's),
(52, 32474), (56, 32498), (57, 32504), (67, 32597),

Gene: Ariadne_76 Start: 43251, Stop: 43544, Start Num: 32
Candidate Starts for Ariadne_76:
(Start: 32 @43251 has 56 MA's), (56, 43329), (63, 43392), (66, 43410),

Gene: Baddon_82 Start: 57243, Stop: 57506, Start Num: 36
Candidate Starts for Baddon_82:
(Start: 27 @57210 has 38 MA's), (Start: 36 @57243 has 37 MA's), (53, 57306), (62, 57387),

Gene: BarretLemon_72 Start: 46543, Stop: 46214, Start Num: 27
Candidate Starts for BarretLemon_72:
(Start: 27 @46543 has 38 MA's),

Gene: Barsten_87 Start: 58499, Stop: 58765, Start Num: 36
Candidate Starts for Barsten_87:
(Start: 27 @58466 has 38 MA's), (Start: 36 @58499 has 37 MA's), (53, 58562), (62, 58643), (73, 58745),

Gene: BeagleBug_65 Start: 41411, Stop: 41704, Start Num: 32
Candidate Starts for BeagleBug_65:

(Start: 32 @41411 has 56 MA's), (56, 41489), (63, 41552), (65, 41567), (66, 41570),

Gene: Beans_68 Start: 45863, Stop: 45561, Start Num: 27

Candidate Starts for Beans_68:

(Start: 27 @45863 has 38 MA's), (53, 45794), (71, 45656),

Gene: Bibwit_82 Start: 56692, Stop: 56955, Start Num: 36

Candidate Starts for Bibwit_82:

(Start: 27 @56659 has 38 MA's), (Start: 36 @56692 has 37 MA's), (53, 56755), (62, 56836),

Gene: BigDome_72 Start: 46718, Stop: 46389, Start Num: 27

Candidate Starts for BigDome_72:

(Start: 27 @46718 has 38 MA's),

Gene: Blett_52 Start: 32593, Stop: 32868, Start Num: 32

Candidate Starts for Blett_52:

(1, 32110), (2, 32137), (13, 32458), (Start: 32 @32593 has 56 MA's), (Start: 35 @32602 has 2 MA's), (52, 32659), (56, 32683), (57, 32689), (67, 32782),

Gene: BobBob_86 Start: 57531, Stop: 57794, Start Num: 36

Candidate Starts for BobBob_86:

(Start: 27 @57498 has 38 MA's), (Start: 36 @57531 has 37 MA's), (53, 57594), (62, 57675),

Gene: BossLady_74 Start: 47057, Stop: 46746, Start Num: 39

Candidate Starts for BossLady_74:

(Start: 27 @47078 has 38 MA's), (Start: 39 @47057 has 2 MA's), (53, 47009), (76, 46814),

Gene: Brandonk123_88 Start: 57696, Stop: 57959, Start Num: 36

Candidate Starts for Brandonk123_88:

(Start: 27 @57663 has 38 MA's), (Start: 36 @57696 has 37 MA's), (53, 57759), (62, 57840),

Gene: Brawn1_81 Start: 56836, Stop: 57099, Start Num: 36

Candidate Starts for Brawn1_81:

(Start: 27 @56803 has 38 MA's), (Start: 36 @56836 has 37 MA's), (53, 56899), (62, 56980),

Gene: BrazzalePHS_65 Start: 41393, Stop: 41692, Start Num: 32

Candidate Starts for BrazzalePHS_65:

(Start: 32 @41393 has 56 MA's), (45, 41423), (63, 41540), (65, 41555), (66, 41558),

Gene: Brent_69 Start: 46039, Stop: 45731, Start Num: 27

Candidate Starts for Brent_69:

(Start: 27 @46039 has 38 MA's), (43, 46000), (53, 45964),

Gene: Busephilis_65 Start: 41338, Stop: 41631, Start Num: 32

Candidate Starts for Busephilis_65:

(26, 41314), (Start: 32 @41338 has 56 MA's), (56, 41416), (63, 41479), (65, 41494), (66, 41497),

Gene: Bush_53 Start: 32542, Stop: 32817, Start Num: 32

Candidate Starts for Bush_53:

(13, 32407), (Start: 32 @32542 has 56 MA's), (Start: 35 @32551 has 2 MA's), (52, 32608), (56, 32632), (57, 32638), (67, 32731),

Gene: Carrillo_54 Start: 32516, Stop: 32791, Start Num: 32

Candidate Starts for Carrillo_54:

(13, 32381), (Start: 32 @32516 has 56 MA's), (Start: 35 @32525 has 2 MA's), (52, 32582), (56, 32606), (57, 32612), (67, 32705),

Gene: ChadMasterC_83 Start: 58686, Stop: 58949, Start Num: 36

Candidate Starts for ChadMasterC_83:

(Start: 27 @58653 has 38 MA's), (Start: 36 @58686 has 37 MA's), (53, 58749), (62, 58830),

Gene: Charming_87 Start: 56965, Stop: 57264, Start Num: 27

Candidate Starts for Charming_87:

(Start: 27 @56965 has 38 MA's), (Start: 36 @56998 has 37 MA's), (53, 57061), (62, 57142), (73, 57244),

Gene: ClearAsMud_70 Start: 41913, Stop: 42206, Start Num: 32

Candidate Starts for ClearAsMud_70:

(Start: 32 @41913 has 56 MA's), (46, 41940), (56, 41991), (63, 42054), (66, 42072),

Gene: CookieDog_52 Start: 32516, Stop: 32791, Start Num: 32

Candidate Starts for CookieDog_52:

(3, 32120), (4, 32195), (13, 32381), (Start: 32 @32516 has 56 MA's), (Start: 35 @32525 has 2 MA's), (52, 32582), (56, 32606), (57, 32612), (67, 32705),

Gene: Cranjis_67 Start: 41586, Stop: 41879, Start Num: 32

Candidate Starts for Cranjis_67:

(Start: 32 @41586 has 56 MA's), (56, 41664), (63, 41727), (65, 41742), (66, 41745),

Gene: CrazyRich_65 Start: 41392, Stop: 41685, Start Num: 32

Candidate Starts for CrazyRich_65:

(26, 41368), (Start: 32 @41392 has 56 MA's), (56, 41470), (63, 41533), (65, 41548), (66, 41551),

Gene: Crisis_67 Start: 41401, Stop: 41694, Start Num: 32

Candidate Starts for Crisis_67:

(26, 41377), (Start: 32 @41401 has 56 MA's), (56, 41479), (63, 41542), (65, 41557), (66, 41560),

Gene: Delrey21_88 Start: 60349, Stop: 60621, Start Num: 33

Candidate Starts for Delrey21_88:

(23, 60304), (Start: 33 @60349 has 9 MA's), (41, 60367), (53, 60418), (62, 60496), (69, 60544),

Gene: Divya_86 Start: 47623, Stop: 47318, Start Num: 27

Candidate Starts for Divya_86:

(Start: 27 @47623 has 38 MA's), (38, 47596), (51, 47554), (72, 47395), (74, 47368),

Gene: DoctorFroggo_88 Start: 60349, Stop: 60621, Start Num: 33

Candidate Starts for DoctorFroggo_88:

(23, 60304), (Start: 33 @60349 has 9 MA's), (41, 60367), (53, 60418), (62, 60496), (69, 60544),

Gene: Dropshot_52 Start: 32243, Stop: 32518, Start Num: 32

Candidate Starts for Dropshot_52:

(3, 31847), (4, 31922), (13, 32108), (Start: 32 @32243 has 56 MA's), (Start: 35 @32252 has 2 MA's), (52, 32309), (56, 32333), (57, 32339), (67, 32432),

Gene: EarickHC_67 Start: 41323, Stop: 41616, Start Num: 32

Candidate Starts for EarickHC_67:

(Start: 32 @41323 has 56 MA's), (56, 41401), (63, 41464), (65, 41479), (66, 41482),

Gene: EastWest_78 Start: 46071, Stop: 45799, Start Num: 27

Candidate Starts for EastWest_78:

(Start: 27 @46071 has 38 MA's), (53, 46002), (61, 45927), (72, 45852),

Gene: Fireman_69 Start: 43363, Stop: 43656, Start Num: 32

Candidate Starts for Fireman_69:

(Start: 32 @43363 has 56 MA's), (56, 43441), (63, 43504), (66, 43522),

Gene: Fitzgerald_82 Start: 57842, Stop: 58105, Start Num: 36

Candidate Starts for Fitzgerald_82:

(Start: 27 @57809 has 38 MA's), (Start: 36 @57842 has 37 MA's), (53, 57905), (62, 57986),

Gene: Fosterous_86 Start: 57990, Stop: 58253, Start Num: 36

Candidate Starts for Fosterous_86:

(23, 57939), (Start: 36 @57990 has 37 MA's), (53, 58053), (62, 58134),

Gene: Franzy_67 Start: 46121, Stop: 45813, Start Num: 27

Candidate Starts for Franzy_67:

(Start: 27 @46121 has 38 MA's), (43, 46082), (53, 46046),

Gene: FuegoCuervo_89 Start: 58028, Stop: 58291, Start Num: 36

Candidate Starts for FuegoCuervo_89:

(Start: 27 @57995 has 38 MA's), (Start: 36 @58028 has 37 MA's), (53, 58091), (62, 58172),

Gene: Galadriel_85 Start: 58206, Stop: 58469, Start Num: 36

Candidate Starts for Galadriel_85:

(23, 58155), (Start: 36 @58206 has 37 MA's), (53, 58269), (62, 58350),

Gene: Ganandorf_65 Start: 41419, Stop: 41712, Start Num: 32

Candidate Starts for Ganandorf_65:

(26, 41395), (Start: 32 @41419 has 56 MA's), (56, 41497), (63, 41560), (65, 41575), (66, 41578),

Gene: Geodirt_84 Start: 58493, Stop: 58759, Start Num: 36

Candidate Starts for Geodirt_84:

(Start: 27 @58460 has 38 MA's), (Start: 36 @58493 has 37 MA's), (53, 58556), (62, 58637), (73, 58739),

Gene: Germa_68 Start: 41249, Stop: 41542, Start Num: 32

Candidate Starts for Germa_68:

(Start: 32 @41249 has 56 MA's), (56, 41327), (63, 41390), (65, 41405), (66, 41408),

Gene: Gina_70 Start: 41480, Stop: 41773, Start Num: 32

Candidate Starts for Gina_70:

(14, 41387), (Start: 32 @41480 has 56 MA's), (56, 41558), (63, 41621), (66, 41639),

Gene: Glorp_67 Start: 41383, Stop: 41676, Start Num: 32

Candidate Starts for Glorp_67:

(26, 41359), (Start: 32 @41383 has 56 MA's), (56, 41461), (63, 41524), (65, 41539), (66, 41542),

Gene: GoldDust_76 Start: 48481, Stop: 48173, Start Num: 27

Candidate Starts for GoldDust_76:

(Start: 27 @48481 has 38 MA's), (60, 48340), (65, 48310), (77, 48211), (81, 48196),

Gene: Gooberta_77 Start: 49208, Stop: 48900, Start Num: 27

Candidate Starts for Gooberta_77:

(Start: 27 @49208 has 38 MA's), (60, 49067), (65, 49037), (77, 48938), (81, 48923),

Gene: GravityBall_72 Start: 46734, Stop: 46405, Start Num: 27

Candidate Starts for GravityBall_72:

(Start: 27 @46734 has 38 MA's),

Gene: Grekaycon_73 Start: 46991, Stop: 46659, Start Num: 27

Candidate Starts for Grekaycon_73:

(Start: 27 @46991 has 38 MA's), (Start: 39 @46970 has 2 MA's), (53, 46922), (76, 46727),

Gene: Guzman_52 Start: 32499, Stop: 32774, Start Num: 32

Candidate Starts for Guzman_52:

(3, 32103), (4, 32178), (13, 32364), (Start: 32 @32499 has 56 MA's), (Start: 35 @32508 has 2 MA's), (52, 32565), (56, 32589), (57, 32595), (67, 32688),

Gene: Hans_87 Start: 58571, Stop: 58822, Start Num: 36

Candidate Starts for Hans_87:

(Start: 36 @58571 has 37 MA's), (53, 58634), (58, 58694), (59, 58700), (62, 58712), (63, 58715),

Gene: Hermeonysus_66 Start: 41314, Stop: 41607, Start Num: 32

Candidate Starts for Hermeonysus_66:

(Start: 32 @41314 has 56 MA's), (56, 41392), (63, 41455), (65, 41470), (66, 41473),

Gene: Hirko_79 Start: 48513, Stop: 48205, Start Num: 27

Candidate Starts for Hirko_79:

(Start: 27 @48513 has 38 MA's),

Gene: Honeyfin_67 Start: 41574, Stop: 41867, Start Num: 32

Candidate Starts for Honeyfin_67:

(26, 41550), (Start: 32 @41574 has 56 MA's), (56, 41652), (63, 41715), (65, 41730), (66, 41733),

Gene: Inspectinfecti_87 Start: 58519, Stop: 58770, Start Num: 36

Candidate Starts for Inspectinfecti_87:

(Start: 36 @58519 has 37 MA's), (53, 58582), (58, 58642), (59, 58648), (62, 58660), (63, 58663),

Gene: JKerns_72 Start: 46983, Stop: 46651, Start Num: 27

Candidate Starts for JKerns_72:

(Start: 27 @46983 has 38 MA's), (Start: 39 @46962 has 2 MA's), (53, 46914),

Gene: Jabberwocky_83 Start: 58270, Stop: 58566, Start Num: 27

Candidate Starts for Jabberwocky_83:

(Start: 27 @58270 has 38 MA's), (Start: 36 @58303 has 37 MA's), (53, 58366), (62, 58447),

Gene: Jace_90 Start: 50456, Stop: 50166, Start Num: 30

Candidate Starts for Jace_90:

(11, 50609), (Start: 30 @50456 has 1 MA's), (Start: 32 @50450 has 56 MA's), (40, 50429), (72, 50234), (75, 50192),

Gene: Jakelyne_55 Start: 32609, Stop: 32884, Start Num: 32

Candidate Starts for Jakelyne_55:

(13, 32474), (Start: 32 @32609 has 56 MA's), (Start: 35 @32618 has 2 MA's), (52, 32675), (56, 32699), (57, 32705), (67, 32798),

Gene: Jawnski_68 Start: 45564, Stop: 45256, Start Num: 27

Candidate Starts for Jawnski_68:

(Start: 27 @45564 has 38 MA's), (43, 45525), (53, 45489),

Gene: Jayden_67 Start: 41914, Stop: 42210, Start Num: 32

Candidate Starts for Jayden_67:

(Start: 32 @41914 has 56 MA's), (63, 42058), (66, 42076), (82, 42196),

Gene: Jefe_66 Start: 41369, Stop: 41662, Start Num: 32

Candidate Starts for Jefe_66:

(26, 41345), (Start: 32 @41369 has 56 MA's), (56, 41447), (63, 41510), (65, 41525), (66, 41528),

Gene: Jinkies_84 Start: 48737, Stop: 48420, Start Num: 27

Candidate Starts for Jinkies_84:

(9, 48893), (17, 48791), (Start: 27 @48737 has 38 MA's), (74, 48470),

Gene: Jollipop_67 Start: 41751, Stop: 42050, Start Num: 32

Candidate Starts for Jollipop_67:

(Start: 32 @41751 has 56 MA's), (45, 41781), (63, 41898), (65, 41913), (66, 41916),

Gene: Jordan_73 Start: 47141, Stop: 46809, Start Num: 27

Candidate Starts for Jordan_73:

(Start: 27 @47141 has 38 MA's), (Start: 39 @47120 has 2 MA's), (53, 47072),

Gene: KaiHaiDragon_67 Start: 41323, Stop: 41616, Start Num: 32

Candidate Starts for KaiHaiDragon_67:

(Start: 32 @41323 has 56 MA's), (56, 41401), (63, 41464), (65, 41479), (66, 41482),

Gene: Kamashten_85 Start: 58100, Stop: 58363, Start Num: 36

Candidate Starts for Kamashten_85:

(23, 58049), (Start: 36 @58100 has 37 MA's), (53, 58163), (62, 58244),

Gene: Keitabear_82 Start: 58580, Stop: 58876, Start Num: 27

Candidate Starts for Keitabear_82:

(Start: 27 @58580 has 38 MA's), (Start: 36 @58613 has 37 MA's), (53, 58676), (62, 58757),

Gene: Kewpiedoll_85 Start: 58474, Stop: 58737, Start Num: 36

Candidate Starts for Kewpiedoll_85:

(Start: 27 @58441 has 38 MA's), (Start: 36 @58474 has 37 MA's), (53, 58537), (62, 58618),

Gene: King2_67 Start: 46100, Stop: 45792, Start Num: 27

Candidate Starts for King2_67:

(Start: 27 @46100 has 38 MA's), (43, 46061),

Gene: Kowalski_65 Start: 41388, Stop: 41687, Start Num: 32

Candidate Starts for Kowalski_65:

(Start: 32 @41388 has 56 MA's), (45, 41418), (63, 41535), (65, 41550), (66, 41553),

Gene: LeeroyJ_73 Start: 46660, Stop: 46331, Start Num: 27

Candidate Starts for LeeroyJ_73:
(Start: 27 @46660 has 38 MA's),

Gene: Lennon_84 Start: 59043, Stop: 59306, Start Num: 36
Candidate Starts for Lennon_84:
(Start: 27 @59010 has 38 MA's), (Start: 36 @59043 has 37 MA's), (53, 59106), (62, 59187),

Gene: Leonard_86 Start: 58581, Stop: 58832, Start Num: 36
Candidate Starts for Leonard_86:
(Start: 36 @58581 has 37 MA's), (53, 58644), (58, 58704), (59, 58710), (62, 58722), (63, 58725),

Gene: LittleFortune_68 Start: 41679, Stop: 41972, Start Num: 32
Candidate Starts for LittleFortune_68:
(Start: 32 @41679 has 56 MA's), (56, 41757), (63, 41820), (65, 41835), (66, 41838),

Gene: Losacky_54 Start: 32783, Stop: 33049, Start Num: 35
Candidate Starts for Losacky_54:
(13, 32639), (Start: 32 @32774 has 56 MA's), (Start: 35 @32783 has 2 MA's), (52, 32840), (56, 32864),
(57, 32870), (67, 32963),

Gene: Love_90 Start: 58854, Stop: 59117, Start Num: 36
Candidate Starts for Love_90:
(Start: 27 @58821 has 38 MA's), (Start: 36 @58854 has 37 MA's), (53, 58917), (62, 58998),

Gene: Lucretia_66 Start: 41301, Stop: 41594, Start Num: 32
Candidate Starts for Lucretia_66:
(26, 41277), (Start: 32 @41301 has 56 MA's), (56, 41379), (63, 41442), (65, 41457), (66, 41460),

Gene: Mariel_55 Start: 32980, Stop: 33258, Start Num: 32
Candidate Starts for Mariel_55:
(13, 32845), (Start: 32 @32980 has 56 MA's), (Start: 35 @32989 has 2 MA's), (52, 33049), (56, 33073),
(57, 33079), (67, 33172),

Gene: Martha_72 Start: 46927, Stop: 46595, Start Num: 27
Candidate Starts for Martha_72:
(Start: 27 @46927 has 38 MA's), (Start: 39 @46906 has 2 MA's), (53, 46858), (76, 46663),

Gene: Maruru_94 Start: 57349, Stop: 57080, Start Num: 29
Candidate Starts for Maruru_94:
(Start: 29 @57349 has 2 MA's), (31, 57343), (34, 57337), (40, 57325), (47, 57310), (48, 57307), (54,
57274), (56, 57259),

Gene: McCrothy_83 Start: 58830, Stop: 59093, Start Num: 36
Candidate Starts for McCrothy_83:
(23, 58779), (Start: 36 @58830 has 37 MA's), (53, 58893), (62, 58974),

Gene: McKinley_87 Start: 57834, Stop: 58097, Start Num: 36
Candidate Starts for McKinley_87:
(Start: 27 @57801 has 38 MA's), (Start: 36 @57834 has 37 MA's), (53, 57897), (62, 57978),

Gene: MelBins_88 Start: 59070, Stop: 59321, Start Num: 36
Candidate Starts for MelBins_88:
(5, 58767), (Start: 36 @59070 has 37 MA's), (53, 59133), (58, 59193), (62, 59211), (63, 59214),

Gene: MenE_54 Start: 32665, Stop: 32940, Start Num: 32

Candidate Starts for MenE_54:

(13, 32530), (Start: 32 @32665 has 56 MA's), (Start: 35 @32674 has 2 MA's), (52, 32731), (56, 32755), (57, 32761), (67, 32854),

Gene: Merry_ Start: 43564, Stop: 43854, Start Num: 32

Candidate Starts for Merry_:

(20, 43516), (Start: 32 @43564 has 56 MA's), (56, 43648), (63, 43711),

Gene: Metamorphoo_69 Start: 42657, Stop: 42950, Start Num: 32

Candidate Starts for Metamorphoo_69:

(Start: 32 @42657 has 56 MA's), (56, 42735), (63, 42798), (66, 42816),

Gene: MoontowerMania_85 Start: 58915, Stop: 59211, Start Num: 27

Candidate Starts for MoontowerMania_85:

(Start: 27 @58915 has 38 MA's), (Start: 36 @58948 has 37 MA's), (53, 59011), (62, 59092),

Gene: Mufasa8_98 Start: 57231, Stop: 56944, Start Num: 25

Candidate Starts for Mufasa8_98:

(Start: 25 @57231 has 1 MA's), (28, 57222), (40, 57186), (47, 57171), (63, 57057), (66, 57039),

Gene: Music_81 Start: 49006, Stop: 48698, Start Num: 27

Candidate Starts for Music_81:

(Start: 27 @49006 has 38 MA's), (60, 48865), (65, 48835), (77, 48736), (81, 48721),

Gene: NCRodriguez_54 Start: 32734, Stop: 33009, Start Num: 32

Candidate Starts for NCRodriguez_54:

(1, 32251), (2, 32278), (13, 32599), (Start: 32 @32734 has 56 MA's), (Start: 35 @32743 has 2 MA's), (52, 32800), (56, 32824), (57, 32830), (67, 32923),

Gene: NathanVaag_68 Start: 45795, Stop: 45487, Start Num: 27

Candidate Starts for NathanVaag_68:

(Start: 27 @45795 has 38 MA's), (43, 45756), (53, 45720), (71, 45582),

Gene: Natkenzie_88 Start: 58873, Stop: 59145, Start Num: 33

Candidate Starts for Natkenzie_88:

(7, 58672), (8, 58681), (10, 58693), (12, 58699), (Start: 33 @58873 has 9 MA's), (53, 58942), (62, 59020),

Gene: NoodlelyBoi_67 Start: 42162, Stop: 42455, Start Num: 32

Candidate Starts for NoodlelyBoi_67:

(21, 42120), (Start: 32 @42162 has 56 MA's), (46, 42189), (56, 42240), (63, 42303), (66, 42321),

Gene: Nordenberg_83 Start: 56540, Stop: 56839, Start Num: 27

Candidate Starts for Nordenberg_83:

(Start: 27 @56540 has 38 MA's), (Start: 36 @56573 has 37 MA's), (53, 56636), (62, 56717), (73, 56819),

Gene: Nostromo_67 Start: 43577, Stop: 43287, Start Num: 27

Candidate Starts for Nostromo_67:

(Start: 27 @43577 has 38 MA's), (67, 43391), (79, 43307),

Gene: Onika_65 Start: 41397, Stop: 41696, Start Num: 32
Candidate Starts for Onika_65:
(Start: 32 @41397 has 56 MA's), (45, 41427), (63, 41544), (65, 41559), (66, 41562),

Gene: Orkz_88 Start: 46496, Stop: 46179, Start Num: 27
Candidate Starts for Orkz_88:
(17, 46550), (Start: 27 @46496 has 38 MA's), (50, 46421), (74, 46229),

Gene: Paries_88 Start: 59125, Stop: 59388, Start Num: 36
Candidate Starts for Paries_88:
(Start: 27 @59092 has 38 MA's), (Start: 36 @59125 has 37 MA's), (53, 59188), (62, 59269),

Gene: Paschalis_66 Start: 41416, Stop: 41715, Start Num: 32
Candidate Starts for Paschalis_66:
(Start: 32 @41416 has 56 MA's), (45, 41446), (63, 41563), (65, 41578), (66, 41581),

Gene: Phauci_78 Start: 55646, Stop: 55897, Start Num: 36
Candidate Starts for Phauci_78:
(6, 55400), (Start: 36 @55646 has 37 MA's), (53, 55709), (58, 55769), (59, 55775), (62, 55787), (63, 55790),

Gene: PhedwardCullen_65 Start: 41139, Stop: 41432, Start Num: 32
Candidate Starts for PhedwardCullen_65:
(26, 41115), (Start: 32 @41139 has 56 MA's), (56, 41217), (63, 41280), (65, 41295), (66, 41298),

Gene: PhillyJawn_53 Start: 32405, Stop: 32680, Start Num: 32
Candidate Starts for PhillyJawn_53:
(3, 32009), (4, 32084), (13, 32270), (Start: 32 @32405 has 56 MA's), (Start: 35 @32414 has 2 MA's), (52, 32471), (56, 32495), (57, 32501), (67, 32594),

Gene: Phinally_86 Start: 58578, Stop: 58829, Start Num: 36
Candidate Starts for Phinally_86:
(Start: 36 @58578 has 37 MA's), (53, 58641), (58, 58701), (59, 58707), (62, 58719), (63, 58722),

Gene: Phingu_55 Start: 32629, Stop: 32904, Start Num: 32
Candidate Starts for Phingu_55:
(1, 32146), (2, 32173), (13, 32494), (Start: 32 @32629 has 56 MA's), (Start: 35 @32638 has 2 MA's), (52, 32695), (56, 32719), (57, 32725), (67, 32818),

Gene: Phonegingi_52 Start: 32447, Stop: 32722, Start Num: 32
Candidate Starts for Phonegingi_52:
(1, 31964), (2, 31991), (13, 32312), (Start: 32 @32447 has 56 MA's), (Start: 35 @32456 has 2 MA's), (52, 32513), (56, 32537), (57, 32543),

Gene: Phorgeous_66 Start: 41205, Stop: 41498, Start Num: 32
Candidate Starts for Phorgeous_66:
(26, 41181), (Start: 32 @41205 has 56 MA's), (56, 41283), (63, 41346), (65, 41361), (66, 41364),

Gene: Phrancesco_66 Start: 41528, Stop: 41821, Start Num: 32
Candidate Starts for Phrancesco_66:
(26, 41504), (Start: 32 @41528 has 56 MA's), (56, 41606), (63, 41669), (65, 41684), (66, 41687),

Gene: Piccoletto_69 Start: 45957, Stop: 45649, Start Num: 27

Candidate Starts for Piccoletto_69:

(Start: 27 @45957 has 38 MA's), (43, 45918), (53, 45882), (71, 45744),

Gene: Pickles13_51 Start: 32723, Stop: 32998, Start Num: 32

Candidate Starts for Pickles13_51:

(Start: 32 @32723 has 56 MA's), (Start: 35 @32732 has 2 MA's), (52, 32789), (56, 32813), (57, 32819), (67, 32912),

Gene: PierreOrion_66 Start: 41628, Stop: 41927, Start Num: 32

Candidate Starts for PierreOrion_66:

(Start: 32 @41628 has 56 MA's), (45, 41658), (63, 41775), (65, 41790), (66, 41793),

Gene: PiperSansNom_67 Start: 41707, Stop: 42006, Start Num: 32

Candidate Starts for PiperSansNom_67:

(Start: 32 @41707 has 56 MA's), (45, 41737), (63, 41854), (65, 41869), (66, 41872),

Gene: Piperis_67 Start: 41330, Stop: 41623, Start Num: 32

Candidate Starts for Piperis_67:

(Start: 32 @41330 has 56 MA's), (56, 41408), (63, 41471), (65, 41486), (66, 41489),

Gene: Pippa_73 Start: 46951, Stop: 46640, Start Num: 39

Candidate Starts for Pippa_73:

(Start: 27 @46972 has 38 MA's), (Start: 39 @46951 has 2 MA's), (53, 46903),

Gene: Pulchra_68 Start: 41726, Stop: 42019, Start Num: 32

Candidate Starts for Pulchra_68:

(26, 41702), (Start: 32 @41726 has 56 MA's), (56, 41804), (63, 41867), (65, 41882), (66, 41885),

Gene: Pumpkiney_88 Start: 57465, Stop: 57734, Start Num: 33

Candidate Starts for Pumpkiney_88:

(7, 57261), (8, 57270), (10, 57282), (Start: 33 @57465 has 9 MA's), (53, 57534), (62, 57612),

Gene: Pupper_76 Start: 28500, Stop: 28886, Start Num: 19

Candidate Starts for Pupper_76:

(Start: 19 @28500 has 3 MA's), (42, 28584), (55, 28653), (64, 28731), (68, 28764), (70, 28782), (76, 28851),

Gene: Quhwah_70 Start: 42015, Stop: 42308, Start Num: 32

Candidate Starts for Quhwah_70:

(Start: 32 @42015 has 56 MA's), (56, 42093), (63, 42156), (65, 42171), (66, 42174),

Gene: Ramiel05_65 Start: 41388, Stop: 41687, Start Num: 32

Candidate Starts for Ramiel05_65:

(Start: 32 @41388 has 56 MA's), (45, 41418), (63, 41535), (65, 41550), (66, 41553),

Gene: RiverRaider_86 Start: 55943, Stop: 56194, Start Num: 36

Candidate Starts for RiverRaider_86:

(23, 55889), (Start: 36 @55943 has 37 MA's), (44, 55964), (53, 56006), (60, 56072), (62, 56084),

Gene: RobsFeet_70 Start: 42943, Stop: 43236, Start Num: 32

Candidate Starts for RobsFeet_70:

(Start: 32 @42943 has 56 MA's), (56, 43021), (63, 43084), (66, 43102),

Gene: Rockwell_65 Start: 41418, Stop: 41717, Start Num: 32
Candidate Starts for Rockwell_65:
(Start: 32 @41418 has 56 MA's), (45, 41448), (63, 41565), (65, 41580), (66, 41583),

Gene: Rofo_84 Start: 57573, Stop: 57836, Start Num: 36
Candidate Starts for Rofo_84:
(23, 57522), (Start: 36 @57573 has 37 MA's), (53, 57636), (62, 57717),

Gene: SCentae_75 Start: 28255, Stop: 28641, Start Num: 19
Candidate Starts for SCentae_75:
(Start: 19 @28255 has 3 MA's), (42, 28339), (55, 28408), (64, 28486), (68, 28519), (70, 28537), (76, 28606),

Gene: Sampson_90 Start: 59024, Stop: 59296, Start Num: 33
Candidate Starts for Sampson_90:
(7, 58823), (8, 58832), (10, 58844), (12, 58850), (Start: 33 @59024 has 9 MA's), (53, 59093), (62, 59171),

Gene: Sanjuju_82 Start: 57928, Stop: 58191, Start Num: 36
Candidate Starts for Sanjuju_82:
(Start: 27 @57895 has 38 MA's), (Start: 36 @57928 has 37 MA's), (53, 57991), (62, 58072),

Gene: Savannah_65 Start: 41445, Stop: 41738, Start Num: 32
Candidate Starts for Savannah_65:
(Start: 32 @41445 has 56 MA's), (56, 41523), (63, 41586), (65, 41601), (66, 41604),

Gene: Scioto_89 Start: 58874, Stop: 59146, Start Num: 33
Candidate Starts for Scioto_89:
(7, 58673), (8, 58682), (10, 58694), (12, 58700), (Start: 33 @58874 has 9 MA's), (53, 58943), (62, 59021),

Gene: ScoobySnack_49 Start: 32220, Stop: 32489, Start Num: 35
Candidate Starts for ScoobySnack_49:
(1, 31728), (2, 31755), (4, 31890), (13, 32076), (Start: 32 @32211 has 56 MA's), (Start: 35 @32220 has 2 MA's), (52, 32280), (56, 32304), (57, 32310),

Gene: Scumberland_68 Start: 41640, Stop: 41933, Start Num: 32
Candidate Starts for Scumberland_68:
(Start: 32 @41640 has 56 MA's), (46, 41667), (56, 41718), (63, 41781), (65, 41796), (66, 41799),

Gene: Sedona_82 Start: 58425, Stop: 58688, Start Num: 36
Candidate Starts for Sedona_82:
(Start: 27 @58392 has 38 MA's), (Start: 36 @58425 has 37 MA's), (53, 58488), (62, 58569),

Gene: Selwyn23_67 Start: 41557, Stop: 41850, Start Num: 32
Candidate Starts for Selwyn23_67:
(26, 41533), (Start: 32 @41557 has 56 MA's), (56, 41635), (63, 41698), (65, 41713), (66, 41716),

Gene: Shade_72 Start: 46747, Stop: 46415, Start Num: 27
Candidate Starts for Shade_72:
(Start: 27 @46747 has 38 MA's), (Start: 39 @46726 has 2 MA's), (53, 46678),

Gene: Shivanishola_86 Start: 56589, Stop: 56852, Start Num: 36

Candidate Starts for Shivanishola_86:

(Start: 27 @56556 has 38 MA's), (Start: 36 @56589 has 37 MA's), (53, 56652), (62, 56733),

Gene: Shotgun_66 Start: 41324, Stop: 41617, Start Num: 32

Candidate Starts for Shotgun_66:

(26, 41300), (Start: 32 @41324 has 56 MA's), (56, 41402), (63, 41465), (65, 41480), (66, 41483),

Gene: Shrubaron_70 Start: 42538, Stop: 42831, Start Num: 32

Candidate Starts for Shrubaron_70:

(Start: 32 @42538 has 56 MA's), (56, 42616), (63, 42679), (66, 42697),

Gene: Sicarius2_74 Start: 44932, Stop: 44645, Start Num: 27

Candidate Starts for Sicarius2_74:

(Start: 27 @44932 has 38 MA's), (49, 44884), (53, 44860), (80, 44653),

Gene: SirFrank_66 Start: 41608, Stop: 41901, Start Num: 32

Candidate Starts for SirFrank_66:

(Start: 32 @41608 has 56 MA's), (46, 41635), (56, 41686), (63, 41749), (66, 41767),

Gene: Sitar_83 Start: 58447, Stop: 58710, Start Num: 36

Candidate Starts for Sitar_83:

(Start: 27 @58414 has 38 MA's), (Start: 36 @58447 has 37 MA's), (53, 58510), (62, 58591),

Gene: Skog_138 Start: 57413, Stop: 57799, Start Num: 19

Candidate Starts for Skog_138:

(15, 57380), (Start: 19 @57413 has 3 MA's), (22, 57425), (24, 57440), (26, 57443), (37, 57482), (68, 57677), (76, 57764), (79, 57773),

Gene: Skugga_66 Start: 41866, Stop: 42165, Start Num: 32

Candidate Starts for Skugga_66:

(Start: 32 @41866 has 56 MA's), (56, 41950), (63, 42013), (65, 42028), (66, 42031),

Gene: Smarties_76 Start: 43251, Stop: 43544, Start Num: 32

Candidate Starts for Smarties_76:

(Start: 32 @43251 has 56 MA's), (56, 43329), (63, 43392), (66, 43410),

Gene: Sonali_93 Start: 57959, Stop: 57690, Start Num: 29

Candidate Starts for Sonali_93:

(Start: 29 @57959 has 2 MA's), (31, 57953), (34, 57947), (40, 57935), (47, 57920), (48, 57917), (54, 57884), (56, 57869),

Gene: Sonny_72 Start: 46702, Stop: 46370, Start Num: 27

Candidate Starts for Sonny_72:

(Start: 27 @46702 has 38 MA's), (Start: 39 @46681 has 2 MA's), (53, 46633),

Gene: StevieBAY_73 Start: 46953, Stop: 46624, Start Num: 27

Candidate Starts for StevieBAY_73:

(Start: 27 @46953 has 38 MA's),

Gene: Stultus_79 Start: 56719, Stop: 56982, Start Num: 36

Candidate Starts for Stultus_79:

(Start: 27 @56686 has 38 MA's), (Start: 36 @56719 has 37 MA's), (53, 56782), (62, 56863),

Gene: Sunny_ Start: 43566, Stop: 43856, Start Num: 32
Candidate Starts for Sunny_:
(20, 43518), (Start: 32 @43566 has 56 MA's), (56, 43650), (63, 43713),

Gene: Sunshine23_95 Start: 57525, Stop: 57268, Start Num: 48
Candidate Starts for Sunshine23_95:
(Start: 29 @57567 has 2 MA's), (31, 57561), (34, 57555), (40, 57543), (47, 57528), (48, 57525), (54, 57492), (56, 57477),

Gene: TaeYoung_73 Start: 46899, Stop: 46567, Start Num: 27
Candidate Starts for TaeYoung_73:
(Start: 27 @46899 has 38 MA's), (Start: 39 @46878 has 2 MA's), (53, 46830), (76, 46635),

Gene: Tangent_87 Start: 57279, Stop: 57545, Start Num: 36
Candidate Starts for Tangent_87:
(Start: 27 @57246 has 38 MA's), (Start: 36 @57279 has 37 MA's), (53, 57342), (62, 57423), (73, 57525),

Gene: Tardus_90 Start: 59420, Stop: 59689, Start Num: 33
Candidate Starts for Tardus_90:
(Start: 33 @59420 has 9 MA's), (53, 59489), (62, 59567),

Gene: Teamocil_70 Start: 41573, Stop: 41866, Start Num: 32
Candidate Starts for Teamocil_70:
(14, 41480), (Start: 32 @41573 has 56 MA's), (56, 41651), (63, 41714), (66, 41732),

Gene: Thing3_85 Start: 58100, Stop: 58363, Start Num: 36
Candidate Starts for Thing3_85:
(23, 58049), (Start: 36 @58100 has 37 MA's), (53, 58163), (62, 58244),

Gene: Timinator_73 Start: 46773, Stop: 46444, Start Num: 27
Candidate Starts for Timinator_73:
(Start: 27 @46773 has 38 MA's),

Gene: Tyrumbra_65 Start: 42225, Stop: 42518, Start Num: 32
Candidate Starts for Tyrumbra_65:
(Start: 32 @42225 has 56 MA's), (56, 42303), (63, 42366), (66, 42384),

Gene: Verity_87 Start: 60121, Stop: 60393, Start Num: 33
Candidate Starts for Verity_87:
(23, 60076), (Start: 33 @60121 has 9 MA's), (41, 60139), (53, 60190), (62, 60268), (69, 60316),

Gene: Vibaki_78 Start: 47924, Stop: 47616, Start Num: 27
Candidate Starts for Vibaki_78:
(Start: 27 @47924 has 38 MA's), (60, 47783), (65, 47753), (77, 47654), (81, 47639),

Gene: Violeta_54 Start: 32507, Stop: 32782, Start Num: 32
Candidate Starts for Violeta_54:
(13, 32372), (Start: 32 @32507 has 56 MA's), (Start: 35 @32516 has 2 MA's), (52, 32573), (56, 32597), (57, 32603), (67, 32696),

Gene: Vitus_81 Start: 47279, Stop: 46962, Start Num: 27
Candidate Starts for Vitus_81:

(16, 47342), (18, 47330), (Start: 27 @47279 has 38 MA's), (60, 47132), (74, 47024),

Gene: Vivi2_88 Start: 58335, Stop: 58601, Start Num: 36

Candidate Starts for Vivi2_88:

(Start: 27 @58302 has 38 MA's), (Start: 36 @58335 has 37 MA's), (53, 58398), (62, 58479), (73, 58581),

Gene: Warren_52 Start: 32462, Stop: 32737, Start Num: 32

Candidate Starts for Warren_52:

(Start: 32 @32462 has 56 MA's), (Start: 35 @32471 has 2 MA's), (52, 32528), (56, 32552), (57, 32558), (67, 32651),

Gene: Winchester007_68 Start: 38187, Stop: 38462, Start Num: 32

Candidate Starts for Winchester007_68:

(3, 37791), (4, 37866), (13, 38052), (Start: 32 @38187 has 56 MA's), (Start: 35 @38196 has 2 MA's), (52, 38253), (56, 38277), (57, 38283), (67, 38376),

Gene: Wyborn_73 Start: 45667, Stop: 45380, Start Num: 27

Candidate Starts for Wyborn_73:

(Start: 27 @45667 has 38 MA's), (49, 45619), (53, 45595), (80, 45388),

Gene: Yeti_68 Start: 41362, Stop: 41655, Start Num: 32

Candidate Starts for Yeti_68:

(Start: 32 @41362 has 56 MA's), (56, 41440), (63, 41503), (65, 41518), (66, 41521),

Gene: Zapato_66 Start: 42216, Stop: 42509, Start Num: 32

Candidate Starts for Zapato_66:

(Start: 32 @42216 has 56 MA's), (56, 42294), (63, 42357),

Gene: Zartrosa_74 Start: 46999, Stop: 46667, Start Num: 27

Candidate Starts for Zartrosa_74:

(Start: 27 @46999 has 38 MA's), (Start: 39 @46978 has 2 MA's), (53, 46930),

Gene: Zipp_88 Start: 60092, Stop: 60364, Start Num: 33

Candidate Starts for Zipp_88:

(23, 60047), (Start: 33 @60092 has 9 MA's), (41, 60110), (53, 60161), (62, 60239), (69, 60287),