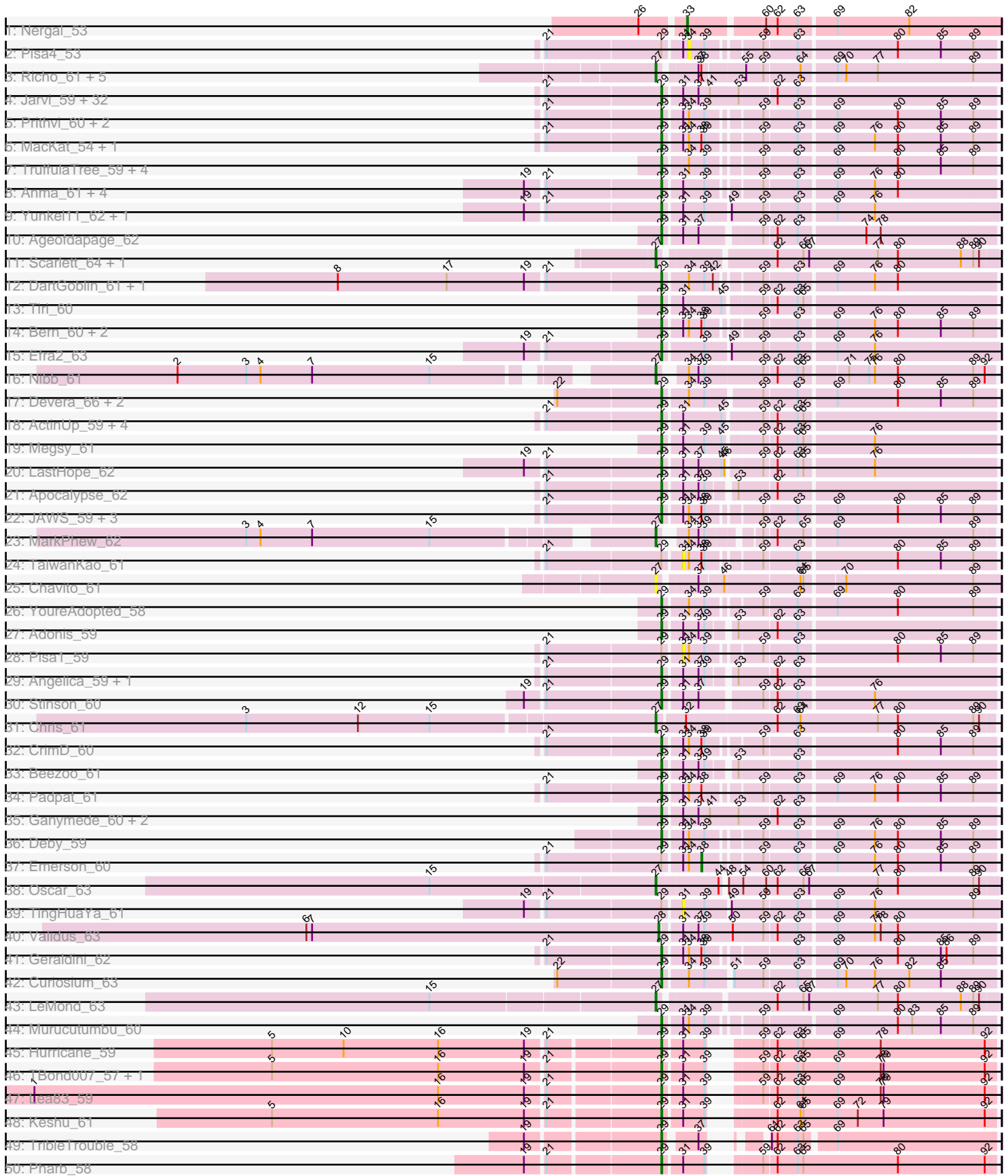
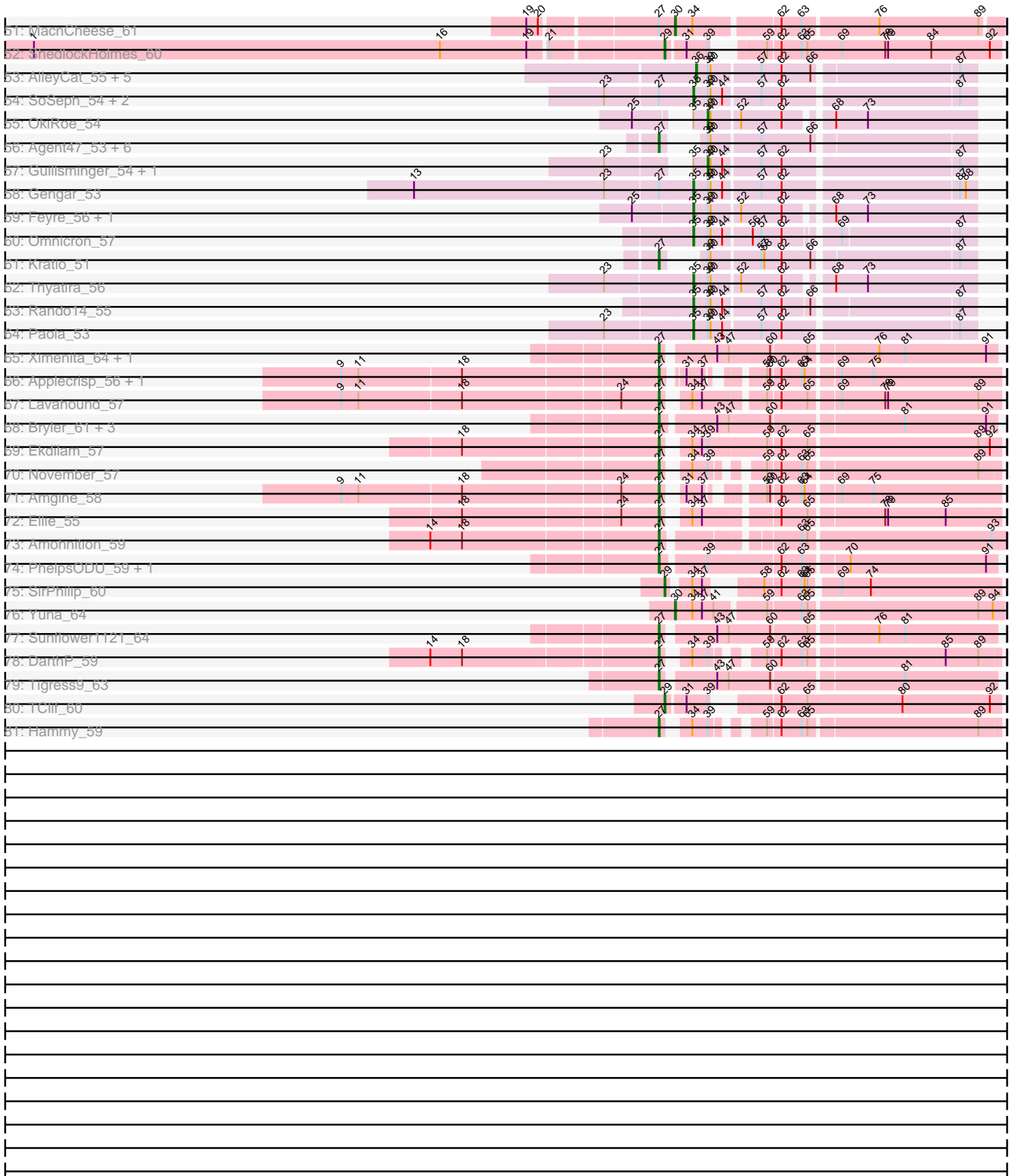


Pham 311290



Pham 311290



Note: Tracks are now grouped by subcluster and scaled. Switching in subcluster is indicated by changes in track color. Track scale is now set by default to display the region 30 bp upstream of start 1 to 30 bp downstream of the last possible start. If this default region is judged to be packed too tightly with annotated starts, the track will be further scaled to only show that region of the ORF with annotated starts. This action will be indicated by adding "Zoomed" to the title. For starts, yellow indicates the location of called starts comprised solely of Glimmer/GeneMark auto-annotations, green indicates the location of called starts with at least 1 manual gene annotation.

## Pham 311290 Report

This analysis was run 06/27/26 on database version 652.

Pham number 311290 has 168 members, 11 are drafts.

Phages represented in each track:

- Track 1 : Nergal\_53
- Track 2 : Pisa4\_53
- Track 3 : Richo\_61, Dartin\_61, Niklas\_61, Shaobing\_61, McMater\_61, Peanam\_61
- Track 4 : Jarvi\_59, Peel\_59, CREW\_59, Topper\_59, Boiii\_59, BGIlluviae\_59, Dalmuri\_59, Asayake\_59, Hyperbowlee\_59, Jeckyll\_59, AlishaPH\_59, Atiba\_60, CaseJules\_61, BEEST\_59, Inky\_59, Joy99\_59, Capricorn\_59, Lunahalos\_59, Blizzard\_59, Padfoot\_59, CallaLilly\_59, Belladonna\_59, Homura\_59, Tachez\_59, Spock\_59, Durfee\_59, Twitch\_59, Adephagia\_59, ShiaSurprise\_60, Llorens\_59, Piatt\_59, Anaya\_61, Rosmarinus\_59
- Track 5 : Prithvi\_60, LindNT\_58, TreyKay\_60
- Track 6 : MacKat\_54, Clipper\_62
- Track 7 : TruffulaTree\_59, Slimphazie\_59, Pokerus\_58, BarrelRoll\_59, Rapunzel97\_60
- Track 8 : Anma\_61, DrHayes\_60, TiniBug\_60, Urkel\_60, SamuelLPlaqson\_60
- Track 9 : Yunkel11\_62, Guanica15\_62
- Track 10 : Ageofdapage\_62
- Track 11 : Scarlett\_64, KiSi\_64
- Track 12 : DartGoblin\_61, Bella96\_60
- Track 13 : Tiri\_60
- Track 14 : Bern\_60, BaghaKamala\_58, CheetoDust\_58
- Track 15 : Efra2\_63
- Track 16 : Nibb\_61
- Track 17 : Devera\_66, Dole\_64, Illumine\_64
- Track 18 : ActinUp\_59, HedwigODU\_59, Ramen\_60, Jayhawk\_60, Zabiza\_54
- Track 19 : Megsy\_61
- Track 20 : LastHope\_62
- Track 21 : Apocalypse\_62
- Track 22 : JAWS\_59, Veliki\_60, Mynx\_60, Zavala\_61
- Track 23 : MarkPhew\_62
- Track 24 : TaiwanKao\_61
- Track 25 : Chavito\_61
- Track 26 : YoureAdopted\_58
- Track 27 : Adonis\_59
- Track 28 : Pisa1\_59
- Track 29 : Angelica\_59, MeaningOfLife\_60
- Track 30 : Stinson\_60
- Track 31 : Chris\_61

- Track 32 : CrimD\_60
- Track 33 : Beezoo\_61
- Track 34 : Padpat\_61
- Track 35 : Ganymede\_60, QuincyRose\_58, Sulley\_59
- Track 36 : Deby\_59
- Track 37 : Emerson\_60
- Track 38 : Oscar\_63
- Track 39 : TingHuaYa\_61
- Track 40 : Validus\_63
- Track 41 : Geraldini\_62
- Track 42 : Curiosium\_63
- Track 43 : LeMond\_63
- Track 44 : Murucutumbu\_60
- Track 45 : Hurricane\_59
- Track 46 : TBond007\_57, Pixie\_58
- Track 47 : Lea83\_59
- Track 48 : Keshu\_61
- Track 49 : TribbleTrouble\_58
- Track 50 : Pharb\_58
- Track 51 : MacnCheese\_61
- Track 52 : ShedlockHolmes\_60
- Track 53 : AlleyCat\_55, Larva\_54, Edugator\_52, Neighly\_55, Dadosky\_55, Psycho\_53
- Track 54 : SoSeph\_54, Heftyboy\_54, Waterfoul\_55
- Track 55 : OkiRoe\_54
- Track 56 : Agent47\_53, BananenDer11\_53, LiIDirt\_52, Collard\_51, InvictusManeo\_51, ViviJ\_52, DoubleChamp\_50
- Track 57 : Guillsminger\_54, Leston\_53
- Track 58 : Gengar\_53
- Track 59 : Feyre\_56, Miryou\_57
- Track 60 : Omnicron\_57
- Track 61 : Kratio\_51
- Track 62 : Thyatira\_56
- Track 63 : Rando14\_55
- Track 64 : Paola\_53
- Track 65 : Ximenita\_64, Shadow1\_63
- Track 66 : Applecrisp\_56, Fefferhead\_57
- Track 67 : Lavahound\_57
- Track 68 : Bryler\_61, Tierra\_61, Cain\_61, Phrank\_61
- Track 69 : Ekdilam\_57
- Track 70 : November\_57
- Track 71 : Amgine\_58
- Track 72 : Ellie\_55
- Track 73 : Amohnition\_59
- Track 74 : PhelpsODU\_59, Unicorn\_59
- Track 75 : SirPhilip\_60
- Track 76 : Yuna\_64
- Track 77 : Sunflower1121\_64
- Track 78 : DARTH\_P\_59
- Track 79 : Tigress9\_63
- Track 80 : TClif\_60
- Track 81 : Hammy\_59

### **Summary of Final Annotations (See graph section above for start numbers):**

The start number called the most often in the published annotations is 29, it was called in 97 of the 157 non-draft genes in the pham.

Genes that call this "Most Annotated" start:

- ActinUp\_59, Adephegia\_59, Adonis\_59, Ageofdapage\_62, AlishaPH\_59, Anaya\_61, Angelica\_59, Anma\_61, Apocalypse\_62, Asayake\_59, Atiba\_60, BEEST\_59, BGIlluviae\_59, BaghaKamala\_58, BarrelRoll\_59, Beezoo\_61, Bella96\_60, Belladonna\_59, Bern\_60, Blizzard\_59, Boiiii\_59, CREW\_59, CallaLilly\_59, Capricorn\_59, CaseJules\_61, CheetoDust\_58, Clipper\_62, CrimD\_60, Curiosium\_63, Dalmuri\_59, DartGoblin\_61, Deby\_59, Devera\_66, Dole\_64, DrHayes\_60, Durfee\_59, Efra2\_63, Ganymede\_60, Geraldini\_62, Guanica15\_62, HedwigODU\_59, Homura\_59, Hurricane\_59, Hyperbowlee\_59, Illumine\_64, Inky\_59, JAWS\_59, Jarvi\_59, Jayhawk\_60, Jeckyll\_59, Joy99\_59, Keshu\_61, LastHope\_62, Lea83\_59, LindNT\_58, Llorens\_59, Lunahalos\_59, MacKat\_54, MeaningOfLife\_60, Megsy\_61, Murucutumbu\_60, Mynx\_60, Padfoot\_59, Padpat\_61, Peel\_59, Pharb\_58, Piatt\_59, Pixie\_58, Pokerus\_58, Prithvi\_60, QuincyRose\_58, Ramen\_60, Rapunzel97\_60, Rosmarinus\_59, SamuelLPlaqson\_60, ShedlockHolmes\_60, ShiaSurprise\_60, SirPhilip\_60, Slimphazie\_59, Spock\_59, Stinson\_60, Sulley\_59, TBond007\_57, TClif\_60, Tachez\_59, TiniBug\_60, Tiri\_60, Topper\_59, TreyKay\_60, TribbleTrouble\_58, TruffulaTree\_59, Twitch\_59, Urkel\_60, Veliki\_60, YoureAdopted\_58, Yunkel11\_62, Zabiza\_54, Zavala\_61,

Genes that have the "Most Annotated" start but do not call it:

- Emerson\_60, Pisa1\_59, Pisa4\_53, TaiwanKao\_61, TingHuaYa\_61,

Genes that do not have the "Most Annotated" start:

- Agent47\_53, AlleyCat\_55, Amgine\_58, Amohnition\_59, Applecrisp\_56, BananenDer11\_53, Bryler\_61, Cain\_61, Chavito\_61, Chris\_61, Collard\_51, Dadosky\_55, DarthP\_59, Dartin\_61, DoubleChamp\_50, Edugator\_52, Ekdilam\_57, Ellie\_55, Fefferhead\_57, Feyre\_56, Gengar\_53, Guillsminger\_54, Hammy\_59, Heftyboy\_54, InvictusManeo\_51, KiSi\_64, Kratio\_51, Larva\_54, Lavahound\_57, LeMond\_63, Leston\_53, LilDirt\_52, MacnCheese\_61, MarkPhew\_62, McMater\_61, Miryou\_57, Neighly\_55, Nergal\_53, Nibb\_61, Niklas\_61, November\_57, OkiRoe\_54, Omnicron\_57, Oscar\_63, Paola\_53, Peanam\_61, PhelpsODU\_59, Phrank\_61, Psycho\_53, Rando14\_55, Richo\_61, Scarlett\_64, Shadow1\_63, Shaobing\_61, SoSeph\_54, Sunflower1121\_64, Thyatira\_56, Tierra\_61, Tigress9\_63, Unicorn\_59, Validus\_63, ViviJ\_52, Waterfoul\_55, Ximenita\_64, Yuna\_64,

### **Summary by start number:**

Start 27:

- Found in 47 of 168 ( 28.0% ) of genes in pham
- Manual Annotations of this start: 37 of 157
- Called 89.4% of time when present
- Phage (with cluster) where this start called: Agent47\_53 (K5), Amgine\_58 (K6), Amohnition\_59 (K6), Applecrisp\_56 (K6), BananenDer11\_53 (K5), Bryler\_61 (K6), Cain\_61 (K6), Chavito\_61 (K1), Chris\_61 (K1), Collard\_51 (K5), DarthP\_59 (K6), Dartin\_61 (K1), DoubleChamp\_50 (K5), Ekdilam\_57 (K6), Ellie\_55 (K6),

Fefferhead\_57 (K6), Hammy\_59 (K6), InvictusManeo\_51 (K5), KiSi\_64 (K1), Kratio\_51 (K5), Lavahound\_57 (K6), LeMond\_63 (K1), LilDirt\_52 (K5), MarkPhew\_62 (K1), McMater\_61 (K1), Nibb\_61 (K1), Niklas\_61 (K1), November\_57 (K6), Oscar\_63 (K1), Peanam\_61 (K1), PhelpsODU\_59 (K6), Phrank\_61 (K6), Richo\_61 (K1), Scarlett\_64 (K1), Shadow1\_63 (K6), Shaobing\_61 (K1), Sunflower1121\_64 (K6), Tierra\_61 (K6), Tigress9\_63 (K6), Unicorn\_59 (K6), ViviJ\_52 (K5), Ximenita\_64 (K6),

#### Start 28:

- Found in 1 of 168 ( 0.6% ) of genes in pham
- Manual Annotations of this start: 1 of 157
- Called 100.0% of time when present
- Phage (with cluster) where this start called: Validus\_63 (K1),

#### Start 29:

- Found in 103 of 168 ( 61.3% ) of genes in pham
- Manual Annotations of this start: 97 of 157
- Called 95.1% of time when present
- Phage (with cluster) where this start called: ActinUp\_59 (K1), Adephagia\_59 (K1), Adonis\_59 (K1), Ageofdapage\_62 (K1), AlishaPH\_59 (K1), Anaya\_61 (K1), Angelica\_59 (K1), Anma\_61 (K1), Apocalypse\_62 (K1), Asayake\_59 (K1), Atiba\_60 (K1), BEEST\_59 (K1), BGlluviae\_59 (K1), BaghaKamala\_58 (K1), BarrelRoll\_59 (K1), Beezoo\_61 (K1), Bella96\_60 (K1), Belladonna\_59 (K1), Bern\_60 (K1), Blizzard\_59 (K1), Boiiii\_59 (K1), CREW\_59 (K1), CallaLilly\_59 (K1), Capricorn\_59 (K1), CaseJules\_61 (K1), CheetoDust\_58 (K1), Clipper\_62 (K1), CrimD\_60 (K1), Curiosium\_63 (K1), Dalmuri\_59 (K1), DartGoblin\_61 (K1), Deby\_59 (K1), Devera\_66 (K1), Dole\_64 (K1), DrHayes\_60 (K1), Durfee\_59 (K1), Efra2\_63 (K1), Ganymede\_60 (K1), Geraldini\_62 (K1), Guanica15\_62 (K1), HedwigODU\_59 (K1), Homura\_59 (K1), Hurricane\_59 (K3), Hyperbowlee\_59 (K1), Illumine\_64 (K1), Inky\_59 (K1), JAWS\_59 (K1), Jarvi\_59 (K1), Jayhawk\_60 (K1), Jeckyll\_59 (K1), Joy99\_59 (K1), Keshu\_61 (K3), LastHope\_62 (K1), Lea83\_59 (K3), LindNT\_58 (K1), Llorens\_59 (K1), Lunahalos\_59 (K1), MacKat\_54 (K1), MeaningOfLife\_60 (K1), Megsy\_61 (K1), Murucutumbu\_60 (K1), Mynx\_60 (K1), Padfoot\_59 (K1), Padpat\_61 (K1), Peel\_59 (K1), Pharb\_58 (K3), Piatt\_59 (K1), Pixie\_58 (K3), Pokerus\_58 (K1), Prithvi\_60 (K1), QuincyRose\_58 (K1), Ramen\_60 (K1), Rapunzel97\_60 (K1), Rosmarinus\_59 (K1), SamuelLPlaqson\_60 (K1), ShedlockHolmes\_60 (K3), ShiaSurprise\_60 (K1), SirPhilip\_60 (K6), Slimphazie\_59 (K1), Spock\_59 (K1), Stinson\_60 (K1), Sulley\_59 (K1), TBond007\_57 (K3), TClif\_60 (K6), Tachez\_59 (K1), TiniBug\_60 (K1), Tiri\_60 (K1), Topper\_59 (K1), TreyKay\_60 (K1), TripleTrouble\_58 (K3), TruffulaTree\_59 (K1), Twitch\_59 (K1), Urkel\_60 (K1), Veliki\_60 (K1), YoureAdopted\_58 (K1), Yunkel11\_62 (K1), Zabiza\_54 (K1), Zavala\_61 (K1),

#### Start 30:

- Found in 2 of 168 ( 1.2% ) of genes in pham
- Manual Annotations of this start: 2 of 157
- Called 100.0% of time when present
- Phage (with cluster) where this start called: MacnCheese\_61 (K3), Yuna\_64 (K6),

#### Start 31:

- Found in 92 of 168 ( 54.8% ) of genes in pham
- No Manual Annotations of this start.
- Called 3.3% of time when present
- Phage (with cluster) where this start called: Pisa1\_59 (K1), TaiwanKao\_61 (K1), TingHuaYa\_61 (K1),

Start 33:

- Found in 1 of 168 ( 0.6% ) of genes in pham
- Manual Annotations of this start: 1 of 157
- Called 100.0% of time when present
- Phage (with cluster) where this start called: Nergal\_53 (AG),

Start 34:

- Found in 44 of 168 ( 26.2% ) of genes in pham
- No Manual Annotations of this start.
- Called 2.3% of time when present
- Phage (with cluster) where this start called: Pisa4\_53 (K1),

Start 35:

- Found in 13 of 168 ( 7.7% ) of genes in pham
- Manual Annotations of this start: 10 of 157
- Called 76.9% of time when present
- Phage (with cluster) where this start called: Feyre\_56 (K5), Gengar\_53 (K5), Heftyboy\_54 (K5), Miryou\_57 (K5), Omnicron\_57 (K5), Paola\_53 (K5), Rando14\_55 (K5), SoSeph\_54 (K5), Thyatira\_56 (K5), Waterfoul\_55 (K5),

Start 36:

- Found in 6 of 168 ( 3.6% ) of genes in pham
- Manual Annotations of this start: 5 of 157
- Called 100.0% of time when present
- Phage (with cluster) where this start called: AlleyCat\_55 (K5), Dadosky\_55 (K5), Edugator\_52 (K5), Larva\_54 (K5), Neighly\_55 (K3), Psycho\_53 (K5),

Start 38:

- Found in 20 of 168 ( 11.9% ) of genes in pham
- Manual Annotations of this start: 1 of 157
- Called 5.0% of time when present
- Phage (with cluster) where this start called: Emerson\_60 (K1),

Start 39:

- Found in 90 of 168 ( 53.6% ) of genes in pham
- Manual Annotations of this start: 3 of 157
- Called 3.3% of time when present
- Phage (with cluster) where this start called: Guillsminger\_54 (K5), Leston\_53 (K5), OkiRoe\_54 (K5),

**Summary by clusters:**

There are 5 clusters represented in this pham: K3, K1, AG, K6, K5,

Info for manual annotations of cluster AG:

- Start number 33 was manually annotated 1 time for cluster AG.

Info for manual annotations of cluster K1:

- Start number 27 was manually annotated 10 times for cluster K1.
- Start number 28 was manually annotated 1 time for cluster K1.
- Start number 29 was manually annotated 87 times for cluster K1.
- Start number 38 was manually annotated 1 time for cluster K1.

Info for manual annotations of cluster K3:

- Start number 29 was manually annotated 8 times for cluster K3.
- Start number 30 was manually annotated 1 time for cluster K3.

Info for manual annotations of cluster K5:

- Start number 27 was manually annotated 7 times for cluster K5.
- Start number 35 was manually annotated 10 times for cluster K5.
- Start number 36 was manually annotated 5 times for cluster K5.
- Start number 39 was manually annotated 3 times for cluster K5.

Info for manual annotations of cluster K6:

- Start number 27 was manually annotated 20 times for cluster K6.
- Start number 29 was manually annotated 2 times for cluster K6.
- Start number 30 was manually annotated 1 time for cluster K6.

### ***Gene Information:***

Gene: ActinUp\_59 Start: 40802, Stop: 41128, Start Num: 29

Candidate Starts for ActinUp\_59:

(21, 40685), (Start: 29 @40802 has 97 MA's), (31, 40820), (45, 40859), (59, 40895), (62, 40907), (63, 40928), (65, 40934),

Gene: Adephagia\_59 Start: 40803, Stop: 41135, Start Num: 29

Candidate Starts for Adephagia\_59:

(21, 40686), (Start: 29 @40803 has 97 MA's), (31, 40821), (37, 40836), (41, 40848), (53, 40878), (62, 40914), (63, 40935),

Gene: Adonis\_59 Start: 41050, Stop: 41370, Start Num: 29

Candidate Starts for Adonis\_59:

(Start: 29 @41050 has 97 MA's), (31, 41068), (37, 41083), (Start: 39 @41089 has 3 MA's), (53, 41113), (62, 41149), (63, 41170),

Gene: Agent47\_53 Start: 38092, Stop: 38367, Start Num: 27

Candidate Starts for Agent47\_53:

(Start: 27 @38092 has 37 MA's), (Start: 39 @38107 has 3 MA's), (40, 38110), (57, 38158), (66, 38209),

Gene: Ageofdapage\_62 Start: 41791, Stop: 42111, Start Num: 29

Candidate Starts for Ageofdapage\_62:

(Start: 29 @41791 has 97 MA's), (31, 41809), (37, 41824), (59, 41878), (62, 41890), (63, 41911), (74, 41977), (78, 41992),

Gene: AlishaPH\_59 Start: 41064, Stop: 41396, Start Num: 29

Candidate Starts for AlishaPH\_59:

(21, 40947), (Start: 29 @41064 has 97 MA's), (31, 41082), (37, 41097), (41, 41109), (53, 41139), (62, 41175), (63, 41196),

Gene: AlleyCat\_55 Start: 38399, Stop: 38671, Start Num: 36

Candidate Starts for AlleyCat\_55:

(Start: 36 @38399 has 5 MA's), (Start: 39 @38411 has 3 MA's), (40, 38414), (57, 38462), (62, 38483), (66, 38513), (87, 38654),

Gene: Amgine\_58 Start: 41663, Stop: 41959, Start Num: 27

Candidate Starts for Amgine\_58:

(9, 41345), (11, 41363), (18, 41468), (24, 41624), (Start: 27 @41663 has 37 MA's), (31, 41675), (37, 41690), (59, 41729), (60, 41732), (62, 41741), (63, 41762), (64, 41765), (69, 41795), (75, 41828),

Gene: Amohnition\_59 Start: 41255, Stop: 41578, Start Num: 27

Candidate Starts for Amohnition\_59:

(14, 41027), (18, 41060), (Start: 27 @41255 has 37 MA's), (63, 41372), (65, 41378), (93, 41564),

Gene: Anaya\_61 Start: 41319, Stop: 41651, Start Num: 29

Candidate Starts for Anaya\_61:

(21, 41202), (Start: 29 @41319 has 97 MA's), (31, 41337), (37, 41352), (41, 41364), (53, 41394), (62, 41430), (63, 41451),

Gene: Angelica\_59 Start: 40958, Stop: 41278, Start Num: 29

Candidate Starts for Angelica\_59:

(21, 40841), (Start: 29 @40958 has 97 MA's), (31, 40976), (37, 40991), (Start: 39 @40997 has 3 MA's), (53, 41021), (62, 41057), (63, 41078),

Gene: Anma\_61 Start: 41702, Stop: 42022, Start Num: 29

Candidate Starts for Anma\_61:

(19, 41567), (21, 41585), (Start: 29 @41702 has 97 MA's), (31, 41720), (Start: 39 @41741 has 3 MA's), (59, 41789), (63, 41822), (69, 41858), (76, 41897), (80, 41921),

Gene: Apocalypse\_62 Start: 41727, Stop: 42047, Start Num: 29

Candidate Starts for Apocalypse\_62:

(21, 41610), (Start: 29 @41727 has 97 MA's), (31, 41745), (37, 41760), (Start: 39 @41766 has 3 MA's), (53, 41790), (62, 41826),

Gene: Applecrisp\_56 Start: 40800, Stop: 41099, Start Num: 27

Candidate Starts for Applecrisp\_56:

(9, 40482), (11, 40500), (18, 40605), (Start: 27 @40800 has 37 MA's), (31, 40815), (37, 40830), (59, 40869), (60, 40872), (62, 40881), (63, 40902), (64, 40905), (69, 40935), (75, 40968),

Gene: Asayake\_59 Start: 41118, Stop: 41450, Start Num: 29

Candidate Starts for Asayake\_59:

(21, 41001), (Start: 29 @41118 has 97 MA's), (31, 41136), (37, 41151), (41, 41163), (53, 41193), (62, 41229), (63, 41250),

Gene: Atiba\_60 Start: 40766, Stop: 41098, Start Num: 29

Candidate Starts for Atiba\_60:

(21, 40649), (Start: 29 @40766 has 97 MA's), (31, 40784), (37, 40799), (41, 40811), (53, 40841), (62, 40877), (63, 40898),

Gene: BEEST\_59 Start: 41118, Stop: 41450, Start Num: 29

Candidate Starts for BEEST\_59:

(21, 41001), (Start: 29 @41118 has 97 MA's), (31, 41136), (37, 41151), (41, 41163), (53, 41193), (62, 41229), (63, 41250),

Gene: BGlluviae\_59 Start: 40921, Stop: 41253, Start Num: 29

Candidate Starts for BGlluviae\_59:

(21, 40804), (Start: 29 @40921 has 97 MA's), (31, 40939), (37, 40954), (41, 40966), (53, 40996), (62, 41032), (63, 41053),

Gene: BaghaKamala\_58 Start: 40159, Stop: 40479, Start Num: 29

Candidate Starts for BaghaKamala\_58:

(Start: 29 @40159 has 97 MA's), (31, 40177), (34, 40183), (Start: 38 @40195 has 1 MA's), (Start: 39 @40198 has 3 MA's), (59, 40246), (63, 40279), (69, 40315), (76, 40354), (80, 40378), (85, 40423), (89, 40456),

Gene: BananenDer11\_53 Start: 38053, Stop: 38328, Start Num: 27

Candidate Starts for BananenDer11\_53:

(Start: 27 @38053 has 37 MA's), (Start: 39 @38068 has 3 MA's), (40, 38071), (57, 38119), (66, 38170),

Gene: BarrelRoll\_59 Start: 40782, Stop: 41102, Start Num: 29

Candidate Starts for BarrelRoll\_59:

(Start: 29 @40782 has 97 MA's), (34, 40806), (Start: 39 @40821 has 3 MA's), (59, 40869), (63, 40902), (69, 40938), (80, 41001), (85, 41046), (89, 41079),

Gene: Beezoo\_61 Start: 41766, Stop: 42086, Start Num: 29

Candidate Starts for Beezoo\_61:

(Start: 29 @41766 has 97 MA's), (31, 41784), (37, 41799), (Start: 39 @41805 has 3 MA's), (53, 41829), (63, 41886),

Gene: Bella96\_60 Start: 41547, Stop: 41867, Start Num: 29

Candidate Starts for Bella96\_60:

(8, 41217), (17, 41331), (19, 41412), (21, 41430), (Start: 29 @41547 has 97 MA's), (34, 41571), (Start: 39 @41586 has 3 MA's), (42, 41595), (59, 41634), (63, 41667), (69, 41703), (76, 41742), (80, 41766),

Gene: Belladonna\_59 Start: 40921, Stop: 41253, Start Num: 29

Candidate Starts for Belladonna\_59:

(21, 40804), (Start: 29 @40921 has 97 MA's), (31, 40939), (37, 40954), (41, 40966), (53, 40996), (62, 41032), (63, 41053),

Gene: Bern\_60 Start: 39749, Stop: 40069, Start Num: 29

Candidate Starts for Bern\_60:

(Start: 29 @39749 has 97 MA's), (31, 39767), (34, 39773), (Start: 38 @39785 has 1 MA's), (Start: 39 @39788 has 3 MA's), (59, 39836), (63, 39869), (69, 39905), (76, 39944), (80, 39968), (85, 40013), (89, 40046),

Gene: Blizzard\_59 Start: 41118, Stop: 41450, Start Num: 29

Candidate Starts for Blizzard\_59:

(21, 41001), (Start: 29 @41118 has 97 MA's), (31, 41136), (37, 41151), (41, 41163), (53, 41193), (62, 41229), (63, 41250),

Gene: Boiiii\_59 Start: 41120, Stop: 41452, Start Num: 29

Candidate Starts for Boiiii\_59:

(21, 41003), (Start: 29 @41120 has 97 MA's), (31, 41138), (37, 41153), (41, 41165), (53, 41195), (62, 41231), (63, 41252),

Gene: Bryler\_61 Start: 40039, Stop: 40365, Start Num: 27

Candidate Starts for Bryler\_61:

(Start: 27 @40039 has 37 MA's), (43, 40090), (47, 40102), (60, 40141), (81, 40270), (91, 40354),

Gene: CREW\_59 Start: 40921, Stop: 41253, Start Num: 29

Candidate Starts for CREW\_59:

(21, 40804), (Start: 29 @40921 has 97 MA's), (31, 40939), (37, 40954), (41, 40966), (53, 40996), (62, 41032), (63, 41053),

Gene: Cain\_61 Start: 40027, Stop: 40353, Start Num: 27

Candidate Starts for Cain\_61:

(Start: 27 @40027 has 37 MA's), (43, 40078), (47, 40090), (60, 40129), (81, 40258), (91, 40342),

Gene: CallaLilly\_59 Start: 40844, Stop: 41176, Start Num: 29

Candidate Starts for CallaLilly\_59:

(21, 40727), (Start: 29 @40844 has 97 MA's), (31, 40862), (37, 40877), (41, 40889), (53, 40919), (62, 40955), (63, 40976),

Gene: Capricorn\_59 Start: 40921, Stop: 41253, Start Num: 29

Candidate Starts for Capricorn\_59:

(21, 40804), (Start: 29 @40921 has 97 MA's), (31, 40939), (37, 40954), (41, 40966), (53, 40996), (62, 41032), (63, 41053),

Gene: CaseJules\_61 Start: 41118, Stop: 41450, Start Num: 29

Candidate Starts for CaseJules\_61:

(21, 41001), (Start: 29 @41118 has 97 MA's), (31, 41136), (37, 41151), (41, 41163), (53, 41193), (62, 41229), (63, 41250),

Gene: Chavito\_61 Start: 41689, Stop: 42021, Start Num: 27

Candidate Starts for Chavito\_61:

(Start: 27 @41689 has 37 MA's), (37, 41722), (46, 41746), (64, 41821), (65, 41824), (70, 41860), (89, 41992),

Gene: CheetoDust\_58 Start: 40203, Stop: 40523, Start Num: 29

Candidate Starts for CheetoDust\_58:

(Start: 29 @40203 has 97 MA's), (31, 40221), (34, 40227), (Start: 38 @40239 has 1 MA's), (Start: 39 @40242 has 3 MA's), (59, 40290), (63, 40323), (69, 40359), (76, 40398), (80, 40422), (85, 40467), (89, 40500),

Gene: Chris\_61 Start: 41524, Stop: 41868, Start Num: 27

Candidate Starts for Chris\_61:

(3, 41107), (12, 41224), (15, 41299), (Start: 27 @41524 has 37 MA's), (32, 41551), (62, 41644), (63, 41665), (64, 41668), (77, 41749), (80, 41770), (89, 41848), (90, 41854),

Gene: Clipper\_62 Start: 41381, Stop: 41701, Start Num: 29

Candidate Starts for Clipper\_62:

(21, 41264), (Start: 29 @41381 has 97 MA's), (31, 41399), (34, 41405), (Start: 38 @41417 has 1 MA's), (Start: 39 @41420 has 3 MA's), (59, 41468), (63, 41501), (69, 41537), (76, 41576), (80, 41600), (85, 41645), (89, 41678),

Gene: Collard\_51 Start: 38053, Stop: 38328, Start Num: 27

Candidate Starts for Collard\_51:

(Start: 27 @38053 has 37 MA's), (Start: 39 @38068 has 3 MA's), (40, 38071), (57, 38119), (66, 38170),

Gene: CrimD\_60 Start: 41339, Stop: 41659, Start Num: 29

Candidate Starts for CrimD\_60:

(21, 41222), (Start: 29 @41339 has 97 MA's), (31, 41357), (34, 41363), (Start: 38 @41375 has 1 MA's), (Start: 39 @41378 has 3 MA's), (59, 41426), (63, 41459), (80, 41558), (85, 41603), (89, 41636),

Gene: Curiosium\_63 Start: 40449, Stop: 40775, Start Num: 29

Candidate Starts for Curiosium\_63:

(22, 40344), (Start: 29 @40449 has 97 MA's), (34, 40473), (Start: 39 @40488 has 3 MA's), (51, 40512), (59, 40542), (63, 40575), (69, 40611), (70, 40620), (76, 40650), (82, 40686), (85, 40719),

Gene: Dadosky\_55 Start: 38401, Stop: 38673, Start Num: 36

Candidate Starts for Dadosky\_55:

(Start: 36 @38401 has 5 MA's), (Start: 39 @38413 has 3 MA's), (40, 38416), (57, 38464), (62, 38485), (66, 38515), (87, 38656),

Gene: Dalmuri\_59 Start: 40921, Stop: 41253, Start Num: 29

Candidate Starts for Dalmuri\_59:

(21, 40804), (Start: 29 @40921 has 97 MA's), (31, 40939), (37, 40954), (41, 40966), (53, 40996), (62, 41032), (63, 41053),

Gene: DartGoblin\_61 Start: 41519, Stop: 41839, Start Num: 29

Candidate Starts for DartGoblin\_61:

(8, 41189), (17, 41303), (19, 41384), (21, 41402), (Start: 29 @41519 has 97 MA's), (34, 41543), (Start: 39 @41558 has 3 MA's), (42, 41567), (59, 41606), (63, 41639), (69, 41675), (76, 41714), (80, 41738),

Gene: DarthP\_59 Start: 41139, Stop: 41435, Start Num: 27

Candidate Starts for DarthP\_59:

(14, 40911), (18, 40944), (Start: 27 @41139 has 37 MA's), (34, 41157), (Start: 39 @41172 has 3 MA's), (59, 41208), (62, 41220), (63, 41241), (65, 41247), (85, 41382), (89, 41415),

Gene: Dartin\_61 Start: 41185, Stop: 41520, Start Num: 27

Candidate Starts for Dartin\_61:

(Start: 27 @41185 has 37 MA's), (37, 41218), (Start: 38 @41221 has 1 MA's), (55, 41263), (59, 41281), (64, 41317), (69, 41350), (70, 41359), (77, 41392), (89, 41491),

Gene: Deby\_59 Start: 40980, Stop: 41300, Start Num: 29

Candidate Starts for Deby\_59:

(Start: 29 @40980 has 97 MA's), (31, 40998), (34, 41004), (Start: 39 @41019 has 3 MA's), (59, 41067), (63, 41100), (69, 41136), (76, 41175), (80, 41199), (85, 41244), (89, 41277),

Gene: Devera\_66 Start: 42342, Stop: 42668, Start Num: 29

Candidate Starts for Devera\_66:

(22, 42237), (Start: 29 @42342 has 97 MA's), (34, 42366), (Start: 39 @42381 has 3 MA's), (59, 42435), (63, 42468), (69, 42504), (80, 42567), (85, 42612), (89, 42645),

Gene: Dole\_64 Start: 42345, Stop: 42671, Start Num: 29

Candidate Starts for Dole\_64:

(22, 42240), (Start: 29 @42345 has 97 MA's), (34, 42369), (Start: 39 @42384 has 3 MA's), (59, 42438), (63, 42471), (69, 42507), (80, 42570), (85, 42615), (89, 42648),

Gene: DoubleChamp\_50 Start: 38053, Stop: 38328, Start Num: 27

Candidate Starts for DoubleChamp\_50:

(Start: 27 @38053 has 37 MA's), (Start: 39 @38068 has 3 MA's), (40, 38071), (57, 38119), (66, 38170),

Gene: DrHayes\_60 Start: 41702, Stop: 42022, Start Num: 29

Candidate Starts for DrHayes\_60:

(19, 41567), (21, 41585), (Start: 29 @41702 has 97 MA's), (31, 41720), (Start: 39 @41741 has 3 MA's), (59, 41789), (63, 41822), (69, 41858), (76, 41897), (80, 41921),

Gene: Durfee\_59 Start: 41118, Stop: 41450, Start Num: 29

Candidate Starts for Durfee\_59:

(21, 41001), (Start: 29 @41118 has 97 MA's), (31, 41136), (37, 41151), (41, 41163), (53, 41193), (62, 41229), (63, 41250),

Gene: Edugator\_52 Start: 39822, Stop: 40094, Start Num: 36

Candidate Starts for Edugator\_52:

(Start: 36 @39822 has 5 MA's), (Start: 39 @39834 has 3 MA's), (40, 39837), (57, 39885), (62, 39906), (66, 39936), (87, 40077),

Gene: Efra2\_63 Start: 40878, Stop: 41210, Start Num: 29

Candidate Starts for Efra2\_63:

(19, 40743), (21, 40761), (Start: 29 @40878 has 97 MA's), (Start: 39 @40917 has 3 MA's), (49, 40941), (59, 40974), (63, 41007), (69, 41043), (76, 41082),

Gene: Ekdilam\_57 Start: 41139, Stop: 41465, Start Num: 27

Candidate Starts for Ekdilam\_57:

(18, 40944), (Start: 27 @41139 has 37 MA's), (34, 41157), (37, 41166), (Start: 39 @41172 has 3 MA's), (59, 41232), (62, 41244), (65, 41271), (89, 41442), (92, 41454),

Gene: Ellie\_55 Start: 40492, Stop: 40803, Start Num: 27

Candidate Starts for Ellie\_55:

(18, 40297), (24, 40453), (Start: 27 @40492 has 37 MA's), (34, 40510), (37, 40519), (62, 40588), (65, 40615), (78, 40687), (79, 40690), (85, 40750),

Gene: Emerson\_60 Start: 40835, Stop: 41119, Start Num: 38

Candidate Starts for Emerson\_60:

(21, 40682), (Start: 29 @40799 has 97 MA's), (31, 40817), (34, 40823), (Start: 38 @40835 has 1 MA's), (59, 40886), (63, 40919), (69, 40955), (76, 40994), (80, 41018), (85, 41063), (89, 41096),

Gene: Fefferhead\_57 Start: 40439, Stop: 40738, Start Num: 27

Candidate Starts for Fefferhead\_57:

(9, 40121), (11, 40139), (18, 40244), (Start: 27 @40439 has 37 MA's), (31, 40454), (37, 40469), (59, 40508), (60, 40511), (62, 40520), (63, 40541), (64, 40544), (69, 40574), (75, 40607),

Gene: Feyre\_56 Start: 41781, Stop: 42053, Start Num: 35

Candidate Starts for Feyre\_56:

(25, 41748), (Start: 35 @41781 has 10 MA's), (Start: 39 @41796 has 3 MA's), (40, 41799), (52, 41826), (62, 41868), (68, 41907), (73, 41940),

Gene: Ganymede\_60 Start: 41182, Stop: 41514, Start Num: 29

Candidate Starts for Ganymede\_60:

(Start: 29 @41182 has 97 MA's), (31, 41200), (37, 41215), (41, 41227), (53, 41257), (62, 41293), (63, 41314),

Gene: Gengar\_53 Start: 39794, Stop: 40072, Start Num: 35

Candidate Starts for Gengar\_53:

(13, 39533), (23, 39731), (Start: 27 @39785 has 37 MA's), (Start: 35 @39794 has 10 MA's), (Start: 39 @39809 has 3 MA's), (40, 39812), (44, 39824), (57, 39860), (62, 39881), (87, 40055), (88, 40061),

Gene: Geraldini\_62 Start: 41848, Stop: 42168, Start Num: 29

Candidate Starts for Geraldini\_62:

(21, 41731), (Start: 29 @41848 has 97 MA's), (31, 41866), (34, 41872), (Start: 38 @41884 has 1 MA's), (Start: 39 @41887 has 3 MA's), (63, 41968), (69, 42004), (80, 42067), (85, 42112), (86, 42118), (89, 42145),

Gene: Guanica15\_62 Start: 40619, Stop: 40951, Start Num: 29

Candidate Starts for Guanica15\_62:

(19, 40484), (21, 40502), (Start: 29 @40619 has 97 MA's), (31, 40637), (Start: 39 @40658 has 3 MA's), (49, 40682), (59, 40715), (63, 40748), (69, 40784), (76, 40823),

Gene: Guillsminger\_54 Start: 39780, Stop: 40043, Start Num: 39

Candidate Starts for Guillsminger\_54:

(23, 39702), (Start: 35 @39765 has 10 MA's), (Start: 39 @39780 has 3 MA's), (40, 39783), (44, 39795), (57, 39831), (62, 39852), (87, 40026),

Gene: Hammy\_59 Start: 41127, Stop: 41423, Start Num: 27

Candidate Starts for Hammy\_59:

(Start: 27 @41127 has 37 MA's), (34, 41145), (Start: 39 @41160 has 3 MA's), (59, 41196), (62, 41208), (63, 41229), (65, 41235), (89, 41403),

Gene: HedwigODU\_59 Start: 40802, Stop: 41128, Start Num: 29

Candidate Starts for HedwigODU\_59:

(21, 40685), (Start: 29 @40802 has 97 MA's), (31, 40820), (45, 40859), (59, 40895), (62, 40907), (63, 40928), (65, 40934),

Gene: Heftyboy\_54 Start: 40137, Stop: 40415, Start Num: 35

Candidate Starts for Heftyboy\_54:

(23, 40074), (Start: 27 @40128 has 37 MA's), (Start: 35 @40137 has 10 MA's), (Start: 39 @40152 has 3 MA's), (40, 40155), (44, 40167), (57, 40203), (62, 40224), (87, 40398),

Gene: Homura\_59 Start: 40921, Stop: 41253, Start Num: 29

Candidate Starts for Homura\_59:

(21, 40804), (Start: 29 @40921 has 97 MA's), (31, 40939), (37, 40954), (41, 40966), (53, 40996), (62, 41032), (63, 41053),

Gene: Hurricane\_59 Start: 41071, Stop: 41379, Start Num: 29

Candidate Starts for Hurricane\_59:

(5, 40678), (10, 40753), (16, 40852), (19, 40942), (21, 40960), (Start: 29 @41071 has 97 MA's), (31, 41089), (Start: 39 @41110 has 3 MA's), (59, 41140), (62, 41152), (63, 41173), (65, 41179), (69, 41215), (78, 41260), (92, 41368),

Gene: Hyperbowlee\_59 Start: 41118, Stop: 41450, Start Num: 29

Candidate Starts for Hyperbowlee\_59:

(21, 41001), (Start: 29 @41118 has 97 MA's), (31, 41136), (37, 41151), (41, 41163), (53, 41193), (62, 41229), (63, 41250),

Gene: Illumine\_64 Start: 42344, Stop: 42670, Start Num: 29

Candidate Starts for Illumine\_64:

(22, 42239), (Start: 29 @42344 has 97 MA's), (34, 42368), (Start: 39 @42383 has 3 MA's), (59, 42437), (63, 42470), (69, 42506), (80, 42569), (85, 42614), (89, 42647),

Gene: Inky\_59 Start: 40921, Stop: 41253, Start Num: 29

Candidate Starts for Inky\_59:

(21, 40804), (Start: 29 @40921 has 97 MA's), (31, 40939), (37, 40954), (41, 40966), (53, 40996), (62, 41032), (63, 41053),

Gene: InvictusManeo\_51 Start: 38096, Stop: 38371, Start Num: 27

Candidate Starts for InvictusManeo\_51:

(Start: 27 @38096 has 37 MA's), (Start: 39 @38111 has 3 MA's), (40, 38114), (57, 38162), (66, 38213),

Gene: JAWS\_59 Start: 40788, Stop: 41108, Start Num: 29

Candidate Starts for JAWS\_59:

(21, 40671), (Start: 29 @40788 has 97 MA's), (31, 40806), (34, 40812), (Start: 38 @40824 has 1 MA's), (Start: 39 @40827 has 3 MA's), (59, 40875), (63, 40908), (69, 40944), (80, 41007), (85, 41052), (89, 41085),

Gene: Jarvi\_59 Start: 40921, Stop: 41253, Start Num: 29

Candidate Starts for Jarvi\_59:

(21, 40804), (Start: 29 @40921 has 97 MA's), (31, 40939), (37, 40954), (41, 40966), (53, 40996), (62, 41032), (63, 41053),

Gene: Jayhawk\_60 Start: 40797, Stop: 41123, Start Num: 29

Candidate Starts for Jayhawk\_60:

(21, 40680), (Start: 29 @40797 has 97 MA's), (31, 40815), (45, 40854), (59, 40890), (62, 40902), (63, 40923), (65, 40929),

Gene: Jeckyll\_59 Start: 40921, Stop: 41253, Start Num: 29

Candidate Starts for Jeckyll\_59:

(21, 40804), (Start: 29 @40921 has 97 MA's), (31, 40939), (37, 40954), (41, 40966), (53, 40996), (62, 41032), (63, 41053),

Gene: Joy99\_59 Start: 40850, Stop: 41182, Start Num: 29

Candidate Starts for Joy99\_59:

(21, 40733), (Start: 29 @40850 has 97 MA's), (31, 40868), (37, 40883), (41, 40895), (53, 40925), (62, 40961), (63, 40982),

Gene: Keshu\_61 Start: 41169, Stop: 41477, Start Num: 29

Candidate Starts for Keshu\_61:

(5, 40776), (16, 40950), (19, 41040), (21, 41058), (Start: 29 @41169 has 97 MA's), (31, 41187), (Start: 39 @41208 has 3 MA's), (62, 41250), (64, 41274), (65, 41277), (69, 41313), (72, 41334), (79, 41361), (92, 41466),

Gene: KiSi\_64 Start: 41902, Stop: 42237, Start Num: 27

Candidate Starts for KiSi\_64:

(Start: 27 @41902 has 37 MA's), (62, 42010), (65, 42037), (67, 42043), (77, 42115), (80, 42136), (88, 42202), (89, 42214), (90, 42220),

Gene: Kratio\_51 Start: 37838, Stop: 38113, Start Num: 27

Candidate Starts for Kratio\_51:

(Start: 27 @37838 has 37 MA's), (Start: 39 @37853 has 3 MA's), (40, 37856), (57, 37904), (58, 37907), (62, 37925), (66, 37955), (87, 38096),

Gene: Larva\_54 Start: 39273, Stop: 39545, Start Num: 36

Candidate Starts for Larva\_54:

(Start: 36 @39273 has 5 MA's), (Start: 39 @39285 has 3 MA's), (40, 39288), (57, 39336), (62, 39357), (66, 39387), (87, 39528),

Gene: LastHope\_62 Start: 39964, Stop: 40290, Start Num: 29

Candidate Starts for LastHope\_62:

(19, 39829), (21, 39847), (Start: 29 @39964 has 97 MA's), (31, 39982), (37, 39997), (45, 40021), (46, 40024), (59, 40057), (62, 40069), (63, 40090), (65, 40096), (76, 40165),

Gene: Lavahound\_57 Start: 41784, Stop: 42098, Start Num: 27

Candidate Starts for Lavahound\_57:

(9, 41466), (11, 41484), (18, 41589), (24, 41745), (Start: 27 @41784 has 37 MA's), (34, 41802), (37, 41811), (59, 41868), (62, 41880), (65, 41907), (69, 41934), (78, 41979), (79, 41982), (89, 42075),

Gene: LeMond\_63 Start: 41533, Stop: 41868, Start Num: 27

Candidate Starts for LeMond\_63:

(15, 41305), (Start: 27 @41533 has 37 MA's), (62, 41641), (65, 41668), (67, 41674), (77, 41746), (80, 41767), (88, 41833), (89, 41845), (90, 41851),

Gene: Lea83\_59 Start: 41124, Stop: 41432, Start Num: 29

Candidate Starts for Lea83\_59:

(1, 40482), (16, 40905), (19, 40995), (21, 41013), (Start: 29 @41124 has 97 MA's), (31, 41142), (Start: 39 @41163 has 3 MA's), (59, 41193), (62, 41205), (63, 41226), (65, 41232), (69, 41268), (78, 41313), (79, 41316), (92, 41421),

Gene: Leston\_53 Start: 39909, Stop: 40172, Start Num: 39

Candidate Starts for Leston\_53:

(23, 39831), (Start: 35 @39894 has 10 MA's), (Start: 39 @39909 has 3 MA's), (40, 39912), (44, 39924), (57, 39960), (62, 39981), (87, 40155),

Gene: LilDirt\_52 Start: 37854, Stop: 38129, Start Num: 27

Candidate Starts for LilDirt\_52:

(Start: 27 @37854 has 37 MA's), (Start: 39 @37869 has 3 MA's), (40, 37872), (57, 37920), (66, 37971),

Gene: LindNT\_58 Start: 41005, Stop: 41325, Start Num: 29

Candidate Starts for LindNT\_58:

(21, 40888), (Start: 29 @41005 has 97 MA's), (31, 41023), (34, 41029), (Start: 39 @41044 has 3 MA's), (59, 41092), (63, 41125), (69, 41161), (80, 41224), (85, 41269), (89, 41302),

Gene: Llorens\_59 Start: 40921, Stop: 41253, Start Num: 29

Candidate Starts for Llorens\_59:

(21, 40804), (Start: 29 @40921 has 97 MA's), (31, 40939), (37, 40954), (41, 40966), (53, 40996), (62, 41032), (63, 41053),

Gene: Lunahalos\_59 Start: 40921, Stop: 41253, Start Num: 29

Candidate Starts for Lunahalos\_59:

(21, 40804), (Start: 29 @40921 has 97 MA's), (31, 40939), (37, 40954), (41, 40966), (53, 40996), (62, 41032), (63, 41053),

Gene: MacKat\_54 Start: 36265, Stop: 36585, Start Num: 29

Candidate Starts for MacKat\_54:

(21, 36148), (Start: 29 @36265 has 97 MA's), (31, 36283), (34, 36289), (Start: 38 @36301 has 1 MA's), (Start: 39 @36304 has 3 MA's), (59, 36352), (63, 36385), (69, 36421), (76, 36460), (80, 36484), (85, 36529), (89, 36562),

Gene: MacnCheese\_61 Start: 41660, Stop: 41977, Start Num: 30

Candidate Starts for MacnCheese\_61:

(19, 41522), (20, 41534), (Start: 27 @41645 has 37 MA's), (Start: 30 @41660 has 2 MA's), (34, 41678), (62, 41759), (63, 41780), (76, 41855), (89, 41957),

Gene: MarkPhew\_62 Start: 41206, Stop: 41514, Start Num: 27

Candidate Starts for MarkPhew\_62:

(3, 40810), (4, 40825), (7, 40879), (15, 41002), (Start: 27 @41206 has 37 MA's), (34, 41224), (37, 41233), (Start: 39 @41239 has 3 MA's), (59, 41284), (62, 41296), (65, 41323), (69, 41353), (89, 41494),

Gene: McMater\_61 Start: 41185, Stop: 41520, Start Num: 27

Candidate Starts for McMater\_61:

(Start: 27 @41185 has 37 MA's), (37, 41218), (Start: 38 @41221 has 1 MA's), (55, 41263), (59, 41281), (64, 41317), (69, 41350), (70, 41359), (77, 41392), (89, 41491),

Gene: MeaningOfLife\_60 Start: 41676, Stop: 41996, Start Num: 29

Candidate Starts for MeaningOfLife\_60:

(21, 41559), (Start: 29 @41676 has 97 MA's), (31, 41694), (37, 41709), (Start: 39 @41715 has 3 MA's), (53, 41739), (62, 41775), (63, 41796),

Gene: Megsy\_61 Start: 41070, Stop: 41396, Start Num: 29

Candidate Starts for Megsy\_61:

(Start: 29 @41070 has 97 MA's), (31, 41088), (Start: 39 @41109 has 3 MA's), (45, 41127), (59, 41163), (62, 41175), (63, 41196), (65, 41202), (76, 41271),

Gene: Miryou\_57 Start: 42497, Stop: 42769, Start Num: 35

Candidate Starts for Miryou\_57:

(25, 42464), (Start: 35 @42497 has 10 MA's), (Start: 39 @42512 has 3 MA's), (40, 42515), (52, 42542), (62, 42584), (68, 42623), (73, 42656),

Gene: Murucutumbu\_60 Start: 41776, Stop: 42096, Start Num: 29

Candidate Starts for Murucutumbu\_60:

(Start: 29 @41776 has 97 MA's), (31, 41794), (34, 41800), (Start: 39 @41815 has 3 MA's), (59, 41863), (69, 41932), (80, 41995), (83, 42010), (85, 42040), (89, 42073),

Gene: Mynx\_60 Start: 41118, Stop: 41438, Start Num: 29

Candidate Starts for Mynx\_60:

(21, 41001), (Start: 29 @41118 has 97 MA's), (31, 41136), (34, 41142), (Start: 38 @41154 has 1 MA's), (Start: 39 @41157 has 3 MA's), (59, 41205), (63, 41238), (69, 41274), (80, 41337), (85, 41382), (89, 41415),

Gene: Neighly\_55 Start: 39272, Stop: 39544, Start Num: 36

Candidate Starts for Neighly\_55:

(Start: 36 @39272 has 5 MA's), (Start: 39 @39284 has 3 MA's), (40, 39287), (57, 39335), (62, 39356), (66, 39386), (87, 39527),

Gene: Nergal\_53 Start: 37748, Stop: 38059, Start Num: 33

Candidate Starts for Nergal\_53:

(26, 37706), (Start: 33 @37748 has 1 MA's), (60, 37820), (62, 37832), (63, 37853), (69, 37889), (82, 37964),

Gene: Nibb\_61 Start: 40886, Stop: 41206, Start Num: 27

Candidate Starts for Nibb\_61:

(2, 40433), (3, 40505), (4, 40520), (7, 40574), (15, 40697), (Start: 27 @40886 has 37 MA's), (34, 40904), (37, 40913), (Start: 39 @40919 has 3 MA's), (59, 40979), (62, 40991), (63, 41012), (65, 41018), (71, 41057), (75, 41078), (76, 41084), (80, 41108), (89, 41186), (92, 41198),

Gene: Niklas\_61 Start: 41246, Stop: 41581, Start Num: 27

Candidate Starts for Niklas\_61:

(Start: 27 @41246 has 37 MA's), (37, 41279), (Start: 38 @41282 has 1 MA's), (55, 41324), (59, 41342), (64, 41378), (69, 41411), (70, 41420), (77, 41453), (89, 41552),

Gene: November\_57 Start: 41013, Stop: 41309, Start Num: 27

Candidate Starts for November\_57:

(Start: 27 @41013 has 37 MA's), (34, 41031), (Start: 39 @41046 has 3 MA's), (59, 41082), (62, 41094), (63, 41115), (65, 41121), (89, 41289),

Gene: OkiRoe\_54 Start: 40183, Stop: 40440, Start Num: 39

Candidate Starts for OkiRoe\_54:

(25, 40135), (Start: 35 @40168 has 10 MA's), (Start: 39 @40183 has 3 MA's), (40, 40186), (52, 40213), (62, 40255), (68, 40294), (73, 40327),

Gene: Omnicron\_57 Start: 40271, Stop: 40540, Start Num: 35

Candidate Starts for Omnicron\_57:

(Start: 35 @40271 has 10 MA's), (Start: 39 @40286 has 3 MA's), (40, 40289), (44, 40301), (56, 40328), (57, 40337), (62, 40358), (69, 40406), (87, 40523),

Gene: Oscar\_63 Start: 41441, Stop: 41785, Start Num: 27

Candidate Starts for Oscar\_63:

(15, 41210), (Start: 27 @41441 has 37 MA's), (44, 41504), (48, 41507), (54, 41522), (60, 41546), (62, 41558), (65, 41585), (67, 41591), (77, 41663), (80, 41684), (89, 41762), (90, 41768),

Gene: Padfoot\_59 Start: 41118, Stop: 41450, Start Num: 29

Candidate Starts for Padfoot\_59:

(21, 41001), (Start: 29 @41118 has 97 MA's), (31, 41136), (37, 41151), (41, 41163), (53, 41193), (62, 41229), (63, 41250),

Gene: Padpat\_61 Start: 40799, Stop: 41119, Start Num: 29

Candidate Starts for Padpat\_61:

(21, 40682), (Start: 29 @40799 has 97 MA's), (31, 40817), (34, 40823), (Start: 38 @40835 has 1 MA's), (59, 40886), (63, 40919), (69, 40955), (76, 40994), (80, 41018), (85, 41063), (89, 41096),

Gene: Paola\_53 Start: 39765, Stop: 40043, Start Num: 35

Candidate Starts for Paola\_53:

(23, 39702), (Start: 35 @39765 has 10 MA's), (Start: 39 @39780 has 3 MA's), (40, 39783), (44, 39795), (57, 39831), (62, 39852), (87, 40026),

Gene: Peanam\_61 Start: 41204, Stop: 41539, Start Num: 27

Candidate Starts for Peanam\_61:

(Start: 27 @41204 has 37 MA's), (37, 41237), (Start: 38 @41240 has 1 MA's), (55, 41282), (59, 41300), (64, 41336), (69, 41369), (70, 41378), (77, 41411), (89, 41510),

Gene: Peel\_59 Start: 40923, Stop: 41255, Start Num: 29

Candidate Starts for Peel\_59:

(21, 40806), (Start: 29 @40923 has 97 MA's), (31, 40941), (37, 40956), (41, 40968), (53, 40998), (62, 41034), (63, 41055),

Gene: Pharb\_58 Start: 40273, Stop: 40581, Start Num: 29

Candidate Starts for Pharb\_58:

(19, 40144), (21, 40162), (Start: 29 @40273 has 97 MA's), (31, 40291), (Start: 39 @40312 has 3 MA's), (59, 40342), (62, 40354), (63, 40375), (65, 40381), (80, 40480), (92, 40570),

Gene: PhelpsODU\_59 Start: 39956, Stop: 40282, Start Num: 27

Candidate Starts for PhelpsODU\_59:

(Start: 27 @39956 has 37 MA's), (Start: 39 @39998 has 3 MA's), (62, 40067), (63, 40088), (70, 40130), (91, 40271),

Gene: Phrank\_61 Start: 40017, Stop: 40343, Start Num: 27

Candidate Starts for Phrank\_61:

(Start: 27 @40017 has 37 MA's), (43, 40068), (47, 40080), (60, 40119), (81, 40248), (91, 40332),

Gene: Piatt\_59 Start: 41118, Stop: 41450, Start Num: 29

Candidate Starts for Piatt\_59:

(21, 41001), (Start: 29 @41118 has 97 MA's), (31, 41136), (37, 41151), (41, 41163), (53, 41193), (62, 41229), (63, 41250),

Gene: Pisa1\_59 Start: 41799, Stop: 42101, Start Num: 31

Candidate Starts for Pisa1\_59:

(21, 41664), (Start: 29 @41781 has 97 MA's), (31, 41799), (34, 41805), (Start: 39 @41820 has 3 MA's), (59, 41868), (63, 41901), (80, 42000), (85, 42045), (89, 42078),

Gene: Pisa4\_53 Start: 37174, Stop: 37470, Start Num: 34

Candidate Starts for Pisa4\_53:

(21, 37033), (Start: 29 @37150 has 97 MA's), (31, 37168), (34, 37174), (Start: 39 @37189 has 3 MA's), (59, 37237), (63, 37270), (80, 37369), (85, 37414), (89, 37447),

Gene: Pixie\_58 Start: 40609, Stop: 40917, Start Num: 29

Candidate Starts for Pixie\_58:

(5, 40216), (16, 40390), (19, 40480), (21, 40498), (Start: 29 @40609 has 97 MA's), (31, 40627), (Start: 39 @40648 has 3 MA's), (59, 40678), (62, 40690), (63, 40711), (65, 40717), (69, 40753), (78, 40798), (79, 40801), (92, 40906),

Gene: Pokerus\_58 Start: 40848, Stop: 41168, Start Num: 29

Candidate Starts for Pokerus\_58:

(Start: 29 @40848 has 97 MA's), (34, 40872), (Start: 39 @40887 has 3 MA's), (59, 40935), (63, 40968), (69, 41004), (80, 41067), (85, 41112), (89, 41145),

Gene: Prithvi\_60 Start: 41005, Stop: 41325, Start Num: 29

Candidate Starts for Prithvi\_60:

(21, 40888), (Start: 29 @41005 has 97 MA's), (31, 41023), (34, 41029), (Start: 39 @41044 has 3 MA's), (59, 41092), (63, 41125), (69, 41161), (80, 41224), (85, 41269), (89, 41302),

Gene: Psycho\_53 Start: 38398, Stop: 38670, Start Num: 36

Candidate Starts for Psycho\_53:

(Start: 36 @38398 has 5 MA's), (Start: 39 @38410 has 3 MA's), (40, 38413), (57, 38461), (62, 38482), (66, 38512), (87, 38653),

Gene: QuincyRose\_58 Start: 41182, Stop: 41514, Start Num: 29

Candidate Starts for QuincyRose\_58:

(Start: 29 @41182 has 97 MA's), (31, 41200), (37, 41215), (41, 41227), (53, 41257), (62, 41293), (63, 41314),

Gene: Ramen\_60 Start: 40804, Stop: 41130, Start Num: 29

Candidate Starts for Ramen\_60:

(21, 40687), (Start: 29 @40804 has 97 MA's), (31, 40822), (45, 40861), (59, 40897), (62, 40909), (63, 40930), (65, 40936),

Gene: Rando14\_55 Start: 37968, Stop: 38240, Start Num: 35

Candidate Starts for Rando14\_55:

(Start: 35 @37968 has 10 MA's), (Start: 39 @37983 has 3 MA's), (40, 37986), (44, 37998), (57, 38034), (62, 38055), (66, 38082), (87, 38223),

Gene: Rapunzel97\_60 Start: 40797, Stop: 41117, Start Num: 29

Candidate Starts for Rapunzel97\_60:

(Start: 29 @40797 has 97 MA's), (34, 40821), (Start: 39 @40836 has 3 MA's), (59, 40884), (63, 40917), (69, 40953), (80, 41016), (85, 41061), (89, 41094),

Gene: Richo\_61 Start: 41185, Stop: 41520, Start Num: 27

Candidate Starts for Richo\_61:

(Start: 27 @41185 has 37 MA's), (37, 41218), (Start: 38 @41221 has 1 MA's), (55, 41263), (59, 41281), (64, 41317), (69, 41350), (70, 41359), (77, 41392), (89, 41491),

Gene: Rosmarinus\_59 Start: 40909, Stop: 41241, Start Num: 29

Candidate Starts for Rosmarinus\_59:

(21, 40792), (Start: 29 @40909 has 97 MA's), (31, 40927), (37, 40942), (41, 40954), (53, 40984), (62, 41020), (63, 41041),

Gene: SamuelLPlaqson\_60 Start: 41702, Stop: 42022, Start Num: 29

Candidate Starts for SamuelLPlaqson\_60:

(19, 41567), (21, 41585), (Start: 29 @41702 has 97 MA's), (31, 41720), (Start: 39 @41741 has 3 MA's), (59, 41789), (63, 41822), (69, 41858), (76, 41897), (80, 41921),

Gene: Scarlett\_64 Start: 41780, Stop: 42115, Start Num: 27

Candidate Starts for Scarlett\_64:

(Start: 27 @41780 has 37 MA's), (62, 41888), (65, 41915), (67, 41921), (77, 41993), (80, 42014), (88, 42080), (89, 42092), (90, 42098),

Gene: Shadow1\_63 Start: 40864, Stop: 41187, Start Num: 27

Candidate Starts for Shadow1\_63:

(Start: 27 @40864 has 37 MA's), (43, 40912), (47, 40924), (60, 40963), (65, 40999), (76, 41065), (81, 41092), (91, 41176),

Gene: Shaobing\_61 Start: 41222, Stop: 41557, Start Num: 27

Candidate Starts for Shaobing\_61:

(Start: 27 @41222 has 37 MA's), (37, 41255), (Start: 38 @41258 has 1 MA's), (55, 41300), (59, 41318), (64, 41354), (69, 41387), (70, 41396), (77, 41429), (89, 41528),

Gene: ShedlockHolmes\_60 Start: 41128, Stop: 41436, Start Num: 29

Candidate Starts for ShedlockHolmes\_60:

(1, 40486), (16, 40909), (19, 40999), (21, 41017), (Start: 29 @41128 has 97 MA's), (31, 41146), (Start: 39 @41167 has 3 MA's), (59, 41197), (62, 41209), (63, 41230), (65, 41236), (69, 41272), (78, 41317), (79, 41320), (84, 41365), (92, 41425),

Gene: ShiaSurprise\_60 Start: 41118, Stop: 41450, Start Num: 29

Candidate Starts for ShiaSurprise\_60:

(21, 41001), (Start: 29 @41118 has 97 MA's), (31, 41136), (37, 41151), (41, 41163), (53, 41193), (62, 41229), (63, 41250),

Gene: SirPhilip\_60 Start: 41537, Stop: 41830, Start Num: 29

Candidate Starts for SirPhilip\_60:

(Start: 29 @41537 has 97 MA's), (34, 41555), (37, 41564), (58, 41597), (62, 41612), (63, 41633), (64, 41636), (65, 41639), (69, 41666), (74, 41696),

Gene: Slimphazie\_59 Start: 40797, Stop: 41117, Start Num: 29

Candidate Starts for Slimphazie\_59:

(Start: 29 @40797 has 97 MA's), (34, 40821), (Start: 39 @40836 has 3 MA's), (59, 40884), (63, 40917), (69, 40953), (80, 41016), (85, 41061), (89, 41094),

Gene: SoSeph\_54 Start: 40137, Stop: 40415, Start Num: 35

Candidate Starts for SoSeph\_54:

(23, 40074), (Start: 27 @40128 has 37 MA's), (Start: 35 @40137 has 10 MA's), (Start: 39 @40152 has 3 MA's), (40, 40155), (44, 40167), (57, 40203), (62, 40224), (87, 40398),

Gene: Spock\_59 Start: 40922, Stop: 41254, Start Num: 29

Candidate Starts for Spock\_59:

(21, 40805), (Start: 29 @40922 has 97 MA's), (31, 40940), (37, 40955), (41, 40967), (53, 40997), (62, 41033), (63, 41054),

Gene: Stinson\_60 Start: 41299, Stop: 41619, Start Num: 29

Candidate Starts for Stinson\_60:

(19, 41164), (21, 41182), (Start: 29 @41299 has 97 MA's), (31, 41317), (37, 41332), (59, 41386), (62, 41398), (63, 41419), (76, 41494),

Gene: Sulley\_59 Start: 40973, Stop: 41305, Start Num: 29

Candidate Starts for Sulley\_59:

(Start: 29 @40973 has 97 MA's), (31, 40991), (37, 41006), (41, 41018), (53, 41048), (62, 41084), (63, 41105),

Gene: Sunflower1121\_64 Start: 41010, Stop: 41333, Start Num: 27

Candidate Starts for Sunflower1121\_64:

(Start: 27 @41010 has 37 MA's), (43, 41058), (47, 41070), (60, 41109), (65, 41145), (76, 41211), (81, 41238),

Gene: TBond007\_57 Start: 40608, Stop: 40916, Start Num: 29

Candidate Starts for TBond007\_57:

(5, 40215), (16, 40389), (19, 40479), (21, 40497), (Start: 29 @40608 has 97 MA's), (31, 40626), (Start: 39 @40647 has 3 MA's), (59, 40677), (62, 40689), (63, 40710), (65, 40716), (69, 40752), (78, 40797), (79, 40800), (92, 40905),

Gene: TClif\_60 Start: 40675, Stop: 40983, Start Num: 29

Candidate Starts for TClif\_60:

(Start: 29 @40675 has 97 MA's), (31, 40693), (Start: 39 @40714 has 3 MA's), (62, 40756), (65, 40783), (80, 40882), (92, 40972),

Gene: Tachez\_59 Start: 40766, Stop: 41098, Start Num: 29

Candidate Starts for Tachez\_59:

(21, 40649), (Start: 29 @40766 has 97 MA's), (31, 40784), (37, 40799), (41, 40811), (53, 40841), (62, 40877), (63, 40898),

Gene: TaiwanKao\_61 Start: 41085, Stop: 41387, Start Num: 31

Candidate Starts for TaiwanKao\_61:

(21, 40950), (Start: 29 @41067 has 97 MA's), (31, 41085), (34, 41091), (Start: 38 @41103 has 1 MA's), (Start: 39 @41106 has 3 MA's), (59, 41154), (63, 41187), (80, 41286), (85, 41331), (89, 41364),

Gene: Thyatira\_56 Start: 42101, Stop: 42373, Start Num: 35

Candidate Starts for Thyatira\_56:

(23, 42038), (Start: 35 @42101 has 10 MA's), (Start: 39 @42116 has 3 MA's), (40, 42119), (52, 42146), (62, 42188), (68, 42227), (73, 42260),

Gene: Tierra\_61 Start: 40828, Stop: 41154, Start Num: 27

Candidate Starts for Tierra\_61:

(Start: 27 @40828 has 37 MA's), (43, 40879), (47, 40891), (60, 40930), (81, 41059), (91, 41143),

Gene: Tigress9\_63 Start: 41019, Stop: 41342, Start Num: 27

Candidate Starts for Tigress9\_63:

(Start: 27 @41019 has 37 MA's), (43, 41067), (47, 41079), (60, 41118), (81, 41247),

Gene: TingHuaYa\_61 Start: 40144, Stop: 40458, Start Num: 31

Candidate Starts for TingHuaYa\_61:

(19, 39991), (21, 40009), (Start: 29 @40126 has 97 MA's), (31, 40144), (Start: 39 @40165 has 3 MA's), (49, 40189), (59, 40222), (63, 40255), (69, 40291), (76, 40330), (89, 40432),

Gene: TiniBug\_60 Start: 41698, Stop: 42018, Start Num: 29

Candidate Starts for TiniBug\_60:

(19, 41563), (21, 41581), (Start: 29 @41698 has 97 MA's), (31, 41716), (Start: 39 @41737 has 3 MA's), (59, 41785), (63, 41818), (69, 41854), (76, 41893), (80, 41917),

Gene: Tiri\_60 Start: 41087, Stop: 41413, Start Num: 29

Candidate Starts for Tiri\_60:

(Start: 29 @41087 has 97 MA's), (31, 41105), (45, 41144), (59, 41180), (62, 41192), (63, 41213), (65, 41219),

Gene: Topper\_59 Start: 40921, Stop: 41253, Start Num: 29

Candidate Starts for Topper\_59:

(21, 40804), (Start: 29 @40921 has 97 MA's), (31, 40939), (37, 40954), (41, 40966), (53, 40996), (62, 41032), (63, 41053),

Gene: TreyKay\_60 Start: 41005, Stop: 41325, Start Num: 29

Candidate Starts for TreyKay\_60:

(21, 40888), (Start: 29 @41005 has 97 MA's), (31, 41023), (34, 41029), (Start: 39 @41044 has 3 MA's), (59, 41092), (63, 41125), (69, 41161), (80, 41224), (85, 41269), (89, 41302),

Gene: TribbleTrouble\_58 Start: 41084, Stop: 41362, Start Num: 29

Candidate Starts for TribbleTrouble\_58:

(19, 40955), (Start: 29 @41084 has 97 MA's), (37, 41111), (61, 41138), (62, 41144), (63, 41165), (65, 41171), (69, 41198),

Gene: TruffulaTree\_59 Start: 40793, Stop: 41113, Start Num: 29

Candidate Starts for TruffulaTree\_59:

(Start: 29 @40793 has 97 MA's), (34, 40817), (Start: 39 @40832 has 3 MA's), (59, 40880), (63, 40913), (69, 40949), (80, 41012), (85, 41057), (89, 41090),

Gene: Twitch\_59 Start: 40923, Stop: 41255, Start Num: 29

Candidate Starts for Twitch\_59:

(21, 40806), (Start: 29 @40923 has 97 MA's), (31, 40941), (37, 40956), (41, 40968), (53, 40998), (62, 41034), (63, 41055),

Gene: Unicorn\_59 Start: 39956, Stop: 40282, Start Num: 27

Candidate Starts for Unicorn\_59:

(Start: 27 @39956 has 37 MA's), (Start: 39 @39998 has 3 MA's), (62, 40067), (63, 40088), (70, 40130), (91, 40271),

Gene: Urkel\_60 Start: 41702, Stop: 42022, Start Num: 29

Candidate Starts for Urkel\_60:

(19, 41567), (21, 41585), (Start: 29 @41702 has 97 MA's), (31, 41720), (Start: 39 @41741 has 3 MA's), (59, 41789), (63, 41822), (69, 41858), (76, 41897), (80, 41921),

Gene: Validus\_63 Start: 41564, Stop: 41896, Start Num: 28

Candidate Starts for Validus\_63:

(6, 41195), (7, 41201), (Start: 28 @41564 has 1 MA's), (31, 41582), (37, 41597), (Start: 39 @41603 has 3 MA's), (50, 41633), (59, 41663), (62, 41675), (63, 41696), (69, 41732), (76, 41771), (78, 41777), (80, 41795),

Gene: Veliki\_60 Start: 40779, Stop: 41099, Start Num: 29

Candidate Starts for Veliki\_60:

(21, 40662), (Start: 29 @40779 has 97 MA's), (31, 40797), (34, 40803), (Start: 38 @40815 has 1 MA's), (Start: 39 @40818 has 3 MA's), (59, 40866), (63, 40899), (69, 40935), (80, 40998), (85, 41043), (89, 41076),

Gene: ViviJ\_52 Start: 37853, Stop: 38128, Start Num: 27

Candidate Starts for ViviJ\_52:

(Start: 27 @37853 has 37 MA's), (Start: 39 @37868 has 3 MA's), (40, 37871), (57, 37919), (66, 37970),

Gene: Waterfoul\_55 Start: 40199, Stop: 40477, Start Num: 35

Candidate Starts for Waterfoul\_55:

(23, 40136), (Start: 27 @40190 has 37 MA's), (Start: 35 @40199 has 10 MA's), (Start: 39 @40214 has 3 MA's), (40, 40217), (44, 40229), (57, 40265), (62, 40286), (87, 40460),

Gene: Ximenita\_64 Start: 41028, Stop: 41351, Start Num: 27

Candidate Starts for Ximenita\_64:

(Start: 27 @41028 has 37 MA's), (43, 41076), (47, 41088), (60, 41127), (65, 41163), (76, 41229), (81, 41256), (91, 41340),

Gene: YoureAdopted\_58 Start: 40922, Stop: 41242, Start Num: 29

Candidate Starts for YoureAdopted\_58:

(Start: 29 @40922 has 97 MA's), (34, 40946), (Start: 39 @40961 has 3 MA's), (59, 41009), (63, 41042), (69, 41078), (80, 41141), (89, 41219),

Gene: Yuna\_64 Start: 42123, Stop: 42446, Start Num: 30

Candidate Starts for Yuna\_64:

(Start: 30 @42123 has 2 MA's), (34, 42141), (37, 42150), (41, 42162), (59, 42210), (63, 42243), (65, 42249), (89, 42420), (94, 42435),

Gene: Yunkel11\_62 Start: 40618, Stop: 40950, Start Num: 29

Candidate Starts for Yunkel11\_62:

(19, 40483), (21, 40501), (Start: 29 @40618 has 97 MA's), (31, 40636), (Start: 39 @40657 has 3 MA's), (49, 40681), (59, 40714), (63, 40747), (69, 40783), (76, 40822),

Gene: Zabiza\_54 Start: 37107, Stop: 37433, Start Num: 29

Candidate Starts for Zabiza\_54:

(21, 36990), (Start: 29 @37107 has 97 MA's), (31, 37125), (45, 37164), (59, 37200), (62, 37212), (63, 37233), (65, 37239),

Gene: Zavala\_61 Start: 41078, Stop: 41398, Start Num: 29

Candidate Starts for Zavala\_61:

(21, 40961), (Start: 29 @41078 has 97 MA's), (31, 41096), (34, 41102), (Start: 38 @41114 has 1 MA's), (Start: 39 @41117 has 3 MA's), (59, 41165), (63, 41198), (69, 41234), (80, 41297), (85, 41342), (89, 41375),