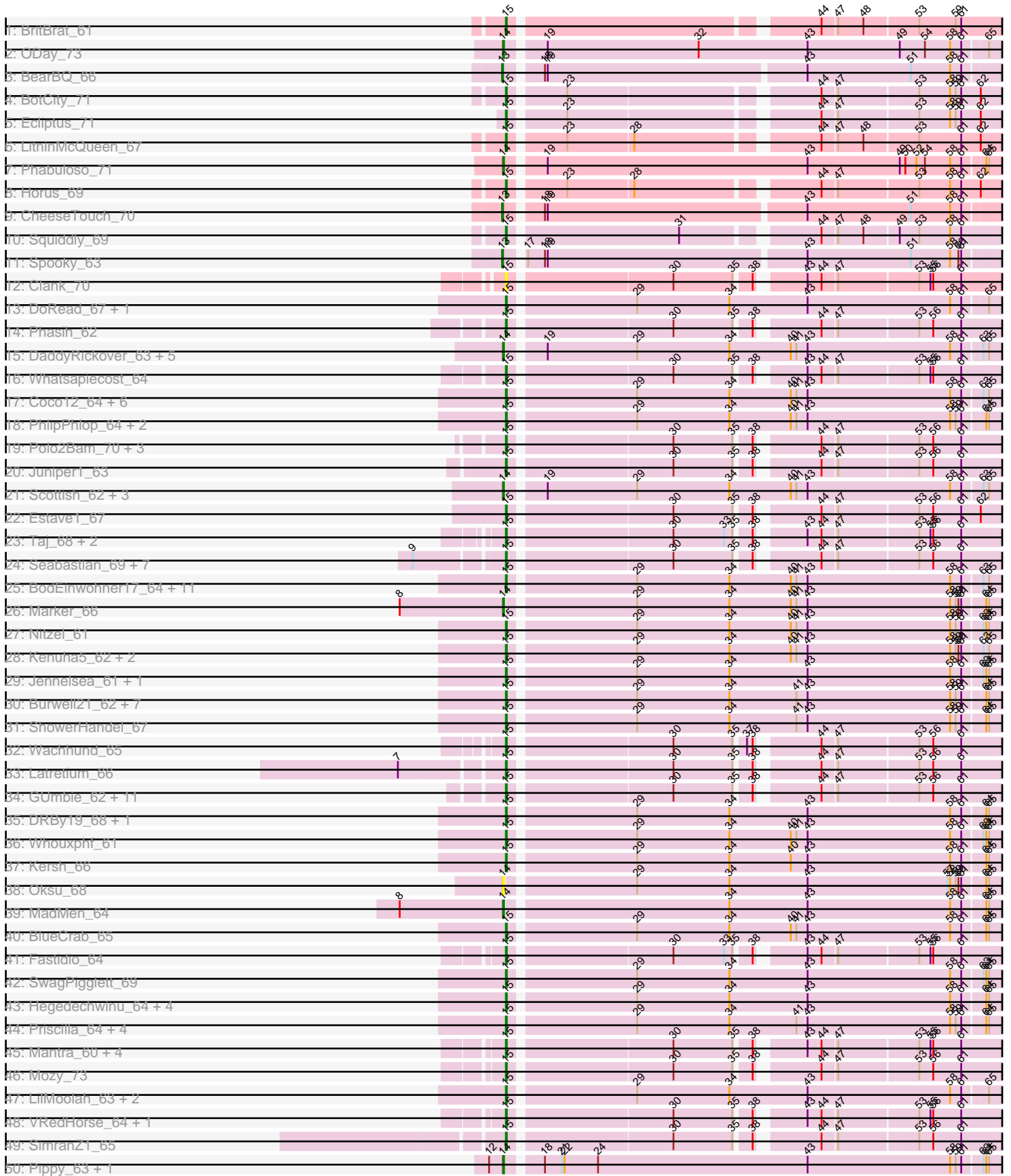
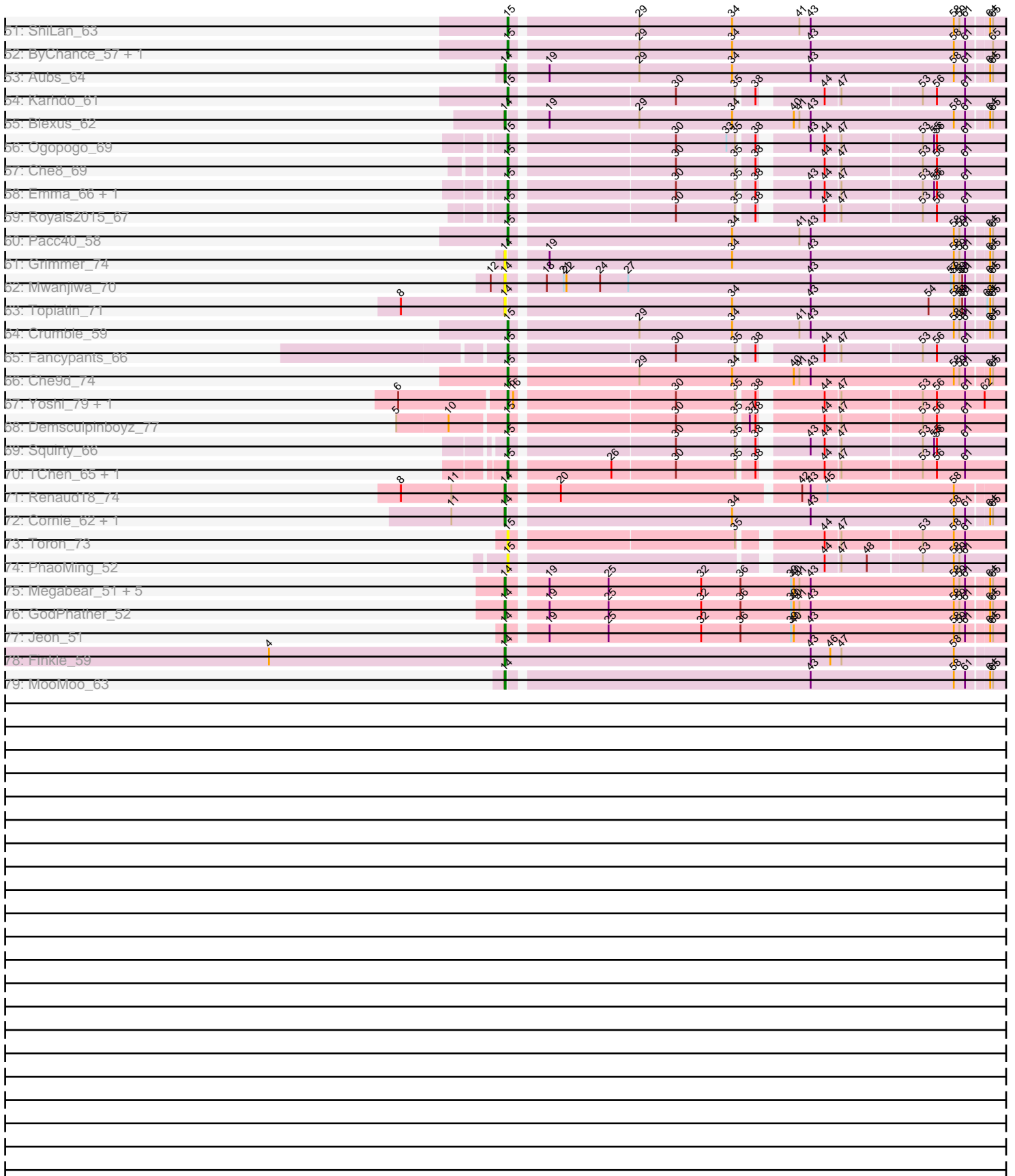


Zoomed Pham 311293



Zoomed Pham 311293



Note: Tracks are now grouped by subcluster and scaled. Switching in subcluster is indicated by changes in track color. Track scale is now set by default to display the region 30 bp upstream of start 1 to 30 bp downstream of the last possible start. If this default region is judged to be packed too tightly with annotated starts, the track will be further scaled to only show that region of the ORF with annotated starts. This action will be indicated by adding "Zoomed" to the title. For starts, yellow indicates the location of called starts comprised solely of Glimmer/GeneMark auto-annotations, green indicates the location of called starts with at least 1 manual gene annotation.

Pham 311293 Report

This analysis was run 06/27/26 on database version 652.

Pham number 311293 has 167 members, 17 are drafts.

Phages represented in each track:

- Track 1 : BritBrat_61
- Track 2 : ODay_73
- Track 3 : BearBQ_66
- Track 4 : BotCity_71
- Track 5 : Ecliptus_71
- Track 6 : LitninMcQueen_67
- Track 7 : Phabuloso_71
- Track 8 : Horus_69
- Track 9 : CheeseTouch_70
- Track 10 : Squiddly_69
- Track 11 : Spooky_63
- Track 12 : Clank_70
- Track 13 : DoRead_67, Zizzle_68
- Track 14 : Phasih_62
- Track 15 : DaddyRickover_63, Sassafras_62, IbOuu_63, RedBird_62, Dorothy_62, Inventum_59
- Track 16 : Whatsapiecost_64
- Track 17 : Coco12_64, Cerasum_61, Brookers_62, BigPhil_61, Sarma624_63, Kingsley_62, Velveteen_60
- Track 18 : PhlipPhlop_64, Vivum_65, EmiMonkey_62
- Track 19 : Polo2Bam_70, SeaLumen_69, NewHope4_65, Enzomatic_71
- Track 20 : Juniper1_63
- Track 21 : Scottish_62, Stap_61, OldBen_61, Polka14_62
- Track 22 : Estave1_67
- Track 23 : Taj_68, Wee_68, DeadP_70
- Track 24 : Seabastian_69, Jinglebell_69, Ochi17_67, OfUltron_69, Llama_68, AlpineSix_69, Modragons_67, Nichirin_71
- Track 25 : BodEinwohner17_64, Leperchaun_56, JoeyJr_59, Daenerys_58, Deb65_58, KingMidas_63, PHappiness_59, Spoonbill_61, RitaG_59, Geralt_58, Empress_62, Nimbo_57
- Track 26 : Marker_66
- Track 27 : Nitzel_61
- Track 28 : Kenuha5_62, SuperGrey_68, Bipolar_64
- Track 29 : Jennelsea_61, Jarcob_64
- Track 30 : Burwell21_62, Minnie_67, Martik_64, Tootsieroll_65, Brocalys_59, Clifton_59, Sandalphon_65, LastJedi_58
- Track 31 : ShowerHandel_67

- Track 32 : Wachhund_65
- Track 33 : Latretium_66
- Track 34 : GUmbie_62, Eradicator_57, Yorick_63, Gorge_68, BuzzLyseyear_70, Lizziana_70, Pollywog_65, Saal_66, OlympiaSaint_66, Mattes_68, James_68, Tchotchke_63
- Track 35 : DRBy19_68, Philus_68
- Track 36 : Whouxphf_61
- Track 37 : Kersh_66
- Track 38 : Oksu_68
- Track 39 : MadMen_64
- Track 40 : BlueCrab_65
- Track 41 : Fastidio_64
- Track 42 : SwagPigglett_69
- Track 43 : Hegedechwinu_64, Gandalph_67, CaptainTrips_62, MinionDave_63, Doomslug_73
- Track 44 : Priscilla_64, Koella_58, NormanBulbieJr_64, Cabrinians_65, FreddyB_65
- Track 45 : Mantra_60, Zapner_77, DillTech15_61, Jabbawokkie_78, Blarby_76
- Track 46 : Mozy_73
- Track 47 : LilMoolah_63, Job42_67, Nivrat_61
- Track 48 : VRedHorse_64, Medindi_60
- Track 49 : SimranZ1_65
- Track 50 : Pippy_63, Maravista_66
- Track 51 : ShiLan_63
- Track 52 : ByChance_57, BobaPhett_68
- Track 53 : Aubs_64
- Track 54 : Karhdo_61
- Track 55 : Blexus_62
- Track 56 : Ogopogo_69
- Track 57 : Che8_69
- Track 58 : Emma_66, Moonbeam_63
- Track 59 : Royals2015_67
- Track 60 : Pacc40_58
- Track 61 : Grimmer_74
- Track 62 : Mwanjiwa_70
- Track 63 : Topiatin_71
- Track 64 : Crumble_59
- Track 65 : Fancypants_66
- Track 66 : Che9d_74
- Track 67 : Yoshi_79, ThetaBob_71
- Track 68 : Demsculpinboyz_77
- Track 69 : Squirty_66
- Track 70 : TChen_65, LunaStella_63
- Track 71 : Renaud18_74
- Track 72 : Cornie_62, Cheesepuff_73
- Track 73 : Toron_73
- Track 74 : PhaoMing_52
- Track 75 : Megabear_51, Cepens_51, D12_50, Taptic_51, PR_51, Argie_52
- Track 76 : GodPhather_52
- Track 77 : Jeon_51
- Track 78 : Finkle_59
- Track 79 : MooMoo_63

Summary of Final Annotations (See graph section above for start numbers):

The start number called the most often in the published annotations is 15, it was called in 116 of the 150 non-draft genes in the pham.

Genes that call this "Most Annotated" start:

- AlpineSix_69, BigPhil_61, Bipolar_64, Blarby_76, BlueCrab_65, BobaPhett_68, BodEinwohner17_64, BotCity_71, BritBrat_61, Brocalys_59, Brookers_62, Burwell21_62, BuzzLyseyear_70, ByChance_57, Cabrinians_65, CaptainTrips_62, Cerasum_61, Che8_69, Che9d_74, Clank_70, Clifton_59, Coco12_64, Crumble_59, DRBy19_68, Daenerys_58, DeadP_70, Deb65_58, Demsculpinboyz_77, DillTech15_61, DoRead_67, Doomslug_73, Ecliptus_71, EmiMonkey_62, Emma_66, Empress_62, Enzomatic_71, Eradicator_57, Estave1_67, Fancypants_66, Fastidio_64, FreddyB_65, GUmbie_62, Gandalph_67, Geralt_58, Gorge_68, Hegedechwinu_64, Horus_69, Jabbawokkie_78, James_68, Jarcob_64, Jennelsea_61, Jinglebell_69, Job42_67, JoeyJr_59, Juniper1_63, Karhdo_61, Kenuha5_62, Kersh_66, KingMidas_63, Kingsley_62, Koella_58, LastJedi_58, Latretium_66, Leperchaun_56, LilMoolah_63, LitninMcQueen_67, Lizziana_70, Llama_68, LunaStella_63, Mantra_60, Martik_64, Mattes_68, Medindi_60, MinionDave_63, Minnie_67, Modragons_67, Moonbeam_63, Mozy_73, NewHope4_65, Nichirin_71, Nimbo_57, Nitzel_61, Nivrat_61, NormanBulbieJr_64, Ochi17_67, OfUltron_69, Ogopogo_69, OlympiaSaint_66, PHappiness_59, Pacc40_58, PhaoMing_52, Phasih_62, Philus_68, PhilipPhlop_64, Pollywog_65, Polo2Bam_70, Priscilla_64, RitaG_59, Royals2015_67, Saal_66, Sandalphon_65, Sarma624_63, SeaLumen_69, Seabastian_69, ShiLan_63, ShowerHandel_67, SimranZ1_65, Spoonbill_61, Squiddly_69, Squirty_66, SuperGrey_68, SwagPiggett_69, TChen_65, Taj_68, Tchotchke_63, ThetaBob_71, Tootsieroll_65, Toron_73, VRedHorse_64, Velveteen_60, Vivum_65, Wachhund_65, Wee_68, Whatsapiecost_64, Whouxphf_61, Yorick_63, Yoshi_79, Zapner_77, Zizzle_68,

Genes that have the "Most Annotated" start but do not call it:

-

Genes that do not have the "Most Annotated" start:

- Argie_52, Aubs_64, BearBQ_66, Blexus_62, Cepens_51, CheeseTouch_70, Cheesepuff_73, Cornie_62, D12_50, DaddyRickover_63, Dorothy_62, Finkle_59, GodPhather_52, Grimmer_74, IbOuu_63, Inventum_59, Jeon_51, MadMen_64, Maravista_66, Marker_66, Megabear_51, MooMoo_63, Mwanjiwa_70, ODay_73, Oksu_68, OldBen_61, PR_51, Phabuloso_71, Pippy_63, Polka14_62, RedBird_62, Renaud18_74, Sassafras_62, Scottish_62, Spooky_63, Stap_61, Taptic_51, Topiatin_71,

Summary by start number:

Start 13:

- Found in 3 of 167 (1.8%) of genes in pham
- Manual Annotations of this start: 3 of 150
- Called 100.0% of time when present
- Phage (with cluster) where this start called: BearBQ_66 (DN), CheeseTouch_70 (DN1), Spooky_63 (DN2),

Start 14:

- Found in 35 of 167 (21.0%) of genes in pham
- Manual Annotations of this start: 31 of 150
- Called 100.0% of time when present
- Phage (with cluster) where this start called: Argie_52 (W), Aubs_64 (F1), Blexus_62 (F1), Cepens_51 (W), CheesePuff_73 (F1), Cornie_62 (F5), D12_50 (W), DaddyRickover_63 (F1), Dorothy_62 (F1), Finkle_59 (singleton), GodPhather_52 (W), Grimmer_74 (F1), IbOuu_63 (F1), Inventum_59 (F1), Jeon_51 (W), MadMen_64 (F1), Maravista_66 (F1), Marker_66 (F1), Megabear_51 (W), MooMoo_63 (singleton), Mwanjiwa_70 (F1), ODay_73 (DN), Oksu_68 (F1), OldBen_61 (F1), PR_51 (W), Phabuloso_71 (DN1), Pippy_63 (F1), Polka14_62 (F1), RedBird_62 (F1), Renaud18_74 (F4), Sassafras_62 (F1), Scottish_62 (F1), Stap_61 (F1), Taptic_51 (W), Topiatin_71 (F1),

Start 15:

- Found in 129 of 167 (77.2%) of genes in pham
- Manual Annotations of this start: 116 of 150
- Called 100.0% of time when present
- Phage (with cluster) where this start called: AlpineSix_69 (F1), BigPhil_61 (F1), Bipolar_64 (F1), Blarby_76 (F), BlueCrab_65 (F1), BobaPhett_68 (F1), BodEinwohner17_64 (F1), BotCity_71 (DN), BritBrat_61 (CY2), Brocalys_59 (F1), Brookers_62 (F1), Burwell21_62 (F1), BuzzLyseyear_70 (F1), ByChance_57 (F1), Cabrinians_65 (F1), CaptainTrips_62 (F1), Cerasum_61 (F1), Che8_69 (F1), Che9d_74 (F2), Clank_70 (F), Clifton_59 (F1), Coco12_64 (F1), Crumble_59 (F1), DRBy19_68 (F1), Daenerys_58 (F1), DeadP_70 (F1), Deb65_58 (F1), Demsculpinboyz_77 (F2), DillTech15_61 (F1), DoRead_67 (F1), Doomslug_73 (F), Ecliptus_71 (DN), EmiMonkey_62 (F1), Emma_66 (F1), Empress_62 (F1), Enzomatic_71 (F1), Eradicator_57 (F1), Estave1_67 (F1), Fancypants_66 (F1), Fastidio_64 (F1), FreddyB_65 (F1), GUmbie_62 (F1), Gandalph_67 (F1), Geralt_58 (F1), Gorge_68 (F1), Hegedechwinu_64 (F1), Horus_69 (DN1), Jabbawokkie_78 (F2), James_68 (F1), Jarcob_64 (F1), Jennelsea_61 (F1), Jinglebell_69 (F1), Job42_67 (F1), JoeyJr_59 (F1), Juniper1_63 (F1), Karhdo_61 (F1), Kenuha5_62 (F1), Kersh_66 (F1), KingMidas_63 (F1), Kingsley_62 (F1), Koella_58 (F1), LastJedi_58 (F1), Latretium_66 (F1), Leperchaun_56 (F1), LilMoolah_63 (F1), LitninMcQueen_67 (DN1), Lizziana_70 (F1), Llama_68 (F1), LunaStella_63 (F4), Mantra_60 (F1), Martik_64 (F1), Mattes_68 (F1), Medindi_60 (F1), MinionDave_63 (F1), Minnie_67 (F1), Modragons_67 (F1), Moonbeam_63 (F1), Mozy_73 (F1), NewHope4_65 (F1), Nichirin_71 (F1), Nimbo_57 (F1), Nitzel_61 (F1), Nivrat_61 (F1), NormanBulbieJr_64 (F1), Ochi17_67 (F1), OfUltron_69 (F1), OgoPogo_69 (F1), OlympiaSaint_66 (F1), PHappiness_59 (F1), Pacc40_58 (F1), PhaoMing_52 (UNK), Phasih_62 (F1), Philus_68 (F1), PhilipPhlop_64 (F1), Pollywog_65 (F1), Polo2Bam_70 (F1), Priscilla_64 (F1), RitaG_59 (F1), Royals2015_67 (F1), Saal_66 (F1), Sandalphon_65 (F1), Sarma624_63 (F1), SeaLumen_69 (F1), Seabastian_69 (F1), ShiLan_63 (F1), ShowerHandel_67 (F1), SimranZ1_65 (F1), Spoonbill_61 (F1), Squiddly_69 (DN2), Squirty_66 (F3), SuperGrey_68 (F1), SwagPigglett_69 (F1), TChen_65 (F4), Taj_68 (F1), Tchotchke_63 (F1), ThetaBob_71 (F4), Tootsieroll_65 (F1), Toron_73 (F6), VRedHorse_64 (F1), Velveteen_60 (F1), Vivum_65 (F1), Wachhund_65 (F1), Wee_68 (F1), Whatsapiecost_64 (F1), Whouxphf_61 (F1), Yorick_63 (F1), Yoshi_79 (F2), Zapner_77 (F2), Zizzle_68 (F1),

Summary by clusters:

There are 14 clusters represented in this pham: DN, F1, singleton, F3, F4, F5, F6, F, F2, CY2, DN1, W, DN2, UNK,

Info for manual annotations of cluster CY2:

- Start number 15 was manually annotated 1 time for cluster CY2.

Info for manual annotations of cluster DN:

- Start number 13 was manually annotated 1 time for cluster DN.
- Start number 14 was manually annotated 1 time for cluster DN.
- Start number 15 was manually annotated 2 times for cluster DN.

Info for manual annotations of cluster DN1:

- Start number 13 was manually annotated 1 time for cluster DN1.
- Start number 14 was manually annotated 1 time for cluster DN1.
- Start number 15 was manually annotated 2 times for cluster DN1.

Info for manual annotations of cluster DN2:

- Start number 13 was manually annotated 1 time for cluster DN2.
- Start number 15 was manually annotated 1 time for cluster DN2.

Info for manual annotations of cluster F1:

- Start number 14 was manually annotated 17 times for cluster F1.
- Start number 15 was manually annotated 101 times for cluster F1.

Info for manual annotations of cluster F2:

- Start number 15 was manually annotated 5 times for cluster F2.

Info for manual annotations of cluster F3:

- Start number 15 was manually annotated 1 time for cluster F3.

Info for manual annotations of cluster F4:

- Start number 14 was manually annotated 1 time for cluster F4.
- Start number 15 was manually annotated 3 times for cluster F4.

Info for manual annotations of cluster F5:

- Start number 14 was manually annotated 1 time for cluster F5.

Info for manual annotations of cluster W:

- Start number 14 was manually annotated 8 times for cluster W.

Gene Information:

Gene: AlpineSix_69 Start: 43940, Stop: 44821, Start Num: 15

Candidate Starts for AlpineSix_69:

(9, 43853), (Start: 15 @43940 has 116 MA's), (30, 44105), (35, 44168), (38, 44183), (44, 44240), (47, 44255), (53, 44336), (56, 44351), (61, 44381), (70, 44444), (71, 44450), (80, 44531), (88, 44567), (90, 44573), (101, 44639), (111, 44708), (127, 44789), (130, 44801),

Gene: Argie_52 Start: 43170, Stop: 44210, Start Num: 14

Candidate Starts for Argie_52:

(Start: 14 @43170 has 31 MA's), (19, 43206), (25, 43269), (32, 43368), (36, 43410), (39, 43464), (40, 43467), (41, 43473), (43, 43485), (58, 43638), (59, 43644), (61, 43650), (64, 43671), (65, 43674), (68, 43698), (72, 43737), (79, 43788), (89, 43836), (92, 43851), (101, 43905), (102, 43914), (113, 43986), (121, 44028), (122, 44031), (130, 44067), (134, 44091), (141, 44130),

Gene: Aubs_64 Start: 41716, Stop: 42693, Start Num: 14

Candidate Starts for Aubs_64:

(Start: 14 @41716 has 31 MA's), (19, 41749), (29, 41845), (34, 41944), (43, 42028), (58, 42181), (61, 42193), (64, 42214), (65, 42217), (68, 42241), (69, 42247), (75, 42304), (78, 42322), (79, 42328), (98, 42427), (101, 42445), (106, 42493), (111, 42514), (118, 42559), (119, 42562), (122, 42571), (128, 42598), (129, 42601), (136, 42643), (140, 42664),

Gene: BearBQ_66 Start: 41957, Stop: 43009, Start Num: 13

Candidate Starts for BearBQ_66:

(Start: 13 @41957 has 3 MA's), (18, 41990), (19, 41993), (43, 42263), (51, 42374), (58, 42416), (61, 42428), (77, 42557), (79, 42569), (81, 42575), (82, 42596), (83, 42599), (86, 42608), (94, 42641), (99, 42674), (105, 42725), (107, 42737), (112, 42761), (117, 42791), (120, 42809), (129, 42848), (135, 42878), (137, 42890), (142, 42914), (143, 42926),

Gene: BigPhil_61 Start: 38174, Stop: 39151, Start Num: 15

Candidate Starts for BigPhil_61:

(Start: 15 @38174 has 116 MA's), (29, 38303), (34, 38402), (40, 38468), (41, 38474), (43, 38486), (58, 38639), (61, 38651), (63, 38669), (65, 38675), (68, 38699), (69, 38705), (78, 38780), (79, 38786), (81, 38792), (98, 38885), (101, 38903), (105, 38942), (106, 38951), (111, 38972), (113, 38984), (115, 38990), (118, 39017), (119, 39020), (122, 39029), (128, 39056), (129, 39059), (136, 39101), (139, 39119), (140, 39122),

Gene: Bipolar_64 Start: 41716, Stop: 42693, Start Num: 15

Candidate Starts for Bipolar_64:

(Start: 15 @41716 has 116 MA's), (29, 41845), (34, 41944), (40, 42010), (41, 42016), (43, 42028), (58, 42181), (59, 42187), (60, 42190), (61, 42193), (63, 42211), (65, 42217), (68, 42241), (69, 42247), (78, 42322), (79, 42328), (81, 42334), (98, 42427), (101, 42445), (105, 42484), (106, 42493), (111, 42514), (113, 42526), (115, 42532), (118, 42559), (119, 42562), (122, 42571), (128, 42598), (129, 42601), (136, 42643), (139, 42661), (140, 42664),

Gene: Blarby_76 Start: 43102, Stop: 43983, Start Num: 15

Candidate Starts for Blarby_76:

(Start: 15 @43102 has 116 MA's), (30, 43267), (35, 43330), (38, 43345), (43, 43387), (44, 43402), (47, 43417), (53, 43498), (55, 43510), (56, 43513), (61, 43543), (70, 43606), (71, 43612), (79, 43690), (80, 43693), (88, 43729), (90, 43735), (97, 43774), (101, 43801), (122, 43927), (124, 43939), (130, 43963),

Gene: Blexus_62 Start: 41845, Stop: 42822, Start Num: 14

Candidate Starts for Blexus_62:

(Start: 14 @41845 has 31 MA's), (19, 41878), (29, 41974), (34, 42073), (40, 42139), (41, 42145), (43, 42157), (58, 42310), (61, 42322), (64, 42343), (65, 42346), (68, 42370), (69, 42376), (75, 42433), (78, 42451), (79, 42457), (101, 42574), (105, 42613), (106, 42622), (111, 42643), (115, 42661), (118, 42688), (119, 42691), (122, 42700), (128, 42727), (129, 42730), (136, 42772), (140, 42793),

Gene: BlueCrab_65 Start: 42554, Stop: 43531, Start Num: 15

Candidate Starts for BlueCrab_65:

(Start: 15 @42554 has 116 MA's), (29, 42683), (34, 42782), (40, 42848), (41, 42854), (43, 42866), (58, 43019), (61, 43031), (64, 43052), (65, 43055), (68, 43079), (69, 43085), (78, 43160), (81, 43172), (98, 43265), (100, 43280), (101, 43283), (105, 43322), (106, 43331), (111, 43352), (118, 43397), (119,

43400), (122, 43409), (128, 43436), (129, 43439), (136, 43481), (140, 43502),

Gene: BobaPhett_68 Start: 44140, Stop: 45117, Start Num: 15

Candidate Starts for BobaPhett_68:

(Start: 15 @44140 has 116 MA's), (29, 44269), (34, 44368), (43, 44452), (58, 44605), (61, 44617), (65, 44641), (68, 44665), (69, 44671), (78, 44746), (81, 44758), (98, 44851), (100, 44866), (101, 44869), (105, 44908), (106, 44917), (111, 44938), (118, 44983), (119, 44986), (122, 44995), (128, 45022), (129, 45025), (136, 45067), (140, 45088),

Gene: BodEinwohner17_64 Start: 40945, Stop: 41922, Start Num: 15

Candidate Starts for BodEinwohner17_64:

(Start: 15 @40945 has 116 MA's), (29, 41074), (34, 41173), (40, 41239), (41, 41245), (43, 41257), (58, 41410), (61, 41422), (63, 41440), (65, 41446), (68, 41470), (69, 41476), (78, 41551), (79, 41557), (81, 41563), (101, 41674), (105, 41713), (111, 41743), (113, 41755), (115, 41761), (118, 41788), (122, 41800), (128, 41827), (129, 41830), (136, 41872), (140, 41893),

Gene: BotCity_71 Start: 42307, Stop: 43245, Start Num: 15

Candidate Starts for BotCity_71:

(Start: 15 @42307 has 116 MA's), (23, 42361), (44, 42607), (47, 42622), (53, 42703), (58, 42736), (59, 42742), (61, 42748), (62, 42769), (66, 42799), (71, 42817), (74, 42859), (75, 42871), (79, 42895), (84, 42919), (93, 42955), (105, 43045), (106, 43054), (110, 43069), (111, 43075), (122, 43132), (123, 43135),

Gene: BritBrat_61 Start: 41289, Stop: 42236, Start Num: 15

Candidate Starts for BritBrat_61:

(Start: 15 @41289 has 116 MA's), (44, 41592), (47, 41607), (48, 41634), (53, 41688), (59, 41727), (61, 41733), (70, 41796), (71, 41802), (79, 41880), (84, 41904), (88, 41919), (90, 41925), (105, 42030), (106, 42039), (111, 42060), (122, 42117),

Gene: Brocalys_59 Start: 38322, Stop: 39299, Start Num: 15

Candidate Starts for Brocalys_59:

(Start: 15 @38322 has 116 MA's), (29, 38451), (34, 38550), (41, 38622), (43, 38634), (58, 38787), (59, 38793), (61, 38799), (64, 38820), (65, 38823), (68, 38847), (69, 38853), (75, 38910), (78, 38928), (81, 38940), (98, 39033), (101, 39051), (105, 39090), (106, 39099), (111, 39120), (115, 39138), (118, 39165), (119, 39168), (122, 39177), (128, 39204), (129, 39207), (136, 39249), (140, 39270),

Gene: Brookers_62 Start: 41125, Stop: 42102, Start Num: 15

Candidate Starts for Brookers_62:

(Start: 15 @41125 has 116 MA's), (29, 41254), (34, 41353), (40, 41419), (41, 41425), (43, 41437), (58, 41590), (61, 41602), (63, 41620), (65, 41626), (68, 41650), (69, 41656), (78, 41731), (79, 41737), (81, 41743), (98, 41836), (101, 41854), (105, 41893), (106, 41902), (111, 41923), (113, 41935), (115, 41941), (118, 41968), (119, 41971), (122, 41980), (128, 42007), (129, 42010), (136, 42052), (139, 42070), (140, 42073),

Gene: Burwell21_62 Start: 41423, Stop: 42400, Start Num: 15

Candidate Starts for Burwell21_62:

(Start: 15 @41423 has 116 MA's), (29, 41552), (34, 41651), (41, 41723), (43, 41735), (58, 41888), (59, 41894), (61, 41900), (64, 41921), (65, 41924), (68, 41948), (69, 41954), (75, 42011), (78, 42029), (81, 42041), (98, 42134), (101, 42152), (105, 42191), (106, 42200), (111, 42221), (115, 42239), (118, 42266), (119, 42269), (122, 42278), (128, 42305), (129, 42308), (136, 42350), (140, 42371),

Gene: BuzzLyseyear_70 Start: 42721, Stop: 43602, Start Num: 15

Candidate Starts for BuzzLyseyear_70:

(Start: 15 @42721 has 116 MA's), (30, 42886), (35, 42949), (38, 42964), (44, 43021), (47, 43036), (53, 43117), (56, 43132), (61, 43162), (70, 43225), (71, 43231), (80, 43312), (88, 43348), (90, 43354), (101, 43420), (111, 43489), (122, 43546), (130, 43582),

Gene: ByChance_57 Start: 37482, Stop: 38459, Start Num: 15

Candidate Starts for ByChance_57:

(Start: 15 @37482 has 116 MA's), (29, 37611), (34, 37710), (43, 37794), (58, 37947), (61, 37959), (65, 37983), (68, 38007), (69, 38013), (78, 38088), (81, 38100), (98, 38193), (100, 38208), (101, 38211), (105, 38250), (106, 38259), (111, 38280), (118, 38325), (119, 38328), (122, 38337), (128, 38364), (129, 38367), (136, 38409), (140, 38430),

Gene: Cabrinians_65 Start: 41501, Stop: 42478, Start Num: 15

Candidate Starts for Cabrinians_65:

(Start: 15 @41501 has 116 MA's), (29, 41630), (34, 41729), (41, 41801), (43, 41813), (58, 41966), (59, 41972), (61, 41978), (64, 41999), (65, 42002), (68, 42026), (69, 42032), (75, 42089), (78, 42107), (81, 42119), (98, 42212), (100, 42227), (101, 42230), (105, 42269), (106, 42278), (111, 42299), (118, 42344), (119, 42347), (122, 42356), (128, 42383), (129, 42386), (136, 42428), (140, 42449),

Gene: CaptainTrips_62 Start: 41236, Stop: 42213, Start Num: 15

Candidate Starts for CaptainTrips_62:

(Start: 15 @41236 has 116 MA's), (29, 41365), (34, 41464), (43, 41548), (58, 41701), (61, 41713), (64, 41734), (65, 41737), (68, 41761), (69, 41767), (75, 41824), (78, 41842), (79, 41848), (98, 41947), (101, 41965), (106, 42013), (111, 42034), (118, 42079), (119, 42082), (122, 42091), (128, 42118), (129, 42121), (136, 42163), (140, 42184),

Gene: Cepens_51 Start: 42885, Stop: 43925, Start Num: 14

Candidate Starts for Cepens_51:

(Start: 14 @42885 has 31 MA's), (19, 42921), (25, 42984), (32, 43083), (36, 43125), (39, 43179), (40, 43182), (41, 43188), (43, 43200), (58, 43353), (59, 43359), (61, 43365), (64, 43386), (65, 43389), (68, 43413), (72, 43452), (79, 43503), (89, 43551), (92, 43566), (101, 43620), (102, 43629), (113, 43701), (121, 43743), (122, 43746), (130, 43782), (134, 43806), (141, 43845),

Gene: Cerasum_61 Start: 38192, Stop: 39169, Start Num: 15

Candidate Starts for Cerasum_61:

(Start: 15 @38192 has 116 MA's), (29, 38321), (34, 38420), (40, 38486), (41, 38492), (43, 38504), (58, 38657), (61, 38669), (63, 38687), (65, 38693), (68, 38717), (69, 38723), (78, 38798), (79, 38804), (81, 38810), (98, 38903), (101, 38921), (105, 38960), (106, 38969), (111, 38990), (113, 39002), (115, 39008), (118, 39035), (119, 39038), (122, 39047), (128, 39074), (129, 39077), (136, 39119), (139, 39137), (140, 39140),

Gene: Che8_69 Start: 44217, Stop: 45098, Start Num: 15

Candidate Starts for Che8_69:

(Start: 15 @44217 has 116 MA's), (30, 44382), (35, 44445), (38, 44460), (44, 44517), (47, 44532), (53, 44613), (56, 44628), (61, 44658), (70, 44721), (71, 44727), (80, 44808), (88, 44844), (90, 44850), (101, 44916), (111, 44985), (117, 45018), (122, 45042), (130, 45078),

Gene: Che9d_74 Start: 41890, Stop: 42867, Start Num: 15

Candidate Starts for Che9d_74:

(Start: 15 @41890 has 116 MA's), (29, 42019), (34, 42118), (40, 42184), (41, 42190), (43, 42202), (58, 42355), (59, 42361), (61, 42367), (64, 42388), (65, 42391), (68, 42415), (69, 42421), (75, 42478), (78, 42496), (79, 42502), (81, 42508), (98, 42601), (101, 42619), (105, 42658), (106, 42667), (111, 42688), (112, 42691), (115, 42706), (118, 42733), (119, 42736), (122, 42745), (128, 42772), (129, 42775), (136, 42817), (140, 42838),

Gene: CheeseTouch_70 Start: 37387, Stop: 38439, Start Num: 13

Candidate Starts for CheeseTouch_70:

(Start: 13 @37387 has 3 MA's), (18, 37420), (19, 37423), (43, 37693), (51, 37804), (58, 37846), (61, 37858), (77, 37987), (79, 37999), (82, 38026), (83, 38029), (94, 38071), (105, 38155), (107, 38167), (112, 38191), (117, 38221), (120, 38239), (129, 38278), (135, 38308), (137, 38320), (142, 38344), (143, 38356), (144, 38359),

Gene: Cheesepuff_73 Start: 43506, Stop: 44483, Start Num: 14

Candidate Starts for Cheesepuff_73:

(11, 43449), (Start: 14 @43506 has 31 MA's), (34, 43734), (43, 43818), (58, 43971), (61, 43983), (64, 44004), (65, 44007), (68, 44031), (69, 44037), (78, 44112), (81, 44124), (98, 44217), (101, 44235), (105, 44274), (106, 44283), (111, 44304), (112, 44307), (113, 44316), (115, 44322), (118, 44349), (119, 44352), (122, 44361), (128, 44388), (129, 44391), (136, 44433), (140, 44454),

Gene: Clank_70 Start: 42434, Stop: 43315, Start Num: 15

Candidate Starts for Clank_70:

(Start: 15 @42434 has 116 MA's), (30, 42599), (35, 42662), (38, 42677), (43, 42719), (44, 42734), (47, 42749), (53, 42830), (55, 42842), (56, 42845), (61, 42875), (70, 42938), (71, 42944), (79, 43022), (80, 43025), (88, 43061), (90, 43067), (97, 43106), (104, 43157), (116, 43223), (117, 43235), (122, 43259), (130, 43295),

Gene: Clifton_59 Start: 38673, Stop: 39650, Start Num: 15

Candidate Starts for Clifton_59:

(Start: 15 @38673 has 116 MA's), (29, 38802), (34, 38901), (41, 38973), (43, 38985), (58, 39138), (59, 39144), (61, 39150), (64, 39171), (65, 39174), (68, 39198), (69, 39204), (75, 39261), (78, 39279), (81, 39291), (98, 39384), (101, 39402), (105, 39441), (106, 39450), (111, 39471), (115, 39489), (118, 39516), (119, 39519), (122, 39528), (128, 39555), (129, 39558), (136, 39600), (140, 39621),

Gene: Coco12_64 Start: 42249, Stop: 43226, Start Num: 15

Candidate Starts for Coco12_64:

(Start: 15 @42249 has 116 MA's), (29, 42378), (34, 42477), (40, 42543), (41, 42549), (43, 42561), (58, 42714), (61, 42726), (63, 42744), (65, 42750), (68, 42774), (69, 42780), (78, 42855), (79, 42861), (81, 42867), (98, 42960), (101, 42978), (105, 43017), (106, 43026), (111, 43047), (113, 43059), (115, 43065), (118, 43092), (119, 43095), (122, 43104), (128, 43131), (129, 43134), (136, 43176), (139, 43194), (140, 43197),

Gene: Cornie_62 Start: 39968, Stop: 40945, Start Num: 14

Candidate Starts for Cornie_62:

(11, 39911), (Start: 14 @39968 has 31 MA's), (34, 40196), (43, 40280), (58, 40433), (61, 40445), (64, 40466), (65, 40469), (68, 40493), (69, 40499), (78, 40574), (81, 40586), (98, 40679), (101, 40697), (105, 40736), (106, 40745), (111, 40766), (112, 40769), (113, 40778), (115, 40784), (118, 40811), (119, 40814), (122, 40823), (128, 40850), (129, 40853), (136, 40895), (140, 40916),

Gene: Crumble_59 Start: 37437, Stop: 38414, Start Num: 15

Candidate Starts for Crumble_59:

(Start: 15 @37437 has 116 MA's), (29, 37566), (34, 37665), (41, 37737), (43, 37749), (58, 37902), (59, 37908), (61, 37914), (64, 37935), (65, 37938), (68, 37962), (69, 37968), (75, 38025), (78, 38043), (81, 38055), (98, 38148), (101, 38166), (106, 38214), (111, 38235), (113, 38247), (118, 38280), (119, 38283), (122, 38292), (128, 38319), (129, 38322), (136, 38364), (140, 38385),

Gene: D12_50 Start: 43433, Stop: 44473, Start Num: 14

Candidate Starts for D12_50:

(Start: 14 @43433 has 31 MA's), (19, 43469), (25, 43532), (32, 43631), (36, 43673), (39, 43727), (40, 43730), (41, 43736), (43, 43748), (58, 43901), (59, 43907), (61, 43913), (64, 43934), (65, 43937), (68, 43961), (72, 44000), (79, 44051), (89, 44099), (92, 44114), (101, 44168), (102, 44177), (113, 44249), (121, 44291), (122, 44294), (130, 44330), (134, 44354), (141, 44393),

Gene: DRBy19_68 Start: 42933, Stop: 43910, Start Num: 15

Candidate Starts for DRBy19_68:

(Start: 15 @42933 has 116 MA's), (29, 43062), (34, 43161), (43, 43245), (58, 43398), (61, 43410), (64, 43431), (65, 43434), (68, 43458), (69, 43464), (78, 43539), (81, 43551), (98, 43644), (101, 43662), (105, 43701), (106, 43710), (111, 43731), (118, 43776), (119, 43779), (122, 43788), (128, 43815), (129, 43818), (136, 43860), (140, 43881),

Gene: DaddyRickover_63 Start: 41508, Stop: 42485, Start Num: 14

Candidate Starts for DaddyRickover_63:

(Start: 14 @41508 has 31 MA's), (19, 41541), (29, 41637), (34, 41736), (40, 41802), (41, 41808), (43, 41820), (58, 41973), (61, 41985), (63, 42003), (65, 42009), (68, 42033), (69, 42039), (78, 42114), (79, 42120), (81, 42126), (101, 42237), (105, 42276), (111, 42306), (113, 42318), (115, 42324), (118, 42351), (122, 42363), (128, 42390), (129, 42393), (136, 42435), (140, 42456),

Gene: Daenerys_58 Start: 39750, Stop: 40727, Start Num: 15

Candidate Starts for Daenerys_58:

(Start: 15 @39750 has 116 MA's), (29, 39879), (34, 39978), (40, 40044), (41, 40050), (43, 40062), (58, 40215), (61, 40227), (63, 40245), (65, 40251), (68, 40275), (69, 40281), (78, 40356), (79, 40362), (81, 40368), (101, 40479), (105, 40518), (111, 40548), (113, 40560), (115, 40566), (118, 40593), (122, 40605), (128, 40632), (129, 40635), (136, 40677), (140, 40698),

Gene: DeadP_70 Start: 43847, Stop: 44728, Start Num: 15

Candidate Starts for DeadP_70:

(Start: 15 @43847 has 116 MA's), (30, 44012), (33, 44066), (35, 44075), (38, 44090), (43, 44132), (44, 44147), (47, 44162), (53, 44243), (55, 44255), (56, 44258), (61, 44288), (70, 44351), (71, 44357), (79, 44435), (80, 44438), (88, 44474), (90, 44480), (97, 44519), (101, 44546), (122, 44672), (124, 44684), (130, 44708),

Gene: Deb65_58 Start: 39720, Stop: 40697, Start Num: 15

Candidate Starts for Deb65_58:

(Start: 15 @39720 has 116 MA's), (29, 39849), (34, 39948), (40, 40014), (41, 40020), (43, 40032), (58, 40185), (61, 40197), (63, 40215), (65, 40221), (68, 40245), (69, 40251), (78, 40326), (79, 40332), (81, 40338), (101, 40449), (105, 40488), (111, 40518), (113, 40530), (115, 40536), (118, 40563), (122, 40575), (128, 40602), (129, 40605), (136, 40647), (140, 40668),

Gene: Demsculpinboyz_77 Start: 41733, Stop: 42614, Start Num: 15

Candidate Starts for Demsculpinboyz_77:

(5, 41622), (10, 41676), (Start: 15 @41733 has 116 MA's), (30, 41898), (35, 41961), (37, 41970), (38, 41976), (44, 42033), (47, 42048), (53, 42129), (56, 42144), (61, 42174), (70, 42237), (71, 42243), (80, 42324), (88, 42360), (90, 42366), (101, 42432), (111, 42501), (127, 42582), (130, 42594),

Gene: DillTech15_61 Start: 39862, Stop: 40743, Start Num: 15

Candidate Starts for DillTech15_61:

(Start: 15 @39862 has 116 MA's), (30, 40027), (35, 40090), (38, 40105), (43, 40147), (44, 40162), (47, 40177), (53, 40258), (55, 40270), (56, 40273), (61, 40303), (70, 40366), (71, 40372), (79, 40450), (80, 40453), (88, 40489), (90, 40495), (97, 40534), (101, 40561), (122, 40687), (124, 40699), (130, 40723),

Gene: DoRead_67 Start: 41068, Stop: 42045, Start Num: 15

Candidate Starts for DoRead_67:

(Start: 15 @41068 has 116 MA's), (29, 41197), (34, 41296), (43, 41380), (58, 41533), (61, 41545), (65, 41569), (68, 41593), (69, 41599), (78, 41674), (81, 41686), (98, 41779), (101, 41797), (106, 41845), (111, 41866), (113, 41878), (118, 41911), (119, 41914), (122, 41923), (128, 41950), (129, 41953), (136, 41995), (140, 42016),

Gene: Doomslug_73 Start: 42018, Stop: 42995, Start Num: 15

Candidate Starts for Doomslug_73:

(Start: 15 @42018 has 116 MA's), (29, 42147), (34, 42246), (43, 42330), (58, 42483), (61, 42495), (64, 42516), (65, 42519), (68, 42543), (69, 42549), (75, 42606), (78, 42624), (79, 42630), (98, 42729), (101, 42747), (106, 42795), (111, 42816), (118, 42861), (119, 42864), (122, 42873), (128, 42900), (129, 42903), (136, 42945), (140, 42966),

Gene: Dorothy_62 Start: 40682, Stop: 41659, Start Num: 14

Candidate Starts for Dorothy_62:

(Start: 14 @40682 has 31 MA's), (19, 40715), (29, 40811), (34, 40910), (40, 40976), (41, 40982), (43, 40994), (58, 41147), (61, 41159), (63, 41177), (65, 41183), (68, 41207), (69, 41213), (78, 41288), (79, 41294), (81, 41300), (101, 41411), (105, 41450), (111, 41480), (113, 41492), (115, 41498), (118, 41525), (122, 41537), (128, 41564), (129, 41567), (136, 41609), (140, 41630),

Gene: Ecliptus_71 Start: 42822, Stop: 43760, Start Num: 15

Candidate Starts for Ecliptus_71:

(Start: 15 @42822 has 116 MA's), (23, 42876), (44, 43122), (47, 43137), (53, 43218), (58, 43251), (59, 43257), (61, 43263), (62, 43284), (66, 43314), (71, 43332), (74, 43374), (75, 43386), (79, 43410), (84, 43434), (93, 43470), (105, 43560), (106, 43569), (110, 43584), (111, 43590), (122, 43647), (123, 43650),

Gene: EmiMonkey_62 Start: 43134, Stop: 44111, Start Num: 15

Candidate Starts for EmiMonkey_62:

(Start: 15 @43134 has 116 MA's), (29, 43263), (34, 43362), (40, 43428), (41, 43434), (43, 43446), (58, 43599), (59, 43605), (61, 43611), (64, 43632), (65, 43635), (68, 43659), (69, 43665), (75, 43722), (78, 43740), (79, 43746), (98, 43845), (101, 43863), (106, 43911), (111, 43932), (112, 43935), (118, 43977), (119, 43980), (122, 43989), (128, 44016), (129, 44019), (136, 44061), (140, 44082),

Gene: Emma_66 Start: 41167, Stop: 42048, Start Num: 15

Candidate Starts for Emma_66:

(Start: 15 @41167 has 116 MA's), (30, 41332), (35, 41395), (38, 41410), (43, 41452), (44, 41467), (47, 41482), (53, 41563), (55, 41575), (56, 41578), (61, 41608), (70, 41671), (71, 41677), (79, 41755), (80, 41758), (88, 41794), (90, 41800), (97, 41839), (111, 41935), (127, 42016), (130, 42028),

Gene: Empress_62 Start: 41164, Stop: 42141, Start Num: 15

Candidate Starts for Empress_62:

(Start: 15 @41164 has 116 MA's), (29, 41293), (34, 41392), (40, 41458), (41, 41464), (43, 41476), (58, 41629), (61, 41641), (63, 41659), (65, 41665), (68, 41689), (69, 41695), (78, 41770), (79, 41776), (81, 41782), (101, 41893), (105, 41932), (111, 41962), (113, 41974), (115, 41980), (118, 42007), (122, 42019), (128, 42046), (129, 42049), (136, 42091), (140, 42112),

Gene: Enzomatic_71 Start: 41142, Stop: 42023, Start Num: 15

Candidate Starts for Enzomatic_71:

(Start: 15 @41142 has 116 MA's), (30, 41307), (35, 41370), (38, 41385), (44, 41442), (47, 41457), (53, 41538), (56, 41553), (61, 41583), (70, 41646), (71, 41652), (80, 41733), (88, 41769), (90, 41775), (97, 41814), (101, 41841), (111, 41910), (130, 42003),

Gene: Eradicator_57 Start: 39571, Stop: 40452, Start Num: 15

Candidate Starts for Eradicator_57:

(Start: 15 @39571 has 116 MA's), (30, 39736), (35, 39799), (38, 39814), (44, 39871), (47, 39886), (53, 39967), (56, 39982), (61, 40012), (70, 40075), (71, 40081), (80, 40162), (88, 40198), (90, 40204), (101, 40270), (111, 40339), (122, 40396), (130, 40432),

Gene: Estave1_67 Start: 42639, Stop: 43520, Start Num: 15

Candidate Starts for Estave1_67:

(Start: 15 @42639 has 116 MA's), (30, 42804), (35, 42867), (38, 42882), (44, 42939), (47, 42954), (53, 43035), (56, 43050), (61, 43080), (62, 43101), (66, 43131), (70, 43143), (71, 43149), (74, 43191), (80, 43230), (88, 43266), (90, 43272), (111, 43407), (116, 43428), (122, 43464), (130, 43500),

Gene: Fancypants_66 Start: 41997, Stop: 42878, Start Num: 15

Candidate Starts for Fancypants_66:

(Start: 15 @41997 has 116 MA's), (30, 42162), (35, 42225), (38, 42240), (44, 42297), (47, 42312), (53, 42393), (56, 42408), (61, 42438), (70, 42501), (71, 42507), (80, 42588), (88, 42624), (90, 42630), (101, 42696), (111, 42765), (117, 42798), (130, 42858),

Gene: Fastidio_64 Start: 40012, Stop: 40893, Start Num: 15

Candidate Starts for Fastidio_64:

(Start: 15 @40012 has 116 MA's), (30, 40177), (33, 40231), (35, 40240), (38, 40255), (43, 40297), (44, 40312), (47, 40327), (53, 40408), (55, 40420), (56, 40423), (61, 40453), (70, 40516), (71, 40522), (79, 40600), (80, 40603), (88, 40639), (90, 40645), (97, 40684), (101, 40711), (122, 40837), (124, 40849), (130, 40873),

Gene: Finkle_59 Start: 37653, Stop: 38765, Start Num: 14

Candidate Starts for Finkle_59:

(1, 37059), (2, 37077), (3, 37086), (4, 37401), (Start: 14 @37653 has 31 MA's), (43, 37980), (46, 38001), (47, 38013), (58, 38133), (77, 38274), (82, 38313), (101, 38403), (126, 38547), (145, 38742),

Gene: FreddyB_65 Start: 40349, Stop: 41326, Start Num: 15

Candidate Starts for FreddyB_65:

(Start: 15 @40349 has 116 MA's), (29, 40478), (34, 40577), (41, 40649), (43, 40661), (58, 40814), (59, 40820), (61, 40826), (64, 40847), (65, 40850), (68, 40874), (69, 40880), (75, 40937), (78, 40955), (81, 40967), (98, 41060), (100, 41075), (101, 41078), (105, 41117), (106, 41126), (111, 41147), (118, 41192), (119, 41195), (122, 41204), (128, 41231), (129, 41234), (136, 41276), (140, 41297),

Gene: GUmbie_62 Start: 40798, Stop: 41679, Start Num: 15

Candidate Starts for GUmbie_62:

(Start: 15 @40798 has 116 MA's), (30, 40963), (35, 41026), (38, 41041), (44, 41098), (47, 41113), (53, 41194), (56, 41209), (61, 41239), (70, 41302), (71, 41308), (80, 41389), (88, 41425), (90, 41431), (101, 41497), (111, 41566), (122, 41623), (130, 41659),

Gene: Gandalph_67 Start: 41746, Stop: 42723, Start Num: 15

Candidate Starts for Gandalph_67:

(Start: 15 @41746 has 116 MA's), (29, 41875), (34, 41974), (43, 42058), (58, 42211), (61, 42223), (64, 42244), (65, 42247), (68, 42271), (69, 42277), (75, 42334), (78, 42352), (79, 42358), (98, 42457), (101, 42475), (106, 42523), (111, 42544), (118, 42589), (119, 42592), (122, 42601), (128, 42628), (129, 42631), (136, 42673), (140, 42694),

Gene: Geralt_58 Start: 39719, Stop: 40696, Start Num: 15

Candidate Starts for Geralt_58:

(Start: 15 @39719 has 116 MA's), (29, 39848), (34, 39947), (40, 40013), (41, 40019), (43, 40031), (58, 40184), (61, 40196), (63, 40214), (65, 40220), (68, 40244), (69, 40250), (78, 40325), (79, 40331), (81, 40337), (101, 40448), (105, 40487), (111, 40517), (113, 40529), (115, 40535), (118, 40562), (122, 40574), (128, 40601), (129, 40604), (136, 40646), (140, 40667),

Gene: GodPhather_52 Start: 43649, Stop: 44713, Start Num: 14

Candidate Starts for GodPhather_52:

(Start: 14 @43649 has 31 MA's), (19, 43685), (25, 43748), (32, 43847), (36, 43889), (39, 43943), (40, 43946), (41, 43952), (43, 43964), (58, 44117), (59, 44123), (61, 44129), (64, 44150), (65, 44153), (68, 44177), (72, 44216), (79, 44267), (89, 44315), (92, 44330), (100, 44381), (101, 44384), (102, 44393), (113, 44465), (121, 44507), (122, 44510), (130, 44546), (134, 44570), (141, 44609),

Gene: Gorge_68 Start: 42740, Stop: 43621, Start Num: 15

Candidate Starts for Gorge_68:

(Start: 15 @42740 has 116 MA's), (30, 42905), (35, 42968), (38, 42983), (44, 43040), (47, 43055), (53, 43136), (56, 43151), (61, 43181), (70, 43244), (71, 43250), (80, 43331), (88, 43367), (90, 43373), (101, 43439), (111, 43508), (122, 43565), (130, 43601),

Gene: Grimmer_74 Start: 42888, Stop: 43865, Start Num: 14

Candidate Starts for Grimmer_74:

(Start: 14 @42888 has 31 MA's), (19, 42921), (34, 43116), (43, 43200), (58, 43353), (59, 43359), (61, 43365), (64, 43386), (65, 43389), (68, 43413), (69, 43419), (78, 43494), (81, 43506), (98, 43599), (101, 43617), (105, 43656), (106, 43665), (111, 43686), (112, 43689), (113, 43698), (115, 43704), (118, 43731), (119, 43734), (122, 43743), (128, 43770), (129, 43773), (136, 43815), (140, 43836),

Gene: Hegedechwinu_64 Start: 40536, Stop: 41513, Start Num: 15

Candidate Starts for Hegedechwinu_64:

(Start: 15 @40536 has 116 MA's), (29, 40665), (34, 40764), (43, 40848), (58, 41001), (61, 41013), (64, 41034), (65, 41037), (68, 41061), (69, 41067), (75, 41124), (78, 41142), (79, 41148), (98, 41247), (101, 41265), (106, 41313), (111, 41334), (118, 41379), (119, 41382), (122, 41391), (128, 41418), (129, 41421), (136, 41463), (140, 41484),

Gene: Horus_69 Start: 42027, Stop: 42965, Start Num: 15

Candidate Starts for Horus_69:

(Start: 15 @42027 has 116 MA's), (23, 42081), (28, 42150), (44, 42327), (47, 42342), (53, 42423), (58, 42456), (61, 42468), (62, 42489), (66, 42519), (71, 42537), (74, 42579), (75, 42591), (79, 42615), (93, 42675), (105, 42765), (106, 42774), (110, 42789), (111, 42795), (122, 42852), (123, 42855),

Gene: lbOuu_63 Start: 41769, Stop: 42746, Start Num: 14

Candidate Starts for lbOuu_63:

(Start: 14 @41769 has 31 MA's), (19, 41802), (29, 41898), (34, 41997), (40, 42063), (41, 42069), (43, 42081), (58, 42234), (61, 42246), (63, 42264), (65, 42270), (68, 42294), (69, 42300), (78, 42375), (79, 42381), (81, 42387), (101, 42498), (105, 42537), (111, 42567), (113, 42579), (115, 42585), (118, 42612), (122, 42624), (128, 42651), (129, 42654), (136, 42696), (140, 42717),

Gene: Inventum_59 Start: 40880, Stop: 41857, Start Num: 14

Candidate Starts for Inventum_59:

(Start: 14 @40880 has 31 MA's), (19, 40913), (29, 41009), (34, 41108), (40, 41174), (41, 41180), (43, 41192), (58, 41345), (61, 41357), (63, 41375), (65, 41381), (68, 41405), (69, 41411), (78, 41486), (79, 41492), (81, 41498), (101, 41609), (105, 41648), (111, 41678), (113, 41690), (115, 41696), (118, 41723), (122, 41735), (128, 41762), (129, 41765), (136, 41807), (140, 41828),

Gene: Jabbawokkie_78 Start: 43022, Stop: 43903, Start Num: 15

Candidate Starts for Jabbawokkie_78:

(Start: 15 @43022 has 116 MA's), (30, 43187), (35, 43250), (38, 43265), (43, 43307), (44, 43322), (47, 43337), (53, 43418), (55, 43430), (56, 43433), (61, 43463), (70, 43526), (71, 43532), (79, 43610), (80, 43613), (88, 43649), (90, 43655), (97, 43694), (101, 43721), (122, 43847), (124, 43859), (130, 43883),

Gene: James_68 Start: 42865, Stop: 43746, Start Num: 15

Candidate Starts for James_68:

(Start: 15 @42865 has 116 MA's), (30, 43030), (35, 43093), (38, 43108), (44, 43165), (47, 43180), (53, 43261), (56, 43276), (61, 43306), (70, 43369), (71, 43375), (80, 43456), (88, 43492), (90, 43498), (101, 43564), (111, 43633), (122, 43690), (130, 43726),

Gene: Jaracob_64 Start: 41472, Stop: 42449, Start Num: 15

Candidate Starts for Jaracob_64:

(Start: 15 @41472 has 116 MA's), (29, 41601), (34, 41700), (43, 41784), (58, 41937), (61, 41949), (63, 41967), (64, 41970), (65, 41973), (68, 41997), (69, 42003), (78, 42078), (81, 42090), (98, 42183), (101, 42201), (106, 42249), (111, 42270), (113, 42282), (118, 42315), (119, 42318), (122, 42327), (128, 42354), (129, 42357), (136, 42399), (140, 42420),

Gene: Jennelsea_61 Start: 40151, Stop: 41128, Start Num: 15

Candidate Starts for Jennelsea_61:

(Start: 15 @40151 has 116 MA's), (29, 40280), (34, 40379), (43, 40463), (58, 40616), (61, 40628), (63, 40646), (64, 40649), (65, 40652), (68, 40676), (69, 40682), (78, 40757), (81, 40769), (98, 40862), (101, 40880), (106, 40928), (111, 40949), (113, 40961), (118, 40994), (119, 40997), (122, 41006), (128, 41033), (129, 41036), (136, 41078), (140, 41099),

Gene: Jeon_51 Start: 43391, Stop: 44455, Start Num: 14

Candidate Starts for Jeon_51:

(Start: 14 @43391 has 31 MA's), (19, 43427), (25, 43490), (32, 43589), (36, 43631), (39, 43685), (40, 43688), (43, 43706), (58, 43859), (59, 43865), (61, 43871), (64, 43892), (65, 43895), (68, 43919), (72, 43958), (79, 44009), (89, 44057), (92, 44072), (100, 44123), (101, 44126), (102, 44135), (113, 44207), (121, 44249), (122, 44252), (130, 44288), (134, 44312), (141, 44351),

Gene: Jinglebell_69 Start: 43939, Stop: 44820, Start Num: 15

Candidate Starts for Jinglebell_69:

(9, 43852), (Start: 15 @43939 has 116 MA's), (30, 44104), (35, 44167), (38, 44182), (44, 44239), (47, 44254), (53, 44335), (56, 44350), (61, 44380), (70, 44443), (71, 44449), (80, 44530), (88, 44566), (90, 44572), (101, 44638), (111, 44707), (127, 44788), (130, 44800),

Gene: Job42_67 Start: 43741, Stop: 44718, Start Num: 15

Candidate Starts for Job42_67:

(Start: 15 @43741 has 116 MA's), (29, 43870), (34, 43969), (43, 44053), (58, 44206), (61, 44218), (65, 44242), (68, 44266), (69, 44272), (78, 44347), (81, 44359), (98, 44452), (101, 44470), (105, 44509), (106, 44518), (111, 44539), (115, 44557), (118, 44584), (119, 44587), (122, 44596), (128, 44623), (129, 44626), (136, 44668), (140, 44689),

Gene: JoeyJr_59 Start: 39918, Stop: 40895, Start Num: 15

Candidate Starts for JoeyJr_59:

(Start: 15 @39918 has 116 MA's), (29, 40047), (34, 40146), (40, 40212), (41, 40218), (43, 40230), (58, 40383), (61, 40395), (63, 40413), (65, 40419), (68, 40443), (69, 40449), (78, 40524), (79, 40530), (81, 40536), (101, 40647), (105, 40686), (111, 40716), (113, 40728), (115, 40734), (118, 40761), (122, 40773), (128, 40800), (129, 40803), (136, 40845), (140, 40866),

Gene: Juniper1_63 Start: 41675, Stop: 42556, Start Num: 15

Candidate Starts for Juniper1_63:

(Start: 15 @41675 has 116 MA's), (30, 41840), (35, 41903), (38, 41918), (44, 41975), (47, 41990), (53, 42071), (56, 42086), (61, 42116), (70, 42179), (71, 42185), (80, 42266), (88, 42302), (90, 42308), (114, 42458), (122, 42500), (127, 42524), (130, 42536),

Gene: Karhdo_61 Start: 41017, Stop: 41898, Start Num: 15

Candidate Starts for Karhdo_61:

(Start: 15 @41017 has 116 MA's), (30, 41182), (35, 41245), (38, 41260), (44, 41317), (47, 41332), (53, 41413), (56, 41428), (61, 41458), (70, 41521), (71, 41527), (80, 41608), (88, 41644), (101, 41716), (104, 41740), (111, 41785), (114, 41800), (116, 41806), (117, 41818), (130, 41878),

Gene: Kenuha5_62 Start: 40321, Stop: 41298, Start Num: 15

Candidate Starts for Kenuha5_62:

(Start: 15 @40321 has 116 MA's), (29, 40450), (34, 40549), (40, 40615), (41, 40621), (43, 40633), (58, 40786), (59, 40792), (60, 40795), (61, 40798), (63, 40816), (65, 40822), (68, 40846), (69, 40852), (78, 40927), (79, 40933), (81, 40939), (98, 41032), (101, 41050), (105, 41089), (106, 41098), (111, 41119), (113, 41131), (115, 41137), (118, 41164), (119, 41167), (122, 41176), (128, 41203), (129, 41206), (136, 41248), (139, 41266), (140, 41269),

Gene: Kersh_66 Start: 43767, Stop: 44744, Start Num: 15

Candidate Starts for Kersh_66:

(Start: 15 @43767 has 116 MA's), (29, 43896), (34, 43995), (40, 44061), (43, 44079), (58, 44232), (61, 44244), (64, 44265), (65, 44268), (68, 44292), (69, 44298), (78, 44373), (81, 44385), (98, 44478), (101, 44496), (105, 44535), (106, 44544), (111, 44565), (112, 44568), (115, 44583), (118, 44610), (119, 44613), (122, 44622), (128, 44649), (129, 44652), (136, 44694), (140, 44715),

Gene: KingMidas_63 Start: 41580, Stop: 42557, Start Num: 15

Candidate Starts for KingMidas_63:

(Start: 15 @41580 has 116 MA's), (29, 41709), (34, 41808), (40, 41874), (41, 41880), (43, 41892), (58, 42045), (61, 42057), (63, 42075), (65, 42081), (68, 42105), (69, 42111), (78, 42186), (79, 42192), (81, 42198), (101, 42309), (105, 42348), (111, 42378), (113, 42390), (115, 42396), (118, 42423), (122, 42435), (128, 42462), (129, 42465), (136, 42507), (140, 42528),

Gene: Kingsley_62 Start: 40982, Stop: 41959, Start Num: 15

Candidate Starts for Kingsley_62:

(Start: 15 @40982 has 116 MA's), (29, 41111), (34, 41210), (40, 41276), (41, 41282), (43, 41294), (58, 41447), (61, 41459), (63, 41477), (65, 41483), (68, 41507), (69, 41513), (78, 41588), (79, 41594), (81, 41600), (98, 41693), (101, 41711), (105, 41750), (106, 41759), (111, 41780), (113, 41792), (115, 41798), (118, 41825), (119, 41828), (122, 41837), (128, 41864), (129, 41867), (136, 41909), (139, 41927), (140, 41930),

Gene: Koella_58 Start: 37399, Stop: 38376, Start Num: 15

Candidate Starts for Koella_58:

(Start: 15 @37399 has 116 MA's), (29, 37528), (34, 37627), (41, 37699), (43, 37711), (58, 37864), (59, 37870), (61, 37876), (64, 37897), (65, 37900), (68, 37924), (69, 37930), (75, 37987), (78, 38005), (81, 38017), (98, 38110), (100, 38125), (101, 38128), (105, 38167), (106, 38176), (111, 38197), (118, 38242), (119, 38245), (122, 38254), (128, 38281), (129, 38284), (136, 38326), (140, 38347),

Gene: LastJedi_58 Start: 38716, Stop: 39693, Start Num: 15

Candidate Starts for LastJedi_58:

(Start: 15 @38716 has 116 MA's), (29, 38845), (34, 38944), (41, 39016), (43, 39028), (58, 39181), (59, 39187), (61, 39193), (64, 39214), (65, 39217), (68, 39241), (69, 39247), (75, 39304), (78, 39322), (81, 39334), (98, 39427), (101, 39445), (105, 39484), (106, 39493), (111, 39514), (115, 39532), (118,

39559), (119, 39562), (122, 39571), (128, 39598), (129, 39601), (136, 39643), (140, 39664),

Gene: Latretium_66 Start: 41901, Stop: 42782, Start Num: 15

Candidate Starts for Latretium_66:

(7, 41799), (Start: 15 @41901 has 116 MA's), (30, 42066), (35, 42129), (38, 42144), (44, 42201), (47, 42216), (53, 42297), (56, 42312), (61, 42342), (70, 42405), (71, 42411), (80, 42492), (88, 42528), (90, 42534), (101, 42600), (114, 42684), (122, 42726), (127, 42750), (130, 42762),

Gene: Leperchaun_56 Start: 39148, Stop: 40125, Start Num: 15

Candidate Starts for Leperchaun_56:

(Start: 15 @39148 has 116 MA's), (29, 39277), (34, 39376), (40, 39442), (41, 39448), (43, 39460), (58, 39613), (61, 39625), (63, 39643), (65, 39649), (68, 39673), (69, 39679), (78, 39754), (79, 39760), (81, 39766), (101, 39877), (105, 39916), (111, 39946), (113, 39958), (115, 39964), (118, 39991), (122, 40003), (128, 40030), (129, 40033), (136, 40075), (140, 40096),

Gene: LilMoolah_63 Start: 41246, Stop: 42223, Start Num: 15

Candidate Starts for LilMoolah_63:

(Start: 15 @41246 has 116 MA's), (29, 41375), (34, 41474), (43, 41558), (58, 41711), (61, 41723), (65, 41747), (68, 41771), (69, 41777), (78, 41852), (81, 41864), (98, 41957), (101, 41975), (105, 42014), (106, 42023), (111, 42044), (115, 42062), (118, 42089), (119, 42092), (122, 42101), (128, 42128), (129, 42131), (136, 42173), (140, 42194),

Gene: LitninMcQueen_67 Start: 40977, Stop: 41915, Start Num: 15

Candidate Starts for LitninMcQueen_67:

(Start: 15 @40977 has 116 MA's), (23, 41031), (28, 41100), (44, 41277), (47, 41292), (48, 41319), (53, 41373), (61, 41418), (62, 41439), (70, 41481), (71, 41487), (75, 41541), (79, 41565), (90, 41610), (105, 41715), (106, 41724), (110, 41739), (111, 41745), (122, 41802), (123, 41805),

Gene: Lizziana_70 Start: 42346, Stop: 43227, Start Num: 15

Candidate Starts for Lizziana_70:

(Start: 15 @42346 has 116 MA's), (30, 42511), (35, 42574), (38, 42589), (44, 42646), (47, 42661), (53, 42742), (56, 42757), (61, 42787), (70, 42850), (71, 42856), (80, 42937), (88, 42973), (90, 42979), (101, 43045), (111, 43114), (122, 43171), (130, 43207),

Gene: Llama_68 Start: 43794, Stop: 44675, Start Num: 15

Candidate Starts for Llama_68:

(9, 43707), (Start: 15 @43794 has 116 MA's), (30, 43959), (35, 44022), (38, 44037), (44, 44094), (47, 44109), (53, 44190), (56, 44205), (61, 44235), (70, 44298), (71, 44304), (80, 44385), (88, 44421), (90, 44427), (101, 44493), (111, 44562), (127, 44643), (130, 44655),

Gene: LunaStella_63 Start: 40779, Stop: 41660, Start Num: 15

Candidate Starts for LunaStella_63:

(Start: 15 @40779 has 116 MA's), (26, 40878), (30, 40944), (35, 41007), (38, 41022), (44, 41079), (47, 41094), (53, 41175), (56, 41190), (61, 41220), (70, 41283), (71, 41289), (79, 41367), (80, 41370), (88, 41406), (90, 41412), (97, 41451), (116, 41568), (117, 41580), (122, 41604), (130, 41640),

Gene: MadMen_64 Start: 41645, Stop: 42622, Start Num: 14

Candidate Starts for MadMen_64:

(8, 41534), (Start: 14 @41645 has 31 MA's), (34, 41873), (43, 41957), (58, 42110), (61, 42122), (64, 42143), (65, 42146), (68, 42170), (69, 42176), (75, 42233), (78, 42251), (79, 42257), (98, 42356), (101, 42374), (106, 42422), (111, 42443), (118, 42488), (119, 42491), (122, 42500), (128, 42527), (129, 42530), (136, 42572), (140, 42593),

Gene: Mantra_60 Start: 40147, Stop: 41028, Start Num: 15

Candidate Starts for Mantra_60:

(Start: 15 @40147 has 116 MA's), (30, 40312), (35, 40375), (38, 40390), (43, 40432), (44, 40447), (47, 40462), (53, 40543), (55, 40555), (56, 40558), (61, 40588), (70, 40651), (71, 40657), (79, 40735), (80, 40738), (88, 40774), (90, 40780), (97, 40819), (101, 40846), (122, 40972), (124, 40984), (130, 41008),

Gene: Maravista_66 Start: 43385, Stop: 44365, Start Num: 14

Candidate Starts for Maravista_66:

(12, 43370), (Start: 14 @43385 has 31 MA's), (18, 43418), (21, 43436), (22, 43439), (24, 43475), (43, 43700), (58, 43853), (59, 43859), (61, 43865), (63, 43883), (64, 43886), (65, 43889), (68, 43913), (69, 43919), (78, 43994), (81, 44006), (98, 44099), (100, 44114), (101, 44117), (105, 44156), (106, 44165), (111, 44186), (115, 44204), (118, 44231), (119, 44234), (122, 44243), (128, 44270), (129, 44273), (136, 44315), (140, 44336),

Gene: Marker_66 Start: 41484, Stop: 42461, Start Num: 14

Candidate Starts for Marker_66:

(8, 41373), (Start: 14 @41484 has 31 MA's), (29, 41613), (34, 41712), (40, 41778), (41, 41784), (43, 41796), (58, 41949), (59, 41955), (60, 41958), (61, 41961), (64, 41982), (65, 41985), (68, 42009), (69, 42015), (75, 42072), (81, 42102), (98, 42195), (101, 42213), (105, 42252), (106, 42261), (111, 42282), (112, 42285), (115, 42300), (118, 42327), (119, 42330), (122, 42339), (128, 42366), (129, 42369), (136, 42411), (140, 42432),

Gene: Martik_64 Start: 41422, Stop: 42399, Start Num: 15

Candidate Starts for Martik_64:

(Start: 15 @41422 has 116 MA's), (29, 41551), (34, 41650), (41, 41722), (43, 41734), (58, 41887), (59, 41893), (61, 41899), (64, 41920), (65, 41923), (68, 41947), (69, 41953), (75, 42010), (78, 42028), (81, 42040), (98, 42133), (101, 42151), (105, 42190), (106, 42199), (111, 42220), (115, 42238), (118, 42265), (119, 42268), (122, 42277), (128, 42304), (129, 42307), (136, 42349), (140, 42370),

Gene: Mattes_68 Start: 42865, Stop: 43746, Start Num: 15

Candidate Starts for Mattes_68:

(Start: 15 @42865 has 116 MA's), (30, 43030), (35, 43093), (38, 43108), (44, 43165), (47, 43180), (53, 43261), (56, 43276), (61, 43306), (70, 43369), (71, 43375), (80, 43456), (88, 43492), (90, 43498), (101, 43564), (111, 43633), (122, 43690), (130, 43726),

Gene: Medindi_60 Start: 38637, Stop: 39518, Start Num: 15

Candidate Starts for Medindi_60:

(Start: 15 @38637 has 116 MA's), (30, 38802), (35, 38865), (38, 38880), (43, 38922), (44, 38937), (47, 38952), (53, 39033), (55, 39045), (56, 39048), (61, 39078), (70, 39141), (71, 39147), (79, 39225), (80, 39228), (88, 39264), (90, 39270), (97, 39309), (104, 39360), (116, 39426), (117, 39438), (122, 39462), (127, 39486), (130, 39498),

Gene: Megabear_51 Start: 42806, Stop: 43846, Start Num: 14

Candidate Starts for Megabear_51:

(Start: 14 @42806 has 31 MA's), (19, 42842), (25, 42905), (32, 43004), (36, 43046), (39, 43100), (40, 43103), (41, 43109), (43, 43121), (58, 43274), (59, 43280), (61, 43286), (64, 43307), (65, 43310), (68, 43334), (72, 43373), (79, 43424), (89, 43472), (92, 43487), (101, 43541), (102, 43550), (113, 43622), (121, 43664), (122, 43667), (130, 43703), (134, 43727), (141, 43766),

Gene: MinionDave_63 Start: 41772, Stop: 42749, Start Num: 15

Candidate Starts for MinionDave_63:

(Start: 15 @41772 has 116 MA's), (29, 41901), (34, 42000), (43, 42084), (58, 42237), (61, 42249), (64, 42270), (65, 42273), (68, 42297), (69, 42303), (75, 42360), (78, 42378), (79, 42384), (98, 42483), (101,

42501), (106, 42549), (111, 42570), (118, 42615), (119, 42618), (122, 42627), (128, 42654), (129, 42657), (136, 42699), (140, 42720),

Gene: Minnie_67 Start: 42992, Stop: 43969, Start Num: 15

Candidate Starts for Minnie_67:

(Start: 15 @42992 has 116 MA's), (29, 43121), (34, 43220), (41, 43292), (43, 43304), (58, 43457), (59, 43463), (61, 43469), (64, 43490), (65, 43493), (68, 43517), (69, 43523), (75, 43580), (78, 43598), (81, 43610), (98, 43703), (101, 43721), (105, 43760), (106, 43769), (111, 43790), (115, 43808), (118, 43835), (119, 43838), (122, 43847), (128, 43874), (129, 43877), (136, 43919), (140, 43940),

Gene: Modragons_67 Start: 43783, Stop: 44664, Start Num: 15

Candidate Starts for Modragons_67:

(9, 43696), (Start: 15 @43783 has 116 MA's), (30, 43948), (35, 44011), (38, 44026), (44, 44083), (47, 44098), (53, 44179), (56, 44194), (61, 44224), (70, 44287), (71, 44293), (80, 44374), (88, 44410), (90, 44416), (101, 44482), (111, 44551), (127, 44632), (130, 44644),

Gene: MooMoo_63 Start: 40832, Stop: 41815, Start Num: 14

Candidate Starts for MooMoo_63:

(Start: 14 @40832 has 31 MA's), (43, 41144), (58, 41297), (61, 41309), (64, 41330), (65, 41333), (68, 41357), (69, 41363), (75, 41420), (78, 41438), (79, 41444), (81, 41450), (89, 41492), (92, 41507), (96, 41534), (102, 41570), (105, 41600), (106, 41609), (119, 41678), (131, 41729), (132, 41732), (137, 41762),

Gene: Moonbeam_63 Start: 41096, Stop: 41977, Start Num: 15

Candidate Starts for Moonbeam_63:

(Start: 15 @41096 has 116 MA's), (30, 41261), (35, 41324), (38, 41339), (43, 41381), (44, 41396), (47, 41411), (53, 41492), (55, 41504), (56, 41507), (61, 41537), (70, 41600), (71, 41606), (79, 41684), (80, 41687), (88, 41723), (90, 41729), (97, 41768), (111, 41864), (127, 41945), (130, 41957),

Gene: Mozy_73 Start: 43781, Stop: 44662, Start Num: 15

Candidate Starts for Mozy_73:

(Start: 15 @43781 has 116 MA's), (30, 43946), (35, 44009), (38, 44024), (44, 44081), (47, 44096), (53, 44177), (56, 44192), (61, 44222), (70, 44285), (71, 44291), (75, 44345), (79, 44369), (80, 44372), (88, 44408), (90, 44414), (97, 44453), (101, 44480), (114, 44564), (130, 44642),

Gene: Mwanjiwa_70 Start: 42564, Stop: 43544, Start Num: 14

Candidate Starts for Mwanjiwa_70:

(12, 42549), (Start: 14 @42564 has 31 MA's), (18, 42597), (21, 42615), (22, 42618), (24, 42654), (27, 42684), (43, 42879), (57, 43029), (58, 43032), (59, 43038), (60, 43041), (61, 43044), (64, 43065), (65, 43068), (68, 43092), (69, 43098), (75, 43155), (78, 43173), (81, 43185), (98, 43278), (101, 43296), (105, 43335), (106, 43344), (111, 43365), (115, 43383), (118, 43410), (119, 43413), (122, 43422), (128, 43449), (129, 43452), (136, 43494), (140, 43515),

Gene: NewHope4_65 Start: 41288, Stop: 42169, Start Num: 15

Candidate Starts for NewHope4_65:

(Start: 15 @41288 has 116 MA's), (30, 41453), (35, 41516), (38, 41531), (44, 41588), (47, 41603), (53, 41684), (56, 41699), (61, 41729), (70, 41792), (71, 41798), (80, 41879), (88, 41915), (90, 41921), (97, 41960), (101, 41987), (111, 42056), (130, 42149),

Gene: Nichirin_71 Start: 45324, Stop: 46205, Start Num: 15

Candidate Starts for Nichirin_71:

(9, 45237), (Start: 15 @45324 has 116 MA's), (30, 45489), (35, 45552), (38, 45567), (44, 45624), (47, 45639), (53, 45720), (56, 45735), (61, 45765), (70, 45828), (71, 45834), (80, 45915), (88, 45951), (90,

45957), (101, 46023), (111, 46092), (127, 46173), (130, 46185),

Gene: Nimbo_57 Start: 39722, Stop: 40699, Start Num: 15

Candidate Starts for Nimbo_57:

(Start: 15 @39722 has 116 MA's), (29, 39851), (34, 39950), (40, 40016), (41, 40022), (43, 40034), (58, 40187), (61, 40199), (63, 40217), (65, 40223), (68, 40247), (69, 40253), (78, 40328), (79, 40334), (81, 40340), (101, 40451), (105, 40490), (111, 40520), (113, 40532), (115, 40538), (118, 40565), (122, 40577), (128, 40604), (129, 40607), (136, 40649), (140, 40670),

Gene: Nitzel_61 Start: 40515, Stop: 41492, Start Num: 15

Candidate Starts for Nitzel_61:

(Start: 15 @40515 has 116 MA's), (29, 40644), (34, 40743), (40, 40809), (41, 40815), (43, 40827), (58, 40980), (59, 40986), (61, 40992), (63, 41010), (64, 41013), (65, 41016), (68, 41040), (69, 41046), (78, 41121), (101, 41244), (105, 41283), (106, 41292), (111, 41313), (112, 41316), (113, 41325), (115, 41331), (118, 41358), (119, 41361), (122, 41370), (128, 41397), (129, 41400), (136, 41442), (140, 41463),

Gene: Nivrat_61 Start: 41119, Stop: 42096, Start Num: 15

Candidate Starts for Nivrat_61:

(Start: 15 @41119 has 116 MA's), (29, 41248), (34, 41347), (43, 41431), (58, 41584), (61, 41596), (65, 41620), (68, 41644), (69, 41650), (78, 41725), (81, 41737), (98, 41830), (101, 41848), (105, 41887), (106, 41896), (111, 41917), (115, 41935), (118, 41962), (119, 41965), (122, 41974), (128, 42001), (129, 42004), (136, 42046), (140, 42067),

Gene: NormanBulbieJr_64 Start: 41412, Stop: 42389, Start Num: 15

Candidate Starts for NormanBulbieJr_64:

(Start: 15 @41412 has 116 MA's), (29, 41541), (34, 41640), (41, 41712), (43, 41724), (58, 41877), (59, 41883), (61, 41889), (64, 41910), (65, 41913), (68, 41937), (69, 41943), (75, 42000), (78, 42018), (81, 42030), (98, 42123), (100, 42138), (101, 42141), (105, 42180), (106, 42189), (111, 42210), (118, 42255), (119, 42258), (122, 42267), (128, 42294), (129, 42297), (136, 42339), (140, 42360),

Gene: ODay_73 Start: 42970, Stop: 44001, Start Num: 14

Candidate Starts for ODay_73:

(Start: 14 @42970 has 31 MA's), (19, 43006), (32, 43168), (43, 43285), (49, 43384), (54, 43411), (58, 43438), (61, 43450), (65, 43474), (69, 43504), (72, 43534), (78, 43579), (79, 43585), (81, 43591), (98, 43684), (100, 43699), (101, 43702), (109, 43759), (113, 43783), (119, 43819), (122, 43828), (128, 43855), (129, 43858), (131, 43870), (134, 43888), (136, 43900),

Gene: Ochi17_67 Start: 43390, Stop: 44271, Start Num: 15

Candidate Starts for Ochi17_67:

(9, 43303), (Start: 15 @43390 has 116 MA's), (30, 43555), (35, 43618), (38, 43633), (44, 43690), (47, 43705), (53, 43786), (56, 43801), (61, 43831), (70, 43894), (71, 43900), (80, 43981), (88, 44017), (90, 44023), (101, 44089), (111, 44158), (127, 44239), (130, 44251),

Gene: OfUltron_69 Start: 43939, Stop: 44820, Start Num: 15

Candidate Starts for OfUltron_69:

(9, 43852), (Start: 15 @43939 has 116 MA's), (30, 44104), (35, 44167), (38, 44182), (44, 44239), (47, 44254), (53, 44335), (56, 44350), (61, 44380), (70, 44443), (71, 44449), (80, 44530), (88, 44566), (90, 44572), (101, 44638), (111, 44707), (127, 44788), (130, 44800),

Gene: Ogopogo_69 Start: 41764, Stop: 42645, Start Num: 15

Candidate Starts for Ogopogo_69:

(Start: 15 @41764 has 116 MA's), (30, 41929), (33, 41983), (35, 41992), (38, 42007), (43, 42049), (44, 42064), (47, 42079), (53, 42160), (55, 42172), (56, 42175), (61, 42205), (70, 42268), (71, 42274), (79, 42352), (80, 42355), (88, 42391), (90, 42397), (97, 42436), (104, 42487), (116, 42553), (117, 42565), (122, 42589), (127, 42613), (130, 42625),

Gene: Oksu_68 Start: 44271, Stop: 45248, Start Num: 14

Candidate Starts for Oksu_68:

(Start: 14 @44271 has 31 MA's), (29, 44400), (34, 44499), (43, 44583), (57, 44733), (58, 44736), (59, 44742), (60, 44745), (61, 44748), (64, 44769), (65, 44772), (68, 44796), (69, 44802), (78, 44877), (81, 44889), (98, 44982), (101, 45000), (105, 45039), (106, 45048), (111, 45069), (112, 45072), (113, 45081), (115, 45087), (118, 45114), (119, 45117), (122, 45126), (128, 45153), (129, 45156), (136, 45198), (140, 45219),

Gene: OldBen_61 Start: 41115, Stop: 42092, Start Num: 14

Candidate Starts for OldBen_61:

(Start: 14 @41115 has 31 MA's), (19, 41148), (29, 41244), (34, 41343), (40, 41409), (41, 41415), (43, 41427), (58, 41580), (61, 41592), (63, 41610), (65, 41616), (68, 41640), (69, 41646), (78, 41721), (79, 41727), (81, 41733), (101, 41844), (105, 41883), (111, 41913), (113, 41925), (115, 41931), (118, 41958), (122, 41970), (128, 41997), (129, 42000), (136, 42042), (140, 42063),

Gene: OlympiaSaint_66 Start: 41807, Stop: 42688, Start Num: 15

Candidate Starts for OlympiaSaint_66:

(Start: 15 @41807 has 116 MA's), (30, 41972), (35, 42035), (38, 42050), (44, 42107), (47, 42122), (53, 42203), (56, 42218), (61, 42248), (70, 42311), (71, 42317), (80, 42398), (88, 42434), (90, 42440), (101, 42506), (111, 42575), (122, 42632), (130, 42668),

Gene: PHappiness_59 Start: 39694, Stop: 40671, Start Num: 15

Candidate Starts for PHappiness_59:

(Start: 15 @39694 has 116 MA's), (29, 39823), (34, 39922), (40, 39988), (41, 39994), (43, 40006), (58, 40159), (61, 40171), (63, 40189), (65, 40195), (68, 40219), (69, 40225), (78, 40300), (79, 40306), (81, 40312), (101, 40423), (105, 40462), (111, 40492), (113, 40504), (115, 40510), (118, 40537), (122, 40549), (128, 40576), (129, 40579), (136, 40621), (140, 40642),

Gene: PR_51 Start: 43410, Stop: 44450, Start Num: 14

Candidate Starts for PR_51:

(Start: 14 @43410 has 31 MA's), (19, 43446), (25, 43509), (32, 43608), (36, 43650), (39, 43704), (40, 43707), (41, 43713), (43, 43725), (58, 43878), (59, 43884), (61, 43890), (64, 43911), (65, 43914), (68, 43938), (72, 43977), (79, 44028), (89, 44076), (92, 44091), (101, 44145), (102, 44154), (113, 44226), (121, 44268), (122, 44271), (130, 44307), (134, 44331), (141, 44370),

Gene: Pacc40_58 Start: 39768, Stop: 40745, Start Num: 15

Candidate Starts for Pacc40_58:

(Start: 15 @39768 has 116 MA's), (34, 39996), (41, 40068), (43, 40080), (58, 40233), (59, 40239), (61, 40245), (64, 40266), (65, 40269), (68, 40293), (69, 40299), (75, 40356), (78, 40374), (81, 40386), (98, 40479), (101, 40497), (105, 40536), (106, 40545), (111, 40566), (115, 40584), (118, 40611), (119, 40614), (122, 40623), (128, 40650), (129, 40653), (136, 40695), (140, 40716),

Gene: Phabuloso_71 Start: 41432, Stop: 42463, Start Num: 14

Candidate Starts for Phabuloso_71:

(Start: 14 @41432 has 31 MA's), (19, 41468), (43, 41747), (49, 41846), (50, 41852), (52, 41864), (54, 41873), (58, 41900), (61, 41912), (64, 41933), (65, 41936), (68, 41960), (69, 41966), (72, 41996), (73, 42005), (78, 42041), (79, 42047), (81, 42053), (89, 42095), (98, 42146), (99, 42152), (100, 42161), (101, 42164), (109, 42221), (113, 42245), (119, 42281), (122, 42290), (129, 42320), (130, 42326),

(131, 42332), (134, 42350), (136, 42362),

Gene: PhaoMing_52 Start: 37123, Stop: 38070, Start Num: 15

Candidate Starts for PhaoMing_52:

(Start: 15 @37123 has 116 MA's), (44, 37426), (47, 37441), (48, 37468), (53, 37522), (58, 37555), (59, 37561), (61, 37567), (70, 37630), (71, 37636), (75, 37690), (78, 37708), (79, 37714), (84, 37738), (88, 37753), (90, 37759), (105, 37864), (106, 37873), (110, 37888), (111, 37894), (122, 37951),

Gene: Phasih_62 Start: 41721, Stop: 42602, Start Num: 15

Candidate Starts for Phasih_62:

(Start: 15 @41721 has 116 MA's), (30, 41886), (35, 41949), (38, 41964), (44, 42021), (47, 42036), (53, 42117), (56, 42132), (61, 42162), (70, 42225), (71, 42231), (80, 42312), (88, 42348), (90, 42354), (97, 42393), (111, 42489), (116, 42510), (122, 42546), (130, 42582),

Gene: Philus_68 Start: 42909, Stop: 43886, Start Num: 15

Candidate Starts for Philus_68:

(Start: 15 @42909 has 116 MA's), (29, 43038), (34, 43137), (43, 43221), (58, 43374), (61, 43386), (64, 43407), (65, 43410), (68, 43434), (69, 43440), (78, 43515), (81, 43527), (98, 43620), (101, 43638), (105, 43677), (106, 43686), (111, 43707), (118, 43752), (119, 43755), (122, 43764), (128, 43791), (129, 43794), (136, 43836), (140, 43857),

Gene: PhlipPhlop_64 Start: 43134, Stop: 44111, Start Num: 15

Candidate Starts for PhlipPhlop_64:

(Start: 15 @43134 has 116 MA's), (29, 43263), (34, 43362), (40, 43428), (41, 43434), (43, 43446), (58, 43599), (59, 43605), (61, 43611), (64, 43632), (65, 43635), (68, 43659), (69, 43665), (75, 43722), (78, 43740), (79, 43746), (98, 43845), (101, 43863), (106, 43911), (111, 43932), (112, 43935), (118, 43977), (119, 43980), (122, 43989), (128, 44016), (129, 44019), (136, 44061), (140, 44082),

Gene: Pippy_63 Start: 40747, Stop: 41727, Start Num: 14

Candidate Starts for Pippy_63:

(12, 40732), (Start: 14 @40747 has 31 MA's), (18, 40780), (21, 40798), (22, 40801), (24, 40837), (43, 41062), (58, 41215), (59, 41221), (61, 41227), (63, 41245), (64, 41248), (65, 41251), (68, 41275), (69, 41281), (78, 41356), (81, 41368), (98, 41461), (100, 41476), (101, 41479), (105, 41518), (106, 41527), (111, 41548), (115, 41566), (118, 41593), (119, 41596), (122, 41605), (128, 41632), (129, 41635), (136, 41677), (140, 41698),

Gene: Polka14_62 Start: 40758, Stop: 41735, Start Num: 14

Candidate Starts for Polka14_62:

(Start: 14 @40758 has 31 MA's), (19, 40791), (29, 40887), (34, 40986), (40, 41052), (41, 41058), (43, 41070), (58, 41223), (61, 41235), (63, 41253), (65, 41259), (68, 41283), (69, 41289), (78, 41364), (79, 41370), (81, 41376), (101, 41487), (105, 41526), (111, 41556), (113, 41568), (115, 41574), (118, 41601), (122, 41613), (128, 41640), (129, 41643), (136, 41685), (140, 41706),

Gene: Pollywog_65 Start: 42125, Stop: 43006, Start Num: 15

Candidate Starts for Pollywog_65:

(Start: 15 @42125 has 116 MA's), (30, 42290), (35, 42353), (38, 42368), (44, 42425), (47, 42440), (53, 42521), (56, 42536), (61, 42566), (70, 42629), (71, 42635), (80, 42716), (88, 42752), (90, 42758), (101, 42824), (111, 42893), (122, 42950), (130, 42986),

Gene: Polo2Bam_70 Start: 41142, Stop: 42023, Start Num: 15

Candidate Starts for Polo2Bam_70:

(Start: 15 @41142 has 116 MA's), (30, 41307), (35, 41370), (38, 41385), (44, 41442), (47, 41457), (53, 41538), (56, 41553), (61, 41583), (70, 41646), (71, 41652), (80, 41733), (88, 41769), (90, 41775), (97,

41814), (101, 41841), (111, 41910), (130, 42003),

Gene: Priscilla_64 Start: 41511, Stop: 42488, Start Num: 15

Candidate Starts for Priscilla_64:

(Start: 15 @41511 has 116 MA's), (29, 41640), (34, 41739), (41, 41811), (43, 41823), (58, 41976), (59, 41982), (61, 41988), (64, 42009), (65, 42012), (68, 42036), (69, 42042), (75, 42099), (78, 42117), (81, 42129), (98, 42222), (100, 42237), (101, 42240), (105, 42279), (106, 42288), (111, 42309), (118, 42354), (119, 42357), (122, 42366), (128, 42393), (129, 42396), (136, 42438), (140, 42459),

Gene: RedBird_62 Start: 40561, Stop: 41538, Start Num: 14

Candidate Starts for RedBird_62:

(Start: 14 @40561 has 31 MA's), (19, 40594), (29, 40690), (34, 40789), (40, 40855), (41, 40861), (43, 40873), (58, 41026), (61, 41038), (63, 41056), (65, 41062), (68, 41086), (69, 41092), (78, 41167), (79, 41173), (81, 41179), (101, 41290), (105, 41329), (111, 41359), (113, 41371), (115, 41377), (118, 41404), (122, 41416), (128, 41443), (129, 41446), (136, 41488), (140, 41509),

Gene: Renaud18_74 Start: 43239, Stop: 44210, Start Num: 14

Candidate Starts for Renaud18_74:

(8, 43128), (11, 43182), (Start: 14 @43239 has 31 MA's), (20, 43284), (42, 43530), (43, 43539), (45, 43557), (58, 43692), (67, 43752), (73, 43803), (77, 43833), (79, 43845), (81, 43851), (82, 43872), (83, 43875), (85, 43878), (91, 43905), (99, 43950), (100, 43959), (102, 43971), (103, 43974), (104, 43980), (106, 44004), (108, 44013), (125, 44100), (133, 44136), (138, 44172), (139, 44175), (141, 44184),

Gene: RitaG_59 Start: 40039, Stop: 41016, Start Num: 15

Candidate Starts for RitaG_59:

(Start: 15 @40039 has 116 MA's), (29, 40168), (34, 40267), (40, 40333), (41, 40339), (43, 40351), (58, 40504), (61, 40516), (63, 40534), (65, 40540), (68, 40564), (69, 40570), (78, 40645), (79, 40651), (81, 40657), (101, 40768), (105, 40807), (111, 40837), (113, 40849), (115, 40855), (118, 40882), (122, 40894), (128, 40921), (129, 40924), (136, 40966), (140, 40987),

Gene: Royals2015_67 Start: 41543, Stop: 42424, Start Num: 15

Candidate Starts for Royals2015_67:

(Start: 15 @41543 has 116 MA's), (30, 41708), (35, 41771), (38, 41786), (44, 41843), (47, 41858), (53, 41939), (56, 41954), (61, 41984), (70, 42047), (71, 42053), (79, 42131), (80, 42134), (88, 42170), (90, 42176), (97, 42215), (111, 42311), (117, 42344), (127, 42392), (130, 42404),

Gene: Saal_66 Start: 42559, Stop: 43440, Start Num: 15

Candidate Starts for Saal_66:

(Start: 15 @42559 has 116 MA's), (30, 42724), (35, 42787), (38, 42802), (44, 42859), (47, 42874), (53, 42955), (56, 42970), (61, 43000), (70, 43063), (71, 43069), (80, 43150), (88, 43186), (90, 43192), (101, 43258), (111, 43327), (122, 43384), (130, 43420),

Gene: Sandalphon_65 Start: 41970, Stop: 42947, Start Num: 15

Candidate Starts for Sandalphon_65:

(Start: 15 @41970 has 116 MA's), (29, 42099), (34, 42198), (41, 42270), (43, 42282), (58, 42435), (59, 42441), (61, 42447), (64, 42468), (65, 42471), (68, 42495), (69, 42501), (75, 42558), (78, 42576), (81, 42588), (98, 42681), (101, 42699), (105, 42738), (106, 42747), (111, 42768), (115, 42786), (118, 42813), (119, 42816), (122, 42825), (128, 42852), (129, 42855), (136, 42897), (140, 42918),

Gene: Sarma624_63 Start: 38174, Stop: 39151, Start Num: 15

Candidate Starts for Sarma624_63:

(Start: 15 @38174 has 116 MA's), (29, 38303), (34, 38402), (40, 38468), (41, 38474), (43, 38486), (58, 38639), (61, 38651), (63, 38669), (65, 38675), (68, 38699), (69, 38705), (78, 38780), (79, 38786), (81,

38792), (98, 38885), (101, 38903), (105, 38942), (106, 38951), (111, 38972), (113, 38984), (115, 38990), (118, 39017), (119, 39020), (122, 39029), (128, 39056), (129, 39059), (136, 39101), (139, 39119), (140, 39122),

Gene: Sassafras_62 Start: 40879, Stop: 41856, Start Num: 14

Candidate Starts for Sassafras_62:

(Start: 14 @40879 has 31 MA's), (19, 40912), (29, 41008), (34, 41107), (40, 41173), (41, 41179), (43, 41191), (58, 41344), (61, 41356), (63, 41374), (65, 41380), (68, 41404), (69, 41410), (78, 41485), (79, 41491), (81, 41497), (101, 41608), (105, 41647), (111, 41677), (113, 41689), (115, 41695), (118, 41722), (122, 41734), (128, 41761), (129, 41764), (136, 41806), (140, 41827),

Gene: Scottish_62 Start: 40835, Stop: 41812, Start Num: 14

Candidate Starts for Scottish_62:

(Start: 14 @40835 has 31 MA's), (19, 40868), (29, 40964), (34, 41063), (40, 41129), (41, 41135), (43, 41147), (58, 41300), (61, 41312), (63, 41330), (65, 41336), (68, 41360), (69, 41366), (78, 41441), (79, 41447), (81, 41453), (101, 41564), (105, 41603), (111, 41633), (113, 41645), (115, 41651), (118, 41678), (122, 41690), (128, 41717), (129, 41720), (136, 41762), (140, 41783),

Gene: SeaLumen_69 Start: 41142, Stop: 42023, Start Num: 15

Candidate Starts for SeaLumen_69:

(Start: 15 @41142 has 116 MA's), (30, 41307), (35, 41370), (38, 41385), (44, 41442), (47, 41457), (53, 41538), (56, 41553), (61, 41583), (70, 41646), (71, 41652), (80, 41733), (88, 41769), (90, 41775), (97, 41814), (101, 41841), (111, 41910), (130, 42003),

Gene: Seabastian_69 Start: 43940, Stop: 44821, Start Num: 15

Candidate Starts for Seabastian_69:

(9, 43853), (Start: 15 @43940 has 116 MA's), (30, 44105), (35, 44168), (38, 44183), (44, 44240), (47, 44255), (53, 44336), (56, 44351), (61, 44381), (70, 44444), (71, 44450), (80, 44531), (88, 44567), (90, 44573), (101, 44639), (111, 44708), (127, 44789), (130, 44801),

Gene: ShiLan_63 Start: 41458, Stop: 42435, Start Num: 15

Candidate Starts for ShiLan_63:

(Start: 15 @41458 has 116 MA's), (29, 41587), (34, 41686), (41, 41758), (43, 41770), (58, 41923), (59, 41929), (61, 41935), (64, 41956), (65, 41959), (68, 41983), (69, 41989), (75, 42046), (78, 42064), (81, 42076), (98, 42169), (101, 42187), (105, 42226), (106, 42235), (111, 42256), (118, 42301), (119, 42304), (122, 42313), (128, 42340), (129, 42343), (136, 42385), (140, 42406),

Gene: ShowerHandel_67 Start: 41422, Stop: 42399, Start Num: 15

Candidate Starts for ShowerHandel_67:

(Start: 15 @41422 has 116 MA's), (29, 41551), (34, 41650), (41, 41722), (43, 41734), (58, 41887), (59, 41893), (61, 41899), (64, 41920), (65, 41923), (68, 41947), (69, 41953), (75, 42010), (78, 42028), (81, 42040), (98, 42133), (100, 42148), (101, 42151), (105, 42190), (106, 42199), (111, 42220), (115, 42238), (118, 42265), (119, 42268), (122, 42277), (128, 42304), (129, 42307), (136, 42349), (140, 42370),

Gene: SimranZ1_65 Start: 41732, Stop: 42613, Start Num: 15

Candidate Starts for SimranZ1_65:

(Start: 15 @41732 has 116 MA's), (30, 41897), (35, 41960), (38, 41975), (44, 42032), (47, 42047), (53, 42128), (56, 42143), (61, 42173), (70, 42236), (71, 42242), (80, 42323), (88, 42359), (90, 42365), (97, 42404), (111, 42500), (116, 42521), (122, 42557), (130, 42593),

Gene: Spooky_63 Start: 39796, Stop: 40848, Start Num: 13

Candidate Starts for Spooky_63:

(Start: 13 @39796 has 3 MA's), (17, 39811), (18, 39829), (19, 39832), (43, 40102), (51, 40213), (58, 40255), (60, 40264), (61, 40267), (79, 40408), (81, 40414), (82, 40435), (83, 40438), (86, 40447), (94, 40480), (95, 40495), (99, 40513), (105, 40564), (107, 40576), (112, 40600), (117, 40630), (120, 40648), (129, 40687), (135, 40717), (136, 40726), (137, 40729), (143, 40765), (144, 40768),

Gene: Spoonbill_61 Start: 39999, Stop: 40976, Start Num: 15

Candidate Starts for Spoonbill_61:

(Start: 15 @39999 has 116 MA's), (29, 40128), (34, 40227), (40, 40293), (41, 40299), (43, 40311), (58, 40464), (61, 40476), (63, 40494), (65, 40500), (68, 40524), (69, 40530), (78, 40605), (79, 40611), (81, 40617), (101, 40728), (105, 40767), (111, 40797), (113, 40809), (115, 40815), (118, 40842), (122, 40854), (128, 40881), (129, 40884), (136, 40926), (140, 40947),

Gene: Squiddly_69 Start: 44638, Stop: 45579, Start Num: 15

Candidate Starts for Squiddly_69:

(Start: 15 @44638 has 116 MA's), (31, 44812), (44, 44941), (47, 44956), (48, 44983), (49, 45016), (53, 45037), (58, 45070), (61, 45082), (70, 45145), (71, 45151), (78, 45223), (79, 45229), (84, 45253), (105, 45379), (106, 45388), (111, 45409), (114, 45424), (122, 45466), (123, 45469), (130, 45502),

Gene: Squirty_66 Start: 42518, Stop: 43399, Start Num: 15

Candidate Starts for Squirty_66:

(Start: 15 @42518 has 116 MA's), (30, 42683), (35, 42746), (38, 42761), (43, 42803), (44, 42818), (47, 42833), (53, 42914), (55, 42926), (56, 42929), (61, 42959), (70, 43022), (71, 43028), (79, 43106), (80, 43109), (88, 43145), (90, 43151), (97, 43190), (106, 43265), (111, 43286), (116, 43307), (122, 43343), (127, 43367), (130, 43379),

Gene: Stap_61 Start: 40768, Stop: 41745, Start Num: 14

Candidate Starts for Stap_61:

(Start: 14 @40768 has 31 MA's), (19, 40801), (29, 40897), (34, 40996), (40, 41062), (41, 41068), (43, 41080), (58, 41233), (61, 41245), (63, 41263), (65, 41269), (68, 41293), (69, 41299), (78, 41374), (79, 41380), (81, 41386), (101, 41497), (105, 41536), (111, 41566), (113, 41578), (115, 41584), (118, 41611), (122, 41623), (128, 41650), (129, 41653), (136, 41695), (140, 41716),

Gene: SuperGrey_68 Start: 43498, Stop: 44475, Start Num: 15

Candidate Starts for SuperGrey_68:

(Start: 15 @43498 has 116 MA's), (29, 43627), (34, 43726), (40, 43792), (41, 43798), (43, 43810), (58, 43963), (59, 43969), (60, 43972), (61, 43975), (63, 43993), (65, 43999), (68, 44023), (69, 44029), (78, 44104), (79, 44110), (81, 44116), (98, 44209), (101, 44227), (105, 44266), (106, 44275), (111, 44296), (113, 44308), (115, 44314), (118, 44341), (119, 44344), (122, 44353), (128, 44380), (129, 44383), (136, 44425), (139, 44443), (140, 44446),

Gene: SwagPigglett_69 Start: 43730, Stop: 44707, Start Num: 15

Candidate Starts for SwagPigglett_69:

(Start: 15 @43730 has 116 MA's), (29, 43859), (34, 43958), (43, 44042), (58, 44195), (61, 44207), (63, 44225), (64, 44228), (65, 44231), (68, 44255), (69, 44261), (75, 44318), (78, 44336), (81, 44348), (98, 44441), (101, 44459), (105, 44498), (106, 44507), (111, 44528), (115, 44546), (118, 44573), (119, 44576), (122, 44585), (128, 44612), (129, 44615), (136, 44657), (140, 44678),

Gene: TChen_65 Start: 42730, Stop: 43611, Start Num: 15

Candidate Starts for TChen_65:

(Start: 15 @42730 has 116 MA's), (26, 42829), (30, 42895), (35, 42958), (38, 42973), (44, 43030), (47, 43045), (53, 43126), (56, 43141), (61, 43171), (70, 43234), (71, 43240), (79, 43318), (80, 43321), (88, 43357), (90, 43363), (97, 43402), (116, 43519), (117, 43531), (122, 43555), (130, 43591),

Gene: Taj_68 Start: 42961, Stop: 43842, Start Num: 15

Candidate Starts for Taj_68:

(Start: 15 @42961 has 116 MA's), (30, 43126), (33, 43180), (35, 43189), (38, 43204), (43, 43246), (44, 43261), (47, 43276), (53, 43357), (55, 43369), (56, 43372), (61, 43402), (70, 43465), (71, 43471), (79, 43549), (80, 43552), (88, 43588), (90, 43594), (97, 43633), (101, 43660), (122, 43786), (124, 43798), (130, 43822),

Gene: Taptic_51 Start: 42806, Stop: 43846, Start Num: 14

Candidate Starts for Taptic_51:

(Start: 14 @42806 has 31 MA's), (19, 42842), (25, 42905), (32, 43004), (36, 43046), (39, 43100), (40, 43103), (41, 43109), (43, 43121), (58, 43274), (59, 43280), (61, 43286), (64, 43307), (65, 43310), (68, 43334), (72, 43373), (79, 43424), (89, 43472), (92, 43487), (101, 43541), (102, 43550), (113, 43622), (121, 43664), (122, 43667), (130, 43703), (134, 43727), (141, 43766),

Gene: Tchotchke_63 Start: 41050, Stop: 41931, Start Num: 15

Candidate Starts for Tchotchke_63:

(Start: 15 @41050 has 116 MA's), (30, 41215), (35, 41278), (38, 41293), (44, 41350), (47, 41365), (53, 41446), (56, 41461), (61, 41491), (70, 41554), (71, 41560), (80, 41641), (88, 41677), (90, 41683), (101, 41749), (111, 41818), (122, 41875), (130, 41911),

Gene: ThetaBob_71 Start: 43215, Stop: 44096, Start Num: 15

Candidate Starts for ThetaBob_71:

(6, 43104), (Start: 15 @43215 has 116 MA's), (16, 43221), (30, 43380), (35, 43443), (38, 43458), (44, 43515), (47, 43530), (53, 43611), (56, 43626), (61, 43656), (62, 43677), (66, 43707), (70, 43719), (71, 43725), (74, 43767), (79, 43803), (80, 43806), (88, 43842), (90, 43848), (101, 43914), (104, 43938), (111, 43983), (117, 44016), (130, 44076),

Gene: Tootsieroll_65 Start: 40754, Stop: 41731, Start Num: 15

Candidate Starts for Tootsieroll_65:

(Start: 15 @40754 has 116 MA's), (29, 40883), (34, 40982), (41, 41054), (43, 41066), (58, 41219), (59, 41225), (61, 41231), (64, 41252), (65, 41255), (68, 41279), (69, 41285), (75, 41342), (78, 41360), (81, 41372), (98, 41465), (101, 41483), (105, 41522), (106, 41531), (111, 41552), (115, 41570), (118, 41597), (119, 41600), (122, 41609), (128, 41636), (129, 41639), (136, 41681), (140, 41702),

Gene: Topiatin_71 Start: 43978, Stop: 44955, Start Num: 14

Candidate Starts for Topiatin_71:

(8, 43867), (Start: 14 @43978 has 31 MA's), (34, 44206), (43, 44290), (54, 44416), (58, 44443), (59, 44449), (60, 44452), (61, 44455), (63, 44473), (64, 44476), (65, 44479), (68, 44503), (69, 44509), (75, 44566), (78, 44584), (79, 44590), (81, 44596), (98, 44689), (101, 44707), (106, 44755), (111, 44776), (118, 44821), (119, 44824), (122, 44833), (128, 44860), (129, 44863), (136, 44905), (140, 44926),

Gene: Toron_73 Start: 44999, Stop: 45895, Start Num: 15

Candidate Starts for Toron_73:

(Start: 15 @44999 has 116 MA's), (35, 45227), (44, 45299), (47, 45314), (53, 45395), (58, 45428), (61, 45440), (71, 45509), (74, 45551), (76, 45569), (78, 45581), (79, 45587), (87, 45623), (90, 45632), (93, 45647), (97, 45671), (106, 45746), (111, 45767), (114, 45782), (122, 45824), (130, 45860),

Gene: VRedHorse_64 Start: 40519, Stop: 41400, Start Num: 15

Candidate Starts for VRedHorse_64:

(Start: 15 @40519 has 116 MA's), (30, 40684), (35, 40747), (38, 40762), (43, 40804), (44, 40819), (47, 40834), (53, 40915), (55, 40927), (56, 40930), (61, 40960), (70, 41023), (71, 41029), (79, 41107), (80, 41110), (88, 41146), (90, 41152), (97, 41191), (104, 41242), (116, 41308), (117, 41320), (122, 41344), (127, 41368), (130, 41380),

Gene: Velveteen_60 Start: 38174, Stop: 39151, Start Num: 15

Candidate Starts for Velveteen_60:

(Start: 15 @38174 has 116 MA's), (29, 38303), (34, 38402), (40, 38468), (41, 38474), (43, 38486), (58, 38639), (61, 38651), (63, 38669), (65, 38675), (68, 38699), (69, 38705), (78, 38780), (79, 38786), (81, 38792), (98, 38885), (101, 38903), (105, 38942), (106, 38951), (111, 38972), (113, 38984), (115, 38990), (118, 39017), (119, 39020), (122, 39029), (128, 39056), (129, 39059), (136, 39101), (139, 39119), (140, 39122),

Gene: Vivum_65 Start: 41743, Stop: 42720, Start Num: 15

Candidate Starts for Vivum_65:

(Start: 15 @41743 has 116 MA's), (29, 41872), (34, 41971), (40, 42037), (41, 42043), (43, 42055), (58, 42208), (59, 42214), (61, 42220), (64, 42241), (65, 42244), (68, 42268), (69, 42274), (75, 42331), (78, 42349), (79, 42355), (98, 42454), (101, 42472), (106, 42520), (111, 42541), (112, 42544), (118, 42586), (119, 42589), (122, 42598), (128, 42625), (129, 42628), (136, 42670), (140, 42691),

Gene: Wachhund_65 Start: 41150, Stop: 42031, Start Num: 15

Candidate Starts for Wachhund_65:

(Start: 15 @41150 has 116 MA's), (30, 41315), (35, 41378), (37, 41387), (38, 41393), (44, 41450), (47, 41465), (53, 41546), (56, 41561), (61, 41591), (70, 41654), (71, 41660), (79, 41738), (80, 41741), (88, 41777), (90, 41783), (101, 41849), (111, 41918), (130, 42011),

Gene: Wee_68 Start: 43037, Stop: 43918, Start Num: 15

Candidate Starts for Wee_68:

(Start: 15 @43037 has 116 MA's), (30, 43202), (33, 43256), (35, 43265), (38, 43280), (43, 43322), (44, 43337), (47, 43352), (53, 43433), (55, 43445), (56, 43448), (61, 43478), (70, 43541), (71, 43547), (79, 43625), (80, 43628), (88, 43664), (90, 43670), (97, 43709), (101, 43736), (122, 43862), (124, 43874), (130, 43898),

Gene: Whatsapiecost_64 Start: 40446, Stop: 41327, Start Num: 15

Candidate Starts for Whatsapiecost_64:

(Start: 15 @40446 has 116 MA's), (30, 40611), (35, 40674), (38, 40689), (43, 40731), (44, 40746), (47, 40761), (53, 40842), (55, 40854), (56, 40857), (61, 40887), (70, 40950), (71, 40956), (79, 41034), (80, 41037), (88, 41073), (90, 41079), (97, 41118), (104, 41169), (116, 41235), (117, 41247), (122, 41271), (127, 41295), (130, 41307),

Gene: Whouxphf_61 Start: 41337, Stop: 42314, Start Num: 15

Candidate Starts for Whouxphf_61:

(Start: 15 @41337 has 116 MA's), (29, 41466), (34, 41565), (40, 41631), (41, 41637), (43, 41649), (58, 41802), (61, 41814), (63, 41832), (64, 41835), (65, 41838), (68, 41862), (69, 41868), (78, 41943), (98, 42048), (101, 42066), (105, 42105), (106, 42114), (111, 42135), (112, 42138), (113, 42147), (115, 42153), (118, 42180), (119, 42183), (122, 42192), (128, 42219), (129, 42222), (136, 42264), (140, 42285),

Gene: Yorick_63 Start: 41673, Stop: 42554, Start Num: 15

Candidate Starts for Yorick_63:

(Start: 15 @41673 has 116 MA's), (30, 41838), (35, 41901), (38, 41916), (44, 41973), (47, 41988), (53, 42069), (56, 42084), (61, 42114), (70, 42177), (71, 42183), (80, 42264), (88, 42300), (90, 42306), (101, 42372), (111, 42441), (122, 42498), (130, 42534),

Gene: Yoshi_79 Start: 43479, Stop: 44360, Start Num: 15

Candidate Starts for Yoshi_79:

(6, 43368), (Start: 15 @43479 has 116 MA's), (16, 43485), (30, 43644), (35, 43707), (38, 43722), (44, 43779), (47, 43794), (53, 43875), (56, 43890), (61, 43920), (62, 43941), (66, 43971), (70, 43983), (71, 43989), (74, 44031), (79, 44067), (80, 44070), (88, 44106), (90, 44112), (101, 44178), (104, 44202), (111, 44247), (117, 44280), (130, 44340),

Gene: Zapner_77 Start: 43116, Stop: 43997, Start Num: 15

Candidate Starts for Zapner_77:

(Start: 15 @43116 has 116 MA's), (30, 43281), (35, 43344), (38, 43359), (43, 43401), (44, 43416), (47, 43431), (53, 43512), (55, 43524), (56, 43527), (61, 43557), (70, 43620), (71, 43626), (79, 43704), (80, 43707), (88, 43743), (90, 43749), (97, 43788), (101, 43815), (122, 43941), (124, 43953), (130, 43977),

Gene: Zizzle_68 Start: 43055, Stop: 44032, Start Num: 15

Candidate Starts for Zizzle_68:

(Start: 15 @43055 has 116 MA's), (29, 43184), (34, 43283), (43, 43367), (58, 43520), (61, 43532), (65, 43556), (68, 43580), (69, 43586), (78, 43661), (81, 43673), (98, 43766), (101, 43784), (106, 43832), (111, 43853), (113, 43865), (118, 43898), (119, 43901), (122, 43910), (128, 43937), (129, 43940), (136, 43982), (140, 44003),