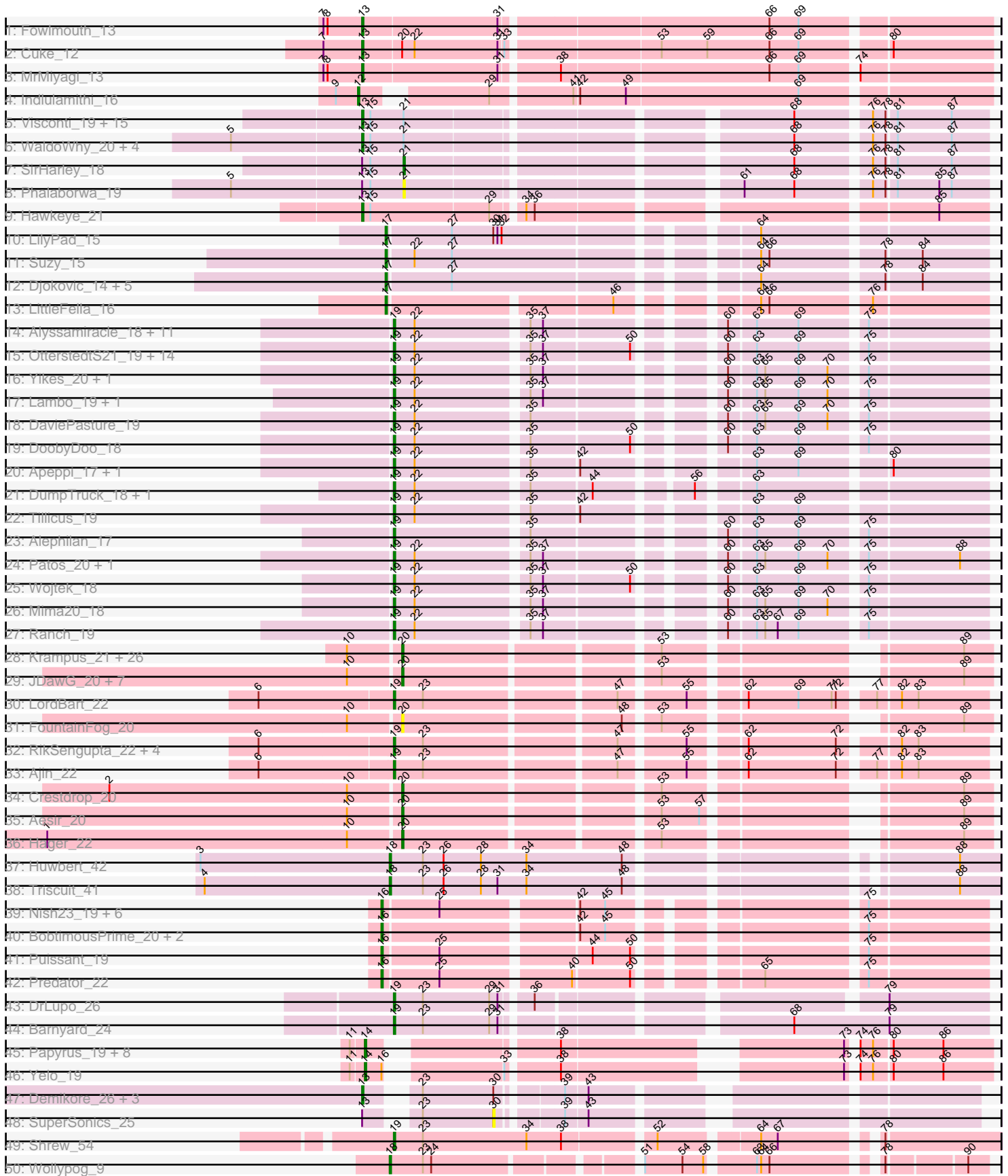


Pham 311305



Note: Tracks are now grouped by subcluster and scaled. Switching in subcluster is indicated by changes in track color. Track scale is now set by default to display the region 30 bp upstream of start 1 to 30 bp downstream of the last possible start. If this default region is judged to be packed too tightly with annotated starts, the track will be further scaled to only show that region of the ORF with annotated starts. This action will be indicated by adding "Zoomed" to the title. For starts, yellow indicates the location of called starts comprised solely of Glimmer/GeneMark auto-annotations, green indicates the location of called starts with at least 1 manual gene annotation.

Pham 311305 Report

This analysis was run 06/27/26 on database version 652.

Pham number 311305 has 160 members, 13 are drafts.

Phages represented in each track:

- Track 1 : Fowlmouth_13
- Track 2 : Cuke_12
- Track 3 : MrMiyagi_13
- Track 4 : Indlulamithi_16
- Track 5 : Visconti_19, Butterscotch_19, KandZ_19, Gumball_18, Thoth_19, Nova_19, Adjutor_20, Penelope2018_19, SuperheroCarly_19, PLOT_20, Troll4_19, Erk16_19, Giuseppe_19, Mopey_19, Helpful_20, PBI1_20
- Track 6 : WaldoWhy_20, Chill_20, Delton_19, BigMama_17, Prager_19
- Track 7 : SirHarley_18
- Track 8 : Phalaborwa_19
- Track 9 : Hawkeye_21
- Track 10 : LilyPad_15
- Track 11 : Suzy_15
- Track 12 : Djokovic_14, Madi_14, Terapin_14, BiteSize_14, Sienna_14, BeyonCage_14
- Track 13 : LittleFella_16
- Track 14 : Alyssamiracle_18, Rumi_18, Charminar_17, Stormer_17, Genamy16_18, Riduram_17, Zany_18, NovaSharks_18, Avian_17, Jamemuya19_17, Astralis_17, RazorC_17
- Track 15 : OtterstedtS21_19, Gibbin_20, Fulcrum_20, Lila22_19, Sampudon_19, Gretellyn_19, MoiGyank_21, Sadboi_19, LavAbarElk_17, Jalebi_19, BirthdayBoy_20, Pywacket_18, GOATification_20, Rota_18, Rukungu_19
- Track 16 : Yikes_20, ParvusTarda_19
- Track 17 : Lambo_19, Erutan_19
- Track 18 : DaviePasture_19
- Track 19 : DoobyDoo_18
- Track 20 : Apeppi_17, LuckyLeo_18
- Track 21 : DumpTruck_18, Xenia2_19
- Track 22 : Tillicus_19
- Track 23 : Alephilan_17
- Track 24 : Patos_20, NorManre_20
- Track 25 : Wojtek_18
- Track 26 : Mima20_18
- Track 27 : Ranch_19
- Track 28 : Krampus_21, Chivey_20, Hiddenleaf_20, Neptune_21, Pharpay_21, Gilda_21, Anakin_21, Rachella_21, DannyDe_20, Poultruss_20, Haunter_21, Kate_21, AnnaSerena_21, CoolCookie_21, FreddieHg_20, OhDear_21,

SilentWarrior_20, Potty_21, Artiphact_21, Tedro_21, JingleBells_20, Cybele_21, OverHedge_21, NarutoRun_21, PhunaPhoke_21, Snakehole_22, Tiggy93_21

- Track 29 : JDawG_20, Rie18_21, Dauntless_20, MortySmith_19, Annapurna_20, Erudite_20, Karate_20, Tongui_20
- Track 30 : LordBart_22
- Track 31 : FountainFog_20
- Track 32 : RikSengupta_22, TinyMiny_22, Kors_22, Bramble_22, Sparcetus_22
- Track 33 : Ajin_22
- Track 34 : Crestdrop_20
- Track 35 : Aesir_20
- Track 36 : Hager_22
- Track 37 : Huwbert_42
- Track 38 : Triscuit_41
- Track 39 : Nish23_19, Damien_18, Cborch11_19, Phreeze_18, Konstantine_23, Beckerton_18, Oaker_18
- Track 40 : BobtimousPrime_20, Megatron06_20, Thumb_18
- Track 41 : Puissant_19
- Track 42 : Predator_22
- Track 43 : DrLupo_26
- Track 44 : Barnyard_24
- Track 45 : Papyrus_19, MontyDev_19, Send513_19, Nilo_20, Candle_19, Weiss13_19, Riparian_19, Rope_19, Zenon_20
- Track 46 : Yelo_19
- Track 47 : Demikore_26, Patience_26, Labelle_25, Madruga_24
- Track 48 : SuperSonics_25
- Track 49 : Shrew_54
- Track 50 : Wollypog_9

Summary of Final Annotations (See graph section above for start numbers):

The start number called the most often in the published annotations is 19, it was called in 49 of the 147 non-draft genes in the pham.

Genes that call this "Most Annotated" start:

- Ajin_22, Alephilan_17, Alyssamiracle_18, Apeppi_17, Astralis_17, Avian_17, Barnyard_24, BirthdayBoy_20, Bramble_22, Charminar_17, DaviePasture_19, DoobyDoo_18, DrLupo_26, DumpTruck_18, Erutan_19, Fulcrum_20, GOATification_20, Genamy16_18, Gibbin_20, GretelLyn_19, Jalebi_19, Jamemuya19_17, Kors_22, Lambo_19, LavAbarElk_17, Lila22_19, LordBart_22, LuckyLeo_18, Mima20_18, MoiGyank_21, NorManre_20, NovaSharks_18, OtterstedtS21_19, ParvusTarda_19, Patos_20, Pywacket_18, Ranch_19, RazorC_17, Riduram_17, RikSengupta_22, Rota_18, Rukungu_19, Rumi_18, Sadboi_19, Sampudon_19, Shrew_54, Sparcetus_22, Stormer_17, Tillicus_19, TinyMiny_22, Wojtek_18, Xenia2_19, Yikes_20, Zany_18,

Genes that have the "Most Annotated" start but do not call it:

-

Genes that do not have the "Most Annotated" start:

- Adjutor_20, Aesir_20, Anakin_21, AnnaSerena_21, Annapurna_20, Artiphact_21, Beckerton_18, Beyoncage_14, BigMama_17, BiteSize_14, BobtimousPrime_20, Butterscotch_19, Candle_19, Cborch11_19, Chill_20, Chivey_20, CoolCookie_21, Crestdrop_20, Cuke_12, Cybele_21, Damien_18, DannyDe_20, Dauntless_20, Delton_19, Demikore_26, Djokovic_14, Erk16_19, Erudite_20, FountainFog_20, Fowlmouth_13, FreddieHg_20, Gilda_21, Giuseppe_19, Gumball_18, Hager_22, Haunter_21, Hawkeye_21, Helpful_20, Hiddenleaf_20, Huwbert_42, Indlulamithi_16, JDawG_20, JingleBells_20, KandZ_19, Karate_20, Kate_21, Konstantine_23, Krampus_21, Labelle_25, LilyPad_15, LittleFella_16, Madi_14, Madrugua_24, Megatron06_20, MontyDev_19, Mopey_19, MortySmith_19, MrMiyagi_13, NarutoRun_21, Neptune_21, Nilo_20, Nish23_19, Nova_19, Oaker_18, OhDear_21, OverHedge_21, PBI1_20, PLOT_20, Papyrus_19, Patience_26, Penelope2018_19, Phalaborwa_19, Pharpay_21, Phreeze_18, PhunaPhoke_21, Potty_21, Poultruss_20, Prager_19, Predator_22, Puissant_19, Rachella_21, Rie18_21, Riparian_19, Rope_19, Send513_19, Sienna_14, SilentWarrior_20, SirHarley_18, Snakehole_22, SuperSonics_25, SuperheroCarly_19, Suzy_15, Tedro_21, Terapin_14, Thoth_19, Thumb_18, Tiggy93_21, Tongui_20, Triscuit_41, Troll4_19, Visconti_19, WaldoWhy_20, Weiss13_19, Wollypog_9, Yelo_19, Zenon_20,

Summary by start number:

Start 12:

- Found in 1 of 160 (0.6%) of genes in pham
- Manual Annotations of this start: 1 of 147
- Called 100.0% of time when present
- Phage (with cluster) where this start called: Indlulamithi_16 (AC),

Start 13:

- Found in 32 of 160 (20.0%) of genes in pham
- Manual Annotations of this start: 28 of 147
- Called 90.6% of time when present
- Phage (with cluster) where this start called: Adjutor_20 (D1), BigMama_17 (D1), Butterscotch_19 (D1), Chill_20 (D1), Cuke_12 (AC), Delton_19 (D1), Demikore_26 (U), Erk16_19 (D1), Fowlmouth_13 (AC), Giuseppe_19 (D1), Gumball_18 (D1), Hawkeye_21 (D2), Helpful_20 (D1), KandZ_19 (D1), Labelle_25 (U), Madrugua_24 (U), Mopey_19 (D1), MrMiyagi_13 (AC), Nova_19 (D1), PBI1_20 (D1), PLOT_20 (D1), Patience_26 (U), Penelope2018_19 (D1), Prager_19 (D1), SuperheroCarly_19 (D1), Thoth_19 (D1), Troll4_19 (D1), Visconti_19 (D1), WaldoWhy_20 (D1),

Start 14:

- Found in 10 of 160 (6.2%) of genes in pham
- Manual Annotations of this start: 10 of 147
- Called 100.0% of time when present
- Phage (with cluster) where this start called: Candle_19 (R), MontyDev_19 (R), Nilo_20 (R), Papyrus_19 (R), Riparian_19 (R), Rope_19 (R), Send513_19 (R), Weiss13_19 (R), Yelo_19 (R), Zenon_20 (R),

Start 16:

- Found in 13 of 160 (8.1%) of genes in pham
- Manual Annotations of this start: 11 of 147
- Called 92.3% of time when present
- Phage (with cluster) where this start called: Beckerton_18 (H1), BobtimousPrime_20 (H1), Cborch11_19 (H1), Damien_18 (H1), Konstantine_23 (H1), Megatron06_20

(H1), Nish23_19 (H1), Oaker_18 (H1), Phreeze_18 (H1), Predator_22 (H1), Puissant_19 (H1), Thumb_18 (H1),

Start 17:

- Found in 9 of 160 (5.6%) of genes in pham
- Manual Annotations of this start: 9 of 147
- Called 100.0% of time when present
- Phage (with cluster) where this start called: Beyoncage_14 (DG1), BiteSize_14 (DG1), Djokovic_14 (DG1), LilyPad_15 (DG1), LittleFella_16 (DG2), Madi_14 (DG1), Sienna_14 (DG1), Suzy_15 (DG1), Terapin_14 (DG1),

Start 18:

- Found in 3 of 160 (1.9%) of genes in pham
- Manual Annotations of this start: 3 of 147
- Called 100.0% of time when present
- Phage (with cluster) where this start called: Huwbert_42 (GG), Triscuit_41 (GG), Wollypog_9 (singleton),

Start 19:

- Found in 54 of 160 (33.8%) of genes in pham
- Manual Annotations of this start: 49 of 147
- Called 100.0% of time when present
- Phage (with cluster) where this start called: Ajin_22 (EF), Alephilan_17 (DV), Alyssamiracle_18 (DV), Apeppi_17 (DV), Astralis_17 (DV), Avian_17 (DV), Barnyard_24 (H2), BirthdayBoy_20 (DV), Bramble_22 (EF), Charminar_17 (DV), DaviePasture_19 (DV), DoobyDoo_18 (DV), DrLupo_26 (H2), DumpTruck_18 (DV), Erutan_19 (DV), Fulcrum_20 (DV), GOATification_20 (DV), Genamy16_18 (DV), Gibbin_20 (DV), GretelLyn_19 (DV), Jalebi_19 (DV), Jamemuya19_17 (DV), Kors_22 (EF), Lambo_19 (DV), LavAbarElk_17 (DV), Lila22_19 (DV), LordBart_22 (EF), LuckyLeo_18 (DV), Mima20_18 (DV), MoiGyank_21 (DV), NorManre_20 (DV), NovaSharks_18 (DV), OtterstedtS21_19 (DV), ParvusTarda_19 (DV), Patos_20 (DV), Pywacket_18 (DV), Ranch_19 (DV), RazorC_17 (DV), Riduram_17 (DV), RikSengupta_22 (EF), Rota_18 (DV), Rukungu_19 (DV), Rumi_18 (DV), Sadboi_19 (DV), Sampudon_19 (DV), Shrew_54 (singleton), Sparcetus_22 (EF), Stormer_17 (DV), Tillicus_19 (DV), TinyMiny_22 (EF), Wojtek_18 (DV), Xenia2_19 (DV), Yikes_20 (DV), Zany_18 (DV),

Start 20:

- Found in 40 of 160 (25.0%) of genes in pham
- Manual Annotations of this start: 35 of 147
- Called 97.5% of time when present
- Phage (with cluster) where this start called: Aesir_20 (EF), Anakin_21 (EF), AnnaSerena_21 (EF), Annapurna_20 (EF), Artiphact_21 (EF), Chivey_20 (EF), CoolCookie_21 (EF), Crestdrop_20 (EF), Cybele_21 (EF), DannyDe_20 (EF), Dauntless_20 (EF), Erudite_20 (EF), FountainFog_20 (EF), FreddieHg_20 (EF), Gilda_21 (EF), Hager_22 (EF), Haunter_21 (EF), Hiddenleaf_20 (EF), JDawG_20 (EF), JingleBells_20 (EF), Karate_20 (EF), Kate_21 (EF), Krampus_21 (EF), MortySmith_19 (EF), NarutoRun_21 (EF), Neptune_21 (EF), OhDear_21 (EF), OverHedge_21 (EF), Pharpay_21 (EF), PhunaPhoke_21 (EF), Potty_21 (EF), Poultruss_20 (EF), Rachella_21 (EF), Rie18_21 (EF), SilentWarrior_20 (EF), Snakehole_22 (EF), Tedro_21 (EF), Tiggy93_21 (EF), Tongui_20 (EF),

Start 21:

- Found in 23 of 160 (14.4%) of genes in pham
- Manual Annotations of this start: 1 of 147
- Called 8.7% of time when present
- Phage (with cluster) where this start called: Phalaborwa_19 (D1), SirHarley_18 (D1),

Start 30:

- Found in 6 of 160 (3.8%) of genes in pham
- No Manual Annotations of this start.
- Called 16.7% of time when present
- Phage (with cluster) where this start called: SuperSonics_25 (U),

Summary by clusters:

There are 13 clusters represented in this pham: DG2, singleton, H1, H2, EF, AC, GG, DG1, U, DV, R, D2, D1,

Info for manual annotations of cluster AC:

- Start number 12 was manually annotated 1 time for cluster AC.
- Start number 13 was manually annotated 3 times for cluster AC.

Info for manual annotations of cluster D1:

- Start number 13 was manually annotated 21 times for cluster D1.
- Start number 21 was manually annotated 1 time for cluster D1.

Info for manual annotations of cluster D2:

- Start number 13 was manually annotated 1 time for cluster D2.

Info for manual annotations of cluster DG1:

- Start number 17 was manually annotated 8 times for cluster DG1.

Info for manual annotations of cluster DG2:

- Start number 17 was manually annotated 1 time for cluster DG2.

Info for manual annotations of cluster DV:

- Start number 19 was manually annotated 39 times for cluster DV.

Info for manual annotations of cluster EF:

- Start number 19 was manually annotated 7 times for cluster EF.
- Start number 20 was manually annotated 35 times for cluster EF.

Info for manual annotations of cluster GG:

- Start number 18 was manually annotated 2 times for cluster GG.

Info for manual annotations of cluster H1:

- Start number 16 was manually annotated 11 times for cluster H1.

Info for manual annotations of cluster H2:

- Start number 19 was manually annotated 2 times for cluster H2.

Info for manual annotations of cluster R:

- Start number 14 was manually annotated 10 times for cluster R.

Info for manual annotations of cluster U:

- Start number 13 was manually annotated 3 times for cluster U.

Gene Information:

Gene: Adjutor_20 Start: 12729, Stop: 13136, Start Num: 13

Candidate Starts for Adjutor_20:

(Start: 13 @12729 has 28 MA's), (15, 12735), (Start: 21 @12759 has 1 MA's), (68, 13008), (76, 13056), (78, 13065), (81, 13071), (87, 13110),

Gene: Aesir_20 Start: 11440, Stop: 11808, Start Num: 20

Candidate Starts for Aesir_20:

(10, 11404), (Start: 20 @11440 has 35 MA's), (53, 11608), (57, 11635), (89, 11788),

Gene: Ajin_22 Start: 11605, Stop: 11991, Start Num: 19

Candidate Starts for Ajin_22:

(6, 11515), (Start: 19 @11605 has 49 MA's), (23, 11626), (47, 11755), (55, 11797), (62, 11830), (72, 11893), (77, 11914), (82, 11929), (83, 11941),

Gene: Alephilan_17 Start: 13251, Stop: 13628, Start Num: 19

Candidate Starts for Alephilan_17:

(Start: 19 @13251 has 49 MA's), (35, 13341), (60, 13455), (63, 13473), (69, 13503), (75, 13545),

Gene: Alyssamiracle_18 Start: 11658, Stop: 12035, Start Num: 19

Candidate Starts for Alyssamiracle_18:

(Start: 19 @11658 has 49 MA's), (22, 11673), (35, 11748), (37, 11757), (60, 11862), (63, 11880), (69, 11910), (75, 11952),

Gene: Anakin_21 Start: 11650, Stop: 12018, Start Num: 20

Candidate Starts for Anakin_21:

(10, 11614), (Start: 20 @11650 has 35 MA's), (53, 11818), (89, 11998),

Gene: AnnaSerena_21 Start: 11659, Stop: 12027, Start Num: 20

Candidate Starts for AnnaSerena_21:

(10, 11623), (Start: 20 @11659 has 35 MA's), (53, 11827), (89, 12007),

Gene: Annapurna_20 Start: 10859, Stop: 11227, Start Num: 20

Candidate Starts for Annapurna_20:

(10, 10823), (Start: 20 @10859 has 35 MA's), (53, 11027), (89, 11207),

Gene: Apeppi_17 Start: 13373, Stop: 13750, Start Num: 19

Candidate Starts for Apeppi_17:

(Start: 19 @13373 has 49 MA's), (22, 13388), (35, 13463), (42, 13496), (63, 13595), (69, 13625), (80, 13682),

Gene: Artiphact_21 Start: 11651, Stop: 12019, Start Num: 20

Candidate Starts for Artiphact_21:

(10, 11615), (Start: 20 @11651 has 35 MA's), (53, 11819), (89, 11999),

Gene: Astralis_17 Start: 11658, Stop: 12035, Start Num: 19

Candidate Starts for Astralis_17:

(Start: 19 @11658 has 49 MA's), (22, 11673), (35, 11748), (37, 11757), (60, 11862), (63, 11880), (69, 11910), (75, 11952),

Gene: Avian_17 Start: 11658, Stop: 12035, Start Num: 19

Candidate Starts for Avian_17:

(Start: 19 @11658 has 49 MA's), (22, 11673), (35, 11748), (37, 11757), (60, 11862), (63, 11880), (69, 11910), (75, 11952),

Gene: Barnyard_24 Start: 14273, Stop: 14668, Start Num: 19

Candidate Starts for Barnyard_24:

(Start: 19 @14273 has 49 MA's), (23, 14294), (29, 14342), (31, 14348), (68, 14528), (79, 14597),

Gene: Beckerton_18 Start: 13163, Stop: 13546, Start Num: 16

Candidate Starts for Beckerton_18:

(Start: 16 @13163 has 11 MA's), (25, 13202), (42, 13292), (45, 13310), (75, 13463),

Gene: Beyoncage_14 Start: 9137, Stop: 9526, Start Num: 17

Candidate Starts for Beyoncage_14:

(Start: 17 @9137 has 9 MA's), (27, 9182), (64, 9374), (78, 9455), (84, 9479),

Gene: BigMama_17 Start: 12805, Stop: 13212, Start Num: 13

Candidate Starts for BigMama_17:

(5, 12712), (Start: 13 @12805 has 28 MA's), (15, 12811), (Start: 21 @12835 has 1 MA's), (68, 13084), (76, 13132), (78, 13141), (81, 13147), (87, 13186),

Gene: BirthdayBoy_20 Start: 14104, Stop: 14481, Start Num: 19

Candidate Starts for BirthdayBoy_20:

(Start: 19 @14104 has 49 MA's), (22, 14119), (35, 14194), (37, 14203), (50, 14263), (60, 14308), (63, 14326), (69, 14356), (75, 14398),

Gene: BiteSize_14 Start: 9137, Stop: 9526, Start Num: 17

Candidate Starts for BiteSize_14:

(Start: 17 @9137 has 9 MA's), (27, 9182), (64, 9374), (78, 9455), (84, 9479),

Gene: BobtimousPrime_20 Start: 13083, Stop: 13466, Start Num: 16

Candidate Starts for BobtimousPrime_20:

(Start: 16 @13083 has 11 MA's), (42, 13212), (45, 13230), (75, 13383),

Gene: Bramble_22 Start: 11570, Stop: 11956, Start Num: 19

Candidate Starts for Bramble_22:

(6, 11480), (Start: 19 @11570 has 49 MA's), (23, 11591), (47, 11720), (55, 11762), (62, 11795), (72, 11858), (82, 11894), (83, 11906),

Gene: Butterscotch_19 Start: 12789, Stop: 13196, Start Num: 13

Candidate Starts for Butterscotch_19:

(Start: 13 @12789 has 28 MA's), (15, 12795), (Start: 21 @12819 has 1 MA's), (68, 13068), (76, 13116), (78, 13125), (81, 13131), (87, 13170),

Gene: Candle_19 Start: 13157, Stop: 13534, Start Num: 14

Candidate Starts for Candle_19:

(11, 13148), (Start: 14 @13157 has 10 MA's), (38, 13268), (73, 13439), (74, 13442), (76, 13451), (80, 13463), (86, 13499),

Gene: Cborch11_19 Start: 12626, Stop: 13009, Start Num: 16
Candidate Starts for Cborch11_19:
(Start: 16 @12626 has 11 MA's), (25, 12665), (42, 12755), (45, 12773), (75, 12926),

Gene: Charminar_17 Start: 11658, Stop: 12035, Start Num: 19
Candidate Starts for Charminar_17:
(Start: 19 @11658 has 49 MA's), (22, 11673), (35, 11748), (37, 11757), (60, 11862), (63, 11880), (69, 11910), (75, 11952),

Gene: Chill_20 Start: 12795, Stop: 13202, Start Num: 13
Candidate Starts for Chill_20:
(5, 12702), (Start: 13 @12795 has 28 MA's), (15, 12801), (Start: 21 @12825 has 1 MA's), (68, 13074), (76, 13122), (78, 13131), (81, 13137), (87, 13176),

Gene: Chivey_20 Start: 10852, Stop: 11220, Start Num: 20
Candidate Starts for Chivey_20:
(10, 10816), (Start: 20 @10852 has 35 MA's), (53, 11020), (89, 11200),

Gene: CoolCookie_21 Start: 11657, Stop: 12025, Start Num: 20
Candidate Starts for CoolCookie_21:
(10, 11621), (Start: 20 @11657 has 35 MA's), (53, 11825), (89, 12005),

Gene: Crestdrop_20 Start: 10726, Stop: 11094, Start Num: 20
Candidate Starts for Crestdrop_20:
(2, 10519), (10, 10690), (Start: 20 @10726 has 35 MA's), (53, 10894), (89, 11074),

Gene: Cuke_12 Start: 8316, Stop: 8744, Start Num: 13
Candidate Starts for Cuke_12:
(7, 8289), (Start: 13 @8316 has 28 MA's), (Start: 20 @8343 has 35 MA's), (22, 8352), (31, 8412), (33, 8415), (53, 8517), (59, 8550), (66, 8595), (69, 8616), (80, 8673),

Gene: Cybele_21 Start: 11627, Stop: 11995, Start Num: 20
Candidate Starts for Cybele_21:
(10, 11591), (Start: 20 @11627 has 35 MA's), (53, 11795), (89, 11975),

Gene: Damien_18 Start: 12625, Stop: 13008, Start Num: 16
Candidate Starts for Damien_18:
(Start: 16 @12625 has 11 MA's), (25, 12664), (42, 12754), (45, 12772), (75, 12925),

Gene: DannyDe_20 Start: 10844, Stop: 11212, Start Num: 20
Candidate Starts for DannyDe_20:
(10, 10808), (Start: 20 @10844 has 35 MA's), (53, 11012), (89, 11192),

Gene: Dauntless_20 Start: 11369, Stop: 11737, Start Num: 20
Candidate Starts for Dauntless_20:
(10, 11333), (Start: 20 @11369 has 35 MA's), (53, 11537), (89, 11717),

Gene: DaviePasture_19 Start: 13861, Stop: 14238, Start Num: 19
Candidate Starts for DaviePasture_19:
(Start: 19 @13861 has 49 MA's), (22, 13876), (35, 13951), (60, 14065), (63, 14083), (65, 14089), (69, 14113), (70, 14134), (75, 14155),

Gene: Delton_19 Start: 12801, Stop: 13208, Start Num: 13

Candidate Starts for Delton_19:

(5, 12708), (Start: 13 @12801 has 28 MA's), (15, 12807), (Start: 21 @12831 has 1 MA's), (68, 13080), (76, 13128), (78, 13137), (81, 13143), (87, 13182),

Gene: Demikore_26 Start: 15829, Stop: 16200, Start Num: 13

Candidate Starts for Demikore_26:

(Start: 13 @15829 has 28 MA's), (23, 15853), (30, 15904), (39, 15943), (43, 15958),

Gene: Djokovic_14 Start: 9137, Stop: 9526, Start Num: 17

Candidate Starts for Djokovic_14:

(Start: 17 @9137 has 9 MA's), (27, 9182), (64, 9374), (78, 9455), (84, 9479),

Gene: DoobyDoo_18 Start: 13038, Stop: 13415, Start Num: 19

Candidate Starts for DoobyDoo_18:

(Start: 19 @13038 has 49 MA's), (22, 13053), (35, 13128), (50, 13197), (60, 13242), (63, 13260), (69, 13290), (75, 13332),

Gene: DrLupo_26 Start: 14684, Stop: 15067, Start Num: 19

Candidate Starts for DrLupo_26:

(Start: 19 @14684 has 49 MA's), (23, 14705), (29, 14753), (31, 14759), (36, 14777), (79, 14996),

Gene: DumpTruck_18 Start: 13292, Stop: 13672, Start Num: 19

Candidate Starts for DumpTruck_18:

(Start: 19 @13292 has 49 MA's), (22, 13307), (35, 13382), (44, 13424), (56, 13484), (63, 13517),

Gene: Erk16_19 Start: 12792, Stop: 13199, Start Num: 13

Candidate Starts for Erk16_19:

(Start: 13 @12792 has 28 MA's), (15, 12798), (Start: 21 @12822 has 1 MA's), (68, 13071), (76, 13119), (78, 13128), (81, 13134), (87, 13173),

Gene: Erudite_20 Start: 11369, Stop: 11737, Start Num: 20

Candidate Starts for Erudite_20:

(10, 11333), (Start: 20 @11369 has 35 MA's), (53, 11537), (89, 11717),

Gene: Erutan_19 Start: 13551, Stop: 13928, Start Num: 19

Candidate Starts for Erutan_19:

(Start: 19 @13551 has 49 MA's), (22, 13566), (35, 13641), (37, 13650), (60, 13755), (63, 13773), (65, 13779), (69, 13803), (70, 13824), (75, 13845),

Gene: FountainFog_20 Start: 10978, Stop: 11346, Start Num: 20

Candidate Starts for FountainFog_20:

(10, 10942), (Start: 20 @10978 has 35 MA's), (48, 11125), (53, 11146), (89, 11326),

Gene: Fowlmouth_13 Start: 8487, Stop: 8915, Start Num: 13

Candidate Starts for Fowlmouth_13:

(7, 8460), (8, 8463), (Start: 13 @8487 has 28 MA's), (31, 8583), (66, 8766), (69, 8787),

Gene: FreddieHg_20 Start: 10868, Stop: 11236, Start Num: 20

Candidate Starts for FreddieHg_20:

(10, 10832), (Start: 20 @10868 has 35 MA's), (53, 11036), (89, 11216),

Gene: Fulcrum_20 Start: 14084, Stop: 14461, Start Num: 19

Candidate Starts for Fulcrum_20:

(Start: 19 @14084 has 49 MA's), (22, 14099), (35, 14174), (37, 14183), (50, 14243), (60, 14288), (63, 14306), (69, 14336), (75, 14378),

Gene: GOATification_20 Start: 14084, Stop: 14461, Start Num: 19

Candidate Starts for GOATification_20:

(Start: 19 @14084 has 49 MA's), (22, 14099), (35, 14174), (37, 14183), (50, 14243), (60, 14288), (63, 14306), (69, 14336), (75, 14378),

Gene: Genamy16_18 Start: 11658, Stop: 12035, Start Num: 19

Candidate Starts for Genamy16_18:

(Start: 19 @11658 has 49 MA's), (22, 11673), (35, 11748), (37, 11757), (60, 11862), (63, 11880), (69, 11910), (75, 11952),

Gene: Gibbin_20 Start: 14144, Stop: 14521, Start Num: 19

Candidate Starts for Gibbin_20:

(Start: 19 @14144 has 49 MA's), (22, 14159), (35, 14234), (37, 14243), (50, 14303), (60, 14348), (63, 14366), (69, 14396), (75, 14438),

Gene: Gilda_21 Start: 11651, Stop: 12019, Start Num: 20

Candidate Starts for Gilda_21:

(10, 11615), (Start: 20 @11651 has 35 MA's), (53, 11819), (89, 11999),

Gene: Giuseppe_19 Start: 12781, Stop: 13188, Start Num: 13

Candidate Starts for Giuseppe_19:

(Start: 13 @12781 has 28 MA's), (15, 12787), (Start: 21 @12811 has 1 MA's), (68, 13060), (76, 13108), (78, 13117), (81, 13123), (87, 13162),

Gene: GretelLyn_19 Start: 14418, Stop: 14795, Start Num: 19

Candidate Starts for GretelLyn_19:

(Start: 19 @14418 has 49 MA's), (22, 14433), (35, 14508), (37, 14517), (50, 14577), (60, 14622), (63, 14640), (69, 14670), (75, 14712),

Gene: Gumball_18 Start: 12739, Stop: 13146, Start Num: 13

Candidate Starts for Gumball_18:

(Start: 13 @12739 has 28 MA's), (15, 12745), (Start: 21 @12769 has 1 MA's), (68, 13018), (76, 13066), (78, 13075), (81, 13081), (87, 13120),

Gene: Hager_22 Start: 11222, Stop: 11590, Start Num: 20

Candidate Starts for Hager_22:

(1, 10970), (10, 11186), (Start: 20 @11222 has 35 MA's), (53, 11390), (89, 11570),

Gene: Haunter_21 Start: 11064, Stop: 11432, Start Num: 20

Candidate Starts for Haunter_21:

(10, 11028), (Start: 20 @11064 has 35 MA's), (53, 11232), (89, 11412),

Gene: Hawkeye_21 Start: 12664, Stop: 13071, Start Num: 13

Candidate Starts for Hawkeye_21:

(Start: 13 @12664 has 28 MA's), (15, 12670), (29, 12754), (34, 12772), (36, 12778), (85, 13036),

Gene: Helpful_20 Start: 12789, Stop: 13196, Start Num: 13

Candidate Starts for Helpful_20:

(Start: 13 @12789 has 28 MA's), (15, 12795), (Start: 21 @12819 has 1 MA's), (68, 13068), (76, 13116), (78, 13125), (81, 13131), (87, 13170),

Gene: Hiddenleaf_20 Start: 10852, Stop: 11220, Start Num: 20
Candidate Starts for Hiddenleaf_20:
(10, 10816), (Start: 20 @10852 has 35 MA's), (53, 11020), (89, 11200),

Gene: Huwbert_42 Start: 21947, Stop: 22348, Start Num: 18
Candidate Starts for Huwbert_42:
(3, 21812), (Start: 18 @21947 has 3 MA's), (23, 21971), (26, 21986), (28, 22013), (34, 22046), (48, 22115), (88, 22319),

Gene: Indlulamithi_16 Start: 10589, Stop: 11005, Start Num: 12
Candidate Starts for Indlulamithi_16:
(9, 10574), (Start: 12 @10589 has 1 MA's), (29, 10664), (41, 10718), (42, 10721), (49, 10754), (69, 10877),

Gene: JDawG_20 Start: 11434, Stop: 11802, Start Num: 20
Candidate Starts for JDawG_20:
(10, 11398), (Start: 20 @11434 has 35 MA's), (53, 11602), (89, 11782),

Gene: Jalebi_19 Start: 14594, Stop: 14971, Start Num: 19
Candidate Starts for Jalebi_19:
(Start: 19 @14594 has 49 MA's), (22, 14609), (35, 14684), (37, 14693), (50, 14753), (60, 14798), (63, 14816), (69, 14846), (75, 14888),

Gene: Jamemuya19_17 Start: 11658, Stop: 12035, Start Num: 19
Candidate Starts for Jamemuya19_17:
(Start: 19 @11658 has 49 MA's), (22, 11673), (35, 11748), (37, 11757), (60, 11862), (63, 11880), (69, 11910), (75, 11952),

Gene: JingleBells_20 Start: 10933, Stop: 11301, Start Num: 20
Candidate Starts for JingleBells_20:
(10, 10897), (Start: 20 @10933 has 35 MA's), (53, 11101), (89, 11281),

Gene: KandZ_19 Start: 12889, Stop: 13296, Start Num: 13
Candidate Starts for KandZ_19:
(Start: 13 @12889 has 28 MA's), (15, 12895), (Start: 21 @12919 has 1 MA's), (68, 13168), (76, 13216), (78, 13225), (81, 13231), (87, 13270),

Gene: Karate_20 Start: 11072, Stop: 11440, Start Num: 20
Candidate Starts for Karate_20:
(10, 11036), (Start: 20 @11072 has 35 MA's), (53, 11240), (89, 11420),

Gene: Kate_21 Start: 11659, Stop: 12027, Start Num: 20
Candidate Starts for Kate_21:
(10, 11623), (Start: 20 @11659 has 35 MA's), (53, 11827), (89, 12007),

Gene: Konstantine_23 Start: 13827, Stop: 14210, Start Num: 16
Candidate Starts for Konstantine_23:
(Start: 16 @13827 has 11 MA's), (25, 13866), (42, 13956), (45, 13974), (75, 14127),

Gene: Kors_22 Start: 11651, Stop: 12037, Start Num: 19
Candidate Starts for Kors_22:

(6, 11561), (Start: 19 @11651 has 49 MA's), (23, 11672), (47, 11801), (55, 11843), (62, 11876), (72, 11939), (82, 11975), (83, 11987),

Gene: Krampus_21 Start: 11657, Stop: 12025, Start Num: 20

Candidate Starts for Krampus_21:

(10, 11621), (Start: 20 @11657 has 35 MA's), (53, 11825), (89, 12005),

Gene: Labelle_25 Start: 15831, Stop: 16202, Start Num: 13

Candidate Starts for Labelle_25:

(Start: 13 @15831 has 28 MA's), (23, 15855), (30, 15906), (39, 15945), (43, 15960),

Gene: Lambo_19 Start: 14088, Stop: 14465, Start Num: 19

Candidate Starts for Lambo_19:

(Start: 19 @14088 has 49 MA's), (22, 14103), (35, 14178), (37, 14187), (60, 14292), (63, 14310), (65, 14316), (69, 14340), (70, 14361), (75, 14382),

Gene: LavAbarElk_17 Start: 12521, Stop: 12898, Start Num: 19

Candidate Starts for LavAbarElk_17:

(Start: 19 @12521 has 49 MA's), (22, 12536), (35, 12611), (37, 12620), (50, 12680), (60, 12725), (63, 12743), (69, 12773), (75, 12815),

Gene: Lila22_19 Start: 14042, Stop: 14419, Start Num: 19

Candidate Starts for Lila22_19:

(Start: 19 @14042 has 49 MA's), (22, 14057), (35, 14132), (37, 14141), (50, 14201), (60, 14246), (63, 14264), (69, 14294), (75, 14336),

Gene: LilyPad_15 Start: 9856, Stop: 10245, Start Num: 17

Candidate Starts for LilyPad_15:

(Start: 17 @9856 has 9 MA's), (27, 9901), (30, 9931), (31, 9934), (32, 9937), (64, 10093),

Gene: LittleFella_16 Start: 11757, Stop: 12137, Start Num: 17

Candidate Starts for LittleFella_16:

(Start: 17 @11757 has 9 MA's), (46, 11907), (64, 11985), (66, 11991), (76, 12057),

Gene: LordBart_22 Start: 11567, Stop: 11953, Start Num: 19

Candidate Starts for LordBart_22:

(6, 11477), (Start: 19 @11567 has 49 MA's), (23, 11588), (47, 11717), (55, 11759), (62, 11792), (69, 11828), (71, 11852), (72, 11855), (77, 11876), (82, 11891), (83, 11903),

Gene: LuckyLeo_18 Start: 13373, Stop: 13750, Start Num: 19

Candidate Starts for LuckyLeo_18:

(Start: 19 @13373 has 49 MA's), (22, 13388), (35, 13463), (42, 13496), (63, 13595), (69, 13625), (80, 13682),

Gene: Madi_14 Start: 9137, Stop: 9526, Start Num: 17

Candidate Starts for Madi_14:

(Start: 17 @9137 has 9 MA's), (27, 9182), (64, 9374), (78, 9455), (84, 9479),

Gene: Madruga_24 Start: 15500, Stop: 15871, Start Num: 13

Candidate Starts for Madruga_24:

(Start: 13 @15500 has 28 MA's), (23, 15524), (30, 15575), (39, 15614), (43, 15629),

Gene: Megatron06_20 Start: 13160, Stop: 13543, Start Num: 16

Candidate Starts for Megatron06_20:

(Start: 16 @13160 has 11 MA's), (42, 13289), (45, 13307), (75, 13460),

Gene: Mima20_18 Start: 13771, Stop: 14148, Start Num: 19

Candidate Starts for Mima20_18:

(Start: 19 @13771 has 49 MA's), (22, 13786), (35, 13861), (37, 13870), (60, 13975), (63, 13993), (65, 13999), (69, 14023), (70, 14044), (75, 14065),

Gene: MoiGyank_21 Start: 14455, Stop: 14832, Start Num: 19

Candidate Starts for MoiGyank_21:

(Start: 19 @14455 has 49 MA's), (22, 14470), (35, 14545), (37, 14554), (50, 14614), (60, 14659), (63, 14677), (69, 14707), (75, 14749),

Gene: MontyDev_19 Start: 12815, Stop: 13192, Start Num: 14

Candidate Starts for MontyDev_19:

(11, 12806), (Start: 14 @12815 has 10 MA's), (38, 12926), (73, 13097), (74, 13100), (76, 13109), (80, 13121), (86, 13157),

Gene: Mopey_19 Start: 12789, Stop: 13196, Start Num: 13

Candidate Starts for Mopey_19:

(Start: 13 @12789 has 28 MA's), (15, 12795), (Start: 21 @12819 has 1 MA's), (68, 13068), (76, 13116), (78, 13125), (81, 13131), (87, 13170),

Gene: MortySmith_19 Start: 10831, Stop: 11199, Start Num: 20

Candidate Starts for MortySmith_19:

(10, 10795), (Start: 20 @10831 has 35 MA's), (53, 10999), (89, 11179),

Gene: MrMiyagi_13 Start: 8487, Stop: 8915, Start Num: 13

Candidate Starts for MrMiyagi_13:

(7, 8460), (8, 8463), (Start: 13 @8487 has 28 MA's), (31, 8583), (38, 8619), (66, 8766), (69, 8787), (74, 8823),

Gene: NarutoRun_21 Start: 11650, Stop: 12018, Start Num: 20

Candidate Starts for NarutoRun_21:

(10, 11614), (Start: 20 @11650 has 35 MA's), (53, 11818), (89, 11998),

Gene: Neptune_21 Start: 11627, Stop: 11995, Start Num: 20

Candidate Starts for Neptune_21:

(10, 11591), (Start: 20 @11627 has 35 MA's), (53, 11795), (89, 11975),

Gene: Nilo_20 Start: 13154, Stop: 13531, Start Num: 14

Candidate Starts for Nilo_20:

(11, 13145), (Start: 14 @13154 has 10 MA's), (38, 13265), (73, 13436), (74, 13439), (76, 13448), (80, 13460), (86, 13496),

Gene: Nish23_19 Start: 12626, Stop: 13009, Start Num: 16

Candidate Starts for Nish23_19:

(Start: 16 @12626 has 11 MA's), (25, 12665), (42, 12755), (45, 12773), (75, 12926),

Gene: NorManre_20 Start: 13650, Stop: 14027, Start Num: 19

Candidate Starts for NorManre_20:

(Start: 19 @13650 has 49 MA's), (22, 13665), (35, 13740), (37, 13749), (60, 13854), (63, 13872), (65, 13878), (69, 13902), (70, 13923), (75, 13944), (88, 14007),

Gene: Nova_19 Start: 13216, Stop: 13623, Start Num: 13

Candidate Starts for Nova_19:

(Start: 13 @13216 has 28 MA's), (15, 13222), (Start: 21 @13246 has 1 MA's), (68, 13495), (76, 13543), (78, 13552), (81, 13558), (87, 13597),

Gene: NovaSharks_18 Start: 11658, Stop: 12035, Start Num: 19

Candidate Starts for NovaSharks_18:

(Start: 19 @11658 has 49 MA's), (22, 11673), (35, 11748), (37, 11757), (60, 11862), (63, 11880), (69, 11910), (75, 11952),

Gene: Oaker_18 Start: 12884, Stop: 13267, Start Num: 16

Candidate Starts for Oaker_18:

(Start: 16 @12884 has 11 MA's), (25, 12923), (42, 13013), (45, 13031), (75, 13184),

Gene: OhDear_21 Start: 11656, Stop: 12024, Start Num: 20

Candidate Starts for OhDear_21:

(10, 11620), (Start: 20 @11656 has 35 MA's), (53, 11824), (89, 12004),

Gene: OtterstedtS21_19 Start: 13740, Stop: 14117, Start Num: 19

Candidate Starts for OtterstedtS21_19:

(Start: 19 @13740 has 49 MA's), (22, 13755), (35, 13830), (37, 13839), (50, 13899), (60, 13944), (63, 13962), (69, 13992), (75, 14034),

Gene: OverHedge_21 Start: 11624, Stop: 11992, Start Num: 20

Candidate Starts for OverHedge_21:

(10, 11588), (Start: 20 @11624 has 35 MA's), (53, 11792), (89, 11972),

Gene: PBI1_20 Start: 12720, Stop: 13127, Start Num: 13

Candidate Starts for PBI1_20:

(Start: 13 @12720 has 28 MA's), (15, 12726), (Start: 21 @12750 has 1 MA's), (68, 12999), (76, 13047), (78, 13056), (81, 13062), (87, 13101),

Gene: PLOT_20 Start: 12792, Stop: 13199, Start Num: 13

Candidate Starts for PLOT_20:

(Start: 13 @12792 has 28 MA's), (15, 12798), (Start: 21 @12822 has 1 MA's), (68, 13071), (76, 13119), (78, 13128), (81, 13134), (87, 13173),

Gene: Papyrus_19 Start: 12816, Stop: 13193, Start Num: 14

Candidate Starts for Papyrus_19:

(11, 12807), (Start: 14 @12816 has 10 MA's), (38, 12927), (73, 13098), (74, 13101), (76, 13110), (80, 13122), (86, 13158),

Gene: ParvusTarda_19 Start: 13222, Stop: 13599, Start Num: 19

Candidate Starts for ParvusTarda_19:

(Start: 19 @13222 has 49 MA's), (22, 13237), (35, 13312), (37, 13321), (60, 13426), (63, 13444), (65, 13450), (69, 13474), (70, 13495), (75, 13516),

Gene: Patience_26 Start: 16390, Stop: 16761, Start Num: 13

Candidate Starts for Patience_26:

(Start: 13 @16390 has 28 MA's), (23, 16414), (30, 16465), (39, 16504), (43, 16519),

Gene: Patos_20 Start: 13650, Stop: 14027, Start Num: 19

Candidate Starts for Patos_20:

(Start: 19 @13650 has 49 MA's), (22, 13665), (35, 13740), (37, 13749), (60, 13854), (63, 13872), (65, 13878), (69, 13902), (70, 13923), (75, 13944), (88, 14007),

Gene: Penelope2018_19 Start: 12789, Stop: 13196, Start Num: 13

Candidate Starts for Penelope2018_19:

(Start: 13 @12789 has 28 MA's), (15, 12795), (Start: 21 @12819 has 1 MA's), (68, 13068), (76, 13116), (78, 13125), (81, 13131), (87, 13170),

Gene: Phalaborwa_19 Start: 12852, Stop: 13229, Start Num: 21

Candidate Starts for Phalaborwa_19:

(5, 12729), (Start: 13 @12822 has 28 MA's), (15, 12828), (Start: 21 @12852 has 1 MA's), (61, 13065), (68, 13101), (76, 13149), (78, 13158), (81, 13164), (85, 13194), (87, 13203),

Gene: Pharpay_21 Start: 11672, Stop: 12040, Start Num: 20

Candidate Starts for Pharpay_21:

(10, 11636), (Start: 20 @11672 has 35 MA's), (53, 11840), (89, 12020),

Gene: Phreeze_18 Start: 12625, Stop: 13008, Start Num: 16

Candidate Starts for Phreeze_18:

(Start: 16 @12625 has 11 MA's), (25, 12664), (42, 12754), (45, 12772), (75, 12925),

Gene: PhunaPhoke_21 Start: 11645, Stop: 12013, Start Num: 20

Candidate Starts for PhunaPhoke_21:

(10, 11609), (Start: 20 @11645 has 35 MA's), (53, 11813), (89, 11993),

Gene: Potty_21 Start: 11650, Stop: 12018, Start Num: 20

Candidate Starts for Potty_21:

(10, 11614), (Start: 20 @11650 has 35 MA's), (53, 11818), (89, 11998),

Gene: Poultruss_20 Start: 11423, Stop: 11791, Start Num: 20

Candidate Starts for Poultruss_20:

(10, 11387), (Start: 20 @11423 has 35 MA's), (53, 11591), (89, 11771),

Gene: Prager_19 Start: 12801, Stop: 13208, Start Num: 13

Candidate Starts for Prager_19:

(5, 12708), (Start: 13 @12801 has 28 MA's), (15, 12807), (Start: 21 @12831 has 1 MA's), (68, 13080), (76, 13128), (78, 13137), (81, 13143), (87, 13182),

Gene: Predator_22 Start: 14150, Stop: 14533, Start Num: 16

Candidate Starts for Predator_22:

(Start: 16 @14150 has 11 MA's), (25, 14189), (40, 14276), (50, 14315), (65, 14384), (75, 14450),

Gene: Puissant_19 Start: 13081, Stop: 13464, Start Num: 16

Candidate Starts for Puissant_19:

(Start: 16 @13081 has 11 MA's), (25, 13120), (44, 13219), (50, 13246), (75, 13381),

Gene: Pywacket_18 Start: 14579, Stop: 14956, Start Num: 19

Candidate Starts for Pywacket_18:

(Start: 19 @14579 has 49 MA's), (22, 14594), (35, 14669), (37, 14678), (50, 14738), (60, 14783), (63, 14801), (69, 14831), (75, 14873),

Gene: Rachella_21 Start: 11653, Stop: 12021, Start Num: 20

Candidate Starts for Rachella_21:

(10, 11617), (Start: 20 @11653 has 35 MA's), (53, 11821), (89, 12001),

Gene: Ranch_19 Start: 12588, Stop: 12965, Start Num: 19

Candidate Starts for Ranch_19:

(Start: 19 @12588 has 49 MA's), (22, 12603), (35, 12678), (37, 12687), (60, 12792), (63, 12810), (65, 12816), (67, 12825), (69, 12840), (75, 12882),

Gene: RazorC_17 Start: 11658, Stop: 12035, Start Num: 19

Candidate Starts for RazorC_17:

(Start: 19 @11658 has 49 MA's), (22, 11673), (35, 11748), (37, 11757), (60, 11862), (63, 11880), (69, 11910), (75, 11952),

Gene: Riduram_17 Start: 11628, Stop: 12005, Start Num: 19

Candidate Starts for Riduram_17:

(Start: 19 @11628 has 49 MA's), (22, 11643), (35, 11718), (37, 11727), (60, 11832), (63, 11850), (69, 11880), (75, 11922),

Gene: Rie18_21 Start: 11004, Stop: 11372, Start Num: 20

Candidate Starts for Rie18_21:

(10, 10968), (Start: 20 @11004 has 35 MA's), (53, 11172), (89, 11352),

Gene: RikSengupta_22 Start: 11688, Stop: 12074, Start Num: 19

Candidate Starts for RikSengupta_22:

(6, 11598), (Start: 19 @11688 has 49 MA's), (23, 11709), (47, 11838), (55, 11880), (62, 11913), (72, 11976), (82, 12012), (83, 12024),

Gene: Riparian_19 Start: 12615, Stop: 12992, Start Num: 14

Candidate Starts for Riparian_19:

(11, 12606), (Start: 14 @12615 has 10 MA's), (38, 12726), (73, 12897), (74, 12900), (76, 12909), (80, 12921), (86, 12957),

Gene: Rope_19 Start: 12807, Stop: 13184, Start Num: 14

Candidate Starts for Rope_19:

(11, 12798), (Start: 14 @12807 has 10 MA's), (38, 12918), (73, 13089), (74, 13092), (76, 13101), (80, 13113), (86, 13149),

Gene: Rota_18 Start: 13546, Stop: 13923, Start Num: 19

Candidate Starts for Rota_18:

(Start: 19 @13546 has 49 MA's), (22, 13561), (35, 13636), (37, 13645), (50, 13705), (60, 13750), (63, 13768), (69, 13798), (75, 13840),

Gene: Rukungu_19 Start: 14287, Stop: 14664, Start Num: 19

Candidate Starts for Rukungu_19:

(Start: 19 @14287 has 49 MA's), (22, 14302), (35, 14377), (37, 14386), (50, 14446), (60, 14491), (63, 14509), (69, 14539), (75, 14581),

Gene: Rumi_18 Start: 11658, Stop: 12035, Start Num: 19

Candidate Starts for Rumi_18:

(Start: 19 @11658 has 49 MA's), (22, 11673), (35, 11748), (37, 11757), (60, 11862), (63, 11880), (69, 11910), (75, 11952),

Gene: Sadboi_19 Start: 14418, Stop: 14795, Start Num: 19

Candidate Starts for Sadboi_19:

(Start: 19 @14418 has 49 MA's), (22, 14433), (35, 14508), (37, 14517), (50, 14577), (60, 14622), (63, 14640), (69, 14670), (75, 14712),

Gene: Sampudon_19 Start: 14594, Stop: 14971, Start Num: 19

Candidate Starts for Sampudon_19:

(Start: 19 @14594 has 49 MA's), (22, 14609), (35, 14684), (37, 14693), (50, 14753), (60, 14798), (63, 14816), (69, 14846), (75, 14888),

Gene: Send513_19 Start: 13157, Stop: 13534, Start Num: 14

Candidate Starts for Send513_19:

(11, 13148), (Start: 14 @13157 has 10 MA's), (38, 13268), (73, 13439), (74, 13442), (76, 13451), (80, 13463), (86, 13499),

Gene: Shrew_54 Start: 26408, Stop: 26803, Start Num: 19

Candidate Starts for Shrew_54:

(Start: 19 @26408 has 49 MA's), (23, 26429), (34, 26504), (38, 26528), (52, 26588), (64, 26651), (67, 26663), (78, 26723),

Gene: Sienna_14 Start: 9137, Stop: 9526, Start Num: 17

Candidate Starts for Sienna_14:

(Start: 17 @9137 has 9 MA's), (27, 9182), (64, 9374), (78, 9455), (84, 9479),

Gene: SilentWarrior_20 Start: 10860, Stop: 11228, Start Num: 20

Candidate Starts for SilentWarrior_20:

(10, 10824), (Start: 20 @10860 has 35 MA's), (53, 11028), (89, 11208),

Gene: SirHarley_18 Start: 12751, Stop: 13128, Start Num: 21

Candidate Starts for SirHarley_18:

(Start: 13 @12721 has 28 MA's), (15, 12727), (Start: 21 @12751 has 1 MA's), (68, 13000), (76, 13048), (78, 13057), (81, 13063), (87, 13102),

Gene: Snakehole_22 Start: 10949, Stop: 11317, Start Num: 20

Candidate Starts for Snakehole_22:

(10, 10913), (Start: 20 @10949 has 35 MA's), (53, 11117), (89, 11297),

Gene: Sparcetus_22 Start: 11567, Stop: 11953, Start Num: 19

Candidate Starts for Sparcetus_22:

(6, 11477), (Start: 19 @11567 has 49 MA's), (23, 11588), (47, 11717), (55, 11759), (62, 11792), (72, 11855), (82, 11891), (83, 11903),

Gene: Stormer_17 Start: 11658, Stop: 12035, Start Num: 19

Candidate Starts for Stormer_17:

(Start: 19 @11658 has 49 MA's), (22, 11673), (35, 11748), (37, 11757), (60, 11862), (63, 11880), (69, 11910), (75, 11952),

Gene: SuperSonics_25 Start: 15632, Stop: 15928, Start Num: 30

Candidate Starts for SuperSonics_25:

(Start: 13 @15557 has 28 MA's), (23, 15581), (30, 15632), (39, 15671), (43, 15686),

Gene: SuperheroCarly_19 Start: 12651, Stop: 13058, Start Num: 13

Candidate Starts for SuperheroCarly_19:

(Start: 13 @12651 has 28 MA's), (15, 12657), (Start: 21 @12681 has 1 MA's), (68, 12930), (76, 12978), (78, 12987), (81, 12993), (87, 13032),

Gene: Suzy_15 Start: 10365, Stop: 10754, Start Num: 17

Candidate Starts for Suzy_15:

(Start: 17 @10365 has 9 MA's), (22, 10383), (27, 10410), (64, 10602), (66, 10608), (78, 10683), (84, 10707),

Gene: Tedro_21 Start: 11123, Stop: 11491, Start Num: 20

Candidate Starts for Tedro_21:

(10, 11087), (Start: 20 @11123 has 35 MA's), (53, 11291), (89, 11471),

Gene: Terapin_14 Start: 9137, Stop: 9526, Start Num: 17

Candidate Starts for Terapin_14:

(Start: 17 @9137 has 9 MA's), (27, 9182), (64, 9374), (78, 9455), (84, 9479),

Gene: Thoth_19 Start: 12786, Stop: 13193, Start Num: 13

Candidate Starts for Thoth_19:

(Start: 13 @12786 has 28 MA's), (15, 12792), (Start: 21 @12816 has 1 MA's), (68, 13065), (76, 13113), (78, 13122), (81, 13128), (87, 13167),

Gene: Thumb_18 Start: 12626, Stop: 13009, Start Num: 16

Candidate Starts for Thumb_18:

(Start: 16 @12626 has 11 MA's), (42, 12755), (45, 12773), (75, 12926),

Gene: Tiggy93_21 Start: 11656, Stop: 12024, Start Num: 20

Candidate Starts for Tiggy93_21:

(10, 11620), (Start: 20 @11656 has 35 MA's), (53, 11824), (89, 12004),

Gene: Tillicus_19 Start: 12967, Stop: 13344, Start Num: 19

Candidate Starts for Tillicus_19:

(Start: 19 @12967 has 49 MA's), (22, 12982), (35, 13057), (42, 13090), (63, 13189), (69, 13219),

Gene: TinyMiny_22 Start: 11586, Stop: 11972, Start Num: 19

Candidate Starts for TinyMiny_22:

(6, 11496), (Start: 19 @11586 has 49 MA's), (23, 11607), (47, 11736), (55, 11778), (62, 11811), (72, 11874), (82, 11910), (83, 11922),

Gene: Tongui_20 Start: 10996, Stop: 11364, Start Num: 20

Candidate Starts for Tongui_20:

(10, 10960), (Start: 20 @10996 has 35 MA's), (53, 11164), (89, 11344),

Gene: Triscuit_41 Start: 21862, Stop: 22263, Start Num: 18

Candidate Starts for Triscuit_41:

(4, 21730), (Start: 18 @21862 has 3 MA's), (23, 21886), (26, 21901), (28, 21928), (31, 21940), (34, 21961), (48, 22030), (88, 22234),

Gene: Troll4_19 Start: 12790, Stop: 13197, Start Num: 13

Candidate Starts for Troll4_19:

(Start: 13 @12790 has 28 MA's), (15, 12796), (Start: 21 @12820 has 1 MA's), (68, 13069), (76, 13117), (78, 13126), (81, 13132), (87, 13171),

Gene: Visconti_19 Start: 12799, Stop: 13206, Start Num: 13

Candidate Starts for Visconti_19:

(Start: 13 @12799 has 28 MA's), (15, 12805), (Start: 21 @12829 has 1 MA's), (68, 13078), (76, 13126), (78, 13135), (81, 13141), (87, 13180),

Gene: WaldoWhy_20 Start: 12795, Stop: 13202, Start Num: 13

Candidate Starts for WaldoWhy_20:

(5, 12702), (Start: 13 @12795 has 28 MA's), (15, 12801), (Start: 21 @12825 has 1 MA's), (68, 13074), (76, 13122), (78, 13131), (81, 13137), (87, 13176),

Gene: Weiss13_19 Start: 12847, Stop: 13224, Start Num: 14

Candidate Starts for Weiss13_19:

(11, 12838), (Start: 14 @12847 has 10 MA's), (38, 12958), (73, 13129), (74, 13132), (76, 13141), (80, 13153), (86, 13189),

Gene: Wojtek_18 Start: 13295, Stop: 13672, Start Num: 19

Candidate Starts for Wojtek_18:

(Start: 19 @13295 has 49 MA's), (22, 13310), (35, 13385), (37, 13394), (50, 13454), (60, 13499), (63, 13517), (69, 13547), (75, 13589),

Gene: Wollypog_9 Start: 8239, Stop: 8610, Start Num: 18

Candidate Starts for Wollypog_9:

(Start: 18 @8239 has 3 MA's), (23, 8263), (24, 8269), (51, 8398), (54, 8425), (58, 8440), (63, 8470), (64, 8473), (66, 8479), (78, 8545), (90, 8596),

Gene: Xenia2_19 Start: 13334, Stop: 13714, Start Num: 19

Candidate Starts for Xenia2_19:

(Start: 19 @13334 has 49 MA's), (22, 13349), (35, 13424), (44, 13466), (56, 13526), (63, 13559),

Gene: Yelo_19 Start: 13157, Stop: 13534, Start Num: 14

Candidate Starts for Yelo_19:

(11, 13148), (Start: 14 @13157 has 10 MA's), (Start: 16 @13169 has 11 MA's), (33, 13235), (38, 13268), (73, 13439), (74, 13442), (76, 13451), (80, 13463), (86, 13499),

Gene: Yikes_20 Start: 14679, Stop: 15056, Start Num: 19

Candidate Starts for Yikes_20:

(Start: 19 @14679 has 49 MA's), (22, 14694), (35, 14769), (37, 14778), (60, 14883), (63, 14901), (65, 14907), (69, 14931), (70, 14952), (75, 14973),

Gene: Zany_18 Start: 13808, Stop: 14185, Start Num: 19

Candidate Starts for Zany_18:

(Start: 19 @13808 has 49 MA's), (22, 13823), (35, 13898), (37, 13907), (60, 14012), (63, 14030), (69, 14060), (75, 14102),

Gene: Zenon_20 Start: 13159, Stop: 13536, Start Num: 14

Candidate Starts for Zenon_20:

(11, 13150), (Start: 14 @13159 has 10 MA's), (38, 13270), (73, 13441), (74, 13444), (76, 13453), (80, 13465), (86, 13501),