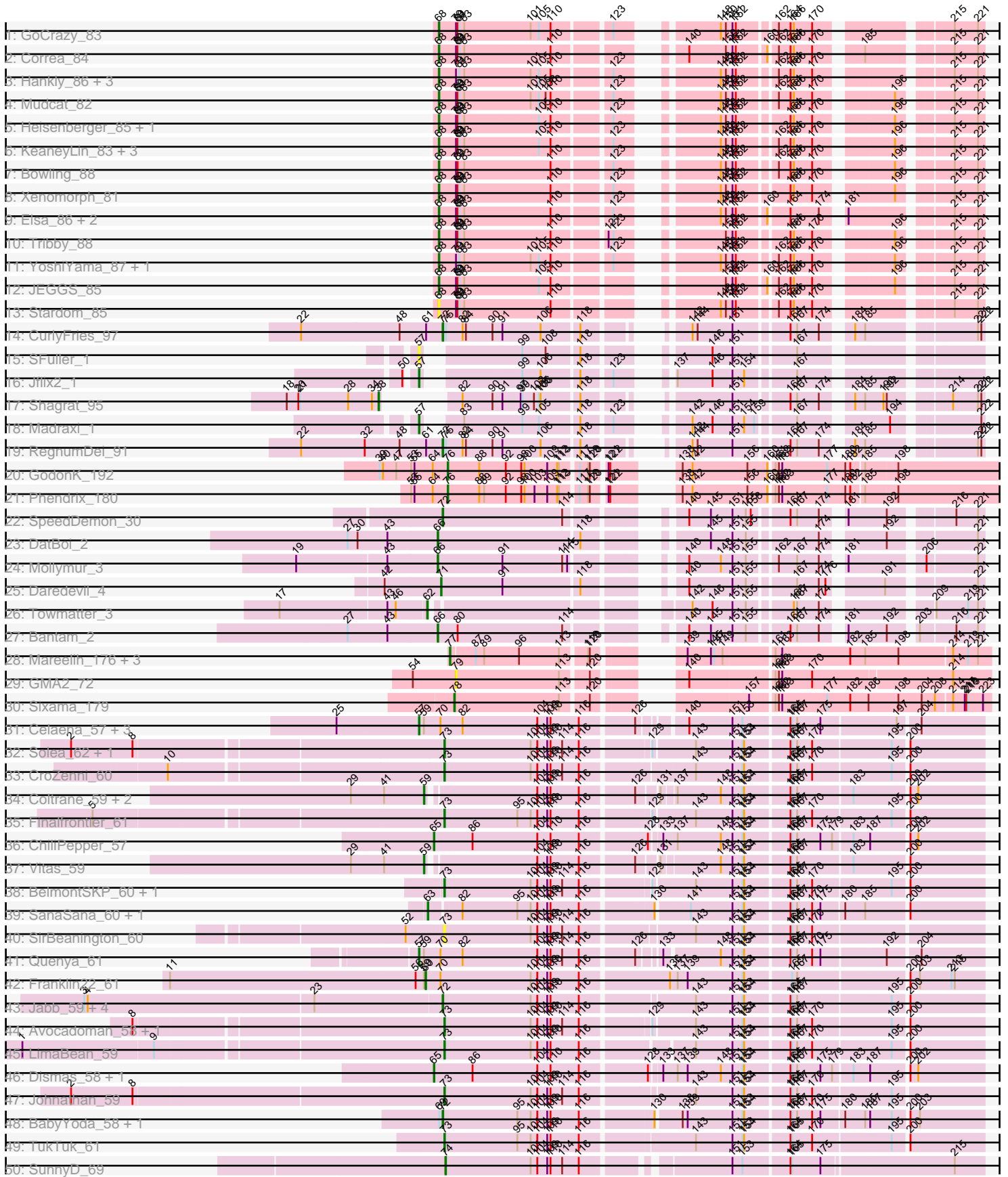
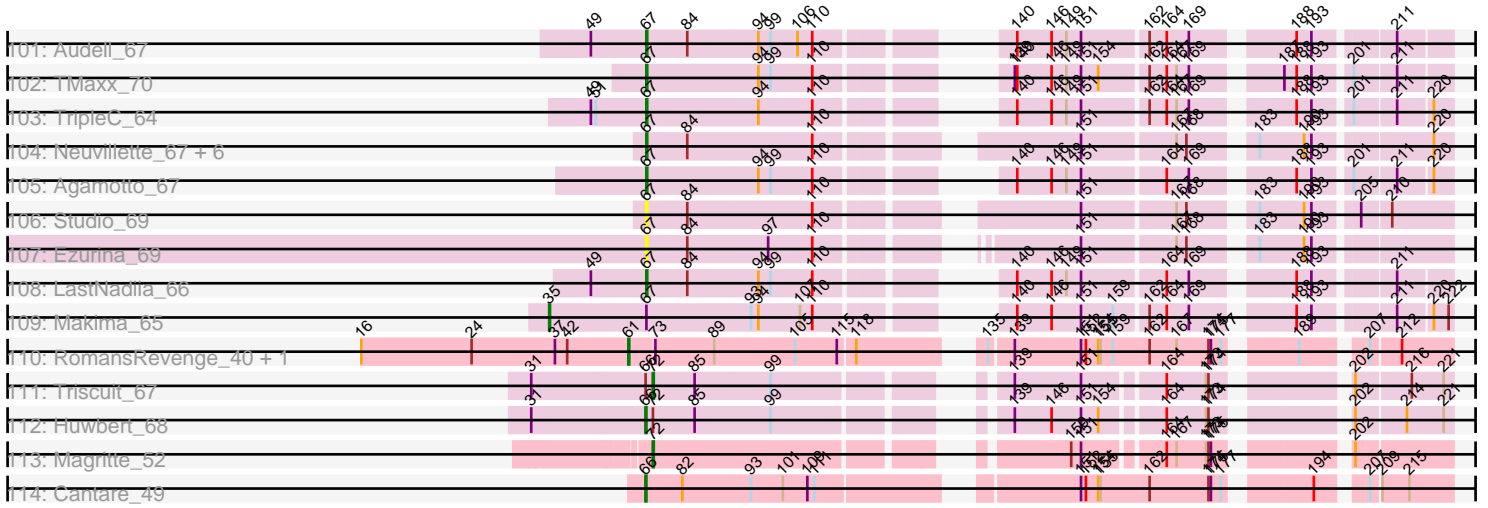


Pham 311310



Pham 311310



Note: Tracks are now grouped by subcluster and scaled. Switching in subcluster is indicated by changes in track color. Track scale is now set by default to display the region 30 bp upstream of start 1 to 30 bp downstream of the last possible start. If this default region is judged to be packed too tightly with annotated starts, the track will be further scaled to only show that region of the ORF with annotated starts. This action will be indicated by adding "Zoomed" to the title. For starts, yellow indicates the location of called starts comprised solely of Glimmer/GeneMark auto-annotations, green indicates the location of called starts with at least 1 manual gene annotation.

Pham 311310 Report

This analysis was run 06/27/26 on database version 652.

Pham number 311310 has 158 members, 22 are drafts.

Phages represented in each track:

- Track 1 : GoCrazy_83
- Track 2 : Correa_84
- Track 3 : Hankly_86, Kardesai_86, Mooshroom_87, Benllo_83
- Track 4 : Mudcat_82
- Track 5 : Heisenberger_85, Cheesy_87
- Track 6 : KeaneyLin_83, NapoleonB_87, Dynamite_86, Circum_86
- Track 7 : Bowling_88
- Track 8 : Xenomorph_81
- Track 9 : Elsa_86, Arcadia_86, Nason_86
- Track 10 : Tribby_88
- Track 11 : YoshiYama_87, BenitoAntonio_86
- Track 12 : JEGGS_85
- Track 13 : Stardom_85
- Track 14 : CurlyFries_97
- Track 15 : SFuller_1
- Track 16 : Jflix2_1
- Track 17 : Shagrat_95
- Track 18 : Madraxi_1
- Track 19 : RegnumDei_91
- Track 20 : GodonK_192
- Track 21 : Phendrix_180
- Track 22 : SpeedDemon_30
- Track 23 : DatBoi_2
- Track 24 : Mollymur_3
- Track 25 : Daredevil_4
- Track 26 : Towmatter_3
- Track 27 : Bantam_2
- Track 28 : Mareelih_176, Forza_179, Boopy_178, BlueNGold_175
- Track 29 : GMA2_72
- Track 30 : Sixama_179
- Track 31 : Celaena_57, Bachaco_57, Katzastrophic_58, FlameThrower_56
- Track 32 : Solea_62, Milomuff_61
- Track 33 : CroZenni_60
- Track 34 : Coltrane_59, Armstrong_59, Brahms_59
- Track 35 : Finalfrontier_61
- Track 36 : ChiliPepper_57
- Track 37 : Vitas_59

- Track 38 : BelmontSKP_60, AnnaLie_60
- Track 39 : SanaSana_60, Stoor_58
- Track 40 : SirBeanington_60
- Track 41 : Quenya_61
- Track 42 : Franklin22_61
- Track 43 : Jabb_59, Eula_59, MsUbiquitous_59, AylexOG_61, CupcakePrincess_59
- Track 44 : Avocadoman_58, Albright_57
- Track 45 : LimaBean_59
- Track 46 : Dismas_58, Rona_57
- Track 47 : Johnathan_59
- Track 48 : BabyYoda_58, Stromboli_58
- Track 49 : TukTuk_61
- Track 50 : SunnyD_69
- Track 51 : Lilo27_61
- Track 52 : Kenzers_59
- Track 53 : Pecas_60
- Track 54 : Kamdara_57
- Track 55 : Sharkboy_59
- Track 56 : BabyDaisy_61
- Track 57 : Kate33_63
- Track 58 : Albedo_61
- Track 59 : Softsoap_61
- Track 60 : BAjuniper_58
- Track 61 : Nicky22_60, QMacho_61
- Track 62 : Loviatar_59, Akino08_59
- Track 63 : Bernstein_59, Rollins_59
- Track 64 : Shayna_69
- Track 65 : Skylord_59
- Track 66 : PhigPhack_62, Bengal_62
- Track 67 : Clayda5_61
- Track 68 : CanFranMach_61
- Track 69 : Didgeridoo_64, PastaFagioli_60
- Track 70 : CliffHanger_69
- Track 71 : Teagster_69
- Track 72 : Cashington_59
- Track 73 : DirtyBubble_58
- Track 74 : IndyLu_61
- Track 75 : Abigail_59
- Track 76 : Burritobowl_61
- Track 77 : Arroyo_60
- Track 78 : Icarian_61
- Track 79 : Lahqtemish_59
- Track 80 : SansAfet_61
- Track 81 : Gack_58
- Track 82 : Phisb_61
- Track 83 : SarBear_59
- Track 84 : BubbaBear_59
- Track 85 : DickRichards_58
- Track 86 : Kieran_57
- Track 87 : PondAmelia_72
- Track 88 : Jovita_58
- Track 89 : AvGardian_60
- Track 90 : Swervy_60

- Track 91 : WalkingDead_61
- Track 92 : Elva_61
- Track 93 : Slay_60
- Track 94 : Doobus_58
- Track 95 : Lynlen_60
- Track 96 : Eden_59
- Track 97 : Paella_196, JeNeSaisPas_190, Qui_196, Elver_195
- Track 98 : Kureo_192
- Track 99 : Gandionco_195, Marianna39_194
- Track 100 : Mireles_68
- Track 101 : Audell_67
- Track 102 : TMaxx_70
- Track 103 : TripleC_64
- Track 104 : Neuville_67, AnnabelLee_69, CardboardBox_69, ChipsNGuac_68, Roberts_68, ChamoyPickle_69, Gerri43_67
- Track 105 : Agamoto_67
- Track 106 : Studio_69
- Track 107 : Ezurina_69
- Track 108 : LastNadiia_66
- Track 109 : Makima_65
- Track 110 : RomansRevenge_40, Boise_39
- Track 111 : Triscuit_67
- Track 112 : Huwbert_68
- Track 113 : Magritte_52
- Track 114 : Cantare_49

Summary of Final Annotations (See graph section above for start numbers):

The start number called the most often in the published annotations is 73, it was called in 25 of the 136 non-draft genes in the pham.

Genes that call this "Most Annotated" start:

- Abigail_59, Albedo_61, Albright_57, AnnaLie_60, Arroyo_60, Avocadoman_58, BelmontSKP_60, Bengal_62, BubbaBear_59, Burritobowl_61, CanFranMach_61, Cashington_59, CroZenni_60, DickRichards_58, Doobus_58, Finalfrontier_61, Johnathan_59, Lahqtemish_59, Lilo27_61, LimaBean_59, Milomuff_61, PhigPhack_62, Phisb_61, SansAfet_61, SirBeanington_60, Slay_60, Softsoap_61, Solea_62, TukTuk_61,

Genes that have the "Most Annotated" start but do not call it:

- Boise_39, RomansRevenge_40,

Genes that do not have the "Most Annotated" start:

- Agamoto_67, Akino08_59, AnnabelLee_69, Arcadia_86, Armstrong_59, Audell_67, AvGuardian_60, AylexOG_61, BAJuniper_58, BabyDaisy_61, BabyYoda_58, Bachaco_57, Bantam_2, BenitoAntonio_86, Benllo_83, Bernstein_59, BlueNGold_175, Boopy_178, Bowling_88, Brahms_59, Cantare_49, CardboardBox_69, Celaena_57, ChamoyPickle_69, Cheesy_87, ChiliPepper_57, ChipsNGuac_68, Circum_86, Clayda5_61, CliffHanger_69, Coltrane_59, Correa_84, CupcakePrincess_59, CurlyFries_97, Daredevil_4, DatBoi_2, Didgeridoo_64,

DirtyBubble_58, Dismas_58, Dynamite_86, Eden_59, Elsa_86, Elva_61, Elver_195, Eula_59, Ezurina_69, FlameThrower_56, Forza_179, Franklin22_61, GMA2_72, Gack_58, Gandionco_195, Gerri43_67, GoCrazy_83, GodonK_192, Hankly_86, Heisenberger_85, Huwbert_68, Icarian_61, IndyLu_61, JEGGS_85, Jabb_59, JeNeSaisPas_190, Jflix2_1, Jovita_58, Kamdara_57, Kardesai_86, Kate33_63, Katzastrophic_58, KeaneyLin_83, Kenzers_59, Kieran_57, Kureo_192, LastNadiia_66, Loviatar_59, Lynlen_60, Madraxi_1, Magritte_52, Makima_65, Mareelih_176, Marianna39_194, Mireles_68, Mollymur_3, Mooshroom_87, MsUbiquitous_59, Mudcat_82, NapoleonB_87, Nason_86, Neuville_67, Nicky22_60, Paella_196, PastaFagioli_60, Pecas_60, Phendrix_180, PondAmelia_72, QMacho_61, Quenya_61, Qui_196, RegnumDei_91, Roberts_68, Rollins_59, Rona_57, SFuller_1, SanaSana_60, SarBear_59, Shagrat_95, Sharkboy_59, Shayna_69, Sixama_179, Skylord_59, SpeedDemon_30, Stardom_85, Stoor_58, Stromboli_58, Studio_69, SunnyD_69, Swervy_60, TMaxx_70, Teagster_69, Towmatter_3, Tribby_88, TripleC_64, Triscuit_67, Vitas_59, WalkingDead_61, Xenomorph_81, YoshiYama_87,

Summary by start number:

Start 26:

- Found in 2 of 158 (1.3%) of genes in pham
- No Manual Annotations of this start.
- Called 100.0% of time when present
- Phage (with cluster) where this start called: Gandionco_195 (FK), Marianna39_194 (FK),

Start 35:

- Found in 1 of 158 (0.6%) of genes in pham
- Manual Annotations of this start: 1 of 136
- Called 100.0% of time when present
- Phage (with cluster) where this start called: Makima_65 (FR),

Start 38:

- Found in 1 of 158 (0.6%) of genes in pham
- Manual Annotations of this start: 1 of 136
- Called 100.0% of time when present
- Phage (with cluster) where this start called: Shagrat_95 (CF),

Start 57:

- Found in 9 of 158 (5.7%) of genes in pham
- Manual Annotations of this start: 8 of 136
- Called 100.0% of time when present
- Phage (with cluster) where this start called: BAjuniper_58 (EB), Bachaco_57 (EB), Celaena_57 (EB), FlameThrower_56 (EB), Jflix2_1 (CF), Katzastrophic_58 (EB), Madraxi_1 (CF), Quenya_61 (EB), SFuller_1 (CF),

Start 58:

- Found in 3 of 158 (1.9%) of genes in pham
- Manual Annotations of this start: 1 of 136
- Called 33.3% of time when present
- Phage (with cluster) where this start called: Gack_58 (EB),

Start 59:

- Found in 15 of 158 (9.5%) of genes in pham
- Manual Annotations of this start: 9 of 136
- Called 60.0% of time when present
- Phage (with cluster) where this start called: Armstrong_59 (EB), Bernstein_59 (EB), Brahms_59 (EB), Clayda5_61 (EB), Coltrane_59 (EB), Eden_59 (EB), Rollins_59 (EB), Skylord_59 (EB), Vitas_59 (EB),

Start 60:

- Found in 1 of 158 (0.6%) of genes in pham
- Manual Annotations of this start: 1 of 136
- Called 100.0% of time when present
- Phage (with cluster) where this start called: Franklin22_61 (EB),

Start 61:

- Found in 4 of 158 (2.5%) of genes in pham
- Manual Annotations of this start: 1 of 136
- Called 50.0% of time when present
- Phage (with cluster) where this start called: Boise_39 (FT), RomansRevenge_40 (FT),

Start 62:

- Found in 1 of 158 (0.6%) of genes in pham
- Manual Annotations of this start: 1 of 136
- Called 100.0% of time when present
- Phage (with cluster) where this start called: Towmatter_3 (DL),

Start 63:

- Found in 9 of 158 (5.7%) of genes in pham
- Manual Annotations of this start: 7 of 136
- Called 100.0% of time when present
- Phage (with cluster) where this start called: Akino08_59 (EB), AvGardian_60 (EB), Elva_61 (EB), Icarian_61 (EB), Loviatar_59 (EB), PondAmelia_72 (EB), SanaSana_60 (EB), Stoor_58 (EB), WalkingDead_61 (EB),

Start 65:

- Found in 6 of 158 (3.8%) of genes in pham
- Manual Annotations of this start: 5 of 136
- Called 100.0% of time when present
- Phage (with cluster) where this start called: ChiliPepper_57 (EB), Dismas_58 (EB), Kamdara_57 (EB), Kieran_57 (EB), Rona_57 (EB), Sharkboy_59 (EB),

Start 66:

- Found in 6 of 158 (3.8%) of genes in pham
- Manual Annotations of this start: 5 of 136
- Called 83.3% of time when present
- Phage (with cluster) where this start called: Bantam_2 (DL), Cantare_49 (singleton), DatBoi_2 (DL), Huwburt_68 (GG), Mollymur_3 (DL),

Start 67:

- Found in 16 of 158 (10.1%) of genes in pham
- Manual Annotations of this start: 10 of 136
- Called 93.8% of time when present

- Phage (with cluster) where this start called: Agamoto_67 (FR), AnnabelLee_69 (FR), Audell_67 (FR), CardboardBox_69 (FR), ChamoyPickle_69 (FR), ChipsNGuac_68 (FR), Ezurina_69 (FR), Gerri43_67 (FR), LastNadiia_66 (FR), Mireles_68 (FR), Neuville_67 (FR), Roberts_68 (FR), Studio_69 (FR), TMaxx_70 (FR), TripleC_64 (FR),

Start 68:

- Found in 30 of 158 (19.0%) of genes in pham
- Manual Annotations of this start: 24 of 136
- Called 93.3% of time when present
- Phage (with cluster) where this start called: Arcadia_86 (AM), BenitoAntonio_86 (AM), Benllo_83 (AM), Bowling_88 (AM), Cheesy_87 (AM), Circum_86 (AM), Correa_84 (AM), Dynamite_86 (AM), Elsa_86 (AM), Elver_195 (FK), GoCrazy_83 (AM), Hankly_86 (AM), Heisenberger_85 (AM), JEGGS_85 (AM), JeNeSaisPas_190 (FK), Kardesai_86 (AM), KeaneyLin_83 (AM), Kureo_192 (FK), Mooshroom_87 (AM), Mudcat_82 (AM), NapoleonB_87 (AM), Nason_86 (AM), Paella_196 (FK), Qui_196 (FK), Stardom_85 (AM), Tribby_88 (AM), Xenomorph_81 (AM), YoshiYama_87 (AM),

Start 71:

- Found in 1 of 158 (0.6%) of genes in pham
- Manual Annotations of this start: 1 of 136
- Called 100.0% of time when present
- Phage (with cluster) where this start called: Daredevil_4 (DL),

Start 72:

- Found in 27 of 158 (17.1%) of genes in pham
- Manual Annotations of this start: 25 of 136
- Called 96.3% of time when present
- Phage (with cluster) where this start called: AylexOG_61 (EB), BabyDaisy_61 (EB), BabyYoda_58 (EB), CupcakePrincess_59 (EB), CurlyFries_97 (CF), Didgeridoo_64 (EB), DirtyBubble_58 (EB), Eula_59 (EB), IndyLu_61 (EB), Jabb_59 (EB), Jovita_58 (EB), Kate33_63 (EB), Kenzers_59 (EB), Lynlen_60 (EB), Magritte_52 (singleton), MsUbiquitous_59 (EB), Nicky22_60 (EB), PastaFagioli_60 (EB), Pecas_60 (EB), QMacho_61 (EB), RegnumDei_91 (CF), SarBear_59 (EB), SpeedDemon_30 (DL), Stromboli_58 (EB), Swervy_60 (EB), Triscuit_67 (GG),

Start 73:

- Found in 31 of 158 (19.6%) of genes in pham
- Manual Annotations of this start: 25 of 136
- Called 93.5% of time when present
- Phage (with cluster) where this start called: Abigail_59 (EB), Albedo_61 (EB), Albright_57 (EB), AnnaLie_60 (EB), Arroyo_60 (EB), Avocadoman_58 (EB), BelmontSKP_60 (EB), Bengal_62 (EB), BubbaBear_59 (EB), Burritobowl_61 (EB), CanFranMach_61 (EB), Cashington_59 (EB), CroZenni_60 (EB), DickRichards_58 (EB), Doobus_58 (EB), Finalfrontier_61 (EB), Johnathan_59 (EB), Lahqtemish_59 (EB), Lilo27_61 (EB), LimaBean_59 (EB), Milomuff_61 (EB), PhigPhack_62 (EB), Phisb_61 (EB), SansAfet_61 (EB), SirBeanington_60 (EB), Slay_60 (EB), Softsoap_61 (EB), Solea_62 (EB), TukTuk_61 (EB),

Start 74:

- Found in 4 of 158 (2.5%) of genes in pham
- Manual Annotations of this start: 4 of 136
- Called 100.0% of time when present

- Phage (with cluster) where this start called: CliffHanger_69 (EB), Shayna_69 (EB), SunnyD_69 (EB), Teagster_69 (EB),

Start 76:

- Found in 2 of 158 (1.3%) of genes in pham
- Manual Annotations of this start: 2 of 136
- Called 100.0% of time when present
- Phage (with cluster) where this start called: GodonK_192 (DK), Phendrix_180 (DK),

Start 77:

- Found in 4 of 158 (2.5%) of genes in pham
- Manual Annotations of this start: 4 of 136
- Called 100.0% of time when present
- Phage (with cluster) where this start called: BlueNGold_175 (DS), Boopy_178 (DS), Forza_179 (DS), Mareelih_176 (DS),

Start 78:

- Found in 1 of 158 (0.6%) of genes in pham
- Manual Annotations of this start: 1 of 136
- Called 100.0% of time when present
- Phage (with cluster) where this start called: Sixama_179 (DS),

Start 79:

- Found in 24 of 158 (15.2%) of genes in pham
- No Manual Annotations of this start.
- Called 4.2% of time when present
- Phage (with cluster) where this start called: GMA2_72 (DS),

Summary by clusters:

There are 11 clusters represented in this pham: singleton, FT, DK, DL, AM, FR, CF, GG, FK, DS, EB,

Info for manual annotations of cluster AM:

- Start number 68 was manually annotated 21 times for cluster AM.

Info for manual annotations of cluster CF:

- Start number 38 was manually annotated 1 time for cluster CF.
- Start number 57 was manually annotated 2 times for cluster CF.
- Start number 72 was manually annotated 2 times for cluster CF.

Info for manual annotations of cluster DK:

- Start number 76 was manually annotated 2 times for cluster DK.

Info for manual annotations of cluster DL:

- Start number 62 was manually annotated 1 time for cluster DL.
- Start number 66 was manually annotated 3 times for cluster DL.
- Start number 71 was manually annotated 1 time for cluster DL.
- Start number 72 was manually annotated 1 time for cluster DL.

Info for manual annotations of cluster DS:

- Start number 77 was manually annotated 4 times for cluster DS.
- Start number 78 was manually annotated 1 time for cluster DS.

Info for manual annotations of cluster EB:

- Start number 57 was manually annotated 6 times for cluster EB.
- Start number 58 was manually annotated 1 time for cluster EB.
- Start number 59 was manually annotated 9 times for cluster EB.
- Start number 60 was manually annotated 1 time for cluster EB.
- Start number 63 was manually annotated 7 times for cluster EB.
- Start number 65 was manually annotated 5 times for cluster EB.
- Start number 72 was manually annotated 20 times for cluster EB.
- Start number 73 was manually annotated 25 times for cluster EB.
- Start number 74 was manually annotated 4 times for cluster EB.

Info for manual annotations of cluster FK:

- Start number 68 was manually annotated 3 times for cluster FK.

Info for manual annotations of cluster FR:

- Start number 35 was manually annotated 1 time for cluster FR.
- Start number 67 was manually annotated 10 times for cluster FR.

Info for manual annotations of cluster FT:

- Start number 61 was manually annotated 1 time for cluster FT.

Info for manual annotations of cluster GG:

- Start number 66 was manually annotated 1 time for cluster GG.
- Start number 72 was manually annotated 1 time for cluster GG.

Gene Information:

Gene: Abigail_59 Start: 37497, Stop: 38399, Start Num: 73

Candidate Starts for Abigail_59:

(10, 37032), (Start: 73 @37497 has 25 MA's), (101, 37650), (104, 37662), (109, 37680), (110, 37686), (114, 37707), (116, 37737), (143, 37911), (151, 37974), (153, 37992), (154, 37995), (164, 38070), (165, 38073), (167, 38082), (170, 38109), (195, 38244), (200, 38268),

Gene: Agamoto_67 Start: 40968, Stop: 41777, Start Num: 67

Candidate Starts for Agamoto_67:

(Start: 67 @40968 has 10 MA's), (94, 41100), (99, 41115), (110, 41166), (140, 41316), (146, 41358), (149, 41376), (151, 41391), (164, 41487), (169, 41514), (188, 41616), (193, 41634), (201, 41670), (211, 41718), (220, 41754),

Gene: Akino08_59 Start: 39149, Stop: 40081, Start Num: 63

Candidate Starts for Akino08_59:

(Start: 63 @39149 has 7 MA's), (82, 39200), (95, 39299), (104, 39335), (109, 39353), (110, 39359), (116, 39410), (130, 39530), (141, 39584), (145, 39620), (151, 39656), (153, 39674), (154, 39677), (164, 39752), (165, 39755), (167, 39764), (170, 39791), (175, 39806), (180, 39845), (185, 39881), (200, 39950),

Gene: Albedo_61 Start: 38402, Stop: 39319, Start Num: 73

Candidate Starts for Albedo_61:

(52, 38333), (Start: 73 @38402 has 25 MA's), (101, 38558), (104, 38570), (109, 38588), (110, 38594), (114, 38615), (116, 38645), (143, 38831), (151, 38894), (153, 38912), (154, 38915), (164, 38990),

(165, 38993), (167, 39002), (170, 39029),

Gene: Albright_57 Start: 36898, Stop: 37803, Start Num: 73

Candidate Starts for Albright_57:

(8, 36373), (Start: 73 @36898 has 25 MA's), (101, 37051), (104, 37063), (109, 37081), (110, 37087), (114, 37108), (116, 37138), (129, 37246), (143, 37315), (151, 37378), (153, 37396), (154, 37399), (164, 37474), (165, 37477), (167, 37486), (170, 37513), (195, 37648), (200, 37672),

Gene: AnnaLie_60 Start: 38333, Stop: 39238, Start Num: 73

Candidate Starts for AnnaLie_60:

(Start: 73 @38333 has 25 MA's), (101, 38486), (104, 38498), (109, 38516), (110, 38522), (114, 38543), (116, 38573), (129, 38681), (143, 38750), (151, 38813), (153, 38831), (154, 38834), (164, 38909), (165, 38912), (167, 38921), (170, 38948), (195, 39083), (200, 39107),

Gene: AnnabelLee_69 Start: 38383, Stop: 39231, Start Num: 67

Candidate Starts for AnnabelLee_69:

(Start: 67 @38383 has 10 MA's), (84, 38431), (110, 38581), (151, 38836), (167, 38944), (168, 38956), (183, 39019), (190, 39070), (193, 39079), (220, 39208),

Gene: Arcadia_86 Start: 50975, Stop: 51781, Start Num: 68

Candidate Starts for Arcadia_86:

(Start: 68 @50975 has 24 MA's), (79, 51005), (80, 51008), (81, 51011), (83, 51020), (110, 51170), (123, 51263), (148, 51389), (150, 51398), (151, 51407), (152, 51413), (160, 51461), (164, 51494), (174, 51545), (181, 51572), (215, 51731), (221, 51770),

Gene: Armstrong_59 Start: 36227, Stop: 37141, Start Num: 59

Candidate Starts for Armstrong_59:

(29, 36095), (41, 36155), (Start: 59 @36227 has 9 MA's), (104, 36410), (109, 36428), (110, 36434), (116, 36485), (126, 36572), (131, 36602), (137, 36623), (148, 36701), (151, 36719), (153, 36737), (154, 36740), (164, 36815), (165, 36818), (167, 36827), (183, 36920), (200, 37010), (202, 37022),

Gene: Arroyo_60 Start: 38445, Stop: 39356, Start Num: 73

Candidate Starts for Arroyo_60:

(8, 37914), (Start: 73 @38445 has 25 MA's), (101, 38598), (104, 38610), (109, 38628), (110, 38634), (116, 38685), (143, 38868), (151, 38931), (153, 38949), (154, 38952), (164, 39027), (165, 39030), (167, 39039), (170, 39066), (195, 39201), (200, 39225),

Gene: Audell_67 Start: 41020, Stop: 41829, Start Num: 67

Candidate Starts for Audell_67:

(49, 40954), (Start: 67 @41020 has 10 MA's), (84, 41068), (94, 41152), (99, 41167), (106, 41200), (110, 41218), (140, 41368), (146, 41410), (149, 41428), (151, 41443), (162, 41518), (164, 41539), (169, 41566), (188, 41668), (193, 41686), (211, 41770),

Gene: AvGardian_60 Start: 38063, Stop: 38998, Start Num: 63

Candidate Starts for AvGardian_60:

(Start: 63 @38063 has 7 MA's), (82, 38114), (104, 38249), (109, 38267), (110, 38273), (114, 38294), (116, 38324), (130, 38444), (141, 38498), (148, 38552), (151, 38570), (153, 38588), (154, 38591), (164, 38666), (165, 38669), (167, 38678), (170, 38705), (175, 38720), (178, 38738), (180, 38762), (200, 38867),

Gene: Avocadoman_58 Start: 37099, Stop: 38004, Start Num: 73

Candidate Starts for Avocadoman_58:

(8, 36574), (Start: 73 @37099 has 25 MA's), (101, 37252), (104, 37264), (109, 37282), (110, 37288), (114, 37309), (116, 37339), (129, 37447), (143, 37516), (151, 37579), (153, 37597), (154, 37600), (164, 37675), (165, 37678), (167, 37687), (170, 37714), (195, 37849), (200, 37873),

Gene: AylexOG_61 Start: 37948, Stop: 38862, Start Num: 72

Candidate Starts for AylexOG_61:

(3, 37315), (4, 37321), (23, 37720), (Start: 72 @37948 has 25 MA's), (101, 38104), (104, 38116), (109, 38134), (110, 38140), (116, 38191), (143, 38374), (151, 38437), (153, 38455), (154, 38458), (164, 38533), (165, 38536), (167, 38545), (195, 38707), (200, 38731),

Gene: BAjuniper_58 Start: 38409, Stop: 39332, Start Num: 57

Candidate Starts for BAjuniper_58:

(Start: 57 @38409 has 8 MA's), (95, 38580), (104, 38616), (109, 38634), (110, 38640), (116, 38691), (133, 38799), (137, 38814), (148, 38892), (151, 38910), (153, 38928), (154, 38931), (161, 38979), (164, 39006), (165, 39009), (170, 39045), (175, 39060), (187, 39138),

Gene: BabyDaisy_61 Start: 38618, Stop: 39529, Start Num: 72

Candidate Starts for BabyDaisy_61:

(Start: 72 @38618 has 25 MA's), (95, 38750), (104, 38786), (109, 38804), (110, 38810), (114, 38831), (116, 38861), (130, 38981), (151, 39107), (153, 39125), (161, 39176), (164, 39203), (165, 39206), (167, 39215), (170, 39242), (175, 39257), (200, 39398),

Gene: BabyYoda_58 Start: 38076, Stop: 38990, Start Num: 72

Candidate Starts for BabyYoda_58:

(69, 38070), (Start: 72 @38076 has 25 MA's), (95, 38208), (101, 38232), (104, 38244), (109, 38262), (110, 38268), (116, 38319), (130, 38439), (138, 38478), (139, 38487), (151, 38565), (153, 38583), (154, 38586), (164, 38661), (165, 38664), (167, 38673), (170, 38700), (175, 38715), (180, 38754), (185, 38790), (187, 38796), (195, 38835), (200, 38859), (203, 38874),

Gene: Bachaco_57 Start: 39107, Stop: 40042, Start Num: 57

Candidate Starts for Bachaco_57:

(25, 38960), (Start: 57 @39107 has 8 MA's), (Start: 59 @39113 has 9 MA's), (70, 39140), (82, 39179), (104, 39314), (109, 39332), (110, 39338), (116, 39389), (126, 39479), (140, 39545), (151, 39620), (153, 39638), (164, 39716), (165, 39719), (167, 39728), (175, 39770), (197, 39896), (204, 39929),

Gene: Bantam_2 Start: 764, Stop: 1576, Start Num: 66

Candidate Starts for Bantam_2:

(27, 605), (43, 674), (Start: 66 @764 has 5 MA's), (80, 800), (114, 983), (140, 1130), (145, 1169), (151, 1205), (155, 1229), (164, 1292), (167, 1304), (174, 1343), (181, 1370), (192, 1436), (203, 1475), (216, 1529), (221, 1565),

Gene: BelmontSKP_60 Start: 38333, Stop: 39238, Start Num: 73

Candidate Starts for BelmontSKP_60:

(Start: 73 @38333 has 25 MA's), (101, 38486), (104, 38498), (109, 38516), (110, 38522), (114, 38543), (116, 38573), (129, 38681), (143, 38750), (151, 38813), (153, 38831), (154, 38834), (164, 38909), (165, 38912), (167, 38921), (170, 38948), (195, 39083), (200, 39107),

Gene: Bengal_62 Start: 38209, Stop: 39114, Start Num: 73

Candidate Starts for Bengal_62:

(Start: 73 @38209 has 25 MA's), (101, 38362), (104, 38374), (109, 38392), (110, 38398), (114, 38419), (116, 38449), (129, 38557), (143, 38626), (151, 38689), (153, 38707), (154, 38710), (164, 38785), (165, 38788), (167, 38797), (170, 38824), (195, 38959), (200, 38983),

Gene: BenitoAntonio_86 Start: 50552, Stop: 51358, Start Num: 68

Candidate Starts for BenitoAntonio_86:

(Start: 68 @50552 has 24 MA's), (79, 50582), (81, 50588), (83, 50597), (101, 50711), (105, 50726), (110, 50747), (123, 50840), (148, 50966), (150, 50975), (151, 50984), (152, 50990), (162, 51050), (164, 51071), (166, 51077), (170, 51110), (196, 51230), (215, 51308), (221, 51347),

Gene: Benllo_83 Start: 50870, Stop: 51676, Start Num: 68

Candidate Starts for Benllo_83:

(Start: 68 @50870 has 24 MA's), (79, 50900), (81, 50906), (83, 50915), (101, 51029), (105, 51044), (110, 51065), (123, 51158), (148, 51284), (150, 51293), (151, 51302), (152, 51308), (162, 51368), (164, 51389), (166, 51395), (170, 51428), (215, 51626), (221, 51665),

Gene: Bernstein_59 Start: 36225, Stop: 37139, Start Num: 59

Candidate Starts for Bernstein_59:

(6, 35667), (29, 36093), (41, 36153), (Start: 59 @36225 has 9 MA's), (101, 36396), (104, 36408), (109, 36426), (110, 36432), (116, 36483), (126, 36570), (131, 36600), (137, 36621), (148, 36699), (151, 36717), (153, 36735), (154, 36738), (164, 36813), (165, 36816), (167, 36825), (183, 36918), (200, 37008), (202, 37020),

Gene: BlueNGold_175 Start: 103285, Stop: 102437, Start Num: 77

Candidate Starts for BlueNGold_175:

(Start: 77 @103285 has 4 MA's), (87, 103246), (89, 103231), (96, 103168), (113, 103096), (119, 103054), (120, 103051), (139, 102961), (145, 102919), (147, 102913), (149, 102898), (161, 102817), (163, 102805), (182, 102682), (185, 102655), (198, 102595), (214, 102502), (219, 102475), (221, 102457),

Gene: Boise_39 Start: 36241, Stop: 35375, Start Num: 61

Candidate Starts for Boise_39:

(16, 36568), (24, 36433), (37, 36331), (42, 36316), (Start: 61 @36241 has 1 MA's), (Start: 73 @36214 has 25 MA's), (89, 36142), (105, 36049), (115, 35998), (118, 35980), (135, 35866), (139, 35842), (151, 35764), (152, 35758), (154, 35743), (155, 35740), (159, 35725), (162, 35680), (167, 35647), (174, 35608), (175, 35605), (177, 35593), (189, 35527), (207, 35464), (212, 35434),

Gene: Boopy_178 Start: 103296, Stop: 102448, Start Num: 77

Candidate Starts for Boopy_178:

(Start: 77 @103296 has 4 MA's), (87, 103257), (89, 103242), (96, 103179), (113, 103107), (119, 103065), (120, 103062), (139, 102972), (145, 102930), (147, 102924), (149, 102909), (161, 102828), (163, 102816), (182, 102693), (185, 102666), (198, 102606), (214, 102513), (219, 102486), (221, 102468),

Gene: Bowling_88 Start: 51328, Stop: 52134, Start Num: 68

Candidate Starts for Bowling_88:

(Start: 68 @51328 has 24 MA's), (79, 51358), (80, 51361), (83, 51373), (110, 51523), (123, 51616), (148, 51742), (150, 51751), (151, 51760), (152, 51766), (162, 51826), (164, 51847), (166, 51853), (170, 51886), (196, 52006), (215, 52084), (221, 52123),

Gene: Brahms_59 Start: 36127, Stop: 37041, Start Num: 59

Candidate Starts for Brahms_59:

(29, 35995), (41, 36055), (Start: 59 @36127 has 9 MA's), (104, 36310), (109, 36328), (110, 36334), (116, 36385), (126, 36472), (131, 36502), (137, 36523), (148, 36601), (151, 36619), (153, 36637), (154, 36640), (164, 36715), (165, 36718), (167, 36727), (183, 36820), (200, 36910), (202, 36922),

Gene: BubbaBear_59 Start: 38098, Stop: 39003, Start Num: 73

Candidate Starts for BubbaBear_59:

(Start: 73 @38098 has 25 MA's), (101, 38251), (104, 38263), (109, 38281), (110, 38287), (114, 38308), (116, 38338), (129, 38446), (143, 38515), (151, 38578), (153, 38596), (154, 38599), (164, 38674), (165, 38677), (167, 38686), (170, 38713), (195, 38848), (200, 38872),

Gene: Burritobowl_61 Start: 37977, Stop: 38882, Start Num: 73

Candidate Starts for Burritobowl_61:

(Start: 73 @37977 has 25 MA's), (101, 38130), (104, 38142), (109, 38160), (110, 38166), (114, 38187), (116, 38217), (129, 38325), (143, 38394), (151, 38457), (153, 38475), (154, 38478), (164, 38553), (165, 38556), (167, 38565), (170, 38592), (195, 38727), (200, 38751),

Gene: CanFranMach_61 Start: 38063, Stop: 38974, Start Num: 73

Candidate Starts for CanFranMach_61:

(Start: 73 @38063 has 25 MA's), (91, 38165), (95, 38192), (101, 38216), (104, 38228), (109, 38246), (110, 38252), (116, 38303), (134, 38432), (143, 38486), (151, 38549), (153, 38567), (154, 38570), (164, 38645), (165, 38648), (167, 38657), (170, 38684), (195, 38819), (200, 38843),

Gene: Cantare_49 Start: 44954, Stop: 45802, Start Num: 66

Candidate Starts for Cantare_49:

(Start: 66 @44954 has 5 MA's), (82, 44996), (93, 45077), (101, 45113), (109, 45143), (111, 45152), (151, 45413), (152, 45419), (154, 45434), (155, 45437), (162, 45497), (174, 45569), (175, 45572), (177, 45584), (194, 45668), (207, 45713), (209, 45722), (215, 45752),

Gene: CardboardBox_69 Start: 38386, Stop: 39234, Start Num: 67

Candidate Starts for CardboardBox_69:

(Start: 67 @38386 has 10 MA's), (84, 38434), (110, 38584), (151, 38839), (167, 38947), (168, 38959), (183, 39022), (190, 39073), (193, 39082), (220, 39211),

Gene: Cashington_59 Start: 37553, Stop: 38458, Start Num: 73

Candidate Starts for Cashington_59:

(45, 37460), (Start: 73 @37553 has 25 MA's), (101, 37706), (104, 37718), (109, 37736), (110, 37742), (114, 37763), (116, 37793), (125, 37880), (129, 37901), (143, 37970), (151, 38033), (153, 38051), (154, 38054), (164, 38129), (165, 38132), (170, 38168), (195, 38303), (200, 38327),

Gene: Celaena_57 Start: 38869, Stop: 39804, Start Num: 57

Candidate Starts for Celaena_57:

(25, 38722), (Start: 57 @38869 has 8 MA's), (Start: 59 @38875 has 9 MA's), (70, 38902), (82, 38941), (104, 39076), (109, 39094), (110, 39100), (116, 39151), (126, 39241), (140, 39307), (151, 39382), (153, 39400), (164, 39478), (165, 39481), (167, 39490), (175, 39532), (197, 39658), (204, 39691),

Gene: ChamoyPickle_69 Start: 38926, Stop: 39774, Start Num: 67

Candidate Starts for ChamoyPickle_69:

(Start: 67 @38926 has 10 MA's), (84, 38974), (110, 39124), (151, 39379), (167, 39487), (168, 39499), (183, 39562), (190, 39613), (193, 39622), (220, 39751),

Gene: Cheesy_87 Start: 50767, Stop: 51573, Start Num: 68

Candidate Starts for Cheesy_87:

(Start: 68 @50767 has 24 MA's), (79, 50797), (80, 50800), (81, 50803), (83, 50812), (105, 50941), (110, 50962), (123, 51055), (148, 51181), (150, 51190), (151, 51199), (152, 51205), (164, 51286), (166, 51292), (170, 51325), (196, 51445), (215, 51523), (221, 51562),

Gene: ChiliPepper_57 Start: 38412, Stop: 39344, Start Num: 65

Candidate Starts for ChiliPepper_57:

(Start: 65 @38412 has 5 MA's), (86, 38481), (104, 38598), (110, 38622), (116, 38673), (128, 38784), (133, 38802), (137, 38826), (148, 38904), (151, 38922), (153, 38940), (154, 38943), (164, 39018), (165, 39021), (167, 39030), (175, 39072), (179, 39093), (183, 39123), (187, 39150), (200, 39213), (202, 39225),

Gene: ChipsNGuac_68 Start: 38386, Stop: 39234, Start Num: 67

Candidate Starts for ChipsNGuac_68:

(Start: 67 @38386 has 10 MA's), (84, 38434), (110, 38584), (151, 38839), (167, 38947), (168, 38959), (183, 39022), (190, 39073), (193, 39082), (220, 39211),

Gene: Circum_86 Start: 50824, Stop: 51630, Start Num: 68

Candidate Starts for Circum_86:

(Start: 68 @50824 has 24 MA's), (79, 50854), (80, 50857), (81, 50860), (83, 50869), (105, 50998), (110, 51019), (123, 51112), (148, 51238), (150, 51247), (151, 51256), (152, 51262), (162, 51322), (164, 51343), (166, 51349), (170, 51382), (196, 51502), (215, 51580), (221, 51619),

Gene: Clayda5_61 Start: 36192, Stop: 37106, Start Num: 59

Candidate Starts for Clayda5_61:

(29, 36060), (41, 36120), (Start: 59 @36192 has 9 MA's), (101, 36363), (104, 36375), (109, 36393), (110, 36399), (116, 36450), (126, 36537), (131, 36567), (137, 36588), (148, 36666), (151, 36684), (153, 36702), (154, 36705), (164, 36780), (165, 36783), (167, 36792), (183, 36885), (200, 36975), (202, 36987),

Gene: CliffHanger_69 Start: 37853, Stop: 38749, Start Num: 74

Candidate Starts for CliffHanger_69:

(Start: 74 @37853 has 4 MA's), (82, 37883), (93, 37964), (104, 38015), (109, 38033), (110, 38039), (114, 38060), (116, 38090), (139, 38240), (151, 38318), (153, 38336), (164, 38414), (165, 38417), (167, 38426), (172, 38459), (175, 38468), (215, 38696),

Gene: Coltrane_59 Start: 36127, Stop: 37041, Start Num: 59

Candidate Starts for Coltrane_59:

(29, 35995), (41, 36055), (Start: 59 @36127 has 9 MA's), (104, 36310), (109, 36328), (110, 36334), (116, 36385), (126, 36472), (131, 36502), (137, 36523), (148, 36601), (151, 36619), (153, 36637), (154, 36640), (164, 36715), (165, 36718), (167, 36727), (183, 36820), (200, 36910), (202, 36922),

Gene: Correa_84 Start: 50324, Stop: 51130, Start Num: 68

Candidate Starts for Correa_84:

(Start: 68 @50324 has 24 MA's), (79, 50354), (80, 50357), (81, 50360), (83, 50369), (110, 50519), (140, 50681), (150, 50747), (151, 50756), (152, 50762), (160, 50810), (162, 50822), (164, 50843), (166, 50849), (170, 50882), (185, 50951), (215, 51080), (221, 51119),

Gene: CroZenni_60 Start: 37761, Stop: 38672, Start Num: 73

Candidate Starts for CroZenni_60:

(10, 37296), (Start: 73 @37761 has 25 MA's), (101, 37914), (104, 37926), (109, 37944), (110, 37950), (114, 37971), (116, 38001), (143, 38184), (151, 38247), (153, 38265), (154, 38268), (164, 38343), (165, 38346), (167, 38355), (170, 38382), (195, 38517), (200, 38541),

Gene: CupcakePrincess_59 Start: 37419, Stop: 38333, Start Num: 72

Candidate Starts for CupcakePrincess_59:

(3, 36786), (4, 36792), (23, 37191), (Start: 72 @37419 has 25 MA's), (101, 37575), (104, 37587), (109, 37605), (110, 37611), (116, 37662), (143, 37845), (151, 37908), (153, 37926), (154, 37929), (164, 38004), (165, 38007), (167, 38016), (195, 38178), (200, 38202),

Gene: CurlyFries_97 Start: 49876, Stop: 50658, Start Num: 72

Candidate Starts for CurlyFries_97:

(22, 49621), (48, 49798), (Start: 61 @49846 has 1 MA's), (Start: 72 @49876 has 25 MA's), (75, 49882), (82, 49912), (84, 49918), (90, 49966), (91, 49981), (106, 50047), (118, 50110), (142, 50218), (144, 50227), (151, 50287), (164, 50374), (167, 50386), (174, 50425), (184, 50464), (185, 50482), (221, 50647), (222, 50653),

Gene: Daredevil_4 Start: 1040, Stop: 1846, Start Num: 71

Candidate Starts for Daredevil_4:

(42, 941), (Start: 71 @1040 has 1 MA's), (91, 1148), (118, 1277), (140, 1397), (151, 1472), (155, 1496), (167, 1571), (174, 1610), (176, 1622), (191, 1700), (221, 1835),

Gene: DatBoi_2 Start: 770, Stop: 1582, Start Num: 66

Candidate Starts for DatBoi_2:

(27, 611), (30, 629), (43, 680), (Start: 66 @770 has 5 MA's), (118, 1013), (145, 1175), (151, 1211), (155, 1235), (174, 1349), (192, 1442), (221, 1571),

Gene: DickRichards_58 Start: 37915, Stop: 38838, Start Num: 73

Candidate Starts for DickRichards_58:

(8, 37390), (10, 37450), (Start: 73 @37915 has 25 MA's), (101, 38068), (104, 38080), (109, 38098), (110, 38104), (114, 38125), (116, 38155), (135, 38302), (143, 38350), (151, 38413), (153, 38431), (154, 38434), (164, 38509), (165, 38512), (167, 38521), (170, 38548), (195, 38683), (200, 38707),

Gene: Didgeridoo_64 Start: 38737, Stop: 39648, Start Num: 72

Candidate Starts for Didgeridoo_64:

(Start: 72 @38737 has 25 MA's), (95, 38869), (104, 38905), (109, 38923), (110, 38929), (114, 38950), (116, 38980), (130, 39100), (151, 39226), (153, 39244), (161, 39295), (164, 39322), (165, 39325), (167, 39334), (170, 39361), (175, 39376), (200, 39517),

Gene: DirtyBubble_58 Start: 38114, Stop: 39028, Start Num: 72

Candidate Starts for DirtyBubble_58:

(Start: 72 @38114 has 25 MA's), (95, 38246), (101, 38270), (104, 38282), (109, 38300), (110, 38306), (116, 38357), (130, 38477), (138, 38516), (139, 38525), (151, 38603), (153, 38621), (154, 38624), (164, 38699), (165, 38702), (167, 38711), (170, 38738), (180, 38792), (185, 38828), (187, 38834), (195, 38873), (200, 38897), (203, 38912),

Gene: Dismas_58 Start: 38333, Stop: 39265, Start Num: 65

Candidate Starts for Dismas_58:

(Start: 65 @38333 has 5 MA's), (86, 38402), (104, 38519), (110, 38543), (116, 38594), (128, 38705), (133, 38723), (137, 38747), (139, 38765), (148, 38825), (151, 38843), (153, 38861), (154, 38864), (164, 38939), (165, 38942), (167, 38951), (175, 38993), (179, 39014), (183, 39044), (187, 39071), (200, 39134), (202, 39146),

Gene: Doobus_58 Start: 37608, Stop: 38513, Start Num: 73

Candidate Starts for Doobus_58:

(7, 37074), (52, 37539), (Start: 73 @37608 has 25 MA's), (101, 37761), (104, 37773), (109, 37791), (110, 37797), (114, 37818), (116, 37848), (129, 37956), (143, 38025), (151, 38088), (153, 38106), (154, 38109), (164, 38184), (165, 38187), (167, 38196), (170, 38223), (195, 38358), (200, 38382),

Gene: Dynamite_86 Start: 50343, Stop: 51149, Start Num: 68

Candidate Starts for Dynamite_86:

(Start: 68 @50343 has 24 MA's), (79, 50373), (80, 50376), (81, 50379), (83, 50388), (105, 50517), (110, 50538), (123, 50631), (148, 50757), (150, 50766), (151, 50775), (152, 50781), (162, 50841),

(164, 50862), (166, 50868), (170, 50901), (196, 51021), (215, 51099), (221, 51138),

Gene: Eden_59 Start: 36997, Stop: 37890, Start Num: 59

Candidate Starts for Eden_59:

(56, 36982), (Start: 59 @36997 has 9 MA's), (95, 37144), (104, 37180), (109, 37198), (110, 37204), (116, 37255), (131, 37360), (138, 37381), (139, 37390), (148, 37450), (151, 37468), (153, 37486), (154, 37489), (164, 37564), (165, 37567), (167, 37576), (199, 37750), (200, 37759),

Gene: Elsa_86 Start: 50975, Stop: 51781, Start Num: 68

Candidate Starts for Elsa_86:

(Start: 68 @50975 has 24 MA's), (79, 51005), (80, 51008), (81, 51011), (83, 51020), (110, 51170), (123, 51263), (148, 51389), (150, 51398), (151, 51407), (152, 51413), (160, 51461), (164, 51494), (174, 51545), (181, 51572), (215, 51731), (221, 51770),

Gene: Elva_61 Start: 38508, Stop: 39437, Start Num: 63

Candidate Starts for Elva_61:

(Start: 63 @38508 has 7 MA's), (82, 38559), (95, 38658), (101, 38682), (104, 38694), (109, 38712), (110, 38718), (116, 38769), (130, 38889), (145, 38979), (151, 39015), (153, 39033), (154, 39036), (161, 39084), (164, 39111), (165, 39114), (167, 39123), (170, 39150), (175, 39165), (200, 39306),

Gene: Elver_195 Start: 93137, Stop: 93946, Start Num: 68

Candidate Starts for Elver_195:

(Start: 68 @93137 has 24 MA's), (91, 93245), (115, 93359), (124, 93452), (148, 93554), (151, 93572), (159, 93611), (164, 93659), (171, 93701), (174, 93710), (221, 93935),

Gene: Eula_59 Start: 37405, Stop: 38319, Start Num: 72

Candidate Starts for Eula_59:

(3, 36772), (4, 36778), (23, 37177), (Start: 72 @37405 has 25 MA's), (101, 37561), (104, 37573), (109, 37591), (110, 37597), (116, 37648), (143, 37831), (151, 37894), (153, 37912), (154, 37915), (164, 37990), (165, 37993), (167, 38002), (195, 38164), (200, 38188),

Gene: Ezurina_69 Start: 39372, Stop: 40202, Start Num: 67

Candidate Starts for Ezurina_69:

(Start: 67 @39372 has 10 MA's), (84, 39420), (97, 39516), (110, 39570), (151, 39807), (167, 39915), (168, 39927), (183, 39990), (190, 40041), (193, 40050),

Gene: Finalfrontier_61 Start: 38910, Stop: 39815, Start Num: 73

Candidate Starts for Finalfrontier_61:

(5, 38307), (Start: 73 @38910 has 25 MA's), (95, 39039), (101, 39063), (104, 39075), (109, 39093), (110, 39099), (116, 39150), (129, 39258), (143, 39327), (151, 39390), (153, 39408), (154, 39411), (164, 39486), (165, 39489), (167, 39498), (170, 39525), (195, 39660), (200, 39684),

Gene: FlameThrower_56 Start: 37906, Stop: 38841, Start Num: 57

Candidate Starts for FlameThrower_56:

(25, 37759), (Start: 57 @37906 has 8 MA's), (Start: 59 @37912 has 9 MA's), (70, 37939), (82, 37978), (104, 38113), (109, 38131), (110, 38137), (116, 38188), (126, 38278), (140, 38344), (151, 38419), (153, 38437), (164, 38515), (165, 38518), (167, 38527), (175, 38569), (197, 38695), (204, 38728),

Gene: Forza_179 Start: 103213, Stop: 102365, Start Num: 77

Candidate Starts for Forza_179:

(Start: 77 @103213 has 4 MA's), (87, 103174), (89, 103159), (96, 103096), (113, 103024), (119, 102982), (120, 102979), (139, 102889), (145, 102847), (147, 102841), (149, 102826), (161, 102745), (163, 102733), (182, 102610), (185, 102583), (198, 102523), (214, 102430), (219, 102403), (221,

102385),

Gene: Franklin22_61 Start: 36648, Stop: 37604, Start Num: 60

Candidate Starts for Franklin22_61:

(11, 36195), (56, 36630), (Start: 59 @36645 has 9 MA's), (Start: 60 @36648 has 1 MA's), (70, 36675), (101, 36837), (104, 36849), (109, 36867), (110, 36873), (116, 36924), (136, 37074), (137, 37086), (139, 37104), (151, 37182), (153, 37200), (154, 37203), (165, 37281), (167, 37290), (200, 37473), (203, 37488), (213, 37545), (215, 37551),

Gene: GMA2_72 Start: 74554, Stop: 73712, Start Num: 79

Candidate Starts for GMA2_72:

(54, 74629), (79, 74554), (113, 74368), (120, 74323), (140, 74230), (161, 74089), (162, 74083), (163, 74077), (170, 74023), (214, 73777),

Gene: Gack_58 Start: 36593, Stop: 37522, Start Num: 58

Candidate Starts for Gack_58:

(Start: 58 @36593 has 1 MA's), (104, 36782), (109, 36800), (110, 36806), (116, 36857), (137, 37004), (148, 37082), (151, 37100), (153, 37118), (154, 37121), (164, 37196), (165, 37199), (167, 37208), (183, 37301), (200, 37391), (203, 37406),

Gene: Gandionco_195 Start: 92541, Stop: 93509, Start Num: 26

Candidate Starts for Gandionco_195:

(26, 92541), (33, 92574), (Start: 68 @92706 has 24 MA's), (91, 92814), (108, 92889), (115, 92928), (124, 93021), (139, 93057), (151, 93135), (159, 93174), (164, 93222), (171, 93264), (174, 93273), (221, 93498),

Gene: Gerri43_67 Start: 38386, Stop: 39234, Start Num: 67

Candidate Starts for Gerri43_67:

(Start: 67 @38386 has 10 MA's), (84, 38434), (110, 38584), (151, 38839), (167, 38947), (168, 38959), (183, 39022), (190, 39073), (193, 39082), (220, 39211),

Gene: GoCrazy_83 Start: 49603, Stop: 50409, Start Num: 68

Candidate Starts for GoCrazy_83:

(Start: 68 @49603 has 24 MA's), (79, 49633), (80, 49636), (81, 49639), (83, 49648), (101, 49762), (105, 49777), (110, 49798), (123, 49891), (148, 50017), (150, 50026), (151, 50035), (152, 50041), (162, 50101), (164, 50122), (166, 50128), (170, 50161), (215, 50359), (221, 50398),

Gene: GodonK_192 Start: 99772, Stop: 98888, Start Num: 76

Candidate Starts for GodonK_192:

(39, 99892), (40, 99886), (47, 99862), (53, 99835), (55, 99829), (64, 99796), (Start: 76 @99772 has 2 MA's), (88, 99715), (92, 99667), (98, 99640), (100, 99634), (109, 99595), (112, 99577), (113, 99574), (117, 99547), (119, 99532), (120, 99529), (121, 99508), (122, 99505), (138, 99448), (142, 99430), (156, 99331), (160, 99298), (161, 99292), (162, 99286), (163, 99280), (177, 99199), (180, 99166), (182, 99157), (185, 99136), (198, 99079),

Gene: Hankly_86 Start: 49981, Stop: 50787, Start Num: 68

Candidate Starts for Hankly_86:

(Start: 68 @49981 has 24 MA's), (79, 50011), (81, 50017), (83, 50026), (101, 50140), (105, 50155), (110, 50176), (123, 50269), (148, 50395), (150, 50404), (151, 50413), (152, 50419), (162, 50479), (164, 50500), (166, 50506), (170, 50539), (215, 50737), (221, 50776),

Gene: Heisenberger_85 Start: 50232, Stop: 51038, Start Num: 68

Candidate Starts for Heisenberger_85:

(Start: 68 @50232 has 24 MA's), (79, 50262), (80, 50265), (81, 50268), (83, 50277), (105, 50406), (110, 50427), (123, 50520), (148, 50646), (150, 50655), (151, 50664), (152, 50670), (164, 50751), (166, 50757), (170, 50790), (196, 50910), (215, 50988), (221, 51027),

Gene: Huwbert_68 Start: 42366, Stop: 43169, Start Num: 66

Candidate Starts for Huwbert_68:

(31, 42228), (Start: 66 @42366 has 5 MA's), (Start: 72 @42375 has 25 MA's), (85, 42426), (99, 42513), (139, 42720), (146, 42765), (151, 42798), (154, 42819), (164, 42885), (173, 42933), (174, 42936), (202, 43065), (214, 43116), (221, 43158),

Gene: Icarian_61 Start: 38747, Stop: 39679, Start Num: 63

Candidate Starts for Icarian_61:

(Start: 58 @38741 has 1 MA's), (Start: 63 @38747 has 7 MA's), (82, 38798), (95, 38897), (101, 38921), (104, 38933), (109, 38951), (110, 38957), (116, 39008), (130, 39128), (141, 39182), (145, 39218), (151, 39254), (153, 39272), (154, 39275), (164, 39350), (165, 39353), (167, 39362), (170, 39389), (175, 39404), (180, 39443), (185, 39479), (200, 39548),

Gene: IndyLu_61 Start: 38349, Stop: 39260, Start Num: 72

Candidate Starts for IndyLu_61:

(Start: 72 @38349 has 25 MA's), (95, 38481), (104, 38517), (109, 38535), (110, 38541), (114, 38562), (116, 38592), (130, 38712), (151, 38838), (153, 38856), (161, 38907), (164, 38934), (165, 38937), (167, 38946), (170, 38973), (175, 38988), (200, 39129),

Gene: JEGGS_85 Start: 50311, Stop: 51117, Start Num: 68

Candidate Starts for JEGGS_85:

(Start: 68 @50311 has 24 MA's), (79, 50341), (80, 50344), (81, 50347), (83, 50356), (105, 50485), (110, 50506), (150, 50734), (151, 50743), (152, 50749), (160, 50797), (162, 50809), (164, 50830), (166, 50836), (170, 50869), (196, 50989), (215, 51067), (221, 51106),

Gene: Jabb_59 Start: 37419, Stop: 38333, Start Num: 72

Candidate Starts for Jabb_59:

(3, 36786), (4, 36792), (23, 37191), (Start: 72 @37419 has 25 MA's), (101, 37575), (104, 37587), (109, 37605), (110, 37611), (116, 37662), (143, 37845), (151, 37908), (153, 37926), (154, 37929), (164, 38004), (165, 38007), (167, 38016), (195, 38178), (200, 38202),

Gene: JeNeSaisPas_190 Start: 93258, Stop: 94067, Start Num: 68

Candidate Starts for JeNeSaisPas_190:

(Start: 68 @93258 has 24 MA's), (91, 93366), (115, 93480), (124, 93573), (148, 93675), (151, 93693), (159, 93732), (164, 93780), (171, 93822), (174, 93831), (221, 94056),

Gene: Jflix2_1 Start: 198, Stop: 998, Start Num: 57

Candidate Starts for Jflix2_1:

(50, 183), (Start: 57 @198 has 8 MA's), (99, 336), (106, 369), (118, 432), (123, 480), (137, 528), (146, 591), (151, 624), (154, 645), (167, 723),

Gene: Johnathan_59 Start: 37470, Stop: 38381, Start Num: 73

Candidate Starts for Johnathan_59:

(2, 36819), (8, 36930), (Start: 73 @37470 has 25 MA's), (101, 37623), (104, 37635), (109, 37653), (110, 37659), (114, 37680), (116, 37710), (143, 37893), (151, 37956), (153, 37974), (154, 37977), (164, 38052), (165, 38055), (167, 38064), (170, 38091), (195, 38226),

Gene: Jovita_58 Start: 37280, Stop: 38191, Start Num: 72

Candidate Starts for Jovita_58:

(6, 36695), (23, 37052), (36, 37160), (44, 37187), (Start: 72 @37280 has 25 MA's), (95, 37409), (101, 37433), (104, 37445), (109, 37463), (110, 37469), (116, 37520), (143, 37703), (151, 37766), (153, 37784), (154, 37787), (164, 37862), (165, 37865), (167, 37874), (170, 37901), (195, 38036), (200, 38060),

Gene: Kamdara_57 Start: 38371, Stop: 39303, Start Num: 65

Candidate Starts for Kamdara_57:

(Start: 65 @38371 has 5 MA's), (86, 38440), (104, 38557), (110, 38581), (116, 38632), (128, 38743), (132, 38758), (133, 38761), (137, 38785), (139, 38803), (148, 38863), (151, 38881), (153, 38899), (154, 38902), (164, 38977), (165, 38980), (167, 38989), (179, 39052), (183, 39082), (187, 39109), (200, 39172), (202, 39184),

Gene: Kardesai_86 Start: 49918, Stop: 50724, Start Num: 68

Candidate Starts for Kardesai_86:

(Start: 68 @49918 has 24 MA's), (79, 49948), (81, 49954), (83, 49963), (101, 50077), (105, 50092), (110, 50113), (123, 50206), (148, 50332), (150, 50341), (151, 50350), (152, 50356), (162, 50416), (164, 50437), (166, 50443), (170, 50476), (215, 50674), (221, 50713),

Gene: Kate33_63 Start: 38085, Stop: 38996, Start Num: 72

Candidate Starts for Kate33_63:

(8, 37551), (Start: 72 @38085 has 25 MA's), (95, 38217), (104, 38253), (109, 38271), (110, 38277), (114, 38298), (116, 38328), (130, 38448), (151, 38574), (153, 38592), (161, 38643), (164, 38670), (165, 38673), (167, 38682), (170, 38709), (175, 38724), (200, 38865),

Gene: Katzastrophic_58 Start: 38416, Stop: 39351, Start Num: 57

Candidate Starts for Katzastrophic_58:

(25, 38269), (Start: 57 @38416 has 8 MA's), (Start: 59 @38422 has 9 MA's), (70, 38449), (82, 38488), (104, 38623), (109, 38641), (110, 38647), (116, 38698), (126, 38788), (140, 38854), (151, 38929), (153, 38947), (164, 39025), (165, 39028), (167, 39037), (175, 39079), (197, 39205), (204, 39238),

Gene: KeaneyLin_83 Start: 50046, Stop: 50852, Start Num: 68

Candidate Starts for KeaneyLin_83:

(Start: 68 @50046 has 24 MA's), (79, 50076), (80, 50079), (81, 50082), (83, 50091), (105, 50220), (110, 50241), (123, 50334), (148, 50460), (150, 50469), (151, 50478), (152, 50484), (162, 50544), (164, 50565), (166, 50571), (170, 50604), (196, 50724), (215, 50802), (221, 50841),

Gene: Kenzers_59 Start: 37344, Stop: 38252, Start Num: 72

Candidate Starts for Kenzers_59:

(Start: 72 @37344 has 25 MA's), (101, 37500), (104, 37512), (109, 37530), (110, 37536), (116, 37587), (127, 37695), (143, 37764), (151, 37827), (153, 37845), (154, 37848), (164, 37923), (165, 37926), (167, 37935), (170, 37962), (195, 38097), (200, 38121),

Gene: Kieran_57 Start: 38374, Stop: 39306, Start Num: 65

Candidate Starts for Kieran_57:

(12, 37912), (Start: 65 @38374 has 5 MA's), (86, 38443), (104, 38560), (110, 38584), (116, 38635), (128, 38746), (132, 38761), (133, 38764), (137, 38788), (139, 38806), (148, 38866), (151, 38884), (153, 38902), (154, 38905), (164, 38980), (165, 38983), (167, 38992), (179, 39055), (183, 39085), (187, 39112), (200, 39175), (202, 39187),

Gene: Kureo_192 Start: 91813, Stop: 92616, Start Num: 68

Candidate Starts for Kureo_192:

(Start: 68 @91813 has 24 MA's), (91, 91921), (108, 91996), (115, 92035), (124, 92128), (139, 92164), (151, 92242), (159, 92281), (164, 92329), (171, 92371), (174, 92380), (221, 92605),

Gene: Lahqtemish_59 Start: 38368, Stop: 39276, Start Num: 73

Candidate Starts for Lahqtemish_59:

(8, 37837), (Start: 73 @38368 has 25 MA's), (101, 38521), (104, 38533), (109, 38551), (110, 38557), (114, 38578), (116, 38608), (143, 38791), (151, 38854), (153, 38872), (154, 38875), (164, 38950), (165, 38953), (167, 38962), (170, 38989), (200, 39145),

Gene: LastNadiia_66 Start: 40425, Stop: 41234, Start Num: 67

Candidate Starts for LastNadiia_66:

(49, 40359), (Start: 67 @40425 has 10 MA's), (84, 40473), (94, 40557), (99, 40572), (110, 40623), (140, 40773), (146, 40815), (149, 40833), (151, 40848), (164, 40944), (169, 40971), (188, 41073), (193, 41091), (211, 41175),

Gene: Lilo27_61 Start: 37952, Stop: 38863, Start Num: 73

Candidate Starts for Lilo27_61:

(5, 37355), (10, 37487), (Start: 73 @37952 has 25 MA's), (101, 38105), (104, 38117), (109, 38135), (110, 38141), (116, 38192), (143, 38375), (151, 38438), (153, 38456), (154, 38459), (164, 38534), (165, 38537), (170, 38573), (195, 38708), (200, 38732), (219, 38834),

Gene: LimaBean_59 Start: 37374, Stop: 38276, Start Num: 73

Candidate Starts for LimaBean_59:

(1, 36651), (9, 36885), (Start: 73 @37374 has 25 MA's), (101, 37527), (104, 37539), (109, 37557), (110, 37563), (116, 37614), (143, 37788), (151, 37851), (153, 37869), (154, 37872), (164, 37947), (165, 37950), (167, 37959), (170, 37986), (195, 38121), (200, 38145),

Gene: Loviatar_59 Start: 39164, Stop: 40096, Start Num: 63

Candidate Starts for Loviatar_59:

(Start: 63 @39164 has 7 MA's), (82, 39215), (95, 39314), (104, 39350), (109, 39368), (110, 39374), (116, 39425), (130, 39545), (141, 39599), (145, 39635), (151, 39671), (153, 39689), (154, 39692), (164, 39767), (165, 39770), (167, 39779), (170, 39806), (175, 39821), (180, 39860), (185, 39896), (200, 39965),

Gene: Lynlen_60 Start: 37527, Stop: 38435, Start Num: 72

Candidate Starts for Lynlen_60:

(44, 37437), (Start: 72 @37527 has 25 MA's), (101, 37683), (104, 37695), (109, 37713), (110, 37719), (114, 37740), (116, 37770), (127, 37878), (143, 37947), (151, 38010), (153, 38028), (154, 38031), (164, 38106), (165, 38109), (167, 38118), (170, 38145), (195, 38280), (200, 38304),

Gene: Madraxi_1 Start: 197, Stop: 994, Start Num: 57

Candidate Starts for Madraxi_1:

(Start: 57 @197 has 8 MA's), (83, 236), (99, 335), (105, 365), (118, 431), (123, 479), (142, 554), (146, 590), (151, 623), (154, 644), (159, 662), (167, 722), (194, 860), (222, 989),

Gene: Magritte_52 Start: 50451, Stop: 51248, Start Num: 72

Candidate Starts for Magritte_52:

(Start: 72 @50451 has 25 MA's), (150, 50868), (151, 50877), (164, 50964), (167, 50976), (173, 51012), (174, 51015), (175, 51018), (202, 51144),

Gene: Makima_65 Start: 40311, Stop: 41237, Start Num: 35

Candidate Starts for Makima_65:

(Start: 35 @40311 has 1 MA's), (Start: 67 @40428 has 10 MA's), (93, 40551), (94, 40560), (107, 40611), (110, 40626), (140, 40776), (146, 40818), (151, 40851), (159, 40890), (162, 40926), (164, 40947), (169, 40974), (188, 41076), (193, 41094), (211, 41178), (220, 41214), (222, 41232),

Gene: Mareelih_176 Start: 102731, Stop: 101883, Start Num: 77

Candidate Starts for Mareelih_176:

(Start: 77 @102731 has 4 MA's), (87, 102692), (89, 102677), (96, 102614), (113, 102542), (119, 102500), (120, 102497), (139, 102407), (145, 102365), (147, 102359), (149, 102344), (161, 102263), (163, 102251), (182, 102128), (185, 102101), (198, 102041), (214, 101948), (219, 101921), (221, 101903),

Gene: Marianna39_194 Start: 93144, Stop: 94112, Start Num: 26

Candidate Starts for Marianna39_194:

(26, 93144), (33, 93177), (Start: 68 @93309 has 24 MA's), (91, 93417), (108, 93492), (115, 93531), (124, 93624), (139, 93660), (151, 93738), (159, 93777), (164, 93825), (171, 93867), (174, 93876), (221, 94101),

Gene: Milomuff_61 Start: 38066, Stop: 38971, Start Num: 73

Candidate Starts for Milomuff_61:

(2, 37430), (8, 37541), (Start: 73 @38066 has 25 MA's), (101, 38219), (104, 38231), (109, 38249), (110, 38255), (114, 38276), (116, 38306), (129, 38414), (143, 38483), (151, 38546), (153, 38564), (154, 38567), (164, 38642), (165, 38645), (167, 38654), (170, 38681), (195, 38816), (200, 38840),

Gene: Mireles_68 Start: 39986, Stop: 40795, Start Num: 67

Candidate Starts for Mireles_68:

(Start: 67 @39986 has 10 MA's), (94, 40118), (99, 40133), (107, 40169), (110, 40184), (140, 40334), (146, 40376), (151, 40409), (162, 40484), (164, 40505), (167, 40517), (169, 40532), (180, 40577), (188, 40634), (193, 40652), (199, 40673), (211, 40736), (220, 40772), (222, 40790),

Gene: Mollymur_3 Start: 852, Stop: 1661, Start Num: 66

Candidate Starts for Mollymur_3:

(19, 603), (43, 762), (Start: 66 @852 has 5 MA's), (91, 966), (114, 1071), (115, 1080), (140, 1215), (148, 1272), (151, 1290), (155, 1314), (162, 1356), (167, 1389), (174, 1428), (181, 1455), (206, 1569), (221, 1650),

Gene: Mooshroom_87 Start: 49918, Stop: 50724, Start Num: 68

Candidate Starts for Mooshroom_87:

(Start: 68 @49918 has 24 MA's), (79, 49948), (81, 49954), (83, 49963), (101, 50077), (105, 50092), (110, 50113), (123, 50206), (148, 50332), (150, 50341), (151, 50350), (152, 50356), (162, 50416), (164, 50437), (166, 50443), (170, 50476), (215, 50674), (221, 50713),

Gene: MsUbiquitous_59 Start: 37419, Stop: 38333, Start Num: 72

Candidate Starts for MsUbiquitous_59:

(3, 36786), (4, 36792), (23, 37191), (Start: 72 @37419 has 25 MA's), (101, 37575), (104, 37587), (109, 37605), (110, 37611), (116, 37662), (143, 37845), (151, 37908), (153, 37926), (154, 37929), (164, 38004), (165, 38007), (167, 38016), (195, 38178), (200, 38202),

Gene: Mudcat_82 Start: 51669, Stop: 52475, Start Num: 68

Candidate Starts for Mudcat_82:

(Start: 68 @51669 has 24 MA's), (79, 51699), (80, 51702), (81, 51705), (83, 51714), (101, 51828), (105, 51843), (108, 51855), (110, 51864), (123, 51957), (148, 52083), (150, 52092), (151, 52101), (152, 52107), (162, 52167), (164, 52188), (166, 52194), (170, 52227), (196, 52347), (215, 52425), (221, 52464),

Gene: NapoleonB_87 Start: 50343, Stop: 51149, Start Num: 68

Candidate Starts for NapoleonB_87:

(Start: 68 @50343 has 24 MA's), (79, 50373), (80, 50376), (81, 50379), (83, 50388), (105, 50517), (110, 50538), (123, 50631), (148, 50757), (150, 50766), (151, 50775), (152, 50781), (162, 50841), (164, 50862), (166, 50868), (170, 50901), (196, 51021), (215, 51099), (221, 51138),

Gene: Nason_86 Start: 50975, Stop: 51781, Start Num: 68

Candidate Starts for Nason_86:

(Start: 68 @50975 has 24 MA's), (79, 51005), (80, 51008), (81, 51011), (83, 51020), (110, 51170), (123, 51263), (148, 51389), (150, 51398), (151, 51407), (152, 51413), (160, 51461), (164, 51494), (174, 51545), (181, 51572), (215, 51731), (221, 51770),

Gene: Neuville_67 Start: 38386, Stop: 39234, Start Num: 67

Candidate Starts for Neuville_67:

(Start: 67 @38386 has 10 MA's), (84, 38434), (110, 38584), (151, 38839), (167, 38947), (168, 38959), (183, 39022), (190, 39073), (193, 39082), (220, 39211),

Gene: Nicky22_60 Start: 38174, Stop: 39073, Start Num: 72

Candidate Starts for Nicky22_60:

(Start: 72 @38174 has 25 MA's), (95, 38303), (101, 38327), (104, 38339), (109, 38357), (110, 38363), (116, 38414), (143, 38585), (151, 38648), (153, 38666), (154, 38669), (164, 38744), (165, 38747), (167, 38756), (170, 38783), (195, 38918), (200, 38942),

Gene: Paella_196 Start: 94013, Stop: 94822, Start Num: 68

Candidate Starts for Paella_196:

(Start: 68 @94013 has 24 MA's), (91, 94121), (115, 94235), (124, 94328), (148, 94430), (151, 94448), (159, 94487), (164, 94535), (171, 94577), (174, 94586), (221, 94811),

Gene: PastaFagioli_60 Start: 38263, Stop: 39174, Start Num: 72

Candidate Starts for PastaFagioli_60:

(Start: 72 @38263 has 25 MA's), (95, 38395), (104, 38431), (109, 38449), (110, 38455), (114, 38476), (116, 38506), (130, 38626), (151, 38752), (153, 38770), (161, 38821), (164, 38848), (165, 38851), (167, 38860), (170, 38887), (175, 38902), (200, 39043),

Gene: Pecas_60 Start: 37794, Stop: 38705, Start Num: 72

Candidate Starts for Pecas_60:

(44, 37701), (Start: 72 @37794 has 25 MA's), (95, 37923), (101, 37947), (104, 37959), (109, 37977), (110, 37983), (116, 38034), (143, 38217), (151, 38280), (153, 38298), (154, 38301), (164, 38376), (165, 38379), (167, 38388), (170, 38415), (195, 38550), (200, 38574),

Gene: Phendrix_180 Start: 98202, Stop: 97318, Start Num: 76

Candidate Starts for Phendrix_180:

(53, 98268), (55, 98262), (64, 98229), (Start: 76 @98202 has 2 MA's), (88, 98145), (89, 98136), (92, 98097), (98, 98070), (100, 98064), (103, 98046), (109, 98025), (112, 98007), (113, 98004), (117, 97977), (119, 97962), (120, 97959), (121, 97938), (122, 97935), (138, 97878), (142, 97860), (156, 97761), (160, 97728), (161, 97722), (162, 97716), (163, 97710), (177, 97629), (180, 97596), (182, 97587), (185, 97566), (198, 97509),

Gene: PhigPhack_62 Start: 38073, Stop: 38978, Start Num: 73

Candidate Starts for PhigPhack_62:

(Start: 73 @38073 has 25 MA's), (101, 38226), (104, 38238), (109, 38256), (110, 38262), (114, 38283), (116, 38313), (129, 38421), (143, 38490), (151, 38553), (153, 38571), (154, 38574), (164, 38649), (165, 38652), (167, 38661), (170, 38688), (195, 38823), (200, 38847),

Gene: Phisb_61 Start: 38046, Stop: 38951, Start Num: 73

Candidate Starts for Phisb_61:

(8, 37515), (Start: 73 @38046 has 25 MA's), (101, 38199), (104, 38211), (109, 38229), (110, 38235), (114, 38256), (116, 38286), (129, 38394), (143, 38463), (151, 38526), (153, 38544), (154, 38547), (164, 38622), (165, 38625), (167, 38634), (170, 38661), (195, 38796), (200, 38820),

Gene: PondAmelia_72 Start: 38126, Stop: 39055, Start Num: 63

Candidate Starts for PondAmelia_72:

(Start: 58 @38120 has 1 MA's), (Start: 63 @38126 has 7 MA's), (82, 38177), (95, 38276), (101, 38300), (104, 38312), (109, 38330), (110, 38336), (116, 38387), (130, 38507), (141, 38561), (145, 38597), (151, 38633), (153, 38651), (164, 38729), (165, 38732), (167, 38741), (170, 38768), (175, 38783), (185, 38855), (200, 38924),

Gene: QMacho_61 Start: 38068, Stop: 38979, Start Num: 72

Candidate Starts for QMacho_61:

(Start: 72 @38068 has 25 MA's), (95, 38197), (101, 38221), (104, 38233), (109, 38251), (110, 38257), (116, 38308), (143, 38491), (151, 38554), (153, 38572), (154, 38575), (164, 38650), (165, 38653), (167, 38662), (170, 38689), (195, 38824), (200, 38848),

Gene: Quenya_61 Start: 38811, Stop: 39746, Start Num: 57

Candidate Starts for Quenya_61:

(Start: 57 @38811 has 8 MA's), (Start: 59 @38817 has 9 MA's), (70, 38844), (82, 38883), (104, 39018), (109, 39036), (110, 39042), (114, 39063), (116, 39093), (126, 39183), (133, 39213), (148, 39306), (151, 39324), (153, 39342), (154, 39345), (164, 39420), (165, 39423), (167, 39432), (170, 39459), (175, 39474), (192, 39582), (204, 39633),

Gene: Qui_196 Start: 94010, Stop: 94819, Start Num: 68

Candidate Starts for Qui_196:

(Start: 68 @94010 has 24 MA's), (91, 94118), (115, 94232), (124, 94325), (148, 94427), (151, 94445), (159, 94484), (164, 94532), (171, 94574), (174, 94583), (221, 94808),

Gene: RegnumDei_91 Start: 50466, Stop: 51248, Start Num: 72

Candidate Starts for RegnumDei_91:

(22, 50211), (32, 50325), (48, 50388), (Start: 61 @50436 has 1 MA's), (Start: 72 @50466 has 25 MA's), (75, 50472), (82, 50502), (84, 50508), (90, 50556), (91, 50571), (106, 50637), (118, 50700), (142, 50808), (144, 50817), (151, 50877), (164, 50964), (167, 50976), (174, 51015), (184, 51054), (185, 51072), (221, 51237), (222, 51243),

Gene: Roberts_68 Start: 38386, Stop: 39234, Start Num: 67

Candidate Starts for Roberts_68:

(Start: 67 @38386 has 10 MA's), (84, 38434), (110, 38584), (151, 38839), (167, 38947), (168, 38959), (183, 39022), (190, 39073), (193, 39082), (220, 39211),

Gene: Rollins_59 Start: 36225, Stop: 37139, Start Num: 59

Candidate Starts for Rollins_59:

(6, 35667), (29, 36093), (41, 36153), (Start: 59 @36225 has 9 MA's), (101, 36396), (104, 36408), (109, 36426), (110, 36432), (116, 36483), (126, 36570), (131, 36600), (137, 36621), (148, 36699), (151, 36717), (153, 36735), (154, 36738), (164, 36813), (165, 36816), (167, 36825), (183, 36918), (200, 37008), (202, 37020),

Gene: RomansRevenge_40 Start: 36241, Stop: 35375, Start Num: 61

Candidate Starts for RomansRevenge_40:

(16, 36568), (24, 36433), (37, 36331), (42, 36316), (Start: 61 @36241 has 1 MA's), (Start: 73 @36214 has 25 MA's), (89, 36142), (105, 36049), (115, 35998), (118, 35980), (135, 35866), (139, 35842), (151,

35764), (152, 35758), (154, 35743), (155, 35740), (159, 35725), (162, 35680), (167, 35647), (174, 35608), (175, 35605), (177, 35593), (189, 35527), (207, 35464), (212, 35434),

Gene: Rona_57 Start: 38324, Stop: 39256, Start Num: 65

Candidate Starts for Rona_57:

(Start: 65 @38324 has 5 MA's), (86, 38393), (104, 38510), (110, 38534), (116, 38585), (128, 38696), (133, 38714), (137, 38738), (139, 38756), (148, 38816), (151, 38834), (153, 38852), (154, 38855), (164, 38930), (165, 38933), (167, 38942), (175, 38984), (179, 39005), (183, 39035), (187, 39062), (200, 39125), (202, 39137),

Gene: SFuller_1 Start: 199, Stop: 999, Start Num: 57

Candidate Starts for SFuller_1:

(Start: 57 @199 has 8 MA's), (99, 337), (108, 379), (118, 433), (146, 592), (151, 625), (167, 724),

Gene: SanaSana_60 Start: 38507, Stop: 39439, Start Num: 63

Candidate Starts for SanaSana_60:

(Start: 63 @38507 has 7 MA's), (82, 38558), (95, 38657), (101, 38681), (104, 38693), (109, 38711), (110, 38717), (116, 38768), (130, 38888), (141, 38942), (151, 39014), (153, 39032), (154, 39035), (164, 39110), (165, 39113), (167, 39122), (170, 39149), (175, 39164), (180, 39203), (185, 39239), (200, 39308),

Gene: SansAfet_61 Start: 37872, Stop: 38777, Start Num: 73

Candidate Starts for SansAfet_61:

(Start: 73 @37872 has 25 MA's), (101, 38025), (104, 38037), (109, 38055), (110, 38061), (116, 38112), (129, 38220), (143, 38289), (151, 38352), (153, 38370), (154, 38373), (164, 38448), (165, 38451), (167, 38460), (170, 38487), (195, 38622), (200, 38646),

Gene: SarBear_59 Start: 37372, Stop: 38283, Start Num: 72

Candidate Starts for SarBear_59:

(Start: 72 @37372 has 25 MA's), (95, 37501), (101, 37525), (104, 37537), (109, 37555), (110, 37561), (116, 37612), (143, 37795), (151, 37858), (153, 37876), (154, 37879), (164, 37954), (165, 37957), (167, 37966), (170, 37993), (195, 38128), (200, 38152),

Gene: Shagrat_95 Start: 49780, Stop: 50556, Start Num: 38

Candidate Starts for Shagrat_95:

(18, 49615), (20, 49636), (21, 49639), (28, 49726), (34, 49768), (Start: 38 @49780 has 1 MA's), (82, 49810), (90, 49864), (91, 49879), (97, 49909), (99, 49912), (102, 49933), (105, 49942), (106, 49945), (118, 50008), (151, 50185), (164, 50272), (167, 50284), (174, 50323), (184, 50362), (185, 50380), (190, 50410), (192, 50416), (214, 50503), (221, 50545), (222, 50551),

Gene: Sharkboy_59 Start: 38698, Stop: 39630, Start Num: 65

Candidate Starts for Sharkboy_59:

(Start: 65 @38698 has 5 MA's), (86, 38767), (104, 38884), (110, 38908), (116, 38959), (128, 39070), (132, 39085), (133, 39088), (137, 39112), (139, 39130), (148, 39190), (151, 39208), (153, 39226), (154, 39229), (164, 39304), (165, 39307), (167, 39316), (175, 39358), (179, 39379), (183, 39409), (187, 39436), (200, 39499), (202, 39511),

Gene: Shayna_69 Start: 38654, Stop: 39547, Start Num: 74

Candidate Starts for Shayna_69:

(13, 38210), (14, 38237), (15, 38258), (Start: 74 @38654 has 4 MA's), (101, 38807), (104, 38819), (109, 38837), (110, 38843), (114, 38864), (116, 38894), (151, 39119), (153, 39137), (164, 39215), (165, 39218), (175, 39269), (215, 39494),

Gene: SirBeanington_60 Start: 38272, Stop: 39186, Start Num: 73

Candidate Starts for SirBeanington_60:

(52, 38203), (Start: 73 @38272 has 25 MA's), (101, 38428), (104, 38440), (109, 38458), (110, 38464), (114, 38485), (116, 38515), (143, 38698), (151, 38761), (153, 38779), (154, 38782), (164, 38857), (165, 38860), (167, 38869), (170, 38896),

Gene: Sixama_179 Start: 103604, Stop: 102756, Start Num: 78

Candidate Starts for Sixama_179:

(Start: 78 @103604 has 1 MA's), (113, 103418), (120, 103373), (157, 103175), (161, 103139), (162, 103133), (163, 103127), (177, 103046), (182, 103004), (186, 102971), (198, 102917), (204, 102875), (208, 102851), (214, 102824), (217, 102803), (218, 102800), (219, 102797), (223, 102770),

Gene: Skylord_59 Start: 36166, Stop: 37056, Start Num: 59

Candidate Starts for Skylord_59:

(29, 36034), (41, 36094), (Start: 59 @36166 has 9 MA's), (104, 36349), (109, 36367), (110, 36373), (116, 36424), (131, 36526), (137, 36538), (148, 36616), (151, 36634), (153, 36652), (154, 36655), (164, 36730), (165, 36733), (167, 36742), (183, 36835), (200, 36925), (202, 36937),

Gene: Slay_60 Start: 38344, Stop: 39249, Start Num: 73

Candidate Starts for Slay_60:

(10, 37879), (Start: 73 @38344 has 25 MA's), (95, 38473), (101, 38497), (104, 38509), (109, 38527), (110, 38533), (116, 38584), (129, 38692), (143, 38761), (151, 38824), (153, 38842), (154, 38845), (164, 38920), (165, 38923), (167, 38932), (170, 38959), (195, 39094), (200, 39118),

Gene: Softsoap_61 Start: 38131, Stop: 39036, Start Num: 73

Candidate Starts for Softsoap_61:

(Start: 73 @38131 has 25 MA's), (101, 38284), (104, 38296), (109, 38314), (110, 38320), (114, 38341), (116, 38371), (129, 38479), (143, 38548), (151, 38611), (153, 38629), (154, 38632), (164, 38707), (165, 38710), (167, 38719), (170, 38746), (195, 38881), (200, 38905),

Gene: Solea_62 Start: 38065, Stop: 38970, Start Num: 73

Candidate Starts for Solea_62:

(2, 37429), (8, 37540), (Start: 73 @38065 has 25 MA's), (101, 38218), (104, 38230), (109, 38248), (110, 38254), (114, 38275), (116, 38305), (129, 38413), (143, 38482), (151, 38545), (153, 38563), (154, 38566), (164, 38641), (165, 38644), (167, 38653), (170, 38680), (195, 38815), (200, 38839),

Gene: SpeedDemon_30 Start: 715, Stop: 1518, Start Num: 72

Candidate Starts for SpeedDemon_30:

(Start: 72 @715 has 25 MA's), (114, 925), (140, 1072), (145, 1111), (151, 1147), (155, 1171), (158, 1180), (164, 1234), (167, 1246), (174, 1285), (181, 1312), (192, 1378), (216, 1471), (221, 1507),

Gene: Stardom_85 Start: 49733, Stop: 50539, Start Num: 68

Candidate Starts for Stardom_85:

(Start: 68 @49733 has 24 MA's), (79, 49763), (80, 49766), (81, 49769), (83, 49778), (110, 49928), (148, 50147), (150, 50156), (151, 50165), (152, 50171), (162, 50231), (164, 50252), (166, 50258), (170, 50291), (215, 50489), (221, 50528),

Gene: Stoor_58 Start: 38294, Stop: 39226, Start Num: 63

Candidate Starts for Stoor_58:

(Start: 63 @38294 has 7 MA's), (82, 38345), (95, 38444), (101, 38468), (104, 38480), (109, 38498), (110, 38504), (116, 38555), (130, 38675), (141, 38729), (151, 38801), (153, 38819), (154, 38822), (164, 38897), (165, 38900), (167, 38909), (170, 38936), (175, 38951), (180, 38990), (185, 39026), (200, 39095),

Gene: Stromboli_58 Start: 38113, Stop: 39027, Start Num: 72

Candidate Starts for Stromboli_58:

(69, 38107), (Start: 72 @38113 has 25 MA's), (95, 38245), (101, 38269), (104, 38281), (109, 38299), (110, 38305), (116, 38356), (130, 38476), (138, 38515), (139, 38524), (151, 38602), (153, 38620), (154, 38623), (164, 38698), (165, 38701), (167, 38710), (170, 38737), (175, 38752), (180, 38791), (185, 38827), (187, 38833), (195, 38872), (200, 38896), (203, 38911),

Gene: Studio_69 Start: 39576, Stop: 40424, Start Num: 67

Candidate Starts for Studio_69:

(Start: 67 @39576 has 10 MA's), (84, 39624), (110, 39774), (151, 40029), (167, 40137), (168, 40149), (183, 40212), (190, 40263), (193, 40272), (205, 40317), (210, 40350),

Gene: SunnyD_69 Start: 38654, Stop: 39547, Start Num: 74

Candidate Starts for SunnyD_69:

(Start: 74 @38654 has 4 MA's), (101, 38807), (104, 38819), (109, 38837), (110, 38843), (114, 38864), (116, 38894), (151, 39119), (153, 39137), (164, 39215), (165, 39218), (175, 39269), (215, 39494),

Gene: Swervy_60 Start: 37644, Stop: 38555, Start Num: 72

Candidate Starts for Swervy_60:

(Start: 72 @37644 has 25 MA's), (95, 37773), (101, 37797), (104, 37809), (109, 37827), (110, 37833), (116, 37884), (143, 38067), (151, 38130), (153, 38148), (154, 38151), (164, 38226), (165, 38229), (167, 38238), (170, 38265), (183, 38334), (195, 38400), (200, 38424),

Gene: TMaxx_70 Start: 40011, Stop: 40820, Start Num: 67

Candidate Starts for TMaxx_70:

(Start: 67 @40011 has 10 MA's), (94, 40143), (99, 40158), (110, 40209), (139, 40356), (140, 40359), (146, 40401), (149, 40419), (151, 40434), (154, 40455), (162, 40509), (164, 40530), (167, 40542), (169, 40557), (187, 40644), (188, 40659), (193, 40677), (201, 40713), (211, 40761),

Gene: Teagster_69 Start: 39117, Stop: 39992, Start Num: 74

Candidate Starts for Teagster_69:

(Start: 74 @39117 has 4 MA's), (101, 39270), (104, 39282), (109, 39300), (110, 39306), (116, 39357), (151, 39564), (153, 39582), (164, 39660), (165, 39663), (215, 39939),

Gene: Towmatter_3 Start: 851, Stop: 1669, Start Num: 62

Candidate Starts for Towmatter_3:

(17, 596), (43, 785), (46, 800), (Start: 62 @851 has 1 MA's), (142, 1229), (146, 1265), (151, 1298), (155, 1322), (166, 1391), (167, 1397), (174, 1436), (209, 1589), (219, 1643), (221, 1658),

Gene: Tribby_88 Start: 51102, Stop: 51908, Start Num: 68

Candidate Starts for Tribby_88:

(Start: 68 @51102 has 24 MA's), (79, 51132), (80, 51135), (81, 51138), (83, 51147), (110, 51297), (121, 51381), (123, 51390), (150, 51525), (151, 51534), (152, 51540), (164, 51621), (166, 51627), (170, 51660), (196, 51780), (215, 51858), (221, 51897),

Gene: TripleC_64 Start: 40196, Stop: 41005, Start Num: 67

Candidate Starts for TripleC_64:

(49, 40130), (51, 40136), (Start: 67 @40196 has 10 MA's), (94, 40328), (110, 40394), (140, 40544), (146, 40586), (149, 40604), (151, 40619), (162, 40694), (164, 40715), (167, 40727), (169, 40742), (188, 40844), (193, 40862), (201, 40898), (211, 40946), (220, 40982),

Gene: Triscuit_67 Start: 42329, Stop: 43126, Start Num: 72

Candidate Starts for Triscuit_67:

(31, 42182), (Start: 66 @42320 has 5 MA's), (Start: 72 @42329 has 25 MA's), (85, 42380), (99, 42467), (139, 42677), (151, 42755), (164, 42842), (173, 42890), (174, 42893), (202, 43022), (216, 43079), (221, 43115),

Gene: TukTuk_61 Start: 38089, Stop: 39000, Start Num: 73

Candidate Starts for TukTuk_61:

(Start: 73 @38089 has 25 MA's), (95, 38218), (101, 38242), (104, 38254), (109, 38272), (110, 38278), (116, 38329), (143, 38512), (151, 38575), (153, 38593), (154, 38596), (164, 38671), (165, 38674), (170, 38710), (195, 38845), (200, 38869),

Gene: Vitas_59 Start: 36198, Stop: 37112, Start Num: 59

Candidate Starts for Vitas_59:

(29, 36066), (41, 36126), (Start: 59 @36198 has 9 MA's), (104, 36381), (109, 36399), (110, 36405), (116, 36456), (126, 36543), (131, 36573), (148, 36672), (151, 36690), (153, 36708), (154, 36711), (164, 36786), (165, 36789), (167, 36798), (183, 36891), (200, 36981),

Gene: WalkingDead_61 Start: 39268, Stop: 40203, Start Num: 63

Candidate Starts for WalkingDead_61:

(Start: 63 @39268 has 7 MA's), (82, 39319), (95, 39418), (101, 39442), (104, 39454), (109, 39472), (110, 39478), (116, 39529), (130, 39649), (141, 39703), (145, 39739), (151, 39775), (153, 39793), (154, 39796), (164, 39871), (165, 39874), (167, 39883), (170, 39910), (175, 39925), (180, 39967), (200, 40072),

Gene: Xenomorph_81 Start: 50629, Stop: 51435, Start Num: 68

Candidate Starts for Xenomorph_81:

(Start: 68 @50629 has 24 MA's), (79, 50659), (80, 50662), (81, 50665), (83, 50674), (110, 50824), (123, 50917), (148, 51043), (150, 51052), (151, 51061), (152, 51067), (164, 51148), (166, 51154), (170, 51187), (196, 51307), (215, 51385), (221, 51424),

Gene: YoshiYama_87 Start: 51381, Stop: 52187, Start Num: 68

Candidate Starts for YoshiYama_87:

(Start: 68 @51381 has 24 MA's), (79, 51411), (81, 51417), (83, 51426), (101, 51540), (105, 51555), (110, 51576), (123, 51669), (148, 51795), (150, 51804), (151, 51813), (152, 51819), (162, 51879), (164, 51900), (166, 51906), (170, 51939), (196, 52059), (215, 52137), (221, 52176),