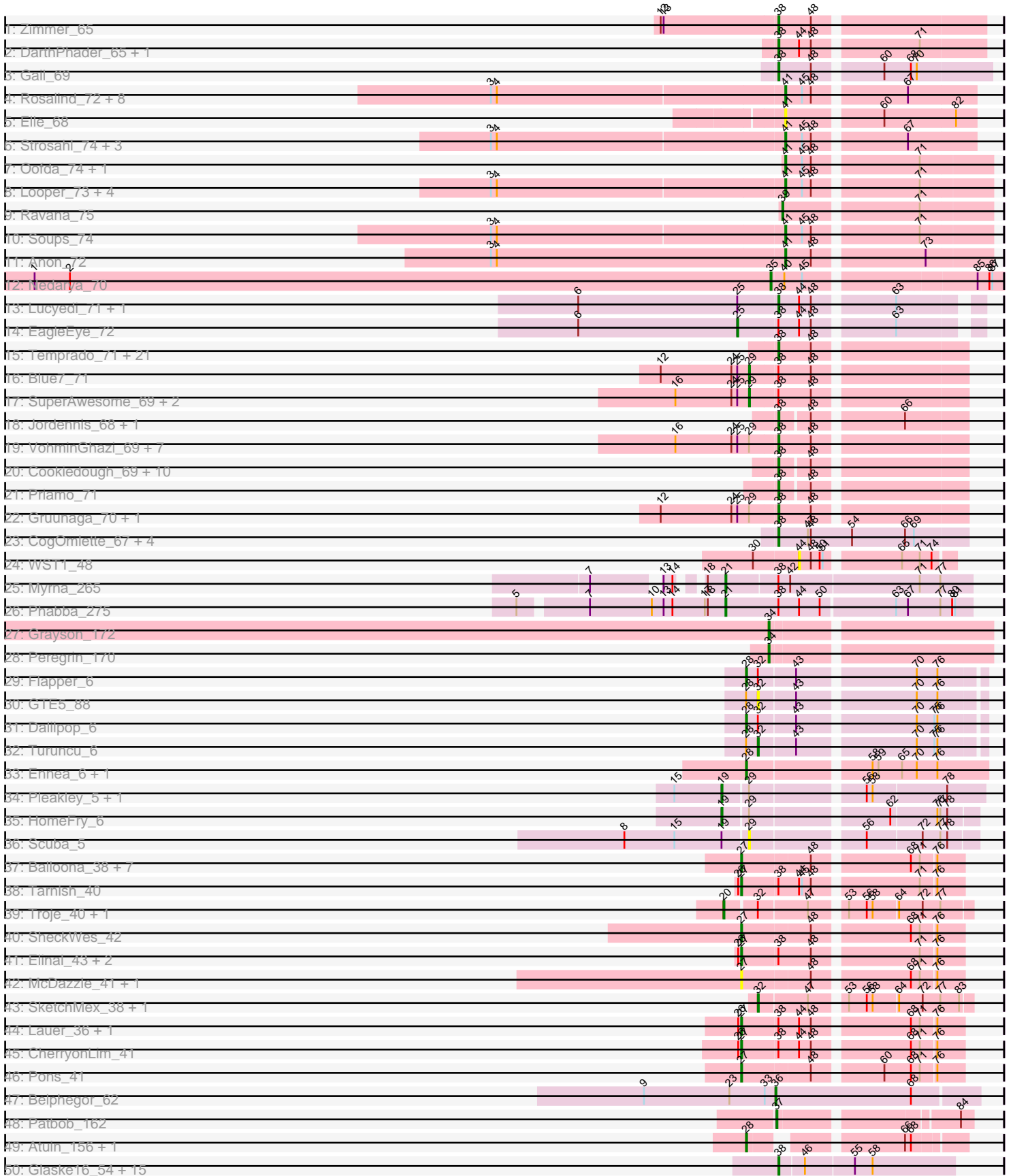
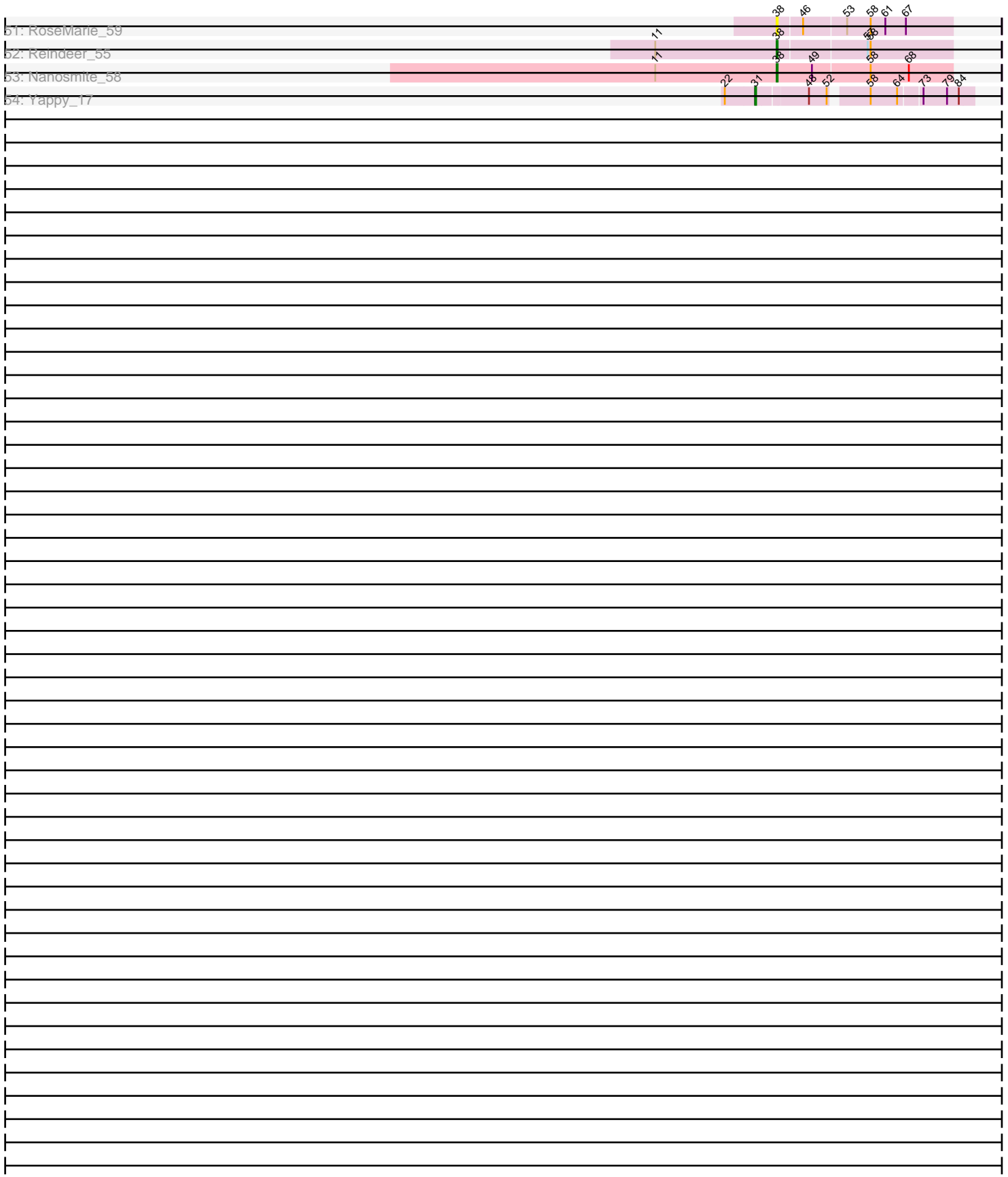


Pham 311330



Pham 311330



Note: Tracks are now grouped by subcluster and scaled. Switching in subcluster is indicated by changes in track color. Track scale is now set by default to display the region 30 bp upstream of start 1 to 30 bp downstream of the last possible start. If this default region is judged to be packed too tightly with annotated starts, the track will be further scaled to only show that region of the ORF with annotated starts. This action will be indicated by adding "Zoomed" to the title. For starts, yellow indicates the location of called starts comprised solely of Glimmer/GeneMark auto-annotations, green indicates the location of called starts with at least 1 manual gene annotation.

Pham 311330 Report

This analysis was run 06/27/26 on database version 652.

Pham number 311330 has 149 members, 20 are drafts.

Phages represented in each track:

- Track 1 : Zimmer_65
- Track 2 : DarthPhader_65, Refuge_65
- Track 3 : Gail_69
- Track 4 : Rosalind_72, KatherineG_74, Epsocamisio_70, DekHockey33_75, Nebulosus_71, Battleship_76, ShayRa_74, Switzerland_73, MinecraftSteve_74
- Track 5 : Elle_68
- Track 6 : Strosahl_74, Waits_74, JSwag_73, Remus_74
- Track 7 : Oofda_74, Warrior24_75
- Track 8 : Looper_73, ReMo_72, Anaysia_74, LastResort_72, Boohoo_74
- Track 9 : Ravana_75
- Track 10 : Soups_74
- Track 11 : Anon_72
- Track 12 : Nedarya_70
- Track 13 : Lucyedi_71, PainterBoy_70
- Track 14 : EagleEye_72
- Track 15 : Temprado_71, Rifter_70, Tucker_70, Jeffabunny_70, Hammer_70, Lilbunny_69, ToneTone_67, BennyP_70, Koko_72, Yokurt_69, WunderPhul_70, BlessJoy_70, Zulu_71, Helmet_72, Gladiator_67, Hexamo_70, Wiks_69, Artemis2UCLA_70, Zaka_70, Garak_71, CloudWang3_71, Indra_73
- Track 16 : Blue7_71
- Track 17 : SuperAwesome_69, Kazan_70, SmellyB_69
- Track 18 : Jordennis_68, BABullseye_62
- Track 19 : VohminGhazi_69, Hoot_64, Candra_67, GreedyLawyer_66, Polyphemus_71, Newrala_69, Kipper29_69, EricB_68
- Track 20 : Cookiedough_69, DelvinSonDorr_66, McFly_69, Isiphiwo_67, Neeharika16_68, SuperCallie99_66, Dorothea_69, Pmask_68, Chartreuse_68, DaVinci_67, JewelBug_69
- Track 21 : Priamo_71
- Track 22 : Gruunaga_70, Roksolana_71
- Track 23 : CogOmlette_67, WorldCup_67, Bellris_67, Minispark_67, Rahalelujah_69
- Track 24 : WST1_48
- Track 25 : Myrna_265
- Track 26 : Phabba_275
- Track 27 : Grayson_172
- Track 28 : Peregrin_170
- Track 29 : Flapper_6
- Track 30 : GTE5_88

- Track 31 : Dalilpop_6
- Track 32 : Turuncu_6
- Track 33 : Ennea_6, Lollipop1437_6
- Track 34 : Pleakley_5, Fury_5
- Track 35 : HomeFry_6
- Track 36 : Scuba_5
- Track 37 : Balloona_38, PotPie_40, Yucky_42, CocoaPuff_40, Vine_42, SummitAcademy_39, BigChungus_39, Feastonyeet_39
- Track 38 : Tarnish_40
- Track 39 : Troje_40, Blondies_41
- Track 40 : SheckWes_42
- Track 41 : Elinal_43, Bavilard_39, KayGee_41
- Track 42 : McDazzle_41, ElJefes_40
- Track 43 : SketchMex_38, Biskit_40
- Track 44 : Lauer_36, Mayweather_43
- Track 45 : CherryonLim_41
- Track 46 : Pons_41
- Track 47 : Belphegor_62
- Track 48 : Patbob_162
- Track 49 : Atuin_156, ReginaGlobina_169
- Track 50 : Glaske16_54, IPhane7_53, LilhomieP_52, Diminimus_54, KleverKiS_54, PegLeg_53, TyDawg_53, Bongo_53, Skinny_54, SlimJimmy_52, Bricole_53, Dulcita_54, Auspice_53, FreakyGoo_54, TpudiCK_55, Izel_54
- Track 51 : RoseMarie_59
- Track 52 : Reindeer_55
- Track 53 : Nanosmite_58
- Track 54 : Yappy_17

Summary of Final Annotations (See graph section above for start numbers):

The start number called the most often in the published annotations is 38, it was called in 66 of the 129 non-draft genes in the pham.

Genes that call this "Most Annotated" start:

• Artemis2UCLA_70, Auspice_53, BABullseye_62, Bellris_67, BennyP_70, BlessJoy_70, Bongo_53, Bricole_53, Candra_67, Chartreuse_68, CloudWang3_71, CogOmlette_67, Cookiedough_69, DaVinci_67, DarthPhader_65, DelvinSonDorr_66, Diminimus_54, Dorothea_69, Dulcita_54, EricB_68, FreakyGoo_54, Gail_69, Garak_71, Gladiator_67, Glaske16_54, GreedyLawyer_66, Gruunaga_70, Hammer_70, Helmet_72, Hexamo_70, Hoot_64, IPhane7_53, Indra_73, Isiphiwo_67, Izel_54, Jeffabunny_70, JewelBug_69, Jordennis_68, Kipper29_69, KleverKiS_54, Koko_72, Lilbunny_69, LilhomieP_52, Lucyedi_71, McFly_69, Minispark_67, Nanosmite_58, Neeharika16_68, Newrala_69, PainterBoy_70, PegLeg_53, Pmask_68, Polyphemus_71, Priamo_71, Rahalelujah_69, Refuge_65, Reindeer_55, Rifter_70, Roksolana_71, RoseMarie_59, Skinny_54, SlimJimmy_52, SuperCallie99_66, Temprado_71, ToneTone_67, TpudiCK_55, Tucker_70, TyDawg_53, VohminGhazi_69, Wiks_69, WorldCup_67, WunderPhul_70, Yokurt_69, Zaka_70, Zimmer_65, Zulu_71,

Genes that have the "Most Annotated" start but do not call it:

- Bavidard_39, Blue7_71, CherryonLim_41, EagleEye_72, Elinal_43, KayGee_41, Kazan_70, Lauer_36, Mayweather_43, Myrna_265, Phabba_275, SmellyB_69, SuperAwesome_69, Tarnish_40,

Genes that do not have the "Most Annotated" start:

- Anaysia_74, Anon_72, Atuin_156, Balloona_38, Battleship_76, Belphegor_62, BigChungus_39, Biskit_40, Blondies_41, Boohoo_74, CocoaPuff_40, Dalilpop_6, DekHockey33_75, ElJefes_40, Elle_68, Ennea_6, Epsocamisio_70, Feastonyeet_39, Flapper_6, Fury_5, GTE5_88, Grayson_172, HomeFry_6, JSwag_73, KatherineG_74, LastResort_72, Lollipop1437_6, Looper_73, McDazzle_41, MinecraftSteve_74, Nebulosus_71, Nedarya_70, Oofda_74, Patbob_162, Peregrin_170, Pleakley_5, Pons_41, PotPie_40, Ravana_75, ReMo_72, ReginaGlobina_169, Remus_74, Rosalind_72, Scuba_5, ShayRa_74, SheckWes_42, SketchMex_38, Soups_74, Strosahl_74, SummitAcademy_39, Switzerland_73, Troje_40, Turuncu_6, Vine_42, WST1_48, Waits_74, Warrior24_75, Yappy_17, Yucky_42,

Summary by start number:

Start 19:

- Found in 4 of 149 (2.7%) of genes in pham
- Manual Annotations of this start: 3 of 129
- Called 75.0% of time when present
- Phage (with cluster) where this start called: Fury_5 (CR5), HomeFry_6 (CR5), Pleakley_5 (CR5),

Start 20:

- Found in 2 of 149 (1.3%) of genes in pham
- Manual Annotations of this start: 2 of 129
- Called 100.0% of time when present
- Phage (with cluster) where this start called: Blondies_41 (CT), Troje_40 (CT),

Start 21:

- Found in 2 of 149 (1.3%) of genes in pham
- Manual Annotations of this start: 2 of 129
- Called 100.0% of time when present
- Phage (with cluster) where this start called: Myrna_265 (C2), Phabba_275 (C2),

Start 25:

- Found in 17 of 149 (11.4%) of genes in pham
- Manual Annotations of this start: 1 of 129
- Called 5.9% of time when present
- Phage (with cluster) where this start called: EagleEye_72 (A16),

Start 27:

- Found in 19 of 149 (12.8%) of genes in pham
- Manual Annotations of this start: 14 of 129
- Called 100.0% of time when present
- Phage (with cluster) where this start called: Balloona_38 (CT), Bavidard_39 (CT), BigChungus_39 (CT), CherryonLim_41 (CT), CocoaPuff_40 (CT), ElJefes_40 (CT), Elinal_43 (CT), Feastonyeet_39 (CT), KayGee_41 (CT), Lauer_36 (CT), Mayweather_43 (CT), McDazzle_41 (CT), Pons_41 (CT), PotPie_40 (CT), SheckWes_42 (CT), SummitAcademy_39 (CT), Tarnish_40 (CT), Vine_42 (CT),

Yucky_42 (CT),

Start 28:

- Found in 8 of 149 (5.4%) of genes in pham
- Manual Annotations of this start: 5 of 129
- Called 75.0% of time when present
- Phage (with cluster) where this start called: Atuin_156 (FC), Dalilpop_6 (CR1), Ennea_6 (CR3), Flapper_6 (CR1), Lollipop1437_6 (CR3), ReginaGlobina_169 (FC),

Start 29:

- Found in 18 of 149 (12.1%) of genes in pham
- Manual Annotations of this start: 4 of 129
- Called 27.8% of time when present
- Phage (with cluster) where this start called: Blue7_71 (A6), Kazan_70 (A6), Scuba_5 (CR5), SmellyB_69 (A6), SuperAwesome_69 (A6),

Start 31:

- Found in 1 of 149 (0.7%) of genes in pham
- Manual Annotations of this start: 1 of 129
- Called 100.0% of time when present
- Phage (with cluster) where this start called: Yappy_17 (singleton),

Start 32:

- Found in 8 of 149 (5.4%) of genes in pham
- Manual Annotations of this start: 3 of 129
- Called 50.0% of time when present
- Phage (with cluster) where this start called: Biskit_40 (CT), GTE5_88 (CR1), SketchMex_38 (CT), Turuncu_6 (CR1),

Start 34:

- Found in 2 of 149 (1.3%) of genes in pham
- Manual Annotations of this start: 2 of 129
- Called 100.0% of time when present
- Phage (with cluster) where this start called: Grayson_172 (CB), Peregrin_170 (CB),

Start 35:

- Found in 1 of 149 (0.7%) of genes in pham
- Manual Annotations of this start: 1 of 129
- Called 100.0% of time when present
- Phage (with cluster) where this start called: Nedarya_70 (A15),

Start 36:

- Found in 1 of 149 (0.7%) of genes in pham
- Manual Annotations of this start: 1 of 129
- Called 100.0% of time when present
- Phage (with cluster) where this start called: Belphegor_62 (DE2),

Start 37:

- Found in 1 of 149 (0.7%) of genes in pham
- Manual Annotations of this start: 1 of 129
- Called 100.0% of time when present
- Phage (with cluster) where this start called: Patbob_162 (FC),

Start 38:

- Found in 90 of 149 (60.4%) of genes in pham
- Manual Annotations of this start: 66 of 129
- Called 84.4% of time when present
- Phage (with cluster) where this start called: Artemis2UCLA_70 (A6), Auspice_53 (M1), BABullseye_62 (A6), Bellris_67 (A9), BennyP_70 (A6), BlessJoy_70 (A6), Bongo_53 (M1), Bricole_53 (M1), Candra_67 (A6), Chartreuse_68 (A6), CloudWang3_71 (A6), CogOmlette_67 (A9), Cookiedough_69 (A6), DaVinci_67 (A6), DarthPhader_65 (A12), DelvinSonDorr_66 (A6), Diminimus_54 (M1), Dorothea_69 (A6), Dulcita_54 (M1), EricB_68 (A6), FreakyGoo_54 (M1), Gail_69 (A14), Garak_71 (A6), Gladiator_67 (A6), Glaske16_54 (M1), GreedyLawyer_66 (A6), Gruunaga_70 (A6), Hammer_70 (A6), Helmet_72 (A6), Hexamo_70 (A6), Hoot_64 (A6), IPhane7_53 (M1), Indra_73 (A6), Isiphiwo_67 (A6), Izel_54 (M1), Jeffabunny_70 (A6), JewelBug_69 (A6), Jordennis_68 (A6), Kipper29_69 (A6), KleverKiS_54 (M1), Koko_72 (A6), Lilbunny_69 (A6), LilhomieP_52 (M1), Lucyedi_71 (A16), McFly_69 (A6), Minispark_67 (A9), Nanosmite_58 (M3), Neeharika16_68 (A6), Newrala_69 (A6), PainterBoy_70 (A16), PegLeg_53 (M1), Pmask_68 (A6), Polyphemus_71 (A6), Priamo_71 (A6), Rahalelujah_69 (A9), Refuge_65 (A12), Reindeer_55 (M1), Rifter_70 (A6), Roksolana_71 (A6), RoseMarie_59 (M1), Skinny_54 (M1), SlimJimmy_52 (M1), SuperCallie99_66 (A6), Temprado_71 (A6), ToneTone_67 (A6), TpudiCK_55 (M1), Tucker_70 (A6), TyDawg_53 (M1), VohminGhazi_69 (A6), Wiks_69 (A6), WorldCup_67 (A9), WunderPhul_70 (A6), Yokurt_69 (A6), Zaka_70 (A6), Zimmer_65 (A12), Zulu_71 (A6),

Start 39:

- Found in 1 of 149 (0.7%) of genes in pham
- Manual Annotations of this start: 1 of 129
- Called 100.0% of time when present
- Phage (with cluster) where this start called: Ravana_75 (A15),

Start 41:

- Found in 23 of 149 (15.4%) of genes in pham
- Manual Annotations of this start: 22 of 129
- Called 100.0% of time when present
- Phage (with cluster) where this start called: Anaysia_74 (A15), Anon_72 (A15), Battleship_76 (A15), Boohoo_74 (A15), DekHockey33_75 (A15), Elle_68 (A15), Epsocamisio_70 (A15), JSwag_73 (A15), KatherineG_74 (A15), LastResort_72 (A15), Looper_73 (A15), MinecraftSteve_74 (A15), Nebulosus_71 (A15), Oofda_74 (A15), ReMo_72 (A15), Remus_74 (A15), Rosalind_72 (A15), ShayRa_74 (A15), Soups_74 (A15), Strosahl_74 (A15), Switzerland_73 (A15), Waits_74 (A15), Warrior24_75 (A15),

Start 44:

- Found in 11 of 149 (7.4%) of genes in pham
- No Manual Annotations of this start.
- Called 9.1% of time when present
- Phage (with cluster) where this start called: WST1_48 (AJ),

Summary by clusters:

There are 18 clusters represented in this pham: A15, A14, singleton, CR1, CR5, CR3, CB, DE2, A12, AJ, FC, M1, M3, A6, A9, C2, A16, CT,

Info for manual annotations of cluster A12:

- Start number 38 was manually annotated 3 times for cluster A12.

Info for manual annotations of cluster A14:

- Start number 38 was manually annotated 1 time for cluster A14.

Info for manual annotations of cluster A15:

- Start number 35 was manually annotated 1 time for cluster A15.
- Start number 39 was manually annotated 1 time for cluster A15.
- Start number 41 was manually annotated 22 times for cluster A15.

Info for manual annotations of cluster A16:

- Start number 25 was manually annotated 1 time for cluster A16.
- Start number 38 was manually annotated 2 times for cluster A16.

Info for manual annotations of cluster A6:

- Start number 29 was manually annotated 4 times for cluster A6.
- Start number 38 was manually annotated 43 times for cluster A6.

Info for manual annotations of cluster A9:

- Start number 38 was manually annotated 1 time for cluster A9.

Info for manual annotations of cluster C2:

- Start number 21 was manually annotated 2 times for cluster C2.

Info for manual annotations of cluster CB:

- Start number 34 was manually annotated 2 times for cluster CB.

Info for manual annotations of cluster CR1:

- Start number 28 was manually annotated 2 times for cluster CR1.
- Start number 32 was manually annotated 1 time for cluster CR1.

Info for manual annotations of cluster CR3:

- Start number 28 was manually annotated 2 times for cluster CR3.

Info for manual annotations of cluster CR5:

- Start number 19 was manually annotated 3 times for cluster CR5.

Info for manual annotations of cluster CT:

- Start number 20 was manually annotated 2 times for cluster CT.
- Start number 27 was manually annotated 14 times for cluster CT.
- Start number 32 was manually annotated 2 times for cluster CT.

Info for manual annotations of cluster DE2:

- Start number 36 was manually annotated 1 time for cluster DE2.

Info for manual annotations of cluster FC:

- Start number 28 was manually annotated 1 time for cluster FC.
- Start number 37 was manually annotated 1 time for cluster FC.

Info for manual annotations of cluster M1:

- Start number 38 was manually annotated 15 times for cluster M1.

Info for manual annotations of cluster M3:

•Start number 38 was manually annotated 1 time for cluster M3.

Gene Information:

Gene: Anaysia_74 Start: 40835, Stop: 40641, Start Num: 41

Candidate Starts for Anaysia_74:

(3, 41129), (4, 41123), (Start: 41 @40835 has 22 MA's), (45, 40820), (48, 40811), (71, 40712),

Gene: Anon_72 Start: 40724, Stop: 40530, Start Num: 41

Candidate Starts for Anon_72:

(3, 41021), (4, 41015), (Start: 41 @40724 has 22 MA's), (48, 40700), (73, 40595),

Gene: Artemis2UCLA_70 Start: 40238, Stop: 40059, Start Num: 38

Candidate Starts for Artemis2UCLA_70:

(Start: 38 @40238 has 66 MA's), (48, 40205),

Gene: Atuin_156 Start: 110180, Stop: 110365, Start Num: 28

Candidate Starts for Atuin_156:

(Start: 28 @110180 has 5 MA's), (66, 110309), (68, 110315),

Gene: Auspice_53 Start: 38208, Stop: 38381, Start Num: 38

Candidate Starts for Auspice_53:

(Start: 38 @38208 has 66 MA's), (46, 38232), (55, 38280), (58, 38298),

Gene: BABullseye_62 Start: 37899, Stop: 37726, Start Num: 38

Candidate Starts for BABullseye_62:

(Start: 38 @37899 has 66 MA's), (48, 37872), (66, 37788),

Gene: Balloona_38 Start: 28381, Stop: 28175, Start Num: 27

Candidate Starts for Balloona_38:

(Start: 27 @28381 has 14 MA's), (48, 28315), (68, 28225), (71, 28216), (76, 28201),

Gene: Battleship_76 Start: 41041, Stop: 40862, Start Num: 41

Candidate Starts for Battleship_76:

(3, 41335), (4, 41329), (Start: 41 @41041 has 22 MA's), (45, 41026), (48, 41017), (67, 40930),

Gene: Bavilard_39 Start: 28599, Stop: 28390, Start Num: 27

Candidate Starts for Bavilard_39:

(26, 28602), (Start: 27 @28599 has 14 MA's), (Start: 38 @28563 has 66 MA's), (48, 28530), (71, 28431), (76, 28416),

Gene: Bellris_67 Start: 41041, Stop: 40850, Start Num: 38

Candidate Starts for Bellris_67:

(Start: 38 @41041 has 66 MA's), (47, 41011), (48, 41008), (54, 40966), (66, 40912), (69, 40903),

Gene: Belphegor_62 Start: 49602, Stop: 49805, Start Num: 36

Candidate Starts for Belphegor_62:

(9, 49470), (23, 49557), (33, 49593), (Start: 36 @49602 has 1 MA's), (68, 49740),

Gene: BennyP_70 Start: 40308, Stop: 40129, Start Num: 38
Candidate Starts for BennyP_70:
(Start: 38 @40308 has 66 MA's), (48, 40275),

Gene: BigChungus_39 Start: 28782, Stop: 28576, Start Num: 27
Candidate Starts for BigChungus_39:
(Start: 27 @28782 has 14 MA's), (48, 28716), (68, 28626), (71, 28617), (76, 28602),

Gene: Biskit_40 Start: 27315, Stop: 27118, Start Num: 32
Candidate Starts for Biskit_40:
(Start: 32 @27315 has 3 MA's), (47, 27267), (53, 27237), (56, 27219), (58, 27213), (64, 27189), (72, 27165), (77, 27147), (83, 27129),

Gene: BlessJoy_70 Start: 40664, Stop: 40485, Start Num: 38
Candidate Starts for BlessJoy_70:
(Start: 38 @40664 has 66 MA's), (48, 40631),

Gene: Blondies_41 Start: 27663, Stop: 27436, Start Num: 20
Candidate Starts for Blondies_41:
(Start: 20 @27663 has 2 MA's), (Start: 32 @27633 has 3 MA's), (47, 27585), (53, 27555), (56, 27537), (58, 27531), (64, 27507), (72, 27483), (77, 27465),

Gene: Blue7_71 Start: 40393, Stop: 40187, Start Num: 29
Candidate Starts for Blue7_71:
(12, 40483), (24, 40411), (Start: 25 @40405 has 1 MA's), (Start: 29 @40393 has 4 MA's), (Start: 38 @40366 has 66 MA's), (48, 40333),

Gene: Bongo_53 Start: 38212, Stop: 38385, Start Num: 38
Candidate Starts for Bongo_53:
(Start: 38 @38212 has 66 MA's), (46, 38236), (55, 38284), (58, 38302),

Gene: Boohoo_74 Start: 40835, Stop: 40641, Start Num: 41
Candidate Starts for Boohoo_74:
(3, 41129), (4, 41123), (Start: 41 @40835 has 22 MA's), (45, 40820), (48, 40811), (71, 40712),

Gene: Bricole_53 Start: 38194, Stop: 38367, Start Num: 38
Candidate Starts for Bricole_53:
(Start: 38 @38194 has 66 MA's), (46, 38218), (55, 38266), (58, 38284),

Gene: Candra_67 Start: 40269, Stop: 40090, Start Num: 38
Candidate Starts for Candra_67:
(16, 40371), (24, 40314), (Start: 25 @40308 has 1 MA's), (Start: 29 @40296 has 4 MA's), (Start: 38 @40269 has 66 MA's), (48, 40236),

Gene: Chartreuse_68 Start: 39579, Stop: 39406, Start Num: 38
Candidate Starts for Chartreuse_68:
(Start: 38 @39579 has 66 MA's), (48, 39552),

Gene: CherryonLim_41 Start: 29932, Stop: 29723, Start Num: 27
Candidate Starts for CherryonLim_41:
(26, 29935), (Start: 27 @29932 has 14 MA's), (Start: 38 @29896 has 66 MA's), (44, 29875), (48, 29863), (68, 29773), (71, 29764), (76, 29749),

Gene: CloudWang3_71 Start: 40750, Stop: 40571, Start Num: 38
Candidate Starts for CloudWang3_71:
(Start: 38 @40750 has 66 MA's), (48, 40717),

Gene: CocoaPuff_40 Start: 28796, Stop: 28590, Start Num: 27
Candidate Starts for CocoaPuff_40:
(Start: 27 @28796 has 14 MA's), (48, 28730), (68, 28640), (71, 28631), (76, 28616),

Gene: CogOmlette_67 Start: 41038, Stop: 40847, Start Num: 38
Candidate Starts for CogOmlette_67:
(Start: 38 @41038 has 66 MA's), (47, 41008), (48, 41005), (54, 40963), (66, 40909), (69, 40900),

Gene: Cookiedough_69 Start: 40207, Stop: 40034, Start Num: 38
Candidate Starts for Cookiedough_69:
(Start: 38 @40207 has 66 MA's), (48, 40180),

Gene: DaVinci_67 Start: 39633, Stop: 39460, Start Num: 38
Candidate Starts for DaVinci_67:
(Start: 38 @39633 has 66 MA's), (48, 39606),

Gene: Dalilpop_6 Start: 4569, Stop: 4790, Start Num: 28
Candidate Starts for Dalilpop_6:
(Start: 28 @4569 has 5 MA's), (Start: 32 @4581 has 3 MA's), (43, 4617), (70, 4728), (75, 4746), (76, 4749),

Gene: DarthPhader_65 Start: 42262, Stop: 42065, Start Num: 38
Candidate Starts for DarthPhader_65:
(Start: 38 @42262 has 66 MA's), (44, 42241), (48, 42229), (71, 42130),

Gene: DekHockey33_75 Start: 41126, Stop: 40947, Start Num: 41
Candidate Starts for DekHockey33_75:
(3, 41420), (4, 41414), (Start: 41 @41126 has 22 MA's), (45, 41111), (48, 41102), (67, 41015),

Gene: DelvinSonDorr_66 Start: 40438, Stop: 40265, Start Num: 38
Candidate Starts for DelvinSonDorr_66:
(Start: 38 @40438 has 66 MA's), (48, 40411),

Gene: Diminimus_54 Start: 38207, Stop: 38380, Start Num: 38
Candidate Starts for Diminimus_54:
(Start: 38 @38207 has 66 MA's), (46, 38231), (55, 38279), (58, 38297),

Gene: Dorothea_69 Start: 40205, Stop: 40032, Start Num: 38
Candidate Starts for Dorothea_69:
(Start: 38 @40205 has 66 MA's), (48, 40178),

Gene: Dulcita_54 Start: 38208, Stop: 38381, Start Num: 38
Candidate Starts for Dulcita_54:
(Start: 38 @38208 has 66 MA's), (46, 38232), (55, 38280), (58, 38298),

Gene: EagleEye_72 Start: 41949, Stop: 41728, Start Num: 25
Candidate Starts for EagleEye_72:
(6, 42111), (Start: 25 @41949 has 1 MA's), (Start: 38 @41910 has 66 MA's), (44, 41889), (48, 41877), (63, 41802),

Gene: ElJefes_40 Start: 29121, Stop: 28915, Start Num: 27

Candidate Starts for ElJefes_40:

(Start: 27 @29121 has 14 MA's), (48, 29055), (68, 28965), (71, 28956), (76, 28941),

Gene: Elinal_43 Start: 29167, Stop: 28958, Start Num: 27

Candidate Starts for Elinal_43:

(26, 29170), (Start: 27 @29167 has 14 MA's), (Start: 38 @29131 has 66 MA's), (48, 29098), (71, 28999), (76, 28984),

Gene: Elle_68 Start: 39328, Stop: 39149, Start Num: 41

Candidate Starts for Elle_68:

(Start: 41 @39328 has 22 MA's), (60, 39241), (82, 39169),

Gene: Ennea_6 Start: 4376, Stop: 4606, Start Num: 28

Candidate Starts for Ennea_6:

(Start: 28 @4376 has 5 MA's), (58, 4490), (59, 4496), (65, 4520), (70, 4535), (76, 4556),

Gene: Epsocamisio_70 Start: 40273, Stop: 40094, Start Num: 41

Candidate Starts for Epsocamisio_70:

(3, 40567), (4, 40561), (Start: 41 @40273 has 22 MA's), (45, 40258), (48, 40249), (67, 40162),

Gene: EricB_68 Start: 40226, Stop: 40047, Start Num: 38

Candidate Starts for EricB_68:

(16, 40328), (24, 40271), (Start: 25 @40265 has 1 MA's), (Start: 29 @40253 has 4 MA's), (Start: 38 @40226 has 66 MA's), (48, 40193),

Gene: Feastonyeet_39 Start: 28782, Stop: 28576, Start Num: 27

Candidate Starts for Feastonyeet_39:

(Start: 27 @28782 has 14 MA's), (48, 28716), (68, 28626), (71, 28617), (76, 28602),

Gene: Flapper_6 Start: 3864, Stop: 4085, Start Num: 28

Candidate Starts for Flapper_6:

(Start: 28 @3864 has 5 MA's), (Start: 32 @3876 has 3 MA's), (43, 3912), (70, 4023), (76, 4044),

Gene: FreakyGoo_54 Start: 38208, Stop: 38381, Start Num: 38

Candidate Starts for FreakyGoo_54:

(Start: 38 @38208 has 66 MA's), (46, 38232), (55, 38280), (58, 38298),

Gene: Fury_5 Start: 2948, Stop: 3193, Start Num: 19

Candidate Starts for Fury_5:

(15, 2900), (Start: 19 @2948 has 3 MA's), (Start: 29 @2972 has 4 MA's), (56, 3077), (58, 3083), (78, 3155),

Gene: GTE5_88 Start: 63789, Stop: 63998, Start Num: 32

Candidate Starts for GTE5_88:

(Start: 28 @63777 has 5 MA's), (Start: 32 @63789 has 3 MA's), (43, 63825), (70, 63936), (76, 63957),

Gene: Gail_69 Start: 42059, Stop: 41856, Start Num: 38

Candidate Starts for Gail_69:

(Start: 38 @42059 has 66 MA's), (48, 42026), (60, 41963), (68, 41936), (70, 41930),

Gene: Garak_71 Start: 40605, Stop: 40426, Start Num: 38

Candidate Starts for Garak_71:
(Start: 38 @40605 has 66 MA's), (48, 40572),

Gene: Gladiator_67 Start: 39830, Stop: 39651, Start Num: 38
Candidate Starts for Gladiator_67:
(Start: 38 @39830 has 66 MA's), (48, 39797),

Gene: Glaske16_54 Start: 38207, Stop: 38380, Start Num: 38
Candidate Starts for Glaske16_54:
(Start: 38 @38207 has 66 MA's), (46, 38231), (55, 38279), (58, 38297),

Gene: Grayson_172 Start: 92452, Stop: 92664, Start Num: 34
Candidate Starts for Grayson_172:
(Start: 34 @92452 has 2 MA's),

Gene: GreedyLawyer_66 Start: 40199, Stop: 40020, Start Num: 38
Candidate Starts for GreedyLawyer_66:
(16, 40301), (24, 40244), (Start: 25 @40238 has 1 MA's), (Start: 29 @40226 has 4 MA's), (Start: 38 @40199 has 66 MA's), (48, 40166),

Gene: Gruunaga_70 Start: 40563, Stop: 40384, Start Num: 38
Candidate Starts for Gruunaga_70:
(12, 40680), (24, 40608), (Start: 25 @40602 has 1 MA's), (Start: 29 @40590 has 4 MA's), (Start: 38 @40563 has 66 MA's), (48, 40530),

Gene: Hammer_70 Start: 40170, Stop: 39991, Start Num: 38
Candidate Starts for Hammer_70:
(Start: 38 @40170 has 66 MA's), (48, 40137),

Gene: Helmet_72 Start: 40605, Stop: 40426, Start Num: 38
Candidate Starts for Helmet_72:
(Start: 38 @40605 has 66 MA's), (48, 40572),

Gene: Hexamo_70 Start: 40235, Stop: 40056, Start Num: 38
Candidate Starts for Hexamo_70:
(Start: 38 @40235 has 66 MA's), (48, 40202),

Gene: HomeFry_6 Start: 2918, Stop: 3154, Start Num: 19
Candidate Starts for HomeFry_6:
(Start: 19 @2918 has 3 MA's), (Start: 29 @2942 has 4 MA's), (62, 3071), (76, 3116), (77, 3119), (78, 3125),

Gene: Hoot_64 Start: 38084, Stop: 37905, Start Num: 38
Candidate Starts for Hoot_64:
(16, 38186), (24, 38129), (Start: 25 @38123 has 1 MA's), (Start: 29 @38111 has 4 MA's), (Start: 38 @38084 has 66 MA's), (48, 38051),

Gene: IPhone7_53 Start: 38212, Stop: 38385, Start Num: 38
Candidate Starts for IPhone7_53:
(Start: 38 @38212 has 66 MA's), (46, 38236), (55, 38284), (58, 38302),

Gene: Indra_73 Start: 40606, Stop: 40427, Start Num: 38
Candidate Starts for Indra_73:

(Start: 38 @40606 has 66 MA's), (48, 40573),

Gene: Isiphiwo_67 Start: 39765, Stop: 39586, Start Num: 38

Candidate Starts for Isiphiwo_67:

(Start: 38 @39765 has 66 MA's), (48, 39732),

Gene: Izel_54 Start: 38207, Stop: 38380, Start Num: 38

Candidate Starts for Izel_54:

(Start: 38 @38207 has 66 MA's), (46, 38231), (55, 38279), (58, 38297),

Gene: JSwag_73 Start: 40558, Stop: 40379, Start Num: 41

Candidate Starts for JSwag_73:

(3, 40852), (4, 40846), (Start: 41 @40558 has 22 MA's), (45, 40543), (48, 40534), (67, 40447),

Gene: Jeffabunny_70 Start: 40232, Stop: 40053, Start Num: 38

Candidate Starts for Jeffabunny_70:

(Start: 38 @40232 has 66 MA's), (48, 40199),

Gene: JewelBug_69 Start: 40499, Stop: 40326, Start Num: 38

Candidate Starts for JewelBug_69:

(Start: 38 @40499 has 66 MA's), (48, 40472),

Gene: Jordennis_68 Start: 39980, Stop: 39807, Start Num: 38

Candidate Starts for Jordennis_68:

(Start: 38 @39980 has 66 MA's), (48, 39953), (66, 39869),

Gene: KatherineG_74 Start: 41031, Stop: 40852, Start Num: 41

Candidate Starts for KatherineG_74:

(3, 41325), (4, 41319), (Start: 41 @41031 has 22 MA's), (45, 41016), (48, 41007), (67, 40920),

Gene: KayGee_41 Start: 29167, Stop: 28958, Start Num: 27

Candidate Starts for KayGee_41:

(26, 29170), (Start: 27 @29167 has 14 MA's), (Start: 38 @29131 has 66 MA's), (48, 29098), (71, 28999), (76, 28984),

Gene: Kazan_70 Start: 40266, Stop: 40060, Start Num: 29

Candidate Starts for Kazan_70:

(16, 40341), (24, 40284), (Start: 25 @40278 has 1 MA's), (Start: 29 @40266 has 4 MA's), (Start: 38 @40239 has 66 MA's), (48, 40206),

Gene: Kipper29_69 Start: 40252, Stop: 40073, Start Num: 38

Candidate Starts for Kipper29_69:

(16, 40354), (24, 40297), (Start: 25 @40291 has 1 MA's), (Start: 29 @40279 has 4 MA's), (Start: 38 @40252 has 66 MA's), (48, 40219),

Gene: KleverKiS_54 Start: 38188, Stop: 38361, Start Num: 38

Candidate Starts for KleverKiS_54:

(Start: 38 @38188 has 66 MA's), (46, 38212), (55, 38260), (58, 38278),

Gene: Koko_72 Start: 41090, Stop: 40911, Start Num: 38

Candidate Starts for Koko_72:

(Start: 38 @41090 has 66 MA's), (48, 41057),

Gene: LastResort_72 Start: 40611, Stop: 40417, Start Num: 41

Candidate Starts for LastResort_72:

(3, 40905), (4, 40899), (Start: 41 @40611 has 22 MA's), (45, 40596), (48, 40587), (71, 40488),

Gene: Lauer_36 Start: 29997, Stop: 29788, Start Num: 27

Candidate Starts for Lauer_36:

(26, 30000), (Start: 27 @29997 has 14 MA's), (Start: 38 @29961 has 66 MA's), (44, 29940), (48, 29928), (68, 29838), (71, 29829), (76, 29814),

Gene: Lilbunny_69 Start: 40236, Stop: 40057, Start Num: 38

Candidate Starts for Lilbunny_69:

(Start: 38 @40236 has 66 MA's), (48, 40203),

Gene: LilhomieP_52 Start: 38212, Stop: 38385, Start Num: 38

Candidate Starts for LilhomieP_52:

(Start: 38 @38212 has 66 MA's), (46, 38236), (55, 38284), (58, 38302),

Gene: Lollipop1437_6 Start: 4364, Stop: 4594, Start Num: 28

Candidate Starts for Lollipop1437_6:

(Start: 28 @4364 has 5 MA's), (58, 4478), (59, 4484), (65, 4508), (70, 4523), (76, 4544),

Gene: Looper_73 Start: 40523, Stop: 40329, Start Num: 41

Candidate Starts for Looper_73:

(3, 40817), (4, 40811), (Start: 41 @40523 has 22 MA's), (45, 40508), (48, 40499), (71, 40400),

Gene: Lucyedi_71 Start: 42106, Stop: 41924, Start Num: 38

Candidate Starts for Lucyedi_71:

(6, 42307), (Start: 25 @42145 has 1 MA's), (Start: 38 @42106 has 66 MA's), (44, 42085), (48, 42073), (63, 41998),

Gene: Mayweather_43 Start: 29791, Stop: 29582, Start Num: 27

Candidate Starts for Mayweather_43:

(26, 29794), (Start: 27 @29791 has 14 MA's), (Start: 38 @29755 has 66 MA's), (44, 29734), (48, 29722), (68, 29632), (71, 29623), (76, 29608),

Gene: McDazzle_41 Start: 29115, Stop: 28909, Start Num: 27

Candidate Starts for McDazzle_41:

(Start: 27 @29115 has 14 MA's), (48, 29049), (68, 28959), (71, 28950), (76, 28935),

Gene: McFly_69 Start: 40192, Stop: 40019, Start Num: 38

Candidate Starts for McFly_69:

(Start: 38 @40192 has 66 MA's), (48, 40165),

Gene: MinecraftSteve_74 Start: 40846, Stop: 40667, Start Num: 41

Candidate Starts for MinecraftSteve_74:

(3, 41140), (4, 41134), (Start: 41 @40846 has 22 MA's), (45, 40831), (48, 40822), (67, 40735),

Gene: Minispark_67 Start: 41035, Stop: 40844, Start Num: 38

Candidate Starts for Minispark_67:

(Start: 38 @41035 has 66 MA's), (47, 41005), (48, 41002), (54, 40960), (66, 40906), (69, 40897),

Gene: Myrna_265 Start: 162813, Stop: 163058, Start Num: 21

Candidate Starts for Myrna_265:

(7, 162711), (13, 162771), (14, 162780), (18, 162795), (Start: 21 @162813 has 2 MA's), (Start: 38 @162864 has 66 MA's), (42, 162876), (71, 163005), (77, 163026),

Gene: Nanosmite_58 Start: 39866, Stop: 40042, Start Num: 38

Candidate Starts for Nanosmite_58:

(11, 39743), (Start: 38 @39866 has 66 MA's), (49, 39902), (58, 39959), (68, 39998),

Gene: Nebulosus_71 Start: 40510, Stop: 40331, Start Num: 41

Candidate Starts for Nebulosus_71:

(3, 40804), (4, 40798), (Start: 41 @40510 has 22 MA's), (45, 40495), (48, 40486), (67, 40399),

Gene: Nedarya_70 Start: 40759, Stop: 40541, Start Num: 35

Candidate Starts for Nedarya_70:

(1, 41509), (2, 41473), (Start: 35 @40759 has 1 MA's), (40, 40747), (45, 40729), (85, 40567), (86, 40555), (87, 40552),

Gene: Neeharika16_68 Start: 39659, Stop: 39486, Start Num: 38

Candidate Starts for Neeharika16_68:

(Start: 38 @39659 has 66 MA's), (48, 39632),

Gene: Newrala_69 Start: 40200, Stop: 40021, Start Num: 38

Candidate Starts for Newrala_69:

(16, 40302), (24, 40245), (Start: 25 @40239 has 1 MA's), (Start: 29 @40227 has 4 MA's), (Start: 38 @40200 has 66 MA's), (48, 40167),

Gene: Oofda_74 Start: 40724, Stop: 40530, Start Num: 41

Candidate Starts for Oofda_74:

(Start: 41 @40724 has 22 MA's), (45, 40709), (48, 40700), (71, 40601),

Gene: PainterBoy_70 Start: 41815, Stop: 41633, Start Num: 38

Candidate Starts for PainterBoy_70:

(6, 42016), (Start: 25 @41854 has 1 MA's), (Start: 38 @41815 has 66 MA's), (44, 41794), (48, 41782), (63, 41707),

Gene: Patbob_162 Start: 111552, Stop: 111728, Start Num: 37

Candidate Starts for Patbob_162:

(Start: 37 @111552 has 1 MA's), (84, 111717),

Gene: PegLeg_53 Start: 38211, Stop: 38384, Start Num: 38

Candidate Starts for PegLeg_53:

(Start: 38 @38211 has 66 MA's), (46, 38235), (55, 38283), (58, 38301),

Gene: Peregrin_170 Start: 91883, Stop: 92095, Start Num: 34

Candidate Starts for Peregrin_170:

(Start: 34 @91883 has 2 MA's),

Gene: Phabba_275 Start: 161775, Stop: 162020, Start Num: 21

Candidate Starts for Phabba_275:

(5, 161574), (7, 161637), (10, 161700), (13, 161712), (14, 161721), (17, 161754), (18, 161757), (Start: 21 @161775 has 2 MA's), (Start: 38 @161829 has 66 MA's), (44, 161850), (50, 161871), (63, 161943), (67, 161955), (77, 161988), (80, 162000), (81, 162003),

Gene: Pleakley_5 Start: 2948, Stop: 3193, Start Num: 19

Candidate Starts for Pleakley_5:

(15, 2900), (Start: 19 @2948 has 3 MA's), (Start: 29 @2972 has 4 MA's), (56, 3077), (58, 3083), (78, 3155),

Gene: Pmask_68 Start: 40195, Stop: 40022, Start Num: 38

Candidate Starts for Pmask_68:

(Start: 38 @40195 has 66 MA's), (48, 40168),

Gene: Polyphemus_71 Start: 40586, Stop: 40407, Start Num: 38

Candidate Starts for Polyphemus_71:

(16, 40688), (24, 40631), (Start: 25 @40625 has 1 MA's), (Start: 29 @40613 has 4 MA's), (Start: 38 @40586 has 66 MA's), (48, 40553),

Gene: Pons_41 Start: 29139, Stop: 28933, Start Num: 27

Candidate Starts for Pons_41:

(Start: 27 @29139 has 14 MA's), (48, 29073), (60, 29010), (68, 28983), (71, 28974), (76, 28959),

Gene: PotPie_40 Start: 30073, Stop: 29867, Start Num: 27

Candidate Starts for PotPie_40:

(Start: 27 @30073 has 14 MA's), (48, 30007), (68, 29917), (71, 29908), (76, 29893),

Gene: Priamo_71 Start: 40046, Stop: 39873, Start Num: 38

Candidate Starts for Priamo_71:

(Start: 38 @40046 has 66 MA's), (48, 40019),

Gene: Rahalelujah_69 Start: 41050, Stop: 40859, Start Num: 38

Candidate Starts for Rahalelujah_69:

(Start: 38 @41050 has 66 MA's), (47, 41020), (48, 41017), (54, 40975), (66, 40921), (69, 40912),

Gene: Ravana_75 Start: 41923, Stop: 41726, Start Num: 39

Candidate Starts for Ravana_75:

(Start: 39 @41923 has 1 MA's), (71, 41797),

Gene: ReMo_72 Start: 40608, Stop: 40414, Start Num: 41

Candidate Starts for ReMo_72:

(3, 40902), (4, 40896), (Start: 41 @40608 has 22 MA's), (45, 40593), (48, 40584), (71, 40485),

Gene: Refuge_65 Start: 42312, Stop: 42115, Start Num: 38

Candidate Starts for Refuge_65:

(Start: 38 @42312 has 66 MA's), (44, 42291), (48, 42279), (71, 42180),

Gene: ReginaGlobina_169 Start: 112062, Stop: 112247, Start Num: 28

Candidate Starts for ReginaGlobina_169:

(Start: 28 @112062 has 5 MA's), (66, 112191), (68, 112197),

Gene: Reindeer_55 Start: 39414, Stop: 39587, Start Num: 38

Candidate Starts for Reindeer_55:

(11, 39291), (Start: 38 @39414 has 66 MA's), (57, 39501), (58, 39504),

Gene: Remus_74 Start: 40598, Stop: 40419, Start Num: 41

Candidate Starts for Remus_74:

(3, 40892), (4, 40886), (Start: 41 @40598 has 22 MA's), (45, 40583), (48, 40574), (67, 40487),

Gene: Rifter_70 Start: 39766, Stop: 39587, Start Num: 38

Candidate Starts for Rifter_70:

(Start: 38 @39766 has 66 MA's), (48, 39733),

Gene: Roksolana_71 Start: 40600, Stop: 40421, Start Num: 38

Candidate Starts for Roksolana_71:

(12, 40717), (24, 40645), (Start: 25 @40639 has 1 MA's), (Start: 29 @40627 has 4 MA's), (Start: 38 @40600 has 66 MA's), (48, 40567),

Gene: Rosalind_72 Start: 40765, Stop: 40586, Start Num: 41

Candidate Starts for Rosalind_72:

(3, 41059), (4, 41053), (Start: 41 @40765 has 22 MA's), (45, 40750), (48, 40741), (67, 40654),

Gene: RoseMarie_59 Start: 41858, Stop: 42031, Start Num: 38

Candidate Starts for RoseMarie_59:

(Start: 38 @41858 has 66 MA's), (46, 41882), (53, 41924), (58, 41948), (61, 41963), (67, 41984),

Gene: Scuba_5 Start: 3052, Stop: 3264, Start Num: 29

Candidate Starts for Scuba_5:

(8, 2929), (15, 2980), (Start: 19 @3028 has 3 MA's), (Start: 29 @3052 has 4 MA's), (56, 3157), (72, 3211), (77, 3229), (78, 3235),

Gene: ShayRa_74 Start: 40794, Stop: 40615, Start Num: 41

Candidate Starts for ShayRa_74:

(3, 41088), (4, 41082), (Start: 41 @40794 has 22 MA's), (45, 40779), (48, 40770), (67, 40683),

Gene: SheckWes_42 Start: 28660, Stop: 28454, Start Num: 27

Candidate Starts for SheckWes_42:

(Start: 27 @28660 has 14 MA's), (48, 28594), (68, 28504), (71, 28495), (76, 28480),

Gene: SketchMex_38 Start: 27315, Stop: 27118, Start Num: 32

Candidate Starts for SketchMex_38:

(Start: 32 @27315 has 3 MA's), (47, 27267), (53, 27237), (56, 27219), (58, 27213), (64, 27189), (72, 27165), (77, 27147), (83, 27129),

Gene: Skinny_54 Start: 38641, Stop: 38814, Start Num: 38

Candidate Starts for Skinny_54:

(Start: 38 @38641 has 66 MA's), (46, 38665), (55, 38713), (58, 38731),

Gene: SlimJimmy_52 Start: 38195, Stop: 38368, Start Num: 38

Candidate Starts for SlimJimmy_52:

(Start: 38 @38195 has 66 MA's), (46, 38219), (55, 38267), (58, 38285),

Gene: SmellyB_69 Start: 40260, Stop: 40054, Start Num: 29

Candidate Starts for SmellyB_69:

(16, 40335), (24, 40278), (Start: 25 @40272 has 1 MA's), (Start: 29 @40260 has 4 MA's), (Start: 38 @40233 has 66 MA's), (48, 40200),

Gene: Soups_74 Start: 41058, Stop: 40864, Start Num: 41

Candidate Starts for Soups_74:

(3, 41352), (4, 41346), (Start: 41 @41058 has 22 MA's), (45, 41043), (48, 41034), (71, 40935),

Gene: Strosahl_74 Start: 40598, Stop: 40419, Start Num: 41

Candidate Starts for Strosahl_74:

(3, 40892), (4, 40886), (Start: 41 @40598 has 22 MA's), (45, 40583), (48, 40574), (67, 40487),

Gene: SummitAcademy_39 Start: 28702, Stop: 28496, Start Num: 27

Candidate Starts for SummitAcademy_39:

(Start: 27 @28702 has 14 MA's), (48, 28636), (68, 28546), (71, 28537), (76, 28522),

Gene: SuperAwesome_69 Start: 40265, Stop: 40059, Start Num: 29

Candidate Starts for SuperAwesome_69:

(16, 40340), (24, 40283), (Start: 25 @40277 has 1 MA's), (Start: 29 @40265 has 4 MA's), (Start: 38 @40238 has 66 MA's), (48, 40205),

Gene: SuperCallie99_66 Start: 40079, Stop: 39906, Start Num: 38

Candidate Starts for SuperCallie99_66:

(Start: 38 @40079 has 66 MA's), (48, 40052),

Gene: Switzerland_73 Start: 40933, Stop: 40754, Start Num: 41

Candidate Starts for Switzerland_73:

(3, 41227), (4, 41221), (Start: 41 @40933 has 22 MA's), (45, 40918), (48, 40909), (67, 40822),

Gene: Tarnish_40 Start: 29209, Stop: 29000, Start Num: 27

Candidate Starts for Tarnish_40:

(26, 29212), (Start: 27 @29209 has 14 MA's), (Start: 38 @29173 has 66 MA's), (44, 29152), (45, 29149), (48, 29140), (71, 29041), (76, 29026),

Gene: Temprado_71 Start: 40605, Stop: 40426, Start Num: 38

Candidate Starts for Temprado_71:

(Start: 38 @40605 has 66 MA's), (48, 40572),

Gene: ToneTone_67 Start: 40165, Stop: 39986, Start Num: 38

Candidate Starts for ToneTone_67:

(Start: 38 @40165 has 66 MA's), (48, 40132),

Gene: TpudiCK_55 Start: 38211, Stop: 38384, Start Num: 38

Candidate Starts for TpudiCK_55:

(Start: 38 @38211 has 66 MA's), (46, 38235), (55, 38283), (58, 38301),

Gene: Troje_40 Start: 27694, Stop: 27467, Start Num: 20

Candidate Starts for Troje_40:

(Start: 20 @27694 has 2 MA's), (Start: 32 @27664 has 3 MA's), (47, 27616), (53, 27586), (56, 27568), (58, 27562), (64, 27538), (72, 27514), (77, 27496),

Gene: Tucker_70 Start: 40368, Stop: 40189, Start Num: 38

Candidate Starts for Tucker_70:

(Start: 38 @40368 has 66 MA's), (48, 40335),

Gene: Turuncu_6 Start: 3772, Stop: 3981, Start Num: 32

Candidate Starts for Turuncu_6:

(Start: 28 @3760 has 5 MA's), (Start: 32 @3772 has 3 MA's), (43, 3808), (70, 3919), (75, 3937), (76, 3940),

Gene: TyDawg_53 Start: 38212, Stop: 38385, Start Num: 38

Candidate Starts for TyDawg_53:

(Start: 38 @38212 has 66 MA's), (46, 38236), (55, 38284), (58, 38302),

Gene: Vine_42 Start: 29438, Stop: 29232, Start Num: 27

Candidate Starts for Vine_42:

(Start: 27 @29438 has 14 MA's), (48, 29372), (68, 29282), (71, 29273), (76, 29258),

Gene: VohminGhazi_69 Start: 40234, Stop: 40055, Start Num: 38

Candidate Starts for VohminGhazi_69:

(16, 40336), (24, 40279), (Start: 25 @40273 has 1 MA's), (Start: 29 @40261 has 4 MA's), (Start: 38 @40234 has 66 MA's), (48, 40201),

Gene: WST1_48 Start: 30928, Stop: 31071, Start Num: 44

Candidate Starts for WST1_48:

(30, 30883), (44, 30928), (48, 30940), (50, 30949), (51, 30952), (65, 31021), (71, 31039), (74, 31051),

Gene: Waits_74 Start: 40830, Stop: 40651, Start Num: 41

Candidate Starts for Waits_74:

(3, 41124), (4, 41118), (Start: 41 @40830 has 22 MA's), (45, 40815), (48, 40806), (67, 40719),

Gene: Warrior24_75 Start: 41179, Stop: 40985, Start Num: 41

Candidate Starts for Warrior24_75:

(Start: 41 @41179 has 22 MA's), (45, 41164), (48, 41155), (71, 41056),

Gene: Wiks_69 Start: 40236, Stop: 40057, Start Num: 38

Candidate Starts for Wiks_69:

(Start: 38 @40236 has 66 MA's), (48, 40203),

Gene: WorldCup_67 Start: 41044, Stop: 40853, Start Num: 38

Candidate Starts for WorldCup_67:

(Start: 38 @41044 has 66 MA's), (47, 41014), (48, 41011), (54, 40969), (66, 40915), (69, 40906),

Gene: WunderPhul_70 Start: 40234, Stop: 40055, Start Num: 38

Candidate Starts for WunderPhul_70:

(Start: 38 @40234 has 66 MA's), (48, 40201),

Gene: Yappy_17 Start: 5650, Stop: 5847, Start Num: 31

Candidate Starts for Yappy_17:

(22, 5620), (Start: 31 @5650 has 1 MA's), (48, 5698), (52, 5716), (58, 5749), (64, 5776), (73, 5797), (79, 5821), (84, 5833),

Gene: Yokurt_69 Start: 40236, Stop: 40057, Start Num: 38

Candidate Starts for Yokurt_69:

(Start: 38 @40236 has 66 MA's), (48, 40203),

Gene: Yucky_42 Start: 29378, Stop: 29172, Start Num: 27

Candidate Starts for Yucky_42:

(Start: 27 @29378 has 14 MA's), (48, 29312), (68, 29222), (71, 29213), (76, 29198),

Gene: Zaka_70 Start: 40236, Stop: 40057, Start Num: 38

Candidate Starts for Zaka_70:

(Start: 38 @40236 has 66 MA's), (48, 40203),

Gene: Zimmer_65 Start: 42012, Stop: 41815, Start Num: 38

Candidate Starts for Zimmer_65:

(12, 42129), (13, 42126), (Start: 38 @42012 has 66 MA's), (48, 41979),

Gene: Zulu_71 Start: 40614, Stop: 40435, Start Num: 38

Candidate Starts for Zulu_71:

(Start: 38 @40614 has 66 MA's), (48, 40581),