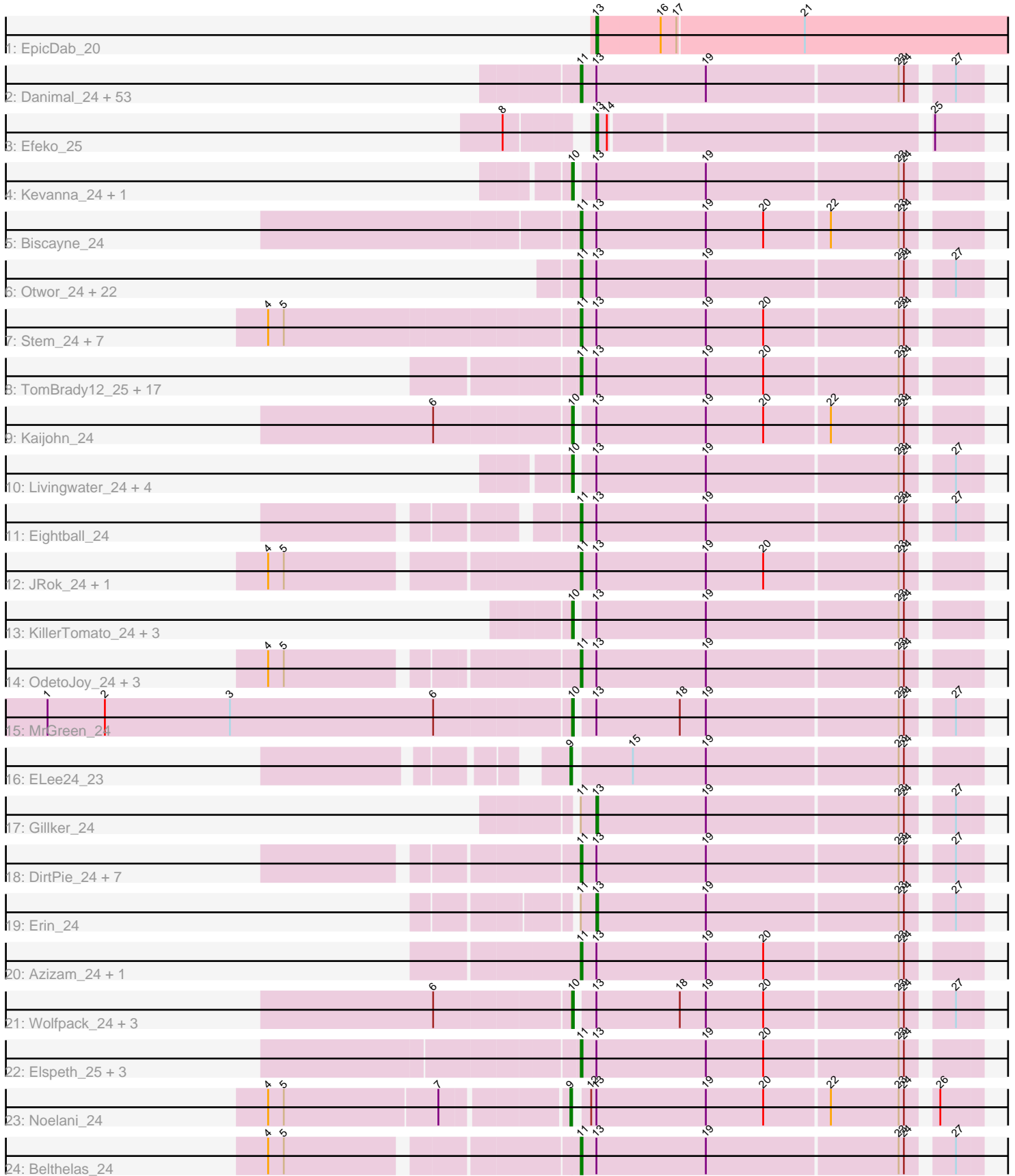


Pham 311331



Note: Tracks are now grouped by subcluster and scaled. Switching in subcluster is indicated by changes in track color. Track scale is now set by default to display the region 30 bp upstream of start 1 to 30 bp downstream of the last possible start. If this default region is judged to be packed too tightly with annotated starts, the track will be further scaled to only show that region of the ORF with annotated starts. This action will be indicated by adding "Zoomed" to the title. For starts, yellow indicates the location of called starts comprised solely of Glimmer/GeneMark auto-annotations, green indicates the location of called starts with at least 1 manual gene annotation.

Pham 311331 Report

This analysis was run 06/27/26 on database version 652.

Pham number 311331 has 149 members, 6 are drafts.

Phages represented in each track:

- Track 1 : EpicDab_20
- Track 2 : Danimal_24, KyriosFaba_24, Bradley2_24, Picnic_24, Anseraureola_24, BarBear_24, Dooby_24, Luxx_24, Goobery_24, JaimeB_24, Chatham_24, Lola20_24, JoBros_24, Ciel_24, Jahseh_24, NeumannU_24, GoldenBlanche_24, Aztec_24, Pondwater_24, Jannah_24, Sachet_24, Witch_24, Goulash_24, Yubaba_24, Astro16_24, Baine_24, Duggle_25, Minima_24, Majesty_24, EdElric_24, Yasuo_24, Myram_24, Dongwon_24, Horacetta_24, Octopus_24, SeaWolves_24, Slentz_24, Gardevoir_24, Jella_26, PaoPu_24, YertPhresh_24, Hernandez44_24, Alucard_24, BurtonThePup_24, ManAs_24, Puddles3_24, Sara_24, Owens_24, Picconator_24, Cayde6_24, Scrunchy_24, LemonPepper_24, Tyrellus_24, BinkBonk_24
- Track 3 : Efeko_25
- Track 4 : Kevanna_24, MelBee03_24
- Track 5 : Biscayne_24
- Track 6 : Otwor_24, Avvas_24, Scamander_24, Kojax4_24, Vanisius_24, RoscoWindex_24, LaviMo_24, SantasSleigh_24, Zahlia_24, Maneater_24, Godfather_24, Sage7_24, Cheesecake_24, Rhysand_24, Danno_24, Grayscar_24, Charbie_24, TimoTea_24, Hulk_24, Gabbspett_24, Aries55_24, Burgy_24, Josuke_24
- Track 7 : Stem_24, JooneeDee_24, Bintii_24, MirimarMandM_24, Niffler_24, PoRanda_24, Nobel_24, Upsilon_24
- Track 8 : TomBrady12_25, Snuffles_26, TinyTruffula_24, Mauilvory_23, Publix_25, Clownery_24, IzzyPants24_24, Trireme_24, Rira_24, Trackstar_24, Namsahir_26, Yami_24, Bullzi2019_25, Slizam_24, Lunatic_24, Cazares_24, PuffyCat_24, Miaurora_24
- Track 9 : Kaijohn_24
- Track 10 : Livingwater_24, Loca_24, Leafy_24, Douggie_24, Quaker_24
- Track 11 : Eightball_24
- Track 12 : JRok_24, McShie_24
- Track 13 : KillerTomato_24, Concrete_24, BoomRoasted_24, Bri160_24
- Track 14 : OdetoJoy_24, Madebyisha_24, Jerky_24, VitulaEligans_24
- Track 15 : MrGreen_24
- Track 16 : ELee24_23
- Track 17 : Gillker_24
- Track 18 : DirtPie_24, Rhogar_24, Marichuy_25, MasterPitts_24, LionelHutz_24, DaftyDuck_24, HeadMave_24, TeddyBoy_24
- Track 19 : Erin_24

- Track 20 : Azizam_24, Oaklynn_24
- Track 21 : Wolfpack_24, Bodhi17_24, KayPaulus_24, Sippinontea_24
- Track 22 : Elspeth_25, Ekko14_25, HarperAnne_25, TlaliMex_26
- Track 23 : Noelani_24
- Track 24 : Belthelas_24

Summary of Final Annotations (See graph section above for start numbers):

The start number called the most often in the published annotations is 11, it was called in 120 of the 143 non-draft genes in the pham.

Genes that call this "Most Annotated" start:

- Alucard_24, Anseraureola_24, Aries55_24, Astro16_24, Avvas_24, Azizam_24, Aztec_24, Baine_24, BarBear_24, Belthelas_24, BinkBonk_24, Bintii_24, Biscayne_24, Bradley2_24, Bullzi2019_25, Burgy_24, BurtonThePup_24, Cayde6_24, Cazares_24, Charbie_24, Chatham_24, Cheesecake_24, Ciel_24, Clownery_24, DaftyDuck_24, Danimal_24, Danno_24, DirtPie_24, Dongwon_24, Dooby_24, Duggle_25, EdElric_24, Eightball_24, Ekko14_25, Elspeth_25, Gabbspett_24, Gardevoir_24, Godfather_24, GoldenBlanche_24, Goobery_24, Goulash_24, Grayscar_24, HarperAnne_25, HeadMave_24, Hernandez44_24, Horacetta_24, Hulk_24, IzzyPants24_24, JRok_24, Jahseh_24, JaimeB_24, Jannah_24, Jella_26, Jerky_24, JoBros_24, JooneeDee_24, Josuke_24, Kojax4_24, KyriosFaba_24, LaviMo_24, LemonPepper_24, LionelHutz_24, Lola20_24, Lunatic_24, Luxx_24, Madebyisha_24, Majesty_24, ManAs_24, Maneater_24, Marichuy_25, MasterPitts_24, Maulivory_23, McShie_24, Miaurora_24, Minima_24, MirimarMandM_24, Myram_24, Namsahir_26, NeumannU_24, Niffler_24, Nobel_24, Oaklynn_24, Octopus_24, OdetoJoy_24, Otwor_24, Owens_24, PaoPu_24, Picconator_24, Picnic_24, PoRanda_24, Pondwater_24, Publix_25, Puddles3_24, PuffyCat_24, Rhogar_24, Rhysand_24, Rira_24, RoscoWindex_24, Sachet_24, Sage7_24, SantasSleigh_24, Sara_24, Scamander_24, Scrunchy_24, SeaWolves_24, Slentz_24, Slizam_24, Snuffles_26, Stem_24, TeddyBoy_24, TimoTea_24, TinyTruffula_24, TlaliMex_26, TomBrady12_25, Trackstar_24, Trireme_24, Tyrellus_24, Upsilon_24, Vanisius_24, VitulaEligans_24, Witch_24, Yami_24, Yasuo_24, YertPhresh_24, Yubaba_24, Zahlia_24,

Genes that have the "Most Annotated" start but do not call it:

- Erin_24, Gillker_24,

Genes that do not have the "Most Annotated" start:

- Bodhi17_24, BoomRoasted_24, Bri160_24, Concrete_24, Douggie_24, ELee24_23, Efeko_25, EpicDab_20, Kaijohn_24, KayPaulus_24, Kevanna_24, KillerTomato_24, Leafy_24, Livingwater_24, Loca_24, MelBee03_24, MrGreen_24, Noelani_24, Quaker_24, Sippinontea_24, Wolfpack_24,

Summary by start number:

Start 9:

- Found in 2 of 149 (1.3%) of genes in pham
- Manual Annotations of this start: 2 of 143
- Called 100.0% of time when present

- Phage (with cluster) where this start called: ELee24_23 (EE), Noelani_24 (EE),

Start 10:

- Found in 17 of 149 (11.4%) of genes in pham
- Manual Annotations of this start: 17 of 143
- Called 100.0% of time when present
- Phage (with cluster) where this start called: Bodhi17_24 (EE), BoomRoasted_24 (EE), Bri160_24 (EE), Concrete_24 (EE), Douggie_24 (EE), Kaijohn_24 (EE), KayPaulus_24 (EE), Kevanna_24 (EE), KillerTomato_24 (EE), Leafy_24 (EE), Livingwater_24 (EE), Loca_24 (EE), MelBee03_24 (EE), MrGreen_24 (EE), Quaker_24 (EE), Sippinontea_24 (EE), Wolfpack_24 (EE),

Start 11:

- Found in 128 of 149 (85.9%) of genes in pham
- Manual Annotations of this start: 120 of 143
- Called 98.4% of time when present
- Phage (with cluster) where this start called: Alucard_24 (EE), Anseraureola_24 (EE), Aries55_24 (EE), Astro16_24 (EE), Avvas_24 (EE), Azizam_24 (EE), Aztec_24 (EE), Baine_24 (EE), BarBear_24 (EE), Belthelas_24 (EE), BinkBonk_24 (EE), Bintii_24 (EE), Biscayne_24 (EE), Bradley2_24 (EE), Bullzi2019_25 (EE), Burgy_24 (EE), BurtonThePup_24 (EE), Cayde6_24 (EE), Cazares_24 (EE), Charbie_24 (EE), Chatham_24 (EE), Cheesecake_24 (EE), Ciel_24 (EE), Clownery_24 (EE), DaftyDuck_24 (EE), Danimal_24 (EE), Danno_24 (EE), DirtPie_24 (EE), Dongwon_24 (EE), Dooby_24 (EE), Duggle_25 (EE), EdElric_24 (EE), Eightball_24 (EE), Ekko14_25 (EE), Elspeth_25 (EE), Gabbspett_24 (EE), Gardevoir_24 (EE), Godfather_24 (EE), GoldenBlanche_24 (EE), Goobery_24 (EE), Goulash_24 (EE), Grayscar_24 (EE), HarperAnne_25 (EE), HeadMave_24 (EE), Hernandez44_24 (EE), Horacetta_24 (EE), Hulk_24 (EE), IzzyPants24_24 (EE), JRok_24 (EE), Jahseh_24 (EE), JaimeB_24 (EE), Jannah_24 (EE), Jella_26 (EE), Jerky_24 (EE), JoBros_24 (EE), JooneeDee_24 (EE), Josuke_24 (EE), Kojax4_24 (EE), KyriosFaba_24 (EE), LaviMo_24 (EE), LemonPepper_24 (EE), LionelHutz_24 (EE), Lola20_24 (EE), Lunatic_24 (EE), Luxx_24 (EE), Madebyisha_24 (EE), Majesty_24 (EE), ManAs_24 (EE), Maneater_24 (EE), Marichuy_25 (EE), MasterPitts_24 (EE), Mauilvory_23 (EE), McShie_24 (EE), Miaurora_24 (EE), Minima_24 (EE), MirimarMandM_24 (EE), Myram_24 (EE), Namsahir_26 (EE), NeumannU_24 (EE), Niffler_24 (EE), Nobel_24 (EE), Oaklynn_24 (EE), Octopus_24 (EE), OdetoJoy_24 (EE), Otwor_24 (EE), Owens_24 (EE), PaoPu_24 (EE), Picconator_24 (EE), Picnic_24 (EE), PoRanda_24 (EE), Pondwater_24 (EE), Publix_25 (EE), Puddles3_24 (EE), PuffyCat_24 (EE), Rhogar_24 (EE), Rhysand_24 (EE), Rira_24 (EE), RoscoWindex_24 (EE), Sachet_24 (EE), Sage7_24 (EE), SantasSleigh_24 (EE), Sara_24 (EE), Scamander_24 (EE), Scrunchy_24 (EE), SeaWolves_24 (EE), Slentz_24 (EE), Slizam_24 (EE), Snuffles_26 (EE), Stem_24 (EE), TeddyBoy_24 (EE), TimoTea_24 (EE), TinyTruffula_24 (EE), TlaliMex_26 (EE), TomBrady12_25 (EE), Trackstar_24 (EE), Trireme_24 (EE), Tyrellus_24 (EE), Upsilon_24 (EE), Vanisius_24 (EE), VitulaEligans_24 (EE), Witch_24 (EE), Yami_24 (EE), Yasuo_24 (EE), YertPhresh_24 (EE), Yubaba_24 (EE), Zahlia_24 (EE),

Start 13:

- Found in 148 of 149 (99.3%) of genes in pham
- Manual Annotations of this start: 4 of 143
- Called 2.7% of time when present
- Phage (with cluster) where this start called: Efeko_25 (EE), EpicDab_20 (DM), Erin_24 (EE), Gillker_24 (EE),

Summary by clusters:

There are 2 clusters represented in this pham: EE, DM,

Info for manual annotations of cluster DM:

- Start number 13 was manually annotated 1 time for cluster DM.

Info for manual annotations of cluster EE:

- Start number 9 was manually annotated 2 times for cluster EE.
- Start number 10 was manually annotated 17 times for cluster EE.
- Start number 11 was manually annotated 120 times for cluster EE.
- Start number 13 was manually annotated 3 times for cluster EE.

Gene Information:

Gene: Alucard_24 Start: 16775, Stop: 16993, Start Num: 11

Candidate Starts for Alucard_24:

(Start: 11 @16775 has 120 MA's), (Start: 13 @16784 has 4 MA's), (19, 16847), (23, 16955), (24, 16958), (27, 16979),

Gene: Anseraureola_24 Start: 16837, Stop: 17055, Start Num: 11

Candidate Starts for Anseraureola_24:

(Start: 11 @16837 has 120 MA's), (Start: 13 @16846 has 4 MA's), (19, 16909), (23, 17017), (24, 17020), (27, 17041),

Gene: Aries55_24 Start: 16864, Stop: 17082, Start Num: 11

Candidate Starts for Aries55_24:

(Start: 11 @16864 has 120 MA's), (Start: 13 @16873 has 4 MA's), (19, 16936), (23, 17044), (24, 17047), (27, 17068),

Gene: Astro16_24 Start: 16857, Stop: 17075, Start Num: 11

Candidate Starts for Astro16_24:

(Start: 11 @16857 has 120 MA's), (Start: 13 @16866 has 4 MA's), (19, 16929), (23, 17037), (24, 17040), (27, 17061),

Gene: Avvas_24 Start: 16864, Stop: 17082, Start Num: 11

Candidate Starts for Avvas_24:

(Start: 11 @16864 has 120 MA's), (Start: 13 @16873 has 4 MA's), (19, 16936), (23, 17044), (24, 17047), (27, 17068),

Gene: Azizam_24 Start: 16797, Stop: 17015, Start Num: 11

Candidate Starts for Azizam_24:

(Start: 11 @16797 has 120 MA's), (Start: 13 @16806 has 4 MA's), (19, 16869), (20, 16902), (23, 16977), (24, 16980),

Gene: Aztec_24 Start: 16780, Stop: 16998, Start Num: 11

Candidate Starts for Aztec_24:

(Start: 11 @16780 has 120 MA's), (Start: 13 @16789 has 4 MA's), (19, 16852), (23, 16960), (24, 16963), (27, 16984),

Gene: Baine_24 Start: 16800, Stop: 17018, Start Num: 11

Candidate Starts for Baine_24:

(Start: 11 @16800 has 120 MA's), (Start: 13 @16809 has 4 MA's), (19, 16872), (23, 16980), (24, 16983), (27, 17004),

Gene: BarBear_24 Start: 16857, Stop: 17075, Start Num: 11

Candidate Starts for BarBear_24:

(Start: 11 @16857 has 120 MA's), (Start: 13 @16866 has 4 MA's), (19, 16929), (23, 17037), (24, 17040), (27, 17061),

Gene: Belthelas_24 Start: 16913, Stop: 17131, Start Num: 11

Candidate Starts for Belthelas_24:

(4, 16754), (5, 16763), (Start: 11 @16913 has 120 MA's), (Start: 13 @16922 has 4 MA's), (19, 16985), (23, 17093), (24, 17096), (27, 17117),

Gene: BinkBonk_24 Start: 16857, Stop: 17075, Start Num: 11

Candidate Starts for BinkBonk_24:

(Start: 11 @16857 has 120 MA's), (Start: 13 @16866 has 4 MA's), (19, 16929), (23, 17037), (24, 17040), (27, 17061),

Gene: Bintii_24 Start: 16879, Stop: 17097, Start Num: 11

Candidate Starts for Bintii_24:

(4, 16708), (5, 16717), (Start: 11 @16879 has 120 MA's), (Start: 13 @16888 has 4 MA's), (19, 16951), (20, 16984), (23, 17059), (24, 17062),

Gene: Biscayne_24 Start: 16940, Stop: 17158, Start Num: 11

Candidate Starts for Biscayne_24:

(Start: 11 @16940 has 120 MA's), (Start: 13 @16949 has 4 MA's), (19, 17012), (20, 17045), (22, 17081), (23, 17120), (24, 17123),

Gene: Bodhi17_24 Start: 16894, Stop: 17112, Start Num: 10

Candidate Starts for Bodhi17_24:

(6, 16819), (Start: 10 @16894 has 17 MA's), (Start: 13 @16903 has 4 MA's), (18, 16951), (19, 16966), (20, 16999), (23, 17074), (24, 17077), (27, 17098),

Gene: BoomRoasted_24 Start: 16867, Stop: 17085, Start Num: 10

Candidate Starts for BoomRoasted_24:

(Start: 10 @16867 has 17 MA's), (Start: 13 @16876 has 4 MA's), (19, 16939), (23, 17047), (24, 17050),

Gene: Bradley2_24 Start: 16779, Stop: 16997, Start Num: 11

Candidate Starts for Bradley2_24:

(Start: 11 @16779 has 120 MA's), (Start: 13 @16788 has 4 MA's), (19, 16851), (23, 16959), (24, 16962), (27, 16983),

Gene: Bri160_24 Start: 16854, Stop: 17072, Start Num: 10

Candidate Starts for Bri160_24:

(Start: 10 @16854 has 17 MA's), (Start: 13 @16863 has 4 MA's), (19, 16926), (23, 17034), (24, 17037),

Gene: Bullzi2019_25 Start: 16555, Stop: 16773, Start Num: 11

Candidate Starts for Bullzi2019_25:

(Start: 11 @16555 has 120 MA's), (Start: 13 @16564 has 4 MA's), (19, 16627), (20, 16660), (23, 16735), (24, 16738),

Gene: Burgy_24 Start: 16865, Stop: 17083, Start Num: 11

Candidate Starts for Burgy_24:

(Start: 11 @16865 has 120 MA's), (Start: 13 @16874 has 4 MA's), (19, 16937), (23, 17045), (24, 17048), (27, 17069),

Gene: BurtonThePup_24 Start: 16857, Stop: 17075, Start Num: 11

Candidate Starts for BurtonThePup_24:

(Start: 11 @16857 has 120 MA's), (Start: 13 @16866 has 4 MA's), (19, 16929), (23, 17037), (24, 17040), (27, 17061),

Gene: Cayde6_24 Start: 16800, Stop: 17018, Start Num: 11

Candidate Starts for Cayde6_24:

(Start: 11 @16800 has 120 MA's), (Start: 13 @16809 has 4 MA's), (19, 16872), (23, 16980), (24, 16983), (27, 17004),

Gene: Cazares_24 Start: 16327, Stop: 16545, Start Num: 11

Candidate Starts for Cazares_24:

(Start: 11 @16327 has 120 MA's), (Start: 13 @16336 has 4 MA's), (19, 16399), (20, 16432), (23, 16507), (24, 16510),

Gene: Charbie_24 Start: 16840, Stop: 17058, Start Num: 11

Candidate Starts for Charbie_24:

(Start: 11 @16840 has 120 MA's), (Start: 13 @16849 has 4 MA's), (19, 16912), (23, 17020), (24, 17023), (27, 17044),

Gene: Chatham_24 Start: 16774, Stop: 16992, Start Num: 11

Candidate Starts for Chatham_24:

(Start: 11 @16774 has 120 MA's), (Start: 13 @16783 has 4 MA's), (19, 16846), (23, 16954), (24, 16957), (27, 16978),

Gene: Cheesecake_24 Start: 16865, Stop: 17083, Start Num: 11

Candidate Starts for Cheesecake_24:

(Start: 11 @16865 has 120 MA's), (Start: 13 @16874 has 4 MA's), (19, 16937), (23, 17045), (24, 17048), (27, 17069),

Gene: Ciel_24 Start: 16857, Stop: 17075, Start Num: 11

Candidate Starts for Ciel_24:

(Start: 11 @16857 has 120 MA's), (Start: 13 @16866 has 4 MA's), (19, 16929), (23, 17037), (24, 17040), (27, 17061),

Gene: Clownery_24 Start: 16453, Stop: 16671, Start Num: 11

Candidate Starts for Clownery_24:

(Start: 11 @16453 has 120 MA's), (Start: 13 @16462 has 4 MA's), (19, 16525), (20, 16558), (23, 16633), (24, 16636),

Gene: Concrete_24 Start: 16844, Stop: 17062, Start Num: 10

Candidate Starts for Concrete_24:

(Start: 10 @16844 has 17 MA's), (Start: 13 @16853 has 4 MA's), (19, 16916), (23, 17024), (24, 17027),

Gene: DaftyDuck_24 Start: 16797, Stop: 17015, Start Num: 11

Candidate Starts for DaftyDuck_24:

(Start: 11 @16797 has 120 MA's), (Start: 13 @16806 has 4 MA's), (19, 16869), (23, 16977), (24, 16980), (27, 17001),

Gene: Danimal_24 Start: 16776, Stop: 16994, Start Num: 11

Candidate Starts for Danimal_24:

(Start: 11 @16776 has 120 MA's), (Start: 13 @16785 has 4 MA's), (19, 16848), (23, 16956), (24, 16959), (27, 16980),

Gene: Danno_24 Start: 16864, Stop: 17082, Start Num: 11

Candidate Starts for Danno_24:

(Start: 11 @16864 has 120 MA's), (Start: 13 @16873 has 4 MA's), (19, 16936), (23, 17044), (24, 17047), (27, 17068),

Gene: DirtPie_24 Start: 16890, Stop: 17108, Start Num: 11

Candidate Starts for DirtPie_24:

(Start: 11 @16890 has 120 MA's), (Start: 13 @16899 has 4 MA's), (19, 16962), (23, 17070), (24, 17073), (27, 17094),

Gene: Dongwon_24 Start: 16774, Stop: 16992, Start Num: 11

Candidate Starts for Dongwon_24:

(Start: 11 @16774 has 120 MA's), (Start: 13 @16783 has 4 MA's), (19, 16846), (23, 16954), (24, 16957), (27, 16978),

Gene: Dooby_24 Start: 16774, Stop: 16992, Start Num: 11

Candidate Starts for Dooby_24:

(Start: 11 @16774 has 120 MA's), (Start: 13 @16783 has 4 MA's), (19, 16846), (23, 16954), (24, 16957), (27, 16978),

Gene: Duggie_24 Start: 16850, Stop: 17068, Start Num: 10

Candidate Starts for Duggie_24:

(Start: 10 @16850 has 17 MA's), (Start: 13 @16859 has 4 MA's), (19, 16922), (23, 17030), (24, 17033), (27, 17054),

Gene: Duggle_25 Start: 16774, Stop: 16992, Start Num: 11

Candidate Starts for Duggle_25:

(Start: 11 @16774 has 120 MA's), (Start: 13 @16783 has 4 MA's), (19, 16846), (23, 16954), (24, 16957), (27, 16978),

Gene: ELee24_23 Start: 16643, Stop: 16861, Start Num: 9

Candidate Starts for ELee24_23:

(Start: 9 @16643 has 2 MA's), (15, 16673), (19, 16715), (23, 16823), (24, 16826),

Gene: EdElric_24 Start: 16774, Stop: 16992, Start Num: 11

Candidate Starts for EdElric_24:

(Start: 11 @16774 has 120 MA's), (Start: 13 @16783 has 4 MA's), (19, 16846), (23, 16954), (24, 16957), (27, 16978),

Gene: Efeko_25 Start: 16548, Stop: 16751, Start Num: 13

Candidate Starts for Efeko_25:

(8, 16509), (Start: 13 @16548 has 4 MA's), (14, 16554), (25, 16725),

Gene: Eightball_24 Start: 16851, Stop: 17069, Start Num: 11

Candidate Starts for Eightball_24:

(Start: 11 @16851 has 120 MA's), (Start: 13 @16860 has 4 MA's), (19, 16923), (23, 17031), (24, 17034), (27, 17055),

Gene: Ekko14_25 Start: 16529, Stop: 16747, Start Num: 11

Candidate Starts for Ekko14_25:

(Start: 11 @16529 has 120 MA's), (Start: 13 @16538 has 4 MA's), (19, 16601), (20, 16634), (23, 16709), (24, 16712),

Gene: Elspeth_25 Start: 16529, Stop: 16747, Start Num: 11

Candidate Starts for Elspeth_25:

(Start: 11 @16529 has 120 MA's), (Start: 13 @16538 has 4 MA's), (19, 16601), (20, 16634), (23, 16709), (24, 16712),

Gene: EpicDab_20 Start: 14839, Stop: 15075, Start Num: 13

Candidate Starts for EpicDab_20:

(Start: 13 @14839 has 4 MA's), (16, 14875), (17, 14884), (21, 14956),

Gene: Erin_24 Start: 16781, Stop: 16990, Start Num: 13

Candidate Starts for Erin_24:

(Start: 11 @16772 has 120 MA's), (Start: 13 @16781 has 4 MA's), (19, 16844), (23, 16952), (24, 16955), (27, 16976),

Gene: Gabbspett_24 Start: 16894, Stop: 17112, Start Num: 11

Candidate Starts for Gabbspett_24:

(Start: 11 @16894 has 120 MA's), (Start: 13 @16903 has 4 MA's), (19, 16966), (23, 17074), (24, 17077), (27, 17098),

Gene: Gardevoir_24 Start: 16808, Stop: 17026, Start Num: 11

Candidate Starts for Gardevoir_24:

(Start: 11 @16808 has 120 MA's), (Start: 13 @16817 has 4 MA's), (19, 16880), (23, 16988), (24, 16991), (27, 17012),

Gene: Gillker_24 Start: 16782, Stop: 16991, Start Num: 13

Candidate Starts for Gillker_24:

(Start: 11 @16773 has 120 MA's), (Start: 13 @16782 has 4 MA's), (19, 16845), (23, 16953), (24, 16956), (27, 16977),

Gene: Godfather_24 Start: 16864, Stop: 17082, Start Num: 11

Candidate Starts for Godfather_24:

(Start: 11 @16864 has 120 MA's), (Start: 13 @16873 has 4 MA's), (19, 16936), (23, 17044), (24, 17047), (27, 17068),

Gene: GoldenBlanche_24 Start: 16774, Stop: 16992, Start Num: 11

Candidate Starts for GoldenBlanche_24:

(Start: 11 @16774 has 120 MA's), (Start: 13 @16783 has 4 MA's), (19, 16846), (23, 16954), (24, 16957), (27, 16978),

Gene: Goobery_24 Start: 16857, Stop: 17075, Start Num: 11

Candidate Starts for Goobery_24:

(Start: 11 @16857 has 120 MA's), (Start: 13 @16866 has 4 MA's), (19, 16929), (23, 17037), (24, 17040), (27, 17061),

Gene: Goulash_24 Start: 16774, Stop: 16992, Start Num: 11

Candidate Starts for Goulash_24:

(Start: 11 @16774 has 120 MA's), (Start: 13 @16783 has 4 MA's), (19, 16846), (23, 16954), (24, 16957), (27, 16978),

Gene: Grayscar_24 Start: 16865, Stop: 17083, Start Num: 11

Candidate Starts for Grayscar_24:

(Start: 11 @16865 has 120 MA's), (Start: 13 @16874 has 4 MA's), (19, 16937), (23, 17045), (24, 17048), (27, 17069),

Gene: HarperAnne_25 Start: 16528, Stop: 16746, Start Num: 11

Candidate Starts for HarperAnne_25:

(Start: 11 @16528 has 120 MA's), (Start: 13 @16537 has 4 MA's), (19, 16600), (20, 16633), (23, 16708), (24, 16711),

Gene: HeadMave_24 Start: 16860, Stop: 17078, Start Num: 11

Candidate Starts for HeadMave_24:

(Start: 11 @16860 has 120 MA's), (Start: 13 @16869 has 4 MA's), (19, 16932), (23, 17040), (24, 17043), (27, 17064),

Gene: Hernandez44_24 Start: 16889, Stop: 17107, Start Num: 11

Candidate Starts for Hernandez44_24:

(Start: 11 @16889 has 120 MA's), (Start: 13 @16898 has 4 MA's), (19, 16961), (23, 17069), (24, 17072), (27, 17093),

Gene: Horacetta_24 Start: 16774, Stop: 16992, Start Num: 11

Candidate Starts for Horacetta_24:

(Start: 11 @16774 has 120 MA's), (Start: 13 @16783 has 4 MA's), (19, 16846), (23, 16954), (24, 16957), (27, 16978),

Gene: Hulk_24 Start: 16807, Stop: 17025, Start Num: 11

Candidate Starts for Hulk_24:

(Start: 11 @16807 has 120 MA's), (Start: 13 @16816 has 4 MA's), (19, 16879), (23, 16987), (24, 16990), (27, 17011),

Gene: IzzyPants24_24 Start: 16383, Stop: 16601, Start Num: 11

Candidate Starts for IzzyPants24_24:

(Start: 11 @16383 has 120 MA's), (Start: 13 @16392 has 4 MA's), (19, 16455), (20, 16488), (23, 16563), (24, 16566),

Gene: JRok_24 Start: 16794, Stop: 17012, Start Num: 11

Candidate Starts for JRok_24:

(4, 16629), (5, 16638), (Start: 11 @16794 has 120 MA's), (Start: 13 @16803 has 4 MA's), (19, 16866), (20, 16899), (23, 16974), (24, 16977),

Gene: Jahseh_24 Start: 16780, Stop: 16998, Start Num: 11

Candidate Starts for Jahseh_24:

(Start: 11 @16780 has 120 MA's), (Start: 13 @16789 has 4 MA's), (19, 16852), (23, 16960), (24, 16963), (27, 16984),

Gene: JaimeB_24 Start: 16857, Stop: 17075, Start Num: 11

Candidate Starts for JaimeB_24:

(Start: 11 @16857 has 120 MA's), (Start: 13 @16866 has 4 MA's), (19, 16929), (23, 17037), (24, 17040), (27, 17061),

Gene: Jannah_24 Start: 16840, Stop: 17058, Start Num: 11

Candidate Starts for Jannah_24:

(Start: 11 @16840 has 120 MA's), (Start: 13 @16849 has 4 MA's), (19, 16912), (23, 17020), (24, 17023), (27, 17044),

Gene: Jella_26 Start: 16875, Stop: 17093, Start Num: 11

Candidate Starts for Jella_26:

(Start: 11 @16875 has 120 MA's), (Start: 13 @16884 has 4 MA's), (19, 16947), (23, 17055), (24, 17058), (27, 17079),

Gene: Jerky_24 Start: 16939, Stop: 17157, Start Num: 11

Candidate Starts for Jerky_24:

(4, 16783), (5, 16792), (Start: 11 @16939 has 120 MA's), (Start: 13 @16948 has 4 MA's), (19, 17011), (23, 17119), (24, 17122),

Gene: JoBros_24 Start: 16775, Stop: 16993, Start Num: 11

Candidate Starts for JoBros_24:

(Start: 11 @16775 has 120 MA's), (Start: 13 @16784 has 4 MA's), (19, 16847), (23, 16955), (24, 16958), (27, 16979),

Gene: JooneeDee_24 Start: 16879, Stop: 17097, Start Num: 11

Candidate Starts for JooneeDee_24:

(4, 16708), (5, 16717), (Start: 11 @16879 has 120 MA's), (Start: 13 @16888 has 4 MA's), (19, 16951), (20, 16984), (23, 17059), (24, 17062),

Gene: Josuke_24 Start: 16865, Stop: 17083, Start Num: 11

Candidate Starts for Josuke_24:

(Start: 11 @16865 has 120 MA's), (Start: 13 @16874 has 4 MA's), (19, 16937), (23, 17045), (24, 17048), (27, 17069),

Gene: Kaijohn_24 Start: 16837, Stop: 17055, Start Num: 10

Candidate Starts for Kaijohn_24:

(6, 16762), (Start: 10 @16837 has 17 MA's), (Start: 13 @16846 has 4 MA's), (19, 16909), (20, 16942), (22, 16978), (23, 17017), (24, 17020),

Gene: KayPaulus_24 Start: 16867, Stop: 17085, Start Num: 10

Candidate Starts for KayPaulus_24:

(6, 16792), (Start: 10 @16867 has 17 MA's), (Start: 13 @16876 has 4 MA's), (18, 16924), (19, 16939), (20, 16972), (23, 17047), (24, 17050), (27, 17071),

Gene: Kevanna_24 Start: 16853, Stop: 17071, Start Num: 10

Candidate Starts for Kevanna_24:

(Start: 10 @16853 has 17 MA's), (Start: 13 @16862 has 4 MA's), (19, 16925), (23, 17033), (24, 17036),

Gene: KillerTomato_24 Start: 16854, Stop: 17072, Start Num: 10

Candidate Starts for KillerTomato_24:

(Start: 10 @16854 has 17 MA's), (Start: 13 @16863 has 4 MA's), (19, 16926), (23, 17034), (24, 17037),

Gene: Kojax4_24 Start: 16864, Stop: 17082, Start Num: 11

Candidate Starts for Kojax4_24:

(Start: 11 @16864 has 120 MA's), (Start: 13 @16873 has 4 MA's), (19, 16936), (23, 17044), (24, 17047), (27, 17068),

Gene: KyriosFaba_24 Start: 16774, Stop: 16992, Start Num: 11

Candidate Starts for KyriosFaba_24:

(Start: 11 @16774 has 120 MA's), (Start: 13 @16783 has 4 MA's), (19, 16846), (23, 16954), (24, 16957), (27, 16978),

Gene: LaviMo_24 Start: 16865, Stop: 17083, Start Num: 11

Candidate Starts for LaviMo_24:

(Start: 11 @16865 has 120 MA's), (Start: 13 @16874 has 4 MA's), (19, 16937), (23, 17045), (24, 17048), (27, 17069),

Gene: Leafy_24 Start: 16819, Stop: 17037, Start Num: 10

Candidate Starts for Leafy_24:

(Start: 10 @16819 has 17 MA's), (Start: 13 @16828 has 4 MA's), (19, 16891), (23, 16999), (24, 17002), (27, 17023),

Gene: LemonPepper_24 Start: 16774, Stop: 16992, Start Num: 11

Candidate Starts for LemonPepper_24:

(Start: 11 @16774 has 120 MA's), (Start: 13 @16783 has 4 MA's), (19, 16846), (23, 16954), (24, 16957), (27, 16978),

Gene: LionelHutz_24 Start: 16860, Stop: 17078, Start Num: 11

Candidate Starts for LionelHutz_24:

(Start: 11 @16860 has 120 MA's), (Start: 13 @16869 has 4 MA's), (19, 16932), (23, 17040), (24, 17043), (27, 17064),

Gene: Livingwater_24 Start: 16862, Stop: 17080, Start Num: 10

Candidate Starts for Livingwater_24:

(Start: 10 @16862 has 17 MA's), (Start: 13 @16871 has 4 MA's), (19, 16934), (23, 17042), (24, 17045), (27, 17066),

Gene: Loca_24 Start: 16887, Stop: 17105, Start Num: 10

Candidate Starts for Loca_24:

(Start: 10 @16887 has 17 MA's), (Start: 13 @16896 has 4 MA's), (19, 16959), (23, 17067), (24, 17070), (27, 17091),

Gene: Lola20_24 Start: 16800, Stop: 17018, Start Num: 11

Candidate Starts for Lola20_24:

(Start: 11 @16800 has 120 MA's), (Start: 13 @16809 has 4 MA's), (19, 16872), (23, 16980), (24, 16983), (27, 17004),

Gene: Lunatic_24 Start: 16327, Stop: 16545, Start Num: 11

Candidate Starts for Lunatic_24:

(Start: 11 @16327 has 120 MA's), (Start: 13 @16336 has 4 MA's), (19, 16399), (20, 16432), (23, 16507), (24, 16510),

Gene: Luxx_24 Start: 16875, Stop: 17093, Start Num: 11

Candidate Starts for Luxx_24:

(Start: 11 @16875 has 120 MA's), (Start: 13 @16884 has 4 MA's), (19, 16947), (23, 17055), (24, 17058), (27, 17079),

Gene: Madebyisha_24 Start: 16939, Stop: 17157, Start Num: 11

Candidate Starts for Madebyisha_24:

(4, 16783), (5, 16792), (Start: 11 @16939 has 120 MA's), (Start: 13 @16948 has 4 MA's), (19, 17011), (23, 17119), (24, 17122),

Gene: Majesty_24 Start: 16856, Stop: 17074, Start Num: 11

Candidate Starts for Majesty_24:

(Start: 11 @16856 has 120 MA's), (Start: 13 @16865 has 4 MA's), (19, 16928), (23, 17036), (24, 17039), (27, 17060),

Gene: ManAs_24 Start: 16774, Stop: 16992, Start Num: 11

Candidate Starts for ManAs_24:

(Start: 11 @16774 has 120 MA's), (Start: 13 @16783 has 4 MA's), (19, 16846), (23, 16954), (24, 16957), (27, 16978),

Gene: Maneater_24 Start: 16839, Stop: 17057, Start Num: 11

Candidate Starts for Maneater_24:

(Start: 11 @16839 has 120 MA's), (Start: 13 @16848 has 4 MA's), (19, 16911), (23, 17019), (24, 17022), (27, 17043),

Gene: Marichuy_25 Start: 16890, Stop: 17108, Start Num: 11

Candidate Starts for Marichuy_25:

(Start: 11 @16890 has 120 MA's), (Start: 13 @16899 has 4 MA's), (19, 16962), (23, 17070), (24, 17073), (27, 17094),

Gene: MasterPitts_24 Start: 16797, Stop: 17015, Start Num: 11

Candidate Starts for MasterPitts_24:

(Start: 11 @16797 has 120 MA's), (Start: 13 @16806 has 4 MA's), (19, 16869), (23, 16977), (24, 16980), (27, 17001),

Gene: Mauilvory_23 Start: 16250, Stop: 16468, Start Num: 11

Candidate Starts for Mauilvory_23:

(Start: 11 @16250 has 120 MA's), (Start: 13 @16259 has 4 MA's), (19, 16322), (20, 16355), (23, 16430), (24, 16433),

Gene: McShie_24 Start: 16846, Stop: 17064, Start Num: 11

Candidate Starts for McShie_24:

(4, 16681), (5, 16690), (Start: 11 @16846 has 120 MA's), (Start: 13 @16855 has 4 MA's), (19, 16918), (20, 16951), (23, 17026), (24, 17029),

Gene: MelBee03_24 Start: 16853, Stop: 17071, Start Num: 10

Candidate Starts for MelBee03_24:

(Start: 10 @16853 has 17 MA's), (Start: 13 @16862 has 4 MA's), (19, 16925), (23, 17033), (24, 17036),

Gene: Miaurora_24 Start: 16444, Stop: 16662, Start Num: 11

Candidate Starts for Miaurora_24:

(Start: 11 @16444 has 120 MA's), (Start: 13 @16453 has 4 MA's), (19, 16516), (20, 16549), (23, 16624), (24, 16627),

Gene: Minima_24 Start: 16774, Stop: 16992, Start Num: 11

Candidate Starts for Minima_24:

(Start: 11 @16774 has 120 MA's), (Start: 13 @16783 has 4 MA's), (19, 16846), (23, 16954), (24, 16957), (27, 16978),

Gene: MirimarMandM_24 Start: 16922, Stop: 17140, Start Num: 11

Candidate Starts for MirimarMandM_24:

(4, 16751), (5, 16760), (Start: 11 @16922 has 120 MA's), (Start: 13 @16931 has 4 MA's), (19, 16994), (20, 17027), (23, 17102), (24, 17105),

Gene: MrGreen_24 Start: 16833, Stop: 17051, Start Num: 10

Candidate Starts for MrGreen_24:

(1, 16536), (2, 16569), (3, 16641), (6, 16758), (Start: 10 @16833 has 17 MA's), (Start: 13 @16842 has 4 MA's), (18, 16890), (19, 16905), (23, 17013), (24, 17016), (27, 17037),

Gene: Myram_24 Start: 16774, Stop: 16992, Start Num: 11

Candidate Starts for Myram_24:

(Start: 11 @16774 has 120 MA's), (Start: 13 @16783 has 4 MA's), (19, 16846), (23, 16954), (24, 16957), (27, 16978),

Gene: Namsahir_26 Start: 16588, Stop: 16806, Start Num: 11

Candidate Starts for Namsahir_26:

(Start: 11 @16588 has 120 MA's), (Start: 13 @16597 has 4 MA's), (19, 16660), (20, 16693), (23, 16768), (24, 16771),

Gene: NeumannU_24 Start: 16857, Stop: 17075, Start Num: 11

Candidate Starts for NeumannU_24:

(Start: 11 @16857 has 120 MA's), (Start: 13 @16866 has 4 MA's), (19, 16929), (23, 17037), (24, 17040), (27, 17061),

Gene: Niffler_24 Start: 16435, Stop: 16653, Start Num: 11

Candidate Starts for Niffler_24:

(4, 16264), (5, 16273), (Start: 11 @16435 has 120 MA's), (Start: 13 @16444 has 4 MA's), (19, 16507), (20, 16540), (23, 16615), (24, 16618),

Gene: Nobel_24 Start: 16461, Stop: 16679, Start Num: 11

Candidate Starts for Nobel_24:

(4, 16290), (5, 16299), (Start: 11 @16461 has 120 MA's), (Start: 13 @16470 has 4 MA's), (19, 16533), (20, 16566), (23, 16641), (24, 16644),

Gene: Noelani_24 Start: 16760, Stop: 16978, Start Num: 9

Candidate Starts for Noelani_24:

(4, 16598), (5, 16607), (7, 16694), (Start: 9 @16760 has 2 MA's), (12, 16766), (Start: 13 @16769 has 4 MA's), (19, 16832), (20, 16865), (22, 16901), (23, 16940), (24, 16943), (26, 16955),

Gene: Oaklynn_24 Start: 16797, Stop: 17015, Start Num: 11

Candidate Starts for Oaklynn_24:

(Start: 11 @16797 has 120 MA's), (Start: 13 @16806 has 4 MA's), (19, 16869), (20, 16902), (23, 16977), (24, 16980),

Gene: Octopus_24 Start: 16780, Stop: 16998, Start Num: 11

Candidate Starts for Octopus_24:

(Start: 11 @16780 has 120 MA's), (Start: 13 @16789 has 4 MA's), (19, 16852), (23, 16960), (24, 16963), (27, 16984),

Gene: OdetoJoy_24 Start: 16939, Stop: 17157, Start Num: 11

Candidate Starts for OdetoJoy_24:

(4, 16783), (5, 16792), (Start: 11 @16939 has 120 MA's), (Start: 13 @16948 has 4 MA's), (19, 17011), (23, 17119), (24, 17122),

Gene: Otwor_24 Start: 16866, Stop: 17084, Start Num: 11

Candidate Starts for Otwor_24:

(Start: 11 @16866 has 120 MA's), (Start: 13 @16875 has 4 MA's), (19, 16938), (23, 17046), (24, 17049), (27, 17070),

Gene: Owens_24 Start: 16857, Stop: 17075, Start Num: 11

Candidate Starts for Owens_24:

(Start: 11 @16857 has 120 MA's), (Start: 13 @16866 has 4 MA's), (19, 16929), (23, 17037), (24, 17040), (27, 17061),

Gene: PaoPu_24 Start: 16774, Stop: 16992, Start Num: 11

Candidate Starts for PaoPu_24:

(Start: 11 @16774 has 120 MA's), (Start: 13 @16783 has 4 MA's), (19, 16846), (23, 16954), (24, 16957), (27, 16978),

Gene: Picconator_24 Start: 16857, Stop: 17075, Start Num: 11

Candidate Starts for Picconator_24:

(Start: 11 @16857 has 120 MA's), (Start: 13 @16866 has 4 MA's), (19, 16929), (23, 17037), (24, 17040), (27, 17061),

Gene: Picnic_24 Start: 16774, Stop: 16992, Start Num: 11

Candidate Starts for Picnic_24:

(Start: 11 @16774 has 120 MA's), (Start: 13 @16783 has 4 MA's), (19, 16846), (23, 16954), (24, 16957), (27, 16978),

Gene: PoRanda_24 Start: 16922, Stop: 17140, Start Num: 11

Candidate Starts for PoRanda_24:

(4, 16751), (5, 16760), (Start: 11 @16922 has 120 MA's), (Start: 13 @16931 has 4 MA's), (19, 16994), (20, 17027), (23, 17102), (24, 17105),

Gene: Pondwater_24 Start: 16774, Stop: 16992, Start Num: 11

Candidate Starts for Pondwater_24:

(Start: 11 @16774 has 120 MA's), (Start: 13 @16783 has 4 MA's), (19, 16846), (23, 16954), (24, 16957), (27, 16978),

Gene: Publix_25 Start: 16588, Stop: 16806, Start Num: 11

Candidate Starts for Publix_25:

(Start: 11 @16588 has 120 MA's), (Start: 13 @16597 has 4 MA's), (19, 16660), (20, 16693), (23, 16768), (24, 16771),

Gene: Puddles3_24 Start: 16774, Stop: 16992, Start Num: 11

Candidate Starts for Puddles3_24:

(Start: 11 @16774 has 120 MA's), (Start: 13 @16783 has 4 MA's), (19, 16846), (23, 16954), (24, 16957), (27, 16978),

Gene: PuffyCat_24 Start: 16378, Stop: 16596, Start Num: 11

Candidate Starts for PuffyCat_24:

(Start: 11 @16378 has 120 MA's), (Start: 13 @16387 has 4 MA's), (19, 16450), (20, 16483), (23, 16558), (24, 16561),

Gene: Quaker_24 Start: 16862, Stop: 17080, Start Num: 10

Candidate Starts for Quaker_24:

(Start: 10 @16862 has 17 MA's), (Start: 13 @16871 has 4 MA's), (19, 16934), (23, 17042), (24, 17045), (27, 17066),

Gene: Rhogar_24 Start: 16860, Stop: 17078, Start Num: 11

Candidate Starts for Rhogar_24:

(Start: 11 @16860 has 120 MA's), (Start: 13 @16869 has 4 MA's), (19, 16932), (23, 17040), (24, 17043), (27, 17064),

Gene: Rhysand_24 Start: 16865, Stop: 17083, Start Num: 11

Candidate Starts for Rhysand_24:

(Start: 11 @16865 has 120 MA's), (Start: 13 @16874 has 4 MA's), (19, 16937), (23, 17045), (24, 17048), (27, 17069),

Gene: Rira_24 Start: 16383, Stop: 16601, Start Num: 11

Candidate Starts for Rira_24:

(Start: 11 @16383 has 120 MA's), (Start: 13 @16392 has 4 MA's), (19, 16455), (20, 16488), (23, 16563), (24, 16566),

Gene: RoscoWindex_24 Start: 16865, Stop: 17083, Start Num: 11

Candidate Starts for RoscoWindex_24:

(Start: 11 @16865 has 120 MA's), (Start: 13 @16874 has 4 MA's), (19, 16937), (23, 17045), (24, 17048), (27, 17069),

Gene: Sachet_24 Start: 16774, Stop: 16992, Start Num: 11

Candidate Starts for Sachet_24:

(Start: 11 @16774 has 120 MA's), (Start: 13 @16783 has 4 MA's), (19, 16846), (23, 16954), (24, 16957), (27, 16978),

Gene: Sage7_24 Start: 16864, Stop: 17082, Start Num: 11

Candidate Starts for Sage7_24:

(Start: 11 @16864 has 120 MA's), (Start: 13 @16873 has 4 MA's), (19, 16936), (23, 17044), (24, 17047), (27, 17068),

Gene: SantasSleigh_24 Start: 16888, Stop: 17106, Start Num: 11

Candidate Starts for SantasSleigh_24:

(Start: 11 @16888 has 120 MA's), (Start: 13 @16897 has 4 MA's), (19, 16960), (23, 17068), (24, 17071), (27, 17092),

Gene: Sara_24 Start: 16774, Stop: 16992, Start Num: 11

Candidate Starts for Sara_24:

(Start: 11 @16774 has 120 MA's), (Start: 13 @16783 has 4 MA's), (19, 16846), (23, 16954), (24, 16957), (27, 16978),

Gene: Scamander_24 Start: 16864, Stop: 17082, Start Num: 11

Candidate Starts for Scamander_24:

(Start: 11 @16864 has 120 MA's), (Start: 13 @16873 has 4 MA's), (19, 16936), (23, 17044), (24, 17047), (27, 17068),

Gene: Scrunchy_24 Start: 16857, Stop: 17075, Start Num: 11

Candidate Starts for Scrunchy_24:

(Start: 11 @16857 has 120 MA's), (Start: 13 @16866 has 4 MA's), (19, 16929), (23, 17037), (24, 17040), (27, 17061),

Gene: SeaWolves_24 Start: 16774, Stop: 16992, Start Num: 11

Candidate Starts for SeaWolves_24:

(Start: 11 @16774 has 120 MA's), (Start: 13 @16783 has 4 MA's), (19, 16846), (23, 16954), (24, 16957), (27, 16978),

Gene: Sippinontea_24 Start: 16885, Stop: 17103, Start Num: 10

Candidate Starts for Sippinontea_24:

(6, 16810), (Start: 10 @16885 has 17 MA's), (Start: 13 @16894 has 4 MA's), (18, 16942), (19, 16957), (20, 16990), (23, 17065), (24, 17068), (27, 17089),

Gene: Slentz_24 Start: 16857, Stop: 17075, Start Num: 11

Candidate Starts for Slentz_24:

(Start: 11 @16857 has 120 MA's), (Start: 13 @16866 has 4 MA's), (19, 16929), (23, 17037), (24, 17040), (27, 17061),

Gene: Slizam_24 Start: 16383, Stop: 16601, Start Num: 11

Candidate Starts for Slizam_24:

(Start: 11 @16383 has 120 MA's), (Start: 13 @16392 has 4 MA's), (19, 16455), (20, 16488), (23, 16563), (24, 16566),

Gene: Snuffles_26 Start: 16736, Stop: 16954, Start Num: 11

Candidate Starts for Snuffles_26:

(Start: 11 @16736 has 120 MA's), (Start: 13 @16745 has 4 MA's), (19, 16808), (20, 16841), (23, 16916), (24, 16919),

Gene: Stem_24 Start: 16393, Stop: 16611, Start Num: 11

Candidate Starts for Stem_24:

(4, 16222), (5, 16231), (Start: 11 @16393 has 120 MA's), (Start: 13 @16402 has 4 MA's), (19, 16465), (20, 16498), (23, 16573), (24, 16576),

Gene: TeddyBoy_24 Start: 16861, Stop: 17079, Start Num: 11

Candidate Starts for TeddyBoy_24:

(Start: 11 @16861 has 120 MA's), (Start: 13 @16870 has 4 MA's), (19, 16933), (23, 17041), (24, 17044), (27, 17065),

Gene: TimoTea_24 Start: 16839, Stop: 17057, Start Num: 11

Candidate Starts for TimoTea_24:

(Start: 11 @16839 has 120 MA's), (Start: 13 @16848 has 4 MA's), (19, 16911), (23, 17019), (24, 17022), (27, 17043),

Gene: TinyTruffula_24 Start: 16462, Stop: 16680, Start Num: 11

Candidate Starts for TinyTruffula_24:

(Start: 11 @16462 has 120 MA's), (Start: 13 @16471 has 4 MA's), (19, 16534), (20, 16567), (23, 16642), (24, 16645),

Gene: TlaliMex_26 Start: 16949, Stop: 17167, Start Num: 11

Candidate Starts for TlaliMex_26:

(Start: 11 @16949 has 120 MA's), (Start: 13 @16958 has 4 MA's), (19, 17021), (20, 17054), (23, 17129), (24, 17132),

Gene: TomBrady12_25 Start: 16565, Stop: 16783, Start Num: 11

Candidate Starts for TomBrady12_25:

(Start: 11 @16565 has 120 MA's), (Start: 13 @16574 has 4 MA's), (19, 16637), (20, 16670), (23, 16745), (24, 16748),

Gene: Trackstar_24 Start: 16445, Stop: 16663, Start Num: 11

Candidate Starts for Trackstar_24:

(Start: 11 @16445 has 120 MA's), (Start: 13 @16454 has 4 MA's), (19, 16517), (20, 16550), (23, 16625), (24, 16628),

Gene: Trireme_24 Start: 16442, Stop: 16660, Start Num: 11

Candidate Starts for Trireme_24:

(Start: 11 @16442 has 120 MA's), (Start: 13 @16451 has 4 MA's), (19, 16514), (20, 16547), (23, 16622), (24, 16625),

Gene: Tyrellus_24 Start: 16857, Stop: 17075, Start Num: 11

Candidate Starts for Tyrellus_24:

(Start: 11 @16857 has 120 MA's), (Start: 13 @16866 has 4 MA's), (19, 16929), (23, 17037), (24, 17040), (27, 17061),

Gene: Upsilon_24 Start: 16922, Stop: 17140, Start Num: 11

Candidate Starts for Upsilon_24:

(4, 16751), (5, 16760), (Start: 11 @16922 has 120 MA's), (Start: 13 @16931 has 4 MA's), (19, 16994), (20, 17027), (23, 17102), (24, 17105),

Gene: Vanisius_24 Start: 16865, Stop: 17083, Start Num: 11

Candidate Starts for Vanisius_24:

(Start: 11 @16865 has 120 MA's), (Start: 13 @16874 has 4 MA's), (19, 16937), (23, 17045), (24, 17048), (27, 17069),

Gene: VitulaEligans_24 Start: 16946, Stop: 17164, Start Num: 11

Candidate Starts for VitulaEligans_24:

(4, 16790), (5, 16799), (Start: 11 @16946 has 120 MA's), (Start: 13 @16955 has 4 MA's), (19, 17018), (23, 17126), (24, 17129),

Gene: Witch_24 Start: 16775, Stop: 16993, Start Num: 11

Candidate Starts for Witch_24:

(Start: 11 @16775 has 120 MA's), (Start: 13 @16784 has 4 MA's), (19, 16847), (23, 16955), (24, 16958), (27, 16979),

Gene: Wolfpack_24 Start: 16867, Stop: 17085, Start Num: 10

Candidate Starts for Wolfpack_24:

(6, 16792), (Start: 10 @16867 has 17 MA's), (Start: 13 @16876 has 4 MA's), (18, 16924), (19, 16939), (20, 16972), (23, 17047), (24, 17050), (27, 17071),

Gene: Yami_24 Start: 16336, Stop: 16554, Start Num: 11

Candidate Starts for Yami_24:

(Start: 11 @16336 has 120 MA's), (Start: 13 @16345 has 4 MA's), (19, 16408), (20, 16441), (23, 16516), (24, 16519),

Gene: Yasuo_24 Start: 16845, Stop: 17063, Start Num: 11

Candidate Starts for Yasuo_24:

(Start: 11 @16845 has 120 MA's), (Start: 13 @16854 has 4 MA's), (19, 16917), (23, 17025), (24, 17028), (27, 17049),

Gene: YertPhresh_24 Start: 16774, Stop: 16992, Start Num: 11

Candidate Starts for YertPhresh_24:

(Start: 11 @16774 has 120 MA's), (Start: 13 @16783 has 4 MA's), (19, 16846), (23, 16954), (24, 16957), (27, 16978),

Gene: Yubaba_24 Start: 16808, Stop: 17026, Start Num: 11

Candidate Starts for Yubaba_24:

(Start: 11 @16808 has 120 MA's), (Start: 13 @16817 has 4 MA's), (19, 16880), (23, 16988), (24, 16991), (27, 17012),

Gene: Zahlia_24 Start: 16893, Stop: 17111, Start Num: 11

Candidate Starts for Zahlia_24:

(Start: 11 @16893 has 120 MA's), (Start: 13 @16902 has 4 MA's), (19, 16965), (23, 17073), (24, 17076), (27, 17097),