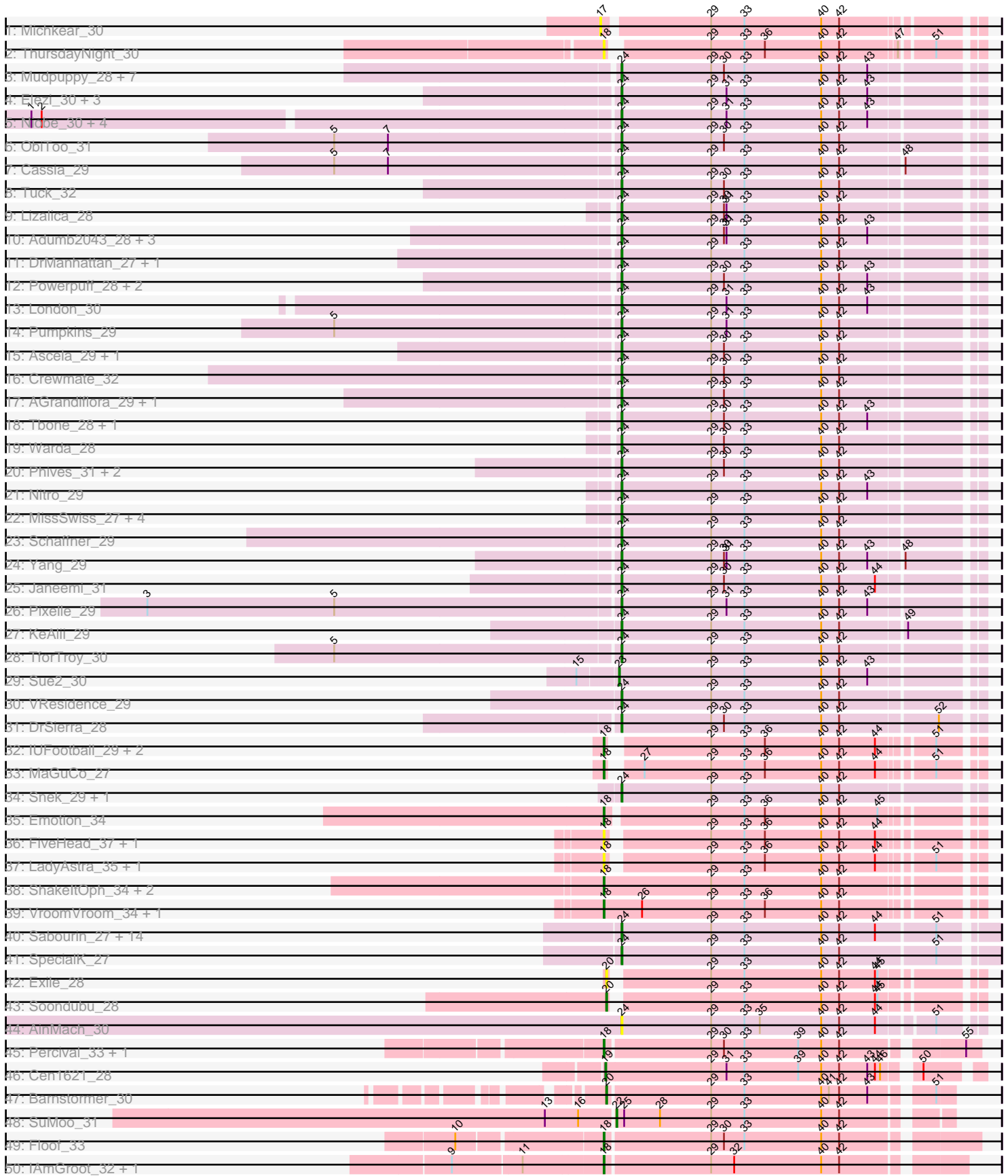
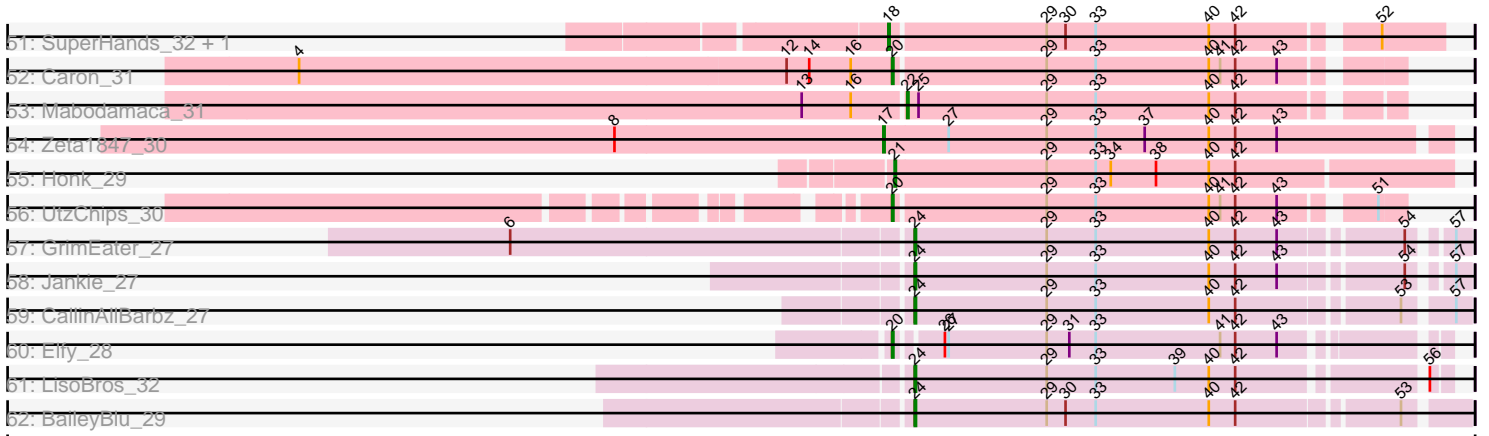


Pham 311390



Pham 311390



Note: Tracks are now grouped by subcluster and scaled. Switching in subcluster is indicated by changes in track color. Track scale is now set by default to display the region 30 bp upstream of start 1 to 30 bp downstream of the last possible start. If this default region is judged to be packed too tightly with annotated starts, the track will be further scaled to only show that region of the ORF with annotated starts. This action will be indicated by adding "Zoomed" to the title. For starts, yellow indicates the location of called starts comprised solely of Glimmer/GeneMark auto-annotations, green indicates the location of called starts with at least 1 manual gene annotation.

Pham 311390 Report

This analysis was run 06/27/26 on database version 652.

Pham number 311390 has 116 members, 22 are drafts.

Phages represented in each track:

- Track 1 : Michkear_30
- Track 2 : ThursdayNight_30
- Track 3 : Mudpuppy_28, Cyan_28, Kaylissa_28, Tutumahutu_28, JohnDoe_28, Simpson_30, Flutur_28, Joemato_28
- Track 4 : Elezi_30, Subaru_31, Tian_29, Amyev_29
- Track 5 : Niobe_30, Asa16_30, Jstan_32, Eraser_30, Skelbel_31
- Track 6 : ObiToo_31
- Track 7 : Cassia_29
- Track 8 : Tuck_32
- Track 9 : Lizalica_28
- Track 10 : Adumb2043_28, Turab_28, Amploria_28, AEgle_28
- Track 11 : DrManhattan_27, Adolin_27
- Track 12 : Powerpuff_28, YesChef_28, Wildwest_29
- Track 13 : London_30
- Track 14 : Pumpkins_29
- Track 15 : Ascela_29, Iter_29
- Track 16 : Crewmate_32
- Track 17 : AGrandiflora_29, Lego_28
- Track 18 : Tbone_28, Tallboi_29
- Track 19 : Warda_28
- Track 20 : Phives_31, Berrie_30, Community_30
- Track 21 : Nitro_29
- Track 22 : MissSwiss_27, Reedo_28, JuneStar_29, PandaPo_27, IttyBittyPiggy_29
- Track 23 : Schaffner_29
- Track 24 : Yang_29
- Track 25 : Janeemi_31
- Track 26 : Pixelle_29
- Track 27 : KeAlii_29
- Track 28 : TforTroy_30
- Track 29 : Sue2_30
- Track 30 : VResidence_29
- Track 31 : DrSierra_28
- Track 32 : IUFootball_29, Liebe_29, Maureen_29
- Track 33 : MaGuCo_27
- Track 34 : Snek_29, Tweety19_29
- Track 35 : Emotion_34
- Track 36 : FiveHead_37, JohnThicc_36

- Track 37 : LadyAstra_35, Origami_35
- Track 38 : ShakeltOph_34, JasmineDragon_34, MiniMommy_34
- Track 39 : VroomVroom_34, AceofSpades_34
- Track 40 : Sabourin_27, Sooty_27, Gumpizza_27, Stuu_27, Ashes_27, Halsey_27, Giorgio_27, Moss_27, Beaupre_27, Mysterium_27, RockScotty_27, Donkey_27, Kalimba_27, Cappuccino_27, Gambol_27
- Track 41 : SpecialK_27
- Track 42 : Exile_28
- Track 43 : Soondubu_28
- Track 44 : AinMach_30
- Track 45 : Percival_33, Gretchen_33
- Track 46 : Cen1621_28
- Track 47 : Barnstormer_30
- Track 48 : SuMoo_31
- Track 49 : Floof_33
- Track 50 : IAmGroot_32, GardenState_32
- Track 51 : SuperHands_32, Forester_32
- Track 52 : Caron_31
- Track 53 : Mabodamaca_31
- Track 54 : Zeta1847_30
- Track 55 : Honk_29
- Track 56 : UtzChips_30
- Track 57 : GrimEater_27
- Track 58 : Jankie_27
- Track 59 : CallinAllBarbz_27
- Track 60 : Elfy_28
- Track 61 : LisoBros_32
- Track 62 : BaileyBlu_29

Summary of Final Annotations (See graph section above for start numbers):

The start number called the most often in the published annotations is 24, it was called in 68 of the 94 non-draft genes in the pham.

Genes that call this "Most Annotated" start:

• AEgle_28, AGrandiflora_29, Adolin_27, Adumb2043_28, AinMach_30, Amploria_28, Amyev_29, Asa16_30, Ascela_29, Ashes_27, BaileyBlu_29, Beaupre_27, Berrie_30, CallinAllBarbz_27, Cappuccino_27, Cassia_29, Community_30, Crewmate_32, Cyan_28, Donkey_27, DrManhattan_27, DrSierra_28, Elezi_30, Eraser_30, Flutur_28, Gambol_27, Giorgio_27, GrimEater_27, Gumpizza_27, Halsey_27, Iter_29, IttyBittyPiggy_29, Janeemi_31, Jankie_27, Joemato_28, JohnDoe_28, Jstan_32, JuneStar_29, Kalimba_27, Kaylissa_28, KeAlii_29, Lego_28, LisoBros_32, Lizalica_28, London_30, MissSwiss_27, Moss_27, Mudpuppy_28, Mysterium_27, Niobe_30, Nitro_29, ObiToo_31, PandaPo_27, Phives_31, Pixelle_29, Powerpuff_28, Pumpkins_29, Reedo_28, RockScotty_27, Sabourin_27, Schaffner_29, Simpson_30, Skelbel_31, Snek_29, Sooty_27, SpecialK_27, Stuu_27, Subaru_31, Tallboi_29, Tbone_28, TforTroy_30, Tian_29, Tuck_32, Turab_28, Tutumahutu_28, Tweety19_29, VResidence_29, Warda_28, Wildwest_29, Yang_29, YesChef_28,

Genes that have the "Most Annotated" start but do not call it:

•

Genes that do not have the "Most Annotated" start:

• AceofSpades_34, Barnstormer_30, Caron_31, Cen1621_28, Elfy_28, Emotion_34, Exile_28, FiveHead_37, Floof_33, Forester_32, GardenState_32, Gretchen_33, Honk_29, IAmGroot_32, IUFootball_29, JasmineDragon_34, JohnThicc_36, LadyAstra_35, Liebe_29, MaGuCo_27, Mabodamaca_31, Maureen_29, Michkear_30, MiniMommy_34, Origami_35, Percival_33, ShakeltOph_34, Soondubu_28, SuMoo_31, Sue2_30, SuperHands_32, ThursdayNight_30, UtzChips_30, VroomVroom_34, Zeta1847_30,

Summary by start number:

Start 17:

- Found in 2 of 116 (1.7%) of genes in pham
- Manual Annotations of this start: 1 of 94
- Called 100.0% of time when present
- Phage (with cluster) where this start called: Michkear_30 (AZ), Zeta1847_30 (EH),

Start 18:

- Found in 22 of 116 (19.0%) of genes in pham
- Manual Annotations of this start: 15 of 94
- Called 100.0% of time when present
- Phage (with cluster) where this start called: AceofSpades_34 (AZ4), Emotion_34 (AZ4), FiveHead_37 (AZ4), Floof_33 (EH), Forester_32 (EH), GardenState_32 (EH), Gretchen_33 (EH), IAmGroot_32 (EH), IUFootball_29 (AZ2), JasmineDragon_34 (AZ4), JohnThicc_36 (AZ4), LadyAstra_35 (AZ4), Liebe_29 (AZ2), MaGuCo_27 (AZ2), Maureen_29 (AZ2), MiniMommy_34 (AZ4), Origami_35 (AZ4), Percival_33 (EH), ShakeltOph_34 (AZ4), SuperHands_32 (EH), ThursdayNight_30 (AZ), VroomVroom_34 (AZ4),

Start 19:

- Found in 1 of 116 (0.9%) of genes in pham
- Manual Annotations of this start: 1 of 94
- Called 100.0% of time when present
- Phage (with cluster) where this start called: Cen1621_28 (EH),

Start 20:

- Found in 6 of 116 (5.2%) of genes in pham
- Manual Annotations of this start: 5 of 94
- Called 100.0% of time when present
- Phage (with cluster) where this start called: Barnstormer_30 (EH), Caron_31 (EH), Elfy_28 (FP), Exile_28 (AZ6), Soondubu_28 (AZ6), UtzChips_30 (EH),

Start 21:

- Found in 1 of 116 (0.9%) of genes in pham
- Manual Annotations of this start: 1 of 94
- Called 100.0% of time when present
- Phage (with cluster) where this start called: Honk_29 (EH),

Start 22:

- Found in 2 of 116 (1.7%) of genes in pham
- Manual Annotations of this start: 2 of 94

- Called 100.0% of time when present
- Phage (with cluster) where this start called: Mabodamaca_31 (EH), SuMoo_31 (EH),

Start 23:

- Found in 1 of 116 (0.9%) of genes in pham
- Manual Annotations of this start: 1 of 94
- Called 100.0% of time when present
- Phage (with cluster) where this start called: Sue2_30 (AZ1),

Start 24:

- Found in 81 of 116 (69.8%) of genes in pham
- Manual Annotations of this start: 68 of 94
- Called 100.0% of time when present
- Phage (with cluster) where this start called: AEgle_28 (AZ1), AGrandiflora_29 (AZ1), Adolin_27 (AZ1), Adumb2043_28 (AZ1), AinMach_30 (AZ7), Amploria_28 (AZ1), Amyev_29 (AZ1), Asa16_30 (AZ1), Ascela_29 (AZ1), Ashes_27 (AZ5), BaileyBlu_29 (FP), Beaupre_27 (AZ5), Berrie_30 (AZ1), CallinAllBarbz_27 (FP), Cappuccino_27 (AZ5), Cassia_29 (AZ1), Community_30 (AZ1), Crewmate_32 (AZ1), Cyan_28 (AZ1), Donkey_27 (AZ5), DrManhattan_27 (AZ1), DrSierra_28 (AZ1), Elezi_30 (AZ1), Eraser_30 (AZ1), Flutur_28 (AZ), Gambol_27 (AZ5), Giorgio_27 (AZ5), GrimEater_27 (FP), Gumpizza_27 (AZ5), Halsey_27 (AZ5), Iter_29 (AZ1), IttyBittyPiggy_29 (AZ1), Janeemi_31 (AZ1), Jankie_27 (FP), Joemato_28 (AZ1), JohnDoe_28 (AZ1), Jstan_32 (AZ1), JuneStar_29 (AZ1), Kalimba_27 (AZ5), Kaylissa_28 (AZ1), KeAlii_29 (AZ1), Lego_28 (AZ1), LisoBros_32 (FP), Lizalica_28 (AZ1), London_30 (AZ1), MissSwiss_27 (AZ1), Moss_27 (AZ5), Mudpuppy_28 (AZ1), Mysterium_27 (AZ5), Niobe_30 (AZ1), Nitro_29 (AZ1), ObiToo_31 (AZ1), PandaPo_27 (AZ1), Phives_31 (AZ1), Pixelle_29 (AZ1), Powerpuff_28 (AZ1), Pumpkins_29 (AZ1), Reedo_28 (AZ1), RockScotty_27 (AZ5), Sabourin_27 (AZ5), Schaffner_29 (AZ1), Simpson_30 (AZ1), Skelbel_31 (AZ1), Snek_29 (AZ3), Sooty_27 (AZ5), SpecialK_27 (AZ5), Stuu_27 (AZ5), Subaru_31 (AZ1), Tallboi_29 (AZ1), Tbone_28 (AZ1), TforTroy_30 (AZ1), Tian_29 (AZ1), Tuck_32 (AZ1), Turab_28 (AZ1), Tutumahutu_28 (AZ1), Tweety19_29 (AZ3), VResidence_29 (AZ1), Warda_28 (AZ1), Wildwest_29 (AZ1), Yang_29 (AZ1), YesChef_28 (AZ1),

Summary by clusters:

There are 10 clusters represented in this pham: FP, AZ, EH, AZ1, AZ2, AZ3, AZ4, AZ5, AZ6, AZ7,

Info for manual annotations of cluster AZ1:

- Start number 23 was manually annotated 1 time for cluster AZ1.
- Start number 24 was manually annotated 45 times for cluster AZ1.

Info for manual annotations of cluster AZ2:

- Start number 18 was manually annotated 3 times for cluster AZ2.

Info for manual annotations of cluster AZ3:

- Start number 24 was manually annotated 2 times for cluster AZ3.

Info for manual annotations of cluster AZ4:

- Start number 18 was manually annotated 5 times for cluster AZ4.

Info for manual annotations of cluster AZ5:

- Start number 24 was manually annotated 16 times for cluster AZ5.

Info for manual annotations of cluster AZ6:

- Start number 20 was manually annotated 1 time for cluster AZ6.

Info for manual annotations of cluster EH:

- Start number 17 was manually annotated 1 time for cluster EH.
- Start number 18 was manually annotated 7 times for cluster EH.
- Start number 19 was manually annotated 1 time for cluster EH.
- Start number 20 was manually annotated 3 times for cluster EH.
- Start number 21 was manually annotated 1 time for cluster EH.
- Start number 22 was manually annotated 2 times for cluster EH.

Info for manual annotations of cluster FP:

- Start number 20 was manually annotated 1 time for cluster FP.
- Start number 24 was manually annotated 5 times for cluster FP.

Gene Information:

Gene: AEgle_28 Start: 22637, Stop: 23041, Start Num: 24

Candidate Starts for AEgle_28:

(Start: 24 @22637 has 68 MA's), (29, 22742), (30, 22757), (31, 22760), (33, 22781), (40, 22871), (42, 22892), (43, 22925),

Gene: AGrandiflora_29 Start: 22667, Stop: 23071, Start Num: 24

Candidate Starts for AGrandiflora_29:

(Start: 24 @22667 has 68 MA's), (29, 22772), (30, 22787), (33, 22811), (40, 22901), (42, 22922),

Gene: AceofSpades_34 Start: 24165, Stop: 24581, Start Num: 18

Candidate Starts for AceofSpades_34:

(Start: 18 @24165 has 15 MA's), (26, 24210), (29, 24291), (33, 24330), (36, 24354), (40, 24420), (42, 24441),

Gene: Adolin_27 Start: 21091, Stop: 21495, Start Num: 24

Candidate Starts for Adolin_27:

(Start: 24 @21091 has 68 MA's), (29, 21196), (33, 21235), (40, 21325), (42, 21346),

Gene: Adumb2043_28 Start: 22636, Stop: 23040, Start Num: 24

Candidate Starts for Adumb2043_28:

(Start: 24 @22636 has 68 MA's), (29, 22741), (30, 22756), (31, 22759), (33, 22780), (40, 22870), (42, 22891), (43, 22924),

Gene: AinMach_30 Start: 23615, Stop: 24013, Start Num: 24

Candidate Starts for AinMach_30:

(Start: 24 @23615 has 68 MA's), (29, 23720), (33, 23759), (35, 23777), (40, 23849), (42, 23870), (44, 23912), (51, 23969),

Gene: Amploria_28 Start: 22636, Stop: 23040, Start Num: 24

Candidate Starts for Amploria_28:

(Start: 24 @22636 has 68 MA's), (29, 22741), (30, 22756), (31, 22759), (33, 22780), (40, 22870), (42, 22891), (43, 22924),

Gene: Amyev_29 Start: 24561, Stop: 24965, Start Num: 24

Candidate Starts for Amyev_29:

(Start: 24 @24561 has 68 MA's), (29, 24666), (31, 24684), (33, 24705), (40, 24795), (42, 24816), (43, 24849),

Gene: Asa16_30 Start: 24809, Stop: 25213, Start Num: 24

Candidate Starts for Asa16_30:

(1, 24143), (2, 24155), (Start: 24 @24809 has 68 MA's), (29, 24914), (31, 24932), (33, 24953), (40, 25043), (42, 25064), (43, 25097),

Gene: Ascela_29 Start: 22804, Stop: 23208, Start Num: 24

Candidate Starts for Ascela_29:

(Start: 24 @22804 has 68 MA's), (29, 22909), (30, 22924), (33, 22948), (40, 23038), (42, 23059),

Gene: Ashes_27 Start: 20985, Stop: 21407, Start Num: 24

Candidate Starts for Ashes_27:

(Start: 24 @20985 has 68 MA's), (29, 21090), (33, 21129), (40, 21219), (42, 21240), (44, 21282), (51, 21348),

Gene: BaileyBlu_29 Start: 22420, Stop: 22836, Start Num: 24

Candidate Starts for BaileyBlu_29:

(Start: 24 @22420 has 68 MA's), (29, 22525), (30, 22540), (33, 22564), (40, 22654), (42, 22675), (53, 22792),

Gene: Barnstormer_30 Start: 22955, Stop: 23335, Start Num: 20

Candidate Starts for Barnstormer_30:

(Start: 20 @22955 has 5 MA's), (29, 23072), (33, 23111), (40, 23201), (41, 23210), (42, 23222), (43, 23255), (51, 23315),

Gene: Beaupre_27 Start: 20986, Stop: 21408, Start Num: 24

Candidate Starts for Beaupre_27:

(Start: 24 @20986 has 68 MA's), (29, 21091), (33, 21130), (40, 21220), (42, 21241), (44, 21283), (51, 21349),

Gene: Berrie_30 Start: 23864, Stop: 24268, Start Num: 24

Candidate Starts for Berrie_30:

(Start: 24 @23864 has 68 MA's), (29, 23969), (30, 23984), (33, 24008), (40, 24098), (42, 24119),

Gene: CallinAllBarbz_27 Start: 22247, Stop: 22663, Start Num: 24

Candidate Starts for CallinAllBarbz_27:

(Start: 24 @22247 has 68 MA's), (29, 22352), (33, 22391), (40, 22481), (42, 22502), (53, 22619), (57, 22652),

Gene: Cappuccino_27 Start: 20894, Stop: 21316, Start Num: 24

Candidate Starts for Cappuccino_27:

(Start: 24 @20894 has 68 MA's), (29, 20999), (33, 21038), (40, 21128), (42, 21149), (44, 21191), (51, 21257),

Gene: Caron_31 Start: 23006, Stop: 23386, Start Num: 20

Candidate Starts for Caron_31:

(4, 22538), (12, 22922), (14, 22940), (16, 22973), (Start: 20 @23006 has 5 MA's), (29, 23123), (33, 23162), (40, 23252), (41, 23261), (42, 23273), (43, 23306),

Gene: Cassia_29 Start: 23256, Stop: 23660, Start Num: 24

Candidate Starts for Cassia_29:

(5, 22932), (7, 22995), (Start: 24 @23256 has 68 MA's), (29, 23361), (33, 23400), (40, 23490), (42, 23511), (48, 23580),

Gene: Cen1621_28 Start: 21545, Stop: 21955, Start Num: 19

Candidate Starts for Cen1621_28:

(Start: 19 @21545 has 1 MA's), (29, 21668), (31, 21686), (33, 21707), (39, 21770), (40, 21797), (42, 21818), (43, 21851), (44, 21860), (46, 21866), (50, 21896),

Gene: Community_30 Start: 24994, Stop: 25398, Start Num: 24

Candidate Starts for Community_30:

(Start: 24 @24994 has 68 MA's), (29, 25099), (30, 25114), (33, 25138), (40, 25228), (42, 25249),

Gene: Crewmate_32 Start: 23514, Stop: 23918, Start Num: 24

Candidate Starts for Crewmate_32:

(Start: 24 @23514 has 68 MA's), (29, 23619), (30, 23634), (33, 23658), (40, 23748), (42, 23769),

Gene: Cyan_28 Start: 22726, Stop: 23130, Start Num: 24

Candidate Starts for Cyan_28:

(Start: 24 @22726 has 68 MA's), (29, 22831), (30, 22846), (33, 22870), (40, 22960), (42, 22981), (43, 23014),

Gene: Donkey_27 Start: 20894, Stop: 21316, Start Num: 24

Candidate Starts for Donkey_27:

(Start: 24 @20894 has 68 MA's), (29, 20999), (33, 21038), (40, 21128), (42, 21149), (44, 21191), (51, 21257),

Gene: DrManhattan_27 Start: 21081, Stop: 21485, Start Num: 24

Candidate Starts for DrManhattan_27:

(Start: 24 @21081 has 68 MA's), (29, 21186), (33, 21225), (40, 21315), (42, 21336),

Gene: DrSierra_28 Start: 21759, Stop: 22163, Start Num: 24

Candidate Starts for DrSierra_28:

(Start: 24 @21759 has 68 MA's), (29, 21864), (30, 21879), (33, 21903), (40, 21993), (42, 22014), (52, 22122),

Gene: Elezi_30 Start: 24824, Stop: 25228, Start Num: 24

Candidate Starts for Elezi_30:

(Start: 24 @24824 has 68 MA's), (29, 24929), (31, 24947), (33, 24968), (40, 25058), (42, 25079), (43, 25112),

Gene: Elfy_28 Start: 22243, Stop: 22644, Start Num: 20

Candidate Starts for Elfy_28:

(Start: 20 @22243 has 5 MA's), (26, 22273), (27, 22276), (29, 22354), (31, 22372), (33, 22393), (41, 22492), (42, 22504), (43, 22537),

Gene: Emotion_34 Start: 24684, Stop: 25088, Start Num: 18

Candidate Starts for Emotion_34:

(Start: 18 @24684 has 15 MA's), (29, 24798), (33, 24837), (36, 24861), (40, 24927), (42, 24948), (45, 24993),

Gene: Eraser_30 Start: 24816, Stop: 25220, Start Num: 24

Candidate Starts for Eraser_30:

(1, 24150), (2, 24162), (Start: 24 @24816 has 68 MA's), (29, 24921), (31, 24939), (33, 24960), (40, 25050), (42, 25071), (43, 25104),

Gene: Exile_28 Start: 24957, Stop: 25355, Start Num: 20

Candidate Starts for Exile_28:

(Start: 20 @24957 has 5 MA's), (29, 25062), (33, 25101), (40, 25191), (42, 25212), (44, 25254), (45, 25257),

Gene: FiveHead_37 Start: 24180, Stop: 24578, Start Num: 18

Candidate Starts for FiveHead_37:

(Start: 18 @24180 has 15 MA's), (29, 24288), (33, 24327), (36, 24351), (40, 24417), (42, 24438), (44, 24480),

Gene: Floof_33 Start: 24052, Stop: 24465, Start Num: 18

Candidate Starts for Floof_33:

(10, 23893), (Start: 18 @24052 has 15 MA's), (29, 24172), (30, 24187), (33, 24211), (40, 24301), (42, 24322),

Gene: Flutur_28 Start: 22957, Stop: 23361, Start Num: 24

Candidate Starts for Flutur_28:

(Start: 24 @22957 has 68 MA's), (29, 23062), (30, 23077), (33, 23101), (40, 23191), (42, 23212), (43, 23245),

Gene: Forester_32 Start: 25506, Stop: 25919, Start Num: 18

Candidate Starts for Forester_32:

(Start: 18 @25506 has 15 MA's), (29, 25626), (30, 25641), (33, 25665), (40, 25755), (42, 25776), (52, 25872),

Gene: Gambol_27 Start: 20894, Stop: 21316, Start Num: 24

Candidate Starts for Gambol_27:

(Start: 24 @20894 has 68 MA's), (29, 20999), (33, 21038), (40, 21128), (42, 21149), (44, 21191), (51, 21257),

Gene: GardenState_32 Start: 23620, Stop: 24018, Start Num: 18

Candidate Starts for GardenState_32:

(9, 23452), (11, 23530), (Start: 18 @23620 has 15 MA's), (29, 23740), (32, 23767), (40, 23869), (42, 23890),

Gene: Giorgio_27 Start: 20993, Stop: 21415, Start Num: 24

Candidate Starts for Giorgio_27:

(Start: 24 @20993 has 68 MA's), (29, 21098), (33, 21137), (40, 21227), (42, 21248), (44, 21290), (51, 21356),

Gene: Gretchen_33 Start: 25200, Stop: 25613, Start Num: 18

Candidate Starts for Gretchen_33:

(Start: 18 @25200 has 15 MA's), (29, 25320), (30, 25335), (33, 25359), (39, 25422), (40, 25449), (42, 25470), (55, 25596),

Gene: GrimEater_27 Start: 22231, Stop: 22641, Start Num: 24

Candidate Starts for GrimEater_27:

(6, 21922), (Start: 24 @22231 has 68 MA's), (29, 22336), (33, 22375), (40, 22465), (42, 22486), (43, 22519), (54, 22606), (57, 22630),

Gene: Gumpizza_27 Start: 20986, Stop: 21408, Start Num: 24

Candidate Starts for Gumpizza_27:

(Start: 24 @20986 has 68 MA's), (29, 21091), (33, 21130), (40, 21220), (42, 21241), (44, 21283), (51, 21349),

Gene: Halsey_27 Start: 20990, Stop: 21412, Start Num: 24

Candidate Starts for Halsey_27:

(Start: 24 @20990 has 68 MA's), (29, 21095), (33, 21134), (40, 21224), (42, 21245), (44, 21287), (51, 21353),

Gene: Honk_29 Start: 21190, Stop: 21627, Start Num: 21

Candidate Starts for Honk_29:

(Start: 21 @21190 has 1 MA's), (29, 21310), (33, 21349), (34, 21361), (38, 21397), (40, 21439), (42, 21460),

Gene: IAmGroot_32 Start: 24284, Stop: 24682, Start Num: 18

Candidate Starts for IAmGroot_32:

(9, 24116), (11, 24194), (Start: 18 @24284 has 15 MA's), (29, 24404), (32, 24431), (40, 24533), (42, 24554),

Gene: IUFootball_29 Start: 23638, Stop: 24033, Start Num: 18

Candidate Starts for IUFootball_29:

(Start: 18 @23638 has 15 MA's), (29, 23743), (33, 23782), (36, 23806), (40, 23872), (42, 23893), (44, 23935), (51, 23989),

Gene: Iter_29 Start: 22804, Stop: 23208, Start Num: 24

Candidate Starts for Iter_29:

(Start: 24 @22804 has 68 MA's), (29, 22909), (30, 22924), (33, 22948), (40, 23038), (42, 23059),

Gene: IttyBittyPiggy_29 Start: 23044, Stop: 23448, Start Num: 24

Candidate Starts for IttyBittyPiggy_29:

(Start: 24 @23044 has 68 MA's), (29, 23149), (33, 23188), (40, 23278), (42, 23299),

Gene: Janeemi_31 Start: 25023, Stop: 25427, Start Num: 24

Candidate Starts for Janeemi_31:

(Start: 24 @25023 has 68 MA's), (29, 25128), (30, 25143), (33, 25167), (40, 25257), (42, 25278), (44, 25320),

Gene: Jankie_27 Start: 22232, Stop: 22642, Start Num: 24

Candidate Starts for Jankie_27:

(Start: 24 @22232 has 68 MA's), (29, 22337), (33, 22376), (40, 22466), (42, 22487), (43, 22520), (54, 22607), (57, 22631),

Gene: JasmineDragon_34 Start: 24080, Stop: 24496, Start Num: 18

Candidate Starts for JasmineDragon_34:

(Start: 18 @24080 has 15 MA's), (29, 24206), (33, 24245), (40, 24335), (42, 24356),

Gene: Joemato_28 Start: 22726, Stop: 23130, Start Num: 24

Candidate Starts for Joemato_28:

(Start: 24 @22726 has 68 MA's), (29, 22831), (30, 22846), (33, 22870), (40, 22960), (42, 22981), (43, 23014),

Gene: JohnDoe_28 Start: 22721, Stop: 23125, Start Num: 24

Candidate Starts for JohnDoe_28:

(Start: 24 @22721 has 68 MA's), (29, 22826), (30, 22841), (33, 22865), (40, 22955), (42, 22976), (43, 23009),

Gene: JohnThicc_36 Start: 24180, Stop: 24578, Start Num: 18

Candidate Starts for JohnThicc_36:

(Start: 18 @24180 has 15 MA's), (29, 24288), (33, 24327), (36, 24351), (40, 24417), (42, 24438), (44, 24480),

Gene: Jstan_32 Start: 24810, Stop: 25214, Start Num: 24

Candidate Starts for Jstan_32:

(1, 24144), (2, 24156), (Start: 24 @24810 has 68 MA's), (29, 24915), (31, 24933), (33, 24954), (40, 25044), (42, 25065), (43, 25098),

Gene: JuneStar_29 Start: 24954, Stop: 25358, Start Num: 24

Candidate Starts for JuneStar_29:

(Start: 24 @24954 has 68 MA's), (29, 25059), (33, 25098), (40, 25188), (42, 25209),

Gene: Kalimba_27 Start: 20894, Stop: 21316, Start Num: 24

Candidate Starts for Kalimba_27:

(Start: 24 @20894 has 68 MA's), (29, 20999), (33, 21038), (40, 21128), (42, 21149), (44, 21191), (51, 21257),

Gene: Kaylissa_28 Start: 22716, Stop: 23120, Start Num: 24

Candidate Starts for Kaylissa_28:

(Start: 24 @22716 has 68 MA's), (29, 22821), (30, 22836), (33, 22860), (40, 22950), (42, 22971), (43, 23004),

Gene: KeAlii_29 Start: 22886, Stop: 23290, Start Num: 24

Candidate Starts for KeAlii_29:

(Start: 24 @22886 has 68 MA's), (29, 22991), (33, 23030), (40, 23120), (42, 23141), (49, 23213),

Gene: LadyAstra_35 Start: 24120, Stop: 24518, Start Num: 18

Candidate Starts for LadyAstra_35:

(Start: 18 @24120 has 15 MA's), (29, 24228), (33, 24267), (36, 24291), (40, 24357), (42, 24378), (44, 24420), (51, 24474),

Gene: Lego_28 Start: 22670, Stop: 23074, Start Num: 24

Candidate Starts for Lego_28:

(Start: 24 @22670 has 68 MA's), (29, 22775), (30, 22790), (33, 22814), (40, 22904), (42, 22925),

Gene: Liebe_29 Start: 23638, Stop: 24033, Start Num: 18

Candidate Starts for Liebe_29:

(Start: 18 @23638 has 15 MA's), (29, 23743), (33, 23782), (36, 23806), (40, 23872), (42, 23893), (44, 23935), (51, 23989),

Gene: LisoBros_32 Start: 25147, Stop: 25545, Start Num: 24

Candidate Starts for LisoBros_32:

(Start: 24 @25147 has 68 MA's), (29, 25252), (33, 25291), (39, 25354), (40, 25381), (42, 25402), (56, 25531),

Gene: Lizalica_28 Start: 22719, Stop: 23123, Start Num: 24

Candidate Starts for Lizalica_28:

(Start: 24 @22719 has 68 MA's), (29, 22824), (30, 22839), (31, 22842), (33, 22863), (40, 22953), (42, 22974),

Gene: London_30 Start: 24824, Stop: 25228, Start Num: 24

Candidate Starts for London_30:

(Start: 24 @24824 has 68 MA's), (29, 24929), (31, 24947), (33, 24968), (40, 25058), (42, 25079), (43, 25112),

Gene: MaGuCo_27 Start: 22439, Stop: 22834, Start Num: 18

Candidate Starts for MaGuCo_27:

(Start: 18 @22439 has 15 MA's), (27, 22466), (29, 22544), (33, 22583), (36, 22607), (40, 22673), (42, 22694), (44, 22736), (51, 22790),

Gene: Mabodamaca_31 Start: 23721, Stop: 24092, Start Num: 22

Candidate Starts for Mabodamaca_31:

(13, 23643), (16, 23682), (Start: 22 @23721 has 2 MA's), (25, 23730), (29, 23832), (33, 23871), (40, 23961), (42, 23982),

Gene: Maureen_29 Start: 23638, Stop: 24033, Start Num: 18

Candidate Starts for Maureen_29:

(Start: 18 @23638 has 15 MA's), (29, 23743), (33, 23782), (36, 23806), (40, 23872), (42, 23893), (44, 23935), (51, 23989),

Gene: Michkear_30 Start: 23928, Stop: 24335, Start Num: 17

Candidate Starts for Michkear_30:

(Start: 17 @23928 has 1 MA's), (29, 24045), (33, 24084), (40, 24174), (42, 24195),

Gene: MiniMommy_34 Start: 24081, Stop: 24497, Start Num: 18

Candidate Starts for MiniMommy_34:

(Start: 18 @24081 has 15 MA's), (29, 24207), (33, 24246), (40, 24336), (42, 24357),

Gene: MissSwiss_27 Start: 21144, Stop: 21548, Start Num: 24

Candidate Starts for MissSwiss_27:

(Start: 24 @21144 has 68 MA's), (29, 21249), (33, 21288), (40, 21378), (42, 21399),

Gene: Moss_27 Start: 20986, Stop: 21408, Start Num: 24

Candidate Starts for Moss_27:

(Start: 24 @20986 has 68 MA's), (29, 21091), (33, 21130), (40, 21220), (42, 21241), (44, 21283), (51, 21349),

Gene: Mudpuppy_28 Start: 22721, Stop: 23125, Start Num: 24

Candidate Starts for Mudpuppy_28:

(Start: 24 @22721 has 68 MA's), (29, 22826), (30, 22841), (33, 22865), (40, 22955), (42, 22976), (43, 23009),

Gene: Mysterium_27 Start: 20986, Stop: 21408, Start Num: 24

Candidate Starts for Mysterium_27:

(Start: 24 @20986 has 68 MA's), (29, 21091), (33, 21130), (40, 21220), (42, 21241), (44, 21283), (51, 21349),

Gene: Niobe_30 Start: 24810, Stop: 25214, Start Num: 24

Candidate Starts for Niobe_30:

(1, 24144), (2, 24156), (Start: 24 @24810 has 68 MA's), (29, 24915), (31, 24933), (33, 24954), (40, 25044), (42, 25065), (43, 25098),

Gene: Nitro_29 Start: 24134, Stop: 24538, Start Num: 24

Candidate Starts for Nitro_29:

(Start: 24 @24134 has 68 MA's), (29, 24239), (33, 24278), (40, 24368), (42, 24389), (43, 24422),

Gene: ObiToo_31 Start: 23254, Stop: 23658, Start Num: 24

Candidate Starts for ObiToo_31:

(5, 22930), (7, 22993), (Start: 24 @23254 has 68 MA's), (29, 23359), (30, 23374), (33, 23398), (40, 23488), (42, 23509),

Gene: Origami_35 Start: 24120, Stop: 24518, Start Num: 18

Candidate Starts for Origami_35:

(Start: 18 @24120 has 15 MA's), (29, 24228), (33, 24267), (36, 24291), (40, 24357), (42, 24378), (44, 24420), (51, 24474),

Gene: PandaPo_27 Start: 21144, Stop: 21548, Start Num: 24

Candidate Starts for PandaPo_27:

(Start: 24 @21144 has 68 MA's), (29, 21249), (33, 21288), (40, 21378), (42, 21399),

Gene: Percival_33 Start: 25031, Stop: 25444, Start Num: 18

Candidate Starts for Percival_33:

(Start: 18 @25031 has 15 MA's), (29, 25151), (30, 25166), (33, 25190), (39, 25253), (40, 25280), (42, 25301), (55, 25427),

Gene: Phives_31 Start: 24831, Stop: 25235, Start Num: 24

Candidate Starts for Phives_31:

(Start: 24 @24831 has 68 MA's), (29, 24936), (30, 24951), (33, 24975), (40, 25065), (42, 25086),

Gene: Pixelle_29 Start: 24581, Stop: 24985, Start Num: 24

Candidate Starts for Pixelle_29:

(3, 24038), (5, 24257), (Start: 24 @24581 has 68 MA's), (29, 24686), (31, 24704), (33, 24725), (40, 24815), (42, 24836), (43, 24869),

Gene: Powerpuff_28 Start: 22721, Stop: 23125, Start Num: 24

Candidate Starts for Powerpuff_28:

(Start: 24 @22721 has 68 MA's), (29, 22826), (30, 22841), (33, 22865), (40, 22955), (42, 22976), (43, 23009),

Gene: Pumpkins_29 Start: 23676, Stop: 24080, Start Num: 24

Candidate Starts for Pumpkins_29:

(5, 23352), (Start: 24 @23676 has 68 MA's), (29, 23781), (31, 23799), (33, 23820), (40, 23910), (42, 23931),

Gene: Reedo_28 Start: 21307, Stop: 21711, Start Num: 24

Candidate Starts for Reedo_28:

(Start: 24 @21307 has 68 MA's), (29, 21412), (33, 21451), (40, 21541), (42, 21562),

Gene: RockScotty_27 Start: 20962, Stop: 21384, Start Num: 24

Candidate Starts for RockScotty_27:

(Start: 24 @20962 has 68 MA's), (29, 21067), (33, 21106), (40, 21196), (42, 21217), (44, 21259), (51, 21325),

Gene: Sabourin_27 Start: 20893, Stop: 21315, Start Num: 24

Candidate Starts for Sabourin_27:

(Start: 24 @20893 has 68 MA's), (29, 20998), (33, 21037), (40, 21127), (42, 21148), (44, 21190), (51, 21256),

Gene: Schaffner_29 Start: 23901, Stop: 24305, Start Num: 24

Candidate Starts for Schaffner_29:

(Start: 24 @23901 has 68 MA's), (29, 24006), (33, 24045), (40, 24135), (42, 24156),

Gene: ShakeltOph_34 Start: 24080, Stop: 24496, Start Num: 18

Candidate Starts for ShakeltOph_34:

(Start: 18 @24080 has 15 MA's), (29, 24206), (33, 24245), (40, 24335), (42, 24356),

Gene: Simpson_30 Start: 22726, Stop: 23130, Start Num: 24

Candidate Starts for Simpson_30:

(Start: 24 @22726 has 68 MA's), (29, 22831), (30, 22846), (33, 22870), (40, 22960), (42, 22981), (43, 23014),

Gene: Skelbel_31 Start: 24810, Stop: 25214, Start Num: 24

Candidate Starts for Skelbel_31:

(1, 24144), (2, 24156), (Start: 24 @24810 has 68 MA's), (29, 24915), (31, 24933), (33, 24954), (40, 25044), (42, 25065), (43, 25098),

Gene: Snek_29 Start: 21883, Stop: 22287, Start Num: 24

Candidate Starts for Snek_29:

(Start: 24 @21883 has 68 MA's), (29, 21988), (33, 22027), (40, 22117), (42, 22138),

Gene: Soondubu_28 Start: 24961, Stop: 25359, Start Num: 20

Candidate Starts for Soondubu_28:

(Start: 20 @24961 has 5 MA's), (29, 25066), (33, 25105), (40, 25195), (42, 25216), (44, 25258), (45, 25261),

Gene: Sooty_27 Start: 20896, Stop: 21318, Start Num: 24

Candidate Starts for Sooty_27:

(Start: 24 @20896 has 68 MA's), (29, 21001), (33, 21040), (40, 21130), (42, 21151), (44, 21193), (51, 21259),

Gene: SpecialK_27 Start: 20893, Stop: 21315, Start Num: 24

Candidate Starts for SpecialK_27:

(Start: 24 @20893 has 68 MA's), (29, 20998), (33, 21037), (40, 21127), (42, 21148), (51, 21256),

Gene: Stuu_27 Start: 20985, Stop: 21407, Start Num: 24

Candidate Starts for Stuu_27:

(Start: 24 @20985 has 68 MA's), (29, 21090), (33, 21129), (40, 21219), (42, 21240), (44, 21282), (51, 21348),

Gene: SuMoo_31 Start: 22679, Stop: 23050, Start Num: 22

Candidate Starts for SuMoo_31:

(13, 22601), (16, 22640), (Start: 22 @22679 has 2 MA's), (25, 22688), (28, 22730), (29, 22790), (33, 22829), (40, 22919), (42, 22940),

Gene: Subaru_31 Start: 24824, Stop: 25228, Start Num: 24

Candidate Starts for Subaru_31:

(Start: 24 @24824 has 68 MA's), (29, 24929), (31, 24947), (33, 24968), (40, 25058), (42, 25079), (43, 25112),

Gene: Sue2_30 Start: 23607, Stop: 24014, Start Num: 23

Candidate Starts for Sue2_30:

(15, 23565), (Start: 23 @23607 has 1 MA's), (29, 23715), (33, 23754), (40, 23844), (42, 23865), (43, 23898),

Gene: SuperHands_32 Start: 25529, Stop: 25942, Start Num: 18

Candidate Starts for SuperHands_32:

(Start: 18 @25529 has 15 MA's), (29, 25649), (30, 25664), (33, 25688), (40, 25778), (42, 25799), (52, 25895),

Gene: Tallboi_29 Start: 24159, Stop: 24563, Start Num: 24

Candidate Starts for Tallboi_29:

(Start: 24 @24159 has 68 MA's), (29, 24264), (30, 24279), (33, 24303), (40, 24393), (42, 24414), (43, 24447),

Gene: Tbone_28 Start: 22745, Stop: 23149, Start Num: 24

Candidate Starts for Tbone_28:

(Start: 24 @22745 has 68 MA's), (29, 22850), (30, 22865), (33, 22889), (40, 22979), (42, 23000), (43, 23033),

Gene: TforTroy_30 Start: 23550, Stop: 23954, Start Num: 24

Candidate Starts for TforTroy_30:

(5, 23226), (Start: 24 @23550 has 68 MA's), (29, 23655), (33, 23694), (40, 23784), (42, 23805),

Gene: ThursdayNight_30 Start: 23341, Stop: 23736, Start Num: 18

Candidate Starts for ThursdayNight_30:

(Start: 18 @23341 has 15 MA's), (29, 23446), (33, 23485), (36, 23509), (40, 23575), (42, 23596), (47, 23659), (51, 23692),

Gene: Tian_29 Start: 24561, Stop: 24965, Start Num: 24

Candidate Starts for Tian_29:

(Start: 24 @24561 has 68 MA's), (29, 24666), (31, 24684), (33, 24705), (40, 24795), (42, 24816), (43, 24849),

Gene: Tuck_32 Start: 25375, Stop: 25779, Start Num: 24

Candidate Starts for Tuck_32:

(Start: 24 @25375 has 68 MA's), (29, 25480), (30, 25495), (33, 25519), (40, 25609), (42, 25630),

Gene: Turab_28 Start: 22636, Stop: 23040, Start Num: 24

Candidate Starts for Turab_28:

(Start: 24 @22636 has 68 MA's), (29, 22741), (30, 22756), (31, 22759), (33, 22780), (40, 22870), (42, 22891), (43, 22924),

Gene: Tutumahutu_28 Start: 22720, Stop: 23124, Start Num: 24

Candidate Starts for Tutumahutu_28:

(Start: 24 @22720 has 68 MA's), (29, 22825), (30, 22840), (33, 22864), (40, 22954), (42, 22975), (43, 23008),

Gene: Tweety19_29 Start: 21882, Stop: 22286, Start Num: 24

Candidate Starts for Tweety19_29:

(Start: 24 @21882 has 68 MA's), (29, 21987), (33, 22026), (40, 22116), (42, 22137),

Gene: UtzChips_30 Start: 22940, Stop: 23320, Start Num: 20

Candidate Starts for UtzChips_30:

(Start: 20 @22940 has 5 MA's), (29, 23057), (33, 23096), (40, 23186), (41, 23195), (42, 23207), (43, 23240), (51, 23300),

Gene: VResidence_29 Start: 22877, Stop: 23281, Start Num: 24

Candidate Starts for VResidence_29:

(Start: 24 @22877 has 68 MA's), (29, 22982), (33, 23021), (40, 23111), (42, 23132),

Gene: VroomVroom_34 Start: 24175, Stop: 24591, Start Num: 18

Candidate Starts for VroomVroom_34:

(Start: 18 @24175 has 15 MA's), (26, 24220), (29, 24301), (33, 24340), (36, 24364), (40, 24430), (42, 24451),

Gene: Warda_28 Start: 22720, Stop: 23124, Start Num: 24

Candidate Starts for Warda_28:

(Start: 24 @22720 has 68 MA's), (29, 22825), (30, 22840), (33, 22864), (40, 22954), (42, 22975),

Gene: Wildwest_29 Start: 22700, Stop: 23104, Start Num: 24

Candidate Starts for Wildwest_29:

(Start: 24 @22700 has 68 MA's), (29, 22805), (30, 22820), (33, 22844), (40, 22934), (42, 22955), (43, 22988),

Gene: Yang_29 Start: 23063, Stop: 23467, Start Num: 24

Candidate Starts for Yang_29:

(Start: 24 @23063 has 68 MA's), (29, 23168), (30, 23183), (31, 23186), (33, 23207), (40, 23297), (42, 23318), (43, 23351), (48, 23387),

Gene: YesChef_28 Start: 22721, Stop: 23125, Start Num: 24

Candidate Starts for YesChef_28:

(Start: 24 @22721 has 68 MA's), (29, 22826), (30, 22841), (33, 22865), (40, 22955), (42, 22976), (43, 23009),

Gene: Zeta1847_30 Start: 22974, Stop: 23414, Start Num: 17

Candidate Starts for Zeta1847_30:

(8, 22761), (Start: 17 @22974 has 1 MA's), (27, 23025), (29, 23103), (33, 23142), (37, 23181), (40, 23232), (42, 23253), (43, 23286),