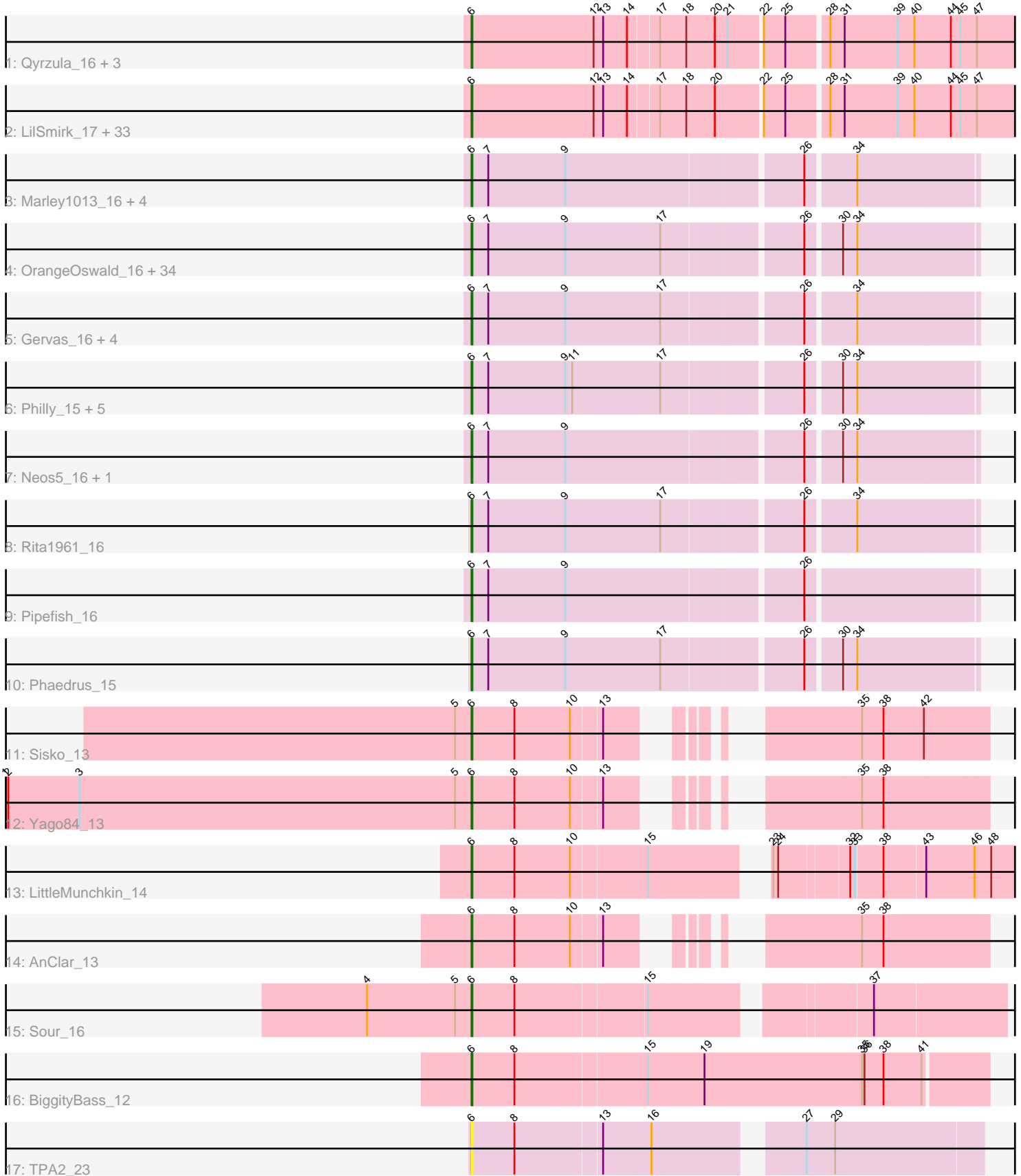


Pham 311427



Note: Tracks are now grouped by subcluster and scaled. Switching in subcluster is indicated by changes in track color. Track scale is now set by default to display the region 30 bp upstream of start 1 to 30 bp downstream of the last possible start. If this default region is judged to be packed too tightly with annotated starts, the track will be further scaled to only show that region of the ORF with annotated starts. This action will be indicated by adding "Zoomed" to the title. For starts, yellow indicates the location of called starts comprised solely of Glimmer/GeneMark auto-annotations, green indicates the location of called starts with at least 1 manual gene annotation.

Pham 311427 Report

This analysis was run 06/27/26 on database version 652.

Pham number 311427 has 101 members, 7 are drafts.

Phages represented in each track:

- Track 1 : Qyrzula_16, Arbiter_17, MasterPo_17, Lephleur_17
- Track 2 : LilSmirk_17, Godines_17, Brownie5_17, Boyle_17, LizLemon_17, Kheth_17, Kolhan_17, Tres_17, Rhinoforte_17, Opia_17, Ares_17, Faze9_17, Eaglehorse_17, Rosebush_17, PrinceCharming_17, Glass_17, ItsyBitsy1_17, Allegro_17, Sabella_17, Laurie_17, FrenchFry_17, Bananafish_17, Vic9_00017, West99_17, Tinciduntolum_18, Blocker23_17, Lars_17, Holeinone_17, Hedgerow_17, Kaleb_17, Phantasmagoria_17, TA17A_17, Calamitous_17, Coffee_17
- Track 3 : Marley1013_16, Akoma_16, Bernardo_16, Yahalom_16, Morty007_16
- Track 4 : OrangeOswald_16, Jackstina_15, Ben11_15, Phlyer_16, Mulaychimus_16, Yinz_16, Tydolla_16, SynergyX_16, LestyG_16, Corofin_16, Briakila_16, TinyTerror_16, Heathcliff_16, Olivio_15, RagingRooster_16, Baloo_16, Abinghost_16, Gadget_17, Glubnar_16, Chentzyk_15, Deenasa_16, Audrey_16, Devonte_16, Kronus_15, Halfpint_15, Obutu_16, MmasiCarm_16, SlippinJimmy_16, Phayeta_16, Athena_17, Daisy_16, RomaT_16, Kamiyu_16, Nozo_16, Shenandoah_16
- Track 5 : Gervas_16, Marlia_16, GlenHope_17, Mortcellus_15, ChaChing_16
- Track 6 : Philly_15, HarveySr_16, Chandler_16, SwainyDoc_16, Casbah_15, Compostia_17
- Track 7 : Neos5_16, Chalmers_16
- Track 8 : Rita1961_16
- Track 9 : Pipefish_16
- Track 10 : Phaedrus_15
- Track 11 : Sisko_13
- Track 12 : Yago84_13
- Track 13 : LittleMunchkin_14
- Track 14 : AnClar_13
- Track 15 : Sour_16
- Track 16 : BiggityBass_12
- Track 17 : TPA2_23

Summary of Final Annotations (See graph section above for start numbers):

The start number called the most often in the published annotations is 6, it was called in 94 of the 94 non-draft genes in the pham.

Genes that call this "Most Annotated" start:

- Abinghost_16, Akoma_16, Allegro_17, AnClar_13, Arbiter_17, Ares_17, Athena_17, Audrey_16, Baloo_16, Bananafish_17, Ben11_15, Bernardo_16, BiggityBass_12, Blocker23_17, Boyle_17, Briakila_16, Brownie5_17, Calamitous_17, Casbah_15, ChaChing_16, Chalmers_16, Chandler_16, Chentzyk_15, Coffee_17, Compostia_17, Corofin_16, Daisy_16, Deenasa_16, Devonte_16, Eaglehorse_17, Faze9_17, FrenchFry_17, Gadget_17, Gervas_16, Glass_17, GlenHope_17, Glubnar_16, Godines_17, Halfpint_15, HarveySr_16, Heathcliff_16, Hedgerow_17, Holeinone_17, ItsyBitsy1_17, Jackstina_15, Kaleb_17, Kamiyu_16, Kheth_17, Kolhan_17, Kronus_15, Lars_17, Laurie_17, Lephleur_17, LestyG_16, LilSmirk_17, LittleMunchkin_14, LizLemon_17, Marley1013_16, Marlia_16, MasterPo_17, MmasiCarm_16, Mortcellus_15, Morty007_16, Mulaychimus_16, Neos5_16, Nozo_16, Obutu_16, Olivio_15, Opia_17, OrangeOswald_16, Phaedrus_15, Phantasmagoria_17, Phayeta_16, Philly_15, Phlyer_16, Pipefish_16, PrinceCharming_17, Qyrzula_16, RagingRooster_16, Rhinoforte_17, Rita1961_16, RomaT_16, Rosebush_17, Sabella_17, Shenandoah_16, Sisko_13, SlippinJimmy_16, Sour_16, SwainyDoc_16, SynergyX_16, TA17A_17, TPA2_23, Tinciduntolum_18, TinyTerror_16, Tres_17, Tydolla_16, Vic9_00017, West99_17, Yago84_13, Yahalom_16, Yinz_16,

Genes that have the "Most Annotated" start but do not call it:

-

Genes that do not have the "Most Annotated" start:

-

Summary by start number:

Start 6:

- Found in 101 of 101 (100.0%) of genes in pham
- Manual Annotations of this start: 94 of 94
- Called 100.0% of time when present
- Phage (with cluster) where this start called: Abinghost_16 (B3), Akoma_16 (B3), Allegro_17 (B2), AnClar_13 (DR), Arbiter_17 (B2), Ares_17 (B2), Athena_17 (B3), Audrey_16 (B3), Baloo_16 (B3), Bananafish_17 (B2), Ben11_15 (B3), Bernardo_16 (B3), BiggityBass_12 (DR), Blocker23_17 (B2), Boyle_17 (B2), Briakila_16 (B3), Brownie5_17 (B2), Calamitous_17 (B2), Casbah_15 (B3), ChaChing_16 (B3), Chalmers_16 (B3), Chandler_16 (B3), Chentzyk_15 (B3), Coffee_17 (B2), Compostia_17 (B3), Corofin_16 (B3), Daisy_16 (B3), Deenasa_16 (B3), Devonte_16 (B3), Eaglehorse_17 (B2), Faze9_17 (B2), FrenchFry_17 (B2), Gadget_17 (B3), Gervas_16 (B3), Glass_17 (B2), GlenHope_17 (B3), Glubnar_16 (B3), Godines_17 (B2), Halfpint_15 (B3), HarveySr_16 (B3), Heathcliff_16 (B3), Hedgerow_17 (B2), Holeinone_17 (B2), ItsyBitsy1_17 (B2), Jackstina_15 (B3), Kaleb_17 (B2), Kamiyu_16 (B3), Kheth_17 (B2), Kolhan_17 (B2), Kronus_15 (B3), Lars_17 (B2), Laurie_17 (B2), Lephleur_17 (B2), LestyG_16 (B3), LilSmirk_17 (B2), LittleMunchkin_14 (DR), LizLemon_17 (B2), Marley1013_16 (B3), Marlia_16 (B3), MasterPo_17 (B2), MmasiCarm_16 (B3), Mortcellus_15 (B3), Morty007_16 (B3), Mulaychimus_16 (B3), Neos5_16 (B3), Nozo_16 (B3), Obutu_16 (B3), Olivio_15 (B3), Opia_17 (B2), OrangeOswald_16 (B3), Phaedrus_15 (B3), Phantasmagoria_17 (B2), Phayeta_16 (B3), Philly_15 (B3), Phlyer_16 (B3), Pipefish_16 (B3), PrinceCharming_17 (B2), Qyrzula_16 (B2), RagingRooster_16 (B3), Rhinoforte_17 (B2), Rita1961_16 (B3), RomaT_16 (B3), Rosebush_17 (B2), Sabella_17 (B2), Shenandoah_16 (B3),

Sisko_13 (DR), SlippinJimmy_16 (B3), Sour_16 (DR), SwainyDoc_16 (B3), SynergyX_16 (B3), TA17A_17 (B2), TPA2_23 (singleton), Tinciduntolum_18 (B2), TinyTerror_16 (B3), Tres_17 (B2), Tydolla_16 (B3), Vic9_00017 (B2), West99_17 (B2), Yago84_13 (DR), Yahalom_16 (B3), Yinz_16 (B3),

Summary by clusters:

There are 4 clusters represented in this pham: singleton, DR, B2, B3,

Info for manual annotations of cluster B2:

•Start number 6 was manually annotated 37 times for cluster B2.

Info for manual annotations of cluster B3:

•Start number 6 was manually annotated 51 times for cluster B3.

Info for manual annotations of cluster DR:

•Start number 6 was manually annotated 6 times for cluster DR.

Gene Information:

Gene: Abinghost_16 Start: 13964, Stop: 14569, Start Num: 6

Candidate Starts for Abinghost_16:

(Start: 6 @13964 has 94 MA's), (7, 13985), (9, 14081), (17, 14201), (26, 14363), (30, 14402), (34, 14420),

Gene: Akoma_16 Start: 13964, Stop: 14569, Start Num: 6

Candidate Starts for Akoma_16:

(Start: 6 @13964 has 94 MA's), (7, 13985), (9, 14081), (26, 14363), (34, 14420),

Gene: Allegro_17 Start: 15353, Stop: 16102, Start Num: 6

Candidate Starts for Allegro_17:

(Start: 6 @15353 has 94 MA's), (12, 15506), (13, 15518), (14, 15548), (17, 15584), (18, 15617), (20, 15650), (22, 15704), (25, 15731), (28, 15779), (31, 15797), (39, 15863), (40, 15884), (44, 15929), (45, 15941), (47, 15962),

Gene: AnClar_13 Start: 13251, Stop: 13772, Start Num: 6

Candidate Starts for AnClar_13:

(Start: 6 @13251 has 94 MA's), (8, 13305), (10, 13374), (13, 13410), (35, 13617), (38, 13644),

Gene: Arbiter_17 Start: 15440, Stop: 16189, Start Num: 6

Candidate Starts for Arbiter_17:

(Start: 6 @15440 has 94 MA's), (12, 15593), (13, 15605), (14, 15635), (17, 15671), (18, 15704), (20, 15737), (21, 15752), (22, 15791), (25, 15818), (28, 15866), (31, 15884), (39, 15950), (40, 15971), (44, 16016), (45, 16028), (47, 16049),

Gene: Ares_17 Start: 15353, Stop: 16102, Start Num: 6

Candidate Starts for Ares_17:

(Start: 6 @15353 has 94 MA's), (12, 15506), (13, 15518), (14, 15548), (17, 15584), (18, 15617), (20, 15650), (22, 15704), (25, 15731), (28, 15779), (31, 15797), (39, 15863), (40, 15884), (44, 15929), (45, 15941), (47, 15962),

Gene: Athena_17 Start: 14727, Stop: 15332, Start Num: 6
Candidate Starts for Athena_17:
(Start: 6 @14727 has 94 MA's), (7, 14748), (9, 14844), (17, 14964), (26, 15126), (30, 15165), (34, 15183),

Gene: Audrey_16 Start: 13964, Stop: 14569, Start Num: 6
Candidate Starts for Audrey_16:
(Start: 6 @13964 has 94 MA's), (7, 13985), (9, 14081), (17, 14201), (26, 14363), (30, 14402), (34, 14420),

Gene: Baloo_16 Start: 13964, Stop: 14569, Start Num: 6
Candidate Starts for Baloo_16:
(Start: 6 @13964 has 94 MA's), (7, 13985), (9, 14081), (17, 14201), (26, 14363), (30, 14402), (34, 14420),

Gene: Bananafish_17 Start: 15350, Stop: 16099, Start Num: 6
Candidate Starts for Bananafish_17:
(Start: 6 @15350 has 94 MA's), (12, 15503), (13, 15515), (14, 15545), (17, 15581), (18, 15614), (20, 15647), (22, 15701), (25, 15728), (28, 15776), (31, 15794), (39, 15860), (40, 15881), (44, 15926), (45, 15938), (47, 15959),

Gene: Ben11_15 Start: 13788, Stop: 14393, Start Num: 6
Candidate Starts for Ben11_15:
(Start: 6 @13788 has 94 MA's), (7, 13809), (9, 13905), (17, 14025), (26, 14187), (30, 14226), (34, 14244),

Gene: Bernardo_16 Start: 13963, Stop: 14568, Start Num: 6
Candidate Starts for Bernardo_16:
(Start: 6 @13963 has 94 MA's), (7, 13984), (9, 14080), (26, 14362), (34, 14419),

Gene: BiggityBass_12 Start: 12234, Stop: 12866, Start Num: 6
Candidate Starts for BiggityBass_12:
(Start: 6 @12234 has 94 MA's), (8, 12288), (15, 12450), (19, 12519), (35, 12717), (36, 12720), (38, 12744), (41, 12792),

Gene: Blocker23_17 Start: 15470, Stop: 16219, Start Num: 6
Candidate Starts for Blocker23_17:
(Start: 6 @15470 has 94 MA's), (12, 15623), (13, 15635), (14, 15665), (17, 15701), (18, 15734), (20, 15767), (22, 15821), (25, 15848), (28, 15896), (31, 15914), (39, 15980), (40, 16001), (44, 16046), (45, 16058), (47, 16079),

Gene: Boyle_17 Start: 15471, Stop: 16220, Start Num: 6
Candidate Starts for Boyle_17:
(Start: 6 @15471 has 94 MA's), (12, 15624), (13, 15636), (14, 15666), (17, 15702), (18, 15735), (20, 15768), (22, 15822), (25, 15849), (28, 15897), (31, 15915), (39, 15981), (40, 16002), (44, 16047), (45, 16059), (47, 16080),

Gene: Briakila_16 Start: 14729, Stop: 15334, Start Num: 6
Candidate Starts for Briakila_16:
(Start: 6 @14729 has 94 MA's), (7, 14750), (9, 14846), (17, 14966), (26, 15128), (30, 15167), (34, 15185),

Gene: Brownie5_17 Start: 15470, Stop: 16219, Start Num: 6

Candidate Starts for Brownie5_17:

(Start: 6 @15470 has 94 MA's), (12, 15623), (13, 15635), (14, 15665), (17, 15701), (18, 15734), (20, 15767), (22, 15821), (25, 15848), (28, 15896), (31, 15914), (39, 15980), (40, 16001), (44, 16046), (45, 16058), (47, 16079),

Gene: Calamitous_17 Start: 15350, Stop: 16099, Start Num: 6

Candidate Starts for Calamitous_17:

(Start: 6 @15350 has 94 MA's), (12, 15503), (13, 15515), (14, 15545), (17, 15581), (18, 15614), (20, 15647), (22, 15701), (25, 15728), (28, 15776), (31, 15794), (39, 15860), (40, 15881), (44, 15926), (45, 15938), (47, 15959),

Gene: Casbah_15 Start: 13816, Stop: 14421, Start Num: 6

Candidate Starts for Casbah_15:

(Start: 6 @13816 has 94 MA's), (7, 13837), (9, 13933), (11, 13942), (17, 14053), (26, 14215), (30, 14254), (34, 14272),

Gene: ChaChing_16 Start: 13979, Stop: 14584, Start Num: 6

Candidate Starts for ChaChing_16:

(Start: 6 @13979 has 94 MA's), (7, 14000), (9, 14096), (17, 14216), (26, 14378), (34, 14435),

Gene: Chalmers_16 Start: 14772, Stop: 15377, Start Num: 6

Candidate Starts for Chalmers_16:

(Start: 6 @14772 has 94 MA's), (7, 14793), (9, 14889), (26, 15171), (30, 15210), (34, 15228),

Gene: Chandler_16 Start: 14738, Stop: 15343, Start Num: 6

Candidate Starts for Chandler_16:

(Start: 6 @14738 has 94 MA's), (7, 14759), (9, 14855), (11, 14864), (17, 14975), (26, 15137), (30, 15176), (34, 15194),

Gene: Chentzyk_15 Start: 13834, Stop: 14439, Start Num: 6

Candidate Starts for Chentzyk_15:

(Start: 6 @13834 has 94 MA's), (7, 13855), (9, 13951), (17, 14071), (26, 14233), (30, 14272), (34, 14290),

Gene: Coffee_17 Start: 15467, Stop: 16216, Start Num: 6

Candidate Starts for Coffee_17:

(Start: 6 @15467 has 94 MA's), (12, 15620), (13, 15632), (14, 15662), (17, 15698), (18, 15731), (20, 15764), (22, 15818), (25, 15845), (28, 15893), (31, 15911), (39, 15977), (40, 15998), (44, 16043), (45, 16055), (47, 16076),

Gene: Compostia_17 Start: 14397, Stop: 15002, Start Num: 6

Candidate Starts for Compostia_17:

(Start: 6 @14397 has 94 MA's), (7, 14418), (9, 14514), (11, 14523), (17, 14634), (26, 14796), (30, 14835), (34, 14853),

Gene: Corofin_16 Start: 13989, Stop: 14594, Start Num: 6

Candidate Starts for Corofin_16:

(Start: 6 @13989 has 94 MA's), (7, 14010), (9, 14106), (17, 14226), (26, 14388), (30, 14427), (34, 14445),

Gene: Daisy_16 Start: 13985, Stop: 14590, Start Num: 6

Candidate Starts for Daisy_16:

(Start: 6 @13985 has 94 MA's), (7, 14006), (9, 14102), (17, 14222), (26, 14384), (30, 14423), (34, 14441),

Gene: Deenasa_16 Start: 14727, Stop: 15332, Start Num: 6

Candidate Starts for Deenasa_16:

(Start: 6 @14727 has 94 MA's), (7, 14748), (9, 14844), (17, 14964), (26, 15126), (30, 15165), (34, 15183),

Gene: Devonte_16 Start: 13964, Stop: 14569, Start Num: 6

Candidate Starts for Devonte_16:

(Start: 6 @13964 has 94 MA's), (7, 13985), (9, 14081), (17, 14201), (26, 14363), (30, 14402), (34, 14420),

Gene: Eaglehorse_17 Start: 15374, Stop: 16123, Start Num: 6

Candidate Starts for Eaglehorse_17:

(Start: 6 @15374 has 94 MA's), (12, 15527), (13, 15539), (14, 15569), (17, 15605), (18, 15638), (20, 15671), (22, 15725), (25, 15752), (28, 15800), (31, 15818), (39, 15884), (40, 15905), (44, 15950), (45, 15962), (47, 15983),

Gene: Faze9_17 Start: 15467, Stop: 16216, Start Num: 6

Candidate Starts for Faze9_17:

(Start: 6 @15467 has 94 MA's), (12, 15620), (13, 15632), (14, 15662), (17, 15698), (18, 15731), (20, 15764), (22, 15818), (25, 15845), (28, 15893), (31, 15911), (39, 15977), (40, 15998), (44, 16043), (45, 16055), (47, 16076),

Gene: FrenchFry_17 Start: 15470, Stop: 16219, Start Num: 6

Candidate Starts for FrenchFry_17:

(Start: 6 @15470 has 94 MA's), (12, 15623), (13, 15635), (14, 15665), (17, 15701), (18, 15734), (20, 15767), (22, 15821), (25, 15848), (28, 15896), (31, 15914), (39, 15980), (40, 16001), (44, 16046), (45, 16058), (47, 16079),

Gene: Gadget_17 Start: 13968, Stop: 14573, Start Num: 6

Candidate Starts for Gadget_17:

(Start: 6 @13968 has 94 MA's), (7, 13989), (9, 14085), (17, 14205), (26, 14367), (30, 14406), (34, 14424),

Gene: Gervas_16 Start: 13947, Stop: 14552, Start Num: 6

Candidate Starts for Gervas_16:

(Start: 6 @13947 has 94 MA's), (7, 13968), (9, 14064), (17, 14184), (26, 14346), (34, 14403),

Gene: Glass_17 Start: 15470, Stop: 16219, Start Num: 6

Candidate Starts for Glass_17:

(Start: 6 @15470 has 94 MA's), (12, 15623), (13, 15635), (14, 15665), (17, 15701), (18, 15734), (20, 15767), (22, 15821), (25, 15848), (28, 15896), (31, 15914), (39, 15980), (40, 16001), (44, 16046), (45, 16058), (47, 16079),

Gene: GlenHope_17 Start: 13954, Stop: 14559, Start Num: 6

Candidate Starts for GlenHope_17:

(Start: 6 @13954 has 94 MA's), (7, 13975), (9, 14071), (17, 14191), (26, 14353), (34, 14410),

Gene: Glubnar_16 Start: 13968, Stop: 14573, Start Num: 6

Candidate Starts for Glubnar_16:

(Start: 6 @13968 has 94 MA's), (7, 13989), (9, 14085), (17, 14205), (26, 14367), (30, 14406), (34, 14424),

Gene: Godines_17 Start: 15353, Stop: 16102, Start Num: 6

Candidate Starts for Godines_17:

(Start: 6 @15353 has 94 MA's), (12, 15506), (13, 15518), (14, 15548), (17, 15584), (18, 15617), (20, 15650), (22, 15704), (25, 15731), (28, 15779), (31, 15797), (39, 15863), (40, 15884), (44, 15929), (45, 15941), (47, 15962),

Gene: Halfpint_15 Start: 13789, Stop: 14394, Start Num: 6

Candidate Starts for Halfpint_15:

(Start: 6 @13789 has 94 MA's), (7, 13810), (9, 13906), (17, 14026), (26, 14188), (30, 14227), (34, 14245),

Gene: HarveySr_16 Start: 13941, Stop: 14546, Start Num: 6

Candidate Starts for HarveySr_16:

(Start: 6 @13941 has 94 MA's), (7, 13962), (9, 14058), (11, 14067), (17, 14178), (26, 14340), (30, 14379), (34, 14397),

Gene: Heathcliff_16 Start: 13926, Stop: 14531, Start Num: 6

Candidate Starts for Heathcliff_16:

(Start: 6 @13926 has 94 MA's), (7, 13947), (9, 14043), (17, 14163), (26, 14325), (30, 14364), (34, 14382),

Gene: Hedgerow_17 Start: 15452, Stop: 16201, Start Num: 6

Candidate Starts for Hedgerow_17:

(Start: 6 @15452 has 94 MA's), (12, 15605), (13, 15617), (14, 15647), (17, 15683), (18, 15716), (20, 15749), (22, 15803), (25, 15830), (28, 15878), (31, 15896), (39, 15962), (40, 15983), (44, 16028), (45, 16040), (47, 16061),

Gene: Holeinone_17 Start: 15352, Stop: 16101, Start Num: 6

Candidate Starts for Holeinone_17:

(Start: 6 @15352 has 94 MA's), (12, 15505), (13, 15517), (14, 15547), (17, 15583), (18, 15616), (20, 15649), (22, 15703), (25, 15730), (28, 15778), (31, 15796), (39, 15862), (40, 15883), (44, 15928), (45, 15940), (47, 15961),

Gene: ItsyBitsy1_17 Start: 15344, Stop: 16093, Start Num: 6

Candidate Starts for ItsyBitsy1_17:

(Start: 6 @15344 has 94 MA's), (12, 15497), (13, 15509), (14, 15539), (17, 15575), (18, 15608), (20, 15641), (22, 15695), (25, 15722), (28, 15770), (31, 15788), (39, 15854), (40, 15875), (44, 15920), (45, 15932), (47, 15953),

Gene: Jackstina_15 Start: 13890, Stop: 14495, Start Num: 6

Candidate Starts for Jackstina_15:

(Start: 6 @13890 has 94 MA's), (7, 13911), (9, 14007), (17, 14127), (26, 14289), (30, 14328), (34, 14346),

Gene: Kaleb_17 Start: 15470, Stop: 16219, Start Num: 6

Candidate Starts for Kaleb_17:

(Start: 6 @15470 has 94 MA's), (12, 15623), (13, 15635), (14, 15665), (17, 15701), (18, 15734), (20, 15767), (22, 15821), (25, 15848), (28, 15896), (31, 15914), (39, 15980), (40, 16001), (44, 16046), (45, 16058), (47, 16079),

Gene: Kamiyu_16 Start: 13935, Stop: 14540, Start Num: 6

Candidate Starts for Kamiyu_16:

(Start: 6 @13935 has 94 MA's), (7, 13956), (9, 14052), (17, 14172), (26, 14334), (30, 14373), (34, 14391),

Gene: Kheth_17 Start: 15353, Stop: 16102, Start Num: 6

Candidate Starts for Kheth_17:

(Start: 6 @15353 has 94 MA's), (12, 15506), (13, 15518), (14, 15548), (17, 15584), (18, 15617), (20, 15650), (22, 15704), (25, 15731), (28, 15779), (31, 15797), (39, 15863), (40, 15884), (44, 15929), (45, 15941), (47, 15962),

Gene: Kolhan_17 Start: 15350, Stop: 16099, Start Num: 6

Candidate Starts for Kolhan_17:

(Start: 6 @15350 has 94 MA's), (12, 15503), (13, 15515), (14, 15545), (17, 15581), (18, 15614), (20, 15647), (22, 15701), (25, 15728), (28, 15776), (31, 15794), (39, 15860), (40, 15881), (44, 15926), (45, 15938), (47, 15959),

Gene: Kronus_15 Start: 14547, Stop: 15152, Start Num: 6

Candidate Starts for Kronus_15:

(Start: 6 @14547 has 94 MA's), (7, 14568), (9, 14664), (17, 14784), (26, 14946), (30, 14985), (34, 15003),

Gene: Lars_17 Start: 15470, Stop: 16219, Start Num: 6

Candidate Starts for Lars_17:

(Start: 6 @15470 has 94 MA's), (12, 15623), (13, 15635), (14, 15665), (17, 15701), (18, 15734), (20, 15767), (22, 15821), (25, 15848), (28, 15896), (31, 15914), (39, 15980), (40, 16001), (44, 16046), (45, 16058), (47, 16079),

Gene: Laurie_17 Start: 15348, Stop: 16097, Start Num: 6

Candidate Starts for Laurie_17:

(Start: 6 @15348 has 94 MA's), (12, 15501), (13, 15513), (14, 15543), (17, 15579), (18, 15612), (20, 15645), (22, 15699), (25, 15726), (28, 15774), (31, 15792), (39, 15858), (40, 15879), (44, 15924), (45, 15936), (47, 15957),

Gene: Lephleur_17 Start: 15350, Stop: 16099, Start Num: 6

Candidate Starts for Lephleur_17:

(Start: 6 @15350 has 94 MA's), (12, 15503), (13, 15515), (14, 15545), (17, 15581), (18, 15614), (20, 15647), (21, 15662), (22, 15701), (25, 15728), (28, 15776), (31, 15794), (39, 15860), (40, 15881), (44, 15926), (45, 15938), (47, 15959),

Gene: LestyG_16 Start: 13968, Stop: 14573, Start Num: 6

Candidate Starts for LestyG_16:

(Start: 6 @13968 has 94 MA's), (7, 13989), (9, 14085), (17, 14205), (26, 14367), (30, 14406), (34, 14424),

Gene: LilSmirk_17 Start: 15350, Stop: 16099, Start Num: 6

Candidate Starts for LilSmirk_17:

(Start: 6 @15350 has 94 MA's), (12, 15503), (13, 15515), (14, 15545), (17, 15581), (18, 15614), (20, 15647), (22, 15701), (25, 15728), (28, 15776), (31, 15794), (39, 15860), (40, 15881), (44, 15926), (45, 15938), (47, 15959),

Gene: LittleMunchkin_14 Start: 13719, Stop: 14384, Start Num: 6

Candidate Starts for LittleMunchkin_14:

(Start: 6 @13719 has 94 MA's), (8, 13773), (10, 13842), (15, 13935), (23, 14049), (24, 14055), (32, 14136), (33, 14142), (38, 14175), (43, 14226), (46, 14286), (48, 14307),

Gene: LizLemon_17 Start: 15470, Stop: 16219, Start Num: 6

Candidate Starts for LizLemon_17:

(Start: 6 @15470 has 94 MA's), (12, 15623), (13, 15635), (14, 15665), (17, 15701), (18, 15734), (20, 15767), (22, 15821), (25, 15848), (28, 15896), (31, 15914), (39, 15980), (40, 16001), (44, 16046), (45, 16058), (47, 16079),

Gene: Marley1013_16 Start: 14748, Stop: 15353, Start Num: 6

Candidate Starts for Marley1013_16:

(Start: 6 @14748 has 94 MA's), (7, 14769), (9, 14865), (26, 15147), (34, 15204),

Gene: Marlia_16 Start: 13950, Stop: 14555, Start Num: 6

Candidate Starts for Marlia_16:

(Start: 6 @13950 has 94 MA's), (7, 13971), (9, 14067), (17, 14187), (26, 14349), (34, 14406),

Gene: MasterPo_17 Start: 15350, Stop: 16099, Start Num: 6

Candidate Starts for MasterPo_17:

(Start: 6 @15350 has 94 MA's), (12, 15503), (13, 15515), (14, 15545), (17, 15581), (18, 15614), (20, 15647), (21, 15662), (22, 15701), (25, 15728), (28, 15776), (31, 15794), (39, 15860), (40, 15881), (44, 15926), (45, 15938), (47, 15959),

Gene: MmasiCarm_16 Start: 13961, Stop: 14566, Start Num: 6

Candidate Starts for MmasiCarm_16:

(Start: 6 @13961 has 94 MA's), (7, 13982), (9, 14078), (17, 14198), (26, 14360), (30, 14399), (34, 14417),

Gene: Mortcellus_15 Start: 14602, Stop: 15207, Start Num: 6

Candidate Starts for Mortcellus_15:

(Start: 6 @14602 has 94 MA's), (7, 14623), (9, 14719), (17, 14839), (26, 15001), (34, 15058),

Gene: Morty007_16 Start: 14748, Stop: 15353, Start Num: 6

Candidate Starts for Morty007_16:

(Start: 6 @14748 has 94 MA's), (7, 14769), (9, 14865), (26, 15147), (34, 15204),

Gene: Mulaychimus_16 Start: 13941, Stop: 14546, Start Num: 6

Candidate Starts for Mulaychimus_16:

(Start: 6 @13941 has 94 MA's), (7, 13962), (9, 14058), (17, 14178), (26, 14340), (30, 14379), (34, 14397),

Gene: Neos5_16 Start: 14754, Stop: 15359, Start Num: 6

Candidate Starts for Neos5_16:

(Start: 6 @14754 has 94 MA's), (7, 14775), (9, 14871), (26, 15153), (30, 15192), (34, 15210),

Gene: Nozo_16 Start: 14729, Stop: 15334, Start Num: 6

Candidate Starts for Nozo_16:

(Start: 6 @14729 has 94 MA's), (7, 14750), (9, 14846), (17, 14966), (26, 15128), (30, 15167), (34, 15185),

Gene: Obutu_16 Start: 13959, Stop: 14564, Start Num: 6

Candidate Starts for Obutu_16:

(Start: 6 @13959 has 94 MA's), (7, 13980), (9, 14076), (17, 14196), (26, 14358), (30, 14397), (34, 14415),

Gene: Olivio_15 Start: 13813, Stop: 14418, Start Num: 6

Candidate Starts for Olivio_15:

(Start: 6 @13813 has 94 MA's), (7, 13834), (9, 13930), (17, 14050), (26, 14212), (30, 14251), (34, 14269),

Gene: Opia_17 Start: 15350, Stop: 16099, Start Num: 6

Candidate Starts for Opia_17:

(Start: 6 @15350 has 94 MA's), (12, 15503), (13, 15515), (14, 15545), (17, 15581), (18, 15614), (20, 15647), (22, 15701), (25, 15728), (28, 15776), (31, 15794), (39, 15860), (40, 15881), (44, 15926), (45, 15938), (47, 15959),

Gene: OrangeOswald_16 Start: 13964, Stop: 14569, Start Num: 6

Candidate Starts for OrangeOswald_16:

(Start: 6 @13964 has 94 MA's), (7, 13985), (9, 14081), (17, 14201), (26, 14363), (30, 14402), (34, 14420),

Gene: Phaedrus_15 Start: 13882, Stop: 14487, Start Num: 6

Candidate Starts for Phaedrus_15:

(Start: 6 @13882 has 94 MA's), (7, 13903), (9, 13999), (17, 14119), (26, 14281), (30, 14320), (34, 14338),

Gene: Phantasmagoria_17 Start: 15350, Stop: 16099, Start Num: 6

Candidate Starts for Phantasmagoria_17:

(Start: 6 @15350 has 94 MA's), (12, 15503), (13, 15515), (14, 15545), (17, 15581), (18, 15614), (20, 15647), (22, 15701), (25, 15728), (28, 15776), (31, 15794), (39, 15860), (40, 15881), (44, 15926), (45, 15938), (47, 15959),

Gene: Phayeta_16 Start: 13840, Stop: 14445, Start Num: 6

Candidate Starts for Phayeta_16:

(Start: 6 @13840 has 94 MA's), (7, 13861), (9, 13957), (17, 14077), (26, 14239), (30, 14278), (34, 14296),

Gene: Philly_15 Start: 13830, Stop: 14435, Start Num: 6

Candidate Starts for Philly_15:

(Start: 6 @13830 has 94 MA's), (7, 13851), (9, 13947), (11, 13956), (17, 14067), (26, 14229), (30, 14268), (34, 14286),

Gene: Phlyer_16 Start: 14698, Stop: 15303, Start Num: 6

Candidate Starts for Phlyer_16:

(Start: 6 @14698 has 94 MA's), (7, 14719), (9, 14815), (17, 14935), (26, 15097), (30, 15136), (34, 15154),

Gene: Pipefish_16 Start: 14848, Stop: 15453, Start Num: 6

Candidate Starts for Pipefish_16:

(Start: 6 @14848 has 94 MA's), (7, 14869), (9, 14965), (26, 15247),

Gene: PrinceCharming_17 Start: 15470, Stop: 16219, Start Num: 6

Candidate Starts for PrinceCharming_17:

(Start: 6 @15470 has 94 MA's), (12, 15623), (13, 15635), (14, 15665), (17, 15701), (18, 15734), (20, 15767), (22, 15821), (25, 15848), (28, 15896), (31, 15914), (39, 15980), (40, 16001), (44, 16046), (45,

16058), (47, 16079),

Gene: Qyrzula_16 Start: 15440, Stop: 16189, Start Num: 6

Candidate Starts for Qyrzula_16:

(Start: 6 @15440 has 94 MA's), (12, 15593), (13, 15605), (14, 15635), (17, 15671), (18, 15704), (20, 15737), (21, 15752), (22, 15791), (25, 15818), (28, 15866), (31, 15884), (39, 15950), (40, 15971), (44, 16016), (45, 16028), (47, 16049),

Gene: RagingRooster_16 Start: 13965, Stop: 14570, Start Num: 6

Candidate Starts for RagingRooster_16:

(Start: 6 @13965 has 94 MA's), (7, 13986), (9, 14082), (17, 14202), (26, 14364), (30, 14403), (34, 14421),

Gene: Rhinoforte_17 Start: 15467, Stop: 16216, Start Num: 6

Candidate Starts for Rhinoforte_17:

(Start: 6 @15467 has 94 MA's), (12, 15620), (13, 15632), (14, 15662), (17, 15698), (18, 15731), (20, 15764), (22, 15818), (25, 15845), (28, 15893), (31, 15911), (39, 15977), (40, 15998), (44, 16043), (45, 16055), (47, 16076),

Gene: Rita1961_16 Start: 13960, Stop: 14565, Start Num: 6

Candidate Starts for Rita1961_16:

(Start: 6 @13960 has 94 MA's), (7, 13981), (9, 14077), (17, 14197), (26, 14359), (34, 14416),

Gene: RomaT_16 Start: 14745, Stop: 15350, Start Num: 6

Candidate Starts for RomaT_16:

(Start: 6 @14745 has 94 MA's), (7, 14766), (9, 14862), (17, 14982), (26, 15144), (30, 15183), (34, 15201),

Gene: Rosebush_17 Start: 15467, Stop: 16216, Start Num: 6

Candidate Starts for Rosebush_17:

(Start: 6 @15467 has 94 MA's), (12, 15620), (13, 15632), (14, 15662), (17, 15698), (18, 15731), (20, 15764), (22, 15818), (25, 15845), (28, 15893), (31, 15911), (39, 15977), (40, 15998), (44, 16043), (45, 16055), (47, 16076),

Gene: Sabella_17 Start: 15353, Stop: 16102, Start Num: 6

Candidate Starts for Sabella_17:

(Start: 6 @15353 has 94 MA's), (12, 15506), (13, 15518), (14, 15548), (17, 15584), (18, 15617), (20, 15650), (22, 15704), (25, 15731), (28, 15779), (31, 15797), (39, 15863), (40, 15884), (44, 15929), (45, 15941), (47, 15962),

Gene: Shenandoah_16 Start: 13943, Stop: 14548, Start Num: 6

Candidate Starts for Shenandoah_16:

(Start: 6 @13943 has 94 MA's), (7, 13964), (9, 14060), (17, 14180), (26, 14342), (30, 14381), (34, 14399),

Gene: Sisko_13 Start: 12759, Stop: 13280, Start Num: 6

Candidate Starts for Sisko_13:

(5, 12738), (Start: 6 @12759 has 94 MA's), (8, 12813), (10, 12882), (13, 12918), (35, 13125), (38, 13152), (42, 13203),

Gene: SlippinJimmy_16 Start: 14729, Stop: 15334, Start Num: 6

Candidate Starts for SlippinJimmy_16:

(Start: 6 @14729 has 94 MA's), (7, 14750), (9, 14846), (17, 14966), (26, 15128), (30, 15167), (34, 15185),

Gene: Sour_16 Start: 14097, Stop: 14714, Start Num: 6

Candidate Starts for Sour_16:

(4, 13965), (5, 14076), (Start: 6 @14097 has 94 MA's), (8, 14151), (15, 14310), (37, 14553),

Gene: SwainyDoc_16 Start: 13962, Stop: 14567, Start Num: 6

Candidate Starts for SwainyDoc_16:

(Start: 6 @13962 has 94 MA's), (7, 13983), (9, 14079), (11, 14088), (17, 14199), (26, 14361), (30, 14400), (34, 14418),

Gene: SynergyX_16 Start: 13965, Stop: 14570, Start Num: 6

Candidate Starts for SynergyX_16:

(Start: 6 @13965 has 94 MA's), (7, 13986), (9, 14082), (17, 14202), (26, 14364), (30, 14403), (34, 14421),

Gene: TA17A_17 Start: 15350, Stop: 16099, Start Num: 6

Candidate Starts for TA17A_17:

(Start: 6 @15350 has 94 MA's), (12, 15503), (13, 15515), (14, 15545), (17, 15581), (18, 15614), (20, 15647), (22, 15701), (25, 15728), (28, 15776), (31, 15794), (39, 15860), (40, 15881), (44, 15926), (45, 15938), (47, 15959),

Gene: TPA2_23 Start: 15116, Stop: 15712, Start Num: 6

Candidate Starts for TPA2_23:

(Start: 6 @15116 has 94 MA's), (8, 15170), (13, 15275), (16, 15335), (27, 15494), (29, 15530),

Gene: Tinciduntolum_18 Start: 15469, Stop: 16218, Start Num: 6

Candidate Starts for Tinciduntolum_18:

(Start: 6 @15469 has 94 MA's), (12, 15622), (13, 15634), (14, 15664), (17, 15700), (18, 15733), (20, 15766), (22, 15820), (25, 15847), (28, 15895), (31, 15913), (39, 15979), (40, 16000), (44, 16045), (45, 16057), (47, 16078),

Gene: TinyTerror_16 Start: 13964, Stop: 14569, Start Num: 6

Candidate Starts for TinyTerror_16:

(Start: 6 @13964 has 94 MA's), (7, 13985), (9, 14081), (17, 14201), (26, 14363), (30, 14402), (34, 14420),

Gene: Tres_17 Start: 15350, Stop: 16099, Start Num: 6

Candidate Starts for Tres_17:

(Start: 6 @15350 has 94 MA's), (12, 15503), (13, 15515), (14, 15545), (17, 15581), (18, 15614), (20, 15647), (22, 15701), (25, 15728), (28, 15776), (31, 15794), (39, 15860), (40, 15881), (44, 15926), (45, 15938), (47, 15959),

Gene: Tydolla_16 Start: 14702, Stop: 15307, Start Num: 6

Candidate Starts for Tydolla_16:

(Start: 6 @14702 has 94 MA's), (7, 14723), (9, 14819), (17, 14939), (26, 15101), (30, 15140), (34, 15158),

Gene: Vic9_00017 Start: 15790, Stop: 16539, Start Num: 6

Candidate Starts for Vic9_00017:

(Start: 6 @15790 has 94 MA's), (12, 15943), (13, 15955), (14, 15985), (17, 16021), (18, 16054), (20, 16087), (22, 16141), (25, 16168), (28, 16216), (31, 16234), (39, 16300), (40, 16321), (44, 16366), (45,

16378), (47, 16399),

Gene: West99_17 Start: 15470, Stop: 16219, Start Num: 6

Candidate Starts for West99_17:

(Start: 6 @15470 has 94 MA's), (12, 15623), (13, 15635), (14, 15665), (17, 15701), (18, 15734), (20, 15767), (22, 15821), (25, 15848), (28, 15896), (31, 15914), (39, 15980), (40, 16001), (44, 16046), (45, 16058), (47, 16079),

Gene: Yago84_13 Start: 12768, Stop: 13289, Start Num: 6

Candidate Starts for Yago84_13:

(1, 12180), (2, 12183), (3, 12273), (5, 12747), (Start: 6 @12768 has 94 MA's), (8, 12822), (10, 12891), (13, 12927), (35, 13134), (38, 13161),

Gene: Yahalom_16 Start: 13976, Stop: 14581, Start Num: 6

Candidate Starts for Yahalom_16:

(Start: 6 @13976 has 94 MA's), (7, 13997), (9, 14093), (26, 14375), (34, 14432),

Gene: Yinz_16 Start: 14003, Stop: 14608, Start Num: 6

Candidate Starts for Yinz_16:

(Start: 6 @14003 has 94 MA's), (7, 14024), (9, 14120), (17, 14240), (26, 14402), (30, 14441), (34, 14459),