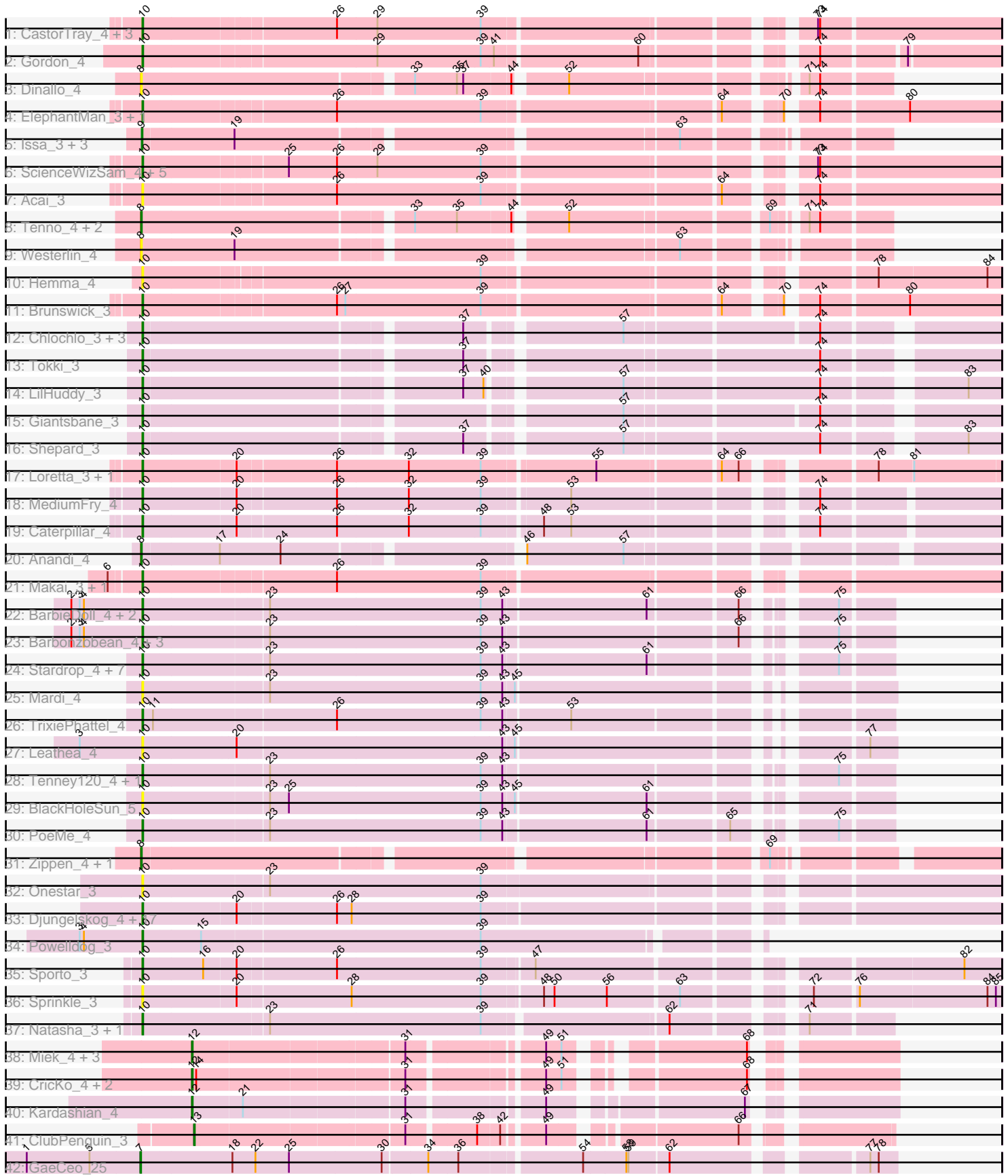


Pham 311436



Note: Tracks are now grouped by subcluster and scaled. Switching in subcluster is indicated by changes in track color. Track scale is now set by default to display the region 30 bp upstream of start 1 to 30 bp downstream of the last possible start. If this default region is judged to be packed too tightly with annotated starts, the track will be further scaled to only show that region of the ORF with annotated starts. This action will be indicated by adding "Zoomed" to the title. For starts, yellow indicates the location of called starts comprised solely of Glimmer/GeneMark auto-annotations, green indicates the location of called starts with at least 1 manual gene annotation.

Pham 311436 Report

This analysis was run 06/27/26 on database version 652.

Pham number 311436 has 98 members, 21 are drafts.

Phages represented in each track:

- Track 1 : CastorTray_4, AreFloNak_3, Tatanka_3, Nivinsha_3
- Track 2 : Gordon_4
- Track 3 : Dinallo_4
- Track 4 : ElephantMan_3, Niktson_3
- Track 5 : Issa_3, Teacup_4, LucySwiss_3, Nightmare_3
- Track 6 : ScienceWizSam_4, DevitoJr_3, Darby_3, Trustiboi_3, Breylor17_3, Synopsis_3
- Track 7 : Acai_3
- Track 8 : Tenno_4, CapnMurica_4, MiniBagel_4
- Track 9 : Westerlin_4
- Track 10 : Hemma_4
- Track 11 : Brunswick_3
- Track 12 : Chlochlo_3, Tipton_3, Bouchard_3, Phaby_3
- Track 13 : Tokki_3
- Track 14 : LilHuddy_3
- Track 15 : Giantsbane_3
- Track 16 : Shepard_3
- Track 17 : Loretta_3, Ingrid_3
- Track 18 : MediumFry_4
- Track 19 : Caterpillar_4
- Track 20 : Anandi_4
- Track 21 : Makai_3, Truckee_3
- Track 22 : BarbieDoll_4, Kinny_4, Renaldo_5
- Track 23 : Barbonzobean_4, Lewando_4, Biscute_3, Muglass_3
- Track 24 : Stardrop_4, Uzumaki_4, Navi1117_4, Altjira_3, Zeina_4, Phaila_4, Argan_3, GantcherGoblin_3
- Track 25 : Mardi_4
- Track 26 : TrixiePhattel_4
- Track 27 : Leathea_4
- Track 28 : Tenney120_4, KevinMinion_3
- Track 29 : BlackHoleSun_5
- Track 30 : PoeMe_4
- Track 31 : Zippen_4, Inked_4
- Track 32 : Onestar_3
- Track 33 : Djungelskog_4, Sloopyjoe_4, Salk_4, HerbBucket_4, Stayer_4, Egad_4, Boog_4, StarLord_4, Michelle_4, Shiba_4, Raunak_4, Jeremy4pt0_4, Spain_4, MrAaronian_4, Linda_4, ProfFrink_4, DoctorPepper_4, BronxBay_4

- Track 34 : Powelldog_3
- Track 35 : Sporto_3
- Track 36 : Sprinkle_3
- Track 37 : Natasha_3, RustyBoy_3
- Track 38 : Miek_4, Regigigas_4, FromIndy_4, SendItCS_4
- Track 39 : CricKo_4, Thiqqums_4, Rainydai_4
- Track 40 : Kardashian_4
- Track 41 : ClubPenguin_3
- Track 42 : GaeCeo_25

Summary of Final Annotations (See graph section above for start numbers):

The start number called the most often in the published annotations is 10, it was called in 59 of the 77 non-draft genes in the pham.

Genes that call this "Most Annotated" start:

- Acai_3, Altjira_3, AreFloNak_3, Argan_3, BarbieDoll_4, Barbonzobean_4, Biscute_3, BlackHoleSun_5, Boog_4, Bouchard_3, Breylor17_3, BronxBay_4, Brunswick_3, CastorTray_4, Caterpillar_4, Chlochlo_3, Darby_3, DevitoJr_3, Djungelskog_4, DoctorPepper_4, Egad_4, ElephantMan_3, GantcherGoblin_3, Giantsbane_3, Gordon_4, Hemma_4, HerbBucket_4, Ingrid_3, Jeremy4pt0_4, KevinMinion_3, Kinny_4, Leathea_4, Lewando_4, LilHuddy_3, Linda_4, Loretta_3, Makai_3, Mardi_4, MediumFry_4, Michelle_4, MrAaronian_4, Muglass_3, Natasha_3, Navi1117_4, Niktson_3, Nivinsha_3, Onestar_3, Phaby_3, Phaila_4, PoeMe_4, Powelldog_3, ProfFrink_4, Raunak_4, Renaldo_5, RustyBoy_3, Salk_4, ScienceWizSam_4, Shepard_3, Shiba_4, Sloopyjoe_4, Spain_4, Sporto_3, Sprinkle_3, StarLord_4, Stardrop_4, Stayer_4, Synepsis_3, Tatanka_3, Tenney120_4, Tipton_3, Tokki_3, TrixiePhattel_4, Truckee_3, Trustiboi_3, Uzumaki_4, Zeina_4,

Genes that have the "Most Annotated" start but do not call it:

-

Genes that do not have the "Most Annotated" start:

- Anandi_4, CapnMurica_4, ClubPenguin_3, CricKo_4, Dinallo_4, FromIndy_4, GaeCeo_25, Inked_4, Issa_3, Kardashian_4, LucySwiss_3, Miek_4, MiniBagel_4, Nightmare_3, Rainydai_4, Regigigas_4, SendItCS_4, Teacup_4, Tenno_4, Thiqqums_4, Westerlin_4, Zippen_4,

Summary by start number:

Start 7:

- Found in 1 of 98 (1.0%) of genes in pham
- Manual Annotations of this start: 1 of 77
- Called 100.0% of time when present
- Phage (with cluster) where this start called: GaeCeo_25 (EA9),

Start 8:

- Found in 8 of 98 (8.2%) of genes in pham
- Manual Annotations of this start: 6 of 77

- Called 100.0% of time when present
- Phage (with cluster) where this start called: Anandi_4 (AU4), CapnMurica_4 (AU1), Dinallo_4 (AU1), Inked_4 (AU7), MiniBagel_4 (AU1), Tenno_4 (AU1), Westerlin_4 (AU1), Zippen_4 (AU7),

Start 9:

- Found in 4 of 98 (4.1%) of genes in pham
- Manual Annotations of this start: 4 of 77
- Called 100.0% of time when present
- Phage (with cluster) where this start called: Issa_3 (AU1), LucySwiss_3 (AU1), Nightmare_3 (AU1), Teacup_4 (AU1),

Start 10:

- Found in 76 of 98 (77.6%) of genes in pham
- Manual Annotations of this start: 59 of 77
- Called 100.0% of time when present
- Phage (with cluster) where this start called: Acai_3 (AU1), Altjira_3 (AU6), AreFloNak_3 (AU1), Argan_3 (AU6), BarbieDoll_4 (AU6), Barbonzobean_4 (AU6), Biscute_3 (AU6), BlackHoleSun_5 (AU6), Boog_4 (AW), Bouchard_3 (AU2), Breylor17_3 (AU1), BronxBay_4 (AW), Brunswick_3 (AU1), CastorTray_4 (AU1), Caterpillar_4 (AU4), Chlochlo_3 (AU2), Darby_3 (AU1), DevitoJr_3 (AU1), Djungelskog_4 (AW), DoctorPepper_4 (AW), Egad_4 (AW), ElephantMan_3 (AU1), GantcherGoblin_3 (AU6), Giantsbane_3 (AU2), Gordon_4 (AU1), Hemma_4 (AU1), HerbBucket_4 (AW), Ingrid_3 (AU3), Jeremy4pt0_4 (AW), KevinMinion_3 (AU6), Kinny_4 (AU6), Leathea_4 (AU6), Lewando_4 (AU6), LilHuddy_3 (AU2), Linda_4 (AW), Loretta_3 (AU3), Makai_3 (AU5), Mardi_4 (AU6), MediumFry_4 (AU4), Michelle_4 (AW), MrAaronian_4 (AW), Muglass_3 (AU6), Natasha_3 (AW), Navi1117_4 (AU6), Niktson_3 (AU1), Nivinsha_3 (AU1), Onestar_3 (AW), Phaby_3 (AU2), Phaila_4 (AU6), PoeMe_4 (AU6), Powelldog_3 (AW), ProfFrink_4 (AW), Raunak_4 (AW), Renaldo_5 (AU6), RustyBoy_3 (AW), Salk_4 (AW), ScienceWizSam_4 (AU1), Shepard_3 (AU2), Shiba_4 (AW), Sloopyjoe_4 (AW), Spain_4 (AW), Sporto_3 (AW), Sprinkle_3 (AW), StarLord_4 (AW), Stardrop_4 (AU6), Stayer_4 (AW), Synopsis_3 (AU1), Tatanka_3 (AU1), Tenney120_4 (AU6), Tipton_3 (AU2), Tokki_3 (AU2), TrixiePhattel_4 (AU6), Truckee_3 (AU5), Trustiboi_3 (AU1), Uzumaki_4 (AU6), Zeina_4 (AU6),

Start 12:

- Found in 8 of 98 (8.2%) of genes in pham
- Manual Annotations of this start: 6 of 77
- Called 100.0% of time when present
- Phage (with cluster) where this start called: CricKo_4 (BI4), FromIndy_4 (BI4), Kardashian_4 (BI6), Miek_4 (BI4), Rainydai_4 (BI4), Regigigas_4 (BI4), SendItCS_4 (BI4), Thiqqums_4 (BI4),

Start 13:

- Found in 1 of 98 (1.0%) of genes in pham
- Manual Annotations of this start: 1 of 77
- Called 100.0% of time when present
- Phage (with cluster) where this start called: ClubPenguin_3 (BI7),

Summary by clusters:

There are 12 clusters represented in this pham: EA9, AU7, AU1, AU3, AU2, AU5, AU4, AW, AU6, BI6, BI7, BI4,

Info for manual annotations of cluster AU1:

- Start number 8 was manually annotated 3 times for cluster AU1.
- Start number 9 was manually annotated 4 times for cluster AU1.
- Start number 10 was manually annotated 12 times for cluster AU1.

Info for manual annotations of cluster AU2:

- Start number 10 was manually annotated 8 times for cluster AU2.

Info for manual annotations of cluster AU3:

- Start number 10 was manually annotated 2 times for cluster AU3.

Info for manual annotations of cluster AU4:

- Start number 8 was manually annotated 1 time for cluster AU4.
- Start number 10 was manually annotated 2 times for cluster AU4.

Info for manual annotations of cluster AU5:

- Start number 10 was manually annotated 2 times for cluster AU5.

Info for manual annotations of cluster AU6:

- Start number 10 was manually annotated 14 times for cluster AU6.

Info for manual annotations of cluster AU7:

- Start number 8 was manually annotated 2 times for cluster AU7.

Info for manual annotations of cluster AW:

- Start number 10 was manually annotated 19 times for cluster AW.

Info for manual annotations of cluster BI4:

- Start number 12 was manually annotated 5 times for cluster BI4.

Info for manual annotations of cluster BI6:

- Start number 12 was manually annotated 1 time for cluster BI6.

Info for manual annotations of cluster BI7:

- Start number 13 was manually annotated 1 time for cluster BI7.

Info for manual annotations of cluster EA9:

- Start number 7 was manually annotated 1 time for cluster EA9.

Gene Information:

Gene: Acai_3 Start: 1549, Stop: 2673, Start Num: 10

Candidate Starts for Acai_3:

(Start: 10 @1549 has 59 MA's), (26, 1807), (39, 2011), (64, 2326), (74, 2422),

Gene: Altjira_3 Start: 1423, Stop: 2403, Start Num: 10

Candidate Starts for Altjira_3:

(Start: 10 @1423 has 59 MA's), (23, 1594), (39, 1894), (43, 1924), (61, 2122), (75, 2332),

Gene: Anandi_4 Start: 1644, Stop: 2735, Start Num: 8

Candidate Starts for Anandi_4:

(Start: 8 @1644 has 6 MA's), (17, 1749), (24, 1836), (46, 2139), (57, 2277),

Gene: AreFloNak_3 Start: 1412, Stop: 2536, Start Num: 10

Candidate Starts for AreFloNak_3:

(Start: 10 @1412 has 59 MA's), (26, 1670), (29, 1727), (39, 1874), (73, 2282), (74, 2285),

Gene: Argan_3 Start: 1237, Stop: 2217, Start Num: 10

Candidate Starts for Argan_3:

(Start: 10 @1237 has 59 MA's), (23, 1408), (39, 1708), (43, 1738), (61, 1936), (75, 2146),

Gene: BarbieDoll_4 Start: 1531, Stop: 2511, Start Num: 10

Candidate Starts for BarbieDoll_4:

(2, 1432), (3, 1444), (4, 1450), (Start: 10 @1531 has 59 MA's), (23, 1702), (39, 2002), (43, 2032), (61, 2230), (66, 2347), (75, 2440),

Gene: Barbonzobean_4 Start: 1227, Stop: 2207, Start Num: 10

Candidate Starts for Barbonzobean_4:

(2, 1128), (3, 1140), (4, 1146), (Start: 10 @1227 has 59 MA's), (23, 1398), (39, 1698), (43, 1728), (66, 2043), (75, 2136),

Gene: Biscute_3 Start: 1227, Stop: 2207, Start Num: 10

Candidate Starts for Biscute_3:

(2, 1128), (3, 1140), (4, 1146), (Start: 10 @1227 has 59 MA's), (23, 1398), (39, 1698), (43, 1728), (66, 2043), (75, 2136),

Gene: BlackHoleSun_5 Start: 1604, Stop: 2584, Start Num: 10

Candidate Starts for BlackHoleSun_5:

(Start: 10 @1604 has 59 MA's), (23, 1775), (25, 1802), (39, 2075), (43, 2105), (45, 2120), (61, 2303),

Gene: Boog_4 Start: 1440, Stop: 2573, Start Num: 10

Candidate Starts for Boog_4:

(Start: 10 @1440 has 59 MA's), (20, 1566), (26, 1701), (28, 1722), (39, 1905),

Gene: Bouchard_3 Start: 1397, Stop: 2491, Start Num: 10

Candidate Starts for Bouchard_3:

(Start: 10 @1397 has 59 MA's), (37, 1823), (57, 2018), (74, 2273),

Gene: Breylor17_3 Start: 1537, Stop: 2661, Start Num: 10

Candidate Starts for Breylor17_3:

(Start: 10 @1537 has 59 MA's), (25, 1726), (26, 1795), (29, 1852), (39, 1999), (73, 2407), (74, 2410),

Gene: BronxBay_4 Start: 1439, Stop: 2572, Start Num: 10

Candidate Starts for BronxBay_4:

(Start: 10 @1439 has 59 MA's), (20, 1565), (26, 1700), (28, 1721), (39, 1904),

Gene: Brunswick_3 Start: 1546, Stop: 2670, Start Num: 10

Candidate Starts for Brunswick_3:

(Start: 10 @1546 has 59 MA's), (26, 1804), (27, 1816), (39, 2008), (64, 2323), (70, 2389), (74, 2419), (80, 2539),

Gene: CapnMurica_4 Start: 2789, Stop: 3742, Start Num: 8
Candidate Starts for CapnMurica_4:
(Start: 8 @2789 has 6 MA's), (33, 3149), (35, 3209), (44, 3281), (52, 3344), (69, 3599), (71, 3632), (74, 3647),

Gene: CastorTray_4 Start: 1391, Stop: 2515, Start Num: 10
Candidate Starts for CastorTray_4:
(Start: 10 @1391 has 59 MA's), (26, 1649), (29, 1706), (39, 1853), (73, 2261), (74, 2264),

Gene: Caterpillar_4 Start: 1620, Stop: 2729, Start Num: 10
Candidate Starts for Caterpillar_4:
(Start: 10 @1620 has 59 MA's), (20, 1746), (26, 1881), (32, 1983), (39, 2085), (48, 2160), (53, 2199), (74, 2493),

Gene: Chlochlo_3 Start: 1398, Stop: 2492, Start Num: 10
Candidate Starts for Chlochlo_3:
(Start: 10 @1398 has 59 MA's), (37, 1824), (57, 2019), (74, 2274),

Gene: ClubPenguin_3 Start: 874, Stop: 1728, Start Num: 13
Candidate Starts for ClubPenguin_3:
(Start: 13 @874 has 1 MA's), (31, 1156), (38, 1246), (42, 1276), (49, 1324), (66, 1555),

Gene: CricKo_4 Start: 1128, Stop: 1970, Start Num: 12
Candidate Starts for CricKo_4:
(Start: 12 @1128 has 6 MA's), (14, 1134), (31, 1413), (49, 1581), (51, 1602), (68, 1806),

Gene: Darby_3 Start: 1394, Stop: 2518, Start Num: 10
Candidate Starts for Darby_3:
(Start: 10 @1394 has 59 MA's), (25, 1583), (26, 1652), (29, 1709), (39, 1856), (73, 2264), (74, 2267),

Gene: DevitoJr_3 Start: 1536, Stop: 2660, Start Num: 10
Candidate Starts for DevitoJr_3:
(Start: 10 @1536 has 59 MA's), (25, 1725), (26, 1794), (29, 1851), (39, 1998), (73, 2406), (74, 2409),

Gene: Dinallo_4 Start: 2789, Stop: 3742, Start Num: 8
Candidate Starts for Dinallo_4:
(Start: 8 @2789 has 6 MA's), (33, 3149), (35, 3209), (37, 3218), (44, 3281), (52, 3344), (71, 3632), (74, 3647),

Gene: Djungelskog_4 Start: 1439, Stop: 2572, Start Num: 10
Candidate Starts for Djungelskog_4:
(Start: 10 @1439 has 59 MA's), (20, 1565), (26, 1700), (28, 1721), (39, 1904),

Gene: DoctorPepper_4 Start: 1439, Stop: 2572, Start Num: 10
Candidate Starts for DoctorPepper_4:
(Start: 10 @1439 has 59 MA's), (20, 1565), (26, 1700), (28, 1721), (39, 1904),

Gene: Egad_4 Start: 1440, Stop: 2573, Start Num: 10
Candidate Starts for Egad_4:
(Start: 10 @1440 has 59 MA's), (20, 1566), (26, 1701), (28, 1722), (39, 1905),

Gene: ElephantMan_3 Start: 1549, Stop: 2673, Start Num: 10
Candidate Starts for ElephantMan_3:

(Start: 10 @1549 has 59 MA's), (26, 1807), (39, 2011), (64, 2326), (70, 2392), (74, 2422), (80, 2542),

Gene: FromIndy_4 Start: 1128, Stop: 1970, Start Num: 12

Candidate Starts for FromIndy_4:

(Start: 12 @1128 has 6 MA's), (31, 1413), (49, 1581), (51, 1602), (68, 1806),

Gene: GaeCeo_25 Start: 18513, Stop: 19511, Start Num: 7

Candidate Starts for GaeCeo_25:

(1, 18351), (5, 18441), (Start: 7 @18513 has 1 MA's), (18, 18642), (22, 18675), (25, 18723), (30, 18855), (34, 18915), (36, 18957), (54, 19119), (58, 19179), (59, 19182), (62, 19236), (77, 19473), (78, 19485),

Gene: GantcherGoblin_3 Start: 1237, Stop: 2217, Start Num: 10

Candidate Starts for GantcherGoblin_3:

(Start: 10 @1237 has 59 MA's), (23, 1408), (39, 1708), (43, 1738), (61, 1936), (75, 2146),

Gene: Giantsbane_3 Start: 1398, Stop: 2492, Start Num: 10

Candidate Starts for Giantsbane_3:

(Start: 10 @1398 has 59 MA's), (57, 2019), (74, 2274),

Gene: Gordon_4 Start: 2678, Stop: 3787, Start Num: 10

Candidate Starts for Gordon_4:

(Start: 10 @2678 has 59 MA's), (29, 2993), (39, 3140), (41, 3158), (60, 3353), (74, 3551), (79, 3659),

Gene: Hemma_4 Start: 1180, Stop: 2295, Start Num: 10

Candidate Starts for Hemma_4:

(Start: 10 @1180 has 59 MA's), (39, 1639), (78, 2122), (84, 2275),

Gene: HerbBucket_4 Start: 1440, Stop: 2573, Start Num: 10

Candidate Starts for HerbBucket_4:

(Start: 10 @1440 has 59 MA's), (20, 1566), (26, 1701), (28, 1722), (39, 1905),

Gene: Ingrid_3 Start: 1418, Stop: 2536, Start Num: 10

Candidate Starts for Ingrid_3:

(Start: 10 @1418 has 59 MA's), (20, 1544), (26, 1679), (32, 1781), (39, 1883), (55, 2033), (64, 2195), (66, 2219), (78, 2366), (81, 2414),

Gene: Inked_4 Start: 1655, Stop: 2740, Start Num: 8

Candidate Starts for Inked_4:

(Start: 8 @1655 has 6 MA's), (69, 2465),

Gene: Issa_3 Start: 1538, Stop: 2491, Start Num: 9

Candidate Starts for Issa_3:

(Start: 9 @1538 has 4 MA's), (19, 1664), (63, 2243),

Gene: Jeremy4pt0_4 Start: 1439, Stop: 2572, Start Num: 10

Candidate Starts for Jeremy4pt0_4:

(Start: 10 @1439 has 59 MA's), (20, 1565), (26, 1700), (28, 1721), (39, 1904),

Gene: Kardashian_4 Start: 1143, Stop: 2003, Start Num: 12

Candidate Starts for Kardashian_4:

(Start: 12 @1143 has 6 MA's), (21, 1212), (31, 1428), (49, 1596), (67, 1836),

Gene: KevinMinion_3 Start: 1393, Stop: 2373, Start Num: 10
Candidate Starts for KevinMinion_3:
(Start: 10 @1393 has 59 MA's), (23, 1564), (39, 1864), (43, 1894), (75, 2302),

Gene: Kinny_4 Start: 1531, Stop: 2511, Start Num: 10
Candidate Starts for Kinny_4:
(2, 1432), (3, 1444), (4, 1450), (Start: 10 @1531 has 59 MA's), (23, 1702), (39, 2002), (43, 2032), (61, 2230), (66, 2347), (75, 2440),

Gene: Leathea_4 Start: 1424, Stop: 2404, Start Num: 10
Candidate Starts for Leathea_4:
(3, 1337), (Start: 10 @1424 has 59 MA's), (20, 1550), (43, 1922), (45, 1937), (77, 2366),

Gene: Lewando_4 Start: 1530, Stop: 2510, Start Num: 10
Candidate Starts for Lewando_4:
(2, 1431), (3, 1443), (4, 1449), (Start: 10 @1530 has 59 MA's), (23, 1701), (39, 2001), (43, 2031), (66, 2346), (75, 2439),

Gene: LilHuddy_3 Start: 1398, Stop: 2501, Start Num: 10
Candidate Starts for LilHuddy_3:
(Start: 10 @1398 has 59 MA's), (37, 1824), (40, 1851), (57, 2019), (74, 2283), (83, 2454),

Gene: Linda_4 Start: 1439, Stop: 2572, Start Num: 10
Candidate Starts for Linda_4:
(Start: 10 @1439 has 59 MA's), (20, 1565), (26, 1700), (28, 1721), (39, 1904),

Gene: Loretta_3 Start: 1418, Stop: 2536, Start Num: 10
Candidate Starts for Loretta_3:
(Start: 10 @1418 has 59 MA's), (20, 1544), (26, 1679), (32, 1781), (39, 1883), (55, 2033), (64, 2195), (66, 2219), (78, 2366), (81, 2414),

Gene: LucySwiss_3 Start: 1557, Stop: 2510, Start Num: 9
Candidate Starts for LucySwiss_3:
(Start: 9 @1557 has 4 MA's), (19, 1683), (63, 2262),

Gene: Makai_3 Start: 1476, Stop: 2600, Start Num: 10
Candidate Starts for Makai_3:
(6, 1437), (Start: 10 @1476 has 59 MA's), (26, 1734), (39, 1938),

Gene: Mardi_4 Start: 1542, Stop: 2525, Start Num: 10
Candidate Starts for Mardi_4:
(Start: 10 @1542 has 59 MA's), (23, 1713), (39, 2013), (43, 2043), (45, 2058),

Gene: MediumFry_4 Start: 1649, Stop: 2758, Start Num: 10
Candidate Starts for MediumFry_4:
(Start: 10 @1649 has 59 MA's), (20, 1775), (26, 1910), (32, 2012), (39, 2114), (53, 2228), (74, 2522),

Gene: Michelle_4 Start: 1439, Stop: 2572, Start Num: 10
Candidate Starts for Michelle_4:
(Start: 10 @1439 has 59 MA's), (20, 1565), (26, 1700), (28, 1721), (39, 1904),

Gene: Miek_4 Start: 1128, Stop: 1970, Start Num: 12
Candidate Starts for Miek_4:

(Start: 12 @1128 has 6 MA's), (31, 1413), (49, 1581), (51, 1602), (68, 1806),

Gene: MiniBagel_4 Start: 2789, Stop: 3742, Start Num: 8

Candidate Starts for MiniBagel_4:

(Start: 8 @2789 has 6 MA's), (33, 3149), (35, 3209), (44, 3281), (52, 3344), (69, 3599), (71, 3632), (74, 3647),

Gene: MrAaronian_4 Start: 1439, Stop: 2572, Start Num: 10

Candidate Starts for MrAaronian_4:

(Start: 10 @1439 has 59 MA's), (20, 1565), (26, 1700), (28, 1721), (39, 1904),

Gene: Muglass_3 Start: 1227, Stop: 2207, Start Num: 10

Candidate Starts for Muglass_3:

(2, 1128), (3, 1140), (4, 1146), (Start: 10 @1227 has 59 MA's), (23, 1398), (39, 1698), (43, 1728), (66, 2043), (75, 2136),

Gene: Natasha_3 Start: 1414, Stop: 2385, Start Num: 10

Candidate Starts for Natasha_3:

(Start: 10 @1414 has 59 MA's), (23, 1585), (39, 1885), (62, 2128), (71, 2275),

Gene: Navi1117_4 Start: 1632, Stop: 2612, Start Num: 10

Candidate Starts for Navi1117_4:

(Start: 10 @1632 has 59 MA's), (23, 1803), (39, 2103), (43, 2133), (61, 2331), (75, 2541),

Gene: Nightmare_3 Start: 1557, Stop: 2510, Start Num: 9

Candidate Starts for Nightmare_3:

(Start: 9 @1557 has 4 MA's), (19, 1683), (63, 2262),

Gene: Niktson_3 Start: 1549, Stop: 2673, Start Num: 10

Candidate Starts for Niktson_3:

(Start: 10 @1549 has 59 MA's), (26, 1807), (39, 2011), (64, 2326), (70, 2392), (74, 2422), (80, 2542),

Gene: Nivinsha_3 Start: 1412, Stop: 2536, Start Num: 10

Candidate Starts for Nivinsha_3:

(Start: 10 @1412 has 59 MA's), (26, 1670), (29, 1727), (39, 1874), (73, 2282), (74, 2285),

Gene: Onestar_3 Start: 1451, Stop: 2590, Start Num: 10

Candidate Starts for Onestar_3:

(Start: 10 @1451 has 59 MA's), (23, 1622), (39, 1922),

Gene: Phaby_3 Start: 1397, Stop: 2491, Start Num: 10

Candidate Starts for Phaby_3:

(Start: 10 @1397 has 59 MA's), (37, 1823), (57, 2018), (74, 2273),

Gene: Phaila_4 Start: 1506, Stop: 2486, Start Num: 10

Candidate Starts for Phaila_4:

(Start: 10 @1506 has 59 MA's), (23, 1677), (39, 1977), (43, 2007), (61, 2205), (75, 2415),

Gene: PoeMe_4 Start: 1540, Stop: 2520, Start Num: 10

Candidate Starts for PoeMe_4:

(Start: 10 @1540 has 59 MA's), (23, 1711), (39, 2011), (43, 2041), (61, 2239), (65, 2344), (75, 2449),

Gene: Powelldog_3 Start: 1471, Stop: 2301, Start Num: 10

Candidate Starts for Powelldog_3:

(3, 1384), (4, 1390), (Start: 10 @1471 has 59 MA's), (15, 1552), (39, 1942),

Gene: ProfFrink_4 Start: 1439, Stop: 2572, Start Num: 10

Candidate Starts for ProfFrink_4:

(Start: 10 @1439 has 59 MA's), (20, 1565), (26, 1700), (28, 1721), (39, 1904),

Gene: Rainydai_4 Start: 1128, Stop: 1970, Start Num: 12

Candidate Starts for Rainydai_4:

(Start: 12 @1128 has 6 MA's), (14, 1134), (31, 1413), (49, 1581), (51, 1602), (68, 1806),

Gene: Raunak_4 Start: 1439, Stop: 2572, Start Num: 10

Candidate Starts for Raunak_4:

(Start: 10 @1439 has 59 MA's), (20, 1565), (26, 1700), (28, 1721), (39, 1904),

Gene: Regigigas_4 Start: 1128, Stop: 1970, Start Num: 12

Candidate Starts for Regigigas_4:

(Start: 12 @1128 has 6 MA's), (31, 1413), (49, 1581), (51, 1602), (68, 1806),

Gene: Renaldo_5 Start: 1531, Stop: 2511, Start Num: 10

Candidate Starts for Renaldo_5:

(2, 1432), (3, 1444), (4, 1450), (Start: 10 @1531 has 59 MA's), (23, 1702), (39, 2002), (43, 2032), (61, 2230), (66, 2347), (75, 2440),

Gene: RustyBoy_3 Start: 1414, Stop: 2385, Start Num: 10

Candidate Starts for RustyBoy_3:

(Start: 10 @1414 has 59 MA's), (23, 1585), (39, 1885), (62, 2128), (71, 2275),

Gene: Salk_4 Start: 1439, Stop: 2572, Start Num: 10

Candidate Starts for Salk_4:

(Start: 10 @1439 has 59 MA's), (20, 1565), (26, 1700), (28, 1721), (39, 1904),

Gene: ScienceWizSam_4 Start: 1367, Stop: 2491, Start Num: 10

Candidate Starts for ScienceWizSam_4:

(Start: 10 @1367 has 59 MA's), (25, 1556), (26, 1625), (29, 1682), (39, 1829), (73, 2237), (74, 2240),

Gene: SendItCS_4 Start: 1128, Stop: 1970, Start Num: 12

Candidate Starts for SendItCS_4:

(Start: 12 @1128 has 6 MA's), (31, 1413), (49, 1581), (51, 1602), (68, 1806),

Gene: Shepard_3 Start: 1398, Stop: 2501, Start Num: 10

Candidate Starts for Shepard_3:

(Start: 10 @1398 has 59 MA's), (37, 1824), (57, 2019), (74, 2283), (83, 2454),

Gene: Shiba_4 Start: 1439, Stop: 2572, Start Num: 10

Candidate Starts for Shiba_4:

(Start: 10 @1439 has 59 MA's), (20, 1565), (26, 1700), (28, 1721), (39, 1904),

Gene: Sloopyjoe_4 Start: 1440, Stop: 2573, Start Num: 10

Candidate Starts for Sloopyjoe_4:

(Start: 10 @1440 has 59 MA's), (20, 1566), (26, 1701), (28, 1722), (39, 1905),

Gene: Spain_4 Start: 1439, Stop: 2572, Start Num: 10

Candidate Starts for Spain_4:

(Start: 10 @1439 has 59 MA's), (20, 1565), (26, 1700), (28, 1721), (39, 1904),

Gene: Sporto_3 Start: 1392, Stop: 2516, Start Num: 10

Candidate Starts for Sporto_3:

(Start: 10 @1392 has 59 MA's), (16, 1476), (20, 1518), (26, 1653), (39, 1857), (47, 1923), (82, 2463),

Gene: Sprinkle_3 Start: 1419, Stop: 2543, Start Num: 10

Candidate Starts for Sprinkle_3:

(Start: 10 @1419 has 59 MA's), (20, 1545), (28, 1701), (39, 1884), (48, 1962), (50, 1977), (56, 2052), (63, 2148), (72, 2286), (76, 2343), (84, 2523), (85, 2535),

Gene: StarLord_4 Start: 1440, Stop: 2573, Start Num: 10

Candidate Starts for StarLord_4:

(Start: 10 @1440 has 59 MA's), (20, 1566), (26, 1701), (28, 1722), (39, 1905),

Gene: Stardrop_4 Start: 1540, Stop: 2520, Start Num: 10

Candidate Starts for Stardrop_4:

(Start: 10 @1540 has 59 MA's), (23, 1711), (39, 2011), (43, 2041), (61, 2239), (75, 2449),

Gene: Stayer_4 Start: 1439, Stop: 2572, Start Num: 10

Candidate Starts for Stayer_4:

(Start: 10 @1439 has 59 MA's), (20, 1565), (26, 1700), (28, 1721), (39, 1904),

Gene: Synopsis_3 Start: 1535, Stop: 2659, Start Num: 10

Candidate Starts for Synopsis_3:

(Start: 10 @1535 has 59 MA's), (25, 1724), (26, 1793), (29, 1850), (39, 1997), (73, 2405), (74, 2408),

Gene: Tatanka_3 Start: 1475, Stop: 2599, Start Num: 10

Candidate Starts for Tatanka_3:

(Start: 10 @1475 has 59 MA's), (26, 1733), (29, 1790), (39, 1937), (73, 2345), (74, 2348),

Gene: Teacup_4 Start: 1538, Stop: 2491, Start Num: 9

Candidate Starts for Teacup_4:

(Start: 9 @1538 has 4 MA's), (19, 1664), (63, 2243),

Gene: Tenney120_4 Start: 1520, Stop: 2500, Start Num: 10

Candidate Starts for Tenney120_4:

(Start: 10 @1520 has 59 MA's), (23, 1691), (39, 1991), (43, 2021), (75, 2429),

Gene: Tenno_4 Start: 2789, Stop: 3742, Start Num: 8

Candidate Starts for Tenno_4:

(Start: 8 @2789 has 6 MA's), (33, 3149), (35, 3209), (44, 3281), (52, 3344), (69, 3599), (71, 3632), (74, 3647),

Gene: Thiqqums_4 Start: 1128, Stop: 1970, Start Num: 12

Candidate Starts for Thiqqums_4:

(Start: 12 @1128 has 6 MA's), (14, 1134), (31, 1413), (49, 1581), (51, 1602), (68, 1806),

Gene: Tipton_3 Start: 1398, Stop: 2492, Start Num: 10

Candidate Starts for Tipton_3:

(Start: 10 @1398 has 59 MA's), (37, 1824), (57, 2019), (74, 2274),

Gene: Tokki_3 Start: 1398, Stop: 2501, Start Num: 10
Candidate Starts for Tokki_3:
(Start: 10 @1398 has 59 MA's), (37, 1824), (74, 2283),

Gene: TrixiePhattel_4 Start: 1473, Stop: 2447, Start Num: 10
Candidate Starts for TrixiePhattel_4:
(Start: 10 @1473 has 59 MA's), (11, 1488), (26, 1740), (39, 1944), (43, 1974), (53, 2064),

Gene: Truckee_3 Start: 1423, Stop: 2547, Start Num: 10
Candidate Starts for Truckee_3:
(6, 1384), (Start: 10 @1423 has 59 MA's), (26, 1681), (39, 1885),

Gene: Trustiboi_3 Start: 1556, Stop: 2680, Start Num: 10
Candidate Starts for Trustiboi_3:
(Start: 10 @1556 has 59 MA's), (25, 1745), (26, 1814), (29, 1871), (39, 2018), (73, 2426), (74, 2429),

Gene: Uzumaki_4 Start: 1520, Stop: 2500, Start Num: 10
Candidate Starts for Uzumaki_4:
(Start: 10 @1520 has 59 MA's), (23, 1691), (39, 1991), (43, 2021), (61, 2219), (75, 2429),

Gene: Westerlin_4 Start: 2789, Stop: 3745, Start Num: 8
Candidate Starts for Westerlin_4:
(Start: 8 @2789 has 6 MA's), (19, 2918), (63, 3497),

Gene: Zeina_4 Start: 1530, Stop: 2510, Start Num: 10
Candidate Starts for Zeina_4:
(Start: 10 @1530 has 59 MA's), (23, 1701), (39, 2001), (43, 2031), (61, 2229), (75, 2439),

Gene: Zippen_4 Start: 1656, Stop: 2741, Start Num: 8
Candidate Starts for Zippen_4:
(Start: 8 @1656 has 6 MA's), (69, 2466),