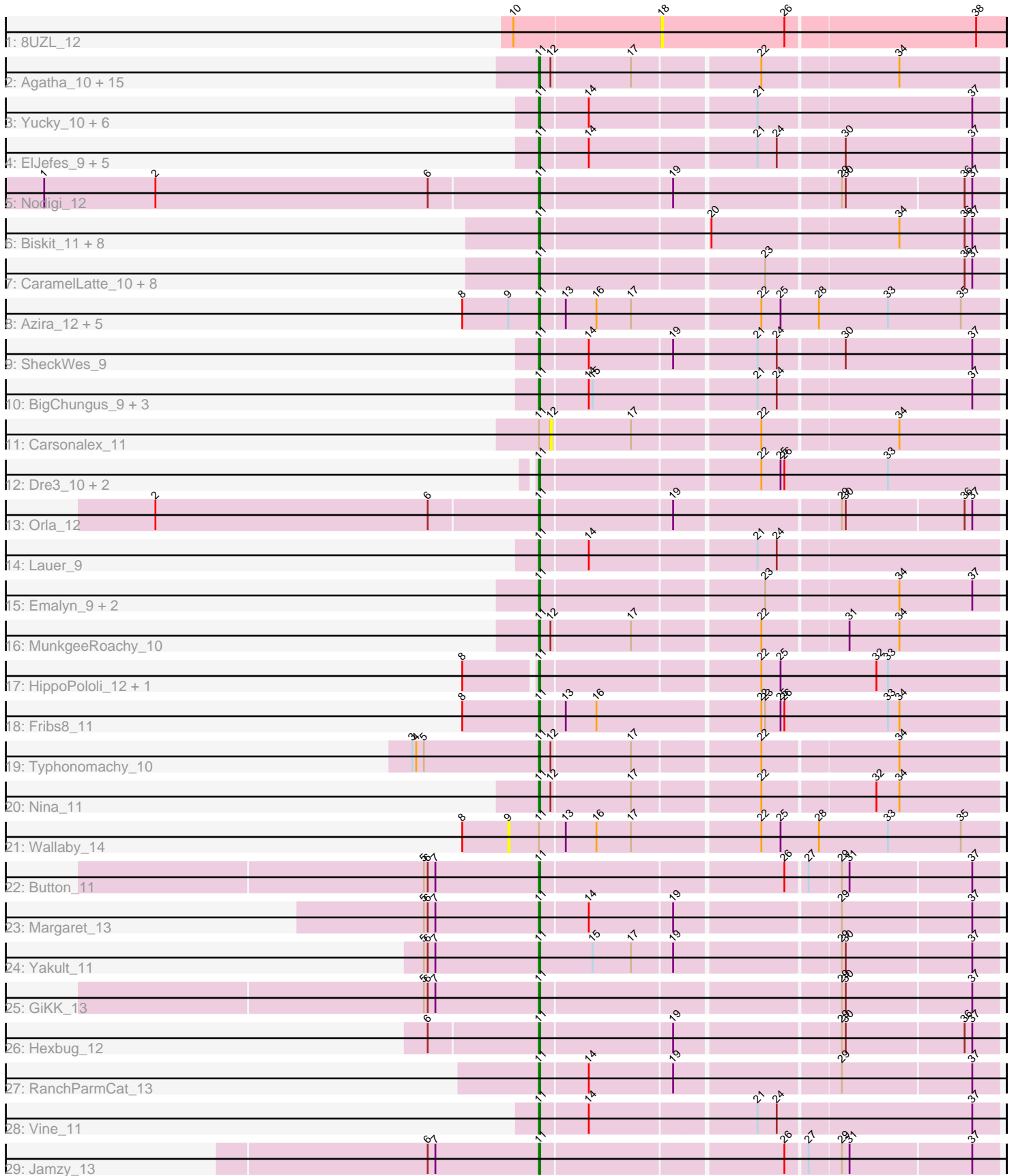


Pham 311490



Note: Tracks are now grouped by subcluster and scaled. Switching in subcluster is indicated by changes in track color. Track scale is now set by default to display the region 30 bp upstream of start 1 to 30 bp downstream of the last possible start. If this default region is judged to be packed too tightly with annotated starts, the track will be further scaled to only show that region of the ORF with annotated starts. This action will be indicated by adding "Zoomed" to the title. For starts, yellow indicates the location of called starts comprised solely of Glimmer/GeneMark auto-annotations, green indicates the location of called starts with at least 1 manual gene annotation.

Pham 311490 Report

This analysis was run 06/27/26 on database version 652.

Pham number 311490 has 84 members, 21 are drafts.

Phages represented in each track:

- Track 1 : 8UZL_12
- Track 2 : Agatha_10, Elliott_10, Starburst_11, Quasar_10, Cozz_10, GoldHunter_11, Socotra_11, Burnsey_10, PsychoKiller_10, Sopespian_10, ChickenTender_12, RSchmailz_11, RADical_11, Bubble_10, RedBaron_12, Axym_10
- Track 3 : Yucky_10, CocoaPuff_9, Bavilard_10, SummitAcademy_9, PotPie_10, KayGee_10, Elinal_11
- Track 4 : ElJefes_9, MAnor_10, CherryonLim_11, Mayweather_11, McDazzle_9, Pons_10
- Track 5 : Nodigi_12
- Track 6 : Biskit_11, SweatNTears_12, Buttrmlkdreams_10, Yummy_11, Horseradish_11, SketchMex_9, Troje_10, MScarn_12, Blondies_11
- Track 7 : CaramelLatte_10, BillDoor_12, ChocoMunchkin_10, Yarn_9, GTE2_08, CanesSauce_10, SteamedHams_12, Tolls_12, AndPeggy_9
- Track 8 : Azira_12, Survivors_12, Wolfwood_12, Nibbles_12, Zareef_12, MaVan_12
- Track 9 : SheckWes_9
- Track 10 : BigChungus_9, Balloona_9, Feastonyeet_9, Tarnish_10
- Track 11 : Carsonalex_11
- Track 12 : Dre3_10, Gibbous_10, Cleo_10
- Track 13 : Orla_12
- Track 14 : Lauer_9
- Track 15 : Emalyn_9, AikoCarson_9, Amok_9
- Track 16 : MunkgeeRoachy_10
- Track 17 : HippoPololi_12, Malvina_12
- Track 18 : Fribs8_11
- Track 19 : Typhonomachy_10
- Track 20 : Nina_11
- Track 21 : Wallaby_14
- Track 22 : Button_11
- Track 23 : Margaret_13
- Track 24 : Yakult_11
- Track 25 : GiKK_13
- Track 26 : Hexbug_12
- Track 27 : RanchParmCat_13
- Track 28 : Vine_11
- Track 29 : Jamzy_13

Summary of Final Annotations (See graph section above for start numbers):

The start number called the most often in the published annotations is 11, it was called in 63 of the 63 non-draft genes in the pham.

Genes that call this "Most Annotated" start:

- Agatha_10, AikoCarson_9, Amok_9, AndPeggy_9, Axym_10, Azira_12, Balloona_9, Bavidard_10, BigChungus_9, BillDoor_12, Biskit_11, Blondies_11, Bubble_10, Burnsey_10, Button_11, Buttrmlkdreams_10, CanesSauce_10, CaramelLatte_10, CherryonLim_11, ChickenTender_12, ChocoMunchkin_10, Cleo_10, CocoaPuff_9, Cozz_10, Dre3_10, ElJefes_9, Elinal_11, Elliott_10, Emalyn_9, Feastonyeet_9, Fribs8_11, GTE2_08, GiKK_13, Gibbous_10, GoldHunter_11, Hexbug_12, HippoPololi_12, Horseradish_11, Jamzy_13, KayGee_10, Lauer_9, MAnor_10, MScarn_12, MaVan_12, Malvina_12, Margaret_13, Mayweather_11, McDazzle_9, MunkgeeRoachy_10, Nibbles_12, Nina_11, Nodigi_12, Orla_12, Pons_10, PotPie_10, PsychoKiller_10, Quasar_10, RADical_11, RSchmailzl_11, RanchParmCat_13, RedBaron_12, SheckWes_9, SketchMex_9, Socotra_11, Sopespian_10, Starburst_11, SteamedHams_12, SummitAcademy_9, Survivors_12, SweatNTears_12, Tarnish_10, Tolls_12, Troje_10, Typhonmarchy_10, Vine_11, Wolfwood_12, Yakult_11, Yarn_9, Yucky_10, Yummy_11, Zareef_12,

Genes that have the "Most Annotated" start but do not call it:

- Carsonalex_11, Wallaby_14,

Genes that do not have the "Most Annotated" start:

- 8UZL_12,

Summary by start number:

Start 9:

- Found in 7 of 84 (8.3%) of genes in pham
- No Manual Annotations of this start.
- Called 14.3% of time when present
- Phage (with cluster) where this start called: Wallaby_14 (CT),

Start 11:

- Found in 83 of 84 (98.8%) of genes in pham
- Manual Annotations of this start: 63 of 63
- Called 97.6% of time when present
- Phage (with cluster) where this start called: Agatha_10 (CT), AikoCarson_9 (CT), Amok_9 (CT), AndPeggy_9 (CT), Axym_10 (CT), Azira_12 (CT), Balloona_9 (CT), Bavidard_10 (CT), BigChungus_9 (CT), BillDoor_12 (CT), Biskit_11 (CT), Blondies_11 (CT), Bubble_10 (CT), Burnsey_10 (CT), Button_11 (CT), Buttrmlkdreams_10 (CT), CanesSauce_10 (CT), CaramelLatte_10 (CT), CherryonLim_11 (CT), ChickenTender_12 (CT), ChocoMunchkin_10 (CT), Cleo_10 (CT), CocoaPuff_9 (CT), Cozz_10 (CT), Dre3_10 (CT), ElJefes_9 (CT), Elinal_11 (CT), Elliott_10 (CT), Emalyn_9 (CT), Feastonyeet_9 (CT), Fribs8_11 (CT), GTE2_08 (CT), GiKK_13 (CT), Gibbous_10 (CT), GoldHunter_11 (CT), Hexbug_12 (CT), HippoPololi_12 (CT), Horseradish_11 (CT), Jamzy_13 (CT), KayGee_10 (CT), Lauer_9 (CT), MAnor_10 (CT), MScarn_12 (CT), MaVan_12 (CT), Malvina_12 (CT), Margaret_13 (CT), Mayweather_11 (CT), McDazzle_9 (CT), MunkgeeRoachy_10 (CT), Nibbles_12 (CT), Nina_11 (CT), Nodigi_12 (CT), Orla_12 (CT), Pons_10 (CT), PotPie_10 (CT),

PsychoKiller_10 (CT), Quasar_10 (CT), RADical_11 (CT), RSchmailzl_11 (CT), RanchParmCat_13 (CT), RedBaron_12 (CT), SheckWes_9 (CT), SketchMex_9 (CT), Socotra_11 (CT), Sopespian_10 (CT), Starburst_11 (CT), SteamedHams_12 (CT), SummitAcademy_9 (CT), Survivors_12 (CT), SweatNTears_12 (CT), Tarnish_10 (CT), Tolls_12 (CT), Troje_10 (CT), Typhonomachy_10 (CT), Vine_11 (CT), Wolfwood_12 (CT), Yakult_11 (CT), Yarn_9 (CT), Yucky_10 (CT), Yummy_11 (CT), Zareef_12 (CT),

Start 12:

- Found in 20 of 84 (23.8%) of genes in pham
- No Manual Annotations of this start.
- Called 5.0% of time when present
- Phage (with cluster) where this start called: Carsonalex_11 (CT),

Start 18:

- Found in 1 of 84 (1.2%) of genes in pham
- No Manual Annotations of this start.
- Called 100.0% of time when present
- Phage (with cluster) where this start called: 8UZL_12 (AB),

Summary by clusters:

There are 2 clusters represented in this pham: AB, CT,

Info for manual annotations of cluster CT:

- Start number 11 was manually annotated 63 times for cluster CT.

Gene Information:

Gene: 8UZL_12 Start: 8333, Stop: 8596, Start Num: 18

Candidate Starts for 8UZL_12:

(10, 8222), (18, 8333), (26, 8429), (38, 8573),

Gene: Agatha_10 Start: 6923, Stop: 7264, Start Num: 11

Candidate Starts for Agatha_10:

(Start: 11 @6923 has 63 MA's), (12, 6932), (17, 6992), (22, 7085), (34, 7187),

Gene: AikoCarson_9 Start: 6653, Stop: 6994, Start Num: 11

Candidate Starts for AikoCarson_9:

(Start: 11 @6653 has 63 MA's), (23, 6818), (34, 6917), (37, 6974),

Gene: Amok_9 Start: 6653, Stop: 6994, Start Num: 11

Candidate Starts for Amok_9:

(Start: 11 @6653 has 63 MA's), (23, 6818), (34, 6917), (37, 6974),

Gene: AndPeggy_9 Start: 6941, Stop: 7282, Start Num: 11

Candidate Starts for AndPeggy_9:

(Start: 11 @6941 has 63 MA's), (23, 7106), (36, 7256), (37, 7262),

Gene: Axym_10 Start: 6923, Stop: 7264, Start Num: 11

Candidate Starts for Axym_10:
(Start: 11 @6923 has 63 MA's), (12, 6932), (17, 6992), (22, 7085), (34, 7187),

Gene: Azira_12 Start: 7820, Stop: 8170, Start Num: 11
Candidate Starts for Azira_12:
(8, 7760), (9, 7796), (Start: 11 @7820 has 63 MA's), (13, 7838), (16, 7862), (17, 7889), (22, 7985), (25, 8000), (28, 8030), (33, 8084), (35, 8141),

Gene: Balloona_9 Start: 6695, Stop: 7036, Start Num: 11
Candidate Starts for Balloona_9:
(Start: 11 @6695 has 63 MA's), (14, 6731), (15, 6734), (21, 6854), (24, 6869), (37, 7016),

Gene: Bavilard_10 Start: 7475, Stop: 7816, Start Num: 11
Candidate Starts for Bavilard_10:
(Start: 11 @7475 has 63 MA's), (14, 7511), (21, 7634), (37, 7796),

Gene: BigChungus_9 Start: 6720, Stop: 7061, Start Num: 11
Candidate Starts for BigChungus_9:
(Start: 11 @6720 has 63 MA's), (14, 6756), (15, 6759), (21, 6879), (24, 6894), (37, 7041),

Gene: BillDoor_12 Start: 6906, Stop: 7247, Start Num: 11
Candidate Starts for BillDoor_12:
(Start: 11 @6906 has 63 MA's), (23, 7071), (36, 7221), (37, 7227),

Gene: Biskit_11 Start: 6907, Stop: 7248, Start Num: 11
Candidate Starts for Biskit_11:
(Start: 11 @6907 has 63 MA's), (20, 7030), (34, 7171), (36, 7222), (37, 7228),

Gene: Blondies_11 Start: 6902, Stop: 7243, Start Num: 11
Candidate Starts for Blondies_11:
(Start: 11 @6902 has 63 MA's), (20, 7025), (34, 7166), (36, 7217), (37, 7223),

Gene: Bubble_10 Start: 6923, Stop: 7264, Start Num: 11
Candidate Starts for Bubble_10:
(Start: 11 @6923 has 63 MA's), (12, 6932), (17, 6992), (22, 7085), (34, 7187),

Gene: Burnsey_10 Start: 6924, Stop: 7265, Start Num: 11
Candidate Starts for Burnsey_10:
(Start: 11 @6924 has 63 MA's), (12, 6933), (17, 6993), (22, 7086), (34, 7188),

Gene: Button_11 Start: 6943, Stop: 7281, Start Num: 11
Candidate Starts for Button_11:
(5, 6853), (6, 6856), (7, 6862), (Start: 11 @6943 has 63 MA's), (26, 7123), (27, 7138), (29, 7162), (31, 7168), (37, 7261),

Gene: Buttrmlkdreams_10 Start: 6901, Stop: 7242, Start Num: 11
Candidate Starts for Buttrmlkdreams_10:
(Start: 11 @6901 has 63 MA's), (20, 7024), (34, 7165), (36, 7216), (37, 7222),

Gene: CanesSauce_10 Start: 6942, Stop: 7283, Start Num: 11
Candidate Starts for CanesSauce_10:
(Start: 11 @6942 has 63 MA's), (23, 7107), (36, 7257), (37, 7263),

Gene: CaramelLatte_10 Start: 6942, Stop: 7283, Start Num: 11
Candidate Starts for CaramelLatte_10:
(Start: 11 @6942 has 63 MA's), (23, 7107), (36, 7257), (37, 7263),

Gene: Carsonalex_11 Start: 6989, Stop: 7321, Start Num: 12
Candidate Starts for Carsonalex_11:
(Start: 11 @6980 has 63 MA's), (12, 6989), (17, 7049), (22, 7142), (34, 7244),

Gene: CherryonLim_11 Start: 7446, Stop: 7787, Start Num: 11
Candidate Starts for CherryonLim_11:
(Start: 11 @7446 has 63 MA's), (14, 7482), (21, 7605), (24, 7620), (30, 7668), (37, 7767),

Gene: ChickenTender_12 Start: 6966, Stop: 7307, Start Num: 11
Candidate Starts for ChickenTender_12:
(Start: 11 @6966 has 63 MA's), (12, 6975), (17, 7035), (22, 7128), (34, 7230),

Gene: ChocoMunchkin_10 Start: 6942, Stop: 7283, Start Num: 11
Candidate Starts for ChocoMunchkin_10:
(Start: 11 @6942 has 63 MA's), (23, 7107), (36, 7257), (37, 7263),

Gene: Cleo_10 Start: 7123, Stop: 7470, Start Num: 11
Candidate Starts for Cleo_10:
(Start: 11 @7123 has 63 MA's), (22, 7285), (25, 7300), (26, 7303), (33, 7384),

Gene: CocoaPuff_9 Start: 6695, Stop: 7036, Start Num: 11
Candidate Starts for CocoaPuff_9:
(Start: 11 @6695 has 63 MA's), (14, 6731), (21, 6854), (37, 7016),

Gene: Cozz_10 Start: 6924, Stop: 7265, Start Num: 11
Candidate Starts for Cozz_10:
(Start: 11 @6924 has 63 MA's), (12, 6933), (17, 6993), (22, 7086), (34, 7188),

Gene: Dre3_10 Start: 7070, Stop: 7417, Start Num: 11
Candidate Starts for Dre3_10:
(Start: 11 @7070 has 63 MA's), (22, 7232), (25, 7247), (26, 7250), (33, 7331),

Gene: ElJefes_9 Start: 7172, Stop: 7513, Start Num: 11
Candidate Starts for ElJefes_9:
(Start: 11 @7172 has 63 MA's), (14, 7208), (21, 7331), (24, 7346), (30, 7394), (37, 7493),

Gene: Elinal_11 Start: 6701, Stop: 7042, Start Num: 11
Candidate Starts for Elinal_11:
(Start: 11 @6701 has 63 MA's), (14, 6737), (21, 6860), (37, 7022),

Gene: Elliott_10 Start: 6923, Stop: 7264, Start Num: 11
Candidate Starts for Elliott_10:
(Start: 11 @6923 has 63 MA's), (12, 6932), (17, 6992), (22, 7085), (34, 7187),

Gene: Emalyn_9 Start: 6652, Stop: 6993, Start Num: 11
Candidate Starts for Emalyn_9:
(Start: 11 @6652 has 63 MA's), (23, 6817), (34, 6916), (37, 6973),

Gene: Feastonyeet_9 Start: 6720, Stop: 7061, Start Num: 11

Candidate Starts for Feastonyeet_9:

(Start: 11 @6720 has 63 MA's), (14, 6756), (15, 6759), (21, 6879), (24, 6894), (37, 7041),

Gene: Fribs8_11 Start: 7633, Stop: 7983, Start Num: 11

Candidate Starts for Fribs8_11:

(8, 7573), (Start: 11 @7633 has 63 MA's), (13, 7651), (16, 7675), (22, 7798), (23, 7801), (25, 7813), (26, 7816), (33, 7897), (34, 7906),

Gene: GTE2_08 Start: 6602, Stop: 6943, Start Num: 11

Candidate Starts for GTE2_08:

(Start: 11 @6602 has 63 MA's), (23, 6767), (36, 6917), (37, 6923),

Gene: GiKK_13 Start: 7246, Stop: 7584, Start Num: 11

Candidate Starts for GiKK_13:

(5, 7156), (6, 7159), (7, 7165), (Start: 11 @7246 has 63 MA's), (29, 7465), (30, 7468), (37, 7564),

Gene: Gibbous_10 Start: 7070, Stop: 7417, Start Num: 11

Candidate Starts for Gibbous_10:

(Start: 11 @7070 has 63 MA's), (22, 7232), (25, 7247), (26, 7250), (33, 7331),

Gene: GoldHunter_11 Start: 6924, Stop: 7265, Start Num: 11

Candidate Starts for GoldHunter_11:

(Start: 11 @6924 has 63 MA's), (12, 6933), (17, 6993), (22, 7086), (34, 7188),

Gene: Hexbug_12 Start: 7932, Stop: 8270, Start Num: 11

Candidate Starts for Hexbug_12:

(6, 7848), (Start: 11 @7932 has 63 MA's), (19, 8031), (29, 8151), (30, 8154), (36, 8244), (37, 8250),

Gene: HippoPololi_12 Start: 7722, Stop: 8069, Start Num: 11

Candidate Starts for HippoPololi_12:

(8, 7668), (Start: 11 @7722 has 63 MA's), (22, 7884), (25, 7899), (32, 7974), (33, 7983),

Gene: Horseradish_11 Start: 6805, Stop: 7146, Start Num: 11

Candidate Starts for Horseradish_11:

(Start: 11 @6805 has 63 MA's), (20, 6928), (34, 7069), (36, 7120), (37, 7126),

Gene: Jamzy_13 Start: 7256, Stop: 7594, Start Num: 11

Candidate Starts for Jamzy_13:

(6, 7169), (7, 7175), (Start: 11 @7256 has 63 MA's), (26, 7436), (27, 7451), (29, 7475), (31, 7481), (37, 7574),

Gene: KayGee_10 Start: 6701, Stop: 7042, Start Num: 11

Candidate Starts for KayGee_10:

(Start: 11 @6701 has 63 MA's), (14, 6737), (21, 6860), (37, 7022),

Gene: Lauer_9 Start: 6750, Stop: 7091, Start Num: 11

Candidate Starts for Lauer_9:

(Start: 11 @6750 has 63 MA's), (14, 6786), (21, 6909), (24, 6924),

Gene: MAnor_10 Start: 6691, Stop: 7032, Start Num: 11

Candidate Starts for MAnor_10:

(Start: 11 @6691 has 63 MA's), (14, 6727), (21, 6850), (24, 6865), (30, 6913), (37, 7012),

Gene: MScarn_12 Start: 6901, Stop: 7242, Start Num: 11
Candidate Starts for MScarn_12:
(Start: 11 @6901 has 63 MA's), (20, 7024), (34, 7165), (36, 7216), (37, 7222),

Gene: MaVan_12 Start: 7820, Stop: 8170, Start Num: 11
Candidate Starts for MaVan_12:
(8, 7760), (9, 7796), (Start: 11 @7820 has 63 MA's), (13, 7838), (16, 7862), (17, 7889), (22, 7985), (25, 8000), (28, 8030), (33, 8084), (35, 8141),

Gene: Malvina_12 Start: 7725, Stop: 8072, Start Num: 11
Candidate Starts for Malvina_12:
(8, 7671), (Start: 11 @7725 has 63 MA's), (22, 7887), (25, 7902), (32, 7977), (33, 7986),

Gene: Margaret_13 Start: 7641, Stop: 7979, Start Num: 11
Candidate Starts for Margaret_13:
(5, 7551), (6, 7554), (7, 7560), (Start: 11 @7641 has 63 MA's), (14, 7677), (19, 7740), (29, 7860), (37, 7959),

Gene: Mayweather_11 Start: 7324, Stop: 7665, Start Num: 11
Candidate Starts for Mayweather_11:
(Start: 11 @7324 has 63 MA's), (14, 7360), (21, 7483), (24, 7498), (30, 7546), (37, 7645),

Gene: McDazzle_9 Start: 7166, Stop: 7507, Start Num: 11
Candidate Starts for McDazzle_9:
(Start: 11 @7166 has 63 MA's), (14, 7202), (21, 7325), (24, 7340), (30, 7388), (37, 7487),

Gene: MunkgeeRoachy_10 Start: 6971, Stop: 7312, Start Num: 11
Candidate Starts for MunkgeeRoachy_10:
(Start: 11 @6971 has 63 MA's), (12, 6980), (17, 7040), (22, 7133), (31, 7196), (34, 7235),

Gene: Nibbles_12 Start: 7820, Stop: 8170, Start Num: 11
Candidate Starts for Nibbles_12:
(8, 7760), (9, 7796), (Start: 11 @7820 has 63 MA's), (13, 7838), (16, 7862), (17, 7889), (22, 7985), (25, 8000), (28, 8030), (33, 8084), (35, 8141),

Gene: Nina_11 Start: 7957, Stop: 8298, Start Num: 11
Candidate Starts for Nina_11:
(Start: 11 @7957 has 63 MA's), (12, 7966), (17, 8026), (22, 8119), (32, 8203), (34, 8221),

Gene: Nodigi_12 Start: 7925, Stop: 8263, Start Num: 11
Candidate Starts for Nodigi_12:
(1, 7541), (2, 7628), (6, 7841), (Start: 11 @7925 has 63 MA's), (19, 8024), (29, 8144), (30, 8147), (36, 8237), (37, 8243),

Gene: Orla_12 Start: 7929, Stop: 8267, Start Num: 11
Candidate Starts for Orla_12:
(2, 7632), (6, 7845), (Start: 11 @7929 has 63 MA's), (19, 8028), (29, 8148), (30, 8151), (36, 8241), (37, 8247),

Gene: Pons_10 Start: 6703, Stop: 7044, Start Num: 11
Candidate Starts for Pons_10:
(Start: 11 @6703 has 63 MA's), (14, 6739), (21, 6862), (24, 6877), (30, 6925), (37, 7024),

Gene: PotPie_10 Start: 7554, Stop: 7895, Start Num: 11
Candidate Starts for PotPie_10:
(Start: 11 @7554 has 63 MA's), (14, 7590), (21, 7713), (37, 7875),

Gene: PsychoKiller_10 Start: 6923, Stop: 7264, Start Num: 11
Candidate Starts for PsychoKiller_10:
(Start: 11 @6923 has 63 MA's), (12, 6932), (17, 6992), (22, 7085), (34, 7187),

Gene: Quasar_10 Start: 7538, Stop: 7879, Start Num: 11
Candidate Starts for Quasar_10:
(Start: 11 @7538 has 63 MA's), (12, 7547), (17, 7607), (22, 7700), (34, 7802),

Gene: RADical_11 Start: 6924, Stop: 7265, Start Num: 11
Candidate Starts for RADical_11:
(Start: 11 @6924 has 63 MA's), (12, 6933), (17, 6993), (22, 7086), (34, 7188),

Gene: RSchmailzl_11 Start: 7064, Stop: 7405, Start Num: 11
Candidate Starts for RSchmailzl_11:
(Start: 11 @7064 has 63 MA's), (12, 7073), (17, 7133), (22, 7226), (34, 7328),

Gene: RanchParmCat_13 Start: 7641, Stop: 7979, Start Num: 11
Candidate Starts for RanchParmCat_13:
(Start: 11 @7641 has 63 MA's), (14, 7677), (19, 7740), (29, 7860), (37, 7959),

Gene: RedBaron_12 Start: 6968, Stop: 7309, Start Num: 11
Candidate Starts for RedBaron_12:
(Start: 11 @6968 has 63 MA's), (12, 6977), (17, 7037), (22, 7130), (34, 7232),

Gene: SheckWes_9 Start: 6691, Stop: 7032, Start Num: 11
Candidate Starts for SheckWes_9:
(Start: 11 @6691 has 63 MA's), (14, 6727), (19, 6790), (21, 6850), (24, 6865), (30, 6913), (37, 7012),

Gene: SketchMex_9 Start: 6907, Stop: 7248, Start Num: 11
Candidate Starts for SketchMex_9:
(Start: 11 @6907 has 63 MA's), (20, 7030), (34, 7171), (36, 7222), (37, 7228),

Gene: Socotra_11 Start: 6923, Stop: 7264, Start Num: 11
Candidate Starts for Socotra_11:
(Start: 11 @6923 has 63 MA's), (12, 6932), (17, 6992), (22, 7085), (34, 7187),

Gene: Sopespian_10 Start: 6923, Stop: 7264, Start Num: 11
Candidate Starts for Sopespian_10:
(Start: 11 @6923 has 63 MA's), (12, 6932), (17, 6992), (22, 7085), (34, 7187),

Gene: Starburst_11 Start: 6923, Stop: 7264, Start Num: 11
Candidate Starts for Starburst_11:
(Start: 11 @6923 has 63 MA's), (12, 6932), (17, 6992), (22, 7085), (34, 7187),

Gene: SteamedHams_12 Start: 6942, Stop: 7283, Start Num: 11
Candidate Starts for SteamedHams_12:
(Start: 11 @6942 has 63 MA's), (23, 7107), (36, 7257), (37, 7263),

Gene: SummitAcademy_9 Start: 6769, Stop: 7110, Start Num: 11

Candidate Starts for SummitAcademy_9:
(Start: 11 @6769 has 63 MA's), (14, 6805), (21, 6928), (37, 7090),

Gene: Survivors_12 Start: 7674, Stop: 8024, Start Num: 11
Candidate Starts for Survivors_12:
(8, 7614), (9, 7650), (Start: 11 @7674 has 63 MA's), (13, 7692), (16, 7716), (17, 7743), (22, 7839), (25, 7854), (28, 7884), (33, 7938), (35, 7995),

Gene: SweatNTears_12 Start: 7427, Stop: 7768, Start Num: 11
Candidate Starts for SweatNTears_12:
(Start: 11 @7427 has 63 MA's), (20, 7550), (34, 7691), (36, 7742), (37, 7748),

Gene: Tarnish_10 Start: 7068, Stop: 7409, Start Num: 11
Candidate Starts for Tarnish_10:
(Start: 11 @7068 has 63 MA's), (14, 7104), (15, 7107), (21, 7227), (24, 7242), (37, 7389),

Gene: Tolls_12 Start: 6945, Stop: 7286, Start Num: 11
Candidate Starts for Tolls_12:
(Start: 11 @6945 has 63 MA's), (23, 7110), (36, 7260), (37, 7266),

Gene: Troje_10 Start: 6901, Stop: 7242, Start Num: 11
Candidate Starts for Troje_10:
(Start: 11 @6901 has 63 MA's), (20, 7024), (34, 7165), (36, 7216), (37, 7222),

Gene: Typhonomachy_10 Start: 6923, Stop: 7264, Start Num: 11
Candidate Starts for Typhonomachy_10:
(3, 6824), (4, 6827), (5, 6833), (Start: 11 @6923 has 63 MA's), (12, 6932), (17, 6992), (22, 7085), (34, 7187),

Gene: Vine_11 Start: 7698, Stop: 8039, Start Num: 11
Candidate Starts for Vine_11:
(Start: 11 @7698 has 63 MA's), (14, 7734), (21, 7857), (24, 7872), (37, 8019),

Gene: Wallaby_14 Start: 7795, Stop: 8169, Start Num: 9
Candidate Starts for Wallaby_14:
(8, 7759), (9, 7795), (Start: 11 @7819 has 63 MA's), (13, 7837), (16, 7861), (17, 7888), (22, 7984), (25, 7999), (28, 8029), (33, 8083), (35, 8140),

Gene: Wolfwood_12 Start: 7819, Stop: 8169, Start Num: 11
Candidate Starts for Wolfwood_12:
(8, 7759), (9, 7795), (Start: 11 @7819 has 63 MA's), (13, 7837), (16, 7861), (17, 7888), (22, 7984), (25, 7999), (28, 8029), (33, 8083), (35, 8140),

Gene: Yakult_11 Start: 6834, Stop: 7175, Start Num: 11
Candidate Starts for Yakult_11:
(5, 6744), (6, 6747), (7, 6753), (Start: 11 @6834 has 63 MA's), (15, 6876), (17, 6906), (19, 6936), (29, 7056), (30, 7059), (37, 7155),

Gene: Yarn_9 Start: 6935, Stop: 7276, Start Num: 11
Candidate Starts for Yarn_9:
(Start: 11 @6935 has 63 MA's), (23, 7100), (36, 7250), (37, 7256),

Gene: Yucky_10 Start: 7558, Stop: 7899, Start Num: 11

Candidate Starts for Yucky_10:

(Start: 11 @7558 has 63 MA's), (14, 7594), (21, 7717), (37, 7879),

Gene: Yummy_11 Start: 6805, Stop: 7146, Start Num: 11

Candidate Starts for Yummy_11:

(Start: 11 @6805 has 63 MA's), (20, 6928), (34, 7069), (36, 7120), (37, 7126),

Gene: Zareef_12 Start: 7821, Stop: 8171, Start Num: 11

Candidate Starts for Zareef_12:

(8, 7761), (9, 7797), (Start: 11 @7821 has 63 MA's), (13, 7839), (16, 7863), (17, 7890), (22, 7986), (25, 8001), (28, 8031), (33, 8085), (35, 8142),