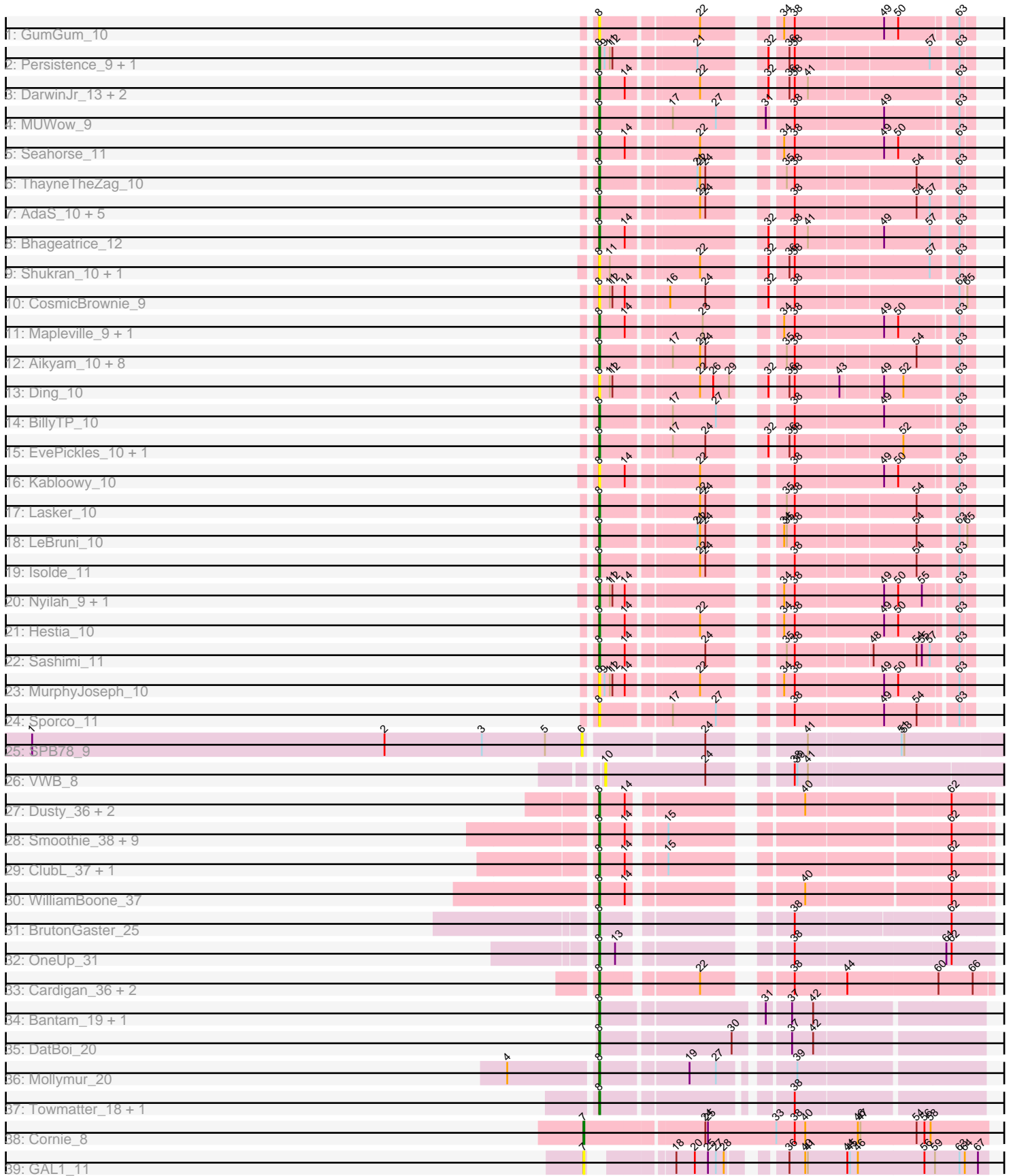


Pham 311527



Note: Tracks are now grouped by subcluster and scaled. Switching in subcluster is indicated by changes in track color. Track scale is now set by default to display the region 30 bp upstream of start 1 to 30 bp downstream of the last possible start. If this default region is judged to be packed too tightly with annotated starts, the track will be further scaled to only show that region of the ORF with annotated starts. This action will be indicated by adding "Zoomed" to the title. For starts, yellow indicates the location of called starts comprised solely of Glimmer/GeneMark auto-annotations, green indicates the location of called starts with at least 1 manual gene annotation.

Pham 311527 Report

This analysis was run 06/27/26 on database version 652.

WARNING: Pham size does not match number of genes in report. Either unphamerated genes have been added (by you) or starterator has removed genes due to invalid start codon.

Pham number 311527 has 75 members, 17 are drafts.

Phages represented in each track:

- Track 1 : GumGum_10
- Track 2 : Persistence_9, JakeTheSnake_10
- Track 3 : DarwinJr_13, Crescenzo_10, Anekin_9
- Track 4 : MUWow_9
- Track 5 : Seahorse_11
- Track 6 : ThayneTheZag_10
- Track 7 : AdaS_10, Raphaella_10, CookieBear_10, JellyBread_10, Auxilium_10, Windest_11
- Track 8 : Bhageatrice_12
- Track 9 : Shukran_10, Satrap_10
- Track 10 : CosmicBrownie_9
- Track 11 : Mapleville_9, Lawnathon_10
- Track 12 : Aikyam_10, BenchScraper_10, MaterMagnus_10, Richie_10, Sakai_10, SpicyFrank_10, SonDevVon_9, YoungHarleezy_10, Gorpy_10
- Track 13 : Ding_10
- Track 14 : BillyTP_10
- Track 15 : EvePickles_10, Faja_10
- Track 16 : Kabloowy_10
- Track 17 : Lasker_10
- Track 18 : LeBruni_10
- Track 19 : Isolde_11
- Track 20 : Nyilah_9, Tiff81_11
- Track 21 : Hestia_10
- Track 22 : Sashimi_11
- Track 23 : MurphyJoseph_10
- Track 24 : Sporco_11
- Track 25 : SPB78_9
- Track 26 : VWB_8
- Track 27 : Dusty_36, Culver_37, Abscondus_36
- Track 28 : Smoothie_38, Aphelion_37, Norvs_38, Bachita_39, Cucurbita_39, Geeche_36, Lozinak_37, PhinkBoden_37, Toniann_37, Engineer_38
- Track 29 : ClubL_37, Miskis_35
- Track 30 : WilliamBoone_37

- Track 31 : BrutonGaster_25
- Track 32 : OneUp_31
- Track 33 : Cardigan_36, JonJames_36, Yvonnetastic_34
- Track 34 : Bantam_19, SpeedDemon_200
- Track 35 : DatBoi_20
- Track 36 : Mollymur_20
- Track 37 : Towmatter_18, Daredevil_19
- Track 38 : Cornie_8
- Track 39 : GAL1_11

Summary of Final Annotations (See graph section above for start numbers):

The start number called the most often in the published annotations is 8, it was called in 57 of the 58 non-draft genes in the pham.

Genes that call this "Most Annotated" start:

- Abscondus_36, AdaS_10, Aikyam_10, Anekin_9, Aphelion_37, Auxilium_10, Bachita_39, Bantam_19, BenchScraper_10, Bhageatrice_12, BillyTP_10, BrutonGaster_25, Cardigan_36, ClubL_37, CookieBear_10, CosmicBrownie_9, Crescenzo_10, Cucurbita_39, Culver_37, Daredevil_19, DarwinJr_13, DatBoi_20, Ding_10, Dusty_36, Engineer_38, EvePickles_10, Faja_10, Geeche_36, Gorpy_10, GumGum_10, Hestia_10, Isolde_11, JakeTheSnake_10, JellyBread_10, JonJames_36, Kabloowy_10, Lasker_10, Lawnathon_10, LeBruni_10, Lozinak_37, MUWow_9, Mapleville_9, MaterMagnus_10, Miskis_35, Mollymur_20, MurphyJoseph_10, Norvs_38, Nyilah_9, OneUp_31, Persistence_9, PhinkBoden_37, Raphaella_10, Richie_10, Sakai_10, Sashimi_11, Satrap_10, Seahorse_11, Shukran_10, Smoothie_38, SonDevVon_9, SpeedDemon_200, SpicyFrank_10, Sporco_11, ThayneTheZag_10, Tiff81_11, Toniann_37, Towmatter_18, WilliamBoone_37, Windest_11, YoungHarleezy_10, Yvonnetastic_34,

Genes that have the "Most Annotated" start but do not call it:

-

Genes that do not have the "Most Annotated" start:

- Cornie_8, GAL1_11, SPB78_9, VWB_8,

Summary by start number:

Start 6:

- Found in 1 of 75 (1.3%) of genes in pham
- No Manual Annotations of this start.
- Called 100.0% of time when present
- Phage (with cluster) where this start called: SPB78_9 (BA),

Start 7:

- Found in 2 of 75 (2.7%) of genes in pham
- Manual Annotations of this start: 1 of 58
- Called 100.0% of time when present
- Phage (with cluster) where this start called: Cornie_8 (F5), GAL1_11 (singleton),

Start 8:

- Found in 71 of 75 (94.7%) of genes in pham
- Manual Annotations of this start: 57 of 58
- Called 100.0% of time when present
- Phage (with cluster) where this start called: Abscondus_36 (CQ1), AdaS_10 (AY), Aikyam_10 (AY), Anekin_9 (AY), Aphelion_37 (CQ1), Auxilium_10 (AY), Bachita_39 (CQ1), Bantam_19 (DL), BenchScraper_10 (AY), Bhageatrice_12 (AY), BillyTP_10 (AY), BrutonGaster_25 (CQ2), Cardigan_36 (DD), ClubL_37 (CQ1), CookieBear_10 (AY), CosmicBrownie_9 (AY), Crescenzo_10 (AY), Cucurbita_39 (CQ1), Culver_37 (CQ1), Daredevil_19 (DL), DarwinJr_13 (AY), DatBoi_20 (DL), Ding_10 (AY), Dusty_36 (CQ1), Engineer_38 (CQ1), EvePickles_10 (AY), Faja_10 (AY), Geeche_36 (CQ1), Gorpy_10 (AY), GumGum_10 (AY), Hestia_10 (AY), Isolde_11 (AY), JakeTheSnake_10 (AY), JellyBread_10 (AY), JonJames_36 (DD), Kabloowy_10 (AY), Lasker_10 (AY), Lawnathon_10 (AY), LeBruni_10 (AY), Lozinak_37 (CQ1), MUWow_9 (AY), Mapleville_9 (AY), MaterMagnus_10 (AY), Miskis_35 (CQ1), Mollymur_20 (DL), MurphyJoseph_10 (AY), Norvs_38 (CQ1), Nyilah_9 (AY), OneUp_31 (CQ2), Persistence_9 (AY), PhinkBoden_37 (CQ1), Raphaella_10 (AY), Richie_10 (AY), Sakai_10 (AY), Sashimi_11 (AY), Satrap_10 (AY), Seahorse_11 (AY), Shukran_10 (AY), Smoothie_38 (CQ1), SonDevVon_9 (AY), SpeedDemon_200 (DL), SpicyFrank_10 (AY), Sporco_11 (AY), ThayneTheZag_10 (AY), Tiff81_11 (AY), Toniann_37 (CQ1), Towmatter_18 (DL), WilliamBoone_37 (CQ1), Windest_11 (AY), YoungHarleezy_10 (AY), Yvonnetastic_34 (DD),

Start 10:

- Found in 1 of 75 (1.3%) of genes in pham
- No Manual Annotations of this start.
- Called 100.0% of time when present
- Phage (with cluster) where this start called: VWB_8 (BA),

Summary by clusters:

There are 8 clusters represented in this pham: DL, BA, DD, singleton, AY, CQ2, CQ1, F5,

Info for manual annotations of cluster AY:

- Start number 8 was manually annotated 32 times for cluster AY.

Info for manual annotations of cluster CQ1:

- Start number 8 was manually annotated 15 times for cluster CQ1.

Info for manual annotations of cluster CQ2:

- Start number 8 was manually annotated 2 times for cluster CQ2.

Info for manual annotations of cluster DD:

- Start number 8 was manually annotated 2 times for cluster DD.

Info for manual annotations of cluster DL:

- Start number 8 was manually annotated 6 times for cluster DL.

Info for manual annotations of cluster F5:

- Start number 7 was manually annotated 1 time for cluster F5.

Gene Information:

Gene: Abscondus_36 Start: 15494, Stop: 15874, Start Num: 8

Candidate Starts for Abscondus_36:

(Start: 8 @15494 has 57 MA's), (14, 15521), (40, 15677), (62, 15830),

Gene: AdaS_10 Start: 7295, Stop: 7651, Start Num: 8

Candidate Starts for AdaS_10:

(Start: 8 @7295 has 57 MA's), (22, 7394), (24, 7400), (38, 7466), (54, 7595), (57, 7610), (63, 7637),

Gene: Aikyam_10 Start: 7296, Stop: 7652, Start Num: 8

Candidate Starts for Aikyam_10:

(Start: 8 @7296 has 57 MA's), (17, 7365), (22, 7395), (24, 7401), (35, 7458), (38, 7467), (54, 7596), (63, 7638),

Gene: Anekin_9 Start: 7408, Stop: 7764, Start Num: 8

Candidate Starts for Anekin_9:

(Start: 8 @7408 has 57 MA's), (14, 7435), (22, 7507), (32, 7558), (36, 7573), (38, 7579), (41, 7594), (63, 7750),

Gene: Aphelion_37 Start: 15763, Stop: 16143, Start Num: 8

Candidate Starts for Aphelion_37:

(Start: 8 @15763 has 57 MA's), (14, 15790), (15, 15823), (62, 16099),

Gene: Auxilium_10 Start: 7295, Stop: 7651, Start Num: 8

Candidate Starts for Auxilium_10:

(Start: 8 @7295 has 57 MA's), (22, 7394), (24, 7400), (38, 7466), (54, 7595), (57, 7610), (63, 7637),

Gene: Bachita_39 Start: 16196, Stop: 16576, Start Num: 8

Candidate Starts for Bachita_39:

(Start: 8 @16196 has 57 MA's), (14, 16223), (15, 16256), (62, 16532),

Gene: Bantam_19 Start: 13233, Stop: 13628, Start Num: 8

Candidate Starts for Bantam_19:

(Start: 8 @13233 has 57 MA's), (31, 13398), (37, 13422), (42, 13446),

Gene: BenchScraper_10 Start: 7310, Stop: 7666, Start Num: 8

Candidate Starts for BenchScraper_10:

(Start: 8 @7310 has 57 MA's), (17, 7379), (22, 7409), (24, 7415), (35, 7472), (38, 7481), (54, 7610), (63, 7652),

Gene: Bhageatrice_12 Start: 8505, Stop: 8861, Start Num: 8

Candidate Starts for Bhageatrice_12:

(Start: 8 @8505 has 57 MA's), (14, 8532), (32, 8655), (38, 8676), (41, 8691), (49, 8769), (57, 8820), (63, 8847),

Gene: BillyTP_10 Start: 7295, Stop: 7654, Start Num: 8

Candidate Starts for BillyTP_10:

(Start: 8 @7295 has 57 MA's), (17, 7364), (27, 7412), (38, 7466), (49, 7565), (63, 7640),

Gene: BrutonGaster_25 Start: 12392, Stop: 12775, Start Num: 8

Candidate Starts for BrutonGaster_25:
(Start: 8 @12392 has 57 MA's), (38, 12563), (62, 12728),

Gene: Cardigan_36 Start: 17393, Stop: 17779, Start Num: 8
Candidate Starts for Cardigan_36:
(Start: 8 @17393 has 57 MA's), (22, 17489), (38, 17564), (44, 17621), (60, 17720), (66, 17759),

Gene: ClubL_37 Start: 15685, Stop: 16065, Start Num: 8
Candidate Starts for ClubL_37:
(Start: 8 @15685 has 57 MA's), (14, 15712), (15, 15745), (62, 16021),

Gene: CookieBear_10 Start: 7295, Stop: 7651, Start Num: 8
Candidate Starts for CookieBear_10:
(Start: 8 @7295 has 57 MA's), (22, 7394), (24, 7400), (38, 7466), (54, 7595), (57, 7610), (63, 7637),

Gene: Cornie_8 Start: 6217, Stop: 6663, Start Num: 7
Candidate Starts for Cornie_8:
(Start: 7 @6217 has 1 MA's), (24, 6343), (25, 6346), (33, 6424), (38, 6445), (40, 6457), (46, 6517), (47, 6520), (54, 6583), (56, 6592), (58, 6598),

Gene: CosmicBrownie_9 Start: 7364, Stop: 7723, Start Num: 8
Candidate Starts for CosmicBrownie_9:
(Start: 8 @7364 has 57 MA's), (11, 7376), (12, 7379), (14, 7391), (16, 7430), (24, 7469), (32, 7514), (38, 7535), (63, 7709), (65, 7715),

Gene: Crescenzo_10 Start: 7336, Stop: 7692, Start Num: 8
Candidate Starts for Crescenzo_10:
(Start: 8 @7336 has 57 MA's), (14, 7363), (22, 7435), (32, 7486), (36, 7501), (38, 7507), (41, 7522), (63, 7678),

Gene: Cucurbita_39 Start: 17055, Stop: 17435, Start Num: 8
Candidate Starts for Cucurbita_39:
(Start: 8 @17055 has 57 MA's), (14, 17082), (15, 17115), (62, 17391),

Gene: Culver_37 Start: 15494, Stop: 15874, Start Num: 8
Candidate Starts for Culver_37:
(Start: 8 @15494 has 57 MA's), (14, 15521), (40, 15677), (62, 15830),

Gene: Daredevil_19 Start: 12081, Stop: 12467, Start Num: 8
Candidate Starts for Daredevil_19:
(Start: 8 @12081 has 57 MA's), (38, 12264),

Gene: DarwinJr_13 Start: 8639, Stop: 8995, Start Num: 8
Candidate Starts for DarwinJr_13:
(Start: 8 @8639 has 57 MA's), (14, 8666), (22, 8738), (32, 8789), (36, 8804), (38, 8810), (41, 8825), (63, 8981),

Gene: DatBoi_20 Start: 14024, Stop: 14419, Start Num: 8
Candidate Starts for DatBoi_20:
(Start: 8 @14024 has 57 MA's), (30, 14162), (37, 14213), (42, 14237),

Gene: Ding_10 Start: 7266, Stop: 7622, Start Num: 8
Candidate Starts for Ding_10:

(Start: 8 @7266 has 57 MA's), (11, 7278), (12, 7281), (22, 7365), (26, 7380), (29, 7398), (32, 7416), (36, 7431), (38, 7437), (43, 7485), (49, 7530), (52, 7551), (63, 7608),

Gene: Dusty_36 Start: 15494, Stop: 15874, Start Num: 8

Candidate Starts for Dusty_36:

(Start: 8 @15494 has 57 MA's), (14, 15521), (40, 15677), (62, 15830),

Gene: Engineer_38 Start: 15711, Stop: 16091, Start Num: 8

Candidate Starts for Engineer_38:

(Start: 8 @15711 has 57 MA's), (14, 15738), (15, 15771), (62, 16047),

Gene: EvePickles_10 Start: 7351, Stop: 7707, Start Num: 8

Candidate Starts for EvePickles_10:

(Start: 8 @7351 has 57 MA's), (17, 7420), (24, 7456), (32, 7501), (36, 7516), (38, 7522), (52, 7636), (63, 7693),

Gene: Faja_10 Start: 7295, Stop: 7651, Start Num: 8

Candidate Starts for Faja_10:

(Start: 8 @7295 has 57 MA's), (17, 7364), (24, 7400), (32, 7445), (36, 7460), (38, 7466), (52, 7580), (63, 7637),

Gene: GAL1_11 Start: 8169, Stop: 8561, Start Num: 7

Candidate Starts for GAL1_11:

(Start: 7 @8169 has 1 MA's), (18, 8238), (20, 8259), (25, 8274), (27, 8283), (28, 8292), (36, 8337), (40, 8355), (41, 8358), (44, 8403), (45, 8406), (46, 8415), (56, 8490), (59, 8502), (63, 8529), (64, 8535), (67, 8550),

Gene: Geeche_36 Start: 15585, Stop: 15965, Start Num: 8

Candidate Starts for Geeche_36:

(Start: 8 @15585 has 57 MA's), (14, 15612), (15, 15645), (62, 15921),

Gene: Gorpy_10 Start: 7304, Stop: 7660, Start Num: 8

Candidate Starts for Gorpy_10:

(Start: 8 @7304 has 57 MA's), (17, 7373), (22, 7403), (24, 7409), (35, 7466), (38, 7475), (54, 7604), (63, 7646),

Gene: GumGum_10 Start: 7340, Stop: 7699, Start Num: 8

Candidate Starts for GumGum_10:

(Start: 8 @7340 has 57 MA's), (22, 7439), (34, 7499), (38, 7511), (49, 7610), (50, 7625), (63, 7685),

Gene: Hestia_10 Start: 7405, Stop: 7764, Start Num: 8

Candidate Starts for Hestia_10:

(Start: 8 @7405 has 57 MA's), (14, 7432), (22, 7504), (34, 7564), (38, 7576), (49, 7675), (50, 7690), (63, 7750),

Gene: Isolde_11 Start: 7366, Stop: 7722, Start Num: 8

Candidate Starts for Isolde_11:

(Start: 8 @7366 has 57 MA's), (22, 7465), (24, 7471), (38, 7537), (54, 7666), (63, 7708),

Gene: JakeTheSnake_10 Start: 7295, Stop: 7651, Start Num: 8

Candidate Starts for JakeTheSnake_10:

(Start: 8 @7295 has 57 MA's), (9, 7301), (11, 7307), (12, 7310), (21, 7391), (32, 7445), (36, 7460), (38, 7466), (57, 7610), (63, 7637),

Gene: JellyBread_10 Start: 7288, Stop: 7644, Start Num: 8
Candidate Starts for JellyBread_10:
(Start: 8 @7288 has 57 MA's), (22, 7387), (24, 7393), (38, 7459), (54, 7588), (57, 7603), (63, 7630),

Gene: JonJames_36 Start: 19608, Stop: 19994, Start Num: 8
Candidate Starts for JonJames_36:
(Start: 8 @19608 has 57 MA's), (22, 19704), (38, 19779), (44, 19836), (60, 19935), (66, 19974),

Gene: Kabloowy_10 Start: 7382, Stop: 7741, Start Num: 8
Candidate Starts for Kabloowy_10:
(Start: 8 @7382 has 57 MA's), (14, 7409), (22, 7481), (38, 7553), (49, 7652), (50, 7667), (63, 7727),

Gene: Lasker_10 Start: 7303, Stop: 7659, Start Num: 8
Candidate Starts for Lasker_10:
(Start: 8 @7303 has 57 MA's), (22, 7402), (24, 7408), (35, 7465), (38, 7474), (54, 7603), (63, 7645),

Gene: Lawnathon_10 Start: 7413, Stop: 7772, Start Num: 8
Candidate Starts for Lawnathon_10:
(Start: 8 @7413 has 57 MA's), (14, 7440), (23, 7515), (34, 7572), (38, 7584), (49, 7683), (50, 7698),
(63, 7758),

Gene: LeBruni_10 Start: 7318, Stop: 7674, Start Num: 8
Candidate Starts for LeBruni_10:
(Start: 8 @7318 has 57 MA's), (21, 7414), (22, 7417), (24, 7423), (34, 7477), (35, 7480), (38, 7489),
(54, 7618), (63, 7660), (65, 7666),

Gene: Lozinak_37 Start: 15766, Stop: 16146, Start Num: 8
Candidate Starts for Lozinak_37:
(Start: 8 @15766 has 57 MA's), (14, 15793), (15, 15826), (62, 16102),

Gene: MUWow_9 Start: 7382, Stop: 7741, Start Num: 8
Candidate Starts for MUWow_9:
(Start: 8 @7382 has 57 MA's), (17, 7451), (27, 7499), (31, 7529), (38, 7553), (49, 7652), (63, 7727),

Gene: Mapleville_9 Start: 7483, Stop: 7842, Start Num: 8
Candidate Starts for Mapleville_9:
(Start: 8 @7483 has 57 MA's), (14, 7510), (23, 7585), (34, 7642), (38, 7654), (49, 7753), (50, 7768),
(63, 7828),

Gene: MaterMagnus_10 Start: 7296, Stop: 7652, Start Num: 8
Candidate Starts for MaterMagnus_10:
(Start: 8 @7296 has 57 MA's), (17, 7365), (22, 7395), (24, 7401), (35, 7458), (38, 7467), (54, 7596),
(63, 7638),

Gene: Miskis_35 Start: 15529, Stop: 15909, Start Num: 8
Candidate Starts for Miskis_35:
(Start: 8 @15529 has 57 MA's), (14, 15556), (15, 15589), (62, 15865),

Gene: Mollymur_20 Start: 14083, Stop: 14469, Start Num: 8
Candidate Starts for Mollymur_20:
(4, 13987), (Start: 8 @14083 has 57 MA's), (19, 14173), (27, 14203), (39, 14269),

Gene: MurphyJoseph_10 Start: 7266, Stop: 7625, Start Num: 8
Candidate Starts for MurphyJoseph_10:
(Start: 8 @7266 has 57 MA's), (9, 7272), (11, 7278), (12, 7281), (14, 7293), (22, 7365), (34, 7425), (38, 7437), (49, 7536), (50, 7551), (63, 7611),

Gene: Norvs_38 Start: 15768, Stop: 16148, Start Num: 8
Candidate Starts for Norvs_38:
(Start: 8 @15768 has 57 MA's), (14, 15795), (15, 15828), (62, 16104),

Gene: Nyilah_9 Start: 7384, Stop: 7743, Start Num: 8
Candidate Starts for Nyilah_9:
(Start: 8 @7384 has 57 MA's), (11, 7396), (12, 7399), (14, 7411), (34, 7543), (38, 7555), (49, 7654), (50, 7669), (55, 7696), (63, 7729),

Gene: OneUp_31 Start: 13478, Stop: 13864, Start Num: 8
Candidate Starts for OneUp_31:
(Start: 8 @13478 has 57 MA's), (13, 13496), (38, 13649), (61, 13811), (62, 13817),

Gene: Persistence_9 Start: 7363, Stop: 7719, Start Num: 8
Candidate Starts for Persistence_9:
(Start: 8 @7363 has 57 MA's), (9, 7369), (11, 7375), (12, 7378), (21, 7459), (32, 7513), (36, 7528), (38, 7534), (57, 7678), (63, 7705),

Gene: PhinkBoden_37 Start: 16149, Stop: 16529, Start Num: 8
Candidate Starts for PhinkBoden_37:
(Start: 8 @16149 has 57 MA's), (14, 16176), (15, 16209), (62, 16485),

Gene: Raphaella_10 Start: 7295, Stop: 7651, Start Num: 8
Candidate Starts for Raphaella_10:
(Start: 8 @7295 has 57 MA's), (22, 7394), (24, 7400), (38, 7466), (54, 7595), (57, 7610), (63, 7637),

Gene: Richie_10 Start: 7310, Stop: 7666, Start Num: 8
Candidate Starts for Richie_10:
(Start: 8 @7310 has 57 MA's), (17, 7379), (22, 7409), (24, 7415), (35, 7472), (38, 7481), (54, 7610), (63, 7652),

Gene: SPB78_9 Start: 6952, Stop: 7395, Start Num: 6
Candidate Starts for SPB78_9:
(1, 6325), (2, 6727), (3, 6838), (5, 6910), (6, 6952), (24, 7078), (41, 7159), (51, 7258), (53, 7261),

Gene: Sakai_10 Start: 7304, Stop: 7660, Start Num: 8
Candidate Starts for Sakai_10:
(Start: 8 @7304 has 57 MA's), (17, 7373), (22, 7403), (24, 7409), (35, 7466), (38, 7475), (54, 7604), (63, 7646),

Gene: Sashimi_11 Start: 7410, Stop: 7766, Start Num: 8
Candidate Starts for Sashimi_11:
(Start: 8 @7410 has 57 MA's), (14, 7437), (24, 7515), (35, 7572), (38, 7581), (48, 7662), (54, 7710), (55, 7716), (57, 7725), (63, 7752),

Gene: Satrap_10 Start: 7247, Stop: 7603, Start Num: 8
Candidate Starts for Satrap_10:

(Start: 8 @7247 has 57 MA's), (11, 7259), (22, 7346), (32, 7397), (36, 7412), (38, 7418), (57, 7562), (63, 7589),

Gene: Seahorse_11 Start: 7514, Stop: 7873, Start Num: 8

Candidate Starts for Seahorse_11:

(Start: 8 @7514 has 57 MA's), (14, 7541), (22, 7613), (34, 7673), (38, 7685), (49, 7784), (50, 7799), (63, 7859),

Gene: Shukran_10 Start: 7247, Stop: 7603, Start Num: 8

Candidate Starts for Shukran_10:

(Start: 8 @7247 has 57 MA's), (11, 7259), (22, 7346), (32, 7397), (36, 7412), (38, 7418), (57, 7562), (63, 7589),

Gene: Smoothie_38 Start: 15766, Stop: 16146, Start Num: 8

Candidate Starts for Smoothie_38:

(Start: 8 @15766 has 57 MA's), (14, 15793), (15, 15826), (62, 16102),

Gene: SonDevVon_9 Start: 7297, Stop: 7653, Start Num: 8

Candidate Starts for SonDevVon_9:

(Start: 8 @7297 has 57 MA's), (17, 7366), (22, 7396), (24, 7402), (35, 7459), (38, 7468), (54, 7597), (63, 7639),

Gene: SpeedDemon_200 Start: 13549, Stop: 13944, Start Num: 8

Candidate Starts for SpeedDemon_200:

(Start: 8 @13549 has 57 MA's), (31, 13714), (37, 13738), (42, 13762),

Gene: SpicyFrank_10 Start: 7358, Stop: 7714, Start Num: 8

Candidate Starts for SpicyFrank_10:

(Start: 8 @7358 has 57 MA's), (17, 7427), (22, 7457), (24, 7463), (35, 7520), (38, 7529), (54, 7658), (63, 7700),

Gene: Sporco_11 Start: 7346, Stop: 7705, Start Num: 8

Candidate Starts for Sporco_11:

(Start: 8 @7346 has 57 MA's), (17, 7415), (27, 7463), (38, 7517), (49, 7616), (54, 7652), (63, 7691),

Gene: ThayneTheZag_10 Start: 7332, Stop: 7688, Start Num: 8

Candidate Starts for ThayneTheZag_10:

(Start: 8 @7332 has 57 MA's), (21, 7428), (22, 7431), (24, 7437), (35, 7494), (38, 7503), (54, 7632), (63, 7674),

Gene: Tiff81_11 Start: 7472, Stop: 7831, Start Num: 8

Candidate Starts for Tiff81_11:

(Start: 8 @7472 has 57 MA's), (11, 7484), (12, 7487), (14, 7499), (34, 7631), (38, 7643), (49, 7742), (50, 7757), (55, 7784), (63, 7817),

Gene: Toniann_37 Start: 15711, Stop: 16091, Start Num: 8

Candidate Starts for Toniann_37:

(Start: 8 @15711 has 57 MA's), (14, 15738), (15, 15771), (62, 16047),

Gene: Towmatter_18 Start: 11903, Stop: 12289, Start Num: 8

Candidate Starts for Towmatter_18:

(Start: 8 @11903 has 57 MA's), (38, 12086),

Gene: VWB_8 Start: 7039, Stop: 7449, Start Num: 10

Candidate Starts for VWB_8:

(10, 7039), (24, 7153), (38, 7219), (39, 7222), (41, 7234),

Gene: WilliamBoone_37 Start: 15075, Stop: 15455, Start Num: 8

Candidate Starts for WilliamBoone_37:

(Start: 8 @15075 has 57 MA's), (14, 15102), (40, 15258), (62, 15411),

Gene: Windest_11 Start: 7352, Stop: 7708, Start Num: 8

Candidate Starts for Windest_11:

(Start: 8 @7352 has 57 MA's), (22, 7451), (24, 7457), (38, 7523), (54, 7652), (57, 7667), (63, 7694),

Gene: YoungHarleezy_10 Start: 7308, Stop: 7664, Start Num: 8

Candidate Starts for YoungHarleezy_10:

(Start: 8 @7308 has 57 MA's), (17, 7377), (22, 7407), (24, 7413), (35, 7470), (38, 7479), (54, 7608), (63, 7650),

Gene: Yvonnetastic_34 Start: 17157, Stop: 17543, Start Num: 8

Candidate Starts for Yvonnetastic_34:

(Start: 8 @17157 has 57 MA's), (22, 17253), (38, 17328), (44, 17385), (60, 17484), (66, 17523),