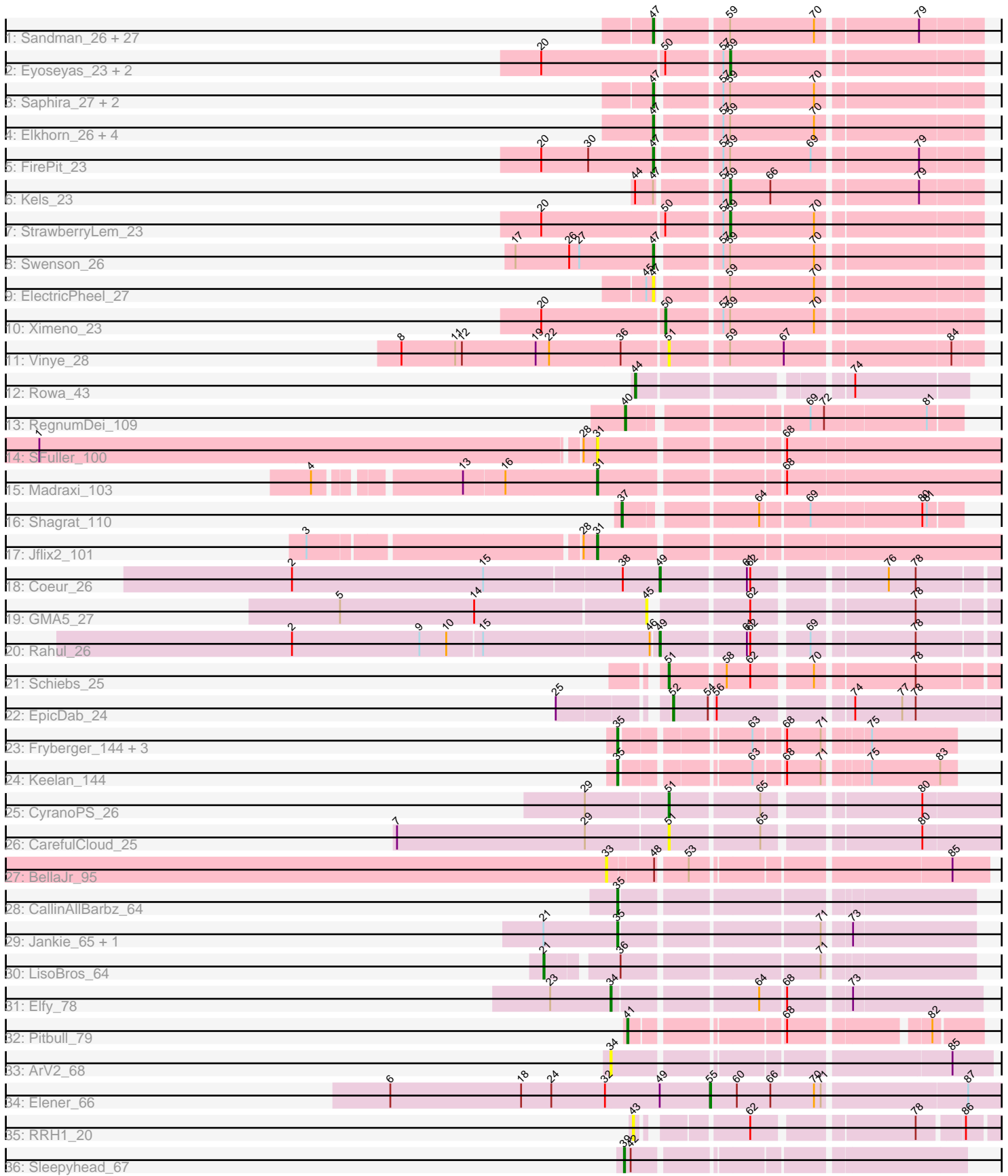


Pham 311528



Note: Tracks are now grouped by subcluster and scaled. Switching in subcluster is indicated by changes in track color. Track scale is now set by default to display the region 30 bp upstream of start 1 to 30 bp downstream of the last possible start. If this default region is judged to be packed too tightly with annotated starts, the track will be further scaled to only show that region of the ORF with annotated starts. This action will be indicated by adding "Zoomed" to the title. For starts, yellow indicates the location of called starts comprised solely of Glimmer/GeneMark auto-annotations, green indicates the location of called starts with at least 1 manual gene annotation.

Pham 311528 Report

This analysis was run 06/27/26 on database version 652.

WARNING: Pham size does not match number of genes in report. Either unphamerated genes have been added (by you) or starterator has removed genes due to invalid start codon.

Pham number 311528 has 75 members, 9 are drafts.

Phages represented in each track:

- Track 1 : Sandman_26, Dewayne_26, Yank_26, Massimo_26, CGermain_26, Guntur_26, Ronnie_26, LouisXIV_26, Inspire2_26, Hunnie_26, Stratus_26, Muttlie_26, Azathoth_26, Courtney3_26, TinoCrisci_26, Arby_26, Moloch_26, TymAbreu_26, Decurro_26, Maggie_26, Mariposa_26, Copper_26, Chestnut_27, Sourignavong_27, Seume_26, Link_26, Prospero_26, Toulouse_25
- Track 2 : Eyoseyas_23, SerialPhiller_23, Arielagos_23
- Track 3 : Saphira_27, Taj14_26, KylieMac_27
- Track 4 : Elkhorn_26, StewieGriff_26, Blair_26, Lore_26, Laila_28
- Track 5 : FirePit_23
- Track 6 : Kels_23
- Track 7 : StrawberryLem_23
- Track 8 : Swenson_26
- Track 9 : ElectricPheel_27
- Track 10 : Ximeno_23
- Track 11 : Vinye_28
- Track 12 : Rowa_43
- Track 13 : RegnumDei_109
- Track 14 : SFuller_100
- Track 15 : Madraxi_103
- Track 16 : Shagrat_110
- Track 17 : Jflix2_101
- Track 18 : Coeur_26
- Track 19 : GMA5_27
- Track 20 : Rahul_26
- Track 21 : Schiebs_25
- Track 22 : EpicDab_24
- Track 23 : Fryberger_144, Volt_150, Ronaldo_147, Guey18_149
- Track 24 : Keelan_144
- Track 25 : CyranoPS_26
- Track 26 : CarefulCloud_25
- Track 27 : BellaJr_95
- Track 28 : CallinAllBarbz_64
- Track 29 : Jankie_65, GrimEater_64

- Track 30 : LisoBros_64
- Track 31 : Elfy_78
- Track 32 : Pitbull_79
- Track 33 : ArV2_68
- Track 34 : Elener_66
- Track 35 : RRH1_20
- Track 36 : Sleepyhead_67

Summary of Final Annotations (See graph section above for start numbers):

The start number called the most often in the published annotations is 47, it was called in 38 of the 66 non-draft genes in the pham.

Genes that call this "Most Annotated" start:

- Arby_26, Azathoth_26, Blair_26, CGermain_26, Chestnut_27, Copper_26, Courtney3_26, Decurro_26, Dewayne_26, ElectricPheel_27, Elkhorn_26, FirePit_23, Guntur_26, Hunnie_26, Inspire2_26, KylieMac_27, Laila_28, Link_26, Lore_26, LouisXIV_26, Maggie_26, Mariposa_26, Massimo_26, Moloch_26, Muttlie_26, Prospero_26, Ronnie_26, Sandman_26, Saphira_27, Seume_26, Sourignavong_27, StewieGriff_26, Stratus_26, Swenson_26, Taj14_26, TinoCrisci_26, Toulouse_25, TymAbreu_26, Yank_26,

Genes that have the "Most Annotated" start but do not call it:

- Kels_23,

Genes that do not have the "Most Annotated" start:

- ArV2_68, Arielagos_23, BellaJr_95, CallinAllBarbz_64, CarefulCloud_25, Coeur_26, CyranoPS_26, Elener_66, Elfy_78, EpicDab_24, Eyoseyas_23, Fryberger_144, GMA5_27, GrimEater_64, Guey18_149, Jankie_65, Jflix2_101, Keelan_144, LisoBros_64, Madraxi_103, Pitbull_79, RRH1_20, Rahul_26, RegnumDei_109, Ronaldo_147, Rowa_43, SFuller_100, Schiebs_25, SerialPhiller_23, Shagrat_110, Sleepyhead_67, StrawberryLem_23, Vinye_28, Volt_150, Ximeno_23,

Summary by start number:

Start 21:

- Found in 3 of 75 (4.0%) of genes in pham
- Manual Annotations of this start: 1 of 66
- Called 33.3% of time when present
- Phage (with cluster) where this start called: LisoBros_64 (FP),

Start 31:

- Found in 3 of 75 (4.0%) of genes in pham
- Manual Annotations of this start: 2 of 66
- Called 100.0% of time when present
- Phage (with cluster) where this start called: Jflix2_101 (CF), Madraxi_103 (CF), SFuller_100 (CF),

Start 33:

- Found in 1 of 75 (1.3%) of genes in pham

- No Manual Annotations of this start.
- Called 100.0% of time when present
- Phage (with cluster) where this start called: BellaJr_95 (FN),

Start 34:

- Found in 2 of 75 (2.7%) of genes in pham
- Manual Annotations of this start: 1 of 66
- Called 100.0% of time when present
- Phage (with cluster) where this start called: ArV2_68 (singleton), Elfy_78 (FP),

Start 35:

- Found in 8 of 75 (10.7%) of genes in pham
- Manual Annotations of this start: 8 of 66
- Called 100.0% of time when present
- Phage (with cluster) where this start called: CallinAllBarbz_64 (FP), Fryberger_144 (DP), GrimEater_64 (FP), Guey18_149 (DP), Jankie_65 (FP), Keelan_144 (DP), Ronaldo_147 (DP), Volt_150 (DP),

Start 37:

- Found in 1 of 75 (1.3%) of genes in pham
- Manual Annotations of this start: 1 of 66
- Called 100.0% of time when present
- Phage (with cluster) where this start called: Shagrat_110 (CF),

Start 39:

- Found in 1 of 75 (1.3%) of genes in pham
- Manual Annotations of this start: 1 of 66
- Called 100.0% of time when present
- Phage (with cluster) where this start called: Sleepyhead_67 (singleton),

Start 40:

- Found in 1 of 75 (1.3%) of genes in pham
- Manual Annotations of this start: 1 of 66
- Called 100.0% of time when present
- Phage (with cluster) where this start called: RegnumDei_109 (CF),

Start 41:

- Found in 1 of 75 (1.3%) of genes in pham
- Manual Annotations of this start: 1 of 66
- Called 100.0% of time when present
- Phage (with cluster) where this start called: Pitbull_79 (FQ1),

Start 43:

- Found in 1 of 75 (1.3%) of genes in pham
- No Manual Annotations of this start.
- Called 100.0% of time when present
- Phage (with cluster) where this start called: RRH1_20 (singleton),

Start 44:

- Found in 2 of 75 (2.7%) of genes in pham
- Manual Annotations of this start: 1 of 66
- Called 50.0% of time when present
- Phage (with cluster) where this start called: Rowa_43 (BL),

Start 45:

- Found in 2 of 75 (2.7%) of genes in pham
- No Manual Annotations of this start.
- Called 50.0% of time when present
- Phage (with cluster) where this start called: GMA5_27 (CW2),

Start 47:

- Found in 40 of 75 (53.3%) of genes in pham
- Manual Annotations of this start: 38 of 66
- Called 97.5% of time when present
- Phage (with cluster) where this start called: Arby_26 (AN), Azathoth_26 (AN), Blair_26 (AN), CGermain_26 (AN), Chestnut_27 (AN), Copper_26 (AN), Courtney3_26 (AN), Decurro_26 (AN), Dewayne_26 (AN), ElectricPheel_27 (AN), Elkhorn_26 (AN), FirePit_23 (AN), Guntur_26 (AN), Hunnie_26 (AN), Inspire2_26 (AN), KylieMac_27 (AN), Laila_28 (AN), Link_26 (AN), Lore_26 (AN), LouisXIV_26 (AN), Maggie_26 (AN), Mariposa_26 (AN), Massimo_26 (AN), Moloch_26 (AN), Muttie_26 (AN), Prospero_26 (AN), Ronnie_26 (AN), Sandman_26 (AN), Saphira_27 (AN), Seume_26 (AN), Sourignavong_27 (AN), StewieGriff_26 (AN), Stratus_26 (AN), Swenson_26 (AN), Taj14_26 (AN), TinoCrisci_26 (AN), Toulouse_25 (AN), TymAbreu_26 (AN), Yank_26 (AN),

Start 49:

- Found in 3 of 75 (4.0%) of genes in pham
- Manual Annotations of this start: 2 of 66
- Called 66.7% of time when present
- Phage (with cluster) where this start called: Coeur_26 (CW2), Rahul_26 (CW2),

Start 50:

- Found in 5 of 75 (6.7%) of genes in pham
- Manual Annotations of this start: 1 of 66
- Called 20.0% of time when present
- Phage (with cluster) where this start called: Ximeno_23 (AN),

Start 51:

- Found in 4 of 75 (5.3%) of genes in pham
- Manual Annotations of this start: 2 of 66
- Called 100.0% of time when present
- Phage (with cluster) where this start called: CarefulCloud_25 (ER), CyranoPS_26 (ER), Schiebs_25 (CW3), Vinye_28 (AN),

Start 52:

- Found in 1 of 75 (1.3%) of genes in pham
- Manual Annotations of this start: 1 of 66
- Called 100.0% of time when present
- Phage (with cluster) where this start called: EpicDab_24 (DM),

Start 55:

- Found in 1 of 75 (1.3%) of genes in pham
- Manual Annotations of this start: 1 of 66
- Called 100.0% of time when present
- Phage (with cluster) where this start called: Elener_66 (singleton),

Start 59:

- Found in 46 of 75 (61.3%) of genes in pham
- Manual Annotations of this start: 4 of 66
- Called 10.9% of time when present
- Phage (with cluster) where this start called: Arielagos_23 (AN), Eyoseyas_23 (AN), Kels_23 (AN), SerialPhiller_23 (AN), StrawberryLem_23 (AN),

Summary by clusters:

There are 12 clusters represented in this pham: FP, singleton, DM, BL, CW3, CW2, CF, AN, DP, FQ1, FN, ER,

Info for manual annotations of cluster AN:

- Start number 47 was manually annotated 38 times for cluster AN.
- Start number 50 was manually annotated 1 time for cluster AN.
- Start number 59 was manually annotated 4 times for cluster AN.

Info for manual annotations of cluster BL:

- Start number 44 was manually annotated 1 time for cluster BL.

Info for manual annotations of cluster CF:

- Start number 31 was manually annotated 2 times for cluster CF.
- Start number 37 was manually annotated 1 time for cluster CF.
- Start number 40 was manually annotated 1 time for cluster CF.

Info for manual annotations of cluster CW2:

- Start number 49 was manually annotated 2 times for cluster CW2.

Info for manual annotations of cluster CW3:

- Start number 51 was manually annotated 1 time for cluster CW3.

Info for manual annotations of cluster DM:

- Start number 52 was manually annotated 1 time for cluster DM.

Info for manual annotations of cluster DP:

- Start number 35 was manually annotated 5 times for cluster DP.

Info for manual annotations of cluster ER:

- Start number 51 was manually annotated 1 time for cluster ER.

Info for manual annotations of cluster FP:

- Start number 21 was manually annotated 1 time for cluster FP.
- Start number 34 was manually annotated 1 time for cluster FP.
- Start number 35 was manually annotated 3 times for cluster FP.

Info for manual annotations of cluster FQ1:

- Start number 41 was manually annotated 1 time for cluster FQ1.

Gene Information:

Gene: ArV2_68 Start: 37011, Stop: 37319, Start Num: 34

Candidate Starts for ArV2_68:

(Start: 34 @37011 has 1 MA's), (85, 37284),

Gene: Arby_26 Start: 15263, Stop: 15529, Start Num: 47

Candidate Starts for Arby_26:

(Start: 47 @15263 has 38 MA's), (Start: 59 @15317 has 4 MA's), (70, 15392), (79, 15476),

Gene: Arielagos_23 Start: 15059, Stop: 15271, Start Num: 59

Candidate Starts for Arielagos_23:

(20, 14903), (Start: 50 @15008 has 1 MA's), (57, 15053), (Start: 59 @15059 has 4 MA's),

Gene: Azathoth_26 Start: 15263, Stop: 15529, Start Num: 47

Candidate Starts for Azathoth_26:

(Start: 47 @15263 has 38 MA's), (Start: 59 @15317 has 4 MA's), (70, 15392), (79, 15476),

Gene: BellaJr_95 Start: 51784, Stop: 52089, Start Num: 33

Candidate Starts for BellaJr_95:

(33, 51784), (48, 51823), (53, 51847), (85, 52057),

Gene: Blair_26 Start: 15263, Stop: 15529, Start Num: 47

Candidate Starts for Blair_26:

(Start: 47 @15263 has 38 MA's), (57, 15311), (Start: 59 @15317 has 4 MA's), (70, 15392),

Gene: CGermain_26 Start: 15263, Stop: 15529, Start Num: 47

Candidate Starts for CGermain_26:

(Start: 47 @15263 has 38 MA's), (Start: 59 @15317 has 4 MA's), (70, 15392), (79, 15476),

Gene: CallinAllBarbz_64 Start: 40753, Stop: 41040, Start Num: 35

Candidate Starts for CallinAllBarbz_64:

(Start: 35 @40753 has 8 MA's),

Gene: CarefulCloud_25 Start: 14576, Stop: 14851, Start Num: 51

Candidate Starts for CarefulCloud_25:

(7, 14336), (29, 14504), (Start: 51 @14576 has 2 MA's), (65, 14651), (80, 14777),

Gene: Chestnut_27 Start: 15263, Stop: 15529, Start Num: 47

Candidate Starts for Chestnut_27:

(Start: 47 @15263 has 38 MA's), (Start: 59 @15317 has 4 MA's), (70, 15392), (79, 15476),

Gene: Coeur_26 Start: 15840, Stop: 16118, Start Num: 49

Candidate Starts for Coeur_26:

(2, 15516), (15, 15687), (38, 15807), (Start: 49 @15840 has 2 MA's), (61, 15912), (62, 15915), (76, 16020), (78, 16044),

Gene: Copper_26 Start: 15263, Stop: 15529, Start Num: 47

Candidate Starts for Copper_26:

(Start: 47 @15263 has 38 MA's), (Start: 59 @15317 has 4 MA's), (70, 15392), (79, 15476),

Gene: Courtney3_26 Start: 15263, Stop: 15529, Start Num: 47

Candidate Starts for Courtney3_26:

(Start: 47 @15263 has 38 MA's), (Start: 59 @15317 has 4 MA's), (70, 15392), (79, 15476),

Gene: CyranoPS_26 Start: 14576, Stop: 14851, Start Num: 51
Candidate Starts for CyranoPS_26:
(29, 14504), (Start: 51 @14576 has 2 MA's), (65, 14651), (80, 14777),

Gene: Decurro_26 Start: 15231, Stop: 15497, Start Num: 47
Candidate Starts for Decurro_26:
(Start: 47 @15231 has 38 MA's), (Start: 59 @15285 has 4 MA's), (70, 15360), (79, 15444),

Gene: Dewayne_26 Start: 15263, Stop: 15529, Start Num: 47
Candidate Starts for Dewayne_26:
(Start: 47 @15263 has 38 MA's), (Start: 59 @15317 has 4 MA's), (70, 15392), (79, 15476),

Gene: ElectricPheel_27 Start: 15304, Stop: 15570, Start Num: 47
Candidate Starts for ElectricPheel_27:
(45, 15298), (Start: 47 @15304 has 38 MA's), (Start: 59 @15358 has 4 MA's), (70, 15433),

Gene: Elener_66 Start: 39019, Stop: 39270, Start Num: 55
Candidate Starts for Elener_66:
(6, 38734), (18, 38851), (24, 38878), (32, 38926), (Start: 49 @38974 has 2 MA's), (Start: 55 @39019 has 1 MA's), (60, 39043), (66, 39073), (70, 39112), (71, 39118), (87, 39241),

Gene: Elfy_78 Start: 43714, Stop: 44013, Start Num: 34
Candidate Starts for Elfy_78:
(23, 43660), (Start: 34 @43714 has 1 MA's), (64, 43831), (68, 43852), (73, 43900),

Gene: Elkhorn_26 Start: 15263, Stop: 15529, Start Num: 47
Candidate Starts for Elkhorn_26:
(Start: 47 @15263 has 38 MA's), (57, 15311), (Start: 59 @15317 has 4 MA's), (70, 15392),

Gene: EpicDab_24 Start: 16340, Stop: 16612, Start Num: 52
Candidate Starts for EpicDab_24:
(25, 16259), (Start: 52 @16340 has 1 MA's), (54, 16370), (56, 16373), (74, 16478), (77, 16520), (78, 16532),

Gene: Eyoseyas_23 Start: 15059, Stop: 15271, Start Num: 59
Candidate Starts for Eyoseyas_23:
(20, 14903), (Start: 50 @15008 has 1 MA's), (57, 15053), (Start: 59 @15059 has 4 MA's),

Gene: FirePit_23 Start: 15015, Stop: 15281, Start Num: 47
Candidate Starts for FirePit_23:
(20, 14916), (30, 14958), (Start: 47 @15015 has 38 MA's), (57, 15063), (Start: 59 @15069 has 4 MA's), (69, 15141), (79, 15228),

Gene: Fryberger_144 Start: 66223, Stop: 66480, Start Num: 35
Candidate Starts for Fryberger_144:
(Start: 35 @66223 has 8 MA's), (63, 66319), (68, 66343), (71, 66373), (75, 66406),

Gene: GMA5_27 Start: 17062, Stop: 17340, Start Num: 45
Candidate Starts for GMA5_27:
(5, 16792), (14, 16912), (45, 17062), (62, 17137), (78, 17266),

Gene: GrimEater_64 Start: 41105, Stop: 41392, Start Num: 35
Candidate Starts for GrimEater_64:

(Start: 21 @41039 has 1 MA's), (Start: 35 @41105 has 8 MA's), (71, 41267), (73, 41285),

Gene: Guey18_149 Start: 67884, Stop: 68141, Start Num: 35

Candidate Starts for Guey18_149:

(Start: 35 @67884 has 8 MA's), (63, 67980), (68, 68004), (71, 68034), (75, 68067),

Gene: Guntur_26 Start: 15263, Stop: 15529, Start Num: 47

Candidate Starts for Guntur_26:

(Start: 47 @15263 has 38 MA's), (Start: 59 @15317 has 4 MA's), (70, 15392), (79, 15476),

Gene: Hunnie_26 Start: 15263, Stop: 15529, Start Num: 47

Candidate Starts for Hunnie_26:

(Start: 47 @15263 has 38 MA's), (Start: 59 @15317 has 4 MA's), (70, 15392), (79, 15476),

Gene: Inspire2_26 Start: 15263, Stop: 15529, Start Num: 47

Candidate Starts for Inspire2_26:

(Start: 47 @15263 has 38 MA's), (Start: 59 @15317 has 4 MA's), (70, 15392), (79, 15476),

Gene: Jankie_65 Start: 41285, Stop: 41572, Start Num: 35

Candidate Starts for Jankie_65:

(Start: 21 @41219 has 1 MA's), (Start: 35 @41285 has 8 MA's), (71, 41447), (73, 41465),

Gene: Jflix2_101 Start: 58160, Stop: 58510, Start Num: 31

Candidate Starts for Jflix2_101:

(3, 57923), (28, 58148), (Start: 31 @58160 has 2 MA's),

Gene: Keelan_144 Start: 66560, Stop: 66817, Start Num: 35

Candidate Starts for Keelan_144:

(Start: 35 @66560 has 8 MA's), (63, 66656), (68, 66680), (71, 66710), (75, 66743), (83, 66803),

Gene: Kels_23 Start: 14592, Stop: 14804, Start Num: 59

Candidate Starts for Kels_23:

(Start: 44 @14523 has 1 MA's), (Start: 47 @14538 has 38 MA's), (57, 14586), (Start: 59 @14592 has 4 MA's), (66, 14628), (79, 14751),

Gene: KylieMac_27 Start: 15247, Stop: 15513, Start Num: 47

Candidate Starts for KylieMac_27:

(Start: 47 @15247 has 38 MA's), (57, 15295), (Start: 59 @15301 has 4 MA's), (70, 15376),

Gene: Laila_28 Start: 15263, Stop: 15529, Start Num: 47

Candidate Starts for Laila_28:

(Start: 47 @15263 has 38 MA's), (57, 15311), (Start: 59 @15317 has 4 MA's), (70, 15392),

Gene: Link_26 Start: 15228, Stop: 15494, Start Num: 47

Candidate Starts for Link_26:

(Start: 47 @15228 has 38 MA's), (Start: 59 @15282 has 4 MA's), (70, 15357), (79, 15441),

Gene: LisoBros_64 Start: 44198, Stop: 44542, Start Num: 21

Candidate Starts for LisoBros_64:

(Start: 21 @44198 has 1 MA's), (36, 44255), (71, 44417),

Gene: Lore_26 Start: 15263, Stop: 15529, Start Num: 47

Candidate Starts for Lore_26:

(Start: 47 @15263 has 38 MA's), (57, 15311), (Start: 59 @15317 has 4 MA's), (70, 15392),

Gene: LouisXIV_26 Start: 15263, Stop: 15529, Start Num: 47

Candidate Starts for LouisXIV_26:

(Start: 47 @15263 has 38 MA's), (Start: 59 @15317 has 4 MA's), (70, 15392), (79, 15476),

Gene: Madraxi_103 Start: 60318, Stop: 60668, Start Num: 31

Candidate Starts for Madraxi_103:

(4, 60090), (13, 60201), (16, 60237), (Start: 31 @60318 has 2 MA's), (68, 60468),

Gene: Maggie_26 Start: 15263, Stop: 15529, Start Num: 47

Candidate Starts for Maggie_26:

(Start: 47 @15263 has 38 MA's), (Start: 59 @15317 has 4 MA's), (70, 15392), (79, 15476),

Gene: Mariposa_26 Start: 15263, Stop: 15529, Start Num: 47

Candidate Starts for Mariposa_26:

(Start: 47 @15263 has 38 MA's), (Start: 59 @15317 has 4 MA's), (70, 15392), (79, 15476),

Gene: Massimo_26 Start: 15263, Stop: 15529, Start Num: 47

Candidate Starts for Massimo_26:

(Start: 47 @15263 has 38 MA's), (Start: 59 @15317 has 4 MA's), (70, 15392), (79, 15476),

Gene: Moloch_26 Start: 15337, Stop: 15603, Start Num: 47

Candidate Starts for Moloch_26:

(Start: 47 @15337 has 38 MA's), (Start: 59 @15391 has 4 MA's), (70, 15466), (79, 15550),

Gene: Muttlie_26 Start: 15231, Stop: 15497, Start Num: 47

Candidate Starts for Muttlie_26:

(Start: 47 @15231 has 38 MA's), (Start: 59 @15285 has 4 MA's), (70, 15360), (79, 15444),

Gene: Pitbull_79 Start: 41146, Stop: 41412, Start Num: 41

Candidate Starts for Pitbull_79:

(Start: 41 @41146 has 1 MA's), (68, 41263), (82, 41371),

Gene: Prospero_26 Start: 15263, Stop: 15529, Start Num: 47

Candidate Starts for Prospero_26:

(Start: 47 @15263 has 38 MA's), (Start: 59 @15317 has 4 MA's), (70, 15392), (79, 15476),

Gene: RRH1_20 Start: 13909, Stop: 14184, Start Num: 43

Candidate Starts for RRH1_20:

(43, 13909), (62, 13987), (78, 14116), (86, 14152),

Gene: Rahul_26 Start: 15845, Stop: 16123, Start Num: 49

Candidate Starts for Rahul_26:

(2, 15524), (9, 15638), (10, 15662), (15, 15692), (46, 15839), (Start: 49 @15845 has 2 MA's), (61, 15917), (62, 15920), (69, 15965), (78, 16049),

Gene: RegnumDei_109 Start: 60267, Stop: 60536, Start Num: 40

Candidate Starts for RegnumDei_109:

(Start: 40 @60267 has 1 MA's), (69, 60408), (72, 60420), (81, 60507),

Gene: Ronaldo_147 Start: 67378, Stop: 67635, Start Num: 35

Candidate Starts for Ronaldo_147:

(Start: 35 @67378 has 8 MA's), (63, 67474), (68, 67498), (71, 67528), (75, 67561),

Gene: Ronnie_26 Start: 15263, Stop: 15529, Start Num: 47

Candidate Starts for Ronnie_26:

(Start: 47 @15263 has 38 MA's), (Start: 59 @15317 has 4 MA's), (70, 15392), (79, 15476),

Gene: Rowa_43 Start: 33013, Stop: 33276, Start Num: 44

Candidate Starts for Rowa_43:

(Start: 44 @33013 has 1 MA's), (74, 33178),

Gene: SFuller_100 Start: 58710, Stop: 59060, Start Num: 31

Candidate Starts for SFuller_100:

(1, 58224), (28, 58698), (Start: 31 @58710 has 2 MA's), (68, 58860),

Gene: Sandman_26 Start: 15337, Stop: 15603, Start Num: 47

Candidate Starts for Sandman_26:

(Start: 47 @15337 has 38 MA's), (Start: 59 @15391 has 4 MA's), (70, 15466), (79, 15550),

Gene: Saphira_27 Start: 15256, Stop: 15522, Start Num: 47

Candidate Starts for Saphira_27:

(Start: 47 @15256 has 38 MA's), (57, 15304), (Start: 59 @15310 has 4 MA's), (70, 15385),

Gene: Schiebs_25 Start: 14310, Stop: 14615, Start Num: 51

Candidate Starts for Schiebs_25:

(Start: 51 @14310 has 2 MA's), (58, 14355), (62, 14376), (70, 14424), (78, 14505),

Gene: SerialPhiller_23 Start: 15059, Stop: 15271, Start Num: 59

Candidate Starts for SerialPhiller_23:

(20, 14903), (Start: 50 @15008 has 1 MA's), (57, 15053), (Start: 59 @15059 has 4 MA's),

Gene: Seume_26 Start: 15026, Stop: 15292, Start Num: 47

Candidate Starts for Seume_26:

(Start: 47 @15026 has 38 MA's), (Start: 59 @15080 has 4 MA's), (70, 15155), (79, 15239),

Gene: Shagrat_110 Start: 58151, Stop: 58423, Start Num: 37

Candidate Starts for Shagrat_110:

(Start: 37 @58151 has 1 MA's), (64, 58256), (69, 58295), (80, 58391), (81, 58394),

Gene: Sleepyhead_67 Start: 43516, Stop: 43788, Start Num: 39

Candidate Starts for Sleepyhead_67:

(Start: 39 @43516 has 1 MA's), (42, 43522),

Gene: Sourignavong_27 Start: 15332, Stop: 15598, Start Num: 47

Candidate Starts for Sourignavong_27:

(Start: 47 @15332 has 38 MA's), (Start: 59 @15386 has 4 MA's), (70, 15461), (79, 15545),

Gene: StewieGriff_26 Start: 15263, Stop: 15529, Start Num: 47

Candidate Starts for StewieGriff_26:

(Start: 47 @15263 has 38 MA's), (57, 15311), (Start: 59 @15317 has 4 MA's), (70, 15392),

Gene: Stratus_26 Start: 15337, Stop: 15603, Start Num: 47

Candidate Starts for Stratus_26:

(Start: 47 @15337 has 38 MA's), (Start: 59 @15391 has 4 MA's), (70, 15466), (79, 15550),

Gene: StrawberryLem_23 Start: 14969, Stop: 15181, Start Num: 59

Candidate Starts for StrawberryLem_23:

(20, 14813), (Start: 50 @14918 has 1 MA's), (57, 14963), (Start: 59 @14969 has 4 MA's), (70, 15044),

Gene: Swenson_26 Start: 15387, Stop: 15653, Start Num: 47

Candidate Starts for Swenson_26:

(17, 15264), (26, 15312), (27, 15321), (Start: 47 @15387 has 38 MA's), (57, 15435), (Start: 59 @15441 has 4 MA's), (70, 15516),

Gene: Taj14_26 Start: 15253, Stop: 15519, Start Num: 47

Candidate Starts for Taj14_26:

(Start: 47 @15253 has 38 MA's), (57, 15301), (Start: 59 @15307 has 4 MA's), (70, 15382),

Gene: TinoCrisci_26 Start: 15263, Stop: 15529, Start Num: 47

Candidate Starts for TinoCrisci_26:

(Start: 47 @15263 has 38 MA's), (Start: 59 @15317 has 4 MA's), (70, 15392), (79, 15476),

Gene: Toulouse_25 Start: 15026, Stop: 15292, Start Num: 47

Candidate Starts for Toulouse_25:

(Start: 47 @15026 has 38 MA's), (Start: 59 @15080 has 4 MA's), (70, 15155), (79, 15239),

Gene: TymAbreu_26 Start: 15263, Stop: 15529, Start Num: 47

Candidate Starts for TymAbreu_26:

(Start: 47 @15263 has 38 MA's), (Start: 59 @15317 has 4 MA's), (70, 15392), (79, 15476),

Gene: Vinye_28 Start: 15707, Stop: 15967, Start Num: 51

Candidate Starts for Vinye_28:

(8, 15473), (11, 15521), (12, 15527), (19, 15593), (22, 15605), (36, 15668), (Start: 51 @15707 has 2 MA's), (Start: 59 @15755 has 4 MA's), (67, 15803), (84, 15941),

Gene: Volt_150 Start: 67542, Stop: 67799, Start Num: 35

Candidate Starts for Volt_150:

(Start: 35 @67542 has 8 MA's), (63, 67638), (68, 67662), (71, 67692), (75, 67725),

Gene: Ximeno_23 Start: 15006, Stop: 15269, Start Num: 50

Candidate Starts for Ximeno_23:

(20, 14901), (Start: 50 @15006 has 1 MA's), (57, 15051), (Start: 59 @15057 has 4 MA's), (70, 15132),

Gene: Yank_26 Start: 15231, Stop: 15497, Start Num: 47

Candidate Starts for Yank_26:

(Start: 47 @15231 has 38 MA's), (Start: 59 @15285 has 4 MA's), (70, 15360), (79, 15444),