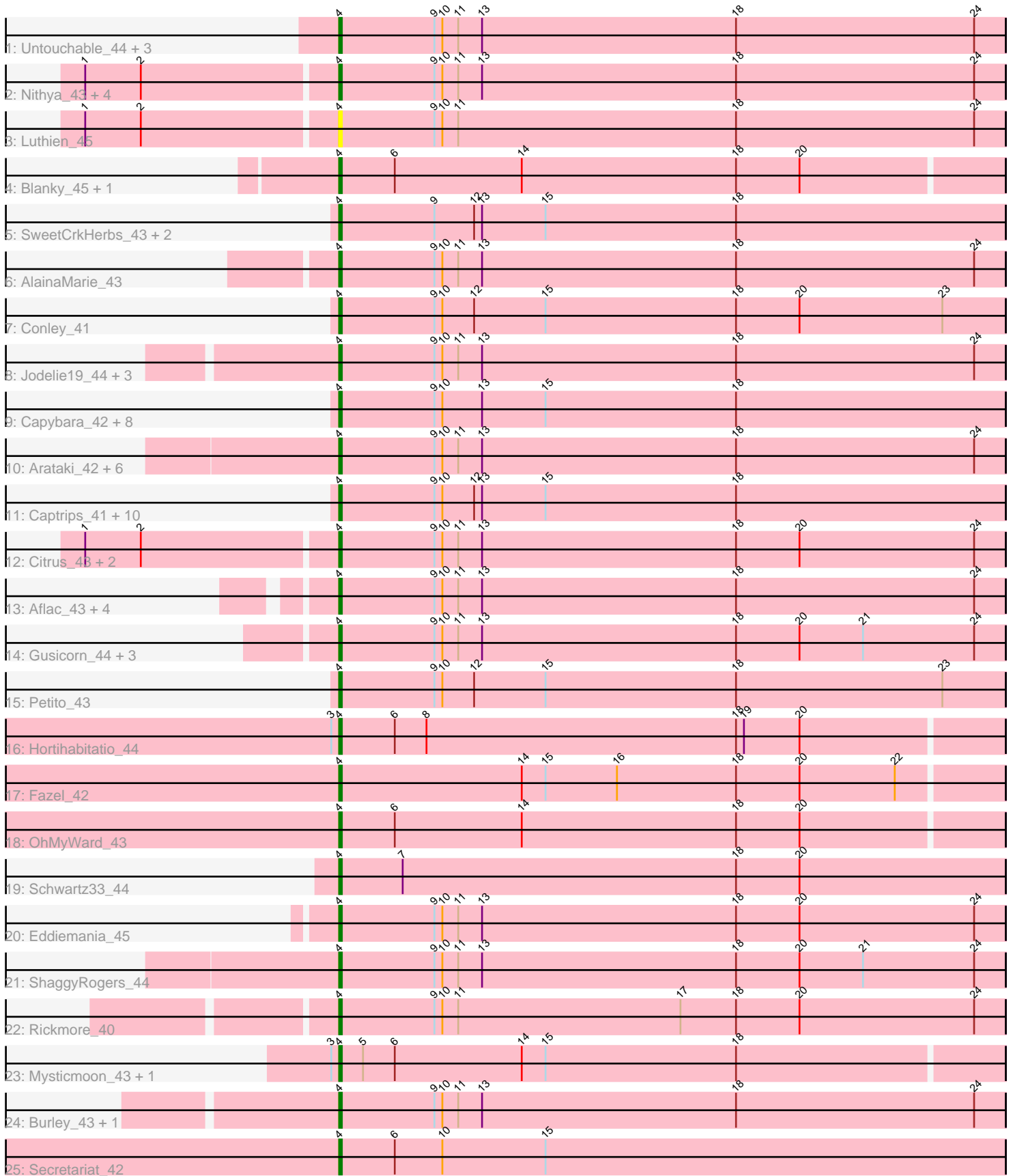


Pham 311538



Note: Tracks are now grouped by subcluster and scaled. Switching in subcluster is indicated by changes in track color. Track scale is now set by default to display the region 30 bp upstream of start 1 to 30 bp downstream of the last possible start. If this default region is judged to be packed too tightly with annotated starts, the track will be further scaled to only show that region of the ORF with annotated starts. This action will be indicated by adding "Zoomed" to the title. For starts, yellow indicates the location of called starts comprised solely of Glimmer/GeneMark auto-annotations, green indicates the location of called starts with at least 1 manual gene annotation.

Pham 311538 Report

This analysis was run 06/27/26 on database version 652.

Pham number 311538 has 73 members, 15 are drafts.

Phages represented in each track:

- Track 1 : Untouchable_44, Phepper_44, Zeph_45, Hydrus_45
- Track 2 : Nithya_43, CWormy_43, Duffington_42, Chikenjars_43, EndAve_44
- Track 3 : Luthien_45
- Track 4 : Blanky_45, Mossy_46
- Track 5 : SweetCrkHerbs_43, Perkunas_43, Talon44_43
- Track 6 : AlainaMarie_43
- Track 7 : Conley_41
- Track 8 : Jodelie19_44, MajinBuu_43, Kenosha_43, Figliar_43
- Track 9 : Capybara_42, Gravy_41, Gill_42, NoPickles_41, Tanis_42, Magel_43, Odesza_41, Roney_42, Kerry_41
- Track 10 : Arataki_42, Nadmeg_44, Dialga_44, Demure_41, ArtetaBall_44, Madvan_43, Crocheter_43
- Track 11 : Captrips_41, Avazak_42, Artorias_41, Tairn4Wing_44, FortCran_41, Dancer_41, Trufflozitus_42, JulesRay_41, ChickyNuggy_43, Bugg_42, Football_43
- Track 12 : Citrus_43, Runhaar_44, Glintora_45
- Track 13 : Aflac_43, BluerMoon_43, Tonaltzin_45, OlgasClover_44, TenaciousP_44
- Track 14 : Gusicorn_44, PestoPenguin_48, Aloe25_47, BetterYeti_44
- Track 15 : Petite_43
- Track 16 : Hortihabitatio_44
- Track 17 : Fazel_42
- Track 18 : OhMyWard_43
- Track 19 : Schwartz33_44
- Track 20 : Eddiemia_45
- Track 21 : ShaggyRogers_44
- Track 22 : Rickmore_40
- Track 23 : Mysticmoon_43, Pherobrine_44
- Track 24 : Burley_43, Vardy_43
- Track 25 : Secretariat_42

Summary of Final Annotations (See graph section above for start numbers):

The start number called the most often in the published annotations is 4, it was called in 58 of the 58 non-draft genes in the pham.

Genes that call this "Most Annotated" start:

- Aflac_43, AlainaMarie_43, Aloe25_47, Arataki_42, ArtetaBall_44, Artorias_41, Avazak_42, BetterYeti_44, Blanky_45, BluerMoon_43, Bugg_42, Burley_43, CWormy_43, Captrips_41, Capybara_42, ChickyNuggy_43, Chikenjars_43, Citrus_43, Conley_41, Crocheter_43, Dancer_41, Demure_41, Dialga_44, Duffington_42, Eddiemania_45, EndAve_44, Fazel_42, Figliar_43, Football_43, FortCran_41, Gill_42, Glintora_45, Gravy_41, Gusicorn_44, Hortihabitatio_44, Hydrus_45, Jodelie19_44, JulesRay_41, Kenosha_43, Kerry_41, Luthien_45, Madvan_43, Magel_43, MajinBuu_43, Mossy_46, Mysticmoon_43, Nadmeg_44, Nithya_43, NoPickles_41, Odesza_41, OhMyWard_43, OlgasClover_44, Perkunas_43, PestoPenguin_48, Petite_43, Phepper_44, Pherobrine_44, Rickmore_40, Roney_42, Runhaar_44, Schwartz33_44, Secretariat_42, ShaggyRogers_44, SweetCrkHerbs_43, Tairn4Wing_44, Talon44_43, Tanis_42, TenaciousP_44, Tonaltzin_45, Trufflozitus_42, Untouchable_44, Vardy_43, Zeph_45,

Genes that have the "Most Annotated" start but do not call it:

-

Genes that do not have the "Most Annotated" start:

-

Summary by start number:

Start 4:

- Found in 73 of 73 (100.0%) of genes in pham
- Manual Annotations of this start: 58 of 58
- Called 100.0% of time when present
- Phage (with cluster) where this start called: Aflac_43 (DJ), AlainaMarie_43 (DJ), Aloe25_47 (DJ), Arataki_42 (DJ), ArtetaBall_44 (DJ), Artorias_41 (DJ), Avazak_42 (DJ), BetterYeti_44 (DJ), Blanky_45 (DJ), BluerMoon_43 (DJ), Bugg_42 (DJ), Burley_43 (DJ), CWormy_43 (DJ), Captrips_41 (DJ), Capybara_42 (DJ), ChickyNuggy_43 (DJ), Chikenjars_43 (DJ), Citrus_43 (DJ), Conley_41 (DJ), Crocheter_43 (DJ), Dancer_41 (DJ), Demure_41 (DJ), Dialga_44 (DJ), Duffington_42 (DJ), Eddiemania_45 (DJ), EndAve_44 (DJ), Fazel_42 (DJ), Figliar_43 (DJ), Football_43 (DJ), FortCran_41 (DJ), Gill_42 (DJ), Glintora_45 (DJ), Gravy_41 (DJ), Gusicorn_44 (DJ), Hortihabitatio_44 (DJ), Hydrus_45 (DJ), Jodelie19_44 (DJ), JulesRay_41 (DJ), Kenosha_43 (DJ), Kerry_41 (DJ), Luthien_45 (DJ), Madvan_43 (DJ), Magel_43 (DJ), MajinBuu_43 (DJ), Mossy_46 (DJ), Mysticmoon_43 (DJ), Nadmeg_44 (DJ), Nithya_43 (DJ), NoPickles_41 (DJ), Odesza_41 (DJ), OhMyWard_43 (DJ), OlgasClover_44 (DJ), Perkunas_43 (DJ), PestoPenguin_48 (DJ), Petite_43 (DJ), Phepper_44 (DJ), Pherobrine_44 (DJ), Rickmore_40 (DJ), Roney_42 (DJ), Runhaar_44 (DJ), Schwartz33_44 (DJ), Secretariat_42 (DJ), ShaggyRogers_44 (DJ), SweetCrkHerbs_43 (DJ), Tairn4Wing_44 (DJ), Talon44_43 (DJ), Tanis_42 (DJ), TenaciousP_44 (DJ), Tonaltzin_45 (DJ), Trufflozitus_42 (DJ), Untouchable_44 (DJ), Vardy_43 (DJ), Zeph_45 (DJ),

Summary by clusters:

There is one cluster represented in this pham: DJ

Info for manual annotations of cluster DJ:

- Start number 4 was manually annotated 58 times for cluster DJ.

Gene Information:

Gene: Aflac_43 Start: 33707, Stop: 33958, Start Num: 4

Candidate Starts for Aflac_43:

(Start: 4 @33707 has 58 MA's), (9, 33743), (10, 33746), (11, 33752), (13, 33761), (18, 33857), (24, 33947),

Gene: AlainaMarie_43 Start: 33692, Stop: 33943, Start Num: 4

Candidate Starts for AlainaMarie_43:

(Start: 4 @33692 has 58 MA's), (9, 33728), (10, 33731), (11, 33737), (13, 33746), (18, 33842), (24, 33932),

Gene: Aloe25_47 Start: 33761, Stop: 34012, Start Num: 4

Candidate Starts for Aloe25_47:

(Start: 4 @33761 has 58 MA's), (9, 33797), (10, 33800), (11, 33806), (13, 33815), (18, 33911), (20, 33935), (21, 33959), (24, 34001),

Gene: Arataki_42 Start: 32810, Stop: 33061, Start Num: 4

Candidate Starts for Arataki_42:

(Start: 4 @32810 has 58 MA's), (9, 32846), (10, 32849), (11, 32855), (13, 32864), (18, 32960), (24, 33050),

Gene: ArtetaBall_44 Start: 34010, Stop: 34261, Start Num: 4

Candidate Starts for ArtetaBall_44:

(Start: 4 @34010 has 58 MA's), (9, 34046), (10, 34049), (11, 34055), (13, 34064), (18, 34160), (24, 34250),

Gene: Artorias_41 Start: 31178, Stop: 31429, Start Num: 4

Candidate Starts for Artorias_41:

(Start: 4 @31178 has 58 MA's), (9, 31214), (10, 31217), (12, 31229), (13, 31232), (15, 31256), (18, 31328),

Gene: Avazak_42 Start: 31543, Stop: 31794, Start Num: 4

Candidate Starts for Avazak_42:

(Start: 4 @31543 has 58 MA's), (9, 31579), (10, 31582), (12, 31594), (13, 31597), (15, 31621), (18, 31693),

Gene: BetterYeti_44 Start: 33760, Stop: 34011, Start Num: 4

Candidate Starts for BetterYeti_44:

(Start: 4 @33760 has 58 MA's), (9, 33796), (10, 33799), (11, 33805), (13, 33814), (18, 33910), (20, 33934), (21, 33958), (24, 34000),

Gene: Blanky_45 Start: 35410, Stop: 35658, Start Num: 4

Candidate Starts for Blanky_45:

(Start: 4 @35410 has 58 MA's), (6, 35431), (14, 35479), (18, 35560), (20, 35584),

Gene: BluerMoon_43 Start: 33703, Stop: 33954, Start Num: 4

Candidate Starts for BluerMoon_43:

(Start: 4 @33703 has 58 MA's), (9, 33739), (10, 33742), (11, 33748), (13, 33757), (18, 33853), (24, 33943),

Gene: Bugg_42 Start: 31223, Stop: 31474, Start Num: 4
Candidate Starts for Bugg_42:
(Start: 4 @31223 has 58 MA's), (9, 31259), (10, 31262), (12, 31274), (13, 31277), (15, 31301), (18, 31373),

Gene: Burley_43 Start: 33465, Stop: 33716, Start Num: 4
Candidate Starts for Burley_43:
(Start: 4 @33465 has 58 MA's), (9, 33501), (10, 33504), (11, 33510), (13, 33519), (18, 33615), (24, 33705),

Gene: CWormy_43 Start: 33423, Stop: 33674, Start Num: 4
Candidate Starts for CWormy_43:
(1, 33330), (2, 33351), (Start: 4 @33423 has 58 MA's), (9, 33459), (10, 33462), (11, 33468), (13, 33477), (18, 33573), (24, 33663),

Gene: Captrips_41 Start: 31216, Stop: 31467, Start Num: 4
Candidate Starts for Captrips_41:
(Start: 4 @31216 has 58 MA's), (9, 31252), (10, 31255), (12, 31267), (13, 31270), (15, 31294), (18, 31366),

Gene: Capybara_42 Start: 31605, Stop: 31856, Start Num: 4
Candidate Starts for Capybara_42:
(Start: 4 @31605 has 58 MA's), (9, 31641), (10, 31644), (13, 31659), (15, 31683), (18, 31755),

Gene: ChickyNuggy_43 Start: 31285, Stop: 31536, Start Num: 4
Candidate Starts for ChickyNuggy_43:
(Start: 4 @31285 has 58 MA's), (9, 31321), (10, 31324), (12, 31336), (13, 31339), (15, 31363), (18, 31435),

Gene: Chikenjars_43 Start: 33703, Stop: 33954, Start Num: 4
Candidate Starts for Chikenjars_43:
(1, 33610), (2, 33631), (Start: 4 @33703 has 58 MA's), (9, 33739), (10, 33742), (11, 33748), (13, 33757), (18, 33853), (24, 33943),

Gene: Citrus_43 Start: 33982, Stop: 34233, Start Num: 4
Candidate Starts for Citrus_43:
(1, 33889), (2, 33910), (Start: 4 @33982 has 58 MA's), (9, 34018), (10, 34021), (11, 34027), (13, 34036), (18, 34132), (20, 34156), (24, 34222),

Gene: Conley_41 Start: 32155, Stop: 32406, Start Num: 4
Candidate Starts for Conley_41:
(Start: 4 @32155 has 58 MA's), (9, 32191), (10, 32194), (12, 32206), (15, 32233), (18, 32305), (20, 32329), (23, 32383),

Gene: Crocheter_43 Start: 33868, Stop: 34119, Start Num: 4
Candidate Starts for Crocheter_43:
(Start: 4 @33868 has 58 MA's), (9, 33904), (10, 33907), (11, 33913), (13, 33922), (18, 34018), (24, 34108),

Gene: Dancer_41 Start: 30916, Stop: 31167, Start Num: 4
Candidate Starts for Dancer_41:
(Start: 4 @30916 has 58 MA's), (9, 30952), (10, 30955), (12, 30967), (13, 30970), (15, 30994), (18, 31066),

Gene: Demure_41 Start: 32810, Stop: 33061, Start Num: 4
Candidate Starts for Demure_41:
(Start: 4 @32810 has 58 MA's), (9, 32846), (10, 32849), (11, 32855), (13, 32864), (18, 32960), (24, 33050),

Gene: Dialga_44 Start: 34029, Stop: 34280, Start Num: 4
Candidate Starts for Dialga_44:
(Start: 4 @34029 has 58 MA's), (9, 34065), (10, 34068), (11, 34074), (13, 34083), (18, 34179), (24, 34269),

Gene: Duffington_42 Start: 33365, Stop: 33616, Start Num: 4
Candidate Starts for Duffington_42:
(1, 33272), (2, 33293), (Start: 4 @33365 has 58 MA's), (9, 33401), (10, 33404), (11, 33410), (13, 33419), (18, 33515), (24, 33605),

Gene: Eddiemania_45 Start: 34627, Stop: 34878, Start Num: 4
Candidate Starts for Eddiemania_45:
(Start: 4 @34627 has 58 MA's), (9, 34663), (10, 34666), (11, 34672), (13, 34681), (18, 34777), (20, 34801), (24, 34867),

Gene: EndAve_44 Start: 33872, Stop: 34123, Start Num: 4
Candidate Starts for EndAve_44:
(1, 33779), (2, 33800), (Start: 4 @33872 has 58 MA's), (9, 33908), (10, 33911), (11, 33917), (13, 33926), (18, 34022), (24, 34112),

Gene: Fazel_42 Start: 33160, Stop: 33408, Start Num: 4
Candidate Starts for Fazel_42:
(Start: 4 @33160 has 58 MA's), (14, 33229), (15, 33238), (16, 33265), (18, 33310), (20, 33334), (22, 33370),

Gene: Figliar_43 Start: 33767, Stop: 34018, Start Num: 4
Candidate Starts for Figliar_43:
(Start: 4 @33767 has 58 MA's), (9, 33803), (10, 33806), (11, 33812), (13, 33821), (18, 33917), (24, 34007),

Gene: Football_43 Start: 30922, Stop: 31173, Start Num: 4
Candidate Starts for Football_43:
(Start: 4 @30922 has 58 MA's), (9, 30958), (10, 30961), (12, 30973), (13, 30976), (15, 31000), (18, 31072),

Gene: FortCran_41 Start: 31178, Stop: 31429, Start Num: 4
Candidate Starts for FortCran_41:
(Start: 4 @31178 has 58 MA's), (9, 31214), (10, 31217), (12, 31229), (13, 31232), (15, 31256), (18, 31328),

Gene: Gill_42 Start: 31622, Stop: 31873, Start Num: 4
Candidate Starts for Gill_42:
(Start: 4 @31622 has 58 MA's), (9, 31658), (10, 31661), (13, 31676), (15, 31700), (18, 31772),

Gene: Glintora_45 Start: 34337, Stop: 34588, Start Num: 4
Candidate Starts for Glintora_45:

(1, 34244), (2, 34265), (Start: 4 @34337 has 58 MA's), (9, 34373), (10, 34376), (11, 34382), (13, 34391), (18, 34487), (20, 34511), (24, 34577),

Gene: Gravy_41 Start: 31295, Stop: 31546, Start Num: 4

Candidate Starts for Gravy_41:

(Start: 4 @31295 has 58 MA's), (9, 31331), (10, 31334), (13, 31349), (15, 31373), (18, 31445),

Gene: Gusicorn_44 Start: 33761, Stop: 34012, Start Num: 4

Candidate Starts for Gusicorn_44:

(Start: 4 @33761 has 58 MA's), (9, 33797), (10, 33800), (11, 33806), (13, 33815), (18, 33911), (20, 33935), (21, 33959), (24, 34001),

Gene: Hortihabitatio_44 Start: 33607, Stop: 33855, Start Num: 4

Candidate Starts for Hortihabitatio_44:

(3, 33604), (Start: 4 @33607 has 58 MA's), (6, 33628), (8, 33640), (18, 33757), (19, 33760), (20, 33781),

Gene: Hydrus_45 Start: 34640, Stop: 34891, Start Num: 4

Candidate Starts for Hydrus_45:

(Start: 4 @34640 has 58 MA's), (9, 34676), (10, 34679), (11, 34685), (13, 34694), (18, 34790), (24, 34880),

Gene: Jodelie19_44 Start: 35222, Stop: 35473, Start Num: 4

Candidate Starts for Jodelie19_44:

(Start: 4 @35222 has 58 MA's), (9, 35258), (10, 35261), (11, 35267), (13, 35276), (18, 35372), (24, 35462),

Gene: JulesRay_41 Start: 31210, Stop: 31461, Start Num: 4

Candidate Starts for JulesRay_41:

(Start: 4 @31210 has 58 MA's), (9, 31246), (10, 31249), (12, 31261), (13, 31264), (15, 31288), (18, 31360),

Gene: Kenosha_43 Start: 34275, Stop: 34526, Start Num: 4

Candidate Starts for Kenosha_43:

(Start: 4 @34275 has 58 MA's), (9, 34311), (10, 34314), (11, 34320), (13, 34329), (18, 34425), (24, 34515),

Gene: Kerry_41 Start: 31295, Stop: 31546, Start Num: 4

Candidate Starts for Kerry_41:

(Start: 4 @31295 has 58 MA's), (9, 31331), (10, 31334), (13, 31349), (15, 31373), (18, 31445),

Gene: Luthien_45 Start: 33870, Stop: 34121, Start Num: 4

Candidate Starts for Luthien_45:

(1, 33777), (2, 33798), (Start: 4 @33870 has 58 MA's), (9, 33906), (10, 33909), (11, 33915), (18, 34020), (24, 34110),

Gene: Madvan_43 Start: 33509, Stop: 33760, Start Num: 4

Candidate Starts for Madvan_43:

(Start: 4 @33509 has 58 MA's), (9, 33545), (10, 33548), (11, 33554), (13, 33563), (18, 33659), (24, 33749),

Gene: Magel_43 Start: 31526, Stop: 31777, Start Num: 4

Candidate Starts for Magel_43:

(Start: 4 @31526 has 58 MA's), (9, 31562), (10, 31565), (13, 31580), (15, 31604), (18, 31676),

Gene: MajinBuu_43 Start: 33794, Stop: 34045, Start Num: 4

Candidate Starts for MajinBuu_43:

(Start: 4 @33794 has 58 MA's), (9, 33830), (10, 33833), (11, 33839), (13, 33848), (18, 33944), (24, 34034),

Gene: Mossy_46 Start: 35625, Stop: 35873, Start Num: 4

Candidate Starts for Mossy_46:

(Start: 4 @35625 has 58 MA's), (6, 35646), (14, 35694), (18, 35775), (20, 35799),

Gene: Mysticmoon_43 Start: 33900, Stop: 34148, Start Num: 4

Candidate Starts for Mysticmoon_43:

(3, 33897), (Start: 4 @33900 has 58 MA's), (5, 33909), (6, 33921), (14, 33969), (15, 33978), (18, 34050),

Gene: Nadmeg_44 Start: 34941, Stop: 35192, Start Num: 4

Candidate Starts for Nadmeg_44:

(Start: 4 @34941 has 58 MA's), (9, 34977), (10, 34980), (11, 34986), (13, 34995), (18, 35091), (24, 35181),

Gene: Nithya_43 Start: 33693, Stop: 33944, Start Num: 4

Candidate Starts for Nithya_43:

(1, 33600), (2, 33621), (Start: 4 @33693 has 58 MA's), (9, 33729), (10, 33732), (11, 33738), (13, 33747), (18, 33843), (24, 33933),

Gene: NoPickles_41 Start: 30927, Stop: 31178, Start Num: 4

Candidate Starts for NoPickles_41:

(Start: 4 @30927 has 58 MA's), (9, 30963), (10, 30966), (13, 30981), (15, 31005), (18, 31077),

Gene: Odesza_41 Start: 31296, Stop: 31547, Start Num: 4

Candidate Starts for Odesza_41:

(Start: 4 @31296 has 58 MA's), (9, 31332), (10, 31335), (13, 31350), (15, 31374), (18, 31446),

Gene: OhMyWard_43 Start: 34719, Stop: 34967, Start Num: 4

Candidate Starts for OhMyWard_43:

(Start: 4 @34719 has 58 MA's), (6, 34740), (14, 34788), (18, 34869), (20, 34893),

Gene: OlgasClover_44 Start: 34751, Stop: 35002, Start Num: 4

Candidate Starts for OlgasClover_44:

(Start: 4 @34751 has 58 MA's), (9, 34787), (10, 34790), (11, 34796), (13, 34805), (18, 34901), (24, 34991),

Gene: Perkunas_43 Start: 31586, Stop: 31837, Start Num: 4

Candidate Starts for Perkunas_43:

(Start: 4 @31586 has 58 MA's), (9, 31622), (12, 31637), (13, 31640), (15, 31664), (18, 31736),

Gene: PestoPenguin_48 Start: 33761, Stop: 34012, Start Num: 4

Candidate Starts for PestoPenguin_48:

(Start: 4 @33761 has 58 MA's), (9, 33797), (10, 33800), (11, 33806), (13, 33815), (18, 33911), (20, 33935), (21, 33959), (24, 34001),

Gene: Petite_43 Start: 32690, Stop: 32941, Start Num: 4

Candidate Starts for Petito_43:

(Start: 4 @32690 has 58 MA's), (9, 32726), (10, 32729), (12, 32741), (15, 32768), (18, 32840), (23, 32918),

Gene: Phepper_44 Start: 33762, Stop: 34013, Start Num: 4

Candidate Starts for Phepper_44:

(Start: 4 @33762 has 58 MA's), (9, 33798), (10, 33801), (11, 33807), (13, 33816), (18, 33912), (24, 34002),

Gene: Pherobrine_44 Start: 34201, Stop: 34449, Start Num: 4

Candidate Starts for Pherobrine_44:

(3, 34198), (Start: 4 @34201 has 58 MA's), (5, 34210), (6, 34222), (14, 34270), (15, 34279), (18, 34351),

Gene: Rickmore_40 Start: 31557, Stop: 31808, Start Num: 4

Candidate Starts for Rickmore_40:

(Start: 4 @31557 has 58 MA's), (9, 31593), (10, 31596), (11, 31602), (17, 31686), (18, 31707), (20, 31731), (24, 31797),

Gene: Roney_42 Start: 31617, Stop: 31868, Start Num: 4

Candidate Starts for Roney_42:

(Start: 4 @31617 has 58 MA's), (9, 31653), (10, 31656), (13, 31671), (15, 31695), (18, 31767),

Gene: Runhaar_44 Start: 33756, Stop: 34007, Start Num: 4

Candidate Starts for Runhaar_44:

(1, 33663), (2, 33684), (Start: 4 @33756 has 58 MA's), (9, 33792), (10, 33795), (11, 33801), (13, 33810), (18, 33906), (20, 33930), (24, 33996),

Gene: Schwartz33_44 Start: 34023, Stop: 34274, Start Num: 4

Candidate Starts for Schwartz33_44:

(Start: 4 @34023 has 58 MA's), (7, 34047), (18, 34173), (20, 34197),

Gene: Secretariat_42 Start: 32934, Stop: 33185, Start Num: 4

Candidate Starts for Secretariat_42:

(Start: 4 @32934 has 58 MA's), (6, 32955), (10, 32973), (15, 33012),

Gene: ShaggyRogers_44 Start: 33511, Stop: 33762, Start Num: 4

Candidate Starts for ShaggyRogers_44:

(Start: 4 @33511 has 58 MA's), (9, 33547), (10, 33550), (11, 33556), (13, 33565), (18, 33661), (20, 33685), (21, 33709), (24, 33751),

Gene: SweetCrkHerbs_43 Start: 31259, Stop: 31510, Start Num: 4

Candidate Starts for SweetCrkHerbs_43:

(Start: 4 @31259 has 58 MA's), (9, 31295), (12, 31310), (13, 31313), (15, 31337), (18, 31409),

Gene: Tairn4Wing_44 Start: 31566, Stop: 31817, Start Num: 4

Candidate Starts for Tairn4Wing_44:

(Start: 4 @31566 has 58 MA's), (9, 31602), (10, 31605), (12, 31617), (13, 31620), (15, 31644), (18, 31716),

Gene: Talon44_43 Start: 31601, Stop: 31852, Start Num: 4

Candidate Starts for Talon44_43:

(Start: 4 @31601 has 58 MA's), (9, 31637), (12, 31652), (13, 31655), (15, 31679), (18, 31751),

Gene: Tanis_42 Start: 31468, Stop: 31719, Start Num: 4

Candidate Starts for Tanis_42:

(Start: 4 @31468 has 58 MA's), (9, 31504), (10, 31507), (13, 31522), (15, 31546), (18, 31618),

Gene: TenaciousP_44 Start: 35132, Stop: 35383, Start Num: 4

Candidate Starts for TenaciousP_44:

(Start: 4 @35132 has 58 MA's), (9, 35168), (10, 35171), (11, 35177), (13, 35186), (18, 35282), (24, 35372),

Gene: Tonaltzin_45 Start: 33702, Stop: 33953, Start Num: 4

Candidate Starts for Tonaltzin_45:

(Start: 4 @33702 has 58 MA's), (9, 33738), (10, 33741), (11, 33747), (13, 33756), (18, 33852), (24, 33942),

Gene: Trufflozitus_42 Start: 31567, Stop: 31818, Start Num: 4

Candidate Starts for Trufflozitus_42:

(Start: 4 @31567 has 58 MA's), (9, 31603), (10, 31606), (12, 31618), (13, 31621), (15, 31645), (18, 31717),

Gene: Untouchable_44 Start: 34122, Stop: 34373, Start Num: 4

Candidate Starts for Untouchable_44:

(Start: 4 @34122 has 58 MA's), (9, 34158), (10, 34161), (11, 34167), (13, 34176), (18, 34272), (24, 34362),

Gene: Vardy_43 Start: 33466, Stop: 33717, Start Num: 4

Candidate Starts for Vardy_43:

(Start: 4 @33466 has 58 MA's), (9, 33502), (10, 33505), (11, 33511), (13, 33520), (18, 33616), (24, 33706),

Gene: Zeph_45 Start: 34620, Stop: 34871, Start Num: 4

Candidate Starts for Zeph_45:

(Start: 4 @34620 has 58 MA's), (9, 34656), (10, 34659), (11, 34665), (13, 34674), (18, 34770), (24, 34860),