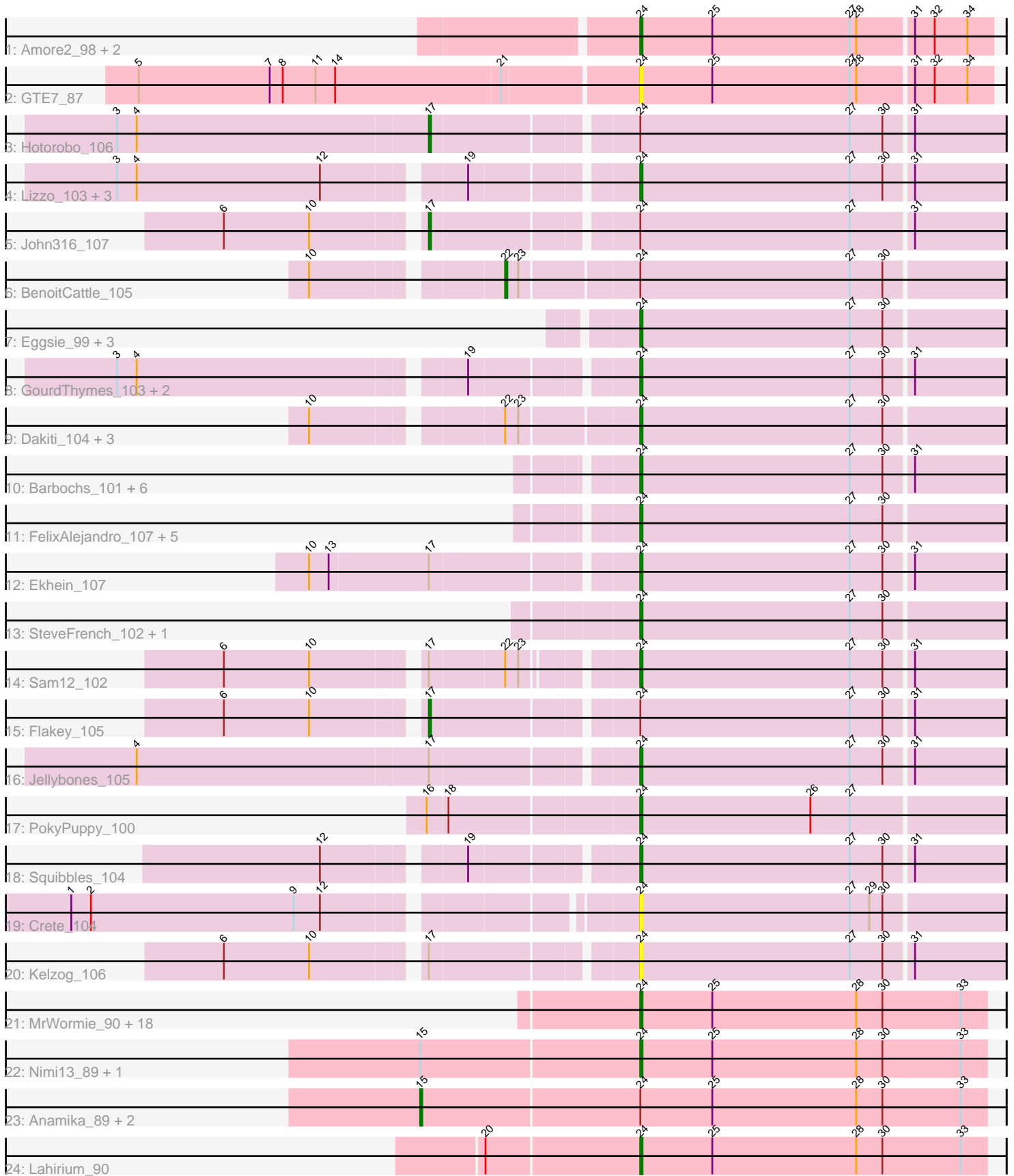


Pham 311559



Note: Tracks are now grouped by subcluster and scaled. Switching in subcluster is indicated by changes in track color. Track scale is now set by default to display the region 30 bp upstream of start 1 to 30 bp downstream of the last possible start. If this default region is judged to be packed too tightly with annotated starts, the track will be further scaled to only show that region of the ORF with annotated starts. This action will be indicated by adding "Zoomed" to the title. For starts, yellow indicates the location of called starts comprised solely of Glimmer/GeneMark auto-annotations, green indicates the location of called starts with at least 1 manual gene annotation.

## Pham 311559 Report

This analysis was run 06/27/26 on database version 652.

Pham number 311559 has 70 members, 6 are drafts.

Phages represented in each track:

- Track 1 : Amore2\_98, Austin\_96, HayZem\_98
- Track 2 : GTE7\_87
- Track 3 : Hotorobo\_106
- Track 4 : Lizzo\_103, CathyBurgh\_103, RemRem\_107, Exiguo\_101
- Track 5 : John316\_107
- Track 6 : BenoitCattle\_105
- Track 7 : Eggsie\_99, Linetti\_104, Diabla\_107, Adgers\_106
- Track 8 : GourdThymes\_103, Gorko\_102, Monty\_103
- Track 9 : Dakiti\_104, Chelms\_103, BigShaq\_105, PierreThree\_103
- Track 10 : Barbochs\_101, BillyBobJr\_108, CinnamonToast\_108, Breezic\_105, Worcestershire\_103, Sombrero\_105, Beaver\_107
- Track 11 : FelixAlejandro\_107, Boneham\_106, Msay19\_108, Poland\_108, BirksAndSocks\_107, Butterball\_105
- Track 12 : Ekhein\_107
- Track 13 : SteveFrench\_102, RoyalG\_103
- Track 14 : Sam12\_102
- Track 15 : Flakey\_105
- Track 16 : Jellybones\_105
- Track 17 : PokyPuppy\_100
- Track 18 : Squibbles\_104
- Track 19 : Crete\_104
- Track 20 : Kelzog\_106
- Track 21 : MrWormie\_90, Neoevie\_89, Harambe\_89, Lidong\_90, Jormungandr\_89, Woes\_89, Newt\_91, Hail2Pitt\_88, Damp\_90, Hello\_89, GalacticEye\_90, Teal\_89, Sticker17\_90, Berries\_90, Luker\_91, Jams\_90, Minos\_91, Shelley\_90, Kaseim\_90
- Track 22 : Nimi13\_89, Guillaume\_89
- Track 23 : Anamika\_89, Charianelly\_90, Bianmat\_90
- Track 24 : Lahirium\_90

### ***Summary of Final Annotations (See graph section above for start numbers):***

The start number called the most often in the published annotations is 24, it was called in 57 of the 64 non-draft genes in the pham.

Genes that call this "Most Annotated" start:

- Adgers\_106, Amore2\_98, Austin\_96, Barbochs\_101, Beaver\_107, Berries\_90, BigShaq\_105, BillyBobJr\_108, BirksAndSocks\_107, Boneham\_106, Breezic\_105, Butterball\_105, CathyBurgh\_103, Chelms\_103, CinnamonToast\_108, Crete\_104, Dakiti\_104, Damp\_90, Diabla\_107, Eggsie\_99, Ekhein\_107, Exiguo\_101, FelixAlejandro\_107, GTE7\_87, GalacticEye\_90, Gorko\_102, GourdThymes\_103, Guillaume\_89, Hail2Pitt\_88, Harambe\_89, HayZem\_98, Hello\_89, Jams\_90, Jellybones\_105, Jormungandr\_89, Kaseim\_90, Kelzog\_106, Lahirium\_90, Lidong\_90, Linetti\_104, Lizzo\_103, Luker\_91, Minos\_91, Monty\_103, MrWormie\_90, Msay19\_108, Neeve\_89, Newt\_91, Nimi13\_89, PierreThree\_103, PokyPuppy\_100, Poland\_108, RemRem\_107, RoyalG\_103, Sam12\_102, Shelley\_90, Sombrero\_105, Squibbles\_104, SteveFrench\_102, Sticker17\_90, Teal\_89, Woes\_89, Worcestershire\_103,

Genes that have the "Most Annotated" start but do not call it:

- Anamika\_89, BenoitCattle\_105, Bianmat\_90, Charianelly\_90, Flakey\_105, Hotorobo\_106, John316\_107,

Genes that do not have the "Most Annotated" start:

- 

### Summary by start number:

Start 15:

- Found in 5 of 70 ( 7.1% ) of genes in pham
- Manual Annotations of this start: 3 of 64
- Called 60.0% of time when present
- Phage (with cluster) where this start called: Anamika\_89 (CS3), Bianmat\_90 (CS3), Charianelly\_90 (CS3),

Start 17:

- Found in 7 of 70 ( 10.0% ) of genes in pham
- Manual Annotations of this start: 3 of 64
- Called 42.9% of time when present
- Phage (with cluster) where this start called: Flakey\_105 (CS2), Hotorobo\_106 (CS2), John316\_107 (CS2),

Start 22:

- Found in 6 of 70 ( 8.6% ) of genes in pham
- Manual Annotations of this start: 1 of 64
- Called 16.7% of time when present
- Phage (with cluster) where this start called: BenoitCattle\_105 (CS2),

Start 24:

- Found in 70 of 70 ( 100.0% ) of genes in pham
- Manual Annotations of this start: 57 of 64
- Called 90.0% of time when present
- Phage (with cluster) where this start called: Adgers\_106 (CS2), Amore2\_98 (CS1), Austin\_96 (CS1), Barbochs\_101 (CS2), Beaver\_107 (CS2), Berries\_90 (CS3), BigShaq\_105 (CS2), BillyBobJr\_108 (CS2), BirksAndSocks\_107 (CS2), Boneham\_106 (CS2), Breezic\_105 (CS2), Butterball\_105 (CS2), CathyBurgh\_103 (CS2), Chelms\_103 (CS2), CinnamonToast\_108 (CS2), Crete\_104 (CS2), Dakiti\_104 (CS2), Damp\_90 (CS3), Diabla\_107 (CS2), Eggsie\_99 (CS2), Ekhein\_107 (CS2),

Exiguo\_101 (CS2), FelixAlejandro\_107 (CS2), GTE7\_87 (CS1), GalacticEye\_90 (CS3), Gorko\_102 (CS2), GourdThymes\_103 (CS2), Guillaume\_89 (CS3), Hail2Pitt\_88 (CS3), Harambe\_89 (CS3), HayZem\_98 (CS1), Hello\_89 (CS3), Jams\_90 (CS3), Jellybones\_105 (CS2), Jormungandr\_89 (CS3), Kaseim\_90 (CS3), Kelzog\_106 (CS2), Lahirium\_90 (CS3), Lidong\_90 (CS3), Linetti\_104 (CS2), Lizzo\_103 (CS2), Luker\_91 (CS3), Minos\_91 (CS3), Monty\_103 (CS2), MrWormie\_90 (CS3), Msay19\_108 (CS2), Neoevie\_89 (CS3), Newt\_91 (CS3), Nimi13\_89 (CS3), PierreThree\_103 (CS2), PokyPuppy\_100 (CS2), Poland\_108 (CS2), RemRem\_107 (CS2), RoyalG\_103 (CS2), Sam12\_102 (CS2), Shelley\_90 (CS3), Sombrero\_105 (CS2), Squibbles\_104 (CS2), SteveFrench\_102 (CS2), Sticker17\_90 (CS3), Teal\_89 (CS3), Woes\_89 (CS3), Worcestershire\_103 (CS2),

### **Summary by clusters:**

There are 3 clusters represented in this pham: CS1, CS3, CS2,

Info for manual annotations of cluster CS1:

- Start number 24 was manually annotated 3 times for cluster CS1.

Info for manual annotations of cluster CS2:

- Start number 17 was manually annotated 3 times for cluster CS2.
- Start number 22 was manually annotated 1 time for cluster CS2.
- Start number 24 was manually annotated 32 times for cluster CS2.

Info for manual annotations of cluster CS3:

- Start number 15 was manually annotated 3 times for cluster CS3.
- Start number 24 was manually annotated 22 times for cluster CS3.

### **Gene Information:**

Gene: Adgers\_106 Start: 73212, Stop: 73048, Start Num: 24

Candidate Starts for Adgers\_106:

(Start: 24 @73212 has 57 MA's), (27, 73116), (30, 73101),

Gene: Amore2\_98 Start: 71254, Stop: 71096, Start Num: 24

Candidate Starts for Amore2\_98:

(Start: 24 @71254 has 57 MA's), (25, 71221), (27, 71158), (28, 71155), (31, 71131), (32, 71122), (34, 71107),

Gene: Anamika\_89 Start: 70826, Stop: 70569, Start Num: 15

Candidate Starts for Anamika\_89:

(Start: 15 @70826 has 3 MA's), (Start: 24 @70727 has 57 MA's), (25, 70694), (28, 70628), (30, 70616), (33, 70580),

Gene: Austin\_96 Start: 71087, Stop: 70929, Start Num: 24

Candidate Starts for Austin\_96:

(Start: 24 @71087 has 57 MA's), (25, 71054), (27, 70991), (28, 70988), (31, 70964), (32, 70955), (34, 70940),

Gene: Barbochs\_101 Start: 72406, Stop: 72242, Start Num: 24

Candidate Starts for Barbochs\_101:

(Start: 24 @72406 has 57 MA's), (27, 72310), (30, 72295), (31, 72283),

Gene: Beaver\_107 Start: 74554, Stop: 74390, Start Num: 24

Candidate Starts for Beaver\_107:

(Start: 24 @74554 has 57 MA's), (27, 74458), (30, 74443), (31, 74431),

Gene: BenoitCattle\_105 Start: 73827, Stop: 73606, Start Num: 22

Candidate Starts for BenoitCattle\_105:

(10, 73905), (Start: 22 @73827 has 1 MA's), (23, 73821), (Start: 24 @73770 has 57 MA's), (27, 73674), (30, 73659),

Gene: Berries\_90 Start: 70699, Stop: 70541, Start Num: 24

Candidate Starts for Berries\_90:

(Start: 24 @70699 has 57 MA's), (25, 70666), (28, 70600), (30, 70588), (33, 70552),

Gene: Bianmat\_90 Start: 70838, Stop: 70581, Start Num: 15

Candidate Starts for Bianmat\_90:

(Start: 15 @70838 has 3 MA's), (Start: 24 @70739 has 57 MA's), (25, 70706), (28, 70640), (30, 70628), (33, 70592),

Gene: BigShaq\_105 Start: 73565, Stop: 73401, Start Num: 24

Candidate Starts for BigShaq\_105:

(10, 73700), (Start: 22 @73622 has 1 MA's), (23, 73616), (Start: 24 @73565 has 57 MA's), (27, 73469), (30, 73454),

Gene: BillyBobJr\_108 Start: 74657, Stop: 74493, Start Num: 24

Candidate Starts for BillyBobJr\_108:

(Start: 24 @74657 has 57 MA's), (27, 74561), (30, 74546), (31, 74534),

Gene: BirksAndSocks\_107 Start: 74167, Stop: 74003, Start Num: 24

Candidate Starts for BirksAndSocks\_107:

(Start: 24 @74167 has 57 MA's), (27, 74071), (30, 74056),

Gene: Boneham\_106 Start: 74092, Stop: 73928, Start Num: 24

Candidate Starts for Boneham\_106:

(Start: 24 @74092 has 57 MA's), (27, 73996), (30, 73981),

Gene: Breezic\_105 Start: 73104, Stop: 72940, Start Num: 24

Candidate Starts for Breezic\_105:

(Start: 24 @73104 has 57 MA's), (27, 73008), (30, 72993), (31, 72981),

Gene: Butterball\_105 Start: 74097, Stop: 73933, Start Num: 24

Candidate Starts for Butterball\_105:

(Start: 24 @74097 has 57 MA's), (27, 74001), (30, 73986),

Gene: CathyBurgh\_103 Start: 72939, Stop: 72775, Start Num: 24

Candidate Starts for CathyBurgh\_103:

(3, 73158), (4, 73149), (12, 73065), (19, 73008), (Start: 24 @72939 has 57 MA's), (27, 72843), (30, 72828), (31, 72816),

Gene: Charianelly\_90 Start: 70551, Stop: 70294, Start Num: 15

Candidate Starts for Charianelly\_90:

(Start: 15 @70551 has 3 MA's), (Start: 24 @70452 has 57 MA's), (25, 70419), (28, 70353), (30, 70341), (33, 70305),

Gene: Chelms\_103 Start: 73508, Stop: 73344, Start Num: 24

Candidate Starts for Chelms\_103:

(10, 73643), (Start: 22 @73565 has 1 MA's), (23, 73559), (Start: 24 @73508 has 57 MA's), (27, 73412), (30, 73397),

Gene: CinnamonToast\_108 Start: 74657, Stop: 74493, Start Num: 24

Candidate Starts for CinnamonToast\_108:

(Start: 24 @74657 has 57 MA's), (27, 74561), (30, 74546), (31, 74534),

Gene: Crete\_104 Start: 73609, Stop: 73445, Start Num: 24

Candidate Starts for Crete\_104:

(1, 73849), (2, 73840), (9, 73747), (12, 73735), (Start: 24 @73609 has 57 MA's), (27, 73513), (29, 73504), (30, 73498),

Gene: Dakiti\_104 Start: 74451, Stop: 74287, Start Num: 24

Candidate Starts for Dakiti\_104:

(10, 74586), (Start: 22 @74508 has 1 MA's), (23, 74502), (Start: 24 @74451 has 57 MA's), (27, 74355), (30, 74340),

Gene: Damp\_90 Start: 69595, Stop: 69437, Start Num: 24

Candidate Starts for Damp\_90:

(Start: 24 @69595 has 57 MA's), (25, 69562), (28, 69496), (30, 69484), (33, 69448),

Gene: Diabla\_107 Start: 73814, Stop: 73650, Start Num: 24

Candidate Starts for Diabla\_107:

(Start: 24 @73814 has 57 MA's), (27, 73718), (30, 73703),

Gene: Eggsie\_99 Start: 71370, Stop: 71206, Start Num: 24

Candidate Starts for Eggsie\_99:

(Start: 24 @71370 has 57 MA's), (27, 71274), (30, 71259),

Gene: Ekhein\_107 Start: 73157, Stop: 72993, Start Num: 24

Candidate Starts for Ekhein\_107:

(10, 73298), (13, 73289), (Start: 17 @73244 has 3 MA's), (Start: 24 @73157 has 57 MA's), (27, 73061), (30, 73046), (31, 73034),

Gene: Exiguo\_101 Start: 72370, Stop: 72206, Start Num: 24

Candidate Starts for Exiguo\_101:

(3, 72589), (4, 72580), (12, 72496), (19, 72439), (Start: 24 @72370 has 57 MA's), (27, 72274), (30, 72259), (31, 72247),

Gene: FelixAlejandro\_107 Start: 74610, Stop: 74446, Start Num: 24

Candidate Starts for FelixAlejandro\_107:

(Start: 24 @74610 has 57 MA's), (27, 74514), (30, 74499),

Gene: Flakey\_105 Start: 74135, Stop: 73884, Start Num: 17

Candidate Starts for Flakey\_105:

(6, 74219), (10, 74180), (Start: 17 @74135 has 3 MA's), (Start: 24 @74048 has 57 MA's), (27, 73952), (30, 73937), (31, 73925),

Gene: GTE7\_87 Start: 65923, Stop: 65765, Start Num: 24  
Candidate Starts for GTE7\_87:  
(5, 66148), (7, 66088), (8, 66082), (11, 66067), (14, 66058), (21, 65983), (Start: 24 @65923 has 57 MA's), (25, 65890), (27, 65827), (28, 65824), (31, 65800), (32, 65791), (34, 65776),

Gene: GalacticEye\_90 Start: 70382, Stop: 70224, Start Num: 24  
Candidate Starts for GalacticEye\_90:  
(Start: 24 @70382 has 57 MA's), (25, 70349), (28, 70283), (30, 70271), (33, 70235),

Gene: Gorko\_102 Start: 72317, Stop: 72153, Start Num: 24  
Candidate Starts for Gorko\_102:  
(3, 72536), (4, 72527), (19, 72386), (Start: 24 @72317 has 57 MA's), (27, 72221), (30, 72206), (31, 72194),

Gene: GourdThymes\_103 Start: 72966, Stop: 72802, Start Num: 24  
Candidate Starts for GourdThymes\_103:  
(3, 73185), (4, 73176), (19, 73035), (Start: 24 @72966 has 57 MA's), (27, 72870), (30, 72855), (31, 72843),

Gene: Guillaume\_89 Start: 70460, Stop: 70302, Start Num: 24  
Candidate Starts for Guillaume\_89:  
(Start: 15 @70559 has 3 MA's), (Start: 24 @70460 has 57 MA's), (25, 70427), (28, 70361), (30, 70349), (33, 70313),

Gene: Hail2Pitt\_88 Start: 70933, Stop: 70775, Start Num: 24  
Candidate Starts for Hail2Pitt\_88:  
(Start: 24 @70933 has 57 MA's), (25, 70900), (28, 70834), (30, 70822), (33, 70786),

Gene: Harambe\_89 Start: 70727, Stop: 70569, Start Num: 24  
Candidate Starts for Harambe\_89:  
(Start: 24 @70727 has 57 MA's), (25, 70694), (28, 70628), (30, 70616), (33, 70580),

Gene: HayZem\_98 Start: 71094, Stop: 70936, Start Num: 24  
Candidate Starts for HayZem\_98:  
(Start: 24 @71094 has 57 MA's), (25, 71061), (27, 70998), (28, 70995), (31, 70971), (32, 70962), (34, 70947),

Gene: Hello\_89 Start: 70682, Stop: 70524, Start Num: 24  
Candidate Starts for Hello\_89:  
(Start: 24 @70682 has 57 MA's), (25, 70649), (28, 70583), (30, 70571), (33, 70535),

Gene: Hotorobo\_106 Start: 74095, Stop: 73844, Start Num: 17  
Candidate Starts for Hotorobo\_106:  
(3, 74236), (4, 74227), (Start: 17 @74095 has 3 MA's), (Start: 24 @74008 has 57 MA's), (27, 73912), (30, 73897), (31, 73885),

Gene: Jams\_90 Start: 69737, Stop: 69579, Start Num: 24  
Candidate Starts for Jams\_90:  
(Start: 24 @69737 has 57 MA's), (25, 69704), (28, 69638), (30, 69626), (33, 69590),

Gene: Jellybones\_105 Start: 74298, Stop: 74134, Start Num: 24  
Candidate Starts for Jellybones\_105:

(4, 74517), (Start: 17 @74385 has 3 MA's), (Start: 24 @74298 has 57 MA's), (27, 74202), (30, 74187), (31, 74175),

Gene: John316\_107 Start: 74362, Stop: 74111, Start Num: 17  
Candidate Starts for John316\_107:

(6, 74446), (10, 74407), (Start: 17 @74362 has 3 MA's), (Start: 24 @74275 has 57 MA's), (27, 74179), (31, 74152),

Gene: Jormungandr\_89 Start: 70442, Stop: 70284, Start Num: 24  
Candidate Starts for Jormungandr\_89:

(Start: 24 @70442 has 57 MA's), (25, 70409), (28, 70343), (30, 70331), (33, 70295),

Gene: Kaseim\_90 Start: 69884, Stop: 69726, Start Num: 24  
Candidate Starts for Kaseim\_90:

(Start: 24 @69884 has 57 MA's), (25, 69851), (28, 69785), (30, 69773), (33, 69737),

Gene: Kelzog\_106 Start: 73542, Stop: 73378, Start Num: 24  
Candidate Starts for Kelzog\_106:

(6, 73713), (10, 73674), (Start: 17 @73629 has 3 MA's), (Start: 24 @73542 has 57 MA's), (27, 73446), (30, 73431), (31, 73419),

Gene: Lahirium\_90 Start: 71478, Stop: 71320, Start Num: 24  
Candidate Starts for Lahirium\_90:

(20, 71547), (Start: 24 @71478 has 57 MA's), (25, 71445), (28, 71379), (30, 71367), (33, 71331),

Gene: Lidong\_90 Start: 70699, Stop: 70541, Start Num: 24  
Candidate Starts for Lidong\_90:

(Start: 24 @70699 has 57 MA's), (25, 70666), (28, 70600), (30, 70588), (33, 70552),

Gene: Linetti\_104 Start: 74728, Stop: 74564, Start Num: 24  
Candidate Starts for Linetti\_104:

(Start: 24 @74728 has 57 MA's), (27, 74632), (30, 74617),

Gene: Lizzo\_103 Start: 72939, Stop: 72775, Start Num: 24  
Candidate Starts for Lizzo\_103:

(3, 73158), (4, 73149), (12, 73065), (19, 73008), (Start: 24 @72939 has 57 MA's), (27, 72843), (30, 72828), (31, 72816),

Gene: Luker\_91 Start: 70752, Stop: 70594, Start Num: 24  
Candidate Starts for Luker\_91:

(Start: 24 @70752 has 57 MA's), (25, 70719), (28, 70653), (30, 70641), (33, 70605),

Gene: Minos\_91 Start: 70426, Stop: 70268, Start Num: 24  
Candidate Starts for Minos\_91:

(Start: 24 @70426 has 57 MA's), (25, 70393), (28, 70327), (30, 70315), (33, 70279),

Gene: Monty\_103 Start: 72841, Stop: 72677, Start Num: 24  
Candidate Starts for Monty\_103:

(3, 73060), (4, 73051), (19, 72910), (Start: 24 @72841 has 57 MA's), (27, 72745), (30, 72730), (31, 72718),

Gene: MrWormie\_90 Start: 69440, Stop: 69282, Start Num: 24  
Candidate Starts for MrWormie\_90:

(Start: 24 @69440 has 57 MA's), (25, 69407), (28, 69341), (30, 69329), (33, 69293),

Gene: Msay19\_108 Start: 74914, Stop: 74750, Start Num: 24

Candidate Starts for Msay19\_108:

(Start: 24 @74914 has 57 MA's), (27, 74818), (30, 74803),

Gene: Neoevie\_89 Start: 70700, Stop: 70542, Start Num: 24

Candidate Starts for Neoevie\_89:

(Start: 24 @70700 has 57 MA's), (25, 70667), (28, 70601), (30, 70589), (33, 70553),

Gene: Newt\_91 Start: 70769, Stop: 70611, Start Num: 24

Candidate Starts for Newt\_91:

(Start: 24 @70769 has 57 MA's), (25, 70736), (28, 70670), (30, 70658), (33, 70622),

Gene: Nimi13\_89 Start: 70450, Stop: 70292, Start Num: 24

Candidate Starts for Nimi13\_89:

(Start: 15 @70549 has 3 MA's), (Start: 24 @70450 has 57 MA's), (25, 70417), (28, 70351), (30, 70339), (33, 70303),

Gene: PierreThree\_103 Start: 74082, Stop: 73918, Start Num: 24

Candidate Starts for PierreThree\_103:

(10, 74217), (Start: 22 @74139 has 1 MA's), (23, 74133), (Start: 24 @74082 has 57 MA's), (27, 73986), (30, 73971),

Gene: PokyPuppy\_100 Start: 73128, Stop: 72964, Start Num: 24

Candidate Starts for PokyPuppy\_100:

(16, 73221), (18, 73212), (Start: 24 @73128 has 57 MA's), (26, 73050), (27, 73032),

Gene: Poland\_108 Start: 74875, Stop: 74711, Start Num: 24

Candidate Starts for Poland\_108:

(Start: 24 @74875 has 57 MA's), (27, 74779), (30, 74764),

Gene: RemRem\_107 Start: 73125, Stop: 72961, Start Num: 24

Candidate Starts for RemRem\_107:

(3, 73344), (4, 73335), (12, 73251), (19, 73194), (Start: 24 @73125 has 57 MA's), (27, 73029), (30, 73014), (31, 73002),

Gene: RoyalG\_103 Start: 72840, Stop: 72676, Start Num: 24

Candidate Starts for RoyalG\_103:

(Start: 24 @72840 has 57 MA's), (27, 72744), (30, 72729),

Gene: Sam12\_102 Start: 72367, Stop: 72203, Start Num: 24

Candidate Starts for Sam12\_102:

(6, 72535), (10, 72496), (Start: 17 @72451 has 3 MA's), (Start: 22 @72418 has 1 MA's), (23, 72412), (Start: 24 @72367 has 57 MA's), (27, 72271), (30, 72256), (31, 72244),

Gene: Shelley\_90 Start: 69926, Stop: 69768, Start Num: 24

Candidate Starts for Shelley\_90:

(Start: 24 @69926 has 57 MA's), (25, 69893), (28, 69827), (30, 69815), (33, 69779),

Gene: Sombrero\_105 Start: 73178, Stop: 73014, Start Num: 24

Candidate Starts for Sombrero\_105:

(Start: 24 @73178 has 57 MA's), (27, 73082), (30, 73067), (31, 73055),

Gene: Squibbles\_104 Start: 73651, Stop: 73487, Start Num: 24

Candidate Starts for Squibbles\_104:

(12, 73777), (19, 73720), (Start: 24 @73651 has 57 MA's), (27, 73555), (30, 73540), (31, 73528),

Gene: SteveFrench\_102 Start: 73079, Stop: 72915, Start Num: 24

Candidate Starts for SteveFrench\_102:

(Start: 24 @73079 has 57 MA's), (27, 72983), (30, 72968),

Gene: Sticker17\_90 Start: 70399, Stop: 70241, Start Num: 24

Candidate Starts for Sticker17\_90:

(Start: 24 @70399 has 57 MA's), (25, 70366), (28, 70300), (30, 70288), (33, 70252),

Gene: Teal\_89 Start: 70905, Stop: 70747, Start Num: 24

Candidate Starts for Teal\_89:

(Start: 24 @70905 has 57 MA's), (25, 70872), (28, 70806), (30, 70794), (33, 70758),

Gene: Woes\_89 Start: 70949, Stop: 70791, Start Num: 24

Candidate Starts for Woes\_89:

(Start: 24 @70949 has 57 MA's), (25, 70916), (28, 70850), (30, 70838), (33, 70802),

Gene: Worcestershire\_103 Start: 72559, Stop: 72395, Start Num: 24

Candidate Starts for Worcestershire\_103:

(Start: 24 @72559 has 57 MA's), (27, 72463), (30, 72448), (31, 72436),