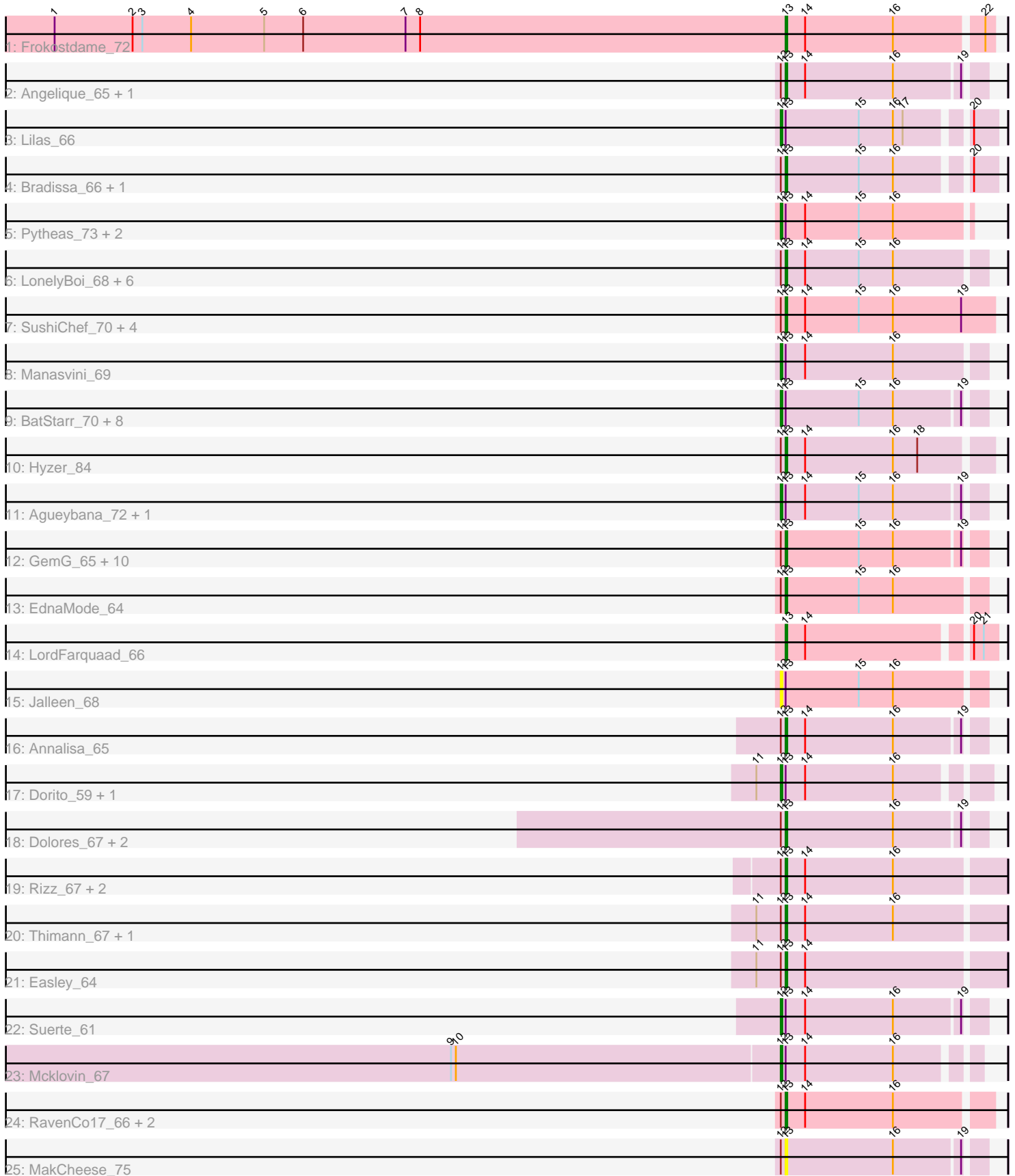


Pham 311585



Note: Tracks are now grouped by subcluster and scaled. Switching in subcluster is indicated by changes in track color. Track scale is now set by default to display the region 30 bp upstream of start 1 to 30 bp downstream of the last possible start. If this default region is judged to be packed too tightly with annotated starts, the track will be further scaled to only show that region of the ORF with annotated starts. This action will be indicated by adding "Zoomed" to the title. For starts, yellow indicates the location of called starts comprised solely of Glimmer/GeneMark auto-annotations, green indicates the location of called starts with at least 1 manual gene annotation.

Pham 311585 Report

This analysis was run 06/27/26 on database version 652.

Pham number 311585 has 66 members, 8 are drafts.

Phages represented in each track:

- Track 1 : Frokostdame_72
- Track 2 : Angelique_65, FroggyToad_65
- Track 3 : Lilas_66
- Track 4 : Bradissa_66, EnalisNailo_65
- Track 5 : Pytheas_73, Yeezy_72, Pollux_73
- Track 6 : LonelyBoi_68, Ohgeesy_69, JCole_62, AlumE_69, Floral_71, Nettuno_62, BoyNamedSue_69
- Track 7 : SushiChef_70, Madavieve_66, EMSquaredA_70, Bunnybear_65, Maridalia_70
- Track 8 : Manasvini_69
- Track 9 : BatStarr_70, Bjanes7_62, Mocha12_65, Yinzer_65, Savage_65, Herod_71, Sproutie_65, Cynthia_65, Hugley_69
- Track 10 : Hyzer_84
- Track 11 : Agueybana_72, Marteena_69
- Track 12 : GemG_65, TuertoX_65, Gizermo_65, PantheRoc_73, TimTam_71, Eviarto_71, Whiteclaw_65, Nymphadora_71, Haley23_65, Lamberg_61, Clap_65
- Track 13 : EdnaMode_64
- Track 14 : LordFarquaad_66
- Track 15 : Jalleen_68
- Track 16 : Annalisa_65
- Track 17 : Dorito_59, DobbysSock_61
- Track 18 : Dolores_67, Sekhmet_66, WinkNick_67
- Track 19 : Rizz_67, Samman98_67, Invectra_69
- Track 20 : Thimann_67, Oregano_67
- Track 21 : Easley_64
- Track 22 : Suerte_61
- Track 23 : Mcklovin_67
- Track 24 : RavenCo17_66, WelcomeAyanna_70, ThankyouJordi_70
- Track 25 : MakCheese_75

Summary of Final Annotations (See graph section above for start numbers):

The start number called the most often in the published annotations is 13, it was called in 40 of the 58 non-draft genes in the pham.

Genes that call this "Most Annotated" start:

- AlumE_69, Angelique_65, Annalisa_65, BoyNamedSue_69, Bradissa_66, Bunnybear_65, Clap_65, Dolores_67, EMSquaredA_70, Easley_64, EdnaMode_64, EnalisNailo_65, Eviarto_71, Floral_71, FroggyToad_65, Frokostdame_72, GemG_65, Gizermo_65, Haley23_65, Hyzer_84, Invectra_69, JCole_62, Lamberg_61, LonelyBoi_68, LordFarquaad_66, Madavieve_66, MakCheese_75, Maridalia_70, Nettuno_62, Nymphadora_71, Ohgeesy_69, Oregano_67, PantheRoc_73, RavenCo17_66, Rizz_67, Samman98_67, Sekhmet_66, SushiChef_70, ThankyouJordi_70, Thimann_67, TimTam_71, TuertoX_65, WelcomeAyanna_70, Whiteclaw_65, WinkNick_67,

Genes that have the "Most Annotated" start but do not call it:

- Agueybana_72, BatStarr_70, Bjanes7_62, Cynthia_65, DobbysSock_61, Dorito_59, Herod_71, Hugley_69, Jalleen_68, Lilas_66, Manasvini_69, Marteena_69, Mcklovin_67, Mocha12_65, Pollux_73, Pytheas_73, Savage_65, Sproutie_65, Suerte_61, Yeezy_72, Yinzer_65,

Genes that do not have the "Most Annotated" start:

-

Summary by start number:

Start 12:

- Found in 64 of 66 (97.0%) of genes in pham
- Manual Annotations of this start: 18 of 58
- Called 32.8% of time when present
- Phage (with cluster) where this start called: Agueybana_72 (CZ1), BatStarr_70 (CZ1), Bjanes7_62 (CZ2), Cynthia_65 (CZ2), DobbysSock_61 (CZ4), Dorito_59 (CZ4), Herod_71 (CZ1), Hugley_69 (CZ1), Jalleen_68 (CZ2), Lilas_66 (CY1), Manasvini_69 (CZ1), Marteena_69 (CY1), Mcklovin_67 (CZ4), Mocha12_65 (CZ2), Pollux_73 (CY1), Pytheas_73 (CY3), Savage_65 (CZ2), Sproutie_65 (CZ2), Suerte_61 (CZ4), Yeezy_72 (CZ3), Yinzer_65 (CZ2),

Start 13:

- Found in 66 of 66 (100.0%) of genes in pham
- Manual Annotations of this start: 40 of 58
- Called 68.2% of time when present
- Phage (with cluster) where this start called: AlumE_69 (CZ1), Angelique_65 (CY1), Annalisa_65 (CZ4), BoyNamedSue_69 (CZ1), Bradissa_66 (CY1), Bunnybear_65 (CZ), Clap_65 (CZ2), Dolores_67 (CZ4), EMSquaredA_70 (CY1), Easley_64 (CZ4), EdnaMode_64 (CZ2), EnalisNailo_65 (CY1), Eviarto_71 (CZ1), Floral_71 (CY1), FroggyToad_65 (CZ2), Frokostdame_72 (CV), GemG_65 (CZ2), Gizermo_65 (CZ2), Haley23_65 (CZ2), Hyzer_84 (CZ1), Invectra_69 (CZ4), JCole_62 (CZ2), Lamberg_61 (CZ2), LonelyBoi_68 (CY7), LordFarquaad_66 (CZ2), Madavieve_66 (CZ1), MakCheese_75 (DW), Maridalia_70 (CZ1), Nettuno_62 (CZ2), Nymphadora_71 (CZ1), Ohgeesy_69 (CZ), Oregano_67 (CZ4), PantheRoc_73 (CZ3), RavenCo17_66 (CZ8), Rizz_67 (CZ4), Samman98_67 (CZ4), Sekhmet_66 (CZ4), SushiChef_70 (CZ), ThankyouJordi_70 (CZ1), Thimann_67 (CZ4), TimTam_71 (CZ1), TuertoX_65 (CZ2), WelcomeAyanna_70 (CZ1), Whiteclaw_65 (CZ2), WinkNick_67 (CZ4),

Summary by clusters:

There are 11 clusters represented in this pham: CY3, CY1, CY7, CZ2, CZ3, CZ1, CZ8, CZ4, CZ, DW, CV,

Info for manual annotations of cluster CV:

- Start number 13 was manually annotated 1 time for cluster CV.

Info for manual annotations of cluster CY1:

- Start number 12 was manually annotated 3 times for cluster CY1.
- Start number 13 was manually annotated 5 times for cluster CY1.

Info for manual annotations of cluster CY3:

- Start number 12 was manually annotated 1 time for cluster CY3.

Info for manual annotations of cluster CY7:

- Start number 13 was manually annotated 1 time for cluster CY7.

Info for manual annotations of cluster CZ:

- Start number 13 was manually annotated 2 times for cluster CZ.

Info for manual annotations of cluster CZ1:

- Start number 12 was manually annotated 4 times for cluster CZ1.
- Start number 13 was manually annotated 9 times for cluster CZ1.

Info for manual annotations of cluster CZ2:

- Start number 12 was manually annotated 5 times for cluster CZ2.
- Start number 13 was manually annotated 11 times for cluster CZ2.

Info for manual annotations of cluster CZ3:

- Start number 12 was manually annotated 1 time for cluster CZ3.
- Start number 13 was manually annotated 1 time for cluster CZ3.

Info for manual annotations of cluster CZ4:

- Start number 12 was manually annotated 4 times for cluster CZ4.
- Start number 13 was manually annotated 9 times for cluster CZ4.

Info for manual annotations of cluster CZ8:

- Start number 13 was manually annotated 1 time for cluster CZ8.

Gene Information:

Gene: Agueybana_72 Start: 47382, Stop: 47501, Start Num: 12

Candidate Starts for Agueybana_72:

(Start: 12 @47382 has 18 MA's), (Start: 13 @47385 has 40 MA's), (14, 47397), (15, 47430), (16, 47451), (19, 47490),

Gene: AlumE_69 Start: 47241, Stop: 47360, Start Num: 13

Candidate Starts for AlumE_69:

(Start: 12 @47238 has 18 MA's), (Start: 13 @47241 has 40 MA's), (14, 47253), (15, 47286), (16, 47307),

Gene: Angelique_65 Start: 45702, Stop: 45818, Start Num: 13

Candidate Starts for Angelique_65:

(Start: 12 @45699 has 18 MA's), (Start: 13 @45702 has 40 MA's), (14, 45714), (16, 45768), (19, 45807),

Gene: Annalisa_65 Start: 42496, Stop: 42612, Start Num: 13

Candidate Starts for Annalisa_65:

(Start: 12 @42493 has 18 MA's), (Start: 13 @42496 has 40 MA's), (14, 42508), (16, 42562), (19, 42601),

Gene: BatStarr_70 Start: 47786, Stop: 47905, Start Num: 12

Candidate Starts for BatStarr_70:

(Start: 12 @47786 has 18 MA's), (Start: 13 @47789 has 40 MA's), (15, 47834), (16, 47855), (19, 47894),

Gene: Bjaner7_62 Start: 41166, Stop: 41285, Start Num: 12

Candidate Starts for Bjaner7_62:

(Start: 12 @41166 has 18 MA's), (Start: 13 @41169 has 40 MA's), (15, 41214), (16, 41235), (19, 41274),

Gene: BoyNamedSue_69 Start: 47241, Stop: 47360, Start Num: 13

Candidate Starts for BoyNamedSue_69:

(Start: 12 @47238 has 18 MA's), (Start: 13 @47241 has 40 MA's), (14, 47253), (15, 47286), (16, 47307),

Gene: Bradissa_66 Start: 46799, Stop: 46918, Start Num: 13

Candidate Starts for Bradissa_66:

(Start: 12 @46796 has 18 MA's), (Start: 13 @46799 has 40 MA's), (15, 46844), (16, 46865), (20, 46904),

Gene: Bunnybear_65 Start: 46124, Stop: 46252, Start Num: 13

Candidate Starts for Bunnybear_65:

(Start: 12 @46121 has 18 MA's), (Start: 13 @46124 has 40 MA's), (14, 46136), (15, 46169), (16, 46190), (19, 46232),

Gene: Clap_65 Start: 41348, Stop: 41464, Start Num: 13

Candidate Starts for Clap_65:

(Start: 12 @41345 has 18 MA's), (Start: 13 @41348 has 40 MA's), (15, 41393), (16, 41414), (19, 41453),

Gene: Cynthia_65 Start: 41343, Stop: 41462, Start Num: 12

Candidate Starts for Cynthia_65:

(Start: 12 @41343 has 18 MA's), (Start: 13 @41346 has 40 MA's), (15, 41391), (16, 41412), (19, 41451),

Gene: DobbysSock_61 Start: 41736, Stop: 41855, Start Num: 12

Candidate Starts for DobbysSock_61:

(11, 41721), (Start: 12 @41736 has 18 MA's), (Start: 13 @41739 has 40 MA's), (14, 41751), (16, 41805),

Gene: Dolores_67 Start: 42031, Stop: 42147, Start Num: 13

Candidate Starts for Dolores_67:

(Start: 12 @42028 has 18 MA's), (Start: 13 @42031 has 40 MA's), (16, 42097), (19, 42136),

Gene: Dorito_59 Start: 39603, Stop: 39722, Start Num: 12

Candidate Starts for Dorito_59:

(11, 39588), (Start: 12 @39603 has 18 MA's), (Start: 13 @39606 has 40 MA's), (14, 39618), (16, 39672),

Gene: EMSquaredA_70 Start: 46270, Stop: 46386, Start Num: 13

Candidate Starts for EMSquaredA_70:

(Start: 12 @46267 has 18 MA's), (Start: 13 @46270 has 40 MA's), (14, 46282), (15, 46315), (16, 46336), (19, 46375),

Gene: Easley_64 Start: 41494, Stop: 41625, Start Num: 13

Candidate Starts for Easley_64:

(11, 41476), (Start: 12 @41491 has 18 MA's), (Start: 13 @41494 has 40 MA's), (14, 41506),

Gene: EdnaMode_64 Start: 41387, Stop: 41506, Start Num: 13

Candidate Starts for EdnaMode_64:

(Start: 12 @41384 has 18 MA's), (Start: 13 @41387 has 40 MA's), (15, 41432), (16, 41453),

Gene: EnalisNailo_65 Start: 46333, Stop: 46452, Start Num: 13

Candidate Starts for EnalisNailo_65:

(Start: 12 @46330 has 18 MA's), (Start: 13 @46333 has 40 MA's), (15, 46378), (16, 46399), (20, 46438),

Gene: Eviarto_71 Start: 47764, Stop: 47880, Start Num: 13

Candidate Starts for Eviarto_71:

(Start: 12 @47761 has 18 MA's), (Start: 13 @47764 has 40 MA's), (15, 47809), (16, 47830), (19, 47869),

Gene: Floral_71 Start: 48158, Stop: 48277, Start Num: 13

Candidate Starts for Floral_71:

(Start: 12 @48155 has 18 MA's), (Start: 13 @48158 has 40 MA's), (14, 48170), (15, 48203), (16, 48224),

Gene: FroggyToad_65 Start: 42630, Stop: 42746, Start Num: 13

Candidate Starts for FroggyToad_65:

(Start: 12 @42627 has 18 MA's), (Start: 13 @42630 has 40 MA's), (14, 42642), (16, 42696), (19, 42735),

Gene: Frokostdame_72 Start: 45952, Stop: 46074, Start Num: 13

Candidate Starts for Frokostdame_72:

(1, 45502), (2, 45550), (3, 45556), (4, 45586), (5, 45631), (6, 45655), (7, 45718), (8, 45727), (Start: 13 @45952 has 40 MA's), (14, 45964), (16, 46018), (22, 46069),

Gene: GemG_65 Start: 41352, Stop: 41468, Start Num: 13

Candidate Starts for GemG_65:

(Start: 12 @41349 has 18 MA's), (Start: 13 @41352 has 40 MA's), (15, 41397), (16, 41418), (19, 41457),

Gene: Gizermo_65 Start: 41348, Stop: 41464, Start Num: 13

Candidate Starts for Gizermo_65:

(Start: 12 @41345 has 18 MA's), (Start: 13 @41348 has 40 MA's), (15, 41393), (16, 41414), (19, 41453),

Gene: Haley23_65 Start: 41348, Stop: 41464, Start Num: 13

Candidate Starts for Haley23_65:

(Start: 12 @41345 has 18 MA's), (Start: 13 @41348 has 40 MA's), (15, 41393), (16, 41414), (19, 41453),

Gene: Herod_71 Start: 48180, Stop: 48299, Start Num: 12

Candidate Starts for Herod_71:

(Start: 12 @48180 has 18 MA's), (Start: 13 @48183 has 40 MA's), (15, 48228), (16, 48249), (19, 48288),

Gene: Hugley_69 Start: 48160, Stop: 48279, Start Num: 12

Candidate Starts for Hugley_69:

(Start: 12 @48160 has 18 MA's), (Start: 13 @48163 has 40 MA's), (15, 48208), (16, 48229), (19, 48268),

Gene: Hyzer_84 Start: 54346, Stop: 54468, Start Num: 13

Candidate Starts for Hyzer_84:

(Start: 12 @54343 has 18 MA's), (Start: 13 @54346 has 40 MA's), (14, 54358), (16, 54412), (18, 54427),

Gene: Invecetra_69 Start: 43673, Stop: 43804, Start Num: 13

Candidate Starts for Invecetra_69:

(Start: 12 @43670 has 18 MA's), (Start: 13 @43673 has 40 MA's), (14, 43685), (16, 43739),

Gene: JCole_62 Start: 40021, Stop: 40143, Start Num: 13

Candidate Starts for JCole_62:

(Start: 12 @40018 has 18 MA's), (Start: 13 @40021 has 40 MA's), (14, 40033), (15, 40066), (16, 40087),

Gene: Jalleen_68 Start: 41656, Stop: 41778, Start Num: 12

Candidate Starts for Jalleen_68:

(Start: 12 @41656 has 18 MA's), (Start: 13 @41659 has 40 MA's), (15, 41704), (16, 41725),

Gene: Lamberg_61 Start: 39857, Stop: 39973, Start Num: 13

Candidate Starts for Lamberg_61:

(Start: 12 @39854 has 18 MA's), (Start: 13 @39857 has 40 MA's), (15, 39902), (16, 39923), (19, 39962),

Gene: Lilas_66 Start: 47868, Stop: 47990, Start Num: 12

Candidate Starts for Lilas_66:

(Start: 12 @47868 has 18 MA's), (Start: 13 @47871 has 40 MA's), (15, 47916), (16, 47937), (17, 47943), (20, 47976),

Gene: LonelyBoi_68 Start: 48324, Stop: 48443, Start Num: 13

Candidate Starts for LonelyBoi_68:

(Start: 12 @48321 has 18 MA's), (Start: 13 @48324 has 40 MA's), (14, 48336), (15, 48369), (16, 48390),

Gene: LordFarquaad_66 Start: 43096, Stop: 43215, Start Num: 13

Candidate Starts for LordFarquaad_66:

(Start: 13 @43096 has 40 MA's), (14, 43108), (20, 43201), (21, 43207),

Gene: Madavieve_66 Start: 46256, Stop: 46384, Start Num: 13

Candidate Starts for Madavieve_66:

(Start: 12 @46253 has 18 MA's), (Start: 13 @46256 has 40 MA's), (14, 46268), (15, 46301), (16, 46322), (19, 46364),

Gene: MakCheese_75 Start: 47979, Stop: 48095, Start Num: 13

Candidate Starts for MakCheese_75:

(Start: 12 @47976 has 18 MA's), (Start: 13 @47979 has 40 MA's), (16, 48045), (19, 48084),

Gene: Manasvini_69 Start: 44779, Stop: 44901, Start Num: 12

Candidate Starts for Manasvini_69:

(Start: 12 @44779 has 18 MA's), (Start: 13 @44782 has 40 MA's), (14, 44794), (16, 44848),

Gene: Maridalia_70 Start: 46136, Stop: 46264, Start Num: 13

Candidate Starts for Maridalia_70:

(Start: 12 @46133 has 18 MA's), (Start: 13 @46136 has 40 MA's), (14, 46148), (15, 46181), (16, 46202), (19, 46244),

Gene: Marteena_69 Start: 46267, Stop: 46386, Start Num: 12

Candidate Starts for Marteena_69:

(Start: 12 @46267 has 18 MA's), (Start: 13 @46270 has 40 MA's), (14, 46282), (15, 46315), (16, 46336), (19, 46375),

Gene: Mcklovin_67 Start: 48617, Stop: 48730, Start Num: 12

Candidate Starts for Mcklovin_67:

(9, 48416), (10, 48419), (Start: 12 @48617 has 18 MA's), (Start: 13 @48620 has 40 MA's), (14, 48632), (16, 48686),

Gene: Mocha12_65 Start: 41345, Stop: 41464, Start Num: 12

Candidate Starts for Mocha12_65:

(Start: 12 @41345 has 18 MA's), (Start: 13 @41348 has 40 MA's), (15, 41393), (16, 41414), (19, 41453),

Gene: Nettuno_62 Start: 40233, Stop: 40352, Start Num: 13

Candidate Starts for Nettuno_62:

(Start: 12 @40230 has 18 MA's), (Start: 13 @40233 has 40 MA's), (14, 40245), (15, 40278), (16, 40299),

Gene: Nymphadora_71 Start: 47788, Stop: 47904, Start Num: 13

Candidate Starts for Nymphadora_71:

(Start: 12 @47785 has 18 MA's), (Start: 13 @47788 has 40 MA's), (15, 47833), (16, 47854), (19, 47893),

Gene: Ohgeesy_69 Start: 46561, Stop: 46692, Start Num: 13

Candidate Starts for Ohgeesy_69:

(Start: 12 @46558 has 18 MA's), (Start: 13 @46561 has 40 MA's), (14, 46573), (15, 46606), (16, 46627),

Gene: Oregano_67 Start: 42226, Stop: 42348, Start Num: 13

Candidate Starts for Oregano_67:

(11, 42208), (Start: 12 @42223 has 18 MA's), (Start: 13 @42226 has 40 MA's), (14, 42238), (16, 42292),

Gene: PantheRoc_73 Start: 47482, Stop: 47598, Start Num: 13

Candidate Starts for PantheRoc_73:

(Start: 12 @47479 has 18 MA's), (Start: 13 @47482 has 40 MA's), (15, 47527), (16, 47548), (19, 47587),

Gene: Pollux_73 Start: 48155, Stop: 48277, Start Num: 12

Candidate Starts for Pollux_73:

(Start: 12 @48155 has 18 MA's), (Start: 13 @48158 has 40 MA's), (14, 48170), (15, 48203), (16, 48224),

Gene: Pytheas_73 Start: 49014, Stop: 49127, Start Num: 12

Candidate Starts for Pytheas_73:

(Start: 12 @49014 has 18 MA's), (Start: 13 @49017 has 40 MA's), (14, 49029), (15, 49062), (16, 49083),

Gene: RavenCo17_66 Start: 46025, Stop: 46147, Start Num: 13

Candidate Starts for RavenCo17_66:

(Start: 12 @46022 has 18 MA's), (Start: 13 @46025 has 40 MA's), (14, 46037), (16, 46091),

Gene: Rizz_67 Start: 42889, Stop: 43020, Start Num: 13

Candidate Starts for Rizz_67:

(Start: 12 @42886 has 18 MA's), (Start: 13 @42889 has 40 MA's), (14, 42901), (16, 42955),

Gene: Samman98_67 Start: 42203, Stop: 42334, Start Num: 13

Candidate Starts for Samman98_67:

(Start: 12 @42200 has 18 MA's), (Start: 13 @42203 has 40 MA's), (14, 42215), (16, 42269),

Gene: Savage_65 Start: 41345, Stop: 41464, Start Num: 12

Candidate Starts for Savage_65:

(Start: 12 @41345 has 18 MA's), (Start: 13 @41348 has 40 MA's), (15, 41393), (16, 41414), (19, 41453),

Gene: Sekhmet_66 Start: 42430, Stop: 42546, Start Num: 13

Candidate Starts for Sekhmet_66:

(Start: 12 @42427 has 18 MA's), (Start: 13 @42430 has 40 MA's), (16, 42496), (19, 42535),

Gene: Sproutie_65 Start: 41345, Stop: 41464, Start Num: 12

Candidate Starts for Sproutie_65:

(Start: 12 @41345 has 18 MA's), (Start: 13 @41348 has 40 MA's), (15, 41393), (16, 41414), (19, 41453),

Gene: Suerte_61 Start: 42042, Stop: 42161, Start Num: 12

Candidate Starts for Suerte_61:

(Start: 12 @42042 has 18 MA's), (Start: 13 @42045 has 40 MA's), (14, 42057), (16, 42111), (19, 42150),

Gene: SushiChef_70 Start: 48023, Stop: 48151, Start Num: 13

Candidate Starts for SushiChef_70:

(Start: 12 @48020 has 18 MA's), (Start: 13 @48023 has 40 MA's), (14, 48035), (15, 48068), (16, 48089), (19, 48131),

Gene: ThankyouJordi_70 Start: 48267, Stop: 48392, Start Num: 13

Candidate Starts for ThankyouJordi_70:

(Start: 12 @48264 has 18 MA's), (Start: 13 @48267 has 40 MA's), (14, 48279), (16, 48333),

Gene: Thimann_67 Start: 42460, Stop: 42591, Start Num: 13

Candidate Starts for Thimann_67:

(11, 42442), (Start: 12 @42457 has 18 MA's), (Start: 13 @42460 has 40 MA's), (14, 42472), (16, 42526),

Gene: TimTam_71 Start: 47788, Stop: 47904, Start Num: 13

Candidate Starts for TimTam_71:

(Start: 12 @47785 has 18 MA's), (Start: 13 @47788 has 40 MA's), (15, 47833), (16, 47854), (19, 47893),

Gene: TuertoX_65 Start: 41348, Stop: 41464, Start Num: 13

Candidate Starts for TuertoX_65:

(Start: 12 @41345 has 18 MA's), (Start: 13 @41348 has 40 MA's), (15, 41393), (16, 41414), (19, 41453),

Gene: WelcomeAyanna_70 Start: 48414, Stop: 48539, Start Num: 13

Candidate Starts for WelcomeAyanna_70:

(Start: 12 @48411 has 18 MA's), (Start: 13 @48414 has 40 MA's), (14, 48426), (16, 48480),

Gene: Whiteclaw_65 Start: 41348, Stop: 41464, Start Num: 13

Candidate Starts for Whiteclaw_65:

(Start: 12 @41345 has 18 MA's), (Start: 13 @41348 has 40 MA's), (15, 41393), (16, 41414), (19, 41453),

Gene: WinkNick_67 Start: 41954, Stop: 42070, Start Num: 13

Candidate Starts for WinkNick_67:

(Start: 12 @41951 has 18 MA's), (Start: 13 @41954 has 40 MA's), (16, 42020), (19, 42059),

Gene: Yeezy_72 Start: 45608, Stop: 45733, Start Num: 12

Candidate Starts for Yeezy_72:

(Start: 12 @45608 has 18 MA's), (Start: 13 @45611 has 40 MA's), (14, 45623), (15, 45656), (16, 45677),

Gene: Yinzer_65 Start: 41345, Stop: 41464, Start Num: 12

Candidate Starts for Yinzer_65:

(Start: 12 @41345 has 18 MA's), (Start: 13 @41348 has 40 MA's), (15, 41393), (16, 41414), (19, 41453),