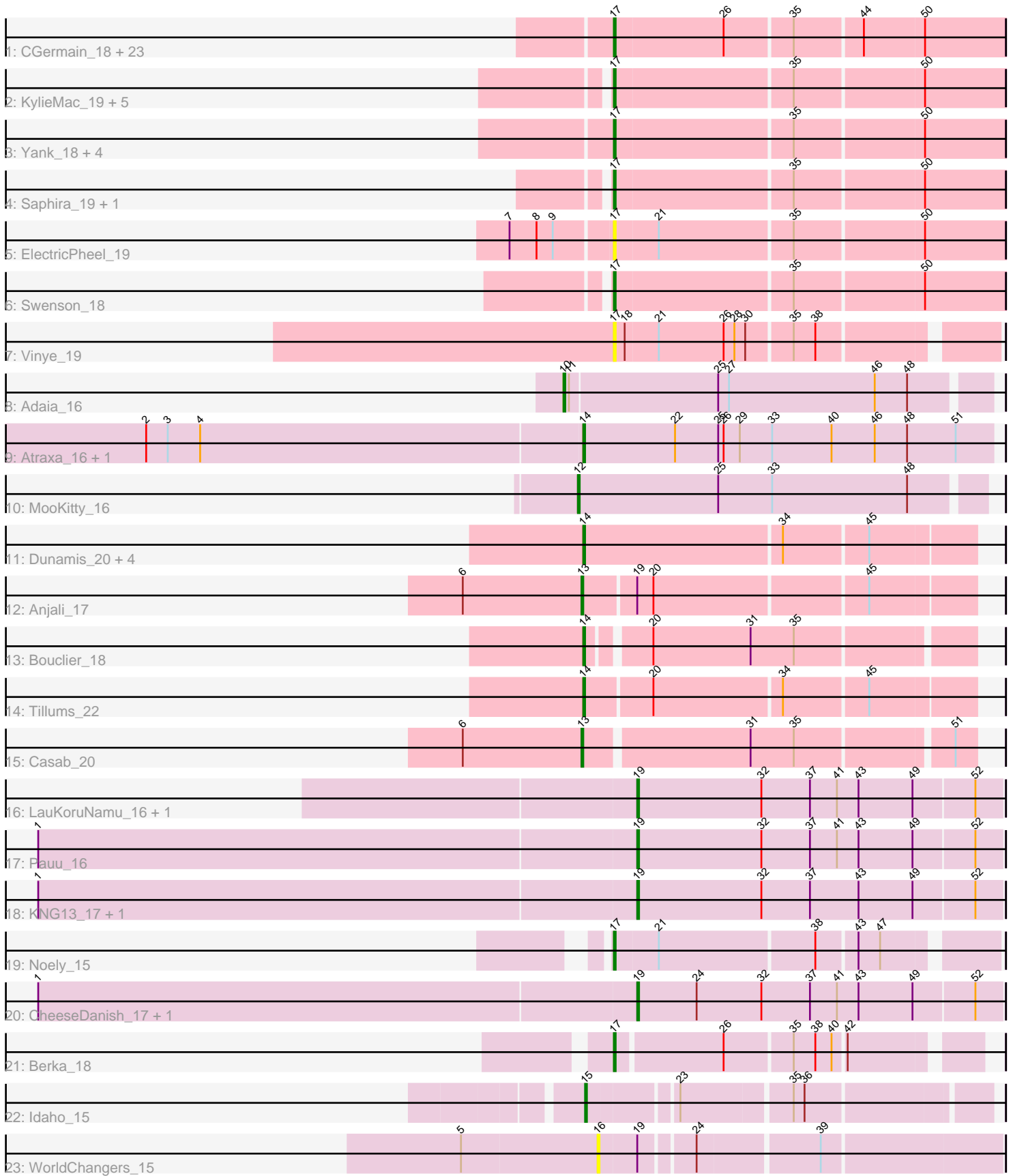


Pham 311596



Note: Tracks are now grouped by subcluster and scaled. Switching in subcluster is indicated by changes in track color. Track scale is now set by default to display the region 30 bp upstream of start 1 to 30 bp downstream of the last possible start. If this default region is judged to be packed too tightly with annotated starts, the track will be further scaled to only show that region of the ORF with annotated starts. This action will be indicated by adding "Zoomed" to the title. For starts, yellow indicates the location of called starts comprised solely of Glimmer/GeneMark auto-annotations, green indicates the location of called starts with at least 1 manual gene annotation.

Pham 311596 Report

This analysis was run 06/27/26 on database version 652.

Pham number 311596 has 64 members, 4 are drafts.

Phages represented in each track:

- Track 1 : CGermain_18, Prospero_18, Guntur_18, Sandman_18, Dewayne_18, Mariposa_18, Maggie_18, Massimo_18, Jessica_19, TymAbreu_18, Copper_18, Toulouse_17, Hunnie_18, LouisXIV_18, Chestnut_18, Stratus_18, Seume_18, Ronnie_18, TinoCrisci_18, Inspire2_18, Azathoth_18, Moloch_18, Arby_18, Courtney3_18
- Track 2 : KylieMac_19, Lore_18, Elkhorn_18, Blair_18, StewieGriff_18, Laila_20
- Track 3 : Yank_18, Muttie_18, Decurro_18, Sourignavong_19, Link_18
- Track 4 : Saphira_19, Taj14_18
- Track 5 : ElectricPheel_19
- Track 6 : Swenson_18
- Track 7 : Vinye_19
- Track 8 : Adaia_16
- Track 9 : Atraxa_16, Sputnik_16
- Track 10 : MooKitty_16
- Track 11 : Dunamis_20, Seldom_21, Mendel_19, Swim_22, Goodgraces_18
- Track 12 : Anjali_17
- Track 13 : Bouclier_18
- Track 14 : Tillums_22
- Track 15 : Casab_20
- Track 16 : LauKoruNamu_16, CabbageMan_15
- Track 17 : Pauu_16
- Track 18 : KNG13_17, Nebulanyx_17
- Track 19 : Noely_15
- Track 20 : CheeseDanish_17, Corgi_17
- Track 21 : Berka_18
- Track 22 : Idaho_15
- Track 23 : WorldChangers_15

Summary of Final Annotations (See graph section above for start numbers):

The start number called the most often in the published annotations is 17, it was called in 40 of the 60 non-draft genes in the pham.

Genes that call this "Most Annotated" start:

- Arby_18, Azathoth_18, Berka_18, Blair_18, CGermain_18, Chestnut_18, Copper_18, Courtney3_18, Decurro_18, Dewayne_18, ElectricPheel_19, Elkhorn_18, Guntur_18, Hunnie_18, Inspire2_18, Jessica_19, KylieMac_19, Laila_20, Link_18, Lore_18, LouisXIV_18, Maggie_18, Mariposa_18, Massimo_18, Moloch_18, Muttie_18, Noely_15, Prospero_18, Ronnie_18, Sandman_18, Saphira_19, Seume_18, Sourignavong_19, StewieGriff_18, Stratus_18, Swenson_18, Taj14_18, TinoCrisci_18, Toulouse_17, TymAbreu_18, Vinye_19, Yank_18,

Genes that have the "Most Annotated" start but do not call it:

-

Genes that do not have the "Most Annotated" start:

- Adaia_16, Anjali_17, Atraxa_16, Bouclier_18, CabbageMan_15, Casab_20, CheeseDanish_17, Corgi_17, Dunamis_20, Goodgraces_18, Idaho_15, KNG13_17, LauKoruNamu_16, Mendel_19, MooKitty_16, Nebulanyx_17, Pauu_16, Seldom_21, Sputnik_16, Swim_22, Tillums_22, WorldChangers_15,

Summary by start number:

Start 10:

- Found in 1 of 64 (1.6%) of genes in pham
- Manual Annotations of this start: 1 of 60
- Called 100.0% of time when present
- Phage (with cluster) where this start called: Adaia_16 (AX),

Start 12:

- Found in 1 of 64 (1.6%) of genes in pham
- Manual Annotations of this start: 1 of 60
- Called 100.0% of time when present
- Phage (with cluster) where this start called: MooKitty_16 (AX),

Start 13:

- Found in 2 of 64 (3.1%) of genes in pham
- Manual Annotations of this start: 2 of 60
- Called 100.0% of time when present
- Phage (with cluster) where this start called: Anjali_17 (FD), Casab_20 (FD),

Start 14:

- Found in 9 of 64 (14.1%) of genes in pham
- Manual Annotations of this start: 9 of 60
- Called 100.0% of time when present
- Phage (with cluster) where this start called: Atraxa_16 (AX), Bouclier_18 (FD), Dunamis_20 (FD), Goodgraces_18 (FD), Mendel_19 (FD), Seldom_21 (FD), Sputnik_16 (AX), Swim_22 (FD), Tillums_22 (FD),

Start 15:

- Found in 1 of 64 (1.6%) of genes in pham
- Manual Annotations of this start: 1 of 60
- Called 100.0% of time when present
- Phage (with cluster) where this start called: Idaho_15 (FE),

Start 16:

- Found in 1 of 64 (1.6%) of genes in pham

- No Manual Annotations of this start.
- Called 100.0% of time when present
- Phage (with cluster) where this start called: WorldChangers_15 (FE),

Start 17:

- Found in 42 of 64 (65.6%) of genes in pham
- Manual Annotations of this start: 40 of 60
- Called 100.0% of time when present
- Phage (with cluster) where this start called: Arby_18 (AN), Azathoth_18 (AN), Berka_18 (FE), Blair_18 (AN), CGermain_18 (AN), Chestnut_18 (AN), Copper_18 (AN), Courtney3_18 (AN), Decurro_18 (AN), Dewayne_18 (AN), ElectricPheel_19 (AN), Elkhorn_18 (AN), Guntur_18 (AN), Hunnie_18 (AN), Inspire2_18 (AN), Jessica_19 (AN), KylieMac_19 (AN), Laila_20 (AN), Link_18 (AN), Lore_18 (AN), LouisXIV_18 (AN), Maggie_18 (AN), Mariposa_18 (AN), Massimo_18 (AN), Moloch_18 (AN), Muttie_18 (AN), Noely_15 (FE), Prospero_18 (AN), Ronnie_18 (AN), Sandman_18 (AN), Saphira_19 (AN), Seume_18 (AN), Sourignavong_19 (AN), StewieGriff_18 (AN), Stratus_18 (AN), Swenson_18 (AN), Taj14_18 (AN), TinoCrisci_18 (AN), Toulouse_17 (AN), TymAbreu_18 (AN), Vinye_19 (AN), Yank_18 (AN),

Start 19:

- Found in 9 of 64 (14.1%) of genes in pham
- Manual Annotations of this start: 6 of 60
- Called 77.8% of time when present
- Phage (with cluster) where this start called: CabbageMan_15 (FE), CheeseDanish_17 (FE), Corgi_17 (FE), KNG13_17 (FE), LauKoruNamu_16 (FE), Nebulanyx_17 (FE), Pauu_16 (FE),

Summary by clusters:

There are 4 clusters represented in this pham: AX, FD, FE, AN,

Info for manual annotations of cluster AN:

- Start number 17 was manually annotated 38 times for cluster AN.

Info for manual annotations of cluster AX:

- Start number 10 was manually annotated 1 time for cluster AX.
- Start number 12 was manually annotated 1 time for cluster AX.
- Start number 14 was manually annotated 2 times for cluster AX.

Info for manual annotations of cluster FD:

- Start number 13 was manually annotated 2 times for cluster FD.
- Start number 14 was manually annotated 7 times for cluster FD.

Info for manual annotations of cluster FE:

- Start number 15 was manually annotated 1 time for cluster FE.
- Start number 17 was manually annotated 2 times for cluster FE.
- Start number 19 was manually annotated 6 times for cluster FE.

Gene Information:

Gene: Adaia_16 Start: 12272, Stop: 12502, Start Num: 10
Candidate Starts for Adaia_16:
(Start: 10 @12272 has 1 MA's), (11, 12275), (25, 12356), (27, 12362), (46, 12443), (48, 12461),

Gene: Anjali_17 Start: 14710, Stop: 14916, Start Num: 13
Candidate Starts for Anjali_17:
(6, 14644), (Start: 13 @14710 has 2 MA's), (Start: 19 @14737 has 6 MA's), (20, 14746), (45, 14860),

Gene: Arby_18 Start: 12697, Stop: 12906, Start Num: 17
Candidate Starts for Arby_18:
(Start: 17 @12697 has 40 MA's), (26, 12757), (35, 12793), (44, 12829), (50, 12862),

Gene: Atraxa_16 Start: 11868, Stop: 12095, Start Num: 14
Candidate Starts for Atraxa_16:
(2, 11628), (3, 11640), (4, 11658), (Start: 14 @11868 has 9 MA's), (22, 11919), (25, 11943), (26, 11946), (29, 11955), (33, 11973), (40, 12006), (46, 12030), (48, 12048), (51, 12075),

Gene: Azathoth_18 Start: 12697, Stop: 12906, Start Num: 17
Candidate Starts for Azathoth_18:
(Start: 17 @12697 has 40 MA's), (26, 12757), (35, 12793), (44, 12829), (50, 12862),

Gene: Berka_18 Start: 11873, Stop: 12058, Start Num: 17
Candidate Starts for Berka_18:
(Start: 17 @11873 has 40 MA's), (26, 11930), (35, 11966), (38, 11978), (40, 11987), (42, 11993),

Gene: Blair_18 Start: 12694, Stop: 12903, Start Num: 17
Candidate Starts for Blair_18:
(Start: 17 @12694 has 40 MA's), (35, 12790), (50, 12859),

Gene: Bouclier_18 Start: 14965, Stop: 15165, Start Num: 14
Candidate Starts for Bouclier_18:
(Start: 14 @14965 has 9 MA's), (20, 14995), (31, 15049), (35, 15073),

Gene: CGermain_18 Start: 12697, Stop: 12906, Start Num: 17
Candidate Starts for CGermain_18:
(Start: 17 @12697 has 40 MA's), (26, 12757), (35, 12793), (44, 12829), (50, 12862),

Gene: CabbageMan_15 Start: 12429, Stop: 12629, Start Num: 19
Candidate Starts for CabbageMan_15:
(Start: 19 @12429 has 6 MA's), (32, 12498), (37, 12525), (41, 12540), (43, 12552), (49, 12582), (52, 12615),

Gene: Casab_20 Start: 15385, Stop: 15588, Start Num: 13
Candidate Starts for Casab_20:
(6, 15319), (Start: 13 @15385 has 2 MA's), (31, 15472), (35, 15496), (51, 15577),

Gene: CheeseDanish_17 Start: 12587, Stop: 12787, Start Num: 19
Candidate Starts for CheeseDanish_17:
(1, 12257), (Start: 19 @12587 has 6 MA's), (24, 12620), (32, 12656), (37, 12683), (41, 12698), (43, 12710), (49, 12740), (52, 12773),

Gene: Chestnut_18 Start: 12697, Stop: 12906, Start Num: 17
Candidate Starts for Chestnut_18:

(Start: 17 @12697 has 40 MA's), (26, 12757), (35, 12793), (44, 12829), (50, 12862),

Gene: Copper_18 Start: 12697, Stop: 12906, Start Num: 17

Candidate Starts for Copper_18:

(Start: 17 @12697 has 40 MA's), (26, 12757), (35, 12793), (44, 12829), (50, 12862),

Gene: Corgi_17 Start: 12587, Stop: 12787, Start Num: 19

Candidate Starts for Corgi_17:

(1, 12257), (Start: 19 @12587 has 6 MA's), (24, 12620), (32, 12656), (37, 12683), (41, 12698), (43, 12710), (49, 12740), (52, 12773),

Gene: Courtney3_18 Start: 12697, Stop: 12906, Start Num: 17

Candidate Starts for Courtney3_18:

(Start: 17 @12697 has 40 MA's), (26, 12757), (35, 12793), (44, 12829), (50, 12862),

Gene: Decurro_18 Start: 12697, Stop: 12906, Start Num: 17

Candidate Starts for Decurro_18:

(Start: 17 @12697 has 40 MA's), (35, 12793), (50, 12862),

Gene: Dewayne_18 Start: 12697, Stop: 12906, Start Num: 17

Candidate Starts for Dewayne_18:

(Start: 17 @12697 has 40 MA's), (26, 12757), (35, 12793), (44, 12829), (50, 12862),

Gene: Dunamis_20 Start: 14864, Stop: 15073, Start Num: 14

Candidate Starts for Dunamis_20:

(Start: 14 @14864 has 9 MA's), (34, 14972), (45, 15017),

Gene: ElectricPheel_19 Start: 12770, Stop: 12979, Start Num: 17

Candidate Starts for ElectricPheel_19:

(7, 12716), (8, 12731), (9, 12740), (Start: 17 @12770 has 40 MA's), (21, 12794), (35, 12866), (50, 12935),

Gene: Elkhorn_18 Start: 12694, Stop: 12903, Start Num: 17

Candidate Starts for Elkhorn_18:

(Start: 17 @12694 has 40 MA's), (35, 12790), (50, 12859),

Gene: Goodgraces_18 Start: 14924, Stop: 15133, Start Num: 14

Candidate Starts for Goodgraces_18:

(Start: 14 @14924 has 9 MA's), (34, 15032), (45, 15077),

Gene: Guntur_18 Start: 12697, Stop: 12906, Start Num: 17

Candidate Starts for Guntur_18:

(Start: 17 @12697 has 40 MA's), (26, 12757), (35, 12793), (44, 12829), (50, 12862),

Gene: Hunnie_18 Start: 12697, Stop: 12906, Start Num: 17

Candidate Starts for Hunnie_18:

(Start: 17 @12697 has 40 MA's), (26, 12757), (35, 12793), (44, 12829), (50, 12862),

Gene: Idaho_15 Start: 12801, Stop: 13004, Start Num: 15

Candidate Starts for Idaho_15:

(Start: 15 @12801 has 1 MA's), (23, 12846), (35, 12903), (36, 12909),

Gene: Inspire2_18 Start: 12697, Stop: 12906, Start Num: 17

Candidate Starts for Inspire2_18:

(Start: 17 @12697 has 40 MA's), (26, 12757), (35, 12793), (44, 12829), (50, 12862),

Gene: Jessica_19 Start: 12697, Stop: 12906, Start Num: 17

Candidate Starts for Jessica_19:

(Start: 17 @12697 has 40 MA's), (26, 12757), (35, 12793), (44, 12829), (50, 12862),

Gene: KNG13_17 Start: 12584, Stop: 12784, Start Num: 19

Candidate Starts for KNG13_17:

(1, 12254), (Start: 19 @12584 has 6 MA's), (32, 12653), (37, 12680), (43, 12707), (49, 12737), (52, 12770),

Gene: KylieMac_19 Start: 12681, Stop: 12890, Start Num: 17

Candidate Starts for KylieMac_19:

(Start: 17 @12681 has 40 MA's), (35, 12777), (50, 12846),

Gene: Laila_20 Start: 12694, Stop: 12903, Start Num: 17

Candidate Starts for Laila_20:

(Start: 17 @12694 has 40 MA's), (35, 12790), (50, 12859),

Gene: LauKoruNamu_16 Start: 12429, Stop: 12629, Start Num: 19

Candidate Starts for LauKoruNamu_16:

(Start: 19 @12429 has 6 MA's), (32, 12498), (37, 12525), (41, 12540), (43, 12552), (49, 12582), (52, 12615),

Gene: Link_18 Start: 12694, Stop: 12903, Start Num: 17

Candidate Starts for Link_18:

(Start: 17 @12694 has 40 MA's), (35, 12790), (50, 12859),

Gene: Lore_18 Start: 12694, Stop: 12903, Start Num: 17

Candidate Starts for Lore_18:

(Start: 17 @12694 has 40 MA's), (35, 12790), (50, 12859),

Gene: LouisXIV_18 Start: 12697, Stop: 12906, Start Num: 17

Candidate Starts for LouisXIV_18:

(Start: 17 @12697 has 40 MA's), (26, 12757), (35, 12793), (44, 12829), (50, 12862),

Gene: Maggie_18 Start: 12697, Stop: 12906, Start Num: 17

Candidate Starts for Maggie_18:

(Start: 17 @12697 has 40 MA's), (26, 12757), (35, 12793), (44, 12829), (50, 12862),

Gene: Mariposa_18 Start: 12697, Stop: 12906, Start Num: 17

Candidate Starts for Mariposa_18:

(Start: 17 @12697 has 40 MA's), (26, 12757), (35, 12793), (44, 12829), (50, 12862),

Gene: Massimo_18 Start: 12697, Stop: 12906, Start Num: 17

Candidate Starts for Massimo_18:

(Start: 17 @12697 has 40 MA's), (26, 12757), (35, 12793), (44, 12829), (50, 12862),

Gene: Mendel_19 Start: 14622, Stop: 14831, Start Num: 14

Candidate Starts for Mendel_19:

(Start: 14 @14622 has 9 MA's), (34, 14730), (45, 14775),

Gene: Moloch_18 Start: 12771, Stop: 12980, Start Num: 17
Candidate Starts for Moloch_18:
(Start: 17 @12771 has 40 MA's), (26, 12831), (35, 12867), (44, 12903), (50, 12936),

Gene: MooKitty_16 Start: 12438, Stop: 12659, Start Num: 12
Candidate Starts for MooKitty_16:
(Start: 12 @12438 has 1 MA's), (25, 12516), (33, 12546), (48, 12621),

Gene: Muttie_18 Start: 12697, Stop: 12906, Start Num: 17
Candidate Starts for Muttie_18:
(Start: 17 @12697 has 40 MA's), (35, 12793), (50, 12862),

Gene: Nebulanyx_17 Start: 12584, Stop: 12784, Start Num: 19
Candidate Starts for Nebulanyx_17:
(1, 12254), (Start: 19 @12584 has 6 MA's), (32, 12653), (37, 12680), (43, 12707), (49, 12737), (52, 12770),

Gene: Noely_15 Start: 11887, Stop: 12084, Start Num: 17
Candidate Starts for Noely_15:
(Start: 17 @11887 has 40 MA's), (21, 11911), (38, 11995), (43, 12016), (47, 12028),

Gene: Pauu_16 Start: 12429, Stop: 12629, Start Num: 19
Candidate Starts for Pauu_16:
(1, 12099), (Start: 19 @12429 has 6 MA's), (32, 12498), (37, 12525), (41, 12540), (43, 12552), (49, 12582), (52, 12615),

Gene: Prospero_18 Start: 12697, Stop: 12906, Start Num: 17
Candidate Starts for Prospero_18:
(Start: 17 @12697 has 40 MA's), (26, 12757), (35, 12793), (44, 12829), (50, 12862),

Gene: Ronnie_18 Start: 12697, Stop: 12906, Start Num: 17
Candidate Starts for Ronnie_18:
(Start: 17 @12697 has 40 MA's), (26, 12757), (35, 12793), (44, 12829), (50, 12862),

Gene: Sandman_18 Start: 12771, Stop: 12980, Start Num: 17
Candidate Starts for Sandman_18:
(Start: 17 @12771 has 40 MA's), (26, 12831), (35, 12867), (44, 12903), (50, 12936),

Gene: Saphira_19 Start: 12696, Stop: 12905, Start Num: 17
Candidate Starts for Saphira_19:
(Start: 17 @12696 has 40 MA's), (35, 12792), (50, 12861),

Gene: Seldom_21 Start: 15248, Stop: 15457, Start Num: 14
Candidate Starts for Seldom_21:
(Start: 14 @15248 has 9 MA's), (34, 15356), (45, 15401),

Gene: Seume_18 Start: 12492, Stop: 12701, Start Num: 17
Candidate Starts for Seume_18:
(Start: 17 @12492 has 40 MA's), (26, 12552), (35, 12588), (44, 12624), (50, 12657),

Gene: Sourignavong_19 Start: 12798, Stop: 13007, Start Num: 17
Candidate Starts for Sourignavong_19:
(Start: 17 @12798 has 40 MA's), (35, 12894), (50, 12963),

Gene: Sputnik_16 Start: 11868, Stop: 12095, Start Num: 14

Candidate Starts for Sputnik_16:

(2, 11628), (3, 11640), (4, 11658), (Start: 14 @11868 has 9 MA's), (22, 11919), (25, 11943), (26, 11946), (29, 11955), (33, 11973), (40, 12006), (46, 12030), (48, 12048), (51, 12075),

Gene: StewieGriff_18 Start: 12694, Stop: 12903, Start Num: 17

Candidate Starts for StewieGriff_18:

(Start: 17 @12694 has 40 MA's), (35, 12790), (50, 12859),

Gene: Stratus_18 Start: 12771, Stop: 12980, Start Num: 17

Candidate Starts for Stratus_18:

(Start: 17 @12771 has 40 MA's), (26, 12831), (35, 12867), (44, 12903), (50, 12936),

Gene: Swenson_18 Start: 12818, Stop: 13027, Start Num: 17

Candidate Starts for Swenson_18:

(Start: 17 @12818 has 40 MA's), (35, 12914), (50, 12983),

Gene: Swim_22 Start: 15121, Stop: 15330, Start Num: 14

Candidate Starts for Swim_22:

(Start: 14 @15121 has 9 MA's), (34, 15229), (45, 15274),

Gene: Taj14_18 Start: 12693, Stop: 12902, Start Num: 17

Candidate Starts for Taj14_18:

(Start: 17 @12693 has 40 MA's), (35, 12789), (50, 12858),

Gene: Tillums_22 Start: 15257, Stop: 15463, Start Num: 14

Candidate Starts for Tillums_22:

(Start: 14 @15257 has 9 MA's), (20, 15293), (34, 15362), (45, 15407),

Gene: TinoCrisci_18 Start: 12697, Stop: 12906, Start Num: 17

Candidate Starts for TinoCrisci_18:

(Start: 17 @12697 has 40 MA's), (26, 12757), (35, 12793), (44, 12829), (50, 12862),

Gene: Toulouse_17 Start: 12492, Stop: 12701, Start Num: 17

Candidate Starts for Toulouse_17:

(Start: 17 @12492 has 40 MA's), (26, 12552), (35, 12588), (44, 12624), (50, 12657),

Gene: TymAbreu_18 Start: 12697, Stop: 12906, Start Num: 17

Candidate Starts for TymAbreu_18:

(Start: 17 @12697 has 40 MA's), (26, 12757), (35, 12793), (44, 12829), (50, 12862),

Gene: Vinye_19 Start: 13132, Stop: 13329, Start Num: 17

Candidate Starts for Vinye_19:

(Start: 17 @13132 has 40 MA's), (18, 13138), (21, 13156), (26, 13192), (28, 13198), (30, 13204), (35, 13228), (38, 13240),

Gene: WorldChangers_15 Start: 11971, Stop: 12177, Start Num: 16

Candidate Starts for WorldChangers_15:

(5, 11896), (16, 11971), (Start: 19 @11992 has 6 MA's), (24, 12019), (39, 12082),

Gene: Yank_18 Start: 12697, Stop: 12906, Start Num: 17

Candidate Starts for Yank_18:

(Start: 17 @12697 has 40 MA's), (35, 12793), (50, 12862),