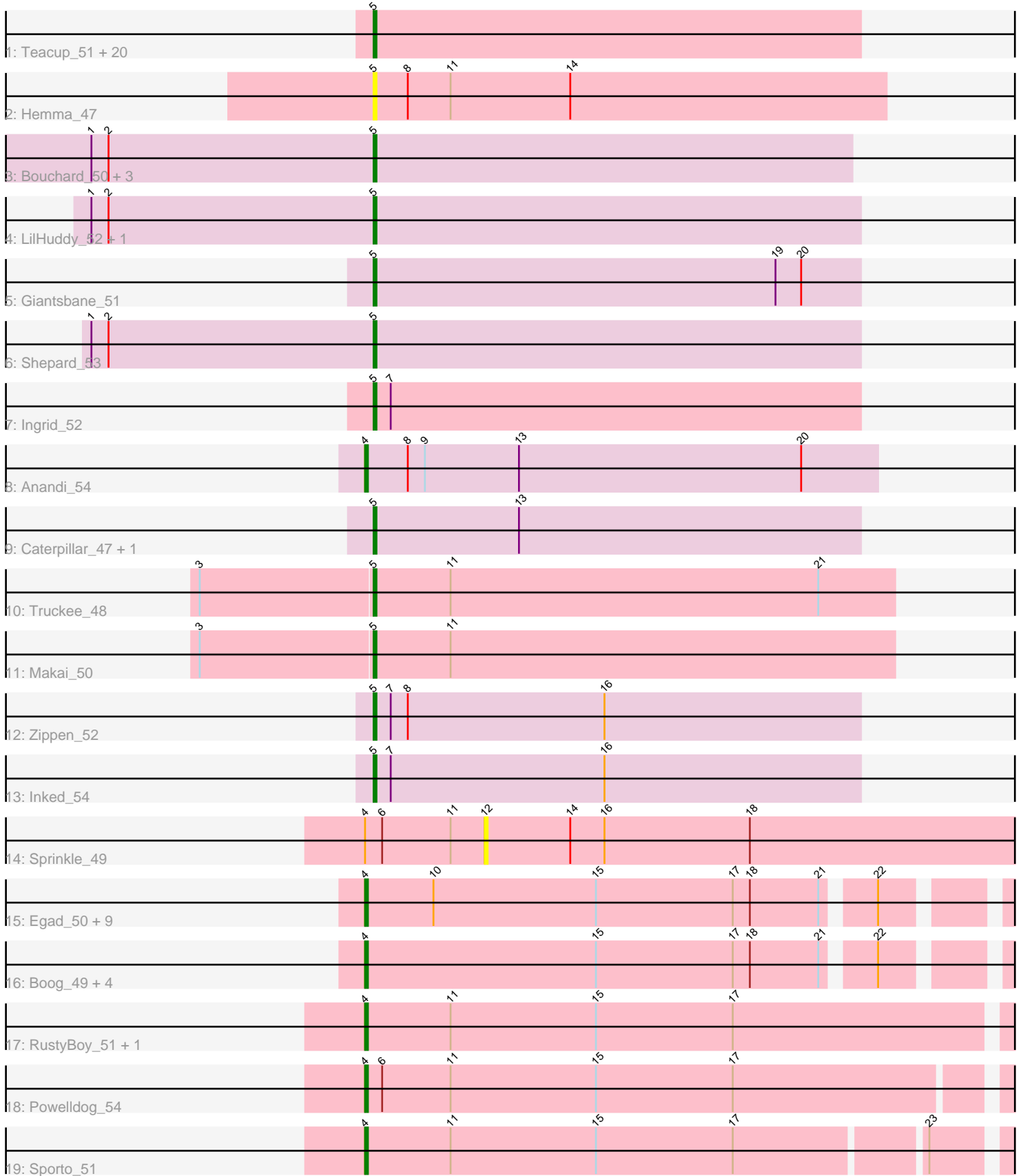


Pham 311631



Note: Tracks are now grouped by subcluster and scaled. Switching in subcluster is indicated by changes in track color. Track scale is now set by default to display the region 30 bp upstream of start 1 to 30 bp downstream of the last possible start. If this default region is judged to be packed too tightly with annotated starts, the track will be further scaled to only show that region of the ORF with annotated starts. This action will be indicated by adding "Zoomed" to the title. For starts, yellow indicates the location of called starts comprised solely of Glimmer/GeneMark auto-annotations, green indicates the location of called starts with at least 1 manual gene annotation.

Pham 311631 Report

This analysis was run 06/27/26 on database version 652.

Pham number 311631 has 58 members, 6 are drafts.

Phages represented in each track:

- Track 1 : Teacup_51, DevitoJr_50, LucySwiss_50, Nightmare_52, Breylor17_50, Nivinsha_52, Gordon_48, AreFloNak_53, CapnMurica_48, Trustiboi_50, Darby_49, Niktson_50, ScienceWizSam_51, CastorTray_53, ElephantMan_50, Brunswick_51, Westerlin_49, Issa_49, Synopsis_49, Tenno_51, MiniBagel_50
- Track 2 : Hemma_47
- Track 3 : Bouchard_50, Chlochlo_51, Phaby_53, Tipton_53
- Track 4 : LilHuddy_52, Tokki_55
- Track 5 : Giantsbane_51
- Track 6 : Shepard_53
- Track 7 : Ingrid_52
- Track 8 : Anandi_54
- Track 9 : Caterpillar_47, MediumFry_48
- Track 10 : Truckee_48
- Track 11 : Makai_50
- Track 12 : Zippen_52
- Track 13 : Inked_54
- Track 14 : Sprinkle_49
- Track 15 : Egad_50, MrAaronian_50, Shiba_49, StarLord_50, Jeremy4pt0_49, Stayer_50, BronxBay_50, Sloopyjoe_50, Michelle_50, ProfFrink_50
- Track 16 : Boog_49, Salk_50, Raunak_53, DoctorPepper_49, Linda_50
- Track 17 : RustyBoy_51, Natasha_51
- Track 18 : Powelldog_54
- Track 19 : Sporto_51

Summary of Final Annotations (See graph section above for start numbers):

The start number called the most often in the published annotations is 5, it was called in 33 of the 52 non-draft genes in the pham.

Genes that call this "Most Annotated" start:

- AreFloNak_53, Bouchard_50, Breylor17_50, Brunswick_51, CapnMurica_48, CastorTray_53, Caterpillar_47, Chlochlo_51, Darby_49, DevitoJr_50, ElephantMan_50, Giantsbane_51, Gordon_48, Hemma_47, Ingrid_52, Inked_54, Issa_49, LilHuddy_52, LucySwiss_50, Makai_50, MediumFry_48, MiniBagel_50,

Nightmare_52, Niktson_50, Nivinsha_52, Phaby_53, ScienceWizSam_51, Shepard_53, Synepsis_49, Teacup_51, Tenno_51, Tipton_53, Tokki_55, Truckee_48, Trustiboi_50, Westerlin_49, Zippen_52,

Genes that have the "Most Annotated" start but do not call it:

-

Genes that do not have the "Most Annotated" start:

• Anandi_54, Boog_49, BronxBay_50, DoctorPepper_49, Egad_50, Jeremy4pt0_49, Linda_50, Michelle_50, MrAaronian_50, Natasha_51, Powellldog_54, ProfFrink_50, Raunak_53, RustyBoy_51, Salk_50, Shiba_49, Sloopyjoe_50, Sporto_51, Sprinkle_49, StarLord_50, Stayer_50,

Summary by start number:

Start 4:

- Found in 21 of 58 (36.2%) of genes in pham
- Manual Annotations of this start: 19 of 52
- Called 95.2% of time when present
- Phage (with cluster) where this start called: Anandi_54 (AU4), Boog_49 (AW), BronxBay_50 (AW), DoctorPepper_49 (AW), Egad_50 (AW), Jeremy4pt0_49 (AW), Linda_50 (AW), Michelle_50 (AW), MrAaronian_50 (AW), Natasha_51 (AW), Powellldog_54 (AW), ProfFrink_50 (AW), Raunak_53 (AW), RustyBoy_51 (AW), Salk_50 (AW), Shiba_49 (AW), Sloopyjoe_50 (AW), Sporto_51 (AW), StarLord_50 (AW), Stayer_50 (AW),

Start 5:

- Found in 37 of 58 (63.8%) of genes in pham
- Manual Annotations of this start: 33 of 52
- Called 100.0% of time when present
- Phage (with cluster) where this start called: AreFloNak_53 (AU1), Bouchard_50 (AU2), Breylor17_50 (AU1), Brunswick_51 (AU1), CapnMurica_48 (AU1), CastorTray_53 (AU1), Caterpillar_47 (AU4), Chlochlo_51 (AU2), Darby_49 (AU1), DevitoJr_50 (AU1), ElephantMan_50 (AU1), Giantsbane_51 (AU2), Gordon_48 (AU1), Hemma_47 (AU1), Ingrid_52 (AU3), Inked_54 (AU7), Issa_49 (AU1), LilHuddy_52 (AU2), LucySwiss_50 (AU1), Makai_50 (AU5), MediumFry_48 (AU4), MiniBage1_50 (AU1), Nightmare_52 (AU1), Niktson_50 (AU1), Nivinsha_52 (AU1), Phaby_53 (AU2), ScienceWizSam_51 (AU1), Shepard_53 (AU2), Synepsis_49 (AU1), Teacup_51 (AU1), Tenno_51 (AU1), Tipton_53 (AU2), Tokki_55 (AU2), Truckee_48 (AU5), Trustiboi_50 (AU1), Westerlin_49 (AU1), Zippen_52 (AU7),

Start 12:

- Found in 1 of 58 (1.7%) of genes in pham
- No Manual Annotations of this start.
- Called 100.0% of time when present
- Phage (with cluster) where this start called: Sprinkle_49 (AW),

Summary by clusters:

There are 7 clusters represented in this pham: AW, AU1, AU3, AU2, AU5, AU4, AU7,

Info for manual annotations of cluster AU1:

- Start number 5 was manually annotated 18 times for cluster AU1.

Info for manual annotations of cluster AU2:

- Start number 5 was manually annotated 8 times for cluster AU2.

Info for manual annotations of cluster AU3:

- Start number 5 was manually annotated 1 time for cluster AU3.

Info for manual annotations of cluster AU4:

- Start number 4 was manually annotated 1 time for cluster AU4.
- Start number 5 was manually annotated 2 times for cluster AU4.

Info for manual annotations of cluster AU5:

- Start number 5 was manually annotated 2 times for cluster AU5.

Info for manual annotations of cluster AU7:

- Start number 5 was manually annotated 2 times for cluster AU7.

Info for manual annotations of cluster AW:

- Start number 4 was manually annotated 18 times for cluster AW.

Gene Information:

Gene: Anandi_54 Start: 35881, Stop: 36060, Start Num: 4

Candidate Starts for Anandi_54:

(Start: 4 @35881 has 19 MA's), (8, 35896), (9, 35902), (13, 35935), (20, 36034),

Gene: AreFloNak_53 Start: 35628, Stop: 35798, Start Num: 5

Candidate Starts for AreFloNak_53:

(Start: 5 @35628 has 33 MA's),

Gene: Boog_49 Start: 33153, Stop: 33386, Start Num: 4

Candidate Starts for Boog_49:

(Start: 4 @33153 has 19 MA's), (15, 33234), (17, 33282), (18, 33288), (21, 33312), (22, 33327),

Gene: Bouchard_50 Start: 35605, Stop: 35772, Start Num: 5

Candidate Starts for Bouchard_50:

(1, 35506), (2, 35512), (Start: 5 @35605 has 33 MA's),

Gene: Breylor17_50 Start: 36219, Stop: 36389, Start Num: 5

Candidate Starts for Breylor17_50:

(Start: 5 @36219 has 33 MA's),

Gene: BronxBay_50 Start: 33451, Stop: 33684, Start Num: 4

Candidate Starts for BronxBay_50:

(Start: 4 @33451 has 19 MA's), (10, 33475), (15, 33532), (17, 33580), (18, 33586), (21, 33610), (22, 33625),

Gene: Brunswick_51 Start: 35512, Stop: 35682, Start Num: 5

Candidate Starts for Brunswick_51:

(Start: 5 @35512 has 33 MA's),

Gene: CapnMurica_48 Start: 36412, Stop: 36582, Start Num: 5
Candidate Starts for CapnMurica_48:
(Start: 5 @36412 has 33 MA's),

Gene: CastorTray_53 Start: 36283, Stop: 36453, Start Num: 5
Candidate Starts for CastorTray_53:
(Start: 5 @36283 has 33 MA's),

Gene: Caterpillar_47 Start: 34682, Stop: 34852, Start Num: 5
Candidate Starts for Caterpillar_47:
(Start: 5 @34682 has 33 MA's), (13, 34733),

Gene: Chlochlo_51 Start: 35349, Stop: 35516, Start Num: 5
Candidate Starts for Chlochlo_51:
(1, 35250), (2, 35256), (Start: 5 @35349 has 33 MA's),

Gene: Darby_49 Start: 35457, Stop: 35627, Start Num: 5
Candidate Starts for Darby_49:
(Start: 5 @35457 has 33 MA's),

Gene: DevitoJr_50 Start: 35849, Stop: 36019, Start Num: 5
Candidate Starts for DevitoJr_50:
(Start: 5 @35849 has 33 MA's),

Gene: DoctorPepper_49 Start: 33155, Stop: 33388, Start Num: 4
Candidate Starts for DoctorPepper_49:
(Start: 4 @33155 has 19 MA's), (15, 33236), (17, 33284), (18, 33290), (21, 33314), (22, 33329),

Gene: Egad_50 Start: 33452, Stop: 33685, Start Num: 4
Candidate Starts for Egad_50:
(Start: 4 @33452 has 19 MA's), (10, 33476), (15, 33533), (17, 33581), (18, 33587), (21, 33611), (22, 33626),

Gene: ElephantMan_50 Start: 36135, Stop: 36305, Start Num: 5
Candidate Starts for ElephantMan_50:
(Start: 5 @36135 has 33 MA's),

Gene: Giantsbane_51 Start: 34529, Stop: 34699, Start Num: 5
Candidate Starts for Giantsbane_51:
(Start: 5 @34529 has 33 MA's), (19, 34670), (20, 34679),

Gene: Gordon_48 Start: 36274, Stop: 36444, Start Num: 5
Candidate Starts for Gordon_48:
(Start: 5 @36274 has 33 MA's),

Gene: Hemma_47 Start: 32471, Stop: 32650, Start Num: 5
Candidate Starts for Hemma_47:
(Start: 5 @32471 has 33 MA's), (8, 32483), (11, 32498), (14, 32540),

Gene: Ingrid_52 Start: 35475, Stop: 35645, Start Num: 5
Candidate Starts for Ingrid_52:
(Start: 5 @35475 has 33 MA's), (7, 35481),

Gene: Inked_54 Start: 36599, Stop: 36769, Start Num: 5
Candidate Starts for Inked_54:
(Start: 5 @36599 has 33 MA's), (7, 36605), (16, 36680),

Gene: Issa_49 Start: 35500, Stop: 35670, Start Num: 5
Candidate Starts for Issa_49:
(Start: 5 @35500 has 33 MA's),

Gene: Jeremy4pt0_49 Start: 33150, Stop: 33383, Start Num: 4
Candidate Starts for Jeremy4pt0_49:
(Start: 4 @33150 has 19 MA's), (10, 33174), (15, 33231), (17, 33279), (18, 33285), (21, 33309), (22, 33324),

Gene: LilHuddy_52 Start: 35722, Stop: 35892, Start Num: 5
Candidate Starts for LilHuddy_52:
(1, 35623), (2, 35629), (Start: 5 @35722 has 33 MA's),

Gene: Linda_50 Start: 33448, Stop: 33681, Start Num: 4
Candidate Starts for Linda_50:
(Start: 4 @33448 has 19 MA's), (15, 33529), (17, 33577), (18, 33583), (21, 33607), (22, 33622),

Gene: LucySwiss_50 Start: 35302, Stop: 35472, Start Num: 5
Candidate Starts for LucySwiss_50:
(Start: 5 @35302 has 33 MA's),

Gene: Makai_50 Start: 35698, Stop: 35880, Start Num: 5
Candidate Starts for Makai_50:
(3, 35638), (Start: 5 @35698 has 33 MA's), (11, 35725),

Gene: MediumFry_48 Start: 34986, Stop: 35156, Start Num: 5
Candidate Starts for MediumFry_48:
(Start: 5 @34986 has 33 MA's), (13, 35037),

Gene: Michelle_50 Start: 33450, Stop: 33683, Start Num: 4
Candidate Starts for Michelle_50:
(Start: 4 @33450 has 19 MA's), (10, 33474), (15, 33531), (17, 33579), (18, 33585), (21, 33609), (22, 33624),

Gene: MiniBagel_50 Start: 36394, Stop: 36564, Start Num: 5
Candidate Starts for MiniBagel_50:
(Start: 5 @36394 has 33 MA's),

Gene: MrAaronian_50 Start: 33450, Stop: 33683, Start Num: 4
Candidate Starts for MrAaronian_50:
(Start: 4 @33450 has 19 MA's), (10, 33474), (15, 33531), (17, 33579), (18, 33585), (21, 33609), (22, 33624),

Gene: Natasha_51 Start: 33238, Stop: 33486, Start Num: 4
Candidate Starts for Natasha_51:
(Start: 4 @33238 has 19 MA's), (11, 33268), (15, 33319), (17, 33367),

Gene: Nightmare_52 Start: 36691, Stop: 36861, Start Num: 5
Candidate Starts for Nightmare_52:

(Start: 5 @36691 has 33 MA's),

Gene: Niktson_50 Start: 36135, Stop: 36305, Start Num: 5

Candidate Starts for Niktson_50:

(Start: 5 @36135 has 33 MA's),

Gene: Nivinsha_52 Start: 35628, Stop: 35798, Start Num: 5

Candidate Starts for Nivinsha_52:

(Start: 5 @35628 has 33 MA's),

Gene: Phaby_53 Start: 36261, Stop: 36428, Start Num: 5

Candidate Starts for Phaby_53:

(1, 36162), (2, 36168), (Start: 5 @36261 has 33 MA's),

Gene: Powelldog_54 Start: 34287, Stop: 34532, Start Num: 4

Candidate Starts for Powelldog_54:

(Start: 4 @34287 has 19 MA's), (6, 34293), (11, 34317), (15, 34368), (17, 34416),

Gene: ProfFrink_50 Start: 33451, Stop: 33684, Start Num: 4

Candidate Starts for ProfFrink_50:

(Start: 4 @33451 has 19 MA's), (10, 33475), (15, 33532), (17, 33580), (18, 33586), (21, 33610), (22, 33625),

Gene: Raunak_53 Start: 33148, Stop: 33381, Start Num: 4

Candidate Starts for Raunak_53:

(Start: 4 @33148 has 19 MA's), (15, 33229), (17, 33277), (18, 33283), (21, 33307), (22, 33322),

Gene: RustyBoy_51 Start: 33219, Stop: 33467, Start Num: 4

Candidate Starts for RustyBoy_51:

(Start: 4 @33219 has 19 MA's), (11, 33249), (15, 33300), (17, 33348),

Gene: Salk_50 Start: 33448, Stop: 33681, Start Num: 4

Candidate Starts for Salk_50:

(Start: 4 @33448 has 19 MA's), (15, 33529), (17, 33577), (18, 33583), (21, 33607), (22, 33622),

Gene: ScienceWizSam_51 Start: 35736, Stop: 35906, Start Num: 5

Candidate Starts for ScienceWizSam_51:

(Start: 5 @35736 has 33 MA's),

Gene: Shepard_53 Start: 35563, Stop: 35733, Start Num: 5

Candidate Starts for Shepard_53:

(1, 35464), (2, 35470), (Start: 5 @35563 has 33 MA's),

Gene: Shiba_49 Start: 33148, Stop: 33381, Start Num: 4

Candidate Starts for Shiba_49:

(Start: 4 @33148 has 19 MA's), (10, 33172), (15, 33229), (17, 33277), (18, 33283), (21, 33307), (22, 33322),

Gene: Sloopyjoe_50 Start: 33452, Stop: 33685, Start Num: 4

Candidate Starts for Sloopyjoe_50:

(Start: 4 @33452 has 19 MA's), (10, 33476), (15, 33533), (17, 33581), (18, 33587), (21, 33611), (22, 33626),

Gene: Sporto_51 Start: 34915, Stop: 35157, Start Num: 4
Candidate Starts for Sporto_51:
(Start: 4 @34915 has 19 MA's), (11, 34945), (15, 34996), (17, 35044), (23, 35107),

Gene: Sprinkle_49 Start: 33969, Stop: 34181, Start Num: 12
Candidate Starts for Sprinkle_49:
(Start: 4 @33927 has 19 MA's), (6, 33933), (11, 33957), (12, 33969), (14, 33999), (16, 34011), (18, 34062),

Gene: StarLord_50 Start: 33451, Stop: 33684, Start Num: 4
Candidate Starts for StarLord_50:
(Start: 4 @33451 has 19 MA's), (10, 33475), (15, 33532), (17, 33580), (18, 33586), (21, 33610), (22, 33625),

Gene: Stayer_50 Start: 33448, Stop: 33681, Start Num: 4
Candidate Starts for Stayer_50:
(Start: 4 @33448 has 19 MA's), (10, 33472), (15, 33529), (17, 33577), (18, 33583), (21, 33607), (22, 33622),

Gene: Synopsis_49 Start: 35804, Stop: 35974, Start Num: 5
Candidate Starts for Synopsis_49:
(Start: 5 @35804 has 33 MA's),

Gene: Teacup_51 Start: 36164, Stop: 36334, Start Num: 5
Candidate Starts for Teacup_51:
(Start: 5 @36164 has 33 MA's),

Gene: Tenno_51 Start: 36467, Stop: 36637, Start Num: 5
Candidate Starts for Tenno_51:
(Start: 5 @36467 has 33 MA's),

Gene: Tipton_53 Start: 36008, Stop: 36175, Start Num: 5
Candidate Starts for Tipton_53:
(1, 35909), (2, 35915), (Start: 5 @36008 has 33 MA's),

Gene: Tokki_55 Start: 35895, Stop: 36062, Start Num: 5
Candidate Starts for Tokki_55:
(1, 35796), (2, 35802), (Start: 5 @35895 has 33 MA's),

Gene: Truckee_48 Start: 35488, Stop: 35670, Start Num: 5
Candidate Starts for Truckee_48:
(3, 35428), (Start: 5 @35488 has 33 MA's), (11, 35515), (21, 35644),

Gene: Trustiboi_50 Start: 36005, Stop: 36175, Start Num: 5
Candidate Starts for Trustiboi_50:
(Start: 5 @36005 has 33 MA's),

Gene: Westerlin_49 Start: 37018, Stop: 37188, Start Num: 5
Candidate Starts for Westerlin_49:
(Start: 5 @37018 has 33 MA's),

Gene: Zippen_52 Start: 36299, Stop: 36469, Start Num: 5
Candidate Starts for Zippen_52:

(Start: 5 @36299 has 33 MA's), (7, 36305), (8, 36311), (16, 36380),