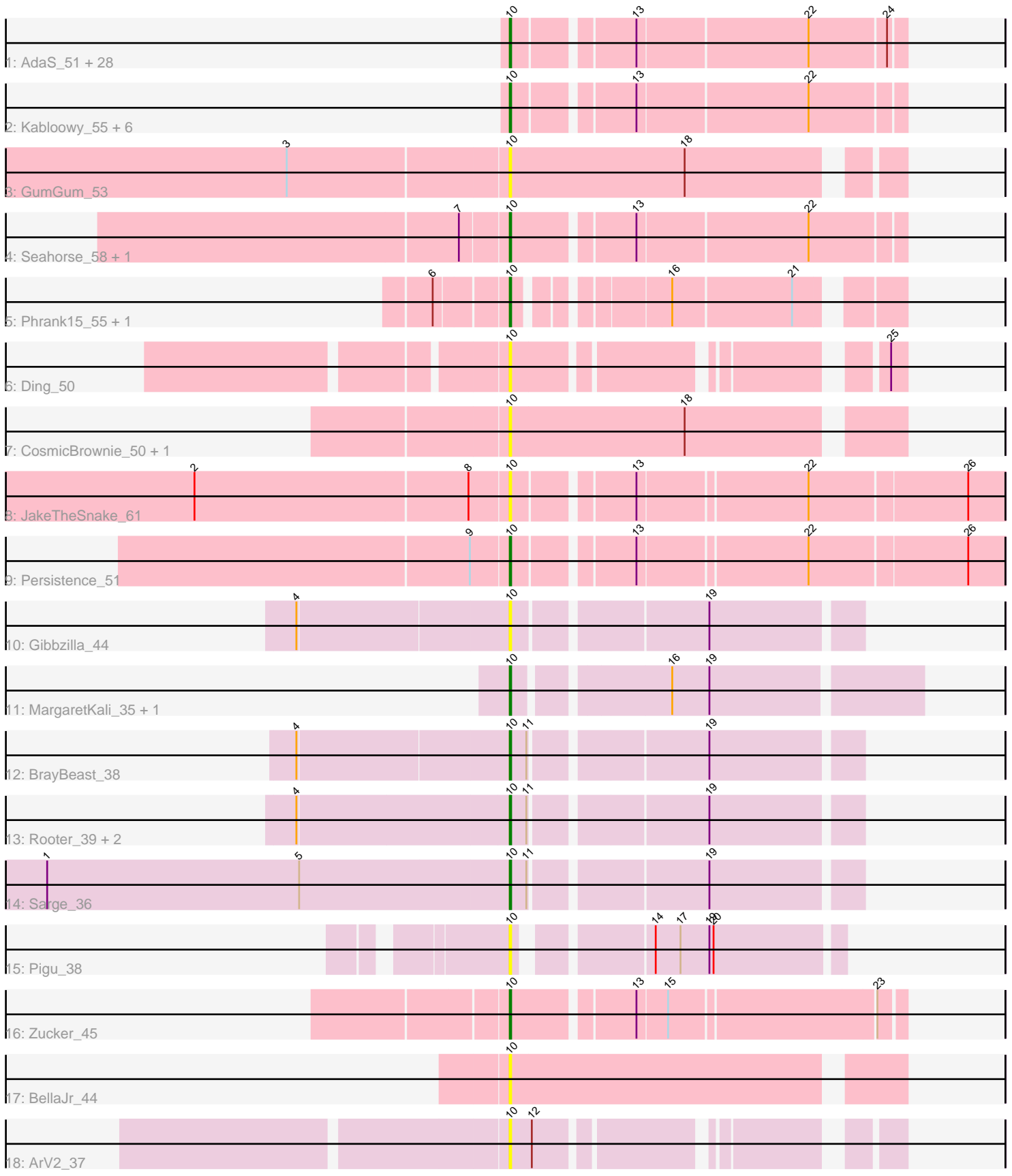


Pham 311635



Note: Tracks are now grouped by subcluster and scaled. Switching in subcluster is indicated by changes in track color. Track scale is now set by default to display the region 30 bp upstream of start 1 to 30 bp downstream of the last possible start. If this default region is judged to be packed too tightly with annotated starts, the track will be further scaled to only show that region of the ORF with annotated starts. This action will be indicated by adding "Zoomed" to the title. For starts, yellow indicates the location of called starts comprised solely of Glimmer/GeneMark auto-annotations, green indicates the location of called starts with at least 1 manual gene annotation.

Pham 311635 Report

This analysis was run 06/27/26 on database version 652.

Pham number 311635 has 58 members, 18 are drafts.

Phages represented in each track:

- Track 1 : AdaS_51, Anekin_52, ThayneTheZag_56, Mapleville_51, Lasker_54, EvePickles_51, BlueShadow_55, BenchScraper_54, Vopal_58, Crescenzo_55, Sakai_54, SpicyFrank_58, Richie_57, CookieBear_55, Isolde_54, Cassini_49, JellyBread_52, Tiff81_51, Faja_56, Sashimi_55, Auxilium_51, Satrap_56, BillyTP_57, MidnightRain_59, Gorpy_55, YoungHarleezy_55, BasketStar_57, DarwinJr_57, Globfish_55
- Track 2 : Kabloowy_55, SonDevVon_59, Hillester_59, Raphaella_54, Lawnathon_56, NewKitty_57, RadFad_59
- Track 3 : GumGum_53
- Track 4 : Seahorse_58, AbbyDaisy_54
- Track 5 : Phrank15_55, Bhageatrice_55
- Track 6 : Ding_50
- Track 7 : CosmicBrownie_50, Nyilah_53
- Track 8 : JakeTheSnake_61
- Track 9 : Persistence_51
- Track 10 : Gibbzilla_44
- Track 11 : MargaretKali_35, Kumotta_35
- Track 12 : BrayBeast_38
- Track 13 : Rooter_39, JeanClaude_40, Shoya_42
- Track 14 : Sarge_36
- Track 15 : Pigu_38
- Track 16 : Zucker_45
- Track 17 : BellaJr_44
- Track 18 : ArV2_37

Summary of Final Annotations (See graph section above for start numbers):

The start number called the most often in the published annotations is 10, it was called in 40 of the 40 non-draft genes in the pham.

Genes that call this "Most Annotated" start:

- AbbyDaisy_54, AdaS_51, Anekin_52, ArV2_37, Auxilium_51, BasketStar_57, BellaJr_44, BenchScraper_54, Bhageatrice_55, BillyTP_57, BlueShadow_55, BrayBeast_38, Cassini_49, CookieBear_55, CosmicBrownie_50, Crescenzo_55,

DarwinJr_57, Ding_50, EvePickles_51, Faja_56, Gibbzilla_44, Globfish_55, Gorpy_55, GumGum_53, Hillester_59, Isolde_54, JakeTheSnake_61, JeanClaude_40, JellyBread_52, Kabloowy_55, Kumotta_35, Lasker_54, Lawnathon_56, Mapleville_51, MargaretKali_35, MidnightRain_59, NewKitty_57, Nyilah_53, Persistence_51, Phrank15_55, Pigu_38, RadFad_59, Raphaella_54, Richie_57, Rooter_39, Sakai_54, Sarge_36, Sashimi_55, Satrap_56, Seahorse_58, Shoya_42, SonDevVon_59, SpicyFrank_58, ThayneTheZag_56, Tiff81_51, Vopal_58, YoungHarleezy_55, Zucker_45,

Genes that have the "Most Annotated" start but do not call it:

-

Genes that do not have the "Most Annotated" start:

-

Summary by start number:

Start 10:

- Found in 58 of 58 (100.0%) of genes in pham
- Manual Annotations of this start: 40 of 40
- Called 100.0% of time when present
- Phage (with cluster) where this start called: AbbyDaisy_54 (AY), AdaS_51 (AY), Anekin_52 (AY), ArV2_37 (singleton), Auxilium_51 (AY), BasketStar_57 (AY), BellaJr_44 (FN), BenchScraper_54 (AY), Bhageatrice_55 (AY), BillyTP_57 (AY), BlueShadow_55 (AY), BrayBeast_38 (FB), Cassini_49 (FN), CookieBear_55 (AY), CosmicBrownie_50 (AY), Crescenzo_55 (AY), DarwinJr_57 (AY), Ding_50 (AY), EvePickles_51 (AY), Faja_56 (AY), Gibbzilla_44 (FB), Globfish_55 (AY), Gorpy_55 (AY), GumGum_53 (AY), Hillester_59 (AY), Isolde_54 (AY), JakeTheSnake_61 (AY), JeanClaude_40 (FB), JellyBread_52 (AY), Kabloowy_55 (AY), Kumotta_35 (FB), Lasker_54 (AY), Lawnathon_56 (AY), Mapleville_51 (AY), MargaretKali_35 (FB), MidnightRain_59 (AY), NewKitty_57 (AY), Nyilah_53 (AY), Persistence_51 (AY), Phrank15_55 (AY), Pigu_38 (FB), RadFad_59 (AY), Raphaella_54 (AY), Richie_57 (AY), Rooter_39 (FB), Sakai_54 (AY), Sarge_36 (FB), Sashimi_55 (AY), Satrap_56 (AY), Seahorse_58 (AY), Shoya_42 (FB), SonDevVon_59 (AY), SpicyFrank_58 (AY), ThayneTheZag_56 (AY), Tiff81_51 (AY), Vopal_58 (AY), YoungHarleezy_55 (AY), Zucker_45 (FN),

Summary by clusters:

There are 4 clusters represented in this pham: AY, FB, singleton, FN,

Info for manual annotations of cluster AY:

- Start number 10 was manually annotated 34 times for cluster AY.

Info for manual annotations of cluster FB:

- Start number 10 was manually annotated 5 times for cluster FB.

Info for manual annotations of cluster FN:

- Start number 10 was manually annotated 1 time for cluster FN.

Gene Information:

Gene: AbbyDaisy_54 Start: 33151, Stop: 33417, Start Num: 10
Candidate Starts for AbbyDaisy_54:
(7, 33118), (Start: 10 @33151 has 40 MA's), (13, 33232), (22, 33352),

Gene: AdaS_51 Start: 31094, Stop: 31357, Start Num: 10
Candidate Starts for AdaS_51:
(Start: 10 @31094 has 40 MA's), (13, 31172), (22, 31292), (24, 31346),

Gene: Anekin_52 Start: 32704, Stop: 32967, Start Num: 10
Candidate Starts for Anekin_52:
(Start: 10 @32704 has 40 MA's), (13, 32782), (22, 32902), (24, 32956),

Gene: ArV2_37 Start: 24984, Stop: 25217, Start Num: 10
Candidate Starts for ArV2_37:
(Start: 10 @24984 has 40 MA's), (12, 24999),

Gene: Auxilium_51 Start: 30422, Stop: 30685, Start Num: 10
Candidate Starts for Auxilium_51:
(Start: 10 @30422 has 40 MA's), (13, 30500), (22, 30620), (24, 30674),

Gene: BasketStar_57 Start: 33764, Stop: 34027, Start Num: 10
Candidate Starts for BasketStar_57:
(Start: 10 @33764 has 40 MA's), (13, 33842), (22, 33962), (24, 34016),

Gene: BellaJr_44 Start: 30867, Stop: 31136, Start Num: 10
Candidate Starts for BellaJr_44:
(Start: 10 @30867 has 40 MA's),

Gene: BenchScraper_54 Start: 32588, Stop: 32851, Start Num: 10
Candidate Starts for BenchScraper_54:
(Start: 10 @32588 has 40 MA's), (13, 32666), (22, 32786), (24, 32840),

Gene: Bhageatrice_55 Start: 34194, Stop: 34430, Start Num: 10
Candidate Starts for Bhageatrice_55:
(6, 34146), (Start: 10 @34194 has 40 MA's), (16, 34284), (21, 34368),

Gene: BillyTP_57 Start: 34460, Stop: 34723, Start Num: 10
Candidate Starts for BillyTP_57:
(Start: 10 @34460 has 40 MA's), (13, 34538), (22, 34658), (24, 34712),

Gene: BlueShadow_55 Start: 33250, Stop: 33513, Start Num: 10
Candidate Starts for BlueShadow_55:
(Start: 10 @33250 has 40 MA's), (13, 33328), (22, 33448), (24, 33502),

Gene: BrayBeast_38 Start: 26733, Stop: 26966, Start Num: 10
Candidate Starts for BrayBeast_38:
(4, 26583), (Start: 10 @26733 has 40 MA's), (11, 26745), (19, 26862),

Gene: Cassini_49 Start: 31523, Stop: 31786, Start Num: 10
Candidate Starts for Cassini_49:
(Start: 10 @31523 has 40 MA's), (13, 31601), (22, 31721), (24, 31775),

Gene: CookieBear_55 Start: 32844, Stop: 33107, Start Num: 10

Candidate Starts for CookieBear_55:
(Start: 10 @32844 has 40 MA's), (13, 32922), (22, 33042), (24, 33096),

Gene: CosmicBrownie_50 Start: 31361, Stop: 31630, Start Num: 10
Candidate Starts for CosmicBrownie_50:
(Start: 10 @31361 has 40 MA's), (18, 31487),

Gene: Crescenzo_55 Start: 33755, Stop: 34018, Start Num: 10
Candidate Starts for Crescenzo_55:
(Start: 10 @33755 has 40 MA's), (13, 33833), (22, 33953), (24, 34007),

Gene: DarwinJr_57 Start: 33823, Stop: 34086, Start Num: 10
Candidate Starts for DarwinJr_57:
(Start: 10 @33823 has 40 MA's), (13, 33901), (22, 34021), (24, 34075),

Gene: Ding_50 Start: 31292, Stop: 31525, Start Num: 10
Candidate Starts for Ding_50:
(Start: 10 @31292 has 40 MA's), (25, 31514),

Gene: EvePickles_51 Start: 33044, Stop: 33307, Start Num: 10
Candidate Starts for EvePickles_51:
(Start: 10 @33044 has 40 MA's), (13, 33122), (22, 33242), (24, 33296),

Gene: Faja_56 Start: 34428, Stop: 34691, Start Num: 10
Candidate Starts for Faja_56:
(Start: 10 @34428 has 40 MA's), (13, 34506), (22, 34626), (24, 34680),

Gene: Gibbzilla_44 Start: 27286, Stop: 27519, Start Num: 10
Candidate Starts for Gibbzilla_44:
(4, 27136), (Start: 10 @27286 has 40 MA's), (19, 27415),

Gene: Globfish_55 Start: 32943, Stop: 33206, Start Num: 10
Candidate Starts for Globfish_55:
(Start: 10 @32943 has 40 MA's), (13, 33021), (22, 33141), (24, 33195),

Gene: Gorpy_55 Start: 33836, Stop: 34099, Start Num: 10
Candidate Starts for Gorpy_55:
(Start: 10 @33836 has 40 MA's), (13, 33914), (22, 34034), (24, 34088),

Gene: GumGum_53 Start: 31780, Stop: 32043, Start Num: 10
Candidate Starts for GumGum_53:
(3, 31624), (Start: 10 @31780 has 40 MA's), (18, 31906),

Gene: Hillester_59 Start: 34186, Stop: 34449, Start Num: 10
Candidate Starts for Hillester_59:
(Start: 10 @34186 has 40 MA's), (13, 34264), (22, 34384),

Gene: Isolde_54 Start: 32513, Stop: 32776, Start Num: 10
Candidate Starts for Isolde_54:
(Start: 10 @32513 has 40 MA's), (13, 32591), (22, 32711), (24, 32765),

Gene: JakeTheSnake_61 Start: 35289, Stop: 35621, Start Num: 10
Candidate Starts for JakeTheSnake_61:

(2, 35067), (8, 35262), (Start: 10 @35289 has 40 MA's), (13, 35367), (22, 35484), (26, 35595),

Gene: JeanClaude_40 Start: 25779, Stop: 26012, Start Num: 10

Candidate Starts for JeanClaude_40:

(4, 25629), (Start: 10 @25779 has 40 MA's), (11, 25791), (19, 25908),

Gene: JellyBread_52 Start: 31634, Stop: 31897, Start Num: 10

Candidate Starts for JellyBread_52:

(Start: 10 @31634 has 40 MA's), (13, 31712), (22, 31832), (24, 31886),

Gene: Kabloowy_55 Start: 33527, Stop: 33790, Start Num: 10

Candidate Starts for Kabloowy_55:

(Start: 10 @33527 has 40 MA's), (13, 33605), (22, 33725),

Gene: Kumotta_35 Start: 26710, Stop: 26988, Start Num: 10

Candidate Starts for Kumotta_35:

(Start: 10 @26710 has 40 MA's), (16, 26809), (19, 26836),

Gene: Lasker_54 Start: 33288, Stop: 33551, Start Num: 10

Candidate Starts for Lasker_54:

(Start: 10 @33288 has 40 MA's), (13, 33366), (22, 33486), (24, 33540),

Gene: Lawnathon_56 Start: 33002, Stop: 33265, Start Num: 10

Candidate Starts for Lawnathon_56:

(Start: 10 @33002 has 40 MA's), (13, 33080), (22, 33200),

Gene: Mapleville_51 Start: 32336, Stop: 32599, Start Num: 10

Candidate Starts for Mapleville_51:

(Start: 10 @32336 has 40 MA's), (13, 32414), (22, 32534), (24, 32588),

Gene: MargaretKali_35 Start: 26345, Stop: 26617, Start Num: 10

Candidate Starts for MargaretKali_35:

(Start: 10 @26345 has 40 MA's), (16, 26444), (19, 26471),

Gene: MidnightRain_59 Start: 34366, Stop: 34629, Start Num: 10

Candidate Starts for MidnightRain_59:

(Start: 10 @34366 has 40 MA's), (13, 34444), (22, 34564), (24, 34618),

Gene: NewKitty_57 Start: 32706, Stop: 32969, Start Num: 10

Candidate Starts for NewKitty_57:

(Start: 10 @32706 has 40 MA's), (13, 32784), (22, 32904),

Gene: Nyilah_53 Start: 30996, Stop: 31265, Start Num: 10

Candidate Starts for Nyilah_53:

(Start: 10 @30996 has 40 MA's), (18, 31122),

Gene: Persistence_51 Start: 31986, Stop: 32318, Start Num: 10

Candidate Starts for Persistence_51:

(9, 31959), (Start: 10 @31986 has 40 MA's), (13, 32064), (22, 32181), (26, 32292),

Gene: Phrank15_55 Start: 32743, Stop: 32979, Start Num: 10

Candidate Starts for Phrank15_55:

(6, 32695), (Start: 10 @32743 has 40 MA's), (16, 32833), (21, 32917),

Gene: Pigu_38 Start: 25904, Stop: 26116, Start Num: 10
Candidate Starts for Pigu_38:
(Start: 10 @25904 has 40 MA's), (14, 25985), (17, 26003), (19, 26024), (20, 26027),

Gene: RadFad_59 Start: 34186, Stop: 34449, Start Num: 10
Candidate Starts for RadFad_59:
(Start: 10 @34186 has 40 MA's), (13, 34264), (22, 34384),

Gene: Raphaella_54 Start: 32445, Stop: 32708, Start Num: 10
Candidate Starts for Raphaella_54:
(Start: 10 @32445 has 40 MA's), (13, 32523), (22, 32643),

Gene: Richie_57 Start: 33514, Stop: 33777, Start Num: 10
Candidate Starts for Richie_57:
(Start: 10 @33514 has 40 MA's), (13, 33592), (22, 33712), (24, 33766),

Gene: Rooter_39 Start: 26271, Stop: 26504, Start Num: 10
Candidate Starts for Rooter_39:
(4, 26121), (Start: 10 @26271 has 40 MA's), (11, 26283), (19, 26400),

Gene: Sakai_54 Start: 32547, Stop: 32810, Start Num: 10
Candidate Starts for Sakai_54:
(Start: 10 @32547 has 40 MA's), (13, 32625), (22, 32745), (24, 32799),

Gene: Sarge_36 Start: 25079, Stop: 25312, Start Num: 10
Candidate Starts for Sarge_36:
(1, 24746), (5, 24929), (Start: 10 @25079 has 40 MA's), (11, 25091), (19, 25208),

Gene: Sashimi_55 Start: 33777, Stop: 34037, Start Num: 10
Candidate Starts for Sashimi_55:
(Start: 10 @33777 has 40 MA's), (13, 33855), (22, 33972), (24, 34026),

Gene: Satrap_56 Start: 32976, Stop: 33239, Start Num: 10
Candidate Starts for Satrap_56:
(Start: 10 @32976 has 40 MA's), (13, 33054), (22, 33174), (24, 33228),

Gene: Seahorse_58 Start: 34780, Stop: 35046, Start Num: 10
Candidate Starts for Seahorse_58:
(7, 34747), (Start: 10 @34780 has 40 MA's), (13, 34861), (22, 34981),

Gene: Shoya_42 Start: 27047, Stop: 27280, Start Num: 10
Candidate Starts for Shoya_42:
(4, 26897), (Start: 10 @27047 has 40 MA's), (11, 27059), (19, 27176),

Gene: SonDevVon_59 Start: 33150, Stop: 33413, Start Num: 10
Candidate Starts for SonDevVon_59:
(Start: 10 @33150 has 40 MA's), (13, 33228), (22, 33348),

Gene: SpicyFrank_58 Start: 33626, Stop: 33889, Start Num: 10
Candidate Starts for SpicyFrank_58:
(Start: 10 @33626 has 40 MA's), (13, 33704), (22, 33824), (24, 33878),

Gene: ThayneTheZag_56 Start: 32621, Stop: 32884, Start Num: 10
Candidate Starts for ThayneTheZag_56:
(Start: 10 @32621 has 40 MA's), (13, 32699), (22, 32819), (24, 32873),

Gene: Tiff81_51 Start: 30958, Stop: 31221, Start Num: 10
Candidate Starts for Tiff81_51:
(Start: 10 @30958 has 40 MA's), (13, 31036), (22, 31156), (24, 31210),

Gene: Vopal_58 Start: 36083, Stop: 36346, Start Num: 10
Candidate Starts for Vopal_58:
(Start: 10 @36083 has 40 MA's), (13, 36161), (22, 36281), (24, 36335),

Gene: YoungHarleezy_55 Start: 33011, Stop: 33274, Start Num: 10
Candidate Starts for YoungHarleezy_55:
(Start: 10 @33011 has 40 MA's), (13, 33089), (22, 33209), (24, 33263),

Gene: Zucker_45 Start: 30793, Stop: 31053, Start Num: 10
Candidate Starts for Zucker_45:
(Start: 10 @30793 has 40 MA's), (13, 30874), (15, 30895), (23, 31036),