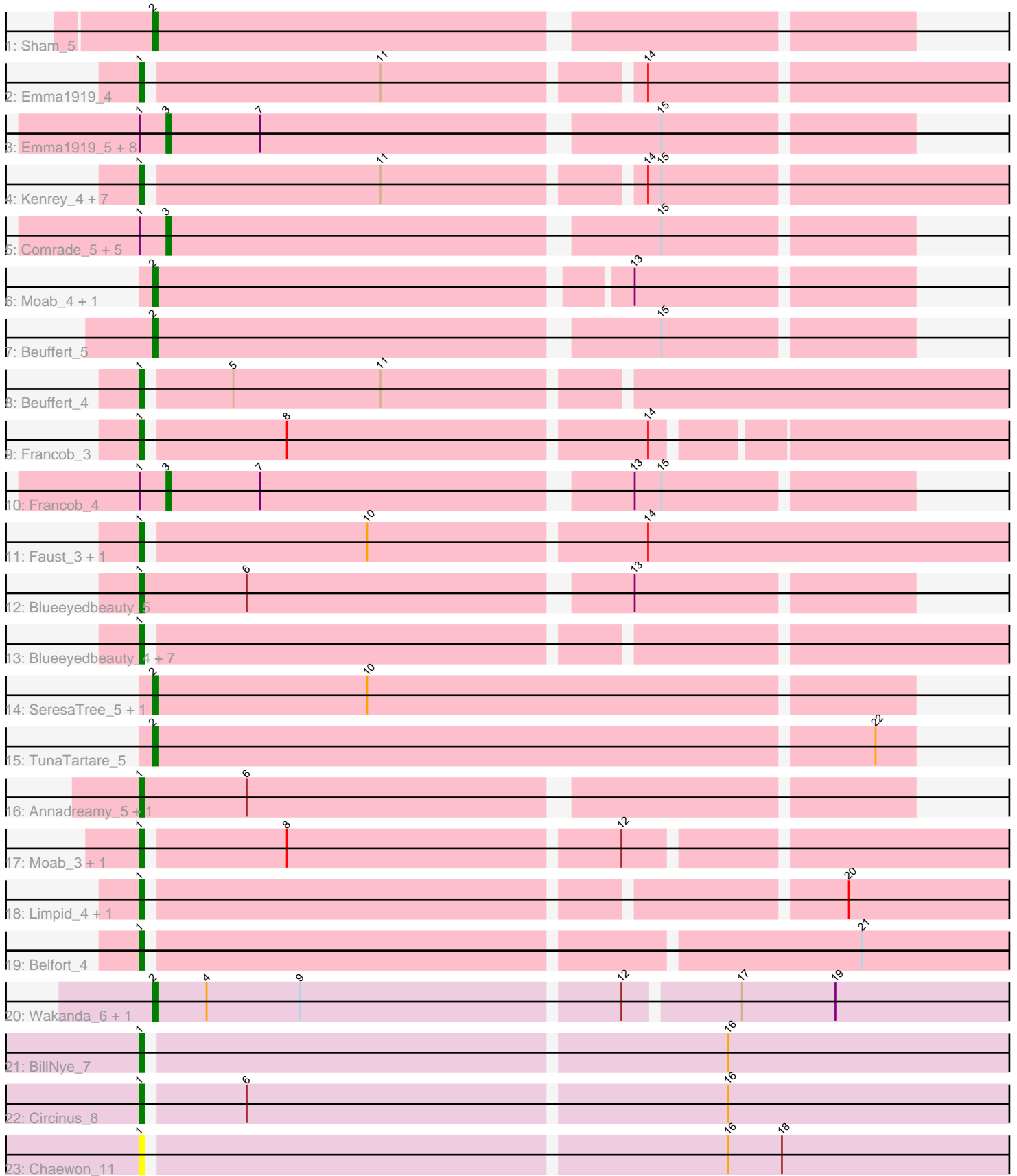


Pham 311639



Note: Tracks are now grouped by subcluster and scaled. Switching in subcluster is indicated by changes in track color. Track scale is now set by default to display the region 30 bp upstream of start 1 to 30 bp downstream of the last possible start. If this default region is judged to be packed too tightly with annotated starts, the track will be further scaled to only show that region of the ORF with annotated starts. This action will be indicated by adding "Zoomed" to the title. For starts, yellow indicates the location of called starts comprised solely of Glimmer/GeneMark auto-annotations, green indicates the location of called starts with at least 1 manual gene annotation.

Pham 311639 Report

This analysis was run 06/27/26 on database version 652.

Pham number 311639 has 57 members, 5 are drafts.

Phages represented in each track:

- Track 1 : Sham_5
- Track 2 : Emma1919_4
- Track 3 : Emma1919_5, Kenrey_5, Jada_5, DeluluLabubu_5, Maupel_5, MeganTheeKilla_5, Gilson_5, Forrest_5, Phredrick_5
- Track 4 : Kenrey_4, MeganTheeKilla_4, Jada_4, Maupel_4, Gilson_4, Forrest_4, Phredrick_4, DeluluLabubu_4
- Track 5 : Comrade_5, Karp_5, SparkleGoddess_5, Stigma_5, Belfort_5, Westy_5
- Track 6 : Moab_4, Patelgo_5
- Track 7 : Beuffert_5
- Track 8 : Beuffert_4
- Track 9 : Francob_3
- Track 10 : Francob_4
- Track 11 : Faust_3, SeresaTree_4
- Track 12 : Blueeyedbeauty_5
- Track 13 : Blueeyedbeauty_4, TunaTartare_4, Comrade_4, Sham_4, Stigma_4, Karp_4, SparkleGoddess_4, Westy_4
- Track 14 : SeresaTree_5, Faust_4
- Track 15 : TunaTartare_5
- Track 16 : Annadreamy_5, Limpid_5
- Track 17 : Moab_3, Patelgo_4
- Track 18 : Limpid_4, Annadreamy_4
- Track 19 : Belfort_4
- Track 20 : Wakanda_6, Muntaha_7
- Track 21 : BillNye_7
- Track 22 : Circinus_8
- Track 23 : Chaewon_11

Summary of Final Annotations (See graph section above for start numbers):

The start number called the most often in the published annotations is 1, it was called in 29 of the 52 non-draft genes in the pham.

Genes that call this "Most Annotated" start:

- Annadreamy_4, Annadreamy_5, Belfort_4, Beuffert_4, BillNye_7, Blueeyedbeauty_4, Blueeyedbeauty_5, Chaewon_11, Circinus_8, Comrade_4, DeluluLabubu_4, Emma1919_4, Faust_3, Forrest_4, Francob_3, Gilson_4, Jada_4, Karp_4, Kenrey_4, Limpid_4, Limpid_5, Maupel_4, MeganTheeKilla_4, Moab_3, Patelgo_4, Phredrick_4, SeresaTree_4, Sham_4, SparkleGoddess_4, Stigma_4, TunaTartare_4, Westy_4,

Genes that have the "Most Annotated" start but do not call it:

- Belfort_5, Comrade_5, DeluluLabubu_5, Emma1919_5, Forrest_5, Francob_4, Gilson_5, Jada_5, Karp_5, Kenrey_5, Maupel_5, MeganTheeKilla_5, Phredrick_5, SparkleGoddess_5, Stigma_5, Westy_5,

Genes that do not have the "Most Annotated" start:

- Beuffert_5, Faust_4, Moab_4, Muntaha_7, Patelgo_5, SeresaTree_5, Sham_5, TunaTartare_5, Wakanda_6,

Summary by start number:

Start 1:

- Found in 48 of 57 (84.2%) of genes in pham
- Manual Annotations of this start: 29 of 52
- Called 66.7% of time when present
- Phage (with cluster) where this start called: Annadreamy_4 (BK1), Annadreamy_5 (BK1), Belfort_4 (BK1), Beuffert_4 (BK1), BillNye_7 (BK2), Blueeyedbeauty_4 (BK1), Blueeyedbeauty_5 (BK1), Chaewon_11 (BK2), Circinus_8 (BK2), Comrade_4 (BK1), DeluluLabubu_4 (BK1), Emma1919_4 (BK1), Faust_3 (BK1), Forrest_4 (BK1), Francob_3 (BK1), Gilson_4 (BK1), Jada_4 (BK1), Karp_4 (BK1), Kenrey_4 (BK1), Limpid_4 (BK1), Limpid_5 (BK1), Maupel_4 (BK1), MeganTheeKilla_4 (BK1), Moab_3 (BK1), Patelgo_4 (BK1), Phredrick_4 (BK1), SeresaTree_4 (BK1), Sham_4 (BK1), SparkleGoddess_4 (BK1), Stigma_4 (BK1), TunaTartare_4 (BK1), Westy_4 (BK1),

Start 2:

- Found in 9 of 57 (15.8%) of genes in pham
- Manual Annotations of this start: 8 of 52
- Called 100.0% of time when present
- Phage (with cluster) where this start called: Beuffert_5 (BK1), Faust_4 (BK1), Moab_4 (BK1), Muntaha_7 (BK2), Patelgo_5 (BK1), SeresaTree_5 (BK1), Sham_5 (BK1), TunaTartare_5 (BK1), Wakanda_6 (BK2),

Start 3:

- Found in 16 of 57 (28.1%) of genes in pham
- Manual Annotations of this start: 15 of 52
- Called 100.0% of time when present
- Phage (with cluster) where this start called: Belfort_5 (BK1), Comrade_5 (BK1), DeluluLabubu_5 (BK1), Emma1919_5 (BK1), Forrest_5 (BK1), Francob_4 (BK1), Gilson_5 (BK1), Jada_5 (BK1), Karp_5 (BK1), Kenrey_5 (BK1), Maupel_5 (BK1), MeganTheeKilla_5 (BK1), Phredrick_5 (BK1), SparkleGoddess_5 (BK1), Stigma_5 (BK1), Westy_5 (BK1),

Summary by clusters:

There are 2 clusters represented in this pham: BK1, BK2,

Info for manual annotations of cluster BK1:

- Start number 1 was manually annotated 27 times for cluster BK1.
- Start number 2 was manually annotated 6 times for cluster BK1.
- Start number 3 was manually annotated 15 times for cluster BK1.

Info for manual annotations of cluster BK2:

- Start number 1 was manually annotated 2 times for cluster BK2.
- Start number 2 was manually annotated 2 times for cluster BK2.

Gene Information:

Gene: Annadreamy_5 Start: 1489, Stop: 1325, Start Num: 1

Candidate Starts for Annadreamy_5:

(Start: 1 @1489 has 29 MA's), (6, 1465),

Gene: Annadreamy_4 Start: 1315, Stop: 1127, Start Num: 1

Candidate Starts for Annadreamy_4:

(Start: 1 @1315 has 29 MA's), (20, 1168),

Gene: Belfort_5 Start: 1434, Stop: 1276, Start Num: 3

Candidate Starts for Belfort_5:

(Start: 1 @1440 has 29 MA's), (Start: 3 @1434 has 15 MA's), (15, 1329),

Gene: Belfort_4 Start: 1266, Stop: 1075, Start Num: 1

Candidate Starts for Belfort_4:

(Start: 1 @1266 has 29 MA's), (21, 1113),

Gene: Beuffert_5 Start: 1561, Stop: 1400, Start Num: 2

Candidate Starts for Beuffert_5:

(Start: 2 @1561 has 8 MA's), (15, 1453),

Gene: Beuffert_4 Start: 1390, Stop: 1199, Start Num: 1

Candidate Starts for Beuffert_4:

(Start: 1 @1390 has 29 MA's), (5, 1372), (11, 1339),

Gene: BillNye_7 Start: 3104, Stop: 2904, Start Num: 1

Candidate Starts for BillNye_7:

(Start: 1 @3104 has 29 MA's), (16, 2978),

Gene: Blueeyedbeauty_5 Start: 1489, Stop: 1325, Start Num: 1

Candidate Starts for Blueeyedbeauty_5:

(Start: 1 @1489 has 29 MA's), (6, 1465), (13, 1384),

Gene: Blueeyedbeauty_4 Start: 1315, Stop: 1127, Start Num: 1

Candidate Starts for Blueeyedbeauty_4:

(Start: 1 @1315 has 29 MA's),

Gene: Chaewon_11 Start: 2874, Stop: 2674, Start Num: 1

Candidate Starts for Chaewon_11:

(Start: 1 @2874 has 29 MA's), (16, 2748), (18, 2736),

Gene: Circinus_8 Start: 2985, Stop: 2785, Start Num: 1
Candidate Starts for Circinus_8:
(Start: 1 @2985 has 29 MA's), (6, 2964), (16, 2859),

Gene: Comrade_5 Start: 1435, Stop: 1277, Start Num: 3
Candidate Starts for Comrade_5:
(Start: 1 @1441 has 29 MA's), (Start: 3 @1435 has 15 MA's), (15, 1330),

Gene: Comrade_4 Start: 1267, Stop: 1076, Start Num: 1
Candidate Starts for Comrade_4:
(Start: 1 @1267 has 29 MA's),

Gene: DeluluLabubu_5 Start: 1442, Stop: 1284, Start Num: 3
Candidate Starts for DeluluLabubu_5:
(Start: 1 @1448 has 29 MA's), (Start: 3 @1442 has 15 MA's), (7, 1421), (15, 1337),

Gene: DeluluLabubu_4 Start: 1274, Stop: 1086, Start Num: 1
Candidate Starts for DeluluLabubu_4:
(Start: 1 @1274 has 29 MA's), (11, 1223), (14, 1169), (15, 1166),

Gene: Emma1919_4 Start: 1277, Stop: 1089, Start Num: 1
Candidate Starts for Emma1919_4:
(Start: 1 @1277 has 29 MA's), (11, 1226), (14, 1172),

Gene: Emma1919_5 Start: 1445, Stop: 1287, Start Num: 3
Candidate Starts for Emma1919_5:
(Start: 1 @1451 has 29 MA's), (Start: 3 @1445 has 15 MA's), (7, 1424), (15, 1340),

Gene: Faust_3 Start: 1407, Stop: 1213, Start Num: 1
Candidate Starts for Faust_3:
(Start: 1 @1407 has 29 MA's), (10, 1359), (14, 1299),

Gene: Faust_4 Start: 1584, Stop: 1417, Start Num: 2
Candidate Starts for Faust_4:
(Start: 2 @1584 has 8 MA's), (10, 1536),

Gene: Forrest_4 Start: 1274, Stop: 1086, Start Num: 1
Candidate Starts for Forrest_4:
(Start: 1 @1274 has 29 MA's), (11, 1223), (14, 1169), (15, 1166),

Gene: Forrest_5 Start: 1442, Stop: 1284, Start Num: 3
Candidate Starts for Forrest_5:
(Start: 1 @1448 has 29 MA's), (Start: 3 @1442 has 15 MA's), (7, 1421), (15, 1337),

Gene: Francob_3 Start: 1276, Stop: 1088, Start Num: 1
Candidate Starts for Francob_3:
(Start: 1 @1276 has 29 MA's), (8, 1246), (14, 1168),

Gene: Francob_4 Start: 1444, Stop: 1286, Start Num: 3
Candidate Starts for Francob_4:
(Start: 1 @1450 has 29 MA's), (Start: 3 @1444 has 15 MA's), (7, 1423), (13, 1345), (15, 1339),

Gene: Gilson_4 Start: 1274, Stop: 1086, Start Num: 1

Candidate Starts for Gilson_4:

(Start: 1 @1274 has 29 MA's), (11, 1223), (14, 1169), (15, 1166),

Gene: Gilson_5 Start: 1442, Stop: 1284, Start Num: 3

Candidate Starts for Gilson_5:

(Start: 1 @1448 has 29 MA's), (Start: 3 @1442 has 15 MA's), (7, 1421), (15, 1337),

Gene: Jada_5 Start: 1442, Stop: 1284, Start Num: 3

Candidate Starts for Jada_5:

(Start: 1 @1448 has 29 MA's), (Start: 3 @1442 has 15 MA's), (7, 1421), (15, 1337),

Gene: Jada_4 Start: 1274, Stop: 1086, Start Num: 1

Candidate Starts for Jada_4:

(Start: 1 @1274 has 29 MA's), (11, 1223), (14, 1169), (15, 1166),

Gene: Karp_4 Start: 1267, Stop: 1076, Start Num: 1

Candidate Starts for Karp_4:

(Start: 1 @1267 has 29 MA's),

Gene: Karp_5 Start: 1435, Stop: 1277, Start Num: 3

Candidate Starts for Karp_5:

(Start: 1 @1441 has 29 MA's), (Start: 3 @1435 has 15 MA's), (15, 1330),

Gene: Kenrey_4 Start: 1263, Stop: 1075, Start Num: 1

Candidate Starts for Kenrey_4:

(Start: 1 @1263 has 29 MA's), (11, 1212), (14, 1158), (15, 1155),

Gene: Kenrey_5 Start: 1431, Stop: 1273, Start Num: 3

Candidate Starts for Kenrey_5:

(Start: 1 @1437 has 29 MA's), (Start: 3 @1431 has 15 MA's), (7, 1410), (15, 1326),

Gene: Limpid_5 Start: 1488, Stop: 1324, Start Num: 1

Candidate Starts for Limpid_5:

(Start: 1 @1488 has 29 MA's), (6, 1464),

Gene: Limpid_4 Start: 1314, Stop: 1126, Start Num: 1

Candidate Starts for Limpid_4:

(Start: 1 @1314 has 29 MA's), (20, 1167),

Gene: Maupel_4 Start: 1274, Stop: 1086, Start Num: 1

Candidate Starts for Maupel_4:

(Start: 1 @1274 has 29 MA's), (11, 1223), (14, 1169), (15, 1166),

Gene: Maupel_5 Start: 1442, Stop: 1284, Start Num: 3

Candidate Starts for Maupel_5:

(Start: 1 @1448 has 29 MA's), (Start: 3 @1442 has 15 MA's), (7, 1421), (15, 1337),

Gene: MeganTheeKilla_4 Start: 1274, Stop: 1086, Start Num: 1

Candidate Starts for MeganTheeKilla_4:

(Start: 1 @1274 has 29 MA's), (11, 1223), (14, 1169), (15, 1166),

Gene: MeganTheeKilla_5 Start: 1442, Stop: 1284, Start Num: 3

Candidate Starts for MeganTheeKilla_5:

(Start: 1 @1448 has 29 MA's), (Start: 3 @1442 has 15 MA's), (7, 1421), (15, 1337),

Gene: Moab_4 Start: 1395, Stop: 1234, Start Num: 2

Candidate Starts for Moab_4:

(Start: 2 @1395 has 8 MA's), (13, 1293),

Gene: Moab_3 Start: 1225, Stop: 1037, Start Num: 1

Candidate Starts for Moab_3:

(Start: 1 @1225 has 29 MA's), (8, 1195), (12, 1123),

Gene: Muntaha_7 Start: 2648, Stop: 2454, Start Num: 2

Candidate Starts for Muntaha_7:

(Start: 2 @2648 has 8 MA's), (4, 2636), (9, 2615), (12, 2546), (17, 2522), (19, 2501),

Gene: Patelgo_5 Start: 1395, Stop: 1234, Start Num: 2

Candidate Starts for Patelgo_5:

(Start: 2 @1395 has 8 MA's), (13, 1293),

Gene: Patelgo_4 Start: 1225, Stop: 1037, Start Num: 1

Candidate Starts for Patelgo_4:

(Start: 1 @1225 has 29 MA's), (8, 1195), (12, 1123),

Gene: Phredrick_5 Start: 1442, Stop: 1284, Start Num: 3

Candidate Starts for Phredrick_5:

(Start: 1 @1448 has 29 MA's), (Start: 3 @1442 has 15 MA's), (7, 1421), (15, 1337),

Gene: Phredrick_4 Start: 1274, Stop: 1086, Start Num: 1

Candidate Starts for Phredrick_4:

(Start: 1 @1274 has 29 MA's), (11, 1223), (14, 1169), (15, 1166),

Gene: SeresaTree_5 Start: 1584, Stop: 1417, Start Num: 2

Candidate Starts for SeresaTree_5:

(Start: 2 @1584 has 8 MA's), (10, 1536),

Gene: SeresaTree_4 Start: 1407, Stop: 1213, Start Num: 1

Candidate Starts for SeresaTree_4:

(Start: 1 @1407 has 29 MA's), (10, 1359), (14, 1299),

Gene: Sham_5 Start: 1577, Stop: 1416, Start Num: 2

Candidate Starts for Sham_5:

(Start: 2 @1577 has 8 MA's),

Gene: Sham_4 Start: 1406, Stop: 1215, Start Num: 1

Candidate Starts for Sham_4:

(Start: 1 @1406 has 29 MA's),

Gene: SparkleGoddess_5 Start: 1431, Stop: 1273, Start Num: 3

Candidate Starts for SparkleGoddess_5:

(Start: 1 @1437 has 29 MA's), (Start: 3 @1431 has 15 MA's), (15, 1326),

Gene: SparkleGoddess_4 Start: 1263, Stop: 1072, Start Num: 1

Candidate Starts for SparkleGoddess_4:

(Start: 1 @1263 has 29 MA's),

Gene: Stigma_4 Start: 1267, Stop: 1076, Start Num: 1
Candidate Starts for Stigma_4:
(Start: 1 @1267 has 29 MA's),

Gene: Stigma_5 Start: 1435, Stop: 1277, Start Num: 3
Candidate Starts for Stigma_5:
(Start: 1 @1441 has 29 MA's), (Start: 3 @1435 has 15 MA's), (15, 1330),

Gene: TunaTartare_4 Start: 1388, Stop: 1197, Start Num: 1
Candidate Starts for TunaTartare_4:
(Start: 1 @1388 has 29 MA's),

Gene: TunaTartare_5 Start: 1565, Stop: 1398, Start Num: 2
Candidate Starts for TunaTartare_5:
(Start: 2 @1565 has 8 MA's), (22, 1406),

Gene: Wakanda_6 Start: 2547, Stop: 2353, Start Num: 2
Candidate Starts for Wakanda_6:
(Start: 2 @2547 has 8 MA's), (4, 2535), (9, 2514), (12, 2445), (17, 2421), (19, 2400),

Gene: Westy_5 Start: 1435, Stop: 1277, Start Num: 3
Candidate Starts for Westy_5:
(Start: 1 @1441 has 29 MA's), (Start: 3 @1435 has 15 MA's), (15, 1330),

Gene: Westy_4 Start: 1267, Stop: 1076, Start Num: 1
Candidate Starts for Westy_4:
(Start: 1 @1267 has 29 MA's),