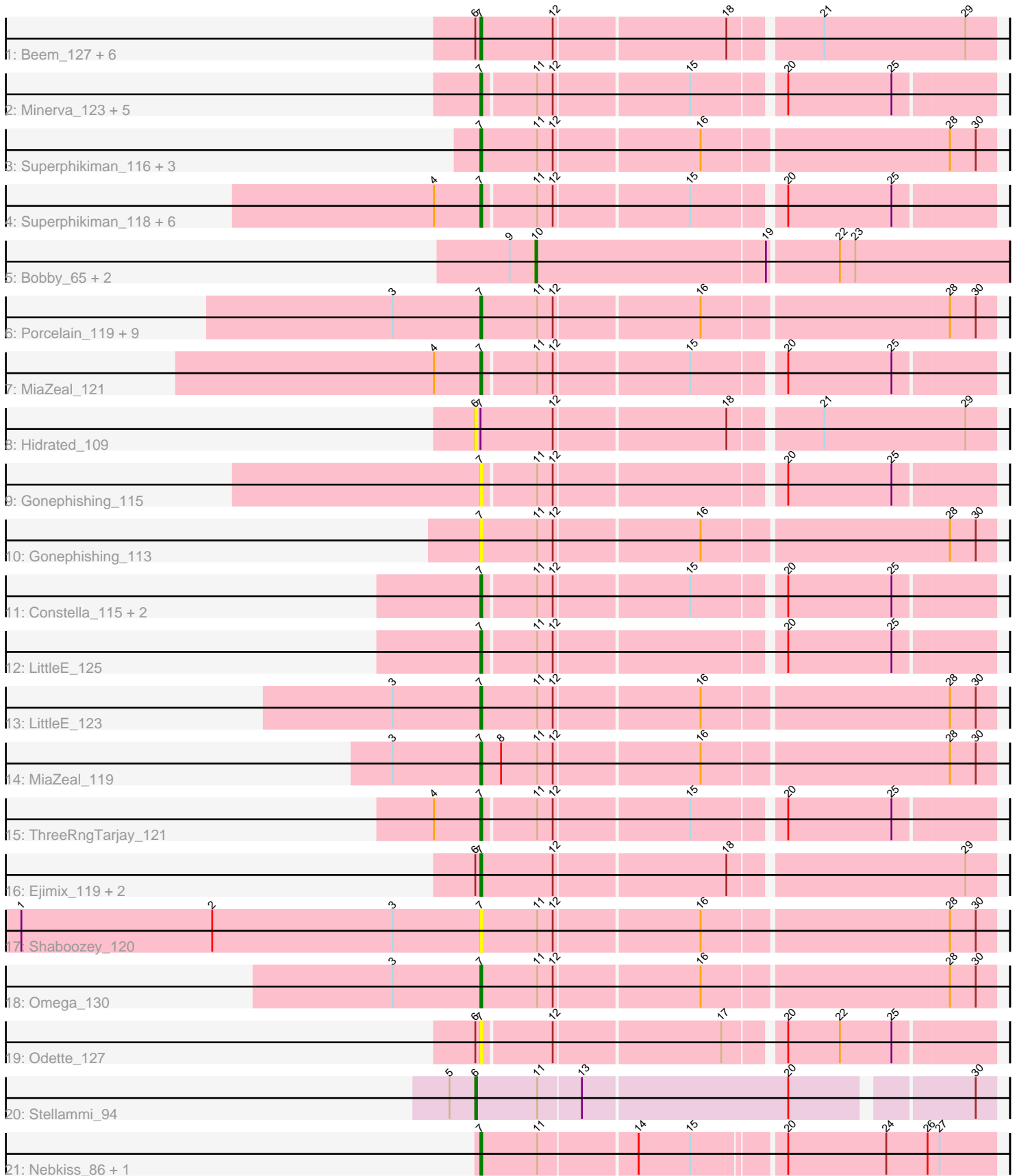


Pham 311641



Note: Tracks are now grouped by subcluster and scaled. Switching in subcluster is indicated by changes in track color. Track scale is now set by default to display the region 30 bp upstream of start 1 to 30 bp downstream of the last possible start. If this default region is judged to be packed too tightly with annotated starts, the track will be further scaled to only show that region of the ORF with annotated starts. This action will be indicated by adding "Zoomed" to the title. For starts, yellow indicates the location of called starts comprised solely of Glimmer/GeneMark auto-annotations, green indicates the location of called starts with at least 1 manual gene annotation.

Pham 311641 Report

This analysis was run 06/27/26 on database version 652.

Pham number 311641 has 57 members, 15 are drafts.

Phages represented in each track:

- Track 1 : Beem_127, JuicyJay_122, Bobby_117, Dove_111, Marleymoo_109, Phoebus_126, HokkenD_115
- Track 2 : Minerva_123, EricMillard_117, Optimus_116, Hughesyang_125, BAKA_125, Zelink_120
- Track 3 : Superphikiman_116, Squint_117, Courthouse_114, Ariel_119
- Track 4 : Superphikiman_118, Courthouse_116, Rearden_119, BronnyJames_118, Ariel_121, Squint_119, Shaboozey_122
- Track 5 : Bobby_65, Marleymoo_62, Hidrated_63
- Track 6 : Porcelain_119, Lucky2013_116, Nibley_116, Hannaconda_110, Nekros_122, BronnyJames_116, Bombitas_111, KashFlow_116, Yeet_115, Rearden_117
- Track 7 : MiaZeal_121
- Track 8 : Hidrated_109
- Track 9 : Gonephishing_115
- Track 10 : Gonephishing_113
- Track 11 : Constella_115, NihilNomen_127, Wanda_124
- Track 12 : LittleE_125
- Track 13 : LittleE_123
- Track 14 : MiaZeal_119
- Track 15 : ThreeRngTarjay_121
- Track 16 : Ejimix_119, Dallas_126, Halley_127
- Track 17 : Shaboozey_120
- Track 18 : Omega_130
- Track 19 : Odette_127
- Track 20 : Stellammi_94
- Track 21 : Nebkiss_86, Gaia_87

Summary of Final Annotations (See graph section above for start numbers):

The start number called the most often in the published annotations is 7, it was called in 40 of the 42 non-draft genes in the pham.

Genes that call this "Most Annotated" start:

- Ariel_119, Ariel_121, BAKA_125, Beem_127, Bobby_117, Bombitas_111, BronnyJames_116, BronnyJames_118, Constella_115, Courthouse_114, Courthouse_116, Dallas_126, Dove_111, Ejimix_119, EricMillard_117, Gaia_87, Gonephishing_113, Gonephishing_115, Halley_127, Hannaconda_110, HokkenD_115, Hughesyang_125, JuicyJay_122, KashFlow_116, LittleE_123, LittleE_125, Lucky2013_116, Marleymoo_109, MiaZeal_119, MiaZeal_121, Minerva_123, Nebkiss_86, Nekros_122, Nibley_116, NihilNomen_127, Odette_127, Omega_130, Optimus_116, Phoebus_126, Porcelain_119, Rearden_117, Rearden_119, Shaboozey_120, Shaboozey_122, Squint_117, Squint_119, Superphikiman_116, Superphikiman_118, ThreeRngTarjay_121, Wanda_124, Yeet_115, Zelink_120,

Genes that have the "Most Annotated" start but do not call it:

- Hidrated_109,

Genes that do not have the "Most Annotated" start:

- Bobby_65, Hidrated_63, Marleymoo_62, Stellammi_94,

Summary by start number:

Start 6:

- Found in 13 of 57 (22.8%) of genes in pham
- Manual Annotations of this start: 1 of 42
- Called 15.4% of time when present
- Phage (with cluster) where this start called: Hidrated_109 (J), Stellammi_94 (UNK),

Start 7:

- Found in 53 of 57 (93.0%) of genes in pham
- Manual Annotations of this start: 40 of 42
- Called 98.1% of time when present
- Phage (with cluster) where this start called: Ariel_119 (J), Ariel_121 (J), BAKA_125 (J), Beem_127 (J), Bobby_117 (J), Bombitas_111 (J), BronnyJames_116 (J), BronnyJames_118 (J), Constella_115 (J), Courthouse_114 (J), Courthouse_116 (J), Dallas_126 (J), Dove_111 (J), Ejimix_119 (J), EricMillard_117 (J), Gaia_87 (X), Gonephishing_113 (J), Gonephishing_115 (J), Halley_127 (J), Hannaconda_110 (J), HokkenD_115 (J), Hughesyang_125 (J), JuicyJay_122 (J), KashFlow_116 (J), LittleE_123 (J), LittleE_125 (J), Lucky2013_116 (J), Marleymoo_109 (J), MiaZeal_119 (J), MiaZeal_121 (J), Minerva_123 (J), Nebkiss_86 (X), Nekros_122 (J), Nibley_116 (J), NihilNomen_127 (J), Odette_127 (J), Omega_130 (J), Optimus_116 (J), Phoebus_126 (J), Porcelain_119 (J), Rearden_117 (J), Rearden_119 (J), Shaboozey_120 (J), Shaboozey_122 (J), Squint_117 (J), Squint_119 (J), Superphikiman_116 (J), Superphikiman_118 (J), ThreeRngTarjay_121 (J), Wanda_124 (J), Yeet_115 (J), Zelink_120 (J),

Start 10:

- Found in 3 of 57 (5.3%) of genes in pham
- Manual Annotations of this start: 1 of 42
- Called 100.0% of time when present
- Phage (with cluster) where this start called: Bobby_65 (J), Hidrated_63 (J), Marleymoo_62 (J),

Summary by clusters:

There are 3 clusters represented in this pham: X, UNK, J,

Info for manual annotations of cluster J:

- Start number 7 was manually annotated 38 times for cluster J.
- Start number 10 was manually annotated 1 time for cluster J.

Info for manual annotations of cluster UNK:

- Start number 6 was manually annotated 1 time for cluster UNK.

Info for manual annotations of cluster X:

- Start number 7 was manually annotated 2 times for cluster X.

Gene Information:

Gene: Ariel_121 Start: 65103, Stop: 65381, Start Num: 7

Candidate Starts for Ariel_121:

(4, 65076), (Start: 7 @65103 has 40 MA's), (11, 65133), (12, 65142), (15, 65217), (20, 65265), (25, 65325),

Gene: Ariel_119 Start: 64508, Stop: 64795, Start Num: 7

Candidate Starts for Ariel_119:

(Start: 7 @64508 has 40 MA's), (11, 64541), (12, 64550), (16, 64631), (28, 64769), (30, 64784),

Gene: BAKA_125 Start: 68647, Stop: 68925, Start Num: 7

Candidate Starts for BAKA_125:

(Start: 7 @68647 has 40 MA's), (11, 68677), (12, 68686), (15, 68761), (20, 68809), (25, 68869),

Gene: Beem_127 Start: 70223, Stop: 70507, Start Num: 7

Candidate Starts for Beem_127:

(Start: 6 @70220 has 1 MA's), (Start: 7 @70223 has 40 MA's), (12, 70265), (18, 70361), (21, 70409), (29, 70490),

Gene: Bobby_65 Start: 48055, Stop: 47786, Start Num: 10

Candidate Starts for Bobby_65:

(9, 48070), (Start: 10 @48055 has 1 MA's), (19, 47923), (22, 47884), (23, 47875),

Gene: Bobby_117 Start: 69823, Stop: 70107, Start Num: 7

Candidate Starts for Bobby_117:

(Start: 6 @69820 has 1 MA's), (Start: 7 @69823 has 40 MA's), (12, 69865), (18, 69961), (21, 70009), (29, 70090),

Gene: Bombitas_111 Start: 66635, Stop: 66922, Start Num: 7

Candidate Starts for Bombitas_111:

(3, 66584), (Start: 7 @66635 has 40 MA's), (11, 66668), (12, 66677), (16, 66758), (28, 66896), (30, 66911),

Gene: BronnyJames_118 Start: 66083, Stop: 66361, Start Num: 7

Candidate Starts for BronnyJames_118:

(4, 66056), (Start: 7 @66083 has 40 MA's), (11, 66113), (12, 66122), (15, 66197), (20, 66245), (25, 66305),

Gene: BronnyJames_116 Start: 65488, Stop: 65775, Start Num: 7
Candidate Starts for BronnyJames_116:
(3, 65437), (Start: 7 @65488 has 40 MA's), (11, 65521), (12, 65530), (16, 65611), (28, 65749), (30, 65764),

Gene: Constella_115 Start: 65734, Stop: 66012, Start Num: 7
Candidate Starts for Constella_115:
(Start: 7 @65734 has 40 MA's), (11, 65764), (12, 65773), (15, 65848), (20, 65896), (25, 65956),

Gene: Courthouse_116 Start: 64703, Stop: 64981, Start Num: 7
Candidate Starts for Courthouse_116:
(4, 64676), (Start: 7 @64703 has 40 MA's), (11, 64733), (12, 64742), (15, 64817), (20, 64865), (25, 64925),

Gene: Courthouse_114 Start: 64108, Stop: 64395, Start Num: 7
Candidate Starts for Courthouse_114:
(Start: 7 @64108 has 40 MA's), (11, 64141), (12, 64150), (16, 64231), (28, 64369), (30, 64384),

Gene: Dallas_126 Start: 69738, Stop: 70022, Start Num: 7
Candidate Starts for Dallas_126:
(Start: 6 @69735 has 1 MA's), (Start: 7 @69738 has 40 MA's), (12, 69780), (18, 69876), (29, 70005),

Gene: Dove_111 Start: 64651, Stop: 64935, Start Num: 7
Candidate Starts for Dove_111:
(Start: 6 @64648 has 1 MA's), (Start: 7 @64651 has 40 MA's), (12, 64693), (18, 64789), (21, 64837), (29, 64918),

Gene: Ejimix_119 Start: 69806, Stop: 70090, Start Num: 7
Candidate Starts for Ejimix_119:
(Start: 6 @69803 has 1 MA's), (Start: 7 @69806 has 40 MA's), (12, 69848), (18, 69944), (29, 70073),

Gene: EricMillard_117 Start: 68284, Stop: 68562, Start Num: 7
Candidate Starts for EricMillard_117:
(Start: 7 @68284 has 40 MA's), (11, 68314), (12, 68323), (15, 68398), (20, 68446), (25, 68506),

Gene: Gaia_87 Start: 50934, Stop: 51218, Start Num: 7
Candidate Starts for Gaia_87:
(Start: 7 @50934 has 40 MA's), (11, 50967), (14, 51021), (15, 51051), (20, 51099), (24, 51156), (26, 51180), (27, 51186),

Gene: Gonephishing_115 Start: 64109, Stop: 64387, Start Num: 7
Candidate Starts for Gonephishing_115:
(Start: 7 @64109 has 40 MA's), (11, 64139), (12, 64148), (20, 64271), (25, 64331),

Gene: Gonephishing_113 Start: 63514, Stop: 63801, Start Num: 7
Candidate Starts for Gonephishing_113:
(Start: 7 @63514 has 40 MA's), (11, 63547), (12, 63556), (16, 63637), (28, 63775), (30, 63790),

Gene: Halley_127 Start: 70122, Stop: 70406, Start Num: 7
Candidate Starts for Halley_127:
(Start: 6 @70119 has 1 MA's), (Start: 7 @70122 has 40 MA's), (12, 70164), (18, 70260), (29, 70389),

Gene: Hannaconda_110 Start: 63044, Stop: 63331, Start Num: 7

Candidate Starts for Hannaconda_110:

(3, 62993), (Start: 7 @63044 has 40 MA's), (11, 63077), (12, 63086), (16, 63167), (28, 63305), (30, 63320),

Gene: Hidrated_109 Start: 66388, Stop: 66675, Start Num: 6

Candidate Starts for Hidrated_109:

(Start: 6 @66388 has 1 MA's), (Start: 7 @66391 has 40 MA's), (12, 66433), (18, 66529), (21, 66577), (29, 66658),

Gene: Hidrated_63 Start: 48379, Stop: 48110, Start Num: 10

Candidate Starts for Hidrated_63:

(9, 48394), (Start: 10 @48379 has 1 MA's), (19, 48247), (22, 48208), (23, 48199),

Gene: HokkenD_115 Start: 68452, Stop: 68736, Start Num: 7

Candidate Starts for HokkenD_115:

(Start: 6 @68449 has 1 MA's), (Start: 7 @68452 has 40 MA's), (12, 68494), (18, 68590), (21, 68638), (29, 68719),

Gene: Hughesyang_125 Start: 69821, Stop: 70099, Start Num: 7

Candidate Starts for Hughesyang_125:

(Start: 7 @69821 has 40 MA's), (11, 69851), (12, 69860), (15, 69935), (20, 69983), (25, 70043),

Gene: JuicyJay_122 Start: 71359, Stop: 71643, Start Num: 7

Candidate Starts for JuicyJay_122:

(Start: 6 @71356 has 1 MA's), (Start: 7 @71359 has 40 MA's), (12, 71401), (18, 71497), (21, 71545), (29, 71626),

Gene: KashFlow_116 Start: 65549, Stop: 65836, Start Num: 7

Candidate Starts for KashFlow_116:

(3, 65498), (Start: 7 @65549 has 40 MA's), (11, 65582), (12, 65591), (16, 65672), (28, 65810), (30, 65825),

Gene: LittleE_125 Start: 68308, Stop: 68586, Start Num: 7

Candidate Starts for LittleE_125:

(Start: 7 @68308 has 40 MA's), (11, 68338), (12, 68347), (20, 68470), (25, 68530),

Gene: LittleE_123 Start: 67713, Stop: 68000, Start Num: 7

Candidate Starts for LittleE_123:

(3, 67662), (Start: 7 @67713 has 40 MA's), (11, 67746), (12, 67755), (16, 67836), (28, 67974), (30, 67989),

Gene: Lucky2013_116 Start: 64428, Stop: 64715, Start Num: 7

Candidate Starts for Lucky2013_116:

(3, 64377), (Start: 7 @64428 has 40 MA's), (11, 64461), (12, 64470), (16, 64551), (28, 64689), (30, 64704),

Gene: Marleymoo_62 Start: 47177, Stop: 46908, Start Num: 10

Candidate Starts for Marleymoo_62:

(9, 47192), (Start: 10 @47177 has 1 MA's), (19, 47045), (22, 47006), (23, 46997),

Gene: Marleymoo_109 Start: 65569, Stop: 65853, Start Num: 7

Candidate Starts for Marleymoo_109:

(Start: 6 @65566 has 1 MA's), (Start: 7 @65569 has 40 MA's), (12, 65611), (18, 65707), (21, 65755), (29, 65836),

Gene: MiaZeal_121 Start: 65781, Stop: 66059, Start Num: 7

Candidate Starts for MiaZeal_121:

(4, 65754), (Start: 7 @65781 has 40 MA's), (11, 65811), (12, 65820), (15, 65895), (20, 65943), (25, 66003),

Gene: MiaZeal_119 Start: 65186, Stop: 65473, Start Num: 7

Candidate Starts for MiaZeal_119:

(3, 65135), (Start: 7 @65186 has 40 MA's), (8, 65198), (11, 65219), (12, 65228), (16, 65309), (28, 65447), (30, 65462),

Gene: Minerva_123 Start: 68422, Stop: 68700, Start Num: 7

Candidate Starts for Minerva_123:

(Start: 7 @68422 has 40 MA's), (11, 68452), (12, 68461), (15, 68536), (20, 68584), (25, 68644),

Gene: Nebkiss_86 Start: 49546, Stop: 49830, Start Num: 7

Candidate Starts for Nebkiss_86:

(Start: 7 @49546 has 40 MA's), (11, 49579), (14, 49633), (15, 49663), (20, 49711), (24, 49768), (26, 49792), (27, 49798),

Gene: Nekros_122 Start: 68269, Stop: 68556, Start Num: 7

Candidate Starts for Nekros_122:

(3, 68218), (Start: 7 @68269 has 40 MA's), (11, 68302), (12, 68311), (16, 68392), (28, 68530), (30, 68545),

Gene: Nibley_116 Start: 65065, Stop: 65352, Start Num: 7

Candidate Starts for Nibley_116:

(3, 65014), (Start: 7 @65065 has 40 MA's), (11, 65098), (12, 65107), (16, 65188), (28, 65326), (30, 65341),

Gene: NihilNomen_127 Start: 69311, Stop: 69589, Start Num: 7

Candidate Starts for NihilNomen_127:

(Start: 7 @69311 has 40 MA's), (11, 69341), (12, 69350), (15, 69425), (20, 69473), (25, 69533),

Gene: Odette_127 Start: 69995, Stop: 70273, Start Num: 7

Candidate Starts for Odette_127:

(Start: 6 @69992 has 1 MA's), (Start: 7 @69995 has 40 MA's), (12, 70034), (17, 70127), (20, 70157), (22, 70187), (25, 70217),

Gene: Omega_130 Start: 69533, Stop: 69820, Start Num: 7

Candidate Starts for Omega_130:

(3, 69482), (Start: 7 @69533 has 40 MA's), (11, 69566), (12, 69575), (16, 69656), (28, 69794), (30, 69809),

Gene: Optimus_116 Start: 66818, Stop: 67096, Start Num: 7

Candidate Starts for Optimus_116:

(Start: 7 @66818 has 40 MA's), (11, 66848), (12, 66857), (15, 66932), (20, 66980), (25, 67040),

Gene: Phoebus_126 Start: 71168, Stop: 71452, Start Num: 7

Candidate Starts for Phoebus_126:

(Start: 6 @71165 has 1 MA's), (Start: 7 @71168 has 40 MA's), (12, 71210), (18, 71306), (21, 71354), (29, 71435),

Gene: Porcelain_119 Start: 65374, Stop: 65661, Start Num: 7

Candidate Starts for Porcelain_119:

(3, 65323), (Start: 7 @65374 has 40 MA's), (11, 65407), (12, 65416), (16, 65497), (28, 65635), (30, 65650),

Gene: Rearden_119 Start: 65680, Stop: 65958, Start Num: 7

Candidate Starts for Rearden_119:

(4, 65653), (Start: 7 @65680 has 40 MA's), (11, 65710), (12, 65719), (15, 65794), (20, 65842), (25, 65902),

Gene: Rearden_117 Start: 65085, Stop: 65372, Start Num: 7

Candidate Starts for Rearden_117:

(3, 65034), (Start: 7 @65085 has 40 MA's), (11, 65118), (12, 65127), (16, 65208), (28, 65346), (30, 65361),

Gene: Shaboozey_120 Start: 65509, Stop: 65796, Start Num: 7

Candidate Starts for Shaboozey_120:

(1, 65242), (2, 65353), (3, 65458), (Start: 7 @65509 has 40 MA's), (11, 65542), (12, 65551), (16, 65632), (28, 65770), (30, 65785),

Gene: Shaboozey_122 Start: 66104, Stop: 66382, Start Num: 7

Candidate Starts for Shaboozey_122:

(4, 66077), (Start: 7 @66104 has 40 MA's), (11, 66134), (12, 66143), (15, 66218), (20, 66266), (25, 66326),

Gene: Squint_117 Start: 65299, Stop: 65586, Start Num: 7

Candidate Starts for Squint_117:

(Start: 7 @65299 has 40 MA's), (11, 65332), (12, 65341), (16, 65422), (28, 65560), (30, 65575),

Gene: Squint_119 Start: 65894, Stop: 66172, Start Num: 7

Candidate Starts for Squint_119:

(4, 65867), (Start: 7 @65894 has 40 MA's), (11, 65924), (12, 65933), (15, 66008), (20, 66056), (25, 66116),

Gene: Stellammi_94 Start: 47676, Stop: 47960, Start Num: 6

Candidate Starts for Stellammi_94:

(5, 47661), (Start: 6 @47676 has 1 MA's), (11, 47712), (13, 47736), (20, 47853), (30, 47949),

Gene: Superphikiman_116 Start: 64390, Stop: 64677, Start Num: 7

Candidate Starts for Superphikiman_116:

(Start: 7 @64390 has 40 MA's), (11, 64423), (12, 64432), (16, 64513), (28, 64651), (30, 64666),

Gene: Superphikiman_118 Start: 64985, Stop: 65263, Start Num: 7

Candidate Starts for Superphikiman_118:

(4, 64958), (Start: 7 @64985 has 40 MA's), (11, 65015), (12, 65024), (15, 65099), (20, 65147), (25, 65207),

Gene: ThreeRngTarjay_121 Start: 69766, Stop: 70044, Start Num: 7

Candidate Starts for ThreeRngTarjay_121:

(4, 69739), (Start: 7 @69766 has 40 MA's), (11, 69796), (12, 69805), (15, 69880), (20, 69928), (25, 69988),

Gene: Wanda_124 Start: 66901, Stop: 67179, Start Num: 7

Candidate Starts for Wanda_124:

(Start: 7 @66901 has 40 MA's), (11, 66931), (12, 66940), (15, 67015), (20, 67063), (25, 67123),

Gene: Yeet_115 Start: 67515, Stop: 67802, Start Num: 7

Candidate Starts for Yeet_115:

(3, 67464), (Start: 7 @67515 has 40 MA's), (11, 67548), (12, 67557), (16, 67638), (28, 67776), (30, 67791),

Gene: Zelink_120 Start: 69713, Stop: 69991, Start Num: 7

Candidate Starts for Zelink_120:

(Start: 7 @69713 has 40 MA's), (11, 69743), (12, 69752), (15, 69827), (20, 69875), (25, 69935),