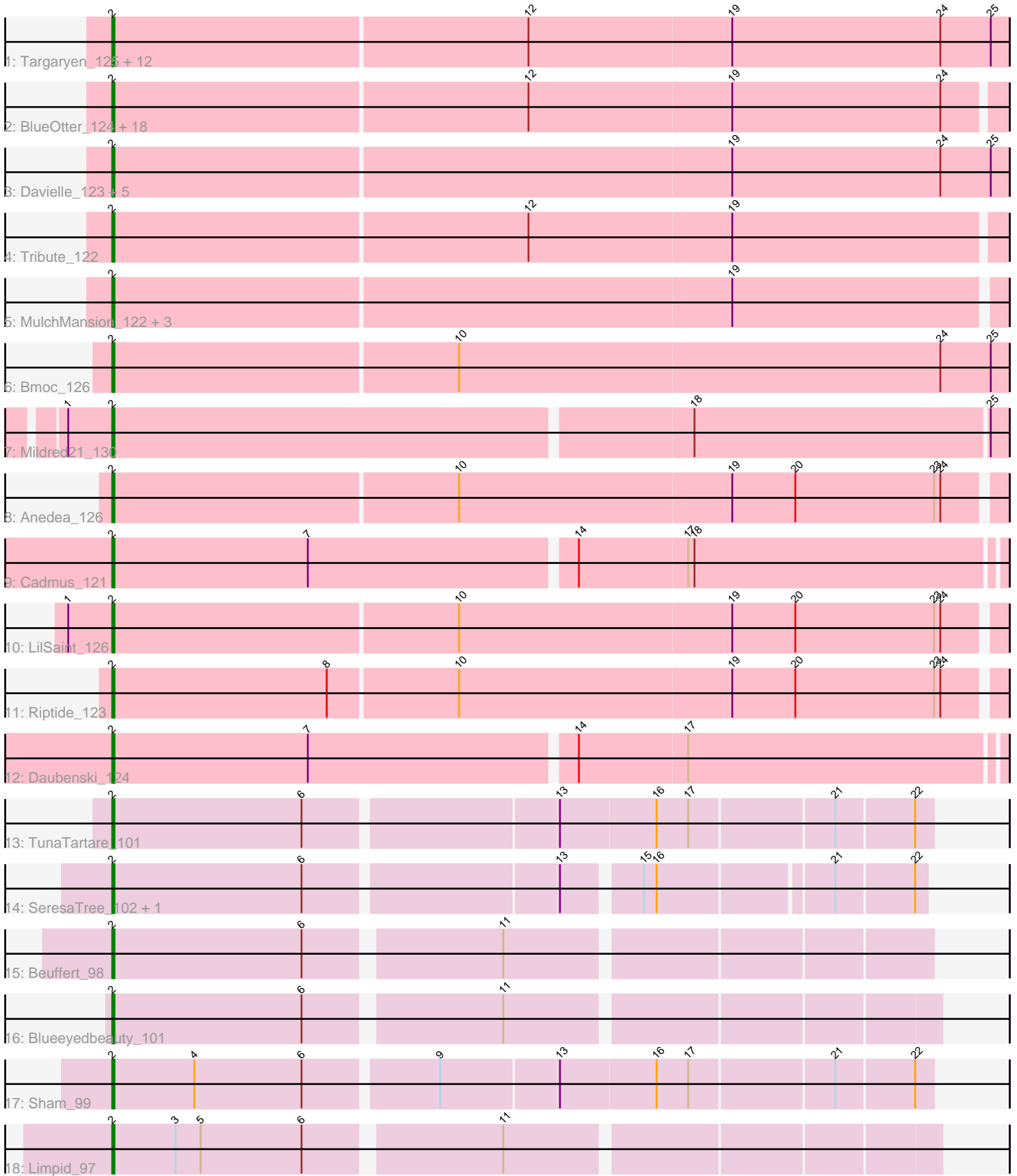


Pham 311643



Note: Tracks are now grouped by subcluster and scaled. Switching in subcluster is indicated by changes in track color. Track scale is now set by default to display the region 30 bp upstream of start 1 to 30 bp downstream of the last possible start. If this default region is judged to be packed too tightly with annotated starts, the track will be further scaled to only show that region of the ORF with annotated starts. This action will be indicated by adding "Zoomed" to the title. For starts, yellow indicates the location of called starts comprised solely of Glimmer/GeneMark auto-annotations, green indicates the location of called starts with at least 1 manual gene annotation.

Pham 311643 Report

This analysis was run 06/27/26 on database version 652.

Pham number 311643 has 57 members, 6 are drafts.

Phages represented in each track:

- Track 1 : Targaryen_125, Paradiddles_119, Evy_122, Liandry_123, Shuckle_122, Jay2Jay_129, FreddyDRoo_123, Squillium_124, NootNoot_120, Eliot67_122, Braelyn_124, Warpy_128, PinkiePie_121
- Track 2 : BlueOtter_124, Leo04_125, PacManQ_123, WashU_128, EGole_127, Peebs_122, Cross_124, ArianaSWT_130, Sushi23_123, Coogler_124, Scheme_125, Teutsch_123, Samisti12_125, Cursive_122, Watermoore_123, Lululemon_123, HangryHippo_124, Larnav_124, Pepperwood_124
- Track 3 : Davielle_123, Bartholomune_123, PynkPanther_130, Persimmon_123, Navo_121, WhereRU_122
- Track 4 : Tribute_122
- Track 5 : MulchMansion_122, Angela_123, Marsus_124, LilMartin_122
- Track 6 : Bmoc_126
- Track 7 : Mildred21_130
- Track 8 : Anedea_126
- Track 9 : Cadmus_121
- Track 10 : LilSaint_126
- Track 11 : Riptide_123
- Track 12 : Daubenski_124
- Track 13 : TunaTartare_101
- Track 14 : SeresaTree_102, Faust_102
- Track 15 : Beuffert_98
- Track 16 : Blueeyedbeauty_101
- Track 17 : Sham_99
- Track 18 : Limpid_97

Summary of Final Annotations (See graph section above for start numbers):

The start number called the most often in the published annotations is 2, it was called in 51 of the 51 non-draft genes in the pham.

Genes that call this "Most Annotated" start:

- Anedea_126, Angela_123, ArianaSWT_130, Bartholomune_123, Beuffert_98, BlueOtter_124, Blueeyedbeauty_101, Bmoc_126, Braelyn_124, Cadmus_121, Coogler_124, Cross_124, Cursive_122, Daubenski_124, Davielle_123, EGole_127,

Eliot67_122, Evy_122, Faust_102, FreddyDRoo_123, HangryHippo_124, Jay2Jay_129, Larnav_124, Leo04_125, Liandry_123, LilMartin_122, LilSaint_126, Limpid_97, Lululemon_123, Marsus_124, Mildred21_130, MulchMansion_122, Navo_121, NootNoot_120, PacManQ_123, Paradiddles_119, Peebs_122, Pepperwood_124, Persimmon_123, PinkiePie_121, PynkPanther_130, Riptide_123, Samisti12_125, Scheme_125, SeresaTree_102, Sham_99, Shuckle_122, Squillium_124, Sushi23_123, Targaryen_125, Teutsch_123, Tribute_122, TunaTartare_101, Warpy_128, WashU_128, Watermoore_123, WhereRU_122,

Genes that have the "Most Annotated" start but do not call it:

-

Genes that do not have the "Most Annotated" start:

-

Summary by start number:

Start 2:

- Found in 57 of 57 (100.0%) of genes in pham
- Manual Annotations of this start: 51 of 51
- Called 100.0% of time when present
- Phage (with cluster) where this start called: Anedea_126 (BE1), Angela_123 (BE1), ArianaSWT_130 (BE1), Bartholomune_123 (BE1), Beuffert_98 (BK1), BlueOtter_124 (BE1), Blueeyedbeauty_101 (BK1), Bmoc_126 (BE1), Braelyn_124 (BE1), Cadmus_121 (BE1), Coogler_124 (BE1), Cross_124 (BE1), Cursive_122 (BE1), Daubenski_124 (BE1), Davielle_123 (BE1), EGole_127 (BE1), Eliot67_122 (BE1), Evy_122 (BE1), Faust_102 (BK1), FreddyDRoo_123 (BE1), HangryHippo_124 (BE1), Jay2Jay_129 (BE1), Larnav_124 (BE1), Leo04_125 (BE1), Liandry_123 (BE1), LilMartin_122 (BE1), LilSaint_126 (BE1), Limpid_97 (BK1), Lululemon_123 (BE1), Marsus_124 (BE1), Mildred21_130 (BE1), MulchMansion_122 (BE1), Navo_121 (BE1), NootNoot_120 (BE1), PacManQ_123 (BE1), Paradiddles_119 (BE1), Peebs_122 (BE1), Pepperwood_124 (BE1), Persimmon_123 (BE1), PinkiePie_121 (BE1), PynkPanther_130 (BE1), Riptide_123 (BE1), Samisti12_125 (BE1), Scheme_125 (BE1), SeresaTree_102 (BK1), Sham_99 (BK1), Shuckle_122 (BE1), Squillium_124 (BE1), Sushi23_123 (BE1), Targaryen_125 (BE1), Teutsch_123 (BE1), Tribute_122 (BE1), TunaTartare_101 (BK1), Warpy_128 (BE1), WashU_128 (BE1), Watermoore_123 (BE1), WhereRU_122 (BE1),

Summary by clusters:

There are 2 clusters represented in this pham: BE1, BK1,

Info for manual annotations of cluster BE1:

- Start number 2 was manually annotated 45 times for cluster BE1.

Info for manual annotations of cluster BK1:

- Start number 2 was manually annotated 6 times for cluster BK1.

Gene Information:

Gene: Anedea_126 Start: 79387, Stop: 79803, Start Num: 2

Candidate Starts for Anedea_126:

(Start: 2 @79387 has 51 MA's), (10, 79549), (19, 79678), (20, 79708), (23, 79774), (24, 79777),

Gene: Angela_123 Start: 79460, Stop: 79876, Start Num: 2

Candidate Starts for Angela_123:

(Start: 2 @79460 has 51 MA's), (19, 79751),

Gene: ArianaSWT_130 Start: 81857, Stop: 82273, Start Num: 2

Candidate Starts for ArianaSWT_130:

(Start: 2 @81857 has 51 MA's), (12, 82052), (19, 82148), (24, 82247),

Gene: Bartholomune_123 Start: 79645, Stop: 80067, Start Num: 2

Candidate Starts for Bartholomune_123:

(Start: 2 @79645 has 51 MA's), (19, 79936), (24, 80035), (25, 80059),

Gene: Beuffert_98 Start: 67977, Stop: 68345, Start Num: 2

Candidate Starts for Beuffert_98:

(Start: 2 @67977 has 51 MA's), (6, 68067), (11, 68154),

Gene: BlueOtter_124 Start: 81894, Stop: 82310, Start Num: 2

Candidate Starts for BlueOtter_124:

(Start: 2 @81894 has 51 MA's), (12, 82089), (19, 82185), (24, 82284),

Gene: Blueeyedbeauty_101 Start: 67379, Stop: 67750, Start Num: 2

Candidate Starts for Blueeyedbeauty_101:

(Start: 2 @67379 has 51 MA's), (6, 67469), (11, 67556),

Gene: Bmoc_126 Start: 79770, Stop: 80192, Start Num: 2

Candidate Starts for Bmoc_126:

(Start: 2 @79770 has 51 MA's), (10, 79932), (24, 80160), (25, 80184),

Gene: Braelyn_124 Start: 80531, Stop: 80953, Start Num: 2

Candidate Starts for Braelyn_124:

(Start: 2 @80531 has 51 MA's), (12, 80726), (19, 80822), (24, 80921), (25, 80945),

Gene: Cadmus_121 Start: 80245, Stop: 80658, Start Num: 2

Candidate Starts for Cadmus_121:

(Start: 2 @80245 has 51 MA's), (7, 80338), (14, 80461), (17, 80512), (18, 80515),

Gene: Coogler_124 Start: 81919, Stop: 82335, Start Num: 2

Candidate Starts for Coogler_124:

(Start: 2 @81919 has 51 MA's), (12, 82114), (19, 82210), (24, 82309),

Gene: Cross_124 Start: 81895, Stop: 82311, Start Num: 2

Candidate Starts for Cross_124:

(Start: 2 @81895 has 51 MA's), (12, 82090), (19, 82186), (24, 82285),

Gene: Cursive_122 Start: 80104, Stop: 80520, Start Num: 2

Candidate Starts for Cursive_122:

(Start: 2 @80104 has 51 MA's), (12, 80299), (19, 80395), (24, 80494),

Gene: Daubenski_124 Start: 81481, Stop: 81894, Start Num: 2

Candidate Starts for Daubenski_124:

(Start: 2 @81481 has 51 MA's), (7, 81574), (14, 81697), (17, 81748),

Gene: Davielle_123 Start: 79988, Stop: 80410, Start Num: 2

Candidate Starts for Davielle_123:

(Start: 2 @79988 has 51 MA's), (19, 80279), (24, 80378), (25, 80402),

Gene: EGole_127 Start: 82928, Stop: 83344, Start Num: 2

Candidate Starts for EGole_127:

(Start: 2 @82928 has 51 MA's), (12, 83123), (19, 83219), (24, 83318),

Gene: Eliot67_122 Start: 79681, Stop: 80103, Start Num: 2

Candidate Starts for Eliot67_122:

(Start: 2 @79681 has 51 MA's), (12, 79876), (19, 79972), (24, 80071), (25, 80095),

Gene: Evy_122 Start: 81803, Stop: 82225, Start Num: 2

Candidate Starts for Evy_122:

(Start: 2 @81803 has 51 MA's), (12, 81998), (19, 82094), (24, 82193), (25, 82217),

Gene: Faust_102 Start: 69072, Stop: 69434, Start Num: 2

Candidate Starts for Faust_102:

(Start: 2 @69072 has 51 MA's), (6, 69162), (13, 69276), (15, 69309), (16, 69315), (21, 69393), (22, 69429),

Gene: FreddyDRoo_123 Start: 79681, Stop: 80103, Start Num: 2

Candidate Starts for FreddyDRoo_123:

(Start: 2 @79681 has 51 MA's), (12, 79876), (19, 79972), (24, 80071), (25, 80095),

Gene: HangryHippo_124 Start: 81894, Stop: 82310, Start Num: 2

Candidate Starts for HangryHippo_124:

(Start: 2 @81894 has 51 MA's), (12, 82089), (19, 82185), (24, 82284),

Gene: Jay2Jay_129 Start: 82640, Stop: 83062, Start Num: 2

Candidate Starts for Jay2Jay_129:

(Start: 2 @82640 has 51 MA's), (12, 82835), (19, 82931), (24, 83030), (25, 83054),

Gene: Larnav_124 Start: 81878, Stop: 82294, Start Num: 2

Candidate Starts for Larnav_124:

(Start: 2 @81878 has 51 MA's), (12, 82073), (19, 82169), (24, 82268),

Gene: Leo04_125 Start: 82394, Stop: 82810, Start Num: 2

Candidate Starts for Leo04_125:

(Start: 2 @82394 has 51 MA's), (12, 82589), (19, 82685), (24, 82784),

Gene: Liandry_123 Start: 80388, Stop: 80810, Start Num: 2

Candidate Starts for Liandry_123:

(Start: 2 @80388 has 51 MA's), (12, 80583), (19, 80679), (24, 80778), (25, 80802),

Gene: LilMartin_122 Start: 79365, Stop: 79781, Start Num: 2

Candidate Starts for LilMartin_122:

(Start: 2 @79365 has 51 MA's), (19, 79656),

Gene: LilSaint_126 Start: 79278, Stop: 79694, Start Num: 2

Candidate Starts for LilSaint_126:

(1, 79257), (Start: 2 @79278 has 51 MA's), (10, 79440), (19, 79569), (20, 79599), (23, 79665), (24, 79668),

Gene: Limpid_97 Start: 67416, Stop: 67787, Start Num: 2

Candidate Starts for Limpid_97:

(Start: 2 @67416 has 51 MA's), (3, 67446), (5, 67458), (6, 67506), (11, 67593),

Gene: Lululemon_123 Start: 81275, Stop: 81691, Start Num: 2

Candidate Starts for Lululemon_123:

(Start: 2 @81275 has 51 MA's), (12, 81470), (19, 81566), (24, 81665),

Gene: Marsus_124 Start: 79839, Stop: 80255, Start Num: 2

Candidate Starts for Marsus_124:

(Start: 2 @79839 has 51 MA's), (19, 80130),

Gene: Mildred21_130 Start: 80335, Stop: 80751, Start Num: 2

Candidate Starts for Mildred21_130:

(1, 80314), (Start: 2 @80335 has 51 MA's), (18, 80605), (25, 80743),

Gene: MulchMansion_122 Start: 79408, Stop: 79824, Start Num: 2

Candidate Starts for MulchMansion_122:

(Start: 2 @79408 has 51 MA's), (19, 79699),

Gene: Navo_121 Start: 80193, Stop: 80615, Start Num: 2

Candidate Starts for Navo_121:

(Start: 2 @80193 has 51 MA's), (19, 80484), (24, 80583), (25, 80607),

Gene: NootNoot_120 Start: 79302, Stop: 79724, Start Num: 2

Candidate Starts for NootNoot_120:

(Start: 2 @79302 has 51 MA's), (12, 79497), (19, 79593), (24, 79692), (25, 79716),

Gene: PacManQ_123 Start: 81275, Stop: 81691, Start Num: 2

Candidate Starts for PacManQ_123:

(Start: 2 @81275 has 51 MA's), (12, 81470), (19, 81566), (24, 81665),

Gene: Paradiddles_119 Start: 81204, Stop: 81626, Start Num: 2

Candidate Starts for Paradiddles_119:

(Start: 2 @81204 has 51 MA's), (12, 81399), (19, 81495), (24, 81594), (25, 81618),

Gene: Peebs_122 Start: 81691, Stop: 82107, Start Num: 2

Candidate Starts for Peebs_122:

(Start: 2 @81691 has 51 MA's), (12, 81886), (19, 81982), (24, 82081),

Gene: Pepperwood_124 Start: 81822, Stop: 82238, Start Num: 2

Candidate Starts for Pepperwood_124:

(Start: 2 @81822 has 51 MA's), (12, 82017), (19, 82113), (24, 82212),

Gene: Persimmon_123 Start: 79236, Stop: 79658, Start Num: 2

Candidate Starts for Persimmon_123:

(Start: 2 @79236 has 51 MA's), (19, 79527), (24, 79626), (25, 79650),

Gene: PinkiePie_121 Start: 80388, Stop: 80810, Start Num: 2

Candidate Starts for PinkiePie_121:

(Start: 2 @80388 has 51 MA's), (12, 80583), (19, 80679), (24, 80778), (25, 80802),

Gene: PynkPanther_130 Start: 80925, Stop: 81347, Start Num: 2

Candidate Starts for PynkPanther_130:

(Start: 2 @80925 has 51 MA's), (19, 81216), (24, 81315), (25, 81339),

Gene: Riptide_123 Start: 79065, Stop: 79481, Start Num: 2

Candidate Starts for Riptide_123:

(Start: 2 @79065 has 51 MA's), (8, 79167), (10, 79227), (19, 79356), (20, 79386), (23, 79452), (24, 79455),

Gene: Samisti12_125 Start: 83070, Stop: 83486, Start Num: 2

Candidate Starts for Samisti12_125:

(Start: 2 @83070 has 51 MA's), (12, 83265), (19, 83361), (24, 83460),

Gene: Scheme_125 Start: 82476, Stop: 82892, Start Num: 2

Candidate Starts for Scheme_125:

(Start: 2 @82476 has 51 MA's), (12, 82671), (19, 82767), (24, 82866),

Gene: SeresaTree_102 Start: 68454, Stop: 68816, Start Num: 2

Candidate Starts for SeresaTree_102:

(Start: 2 @68454 has 51 MA's), (6, 68544), (13, 68658), (15, 68691), (16, 68697), (21, 68775), (22, 68811),

Gene: Sham_99 Start: 68644, Stop: 69018, Start Num: 2

Candidate Starts for Sham_99:

(Start: 2 @68644 has 51 MA's), (4, 68683), (6, 68734), (9, 68794), (13, 68848), (16, 68893), (17, 68908), (21, 68974), (22, 69010),

Gene: Shuckle_122 Start: 80541, Stop: 80963, Start Num: 2

Candidate Starts for Shuckle_122:

(Start: 2 @80541 has 51 MA's), (12, 80736), (19, 80832), (24, 80931), (25, 80955),

Gene: Squillium_124 Start: 80390, Stop: 80812, Start Num: 2

Candidate Starts for Squillium_124:

(Start: 2 @80390 has 51 MA's), (12, 80585), (19, 80681), (24, 80780), (25, 80804),

Gene: Sushi23_123 Start: 82047, Stop: 82463, Start Num: 2

Candidate Starts for Sushi23_123:

(Start: 2 @82047 has 51 MA's), (12, 82242), (19, 82338), (24, 82437),

Gene: Targaryen_125 Start: 82782, Stop: 83204, Start Num: 2

Candidate Starts for Targaryen_125:

(Start: 2 @82782 has 51 MA's), (12, 82977), (19, 83073), (24, 83172), (25, 83196),

Gene: Teutsch_123 Start: 82252, Stop: 82668, Start Num: 2

Candidate Starts for Teutsch_123:

(Start: 2 @82252 has 51 MA's), (12, 82447), (19, 82543), (24, 82642),

Gene: Tribute_122 Start: 81901, Stop: 82317, Start Num: 2

Candidate Starts for Tribute_122:

(Start: 2 @81901 has 51 MA's), (12, 82096), (19, 82192),

Gene: TunaTartare_101 Start: 69807, Stop: 70181, Start Num: 2

Candidate Starts for TunaTartare_101:

(Start: 2 @69807 has 51 MA's), (6, 69897), (13, 70011), (16, 70056), (17, 70071), (21, 70137), (22, 70173),

Gene: Warpy_128 Start: 82295, Stop: 82717, Start Num: 2

Candidate Starts for Warpy_128:

(Start: 2 @82295 has 51 MA's), (12, 82490), (19, 82586), (24, 82685), (25, 82709),

Gene: WashU_128 Start: 82264, Stop: 82680, Start Num: 2

Candidate Starts for WashU_128:

(Start: 2 @82264 has 51 MA's), (12, 82459), (19, 82555), (24, 82654),

Gene: Watermoore_123 Start: 82466, Stop: 82882, Start Num: 2

Candidate Starts for Watermoore_123:

(Start: 2 @82466 has 51 MA's), (12, 82661), (19, 82757), (24, 82856),

Gene: WhereRU_122 Start: 79988, Stop: 80410, Start Num: 2

Candidate Starts for WhereRU_122:

(Start: 2 @79988 has 51 MA's), (19, 80279), (24, 80378), (25, 80402),