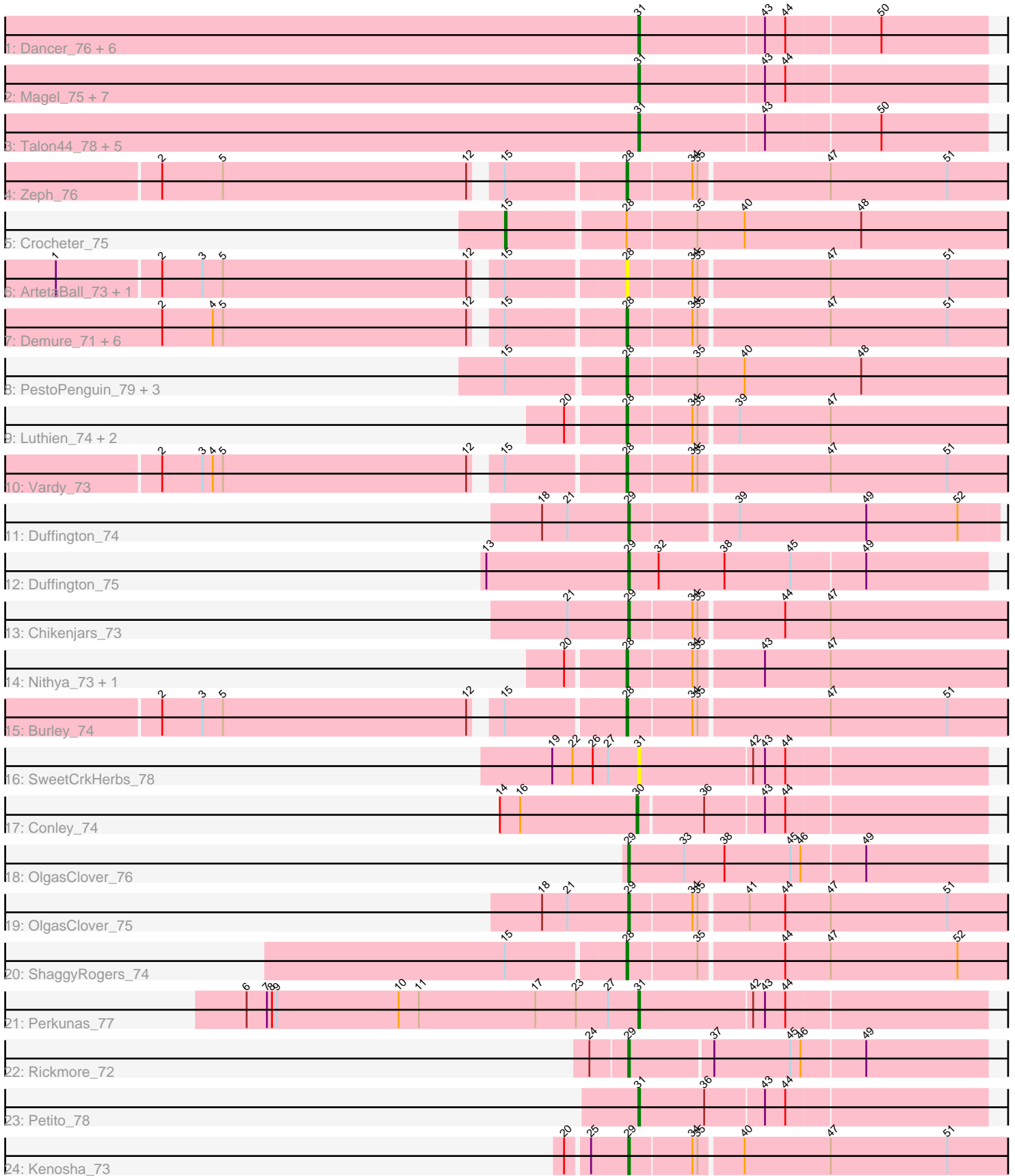


Pham 311652



Note: Tracks are now grouped by subcluster and scaled. Switching in subcluster is indicated by changes in track color. Track scale is now set by default to display the region 30 bp upstream of start 1 to 30 bp downstream of the last possible start. If this default region is judged to be packed too tightly with annotated starts, the track will be further scaled to only show that region of the ORF with annotated starts. This action will be indicated by adding "Zoomed" to the title. For starts, yellow indicates the location of called starts comprised solely of Glimmer/GeneMark auto-annotations, green indicates the location of called starts with at least 1 manual gene annotation.

Pham 311652 Report

This analysis was run 06/27/26 on database version 652.

Pham number 311652 has 55 members, 12 are drafts.

Phages represented in each track:

- Track 1 : Dancer_76, Trufflozitus_77, Football_79, Bugg_80, Artorias_76, Tairn4Wing_79, FortCran_76
- Track 2 : Magel_75, Odesza_73, Roney_74, Kerry_73, Tanis_74, Capybara_74, Gill_74, Gravy_73
- Track 3 : Talon44_78, JulesRay_76, ChickyNuggy_79, Captrips_75, Avazak_77, NoPickles_75
- Track 4 : Zeph_76
- Track 5 : Crocheter_75
- Track 6 : ArtetaBall_73, Dialga_75
- Track 7 : Demure_71, Madvan_74, Runhaar_73, Phepper_75, CWormy_72, Untouchable_76, Arataki_73
- Track 8 : PestoPenguin_79, BetterYeti_74, Aloe25_78, Gusicorn_76
- Track 9 : Luthien_74, EndAve_75, Citrus_73
- Track 10 : Vardy_73
- Track 11 : Duffington_74
- Track 12 : Duffington_75
- Track 13 : Chickenjars_73
- Track 14 : Nithya_73, AlainaMarie_73
- Track 15 : Burley_74
- Track 16 : SweetCrkHerbs_78
- Track 17 : Conley_74
- Track 18 : OlgasClover_76
- Track 19 : OlgasClover_75
- Track 20 : ShaggyRogers_74
- Track 21 : Perkunas_77
- Track 22 : Rickmore_72
- Track 23 : Petite_78
- Track 24 : Kenosha_73

Summary of Final Annotations (See graph section above for start numbers):

The start number called the most often in the published annotations is 31, it was called in 19 of the 43 non-draft genes in the pham.

Genes that call this "Most Annotated" start:

- Artorias_76, Avazak_77, Bugg_80, Captrips_75, Copybara_74, ChickyNuggy_79, Dancer_76, Football_79, FortCran_76, Gill_74, Gravy_73, JulesRay_76, Kerry_73, Magel_75, NoPickles_75, Odesza_73, Perkunas_77, Petito_78, Roney_74, SweetCrkHerbs_78, Tairn4Wing_79, Talon44_78, Tanis_74, Trufflozitus_77,

Genes that have the "Most Annotated" start but do not call it:

-

Genes that do not have the "Most Annotated" start:

- AlainaMarie_73, Aloe25_78, Arataki_73, ArtetaBall_73, BetterYeti_74, Burley_74, CWormy_72, Chikenjars_73, Citrus_73, Conley_74, Crocheter_75, Demure_71, Dialga_75, Duffington_74, Duffington_75, EndAve_75, Gusicorn_76, Kenosha_73, Luthien_74, Madvan_74, Nithya_73, OlgasClover_75, OlgasClover_76, PestoPenguin_79, Phepper_75, Rickmore_72, Runhaar_73, ShaggyRogers_74, Untouchable_76, Vardy_73, Zeph_76,

Summary by start number:

Start 15:

- Found in 18 of 55 (32.7%) of genes in pham
- Manual Annotations of this start: 1 of 43
- Called 5.6% of time when present
- Phage (with cluster) where this start called: Crocheter_75 (DJ),

Start 28:

- Found in 23 of 55 (41.8%) of genes in pham
- Manual Annotations of this start: 15 of 43
- Called 95.7% of time when present
- Phage (with cluster) where this start called: AlainaMarie_73 (DJ), Aloe25_78 (DJ), Arataki_73 (DJ), ArtetaBall_73 (DJ), BetterYeti_74 (DJ), Burley_74 (DJ), CWormy_72 (DJ), Citrus_73 (DJ), Demure_71 (DJ), Dialga_75 (DJ), EndAve_75 (DJ), Gusicorn_76 (DJ), Luthien_74 (DJ), Madvan_74 (DJ), Nithya_73 (DJ), PestoPenguin_79 (DJ), Phepper_75 (DJ), Runhaar_73 (DJ), ShaggyRogers_74 (DJ), Untouchable_76 (DJ), Vardy_73 (DJ), Zeph_76 (DJ),

Start 29:

- Found in 7 of 55 (12.7%) of genes in pham
- Manual Annotations of this start: 7 of 43
- Called 100.0% of time when present
- Phage (with cluster) where this start called: Chikenjars_73 (DJ), Duffington_74 (DJ), Duffington_75 (DJ), Kenosha_73 (DJ), OlgasClover_75 (DJ), OlgasClover_76 (DJ), Rickmore_72 (DJ),

Start 30:

- Found in 1 of 55 (1.8%) of genes in pham
- Manual Annotations of this start: 1 of 43
- Called 100.0% of time when present
- Phage (with cluster) where this start called: Conley_74 (DJ),

Start 31:

- Found in 24 of 55 (43.6%) of genes in pham
- Manual Annotations of this start: 19 of 43

- Called 100.0% of time when present
- Phage (with cluster) where this start called: Artorias_76 (DJ), Avazak_77 (DJ), Bugg_80 (DJ), Captrips_75 (DJ), Copybara_74 (DJ), ChickyNuggy_79 (DJ), Dancer_76 (DJ), Football_79 (DJ), FortCran_76 (DJ), Gill_74 (DJ), Gravy_73 (DJ), JulesRay_76 (DJ), Kerry_73 (DJ), Magel_75 (DJ), NoPickles_75 (DJ), Odesza_73 (DJ), Perkunas_77 (DJ), Petite_78 (DJ), Roney_74 (DJ), SweetCrkHerbs_78 (DJ), Tairn4Wing_79 (DJ), Talon44_78 (DJ), Tanis_74 (DJ), Trufflozitus_77 (DJ),

Summary by clusters:

There is one cluster represented in this pham: DJ

Info for manual annotations of cluster DJ:

- Start number 15 was manually annotated 1 time for cluster DJ.
- Start number 28 was manually annotated 15 times for cluster DJ.
- Start number 29 was manually annotated 7 times for cluster DJ.
- Start number 30 was manually annotated 1 time for cluster DJ.
- Start number 31 was manually annotated 19 times for cluster DJ.

Gene Information:

Gene: AlainaMarie_73 Start: 50890, Stop: 51117, Start Num: 28

Candidate Starts for AlainaMarie_73:

(20, 50857), (Start: 28 @50890 has 15 MA's), (34, 50926), (35, 50929), (43, 50965), (47, 51004),

Gene: Aloe25_78 Start: 50705, Stop: 50938, Start Num: 28

Candidate Starts for Aloe25_78:

(Start: 15 @50639 has 1 MA's), (Start: 28 @50705 has 15 MA's), (35, 50744), (40, 50771), (48, 50840),

Gene: Arataki_73 Start: 50324, Stop: 50554, Start Num: 28

Candidate Starts for Arataki_73:

(2, 50066), (4, 50096), (5, 50102), (12, 50246), (Start: 15 @50258 has 1 MA's), (Start: 28 @50324 has 15 MA's), (34, 50360), (35, 50363), (47, 50438), (51, 50507),

Gene: ArtetaBall_73 Start: 50884, Stop: 51114, Start Num: 28

Candidate Starts for ArtetaBall_73:

(1, 50566), (2, 50626), (3, 50650), (5, 50662), (12, 50806), (Start: 15 @50818 has 1 MA's), (Start: 28 @50884 has 15 MA's), (34, 50920), (35, 50923), (47, 50998), (51, 51067),

Gene: Artorias_76 Start: 50584, Stop: 50784, Start Num: 31

Candidate Starts for Artorias_76:

(Start: 31 @50584 has 19 MA's), (43, 50656), (44, 50668), (50, 50722),

Gene: Avazak_77 Start: 51266, Stop: 51466, Start Num: 31

Candidate Starts for Avazak_77:

(Start: 31 @51266 has 19 MA's), (43, 51338), (50, 51404),

Gene: BetterYeti_74 Start: 50704, Stop: 50937, Start Num: 28

Candidate Starts for BetterYeti_74:

(Start: 15 @50638 has 1 MA's), (Start: 28 @50704 has 15 MA's), (35, 50743), (40, 50770), (48, 50839),

Gene: Bugg_80 Start: 50629, Stop: 50829, Start Num: 31
Candidate Starts for Bugg_80:
(Start: 31 @50629 has 19 MA's), (43, 50701), (44, 50713), (50, 50767),

Gene: Burley_74 Start: 50340, Stop: 50570, Start Num: 28
Candidate Starts for Burley_74:
(2, 50082), (3, 50106), (5, 50118), (12, 50262), (Start: 15 @50274 has 1 MA's), (Start: 28 @50340 has 15 MA's), (34, 50376), (35, 50379), (47, 50454), (51, 50523),

Gene: CWormy_72 Start: 50301, Stop: 50531, Start Num: 28
Candidate Starts for CWormy_72:
(2, 50043), (4, 50073), (5, 50079), (12, 50223), (Start: 15 @50235 has 1 MA's), (Start: 28 @50301 has 15 MA's), (34, 50337), (35, 50340), (47, 50415), (51, 50484),

Gene: Captrips_75 Start: 50414, Stop: 50614, Start Num: 31
Candidate Starts for Captrips_75:
(Start: 31 @50414 has 19 MA's), (43, 50486), (50, 50552),

Gene: Capybara_74 Start: 50251, Stop: 50451, Start Num: 31
Candidate Starts for Capybara_74:
(Start: 31 @50251 has 19 MA's), (43, 50323), (44, 50335),

Gene: ChickyNuggy_79 Start: 51008, Stop: 51208, Start Num: 31
Candidate Starts for ChickyNuggy_79:
(Start: 31 @51008 has 19 MA's), (43, 51080), (50, 51146),

Gene: Chikenjars_73 Start: 51135, Stop: 51365, Start Num: 29
Candidate Starts for Chikenjars_73:
(21, 51099), (Start: 29 @51135 has 7 MA's), (34, 51171), (35, 51174), (44, 51222), (47, 51249),

Gene: Citrus_73 Start: 51186, Stop: 51413, Start Num: 28
Candidate Starts for Citrus_73:
(20, 51153), (Start: 28 @51186 has 15 MA's), (34, 51222), (35, 51225), (39, 51246), (47, 51300),

Gene: Conley_74 Start: 50831, Stop: 51028, Start Num: 30
Candidate Starts for Conley_74:
(14, 50750), (16, 50762), (Start: 30 @50831 has 1 MA's), (36, 50867), (43, 50900), (44, 50912),

Gene: Crocheter_75 Start: 50732, Stop: 51031, Start Num: 15
Candidate Starts for Crocheter_75:
(Start: 15 @50732 has 1 MA's), (Start: 28 @50798 has 15 MA's), (35, 50837), (40, 50864), (48, 50933),

Gene: Dancer_76 Start: 50321, Stop: 50521, Start Num: 31
Candidate Starts for Dancer_76:
(Start: 31 @50321 has 19 MA's), (43, 50393), (44, 50405), (50, 50459),

Gene: Demure_71 Start: 50324, Stop: 50554, Start Num: 28
Candidate Starts for Demure_71:
(2, 50066), (4, 50096), (5, 50102), (12, 50246), (Start: 15 @50258 has 1 MA's), (Start: 28 @50324 has 15 MA's), (34, 50360), (35, 50363), (47, 50438), (51, 50507),

Gene: Dialga_75 Start: 50903, Stop: 51133, Start Num: 28
Candidate Starts for Dialga_75:

(1, 50585), (2, 50645), (3, 50669), (5, 50681), (12, 50825), (Start: 15 @50837 has 1 MA's), (Start: 28 @50903 has 15 MA's), (34, 50939), (35, 50942), (47, 51017), (51, 51086),

Gene: Duffington_74 Start: 51067, Stop: 51279, Start Num: 29

Candidate Starts for Duffington_74:

(18, 51016), (21, 51031), (Start: 29 @51067 has 7 MA's), (39, 51127), (49, 51202), (52, 51256),

Gene: Duffington_75 Start: 51276, Stop: 51485, Start Num: 29

Candidate Starts for Duffington_75:

(13, 51192), (Start: 29 @51276 has 7 MA's), (32, 51294), (38, 51333), (45, 51372), (49, 51414),

Gene: EndAve_75 Start: 51080, Stop: 51307, Start Num: 28

Candidate Starts for EndAve_75:

(20, 51047), (Start: 28 @51080 has 15 MA's), (34, 51116), (35, 51119), (39, 51140), (47, 51194),

Gene: Football_79 Start: 50211, Stop: 50411, Start Num: 31

Candidate Starts for Football_79:

(Start: 31 @50211 has 19 MA's), (43, 50283), (44, 50295), (50, 50349),

Gene: FortCran_76 Start: 50584, Stop: 50784, Start Num: 31

Candidate Starts for FortCran_76:

(Start: 31 @50584 has 19 MA's), (43, 50656), (44, 50668), (50, 50722),

Gene: Gill_74 Start: 50263, Stop: 50463, Start Num: 31

Candidate Starts for Gill_74:

(Start: 31 @50263 has 19 MA's), (43, 50335), (44, 50347),

Gene: Gravy_73 Start: 49941, Stop: 50141, Start Num: 31

Candidate Starts for Gravy_73:

(Start: 31 @49941 has 19 MA's), (43, 50013), (44, 50025),

Gene: Gusicorn_76 Start: 50705, Stop: 50938, Start Num: 28

Candidate Starts for Gusicorn_76:

(Start: 15 @50639 has 1 MA's), (Start: 28 @50705 has 15 MA's), (35, 50744), (40, 50771), (48, 50840),

Gene: JulesRay_76 Start: 50933, Stop: 51133, Start Num: 31

Candidate Starts for JulesRay_76:

(Start: 31 @50933 has 19 MA's), (43, 51005), (50, 51071),

Gene: Kenosha_73 Start: 50932, Stop: 51162, Start Num: 29

Candidate Starts for Kenosha_73:

(20, 50899), (25, 50911), (Start: 29 @50932 has 7 MA's), (34, 50968), (35, 50971), (40, 50995), (47, 51046), (51, 51115),

Gene: Kerry_73 Start: 50004, Stop: 50204, Start Num: 31

Candidate Starts for Kerry_73:

(Start: 31 @50004 has 19 MA's), (43, 50076), (44, 50088),

Gene: Luthien_74 Start: 51075, Stop: 51302, Start Num: 28

Candidate Starts for Luthien_74:

(20, 51042), (Start: 28 @51075 has 15 MA's), (34, 51111), (35, 51114), (39, 51135), (47, 51189),

Gene: Madvan_74 Start: 50396, Stop: 50626, Start Num: 28

Candidate Starts for Madvan_74:

(2, 50138), (4, 50168), (5, 50174), (12, 50318), (Start: 15 @50330 has 1 MA's), (Start: 28 @50396 has 15 MA's), (34, 50432), (35, 50435), (47, 50510), (51, 50579),

Gene: Magel_75 Start: 50178, Stop: 50378, Start Num: 31

Candidate Starts for Magel_75:

(Start: 31 @50178 has 19 MA's), (43, 50250), (44, 50262),

Gene: Nithya_73 Start: 50778, Stop: 51005, Start Num: 28

Candidate Starts for Nithya_73:

(20, 50745), (Start: 28 @50778 has 15 MA's), (34, 50814), (35, 50817), (43, 50853), (47, 50892),

Gene: NoPickles_75 Start: 50100, Stop: 50300, Start Num: 31

Candidate Starts for NoPickles_75:

(Start: 31 @50100 has 19 MA's), (43, 50172), (50, 50238),

Gene: Odesza_73 Start: 50122, Stop: 50322, Start Num: 31

Candidate Starts for Odesza_73:

(Start: 31 @50122 has 19 MA's), (43, 50194), (44, 50206),

Gene: OlgasClover_76 Start: 51866, Stop: 52075, Start Num: 29

Candidate Starts for OlgasClover_76:

(Start: 29 @51866 has 7 MA's), (33, 51899), (38, 51923), (45, 51962), (46, 51968), (49, 52004),

Gene: OlgasClover_75 Start: 51639, Stop: 51869, Start Num: 29

Candidate Starts for OlgasClover_75:

(18, 51588), (21, 51603), (Start: 29 @51639 has 7 MA's), (34, 51675), (35, 51678), (41, 51705), (44, 51726), (47, 51753), (51, 51822),

Gene: Perkunas_77 Start: 50320, Stop: 50520, Start Num: 31

Candidate Starts for Perkunas_77:

(6, 50089), (7, 50101), (8, 50104), (9, 50107), (10, 50179), (11, 50191), (17, 50260), (23, 50284), (27, 50302), (Start: 31 @50320 has 19 MA's), (42, 50386), (43, 50392), (44, 50404),

Gene: PestoPenguin_79 Start: 50705, Stop: 50938, Start Num: 28

Candidate Starts for PestoPenguin_79:

(Start: 15 @50639 has 1 MA's), (Start: 28 @50705 has 15 MA's), (35, 50744), (40, 50771), (48, 50840),

Gene: Petite_78 Start: 51778, Stop: 51978, Start Num: 31

Candidate Starts for Petite_78:

(Start: 31 @51778 has 19 MA's), (36, 51817), (43, 51850), (44, 51862),

Gene: Phepper_75 Start: 50638, Stop: 50868, Start Num: 28

Candidate Starts for Phepper_75:

(2, 50380), (4, 50410), (5, 50416), (12, 50560), (Start: 15 @50572 has 1 MA's), (Start: 28 @50638 has 15 MA's), (34, 50674), (35, 50677), (47, 50752), (51, 50821),

Gene: Rickmore_72 Start: 49453, Stop: 49659, Start Num: 29

Candidate Starts for Rickmore_72:

(24, 49432), (Start: 29 @49453 has 7 MA's), (37, 49501), (45, 49546), (46, 49552), (49, 49588),

Gene: Roney_74 Start: 50288, Stop: 50488, Start Num: 31

Candidate Starts for Roney_74:

(Start: 31 @50288 has 19 MA's), (43, 50360), (44, 50372),

Gene: Runhaar_73 Start: 50447, Stop: 50677, Start Num: 28

Candidate Starts for Runhaar_73:

(2, 50189), (4, 50219), (5, 50225), (12, 50369), (Start: 15 @50381 has 1 MA's), (Start: 28 @50447 has 15 MA's), (34, 50483), (35, 50486), (47, 50561), (51, 50630),

Gene: ShaggyRogers_74 Start: 50438, Stop: 50668, Start Num: 28

Candidate Starts for ShaggyRogers_74:

(Start: 15 @50372 has 1 MA's), (Start: 28 @50438 has 15 MA's), (35, 50477), (44, 50525), (47, 50552), (52, 50627),

Gene: SweetCrkHerbs_78 Start: 50333, Stop: 50533, Start Num: 31

Candidate Starts for SweetCrkHerbs_78:

(19, 50282), (22, 50294), (26, 50306), (27, 50315), (Start: 31 @50333 has 19 MA's), (42, 50399), (43, 50405), (44, 50417),

Gene: Tairn4Wing_79 Start: 50422, Stop: 50622, Start Num: 31

Candidate Starts for Tairn4Wing_79:

(Start: 31 @50422 has 19 MA's), (43, 50494), (44, 50506), (50, 50560),

Gene: Talon44_78 Start: 51052, Stop: 51252, Start Num: 31

Candidate Starts for Talon44_78:

(Start: 31 @51052 has 19 MA's), (43, 51124), (50, 51190),

Gene: Tanis_74 Start: 50108, Stop: 50308, Start Num: 31

Candidate Starts for Tanis_74:

(Start: 31 @50108 has 19 MA's), (43, 50180), (44, 50192),

Gene: Trufflozitus_77 Start: 50937, Stop: 51137, Start Num: 31

Candidate Starts for Trufflozitus_77:

(Start: 31 @50937 has 19 MA's), (43, 51009), (44, 51021), (50, 51075),

Gene: Untouchable_76 Start: 51635, Stop: 51865, Start Num: 28

Candidate Starts for Untouchable_76:

(2, 51377), (4, 51407), (5, 51413), (12, 51557), (Start: 15 @51569 has 1 MA's), (Start: 28 @51635 has 15 MA's), (34, 51671), (35, 51674), (47, 51749), (51, 51818),

Gene: Vardy_73 Start: 50334, Stop: 50564, Start Num: 28

Candidate Starts for Vardy_73:

(2, 50076), (3, 50100), (4, 50106), (5, 50112), (12, 50256), (Start: 15 @50268 has 1 MA's), (Start: 28 @50334 has 15 MA's), (34, 50370), (35, 50373), (47, 50448), (51, 50517),

Gene: Zeph_76 Start: 51472, Stop: 51702, Start Num: 28

Candidate Starts for Zeph_76:

(2, 51214), (5, 51250), (12, 51394), (Start: 15 @51406 has 1 MA's), (Start: 28 @51472 has 15 MA's), (34, 51508), (35, 51511), (47, 51586), (51, 51655),