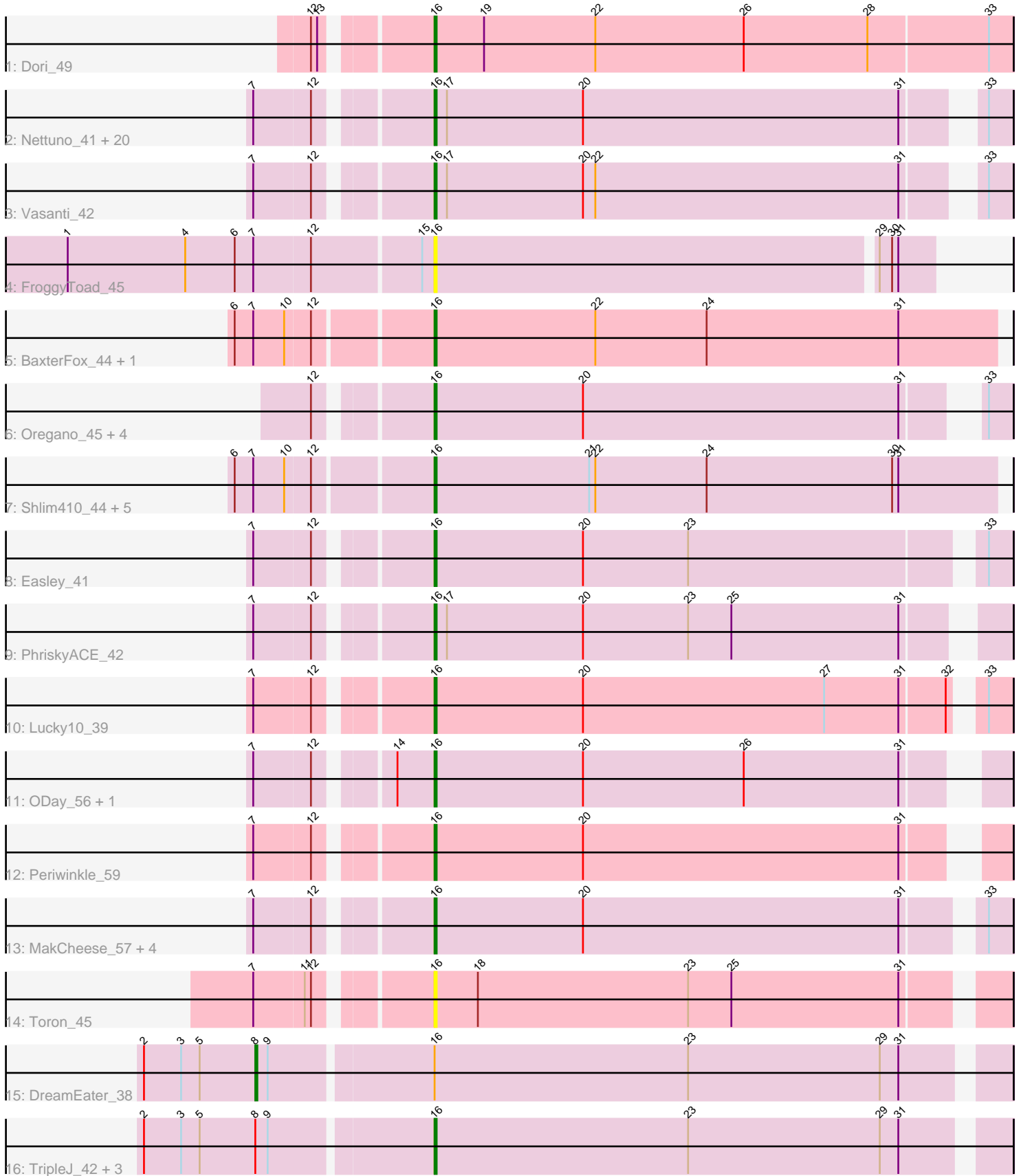


Pham 311661



Note: Tracks are now grouped by subcluster and scaled. Switching in subcluster is indicated by changes in track color. Track scale is now set by default to display the region 30 bp upstream of start 1 to 30 bp downstream of the last possible start. If this default region is judged to be packed too tightly with annotated starts, the track will be further scaled to only show that region of the ORF with annotated starts. This action will be indicated by adding "Zoomed" to the title. For starts, yellow indicates the location of called starts comprised solely of Glimmer/GeneMark auto-annotations, green indicates the location of called starts with at least 1 manual gene annotation.

Pham 311661 Report

This analysis was run 06/27/26 on database version 652.

Pham number 311661 has 54 members, 8 are drafts.

Phages represented in each track:

- Track 1 : Dori_49
- Track 2 : Nettuno_41, Lamberg_41, GemG_45, TuertoX_45, Whiteclaw_45, Gizermo_45, Ebert_47, Wrigley_50, JCole_43, Matteo_38, Mocha12_45, Sahara_44, Bjanes7_42, Yinzer_45, Clap_45, Bosnia_47, Sproutie_45, Savage_45, Cynthia_45, Jalleen_45, Haley23_45
- Track 3 : Vasanti_42
- Track 4 : FroggyToad_45
- Track 5 : BaxterFox_44, PantheRoc_43
- Track 6 : Oregano_45, Dolores_45, WinkNick_46, Sprinklemunch_51, Annalisa_42
- Track 7 : Shlim410_44, Twinkle_45, Howe_46, Mcklovin_42, Adora_43, Hortense_46
- Track 8 : Easley_41
- Track 9 : PhriskyACE_42
- Track 10 : Lucky10_39
- Track 11 : ODay_56, Getalong_56
- Track 12 : Periwinkle_59
- Track 13 : MakCheese_57, Zodiariah_43, Suerte_41, Floral_43, Pollux_45
- Track 14 : Toron_45
- Track 15 : DreamEater_38
- Track 16 : TripleJ_42, Kukla_41, GUPitcher_39, PetriParty_43

Summary of Final Annotations (See graph section above for start numbers):

The start number called the most often in the published annotations is 16, it was called in 45 of the 46 non-draft genes in the pham.

Genes that call this "Most Annotated" start:

- Adora_43, Annalisa_42, BaxterFox_44, Bjanes7_42, Bosnia_47, Clap_45, Cynthia_45, Dolores_45, Dori_49, Easley_41, Ebert_47, Floral_43, FroggyToad_45, GUPitcher_39, GemG_45, Getalong_56, Gizermo_45, Haley23_45, Hortense_46, Howe_46, JCole_43, Jalleen_45, Kukla_41, Lamberg_41, Lucky10_39, MakCheese_57, Matteo_38, Mcklovin_42, Mocha12_45, Nettuno_41, ODay_56, Oregano_45, PantheRoc_43, Periwinkle_59, PetriParty_43, PhriskyACE_42, Pollux_45, Sahara_44, Savage_45, Shlim410_44, Sprinklemunch_51, Sproutie_45,

Suerte_41, Toron_45, TripleJ_42, TuertoX_45, Twinkle_45, Vasanti_42, Whiteclaw_45, WinkNick_46, Wrigley_50, Yinzer_45, Zodiariah_43,

Genes that have the "Most Annotated" start but do not call it:

- DreamEater_38,

Genes that do not have the "Most Annotated" start:

-

Summary by start number:

Start 8:

- Found in 5 of 54 (9.3%) of genes in pham
- Manual Annotations of this start: 1 of 46
- Called 20.0% of time when present
- Phage (with cluster) where this start called: DreamEater_38 (FJ),

Start 16:

- Found in 54 of 54 (100.0%) of genes in pham
- Manual Annotations of this start: 45 of 46
- Called 98.1% of time when present
- Phage (with cluster) where this start called: Adora_43 (CZ4), Annalisa_42 (CZ4), BaxterFox_44 (CZ3), Bjaner7_42 (CZ2), Bosnia_47 (CZ1), Clap_45 (CZ2), Cynthia_45 (CZ2), Dolores_45 (CZ4), Dori_49 (AD), Easley_41 (CZ4), Ebert_47 (CZ2), Floral_43 (CY1), FroggyToad_45 (CZ2), GUPitcher_39 (FJ), GemG_45 (CZ2), Getalong_56 (DN1), Gizermo_45 (CZ2), Haley23_45 (CZ2), Hortense_46 (CZ4), Howe_46 (CZ4), JCole_43 (CZ2), Jalleen_45 (CZ2), Kukla_41 (FJ), Lamberg_41 (CZ2), Lucky10_39 (DH), MakCheese_57 (DW), Matteo_38 (CZ2), Mcklovin_42 (CZ4), Mocha12_45 (CZ2), Nettuno_41 (CZ2), ODay_56 (DN), Oregano_45 (CZ4), PantheRoc_43 (CZ3), Periwinkle_59 (DN1), PetriParty_43 (FJ), PhriskyACE_42 (CZ4), Pollux_45 (CY1), Sahara_44 (CZ2), Savage_45 (CZ2), Shlim410_44 (CZ4), Sprinklemunch_51 (DW), Sproutie_45 (CZ2), Suerte_41 (CZ4), Toron_45 (F6), TripleJ_42 (FJ), TuertoX_45 (CZ2), Twinkle_45 (CZ4), Vasanti_42 (CZ2), Whiteclaw_45 (CZ2), WinkNick_46 (CZ4), Wrigley_50 (CY4), Yinzer_45 (CZ2), Zodiariah_43 (DW),

Summary by clusters:

There are 13 clusters represented in this pham: DN, CY1, AD, F6, CY4, CZ2, CZ3, CZ1, CZ4, DN1, DH, DW, FJ,

Info for manual annotations of cluster AD:

- Start number 16 was manually annotated 1 time for cluster AD.

Info for manual annotations of cluster CY1:

- Start number 16 was manually annotated 2 times for cluster CY1.

Info for manual annotations of cluster CY4:

- Start number 16 was manually annotated 1 time for cluster CY4.

Info for manual annotations of cluster CZ1:

- Start number 16 was manually annotated 1 time for cluster CZ1.

Info for manual annotations of cluster CZ2:

- Start number 16 was manually annotated 18 times for cluster CZ2.

Info for manual annotations of cluster CZ3:

- Start number 16 was manually annotated 2 times for cluster CZ3.

Info for manual annotations of cluster CZ4:

- Start number 16 was manually annotated 13 times for cluster CZ4.

Info for manual annotations of cluster DH:

- Start number 16 was manually annotated 1 time for cluster DH.

Info for manual annotations of cluster DN:

- Start number 16 was manually annotated 1 time for cluster DN.

Info for manual annotations of cluster DN1:

- Start number 16 was manually annotated 2 times for cluster DN1.

Info for manual annotations of cluster DW:

- Start number 16 was manually annotated 1 time for cluster DW.

Info for manual annotations of cluster FJ:

- Start number 8 was manually annotated 1 time for cluster FJ.
- Start number 16 was manually annotated 2 times for cluster FJ.

Gene Information:

Gene: Adora_43 Start: 35227, Stop: 35499, Start Num: 16

Candidate Starts for Adora_43:

(6, 35137), (7, 35146), (10, 35161), (12, 35173), (Start: 16 @35227 has 45 MA's), (21, 35302), (22, 35305), (24, 35359), (30, 35449), (31, 35452),

Gene: Annalisa_42 Start: 32284, Stop: 32544, Start Num: 16

Candidate Starts for Annalisa_42:

(12, 32236), (Start: 16 @32284 has 45 MA's), (20, 32356), (31, 32509), (33, 32533),

Gene: BaxterFox_44 Start: 35506, Stop: 35778, Start Num: 16

Candidate Starts for BaxterFox_44:

(6, 35416), (7, 35425), (10, 35440), (12, 35452), (Start: 16 @35506 has 45 MA's), (22, 35584), (24, 35638), (31, 35731),

Gene: Bjanes7_42 Start: 32133, Stop: 32396, Start Num: 16

Candidate Starts for Bjanes7_42:

(7, 32058), (12, 32085), (Start: 16 @32133 has 45 MA's), (17, 32139), (20, 32205), (31, 32358), (33, 32385),

Gene: Bosnia_47 Start: 38497, Stop: 38760, Start Num: 16

Candidate Starts for Bosnia_47:

(7, 38422), (12, 38449), (Start: 16 @38497 has 45 MA's), (17, 38503), (20, 38569), (31, 38722), (33, 38749),

Gene: Clap_45 Start: 32312, Stop: 32575, Start Num: 16

Candidate Starts for Clap_45:

(7, 32237), (12, 32264), (Start: 16 @32312 has 45 MA's), (17, 32318), (20, 32384), (31, 32537), (33, 32564),

Gene: Cynthia_45 Start: 32312, Stop: 32575, Start Num: 16

Candidate Starts for Cynthia_45:

(7, 32237), (12, 32264), (Start: 16 @32312 has 45 MA's), (17, 32318), (20, 32384), (31, 32537), (33, 32564),

Gene: Dolores_45 Start: 33363, Stop: 33623, Start Num: 16

Candidate Starts for Dolores_45:

(12, 33315), (Start: 16 @33363 has 45 MA's), (20, 33435), (31, 33588), (33, 33612),

Gene: Dori_49 Start: 44285, Stop: 44563, Start Num: 16

Candidate Starts for Dori_49:

(12, 44237), (13, 44240), (Start: 16 @44285 has 45 MA's), (19, 44309), (22, 44363), (26, 44435), (28, 44495), (33, 44552),

Gene: DreamEater_38 Start: 30245, Stop: 30595, Start Num: 8

Candidate Starts for DreamEater_38:

(2, 30191), (3, 30209), (5, 30218), (Start: 8 @30245 has 1 MA's), (9, 30251), (Start: 16 @30326 has 45 MA's), (23, 30449), (29, 30542), (31, 30551),

Gene: Easley_41 Start: 31894, Stop: 32160, Start Num: 16

Candidate Starts for Easley_41:

(7, 31819), (12, 31846), (Start: 16 @31894 has 45 MA's), (20, 31966), (23, 32017), (33, 32149),

Gene: Ebert_47 Start: 32236, Stop: 32499, Start Num: 16

Candidate Starts for Ebert_47:

(7, 32161), (12, 32188), (Start: 16 @32236 has 45 MA's), (17, 32242), (20, 32308), (31, 32461), (33, 32488),

Gene: Floral_43 Start: 36167, Stop: 36430, Start Num: 16

Candidate Starts for Floral_43:

(7, 36092), (12, 36119), (Start: 16 @36167 has 45 MA's), (20, 36239), (31, 36392), (33, 36419),

Gene: FroggyToad_45 Start: 32883, Stop: 33119, Start Num: 16

Candidate Starts for FroggyToad_45:

(1, 32709), (4, 32766), (6, 32790), (7, 32799), (12, 32826), (15, 32877), (Start: 16 @32883 has 45 MA's), (29, 33093), (30, 33099), (31, 33102),

Gene: GUPitcher_39 Start: 30557, Stop: 30826, Start Num: 16

Candidate Starts for GUPitcher_39:

(2, 30422), (3, 30440), (5, 30449), (Start: 8 @30476 has 1 MA's), (9, 30482), (Start: 16 @30557 has 45 MA's), (23, 30680), (29, 30773), (31, 30782),

Gene: GemG_45 Start: 32312, Stop: 32575, Start Num: 16

Candidate Starts for GemG_45:

(7, 32237), (12, 32264), (Start: 16 @32312 has 45 MA's), (17, 32318), (20, 32384), (31, 32537), (33, 32564),

Gene: Getalong_56 Start: 37752, Stop: 38012, Start Num: 16

Candidate Starts for Getalong_56:

(7, 37677), (12, 37704), (14, 37734), (Start: 16 @37752 has 45 MA's), (20, 37824), (26, 37902), (31, 37977),

Gene: Gizermo_45 Start: 32312, Stop: 32575, Start Num: 16

Candidate Starts for Gizermo_45:

(7, 32237), (12, 32264), (Start: 16 @32312 has 45 MA's), (17, 32318), (20, 32384), (31, 32537), (33, 32564),

Gene: Haley23_45 Start: 32312, Stop: 32575, Start Num: 16

Candidate Starts for Haley23_45:

(7, 32237), (12, 32264), (Start: 16 @32312 has 45 MA's), (17, 32318), (20, 32384), (31, 32537), (33, 32564),

Gene: Hortense_46 Start: 36582, Stop: 36854, Start Num: 16

Candidate Starts for Hortense_46:

(6, 36492), (7, 36501), (10, 36516), (12, 36528), (Start: 16 @36582 has 45 MA's), (21, 36657), (22, 36660), (24, 36714), (30, 36804), (31, 36807),

Gene: Howe_46 Start: 36582, Stop: 36854, Start Num: 16

Candidate Starts for Howe_46:

(6, 36492), (7, 36501), (10, 36516), (12, 36528), (Start: 16 @36582 has 45 MA's), (21, 36657), (22, 36660), (24, 36714), (30, 36804), (31, 36807),

Gene: JCole_43 Start: 31330, Stop: 31593, Start Num: 16

Candidate Starts for JCole_43:

(7, 31255), (12, 31282), (Start: 16 @31330 has 45 MA's), (17, 31336), (20, 31402), (31, 31555), (33, 31582),

Gene: Jalleen_45 Start: 31951, Stop: 32214, Start Num: 16

Candidate Starts for Jalleen_45:

(7, 31876), (12, 31903), (Start: 16 @31951 has 45 MA's), (17, 31957), (20, 32023), (31, 32176), (33, 32203),

Gene: Kukla_41 Start: 30045, Stop: 30314, Start Num: 16

Candidate Starts for Kukla_41:

(2, 29910), (3, 29928), (5, 29937), (Start: 8 @29964 has 1 MA's), (9, 29970), (Start: 16 @30045 has 45 MA's), (23, 30168), (29, 30261), (31, 30270),

Gene: Lamberg_41 Start: 30821, Stop: 31084, Start Num: 16

Candidate Starts for Lamberg_41:

(7, 30746), (12, 30773), (Start: 16 @30821 has 45 MA's), (17, 30827), (20, 30893), (31, 31046), (33, 31073),

Gene: Lucky10_39 Start: 30804, Stop: 31070, Start Num: 16

Candidate Starts for Lucky10_39:

(7, 30729), (12, 30756), (Start: 16 @30804 has 45 MA's), (20, 30876), (27, 30993), (31, 31029), (32, 31050), (33, 31059),

Gene: MakCheese_57 Start: 39370, Stop: 39636, Start Num: 16

Candidate Starts for MakCheese_57:

(7, 39295), (12, 39322), (Start: 16 @39370 has 45 MA's), (20, 39442), (31, 39595), (33, 39625),

Gene: Matteo_38 Start: 29863, Stop: 30126, Start Num: 16

Candidate Starts for Matteo_38:

(7, 29788), (12, 29815), (Start: 16 @29863 has 45 MA's), (17, 29869), (20, 29935), (31, 30088), (33, 30115),

Gene: Mcklovin_42 Start: 38049, Stop: 38321, Start Num: 16

Candidate Starts for Mcklovin_42:

(6, 37959), (7, 37968), (10, 37983), (12, 37995), (Start: 16 @38049 has 45 MA's), (21, 38124), (22, 38127), (24, 38181), (30, 38271), (31, 38274),

Gene: Mocha12_45 Start: 32312, Stop: 32575, Start Num: 16

Candidate Starts for Mocha12_45:

(7, 32237), (12, 32264), (Start: 16 @32312 has 45 MA's), (17, 32318), (20, 32384), (31, 32537), (33, 32564),

Gene: Nettuno_41 Start: 30821, Stop: 31084, Start Num: 16

Candidate Starts for Nettuno_41:

(7, 30746), (12, 30773), (Start: 16 @30821 has 45 MA's), (17, 30827), (20, 30893), (31, 31046), (33, 31073),

Gene: ODay_56 Start: 36641, Stop: 36901, Start Num: 16

Candidate Starts for ODay_56:

(7, 36566), (12, 36593), (14, 36623), (Start: 16 @36641 has 45 MA's), (20, 36713), (26, 36791), (31, 36866),

Gene: Oregano_45 Start: 32917, Stop: 33177, Start Num: 16

Candidate Starts for Oregano_45:

(12, 32869), (Start: 16 @32917 has 45 MA's), (20, 32989), (31, 33142), (33, 33166),

Gene: PantheRoc_43 Start: 34481, Stop: 34753, Start Num: 16

Candidate Starts for PantheRoc_43:

(6, 34391), (7, 34400), (10, 34415), (12, 34427), (Start: 16 @34481 has 45 MA's), (22, 34559), (24, 34613), (31, 34706),

Gene: Periwinkle_59 Start: 37039, Stop: 37299, Start Num: 16

Candidate Starts for Periwinkle_59:

(7, 36964), (12, 36991), (Start: 16 @37039 has 45 MA's), (20, 37111), (31, 37264),

Gene: PetriParty_43 Start: 30282, Stop: 30551, Start Num: 16

Candidate Starts for PetriParty_43:

(2, 30147), (3, 30165), (5, 30174), (Start: 8 @30201 has 1 MA's), (9, 30207), (Start: 16 @30282 has 45 MA's), (23, 30405), (29, 30498), (31, 30507),

Gene: PhriskyACE_42 Start: 33638, Stop: 33901, Start Num: 16

Candidate Starts for PhriskyACE_42:

(7, 33563), (12, 33590), (Start: 16 @33638 has 45 MA's), (17, 33644), (20, 33710), (23, 33761), (25, 33782), (31, 33863),

Gene: Pollux_45 Start: 36167, Stop: 36430, Start Num: 16

Candidate Starts for Pollux_45:

(7, 36092), (12, 36119), (Start: 16 @36167 has 45 MA's), (20, 36239), (31, 36392), (33, 36419),

Gene: Sahara_44 Start: 32059, Stop: 32322, Start Num: 16
Candidate Starts for Sahara_44:
(7, 31984), (12, 32011), (Start: 16 @32059 has 45 MA's), (17, 32065), (20, 32131), (31, 32284), (33, 32311),

Gene: Savage_45 Start: 32312, Stop: 32575, Start Num: 16
Candidate Starts for Savage_45:
(7, 32237), (12, 32264), (Start: 16 @32312 has 45 MA's), (17, 32318), (20, 32384), (31, 32537), (33, 32564),

Gene: Shlim410_44 Start: 36582, Stop: 36854, Start Num: 16
Candidate Starts for Shlim410_44:
(6, 36492), (7, 36501), (10, 36516), (12, 36528), (Start: 16 @36582 has 45 MA's), (21, 36657), (22, 36660), (24, 36714), (30, 36804), (31, 36807),

Gene: Sprinklemunch_51 Start: 38193, Stop: 38456, Start Num: 16
Candidate Starts for Sprinklemunch_51:
(12, 38145), (Start: 16 @38193 has 45 MA's), (20, 38265), (31, 38418), (33, 38445),

Gene: Sproutie_45 Start: 32312, Stop: 32575, Start Num: 16
Candidate Starts for Sproutie_45:
(7, 32237), (12, 32264), (Start: 16 @32312 has 45 MA's), (17, 32318), (20, 32384), (31, 32537), (33, 32564),

Gene: Suerte_41 Start: 32461, Stop: 32724, Start Num: 16
Candidate Starts for Suerte_41:
(7, 32386), (12, 32413), (Start: 16 @32461 has 45 MA's), (20, 32533), (31, 32686), (33, 32713),

Gene: Toron_45 Start: 35058, Stop: 35324, Start Num: 16
Candidate Starts for Toron_45:
(7, 34983), (11, 35007), (12, 35010), (Start: 16 @35058 has 45 MA's), (18, 35079), (23, 35181), (25, 35202), (31, 35283),

Gene: TripleJ_42 Start: 29886, Stop: 30155, Start Num: 16
Candidate Starts for TripleJ_42:
(2, 29751), (3, 29769), (5, 29778), (Start: 8 @29805 has 1 MA's), (9, 29811), (Start: 16 @29886 has 45 MA's), (23, 30009), (29, 30102), (31, 30111),

Gene: TuertoX_45 Start: 32312, Stop: 32575, Start Num: 16
Candidate Starts for TuertoX_45:
(7, 32237), (12, 32264), (Start: 16 @32312 has 45 MA's), (17, 32318), (20, 32384), (31, 32537), (33, 32564),

Gene: Twinkle_45 Start: 37641, Stop: 37913, Start Num: 16
Candidate Starts for Twinkle_45:
(6, 37551), (7, 37560), (10, 37575), (12, 37587), (Start: 16 @37641 has 45 MA's), (21, 37716), (22, 37719), (24, 37773), (30, 37863), (31, 37866),

Gene: Vasanti_42 Start: 31327, Stop: 31590, Start Num: 16
Candidate Starts for Vasanti_42:
(7, 31252), (12, 31279), (Start: 16 @31327 has 45 MA's), (17, 31333), (20, 31399), (22, 31405), (31, 31552), (33, 31579),

Gene: Whiteclaw_45 Start: 32312, Stop: 32575, Start Num: 16

Candidate Starts for Whiteclaw_45:

(7, 32237), (12, 32264), (Start: 16 @32312 has 45 MA's), (17, 32318), (20, 32384), (31, 32537), (33, 32564),

Gene: WinkNick_46 Start: 33286, Stop: 33546, Start Num: 16

Candidate Starts for WinkNick_46:

(12, 33238), (Start: 16 @33286 has 45 MA's), (20, 33358), (31, 33511), (33, 33535),

Gene: Wrigley_50 Start: 36007, Stop: 36270, Start Num: 16

Candidate Starts for Wrigley_50:

(7, 35932), (12, 35959), (Start: 16 @36007 has 45 MA's), (17, 36013), (20, 36079), (31, 36232), (33, 36259),

Gene: Yinzer_45 Start: 32312, Stop: 32575, Start Num: 16

Candidate Starts for Yinzer_45:

(7, 32237), (12, 32264), (Start: 16 @32312 has 45 MA's), (17, 32318), (20, 32384), (31, 32537), (33, 32564),

Gene: Zodiariah_43 Start: 36395, Stop: 36658, Start Num: 16

Candidate Starts for Zodiariah_43:

(7, 36320), (12, 36347), (Start: 16 @36395 has 45 MA's), (20, 36467), (31, 36620), (33, 36647),