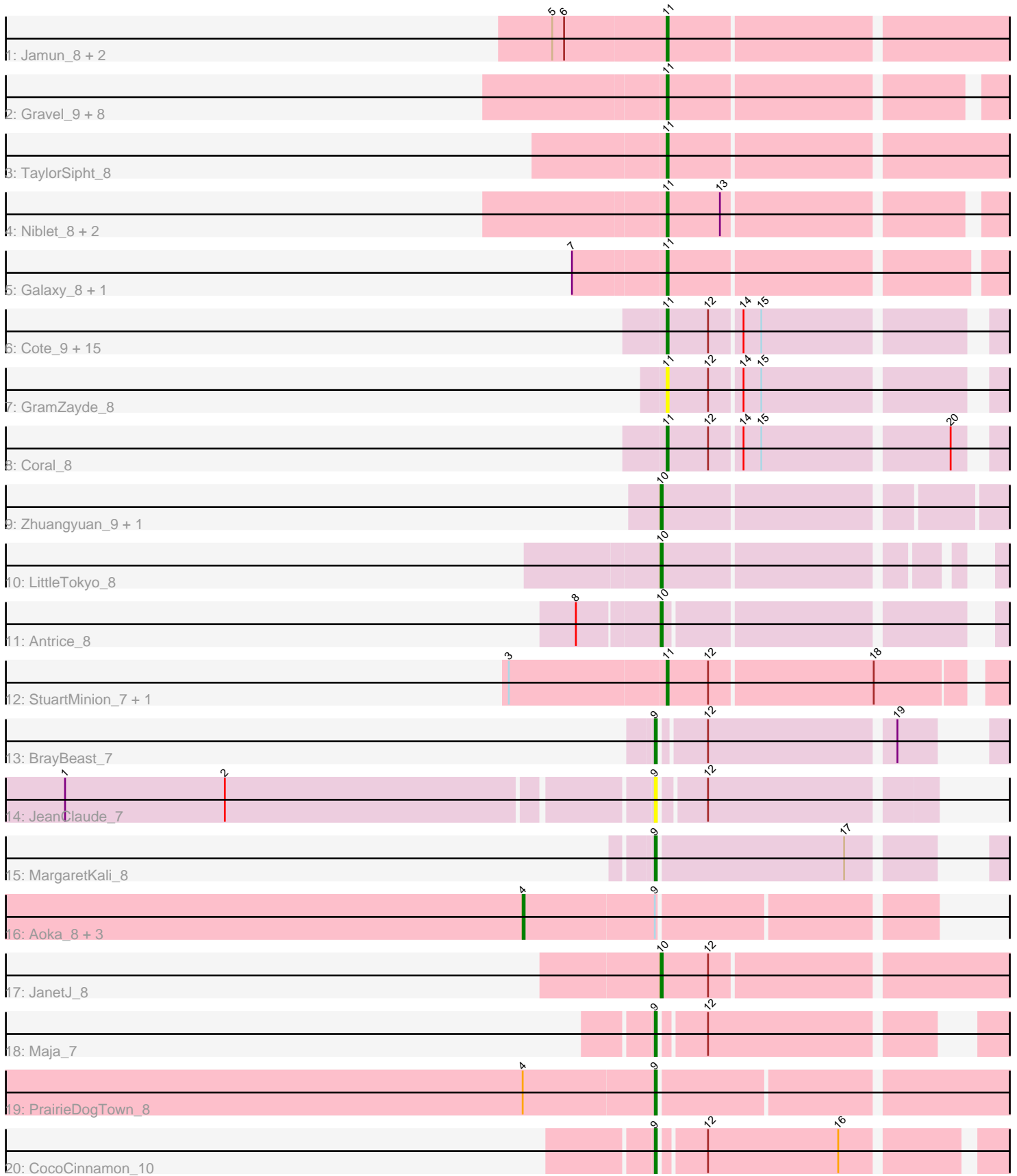


Pham 311672



Note: Tracks are now grouped by subcluster and scaled. Switching in subcluster is indicated by changes in track color. Track scale is now set by default to display the region 30 bp upstream of start 1 to 30 bp downstream of the last possible start. If this default region is judged to be packed too tightly with annotated starts, the track will be further scaled to only show that region of the ORF with annotated starts. This action will be indicated by adding "Zoomed" to the title. For starts, yellow indicates the location of called starts comprised solely of Glimmer/GeneMark auto-annotations, green indicates the location of called starts with at least 1 manual gene annotation.

Pham 311672 Report

This analysis was run 06/27/26 on database version 652.

Pham number 311672 has 53 members, 13 are drafts.

Phages represented in each track:

- Track 1 : Jamun_8, Brynnie_8, Basilisk_8
- Track 2 : Gravel_9, KendraB23_9, Shen_9, Amanises_9, Orcanus_8, Eesa_8, Pelletreau_9, Westrich_9, Toad24_9
- Track 3 : TaylorSipt_8
- Track 4 : Niblet_8, Chicken_8, Zixiang_8
- Track 5 : Galaxy_8, Abidatro_8
- Track 6 : Cote_9, Daob_9, Bibble12_9, Lunar_9, HannahPhantana_9, Melons_9, Polka_8, Colusalem_8, Pineda_9, Kepler_8, OtsoOtso_8, Amelia_9, Bedetta_9, Jerole_9, Damocles_9, PhirstandPhine_9
- Track 7 : GramZayde_8
- Track 8 : Coral_8
- Track 9 : Zhuangyuan_9, Cygnet_8
- Track 10 : LittleTokyo_8
- Track 11 : Antrice_8
- Track 12 : StuartMinion_7, AlexMinion_7
- Track 13 : BrayBeast_7
- Track 14 : JeanClaude_7
- Track 15 : MargaretKali_8
- Track 16 : Aoka_8, EvenBluerMoon_8, Morrey_11, Hereford_9
- Track 17 : JanetJ_8
- Track 18 : Maja_7
- Track 19 : PrairieDogTown_8
- Track 20 : CocoCinnamon_10

Summary of Final Annotations (See graph section above for start numbers):

The start number called the most often in the published annotations is 11, it was called in 27 of the 40 non-draft genes in the pham.

Genes that call this "Most Annotated" start:

- Abidatro_8, AlexMinion_7, Amanises_9, Amelia_9, Basilisk_8, Bedetta_9, Bibble12_9, Brynnie_8, Chicken_8, Colusalem_8, Coral_8, Cote_9, Damocles_9, Daob_9, Eesa_8, Galaxy_8, GramZayde_8, Gravel_9, HannahPhantana_9, Jamun_8, Jerole_9, KendraB23_9, Kepler_8, Lunar_9, Melons_9, Niblet_8,

Orcanus_8, OtsoOtso_8, Pelletreau_9, PhirstandPhine_9, Pineda_9, Polka_8, Shen_9, StuartMinion_7, TaylorSipht_8, Toad24_9, Westrich_9, Zixiang_8,

Genes that have the "Most Annotated" start but do not call it:

-

Genes that do not have the "Most Annotated" start:

• Antrice_8, Aoka_8, BrayBeast_7, CocoCinnamon_10, Cygnet_8, EvenBluerMoon_8, Hereford_9, JanetJ_8, JeanClaude_7, LittleTokyo_8, Maja_7, MargaretKali_8, Morrey_11, PrairieDogTown_8, Zhuangyuan_9,

Summary by start number:

Start 4:

- Found in 5 of 53 (9.4%) of genes in pham
- Manual Annotations of this start: 3 of 40
- Called 80.0% of time when present
- Phage (with cluster) where this start called: Aoka_8 (FO), EvenBluerMoon_8 (FO), Hereford_9 (FO), Morrey_11 (FO),

Start 9:

- Found in 10 of 53 (18.9%) of genes in pham
- Manual Annotations of this start: 5 of 40
- Called 60.0% of time when present
- Phage (with cluster) where this start called: BrayBeast_7 (FB), CocoCinnamon_10 (FO), JeanClaude_7 (FB), Maja_7 (FO), MargaretKali_8 (FB), PrairieDogTown_8 (FO),

Start 10:

- Found in 5 of 53 (9.4%) of genes in pham
- Manual Annotations of this start: 5 of 40
- Called 100.0% of time when present
- Phage (with cluster) where this start called: Antrice_8 (AS2), Cygnet_8 (AS2), JanetJ_8 (FO), LittleTokyo_8 (AS2), Zhuangyuan_9 (AS2),

Start 11:

- Found in 38 of 53 (71.7%) of genes in pham
- Manual Annotations of this start: 27 of 40
- Called 100.0% of time when present
- Phage (with cluster) where this start called: Abidatro_8 (AS1), AlexMinion_7 (AS3), Amanises_9 (AS1), Amelia_9 (AS2), Basilisk_8 (AS1), Bedetta_9 (AS2), Bibble12_9 (AS2), Brynnie_8 (AS1), Chicken_8 (AS1), Colusalem_8 (AS2), Coral_8 (AS2), Cote_9 (AS2), Damocles_9 (AS2), Daob_9 (AS2), Eesa_8 (AS1), Galaxy_8 (AS1), GramZayde_8 (AS2), Gravel_9 (AS1), HannahPhantana_9 (AS2), Jamun_8 (AS1), Jerole_9 (AS2), KendraB23_9 (AS1), Kepler_8 (AS2), Lunar_9 (AS2), Melons_9 (AS2), Niblet_8 (AS1), Orcanus_8 (AS1), OtsoOtso_8 (AS2), Pelletreau_9 (AS1), PhirstandPhine_9 (AS2), Pineda_9 (AS2), Polka_8 (AS2), Shen_9 (AS1), StuartMinion_7 (AS3), TaylorSipht_8 (AS1), Toad24_9 (AS1), Westrich_9 (AS1), Zixiang_8 (AS1),

Summary by clusters:

There are 5 clusters represented in this pham: AS3, AS2, AS1, FB, FO,

Info for manual annotations of cluster AS1:

- Start number 11 was manually annotated 13 times for cluster AS1.

Info for manual annotations of cluster AS2:

- Start number 10 was manually annotated 4 times for cluster AS2.
- Start number 11 was manually annotated 13 times for cluster AS2.

Info for manual annotations of cluster AS3:

- Start number 11 was manually annotated 1 time for cluster AS3.

Info for manual annotations of cluster FB:

- Start number 9 was manually annotated 2 times for cluster FB.

Info for manual annotations of cluster FO:

- Start number 4 was manually annotated 3 times for cluster FO.
- Start number 9 was manually annotated 3 times for cluster FO.
- Start number 10 was manually annotated 1 time for cluster FO.

Gene Information:

Gene: Abidatro_8 Start: 6875, Stop: 7084, Start Num: 11

Candidate Starts for Abidatro_8:

(7, 6830), (Start: 11 @6875 has 27 MA's),

Gene: AlexMinion_7 Start: 6509, Stop: 6718, Start Num: 11

Candidate Starts for AlexMinion_7:

(3, 6431), (Start: 11 @6509 has 27 MA's), (12, 6530), (18, 6611),

Gene: Amanises_9 Start: 7098, Stop: 7280, Start Num: 11

Candidate Starts for Amanises_9:

(Start: 11 @7098 has 27 MA's),

Gene: Amelia_9 Start: 7077, Stop: 7280, Start Num: 11

Candidate Starts for Amelia_9:

(Start: 11 @7077 has 27 MA's), (12, 7098), (14, 7113), (15, 7122),

Gene: Antrice_8 Start: 6824, Stop: 7024, Start Num: 10

Candidate Starts for Antrice_8:

(8, 6785), (Start: 10 @6824 has 5 MA's),

Gene: Aoka_8 Start: 7232, Stop: 7573, Start Num: 4

Candidate Starts for Aoka_8:

(Start: 4 @7232 has 3 MA's), (Start: 9 @7298 has 5 MA's),

Gene: Basilisk_8 Start: 7139, Stop: 7408, Start Num: 11

Candidate Starts for Basilisk_8:

(5, 7082), (6, 7088), (Start: 11 @7139 has 27 MA's),

Gene: Bedetta_9 Start: 7077, Stop: 7280, Start Num: 11

Candidate Starts for Bedetta_9:

(Start: 11 @7077 has 27 MA's), (12, 7098), (14, 7113), (15, 7122),

Gene: Bible12_9 Start: 7080, Stop: 7283, Start Num: 11

Candidate Starts for Bible12_9:

(Start: 11 @7080 has 27 MA's), (12, 7101), (14, 7116), (15, 7125),

Gene: BrayBeast_7 Start: 6205, Stop: 6471, Start Num: 9

Candidate Starts for BrayBeast_7:

(Start: 9 @6205 has 5 MA's), (12, 6226), (19, 6316),

Gene: Brynnie_8 Start: 6936, Stop: 7220, Start Num: 11

Candidate Starts for Brynnie_8:

(5, 6879), (6, 6885), (Start: 11 @6936 has 27 MA's),

Gene: Chicken_8 Start: 6886, Stop: 7068, Start Num: 11

Candidate Starts for Chicken_8:

(Start: 11 @6886 has 27 MA's), (13, 6913),

Gene: CocoCinnamon_10 Start: 7373, Stop: 7678, Start Num: 9

Candidate Starts for CocoCinnamon_10:

(Start: 9 @7373 has 5 MA's), (12, 7394), (16, 7460),

Gene: Colusalem_8 Start: 6916, Stop: 7119, Start Num: 11

Candidate Starts for Colusalem_8:

(Start: 11 @6916 has 27 MA's), (12, 6937), (14, 6952), (15, 6961),

Gene: Coral_8 Start: 6916, Stop: 7119, Start Num: 11

Candidate Starts for Coral_8:

(Start: 11 @6916 has 27 MA's), (12, 6937), (14, 6952), (15, 6961), (20, 7051),

Gene: Cote_9 Start: 7077, Stop: 7280, Start Num: 11

Candidate Starts for Cote_9:

(Start: 11 @7077 has 27 MA's), (12, 7098), (14, 7113), (15, 7122),

Gene: Cygnet_8 Start: 6857, Stop: 7063, Start Num: 10

Candidate Starts for Cygnet_8:

(Start: 10 @6857 has 5 MA's),

Gene: Damocles_9 Start: 7077, Stop: 7280, Start Num: 11

Candidate Starts for Damocles_9:

(Start: 11 @7077 has 27 MA's), (12, 7098), (14, 7113), (15, 7122),

Gene: Daob_9 Start: 7080, Stop: 7283, Start Num: 11

Candidate Starts for Daob_9:

(Start: 11 @7080 has 27 MA's), (12, 7101), (14, 7116), (15, 7125),

Gene: Eesa_8 Start: 7101, Stop: 7283, Start Num: 11

Candidate Starts for Eesa_8:

(Start: 11 @7101 has 27 MA's),

Gene: EvenBluerMoon_8 Start: 7230, Stop: 7607, Start Num: 4

Candidate Starts for EvenBluerMoon_8:

(Start: 4 @7230 has 3 MA's), (Start: 9 @7296 has 5 MA's),

Gene: Galaxy_8 Start: 6882, Stop: 7091, Start Num: 11

Candidate Starts for Galaxy_8:

(7, 6837), (Start: 11 @6882 has 27 MA's),

Gene: GramZayde_8 Start: 6916, Stop: 7119, Start Num: 11

Candidate Starts for GramZayde_8:

(Start: 11 @6916 has 27 MA's), (12, 6937), (14, 6952), (15, 6961),

Gene: Gravel_9 Start: 7098, Stop: 7280, Start Num: 11

Candidate Starts for Gravel_9:

(Start: 11 @7098 has 27 MA's),

Gene: HannahPhantana_9 Start: 7080, Stop: 7283, Start Num: 11

Candidate Starts for HannahPhantana_9:

(Start: 11 @7080 has 27 MA's), (12, 7101), (14, 7116), (15, 7125),

Gene: Hereford_9 Start: 7411, Stop: 7752, Start Num: 4

Candidate Starts for Hereford_9:

(Start: 4 @7411 has 3 MA's), (Start: 9 @7477 has 5 MA's),

Gene: Jamun_8 Start: 7154, Stop: 7432, Start Num: 11

Candidate Starts for Jamun_8:

(5, 7097), (6, 7103), (Start: 11 @7154 has 27 MA's),

Gene: JanetJ_8 Start: 7079, Stop: 7387, Start Num: 10

Candidate Starts for JanetJ_8:

(Start: 10 @7079 has 5 MA's), (12, 7103),

Gene: JeanClaude_7 Start: 6199, Stop: 6378, Start Num: 9

Candidate Starts for JeanClaude_7:

(1, 5911), (2, 5992), (Start: 9 @6199 has 5 MA's), (12, 6220),

Gene: Jerole_9 Start: 7077, Stop: 7280, Start Num: 11

Candidate Starts for Jerole_9:

(Start: 11 @7077 has 27 MA's), (12, 7098), (14, 7113), (15, 7122),

Gene: KendraB23_9 Start: 7098, Stop: 7280, Start Num: 11

Candidate Starts for KendraB23_9:

(Start: 11 @7098 has 27 MA's),

Gene: Kepler_8 Start: 6915, Stop: 7118, Start Num: 11

Candidate Starts for Kepler_8:

(Start: 11 @6915 has 27 MA's), (12, 6936), (14, 6951), (15, 6960),

Gene: LittleTokyo_8 Start: 6828, Stop: 7022, Start Num: 10

Candidate Starts for LittleTokyo_8:

(Start: 10 @6828 has 5 MA's),

Gene: Lunar_9 Start: 7077, Stop: 7280, Start Num: 11

Candidate Starts for Lunar_9:

(Start: 11 @7077 has 27 MA's), (12, 7098), (14, 7113), (15, 7122),

Gene: Maja_7 Start: 6613, Stop: 6900, Start Num: 9
Candidate Starts for Maja_7:
(Start: 9 @6613 has 5 MA's), (12, 6634),

Gene: MargaretKali_8 Start: 6706, Stop: 6972, Start Num: 9
Candidate Starts for MargaretKali_8:
(Start: 9 @6706 has 5 MA's), (17, 6799),

Gene: Melons_9 Start: 7077, Stop: 7280, Start Num: 11
Candidate Starts for Melons_9:
(Start: 11 @7077 has 27 MA's), (12, 7098), (14, 7113), (15, 7122),

Gene: Morrey_11 Start: 7232, Stop: 7609, Start Num: 4
Candidate Starts for Morrey_11:
(Start: 4 @7232 has 3 MA's), (Start: 9 @7298 has 5 MA's),

Gene: Niblet_8 Start: 6886, Stop: 7068, Start Num: 11
Candidate Starts for Niblet_8:
(Start: 11 @6886 has 27 MA's), (13, 6913),

Gene: Orcanus_8 Start: 6891, Stop: 7073, Start Num: 11
Candidate Starts for Orcanus_8:
(Start: 11 @6891 has 27 MA's),

Gene: OtsoOtso_8 Start: 6916, Stop: 7119, Start Num: 11
Candidate Starts for OtsoOtso_8:
(Start: 11 @6916 has 27 MA's), (12, 6937), (14, 6952), (15, 6961),

Gene: Pelletreau_9 Start: 7098, Stop: 7280, Start Num: 11
Candidate Starts for Pelletreau_9:
(Start: 11 @7098 has 27 MA's),

Gene: PhirstandPhine_9 Start: 7077, Stop: 7280, Start Num: 11
Candidate Starts for PhirstandPhine_9:
(Start: 11 @7077 has 27 MA's), (12, 7098), (14, 7113), (15, 7122),

Gene: Pineda_9 Start: 7077, Stop: 7280, Start Num: 11
Candidate Starts for Pineda_9:
(Start: 11 @7077 has 27 MA's), (12, 7098), (14, 7113), (15, 7122),

Gene: Polka_8 Start: 6916, Stop: 7119, Start Num: 11
Candidate Starts for Polka_8:
(Start: 11 @6916 has 27 MA's), (12, 6937), (14, 6952), (15, 6961),

Gene: PrairieDogTown_8 Start: 7298, Stop: 7609, Start Num: 9
Candidate Starts for PrairieDogTown_8:
(Start: 4 @7232 has 3 MA's), (Start: 9 @7298 has 5 MA's),

Gene: Shen_9 Start: 7098, Stop: 7280, Start Num: 11
Candidate Starts for Shen_9:
(Start: 11 @7098 has 27 MA's),

Gene: StuartMinion_7 Start: 6509, Stop: 6718, Start Num: 11

Candidate Starts for StuartMinion_7:

(3, 6431), (Start: 11 @6509 has 27 MA's), (12, 6530), (18, 6611),

Gene: TaylorSipht_8 Start: 6914, Stop: 7159, Start Num: 11

Candidate Starts for TaylorSipht_8:

(Start: 11 @6914 has 27 MA's),

Gene: Toad24_9 Start: 7098, Stop: 7280, Start Num: 11

Candidate Starts for Toad24_9:

(Start: 11 @7098 has 27 MA's),

Gene: Westrich_9 Start: 7086, Stop: 7268, Start Num: 11

Candidate Starts for Westrich_9:

(Start: 11 @7086 has 27 MA's),

Gene: Zhuangyuan_9 Start: 7207, Stop: 7446, Start Num: 10

Candidate Starts for Zhuangyuan_9:

(Start: 10 @7207 has 5 MA's),

Gene: Zixiang_8 Start: 6886, Stop: 7068, Start Num: 11

Candidate Starts for Zixiang_8:

(Start: 11 @6886 has 27 MA's), (13, 6913),