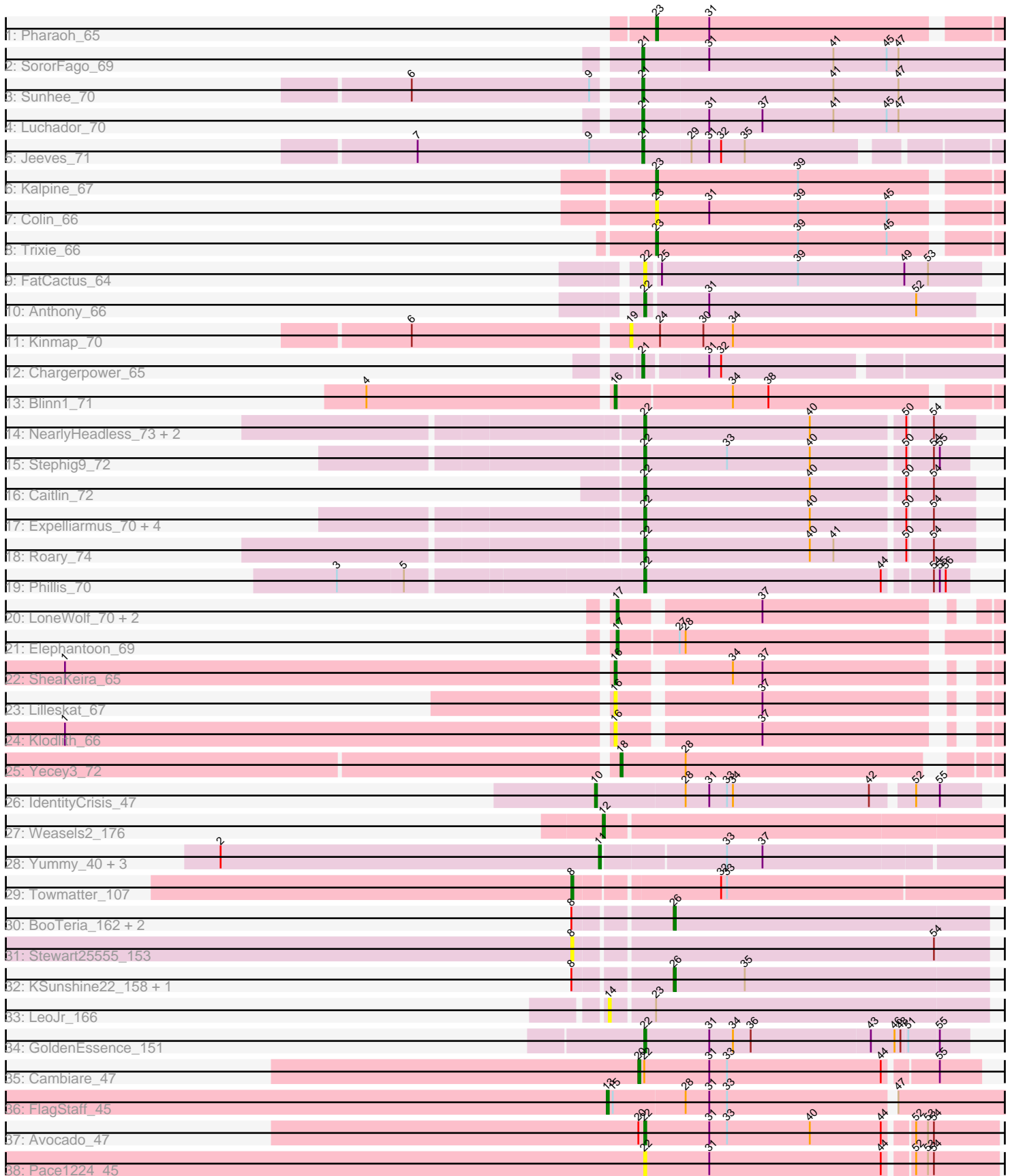


Pham 311679



Note: Tracks are now grouped by subcluster and scaled. Switching in subcluster is indicated by changes in track color. Track scale is now set by default to display the region 30 bp upstream of start 1 to 30 bp downstream of the last possible start. If this default region is judged to be packed too tightly with annotated starts, the track will be further scaled to only show that region of the ORF with annotated starts. This action will be indicated by adding "Zoomed" to the title. For starts, yellow indicates the location of called starts comprised solely of Glimmer/GeneMark auto-annotations, green indicates the location of called starts with at least 1 manual gene annotation.

Pham 311679 Report

This analysis was run 06/27/26 on database version 652.

Pham number 311679 has 52 members, 11 are drafts.

Phages represented in each track:

- Track 1 : Pharaoh_65
- Track 2 : SororFago_69
- Track 3 : Sunhee_70
- Track 4 : Luchador_70
- Track 5 : Jeeves_71
- Track 6 : Kalpine_67
- Track 7 : Colin_66
- Track 8 : Trixie_66
- Track 9 : FatCactus_64
- Track 10 : Anthony_66
- Track 11 : Kinmap_70
- Track 12 : Chargerpower_65
- Track 13 : Blinn1_71
- Track 14 : NearlyHeadless_73, Saintus_68, Dixon_72
- Track 15 : Stephig9_72
- Track 16 : Caitlin_72
- Track 17 : Expelliarmus_70, Groundhog_72, Astro_73, Danforth_73, Smeadley_73
- Track 18 : Roary_74
- Track 19 : Phillis_70
- Track 20 : LoneWolf_70, BogosyJay_70, Maminiaina_70
- Track 21 : Elephantoon_69
- Track 22 : SheaKeira_65
- Track 23 : Lilleskat_67
- Track 24 : Klodlith_66
- Track 25 : Yecey3_72
- Track 26 : IdentityCrisis_47
- Track 27 : Weasels2_176
- Track 28 : Yummy_40, Buttrmilkdreams_40, Horseradish_40, MScarn_41
- Track 29 : Towmatter_107
- Track 30 : BooTeria_162, Emmetator_156, DunneganBoMo_153
- Track 31 : Stewart25555_153
- Track 32 : KSunshine22_158, Ellewin_153
- Track 33 : LeoJr_166
- Track 34 : GoldenEssence_151
- Track 35 : Cambiare_47
- Track 36 : FlagStaff_45
- Track 37 : Avocado_47

- Track 38 : Pace1224_45

Summary of Final Annotations (See graph section above for start numbers):

The start number called the most often in the published annotations is 22, it was called in 15 of the 41 non-draft genes in the pham.

Genes that call this "Most Annotated" start:

- Anthony_66, Astro_73, Avocado_47, Caitlin_72, Danforth_73, Dixon_72, Expelliarmus_70, FatCactus_64, GoldenEssence_151, Groundhog_72, NearlyHeadless_73, Pace1224_45, Phillis_70, Roary_74, Saintus_68, Smeadley_73, StepHig9_72,

Genes that have the "Most Annotated" start but do not call it:

- Cambiare_47,

Genes that do not have the "Most Annotated" start:

- Blinn1_71, BogosyJay_70, BooTeria_162, Buttrmilkdreams_40, Chargerpower_65, Colin_66, DunneganBoMo_153, Elephantoan_69, Ellewin_153, Emmetator_156, FlagStaff_45, Horseradish_40, IdentityCrisis_47, Jeeves_71, KSunshine22_158, Kalpine_67, Kinmap_70, Klodlith_66, LeoJr_166, Lilleskat_67, LoneWolf_70, Luchador_70, MScarn_41, Maminiaina_70, Pharaoh_65, SheaKeira_65, SororFago_69, Stewart25555_153, Sunhee_70, Towmatter_107, Trixie_66, Weasels2_176, Yecey3_72, Yummy_40,

Summary by start number:

Start 8:

- Found in 7 of 52 (13.5%) of genes in pham
- Manual Annotations of this start: 1 of 41
- Called 28.6% of time when present
- Phage (with cluster) where this start called: Stewart25555_153 (FC), Towmatter_107 (DL),

Start 10:

- Found in 1 of 52 (1.9%) of genes in pham
- Manual Annotations of this start: 1 of 41
- Called 100.0% of time when present
- Phage (with cluster) where this start called: IdentityCrisis_47 (AJ),

Start 11:

- Found in 4 of 52 (7.7%) of genes in pham
- Manual Annotations of this start: 4 of 41
- Called 100.0% of time when present
- Phage (with cluster) where this start called: Buttrmilkdreams_40 (CT), Horseradish_40 (CT), MScarn_41 (CT), Yummy_40 (CT),

Start 12:

- Found in 1 of 52 (1.9%) of genes in pham
- Manual Annotations of this start: 1 of 41

- Called 100.0% of time when present
- Phage (with cluster) where this start called: Weasels2_176 (CB),

Start 13:

- Found in 1 of 52 (1.9%) of genes in pham
- Manual Annotations of this start: 1 of 41
- Called 100.0% of time when present
- Phage (with cluster) where this start called: FlagStaff_45 (G2),

Start 14:

- Found in 1 of 52 (1.9%) of genes in pham
- No Manual Annotations of this start.
- Called 100.0% of time when present
- Phage (with cluster) where this start called: LeoJr_166 (FC),

Start 16:

- Found in 4 of 52 (7.7%) of genes in pham
- Manual Annotations of this start: 2 of 41
- Called 100.0% of time when present
- Phage (with cluster) where this start called: Blinn1_71 (A6), Klodlith_66 (A9), Lilleskat_67 (A9), SheaKeira_65 (A9),

Start 17:

- Found in 4 of 52 (7.7%) of genes in pham
- Manual Annotations of this start: 4 of 41
- Called 100.0% of time when present
- Phage (with cluster) where this start called: BogosyJay_70 (A9), Elephantoon_69 (A9), LoneWolf_70 (A9), Maminiaina_70 (A9),

Start 18:

- Found in 1 of 52 (1.9%) of genes in pham
- Manual Annotations of this start: 1 of 41
- Called 100.0% of time when present
- Phage (with cluster) where this start called: Yecey3_72 (A9),

Start 19:

- Found in 1 of 52 (1.9%) of genes in pham
- No Manual Annotations of this start.
- Called 100.0% of time when present
- Phage (with cluster) where this start called: Kinmap_70 (A21),

Start 20:

- Found in 2 of 52 (3.8%) of genes in pham
- Manual Annotations of this start: 1 of 41
- Called 50.0% of time when present
- Phage (with cluster) where this start called: Cambiare_47 (G2),

Start 21:

- Found in 5 of 52 (9.6%) of genes in pham
- Manual Annotations of this start: 5 of 41
- Called 100.0% of time when present
- Phage (with cluster) where this start called: Chargerpower_65 (A22), Jeeves_71 (A14), Luchador_70 (A14), SororFago_69 (A14), Sunhee_70 (A14),

Start 22:

- Found in 18 of 52 (34.6%) of genes in pham
- Manual Annotations of this start: 15 of 41
- Called 94.4% of time when present
- Phage (with cluster) where this start called: Anthony_66 (A20), Astro_73 (A8), Avocado_47 (G2), Caitlin_72 (A8), Danforth_73 (A8), Dixon_72 (A8), Expelliarmus_70 (A8), FatCactus_64 (A20), GoldenEssence_151 (FC), Groundhog_72 (A8), NearlyHeadless_73 (A8), Pace1224_45 (G2), Phillis_70 (A8), Roary_74 (A8), Saintus_68 (A8), Smeadley_73 (A8), Stephig9_72 (A8),

Start 23:

- Found in 5 of 52 (9.6%) of genes in pham
- Manual Annotations of this start: 3 of 41
- Called 80.0% of time when present
- Phage (with cluster) where this start called: Colin_66 (A2), Kalpine_67 (A2), Pharaoh_65 (A12), Trixie_66 (A2),

Start 26:

- Found in 5 of 52 (9.6%) of genes in pham
- Manual Annotations of this start: 2 of 41
- Called 100.0% of time when present
- Phage (with cluster) where this start called: BooTeria_162 (FC), DunneganBoMo_153 (FC), Ellewin_153 (FC), Emmetator_156 (FC), KSunshine22_158 (FC),

Summary by clusters:

There are 15 clusters represented in this pham: A20, A14, DL, G2, A12, CB, AJ, A22, A21, FC, A6, A9, A8, A2, CT,

Info for manual annotations of cluster A12:

- Start number 23 was manually annotated 1 time for cluster A12.

Info for manual annotations of cluster A14:

- Start number 21 was manually annotated 4 times for cluster A14.

Info for manual annotations of cluster A2:

- Start number 23 was manually annotated 2 times for cluster A2.

Info for manual annotations of cluster A20:

- Start number 22 was manually annotated 1 time for cluster A20.

Info for manual annotations of cluster A22:

- Start number 21 was manually annotated 1 time for cluster A22.

Info for manual annotations of cluster A6:

- Start number 16 was manually annotated 1 time for cluster A6.

Info for manual annotations of cluster A8:

- Start number 22 was manually annotated 12 times for cluster A8.

Info for manual annotations of cluster A9:

- Start number 16 was manually annotated 1 time for cluster A9.
- Start number 17 was manually annotated 4 times for cluster A9.
- Start number 18 was manually annotated 1 time for cluster A9.

Info for manual annotations of cluster AJ:

- Start number 10 was manually annotated 1 time for cluster AJ.

Info for manual annotations of cluster CB:

- Start number 12 was manually annotated 1 time for cluster CB.

Info for manual annotations of cluster CT:

- Start number 11 was manually annotated 4 times for cluster CT.

Info for manual annotations of cluster DL:

- Start number 8 was manually annotated 1 time for cluster DL.

Info for manual annotations of cluster FC:

- Start number 22 was manually annotated 1 time for cluster FC.
- Start number 26 was manually annotated 2 times for cluster FC.

Info for manual annotations of cluster G2:

- Start number 13 was manually annotated 1 time for cluster G2.
- Start number 20 was manually annotated 1 time for cluster G2.
- Start number 22 was manually annotated 1 time for cluster G2.

Gene Information:

Gene: Anthony_66 Start: 40829, Stop: 40665, Start Num: 22

Candidate Starts for Anthony_66:

(Start: 22 @40829 has 15 MA's), (31, 40799), (52, 40694),

Gene: Astro_73 Start: 40939, Stop: 40778, Start Num: 22

Candidate Starts for Astro_73:

(Start: 22 @40939 has 15 MA's), (40, 40855), (50, 40810), (54, 40798),

Gene: Avocado_47 Start: 37189, Stop: 37362, Start Num: 22

Candidate Starts for Avocado_47:

(Start: 20 @37186 has 1 MA's), (Start: 22 @37189 has 15 MA's), (31, 37222), (33, 37231), (40, 37273), (44, 37309), (52, 37321), (53, 37327), (54, 37330),

Gene: Blinn1_71 Start: 39967, Stop: 39776, Start Num: 16

Candidate Starts for Blinn1_71:

(4, 40087), (Start: 16 @39967 has 2 MA's), (34, 39910), (38, 39892),

Gene: BogosyJay_70 Start: 41590, Stop: 41414, Start Num: 17

Candidate Starts for BogosyJay_70:

(Start: 17 @41590 has 4 MA's), (37, 41524),

Gene: BooTeria_162 Start: 107851, Stop: 108009, Start Num: 26

Candidate Starts for BooTeria_162:

(Start: 8 @107806 has 1 MA's), (Start: 26 @107851 has 2 MA's),

Gene: Buttrmlkdreams_40 Start: 27645, Stop: 27442, Start Num: 11
Candidate Starts for Buttrmlkdreams_40:
(2, 27837), (Start: 11 @27645 has 4 MA's), (33, 27585), (37, 27567),

Gene: Caitlin_72 Start: 40640, Stop: 40479, Start Num: 22
Candidate Starts for Caitlin_72:
(Start: 22 @40640 has 15 MA's), (40, 40556), (50, 40511), (54, 40499),

Gene: Cambiare_47 Start: 37281, Stop: 37448, Start Num: 20
Candidate Starts for Cambiare_47:
(Start: 20 @37281 has 1 MA's), (Start: 22 @37284 has 15 MA's), (31, 37317), (33, 37326), (44, 37404),
(55, 37428),

Gene: Chargerpower_65 Start: 39591, Stop: 39409, Start Num: 21
Candidate Starts for Chargerpower_65:
(Start: 21 @39591 has 5 MA's), (31, 39561), (32, 39555),

Gene: Colin_66 Start: 42014, Stop: 41838, Start Num: 23
Candidate Starts for Colin_66:
(Start: 23 @42014 has 3 MA's), (31, 41987), (39, 41942), (45, 41897),

Gene: Danforth_73 Start: 40987, Stop: 40826, Start Num: 22
Candidate Starts for Danforth_73:
(Start: 22 @40987 has 15 MA's), (40, 40903), (50, 40858), (54, 40846),

Gene: Dixon_72 Start: 40507, Stop: 40346, Start Num: 22
Candidate Starts for Dixon_72:
(Start: 22 @40507 has 15 MA's), (40, 40423), (50, 40378), (54, 40366),

Gene: DunneganBoMo_153 Start: 107120, Stop: 107278, Start Num: 26
Candidate Starts for DunneganBoMo_153:
(Start: 8 @107075 has 1 MA's), (Start: 26 @107120 has 2 MA's),

Gene: Elephantoon_69 Start: 40932, Stop: 40738, Start Num: 17
Candidate Starts for Elephantoon_69:
(Start: 17 @40932 has 4 MA's), (27, 40902), (28, 40899),

Gene: Ellewin_153 Start: 107224, Stop: 107382, Start Num: 26
Candidate Starts for Ellewin_153:
(Start: 8 @107179 has 1 MA's), (Start: 26 @107224 has 2 MA's), (35, 107260),

Gene: Emmetator_156 Start: 107433, Stop: 107591, Start Num: 26
Candidate Starts for Emmetator_156:
(Start: 8 @107388 has 1 MA's), (Start: 26 @107433 has 2 MA's),

Gene: Expelliarmus_70 Start: 40711, Stop: 40550, Start Num: 22
Candidate Starts for Expelliarmus_70:
(Start: 22 @40711 has 15 MA's), (40, 40627), (50, 40582), (54, 40570),

Gene: FatCactus_64 Start: 40465, Stop: 40298, Start Num: 22
Candidate Starts for FatCactus_64:

(Start: 22 @40465 has 15 MA's), (25, 40459), (39, 40390), (49, 40336), (53, 40324),

Gene: FlagStaff_45 Start: 36055, Stop: 36249, Start Num: 13

Candidate Starts for FlagStaff_45:

(Start: 13 @36055 has 1 MA's), (15, 36058), (28, 36094), (31, 36106), (33, 36115), (47, 36196),

Gene: GoldenEssence_151 Start: 104838, Stop: 104999, Start Num: 22

Candidate Starts for GoldenEssence_151:

(Start: 22 @104838 has 15 MA's), (31, 104871), (34, 104883), (36, 104892), (43, 104952), (46, 104964), (48, 104967), (51, 104970), (55, 104985),

Gene: Groundhog_72 Start: 40917, Stop: 40756, Start Num: 22

Candidate Starts for Groundhog_72:

(Start: 22 @40917 has 15 MA's), (40, 40833), (50, 40788), (54, 40776),

Gene: Horseradish_40 Start: 27173, Stop: 26970, Start Num: 11

Candidate Starts for Horseradish_40:

(2, 27365), (Start: 11 @27173 has 4 MA's), (33, 27113), (37, 27095),

Gene: IdentityCrisis_47 Start: 31026, Stop: 31214, Start Num: 10

Candidate Starts for IdentityCrisis_47:

(Start: 10 @31026 has 1 MA's), (28, 31071), (31, 31083), (33, 31092), (34, 31095), (42, 31164), (52, 31182), (55, 31194),

Gene: Jeeves_71 Start: 41042, Stop: 40869, Start Num: 21

Candidate Starts for Jeeves_71:

(7, 41156), (9, 41069), (Start: 21 @41042 has 5 MA's), (29, 41018), (31, 41009), (32, 41003), (35, 40991),

Gene: KSunshine22_158 Start: 108183, Stop: 108341, Start Num: 26

Candidate Starts for KSunshine22_158:

(Start: 8 @108138 has 1 MA's), (Start: 26 @108183 has 2 MA's), (35, 108219),

Gene: Kalpine_67 Start: 42195, Stop: 42019, Start Num: 23

Candidate Starts for Kalpine_67:

(Start: 23 @42195 has 3 MA's), (39, 42123),

Gene: Kinmap_70 Start: 40504, Stop: 40307, Start Num: 19

Candidate Starts for Kinmap_70:

(6, 40609), (19, 40504), (24, 40489), (30, 40468), (34, 40453),

Gene: Klodlith_66 Start: 40644, Stop: 40468, Start Num: 16

Candidate Starts for Klodlith_66:

(1, 40917), (Start: 16 @40644 has 2 MA's), (37, 40578),

Gene: LeoJr_166 Start: 110788, Stop: 110976, Start Num: 14

Candidate Starts for LeoJr_166:

(14, 110788), (Start: 23 @110809 has 3 MA's),

Gene: Lilleskat_67 Start: 41392, Stop: 41216, Start Num: 16

Candidate Starts for Lilleskat_67:

(Start: 16 @41392 has 2 MA's), (37, 41326),

Gene: LoneWolf_70 Start: 41439, Stop: 41263, Start Num: 17

Candidate Starts for LoneWolf_70:

(Start: 17 @41439 has 4 MA's), (37, 41373),

Gene: Luchador_70 Start: 42522, Stop: 42328, Start Num: 21

Candidate Starts for Luchador_70:

(Start: 21 @42522 has 5 MA's), (31, 42489), (37, 42462), (41, 42426), (45, 42399), (47, 42393),

Gene: MScarn_41 Start: 27313, Stop: 27110, Start Num: 11

Candidate Starts for MScarn_41:

(2, 27505), (Start: 11 @27313 has 4 MA's), (33, 27253), (37, 27235),

Gene: Maminiaina_70 Start: 41572, Stop: 41396, Start Num: 17

Candidate Starts for Maminiaina_70:

(Start: 17 @41572 has 4 MA's), (37, 41506),

Gene: NearlyHeadless_73 Start: 40753, Stop: 40592, Start Num: 22

Candidate Starts for NearlyHeadless_73:

(Start: 22 @40753 has 15 MA's), (40, 40669), (50, 40624), (54, 40612),

Gene: Pace1224_45 Start: 36103, Stop: 36276, Start Num: 22

Candidate Starts for Pace1224_45:

(Start: 22 @36103 has 15 MA's), (31, 36136), (44, 36223), (52, 36235), (53, 36241), (54, 36244),

Gene: Pharaoh_65 Start: 41502, Stop: 41326, Start Num: 23

Candidate Starts for Pharaoh_65:

(Start: 23 @41502 has 3 MA's), (31, 41475),

Gene: Phillis_70 Start: 40207, Stop: 40049, Start Num: 22

Candidate Starts for Phillis_70:

(3, 40354), (5, 40321), (Start: 22 @40207 has 15 MA's), (44, 40087), (54, 40066), (55, 40063), (56, 40060),

Gene: Roary_74 Start: 40972, Stop: 40811, Start Num: 22

Candidate Starts for Roary_74:

(Start: 22 @40972 has 15 MA's), (40, 40888), (41, 40876), (50, 40843), (54, 40831),

Gene: Saintus_68 Start: 37637, Stop: 37476, Start Num: 22

Candidate Starts for Saintus_68:

(Start: 22 @37637 has 15 MA's), (40, 37553), (50, 37508), (54, 37496),

Gene: SheaKeira_65 Start: 40520, Stop: 40344, Start Num: 16

Candidate Starts for SheaKeira_65:

(1, 40793), (Start: 16 @40520 has 2 MA's), (34, 40469), (37, 40454),

Gene: Smeadley_73 Start: 40833, Stop: 40672, Start Num: 22

Candidate Starts for Smeadley_73:

(Start: 22 @40833 has 15 MA's), (40, 40749), (50, 40704), (54, 40692),

Gene: SororFago_69 Start: 42242, Stop: 42048, Start Num: 21

Candidate Starts for SororFago_69:

(Start: 21 @42242 has 5 MA's), (31, 42209), (41, 42146), (45, 42119), (47, 42113),

Gene: Stephig9_72 Start: 40770, Stop: 40612, Start Num: 22
Candidate Starts for Stephig9_72:
(Start: 22 @40770 has 15 MA's), (33, 40728), (40, 40686), (50, 40641), (54, 40629), (55, 40626),

Gene: Stewart25555_153 Start: 108142, Stop: 108345, Start Num: 8
Candidate Starts for Stewart25555_153:
(Start: 8 @108142 has 1 MA's), (54, 108319),

Gene: Sunhee_70 Start: 40582, Stop: 40388, Start Num: 21
Candidate Starts for Sunhee_70:
(6, 40693), (9, 40603), (Start: 21 @40582 has 5 MA's), (41, 40486), (47, 40453),

Gene: Towmatter_107 Start: 68561, Stop: 68797, Start Num: 8
Candidate Starts for Towmatter_107:
(Start: 8 @68561 has 1 MA's), (32, 68630), (33, 68633),

Gene: Trixie_66 Start: 41830, Stop: 41654, Start Num: 23
Candidate Starts for Trixie_66:
(Start: 23 @41830 has 3 MA's), (39, 41758), (45, 41713),

Gene: Weasels2_176 Start: 96304, Stop: 96510, Start Num: 12
Candidate Starts for Weasels2_176:
(Start: 12 @96304 has 1 MA's),

Gene: Yecey3_72 Start: 41315, Stop: 41127, Start Num: 18
Candidate Starts for Yecey3_72:
(Start: 18 @41315 has 1 MA's), (28, 41282),

Gene: Yummy_40 Start: 27287, Stop: 27084, Start Num: 11
Candidate Starts for Yummy_40:
(2, 27479), (Start: 11 @27287 has 4 MA's), (33, 27227), (37, 27209),