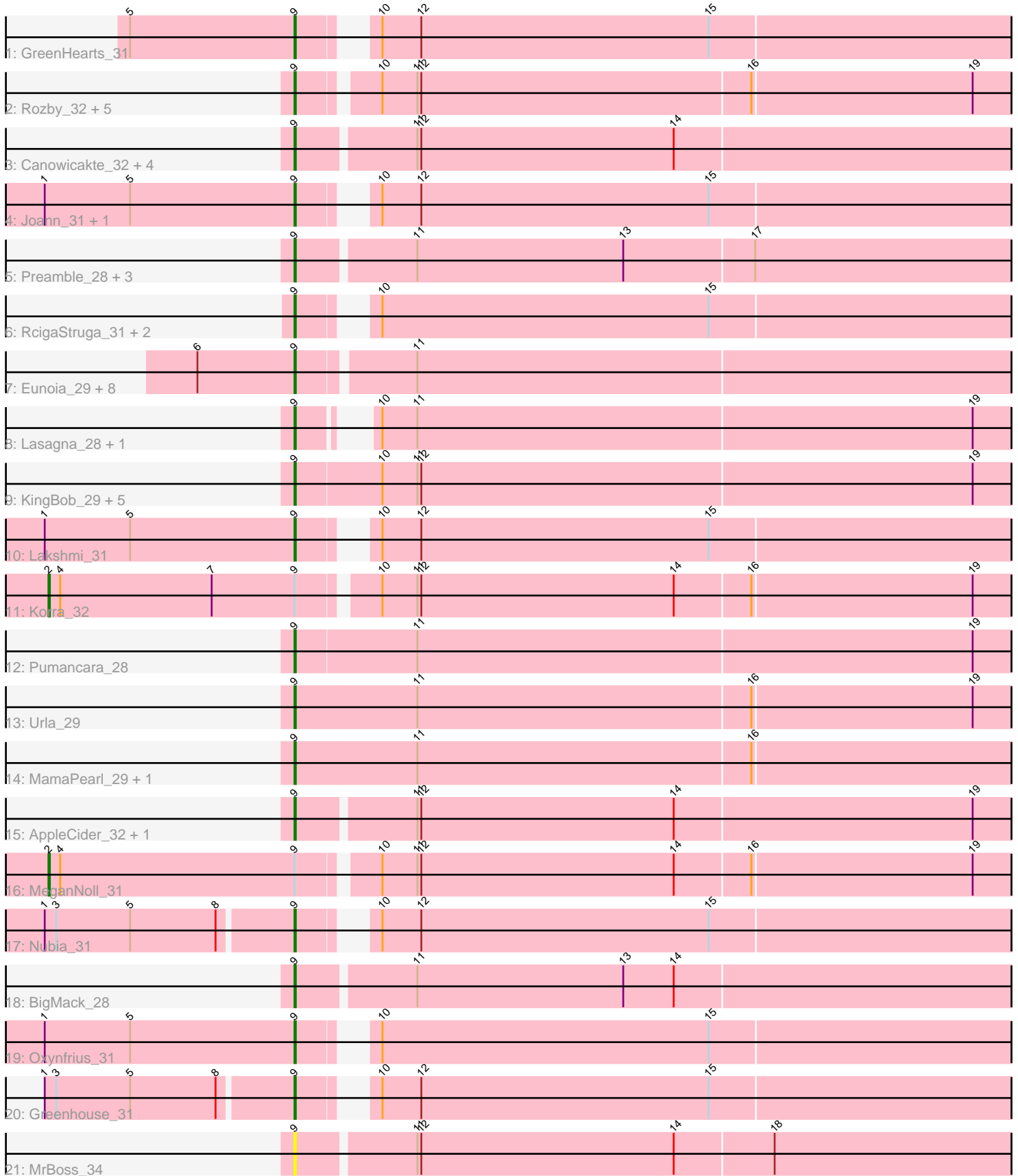


Pham 311681



Note: Tracks are now grouped by subcluster and scaled. Switching in subcluster is indicated by changes in track color. Track scale is now set by default to display the region 30 bp upstream of start 1 to 30 bp downstream of the last possible start. If this default region is judged to be packed too tightly with annotated starts, the track will be further scaled to only show that region of the ORF with annotated starts. This action will be indicated by adding "Zoomed" to the title. For starts, yellow indicates the location of called starts comprised solely of Glimmer/GeneMark auto-annotations, green indicates the location of called starts with at least 1 manual gene annotation.

## Pham 311681 Report

This analysis was run 06/27/26 on database version 652.

Pham number 311681 has 52 members, 1 are drafts.

Phages represented in each track:

- Track 1 : GreenHearts\_31
- Track 2 : Rozby\_32, Potatoes\_32, Cholula\_32, Immaculata\_32, Glenn\_32, Vallejo\_32
- Track 3 : Canowicakte\_32, Suppi\_32, Wayne\_32, Litotes\_32, CallieOMalley\_32
- Track 4 : Joann\_31, Albanese\_31
- Track 5 : Preamble\_28, Gisselle\_28, DreamTeam\_28, Kittykat\_28
- Track 6 : RcigaStruga\_31, Huntingdon\_31, Misaeng\_31
- Track 7 : Eunoia\_29, Supakev\_29, Vulture\_29, Aledel\_29, HunterDalle\_29, OMalley\_29, Riovina\_29, AustinPowers\_29, Chridison\_28
- Track 8 : Lasagna\_28, Lucy\_28
- Track 9 : KingBob\_29, Herb\_29, Maria1952\_29, Temper16\_29, Sergei\_29, Daiboju\_29
- Track 10 : Lakshmi\_31
- Track 11 : Korra\_32
- Track 12 : Pumancara\_28
- Track 13 : Urla\_29
- Track 14 : MamaPearl\_29, EstebanJulior\_29
- Track 15 : AppleCider\_32, PartyCup\_32
- Track 16 : MeganNoll\_31
- Track 17 : Nubia\_31
- Track 18 : BigMack\_28
- Track 19 : Oxynfrius\_31
- Track 20 : Greenhouse\_31
- Track 21 : MrBoss\_34

### ***Summary of Final Annotations (See graph section above for start numbers):***

The start number called the most often in the published annotations is 9, it was called in 49 of the 51 non-draft genes in the pham.

Genes that call this "Most Annotated" start:

- Albanese\_31, Aledel\_29, AppleCider\_32, AustinPowers\_29, BigMack\_28, CallieOMalley\_32, Canowicakte\_32, Cholula\_32, Chridison\_28, Daiboju\_29, DreamTeam\_28, EstebanJulior\_29, Eunoia\_29, Gisselle\_28, Glenn\_32,

GreenHearts\_31, Greenhouse\_31, Herb\_29, HunterDalle\_29, Huntingdon\_31, Immaculata\_32, Joann\_31, KingBob\_29, Kittykat\_28, Lakshmi\_31, Lasagna\_28, Litotes\_32, Lucy\_28, MamaPearl\_29, Maria1952\_29, Misaeng\_31, MrBoss\_34, Nubia\_31, OMalley\_29, Oxynfrius\_31, PartyCup\_32, Potatoes\_32, Preamble\_28, Pumancara\_28, RcigaStruga\_31, Riovina\_29, Rozby\_32, Sergei\_29, Supakev\_29, Suppi\_32, Temper16\_29, Urla\_29, Vallejo\_32, Vulture\_29, Wayne\_32,

Genes that have the "Most Annotated" start but do not call it:

- Korra\_32, MeganNoll\_31,

Genes that do not have the "Most Annotated" start:

- 

### Summary by start number:

Start 2:

- Found in 2 of 52 ( 3.8% ) of genes in pham
- Manual Annotations of this start: 2 of 51
- Called 100.0% of time when present
- Phage (with cluster) where this start called: Korra\_32 (AK), MeganNoll\_31 (AK),

Start 9:

- Found in 52 of 52 ( 100.0% ) of genes in pham
- Manual Annotations of this start: 49 of 51
- Called 96.2% of time when present
- Phage (with cluster) where this start called: Albanese\_31 (AK), Aledel\_29 (AK), AppleCider\_32 (AK), AustinPowers\_29 (AK), BigMack\_28 (AK), CallieOMalley\_32 (AK), Canowicakte\_32 (AK), Cholula\_32 (AK), Chridison\_28 (AK), Daiboju\_29 (AK), DreamTeam\_28 (AK), EstebanJulior\_29 (AK), Eunoia\_29 (AK), Gisselle\_28 (AK), Glenn\_32 (AK), GreenHearts\_31 (AK), Greenhouse\_31 (AK), Herb\_29 (AK), HunterDalle\_29 (AK), Huntingdon\_31 (AK), Immaculata\_32 (AK), Joann\_31 (AK), KingBob\_29 (AK), Kittykat\_28 (AK), Lakshmi\_31 (AK), Lasagna\_28 (AK), Litotes\_32 (AK), Lucy\_28 (AK), MamaPearl\_29 (AK), Maria1952\_29 (AK), Misaeng\_31 (AK), MrBoss\_34 (AK), Nubia\_31 (AK), OMalley\_29 (AK), Oxynfrius\_31 (AK), PartyCup\_32 (AK), Potatoes\_32 (AK), Preamble\_28 (AK), Pumancara\_28 (AK), RcigaStruga\_31 (AK), Riovina\_29 (AK), Rozby\_32 (AK), Sergei\_29 (AK), Supakev\_29 (AK), Suppi\_32 (AK), Temper16\_29 (AK), Urla\_29 (AK), Vallejo\_32 (AK), Vulture\_29 (AK), Wayne\_32 (AK),

### Summary by clusters:

There is one cluster represented in this pham: AK

Info for manual annotations of cluster AK:

- Start number 2 was manually annotated 2 times for cluster AK.
- Start number 9 was manually annotated 49 times for cluster AK.

### Gene Information:

Gene: Albanese\_31 Start: 24070, Stop: 24675, Start Num: 9

Candidate Starts for Albanese\_31:

(1, 23878), (5, 23944), (Start: 9 @24070 has 49 MA's), (10, 24109), (12, 24139), (15, 24361),

Gene: Aledel\_29 Start: 23671, Stop: 24288, Start Num: 9

Candidate Starts for Aledel\_29:

(6, 23596), (Start: 9 @23671 has 49 MA's), (11, 23755),

Gene: AppleCider\_32 Start: 24065, Stop: 24688, Start Num: 9

Candidate Starts for AppleCider\_32:

(Start: 9 @24065 has 49 MA's), (11, 24152), (12, 24155), (14, 24350), (19, 24578),

Gene: AustinPowers\_29 Start: 23669, Stop: 24286, Start Num: 9

Candidate Starts for AustinPowers\_29:

(6, 23594), (Start: 9 @23669 has 49 MA's), (11, 23753),

Gene: BigMack\_28 Start: 22539, Stop: 23165, Start Num: 9

Candidate Starts for BigMack\_28:

(Start: 9 @22539 has 49 MA's), (11, 22626), (13, 22785), (14, 22824),

Gene: CallieOMalley\_32 Start: 24065, Stop: 24688, Start Num: 9

Candidate Starts for CallieOMalley\_32:

(Start: 9 @24065 has 49 MA's), (11, 24152), (12, 24155), (14, 24350),

Gene: Canowicakte\_32 Start: 24100, Stop: 24723, Start Num: 9

Candidate Starts for Canowicakte\_32:

(Start: 9 @24100 has 49 MA's), (11, 24187), (12, 24190), (14, 24385),

Gene: Cholula\_32 Start: 24122, Stop: 24739, Start Num: 9

Candidate Starts for Cholula\_32:

(Start: 9 @24122 has 49 MA's), (10, 24176), (11, 24203), (12, 24206), (16, 24458), (19, 24626),

Gene: Chridison\_28 Start: 23669, Stop: 24286, Start Num: 9

Candidate Starts for Chridison\_28:

(6, 23594), (Start: 9 @23669 has 49 MA's), (11, 23753),

Gene: Daiboju\_29 Start: 23661, Stop: 24290, Start Num: 9

Candidate Starts for Daiboju\_29:

(Start: 9 @23661 has 49 MA's), (10, 23727), (11, 23754), (12, 23757), (19, 24180),

Gene: DreamTeam\_28 Start: 22603, Stop: 23226, Start Num: 9

Candidate Starts for DreamTeam\_28:

(Start: 9 @22603 has 49 MA's), (11, 22690), (13, 22849), (17, 22948),

Gene: EstebanJulior\_29 Start: 23719, Stop: 24348, Start Num: 9

Candidate Starts for EstebanJulior\_29:

(Start: 9 @23719 has 49 MA's), (11, 23812), (16, 24067),

Gene: Eunoia\_29 Start: 23671, Stop: 24288, Start Num: 9

Candidate Starts for Eunoia\_29:

(6, 23596), (Start: 9 @23671 has 49 MA's), (11, 23755),

Gene: Gisselle\_28 Start: 22603, Stop: 23226, Start Num: 9

Candidate Starts for Gisselle\_28:

(Start: 9 @22603 has 49 MA's), (11, 22690), (13, 22849), (17, 22948),

Gene: Glenn\_32 Start: 24126, Stop: 24743, Start Num: 9  
Candidate Starts for Glenn\_32:  
(Start: 9 @24126 has 49 MA's), (10, 24180), (11, 24207), (12, 24210), (16, 24462), (19, 24630),

Gene: GreenHearts\_31 Start: 24162, Stop: 24767, Start Num: 9  
Candidate Starts for GreenHearts\_31:  
(5, 24036), (Start: 9 @24162 has 49 MA's), (10, 24201), (12, 24231), (15, 24453),

Gene: Greenhouse\_31 Start: 24076, Stop: 24681, Start Num: 9  
Candidate Starts for Greenhouse\_31:  
(1, 23890), (3, 23899), (5, 23956), (8, 24022), (Start: 9 @24076 has 49 MA's), (10, 24115), (12, 24145),  
(15, 24367),

Gene: Herb\_29 Start: 23661, Stop: 24290, Start Num: 9  
Candidate Starts for Herb\_29:  
(Start: 9 @23661 has 49 MA's), (10, 23727), (11, 23754), (12, 23757), (19, 24180),

Gene: HunterDalle\_29 Start: 23668, Stop: 24285, Start Num: 9  
Candidate Starts for HunterDalle\_29:  
(6, 23593), (Start: 9 @23668 has 49 MA's), (11, 23752),

Gene: Huntingdon\_31 Start: 24054, Stop: 24659, Start Num: 9  
Candidate Starts for Huntingdon\_31:  
(Start: 9 @24054 has 49 MA's), (10, 24093), (15, 24345),

Gene: Immaculata\_32 Start: 24121, Stop: 24738, Start Num: 9  
Candidate Starts for Immaculata\_32:  
(Start: 9 @24121 has 49 MA's), (10, 24175), (11, 24202), (12, 24205), (16, 24457), (19, 24625),

Gene: Joann\_31 Start: 24020, Stop: 24625, Start Num: 9  
Candidate Starts for Joann\_31:  
(1, 23828), (5, 23894), (Start: 9 @24020 has 49 MA's), (10, 24059), (12, 24089), (15, 24311),

Gene: KingBob\_29 Start: 23661, Stop: 24290, Start Num: 9  
Candidate Starts for KingBob\_29:  
(Start: 9 @23661 has 49 MA's), (10, 23727), (11, 23754), (12, 23757), (19, 24180),

Gene: Kittykat\_28 Start: 22585, Stop: 23205, Start Num: 9  
Candidate Starts for Kittykat\_28:  
(Start: 9 @22585 has 49 MA's), (11, 22672), (13, 22831), (17, 22930),

Gene: Korra\_32 Start: 23885, Stop: 24691, Start Num: 2  
Candidate Starts for Korra\_32:  
(Start: 2 @23885 has 2 MA's), (4, 23894), (7, 24011), (Start: 9 @24074 has 49 MA's), (10, 24128), (11,  
24155), (12, 24158), (14, 24353), (16, 24410), (19, 24578),

Gene: Lakshmi\_31 Start: 24046, Stop: 24651, Start Num: 9  
Candidate Starts for Lakshmi\_31:  
(1, 23854), (5, 23920), (Start: 9 @24046 has 49 MA's), (10, 24085), (12, 24115), (15, 24337),

Gene: Lasagna\_28 Start: 22548, Stop: 23147, Start Num: 9  
Candidate Starts for Lasagna\_28:

(Start: 9 @22548 has 49 MA's), (10, 22581), (11, 22608), (19, 23034),

Gene: Litotes\_32 Start: 24050, Stop: 24673, Start Num: 9

Candidate Starts for Litotes\_32:

(Start: 9 @24050 has 49 MA's), (11, 24137), (12, 24140), (14, 24335),

Gene: Lucy\_28 Start: 22528, Stop: 23127, Start Num: 9

Candidate Starts for Lucy\_28:

(Start: 9 @22528 has 49 MA's), (10, 22561), (11, 22588), (19, 23014),

Gene: MamaPearl\_29 Start: 23719, Stop: 24348, Start Num: 9

Candidate Starts for MamaPearl\_29:

(Start: 9 @23719 has 49 MA's), (11, 23812), (16, 24067),

Gene: Maria1952\_29 Start: 23661, Stop: 24290, Start Num: 9

Candidate Starts for Maria1952\_29:

(Start: 9 @23661 has 49 MA's), (10, 23727), (11, 23754), (12, 23757), (19, 24180),

Gene: MeganNoll\_31 Start: 23937, Stop: 24743, Start Num: 2

Candidate Starts for MeganNoll\_31:

(Start: 2 @23937 has 2 MA's), (4, 23946), (Start: 9 @24126 has 49 MA's), (10, 24180), (11, 24207), (12, 24210), (14, 24405), (16, 24462), (19, 24630),

Gene: Misaeng\_31 Start: 24181, Stop: 24780, Start Num: 9

Candidate Starts for Misaeng\_31:

(Start: 9 @24181 has 49 MA's), (10, 24220), (15, 24472),

Gene: MrBoss\_34 Start: 24050, Stop: 24673, Start Num: 9

Candidate Starts for MrBoss\_34:

(Start: 9 @24050 has 49 MA's), (11, 24137), (12, 24140), (14, 24335), (18, 24410),

Gene: Nubia\_31 Start: 23995, Stop: 24600, Start Num: 9

Candidate Starts for Nubia\_31:

(1, 23809), (3, 23818), (5, 23875), (8, 23941), (Start: 9 @23995 has 49 MA's), (10, 24034), (12, 24064), (15, 24286),

Gene: OMalley\_29 Start: 23671, Stop: 24288, Start Num: 9

Candidate Starts for OMalley\_29:

(6, 23596), (Start: 9 @23671 has 49 MA's), (11, 23755),

Gene: Oxynfrius\_31 Start: 24020, Stop: 24625, Start Num: 9

Candidate Starts for Oxynfrius\_31:

(1, 23828), (5, 23894), (Start: 9 @24020 has 49 MA's), (10, 24059), (15, 24311),

Gene: PartyCup\_32 Start: 24097, Stop: 24720, Start Num: 9

Candidate Starts for PartyCup\_32:

(Start: 9 @24097 has 49 MA's), (11, 24184), (12, 24187), (14, 24382), (19, 24610),

Gene: Potatoes\_32 Start: 24122, Stop: 24739, Start Num: 9

Candidate Starts for Potatoes\_32:

(Start: 9 @24122 has 49 MA's), (10, 24176), (11, 24203), (12, 24206), (16, 24458), (19, 24626),

Gene: Preamble\_28 Start: 22559, Stop: 23182, Start Num: 9

Candidate Starts for Preamble\_28:

(Start: 9 @22559 has 49 MA's), (11, 22646), (13, 22805), (17, 22904),

Gene: Pumancara\_28 Start: 22470, Stop: 23099, Start Num: 9

Candidate Starts for Pumancara\_28:

(Start: 9 @22470 has 49 MA's), (11, 22563), (19, 22989),

Gene: RcigaStruga\_31 Start: 24054, Stop: 24659, Start Num: 9

Candidate Starts for RcigaStruga\_31:

(Start: 9 @24054 has 49 MA's), (10, 24093), (15, 24345),

Gene: Riovina\_29 Start: 23671, Stop: 24288, Start Num: 9

Candidate Starts for Riovina\_29:

(6, 23596), (Start: 9 @23671 has 49 MA's), (11, 23755),

Gene: Rozby\_32 Start: 24057, Stop: 24674, Start Num: 9

Candidate Starts for Rozby\_32:

(Start: 9 @24057 has 49 MA's), (10, 24111), (11, 24138), (12, 24141), (16, 24393), (19, 24561),

Gene: Sergei\_29 Start: 23661, Stop: 24290, Start Num: 9

Candidate Starts for Sergei\_29:

(Start: 9 @23661 has 49 MA's), (10, 23727), (11, 23754), (12, 23757), (19, 24180),

Gene: Supakev\_29 Start: 23671, Stop: 24288, Start Num: 9

Candidate Starts for Supakev\_29:

(6, 23596), (Start: 9 @23671 has 49 MA's), (11, 23755),

Gene: Suppi\_32 Start: 24100, Stop: 24723, Start Num: 9

Candidate Starts for Suppi\_32:

(Start: 9 @24100 has 49 MA's), (11, 24187), (12, 24190), (14, 24385),

Gene: Temper16\_29 Start: 23661, Stop: 24290, Start Num: 9

Candidate Starts for Temper16\_29:

(Start: 9 @23661 has 49 MA's), (10, 23727), (11, 23754), (12, 23757), (19, 24180),

Gene: Urla\_29 Start: 23729, Stop: 24355, Start Num: 9

Candidate Starts for Urla\_29:

(Start: 9 @23729 has 49 MA's), (11, 23822), (16, 24077), (19, 24245),

Gene: Vallejo\_32 Start: 24059, Stop: 24676, Start Num: 9

Candidate Starts for Vallejo\_32:

(Start: 9 @24059 has 49 MA's), (10, 24113), (11, 24140), (12, 24143), (16, 24395), (19, 24563),

Gene: Vulture\_29 Start: 23668, Stop: 24285, Start Num: 9

Candidate Starts for Vulture\_29:

(6, 23593), (Start: 9 @23668 has 49 MA's), (11, 23752),

Gene: Wayne\_32 Start: 24146, Stop: 24769, Start Num: 9

Candidate Starts for Wayne\_32:

(Start: 9 @24146 has 49 MA's), (11, 24233), (12, 24236), (14, 24431),