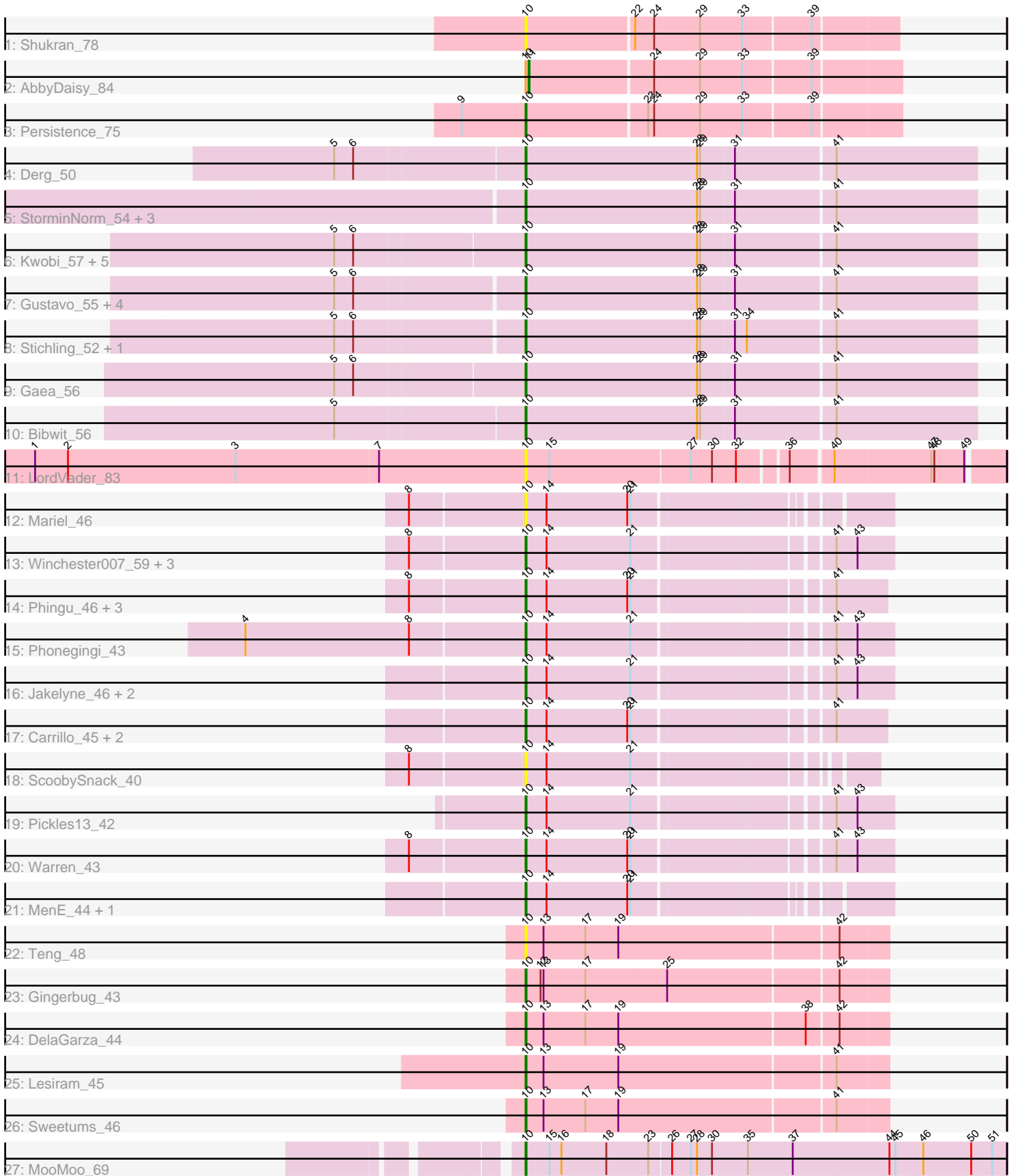


Pham 311687



Note: Tracks are now grouped by subcluster and scaled. Switching in subcluster is indicated by changes in track color. Track scale is now set by default to display the region 30 bp upstream of start 1 to 30 bp downstream of the last possible start. If this default region is judged to be packed too tightly with annotated starts, the track will be further scaled to only show that region of the ORF with annotated starts. This action will be indicated by adding "Zoomed" to the title. For starts, yellow indicates the location of called starts comprised solely of Glimmer/GeneMark auto-annotations, green indicates the location of called starts with at least 1 manual gene annotation.

## Pham 311687 Report

This analysis was run 06/27/26 on database version 652.

Pham number 311687 has 51 members, 14 are drafts.

Phages represented in each track:

- Track 1 : Shukran\_78
- Track 2 : AbbyDaisy\_84
- Track 3 : Persistence\_75
- Track 4 : Derg\_50
- Track 5 : StorminNorm\_54, LilHam\_52, Tycho\_54, Baumdotcom\_53
- Track 6 : Kwobi\_57, Bizzy\_55, YorkOnyx\_56, Ribeye\_55, SchottB\_53, Kroos\_55
- Track 7 : Gustavo\_55, Flatwoods\_55, Saronaya\_55, Tangerine\_54, Baddon\_55
- Track 8 : Stichling\_52, JKSyngboy\_53
- Track 9 : Gaea\_56
- Track 10 : Bibwit\_56
- Track 11 : LordVader\_83
- Track 12 : Mariel\_46
- Track 13 : Winchester007\_59, Appa\_43, PhillyJawn\_44, Dropshot\_43
- Track 14 : Phingu\_46, Blett\_43, Bush\_44, NCRodriguez\_45
- Track 15 : Phonegingi\_43
- Track 16 : Jakelyne\_46, Losacky\_44, Guzman\_43
- Track 17 : Carrillo\_45, Violeta\_45, CookieDog\_43
- Track 18 : ScoobySnack\_40
- Track 19 : Pickles13\_42
- Track 20 : Warren\_43
- Track 21 : MenE\_44, Antuna\_44
- Track 22 : Teng\_48
- Track 23 : Gingerbug\_43
- Track 24 : DelaGarza\_44
- Track 25 : Lesiram\_45
- Track 26 : Sweetums\_46
- Track 27 : MooMoo\_69

### ***Summary of Final Annotations (See graph section above for start numbers):***

The start number called the most often in the published annotations is 10, it was called in 36 of the 37 non-draft genes in the pham.

Genes that call this "Most Annotated" start:

- Antuna\_44, Appa\_43, Baddon\_55, Baumdotcom\_53, Bibwit\_56, Bizzy\_55, Blett\_43, Bush\_44, Carrillo\_45, CookieDog\_43, DelaGarza\_44, Derg\_50, Dropshot\_43, Flatwoods\_55, Gaea\_56, Gingerbug\_43, Gustavo\_55, Guzman\_43, JKSyngboy\_53, Jakelyne\_46, Kroos\_55, Kwobi\_57, Lesiram\_45, LilHam\_52, LordVader\_83, Losacky\_44, Mariel\_46, MenE\_44, MooMoo\_69, NCRodriguez\_45, Persistence\_75, PhillyJawn\_44, Phingu\_46, Phonegingi\_43, Pickles13\_42, Ribeye\_55, Saronaya\_55, SchottB\_53, ScoobySnack\_40, Shukran\_78, Stichling\_52, StorminNorm\_54, Sweetums\_46, Tangerine\_54, Teng\_48, Tycho\_54, Violeta\_45, Warren\_43, Winchester007\_59, YorkOnyx\_56,

Genes that have the "Most Annotated" start but do not call it:

- AbbyDaisy\_84,

Genes that do not have the "Most Annotated" start:

- 

### Summary by start number:

Start 10:

- Found in 51 of 51 ( 100.0% ) of genes in pham
- Manual Annotations of this start: 36 of 37
- Called 98.0% of time when present
- Phage (with cluster) where this start called: Antuna\_44 (GA), Appa\_43 (GA), Baddon\_55 (DE1), Baumdotcom\_53 (DE1), Bibwit\_56 (DE1), Bizzy\_55 (DE1), Blett\_43 (GA), Bush\_44 (GA), Carrillo\_45 (GA), CookieDog\_43 (GA), DelaGarza\_44 (GF), Derg\_50 (DE1), Dropshot\_43 (GA), Flatwoods\_55 (DE1), Gaea\_56 (DE1), Gingerbug\_43 (GF), Gustavo\_55 (DE1), Guzman\_43 (GA), JKSyngboy\_53 (DE1), Jakelyne\_46 (GA), Kroos\_55 (DE1), Kwobi\_57 (DE1), Lesiram\_45 (GF), LilHam\_52 (DE1), LordVader\_83 (F), Losacky\_44 (GA), Mariel\_46 (GA), MenE\_44 (GA), MooMoo\_69 (singleton), NCRodriguez\_45 (GA), Persistence\_75 (AY), PhillyJawn\_44 (GA), Phingu\_46 (GA), Phonegingi\_43 (GA), Pickles13\_42 (GA), Ribeye\_55 (DE1), Saronaya\_55 (DE1), SchottB\_53 (DE1), ScoobySnack\_40 (GA), Shukran\_78 (AY), Stichling\_52 (DE1), StorminNorm\_54 (DE1), Sweetums\_46 (GF), Tangerine\_54 (DE1), Teng\_48 (GF), Tycho\_54 (DE1), Violeta\_45 (GA), Warren\_43 (GA), Winchester007\_59 (GA), YorkOnyx\_56 (DE1),

Start 11:

- Found in 1 of 51 ( 2.0% ) of genes in pham
- Manual Annotations of this start: 1 of 37
- Called 100.0% of time when present
- Phage (with cluster) where this start called: AbbyDaisy\_84 (AY),

### Summary by clusters:

There are 6 clusters represented in this pham: singleton, F, DE1, GF, GA, AY,

Info for manual annotations of cluster AY:

- Start number 10 was manually annotated 1 time for cluster AY.
- Start number 11 was manually annotated 1 time for cluster AY.

Info for manual annotations of cluster DE1:

- Start number 10 was manually annotated 19 times for cluster DE1.

Info for manual annotations of cluster GA:

- Start number 10 was manually annotated 11 times for cluster GA.

Info for manual annotations of cluster GF:

- Start number 10 was manually annotated 4 times for cluster GF.

### **Gene Information:**

Gene: AbbyDaisy\_84 Start: 48452, Stop: 48808, Start Num: 11

Candidate Starts for AbbyDaisy\_84:

(Start: 10 @48449 has 36 MA's), (Start: 11 @48452 has 1 MA's), (24, 48572), (29, 48617), (33, 48659), (39, 48725),

Gene: Antuna\_44 Start: 26934, Stop: 27266, Start Num: 10

Candidate Starts for Antuna\_44:

(Start: 10 @26934 has 36 MA's), (14, 26955), (20, 27036), (21, 27039),

Gene: Appa\_43 Start: 26832, Stop: 27176, Start Num: 10

Candidate Starts for Appa\_43:

(8, 26721), (Start: 10 @26832 has 36 MA's), (14, 26853), (21, 26937), (41, 27120), (43, 27141),

Gene: Baddon\_55 Start: 46339, Stop: 46782, Start Num: 10

Candidate Starts for Baddon\_55:

(5, 46159), (6, 46177), (Start: 10 @46339 has 36 MA's), (28, 46510), (29, 46513), (31, 46546), (41, 46642),

Gene: Baumdotcom\_53 Start: 44887, Stop: 45330, Start Num: 10

Candidate Starts for Baumdotcom\_53:

(Start: 10 @44887 has 36 MA's), (28, 45058), (29, 45061), (31, 45094), (41, 45190),

Gene: Bibwit\_56 Start: 45240, Stop: 45683, Start Num: 10

Candidate Starts for Bibwit\_56:

(5, 45057), (Start: 10 @45240 has 36 MA's), (28, 45411), (29, 45414), (31, 45447), (41, 45543),

Gene: Bizzy\_55 Start: 45057, Stop: 45500, Start Num: 10

Candidate Starts for Bizzy\_55:

(5, 44874), (6, 44892), (Start: 10 @45057 has 36 MA's), (28, 45228), (29, 45231), (31, 45264), (41, 45360),

Gene: Blett\_43 Start: 27033, Stop: 27371, Start Num: 10

Candidate Starts for Blett\_43:

(8, 26922), (Start: 10 @27033 has 36 MA's), (14, 27054), (20, 27135), (21, 27138), (41, 27321),

Gene: Bush\_44 Start: 26981, Stop: 27319, Start Num: 10

Candidate Starts for Bush\_44:

(8, 26870), (Start: 10 @26981 has 36 MA's), (14, 27002), (20, 27083), (21, 27086), (41, 27269),

Gene: Carrillo\_45 Start: 26954, Stop: 27292, Start Num: 10

Candidate Starts for Carrillo\_45:

(Start: 10 @26954 has 36 MA's), (14, 26975), (20, 27056), (21, 27059), (41, 27242),

Gene: CookieDog\_43 Start: 26954, Stop: 27292, Start Num: 10

Candidate Starts for CookieDog\_43:

(Start: 10 @26954 has 36 MA's), (14, 26975), (20, 27056), (21, 27059), (41, 27242),

Gene: DelaGarza\_44 Start: 26877, Stop: 26524, Start Num: 10

Candidate Starts for DelaGarza\_44:

(Start: 10 @26877 has 36 MA's), (13, 26859), (17, 26817), (19, 26784), (38, 26601), (42, 26571),

Gene: Derg\_50 Start: 44649, Stop: 45092, Start Num: 10

Candidate Starts for Derg\_50:

(5, 44466), (6, 44484), (Start: 10 @44649 has 36 MA's), (28, 44820), (29, 44823), (31, 44856), (41, 44952),

Gene: Dropshot\_43 Start: 26667, Stop: 27011, Start Num: 10

Candidate Starts for Dropshot\_43:

(8, 26556), (Start: 10 @26667 has 36 MA's), (14, 26688), (21, 26772), (41, 26955), (43, 26976),

Gene: Flatwoods\_55 Start: 44995, Stop: 45438, Start Num: 10

Candidate Starts for Flatwoods\_55:

(5, 44815), (6, 44833), (Start: 10 @44995 has 36 MA's), (28, 45166), (29, 45169), (31, 45202), (41, 45298),

Gene: Gaea\_56 Start: 45026, Stop: 45469, Start Num: 10

Candidate Starts for Gaea\_56:

(5, 44843), (6, 44861), (Start: 10 @45026 has 36 MA's), (28, 45197), (29, 45200), (31, 45233), (41, 45329),

Gene: Gingerbug\_43 Start: 27395, Stop: 27042, Start Num: 10

Candidate Starts for Gingerbug\_43:

(Start: 10 @27395 has 36 MA's), (12, 27380), (13, 27377), (17, 27335), (25, 27254), (42, 27089),

Gene: Gustavo\_55 Start: 45277, Stop: 45720, Start Num: 10

Candidate Starts for Gustavo\_55:

(5, 45097), (6, 45115), (Start: 10 @45277 has 36 MA's), (28, 45448), (29, 45451), (31, 45484), (41, 45580),

Gene: Guzman\_43 Start: 26931, Stop: 27275, Start Num: 10

Candidate Starts for Guzman\_43:

(Start: 10 @26931 has 36 MA's), (14, 26952), (21, 27036), (41, 27219), (43, 27240),

Gene: JKSyngboy\_53 Start: 45870, Stop: 46313, Start Num: 10

Candidate Starts for JKSyngboy\_53:

(5, 45690), (6, 45708), (Start: 10 @45870 has 36 MA's), (28, 46041), (29, 46044), (31, 46077), (34, 46089), (41, 46173),

Gene: Jakelyne\_46 Start: 27042, Stop: 27386, Start Num: 10

Candidate Starts for Jakelyne\_46:

(Start: 10 @27042 has 36 MA's), (14, 27063), (21, 27147), (41, 27330), (43, 27351),

Gene: Kroos\_55 Start: 45557, Stop: 46000, Start Num: 10

Candidate Starts for Kroos\_55:

(5, 45374), (6, 45392), (Start: 10 @45557 has 36 MA's), (28, 45728), (29, 45731), (31, 45764), (41, 45860),

Gene: Kwobi\_57 Start: 45983, Stop: 46426, Start Num: 10

Candidate Starts for Kwobi\_57:

(5, 45800), (6, 45818), (Start: 10 @45983 has 36 MA's), (28, 46154), (29, 46157), (31, 46190), (41, 46286),

Gene: Lesiram\_45 Start: 26848, Stop: 26495, Start Num: 10

Candidate Starts for Lesiram\_45:

(Start: 10 @26848 has 36 MA's), (13, 26830), (19, 26755), (41, 26545),

Gene: LilHam\_52 Start: 44286, Stop: 44729, Start Num: 10

Candidate Starts for LilHam\_52:

(Start: 10 @44286 has 36 MA's), (28, 44457), (29, 44460), (31, 44493), (41, 44589),

Gene: LordVader\_83 Start: 47672, Stop: 48121, Start Num: 10

Candidate Starts for LordVader\_83:

(1, 47183), (2, 47216), (3, 47384), (7, 47525), (Start: 10 @47672 has 36 MA's), (15, 47696), (27, 47834), (30, 47855), (32, 47879), (36, 47921), (40, 47960), (47, 48053), (48, 48056), (49, 48086),

Gene: Losacky\_44 Start: 27052, Stop: 27396, Start Num: 10

Candidate Starts for Losacky\_44:

(Start: 10 @27052 has 36 MA's), (14, 27073), (21, 27157), (41, 27340), (43, 27361),

Gene: Mariel\_46 Start: 27425, Stop: 27757, Start Num: 10

Candidate Starts for Mariel\_46:

(8, 27314), (Start: 10 @27425 has 36 MA's), (14, 27446), (20, 27527), (21, 27530),

Gene: MenE\_44 Start: 26956, Stop: 27288, Start Num: 10

Candidate Starts for MenE\_44:

(Start: 10 @26956 has 36 MA's), (14, 26977), (20, 27058), (21, 27061),

Gene: MooMoo\_69 Start: 44993, Stop: 45469, Start Num: 10

Candidate Starts for MooMoo\_69:

(Start: 10 @44993 has 36 MA's), (15, 45017), (16, 45029), (18, 45074), (23, 45116), (26, 45137), (27, 45155), (28, 45161), (30, 45176), (35, 45212), (37, 45257), (44, 45353), (45, 45359), (46, 45386), (50, 45434), (51, 45455),

Gene: NCRodriguez\_45 Start: 27175, Stop: 27513, Start Num: 10

Candidate Starts for NCRodriguez\_45:

(8, 27064), (Start: 10 @27175 has 36 MA's), (14, 27196), (20, 27277), (21, 27280), (41, 27463),

Gene: Persistence\_75 Start: 44425, Stop: 44784, Start Num: 10

Candidate Starts for Persistence\_75:

(9, 44362), (Start: 10 @44425 has 36 MA's), (23, 44542), (24, 44548), (29, 44593), (33, 44635), (39, 44701),

Gene: PhillyJawn\_44 Start: 26829, Stop: 27173, Start Num: 10

Candidate Starts for PhillyJawn\_44:

(8, 26718), (Start: 10 @26829 has 36 MA's), (14, 26850), (21, 26934), (41, 27117), (43, 27138),

Gene: Phingu\_46 Start: 27066, Stop: 27404, Start Num: 10

Candidate Starts for Phingu\_46:

(8, 26955), (Start: 10 @27066 has 36 MA's), (14, 27087), (20, 27168), (21, 27171), (41, 27354),

Gene: Phonegingi\_43 Start: 26878, Stop: 27222, Start Num: 10

Candidate Starts for Phonegingi\_43:

(4, 26605), (8, 26767), (Start: 10 @26878 has 36 MA's), (14, 26899), (21, 26983), (41, 27166), (43, 27187),

Gene: Pickles13\_42 Start: 27142, Stop: 27486, Start Num: 10

Candidate Starts for Pickles13\_42:

(Start: 10 @27142 has 36 MA's), (14, 27163), (21, 27247), (41, 27430), (43, 27451),

Gene: Ribeye\_55 Start: 45981, Stop: 46424, Start Num: 10

Candidate Starts for Ribeye\_55:

(5, 45798), (6, 45816), (Start: 10 @45981 has 36 MA's), (28, 46152), (29, 46155), (31, 46188), (41, 46284),

Gene: Saronaya\_55 Start: 45277, Stop: 45720, Start Num: 10

Candidate Starts for Saronaya\_55:

(5, 45097), (6, 45115), (Start: 10 @45277 has 36 MA's), (28, 45448), (29, 45451), (31, 45484), (41, 45580),

Gene: SchottB\_53 Start: 45817, Stop: 46260, Start Num: 10

Candidate Starts for SchottB\_53:

(5, 45634), (6, 45652), (Start: 10 @45817 has 36 MA's), (28, 45988), (29, 45991), (31, 46024), (41, 46120),

Gene: ScoobySnack\_40 Start: 26668, Stop: 26985, Start Num: 10

Candidate Starts for ScoobySnack\_40:

(8, 26557), (Start: 10 @26668 has 36 MA's), (14, 26689), (21, 26773),

Gene: Shukran\_78 Start: 45292, Stop: 45648, Start Num: 10

Candidate Starts for Shukran\_78:

(Start: 10 @45292 has 36 MA's), (22, 45397), (24, 45415), (29, 45460), (33, 45502), (39, 45568),

Gene: Stichling\_52 Start: 44334, Stop: 44777, Start Num: 10

Candidate Starts for Stichling\_52:

(5, 44154), (6, 44172), (Start: 10 @44334 has 36 MA's), (28, 44505), (29, 44508), (31, 44541), (34, 44553), (41, 44637),

Gene: StorminNorm\_54 Start: 45026, Stop: 45469, Start Num: 10

Candidate Starts for StorminNorm\_54:

(Start: 10 @45026 has 36 MA's), (28, 45197), (29, 45200), (31, 45233), (41, 45329),

Gene: Sweetums\_46 Start: 26961, Stop: 26608, Start Num: 10

Candidate Starts for Sweetums\_46:

(Start: 10 @26961 has 36 MA's), (13, 26943), (17, 26901), (19, 26868), (41, 26658),

Gene: Tangerine\_54 Start: 44689, Stop: 45132, Start Num: 10

Candidate Starts for Tangerine\_54:

(5, 44509), (6, 44527), (Start: 10 @44689 has 36 MA's), (28, 44860), (29, 44863), (31, 44896), (41, 44992),

Gene: Teng\_48 Start: 26868, Stop: 26515, Start Num: 10

Candidate Starts for Teng\_48:

(Start: 10 @26868 has 36 MA's), (13, 26850), (17, 26808), (19, 26775), (42, 26562),

Gene: Tycho\_54 Start: 44894, Stop: 45337, Start Num: 10

Candidate Starts for Tycho\_54:

(Start: 10 @44894 has 36 MA's), (28, 45065), (29, 45068), (31, 45101), (41, 45197),

Gene: Violeta\_45 Start: 26945, Stop: 27283, Start Num: 10

Candidate Starts for Violeta\_45:

(Start: 10 @26945 has 36 MA's), (14, 26966), (20, 27047), (21, 27050), (41, 27233),

Gene: Warren\_43 Start: 26888, Stop: 27232, Start Num: 10

Candidate Starts for Warren\_43:

(8, 26777), (Start: 10 @26888 has 36 MA's), (14, 26909), (20, 26990), (21, 26993), (41, 27176), (43, 27197),

Gene: Winchester007\_59 Start: 32944, Stop: 33288, Start Num: 10

Candidate Starts for Winchester007\_59:

(8, 32833), (Start: 10 @32944 has 36 MA's), (14, 32965), (21, 33049), (41, 33232), (43, 33253),

Gene: YorkOnyx\_56 Start: 45472, Stop: 45915, Start Num: 10

Candidate Starts for YorkOnyx\_56:

(5, 45289), (6, 45307), (Start: 10 @45472 has 36 MA's), (28, 45643), (29, 45646), (31, 45679), (41, 45775),