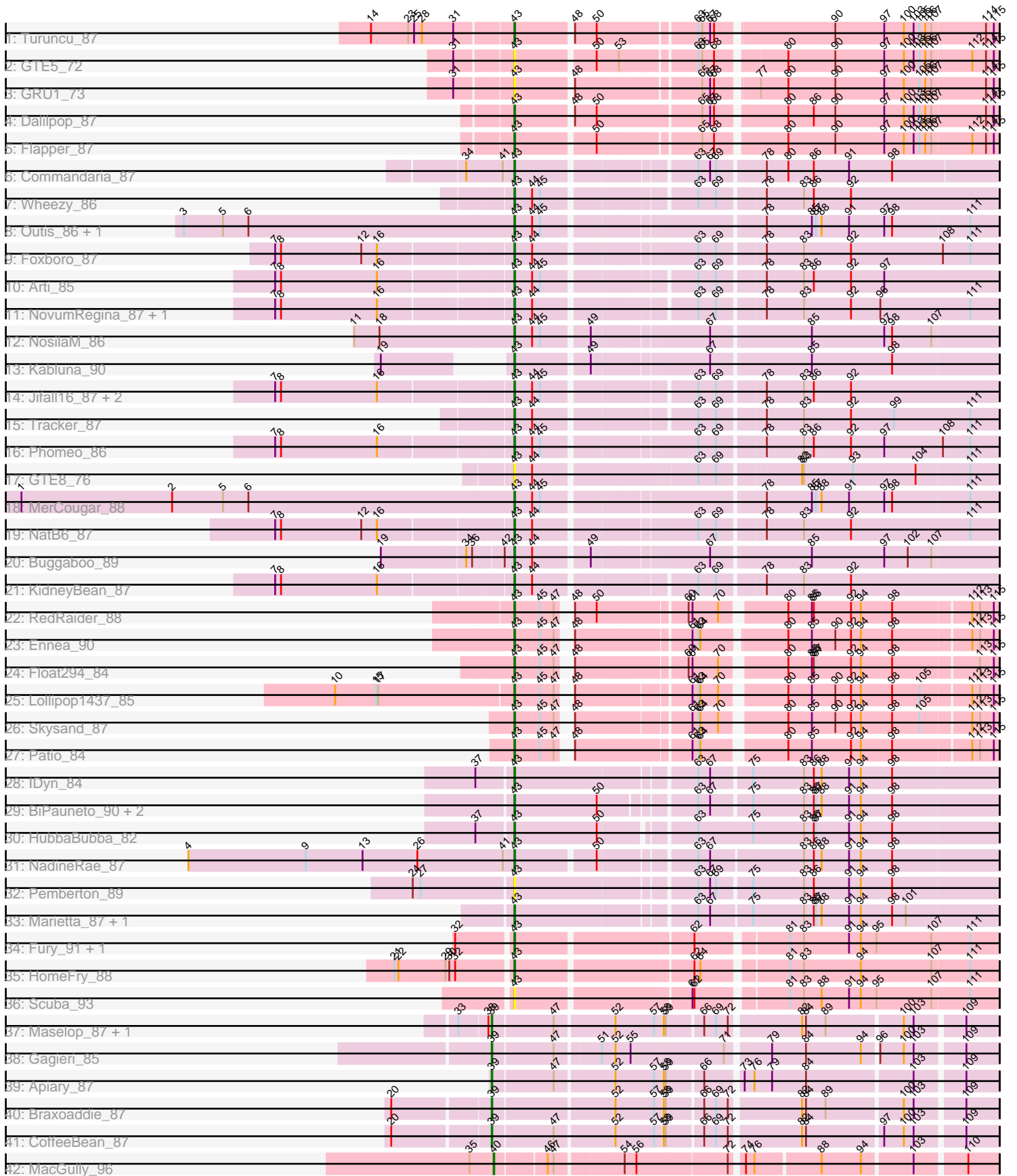


Pham 311694



Note: Tracks are now grouped by subcluster and scaled. Switching in subcluster is indicated by changes in track color. Track scale is now set by default to display the region 30 bp upstream of start 1 to 30 bp downstream of the last possible start. If this default region is judged to be packed too tightly with annotated starts, the track will be further scaled to only show that region of the ORF with annotated starts. This action will be indicated by adding "Zoomed" to the title. For starts, yellow indicates the location of called starts comprised solely of Glimmer/GeneMark auto-annotations, green indicates the location of called starts with at least 1 manual gene annotation.

Pham 311694 Report

This analysis was run 06/27/26 on database version 652.

Pham number 311694 has 51 members, 5 are drafts.

Phages represented in each track:

- Track 1 : Turuncu_87
- Track 2 : GTE5_72
- Track 3 : GRU1_73
- Track 4 : Dalilpop_87
- Track 5 : Flapper_87
- Track 6 : Commandaria_87
- Track 7 : Wheezy_86
- Track 8 : Outis_86, StarStruck_86
- Track 9 : Foxboro_87
- Track 10 : Arti_85
- Track 11 : NovumRegina_87, GrootJr_89
- Track 12 : NosilaM_86
- Track 13 : Kabluna_90
- Track 14 : Jifall16_87, Kurt_89, Emianna_89
- Track 15 : Tracker_87
- Track 16 : Phomeo_86
- Track 17 : GTE8_76
- Track 18 : MerCougar_88
- Track 19 : NatB6_87
- Track 20 : Buggaboo_89
- Track 21 : KidneyBean_87
- Track 22 : RedRaider_88
- Track 23 : Ennea_90
- Track 24 : Float294_84
- Track 25 : Lollipop1437_85
- Track 26 : Skysand_87
- Track 27 : Patio_84
- Track 28 : IDyn_84
- Track 29 : BiPauneto_90, Yndexa_88, Sukkupi_88
- Track 30 : HubbaBubba_82
- Track 31 : NadineRae_87
- Track 32 : Pemberton_89
- Track 33 : Marietta_87, WhoseManz_87
- Track 34 : Fury_91, Pleakley_91
- Track 35 : HomeFry_88
- Track 36 : Scuba_93
- Track 37 : Maselop_87, Polyuyuki_86

- Track 38 : Gagieri_85
- Track 39 : Apiary_87
- Track 40 : Braxoaddie_87
- Track 41 : CoffeeBean_87
- Track 42 : MacGully_96

Summary of Final Annotations (See graph section above for start numbers):

The start number called the most often in the published annotations is 43, it was called in 39 of the 46 non-draft genes in the pham.

Genes that call this "Most Annotated" start:

- Arti_85, BiPauneto_90, Buggaboo_89, Commandaria_87, Dalilpop_87, Emianna_89, Ennea_90, Flapper_87, Float294_84, Foxboro_87, Fury_91, GRU1_73, GTE5_72, GTE8_76, GrootJr_89, HomeFry_88, HubbaBubba_82, IDyn_84, Jifall16_87, Kabluna_90, KidneyBean_87, Kurt_89, Lollipop1437_85, Marietta_87, MerCougar_88, NadineRae_87, NatB6_87, NosilaM_86, NovumRegina_87, Outis_86, Patio_84, Pemberton_89, Phomeo_86, Pleakley_91, RedRaider_88, Scuba_93, Skysand_87, StarStruck_86, Sukkupi_88, Tracker_87, Turuncu_87, Wheezy_86, WhoseManz_87, Yndexa_88,

Genes that have the "Most Annotated" start but do not call it:

-

Genes that do not have the "Most Annotated" start:

- Apiary_87, Braxoaddie_87, CoffeeBean_87, Gagieri_85, MacGully_96, Maselop_87, Polyuyuki_86,

Summary by start number:

Start 39:

- Found in 6 of 51 (11.8%) of genes in pham
- Manual Annotations of this start: 6 of 46
- Called 100.0% of time when present
- Phage (with cluster) where this start called: Apiary_87 (CR6), Braxoaddie_87 (CR6), CoffeeBean_87 (CR6), Gagieri_85 (CR6), Maselop_87 (CR6), Polyuyuki_86 (CR6),

Start 40:

- Found in 1 of 51 (2.0%) of genes in pham
- Manual Annotations of this start: 1 of 46
- Called 100.0% of time when present
- Phage (with cluster) where this start called: MacGully_96 (CR7),

Start 43:

- Found in 44 of 51 (86.3%) of genes in pham
- Manual Annotations of this start: 39 of 46
- Called 100.0% of time when present
- Phage (with cluster) where this start called: Arti_85 (CR2), BiPauneto_90 (CR4), Buggaboo_89 (CR2), Commandaria_87 (CR2), Dalilpop_87 (CR1), Emianna_89 (CR2), Ennea_90 (CR3), Flapper_87 (CR1), Float294_84 (CR3), Foxboro_87 (CR2),

Fury_91 (CR5), GRU1_73 (CR1), GTE5_72 (CR1), GTE8_76 (CR2), GrootJr_89 (CR2), HomeFry_88 (CR5), HubbaBubba_82 (CR4), IDyn_84 (CR4), Jifall16_87 (CR2), Kabluna_90 (CR2), KidneyBean_87 (CR2), Kurt_89 (CR2), Lollipop1437_85 (CR3), Marietta_87 (CR4), MerCougar_88 (CR2), NadineRae_87 (CR4), NatB6_87 (CR2), NosilaM_86 (CR2), NovumRegina_87 (CR2), Outis_86 (CR2), Patio_84 (CR3), Pemberton_89 (CR4), Phomeo_86 (CR2), Pleakley_91 (CR5), RedRaider_88 (CR3), Scuba_93 (CR5), Skysand_87 (CR3), StarStruck_86 (CR2), Sukkupi_88 (CR4), Tracker_87 (CR2), Turuncu_87 (CR1), Wheezy_86 (CR2), WhoseManz_87 (CR4), Yndexa_88 (CR4),

Summary by clusters:

There are 7 clusters represented in this pham: CR2, CR3, CR1, CR6, CR7, CR4, CR5,

Info for manual annotations of cluster CR1:

- Start number 43 was manually annotated 3 times for cluster CR1.

Info for manual annotations of cluster CR2:

- Start number 43 was manually annotated 19 times for cluster CR2.

Info for manual annotations of cluster CR3:

- Start number 43 was manually annotated 6 times for cluster CR3.

Info for manual annotations of cluster CR4:

- Start number 43 was manually annotated 8 times for cluster CR4.

Info for manual annotations of cluster CR5:

- Start number 43 was manually annotated 3 times for cluster CR5.

Info for manual annotations of cluster CR6:

- Start number 39 was manually annotated 6 times for cluster CR6.

Info for manual annotations of cluster CR7:

- Start number 40 was manually annotated 1 time for cluster CR7.

Gene Information:

Gene: Apiary_87 Start: 60837, Stop: 61550, Start Num: 39

Candidate Starts for Apiary_87:

(Start: 39 @60837 has 6 MA's), (47, 60927), (52, 61014), (57, 61071), (58, 61083), (59, 61086), (66, 61134), (73, 61182), (76, 61197), (79, 61224), (84, 61275), (103, 61431), (109, 61500),

Gene: Arti_85 Start: 63159, Stop: 63842, Start Num: 43

Candidate Starts for Arti_85:

(7, 62817), (8, 62826), (16, 62973), (Start: 43 @63159 has 39 MA's), (44, 63186), (45, 63198), (63, 63399), (69, 63426), (78, 63489), (83, 63546), (86, 63561), (92, 63618), (97, 63669),

Gene: BiPauneto_90 Start: 62982, Stop: 63671, Start Num: 43

Candidate Starts for BiPauneto_90:

(Start: 43 @62982 has 39 MA's), (50, 63108), (63, 63225), (67, 63243), (75, 63300), (83, 63378), (86, 63393), (87, 63396), (88, 63405), (91, 63447), (94, 63465), (98, 63513),

Gene: Braxoaddie_87 Start: 60838, Stop: 61548, Start Num: 39

Candidate Starts for Braxoaddie_87:

(20, 60703), (Start: 39 @60838 has 6 MA's), (52, 61015), (57, 61072), (58, 61084), (59, 61087), (66, 61135), (69, 61153), (72, 61171), (82, 61267), (84, 61273), (89, 61303), (100, 61414), (103, 61429), (109, 61498),

Gene: Buggaboo_89 Start: 64935, Stop: 65627, Start Num: 43

Candidate Starts for Buggaboo_89:

(19, 64743), (34, 64869), (36, 64878), (42, 64920), (Start: 43 @64935 has 39 MA's), (44, 64962), (49, 65040), (67, 65202), (85, 65346), (97, 65457), (102, 65493), (107, 65529),

Gene: CoffeeBean_87 Start: 60796, Stop: 61506, Start Num: 39

Candidate Starts for CoffeeBean_87:

(20, 60661), (Start: 39 @60796 has 6 MA's), (47, 60886), (52, 60973), (57, 61030), (58, 61042), (59, 61045), (66, 61093), (69, 61111), (72, 61129), (82, 61225), (84, 61231), (97, 61342), (100, 61372), (103, 61387), (109, 61456),

Gene: Commandaria_87 Start: 64123, Stop: 64806, Start Num: 43

Candidate Starts for Commandaria_87:

(34, 64057), (41, 64108), (Start: 43 @64123 has 39 MA's), (63, 64363), (67, 64381), (69, 64390), (78, 64459), (80, 64492), (86, 64531), (91, 64585), (98, 64651),

Gene: Dalilpop_87 Start: 62545, Stop: 63237, Start Num: 43

Candidate Starts for Dalilpop_87:

(Start: 43 @62545 has 39 MA's), (48, 62626), (50, 62659), (65, 62803), (67, 62815), (68, 62821), (80, 62920), (86, 62959), (90, 62992), (97, 63067), (100, 63097), (103, 63112), (105, 63121), (106, 63130), (107, 63139), (114, 63220), (115, 63232),

Gene: Emianna_89 Start: 64859, Stop: 65542, Start Num: 43

Candidate Starts for Emianna_89:

(7, 64517), (8, 64526), (16, 64673), (Start: 43 @64859 has 39 MA's), (44, 64886), (45, 64898), (63, 65099), (69, 65126), (78, 65189), (83, 65246), (86, 65261), (92, 65318),

Gene: Ennea_90 Start: 62727, Stop: 63398, Start Num: 43

Candidate Starts for Ennea_90:

(Start: 43 @62727 has 39 MA's), (45, 62766), (47, 62787), (48, 62796), (61, 62958), (63, 62967), (64, 62970), (80, 63087), (85, 63123), (90, 63159), (92, 63183), (94, 63198), (98, 63246), (112, 63360), (113, 63372), (115, 63393),

Gene: Flapper_87 Start: 62379, Stop: 63068, Start Num: 43

Candidate Starts for Flapper_87:

(Start: 43 @62379 has 39 MA's), (50, 62493), (65, 62634), (68, 62652), (80, 62751), (90, 62823), (97, 62898), (100, 62928), (103, 62943), (105, 62952), (106, 62961), (107, 62970), (112, 63030), (114, 63051), (115, 63063),

Gene: Float294_84 Start: 62632, Stop: 63300, Start Num: 43

Candidate Starts for Float294_84:

(Start: 43 @62632 has 39 MA's), (45, 62671), (47, 62692), (48, 62701), (60, 62857), (61, 62863), (70, 62902), (80, 62989), (85, 63025), (86, 63028), (87, 63031), (92, 63085), (94, 63100), (98, 63148), (113, 63274), (115, 63295),

Gene: Foxboro_87 Start: 64464, Stop: 65156, Start Num: 43

Candidate Starts for Foxboro_87:

(7, 64122), (8, 64131), (12, 64254), (16, 64278), (Start: 43 @64464 has 39 MA's), (44, 64491), (63, 64713), (69, 64740), (78, 64803), (83, 64860), (92, 64932), (108, 65073), (111, 65115),

Gene: Fury_91 Start: 60431, Stop: 61120, Start Num: 43

Candidate Starts for Fury_91:

(32, 60356), (Start: 43 @60431 has 39 MA's), (62, 60680), (81, 60806), (83, 60827), (91, 60896), (94, 60914), (95, 60938), (107, 61022), (111, 61079),

Gene: GRU1_73 Start: 53998, Stop: 54684, Start Num: 43

Candidate Starts for GRU1_73:

(31, 53917), (Start: 43 @53998 has 39 MA's), (48, 54079), (65, 54253), (67, 54265), (68, 54271), (77, 54325), (80, 54367), (90, 54439), (97, 54514), (100, 54544), (105, 54568), (106, 54577), (107, 54586), (114, 54667), (115, 54679),

Gene: GTE5_72 Start: 54889, Stop: 55575, Start Num: 43

Candidate Starts for GTE5_72:

(31, 54808), (Start: 43 @54889 has 39 MA's), (50, 55003), (53, 55033), (63, 55138), (65, 55144), (68, 55162), (80, 55258), (90, 55330), (97, 55405), (100, 55435), (103, 55450), (105, 55459), (106, 55468), (107, 55477), (112, 55537), (114, 55558), (115, 55570),

Gene: GTE8_76 Start: 57064, Stop: 57753, Start Num: 43

Candidate Starts for GTE8_76:

(Start: 43 @57064 has 39 MA's), (44, 57091), (63, 57319), (69, 57346), (82, 57460), (83, 57463), (93, 57538), (104, 57634), (111, 57712),

Gene: Gagieri_85 Start: 60413, Stop: 61129, Start Num: 39

Candidate Starts for Gagieri_85:

(Start: 39 @60413 has 6 MA's), (47, 60503), (51, 60566), (52, 60587), (55, 60608), (71, 60746), (79, 60803), (84, 60854), (94, 60938), (96, 60959), (100, 60995), (103, 61010), (109, 61079),

Gene: GrootJr_89 Start: 63867, Stop: 64550, Start Num: 43

Candidate Starts for GrootJr_89:

(7, 63525), (8, 63534), (16, 63681), (Start: 43 @63867 has 39 MA's), (44, 63894), (63, 64107), (69, 64134), (78, 64197), (83, 64254), (92, 64326), (96, 64371), (111, 64509),

Gene: HomeFry_88 Start: 59506, Stop: 60195, Start Num: 43

Candidate Starts for HomeFry_88:

(21, 59338), (22, 59344), (29, 59416), (30, 59422), (32, 59431), (Start: 43 @59506 has 39 MA's), (62, 59755), (64, 59764), (81, 59881), (83, 59902), (94, 59989), (107, 60097), (111, 60154),

Gene: HubbaBubba_82 Start: 59977, Stop: 60675, Start Num: 43

Candidate Starts for HubbaBubba_82:

(37, 59929), (Start: 43 @59977 has 39 MA's), (50, 60103), (63, 60220), (75, 60304), (83, 60382), (86, 60397), (87, 60400), (91, 60451), (94, 60469), (98, 60517),

Gene: IDyn_84 Start: 60626, Stop: 61321, Start Num: 43

Candidate Starts for IDyn_84:

(37, 60578), (Start: 43 @60626 has 39 MA's), (63, 60875), (67, 60893), (75, 60950), (83, 61028), (86, 61043), (88, 61055), (91, 61097), (94, 61115), (98, 61163),

Gene: Jifall16_87 Start: 64115, Stop: 64798, Start Num: 43

Candidate Starts for Jifall16_87:

(7, 63773), (8, 63782), (16, 63929), (Start: 43 @64115 has 39 MA's), (44, 64142), (45, 64154), (63, 64355), (69, 64382), (78, 64445), (83, 64502), (86, 64517), (92, 64574),

Gene: Kabluna_90 Start: 62117, Stop: 62809, Start Num: 43

Candidate Starts for Kabluna_90:

(19, 61997), (Start: 43 @62117 has 39 MA's), (49, 62222), (67, 62384), (85, 62528), (98, 62651),

Gene: KidneyBean_87 Start: 64452, Stop: 65135, Start Num: 43

Candidate Starts for KidneyBean_87:

(7, 64110), (8, 64119), (16, 64266), (Start: 43 @64452 has 39 MA's), (44, 64479), (63, 64692), (69, 64719), (78, 64782), (83, 64839), (92, 64911),

Gene: Kurt_89 Start: 64874, Stop: 65557, Start Num: 43

Candidate Starts for Kurt_89:

(7, 64532), (8, 64541), (16, 64688), (Start: 43 @64874 has 39 MA's), (44, 64901), (45, 64913), (63, 65114), (69, 65141), (78, 65204), (83, 65261), (86, 65276), (92, 65333),

Gene: Lollipop1437_85 Start: 62420, Stop: 63082, Start Num: 43

Candidate Starts for Lollipop1437_85:

(10, 62153), (15, 62216), (17, 62219), (Start: 43 @62420 has 39 MA's), (45, 62459), (47, 62480), (48, 62489), (61, 62645), (63, 62654), (64, 62657), (70, 62684), (80, 62771), (85, 62807), (90, 62843), (92, 62867), (94, 62882), (98, 62930), (105, 62972), (112, 63044), (113, 63056), (115, 63077),

Gene: MacGully_96 Start: 63179, Stop: 63874, Start Num: 40

Candidate Starts for MacGully_96:

(35, 63146), (Start: 40 @63179 has 1 MA's), (46, 63248), (47, 63257), (54, 63353), (56, 63371), (72, 63506), (74, 63521), (76, 63533), (88, 63623), (94, 63683), (103, 63755), (110, 63827),

Gene: Marietta_87 Start: 60667, Stop: 61365, Start Num: 43

Candidate Starts for Marietta_87:

(Start: 43 @60667 has 39 MA's), (63, 60916), (67, 60934), (75, 60994), (83, 61072), (86, 61087), (87, 61090), (88, 61099), (91, 61141), (94, 61159), (98, 61207), (101, 61228),

Gene: Maselop_87 Start: 60846, Stop: 61556, Start Num: 39

Candidate Starts for Maselop_87:

(33, 60804), (38, 60843), (Start: 39 @60846 has 6 MA's), (47, 60936), (52, 61023), (57, 61080), (58, 61092), (59, 61095), (66, 61143), (69, 61161), (72, 61179), (82, 61275), (84, 61281), (89, 61311), (100, 61422), (103, 61437), (109, 61506),

Gene: MerCougar_88 Start: 64667, Stop: 65359, Start Num: 43

Candidate Starts for MerCougar_88:

(1, 63917), (2, 64148), (5, 64226), (6, 64265), (Start: 43 @64667 has 39 MA's), (44, 64694), (45, 64706), (78, 65009), (85, 65078), (87, 65084), (88, 65093), (91, 65135), (97, 65189), (98, 65201), (111, 65318),

Gene: NadineRae_87 Start: 60610, Stop: 61296, Start Num: 43

Candidate Starts for NadineRae_87:

(4, 60121), (9, 60301), (13, 60388), (26, 60472), (41, 60595), (Start: 43 @60610 has 39 MA's), (50, 60724), (63, 60847), (67, 60865), (83, 61003), (86, 61018), (88, 61030), (91, 61072), (94, 61090), (98, 61138),

Gene: NatB6_87 Start: 63499, Stop: 64191, Start Num: 43

Candidate Starts for NatB6_87:

(7, 63157), (8, 63166), (12, 63289), (16, 63313), (Start: 43 @63499 has 39 MA's), (44, 63526), (63, 63748), (69, 63775), (78, 63838), (83, 63895), (92, 63967), (111, 64150),

Gene: NosilaM_86 Start: 63524, Stop: 64216, Start Num: 43

Candidate Starts for NosilaM_86:

(11, 63284), (18, 63323), (Start: 43 @63524 has 39 MA's), (44, 63551), (45, 63563), (49, 63629), (67, 63791), (85, 63935), (97, 64046), (98, 64058), (107, 64118),

Gene: NovumRegina_87 Start: 63866, Stop: 64549, Start Num: 43

Candidate Starts for NovumRegina_87:

(7, 63524), (8, 63533), (16, 63680), (Start: 43 @63866 has 39 MA's), (44, 63893), (63, 64106), (69, 64133), (78, 64196), (83, 64253), (92, 64325), (96, 64370), (111, 64508),

Gene: Outis_86 Start: 63940, Stop: 64632, Start Num: 43

Candidate Starts for Outis_86:

(3, 63439), (5, 63499), (6, 63538), (Start: 43 @63940 has 39 MA's), (44, 63967), (45, 63979), (78, 64282), (85, 64351), (87, 64357), (88, 64366), (91, 64408), (97, 64462), (98, 64474), (111, 64591),

Gene: Patio_84 Start: 61626, Stop: 62291, Start Num: 43

Candidate Starts for Patio_84:

(Start: 43 @61626 has 39 MA's), (45, 61665), (47, 61686), (48, 61695), (61, 61854), (63, 61863), (64, 61866), (80, 61980), (85, 62016), (92, 62076), (94, 62091), (98, 62139), (112, 62253), (113, 62265), (115, 62286),

Gene: Pemberton_89 Start: 60919, Stop: 61614, Start Num: 43

Candidate Starts for Pemberton_89:

(24, 60781), (27, 60793), (Start: 43 @60919 has 39 MA's), (63, 61168), (67, 61186), (69, 61195), (75, 61243), (83, 61321), (86, 61336), (91, 61390), (94, 61408), (98, 61456),

Gene: Phomeo_86 Start: 64111, Stop: 64803, Start Num: 43

Candidate Starts for Phomeo_86:

(7, 63769), (8, 63778), (16, 63925), (Start: 43 @64111 has 39 MA's), (44, 64138), (45, 64150), (63, 64360), (69, 64387), (78, 64450), (83, 64507), (86, 64522), (92, 64579), (97, 64630), (108, 64720), (111, 64762),

Gene: Pleakley_91 Start: 60432, Stop: 61121, Start Num: 43

Candidate Starts for Pleakley_91:

(32, 60357), (Start: 43 @60432 has 39 MA's), (62, 60681), (81, 60807), (83, 60828), (91, 60897), (94, 60915), (95, 60939), (107, 61023), (111, 61080),

Gene: Polyzuki_86 Start: 60856, Stop: 61566, Start Num: 39

Candidate Starts for Polyzuki_86:

(33, 60814), (38, 60853), (Start: 39 @60856 has 6 MA's), (47, 60946), (52, 61033), (57, 61090), (58, 61102), (59, 61105), (66, 61153), (69, 61171), (72, 61189), (82, 61285), (84, 61291), (89, 61321), (100, 61432), (103, 61447), (109, 61516),

Gene: RedRaider_88 Start: 63832, Stop: 64500, Start Num: 43

Candidate Starts for RedRaider_88:

(Start: 43 @63832 has 39 MA's), (45, 63871), (47, 63892), (48, 63901), (50, 63934), (60, 64057), (61, 64063), (70, 64102), (80, 64189), (85, 64225), (86, 64228), (92, 64285), (94, 64300), (98, 64348), (112, 64462), (113, 64474), (115, 64495),

Gene: Scuba_93 Start: 60542, Stop: 61231, Start Num: 43

Candidate Starts for Scuba_93:

(Start: 43 @60542 has 39 MA's), (61, 60788), (62, 60791), (81, 60917), (83, 60938), (88, 60965), (91, 61007), (94, 61025), (95, 61049), (107, 61133), (111, 61190),

Gene: Skysand_87 Start: 62582, Stop: 63244, Start Num: 43

Candidate Starts for Skysand_87:

(Start: 43 @62582 has 39 MA's), (45, 62621), (47, 62642), (48, 62651), (61, 62807), (63, 62816), (64, 62819), (70, 62846), (80, 62933), (85, 62969), (90, 63005), (92, 63029), (94, 63044), (98, 63092), (105, 63134), (112, 63206), (113, 63218), (115, 63239),

Gene: StarStruck_86 Start: 63940, Stop: 64632, Start Num: 43

Candidate Starts for StarStruck_86:

(3, 63439), (5, 63499), (6, 63538), (Start: 43 @63940 has 39 MA's), (44, 63967), (45, 63979), (78, 64282), (85, 64351), (87, 64357), (88, 64366), (91, 64408), (97, 64462), (98, 64474), (111, 64591),

Gene: Sukkupi_88 Start: 62790, Stop: 63485, Start Num: 43

Candidate Starts for Sukkupi_88:

(Start: 43 @62790 has 39 MA's), (50, 62916), (63, 63039), (67, 63057), (75, 63114), (83, 63192), (86, 63207), (87, 63210), (88, 63219), (91, 63261), (94, 63279), (98, 63327),

Gene: Tracker_87 Start: 63291, Stop: 63974, Start Num: 43

Candidate Starts for Tracker_87:

(Start: 43 @63291 has 39 MA's), (44, 63318), (63, 63531), (69, 63558), (78, 63621), (83, 63678), (92, 63750), (99, 63816), (111, 63933),

Gene: Turuncu_87 Start: 61998, Stop: 62684, Start Num: 43

Candidate Starts for Turuncu_87:

(14, 61791), (23, 61848), (25, 61857), (28, 61869), (31, 61917), (Start: 43 @61998 has 39 MA's), (48, 62079), (50, 62112), (63, 62247), (65, 62253), (67, 62265), (68, 62271), (90, 62439), (97, 62514), (100, 62544), (103, 62559), (105, 62568), (106, 62577), (107, 62586), (114, 62667), (115, 62679),

Gene: Wheezy_86 Start: 63691, Stop: 64374, Start Num: 43

Candidate Starts for Wheezy_86:

(Start: 43 @63691 has 39 MA's), (44, 63718), (45, 63730), (63, 63931), (69, 63958), (78, 64021), (83, 64078), (86, 64093), (92, 64150),

Gene: WhoseManz_87 Start: 60330, Stop: 61028, Start Num: 43

Candidate Starts for WhoseManz_87:

(Start: 43 @60330 has 39 MA's), (63, 60579), (67, 60597), (75, 60657), (83, 60735), (86, 60750), (87, 60753), (88, 60762), (91, 60804), (94, 60822), (98, 60870), (101, 60891),

Gene: Yndexa_88 Start: 62790, Stop: 63485, Start Num: 43

Candidate Starts for Yndexa_88:

(Start: 43 @62790 has 39 MA's), (50, 62916), (63, 63039), (67, 63057), (75, 63114), (83, 63192), (86, 63207), (87, 63210), (88, 63219), (91, 63261), (94, 63279), (98, 63327),