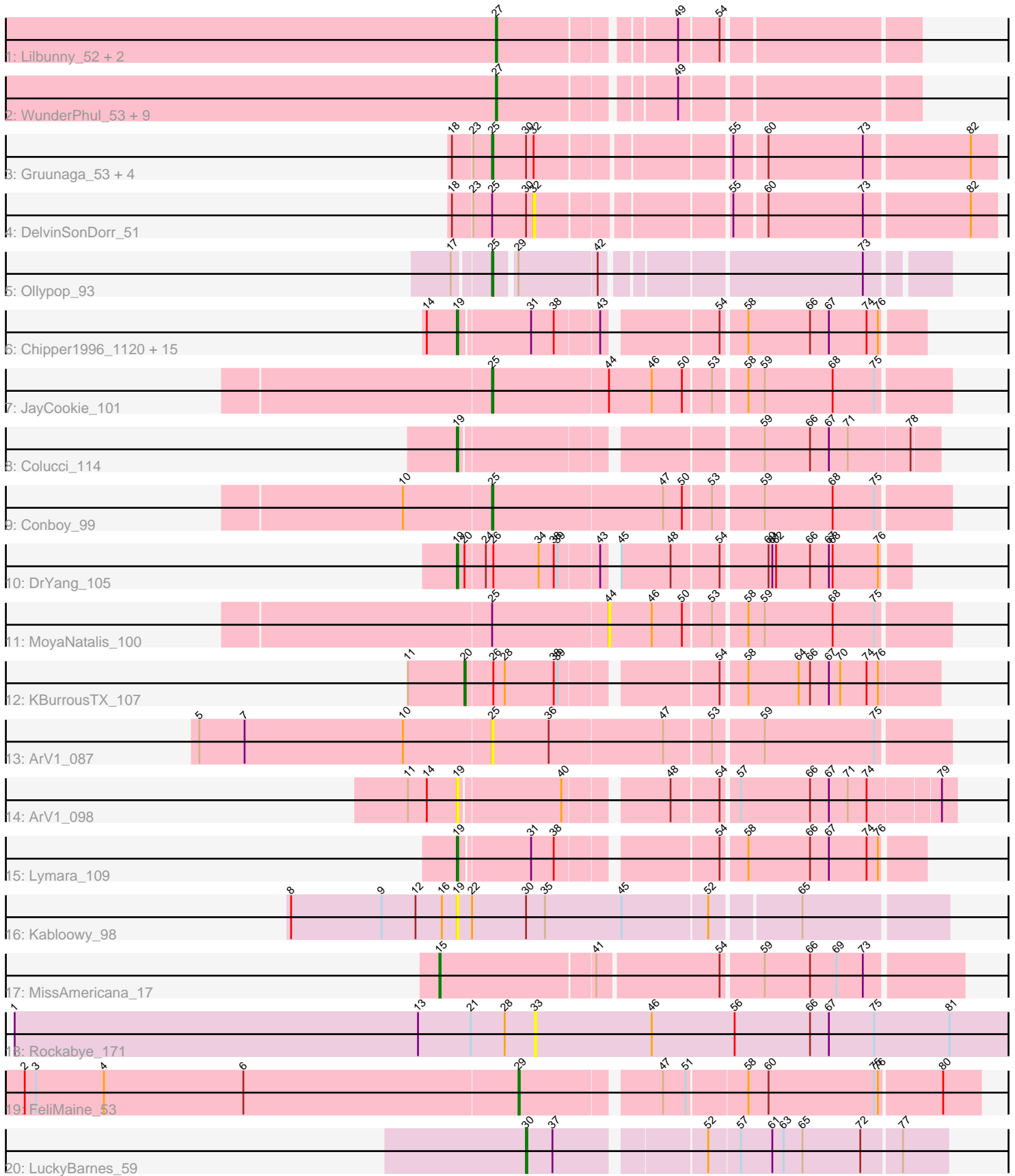


Pham 311699



Note: Tracks are now grouped by subcluster and scaled. Switching in subcluster is indicated by changes in track color. Track scale is now set by default to display the region 30 bp upstream of start 1 to 30 bp downstream of the last possible start. If this default region is judged to be packed too tightly with annotated starts, the track will be further scaled to only show that region of the ORF with annotated starts. This action will be indicated by adding "Zoomed" to the title. For starts, yellow indicates the location of called starts comprised solely of Glimmer/GeneMark auto-annotations, green indicates the location of called starts with at least 1 manual gene annotation.

Pham 311699 Report

This analysis was run 06/27/26 on database version 652.

Pham number 311699 has 50 members, 8 are drafts.

Phages represented in each track:

- Track 1 : Lilbunny_52, Jeffabunny_53, Hexamo_53
- Track 2 : WunderPhul_53, Garak_55, ToneTone_50, Wiks_52, Temprado_54, Zulu_54, Zaka_53, Indra_56, Yokurt_53, Helmet_55
- Track 3 : Gruunaga_53, CloudWang3_53, Artemis2UCLA_53, Roksolana_54, Koko_54
- Track 4 : DelvinSonDorr_51
- Track 5 : Ollypop_93
- Track 6 : Chipper1996_1120, HumptyDumpty_111, Chocolat_111, PrincessTrina_112, JaNo_110, RosiePosie_112, MoyaNatalis_112, Conboy_111, Mordred_111, Chubster_112, Tophat_111, JayCookie_112, EdgarPoe_111, Kabreeze_111, Scavito_112, Linus_112
- Track 7 : JayCookie_101
- Track 8 : Colucci_114
- Track 9 : Conboy_99
- Track 10 : DrYang_105
- Track 11 : MoyaNatalis_100
- Track 12 : KBurrousTX_107
- Track 13 : ArV1_087
- Track 14 : ArV1_098
- Track 15 : Lymara_109
- Track 16 : Kabloowy_98
- Track 17 : MissAmericana_17
- Track 18 : Rockabye_171
- Track 19 : FeliMaine_53
- Track 20 : LuckyBarnes_59

Summary of Final Annotations (See graph section above for start numbers):

The start number called the most often in the published annotations is 19, it was called in 18 of the 42 non-draft genes in the pham.

Genes that call this "Most Annotated" start:

- ArV1_098, Chipper1996_1120, Chocolat_111, Chubster_112, Colucci_114, Conboy_111, DrYang_105, EdgarPoe_111, HumptyDumpty_111, JaNo_110,

JayCookie_112, Kabloowy_98, Kabreeze_111, Linus_112, Lymara_109, Mordred_111, MoyaNatalis_112, PrincessTrina_112, RosiePosie_112, Scavito_112, Tophat_111,

Genes that have the "Most Annotated" start but do not call it:

-

Genes that do not have the "Most Annotated" start:

- ArV1_087, Artemis2UCLA_53, CloudWang3_53, Conboy_99, DelvinSonDorr_51, FeliMaine_53, Garak_55, Gruunaga_53, Helmet_55, Hexamo_53, Indra_56, JayCookie_101, Jeffabunny_53, KBurroustX_107, Koko_54, Lilbunny_52, LuckyBarnes_59, MissAmericana_17, MoyaNatalis_100, Ollypop_93, Rockabye_171, Roksolana_54, Temprado_54, ToneTone_50, Wiks_52, WunderPhul_53, Yokurt_53, Zaka_53, Zulu_54,

Summary by start number:

Start 15:

- Found in 1 of 50 (2.0%) of genes in pham
- Manual Annotations of this start: 1 of 42
- Called 100.0% of time when present
- Phage (with cluster) where this start called: MissAmericana_17 (EM2),

Start 19:

- Found in 21 of 50 (42.0%) of genes in pham
- Manual Annotations of this start: 18 of 42
- Called 100.0% of time when present
- Phage (with cluster) where this start called: ArV1_098 (AR), Chipper1996_1120 (AR), Chocolat_111 (AR), Chubster_112 (AR), Colucci_114 (AR), Conboy_111 (AR), DrYang_105 (AR), EdgarPoe_111 (AR), HumptyDumpty_111 (AR), JaNo_110 (AR), JayCookie_112 (AR), Kabloowy_98 (AY), Kabreeze_111 (AR), Linus_112 (AR), Lymara_109 (AR), Mordred_111 (AR), MoyaNatalis_112 (AR), PrincessTrina_112 (AR), RosiePosie_112 (AR), Scavito_112 (AR), Tophat_111 (AR),

Start 20:

- Found in 2 of 50 (4.0%) of genes in pham
- Manual Annotations of this start: 1 of 42
- Called 50.0% of time when present
- Phage (with cluster) where this start called: KBurroustX_107 (AR),

Start 25:

- Found in 11 of 50 (22.0%) of genes in pham
- Manual Annotations of this start: 8 of 42
- Called 81.8% of time when present
- Phage (with cluster) where this start called: ArV1_087 (AR), Artemis2UCLA_53 (A6), CloudWang3_53 (A6), Conboy_99 (AR), Gruunaga_53 (A6), JayCookie_101 (AR), Koko_54 (A6), Ollypop_93 (AP2), Roksolana_54 (A6),

Start 27:

- Found in 13 of 50 (26.0%) of genes in pham
- Manual Annotations of this start: 12 of 42
- Called 100.0% of time when present

- Phage (with cluster) where this start called: Garak_55 (A6), Helmet_55 (A6), Hexamo_53 (A6), Indra_56 (A6), Jeffabunny_53 (A6), Lilbunny_52 (A6), Temprado_54 (A6), ToneTone_50 (A6), Wiks_52 (A6), WunderPhul_53 (A6), Yokurt_53 (A6), Zaka_53 (A6), Zulu_54 (A6),

Start 29:

- Found in 2 of 50 (4.0%) of genes in pham
- Manual Annotations of this start: 1 of 42
- Called 50.0% of time when present
- Phage (with cluster) where this start called: FeliMaine_53 (S),

Start 30:

- Found in 8 of 50 (16.0%) of genes in pham
- Manual Annotations of this start: 1 of 42
- Called 12.5% of time when present
- Phage (with cluster) where this start called: LuckyBarnes_59 (singleton),

Start 32:

- Found in 6 of 50 (12.0%) of genes in pham
- No Manual Annotations of this start.
- Called 16.7% of time when present
- Phage (with cluster) where this start called: DelvinSonDorr_51 (A6),

Start 33:

- Found in 1 of 50 (2.0%) of genes in pham
- No Manual Annotations of this start.
- Called 100.0% of time when present
- Phage (with cluster) where this start called: Rockabye_171 (FC),

Start 44:

- Found in 2 of 50 (4.0%) of genes in pham
- No Manual Annotations of this start.
- Called 50.0% of time when present
- Phage (with cluster) where this start called: MoyaNatalis_100 (AR),

Summary by clusters:

There are 8 clusters represented in this pham: singleton, AP2, EM2, S, FC, A6, AY, AR,

Info for manual annotations of cluster A6:

- Start number 25 was manually annotated 5 times for cluster A6.
- Start number 27 was manually annotated 12 times for cluster A6.

Info for manual annotations of cluster AP2:

- Start number 25 was manually annotated 1 time for cluster AP2.

Info for manual annotations of cluster AR:

- Start number 19 was manually annotated 18 times for cluster AR.
- Start number 20 was manually annotated 1 time for cluster AR.
- Start number 25 was manually annotated 2 times for cluster AR.

Info for manual annotations of cluster EM2:

- Start number 15 was manually annotated 1 time for cluster EM2.

Info for manual annotations of cluster S:

- Start number 29 was manually annotated 1 time for cluster S.

Gene Information:

Gene: ArV1_087 Start: 62389, Stop: 62736, Start Num: 25

Candidate Starts for ArV1_087:

(5, 62158), (7, 62194), (10, 62320), (Start: 25 @62389 has 8 MA's), (36, 62434), (47, 62521), (53, 62557), (59, 62593), (75, 62680),

Gene: ArV1_098 Start: 69415, Stop: 69777, Start Num: 19

Candidate Starts for ArV1_098:

(11, 69376), (14, 69391), (Start: 19 @69415 has 18 MA's), (40, 69493), (48, 69565), (54, 69601), (57, 69613), (66, 69667), (67, 69682), (71, 69697), (74, 69712), (79, 69766),

Gene: Artemis2UCLA_53 Start: 32856, Stop: 32485, Start Num: 25

Candidate Starts for Artemis2UCLA_53:

(18, 32886), (23, 32871), (Start: 25 @32856 has 8 MA's), (Start: 30 @32829 has 1 MA's), (32, 32823), (55, 32685), (60, 32661), (73, 32586), (82, 32505),

Gene: Chipper1996_1120 Start: 69696, Stop: 70034, Start Num: 19

Candidate Starts for Chipper1996_1120:

(14, 69672), (Start: 19 @69696 has 18 MA's), (31, 69750), (38, 69768), (43, 69801), (54, 69882), (58, 69900), (66, 69948), (67, 69963), (74, 69993), (76, 70002),

Gene: Chocolat_111 Start: 69404, Stop: 69742, Start Num: 19

Candidate Starts for Chocolat_111:

(14, 69380), (Start: 19 @69404 has 18 MA's), (31, 69458), (38, 69476), (43, 69509), (54, 69590), (58, 69608), (66, 69656), (67, 69671), (74, 69701), (76, 69710),

Gene: Chubster_112 Start: 69864, Stop: 70193, Start Num: 19

Candidate Starts for Chubster_112:

(14, 69840), (Start: 19 @69864 has 18 MA's), (31, 69918), (38, 69936), (43, 69969), (54, 70050), (58, 70068), (66, 70116), (67, 70131), (74, 70161), (76, 70170),

Gene: CloudWang3_53 Start: 32944, Stop: 32573, Start Num: 25

Candidate Starts for CloudWang3_53:

(18, 32974), (23, 32959), (Start: 25 @32944 has 8 MA's), (Start: 30 @32917 has 1 MA's), (32, 32911), (55, 32773), (60, 32749), (73, 32674), (82, 32593),

Gene: Colucci_114 Start: 70302, Stop: 70652, Start Num: 19

Candidate Starts for Colucci_114:

(Start: 19 @70302 has 18 MA's), (59, 70518), (66, 70554), (67, 70569), (71, 70584), (78, 70632),

Gene: Conboy_99 Start: 63527, Stop: 63874, Start Num: 25

Candidate Starts for Conboy_99:

(10, 63458), (Start: 25 @63527 has 8 MA's), (47, 63659), (50, 63674), (53, 63695), (59, 63731), (68, 63785), (75, 63818),

Gene: Conboy_111 Start: 69702, Stop: 70040, Start Num: 19

Candidate Starts for Conboy_111:

(14, 69678), (Start: 19 @69702 has 18 MA's), (31, 69756), (38, 69774), (43, 69807), (54, 69888), (58, 69906), (66, 69954), (67, 69969), (74, 69999), (76, 70008),

Gene: DelvinSonDorr_51 Start: 32982, Stop: 32644, Start Num: 32

Candidate Starts for DelvinSonDorr_51:

(18, 33045), (23, 33030), (Start: 25 @33015 has 8 MA's), (Start: 30 @32988 has 1 MA's), (32, 32982), (55, 32844), (60, 32820), (73, 32745), (82, 32664),

Gene: DrYang_105 Start: 68663, Stop: 68992, Start Num: 19

Candidate Starts for DrYang_105:

(Start: 19 @68663 has 18 MA's), (Start: 20 @68669 has 1 MA's), (24, 68684), (26, 68690), (34, 68726), (38, 68738), (39, 68741), (43, 68771), (45, 68777), (48, 68816), (54, 68852), (60, 68885), (61, 68888), (62, 68891), (66, 68918), (67, 68933), (68, 68936), (76, 68972),

Gene: EdgarPoe_111 Start: 69782, Stop: 70120, Start Num: 19

Candidate Starts for EdgarPoe_111:

(14, 69758), (Start: 19 @69782 has 18 MA's), (31, 69836), (38, 69854), (43, 69887), (54, 69968), (58, 69986), (66, 70034), (67, 70049), (74, 70079), (76, 70088),

Gene: FeliMaine_53 Start: 29519, Stop: 29863, Start Num: 29

Candidate Starts for FeliMaine_53:

(2, 29129), (3, 29138), (4, 29192), (6, 29303), (Start: 29 @29519 has 1 MA's), (47, 29621), (51, 29639), (58, 29684), (60, 29699), (75, 29783), (76, 29786), (80, 29834),

Gene: Garak_55 Start: 33226, Stop: 32924, Start Num: 27

Candidate Starts for Garak_55:

(Start: 27 @33226 has 12 MA's), (49, 33100),

Gene: Gruunaga_53 Start: 33147, Stop: 32776, Start Num: 25

Candidate Starts for Gruunaga_53:

(18, 33177), (23, 33162), (Start: 25 @33147 has 8 MA's), (Start: 30 @33120 has 1 MA's), (32, 33114), (55, 32976), (60, 32952), (73, 32877), (82, 32796),

Gene: Helmet_55 Start: 33226, Stop: 32924, Start Num: 27

Candidate Starts for Helmet_55:

(Start: 27 @33226 has 12 MA's), (49, 33100),

Gene: Hexamo_53 Start: 32856, Stop: 32554, Start Num: 27

Candidate Starts for Hexamo_53:

(Start: 27 @32856 has 12 MA's), (49, 32730), (54, 32700),

Gene: HumptyDumpty_111 Start: 69584, Stop: 69922, Start Num: 19

Candidate Starts for HumptyDumpty_111:

(14, 69560), (Start: 19 @69584 has 18 MA's), (31, 69638), (38, 69656), (43, 69689), (54, 69770), (58, 69788), (66, 69836), (67, 69851), (74, 69881), (76, 69890),

Gene: Indra_56 Start: 33227, Stop: 32925, Start Num: 27

Candidate Starts for Indra_56:

(Start: 27 @33227 has 12 MA's), (49, 33101),

Gene: JaNo_110 Start: 69555, Stop: 69893, Start Num: 19

Candidate Starts for JaNo_110:

(14, 69531), (Start: 19 @69555 has 18 MA's), (31, 69609), (38, 69627), (43, 69660), (54, 69741), (58, 69759), (66, 69807), (67, 69822), (74, 69852), (76, 69861),

Gene: JayCookie_101 Start: 64271, Stop: 64618, Start Num: 25

Candidate Starts for JayCookie_101:

(Start: 25 @64271 has 8 MA's), (44, 64361), (46, 64394), (50, 64418), (53, 64439), (58, 64463), (59, 64475), (68, 64529), (75, 64562),

Gene: JayCookie_112 Start: 69968, Stop: 70306, Start Num: 19

Candidate Starts for JayCookie_112:

(14, 69944), (Start: 19 @69968 has 18 MA's), (31, 70022), (38, 70040), (43, 70073), (54, 70154), (58, 70172), (66, 70220), (67, 70235), (74, 70265), (76, 70274),

Gene: Jeffabunny_53 Start: 32883, Stop: 32581, Start Num: 27

Candidate Starts for Jeffabunny_53:

(Start: 27 @32883 has 12 MA's), (49, 32757), (54, 32727),

Gene: KBurrousTX_107 Start: 70618, Stop: 70968, Start Num: 20

Candidate Starts for KBurrousTX_107:

(11, 70573), (Start: 20 @70618 has 1 MA's), (26, 70639), (28, 70648), (38, 70687), (39, 70690), (54, 70801), (58, 70819), (64, 70858), (66, 70867), (67, 70882), (70, 70891), (74, 70912), (76, 70921),

Gene: Kabloowy_98 Start: 53150, Stop: 53521, Start Num: 19

Candidate Starts for Kabloowy_98:

(8, 53018), (9, 53090), (12, 53117), (16, 53138), (Start: 19 @53150 has 18 MA's), (22, 53162), (Start: 30 @53204 has 1 MA's), (35, 53219), (45, 53279), (52, 53345), (65, 53411),

Gene: Kabreeze_111 Start: 69641, Stop: 69979, Start Num: 19

Candidate Starts for Kabreeze_111:

(14, 69617), (Start: 19 @69641 has 18 MA's), (31, 69695), (38, 69713), (43, 69746), (54, 69827), (58, 69845), (66, 69893), (67, 69908), (74, 69938), (76, 69947),

Gene: Koko_54 Start: 33284, Stop: 32913, Start Num: 25

Candidate Starts for Koko_54:

(18, 33314), (23, 33299), (Start: 25 @33284 has 8 MA's), (Start: 30 @33257 has 1 MA's), (32, 33251), (55, 33113), (60, 33089), (73, 33014), (82, 32933),

Gene: Lilbunny_52 Start: 32857, Stop: 32555, Start Num: 27

Candidate Starts for Lilbunny_52:

(Start: 27 @32857 has 12 MA's), (49, 32731), (54, 32701),

Gene: Linus_112 Start: 70132, Stop: 70470, Start Num: 19

Candidate Starts for Linus_112:

(14, 70108), (Start: 19 @70132 has 18 MA's), (31, 70186), (38, 70204), (43, 70237), (54, 70318), (58, 70336), (66, 70384), (67, 70399), (74, 70429), (76, 70438),

Gene: LuckyBarnes_59 Start: 44469, Stop: 44158, Start Num: 30

Candidate Starts for LuckyBarnes_59:

(Start: 30 @44469 has 1 MA's), (37, 44448), (52, 44340), (57, 44316), (61, 44292), (63, 44283), (65, 44268), (72, 44223), (77, 44193),

Gene: Lymara_109 Start: 68369, Stop: 68707, Start Num: 19

Candidate Starts for Lymara_109:

(Start: 19 @68369 has 18 MA's), (31, 68423), (38, 68441), (54, 68555), (58, 68573), (66, 68621), (67, 68636), (74, 68666), (76, 68675),

Gene: MissAmericana_17 Start: 11528, Stop: 11133, Start Num: 15

Candidate Starts for MissAmericana_17:

(Start: 15 @11528 has 1 MA's), (41, 11408), (54, 11315), (59, 11285), (66, 11249), (69, 11228), (73, 11207),

Gene: Mordred_111 Start: 69680, Stop: 70018, Start Num: 19

Candidate Starts for Mordred_111:

(14, 69656), (Start: 19 @69680 has 18 MA's), (31, 69734), (38, 69752), (43, 69785), (54, 69866), (58, 69884), (66, 69932), (67, 69947), (74, 69977), (76, 69986),

Gene: MoyaNatalis_112 Start: 69414, Stop: 69752, Start Num: 19

Candidate Starts for MoyaNatalis_112:

(14, 69390), (Start: 19 @69414 has 18 MA's), (31, 69468), (38, 69486), (43, 69519), (54, 69600), (58, 69618), (66, 69666), (67, 69681), (74, 69711), (76, 69720),

Gene: MoyaNatalis_100 Start: 63807, Stop: 64064, Start Num: 44

Candidate Starts for MoyaNatalis_100:

(Start: 25 @63717 has 8 MA's), (44, 63807), (46, 63840), (50, 63864), (53, 63885), (58, 63909), (59, 63921), (68, 63975), (75, 64008),

Gene: Ollypop_93 Start: 58434, Stop: 58111, Start Num: 25

Candidate Starts for Ollypop_93:

(17, 58461), (Start: 25 @58434 has 8 MA's), (Start: 29 @58419 has 1 MA's), (42, 58359), (73, 58170),

Gene: PrincessTrina_112 Start: 69871, Stop: 70209, Start Num: 19

Candidate Starts for PrincessTrina_112:

(14, 69847), (Start: 19 @69871 has 18 MA's), (31, 69925), (38, 69943), (43, 69976), (54, 70057), (58, 70075), (66, 70123), (67, 70138), (74, 70168), (76, 70177),

Gene: Rockabye_171 Start: 104442, Stop: 104819, Start Num: 33

Candidate Starts for Rockabye_171:

(1, 104028), (13, 104349), (21, 104391), (28, 104418), (33, 104442), (46, 104535), (56, 104601), (66, 104661), (67, 104676), (75, 104712), (81, 104772),

Gene: Roksolana_54 Start: 33190, Stop: 32819, Start Num: 25

Candidate Starts for Roksolana_54:

(18, 33220), (23, 33205), (Start: 25 @33190 has 8 MA's), (Start: 30 @33163 has 1 MA's), (32, 33157), (55, 33019), (60, 32995), (73, 32920), (82, 32839),

Gene: RosiePosie_112 Start: 70002, Stop: 70340, Start Num: 19

Candidate Starts for RosiePosie_112:

(14, 69978), (Start: 19 @70002 has 18 MA's), (31, 70056), (38, 70074), (43, 70107), (54, 70188), (58, 70206), (66, 70254), (67, 70269), (74, 70299), (76, 70308),

Gene: Scavito_112 Start: 69729, Stop: 70067, Start Num: 19

Candidate Starts for Scavito_112:

(14, 69705), (Start: 19 @69729 has 18 MA's), (31, 69783), (38, 69801), (43, 69834), (54, 69915), (58, 69933), (66, 69981), (67, 69996), (74, 70026), (76, 70035),

Gene: Temprado_54 Start: 33226, Stop: 32924, Start Num: 27

Candidate Starts for Temprado_54:

(Start: 27 @33226 has 12 MA's), (49, 33100),

Gene: ToneTone_50 Start: 32786, Stop: 32484, Start Num: 27

Candidate Starts for ToneTone_50:

(Start: 27 @32786 has 12 MA's), (49, 32660),

Gene: Tophat_111 Start: 69697, Stop: 70035, Start Num: 19

Candidate Starts for Tophat_111:

(14, 69673), (Start: 19 @69697 has 18 MA's), (31, 69751), (38, 69769), (43, 69802), (54, 69883), (58, 69901), (66, 69949), (67, 69964), (74, 69994), (76, 70003),

Gene: Wiks_52 Start: 32857, Stop: 32555, Start Num: 27

Candidate Starts for Wiks_52:

(Start: 27 @32857 has 12 MA's), (49, 32731),

Gene: WunderPhul_53 Start: 32855, Stop: 32553, Start Num: 27

Candidate Starts for WunderPhul_53:

(Start: 27 @32855 has 12 MA's), (49, 32729),

Gene: Yokurt_53 Start: 32857, Stop: 32555, Start Num: 27

Candidate Starts for Yokurt_53:

(Start: 27 @32857 has 12 MA's), (49, 32731),

Gene: Zaka_53 Start: 32857, Stop: 32555, Start Num: 27

Candidate Starts for Zaka_53:

(Start: 27 @32857 has 12 MA's), (49, 32731),

Gene: Zulu_54 Start: 33235, Stop: 32933, Start Num: 27

Candidate Starts for Zulu_54:

(Start: 27 @33235 has 12 MA's), (49, 33109),