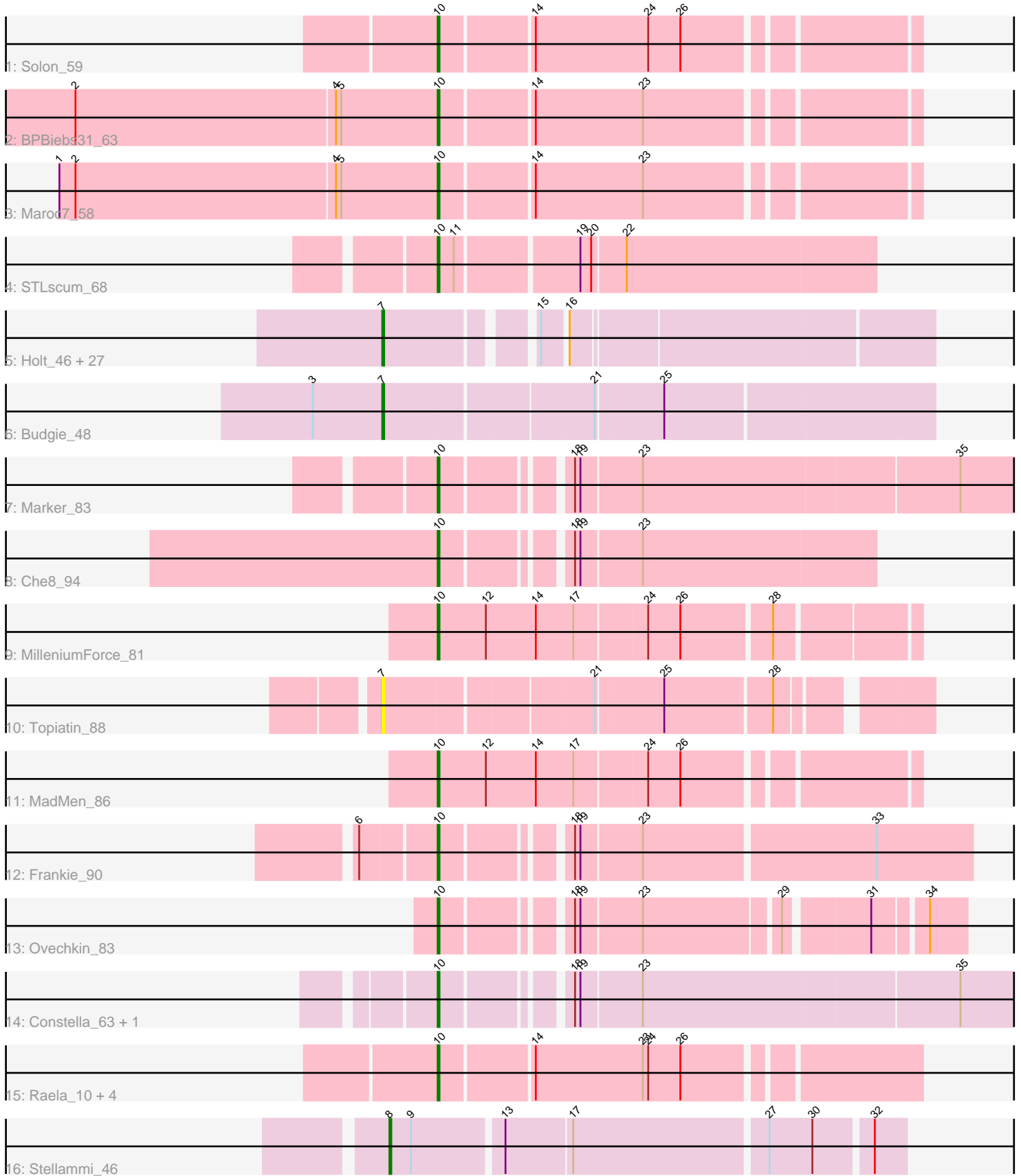


Pham 311719



Note: Tracks are now grouped by subcluster and scaled. Switching in subcluster is indicated by changes in track color. Track scale is now set by default to display the region 30 bp upstream of start 1 to 30 bp downstream of the last possible start. If this default region is judged to be packed too tightly with annotated starts, the track will be further scaled to only show that region of the ORF with annotated starts. This action will be indicated by adding "Zoomed" to the title. For starts, yellow indicates the location of called starts comprised solely of Glimmer/GeneMark auto-annotations, green indicates the location of called starts with at least 1 manual gene annotation.

Pham 311719 Report

This analysis was run 06/27/26 on database version 652.

Pham number 311719 has 48 members, 9 are drafts.

Phages represented in each track:

- Track 1 : Solon_59
- Track 2 : BPBiebs31_63
- Track 3 : Maroc7_58
- Track 4 : STLscum_68
- Track 5 : Holt_46, Becksu_44, MISSy_43, Palpatine_46, Phaux_45, Rimmer_44, Quallification_44, Liveloughbron_47, Buck_44, Murica_45, Policronamos_46, Petra64142_48, Kostya_44, Nala_44, xkcd_47, HufflyPuff_45, Terminus_45, TeamEdward_45, StormChicken_45, PhatBacter_46, FireRed_46, FairyPath_43, Greep_47, MPhalcon_43, Youngblood_45, BugsBunny_44, Nimrod_46, Misfit_45
- Track 6 : Budgie_48
- Track 7 : Marker_83
- Track 8 : Che8_94
- Track 9 : MilleniumForce_81
- Track 10 : Topiatin_88
- Track 11 : MadMen_86
- Track 12 : Frankie_90
- Track 13 : Ovechkin_83
- Track 14 : Constella_63, Xiaokay_67
- Track 15 : Raela_10, Tesla_10, Poise_10, Blackbeetle_10, SG4_82
- Track 16 : Stellammi_46

Summary of Final Annotations (See graph section above for start numbers):

The start number called the most often in the published annotations is 7, it was called in 22 of the 39 non-draft genes in the pham.

Genes that call this "Most Annotated" start:

- Becksu_44, Buck_44, Budgie_48, BugsBunny_44, FairyPath_43, FireRed_46, Greep_47, Holt_46, HufflyPuff_45, Kostya_44, Liveloughbron_47, MISSy_43, MPhalcon_43, Misfit_45, Murica_45, Nala_44, Nimrod_46, Palpatine_46, Petra64142_48, PhatBacter_46, Phaux_45, Policronamos_46, Quallification_44, Rimmer_44, StormChicken_45, TeamEdward_45, Terminus_45, Topiatin_88, Youngblood_45, xkcd_47,

Genes that have the "Most Annotated" start but do not call it:

-

Genes that do not have the "Most Annotated" start:

• BPBiebs31_63, Blackbeetle_10, Che8_94, Constella_63, Frankie_90, MadMen_86, Marker_83, Maroc7_58, MilleniumForce_81, Ovechkin_83, Poise_10, Raela_10, SG4_82, STLscum_68, Solon_59, Stellammi_46, Tesla_10, Xiaokay_67,

Summary by start number:

Start 7:

- Found in 30 of 48 (62.5%) of genes in pham
- Manual Annotations of this start: 22 of 39
- Called 100.0% of time when present
- Phage (with cluster) where this start called: Becksu_44 (E), Buck_44 (E), Budgie_48 (E), BugsBunny_44 (E), FairyPath_43 (E), FireRed_46 (E), Greep_47 (E), Holt_46 (E), HufflyPuff_45 (E), Kostya_44 (E), Liveloughbron_47 (E), MISSy_43 (E), MPhalcon_43 (E), Misfit_45 (E), Murica_45 (E), Nala_44 (E), Nimrod_46 (E), Palpatine_46 (E), Petra64142_48 (E), PhatBacter_46 (E), Phaux_45 (E), Policronamos_46 (E), Quallification_44 (E), Rimmer_44 (E), StormChicken_45 (E), TeamEdward_45 (E), Terminus_45 (E), Topiatin_88 (F1), Youngblood_45 (E), xkcd_47 (E),

Start 8:

- Found in 1 of 48 (2.1%) of genes in pham
- Manual Annotations of this start: 1 of 39
- Called 100.0% of time when present
- Phage (with cluster) where this start called: Stellammi_46 (UNK),

Start 10:

- Found in 17 of 48 (35.4%) of genes in pham
- Manual Annotations of this start: 16 of 39
- Called 100.0% of time when present
- Phage (with cluster) where this start called: BPBiebs31_63 (A1), Blackbeetle_10 (S), Che8_94 (F1), Constella_63 (J), Frankie_90 (F1), MadMen_86 (F1), Marker_83 (F1), Maroc7_58 (A1), MilleniumForce_81 (F1), Ovechkin_83 (F1), Poise_10 (S), Raela_10 (S), SG4_82 (F1), STLscum_68 (A1), Solon_59 (A1), Tesla_10 (S), Xiaokay_67 (J),

Summary by clusters:

There are 6 clusters represented in this pham: F1, E, J, A1, S, UNK,

Info for manual annotations of cluster A1:

- Start number 10 was manually annotated 4 times for cluster A1.

Info for manual annotations of cluster E:

- Start number 7 was manually annotated 22 times for cluster E.

Info for manual annotations of cluster F1:

- Start number 10 was manually annotated 7 times for cluster F1.

Info for manual annotations of cluster J:

- Start number 10 was manually annotated 1 time for cluster J.

Info for manual annotations of cluster S:

- Start number 10 was manually annotated 4 times for cluster S.

Info for manual annotations of cluster UNK:

- Start number 8 was manually annotated 1 time for cluster UNK.

Gene Information:

Gene: BPBiEbs31_63 Start: 41560, Stop: 41312, Start Num: 10

Candidate Starts for BPBiEbs31_63:

(2, 41761), (4, 41617), (5, 41614), (Start: 10 @41560 has 16 MA's), (14, 41512), (23, 41452),

Gene: Becksu_44 Start: 35976, Stop: 35701, Start Num: 7

Candidate Starts for Becksu_44:

(Start: 7 @35976 has 22 MA's), (15, 35904), (16, 35892),

Gene: Blackbeetle_10 Start: 3064, Stop: 3315, Start Num: 10

Candidate Starts for Blackbeetle_10:

(Start: 10 @3064 has 16 MA's), (14, 3112), (23, 3172), (24, 3175), (26, 3193),

Gene: Buck_44 Start: 36027, Stop: 35752, Start Num: 7

Candidate Starts for Buck_44:

(Start: 7 @36027 has 22 MA's), (15, 35955), (16, 35943),

Gene: Budgie_48 Start: 35683, Stop: 35390, Start Num: 7

Candidate Starts for Budgie_48:

(3, 35722), (Start: 7 @35683 has 22 MA's), (21, 35572), (25, 35536),

Gene: BugsBunny_44 Start: 35858, Stop: 35583, Start Num: 7

Candidate Starts for BugsBunny_44:

(Start: 7 @35858 has 22 MA's), (15, 35786), (16, 35774),

Gene: Che8_94 Start: 51968, Stop: 52192, Start Num: 10

Candidate Starts for Che8_94:

(Start: 10 @51968 has 16 MA's), (18, 52028), (19, 52031), (23, 52064),

Gene: Constella_63 Start: 45933, Stop: 45571, Start Num: 10

Candidate Starts for Constella_63:

(Start: 10 @45933 has 16 MA's), (18, 45873), (19, 45870), (23, 45837), (35, 45663),

Gene: FairyPath_43 Start: 35922, Stop: 35647, Start Num: 7

Candidate Starts for FairyPath_43:

(Start: 7 @35922 has 22 MA's), (15, 35850), (16, 35838),

Gene: FireRed_46 Start: 36297, Stop: 36022, Start Num: 7

Candidate Starts for FireRed_46:

(Start: 7 @36297 has 22 MA's), (15, 36225), (16, 36213),

Gene: Frankie_90 Start: 50801, Stop: 51076, Start Num: 10

Candidate Starts for Frankie_90:

(6, 50762), (Start: 10 @50801 has 16 MA's), (18, 50861), (19, 50864), (23, 50897), (33, 51023),

Gene: Greep_47 Start: 36589, Stop: 36314, Start Num: 7

Candidate Starts for Greep_47:

(Start: 7 @36589 has 22 MA's), (15, 36517), (16, 36505),

Gene: Holt_46 Start: 35597, Stop: 35322, Start Num: 7

Candidate Starts for Holt_46:

(Start: 7 @35597 has 22 MA's), (15, 35525), (16, 35513),

Gene: HufflyPuff_45 Start: 36253, Stop: 35978, Start Num: 7

Candidate Starts for HufflyPuff_45:

(Start: 7 @36253 has 22 MA's), (15, 36181), (16, 36169),

Gene: Kostya_44 Start: 35744, Stop: 35469, Start Num: 7

Candidate Starts for Kostya_44:

(Start: 7 @35744 has 22 MA's), (15, 35672), (16, 35660),

Gene: Liveloughbron_47 Start: 36383, Stop: 36108, Start Num: 7

Candidate Starts for Liveloughbron_47:

(Start: 7 @36383 has 22 MA's), (15, 36311), (16, 36299),

Gene: MISSy_43 Start: 35306, Stop: 35031, Start Num: 7

Candidate Starts for MISSy_43:

(Start: 7 @35306 has 22 MA's), (15, 35234), (16, 35222),

Gene: MPhalcon_43 Start: 35299, Stop: 35024, Start Num: 7

Candidate Starts for MPhalcon_43:

(Start: 7 @35299 has 22 MA's), (15, 35227), (16, 35215),

Gene: MadMen_86 Start: 49352, Stop: 49603, Start Num: 10

Candidate Starts for MadMen_86:

(Start: 10 @49352 has 16 MA's), (12, 49379), (14, 49406), (17, 49427), (24, 49466), (26, 49484),

Gene: Marker_83 Start: 48420, Stop: 48782, Start Num: 10

Candidate Starts for Marker_83:

(Start: 10 @48420 has 16 MA's), (18, 48480), (19, 48483), (23, 48516), (35, 48690),

Gene: Maroc7_58 Start: 41045, Stop: 40797, Start Num: 10

Candidate Starts for Maroc7_58:

(1, 41255), (2, 41246), (4, 41102), (5, 41099), (Start: 10 @41045 has 16 MA's), (14, 40997), (23, 40937),

Gene: MilleniumForce_81 Start: 49506, Stop: 49760, Start Num: 10

Candidate Starts for MilleniumForce_81:

(Start: 10 @49506 has 16 MA's), (12, 49533), (14, 49560), (17, 49581), (24, 49620), (26, 49638), (28, 49686),

Gene: Misfit_45 Start: 36318, Stop: 36043, Start Num: 7

Candidate Starts for Misfit_45:

(Start: 7 @36318 has 22 MA's), (15, 36246), (16, 36234),

Gene: Murica_45 Start: 36253, Stop: 35978, Start Num: 7

Candidate Starts for Murica_45:

(Start: 7 @36253 has 22 MA's), (15, 36181), (16, 36169),

Gene: Nala_44 Start: 35811, Stop: 35536, Start Num: 7

Candidate Starts for Nala_44:

(Start: 7 @35811 has 22 MA's), (15, 35739), (16, 35727),

Gene: Nimrod_46 Start: 36511, Stop: 36236, Start Num: 7

Candidate Starts for Nimrod_46:

(Start: 7 @36511 has 22 MA's), (15, 36439), (16, 36427),

Gene: Ovechkin_83 Start: 49406, Stop: 49663, Start Num: 10

Candidate Starts for Ovechkin_83:

(Start: 10 @49406 has 16 MA's), (18, 49466), (19, 49469), (23, 49502), (29, 49574), (31, 49616), (34, 49643),

Gene: Palpatine_46 Start: 36283, Stop: 36008, Start Num: 7

Candidate Starts for Palpatine_46:

(Start: 7 @36283 has 22 MA's), (15, 36211), (16, 36199),

Gene: Petra64142_48 Start: 36747, Stop: 36472, Start Num: 7

Candidate Starts for Petra64142_48:

(Start: 7 @36747 has 22 MA's), (15, 36675), (16, 36663),

Gene: PhatBacter_46 Start: 36297, Stop: 36022, Start Num: 7

Candidate Starts for PhatBacter_46:

(Start: 7 @36297 has 22 MA's), (15, 36225), (16, 36213),

Gene: Phaux_45 Start: 36295, Stop: 36020, Start Num: 7

Candidate Starts for Phaux_45:

(Start: 7 @36295 has 22 MA's), (15, 36223), (16, 36211),

Gene: Poise_10 Start: 3064, Stop: 3315, Start Num: 10

Candidate Starts for Poise_10:

(Start: 10 @3064 has 16 MA's), (14, 3112), (23, 3172), (24, 3175), (26, 3193),

Gene: Policronamos_46 Start: 36295, Stop: 36020, Start Num: 7

Candidate Starts for Policronamos_46:

(Start: 7 @36295 has 22 MA's), (15, 36223), (16, 36211),

Gene: Quallification_44 Start: 35933, Stop: 35658, Start Num: 7

Candidate Starts for Quallification_44:

(Start: 7 @35933 has 22 MA's), (15, 35861), (16, 35849),

Gene: Raela_10 Start: 3468, Stop: 3719, Start Num: 10

Candidate Starts for Raela_10:

(Start: 10 @3468 has 16 MA's), (14, 3516), (23, 3576), (24, 3579), (26, 3597),

Gene: Rimmer_44 Start: 35637, Stop: 35362, Start Num: 7

Candidate Starts for Rimmer_44:

(Start: 7 @35637 has 22 MA's), (15, 35565), (16, 35553),

Gene: SG4_82 Start: 49730, Stop: 49978, Start Num: 10

Candidate Starts for SG4_82:

(Start: 10 @49730 has 16 MA's), (14, 49778), (23, 49838), (24, 49841), (26, 49859),

Gene: STLscum_68 Start: 42547, Stop: 42314, Start Num: 10

Candidate Starts for STLscum_68:

(Start: 10 @42547 has 16 MA's), (11, 42538), (19, 42475), (20, 42469), (22, 42451),

Gene: Solon_59 Start: 40107, Stop: 39859, Start Num: 10

Candidate Starts for Solon_59:

(Start: 10 @40107 has 16 MA's), (14, 40059), (24, 39996), (26, 39978),

Gene: Stellammi_46 Start: 31914, Stop: 31642, Start Num: 8

Candidate Starts for Stellammi_46:

(Start: 8 @31914 has 1 MA's), (9, 31902), (13, 31854), (17, 31818), (27, 31713), (30, 31689), (32, 31659),

Gene: StormChicken_45 Start: 36245, Stop: 35970, Start Num: 7

Candidate Starts for StormChicken_45:

(Start: 7 @36245 has 22 MA's), (15, 36173), (16, 36161),

Gene: TeamEdward_45 Start: 36242, Stop: 35967, Start Num: 7

Candidate Starts for TeamEdward_45:

(Start: 7 @36242 has 22 MA's), (15, 36170), (16, 36158),

Gene: Terminus_45 Start: 36318, Stop: 36043, Start Num: 7

Candidate Starts for Terminus_45:

(Start: 7 @36318 has 22 MA's), (15, 36246), (16, 36234),

Gene: Tesla_10 Start: 3055, Stop: 3306, Start Num: 10

Candidate Starts for Tesla_10:

(Start: 10 @3055 has 16 MA's), (14, 3103), (23, 3163), (24, 3166), (26, 3184),

Gene: Topiatin_88 Start: 50765, Stop: 51043, Start Num: 7

Candidate Starts for Topiatin_88:

(Start: 7 @50765 has 22 MA's), (21, 50876), (25, 50912), (28, 50969),

Gene: Xiaokay_67 Start: 47794, Stop: 47432, Start Num: 10

Candidate Starts for Xiaokay_67:

(Start: 10 @47794 has 16 MA's), (18, 47734), (19, 47731), (23, 47698), (35, 47524),

Gene: Youngblood_45 Start: 36248, Stop: 35973, Start Num: 7

Candidate Starts for Youngblood_45:

(Start: 7 @36248 has 22 MA's), (15, 36176), (16, 36164),

Gene: xkcd_47 Start: 36438, Stop: 36163, Start Num: 7

Candidate Starts for xkcd_47:

(Start: 7 @36438 has 22 MA's), (15, 36366), (16, 36354),