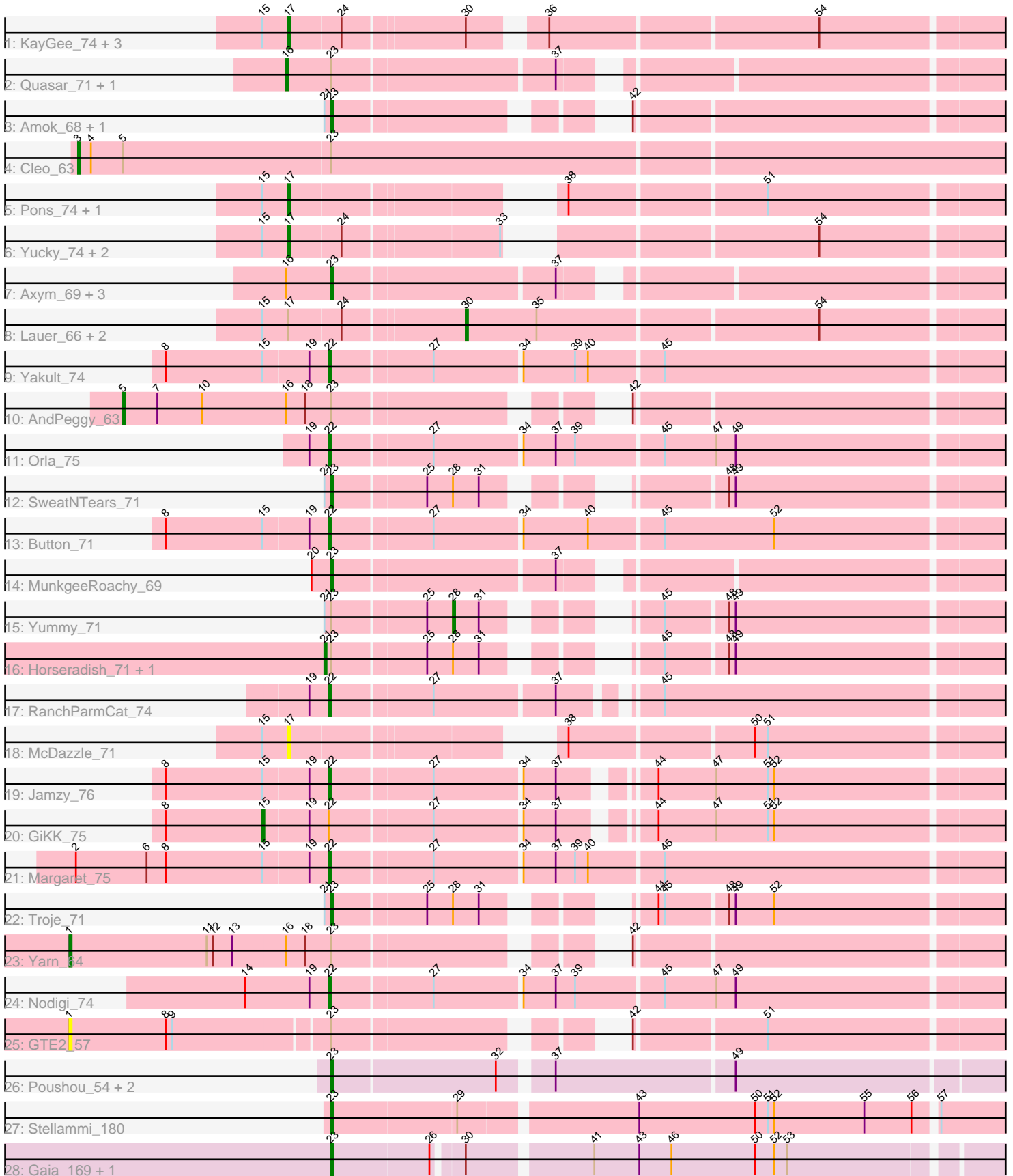


Pham 311744



Note: Tracks are now grouped by subcluster and scaled. Switching in subcluster is indicated by changes in track color. Track scale is now set by default to display the region 30 bp upstream of start 1 to 30 bp downstream of the last possible start. If this default region is judged to be packed too tightly with annotated starts, the track will be further scaled to only show that region of the ORF with annotated starts. This action will be indicated by adding "Zoomed" to the title. For starts, yellow indicates the location of called starts comprised solely of Glimmer/GeneMark auto-annotations, green indicates the location of called starts with at least 1 manual gene annotation.

Pham 311744 Report

This analysis was run 06/27/26 on database version 652.

Pham number 311744 has 45 members, 4 are drafts.

Phages represented in each track:

- Track 1 : KayGee_74, Mayweather_74, Elinal_76, Vine_74
- Track 2 : Quasar_71, Bubble_70
- Track 3 : Amok_68, Emalyn_67
- Track 4 : Cleo_63
- Track 5 : Pons_74, MAnor_73
- Track 6 : Yucky_74, SummitAcademy_71, PotPie_71
- Track 7 : Axym_69, Agatha_71, Socotra_72, Burnsey_70
- Track 8 : Lauer_66, Balloona_71, CocoaPuff_70
- Track 9 : Yakult_74
- Track 10 : AndPeggy_63
- Track 11 : Orla_75
- Track 12 : SweatNTears_71
- Track 13 : Button_71
- Track 14 : MunkgeeRoachy_69
- Track 15 : Yummy_71
- Track 16 : Horseradish_71, Buttrmlkdreams_71
- Track 17 : RanchParmCat_74
- Track 18 : McDazzle_71
- Track 19 : Jamzy_76
- Track 20 : GiKK_75
- Track 21 : Margaret_75
- Track 22 : Troje_71
- Track 23 : Yarn_64
- Track 24 : Nodigi_74
- Track 25 : GTE2_57
- Track 26 : Poushou_54, Arianna_54, TouchMeNot_54
- Track 27 : Stellammi_180
- Track 28 : Gaia_169, Nebkiss_165

Summary of Final Annotations (See graph section above for start numbers):

The start number called the most often in the published annotations is 23, it was called in 15 of the 41 non-draft genes in the pham.

Genes that call this "Most Annotated" start:

- Agatha_71, Amok_68, Arianna_54, Axym_69, Burnsey_70, Emalyn_67, Gaia_169, MunkgeeRoachy_69, Nebkiss_165, Poushou_54, Socotra_72, Stellammi_180, SweatNTears_71, TouchMeNot_54, Troje_71,

Genes that have the "Most Annotated" start but do not call it:

- AndPeggy_63, Bubble_70, Buttrmlkdreams_71, Cleo_63, GTE2_57, Horseradish_71, Quasar_71, Yarn_64, Yummy_71,

Genes that do not have the "Most Annotated" start:

- Balloona_71, Button_71, CocoaPuff_70, Elinal_76, GiKK_75, Jamzy_76, KayGee_74, Lauer_66, MAnor_73, Margaret_75, Mayweather_74, McDazzle_71, Nodigi_74, Orla_75, Pons_74, PotPie_71, RanchParmCat_74, SummitAcademy_71, Vine_74, Yakult_74, Yucky_74,

Summary by start number:

Start 1:

- Found in 2 of 45 (4.4%) of genes in pham
- Manual Annotations of this start: 1 of 41
- Called 100.0% of time when present
- Phage (with cluster) where this start called: GTE2_57 (CT), Yarn_64 (CT),

Start 3:

- Found in 1 of 45 (2.2%) of genes in pham
- Manual Annotations of this start: 1 of 41
- Called 100.0% of time when present
- Phage (with cluster) where this start called: Cleo_63 (CT),

Start 5:

- Found in 2 of 45 (4.4%) of genes in pham
- Manual Annotations of this start: 1 of 41
- Called 50.0% of time when present
- Phage (with cluster) where this start called: AndPeggy_63 (CT),

Start 15:

- Found in 18 of 45 (40.0%) of genes in pham
- Manual Annotations of this start: 1 of 41
- Called 5.6% of time when present
- Phage (with cluster) where this start called: GiKK_75 (CT),

Start 16:

- Found in 8 of 45 (17.8%) of genes in pham
- Manual Annotations of this start: 2 of 41
- Called 25.0% of time when present
- Phage (with cluster) where this start called: Bubble_70 (CT), Quasar_71 (CT),

Start 17:

- Found in 13 of 45 (28.9%) of genes in pham
- Manual Annotations of this start: 9 of 41
- Called 76.9% of time when present
- Phage (with cluster) where this start called: Elinal_76 (CT), KayGee_74 (CT), MAnor_73 (CT), Mayweather_74 (CT), McDazzle_71 (CT), Pons_74 (CT), PotPie_71

(CT), SummitAcademy_71 (CT), Vine_74 (CT), Yucky_74 (CT),

Start 21:

- Found in 7 of 45 (15.6%) of genes in pham
- Manual Annotations of this start: 2 of 41
- Called 28.6% of time when present
- Phage (with cluster) where this start called: Buttrmilkdreams_71 (CT), Horseradish_71 (CT),

Start 22:

- Found in 8 of 45 (17.8%) of genes in pham
- Manual Annotations of this start: 7 of 41
- Called 87.5% of time when present
- Phage (with cluster) where this start called: Button_71 (CT), Jamzy_76 (CT), Margaret_75 (CT), Nodigi_74 (CT), Orla_75 (CT), RanchParmCat_74 (CT), Yakult_74 (CT),

Start 23:

- Found in 24 of 45 (53.3%) of genes in pham
- Manual Annotations of this start: 15 of 41
- Called 62.5% of time when present
- Phage (with cluster) where this start called: Agatha_71 (CT), Amok_68 (CT), Arianna_54 (EO), Axym_69 (CT), Burnsey_70 (CT), Emalyn_67 (CT), Gaia_169 (X), MunkgeeRoachy_69 (CT), Nebkiss_165 (X), Poushou_54 (EO), Socotra_72 (CT), Stellammi_180 (UNK), SweatNTears_71 (CT), TouchMeNot_54 (EO), Troje_71 (CT),

Start 28:

- Found in 5 of 45 (11.1%) of genes in pham
- Manual Annotations of this start: 1 of 41
- Called 20.0% of time when present
- Phage (with cluster) where this start called: Yummy_71 (CT),

Start 30:

- Found in 9 of 45 (20.0%) of genes in pham
- Manual Annotations of this start: 1 of 41
- Called 33.3% of time when present
- Phage (with cluster) where this start called: Balloona_71 (CT), CocoaPuff_70 (CT), Lauer_66 (CT),

Summary by clusters:

There are 4 clusters represented in this pham: X, EO, UNK, CT,

Info for manual annotations of cluster CT:

- Start number 1 was manually annotated 1 time for cluster CT.
- Start number 3 was manually annotated 1 time for cluster CT.
- Start number 5 was manually annotated 1 time for cluster CT.
- Start number 15 was manually annotated 1 time for cluster CT.
- Start number 16 was manually annotated 2 times for cluster CT.
- Start number 17 was manually annotated 9 times for cluster CT.
- Start number 21 was manually annotated 2 times for cluster CT.
- Start number 22 was manually annotated 7 times for cluster CT.
- Start number 23 was manually annotated 9 times for cluster CT.

- Start number 28 was manually annotated 1 time for cluster CT.
- Start number 30 was manually annotated 1 time for cluster CT.

Info for manual annotations of cluster EO:

- Start number 23 was manually annotated 3 times for cluster EO.

Info for manual annotations of cluster UNK:

- Start number 23 was manually annotated 1 time for cluster UNK.

Info for manual annotations of cluster X:

- Start number 23 was manually annotated 2 times for cluster X.

Gene Information:

Gene: Agatha_71 Start: 46233, Stop: 46523, Start Num: 23

Candidate Starts for Agatha_71:

(Start: 16 @46212 has 2 MA's), (Start: 23 @46233 has 15 MA's), (37, 46332),

Gene: Amok_68 Start: 44983, Stop: 45258, Start Num: 23

Candidate Starts for Amok_68:

(Start: 21 @44980 has 2 MA's), (Start: 23 @44983 has 15 MA's), (42, 45088),

Gene: AndPeggy_63 Start: 44218, Stop: 44589, Start Num: 5

Candidate Starts for AndPeggy_63:

(Start: 5 @44218 has 1 MA's), (7, 44233), (10, 44254), (Start: 16 @44293 has 2 MA's), (18, 44302), (Start: 23 @44314 has 15 MA's), (42, 44419),

Gene: Arianna_54 Start: 40153, Stop: 40458, Start Num: 23

Candidate Starts for Arianna_54:

(Start: 23 @40153 has 15 MA's), (32, 40228), (37, 40249), (49, 40330),

Gene: Axym_69 Start: 46163, Stop: 46453, Start Num: 23

Candidate Starts for Axym_69:

(Start: 16 @46142 has 2 MA's), (Start: 23 @46163 has 15 MA's), (37, 46262),

Gene: Balloona_71 Start: 47653, Stop: 47916, Start Num: 30

Candidate Starts for Balloona_71:

(Start: 15 @47563 has 1 MA's), (Start: 17 @47575 has 9 MA's), (24, 47599), (Start: 30 @47653 has 1 MA's), (35, 47686), (54, 47812),

Gene: Bubble_70 Start: 46197, Stop: 46508, Start Num: 16

Candidate Starts for Bubble_70:

(Start: 16 @46197 has 2 MA's), (Start: 23 @46218 has 15 MA's), (37, 46317),

Gene: Burnsey_70 Start: 45875, Stop: 46165, Start Num: 23

Candidate Starts for Burnsey_70:

(Start: 16 @45854 has 2 MA's), (Start: 23 @45875 has 15 MA's), (37, 45974),

Gene: Button_71 Start: 45762, Stop: 46070, Start Num: 22

Candidate Starts for Button_71:

(8, 45687), (Start: 15 @45732 has 1 MA's), (19, 45753), (Start: 22 @45762 has 7 MA's), (27, 45807), (34, 45846), (40, 45876), (45, 45909), (52, 45960),

Gene: Buttrmlkdreams_71 Start: 45701, Stop: 45979, Start Num: 21

Candidate Starts for Buttrmlkdreams_71:

(Start: 21 @45701 has 2 MA's), (Start: 23 @45704 has 15 MA's), (25, 45746), (Start: 28 @45758 has 1 MA's), (31, 45770), (45, 45821), (48, 45848), (49, 45851),

Gene: Cleo_63 Start: 44342, Stop: 44791, Start Num: 3

Candidate Starts for Cleo_63:

(Start: 3 @44342 has 1 MA's), (4, 44348), (Start: 5 @44363 has 1 MA's), (Start: 23 @44459 has 15 MA's),

Gene: CocoaPuff_70 Start: 46933, Stop: 47196, Start Num: 30

Candidate Starts for CocoaPuff_70:

(Start: 15 @46843 has 1 MA's), (Start: 17 @46855 has 9 MA's), (24, 46879), (Start: 30 @46933 has 1 MA's), (35, 46966), (54, 47092),

Gene: Elinal_76 Start: 48006, Stop: 48332, Start Num: 17

Candidate Starts for Elinal_76:

(Start: 15 @47994 has 1 MA's), (Start: 17 @48006 has 9 MA's), (24, 48030), (Start: 30 @48084 has 1 MA's), (36, 48111), (54, 48231),

Gene: Emalyn_67 Start: 43687, Stop: 43962, Start Num: 23

Candidate Starts for Emalyn_67:

(Start: 21 @43684 has 2 MA's), (Start: 23 @43687 has 15 MA's), (42, 43792),

Gene: GTE2_57 Start: 45128, Stop: 45520, Start Num: 1

Candidate Starts for GTE2_57:

(Start: 1 @45128 has 1 MA's), (8, 45173), (9, 45176), (Start: 23 @45245 has 15 MA's), (42, 45350), (51, 45407),

Gene: Gaia_169 Start: 83930, Stop: 84226, Start Num: 23

Candidate Starts for Gaia_169:

(Start: 23 @83930 has 15 MA's), (26, 83975), (Start: 30 @83987 has 1 MA's), (41, 84041), (43, 84062), (46, 84077), (50, 84116), (52, 84125), (53, 84131),

Gene: GiKK_75 Start: 47115, Stop: 47441, Start Num: 15

Candidate Starts for GiKK_75:

(8, 47070), (Start: 15 @47115 has 1 MA's), (19, 47136), (Start: 22 @47145 has 7 MA's), (27, 47190), (34, 47229), (37, 47244), (44, 47277), (47, 47304), (51, 47328), (52, 47331),

Gene: Horseradish_71 Start: 45465, Stop: 45743, Start Num: 21

Candidate Starts for Horseradish_71:

(Start: 21 @45465 has 2 MA's), (Start: 23 @45468 has 15 MA's), (25, 45510), (Start: 28 @45522 has 1 MA's), (31, 45534), (45, 45585), (48, 45612), (49, 45615),

Gene: Jamzy_76 Start: 46875, Stop: 47171, Start Num: 22

Candidate Starts for Jamzy_76:

(8, 46800), (Start: 15 @46845 has 1 MA's), (19, 46866), (Start: 22 @46875 has 7 MA's), (27, 46920), (34, 46959), (37, 46974), (44, 47007), (47, 47034), (51, 47058), (52, 47061),

Gene: KayGee_74 Start: 48035, Stop: 48361, Start Num: 17

Candidate Starts for KayGee_74:

(Start: 15 @48023 has 1 MA's), (Start: 17 @48035 has 9 MA's), (24, 48059), (Start: 30 @48113 has 1 MA's), (36, 48140), (54, 48260),

Gene: Lauer_66 Start: 47856, Stop: 48119, Start Num: 30

Candidate Starts for Lauer_66:

(Start: 15 @47766 has 1 MA's), (Start: 17 @47778 has 9 MA's), (24, 47802), (Start: 30 @47856 has 1 MA's), (35, 47889), (54, 48015),

Gene: MAnor_73 Start: 48015, Stop: 48329, Start Num: 17

Candidate Starts for MAnor_73:

(Start: 15 @48003 has 1 MA's), (Start: 17 @48015 has 9 MA's), (38, 48114), (51, 48201),

Gene: Margaret_75 Start: 46622, Stop: 46930, Start Num: 22

Candidate Starts for Margaret_75:

(2, 46505), (6, 46538), (8, 46547), (Start: 15 @46592 has 1 MA's), (19, 46613), (Start: 22 @46622 has 7 MA's), (27, 46667), (34, 46706), (37, 46721), (39, 46730), (40, 46736), (45, 46769),

Gene: Mayweather_74 Start: 48037, Stop: 48378, Start Num: 17

Candidate Starts for Mayweather_74:

(Start: 15 @48025 has 1 MA's), (Start: 17 @48037 has 9 MA's), (24, 48061), (Start: 30 @48115 has 1 MA's), (36, 48154), (54, 48274),

Gene: McDazzle_71 Start: 47583, Stop: 47897, Start Num: 17

Candidate Starts for McDazzle_71:

(Start: 15 @47571 has 1 MA's), (Start: 17 @47583 has 9 MA's), (38, 47682), (50, 47763), (51, 47769),

Gene: MunkgeeRoachy_69 Start: 45602, Stop: 45892, Start Num: 23

Candidate Starts for MunkgeeRoachy_69:

(20, 45596), (Start: 23 @45602 has 15 MA's), (37, 45701),

Gene: Nebkiss_165 Start: 79421, Stop: 79717, Start Num: 23

Candidate Starts for Nebkiss_165:

(Start: 23 @79421 has 15 MA's), (26, 79466), (Start: 30 @79478 has 1 MA's), (41, 79532), (43, 79553), (46, 79568), (50, 79607), (52, 79616), (53, 79622),

Gene: Nodigi_74 Start: 46877, Stop: 47185, Start Num: 22

Candidate Starts for Nodigi_74:

(14, 46838), (19, 46868), (Start: 22 @46877 has 7 MA's), (27, 46922), (34, 46961), (37, 46976), (39, 46985), (45, 47024), (47, 47048), (49, 47057),

Gene: Orla_75 Start: 47026, Stop: 47334, Start Num: 22

Candidate Starts for Orla_75:

(19, 47017), (Start: 22 @47026 has 7 MA's), (27, 47071), (34, 47110), (37, 47125), (39, 47134), (45, 47173), (47, 47197), (49, 47206),

Gene: Pons_74 Start: 47664, Stop: 47978, Start Num: 17

Candidate Starts for Pons_74:

(Start: 15 @47652 has 1 MA's), (Start: 17 @47664 has 9 MA's), (38, 47763), (51, 47850),

Gene: PotPie_71 Start: 47864, Stop: 48178, Start Num: 17

Candidate Starts for PotPie_71:

(Start: 15 @47852 has 1 MA's), (Start: 17 @47864 has 9 MA's), (24, 47888), (33, 47957), (54, 48074),

Gene: Poushou_54 Start: 39982, Stop: 40287, Start Num: 23
Candidate Starts for Poushou_54:
(Start: 23 @39982 has 15 MA's), (32, 40057), (37, 40078), (49, 40159),

Gene: Quasar_71 Start: 46628, Stop: 46939, Start Num: 16
Candidate Starts for Quasar_71:
(Start: 16 @46628 has 2 MA's), (Start: 23 @46649 has 15 MA's), (37, 46748),

Gene: RanchParmCat_74 Start: 46910, Stop: 47206, Start Num: 22
Candidate Starts for RanchParmCat_74:
(19, 46901), (Start: 22 @46910 has 7 MA's), (27, 46955), (37, 47009), (45, 47045),

Gene: Socotra_72 Start: 46272, Stop: 46562, Start Num: 23
Candidate Starts for Socotra_72:
(Start: 16 @46251 has 2 MA's), (Start: 23 @46272 has 15 MA's), (37, 46371),

Gene: Stellammi_180 Start: 80295, Stop: 80594, Start Num: 23
Candidate Starts for Stellammi_180:
(Start: 23 @80295 has 15 MA's), (29, 80352), (43, 80430), (50, 80484), (51, 80490), (52, 80493), (55, 80535), (56, 80556), (57, 80565),

Gene: SummitAcademy_71 Start: 47007, Stop: 47324, Start Num: 17
Candidate Starts for SummitAcademy_71:
(Start: 15 @46995 has 1 MA's), (Start: 17 @47007 has 9 MA's), (24, 47031), (33, 47100), (54, 47217),

Gene: SweatNTears_71 Start: 45622, Stop: 45897, Start Num: 23
Candidate Starts for SweatNTears_71:
(Start: 21 @45619 has 2 MA's), (Start: 23 @45622 has 15 MA's), (25, 45664), (Start: 28 @45676 has 1 MA's), (31, 45688), (48, 45766), (49, 45769),

Gene: TouchMeNot_54 Start: 40155, Stop: 40460, Start Num: 23
Candidate Starts for TouchMeNot_54:
(Start: 23 @40155 has 15 MA's), (32, 40230), (37, 40251), (49, 40332),

Gene: Troje_71 Start: 45614, Stop: 45889, Start Num: 23
Candidate Starts for Troje_71:
(Start: 21 @45611 has 2 MA's), (Start: 23 @45614 has 15 MA's), (25, 45656), (Start: 28 @45668 has 1 MA's), (31, 45680), (44, 45728), (45, 45731), (48, 45758), (49, 45761), (52, 45779),

Gene: Vine_74 Start: 47747, Stop: 48088, Start Num: 17
Candidate Starts for Vine_74:
(Start: 15 @47735 has 1 MA's), (Start: 17 @47747 has 9 MA's), (24, 47771), (Start: 30 @47825 has 1 MA's), (36, 47864), (54, 47984),

Gene: Yakult_74 Start: 46869, Stop: 47177, Start Num: 22
Candidate Starts for Yakult_74:
(8, 46794), (Start: 15 @46839 has 1 MA's), (19, 46860), (Start: 22 @46869 has 7 MA's), (27, 46914), (34, 46953), (39, 46977), (40, 46983), (45, 47016),

Gene: Yarn_64 Start: 44204, Stop: 44599, Start Num: 1
Candidate Starts for Yarn_64:

(Start: 1 @44204 has 1 MA's), (11, 44267), (12, 44270), (13, 44279), (Start: 16 @44303 has 2 MA's), (18, 44312), (Start: 23 @44324 has 15 MA's), (42, 44429),

Gene: Yucky_74 Start: 47485, Stop: 47799, Start Num: 17

Candidate Starts for Yucky_74:

(Start: 15 @47473 has 1 MA's), (Start: 17 @47485 has 9 MA's), (24, 47509), (33, 47578), (54, 47695),

Gene: Yummy_71 Start: 45636, Stop: 45857, Start Num: 28

Candidate Starts for Yummy_71:

(Start: 21 @45579 has 2 MA's), (Start: 23 @45582 has 15 MA's), (25, 45624), (Start: 28 @45636 has 1 MA's), (31, 45648), (45, 45699), (48, 45726), (49, 45729),