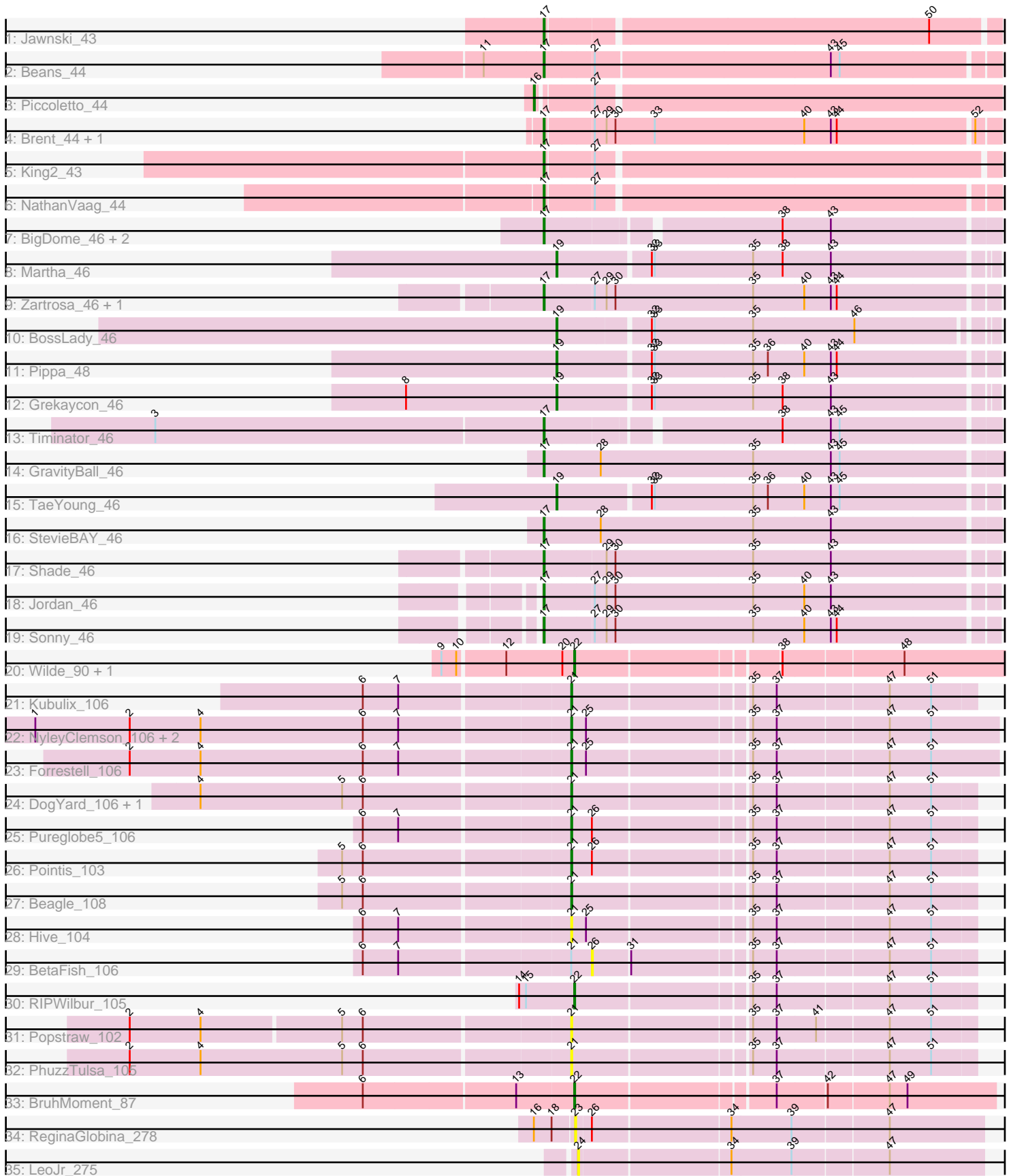


Pham 311760



Note: Tracks are now grouped by subcluster and scaled. Switching in subcluster is indicated by changes in track color. Track scale is now set by default to display the region 30 bp upstream of start 1 to 30 bp downstream of the last possible start. If this default region is judged to be packed too tightly with annotated starts, the track will be further scaled to only show that region of the ORF with annotated starts. This action will be indicated by adding "Zoomed" to the title. For starts, yellow indicates the location of called starts comprised solely of Glimmer/GeneMark auto-annotations, green indicates the location of called starts with at least 1 manual gene annotation.

Pham 311760 Report

This analysis was run 06/27/26 on database version 652.

Pham number 311760 has 43 members, 7 are drafts.

Phages represented in each track:

- Track 1 : Jawnski_43
- Track 2 : Beans_44
- Track 3 : Piccoletto_44
- Track 4 : Brent_44, Franzy_44
- Track 5 : King2_43
- Track 6 : NathanVaag_44
- Track 7 : BigDome_46, LeeroyJ_46, BarretLemon_46
- Track 8 : Martha_46
- Track 9 : Zartrosa_46, JKerns_46
- Track 10 : BossLady_46
- Track 11 : Pippa_48
- Track 12 : Grekaycon_46
- Track 13 : Timinator_46
- Track 14 : GravityBall_46
- Track 15 : TaeYoung_46
- Track 16 : StevieBAY_46
- Track 17 : Shade_46
- Track 18 : Jordan_46
- Track 19 : Sonny_46
- Track 20 : Wilde_90, Tank_88
- Track 21 : Kubulix_106
- Track 22 : NyleyClemson_106, MellowYellow_108, RazzB_106
- Track 23 : Forrestell_106
- Track 24 : DogYard_106, Odyssey395_106
- Track 25 : Pureglobe5_106
- Track 26 : Pointis_103
- Track 27 : Beagle_108
- Track 28 : Hive_104
- Track 29 : BetaFish_106
- Track 30 : RIPWilbur_105
- Track 31 : Popstraw_102
- Track 32 : PhuzzTulsa_105
- Track 33 : BruhMoment_87
- Track 34 : ReginaGlobina_278
- Track 35 : LeoJr_275

Summary of Final Annotations (See graph section above for start numbers):

The start number called the most often in the published annotations is 17, it was called in 16 of the 36 non-draft genes in the pham.

Genes that call this "Most Annotated" start:

- BarretLemon_46, Beans_44, BigDome_46, Brent_44, Franzy_44, GravityBall_46, JKerns_46, Jawnski_43, Jordan_46, King2_43, LeeroyJ_46, NathanVaag_44, Shade_46, Sonny_46, StevieBAY_46, Timinator_46, Zartrosa_46,

Genes that have the "Most Annotated" start but do not call it:

-

Genes that do not have the "Most Annotated" start:

- Beagle_108, BetaFish_106, BossLady_46, BruhMoment_87, DogYard_106, Forrestell_106, Grekaycon_46, Hive_104, Kubulix_106, LeoJr_275, Martha_46, MellowYellow_108, NyleyClemson_106, Odyssey395_106, PhuzzTulsa_105, Piccoletto_44, Pippa_48, Pointis_103, Popstraw_102, Pureglobe5_106, RIPWilbur_105, RazzB_106, ReginaGlobina_278, TaeYoung_46, Tank_88, Wilde_90,

Summary by start number:

Start 16:

- Found in 2 of 43 (4.7%) of genes in pham
- Manual Annotations of this start: 1 of 36
- Called 50.0% of time when present
- Phage (with cluster) where this start called: Piccoletto_44 (AO1),

Start 17:

- Found in 17 of 43 (39.5%) of genes in pham
- Manual Annotations of this start: 16 of 36
- Called 100.0% of time when present
- Phage (with cluster) where this start called: BarretLemon_46 (AO2), Beans_44 (AO1), BigDome_46 (AO2), Brent_44 (AO1), Franzy_44 (AO1), GravityBall_46 (AO2), JKerns_46 (AO2), Jawnski_43 (AO1), Jordan_46 (AO2), King2_43 (AO1), LeeroyJ_46 (AO2), NathanVaag_44 (AO1), Shade_46 (AO2), Sonny_46 (AO2), StevieBAY_46 (AO2), Timinator_46 (AO2), Zartrosa_46 (AO2),

Start 19:

- Found in 5 of 43 (11.6%) of genes in pham
- Manual Annotations of this start: 5 of 36
- Called 100.0% of time when present
- Phage (with cluster) where this start called: BossLady_46 (AO2), Grekaycon_46 (AO2), Martha_46 (AO2), Pippa_48 (AO2), TaeYoung_46 (AO2),

Start 21:

- Found in 14 of 43 (32.6%) of genes in pham
- Manual Annotations of this start: 10 of 36
- Called 92.9% of time when present
- Phage (with cluster) where this start called: Beagle_108 (AP2), DogYard_106 (AP2), Forrestell_106 (AP2), Hive_104 (AP2), Kubulix_106 (AP2), MellowYellow_108 (AP2),

NyleyClemson_106 (AP2), Odyssey395_106 (AP2), PhuzzTulsa_105 (AP2), Pointis_103 (AP2), Popstraw_102 (AP2), Pureglobe5_106 (AP2), RazzB_106 (AP2),

Start 22:

- Found in 4 of 43 (9.3%) of genes in pham
- Manual Annotations of this start: 4 of 36
- Called 100.0% of time when present
- Phage (with cluster) where this start called: BruhMoment_87 (AP3), RIPWilbur_105 (AP2), Tank_88 (AP1), Wilde_90 (AP1),

Start 23:

- Found in 1 of 43 (2.3%) of genes in pham
- No Manual Annotations of this start.
- Called 100.0% of time when present
- Phage (with cluster) where this start called: ReginaGlobina_278 (FC),

Start 24:

- Found in 1 of 43 (2.3%) of genes in pham
- No Manual Annotations of this start.
- Called 100.0% of time when present
- Phage (with cluster) where this start called: LeoJr_275 (FC),

Start 26:

- Found in 4 of 43 (9.3%) of genes in pham
- No Manual Annotations of this start.
- Called 25.0% of time when present
- Phage (with cluster) where this start called: BetaFish_106 (AP2),

Summary by clusters:

There are 6 clusters represented in this pham: AP2, AP3, AP1, FC, AO2, AO1,

Info for manual annotations of cluster AO1:

- Start number 16 was manually annotated 1 time for cluster AO1.
- Start number 17 was manually annotated 6 times for cluster AO1.

Info for manual annotations of cluster AO2:

- Start number 17 was manually annotated 10 times for cluster AO2.
- Start number 19 was manually annotated 5 times for cluster AO2.

Info for manual annotations of cluster AP1:

- Start number 22 was manually annotated 2 times for cluster AP1.

Info for manual annotations of cluster AP2:

- Start number 21 was manually annotated 10 times for cluster AP2.
- Start number 22 was manually annotated 1 time for cluster AP2.

Info for manual annotations of cluster AP3:

- Start number 22 was manually annotated 1 time for cluster AP3.

Gene Information:

Gene: BarretLemon_46 Start: 35756, Stop: 36196, Start Num: 17

Candidate Starts for BarretLemon_46:

(Start: 17 @35756 has 16 MA's), (38, 35975), (43, 36023),

Gene: Beagle_108 Start: 63524, Stop: 63138, Start Num: 21

Candidate Starts for Beagle_108:

(5, 63746), (6, 63725), (Start: 21 @63524 has 10 MA's), (35, 63356), (37, 63332), (47, 63224), (51, 63182),

Gene: Beans_44 Start: 35537, Stop: 35989, Start Num: 17

Candidate Starts for Beans_44:

(11, 35477), (Start: 17 @35537 has 16 MA's), (27, 35585), (43, 35819), (45, 35828),

Gene: BetaFish_106 Start: 63712, Stop: 63347, Start Num: 26

Candidate Starts for BetaFish_106:

(6, 63934), (7, 63898), (Start: 21 @63733 has 10 MA's), (26, 63712), (31, 63676), (35, 63565), (37, 63541), (47, 63433), (51, 63391),

Gene: BigDome_46 Start: 35780, Stop: 36220, Start Num: 17

Candidate Starts for BigDome_46:

(Start: 17 @35780 has 16 MA's), (38, 35999), (43, 36047),

Gene: BossLady_46 Start: 35752, Stop: 36180, Start Num: 19

Candidate Starts for BossLady_46:

(Start: 19 @35752 has 5 MA's), (32, 35839), (33, 35842), (35, 35941), (46, 36043),

Gene: Brent_44 Start: 35710, Stop: 36162, Start Num: 17

Candidate Starts for Brent_44:

(Start: 17 @35710 has 16 MA's), (27, 35755), (29, 35767), (30, 35776), (33, 35815), (40, 35965), (43, 35992), (44, 35998), (52, 36130),

Gene: BruhMoment_87 Start: 56498, Stop: 56094, Start Num: 22

Candidate Starts for BruhMoment_87:

(6, 56705), (13, 56555), (Start: 22 @56498 has 4 MA's), (37, 56309), (42, 56261), (47, 56201), (49, 56183),

Gene: DogYard_106 Start: 63226, Stop: 62840, Start Num: 21

Candidate Starts for DogYard_106:

(4, 63592), (5, 63448), (6, 63427), (Start: 21 @63226 has 10 MA's), (35, 63058), (37, 63034), (47, 62926), (51, 62884),

Gene: Forrestell_106 Start: 62180, Stop: 61770, Start Num: 21

Candidate Starts for Forrestell_106:

(2, 62618), (4, 62546), (6, 62381), (7, 62345), (Start: 21 @62180 has 10 MA's), (25, 62165), (35, 62012), (37, 61988), (47, 61880), (51, 61838),

Gene: Franzy_44 Start: 35726, Stop: 36178, Start Num: 17

Candidate Starts for Franzy_44:

(Start: 17 @35726 has 16 MA's), (27, 35771), (29, 35783), (30, 35792), (33, 35831), (40, 35981), (43, 36008), (44, 36014), (52, 36146),

Gene: GravityBall_46 Start: 35828, Stop: 36292, Start Num: 17

Candidate Starts for GravityBall_46:

(Start: 17 @35828 has 16 MA's), (28, 35885), (35, 36038), (43, 36116), (45, 36125),

Gene: Grekaycon_46 Start: 35779, Stop: 36219, Start Num: 19

Candidate Starts for Grekaycon_46:

(8, 35626), (Start: 19 @35779 has 5 MA's), (32, 35869), (33, 35872), (35, 35971), (38, 36001), (43, 36049),

Gene: Hive_104 Start: 63208, Stop: 62822, Start Num: 21

Candidate Starts for Hive_104:

(6, 63409), (7, 63373), (Start: 21 @63208 has 10 MA's), (25, 63193), (35, 63040), (37, 63016), (47, 62908), (51, 62866),

Gene: JKerns_46 Start: 35903, Stop: 36364, Start Num: 17

Candidate Starts for JKerns_46:

(Start: 17 @35903 has 16 MA's), (27, 35951), (29, 35963), (30, 35972), (35, 36110), (40, 36161), (43, 36188), (44, 36194),

Gene: Jawnski_43 Start: 35252, Stop: 35698, Start Num: 17

Candidate Starts for Jawnski_43:

(Start: 17 @35252 has 16 MA's), (50, 35624),

Gene: Jordan_46 Start: 35793, Stop: 36251, Start Num: 17

Candidate Starts for Jordan_46:

(Start: 17 @35793 has 16 MA's), (27, 35841), (29, 35853), (30, 35862), (35, 36000), (40, 36051), (43, 36078),

Gene: King2_43 Start: 35563, Stop: 36009, Start Num: 17

Candidate Starts for King2_43:

(Start: 17 @35563 has 16 MA's), (27, 35608),

Gene: Kubulix_106 Start: 62899, Stop: 62513, Start Num: 21

Candidate Starts for Kubulix_106:

(6, 63100), (7, 63064), (Start: 21 @62899 has 10 MA's), (35, 62731), (37, 62707), (47, 62599), (51, 62557),

Gene: LeeroyJ_46 Start: 35785, Stop: 36225, Start Num: 17

Candidate Starts for LeeroyJ_46:

(Start: 17 @35785 has 16 MA's), (38, 36004), (43, 36052),

Gene: LeoJr_275 Start: 164578, Stop: 164973, Start Num: 24

Candidate Starts for LeoJr_275:

(24, 164578), (34, 164725), (39, 164785), (47, 164878),

Gene: Martha_46 Start: 35756, Stop: 36193, Start Num: 19

Candidate Starts for Martha_46:

(Start: 19 @35756 has 5 MA's), (32, 35846), (33, 35849), (35, 35948), (38, 35978), (43, 36026),

Gene: MellowYellow_108 Start: 63382, Stop: 62972, Start Num: 21

Candidate Starts for MellowYellow_108:

(1, 63916), (2, 63820), (4, 63748), (6, 63583), (7, 63547), (Start: 21 @63382 has 10 MA's), (25, 63367), (35, 63214), (37, 63190), (47, 63082), (51, 63040),

Gene: NathanVaag_44 Start: 35496, Stop: 35939, Start Num: 17

Candidate Starts for NathanVaag_44:

(Start: 17 @35496 has 16 MA's), (27, 35541),

Gene: NyleyClemson_106 Start: 63012, Stop: 62602, Start Num: 21

Candidate Starts for NyleyClemson_106:

(1, 63546), (2, 63450), (4, 63378), (6, 63213), (7, 63177), (Start: 21 @63012 has 10 MA's), (25, 62997), (35, 62844), (37, 62820), (47, 62712), (51, 62670),

Gene: Odyssey395_106 Start: 62916, Stop: 62530, Start Num: 21

Candidate Starts for Odyssey395_106:

(4, 63282), (5, 63138), (6, 63117), (Start: 21 @62916 has 10 MA's), (35, 62748), (37, 62724), (47, 62616), (51, 62574),

Gene: PhuzzTulsa_105 Start: 63364, Stop: 62978, Start Num: 21

Candidate Starts for PhuzzTulsa_105:

(2, 63802), (4, 63730), (5, 63586), (6, 63565), (Start: 21 @63364 has 10 MA's), (35, 63196), (37, 63172), (47, 63064), (51, 63022),

Gene: Piccoletto_44 Start: 35628, Stop: 36086, Start Num: 16

Candidate Starts for Piccoletto_44:

(Start: 16 @35628 has 1 MA's), (27, 35676),

Gene: Pippa_48 Start: 36175, Stop: 36618, Start Num: 19

Candidate Starts for Pippa_48:

(Start: 19 @36175 has 5 MA's), (32, 36265), (33, 36268), (35, 36367), (36, 36382), (40, 36418), (43, 36445), (44, 36451),

Gene: Pointis_103 Start: 62815, Stop: 62429, Start Num: 21

Candidate Starts for Pointis_103:

(5, 63037), (6, 63016), (Start: 21 @62815 has 10 MA's), (26, 62794), (35, 62647), (37, 62623), (47, 62515), (51, 62473),

Gene: Popstraw_102 Start: 62985, Stop: 62599, Start Num: 21

Candidate Starts for Popstraw_102:

(2, 63417), (4, 63345), (5, 63207), (6, 63186), (Start: 21 @62985 has 10 MA's), (35, 62817), (37, 62793), (41, 62754), (47, 62685), (51, 62643),

Gene: Pureglobe5_106 Start: 63474, Stop: 63088, Start Num: 21

Candidate Starts for Pureglobe5_106:

(6, 63675), (7, 63639), (Start: 21 @63474 has 10 MA's), (26, 63453), (35, 63306), (37, 63282), (47, 63174), (51, 63132),

Gene: RIPWilbur_105 Start: 62785, Stop: 62402, Start Num: 22

Candidate Starts for RIPWilbur_105:

(14, 62839), (15, 62833), (Start: 22 @62785 has 4 MA's), (35, 62620), (37, 62596), (47, 62488), (51, 62446),

Gene: RazzB_106 Start: 62588, Stop: 62178, Start Num: 21

Candidate Starts for RazzB_106:

(1, 63122), (2, 63026), (4, 62954), (6, 62789), (7, 62753), (Start: 21 @62588 has 10 MA's), (25, 62573), (35, 62420), (37, 62396), (47, 62288), (51, 62246),

Gene: ReginaGlobina_278 Start: 166016, Stop: 166414, Start Num: 23

Candidate Starts for ReginaGlobina_278:

(Start: 16 @165977 has 1 MA's), (18, 165995), (23, 166016), (26, 166031), (34, 166166), (39, 166226), (47, 166319),

Gene: Shade_46 Start: 35661, Stop: 36122, Start Num: 17

Candidate Starts for Shade_46:

(Start: 17 @35661 has 16 MA's), (29, 35721), (30, 35730), (35, 35868), (43, 35946),

Gene: Sonny_46 Start: 35802, Stop: 36263, Start Num: 17

Candidate Starts for Sonny_46:

(Start: 17 @35802 has 16 MA's), (27, 35850), (29, 35862), (30, 35871), (35, 36009), (40, 36060), (43, 36087), (44, 36093),

Gene: StevieBAY_46 Start: 35828, Stop: 36289, Start Num: 17

Candidate Starts for StevieBAY_46:

(Start: 17 @35828 has 16 MA's), (28, 35885), (35, 36038), (43, 36116),

Gene: TaeYoung_46 Start: 35708, Stop: 36148, Start Num: 19

Candidate Starts for TaeYoung_46:

(Start: 19 @35708 has 5 MA's), (32, 35798), (33, 35801), (35, 35900), (36, 35915), (40, 35951), (43, 35978), (45, 35987),

Gene: Tank_88 Start: 59965, Stop: 59528, Start Num: 22

Candidate Starts for Tank_88:

(9, 60094), (10, 60079), (12, 60034), (20, 59977), (Start: 22 @59965 has 4 MA's), (38, 59773), (48, 59656),

Gene: Timinator_46 Start: 35785, Stop: 36225, Start Num: 17

Candidate Starts for Timinator_46:

(3, 35395), (Start: 17 @35785 has 16 MA's), (38, 36004), (43, 36052), (45, 36061),

Gene: Wilde_90 Start: 60311, Stop: 59874, Start Num: 22

Candidate Starts for Wilde_90:

(9, 60440), (10, 60425), (12, 60380), (20, 60323), (Start: 22 @60311 has 4 MA's), (38, 60119), (48, 60002),

Gene: Zartrosa_46 Start: 35856, Stop: 36314, Start Num: 17

Candidate Starts for Zartrosa_46:

(Start: 17 @35856 has 16 MA's), (27, 35904), (29, 35916), (30, 35925), (35, 36063), (40, 36114), (43, 36141), (44, 36147),